

[MS-WWSP]: Workflow Web Service Protocol

Intellectual Property Rights Notice for Open Specifications Documentation

- **Technical Documentation.** Microsoft publishes Open Specifications documentation for protocols, file formats, languages, standards as well as overviews of the interaction among each of these technologies.
- **Copyrights.** This documentation is covered by Microsoft copyrights. Regardless of any other terms that are contained in the terms of use for the Microsoft website that hosts this documentation, you may make copies of it in order to develop implementations of the technologies described in the Open Specifications and may distribute portions of it in your implementations using these technologies or your documentation as necessary to properly document the implementation. You may also distribute in your implementation, with or without modification, any schema, IDL's, or code samples that are included in the documentation. This permission also applies to any documents that are referenced in the Open Specifications.
- **No Trade Secrets.** Microsoft does not claim any trade secret rights in this documentation.
- **Patents.** Microsoft has patents that may cover your implementations of the technologies described in the Open Specifications. Neither this notice nor Microsoft's delivery of the documentation grants any licenses under those or any other Microsoft patents. However, a given Open Specification may be covered by Microsoft [Open Specification Promise](#) or the [Community Promise](#). If you would prefer a written license, or if the technologies described in the Open Specifications are not covered by the Open Specifications Promise or Community Promise, as applicable, patent licenses are available by contacting iplg@microsoft.com.
- **Trademarks.** The names of companies and products contained in this documentation may be covered by trademarks or similar intellectual property rights. This notice does not grant any licenses under those rights. For a list of Microsoft trademarks, visit www.microsoft.com/trademarks.
- **Fictitious Names.** The example companies, organizations, products, domain names, email addresses, logos, people, places, and events depicted in this documentation are fictitious. No association with any real company, organization, product, domain name, email address, logo, person, place, or event is intended or should be inferred.

Reservation of Rights. All other rights are reserved, and this notice does not grant any rights other than specifically described above, whether by implication, estoppel, or otherwise.

Tools. The Open Specifications do not require the use of Microsoft programming tools or programming environments in order for you to develop an implementation. If you have access to Microsoft programming tools and environments you are free to take advantage of them. Certain Open Specifications are intended for use in conjunction with publicly available standard specifications and network programming art, and assumes that the reader either is familiar with the aforementioned material or has immediate access to it.

Revision Summary

Date	Revision History	Revision Class	Comments
04/04/2008	0.1		Initial Availability
06/27/2008	1.0	Major	Revised and edited the technical content
10/06/2008	1.01	Editorial	Revised and edited the technical content
12/12/2008	1.02	Editorial	Revised and edited the technical content
07/13/2009	1.03	Major	Revised and edited the technical content
08/28/2009	1.04	Editorial	Revised and edited the technical content
11/06/2009	1.05	Editorial	Revised and edited the technical content
02/19/2010	2.0	Major	Updated and revised the technical content
03/31/2010	2.01	Editorial	Revised and edited the technical content
04/30/2010	2.02	Minor	Updated the technical content
06/07/2010	2.03	Editorial	Revised and edited the technical content
06/29/2010	2.04	Editorial	Changed language and formatting in the technical content.
07/23/2010	2.04	No change	No changes to the meaning, language, or formatting of the technical content.
09/27/2010	2.04	No change	No changes to the meaning, language, or formatting of the technical content.
11/15/2010	2.04	No change	No changes to the meaning, language, or formatting of the technical content.
12/17/2010	2.04	No change	No changes to the meaning, language, or formatting of the technical content.
03/18/2011	2.04	No change	No changes to the meaning, language, or formatting of the technical content.
06/10/2011	2.04	No change	No changes to the meaning, language, or formatting of the technical content.
01/20/2012	3.0	Major	Significantly changed the technical content.
04/11/2012	3.0	No change	No changes to the meaning, language, or formatting of the technical content.
07/16/2012	3.1	Minor	Clarified the meaning of the technical content.
09/12/2012	3.1	No change	No changes to the meaning, language, or formatting of the technical content.

Date	Revision History	Revision Class	Comments
10/08/2012	3.2	Minor	Clarified the meaning of the technical content.
02/11/2013	4.0	Major	Significantly changed the technical content.
07/30/2013	4.0	No change	No changes to the meaning, language, or formatting of the technical content.
11/18/2013	4.0	No change	No changes to the meaning, language, or formatting of the technical content.
02/10/2014	4.0	No change	No changes to the meaning, language, or formatting of the technical content.
04/30/2014	4.0	No change	No changes to the meaning, language, or formatting of the technical content.
07/31/2014	4.1	Minor	Clarified the meaning of the technical content.

Table of Contents

1 Introduction	7
1.1 Glossary	7
1.2 References	8
1.2.1 Normative References	8
1.2.2 Informative References	8
1.3 Overview	9
1.4 Relationship to Other Protocols	9
1.5 Prerequisites/Preconditions	9
1.6 Applicability Statement	10
1.7 Versioning and Capability Negotiation	10
1.8 Vendor-Extensible Fields	10
1.9 Standards Assignments	10
2 Messages	11
2.1 Transport	11
2.2 Common Message Syntax	11
2.2.1 Namespaces	11
2.2.2 Messages	12
2.2.3 Elements	12
2.2.3.1 TemplateData	12
2.2.3.2 ToDoData	14
2.2.4 Complex Types	15
2.2.5 Simple Types	15
2.2.6 Attributes	15
2.2.7 Groups	15
2.2.8 Attribute Groups	15
3 Protocol Details	16
3.1 WorkflowSoap Server Details	16
3.1.1 Abstract Data Model	16
3.1.2 Timers	16
3.1.3 Initialization	16
3.1.4 Message Processing Events and Sequencing Rules	16
3.1.4.1 AlterToDo	17
3.1.4.1.1 Messages	17
3.1.4.1.1.1 AlterToDoSoapIn	17
3.1.4.1.1.2 AlterToDoSoapOut	17
3.1.4.1.2 Elements	17
3.1.4.1.2.1 AlterToDo	18
3.1.4.1.2.2 AlterToDoResponse	18
3.1.4.2 ClaimReleaseTask	19
3.1.4.2.1 Messages	19
3.1.4.2.1.1 ClaimReleaseTaskSoapIn	19
3.1.4.2.1.2 ClaimReleaseTaskSoapOut	19
3.1.4.2.2 Elements	19
3.1.4.2.2.1 ClaimReleaseTask	20
3.1.4.2.2.2 ClaimReleaseTaskResponse	20
3.1.4.3 GetTemplatesForItem	21
3.1.4.3.1 Messages	21
3.1.4.3.1.1 GetTemplatesForItemSoapIn	21

3.1.4.3.1.2	GetTemplatesForItemSoapOut	22
3.1.4.3.2	Elements.....	22
3.1.4.3.2.1	GetTemplatesForItem	22
3.1.4.3.2.2	GetTemplatesForItemResponse	22
3.1.4.4	GetTodosForItem	23
3.1.4.4.1	Messages	23
3.1.4.4.1.1	GetTodosForItemSoapIn	23
3.1.4.4.1.2	GetTodosForItemSoapOut	23
3.1.4.4.2	Elements.....	23
3.1.4.4.2.1	GetTodosForItem	24
3.1.4.4.2.2	GetTodosForItemResponse	24
3.1.4.5	GetWorkflowDataForItem	24
3.1.4.5.1	Messages	24
3.1.4.5.1.1	GetWorkflowDataForItemSoapIn	25
3.1.4.5.1.2	GetWorkflowDataForItemSoapOut	25
3.1.4.5.2	Elements.....	25
3.1.4.5.2.1	GetWorkflowDataForItem	25
3.1.4.5.2.2	GetWorkflowDataForItemResponse	25
3.1.4.6	GetWorkflowTaskData	30
3.1.4.6.1	Messages	30
3.1.4.6.1.1	GetWorkflowTaskDataSoapIn	31
3.1.4.6.1.2	GetWorkflowTaskDataSoapOut	31
3.1.4.6.2	Elements.....	31
3.1.4.6.2.1	GetWorkflowTaskData	31
3.1.4.6.2.2	GetWorkflowTaskDataResponse.....	32
3.1.4.7	StartWorkflow	32
3.1.4.7.1	Messages	32
3.1.4.7.1.1	StartWorkflowSoapIn	33
3.1.4.7.1.2	StartWorkflowSoapOut	33
3.1.4.7.2	Elements.....	33
3.1.4.7.2.1	StartWorkflow	33
3.1.4.7.2.2	StartWorkflowResponse.....	34
3.1.5	Timer Events	34
3.1.6	Other Local Events	34
4	Protocol Examples.....	35
4.1	Create a Workflow Instance	35
4.1.1	Retrieve Available Workflow Associations	35
4.1.2	Start a Workflow from a Known Workflow Association	38
4.2	Update a Workflow Task	39
4.2.1	Retrieve All Workflow Data on a Document	40
4.2.2	Alter a Workflow Task	45
4.3	Related Files	46
4.3.1	ToDoData.Xml	46
4.3.2	TemplateData.WorkflowTemplates.WorkflowTemplate.AssociationData	46
4.3.3	TemplateData.WorkflowTemplates.WorkflowTemplate.Metadata	50
4.3.4	StartWorkflow.workflowParameters	52
4.3.5	AlterToDo.taskData	58
5	Security.....	65
5.1	Security Considerations for Implementers.....	65
5.2	Index of Security Parameters	65

6	Appendix A: Full WSDL	66
7	Appendix B: Product Behavior	79
8	Change Tracking.....	80
9	Index	82

1 Introduction

The Workflow Web Service Protocol specifies the communication sequences used to query, start, and manipulate workflows on a document.

Sections 1.8, 2, and 3 of this specification are normative and can contain the terms MAY, SHOULD, MUST, MUST NOT, and SHOULD NOT as defined in [\[RFC2119\]](#). Sections 1.5 and 1.9 are also normative but does not contain those terms. All other sections and examples in this specification are informative.

1.1 Glossary

The following terms are defined in [\[MS-GLOS\]](#):

- Coordinated Universal Time (UTC)**
- GUID**
- Hypertext Transfer Protocol (HTTP)**
- Hypertext Transfer Protocol over Secure Sockets Layer (HTTPS)**
- SOAP**
- SOAP action**
- SOAP body**
- SOAP fault**
- SOAP message**
- XML namespace**

The following terms are defined in [\[MS-OFCGLOS\]](#):

- absolute URL**
- claim**
- document**
- fully qualified URL**
- group**
- list**
- list identifier**
- list item identifier**
- site**
- Uniform Resource Locator (URL)**
- Web Services Description Language (WSDL)**
- workflow**
- workflow association**
- workflow identifier**
- workflow instance**
- workflow task**
- workflow template**
- XML schema**

The following terms are specific to this document:

MAY, SHOULD, MUST, SHOULD NOT, MUST NOT: These terms (in all caps) are used as described in [\[RFC2119\]](#). All statements of optional behavior use either MAY, SHOULD, or SHOULD NOT.

1.2 References

References to Microsoft Open Specification documents do not include a publishing year because links are to the latest version of the documents, which are updated frequently. References to other documents include a publishing year when one is available.

1.2.1 Normative References

We conduct frequent surveys of the normative references to assure their continued availability. If you have any issue with finding a normative reference, please contact dochelp@microsoft.com. We will assist you in finding the relevant information.

[MS-PRSTFR] Microsoft Corporation, "[ADO XML Persistence Format Protocol Specification](#)".

[RFC2119] Bradner, S., "Key words for use in RFCs to Indicate Requirement Levels", BCP 14, RFC 2119, March 1997, <http://www.rfc-editor.org/rfc/rfc2119.txt>

[RFC2616] Fielding, R., Gettys, J., Mogul, J., et al., "Hypertext Transfer Protocol -- HTTP/1.1", RFC 2616, June 1999, <http://www.ietf.org/rfc/rfc2616.txt>

[SOAP1.1] Box, D., Ehnebuske, D., Kakivaya, G., et al., "Simple Object Access Protocol (SOAP) 1.1", May 2000, <http://www.w3.org/TR/2000/NOTE-SOAP-20000508/>

[SOAP1.2/1] Gudgin, M., Hadley, M., Mendelsohn, N., Moreau, J., and Nielsen, H.F., "SOAP Version 1.2 Part 1: Messaging Framework", W3C Recommendation, June 2003, <http://www.w3.org/TR/2003/REC-soap12-part1-20030624>

[SOAP1.2/2] Gudgin, M., Hadley, M., Mendelsohn, N., Moreau, J., and Nielsen, H.F., "SOAP Version 1.2 Part 2: Adjuncts", W3C Recommendation, June 2003, <http://www.w3.org/TR/2003/REC-soap12-part2-20030624>

[WSDL] Christensen, E., Curbera, F., Meredith, G., and Weerawarana, S., "Web Services Description Language (WSDL) 1.1", W3C Note, March 2001, <http://www.w3.org/TR/2001/NOTE-wsdl-20010315>

[XML10] World Wide Web Consortium, "Extensible Markup Language (XML) 1.0 (Third Edition)", February 2004, <http://www.w3.org/TR/2004/REC-xml-20040204/>

[XMLNS] Bray, T., Hollander, D., Layman, A., et al., Eds., "Namespaces in XML 1.0 (Third Edition)", W3C Recommendation, December 2009, <http://www.w3.org/TR/2009/REC-xml-names-20091208/>

[XMLSCHEMA1] Thompson, H.S., Beech, D., Maloney, M., and Mendelsohn, N., Eds., "XML Schema Part 1: Structures", W3C Recommendation, May 2001, <http://www.w3.org/TR/2001/REC-xmlschema-1-20010502/>

[XMLSCHEMA2] Biron, P.V., and Malhotra, A., Eds., "XML Schema Part 2: Datatypes", W3C Recommendation, May 2001, <http://www.w3.org/TR/2001/REC-xmlschema-2-20010502/>

1.2.2 Informative References

[MS-GLOS] Microsoft Corporation, "[Windows Protocols Master Glossary](#)".

[MS-OFCGLOS] Microsoft Corporation, "[Microsoft Office Master Glossary](#)".

[MS-WSSFO3] Microsoft Corporation, "[Windows SharePoint Services \(WSS\): File Operations Database Communications Version 3 Protocol](#)".

[RFC2818] Rescorla, E., "HTTP Over TLS", RFC 2818, May 2000, <http://www.ietf.org/rfc/rfc2818.txt>

1.3 Overview

The purpose of this protocol is to enable protocol clients to query, start, and manipulate **workflows** associated with a **document**. The following information can be gathered by the protocol client when using this protocol:

- Existing **workflow instances**.
- **Workflow tasks** emitted by workflow instances.
- Available **workflow associations** for a specified **list (1)**.

In addition, protocol clients can create new workflow instances from a workflow association for a document or modify workflow tasks related to a document.

Each method in the protocol is a **SOAP action** that accepts a set of parameters as a SOAP request and returns a set of values as a SOAP response. The protocol client sends a request to the protocol server by a request **SOAP message**, and the protocol server sends return values to the protocol client by a response SOAP message.

1.4 Relationship to Other Protocols

This protocol uses the **SOAP** message protocol for formatting request and response messages, as described in [\[SOAP1.1\]](#), [\[SOAP1.2/1\]](#) and [\[SOAP1.2/2\]](#). It transmits those messages by using **HTTP**, as described in [\[RFC2616\]](#), or **Hypertext Transfer Protocol over Secure Sockets Layer (HTTPS)**, as described in [\[RFC2818\]](#).

The following diagram shows the underlying messaging and transport stack used by the protocol.

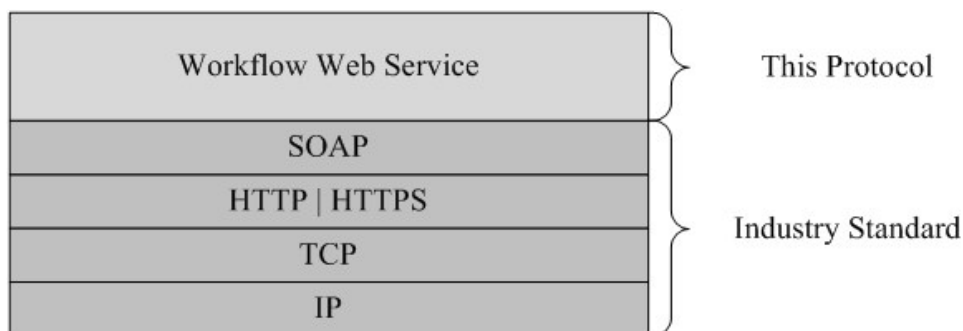


Figure 1: This protocol in relation to other protocols

1.5 Prerequisites/Preconditions

The protocol client is required to have a **URL** for the protocol server with which it wants to communicate, which is usually provided by the user as prompted in the client user interface. If required by the protocol server, the protocol client authenticates by using the underlying HTTP mechanisms, as described in [\[RFC2616\]](#) section 14.8.<1>

The protocol client is also expected to have a valid document URL or list URL for use with this protocol.

1.6 Applicability Statement

This protocol is used to query information about, instantiate, or operate on workflows or workflow associations on a remote server.

1.7 Versioning and Capability Negotiation

This document covers versioning issues in the following areas:

- **Supported transports:** This protocol uses multiple transports with SOAP as described in section [2.1](#).
- **Localization:** This protocol includes text strings in various messages. Localization considerations for such strings are described in sections [2.2](#) and [3.1.4](#).

1.8 Vendor-Extensible Fields

The **AlterToDo** message contains a **TaskData** section that can be any set of XML nodes as described in section [3.1.4.1](#). These nodes can be used to alter the workflow task described by the message. This is described in section [4.3.5](#).

The **StartWorkflow** message contains a **workflowParameters** section that can be any set of XML nodes. These nodes are passed to the workflow that was created by sending this message. The implementation could validate, modify, replace, or remove data in this element. The vendor of the **workflow template** and any implementation that runs during a workflow is responsible for handling the contents of this node. This is described in section [4.3.4](#).

The XML node from the common **ToDoData** element defined in [2.2.3.2](#) can be any valid **Rowset** XML, as described in [\[MS-PRSTFR\]](#) section 2.4, and can be modified within the constraints of that protocol specification. For example, the implementer could validate a URL in this node or add other attributes to an **rs:row** element that conforms to the specification. This is described in section [4.3.1](#).

The **WorkflowTemplates.WorkflowTemplate.AssociationData** node of the common **TemplateData** element, as defined in [2.2.3.1](#), can be any set of XML nodes. These nodes are passed from the workflow association to the protocol client. The implementer of the workflow template and any logic that creates this workflow association are responsible for the contents of this node. This is described in section [4.3.2](#).

The **WorkflowTemplates.WorkflowTemplate.Metadata** node of the common **TemplateData** element, as defined in [2.2.3.1](#) can contain up to five extensible nodes. These nodes are **WorkflowTemplates.WorkflowTemplate.Metadata.Instantiation_FormURN**, **WorkflowTemplates.WorkflowTemplate.Metadata.Instantiation_FormURI**, **WorkflowTemplates.WorkflowTemplate.Metadata.InitiationCategories**, **WorkflowTemplates.WorkflowTemplate.Metadata.AssignmentStagesName**, and **WorkflowTemplates.WorkflowTemplate.Metadata.SigClientSettings**. The vendor of the workflow template is responsible for the existence and contents of these nodes. Implementers of this protocol that send the **StartWorkflow** message can use the contents of these nodes to restrict, modify, or suggest contents of the **workflowParameters** node of the **StartWorkflow** message. This is described in section [4.3.3](#).

1.9 Standards Assignments

None.

2 Messages

2.1 Transport

Protocol servers MUST support SOAP over HTTP. Protocol servers SHOULD additionally support SOAP over HTTPS for securing communication with clients.

Protocol messages MUST be formatted as specified in [\[SOAP1.1\]](#) section 4, or [\[SOAP1.2/1\]](#) section 5. Protocol server faults MUST be returned either using HTTP Status Codes as specified in [\[RFC2616\]](#) section 10 or using **SOAP faults** as specified in [\[SOAP1.1\]](#) section 4.4, or [\[SOAP1.2/1\]](#) section 5.4, SOAP Fault.

2.2 Common Message Syntax

This section contains common definitions that are used by this protocol. The syntax of the definitions uses **XML schema**, as specified in [\[XMLSCHEMA1\]](#) and [\[XMLSCHEMA2\]](#), and **WSDL**, as specified in [\[WSDL\]](#).

2.2.1 Namespaces

This specification defines and references various **XML namespaces** using the mechanisms specified in [\[XMLNS\]](#). Although this specification associates a specific XML namespace prefix for each XML namespace that is used, the choice of any particular XML namespace prefix is implementation-specific and not significant for interoperability.

Prefix	Namespace URI	Reference
soap	http://schemas.xmlsoap.org/wsdl/soap/	[SOAP1.1]
tns	http://schemas.microsoft.com/sharepoint/soap/workflow/	
s1	http://microsoft.com/wsdl/types/	
s	http://www.w3.org/2001/XMLSchema	[XMLSCHEMA1] [XMLSCHEMA2]
soap12	http://schemas.xmlsoap.org/wsdl/soap12/	[SOAP1.2/1] [SOAP1.2/2]
(none)	http://schemas.microsoft.com/sharepoint/soap/workflow/	
wsdl	http://schemas.xmlsoap.org/wsdl/	[WSDL]
xsi	http://www.w3.org/2001/XMLSchema-instance	[XMLSCHEMA1] [XMLSCHEMA2]
xsd	http://www.w3.org/2001/XMLSchema	[XMLSCHEMA1] [XMLSCHEMA2]
dt	uuid:C2F41010-65B3-11d1-A29F-00AA00C14882	
rs	urn:schemas-microsoft-com:rowset	[MS-PRSTFR]
z	#RowsetSchema	[MS-PRSTFR]

2.2.2 Messages

This specification does not define any common WSDL message definitions.

2.2.3 Elements

The following table summarizes the set of common XML schema element definitions defined by this specification. XML schema element definitions that are specific to a particular operation are described with the operation.

Element	Description
TemplateData	Specifies a set of workflow associations.
ToDoData	Specifies a set of workflow tasks.

2.2.3.1 TemplateData

The **TemplateData** element specifies a set of workflow associations for a protocol client as follows:

```
<s:element name="TemplateData" >
  <s:complexType>
    <s:sequence>
      <s:element name="Web" minOccurs="1" maxOccurs="1" >
        <s:complexType>
          <s:attribute name="Title" type="s:string" use="required" />
          <s:attribute name="Url" type="s:string" use="required" />
        </s:complexType>
      </s:element>
      <s:element name="List" minOccurs="1" maxOccurs="1" >
        <s:complexType>
          <s:attribute name="Title" type="s:string" use="required" />
          <s:attribute name="Url" type="s:string" use="required" />
        </s:complexType>
      </s:element>
      <s:element name="WorkflowTemplates" >
        <s:complexType>
          <s:sequence>
            <s:element name="WorkflowTemplate" minOccurs="0" maxOccurs="unbounded">
              <s:complexType>
                <s:sequence>
                  <s:element name="WorkflowTemplateIdSet" minOccurs="1" maxOccurs="1">
                    <s:complexType>
                      <s:attribute name="TemplateId" type="s1:guid" use="required" />
                      <s:attribute name="BaseId" type="s1:guid" use="required" />
                    </s:complexType>
                  </s:element>
                  <s:element name="AssociationData" minOccurs="0" maxOccurs="1" >
                    <s:complexType>
                      <s:sequence>
                        <s:any/>
                      </s:sequence>
                    </s:complexType>
                  </s:element>
                  <s:element name="Metadata" minOccurs="1" maxOccurs="1">
                    <s:complexType>
```

```

    <s:all>
      <s:element name="InitiationCategories" minOccurs="0" maxOccurs="1">
        <s:complexType>
          <s:sequence>
            <s:any/>
          </s:sequence>
        </s:complexType>
      </s:element>
      <s:element name="Instantiation_FormURN" minOccurs="0"
maxOccurs="1">
        <s:complexType>
          <s:sequence>
            <s:any/>
          </s:sequence>
        </s:complexType>
      </s:element>
      <s:element name="Instantiation_FormURI" minOccurs="0"
maxOccurs="1">
        <s:complexType>
          <s:sequence>
            <s:any/>
          </s:sequence>
        </s:complexType>
      </s:element>
      <s:element name="AssignmentStagesName" minOccurs="0" maxOccurs="1">
        <s:complexType>
          <s:sequence>
            <s:any/>
          </s:sequence>
        </s:complexType>
      </s:element>
      <s:element name="SigClientSettings" minOccurs="0" maxOccurs="1">
        <s:complexType>
          <s:sequence>
            <s:any/>
          </s:sequence>
        </s:complexType>
      </s:element>
    </s:all>

    </s:complexType>
  </s:element>
</s:sequence>
<s:attribute name="Name" type="s:string" use="required" />
<s:attribute name="Description" type="s:string" use="required" />
<s:attribute name="InstantiationUrl" type="s:string" />
</s:complexType>
</s:element>
</s:sequence>
</s:complexType>
</s:element>
</s:sequence>
</s:complexType>
</s:element>

```

Web.Title: The title of the **site (2)** for this set of workflow associations.

Web.Url: A site URL for this set of workflow associations.

List.Title: The title of the list for this set of workflow associations.

List.Url: A list URL for this set of workflow associations.

WorkflowTemplates.WorkflowTemplate: A workflow association.

WorkflowTemplates.WorkflowTemplate.WorkflowTemplateIdSet.TemplateId: A **GUID** identifying this workflow association.

WorkflowTemplates.WorkflowTemplate.WorkflowTemplateIdSet.BaseId: A GUID identifying the workflow template upon which this workflow association is based.

WorkflowTemplates.WorkflowTemplate.Name: The name of this workflow association.

WorkflowTemplates.WorkflowTemplate.Description: The description of this workflow association.

WorkflowTemplates.WorkflowTemplate.InstantiationUrl: The **absolute URL** of a Web page that can create a new workflow instance of this workflow association.

WorkflowTemplates.WorkflowTemplate.AssociationData: Customized settings for this workflow association. This element **MUST** contain no attributes. This element **SHOULD** contain child elements.

WorkflowTemplates.WorkflowTemplate.Metadata.InitiationCategories: A string used to enable or disable creation of a new workflow instance. [<2>](#)

WorkflowTemplates.WorkflowTemplate.Metadata.Instantiation_FormURN: A string reference to a form displayed during creation of a new workflow instance.

WorkflowTemplates.WorkflowTemplate.Metadata.Instantiation_FormURI: A string reference to a URL for a form displayed during creation of a new workflow instance. This **SHOULD** be used as an alternate reference when **Instantiation_FormURN** is not supplied or as determined by the protocol server. [<3>](#)

WorkflowTemplates.WorkflowTemplate.Metadata.AssignmentStagesName: A string used for suggesting workflow tasks in the form referenced by either **Instantiation_FormURN** or **Instantiation_FormURI**.

WorkflowTemplates.WorkflowTemplate.Metadata.SigClientSettings: A string used for suggesting workflow tasks in the form referenced by either **Instantiation_FormURN** or **Instantiation_FormURI**.

2.2.3.2 ToDoData

The **ToDoData** element specifies a set of workflow tasks for a protocol client as follows:

```
<s:element name="ToDoData" >
  <s:complexType>
    <s:sequence>
      <s:element name="xml" type="rs:data" minOccurs="0" maxOccurs="1" />
    </s:sequence>
  </s:complexType>
</s:element>
```

xml: A set of **Rowsets** as specified in [\[MS-PRSTFR\]](#) section 2.4.

2.2.4 Complex Types

This specification does not define any common XML schema complex type definitions.

2.2.5 Simple Types

This specification does not define any common XML schema simple type definitions.

2.2.6 Attributes

This specification does not define any common XML schema attribute definitions.

2.2.7 Groups

This specification does not define any common XML schema group definitions.

2.2.8 Attribute Groups

This specification does not define any common XML schema attribute group definitions.

3 Protocol Details

The client side of this protocol is simply a pass-through. That is, no additional timers or other state is required on the client side of this protocol. Calls made by the higher-layer protocol or application are passed directly to the transport, and the results returned by the transport are passed directly back to the higher-layer protocol or application.

3.1 WorkflowSoap Server Details

The protocol server has a set of documents, installed workflow templates defined by vendors, and workflow associations.

The protocol client, given a document URL, can query the protocol server for information about a workflow association, workflow, workflow task, or any other data related to the document. The protocol client can then start new workflows with a known document URL and workflow association or modify known workflow tasks.

The protocol itself is stateless: messages can be sent in any order as long as the data required for such message is already known. The protocol server is expected to maintain any state or data related to any underlying objects, such as documents or workflows separate from this protocol.

3.1.1 Abstract Data Model

This section describes a conceptual model of possible data organization that an implementation maintains to participate in this protocol. The described organization is provided to facilitate the explanation of how the protocol behaves. This document does not mandate that implementations adhere to this model as long as their external behavior is consistent with that described in this document.

3.1.2 Timers

None.

3.1.3 Initialization

None.

3.1.4 Message Processing Events and Sequencing Rules

The following table summarizes the list of WSDL operations as defined by this specification:

Operation	Description
AlterToDo	Modifies a workflow task.
ClaimReleaseTask	Claims (1) or releases a claim (1) on a workflow task.
GetTemplatesForItem	Obtains a set of workflow associations that can be started on a new or existing document in a specified list.
GetToDosForItem	Obtains a set of workflow tasks for an existing document.
GetWorkflowDataForItem	Obtains an aggregated set of workflows, workflow associations, and workflow tasks for an existing document.

Operation	Description
GetWorkflowTaskData	Retrieves data about a single workflow task.
StartWorkflow	Instantiates a new workflow for an existing document and a workflow association.

3.1.4.1 AlterToDo

This operation is used to modify the values of Fields on a workflow task. It is defined as follows:

```
<wsdl:operation name="AlterToDo">
  <wsdl:input message="tns:AlterToDoSoapIn" />
  <wsdl:output message="tns:AlterToDoSoapOut" />
</wsdl:operation>
```

The protocol client sends an **AlterToDoSoapIn** request message, and the protocol server responds with an **AlterToDoSoapOut** response message.

3.1.4.1.1 Messages

The following table summarizes the set of WSDL message definitions that are specific to this operation.

Message	Description
AlterToDoSoapIn	The request to modify the values of Fields on a workflow task.
AlterToDoSoapOut	The response to a request to modify the values of Fields on a workflow task.

3.1.4.1.1.1 AlterToDoSoapIn

This is the message that requests the **AlterToDo** SOAP operation.

The SOAP action value of the message is defined as follows:

```
http://schemas.microsoft.com/sharepoint/soap/workflow/AlterToDo
```

The **SOAP body** contains an **AlterToDo** element.

3.1.4.1.1.2 AlterToDoSoapOut

This is the message that responds to the **AlterToDo** SOAP operation.

The SOAP body contains an **AlterToDoResponse** element.

3.1.4.1.2 Elements

The following table summarizes the XML schema element definitions that are specific to this operation.

Element	Description
AlterToDo	The request to modify the values of Fields on a workflow task.
AlterToDoResponse	Contains the response to a request to modify the values of Fields on a workflow task.

3.1.4.1.2.1 AlterToDo

This element is sent with **AlterToDoSoapIn** and specifies the workflow task to be modified, as well as the fields and values to be modified. It is defined as follows:

```
<s:element name="AlterToDo">
  <s:complexType>
    <s:sequence>
      <s:element name="item" type="s:string" minOccurs="1" maxOccurs="1" />
      <s:element name="todoId" type="s:int" minOccurs="1" maxOccurs="1" />
      <s:element name="todoListId" type="s1:guid" minOccurs="1" maxOccurs="1" />
      <s:element name="taskData" minOccurs="0" maxOccurs="1" >
        <s:complexType>
          <s:sequence>
            <s:any/>
          </s:sequence>
        </s:complexType>
      </s:element>
    </s:sequence>
  </s:complexType>
</s:element>
```

item: A URL to a document on this site (2). The server MUST ignore this value unless the site (2) of the SOAP request URL does not contain a list with the specified **todoListId**. If the SOAP request URL does not contain such a list, this field MUST be the site URL of the specified **todoListId**.

todoId: A **list item identifier** identifying a workflow task to be modified.

todoListId: A **list identifier** of the workflow task to be modified.

taskData: Contains a set of elements representing field names and values to be altered on a workflow task. **taskData** SHOULD NOT be null. If **taskData** is not present, then the server will return a SOAP fault with error string "Value cannot be null. Parameter name: taskData".

3.1.4.1.2.2 AlterToDoResponse

This element is sent with **AlterToDoSoapOut** and specifies whether the **AlterToDo** operation was successful. It is defined as follows:

```
<s:element name="AlterToDoResponse">
  <s:complexType>
    <s:sequence>
      <s:element name="AlterToDoResult" minOccurs="1" maxOccurs="1" >
        <s:complexType mixed="true">
          <s:sequence>
            <s:element name="fSuccess" type="s:int" minOccurs="1" maxOccurs="1" />
          </s:sequence>
        </s:complexType>
      </s:element>
    </s:sequence>
  </s:complexType>
</s:element>
```

```

    </s:sequence>
  </s:complexType>
</s:element>

```

AlterToDoResult.fSuccess: If the operation was successful, this MUST be set to 1. Otherwise, this MUST be set to zero. The success of this operation is determined by the protocol server, and MUST NOT substitute for a SOAP fault or HTTP Status Code in the case of a protocol server fault.

3.1.4.2 ClaimReleaseTask

This operation claims (1) or releases a claim (1) on workflow task. It is defined as follows:

```

<wsdl:operation name="ClaimReleaseTask">
  <wsdl:input message="tns:ClaimReleaseTaskSoapIn" />
  <wsdl:output message="tns:ClaimReleaseTaskSoapOut" />
</wsdl:operation>

```

The protocol client sends a **ClaimReleaseTaskSoapIn** request message, and the protocol server responds with a **ClaimReleaseTaskSoapOut** response message.

3.1.4.2.1 Messages

The following table summarizes the set of WSDL message definitions that are specific to this operation.

Message	Description
ClaimReleaseTaskSoapIn	The request to claim (1) or release a claim (1) on a workflow task.
ClaimReleaseTaskSoapOut	The response to a request to claim (1) or release a claim (1) on a workflow task.

3.1.4.2.1.1 ClaimReleaseTaskSoapIn

This message requests the **ClaimReleaseTask** SOAP operation.

The SOAP action value of the message is defined as follows:

```
http://schemas.microsoft.com/sharepoint/soap/workflow/ClaimReleaseTask
```

The SOAP body contains a **ClaimReleaseTask** element.

3.1.4.2.1.2 ClaimReleaseTaskSoapOut

This message responds to the **ClaimReleaseTask** SOAP operation.

The SOAP body contains a **ClaimReleaseTaskResponse** element.

3.1.4.2.2 Elements

The following table summarizes the XML schema element definitions that are specific to this operation.

Element	Description
ClaimReleaseTask	The request to claim (1) or release a claim (1) on a workflow task.
ClaimReleaseTaskResponse	Contains the response to a request to claim (1) or release a claim (1) on a workflow task.

3.1.4.2.2.1 ClaimReleaseTask

This element is sent with **ClaimReleaseTaskSoapIn** and specifies the workflow task on which to operate, and whether the operation is to claim or to release a claim. It is defined as follows:

```
<s:element name="ClaimReleaseTask">
  <s:complexType>
    <s:sequence>
      <s:element name="item" type="s:string" minOccurs="1" maxOccurs="1"/>
      <s:element name="taskId" type="s:int" minOccurs="1" maxOccurs="1"/>
      <s:element name="listId" type="s1:guid" minOccurs="1" maxOccurs="1"/>
      <s:element name="fClaim" type="s:boolean" minOccurs="1" maxOccurs="1"/>
    </s:sequence>
  </s:complexType>
</s:element>
```

item: The URL of a document on this site. The server **MUST** ignore this value unless the site of the SOAP request URL does not contain a list with the specified **listId**. If such a list is contained, this field **MUST** be set to the site URL of the specified **listId**.

taskId: The list item identifier for a specified workflow task that is to be claimed or released from a claim.

listId: The list identifier for a specified workflow task that is to be claimed or released from a claim.

fClaim: A Boolean that specifies whether the operation is a claim or a release. This **MUST** be set to TRUE if the operation is a claim and **MUST** be set to FALSE if the operation is to release a claim.

3.1.4.2.2.2 ClaimReleaseTaskResponse

This element is sent with **ClaimReleaseTaskSoapOut**. It describes the workflow task that was claimed or released after a **ClaimReleaseTask** operation. It is defined as follows:

```
<s:element name="ClaimReleaseTaskResponse">
  <s:complexType>
    <s:sequence>
      <s:element name="ClaimReleaseTaskResult" minOccurs="1">
        <s:complexType mixed="true">
          <s:sequence>
            <s:element name="TaskData" minOccurs="1" maxOccurs="1">
              <s:complexType>
                <s:sequence>
                  <s:attribute name="AssignedTo" type="s:string" use="required"/>
                  <s:attribute name="TaskGroup" type="s:string" use="required"/>
                  <s:attribute name="ItemId" type="s:int" use="required"/>
                  <s:attribute name="ListId" type="s1:guid" use="required"/>
                </s:sequence>
              </s:complexType>
            </s:element>
          </s:sequence>
        </s:complexType>
      </s:element>
    </s:sequence>
  </s:complexType>
</s:element>
```

```

        </s:sequence>
    </s:complexType>
</s:element>
</s:sequence>
</s:complexType>
</s:element>

```

ClaimReleaseTaskResult.TaskData.AssignedTo: The user to whom this workflow task is now assigned. This MUST be the user authenticated in section [1.5](#) if this operation is a claim and the protocol server requires authentication.

ClaimReleaseTaskResult.TaskData.TaskGroup: The **group (2)** to whom this workflow task is now assigned.

ClaimReleaseTaskResult.TaskData.ItemId: A list item identifier of a workflow task.

ClaimReleaseTaskResult.TaskData.ListId: The list identifier of the workflow task.

3.1.4.3 GetTemplatesForItem

This operation obtains a set of workflow associations for a new or existing document. It is defined as follows:

```

<wsdl:operation name="GetTemplatesForItem">
  <wsdl:input message="tns:GetTemplatesForItemSoapIn" />
  <wsdl:output message="tns:GetTemplatesForItemSoapOut" />
</wsdl:operation>

```

The protocol client sends a **GetTemplatesForItemSoapIn** request message, and the protocol server responds with a **GetTemplatesForItemSoapOut** response message.

3.1.4.3.1 Messages

The following table summarizes the set of WSDL message definitions that are specific to this operation.

Message	Description
GetTemplatesForItemSoapIn	The request for a set of workflow associations for a new or existing document.
GetTemplatesForItemSoapOut	The response to a request for a set of workflow associations for a new or existing document.

3.1.4.3.1.1 GetTemplatesForItemSoapIn

This message is sent to request the **GetTemplatesForItem** SOAP operation.

The SOAP action value of the message is defined as follows:

```
http://schemas.microsoft.com/sharepoint/soap/workflow/GetTemplatesForItem
```

The SOAP body contains a **GetTemplatesForItem** element.

3.1.4.3.1.2 GetTemplatesForItemSoapOut

This message is the response to the **GetTemplatesFromItem** SOAP operation.

The SOAP body contains a **GetTemplatesForItemResponse** element.

3.1.4.3.2 Elements

The following table summarizes the XML schema element definitions that are specific to this operation.

Element	Description
GetTemplatesForItem	The request for a set of workflow associations for a new or existing document.
GetTemplatesForItemResponse	Contains the response to a request for a set of workflow associations for a new or existing document.

3.1.4.3.2.1 GetTemplatesForItem

This element is sent with a **GetTemplatesForItemSoapIn** message. It is defined as follows:

```
<s:element name="GetTemplatesForItem">
  <s:complexType>
    <s:sequence>
      <s:element name="item" type="s:string" minOccurs="1"/>
    </s:sequence>
  </s:complexType>
</s:element>
```

item: A document URL or a list URL. If this parameter ends with a slash (/), it MUST be a valid list URL. Otherwise, it MUST be a valid document URL.

3.1.4.3.2.2 GetTemplatesForItemResponse

This element is sent with a **GetTemplatesForItemSoapOut** message. It is defined as follows:

```
<s:element name="GetTemplatesForItemResponse">
  <s:complexType>
    <s:sequence>
      <s:element name="GetTemplatesForItemResult" minOccurs="0">
        <s:complexType mixed="true">
          <s:sequence>
            <s:element name="TemplateData" ref="tns:TemplateData" minOccurs="1"
maxOccurs="1"/>
          </s:sequence>
        </s:complexType>
      </s:element>
    </s:sequence>
  </s:complexType>
</s:element>
```

GetTemplatesForItemResult: Contains a **TemplateData** element as specified in section [2.2.3.1](#) that specifies a set of workflow associations.

3.1.4.4 GetToDosForItem

This operation obtains a set of workflow tasks for a document. It is defined as follows:

```
<wsdl:operation name="GetToDosForItem">
  <wsdl:input message="tns:GetToDosForItemSoapIn" />
  <wsdl:output message="tns:GetToDosForItemSoapOut" />
</wsdl:operation>
```

The protocol client sends a **GetToDosForItemSoapIn** request message, and the protocol server responds with a **GetToDosForItemSoapOut** response message.

3.1.4.4.1 Messages

The following table summarizes the set of WSDL message definitions that are specific to this operation.

Message	Description
GetToDosForItemSoapIn	The request for a set of workflow tasks for a document.
GetToDosForItemSoapOut	The response to a request for a set of workflow tasks for a document.

3.1.4.4.1.1 GetToDosForItemSoapIn

This message requests the **GetToDosForItem** SOAP operation.

The SOAP action value of the message is defined as follows:

```
http://schemas.microsoft.com/sharepoint/soap/workflow/GetToDosForItem
```

The SOAP body contains a **GetToDosForItem** element.

3.1.4.4.1.2 GetToDosForItemSoapOut

This message is the response to the **GetToDosForItem** SOAP operation.

The SOAP body contains a **GetToDosForItemResponse** element.

3.1.4.4.2 Elements

The following table summarizes the XML schema element definitions that are specific to this operation.

Element	Description
GetToDosForItem	The request for a set of workflow tasks for a document.
GetToDosForItemResponse	Contains the response to a request for a set of workflow tasks for a document.

3.1.4.4.2.1 GetToDosForItem

This element is sent with a **GetToDosForItem** message.

```
<s:element name="GetToDosForItem">
  <s:complexType>
    <s:sequence>
      <s:element name="item" type="s:string" minOccurs="1" maxOccurs="1"/>
    </s:sequence>
  </s:complexType>
</s:element>
```

item: The URL of a document.

3.1.4.4.2.2 GetToDosForItemResponse

This element is the response to a **GetToDosForItem** message.

```
<s:element name="GetToDosForItemResponse">
  <s:complexType>
    <s:sequence>
      <s:element name="GetToDosForItemResult" minOccurs="0">
        <s:complexType mixed="true">
          <s:sequence>
            <s:element name="ToDoData" ref="s1:ToDoData" minOccurs="1" maxOccurs="1"/>
          </s:sequence>
        </s:complexType>
      </s:element>
    </s:sequence>
  </s:complexType>
</s:element>
```

GetToDosForItemResult: Contains a **ToDoData** element as specified in section [2.2.3.2](#) containing data about a set of workflow tasks.

3.1.4.5 GetWorkflowDataForItem

This operation queries a set of workflow associations, workflow tasks, and workflows for a document. This operation retrieves some of the same data that **GetToDosForItem** and **GetTemplatesForItem** retrieve, as well as additional data.

```
<wsdl:operation name="GetWorkflowDataForItem">
  <wsdl:input message="tns:GetWorkflowDataForItemSoapIn" />
  <wsdl:output message="tns:GetWorkflowDataForItemSoapOut" />
</wsdl:operation>
```

The protocol client sends a **GetWorkflowDataForItemSoapIn** request message, and the protocol server responds with a **GetWorkflowDataForItemSoapOut** response message.

3.1.4.5.1 Messages

The following table summarizes the set of WSDL message definitions that are specific to this operation.

Message	Description
GetWorkflowDataForItemSoapIn	The request to query a set of workflow associations, workflow tasks, and workflows for a document.
GetWorkflowDataForItemSoapOut	The response to a request to query a set of workflow associations, workflow tasks, and workflows for a document.

3.1.4.5.1.1 GetWorkflowDataForItemSoapIn

This message requests the **GetWorkflowDataForItem** SOAP operation.

The SOAP action value of the message is defined as follows:

```
http://schemas.microsoft.com/sharepoint/soap/workflow/GetWorkflowDataForItem
```

The SOAP body contains a **GetWorkflowDataForItem** element.

3.1.4.5.1.2 GetWorkflowDataForItemSoapOut

This message is the response to the **GetWorkflowDataForItem** SOAP operation.

The SOAP body contains a **GetWorkflowDataForItemResponse** element.

3.1.4.5.2 Elements

The following table summarizes the XML schema element definitions that are specific to this operation.

Element	Description
GetWorkflowDataForItem	The request to query a set of workflow associations, workflow tasks, and workflows for a document.
GetWorkflowDataForItemResponse	Contains the response to a request to query a set of workflow associations, workflow tasks, and workflows for a document.

3.1.4.5.2.1 GetWorkflowDataForItem

This element is sent with a **GetWorkflowDataForItem** message. It is defined as follows:

```
<s:element name="GetWorkflowDataForItem">
  <s:complexType>
    <s:sequence>
      <s:element name="item" type="s:string" minOccurs="1"/>
    </s:sequence>
  </s:complexType>
</s:element>
```

item: A document URL.

3.1.4.5.2.2 GetWorkflowDataForItemResponse

This element is the response to a **GetWorkflowDataForItem** message. It is defined as follows:

```

<s:element name="GetWorkflowDataForItemResponse">
  <s:complexType>
    <s:sequence>
      <s:element name="GetWorkflowDataForItemResult" minOccurs="1" maxOccurs="1">
        <s:complexType>
          <s:sequence>
            <s:element name="WorkflowData" minOccurs="1" maxOccurs="1">
              <s:complexType>
                <s:sequence>
                  <s:element name="ToDoData" ref="s1:ToDoData" minOccurs="1" maxOccurs="1" />
                  <s:element name="TemplateData" ref="tns:TemplateData" minOccurs="1"
maxOccurs="1" />
                  <s:element name="ActiveWorkflowsData" minOccurs="1" maxOccurs="1" >
                    <s:complexType>
                      <s:sequence>
                        <s:element name="Workflows" minOccurs="1" maxOccurs="1" >
                          <s:complexType>
                            <s:sequence>
                              <s:element name="Workflow" minOccurs="0" maxOccurs="unbounded">
                                <s:complexType>
                                  <s:attribute name="StatusPageUrl" type="s:string"
use="required"/>
                                  <s:attribute name="Id" type="s1:guid" use="required" />
                                  <s:attribute name="TemplateId" type="s1:guid"
use="required" />
                                  <s:attribute name="ListId" type="s1:guid" use="required"/>
                                  <s:attribute name="SiteId" type="s1:guid" use="required" />
                                  <s:attribute name="WebId" type="s1:guid" use="required"/>
                                  <s:attribute name="ItemId" type="s:int" use="required"/>
                                  <s:attribute name="ItemGUID" type="s1:guid"
use="required"/>
                                  <s:attribute name="TaskListId" type="s1:guid"
use="required"/>
                                  <s:attribute name="AdminTaskListId" type="s:string"
use="required"/>
                                  <s:attribute name="Author" type="s:int" use="required"/>
                                  <s:attribute name="Modified" type="s:string"
use="required"/>
                                  <s:attribute name="Created" type="s:string"
use="required"/>
                                  <s:attribute name="StatusVersion" type="s:int"
use="required"/>
                                  <s:attribute name="Status1" type="s:int" use="required"/>
                                  <s:attribute name="Status2" type="s:string"
use="required"/>
                                  <s:attribute name="Status3" type="s:string"
use="required"/>
                                  <s:attribute name="Status4" type="s:string"
use="required"/>
                                  <s:attribute name="Status5" type="s:string"
use="required"/>
                                  <s:attribute name="Status6" type="s:string"
use="required"/>
                                  <s:attribute name="Status7" type="s:string"
use="required"/>
                                  <s:attribute name="Status8" type="s:string"
use="required"/>
                                  <s:attribute name="Status9" type="s:string"
use="required"/>
                                  <s:attribute name="Status10" type="s:string"
use="required"/>
                                </s:complexType>
                              </s:element>
                            </s:sequence>
                          </s:complexType>
                        </s:element>
                      </s:sequence>
                    </s:complexType>
                  </s:element>
                </s:sequence>
              </s:complexType>
            </s:element>
          </s:sequence>
        </s:complexType>
      </s:element>
    </s:sequence>
  </s:complexType>
</s:element>

```

```

        use="required"/>
        use="required"/>
        use="required"/>
        use="required"/>
        use="required"/>
        use="required"/>
        use="required" />
        use="required" />
        use="required"/>
        use="required"/>
        use="required"/>
        use="required"/>
        use="required"/>
        use="required"/>
        <s:attribute name="TextStatus1" type="s:string"
        <s:attribute name="TextStatus2" type="s:string"
        <s:attribute name="TextStatus3" type="s:string"
        <s:attribute name="TextStatus4" type="s:string"
        <s:attribute name="TextStatus5" type="s:string"
        <s:attribute name="Modifications" type="s:string"
        <s:attribute name="ActivityDetails" type="s:string"
        <s:attribute name="CorrelationId" type=" s:string"
        <s:attribute name="InstanceData" type="s:string"
        <s:attribute name="InstanceDataSize" type="s:int"
        <s:attribute name="InternalState" type="s:int"
        <s:attribute name="ProcessingId" type="s:string"
        </s:complexType>
        </s:element>
        </s:sequence>
        </s:complexType>
        </s:element>
        </s:sequence>
        </s:complexType>
        </s:element>
        <s:element name="DefaultWorkflows" minOccurs="1" maxOccurs="1" >
        <s:complexType>
        <s:sequence>
        <s:element name="DefaultWorkflow" minOccurs="0" maxOccurs="1" >
        <s:complexType>
        <s:attribute name="Event" type="s:string" use="required"/>
        <s:attribute name="TemplateId" type="s1:guid" use="required"/>
        </s:complexType>
        </s:element>
        </s:sequence>
        </s:complexType>
        </s:element>
        </s:sequence>
        </s:complexType>
        </s:element>
        </s:sequence>
        </s:complexType>
        </s:element>
        </s:sequence>
        </s:complexType>
        </s:element>

```

GetWorkflowDataForItemResult.WorkflowData.ToDoData: Specifies a set of workflow tasks as defined in section [2.2.3.2](#).

GetWorkflowDataForItemResult.WorkflowData.TemplateData: Specifies a set of workflow associations as defined in section [2.2.3.1](#).

GetWorkflowDataForItemResult.WorkflowData.ActiveWorkflowsData: A set of workflows running on the document.

GetWorkflowDataForItemResult.WorkflowData.ActiveWorkflowsData.Workflows.Workflow.StatusPageUrl: The URL of a Web page that can show the status of a workflow. This URL MUST be both a **fully qualified URL** and an absolute URL.

GetWorkflowDataForItemResult.WorkflowData.ActiveWorkflowsData.Workflows.Workflow.Id: A **workflow identifier**.

GetWorkflowDataForItemResult.WorkflowData.ActiveWorkflowsData.Workflows.Workflow.TemplateId: A GUID identifying the workflow association of a workflow. This MUST be the workflow association of the workflow specified by **Workflow.Id**.

GetWorkflowDataForItemResult.WorkflowData.ActiveWorkflowsData.Workflows.Workflow.ListId: Unused. The protocol client MUST ignore this GUID.

GetWorkflowDataForItemResult.WorkflowData.ActiveWorkflowsData.Workflows.Workflow.SiteId: Unused. The protocol client MUST ignore this GUID.

GetWorkflowDataForItemResult.WorkflowData.ActiveWorkflowsData.Workflows.Workflow.WebId: Unused. The protocol client MUST ignore this GUID.

GetWorkflowDataForItemResult.WorkflowData.ActiveWorkflowsData.Workflows.Workflow.ItemId: Unused. The protocol client MUST ignore this GUID.

GetWorkflowDataForItemResult.WorkflowData.ActiveWorkflowsData.Workflows.Workflow.ItemGUID: Unused. The protocol client MUST ignore this GUID.

GetWorkflowDataForItemResult.WorkflowData.ActiveWorkflowsData.Workflows.Workflow.TaskListId: Unused. The protocol client MUST ignore this GUID.

GetWorkflowDataForItemResult.WorkflowData.ActiveWorkflowsData.Workflows.Workflow.AdminTaskListId: Unused. The protocol client MUST ignore this GUID.

GetWorkflowDataForItemResult.WorkflowData.ActiveWorkflowsData.Workflows.Workflow.Author: Unused. The protocol client MUST ignore this value.

GetWorkflowDataForItemResult.WorkflowData.ActiveWorkflowsData.Workflows.Workflow.Modified: Unused. The protocol client MUST ignore this value.

GetWorkflowDataForItemResult.WorkflowData.ActiveWorkflowsData.Workflows.Workflow.Created: Unused. The protocol client MUST ignore this value.

GetWorkflowDataForItemResult.WorkflowData.ActiveWorkflowsData.Workflows.Workflow.StatusVersion: Unused. The protocol client MUST ignore this value.

GetWorkflowDataForItemResult.WorkflowData.ActiveWorkflowsData.Workflows.Workflow.Status1: Unused. The protocol client MUST ignore this value.

GetWorkflowDataForItemResult.WorkflowData.ActiveWorkflowsData.Workflows.Workflow.Status2: Unused. The protocol client MUST ignore this value.

GetWorkflowDataForItemResult.WorkflowData.ActiveWorkflowsData.Workflows.Workflow.Status3: Unused. The protocol client MUST ignore this value.

GetWorkflowDataForItemResult.WorkflowData.ActiveWorkflowsData.Workflows.Workflow.Status4: Unused. The protocol client MUST ignore this value.

GetWorkflowDataForItemResult.WorkflowData.ActiveWorkflowsData.Workflows.Workflow.Status5: Unused. The protocol client MUST ignore this value.

GetWorkflowDataForItemResult.WorkflowData.ActiveWorkflowsData.Workflows.Workflow.Status6: Unused. The protocol client MUST ignore this value.

GetWorkflowDataForItemResult.WorkflowData.ActiveWorkflowsData.Workflows.Workflow.Status7: Unused. The protocol client MUST ignore this value.

GetWorkflowDataForItemResult.WorkflowData.ActiveWorkflowsData.Workflows.Workflow.Status8: Unused. The protocol client MUST ignore this value.

GetWorkflowDataForItemResult.WorkflowData.ActiveWorkflowsData.Workflows.Workflow.Status9: Unused. The protocol client MUST ignore this value.

GetWorkflowDataForItemResult.WorkflowData.ActiveWorkflowsData.Workflows.Workflow.Status10: Unused. The protocol client MUST ignore this value.

GetWorkflowDataForItemResult.WorkflowData.ActiveWorkflowsData.Workflows.Workflow.TextStatus1: Unused. The protocol client MUST ignore this value.

GetWorkflowDataForItemResult.WorkflowData.ActiveWorkflowsData.Workflows.Workflow.TextStatus2: Unused. The protocol client MUST ignore this value.

GetWorkflowDataForItemResult.WorkflowData.ActiveWorkflowsData.Workflows.Workflow.TextStatus3: Unused. The protocol client MUST ignore this value.

GetWorkflowDataForItemResult.WorkflowData.ActiveWorkflowsData.Workflows.Workflow.TextStatus4: Unused. The protocol client MUST ignore this value.

GetWorkflowDataForItemResult.WorkflowData.ActiveWorkflowsData.Workflows.Workflow.TextStatus5: Unused. The protocol client MUST ignore this value.

GetWorkflowDataForItemResult.WorkflowData.ActiveWorkflowsData.Workflows.Workflow.Modifications: Unused. The protocol client MUST ignore this value.

GetWorkflowDataForItemResult.WorkflowData.ActiveWorkflowsData.Workflows.Workflow.ActivityDetails: Unused. The protocol client MUST ignore this value. [<4>](#)

GetWorkflowDataForItemResult.WorkflowData.ActiveWorkflowsData.Workflows.Workflow.CorrelationId: The value is an empty string or GUID format if it is present. Unused. The protocol client MUST ignore this GUID. [<5>](#)

GetWorkflowDataForItemResult.WorkflowData.ActiveWorkflowsData.Workflows.Workflow.InstanceData: Unused. The protocol client MUST ignore this value.

GetWorkflowDataForItemResult.WorkflowData.ActiveWorkflowsData.Workflows.Workflow.InstanceDataSize: Unused. The protocol client MUST ignore this value.

GetWorkflowDataForItemResult.WorkflowData.ActiveWorkflowsData.Workflows.Workflow.InternalState: A 32-bit mask describing the state of the workflow. The only valid values of the Workflow Internal State bits are specified as follows:

Value	Name	Meaning
0x00000001	WFS_LOCKED	A front-end Web server has locked the workflow for processing. No other front-end Web server can process the workflow.

Value	Name	Meaning
0x00000002	WFS_RUNNING	A front-end Web server is processing the workflow.
0x00000004	WFS_COMPLETED	The workflow has completely processed. No further processing can be done.
0x00000008	WFS_CANCELED	The workflow was canceled by a user. No further processing can be done.
0x00000040	WFS_FAULTING	The workflow has encountered a faulting error.
0x00000080	WFS_TERMINATED	The workflow was terminated before being completely processed. No further processing can be done.
0x00000100	WFS_SUSPENDED	The workflow was suspended. The workflow can resume running.
0x00000400	WFS_HASNEWEVENTS	The workflow has events that need to be processed.
0x00000800	WFS_NOTSTARTED	The workflow has not yet started running.
0x00001000	WFS_HASWAKEUPTIME	A work item has been created to resume processing the workflow.

GetWorkflowDataForItemResult.WorkflowData.ActiveWorkflowsData.Workflows.Workflow.ProcessingId: Unused. The protocol client MUST ignore this GUID.

GetWorkflowDataForItemResult.WorkflowData.DefaultWorkflows.DefaultWorkflow: Specifies the default workflow association defined by the server to start when a document is checked in.

GetWorkflowDataForItemResult.WorkflowData.DefaultWorkflows.DefaultWorkflow.Event: MUST be set to "OnCheckInMajor".

GetWorkflowDataForItemResult.WorkflowData.DefaultWorkflows.DefaultWorkflow.TemplateId: A workflow association identifier.

3.1.4.6 GetWorkflowTaskData

This operation retrieves data about a single workflow task. It is defined as follows:

```
<wsdl:operation name="GetWorkflowTaskData">
  <wsdl:input message="tns:GetWorkflowTaskDataSoapIn" />
  <wsdl:output message="tns:GetWorkflowTaskDataSoapOut" />
</wsdl:operation>
```

The protocol client sends a **GetWorkflowTaskDataSoapIn** request message, and the protocol server responds with a **GetWorkflowTaskDataSoapOut** response message.

3.1.4.6.1 Messages

The following table summarizes the set of WSDL message definitions that are specific to this operation.

Message	Description
GetWorkflowTaskDataSoapIn	The request to retrieve data about a single workflow task.
GetWorkflowTaskDataSoapOut	The response to a request to retrieve data about a single workflow task.

3.1.4.6.1.1 GetWorkflowTaskDataSoapIn

This message requests the **GetWorkflowTaskData** SOAP operation.

The SOAP action value of the message is defined as follows:

```
http://schemas.microsoft.com/sharepoint/soap/workflow/GetWorkflowTaskData
```

The SOAP body contains a **GetWorkflowTaskData** element.

3.1.4.6.1.2 GetWorkflowTaskDataSoapOut

This message is the response to the **GetWorkflowTaskData** SOAP operation.

The SOAP body contains a **GetWorkflowTaskDataResponse** element.

3.1.4.6.2 Elements

The following table summarizes the XML schema element definitions that are specific to this operation.

Element	Description
GetWorkflowTaskData	The request to retrieve data about a single workflow task.
GetWorkflowTaskDataResponse	Contains the response to a request to retrieve data about a single workflow task.

3.1.4.6.2.1 GetWorkflowTaskData

This element is sent with a **GetWorkflowTaskData** message. It is defined as follows:

```
<s:element name="GetWorkflowTaskData">
  <s:complexType>
    <s:sequence>
      <s:element name="item" type="s:string" minOccurs="1"/>
      <s:element name="taskId" type="s:int"/>
      <s:element name="listId" type="s1:guid"/>
    </s:sequence>
  </s:complexType>
</s:element>
```

item: The URL of a document on this site (2). The server MUST ignore this value unless the site (2) of the SOAP request URL does not contain a list with the specified **listId**. If the site (2) of the SOAP request URL does not contain a list with the specified **listId**, **item** MUST be the site URL of the specified **listId**.

taskId: An integer identifying a workflow task.

listId: A list identifier that MUST identify the list of the workflow task specified by **taskId**.

3.1.4.6.2.2 GetWorkflowTaskDataResponse

This element is the response to a **GetWorkflowTaskData** message. It is defined as follows:

```
<s:element name="GetWorkflowTaskDataResponse">
  <s:complexType>
    <s:sequence>
      <s:element name="GetWorkflowTaskDataResult" >
        <s:complexType>
          <s:sequence>
            <s:any minOccurs="0" maxOccurs="unbounded" />
          </s:sequence>
        </s:complexType>
      </s:element>
    </s:sequence>
  </s:complexType>
</s:element>
```

GetWorkflowTaskDataResult: The **GetWorkflowTaskDataResult** element contains an array of **z:row** elements, where the z is equal to #RowsetSchema in the ActiveX Data Objects (ADO) XML Persistence format (see [\[MS-PRSTFR\]](#)). Each **z:row** element describes a single list item. The names of the attributes of this element correspond to the names of fields in the list. (For more details, see [\[MS-WSSFO3\]](#).)

3.1.4.7 StartWorkflow

This operation starts a new workflow, generating a workflow from a workflow association. It is defined as follows:

```
<wsdl:operation name="StartWorkflow">
  <wsdl:input message="tns:StartWorkflowSoapIn" />
  <wsdl:output message="tns:StartWorkflowSoapOut" />
</wsdl:operation>
```

The protocol client sends a **StartWorkflowSoapIn** request message, and the protocol server responds with a **StartWorkflowSoapOut** response message.

The protocol server MUST NOT start multiple workflow instances of the same item and same workflow association using this operation.

3.1.4.7.1 Messages

The following table summarizes the set of WSDL message definitions that are specific to this operation.

Message	Description
StartWorkflowSoapIn	The request to start a new workflow, generating a workflow from a workflow association.
StartWorkflowSoapOut	The response to a request to start a new workflow.

3.1.4.7.1.1 StartWorkflowSoapIn

This message requests the **StartWorkflow** SOAP operation.

The SOAP action value of the message is defined as follows:

```
http://schemas.microsoft.com/sharepoint/soap/workflow/StartWorkflow
```

The SOAP body contains a **StartWorkflow** element.

3.1.4.7.1.2 StartWorkflowSoapOut

This message is the response to the **StartWorkflow** SOAP operation.

The SOAP body contains a **StartWorkflowResponse** element.

3.1.4.7.2 Elements

The following table summarizes the XML schema element definitions that are specific to this operation.

Element	Description
StartWorkflow	The request to start a new workflow, generating a workflow from a workflow association.
StartWorkflowResponse	Contains the response to a request to start a new workflow.

3.1.4.7.2.1 StartWorkflow

This element is sent with a **StartWorkflow** message. It is defined as follows:

```
<s:element name="StartWorkflow">
  <s:complexType>
    <s:sequence>
      <s:element name="item" type="s:string" minOccurs="1" maxOccurs="1"/>
      <s:element name="templateId" type="s1:guid"/>
      <s:element name="workflowParameters" minOccurs="0">
        <s:complexType mixed="true">
          <s:sequence>
            <s:any/>
          </s:sequence>
        </s:complexType>
      </s:element>
    </s:sequence>
  </s:complexType>
</s:element>
```

item: A document URL. This field **MUST** be both a fully qualified URL and an absolute URL.

templateId: A GUID that identifies a workflow association that can be started for the document. This can be retrieved from the **TemplateId** attribute of a **WorkflowTemplateIdSet** element as specified in section [2.2.3.1](#).

workflowParameters: XML to be used by the workflow upon creation. This element is considered vendor-extensible and is described in section [4.3.2](#). **workflowParameters** SHOULD NOT be null.

3.1.4.7.2.2 StartWorkflowResponse

This element is the response to a **StartWorkflow** message. It is defined as follows:

```
<s:element name="StartWorkflowResponse">
  <s:complexType>
    <s:sequence>
      <s:element name="StartWorkflowResult" minOccurs="1"/>
    </s:sequence>
  </s:complexType>
</s:element>
```

StartWorkflowResult: This element is unused. The protocol client MUST ignore this element.

3.1.5 Timer Events

None.

3.1.6 Other Local Events

None.

4 Protocol Examples

4.1 Create a Workflow Instance

By retrieving information about the available workflow associations, a protocol client can start a new workflow on a document. The following diagram shows how this is done.

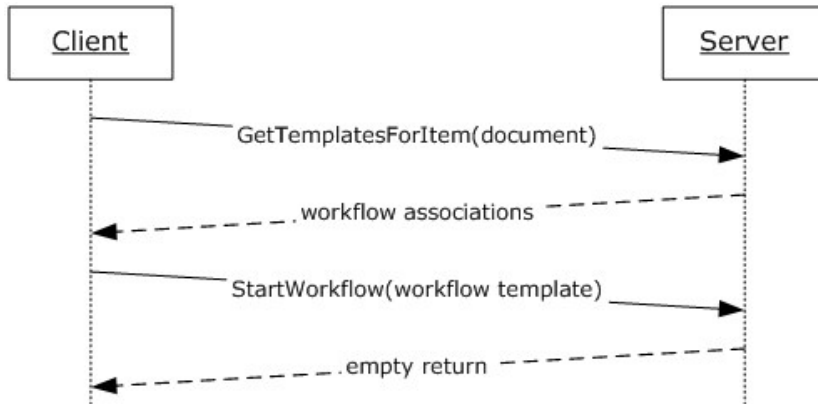


Figure 2: Creating a new workflow instance

4.1.1 Retrieve Available Workflow Associations

To retrieve the set of workflow associations for a list known as Documents (given its URL), the protocol client sends the following SOAP message as follows:

```
<?xml version="1.0" encoding="utf-8"?>
<soap:Envelope xmlns:soap="http://schemas.xmlsoap.org/soap/envelope/">
  <soap:Body>
    <GetTemplatesForItem xmlns="http://schemas.microsoft.com/sharepoint/soap/workflow/">
      <item>http://server/Documents/</item>
    </GetTemplatesForItem>
  </soap:Body>
</soap:Envelope>
```

The protocol server finds the appropriate set of workflow associations for the list known as Documents (given its URL) and returns the set in the form of the following SOAP message:

```
<?xml version="1.0" encoding="utf-8"?>
<soap:Envelope xmlns:soap="http://schemas.xmlsoap.org/soap/envelope/"
  xmlns:xsi="http://www.w3.org/2001/XMLSchema-instance"
  xmlns:xsd="http://www.w3.org/2001/XMLSchema">
  <soap:Body>
    <GetTemplatesForItemResponse
  xmlns="http://schemas.microsoft.com/sharepoint/soap/workflow/">
      <GetTemplatesForItemResult>
        <TemplateData>
          <Web Title="Site" Url="http://server" />
          <List Title="Documents" Url="http://server/Documents" />
          <WorkflowTemplates>
```

```

        <WorkflowTemplate Name="Collect Feedback" Description="Routes a document
for review. Reviewers can provide feedback, which is compiled and sent to the document owner
when the workflow has completed."
InstantiationUrl="http://server/documents/_layouts/IniWrkflIP.aspx?List=6dc0f376-503e-4a7b-
b74f-b4b148a42772&ID=1&TemplateID={092dd5a9-78da-4ab5-b00f-320090113b81}">
        <WorkflowTemplateIdSet TemplateId="092dd5a9-78da-4ab5-b00f-320090113b81"
BaseId="46c389a4-6e18-476c-aa17-289b0c79fb8f" />
        <AssociationData>
            <string>
                <my:myFields xmlns:xsi="http://www.w3.org/2001/XMLSchema-instance"
xmlns:my="http://schemas.microsoft.com/office/infopath/2003/myXSD" xml:lang="en-us">
                    <my:Reviewers>
                    </my:Reviewers>
                    <my:CC>
                    </my:CC>
                    <my:DueDate xsi:nil="true">
                    </my:DueDate>
                    <my:Description>
                    </my:Description>
                    <my>Title>
                    </my>Title>
                    <my:DefaultTaskType>0</my:DefaultTaskType>
                    <my>CreateTasksInSerial>>false</my>CreateTasksInSerial>
                    <my:AllowDelegation>>true</my:AllowDelegation>
                    <my:AllowChangeRequests>>true</my:AllowChangeRequests>
                    <my:StopOnAnyReject xsi:nil="true">
                    </my:StopOnAnyReject>
                    <my:WantedTasks xsi:nil="true">
                    </my:WantedTasks>
                    <my:SetMetadataOnSuccess>>false</my:SetMetadataOnSuccess>
                    <my:MetadataSuccessField>
                    </my:MetadataSuccessField>
                    <my:MetadataSuccessValue>
                    </my:MetadataSuccessValue>
                    <my:ApproveWhenComplete>>false</my:ApproveWhenComplete>
                    <my:TimePerTaskVal xsi:nil="true">
                    </my:TimePerTaskVal>
                    <my:TimePerTaskType xsi:nil="true">
                    </my:TimePerTaskType>
                    <my:Voting>>false</my:Voting>
                    <my:MetadataTriggerField>
                    </my:MetadataTriggerField>
                    <my:MetadataTriggerValue>
                    </my:MetadataTriggerValue>
                    <my:InitLock>>false</my:InitLock>
                    <my:MetadataStop>>false</my:MetadataStop>
                    <my:ItemChangeStop>>false</my:ItemChangeStop>
                    <my:GroupTasks>>false</my:GroupTasks>
                    </my:myFields>
                </string>
            </AssociationData>
            <Metadata>
                <Instantiation_FormURN>
                    <string>urn:schemas-microsoft-
com:office:infopath:workflow:ReviewRouting-Init:$Subst:LCID;</string>
                </Instantiation_FormURN>
            </Metadata>
        </WorkflowTemplate>
        <WorkflowTemplate Name="Collect Signatures" Description="Gathers signatures
needed to complete a document. This workflow can be started only from within a client.">

```

```

        <WorkflowTemplateIdSet TemplateId="fd7a5c57-fd96-4656-a07e-712b485201e0"
BaseId="2f213931-3b93-4f81-b021-3022434a3114" />
        <Metadata>
            <InitiationCategories>
                <string>SigClientRequired</string>
            </InitiationCategories>
            <Instantiation_FormURN>
                <string>urn:schemas-microsoft-
com:office:infopath:workflow:CollectSignatures-Init:$Subst:LCID;</string>
            </Instantiation_FormURN>
        </Metadata>
    </WorkflowTemplate>
    <WorkflowTemplate Name="Approval" Description="Routes a document for approval.
Approvers can approve or reject the document, reassign the approval task, or request changes
to the document."
InstantiationUrl="http://server/Documents/_layouts/IniWrkflIP.aspx?List=6dc0f376-503e-4a7b-
b74f-b4b148a42772&ID=1&TemplateID={f002dd2c-cdba-4e9a-b9ff-cad76df6e4e7}">
        <WorkflowTemplateIdSet TemplateId="f002dd2c-cdba-4e9a-b9ff-cad76df6e4e7"
BaseId="c6964bff-bf8d-41ac-ad5e-b61ec111731c" />
        <AssociationData>
            <string>
                <my:myFields xmlns:xsi="http://www.w3.org/2001/XMLSchema-instance"
xmlns:my="http://schemas.microsoft.com/office/infopath/2003/myXSD" xml:lang="en-us">
                    <my:Reviewers>
                    </my:Reviewers>
                    <my:CC>
                    </my:CC>
                    <my:DueDate xsi:nil="true">
                    </my:DueDate>
                    <my:Description>
                    </my:Description>
                    <my>Title>
                    </my>Title>
                    <my:DefaultTaskType>1</my:DefaultTaskType>
                    <my:CreateTasksInSerial>true</my:CreateTasksInSerial>
                    <my:AllowDelegation>true</my:AllowDelegation>
                    <my:AllowChangeRequests>true</my:AllowChangeRequests>
                    <my:StopOnAnyReject xsi:nil="true">
                    </my:StopOnAnyReject>
                    <my:WantedTasks xsi:nil="true">
                    </my:WantedTasks>
                    <my:SetMetadataOnSuccess>>false</my:SetMetadataOnSuccess>
                    <my:MetadataSuccessField>
                    </my:MetadataSuccessField>
                    <my:MetadataSuccessValue>
                    </my:MetadataSuccessValue>
                    <my:ApproveWhenComplete>>false</my:ApproveWhenComplete>
                    <my:TimePerTaskVal xsi:nil="true">
                    </my:TimePerTaskVal>
                    <my:TimePerTaskType xsi:nil="true">
                    </my:TimePerTaskType>
                    <my:Voting>>false</my:Voting>
                    <my:MetadataTriggerField>
                    </my:MetadataTriggerField>
                    <my:MetadataTriggerValue>
                    </my:MetadataTriggerValue>
                    <my:InitLock>>false</my:InitLock>
                    <my:MetadataStop>>false</my:MetadataStop>
                    <my:ItemChangeStop>>false</my:ItemChangeStop>
                    <my:GroupTasks>>false</my:GroupTasks>
                </string>
            </AssociationData>
    </WorkflowTemplate>

```

```

        </my:myFields>
    </string>
</AssociationData>
<Metadata>
    <Instantiation_FormURN>
        <string>urn:schemas-microsoft-
com:office:infopath:workflow:ReviewRouting-Init:$Subst:LCID;</string>
    </Instantiation_FormURN>
</Metadata>
</WorkflowTemplate>
</WorkflowTemplates>
</TemplateData>
</GetTemplatesForItemResult>
</GetTemplatesForItemResponse>
</soap:Body>
</soap:Envelope>

```

4.1.2 Start a Workflow from a Known Workflow Association

To start a new workflow from a known workflow association on a document, the protocol client sends the following SOAP message as follows:

```

<?xml version="1.0" encoding="utf-8"?>
<soap:Envelope xmlns:soap="http://schemas.xmlsoap.org/soap/envelope/">
  <soap:Body>
    <StartWorkflow xmlns="http://schemas.microsoft.com/sharepoint/soap/workflow/">
      <item>http://server/Documents/Document.xml</item>
      <templateId>8637567d-fd4a-4bbc-a994-7854df1ebd7a</templateId>
      <workflowParameters>
        <my:myFields xml:lang="en-us" xmlns:xsi="http://www.w3.org/2001/XMLSchema-instance"
xmlns:my="http://schemas.microsoft.com/office/infopath/2003/myXSD">
          <my:Reviewers>
            <my:Person>
              <my:DisplayName>User</my:DisplayName>
              <my:AccountId>DOMAIN\user</my:AccountId>
              <my:AccountType>User</my:AccountType>
            </my:Person>
          </my:Reviewers>
          <my:CC>
            </my:CC>
          <my:DueDate xsi:nil="true">
            </my:DueDate>
          <my>Description>
            </my>Description>
          <my>Title>
            </my>Title>
          <my:DefaultTaskType>0</my:DefaultTaskType>
          <my>CreateTasksInSerial>>false</my>CreateTasksInSerial>
          <my:AllowDelegation>>true</my:AllowDelegation>
          <my:AllowChangeRequests>>true</my:AllowChangeRequests>
          <my:StopOnAnyReject xsi:nil="true">
            </my:StopOnAnyReject>
          <my:WantedTasks xsi:nil="true">
            </my:WantedTasks>
          <my:SetMetadataOnSuccess>>false</my:SetMetadataOnSuccess>
          <my:MetadataSuccessField>
            </my:MetadataSuccessField>

```

```

    <my:MetadataSuccessValue>
    </my:MetadataSuccessValue>
    <my:ApproveWhenComplete>false</my:ApproveWhenComplete>
    <my:TimePerTaskVal xsi:nil="true">
    </my:TimePerTaskVal>
    <my:TimePerTaskType xsi:nil="true">
    </my:TimePerTaskType>
    <my:Voting>false</my:Voting>
    <my:MetadataTriggerField>
    </my:MetadataTriggerField>
    <my:MetadataTriggerValue>
    </my:MetadataTriggerValue>
    <my:InitLock>false</my:InitLock>
    <my:MetadataStop>false</my:MetadataStop>
    <my:ItemChangeStop>false</my:ItemChangeStop>
    <my:GroupTasks>false</my:GroupTasks>
  </my:myFields>
</workflowParameters>
</StartWorkflow>
</soap:Body>
</soap:Envelope>

```

The protocol server finds the appropriate set of data for the document and returns the following SOAP message:

```

<?xml version="1.0" encoding="utf-8"?>
<soap:Envelope xmlns:soap="http://schemas.xmlsoap.org/soap/envelope/"
xmlns:xsi="http://www.w3.org/2001/XMLSchema-instance"
xmlns:xsd="http://www.w3.org/2001/XMLSchema">
  <soap:Body>
    <StartWorkflowResponse xmlns="http://schemas.microsoft.com/sharepoint/soap/workflow/">
      <StartWorkflowResult>
      </StartWorkflowResult>
    </StartWorkflowResponse>
  </soap:Body>
</soap:Envelope>

```

4.2 Update a Workflow Task

By retrieving information about all available data on a specific document, which includes workflows, workflow associations, and workflow tasks, a protocol client can retrieve and modify a workflow task. The following diagram shows how this is done.

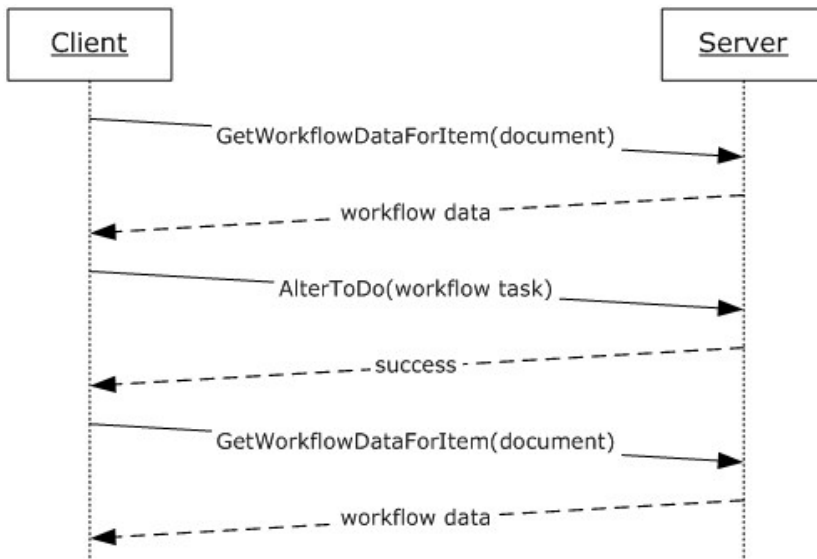


Figure 3: Querying all workflow data, altering a workflow task

4.2.1 Retrieve All Workflow Data on a Document

To retrieve the aggregated set of workflow associations, workflows, workflow tasks, and other related information for a document, the protocol client sends the following SOAP message:

```

<?xml version="1.0" encoding="utf-8"?>
<soap:Envelope xmlns:soap="http://schemas.xmlsoap.org/soap/envelope/">
  <soap:Body>
    <GetWorkflowDataForItem xmlns="http://schemas.microsoft.com/sharepoint/soap/workflow/">
      <item>http://server/Documents/Document.docx</item>
    </GetWorkflowDataForItem>
  </soap:Body>
</soap:Envelope>
  
```

The protocol server finds the appropriate set of data for the document and responds with the following SOAP message:

```

<?xml version="1.0" encoding="utf-8"?>
<soap:Envelope xmlns:soap="http://schemas.xmlsoap.org/soap/envelope/"
  xmlns:xsi="http://www.w3.org/2001/XMLSchema-instance"
  xmlns:xsd="http://www.w3.org/2001/XMLSchema">
  <soap:Body>
    <GetWorkflowDataForItemResponse
  xmlns="http://schemas.microsoft.com/sharepoint/soap/workflow/">
      <GetWorkflowDataForItemResult>
        <WorkflowData>
          <ToDoData>
            <xml xmlns:s="uuid:BDC6E3F0-6DA3-11d1-A2A3-00AA00C14882"
  xmlns:dt="uuid:C2F41010-65B3-11d1-A29F-00AA00C14882" xmlns:rs="urn:schemas-microsoft-
  com:rowset" xmlns:z="#RowsetSchema">
              <rs:data ItemCount="2">
                <z:row
  ows_ContentTypeId="0x01080100C9C9515DE4E24001905074F980F93160003CB2AB313AE62048BEE174C9F41ECC
  7C" ows_Title="Please approve Document" ows_Priority="(2) Normal" ows_Status="Not Started"
  
```



```

ows_AssignedTo="1;#User" ows_Body="Please approve Document" ows_StartDate="2008-02-06
10:18:13" ows_WorkflowLink="http://server/Documents/Document.docx, Document"
ows_WorkflowName="Approval" ows_TaskType="1" ows_FormURN="urn:schemas-microsoft-
com:office:infopath:workflow:ReviewRouting-Review:$Subst:LCID;" ows_HasCustomEmailBody="0"
ows_SendEmailNotification="1" ows_Completed="0" ows_WorkflowListId="{5F2F1E89-06D7-44F5-886B-
3EE11FF2D5B3}" ows_WorkflowItemId="6" ows_AllowChangeRequests="True"
ows_AllowDelegation="True" ows_BodyText="Please approve Document" ows_ContentType="Office
SharePoint Server Workflow Task" ows_ID="13" ows_WorkflowFormURL="" ows_FormData=""
ows_Modified="2008-02-06 10:18:13" ows_Created="2008-02-06 10:18:13" ows_Author="1;#User"
ows_Editor="1073741823;#System Account" ows_owshiddenversion="1" ows_WorkflowVersion="1"
ows_UIVersion="512" ows_UIVersionString="1.0" ows_Attachments="0" ows_ModerationStatus="0"
ows_LinkTitleNoMenu="Please approve Document" ows_LinkTitle="Please approve Document"
ows_SelectTitle="13" ows_Order="1300.000000000000" ows_GUID="{C72C44AB-3DD7-4947-8E60-
BAF09E56E9BF}" ows_WorkflowInstanceId="{3EFDE9D9-C8DE-463B-8FE6-F13E15419C79}"
ows_FileRef="13;#Lists/Tasks/13_000" ows_FileDirRef="13;#Lists/Tasks"
ows_Last_x0020_Modified="13;#2008-02-06 10:18:13" ows_Created_x0020_Date="13;#2008-02-06
10:18:13" ows_FSObjType="13;#0" ows_PermMask="0x7fffffff"
ows_FileLeafRef="13;#13_000" ows_UniqueId="13;#{0B46AE7B-EB5E-4C2A-9B0A-3FE29BE2078C}"
ows_ProgId="13;#" ows_ScopeId="13;#{349A0AFD-F2F8-4564-A1D4-CCFF4880C19C}"
ows_EditMenuTableStart="13_000" ows_EditMenuTableEnd="13" ows_LinkFilenameNoMenu="13_000"
ows_LinkFilename="13_000" ows_ServerUrl="/Lists/Tasks/13_000"
ows_EncodedAbsUrl="http://server/Lists/Tasks/13_000" ows_BaseName="13_" ows_Level="1"
ows_IsCurrentVersion="1"
ows_MetaInfo_vti_versionhistory="4c620c8dbfe64857a29e5b628ebb9ddb:1"
ows_MetaInfo_WorkflowCreationPath="94218b95-47d3-4fa3-8e3f-f44f6d234acd;"
ows_TaskListId="4c620c8d-bfe6-4857-a29e-5b628ebb9ddb"
ows_EditFormURL="http://server/_layouts/WrkTaskIP.aspx?ID=13&List=4c620c8d-bfe6-4857-
a29e-5b628ebb9ddb" />
<z:row
ows_ContentTypeId="0x01080100C9C9515DE4E24001905074F98F93160003CB2AB313AE62048BEE174C9F41ECC
7C" ows_Title="Please approve Document" ows_Priority="(2) Normal" ows_Status="Not Started"
ows_AssignedTo="1;#User" ows_Body="asdf" ows_StartDate="2008-02-13 13:28:52"
ows_WorkflowLink="http://server/Documents/Document.docx, Document" ows_WorkflowName="app"
ows_TaskType="1" ows_FormURN="urn:schemas-microsoft-
com:office:infopath:workflow:ReviewRouting-Review:$Subst:LCID;" ows_HasCustomEmailBody="0"
ows_SendEmailNotification="1" ows_Completed="0" ows_WorkflowListId="{5F2F1E89-06D7-44F5-886B-
3EE11FF2D5B3}" ows_WorkflowItemId="6" ows_AllowChangeRequests="True"
ows_AllowDelegation="True" ows_BodyText="asdf" ows_ContentType="Office SharePoint Server
Workflow Task" ows_ID="21" ows_Modified="2008-02-13 13:28:52" ows_Created="2008-02-13
13:28:52" ows_Author="1;#User" ows_Editor="1073741823;#System Account"
ows_owshiddenversion="1" ows_WorkflowVersion="1" ows_UIVersion="512"
ows_UIVersionString="1.0" ows_Attachments="0" ows_ModerationStatus="0"
ows_LinkTitleNoMenu="Please approve Document" ows_LinkTitle="Please approve Document"
ows_SelectTitle="21" ows_Order="2100.000000000000" ows_GUID="{F390F9F9-4942-482C-A238-
3002A332BF4D}" ows_WorkflowInstanceId="{874E77FB-144F-4E4E-9500-25C9D1FC53E4}"
ows_FileRef="21;#Lists/Tasks/21_000" ows_FileDirRef="21;#Lists/Tasks"
ows_Last_x0020_Modified="21;#2008-02-13 13:28:53" ows_Created_x0020_Date="21;#2008-02-13
13:28:53" ows_FSObjType="21;#0" ows_PermMask="0x7fffffff"
ows_FileLeafRef="21;#21_000" ows_UniqueId="21;#{21C0167B-0810-456B-BC87-2490301830C1}"
ows_ProgId="21;#" ows_ScopeId="21;#{349A0AFD-F2F8-4564-A1D4-CCFF4880C19C}"
ows_EditMenuTableStart="21_000" ows_EditMenuTableEnd="21" ows_LinkFilenameNoMenu="21_000"
ows_LinkFilename="21_000" ows_ServerUrl="/Lists/Tasks/21_000"
ows_EncodedAbsUrl="http://server/Lists/Tasks/21_000" ows_BaseName="21_" ows_Level="1"
ows_IsCurrentVersion="1"
ows_MetaInfo_vti_versionhistory="4c620c8dbfe64857a29e5b628ebb9ddb:1"
ows_MetaInfo_WorkflowCreationPath="ab6d93ed-0fc1-49ca-8259-b02533f51859;"
ows_TaskListId="4c620c8d-bfe6-4857-a29e-5b628ebb9ddb"
ows_EditFormURL="http://server/_layouts/WrkTaskIP.aspx?ID=21&List=4c620c8d-bfe6-4857-
a29e-5b628ebb9ddb" />
</rs:data>
</xml>
</ToDoData>
<TemplateData>
<Web Title="Home" Url="http://server" />
<List Title="Documents" Url="http://server/Documents" />

```

```

<WorkflowTemplates>
  <WorkflowTemplate Name="app" Description="Routes a document for approval.
  Approvers can approve or reject the document, reassign the approval task, or request changes
  to the document." InstantiationUrl="http://server/_layouts/IniWrkflIP.aspx?List=5f2f1e89-
  06d7-44f5-886b-3eell1ff2d5b3&ID=6&TemplateID={ab6d93ed-0fc1-49ca-8259-b02533f51859}">
    <WorkflowTemplateIdSet TemplateId="ab6d93ed-0fc1-49ca-8259-b02533f51859"
    BaseId="c6964bff-bf8d-41ac-ad5e-b61ec111731c" />
    <AssociationData>
      <string>&lt;my:myFields xmlns:lang="en-us"
      xmlns:xsi="http://www.w3.org/2001/XMLSchema-instance"
      xmlns:my="http://schemas.microsoft.com/office/infopath/2003/myXSD"&gt;
        &lt;my:Reviewers&gt;&lt;/my:Reviewers&gt; &lt;my:CC&gt;&lt;/my:CC&gt; &lt;my:DueDate
        xsi:nil="true"&gt;&lt;/my:DueDate&gt; &lt;my:Description&gt;&lt;/my:Description&gt;
        &lt;my>Title&gt;&lt;/my>Title&gt; &lt;my:DefaultTaskType&gt;1&lt;/my:DefaultTaskType&gt;
        &lt;my:CreateTasksInSerial&gt;true&lt;/my:CreateTasksInSerial&gt;
        &lt;my:AllowDelegation&gt;true&lt;/my:AllowDelegation&gt;
        &lt;my:AllowChangeRequests&gt;true&lt;/my:AllowChangeRequests&gt; &lt;my:StopOnAnyReject
        xsi:nil="true"&gt;&lt;/my:StopOnAnyReject&gt; &lt;my:WantedTasks
        xsi:nil="true"&gt;&lt;/my:WantedTasks&gt;
        &lt;my:SetMetadataOnSuccess&gt;false&lt;/my:SetMetadataOnSuccess&gt;
        &lt;my:MetadataSuccessField&gt;&lt;/my:MetadataSuccessField&gt;
        &lt;my:MetadataSuccessValue&gt;&lt;/my:MetadataSuccessValue&gt;
        &lt;my:ApproveWhenComplete&gt;false&lt;/my:ApproveWhenComplete&gt; &lt;my:TimePerTaskVal
        xsi:nil="true"&gt;&lt;/my:TimePerTaskVal&gt; &lt;my:TimePerTaskType
        xsi:nil="true"&gt;&lt;/my:TimePerTaskType&gt; &lt;my:Voting&gt;false&lt;/my:Voting&gt;
        &lt;my:MetadataTriggerField&gt;&lt;/my:MetadataTriggerField&gt;
        &lt;my:MetadataTriggerValue&gt;&lt;/my:MetadataTriggerValue&gt;
        &lt;my:InitLock&gt;false&lt;/my:InitLock&gt;
        &lt;my:MetadataStop&gt;false&lt;/my:MetadataStop&gt;
        &lt;my:ItemChangeStop&gt;false&lt;/my:ItemChangeStop&gt;
        &lt;my:GroupTasks&gt;false&lt;/my:GroupTasks&gt;&lt;/my:myFields&gt;</string>
      </AssociationData>
      <Metadata>
        <Instantiation_FormURN>
          <string>urn:schemas-microsoft-
          com:office:infopath:workflow:ReviewRouting-Init:$Subst:LCID;</string>
        </Instantiation_FormURN>
      </Metadata>
    </WorkflowTemplate>
    <WorkflowTemplate Name="Collect Feedback" Description="Routes a document for
    review. Reviewers can provide feedback, which is compiled and sent to the document owner when
    the workflow has completed."
    InstantiationUrl="http://server/_layouts/IniWrkflIP.aspx?List=5f2f1e89-06d7-44f5-886b-
    3eell1ff2d5b3&ID=6&TemplateID={b03dbala-b247-451f-9ea2-117d7e366cdb}">
      <WorkflowTemplateIdSet TemplateId="b03dbala-b247-451f-9ea2-117d7e366cdb"
      BaseId="46c389a4-6e18-476c-aal7-289b0c79fb8f" />
      <AssociationData>
        <string>&lt;my:myFields xmlns:xsi="http://www.w3.org/2001/XMLSchema-instance"
        xmlns:my="http://schemas.microsoft.com/office/infopath/2003/myXSD" xmlns:lang="en-
        us"&gt;&lt;/my:Reviewers&gt;&lt;/my:Reviewers&gt; &lt;my:CC&gt;&lt;/my:CC&gt; &lt;my:DueDate
        xsi:nil="true"&gt;&lt;/my:DueDate&gt; &lt;my:Description&gt;&lt;/my:Description&gt; &lt;my:Titr
        e&gt;&lt;/my>Title&gt; &lt;my:DefaultTaskType&gt;0&lt;/my:DefaultTaskType&gt; &lt;my:CreateTask
        sInSerial&gt;false&lt;/my:CreateTasksInSerial&gt; &lt;my:AllowDelegation&gt;true&lt;/my:AllowD
        elegation&gt;&lt;/my:AllowChangeRequests&gt;true&lt;/my:AllowChangeRequests&gt; &lt;my:StopOnAn
        yReject xsi:nil="true"&gt;&lt;/my:StopOnAnyReject&gt; &lt;my:WantedTasks
        xsi:nil="true"&gt;&lt;/my:WantedTasks&gt; &lt;my:SetMetadataOnSuccess&gt;false&lt;/my:SetMetad
        ataOnSuccess&gt;&lt;/my:MetadataSuccessField&gt;&lt;/my:MetadataSuccessField&gt; &lt;my:Metadat
        aSuccessValue&gt;&lt;/my:MetadataSuccessValue&gt; &lt;my:ApproveWhenComplete&gt;false&lt;/my:A
        pproveWhenComplete&gt; &lt;my:TimePerTaskVal
        xsi:nil="true"&gt;&lt;/my:TimePerTaskVal&gt; &lt;my:TimePerTaskType
        xsi:nil="true"&gt;&lt;/my:TimePerTaskType&gt; &lt;my:Voting&gt;false&lt;/my:Voting&gt; &lt;my:M
        etadataTriggerField&gt;&lt;/my:MetadataTriggerField&gt; &lt;my:MetadataTriggerValue&gt;&lt;/my:
        MetadataTriggerValue&gt; &lt;my:InitLock&gt;false&lt;/my:InitLock&gt; &lt;my:MetadataStop&gt;f

```

```

also<my:MetadataStop><my:ItemChangeStop>false</my:ItemChangeStop></my:GroupTasks>false</my:GroupTasks></my:myFields></string>
  </AssociationData>
  <Metadata>
    <Instantiation_FormURN>
      <string>urn:schemas-microsoft-com:office:infopath:workflow:ReviewRouting-
Init:$Subst:LCID;</string>
    </Instantiation_FormURN>
  </Metadata>
</WorkflowTemplate>
  <WorkflowTemplate Name="Collect Signatures" Description="Gathers signatures needed
to complete a Microsoft Office document. This workflow can be started only from within an
Office client.">
  <WorkflowTemplateIdSet TemplateId="5b8d2cf1-3ef0-46ee-ae87-61c595a34fb7"
BaseId="2f213931-3b93-4f81-b021-3022434a3114" />
  <Metadata>
    <InitiationCategories>
      <string>SigClientRequired</string>
    </InitiationCategories>
    <Instantiation_FormURN>
      <string>urn:schemas-microsoft-
com:office:infopath:workflow:CollectSignatures-Init:$Subst:LCID;</string>
    </Instantiation_FormURN>
  </Metadata>
</WorkflowTemplate>
  <WorkflowTemplate Name="Approval" Description="Routes a document for approval.
Approvers can approve or reject the document, reassign the approval task, or request changes
to the document." InstantiationUrl="http://server/_layouts/IniWrkflIP.aspx?List=5f2fle89-
06d7-44f5-886b-3eell1ff2d5b3&ID=6&TemplateID={94218b95-47d3-4fa3-8e3f-f44f6d234acd}">
  <WorkflowTemplateIdSet TemplateId="94218b95-47d3-4fa3-8e3f-f44f6d234acd"
BaseId="c6964bff-bf8d-41ac-ad5e-b61ec111731c" />
  <AssociationData>
    <string><my:myFields xmlns:xsi="http://www.w3.org/2001/XMLSchema-instance"
xmlns:my="http://schemas.microsoft.com/office/infopath/2003/myXSD" xml:lang="en-
us"><my:Reviewers></my:Reviewers><my:CC></my:CC><my:DueDate
xsi:nil="true"></my:DueDate><my:Description></my:Description><my:Titl
e></my>Title><my:DefaultTaskType>1</my:DefaultTaskType><my:CreateTask
sInSerial>true</my:CreateTasksInSerial><my:AllowDelegation>true</my:AllowDe
legation><my:AllowChangeRequests>true</my:AllowChangeRequests><my:StopOnAny
Reject xsi:nil="true"></my:StopOnAnyReject><my:WantedTasks
xsi:nil="true"></my:WantedTasks><my:SetMetadataOnSuccess>false</my:SetMetad
ataOnSuccess><my:MetadataSuccessField></my:MetadataSuccessField><my:Metadat
aSuccessValue></my:MetadataSuccessValue><my:ApproveWhenComplete>false</my:A
pproveWhenComplete><my:TimePerTaskVal
xsi:nil="true"></my:TimePerTaskVal><my:TimePerTaskType
xsi:nil="true"></my:TimePerTaskType><my:Voting>false</my:Voting><my:M
etadataTriggerField></my:MetadataTriggerField><my:MetadataTriggerValue></my:
MetadataTriggerValue><my:InitLock>false</my:InitLock><my:MetadataStop>f
alse</my:MetadataStop><my:ItemChangeStop>false</my:ItemChangeStop><my:Gr
oupTasks>false</my:GroupTasks></my:myFields></string>
  </AssociationData>
  <Metadata>
    <Instantiation_FormURN>
      <string>urn:schemas-microsoft-com:office:infopath:workflow:ReviewRouting-
Init:$Subst:LCID;</string>
    </Instantiation_FormURN>
  </Metadata>
</WorkflowTemplate>
</WorkflowTemplates>
</TemplateData>
<ActiveWorkflowsData>
  <Workflows>

```

<Workflow
StatusPageUrl="http://server/_layouts/WrkStat.aspx?List=%7B5F2F1E89%2D06D7%2D44F5%2D886B%2D3EE11FF2D5B3%7D&WorkflowInstanceID=%7B874e77fb%2D144f%2D4e4e%2D9500%2D25c9d1fc53e4%7D" Id="874e77fb-144f-4e4e-9500-25c9d1fc53e4" TemplateId="ab6d93ed-0fc1-49ca-8259-b02533f51859" ListId="5f2f1e89-06d7-44f5-886b-3ee11ff2d5b3" SiteId="4ca76181-d8d6-4535-86c7-2eb7fcf91c0e" WebId="598b4ef0-3ec0-4282-aac9-ed6d114f2b7f" ItemId="6" ItemGUID="7522c63c-a7b4-4bff-bf34-3c274b2d8ea7" TaskListId="4c620c8d-bfe6-4857-a29e-5b628ebb9ddb" AdminTaskListId="" Author="1" Modified="20080213 21:28:53" Created="20080213 21:28:52" StatusVersion="0" Status1="2" Status2="" Status3="" Status4="" Status5="" Status6="" Status7="" Status8="" Status9="" Status10="" TextStatus1="" TextStatus2="" TextStatus3="" TextStatus4="" TextStatus5="" Modifications=""<Mod><Mod><SubId><Id><Data><my:DueDate><my:DueDate><my:Description><Data><Mod><Mod><SubId><Id><Data><my:NewReviewers><my:NewReviewers><my:DueDate><my:Description><my:Duration><my:DurType><my:GroupTasks><my:GroupTasks><my:ShowDuration><Data><Mod><Mod><ActivityDetails="System.Byte[]" InstanceData="" InstanceDataSize="0" InternalState="2" ProcessingId="" />

<Workflow
StatusPageUrl="http://server/_layouts/WrkStat.aspx?List=%7B5F2F1E89%2D06D7%2D44F5%2D886B%2D3EE11FF2D5B3%7D&WorkflowInstanceID=%7B3efde9d9%2Dc8de%2D463b%2D8fe6%2Ddf13e15419c79%7D" Id="3efde9d9-c8de-463b-8fe6-f13e15419c79" TemplateId="94218b95-47d3-4fa3-8e3f-f44f6d234acd" ListId="5f2f1e89-06d7-44f5-886b-3ee11ff2d5b3" SiteId="4ca76181-d8d6-4535-86c7-2eb7fcf91c0e" WebId="598b4ef0-3ec0-4282-aac9-ed6d114f2b7f" ItemId="6" ItemGUID="7522c63c-a7b4-4bff-bf34-3c274b2d8ea7" TaskListId="4c620c8d-bfe6-4857-a29e-5b628ebb9ddb" AdminTaskListId="" Author="1" Modified="20080206 18:18:13" Created="20080206 18:18:12" StatusVersion="0" Status1="2" Status2="" Status3="" Status4="" Status5="" Status6="" Status7="" Status8="" Status9="" Status10="" TextStatus1="" TextStatus2="" TextStatus3="" TextStatus4="" TextStatus5="" Modifications=""<Mod><Mod><SubId><Id><Data><my:DueDate><my:DueDate><my:Description><Please approve Document><Data><Mod><Mod><SubId><Id><Data><Mod><Mod><SubId><Id><Data><my:NewReviewers><my:NewReviewers><my:DueDate><my:Description><Please approve Document><my:Duration><my:DurType><my:GroupTasks><my:GroupTasks><my:ShowDuration><Data><Mod><Mod><ActivityDetails="System.Byte[]" InstanceData="" InstanceDataSize="0" InternalState="2" ProcessingId="" />

<Workflow
StatusPageUrl="http://server/_layouts/WrkStat.aspx?List=%7B5F2F1E89%2D06D7%2D44F5%2D886B%2D3EE11FF2D5B3%7D&WorkflowInstanceID=%7Bcc2ec83f%2Dab79%2D4e18%2D85eb%2Ddf90c72427b21%7D" Id="cc2ec83f-ab79-4e18-85eb-f90c72427b21" TemplateId="b03dba1a-b247-451f-9ea2-117d7e366cdb" ListId="5f2f1e89-06d7-44f5-886b-3ee11ff2d5b3" SiteId="4ca76181-d8d6-4535-86c7-2eb7fcf91c0e" WebId="598b4ef0-3ec0-4282-aac9-ed6d114f2b7f" ItemId="6" ItemGUID="7522c63c-a7b4-4bff-bf34-3c274b2d8ea7" TaskListId="4c620c8d-bfe6-4857-a29e-5b628ebb9ddb" AdminTaskListId="" Author="1" Modified="20080213 22:08:29" Created="20080213 21:58:33" StatusVersion="1" Status1="15" Status2="" Status3="" Status4="" Status5="" Status6="" Status7="" Status8="" Status9="" Status10="" TextStatus1="" TextStatus2="" TextStatus3="" TextStatus4="" TextStatus5="" Modifications="" ActivityDetails="System.Byte[]" InstanceData="" InstanceDataSize="0" InternalState="4" ProcessingId="" />
</Workflows>

```

</ActiveWorkflowsData>
<DefaultWorkflows>
</DefaultWorkflows>
  </WorkflowData>
</GetWorkflowDataForItemResult>
</GetWorkflowDataForItemResponse>
</soap:Body>
</soap:Envelope>

```

4.2.2 Alter a Workflow Task

To modify a workflow task for a document, the protocol client sends the following SOAP message:

```

<?xml version="1.0" encoding="utf-8"?>
<soap:Envelope xmlns:soap="http://schemas.xmlsoap.org/soap/envelope/">
<soap:Body>
  <AlterToDo
    xmlns="http://schemas.microsoft.com/sharepoint/soap/workflow/">
    <item>http://server/Documents/Document.xml</item>
    <todoId>23</todoId>
    <todoListId>4c620c8d-bfe6-4857-a29e-5b628ebb9ddb</todoListId>
    <taskData>
      <my:myFields xmlns:xsi="http://www.w3.org/2001/XMLSchema-instance"
        xmlns:xhtml="http://www.w3.org/1999/xhtml"
        xmlns:aml="http://schemas.microsoft.com/aml/2001/core"
        xmlns:dt="uuid:C2F41010-65B3-11d1-A29F-00AA00C14882"
        xmlns:o="urn:schemas-microsoft-com:office:office"
        xmlns:o12="http://schemas.microsoft.com/office/2004/7/core"
        xmlns:w10="urn:schemas-microsoft-com:office:word"
        xmlns:v="urn:schemas-microsoft-com:vml"
        xmlns:w12="http://schemas.microsoft.com/office/word/2004/6/wordml"
        xmlns:wx="http://schemas.microsoft.com/office/word/2003/auxHint"
        xmlns:w="http://schemas.microsoft.com/office/word/2003/wordml"
        xmlns:sl="http://schemas.microsoft.com/schemaLibrary/2003/core"
        xmlns:dfs="http://schemas.microsoft.com/office/infopath/2003/
          dataFormSolution"
        xmlns:tns="http://schemas.microsoft.com/sharepoint/soap/workflow/"
        xmlns:s1="http://microsoft.com/wsdl/types/"
        xmlns:z="#RowsetSchema"
        xmlns:my="http://schemas.microsoft.com/office/infopath/2003/myXSD"
        xmlns:xd="http://schemas.microsoft.com/office/infopath/2003"
        xml:lang="en-us">
        <my:TaskStatus>#</my:TaskStatus>
        <my:Comments>Comment1</my:Comments>
        <my:DelegateTo>User</my:DelegateTo>
        <my:NewDescription>Please review Form</my:NewDescription>
        <my:NewDueDate xsi:nil="true">
      </my:NewDueDate>
        <my:RequestTo>
      </my:RequestTo>
        <my:Decline>0</my:Decline>
        <my:dcr>0</my:dcr>
        <my:Status>Completed</my:Status>
      </my:myFields>
    </taskData>
  </AlterToDo>
</soap:Body>

```

```
</soap:Envelope>
```

The protocol server modifies the specified workflow task and responds with the following SOAP message:

```
<?xml version="1.0" encoding="utf-8"?>
<soap:Envelope xmlns:soap="http://schemas.xmlsoap.org/soap/envelope/"
  xmlns:xsi="http://www.w3.org/2001/XMLSchema-instance"
  xmlns:xsd="http://www.w3.org/2001/XMLSchema">
  <soap:Body>
    <AlterToDoResponse
      xmlns="http://schemas.microsoft.com/sharepoint/soap/workflow/">
      <AlterToDoResult>
        <fSuccess>1</fSuccess>
      </AlterToDoResult>
    </AlterToDoResponse>
  </soap:Body>
</soap:Envelope>
```

4.3 Related Files

4.3.1 TodoData.Xml

Implementations of this protocol return workflow tasks that have a field named **WorkflowInstanceId** matching the **Id** of a workflow started on the queried document.

If the queried document is part of a workflow with **WorkflowTemplateIdSet.TemplateId** set to the GUID {B4154DF4-CC53-4C4F-ADEF-1ECF0B7417F6}, this workflow is a Translation Workflow then the protocol server also returns workflow tasks belonging to the parent of this document that satisfy the following conditions:

- The workflow task has a **WorkflowInstanceId** that identifies a workflow based on a Translation Workflow template.
- The workflow task has a field named **ows_PlaceholderDocListItemID** matching the queried document list item identifier.

The parent of the document is determined by checking the **TranslationBaseDocument** field, which contains a list item identifier specifying a document in the queried document list. If this field identifies a valid document, there is a parent document.

4.3.2 TemplateData.WorkflowTemplates.WorkflowTemplate.AssociationData

As defined by this protocol, this element can contain any XML or be empty. Proof-of-concept implementations of workflow templates use the following XML format for this node.

```
<?xml version="1.0" encoding="UTF-8" standalone="no"?>
<xsd:schema
  targetNamespace="http://schemas.microsoft.com/office/
  infopath/2003/myXSD" xmlns:xsi="http://www.w3.org/2001/XMLSchema-
  instance"
  xmlns:xhtml="http://www.w3.org/1999/xhtml"
  xmlns:aml="http://schemas.microsoft.com/aml/2001/core"
  xmlns:dt="uuid:C2F41010-65B3-11d1-A29F-00AA00C14882">
```

```

xmlns:o="urn:schemas-microsoft-com:office:office"
xmlns:o12="http://schemas.microsoft.com/office/2004/7/core"
xmlns:w10="urn:schemas-microsoft-com:office:word"
xmlns:v="urn:schemas-microsoft-com:vml"
xmlns:w12="http://schemas.microsoft.com/office/word/2004/6/wordml"
xmlns:wx="http://schemas.microsoft.com/office/word/2003/auxHint"
xmlns:w="http://schemas.microsoft.com/office/word/2003/wordml"
xmlns:s1="http://schemas.microsoft.com/schemaLibrary/2003/core"
xmlns:dfs="http://schemas.microsoft.com/office/
  infopath/2003/dataFormSolution"
xmlns:tns="http://schemas.microsoft.com/sharepoint/soap/workflow/"
xmlns:s1="http://microsoft.com/wsdl/types/" xmlns:z="#RowsetSchema"
xmlns:my="http://schemas.microsoft.com/office/infopath/2003/myXSD"
xmlns:xd="http://schemas.microsoft.com/office/infopath/2003"
xmlns:xsd="http://www.w3.org/2001/XMLSchema">
<xsd:element name="myFields">
  <xsd:complexType>
    <xsd:sequence>
      <xsd:element ref="my:fieldALS" minOccurs="0"/>
      <xsd:element ref="my:InitiatedBy" minOccurs="0"/>
      <xsd:element ref="my:Reviewers" minOccurs="0"/>
      <xsd:element ref="my:DefaultTaskType" minOccurs="0"/>
      <xsd:element ref="my:MySignatureURL" minOccurs="0"/>
      <xsd:element ref="my:LastSignatureID" minOccurs="0"/>
      <xsd:element ref="my:CurrentSignatureID" minOccurs="0"/>
      <xsd:element ref="my:AllowArbitraryApproval" minOccurs="0"/>
      <xsd:element ref="my:RejectedImageURL" minOccurs="0"/>
      <xsd:element ref="my:CanSubmit" minOccurs="0"/>
      <xsd:element ref="my:EawfAttachments" minOccurs="0"/>
      <xsd:element ref="my:group1" minOccurs="0"/>
      <xsd:element ref="my:group2" minOccurs="0"/>
      <xsd:element ref="my:group3" minOccurs="0"/>
    </xsd:sequence>
    <xsd:anyAttribute processContents="lax"
      namespace="http://www.w3.org/XML/1998/namespace"/>
  </xsd:complexType>
</xsd:element>
<xsd:element name="fieldALS" type="xsd:string"/>
<xsd:element name="InitiatedBy" type="xsd:string"/>
<xsd:element name="Reviewers">
  <xsd:complexType>
    <xsd:sequence>
      <xsd:element ref="my:Person" minOccurs="0" maxOccurs="unbounded"/>
    </xsd:sequence>
  </xsd:complexType>
</xsd:element>
<xsd:element name="Person">
  <xsd:complexType>
    <xsd:sequence>
      <xsd:element ref="my:ID" minOccurs="0"/>
      <xsd:element ref="my:Type" minOccurs="0"/>
      <xsd:element ref="my:DisplayName" minOccurs="0"/>
      <xsd:element ref="my:EmailAddress" minOccurs="0"/>
      <xsd:element ref="my:Order" minOccurs="0"/>
      <xsd:element ref="my:Comment" minOccurs="0"/>
      <xsd:element ref="my:ApprovalType" minOccurs="0"/>
      <xsd:element ref="my:SignatureID" minOccurs="0"/>
      <xsd:element ref="my:Department" minOccurs="0"/>
    </xsd:sequence>
  </xsd:complexType>
</xsd:element>

```

```

    </xsd:complexType>
</xsd:element>
<xsd:element name="ID" type="xsd:string"/>
<xsd:element name="Type" type="xsd:string"/>
<xsd:element name="DisplayName" type="xsd:string"/>
<xsd:element name="EmailAddress" type="xsd:string"/>
<xsd:element name="Order" type="xsd:string"/>
<xsd:element name="Comment" type="xsd:string"/>
<xsd:element name="ApprovalType" type="xsd:string"/>
<xsd:element name="SignatureID" type="xsd:string"/>
<xsd:element name="Department" type="xsd:string"/>
<xsd:element name="DefaultTaskType" nillable="true" type="xsd:integer"/>
<xsd:element name="MySignatureURL" type="xsd:string"/>
<xsd:element name="LastSignatureID" type="xsd:string"/>
<xsd:element name="CurrentSignatureID" type="xsd:string"/>
<xsd:element name="AllowArbitraryApproval" nillable="true"
    type="xsd:boolean"/>
<xsd:element name="RejectedImageURL" type="xsd:string"/>
<xsd:element name="CanSubmit" nillable="true" type="xsd:boolean"/>
<xsd:element name="EawfAttachments">
    <xsd:complexType>
        <xsd:sequence>
            <xsd:element ref="my:EawfAttachment" minOccurs="0"
                maxOccurs="unbounded"/>
        </xsd:sequence>
    </xsd:complexType>
</xsd:element>
<xsd:element name="EawfAttachment">
    <xsd:complexType>
        <xsd:sequence>
            <xsd:element ref="my:AttachedFile" minOccurs="0"/>
        </xsd:sequence>
    </xsd:complexType>
</xsd:element>
<xsd:element name="AttachedFile" nillable="true" type="xsd:base64Binary"/>
<xsd:element name="group1">
    <xsd:complexType>
        <xsd:sequence/>
    </xsd:complexType>
</xsd:element>
<xsd:element name="group2">
    <xsd:complexType>
        <xsd:sequence/>
    </xsd:complexType>
</xsd:element>
<xsd:element name="group3">
    <xsd:complexType>
        <xsd:sequence/>
    </xsd:complexType>
</xsd:element>
</xsd:schema>
<?xml version="1.0" encoding="UTF-8" standalone="no"?>
<xsd:schema
    targetNamespace="http://schemas.microsoft.com/office/infopath/2003/myXSD"
    xmlns:xsi="http://www.w3.org/2001/XMLSchema-instance"
    xmlns:xhtml="http://www.w3.org/1999/xhtml"
    xmlns:aml="http://schemas.microsoft.com/aml/2001/core"
    xmlns:dt="uuid:C2F41010-65B3-11d1-A29F-00AA00C14882"
    xmlns:o="urn:schemas-microsoft-com:office:office"

```



```

xmlns:o12="http://schemas.microsoft.com/office/2004/7/core"
xmlns:w10="urn:schemas-microsoft-com:office:word" xmlns:v="urn:schemas-
microsoft-com:vml"
xmlns:w12="http://schemas.microsoft.com/office/word/2004/6/wordml"
xmlns:wx="http://schemas.microsoft.com/office/word/2003/auxHint"
xmlns:w="http://schemas.microsoft.com/office/word/2003/wordml"
xmlns:s1="http://schemas.microsoft.com/schemaLibrary/2003/core"
xmlns:dfs="http://schemas.microsoft.com/office/
infopath/2003/dataFormSolution"
xmlns:tns="http://schemas.microsoft.com/sharepoint/soap/workflow/"
xmlns:s1="http://schemas.microsoft.com/wsdl/types/" xmlns:z="#RowsetSchema"
xmlns:my="http://schemas.microsoft.com/office/infopath/2003/myXSD"
xmlns:xd="http://schemas.microsoft.com/office/infopath/2003"
xmlns:xsd="http://www.w3.org/2001/XMLSchema">
<xsd:element name="myFields">
  <xsd:complexType>
    <xsd:sequence>
      <xsd:element ref="my:Reviewers" minOccurs="0"/>
      <xsd:element ref="my:CC" minOccurs="0"/>
      <xsd:element ref="my:DueDate" minOccurs="0"/>
      <xsd:element ref="my:Description" minOccurs="0"/>
      <xsd:element ref="my:Title" minOccurs="0"/>
      <xsd:element ref="my:DefaultTaskType" minOccurs="0"/>
      <xsd:element ref="my:CreateTasksInSerial" minOccurs="0"/>
      <xsd:element ref="my:AllowDelegation" minOccurs="0"/>
      <xsd:element ref="my:AllowChangeRequests" minOccurs="0"/>
      <xsd:element ref="my:StopOnAnyReject" minOccurs="0"/>
      <xsd:element ref="my:WantedTasks" minOccurs="0"/>
      <xsd:element ref="my:SetMetadataOnSuccess" minOccurs="0"/>
      <xsd:element ref="my:MetadataSuccessField" minOccurs="0"/>
      <xsd:element ref="my:MetadataSuccessValue" minOccurs="0"/>
      <xsd:element ref="my:ApproveWhenComplete" minOccurs="0"/>
      <xsd:element ref="my:TimePerTaskVal" minOccurs="0"/>
      <xsd:element ref="my:TimePerTaskType" minOccurs="0"/>
      <xsd:element ref="my:Voting" minOccurs="0"/>
      <xsd:element ref="my:MetadataTriggerField" minOccurs="0"/>
      <xsd:element ref="my:MetadataTriggerValue" minOccurs="0"/>
      <xsd:element ref="my:InitLock" minOccurs="0"/>
      <xsd:element ref="my:MetadataStop" minOccurs="0"/>
      <xsd:element ref="my:ItemChangeStop" minOccurs="0"/>
      <xsd:element ref="my:GroupTasks" minOccurs="0"/>
    </xsd:sequence>
    <xsd:anyAttribute processContents="lax"
      namespace="http://www.w3.org/XML/1998/namespace"/>
  </xsd:complexType>
</xsd:element>
<xsd:element name="Reviewers">
  <xsd:complexType>
    <xsd:sequence>
      <xsd:element ref="my:Person" minOccurs="0"
        maxOccurs="unbounded"/>
    </xsd:sequence>
  </xsd:complexType>
</xsd:element>
<xsd:element name="Person">
  <xsd:complexType>
    <xsd:sequence>
      <xsd:element ref="my:DisplayName" minOccurs="0"/>
      <xsd:element ref="my:AccountId" minOccurs="0"/>
    </xsd:sequence>
  </xsd:complexType>
</xsd:element>

```

```

        <xsd:element ref="my:AccountType" minOccurs="0"/>
    </xsd:sequence>
</xsd:complexType>
</xsd:element>
<xsd:element name="DisplayName" type="xsd:string"/>
<xsd:element name="AccountId" type="xsd:string"/>
<xsd:element name="AccountType" type="xsd:string"/>
<xsd:element name="CC">
    <xsd:complexType>
        <xsd:sequence>
            <xsd:element ref="my:Person" minOccurs="0"
                maxOccurs="unbounded"/>
        </xsd:sequence>
    </xsd:complexType>
</xsd:element>
<xsd:element name="DueDate" nillable="true" type="xsd:date"/>
<xsd:element name="Description" type="xsd:string"/>
<xsd:element name="Title" type="xsd:string"/>
<xsd:element name="DefaultTaskType" nillable="true" type="xsd:integer"/>
<xsd:element name="CreateTasksInSerial" nillable="true"
    type="xsd:boolean"/>
<xsd:element name="AllowDelegation" nillable="true" type="xsd:boolean"/>
<xsd:element name="AllowChangeRequests" nillable="true"
    type="xsd:boolean"/>
<xsd:element name="StopOnAnyReject" nillable="true" type="xsd:boolean"/>
<xsd:element name="WantedTasks" nillable="true" type="xsd:integer"/>
<xsd:element name="SetMetadataOnSuccess" nillable="true"
    type="xsd:boolean"/>
<xsd:element name="MetadataSuccessField" type="xsd:string"/>
<xsd:element name="MetadataSuccessValue" type="xsd:string"/>
<xsd:element name="ApproveWhenComplete" nillable="true"
    type="xsd:boolean"/>
<xsd:element name="TimePerTaskVal" nillable="true" type="xsd:integer"/>
<xsd:element name="TimePerTaskType" nillable="true" type="xsd:integer"/>
<xsd:element name="Voting" nillable="true" type="xsd:boolean"/>
<xsd:element name="MetadataTriggerField" type="xsd:string"/>
<xsd:element name="MetadataTriggerValue" type="xsd:string"/>
<xsd:element name="InitLock" nillable="true" type="xsd:boolean"/>
<xsd:element name="MetadataStop" nillable="true" type="xsd:boolean"/>
<xsd:element name="ItemChangeStop" nillable="true" type="xsd:boolean"/>
<xsd:element name="GroupTasks" nillable="true" type="xsd:boolean"/>
</xsd:schema>

```

4.3.3 TemplateData.WorkflowTemplates.WorkflowTemplate.Metadata

As defined by this protocol, this element, if supplied, can contain elements that are vendor-extensible. These vendor-extensible elements are **InitiationCategories**, **Instantiation_FormURN**, **Instantiation_FormURI**, **SigClientSettings**, and **AssignmentStagesName**. Proof-of-concept implementations of workflow templates use the following strings for these nodes in the **TemplateData.WorkflowTemplates.WorkflowTemplate.Metadata** node.

```

<Metadata>
    <Instantiation_FormURN>
        <string>http://server/_catalogs/wfpub/Collect Feedback - SharePoint
14/reviewfeedback_1033.xsn</string>
    </Instantiation_FormURN>

```

```

    <InitiationCategories>
      <string>List;Language:1033;#ContentType;Language:1033</string>
    </InitiationCategories>
    <AssignmentStagesName>
      <string>Reviewers</string>
    </AssignmentStagesName>
  </Metadata>

  <Metadata>
    <Instantiation_FormURN>
      <string>http://server/_catalogs/wfpub/Approval - SharePoint
14/reviewapproval_1033.xsn</string>
    </Instantiation_FormURN>
    <InitiationCategories>
      <string>List;Language:1033;#ContentType;Language:1033</string>
    </InitiationCategories>
    <AssignmentStagesName>
      <string>Approvers</string>
    </AssignmentStagesName>
  </Metadata>

  <Metadata>
    <Instantiation_FormURN>
      <string>urn:schemas-microsoft-com:office:infopath:workflow:ReviewRouting-
Init:$Subst:LCID;</string>
    </Instantiation_FormURN>
    <InitiationCategories>
      <string>General</string>
    </InitiationCategories>
  </Metadata>

  <Metadata>
    <InitiationCategories>
      <string>SigClientRequired</string>
    </InitiationCategories>
    <Instantiation_FormURN>
      <string>urn:schemas-microsoft-com:office:infopath:workflow:CollectSignatures-
Init:$Subst:LCID;</string>
    </Instantiation_FormURN>
  </Metadata>

  <Metadata>
    <Instantiation_FormURN>
      <string>http://server/_catalogs/wfpub/Collect Feedback - SharePoint
14/reviewfeedback_1033.xsn</string>
    </Instantiation_FormURN>
    <InitiationCategories>
      <string>List;Language:1033;#ContentType;Language:1033</string>
    </InitiationCategories>
    <AssignmentStagesName>
      <string>Reviewers</string>
    </AssignmentStagesName>
  </Metadata>

  <Metadata>
    <InitiationCategories>
      <string>List;Language:1033;#ContentType;Language:1033;#SigClientRequired</string>
    </InitiationCategories>
    <Instantiation_FormURI>

```

```

    <string>http://server/_catalogs/wfpub/Collect Signatures - SharePoint
14/Signatures_1033.xsn</string>
  </Instantiation_FormURI>
  <SigClientSettings>
    <string>DigitalSignaturesEnabled;#UseAssociationDataToSuggestedSigners</string>
  </SigClientSettings>
  <AssignmentStagesName>
    <string>Signers</string>
  </AssignmentStagesName>
</Metadata>

<Metadata>
  <Instantiation_FormURN>
    <string>urn:schemas-microsoft-com:office:infopath:workflow:ReviewRouting-
Init:$Subst:LCID;</string>
  </Instantiation_FormURN>
  <InitiationCategories>
    <string>General</string>
  </InitiationCategories>
</Metadata>

<Metadata>
  <Instantiation_FormURN>
    <string>http://server/_catalogs/wfpub/Approval - SharePoint
14/reviewapproval_1033.xsn</string>
  </Instantiation_FormURN>
  <InitiationCategories>
    <string>List;Language:1033;#ContentType;Language:1033</string>
  </InitiationCategories>
  <AssignmentStagesName>
    <string>Approvers</string>
  </AssignmentStagesName>
</Metadata>

```

4.3.4 StartWorkflow.workflowParameters

As defined by this protocol, this element can contain any XML or be empty. Proof-of-concept implementations of workflow templates require the following XML format for this node when initializing a new workflow:

```

<?xml version="1.0" encoding="UTF-8" standalone="no"?>
<xsd:schema targetNamespace="http://schemas.microsoft.com/office/infopath/2003/myXSD"
  xmlns:xsi="http://www.w3.org/2001/XMLSchema-instance"
  xmlns:xhtml="http://www.w3.org/1999/xhtml"
  xmlns:aml="http://schemas.microsoft.com/aml/2001/core"
  xmlns:dt="uuid:C2F41010-65B3-11d1-A29F-00AA00C14882"
  xmlns:o="urn:schemas-microsoft-com:office:office"
  xmlns:o12="http://schemas.microsoft.com/office/2004/7/core"
  xmlns:w10="urn:schemas-microsoft-com:office:word" xmlns:v="urn:schemas-
microsoft-com:vml"
  xmlns:w12="http://schemas.microsoft.com/office/word/2004/6/wordml"
  xmlns:wx="http://schemas.microsoft.com/office/word/2003/auxHint"
  xmlns:w="http://schemas.microsoft.com/office/word/2003/wordml"
  xmlns:sl="http://schemas.microsoft.com/schemaLibrary/2003/core"
  xmlns:dfs="http://schemas.microsoft.com/office/
infopath/2003/dataFormSolution"
  xmlns:tns="http://schemas.microsoft.com/sharepoint/soap/workflow/"

```

```

xmlns:s1="http://microsoft.com/wsdl/types/" xmlns:z="#RowsetSchema"
xmlns:my="http://schemas.microsoft.com/office/infopath/2003/myXSD"
xmlns:xd="http://schemas.microsoft.com/office/infopath/2003"
xmlns:xsd="http://www.w3.org/2001/XMLSchema">
  <xsd:element name="myFields">
    <xsd:complexType>
      <xsd:sequence>
        <xsd:element ref="my:Reviewers" minOccurs="0"/>
        <xsd:element ref="my:CC" minOccurs="0"/>
        <xsd:element ref="my:DueDate" minOccurs="0"/>
        <xsd:element ref="my:Description" minOccurs="0"/>
        <xsd:element ref="my:Title" minOccurs="0"/>
        <xsd:element ref="my:DefaultTaskType" minOccurs="0"/>
        <xsd:element ref="my:CreateTasksInSerial" minOccurs="0"/>
        <xsd:element ref="my:AllowDelegation" minOccurs="0"/>
        <xsd:element ref="my:AllowChangeRequests" minOccurs="0"/>
        <xsd:element ref="my:StopOnAnyReject" minOccurs="0"/>
        <xsd:element ref="my:WantedTasks" minOccurs="0"/>
        <xsd:element ref="my:SetMetadataOnSuccess" minOccurs="0"/>
        <xsd:element ref="my:MetadataSuccessField" minOccurs="0"/>
        <xsd:element ref="my:MetadataSuccessValue" minOccurs="0"/>
        <xsd:element ref="my:ApproveWhenComplete" minOccurs="0"/>
        <xsd:element ref="my:TimePerTaskVal" minOccurs="0"/>
        <xsd:element ref="my:TimePerTaskType" minOccurs="0"/>
        <xsd:element ref="my:Voting" minOccurs="0"/>
        <xsd:element ref="my:MetadataTriggerField" minOccurs="0"/>
        <xsd:element ref="my:MetadataTriggerValue" minOccurs="0"/>
        <xsd:element ref="my:InitLock" minOccurs="0"/>
        <xsd:element ref="my:MetadataStop" minOccurs="0"/>
        <xsd:element ref="my:ItemChangeStop" minOccurs="0"/>
        <xsd:element ref="my:GroupTasks" minOccurs="0"/>
      </xsd:sequence>
      <xsd:anyAttribute processContents="lax"
        namespace="http://www.w3.org/XML/1998/namespace"/>
    </xsd:complexType>
  </xsd:element>
  <xsd:element name="Reviewers">
    <xsd:complexType>
      <xsd:sequence>
        <xsd:element ref="my:Person" minOccurs="0"
          maxOccurs="unbounded"/>
      </xsd:sequence>
    </xsd:complexType>
  </xsd:element>
  <xsd:element name="Person">
    <xsd:complexType>
      <xsd:sequence>
        <xsd:element ref="my:DisplayName" minOccurs="0"/>
        <xsd:element ref="my:AccountId" minOccurs="0"/>
        <xsd:element ref="my:AccountType" minOccurs="0"/>
      </xsd:sequence>
    </xsd:complexType>
  </xsd:element>
  <xsd:element name="DisplayName" type="xsd:string"/>
  <xsd:element name="AccountId" type="xsd:string"/>
  <xsd:element name="AccountType" type="xsd:string"/>
  <xsd:element name="CC">
    <xsd:complexType>
      <xsd:sequence>

```

```

        <xsd:element ref="my:Person" minOccurs="0" maxOccurs="unbounded"/>
    </xsd:sequence>
</xsd:complexType>
</xsd:element>
<xsd:element name="DueDate" nillable="true" type="xsd:date"/>
<xsd:element name="Description" type="xsd:string"/>
<xsd:element name="Title" type="xsd:string"/>
<xsd:element name="DefaultTaskType" nillable="true" type="xsd:integer"/>
<xsd:element name="CreateTasksInSerial" nillable="true" type="xsd:boolean"/>
<xsd:element name="AllowDelegation" nillable="true" type="xsd:boolean"/>
<xsd:element name="AllowChangeRequests" nillable="true" type="xsd:boolean"/>
<xsd:element name="StopOnAnyReject" nillable="true" type="xsd:boolean"/>
<xsd:element name="WantedTasks" nillable="true" type="xsd:integer"/>
<xsd:element name="SetMetadataOnSuccess" nillable="true" type="xsd:boolean"/>
<xsd:element name="MetadataSuccessField" type="xsd:string"/>
<xsd:element name="MetadataSuccessValue" type="xsd:string"/>
<xsd:element name="ApproveWhenComplete" nillable="true" type="xsd:boolean"/>
<xsd:element name="TimePerTaskVal" nillable="true" type="xsd:integer"/>
<xsd:element name="TimePerTaskType" nillable="true" type="xsd:integer"/>
<xsd:element name="Voting" nillable="true" type="xsd:boolean"/>
<xsd:element name="MetadataTriggerField" type="xsd:string"/>
<xsd:element name="MetadataTriggerValue" type="xsd:string"/>
<xsd:element name="InitLock" nillable="true" type="xsd:boolean"/>
<xsd:element name="MetadataStop" nillable="true" type="xsd:boolean"/>
<xsd:element name="ItemChangeStop" nillable="true" type="xsd:boolean"/>
<xsd:element name="GroupTasks" nillable="true" type="xsd:boolean"/>
</xsd:schema>
<?xml version="1.0" encoding="UTF-8" standalone="no"?>
<xsd:schema targetNamespace="http://schemas.microsoft.com/office/infopath/2003/myXSD"
xmlns:xsi="http://www.w3.org/2001/XMLSchema-instance"
xmlns:xhtml="http://www.w3.org/1999/xhtml"
xmlns:aml="http://schemas.microsoft.com/aml/2001/core" xmlns:dt="uuid:C2F41010-65B3-11d1-
A29F-00AA00C14882" xmlns:o="urn:schemas-microsoft-com:office:office"
xmlns:o12="http://schemas.microsoft.com/office/2004/7/core" xmlns:w10="urn:schemas-microsoft-
com:office:word" xmlns:v="urn:schemas-microsoft-com:vml"
xmlns:w12="http://schemas.microsoft.com/office/word/2004/6/wordml"
xmlns:wx="http://schemas.microsoft.com/office/word/2003/auxHint"
xmlns:w="http://schemas.microsoft.com/office/word/2003/wordml"
xmlns:sl="http://schemas.microsoft.com/schemaLibrary/2003/core"
xmlns:dfs="http://schemas.microsoft.com/office/infopath/2003/dataFormSolution"
xmlns:tns="http://schemas.microsoft.com/sharepoint/soap/workflow/"
xmlns:s1="http://microsoft.com/wsdl/types/" xmlns:z="#RowsetSchema"
xmlns:my="http://schemas.microsoft.com/office/infopath/2003/myXSD"
xmlns:xd="http://schemas.microsoft.com/office/infopath/2003"
xmlns:xsd="http://www.w3.org/2001/XMLSchema">
    <xsd:element name="myFields">
        <xsd:complexType>
            <xsd:sequence>
                <xsd:element ref="my:DueDate" minOccurs="0"/>
                <xsd:element ref="my:DueDateDays" minOccurs="0"/>
                <xsd:element ref="my:TaskDescription" minOccurs="0"/>
                <xsd:element ref="my:TranslatorsList" minOccurs="0"/>
                <xsd:element ref="my:ManuallyInitiated" minOccurs="0"/>
                <xsd:element ref="my:StopOnBaseDocChange" minOccurs="0"/>
            </xsd:sequence>
            <xsd:anyAttribute processContents="lax"
namespace="http://www.w3.org/XML/1998/namespace"/>
        </xsd:complexType>
    </xsd:element>
    <xsd:element name="DueDate" nillable="true" type="xsd:date"/>

```

```

<xsd:element name="DueDateDays" nillable="true" type="xsd:integer"/>
<xsd:element name="TaskDescription" type="xsd:string"/>
<xsd:element name="TranslatorsList" type="xsd:string"/>
<xsd:element name="ManuallyInitiated" nillable="true" type="xsd:boolean"/>
<xsd:element name="StopOnBaseDocChange" nillable="true" type="xsd:boolean"/>
</xsd:schema>

<?xml version="1.0" encoding="UTF-8" standalone="no"?>
<xsd:schema targetNamespace="http://schemas.microsoft.com/office/infopath/2003/myXSD"
xmlns:xsi="http://www.w3.org/2001/XMLSchema-instance"
xmlns:xhtml="http://www.w3.org/1999/xhtml"
xmlns:aml="http://schemas.microsoft.com/aml/2001/core" xmlns:dt="uuid:C2F41010-65B3-11d1-
A29F-00AA00C14882" xmlns:o="urn:schemas-microsoft-com:office:office"
xmlns:o12="http://schemas.microsoft.com/office/2004/7/core" xmlns:w10="urn:schemas-microsoft-
com:office:word" xmlns:v="urn:schemas-microsoft-com:vml"
xmlns:w12="http://schemas.microsoft.com/office/word/2004/6/wordml"
xmlns:wx="http://schemas.microsoft.com/office/word/2003/auxHint"
xmlns:w="http://schemas.microsoft.com/office/word/2003/wordml"
xmlns:s1="http://schemas.microsoft.com/schemaLibrary/2003/core"
xmlns:dfs="http://schemas.microsoft.com/office/infopath/2003/dataFormSolution"
xmlns:tns="http://schemas.microsoft.com/sharepoint/soap/workflow/"
xmlns:s1="http://microsoft.com/wsdl/types/" xmlns:z="#RowsetSchema"
xmlns:my="http://schemas.microsoft.com/office/infopath/2003/myXSD"
xmlns:xd="http://schemas.microsoft.com/office/infopath/2003"
xmlns:xsd="http://www.w3.org/2001/XMLSchema">
  <xsd:attribute name="SignatureSpotID" type="xsd:string"/>
  <xsd:attribute name="SuggestedSigner" type="xsd:string"/>
  <xsd:element name="myFields">
    <xsd:complexType>
      <xsd:sequence>
        <xsd:element ref="my:CC" minOccurs="0"/>
        <xsd:element ref="my:SignatureSpots" minOccurs="0"/>
        <xsd:element ref="my:IsSerial" minOccurs="0"/>
      </xsd:sequence>
      <xsd:anyAttribute processContents="lax"
namespace="http://www.w3.org/XML/1998/namespace"/>
    </xsd:complexType>
  </xsd:element>
  <xsd:element name="CC">
    <xsd:complexType>
      <xsd:sequence>
        <xsd:element ref="my:Person" minOccurs="0" maxOccurs="unbounded"/>
      </xsd:sequence>
    </xsd:complexType>
  </xsd:element>
  <xsd:element name="Person">
    <xsd:complexType>
      <xsd:sequence>
        <xsd:element ref="my:DisplayName" minOccurs="0"/>
        <xsd:element ref="my:AccountId" minOccurs="0"/>
        <xsd:element ref="my:AccountType" minOccurs="0"/>
      </xsd:sequence>
    </xsd:complexType>
  </xsd:element>
  <xsd:element name="DisplayName" type="xsd:string"/>
  <xsd:element name="AccountId" type="xsd:string"/>
  <xsd:element name="AccountType" type="xsd:string"/>
  <xsd:element name="SignatureSpots">
    <xsd:complexType>
      <xsd:sequence>

```

```

        <xsd:element ref="my:SignatureSpot" minOccurs="0" maxOccurs="unbounded"/>
    </xsd:sequence>
</xsd:complexType>
</xsd:element>
<xsd:element name="SignatureSpot">
    <xsd:complexType>
        <xsd:sequence>
            <xsd:element ref="my:Assignee" minOccurs="0"/>
        </xsd:sequence>
        <xsd:attribute ref="my:SignatureSpotID"/>
        <xsd:attribute ref="my:SuggestedSigner"/>
    </xsd:complexType>
</xsd:element>
<xsd:element name="Assignee">
    <xsd:complexType>
        <xsd:sequence>
            <xsd:element ref="my:Person" minOccurs="0" maxOccurs="unbounded"/>
        </xsd:sequence>
    </xsd:complexType>
</xsd:element>
<xsd:element name="IsSerial" nillable="true" type="xsd:boolean"/>
</xsd:schema>
<?xml version="1.0" encoding="UTF-8" standalone="no"?>
<xsd:schema targetNamespace="http://schemas.microsoft.com/office/infopath/2003/myXSD"
xmlns:xsi="http://www.w3.org/2001/XMLSchema-instance"
xmlns:xhtml="http://www.w3.org/1999/xhtml"
xmlns:aml="http://schemas.microsoft.com/aml/2001/core" xmlns:dt="uuid:C2F41010-65B3-11d1-
A29F-00AA00C14882" xmlns:o="urn:schemas-microsoft-com:office:office"
xmlns:o12="http://schemas.microsoft.com/office/2004/7/core" xmlns:w10="urn:schemas-microsoft-
com:office:word" xmlns:v="urn:schemas-microsoft-com:vml"
xmlns:w12="http://schemas.microsoft.com/office/word/2004/6/wordml"
xmlns:wx="http://schemas.microsoft.com/office/word/2003/auxHint"
xmlns:w="http://schemas.microsoft.com/office/word/2003/wordml"
xmlns:sl="http://schemas.microsoft.com/schemaLibrary/2003/core"
xmlns:dfs="http://schemas.microsoft.com/office/infopath/2003/dataFormSolution"
xmlns:tns="http://schemas.microsoft.com/sharepoint/soap/workflow/"
xmlns:s1="http://microsoft.com/wsdl/types/" xmlns:z="#RowsetSchema"
xmlns:my="http://schemas.microsoft.com/office/infopath/2003/myXSD"
xmlns:xd="http://schemas.microsoft.com/office/infopath/2003"
xmlns:xsd="http://www.w3.org/2001/XMLSchema">
    <xsd:element name="myFields">
        <xsd:complexType>
            <xsd:sequence>
                <xsd:element ref="my:fieldALS" minOccurs="0"/>
                <xsd:element ref="my:InitiatedBy" minOccurs="0"/>
                <xsd:element ref="my:Reviewers" minOccurs="0"/>
                <xsd:element ref="my:DefaultTaskType" minOccurs="0"/>
                <xsd:element ref="my:MySignatureURL" minOccurs="0"/>
                <xsd:element ref="my:LastSignatureID" minOccurs="0"/>
                <xsd:element ref="my:CurrentSignatureID" minOccurs="0"/>
                <xsd:element ref="my:AllowArbitraryApproval" minOccurs="0"/>
                <xsd:element ref="my:RejectedImageURL" minOccurs="0"/>
                <xsd:element ref="my:CanSubmit" minOccurs="0"/>
                <xsd:element ref="my:EawfAttachments" minOccurs="0"/>
                <xsd:element ref="my:group1" minOccurs="0"/>
                <xsd:element ref="my:group2" minOccurs="0"/>
                <xsd:element ref="my:group3" minOccurs="0"/>
            </xsd:sequence>
            <xsd:anyAttribute processContents="lax"
namespace="http://www.w3.org/XML/1998/namespace"/>

```



```

    </xsd:complexType>
  </xsd:element>
  <xsd:element name="fieldALS" type="xsd:string"/>
  <xsd:element name="InitiatedBy" type="xsd:string"/>
  <xsd:element name="Reviewers">
    <xsd:complexType>
      <xsd:sequence>
        <xsd:element ref="my:Person" minOccurs="0" maxOccurs="unbounded"/>
      </xsd:sequence>
    </xsd:complexType>
  </xsd:element>
  <xsd:element name="Person">
    <xsd:complexType>
      <xsd:sequence>
        <xsd:element ref="my:ID" minOccurs="0"/>
        <xsd:element ref="my:Type" minOccurs="0"/>
        <xsd:element ref="my:DisplayName" minOccurs="0"/>
        <xsd:element ref="my:EmailAddress" minOccurs="0"/>
        <xsd:element ref="my:Order" minOccurs="0"/>
        <xsd:element ref="my:Comment" minOccurs="0"/>
        <xsd:element ref="my:ApprovalType" minOccurs="0"/>
        <xsd:element ref="my:SignatureID" minOccurs="0"/>
        <xsd:element ref="my:Department" minOccurs="0"/>
      </xsd:sequence>
    </xsd:complexType>
  </xsd:element>
  <xsd:element name="ID" type="xsd:string"/>
  <xsd:element name="Type" type="xsd:string"/>
  <xsd:element name="DisplayName" type="xsd:string"/>
  <xsd:element name="EmailAddress" type="xsd:string"/>
  <xsd:element name="Order" type="xsd:string"/>
  <xsd:element name="Comment" type="xsd:string"/>
  <xsd:element name="ApprovalType" type="xsd:string"/>
  <xsd:element name="SignatureID" type="xsd:string"/>
  <xsd:element name="Department" type="xsd:string"/>
  <xsd:element name="DefaultTaskType" nillable="true" type="xsd:integer"/>
  <xsd:element name="MySignatureURL" type="xsd:string"/>
  <xsd:element name="LastSignatureID" type="xsd:string"/>
  <xsd:element name="CurrentSignatureID" type="xsd:string"/>
  <xsd:element name="AllowArbitraryApproval" nillable="true" type="xsd:boolean"/>
  <xsd:element name="RejectedImageURL" type="xsd:string"/>
  <xsd:element name="CanSubmit" nillable="true" type="xsd:boolean"/>
  <xsd:element name="EawfAttachments">
    <xsd:complexType>
      <xsd:sequence>
        <xsd:element ref="my:EawfAttachment" minOccurs="0" maxOccurs="unbounded"/>
      </xsd:sequence>
    </xsd:complexType>
  </xsd:element>
  <xsd:element name="EawfAttachment">
    <xsd:complexType>
      <xsd:sequence>
        <xsd:element ref="my:AttachedFile" minOccurs="0"/>
      </xsd:sequence>
    </xsd:complexType>
  </xsd:element>
  <xsd:element name="AttachedFile" nillable="true" type="xsd:base64Binary"/>
  <xsd:element name="group1">
    <xsd:complexType>

```

```

        <xsd:sequence/>
    </xsd:complexType>
</xsd:element>
<xsd:element name="group2">
    <xsd:complexType>
        <xsd:sequence/>
    </xsd:complexType>
</xsd:element>
<xsd:element name="group3">
    <xsd:complexType>
        <xsd:sequence/>
    </xsd:complexType>
</xsd:element>
</xsd:schema>

```

This XML is handled by the protocol server verbatim, without any modifications. The protocol server supplies this data to the new workflow being created.

4.3.5 AlterToDo.taskData

As defined by this protocol, this element can contain any XML or be empty. Proof-of-concept implementations of workflow templates require the following XML format for this node when initializing a new workflow:

```

<?xml version="1.0" encoding="UTF-8" standalone="no"?>
<xsd:schema targetNamespace="http://schemas.microsoft.com/office/infopath/2003/myXSD"
xmlns:xsi="http://www.w3.org/2001/XMLSchema-instance"
xmlns:xhtml="http://www.w3.org/1999/xhtml"
xmlns:aml="http://schemas.microsoft.com/aml/2001/core" xmlns:dt="uuid:C2F41010-65B3-11d1-
A29F-00AA00C14882" xmlns:o="urn:schemas-microsoft-com:office:office"
xmlns:ol2="http://schemas.microsoft.com/office/2004/7/core" xmlns:w10="urn:schemas-microsoft-
com:office:word" xmlns:v="urn:schemas-microsoft-com:vml"
xmlns:w12="http://schemas.microsoft.com/office/word/2004/6/wordml"
xmlns:wx="http://schemas.microsoft.com/office/word/2003/auxHint"
xmlns:w="http://schemas.microsoft.com/office/word/2003/wordml"
xmlns:sl="http://schemas.microsoft.com/schemaLibrary/2003/core"
xmlns:dfs="http://schemas.microsoft.com/office/infopath/2003/dataFormSolution"
xmlns:tns="http://schemas.microsoft.com/sharepoint/soap/workflow/"
xmlns:s1="http://schemas.microsoft.com/wsdl/types/" xmlns:z="#RowsetSchema"
xmlns:my="http://schemas.microsoft.com/office/infopath/2003/myXSD"
xmlns:xd="http://schemas.microsoft.com/office/infopath/2003"
xmlns:xsd="http://www.w3.org/2001/XMLSchema">
    <xsd:element name="myFields">
        <xsd:complexType>
            <xsd:sequence>
                <xsd:element ref="my:TaskStatus" minOccurs="0"/>
                <xsd:element ref="my:DelegateTo" minOccurs="0"/>
                <xsd:element ref="my:SigInstructions" minOccurs="0"/>
                <xsd:element ref="my:SigDetails" minOccurs="0"/>
                <xsd:element ref="my:Status" minOccurs="0"/>
            </xsd:sequence>
            <xsd:anyAttribute processContents="lax"
namespace="http://www.w3.org/XML/1998/namespace"/>
        </xsd:complexType>
    </xsd:element>
    <xsd:element name="TaskStatus" type="xsd:string"/>
    <xsd:element name="DelegateTo">
        <xsd:complexType>
            <xsd:sequence>

```

```

        <xsd:element ref="my:Person" minOccurs="0" maxOccurs="unbounded"/>
    </xsd:sequence>
</xsd:complexType>
</xsd:element>
<xsd:element name="Person">
    <xsd:complexType>
        <xsd:sequence>
            <xsd:element ref="my:DisplayName" minOccurs="0"/>
            <xsd:element ref="my:AccountId" minOccurs="0"/>
            <xsd:element ref="my:AccountType" minOccurs="0"/>
        </xsd:sequence>
    </xsd:complexType>
</xsd:element>
<xsd:element name="DisplayName" type="xsd:string"/>
<xsd:element name="AccountId" type="xsd:string"/>
<xsd:element name="AccountType" type="xsd:string"/>
<xsd:element name="SigInstructions">
    <xsd:complexType>
        <xsd:sequence>
            <xsd:element ref="my:OffsiteParticipant" minOccurs="0"/>
        </xsd:sequence>
    </xsd:complexType>
</xsd:element>
<xsd:element name="OffsiteParticipant">
    <xsd:complexType>
        <xsd:sequence/>
    </xsd:complexType>
</xsd:element>
<xsd:element name="SigDetails">
    <xsd:complexType>
        <xsd:sequence/>
    </xsd:complexType>
</xsd:element>
<xsd:element name="Status" type="xsd:string"/>
</xsd:schema>

<?xml version="1.0" encoding="UTF-8" standalone="no"?>
  <xsd:schema targetNamespace="http://schemas.microsoft.com/office/infopath/2003/myXSD"
    xmlns:xsi="http://www.w3.org/2001/XMLSchema-instance"
    xmlns:xhtml="http://www.w3.org/1999/xhtml"
    xmlns:aml="http://schemas.microsoft.com/aml/2001/core" xmlns:dt="uuid:C2F41010-65B3-11d1-
A29F-00AA00C14882" xmlns:o="urn:schemas-microsoft-com:office:office"
    xmlns:ol2="http://schemas.microsoft.com/office/2004/7/core" xmlns:w10="urn:schemas-microsoft-
com:office:word" xmlns:v="urn:schemas-microsoft-com:vml"
    xmlns:w12="http://schemas.microsoft.com/office/word/2004/6/wordml"
    xmlns:wx="http://schemas.microsoft.com/office/word/2003/auxHint"
    xmlns:w="http://schemas.microsoft.com/office/word/2003/wordml"
    xmlns:sl="http://schemas.microsoft.com/schemaLibrary/2003/core"
    xmlns:dfs="http://schemas.microsoft.com/office/infopath/2003/dataFormSolution"
    xmlns:tns="http://schemas.microsoft.com/sharepoint/soap/workflow/"
    xmlns:s1="http://microsoft.com/wsdl/types/" xmlns:z="#RowsetSchema"
    xmlns:my="http://schemas.microsoft.com/office/infopath/2003/myXSD"
    xmlns:xd="http://schemas.microsoft.com/office/infopath/2003"
    xmlns:xsd="http://www.w3.org/2001/XMLSchema">
    <xsd:element name="myFields">
        <xsd:complexType>
            <xsd:sequence>
                <xsd:element ref="my:TaskStatus" minOccurs="0"/>
                <xsd:element ref="my:Comments" minOccurs="0"/>
                <xsd:element ref="my:AssigneeEmail" minOccurs="0"/>
            </xsd:sequence>
        </xsd:complexType>
    </xsd:element>

```

```

        <xsd:element ref="my:Description" minOccurs="0"/>
        <xsd:element ref="my:IsHold" minOccurs="0"/>
        <xsd:element ref="my:fieldALS" minOccurs="0"/>
        <xsd:element ref="my:Reviewers" minOccurs="0"/>
        <xsd:element ref="my:IsArbitrary" minOccurs="0"/>
        <xsd:element ref="my:IsInvalidated" minOccurs="0"/>
        <xsd:element ref="my:IsALSAllowed" minOccurs="0"/>
        <xsd:element ref="my:MySignatureURL" minOccurs="0"/>
        <xsd:element ref="my>LastSignatureID" minOccurs="0"/>
        <xsd:element ref="my:CurrentSignatureID" minOccurs="0"/>
        <xsd:element ref="my:CurrentSigner" minOccurs="0"/>
        <xsd:element ref="my:CurrentSignerTitle" minOccurs="0"/>
        <xsd:element ref="my:CurrentApprovalType" minOccurs="0"/>
        <xsd:element ref="my>LastApprover" minOccurs="0"/>
        <xsd:element ref="my:EnableArbitraryApproval" minOccurs="0"/>
        <xsd:element ref="my:RejectedImageURL" minOccurs="0"/>
        <xsd:element ref="my:CanSubmit" minOccurs="0"/>
        <xsd:element ref="my:EawfAttachments" minOccurs="0"/>
        <xsd:element ref="my:group1" minOccurs="0"/>
        <xsd:element ref="my:group2" minOccurs="0"/>
        <xsd:element ref="my:group3" minOccurs="0"/>
        <xsd:element ref="my:group4" minOccurs="0"/>
    </xsd:sequence>
    <xsd:anyAttribute processContents="lax"
namespace="http://www.w3.org/XML/1998/namespace"/>
</xsd:complexType>
</xsd:element>
<xsd:element name="TaskStatus" type="xsd:string"/>
<xsd:element name="Comments" type="xsd:string"/>
<xsd:element name="AssigneeEmail" type="xsd:string"/>
<xsd:element name="Description" type="xsd:string"/>
<xsd:element name="IsHold" nillable="true" type="xsd:boolean"/>
<xsd:element name="fieldALS" type="xsd:string"/>
<xsd:element name="Reviewers">
    <xsd:complexType>
        <xsd:sequence>
            <xsd:element ref="my:Person" minOccurs="0" maxOccurs="unbounded"/>
        </xsd:sequence>
    </xsd:complexType>
</xsd:element>
<xsd:element name="Person">
    <xsd:complexType>
        <xsd:sequence>
            <xsd:element ref="my:ID" minOccurs="0"/>
            <xsd:element ref="my:Type" minOccurs="0"/>
            <xsd:element ref="my:DisplayName" minOccurs="0"/>
            <xsd:element ref="my:EmailAddress" minOccurs="0"/>
            <xsd:element ref="my:Order" minOccurs="0"/>
            <xsd:element ref="my:Comment" minOccurs="0"/>
            <xsd:element ref="my:ApprovalType" minOccurs="0"/>
            <xsd:element ref="my:SignatureID" minOccurs="0"/>
            <xsd:element ref="my:Department" minOccurs="0"/>
        </xsd:sequence>
    </xsd:complexType>
</xsd:element>
<xsd:element name="ID" type="xsd:string"/>
<xsd:element name="Type" type="xsd:string"/>
<xsd:element name="DisplayName" type="xsd:string"/>
<xsd:element name="EmailAddress" type="xsd:string"/>

```

```

<xsd:element name="Order" type="xsd:string"/>
<xsd:element name="Comment" type="xsd:string"/>
<xsd:element name="ApprovalType" type="xsd:string"/>
<xsd:element name="SignatureID" type="xsd:string"/>
<xsd:element name="Department" type="xsd:string"/>
<xsd:element name="IsArbitrary" nillable="true" type="xsd:boolean"/>
<xsd:element name="IsInvalidated" nillable="true" type="xsd:boolean"/>
<xsd:element name="IsALSAllowed" nillable="true" type="xsd:boolean"/>
<xsd:element name="MySignatureURL" type="xsd:string"/>
<xsd:element name="LastSignatureID" type="xsd:string"/>
<xsd:element name="CurrentSignatureID" type="xsd:string"/>
<xsd:element name="CurrentSigner" type="xsd:string"/>
<xsd:element name="CurrentSignerTitle" type="xsd:string"/>
<xsd:element name="CurrentApprovalType" type="xsd:string"/>
<xsd:element name="LastApprover" type="xsd:string"/>
<xsd:element name="EnableArbitraryApproval" nillable="true" type="xsd:boolean"/>
<xsd:element name="CanSubmit" nillable="true" type="xsd:boolean"/>
<xsd:element name="RejectedImageURL" type="xsd:string"/>
<xsd:element name="EawfAttachments">
  <xsd:complexType>
    <xsd:sequence>
      <xsd:element ref="my:EawfAttachment" minOccurs="0" maxOccurs="unbounded"/>
    </xsd:sequence>
  </xsd:complexType>
</xsd:element>
<xsd:element name="EawfAttachment">
  <xsd:complexType>
    <xsd:sequence>
      <xsd:element ref="my:AttachedFile" minOccurs="0"/>
    </xsd:sequence>
  </xsd:complexType>
</xsd:element>
<xsd:element name="AttachedFile" nillable="true" type="xsd:base64Binary"/>
<xsd:element name="group1">
  <xsd:complexType>
    <xsd:sequence/>
  </xsd:complexType>
</xsd:element>
<xsd:element name="group2">
  <xsd:complexType>
    <xsd:sequence/>
  </xsd:complexType>
</xsd:element>
<xsd:element name="group3">
  <xsd:complexType>
    <xsd:sequence/>
  </xsd:complexType>
</xsd:element>
<xsd:element name="group4">
  <xsd:complexType>
    <xsd:sequence/>
  </xsd:complexType>
</xsd:element>
</xsd:schema>
<?xml version="1.0" encoding="UTF-8" standalone="no"?>
<xsd:schema targetNamespace="http://schemas.microsoft.com/office/infopath/2003/myXSD"
xmlns:xsi="http://www.w3.org/2001/XMLSchema-instance"
xmlns:xhtml="http://www.w3.org/1999/xhtml"
xmlns:aml="http://schemas.microsoft.com/aml/2001/core" xmlns:dt="uuid:C2F41010-65B3-11d1-

```

```

A29F-00AA00C14882" xmlns:o="urn:schemas-microsoft-com:office:office"
xmlns:ol2="http://schemas.microsoft.com/office/2004/7/core" xmlns:w10="urn:schemas-microsoft-
com:office:word" xmlns:v="urn:schemas-microsoft-com:vml"
xmlns:w12="http://schemas.microsoft.com/office/word/2004/6/wordml"
xmlns:wx="http://schemas.microsoft.com/office/word/2003/auxHint"
xmlns:w="http://schemas.microsoft.com/office/word/2003/wordml"
xmlns:s1="http://schemas.microsoft.com/schemaLibrary/2003/core"
xmlns:dfs="http://schemas.microsoft.com/office/infopath/2003/dataFormSolution"
xmlns:tns="http://schemas.microsoft.com/sharepoint/soap/workflow/"
xmlns:s1="http://microsoft.com/wsdl/types/" xmlns:z="#RowsetSchema"
xmlns:my="http://schemas.microsoft.com/office/infopath/2003/myXSD"
xmlns:xd="http://schemas.microsoft.com/office/infopath/2003"
xmlns:xsd="http://www.w3.org/2001/XMLSchema">
  <xsd:element name="myFields">
    <xsd:complexType>
      <xsd:sequence>
        <xsd:element ref="my:TaskStatus" minOccurs="0"/>
        <xsd:element ref="my:Description" minOccurs="0"/>
        <xsd:element ref="my:ActionGroupChoice" minOccurs="0"/>
        <xsd:element ref="my:CommentsTextBox" minOccurs="0"/>
        <xsd:element ref="my:KeepMetadataCheckBox" minOccurs="0"/>
        <xsd:element ref="my:group5" minOccurs="0"/>
        <xsd:element ref="my:group7" minOccurs="0"/>
        <xsd:element ref="my:field1" minOccurs="0"/>
        <xsd:element ref="my:group8" minOccurs="0"/>
        <xsd:element ref="my:group9" minOccurs="0"/>
        <xsd:element ref="my:group10" minOccurs="0"/>
      </xsd:sequence>
      <xsd:anyAttribute processContents="lax"
namespace="http://www.w3.org/XML/1998/namespace"/>
    </xsd:complexType>
  </xsd:element>
  <xsd:element name="TaskStatus" type="xsd:string"/>
  <xsd:element name="Description" type="xsd:string"/>
  <xsd:element name="ActionGroupChoice" type="xsd:string"/>
  <xsd:element name="CommentsTextBox" type="xsd:string"/>
  <xsd:element name="KeepMetadataCheckBox" nillable="true" type="xsd:boolean"/>
  <xsd:element name="group5">
    <xsd:complexType>
      <xsd:sequence/>
    </xsd:complexType>
  </xsd:element>
  <xsd:element name="group7">
    <xsd:complexType>
      <xsd:sequence/>
    </xsd:complexType>
  </xsd:element>
  <xsd:element name="field1" nillable="true" type="xsd:boolean"/>
  <xsd:element name="group8">
    <xsd:complexType>
      <xsd:sequence/>
    </xsd:complexType>
  </xsd:element>
  <xsd:element name="group9">
    <xsd:complexType>
      <xsd:sequence/>
    </xsd:complexType>
  </xsd:element>
  <xsd:element name="group10">
    <xsd:complexType>
      <xsd:sequence/>
    </xsd:complexType>
  </xsd:element>

```

```

    </xsd:complexType>
  </xsd:element>
</xsd:schema>
<?xml version="1.0" encoding="UTF-8" standalone="no"?>
<xsd:schema targetNamespace="http://schemas.microsoft.com/office/infopath/2003/myXSD"
xmlns:xsi="http://www.w3.org/2001/XMLSchema-instance"
xmlns:xhtml="http://www.w3.org/1999/xhtml"
xmlns:aml="http://schemas.microsoft.com/aml/2001/core" xmlns:dt="uuid:C2F41010-65B3-11d1-
A29F-00AA00C14882" xmlns:o="urn:schemas-microsoft-com:office:office"
xmlns:o12="http://schemas.microsoft.com/office/2004/7/core" xmlns:w10="urn:schemas-microsoft-
com:office:word" xmlns:v="urn:schemas-microsoft-com:vml"
xmlns:w12="http://schemas.microsoft.com/office/word/2004/6/wordml"
xmlns:wx="http://schemas.microsoft.com/office/word/2003/auxHint"
xmlns:w="http://schemas.microsoft.com/office/word/2003/wordml"
xmlns:sl="http://schemas.microsoft.com/schemaLibrary/2003/core"
xmlns:dfs="http://schemas.microsoft.com/office/infopath/2003/dataFormSolution"
xmlns:tns="http://schemas.microsoft.com/sharepoint/soap/workflow/"
xmlns:s1="http://microsoft.com/wsdl/types/" xmlns:z="#RowsetSchema"
xmlns:my="http://schemas.microsoft.com/office/infopath/2003/myXSD"
xmlns:xd="http://schemas.microsoft.com/office/infopath/2003"
xmlns:xsd="http://www.w3.org/2001/XMLSchema">
  <xsd:element name="myFields">
    <xsd:complexType>
      <xsd:sequence>
        <xsd:element ref="my:TaskStatus" minOccurs="0"/>
        <xsd:element ref="my:Comments" minOccurs="0"/>
        <xsd:element ref="my:DelegateTo" minOccurs="0"/>
        <xsd:element ref="my:NewDescription" minOccurs="0"/>
        <xsd:element ref="my:NewDueDate" minOccurs="0"/>
        <xsd:element ref="my:RequestTo" minOccurs="0"/>
        <xsd:element ref="my:Decline" minOccurs="0"/>
        <xsd:element ref="my:dcr" minOccurs="0"/>
        <xsd:element ref="my:Status" minOccurs="0"/>
      </xsd:sequence>
      <xsd:anyAttribute processContents="lax"
namespace="http://www.w3.org/XML/1998/namespace"/>
    </xsd:complexType>
  </xsd:element>
  <xsd:element name="TaskStatus" type="xsd:string"/>
  <xsd:element name="Comments" type="xsd:string"/>
  <xsd:element name="DelegateTo">
    <xsd:complexType>
      <xsd:sequence>
        <xsd:element ref="my:Person" minOccurs="0" maxOccurs="unbounded"/>
      </xsd:sequence>
    </xsd:complexType>
  </xsd:element>
  <xsd:element name="Person">
    <xsd:complexType>
      <xsd:sequence>
        <xsd:element ref="my:DisplayName" minOccurs="0"/>
        <xsd:element ref="my:AccountId" minOccurs="0"/>
        <xsd:element ref="my:AccountType" minOccurs="0"/>
      </xsd:sequence>
    </xsd:complexType>
  </xsd:element>
  <xsd:element name="DisplayName" type="xsd:string"/>
  <xsd:element name="AccountId" type="xsd:string"/>
  <xsd:element name="AccountType" type="xsd:string"/>
  <xsd:element name="NewDescription" type="xsd:string"/>

```

```

<xsd:element name="NewDueDate" nillable="true" type="xsd:date"/>
<xsd:element name="RequestTo">
  <xsd:complexType>
    <xsd:sequence>
      <xsd:element ref="my:Person" minOccurs="0" maxOccurs="unbounded"/>
    </xsd:sequence>
  </xsd:complexType>
</xsd:element>
<xsd:element name="Decline" nillable="true" type="xsd:integer"/>
<xsd:element name="dcr" nillable="true" type="xsd:integer"/>
<xsd:element name="Status" type="xsd:string"/>
</xsd:schema>
<?xml version="1.0" encoding="UTF-8" standalone="no"?>
<xsd:schema targetNamespace="http://schemas.microsoft.com/office/infopath/2003/myXSD"
xmlns:xsi="http://www.w3.org/2001/XMLSchema-instance"
xmlns:xhtml="http://www.w3.org/1999/xhtml"
xmlns:aml="http://schemas.microsoft.com/aml/2001/core" xmlns:dt="uuid:C2F41010-65B3-11d1-
A29F-00AA00C14882" xmlns:o="urn:schemas-microsoft-com:office:office"
xmlns:ol2="http://schemas.microsoft.com/office/2004/7/core" xmlns:w10="urn:schemas-microsoft-
com:office:word" xmlns:v="urn:schemas-microsoft-com:vml"
xmlns:w12="http://schemas.microsoft.com/office/word/2004/6/wordml"
xmlns:wx="http://schemas.microsoft.com/office/word/2003/auxHint"
xmlns:w="http://schemas.microsoft.com/office/word/2003/wordml"
xmlns:s1="http://schemas.microsoft.com/schemaLibrary/2003/core"
xmlns:dfs="http://schemas.microsoft.com/office/infopath/2003/dataFormSolution"
xmlns:tns="http://schemas.microsoft.com/sharepoint/soap/workflow/"
xmlns:s1="http://microsoft.com/wsdl/types/" xmlns:z="#RowsetSchema"
xmlns:my="http://schemas.microsoft.com/office/infopath/2003/myXSD"
xmlns:xd="http://schemas.microsoft.com/office/infopath/2003"
xmlns:xsd="http://www.w3.org/2001/XMLSchema">
  <xsd:element name="myFields">
    <xsd:complexType>
      <xsd:sequence>
        <xsd:element ref="my:TaskStatus" minOccurs="0"/>
        <xsd:element ref="my:Description" minOccurs="0"/>
        <xsd:element ref="my:Status" minOccurs="0"/>
      </xsd:sequence>
      <xsd:anyAttribute processContents="lax"
namespace="http://www.w3.org/XML/1998/namespace"/>
    </xsd:complexType>
  </xsd:element>
  <xsd:element name="TaskStatus" type="xsd:string"/>
  <xsd:element name="Description" type="xsd:string"/>
  <xsd:element name="Status" type="xsd:string"/>
</xsd:schema>

```

As defined by this protocol, **AlterToDo.taskData** is used to modify fields on a workflow task. Proof-of-concept implementations do this by interpreting the name of each subnode under the root node of the **AlterToDo.taskData** element as the name of a field to be altered. The contents of each subnode are treated as text data used to set the value of the field.

If the type of the field being modified is **datetime**, the provided text data uses **Coordinated Universal Time (UTC)** formatting. If the type of the field being modified is a user, the text data can be either of the following:

- A valid e-mail address.
- An XML node with a subnode **AccountId**, where the **AccountId** subnode contains a valid e-mail address.

5 Security

5.1 Security Considerations for Implementers

None.

5.2 Index of Security Parameters

None.

6 Appendix A: Full WSDL

For ease of implementation, the full WSDL and schema are provided in this appendix.

```
<wsdl:definitions xmlns:soap="http://schemas.xmlsoap.org/wsdl/soap/"
xmlns:tns="http://schemas.microsoft.com/sharepoint/soap/workflow/"
xmlns:s1="http://microsoft.com/wsdl/types/" xmlns:z="#RowsetSchema"
xmlns:s="http://www.w3.org/2001/XMLSchema"
xmlns:rs="urn:schemas-microsoft-com:rowset"
xmlns:soap12="http://schemas.xmlsoap.org/wsdl/soap12/"
targetNamespace="http://schemas.microsoft.com/sharepoint/soap/workflow/"
xmlns:wsdl="http://schemas.xmlsoap.org/wsdl/">
  <wsdl:types>
    <s:schema elementFormDefault="qualified"
targetNamespace="http://schemas.microsoft.com/sharepoint/soap/workflow/">
      <s:import namespace="http://www.w3.org/2001/XMLSchema/" />
      <s:import namespace="http://microsoft.com/wsdl/types/" />
      <s:element name="GetToDosForItem">
        <s:complexType>
          <s:sequence>
            <s:element name="item" type="s:string" minOccurs="1" maxOccurs="1"/>
          </s:sequence>
        </s:complexType>
      </s:element>
      <s:element name="GetToDosForItemResponse">
        <s:complexType>
          <s:sequence>
            <s:element name="GetToDosForItemResult" minOccurs="0">
              <s:complexType mixed="true">
                <s:sequence>
                  <s:element name="ToDoData" >
                    <s:complexType>
                      <s:sequence>
                        <s:element name="xml" type="rs:data" minOccurs="0"
maxOccurs="1" />
                      </s:sequence>
                    </s:complexType>
                  </s:element>
                </s:sequence>
              </s:complexType>
            </s:element>
          </s:sequence>
        </s:complexType>
      </s:element>
      <s:element name="GetTemplatesForItem">
        <s:complexType>
          <s:sequence>
            <s:element name="item" type="s:string" minOccurs="1"/>
          </s:sequence>
        </s:complexType>
      </s:element>
      <s:element name="GetTemplatesForItemResponse">
        <s:complexType>
          <s:sequence>
            <s:element name="GetTemplatesForItemResult" minOccurs="0">
              <s:complexType mixed="true">
                <s:sequence>
                  <s:element name="TemplateData" >
                    <s:complexType>
```

```

<s:sequence>
  <s:element name="Web" minOccurs="1" maxOccurs="1" >
    <s:complexType>
      <s:attribute name="Title" type="s:string"
        use="required" />
      <s:attribute name="Url" type="s:string" use="required"
        />
    </s:complexType>
  </s:element>
  <s:element name="List" minOccurs="1" maxOccurs="1" >
    <s:complexType>
      <s:attribute name="Title" type="s:string"
        use="required" />
      <s:attribute name="Url" type="s:string" use="required"
        />
    </s:complexType>
  </s:element>
  <s:element name="WorkflowTemplates" >
    <s:complexType>
      <s:sequence>
        <s:element name="WorkflowTemplate" minOccurs="0"
          maxOccurs="unbounded">
          <s:complexType>
            <s:sequence>
              <s:element name="WorkflowTemplateIdSet"
                minOccurs="1" maxOccurs="1" >
                <s:complexType>
                  <s:attribute name="TemplateId"
                    type="s1:guid" use="required" />
                  <s:attribute name="BaseId"
                    type="s1:guid" use="required" />
                </s:complexType>
              </s:element>
              <s:element name="AssociationData"
                minOccurs="0" maxOccurs="1" >
                <s:complexType>
                  <s:sequence>
                    <s:any/>
                  </s:sequence>
                </s:complexType>
              </s:element>
              <s:element name="Metadata" minOccurs="1"
                maxOccurs="1">
                <s:complexType>
                  <s:all>
                    <s:element
                      name="InitiationCategories" minOccurs="0" maxOccurs="1">
                      <s:complexType>
                        <s:sequence>
                          <s:any/>
                        </s:sequence>
                      </s:complexType>
                    </s:element>
                    <s:element
                      name="Instantiation_FormURN" minOccurs="0" maxOccurs="1">
                      <s:complexType>
                        <s:sequence>
                          <s:any/>
                        </s:sequence>
                    </s:element>
                  </s:all>
                </s:complexType>
              </s:element>
            </s:sequence>
          </s:complexType>
        </s:element>
      </s:sequence>
    </s:complexType>
  </s:element>

```

```

        </s:complexType>
        </s:element>
        <s:element
name="Instantiation_FormURI" minOccurs="0" maxOccurs="1">
        <s:complexType>
        <s:sequence>
        <s:any/>
        </s:sequence>
        </s:complexType>
        </s:element>
        <s:element
name="AssignmentStagesName" minOccurs="0" maxOccurs="1">
        <s:complexType>
        <s:sequence>
        <s:any/>
        </s:sequence>
        </s:complexType>
        </s:element>
        <s:element name="SigClientSettings"
minOccurs="0" maxOccurs="1">
        <s:complexType>
        <s:sequence>
        <s:any/>
        </s:sequence>
        </s:complexType>
        </s:element>
        </s:all>
        </s:complexType>
        </s:element>
        </s:sequence>
        <s:attribute name="Name" type="s:string"
use="required" />
        <s:attribute name="Description" type="s:string"
use="required" />
        <s:attribute name="InstantiationUrl"
type="s:string" />
        </s:complexType>
        </s:element>
        </s:sequence>
        </s:complexType>
        </s:element>
        </s:sequence>
        </s:complexType>
        </s:element>
        </s:sequence>
        </s:complexType>
        </s:element>
        </s:sequence>
        </s:complexType>
        </s:element>
        <s:element name="StartWorkflow">
        <s:complexType>
        <s:sequence>
        <s:element name="item" type="s:string" minOccurs="1" maxOccurs="1"/>
        <s:element name="templateId" type="sl:guid"/>
        <s:element name="workflowParameters" minOccurs="0">
        <s:complexType mixed="true">
        <s:sequence>

```

```

        <s:any/>
      </s:sequence>
    </s:complexType>
  </s:element>
</s:sequence>
</s:complexType>
</s:element>
<s:element name="StartWorkflowResponse">
  <s:complexType>
    <s:sequence>
      <s:element name="StartWorkflowResult" minOccurs="1"/>
    </s:sequence>
  </s:complexType>
</s:element>
<s:element name="AlterToDo">
  <s:complexType>
    <s:sequence>
      <s:element name="item" type="s:string" minOccurs="1" maxOccurs="1" />
      <s:element name="todoId" type="s:int" minOccurs="1" maxOccurs="1" />
      <s:element name="todoListId" type="s1:guid" minOccurs="1" maxOccurs="1" />
      <s:element name="taskData" minOccurs="0" maxOccurs="1" >
        <s:complexType>
          <s:sequence>
            <s:any/>
          </s:sequence>
        </s:complexType>
      </s:element>
    </s:sequence>
  </s:complexType>
</s:element>
<s:element name="AlterToDoResponse">
  <s:complexType>
    <s:sequence>
      <s:element name="AlterToDoResult" minOccurs="1" maxOccurs="1" >
        <s:complexType mixed="true">
          <s:sequence>
            <s:element name="fSuccess" type="s:int" minOccurs="1" maxOccurs="1" />
          </s:sequence>
        </s:complexType>
      </s:element>
    </s:sequence>
  </s:complexType>
</s:element>
<s:element name="GetWorkflowDataForItem">
  <s:complexType>
    <s:sequence>
      <s:element name="item" type="s:string" minOccurs="1"/>
    </s:sequence>
  </s:complexType>
</s:element>
<s:element name="GetWorkflowDataForItemResponse">
  <s:complexType>
    <s:sequence>
      <s:element name="GetWorkflowDataForItemResult" minOccurs="1" maxOccurs="1">
        <s:complexType>
          <s:sequence>
            <s:element name="WorkflowData" minOccurs="1" maxOccurs="1">
              <s:complexType>
                <s:sequence>

```

```

        <s:element name="ToDoData" >
            <s:complexType>
                <s:sequence>
                    <s:element name="xml" type="rs:data" minOccurs="0"
maxOccurs="1" />
                </s:sequence>
            </s:complexType>
        </s:element>
        <s:element name="TemplateData" >
            <s:complexType>
                <s:sequence>
                    <s:element name="Web" minOccurs="1" maxOccurs="1" >
                        <s:complexType>
                            <s:attribute name="Title" type="s:string"
use="required" />
                            <s:attribute name="Url" type="s:string"
use="required" />
                        </s:complexType>
                    </s:element>
                    <s:element name="List" minOccurs="1" maxOccurs="1" >
                        <s:complexType>
                            <s:attribute name="Title" type="s:string"
use="required" />
                            <s:attribute name="Url" type="s:string"
use="required" />
                        </s:complexType>
                    </s:element>
                    <s:element name="WorkflowTemplates" >
                        <s:complexType>
                            <s:sequence>
                                <s:element name="WorkflowTemplate"
minOccurs="0" maxOccurs="unbounded">
                                    <s:complexType>
                                        <s:sequence>
                                            <s:element
name="WorkflowTemplateIdSet" minOccurs="1" maxOccurs="1" >
                                                <s:complexType>
                                                    <s:attribute name="TemplateId"
type="s1:guid" use="required" />
                                                    <s:attribute name="BaseId"
type="s1:guid" use="required" />
                                                </s:complexType>
                                            </s:element>
                                            <s:element name="AssociationData"
minOccurs="0" maxOccurs="1" >
                                                <s:complexType>
                                                    <s:sequence>
                                                        <s:any/>
                                                    </s:sequence>
                                                </s:complexType>
                                            </s:element>
                                        </s:sequence>
                                    </s:complexType>
                                </s:element>
                                <s:element name="Metadata" minOccurs="1"
maxOccurs="1">
                                    <s:complexType>
                                        <s:all>
                                            <s:element
name="InitiationCategories" minOccurs="0" maxOccurs="1">
                                                <s:complexType>
                                                    <s:sequence>

```

```

        <s:any/>
        </s:sequence>
    </s:complexType>
</s:element>
<s:element
name="Instantiation_FormURN" minOccurs="0" maxOccurs="1">
    <s:complexType>
        <s:sequence>
            <s:any/>
        </s:sequence>
    </s:complexType>
</s:element>
<s:element
name="Instantiation_FormURI" minOccurs="0" maxOccurs="1">
    <s:complexType>
        <s:sequence>
            <s:any/>
        </s:sequence>
    </s:complexType>
</s:element>
<s:element
name="AssignmentStagesName" minOccurs="0" maxOccurs="1">
    <s:complexType>
        <s:sequence>
            <s:any/>
        </s:sequence>
    </s:complexType>
</s:element>
<s:element
name="SigClientSettings" minOccurs="0" maxOccurs="1">
    <s:complexType>
        <s:sequence>
            <s:any/>
        </s:sequence>
    </s:complexType>
</s:element>
</s:all>

        </s:complexType>
    </s:element>
</s:sequence>
<s:attribute name="Name" type="s:string"
use="required" />
<s:attribute name="Description"
type="s:string" use="required" />
<s:attribute name=" InstantiationUrl"
type="s:string" />
        </s:complexType>
    </s:element>
</s:sequence>
</s:complexType>
</s:element>
</s:sequence>
</s:complexType>
</s:element>
<s:element name="ActiveWorkflowsData" minOccurs="1" maxOccurs="1" >
    <s:complexType>
        <s:sequence>
            <s:element name="Workflows" minOccurs="1" maxOccurs="1" >

```

```

<s:complexType>
  <s:sequence>
    <s:element name="Workflow" minOccurs="0" maxOccurs="unbounded">
      <s:complexType>
        <s:attribute name="StatusPageUrl" type="s:string"
use="required"/>
        <s:attribute name="Id" type="s1:guid" use="required" />
        <s:attribute name="TemplateId" type="s1:guid"
use="required" />
        <s:attribute name="ListId" type="s1:guid"
use="required"/>
        <s:attribute name="SiteId" type="s1:guid" use="required"
/>
        <s:attribute name="WebId" type="s1:guid" use="required"/>
        <s:attribute name="ItemId" type="s:int" use="required"/>
        <s:attribute name="ItemGUID" type="s1:guid"
use="required"/>
        <s:attribute name="TaskListId" type="s1:guid"
use="required"/>
        <s:attribute name="AdminTaskListId" type="s:string"
use="required"/>
        <s:attribute name="Author" type="s:int" use="required"/>
        <s:attribute name="Modified" type="s:string"
use="required"/>
        <s:attribute name="Created" type="s:string"
use="required"/>
        <s:attribute name="StatusVersion" type="s:int"
use="required"/>
        <s:attribute name="Status1" type="s:int" use="required"/>
        <s:attribute name="Status2" type="s:string"
use="required"/>
        <s:attribute name="Status3" type="s:string"
use="required"/>
        <s:attribute name="Status4" type="s:string"
use="required"/>
        <s:attribute name="Status5" type="s:string"
use="required"/>
        <s:attribute name="Status6" type="s:string"
use="required"/>
        <s:attribute name="Status7" type="s:string"
use="required"/>
        <s:attribute name="Status8" type="s:string"
use="required"/>
        <s:attribute name="Status9" type="s:string"
use="required"/>
        <s:attribute name="Status10" type="s:string"
use="required"/>
        <s:attribute name="TextStatus1" type="s:string"
use="required"/>
        <s:attribute name="TextStatus2" type="s:string"
use="required"/>
        <s:attribute name="TextStatus3" type="s:string"
use="required"/>
        <s:attribute name="TextStatus4" type="s:string"
use="required"/>
        <s:attribute name="TextStatus5" type="s:string"
use="required"/>
        <s:attribute name="Modifications" type="s:string"
use="required"/>
        <s:attribute name="ActivityDetails" type="s:string"
use="required" />
      </s:complexType>
    </s:element>
  </s:sequence>
</s:complexType>

```



```

use="required" />
use="required"/>
use="required"/>
use="required"/>
use="required"/>
use="required"/>
<s:attribute name="CorrelationId" type=" s:string"
<s:attribute name="InstanceData" type="s:string"
<s:attribute name="InstanceDataSize" type="s:int"
<s:attribute name="InternalState" type="s:int"
<s:attribute name="ProcessingId" type=" s:string"
</s:complexType>
</s:element>
</s:sequence>
</s:complexType>
</s:element>
</s:sequence>
</s:complexType>
</s:element>
<s:element name="DefaultWorkflows" minOccurs="1" maxOccurs="1" >
<s:complexType>
<s:sequence>
<s:element name="DefaultWorkflow" minOccurs="0" maxOccurs="1" >
<s:complexType>
<s:attribute name="Event" type="s:string" use="required"/>
<s:attribute name="TemplateId" type="s:guid" use="required"/>
</s:complexType>
</s:element>
</s:sequence>
</s:complexType>
</s:element>
</s:sequence>
</s:complexType>
</s:element>
</s:sequence>
</s:complexType>
</s:element>
</s:sequence>
</s:complexType>
</s:element>
</s:sequence>
</s:complexType>
</s:element>
<s:element name="ClaimReleaseTask">
<s:complexType>
<s:sequence>
<s:element name="item" type="s:string" minOccurs="1" maxOccurs="1"/>
<s:element name="taskId" type="s:int" minOccurs="1" maxOccurs="1"/>
<s:element name="listId" type="s:guid" minOccurs="1" maxOccurs="1"/>
<s:element name="fClaim" type="s:boolean" minOccurs="1" maxOccurs="1"/>
</s:sequence>
</s:complexType>
</s:element>
<s:element name="ClaimReleaseTaskResponse">
<s:complexType>
<s:sequence>
<s:element name="ClaimReleaseTaskResult" minOccurs="1">
<s:complexType mixed="true">
<s:sequence>
<s:element name="TaskData" minOccurs="1" maxOccurs="1">
<s:complexType>
<s:attribute name="AssignedTo" type="s:string"
use="required"/>

```

```

        <s:attribute name="TaskGroup" type="s:string"
use="required"/>
        <s:attribute name="ItemId" type="s:int" use="required"/>
        <s:attribute name="ListId" type="s1:guid"
use="required"/>
        </s:complexType>
    </s:element>
    </s:sequence>
</s:complexType>
</s:element>
</s:sequence>
</s:complexType>
</s:element>
<s:element name="GetWorkflowTaskData">
    <s:complexType>
        <s:sequence>
            <s:element name="item" type="s:string" minOccurs="1"/>
            <s:element name="taskId" type="s:int"/>
            <s:element name="listId" type="s1:guid"/>
        </s:sequence>
    </s:complexType>
</s:element>
<s:element name="GetWorkflowTaskDataResponse">
    <s:complexType>
        <s:sequence>
            <s:element name="GetWorkflowTaskDataResult" >
                <s:complexType>
                    <s:sequence>
                        <s:any minOccurs="0" maxOccurs="unbounded" />
                    </s:sequence>
                </s:complexType>
            </s:element>
        </s:sequence>
    </s:complexType>
</s:element>
</s:schema>
<s:schema elementFormDefault="qualified"
targetNamespace="http://microsoft.com/wsdl/types/">
    <s:simpleType name="guid">
        <s:restriction base="s:string">
            <s:pattern value="[0-9a-fA-F]{8}-[0-9a-fA-F]{4}-[0-9a-fA-F]{4}-[0-9a-fA-F]{4}-[0-9a-fA-F]{12}" />
        </s:restriction>
    </s:simpleType>
</s:schema>
</wsdl:types>
<wsdl:message name="GetToDosForItemSoapIn">
    <wsdl:part name="parameters" element="tns:GetToDosForItem" />
</wsdl:message>
<wsdl:message name="GetToDosForItemSoapOut">
    <wsdl:part name="parameters" element="tns:GetToDosForItemResponse" />
</wsdl:message>
<wsdl:message name="GetTemplatesForItemSoapIn">
    <wsdl:part name="parameters" element="tns:GetTemplatesForItem" />
</wsdl:message>
<wsdl:message name="GetTemplatesForItemSoapOut">
    <wsdl:part name="parameters" element="tns:GetTemplatesForItemResponse" />
</wsdl:message>
<wsdl:message name="StartWorkflowSoapIn">

```

```

    <wsdl:part name="parameters" element="tns:StartWorkflow" />
</wsdl:message>
<wsdl:message name="StartWorkflowSoapOut">
    <wsdl:part name="parameters" element="tns:StartWorkflowResponse" />
</wsdl:message>
<wsdl:message name="AlterToDoSoapIn">
    <wsdl:part name="parameters" element="tns:AlterToDo" />
</wsdl:message>
<wsdl:message name="AlterToDoSoapOut">
    <wsdl:part name="parameters" element="tns:AlterToDoResponse" />
</wsdl:message>
<wsdl:message name="GetWorkflowDataForItemSoapIn">
    <wsdl:part name="parameters" element="tns:GetWorkflowDataForItem" />
</wsdl:message>
<wsdl:message name="GetWorkflowDataForItemSoapOut">
    <wsdl:part name="parameters" element="tns:GetWorkflowDataForItemResponse" />
</wsdl:message>
<wsdl:message name="ClaimReleaseTaskSoapIn">
    <wsdl:part name="parameters" element="tns:ClaimReleaseTask" />
</wsdl:message>
<wsdl:message name="ClaimReleaseTaskSoapOut">
    <wsdl:part name="parameters" element="tns:ClaimReleaseTaskResponse" />
</wsdl:message>
<wsdl:message name="GetWorkflowTaskDataSoapIn">
    <wsdl:part name="parameters" element="tns:GetWorkflowTaskData" />
</wsdl:message>
<wsdl:message name="GetWorkflowTaskDataSoapOut">
    <wsdl:part name="parameters" element="tns:GetWorkflowTaskDataResponse" />
</wsdl:message>
<wsdl:portType name="WorkflowSoap">
    <wsdl:operation name="GetToDosForItem">
        <wsdl:input message="tns:GetToDosForItemSoapIn" />
        <wsdl:output message="tns:GetToDosForItemSoapOut" />
    </wsdl:operation>
    <wsdl:operation name="GetTemplatesForItem">
        <wsdl:input message="tns:GetTemplatesForItemSoapIn" />
        <wsdl:output message="tns:GetTemplatesForItemSoapOut" />
    </wsdl:operation>
    <wsdl:operation name="StartWorkflow">
        <wsdl:input message="tns:StartWorkflowSoapIn" />
        <wsdl:output message="tns:StartWorkflowSoapOut" />
    </wsdl:operation>
    <wsdl:operation name="AlterToDo">
        <wsdl:input message="tns:AlterToDoSoapIn" />
        <wsdl:output message="tns:AlterToDoSoapOut" />
    </wsdl:operation>
    <wsdl:operation name="GetWorkflowDataForItem">
        <wsdl:input message="tns:GetWorkflowDataForItemSoapIn" />
        <wsdl:output message="tns:GetWorkflowDataForItemSoapOut" />
    </wsdl:operation>
    <wsdl:operation name="ClaimReleaseTask">
        <wsdl:input message="tns:ClaimReleaseTaskSoapIn" />
        <wsdl:output message="tns:ClaimReleaseTaskSoapOut" />
    </wsdl:operation>
    <wsdl:operation name="GetWorkflowTaskData">
        <wsdl:input message="tns:GetWorkflowTaskDataSoapIn" />
        <wsdl:output message="tns:GetWorkflowTaskDataSoapOut" />
    </wsdl:operation>
</wsdl:portType>

```

```

    <wsdl:binding name="WorkflowSoap" type="tns:WorkflowSoap">
      <soap:binding transport="http://schemas.xmlsoap.org/soap/http" />
      <wsdl:operation name="GetToDosForItem">
        <soap:operation
soapAction="http://schemas.microsoft.com/sharepoint/soap/workflow/GetToDosForItem"
style="document" />
        <wsdl:input>
          <soap:body use="literal" />
        </wsdl:input>
        <wsdl:output>
          <soap:body use="literal" />
        </wsdl:output>
      </wsdl:operation>
      <wsdl:operation name="GetTemplatesForItem">
        <soap:operation
soapAction="http://schemas.microsoft.com/sharepoint/soap/workflow/GetTemplatesForItem"
style="document" />
        <wsdl:input>
          <soap:body use="literal" />
        </wsdl:input>
        <wsdl:output>
          <soap:body use="literal" />
        </wsdl:output>
      </wsdl:operation>
      <wsdl:operation name="StartWorkflow">
        <soap:operation
soapAction="http://schemas.microsoft.com/sharepoint/soap/workflow/StartWorkflow"
style="document" />
        <wsdl:input>
          <soap:body use="literal" />
        </wsdl:input>
        <wsdl:output>
          <soap:body use="literal" />
        </wsdl:output>
      </wsdl:operation>
      <wsdl:operation name="AlterToDo">
        <soap:operation
soapAction="http://schemas.microsoft.com/sharepoint/soap/workflow/AlterToDo" style="document"
/>
        <wsdl:input>
          <soap:body use="literal" />
        </wsdl:input>
        <wsdl:output>
          <soap:body use="literal" />
        </wsdl:output>
      </wsdl:operation>
      <wsdl:operation name="GetWorkflowDataForItem">
        <soap:operation
soapAction="http://schemas.microsoft.com/sharepoint/soap/workflow/GetWorkflowDataForItem"
style="document" />
        <wsdl:input>
          <soap:body use="literal" />
        </wsdl:input>
        <wsdl:output>
          <soap:body use="literal" />
        </wsdl:output>
      </wsdl:operation>
      <wsdl:operation name="ClaimReleaseTask">

```

```

        <soap:operation
soapAction="http://schemas.microsoft.com/sharepoint/soap/workflow/ClaimReleaseTask"
style="document" />
        <wsdl:input>
            <soap:body use="literal" />
        </wsdl:input>
        <wsdl:output>
            <soap:body use="literal" />
        </wsdl:output>
    </wsdl:operation>
    <wsdl:operation name="GetWorkflowTaskData">
        <soap:operation
soapAction="http://schemas.microsoft.com/sharepoint/soap/workflow/GetWorkflowTaskData"
style="document" />
        <wsdl:input>
            <soap:body use="literal" />
        </wsdl:input>
        <wsdl:output>
            <soap:body use="literal" />
        </wsdl:output>
    </wsdl:operation>
</wsdl:binding>
<wsdl:binding name="WorkflowSoap12" type="tns:WorkflowSoap">
    <soap12:binding transport="http://schemas.xmlsoap.org/soap/http" />
    <wsdl:operation name="GetToDosForItem">
        <soap12:operation
soapAction="http://schemas.microsoft.com/sharepoint/soap/workflow/GetToDosForItem"
style="document" />
        <wsdl:input>
            <soap12:body use="literal" />
        </wsdl:input>
        <wsdl:output>
            <soap12:body use="literal" />
        </wsdl:output>
    </wsdl:operation>
    <wsdl:operation name="GetTemplatesForItem">
        <soap12:operation
soapAction="http://schemas.microsoft.com/sharepoint/soap/workflow/GetTemplatesForItem"
style="document" />
        <wsdl:input>
            <soap12:body use="literal" />
        </wsdl:input>
        <wsdl:output>
            <soap12:body use="literal" />
        </wsdl:output>
    </wsdl:operation>
    <wsdl:operation name="StartWorkflow">
        <soap12:operation
soapAction="http://schemas.microsoft.com/sharepoint/soap/workflow/StartWorkflow"
style="document" />
        <wsdl:input>
            <soap12:body use="literal" />
        </wsdl:input>
        <wsdl:output>
            <soap12:body use="literal" />
        </wsdl:output>
    </wsdl:operation>
    <wsdl:operation name="AlterToDo">

```

```

        <soap12:operation
soapAction="http://schemas.microsoft.com/sharepoint/soap/workflow/AlterToDo" style="document"
/>
        <wsdl:input>
            <soap12:body use="literal" />
        </wsdl:input>
        <wsdl:output>
            <soap12:body use="literal" />
        </wsdl:output>
    </wsdl:operation>
    <wsdl:operation name="GetWorkflowDataForItem">
        <soap12:operation
soapAction="http://schemas.microsoft.com/sharepoint/soap/workflow/GetWorkflowDataForItem"
style="document" />
        <wsdl:input>
            <soap12:body use="literal" />
        </wsdl:input>
        <wsdl:output>
            <soap12:body use="literal" />
        </wsdl:output>
    </wsdl:operation>
    <wsdl:operation name="ClaimReleaseTask">
        <soap12:operation
soapAction="http://schemas.microsoft.com/sharepoint/soap/workflow/ClaimReleaseTask"
style="document" />
        <wsdl:input>
            <soap12:body use="literal" />
        </wsdl:input>
        <wsdl:output>
            <soap12:body use="literal" />
        </wsdl:output>
    </wsdl:operation>
    <wsdl:operation name="GetWorkflowTaskData">
        <soap12:operation
soapAction="http://schemas.microsoft.com/sharepoint/soap/workflow/GetWorkflowTaskData"
style="document" />
        <wsdl:input>
            <soap12:body use="literal" />
        </wsdl:input>
        <wsdl:output>
            <soap12:body use="literal" />
        </wsdl:output>
    </wsdl:operation>
</wsdl:binding>
</wsdl:definitions>

```

7 Appendix B: Product Behavior

The information in this specification is applicable to the following Microsoft products or supplemental software. References to product versions include released service packs:

- Microsoft SharePoint Server 2010
- Microsoft SharePoint Server 2013
- Microsoft Office SharePoint Server 2007

Exceptions, if any, are noted below. If a service pack or Quick Fix Engineering (QFE) number appears with the product version, behavior changed in that service pack or QFE. The new behavior also applies to subsequent service packs of the product unless otherwise specified. If a product edition appears with the product version, behavior is different in that product edition.

Unless otherwise specified, any statement of optional behavior in this specification that is prescribed using the terms SHOULD or SHOULD NOT implies product behavior in accordance with the SHOULD or SHOULD NOT prescription. Unless otherwise specified, the term MAY implies that the product does not follow the prescription.

[<1> Section 1.5:](#) In Office SharePoint Server 2007 and SharePoint Server 2010, the protocol server endpoint URL is formed by appending `"/_vti_bin/workflow.aspx"` to the URL of the site, for example: `http://www.contoso.com/PurchaseOrders/_vti_bin/workflow.aspx`.

[<2> Section 2.2.3.1:](#) The client looks for specific values in this element to determine whether to enable creation of a new workflow instance.

If this element contains "General", "Word.Application", "Word.Application.12" or "SigClientRequired", then Word 2010 enables creation of a new workflow instance.

If this element contains "General", "Excel.Application", "Excel.Application.12" or "SigClientRequired", then Excel 2010 enables creation of a new workflow instance.

If this element contains "General", "InfoPath.Application", "InfoPath.Application.12" or "SigClientRequired", then InfoPath 2010 enables creation of a new workflow instance.

If this element does not contain "SigClientRequired" and contains "General", "PowerPoint.Application", or "PowerPoint.Application.12", then PowerPoint 2010 enables creation of a new workflow instance.

If this element does not contain "SigClientRequired" and contains "General", "Outlook.Application", or "Outlook.Application.12", then Outlook 2010 enables creation of a new workflow instance.

If this element does not contain "SigClientRequired" and contains "General", "Access.Application", or "Access.Application.12", then Access 2010 enables creation of a new workflow instance.

[<3> Section 2.2.3.1:](#) Office SharePoint Server 2007 does not support this element.

[<4> Section 3.1.4.5.2.2:](#) Office SharePoint Server 2007 does not include this attribute.

[<5> Section 3.1.4.5.2.2:](#) Office SharePoint Server 2007 and SharePoint Server 2010 do not include this attribute.

8 Change Tracking

This section identifies changes that were made to the [MS-WWSP] protocol document between the April 2014 and July 2014 releases. Changes are classified as New, Major, Minor, Editorial, or No change.

The revision class **New** means that a new document is being released.

The revision class **Major** means that the technical content in the document was significantly revised. Major changes affect protocol interoperability or implementation. Examples of major changes are:

- A document revision that incorporates changes to interoperability requirements or functionality.
- The removal of a document from the documentation set.

The revision class **Minor** means that the meaning of the technical content was clarified. Minor changes do not affect protocol interoperability or implementation. Examples of minor changes are updates to clarify ambiguity at the sentence, paragraph, or table level.

The revision class **Editorial** means that the formatting in the technical content was changed. Editorial changes apply to grammatical, formatting, and style issues.

The revision class **No change** means that no new technical changes were introduced. Minor editorial and formatting changes may have been made, but the technical content of the document is identical to the last released version.

Major and minor changes can be described further using the following change types:

- New content added.
- Content updated.
- Content removed.
- New product behavior note added.
- Product behavior note updated.
- Product behavior note removed.
- New protocol syntax added.
- Protocol syntax updated.
- Protocol syntax removed.
- New content added due to protocol revision.
- Content updated due to protocol revision.
- Content removed due to protocol revision.
- New protocol syntax added due to protocol revision.
- Protocol syntax updated due to protocol revision.
- Protocol syntax removed due to protocol revision.

- Obsolete document removed.

Editorial changes are always classified with the change type **Editorially updated**.

Some important terms used in the change type descriptions are defined as follows:

- **Protocol syntax** refers to data elements (such as packets, structures, enumerations, and methods) as well as interfaces.
- **Protocol revision** refers to changes made to a protocol that affect the bits that are sent over the wire.

The changes made to this document are listed in the following table. For more information, please contact dochelp@microsoft.com.

Section	Tracking number (if applicable) and description	Major change (Y or N)	Change type
3.1.4.2.2.1 ClaimReleaseTask	Refined the schema for ClaimReleaseTask element.	N	Content updated.

9 Index

A

Abstract data model
[server](#) 16
[Alter a workflow task example](#) 45
[AlterToDo.taskData example](#) 58
[Applicability](#) 10
[Attribute groups](#) 15
[Attributes](#) 15

C

[Capability negotiation](#) 10
[Change tracking](#) 80
Client
[overview](#) 16
[Complex types](#) 15
[Create a workflow instance example](#) 35

D

Data model - abstract
[server](#) 16

E

Elements
[TemplateData](#) 12
[ToDoData](#) 14

Events
[local - server](#) 34
[timer - server](#) 34

Examples
[alter a workflow task](#) 45
[AlterToDo.taskData](#) 58
[create a workflow instance](#) 35
[retrieve all workflow data on a document](#) 40
[retrieve available workflow associations](#) 35
[start a workflow from a known workflow association](#) 38
[StartWorkflow.workflowParameters](#) 52
[TemplateData.WorkflowTemplates.WorkflowTemplate.AssociationData](#) 46
[TemplateData.WorkflowTemplates.WorkflowTemplate.Metadata](#) 50
[ToDoData.Xml](#) 46
[update a workflow task](#) 39

F

[Fields - vendor-extensible](#) 10
[Full WSDL](#) 66

G

[Glossary](#) 7
[Groups](#) 15

I

[Implementer - security considerations](#) 65
[Index of security parameters](#) 65
[Informative references](#) 8
Initialization
[server](#) 16
Interfaces
[WorkflowSoap](#) 16
[Introduction](#) 7

L

Local events
[server](#) 34

M

Message processing
[server](#) 16
Messages
[attribute groups](#) 15
[attributes](#) 15
[complex types](#) 15
[elements](#) 12
[enumerated](#) 12
[groups](#) 15
[namespaces](#) 11
[simple types](#) 15
[syntax](#) 11
[TemplateDataelement](#) 12
[ToDoDataelement](#) 14
[transport](#) 11

N

[Namespaces](#) 11
[Normative references](#) 8

O

Operations
[AlterToDo](#) 17
[ClaimReleaseTask](#) 19
[GetTemplatesForItem](#) 21
[GetToDosForItem](#) 23
[GetWorkflowDataForItem](#) 24
[GetWorkflowTaskData](#) 30
[StartWorkflow](#) 32
[Overview \(synopsis\)](#) 9

P

[Parameters - security index](#) 65
[Preconditions](#) 9
[Prerequisites](#) 9
[Product behavior](#) 79

Protocol Details
[overview](#) 16

R

[References](#) 8
 [informative](#) 8
 [normative](#) 8
[Relationship to other protocols](#) 9
[Retrieve all workflow data on a document example](#)
 40
[Retrieve available workflow associations example](#)
 35

S

Security
 [implementer considerations](#) 65
 [parameter index](#) 65
Sequencing rules
 [server](#) 16
Server
 [abstract data model](#) 16
 [AlterToDo operation](#) 17
 [ClaimReleaseTask operation](#) 19
 [GetTemplatesForItem operation](#) 21
 [GetToDosForItem operation](#) 23
 [GetWorkflowDataForItem operation](#) 24
 [GetWorkflowTaskData operation](#) 30
 [initialization](#) 16
 [local events](#) 34
 [message processing](#) 16
 [overview](#) 16
 [sequencing rules](#) 16
 [StartWorkflow operation](#) 32
 [timer events](#) 34
 [timers](#) 16
 [WorkflowSoap](#) 16
[Simple types](#) 15
[Standards assignments](#) 10
[Start a workflow from a known workflow association example](#) 38
[StartWorkflow.workflowParameters example](#) 52
Syntax
 [messages - overview](#) 11

T

[TemplateData.WorkflowTemplates.WorkflowTemplate.AssociationData example](#) 46
[TemplateData.WorkflowTemplates.WorkflowTemplate.Metadata example](#) 50
[TemplateDataelement](#) 12
Timer events
 [server](#) 34
Timers
 [server](#) 16
[ToDoData.Xml example](#) 46
[ToDoDataelement](#) 14
[Tracking changes](#) 80
[Transport](#) 11
Types

[complex](#) 15
[simple](#) 15

U

[Update a workflow task example](#) 39

V

[Vendor-extensible fields](#) 10
[Versioning](#) 10

W

[WorkflowSoap interface](#) 16
[WSDL](#) 66