

[MS-WOPI]:

Web Application Open Platform Interface Protocol

Intellectual Property Rights Notice for Open Specifications Documentation

- **Technical Documentation.** Microsoft publishes Open Specifications documentation (“this documentation”) for protocols, file formats, data portability, computer languages, and standards support. Additionally, overview documents cover inter-protocol relationships and interactions.
- **Copyrights.** This documentation is covered by Microsoft copyrights. Regardless of any other terms that are contained in the terms of use for the Microsoft website that hosts this documentation, you can make copies of it in order to develop implementations of the technologies that are described in this documentation and can distribute portions of it in your implementations that use these technologies or in your documentation as necessary to properly document the implementation. You can also distribute in your implementation, with or without modification, any schemas, IDLs, or code samples that are included in the documentation. This permission also applies to any documents that are referenced in the Open Specifications documentation.
- **No Trade Secrets.** Microsoft does not claim any trade secret rights in this documentation.
- **Patents.** Microsoft has patents that might cover your implementations of the technologies described in the Open Specifications documentation. Neither this notice nor Microsoft's delivery of this documentation grants any licenses under those patents or any other Microsoft patents. However, a given Open Specifications document might be covered by the Microsoft [Open Specifications Promise](#) or the [Microsoft Community Promise](#). If you would prefer a written license, or if the technologies described in this documentation are not covered by the Open Specifications Promise or Community Promise, as applicable, patent licenses are available by contacting iplg@microsoft.com.
- **License Programs.** To see all of the protocols in scope under a specific license program and the associated patents, visit the [Patent Map](#).
- **Trademarks.** The names of companies and products contained in this documentation might be covered by trademarks or similar intellectual property rights. This notice does not grant any licenses under those rights. For a list of Microsoft trademarks, visit www.microsoft.com/trademarks.
- **Fictitious Names.** The example companies, organizations, products, domain names, email addresses, logos, people, places, and events that are depicted in this documentation are fictitious. No association with any real company, organization, product, domain name, email address, logo, person, place, or event is intended or should be inferred.

Reservation of Rights. All other rights are reserved, and this notice does not grant any rights other than as specifically described above, whether by implication, estoppel, or otherwise.

Tools. The Open Specifications documentation does not require the use of Microsoft programming tools or programming environments in order for you to develop an implementation. If you have access to Microsoft programming tools and environments, you are free to take advantage of them. Certain Open Specifications documents are intended for use in conjunction with publicly available standards specifications and network programming art and, as such, assume that the reader either is familiar with the aforementioned material or has immediate access to it.

Support. For questions and support, please contact dochelp@microsoft.com.

Revision Summary

Date	Revision History	Revision Class	Comments
1/20/2012	0.1	New	Released new document.
4/11/2012	0.1	None	No changes to the meaning, language, or formatting of the technical content.
7/16/2012	0.2	Minor	Clarified the meaning of the technical content.
10/8/2012	1.0	Major	Significantly changed the technical content.
2/11/2013	1.0	None	No changes to the meaning, language, or formatting of the technical content.
7/30/2013	1.0	None	No changes to the meaning, language, or formatting of the technical content.
11/18/2013	1.0	None	No changes to the meaning, language, or formatting of the technical content.
2/10/2014	1.0	None	No changes to the meaning, language, or formatting of the technical content.
4/30/2014	2.0	Major	Significantly changed the technical content.
7/31/2014	2.1	Minor	Clarified the meaning of the technical content.
10/30/2014	2.2	Minor	Clarified the meaning of the technical content.
3/16/2015	3.0	Major	Significantly changed the technical content.
9/10/2015	4.0	Major	Significantly changed the technical content.
6/23/2016	5.0	Major	Significantly changed the technical content.
9/7/2016	6.0	Major	Significantly changed the technical content.
9/14/2016	6.0	None	No changes to the meaning, language, or formatting of the technical content.
10/17/2016	7.0	Major	Significantly changed the technical content.
3/28/2017	8.0	Major	Significantly changed the technical content.
6/20/2017	9.0	Major	Significantly changed the technical content.
9/19/2017	10.0	Major	Significantly changed the technical content.
12/12/2017	11.0	Major	Significantly changed the technical content.
7/24/2018	11.0	None	No changes to the meaning, language, or formatting of the technical content.
10/1/2018	11.1	Minor	Clarified the meaning of the technical content.
3/19/2019	12.0	Major	Significantly changed the technical content.
6/18/2019	12.1	Minor	Clarified the meaning of the technical content.
11/17/2020	12.2	Minor	Clarified the meaning of the technical content.
7/20/2021	13.0	Major	Significantly changed the technical content.

Date	Revision History	Revision Class	Comments
10/5/2021	14.0	Major	Significantly changed the technical content.
11/16/2021	14.0	None	No changes to the meaning, language, or formatting of the technical content.
5/17/2022	14.1	Minor	Clarified the meaning of the technical content.
11/15/2022	14.2	Minor	Clarified the meaning of the technical content.
2/21/2023	14.3	Minor	Clarified the meaning of the technical content.
5/21/2024	14.3	None	No changes to the meaning, language, or formatting of the technical content.

Table of Contents

1	Introduction	8
1.1	Glossary	8
1.2	References	9
1.2.1	Normative References	9
1.2.2	Informative References	10
1.3	Overview	11
1.4	Relationship to Other Protocols	12
1.5	Prerequisites/Preconditions	12
1.6	Applicability Statement	12
1.7	Versioning and Capability Negotiation	12
1.8	Vendor-Extensible Fields	12
1.9	Standards Assignments	13
2	Messages	14
2.1	Transport	14
2.2	Message Syntax	14
2.2.1	Custom HTTP Headers	14
2.2.2	Common Types	16
2.2.2.1	Activity Object	16
2.2.2.2	Person	17
2.2.3	Common URI Parameters	18
3	Protocol Details	20
3.1	WOPI Discovery Details	20
3.1.1	Abstract Data Model	20
3.1.2	Timers	20
3.1.3	Initialization	20
3.1.4	Higher-Layer Triggered Events	20
3.1.5	Message Processing Events and Sequencing Rules	20
3.1.5.1	HTTP://server/hosting/discovery	20
3.1.5.1.1	Discovery	20
3.1.5.1.1.1	Request Body	21
3.1.5.1.1.2	Response Body	21
3.1.5.1.1.2.1	Elements	21
3.1.5.1.1.2.1.1	wopi-discovery	21
3.1.5.1.1.2.2	Complex Types	21
3.1.5.1.1.2.2.1	ct_wopi-discovery	21
3.1.5.1.1.2.2.2	ct_net-zone	21
3.1.5.1.1.2.2.3	ct_app-name	21
3.1.5.1.1.2.2.4	ct_wopi-action	22
3.1.5.1.1.2.2.5	ct_proof-key	23
3.1.5.1.1.2.3	Simple Types	24
3.1.5.1.1.2.3.1	st_wopi-action-values	24
3.1.5.1.1.2.3.2	st_wopi-action-requirements	26
3.1.5.1.1.2.3.3	st_wopi-url-source	26
3.1.5.1.1.2.3.4	st_wopi-zone	28
3.1.5.1.1.3	Processing Details	28
3.1.6	Timer Events	29
3.1.7	Other Local Events	29
3.2	WOPI Protocol Client Details	29
3.2.1	Abstract Data Model	29
3.2.2	Timers	29
3.2.3	Initialization	29
3.2.4	Higher-Layer Triggered Events	29
3.2.5	Message Processing Events and Sequencing Rules	29

3.2.6	Timer Events.....	29
3.2.7	Other Local Events.....	29
3.3	WOPI Protocol Server Details.....	29
3.3.1	Abstract Data Model.....	30
3.3.2	Timers	30
3.3.3	Initialization.....	30
3.3.4	Higher-Layer Triggered Events	30
3.3.5	Message Processing Events and Sequencing Rules	30
3.3.5.1	HTTP://server/<...>/wopi*/files/<id>	30
3.3.5.1.1	AddActivities.....	32
3.3.5.1.1.1	Request Body	32
3.3.5.1.1.2	Response Body	32
3.3.5.1.1.3	Processing Details.....	33
3.3.5.1.2	CheckFileInfo	33
3.3.5.1.2.1	Request Body	33
3.3.5.1.2.2	Response Body	33
3.3.5.1.2.3	Processing Details.....	42
3.3.5.1.3	CheckPolicy	42
3.3.5.1.3.1	Request Body	42
3.3.5.1.3.2	Response Body	42
3.3.5.1.3.3	Processing Details.....	43
3.3.5.1.4	CheckUserAccess.....	43
3.3.5.1.4.1	Request Body	43
3.3.5.1.4.2	Response Body	44
3.3.5.1.4.3	Processing Details.....	44
3.3.5.1.5	DeleteFile	44
3.3.5.1.5.1	Request Body	45
3.3.5.1.5.2	Response Body	45
3.3.5.1.5.3	Processing Details.....	45
3.3.5.1.6	ExecuteCellStorageRelativeRequest	45
3.3.5.1.6.1	Request Body	46
3.3.5.1.6.2	Response Body	46
3.3.5.1.6.3	Processing Details.....	46
3.3.5.1.7	ExecuteCellStorageRequest	46
3.3.5.1.7.1	Request Body	47
3.3.5.1.7.2	Response Body	47
3.3.5.1.7.3	Processing Details.....	47
3.3.5.1.8	GetActivities	47
3.3.5.1.8.1	Request Body	47
3.3.5.1.8.2	Response Body	48
3.3.5.1.8.3	Processing Details.....	48
3.3.5.1.9	GetFileUserValue	48
3.3.5.1.9.1	Request Body	49
3.3.5.1.9.2	Response Body	49
3.3.5.1.9.3	Processing Details.....	49
3.3.5.1.10	GetLock.....	49
3.3.5.1.10.1	Request Body	50
3.3.5.1.10.2	Response Body	50
3.3.5.1.10.3	Processing Details.....	50
3.3.5.1.11	GetRestrictedLink	51
3.3.5.1.11.1	Request Body	51
3.3.5.1.11.2	Response Body	51
3.3.5.1.11.3	Processing Details.....	51
3.3.5.1.12	GetShareUrl.....	52
3.3.5.1.12.1	Request Body	52
3.3.5.1.12.2	Response Body	52
3.3.5.1.12.3	Processing Details.....	52
3.3.5.1.13	GrantUserAccess	52

3.3.5.1.13.1	Request Body	53
3.3.5.1.13.2	Response Body	53
3.3.5.1.13.3	Processing Details	54
3.3.5.1.14	Lock	54
3.3.5.1.14.1	Request Body	55
3.3.5.1.14.2	Response Body	55
3.3.5.1.14.3	Processing Details	55
3.3.5.1.15	PutRelativeFile	55
3.3.5.1.15.1	Request Body	57
3.3.5.1.15.2	Response Body	57
3.3.5.1.15.3	Processing Details	57
3.3.5.1.16	PutUserInfo	57
3.3.5.1.16.1	Request Body	58
3.3.5.1.16.2	Response Body	58
3.3.5.1.16.3	Processing Details	58
3.3.5.1.17	ReadSecureStore.....	58
3.3.5.1.17.1	Request Body	59
3.3.5.1.17.2	Response Body	59
3.3.5.1.17.3	Processing Details	59
3.3.5.1.18	RefreshLock.....	59
3.3.5.1.18.1	Request Body	60
3.3.5.1.18.2	Response Body	60
3.3.5.1.18.3	Processing Details	60
3.3.5.1.19	RenameFile.....	61
3.3.5.1.19.1	Request Body	61
3.3.5.1.19.2	Response Body	61
3.3.5.1.19.3	Processing Details	62
3.3.5.1.20	RevokeRestrictedLink.....	62
3.3.5.1.20.1	Request Body	62
3.3.5.1.20.2	Response Body	62
3.3.5.1.20.3	Processing Details	62
3.3.5.1.21	SetFileUserValue	63
3.3.5.1.21.1	Request Body	63
3.3.5.1.21.2	Response Body	63
3.3.5.1.21.3	Processing Details	63
3.3.5.1.22	Unlock	64
3.3.5.1.22.1	Request Body	64
3.3.5.1.22.2	Response Body	64
3.3.5.1.22.3	Processing Details	65
3.3.5.1.23	UnlockAndRelock.....	65
3.3.5.1.23.1	Request Body	66
3.3.5.1.23.2	Response Body	66
3.3.5.1.23.3	Processing Details	66
3.3.5.2	HTTP://server/<...>/wopi*/folders/<id>	66
3.3.5.2.1	CheckFolderInfo	66
3.3.5.2.1.1	Request Body	67
3.3.5.2.1.2	Response Body	67
3.3.5.2.1.3	Processing Details	71
3.3.5.3	HTTP://server/<...>/wopi*/files/<id>/contents	71
3.3.5.3.1	GetFile	71
3.3.5.3.1.1	Request Body	72
3.3.5.3.1.2	Response Body	72
3.3.5.3.1.3	Processing Details	72
3.3.5.3.2	PutFile	72
3.3.5.3.2.1	Request Body	72
3.3.5.3.2.2	Response Body	72
3.3.5.3.2.3	Processing Details	73
3.3.5.4	HTTP://server/<...>/wopi*/folders/<id>/children	73

3.3.5.4.1	EnumerateChildren	73
3.3.5.4.1.1	Request Body	74
3.3.5.4.1.2	Response Body	74
3.3.5.4.1.3	Processing Details	74
3.3.6	Timer Events.....	74
3.3.7	Other Local Events.....	74
4	Protocol Examples	75
4.1	Additional WOPI Server Documentation	75
4.2	Accessing Discovery XML	75
4.3	Viewing a Document.....	76
5	Security	78
5.1	Security Considerations for Implementers	78
5.2	Index of Security Parameters	78
6	Appendix A: Full XML Schema.....	79
7	Appendix B: Full JSON Schema	81
7.1	Types JSON schema	81
7.2	AddActivities JSON request.....	82
7.3	AddActivities JSON response.....	82
7.4	CheckFileInfo JSON response.....	82
7.5	CheckFolderInfo JSON response	84
7.6	CheckPolicy JSON request	85
7.7	CheckPolicy JSON response	85
7.8	CheckUserAccess JSON request	85
7.9	CheckUserAccess JSON response	86
7.10	EnumerateChildren JSON response.....	86
7.11	GetActivities JSON request	86
7.12	GetActivities JSON response	86
7.13	GetFileUserValue JSON request.....	86
7.14	GetFileUserValue JSON response.....	86
7.15	GetShareUrl JSON response	87
7.16	GrantUserAccess JSON request	87
7.17	GrantUserAccess JSON response	87
7.18	PutRelativeFile JSON response	87
7.19	ReadSecureStore JSON response	87
7.20	RenameFile JSON response	87
7.21	SetFileUserValue JSON request	88
8	Appendix C: Product Behavior	89
9	Change Tracking.....	96
10	Index.....	97

1 Introduction

The Web Application Open Platform Interface Protocol (WOPI) defines a set of operations that enables a client to access and change files stored by a server. This allows the client to render files and provide file editing functionality for files stored by the server.

Sections 1.5, 1.8, 1.9, 2, and 3 of this specification are normative. All other sections and examples in this specification are informative.

1.1 Glossary

This document uses the following terms:

ASCII: The American Standard Code for Information Interchange (ASCII) is an 8-bit character-encoding scheme based on the English alphabet. ASCII codes represent text in computers, communications equipment, and other devices that work with text. ASCII refers to a single 8-bit ASCII character or an array of 8-bit ASCII characters with the high bit of each character set to zero.

atomic transaction: A shared activity that provides mechanisms for achieving the atomicity, consistency, isolation, and durability (ACID) properties when state changes occur inside participating resource managers.

Augmented Backus-Naur Form (ABNF): A modified version of Backus-Naur Form (BNF), commonly used by Internet specifications. ABNF notation balances compactness and simplicity with reasonable representational power. ABNF differs from standard BNF in its definitions and uses of naming rules, repetition, alternatives, order-independence, and value ranges. For more information, see [\[RFC5234\]](#).

Azure Active Directory (Azure AD): The identity service in Microsoft Azure that provides identity management and access control capabilities through a REST-based API, an Azure portal, or a PowerShell command window.

base64 encoding: A binary-to-text encoding scheme whereby an arbitrary sequence of bytes is converted to a sequence of printable **ASCII** characters, as described in [\[RFC4648\]](#).

Coordinated Universal Time (UTC): A high-precision atomic time standard that approximately tracks Universal Time (UT). It is the basis for legal, civil time all over the Earth. Time zones around the world are expressed as positive and negative offsets from UTC. In this role, it is also referred to as Zulu time (Z) and Greenwich Mean Time (GMT). In these specifications, all references to UTC refer to the time at UTC-0 (or GMT).

file extension: The sequence of characters in a file's name between the end of the file's name and the last "." character. Vendors of applications choose such sequences for the applications to uniquely identify files that were created by those applications. This allows file management software to determine which application are to be used to open a file.

Hypertext Markup Language (HTML): An application of the Standard Generalized Markup Language (SGML) that uses tags to mark elements in a document, as described in [\[HTML\]](#).

Hypertext Transfer Protocol (HTTP): An application-level protocol for distributed, collaborative, hypermedia information systems (text, graphic images, sound, video, and other multimedia files) on the World Wide Web.

Hypertext Transfer Protocol Secure (HTTPS): An extension of HTTP that securely encrypts and decrypts web page requests. In some older protocols, "Hypertext Transfer Protocol over Secure Sockets Layer" is still used (Secure Sockets Layer has been deprecated). For more information, see [\[SSL3\]](#) and [\[RFC5246\]](#).

Information Rights Management (IRM): A technology that provides persistent protection to digital data by using encryption, certificates, and authentication. Authorized recipients or users acquire a license to gain access to the protected files according to the rights or business rules that are set by the content owner.

Internet Assigned Numbers Authority (IANA): A central repository for the protocol name and number registries that are used in many Internet protocols.

JavaScript Object Notation (JSON): A text-based, data interchange format that is used to transmit structured data, typically in Asynchronous JavaScript + XML (AJAX) web applications, as described in [\[RFC7159\]](#). The JSON format is based on the structure of ECMAScript (Jscript, JavaScript) objects.

Representational State Transfer (REST): A software architecture implementation for distributed hypermedia systems, such as the World Wide Web.

Secure Sockets Layer (SSL): A security protocol that supports confidentiality and integrity of messages in client and server applications that communicate over open networks. SSL supports server and, optionally, client authentication using X.509 certificates [\[X509\]](#) and [\[RFC5280\]](#). SSL is superseded by Transport Layer Security (TLS). TLS version 1.0 is based on SSL version 3.0 [SSL3].

tenant: A protocol client or protocol server that accesses a partition in a shared service database.

Uniform Resource Identifier (URI): A string that identifies a resource. The URI is an addressing mechanism defined in Internet Engineering Task Force (IETF) Uniform Resource Identifier (URI): Generic Syntax [\[RFC3986\]](#).

Uniform Resource Locator (URL): A string of characters in a standardized format that identifies a document or resource on the World Wide Web. The format is as specified in [\[RFC1738\]](#).

universally unique identifier (UUID): A 128-bit value. UUIDs can be used for multiple purposes, from tagging objects with an extremely short lifetime, to reliably identifying very persistent objects in cross-process communication such as client and server interfaces, manager entry-point vectors, and RPC objects. UUIDs are highly likely to be unique. UUIDs are also known as globally unique identifiers (GUIDs) and these terms are used interchangeably in the Microsoft protocol technical documents (TDs). Interchanging the usage of these terms does not imply or require a specific algorithm or mechanism to generate the UUID. Specifically, the use of this term does not imply or require that the algorithms described in [\[RFC4122\]](#) or [\[C706\]](#) has to be used for generating the UUID.

MAY, SHOULD, MUST, SHOULD NOT, MUST NOT: These terms (in all caps) are used as defined in [\[RFC2119\]](#). All statements of optional behavior use either MAY, SHOULD, or SHOULD NOT.

1.2 References

Links to a document in the Microsoft Open Specifications library point to the correct section in the most recently published version of the referenced document. However, because individual documents in the library are not updated at the same time, the section numbers in the documents may not match. You can confirm the correct section numbering by checking the [Errata](#).

1.2.1 Normative References

We conduct frequent surveys of the normative references to assure their continued availability. If you have any issue with finding a normative reference, please contact dochelp@microsoft.com. We will assist you in finding the relevant information.

[FIPS180-2] National Institute of Standards and Technology, "Secure Hash Standard", FIPS PUB 180-2, August 2002, <http://csrc.nist.gov/publications/fips/fips180-2/fips180-2.pdf>

[MS-FSSHTTP] Microsoft Corporation, "[File Synchronization via SOAP over HTTP Protocol](#)".

[RFC1766] Alvestrand, H., "Tags for the Identification of Languages", RFC 1766, March 1995, <https://www.rfc-editor.org/info/rfc1766>

[RFC2119] Bradner, S., "Key words for use in RFCs to Indicate Requirement Levels", BCP 14, RFC 2119, March 1997, <https://www.rfc-editor.org/info/rfc2119>

[RFC2616] Fielding, R., Gettys, J., Mogul, J., et al., "Hypertext Transfer Protocol -- HTTP/1.1", RFC 2616, June 1999, <https://www.rfc-editor.org/info/rfc2616>

[RFC3023] Murata, M., St.Laurent, S., and Kohn, D., "XML Media Types", RFC 3023, January 2001, <http://www.rfc-editor.org/rfc/rfc3023.txt>

[RFC4627] Crockford, D., "The application/json Media Type for JavaScript Object Notation (JSON)", RFC 4627, July 2006, <https://www.rfc-editor.org/info/rfc4627>

[RFC5323] Reschke, J., Ed., Reddy, S., Davis, J., and Babich, A., "Web Distributed Authoring and Versioning (WebDAV) SEARCH", RFC 5323, November 2008, <http://www.rfc-editor.org/rfc/rfc5323.txt>

[UNICODE] The Unicode Consortium, "The Unicode Consortium Home Page", <http://www.unicode.org/>

[W3C-HTML5WEBMSG] World Wide Web Consortium, "HTML5 Web Messaging", W3C Recommendation 19 May 2015, <http://www.w3.org/TR/2015/REC-webmessaging-20150519/>

[XMLSCHEMA1] Thompson, H., Beech, D., Maloney, M., and Mendelsohn, N., Eds., "XML Schema Part 1: Structures", W3C Recommendation, May 2001, <https://www.w3.org/TR/2001/REC-xmlschema-1-20010502/>

1.2.2 Informative References

[IANAPORT] IANA, "Service Name and Transport Protocol Port Number Registry", <https://www.iana.org/assignments/service-names-port-numbers/service-names-port-numbers.xhtml>

[MS-OBPAS] Microsoft Corporation, "[Office Broadcast Participant Service](#)".

[MS-OBPRS] Microsoft Corporation, "[Office Broadcast Presentation Service](#)".

[MS-SSWPS] Microsoft Corporation, "[Secure Store Web Service Protocol](#)".

[MSDN-CAPI] Microsoft Corporation, "Cryptography", <https://msdn.microsoft.com/en-us/library/aa380255.aspx>

[RFC2818] Rescorla, E., "HTTP Over TLS", RFC 2818, May 2000, <https://www.rfc-editor.org/info/rfc2818>

[RFC3447] Jonsson, J. and Kaliski, B., "Public-Key Cryptography Standards (PKCS) #1: RSA Cryptography Specifications Version 2.1", RFC 3447, February 2003, <https://www.rfc-editor.org/info/rfc3447>

[RFC4648] Josefsson, S., "The Base16, Base32, and Base64 Data Encodings", RFC 4648, October 2006, <https://www.rfc-editor.org/info/rfc4648>

[WOPIOfficeOnline] Microsoft, "Using the WOPI protocol to integrate with Office Online", <https://learn.microsoft.com/en-us/microsoft-365/cloud-storage-partner-program/online/>

1.3 Overview

WOPI defines a set of operations that enables a client to access and change files stored by a server. This allows the client to render files and provide file editing functionality for files stored by the server.

One example of how a client might use WOPI is by providing a browser-based viewer for a specific type of file. That client uses WOPI to get the contents of the file to present that content to the user as a web page in a browser. The following diagram shows an example of how that might work.

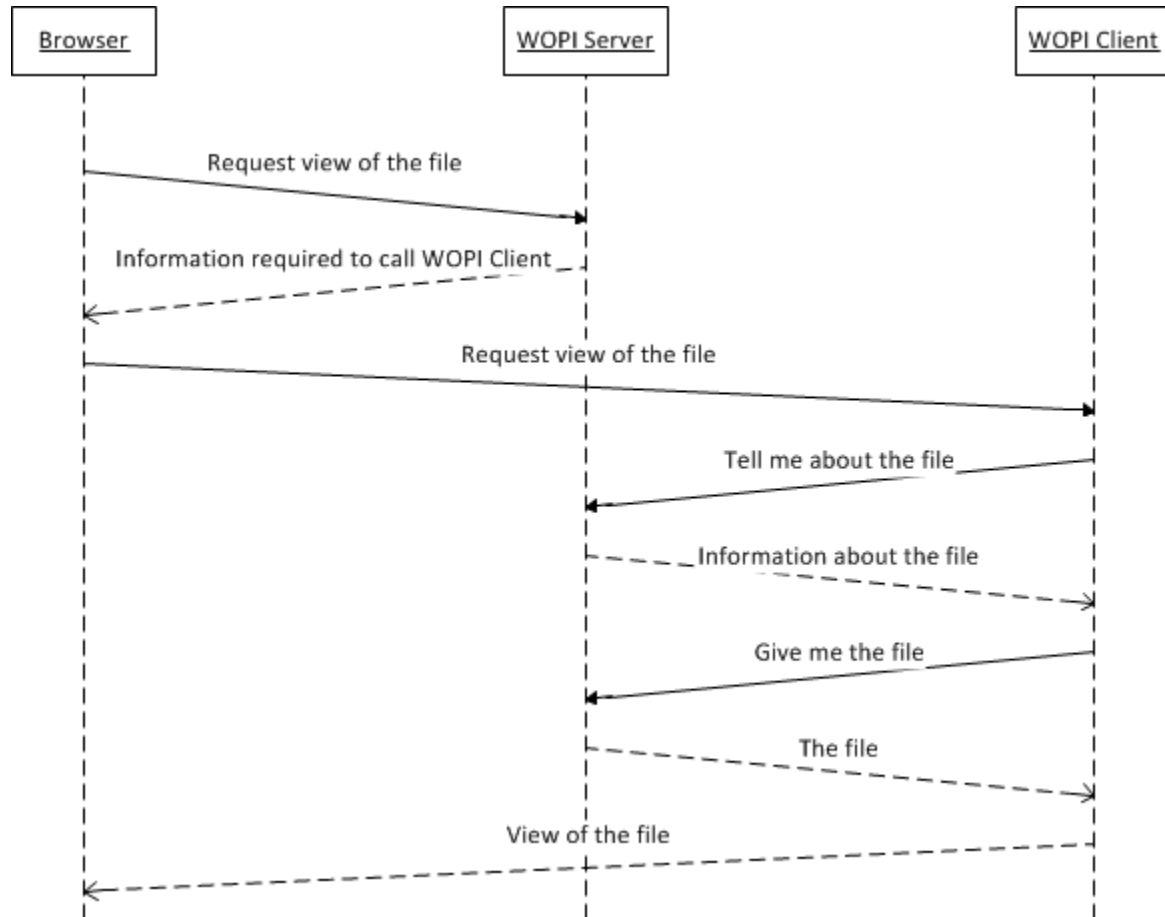


Figure 1: Using WOPI to provide a browser-based viewer for a specific type of file

A notable detail in the interaction in the preceding figure is that the WOPI server provides "information required to call the WOPI client". This information is learned by the WOPI server through an interaction called WOPI discovery. WOPI clients provide a mechanism through which a WOPI server discovers the abilities of the WOPI client, and methods for invoking those abilities. The following diagram depicts that interaction:

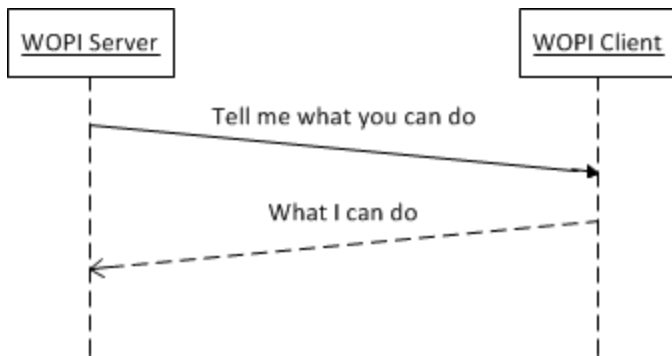


Figure 2: WOPI discovery

1.4 Relationship to Other Protocols

The WOPI Protocol uses **Hypertext Transfer Protocol (HTTP)** as described in [\[RFC2616\]](#), and **Hypertext Transfer Protocol over Secure Sockets Layer (HTTPS)** as described in [\[RFC2818\]](#).

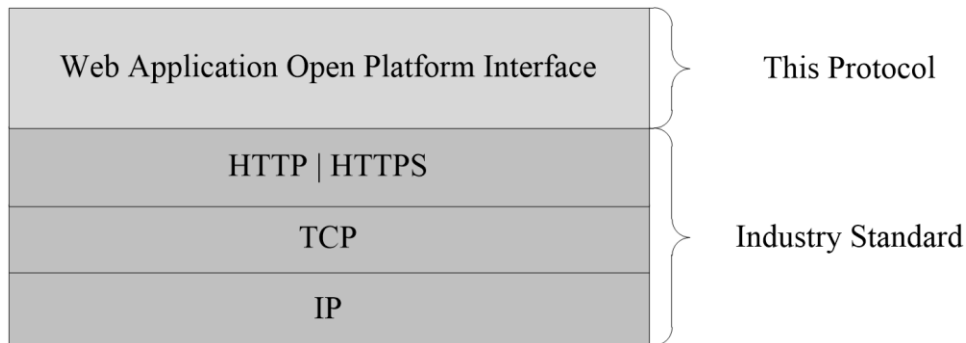


Figure 3: This protocol in relation to other protocols

1.5 Prerequisites/Preconditions

Some parts of the WOPI protocol require that the WOPI server and WOPI client have implemented the system described in "File Synchronization via SOAP over HTTP Protocol" ([\[MS-FSSHTTP\]](#)). This implementation is optional because WOPI servers and WOPI clients are not required to implement the complete WOPI protocol.

1.6 Applicability Statement

This document specifies a protocol for enabling the bidirectional transfer of file information using HTTP/HTTPS between systems designed to store and manage files and systems designed to render and manipulate files.

1.7 Versioning and Capability Negotiation

The WOPI client indicates its capabilities to the WOPI server via WOPI Discovery (section [3.1](#)).

1.8 Vendor-Extensible Fields

None.

1.9 Standards Assignments

This protocol uses standard **Internet Assigned Numbers Authority (IANA)** port assignments for **HTTP** and **Secure Sockets Layer (SSL)**. These standard port assignments use IANA-assigned ports, as listed in the following table.

Parameter	Value	Reference
IANA assigned port for HTTP	80	[IANAPORT]
IANA assigned port for SSL	443	[IANAPORT]

2 Messages

2.1 Transport

Messages MUST be transported using HTTP or HTTPS using the default ports for these protocols.

2.2 Message Syntax

This section contains common definitions used by this protocol.

2.2.1 Custom HTTP Headers

The following HTTP header MUST be included in all WOPI requests.

Header	Description
Authorization	Defined in [RFC2616] . This header MUST have the value "Bearer " + <token> as specified in section 2.2.3 . Note that there MUST be a space between "Bearer" and <token> .

The following HTTP headers can be included with all WOPI requests.

Header	Description
X-WOPI-AppEndpoint	A string specifying the endpoint of the WOPI client sending the request. This string MUST NOT be used for anything other than logging.
X-WOPI-ClientVersion	A string specifying the version of the WOPI client. There is no standard for how this string is to be formatted. This string MUST NOT be used for anything other than logging.
X-WOPI-MachineName	A string indicating the name of the machine making the call, which MUST NOT be used for anything other than logging.
X-WOPI-PerfTraceRequested	A Boolean value that indicates that the WOPI client has requested the WOPI server to return a value for X-WOPI-PerfTrace.
X-WOPI-CorrelationId	A string that the WOPI server uses when logging server activity to correlate that activity with WOPI client activity.
X-WOPI-UsingRestrictedScenario	<p>A restricted scenario is a case where a user is able to operate on a file in a limited way. For example, a user might be allowed to change a file in the course of filling out a form while not having permission to freely edit the file. The value of this header varies depending on the scenario. The value of this header is determined through convention understood by the client and server implementer.</p> <p>The header MUST be present and the value MUST be correct in cases where the WOPI action (see section 3.1.5.1.1.2.2.4) represents a restricted scenario.</p>
X-WOPI-Proof	<p>A set of data signed using a SHA256 (A 256 bit SHA-2-encoded [FIPS180-2]) encryption algorithm. The value of X-WOPI-Proof is decrypted using the values provided in ct_proof-key (section 3.1.5.1.1.2.2.5) in Discovery (section 3.1.5.1.1) as the public key.</p> <p>The value of X-WOPI-Proof MUST match the following pattern:</p>

Header	Description
	<p>4 bytes in network byte order representing the length of the <token> (see section 2.2.3) as an integer + the <token> represented in UTF-8 [UNICODE] +</p> <p>4 bytes in network byte order representing the length of the URL of the WOPI request as an integer + the absolute URL of the WOPI request in uppercase +</p> <p>4 bytes in network byte order representing the length of X-WOPI-TimeStamp (see this section) + the value of X-WOPI-TimeStamp</p> <p>This data is then signed as described above.</p> <p>The intent of passing this header is to allow the WOPI server to validate that the WOPI request originated from the WOPI client that provided the public key in Discovery via ct_proof-key.</p>
X-WOPI-ProofOld	<p>A set of data signed using a SHA256 (A 256 bit SHA-2-encoded [FIPS180-2]) encryption algorithm. The value of X-WOPI-ProofOld is decrypted using the values provided in ct_proof-key (section 3.1.5.1.1.2.2.5) in Discovery (section 3.1.5.1.1) as the public key.</p> <p>The value of X-WOPI-ProofOld MUST match the following pattern:</p> <p>4 bytes in network byte order representing the length of the <token> (see section 2.2.3) as an integer + the <token> represented in UTF-8 [UNICODE] +</p> <p>4 bytes in network byte order representing the length of the URL of the WOPI request as an integer + the absolute URL of the WOPI request in uppercase +</p> <p>4 bytes in network byte order representing the length of X-WOPI-TimeStamp (see this section) + the value of X-WOPI-TimeStamp</p> <p>This data is then signed as described above.</p> <p>The intent of passing this header is to allow the WOPI server to validate that the WOPI request originated from the WOPI client that provided the public key in Discovery via ct_proof-key.</p>
X-WOPI-TimeStamp	<p>A 64-bit integer that represents the number of 100-nanosecond intervals that have elapsed between 12:00:00 midnight, January 1, 0001 and the time of the request. The WOPI client MUST include this HTTP header if it includes X-WOPI-Proof or X-WOPI-ProofOld.</p>

The following HTTP headers can be included with all WOPI responses.

Header	Description
X-WOPI-HostEndpoint	A string specifying the endpoint of the WOPI server handling the request. This string MUST NOT be used for anything other than logging.
X-WOPI-ServerVersion	A string specifying the version of the WOPI server and MUST be included with all WOPI responses. There is no standard for how this string is to be formatted. This string MUST NOT be used for anything other than logging.
X-WOPI-MachineName	A string specifying the name of the WOPI server and MUST be included with all WOPI responses, which MUST NOT be used for anything other than logging.

Header	Description
X-WOPI-PerfTrace	A string that the WOPI client uses to track performance data. It is included in a WOPI response if the header X-WOPI-PerfTraceRequested in the request is present and equal to "true".
X-WOPI-ServerError	A string indicating that an error occurred while processing the WOPI request, which is included in a WOPI response if the status code is 500. This string can include details about the error, and MUST NOT be used for anything other than logging.

2.2.2 Common Types

This section contains the common types used by this protocol.

2.2.2.1 Activity Object

An activity object is a **JSON** object (as specified in [RFC4627](#)) with the following parameters:

```
{
  "definitions":{
    "activity":{
      "Type":{"type":"string","default":"","optional":true },
      "Id":{"type":"string","default":"","optional":true },
      "Timestamp":{"type":"string","default":"","optional":true },
      "HostTimestamp":{"type":"string","default":"","optional":true },
      "People": [{ "$ref": "#/definitions/person" }],
      "Data":
        {
          "CommentText":{"type":"string","default":"","optional":true},
          "ContentAction":{"type":"string","default":"","optional":true},
          "ContentId":{"type":"string","default":"","optional":true},
          "NavigationId":{"type":"string","default":"","optional":true},
          "ContentOrigin":{"type":"string","default":"","optional":true},
          "ParentContentId":{"type":"string","default":"","optional":true},
          "Revisions":{"type":"string[]","default":[],"optional":true},
        },
    }
  }
}
```

Type: A string value that identifies the activity type. An activity can be one of the following types:

Type	Description
Comment	A comment activity indicates that the user has left a comment in or about this file.
Mention	A mention activity indicates that the user has mentioned another user. A mention activity SHOULD have one person in its People array who represents the person who was being mentioned.
CommentReply	A comment reply activity indicates that the user has left a comment in reply to an existing comment in this file.
RevisionSet	A revision set activity indicates the changes the user has made to the document.

Id: A string value representing the **UUID** of the activity.

Timestamp: A string value that identifies the time, in **UTC**, the activity happened.

HostTimestamp: A string that identifies the time in UTC, the activity was received by the server.

People: An array of person objects (section [2.2.2.2](#)) that specifies the people who were involved with this activity.

Data: An object with data that is particular to the activity type.

Data	Description
CommentText	A string containing the text of the comment.
ContentAction	A string value specifies the action. Valid values are "Create", "Update", and "Delete".
ContentId	A string identifying the content this activity relates to in the document. Maximum length 1024 Unicode characters.
NavigationId	A string that represents the location in the document where the activity happened. Maximum 1024 Unicode characters.
ContentOrigin	A string that represents the origin of the content that the activity refers to.
ParentContentId	A string identifying the ContentId of the part of the document that contains this mention.
Revisions	An array of strings containing the revisions in the change.

The following table indicates which data are included for a given activity.

Data	Comment Activity	Mention Activity	Comment Reply Activity	Revision Set Activity
CommentText	Yes		Yes	
ContentAction	Yes	Yes	Yes	
ContentId	Yes	Yes	Yes	
NavigationId	Yes	Yes	Yes	
ContentOrigin	Yes	Yes	Yes	
ParentContentId		Yes		
Revisions				Yes

2.2.2.2 Person

A person is a **JSON** object (as specified in [\[RFC4627\]](#)) with the following parameters:

```
{
  "definitions": {
    "person": {
      "Id": {"type": "string", "default": ""},
      "Provider": {"type": "string", "default": ""},
      "Name": {"type": "string", "default": ""},
      "PictureUrl": {"type": "string", "default": ""},
      "Email": {"type": "string", "default": ""},
      "Roles": {"type": "string[]", "default": []},
      "HostId": {"type": "string", "default": null},
      "HostProvider": {"type": "string", "default": null},
    }
  }
}
```

```

    "HostName":{"type":"string","default":null},
    "HostPictureUrl":{"type":"string","default":null},
    "HostEmail":{"type":"string","default":null},
    "HostRoles":{"type":"string[]","default":null},
  }
}
}

```

Id: A string that uniquely identify the user.

Provider: A string giving the context in which the Id can be used to identify the user.

Name: A string that specifies the user’s friendly name.

PictureUrl: A string that specifies the **URL** to a profile picture of the user.

Email: A string that specifies the user’s email address.

Roles: An array of strings to indicate the relationship of the person to the activity as specified in following table:

Role	Description
Creator	Specifies that this user is the person who created the activity.
InThread	Specifies that this user was part of a threaded discussion but was not explicitly involved in this activity.
Mentioned	Specifies this person was explicitly mentioned in the activity.
RepliedTo	Specifies that this user is the parent of a piece of content that this activity is replying to.

HostId: An Id set by the host.

HostProvider: A provider set by the host.

HostName: Name of the person, set by the host.

HostPictureUrl: Picture URL, set by the host.

HostEmail: Email of the Person, set by the host.

HostRoles: Roles of the Person, set by the host.

2.2.3 Common URI Parameters

The following **URI** parameters MUST be included with all WOPI requests.

URI Parameter	Description
<token>	<p>A string used by the WOPI server to determine the identity and permissions of the issuer of the WOPI request. The token is generated by the WOPI server and learned by the WOPI client before the first WOPI request. The WOPI server passes the token to the WOPI client in the initiating request described in section 3.1.5.1.1.2.3.3.</p> <p>The WOPI client requires no understanding of the format or content of the token.</p> <p>The token SHOULD expire after a length of time deemed reasonable by the implementer of the WOPI server.</p>

URI Parameter	Description
	The token SHOULD only provide access to resources associated with the WOPI request. That is, the token SHOULD be scoped to a specific user and set of resources.
<id>	The id represents the file or folder being operated on by the WOPI client. A WOPI server MUST issue a unique id for any resource that a WOPI client operates on.

The <token> and <id> parameters are a core part of all WOPI requests. The URI syntax for using these parameters is described first in the **CheckFileInfo** operation (see section [3.3.5.1.2](#)). The WOPI server provides both <token> and <id> through the **urlsrc** parameter, as described in the **st_wopi-uri-source** simple type (see section 3.1.5.1.1.2.3.3).

The following URI parameters can be included with all WOPI requests.

URI Parameter	Description
<sc>	The sc is a string that the WOPI server can include with a WOPI request. The WOPI client can in turn return the value of sc as the value of the X-WOPI-SessionContext HTTP header when making the CheckFileInfo (section 3.3.5.1.2) and CheckFolderInfo (section 3.3.5.2.1) WOPI requests.

3 Protocol Details

3.1 WOPI Discovery Details

The WOPI client provides XML [\[RFC3023\]](#) that describes the supported abilities of the WOPI client and how to call these abilities through URIs. This XML is available through a predetermined URI that MUST be provided by a WOPI client.

3.1.1 Abstract Data Model

None.

3.1.2 Timers

None.

3.1.3 Initialization

None.

3.1.4 Higher-Layer Triggered Events

None.

3.1.5 Message Processing Events and Sequencing Rules

WOPI Discovery involves a single URI that takes no parameters.

Resource	Description
HTTP://server/hosting/discovery	Provides access to information about the capabilities of a WOPI client and the mechanisms for invoking those abilities through URIs.

3.1.5.1 HTTP://server/hosting/discovery

The data that describes the supported abilities of the WOPI client and how to call these abilities through URIs is provided through the following URI:

HTTP://server/hosting/discovery

Operation	Description
Discovery	Returns data that describes the supported abilities of the WOPI client and how to call these abilities through URIs.

3.1.5.1.1 Discovery

The operation that returns data that describes the supported abilities of the WOPI client and how to call these abilities through URIs.

3.1.5.1.1.1 Request Body

None.

3.1.5.1.1.2 Response Body

The WOPI Discovery response is XML [\[RFC3023\]](#) with the following characteristics.

3.1.5.1.1.2.1 Elements

This section describes the elements of the WOPI Discovery XML.

3.1.5.1.1.2.1.1 wopi-discovery

A **ct_wopi-discovery** element (section [3.1.5.1.1.2.2.1](#)) specifies the capabilities and URIs for accessing the capabilities of the WOPI client. This element is the root element of WOPI Discovery XML.

The following W3C XML schema ([\[XMLSCHEMA1\]](#) section 2.1) fragment specifies the contents of this element.

```
<xs:element name="wopi-discovery" type="ct_wopi-discovery"/>
```

3.1.5.1.1.2.2 Complex Types

The following XML schema complex type definitions are specific to this operation.

3.1.5.1.1.2.2.1 ct_wopi-discovery

This **ct_wopi-discovery** complex type specifies the capabilities and URIs for accessing the capabilities of the WOPI client.

```
<xs:complexType name="ct_wopi-discovery">
  <xs:sequence>
    <xs:element name="net-zone" minOccurs="1" maxOccurs="4" type="ct_net-zone"/>
    <xs:element name="proof-key" minOccurs="0" maxOccurs="1" type="ct_proof-key"/>
  </xs:sequence>
</xs:complexType>
```

3.1.5.1.1.2.2.2 ct_net-zone

This **ct_net-zone** complex type specifies the protocol and the intended network-type of the **ct_app-name** type elements (section [3.1.5.1.1.2.2.3](#)) it contains.

```
<xs:complexType name="ct_net-zone">
  <xs:sequence>
    <xs:element name="app" minOccurs="1" maxOccurs="unbounded"
      type="ct_app-name"/>
  </xs:sequence>
  <xs:attribute name="name" type="st_wopi-zone"/>
</xs:complexType>
```

3.1.5.1.1.2.2.3 ct_app-name

The **ct_app-name** complex type specifies the application name that a set of WOPI actions are grouped under. The application name is intended as a convenient way of grouping similar actions such as all those pertaining to spreadsheets. It is not required that all actions contained within an element

of this type have the same **file extension** or **progid** (a **string** that identifies a folder as being associated with a specific application).

Attributes:

name: A **string** attribute that specifies the name of the application.

favIconUrl: A **string** attribute that specifies the URL of an image resource that a WOPI server uses as the Favorites Icon for a page showing the output of a WOPI client.

checkLicense: A **Boolean** attribute that specifies that a WOPI server SHOULD enforce license restrictions for file types within the **ct_app-name** block.

```
<xs:complexType name="ct_app-name">
  <xs:sequence>
    <xs:element name="action" minOccurs="1" maxOccurs="unbounded"
      type="ct_wopi-action"/>
  </xs:sequence>
  <xs:attribute name="name" type="xs:string" use="required"/>
  <xs:attribute name="favIconUrl" type="xs:string" use="optional"/>
  <xs:attribute name="checkLicense" type="xs:boolean" use="optional"
    default="false"/>
</xs:complexType>
```

3.1.5.1.1.2.2.4 ct_wopi-action

The **ct_wopi-action** complex type specifies an action (such as viewing a file) that a WOPI client can perform.

Attributes:

name: A **st_wopi-action-values** attribute (section [3.1.5.1.1.2.3.1](#)) that specifies the name of the action.

default: A **Boolean** attribute that specifies whether the WOPI server is to use this action as the default action for this file type.

requires: A **st_wopi-action-requirements** attribute (section [3.1.5.1.1.2.3.2](#)) that specifies the required capabilities of the WOPI server to be able to use this action.

urlsrc: A **st_wopi-url-source** attribute (section [3.1.5.1.1.2.3.3](#)) that specifies the **URI** that the WOPI server can use to call the action.

ext: A **string** attribute that specifies the **file extension** supported by this action. Note that either **ext** or **progid** MUST be present, but that **ext** and **progid** MUST NOT be present in the same action.

progid: A **string** attribute that specifies the **progid** (a **string** that identifies a folder as being associated with a specific application) supported by this action. Note that either **ext** or **progid** MUST be present, but that **ext** and **progid** MUST NOT be present in the same action.

newprogid: A **string** attribute that specifies the **progid** that the **editnew** (see **st_wopi-action-values** in section [3.1.5.1.1.2.3.1](#)) will use for the new file. Note that either **newext** or **newprogid** MUST be present when using **editnew** but that **newext** and **newprogid** MUST NOT be present in the same action.

newext: A **string** attribute that specifies the file extension that the **editnew** (see **st_wopi-action-values** in section [3.1.5.1.1.2.3.1](#)) will use for the new file. Note that either **newext** or **newprogid** MUST be present when using **editnew**, but that **newext** and **newprogid** MUST NOT be present in the same action.

useParent: A **Boolean** attribute that specifies that the WOPI server MUST call the WOPI action on the parent folder of the file.

targettext: A **string** attribute that specifies the file extension of the target object. Used by actions that require both source and target host objects.

The following W3C XML schema ([\[XMLSCHEMA1\]](#) section 2.1) fragment specifies the contents of this complex type.

```
<xs:complexType name="ct_wopi-action">
  <xs:attribute name="name" use="required" type="st_wopi-action-values"/>
  <xs:attribute name="default" type="xs:boolean" default="false"/>
  <xs:attribute name="requires" type="st_wopi-action-requirements"/>
  <xs:attribute name="urlsrc" use="required" type="st_wopi-url-source"/>
  <xs:attribute name="ext" type="xs:string" use="optional"/>
  <xs:attribute name="progid" type="xs:string" use="optional"/>
  <xs:attribute name="newprogid" type="xs:string" use="optional"/>
  <xs:attribute name="newext" type="xs:string" use="optional"/>
  <xs:attribute name="useParent" type="xs:boolean" default="false"/>
  <xs:attribute name="targettext" type="xs:string" use="optional"/>
</xs:complexType>
```

3.1.5.1.1.2.2.5 ct_proof-key

The **ct_proof-key** complex type specifies two public keys that a WOPI server uses to decrypt the values passed in the **X-WOPI-Proof** and **X-WOPI-ProofOld** HTTP headers (section [2.2.1](#)). Note that the public keys passed in this complex type decrypt either of the HTTP header values.

The public keys are specified in two different formats.

If you include proof keys in discovery, you SHOULD include **X-WOPI-Proof** and **X-WOPI-ProofOld** HTTP headers (section [2.2.1](#)) in all WOPI requests.

Attributes:

oldvalue: A **base64-encoded** value representing public key information that is compatible with the unmanaged Microsoft Cryptographic API ([\[MSDN-CAPI\]](#)).

value: A base64-encoded value representing public key information that is compatible with the unmanaged Microsoft Cryptographic API ([\[MSDN-CAPI\]](#)).

modulus: A base64-encoded value representing the RSA modulus as described in [\[RFC3447\]](#) section A.1.1. This modulus value MUST only be used with the value of the **exponent** attribute to produce a complete public key.

oldmodulus: A base64-encoded value representing the RSA modulus as described in [\[RFC3447\]](#) section A.1.1. This modulus value MUST only be used with the value of the **oldexponent** attribute to produce a complete public key.

exponent: A base64-encoded ([\[RFC4648\]](#)) value representing the RSA publicExponent as described in [\[RFC3447\]](#) section A.1.1. This exponent value MUST only be used with the value of the **modulus** attribute to produce a complete public key.

oldexponent: A base64-encoded ([\[RFC4648\]](#)) value representing the RSA publicExponent as described in [\[RFC3447\]](#) section A.1.1. This exponent value MUST only be used with the value of the **oldmodulus** attribute to produce a complete public key.

The following W3C XML schema ([\[XMLSCHEMA1\]](#) section 2.1) fragment specifies the contents of this complex type.

```

<xs:complexType name="ct proof-key">
  <xs:attribute name="exponent" type="xs:string" use="required"/>
  <xs:attribute name="modulus" type="xs:string" use="required"/>
  <xs:attribute name="oldexponent" type="xs:string" use="required"/>
  <xs:attribute name="oldmodulus" type="xs:string" use="required"/>
  <xs:attribute name="oldvalue" type="xs:string" use="required"/>
  <xs:attribute name="value" type="xs:string" use="required"/>
</xs:complexType>

```

3.1.5.1.1.2.3 Simple Types

The following XML schema simple type definitions are specific to this operation.

3.1.5.1.1.2.3.1 **st_wopi-action-values**

This simple type specifies all the well-known WOPI actions that a WOPI client and WOPI server support. It is important to note that while the following schema restricts this type, WOPI servers **MUST NOT** fail when they encounter additional values not included in this schema.

Enumeration Values:

view: An action that indicates that the WOPI client supports viewing the file type. All WOPI clients **MUST** support this action for all file types that they support.

edit: An action that indicates that the WOPI client supports editing the file type.

mobileView: An action that indicates that the WOPI client supports a view of the file type that is optimized for viewing on mobile devices such as cellular phones.

embedview: An action that indicates that the WOPI client supports a view of the file that can be embedded in a web page.

embededit: An action that indicates that the WOPI client supports an editable view of the file that can be embedded in a web page.

present: An action that indicates that the WOPI client supports a broadcast of the file. A broadcast is a special view that is driven by one or more presenters from a client for the purposes of being viewed by a set of attendees viewing in separate clients. The **present** action is associated with the URI used by presenters.

presentservice: An action that indicates the location of a broadcast endpoint for broadcast presenters. Interaction with the endpoint is described in [\[MS-OBPRS\]](#).

attendservice: An action that indicates the location of a broadcast endpoint for broadcast attendees. Interaction with the endpoint is described in [\[MS-OBPAS\]](#).

attend: An action that indicates that the WOPI client supports a broadcast of the file. A broadcast is a special view that is driven by one or more presenters from a client for the purposes of being viewed by a set of attendees viewing in separate clients. The **attend** action is associated with the URI used by attendees.

editnew: An action that indicates that the WOPI client supports the creation of a new file based on the file provided by the WOPI server. The **newext** and **newprogid** attributes defined by the **ct_wopi-action** complex type (see section [3.1.5.1.1.2.2.4](#)) indicate the type of file that will result from invoking the **editnew** action.

imagepreview: An action that indicates that the WOPI client supports providing an image preview of the file type.

interactivepreview: An action that indicates that the WOPI client supports providing an interactive preview of the file type. For example, a smaller version of a presentation that a user can still advance from slide to slide.

formsubmit: An action that indicates that the WOPI client supports accepting changes to the file type via a form-style interface. For example, a user might be able to use this action to change the content of a workbook even if they did not have permission to use the **edit** action.

formedit: An action that indicates that the WOPI client supports editing the file type in a mode better suited to working with files that have been used to collect form data via the **formsubmit** action.

rest: An action that indicates that the WOPI client supports interacting with the file type via additional URL parameters that are specific to the file type in question.

preloadview: An action that indicates that the WOPI client supports preloading static content prior to using the **view** action.

preloadedit: An action that indicates that the WOPI client supports preloading static content prior to using the **edit** action.

rtc: An action that indicates the location of a real-time communication endpoint for the file type.

getinfo: An action that indicates that the WOPI client supports retrieving additional information about the WOPI client in relation to the file type.

convert: An action that indicates that the WOPI client supports converting a document in a binary format, such as doc, into a modern format, like docx.

syndicate: An action that indicates that the WOPI client supports a view of the file type in web part mode.

legacywebservice: An action that indicates that the WOPI client supports a view of the file type in legacy web service mode.

collab: An action that indicates that the WOPI client supports joining collaboration service.

formpreview: An action that indicates that the WOPI client supports previewing the file type via a form-style interface.

documentchat: An action that indicates that the WOPI client supports chatting with other coauthors in this document.

The following W3C XML schema ([\[XMLSCHEMA1\]](#) section 2.1) fragment specifies the contents of this simple type.

```
<xs:simpleType name="st_wopi-action-values">
  <xs:restriction base="xs:string">
    <xs:enumeration value="view" />
    <xs:enumeration value="edit" />
    <xs:enumeration value="mobileView" />
    <xs:enumeration value="embedview" />
    <xs:enumeration value="embededit" />
    <xs:enumeration value="present" />
    <xs:enumeration value="presentservice" />
    <xs:enumeration value="attend" />
    <xs:enumeration value="attendservice" />
    <xs:enumeration value="editnew" />
    <xs:enumeration value="imagepreview" />
    <xs:enumeration value="interactivepreview" />
    <xs:enumeration value="formsubmit" />
    <xs:enumeration value="formedit" />
    <xs:enumeration value="rest" />
    <xs:enumeration value="preloadview" />
  </xs:restriction>
</xs:simpleType>
```

```

    <xs:enumeration value="preloadedit" />
    <xs:enumeration value="rtc" />
    <xs:enumeration value="getinfo" />
    <xs:enumeration value="convert" />
    <xs:enumeration value="syndicate" />
    <xs:enumeration value="legacywebservice" />
    <xs:enumeration value="collab" />
    <xs:enumeration value="formpreview" />
    <xs:enumeration value="documentchat" />
  </xs:restriction>
</xs:simpleType>

```

3.1.5.1.1.2.3.2 st_wopi-action-requirements

The **st_wopi-action-requirements** simple type specifies the capabilities that a WOPI server MUST support to call the associated WOPI action. It is important to note that while the following schema restricts this type to well-known requirements, WOPI servers MUST NOT fail when they encounter additional values not included in this schema.

Values:

update: Indicates that the WOPI server MUST support changes to the file through **PutFile** (see section [3.3.5.3.2](#))

locks: Indicates that the WOPI server MUST support the ability to lock the file for editing through **Lock** (see section [3.3.5.1.14](#)), **Unlock** (see section [3.3.5.1.22](#)), **RefreshLock** (see section [3.3.5.1.18](#)), and **UnlockAndRelock** (see section [3.3.5.1.23](#)).

cobalt: Indicates that the WOPI server MUST support the system described in [\[MS-FSSHHTTP\]](#) through **ExecuteCellStorageRequest** (see section [3.3.5.1.7](#)) and **ExecuteCellStorageRelativeRequest** (see section [3.3.5.1.6](#)).

containers: Indicates that the WOPI server supports accessing folders and folder hierarchy through **EnumerateChildren** (see section [3.3.5.4.1](#)), **CheckFolderInfo** (see section [3.3.5.2.1](#)), and **DeleteFile** (see section [3.3.5.1.5](#)).

The following W3C XML schema ([\[XMLSCHEMA1\]](#) section 2.1) fragment specifies the contents of this simple type.

```

<xs:simpleType name="st_wopi-action-requirements">
  <xs:restriction base="xs:string">
    <xs:pattern value="/^((update|locks|cobalt|containers)\s*(,\s*|$\))*
      ((update|locks|cobalt|containers)\s*$)/" />
  </xs:restriction>
</xs:simpleType>

```

3.1.5.1.1.2.3.3 st_wopi-url-source

The **st_wopi-url-source** simple type specifies the URI that is used to call the associated WOPI action.

When a WOPI server receives a request from the browser that is required to use a WOPI action, an HTTP POST request MUST be sent from the WOPI server that navigates the browser along with a query string **WOPISrc** parameter and the **access_token** access token as the request body.

A WOPI server can also send an **access_token_TTL** as the request body.

access_token: A parameter that is the **<token>** (see section [2.2.3](#)).

The URI parameter MUST have the form "access_token=**<token>**".

Because the **token** represents user credentials it needs to be protected. To protect the **token** the WOPI client MUST accept the **token** as part of the body of an HTTP POST. The format of the POST body MUST be "access_token=<token>"

The WOPI client SHOULD NOT include the URI parameter **access_token** and the POST body content in the same request.

access_token_TTL: A 64-bit **integer** containing the number of milliseconds since January 1, 1970 **UTC** and representing the expiration date and time stamp of the **access_token**.

The WOPI client MUST accept the **access_token_TTL** as part of the body of an HTTP POST. The format of the POST body MUST be "access_token_TTL=[a 64-bit integer as described above]"

The WOPI client SHOULD NOT include the URI parameter **access_token_TTL** and the POST body content in the same request.

WOPISrc: A URI that conforms to the pattern **http://server/<...>/wopi*/files/<id>** (see section [3.3.5.1](#)). The URI MUST be encoded to a URL string.

There are a number of optional query string parameters that this simple type could contain. As described in the following, the WOPI servers MUST replace each optional parameter when using URI of this type, either by removing them, or processing them by providing the corresponding string in place of the placeholder value. Each optional parameter conforms to the pattern **<name=PLACEHOLDER_VALUE[&]>**. The WOPI server MAY omit the optional parameter, but MUST only process it if the placeholder value is understood and the corresponding replacement value can be determined. If the value is understood, the "<" and ">" MUST be removed, the **name** left intact, and the optional "&" MUST be preserved if present. As an example, "<ui=UI_LLCC&>" could be rewritten to "ui=en-us&".

Placeholder Values:

UI_LLCC: Indicates that the WOPI server includes the preferred UI language in the format described in [\[RFC1766\]](#).

DC_LLCC: Indicates that the WOPI server includes preferred data language in the format described in [\[RFC1766\]](#) for cases where language can affect data calculation.

EMBEDDED: Indicates that the WOPI server includes the value "true" to use the output of this action embedded in a web page.

DISABLE_ASYNC: Indicates that the WOPI server includes the value "true" to prevent the attendee from navigating a file. For example, when using the attendee action (see **st_wopi-action-values** in section [3.1.5.1.1.2.3.1](#)).

DISABLE_BROADCAST: Indicates that the WOPI server includes the value "true" to load a view of the document that does not create or join a broadcast session. This view looks and behaves like a regular broadcast frame.

FULLSCREEN: Indicates that the WOPI server includes the value "true" to load the file type in full-screen mode.

RECORDING: Indicates that the WOPI server includes the value "true" to load the file type with a minimal user interface.

THEME_ID: Indicates that the WOPI server includes a value to designate the theme used. Current values are "1" to indicate a light-colored theme and "2" to indicate a darker colored theme.

BUSINESS_USER: Indicates that the WOPI server includes the value "1" to indicate that the user is a business user.

DISABLE_CHAT: Indicates that the WOPI server includes the value "1" to load a view of the document that does not create or join a chat session.

The following W3C XML schema ([\[XMLSCHEMA1\]](#) section 2.1) fragment specifies the contents of this simple type.

```
<xs:simpleType name="st_wopi-url-source">
  <xs:restriction base="xs:string">
    <xs:pattern value="/^([a-z0-9+.-]+):(?:/(?:((?:[a-z0-9-.\~!$&#x27;()*+,@;=]|%[0-9A-F]{2})*))?(?:[a-z0-9-.\~!$&#x27;()*+,@;=:/?]|%[0-9A-F]{2})*)(?:\?((?:[a-z0-9-.\~!$&#x27;()*+,@;=:/?]|%[0-9A-F]{2})*))?(?:\#((?:[a-z0-9-.\~!$&#x27;()*+,@;=:/?]|%[0-9A-F]{2})*))?$&#x2F;i" />
  </xs:restriction>
</xs:simpleType>
```

Additionally, WOPI servers MUST append to the **WOPISrc** any query string parameters included with the WOPI server URL that begin with the characters: "wd". That is, if the WOPI server receives a request from a browser that indicates to the WOPI server that the browser wishes to call a WOPI client action, then all query string parameters included on the request to the WOPI server MUST be passed through on the **WOPISrc**.

3.1.5.1.1.2.3.4 **st_wopi-zone**

The **st_wopi-zone** simple type indicates the supported protocols, and the preferred network environments of each set of WOPI actions.

Values:

internal-http: Indicates that the WOPI actions associated with this type are intended for use on internal networks (not internet or extranet networks) and use the HTTP protocol.

internal-https: Indicates that the WOPI actions associated with this type are intended for use on internal networks (not internet or extranet networks) and use the HTTPS protocol.

external-http: Indicates that the WOPI actions associated with this type are intended for use on internet or extranet networks and use the HTTP protocol.

external-https: Indicates that the WOPI actions associated with this type are intended for use on internet or extranet networks and use the HTTPS protocol.

The following W3C XML schema ([\[XMLSCHEMA1\]](#) section 2.1) fragment specifies the contents of this simple type.

```
<xs:simpleType name="st_wopi-zone">
  <xs:restriction base="xs:string">
    <xs:enumeration value="internal-http" />
    <xs:enumeration value="internal-https" />
    <xs:enumeration value="external-http" />
    <xs:enumeration value="external-https" />
  </xs:restriction>
</xs:simpleType>
```

3.1.5.1.1.3 **Processing Details**

WOPI servers are expected to use the contents of WOPI Discovery XML to associate the functionality described in the XML with the file types in the XML. A WOPI server MAY choose to associate any set of the functionality described in WOPI Discovery XML but the WOPI server MUST only expose actions that are known to it and that have requirements that it understands and can meet.

3.1.6 Timer Events

None.

3.1.7 Other Local Events

None.

3.2 WOPI Protocol Client Details

The WOPI client issues requests to WOPI servers to:

- access information about files and folders.
- access the content of files and folders.
- change the content of files and folders.

For details about WOPI client requests, see WOPI Protocol Server Details (see section [3.3](#)).

3.2.1 Abstract Data Model

None.

3.2.2 Timers

None.

3.2.3 Initialization

None.

3.2.4 Higher-Layer Triggered Events

None.

3.2.5 Message Processing Events and Sequencing Rules

None.

3.2.6 Timer Events

None.

3.2.7 Other Local Events

None.

3.3 WOPI Protocol Server Details

The WOPI server responds to WOPI requests from WOPI clients. It returns information about files and file content in its responses. The WOPI server never initiates communication with the WOPI client.

Except where specified, WOPI clients SHOULD interpret HTTP Status-Codes returned by the WOPI server as specified in [\[RFC2616\]](#) section 10, "Status Code Definitions."

3.3.1 Abstract Data Model

This section describes a conceptual model of possible file state management that an implementation maintains to participate in this protocol. The described model is provided to facilitate the explanation of how the protocol behaves. This document does not mandate that implementations adhere to this model as long as their external behavior is consistent with what is described in this document.

The WOPI server SHOULD manage the state of files such that it can respond to WOPI requests based on the current state of the file. This state management includes but is not limited to:

- User does not have permission to view or edit a file
- File is read-only
- File is locked for editing by another user
- File is checked out by another user

Additionally, the WOPI server SHOULD manage state in accordance with [\[MS-FSSHTTP\]](#) to enable some specific WOPI server operations as described in section [3.3.5.1.7](#) and section [3.3.5.1.6](#) of this document.

3.3.2 Timers

None.

3.3.3 Initialization

None.

3.3.4 Higher-Layer Triggered Events

None.

3.3.5 Message Processing Events and Sequencing Rules

Resource	Description
HTTP://server/<...>/wopi*/files/<id>	Provides access to information about a file and allows for file-level operations.
HTTP://server/<...>/wopi*/folders/<id>	Provides access to information about a folder and allows for folder level operations.
HTTP://server/<...>/wopi*/files/<id>/contents	Provides access to operations that get and update the contents of a file.
HTTP://server/<...>/wopi*/folders/<id>/children	Provides access to the files and folders in a folder.

3.3.5.1 HTTP://server/<...>/wopi*/files/<id>

The file being accessed by WOPI is identified by the following URI:

HTTP://server/<...>/wopi*/files/<id>

The syntax URI parameters are defined by the following **Augmented Backus-Naur Form (ABNF)**:

id = STRING

id: A **string** that specifies a unique identifier of a file managed by the WOPI server. This **string** MUST be URL safe.

The following operations are allowed to be performed on this resource.

Operation	Description
AddActivities	Sends activities about the file to the server.
CheckFileInfo	Returns information about a file.
CheckPolicy	Checks the policy on a file.
CheckUserAccess	Checks what kind of access one or more users have to the file.
DeleteFile	Removes a file from the WOPI server.
ExecuteCellStorageRelativeRequest	Changes the contents of the file in accordance with [MS-FSSHTTP] .
ExecuteCellStorageRequest	Changes the contents of the file in accordance with [MS-FSSHTTP] .
GetActivities	Queries activities from the WOPI server.
GetFileUserValue	Queries file and user specific values from the WOPI server.
GetLock	Retrieves a lock for editing a file.
GetRestrictedLink	Gets a link to a file through which a user is able to operate on a file in a limited way.
GetShareUrl	Gets a URI to the file that is suitable for sharing with other users.
GrantUserAccess	Requests that one or more users be granted a particular type of access to the file.
Lock	Takes a lock for editing a file.
PutRelativeFile	Creates a copy of a file on the WOPI server.
PutUserInfo	Stores user information on the WOPI server.
ReadSecureStore	Accesses the WOPI server's implementation of a secure store.
RefreshLock	Refreshes a lock for editing a file.
RenameFile	Renames a file.
RevokeRestrictedLink	Revokes all links to a file through which a number of users are able to operate on a file in a limited way.
SetFileUserValue	Sets file and user specific values from the WOPI server.
Unlock	Releases a lock for editing a file.
UnlockAndRelock	Releases and then retakes a lock for editing a file.

3.3.5.1.1 AddActivities

Sends activities about the file to the server. <1>

HTTP Verb: POST

URI: HTTP://server/<...>/wopi*/files/<id>/activities?access_token=<token>

The request message for this operation contains the following HTTP headers.

Request header	Usage	Value
X-WOPI-Override	A string specifying requested operation from the WOPI server. Required.	The string "ADD_ACTIVITIES".

The response message for this operation can result in the following status codes.

Status code	Description
200	Success
403	User unauthorized
404	File unknown
500	Server error
501	Unsupported

3.3.5.1.1.1 Request Body

The request body is **JSON** (as specified in [\[RFC4627\]](#)) with the following parameters:

JSON:

```
{
  "Activities": [ { "$ref": "#/definitions/activity" } ]
}
```

Activities: An array of activity objects (section [2.2.2.1](#)).

3.3.5.1.1.2 Response Body

The response body is **JSON** (as specified in [\[RFC4627\]](#)) with the following parameters:

JSON:

```
{
  "ActivityResponses":
  [ {
    "Id": { "type": "string", "default": "", "optional": true },
    "Status": { "type": "integer", "default": 3, "optional": true },
    "Message": { "type": "string", "default": "", "optional": true },
  } ]
}
```


ActivityResponses: An array of objects with the status of each added activity. Each object has the following properties:

Id: A string value indicates the id of the activity.

Status: An integer indicates the status of adding the activity. The value can be one of the following:

Status	Description
0	Success
1	Retryable failure
2	Permanent failure
3	Unknown type

Message: A string that can be logged providing more details around a failure.

3.3.5.1.1.3 Processing Details

The WOPI server can use the activities to send users notifications about their documents. The WOPI server can also choose to store these activities to enable an activity feed.

3.3.5.1.2 CheckFileInfo

Return information about the file and permissions that the current user has relative to that file.

HTTP Verb: GET

URI: HTTP://server/<...>/wopi*/files/<id>?access_token=<token>

The following HTTP header can be included with this request.

Header	Description
X-WOPI-SessionContext	The value of the <sc> URI parameter (section 2.2.3).

The response message for this operation can result in the following status codes.

Status code	Description
200	Success
401	Token is invalid
404	File unknown/User Unauthorized
500	Server error

3.3.5.1.2.1 Request Body

None.

3.3.5.1.2.2 Response Body

The response body is **JavaScript Object Notation (JSON)** (as specified in [RFC4627](#)) with the following parameters:

JSON:

```
{
  "AADUserObjectId":{"type":"string","default":"","optional":true},
  "AccessTokenExpiry":{"type":"long","default":0,"optional":true},
  "AllowAddActivitiesUserBatching":{"type":"bool","default":false,"optional":true},
  "AllowAdditionalMicrosoftServices":{"type":"bool","default":false,"optional":true},
  "AllowEarlyFeatures":{"type":"bool","default":false,"optional":true},
  "AllowErrorReportPrompt":{"type":"bool","default":false,"optional":true},
  "AllowExternalMarketplace":{"type":"bool","default":false,"optional":true},
  "AppCatalogUrl":{"type":"string","default":"","optional":true},
  "AppliedPolicyId":{"type":"string","default":"","optional":true},
  "BaseFileName":{"type":"string","default":"","optional":false},
  "BreadcrumbBrandName":{"type":"string","default":"","optional":true},
  "BreadcrumbBrandUrl":{"type":"string","default":"","optional":true},
  "BreadcrumbDocName":{"type":"string","default":"","optional":true},
  "BreadcrumbDocUrl":{"type":"string","default":"","optional":true},
  "BreadcrumbFolderName":{"type":"string","default":"","optional":true},
  "BreadcrumbFolderUrl":{"type":"string","default":"","optional":true},
  "ClientUrl":{"type":"string","default":"","optional":true},
  "CloseButtonClosesWindow":{"type":"bool","default":false,"optional":true},
  "ClosePostMessage":{"type":"bool","default":false,"optional":true},
  "CloseUrl":{"type":"string","default":"","optional":true},
  "DirectInvokeDAVUrl":{"type":"string","default":"","optional":true},
  "DisableBrowserCachingOfUserContent":{"type":"bool","default":false,"optional":true},
  "DisablePrint":{"type":"bool","default":false,"optional":true},
  "DisableTranslation":{"type":"bool","default":false,"optional":true},
  "DownloadUrl":{"type":"string","default":"","optional":true},
  "EditAndReplyUrl":{"type":"string","default":"","optional":true},
  "EditingCannotSave":{"type":"bool","default":false,"optional":true},
  "EditModePostMessage":{"type":"bool","default":false,"optional":true},
  "EditNotificationPostMessage":{"type":"bool","default":false,"optional":true},
  "EmbeddingPageOrigin":{"type":"string","default":"","optional":true},
  "EmbeddingPageSessionInfo":{"type":"string","default":"","optional":true},
  "EnabledApplicationFeatures":{"type":"string[]","default":[],"optional":true},
  "FileEmbedCommandPostMessage":{"type":"bool","default":false,"optional":true},
  "FileEmbedCommandUrl":{"type":"string","default":"","optional":true},
  "FileExtension":{"type":"string","default":"","optional":true},
  "FileNameMaxLength":{"type":"integer","default":250,"optional":true},
  "FileSharingPostMessage":{"type":"bool","default":false,"optional":true},
  "FileSharingUrl":{"type":"string","default":"","optional":true},
  "FileUrl":{"type":"string","default":"","optional":true},
  "FileVersionPostMessage":{"type":"bool","default":false,"optional":true},
  "FileVersionUrl":{"type":"string","default":"","optional":true},
  "HostAuthenticationId":{"type":"string","default":"","optional":true},
  "HostAuthenticationIdType":{"type":"string","default":"","optional":true},
  "HostDivSyndicationViewUrl":{"type":"string","default":"","optional":true},
  "HostEditUrl":{"type":"string","default":"","optional":true},
  "HostEmbeddedEditUrl":{"type":"string","default":"","optional":true},
  "HostEmbeddedViewUrl":{"type":"string","default":"","optional":true},
  "HostName":{"type":"string","default":"","optional":true},
  "HostNotes":{"type":"string","default":"","optional":true},
  "HostRestUrl":{"type":"string","default":"","optional":true},
  "HostViewUrl":{"type":"string","default":"","optional":true},
  "InsertImagePostMessage":{"type":"bool","default":false,"optional":true},
  "IrmPolicyDescription":{"type":"string","default":"","optional":true},
  "IrmPolicyTitle":{"type":"string","default":"","optional":true},
  "IsAnonymousUser":{"type":"bool","default":false,"optional":true},
  "IsEduUser":{"type":"bool","default":false,"optional":true},
  "IsYammerEnabled":{"type":"bool","default":false,"optional":true},
  "LastModifiedTime":{"type":"string","default":"","optional":true},
  "LicenseCheckForEditIsEnabled":{"type":"bool","default":false,"optional":true},
  "LicensedOrganization":{"type":"string","default":"","optional":true},
  "OfficeCollaborationServiceEndpointUrl":{"type":"string","default":"","optional":false},
  "OpenInClientCommandUrl":{"type":"string","default":"","optional":false},
```

```

"OpenInClientPostMessage":{"type":"bool","default":false,"optional":false},
"OwnerId":{"type":"string","default":"","optional":false},
"PermissionsPostMessage":{"type":"bool","default":false,"optional":true},
"PolicyCheckPostMessage":{"type":"bool","default":false,"optional":true},
"PostMessageOrigin":{"type":"string","default":"","optional":true},
"PresenceProvider":{"type":"string","default":"","optional":true},
"PresenceUserId":{"type":"string","default":"","optional":true},
"PrivacyUrl":{"type":"string","default":"","optional":true},
"ProtectedFile":{"type":"bool","default":false,"optional":true},
"ProtectInClient":{"type":"bool","default":false,"optional":true},
"ReadOnly":{"type":"bool","default":false,"optional":true},
"ReportAbusePostMessage":{"type":"bool","default":false,"optional":true},
"ReportAbuseUrl":{"type":"string","default":"","optional":true},
"RestrictedWebViewOnly":{"type":"bool","default":false,"optional":true},
"SafeLinksStatus":{"type":"string","default":"","optional":true},
"SHA256":{"type":"string","default":"","optional":true},
"SignInUrl":{"type":"string","default":"","optional":true},
"SignoutUrl":{"type":"string","default":"","optional":true},
"Size":{"type":"integer","default":-1,"optional":false},
"SupportedShareUrlTypes":{"type":"string[]","default":[],"optional":true},
"SupportsAddActivities":{"type":"bool","default":false,"optional":true},
"SupportsCheckPolicy":{"type":"bool","default":false,"optional":true},
"SupportsCheckUserAccess":{"type":"bool","default":false,"optional":true},
"SupportsCoauth":{"type":"bool","default":false,"optional":true},
"SupportsCobalt":{"type":"bool","default":false,"optional":true},
"SupportsContactsResolution":{"type":"bool","default":false,"optional":true},
"SupportsContainers":{"type":"bool","default":false,"optional":true},
"SupportsDeleteFile":{"type":"bool","default":false,"optional":true},
"SupportsEcosystem":{"type":"bool","default":false,"optional":true},
"SupportsExtendedLockLength":{"type":"bool","default":false,"optional":true},
"SupportsFileCreation":{"type":"bool","default":false,"optional":true},
"SupportsFileUserValue":{"type":"bool","default":false,"optional":true},
"SupportsFolders":{"type":"bool","default":false,"optional":true},
"SupportsGetActivities":{"type":"bool","default":false,"optional":true},
"SupportsGetLock":{"type":"bool","default":false,"optional":true},
"SupportsGrantUserAccess":{"type":"bool","default":false,"optional":true},
"SupportsLocks":{"type":"bool","default":false,"optional":true},
"SupportsPolicies":{"type":"bool","default":false,"optional":true},
"SupportsRename":{"type":"bool","default":false,"optional":true},
"SupportsReviewing":{"type":"bool","default":false,"optional":true},
"SupportsScenarioLinks":{"type":"bool","default":false,"optional":true},
"SupportsSecureStore":{"type":"bool","default":false,"optional":true},
"SupportsUpdate":{"type":"bool","default":false,"optional":true},
"SupportsUserInfo":{"type":"bool","default":false,"optional":true},
"TenantId":{"type":"string","default":"","optional":true},
"TermsOfUseUrl":{"type":"string","default":"","optional":true},
"TimeZone":{"type":"string","default":"","optional":true},
"UniqueContentId":{"type":"string","default":"","optional":true},
"UserCanAttend":{"type":"bool","default":false,"optional":true},
"UserCanNotWriteRelative":{"type":"bool","default":false,"optional":true},
"UserCanPresent":{"type":"bool","default":false,"optional":true},
"UserCanRename":{"type":"bool","default":false,"optional":true},
"UserCanReview":{"type":"bool","default":false,"optional":true},
"UserCanWrite":{"type":"bool","default":false,"optional":true},
"UserFriendlyName":{"type":"string","default":"","optional":true},
"UserId":{"type":"string","default":"","optional":true},
"UserInfo":{"type":"string","default":"","optional":true},
"UserPrincipalName":{"type":"string","default":"","optional":false},
"Version":{"type":"string","default":"","optional":false},
"WebEditingDisabled":{"type":"bool","default":false,"optional":true},
"WorkflowPostMessage":{"type":"bool","default":"","optional":true},
"WorkflowType":{"type":"string[]","default":[],"optional":true},
"WorkflowUrl":{"type":"string","default":"","optional":true},
}

```

AADUserObjectId: A string value that uniquely identifies an **Azure Active Directory (Azure AD)** user. <2>

AccessTokenExpiry: A **long** value which is the timestamp of when the access token expires. <3>

AllowAddActivitiesUserBatching: A **Boolean** value. True indicates user's activities are allowed to be batched with other users' activities in an **AddActivities** operation (section 3.3.5.1.1). <4>

AllowAdditionalMicrosoftServices: A **Boolean** value that indicates the WOPI client allows connections to external Microsoft services to provide additional functionality. <5> If this value is false, then the WOPI client MUST NOT allow such connections.

AllowEarlyFeatures: A **Boolean** value. True Indicates the server supports allowing the user to be exposed to early features. <6>

AllowErrorReportPrompt: A **Boolean** value. True indicates that the server allows us to prompt the user for additional information if they hit a failure. <7>

AllowExternalMarketplace: A **Boolean** value that indicates the WOPI client allows connections to external services referenced in the file (for example, a marketplace of embeddable JavaScript apps). If this value is false, then the WOPI client MUST NOT allow such connections.

AppCatalogUrl: A **string** value that is the base **URL** used to create calls to retrieve a catalog of applications. <8>

AppliedPolicyId: A **string** value which is the identifier of the policy applied on the file. <9>

BaseFileName: The name of the file without the path. Used for display in user interface (UI), and determining the extension of the file.

BreadcrumbBrandName: A **string** that the WOPI client displays to the user that indicates the brand name of the WOPI server.

BreadcrumbBrandUrl: A URI to a web page that the WOPI client navigates to when the user clicks on UI that displays **BreadcrumbBrandName**.

BreadcrumbDocName: A **string** that the WOPI client displays to the user that indicates the name of the file.

BreadcrumbDocUrl: A **string** value which MAY specifies a URI to a web page that the WOPI client navigates to when the user clicks on UI that displays **BreadcrumbDocName**. <10>

BreadcrumbFolderName: A **string** that the WOPI client displays to the user that indicates the name of the folder that contains the file.

BreadcrumbFolderUrl: A URI to a web page that the WOPI client navigates to when the user clicks on UI that displays **BreadcrumbFolderName**.

ClientUrl: A user-accessible URI directly to the file intended for opening the file through a client. Can be a DAV URL ([\[RFC5323\]](#)), but MAY be any URL that can be handled by a client that can open a file of the given type.

CloseButtonClosesWindow: A **Boolean** value that indicates that the WOPI client SHOULD close the browser window containing the output of the WOPI client when the user calls the close UI.

ClosePostMessage: A **Boolean** value that indicates that the WOPI client SHOULD notify the WOPI server in the event that the user closes the rendering or editing client currently using this file. <11>

CloseURL: A URI to a web page that the implementer deems useful to a user in the event that the user closes the rendering or editing client currently using this file.

DirectInvokeDAVUrl: A **string** value that indicates the URL used when document could not be opened in client. <12>

DisableBrowserCachingOfUserContent: A **Boolean** value that indicates that the WOPI client MUST disable caching of file contents in the browser cache.

DisablePrint: A **Boolean** value that indicates that the WOPI client MUST disable any print functionality under its control.

DisableTranslation: A **Boolean** value that indicates that the WOPI client MUST NOT permit the use of machine translation functionality that is exposed by the WOPI client.

DownloadUrl: A user-accessible URI to the file intended to allow the user to download a copy of the file. <13>

EditAndReplyUrl: A URI to a web page that provides an editing experience for the file, utilizing the WOPI client.

EditingCannotSave: A **Boolean** value. True indicates that this server will allow editing files but not save them. <14>

EditModePostMessage: A **Boolean** value that indicates that the WOPI client SHOULD notify the WOPI server in the event that the user attempts to edit the file.

EditNotificationPostMessage: A **Boolean** value that indicates that the WOPI client SHOULD notify the WOPI server in the event that the user attempts to edit the file. <15>

EmbeddingPageOrigin: A **string** value that provides the origin for the embedding page. <16>

EmbeddingPageSessionInfo: A **string** value that provides the session information for the embedding page. This is used during the handshake between WOPI client and the embedding page. <17>

EnabledApplicationFeatures: An **array of strings** which is the list of features supported by a given server. <18>

FileEmbedCommandPostMessage: A **Boolean** value. True indicates the WOPI client will notify the WOPI server in the event that the user attempts to embed file. <19>

FileEmbedCommandUrl: A **string** value that is the URL to the server's unique file embedding UI experience. <20>

FileExtension: A **string** specifying the **file extension** of the file. This value MUST begin with a ".". <21>

FileNameMaxLength: An **integer** indicating the maximum length for file names, including the file extension, supported by the WOPI server.

FileSharingUrl: A URI to a location that allows the user to share the file.

FileSharingPostMessage: A **Boolean** value that indicates that the WOPI client SHOULD notify the WOPI server in the event that the user attempts to share the file. <22>

FileUrl: A URI to the file location that the WOPI client uses to get the file. If this is provided, a WOPI client MUST use this URI to get the file instead of

HTTP://server/<...>/wopi*/files/<id>/contents (see section [3.3.5.3](#)).

FileVersionPostMessage: A **Boolean** value. True indicates that the WOPI client will notify the WOPI server in the event that the user attempts to navigate to a previous file version. <23>

FileVersionUrl: A **string** value which is the URL that WOPI client navigate to a previous file version. <24>

HostAuthenticationId: A **string** that is used by the WOPI server to uniquely identify the user.

HostAuthenticationIdType: A **string** value that indicates the type of authentication used by the server. [<25>](#)

HostDivSyndicationViewUrl: A **string** value which is the URL to the server's div syndication embedded viewer for this item. [<26>](#)

HostEditUrl: A URI to a web page that provides an editing experience for the file, utilizing the WOPI client.

HostEmbeddedEditUrl: A URI to a web page that provides access to an editing experience for the file that can be embedded in another **HTML** page. For example, a page that provides an HTML snippet that can be inserted into the HTML of a blog.

HostEmbeddedViewUrl: A URI to a web page that provides access to a viewing experience for the file that can be embedded in another HTML page. For example, a page that provides an HTML snippet that can be inserted into the HTML of a blog.

HostName: A **string** that is the name provided by the WOPI server used to identify it for logging and other informational purposes.

HostNotes: A **string** that is used by the WOPI server to pass arbitrary information to the WOPI client. The WOPI client MAY ignore this string if it does not recognize the contents. A WOPI server MUST NOT require that a WOPI client understand the contents of this string to operate.

HostRestUrl: A URI that is the base URI for **REST** operations for the file.

HostViewUrl: A URI to a web page that provides a viewing experience for the file utilizing the WOPI client.

InsertImagePostMessage: A **Boolean** value. True indicates the server supports an image picker to insert online pictures from their servers. [<27>](#)

IrmPolicyDescription: A **string** that the WOPI client SHOULD display to the user indicating the **Information Rights Management (IRM)** policy for the file. This value SHOULD be combined with **IrmPolicyTitle**.

IrmPolicyTitle: A **string** that the WOPI client SHOULD display to the user indicating the IRM policy for the file. This value SHOULD be combined with **IrmPolicyDescription**.

IsAnonymousUser: A **Boolean** value. True indicates the user is anonymous. [<28>](#)

IsEduUser: A **Boolean** value. True indicates that the current user is a user from an educational organization. [<29>](#)

IsYammerEnabled: A **Boolean** value. True indicates the Yammer discussion panel is enabled in this context. [<30>](#)

LastModifiedTime: A **string** value indicates the last time the file was modified. [<31>](#)

LicenseCheckInEditIsEnabled: A **Boolean** value that indicates that the WOPI client SHOULD take measures to ensure the user is properly licensed prior to allowing editing of the file.

LicensedOrganization: A **string** value indicates whether license verification is by bypassed. Hosts can ask WOPI client to bypass license verification for users of specific organizations. [<32>](#)

OfficeCollaborationServiceEndpointUrl: A **string** value which is the URL for the Office Collaboration Service, if exists. [<33>](#)

OpenInClientCommandUrl: A **string** value which is the URL that WOPI client navigate to a server-controlled opening in client. [<34>](#)

OpenInClientPostMessage: A **Boolean** value. True indicates that the WOPI client will notify the WOPI server in the event that the user attempts to navigate to a server-controlled opening in client. <35>

OwnerId: A **string** that SHOULD uniquely identify the owner of the file.

PermissionsPostMessage: A **Boolean** value. True indicates that the WOPI client will notify the WOPI server in the event that the user attempts to share and check user permissions. <36>

PolicyCheckPostMessage: A **Boolean** value. True indicates that the WOPI client will notify the WOPI server in the event that the user attempts to policy check. <37>

PostMessageOrigin: A **string** that the WOPI client MUST use as the *targetOrigin* parameter when sending messages as specified in [W3C-HTML5WEBMSG]. <38>

PresenceProvider: A **string** that identifies the provider of information that a WOPI client uses to discover information about the user's online status (for example, whether a user is available via instant messenger). A WOPI client requires knowledge of specific presence providers to be able to take advantage of this value.

PresenceUserId: A **string** that identifies the user in the context of the **PresenceProvider**.

PrivacyUrl: A URI to a webpage that explains the privacy policy of the WOPI server.

ProtectedFile: A **Boolean** value. True indicates server give us a decrypted stream of a protected encrypted file. <39>

ProtectInClient: A **Boolean** value that indicates that the WOPI client SHOULD take measures to prevent copying and printing of the file. This is intended to help enforce IRM in WOPI clients.

ReadOnly: Indicates that, for this user, the file cannot be changed.

ReportAbusePostMessage: A **Boolean** value, True indicates that the WOPI client will notify the WOPI server in the event that the user attempts to report abuse. <40>

ReportAbuseUrl: A **string** value which is the URL to notify server for reporting abuse. <41>

RestrictedWebViewOnly: A **Boolean** value that indicates that the WOPI client MUST NOT allow the user to download the file or open the file in a separate application.

SafeLinksStatus: A **string** value indicates user's tenant is provisioned for SafeLinks protection. <42>

SHA256: If it is present and not empty, it is a 256 bit SHA-2-encoded [FIPS180-2] hash of the file contents. <43>

SignInUrl: A URI that will sign the current user into the WOPI server supported authentication system.

SignoutUrl: A URI that will sign the current user out of the WOPI server supported authentication system.

Size: The size of the file expressed in bytes.

SupportedShareUrlTypes: An **array of strings** indicating the share URL types supported by the WOPI server. Possible values are **ReadOnly** and **ReadWrite**. <44> The values can be passed in the **X-WOPI-UrlType** request header to signify which Share URL type to return for the **GetShareUrl** operation (section 3.3.5.1.12).

SupportsAddActivities: A **Boolean** value. True indicates the server supports the **AddActivities** operation (section 3.3.5.1.1). <45>

SupportsCheckPolicy: A **Boolean** value. True if server supports the **CheckPolicy** operation (section [3.3.5.1.3](#)). [<46>](#)

SupportsCheckUserAccess: A **Boolean** value. True indicates the server supports the **CheckUserAccess** operation (section [3.3.5.1.4](#)). [<47>](#)

SupportsCoauth: A **Boolean** value that indicates that the WOPI server supports multiple users making changes to this file simultaneously. [<48>](#)

SupportsCobalt: A **Boolean** value that indicates that the WOPI server supports **ExecuteCellStorageRequest** (see section [3.3.5.1.7](#)) and **ExecuteCellStorageRelativeRequest** (see section [3.3.5.1.6](#)) operations for this file.

SupportsContactsResolution: A **Boolean** value. True indicates the server supports getting contacts information. [<49>](#)

SupportsContainers: A **Boolean** value. True indicates the server supports persisting the containers namespace. [<50>](#)

SupportsDeleteFile: A **Boolean** value. True indicates the server supports the **DeleteFile** operation (section [3.3.5.1.5](#)). [<51>](#)

SupportsEcosystem: A **Boolean** value. True indicates the server supports persisting the ecosystem namespace. [<52>](#)

SupportsExtendedLockLength: A **Boolean** value that indicates that the WOPI server supports lock IDs up to 1024 **ASCII** characters in length. [<53>](#)

SupportsFileCreation: A **Boolean** value that indicates that the WOPI server supports creating new files using the WOPI client. [<54>](#)

SupportsFileUserValue: A **Boolean** value. True indicates the server supports **GetFileUserValue** (section [3.3.5.1.9](#)) and **SetFileUserValue** (section [3.3.5.1.21](#)) operations. [<55>](#)

SupportsFolders: A **Boolean** value that indicates that the WOPI server supports **EnumerateChildren** (see section [3.3.5.4.1](#)) and **DeleteFile** (see section [3.3.5.1.5](#)) operations for this file.

SupportsGetActivities: A **Boolean** value. True indicates the server supports the **GetActivities** operation (section [3.3.5.1.8](#)). [<56>](#)

SupportsGetLock: A **Boolean** value that indicates that the WOPI server supports **GetLock** (see section [3.3.5.1.10](#)). [<57>](#)

SupportsGrantUserAccess: A **Boolean** value. True indicates the server supports the **GrantUserAccess** operation (section [3.3.5.1.13](#)). [<58>](#)

SupportsLocks: A **Boolean** value that indicates that the WOPI server supports **Lock** (see section [3.3.5.1.14](#)), **Unlock** (see section [3.3.5.1.22](#)), **RefreshLock** (see section [3.3.5.1.18](#)), and **UnlockAndRelock** (see section [3.3.5.1.23](#)) operations for this file.

SupportsPolicies: A **Boolean** value. True indicates the server supports Policies. [<59>](#)

SupportsRename: A **Boolean** value that indicates that the WOPI server supports **RenameFile** (see section [3.3.5.1.19](#)). [<60>](#)

SupportsReviewing: A **Boolean** value. True indicates the server supports the review permission. [<61>](#)

SupportsScenarioLinks: A **Boolean** value that indicates that the WOPI server supports scenarios where users can operate on files in limited ways via restricted URLs.

SupportsSecureStore: A **Boolean** value that indicates that the WOPI server supports calls to a secure data store utilizing credentials stored in the file.

SupportsUpdate: A **Boolean** value that indicates that the WOPI server supports **PutFile** (see section [3.3.5.3.2](#)) and **PutRelativeFile** (see section [3.3.5.1.15](#)) operations for this file.

SupportsUserInfo: A **Boolean** value that indicates that the WOPI server supports **PutUserInfo** (see section [3.3.5.1.16](#)).[<62>](#)

TenantId: A **string** that is used by the WOPI server to uniquely identify the **tenant** .

TermsOfUseUrl: A URI to a webpage that explains the terms of use policy of the WOPI server.

TimeZone: A **string** that is used to pass time zone information to a WOPI client in the format chosen by the WOPI server.

UniqueContentId: A **string** that uniquely represents the file contents.[<63>](#) This value MUST change when the file content changes. This value MUST also be equivalent for all files with equivalent contents.

UserCanAttend: A **Boolean** value that indicates that the user has permission to view a broadcast of this file. A broadcast is file activity that involves one or more presenters controlling the view of the file for a set of attendees. For example, a slideshow can be broadcast by a presenter to many attendees.

UserCanNotWriteRelative: A **Boolean** value that indicates the user does not have sufficient permissions to create new files on the WOPI server.

UserCanPresent: A **Boolean** value that indicates that the user has permission to broadcast this file to a set of users who have permission to broadcast or view a broadcast of this file. A broadcast is file activity that involves one or more presenters controlling the view of the file for a set of attendees. For example, a slideshow can be broadcast by a presenter to many attendees.

UserCanRename: A **Boolean** value that indicates the user has permissions to rename the file.[<64>](#)

UserCanReview: A **Boolean** value. True indicates the user has permissions to review the file. [<65>](#)

UserCanWrite: A **Boolean** value that indicates that the user has permissions to alter the file.

UserFriendlyName: A **string** that is the name of the user. If blank, the WOPI client MAY be configured to use a placeholder **string** in some scenarios, or to show no name at all.

UserId: A **string** that is used by the WOPI server to uniquely identify the user.

UserInfo: A **string** that the WOPI client SHOULD use to verify the user's licensing status. The WOPI client MAY ignore this string if it does not recognize the contents.

UserPrincipalName: A **string** value which is the user principal name. [<66>](#)

Version: A **string** representing the current version of the file based on the WOPI server's file versioning schema. This value MUST change when the file content changes, and version values MUST never repeat for a given file.

WebEditingDisabled: A **Boolean** value that indicates that the WOPI client MUST NOT allow the user to use the WOPI client's editing functionality to operate on the file. This does not mean that the user doesn't have rights to edit the file.

WorkflowPostMessage: A **Boolean** value that indicates that the WOPI client SHOULD notify the WOPI server in the event that the user attempts to trigger a workflow on the file.[<67>](#)

WorkflowType: An **array of strings** representing the workflow types that are available for the file.[<68>](#)

WorkflowUrl: A **string** representing the current version of the file based on the WOPI server's file versioning schema. This value **MUST** change when the file content changes, and version values **MUST** never repeat for a given file. <69>

3.3.5.1.2.3 Processing Details

The **id** represents the file that the WOPI server is providing information about. The **token** represents the credentials that the WOPI server **MUST** use when determining the permissions the WOPI client has when interacting with the file.

3.3.5.1.3 CheckPolicy

Checks the policy on a file. <70>

HTTP Verb: POST

URI: HTTP://server/<...>/wopi*/files/<id>?access_token=<token>

The request message for this operation contains the following HTTP headers.

Request header	Usage	Value
X-WOPI-Override	A string specifying requested operation from the WOPI server. Required.	The string "CHECK_POLICY".

The response message for this operation can result in the following status codes.

Status code	Description
200	Success
401	Token is invalid
404	File unknown/User unauthorized
500	Server error
501	Unsupported

3.3.5.1.3.1 Request Body

The request body is **JSON** (as specified in [\[RFC4627\]](#)) with the following parameters:

JSON:

```
{
  "Fragments": {"type": "string[]", "default": null, "optional": true},
  "LoggingString": {"type": "string", "default": "", "optional": true},
}
```

Fragments: Fragments for policy checking.

LoggingString: A string for logging.

3.3.5.1.3.2 Response Body

The response body is **JSON** (as specified in [\[RFC4627\]](#)) with the following parameters:

JSON:

```
{
  "Warn":{"type":"bool","default":false,"optional":true},
  "Block":{"type":"bool","default":false,"optional":true},
  "BlockedWords":{"type":"string[]","default":null,"optional":true},
}
```

Warn: A **Boolean** value specifying whether the policy shows the warning.

Block: A **Boolean** value specifying whether the policy block the checked text.

BlockedWords: An array of string specifying the Blocked words according to the policy.

3.3.5.1.3.3 Processing Details

None.

3.3.5.1.4 CheckUserAccess

Checks what kind of access one or more users have to the file. [<71>](#)

HTTP Verb: POST

URI: HTTP://server/<...>/wopi*/files/<id>?access_token=<token>

The request message for this operation contains the following HTTP headers.

Request header	Usage	Value
X-WOPI-Override	A string specifying requested operation from the WOPI server. Required.	The string "CHECK_USER_ACCESS".

The response message for this operation can result in the following status codes.

Status code	Description
200	Success
400	Invalid user JSON.
401	Token is invalid
404	File unknown/User unauthorized
500	Server error
501	Unsupported

3.3.5.1.4.1 Request Body

The request body is **JSON** (as specified in [\[RFC4627\]](#)) with the following parameters:

JSON:

```
{
  "Users": [ { "$ref": "#/definitions/person" } ]
}
```

}

Users: An array of person objects (section [2.2.2.2](#)) representing the people whose access to check.

3.3.5.1.4.2 Response Body

The response body is **JSON** (as specified in [RFC4627](#)) with the following parameters:

JSON:

```
{
  "CheckUserAccessResponses":
  [
    {
      "Id": {"type": "string", "default": "", "optional": true},
      "Provider": {"type": "string", "default": "", "optional": true},
      "Status": {"type": "integer", "default": 0, "optional": true},
      "Message": {"type": "string", "default": "", "optional": true},
      "UserCanRead": {"type": "bool", "default": false, "optional": false},
      "UserCanReview": {"type": "bool", "default": false, "optional": false},
      "UserCanWrite": {"type": "bool", "default": false, "optional": false},
    }
  ]
}
```

CheckUserAccessResponses: An array of objects that describes the current permissions of each user. Each object has following properties:

Id: A string to uniquely identify the user. Equivalent to the **UserId** property of **CheckFileInfo** (section [3.3.5.1.2.2](#)).

Provider: A string giving the context in which the Id can be used to identify the user.

Status: The status of this user. Can be one of the following values:

Status	Description
0	Success
1	User does not exist

Message: A string that can be logged providing more details around a failure.

UserCanRead: A Boolean value specifying whether the user has read access to the file.

UserCanReview: A Boolean value specifying whether the user has review access to the file. Equivalent to the **UserCanReview** property of **CheckFileInfo**.

UserCanWrite: A Boolean value specifying whether the user has write access to the file. Equivalent to the **UserCanWrite** property of **CheckFileInfo**.

3.3.5.1.4.3 Processing Details

None.

3.3.5.1.5 DeleteFile

Delete a file.

HTTP Verb: POST

URI: HTTP://server/<...>/wopi*/files/<id>?access_token=<token>

The request message for this operation contains the following HTTP headers.

Request header	Usage	Value
X-WOPI-Override	A string specifying requested operation from the WOPI server. Required.	The string "DELETE".

The response message for this operation can result in the following status codes.

Status code	Description
200	Success
404	File unknown/User unauthorized
500	Server error
501	Unsupported

3.3.5.1.5.1 Request Body

None.

3.3.5.1.5.2 Response Body

None.

3.3.5.1.5.3 Processing Details

The WOPI server MUST delete the file if possible, given the permissions and state of the file.

3.3.5.1.6 ExecuteCellStorageRelativeRequest

Make a change or create a new file in a location relative to the current file or folder using the standards defined by [\[MS-FSSHTTP\]](#).

HTTP Verb: POST

URI: HTTP://server/<...>/wopi*/files/<id>?access_token=<token>

The request message for this operation contains the following HTTP headers.

Request header	Usage	Value
X-WOPI-Override	A string specifying the requested operation from the WOPI server. Required.	The string "COBALT".
X-WOPI-Size	An integer specifying the size of the request body.	An integer .
X-WOPI-RelativeTarget	A string that is the name of the file being created or changed by this operation. The location of this file is relative to the current file or folder. That is, it MUST be a sibling of a file and a child of a	A string .

Request header	Usage	Value
	folder.	

The response message for this operation can result in the following status codes.

Status code	Description
200	Success
404	File unknown/User unauthorized
500	Server error
501	Unsupported

3.3.5.1.6.1 Request Body

Content that conforms to the **Body** element specified in [\[MS-FSSHTTP\]](#) section 2.2.2.1.

3.3.5.1.6.2 Response Body

Content that conforms to the **Body** element specified in [\[MS-FSSHTTP\]](#) section 2.2.2.2.

3.3.5.1.6.3 Processing Details

Both the WOPI client and the WOPI server MUST follow the interaction model defined in [\[MS-FSSHTTP\]](#). Success indicates that the request executed correctly.

3.3.5.1.7 ExecuteCellStorageRequest

Make a change to a file using the standards defined by [\[MS-FSSHTTP\]](#).

HTTP Verb: POST

URI: HTTP://server/<...>/wopi*/files/<id>?access_token=<token>

The request message for this operation contains the following HTTP headers.

Request header	Usage	Value
X-WOPI-Override	A string specifying requested operation from the WOPI server. Required.	The string "COBALT".
X-WOPI-Size	An integer specifying the size of the request body.	An integer .

The response message for this operation can result in the following status codes.

Status code	Description
200	Success
404	File unknown/User unauthorized
500	Server error
501	Unsupported

3.3.5.1.7.1 Request Body

Content that conforms to the **Body** element specified in [\[MS-FSSHTTP\]](#) section 2.2.2.1.

3.3.5.1.7.2 Response Body

Content that conforms to the **Body** element specified in [\[MS-FSSHTTP\]](#) section 2.2.2.2.

3.3.5.1.7.3 Processing Details

Both the WOPI client and the WOPI server MUST follow the interaction model defined in [\[MS-FSSHTTP\]](#). Success indicates that the request executed correctly.

3.3.5.1.8 GetActivities

Queries activities about the file from the WOPI server. [<72>](#)

HTTP Verb: POST

URI: HTTP://server/<...>/wopi*/files/<id>/activities?access_token=<token>

The request message for this operation contains the following HTTP headers.

Request header	Usage	Value
X-WOPI-Override	A string specifying requested operation from the WOPI server. Required.	The string "GET_ACTIVITIES".

The response message for this operation can result in the following status codes.

Status code	Description
200	Success
403	User unauthorized
404	File unknown
500	Server error
501	Unsupported

3.3.5.1.8.1 Request Body

The request body is **JSON** (as specified in [\[RFC4627\]](#)) with the following parameters:

JSON:

```
{
  "Top":{"type":"integer","default":0,"optional":false},
  "SkipToken":{"type":"string","default":"","optional":true},
  "TypeFilter":[{"type":"string[]","default":[],"optional":true}],
}
```

Top: An integer with the maximum number of activities the client would like returned.

SkipToken: This string is returned in the **GetActivities** response and can be sent on subsequent **GetActivities** requests for paging.

TypeFilter: An array of strings listing the activity types the client wants. If the client does not provide a filter, all activity types SHOULD be returned.

3.3.5.1.8.2 Response Body

The response body is **JSON** (as specified in [\[RFC4627\]](#)) with the following parameters:

JSON:

```
{
  "Activities": [ { "$ref": "#/definitions/activity" } ],
  "MoreResultsExist": { "type": "boolean", "default": false, "optional": true },
  "SkipToken": { "type": "string", "default": "", "optional": true },
  "HostActivityViewUrl": { "type": "string", "default": "", "optional": true },
}
```

Activities: An array of activity objects (section [2.2.2.1](#)).

MoreResultsExist: A Boolean indicating whether there are more activities matching the filter than were returned. The client can send another **GetActivities** request and include the SkipToken value to see the next batch.

SkipToken: A string value which clients can send on subsequent **GetActivities** requests for paging.

HostActivityViewUrl: A string that indicates the **URL** to the host's activity view page, if it has one.

3.3.5.1.8.3 Processing Details

None.

3.3.5.1.9 GetFileUserValue

Queries file and user specific values from the WOPI server. [<73>](#)

HTTP Verb: POST

URI: HTTP://server/<...>/wopi*/files/<id>?access_token=<token>

The request message for this operation contains the following HTTP headers.

Request header	Usage	Value
X-WOPI-Override	A string specifying requested operation from the WOPI server. Required.	The string "GET_FILE_USER_VALUE".

The response message for this operation can result in the following status codes.

Status code	Description
200	Success
400	Specified key is illegal
401	Token is invalid

Status code	Description
404	File unknown/User unauthorized
500	Server error
501	Unsupported

3.3.5.1.9.1 Request Body

The request body is JSON (as specified in [\[RFC4627\]](#)) with the following parameters:

JSON:

```
{
  "Key": {"type": "string", "default": "", "optional": false}
}
```

Key: A string indicating the key to query for.

3.3.5.1.9.2 Response Body

The response body is JSON (as specified in [\[RFC4627\]](#)) with the following parameters:

JSON:

```
{
  "Key": {"type": "string", "default": "", "optional": true},
  "Value": {"type": "string", "default": "", "optional": true}
}
```

Key: A string indicating the key to query for in the request.

Value: A string containing the value of the entry being queried.

3.3.5.1.9.3 Processing Details

None.

3.3.5.1.10 GetLock

Retrieve a lock for editing a file. [<74>](#)

HTTP Verb: POST

URI: HTTP://server/<...>/wopi*/files/<id>?access_token=<token>

The request message for this operation contains the following HTTP headers.

Request header	Usage	Value
X-WOPI-Override	A string specifying the requested operation from the WOPI server. Required.	The string "GET_LOCK".

The response message for this operation can contain the following HTTP headers.

Response header	Usage	Value
X-WOPI-Lock	A string provided by the WOPI client that the WOPI server MUST use to identify the lock on the file. This header MUST be included when responding with the following status codes: 200 409	A string .
X-WOPI-LockFailureReason	A string indicating why the operation failed. There is no standard for how this string is to be formatted. This string MUST NOT be used for anything other than logging. This header MAY only be included when responding with the 409 status code.	A string .
X-WOPI-LockedByOtherInterface	A string indicating that the file is currently locked by another client. This header SHOULD only be included when responding with the 409 status code.	The string "true".

The response message for this operation can result in the following status codes.

Status code	Description
200	Success
401	Token is invalid
404	File unknown/User unauthorized
409	Lock mismatch/locked by another interface; an X-WOPI-Lock response header containing the value of the current lock on the file MUST be included when using this response code
500	Server error
501	Unsupported

3.3.5.1.10.1 Request Body

None.

3.3.5.1.10.2 Response Body

None.

3.3.5.1.10.3 Processing Details

Retrieves an existing lock on a file.

3.3.5.1.11 GetRestrictedLink

Gets a link to a file through which a user is able to operate on a file in a limited way. For example, a user might be allowed to change a file in the course of filling out a form while not having permission to freely edit the file.

HTTP Verb: POST

URI: HTTP://server/<...>/wopi*/files/<id>?access_token=<token>

The request message for this operation contains the following HTTP headers.

Request header	Usage	Value
X-WOPI-Override	A string specifying requested operation from the WOPI server. Required.	The string "GET_RESTRICTED_LINK".
X-WOPI-RestrictedLink	A string specifying the type of restricted link being requested by the WOPI client. The valid values of this string are determined through convention. The only valid value currently is "FORMS". Required.	A string that is a valid value for a restricted link type. For example, "FORMS".

The response message for this operation contains the following HTTP headers.

Response header	Usage	Value
X-WOPI-RestrictedUseLink	A string specifying the URL that the WOPI client requested. For example, the URL that allows the user to fill out a form. Required.	A string that is a valid URL.

The response message for this operation can result in the following status codes.

Status code	Description
200	Success
401	Token is invalid
404	File unknown/User unauthorized
500	Server error
501	Unsupported

3.3.5.1.11.1 Request Body

None.

3.3.5.1.11.2 Response Body

None.

3.3.5.1.11.3 Processing Details

This operation is directly related to the use of the **X-WOPI-UsingRestrictedScenario** HTTP header (section [2.2.1](#)).

3.3.5.1.12 GetShareUrl

Gets a URI to the file that is suitable for sharing with other users. <75>

HTTP Verb: POST

URI: HTTP://server/<...>/wopi*/files/<id>?access_token=<token>

The request message for this operation contains the following HTTP headers.

Request header	Usage	Value
X-WOPI-Override	A string specifying the requested operation from the WOPI server. Required.	The string "GET_SHARE_URL".
X-WOPI-UrlType	A string indicating what share URL type to return. Required.	A string .

The response message for this operation can result in the following status codes.

Status code	Description
200	Success
401	Token is invalid
404	File unknown/User unauthorized
500	Server error
501	Unsupported

3.3.5.1.12.1 Request Body

None.

3.3.5.1.12.2 Response Body

The response body is **JavaScript Object Notation (JSON)** (as specified in [RFC4627](#)) with the following parameters:

JSON:

```
{
  "ShareUrl":{"type":"string","default":"","optional":true}
}
```

ShareUrl: A URI to a location that allows authorized users to view the file.

3.3.5.1.12.3 Processing Details

If the X-WOPI-UrlType header is not present, or the WOPI server does not recognize the value, then the WOPI server MUST respond with a 501 status code.

3.3.5.1.13 GrantUserAccess

Requests that one or more users be granted a particular type of access to the file. [<76>](#)

HTTP Verb: POST

URI: HTTP://server/<...>/wopi*/files/<id>?access_token=<token>

The request message for this operation contains the following HTTP headers.

Request header	Usage	Value
X-WOPI-Override	A string specifying requested operation from the WOPI server. Required.	The string "GRANT_USER_ACCESS".

The response message for this operation can result in the following status codes.

Status code	Description
200	Success
400	Invalid user JSON.
401	Token is invalid
404	File unknown/User unauthorized
500	Server error
501	Unsupported

3.3.5.1.13.1 Request Body

The request body is **JSON** (as specified in [RFC4627](#)) with the following parameters:

JSON:

```
{
  "Users": [ { "$ref": "#/definitions/person" } ],
  "GrantReadAccess": { "type": "bool", "default": false, "optional": true },
  "GrantReviewAccess": { "type": "bool", "default": false, "optional": true },
  "GrantWriteAccess": { "type": "bool", "default": false, "optional": true },
  "Scenario": { "type": "string", "default": "", "optional": true },
}
```

Users: An array of person objects (section [2.2.2.2](#)) representing the people to grant access to.

GrantReadAccess: A Boolean value specifying whether to grant the user read access.

GrantReviewAccess: A Boolean value specifying whether to grant the user review access.

GrantWriteAccess: A Boolean value specifying whether to grant the user write access.

Scenario: A string that gives more details about the reason that access is being granted. Valid values are "mention", "share".

3.3.5.1.13.2 Response Body

The response body is **JSON** (as specified in [RFC4627](#)) with the following parameters:

JSON:

```
{
  "GrantUserAccessResponses":
  [ {
    "Id": { "type": "string", "default": "", "optional": true },
    "Provider": { "type": "string", "default": "", "optional": true },
    "Status": { "type": "integer", "default": 0, "optional": true },
  } ]
}
```

```

    "Message":{"type":"string","default":"","optional":true},
  }}
}

```

GrantUserAccessResponses: An array of objects with the status of the user. Each object has the following properties:

Id: A string to uniquely identify the user. Equivalent to the **UserId** property of **CheckFileInfo** (section [3.3.5.1.2.2](#)).

Provider: A string giving the context in which the Id can be used to identify the user.

Status: The status of this user. Can be one of the following values:

Status code	Description
0	Success
1	Permission cannot be grant
2	User does not exist

Message: A string that can be logged providing more details around a failure.

3.3.5.1.13.3 Processing Details

The permissions specified are to be applied to each user in the request. Different combinations of permissions cannot be specified for each user. If a WOPI client wants to specify different permissions for some users, it MUST separate those users into another request.

3.3.5.1.14 Lock

Take a lock for editing a file.

HTTP Verb: POST

URI: HTTP://server/<...>/wopi*/files/<id>?access_token=<token>

The request message for this operation contains the following HTTP headers.

Request header	Usage	Value
X-WOPI-Override	A string specifying the requested operation from the WOPI server. Required.	The string "LOCK".
X-WOPI-Lock	A string provided by the WOPI client that the WOPI server MUST use to identify the lock on the file. Required.	A string .

The response message for this operation can contain the following HTTP headers.

Response header	Usage	Value
X-WOPI-Lock	A string provided by the WOPI client that the WOPI server MUST use to identify the lock on the file. This header SHOULD be included when responding with the 409 status code if a different shared lock exists on the file. This header SHOULD NOT be included when responding with the 200 status code.	A string .

Response header	Usage	Value
X-WOPI-LockFailureReason	A string indicating why the operation failed. There is no standard for how this string is to be formatted. This string MUST NOT be used for anything other than logging. This header SHOULD only be included when responding with the 409 status code.	A string .
X-WOPI-LockedByOtherInterface	A string indicating that the file is currently locked by another client. This header SHOULD only be included when responding with the 409 status code.	The string "true".

The response message for this operation can result in the following status codes.

Status code	Description
200	Success
401	Token is invalid
404	File unknown/User unauthorized
409	Lock mismatch/locked by another interface;
500	Server error
501	Unsupported

3.3.5.1.14.1 Request Body

None.

3.3.5.1.14.2 Response Body

None.

3.3.5.1.14.3 Processing Details

The WOPI server MUST use the **string** provided in the X-WOPI-Lock header to create a lock on a file. When a WOPI client has a lock on a file the WOPI client is able to safely make changes to the file. The lock MUST last for 30 minutes, unless modified by a subsequent WOPI client operation.

3.3.5.1.15 PutRelativeFile

Create a new file on the WOPI server based on the current file.

HTTP Verb: POST

URI: HTTP://server/<...>/wopi*/files/<id>?access_token=<token>

The request message for this operation contains the following HTTP headers.

Request header	Usage	Value
X-WOPI-Override	A string specifying the requested operation from the WOPI server. Required.	The string "PUT_RELATIVE".
X-WOPI-	A UTF-7 string specifying either a file extension or a full	A string that is a file

Request header	Usage	Value
SuggestedTarget	file name. If only the extension is provided, the name of the initial file without extension SHOULD be combined with the extension to create the proposed name. The WOPI server MUST modify the proposed name as needed to create a new file that is both legally named and does not overwrite any existing file, while preserving the file extension. This header MUST be present if X-WOPI-RelativeTarget is not present.	extension or a full file name.
X-WOPI-RelativeTarget	A UTF-7 string that specifies a full file name. The WOPI server MUST NOT modify the name to fulfill the request. When a file with the specified name already exists, if the X-WOPI-OverwriteRelativeTarget request header is set to false, or if the X-WOPI-OverwriteRelativeTarget request header is set to true and the file is locked, the host MUST respond with a 409 status code.	A string that is a full file name.
X-WOPI-OverwriteRelativeTarget	A Boolean value that specifies whether the host MUST overwrite the file name if it exists.	A Boolean value.
X-WOPI-Size	An integer that specifies the size of the file in bytes.	An integer .

The response message for this operation can contain the following HTTP headers.

Response header	Usage	Value
X-WOPI-ValidRelativeTarget	A UTF-7 string provided by the WOPI server that the WOPI client can use as the value of X-WOPI-RelativeTarget in a future PutRelativeFile operation. This header SHOULD only be included when responding with the 409 status code if a file with the specified name already exists.	A string .

The response message for this operation can result in the following status codes.

Status code	Description
200	Success
400	Specified name is illegal
401	Token is invalid
404	File unknown/User unauthorized
409	Target file already exists or the file is locked;
413	File is too large. The maximum size is implementation-specific.
500	Server error
501	Unsupported

3.3.5.1.15.1 Request Body

The binary contents of the file.

3.3.5.1.15.2 Response Body

The response body is JSON (as specified in [\[RFC4627\]](#)) with the following parameters:

JSON:

```
{
  "Name":{"type":"string","optional":false},
  "Url":{"type":"string","default":"","optional":false},
  "HostViewUrl":{"type":"string","default":"","optional":true},
  "HostEditNewUrl":{"type":"string","default":"","optional":true},
  "HostEditUrl":{"type":"string","default":"","optional":true},
}
```

Name: The name of the file without the path.

URL: A URI that is the WOPI server URI of the newly created file in the form:

HTTP://server/<...>/wopi*/files/<id>?access_token=<token>

Where **id** is the WOPI server's **id** for the new file, and **token** is the WOPI server's credentials token for accessing the new file.

HostViewUrl: A URI to a web page that provides a viewing experience for the new file utilizing the WOPI client.

HostEditNewUrl: A URI to a web page that provides an editing experience for the new file utilizing the WOPI client, using the editnew action.[<77>](#)

HostEditUrl: A URI to a web page that provides an editing experience for the new file utilizing the WOPI client.

3.3.5.1.15.3 Processing Details

The WOPI server MUST use the content in the POST body to create a new file. The rules for naming the new file and handling errors are described in the introductory section of this operation.

3.3.5.1.16 PutUserInfo

Stores user information on the WOPI server.[<78>](#)

HTTP Verb: POST

URI: HTTP://server/<...>/wopi*/files/<id>?access_token=<token>

The request message for this operation contains the following HTTP headers.

Request header	Usage	Value
X-WOPI-Override	A string specifying the requested operation from the WOPI server. Required.	The string "PUT_USER_INFO".

The response message for this operation can result in the following status codes.

Status code	Description
200	Success
401	Token is invalid
404	File unknown/User unauthorized
500	Server error
501	Unsupported

3.3.5.1.16.1 Request Body

A **string** that the WOPI server MUST store. If stored, the WOPI server MUST associate it with the current user. The WOPI server SHOULD include this **string** in the **UserInfo** property

3.3.5.1.16.2 Response Body

None.

3.3.5.1.16.3 Processing Details

The WOPI server MUST store the string passed in the request body and MUST associate it with the current user. The WOPI server MUST include this **string** in the **UserInfo** property when responding to **CheckFileInfo** (see section [3.3.5.1.2](#)) requests for this user.

3.3.5.1.17 ReadSecureStore

Access the WOPI server's implementation of a secure store as specified in [\[MS-SSWPS\]<79>](#). Note that the WOPI client is not required to implement [MS-SSWPS]. However, an understanding of the protocol and the acquisition of information that is part of the protocol is required to use ReadSecureStore.

HTTP Verb: POST

URI: HTTP://server/<...>/wopi*/files/<id>?access_token=<token>

The request message for this operation contains the following HTTP headers.

Request header	Usage	Value
X-WOPI-Override	A string specifying requested operation from the WOPI server. Required.	The string "READ_SECURE_STORE".
X-WOPI-ApplicationId	[MS-SSWPS] section 3.1.4.2 describes how a WOPI client obtains the application ID required to access a specific secure store. This value is equal to the appId element of the application element nested under the CreateApplication element. This value is required.	The value of the Application ID.

The response message for this operation can result in the following status codes.

Status code	Description
200	Success

Status code	Description
401	Token is invalid
404	File unknown/User unauthorized
500	Server error
501	Unsupported

3.3.5.1.17.1 Request Body

None.

3.3.5.1.17.2 Response Body

The response body is JSON (as specified in [RFC4627](#)) with the following parameters:

JSON:

```
{
  "UserName":{"type":"string","optional":false},
  "Password":{"type":"string","default":"","optional":false},
  "IsWindowsCredentials":{"type":"bool","default":"false","optional":true},
  "IsGroup":{"type":"bool","default":"false","optional":true},
}
```

UserName: The **UserName** (see [MS-SSWPS](#) section 2.2.5.4).

Password: The **Password** (see [MS-SSWPS] section 2.2.5.4).

IsWindowsCredentials: A **Boolean** value that specifies that **UserName** corresponds to **WindowsUserName** and **Password** corresponds to **WindowsPassword** (see [MS-SSWPS] section 2.2.5.4).

IsGroup: A **Boolean** value that specifies that the secure store application is a **Group** (see [MS-SSWPS] section 2.2.5.5).

3.3.5.1.17.3 Processing Details

The WOPI client MAY use the credentials returned by the WOPI server to access other server types on behalf of the user.

3.3.5.1.18 RefreshLock

Refresh an existing lock for modifying a file.

HTTP Verb: POST

URI: HTTP://server/<...>/wopi*/files/<id>?access_token=<token>

The request message for this operation contains the following HTTP headers.

Request header	Usage	Value
X-WOPI-Override	A string specifying the requested operation from the WOPI server. Required.	The string "REFRESH_LOCK".

Request header	Usage	Value
X-WOPI-Lock	A string provided by the WOPI client that the WOPI server MUST use to identify the lock on the file. Required.	The string provided by the WOPI client through Lock (see section 3.3.5.1.14).

The response message for this operation can contain the following HTTP headers.

Response header	Usage	Value
X-WOPI-Lock	A string provided by the WOPI client that the WOPI server uses to identify the lock on the file. This header MUST be included when responding with the 409 status code if no lock or a different shared lock exists on the file. This header SHOULD NOT be included when responding with the 200 status code.	A string .
X-WOPI-LockedByOtherInterface	A string indicating that the file is currently locked by another client. This header SHOULD be included when responding with the 409 status code if the file is locked by another client.	The string "true".

The response message for this operation can result in the following status codes.

Status code	Description
200	Success
401	Token is invalid
404	File unknown/User unauthorized
409	Lock mismatch/locked by another interface;
500	Server error
501	Unsupported

3.3.5.1.18.1 Request Body

None.

3.3.5.1.18.2 Response Body

None.

3.3.5.1.18.3 Processing Details

Renews an existing lock on a file. The lock MUST expire 30 minutes after this operation unless the lock is modified by a subsequent WOPI client operation.

3.3.5.1.19 RenameFile

Renames a file. [<80>](#)

HTTP Verb: POST

URI: HTTP://server/<...>/wopi*/files/<id>?access_token=<token>

The request message for this operation contains the following HTTP headers.

Request header	Usage	Value
X-WOPI-Override	A string specifying the requested operation from the WOPI server. Required.	The string "RENAME_FILE".
X-WOPI-Lock	A string provided by the WOPI client that the WOPI server uses to identify the lock on the file. Required.	The string provided by the WOPI client through Lock (see section 3.3.5.1.14).
X-WOPI-RequestedName	A UTF-7 string that is a full file name. Required.	A string .

The response message for this operation can contain the following HTTP headers.

Response header	Usage	Value
X-WOPI-InvalidFileNameError	A string indicating why the operation failed. There is no standard for how this string is to be formatted. This string MUST NOT be used for anything other than logging. This header SHOULD only be included when responding with the 400 status code.	A string .

The response message for this operation can result in the following status codes.

Status code	Description
200	Success
401	Token is invalid
400	Specified name is illegal
403	User unauthorized
404	File unknown
500	Server error
501	Unsupported file type

3.3.5.1.19.1 Request Body

None.

3.3.5.1.19.2 Response Body

The response body is JSON (as specified in [\[RFC4627\]](#)) with the following parameters:

JSON:

```
{
  "Name":{"type":"string","optional":false}
}
```

Name: The name of the renamed file without the path or **file extension**.

3.3.5.1.19.3 Processing Details

None.

3.3.5.1.20 RevokeRestrictedLink

Revokes all links to a file through which a number of users are able to operate on a file in a limited way. For example, users might be allowed to change a file in the course of filling out a form while not having permission to freely edit the file. This operation will render all links of that type invalid.

HTTP Verb: POST

URI: HTTP://server/<...>/wopi*/files/<id>?access_token=<token>

The request message for this operation contains the following HTTP headers.

Request header	Usage	Value
X-WOPI-Override	A string specifying requested operation from the WOPI server. Required.	The string "REVOKE_RESTRICTED_LINK".
X-WOPI-RestrictedLink	A string specifying the type of restricted link being revoked by the WOPI client. The valid values of this string are determined through convention. The only valid value currently is "FORMS".	A string that is a valid value for a restricted link type. For example, "FORMS".

The response message for this operation can result in the following status codes.

Status code	Description
200	Success
401	Token is invalid
404	File unknown/User unauthorized
500	Server error
501	Unsupported

3.3.5.1.20.1 Request Body

None.

3.3.5.1.20.2 Response Body

None.

3.3.5.1.20.3 Processing Details

This operation is directly related to the use of the **X-WOPI-UsingRestrictedScenario** HTTP header (section [2.2.1](#)).

3.3.5.1.21 SetFileUserValue

Sets file and user specific values from the WOPI server. [<81>](#)

HTTP Verb: POST

URI: HTTP://server/<...>/wopi*/files/<id>?access_token=<token>

The request message for this operation contains the following HTTP headers.

Request header	Usage	Value
X-WOPI-Override	A string specifying requested operation from the WOPI server. Required.	The string "SET_FILE_USER_VALUE".

The response message for this operation can result in the following status codes.

Status code	Description
200	Success
400	Specified key or value is illegal
401	Token is invalid
404	File unknown/User unauthorized
500	Server error
501	Unsupported

3.3.5.1.21.1 Request Body

The request body is JSON (as specified in [RFC4627](#)) with the following parameters:

JSON:

```
{
  "Key":{"type":"string","default":"","optional":true}
  "Value":{"type":"string","default":"","optional": true }
}
```

Key: A string indicating the key to be set.

Value: A string containing the value of the entry being set.

3.3.5.1.21.2 Response Body

None.

3.3.5.1.21.3 Processing Details

None.

3.3.5.1.22 Unlock

Release a lock for editing a file.

HTTP Verb: POST

URI: HTTP://server/<...>/wopi*/files/<id>?access_token=<token>

The request message for this operation contains the following HTTP headers.

Request header	Usage	Value
X-WOPI-Override	A string specifying the requested operation from the WOPI server. Required.	The string "UNLOCK".
X-WOPI-Lock	A string provided by the WOPI client that the WOPI server MUST use to identify the lock on the file. Required.	The string provided by the WOPI client through Lock (see section 3.3.5.1.14).

The response message for this operation can contain the following HTTP headers.

Response header	Usage	Value
X-WOPI-Lock	A string provided by the WOPI client that the WOPI server uses to identify the lock on the file. This header SHOULD be included when responding with the 409 status code if no lock or a different shared lock exists on the file. This header SHOULD NOT be included when responding with the 200 status code.	A string .
X-WOPI-LockedByOtherInterface	A string indicating that the file is currently locked by another client. This header SHOULD be included when responding with the 409 status code if the file is locked by another client.	The string "true".

The response message for this operation can result in the following status codes.

Status code	Description
200	Success
401	Token is invalid
404	File unknown/User unauthorized
409	Lock mismatch/locked by another interface;
500	Server error
501	Unsupported

3.3.5.1.22.1 Request Body

None.

3.3.5.1.22.2 Response Body

None.

3.3.5.1.22.3 Processing Details

By releasing a lock, the WOPI client is indicating that it is not making further changes to a file.

3.3.5.1.23 UnlockAndRelock

Release and retake a lock for editing a file. This MUST be an **atomic** operation.

HTTP Verb: POST

URI: HTTP://server/<...>/wopi*/files/<id>?access_token=<token>

The request message for this operation contains the following HTTP headers.

Request header	Usage	Value
X-WOPI-Override	A string specifying the requested operation from the WOPI server. Required.	The string "LOCK".
X-WOPI-Lock	A string provided by the WOPI client that the WOPI server MUST use to identify the lock on the file. Required.	A string .
X-WOPI-OldLock	A string previously provided by the WOPI client that the WOPI server MUST have used to identify the lock on the file. Required.	The string provided by the WOPI client through Lock (see section 3.3.5.1.14).

The response message for this operation can contain the following HTTP headers.

Response header	Usage	Value
X-WOPI-Lock	A string provided by the WOPI client that the WOPI server MUST use to identify the lock on the file. This header SHOULD be included when responding with the 409 status code if no lock or a different shared lock exists on the file. This header SHOULD NOT be included when responding with the 200 status code.	A string .
X-WOPI-LockFailureReason	A string indicating why the operation failed. There is no standard for how this string is to be formatted. This string MUST NOT be used for anything other than logging. This header SHOULD only be included when responding with the 409 status code.	A string .
X-WOPI-LockedByOtherInterface	A string indicating that the file is currently locked by another client. This header SHOULD only be included when responding with the 409 status code.	The string "true".

The response message for this operation can result in the following status codes.

Status code	Description
200	Success
401	Token is invalid
404	File unknown/User unauthorized
409	Lock mismatch/locked by another interface;
500	Server error
501	Unsupported

3.3.5.1.23.1 Request Body

None.

3.3.5.1.23.2 Response Body

None.

3.3.5.1.23.3 Processing Details

The WOPI server uses the X-WOPI-OldLock to identify which lock to release, and the X-WOPI-Lock as the **id** of the new lock. The new lock MUST expire 30 minutes after this operation, unless modified by a subsequent WOPI client action.

3.3.5.2 HTTP://server/<...>/wopi*/folders/<id>

The folder being accessed by WOPI is identified by the following URI:

HTTP://server/<...>/wopi*/folders/<id>

The syntax URI parameters are defined by the following ABNF:

```
id = STRING
```

id: A unique identifier of a folder managed by the WOPI server.

The following operation is allowed to be performed on this resource.

Operation	Description
CheckFolderInfo	Returns information about a folder.

3.3.5.2.1 CheckFolderInfo

Return information about the folder and permissions that the current user has relative to that file.

HTTP Verb: GET

URI: HTTP://server/<...>/wopi*/folders/<id>?access_token=<token>

The following HTTP header can be included with this request.

Header	Description
X-WOPI-SessionContext	The value of the <sc> URI parameter (section 2.2.3).

3.3.5.2.1.1 Request Body

None.

3.3.5.2.1.2 Response Body

The response body is JSON (as specified in [RFC4627](#)) with the following parameters:

JSON:

```
{
```

```

AADUserObjectId: {"type": "string", "default": "", "optional": true},
AccessTokenExpiry: {"type": "long", "default": 0, "optional": true},
AllowEarlyFeatures: {"type": "bool", "default": false, "optional": true},
AllowExternalMarketplace: {"type": "bool", "default": false, "optional": true},
AppCatalogUrl: {"type": "string", "default": "", "optional": true},
FolderName: {"type": "string", "default": "", "optional": false},
BreadcrumbBrandIconUrl: {"type": "string", "default": "", "optional": true},
BreadcrumbBrandName: {"type": "string", "default": "", "optional": true},
BreadcrumbBrandUrl: {"type": "string", "default": "", "optional": true},
BreadcrumbDocName: {"type": "string", "default": "", "optional": true},
BreadcrumbDocUrl: {"type": "string", "default": "", "optional": true},
BreadcrumbFolderName: {"type": "string", "default": "", "optional": true},
BreadcrumbFolderUrl: {"type": "string", "default": "", "optional": true},
ClientUrl: {"type": "string", "default": "", "optional": true},
CloseButtonClosesWindow: {"type": "bool", "default": false, "optional": true},
ClosePostMessage: {"type": "bool", "default": false, "optional": true},
CloseUrl: {"type": "string", "default": "", "optional": true},
DirectInvokeDAVUrl: {"type": "string", "default": "", "optional": true},
DisablePrint: {"type": "bool", "default": false, "optional": true},
EditNotificationPostMessage: {"type": "bool", "default": false, "optional": true},
FileSharingPostMessage: {"type": "bool", "default": false, "optional": true},
FileSharingUrl: {"type": "string", "default": "", "optional": true},
FileVersionPostMessage: {"type": "bool", "default": false, "optional": true},
FileVersionUrl: {"type": "string", "default": "", "optional": true},
HostAuthenticationId: {"type": "string", "default": "", "optional": true},
HostAuthenticationIdType: {"type": "string", "default": "", "optional": true},
HostEditUrl: {"type": "string", "default": "", "optional": true},
HostEmbeddedEditUrl: {"type": "string", "default": "", "optional": true},
HostEmbeddedViewUrl: {"type": "string", "default": "", "optional": true},
HostName: {"type": "string", "default": "", "optional": true},
HostNotes: {"type": "string", "default": "", "optional": true},
HostViewUrl: {"type": "string", "default": "", "optional": true},
IrmPolicyDescription: {"type": "string", "default": "", "optional": true},
IrmPolicyTitle: {"type": "string", "default": "", "optional": true},
IsAnonymousUser: {"type": "bool", "default": false, "optional": true},
OpenInClientCommandUrl: {"type": "string", "default": "", "optional": false},
OpenInClientPostMessage: {"type": "bool", "default": false, "optional": false},
OwnerId: {"type": "string", "default": false, "optional": false},
PostMessageOrigin: {"type": "string", "default": "", "optional": true},
PresenceProvider: {"type": "string", "default": "", "optional": true},
PresenceUserId: {"type": "string", "default": "", "optional": true},
PrivacyUrl: {"type": "string", "default": "", "optional": true},
ProtectInClient: {"type": "bool", "default": false, "optional": true},
ReportAbusePostMessage: {"type": "bool", "default": false, "optional": true},
ReportAbuseUrl: {"type": "string", "default": "", "optional": true},
SafeLinksStatus: {"type": "string", "default": "", "optional": true},
SignoutUrl: {"type": "string", "default": "", "optional": true},
SupportsFileUserValue: {"type": "bool", "default": false, "optional": true},
SupportsSecureStore: {"type": "bool", "default": false, "optional": true},
TenantId: {"type": "string", "default": "", "optional": true},
TermsOfUseUrl: {"type": "string", "default": "", "optional": true},
UserCanReview: {"type": "bool", "default": false, "optional": true},
UserCanWrite: {"type": "bool", "default": false, "optional": true},
UserFriendlyName: {"type": "string", "default": "", "optional": true},
UserId: {"type": "string", "default": "", "optional": true},
UserPrincipalName: {"type": "string", "default": "", "optional": false},
WebEditingDisabled: {"type": "bool", "default": false, "optional": true},

WorkflowPostMessage: {"type": "bool", "default": "", "optional": true},
WorkflowType: {"type": "string[]", "default": [], "optional": true},
WorkflowUrl: {"type": "string", "default": "", "optional": true},
}

```

AADUserObjectId: A **string** value that uniquely identifies an **Azure Active Directory (Azure AD)** user. <82>

AccessTokenExpiry: A **long** value which is the timestamp of when the access token expires. <83>

AllowEarlyFeatures: A **Boolean** value. True Indicates the server supports allowing the user to be exposed to early features. <84>

AllowExternalMarketplace: A **Boolean** value that indicates the WOPI client allows connections to external services referenced in the file (for example, a marketplace of embeddable JavaScript apps). <85> If this value is false, then the WOPI client MUST NOT allow such connections.

AppCatalogUrl: A **string** value that is the base **URL** used to create calls to retrieve a catalog of applications. <86>

FolderName: The name of the folder without the path. Used for display in the UI. **BreadcrumbBrandImageUrl:** A URI to an image that the WOPI client displays to the user as the branding image of the WOPI server.

BreadcrumbBrandName: A **string** that the WOPI client displays to the user that indicates the brand name of the WOPI server.

BreadcrumbBrandUrl: A URI to a web page that the WOPI client navigates to when the user clicks on the UI that displays **BreadcrumbBrandName**.

BreadcrumbDocName: A **string** that the WOPI client displays to the user that indicates the name of the file.

BreadcrumbDocUrl: A **string** value which MAY specifies a URI to a web page that the WOPI client navigates to when the user clicks on the UI that displays **BreadcrumbDocName**. <87>

BreadcrumbFolderName: A **string** that the WOPI client displays to the user that indicates the name of the folder that contains the file.

BreadcrumbFolderUrl: A URI to a web page that the WOPI client navigates to when the user clicks on the UI that displays **BreadcrumbFolderName**.

ClientUrl: A user-accessible URI directly to the folder intended for opening the file through a client. Can be a DAV URL ([RFC5323]), but MAY be any URL that can be handled by a client that can open a file of the given type.

CloseButtonClosesWindow: A **Boolean** value that indicates that the WOPI client SHOULD close the browser window containing the output of the WOPI client when the user calls the close UI.

ClosePostMessage: A **Boolean** value that indicates that the WOPI client SHOULD notify the WOPI server in the event that the user closes the rendering or editing client currently using this file. <88>

CloseURL: A URI to a web page that the implementer deems useful to a user in the event that the user closes the rendering or editing client currently using this folder.

DirectInvokeDAVUrl: A **string** value that indicates the URL used when document could not be opened in client. <89>

DisablePrint: A **Boolean** value that indicates that the WOPI client MUST disable any print functionality under its control. <90>

EditNotificationPostMessage: A **Boolean** value that indicates that the WOPI client SHOULD notify the WOPI server in the event that the user attempts to edit the file. <91>

FileSharingPostMessage: A **Boolean** value that indicates that the WOPI client SHOULD notify the WOPI server in the event that the user attempts to share the file. <92>

FileSharingURL: A URI to a location that allows the user to share the file.

FileVersionPostMessage: A **Boolean** value. True indicates that the WOPI client will notify the WOPI server in the event that the user attempts to navigate to a previous file version. <93>

FileVersionUrl: A **string** value which is the URL that WOPI client navigate to a previous file version. [<94>](#)

HostAuthenticationId: A **string** that is used by the WOPI server to uniquely identify the user.

HostAuthenticationIdType: A **string** value that indicates the type of authentication used by the server. [<95>](#)

HostEditUrl: A URI to a web page that provides an editing experience for the folder utilizing the WOPI client.

HostEmbeddedEditUrl: A URI to a web page that provides access to an editing experience for the folder that can be embedded in another **HTML** page. For example, a page that provides an HTML snippet that can be inserted into the HTML of a blog.

HostEmbeddedViewUrl: A URI to a web page that provides access to a viewing experience for the folder that can be embedded in another HTML page. For example, a page that provides an HTML snippet that can be inserted into the HTML of a blog.

HostName: A **string** that is the name provided by the WOPI server used to identify it for logging and other informational purposes.

HostNotes: A **string** that is used by the WOPI server to pass arbitrary information to the WOPI client. The WOPI client MAY ignore this string if it does not recognize the contents. A WOPI server MUST NOT require that a WOPI client understand the contents of this string to operate.

HostViewUrl: A URI to a web page that provides a viewing experience for the folder utilizing the WOPI client.

IrmPolicyDescription: A **string** that the WOPI client SHOULD display to the user indicating the **Information Rights Management (IRM)** policy for the file. [<96>](#) This value SHOULD be combined with **IrmPolicyTitle**.

IrmPolicyTitle: A **string** that the WOPI client SHOULD display to the user indicating the IRM policy for the file. [<97>](#) This value SHOULD be combined with **IrmPolicyDescription**.

IsAnonymousUser: A **Boolean** value. True indicates the user is anonymous. [<98>](#)

OpenInClientCommandUrl: A **string** value which is the URL that WOPI client navigate to a server-controlled opening in client. [<99>](#)

OpenInClientPostMessage: A **Boolean** value. True indicates that the WOPI client will notify the WOPI server in the event that the user attempts to navigate to a server-controlled opening in client. [<100>](#)

OwnerId: A **string** that SHOULD uniquely identify the owner of the file.

PostMessageOrigin: A **string** that the WOPI client MUST use as the *targetOrigin* parameter when sending messages as specified in [\[W3C-HTML5WEBMSG\]](#). [<101>](#)

PresenceProvider: A **string** that identifies the provider of information that a WOPI client uses to discover information about the user's online status (for example, whether a user is available via instant messenger). A WOPI client requires knowledge of specific presence providers to be able to take advantage of this value.

PresenceUserId: A **string** that identifies the user in the context of the **PresenceProvider**.

PrivacyUrl: A URI to a webpage that explains the privacy policy of the WOPI server.

ProtectInClient: A **Boolean** value that indicates that the WOPI client SHOULD take measures to prevent copying and printing of the file. [<102>](#) This is intended to help enforce IRM in WOPI clients.

ReportAbusePostMessage: A **Boolean** value. True indicates that the WOPI client will notify the WOPI server in the event that the user attempts to report abuse. [<103>](#)

ReportAbuseUrl: A **string** value which is the URL to notify server for reporting abuse. [<104>](#)

SafeLinksStatus: A **string** value indicates user's tenant is provisioned for SafeLinks protection. [<105>](#)

SignoutUrl: A URI that will sign the current user out of the WOPI server supported authentication system.

SupportsFileUserValue: A **Boolean** value. True indicates the server supports **GetFileUserValue** (section [3.3.5.1.9](#)) and **SetFileUserValue** (section [3.3.5.1.21](#)) operations. [<106>](#)

SupportsSecureStore: A **Boolean** value that indicates that the WOPI server supports calls to a secure data store utilizing credentials stored in the file.

TenantId: A **string** that is used by the WOPI server to uniquely identify the **tenant**.

TermsOfUseUrl: A URI to a webpage that explains the terms of use policy of the WOPI server.

UserCanReview: A **Boolean** value. True indicates the user has permissions to review the file. [<107>](#)

UserCanWrite: Indicates that the user has permissions to alter the folder.

UserFriendlyName: A **string** that is the name of the user. If blank, the WOPI client MAY be configured to use a placeholder **string** in some scenarios, or to show no name at all.

UserId: A **string** that is used by the WOPI server to uniquely identify the user.

UserPrincipalName: A **string** value which is the user principal name. [<108>](#)

WebEditingDisabled: A **Boolean** value that indicates that the WOPI client MUST NOT allow the user to use the WOPI client's editing functionality to operate on the file. This does not mean that the user doesn't have rights to edit the file.

WorkflowPostMessage: A **Boolean** value that indicates that the WOPI client SHOULD notify the WOPI server in the event that the user attempts to trigger a workflow on the file. [<109>](#)

WorkflowType: An **array of strings** representing the workflow types that are available for the file. [<110>](#)

WorkflowUrl: A **string** representing the current version of the file based on the WOPI server's file versioning schema. This value MUST change when the file content changes, and version values MUST never repeat for a given file. [<111>](#)

3.3.5.2.1.3 Processing Details

The **id** represents the folder that the WOPI server is providing information about. The **token** represents the credentials that the WOPI server MUST use when determining the permissions the WOPI client has when interacting with the folder.

3.3.5.3 HTTP://server/<...>/wopi*/files/<id>/contents

The content of a file being accessed by WOPI is identified by the following URI:

HTTP://server/<...>/wopi*/files/<id>/contents

The syntax URI parameters are defined by the following ABNF:

id = STRING

id: A unique identifier of a file managed by the WOPI server.

The following operations are allowed to be performed on this resource.

Operation	Description
GetFile	Request message to retrieve a file for the HTTP://server/<...>/wopi*/files/<id>/contents operation.
PutFile	Request message to update a file for the HTTP://server/<...>/wopi*/files/<id>/contents operation.

3.3.5.3.1 GetFile

Get a file.

HTTP Verb: GET

URI: HTTP://server/<...>/wopi*/files/<id>/contents?access_token=<token>

The request message for this operation contains the following HTTP headers.

Request header	Usage	Value
X-WOPI-MaxExpectedSize	An integer specifying the upper bound of the expected size of the file being requested. Optional. The WOPI server will use the maximum value of a 4-byte integer if this value is not set in the request.	An integer .

The response message for this operation can result in the following status codes.

Status code	Description
200	Success.
401	Token is invalid
404	File unknown/User unauthorized.
500	Server error.

3.3.5.3.1.1 Request Body

None.

3.3.5.3.1.2 Response Body

The binary contents of the file.

3.3.5.3.1.3 Processing Details

The WOPI server MUST return the complete binary of the file identified by <id> in the response body, if the response indicates Success.

3.3.5.3.2 PutFile

Update a file on the WOPI server.

HTTP Verb: POST

URI: HTTP://server/<...>/wopi*/files/<id>/contents?access_token=<token>

The request message for this operation contains the following HTTP headers.

Request header	Usage	Value
X-WOPI-Override	A string specifying the requested operation from the WOPI server. Required.	The string "PUT".
X-WOPI-Lock	A string provided by the WOPI client that the WOPI server used to identify the lock on the file. Required.	The string provided by the WOPI client through Lock (see section 3.3.5.1.14).

The response message for this operation can result in the following status codes.

Status code	Description
200	Success
401	Token is invalid
404	File unknown/User unauthorized
409	Lock mismatch/locked by another interface;
413	File is too large. The maximum file size is implementation-specific.
500	Server error
501	Unsupported

3.3.5.3.2.1 Request Body

The binary contents of the file.

3.3.5.3.2.2 Response Body

None.

3.3.5.3.2.3 Processing Details

The WOPI server MUST update the binary of the file identified by <id> to match the binary contents in the request body, if the response indicates Success. If the file is currently associated with a lock established by the **Lock** operation (see section [3.3.5.1.14](#)) or the **UnlockAndRelock** operation (see section [3.3.5.1.23](#)) the WOPI server MUST provide the matching lock value in order for this operation to succeed.

3.3.5.4 HTTP://server/<...>/wopi*/folders/<id>/children

The contents of a folder being accessed by WOPI are identified by the following URI:

HTTP://server/<...>/wopi*/folders/<id>/children

The syntax URI parameters are defined by the following ABNF:

```
id = STRING
```

id: A unique identifier of a folder managed by the WOPI server.

The following operation is allowed to be performed on this resource.

Operation	Description
EnumerateChildren	Returns a set of URIs that provides access to resources in the folder.

3.3.5.4.1 EnumerateChildren

The **EnumerateChildren** method returns the contents of a folder on the WOPI server.

HTTP Verb: GET

URI: HTTP://server/<...>/wopi*/folders/<id>/children?access_token=<token>

The request message for this operation MAY contain the following HTTP headers.

Request header	Usage	Value
X-WOPI-RelativeTarget	A UTF-7 string that specifies the full file path and file name from the root folder. The WOPI server MUST NOT modify the name to fulfill the request.	A string that is a full file path and file name.

The response message for this operation can result in the following status codes.

Status code	Description
200	Success.
404	Folder unknown/User unauthorized.
500	Server error.
501	Unsupported.

3.3.5.4.1.1 Request Body

None.

3.3.5.4.1.2 Response Body

The response body is JSON (as specified in [RFC4627](#)) with the following parameters:

JSON:

```
{
  "Children":
  [
    {
      "Name": "<name>",
      "Url": "<url>",
      "Version": "<version>"
    },
  ]
}
```

Name: The name of the child resource.

Uri: The URI of the child resource of the form `http://server/<...>/wopi*/files/<id>?access_token=<token>` where **id** is the WOPI server's unique id of the resource and **token** is the token that provides access to the resource.

Version: The current version of the resource based on the server's file versioning schema. This value MUST change when the file changes and MUST match the value that would be provided by the "Version" field in the response to **CheckFileInfo** (see section [3.3.5.1.2](#)).

3.3.5.4.1.3 Processing Details

The WOPI server returns URLs in the response body JSON that the WOPI client MAY then use to initiate further WOPI operations on the items in the folder.

When the X-WOPI-RelativeTarget header is supplied, only the target name will be returned by this endpoint. If omitted, all children for the root folder will be returned.

3.3.6 Timer Events

None.

3.3.7 Other Local Events

None.

4 Protocol Examples

The following two scenarios show how a WOPI server discovers a WOPI client and how a user can view a document on that WOPI server.

4.1 Additional WOPI Server Documentation

Additional documentation describing how to implement a WOPI server can be found at [\[WOPIOfficeOnline\]](#).

4.2 Accessing Discovery XML

In this scenario, the WOPI server discovers a WOPI client through WOPI Discovery.

A WOPI server administrator uses the administrator console to instruct the WOPI server to request Discovery XML from a WOPI client. Typically, the administrator need only provide the host name of the WOPI client as the specific URI will always be `http://server/hosting/discovery`.

The WOPI server makes the request to `http://server/hosting/discovery` and receives the Discovery XML. Based on the content of the Discovery XML, the WOPI server is now able to offer viewing of `.docx` files through the WOPI client.

The WOPI server updates its UI to reflect this new functionality.

Request from WOPI server:

```
GET http://WOPIClient/hosting/discovery HTTP/1.1
```

Response from WOPI client:

```
<?xml version="1.0" encoding="utf-8"?>
<wopi-discovery>
<net-zone name="internal-http">
  <app name="Word" faviconUrl="http://WOPIClient/wv/resources/1033/FavIcon Word.ico"
checkLicense="true">
  .....
  <action name="view" ext="docx" default="true"
urlsrc="http://WOPIClient/wv/wordviewerframe.aspx?&lt;ui=UI_LLCC&amp;&gt;&lt;rs=DC_LLCC&amp;&
&lt;showpagestats=PERFSTATS&amp;&gt;" />
  .....
  <action name="edit" ext="docx" requires="locks,cobalt,update"
urlsrc="http://WOPIClient/we/wordeditorframe.aspx?&lt;ui=UI_LLCC&amp;&gt;&lt;rs=DC_LLCC&amp;&
&lt;showpagestats=PERFSTATS&amp;&gt;" />
  .....
  <action name="editnew" ext="docx" requires="locks,cobalt,update"
urlsrc="http://WOPIClient/we/wordeditorframe.aspx?new=1&amp;&lt;ui=UI_LLCC&amp;&gt;&lt;rs=DC
LLCC&amp;&gt;&lt;showpagestats=PERFSTATS&amp;&gt;" />
  .....
  <action name="imagepreview" ext="docx"
urlsrc="http://WOPIClient/wv/WordPreviewHandler.ashx?&lt;ui=UI_LLCC&amp;&gt;&lt;rs=DC_LLCC&am
p;&lt;showpagestats=PERFSTATS&amp;&gt;" />
  .....
  <action name="interactivepreview" ext="docx"
urlsrc="http://WOPIClient/wv/wordviewerframe.aspx?embed=1&amp;&lt;ui=UI_LLCC&amp;&gt;&lt;rs=D
C_LLCC&amp;&gt;&lt;showpagestats=PERFSTATS&amp;&gt;" />
  .....
  <action name="mobileView" ext="docx"
urlsrc="http://WOPIClient/wv/wordviewerframe.aspx?&lt;ui=UI_LLCC&amp;&gt;&lt;rs=DC_LLCC&amp;&
&lt;showpagestats=PERFSTATS&amp;&gt;" />
  .....
```


GetFile response from WOPI server:

```
<?xml version="1.0"?>
<Pages>
  <Page id="1">
    <Header>
      <P storyId="2" id="6C2D515C">
        <CN/>
        <T id="0" l="96.1" t="49.4" w="9" h="15" b="1" cw=",7;" >/T>
      </P>
    </Header>
    <Footer>
      <P storyId="3" id="4F36214B">
        <CN/>
        <T id="1" l="96.1" t="992.2" w="9" h="15" b="1" cw=",7;" >/T>
      </P>
    </Footer>
    <P storyId="1" id="4F75DE7D">
      <T id="2" l="96.1" t="97.4" w="33" h="15" b="1" cw="410,4;286,6;400,5;410,3;,7;">test
    </T>
  </P>
</Page>
</Pages>
```

5 Security

5.1 Security Considerations for Implementers

The WOPI protocol uses a token to pass credentials from between the WOPI server, the WOPI client, and the user client (for example, a browser). This token is a **string** and, if compromised, allows anyone with the token and information about the file to act as the original user in the context of that single file. To protect this token, use HTTPS for all WOPI network traffic.

5.2 Index of Security Parameters

None.

6 Appendix A: Full XML Schema

For ease of implementation, the following is the full XML schema for this protocol.

```
<?xml version="1.0" encoding="utf-8"?>
<xs:schema id="Discovery"
  targetNamespace="http://tempuri.org/Discovery.xsd"
  elementFormDefault="qualified"
  xmlns="http://tempuri.org/Discovery.xsd"
  xmlns:mstns="http://tempuri.org/Discovery.xsd"
  xmlns:xs="http://www.w3.org/2001/XMLSchema"
  >
  <xs:simpleType name="st_wopi-action-values">
    <xs:restriction base="xs:string">
      <xs:enumeration value="view" />
      <xs:enumeration value="edit" />
      <xs:enumeration value="mobileView" />
      <xs:enumeration value="embedview" />
      <xs:enumeration value="embededit" />
      <xs:enumeration value="present" />
      <xs:enumeration value="presentservice" />
      <xs:enumeration value="attend" />
      <xs:enumeration value="attendservice" />
      <xs:enumeration value="editnew" />
      <xs:enumeration value="imagepreview" />
      <xs:enumeration value="interactivepreview" />
      <xs:enumeration value="formsubmit" />
      <xs:enumeration value="formedit" />
      <xs:enumeration value="rest" />
      <xs:enumeration value="preloadview" />
      <xs:enumeration value="preloadedit" />
      <xs:enumeration value="rtc" />
      <xs:enumeration value="getinfo" />
      <xs:enumeration value="convert" />
      <xs:enumeration value="syndicate" />
      <xs:enumeration value="legacywebservice" />
      <xs:enumeration value="collab" />
      <xs:enumeration value="formpreview" />
      <xs:enumeration value="documentchat" />
    </xs:restriction>
  </xs:simpleType>

  <xs:simpleType name="st_wopi-action-requirements">
    <xs:restriction base="xs:string">
      <xs:pattern
value="/^((update|locks|cobalt|containers)\s*(,\s*$))*((update|locks|cobalt|containers)\s*$)
/" />
    </xs:restriction>
  </xs:simpleType>

  <xs:simpleType name="st_wopi-url-source">
    <xs:restriction base="xs:string">
      <xs:pattern value="/^([a-z0-9+.-]+):(?://(?:([a-z0-9-._~!$&#x2011;()*+,;=]|%[0-9A-
F]{2})*)*)?((?:[a-z0-9-._~!$&#x2011;()*+,;=]|%[0-9A-F]{2})*)?(?:\.(?:[a-z0-9-
._~!$&#x2011;()*+,;=]|%[0-9A-F]{2})*)?|(/(?:[a-z0-9-._~!$&#x2011;()*+,;=]|%[0-9A-
F]{2})+)?(?:[a-z0-9-._~!$&#x2011;()*+,;=]|%[0-9A-F]{2})*)?(?:\.(?:[a-z0-9-
._~!$&#x2011;()*+,;=]|%[0-9A-F]{2})*)?|(?:(?:[a-z0-9-._~!$&#x2011;()*+,;=]|%[0-9A-
F]{2})*)?$/i" />
    </xs:restriction>
  </xs:simpleType>

  <xs:complexType name="ct_wopi-action">
    <xs:attribute name="name" use="required" type="st_wopi-action-values"/>
    <xs:attribute name="default" type="xs:boolean" default="false"/>
    <xs:attribute name="requires" type="st_wopi-action-requirements"/>
    <xs:attribute name="urlsrc" use="required" type="st_wopi-url-source"/>
    <xs:attribute name="ext" type="xs:string" use="optional"/>
  </xs:complexType>

```

```

    <xs:attribute name="progid" type="xs:string" use="optional"/>
    <xs:attribute name="newprogid" type="xs:string" use="optional"/>
    <xs:attribute name="newext" type="xs:string" use="optional"/>
    <xs:attribute name="useParent" type="xs:boolean" default="false"/>
    <xs:attribute name="targettext" type="xs:string" use="optional"/>
</xs:complexType>

<xs:simpleType name="st_wopi-zone">
  <xs:restriction base="xs:string">
    <xs:enumeration value="internal-http" />
    <xs:enumeration value="internal-https" />
    <xs:enumeration value="external-http" />
    <xs:enumeration value="external-https" />
  </xs:restriction>
</xs:simpleType>

<xs:complexType name="ct_net-zone">
  <xs:sequence>
    <xs:element name="app" minOccurs="1" maxOccurs="unbounded" type="ct_app-name"/>
  </xs:sequence>
  <xs:attribute name="name" type="mstns:st_wopi-zone"/>
</xs:complexType>

<xs:complexType name="ct_wopi-discovery">
  <xs:sequence>
    <xs:element name="net-zone" minOccurs="1" maxOccurs="4" type="ct_net-zone"/>
    <xs:element name="proof-key" minOccurs="0" maxOccurs="1" type="ct_proof-key"/>
  </xs:sequence>
</xs:complexType>

<xs:element name="wopi-discovery" type="ct_wopi-discovery"/>

<xs:complexType name="ct_app-name">
  <xs:sequence>
    <xs:element name="action" minOccurs="1" maxOccurs="unbounded"
      type="ct_wopi-action"/>
  </xs:sequence>
  <xs:attribute name="name" type="xs:string" use="required"/>
  <xs:attribute name="favIconUrl" type="xs:string" use="optional"/>
  <xs:attribute name="checkLicense" type="xs:boolean" use="optional"
    default="false"/>
</xs:complexType>

<xs:complexType name="ct_proof-key">
  <xs:attribute name="exponent" type="xs:string" use="required"/>
  <xs:attribute name="modulus" type="xs:string" use="required"/>
  <xs:attribute name="oldexponent" type="xs:string" use="required"/>
  <xs:attribute name="oldmodulus" type="xs:string" use="required"/>
  <xs:attribute name="oldvalue" type="xs:string" use="required"/>
  <xs:attribute name="value" type="xs:string" use="required"/>
</xs:complexType>

</xs:schema>

```


7 Appendix B: Full JSON Schema

For ease of implementation, the following sections provide the full JSON schema for this protocol.

Schema name	Section
Types JSON schema	7.1
AddActivities JSON request	7.2
AddActivities JSON response	7.3
CheckFileInfo JSON response	7.4
CheckFolderInfo JSON response	7.5
CheckPolicy JSON request	7.6
CheckPolicy JSON response	7.7
CheckUserAccess JSON request	7.8
CheckUserAccess JSON response	7.9
EnumerateChildren JSON response	7.10
GetActivities JSON request	7.11
GetActivities JSON response	7.12
GetFileUserValue JSON request	7.13
GetFileUserValue JSON response	7.14
GetShareUrl JSON response	7.15
GrantUserAccess JSON request	7.16
GrantUserAccess JSON response	7.17
PutRelativeFile JSON response	7.18
ReadSecureStore JSON response	7.19
RenameFile JSON response	7.20
SetFileUserValue JSON request	7.21

7.1 Types JSON schema

```
{
  "definitions": {
    "activity": {
      "Type": { "type": "string", "default": "", "optional": true },
      "Id": { "type": "string", "default": "", "optional": true },
      "Timestamp": { "type": "string", "default": "", "optional": true },
      "HostTimestamp": { "type": "string", "default": "", "optional": true },
      "People": [ { "$ref": "#/definitions/person" } ],
      "Data": {
        {
          "CommentText": { "type": "string", "default": "", "optional": true },

```

```

    "ContentAction":{"type":"string","default":"","optional":true},
    "ContentId":{"type":"string","default":"","optional":true},
    "NavigationId":{"type":"string","default":"","optional":true},
    "ContentOrigin":{"type":"string","default":"","optional":true},
    "ParentContentId":{"type":"string","default":"","optional":true},
    "Revisions":{"type":"string[]","default":[],"optional":true},
  },
}
"person":{
  "Id":{"type":"string","default":""},
  "Provider":{"type":"string","default":""},
  "Name":{"type":"string","default":""},
  "PictureUrl":{"type":"string","default":""},
  "Email":{"type":"string","default":""},
  "Roles":{"type":"string[]","default":[]},
  "HostId":{"type":"string","default":null},
  "HostProvider":{"type":"string","default":null},
  "HostName":{"type":"string","default":null},
  "HostPictureUrl":{"type":"string","default":null},
  "HostEmail":{"type":"string","default":null},
  "HostRoles":{"type":"string[]","default":null},
}
}
}

```

7.2 AddActivities JSON request

```

{
  "Activities":[ {"$ref": "#/definitions/activity" } ]
}

```

7.3 AddActivities JSON response

```

{
  "ActivityResponses":
  [{
    "Id":{"type":"string","default":"","optional":true},
    "Status":{"type":"integer","default":3,"optional":true},
    "Message":{"type":"string","default":"","optional":true},
  ]
}

```

7.4 CheckFileInfo JSON response

```

{
  "AADUserObjectId":{"type":"string","default":"","optional":true},
  "AccessTokenExpiry":{"type":"long","default":0,"optional":true},
  "AllowAddActivitiesUserBatching":{"type":"bool","default":false,"optional":true},
  "AllowAdditionalMicrosoftServices":{"type":"bool","default":false,"optional":true},
  "AllowEarlyFeatures":{"type":"bool","default":false,"optional":true},
  "AllowErrorReportPrompt":{"type":"bool","default":false,"optional":true},
  "AllowExternalMarketplace":{"type":"bool","default":false,"optional":true},
  "AppCatalogUrl":{"type":"string","default":"","optional":true},
  "AppliedPolicyId":{"type":"string","default":"","optional":true},
  "BaseFileName":{"type":"string","default":"","optional":false},
  "BreadcrumbBrandName":{"type":"string","default":"","optional":true},
  "BreadcrumbBrandUrl":{"type":"string","default":"","optional":true},
  "BreadcrumbDocName":{"type":"string","default":"","optional":true},
  "BreadcrumbDocUrl":{"type":"string","default":"","optional":true},
  "BreadcrumbFolderName":{"type":"string","default":"","optional":true},
  "BreadcrumbFolderUrl":{"type":"string","default":"","optional":true},

```

```
"ClientUrl":{"type":"string","default":"","optional":true},
"CloseButtonClosesWindow":{"type":"bool","default":false,"optional":true},
"ClosePostMessage":{"type":"bool","default":false,"optional":true},
"CloseUrl":{"type":"string","default":"","optional":true},
"DirectInvokeDAVUrl":{"type":"string","default":"","optional":true},
"DisableBrowserCachingOfUserContent":{"type":"bool","default":false,"optional":true},
"DisablePrint":{"type":"bool","default":false,"optional":true},
"DisableTranslation":{"type":"bool","default":false,"optional":true},
"DownloadUrl":{"type":"string","default":"","optional":true},
"EditAndReplyUrl":{"type":"string","default":"","optional":true},
"EditingCannotSave":{"type":"bool","default":false,"optional":true},
"EditModePostMessage":{"type":"bool","default":false,"optional":true},
"EditNotificationPostMessage":{"type":"bool","default":false,"optional":true},
"EmbeddingPageOrigin":{"type":"string","default":"","optional":true},
"EmbeddingPageSessionInfo":{"type":"string","default":"","optional":true},
"EnabledApplicationFeatures":{"type":"string[]","default":[],"optional":true},
"FileEmbedCommandPostMessage":{"type":"bool","default":false,"optional":true},
"FileEmbedCommandUrl":{"type":"string","default":"","optional":true},
"FileExtension":{"type":"string","default":"","optional":true},
"FileNameMaxLength":{"type":"integer","default":250,"optional":true},
"FileSharingPostMessage":{"type":"bool","default":false,"optional":true},
"FileSharingUrl":{"type":"string","default":"","optional":true},
"FileUrl":{"type":"string","default":"","optional":true},
"FileVersionPostMessage":{"type":"bool","default":false,"optional":true},
"FileVersionUrl":{"type":"string","default":"","optional":true},
"HostAuthenticationId":{"type":"string","default":"","optional":true},
"HostAuthenticationIdType":{"type":"string","default":"","optional":true},
"HostDivSyndicationViewUrl":{"type":"string","default":"","optional":true},
"HostEditUrl":{"type":"string","default":"","optional":true},
"HostEmbeddedEditUrl":{"type":"string","default":"","optional":true},
"HostEmbeddedViewUrl":{"type":"string","default":"","optional":true},
"HostName":{"type":"string","default":"","optional":true},
"HostNotes":{"type":"string","default":"","optional":true},
"HostRestUrl":{"type":"string","default":"","optional":true},
"HostViewUrl":{"type":"string","default":"","optional":true},
"InsertImagePostMessage":{"type":"bool","default":false,"optional":true},
"IrmPolicyDescription":{"type":"string","default":"","optional":true},
"IrmPolicyTitle":{"type":"string","default":"","optional":true},
"IsAnonymousUser":{"type":"bool","default":false,"optional":true},
"IsEduUser":{"type":"bool","default":false,"optional":true},
"IsYammerEnabled":{"type":"bool","default":false,"optional":true},
"LastModifiedTime":{"type":"string","default":"","optional":true},
"LicenseCheckForEditIsEnabled":{"type":"bool","default":false,"optional":true},
"LicensedOrganization":{"type":"string","default":"","optional":true},
"OfficeCollaborationServiceEndpointUrl":{"type":"string","default":"","optional":false},
"OpenInClientCommandUrl":{"type":"string","default":"","optional":false},
"OpenInClientPostMessage":{"type":"bool","default":false,"optional":false},
"OwnerId":{"type":"string","default":"","optional":false},
"PermissionsPostMessage":{"type":"bool","default":false,"optional":true},
"PolicyCheckPostMessage":{"type":"bool","default":false,"optional":true},
"PostMessageOrigin":{"type":"string","default":"","optional":true},
"PresenceProvider":{"type":"string","default":"","optional":true},
"PresenceUserId":{"type":"string","default":"","optional":true},
"PrivacyUrl":{"type":"string","default":"","optional":true},
"ProtectedFile":{"type":"bool","default":false,"optional":true},
"ProtectInClient":{"type":"bool","default":false,"optional":true},
"ReadOnly":{"type":"bool","default":false,"optional":true},
"ReportAbusePostMessage":{"type":"bool","default":false,"optional":true},
"ReportAbuseUrl":{"type":"string","default":"","optional":true},
"RestrictedWebViewOnly":{"type":"bool","default":false,"optional":true},
"SafeLinksStatus":{"type":"string","default":"","optional":true},
"SHA256":{"type":"string","default":"","optional":true},
"SignInUrl":{"type":"string","default":"","optional":true},
"SignoutUrl":{"type":"string","default":"","optional":true},
"Size":{"type":"integer","default":-1,"optional":false},
"SupportedShareUrlTypes":{"type":"string[]","default":[],"optional":true},
"SupportsAddActivities":{"type":"bool","default":false,"optional":true},
"SupportsCheckPolicy":{"type":"bool","default":false,"optional":true},
"SupportsCheckUserAccess":{"type":"bool","default":false,"optional":true},
```

```

"SupportsCoauth":{"type":"bool","default":false,"optional":true},
"SupportsCobalt":{"type":"bool","default":false,"optional":true},
"SupportsContactsResolution":{"type":"bool","default":false,"optional":true},
"SupportsContainers":{"type":"bool","default":false,"optional":true},
"SupportsDeleteFile":{"type":"bool","default":false,"optional":true},
"SupportsEcosystem":{"type":"bool","default":false,"optional":true},
"SupportsExtendedLockLength":{"type":"bool","default":false,"optional":true},
"SupportsFileCreation":{"type":"bool","default":false,"optional":true},
"SupportsFileUserValue":{"type":"bool","default":false,"optional":true},
"SupportsFolders":{"type":"bool","default":false,"optional":true},
"SupportsGetActivities":{"type":"bool","default":false,"optional":true},
"SupportsGetLock":{"type":"bool","default":false,"optional":true},
"SupportsGrantUserAccess":{"type":"bool","default":false,"optional":true},
"SupportsLocks":{"type":"bool","default":false,"optional":true},
"SupportsPolicies":{"type":"bool","default":false,"optional":true},
"SupportsRename":{"type":"bool","default":false,"optional":true},
"SupportsReviewing":{"type":"bool","default":false,"optional":true},
"SupportsScenarioLinks":{"type":"bool","default":false,"optional":true},
"SupportsSecureStore":{"type":"bool","default":false,"optional":true},
"SupportsUpdate":{"type":"bool","default":false,"optional":true},
"SupportsUserInfo":{"type":"bool","default":false,"optional":true},
"TenantId":{"type":"string","default":"","optional":true},
"TermsOfUseUrl":{"type":"string","default":"","optional":true},
"TimeZone":{"type":"string","default":"","optional":true},
"UniqueContentId":{"type":"string","default":"","optional":true},
"UserCanAttend":{"type":"bool","default":false,"optional":true},
"UserCanNotWriteRelative":{"type":"bool","default":false,"optional":true},
"UserCanPresent":{"type":"bool","default":false,"optional":true},
"UserCanRename":{"type":"bool","default":false,"optional":true},
"UserCanReview":{"type":"bool","default":false,"optional":true},
"UserCanWrite":{"type":"bool","default":false,"optional":true},
"UserFriendlyName":{"type":"string","default":"","optional":true},
"UserId":{"type":"string","default":"","optional":true},
"UserInfo":{"type":"string","default":"","optional":true},
"UserPrincipalName":{"type":"string","default":"","optional":false},
"Version":{"type":"string","default":"","optional":false},
"WebEditingDisabled":{"type":"bool","default":false,"optional":true},
"WorkflowPostMessage":{"type":"bool","default":"","optional":true},
"WorkflowType":{"type":"string[]","default":[],"optional":true},
"WorkflowUrl":{"type":"string","default":"","optional":true},
}

```

7.5 CheckFolderInfo JSON response

```

{
  "AADUserObjectId":{"type":"string","default":"","optional":true},
  "AccessTokenExpiry":{"type":"long","default":0,"optional":true},
  "AllowEarlyFeatures":{"type":"bool","default":false,"optional":true},
  "AllowExternalMarketplace":{"type":"bool","default":false,"optional":true},
  "AppCatalogUrl":{"type":"string","default":"","optional":true},
  "FolderName":{"type":"string","default":"","optional":false},
  "BreadcrumbBrandIconUrl":{"type":"string","default":"","optional":true},
  "BreadcrumbBrandName":{"type":"string","default":"","optional":true},
  "BreadcrumbBrandUrl":{"type":"string","default":"","optional":true},
  "BreadcrumbDocName":{"type":"string","default":"","optional":true},
  "BreadcrumbDocUrl":{"type":"string","default":"","optional":true},
  "BreadcrumbFolderName":{"type":"string","default":"","optional":true},
  "BreadcrumbFolderUrl":{"type":"string","default":"","optional":true},
  "ClientUrl":{"type":"string","default":"","optional":true},
  "CloseButtonClosesWindow":{"type":"bool","default":false,"optional":true},
  "ClosePostMessage":{"type":"bool","default":false,"optional":true},
  "CloseUrl":{"type":"string","default":"","optional":true},
  "DirectInvokeDAVUrl":{"type":"string","default":"","optional":true},
  "DisablePrint":{"type":"bool","default":false,"optional":true},
  "EditNotificationPostMessage":{"type":"bool","default":false,"optional":true},
  "FileSharingPostMessage":{"type":"bool","default":false,"optional":true},
  "FileSharingUrl":{"type":"string","default":"","optional":true},
}

```

```

"FileVersionPostMessage":{"type":"bool","default":false,"optional":true},
"FileVersionUrl":{"type":"string","default":"","optional":true},
"HostAuthenticationId":{"type":"string","default":"","optional":true},
"HostAuthenticationIdType":{"type":"string","default":"","optional":true},
"HostEditUrl":{"type":"string","default":"","optional":true},
"HostEmbeddedEditUrl":{"type":"string","default":"","optional":true},
"HostEmbeddedViewUrl":{"type":"string","default":"","optional":true},
"HostName":{"type":"string","default":"","optional":true},
"HostNotes":{"type":"string","default":"","optional":true},
"HostViewUrl":{"type":"string","default":"","optional":true},
"IrmPolicyDescription":{"type":"string","default":"","optional":true},
"IrmPolicyTitle":{"type":"string","default":"","optional":true},
"IsAnonymousUser":{"type":"bool","default":false,"optional":true},
"OpenInClientCommandUrl":{"type":"string","default":"","optional":false},
"OpenInClientPostMessage":{"type":"bool","default":false,"optional":false},
"OwnerId":{"type":"string","default":false,"optional":false},
"PostMessageOrigin":{"type":"string","default":"","optional":true},
"PresenceProvider":{"type":"string","default":"","optional":true},
"PresenceUserId":{"type":"string","default":"","optional":true},
"PrivacyUrl":{"type":"string","default":"","optional":true},
"ProtectInClient":{"type":"bool","default":false,"optional":true},
"ReportAbusePostMessage":{"type":"bool","default":false,"optional":true},
"ReportAbuseUrl":{"type":"string","default":"","optional":true},
"SafeLinksStatus":{"type":"string","default":"","optional":true},
"SignoutUrl":{"type":"string","default":"","optional":true},
"SupportsFileUserValue":{"type":"bool","default":false,"optional":true},
"SupportsSecureStore":{"type":"bool","default":false,"optional":true},
"TenantId":{"type":"string","default":"","optional":true},
"TermsOfUseUrl":{"type":"string","default":"","optional":true},
"UserCanReview":{"type":"bool","default":false,"optional":true},
"UserCanWrite":{"type":"bool","default":false,"optional":true},
"UserFriendlyName":{"type":"string","default":"","optional":true},
"UserId":{"type":"string","default":"","optional":true},
"UserPrincipalName":{"type":"string","default":"","optional":false},
"WebEditingDisabled":{"type":"bool","default":false,"optional":true},
"WorkflowPostMessage":{"type":"bool","default":"","optional":true},
"WorkflowType":{"type":"string[]","default":[],"optional":true},
"WorkflowUrl":{"type":"string","default":"","optional":true},

```

7.6 CheckPolicy JSON request

```

{
  "Fragments":{"type":"string[]","default":null,"optional":true},
  "LoggingString":{"type":"string","default":"","optional":true},
}

```

7.7 CheckPolicy JSON response

```

{
  "Warn":{"type":"bool","default":false,"optional":true},
  "Block":{"type":"bool","default":false,"optional":true},
  "BlockedWords":{"type":"string[]","default":null,"optional":true},
}

```

7.8 CheckUserAccess JSON request

```

{
  "Users": [{ "$ref": "#/definitions/person" }]
}

```

7.9 CheckUserAccess JSON response

```
{
  "CheckUserAccessResponses":
  [
    {
      "Id": {"type": "string", "default": "", "optional": true},
      "Provider": {"type": "string", "default": "", "optional": true},
      "Status": {"type": "integer", "default": 0, "optional": true},
      "Message": {"type": "string", "default": "", "optional": true},
      "UserCanRead": {"type": "bool", "default": false, "optional": false},
      "UserCanReview": {"type": "bool", "default": false, "optional": false},
      "UserCanWrite": {"type": "bool", "default": false, "optional": false},
    }
  ]
}
```

7.10 EnumerateChildren JSON response

```
{
  "Children":
  [
    {
      "Name": "<name>",
      "Url": "<url>",
      "Version": "<version>"
    }
  ]
}
```

7.11 GetActivities JSON request

```
{
  "Top": {"type": "integer", "default": 0, "optional": false},
  "SkipToken": {"type": "string", "default": "", "optional": true},
  "TypeFilter": [{"type": "string", "default": [], "optional": true}],
}
```

7.12 GetActivities JSON response

```
{
  "Activities": [ {"$ref": "#/definitions/activity" } ],
  "MoreResultsExist": {"type": "boolean", "default": false, "optional": true},
  "SkipToken": {"type": "string", "default": "", "optional": true},
  "HostActivityViewUrl": {"type": "string", "default": "", "optional": true},
}
```

7.13 GetFileUserValue JSON request

```
{
  "Key": {"type": "string", "default": "", "optional": false}
}
```

7.14 GetFileUserValue JSON response

```
{
  "Key": {"type": "string", "default": "", "optional": true},
  "Value": {"type": "string", "default": "", "optional": true}
}
```

7.15 GetShareUrl JSON response

```
{
  "ShareUrl":{"type":"string","default":"","optional":true}
}
```

7.16 GrantUserAccess JSON request

```
{
  "Users": [{ "$ref": "#/definitions/person" }],
  "GrantReadAccess":{"type":"bool","default":false,"optional":true},
  "GrantReviewAccess":{"type":"bool","default": false,"optional":true},
  "GrantWriteAccess":{"type":"bool","default": false,"optional":true},
  "Scenario":{"type":"string","default":"","optional":true},
}
```

7.17 GrantUserAccess JSON response

```
{
  "GrantUserAccessResponses":
  [{
    "Id":{"type":"string","default":"","optional":true},
    "Provider":{"type":"string","default":"","optional":true},
    "Status":{"type":"integer","default":0,"optional":true},
    "Message":{"type":"string","default":"","optional":true},
  ]
}
```

7.18 PutRelativeFile JSON response

```
{
  "Name":{"type":"string","optional":false},
  "Url":{"type":"string","default":"","optional":false},
  "HostViewUrl":{"type":"string","default":"","optional":true},
  "HostEditNewUrl":{"type":"string","default":"","optional":true},
  "HostEditUrl":{"type":"string","default":"","optional":true},
}
```

7.19 ReadSecureStore JSON response

```
{
  "UserName":{"type":"string","optional":false},
  "Password":{"type":"string","default":"","optional":false},
  "IsWindowsCredentials":{"type":"bool","default":"false","optional":true},
  "IsGroup":{"type":"bool","default":"false","optional":true},
}
```

7.20 RenameFile JSON response

```
{
  "Name":{"type":"string","optional":false}
}
```

7.21 SetFileUserValue JSON request

```
{  
  "Key":{"type":"string","default":"","optional":true}  
  "Value":{"type":"string","default":"","optional": true }  
}
```


8 Appendix C: Product Behavior

The information in this specification is applicable to the following Microsoft products or supplemental software. References to product versions include updates to those products.

- Microsoft Lync Server 2013
- Microsoft Exchange Server 2013
- Microsoft Office Web Apps Server
- Microsoft SharePoint Server 2013
- Microsoft SharePoint Foundation 2013
- Office Online Server
- Microsoft Skype for Business Server 2015
- Microsoft SharePoint Server 2016
- Microsoft Skype for Business Server 2019
- Microsoft SharePoint Server 2019
- Microsoft SharePoint Server Subscription Edition

Exceptions, if any, are noted in this section. If an update version, service pack or Knowledge Base (KB) number appears with a product name, the behavior changed in that update. The new behavior also applies to subsequent updates unless otherwise specified. If a product edition appears with the product version, behavior is different in that product edition.

Unless otherwise specified, any statement of optional behavior in this specification that is prescribed using the terms "SHOULD" or "SHOULD NOT" implies product behavior in accordance with the SHOULD or SHOULD NOT prescription. Unless otherwise specified, the term "MAY" implies that the product does not follow the prescription.

[<1> Section 3.3.5.1.1](#): SharePoint Server 2019, SharePoint Server 2016, SharePoint Server 2013 and Office Web Apps Server do not support the **AddActivities** operation.

[<2> Section 3.3.5.1.2.2](#): SharePoint Server 2013 and SharePoint Server 2016 do not support the **AADUserObjectId** field.

[<3> Section 3.3.5.1.2.2](#): SharePoint Server 2013 and SharePoint Server 2016 do not support the **AccessTokenExpiry** field. SharePoint Server 2019 does not set this field and returns the default value.

[<4> Section 3.3.5.1.2.2](#): SharePoint Server 2013 and SharePoint Server 2016 do not support the **AllowAddActivitiesUserBatching** field. SharePoint Server 2019 does not set this field and returns the default value.

[<5> Section 3.3.5.1.2.2](#): SharePoint Server 2013 and SharePoint Server 2016 do not support the **AllowAdditionalMicrosoftServices** field. SharePoint Server 2019 does not set this field and returns the default value.

[<6> Section 3.3.5.1.2.2](#): SharePoint Server 2013 and SharePoint Server 2016 do not support the **AllowEarlyFeatures** field.

[<7> Section 3.3.5.1.2.2](#): SharePoint Server 2013 and SharePoint Server 2016 do not support the **AllowErrorReportPrompt** field. SharePoint Server 2019 does not set this field and returns the default value.

<8> [Section 3.3.5.1.2.2](#): SharePoint Server 2013 and SharePoint Server 2016 do not support the **AppCatalogUrl** field. SharePoint Server 2019 does not set this field and returns the default value.

<9> [Section 3.3.5.1.2.2](#): SharePoint Server 2013 and SharePoint Server 2016 do not support the **AppliedPolicyId** field. SharePoint Server 2019 does not set this field and returns the default value.

<10> [Section 3.3.5.1.2.2](#): SharePoint Server 2013 supports the **BreadcrumbDocUrl** field.

<11> [Section 3.3.5.1.2.2](#): SharePoint Server 2013 and Office Web Apps Server do not support the **ClosePostMessage** field.

<12> [Section 3.3.5.1.2.2](#): SharePoint Server 2013 and SharePoint Server 2016 do not support the **DirectInvokeDAVUrl** field. SharePoint Server 2019 does not set this field and returns the default value.

<13> [Section 3.3.5.1.2.2](#): Microsoft Excel Online web application does not support **DownloadUrl**. Instead workbook is retrieved by using a cached copy from Office Online Server.

<14> [Section 3.3.5.1.2.2](#): SharePoint Server 2013 do not support the **EditingCannotSave** field. SharePoint Server 2019 and SharePoint Server 2016 do not set this field and return the default value.

<15> [Section 3.3.5.1.2.2](#): SharePoint Server 2013 and Office Web Apps Server do not support the **EditNotificationPostMessage** field.

<16> [Section 3.3.5.1.2.2](#): SharePoint Server 2013 and SharePoint Server 2016 do not support the **EmbeddingPageOrigin** field.

<17> [Section 3.3.5.1.2.2](#): SharePoint Server 2013 and SharePoint Server 2016 do not support the **EmbeddingPageSessionInfo** field.

<18> [Section 3.3.5.1.2.2](#): SharePoint Server 2013 and SharePoint Server 2016 do not support the **EnabledApplicationFeatures** field. SharePoint Server 2019 does not set this field and returns the default value.

<19> [Section 3.3.5.1.2.2](#): SharePoint Server 2013, SharePoint Server 2016 and Office Web Apps Server do not support the **FileEmbedCommandPostMessage** field. SharePoint Server 2019 does not set this field and returns the default value.

<20> [Section 3.3.5.1.2.2](#): SharePoint Server 2013 and SharePoint Server 2016 do not support the **FileEmbedCommandUrl** field. SharePoint Server 2019 does not set this field and returns the default value.

<21> [Section 3.3.5.1.2.2](#): SharePoint Server 2013 and SharePoint Server 2016 do not support the **FileExtension** field. SharePoint Server 2019 does not set this field and returns the default value.

<22> [Section 3.3.5.1.2.2](#): SharePoint Server 2013 and Office Web Apps Server do not support the **FileSharingPostMessage** field.

<23> [Section 3.3.5.1.2.2](#): SharePoint Server 2013, SharePoint Server 2016 and Office Web Apps Server do not support the **FileVersionPostMessage** field. SharePoint Server 2019 does not set this field and returns the default value.

<24> [Section 3.3.5.1.2.2](#): SharePoint Server 2013 and SharePoint Server 2016 do not support the **FileVersionUrl** field. SharePoint Server 2019 does not set this field and returns the default value.

<25> [Section 3.3.5.1.2.2](#): SharePoint Server 2013 and SharePoint Server 2016 do not support the **HostAuthenticationIdType** field. SharePoint Server 2019 does not set this field and returns the default value.

<26> [Section 3.3.5.1.2.2](#): SharePoint Server 2013 and SharePoint Server 2016 do not support the **HostDivSyndicationViewUrl** field. SharePoint Server 2019 does not set this field and returns the default value.

<27> [Section 3.3.5.1.2.2](#): SharePoint Server 2013, SharePoint Server 2016 and Office Web Apps Server do not support the **InsertImagePostMessage** field. SharePoint Server 2019 does not set this field and returns the default value.

<28> [Section 3.3.5.1.2.2](#): SharePoint Server 2013 and SharePoint Server 2016 do not support the **IsAnonymousUser** field.

<29> [Section 3.3.5.1.2.2](#): SharePoint Server 2013 and SharePoint Server 2016 do not support the **IsEduUser** field.

<30> [Section 3.3.5.1.2.2](#): SharePoint Server 2013 does not support the **IsYammerEnabled** field. SharePoint Server 2019 and SharePoint Server 2016 do not set this field and return the default value.

<31> [Section 3.3.5.1.2.2](#): SharePoint Server 2013 and SharePoint Server 2016 do not support the **LastModifiedTime** field.

<32> [Section 3.3.5.1.2.2](#): SharePoint Server 2013 does not support the **LicensedOrganization** field. SharePoint Server 2019 and SharePoint Server 2016 do not set this field and return the default value.

<33> [Section 3.3.5.1.2.2](#): SharePoint Server 2013 and SharePoint Server 2016 do not support the **OfficeCollaborationServiceEndpointUrl** field.

<34> [Section 3.3.5.1.2.2](#): SharePoint Server 2013 and SharePoint Server 2016 do not support the **OpenInClientCommandUrl** field. SharePoint Server 2019 does not set this field and returns the default value.

<35> [Section 3.3.5.1.2.2](#): SharePoint Server 2013, SharePoint Server 2016 and Office Web Apps Server do not support the **OpenInClientPostMessage** field. SharePoint Server 2019 does not set this field and returns the default value.

<36> [Section 3.3.5.1.2.2](#): SharePoint Server 2013, SharePoint Server 2016 and Office Web Apps Server do not support the **PermissionsPostMessage** field.

<37> [Section 3.3.5.1.2.2](#): SharePoint Server 2013, SharePoint Server 2016 and Office Web Apps Server do not support the **PolicyCheckPostMessage** field. SharePoint Server 2019 does not set this field and returns the default value.

<38> [Section 3.3.5.1.2.2](#): SharePoint Server 2013 does not support the **PostMessageOrigin** field.

<39> [Section 3.3.5.1.2.2](#): SharePoint Server 2013 and SharePoint Server 2016 do not support the **ProtectedFile** field. SharePoint Server 2019 does not set this field and returns the default value.

<40> [Section 3.3.5.1.2.2](#): SharePoint Server 2013, SharePoint Server 2016 and Office Web Apps Server do not support the **ReportAbusePostMessage** field. SharePoint Server 2019 does not set this field and returns the default value.

<41> [Section 3.3.5.1.2.2](#): SharePoint Server 2013 and SharePoint Server 2016 do not support the **ReportAbuseUrl** field. SharePoint Server 2019 does not set this field and returns the default value.

<42> [Section 3.3.5.1.2.2](#): SharePoint Server 2013 and SharePoint Server 2016 do not support the **SafeLinksStatus** field. SharePoint Server 2019 does not set this field and returns the default value.

<43> [Section 3.3.5.1.2.2](#): SharePoint Server 2019, SharePoint Server 2016 and SharePoint Server 2013 do not set the **SHA256** field and return the default value.

<44> [Section 3.3.5.1.2.2](#): SharePoint Server 2013 and SharePoint Server 2016 do not support the **SupportedShareUrlTypes** field. SharePoint Server 2019 does not set this field and returns the default value.

<45> [Section 3.3.5.1.2.2](#): SharePoint Server 2013 and SharePoint Server 2016 do not support the **SupportsAddActivities** field.

<46> [Section 3.3.5.1.2.2](#): SharePoint Server 2013 and SharePoint Server 2016 do not support the **SupportsCheckPolicy** field. SharePoint Server 2019 does not set this field and returns the default value.

<47> [Section 3.3.5.1.2.2](#): SharePoint Server 2013 and SharePoint Server 2016 do not support the **SupportsCheckUserAccess** field.

<48> [Section 3.3.5.1.2.2](#): SharePoint Server 2019, SharePoint Server 2016 and SharePoint Server 2013 do not set the **SupportsCoauth** field and return the default value.

<49> [Section 3.3.5.1.2.2](#): SharePoint Server 2013 and SharePoint Server 2016 do not support the **SupportsContactsResolution** field. SharePoint Server 2019 does not set this field and returns the default value.

<50> [Section 3.3.5.1.2.2](#): SharePoint Server 2013 and SharePoint Server 2016 do not support the **SupportsContainers** field. SharePoint Server 2019 does not set this field and returns the default value.

<51> [Section 3.3.5.1.2.2](#): SharePoint Server 2013 and SharePoint Server 2016 do not support the **SupportsDeleteFile** field. SharePoint Server 2019 does not set this field and returns the default value.

<52> [Section 3.3.5.1.2.2](#): SharePoint Server 2013 and SharePoint Server 2016 do not support the **SupportsEcosystem** field. SharePoint Server 2019 does not set this field and returns the default value.

<53> [Section 3.3.5.1.2.2](#): SharePoint Server 2013 and SharePoint Server 2016 do not support the **SupportsExtendedLockLength** field. SharePoint Server 2019 does not set this field and returns the default value.

<54> [Section 3.3.5.1.2.2](#): SharePoint Server 2013 does not support the **SupportsFileCreation** field.

<55> [Section 3.3.5.1.2.2](#): SharePoint Server 2013 and SharePoint Server 2016 do not support the **SupportsFileUserValue** field. SharePoint Server 2019 does not set this field and returns the default value.

<56> [Section 3.3.5.1.2.2](#): SharePoint Server 2013 and SharePoint Server 2016 do not support the **SupportsGetActivities** field.

<57> [Section 3.3.5.1.2.2](#): SharePoint Server 2013 and SharePoint Server 2016 do not support the **SupportsGetLock** field. SharePoint Server 2019 does not set this field and returns the default value.

<58> [Section 3.3.5.1.2.2](#): SharePoint Server 2013 and SharePoint Server 2016 do not support the **SupportsGrantUserAccess** field. SharePoint Server 2019 returns false for this field.

<59> [Section 3.3.5.1.2.2](#): SharePoint Server 2013 and SharePoint Server 2016 do not support the **SupportsPolicies** field. SharePoint Server 2019 does not set this field and returns the default value.

<60> [Section 3.3.5.1.2.2](#): SharePoint Server 2013 does not support the **SupportsRename** field.

<61> [Section 3.3.5.1.2.2](#): SharePoint Server 2013 and SharePoint Server 2016 do not support the **SupportsReviewing** field.

<62> [Section 3.3.5.1.2.2](#): SharePoint Server 2013 do not support the **SupportsUserInfo** field. SharePoint Server 2019 and SharePoint Server 2016 do not set this field and return the default value.

<63> [Section 3.3.5.1.2.2](#): SharePoint Server 2019, SharePoint Server 2016 and SharePoint Server 2013 do not set the **UniqueContentId** field and return the default value.

<64> [Section 3.3.5.1.2.2](#): SharePoint Server 2013 does not support the **UserCanRename** field.

<65> [Section 3.3.5.1.2.2](#): SharePoint Server 2013 and SharePoint Server 2016 do not support the **UserCanReview** field.

<66> [Section 3.3.5.1.2.2](#): SharePoint Server 2013 does not support the **UserPrincipalName** field.

<67> [Section 3.3.5.1.2.2](#): SharePoint Server 2013 and SharePoint Server 2016 do not support the **WorkflowPostMessage** field.

<68> [Section 3.3.5.1.2.2](#): SharePoint Server 2013 and SharePoint Server 2016 do not support the **WorkflowType** field.

<69> [Section 3.3.5.1.2.2](#): SharePoint Server 2013 and SharePoint Server 2016 do not support the **WorkflowUrl** field.

<70> [Section 3.3.5.1.3](#): SharePoint Server 2019, SharePoint Server 2016, SharePoint Server 2013 and Office Web Apps Server do not support the **CheckPolicy** operation.

<71> [Section 3.3.5.1.4](#): SharePoint Server 2019, SharePoint Server 2016, SharePoint Server 2013 and Office Web Apps Server do not support the **CheckUserAccess** operation.

<72> [Section 3.3.5.1.8](#): SharePoint Server 2019, SharePoint Server 2016, SharePoint Server 2013 and Office Web Apps Server do not support the **GetActivities** operation.

<73> [Section 3.3.5.1.9](#): SharePoint Server 2019, SharePoint Server 2016, SharePoint Server 2013 and Office Web Apps Server do not support the **GetFileUserValue** operation.

<74> [Section 3.3.5.1.10](#): SharePoint Server 2019, SharePoint Server 2016, SharePoint Server 2013 and Office Web Apps Server do not support the **GetLock** operation.

<75> [Section 3.3.5.1.12](#): SharePoint Server 2019, SharePoint Server 2016, SharePoint Server 2013 and Office Web Apps Server do not support the **GetShareUrl** operation.

<76> [Section 3.3.5.1.13](#): SharePoint Server 2019, SharePoint Server 2016, SharePoint Server 2013 and Office Web Apps Server do not support the **GrantUserAccess** operation.

<77> [Section 3.3.5.1.15.2](#): SharePoint Server 2016, SharePoint Server 2013 and Office Web Apps Server do not support the **HostEditNewUrl** field. SharePoint Server 2019 does not set this field and returns the default value.

<78> [Section 3.3.5.1.16](#): SharePoint Server 2019, SharePoint Server 2016 and SharePoint Server 2013 do not support the **PutUserInfo** operation.

<79> [Section 3.3.5.1.17](#): SharePoint Foundation 2013 does not support the **ReadSecureStore** operation.

<80> [Section 3.3.5.1.19](#): SharePoint Server 2013 does not support the **RenameFile** operation.

<81> [Section 3.3.5.1.21](#): SharePoint Server 2019, SharePoint Server 2016, SharePoint Server 2013 and Office Web Apps Server do not support the **SetFileUserValue** operation.

<82> [Section 3.3.5.2.1.2](#): SharePoint Server 2013 and SharePoint Server 2016 do not support the **AADUserObjectId** field.

<83> [Section 3.3.5.2.1.2](#): SharePoint Server 2013 and SharePoint Server 2016 do not support the **AccessTokenExpiry** field. SharePoint Server 2019 does not set this field and returns the default value.

<84> [Section 3.3.5.2.1.2](#): SharePoint Server 2013 and SharePoint Server 2016 do not support the **AllowEarlyFeatures** field.

<85> [Section 3.3.5.2.1.2](#): SharePoint Server 2013 does not support the **AllowExternalMarketplace** field.

<86> [Section 3.3.5.2.1.2](#): SharePoint Server 2013 and SharePoint Server 2016 do not support the **AppCatalogUrl** field. SharePoint Server 2019 does not set this field and returns the default value.

<87> [Section 3.3.5.2.1.2](#): SharePoint Server 2013 supports the **BreadcrumbDocUrl** field.

<88> [Section 3.3.5.2.1.2](#): SharePoint Server 2013 and Office Web Apps Server do not support the **ClosePostMessage** field.

<89> [Section 3.3.5.2.1.2](#): SharePoint Server 2013 and SharePoint Server 2016 do not support the **DirectInvokeDAVUrl** field. SharePoint Server 2019 does not set this field and returns the default value.

<90> [Section 3.3.5.2.1.2](#): SharePoint Server 2013 and SharePoint Server 2016 do not support the **DisablePrint** field.

<91> [Section 3.3.5.2.1.2](#): SharePoint Server 2013 and Office Web Apps Server do not support the **EditNotificationPostMessage** field.

<92> [Section 3.3.5.2.1.2](#): SharePoint Server 2013 and Office Web Apps Server do not support the **FileSharingPostMessage** field.

<93> [Section 3.3.5.2.1.2](#): SharePoint Server 2013, SharePoint Server 2016 and Office Web Apps Server do not support the **FileVersionPostMessage** field. SharePoint Server 2019 does not set this field and returns the default value.

<94> [Section 3.3.5.2.1.2](#): SharePoint Server 2013 and SharePoint Server 2016 do not support the **FileVersionUrl** field. SharePoint Server 2019 does not set this field and returns the default value.

<95> [Section 3.3.5.2.1.2](#): SharePoint Server 2013 and SharePoint Server 2016 do not support the **HostAuthenticationIdType** field. SharePoint Server 2019 does not set this field and returns the default value.

<96> [Section 3.3.5.2.1.2](#): SharePoint Server 2013 and SharePoint Server 2016 do not support the **IrmPolicyDescription** field.

<97> [Section 3.3.5.2.1.2](#): SharePoint Server 2013 and SharePoint Server 2016 do not support the **IrmPolicyTitle** field.

<98> [Section 3.3.5.2.1.2](#): SharePoint Server 2013 and SharePoint Server 2016 do not support the **IsAnonymousUser** field.

<99> [Section 3.3.5.2.1.2](#): SharePoint Server 2013 and SharePoint Server 2016 do not support the **OpenInClientCommandUrl** field. SharePoint Server 2019 does not set this field and returns the default value.

<100> [Section 3.3.5.2.1.2](#): SharePoint Server 2013, SharePoint Server 2016 and Office Web Apps Server do not support the **OpenInClientPostMessage** field. SharePoint Server 2019 does not set this field and returns the default value.

<101> [Section 3.3.5.2.1.2](#): SharePoint Server 2013 does not support the **PostMessageOrigin** field.

<102> [Section 3.3.5.2.1.2](#): SharePoint Server 2013 and SharePoint Server 2016 do not support the **ProtectInClient** field.

<103> [Section 3.3.5.2.1.2](#): SharePoint Server 2013, SharePoint Server 2016 and Office Web Apps Server do not support the **ReportAbusePostMessage** field. SharePoint Server 2019 does not set this field and returns the default value.

<104> [Section 3.3.5.2.1.2](#): SharePoint Server 2013 and SharePoint Server 2016 do not support the **ReportAbuseUrl** field. SharePoint Server 2019 does not set this field and returns the default value.

<105> [Section 3.3.5.2.1.2](#): SharePoint Server 2013 and SharePoint Server 2016 do not support the **SafeLinksStatus** field. SharePoint Server 2019 does not set this field and returns the default value.

<106> [Section 3.3.5.2.1.2](#): SharePoint Server 2013 and SharePoint Server 2016 do not support the **SupportsFileUserValue** field. SharePoint Server 2019 does not set this field and returns the default value.

<107> [Section 3.3.5.2.1.2](#): SharePoint Server 2013 and SharePoint Server 2016 do not support the **UserCanReview** field.

<108> [Section 3.3.5.2.1.2](#): SharePoint Server 2013 does not support the **UserPrincipalName** field.

<109> [Section 3.3.5.2.1.2](#): SharePoint Server 2013 and SharePoint Server 2016 do not support the **WorkflowPostMessage** field.

<110> [Section 3.3.5.2.1.2](#): SharePoint Server 2013 and SharePoint Server 2016 do not support the **WorkflowType** field.

<111> [Section 3.3.5.2.1.2](#): SharePoint Server 2013 and SharePoint Server 2016 do not support the **WorkflowUrl** field.

9 Change Tracking

No table of changes is available. The document is either new or has had no changes since its last release.

10 Index

A

Abstract data model
[WOPI protocol server details](#) 30
[Accessing discovery XML example](#) 75
[AddActivities JSON request](#) 82
[AddActivities JSON response](#) 82
[Applicability](#) 12

C

[Capability negotiation](#) 12
[Change tracking](#) 96
[CheckFileInfo JSON response](#) 82
[CheckFolderInfo JSON response](#) 84
[CheckPolicy JSON request](#) 85
[CheckPolicy JSON response](#) 85
[CheckUserAccess JSON request](#) 85
[CheckUserAccess JSON response](#) 86
[Common types](#) 16
[Common URI parameters](#) 18
[Custom HTTP headers](#) 14

D

Data model – abstract
[WOPI protocol server details](#) 30

E

[EnumerateChildren JSON response](#) 86
Examples
[Accessing Discovery XML example](#) 75
[Additional WOPI Server Documentation example](#)
75
[overview](#) 75
[Viewing a Document example](#) 76

F

[Fields - vendor-extensible](#) 12
[Full JSON schema](#) 81
[AddActivities request](#) 82
[AddActivities response](#) 82
[CheckFileInfo response](#) 82
[CheckFolderInfo response](#) 84
[CheckPolicy request](#) 85
[CheckPolicy response](#) 85
[CheckUserAccess request](#) 85
[CheckUserAccess response](#) 86
[EnumerateChildren response](#) 86
[GetActivities request](#) 86
[GetActivities response](#) 86
[GetFileUserValue request](#) 86
[GetFileUserValue response](#) 86
[GetShareUrl response](#) 87
[GrantUserAccess request](#) 87
[GrantUserAccess response](#) 87
[PutRelativeFile response](#) 87
[ReadSecureStore response](#) 87
[RenameFile response](#) 87
[SetFileUserValue request](#) 88

[Types schema](#) 81
[Full XML schema](#) 79

G

[GetActivities JSON request](#) 86
[GetActivities JSON response](#) 86
[GetFileUserValue JSON request](#) 86
[GetFileUserValue JSON response](#) 86
[GetShareUrl JSON response](#) 87
[Glossary](#) 8
[GrantUserAccess JSON request](#) 87
[GrantUserAccess JSON response](#) 87

H

Headers
[custom HTTP](#) 14

I

[Implementer - security considerations](#) 78
[Index of security parameters](#) 78
[Informative references](#) 10
[Introduction](#) 8

J

[JSON schema](#) 81
[AddActivities request](#) 82
[AddActivities response](#) 82
[CheckFileInfo response](#) 82
[CheckFolderInfo response](#) 84
[CheckPolicy request](#) 85
[CheckPolicy response](#) 85
[CheckUserAccess request](#) 85
[CheckUserAccess response](#) 86
[EnumerateChildren response](#) 86
[GetActivities request](#) 86
[GetActivities response](#) 86
[GetFileUserValue request](#) 86
[GetFileUserValue response](#) 86
[GetShareUrl response](#) 87
[GrantUserAccess request](#) 87
[GrantUserAccess response](#) 87
[PutRelativeFile response](#) 87
[ReadSecureStore response](#) 87
[RenameFile response](#) 87
[SetFileUserValue request](#) 88
[Types schema](#) 81

M

Message processing
[WOPI discovery details](#) 20
[WOPI protocol server details](#) 30
Messages
[syntax](#) 14
[transport](#) 14

N

[Normative references](#) 9

O

[Overview \(synopsis\)](#) 11

P

Parameters

[common URI](#) 18

[Parameters - security index](#) 78

[Preconditions](#) 12

[Prerequisites](#) 12

[Product behavior](#) 89

Protocol Details

[WOPI Discovery](#) 20

[WOPI Protocol Client](#) 29

[WOPI Protocol Server](#) 29

Protocol examples

[Accessing Discovery XML](#) 75

[Additional WOPI Server Documentation](#) 75

[Viewing a Document](#) 76

[PutRelativeFile JSON response](#) 87

R

[ReadSecureStore JSON response](#) 87

References

[informative](#) 10

[normative](#) 9

[Relationship to other protocols](#) 12

[RenameFile JSON response](#) 87

S

Security

[implementer considerations](#) 78

[parameter index](#) 78

[SetFileUserValue JSON request](#) 88

[Standards assignments](#) 13

Syntax

[messages - overview](#) 14

T

[Tracking changes](#) 96

[Transport](#) 14

Types

[common types](#) 16

[Types JSON schema](#) 81

V

[Vendor-extensible fields](#) 12

[Versioning](#) 12

[Viewing a document example](#) 76

W

Wopi discovery

[Abstract data model](#) 20

[Higher-layer triggered events](#) 20

[Initialization](#) 20

[Message processing events and sequencing rules](#)
20

[Other local events](#) 29

[Timer events](#) 29

[Timers](#) 20

[WOPI discovery details](#) 20

[message processing](#) 20

[sequencing rules](#) 20

Wopi protocol client

[Abstract data model](#) 29

[Higher-layer triggered events](#) 29

[Initialization](#) 29

[Message processing events and sequencing rules](#)
29

[Other local events](#) 29

[Timer events](#) 29

[Timers](#) 29

[WOPI protocol client details](#) 29

Wopi protocol server

[Abstract data model](#) 30

[Higher-layer triggered events](#) 30

[Initialization](#) 30

[Message processing events and sequencing rules](#)
30

[Other local events](#) 74

[Timer events](#) 74

[Timers](#) 30

[WOPI protocol server details](#) 29

[abstract data model](#) 30

[message processing](#) 30

[sequencing rules](#) 30

X

[XML schema](#) 79