

# [MS-UPSSCXPP]: User Profile Synchronization (UPS): Schema Exchange Protocol Profile

---

## Intellectual Property Rights Notice for Open Specifications Documentation

- **Technical Documentation.** Microsoft publishes Open Specifications documentation for protocols, file formats, languages, standards as well as overviews of the interaction among each of these technologies.
- **Copyrights.** This documentation is covered by Microsoft copyrights. Regardless of any other terms that are contained in the terms of use for the Microsoft website that hosts this documentation, you may make copies of it in order to develop implementations of the technologies described in the Open Specifications and may distribute portions of it in your implementations using these technologies or your documentation as necessary to properly document the implementation. You may also distribute in your implementation, with or without modification, any schema, IDL's, or code samples that are included in the documentation. This permission also applies to any documents that are referenced in the Open Specifications.
- **No Trade Secrets.** Microsoft does not claim any trade secret rights in this documentation.
- **Patents.** Microsoft has patents that may cover your implementations of the technologies described in the Open Specifications. Neither this notice nor Microsoft's delivery of the documentation grants any licenses under those or any other Microsoft patents. However, a given Open Specification may be covered by Microsoft [Open Specification Promise](#) or the [Community Promise](#). If you would prefer a written license, or if the technologies described in the Open Specifications are not covered by the Open Specifications Promise or Community Promise, as applicable, patent licenses are available by contacting [iplg@microsoft.com](mailto:iplg@microsoft.com).
- **Trademarks.** The names of companies and products contained in this documentation may be covered by trademarks or similar intellectual property rights. This notice does not grant any licenses under those rights. For a list of Microsoft trademarks, visit [www.microsoft.com/trademarks](http://www.microsoft.com/trademarks).
- **Fictitious Names.** The example companies, organizations, products, domain names, email addresses, logos, people, places, and events depicted in this documentation are fictitious. No association with any real company, organization, product, domain name, email address, logo, person, place, or event is intended or should be inferred.

**Reservation of Rights.** All other rights are reserved, and this notice does not grant any rights other than specifically described above, whether by implication, estoppel, or otherwise.

**Tools.** The Open Specifications do not require the use of Microsoft programming tools or programming environments in order for you to develop an implementation. If you have access to Microsoft programming tools and environments you are free to take advantage of them. Certain Open Specifications are intended for use in conjunction with publicly available standard specifications and network programming art, and assumes that the reader either is familiar with the aforementioned material or has immediate access to it.

## Revision Summary

Date	Revision History	Revision Class	Comments
08/14/2009	0.1	Major	First Release.
09/25/2009	0.2	Minor	Updated the technical content.
11/06/2009	0.2.1	Editorial	Revised and edited the technical content.
12/18/2009	0.2.2	Editorial	Revised and edited the technical content.
01/29/2010	0.2.3	Editorial	Revised and edited the technical content.
03/12/2010	0.2.4	Editorial	Revised and edited the technical content.
04/23/2010	0.2.5	Editorial	Revised and edited the technical content.
06/04/2010	0.2.6	Editorial	Revised and edited the technical content.
07/16/2010	0.2.6	No change	No changes to the meaning, language, or formatting of the technical content.
08/27/2010	0.3	Minor	Clarified the meaning of the technical content.
10/08/2010	0.3	No change	No changes to the meaning, language, or formatting of the technical content.
11/19/2010	0.3	No change	No changes to the meaning, language, or formatting of the technical content.
01/07/2011	0.3	No change	No changes to the meaning, language, or formatting of the technical content.
02/11/2011	0.3	No change	No changes to the meaning, language, or formatting of the technical content.
03/25/2011	0.3	No change	No changes to the meaning, language, or formatting of the technical content.
05/06/2011	0.4	Minor	Clarified the meaning of the technical content.
06/17/2011	0.5	Minor	Clarified the meaning of the technical content.
09/23/2011	0.5	No change	No changes to the meaning, language, or formatting of the technical content.
12/16/2011	0.5	No change	No changes to the meaning, language, or formatting of the technical content.
03/30/2012	0.5	No change	No changes to the meaning, language, or formatting of the technical content.
07/12/2012	0.5	No change	No changes to the meaning, language, or formatting of the technical content.
09/12/2012	1.0	No change	No changes to the meaning, language, or formatting of

Date	Revision History	Revision Class	Comments
			the technical content.
10/08/2012	1.0	No change	No changes to the meaning, language, or formatting of the technical content.
02/11/2013	1.0	No change	No changes to the meaning, language, or formatting of the technical content.
07/30/2013	1.1	Minor	Clarified the meaning of the technical content.
11/18/2013	1.1	No change	No changes to the meaning, language, or formatting of the technical content.
02/10/2014	1.1	No change	No changes to the meaning, language, or formatting of the technical content.
04/30/2014	1.1	No change	No changes to the meaning, language, or formatting of the technical content.

# Table of Contents

<b>1</b>	<b>Introduction .....</b>	<b>6</b>
1.1	Glossary .....	6
1.2	References.....	6
1.2.1	Normative References.....	6
1.2.2	Informative References .....	7
1.3	Overview .....	7
1.4	Relationship to Other Protocols.....	8
1.5	Prerequisites/Preconditions .....	8
1.6	Applicability Statement.....	9
1.7	Versioning and Capability Negotiation.....	9
1.8	Vendor-Extensible Fields.....	9
1.9	Standards Assignments .....	9
<b>2</b>	<b>Messages.....</b>	<b>10</b>
2.1	Transport.....	10
2.2	Common Message Syntax .....	10
2.2.1	Namespaces .....	10
2.2.2	Messages .....	10
2.2.2.1	GetMetadataMsg.....	10
2.2.2.2	GetMetadataResponseMsg .....	11
2.2.3	Elements.....	11
2.2.3.1	DataType.....	11
2.2.3.2	Key.....	11
2.2.3.3	GetMetadata .....	12
2.2.3.4	Metadata .....	12
2.2.4	Complex Types .....	13
2.2.5	Simple Types.....	13
2.2.6	Attributes.....	13
2.2.7	Groups.....	13
2.2.8	Attribute Groups .....	13
2.3	Directory Service Schema Elements .....	14
<b>3</b>	<b>Protocol Details.....</b>	<b>15</b>
3.1	Server Details .....	15
3.1.1	Abstract Data Model .....	15
3.1.2	Timers .....	15
3.1.3	Initialization .....	15
3.1.4	Message Processing Events and Sequencing Rules.....	15
3.1.4.1	Get .....	15
3.1.4.1.1	Messages .....	16
3.1.4.1.2	Elements.....	16
3.1.4.1.3	Complex Types .....	16
3.1.4.1.4	Simple Types.....	16
3.1.4.1.5	Attributes.....	16
3.1.4.1.6	Groups.....	16
3.1.4.1.7	Attribute Groups .....	16
3.1.5	Timer Events .....	16
3.1.6	Other Local Events .....	16
3.2	Client Details.....	16
3.2.1	Abstract Data Model .....	16

3.2.2	Timers .....	16
3.2.3	Initialization .....	17
3.2.4	Message Processing Events and Sequencing Rules .....	17
3.2.5	Timer Events .....	17
3.2.6	Other Local Events .....	17
<b>4</b>	<b>Protocol Examples.....</b>	<b>18</b>
4.1	Example of Retrieving Metadata from the Server .....	18
4.1.1	SOAP GetMetadataMsg Message.....	18
4.1.2	SOAP GetMetadataResponseMsg Message .....	18
<b>5</b>	<b>Security.....</b>	<b>21</b>
5.1	Security Considerations for Implementers.....	21
5.2	Index of Security Parameters .....	21
<b>6</b>	<b>Appendix A: Full WSDL.....</b>	<b>22</b>
<b>7</b>	<b>Appendix B: Product Behavior .....</b>	<b>23</b>
<b>8</b>	<b>Change Tracking.....</b>	<b>24</b>
<b>9</b>	<b>Index .....</b>	<b>25</b>

# 1 Introduction

The User Profile Synchronization (UPS): Schema Exchange Protocol Profile profiles metadata exchange with a Web service, as described in [\[WS-MetaDataExchange\]](#), enabling protocol clients to discover metadata for a protocol server implementation of the User Profile Synchronization (UPS): Configuration Data Structure, as described in [\[MS-UPSCDS\]](#).

Sections 1.8, 2, and 3 of this specification are normative and can contain the terms MAY, SHOULD, MUST, MUST NOT, and SHOULD NOT as defined in RFC 2119. Sections 1.5 and 1.9 are also normative but cannot contain those terms. All other sections and examples in this specification are informative.

## 1.1 Glossary

The following terms are defined in [\[MS-GLOS\]](#):

**directory service (DS)**  
**Hypertext Transfer Protocol (HTTP)**  
**SOAP action**  
**SOAP body**  
**SOAP message**  
**Transmission Control Protocol (TCP)**  
**XML namespace**

The following terms are defined in [\[MS-OFCGLOS\]](#):

**endpoint**  
**policy**  
**Uniform Resource Locator (URL)**  
**Web Services Description Language (WSDL)**  
**XML attribute**  
**XML schema**

The following terms are specific to this document:

**MAY, SHOULD, MUST, SHOULD NOT, MUST NOT:** These terms (in all caps) are used as described in [\[RFC2119\]](#). All statements of optional behavior use either MAY, SHOULD, or SHOULD NOT.

## 1.2 References

References to Microsoft Open Specifications documentation do not include a publishing year because links are to the latest version of the documents, which are updated frequently. References to other documents include a publishing year when one is available.

### 1.2.1 Normative References

We conduct frequent surveys of the normative references to assure their continued availability. If you have any issue with finding a normative reference, please contact [dochelp@microsoft.com](mailto:dochelp@microsoft.com). We will assist you in finding the relevant information.

[MS-UPSCDS] Microsoft Corporation, "[User Profile Synchronization \(UPS\): Configuration Data Structure](#)".

[RFC2119] Bradner, S., "Key words for use in RFCs to Indicate Requirement Levels", BCP 14, RFC 2119, March 1997, <http://www.rfc-editor.org/rfc/rfc2119.txt>

[SOAP1.2/1] Gudgin, M., Hadley, M., Mendelsohn, N., Moreau, J., and Nielsen, H.F., "SOAP Version 1.2 Part 1: Messaging Framework", W3C Recommendation, June 2003, <http://www.w3.org/TR/2003/REC-soap12-part1-20030624>

[WSDL] Christensen, E., Curbera, F., Meredith, G., and Weerawarana, S., "Web Services Description Language (WSDL) 1.1", W3C Note, March 2001, <http://www.w3.org/TR/2001/NOTE-wsdl-20010315>

[WS-MetadataExchange] Ballinger, K. et al., "Web Services Metadata Exchange (WS-MetadataExchange) Version 1.1", August 2006, <http://specs.xmlsoap.org/ws/2004/09/mex/WS-MetadataExchange.pdf>

[WXFR] Alexander, J., Box, D., Cabrera, L.F., et al., "Web Services Transfer (WS-Transfer)", September 2006, <http://www.w3.org/Submission/2006/SUBM-WS-Transfer-20060927/>

[XMLNS] Bray, T., Hollander, D., Layman, A., et al., Eds., "Namespaces in XML 1.0 (Third Edition)", W3C Recommendation, December 2009, <http://www.w3.org/TR/2009/REC-xml-names-20091208/>

[XMLSCHEMA1/2] Thompson, H.S., Beech, D., Maloney, M., and Mendelsohn, N., Eds., "XML Schema Part 1: Structures Second Edition", W3C Recommendation, October 2004, <http://www.w3.org/TR/2004/REC-xmlschema-1-20041028/>

[XMLSCHEMA1] Thompson, H.S., Beech, D., Maloney, M., and Mendelsohn, N., Eds., "XML Schema Part 1: Structures", W3C Recommendation, May 2001, <http://www.w3.org/TR/2001/REC-xmlschema-1-20010502/>

[XMLSCHEMA2/2] Biron, P.V., and Malhotra, A., Eds., "XML Schema Part 2: Datatypes Second Edition", W3C Recommendation, October 2004, <http://www.w3.org/TR/2004/REC-xmlschema-2-20041028/>

[XMLSCHEMA2] Biron, P.V., and Malhotra, A., Eds., "XML Schema Part 2: Datatypes", W3C Recommendation, May 2001, <http://www.w3.org/TR/2001/REC-xmlschema-2-20010502/>

### 1.2.2 Informative References

[IANAPORT] IANA, "Port Numbers", November 2006, <http://www.iana.org/assignments/port-numbers>

[MS-GLOS] Microsoft Corporation, "[Windows Protocols Master Glossary](#)".

[MS-OFCGLOS] Microsoft Corporation, "[Microsoft Office Master Glossary](#)".

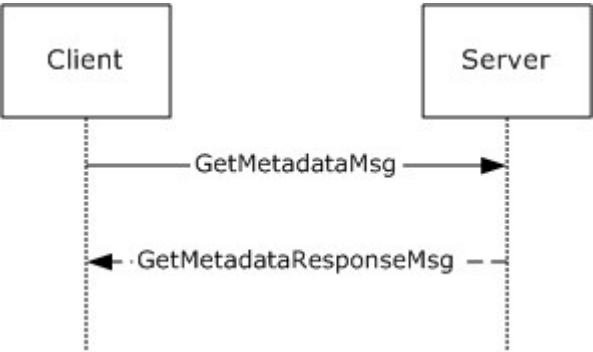
[WSSE 1.0] Nadalin, A., Kaler, C., Hallam-Baker, P., and Monzillo, R., Eds., "Web Services Security: SOAP Message Security 1.0 (WS-Security 2004)", OASIS Standard 200401, March 2004, <http://docs.oasis-open.org/wss/2004/01/oasis-200401-wss-soap-message-security-1.0.pdf>

### 1.3 Overview

This protocol is a profile of [\[WS-MetadataExchange\]](#) that enables a protocol client to retrieve metadata from a protocol server. Included in this metadata are [\[XMLSCHEMA1/2\]](#) elements, which describe the structures described in [\[MS-UPSCDS\]](#).

As an example of how the protocol server accepts a request message sent by a protocol client, as described in [\[WS-MetadataExchange\]](#), and the protocol server then returns a response message see

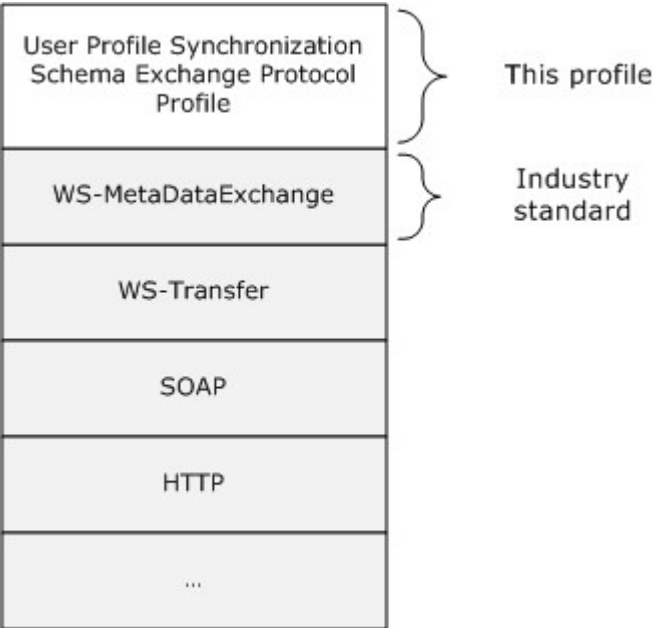
section 4. The following figure, Message Pattern of the User Profile Synchronization (UPS): Schema Exchange Protocol Profile, illustrates this behavior.



**Figure 1: Message pattern of the User Profile Synchronization (UPS): Schema Exchange Protocol Profile**

### 1.4 Relationship to Other Protocols

This protocol uses the SOAP protocol, as described in [\[SOAP1.2/1\]](#), over **HTTP** as shown in the following figure.



**Figure 2: This protocol in relation to other protocols**

### 1.5 Prerequisites/Preconditions

The operations described by this profile operate between a protocol client and a protocol server. The protocol client is expected to have the **URL** of the resource **endpoint (4)** of the protocol server.

The protocol server endpoint is formed by appending `"/_vti_bin/OfficialFile.asmx "` to the URL of the site, for example: `http://www.example.com/Repository/_vti_bin/OfficialFile.asmx`.



## 1.6 Applicability Statement

This profile is intended to return the **XML schema** elements, as described in [\[XMLSCHEMA1/2\]](#), of the User Profile Synchronization: Configuration Data Structure [\[MS-UPSCDS\]](#).

## 1.7 Versioning and Capability Negotiation

None.

## 1.8 Vendor-Extensible Fields

None.

## 1.9 Standards Assignments

All request messages defined in this profile are transmitted over **Transmission Control Protocol (TCP)** to a protocol server listening on port 5725.

Parameter	Value	Reference
TCP Port	5725	<a href="#">[IANAPORT]</a>

## 2 Messages

### 2.1 Transport

Messages MUST be transported using the SOAP protocol, as specified in [\[SOAP1.2/1\]](#), over HTTP. The HTTP connection is made by a protocol client to a protocol server listening on TCP port 5725.

### 2.2 Common Message Syntax

This section contains common definitions used by this profile. The syntax of the definitions uses an XML schema as defined in [\[XMLSCHEMA1/2\]](#) and [\[XMLSCHEMA2/2\]](#), and the **Web Services Description Language (WSDL)** as defined in [\[WSDL\]](#).

#### 2.2.1 Namespaces

This specification defines and references various **XML namespaces** using the mechanisms specified in [\[XMLNS\]](#). Although this specification associates a specific XML namespace prefix for each XML namespace that is used, the choice of any particular XML namespace prefix is implementation-specific and is not significant for interoperability.

Prefix	Namespace URI	Reference
xs	<a href="http://www.w3.org/2001/XMLSchema">http://www.w3.org/2001/XMLSchema</a>	<a href="#">[XMLSCHEMA1/2]</a>
wxf	<a href="http://schemas.xmlsoap.org/ws/2004/09/transfer">http://schemas.xmlsoap.org/ws/2004/09/transfer</a>	<a href="#">[WXFR]</a>
rm	<a href="http://schemas.microsoft.com/2006/11/ResourceManagement">http://schemas.microsoft.com/2006/11/ResourceManagement</a>	<a href="#">[MS-UPSCDS]</a>
mex	<a href="http://schemas.xmlsoap.org/ws/2004/09/mex">http://schemas.xmlsoap.org/ws/2004/09/mex</a>	<a href="#">[WS-MetaDataExchange]</a>

#### 2.2.2 Messages

Message	Description
GetMetadataMsg (section <a href="#">2.2.2.1</a> )	A message the protocol client sends to request metadata from the protocol server.
GetMetadataResponseMsg (section <a href="#">2.2.2.2</a> )	A message the protocol server sends in response to a GetMetadataMsg request.

##### 2.2.2.1 GetMetadataMsg

The protocol client sends the message **GetMetadataMsg** to request metadata from the protocol server.

In contrast with section 5.2 of [\[WS-MetaDataExchange\]](#), the **SOAP action** value of the message MUST be:

`http://schemas.xmlsoap.org/ws/2004/09/transfer/Get`

The **SOAP body** MUST contain the element `<mex:GetMetadata>`. The element `<mex:GetMetadata>` is defined in section [2.2.3.3](#).

```
<wsdl:message name="GetMetadataMsg">
  <wsdl:part name="Body" element="mex:GetMetadata" />
</wsdl:message>
```

### 2.2.2.2 GetMetadataResponseMsg

The protocol server sends the message **GetMetadataResponseMsg** in response to a **GetMetadataMsg** request message (section [2.2.2.1](#)).

In contrast with section 5.2 of [\[WS-MetaDataExchange\]](#), the SOAP action value of the message MUST be:

```
http://schemas.xmlsoap.org/ws/2004/09/transfer/GetResponse
```

The SOAP body MUST contain the element `<mex:Metadata>`. This element is defined in section [2.2.3.4](#).

```
<wsdl:message name="GetMetadataResponseMsg">
  <wsdl:part name="Body" element="mex:Metadata" />
</wsdl:message>
```

## 2.2.3 Elements

Element	Description
DataType (section <a href="#">2.2.3.1</a> )	An element that contains the string literal "String".
GetMetadata (section <a href="#">2.2.3.3</a> )	An element that contains a query for metadata information.
Key (section <a href="#">2.2.3.2</a> )	An element that contains an integer.
Metadata (section <a href="#">2.2.3.4</a> )	An element that contains metadata information.

### 2.2.3.1 DataType

The element `<rm:Data>` is derived from `xs:string` and MUST be the string literal "String".

```
<?xml version="1.0" encoding="utf-8"?>
<xs:schema xmlns:xs="http://www.w3.org/2001/XMLSchema"
  targetNamespace="http://schemas.microsoft.com/2006/11/ResourceManagement">
  <xs:element name="Key">
    <xs:simpleType>
      <xs:restriction base="xs:string">
        <xs:enumeration value="String"/>
      </xs:restriction>
    </xs:simpleType>
  </xs:element>
</xs:schema>
```

### 2.2.3.2 Key

The element `<rm:Key>` is an `xs:integer`.

```
<?xml version="1.0" encoding="utf-8"?>
<xs:schema xmlns:xs="http://www.w3.org/2001/XMLSchema"
targetNamespace="http://schemas.microsoft.com/2006/11/ResourceManagement">
  <xs:element name="Key" type="xs:integer"/>
</xs:schema>
```

### 2.2.3.3 GetMetadata

The element `<mex:GetMetadata>` is defined in section 5.2 of [\[WS-MetaDataExchange\]](#).

As a profile of [\[WS-MetaDataExchange\]](#), the element `<mex:GetMetadata>` MUST contain the attribute `<mex:Dialect>`, and the value of `<mex:Dialect>` MUST be set to the literal string `"http://www.w3.org/2001/XMLSchema"`.

As a profile of [\[WS-MetaDataExchange\]](#), the element `<mex:GetMetadata>` MUST contain the attribute `<mex:Identifier>`, and the value of `<mex:Identifier>` MUST be set to the literal string `":"`.

### 2.2.3.4 Metadata

The element `<mex:Metadata>` is defined in section 4 of [\[WS-MetaDataExchange\]](#).

As a profile of [\[WS-MetaDataExchange\]](#), the first child of element `<mex:Metadata>` MUST be element `<mex:MetadataSection>`. This element `<mex:MetadataSection>` MUST have an **XML attribute @xmlns** with its value set to the empty string. The element `<mex:MetadataSection>` MUST have an XML attribute **@mex:Identifier** with a value set to the literal string `":"`. The element `<mex:MetadataSection>` MUST have an XML attribute **@mex:Dialect** with its value set to the literal string `"http://www.w3.org/2001/XMLSchema"`. See section 4.1.2 for an example of this element.

As a profile of [\[WS-MetaDataExchange\]](#), the first child of the element `<mex:MetadataSection>` MUST be element `<xs:schema>`. The element `<xs:schema>` is defined in [\[XMLSCHEMA1/2\]](#).

As a profile of [\[WS-MetaDataExchange\]](#), [\[XMLSCHEMA1/2\]](#) annotations are present in `<xs:element>` elements. Annotating elements is defined in section 3.13 of [\[XMLSCHEMA1/2\]](#). The manner in which a protocol client uses annotations is not defined.

```
//xs:element/xs:annotation
```

The element `<xs:annotation>`, defined in section 3.13 of [\[XMLSCHEMA1/2\]](#), MUST be present as a child of all `<xs:element>` elements.

```
//xs:element/xs:annotation/xs:appinfo
```

The element `<xs:appinfo>`, defined in section 3.13 of [\[XMLSCHEMA1/2\]](#), MUST be present as a child of all `<xs:annotation>` elements.

```
//xs:element/xs:annotation/xs:appinfo/rm:DisplayName
```

The element `<rm:DisplayName>`, defined in [\[MS-UPSCDS\]](#) section 2.1.3, MUST be present as a child of all `<xs:appinfo>` elements used to annotate `<xs:element>` elements.

```
//xs:element/xs:annotation/xs:appinfo/rm:Description
```

The element `<rm:Description>`, defined in [\[MS-UPSCDS\]](#) section 2.1.3, MUST be present as a child of all `<xs:appinfo>` elements used to annotate `<xs:element>` elements.

```
//xs:element/xs:annotation/xs:appinfo/rm:Key
```

The element `<rm:Key>`, defined in section 2.2.3.1 of this specification, MUST be present as a child of all `<xs:appinfo>` elements used to annotate `<xs:element>` elements.

```
//xs:simpleType[/xs:restriction/@xs:base="xs:string"  
/xs:pattern/@xs:value="{0,448}"]/xs:annotation
```

The element `<xs:annotation>`, defined in section 3.13 of [\[XMLSCHEMA1/2\]](#), MUST be present as a child of all `<xs:simpleType>` elements that derive from `<xs:string>` with the pattern `"{0,448}"`.

```
//xs:simpleType[/xs:restriction/@xs:base="xs:string"  
/xs:pattern/@xs:value="{0,448}"]/xs:annotation/xs:appinfo
```

The element `<xs:appinfo>`, defined in section 3.13 of [\[XMLSCHEMA1/2\]](#), MUST be present as a child of all `<xs:annotation>` elements that are children of `<xs:simpleType>` elements that derive from `xs:string` with pattern `"{0,448}"`.

```
//xs:simpleType[/xs:restriction/@xs:base="xs:string"/xs:pattern/@xs:value="{0,448}"]/xs:anno  
tation/xs:appinfo/rm:DataType
```

The element `<rm:DataType>`, defined in section 2.2.3.1 of this specification, MUST be present as a child of all `<xs:appinfo>` elements that are used to annotate `<xs:simpleType>` elements that are derived from `xs:string` with the pattern `"{0,448}"`.

## 2.2.4 Complex Types

This specification does not define any common XML schema complex type definitions.

## 2.2.5 Simple Types

This specification does not define any common XML schema simple type definitions.

## 2.2.6 Attributes

This specification does not define any common XML schema attribute definitions.

## 2.2.7 Groups

This specification does not define any common XML schema group definitions.

## 2.2.8 Attribute Groups

This specification does not define any common XML schema attribute group definitions.

## 2.3 Directory Service Schema Elements

Implementations of this profile do not require access to any **directory service (DS)** schema classes or attributes.

## 3 Protocol Details

### 3.1 Server Details

As a profile of [\[WS-MetaDataExchange\]](#), the protocol server MUST provide the Resource endpoint (4) defined by the Resource port type in [\[WXFR\]](#). The protocol server processes the following operation on the Resource endpoint (4):

- Get

#### 3.1.1 Abstract Data Model

This section describes a conceptual model of possible data organization that an implementation maintains to participate in this profile. The described organization is provided to facilitate the explanation of how an implementation following this profile of [\[WS-MetaDataExchange\]](#) behaves. This document does not mandate that implementations adhere to this model as long as their external behavior is consistent with that described in this document.

No new abstract data model is required other than those specified in [\[WS-MetaDataExchange\]](#) and [\[MS-UPSCDS\]](#).

#### 3.1.2 Timers

None.

#### 3.1.3 Initialization

There is no initialization in this profile. All **policy**, schema, and operations MUST be pre-configured prior to the protocol client sending requests.

#### 3.1.4 Message Processing Events and Sequencing Rules

Operation	Description
Get	An operation that accepts a <b>GetMetadataMsg</b> request (section <a href="#">2.2.2.1</a> ) from the protocol client and returns a <b>GetMetadataResponseMsg</b> response (section <a href="#">2.2.2.2</a> ).

##### 3.1.4.1 Get

A protocol client sends a **GetMetadataMsg** message, defined in section [2.2.2.1](#) of this specification, to the Resource endpoint (4) of the protocol server to request metadata from the protocol server. Upon successful processing of the **GetMetadataMsg** message, the protocol server responds with a **GetMetadataResponseMsg** message, defined in section [2.2.2.2](#) of this specification.

```
<wsdl:operation name="Get">
  <soap12:operation soapAction="http://schemas.xmlsoap.org/ws/2004/09/transfer/Get"
style="document" />
  <wsdl:input wsdl:message="mex:GetMetadataMsg"
wsa:Action="http://schemas.xmlsoap.org/ws/2004/09/transfer/Get">
    </wsdl:input>
  <wsdl:output wsdl:message="mex:GetMetadataResponseMsg"
wsa:Action="http://schemas.xmlsoap.org/ws/2004/09/transfer/GetResponse">
    </wsdl:output>
</wsdl:operation>
```

If the protocol server cannot successfully process the **GetMetadataMsg** message, the protocol server will ignore any internal error and MUST respond with a **GetMetadataResponseMsg** message.

#### **3.1.4.1.1 Messages**

This operation defines no messages beyond those present in [\[WS-MetaDataExchange\]](#) and section [2.2.2](#) of this specification.

#### **3.1.4.1.2 Elements**

This operation defines no elements beyond those present in [\[WS-MetaDataExchange\]](#).

#### **3.1.4.1.3 Complex Types**

This operation defines no complex types beyond those present in [\[WS-MetaDataExchange\]](#).

#### **3.1.4.1.4 Simple Types**

This operation defines no simple types beyond those present in [\[WS-MetaDataExchange\]](#).

#### **3.1.4.1.5 Attributes**

This operation defines no attributes beyond those present in [\[WS-MetaDataExchange\]](#).

#### **3.1.4.1.6 Groups**

This operation defines no groups beyond those present in [\[WS-MetaDataExchange\]](#).

#### **3.1.4.1.7 Attribute Groups**

This operation defines no attribute groups beyond those present in [\[WS-MetaDataExchange\]](#).

#### **3.1.5 Timer Events**

None.

#### **3.1.6 Other Local Events**

None.

### **3.2 Client Details**

None.

#### **3.2.1 Abstract Data Model**

None.

#### **3.2.2 Timers**

None.



### **3.2.3 Initialization**

All metadata dialects and identifiers defined are expected to be configured on the protocol client prior to sending requests.

### **3.2.4 Message Processing Events and Sequencing Rules**

None.

### **3.2.5 Timer Events**

None.

### **3.2.6 Other Local Events**

None.

## 4 Protocol Examples

This section provides an example of the **SOAP messages** specified in section [2](#).

### 4.1 Example of Retrieving Metadata from the Server

In this section, the protocol client requests metadata from the protocol server using a **GetMetadataMsg** message (section [2.2.2.1](#)) that contains a `<mex:GetMetadata>` element. The protocol server responds to the protocol client with a **GetMetadataResponseMsg** message (section [2.2.2.2](#)) that contains a `<mex:Metadata>` element.

#### 4.1.1 SOAP GetMetadataMsg Message

```
<?xml version="1.0" encoding="utf-8"?>
<s:Envelope
  xmlns:a="http://www.w3.org/2005/08/addressing"
  xmlns:s="http://www.w3.org/2003/05/soap-envelope"
  xmlns:mex="http://schemas.xmlsoap.org/ws/2004/09/mex">

  <s:Header>
    <a:Action
s:mustUnderstand="1">http://schemas.xmlsoap.org/ws/2004/09/transfer/Get</a:Action>
    <a:MessageID>urn:uuid:6eb17746-64d0-42fb-8206-af9c2470819b</a:MessageID>
    <a:ReplyTo>
      <a:Address>http://www.w3.org/2005/08/addressing/anonymous</a:Address>
    </a:ReplyTo>
    <a:To s:mustUnderstand="1">http://localhost:5725/ResourceManagementService/MEX</a:To>
  </s:Header>
  <s:Body>
    <mex:GetMetadata>
      <mex:Dialect>http://www.w3.org/2001/XMLSchema</mex:Dialect>
      <mex:Identifier></mex:Identifier>
    </mex:GetMetadata>
  </s:Body>
</s:Envelope>
```

#### 4.1.2 SOAP GetMetadataResponseMsg Message

```
<?xml version="1.0" encoding="utf-8"?>
<s:Envelope xmlns:s="http://www.w3.org/2003/05/soap-envelope"
  xmlns:a="http://www.w3.org/2005/08/addressing">
  <s:Header>
    <a:Action
s:mustUnderstand="1">http://schemas.xmlsoap.org/ws/2004/09/transfer/GetResponse</a:Action>
    <a:RelatesTo>urn:uuid:6eb17746-64d0-42fb-8206-af9c2470819b</a:RelatesTo>
  </s:Header>
  <s:Body>
    <Metadata xmlns="http://schemas.xmlsoap.org/ws/2004/09/mex"
  xmlns:wsx="http://schemas.xmlsoap.org/ws/2004/09/mex">
    <wsx:MetadataSection Dialect="http://www.w3.org/2001/XMLSchema" Identifier=":" xmlns="">
      <xs:schema attributeFormDefault="unqualified" elementFormDefault="qualified"
targetNamespace="http://schemas.microsoft.com/2006/11/ResourceManagement" version="1.0"
xmlns:xs="http://www.w3.org/2001/XMLSchema"
xmlns:rm="http://schemas.microsoft.com/2006/11/ResourceManagement">
        <xs:simpleType name="ReferenceType">
          <xs:restriction base="xs:string">
```

```

        <xs:pattern value="([0-9a-fA-F]){8}-([0-9a-fA-F]){4}-([0-9a-fA-
F]){4}-([0-9a-fA-F]){4}-([0-9a-fA-F]){12}" />
    </xs:restriction>
</xs:simpleType>
<xs:complexType name="BinaryCollectionType">
    <xs:sequence>
        <xs:element minOccurs="1" maxOccurs="unbounded" name="Item"
type="xs:base64Binary" />
    </xs:sequence>
</xs:complexType>
<xs:complexType name="DateTimeCollectionType">
    <xs:sequence>
        <xs:element minOccurs="1" maxOccurs="unbounded" name="Item"
type="xs:dateTime" />
    </xs:sequence>
</xs:complexType>
<xs:complexType name="IntegerCollectionType">
    <xs:sequence>
        <xs:element minOccurs="1" maxOccurs="unbounded" name="Item"
type="xs:integer" />
    </xs:sequence>
</xs:complexType>
<xs:complexType name="ReferenceCollectionType">
    <xs:sequence>
        <xs:element minOccurs="1" maxOccurs="unbounded" name="Item"
type="rm:ReferenceType" />
    </xs:sequence>
</xs:complexType>
<xs:complexType name="StringCollectionType">
    <xs:sequence>
        <xs:element minOccurs="1" maxOccurs="unbounded" name="Item">
            <xs:simpleType>
                <xs:annotation>
                    <xs:appinfo>
                        <rm:DataType>String</rm:DataType>
                    </xs:appinfo>
                </xs:annotation>
                <xs:restriction base="xs:string">
                    <xs:pattern value=".{0,448}" />
                </xs:restriction>
            </xs:simpleType>
        </xs:element>
        <xs:element minOccurs="1" name="CreatedTime" type="xs:dateTime">
            <xs:annotation>
                <xs:appinfo>
                    <rm:DisplayName>Created Time</rm:DisplayName>
                    <rm:Description>The time when the resource is created
in the FIM service database. This attribute is assigned its value by the FIM service. It
cannot be modified by any user.</rm:Description>
                    <rm:Key>4</rm:Key>
                </xs:appinfo>
            </xs:annotation>
        </xs:element>
    </xs:sequence>
</xs:complexType>
<xs:element name="mv-dataInstance" type="rm:mv-data" />
</xs:schema>
</wsx:MetadataSection>
</Metadata>

```

```
</s:Body>  
</s:Envelope>
```

## 5 Security

### 5.1 Security Considerations for Implementers

In contrast with section 8 of [\[WS-MetaDataExchange\]](#), the protocol server and protocol client do not use security features, as described in [\[WSSE 1.0\]](#).

### 5.2 Index of Security Parameters

None.

## 6 Appendix A: Full WSDL

For ease of implementation, the full WSDL is provided in this appendix.

```
<?xml version="1.0" encoding="utf-8"?>
<wsdl:definitions xmlns:soap="http://schemas.xmlsoap.org/wsdl/soap/"
xmlns:soapenc="http://schemas.xmlsoap.org/soap/encoding/" xmlns:wsu="http://docs.oasis-
open.org/wss/2004/01/oasis-200401-wss-wssecurity-utility-1.0.xsd"
xmlns:wsa="http://schemas.xmlsoap.org/ws/2004/08/addressing"
xmlns:wsam="http://www.w3.org/2007/05/addressing/metadata"
xmlns:tns="http://schemas.microsoft.com/2006/11/ResourceManagement"
xmlns:wsp="http://www.w3.org/ns/ws-policy"
xmlns:i0="http://schemas.xmlsoap.org/ws/2004/09/transfer"
xmlns:wsap="http://schemas.xmlsoap.org/ws/2004/08/addressing/policy"
xmlns:xsd="http://www.w3.org/2001/XMLSchema"
xmlns:msc="http://schemas.microsoft.com/ws/2005/12/wsdl/contract"
xmlns:wsaw="http://www.w3.org/2006/05/addressing/wsdl"
xmlns:soap12="http://schemas.xmlsoap.org/wsdl/soap12/"
xmlns:wsa10="http://www.w3.org/2005/08/addressing"
targetNamespace="http://schemas.microsoft.com/2006/11/ResourceManagement"
xmlns:wsdl="http://schemas.xmlsoap.org/wsdl/"
xmlns:mex="http://schemas.xmlsoap.org/ws/2004/09/mex"
>
  <wsdl:import namespace="http://schemas.xmlsoap.org/ws/2004/09/transfer"
location="http://schemas.xmlsoap.org/ws/2004/09/transfer/transfer.wsdl" />
  <wsdl:types>
    <xsd:schema targetNamespace="http://schemas.xmlsoap.org/ws/2004/09/mex">
      <xsd:include
schemaLocation="http://schemas.xmlsoap.org/ws/2004/09/mex/metadataexchange.xsd" />
    </xsd:schema>
  </wsdl:types>
  <wsdl:message name="GetMetadataMsg">
    <wsdl:part name="Body" element="mex:GetMetadata" />
  </wsdl:message>
  <wsdl:message name="GetMetadataResponseMsg">
    <wsdl:part name="Body" element="mex:Metadata" />
  </wsdl:message>
  <wsdl:binding name="ServiceMultipleTokenBinding_Resource" type="i0:Resource">
    <soap12:binding transport="http://schemas.xmlsoap.org/soap/http" />
    <wsdl:operation name="Get">
      <soap12:operation soapAction="http://schemas.xmlsoap.org/ws/2004/09/transfer/Get"
style="document" />
      <wsdl:input wsdl:message="mex:GetMetadataMsg"
wsa:Action="http://schemas.xmlsoap.org/ws/2004/09/transfer/Get">
        </wsdl:input>
      <wsdl:output wsdl:message="mex:GetMetadataResponseMsg"
wsa:Action="http://schemas.xmlsoap.org/ws/2004/09/transfer/GetResponse">
        </wsdl:output>
      <wsdl:input>
        <soap12:body use="literal" />
      </wsdl:input>
      <wsdl:output>
        <soap12:body use="literal" />
      </wsdl:output>
    </wsdl:operation>
  </wsdl:binding>
</wsdl:definitions>
```

## 7 Appendix B: Product Behavior

The information in this specification is applicable to the following Microsoft products or supplemental software. References to product versions include released service packs:

- Microsoft SharePoint Server 2010
- Microsoft SharePoint Server 2013

Exceptions, if any, are noted below. If a service pack or Quick Fix Engineering (QFE) number appears with the product version, behavior changed in that service pack or QFE. The new behavior also applies to subsequent service packs of the product unless otherwise specified. If a product edition appears with the product version, behavior is different in that product edition.

Unless otherwise specified, any statement of optional behavior in this specification that is prescribed using the terms SHOULD or SHOULD NOT implies product behavior in accordance with the SHOULD or SHOULD NOT prescription. Unless otherwise specified, the term MAY implies that the product does not follow the prescription.

## 8 Change Tracking

No table of changes is available. The document is either new or has had no changes since its last release.



## 9 Index

### A

Abstract data model  
    [client](#) 16  
    [server](#) 15  
[Applicability](#) 9  
[Attribute groups](#) 13  
[Attributes](#) 13

### C

[Capability negotiation](#) 9  
[Change tracking](#) 24  
Client  
    [abstract data model](#) 16  
    [initialization](#) 17  
    [local events](#) 17  
    [message processing](#) 17  
    [sequencing rules](#) 17  
    [timer events](#) 17  
    [timers](#) 16  
[Complex types](#) 13

### D

Data model - abstract  
    [client](#) 16  
    [server](#) 15  
[DataTypeelement](#) 11  
[Directory service schema elements](#) 14

### E

Elements  
    [DataType](#) 11  
    [GetMetadata](#) 12  
    [Key](#) 11  
    [Metadata](#) 12  
[Elements - directory service schema](#) 14  
Events  
    [local - client](#) 17  
    [local - server](#) 16  
    [timer - client](#) 17  
    [timer - server](#) 16  
Examples  
    [overview](#) 18  
    [retrieving metadata from the server](#) 18

### F

[Fields - vendor-extensible](#) 9  
[Full WSDL](#) 22

### G

[GetMetadataelement](#) 12  
[Glossary](#) 6  
[Groups](#) 13

### I

[Implementer - security considerations](#) 21  
[Index of security parameters](#) 21  
[Informative references](#) 7  
Initialization  
    [client](#) 17  
    [server](#) 15  
[Introduction](#) 6

### K

[Keyelement](#) 11

### L

Local events  
    [client](#) 17  
    [server](#) 16

### M

Message processing  
    [client](#) 17  
    [server](#) 15  
Messages  
    [attribute groups](#) 13  
    [attributes](#) 13  
    [complex types](#) 13  
    [DataTypeelement](#) 11  
    [elements](#) 11  
    [enumerated](#) 10  
    [GetMetadataelement](#) 12  
    [GetMetadataMsg](#) 10  
    [GetMetadataMsgmessage](#) 10  
    [GetMetadataResponseMsg](#) 11  
    [GetMetadataResponseMsgmessage](#) 11  
    [groups](#) 13  
    [Keyelement](#) 11  
    [Metadataelement](#) 12  
    [namespaces](#) 10  
    [simple types](#) 13  
    [syntax](#) 10  
    [transport](#) 10  
[Metadataelement](#) 12

### N

[Namespaces](#) 10  
[Normative references](#) 6

### O

Operations  
    [Get](#) 15  
[Overview \(synopsis\)](#) 7

### P

[Parameters - security index](#) 21  
[Preconditions](#) 8  
[Prerequisites](#) 8  
[Product behavior](#) 23

## R

[References](#) 6  
    [informative](#) 7  
    [normative](#) 6  
[Relationship to other protocols](#) 8  
[Retrieving metadata from the server example](#) 18

## S

[Schema elements - directory service](#) 14  
Security  
    [implementer considerations](#) 21  
    [parameter index](#) 21  
Sequencing rules  
    [client](#) 17  
    [server](#) 15  
Server  
    [abstract data model](#) 15  
    [details](#) 15  
    [Get operation](#) 15  
    [initialization](#) 15  
    [local events](#) 16  
    [message processing](#) 15  
    [sequencing rules](#) 15  
    [timer events](#) 16  
    [timers](#) 15  
[Simple types](#) 13  
[Standards assignments](#) 9  
Syntax  
    [messages - overview](#) 10

## T

Timer events  
    [client](#) 17  
    [server](#) 16  
Timers  
    [client](#) 16  
    [server](#) 15  
[Tracking changes](#) 24  
[Transport](#) 10  
Types  
    [complex](#) 13  
    [simple](#) 13

## V

[Vendor-extensible fields](#) 9  
[Versioning](#) 9

## W

[WSDL](#) 22