

[MS-UPFCWS]:

User Activity Feed Cache Web Service Protocol

Intellectual Property Rights Notice for Open Specifications Documentation

- **Technical Documentation.** Microsoft publishes Open Specifications documentation (“this documentation”) for protocols, file formats, data portability, computer languages, and standards support. Additionally, overview documents cover inter-protocol relationships and interactions.
- **Copyrights.** This documentation is covered by Microsoft copyrights. Regardless of any other terms that are contained in the terms of use for the Microsoft website that hosts this documentation, you can make copies of it in order to develop implementations of the technologies that are described in this documentation and can distribute portions of it in your implementations that use these technologies or in your documentation as necessary to properly document the implementation. You can also distribute in your implementation, with or without modification, any schemas, IDLs, or code samples that are included in the documentation. This permission also applies to any documents that are referenced in the Open Specifications documentation.
- **No Trade Secrets.** Microsoft does not claim any trade secret rights in this documentation.
- **Patents.** Microsoft has patents that might cover your implementations of the technologies described in the Open Specifications documentation. Neither this notice nor Microsoft's delivery of this documentation grants any licenses under those patents or any other Microsoft patents. However, a given Open Specifications document might be covered by the Microsoft [Open Specifications Promise](#) or the [Microsoft Community Promise](#). If you would prefer a written license, or if the technologies described in this documentation are not covered by the Open Specifications Promise or Community Promise, as applicable, patent licenses are available by contacting iplg@microsoft.com.
- **Trademarks.** The names of companies and products contained in this documentation might be covered by trademarks or similar intellectual property rights. This notice does not grant any licenses under those rights. For a list of Microsoft trademarks, visit www.microsoft.com/trademarks.
- **Fictitious Names.** The example companies, organizations, products, domain names, email addresses, logos, people, places, and events that are depicted in this documentation are fictitious. No association with any real company, organization, product, domain name, email address, logo, person, place, or event is intended or should be inferred.

Reservation of Rights. All other rights are reserved, and this notice does not grant any rights other than as specifically described above, whether by implication, estoppel, or otherwise.

Tools. The Open Specifications documentation does not require the use of Microsoft programming tools or programming environments in order for you to develop an implementation. If you have access to Microsoft programming tools and environments, you are free to take advantage of them. Certain Open Specifications documents are intended for use in conjunction with publicly available standards specifications and network programming art and, as such, assume that the reader either is familiar with the aforementioned material or has immediate access to it.

Revision Summary

Date	Revision History	Revision Class	Comments
1/20/2012	0.1	New	Released new document.
4/11/2012	0.1	None	No changes to the meaning, language, or formatting of the technical content.
7/16/2012	0.1	None	No changes to the meaning, language, or formatting of the technical content.
9/12/2012	0.1	None	No changes to the meaning, language, or formatting of the technical content.
10/8/2012	1.0	Major	Significantly changed the technical content.
2/11/2013	1.1	Minor	Clarified the meaning of the technical content.
7/30/2013	1.1	None	No changes to the meaning, language, or formatting of the technical content.
11/18/2013	1.1	None	No changes to the meaning, language, or formatting of the technical content.
2/10/2014	1.1	None	No changes to the meaning, language, or formatting of the technical content.
4/30/2014	1.2	Minor	Clarified the meaning of the technical content.
7/31/2014	1.3	Minor	Clarified the meaning of the technical content.
10/30/2014	1.3	None	No changes to the meaning, language, or formatting of the technical content.
2/26/2016	2.0	Major	Significantly changed the technical content.
7/15/2016	2.0	None	No changes to the meaning, language, or formatting of the technical content.
9/14/2016	2.0	None	No changes to the meaning, language, or formatting of the technical content.

Table of Contents

1	Introduction	8
1.1	Glossary	8
1.2	References	10
1.2.1	Normative References	10
1.2.2	Informative References	10
1.3	Overview	11
1.4	Relationship to Other Protocols	11
1.5	Prerequisites/Preconditions	11
1.6	Applicability Statement	11
1.7	Versioning and Capability Negotiation	11
1.8	Vendor-Extensible Fields	12
1.9	Standards Assignments.....	12
2	Messages.....	13
2.1	Transport	13
2.2	Common Message Syntax	13
2.2.1	Namespaces	13
2.2.2	Messages.....	14
2.2.3	Elements	14
2.2.4	Complex Types.....	14
2.2.4.1	ArrayOfE.....	15
2.2.4.2	ArrayOfEC.....	15
2.2.4.3	ArrayOfEDT.....	15
2.2.4.4	ArrayOfint.....	16
2.2.4.5	ArrayOfNullableOfguid	16
2.2.4.6	ArrayOfP.....	16
2.2.4.7	ArrayOfstring.....	16
2.2.4.8	ArrayOfUserData.....	17
2.2.4.9	E.....	17
2.2.4.10	EC.....	18
2.2.4.11	EDT.....	18
2.2.4.12	FeedCacheFault	18
2.2.4.13	FCCR	19
2.2.4.14	FCRE	19
2.2.4.15	FCRO.....	20
2.2.4.16	P.....	21
2.2.4.17	PC.....	22
2.2.4.18	UserData	23
2.2.5	Simple Types	25
2.2.5.1	char	25
2.2.5.2	duration.....	25
2.2.5.3	FeedCacheFaultCodes.....	25
2.2.5.4	guid	26
2.2.5.5	ET.....	26
2.2.5.6	UPL.....	27
2.2.6	Attributes	27
2.2.7	Groups	27
2.2.8	Attribute Groups.....	27
3	Protocol Details.....	28
3.1	Server Details.....	28
3.1.1	Abstract Data Model.....	29
3.1.2	Timers	30
3.1.3	Initialization.....	30
3.1.4	Message Processing Events and Sequencing Rules	30

3.1.4.1	AddFeedEntry	31
3.1.4.1.1	Messages	31
3.1.4.1.1.1	IFeedCacheService_AddFeedEntry_InputMessage	31
3.1.4.1.1.2	IFeedCacheService_AddFeedEntry_OutputMessage	32
3.1.4.1.2	Elements	32
3.1.4.1.2.1	AddFeedEntry	32
3.1.4.1.2.2	AddFeedEntryResponse	32
3.1.4.1.3	Complex Types	32
3.1.4.1.4	Simple Types	32
3.1.4.1.5	Attributes	33
3.1.4.1.6	Groups	33
3.1.4.1.7	Attribute Groups	33
3.1.4.2	BulkLMTUpdate	33
3.1.4.2.1	Messages	33
3.1.4.2.1.1	IFeedCacheService_BulkLMTUpdate_InputMessage	33
3.1.4.2.1.2	IFeedCacheService_BulkLMTUpdate_OutputMessage	34
3.1.4.2.2	Elements	34
3.1.4.2.2.1	BulkLMTUpdate	34
3.1.4.2.2.2	BulkLMTUpdateResponse	34
3.1.4.2.3	Complex Types	35
3.1.4.2.3.1	ArrayOfKeyValuePairOfELEHsv_SIRZJ	35
3.1.4.2.3.2	KeyValuePairOfELEHsv_SIRZJ	35
3.1.4.2.3.3	LE	35
3.1.4.2.4	Simple Types	36
3.1.4.2.5	Attributes	36
3.1.4.2.6	Groups	36
3.1.4.2.7	Attribute Groups	36
3.1.4.3	GetCategoricalFeed	36
3.1.4.3.1	Messages	36
3.1.4.3.1.1	IFeedCacheService_GetCategoricalFeed_InputMessage	37
3.1.4.3.1.2	IFeedCacheService_GetCategoricalFeed_OutputMessage	37
3.1.4.3.2	Elements	37
3.1.4.3.2.1	GetCategoricalFeed	37
3.1.4.3.2.2	GetCategoricalFeedResponse	38
3.1.4.3.3	Complex Types	38
3.1.4.3.4	Simple Types	38
3.1.4.3.5	Attributes	38
3.1.4.3.6	Groups	38
3.1.4.3.7	Attribute Groups	38
3.1.4.4	GetConsolidatedFeed	38
3.1.4.4.1	Messages	39
3.1.4.4.1.1	IFeedCacheService_GetConsolidatedFeed_InputMessage	39
3.1.4.4.1.2	IFeedCacheService_GetConsolidatedFeed_OutputMessage	39
3.1.4.4.2	Elements	39
3.1.4.4.2.1	GetConsolidatedFeed	39
3.1.4.4.2.2	GetConsolidatedFeedResponse	40
3.1.4.4.3	Complex Types	40
3.1.4.4.4	Simple Types	40
3.1.4.4.5	Attributes	40
3.1.4.4.6	Groups	40
3.1.4.4.7	Attribute Groups	40
3.1.4.5	GetEntries	40
3.1.4.5.1	Messages	41
3.1.4.5.1.1	IFeedCacheService_GetEntries_InputMessage	41
3.1.4.5.1.2	IFeedCacheService_GetEntries_OutputMessage	41
3.1.4.5.2	Elements	41
3.1.4.5.2.1	GetEntries	41
3.1.4.5.2.2	GetEntriesResponse	42

3.1.4.5.3	Complex Types	42
3.1.4.5.3.1	ArrayOfPI	42
3.1.4.5.3.2	PI	42
3.1.4.5.4	Simple Types	43
3.1.4.5.5	Attributes	43
3.1.4.5.6	Groups	43
3.1.4.5.7	Attribute Groups	43
3.1.4.6	GetFeeds	43
3.1.4.6.1	Messages	43
3.1.4.6.1.1	IFeedCacheService_GetFeeds_InputMessage	44
3.1.4.6.1.2	IFeedCacheService_GetFeeds_OutputMessage	44
3.1.4.6.2	Elements	44
3.1.4.6.2.1	GetFeeds	44
3.1.4.6.2.2	GetFeedsResponse	45
3.1.4.6.3	Complex Types	45
3.1.4.6.4	Simple Types	45
3.1.4.6.5	Attributes	45
3.1.4.6.6	Groups	45
3.1.4.6.7	Attribute Groups	45
3.1.4.7	GetPublishedFeed	45
3.1.4.7.1	Messages	46
3.1.4.7.1.1	IFeedCacheService_GetPublishedFeed_InputMessage	46
3.1.4.7.1.2	IFeedCacheService_GetPublishedFeed_OutputMessage	46
3.1.4.7.2	Elements	46
3.1.4.7.2.1	GetPublishedFeed	46
3.1.4.7.2.2	GetPublishedFeedResponse	47
3.1.4.7.3	Complex Types	47
3.1.4.7.4	Simple Types	47
3.1.4.7.5	Attributes	47
3.1.4.7.6	Groups	47
3.1.4.7.7	Attribute Groups	47
3.1.4.8	IsEntityActivelyFollowed	47
3.1.4.8.1	Messages	48
3.1.4.8.1.1	IFeedCacheService_IsEntityActivelyFollowed_InputMessage	48
3.1.4.8.1.2	IFeedCacheService_IsEntityActivelyFollowed_OutputMessage	48
3.1.4.8.2	Elements	48
3.1.4.8.2.1	IsEntityActivelyFollowed	49
3.1.4.8.2.2	IsEntityActivelyFollowedResponse	49
3.1.4.8.3	Complex Types	49
3.1.4.8.4	Simple Types	49
3.1.4.8.5	Attributes	49
3.1.4.8.6	Groups	49
3.1.4.8.7	Attribute Groups	49
3.1.4.9	IsRepopulationNeeded	50
3.1.4.9.1	Messages	50
3.1.4.9.1.1	IFeedCacheService_IsRepopulationNeeded_InputMessage	50
3.1.4.9.1.2	IFeedCacheService_IsRepopulationNeeded_OutputMessage	50
3.1.4.9.2	Elements	50
3.1.4.9.2.1	IsRepopulationNeeded	51
3.1.4.9.2.2	IsRepopulationNeededResponse	51
3.1.4.9.3	Complex Types	51
3.1.4.9.4	Simple Types	51
3.1.4.9.5	Attributes	51
3.1.4.9.6	Groups	51
3.1.4.9.7	Attribute Groups	51
3.1.4.10	NewEntityFollower	52
3.1.4.10.1	Messages	52
3.1.4.10.1.1	IFeedCacheService_NewEntityFollower_InputMessage	52

3.1.4.10.1.2	IFeedCacheService_NewEntityFollower_OutputMessage	52
3.1.4.10.2	Elements	52
3.1.4.10.2.1	NewEntityFollower	53
3.1.4.10.2.2	NewEntityFollowerResponse	53
3.1.4.10.3	Complex Types	53
3.1.4.10.4	Simple Types	53
3.1.4.10.5	Attributes	53
3.1.4.10.6	Groups.....	53
3.1.4.10.7	Attribute Groups.....	53
3.1.4.11	RefreshFollowedEntities	54
3.1.4.11.1	Messages	54
3.1.4.11.1.1	IFeedCacheService_RefreshFollowedEntities_InputMessage.....	54
3.1.4.11.1.2	IFeedCacheService_RefreshFollowedEntities_OutputMessage	54
3.1.4.11.2	Elements.....	54
3.1.4.11.2.1	RefreshFollowedEntities	55
3.1.4.11.2.2	RefreshFollowedEntitiesResponse	55
3.1.4.11.3	Complex Types	55
3.1.4.11.4	Simple Types	55
3.1.4.11.5	Attributes	55
3.1.4.11.6	Groups.....	55
3.1.4.11.7	Attribute Groups.....	56
3.1.4.12	RemoveEntityFeed	56
3.1.4.12.1	Messages	56
3.1.4.12.1.1	IFeedCacheService_RemoveEntityFeed_InputMessage.....	56
3.1.4.12.1.2	IFeedCacheService_RemoveEntityFeed_OutputMessage.....	56
3.1.4.12.2	Elements.....	56
3.1.4.12.2.1	RemoveEntityFeed	57
3.1.4.12.2.2	RemoveEntityFeedResponse	57
3.1.4.12.3	Complex Types	57
3.1.4.12.4	Simple Types	57
3.1.4.12.5	Attributes	57
3.1.4.12.6	Groups.....	57
3.1.4.12.7	Attribute Groups.....	57
3.1.4.13	RemoveFeedEntry	58
3.1.4.13.1	Messages	58
3.1.4.13.1.1	IFeedCacheService_RemoveFeedEntry_InputMessage	58
3.1.4.13.1.2	IFeedCacheService_RemoveFeedEntry_OutputMessage	58
3.1.4.13.2	Elements.....	58
3.1.4.13.2.1	RemoveFeedEntry	59
3.1.4.13.2.2	RemoveFeedEntryResponse.....	59
3.1.4.13.3	Complex Types	59
3.1.4.13.4	Simple Types	59
3.1.4.13.5	Attributes	59
3.1.4.13.6	Groups.....	59
3.1.4.13.7	Attribute Groups.....	60
3.1.4.14	AddFeedEntries.....	60
3.1.4.14.1	Messages	60
3.1.4.14.1.1	IFeedCacheService_AddFeedEntries_InputMessage	60
3.1.4.14.1.2	IFeedCacheService_AddFeedEntries_OutputMessage	60
3.1.4.14.2	Elements.....	61
3.1.4.14.2.1	AddFeedEntries.....	61
3.1.4.14.2.2	AddFeedEntriesResponse	61
3.1.4.14.3	Complex Types	61
3.1.4.14.4	Simple Types	61
3.1.4.14.5	Attributes	61
3.1.4.14.6	Groups.....	61
3.1.4.14.7	Attribute Groups.....	62
3.1.4.15	RemoveInternalRegions	62

3.1.4.15.1	Messages	62
3.1.4.15.1.1	IFeedCacheService_RemoveInternalRegions_InputMessage	62
3.1.4.15.1.2	IFeedCacheService_RemoveInternalRegions_OutputMessage	62
3.1.4.15.2	Elements	63
3.1.4.15.2.1	RemoveInternalRegions	63
3.1.4.15.2.2	RemoveInternalRegionsResponse	63
3.1.4.15.3	Complex Types	63
3.1.4.15.4	Simple Types	63
3.1.4.15.5	Attributes	63
3.1.4.15.6	Groups	64
3.1.4.15.7	Attribute Groups	64
3.1.4.16	AddFeedEntriesForRepop	64
3.1.4.16.1	Messages	64
3.1.4.16.1.1	IFeedCacheService_AddFeedEntriesForRepop_InputMessage	64
3.1.4.16.1.2	IFeedCacheService_AddFeedEntriesForRepop_OutputMessage	64
3.1.4.16.2	Elements	65
3.1.4.16.2.1	AddFeedEntriesForRepop	65
3.1.4.16.2.2	AddFeedEntriesForRepopResponse	65
3.1.4.16.3	Complex Types	65
3.1.4.16.4	Simple Types	66
3.1.4.16.5	Attributes	66
3.1.4.16.6	Groups	66
3.1.4.16.7	Attribute Groups	66
3.1.5	Timer Events	66
3.1.6	Other Local Events	66
4	Protocol Examples	67
4.1	AddFeedEntry	67
4.2	GetPublishedFeed	67
5	Security	70
5.1	Security Considerations for Implementers	70
5.2	Index of Security Parameters	70
6	Appendix A: Full WSDL	71
7	Appendix B: Full XML Schema	80
7.1	http://tempuri.org/ Schema	80
7.2	http://schemas.microsoft.com/2003/10/Serialization/ Schema	84
7.3	http://Microsoft/Office/Server/FeedCache Schema	85
7.4	http://schemas.microsoft.com/2003/10/Serialization/Arrays Schema	87
7.5	http://schemas.datacontract.org/2004/07/System.Collections.Generic Schema	88
7.6	http://Microsoft/Office/Server/UserProfiles Schema	88
7.7	http://schemas.datacontract.org/2004/07/System Schema	89
7.8	http://Microsoft/Office/Server/FeedyCache Schema	89
8	Appendix C: Product Behavior	91
9	Change Tracking	92
10	Index	93

1 Introduction

The User Activity Feed Cache Web Service Protocol enables protocol clients to store and retrieve data related to social feed posts and feed metadata in an in-memory cache on a protocol server.

Sections 1.5, 1.8, 1.9, 2, and 3 of this specification are normative. All other sections and examples in this specification are informative.

1.1 Glossary

This document uses the following terms:

application server: A computer that provides infrastructure and services for applications that are hosted on a server farm.

Coordinated Universal Time (UTC): A high-precision atomic time standard that approximately tracks Universal Time (UT). It is the basis for legal, civil time all over the Earth. Time zones around the world are expressed as positive and negative offsets from UTC. In this role, it is also referred to as Zulu time (Z) and Greenwich Mean Time (GMT). In these specifications, all references to UTC refer to the time at UTC-0 (or GMT).

datetime: A data type that represents the date and time when a document can be normalized and indexed as a numeric value by a search application. The range and degree of granularity varies according to search application and implementation.

document: An object in a content database such as a file, folder, **list**, or **site**. Each object is identified by a URI.

email address: A string that identifies a user and enables the user to receive Internet messages.

endpoint: A communication port that is exposed by an **application server** for a specific shared service and to which messages can be addressed.

feed entity: An object that represents anything that can have a feed, such as a user, a document, or a site.

feed entry: The data contained in a posting to a feed.

globally unique identifier (GUID): A term used interchangeably with universally unique identifier (UUID) in Microsoft protocol technical documents (TDs). Interchanging the usage of these terms does not imply or require a specific algorithm or mechanism to generate the value. Specifically, the use of this term does not imply or require that the algorithms described in [\[RFC4122\]](#) or [\[C706\]](#) must be used for generating the **GUID**. See also universally unique identifier (UUID).

list: A container within a SharePoint site that stores list items. A list has a customizable schema that is composed of one or more fields.

login name: A string that is used to identify a user or entity to an operating system, directory service, or distributed system. For example, in Windows-integrated authentication, a login name uses the form "DOMAIN\username".

partition identifier: A GUID that identifies a partition (1).

security identifier (SID): An identifier for security principals in Windows that is used to identify an account or a group. Conceptually, the **SID** is composed of an account authority portion (typically a domain) and a smaller integer representing an identity relative to the account authority, termed the relative identifier (RID). The **SID** format is specified in [\[MS-DTYP\]](#) section

2.4.2; a string representation of **SIDs** is specified in [MS-DTYP] section 2.4.2 and [\[MS-AZOD\]](#) section 1.1.1.2.

site: A group of related webpages that is hosted by a server on the World Wide Web or an intranet. Each website has its own entry points, metadata, administration settings, and workflows. Also referred to as web site.

site collection: A set of websites (1) that are in the same content database, have the same owner, and share administration settings. A site collection can be identified by a **GUID** or the **URL** of the top-level site for the site collection. Each site collection contains a top-level site, can contain one or more subsites, and can have a shared navigational structure.

SOAP: A lightweight protocol for exchanging structured information in a decentralized, distributed environment. **SOAP** uses XML technologies to define an extensible messaging framework, which provides a message construct that can be exchanged over a variety of underlying protocols. The framework has been designed to be independent of any particular programming model and other implementation-specific semantics. SOAP 1.2 supersedes SOAP 1.1. See [\[SOAP1.2-1/2003\]](#).

SOAP action: The HTTP request header field used to indicate the intent of the **SOAP** request, using a URI value. See [\[SOAP1.1\]](#) section 6.1.1 for more information.

SOAP body: A container for the payload data being delivered by a SOAP message to its recipient. See [\[SOAP1.2-1/2007\]](#) section 5.3 for more information.

social tag: A user-defined keyword and hyperlink to a webpage or item on a SharePoint site or the Internet. Individual users create these tags and, by default, share them with other users.

tenant: A protocol client or protocol server that accesses a partition in a shared service database.

Uniform Resource Locator (URL): A string of characters in a standardized format that identifies a document or resource on the World Wide Web. The format is as specified in [\[RFC1738\]](#).

user object: An object of class user. A user object is a security principal object; the principal is a person or service entity running on the computer. The shared secret allows the person or service entity to authenticate itself, as described in ([\[MS-AUTHSOD\]](#) section 1.1.1.1).

user profile: A collection of properties that pertain to a specific person or entity within a portal site.

User Profile Service: A data source that stores, provides, and applies information about users.

web application: A software application that uses HTTP as its core communication protocol and delivers information to the user by using web-based languages such as HTML and XML.

web service: A unit of application logic that provides data and services to other applications and can be called by using standard Internet transport protocols such as HTTP, Simple Mail Transfer Protocol (SMTP), or File Transfer Protocol (FTP). Web services can perform functions that range from simple requests to complicated business processes.

Web Services Description Language (WSDL): An XML format for describing network services as a set of endpoints that operate on messages that contain either document-oriented or procedure-oriented information. The operations and messages are described abstractly and are bound to a concrete network protocol and message format in order to define an endpoint. Related concrete endpoints are combined into abstract endpoints, which describe a network service. WSDL is extensible, which allows the description of endpoints and their messages regardless of the message formats or network protocols that are used.

WSDL message: An abstract, typed definition of the data that is communicated during a **WSDL operation** [WSDL]. Also, an element that describes the data being exchanged between web service providers and clients.

WSDL operation: A single action or function of a web service. The execution of a WSDL operation typically requires the exchange of messages between the service requestor and the service provider.

XML namespace: A collection of names that is used to identify elements, types, and attributes in XML documents identified in a URI reference [RFC3986]. A combination of XML namespace and local name allows XML documents to use elements, types, and attributes that have the same names but come from different sources. For more information, see [XMLNS-2ED].

XML namespace prefix: An abbreviated form of an **XML namespace**, as described in [XML].

XML schema: A description of a type of XML document that is typically expressed in terms of constraints on the structure and content of documents of that type, in addition to the basic syntax constraints that are imposed by XML itself. An XML schema provides a view of a document type at a relatively high level of abstraction.

MAY, SHOULD, MUST, SHOULD NOT, MUST NOT: These terms (in all caps) are used as defined in [RFC2119]. All statements of optional behavior use either MAY, SHOULD, or SHOULD NOT.

1.2 References

Links to a document in the Microsoft Open Specifications library point to the correct section in the most recently published version of the referenced document. However, because individual documents in the library are not updated at the same time, the section numbers in the documents may not match. You can confirm the correct section numbering by checking the [Errata](#).

1.2.1 Normative References

We conduct frequent surveys of the normative references to assure their continued availability. If you have any issue with finding a normative reference, please contact dochelp@microsoft.com. We will assist you in finding the relevant information.

[MS-UPSCWS] Microsoft Corporation, "[User Profile Service Application Caching Web Service Protocol](#)".

[RFC2119] Bradner, S., "Key words for use in RFCs to Indicate Requirement Levels", BCP 14, RFC 2119, March 1997, <http://www.rfc-editor.org/rfc/rfc2119.txt>

[SOAP1.1] Box, D., Ehnebuske, D., Kakivaya, G., et al., "Simple Object Access Protocol (SOAP) 1.1", May 2000, <http://www.w3.org/TR/2000/NOTE-SOAP-20000508/>

[WSDL] Christensen, E., Curbera, F., Meredith, G., and Weerawarana, S., "Web Services Description Language (WSDL) 1.1", W3C Note, March 2001, <http://www.w3.org/TR/2001/NOTE-wsdl-20010315>

[XMLNS] Bray, T., Hollander, D., Layman, A., et al., Eds., "Namespaces in XML 1.0 (Third Edition)", W3C Recommendation, December 2009, <http://www.w3.org/TR/2009/REC-xml-names-20091208/>

[XMLSCHEMA1] Thompson, H., Beech, D., Maloney, M., and Mendelsohn, N., Eds., "XML Schema Part 1: Structures", W3C Recommendation, May 2001, <http://www.w3.org/TR/2001/REC-xmlschema-1-20010502/>

[XMLSCHEMA2] Biron, P.V., Ed. and Malhotra, A., Ed., "XML Schema Part 2: Datatypes", W3C Recommendation, May 2001, <http://www.w3.org/TR/2001/REC-xmlschema-2-20010502/>

1.2.2 Informative References

None.

1.3 Overview

This protocol allows protocol clients to store data related to social feed posts and feed metadata in an in-memory cache on a middle-tier **application server**. A typical scenario is a protocol client fetching the posts from a number of users to display a consolidated view of recent activities.

1.4 Relationship to Other Protocols

This protocol uses the **SOAP** message protocol for formatting requests and responses as described in [\[SOAP1.1\]](#), [\[SOAP1.2/1\]](#) and [\[SOAP1.2/2\]](#). It transmits these messages by using HTTP protocol as described in [\[RFC2616\]](#), or the HTTPS protocol as described in [\[RFC2818\]](#) or the TCP protocol as described in [\[MC-NMF\]](#).

The following diagram shows the underlying messaging and transport stack used by the protocol.

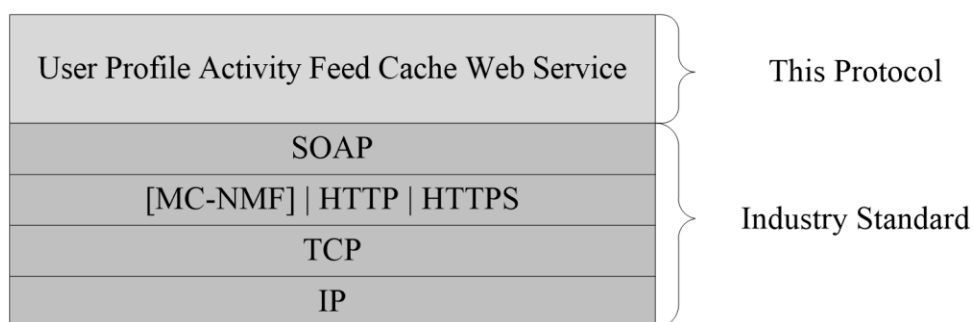


Figure 1: This protocol in relation to other protocols

1.5 Prerequisites/Preconditions

This protocol operates against a protocol server that exposes one or more **endpoint** URIs that are known by protocol clients. The endpoint URI of the protocol server and the transport that is used by the protocol server are either known by the protocol client or obtained by using the discovery mechanism that is described in [\[MS-SPTWS\]](#).

The protocol client obtains the requisite ApplicationClassId and ApplicationVersion values and the endpoint URI of the protocol server that provides the discovery mechanism, as described in [\[MS-SPTWS\]](#), by means that are independent of either protocol.

This protocol requires the protocol client to have appropriate permission to call the methods on the protocol server.

The protocol client implements the token-based security mechanisms that are required by the protocol server and related security protocols, as described in [\[MS-SPSTWS\]](#).

1.6 Applicability Statement

The protocol is designed to work with cached feed data.

1.7 Versioning and Capability Negotiation

This document covers versioning issues in the following areas:

- **Supported Transports:** This protocol can be implemented by using transports that support sending Simple Object Access Protocol (SOAP) messages, as described in section 2.1.
- **Protocol Versions:** This protocol is not versioned.

Capability Negotiation: This protocol does not support version negotiation.

1.8 Vendor-Extensible Fields

None.

1.9 Standards Assignments

None.

2 Messages

2.1 Transport

Protocol servers MUST support Simple Object Access Protocol (SOAP) over Hypertext Transfer Protocol (HTTP), Hypertext Transfer Protocol over Secure Sockets Layer (HTTPS), or TCP.

All protocol messages MUST be transported by using HTTP or TCP bindings at the transport level.

Protocol messages MUST be formatted as specified in either [\[SOAP1.1\]](#) section 4 or [\[SOAP1.2/1\]](#) section 5. Protocol server faults MUST be returned by using HTTP status codes, as specified in [\[RFC2616\]](#) section 10, or SOAP faults, as specified in [\[SOAP1.1\]](#) section 4.4 or [\[SOAP1.2/1\]](#) section 5.4.

If the HTTPS transport is used, a server certificate MUST be deployed.

This protocol MAY transmit an additional SOAP header, the **ServiceContext** header, as specified in [\[MS-SPSTWS\]](#).

This protocol does not define any means for activating a protocol server or protocol client. The protocol server MUST be configured and begin listening in an implementation-specific way. In addition, the protocol client MUST know the format and transport that is used by the server, for example, the SOAP format over an HTTP transport.

2.2 Common Message Syntax

This section contains common definitions that are used by this protocol. The syntax of the definitions uses **XML schema**, as specified in [\[XMLSCHEMA1\]](#) and [\[XMLSCHEMA2\]](#), and **WSDL**, as specified in [\[WSDL\]](#).

2.2.1 Namespaces

This specification defines and references various **XML namespaces** using the mechanisms specified in [\[XMLNS\]](#). Although this specification associates a specific **XML namespace prefix** for each XML namespace that is used, the choice of any particular XML namespace prefix is implementation-specific and not significant for interoperability.

Prefix	Namespace URI	Reference
q1	http://Microsoft/Office/Server/FeedCache	
q2	http://schemas.microsoft.com/2003/10/Serialization/Arrays	
q3	http://Microsoft/Office/Server/UserProfiles	
q5	http://schemas.datacontract.org/2004/07/System	
ser	http://schemas.microsoft.com/2003/10/Serialization/	
soap	http://schemas.xmlsoap.org/wsdl/soap/	[SOAP1.1]
tns	http://tempuri.org/	
tns1	http://Microsoft/Office/Server/FeedyCache	
tns2	http://schemas.datacontract.org/2004/07/System.Collections.Generic	

Prefix	Namespace URI	Reference
tns3	http://tempuri.org/Imports	
wsaw	http://www.w3.org/2006/05/addressing/wsdl	
wsdl	http://schemas.xmlsoap.org/wsdl/	[WSDL]
xs	http://www.w3.org/2001/XMLSchema	[XMLSCHEMA1] [XMLSCHEMA2]

2.2.2 Messages

This specification does not define any common **WSDL message** definitions.

2.2.3 Elements

This specification does not define any common XML schema element definitions.

2.2.4 Complex Types

The following table summarizes the set of common XML schema complex type definitions defined by this specification. XML schema complex type definitions that are specific to a particular operation are described with the operation.

Complex type	Description
ArrayOfE	The ArrayOfE complex type is a sequence of 0 or more E entries which are described in section 2.2.4.9 .
ArrayOfEC	The ArrayOfEC complex type specifies a sequence of zero or more EC entries that are described in section 2.2.4.10 .
ArrayOfEDT	The ArrayOfEDT complex type is a sequence of 0 or more EDT entries which are described in section 2.2.4.11 .
ArrayOfint	The ArrayOfint complex type represents an array of arbitrary integer values.
ArrayOfNullableOfguid	The ArrayOfNullableOfguid complex type represents an array of arbitrary GUID values.
ArrayOfP	The ArrayOfP complex type is a sequence of 0 or more P entries which are described in section 2.2.4.16 .
ArrayOfstring	The ArrayOfstring complex type represents an array of arbitrary string values.
ArrayOfUserData	The ArrayOfUserData complex type is defined in [MS-UPSCWS] section 2.2.4.5.
E	The E complex type specifies the details of Feed entity .
EC	The EC complex type consists of a pair of feed entity type and a count.
EDT	The EDT complex type specifies a pair of feed entity and date time.
FCCR	The FCCR complex type represents the result of various operations to get feed entries .
FCRE	The FCRE complex type represents the input of various operations to get feed entries.

Complex type	Description
FCRO	The FCRO complex type specifies the retrieval options used by various methods to retrieve the feed entries.
FeedCacheFault	The FeedCacheFault complex type describes errors that have occurred at the transport or the service layer.
P	The P complex type specifies a feed entry.
PC	The PC complex type specifies a sequence of zero or more feed entries as described in section 2.2.4.16 along with associated metadata.
UserData	The UserData complex type is defined in [MS-UPSCWS] section 2.2.4.6.

2.2.4.1 ArrayOfE

Namespace: http://Microsoft/Office/Server/FeedCache

The **ArrayOfE** complex type is a sequence of 0 or more **E** entries which are described in section [2.2.4.9](#).

```
<xs:complexType name="ArrayOfE" xmlns:xs="http://www.w3.org/2001/XMLSchema">
  <xs:sequence>
    <xs:element minOccurs="0" maxOccurs="unbounded" name="E" nillable="true" type="q1:E"/>
  </xs:sequence>
</xs:complexType>
```

E: Feed entity as described in section 2.2.4.9.

2.2.4.2 ArrayOfEC

Namespace: http://Microsoft/Office/Server/FeedCache

The **ArrayOfEC** complex type specifies a sequence of zero or more **EC** entries that are described in section [2.2.4.10](#).

```
<xs:complexType name="ArrayOfEC" xmlns:xs="http://www.w3.org/2001/XMLSchema">
  <xs:sequence>
    <xs:element minOccurs="0" maxOccurs="unbounded" name="EC" nillable="true" type="q1:EC"/>
  </xs:sequence>
</xs:complexType>
```

EC: The EC entry as described in section 2.2.4.10.

2.2.4.3 ArrayOfEDT

Namespace: http://Microsoft/Office/Server/FeedCache

The **ArrayOfEDT** complex type is a sequence of 0 or more **EDT** entries which are described in section [2.2.4.11](#).

```
<xs:complexType name="ArrayOfEDT" xmlns:xs="http://www.w3.org/2001/XMLSchema">
  <xs:sequence>
```

```

    <xs:element minOccurs="0" maxOccurs="unbounded" name="EDT" nillable="true"
type="q1:EDT"/>
  </xs:sequence>
</xs:complexType>

```

EDT: Entity data time pair as described in section 2.2.4.11.

2.2.4.4 ArrayOfint

Namespace: <http://schemas.microsoft.com/2003/10/Serialization/Arrays>

The **ArrayOfint** complex type represents an array of arbitrary integer values.

```

<xs:complexType name="ArrayOfint" xmlns:xs="http://www.w3.org/2001/XMLSchema">
  <xs:sequence>
    <xs:element minOccurs="0" maxOccurs="unbounded" name="int" type="xs:int"/>
  </xs:sequence>
</xs:complexType>

```

int: A single integer value.

2.2.4.5 ArrayOfNullableOfguid

Namespace: <http://schemas.datacontract.org/2004/07/System>

The **ArrayOfNullableOfguid** complex type represents an array of arbitrary GUID values.

```

<xs:complexType name="ArrayOfNullableOfguid" xmlns:xs="http://www.w3.org/2001/XMLSchema">
  <xs:sequence>
    <xs:element minOccurs="0" maxOccurs="unbounded" name="guid" nillable="true"
type="ser:guid"/>
  </xs:sequence>
</xs:complexType>

```

guid: A single GUID value or NULL.

2.2.4.6 ArrayOfP

Namespace: <http://Microsoft/Office/Server/FeedCache>

The **ArrayOfP** complex type is a sequence of 0 or more **P** entries which are described in section [2.2.4.16](#).

```

<xs:complexType name="ArrayOfP" xmlns:xs="http://www.w3.org/2001/XMLSchema">
  <xs:sequence>
    <xs:element minOccurs="0" maxOccurs="unbounded" name="P" nillable="true" type="q1:P"/>
  </xs:sequence>
</xs:complexType>

```

P: Feed entry as described in section 2.2.4.16.

2.2.4.7 ArrayOfstring

Namespace: <http://schemas.microsoft.com/2003/10/Serialization/Arrays>

The **ArrayOfstring** complex type represents an array of arbitrary string values.

```
<xs:complexType name="ArrayOfstring" xmlns:xs="http://www.w3.org/2001/XMLSchema">
  <xs:sequence>
    <xs:element minOccurs="0" maxOccurs="unbounded" name="string" nillable="true"
      type="xs:string"/>
  </xs:sequence>
</xs:complexType>
```

string: A single string value.

2.2.4.8 ArrayOfUserData

Namespace: http://Microsoft/Office/Server/UserProfiles

The **ArrayOfUserData** complex type is defined in [\[MS-UPSCWS\]](#) section 2.2.4.5.

```
<xs:complexType name="ArrayOfUserData" xmlns:xs="http://www.w3.org/2001/XMLSchema">
  <xs:sequence>
    <xs:element minOccurs="0" maxOccurs="unbounded" name="UserData" nillable="true"
      type="q3:UserData"/>
  </xs:sequence>
</xs:complexType>
```

UserData: Defined in [MS-UPSCWS] section 2.2.4.5.

2.2.4.9 E

Namespace: http://Microsoft/Office/Server/FeedCache

The **E** complex type specifies the details of Feed entity.

```
<xs:complexType name="E" xmlns:xs="http://www.w3.org/2001/XMLSchema">
  <xs:sequence>
    <xs:element minOccurs="0" name="ET" type="q1:ET"/>
    <xs:element minOccurs="0" name="LID" type="ser:guid"/>
    <xs:element minOccurs="0" name="PID" type="ser:guid"/>
    <xs:element minOccurs="0" name="SID" type="ser:guid"/>
    <xs:element minOccurs="0" name="Url" nillable="true" type="xs:string"/>
    <xs:element minOccurs="0" name="WID" type="ser:guid"/>
  </xs:sequence>
</xs:complexType>
```

ET: Specifies the type of feed entity as described in section [2.2.5.5](#). The value MUST NOT be null or empty.

LID: Specifies the identifier of the **list** where the entity feed is stored. The value MUST NOT be null or empty.

PID: Specifies the identifier of the **tenant** to which this entity belongs. The value MUST NOT be null or empty.

SID: Specifies the identifier of the **site collection** where the entity feed is stored. The value MUST NOT be null or empty.

Url: Specifies the **Uniform Resource Locator (URL)** of the **site** where the entity feed is stored. The value MUST NOT be null or empty.

WID: Specifies the identifier of the site where the entity feed is stored. The value MUST NOT be null or empty.

2.2.4.10 EC

Namespace: http://Microsoft/Office/Server/FeedCache

The **EC** complex type consists of a pair of feed entity type and a count.

```
<xs:complexType name="EC" xmlns:xs="http://www.w3.org/2001/XMLSchema">
  <xs:sequence>
    <xs:element minOccurs="0" name="C" type="xs:int"/>
    <xs:element minOccurs="0" name="ET" type="q1:ET"/>
  </xs:sequence>
</xs:complexType>
```

C: An integer denoting the count for this particular feed entity type.

ET: A Feed entity type as described in section [2.2.5.5](#).

2.2.4.11 EDT

Namespace: http://Microsoft/Office/Server/FeedCache

The **EDT** complex type specifies a pair of feed entity and date time.

```
<xs:complexType name="EDT" xmlns:xs="http://www.w3.org/2001/XMLSchema">
  <xs:sequence>
    <xs:element minOccurs="0" name="D" type="xs:dateTime"/>
    <xs:element minOccurs="0" name="E" nillable="true" type="q1:E"/>
  </xs:sequence>
</xs:complexType>
```

D: This specifies a date and time value. This value MUST NOT be null.

E: This specifies a feed entity as described in section [2.2.4.9](#). This value MUST NOT be null.

2.2.4.12 FeedCacheFault

Namespace: http://Microsoft/Office/Server/FeedCache

The **FeedCacheFault** complex type describes errors that have occurred at the transport or the service layer.

```
<xs:complexType name="FeedCacheFault" xmlns:xs="http://www.w3.org/2001/XMLSchema">
  <xs:sequence>
    <xs:element minOccurs="0" name="FailureDetail" nillable="true" type="xs:string"/>
    <xs:element minOccurs="0" name="FaultCode" type="q1:FeedCacheFaultCodes"/>
  </xs:sequence>
</xs:complexType>
```

FailureDetail: Specifies an error string. The protocol does not impose any restriction on the behavior of the protocol client with respect to this field.

FaultCode: Specifies an indicator of the error that occurred as described in section [2.2.5.3](#). The protocol does not impose any restriction on the behavior of the protocol client with respect to this field.

2.2.4.13 FCCR

Namespace: http://Microsoft/Office/Server/FeedCache

The **FCCR** complex type represents the result of various operations to get feed entries.

```
<xs:complexType name="FCCR" xmlns:xs="http://www.w3.org/2001/XMLSchema">
  <xs:sequence>
    <xs:element xmlns:q1="http://Microsoft/Office/Server/FeedCache" minOccurs="0" name="EC"
      nillable="true" type="q1:PC"/>
    <xs:element xmlns:q1="http://Microsoft/Office/Server/FeedCache" minOccurs="0" name="FC"
      nillable="true" type="q1:ArrayOfEC"/>
    <xs:element xmlns:q3="http://Microsoft/Office/Server/UserProfiles" minOccurs="0" name="P"
      nillable="true" type="q3:ArrayOfUserData"/>
    <xs:element xmlns:q2="http://schemas.microsoft.com/2003/10/Serialization/Arrays"
      minOccurs="0" name="S" nillable="true" type="q2:ArrayOfstring"/>
    <xs:element xmlns:q5="http://schemas.datacontract.org/2004/07/System" minOccurs="0"
      name="T" nillable="true" type="q5:ArrayOfNullableOfguid"/>
    <xs:element minOccurs="0" name="TN" nillable="true" type="xs:dateTime"/>
    <xs:element minOccurs="0" name="TO" nillable="true" type="xs:dateTime"/>
  </xs:sequence>
</xs:complexType>
```

EC: A feed entry collection as specified in section [2.2.4.17](#).

FC: A list of **EC**. **EC** is specified in section [2.2.4.10](#).

P: An **ArrayOfUserData** of all users who have participated in the entries contained in this returned feed entry collection.

The **ArrayOfUserData** complex type is defined in [\[MS-UPSCWS\]](#) section 2.2.4.5.

S: An **ArrayOfstring** of the identifiers corresponding to the feed identifiers of those Participants in the returned feed entry collection who are also followed by the feed entity provided in the supplied **FCRE**. This collection will be empty if the value of the **FCRE** field **e** as defined in [\[MS-UPSCWS\]](#) section 2.2.4.5 is true.

The **ArrayOfstring** complex type is defined in [\[MS-UPSCWS\]](#) section 2.2.4.5.

T: An **ArrayOfNullableOfguid** containing the list of GUIDs of taxonomy identifiers followed by the querying feed entity provided in the supplied **FCRE**. This collection will be empty if the value of the **FCRE** field **e** as defined in [\[MS-UPSCWS\]](#) section 2.2.4.5 is true.

The **ArrayOfNullableOfguid** complex type is defined in [\[MS-UPSCWS\]](#) section 2.2.4.5.

TN: Specifies a **datetime** value, indicating the last-modified-time of the newest feed cache entry considered when assembling the contents of the **EC** field.

TO: Specifies a **datetime** value, indicating the last-modified-time of the oldest feed cache entry considered when assembling the contents of **EC** field.

2.2.4.14 FCRE

Namespace: http://Microsoft/Office/Server/FeedCache

The **FCRE** complex type represents the input of various operations to get feed entries.

```
<xs:complexType name="FCRE" xmlns:xs="http://www.w3.org/2001/XMLSchema">
  <xs:sequence>
    <xs:element minOccurs="0" name="a" nillable="true" type="q1:E"/>
    <xs:element minOccurs="0" name="b" nillable="true" type="xs:string"/>
  </xs:sequence>
</xs:complexType>
```

```

    <xs:element minOccurs="0" name="c" type="q1:UPL"/>
    <xs:element minOccurs="0" name="d" type="ser:guid"/>
    <xs:element minOccurs="0" name="e" type="xs:boolean"/>
  </xs:sequence>
</xs:complexType>

```

a: The feed entity on behalf of which this operation is being executed. If **b** is present, then this value MUST be ignored.

b: Specifies the string identifier of the feed entity.

c: Specifies how to lookup the feed entity, as specified in section [2.2.5.6](#).

d: A globally unique **partition identifier**.

e: A Boolean field. When true will suppress retrieval of followed feed entity information (people, tags) for the specified feed entity.

2.2.4.15 FCRO

Namespace: <http://Microsoft/Office/Server/FeedCache>

The **FCRO** complex type specifies the retrieval options used by various methods to retrieve the feed entries.

```

<xs:complexType name="FCRO" xmlns:xs="http://www.w3.org/2001/XMLSchema">
  <xs:sequence>
    <xs:element xmlns:q2="http://schemas.microsoft.com/2003/10/Serialization/Arrays"
minOccurs="0" name="a" nillable="true" type="q2:ArrayOfint"/>
    <xs:element minOccurs="0" name="b" type="xs:int"/>
    <xs:element minOccurs="0" name="c" type="xs:boolean"/>
    <xs:element minOccurs="0" name="d" type="xs:int"/>
    <xs:element minOccurs="0" name="e" type="xs:int"/>
    <xs:element minOccurs="0" name="f" type="xs:int"/>
    <xs:element minOccurs="0" name="g" nillable="true" type="xs:dateTime"/>
    <xs:element minOccurs="0" name="h" nillable="true" type="xs:dateTime"/>
    <xs:element minOccurs="0" name="i" type="ser:duration"/>
  </xs:sequence>
</xs:complexType>

```

a: A list of numerical values representing the definition of the entry, which indicates that feed entries will be considered for inclusion in the **FCCR** field **EC**, if this field contains the value of the field **MBD** of the candidate feed entry of complex type **P** as defined in [\[MS-UPSCWS\]](#) section 2.2.4.5 .

b: An integer bitmask field, which indicates that feed entries will be considered for inclusion in the **FCCR** field **EC**, if a bitwise AND of this field, and the value of the field **MBT** of the candidate feed entry of complex type **P** as defined in in [\[MS-UPSCWS\]](#) section 2.2.4.5 has a nonzero result.

c: A Boolean field which, if true, indicates that feed entries will be considered for inclusion in the **FCCR** field **EC**, the value of the field **ST** of the candidate feed entry of complex type **P** as defined in in [\[MS-UPSCWS\]](#) section 2.2.4.5 is nonzero.

d: MaxItemsPerEntity: An integer field indicating the maximum number of feed entries of complex type **P**, as specified in section 2.2.4.5, belonging to a single feed entity to be included in the returned **FCCR** field **EC**.

e: MaxNumberEntities: An integer field indicating the maximum number of feed entities to examine when considering feed entries for inclusion in the returned **FCCR** field **EC**.

f: MaxTotalItems: An integer field indicating the maximum permissible number of feed entries to include in the returned **FCCR** field **EC**.

g: Specifies a **datetime** value, indicating the most recent last-modified-time for a feed cache entry to be considered for inclusion in the **FCCR** field **EC**.

h: Specifies a **datetime** value, indicating the oldest permissible last-modified-time for a feed cache entry to be considered for inclusion in the **FCCR** field **EC**.

i: A **duration** (section [2.2.5.2](#)) object indicating the desired maximum duration permitted for execution of the feed cache for entries meeting the constraints of the **FCRO** for the supplied **FCRE**. Upon detection of queries lasting longer than this time, the query will be terminated, and a partial **FCCR** will be returned, marked as incomplete.

2.2.4.16 P

Namespace: <http://Microsoft/Office/Server/FeedCache>

The **P** complex type specifies a feed entry.

```
<xs:complexType name="P" xmlns:xs="http://www.w3.org/2001/XMLSchema">
  <xs:sequence>
    <xs:element minOccurs="0" name="AD" nillable="true" type="xs:string"/>
    <xs:element minOccurs="0" name="D1" nillable="true" type="xs:string"/>
    <xs:element minOccurs="0" name="D2" nillable="true" type="xs:string"/>
    <xs:element minOccurs="0" name="D3" nillable="true" type="xs:string"/>
    <xs:element minOccurs="0" name="D4" nillable="true" type="xs:string"/>
    <xs:element minOccurs="0" name="DP" nillable="true" type="xs:string"/>
    <xs:element minOccurs="0" name="EID" nillable="true" type="xs:string"/>
    <xs:element minOccurs="0" name="En" nillable="true" type="q1:E"/>
    <xs:element minOccurs="0" name="M" type="xs:dateTime"/>
    <xs:element minOccurs="0" name="MBD" type="xs:int"/>
    <xs:element minOccurs="0" name="MBT" type="xs:int"/>
    <xs:element minOccurs="0" name="PL" nillable="true" type="xs:string"/>
    <xs:element minOccurs="0" name="R1" nillable="true" type="xs:string"/>
    <xs:element minOccurs="0" name="R2" nillable="true" type="xs:string"/>
    <xs:element minOccurs="0" name="R3" type="xs:int"/>
    <xs:element minOccurs="0" name="ST" type="xs:int"/>
  </xs:sequence>
</xs:complexType>
```

AD: Specifies a string value representing author. It is up to the protocol client how to use this field.

D1: Specifies a string value representing entry data. It is up to the protocol client how to use this field.

D2: Specifies a string value representing entry data. It is up to the protocol client how to use this field.

D3: Specifies a string value representing entry data. It is up to the protocol client how to use this field.

D4: Specifies a string value representing entry data. It is up to the protocol client how to use this field.

DP: Specifies a string value representing participant data. It is up to the protocol client how to use this field.

EID: Specifies a unique identifier for this entry. The value **MUST NOT** be null.

En: Specifies the feed entity this entry belongs to as described in section [2.2.4.9](#).

M: Specifies a date and time value in **Coordinated Universal Time (UTC)** when this entry was last modified. The value **MUST NOT** be null.

MBD: Specifies a numerical value representing the definition of the entry. It is up to the protocol client how to use this field.

MBT: Specifies a numerical value representing the type of the entry. It is up to the protocol client how to use this field.

PL: Specifies a string value representing participant data. It is up to the protocol client how to use this field.

R1: Specifies a related feed entity. It is up to the protocol client how to use this field.

R2: Specifies a related feed entry. It is up to the protocol client how to use this field.

R3: Specifies a related feed entity type. It is up to the protocol client how to use this field.

ST: Specifies an integer value representing entry data. It is up to the protocol client how to use this field.

2.2.4.17 PC

Namespace: <http://Microsoft/Office/Server/FeedCache>

The **PC** complex type specifies a sequence of zero or more feed entries as described in section [2.2.4.16](#) along with associated metadata.

```
<xs:complexType name="PC" xmlns:xs="http://www.w3.org/2001/XMLSchema">
  <xs:sequence>
    <xs:element minOccurs="0" name="D" nillable="true" type="q1:ArrayOfEDT"/>
    <xs:element minOccurs="0" name="En" nillable="true" type="q1:ArrayOfP"/>
    <xs:element minOccurs="0" name="I" type="xs:boolean"/>
    <xs:element minOccurs="0" name="M" type="xs:int"/>
    <xs:element minOccurs="0" name="N" nillable="true" type="xs:dateTime"/>
    <xs:element minOccurs="0" name="O" nillable="true" type="xs:dateTime"/>
    <xs:element minOccurs="0" name="R" type="xs:boolean"/>
    <xs:element minOccurs="0" name="S" type="xs:boolean"/>
    <xs:element minOccurs="0" name="T" type="xs:boolean"/>
  </xs:sequence>
</xs:complexType>
```

D: Specifies a sequence of zero or more pairs of feed entities and last deletion time as specified in section [2.2.4.11](#).

En: Specifies the sequence of feed entries as specified in section 2.2.4.16.

I: Specifies if the sequence **En** is incomplete.

M: Specifies the maximum number of feed entries to return for a particular feed entity. The protocol server **MUST NOT** return more entries than this value for any entity.

N: Specifies a **datetime** value. If a value is present, the protocol server **MUST** only return entries having modified time newer than this value.

O: Specifies a datetime value. If a value is present, the protocol server **MUST** only return entries having modified time older than this value.

R: Specifies if the protocol server **MUST** return delete markers.

S: Indicates if the sequence **En** is already sorted.

T: Indicates if the protocol server timed out before retrieving the sequence **En**. True indicates that the protocol server timed out, and false indicates that it did not time out.

2.2.4.18 UserData

Namespace: http://Microsoft/Office/Server/UserProfiles

The **UserData** complex type is defined in [\[MS-UPSCWS\]](#) section 2.2.4.6.

```
<xs:complexType name="UserData" xmlns:xs="http://www.w3.org/2001/XMLSchema">
  <xs:sequence>
    <xs:element minOccurs="0" name="Department" nillable="true" type="xs:string"/>
    <xs:element minOccurs="0" name="Email" nillable="true" type="xs:string"/>
    <xs:element minOccurs="0" name="EmailOptin" type="xs:int"/>
    <xs:element minOccurs="0" name="FeedIdentifier" nillable="true" type="xs:string"/>
    <xs:element minOccurs="0" name="FeedPrivacyActivity" type="xs:int"/>
    <xs:element minOccurs="0" name="IsPeopleListPublic" type="xs:boolean"/>
    <xs:element minOccurs="0" name="LastUpdate" type="xs:dateTime"/>
    <xs:element minOccurs="0" name="MasterRecordID" type="xs:long"/>
    <xs:element minOccurs="0" name="NTName" nillable="true" type="xs:string"/>
    <xs:element minOccurs="0" name="O15FirstRunExperience" type="xs:int"/>
    <xs:element minOccurs="0" name="PartitionID" type="ser:guid"/>
    <xs:element minOccurs="0" name="PersonalSiteCapabilities" type="xs:int"/>
    <xs:element minOccurs="0" name="PersonalSiteInstantiationState" type="xs:int"/>
    <xs:element minOccurs="0" name="PersonalSpace" nillable="true" type="xs:string"/>
    <xs:element minOccurs="0" name="PictureExchangeSyncState" type="xs:int"/>
    <xs:element minOccurs="0" name="PicturePlaceholderState" type="xs:int"/>
    <xs:element minOccurs="0" name="PictureTimestamp" nillable="true" type="xs:string"/>
    <xs:element minOccurs="0" name="PictureUrl" nillable="true" type="xs:string"/>
    <xs:element minOccurs="0" name="PreferredName" nillable="true" type="xs:string"/>
    <xs:element minOccurs="0" name="ProfileSubtypeID" type="xs:int"/>
    <xs:element minOccurs="0" name="RecordID" type="xs:long"/>
    <xs:element minOccurs="0" name="SID" nillable="true" type="xs:base64Binary"/>
    <xs:element minOccurs="0" name="SipAddress" nillable="true" type="xs:string"/>
    <xs:element minOccurs="0" name="StatusNote" nillable="true" type="xs:string"/>
    <xs:element minOccurs="0" name="Title" nillable="true" type="xs:string"/>
    <xs:element minOccurs="0" name="UserID" type="ser:guid"/>
    <xs:element minOccurs="0" name="DelveFlags" type="xs:int"/>
    <xs:element minOccurs="0" name="HideFromAddressLists" type="xs:boolean"/>
    <xs:element minOccurs="0" name="OfficeGraphEnabled" type="xs:boolean"/>
    <xs:element minOccurs="0" name="PersonalSiteFirstCreationError" nillable="true"
type="xs:string"/>
    <xs:element minOccurs="0" name="PersonalSiteFirstCreationTime" type="xs:dateTime"/>
    <xs:element minOccurs="0" name="PersonalSiteLastCreationTime" type="xs:dateTime"/>
    <xs:element minOccurs="0" name="PersonalSiteNumberOfRetries" type="xs:int"/>
    <xs:element minOccurs="0" name="PulseMRUPeople" nillable="true" type="xs:string"/>
    <xs:element minOccurs="0" name="RecipientTypeDetails" type="xs:long"/>
    <xs:element minOccurs="0" name="UserType" type="xs:int"/>
  </xs:sequence>
</xs:complexType>
```

Department: Defined in [\[MS-UPSCWS\]](#) section 2.2.4.6.

Email: Defined in [\[MS-UPSCWS\]](#) section 2.2.4.6.

EmailOptin: Defined in [\[MS-UPSCWS\]](#) section 2.2.4.6.

FeedIdentifier: Defined in [\[MS-UPSCWS\]](#) section 2.2.4.6.

FeedPrivacyActivity: Defined in [\[MS-UPSCWS\]](#) section 2.2.4.6.

IsPeopleListPublic: Defined in [\[MS-UPSCWS\]](#) section 2.2.4.6.

LastUpdate: Defined in [\[MS-UPSCWS\]](#) section 2.2.4.6.

MasterRecordID: Defined in [MS-UPSCWS] section 2.2.4.6.

NTName: Defined in [MS-UPSCWS] section 2.2.4.6.

O15FirstRunExperience: Defined in [MS-UPSCWS] section 2.2.4.6.

PartitionID: Defined in [MS-UPSCWS] section 2.2.4.6.

PersonalSiteCapabilities: Defined in [MS-UPSCWS] section 2.2.4.6.

PersonalSiteInstantiationState: Defined in [MS-UPSCWS] section 2.2.4.6.

PersonalSpace: Defined in [MS-UPSCWS] section 2.2.4.6.

PictureExchangeSyncState: An integer that indicates whether the picture by which the user prefers to be recognized is being imported from the corresponding picture in user's Exchange profile. Valid values are "0" (false) and "1" (true).

PicturePlaceholderState: An integer that indicates whether the picture by which the user prefers to be recognized is the default placeholder image. Valid values are "0" (false) and "1" (true).

PictureTimestamp: The timestamp, in UTC format, of the latest time the picture by which the user prefers to be recognized was updated.

PictureUrl: Defined in [MS-UPSCWS] section 2.2.4.6.

PreferredName: Defined in [MS-UPSCWS] section 2.2.4.6.

ProfileSubtypeID: Defined in [MS-UPSCWS] section 2.2.4.6.

RecordID: Defined in [MS-UPSCWS] section 2.2.4.6.

SID: Defined in [MS-UPSCWS] section 2.2.4.6.

SipAddress: Defined in [MS-UPSCWS] section 2.2.4.6.

StatusNote: Defined in [MS-UPSCWS] section 2.2.4.6.

Title: Defined in [MS-UPSCWS] section 2.2.4.6.

UserID: Defined in [MS-UPSCWS] section 2.2.4.6.

DelveFlags: For internal use only.

HideFromAddressLists: Used to hide user accounts from Delve. Only available for tenants with on-premise AD with DirSync.

OfficeGraphEnabled: For internal use only.

PersonalSiteFirstCreationError: The first error that occurred when an attempt was made to create My Site for that user for the first time.

PersonalSiteFirstCreationTime: Time when an attempt was made to create My Site for that user for the first time.

PersonalSiteLastCreationTime: Time when the last attempt was made to create My Site.

PersonalSiteNumberOfRetries: The number of attempts that were made to create the My Site.

PulseMRUPeople: The list of most recently used people.

RecipientTypeDetails: Used to categorize and filter out non-person accounts in Delve (such as meeting rooms). Only available for tenants with on-premise AD with DirSync.

UserType: Property used to distinguish between guest accounts and other user accounts. Guest accounts are filtered out in Delve.

2.2.5 Simple Types

The following table summarizes the set of common XML schema simple type definitions defined by this specification. XML schema simple type definitions that are specific to a particular operation are described with the operation.

Simple type	Description
char	The char simple type is a Unicode character that is stored in a 4-byte integer.
duration	The duration simple type is the length of time, as specified in [XMLSCHEMA1] and [XMLSCHEMA2] .
ET	The ET simple type specifies the type of Feed entity.
FeedCacheFaultCodes	The FeedCacheFaultCodes simple type describes the errors that have occurred either at the endpoint of this protocol or in the transport layer.
guid	The guid simple type denotes a GUID.
UPL	The UPL simple type specifies how to lookup user profiles .

2.2.5.1 char

Namespace: <http://schemas.microsoft.com/2003/10/Serialization/>

The **char** simple type is a Unicode character that is stored in a 4-byte integer.

```
<xs:simpleType name="char" xmlns:xs="http://www.w3.org/2001/XMLSchema">  
  <xs:restriction base="xs:int"/>  
</xs:simpleType>
```

2.2.5.2 duration

Namespace: <http://schemas.microsoft.com/2003/10/Serialization/>

The **duration** simple type is the length of time, as specified in [\[XMLSCHEMA1\]](#) and [\[XMLSCHEMA2\]](#).

```
<xs:simpleType name="duration" xmlns:xs="http://www.w3.org/2001/XMLSchema">  
  <xs:restriction base="xs:duration">  
    <xs:pattern value="\-?P(\d*D)?(T(\d*H)?(\d*M)?(\d*(\.\d*)?S)?)?"/>  
    <xs:minInclusive value="-P10675199DT2H48M5.4775808S"/>  
    <xs:maxInclusive value="P10675199DT2H48M5.4775807S"/>  
  </xs:restriction>  
</xs:simpleType>
```

2.2.5.3 FeedCacheFaultCodes

Namespace: <http://Microsoft/Office/Server/FeedCache>

The **FeedCacheFaultCodes** simple type describes the errors that have occurred either at the endpoint of this protocol or in the transport layer.

```

<xs:simpleType name="FeedCacheFaultCodes" xmlns:xs="http://www.w3.org/2001/XMLSchema">
  <xs:restriction base="xs:string">
    <xs:enumeration value="UnknownError"/>
    <xs:enumeration value="InvalidInput"/>
    <xs:enumeration value="InvalidConfiguration"/>
  </xs:restriction>
</xs:simpleType>

```

The following table specifies the allowable values for the **FeedCacheFaultCodes** simple type.

Value	Meaning
UnknownError	The error occurred because of unknown reasons.
InvalidInput	The error occurred because of invalid input.
InvalidConfiguration	The error occurred because of a configuration failure.

2.2.5.4 guid

Namespace: <http://schemas.microsoft.com/2003/10/Serialization/>

The **guid** simple type denotes a GUID.

```

<xs:simpleType name="guid" xmlns:xs="http://www.w3.org/2001/XMLSchema">
  <xs:restriction base="xs:string">
    <xs:pattern value="\da-fA-F}{8}-[\da-fA-F]{4}-[\da-fA-F]{4}-[\da-fA-F]{4}-[\da-fA-F]{12}"/>
  </xs:restriction>
</xs:simpleType>

```

2.2.5.5 ET

Namespace: <http://Microsoft/Office/Server/FeedCache>

The **ET** simple type specifies the type of Feed entity.

```

<xs:simpleType name="ET" xmlns:xs="http://www.w3.org/2001/XMLSchema">
  <xs:list>
    <xs:simpleType>
      <xs:restriction base="xs:string">
        <xs:enumeration value="Unknow"/>
        <xs:enumeration value="User"/>
        <xs:enumeration value="Document"/>
        <xs:enumeration value="Site"/>
        <xs:enumeration value="Tag"/>
        <xs:enumeration value="Group"/>
      </xs:restriction>
    </xs:simpleType>
  </xs:list>
</xs:simpleType>

```

The following table specifies the allowable values for the **ET** simple type.

Value	Meaning
Unknown	The type of the Feed entity is not known.
User	The Feed entity is of type user and is associated with a user profile.
Document	The Feed entity is of type document .
Site	The Feed entity is of type site.
Tag	The Feed entity is of type social tag .
Group	This Feed entity MUST NOT be used.

2.2.5.6 UPL

Namespace: http://Microsoft/Office/Server/FeedCache

The **UPL** simple type specifies how to lookup user profiles.

```
<xs:simpleType name="UPL" xmlns:xs="http://www.w3.org/2001/XMLSchema">
  <xs:restriction base="xs:string">
    <xs:enumeration value="ByEmail"/>
    <xs:enumeration value="ByAccountName"/>
    <xs:enumeration value="BySid"/>
  </xs:restriction>
</xs:simpleType>
```

The following table specifies the allowable values for the **UPL** simple type.

Value	Meaning
ByEmail	Lookup by email address .
ByAccountName	Lookup by login name .
BySid	Lookup by security identifier (SID) .

2.2.6 Attributes

This specification does not define any common XML schema attribute definitions.

2.2.7 Groups

This specification does not define any common XML schema group definitions.

2.2.8 Attribute Groups

This specification does not define any common XML schema attribute group definitions.

3 Protocol Details

The client side of this protocol is simply a pass-through. That is, no additional timers or other state is required on the client side of this protocol. Calls that are made by the higher-layer protocol or application are passed directly to the transport, and the results that are returned by the transport are passed directly to the higher-layer protocol or application.

Except where specified, protocol clients SHOULD interpret Hypertext Transfer Protocol (HTTP) status codes that are returned by the protocol server as specified in [RFC2616], section 10.

This protocol allows protocol servers to notify protocol clients of application-level faults by using SOAP faults. Except where otherwise specified, these SOAP faults are not significant for interoperability and protocol clients can interpret them in an implementation-specific manner.

This protocol allows protocol servers to perform implementation-specific authorization checks and to notify protocol clients of authorization faults by using either HTTP status codes or SOAP faults, as specified previously in this section.

3.1 Server Details

This protocol is based on stateless interaction between the protocol client and protocol server. The protocol simply exposes the current configuration state of the **User Profile Service** to all authenticated **user objects**. There are no dependencies between the information sent in one client-server request/response pair and the next pair; all dependencies are based on the current state of the application service. They are specified in the following figure.

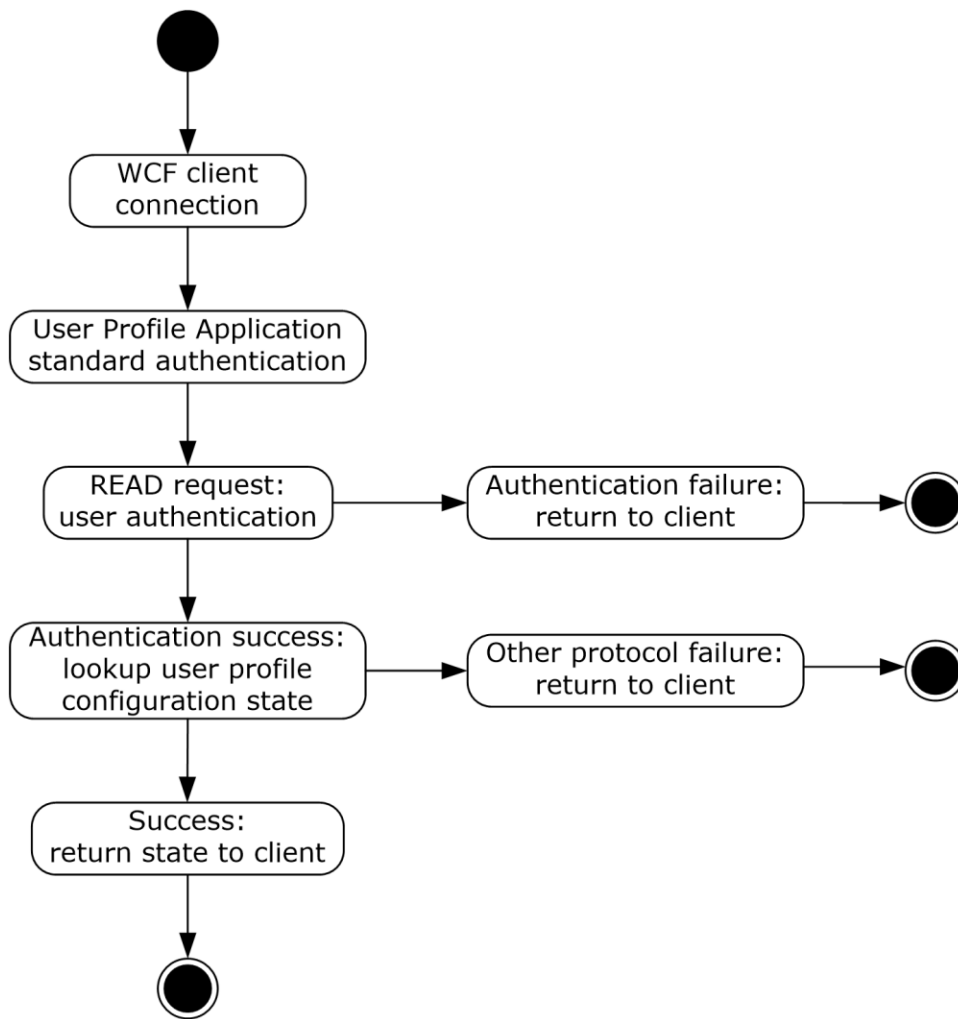


Figure 2: State dependencies of the application service

The User Profile Service uses authentication mechanisms that are standard for **Web services** and SOAP.

3.1.1 Abstract Data Model

This section describes a conceptual model of possible data organization that an implementation maintains to participate in this protocol. The described organization is provided to facilitate the explanation of how the protocol behaves. This document does not mandate that implementations adhere to this model as long as their external behavior is consistent with that described in this document.

This protocol allows protocol clients to store feed data and later retrieve it in various ways. The protocol server needs to maintain the state between each of the operations as described in section [3.1.4](#).

The protocol server needs to keep track of:

Feed entries: The protocol server needs to see how many feed entries have been added using the operations described in section 3.1.4. It also needs to track which feed entry corresponds to which feed entity. It is up to the protocol server how long it keeps track of this information.

Feed entity **followed status**: The protocol server also needs to keep track if a given entity has been marked as followed using the operations described in section 3.1.4. It is up to the protocol server how long it keeps track of this information.

LMT repopulation needed: The protocol server needs to keep track of whether last modified time repopulation is required for any given protocol client. It is up to the protocol server how long it keeps track of this information.

3.1.2 Timers

None.

3.1.3 Initialization

None.

3.1.4 Message Processing Events and Sequencing Rules

The following table summarizes the list of operations as defined by this specification.

Operation	Description
AddFeedEntries	This WSDL operation helps in adding multiple feed entries.
AddFeedEntriesForRepop	This WSDL operation helps in adding multiple feed entries.
AddFeedEntry	This WSDL operation adds a feed entry for a given feed entity.
BulkLMTUpdate	This WSDL operation updates the last modified times of a number of feed entities.
GetCategoricalFeed	This WSDL operation retrieves up to 100 recently modified feed entries from the provided feed entities.
GetConsolidatedFeed	This WSDL operation retrieves specified feed entries from the provided feed entities.
GetEntries	This WSDL operation lets a protocol client query feed entries given their feed entry identifiers.
GetFeeds	This WSDL operation lets the protocol client to get feed entries from the specified feed entities.
GetPublishedFeed	This WSDL operation lets a protocol client retrieve the published feed entries for a specific feed entity.
IsEntityActivelyFollowed	This WSDL operation checks if a given feed entity has earlier been marked as followed.
IsRepopulationNeeded	This WSDL operation lets a protocol client know if last modified time repopulation is needed.
NewEntityFollower	This WSDL operation lets a protocol client mark a given feed entity as being actively followed.
RefreshFollowedEntities	This WSDL operation lets a protocol client mark a number of feed entities as followed.
RemoveEntityFeed	This WSDL operation is used to remove all the feed entries of a given feed entity.
RemoveFeedEntry	This WSDL operation removes a given feed entry from a given feed entity.

Operation	Description
RemoveInternalRegions	This WSDL operation removes some internal data structure. This operation MUST NOT be called by any protocol client.

3.1.4.1 AddFeedEntry

This WSDL operation adds a feed entry for a given feed entity.

The following is the WSDL port type specification of the **AddFeedEntry** WSDL operation.

```
<wsdl:operation name="AddFeedEntry" xmlns:wsdl="http://schemas.xmlsoap.org/wsdl/">
  <wsdl:input wsaw:Action="http://Microsoft.Office.Server.UserProfiles/AddFeedEntry"
    message="tns:IFeedCacheService_AddFeedEntry_InputMessage"
    xmlns:wsaw="http://www.w3.org/2006/05/addressing/wsdl"/>
  <wsdl:output wsaw:Action="http://tempuri.org/IFeedCacheService/AddFeedEntryResponse"
    message="tns:IFeedCacheService_AddFeedEntry_OutputMessage"
    xmlns:wsaw="http://www.w3.org/2006/05/addressing/wsdl"/>
  <wsdl:fault
    wsaw:Action="http://tempuri.org/IFeedCacheService/AddFeedEntryFeedCacheFaultFault"
    name="FeedCacheFaultFault"
    message="tns:IFeedCacheService_AddFeedEntry_FeedCacheFaultFault_FaultMessage"
    xmlns:wsaw="http://www.w3.org/2006/05/addressing/wsdl"/>
</wsdl:operation>
```

AddFeedEntry adds a feed entry to a feed entity. The entries can later be retrieved by the retrieval operations as described in section [3.1.4.4](#), section [3.1.4.3](#), section [3.1.4.5](#), section [3.1.4.6](#), and section [3.1.4.7](#). The feed entry can also be removed as described in section [3.1.4.12](#), and section [3.1.4.13](#).

3.1.4.1.1 Messages

The following table summarizes the set of WSDL message definitions that are specific to this operation.

Message	Description
IFeedCacheService_AddFeedEntry_InputMessage	The request WSDL message for the AddFeedEntry WSDL operation.
IFeedCacheService_AddFeedEntry_OutputMessage	The response WSDL message for the AddFeedEntry WSDL operation.

3.1.4.1.1.1 IFeedCacheService_AddFeedEntry_InputMessage

The request WSDL message for the **AddFeedEntry** WSDL operation.

The **SOAP action** value is:

```
http://Microsoft.Office.Server.UserProfiles/AddFeedEntry
```

The **SOAP body** contains the **AddFeedEntry** element.

3.1.4.1.1.2 IFeedCacheService_AddFeedEntry_OutputMessage

The response WSDL message for the **AddFeedEntry** WSDL operation.

The SOAP body contains the **AddFeedEntryResponse** element.

3.1.4.1.2 Elements

The following table summarizes the XML schema element definitions that are specific to this operation.

Element	Description
AddFeedEntry	The input data for the AddFeedEntry WSDL operation.
AddFeedEntryResponse	The result data for the AddFeedEntry WSDL operation.

3.1.4.1.2.1 AddFeedEntry

The **AddFeedEntry** element specifies the input data for the **AddFeedEntry** WSDL operation.

```
<xs:element name="AddFeedEntry" xmlns:xs="http://www.w3.org/2001/XMLSchema">
  <xs:complexType>
    <xs:sequence>
      <xs:element xmlns:q1="http://Microsoft/Office/Server/FeedCache" minOccurs="0"
name="entity" nillable="true" type="q1:E"/>
      <xs:element xmlns:q1="http://Microsoft/Office/Server/FeedCache" minOccurs="0"
name="entry" nillable="true" type="q1:P"/>
    </xs:sequence>
  </xs:complexType>
</xs:element>
```

entity: The feed entity to which this feed entry is to be added.

entry: The feed entry to be added.

3.1.4.1.2.2 AddFeedEntryResponse

The **AddFeedEntryResponse** element specifies the result data for the **AddFeedEntry** WSDL operation.

```
<xs:element name="AddFeedEntryResponse" xmlns:xs="http://www.w3.org/2001/XMLSchema">
  <xs:complexType>
    <xs:sequence>
      <xs:element minOccurs="0" name="AddFeedEntryResult" type="xs:boolean"/>
    </xs:sequence>
  </xs:complexType>
</xs:element>
```

AddFeedEntryResult: A Boolean value that indicates whether the operation succeeded or failed.

3.1.4.1.3 Complex Types

None.

3.1.4.1.4 Simple Types

None.

3.1.4.1.5 Attributes

None.

3.1.4.1.6 Groups

None.

3.1.4.1.7 Attribute Groups

None.

3.1.4.2 BulkLMTUpdate

This WSDL operation updates the last modified times of a number of feed entities.

The following is the WSDL port type specification of the **BulkLMTUpdate** WSDL operation.

```
<wsdl:operation name="BulkLMTUpdate" xmlns:wsdl="http://schemas.xmlsoap.org/wsdl/">
  <wsdl:input wsaw:Action="http://Microsoft.Office.Server.UserProfiles/BulkLMTUpdate"
message="tns:IFeedCacheService_BulkLMTUpdate_InputMessage"
xmlns:wsaw="http://www.w3.org/2006/05/addressing/wsdl"/>
  <wsdl:output wsaw:Action="http://tempuri.org/IFeedCacheService/BulkLMTUpdateResponse"
message="tns:IFeedCacheService_BulkLMTUpdate_OutputMessage"
xmlns:wsaw="http://www.w3.org/2006/05/addressing/wsdl"/>
  <wsdl:fault
wsaw:Action="http://tempuri.org/IFeedCacheService/BulkLMTUpdateFeedCacheFaultFault"
name="FeedCacheFaultFault"
message="tns:IFeedCacheService_BulkLMTUpdate_FeedCacheFaultFault_FaultMessage"
xmlns:wsaw="http://www.w3.org/2006/05/addressing/wsdl"/>
</wsdl:operation>
```

This operation helps update the last modified times of feed entities. This operation is used in conjunction with **IsRepopulationNeeded** as outlined in section [3.1.4.9](#). If **IsRepopulationNeeded** returns true, the protocol client can use this operation to update the last modified times.

3.1.4.2.1 Messages

The following table summarizes the set of WSDL message definitions that are specific to this operation.

Message	Description
IFeedCacheService_BulkLMTUpdate_InputMessage	The request WSDL message for the BulkLMTUpdate WSDL operation.
IFeedCacheService_BulkLMTUpdate_OutputMessage	The response WSDL message for the BulkLMTUpdate WSDL operation.

3.1.4.2.1.1 IFeedCacheService_BulkLMTUpdate_InputMessage

The request WSDL message for the **BulkLMTUpdate** WSDL operation.

The SOAP action value is:

http://Microsoft.Office.Server.UserProfiles/BulkLMTUpdate

The SOAP body contains the **BulkLMTUpdate** element.

3.1.4.2.1.2 IFeedCacheService_BulkLMTUpdate_OutputMessage

The response WSDL message for the **BulkLMTUpdate** WSDL operation.

The SOAP body contains the **BulkLMTUpdateResponse** element.

3.1.4.2.2 Elements

The following table summarizes the XML schema element definitions that are specific to this operation.

Element	Description
BulkLMTUpdate	The input data for the BulkLMTUpdate WSDL operation.
BulkLMTUpdateResponse	The result data for the BulkLMTUpdate WSDL operation.

3.1.4.2.2.1 BulkLMTUpdate

The **BulkLMTUpdate** element specifies the input data for the **BulkLMTUpdate** WSDL operation.

```
<xs:element name="BulkLMTUpdate" xmlns:xs="http://www.w3.org/2001/XMLSchema">
  <xs:complexType>
    <xs:sequence>
      <xs:element xmlns:ser="http://schemas.microsoft.com/2003/10/Serialization/"
        minOccurs="0" name="callerID" type="ser:guid"/>
      <xs:element
        xmlns:tns2="http://schemas.datacontract.org/2004/07/System.Collections.Generic" minOccurs="0"
        name="lastModifiedTimes" nillable="true" type="tns2:ArrayOfKeyValuePairOfELEHsv_S1RZJ"/>
    </xs:sequence>
  </xs:complexType>
</xs:element>
```

callerID: The identifier for the protocol client. This value MUST NOT be null or empty.

lastModifiedTimes: Specifies the list of feed entries and their associated last modified time as specified in section [3.1.4.2.3.1](#).

3.1.4.2.2.2 BulkLMTUpdateResponse

The **BulkLMTUpdateResponse** element specifies the result data for the **BulkLMTUpdate** WSDL operation.

```
<xs:element name="BulkLMTUpdateResponse" xmlns:xs="http://www.w3.org/2001/XMLSchema">
  <xs:complexType>
    <xs:sequence>
      <xs:element minOccurs="0" name="BulkLMTUpdateResult" type="xs:boolean"/>
    </xs:sequence>
  </xs:complexType>
</xs:element>
```

BulkLMTUpdateResult: A Boolean value that indicates whether the operation succeeded or failed.

3.1.4.2.3 Complex Types

The following table summarizes the XML schema complex type definitions that are specific to this operation.

Complex type	Description
ArrayOfKeyValuePairOfELEHsv_SIRZJ	Contains zero or more KeyValuePairOfELEHsv_SIRZJ objects.
KeyValuePairOfELEHsv_SIRZJ	A key value pair of feed entity and the last time it was modified.
LE	Represents the last modified time data of a given feed entity.

3.1.4.2.3.1 ArrayOfKeyValuePairOfELEHsv_SIRZJ

Namespace: <http://schemas.datacontract.org/2004/07/System.Collections.Generic>

This complex type contains zero or more **KeyValuePairOfELEHsv_SIRZJ** objects.

```
<xs:complexType name="ArrayOfKeyValuePairOfELEHsv_S1RZJ"
xmlns:xs="http://www.w3.org/2001/XMLSchema">
  <xs:sequence>
    <xs:element minOccurs="0" maxOccurs="unbounded" name="KeyValuePairOfELEHsv_S1RZJ"
type="tns2:KeyValuePairOfELEHsv_S1RZJ"/>
  </xs:sequence>
</xs:complexType>
```

KeyValuePairOfELEHsv_SIRZJ: Specifies the key value pair of entity and last modified time as detailed in section [3.1.4.2.3.2](#).

3.1.4.2.3.2 KeyValuePairOfELEHsv_SIRZJ

Namespace: <http://schemas.datacontract.org/2004/07/System.Collections.Generic>

This complex type is a key value pair of feed entity and the last time it was modified.

```
<xs:complexType name="KeyValuePairOfELEHsv_S1RZJ"
xmlns:xs="http://www.w3.org/2001/XMLSchema">
  <xs:sequence>
    <xs:element xmlns:q1="http://Microsoft/Office/Server/FeedCache" name="key"
nillable="true" type="q1:E"/>
    <xs:element xmlns:q1="http://Microsoft/Office/Server/FeedCache" name="value"
nillable="true" type="q1:LE"/>
  </xs:sequence>
</xs:complexType>
```

key: Specifies the feed entity.

value: Specifies the last modified data as specified in section [3.1.4.2.3.3](#).

3.1.4.2.3.3 LE

Namespace: <http://Microsoft/Office/Server/FeedCache>

This complex type represents the last modified time data of a given feed entity.

```
<xs:complexType name="LE" xmlns:xs="http://www.w3.org/2001/XMLSchema">
```

```

<xs:sequence>
  <xs:element minOccurs="0" name="b" type="xs:unsignedLong"/>
  <xs:element minOccurs="0" name="c" type="xs:unsignedShort"/>
  <xs:element minOccurs="0" name="r" type="xs:long"/>
  <xs:element minOccurs="0" name="t" type="xs:long"/>
</xs:sequence>
</xs:complexType>

```

b: This value MUST be ZERO (0).

c: This value MUST be ZERO (0).

r: This value MUST be null.

t: This MUST contain the last time this feed entity was modified.

3.1.4.2.4 Simple Types

None.

3.1.4.2.5 Attributes

None.

3.1.4.2.6 Groups

None.

3.1.4.2.7 Attribute Groups

None.

3.1.4.3 GetCategoricalFeed

This WSDL operation retrieves up to 100 recently modified feed entries from the provided feed entities.

The following is the WSDL port type specification of the **GetCategoricalFeed** WSDL operation.

```

<wsdl:operation name="GetCategoricalFeed" xmlns:wsdl="http://schemas.xmlsoap.org/wsdl/">
  <wsdl:input wsaw:Action="http://Microsoft.Office.Server.UserProfiles/GetCategoricalFeed"
    message="tns:IFeedCacheService_GetCategoricalFeed_InputMessage"
    xmlns:wsaw="http://www.w3.org/2006/05/addressing/wsdl"/>
  <wsdl:output wsaw:Action="http://tempuri.org/IFeedCacheService/GetCategoricalFeedResponse"
    message="tns:IFeedCacheService_GetCategoricalFeed_OutputMessage"
    xmlns:wsaw="http://www.w3.org/2006/05/addressing/wsdl"/>
  <wsdl:fault
    wsaw:Action="http://tempuri.org/IFeedCacheService/GetCategoricalFeedFeedCacheFaultFault"
    name="FeedCacheFaultFault"
    message="tns:IFeedCacheService_GetCategoricalFeed_FeedCacheFaultFault_FaultMessage"
    xmlns:wsaw="http://www.w3.org/2006/05/addressing/wsdl"/>
</wsdl:operation>

```

3.1.4.3.1 Messages

The following table summarizes the set of WSDL message definitions that are specific to this operation.

Message	Description
IFeedCacheService_GetCategoricalFeed_InputMessage	The request WSDL message for the GetCategoricalFeed WSDL operation.
IFeedCacheService_GetCategoricalFeed_OutputMessage	The response WSDL message for the GetCategoricalFeed WSDL operation.

3.1.4.3.1.1 IFeedCacheService_GetCategoricalFeed_InputMessage

The request WSDL message for the **GetCategoricalFeed** WSDL operation.

The SOAP action value is:

```
http://Microsoft.Office.Server.UserProfiles/GetCategoricalFeed
```

The SOAP body contains the **GetCategoricalFeed** element.

3.1.4.3.1.2 IFeedCacheService_GetCategoricalFeed_OutputMessage

The response WSDL message for the **GetCategoricalFeed** WSDL operation.

The SOAP body contains the **GetCategoricalFeedResponse** element.

3.1.4.3.2 Elements

The following table summarizes the XML schema element definitions that are specific to this operation.

Element	Description
GetCategoricalFeed	The input data for the GetCategoricalFeed WSDL operation.
GetCategoricalFeedResponse	The result data for the GetCategoricalFeed WSDL operation.

3.1.4.3.2.1 GetCategoricalFeed

The **GetCategoricalFeed** element specifies the input data for the **GetCategoricalFeed** WSDL operation.

```
<xs:element name="GetCategoricalFeed" xmlns:xs="http://www.w3.org/2001/XMLSchema">
  <xs:complexType>
    <xs:sequence>
      <xs:element xmlns:q1="http://Microsoft/Office/Server/FeedCache" minOccurs="0"
name="fcRetEntity" nillable="true" type="q1:FCRE"/>
      <xs:element xmlns:q1="http://Microsoft/Office/Server/FeedCache" minOccurs="0"
name="followedEntities" nillable="true" type="q1:ArrayOfE"/>
      <xs:element xmlns:q1="http://Microsoft/Office/Server/FeedCache" minOccurs="0"
name="fcRetOptions" nillable="true" type="q1:FCRO"/>
    </xs:sequence>
  </xs:complexType>
</xs:element>
```

fcRetEntity: Element of type **FCRE** as describe in section [2.2.4.14](#).

followedEntities: The feed entities whose feed entries are to be retrieved.

fcRetOptions: Element of type **FCRO** as describe in section [2.2.4.15](#).

3.1.4.3.2.2 GetCategoricalFeedResponse

The **GetCategoricalFeedResponse** element specifies the result data for the **GetCategoricalFeed** WSDL operation.

```
<xs:element name="GetCategoricalFeedResponse" xmlns:xs="http://www.w3.org/2001/XMLSchema">
  <xs:complexType>
    <xs:sequence>
      <xs:element xmlns:tns1="http://Microsoft/Office/Server/FeedyCache" minOccurs="0"
name="GetCategoricalFeedResult" nillable="true" type="tns1:FCCR"/>
    </xs:sequence>
  </xs:complexType>
</xs:element>
```

GetCategoricalFeedResult: Element of type **PC** as described in section [2.2.4.17](#).

3.1.4.3.3 Complex Types

None.

3.1.4.3.4 Simple Types

None.

3.1.4.3.5 Attributes

None.

3.1.4.3.6 Groups

None.

3.1.4.3.7 Attribute Groups

None.

3.1.4.4 GetConsolidatedFeed

This WSDL operation retrieves specified feed entries from the provided feed entities.

The following is the WSDL port type specification of the **GetConsolidatedFeed** WSDL operation.

```
<wsdl:operation name="GetConsolidatedFeed" xmlns:wsdl="http://schemas.xmlsoap.org/wsdl/">
  <wsdl:input wsaw:Action="http://Microsoft.Office.Server.UserProfiles/GetConsolidatedFeed"
message="tns:IFeedCacheService_GetConsolidatedFeed_InputMessage"
xmlns:wsaw="http://www.w3.org/2006/05/addressing/wsdl"/>
  <wsdl:output wsaw:Action="http://tempuri.org/IFeedCacheService/GetConsolidatedFeedResponse"
message="tns:IFeedCacheService_GetConsolidatedFeed_OutputMessage"
xmlns:wsaw="http://www.w3.org/2006/05/addressing/wsdl"/>
  <wsdl:fault
wsaw:Action="http://tempuri.org/IFeedCacheService/GetConsolidatedFeedFeedCacheFaultFault"
name="FeedCacheFaultFault"
message="tns:IFeedCacheService_GetConsolidatedFeed_FeedCacheFaultFault_FaultMessage"
xmlns:wsaw="http://www.w3.org/2006/05/addressing/wsdl"/>
</wsdl:operation>
```

3.1.4.4.1 Messages

The following table summarizes the set of WSDL message definitions that are specific to this operation.

Message	Description
IFeedCacheService_GetConsolidatedFeed_InputMessage	The request WSDL message for the GetConsolidatedFeed WSDL operation.
IFeedCacheService_GetConsolidatedFeed_OutputMessage	The response WSDL message for the GetConsolidatedFeed WSDL operation.

3.1.4.4.1.1 IFeedCacheService_GetConsolidatedFeed_InputMessage

The request WSDL message for the **GetConsolidatedFeed** WSDL operation.

The SOAP action value is:

```
http://Microsoft.Office.Server.UserProfiles/GetConsolidatedFeed
```

The SOAP body contains the **GetConsolidatedFeed** element.

3.1.4.4.1.2 IFeedCacheService_GetConsolidatedFeed_OutputMessage

The response WSDL message for the **GetConsolidatedFeed** WSDL operation.

The SOAP body contains the **GetConsolidatedFeedResponse** element.

3.1.4.4.2 Elements

The following table summarizes the XML schema element definitions that are specific to this operation.

Element	Description
GetConsolidatedFeed	The input data for the GetConsolidatedFeed WSDL operation.
GetConsolidatedFeedResponse	The result data for the GetConsolidatedFeed WSDL operation.

3.1.4.4.2.1 GetConsolidatedFeed

The **GetConsolidatedFeed** element specifies the input data for the **GetConsolidatedFeed** WSDL operation.

```
<xs:element name="GetConsolidatedFeed" xmlns:xs="http://www.w3.org/2001/XMLSchema">
  <xs:complexType>
    <xs:sequence>
      <xs:element xmlns:q1="http://Microsoft/Office/Server/FeedCache" minOccurs="0"
name="fcRetEntity" nillable="true" type="q1:FCRE"/>
      <xs:element xmlns:q1="http://Microsoft/Office/Server/FeedCache" minOccurs="0"
name="followedEntities" nillable="true" type="q1:ArrayOfE"/>
      <xs:element xmlns:q1="http://Microsoft/Office/Server/FeedCache" minOccurs="0"
name="fcRetOptions" nillable="true" type="q1:FCRO"/>
    </xs:sequence>
  </xs:complexType>
</xs:element>
```

```
</xs:element>
```

fcRetEntity: Element of type **FCRE** as describe in section [2.2.4.14](#).

followedEntities: The feed entities whose feed entries are to be retrieved.

fcRetOptions: Element of type **FCRO** as describe in section [2.2.4.15](#).

3.1.4.4.2 GetConsolidatedFeedResponse

The **GetConsolidatedFeedResponse** element specifies the result data for the **GetConsolidatedFeed** WSDL operation.

```
<xs:element name="GetConsolidatedFeedResponse" xmlns:xs="http://www.w3.org/2001/XMLSchema">
  <xs:complexType>
    <xs:sequence>
      <xs:element xmlns:tnsl="http://Microsoft/Office/Server/FeedyCache" minOccurs="0"
name="GetConsolidatedFeedResult" nillable="true" type="tnsl:FCCR"/>
    </xs:sequence>
  </xs:complexType>
</xs:element>
```

GetConsolidatedFeedResult: Element of type **PC** as described in section [2.2.4.17](#).

3.1.4.4.3 Complex Types

None.

3.1.4.4.4 Simple Types

None.

3.1.4.4.5 Attributes

None.

3.1.4.4.6 Groups

None.

3.1.4.4.7 Attribute Groups

None.

3.1.4.5 GetEntries

This WSDL operation lets a protocol client query feed entries given their feed entry identifiers.

The following is the WSDL port type specification of the **GetEntries** WSDL operation.

```
<wsdl:operation name="GetEntries" xmlns:wsdl="http://schemas.xmlsoap.org/wsdl/">
  <wsdl:input wsaw:Action="http://Microsoft.Office.Server.UserProfiles/GetThreadEntries"
message="tns:IFeedCacheService_GetEntries_InputMessage"
xmlns:wsaw="http://www.w3.org/2006/05/addressing/wsdl"/>
  <wsdl:output wsaw:Action="http://tempuri.org/IFeedCacheService/GetEntriesResponse"
message="tns:IFeedCacheService_GetEntries_OutputMessage"
xmlns:wsaw="http://www.w3.org/2006/05/addressing/wsdl"/>
</wsdl:operation>
```



```

    <wsdl:fault
      wsaw:Action="http://tempuri.org/IFeedCacheService/GetEntriesFeedCacheFaultFault"
      name="FeedCacheFaultFault"
      message="tns:IFeedCacheService_GetEntries_FeedCacheFaultFault_FaultMessage"
      xmlns:wsaw="http://www.w3.org/2006/05/addressing/wsdl"/>
  </wsdl:operation>

```

3.1.4.5.1 Messages

The following table summarizes the set of WSDL message definitions that are specific to this operation.

Message	Description
IFeedCacheService_GetEntries_InputMessage	The request WSDL message for the GetEntries WSDL operation.
IFeedCacheService_GetEntries_OutputMessage	The response WSDL message for the GetEntries WSDL operation.

3.1.4.5.1.1 IFeedCacheService_GetEntries_InputMessage

The request WSDL message for the **GetEntries** WSDL operation.

The SOAP action value is:

```
http://Microsoft.Office.Server.UserProfiles/GetThreadEntries
```

The SOAP body contains the **GetEntries** element.

3.1.4.5.1.2 IFeedCacheService_GetEntries_OutputMessage

The response WSDL message for the **GetEntries** WSDL operation.

The SOAP body contains the **GetEntriesResponse** element.

3.1.4.5.2 Elements

The following table summarizes the XML schema element definitions that are specific to this operation.

Element	Description
GetEntries	The input data for the GetEntries WSDL operation.
GetEntriesResponse	The result data for the GetEntries WSDL operation.

3.1.4.5.2.1 GetEntries

The **GetEntries** element specifies the input data for the **GetEntries** WSDL operation.

```

<xs:element name="GetEntries" xmlns:xs="http://www.w3.org/2001/XMLSchema">
  <xs:complexType>
    <xs:sequence>

```

```

        <xs:element xmlns:q1="http://Microsoft/Office/Server/FeedCache" minOccurs="0"
name="entryIdentifiers" nillable="true" type="q1:ArrayOfPI"/>
    </xs:sequence>
</xs:complexType>
</xs:element>

```

entryIdentifiers: Array of entry identifiers as specified in section [3.1.4.5.3.1](#).

3.1.4.5.2.2 GetEntriesResponse

The **GetEntriesResponse** element specifies the result data for the **GetEntries** WSDL operation.

```

<xs:element name="GetEntriesResponse" xmlns:xs="http://www.w3.org/2001/XMLSchema">
  <xs:complexType>
    <xs:sequence>
      <xs:element xmlns:q1="http://Microsoft/Office/Server/FeedCache" minOccurs="0"
name="GetEntriesResult" nillable="true" type="q1:PC"/>
    </xs:sequence>
  </xs:complexType>
</xs:element>

```

GetEntriesResult: Element of type **PC** as described in section [2.2.4.17](#).

3.1.4.5.3 Complex Types

The following table summarizes the XML schema complex type definitions that are specific to this operation.

Complex type	Description
ArrayOfPI	A sequence of zero or more elements of type PI .
PI	A pair of feed entity and the associated feed entry identifiers.

3.1.4.5.3.1 ArrayOfPI

Namespace: http://Microsoft/Office/Server/FeedCache

The complex type **ArrayOfPI** is a sequence of zero or more elements of type **PI**.

```

<xs:complexType name="ArrayOfPI" xmlns:xs="http://www.w3.org/2001/XMLSchema">
  <xs:sequence>
    <xs:element minOccurs="0" maxOccurs="unbounded" name="PI" nillable="true" type="q1:PI"/>
  </xs:sequence>
</xs:complexType>

```

PI: A pair of feed entity and feed entry identifiers as specified in section [3.1.4.5.3.2](#).

3.1.4.5.3.2 PI

Namespace: http://Microsoft/Office/Server/FeedCache

The complex type **PI** is actually a pair of feed entity and the associated feed entry identifiers.

```

<xs:complexType name="PI" xmlns:xs="http://www.w3.org/2001/XMLSchema">

```

```

<xs:sequence>
  <xs:element minOccurs="0" name="E" nillable="true" type="q1:E"/>
  <xs:element xmlns:q2="http://schemas.microsoft.com/2003/10/Serialization/Arrays"
minOccurs="0" name="I" nillable="true" type="q2:ArrayOfstring"/>
</xs:sequence>
</xs:complexType>

```

E: Specifies the feed entity.

I: A sequence of zero (0) or more feed entry identifiers.

3.1.4.5.4 Simple Types

None.

3.1.4.5.5 Attributes

None.

3.1.4.5.6 Groups

None.

3.1.4.5.7 Attribute Groups

None.

3.1.4.6 GetFeeds

This WSDL operation lets the protocol client to get feed entries from the specified feed entities.

The following is the WSDL port type specification of the **GetFeeds** WSDL operation.

```

<wsdl:operation name="GetFeeds" xmlns:wsdl="http://schemas.xmlsoap.org/wsdl/">
  <wsdl:input wsaw:Action="http://Microsoft.Office.Server.UserProfiles/GetFeeds"
message="tns:IFeedCacheService_GetFeeds_InputMessage"
xmlns:wsaw="http://www.w3.org/2006/05/addressing/wsdl"/>
  <wsdl:output wsaw:Action="http://tempuri.org/IFeedCacheService/GetFeedsResponse"
message="tns:IFeedCacheService_GetFeeds_OutputMessage"
xmlns:wsaw="http://www.w3.org/2006/05/addressing/wsdl"/>
  <wsdl:fault wsaw:Action="http://tempuri.org/IFeedCacheService/GetFeedsFeedCacheFaultFault"
name="FeedCacheFaultFault"
message="tns:IFeedCacheService_GetFeeds_FeedCacheFaultFault_FaultMessage"
xmlns:wsaw="http://www.w3.org/2006/05/addressing/wsdl"/>
</wsdl:operation>

```

This operation helps retrieve feed entries for a number of feed entities in one call. One possible use of this is to transfer data between two protocol servers.

3.1.4.6.1 Messages

The following table summarizes the set of WSDL message definitions that are specific to this operation.

Message	Description
IFeedCacheService_GetFeeds_InputMessage	The request WSDL message for the GetFeeds WSDL operation.

Message	Description
IFeedCacheService_GetFeeds_OutputMessage	The response WSDL message for the GetFeeds WSDL operation.

3.1.4.6.1.1 IFeedCacheService_GetFeeds_InputMessage

The request WSDL message for the **GetFeeds** WSDL operation.

The SOAP action value is:

```
http://Microsoft.Office.Server.UserProfiles/GetFeeds
```

The SOAP body contains the **GetFeeds** element.

3.1.4.6.1.2 IFeedCacheService_GetFeeds_OutputMessage

The response WSDL message for the **GetFeeds** WSDL operation.

The SOAP body contains the **GetFeedsResponse** element.

3.1.4.6.2 Elements

The following table summarizes the XML schema element definitions that are specific to this operation.

Element	Description
GetFeeds	The input data for the GetFeeds WSDL operation.
GetFeedsResponse	The result data for the GetFeeds WSDL operation.

3.1.4.6.2.1 GetFeeds

The **GetFeeds** element specifies the input data for the **GetFeeds** WSDL operation.

```
<xs:element name="GetFeeds" xmlns:xs="http://www.w3.org/2001/XMLSchema">
  <xs:complexType>
    <xs:sequence>
      <xs:element xmlns:ser="http://schemas.microsoft.com/2003/10/Serialization/"
        minOccurs="0" name="callerID" type="ser:guid"/>
      <xs:element xmlns:q1="http://Microsoft/Office/Server/FeedCache" minOccurs="0"
        name="requestingEntity" nillable="true" type="q1:E"/>
      <xs:element xmlns:q1="http://Microsoft/Office/Server/FeedCache" minOccurs="0"
        name="entityNewerThanPair" nillable="true" type="q1:ArrayOfEDT"/>
      <xs:element minOccurs="0" name="maxItemsPerEntity" type="xs:int"/>
    </xs:sequence>
  </xs:complexType>
</xs:element>
```

callerID: The identifier for the protocol client. This value MUST NOT be null or empty.

requestingEntity: The feed entity on behalf of which this call is being made.

entityNewerThanPair: A sequence of pairs of feed entity and a date time value. The operation MUST NOT return feed entries for this feed entity having a modified time older than this date time.

maxItemsPerEntity: An integer specifying the maximum number of feed entries to return for a given feed entity. The "M" element in the response is also set to this value.

3.1.4.6.2.2 GetFeedsResponse

The **GetFeedsResponse** element specifies the result data for the **GetFeeds** WSDL operation.

```
<xs:element name="GetFeedsResponse" xmlns:xs="http://www.w3.org/2001/XMLSchema">
  <xs:complexType>
    <xs:sequence>
      <xs:element xmlns:q1="http://Microsoft/Office/Server/FeedCache" minOccurs="0"
name="GetFeedsResult" nillable="true" type="q1:PC"/>
    </xs:sequence>
  </xs:complexType>
</xs:element>
```

GetFeedsResult: Element of type **PC** as described in section [2.2.4.17](#).

3.1.4.6.3 Complex Types

None.

3.1.4.6.4 Simple Types

None.

3.1.4.6.5 Attributes

None.

3.1.4.6.6 Groups

None.

3.1.4.6.7 Attribute Groups

None.

3.1.4.7 GetPublishedFeed

This WSDL operation lets a protocol client retrieve the published feed entries for a specific feed entity.

The following is the WSDL port type specification of the **GetPublishedFeed** WSDL operation.

```
<wsdl:operation name="GetPublishedFeed" xmlns:wsdl="http://schemas.xmlsoap.org/wsdl/">
  <wsdl:input wsaw:Action="http://Microsoft.Office.Server.UserProfiles/GetPublishedFeed"
message="tns:IFeedCacheService_GetPublishedFeed_InputMessage"
xmlns:wsaw="http://www.w3.org/2006/05/addressing/wsdl"/>
  <wsdl:output wsaw:Action="http://tempuri.org/IFeedCacheService/GetPublishedFeedResponse"
message="tns:IFeedCacheService_GetPublishedFeed_OutputMessage"
xmlns:wsaw="http://www.w3.org/2006/05/addressing/wsdl"/>
  <wsdl:fault
wsaw:Action="http://tempuri.org/IFeedCacheService/GetPublishedFeedFeedCacheFaultFault"
name="FeedCacheFaultFault"
message="tns:IFeedCacheService_GetPublishedFeed_FeedCacheFaultFault_FaultMessage"
xmlns:wsaw="http://www.w3.org/2006/05/addressing/wsdl"/>
```

</wsdl:operation>

3.1.4.7.1 Messages

The following table summarizes the set of WSDL message definitions that are specific to this operation.

Message	Description
IFeedCacheService_GetPublishedFeed_InputMessage	The request WSDL message for the GetPublishedFeed WSDL operation.
IFeedCacheService_GetPublishedFeed_OutputMessage	The response WSDL message for the GetPublishedFeed WSDL operation.

3.1.4.7.1.1 IFeedCacheService_GetPublishedFeed_InputMessage

The request WSDL message for the **GetPublishedFeed** WSDL operation.

The SOAP action value is:

```
http://Microsoft.Office.Server.UserProfiles/GetPublishedFeed
```

The SOAP body contains the **GetPublishedFeed** element.

3.1.4.7.1.2 IFeedCacheService_GetPublishedFeed_OutputMessage

The response WSDL message for the **GetPublishedFeed** WSDL operation.

The SOAP body contains the **GetPublishedFeedResponse** element.

3.1.4.7.2 Elements

The following table summarizes the XML schema element definitions that are specific to this operation.

Element	Description
GetPublishedFeed	The input data for the GetPublishedFeed WSDL operation.
GetPublishedFeedResponse	The result data for the GetPublishedFeed WSDL operation.

3.1.4.7.2.1 GetPublishedFeed

The **GetPublishedFeed** element specifies the input data for the **GetPublishedFeed** WSDL operation.

```
<xs:element name="GetPublishedFeed" xmlns:xs="http://www.w3.org/2001/XMLSchema">
  <xs:complexType>
    <xs:sequence>
      <xs:element xmlns:q1="http://Microsoft/Office/Server/FeedCache" minOccurs="0"
name="fcTargetEntity" nillable="true" type="q1:FCRE"/>
      <xs:element xmlns:q1="http://Microsoft/Office/Server/FeedCache" minOccurs="0"
name="fcViewingEntity" nillable="true" type="q1:FCRE"/>
    
```

```

    <xs:element xmlns:q1="http://Microsoft/Office/Server/FeedCache" minOccurs="0"
name="fcRetOptions" nillable="true" type="q1:FCRO"/>
  </xs:sequence>
</xs:complexType>
</xs:element>

```

fcTargetEntity: Element of type **FCRE** as describe in section [2.2.4.14](#).

fcViewingEntity: Element of type **FCRE** as describe in section 2.2.4.14.

fcRetOptions: Element of type **FCRO** as describe in section [2.2.4.15](#).

3.1.4.7.2 GetPublishedFeedResponse

The **GetPublishedFeedResponse** element specifies the result data for the **GetPublishedFeed** WSDL operation.

```

<xs:element name="GetPublishedFeedResponse" xmlns:xs="http://www.w3.org/2001/XMLSchema">
  <xs:complexType>
    <xs:sequence>
      <xs:element xmlns:tns1="http://Microsoft/Office/Server/FeedyCache" minOccurs="0"
name="GetPublishedFeedResult" nillable="true" type="tns1:FCCR"/>
    </xs:sequence>
  </xs:complexType>
</xs:element>

```

GetPublishedFeedResult: Element of type **FCCR** as described in section [2.2.4.13](#).

3.1.4.7.3 Complex Types

None.

3.1.4.7.4 Simple Types

None.

3.1.4.7.5 Attributes

None.

3.1.4.7.6 Groups

None.

3.1.4.7.7 Attribute Groups

None.

3.1.4.8 IsEntityActivelyFollowed

This WSDL operation checks if a given feed entity has earlier been marked as followed.

The following is the WSDL port type specification of the **IsEntityActivelyFollowed** WSDL operation.

```

<wsdl:operation name="IsEntityActivelyFollowed"
xmlns:wsdl="http://schemas.xmlsoap.org/wsdl/">

```

```

    <wsdl:input
      wsaw:Action="http://Microsoft.Office.Server.UserProfiles/IsEntityActivelyFollowed"
      message="tns:IFeedCacheService_IsEntityActivelyFollowed_InputMessage"
      xmlns:wsaw="http://www.w3.org/2006/05/addressing/wsdl"/>
    <wsdl:output
      wsaw:Action="http://tempuri.org/IFeedCacheService/IsEntityActivelyFollowedResponse"
      message="tns:IFeedCacheService_IsEntityActivelyFollowed_OutputMessage"
      xmlns:wsaw="http://www.w3.org/2006/05/addressing/wsdl"/>
    <wsdl:fault
      wsaw:Action="http://tempuri.org/IFeedCacheService/IsEntityActivelyFollowedFeedCacheFaultFault"
      name="FeedCacheFaultFault"
      message="tns:IFeedCacheService_IsEntityActivelyFollowed_FeedCacheFaultFault_FaultMessage"
      xmlns:wsaw="http://www.w3.org/2006/05/addressing/wsdl"/>
  </wsdl:operation>

```

3.1.4.8.1 Messages

The following table summarizes the set of WSDL message definitions that are specific to this operation.

Message	Description
IFeedCacheService_IsEntityActivelyFollowed_InputMessage	The request WSDL message for the IsEntityActivelyFollowed WSDL operation.
IFeedCacheService_IsEntityActivelyFollowed_OutputMessage	The response WSDL message for the IsEntityActivelyFollowed WSDL operation.

3.1.4.8.1.1 IFeedCacheService_IsEntityActivelyFollowed_InputMessage

The request WSDL message for the **IsEntityActivelyFollowed** WSDL operation.

The SOAP action value is:

```
http://Microsoft.Office.Server.UserProfiles/IsEntityActivelyFollowed
```

The SOAP body contains the **IsEntityActivelyFollowed** element.

3.1.4.8.1.2 IFeedCacheService_IsEntityActivelyFollowed_OutputMessage

The response WSDL message for the **IsEntityActivelyFollowed** WSDL operation.

The SOAP body contains the **IsEntityActivelyFollowedResponse** element.

3.1.4.8.2 Elements

The following table summarizes the XML schema element definitions that are specific to this operation.

Element	Description
IsEntityActivelyFollowed	The input data for the IsEntityActivelyFollowed WSDL operation.
IsEntityActivelyFollowedResponse	The result data for the IsEntityActivelyFollowed WSDL operation.

3.1.4.8.2.1 IsEntityActivelyFollowed

The **IsEntityActivelyFollowed** element specifies the input data for the **IsEntityActivelyFollowed** WSDL operation.

```
<xs:element name="IsEntityActivelyFollowed" xmlns:xs="http://www.w3.org/2001/XMLSchema">
  <xs:complexType>
    <xs:sequence>
      <xs:element xmlns:q1="http://Microsoft/Office/Server/FeedCache" minOccurs="0"
name="entity" nillable="true" type="q1:E"/>
    </xs:sequence>
  </xs:complexType>
</xs:element>
```

entity: The feed entity to check for.

3.1.4.8.2.2 IsEntityActivelyFollowedResponse

The **IsEntityActivelyFollowedResponse** element specifies the result data for the **IsEntityActivelyFollowed** WSDL operation.

```
<xs:element name="IsEntityActivelyFollowedResponse"
xmlns:xs="http://www.w3.org/2001/XMLSchema">
  <xs:complexType>
    <xs:sequence>
      <xs:element minOccurs="0" name="IsEntityActivelyFollowedResult" type="xs:boolean"/>
    </xs:sequence>
  </xs:complexType>
</xs:element>
```

IsEntityActivelyFollowedResult: A Boolean value that indicates whether the feed entity has been marked as followed or not.

3.1.4.8.3 Complex Types

None.

3.1.4.8.4 Simple Types

None.

3.1.4.8.5 Attributes

None.

3.1.4.8.6 Groups

None.

3.1.4.8.7 Attribute Groups

None.

3.1.4.9 IsRepopulationNeeded

This WSDL operation lets a protocol client know if last modified time repopulation is needed.

The following is the WSDL port type specification of the **IsRepopulationNeeded** WSDL operation.

```
<wsdl:operation name="IsRepopulationNeeded" xmlns:wsdl="http://schemas.xmlsoap.org/wsdl/">
  <wsdl:input wsaw:Action="http://Microsoft.Office.Server.UserProfiles/IsRepopulationNeeded"
    message="tns:IFeedCacheService_IsRepopulationNeeded_InputMessage"
    xmlns:wsaw="http://www.w3.org/2006/05/addressing/wsdl"/>
  <wsdl:output
    wsaw:Action="http://tempuri.org/IFeedCacheService/IsRepopulationNeededResponse"
    message="tns:IFeedCacheService_IsRepopulationNeeded_OutputMessage"
    xmlns:wsaw="http://www.w3.org/2006/05/addressing/wsdl"/>
  <wsdl:fault
    wsaw:Action="http://tempuri.org/IFeedCacheService/IsRepopulationNeededFeedCacheFaultFault"
    name="FeedCacheFaultFault"
    message="tns:IFeedCacheService_IsRepopulationNeeded_FeedCacheFaultFault_FaultMessage"
    xmlns:wsaw="http://www.w3.org/2006/05/addressing/wsdl"/>
</wsdl:operation>
```

This operation is to be used by protocol clients to check if they need to repopulate the last modified times. If this operation returns true, then the protocol client can use the **BulkLMTUpdate** operation as specified in section [3.1.4.2](#) to update the last modified times.

3.1.4.9.1 Messages

The following table summarizes the set of WSDL message definitions that are specific to this operation.

Message	Description
IFeedCacheService_IsRepopulationNeeded_InputMessage	The request WSDL message for the IsRepopulationNeeded WSDL operation.
IFeedCacheService_IsRepopulationNeeded_OutputMessage	The response WSDL message for the IsRepopulationNeeded WSDL operation.

3.1.4.9.1.1 IFeedCacheService_IsRepopulationNeeded_InputMessage

The request WSDL message for the **IsRepopulationNeeded** WSDL operation.

The SOAP action value is:

```
http://Microsoft.Office.Server.UserProfiles/IsRepopulationNeeded
```

The SOAP body contains the **IsRepopulationNeeded** element.

3.1.4.9.1.2 IFeedCacheService_IsRepopulationNeeded_OutputMessage

The response WSDL message for the **IsRepopulationNeeded** WSDL operation.

The SOAP body contains the **IsRepopulationNeededResponse** element.

3.1.4.9.2 Elements

The following table summarizes the XML schema element definitions that are specific to this operation.

Element	Description
IsRepopulationNeeded	The input data for the IsRepopulationNeeded WSDL operation.
IsRepopulationNeededResponse	The result data for the IsRepopulationNeeded WSDL operation.

3.1.4.9.2.1 IsRepopulationNeeded

The **IsRepopulationNeeded** element specifies the input data for the **IsRepopulationNeeded** WSDL operation.

```
<xs:element name="IsRepopulationNeeded" xmlns:xs="http://www.w3.org/2001/XMLSchema">
  <xs:complexType>
    <xs:sequence>
      <xs:element xmlns:ser="http://schemas.microsoft.com/2003/10/Serialization/"
minOccurs="0" name="callerID" type="ser:guid"/>
    </xs:sequence>
  </xs:complexType>
</xs:element>
```

callerID: The identifier for the protocol client. This value MUST NOT be null or empty.

3.1.4.9.2.2 IsRepopulationNeededResponse

The **IsRepopulationNeededResponse** element specifies the result data for the **IsRepopulationNeeded** WSDL operation.

```
<xs:element name="IsRepopulationNeededResponse" xmlns:xs="http://www.w3.org/2001/XMLSchema">
  <xs:complexType>
    <xs:sequence>
      <xs:element minOccurs="0" name="IsRepopulationNeededResult" type="xs:boolean"/>
    </xs:sequence>
  </xs:complexType>
</xs:element>
```

IsRepopulationNeededResult: A Boolean value that indicates whether repopulation is needed.

3.1.4.9.3 Complex Types

None.

3.1.4.9.4 Simple Types

None.

3.1.4.9.5 Attributes

None.

3.1.4.9.6 Groups

None.

3.1.4.9.7 Attribute Groups

None.

3.1.4.10 NewEntityFollower

This WSDL operation lets a protocol client mark a given feed entity as being actively followed.

The following is the WSDL port type specification of the **NewEntityFollower** WSDL operation.

```
<wsdl:operation name="NewEntityFollower" xmlns:wsdl="http://schemas.xmlsoap.org/wsdl/">
  <wsdl:input wsaw:Action="http://Microsoft.Office.Server.UserProfiles/NewEntityFollower"
  message="tns:IFeedCacheService_NewEntityFollower_InputMessage"
  xmlns:wsaw="http://www.w3.org/2006/05/addressing/wsdl"/>
  <wsdl:output wsaw:Action="http://tempuri.org/IFeedCacheService/NewEntityFollowerResponse"
  message="tns:IFeedCacheService_NewEntityFollower_OutputMessage"
  xmlns:wsaw="http://www.w3.org/2006/05/addressing/wsdl"/>
  <wsdl:fault
  wsaw:Action="http://tempuri.org/IFeedCacheService/NewEntityFollowerFeedCacheFaultFault"
  name="FeedCacheFaultFault"
  message="tns:IFeedCacheService_NewEntityFollower_FeedCacheFaultFault_FaultMessage"
  xmlns:wsaw="http://www.w3.org/2006/05/addressing/wsdl"/>
</wsdl:operation>
```

3.1.4.10.1 Messages

The following table summarizes the set of WSDL message definitions that are specific to this operation.

Message	Description
IFeedCacheService_NewEntityFollower_InputMessage	The request WSDL message for the NewEntityFollower WSDL operation.
IFeedCacheService_NewEntityFollower_OutputMessage	The response WSDL message for the NewEntityFollower WSDL operation.

3.1.4.10.1.1 IFeedCacheService_NewEntityFollower_InputMessage

The request WSDL message for the **NewEntityFollower** WSDL operation.

The SOAP action value is:

```
http://Microsoft.Office.Server.UserProfiles/NewEntityFollower
```

The SOAP body contains the **NewEntityFollower** element.

3.1.4.10.1.2 IFeedCacheService_NewEntityFollower_OutputMessage

The response WSDL message for the **NewEntityFollower** WSDL operation.

The SOAP body contains the **NewEntityFollowerResponse** element.

3.1.4.10.2 Elements

The following table summarizes the XML schema element definitions that are specific to this operation.

Element	Description
NewEntityFollower	The input data for the NewEntityFollower WSDL operation.
NewEntityFollowerResponse	The result data for the NewEntityFollower WSDL operation.

3.1.4.10.2.1 NewEntityFollower

The **NewEntityFollower** element specifies the input data for the **NewEntityFollower** WSDL operation.

```
<xs:element name="NewEntityFollower" xmlns:xs="http://www.w3.org/2001/XMLSchema">
  <xs:complexType>
    <xs:sequence>
      <xs:element xmlns:q1="http://Microsoft/Office/Server/FeedCache" minOccurs="0"
name="entity" nillable="true" type="q1:E"/>
    </xs:sequence>
  </xs:complexType>
</xs:element>
```

entity: The feed entity which is to be marked as followed.

3.1.4.10.2.2 NewEntityFollowerResponse

The **NewEntityFollowerResponse** element specifies the result data for the **NewEntityFollower** WSDL operation.

```
<xs:element name="NewEntityFollowerResponse" xmlns:xs="http://www.w3.org/2001/XMLSchema">
  <xs:complexType>
    <xs:sequence>
      <xs:element minOccurs="0" name="NewEntityFollowerResult" type="xs:boolean"/>
    </xs:sequence>
  </xs:complexType>
</xs:element>
```

NewEntityFollowerResult: A Boolean value that indicates whether the operation succeeded or failed.

3.1.4.10.3 Complex Types

None.

3.1.4.10.4 Simple Types

None.

3.1.4.10.5 Attributes

None.

3.1.4.10.6 Groups

None.

3.1.4.10.7 Attribute Groups

None.

3.1.4.11 RefreshFollowedEntities

This WSDL operation lets a protocol client mark a number of feed entities as followed.

The following is the WSDL port type specification of the **RefreshFollowedEntities** WSDL operation.

```
<wsdl:operation name="RefreshFollowedEntities" xmlns:wsdl="http://schemas.xmlsoap.org/wsdl/">
  <wsdl:input
    wsaw:Action="http://Microsoft.Office.Server.UserProfiles/RefreshFollowedEntities"
    message="tns:IFeedCacheService RefreshFollowedEntities InputMessage"
    xmlns:wsaw="http://www.w3.org/2006/05/addressing/wsdl"/>
  <wsdl:output
    wsaw:Action="http://tempuri.org/IFeedCacheService/RefreshFollowedEntitiesResponse"
    message="tns:IFeedCacheService RefreshFollowedEntities OutputMessage"
    xmlns:wsaw="http://www.w3.org/2006/05/addressing/wsdl"/>
  <wsdl:fault
    wsaw:Action="http://tempuri.org/IFeedCacheService/RefreshFollowedEntitiesFeedCacheFaultFault"
    name="FeedCacheFaultFault"
    message="tns:IFeedCacheService RefreshFollowedEntities FeedCacheFaultFault FaultMessage"
    xmlns:wsaw="http://www.w3.org/2006/05/addressing/wsdl"/>
</wsdl:operation>
```

3.1.4.11.1 Messages

The following table summarizes the set of WSDL message definitions that are specific to this operation.

Message	Description
IFeedCacheService_RefreshFollowedEntities_InputMessage	The request WSDL message for the RefreshFollowedEntities WSDL operation.
IFeedCacheService_RefreshFollowedEntities_OutputMessage	The response WSDL message for the RefreshFollowedEntities WSDL operation.

3.1.4.11.1.1 IFeedCacheService_RefreshFollowedEntities_InputMessage

The request WSDL message for the **RefreshFollowedEntities** WSDL operation.

The SOAP action value is:

```
http://Microsoft.Office.Server.UserProfiles/RefreshFollowedEntities
```

The SOAP body contains the **RefreshFollowedEntities** element.

3.1.4.11.1.2 IFeedCacheService_RefreshFollowedEntities_OutputMessage

The response WSDL message for the **RefreshFollowedEntities** WSDL operation.

The SOAP body contains the **RefreshFollowedEntitiesResponse** element.

3.1.4.11.2 Elements

The following table summarizes the XML schema element definitions that are specific to this operation.

Element	Description
RefreshFollowedEntities	The input data for the RefreshFollowedEntities WSDL operation.
RefreshFollowedEntitiesResponse	The result data for the RefreshFollowedEntities WSDL operation.

3.1.4.11.2.1 RefreshFollowedEntities

The **RefreshFollowedEntities** element specifies the input data for the **RefreshFollowedEntities** WSDL operation.

```
<xs:element name="RefreshFollowedEntities" xmlns:xs="http://www.w3.org/2001/XMLSchema">
  <xs:complexType>
    <xs:sequence>
      <xs:element xmlns:q1="http://Microsoft/Office/Server/FeedCache" minOccurs="0"
name="followedEntities" nillable="true" type="q1:ArrayOfE"/>
    </xs:sequence>
  </xs:complexType>
</xs:element>
```

followedEntities: A sequence of zero or more feed entities to mark as followed.

3.1.4.11.2.2 RefreshFollowedEntitiesResponse

The **RefreshFollowedEntitiesResponse** element specifies the result data for the **RefreshFollowedEntities** WSDL operation.

```
<xs:element name="RefreshFollowedEntitiesResponse"
xmlns:xs="http://www.w3.org/2001/XMLSchema">
  <xs:complexType>
    <xs:sequence>
      <xs:element minOccurs="0" name="RefreshFollowedEntitiesResult" type="xs:boolean"/>
    </xs:sequence>
  </xs:complexType>
</xs:element>
```

RefreshFollowedEntitiesResult: A Boolean value that indicates whether the operation succeeded or failed.

3.1.4.11.3 Complex Types

None.

3.1.4.11.4 Simple Types

None.

3.1.4.11.5 Attributes

None.

3.1.4.11.6 Groups

None.

3.1.4.11.7 Attribute Groups

None.

3.1.4.12 RemoveEntityFeed

This WSDL operation is used to remove all the feed entries of a given feed entity.

The following is the WSDL port type specification of the **RemoveEntityFeed** WSDL operation.

```
<wsdl:operation name="RemoveEntityFeed" xmlns:wsdl="http://schemas.xmlsoap.org/wsdl/">
  <wsdl:input wsaw:Action="http://Microsoft.Office.Server.UserProfiles/RemoveEntityFeed"
    message="tns:IFeedCacheService_RemoveEntityFeed_InputMessage"
    xmlns:wsaw="http://www.w3.org/2006/05/addressing/wsdl"/>
  <wsdl:output wsaw:Action="http://tempuri.org/IFeedCacheService/RemoveEntityFeedResponse"
    message="tns:IFeedCacheService_RemoveEntityFeed_OutputMessage"
    xmlns:wsaw="http://www.w3.org/2006/05/addressing/wsdl"/>
  <wsdl:fault
    wsaw:Action="http://tempuri.org/IFeedCacheService/RemoveEntityFeedFeedCacheFaultFault"
    name="FeedCacheFaultFault"
    message="tns:IFeedCacheService_RemoveEntityFeed_FeedCacheFaultFault_FaultMessage"
    xmlns:wsaw="http://www.w3.org/2006/05/addressing/wsdl"/>
</wsdl:operation>
```

3.1.4.12.1 Messages

The following table summarizes the set of WSDL message definitions that are specific to this operation.

Message	Description
IFeedCacheService_RemoveEntityFeed_InputMessage	The request WSDL message for the RemoveEntityFeed WSDL operation.
IFeedCacheService_RemoveEntityFeed_OutputMessage	The response WSDL message for the RemoveEntityFeed WSDL operation.

3.1.4.12.1.1 IFeedCacheService_RemoveEntityFeed_InputMessage

The request WSDL message for the **RemoveEntityFeed** WSDL operation.

The SOAP action value is:

```
http://Microsoft.Office.Server.UserProfiles/RemoveEntityFeed
```

The SOAP body contains the **RemoveEntityFeed** element.

3.1.4.12.1.2 IFeedCacheService_RemoveEntityFeed_OutputMessage

The response WSDL message for the **RemoveEntityFeed** WSDL operation.

The SOAP body contains the **RemoveEntityFeedResponse** element.

3.1.4.12.2 Elements

The following table summarizes the XML schema element definitions that are specific to this operation.

Element	Description
RemoveEntityFeed	The input data for the RemoveEntityFeed WSDL operation.
RemoveEntityFeedResponse	The result data for the RemoveEntityFeed WSDL operation.

3.1.4.12.2.1 RemoveEntityFeed

The **RemoveEntityFeed** element specifies the input data for the **RemoveEntityFeed** WSDL operation.

```
<xs:element name="RemoveEntityFeed" xmlns:xs="http://www.w3.org/2001/XMLSchema">
  <xs:complexType>
    <xs:sequence>
      <xs:element xmlns:q1="http://Microsoft/Office/Server/FeedCache" minOccurs="0"
name="entity" nillable="true" type="q1:E"/>
    </xs:sequence>
  </xs:complexType>
</xs:element>
```

entity: The feed entity whose feed entries to remove. The entity MUST be of type 'User'.

3.1.4.12.2.2 RemoveEntityFeedResponse

The **RemoveEntityFeedResponse** element specifies the result data for the **RemoveEntityFeed** WSDL operation.

```
<xs:element name="RemoveEntityFeedResponse" xmlns:xs="http://www.w3.org/2001/XMLSchema">
  <xs:complexType>
    <xs:sequence>
      <xs:element minOccurs="0" name="RemoveEntityFeedResult" type="xs:boolean"/>
    </xs:sequence>
  </xs:complexType>
</xs:element>
```

RemoveEntityFeedResult: A Boolean value that indicates whether the operation succeeded or failed.

3.1.4.12.3 Complex Types

None.

3.1.4.12.4 Simple Types

None.

3.1.4.12.5 Attributes

None.

3.1.4.12.6 Groups

None.

3.1.4.12.7 Attribute Groups

None.

3.1.4.13 RemoveFeedEntry

This WSDL operation removes a given feed entry from a given feed entity.

The following is the WSDL port type specification of the **RemoveFeedEntry** WSDL operation.

```
<wsdl:operation name="RemoveFeedEntry" xmlns:wsdl="http://schemas.xmlsoap.org/wsdl/">
  <wsdl:input wsaw:Action="http://Microsoft.Office.Server.UserProfiles/RemoveFeedEntry"
message="tns:IFeedCacheService_RemoveFeedEntry_InputMessage"
xmlns:wsaw="http://www.w3.org/2006/05/addressing/wsdl"/>
  <wsdl:output wsaw:Action="http://tempuri.org/IFeedCacheService/RemoveFeedEntryResponse"
message="tns:IFeedCacheService_RemoveFeedEntry_OutputMessage"
xmlns:wsaw="http://www.w3.org/2006/05/addressing/wsdl"/>
  <wsdl:fault
wsaw:Action="http://tempuri.org/IFeedCacheService/RemoveFeedEntryFeedCacheFaultFault"
name="FeedCacheFaultFault"
message="tns:IFeedCacheService_RemoveFeedEntry_FeedCacheFaultFault_FaultMessage"
xmlns:wsaw="http://www.w3.org/2006/05/addressing/wsdl"/>
</wsdl:operation>
```

3.1.4.13.1 Messages

The following table summarizes the set of WSDL message definitions that are specific to this operation.

Message	Description
IFeedCacheService_RemoveFeedEntry_InputMessage	The request WSDL message for the RemoveFeedEntry WSDL operation.
IFeedCacheService_RemoveFeedEntry_OutputMessage	The response WSDL message for the RemoveFeedEntry WSDL operation.

3.1.4.13.1.1 IFeedCacheService_RemoveFeedEntry_InputMessage

The request WSDL message for the **RemoveFeedEntry** WSDL operation.

The SOAP action value is:

```
http://Microsoft.Office.Server.UserProfiles/RemoveFeedEntry
```

The SOAP body contains the **RemoveFeedEntry** element.

3.1.4.13.1.2 IFeedCacheService_RemoveFeedEntry_OutputMessage

The response WSDL message for the **RemoveFeedEntry** WSDL operation.

The SOAP body contains the **RemoveFeedEntryResponse** element.

3.1.4.13.2 Elements

The following table summarizes the XML schema element definitions that are specific to this operation.

Element	Description
RemoveFeedEntry	The input data for the RemoveFeedEntry WSDL operation.
RemoveFeedEntryResponse	The result data for the RemoveFeedEntry WSDL operation.

3.1.4.13.2.1 RemoveFeedEntry

The **RemoveFeedEntry** element specifies the input data for the **RemoveFeedEntry** WSDL operation.

```
<xs:element name="RemoveFeedEntry" xmlns:xs="http://www.w3.org/2001/XMLSchema">
  <xs:complexType>
    <xs:sequence>
      <xs:element xmlns:q1="http://Microsoft/Office/Server/FeedCache" minOccurs="0"
name="entity" nillable="true" type="q1:E"/>
      <xs:element xmlns:q1="http://Microsoft/Office/Server/FeedCache" minOccurs="0"
name="entry" nillable="true" type="q1:P"/>
    </xs:sequence>
  </xs:complexType>
</xs:element>
```

entity: The feed entity whose feed entry to remove.

entry: The feed entry to remove.

3.1.4.13.2.2 RemoveFeedEntryResponse

The **RemoveFeedEntryResponse** element specifies the result data for the **RemoveFeedEntry** WSDL operation.

```
<xs:element name="RemoveFeedEntryResponse" xmlns:xs="http://www.w3.org/2001/XMLSchema">
  <xs:complexType>
    <xs:sequence>
      <xs:element minOccurs="0" name="RemoveFeedEntryResult" type="xs:boolean"/>
    </xs:sequence>
  </xs:complexType>
</xs:element>
```

RemoveFeedEntryResult: A Boolean value that indicates whether the operation succeeded or failed.

3.1.4.13.3 Complex Types

None.

3.1.4.13.4 Simple Types

None.

3.1.4.13.5 Attributes

None.

3.1.4.13.6 Groups

None.

3.1.4.13.7 Attribute Groups

None.

3.1.4.14 AddFeedEntries

This WSDL operation helps in adding multiple feed entries.

The following is the WSDL port type specification of the **AddFeedEntries** WSDL operation.

```
<wsdl:operation name="AddFeedEntries" xmlns:wsdl="http://schemas.xmlsoap.org/wsdl/">
  <wsdl:input wsaw:Action="http://Microsoft.Office.Server.UserProfiles/AddFeedEntries"
  message="tns:IFeedCacheService_AddFeedEntries_InputMessage"
  xmlns:wsaw="http://www.w3.org/2006/05/addressing/wsdl"/>
  <wsdl:output wsaw:Action="http://tempuri.org/IFeedCacheService/AddFeedEntriesResponse"
  message="tns:IFeedCacheService_AddFeedEntries_OutputMessage"
  xmlns:wsaw="http://www.w3.org/2006/05/addressing/wsdl"/>
  <wsdl:fault
  wsaw:Action="http://tempuri.org/IFeedCacheService/AddFeedEntriesFeedCacheFaultFault"
  name="FeedCacheFaultFault"
  message="tns:IFeedCacheService_AddFeedEntries_FeedCacheFaultFault_FaultMessage"
  xmlns:wsaw="http://www.w3.org/2006/05/addressing/wsdl"/>
</wsdl:operation>
```

This operation is used to add a number of feed entries potentially associated with separate feed entities in a single operation. This can be used in scenarios such as repopulating feed entries of a given feed entity or in some automated process.

3.1.4.14.1 Messages

The following table summarizes the set of WSDL message definitions that are specific to this operation.

Message	Description
IFeedCacheService_AddFeedEntries_InputMessage	The request WSDL message for the AddFeedEntries WSDL operation.
IFeedCacheService_AddFeedEntries_OutputMessage	The response WSDL message for the AddFeedEntries WSDL operation.

3.1.4.14.1.1 IFeedCacheService_AddFeedEntries_InputMessage

The request WSDL message for the **AddFeedEntries** WSDL operation.

The SOAP action value is:

```
http://Microsoft.Office.Server.UserProfiles/AddFeedEntries
```

The SOAP body contains the **AddFeedEntries** element.

3.1.4.14.1.2 IFeedCacheService_AddFeedEntries_OutputMessage

The response WSDL message for the **AddFeedEntries** WSDL operation.

The SOAP body contains the **AddFeedEntriesResponse** element.

3.1.4.14.2 Elements

The following table summarizes the XML schema element definitions that are specific to this operation.

Element	Description
AddFeedEntries	The input data for the AddFeedEntries WSDL operation.
AddFeedEntriesResponse	The result data for the AddFeedEntries WSDL operation.

3.1.4.14.2.1 AddFeedEntries

The **AddFeedEntries** element specifies the input data for the **AddFeedEntries** WSDL operation.

```
<xs:element name="AddFeedEntries" xmlns:xs="http://www.w3.org/2001/XMLSchema">
  <xs:complexType>
    <xs:sequence>
      <xs:element xmlns:q1="http://Microsoft/Office/Server/FeedCache" minOccurs="0"
name="entries" nillable="true" type="q1:PC"/>
    </xs:sequence>
  </xs:complexType>
</xs:element>
```

entries: An element of type **PC**, as specified in section [2.2.4.17](#). MUST NOT be null. Only the EN element is used by this operation, and it specifies a sequence of zero or more feed entries as specified in section [2.2.4.16](#). MUST NOT be null.

3.1.4.14.2.2 AddFeedEntriesResponse

The **AddFeedEntriesResponse** element specifies the result data for the **AddFeedEntries** WSDL operation.

```
<xs:element name="AddFeedEntriesResponse" xmlns:xs="http://www.w3.org/2001/XMLSchema">
  <xs:complexType>
    <xs:sequence>
      <xs:element minOccurs="0" name="AddFeedEntriesResult" type="xs:boolean"/>
    </xs:sequence>
  </xs:complexType>
</xs:element>
```

AddFeedEntriesResult: A Boolean value that indicates whether the operation succeeded or failed.

3.1.4.14.3 Complex Types

None.

3.1.4.14.4 Simple Types

None.

3.1.4.14.5 Attributes

None.

3.1.4.14.6 Groups

None.

3.1.4.14.7 Attribute Groups

None.

3.1.4.15 RemoveInternalRegions

This WSDL operation removes some internal data structure. This operation MUST NOT be called by any protocol client.

The following is the WSDL port type specification of the **RemoveInternalRegions** WSDL operation.

```
<wsdl:operation name="RemoveInternalRegions" xmlns:wsdl="http://schemas.xmlsoap.org/wsdl/">
  <wsdl:input wsaw:Action="http://Microsoft.Office.Server.UserProfiles/RemoveInternalRegions"
  message="tns:IFeedCacheService_RemoveInternalRegions_InputMessage"
  xmlns:wsaw="http://www.w3.org/2006/05/addressing/wsdl"/>
  <wsdl:output
  wsaw:Action="http://tempuri.org/IFeedCacheService/RemoveInternalRegionsResponse"
  message="tns:IFeedCacheService_RemoveInternalRegions_OutputMessage"
  xmlns:wsaw="http://www.w3.org/2006/05/addressing/wsdl"/>
  <wsdl:fault
  wsaw:Action="http://tempuri.org/IFeedCacheService/RemoveInternalRegionsFeedCacheFaultFault"
  name="FeedCacheFaultFault"
  message="tns:IFeedCacheService_RemoveInternalRegions_FeedCacheFaultFault_FaultMessage"
  xmlns:wsaw="http://www.w3.org/2006/05/addressing/wsdl"/>
</wsdl:operation>
```

3.1.4.15.1 Messages

The following table summarizes the set of WSDL message definitions that are specific to this operation.

Message	Description
IFeedCacheService_RemoveInternalRegions_InputMessage	The request WSDL message for the RemoveInternalRegions WSDL operation.
IFeedCacheService_RemoveInternalRegions_OutputMessage	The response WSDL message for the RemoveInternalRegions WSDL operation.

3.1.4.15.1.1 IFeedCacheService_RemoveInternalRegions_InputMessage

The request WSDL message for the **RemoveInternalRegions** WSDL operation.

The SOAP action value is:

```
http://Microsoft.Office.Server.UserProfiles/RemoveInternalRegions
```

The SOAP body contains the **RemoveInternalRegions** element.

3.1.4.15.1.2 IFeedCacheService_RemoveInternalRegions_OutputMessage

The response WSDL message for the **RemoveInternalRegions** WSDL operation.

The SOAP body contains the **RemoveInternalRegionsResponse** element.

3.1.4.15.2 Elements

The following table summarizes the XML schema element definitions that are specific to this operation.

Element	Description
RemoveInternalRegions	The input data for the RemoveInternalRegions WSDL operation.
RemoveInternalRegionsResponse	The result data for the RemoveInternalRegions WSDL operation.

3.1.4.15.2.1 RemoveInternalRegions

The **RemoveInternalRegions** element specifies the input data for the **RemoveInternalRegions** WSDL operation.

```
<xs:element name="RemoveInternalRegions" xmlns:xs="http://www.w3.org/2001/XMLSchema">
  <xs:complexType>
    <xs:sequence>
      <xs:element minOccurs="0" name="webAppUrl" nillable="true" type="xs:string"/>
    </xs:sequence>
  </xs:complexType>
</xs:element>
```

webAppUrl: The URL of the calling **Web application**.

3.1.4.15.2.2 RemoveInternalRegionsResponse

The **RemoveInternalRegionsResponse** element specifies the result data for the **RemoveInternalRegions** WSDL operation.

```
<xs:element name="RemoveInternalRegionsResponse" xmlns:xs="http://www.w3.org/2001/XMLSchema">
  <xs:complexType>
    <xs:sequence>
      <xs:element minOccurs="0" name="RemoveInternalRegionsResult" type="xs:boolean"/>
    </xs:sequence>
  </xs:complexType>
</xs:element>
```

RemoveInternalRegionsResult: A Boolean value that indicates whether the operation succeeded or failed.

3.1.4.15.3 Complex Types

None.

3.1.4.15.4 Simple Types

None.

3.1.4.15.5 Attributes

None.

3.1.4.15.6 Groups

None.

3.1.4.15.7 Attribute Groups

None.

3.1.4.16 AddFeedEntriesForRepop

This WSDL operation helps in adding multiple feed entries.

The following is the WSDL port type specification of the **AddFeedEntriesForRepop** WSDL operation.

```
<wsdl:operation name="AddFeedEntriesForRepop" xmlns:wsdl="http://schemas.xmlsoap.org/wsdl/">
  <wsdl:input
    wsaw:Action="http://Microsoft.Office.Server.UserProfiles/AddFeedEntriesForRepop"
    message="tns:IFeedCacheService_AddFeedEntriesForRepop_InputMessage"
    xmlns:wsaw="http://www.w3.org/2006/05/addressing/wsdl"/>
  <wsdl:output
    wsaw:Action="http://tempuri.org/IFeedCacheService/AddFeedEntriesForRepopResponse"
    message="tns:IFeedCacheService_AddFeedEntriesForRepop_OutputMessage"
    xmlns:wsaw="http://www.w3.org/2006/05/addressing/wsdl"/>
  <wsdl:fault
    wsaw:Action="http://tempuri.org/IFeedCacheService/AddFeedEntriesForRepopFeedCacheFaultFault"
    name="FeedCacheFaultFault"
    message="tns:IFeedCacheService_AddFeedEntriesForRepop_FeedCacheFaultFault_FaultMessage"
    xmlns:wsaw="http://www.w3.org/2006/05/addressing/wsdl"/>
</wsdl:operation>
```

3.1.4.16.1 Messages

The following table summarizes the set of WSDL message definitions that are specific to this operation.

Message	Description
IFeedCacheService_AddFeedEntriesForRepop_InputMessage	The request WSDL message for the AddFeedEntriesForRepop WSDL operation.
IFeedCacheService_AddFeedEntriesForRepop_OutputMessage	The response WSDL message for the AddFeedEntriesForRepop WSDL operation.

3.1.4.16.1.1 IFeedCacheService_AddFeedEntriesForRepop_InputMessage

The request WSDL message for the **AddFeedEntriesForRepop** WSDL operation.

The SOAP action value is:

```
http://Microsoft.Office.Server.UserProfiles/AddFeedEntriesForRepop
```

The SOAP body contains the **AddFeedEntriesForRepop** element.

3.1.4.16.1.2 IFeedCacheService_AddFeedEntriesForRepop_OutputMessage

The response WSDL message for the **AddFeedEntriesForRepop** WSDL operation.

The SOAP body contains the **AddFeedEntriesForRepopResponse** element.

3.1.4.16.2 Elements

The following table summarizes the XML schema element definitions that are specific to this operation.

Element	Description
AddFeedEntriesForRepop	The input data for the AddFeedEntriesForRepop WSDL operation.
AddFeedEntriesForRepopResponse	The result data for the AddFeedEntriesForRepop WSDL operation.

3.1.4.16.2.1 AddFeedEntriesForRepop

The **AddFeedEntriesForRepop** element specifies the input data for the **AddFeedEntriesForRepop** WSDL operation.

```
<xs:element name="AddFeedEntriesForRepop" xmlns:xs="http://www.w3.org/2001/XMLSchema">
  <xs:complexType>
    <xs:sequence>
      <xs:element xmlns:q1="http://Microsoft/Office/Server/FeedCache" minOccurs="0"
name="entity" nillable="true" type="q1:E"/>
      <xs:element xmlns:q1="http://Microsoft/Office/Server/FeedCache" minOccurs="0"
name="entries" nillable="true" type="q1:PC"/>
      <xs:element minOccurs="0" name="lastDeleted" nillable="true" type="xs:dateTime"/>
    </xs:sequence>
  </xs:complexType>
</xs:element>
```

entity: The feed entity on behalf of which this operation is being executed.

entries: A sequence of zero or more feed entries of type **PC** (as specified in section [2.2.4.17](#)) that are to be added.

lastDeleted: A date and time indicating when the last time a feed entry was deleted from the feed entity.

3.1.4.16.2.2 AddFeedEntriesForRepopResponse

The **AddFeedEntriesForRepopResponse** element specifies the result data for the **AddFeedEntriesForRepop** WSDL operation.

```
<xs:element name="AddFeedEntriesForRepopResponse"
xmlns:xs="http://www.w3.org/2001/XMLSchema">
  <xs:complexType>
    <xs:sequence>
      <xs:element minOccurs="0" name="AddFeedEntriesForRepopResult" type="xs:boolean"/>
    </xs:sequence>
  </xs:complexType>
</xs:element>
```

AddFeedEntriesForRepopResult: A Boolean value that indicates whether the operation succeeded or failed.

3.1.4.16.3 Complex Types

None.

3.1.4.16.4 Simple Types

None.

3.1.4.16.5 Attributes

None.

3.1.4.16.6 Groups

None.

3.1.4.16.7 Attribute Groups

None.

3.1.5 Timer Events

None.

3.1.6 Other Local Events

None.

4 Protocol Examples

4.1 AddFeedEntry

To add a feed entry, the protocol client sends the following WSDL message:

```
<s:Envelope xmlns:s="http://www.w3.org/2003/05/soap-envelope"
xmlns:a="http://www.w3.org/2005/08/addressing" xmlns:u="http://docs.oasis-
open.org/wss/2004/01/oasis-200401-wss-wssecurity-utility-1.0.xsd">
  <s:Header>
    <a:Action
s:mustUnderstand="1">http://Microsoft.Office.Server.UserProfiles/AddFeedEntry</a:Action>
    <a:MessageID>urn:uuid:e2a9eble-6fde-4934-be39-9cf816f1f655</a:MessageID>
    <a:ReplyTo>
      <a:Address>http://www.w3.org/2005/08/addressing/anonymous</a:Address>
    </a:ReplyTo>
  </s:Header>
  <s:Body>
    <AddFeedEntry xmlns="http://tempuri.org/">
      <entity xmlns:b="http://Microsoft/Office/Server/FeedCache"
xmlns:i="http://www.w3.org/2001/XMLSchema-instance">
        <b:ET>User</b:ET>
        <b:LID>61e7fd65-62f4-4321-8f44-945640eb2ce1</b:LID>
        <b:PID>0c37852b-34d0-418e-91c6-2ac25af4be5b</b:PID>
        <b:SID>354936ff-bb63-45a5-b08d-ba6373087cf7</b:SID>
        <b:Url>http://machine/my/personal/user</b:Url>
        <b:WID>6c00a125-2a29-44c3-97ea-7e6f2341000e</b:WID>
      </entity>
      <entry xmlns:b="http://Microsoft/Office/Server/FeedCache"
xmlns:i="http://www.w3.org/2001/XMLSchema-instance">
        <b:D1>entry</b:D1>
        <b:EID>364a93b2a29d459ebea86a959b104d98</b:EID>
        <b:M>2011-10-29T00:06:15.0336138Z</b:M>
        <b:MBD>1</b:MBD>
        <b:MBT>2</b:MBT>
      </entry>
    </AddFeedEntry>
  </s:Body>
</s:Envelope>
```

The protocol server responds with:

```
<s:Envelope xmlns:s="http://www.w3.org/2003/05/soap-envelope"
xmlns:a="http://www.w3.org/2005/08/addressing" xmlns:u="http://docs.oasis-
open.org/wss/2004/01/oasis-200401-wss-wssecurity-utility-1.0.xsd">
  <s:Header>
    <a:Action
s:mustUnderstand="1">http://tempuri.org/IFeedCacheService/AddFeedEntryResponse</a:A
ction>
  </s:Header>
  <s:Body>
    <AddFeedEntryResponse xmlns="http://tempuri.org/">
      <AddFeedEntryResult>true</AddFeedEntryResult>
    </AddFeedEntryResponse>
  </s:Body>
</s:Envelope>
```

4.2 GetPublishedFeed

To get the feed entries back for this feed entity, the protocol client sends the following WSDL message:

```
<s:Envelope xmlns:s="http://www.w3.org/2003/05/soap-envelope"
xmlns:a="http://www.w3.org/2005/08/addressing">
  <s:Header>
    <a:Action
s:mustUnderstand="1">http://Microsoft.Office.Server.UserProfiles/GetPublishedFeed</a:Action>
    <a:MessageID>urn:uuid:ae5e547d-5663-46f3-8574-daf7b774bd29</a:MessageID>
    <a:ReplyTo>
      <a:Address>http://www.w3.org/2005/08/addressing/anonymous</a:Address>
    </a:ReplyTo>
  </s:Header>
  <s:Body>
    <GetPublishedFeed xmlns="http://tempuri.org/">
      <fcTargetEntity xmlns:b="http://Microsoft/Office/Server/FeedCache"
xmlns:i="http://www.w3.org/2001/XMLSchema-instance">
        <b:a>
          <b:ET>User</b:ET>
          <b:LID>61e7fd65-62f4-4321-8f44-945640eb2ce1</b:LID>
          <b:PID>0c37852b-34d0-418e-91c6-2ac25af4be5b</b:PID>
          <b:SID>354936ff-bb63-45a5-b08d-ba6373087cf7</b:SID>
          <b:Url>http://machine/my/personal/user</b:Url>
          <b:WID>6c00a125-2a29-44c3-97ea-7e6f2341000e</b:WID>
        </b:a>
        <b:d>0c37852b-34d0-418e-91c6-2ac25af4be5b</b:d>
      </fcTargetEntity>
      <fcViewingEntity xmlns:b="http://Microsoft/Office/Server/FeedCache"
xmlns:i="http://www.w3.org/2001/XMLSchema-instance">
        <b:a>
          <b:ET>User</b:ET>
          <b:LID>61e7fd65-62f4-4321-8f44-945640eb2ce1</b:LID>
          <b:PID>0c37852b-34d0-418e-91c6-2ac25af4be5b</b:PID>
          <b:SID>354936ff-bb63-45a5-b08d-ba6373087cf7</b:SID>
          <b:Url>http://machine/my/personal/user</b:Url>
          <b:WID>6c00a125-2a29-44c3-97ea-7e6f2341000e</b:WID>
        </b:a>
        <b:d>0c37852b-34d0-418e-91c6-2ac25af4be5b</b:d>
      </fcViewingEntity>
      <fcRetOptions xmlns:b="http://Microsoft/Office/Server/FeedCache"
xmlns:i="http://www.w3.org/2001/XMLSchema-instance">
        <b:d>20</b:d>
        <b:e>20</b:e>
        <b:f>20</b:f>
        <b:h>2011-10-28T16:37:53.266-07:00</b:h>
      </fcRetOptions>
    </GetPublishedFeed>
  </s:Body>
</s:Envelope>
```

The protocol server responds with:

```
<s:Envelope xmlns:s="http://www.w3.org/2003/05/soap-envelope"
xmlns:a="http://www.w3.org/2005/08/addressing" xmlns:u="http://docs.oasis-
open.org/wss/2004/01/oasis-200401-wss-wssecurity-utility-1.0.xsd">
  <s:Header>
    <a:Action
s:mustUnderstand="1">http://tempuri.org/IFeedCacheService/GetPublishedFeedResponse</a:Action>
    <a:RelatesTo>urn:uuid:ef48db0d-d770-4e13-8710-496c38a1f82c</a:RelatesTo>
    <ActivityId CorrelationId="6e89a29a-db76-4de4-8465-11c526e28acb"
xmlns="http://schemas.microsoft.com/2004/09/ServiceModel/Diagnostics">00000000-0000-0000-
0000-000000000000</ActivityId>
  </s:Header>
  <s:Body>
```

```
<GetPublishedFeedResponse xmlns="http://tempuri.org/">
  <GetPublishedFeedResult xmlns:b="http://Microsoft/Office/Server/FeedCache"
xmlns:i="http://www.w3.org/2001/XMLSchema-instance">
  <b:En>
    <b:P>
      <b:D1>entry</b:D1>
      <b:EID>ff2bc270089f4bf0a54690c30eae9d30</b:EID>
      <b:En>
        <b:ET>User</b:ET>
        <b:LID>61e7fd65-62f4-4321-8f44-945640eb2ce1</b:LID>
        <b:PID>0c37852b-34d0-418e-91c6-2ac25af4be5b</b:PID>
        <b:SID>354936ff-bb63-45a5-b08d-ba6373087cf7</b:SID>
        <b:Url>http://machine/my/personal/user</b:Url>
        <b:WID>6c00a125-2a29-44c3-97ea-7e6f2341000e</b:WID>
      </b:En>
      <b:M>2011-10-28T23:37:53.2668995Z</b:M>
      <b:MBD>1</b:MBD>
      <b:MBT>2</b:MBT>
    </b:P>
  </b:En>
  <b:M>20</b:M>
</GetPublishedFeedResult>
</GetPublishedFeedResponse>
</s:Body>
</s:Envelope>
```

5 Security

5.1 Security Considerations for Implementers

None.

5.2 Index of Security Parameters

None.

6 Appendix A: Full WSDL

For ease of implementation, the full WSDL is provided in this appendix.

```
<?xml version="1.0" encoding="UTF-8"?>
<wsdl:definitions xmlns:xs="http://www.w3.org/2001/XMLSchema"
xmlns:soap="http://schemas.xmlsoap.org/wsdl/soap/" xmlns:tns="http://tempuri.org/"
xmlns:wsaw="http://www.w3.org/2006/05/addressing/wsdl" targetNamespace="http://tempuri.org/"
xmlns:wsdl="http://schemas.xmlsoap.org/wsdl/">
  <wsdl:types>
    <xs:schema xmlns:tns3="http://tempuri.org/Imports"
targetNamespace="http://tempuri.org/Imports">
      <xs:import namespace="http://Microsoft/Office/Server/FeedCache"/>
      <xs:import namespace="http://Microsoft/Office/Server/FeedyCache"/>
      <xs:import namespace="http://Microsoft/Office/Server/UserProfiles"/>
      <xs:import namespace="http://schemas.datacontract.org/2004/07/System"/>
      <xs:import
namespace="http://schemas.datacontract.org/2004/07/System.Collections.Generic"/>
      <xs:import namespace="http://schemas.microsoft.com/2003/10/Serialization/">
      <xs:import namespace="http://schemas.microsoft.com/2003/10/Serialization/Arrays"/>
      <xs:import namespace="http://tempuri.org/">
    </xs:schema>
  </wsdl:types>
  <wsdl:portType name="IFeedCacheService">
    <wsdl:operation name="AddFeedEntry">
      <wsdl:input wsaw:Action="http://Microsoft.Office.Server.UserProfiles/AddFeedEntry"
message="tns:IFeedCacheService AddFeedEntry InputMessage"/>
      <wsdl:output wsaw:Action="http://tempuri.org/IFeedCacheService/AddFeedEntryResponse"
message="tns:IFeedCacheService_AddFeedEntry_OutputMessage"/>
      <wsdl:fault
wsaw:Action="http://tempuri.org/IFeedCacheService/AddFeedEntryFeedCacheFaultFault"
name="FeedCacheFaultFault"
message="tns:IFeedCacheService_AddFeedEntry_FeedCacheFaultFault_FaultMessage"/>
    </wsdl:operation>
    <wsdl:operation name="AddFeedEntries">
      <wsdl:input wsaw:Action="http://Microsoft.Office.Server.UserProfiles/AddFeedEntries"
message="tns:IFeedCacheService_AddFeedEntries_InputMessage"/>
      <wsdl:output wsaw:Action="http://tempuri.org/IFeedCacheService/AddFeedEntriesResponse"
message="tns:IFeedCacheService_AddFeedEntries_OutputMessage"/>
      <wsdl:fault
wsaw:Action="http://tempuri.org/IFeedCacheService/AddFeedEntriesFeedCacheFaultFault"
name="FeedCacheFaultFault"
message="tns:IFeedCacheService_AddFeedEntries_FeedCacheFaultFault_FaultMessage"/>
    </wsdl:operation>
    <wsdl:operation name="RemoveFeedEntry">
      <wsdl:input wsaw:Action="http://Microsoft.Office.Server.UserProfiles/RemoveFeedEntry"
message="tns:IFeedCacheService_RemoveFeedEntry_InputMessage"/>
      <wsdl:output wsaw:Action="http://tempuri.org/IFeedCacheService/RemoveFeedEntryResponse"
message="tns:IFeedCacheService_RemoveFeedEntry_OutputMessage"/>
      <wsdl:fault
wsaw:Action="http://tempuri.org/IFeedCacheService/RemoveFeedEntryFeedCacheFaultFault"
name="FeedCacheFaultFault"
message="tns:IFeedCacheService_RemoveFeedEntry_FeedCacheFaultFault_FaultMessage"/>
    </wsdl:operation>
    <wsdl:operation name="RemoveEntityFeed">
      <wsdl:input wsaw:Action="http://Microsoft.Office.Server.UserProfiles/RemoveEntityFeed"
message="tns:IFeedCacheService RemoveEntityFeed InputMessage"/>
      <wsdl:output
wsaw:Action="http://tempuri.org/IFeedCacheService/RemoveEntityFeedResponse"
message="tns:IFeedCacheService_RemoveEntityFeed_OutputMessage"/>
      <wsdl:fault
wsaw:Action="http://tempuri.org/IFeedCacheService/RemoveEntityFeedFeedCacheFaultFault"
name="FeedCacheFaultFault"
message="tns:IFeedCacheService_RemoveEntityFeed_FeedCacheFaultFault_FaultMessage"/>
    </wsdl:operation>
  </wsdl:portType>

```

```

    <wsdl:operation name="RemoveInternalRegions">
      <wsdl:input
wsaw:Action="http://Microsoft.Office.Server.UserProfiles/RemoveInternalRegions"
message="tns:IFeedCacheService_RemoveInternalRegions_InputMessage"/>
      <wsdl:output
wsaw:Action="http://tempuri.org/IFeedCacheService/RemoveInternalRegionsResponse"
message="tns:IFeedCacheService_RemoveInternalRegions_OutputMessage"/>
      <wsdl:fault
wsaw:Action="http://tempuri.org/IFeedCacheService/RemoveInternalRegionsFeedCacheFaultFault"
name="FeedCacheFaultFault"
message="tns:IFeedCacheService_RemoveInternalRegions_FeedCacheFaultFault_FaultMessage"/>
    </wsdl:operation>
    <wsdl:operation name="GetConsolidatedFeed">
      <wsdl:input
wsaw:Action="http://Microsoft.Office.Server.UserProfiles/GetConsolidatedFeed"
message="tns:IFeedCacheService_GetConsolidatedFeed_InputMessage"/>
      <wsdl:output
wsaw:Action="http://tempuri.org/IFeedCacheService/GetConsolidatedFeedResponse"
message="tns:IFeedCacheService_GetConsolidatedFeed_OutputMessage"/>
      <wsdl:fault
wsaw:Action="http://tempuri.org/IFeedCacheService/GetConsolidatedFeedFeedCacheFaultFault"
name="FeedCacheFaultFault"
message="tns:IFeedCacheService_GetConsolidatedFeed_FeedCacheFaultFault_FaultMessage"/>
    </wsdl:operation>
    <wsdl:operation name="GetPublishedFeed">
      <wsdl:input wsaw:Action="http://Microsoft.Office.Server.UserProfiles/GetPublishedFeed"
message="tns:IFeedCacheService_GetPublishedFeed_InputMessage"/>
      <wsdl:output
wsaw:Action="http://tempuri.org/IFeedCacheService/GetPublishedFeedResponse"
message="tns:IFeedCacheService_GetPublishedFeed_OutputMessage"/>
      <wsdl:fault
wsaw:Action="http://tempuri.org/IFeedCacheService/GetPublishedFeedFeedCacheFaultFault"
name="FeedCacheFaultFault"
message="tns:IFeedCacheService_GetPublishedFeed_FeedCacheFaultFault_FaultMessage"/>
    </wsdl:operation>
    <wsdl:operation name="GetCategoricalFeed">
      <wsdl:input
wsaw:Action="http://Microsoft.Office.Server.UserProfiles/GetCategoricalFeed"
message="tns:IFeedCacheService_GetCategoricalFeed_InputMessage"/>
      <wsdl:output
wsaw:Action="http://tempuri.org/IFeedCacheService/GetCategoricalFeedResponse"
message="tns:IFeedCacheService_GetCategoricalFeed_OutputMessage"/>
      <wsdl:fault
wsaw:Action="http://tempuri.org/IFeedCacheService/GetCategoricalFeedFeedCacheFaultFault"
name="FeedCacheFaultFault"
message="tns:IFeedCacheService_GetCategoricalFeed_FeedCacheFaultFault_FaultMessage"/>
    </wsdl:operation>
    <wsdl:operation name="GetEntries">
      <wsdl:input wsaw:Action="http://Microsoft.Office.Server.UserProfiles/GetThreadEntries"
message="tns:IFeedCacheService_GetEntries_InputMessage"/>
      <wsdl:output wsaw:Action="http://tempuri.org/IFeedCacheService/GetEntriesResponse"
message="tns:IFeedCacheService_GetEntries_OutputMessage"/>
      <wsdl:fault
wsaw:Action="http://tempuri.org/IFeedCacheService/GetEntriesFeedCacheFaultFault"
name="FeedCacheFaultFault"
message="tns:IFeedCacheService_GetEntries_FeedCacheFaultFault_FaultMessage"/>
    </wsdl:operation>
    <wsdl:operation name="NewEntityFollower">
      <wsdl:input wsaw:Action="http://Microsoft.Office.Server.UserProfiles/NewEntityFollower"
message="tns:IFeedCacheService_NewEntityFollower_InputMessage"/>
      <wsdl:output
wsaw:Action="http://tempuri.org/IFeedCacheService/NewEntityFollowerResponse"
message="tns:IFeedCacheService_NewEntityFollower_OutputMessage"/>
      <wsdl:fault
wsaw:Action="http://tempuri.org/IFeedCacheService/NewEntityFollowerFeedCacheFaultFault"
name="FeedCacheFaultFault"
message="tns:IFeedCacheService_NewEntityFollower_FeedCacheFaultFault_FaultMessage"/>
    </wsdl:operation>
    <wsdl:operation name="IsEntityActivelyFollowed">

```



```

    <wsdl:input
wsaw:Action="http://Microsoft.Office.Server.UserProfiles/IsEntityActivelyFollowed"
message="tns:IFeedCacheService_IsEntityActivelyFollowed_InputMessage"/>
    <wsdl:output
wsaw:Action="http://tempuri.org/IFeedCacheService/IsEntityActivelyFollowedResponse"
message="tns:IFeedCacheService_IsEntityActivelyFollowed_OutputMessage"/>
    <wsdl:fault
wsaw:Action="http://tempuri.org/IFeedCacheService/IsEntityActivelyFollowedFeedCacheFaultFault"
name="FeedCacheFaultFault"
message="tns:IFeedCacheService_IsEntityActivelyFollowed_FeedCacheFaultFault_FaultMessage"/>
    </wsdl:operation>
    <wsdl:operation name="RefreshFollowedEntities">
    <wsdl:input
wsaw:Action="http://Microsoft.Office.Server.UserProfiles/RefreshFollowedEntities"
message="tns:IFeedCacheService_RefreshFollowedEntities_InputMessage"/>
    <wsdl:output
wsaw:Action="http://tempuri.org/IFeedCacheService/RefreshFollowedEntitiesResponse"
message="tns:IFeedCacheService_RefreshFollowedEntities_OutputMessage"/>
    <wsdl:fault
wsaw:Action="http://tempuri.org/IFeedCacheService/RefreshFollowedEntitiesFeedCacheFaultFault"
name="FeedCacheFaultFault"
message="tns:IFeedCacheService_RefreshFollowedEntities_FeedCacheFaultFault_FaultMessage"/>
    </wsdl:operation>
    <wsdl:operation name="BulkLMTUpdate">
    <wsdl:input wsaw:Action="http://Microsoft.Office.Server.UserProfiles/BulkLMTUpdate"
message="tns:IFeedCacheService_BulkLMTUpdate_InputMessage"/>
    <wsdl:output wsaw:Action="http://tempuri.org/IFeedCacheService/BulkLMTUpdateResponse"
message="tns:IFeedCacheService_BulkLMTUpdate_OutputMessage"/>
    <wsdl:fault
wsaw:Action="http://tempuri.org/IFeedCacheService/BulkLMTUpdateFeedCacheFaultFault"
name="FeedCacheFaultFault"
message="tns:IFeedCacheService_BulkLMTUpdate_FeedCacheFaultFault_FaultMessage"/>
    </wsdl:operation>
    <wsdl:operation name="AddFeedEntriesForRepop">
    <wsdl:input
wsaw:Action="http://Microsoft.Office.Server.UserProfiles/AddFeedEntriesForRepop"
message="tns:IFeedCacheService_AddFeedEntriesForRepop_InputMessage"/>
    <wsdl:output
wsaw:Action="http://tempuri.org/IFeedCacheService/AddFeedEntriesForRepopResponse"
message="tns:IFeedCacheService_AddFeedEntriesForRepop_OutputMessage"/>
    <wsdl:fault
wsaw:Action="http://tempuri.org/IFeedCacheService/AddFeedEntriesForRepopFeedCacheFaultFault"
name="FeedCacheFaultFault"
message="tns:IFeedCacheService_AddFeedEntriesForRepop_FeedCacheFaultFault_FaultMessage"/>
    </wsdl:operation>
    <wsdl:operation name="IsRepopulationNeeded">
    <wsdl:input
wsaw:Action="http://Microsoft.Office.Server.UserProfiles/IsRepopulationNeeded"
message="tns:IFeedCacheService_IsRepopulationNeeded_InputMessage"/>
    <wsdl:output
wsaw:Action="http://tempuri.org/IFeedCacheService/IsRepopulationNeededResponse"
message="tns:IFeedCacheService_IsRepopulationNeeded_OutputMessage"/>
    <wsdl:fault
wsaw:Action="http://tempuri.org/IFeedCacheService/IsRepopulationNeededFeedCacheFaultFault"
name="FeedCacheFaultFault"
message="tns:IFeedCacheService_IsRepopulationNeeded_FeedCacheFaultFault_FaultMessage"/>
    </wsdl:operation>
    <wsdl:operation name="GetFeeds">
    <wsdl:input wsaw:Action="http://Microsoft.Office.Server.UserProfiles/GetFeeds"
message="tns:IFeedCacheService_GetFeeds_InputMessage"/>
    <wsdl:output wsaw:Action="http://tempuri.org/IFeedCacheService/GetFeedsResponse"
message="tns:IFeedCacheService_GetFeeds_OutputMessage"/>
    <wsdl:fault
wsaw:Action="http://tempuri.org/IFeedCacheService/GetFeedsFeedCacheFaultFault"
name="FeedCacheFaultFault"
message="tns:IFeedCacheService_GetFeeds_FeedCacheFaultFault_FaultMessage"/>
    </wsdl:operation>
</wsdl:portType>
<wsdl:binding name="DefaultBinding_IFeedCacheService" type="tns:IFeedCacheService">

```

```

    <soap:binding transport="http://schemas.xmlsoap.org/soap/http"/>
    <wsdl:operation name="AddFeedEntry">
      <soap:operation soapAction="http://Microsoft.Office.Server.UserProfiles/AddFeedEntry"
style="document"/>
      <wsdl:input>
        <soap:body use="literal"/>
      </wsdl:input>
      <wsdl:output>
        <soap:body use="literal"/>
      </wsdl:output>
      <wsdl:fault name="FeedCacheFaultFault">
        <soap:fault use="literal" name="FeedCacheFaultFault" namespace=""/>
      </wsdl:fault>
    </wsdl:operation>
    <wsdl:operation name="AddFeedEntries">
      <soap:operation soapAction="http://Microsoft.Office.Server.UserProfiles/AddFeedEntries"
style="document"/>
      <wsdl:input>
        <soap:body use="literal"/>
      </wsdl:input>
      <wsdl:output>
        <soap:body use="literal"/>
      </wsdl:output>
      <wsdl:fault name="FeedCacheFaultFault">
        <soap:fault use="literal" name="FeedCacheFaultFault" namespace=""/>
      </wsdl:fault>
    </wsdl:operation>
    <wsdl:operation name="RemoveFeedEntry">
      <soap:operation
soapAction="http://Microsoft.Office.Server.UserProfiles/RemoveFeedEntry" style="document"/>
      <wsdl:input>
        <soap:body use="literal"/>
      </wsdl:input>
      <wsdl:output>
        <soap:body use="literal"/>
      </wsdl:output>
      <wsdl:fault name="FeedCacheFaultFault">
        <soap:fault use="literal" name="FeedCacheFaultFault" namespace=""/>
      </wsdl:fault>
    </wsdl:operation>
    <wsdl:operation name="RemoveEntityFeed">
      <soap:operation
soapAction="http://Microsoft.Office.Server.UserProfiles/RemoveEntityFeed" style="document"/>
      <wsdl:input>
        <soap:body use="literal"/>
      </wsdl:input>
      <wsdl:output>
        <soap:body use="literal"/>
      </wsdl:output>
      <wsdl:fault name="FeedCacheFaultFault">
        <soap:fault use="literal" name="FeedCacheFaultFault" namespace=""/>
      </wsdl:fault>
    </wsdl:operation>
    <wsdl:operation name="RemoveInternalRegions">
      <soap:operation
soapAction="http://Microsoft.Office.Server.UserProfiles/RemoveInternalRegions"
style="document"/>
      <wsdl:input>
        <soap:body use="literal"/>
      </wsdl:input>
      <wsdl:output>
        <soap:body use="literal"/>
      </wsdl:output>
      <wsdl:fault name="FeedCacheFaultFault">
        <soap:fault use="literal" name="FeedCacheFaultFault" namespace=""/>
      </wsdl:fault>
    </wsdl:operation>
    <wsdl:operation name="GetConsolidatedFeed">

```

```

    <soap:operation
soapAction="http://Microsoft.Office.Server.UserProfiles/GetConsolidatedFeed"
style="document"/>
    <wsdl:input>
        <soap:body use="literal"/>
    </wsdl:input>
    <wsdl:output>
        <soap:body use="literal"/>
    </wsdl:output>
    <wsdl:fault name="FeedCacheFaultFault">
        <soap:fault use="literal" name="FeedCacheFaultFault" namespace=""/>
    </wsdl:fault>
</wsdl:operation>
<wsdl:operation name="GetPublishedFeed">
    <soap:operation
soapAction="http://Microsoft.Office.Server.UserProfiles/GetPublishedFeed" style="document"/>
    <wsdl:input>
        <soap:body use="literal"/>
    </wsdl:input>
    <wsdl:output>
        <soap:body use="literal"/>
    </wsdl:output>
    <wsdl:fault name="FeedCacheFaultFault">
        <soap:fault use="literal" name="FeedCacheFaultFault" namespace=""/>
    </wsdl:fault>
</wsdl:operation>
<wsdl:operation name="GetCategoricalFeed">
    <soap:operation
soapAction="http://Microsoft.Office.Server.UserProfiles/GetCategoricalFeed"
style="document"/>
    <wsdl:input>
        <soap:body use="literal"/>
    </wsdl:input>
    <wsdl:output>
        <soap:body use="literal"/>
    </wsdl:output>
    <wsdl:fault name="FeedCacheFaultFault">
        <soap:fault use="literal" name="FeedCacheFaultFault" namespace=""/>
    </wsdl:fault>
</wsdl:operation>
<wsdl:operation name="GetEntries">
    <soap:operation
soapAction="http://Microsoft.Office.Server.UserProfiles/GetThreadEntries" style="document"/>
    <wsdl:input>
        <soap:body use="literal"/>
    </wsdl:input>
    <wsdl:output>
        <soap:body use="literal"/>
    </wsdl:output>
    <wsdl:fault name="FeedCacheFaultFault">
        <soap:fault use="literal" name="FeedCacheFaultFault" namespace=""/>
    </wsdl:fault>
</wsdl:operation>
<wsdl:operation name="NewEntityFollower">
    <soap:operation
soapAction="http://Microsoft.Office.Server.UserProfiles/NewEntityFollower" style="document"/>
    <wsdl:input>
        <soap:body use="literal"/>
    </wsdl:input>
    <wsdl:output>
        <soap:body use="literal"/>
    </wsdl:output>
    <wsdl:fault name="FeedCacheFaultFault">
        <soap:fault use="literal" name="FeedCacheFaultFault" namespace=""/>
    </wsdl:fault>
</wsdl:operation>
<wsdl:operation name="IsEntityActivelyFollowed">

```

```

    <soap:operation
soapAction="http://Microsoft.Office.Server.UserProfiles/IsEntityActivelyFollowed"
style="document"/>
    <wsdl:input>
        <soap:body use="literal"/>
    </wsdl:input>
    <wsdl:output>
        <soap:body use="literal"/>
    </wsdl:output>
    <wsdl:fault name="FeedCacheFaultFault">
        <soap:fault use="literal" name="FeedCacheFaultFault" namespace=""/>
    </wsdl:fault>
</wsdl:operation>
<wsdl:operation name="RefreshFollowedEntities">
    <soap:operation
soapAction="http://Microsoft.Office.Server.UserProfiles/RefreshFollowedEntities"
style="document"/>
    <wsdl:input>
        <soap:body use="literal"/>
    </wsdl:input>
    <wsdl:output>
        <soap:body use="literal"/>
    </wsdl:output>
    <wsdl:fault name="FeedCacheFaultFault">
        <soap:fault use="literal" name="FeedCacheFaultFault" namespace=""/>
    </wsdl:fault>
</wsdl:operation>
<wsdl:operation name="BulkLMTUpdate">
    <soap:operation soapAction="http://Microsoft.Office.Server.UserProfiles/BulkLMTUpdate"
style="document"/>
    <wsdl:input>
        <soap:body use="literal"/>
    </wsdl:input>
    <wsdl:output>
        <soap:body use="literal"/>
    </wsdl:output>
    <wsdl:fault name="FeedCacheFaultFault">
        <soap:fault use="literal" name="FeedCacheFaultFault" namespace=""/>
    </wsdl:fault>
</wsdl:operation>
<wsdl:operation name="AddFeedEntriesForRepop">
    <soap:operation
soapAction="http://Microsoft.Office.Server.UserProfiles/AddFeedEntriesForRepop"
style="document"/>
    <wsdl:input>
        <soap:body use="literal"/>
    </wsdl:input>
    <wsdl:output>
        <soap:body use="literal"/>
    </wsdl:output>
    <wsdl:fault name="FeedCacheFaultFault">
        <soap:fault use="literal" name="FeedCacheFaultFault" namespace=""/>
    </wsdl:fault>
</wsdl:operation>
<wsdl:operation name="IsRepopulationNeeded">
    <soap:operation
soapAction="http://Microsoft.Office.Server.UserProfiles/IsRepopulationNeeded"
style="document"/>
    <wsdl:input>
        <soap:body use="literal"/>
    </wsdl:input>
    <wsdl:output>
        <soap:body use="literal"/>
    </wsdl:output>
    <wsdl:fault name="FeedCacheFaultFault">
        <soap:fault use="literal" name="FeedCacheFaultFault" namespace=""/>
    </wsdl:fault>
</wsdl:operation>
<wsdl:operation name="GetFeeds">

```

```

        <soap:operation soapAction="http://Microsoft.Office.Server.UserProfiles/GetFeeds"
style="document"/>
        <wsdl:input>
            <soap:body use="literal"/>
        </wsdl:input>
        <wsdl:output>
            <soap:body use="literal"/>
        </wsdl:output>
        <wsdl:fault name="FeedCacheFaultFault">
            <soap:fault use="literal" name="FeedCacheFaultFault" namespace=""/>
        </wsdl:fault>
    </wsdl:operation>
</wsdl:binding>
<wsdl:message name="IFeedCacheService_AddFeedEntries_FeedCacheFaultFault_FaultMessage">
    <wsdl:part xmlns:q1="http://Microsoft/Office/Server/FeedCache" name="detail"
element="q1:FeedCacheFault"/>
</wsdl:message>
<wsdl:message name="IFeedCacheService_AddFeedEntries_InputMessage">
    <wsdl:part name="parameters" element="tns:AddFeedEntries"/>
</wsdl:message>
<wsdl:message name="IFeedCacheService_AddFeedEntries_OutputMessage">
    <wsdl:part name="parameters" element="tns:AddFeedEntriesResponse"/>
</wsdl:message>
<wsdl:message
name="IFeedCacheService_AddFeedEntriesForRepop_FeedCacheFaultFault_FaultMessage">
    <wsdl:part xmlns:q1="http://Microsoft/Office/Server/FeedCache" name="detail"
element="q1:FeedCacheFault"/>
</wsdl:message>
<wsdl:message name="IFeedCacheService_AddFeedEntriesForRepop_InputMessage">
    <wsdl:part name="parameters" element="tns:AddFeedEntriesForRepop"/>
</wsdl:message>
<wsdl:message name="IFeedCacheService_AddFeedEntriesForRepop_OutputMessage">
    <wsdl:part name="parameters" element="tns:AddFeedEntriesForRepopResponse"/>
</wsdl:message>
<wsdl:message name="IFeedCacheService_AddFeedEntry_FeedCacheFaultFault_FaultMessage">
    <wsdl:part xmlns:q1="http://Microsoft/Office/Server/FeedCache" name="detail"
element="q1:FeedCacheFault"/>
</wsdl:message>
<wsdl:message name="IFeedCacheService_AddFeedEntry_InputMessage">
    <wsdl:part name="parameters" element="tns:AddFeedEntry"/>
</wsdl:message>
<wsdl:message name="IFeedCacheService_AddFeedEntry_OutputMessage">
    <wsdl:part name="parameters" element="tns:AddFeedEntryResponse"/>
</wsdl:message>
<wsdl:message name="IFeedCacheService_BulkLMTUpdate_FeedCacheFaultFault_FaultMessage">
    <wsdl:part xmlns:q1="http://Microsoft/Office/Server/FeedCache" name="detail"
element="q1:FeedCacheFault"/>
</wsdl:message>
<wsdl:message name="IFeedCacheService_BulkLMTUpdate_InputMessage">
    <wsdl:part name="parameters" element="tns:BulkLMTUpdate"/>
</wsdl:message>
<wsdl:message name="IFeedCacheService_BulkLMTUpdate_OutputMessage">
    <wsdl:part name="parameters" element="tns:BulkLMTUpdateResponse"/>
</wsdl:message>
<wsdl:message name="IFeedCacheService_GetCategoricalFeed_FeedCacheFaultFault_FaultMessage">
    <wsdl:part xmlns:q1="http://Microsoft/Office/Server/FeedCache" name="detail"
element="q1:FeedCacheFault"/>
</wsdl:message>
<wsdl:message name="IFeedCacheService_GetCategoricalFeed_InputMessage">
    <wsdl:part name="parameters" element="tns:GetCategoricalFeed"/>
</wsdl:message>
<wsdl:message name="IFeedCacheService_GetCategoricalFeed_OutputMessage">
    <wsdl:part name="parameters" element="tns:GetCategoricalFeedResponse"/>
</wsdl:message>
<wsdl:message
name="IFeedCacheService_GetConsolidatedFeed_FeedCacheFaultFault_FaultMessage">
    <wsdl:part xmlns:q1="http://Microsoft/Office/Server/FeedCache" name="detail"
element="q1:FeedCacheFault"/>
</wsdl:message>

```

```

<wsdl:message name="IFeedCacheService_GetConsolidatedFeed_InputMessage">
  <wsdl:part name="parameters" element="tns:GetConsolidatedFeed"/>
</wsdl:message>
<wsdl:message name="IFeedCacheService_GetConsolidatedFeed_OutputMessage">
  <wsdl:part name="parameters" element="tns:GetConsolidatedFeedResponse"/>
</wsdl:message>
<wsdl:message name="IFeedCacheService_GetEntries_FeedCacheFaultFault_FaultMessage">
  <wsdl:part xmlns:q1="http://Microsoft/Office/Server/FeedCache" name="detail"
element="q1:FeedCacheFault"/>
</wsdl:message>
<wsdl:message name="IFeedCacheService_GetEntries_InputMessage">
  <wsdl:part name="parameters" element="tns:GetEntries"/>
</wsdl:message>
<wsdl:message name="IFeedCacheService_GetEntries_OutputMessage">
  <wsdl:part name="parameters" element="tns:GetEntriesResponse"/>
</wsdl:message>
<wsdl:message name="IFeedCacheService_GetFeeds_FeedCacheFaultFault_FaultMessage">
  <wsdl:part xmlns:q1="http://Microsoft/Office/Server/FeedCache" name="detail"
element="q1:FeedCacheFault"/>
</wsdl:message>
<wsdl:message name="IFeedCacheService_GetFeeds_InputMessage">
  <wsdl:part name="parameters" element="tns:GetFeeds"/>
</wsdl:message>
<wsdl:message name="IFeedCacheService_GetFeeds_OutputMessage">
  <wsdl:part name="parameters" element="tns:GetFeedsResponse"/>
</wsdl:message>
<wsdl:message name="IFeedCacheService_GetPublishedFeed_FeedCacheFaultFault_FaultMessage">
  <wsdl:part xmlns:q1="http://Microsoft/Office/Server/FeedCache" name="detail"
element="q1:FeedCacheFault"/>
</wsdl:message>
<wsdl:message name="IFeedCacheService_GetPublishedFeed_InputMessage">
  <wsdl:part name="parameters" element="tns:GetPublishedFeed"/>
</wsdl:message>
<wsdl:message name="IFeedCacheService_GetPublishedFeed_OutputMessage">
  <wsdl:part name="parameters" element="tns:GetPublishedFeedResponse"/>
</wsdl:message>
<wsdl:message
name="IFeedCacheService_IsEntityActivelyFollowed_FeedCacheFaultFault_FaultMessage">
  <wsdl:part xmlns:q1="http://Microsoft/Office/Server/FeedCache" name="detail"
element="q1:FeedCacheFault"/>
</wsdl:message>
<wsdl:message name="IFeedCacheService_IsEntityActivelyFollowed_InputMessage">
  <wsdl:part name="parameters" element="tns:IsEntityActivelyFollowed"/>
</wsdl:message>
<wsdl:message name="IFeedCacheService_IsEntityActivelyFollowed_OutputMessage">
  <wsdl:part name="parameters" element="tns:IsEntityActivelyFollowedResponse"/>
</wsdl:message>
<wsdl:message
name="IFeedCacheService_IsRepopulationNeeded_FeedCacheFaultFault_FaultMessage">
  <wsdl:part xmlns:q1="http://Microsoft/Office/Server/FeedCache" name="detail"
element="q1:FeedCacheFault"/>
</wsdl:message>
<wsdl:message name="IFeedCacheService_IsRepopulationNeeded_InputMessage">
  <wsdl:part name="parameters" element="tns:IsRepopulationNeeded"/>
</wsdl:message>
<wsdl:message name="IFeedCacheService_IsRepopulationNeeded_OutputMessage">
  <wsdl:part name="parameters" element="tns:IsRepopulationNeededResponse"/>
</wsdl:message>
<wsdl:message name="IFeedCacheService_NewEntityFollower_FeedCacheFaultFault_FaultMessage">
  <wsdl:part xmlns:q1="http://Microsoft/Office/Server/FeedCache" name="detail"
element="q1:FeedCacheFault"/>
</wsdl:message>
<wsdl:message name="IFeedCacheService_NewEntityFollower_InputMessage">
  <wsdl:part name="parameters" element="tns:NewEntityFollower"/>
</wsdl:message>
<wsdl:message name="IFeedCacheService_NewEntityFollower_OutputMessage">
  <wsdl:part name="parameters" element="tns:NewEntityFollowerResponse"/>
</wsdl:message>

```

```

    <wsdl:message
name="IFeedCacheService_RefreshFollowedEntities_FeedCacheFaultFault_FaultMessage">
    <wsdl:part xmlns:q1="http://Microsoft/Office/Server/FeedCache" name="detail"
element="q1:FeedCacheFault"/>
    </wsdl:message>
    <wsdl:message name="IFeedCacheService_RefreshFollowedEntities_InputMessage">
    <wsdl:part name="parameters" element="tns:RefreshFollowedEntities"/>
    </wsdl:message>
    <wsdl:message name="IFeedCacheService_RefreshFollowedEntities_OutputMessage">
    <wsdl:part name="parameters" element="tns:RefreshFollowedEntitiesResponse"/>
    </wsdl:message>
    <wsdl:message name="IFeedCacheService_RemoveEntityFeed_FeedCacheFaultFault_FaultMessage">
    <wsdl:part xmlns:q1="http://Microsoft/Office/Server/FeedCache" name="detail"
element="q1:FeedCacheFault"/>
    </wsdl:message>
    <wsdl:message name="IFeedCacheService_RemoveEntityFeed_InputMessage">
    <wsdl:part name="parameters" element="tns:RemoveEntityFeed"/>
    </wsdl:message>
    <wsdl:message name="IFeedCacheService_RemoveEntityFeed_OutputMessage">
    <wsdl:part name="parameters" element="tns:RemoveEntityFeedResponse"/>
    </wsdl:message>
    <wsdl:message name="IFeedCacheService_RemoveFeedEntry_FeedCacheFaultFault_FaultMessage">
    <wsdl:part xmlns:q1="http://Microsoft/Office/Server/FeedCache" name="detail"
element="q1:FeedCacheFault"/>
    </wsdl:message>
    <wsdl:message name="IFeedCacheService_RemoveFeedEntry_InputMessage">
    <wsdl:part name="parameters" element="tns:RemoveFeedEntry"/>
    </wsdl:message>
    <wsdl:message name="IFeedCacheService_RemoveFeedEntry_OutputMessage">
    <wsdl:part name="parameters" element="tns:RemoveFeedEntryResponse"/>
    </wsdl:message>
    <wsdl:message
name="IFeedCacheService_RemoveInternalRegions_FeedCacheFaultFault_FaultMessage">
    <wsdl:part xmlns:q1="http://Microsoft/Office/Server/FeedCache" name="detail"
element="q1:FeedCacheFault"/>
    </wsdl:message>
    <wsdl:message name="IFeedCacheService_RemoveInternalRegions_InputMessage">
    <wsdl:part name="parameters" element="tns:RemoveInternalRegions"/>
    </wsdl:message>
    <wsdl:message name="IFeedCacheService_RemoveInternalRegions_OutputMessage">
    <wsdl:part name="parameters" element="tns:RemoveInternalRegionsResponse"/>
    </wsdl:message>
</wsdl:definitions>

```

7 Appendix B: Full XML Schema

Schema name	Prefix	Section
http://Microsoft/Office/Server/FeedCache	q1	7.3
http://Microsoft/Office/Server/FeedyCache	tns1	7.8
http://Microsoft/Office/Server/UserProfiles	q3	7.6
http://schemas.microsoft.com/2003/10/Serialization/Arrays	q2	7.4
http://schemas.microsoft.com/2003/10/Serialization/	ser	7.2
http://schemas.datacontract.org/2004/07/System.Collections.Generic	tns2	7.5
http://schemas.datacontract.org/2004/07/System	q5	7.7
http://tempuri.org/	tns	7.1

For ease of implementation, the following sections provide the full XML schema for this protocol.

7.1 http://tempuri.org/ Schema

```
<?xml version="1.0" encoding="UTF-8"?>
<xs:schema elementFormDefault="qualified" targetNamespace="http://tempuri.org/"
xmlns:xs="http://www.w3.org/2001/XMLSchema">
  <xs:element name="AddFeedEntry">
    <xs:complexType>
      <xs:sequence>
        <xs:element xmlns:q1="http://Microsoft/Office/Server/FeedCache" minOccurs="0"
name="entity" nillable="true" type="q1:E"/>
        <xs:element xmlns:q1="http://Microsoft/Office/Server/FeedCache" minOccurs="0"
name="entry" nillable="true" type="q1:P"/>
      </xs:sequence>
    </xs:complexType>
  </xs:element>
  <xs:element name="AddFeedEntryResponse">
    <xs:complexType>
      <xs:sequence>
        <xs:element minOccurs="0" name="AddFeedEntryResult" type="xs:boolean"/>
      </xs:sequence>
    </xs:complexType>
  </xs:element>
  <xs:element name="AddFeedEntries">
    <xs:complexType>
      <xs:sequence>
        <xs:element xmlns:q1="http://Microsoft/Office/Server/FeedCache" minOccurs="0"
name="entries" nillable="true" type="q1:PC"/>
      </xs:sequence>
    </xs:complexType>
  </xs:element>
  <xs:element name="AddFeedEntriesResponse">
    <xs:complexType>
      <xs:sequence>
        <xs:element minOccurs="0" name="AddFeedEntriesResult" type="xs:boolean"/>
      </xs:sequence>
    </xs:complexType>
  </xs:element>
  <xs:element name="RemoveFeedEntry">
    <xs:complexType>
      <xs:sequence>
        <xs:element xmlns:q1="http://Microsoft/Office/Server/FeedCache" minOccurs="0"
name="entity" nillable="true" type="q1:E"/>
      </xs:sequence>
    </xs:complexType>
  </xs:element>
</xs:schema>
```



```

        <xs:element xmlns:q1="http://Microsoft/Office/Server/FeedCache" minOccurs="0"
name="entry" nillable="true" type="q1:P"/>
    </xs:sequence>
</xs:complexType>
</xs:element>
<xs:element name="RemoveFeedEntryResponse">
    <xs:complexType>
        <xs:sequence>
            <xs:element minOccurs="0" name="RemoveFeedEntryResult" type="xs:boolean"/>
        </xs:sequence>
    </xs:complexType>
</xs:element>
<xs:element name="RemoveEntityFeed">
    <xs:complexType>
        <xs:sequence>
            <xs:element xmlns:q1="http://Microsoft/Office/Server/FeedCache" minOccurs="0"
name="entity" nillable="true" type="q1:E"/>
        </xs:sequence>
    </xs:complexType>
</xs:element>
<xs:element name="RemoveEntityFeedResponse">
    <xs:complexType>
        <xs:sequence>
            <xs:element minOccurs="0" name="RemoveEntityFeedResult" type="xs:boolean"/>
        </xs:sequence>
    </xs:complexType>
</xs:element>
<xs:element name="RemoveInternalRegions">
    <xs:complexType>
        <xs:sequence>
            <xs:element minOccurs="0" name="webAppUrl" nillable="true" type="xs:string"/>
        </xs:sequence>
    </xs:complexType>
</xs:element>
<xs:element name="RemoveInternalRegionsResponse">
    <xs:complexType>
        <xs:sequence>
            <xs:element minOccurs="0" name="RemoveInternalRegionsResult" type="xs:boolean"/>
        </xs:sequence>
    </xs:complexType>
</xs:element>
<xs:element name="GetConsolidatedFeed">
    <xs:complexType>
        <xs:sequence>
            <xs:element xmlns:q1="http://Microsoft/Office/Server/FeedCache" minOccurs="0"
name="fcRetEntity" nillable="true" type="q1:FCRE"/>
            <xs:element xmlns:q1="http://Microsoft/Office/Server/FeedCache" minOccurs="0"
name="followedEntities" nillable="true" type="q1:ArrayOfE"/>
            <xs:element xmlns:q1="http://Microsoft/Office/Server/FeedCache" minOccurs="0"
name="fcRetOptions" nillable="true" type="q1:FCRO"/>
        </xs:sequence>
    </xs:complexType>
</xs:element>
<xs:element name="GetConsolidatedFeedResponse">
    <xs:complexType>
        <xs:sequence>
            <xs:element xmlns:tns1="http://Microsoft/Office/Server/FeedCache" minOccurs="0"
name="GetConsolidatedFeedResult" nillable="true" type="tns1:FCCR"/>
        </xs:sequence>
    </xs:complexType>
</xs:element>
<xs:element name="GetPublishedFeed">
    <xs:complexType>
        <xs:sequence>
            <xs:element xmlns:q1="http://Microsoft/Office/Server/FeedCache" minOccurs="0"
name="fcTargetEntity" nillable="true" type="q1:FCRE"/>
            <xs:element xmlns:q1="http://Microsoft/Office/Server/FeedCache" minOccurs="0"
name="fcViewingEntity" nillable="true" type="q1:FCRE"/>
        </xs:sequence>
    </xs:complexType>
</xs:element>

```

```

        <xs:element xmlns:q1="http://Microsoft/Office/Server/FeedCache" minOccurs="0"
name="fcRetOptions" nillable="true" type="q1:FCRO"/>
    </xs:sequence>
</xs:complexType>
</xs:element>
<xs:element name="GetPublishedFeedResponse">
    <xs:complexType>
        <xs:sequence>
            <xs:element xmlns:tns1="http://Microsoft/Office/Server/FeedyCache" minOccurs="0"
name="GetPublishedFeedResult" nillable="true" type="tns1:FCCR"/>
        </xs:sequence>
    </xs:complexType>
</xs:element>
<xs:element name="GetCategoricalFeed">
    <xs:complexType>
        <xs:sequence>
            <xs:element xmlns:q1="http://Microsoft/Office/Server/FeedCache" minOccurs="0"
name="fcRetEntity" nillable="true" type="q1:FCRE"/>
            <xs:element xmlns:q1="http://Microsoft/Office/Server/FeedCache" minOccurs="0"
name="followedEntities" nillable="true" type="q1:ArrayOfE"/>
            <xs:element xmlns:q1="http://Microsoft/Office/Server/FeedCache" minOccurs="0"
name="fcRetOptions" nillable="true" type="q1:FCRO"/>
        </xs:sequence>
    </xs:complexType>
</xs:element>
<xs:element name="GetCategoricalFeedResponse">
    <xs:complexType>
        <xs:sequence>
            <xs:element xmlns:tns1="http://Microsoft/Office/Server/FeedyCache" minOccurs="0"
name="GetCategoricalFeedResult" nillable="true" type="tns1:FCCR"/>
        </xs:sequence>
    </xs:complexType>
</xs:element>
<xs:element name="GetEntries">
    <xs:complexType>
        <xs:sequence>
            <xs:element xmlns:q1="http://Microsoft/Office/Server/FeedCache" minOccurs="0"
name="entryIdentifiers" nillable="true" type="q1:ArrayOfPI"/>
        </xs:sequence>
    </xs:complexType>
</xs:element>
<xs:element name="GetEntriesResponse">
    <xs:complexType>
        <xs:sequence>
            <xs:element xmlns:q1="http://Microsoft/Office/Server/FeedCache" minOccurs="0"
name="GetEntriesResult" nillable="true" type="q1:PC"/>
        </xs:sequence>
    </xs:complexType>
</xs:element>
<xs:element name="NewEntityFollower">
    <xs:complexType>
        <xs:sequence>
            <xs:element xmlns:q1="http://Microsoft/Office/Server/FeedCache" minOccurs="0"
name="entity" nillable="true" type="q1:E"/>
        </xs:sequence>
    </xs:complexType>
</xs:element>
<xs:element name="NewEntityFollowerResponse">
    <xs:complexType>
        <xs:sequence>
            <xs:element minOccurs="0" name="NewEntityFollowerResult" type="xs:boolean"/>
        </xs:sequence>
    </xs:complexType>
</xs:element>
<xs:element name="IsEntityActivelyFollowed">
    <xs:complexType>
        <xs:sequence>
            <xs:element xmlns:q1="http://Microsoft/Office/Server/FeedCache" minOccurs="0"
name="entity" nillable="true" type="q1:E"/>
        </xs:sequence>
    </xs:complexType>
</xs:element>

```

```

        </xs:sequence>
    </xs:complexType>
</xs:element>
<xs:element name="IsEntityActivelyFollowedResponse">
    <xs:complexType>
        <xs:sequence>
            <xs:element minOccurs="0" name="IsEntityActivelyFollowedResult" type="xs:boolean"/>
        </xs:sequence>
    </xs:complexType>
</xs:element>
<xs:element name="RefreshFollowedEntities">
    <xs:complexType>
        <xs:sequence>
            <xs:element xmlns:ql="http://Microsoft/Office/Server/FeedCache" minOccurs="0"
name="followedEntities" nillable="true" type="ql:ArrayOfE"/>
        </xs:sequence>
    </xs:complexType>
</xs:element>
<xs:element name="RefreshFollowedEntitiesResponse">
    <xs:complexType>
        <xs:sequence>
            <xs:element minOccurs="0" name="RefreshFollowedEntitiesResult" type="xs:boolean"/>
        </xs:sequence>
    </xs:complexType>
</xs:element>
<xs:element name="BulkLMTUpdate">
    <xs:complexType>
        <xs:sequence>
            <xs:element xmlns:ser="http://schemas.microsoft.com/2003/10/Serialization/"
minOccurs="0" name="callerID" type="ser:guid"/>
            <xs:element
xmlns:tns2="http://schemas.datacontract.org/2004/07/System.Collections.Generic" minOccurs="0"
name="lastModifiedTimes" nillable="true" type="tns2:ArrayOfKeyValuePairOfELEHsv_SlRZJ"/>
        </xs:sequence>
    </xs:complexType>
</xs:element>
<xs:element name="BulkLMTUpdateResponse">
    <xs:complexType>
        <xs:sequence>
            <xs:element minOccurs="0" name="BulkLMTUpdateResult" type="xs:boolean"/>
        </xs:sequence>
    </xs:complexType>
</xs:element>
<xs:element name="AddFeedEntriesForRepop">
    <xs:complexType>
        <xs:sequence>
            <xs:element xmlns:ql="http://Microsoft/Office/Server/FeedCache" minOccurs="0"
name="entity" nillable="true" type="ql:E"/>
            <xs:element xmlns:ql="http://Microsoft/Office/Server/FeedCache" minOccurs="0"
name="entries" nillable="true" type="ql:PC"/>
            <xs:element minOccurs="0" name="lastDeleted" nillable="true" type="xs:dateTime"/>
        </xs:sequence>
    </xs:complexType>
</xs:element>
<xs:element name="AddFeedEntriesForRepopResponse">
    <xs:complexType>
        <xs:sequence>
            <xs:element minOccurs="0" name="AddFeedEntriesForRepopResult" type="xs:boolean"/>
        </xs:sequence>
    </xs:complexType>
</xs:element>
<xs:element name="IsRepopulationNeeded">
    <xs:complexType>
        <xs:sequence>
            <xs:element xmlns:ser="http://schemas.microsoft.com/2003/10/Serialization/"
minOccurs="0" name="callerID" type="ser:guid"/>
        </xs:sequence>
    </xs:complexType>
</xs:element>

```

```

<xs:element name="IsRepopulationNeededResponse">
  <xs:complexType>
    <xs:sequence>
      <xs:element minOccurs="0" name="IsRepopulationNeededResult" type="xs:boolean"/>
    </xs:sequence>
  </xs:complexType>
</xs:element>
<xs:element name="GetFeeds">
  <xs:complexType>
    <xs:sequence>
      <xs:element xmlns:ser="http://schemas.microsoft.com/2003/10/Serialization/"
minOccurs="0" name="callerID" type="ser:guid"/>
      <xs:element xmlns:ql="http://Microsoft/Office/Server/FeedCache" minOccurs="0"
name="requestingEntity" nillable="true" type="ql:E"/>
      <xs:element xmlns:ql="http://Microsoft/Office/Server/FeedCache" minOccurs="0"
name="entityNewerThanPair" nillable="true" type="ql:ArrayOfEDT"/>
      <xs:element minOccurs="0" name="maxItemsPerEntity" type="xs:int"/>
    </xs:sequence>
  </xs:complexType>
</xs:element>
<xs:element name="GetFeedsResponse">
  <xs:complexType>
    <xs:sequence>
      <xs:element xmlns:ql="http://Microsoft/Office/Server/FeedCache" minOccurs="0"
name="GetFeedsResult" nillable="true" type="ql:PC"/>
    </xs:sequence>
  </xs:complexType>
</xs:element>
<xs:import namespace="http://Microsoft/Office/Server/FeedCache"/>
<xs:import namespace="http://Microsoft/Office/Server/FeedyCache"/>
<xs:import namespace="http://schemas.datacontract.org/2004/07/System.Collections.Generic"/>
<xs:import namespace="http://schemas.microsoft.com/2003/10/Serialization"/>
</xs:schema>

```

7.2 http://schemas.microsoft.com/2003/10/Serialization/ Schema

```

<?xml version="1.0" encoding="UTF-8"?>
<xs:schema xmlns:ser="http://schemas.microsoft.com/2003/10/Serialization/"
attributeFormDefault="qualified" elementFormDefault="qualified"
targetNamespace="http://schemas.microsoft.com/2003/10/Serialization/"
xmlns:xs="http://www.w3.org/2001/XMLSchema">
  <xs:element name="anyType" nillable="true" type="xs:anyType"/>
  <xs:element name="anyURI" nillable="true" type="xs:anyURI"/>
  <xs:element name="base64Binary" nillable="true" type="xs:base64Binary"/>
  <xs:element name="boolean" nillable="true" type="xs:boolean"/>
  <xs:element name="byte" nillable="true" type="xs:byte"/>
  <xs:element name="dateTime" nillable="true" type="xs:dateTime"/>
  <xs:element name="decimal" nillable="true" type="xs:decimal"/>
  <xs:element name="double" nillable="true" type="xs:double"/>
  <xs:element name="float" nillable="true" type="xs:float"/>
  <xs:element name="int" nillable="true" type="xs:int"/>
  <xs:element name="long" nillable="true" type="xs:long"/>
  <xs:element name="QName" nillable="true" type="xs:QName"/>
  <xs:element name="short" nillable="true" type="xs:short"/>
  <xs:element name="string" nillable="true" type="xs:string"/>
  <xs:element name="unsignedByte" nillable="true" type="xs:unsignedByte"/>
  <xs:element name="unsignedInt" nillable="true" type="xs:unsignedInt"/>
  <xs:element name="unsignedLong" nillable="true" type="xs:unsignedLong"/>
  <xs:element name="unsignedShort" nillable="true" type="xs:unsignedShort"/>
  <xs:element name="char" nillable="true" type="ser:char"/>
  <xs:simpleType name="char">
    <xs:restriction base="xs:int"/>
  </xs:simpleType>
  <xs:element name="duration" nillable="true" type="ser:duration"/>
  <xs:simpleType name="duration">
    <xs:restriction base="xs:duration">
      <xs:pattern value="\-?P(\d*D)?(T(\d*H)?(\d*M)?(\d*(\.\d*)?S)?)?"/>
    </xs:restriction>
  </xs:simpleType>

```

```

        <xs:minInclusive value="-P10675199DT2H48M5.4775808S"/>
        <xs:maxInclusive value="P10675199DT2H48M5.4775807S"/>
    </xs:restriction>
</xs:simpleType>
<xs:element name="guid" nillable="true" type="ser:guid"/>
<xs:simpleType name="guid">
    <xs:restriction base="xs:string">
        <xs:pattern value="\da-fA-F]{8}-[\da-fA-F]{4}-[\da-fA-F]{4}-[\da-fA-F]{4}-[\da-fA-F]{12}"/>
    </xs:restriction>
</xs:simpleType>
<xs:attribute name="FactoryType" type="xs:QName"/>
<xs:attribute name="Id" type="xs:ID"/>
<xs:attribute name="Ref" type="xs:IDREF"/>
</xs:schema>

```

7.3 http://Microsoft/Office/Server/FeedCache Schema

```

<?xml version="1.0" encoding="UTF-8"?>
<xs:schema xmlns:q1="http://Microsoft/Office/Server/FeedCache"
xmlns:ser="http://schemas.microsoft.com/2003/10/Serialization/"
elementFormDefault="qualified" targetNamespace="http://Microsoft/Office/Server/FeedCache"
xmlns:xs="http://www.w3.org/2001/XMLSchema">
    <xs:complexType name="E">
        <xs:sequence>
            <xs:element minOccurs="0" name="ET" type="q1:ET"/>
            <xs:element minOccurs="0" name="LID" type="ser:guid"/>
            <xs:element minOccurs="0" name="PID" type="ser:guid"/>
            <xs:element minOccurs="0" name="SID" type="ser:guid"/>
            <xs:element minOccurs="0" name="Url" nillable="true" type="xs:string"/>
            <xs:element minOccurs="0" name="WID" type="ser:guid"/>
        </xs:sequence>
    </xs:complexType>
    <xs:element name="E" nillable="true" type="q1:E"/>
    <xs:simpleType name="ET">
        <xs:list>
            <xs:simpleType>
                <xs:restriction base="xs:string">
                    <xs:enumeration value="Unknown"/>
                    <xs:enumeration value="User"/>
                    <xs:enumeration value="Document"/>
                    <xs:enumeration value="Site"/>
                    <xs:enumeration value="Tag"/>
                    <xs:enumeration value="Group"/>
                </xs:restriction>
            </xs:simpleType>
        </xs:list>
    </xs:simpleType>
    <xs:element name="ET" nillable="true" type="q1:ET"/>
    <xs:complexType name="P">
        <xs:sequence>
            <xs:element minOccurs="0" name="AD" nillable="true" type="xs:string"/>
            <xs:element minOccurs="0" name="D1" nillable="true" type="xs:string"/>
            <xs:element minOccurs="0" name="D2" nillable="true" type="xs:string"/>
            <xs:element minOccurs="0" name="D3" nillable="true" type="xs:string"/>
            <xs:element minOccurs="0" name="D4" nillable="true" type="xs:string"/>
            <xs:element minOccurs="0" name="DP" nillable="true" type="xs:string"/>
            <xs:element minOccurs="0" name="EID" nillable="true" type="xs:string"/>
            <xs:element minOccurs="0" name="En" nillable="true" type="q1:E"/>
            <xs:element minOccurs="0" name="M" type="xs:dateTime"/>
            <xs:element minOccurs="0" name="MBD" type="xs:int"/>
            <xs:element minOccurs="0" name="MBT" type="xs:int"/>
            <xs:element minOccurs="0" name="PL" nillable="true" type="xs:string"/>
            <xs:element minOccurs="0" name="R1" nillable="true" type="xs:string"/>
            <xs:element minOccurs="0" name="R2" nillable="true" type="xs:string"/>
            <xs:element minOccurs="0" name="R3" type="xs:int"/>
            <xs:element minOccurs="0" name="ST" type="xs:int"/>
        </xs:sequence>
    </xs:complexType>

```

```

    </xs:sequence>
</xs:complexType>
<xs:element name="P" nillable="true" type="q1:P"/>
<xs:complexType name="FeedCacheFault">
  <xs:sequence>
    <xs:element minOccurs="0" name="FailureDetail" nillable="true" type="xs:string"/>
    <xs:element minOccurs="0" name="FaultCode" type="q1:FeedCacheFaultCodes"/>
  </xs:sequence>
</xs:complexType>
<xs:element name="FeedCacheFault" nillable="true" type="q1:FeedCacheFault"/>
<xs:simpleType name="FeedCacheFaultCodes">
  <xs:restriction base="xs:string">
    <xs:enumeration value="UnknownError"/>
    <xs:enumeration value="InvalidInput"/>
    <xs:enumeration value="InvalidConfiguration"/>
  </xs:restriction>
</xs:simpleType>
<xs:element name="FeedCacheFaultCodes" nillable="true" type="q1:FeedCacheFaultCodes"/>
<xs:complexType name="PC">
  <xs:sequence>
    <xs:element minOccurs="0" name="D" nillable="true" type="q1:ArrayOfEDT"/>
    <xs:element minOccurs="0" name="En" nillable="true" type="q1:ArrayOfP"/>
    <xs:element minOccurs="0" name="I" type="xs:boolean"/>
    <xs:element minOccurs="0" name="M" type="xs:int"/>
    <xs:element minOccurs="0" name="N" nillable="true" type="xs:dateTime"/>
    <xs:element minOccurs="0" name="O" nillable="true" type="xs:dateTime"/>
    <xs:element minOccurs="0" name="R" type="xs:boolean"/>
    <xs:element minOccurs="0" name="S" type="xs:boolean"/>
    <xs:element minOccurs="0" name="T" type="xs:boolean"/>
  </xs:sequence>
</xs:complexType>
<xs:element name="PC" nillable="true" type="q1:PC"/>
<xs:complexType name="ArrayOfEDT">
  <xs:sequence>
    <xs:element minOccurs="0" maxOccurs="unbounded" name="EDT" nillable="true"
type="q1:EDT"/>
  </xs:sequence>
</xs:complexType>
<xs:element name="ArrayOfEDT" nillable="true" type="q1:ArrayOfEDT"/>
<xs:complexType name="EDT">
  <xs:sequence>
    <xs:element minOccurs="0" name="D" type="xs:dateTime"/>
    <xs:element minOccurs="0" name="E" nillable="true" type="q1:E"/>
  </xs:sequence>
</xs:complexType>
<xs:element name="EDT" nillable="true" type="q1:EDT"/>
<xs:complexType name="ArrayOfP">
  <xs:sequence>
    <xs:element minOccurs="0" maxOccurs="unbounded" name="P" nillable="true" type="q1:P"/>
  </xs:sequence>
</xs:complexType>
<xs:element name="ArrayOfP" nillable="true" type="q1:ArrayOfP"/>
<xs:complexType name="FCRE">
  <xs:sequence>
    <xs:element minOccurs="0" name="a" nillable="true" type="q1:E"/>
    <xs:element minOccurs="0" name="b" nillable="true" type="xs:string"/>
    <xs:element minOccurs="0" name="c" type="q1:UPL"/>
    <xs:element minOccurs="0" name="d" type="ser:guid"/>
    <xs:element minOccurs="0" name="e" type="xs:boolean"/>
  </xs:sequence>
</xs:complexType>
<xs:element name="FCRE" nillable="true" type="q1:FCRE"/>
<xs:simpleType name="UPL">
  <xs:restriction base="xs:string">
    <xs:enumeration value="ByEmail"/>
    <xs:enumeration value="ByAccountName"/>
    <xs:enumeration value="BySid"/>
  </xs:restriction>
</xs:simpleType>

```

```

<xs:element name="UPL" nillable="true" type="q1:UPL"/>
<xs:complexType name="ArrayOfE">
  <xs:sequence>
    <xs:element minOccurs="0" maxOccurs="unbounded" name="E" nillable="true" type="q1:E"/>
  </xs:sequence>
</xs:complexType>
<xs:element name="ArrayOfE" nillable="true" type="q1:ArrayOfE"/>
<xs:complexType name="FCRO">
  <xs:sequence>
    <xs:element xmlns:q2="http://schemas.microsoft.com/2003/10/Serialization/Arrays"
minOccurs="0" name="a" nillable="true" type="q2:ArrayOfint"/>
    <xs:element minOccurs="0" name="b" type="xs:int"/>
    <xs:element minOccurs="0" name="c" type="xs:boolean"/>
    <xs:element minOccurs="0" name="d" type="xs:int"/>
    <xs:element minOccurs="0" name="e" type="xs:int"/>
    <xs:element minOccurs="0" name="f" type="xs:int"/>
    <xs:element minOccurs="0" name="g" nillable="true" type="xs:dateTime"/>
    <xs:element minOccurs="0" name="h" nillable="true" type="xs:dateTime"/>
    <xs:element minOccurs="0" name="i" type="ser:duration"/>
  </xs:sequence>
</xs:complexType>
<xs:element name="FCRO" nillable="true" type="q1:FCRO"/>
<xs:complexType name="ArrayOfEC">
  <xs:sequence>
    <xs:element minOccurs="0" maxOccurs="unbounded" name="EC" nillable="true"
type="q1:EC"/>
  </xs:sequence>
</xs:complexType>
<xs:element name="ArrayOfEC" nillable="true" type="q1:ArrayOfEC"/>
<xs:complexType name="EC">
  <xs:sequence>
    <xs:element minOccurs="0" name="C" type="xs:int"/>
    <xs:element minOccurs="0" name="ET" type="q1:ET"/>
  </xs:sequence>
</xs:complexType>
<xs:element name="EC" nillable="true" type="q1:EC"/>
<xs:complexType name="ArrayOfPI">
  <xs:sequence>
    <xs:element minOccurs="0" maxOccurs="unbounded" name="PI" nillable="true"
type="q1:PI"/>
  </xs:sequence>
</xs:complexType>
<xs:element name="ArrayOfPI" nillable="true" type="q1:ArrayOfPI"/>
<xs:complexType name="PI">
  <xs:sequence>
    <xs:element minOccurs="0" name="E" nillable="true" type="q1:E"/>
    <xs:element xmlns:q2="http://schemas.microsoft.com/2003/10/Serialization/Arrays"
minOccurs="0" name="I" nillable="true" type="q2:ArrayOfstring"/>
  </xs:sequence>
</xs:complexType>
<xs:element name="PI" nillable="true" type="q1:PI"/>
<xs:complexType name="LE">
  <xs:sequence>
    <xs:element minOccurs="0" name="b" type="xs:unsignedLong"/>
    <xs:element minOccurs="0" name="c" type="xs:unsignedShort"/>
    <xs:element minOccurs="0" name="r" type="xs:long"/>
    <xs:element minOccurs="0" name="t" type="xs:long"/>
  </xs:sequence>
</xs:complexType>
<xs:element name="LE" nillable="true" type="q1:LE"/>
<xs:import namespace="http://schemas.microsoft.com/2003/10/Serialization/" />
<xs:import namespace="http://schemas.microsoft.com/2003/10/Serialization/Arrays" />
</xs:schema>

```

7.4 http://schemas.microsoft.com/2003/10/Serialization/Arrays Schema

```
<?xml version="1.0" encoding="UTF-8"?>
```

```

<xs:schema xmlns:q2="http://schemas.microsoft.com/2003/10/Serialization/Arrays"
elementFormDefault="qualified"
targetNamespace="http://schemas.microsoft.com/2003/10/Serialization/Arrays"
xmlns:xs="http://www.w3.org/2001/XMLSchema">
  <xs:complexType name="ArrayOfint">
    <xs:sequence>
      <xs:element minOccurs="0" maxOccurs="unbounded" name="int" type="xs:int"/>
    </xs:sequence>
  </xs:complexType>
  <xs:element name="ArrayOfint" nillable="true" type="q2:ArrayOfint"/>
  <xs:complexType name="ArrayOfstring">
    <xs:sequence>
      <xs:element minOccurs="0" maxOccurs="unbounded" name="string" nillable="true"
type="xs:string"/>
    </xs:sequence>
  </xs:complexType>
  <xs:element name="ArrayOfstring" nillable="true" type="q2:ArrayOfstring"/>
</xs:schema>

```

7.5 http://schemas.datacontract.org/2004/07/System.Collections.Generic Schema

```

<?xml version="1.0" encoding="UTF-8"?>
<xs:schema xmlns:tns2="http://schemas.datacontract.org/2004/07/System.Collections.Generic"
elementFormDefault="qualified"
targetNamespace="http://schemas.datacontract.org/2004/07/System.Collections.Generic"
xmlns:xs="http://www.w3.org/2001/XMLSchema">
  <xs:complexType name="ArrayOfKeyValuePairOfELEHsv_SlRZJ">
    <xs:sequence>
      <xs:element minOccurs="0" maxOccurs="unbounded" name="KeyValuePairOfELEHsv_SlRZJ"
type="tns2:KeyValuePairOfELEHsv_SlRZJ"/>
    </xs:sequence>
  </xs:complexType>
  <xs:element name="ArrayOfKeyValuePairOfELEHsv_SlRZJ" nillable="true"
type="tns2:ArrayOfKeyValuePairOfELEHsv_SlRZJ"/>
  <xs:complexType name="KeyValuePairOfELEHsv_SlRZJ">
    <xs:sequence>
      <xs:element xmlns:q1="http://Microsoft/Office/Server/FeedCache" name="key"
nillable="true" type="q1:E"/>
      <xs:element xmlns:q1="http://Microsoft/Office/Server/FeedCache" name="value"
nillable="true" type="q1:LE"/>
    </xs:sequence>
  </xs:complexType>
  <xs:element name="KeyValuePairOfELEHsv_SlRZJ" nillable="true"
type="tns2:KeyValuePairOfELEHsv_SlRZJ"/>
  <xs:import namespace="http://Microsoft/Office/Server/FeedCache"/>
  <xs:import namespace="http://schemas.microsoft.com/2003/10/Serialization"/>
</xs:schema>

```

7.6 http://Microsoft/Office/Server/UserProfiles Schema

```

<?xml version="1.0" encoding="UTF-8"?>
<xs:schema xmlns:q3="http://Microsoft/Office/Server/UserProfiles"
xmlns:ser="http://schemas.microsoft.com/2003/10/Serialization/"
elementFormDefault="qualified" targetNamespace="http://Microsoft/Office/Server/UserProfiles"
xmlns:xs="http://www.w3.org/2001/XMLSchema">
  <xs:import namespace="http://schemas.microsoft.com/2003/10/Serialization"/>
  <xs:complexType name="ArrayOfUserData">
    <xs:sequence>
      <xs:element minOccurs="0" maxOccurs="unbounded" name="UserData" nillable="true"
type="q3:UserData"/>
    </xs:sequence>
  </xs:complexType>
  <xs:element name="ArrayOfUserData" nillable="true" type="q3:ArrayOfUserData"/>
  <xs:complexType name="UserData">
    <xs:sequence>

```



```

<xs:element minOccurs="0" name="Department" nillable="true" type="xs:string"/>
<xs:element minOccurs="0" name="Email" nillable="true" type="xs:string"/>
<xs:element minOccurs="0" name="EmailOptin" type="xs:int"/>
<xs:element minOccurs="0" name="FeedIdentifier" nillable="true" type="xs:string"/>
<xs:element minOccurs="0" name="FeedPrivacyActivity" type="xs:int"/>
<xs:element minOccurs="0" name="IsPeopleListPublic" type="xs:boolean"/>
<xs:element minOccurs="0" name="LastUpdate" type="xs:dateTime"/>
<xs:element minOccurs="0" name="MasterRecordID" type="xs:long"/>
<xs:element minOccurs="0" name="NTName" nillable="true" type="xs:string"/>
<xs:element minOccurs="0" name="O15FirstRunExperience" type="xs:int"/>
<xs:element minOccurs="0" name="PartitionID" type="ser:guid"/>
<xs:element minOccurs="0" name="PersonalSiteCapabilities" type="xs:int"/>
<xs:element minOccurs="0" name="PersonalSiteInstantiationState" type="xs:int"/>
<xs:element minOccurs="0" name="PersonalSpace" nillable="true" type="xs:string"/>
<xs:element minOccurs="0" name="PictureExchangeSyncState" type="xs:int"/>
<xs:element minOccurs="0" name="PicturePlaceholderState" type="xs:int"/>
<xs:element minOccurs="0" name="PictureTimestamp" nillable="true" type="xs:string"/>
<xs:element minOccurs="0" name="PictureUrl" nillable="true" type="xs:string"/>
<xs:element minOccurs="0" name="PreferredName" nillable="true" type="xs:string"/>
<xs:element minOccurs="0" name="ProfileSubtypeID" type="xs:int"/>
<xs:element minOccurs="0" name="RecordID" type="xs:long"/>
<xs:element minOccurs="0" name="SID" nillable="true" type="xs:base64Binary"/>
<xs:element minOccurs="0" name="SipAddress" nillable="true" type="xs:string"/>
<xs:element minOccurs="0" name="StatusNote" nillable="true" type="xs:string"/>
<xs:element minOccurs="0" name="Title" nillable="true" type="xs:string"/>
<xs:element minOccurs="0" name="UserID" type="ser:guid"/>
<xs:element minOccurs="0" name="DelveFlags" type="xs:int"/>
<xs:element minOccurs="0" name="HideFromAddressLists" type="xs:boolean"/>
<xs:element minOccurs="0" name="OfficeGraphEnabled" type="xs:boolean"/>
<xs:element minOccurs="0" name="PersonalSiteFirstCreationError" nillable="true"
type="xs:string"/>
<xs:element minOccurs="0" name="PersonalSiteFirstCreationTime" type="xs:dateTime"/>
<xs:element minOccurs="0" name="PersonalSiteLastCreationTime" type="xs:dateTime"/>
<xs:element minOccurs="0" name="PersonalSiteNumberOfRetries" type="xs:int"/>
<xs:element minOccurs="0" name="PulseMRUPeople" nillable="true" type="xs:string"/>
<xs:element minOccurs="0" name="RecipientTypeDetails" type="xs:long"/>
<xs:element minOccurs="0" name="UserType" type="xs:int"/>
</xs:sequence>
</xs:complexType>
<xs:element name="UserData" nillable="true" type="q3:UserData"/>
</xs:schema>

```

7.7 <http://schemas.datacontract.org/2004/07/System> Schema

```

<?xml version="1.0" encoding="UTF-8"?>
<xs:schema xmlns:q5="http://schemas.datacontract.org/2004/07/System"
xmlns:ser="http://schemas.microsoft.com/2003/10/Serialization/"
elementFormDefault="qualified"
targetNamespace="http://schemas.datacontract.org/2004/07/System"
xmlns:xs="http://www.w3.org/2001/XMLSchema">
  <xs:import namespace="http://schemas.microsoft.com/2003/10/Serialization/" />
  <xs:complexType name="ArrayOfNullableOfguid">
    <xs:sequence>
      <xs:element minOccurs="0" maxOccurs="unbounded" name="guid" nillable="true"
type="ser:guid"/>
    </xs:sequence>
  </xs:complexType>
  <xs:element name="ArrayOfNullableOfguid" nillable="true" type="q5:ArrayOfNullableOfguid"/>
</xs:schema>

```

7.8 <http://Microsoft/Office/Server/FeedyCache> Schema

```

<?xml version="1.0" encoding="UTF-8"?>

```

```

<xs:schema xmlns:tns1="http://Microsoft/Office/Server/FeedyCache"
elementFormDefault="qualified" targetNamespace="http://Microsoft/Office/Server/FeedyCache"
xmlns:xs="http://www.w3.org/2001/XMLSchema">
  <xs:complexType name="FCCR">
    <xs:sequence>
      <xs:element xmlns:q1="http://Microsoft/Office/Server/FeedCache" minOccurs="0" name="EC"
nillable="true" type="q1:PC"/>
      <xs:element xmlns:q1="http://Microsoft/Office/Server/FeedCache" minOccurs="0" name="FC"
nillable="true" type="q1:ArrayOfEC"/>
      <xs:element xmlns:q3="http://Microsoft/Office/Server/UserProfiles" minOccurs="0"
name="P" nillable="true" type="q3:ArrayOfUserData"/>
      <xs:element xmlns:q2="http://schemas.microsoft.com/2003/10/Serialization/Arrays"
minOccurs="0" name="S" nillable="true" type="q2:ArrayOfstring"/>
      <xs:element xmlns:q5="http://schemas.datacontract.org/2004/07/System" minOccurs="0"
name="T" nillable="true" type="q5:ArrayOfNullableOfguid"/>
      <xs:element minOccurs="0" name="TN" nillable="true" type="xs:dateTime"/>
      <xs:element minOccurs="0" name="TO" nillable="true" type="xs:dateTime"/>
    </xs:sequence>
  </xs:complexType>
  <xs:element name="FCCR" nillable="true" type="tns1:FCCR"/>
  <xs:import namespace="http://Microsoft/Office/Server/FeedCache"/>
  <xs:import namespace="http://Microsoft/Office/Server/UserProfiles"/>
  <xs:import namespace="http://schemas.datacontract.org/2004/07/System"/>
  <xs:import namespace="http://schemas.microsoft.com/2003/10/Serialization/Arrays"/>
</xs:schema>

```

8 Appendix C: Product Behavior

The information in this specification is applicable to the following Microsoft products or supplemental software. References to product versions include released service packs.

- Microsoft SharePoint Server 2013
- Microsoft SharePoint Server 2016

Exceptions, if any, are noted below. If a service pack or Quick Fix Engineering (QFE) number appears with the product version, behavior changed in that service pack or QFE. The new behavior also applies to subsequent service packs of the product unless otherwise specified. If a product edition appears with the product version, behavior is different in that product edition.

Unless otherwise specified, any statement of optional behavior in this specification that is prescribed using the terms SHOULD or SHOULD NOT implies product behavior in accordance with the SHOULD or SHOULD NOT prescription. Unless otherwise specified, the term MAY implies that the product does not follow the prescription.

9 Change Tracking

No table of changes is available. The document is either new or has had no changes since its last release.

10 Index

A

Abstract data model
 [server](#) 29
[AddFeedEntry example](#) 67
[Applicability](#) 11
[ArrayOfE complex type](#) 15
[ArrayOfEC complex type](#) 15
[ArrayOfEDT complex type](#) 15
[ArrayOfint complex type](#) 16
[ArrayOfNullableOfguid complex type](#) 16
[ArrayOfP complex type](#) 16
[ArrayOfstring complex type](#) 16
[ArrayOfUserData complex type](#) 17
[Attribute groups](#) 27
[Attributes](#) 27

C

[Capability negotiation](#) 11
[Change tracking](#) 92
[char simple type](#) 25
[Complex types](#) 14
 [ArrayOfE](#) 15
 [ArrayOfEC](#) 15
 [ArrayOfEDT](#) 15
 [ArrayOfint](#) 16
 [ArrayOfNullableOfguid](#) 16
 [ArrayOfP](#) 16
 [ArrayOfstring](#) 16
 [ArrayOfUserData](#) 17
 [E](#) 17
 [EC](#) 18
 [EDT](#) 18
 [FCCR](#) 19
 [FCRE](#) 19
 [FCRO](#) 20
 [FeedCacheFault](#) 18
 [P](#) 21
 [PC](#) 22
 [UserData](#) 23

D

Data model - abstract
 [server](#) 29
Details
 [server](#) 28
[duration simple type](#) 25

E

[E complex type](#) 17
[EC complex type](#) 18
[EDT complex type](#) 18
[ET simple type](#) 26
Events
 [local - server](#) 66
 [timer - server](#) 66
Examples
 [AddFeedEntry](#) 67
 [GetPublishedFeed](#) 67

F

[FCCR complex type](#) 19
[FCRE complex type](#) 19
[FCRO complex type](#) 20
[FeedCacheFault complex type](#) 18
[FeedCacheFaultCodes simple type](#) 25
[Fields - vendor-extensible](#) 12
[Full WSDL](#) 71
[Full XML schema](#) 80
 [http://Microsoft/Office/Server/FeedCache Schema](#)
 85
 [http://Microsoft/Office/Server/FeedyCache Schema](#)
 89
 [http://Microsoft/Office/Server/UserProfiles Schema](#)
 88
 [http://schemas.datacontract.org/2004/07/System Schema](#) 89
 [http://schemas.datacontract.org/2004/07/System.Collections.Generic Schema](#) 88
 [http://schemas.microsoft.com/2003/10/Serialization/ Schema](#) 84
 [http://schemas.microsoft.com/2003/10/Serialization/Arrays Schema](#) 87
 [http://tempuri.org/ Schema](#) 80

G

[GetPublishedFeed example](#) 67
[Glossary](#) 8
[Groups](#) 27
[guid simple type](#) 26

I

[Implementer - security considerations](#) 70
[Index of security parameters](#) 70
[Informative references](#) 10
Initialization
 [server](#) 30
[Introduction](#) 8

L

Local events
 [server](#) 66

M

Message processing
 [server](#) 30
Messages
 [ArrayOfE complex type](#) 15
 [ArrayOfEC complex type](#) 15
 [ArrayOfEDT complex type](#) 15
 [ArrayOfint complex type](#) 16
 [ArrayOfNullableOfguid complex type](#) 16
 [ArrayOfP complex type](#) 16

- [ArrayOfstring complex type](#) 16
- [ArrayOfUserData complex type](#) 17
- [attribute groups](#) 27
- [attributes](#) 27
- [char simple type](#) 25
- [complex types](#) 14
- [duration simple type](#) 25
- [E complex type](#) 17
- [EC complex type](#) 18
- [EDT complex type](#) 18
- [elements](#) 14
- [enumerated](#) 14
- [ET simple type](#) 26
- [FCCR complex type](#) 19
- [FCRE complex type](#) 19
- [FCRO complex type](#) 20
- [FeedCacheFault complex type](#) 18
- [FeedCacheFaultCodes simple type](#) 25
- [groups](#) 27
- [guid simple type](#) 26
- [namespaces](#) 13
- [P complex type](#) 21
- [PC complex type](#) 22
- [simple types](#) 25
- [syntax](#) 13
- [transport](#) 13
- [UPL simple type](#) 27
- [UserData complex type](#) 23

N

- [Namespaces](#) 13
- [Normative references](#) 10

O

- Operations
 - [AddFeedEntries](#) 60
 - [AddFeedEntriesForRepop](#) 64
 - [AddFeedEntry](#) 31
 - [BulkLMTUpdate](#) 33
 - [GetCategoricalFeed](#) 36
 - [GetConsolidatedFeed](#) 38
 - [GetEntries](#) 40
 - [GetFeeds](#) 43
 - [GetPublishedFeed](#) 45
 - [IsEntityActivelyFollowed](#) 47
 - [IsRepopulationNeeded](#) 50
 - [NewEntityFollower](#) 52
 - [RefreshFollowedEntities](#) 54
 - [RemoveEntityFeed](#) 56
 - [RemoveFeedEntry](#) 58
 - [RemoveInternalRegions](#) 62
- [Overview \(synopsis\)](#) 11

P

- [P complex type](#) 21
- [Parameters - security index](#) 70
- [PC complex type](#) 22
- [Preconditions](#) 11
- [Prerequisites](#) 11
- [Product behavior](#) 91
- Protocol Details
 - [overview](#) 28

R

- [References](#) 10
 - [informative](#) 10
 - [normative](#) 10
- [Relationship to other protocols](#) 11

S

- Security
 - [implementer considerations](#) 70
 - [parameter index](#) 70
- Sequencing rules
 - [server](#) 30
- Server
 - [abstract data model](#) 29
 - [AddFeedEntries operation](#) 60
 - [AddFeedEntriesForRepop operation](#) 64
 - [AddFeedEntry operation](#) 31
 - [BulkLMTUpdate operation](#) 33
 - [GetCategoricalFeed operation](#) 36
 - [GetConsolidatedFeed operation](#) 38
 - [GetEntries operation](#) 40
 - [GetFeeds operation](#) 43
 - [GetPublishedFeed operation](#) 45
 - [initialization](#) 30
 - [IsEntityActivelyFollowed operation](#) 47
 - [IsRepopulationNeeded operation](#) 50
 - [local events](#) 66
 - [message processing](#) 30
 - [NewEntityFollower operation](#) 52
 - [RefreshFollowedEntities operation](#) 54
 - [RemoveEntityFeed operation](#) 56
 - [RemoveFeedEntry operation](#) 58
 - [RemoveInternalRegions operation](#) 62
 - [sequencing rules](#) 30
 - [timer events](#) 66
 - [timers](#) 30
- [Server details](#) 28
- [Simple types](#) 25
 - [char](#) 25
 - [duration](#) 25
 - [ET](#) 26
 - [FeedCacheFaultCodes](#) 25
 - [guid](#) 26
 - [UPL](#) 27
- [Standards assignments](#) 12
- Syntax
 - [messages - overview](#) 13

T

- Timer events
 - [server](#) 66
- Timers
 - [server](#) 30
- [Tracking changes](#) 92
- [Transport](#) 13
- Types
 - [complex](#) 14
 - [simple](#) 25

U

[UPL simple type](#) 27
[UserData complex type](#) 23

V

[Vendor-extensible fields](#) 12
[Versioning](#) 11

W

[WSDL](#) 71

X

[XML schema](#) 80
<http://Microsoft/Office/Server/FeedCache Schema>
85
<http://Microsoft/Office/Server/FeedyCache Schema>
89
<http://Microsoft/Office/Server/UserProfiles Schema>
88
<http://schemas.datacontract.org/2004/07/System Schema> 89

<http://schemas.datacontract.org/2004/07/System.Collections.Generic Schema> 88

<http://schemas.microsoft.com/2003/10/Serialization/ Schema> 84

<http://schemas.microsoft.com/2003/10/Serialization/Arrays Schema> 87
<http://tempuri.org/ Schema> 80