

[MS-UPFCWS]: User Activity Feed Cache Web Service Protocol

Intellectual Property Rights Notice for Open Specifications Documentation

- **Technical Documentation.** Microsoft publishes Open Specifications documentation for protocols, file formats, languages, standards as well as overviews of the interaction among each of these technologies.
- **Copyrights.** This documentation is covered by Microsoft copyrights. Regardless of any other terms that are contained in the terms of use for the Microsoft website that hosts this documentation, you may make copies of it in order to develop implementations of the technologies described in the Open Specifications and may distribute portions of it in your implementations using these technologies or your documentation as necessary to properly document the implementation. You may also distribute in your implementation, with or without modification, any schema, IDL's, or code samples that are included in the documentation. This permission also applies to any documents that are referenced in the Open Specifications.
- **No Trade Secrets.** Microsoft does not claim any trade secret rights in this documentation.
- **Patents.** Microsoft has patents that may cover your implementations of the technologies described in the Open Specifications. Neither this notice nor Microsoft's delivery of the documentation grants any licenses under those or any other Microsoft patents. However, a given Open Specification may be covered by Microsoft [Open Specification Promise](#) or the [Community Promise](#). If you would prefer a written license, or if the technologies described in the Open Specifications are not covered by the Open Specifications Promise or Community Promise, as applicable, patent licenses are available by contacting iplg@microsoft.com.
- **Trademarks.** The names of companies and products contained in this documentation may be covered by trademarks or similar intellectual property rights. This notice does not grant any licenses under those rights. For a list of Microsoft trademarks, visit www.microsoft.com/trademarks.
- **Fictitious Names.** The example companies, organizations, products, domain names, email addresses, logos, people, places, and events depicted in this documentation are fictitious. No association with any real company, organization, product, domain name, email address, logo, person, place, or event is intended or should be inferred.

Reservation of Rights. All other rights are reserved, and this notice does not grant any rights other than specifically described above, whether by implication, estoppel, or otherwise.

Tools. The Open Specifications do not require the use of Microsoft programming tools or programming environments in order for you to develop an implementation. If you have access to Microsoft programming tools and environments you are free to take advantage of them. Certain Open Specifications are intended for use in conjunction with publicly available standard specifications and network programming art, and assumes that the reader either is familiar with the aforementioned material or has immediate access to it.

Revision Summary

Date	Revision History	Revision Class	Comments
01/20/2012	0.1	New	Released new document.
04/11/2012	0.1	No change	No changes to the meaning, language, or formatting of the technical content.
07/16/2012	0.1	No change	No changes to the meaning, language, or formatting of the technical content.
09/12/2012	0.1	No change	No changes to the meaning, language, or formatting of the technical content.
10/08/2012	1.0	Major	Significantly changed the technical content.
02/11/2013	1.1	Minor	Clarified the meaning of the technical content.
07/30/2013	1.1	No change	No changes to the meaning, language, or formatting of the technical content.
11/18/2013	1.1	No change	No changes to the meaning, language, or formatting of the technical content.
02/10/2014	1.1	No change	No changes to the meaning, language, or formatting of the technical content.
04/30/2014	1.2	Minor	Clarified the meaning of the technical content.

Table of Contents

1 Introduction	9
1.1 Glossary	9
1.2 References	10
1.2.1 Normative References	10
1.2.2 Informative References	11
1.3 Overview	11
1.4 Relationship to Other Protocols	11
1.5 Prerequisites/Preconditions	11
1.6 Applicability Statement	12
1.7 Versioning and Capability Negotiation	12
1.8 Vendor-Extensible Fields	12
1.9 Standards Assignments	12
2 Messages	13
2.1 Transport	13
2.2 Common Message Syntax	13
2.2.1 Namespaces	13
2.2.2 Messages	14
2.2.3 Elements	14
2.2.4 Complex Types	14
2.2.4.1 ArrayOfE	15
2.2.4.2 ArrayOfEC	15
2.2.4.3 ArrayOfEDT	15
2.2.4.4 ArrayOfint	16
2.2.4.5 ArrayOfNullableOfguid	16
2.2.4.6 ArrayOfP	16
2.2.4.7 ArrayOfstring	17
2.2.4.8 ArrayOfUserData	17
2.2.4.9 E	17
2.2.4.10 EC	18
2.2.4.11 EDT	18
2.2.4.12 FeedCacheFault	18
2.2.4.13 FCCR	19
2.2.4.14 FCRE	20
2.2.4.15 FCRO	20
2.2.4.16 P	21
2.2.4.17 PC	22
2.2.4.18 UserData	23
2.2.5 Simple Types	25
2.2.5.1 char	25
2.2.5.2 duration	25
2.2.5.3 FeedCacheFaultCodes	26
2.2.5.4 guid	26
2.2.5.5 ET	26
2.2.5.6 UPL	27
2.2.6 Attributes	27
2.2.7 Groups	27
2.2.8 Attribute Groups	28
3 Protocol Details	29

3.1	Server Details	29
3.1.1	Abstract Data Model	30
3.1.2	Timers	31
3.1.3	Initialization	31
3.1.4	Message Processing Events and Sequencing Rules	31
3.1.4.1	AddFeedEntry	32
3.1.4.1.1	Messages	32
3.1.4.1.1.1	IFeedCacheService_AddFeedEntry_InputMessage	32
3.1.4.1.1.2	IFeedCacheService_AddFeedEntry_OutputMessage	33
3.1.4.1.2	Elements	33
3.1.4.1.2.1	AddFeedEntry	33
3.1.4.1.2.2	AddFeedEntryResponse	33
3.1.4.1.3	Complex Types	34
3.1.4.1.4	Simple Types	34
3.1.4.1.5	Attributes	34
3.1.4.1.6	Groups	34
3.1.4.1.7	Attribute Groups	34
3.1.4.2	BulkLMTUpdate	34
3.1.4.2.1	Messages	34
3.1.4.2.1.1	IFeedCacheService_BulkLMTUpdate_InputMessage	35
3.1.4.2.1.2	IFeedCacheService_BulkLMTUpdate_OutputMessage	35
3.1.4.2.2	Elements	35
3.1.4.2.2.1	BulkLMTUpdate	35
3.1.4.2.2.2	BulkLMTUpdateResponse	36
3.1.4.2.3	Complex Types	36
3.1.4.2.3.1	ArrayOfKeyValuePairOfELEHsv_SIRZJ	36
3.1.4.2.3.2	KeyValuePairOfELEHsv_SIRZJ	36
3.1.4.2.3.3	LE	37
3.1.4.2.4	Simple Types	37
3.1.4.2.5	Attributes	37
3.1.4.2.6	Groups	37
3.1.4.2.7	Attribute Groups	37
3.1.4.3	GetCategoricalFeed	37
3.1.4.3.1	Messages	38
3.1.4.3.1.1	IFeedCacheService_GetCategoricalFeed_InputMessage	38
3.1.4.3.1.2	IFeedCacheService_GetCategoricalFeed_OutputMessage	38
3.1.4.3.2	Elements	38
3.1.4.3.2.1	GetCategoricalFeed	39
3.1.4.3.2.2	GetCategoricalFeedResponse	39
3.1.4.3.3	Complex Types	39
3.1.4.3.4	Simple Types	39
3.1.4.3.5	Attributes	39
3.1.4.3.6	Groups	39
3.1.4.3.7	Attribute Groups	40
3.1.4.4	GetConsolidatedFeed	40
3.1.4.4.1	Messages	40
3.1.4.4.1.1	IFeedCacheService_GetConsolidatedFeed_InputMessage	40
3.1.4.4.1.2	IFeedCacheService_GetConsolidatedFeed_OutputMessage	40
3.1.4.4.2	Elements	41
3.1.4.4.2.1	GetConsolidatedFeed	41
3.1.4.4.2.2	GetConsolidatedFeedResponse	41
3.1.4.4.3	Complex Types	41
3.1.4.4.4	Simple Types	42

3.1.4.4.5	Attributes.....	42
3.1.4.4.6	Groups.....	42
3.1.4.4.7	Attribute Groups	42
3.1.4.5	GetEntries	42
3.1.4.5.1	Messages	42
3.1.4.5.1.1	IFeedCacheService_GetEntries_InputMessage.....	42
3.1.4.5.1.2	IFeedCacheService_GetEntries_OutputMessage.....	43
3.1.4.5.2	Elements.....	43
3.1.4.5.2.1	GetEntries	43
3.1.4.5.2.2	GetEntriesResponse	43
3.1.4.5.3	Complex Types	44
3.1.4.5.3.1	ArrayOfPI	44
3.1.4.5.3.2	PI	44
3.1.4.5.4	Simple Types.....	44
3.1.4.5.5	Attributes.....	44
3.1.4.5.6	Groups.....	44
3.1.4.5.7	Attribute Groups	45
3.1.4.6	GetFeeds.....	45
3.1.4.6.1	Messages	45
3.1.4.6.1.1	IFeedCacheService_GetFeeds_InputMessage	45
3.1.4.6.1.2	IFeedCacheService_GetFeeds_OutputMessage	45
3.1.4.6.2	Elements.....	46
3.1.4.6.2.1	GetFeeds.....	46
3.1.4.6.2.2	GetFeedsResponse.....	46
3.1.4.6.3	Complex Types	47
3.1.4.6.4	Simple Types.....	47
3.1.4.6.5	Attributes.....	47
3.1.4.6.6	Groups.....	47
3.1.4.6.7	Attribute Groups	47
3.1.4.7	GetPublishedFeed	47
3.1.4.7.1	Messages	47
3.1.4.7.1.1	IFeedCacheService_GetPublishedFeed_InputMessage	48
3.1.4.7.1.2	IFeedCacheService_GetPublishedFeed_OutputMessage	48
3.1.4.7.2	Elements.....	48
3.1.4.7.2.1	GetPublishedFeed	48
3.1.4.7.2.2	GetPublishedFeedResponse.....	48
3.1.4.7.3	Complex Types	49
3.1.4.7.4	Simple Types.....	49
3.1.4.7.5	Attributes.....	49
3.1.4.7.6	Groups.....	49
3.1.4.7.7	Attribute Groups	49
3.1.4.8	IsEntityActivelyFollowed	49
3.1.4.8.1	Messages	50
3.1.4.8.1.1	IFeedCacheService_IsEntityActivelyFollowed_InputMessage.....	50
3.1.4.8.1.2	IFeedCacheService_IsEntityActivelyFollowed_OutputMessage	50
3.1.4.8.2	Elements.....	50
3.1.4.8.2.1	IsEntityActivelyFollowed	50
3.1.4.8.2.2	IsEntityActivelyFollowedResponse.....	51
3.1.4.8.3	Complex Types	51
3.1.4.8.4	Simple Types.....	51
3.1.4.8.5	Attributes.....	51
3.1.4.8.6	Groups.....	51
3.1.4.8.7	Attribute Groups	51

3.1.4.9	IsRepopulationNeeded.....	51
3.1.4.9.1	Messages	52
3.1.4.9.1.1	IFeedCacheService_IsRepopulationNeeded_InputMessage	52
3.1.4.9.1.2	IFeedCacheService_IsRepopulationNeeded_OutputMessage	52
3.1.4.9.2	Elements.....	52
3.1.4.9.2.1	IsRepopulationNeeded	53
3.1.4.9.2.2	IsRepopulationNeededResponse	53
3.1.4.9.3	Complex Types	53
3.1.4.9.4	Simple Types.....	53
3.1.4.9.5	Attributes.....	53
3.1.4.9.6	Groups.....	53
3.1.4.9.7	Attribute Groups	53
3.1.4.10	NewEntityFollower	53
3.1.4.10.1	Messages	54
3.1.4.10.1.1	IFeedCacheService_NewEntityFollower_InputMessage	54
3.1.4.10.1.2	IFeedCacheService_NewEntityFollower_OutputMessage.....	54
3.1.4.10.2	Elements.....	54
3.1.4.10.2.1	NewEntityFollower	55
3.1.4.10.2.2	NewEntityFollowerResponse	55
3.1.4.10.3	Complex Types	55
3.1.4.10.4	Simple Types	55
3.1.4.10.5	Attributes	55
3.1.4.10.6	Groups.....	55
3.1.4.10.7	Attribute Groups.....	55
3.1.4.11	RefreshFollowedEntities	56
3.1.4.11.1	Messages	56
3.1.4.11.1.1	IFeedCacheService_RefreshFollowedEntities_InputMessage	56
3.1.4.11.1.2	IFeedCacheService_RefreshFollowedEntities_OutputMessage	56
3.1.4.11.2	Elements.....	57
3.1.4.11.2.1	RefreshFollowedEntities.....	57
3.1.4.11.2.2	RefreshFollowedEntitiesResponse.....	57
3.1.4.11.3	Complex Types	57
3.1.4.11.4	Simple Types	57
3.1.4.11.5	Attributes	58
3.1.4.11.6	Groups.....	58
3.1.4.11.7	Attribute Groups.....	58
3.1.4.12	RemoveEntityFeed	58
3.1.4.12.1	Messages	58
3.1.4.12.1.1	IFeedCacheService_RemoveEntityFeed_InputMessage.....	58
3.1.4.12.1.2	IFeedCacheService_RemoveEntityFeed_OutputMessage	59
3.1.4.12.2	Elements.....	59
3.1.4.12.2.1	RemoveEntityFeed	59
3.1.4.12.2.2	RemoveEntityFeedResponse.....	59
3.1.4.12.3	Complex Types	59
3.1.4.12.4	Simple Types	60
3.1.4.12.5	Attributes	60
3.1.4.12.6	Groups.....	60
3.1.4.12.7	Attribute Groups.....	60
3.1.4.13	RemoveFeedEntry	60
3.1.4.13.1	Messages	60
3.1.4.13.1.1	IFeedCacheService_RemoveFeedEntry_InputMessage	60
3.1.4.13.1.2	IFeedCacheService_RemoveFeedEntry_OutputMessage	61
3.1.4.13.2	Elements.....	61

3.1.4.13.2.1	RemoveFeedEntry	61
3.1.4.13.2.2	RemoveFeedEntryResponse	61
3.1.4.13.3	Complex Types	62
3.1.4.13.4	Simple Types	62
3.1.4.13.5	Attributes	62
3.1.4.13.6	Groups.....	62
3.1.4.13.7	Attribute Groups.....	62
3.1.4.14	AddFeedEntries.....	62
3.1.4.14.1	Messages	62
3.1.4.14.1.1	IFeedCacheService_AddFeedEntries_InputMessage	63
3.1.4.14.1.2	IFeedCacheService_AddFeedEntries_OutputMessage	63
3.1.4.14.2	Elements.....	63
3.1.4.14.2.1	AddFeedEntries	63
3.1.4.14.2.2	AddFeedEntriesResponse	64
3.1.4.14.3	Complex Types	64
3.1.4.14.4	Simple Types	64
3.1.4.14.5	Attributes.....	64
3.1.4.14.6	Groups.....	64
3.1.4.14.7	Attribute Groups.....	64
3.1.4.15	RemoveInternalRegions	64
3.1.4.15.1	Messages	65
3.1.4.15.1.1	IFeedCacheService_RemoveInternalRegions_InputMessage	65
3.1.4.15.1.2	IFeedCacheService_RemoveInternalRegions_OutputMessage	65
3.1.4.15.2	Elements.....	65
3.1.4.15.2.1	RemoveInternalRegions.....	65
3.1.4.15.2.2	RemoveInternalRegionsResponse	66
3.1.4.15.3	Complex Types	66
3.1.4.15.4	Simple Types	66
3.1.4.15.5	Attributes.....	66
3.1.4.15.6	Groups.....	66
3.1.4.15.7	Attribute Groups.....	66
3.1.4.16	AddFeedEntriesForRepop	66
3.1.4.16.1	Messages	67
3.1.4.16.1.1	IFeedCacheService_AddFeedEntriesForRepop_InputMessage	67
3.1.4.16.1.2	IFeedCacheService_AddFeedEntriesForRepop_OutputMessage	67
3.1.4.16.2	Elements.....	67
3.1.4.16.2.1	AddFeedEntriesForRepop	68
3.1.4.16.2.2	AddFeedEntriesForRepopResponse	68
3.1.4.16.3	Complex Types	68
3.1.4.16.4	Simple Types	68
3.1.4.16.5	Attributes.....	69
3.1.4.16.6	Groups.....	69
3.1.4.16.7	Attribute Groups.....	69
3.1.5	Timer Events	69
3.1.6	Other Local Events	69
4	Protocol Examples.....	70
4.1	AddFeedEntry.....	70
4.2	GetPublishedFeed	71
5	Security.....	73
5.1	Security Considerations for Implementers.....	73
5.2	Index of Security Parameters	73

6	Appendix A: Full WSDL	74
7	Appendix B: Full XML Schema	84
7.1	http://tempuri.org/ Schema	84
7.2	http://schemas.microsoft.com/2003/10/Serialization/ Schema	89
7.3	http://Microsoft/Office/Server/FeedCache Schema	90
7.4	http://schemas.microsoft.com/2003/10/Serialization/Arrays Schema	93
7.5	http://schemas.datacontract.org/2004/07/System.Collections.Generic Schema	93
7.6	http://Microsoft/Office/Server/UserProfiles Schema	94
7.7	http://schemas.datacontract.org/2004/07/System Schema	94
7.8	http://Microsoft/Office/Server/FeedyCache Schema	95
8	Appendix C: Product Behavior	96
9	Change Tracking.....	97
10	Index	99

1 Introduction

The User Activity Feed Cache Web Service Protocol enables protocol clients to store and retrieve data related to social feed posts and feed metadata in an in-memory cache on a protocol server.

Sections 1.8, 2, and 3 of this specification are normative and can contain the terms MAY, SHOULD, MUST, MUST NOT, and SHOULD NOT as defined in RFC 2119. Sections 1.5 and 1.9 are also normative but cannot contain those terms. All other sections and examples in this specification are informative.

1.1 Glossary

The following terms are defined in [\[MS-GLOS\]](#):

- Coordinated Universal Time (UTC)**
- GUID**
- Hypertext Transfer Protocol (HTTP)**
- Hypertext Transfer Protocol over Secure Sockets Layer (HTTPS)**
- security identifier (SID)**
- SOAP**
- SOAP action**
- SOAP body**
- SOAP fault**
- SOAP header**
- Transmission Control Protocol (TCP)**
- user object**
- XML namespace**

The following terms are defined in [\[MS-OFCGLOS\]](#):

- application server**
- datetime**
- document**
- email address**
- endpoint**
- list**
- login name**
- partition identifier**
- site**
- site collection**
- social tag**
- tenant**
- Uniform Resource Identifier (URI)**
- Uniform Resource Locator (URL)**
- user profile**
- User Profile Service**
- web application**
- web service**
- Web Services Description Language (WSDL)**
- WSDL message**
- WSDL operation**
- XML namespace prefix**
- XML schema**

The following terms are specific to this document:

feed entity: An object that represents anything that can have a feed, such as a user, a document, or a site.

feed entry: The data contained in a posting to a feed.

MAY, SHOULD, MUST, SHOULD NOT, MUST NOT: These terms (in all caps) are used as described in [\[RFC2119\]](#). All statements of optional behavior use either MAY, SHOULD, or SHOULD NOT.

1.2 References

References to Microsoft Open Specifications documentation do not include a publishing year because links are to the latest version of the documents, which are updated frequently. References to other documents include a publishing year when one is available.

1.2.1 Normative References

We conduct frequent surveys of the normative references to assure their continued availability. If you have any issue with finding a normative reference, please contact dochelp@microsoft.com. We will assist you in finding the relevant information.

[MS-SPSTWS] Microsoft Corporation, "[SharePoint Security Token Service Web Service Protocol](#)".

[MS-UPSCWS] Microsoft Corporation, "[User Profile Service Application Caching Web Service Protocol](#)".

[RFC2119] Bradner, S., "Key words for use in RFCs to Indicate Requirement Levels", BCP 14, RFC 2119, March 1997, <http://www.rfc-editor.org/rfc/rfc2119.txt>

[RFC2616] Fielding, R., Gettys, J., Mogul, J., et al., "Hypertext Transfer Protocol -- HTTP/1.1", RFC 2616, June 1999, <http://www.ietf.org/rfc/rfc2616.txt>

[RFC2818] Rescorla, E., "HTTP Over TLS", RFC 2818, May 2000, <http://www.ietf.org/rfc/rfc2818.txt>

[SOAP1.1] Box, D., Ehnebuske, D., Kakivaya, G., et al., "Simple Object Access Protocol (SOAP) 1.1", May 2000, <http://www.w3.org/TR/2000/NOTE-SOAP-20000508/>

[SOAP1.2/1] Gudgin, M., Hadley, M., Mendelsohn, N., Moreau, J., and Nielsen, H.F., "SOAP Version 1.2 Part 1: Messaging Framework", W3C Recommendation, June 2003, <http://www.w3.org/TR/2003/REC-soap12-part1-20030624>

[SOAP1.2/2] Gudgin, M., Hadley, M., Mendelsohn, N., Moreau, J., and Nielsen, H.F., "SOAP Version 1.2 Part 2: Adjuncts", W3C Recommendation, June 2003, <http://www.w3.org/TR/2003/REC-soap12-part2-20030624>

[WSDL] Christensen, E., Curbera, F., Meredith, G., and Weerawarana, S., "Web Services Description Language (WSDL) 1.1", W3C Note, March 2001, <http://www.w3.org/TR/2001/NOTE-wsdl-20010315>

[XMLNS] Bray, T., Hollander, D., Layman, A., et al., Eds., "Namespaces in XML 1.0 (Third Edition)", W3C Recommendation, December 2009, <http://www.w3.org/TR/2009/REC-xml-names-20091208/>

[XMLSCHEMA1] Thompson, H.S., Beech, D., Maloney, M., and Mendelsohn, N., Eds., "XML Schema Part 1: Structures", W3C Recommendation, May 2001, <http://www.w3.org/TR/2001/REC-xmlschema-1-20010502/>

[XMLSCHEMA2] Biron, P.V., and Malhotra, A., Eds., "XML Schema Part 2: Datatypes", W3C Recommendation, May 2001, <http://www.w3.org/TR/2001/REC-xmlschema-2-20010502/>

1.2.2 Informative References

[MC-NMF] Microsoft Corporation, "[.NET Message Framing Protocol](#)".

[MS-GLOS] Microsoft Corporation, "[Windows Protocols Master Glossary](#)".

[MS-OFCGLOS] Microsoft Corporation, "[Microsoft Office Master Glossary](#)".

[MS-SPTWS] Microsoft Corporation, "[Service Platform Topology Web Service Protocol](#)".

1.3 Overview

This protocol allows protocol clients to store data related to social feed posts and feed metadata in an in-memory cache on a middle-tier **application server**. A typical scenario is a protocol client fetching the posts from a number of users to display a consolidated view of recent activities.

1.4 Relationship to Other Protocols

This protocol uses the **SOAP** message protocol for formatting requests and responses as described in [\[SOAP1.1\]](#), [\[SOAP1.2/1\]](#) and [\[SOAP1.2/2\]](#). It transmits these messages by using **HTTP** protocol as described in [\[RFC2616\]](#), or the **HTTPS** protocol as described in [\[RFC2818\]](#) or the **TCP** protocol as described in [\[MC-NMF\]](#).

The following diagram shows the underlying messaging and transport stack used by the protocol.

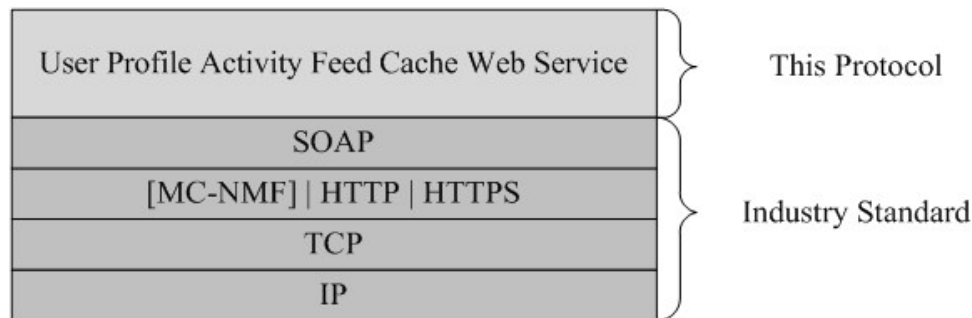


Figure 1: This protocol in relation to other protocols

1.5 Prerequisites/Preconditions

This protocol operates against a protocol server that exposes one or more **endpoint (4) URIs** that are known by protocol clients. The endpoint (4) URI of the protocol server and the transport that is used by the protocol server are either known by the protocol client or obtained by using the discovery mechanism that is described in [\[MS-SPTWS\]](#).

The protocol client obtains the requisite ApplicationClassId and ApplicationVersion values and the endpoint (4) URI of the protocol server that provides the discovery mechanism, as described in [\[MS-SPTWS\]](#), by means that are independent of either protocol.

This protocol requires the protocol client to have appropriate permission to call the methods on the protocol server.

The protocol client implements the token-based security mechanisms that are required by the protocol server and related security protocols, as described in [\[MS-SPSTWS\]](#).

1.6 Applicability Statement

The protocol is designed to work with cached feed data.

1.7 Versioning and Capability Negotiation

This specification covers versioning issues in the following areas:

- **Supported Transports:** This protocol can be implemented by using transports that support sending SOAP messages, as described in section 2.1.
- **Protocol Versions:** This protocol is not versioned.
- **Capability Negotiation:** This protocol does not support version negotiation.

1.8 Vendor-Extensible Fields

None

1.9 Standards Assignments

None

2 Messages

2.1 Transport

Protocol servers MUST support SOAP over HTTP, HTTPS, or TCP.

All protocol messages MUST be transported by using HTTP or TCP bindings at the transport level.

Protocol messages MUST be formatted as specified in either [\[SOAP1.1\]](#) section 4 or [\[SOAP1.2/1\]](#) section 5. Protocol server faults MUST be returned by using HTTP status codes, as specified in [\[RFC2616\]](#) section 10, or **SOAP faults**, as specified in [\[SOAP1.1\]](#) section 4.4 or [\[SOAP1.2/1\]](#) section 5.4.

If the HTTPS transport is used, a server certificate MUST be deployed.

This protocol MAY transmit an additional **SOAP header**, the **ServiceContext** header, as specified in [\[MS-SPSTWS\]](#) section 2.2.4.1.

This protocol does not define any means for activating a protocol server or protocol client. The protocol server MUST be configured and begin listening in an implementation-specific way. In addition, the protocol client MUST know the format and transport that is used by the server, for example, the SOAP format over an HTTP transport.

2.2 Common Message Syntax

This section contains common definitions that are used by this protocol. The syntax of the definitions uses **XML schema**, as specified in [\[XMLSCHEMA1\]](#) and [\[XMLSCHEMA2\]](#), and **WSDL**, as specified in [\[WSDL\]](#).

2.2.1 Namespaces

This specification defines and references various **XML namespaces** using the mechanisms specified in [\[XMLNS\]](#). Although this specification associates a specific **XML namespace prefix** for each XML namespace that is used, the choice of any particular XML namespace prefix is implementation-specific and not significant for interoperability.

Prefix	Namespace URI	Reference
q1	http://schemas.microsoft.com/2003/10/Serialization/Arrays	
q3	http://Microsoft/Office/Server/UserProfiles	
q5	http://schemas.datacontract.org/2004/07/System	
ser	http://schemas.microsoft.com/2003/10/Serialization/	
soap	http://schemas.xmlsoap.org/wsdl/soap/	[SOAP1.1]
tns	http://Microsoft/Office/Server/FeedCache	
tns1	http://Microsoft/Office/Server/FeedyCache	
tns2	http://schemas.datacontract.org/2004/07/System.Collections.Generic	
tns3	http://tempuri.org/	
tns4	http://tempuri.org/Imports	

Prefix	Namespace URI	Reference
wsaw	http://www.w3.org/2006/05/addressing/wsdl	
wsdl	http://schemas.xmlsoap.org/wsdl/	[WSDL]
xs	http://www.w3.org/2001/XMLSchema	[XMLSCHEMA1] [XMLSCHEMA2]

2.2.2 Messages

This specification does not define any common **WSDL message** definitions.

2.2.3 Elements

This specification does not define any common XML schema element definitions.

2.2.4 Complex Types

The following table summarizes the set of common XML schema complex type definitions defined by this specification. XML schema complex type definitions that are specific to a particular operation are described with the operation.

Complex type	Description
ArrayOfE	The ArrayOfE complex type is a sequence of 0 or more E entries which are described in section 2.2.4.9 .
ArrayOfEC	The ArrayOfEC complex type specifies a sequence of zero or more EC entries that are described in section 2.2.4.10 .
ArrayOfEDT	The ArrayOfEDT complex type is a sequence of 0 or more EDT entries which are described in section 2.2.4.11 .
ArrayOfint	The ArrayOfint complex type represents an array of arbitrary integer values.
ArrayOfNullableOfguid	The ArrayOfNullableOfguid complex type represents an array of arbitrary GUID values.
ArrayOfP	The ArrayOfP complex type is a sequence of 0 or more P entries which are described in section 2.2.4.16 .
ArrayOfstring	The ArrayOfstring complex type represents an array of arbitrary string values.
ArrayOfUserData	The ArrayOfUserData complex type is defined in [MS-UPSCWS] section 2.2.4.5.
E	The E complex type specifies the details of Feed entity .
EC	The EC complex type consists of a pair of feed entity type and a count.
EDT	The EDT complex type specifies a pair of feed entity and date time.
FCCR	The FCCR complex type represents the result of various operations to get feed entries .
FCRE	The FCRE complex type represents the input of various operations to get feed

Complex type	Description
	entries.
FCRO	The FCRO complex type specifies the retrieval options used by various methods to retrieve the feed entries.
FeedCacheFault	The FeedCacheFault complex type describes errors that have occurred at the transport or the service layer.
P	The P complex type specifies a feed entry.
PC	The PC complex type specifies a sequence of zero or more feed entries as described in section 2.2.4.16 along with associated metadata.
UserData	The UserData complex type is defined in [MS-UPSCWS] section 2.2.4.6.

2.2.4.1 ArrayOfE

Namespace: <http://Microsoft/Office/Server/FeedCache>

The **ArrayOfE** complex type is a sequence of 0 or more **E** entries which are described in section [2.2.4.9](#).

```
<xs:complexType name="ArrayOfE" xmlns:xs="http://www.w3.org/2001/XMLSchema">
  <xs:sequence>
    <xs:element minOccurs="0" maxOccurs="unbounded" name="E" nillable="true" type="tns:E"/>
  </xs:sequence>
</xs:complexType>
```

E: Feed entity as described in section [2.2.4.9](#).

2.2.4.2 ArrayOfEC

Namespace: <http://Microsoft/Office/Server/FeedCache>

The **ArrayOfEC** complex type specifies a sequence of zero or more **EC** entries that are described in section [2.2.4.10](#).

```
<xs:complexType name="ArrayOfEC" xmlns:xs="http://www.w3.org/2001/XMLSchema">
  <xs:sequence>
    <xs:element minOccurs="0" maxOccurs="unbounded" name="EC" nillable="true" type="tns:EC"/>
  </xs:sequence>
</xs:complexType>
```

EC: The EC entry as described in section [2.2.4.10](#).

2.2.4.3 ArrayOfEDT

Namespace: <http://Microsoft/Office/Server/FeedCache>

The **ArrayOfEDT** complex type is a sequence of 0 or more **EDT** entries which are described in section [2.2.4.11](#).

```
<xs:complexType name="ArrayOfEDT" xmlns:xs="http://www.w3.org/2001/XMLSchema">
```

```

    <xs:sequence>
      <xs:element minOccurs="0" maxOccurs="unbounded" name="EDT" nillable="true"
type="tns:EDT"/>
    </xs:sequence>
  </xs:complexType>

```

EDT: Entity data time pair as described in section [2.2.4.11](#).

2.2.4.4 ArrayOfint

Namespace: http://schemas.microsoft.com/2003/10/Serialization/Arrays

The **ArrayOfint** complex type represents an array of arbitrary integer values.

```

<xs:complexType name="ArrayOfint" xmlns:xs="http://www.w3.org/2001/XMLSchema">
  <xs:sequence>
    <xs:element minOccurs="0" maxOccurs="unbounded" name="int" type="xs:int"/>
  </xs:sequence>
</xs:complexType>

```

int: A single integer value.

2.2.4.5 ArrayOfNullableOfguid

Namespace: http://schemas.datacontract.org/2004/07/System

The **ArrayOfNullableOfguid** complex type represents an array of arbitrary GUID values.

```

<xs:complexType name="ArrayOfNullableOfguid" xmlns:xs="http://www.w3.org/2001/XMLSchema">
  <xs:sequence>
    <xs:element minOccurs="0" maxOccurs="unbounded" name="guid" nillable="true"
type="ser:guid"/>
  </xs:sequence>
</xs:complexType>

```

guid: A single GUID value or NULL.

2.2.4.6 ArrayOfP

Namespace: http://Microsoft/Office/Server/FeedCache

The **ArrayOfP** complex type is a sequence of 0 or more **P** entries which are described in section [2.2.4.16](#).

```

<xs:complexType name="ArrayOfP" xmlns:xs="http://www.w3.org/2001/XMLSchema">
  <xs:sequence>
    <xs:element minOccurs="0" maxOccurs="unbounded" name="P" nillable="true" type="tns:P"/>
  </xs:sequence>
</xs:complexType>

```

P: Feed entry as described in section [2.2.4.16](#).

2.2.4.7 ArrayOfstring

Namespace: http://schemas.microsoft.com/2003/10/Serialization/Arrays

The **ArrayOfstring** complex type represents an array of arbitrary string values.

```
<xs:complexType name="ArrayOfstring" xmlns:xs="http://www.w3.org/2001/XMLSchema">
  <xs:sequence>
    <xs:element minOccurs="0" maxOccurs="unbounded" name="string" nillable="true"
type="xs:string"/>
  </xs:sequence>
</xs:complexType>
```

string: A single string value.

2.2.4.8 ArrayOfUserData

Namespace: http://Microsoft/Office/Server/UserProfiles

The **ArrayOfUserData** complex type is defined in [\[MS-UPSCWS\]](#) section 2.2.4.5.

```
<xs:complexType name="ArrayOfUserData" xmlns:xs="http://www.w3.org/2001/XMLSchema">
  <xs:sequence>
    <xs:element minOccurs="0" maxOccurs="unbounded" name="UserData" nillable="true"
type="q3:UserData"/>
  </xs:sequence>
</xs:complexType>
```

UserData: Defined in [\[MS-UPSCWS\]](#) section 2.2.4.5.

2.2.4.9 E

Namespace: http://Microsoft/Office/Server/FeedCache

The **E** complex type specifies the details of Feed entity.

```
<xs:complexType name="E" xmlns:xs="http://www.w3.org/2001/XMLSchema">
  <xs:sequence>
    <xs:element minOccurs="0" name="ET" type="tns:ET"/>
    <xs:element minOccurs="0" name="LID" type="ser:guid"/>
    <xs:element minOccurs="0" name="PID" type="ser:guid"/>
    <xs:element minOccurs="0" name="SID" type="ser:guid"/>
    <xs:element minOccurs="0" name="Url" nillable="true" type="xs:string"/>
    <xs:element minOccurs="0" name="WID" type="ser:guid"/>
  </xs:sequence>
</xs:complexType>
```

ET: Specifies the type of feed entity as described in section [2.2.5.5](#). The value MUST NOT be null or empty.

LID: Specifies the identifier of the **list (1)** where the entity feed is stored. The value MUST NOT be null or empty.

PID: Specifies the identifier of the **tenant** to which this entity belongs. The value MUST NOT be null or empty.

SID: Specifies the identifier of the **site collection** where the entity feed is stored. The value MUST NOT be null or empty.

Url: Specifies the **Uniform Resource Locator (URL)** of the **site (1)** where the entity feed is stored. The value MUST NOT be null or empty.

WID: Specifies the identifier of the site (1) where the entity feed is stored. The value MUST NOT be null or empty.

2.2.4.10 EC

Namespace: http://Microsoft/Office/Server/FeedCache

The **EC** complex type consists of a pair of feed entity type and a count.

```
<xs:complexType name="EC" xmlns:xs="http://www.w3.org/2001/XMLSchema">
  <xs:sequence>
    <xs:element minOccurs="0" name="C" type="xs:int"/>
    <xs:element minOccurs="0" name="ET" type="tns:ET"/>
  </xs:sequence>
</xs:complexType>
```

C: An integer denoting the count for this particular feed entity type.

ET: A Feed entity type as described in section [2.2.5.5](#).

2.2.4.11 EDT

Namespace: http://Microsoft/Office/Server/FeedCache

The **EDT** complex type specifies a pair of feed entity and date time.

```
<xs:complexType name="EDT" xmlns:xs="http://www.w3.org/2001/XMLSchema">
  <xs:sequence>
    <xs:element minOccurs="0" name="D" type="xs:dateTime"/>
    <xs:element minOccurs="0" name="E" nillable="true" type="tns:E"/>
  </xs:sequence>
</xs:complexType>
```

D: This specifies a date and time value. This value MUST NOT be null.

E: This specifies a feed entity as described in section [2.2.4.9](#). This value MUST NOT be null.

2.2.4.12 FeedCacheFault

Namespace: http://Microsoft/Office/Server/FeedCache

The **FeedCacheFault** complex type describes errors that have occurred at the transport or the service layer.

```
<xs:complexType name="FeedCacheFault" xmlns:xs="http://www.w3.org/2001/XMLSchema">
  <xs:sequence>
    <xs:element minOccurs="0" name="FailureDetail" nillable="true" type="xs:string"/>
    <xs:element minOccurs="0" name="FaultCode" type="tns:FeedCacheFaultCodes"/>
  </xs:sequence>
```

```
</xs:complexType>
```

FailureDetail: Specifies an error string. The protocol does not impose any restriction on the behavior of the protocol client with respect to this field.

FaultCode: Specifies an indicator of the error that occurred as described in section [2.2.5.3](#). The protocol does not impose any restriction on the behavior of the protocol client with respect to this field.

2.2.4.13 FCCR

Namespace: <http://Microsoft/Office/Server/FeedyCache>

The **FCCR** complex type represents the result of various operations to get feed entries.

```
<xs:complexType name="FCCR" xmlns:xs="http://www.w3.org/2001/XMLSchema">
  <xs:sequence>
    <xs:element xmlns:tns="http://Microsoft/Office/Server/FeedCache" minOccurs="0" name="EC"
      nillable="true" type="tns:PC"/>
    <xs:element xmlns:tns="http://Microsoft/Office/Server/FeedCache" minOccurs="0" name="FC"
      nillable="true" type="tns:ArrayOfEC"/>
    <xs:element xmlns:q3="http://Microsoft/Office/Server/UserProfiles" minOccurs="0" name="P"
      nillable="true" type="q3:ArrayOfUserData"/>
    <xs:element xmlns:q1="http://schemas.microsoft.com/2003/10/Serialization/Arrays"
      minOccurs="0" name="S" nillable="true" type="q1:ArrayOfstring"/>
    <xs:element xmlns:q5="http://schemas.datacontract.org/2004/07/System" minOccurs="0"
      name="T" nillable="true" type="q5:ArrayOfNullableOfguid"/>
    <xs:element minOccurs="0" name="TN" nillable="true" type="xs:dateTime"/>
    <xs:element minOccurs="0" name="TO" nillable="true" type="xs:dateTime"/>
  </xs:sequence>
</xs:complexType>
```

EC: A feed entry collection as specified in section [2.2.4.17](#).

FC: A list of **EC**. **EC** is specified in section [2.2.4.10](#).

P: An **ArrayOfUserData** of all users who have participated in the entries contained in this returned feed entry collection.

The **ArrayOfUserData** complex type is defined in [\[MS-UPSCWS\]](#) section 2.2.4.5.

S: An **ArrayOfstring** of the identifiers corresponding to the feed identifiers of those Participants in the returned feed entry collection who are also followed by the feed entity provided in the supplied **FCRE**. This collection will be empty if the value of the **FCRE** field **e** as defined in [\[MS-UPSCWS\]](#) section 2.2.4.5 is true.

The **ArrayOfstring** complex type is defined in [\[MS-UPSCWS\]](#) section 2.2.4.5.

T: An **ArrayOfNullableOfguid** containing the list of GUIDs of taxonomy identifiers followed by the querying feed entity provided in the supplied **FCRE**. This collection will be empty if the value of the **FCRE** field **e** as defined in [\[MS-UPSCWS\]](#) section 2.2.4.5 is true.

The **ArrayOfNullableOfguid** complex type is defined in [\[MS-UPSCWS\]](#) section 2.2.4.5.

TN: Specifies a **datetime** value, indicating the last-modified-time of the newest feed cache entry considered when assembling the contents of the **EC** field.

TO: Specifies a **datetime** value, indicating the last-modified-time of the oldest feed cache entry considered when assembling the contents of **EC** field.

2.2.4.14 FCRE

Namespace: http://Microsoft/Office/Server/FeedCache

The **FCRE** complex type represents the input of various operations to get feed entries.

```
<xs:complexType name="FCRE" xmlns:xs="http://www.w3.org/2001/XMLSchema">
  <xs:sequence>
    <xs:element minOccurs="0" name="a" nillable="true" type="tns:E"/>
    <xs:element minOccurs="0" name="b" nillable="true" type="xs:string"/>
    <xs:element minOccurs="0" name="c" type="tns:UPL"/>
    <xs:element minOccurs="0" name="d" type="ser:guid"/>
    <xs:element minOccurs="0" name="e" type="xs:boolean"/>
  </xs:sequence>
</xs:complexType>
```

a: The feed entity on behalf of which this operation is being executed. If **b** is present, then this value MUST be ignored.

b: Specifies the string identifier of the feed entity.

c: Specifies how to lookup the feed entity, as specified in section [2.2.5.6](#).

d: A globally unique **partition identifier**.

e: A Boolean field. When true will suppress retrieval of followed feed entity information (people, tags) for the specified feed entity.

2.2.4.15 FCRO

Namespace: http://Microsoft/Office/Server/FeedCache

The **FCRO** complex type specifies the retrieval options used by various methods to retrieve the feed entries.

```
<xs:complexType name="FCRO" xmlns:xs="http://www.w3.org/2001/XMLSchema">
  <xs:sequence>
    <xs:element xmlns:q1="http://schemas.microsoft.com/2003/10/Serialization/Arrays"
      minOccurs="0" name="a" nillable="true" type="q1:ArrayOfint"/>
    <xs:element minOccurs="0" name="b" type="xs:int"/>
    <xs:element minOccurs="0" name="c" type="xs:boolean"/>
    <xs:element minOccurs="0" name="d" type="xs:int"/>
    <xs:element minOccurs="0" name="e" type="xs:int"/>
    <xs:element minOccurs="0" name="f" type="xs:int"/>
    <xs:element minOccurs="0" name="g" nillable="true" type="xs:dateTime"/>
    <xs:element minOccurs="0" name="h" nillable="true" type="xs:dateTime"/>
    <xs:element minOccurs="0" name="i" type="ser:duration"/>
  </xs:sequence>
</xs:complexType>
```

a: A list of numerical values representing the definition of the entry, which indicates that feed entries will be considered for inclusion in the **FCCR** field **EC**, if this field contains the value of the

field **MBD** of the candidate feed entry of complex type **P** as defined in [\[MS-UPSCWS\]](#) section 2.2.4.5

b: An integer bitmask field, which indicates that feed entries will be considered for inclusion in the **FCCR** field **EC**, if a bitwise AND of this field, and the value of the field **MBT** of the candidate feed entry of complex type **P** as defined in [\[MS-UPSCWS\]](#) section 2.2.4.5 has a nonzero result.

c: A Boolean field which, if true, indicates that feed entries will be considered for inclusion in the **FCCR** field **EC**, the value of the field **ST** of the candidate feed entry of complex type **P** as defined in [\[MS-UPSCWS\]](#) section 2.2.4.5 is nonzero.

d: MaxItemsPerEntity: An integer field indicating the maximum number of feed entries of complex type **P**, as specified in section [2.2.4.5](#), belonging to a single feed entity to be included in the returned **FCCR** field **EC**.

e: MaxNumberEntities: An integer field indicating the maximum number of feed entities to examine when considering feed entries for inclusion in the returned **FCCR** field **EC**.

f: MaxTotalItems: An integer field indicating the maximum permissible number of feed entries to include in the returned **FCCR** field **EC**.

g: Specifies a **datetime** value, indicating the most recent last-modified-time for a feed cache entry to be considered for inclusion in the **FCCR** field **EC**.

h: Specifies a **datetime** value, indicating the oldest permissible last-modified-time for a feed cache entry to be considered for inclusion in the **FCCR** field **EC**.

i: A **duration** (section [2.2.5.2](#)) object indicating the desired maximum duration permitted for execution of the feed cache for entries meeting the constraints of the **FCRO** for the supplied **FCRE**. Upon detection of queries lasting longer than this time, the query will be terminated, and a partial **FCCR** will be returned, marked as incomplete.

2.2.4.16 P

Namespace: <http://Microsoft/Office/Server/FeedCache>

The **P** complex type specifies a feed entry.

```
<xs:complexType name="P" xmlns:xs="http://www.w3.org/2001/XMLSchema">
  <xs:sequence>
    <xs:element minOccurs="0" name="AD" nillable="true" type="xs:string"/>
    <xs:element minOccurs="0" name="D1" nillable="true" type="xs:string"/>
    <xs:element minOccurs="0" name="D2" nillable="true" type="xs:string"/>
    <xs:element minOccurs="0" name="D3" nillable="true" type="xs:string"/>
    <xs:element minOccurs="0" name="D4" nillable="true" type="xs:string"/>
    <xs:element minOccurs="0" name="DP" nillable="true" type="xs:string"/>
    <xs:element minOccurs="0" name="EID" nillable="true" type="xs:string"/>
    <xs:element minOccurs="0" name="En" nillable="true" type="tns:E"/>
    <xs:element minOccurs="0" name="M" type="xs:dateTime"/>
    <xs:element minOccurs="0" name="MBD" type="xs:int"/>
    <xs:element minOccurs="0" name="MBT" type="xs:int"/>
    <xs:element minOccurs="0" name="PL" nillable="true" type="xs:string"/>
    <xs:element minOccurs="0" name="R1" nillable="true" type="xs:string"/>
    <xs:element minOccurs="0" name="R2" nillable="true" type="xs:string"/>
    <xs:element minOccurs="0" name="R3" type="xs:int"/>
    <xs:element minOccurs="0" name="ST" type="xs:int"/>
  </xs:sequence>
```

</xs:complexType>

AD: Specifies a string value representing author. It is up to the protocol client how to use this field.

D1: Specifies a string value representing entry data. It is up to the protocol client how to use this field.

D2: Specifies a string value representing entry data. It is up to the protocol client how to use this field.

D3: Specifies a string value representing entry data. It is up to the protocol client how to use this field.

D4: Specifies a string value representing entry data. It is up to the protocol client how to use this field.

DP: Specifies a string value representing participant data. It is up to the protocol client how to use this field.

EID: Specifies a unique identifier for this entry. The value MUST NOT be null.

En: Specifies the feed entity this entry belongs to as described in section [2.2.4.9](#).

M: Specifies a date and time value in **Coordinated Universal Time (UTC)** when this entry was last modified. The value MUST NOT be null.

MBD: Specifies a numerical value representing the definition of the entry. It is up to the protocol client how to use this field.

MBT: Specifies a numerical value representing the type of the entry. It is up to the protocol client how to use this field.

PL: Specifies a string value representing participant data. It is up to the protocol client how to use this field.

R1: Specifies a related feed entity. It is up to the protocol client how to use this field.

R2: Specifies a related feed entry. It is up to the protocol client how to use this field.

R3: Specifies a related feed entity type. It is up to the protocol client how to use this field.

ST: Specifies an integer value representing entry data. It is up to the protocol client how to use this field.

2.2.4.17 PC

Namespace: <http://Microsoft/Office/Server/FeedCache>

The **PC** complex type specifies a sequence of zero or more feed entries as described in section [2.2.4.16](#) along with associated metadata.

```
<xs:complexType name="PC" xmlns:xs="http://www.w3.org/2001/XMLSchema">
  <xs:sequence>
    <xs:element minOccurs="0" name="D" nillable="true" type="tns:ArrayOfEDT"/>
    <xs:element minOccurs="0" name="En" nillable="true" type="tns:ArrayOfP"/>
    <xs:element minOccurs="0" name="I" type="xs:boolean"/>
  </xs:sequence>
</xs:complexType>
```

```

<xs:element minOccurs="0" name="M" type="xs:int"/>
<xs:element minOccurs="0" name="N" nillable="true" type="xs:dateTime"/>
<xs:element minOccurs="0" name="O" nillable="true" type="xs:dateTime"/>
<xs:element minOccurs="0" name="R" type="xs:boolean"/>
<xs:element minOccurs="0" name="S" type="xs:boolean"/>
<xs:element minOccurs="0" name="T" type="xs:boolean"/>
</xs:sequence>
</xs:complexType>

```

D: Specifies a sequence of zero or more pairs of feed entities and last deletion time as specified in section [2.2.4.11](#).

En: Specifies the sequence of feed entries as specified in section [2.2.4.16](#).

I: Specifies if the sequence **En** is incomplete.

M: Specifies the maximum number of feed entries to return for a particular feed entity. The protocol server MUST NOT return more entries than this value for any entity.

N: Specifies a **datetime** value. If a value is present, the protocol server MUST only return entries having modified time newer than this value.

O: Specifies a datetime value. If a value is present, the protocol server MUST only return entries having modified time older than this value.

R: Specifies if the protocol server MUST return delete markers.

S: Indicates if the sequence **En** is already sorted.

T: Indicates if the protocol server timed out before retrieving the sequence **En**. True indicates that the protocol server timed out, and false indicates that it did not time out.

2.2.4.18 UserData

Namespace: <http://Microsoft/Office/Server/UserProfiles>

The **UserData** complex type is defined in [\[MS-UPSCWS\]](#) section 2.2.4.6.

```

<xs:complexType name="UserData" xmlns:xs="http://www.w3.org/2001/XMLSchema">
  <xs:sequence>
    <xs:element minOccurs="0" name="Department" nillable="true" type="xs:string"/>
    <xs:element minOccurs="0" name="Email" nillable="true" type="xs:string"/>
    <xs:element minOccurs="0" name="EmailOptin" type="xs:int"/>
    <xs:element minOccurs="0" name="FeedIdentifier" nillable="true" type="xs:string"/>
    <xs:element minOccurs="0" name="FeedPrivacyActivity" type="xs:int"/>
    <xs:element minOccurs="0" name="IsPeopleListPublic" type="xs:boolean"/>
    <xs:element minOccurs="0" name="LastUpdate" type="xs:dateTime"/>
    <xs:element minOccurs="0" name="MasterRecordID" type="xs:long"/>
    <xs:element minOccurs="0" name="NTName" nillable="true" type="xs:string"/>
    <xs:element minOccurs="0" name="O15FirstRunExperience" type="xs:int"/>
    <xs:element minOccurs="0" name="PartitionID" type="ser:guid"/>
    <xs:element minOccurs="0" name="PersonalSiteCapabilities" type="xs:int"/>
    <xs:element minOccurs="0" name="PersonalSiteInstantiationState" type="xs:int"/>
    <xs:element minOccurs="0" name="PersonalSpace" nillable="true" type="xs:string"/>
    <xs:element minOccurs="0" name="PictureExchangeSyncState" type="xs:int"/>
    <xs:element minOccurs="0" name="PicturePlaceholderState" type="xs:int"/>
    <xs:element minOccurs="0" name="PictureTimestamp" nillable="true" type="xs:string"/>
  </xs:sequence>
</xs:complexType>

```

```

<xs:element minOccurs="0" name="PictureUrl" nillable="true" type="xs:string"/>
<xs:element minOccurs="0" name="PreferredName" nillable="true" type="xs:string"/>
<xs:element minOccurs="0" name="ProfileSubtypeID" type="xs:int"/>
<xs:element minOccurs="0" name="RecordID" type="xs:long"/>
<xs:element minOccurs="0" name="SID" nillable="true" type="xs:base64Binary"/>
<xs:element minOccurs="0" name="SipAddress" nillable="true" type="xs:string"/>
<xs:element minOccurs="0" name="StatusNote" nillable="true" type="xs:string"/>
<xs:element minOccurs="0" name="Title" nillable="true" type="xs:string"/>
<xs:element minOccurs="0" name="UserID" type="ser:guid"/>
</xs:sequence>
</xs:complexType>

```

Department: Defined in [\[MS-UPSCWS\]](#) section 2.2.4.6.

Email: Defined in [\[MS-UPSCWS\]](#) section 2.2.4.6.

EmailOptin: Defined in [\[MS-UPSCWS\]](#) section 2.2.4.6.

FeedIdentifier: Defined in [\[MS-UPSCWS\]](#) section 2.2.4.6.

FeedPrivacyActivity: Defined in [\[MS-UPSCWS\]](#) section 2.2.4.6.

IsPeopleListPublic: Defined in [\[MS-UPSCWS\]](#) section 2.2.4.6.

LastUpdate: Defined in [\[MS-UPSCWS\]](#) section 2.2.4.6.

MasterRecordID: Defined in [\[MS-UPSCWS\]](#) section 2.2.4.6.

NTName: Defined in [\[MS-UPSCWS\]](#) section 2.2.4.6.

O15FirstRunExperience: Defined in [\[MS-UPSCWS\]](#) section 2.2.4.6.

PartitionID: Defined in [\[MS-UPSCWS\]](#) section 2.2.4.6.

PersonalSiteCapabilities: Defined in [\[MS-UPSCWS\]](#) section 2.2.4.6.

PersonalSiteInstantiationState: Defined in [\[MS-UPSCWS\]](#) section 2.2.4.6.

PersonalSpace: Defined in [\[MS-UPSCWS\]](#) section 2.2.4.6.

PictureExchangeSyncState: An integer that indicates whether the picture by which the user prefers to be recognized is being imported from the corresponding picture in user's Exchange profile. Valid values are "0" (false) and "1" (true).

PicturePlaceholderState: An integer that indicates whether the picture by which the user prefers to be recognized is the default placeholder image. Valid values are "0" (false) and "1" (true).

PictureTimestamp: The timestamp, in **UTC** format, of the latest time the picture by which the user prefers to be recognized was updated.

PictureUrl: Defined in [\[MS-UPSCWS\]](#) section 2.2.4.6.

PreferredName: Defined in [\[MS-UPSCWS\]](#) section 2.2.4.6.

ProfileSubtypeID: Defined in [\[MS-UPSCWS\]](#) section 2.2.4.6.

RecordID: Defined in [\[MS-UPSCWS\]](#) section 2.2.4.6.

SID: Defined in [\[MS-UPSCWS\]](#) section 2.2.4.6.

SipAddress: Defined in [\[MS-UPSCWS\]](#) section 2.2.4.6.

StatusNote: Defined in [\[MS-UPSCWS\]](#) section 2.2.4.6.

Title: Defined in [\[MS-UPSCWS\]](#) section 2.2.4.6.

UserID: Defined in [\[MS-UPSCWS\]](#) section 2.2.4.6.

2.2.5 Simple Types

The following table summarizes the set of common XML schema simple type definitions defined by this specification. XML schema simple type definitions that are specific to a particular operation are described with the operation.

Simple type	Description
char	The char simple type is a Unicode character that is stored in a 4-byte integer.
duration	The duration simple type is the length of time, as specified in [XMLSCHEMA1] and [XMLSCHEMA2] .
ET	The ET simple type specifies the type of Feed entity.
FeedCacheFaultCodes	The FeedCacheFaultCodes simple type describes the errors that have occurred either at the endpoint (4) of this protocol or in the transport layer.
guid	The guid simple type denotes a GUID.
UPL	The UPL simple type specifies how to lookup user profiles .

2.2.5.1 char

Namespace: <http://schemas.microsoft.com/2003/10/Serialization/>

The **char** simple type is a Unicode character that is stored in a 4-byte integer.

```
<xs:simpleType name="char" xmlns:xs="http://www.w3.org/2001/XMLSchema">  
  <xs:restriction base="xs:int"/>  
</xs:simpleType>
```

2.2.5.2 duration

Namespace: <http://schemas.microsoft.com/2003/10/Serialization/>

The **duration** simple type is the length of time, as specified in [\[XMLSCHEMA1\]](#) and [\[XMLSCHEMA2\]](#).

```
<xs:simpleType name="duration" xmlns:xs="http://www.w3.org/2001/XMLSchema">  
  <xs:restriction base="xs:duration">  
    <xs:pattern value="\-?P(\d*D)?(T(\d*H)?(\d*M)?(\d*(\.\d*)?S)?)?"/>  
    <xs:minInclusive value="-P10675199DT2H48M5.4775808S"/>  
    <xs:maxInclusive value="P10675199DT2H48M5.4775807S"/>  
  </xs:restriction>  
</xs:simpleType>
```

2.2.5.3 FeedCacheFaultCodes

Namespace: http://Microsoft/Office/Server/FeedCache

The **FeedCacheFaultCodes** simple type describes the errors that have occurred either at the endpoint (4) of this protocol or in the transport layer.

```
<xs:simpleType name="FeedCacheFaultCodes" xmlns:xs="http://www.w3.org/2001/XMLSchema">
  <xs:restriction base="xs:string">
    <xs:enumeration value="UnknownError"/>
    <xs:enumeration value="InvalidInput"/>
    <xs:enumeration value="InvalidConfiguration"/>
  </xs:restriction>
</xs:simpleType>
```

The following table specifies the allowable values for the **FeedCacheFaultCodes** simple type.

Value	Meaning
UnknownError	The error occurred because of unknown reasons.
InvalidInput	The error occurred because of invalid input.
InvalidConfiguration	The error occurred because of a configuration failure.

2.2.5.4 guid

Namespace: http://schemas.microsoft.com/2003/10/Serialization/

The **guid** simple type denotes a GUID.

```
<xs:simpleType name="guid" xmlns:xs="http://www.w3.org/2001/XMLSchema">
  <xs:restriction base="xs:string">
    <xs:pattern value="\{da-fA-F\}{8}-[\da-fA-F]{4}-[\da-fA-F]{4}-[\da-fA-F]{4}-[\da-fA-F]{12}"/>
  </xs:restriction>
</xs:simpleType>
```

2.2.5.5 ET

Namespace: http://Microsoft/Office/Server/FeedCache

The **ET** simple type specifies the type of Feed entity.

```
<xs:simpleType name="ET" xmlns:xs="http://www.w3.org/2001/XMLSchema">
  <xs:list>
    <xs:simpleType>
      <xs:restriction base="xs:string">
        <xs:enumeration value="Unknown"/>
        <xs:enumeration value="User"/>
        <xs:enumeration value="Document"/>
        <xs:enumeration value="Site"/>
        <xs:enumeration value="Tag"/>
        <xs:enumeration value="Group"/>
      </xs:restriction>
    </xs:simpleType>
  </xs:list>
</xs:simpleType>
```

```

    </xs:simpleType>
  </xs:list>
</xs:simpleType>

```

The following table specifies the allowable values for the **ET** simple type.

Value	Meaning
Unknown	The type of the Feed entity is not known.
User	The Feed entity is of type user and is associated with a user profile.
Document	The Feed entity is of type document .
Site	The Feed entity is of type site (1).
Tag	The Feed entity is of type social tag .
Group	This Feed entity MUST NOT be used.

2.2.5.6 UPL

Namespace: http://Microsoft/Office/Server/FeedCache

The **UPL** simple type specifies how to lookup user profiles.

```

<xs:simpleType name="UPL" xmlns:xs="http://www.w3.org/2001/XMLSchema">
  <xs:restriction base="xs:string">
    <xs:enumeration value="ByEmail"/>
    <xs:enumeration value="ByAccountName"/>
    <xs:enumeration value="BySid"/>
  </xs:restriction>
</xs:simpleType>

```

The following table specifies the allowable values for the **UPL** simple type.

Value	Meaning
ByEmail	Lookup by email address .
ByAccountName	Lookup by login name .
BySid	Lookup by security identifier (SID) .

2.2.6 Attributes

This specification does not define any common XML schema attribute definitions.

2.2.7 Groups

This specification does not define any common XML schema group definitions.

2.2.8 Attribute Groups

This specification does not define any common XML schema attribute group definitions.

3 Protocol Details

The client side of this protocol is simply a pass-through. That is, no additional timers or other state is required on the client side of this protocol. Calls that are made by the higher-layer protocol or application are passed directly to the transport, and the results that are returned by the transport are passed directly to the higher-layer protocol or application.

Except where specified, protocol clients SHOULD interpret Hypertext Transfer Protocol (HTTP) status codes that are returned by the protocol server as specified in [\[RFC2616\]](#), section 10.

This protocol allows protocol servers to notify protocol clients of application-level faults by using SOAP faults. Except where otherwise specified, these SOAP faults are not significant for interoperability and protocol clients can interpret them in an implementation-specific manner.

This protocol allows protocol servers to perform implementation-specific authorization checks and to notify protocol clients of authorization faults by using either HTTP status codes or SOAP faults, as specified previously in this section.

3.1 Server Details

This protocol is based on stateless interaction between the protocol client and protocol server. The protocol simply exposes the current configuration state of the **User Profile Service** to all authenticated **user objects**. There are no dependencies between the information sent in one client-server request/response pair and the next pair; all dependencies are based on the current state of the application service. They are specified in the following figure.

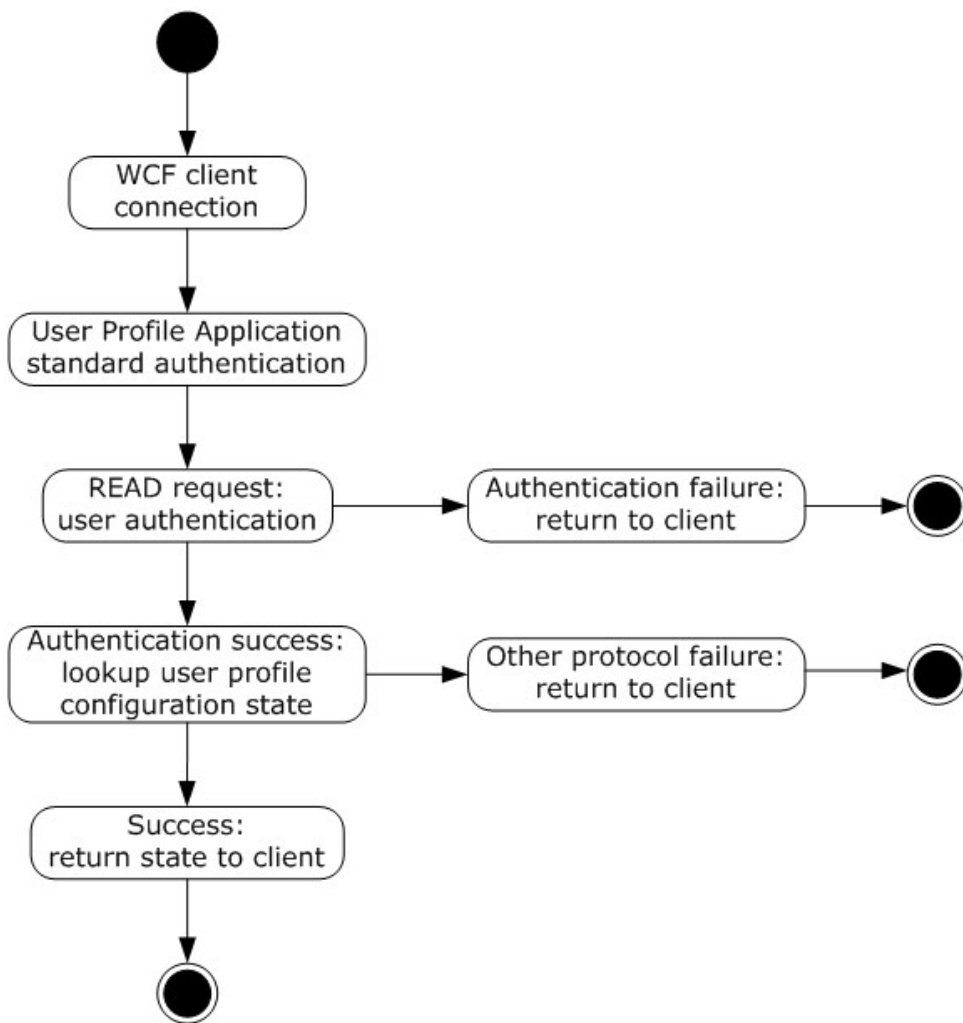


Figure 2: State dependencies of the application service

The User Profile Service uses authentication mechanisms that are standard for **Web services** and SOAP.

3.1.1 Abstract Data Model

This section describes a conceptual model of possible data organization that an implementation maintains to participate in this protocol. The described organization is provided to facilitate the explanation of how the protocol behaves. This specification does not mandate that implementations adhere to this model as long as their external behavior is consistent with that described in this specification.

This protocol allows protocol clients to store feed data and later retrieve it in various ways. The protocol server needs to maintain the state between each of the operations as described in section [3.1.4](#).

The protocol server needs to keep track of:

Feed entries: The protocol server needs to see how many feed entries have been added using the operations described in section [3.1.4](#). It also needs to track which feed entry corresponds to which feed entity. It is up to the protocol server how long it keeps track of this information.

Feed entity followed status: The protocol server also needs to keep track if a given entity has been marked as followed using the operations described in section [3.1.4](#). It is up to the protocol server how long it keeps track of this information.

LMT repopulation needed: The protocol server needs to keep track of whether last modified time repopulation is required for any given protocol client. It is up to the protocol server how long it keeps track of this information.

3.1.2 Timers

None.

3.1.3 Initialization

None.

3.1.4 Message Processing Events and Sequencing Rules

The following table summarizes the list of operations as defined by this specification.

Operation	Description
AddFeedEntries	This WSDL operation helps in adding multiple feed entries.
AddFeedEntriesForRepop	This WSDL operation helps in adding multiple feed entries.
AddFeedEntry	This WSDL operation adds a feed entry for a given feed entity.
BulkLMTUpdate	This WSDL operation updates the last modified times of a number of feed entities.
GetCategoricalFeed	This WSDL operation retrieves up to 100 recently modified feed entries from the provided feed entities.
GetConsolidatedFeed	This WSDL operation retrieves specified feed entries from the provided feed entities.
GetEntries	This WSDL operation lets a protocol client query feed entries given their feed entry identifiers.
GetFeeds	This WSDL operation lets the protocol client to get feed entries from the specified feed entities.
GetPublishedFeed	This WSDL operation lets a protocol client retrieve the published feed entries for a specific feed entity.
IsEntityActivelyFollowed	This WSDL operation checks if a given feed entity has earlier been marked as followed.
IsRepopulationNeeded	This WSDL operation lets a protocol client know if last modified time repopulation is needed.
NewEntityFollower	This WSDL operation lets a protocol client mark a given feed entity as being actively followed.

Operation	Description
RefreshFollowedEntities	This WSDL operation lets a protocol client mark a number of feed entities as followed.
RemoveEntityFeed	This WSDL operation is used to remove all the feed entries of a given feed entity.
RemoveFeedEntry	This WSDL operation removes a given feed entry from a given feed entity.
RemoveInternalRegions	This WSDL operation removes some internal data structure. This operation MUST NOT be called by any protocol client.

3.1.4.1 AddFeedEntry

This WSDL operation adds a feed entry for a given feed entity.

The following is the WSDL port type specification of the **AddFeedEntry** WSDL operation.

```
<wsdl:operation name="AddFeedEntry" xmlns:wsdl="http://schemas.xmlsoap.org/wsdl/">
  <wsdl:input wsaw:Action="http://Microsoft.Office.Server.UserProfiles/AddFeedEntry"
message="tns3:IFeedCacheService_AddFeedEntry_InputMessage"
xmlns:wsaw="http://www.w3.org/2006/05/addressing/wsdl"/>
  <wsdl:output wsaw:Action="http://tempuri.org/IFeedCacheService/AddFeedEntryResponse"
message="tns3:IFeedCacheService_AddFeedEntry_OutputMessage"
xmlns:wsaw="http://www.w3.org/2006/05/addressing/wsdl"/>
  <wsdl:fault
wsaw:Action="http://tempuri.org/IFeedCacheService/AddFeedEntryFeedCacheFaultFault"
name="FeedCacheFaultFault"
message="tns3:IFeedCacheService_AddFeedEntry_FeedCacheFaultFault_FaultMessage"
xmlns:wsaw="http://www.w3.org/2006/05/addressing/wsdl"/>
</wsdl:operation>
```

AddFeedEntry adds a feed entry to a feed entity. The entries can later be retrieved by the retrieval operations as described in section [3.1.4.4](#), section [3.1.4.3](#), section [3.1.4.5](#), section [3.1.4.6](#), and section [3.1.4.7](#). The feed entry can also be removed as described in section [3.1.4.12](#), and section [3.1.4.13](#).

3.1.4.1.1 Messages

The following table summarizes the set of WSDL message definitions that are specific to this operation.

Message	Description
IFeedCacheService_AddFeedEntry_InputMessage	The request WSDL message for the AddFeedEntry WSDL operation.
IFeedCacheService_AddFeedEntry_OutputMessage	The response WSDL message for the AddFeedEntry WSDL operation.

3.1.4.1.1.1 IFeedCacheService_AddFeedEntry_InputMessage

The request WSDL message for the **AddFeedEntry** WSDL operation.

The **SOAP action** value is:

<http://Microsoft.Office.Server.UserProfiles/AddFeedEntry>

The **SOAP body** contains the **AddFeedEntry** element.

3.1.4.1.1.2 IFeedCacheService_AddFeedEntry_OutputMessage

The response WSDL message for the **AddFeedEntry** WSDL operation.

The SOAP body contains the **AddFeedEntryResponse** element.

3.1.4.1.2 Elements

The following table summarizes the XML schema element definitions that are specific to this operation.

Element	Description
AddFeedEntry	The input data for the AddFeedEntry WSDL operation.
AddFeedEntryResponse	The result data for the AddFeedEntry WSDL operation.

3.1.4.1.2.1 AddFeedEntry

The **AddFeedEntry** element specifies the input data for the **AddFeedEntry** WSDL operation.

```
<xs:element name="AddFeedEntry" xmlns:xs="http://www.w3.org/2001/XMLSchema">
  <xs:complexType>
    <xs:sequence>
      <xs:element xmlns:tns="http://Microsoft/Office/Server/FeedCache" minOccurs="0"
name="entity" nillable="true" type="tns:E"/>
      <xs:element xmlns:tns="http://Microsoft/Office/Server/FeedCache" minOccurs="0"
name="entry" nillable="true" type="tns:P"/>
    </xs:sequence>
  </xs:complexType>
</xs:element>
```

entity: The feed entity to which this feed entry is to be added.

entry: The feed entry to be added.

3.1.4.1.2.2 AddFeedEntryResponse

The **AddFeedEntryResponse** element specifies the result data for the **AddFeedEntry** WSDL operation.

```
<xs:element name="AddFeedEntryResponse" xmlns:xs="http://www.w3.org/2001/XMLSchema">
  <xs:complexType>
    <xs:sequence>
      <xs:element minOccurs="0" name="AddFeedEntryResult" type="xs:boolean"/>
    </xs:sequence>
  </xs:complexType>
</xs:element>
```

AddFeedEntryResult: A Boolean value that indicates whether the operation succeeded or failed.

3.1.4.1.3 Complex Types

None.

3.1.4.1.4 Simple Types

None.

3.1.4.1.5 Attributes

None.

3.1.4.1.6 Groups

None.

3.1.4.1.7 Attribute Groups

None.

3.1.4.2 BulkLMTUpdate

This WSDL operation updates the last modified times of a number of feed entities.

The following is the WSDL port type specification of the **BulkLMTUpdate** WSDL operation.

```
<wsdl:operation name="BulkLMTUpdate" xmlns:wsdl="http://schemas.xmlsoap.org/wsdl/">
  <wsdl:input wsaw:Action="http://Microsoft.Office.Server.UserProfiles/BulkLMTUpdate"
    message="tns3:IFeedCacheService_BulkLMTUpdate_InputMessage"
    xmlns:wsaw="http://www.w3.org/2006/05/addressing/wsdl"/>
  <wsdl:output wsaw:Action="http://tempuri.org/IFeedCacheService/BulkLMTUpdateResponse"
    message="tns3:IFeedCacheService_BulkLMTUpdate_OutputMessage"
    xmlns:wsaw="http://www.w3.org/2006/05/addressing/wsdl"/>
  <wsdl:fault
    wsaw:Action="http://tempuri.org/IFeedCacheService/BulkLMTUpdateFeedCacheFaultFault"
    name="FeedCacheFaultFault"
    message="tns3:IFeedCacheService_BulkLMTUpdate_FeedCacheFaultFault_FaultMessage"
    xmlns:wsaw="http://www.w3.org/2006/05/addressing/wsdl"/>
</wsdl:operation>
```

This operation helps update the last modified times of feed entities. This operation is used in conjunction with **IsRepopulationNeeded** as outlined in section [3.1.4.9](#). If **IsRepopulationNeeded** returns true, the protocol client can use this operation to update the last modified times.

3.1.4.2.1 Messages

The following table summarizes the set of WSDL message definitions that are specific to this operation.

Message	Description
IFeedCacheService_BulkLMTUpdate_InputMessage	The request WSDL message for the

Message	Description
	BulkLMTUpdate WSDL operation.
IFeedCacheService_BulkLMTUpdate_OutputMessage	The response WSDL message for the BulkLMTUpdate WSDL operation.

3.1.4.2.1.1 IFeedCacheService_BulkLMTUpdate_InputMessage

The request WSDL message for the **BulkLMTUpdate** WSDL operation.

The SOAP action value is:

```
http://Microsoft.Office.Server.UserProfiles/BulkLMTUpdate
```

The SOAP body contains the **BulkLMTUpdate** element.

3.1.4.2.1.2 IFeedCacheService_BulkLMTUpdate_OutputMessage

The response WSDL message for the **BulkLMTUpdate** WSDL operation.

The SOAP body contains the **BulkLMTUpdateResponse** element.

3.1.4.2.2 Elements

The following table summarizes the XML schema element definitions that are specific to this operation.

Element	Description
BulkLMTUpdate	The input data for the BulkLMTUpdate WSDL operation.
BulkLMTUpdateResponse	The result data for the BulkLMTUpdate WSDL operation.

3.1.4.2.2.1 BulkLMTUpdate

The **BulkLMTUpdate** element specifies the input data for the **BulkLMTUpdate** WSDL operation.

```
<xs:element name="BulkLMTUpdate" xmlns:xs="http://www.w3.org/2001/XMLSchema">
  <xs:complexType>
    <xs:sequence>
      <xs:element xmlns:ser="http://schemas.microsoft.com/2003/10/Serialization/"
        minOccurs="0" name="callerID" type="ser:guid"/>
      <xs:element
        xmlns:tns2="http://schemas.datacontract.org/2004/07/System.Collections.Generic" minOccurs="0"
        name="lastModifiedTimes" nillable="true" type="tns2:ArrayOfKeyValuePairOfELEHsv_SlRZJ"/>
    </xs:sequence>
  </xs:complexType>
</xs:element>
```

callerID: The identifier for the protocol client. This value MUST NOT be null or empty.

lastModifiedTimes: Specifies the list of feed entries and their associated last modified time as specified in section [3.1.4.2.3.1](#).

3.1.4.2.2 BulkLMTUpdateResponse

The **BulkLMTUpdateResponse** element specifies the result data for the **BulkLMTUpdate** WSDL operation.

```
<xs:element name="BulkLMTUpdateResponse" xmlns:xs="http://www.w3.org/2001/XMLSchema">
  <xs:complexType>
    <xs:sequence>
      <xs:element minOccurs="0" name="BulkLMTUpdateResult" type="xs:boolean"/>
    </xs:sequence>
  </xs:complexType>
</xs:element>
```

BulkLMTUpdateResult: A Boolean value that indicates whether the operation succeeded or failed.

3.1.4.2.3 Complex Types

The following table summarizes the XML schema complex type definitions that are specific to this operation.

Complex type	Description
ArrayOfKeyValuePairOfELEHsv_SIRZJ	Contains zero or more KeyValuePairOfELEHsv_SIRZJ objects.
KeyValuePairOfELEHsv_SIRZJ	A key value pair of feed entity and the last time it was modified.
LE	Represents the last modified time data of a given feed entity.

3.1.4.2.3.1 ArrayOfKeyValuePairOfELEHsv_SIRZJ

Namespace: http://schemas.datacontract.org/2004/07/System.Collections.Generic

This complex type contains zero or more **KeyValuePairOfELEHsv_SIRZJ** objects.

```
<xs:complexType name="ArrayOfKeyValuePairOfELEHsv_SIRZJ"
xmlns:xs="http://www.w3.org/2001/XMLSchema">
  <xs:sequence>
    <xs:element minOccurs="0" maxOccurs="unbounded" name="KeyValuePairOfELEHsv_SIRZJ"
type="tns2:KeyValuePairOfELEHsv_SIRZJ"/>
  </xs:sequence>
</xs:complexType>
```

KeyValuePairOfELEHsv_SIRZJ: Specifies the key value pair of entity and last modified time as detailed in section [3.1.4.2.3.2](#).

3.1.4.2.3.2 KeyValuePairOfELEHsv_SIRZJ

Namespace: http://schemas.datacontract.org/2004/07/System.Collections.Generic

This complex type is a key value pair of feed entity and the last time it was modified.

```
<xs:complexType name="KeyValuePairOfELEHsv_SIRZJ"
xmlns:xs="http://www.w3.org/2001/XMLSchema">
```

```

    <xs:sequence>
      <xs:element xmlns:tns="http://Microsoft/Office/Server/FeedCache" name="key"
        nillable="true" type="tns:E"/>
      <xs:element xmlns:tns="http://Microsoft/Office/Server/FeedCache" name="value"
        nillable="true" type="tns:LE"/>
    </xs:sequence>
  </xs:complexType>

```

key: Specifies the feed entity.

value: Specifies the last modified data as specified in section [3.1.4.2.3.3](#).

3.1.4.2.3.3 LE

Namespace: http://Microsoft/Office/Server/FeedCache

This complex type represents the last modified time data of a given feed entity.

```

<xs:complexType name="LE" xmlns:xs="http://www.w3.org/2001/XMLSchema">
  <xs:sequence>
    <xs:element minOccurs="0" name="b" type="xs:unsignedLong"/>
    <xs:element minOccurs="0" name="c" type="xs:unsignedShort"/>
    <xs:element minOccurs="0" name="r" type="xs:long"/>
    <xs:element minOccurs="0" name="t" type="xs:long"/>
  </xs:sequence>
</xs:complexType>

```

b: This value MUST be ZERO (0).

c: This value MUST be ZERO (0).

r: This value MUST be null.

t: This MUST contain the last time this feed entity was modified.

3.1.4.2.4 Simple Types

None.

3.1.4.2.5 Attributes

None.

3.1.4.2.6 Groups

None.

3.1.4.2.7 Attribute Groups

None.

3.1.4.3 GetCategoricalFeed

This WSDL operation retrieves up to 100 recently modified feed entries from the provided feed entities.

The following is the WSDL port type specification of the **GetCategoricalFeed** WSDL operation.

```
<wsdl:operation name="GetCategoricalFeed" xmlns:wsdl="http://schemas.xmlsoap.org/wsdl/">
  <wsdl:input wsaw:Action="http://Microsoft.Office.Server.UserProfiles/GetCategoricalFeed"
message="tns3:IFeedCacheService_GetCategoricalFeed_InputMessage"
xmlns:wsaw="http://www.w3.org/2006/05/addressing/wsdl"/>
  <wsdl:output wsaw:Action="http://tempuri.org/IFeedCacheService/GetCategoricalFeedResponse"
message="tns3:IFeedCacheService_GetCategoricalFeed_OutputMessage"
xmlns:wsaw="http://www.w3.org/2006/05/addressing/wsdl"/>
  <wsdl:fault
wsaw:Action="http://tempuri.org/IFeedCacheService/GetCategoricalFeedFeedCacheFaultFault"
name="FeedCacheFaultFault"
message="tns3:IFeedCacheService_GetCategoricalFeed_FeedCacheFaultFault_FaultMessage"
xmlns:wsaw="http://www.w3.org/2006/05/addressing/wsdl"/>
</wsdl:operation>
```

3.1.4.3.1 Messages

The following table summarizes the set of WSDL message definitions that are specific to this operation.

Message	Description
IFeedCacheService_GetCategoricalFeed_InputMessage	The request WSDL message for the GetCategoricalFeed WSDL operation.
IFeedCacheService_GetCategoricalFeed_OutputMessage	The response WSDL message for the GetCategoricalFeed WSDL operation.

3.1.4.3.1.1 IFeedCacheService_GetCategoricalFeed_InputMessage

The request WSDL message for the **GetCategoricalFeed** WSDL operation.

The SOAP action value is:

```
http://Microsoft.Office.Server.UserProfiles/GetCategoricalFeed
```

The SOAP body contains the **GetCategoricalFeed** element.

3.1.4.3.1.2 IFeedCacheService_GetCategoricalFeed_OutputMessage

The response WSDL message for the **GetCategoricalFeed** WSDL operation.

The SOAP body contains the **GetCategoricalFeedResponse** element.

3.1.4.3.2 Elements

The following table summarizes the XML schema element definitions that are specific to this operation.

Element	Description
GetCategoricalFeed	The input data for the GetCategoricalFeed WSDL operation.
GetCategoricalFeedResponse	The result data for the GetCategoricalFeed WSDL operation.

3.1.4.3.2.1 GetCategoricalFeed

The **GetCategoricalFeed** element specifies the input data for the **GetCategoricalFeed** WSDL operation.

```
<xs:element name="GetCategoricalFeed" xmlns:xs="http://www.w3.org/2001/XMLSchema">
  <xs:complexType>
    <xs:sequence>
      <xs:element xmlns:tns="http://Microsoft/Office/Server/FeedCache" minOccurs="0"
name="fcRetEntity" nillable="true" type="tns:FCRE"/>
      <xs:element xmlns:tns="http://Microsoft/Office/Server/FeedCache" minOccurs="0"
name="followedEntities" nillable="true" type="tns:ArrayOfE"/>
      <xs:element xmlns:tns="http://Microsoft/Office/Server/FeedCache" minOccurs="0"
name="fcRetOptions" nillable="true" type="tns:FCRO"/>
    </xs:sequence>
  </xs:complexType>
</xs:element>
```

fcRetEntity: Element of type **FCRE** as describe in section [2.2.4.14](#).

followedEntities: The feed entities whose feed entries are to be retrieved.

fcRetOptions: Element of type **FCRO** as describe in section [2.2.4.15](#).

3.1.4.3.2.2 GetCategoricalFeedResponse

The **GetCategoricalFeedResponse** element specifies the result data for the **GetCategoricalFeed** WSDL operation.

```
<xs:element name="GetCategoricalFeedResponse" xmlns:xs="http://www.w3.org/2001/XMLSchema">
  <xs:complexType>
    <xs:sequence>
      <xs:element xmlns:tns1="http://Microsoft/Office/Server/FeedyCache" minOccurs="0"
name="GetCategoricalFeedResult" nillable="true" type="tns1:FCCR"/>
    </xs:sequence>
  </xs:complexType>
</xs:element>
```

GetCategoricalFeedResult: Element of type **PC** as described in section [2.2.4.17](#).

3.1.4.3.3 Complex Types

None.

3.1.4.3.4 Simple Types

None.

3.1.4.3.5 Attributes

None.

3.1.4.3.6 Groups

None.

3.1.4.3.7 Attribute Groups

None.

3.1.4.4 GetConsolidatedFeed

This WSDL operation retrieves specified feed entries from the provided feed entities.

The following is the WSDL port type specification of the **GetConsolidatedFeed** WSDL operation.

```
<wsdl:operation name="GetConsolidatedFeed" xmlns:wsdl="http://schemas.xmlsoap.org/wsdl/">
  <wsdl:input wsaw:Action="http://Microsoft.Office.Server.UserProfiles/GetConsolidatedFeed"
    message="tns3:IFeedCacheService_GetConsolidatedFeed_InputMessage"
    xmlns:wsaw="http://www.w3.org/2006/05/addressing/wsdl"/>
  <wsdl:output wsaw:Action="http://tempuri.org/IFeedCacheService/GetConsolidatedFeedResponse"
    message="tns3:IFeedCacheService_GetConsolidatedFeed_OutputMessage"
    xmlns:wsaw="http://www.w3.org/2006/05/addressing/wsdl"/>
  <wsdl:fault
    wsaw:Action="http://tempuri.org/IFeedCacheService/GetConsolidatedFeedFeedCacheFaultFault"
    name="FeedCacheFaultFault"
    message="tns3:IFeedCacheService_GetConsolidatedFeed_FeedCacheFaultFault_FaultMessage"
    xmlns:wsaw="http://www.w3.org/2006/05/addressing/wsdl"/>
</wsdl:operation>
```

3.1.4.4.1 Messages

The following table summarizes the set of WSDL message definitions that are specific to this operation.

Message	Description
IFeedCacheService_GetConsolidatedFeed_InputMessage	The request WSDL message for the GetConsolidatedFeed WSDL operation.
IFeedCacheService_GetConsolidatedFeed_OutputMessage	The response WSDL message for the GetConsolidatedFeed WSDL operation.

3.1.4.4.1.1 IFeedCacheService_GetConsolidatedFeed_InputMessage

The request WSDL message for the **GetConsolidatedFeed** WSDL operation.

The SOAP action value is:

```
http://Microsoft.Office.Server.UserProfiles/GetConsolidatedFeed
```

The SOAP body contains the **GetConsolidatedFeed** element.

3.1.4.4.1.2 IFeedCacheService_GetConsolidatedFeed_OutputMessage

The response WSDL message for the **GetConsolidatedFeed** WSDL operation.

The SOAP body contains the **GetConsolidatedFeedResponse** element.

3.1.4.4.2 Elements

The following table summarizes the XML schema element definitions that are specific to this operation.

Element	Description
GetConsolidatedFeed	The input data for the GetConsolidatedFeed WSDL operation.
GetConsolidatedFeedResponse	The result data for the GetConsolidatedFeed WSDL operation.

3.1.4.4.2.1 GetConsolidatedFeed

The **GetConsolidatedFeed** element specifies the input data for the **GetConsolidatedFeed** WSDL operation.

```
<xs:element name="GetConsolidatedFeed" xmlns:xs="http://www.w3.org/2001/XMLSchema">
  <xs:complexType>
    <xs:sequence>
      <xs:element xmlns:tns="http://Microsoft/Office/Server/FeedCache" minOccurs="0"
name="fcRetEntity" nillable="true" type="tns:FCRE"/>
      <xs:element xmlns:tns="http://Microsoft/Office/Server/FeedCache" minOccurs="0"
name="followedEntities" nillable="true" type="tns:ArrayOfE"/>
      <xs:element xmlns:tns="http://Microsoft/Office/Server/FeedCache" minOccurs="0"
name="fcRetOptions" nillable="true" type="tns:FCRO"/>
    </xs:sequence>
  </xs:complexType>
</xs:element>
```

fcRetEntity: Element of type **FCRE** as describe in section [2.2.4.14](#).

followedEntities: The feed entities whose feed entries are to be retrieved.

fcRetOptions: Element of type **FCRO** as describe in section [2.2.4.15](#).

3.1.4.4.2.2 GetConsolidatedFeedResponse

The **GetConsolidatedFeedResponse** element specifies the result data for the **GetConsolidatedFeed** WSDL operation.

```
<xs:element name="GetConsolidatedFeedResponse" xmlns:xs="http://www.w3.org/2001/XMLSchema">
  <xs:complexType>
    <xs:sequence>
      <xs:element xmlns:tns1="http://Microsoft/Office/Server/FeedyCache" minOccurs="0"
name="GetConsolidatedFeedResult" nillable="true" type="tns1:FCCR"/>
    </xs:sequence>
  </xs:complexType>
</xs:element>
```

GetConsolidatedFeedResult: Element of type **PC** as described in section [2.2.4.17](#).

3.1.4.4.3 Complex Types

None.

3.1.4.4.4 Simple Types

None.

3.1.4.4.5 Attributes

None.

3.1.4.4.6 Groups

None.

3.1.4.4.7 Attribute Groups

None.

3.1.4.5 GetEntries

This WSDL operation lets a protocol client query feed entries given their feed entry identifiers.

The following is the WSDL port type specification of the **GetEntries** WSDL operation.

```
<wsdl:operation name="GetEntries" xmlns:wsdl="http://schemas.xmlsoap.org/wsdl/">
  <wsdl:input wsaw:Action="http://Microsoft.Office.Server.UserProfiles/GetThreadEntries"
  message="tns3:IFeedCacheService_GetEntries_InputMessage"
  xmlns:wsaw="http://www.w3.org/2006/05/addressing/wsdl"/>
  <wsdl:output wsaw:Action="http://tempuri.org/IFeedCacheService/GetEntriesResponse"
  message="tns3:IFeedCacheService_GetEntries_OutputMessage"
  xmlns:wsaw="http://www.w3.org/2006/05/addressing/wsdl"/>
  <wsdl:fault
  wsaw:Action="http://tempuri.org/IFeedCacheService/GetEntriesFeedCacheFaultFault"
  name="FeedCacheFaultFault"
  message="tns3:IFeedCacheService_GetEntries_FeedCacheFaultFault_FaultMessage"
  xmlns:wsaw="http://www.w3.org/2006/05/addressing/wsdl"/>
</wsdl:operation>
```

3.1.4.5.1 Messages

The following table summarizes the set of WSDL message definitions that are specific to this operation.

Message	Description
IFeedCacheService_GetEntries_InputMessage	The request WSDL message for the GetEntries WSDL operation.
IFeedCacheService_GetEntries_OutputMessage	The response WSDL message for the GetEntries WSDL operation.

3.1.4.5.1.1 IFeedCacheService_GetEntries_InputMessage

The request WSDL message for the **GetEntries** WSDL operation.

The SOAP action value is:

http://Microsoft.Office.Server.UserProfiles/GetThreadEntries

The SOAP body contains the **GetEntries** element.

3.1.4.5.1.2 IFeedCacheService_GetEntries_OutputMessage

The response WSDL message for the **GetEntries** WSDL operation.

The SOAP body contains the **GetEntriesResponse** element.

3.1.4.5.2 Elements

The following table summarizes the XML schema element definitions that are specific to this operation.

Element	Description
GetEntries	The input data for the GetEntries WSDL operation.
GetEntriesResponse	The result data for the GetEntries WSDL operation.

3.1.4.5.2.1 GetEntries

The **GetEntries** element specifies the input data for the **GetEntries** WSDL operation.

```
<xs:element name="GetEntries" xmlns:xs="http://www.w3.org/2001/XMLSchema">
  <xs:complexType>
    <xs:sequence>
      <xs:element xmlns:tns="http://Microsoft/Office/Server/FeedCache" minOccurs="0"
name="entryIdentifiers" nillable="true" type="tns:ArrayOfPI"/>
    </xs:sequence>
  </xs:complexType>
</xs:element>
```

entryIdentifiers: Array of entry identifiers as specified in section [3.1.4.5.3.1](#).

3.1.4.5.2.2 GetEntriesResponse

The **GetEntriesResponse** element specifies the result data for the **GetEntries** WSDL operation.

```
<xs:element name="GetEntriesResponse" xmlns:xs="http://www.w3.org/2001/XMLSchema">
  <xs:complexType>
    <xs:sequence>
      <xs:element xmlns:tns="http://Microsoft/Office/Server/FeedCache" minOccurs="0"
name="GetEntriesResult" nillable="true" type="tns:PC"/>
    </xs:sequence>
  </xs:complexType>
</xs:element>
```

GetEntriesResult: Element of type **PC** as described in section [2.2.4.17](#).

3.1.4.5.3 Complex Types

The following table summarizes the XML schema complex type definitions that are specific to this operation.

Complex type	Description
ArrayOfPI	A sequence of zero or more elements of type PI .
PI	A pair of feed entity and the associated feed entry identifiers.

3.1.4.5.3.1 ArrayOfPI

Namespace: http://Microsoft/Office/Server/FeedCache

The complex type **ArrayOfPI** is a sequence of zero or more elements of type **PI**.

```
<xs:complexType name="ArrayOfPI" xmlns:xs="http://www.w3.org/2001/XMLSchema">
  <xs:sequence>
    <xs:element minOccurs="0" maxOccurs="unbounded" name="PI" nillable="true" type="tns:PI"/>
  </xs:sequence>
</xs:complexType>
```

PI: A pair of feed entity and feed entry identifiers as specified in section [3.1.4.5.3.2](#).

3.1.4.5.3.2 PI

Namespace: http://Microsoft/Office/Server/FeedCache

The complex type **PI** is actually a pair of feed entity and the associated feed entry identifiers.

```
<xs:complexType name="PI" xmlns:xs="http://www.w3.org/2001/XMLSchema">
  <xs:sequence>
    <xs:element minOccurs="0" name="E" nillable="true" type="tns:E"/>
    <xs:element xmlns:q1="http://schemas.microsoft.com/2003/10/Serialization/Arrays"
      minOccurs="0" name="I" nillable="true" type="q1:ArrayOfstring"/>
  </xs:sequence>
</xs:complexType>
```

E: Specifies the feed entity.

I: A sequence of zero (0) or more feed entry identifiers.

3.1.4.5.4 Simple Types

None.

3.1.4.5.5 Attributes

None.

3.1.4.5.6 Groups

None.

3.1.4.5.7 Attribute Groups

None.

3.1.4.6 GetFeeds

This WSDL operation lets the protocol client to get feed entries from the specified feed entities.

The following is the WSDL port type specification of the **GetFeeds** WSDL operation.

```
<wsdl:operation name="GetFeeds" xmlns:wsdl="http://schemas.xmlsoap.org/wsdl/">
  <wsdl:input wsaw:Action="http://Microsoft.Office.Server.UserProfiles/GetFeeds"
    message="tns3:IFeedCacheService_GetFeeds_InputMessage"
    xmlns:wsaw="http://www.w3.org/2006/05/addressing/wsdl"/>
  <wsdl:output wsaw:Action="http://tempuri.org/IFeedCacheService/GetFeedsResponse"
    message="tns3:IFeedCacheService_GetFeeds_OutputMessage"
    xmlns:wsaw="http://www.w3.org/2006/05/addressing/wsdl"/>
  <wsdl:fault wsaw:Action="http://tempuri.org/IFeedCacheService/GetFeedsFeedCacheFaultFault"
    name="FeedCacheFaultFault"
    message="tns3:IFeedCacheService_GetFeeds_FeedCacheFaultFault_FaultMessage"
    xmlns:wsaw="http://www.w3.org/2006/05/addressing/wsdl"/>
</wsdl:operation>
```

This operation helps retrieve feed entries for a number of feed entities in one call. One possible use of this is to transfer data between two protocol servers.

3.1.4.6.1 Messages

The following table summarizes the set of WSDL message definitions that are specific to this operation.

Message	Description
IFeedCacheService_GetFeeds_InputMessage	The request WSDL message for the GetFeeds WSDL operation.
IFeedCacheService_GetFeeds_OutputMessage	The response WSDL message for the GetFeeds WSDL operation.

3.1.4.6.1.1 IFeedCacheService_GetFeeds_InputMessage

The request WSDL message for the **GetFeeds** WSDL operation.

The SOAP action value is:

```
http://Microsoft.Office.Server.UserProfiles/GetFeeds
```

The SOAP body contains the **GetFeeds** element.

3.1.4.6.1.2 IFeedCacheService_GetFeeds_OutputMessage

The response WSDL message for the **GetFeeds** WSDL operation.

The SOAP body contains the **GetFeedsResponse** element.

3.1.4.6.2 Elements

The following table summarizes the XML schema element definitions that are specific to this operation.

Element	Description
GetFeeds	The input data for the GetFeeds WSDL operation.
GetFeedsResponse	The result data for the GetFeeds WSDL operation.

3.1.4.6.2.1 GetFeeds

The **GetFeeds** element specifies the input data for the **GetFeeds** WSDL operation.

```
<xs:element name="GetFeeds" xmlns:xs="http://www.w3.org/2001/XMLSchema">
  <xs:complexType>
    <xs:sequence>
      <xs:element xmlns:ser="http://schemas.microsoft.com/2003/10/Serialization/"
        minOccurs="0" name="callerID" type="ser:guid"/>
      <xs:element xmlns:tns="http://Microsoft/Office/Server/FeedCache" minOccurs="0"
        name="requestingEntity" nillable="true" type="tns:E"/>
      <xs:element xmlns:tns="http://Microsoft/Office/Server/FeedCache" minOccurs="0"
        name="entityNewerThanPair" nillable="true" type="tns:ArrayOfEDT"/>
      <xs:element minOccurs="0" name="maxItemsPerEntity" type="xs:int"/>
    </xs:sequence>
  </xs:complexType>
</xs:element>
```

callerID: The identifier for the protocol client. This value MUST NOT be null or empty.

requestingEntity: The feed entity on behalf of which this call is being made.

entityNewerThanPair: A sequence of pairs of feed entity and a date time value. The operation MUST NOT return feed entries for this feed entity having a modified time older than this date time.

maxItemsPerEntity: An integer specifying the maximum number of feed entries to return for a given feed entity. The "M" element in the response is also set to this value.

3.1.4.6.2.2 GetFeedsResponse

The **GetFeedsResponse** element specifies the result data for the **GetFeeds** WSDL operation.

```
<xs:element name="GetFeedsResponse" xmlns:xs="http://www.w3.org/2001/XMLSchema">
  <xs:complexType>
    <xs:sequence>
      <xs:element xmlns:tns="http://Microsoft/Office/Server/FeedCache" minOccurs="0"
        name="GetFeedsResult" nillable="true" type="tns:PC"/>
    </xs:sequence>
  </xs:complexType>
</xs:element>
```

GetFeedsResult: Element of type **PC** as described in section [2.2.4.17](#).

3.1.4.6.3 Complex Types

None.

3.1.4.6.4 Simple Types

None.

3.1.4.6.5 Attributes

None.

3.1.4.6.6 Groups

None.

3.1.4.6.7 Attribute Groups

None.

3.1.4.7 GetPublishedFeed

This WSDL operation lets a protocol client retrieve the published feed entries for a specific feed entity.

The following is the WSDL port type specification of the **GetPublishedFeed** WSDL operation.

```
<wsdl:operation name="GetPublishedFeed" xmlns:wsdl="http://schemas.xmlsoap.org/wsdl/">
  <wsdl:input wsaw:Action="http://Microsoft.Office.Server.UserProfiles.GetPublishedFeed"
  message="tns3:IFeedCacheService_GetPublishedFeed_InputMessage"
  xmlns:wsaw="http://www.w3.org/2006/05/addressing/wsdl"/>
  <wsdl:output wsaw:Action="http://tempuri.org/IFeedCacheService/GetPublishedFeedResponse"
  message="tns3:IFeedCacheService_GetPublishedFeed_OutputMessage"
  xmlns:wsaw="http://www.w3.org/2006/05/addressing7wsdl"/>
  <wsdl:fault
  wsaw:Action="http://tempuri.org/IFeedCacheService/GetPublishedFeedFeedCacheFaultFault"
  name="FeedCacheFaultFault"
  message="tns3:IFeedCacheService_GetPublishedFeed_FeedCacheFaultFault_FaultMessage"
  xmlns:wsaw="http://www.w3.org/2006/05/addressing/wsdl"/>
</wsdl:operation>
```

3.1.4.7.1 Messages

The following table summarizes the set of WSDL message definitions that are specific to this operation.

Message	Description
IFeedCacheService_GetPublishedFeed_InputMessage	The request WSDL message for the GetPublishedFeed WSDL operation.
IFeedCacheService_GetPublishedFeed_OutputMessage	The response WSDL message for the GetPublishedFeed WSDL operation.

3.1.4.7.1.1 IFeedCacheService_GetPublishedFeed_InputMessage

The request WSDL message for the **GetPublishedFeed** WSDL operation.

The SOAP action value is:

```
http://Microsoft.Office.Server.UserProfiles/GetPublishedFeed
```

The SOAP body contains the **GetPublishedFeed** element.

3.1.4.7.1.2 IFeedCacheService_GetPublishedFeed_OutputMessage

The response WSDL message for the **GetPublishedFeed** WSDL operation.

The SOAP body contains the **GetPublishedFeedResponse** element.

3.1.4.7.2 Elements

The following table summarizes the XML schema element definitions that are specific to this operation.

Element	Description
GetPublishedFeed	The input data for the GetPublishedFeed WSDL operation.
GetPublishedFeedResponse	The result data for the GetPublishedFeed WSDL operation.

3.1.4.7.2.1 GetPublishedFeed

The **GetPublishedFeed** element specifies the input data for the **GetPublishedFeed** WSDL operation.

```
<xs:element name="GetPublishedFeed" xmlns:xs="http://www.w3.org/2001/XMLSchema">
  <xs:complexType>
    <xs:sequence>
      <xs:element xmlns:tns="http://Microsoft/Office/Server/FeedCache" minOccurs="0"
name="fcTargetEntity" nillable="true" type="tns:FCRE"/>
      <xs:element xmlns:tns="http://Microsoft/Office/Server/FeedCache" minOccurs="0"
name="fcViewingEntity" nillable="true" type="tns:FCRE"/>
      <xs:element xmlns:tns="http://Microsoft/Office/Server/FeedCache" minOccurs="0"
name="fcRetOptions" nillable="true" type="tns:FCRO"/>
    </xs:sequence>
  </xs:complexType>
</xs:element>
```

fcTargetEntity: Element of type **FCRE** as describe in section [2.2.4.14](#).

fcViewingEntity: Element of type **FCRE** as describe in section [2.2.4.14](#).

fcRetOptions: Element of type **FCRO** as describe in section [2.2.4.15](#).

3.1.4.7.2.2 GetPublishedFeedResponse

The **GetPublishedFeedResponse** element specifies the result data for the **GetPublishedFeed** WSDL operation.


```

<xs:element name="GetPublishedFeedResponse" xmlns:xs="http://www.w3.org/2001/XMLSchema">
  <xs:complexType>
    <xs:sequence>
      <xs:element xmlns:tns1="http://Microsoft/Office/Server/FeedyCache" minOccurs="0"
name="GetPublishedFeedResult" nillable="true" type="tns1:FCCR"/>
    </xs:sequence>
  </xs:complexType>
</xs:element>

```

GetPublishedFeedResult: Element of type **FCCR** as described in section [2.2.4.13](#).

3.1.4.7.3 Complex Types

None.

3.1.4.7.4 Simple Types

None.

3.1.4.7.5 Attributes

None.

3.1.4.7.6 Groups

None.

3.1.4.7.7 Attribute Groups

None.

3.1.4.8 IsEntityActivelyFollowed

This WSDL operation checks if a given feed entity has earlier been marked as followed.

The following is the WSDL port type specification of the **IsEntityActivelyFollowed** WSDL operation.

```

<wsdl:operation name="IsEntityActivelyFollowed"
xmlns:wsdl="http://schemas.xmlsoap.org/wsdl/">
  <wsdl:input
wsaw:Action="http://Microsoft.Office.Server.UserProfiles/IsEntityActivelyFollowed"
message="tns3:IFeedCacheService_IsEntityActivelyFollowed_InputMessage"
xmlns:wsaw="http://www.w3.org/2006/05/addressing/wsdl"/>
  <wsdl:output
wsaw:Action="http://tempuri.org/IFeedCacheService/IsEntityActivelyFollowedResponse"
message="tns3:IFeedCacheService_IsEntityActivelyFollowed_OutputMessage"
xmlns:wsaw="http://www.w3.org/2006/05/addressing/wsdl"/>
  <wsdl:fault
wsaw:Action="http://tempuri.org/IFeedCacheService/IsEntityActivelyFollowedFeedCacheFaultFault"
name="FeedCacheFaultFault"
message="tns3:IFeedCacheService_IsEntityActivelyFollowed_FeedCacheFaultFault_FaultMessage"
xmlns:wsaw="http://www.w3.org/2006/05/addressing/wsdl"/>
</wsdl:operation>

```

3.1.4.8.1 Messages

The following table summarizes the set of WSDL message definitions that are specific to this operation.

Message	Description
IFeedCacheService_IsEntityActivelyFollowed_InputMessage	The request WSDL message for the IsEntityActivelyFollowed WSDL operation.
IFeedCacheService_IsEntityActivelyFollowed_OutputMessage	The response WSDL message for the IsEntityActivelyFollowed WSDL operation.

3.1.4.8.1.1 IFeedCacheService_IsEntityActivelyFollowed_InputMessage

The request WSDL message for the **IsEntityActivelyFollowed** WSDL operation.

The SOAP action value is:

```
http://Microsoft.Office.Server.UserProfiles/IsEntityActivelyFollowed
```

The SOAP body contains the **IsEntityActivelyFollowed** element.

3.1.4.8.1.2 IFeedCacheService_IsEntityActivelyFollowed_OutputMessage

The response WSDL message for the **IsEntityActivelyFollowed** WSDL operation.

The SOAP body contains the **IsEntityActivelyFollowedResponse** element.

3.1.4.8.2 Elements

The following table summarizes the XML schema element definitions that are specific to this operation.

Element	Description
IsEntityActivelyFollowed	The input data for the IsEntityActivelyFollowed WSDL operation.
IsEntityActivelyFollowedResponse	The result data for the IsEntityActivelyFollowed WSDL operation.

3.1.4.8.2.1 IsEntityActivelyFollowed

The **IsEntityActivelyFollowed** element specifies the input data for the **IsEntityActivelyFollowed** WSDL operation.

```
<xs:element name="IsEntityActivelyFollowed" xmlns:xs="http://www.w3.org/2001/XMLSchema">
  <xs:complexType>
    <xs:sequence>
      <xs:element xmlns:tns="http://Microsoft/Office/Server/FeedCache" minOccurs="0"
        name="entity" nillable="true" type="tns:E"/>
    </xs:sequence>
  </xs:complexType>
</xs:element>
```

```
</xs:complexType>
</xs:element>
```

entity: The feed entity to check for.

3.1.4.8.2.2 IsEntityActivelyFollowedResponse

The **IsEntityActivelyFollowedResponse** element specifies the result data for the **IsEntityActivelyFollowed** WSDL operation.

```
<xs:element name="IsEntityActivelyFollowedResponse"
  xmlns:xs="http://www.w3.org/2001/XMLSchema">
  <xs:complexType>
    <xs:sequence>
      <xs:element minOccurs="0" name="IsEntityActivelyFollowedResult" type="xs:boolean"/>
    </xs:sequence>
  </xs:complexType>
</xs:element>
```

IsEntityActivelyFollowedResult: A Boolean value that indicates whether the feed entity has been marked as followed or not.

3.1.4.8.3 Complex Types

None.

3.1.4.8.4 Simple Types

None.

3.1.4.8.5 Attributes

None.

3.1.4.8.6 Groups

None.

3.1.4.8.7 Attribute Groups

None.

3.1.4.9 IsRepopulationNeeded

This WSDL operation lets a protocol client know if last modified time repopulation is needed.

The following is the WSDL port type specification of the **IsRepopulationNeeded** WSDL operation.

```
<wsdl:operation name="IsRepopulationNeeded" xmlns:wsdl="http://schemas.xmlsoap.org/wsdl/">
  <wsdl:input wsaw:Action="http://Microsoft.Office.Server.UserProfiles/IsRepopulationNeeded"
    message="tns3:IFeedCacheService_IsRepopulationNeeded_InputMessage"
    xmlns:wsaw="http://www.w3.org/2006/05/addressing/wsdl"/>
  <wsdl:output
    wsaw:Action="http://tempuri.org/IFeedCacheService/IsRepopulationNeededResponse"/>
```

```

message="tns3:IFeedCacheService_IsRepopulationNeeded_OutputMessage"
xmlns:wsaw="http://www.w3.org/2006/05/addressing/wsdl"/>
  <wsdl:fault
wsaw:Action="http://tempuri.org/IFeedCacheService/IsRepopulationNeededFeedCacheFaultFault"
name="FeedCacheFaultFault"
message="tns3:IFeedCacheService_IsRepopulationNeeded_FeedCacheFaultFault_FaultMessage"
xmlns:wsaw="http://www.w3.org/2006/05/addressing/wsdl"/>
</wsdl:operation>

```

This operation is to be used by protocol clients to check if they need to repopulate the last modified times. If this operation returns true, then the protocol client can use the **BulkLMTUpdate** operation as specified in section [3.1.4.2](#) to update the last modified times.

3.1.4.9.1 Messages

The following table summarizes the set of WSDL message definitions that are specific to this operation.

Message	Description
IFeedCacheService_IsRepopulationNeeded_InputMessage	The request WSDL message for the IsRepopulationNeeded WSDL operation.
IFeedCacheService_IsRepopulationNeeded_OutputMessage	The response WSDL message for the IsRepopulationNeeded WSDL operation.

3.1.4.9.1.1 IFeedCacheService_IsRepopulationNeeded_InputMessage

The request WSDL message for the **IsRepopulationNeeded** WSDL operation.

The SOAP action value is:

```
http://Microsoft.Office.Server.UserProfiles/IsRepopulationNeeded
```

The SOAP body contains the **IsRepopulationNeeded** element.

3.1.4.9.1.2 IFeedCacheService_IsRepopulationNeeded_OutputMessage

The response WSDL message for the **IsRepopulationNeeded** WSDL operation.

The SOAP body contains the **IsRepopulationNeededResponse** element.

3.1.4.9.2 Elements

The following table summarizes the XML schema element definitions that are specific to this operation.

Element	Description
IsRepopulationNeeded	The input data for the IsRepopulationNeeded WSDL operation.
IsRepopulationNeededResponse	The result data for the IsRepopulationNeeded WSDL operation.

3.1.4.9.2.1 IsRepopulationNeeded

The **IsRepopulationNeeded** element specifies the input data for the **IsRepopulationNeeded** WSDL operation.

```
<xs:element name="IsRepopulationNeeded" xmlns:xs="http://www.w3.org/2001/XMLSchema">
  <xs:complexType>
    <xs:sequence>
      <xs:element xmlns:ser="http://schemas.microsoft.com/2003/10/Serialization/"
        minOccurs="0" name="callerID" type="ser:guid"/>
    </xs:sequence>
  </xs:complexType>
</xs:element>
```

callerID: The identifier for the protocol client. This value **MUST NOT** be null or empty.

3.1.4.9.2.2 IsRepopulationNeededResponse

The **IsRepopulationNeededResponse** element specifies the result data for the **IsRepopulationNeeded** WSDL operation.

```
<xs:element name="IsRepopulationNeededResponse" xmlns:xs="http://www.w3.org/2001/XMLSchema">
  <xs:complexType>
    <xs:sequence>
      <xs:element minOccurs="0" name="IsRepopulationNeededResult" type="xs:boolean"/>
    </xs:sequence>
  </xs:complexType>
</xs:element>
```

IsRepopulationNeededResult: A Boolean value that indicates whether repopulation is needed.

3.1.4.9.3 Complex Types

None.

3.1.4.9.4 Simple Types

None.

3.1.4.9.5 Attributes

None.

3.1.4.9.6 Groups

None.

3.1.4.9.7 Attribute Groups

None.

3.1.4.10 NewEntityFollower

This WSDL operation lets a protocol client mark a given feed entity as being actively followed.

The following is the WSDL port type specification of the **NewEntityFollower** WSDL operation.

```
<wsdl:operation name="NewEntityFollower" xmlns:wsdl="http://schemas.xmlsoap.org/wsdl/">
  <wsdl:input wsaw:Action="http://Microsoft.Office.Server.UserProfiles.NewEntityFollower"
message="tns3:IFeedCacheService_NewEntityFollower_InputMessage"
xmlns:wsaw="http://www.w3.org/2006/05/addressing/wsdl"/>
  <wsdl:output wsaw:Action="http://tempuri.org/IFeedCacheService/NewEntityFollowerResponse"
message="tns3:IFeedCacheService_NewEntityFollower_OutputMessage"
xmlns:wsaw="http://www.w3.org/2006/05/addressing/wsdl"/>
  <wsdl:fault
wsaw:Action="http://tempuri.org/IFeedCacheService/NewEntityFollowerFeedCacheFaultFault"
name="FeedCacheFaultFault"
message="tns3:IFeedCacheService_NewEntityFollower_FeedCacheFaultFault_FaultMessage"
xmlns:wsaw="http://www.w3.org/2006/05/addressing/wsdl"/>
</wsdl:operation>
```

3.1.4.10.1 Messages

The following table summarizes the set of WSDL message definitions that are specific to this operation.

Message	Description
IFeedCacheService_NewEntityFollower_InputMessage	The request WSDL message for the NewEntityFollower WSDL operation.
IFeedCacheService_NewEntityFollower_OutputMessage	The response WSDL message for the NewEntityFollower WSDL operation.

3.1.4.10.1.1 IFeedCacheService_NewEntityFollower_InputMessage

The request WSDL message for the **NewEntityFollower** WSDL operation.

The SOAP action value is:

```
http://Microsoft.Office.Server.UserProfiles.NewEntityFollower
```

The SOAP body contains the **NewEntityFollower** element.

3.1.4.10.1.2 IFeedCacheService_NewEntityFollower_OutputMessage

The response WSDL message for the **NewEntityFollower** WSDL operation.

The SOAP body contains the **NewEntityFollowerResponse** element.

3.1.4.10.2 Elements

The following table summarizes the XML schema element definitions that are specific to this operation.

Element	Description
NewEntityFollower	The input data for the NewEntityFollower WSDL operation.
NewEntityFollowerResponse	The result data for the NewEntityFollower WSDL operation.

3.1.4.10.2.1 NewEntityFollower

The **NewEntityFollower** element specifies the input data for the **NewEntityFollower** WSDL operation.

```
<xs:element name="NewEntityFollower" xmlns:xs="http://www.w3.org/2001/XMLSchema">
  <xs:complexType>
    <xs:sequence>
      <xs:element xmlns:tns="http://Microsoft/Office/Server/FeedCache" minOccurs="0"
name="entity" nillable="true" type="tns:E"/>
    </xs:sequence>
  </xs:complexType>
</xs:element>
```

entity: The feed entity which is to be marked as followed.

3.1.4.10.2.2 NewEntityFollowerResponse

The **NewEntityFollowerResponse** element specifies the result data for the **NewEntityFollower** WSDL operation.

```
<xs:element name="NewEntityFollowerResponse" xmlns:xs="http://www.w3.org/2001/XMLSchema">
  <xs:complexType>
    <xs:sequence>
      <xs:element minOccurs="0" name="NewEntityFollowerResult" type="xs:boolean"/>
    </xs:sequence>
  </xs:complexType>
</xs:element>
```

NewEntityFollowerResult: A Boolean value that indicates whether the operation succeeded or failed.

3.1.4.10.3 Complex Types

None.

3.1.4.10.4 Simple Types

None.

3.1.4.10.5 Attributes

None.

3.1.4.10.6 Groups

None.

3.1.4.10.7 Attribute Groups

None.

3.1.4.11 RefreshFollowedEntities

This WSDL operation lets a protocol client mark a number of feed entities as followed.

The following is the WSDL port type specification of the **RefreshFollowedEntities** WSDL operation.

```
<wsdl:operation name="RefreshFollowedEntities" xmlns:wsdl="http://schemas.xmlsoap.org/wsdl/">
  <wsdl:input
    wsaw:Action="http://Microsoft.Office.Server.UserProfiles/RefreshFollowedEntities"
    message="tns3:IFeedCacheService_RefreshFollowedEntities_InputMessage"
    xmlns:wsaw="http://www.w3.org/2006/05/addressing/wsdl"/>
  <wsdl:output
    wsaw:Action="http://tempuri.org/IFeedCacheService/RefreshFollowedEntitiesResponse"
    message="tns3:IFeedCacheService_RefreshFollowedEntities_OutputMessage"
    xmlns:wsaw="http://www.w3.org/2006/05/addressing/wsdl"/>
  <wsdl:fault
    wsaw:Action="http://tempuri.org/IFeedCacheService/RefreshFollowedEntitiesFeedCacheFaultFault"
    name="FeedCacheFaultFault"
    message="tns3:IFeedCacheService_RefreshFollowedEntities_FeedCacheFaultFault_FaultMessage"
    xmlns:wsaw="http://www.w3.org/2006/05/addressing/wsdl"/>
</wsdl:operation>
```

3.1.4.11.1 Messages

The following table summarizes the set of WSDL message definitions that are specific to this operation.

Message	Description
IFeedCacheService_RefreshFollowedEntities_InputMessage	The request WSDL message for the RefreshFollowedEntities WSDL operation.
IFeedCacheService_RefreshFollowedEntities_OutputMessage	The response WSDL message for the RefreshFollowedEntities WSDL operation.

3.1.4.11.1.1 IFeedCacheService_RefreshFollowedEntities_InputMessage

The request WSDL message for the **RefreshFollowedEntities** WSDL operation.

The SOAP action value is:

```
http://Microsoft.Office.Server.UserProfiles/RefreshFollowedEntities
```

The SOAP body contains the **RefreshFollowedEntities** element.

3.1.4.11.1.2 IFeedCacheService_RefreshFollowedEntities_OutputMessage

The response WSDL message for the **RefreshFollowedEntities** WSDL operation.

The SOAP body contains the **RefreshFollowedEntitiesResponse** element.

3.1.4.11.2 Elements

The following table summarizes the XML schema element definitions that are specific to this operation.

Element	Description
RefreshFollowedEntities	The input data for the RefreshFollowedEntities WSDL operation.
RefreshFollowedEntitiesResponse	The result data for the RefreshFollowedEntities WSDL operation.

3.1.4.11.2.1 RefreshFollowedEntities

The **RefreshFollowedEntities** element specifies the input data for the **RefreshFollowedEntities** WSDL operation.

```
<xs:element name="RefreshFollowedEntities" xmlns:xs="http://www.w3.org/2001/XMLSchema">
  <xs:complexType>
    <xs:sequence>
      <xs:element xmlns:tns="http://Microsoft/Office/Server/FeedCache" minOccurs="0"
        name="followedEntities" nillable="true" type="tns:ArrayOfE"/>
    </xs:sequence>
  </xs:complexType>
</xs:element>
```

followedEntities: A sequence of zero or more feed entities to mark as followed.

3.1.4.11.2.2 RefreshFollowedEntitiesResponse

The **RefreshFollowedEntitiesResponse** element specifies the result data for the **RefreshFollowedEntities** WSDL operation.

```
<xs:element name="RefreshFollowedEntitiesResponse"
  xmlns:xs="http://www.w3.org/2001/XMLSchema">
  <xs:complexType>
    <xs:sequence>
      <xs:element minOccurs="0" name="RefreshFollowedEntitiesResult" type="xs:boolean"/>
    </xs:sequence>
  </xs:complexType>
</xs:element>
```

RefreshFollowedEntitiesResult: A Boolean value that indicates whether the operation succeeded or failed.

3.1.4.11.3 Complex Types

None.

3.1.4.11.4 Simple Types

None.

3.1.4.11.5 Attributes

None.

3.1.4.11.6 Groups

None.

3.1.4.11.7 Attribute Groups

None.

3.1.4.12 RemoveEntityFeed

This WSDL operation is used to remove all the feed entries of a given feed entity.

The following is the WSDL port type specification of the **RemoveEntityFeed** WSDL operation.

```
<wsdl:operation name="RemoveEntityFeed" xmlns:wsdl="http://schemas.xmlsoap.org/wsdl/">
  <wsdl:input wsaw:Action="http://Microsoft.Office.Server.UserProfiles/RemoveEntityFeed"
  message="tns3:IFeedCacheService_RemoveEntityFeed_InputMessage"
  xmlns:wsaw="http://www.w3.org/2006/05/addressing/wsdl"/>
  <wsdl:output wsaw:Action="http://tempuri.org/IFeedCacheService/RemoveEntityFeedResponse"
  message="tns3:IFeedCacheService_RemoveEntityFeed_OutputMessage"
  xmlns:wsaw="http://www.w3.org/2006/05/addressing/wsdl"/>
  <wsdl:fault
  wsaw:Action="http://tempuri.org/IFeedCacheService/RemoveEntityFeedFeedCacheFaultFault"
  name="FeedCacheFaultFault"
  message="tns3:IFeedCacheService_RemoveEntityFeed_FeedCacheFaultFault_FaultMessage"
  xmlns:wsaw="http://www.w3.org/2006/05/addressing/wsdl"/>
</wsdl:operation>
```

3.1.4.12.1 Messages

The following table summarizes the set of WSDL message definitions that are specific to this operation.

Message	Description
IFeedCacheService_RemoveEntityFeed_InputMessage	The request WSDL message for the RemoveEntityFeed WSDL operation.
IFeedCacheService_RemoveEntityFeed_OutputMessage	The response WSDL message for the RemoveEntityFeed WSDL operation.

3.1.4.12.1.1 IFeedCacheService_RemoveEntityFeed_InputMessage

The request WSDL message for the **RemoveEntityFeed** WSDL operation.

The SOAP action value is:

```
http://Microsoft.Office.Server.UserProfiles/RemoveEntityFeed
```

The SOAP body contains the **RemoveEntityFeed** element.

3.1.4.12.1.2 IFeedCacheService_RemoveEntityFeed_OutputMessage

The response WSDL message for the **RemoveEntityFeed** WSDL operation.

The SOAP body contains the **RemoveEntityFeedResponse** element.

3.1.4.12.2 Elements

The following table summarizes the XML schema element definitions that are specific to this operation.

Element	Description
RemoveEntityFeed	The input data for the RemoveEntityFeed WSDL operation.
RemoveEntityFeedResponse	The result data for the RemoveEntityFeed WSDL operation.

3.1.4.12.2.1 RemoveEntityFeed

The **RemoveEntityFeed** element specifies the input data for the **RemoveEntityFeed** WSDL operation.

```
<xs:element name="RemoveEntityFeed" xmlns:xs="http://www.w3.org/2001/XMLSchema">
  <xs:complexType>
    <xs:sequence>
      <xs:element xmlns:tns="http://Microsoft/Office/Server/FeedCache" minOccurs="0"
name="entity" nillable="true" type="tns:E"/>
    </xs:sequence>
  </xs:complexType>
</xs:element>
```

entity: The feed entity whose feed entries to remove. The entity **MUST** be of type 'User'.

3.1.4.12.2.2 RemoveEntityFeedResponse

The **RemoveEntityFeedResponse** element specifies the result data for the **RemoveEntityFeed** WSDL operation.

```
<xs:element name="RemoveEntityFeedResponse" xmlns:xs="http://www.w3.org/2001/XMLSchema">
  <xs:complexType>
    <xs:sequence>
      <xs:element minOccurs="0" name="RemoveEntityFeedResult" type="xs:boolean"/>
    </xs:sequence>
  </xs:complexType>
</xs:element>
```

RemoveEntityFeedResult: A Boolean value that indicates whether the operation succeeded or failed.

3.1.4.12.3 Complex Types

None.

3.1.4.12.4 Simple Types

None.

3.1.4.12.5 Attributes

None.

3.1.4.12.6 Groups

None.

3.1.4.12.7 Attribute Groups

None.

3.1.4.13 RemoveFeedEntry

This WSDL operation removes a given feed entry from a given feed entity.

The following is the WSDL port type specification of the **RemoveFeedEntry** WSDL operation.

```
<wsdl:operation name="RemoveFeedEntry" xmlns:wsdl="http://schemas.xmlsoap.org/wsdl/">
  <wsdl:input wsaw:Action="http://Microsoft.Office.Server.UserProfiles/RemoveFeedEntry"
  message="tns3:IFeedCacheService_RemoveFeedEntry_InputMessage"
  xmlns:wsaw="http://www.w3.org/2006/05/addressing/wsdl"/>
  <wsdl:output wsaw:Action="http://tempuri.org/IFeedCacheService/RemoveFeedEntryResponse"
  message="tns3:IFeedCacheService_RemoveFeedEntry_OutputMessage"
  xmlns:wsaw="http://www.w3.org/2006/05/addressing/wsdl"/>
  <wsdl:fault
  wsaw:Action="http://tempuri.org/IFeedCacheService/RemoveFeedEntryFeedCacheFaultFault"
  name="FeedCacheFaultFault"
  message="tns3:IFeedCacheService_RemoveFeedEntry_FeedCacheFaultFault_FaultMessage"
  xmlns:wsaw="http://www.w3.org/2006/05/addressing/wsdl"/>
</wsdl:operation>
```

3.1.4.13.1 Messages

The following table summarizes the set of WSDL message definitions that are specific to this operation.

Message	Description
IFeedCacheService_RemoveFeedEntry_InputMessage	The request WSDL message for the RemoveFeedEntry WSDL operation.
IFeedCacheService_RemoveFeedEntry_OutputMessage	The response WSDL message for the RemoveFeedEntry WSDL operation.

3.1.4.13.1.1 IFeedCacheService_RemoveFeedEntry_InputMessage

The request WSDL message for the **RemoveFeedEntry** WSDL operation.

The SOAP action value is:

`http://Microsoft.Office.Server.UserProfiles/RemoveFeedEntry`

The SOAP body contains the **RemoveFeedEntry** element.

3.1.4.13.1.2 IFeedCacheService_RemoveFeedEntry_OutputMessage

The response WSDL message for the **RemoveFeedEntry** WSDL operation.

The SOAP body contains the **RemoveFeedEntryResponse** element.

3.1.4.13.2 Elements

The following table summarizes the XML schema element definitions that are specific to this operation.

Element	Description
RemoveFeedEntry	The input data for the RemoveFeedEntry WSDL operation.
RemoveFeedEntryResponse	The result data for the RemoveFeedEntry WSDL operation.

3.1.4.13.2.1 RemoveFeedEntry

The **RemoveFeedEntry** element specifies the input data for the **RemoveFeedEntry** WSDL operation.

```
<xs:element name="RemoveFeedEntry" xmlns:xs="http://www.w3.org/2001/XMLSchema">
  <xs:complexType>
    <xs:sequence>
      <xs:element xmlns:tns="http://Microsoft/Office/Server/FeedCache" minOccurs="0"
name="entity" nillable="true" type="tns:E"/>
      <xs:element xmlns:tns="http://Microsoft/Office/Server/FeedCache" minOccurs="0"
name="entry" nillable="true" type="tns:P"/>
    </xs:sequence>
  </xs:complexType>
</xs:element>
```

entity: The feed entity whose feed entry to remove.

entry: The feed entry to remove.

3.1.4.13.2.2 RemoveFeedEntryResponse

The **RemoveFeedEntryResponse** element specifies the result data for the **RemoveFeedEntry** WSDL operation.

```
<xs:element name="RemoveFeedEntryResponse" xmlns:xs="http://www.w3.org/2001/XMLSchema">
  <xs:complexType>
    <xs:sequence>
      <xs:element minOccurs="0" name="RemoveFeedEntryResult" type="xs:boolean"/>
    </xs:sequence>
  </xs:complexType>
</xs:element>
```

RemoveFeedEntryResult: A Boolean value that indicates whether the operation succeeded or failed.

3.1.4.13.3 Complex Types

None.

3.1.4.13.4 Simple Types

None.

3.1.4.13.5 Attributes

None.

3.1.4.13.6 Groups

None.

3.1.4.13.7 Attribute Groups

None.

3.1.4.14 AddFeedEntries

This WSDL operation helps in adding multiple feed entries.

The following is the WSDL port type specification of the **AddFeedEntries** WSDL operation.

```
<wsdl:operation name="AddFeedEntries" xmlns:wsdl="http://schemas.xmlsoap.org/wsdl/">
  <wsdl:input wsaw:Action="http://Microsoft.Office.Server.UserProfiles/AddFeedEntries"
    message="tns3:IFeedCacheService_AddFeedEntries_InputMessage"
    xmlns:wsaw="http://www.w3.org/2006/05/addressing/wsdl"/>
  <wsdl:output wsaw:Action="http://tempuri.org/IFeedCacheService/AddFeedEntriesResponse"
    message="tns3:IFeedCacheService_AddFeedEntries_OutputMessage"
    xmlns:wsaw="http://www.w3.org/2006/05/addressing/wsdl"/>
  <wsdl:fault
    wsaw:Action="http://tempuri.org/IFeedCacheService/AddFeedEntriesFeedCacheFaultFault"
    name="FeedCacheFaultFault"
    message="tns3:IFeedCacheService_AddFeedEntries_FeedCacheFaultFault_FaultMessage"
    xmlns:wsaw="http://www.w3.org/2006/05/addressing/wsdl"/>
</wsdl:operation>
```

This operation is used to add a number of feed entries potentially associated with separate feed entities in a single operation. This can be used in scenarios such as repopulating feed entries of a given feed entity or in some automated process.

3.1.4.14.1 Messages

The following table summarizes the set of WSDL message definitions that are specific to this operation.

Message	Description
IFeedCacheService_AddFeedEntries_InputMessage	The request WSDL message for the

Message	Description
	AddFeedEntries WSDL operation.
IFeedCacheService_AddFeedEntries_OutputMessage	The response WSDL message for the AddFeedEntries WSDL operation.

3.1.4.14.1.1 IFeedCacheService_AddFeedEntries_InputMessage

The request WSDL message for the **AddFeedEntries** WSDL operation.

The SOAP action value is:

```
http://Microsoft.Office.Server.UserProfiles/AddFeedEntries
```

The SOAP body contains the **AddFeedEntries** element.

3.1.4.14.1.2 IFeedCacheService_AddFeedEntries_OutputMessage

The response WSDL message for the **AddFeedEntries** WSDL operation.

The SOAP body contains the **AddFeedEntriesResponse** element.

3.1.4.14.2 Elements

The following table summarizes the XML schema element definitions that are specific to this operation.

Element	Description
AddFeedEntries	The input data for the AddFeedEntries WSDL operation.
AddFeedEntriesResponse	The result data for the AddFeedEntries WSDL operation.

3.1.4.14.2.1 AddFeedEntries

The **AddFeedEntries** element specifies the input data for the **AddFeedEntries** WSDL operation.

```
<xs:element name="AddFeedEntries" xmlns:xs="http://www.w3.org/2001/XMLSchema">
  <xs:complexType>
    <xs:sequence>
      <xs:element xmlns:tns="http://Microsoft/Office/Server/FeedCache" minOccurs="0"
name="entries" nillable="true" type="tns:PC"/>
    </xs:sequence>
  </xs:complexType>
</xs:element>
```

entries: An element of type **PC**, as specified in section [2.2.4.17](#). MUST NOT be null. Only the EN element is used by this operation, and it specifies a sequence of zero or more feed entries as specified in section [2.2.4.16](#). MUST NOT be null.

3.1.4.14.2 AddFeedEntriesResponse

The **AddFeedEntriesResponse** element specifies the result data for the **AddFeedEntries** WSDL operation.

```
<xs:element name="AddFeedEntriesResponse" xmlns:xs="http://www.w3.org/2001/XMLSchema">
  <xs:complexType>
    <xs:sequence>
      <xs:element minOccurs="0" name="AddFeedEntriesResult" type="xs:boolean"/>
    </xs:sequence>
  </xs:complexType>
</xs:element>
```

AddFeedEntriesResult: A Boolean value that indicates whether the operation succeeded or failed.

3.1.4.14.3 Complex Types

None.

3.1.4.14.4 Simple Types

None.

3.1.4.14.5 Attributes

None.

3.1.4.14.6 Groups

None.

3.1.4.14.7 Attribute Groups

None.

3.1.4.15 RemoveInternalRegions

This WSDL operation removes some internal data structure. This operation MUST NOT be called by any protocol client.

The following is the WSDL port type specification of the **RemoveInternalRegions** WSDL operation.

```
<wsdl:operation name="RemoveInternalRegions" xmlns:wsdl="http://schemas.xmlsoap.org/wsdl/">
  <wsdl:input wsaw:Action="http://Microsoft.Office.Server.UserProfiles/RemoveInternalRegions"
    message="tns3:IFeedCacheService_RemoveInternalRegions_InputMessage"
    xmlns:wsaw="http://www.w3.org/2006/05/addressing/wsdl"/>
  <wsdl:output
    wsaw:Action="http://tempuri.org/IFeedCacheService/RemoveInternalRegionsResponse"
    message="tns3:IFeedCacheService_RemoveInternalRegions_OutputMessage"
    xmlns:wsaw="http://www.w3.org/2006/05/addressing/wsdl"/>
  <wsdl:fault
    wsaw:Action="http://tempuri.org/IFeedCacheService/RemoveInternalRegionsFeedCacheFaultFault"
    name="FeedCacheFaultFault"
    message="tns3:IFeedCacheService_RemoveInternalRegions_FeedCacheFaultFault_FaultMessage"
    xmlns:wsaw="http://www.w3.org/2006/05/addressing/wsdl"/>
```


</wsdl:operation>

3.1.4.15.1 Messages

The following table summarizes the set of WSDL message definitions that are specific to this operation.

Message	Description
IFeedCacheService_RemoveInternalRegions_InputMessage	The request WSDL message for the RemoveInternalRegions WSDL operation.
IFeedCacheService_RemoveInternalRegions_OutputMessage	The response WSDL message for the RemoveInternalRegions WSDL operation.

3.1.4.15.1.1 IFeedCacheService_RemoveInternalRegions_InputMessage

The request WSDL message for the **RemoveInternalRegions** WSDL operation.

The SOAP action value is:

```
http://Microsoft.Office.Server.UserProfiles/RemoveInternalRegions
```

The SOAP body contains the **RemoveInternalRegions** element.

3.1.4.15.1.2 IFeedCacheService_RemoveInternalRegions_OutputMessage

The response WSDL message for the **RemoveInternalRegions** WSDL operation.

The SOAP body contains the **RemoveInternalRegionsResponse** element.

3.1.4.15.2 Elements

The following table summarizes the XML schema element definitions that are specific to this operation.

Element	Description
RemoveInternalRegions	The input data for the RemoveInternalRegions WSDL operation.
RemoveInternalRegionsResponse	The result data for the RemoveInternalRegions WSDL operation.

3.1.4.15.2.1 RemoveInternalRegions

The **RemoveInternalRegions** element specifies the input data for the **RemoveInternalRegions** WSDL operation.

```
<xs:element name="RemoveInternalRegions" xmlns:xs="http://www.w3.org/2001/XMLSchema">  
  <xs:complexType>
```

```
<xs:sequence>
  <xs:element minOccurs="0" name="webAppUrl" nillable="true" type="xs:string"/>
</xs:sequence>
</xs:complexType>
</xs:element>
```

webAppUrl: The URL of the calling **Web application (2)**.

3.1.4.15.2.2 RemoveInternalRegionsResponse

The **RemoveInternalRegionsResponse** element specifies the result data for the **RemoveInternalRegions** WSDL operation.

```
<xs:element name="RemoveInternalRegionsResponse" xmlns:xs="http://www.w3.org/2001/XMLSchema">
  <xs:complexType>
    <xs:sequence>
      <xs:element minOccurs="0" name="RemoveInternalRegionsResult" type="xs:boolean"/>
    </xs:sequence>
  </xs:complexType>
</xs:element>
```

RemoveInternalRegionsResult: A Boolean value that indicates whether the operation succeeded or failed.

3.1.4.15.3 Complex Types

None.

3.1.4.15.4 Simple Types

None.

3.1.4.15.5 Attributes

None.

3.1.4.15.6 Groups

None.

3.1.4.15.7 Attribute Groups

None.

3.1.4.16 AddFeedEntriesForRepop

This WSDL operation helps in adding multiple feed entries.

The following is the WSDL port type specification of the **AddFeedEntriesForRepop** WSDL operation.

```
<wsdl:operation name="AddFeedEntriesForRepop" xmlns:wsdl="http://schemas.xmlsoap.org/wsdl/">
```

```

    <wsdl:input
      wsaw:Action="http://Microsoft.Office.Server.UserProfiles/AddFeedEntriesForRepop"
      message="tns3:IFeedCacheService_AddFeedEntriesForRepop_InputMessage"
      xmlns:wsaw="http://www.w3.org/2006/05/addressing/wsdl"/>
    <wsdl:output
      wsaw:Action="http://tempuri.org/IFeedCacheService/AddFeedEntriesForRepopResponse"
      message="tns3:IFeedCacheService_AddFeedEntriesForRepop_OutputMessage"
      xmlns:wsaw="http://www.w3.org/2006/05/addressing/wsdl"/>
    <wsdl:fault
      wsaw:Action="http://tempuri.org/IFeedCacheService/AddFeedEntriesForRepopFeedCacheFaultFault"
      name="FeedCacheFaultFault"
      message="tns3:IFeedCacheService_AddFeedEntriesForRepop_FeedCacheFaultFault_FaultMessage"
      xmlns:wsaw="http://www.w3.org/2006/05/addressing/wsdl"/>
  </wsdl:operation>

```

3.1.4.16.1 Messages

The following table summarizes the set of WSDL message definitions that are specific to this operation.

Message	Description
IFeedCacheService_AddFeedEntriesForRepop_InputMessage	The request WSDL message for the AddFeedEntriesForRepop WSDL operation.
IFeedCacheService_AddFeedEntriesForRepop_OutputMessage	The response WSDL message for the AddFeedEntriesForRepop WSDL operation.

3.1.4.16.1.1 IFeedCacheService_AddFeedEntriesForRepop_InputMessage

The request WSDL message for the **AddFeedEntriesForRepop** WSDL operation.

The SOAP action value is:

```
http://Microsoft.Office.Server.UserProfiles/AddFeedEntriesForRepop
```

The SOAP body contains the **AddFeedEntriesForRepop** element.

3.1.4.16.1.2 IFeedCacheService_AddFeedEntriesForRepop_OutputMessage

The response WSDL message for the **AddFeedEntriesForRepop** WSDL operation.

The SOAP body contains the **AddFeedEntriesForRepopResponse** element.

3.1.4.16.2 Elements

The following table summarizes the XML schema element definitions that are specific to this operation.

Element	Description
AddFeedEntriesForRepop	The input data for the AddFeedEntriesForRepop WSDL operation.

Element	Description
AddFeedEntriesForRepopResponse	The result data for the AddFeedEntriesForRepop WSDL operation.

3.1.4.16.2.1 AddFeedEntriesForRepop

The **AddFeedEntriesForRepop** element specifies the input data for the **AddFeedEntriesForRepop** WSDL operation.

```
<xs:element name="AddFeedEntriesForRepop" xmlns:xs="http://www.w3.org/2001/XMLSchema">
  <xs:complexType>
    <xs:sequence>
      <xs:element xmlns:tns="http://Microsoft/Office/Server/FeedCache" minOccurs="0"
name="entity" nillable="true" type="tns:E"/>
      <xs:element xmlns:tns="http://Microsoft/Office/Server/FeedCache" minOccurs="0"
name="entries" nillable="true" type="tns:PC"/>
      <xs:element minOccurs="0" name="lastDeleted" nillable="true" type="xs:dateTime"/>
    </xs:sequence>
  </xs:complexType>
</xs:element>
```

entity: The feed entity on behalf of which this operation is being executed.

entries: A sequence of zero or more feed entries of type **PC** (as specified in section [2.2.4.17](#)) that are to be added.

lastDeleted: A date and time indicating when the last time a feed entry was deleted from the feed entity.

3.1.4.16.2.2 AddFeedEntriesForRepopResponse

The **AddFeedEntriesForRepopResponse** element specifies the result data for the **AddFeedEntriesForRepop** WSDL operation.

```
<xs:element name="AddFeedEntriesForRepopResponse"
xmlns:xs="http://www.w3.org/2001/XMLSchema">
  <xs:complexType>
    <xs:sequence>
      <xs:element minOccurs="0" name="AddFeedEntriesForRepopResult" type="xs:boolean"/>
    </xs:sequence>
  </xs:complexType>
</xs:element>
```

AddFeedEntriesForRepopResult: A Boolean value that indicates whether the operation succeeded or failed.

3.1.4.16.3 Complex Types

None.

3.1.4.16.4 Simple Types

None.

3.1.4.16.5 Attributes

None.

3.1.4.16.6 Groups

None.

3.1.4.16.7 Attribute Groups

None.

3.1.5 Timer Events

None.

3.1.6 Other Local Events

None.

4 Protocol Examples

4.1 AddFeedEntry

To add a feed entry, the protocol client sends the following WSDL message:

```
<s:Envelope xmlns:s="http://www.w3.org/2003/05/soap-envelope"
xmlns:a="http://www.w3.org/2005/08/addressing" xmlns:u="http://docs.oasis-
open.org/wss/2004/01/oasis-200401-wss-wssecurity-utility-1.0.xsd">
  <s:Header>
    <a:Action
s:mustUnderstand="1">http://Microsoft.Office.Server.UserProfiles/AddFeedEntry</a:Action>
    <a:MessageID>urn:uuid:e2a9eb1e-6fde-4934-be39-9cf816f1f655</a:MessageID>
    <a:ReplyTo>
      <a:Address>http://www.w3.org/2005/08/addressing/anonymous</a:Address>
    </a:ReplyTo>
  </s:Header>
  <s:Body>
    <AddFeedEntry xmlns="http://tempuri.org/">
      <entity xmlns:b="http://Microsoft/Office/Server/FeedCache"
xmlns:i="http://www.w3.org/2001/XMLSchema-instance">
        <b:ET>User</b:ET>
        <b:LID>61e7fd65-62f4-4321-8f44-945640eb2ce1</b:LID>
        <b:PID>0c37852b-34d0-418e-91c6-2ac25af4be5b</b:PID>
        <b:SID>354936ff-bb63-45a5-b08d-ba6373087cf7</b:SID>
        <b:Url>http://machine/my/personal/user</b:Url>
        <b:WID>6c00a125-2a29-44c3-97ea-7e6f2341000e</b:WID>
      </entity>
      <entry xmlns:b="http://Microsoft/Office/Server/FeedCache"
xmlns:i="http://www.w3.org/2001/XMLSchema-instance">
        <b:D1>entry</b:D1>
        <b:EID>364a93b2a29d459ebea86a959b104d98</b:EID>
        <b:M>2011-10-29T00:06:15.0336138Z</b:M>
        <b:MBD>1</b:MBD>
        <b:MBT>2</b:MBT>
      </entry>
    </AddFeedEntry>
  </s:Body>
</s:Envelope>
```

The protocol server responds with:

```
<s:Envelope xmlns:s="http://www.w3.org/2003/05/soap-envelope"
xmlns:a="http://www.w3.org/2005/08/addressing" xmlns:u="http://docs.oasis-
open.org/wss/2004/01/oasis-200401-wss-wssecurity-utility-1.0.xsd">
  <s:Header>
    <a:Action
s:mustUnderstand="1">http://tempuri.org/IFeedCacheService/AddFeedEntryResponse</a:Action>
  </s:Header>
  <s:Body>
    <AddFeedEntryResponse xmlns="http://tempuri.org/">
      <AddFeedEntryResult>true</AddFeedEntryResult>
    </AddFeedEntryResponse>
  </s:Body>
</s:Envelope>
```

4.2 GetPublishedFeed

To get the feed entries back for this feed entity, the protocol client sends the following WSDL message:

```
<s:Envelope xmlns:s="http://www.w3.org/2003/05/soap-envelope"
xmlns:a="http://www.w3.org/2005/08/addressing" xmlns:u="http://docs.oasis-
open.org/wss/2004/01/oasis-200401-wss-wssecurity-utility-1.0.xsd">
  <s:Header>
    <a:Action
s:mustUnderstand="1">http://Microsoft.Office.Server.UserProfiles/GetPublishedFeed</a:Action>
    <a:MessageID>urn:uuid:ef48db0d-d770-4e13-8710-496c38a1f82c</a:MessageID>
    <a:ReplyTo>
      <a:Address>http://www.w3.org/2005/08/addressing/anonymous</a:Address>
    </a:ReplyTo>
  </s:Header>
  <s:Body>
    <GetPublishedFeed xmlns="http://tempuri.org/">
      <entity xmlns:b="http://Microsoft/Office/Server/FeedCache"
xmlns:i="http://www.w3.org/2001/XMLSchema-instance">
        <b:ET>User</b:ET>
        <b:LID>61e7fd65-62f4-4321-8f44-945640eb2ce1</b:LID>
        <b:PID>0c37852b-34d0-418e-91c6-2ac25af4be5b</b:PID>
        <b:SID>354936ff-bb63-45a5-b08d-ba6373087cf7</b:SID>
        <b:Url>http://machine/my/personal/user</b:Url>
        <b:WID>6c00a125-2a29-44c3-97ea-7e6f2341000e</b:WID>
      </entity>
      <maxItemsPerEntity>20</maxItemsPerEntity>
      <newerThan i:nil="true" xmlns:i="http://www.w3.org/2001/XMLSchema-instance"/>
      <olderThan>2011-10-28T23:37:53.266Z</olderThan>
    </GetPublishedFeed>
  </s:Body>
</s:Envelope>
```

The protocol server responds with:

```
<s:Envelope xmlns:s="http://www.w3.org/2003/05/soap-envelope"
xmlns:a="http://www.w3.org/2005/08/addressing" xmlns:u="http://docs.oasis-
open.org/wss/2004/01/oasis-200401-wss-wssecurity-utility-1.0.xsd">
  <s:Header>
    <a:Action
s:mustUnderstand="1">http://tempuri.org/IFeedCacheService/GetPublishedFeedResponse</a:Action>
    <a:RelatesTo>urn:uuid:ef48db0d-d770-4e13-8710-496c38a1f82c</a:RelatesTo>
    <ActivityId CorrelationId="6e89a29a-db76-4de4-8465-11c526e28acb"
xmlns="http://schemas.microsoft.com/2004/09/ServiceModel/Diagnostics">00000000-0000-0000-
0000-000000000000</ActivityId>
  </s:Header>
  <s:Body>
    <GetPublishedFeedResponse xmlns="http://tempuri.org/">
      <GetPublishedFeedResult xmlns:b="http://Microsoft/Office/Server/FeedCache"
xmlns:i="http://www.w3.org/2001/XMLSchema-instance">
        <b:En>
          <b:P>
            <b:D1>entry</b:D1>
            <b:EID>ff2bc270089f4bf0a54690c30eae9d30</b:EID>
          </b:En>
          <b:ET>User</b:ET>
        </b:En>
      </GetPublishedFeedResult>
    </GetPublishedFeedResponse>
  </s:Body>
</s:Envelope>
```

```
<b:LID>61e7fd65-62f4-4321-8f44-945640eb2ce1</b:LID>
<b:PID>0c37852b-34d0-418e-91c6-2ac25af4be5b</b:PID>
<b:SID>354936ff-bb63-45a5-b08d-ba6373087cf7</b:SID>
<b:Url>http://machine/my/personal/user</b:Url>
<b:WID>6c00a125-2a29-44c3-97ea-7e6f2341000e</b:WID>
</b:En>
<b:M>2011-10-28T23:37:53.2668995Z</b:M>
<b:MBD>1</b:MBD>
<b:MBT>2</b:MBT>
</b:P>
</b:En>
<b:M>20</b:M>
</GetPublishedFeedResult>
</GetPublishedFeedResponse>
</s:Body>
</s:Envelope>
```


5 Security

5.1 Security Considerations for Implementers

None.

5.2 Index of Security Parameters

None.

6 Appendix A: Full WSDL

For ease of implementation, the full WSDL is provided in this appendix.

```
<?xml version="1.0"?>
<wsdl:definitions xmlns:xs="http://www.w3.org/2001/XMLSchema"
xmlns:soap="http://schemas.xmlsoap.org/wsdl/soap/" xmlns:tns3="http://tempuri.org/"
xmlns:wsaw="http://www.w3.org/2006/05/addressing/wsdl" targetNamespace="http://tempuri.org/"
xmlns:wsdl="http://schemas.xmlsoap.org/wsdl/">
  <wsdl:types>
    <xs:schema xmlns:tns4="http://tempuri.org/Imports"
targetNamespace="http://tempuri.org/Imports">
      <xs:import namespace="http://Microsoft/Office/Server/FeedCache"/>
      <xs:import namespace="http://Microsoft/Office/Server/FeedyCache"/>
      <xs:import namespace="http://Microsoft/Office/Server/UserProfiles"/>
      <xs:import namespace="http://schemas.datacontract.org/2004/07/System"/>
      <xs:import
namespace="http://schemas.datacontract.org/2004/07/System.Collections.Generic"/>
      <xs:import namespace="http://schemas.microsoft.com/2003/10/Serialization/" />
      <xs:import namespace="http://schemas.microsoft.com/2003/10/Serialization/Arrays" />
      <xs:import namespace="http://tempuri.org/" />
    </xs:schema>
  </wsdl:types>
  <wsdl:portType name="IFeedCacheService">
    <wsdl:operation name="AddFeedEntry">
      <wsdl:input wsaw:Action="http://Microsoft.Office.Server.UserProfiles/AddFeedEntry"
message="tns3:IFeedCacheService_AddFeedEntry_InputMessage"/>
      <wsdl:output wsaw:Action="http://tempuri.org/IFeedCacheService/AddFeedEntryResponse"
message="tns3:IFeedCacheService_AddFeedEntry_OutputMessage"/>
      <wsdl:fault
wsaw:Action="http://tempuri.org/IFeedCacheService/AddFeedEntryFeedCacheFaultFault"
name="FeedCacheFaultFault"
message="tns3:IFeedCacheService_AddFeedEntry_FeedCacheFaultFault_FaultMessage"/>
    </wsdl:operation>
    <wsdl:operation name="AddFeedEntries">
      <wsdl:input wsaw:Action="http://Microsoft.Office.Server.UserProfiles/AddFeedEntries"
message="tns3:IFeedCacheService_AddFeedEntries_InputMessage"/>
      <wsdl:output wsaw:Action="http://tempuri.org/IFeedCacheService/AddFeedEntriesResponse"
message="tns3:IFeedCacheService_AddFeedEntries_OutputMessage"/>
      <wsdl:fault
wsaw:Action="http://tempuri.org/IFeedCacheService/AddFeedEntriesFeedCacheFaultFault"
name="FeedCacheFaultFault"
message="tns3:IFeedCacheService_AddFeedEntries_FeedCacheFaultFault_FaultMessage"/>
    </wsdl:operation>
    <wsdl:operation name="RemoveFeedEntry">
      <wsdl:input wsaw:Action="http://Microsoft.Office.Server.UserProfiles/RemoveFeedEntry"
message="tns3:IFeedCacheService_RemoveFeedEntry_InputMessage"/>
      <wsdl:output wsaw:Action="http://tempuri.org/IFeedCacheService/RemoveFeedEntryResponse"
message="tns3:IFeedCacheService_RemoveFeedEntry_OutputMessage"/>
      <wsdl:fault
wsaw:Action="http://tempuri.org/IFeedCacheService/RemoveFeedEntryFeedCacheFaultFault"
name="FeedCacheFaultFault"
message="tns3:IFeedCacheService_RemoveFeedEntry_FeedCacheFaultFault_FaultMessage"/>
    </wsdl:operation>
    <wsdl:operation name="RemoveEntityFeed">
      <wsdl:input wsaw:Action="http://Microsoft.Office.Server.UserProfiles/RemoveEntityFeed"
message="tns3:IFeedCacheService_RemoveEntityFeed_InputMessage"/>
      <wsdl:output
wsaw:Action="http://tempuri.org/IFeedCacheService/RemoveEntityFeedResponse"
message="tns3:IFeedCacheService_RemoveEntityFeed_OutputMessage"/>
    </wsdl:operation>
  </wsdl:portType>

```

```

    <wsdl:fault
wsaw:Action="http://tempuri.org/IFeedCacheService/RemoveEntityFeedFeedCacheFaultFault"
name="FeedCacheFaultFault"
message="tns3:IFeedCacheService_RemoveEntityFeed_FeedCacheFaultFault_FaultMessage"/>
    </wsdl:operation>
    <wsdl:operation name="RemoveInternalRegions">
    <wsdl:input
wsaw:Action="http://Microsoft.Office.Server.UserProfiles/RemoveInternalRegions"
message="tns3:IFeedCacheService_RemoveInternalRegions_InputMessage"/>
    <wsdl:output
wsaw:Action="http://tempuri.org/IFeedCacheService/RemoveInternalRegionsResponse"
message="tns3:IFeedCacheService_RemoveInternalRegions_OutputMessage"/>
    <wsdl:fault
wsaw:Action="http://tempuri.org/IFeedCacheService/RemoveInternalRegionsFeedCacheFaultFault"
name="FeedCacheFaultFault"
message="tns3:IFeedCacheService_RemoveInternalRegions_FeedCacheFaultFault_FaultMessage"/>
    </wsdl:operation>
    <wsdl:operation name="GetConsolidatedFeed">
    <wsdl:input
wsaw:Action="http://Microsoft.Office.Server.UserProfiles/GetConsolidatedFeed"
message="tns3:IFeedCacheService_GetConsolidatedFeed_InputMessage"/>
    <wsdl:output
wsaw:Action="http://tempuri.org/IFeedCacheService/GetConsolidatedFeedResponse"
message="tns3:IFeedCacheService_GetConsolidatedFeed_OutputMessage"/>
    <wsdl:fault
wsaw:Action="http://tempuri.org/IFeedCacheService/GetConsolidatedFeedFeedCacheFaultFault"
name="FeedCacheFaultFault"
message="tns3:IFeedCacheService_GetConsolidatedFeed_FeedCacheFaultFault_FaultMessage"/>
    </wsdl:operation>
    <wsdl:operation name="GetPublishedFeed">
    <wsdl:input wsaw:Action="http://Microsoft.Office.Server.UserProfiles/GetPublishedFeed"
message="tns3:IFeedCacheService_GetPublishedFeed_InputMessage"/>
    <wsdl:output
wsaw:Action="http://tempuri.org/IFeedCacheService/GetPublishedFeedResponse"
message="tns3:IFeedCacheService_GetPublishedFeed_OutputMessage"/>
    <wsdl:fault
wsaw:Action="http://tempuri.org/IFeedCacheService/GetPublishedFeedFeedCacheFaultFault"
name="FeedCacheFaultFault"
message="tns3:IFeedCacheService_GetPublishedFeed_FeedCacheFaultFault_FaultMessage"/>
    </wsdl:operation>
    <wsdl:operation name="GetCategoricalFeed">
    <wsdl:input
wsaw:Action="http://Microsoft.Office.Server.UserProfiles/GetCategoricalFeed"
message="tns3:IFeedCacheService_GetCategoricalFeed_InputMessage"/>
    <wsdl:output
wsaw:Action="http://tempuri.org/IFeedCacheService/GetCategoricalFeedResponse"
message="tns3:IFeedCacheService_GetCategoricalFeed_OutputMessage"/>
    <wsdl:fault
wsaw:Action="http://tempuri.org/IFeedCacheService/GetCategoricalFeedFeedCacheFaultFault"
name="FeedCacheFaultFault"
message="tns3:IFeedCacheService_GetCategoricalFeed_FeedCacheFaultFault_FaultMessage"/>
    </wsdl:operation>
    <wsdl:operation name="GetEntries">
    <wsdl:input wsaw:Action="http://Microsoft.Office.Server.UserProfiles/GetThreadEntries"
message="tns3:IFeedCacheService_GetEntries_InputMessage"/>
    <wsdl:output wsaw:Action="http://tempuri.org/IFeedCacheService/GetEntriesResponse"
message="tns3:IFeedCacheService_GetEntries_OutputMessage"/>
    <wsdl:fault
wsaw:Action="http://tempuri.org/IFeedCacheService/GetEntriesFeedCacheFaultFault"
name="FeedCacheFaultFault"
message="tns3:IFeedCacheService_GetEntries_FeedCacheFaultFault_FaultMessage"/>
    </wsdl:operation>

```

```

    <wsdl:operation name="NewEntityFollower">
      <wsdl:input wsaw:Action="http://Microsoft.Office.Server.UserProfiles/NewEntityFollower"
message="tns3:IFeedCacheService_NewEntityFollower_InputMessage"/>
      <wsdl:output
wsaw:Action="http://tempuri.org/IFeedCacheService/NewEntityFollowerResponse"
message="tns3:IFeedCacheService_NewEntityFollower_OutputMessage"/>
      <wsdl:fault
wsaw:Action="http://tempuri.org/IFeedCacheService/NewEntityFollowerFeedCacheFaultFault"
name="FeedCacheFaultFault"
message="tns3:IFeedCacheService_NewEntityFollower_FeedCacheFaultFault_FaultMessage"/>
    </wsdl:operation>
    <wsdl:operation name="IsEntityActivelyFollowed">
      <wsdl:input
wsaw:Action="http://Microsoft.Office.Server.UserProfiles/IsEntityActivelyFollowed"
message="tns3:IFeedCacheService_IsEntityActivelyFollowed_InputMessage"/>
      <wsdl:output
wsaw:Action="http://tempuri.org/IFeedCacheService/IsEntityActivelyFollowedResponse"
message="tns3:IFeedCacheService_IsEntityActivelyFollowed_OutputMessage"/>
      <wsdl:fault
wsaw:Action="http://tempuri.org/IFeedCacheService/IsEntityActivelyFollowedFeedCacheFaultFault"
name="FeedCacheFaultFault"
message="tns3:IFeedCacheService_IsEntityActivelyFollowed_FeedCacheFaultFault_FaultMessage"/>
    </wsdl:operation>
    <wsdl:operation name="RefreshFollowedEntities">
      <wsdl:input
wsaw:Action="http://Microsoft.Office.Server.UserProfiles/RefreshFollowedEntities"
message="tns3:IFeedCacheService_RefreshFollowedEntities_InputMessage"/>
      <wsdl:output
wsaw:Action="http://tempuri.org/IFeedCacheService/RefreshFollowedEntitiesResponse"
message="tns3:IFeedCacheService_RefreshFollowedEntities_OutputMessage"/>
      <wsdl:fault
wsaw:Action="http://tempuri.org/IFeedCacheService/RefreshFollowedEntitiesFeedCacheFaultFault"
name="FeedCacheFaultFault"
message="tns3:IFeedCacheService_RefreshFollowedEntities_FeedCacheFaultFault_FaultMessage"/>
    </wsdl:operation>
    <wsdl:operation name="BulkLMTUpdate">
      <wsdl:input wsaw:Action="http://Microsoft.Office.Server.UserProfiles/BulkLMTUpdate"
message="tns3:IFeedCacheService_BulkLMTUpdate_InputMessage"/>
      <wsdl:output wsaw:Action="http://tempuri.org/IFeedCacheService/BulkLMTUpdateResponse"
message="tns3:IFeedCacheService_BulkLMTUpdate_OutputMessage"/>
      <wsdl:fault
wsaw:Action="http://tempuri.org/IFeedCacheService/BulkLMTUpdateFeedCacheFaultFault"
name="FeedCacheFaultFault"
message="tns3:IFeedCacheService_BulkLMTUpdate_FeedCacheFaultFault_FaultMessage"/>
    </wsdl:operation>
    <wsdl:operation name="AddFeedEntriesForRepop">
      <wsdl:input
wsaw:Action="http://Microsoft.Office.Server.UserProfiles/AddFeedEntriesForRepop"
message="tns3:IFeedCacheService_AddFeedEntriesForRepop_InputMessage"/>
      <wsdl:output
wsaw:Action="http://tempuri.org/IFeedCacheService/AddFeedEntriesForRepopResponse"
message="tns3:IFeedCacheService_AddFeedEntriesForRepop_OutputMessage"/>
      <wsdl:fault
wsaw:Action="http://tempuri.org/IFeedCacheService/AddFeedEntriesForRepopFeedCacheFaultFault"
name="FeedCacheFaultFault"
message="tns3:IFeedCacheService_AddFeedEntriesForRepop_FeedCacheFaultFault_FaultMessage"/>
    </wsdl:operation>
    <wsdl:operation name="IsRepopulationNeeded">
      <wsdl:input
wsaw:Action="http://Microsoft.Office.Server.UserProfiles/IsRepopulationNeeded"
message="tns3:IFeedCacheService_IsRepopulationNeeded_InputMessage"/>

```

```

        <wsdl:output
wsaw:Action="http://tempuri.org/IFeedCacheService/IsRepopulationNeededResponse"
message="tns3:IFeedCacheService_IsRepopulationNeeded_OutputMessage"/>
        <wsdl:fault
wsaw:Action="http://tempuri.org/IFeedCacheService/IsRepopulationNeededFeedCacheFaultFault"
name="FeedCacheFaultFault"
message="tns3:IFeedCacheService_IsRepopulationNeeded_FeedCacheFaultFault_FaultMessage"/>
        </wsdl:operation>
        <wsdl:operation name="GetFeeds">
            <wsdl:input wsaw:Action="http://Microsoft.Office.Server.UserProfiles/GetFeeds"
message="tns3:IFeedCacheService_GetFeeds_InputMessage"/>
            <wsdl:output wsaw:Action="http://tempuri.org/IFeedCacheService/GetFeedsResponse"
message="tns3:IFeedCacheService_GetFeeds_OutputMessage"/>
            <wsdl:fault
wsaw:Action="http://tempuri.org/IFeedCacheService/GetFeedsFeedCacheFaultFault"
name="FeedCacheFaultFault"
message="tns3:IFeedCacheService_GetFeeds_FeedCacheFaultFault_FaultMessage"/>
            </wsdl:operation>
        </wsdl:portType>
        <wsdl:binding name="DefaultBinding_IFeedCacheService" type="tns3:IFeedCacheService">
            <soap:binding transport="http://schemas.xmlsoap.org/soap/http"/>
            <wsdl:operation name="AddFeedEntry">
                <soap:operation soapAction="http://Microsoft.Office.Server.UserProfiles/AddFeedEntry"
style="document"/>
                <wsdl:input>
                    <soap:body use="literal"/>
                </wsdl:input>
                <wsdl:output>
                    <soap:body use="literal"/>
                </wsdl:output>
                <wsdl:fault name="FeedCacheFaultFault">
                    <soap:fault use="literal" name="FeedCacheFaultFault" namespace=""/>
                </wsdl:fault>
            </wsdl:operation>
            <wsdl:operation name="AddFeedEntries">
                <soap:operation soapAction="http://Microsoft.Office.Server.UserProfiles/AddFeedEntries"
style="document"/>
                <wsdl:input>
                    <soap:body use="literal"/>
                </wsdl:input>
                <wsdl:output>
                    <soap:body use="literal"/>
                </wsdl:output>
                <wsdl:fault name="FeedCacheFaultFault">
                    <soap:fault use="literal" name="FeedCacheFaultFault" namespace=""/>
                </wsdl:fault>
            </wsdl:operation>
            <wsdl:operation name="RemoveFeedEntry">
                <soap:operation
soapAction="http://Microsoft.Office.Server.UserProfiles/RemoveFeedEntry" style="document"/>
                <wsdl:input>
                    <soap:body use="literal"/>
                </wsdl:input>
                <wsdl:output>
                    <soap:body use="literal"/>
                </wsdl:output>
                <wsdl:fault name="FeedCacheFaultFault">
                    <soap:fault use="literal" name="FeedCacheFaultFault" namespace=""/>
                </wsdl:fault>
            </wsdl:operation>
        </wsdl:binding>
    </wsdl:service>

```

```

    <wsdl:operation name="RemoveEntityFeed">
      <soap:operation
soapAction="http://Microsoft.Office.Server.UserProfiles/RemoveEntityFeed" style="document"/>
      <wsdl:input>
        <soap:body use="literal"/>
      </wsdl:input>
      <wsdl:output>
        <soap:body use="literal"/>
      </wsdl:output>
      <wsdl:fault name="FeedCacheFaultFault">
        <soap:fault use="literal" name="FeedCacheFaultFault" namespace=""/>
      </wsdl:fault>
    </wsdl:operation>
    <wsdl:operation name="RemoveInternalRegions">
      <soap:operation
soapAction="http://Microsoft.Office.Server.UserProfiles/RemoveInternalRegions"
style="document"/>
      <wsdl:input>
        <soap:body use="literal"/>
      </wsdl:input>
      <wsdl:output>
        <soap:body use="literal"/>
      </wsdl:output>
      <wsdl:fault name="FeedCacheFaultFault">
        <soap:fault use="literal" name="FeedCacheFaultFault" namespace=""/>
      </wsdl:fault>
    </wsdl:operation>
    <wsdl:operation name="GetConsolidatedFeed">
      <soap:operation
soapAction="http://Microsoft.Office.Server.UserProfiles/GetConsolidatedFeed"
style="document"/>
      <wsdl:input>
        <soap:body use="literal"/>
      </wsdl:input>
      <wsdl:output>
        <soap:body use="literal"/>
      </wsdl:output>
      <wsdl:fault name="FeedCacheFaultFault">
        <soap:fault use="literal" name="FeedCacheFaultFault" namespace=""/>
      </wsdl:fault>
    </wsdl:operation>
    <wsdl:operation name="GetPublishedFeed">
      <soap:operation
soapAction="http://Microsoft.Office.Server.UserProfiles/GetPublishedFeed" style="document"/>
      <wsdl:input>
        <soap:body use="literal"/>
      </wsdl:input>
      <wsdl:output>
        <soap:body use="literal"/>
      </wsdl:output>
      <wsdl:fault name="FeedCacheFaultFault">
        <soap:fault use="literal" name="FeedCacheFaultFault" namespace=""/>
      </wsdl:fault>
    </wsdl:operation>
    <wsdl:operation name="GetCategoricalFeed">
      <soap:operation
soapAction="http://Microsoft.Office.Server.UserProfiles/GetCategoricalFeed"
style="document"/>
      <wsdl:input>
        <soap:body use="literal"/>

```

```

    </wsdl:input>
    <wsdl:output>
      <soap:body use="literal"/>
    </wsdl:output>
    <wsdl:fault name="FeedCacheFaultFault">
      <soap:fault use="literal" name="FeedCacheFaultFault" namespace=""/>
    </wsdl:fault>
  </wsdl:operation>
  <wsdl:operation name="GetEntries">
    <soap:operation
soapAction="http://Microsoft.Office.Server.UserProfiles/GetThreadEntries" style="document"/>
    <wsdl:input>
      <soap:body use="literal"/>
    </wsdl:input>
    <wsdl:output>
      <soap:body use="literal"/>
    </wsdl:output>
    <wsdl:fault name="FeedCacheFaultFault">
      <soap:fault use="literal" name="FeedCacheFaultFault" namespace=""/>
    </wsdl:fault>
  </wsdl:operation>
  <wsdl:operation name="NewEntityFollower">
    <soap:operation
soapAction="http://Microsoft.Office.Server.UserProfiles/NewEntityFollower" style="document"/>
    <wsdl:input>
      <soap:body use="literal"/>
    </wsdl:input>
    <wsdl:output>
      <soap:body use="literal"/>
    </wsdl:output>
    <wsdl:fault name="FeedCacheFaultFault">
      <soap:fault use="literal" name="FeedCacheFaultFault" namespace=""/>
    </wsdl:fault>
  </wsdl:operation>
  <wsdl:operation name="IsEntityActivelyFollowed">
    <soap:operation
soapAction="http://Microsoft.Office.Server.UserProfiles/IsEntityActivelyFollowed"
style="document"/>
    <wsdl:input>
      <soap:body use="literal"/>
    </wsdl:input>
    <wsdl:output>
      <soap:body use="literal"/>
    </wsdl:output>
    <wsdl:fault name="FeedCacheFaultFault">
      <soap:fault use="literal" name="FeedCacheFaultFault" namespace=""/>
    </wsdl:fault>
  </wsdl:operation>
  <wsdl:operation name="RefreshFollowedEntities">
    <soap:operation
soapAction="http://Microsoft.Office.Server.UserProfiles/RefreshFollowedEntities"
style="document"/>
    <wsdl:input>
      <soap:body use="literal"/>
    </wsdl:input>
    <wsdl:output>
      <soap:body use="literal"/>
    </wsdl:output>
    <wsdl:fault name="FeedCacheFaultFault">

```

```

        <soap:fault use="literal" name="FeedCacheFaultFault" namespace=""/>
    </wsdl:fault>
</wsdl:operation>
<wsdl:operation name="BulkLMTUpdate">
    <soap:operation soapAction="http://Microsoft.Office.Server.UserProfiles/BulkLMTUpdate"
style="document"/>
    <wsdl:input>
        <soap:body use="literal"/>
    </wsdl:input>
    <wsdl:output>
        <soap:body use="literal"/>
    </wsdl:output>
    <wsdl:fault name="FeedCacheFaultFault">
        <soap:fault use="literal" name="FeedCacheFaultFault" namespace=""/>
    </wsdl:fault>
</wsdl:operation>
<wsdl:operation name="AddFeedEntriesForRepop">
    <soap:operation
soapAction="http://Microsoft.Office.Server.UserProfiles/AddFeedEntriesForRepop"
style="document"/>
    <wsdl:input>
        <soap:body use="literal"/>
    </wsdl:input>
    <wsdl:output>
        <soap:body use="literal"/>
    </wsdl:output>
    <wsdl:fault name="FeedCacheFaultFault">
        <soap:fault use="literal" name="FeedCacheFaultFault" namespace=""/>
    </wsdl:fault>
</wsdl:operation>
<wsdl:operation name="IsRepopulationNeeded">
    <soap:operation
soapAction="http://Microsoft.Office.Server.UserProfiles/IsRepopulationNeeded"
style="document"/>
    <wsdl:input>
        <soap:body use="literal"/>
    </wsdl:input>
    <wsdl:output>
        <soap:body use="literal"/>
    </wsdl:output>
    <wsdl:fault name="FeedCacheFaultFault">
        <soap:fault use="literal" name="FeedCacheFaultFault" namespace=""/>
    </wsdl:fault>
</wsdl:operation>
<wsdl:operation name="GetFeeds">
    <soap:operation soapAction="http://Microsoft.Office.Server.UserProfiles/GetFeeds"
style="document"/>
    <wsdl:input>
        <soap:body use="literal"/>
    </wsdl:input>
    <wsdl:output>
        <soap:body use="literal"/>
    </wsdl:output>
    <wsdl:fault name="FeedCacheFaultFault">
        <soap:fault use="literal" name="FeedCacheFaultFault" namespace=""/>
    </wsdl:fault>
</wsdl:operation>
</wsdl:binding>
<wsdl:message name="IFeedCacheService_AddFeedEntries_FeedCacheFaultFault_FaultMessage">

```



```

    <wsdl:part xmlns:tns="http://Microsoft/Office/Server/FeedCache" name="detail"
element="tns:FeedCacheFault"/>
  </wsdl:message>
  <wsdl:message name="IFeedCacheService_AddFeedEntries_InputMessage">
    <wsdl:part name="parameters" element="tns3:AddFeedEntries"/>
  </wsdl:message>
  <wsdl:message name="IFeedCacheService_AddFeedEntries_OutputMessage">
    <wsdl:part name="parameters" element="tns3:AddFeedEntriesResponse"/>
  </wsdl:message>
  <wsdl:message
name="IFeedCacheService_AddFeedEntriesForRepop_FeedCacheFaultFault_FaultMessage">
    <wsdl:part xmlns:tns="http://Microsoft/Office/Server/FeedCache" name="detail"
element="tns:FeedCacheFault"/>
  </wsdl:message>
  <wsdl:message name="IFeedCacheService_AddFeedEntriesForRepop_InputMessage">
    <wsdl:part name="parameters" element="tns3:AddFeedEntriesForRepop"/>
  </wsdl:message>
  <wsdl:message name="IFeedCacheService_AddFeedEntriesForRepop_OutputMessage">
    <wsdl:part name="parameters" element="tns3:AddFeedEntriesForRepopResponse"/>
  </wsdl:message>
  <wsdl:message name="IFeedCacheService_AddFeedEntry_FeedCacheFaultFault_FaultMessage">
    <wsdl:part xmlns:tns="http://Microsoft/Office/Server/FeedCache" name="detail"
element="tns:FeedCacheFault"/>
  </wsdl:message>
  <wsdl:message name="IFeedCacheService_AddFeedEntry_InputMessage">
    <wsdl:part name="parameters" element="tns3:AddFeedEntry"/>
  </wsdl:message>
  <wsdl:message name="IFeedCacheService_AddFeedEntry_OutputMessage">
    <wsdl:part name="parameters" element="tns3:AddFeedEntryResponse"/>
  </wsdl:message>
  <wsdl:message name="IFeedCacheService_BulkLMTUpdate_FeedCacheFaultFault_FaultMessage">
    <wsdl:part xmlns:tns="http://Microsoft/Office/Server/FeedCache" name="detail"
element="tns:FeedCacheFault"/>
  </wsdl:message>
  <wsdl:message name="IFeedCacheService_BulkLMTUpdate_InputMessage">
    <wsdl:part name="parameters" element="tns3:BulkLMTUpdate"/>
  </wsdl:message>
  <wsdl:message name="IFeedCacheService_BulkLMTUpdate_OutputMessage">
    <wsdl:part name="parameters" element="tns3:BulkLMTUpdateResponse"/>
  </wsdl:message>
  <wsdl:message name="IFeedCacheService_GetCategoricalFeed_FeedCacheFaultFault_FaultMessage">
    <wsdl:part xmlns:tns="http://Microsoft/Office/Server/FeedCache" name="detail"
element="tns:FeedCacheFault"/>
  </wsdl:message>
  <wsdl:message name="IFeedCacheService_GetCategoricalFeed_InputMessage">
    <wsdl:part name="parameters" element="tns3:GetCategoricalFeed"/>
  </wsdl:message>
  <wsdl:message name="IFeedCacheService_GetCategoricalFeed_OutputMessage">
    <wsdl:part name="parameters" element="tns3:GetCategoricalFeedResponse"/>
  </wsdl:message>
  <wsdl:message
name="IFeedCacheService_GetConsolidatedFeed_FeedCacheFaultFault_FaultMessage">
    <wsdl:part xmlns:tns="http://Microsoft/Office/Server/FeedCache" name="detail"
element="tns:FeedCacheFault"/>
  </wsdl:message>
  <wsdl:message name="IFeedCacheService_GetConsolidatedFeed_InputMessage">
    <wsdl:part name="parameters" element="tns3:GetConsolidatedFeed"/>
  </wsdl:message>
  <wsdl:message name="IFeedCacheService_GetConsolidatedFeed_OutputMessage">
    <wsdl:part name="parameters" element="tns3:GetConsolidatedFeedResponse"/>
  </wsdl:message>

```

```

</wsdl:message>
<wsdl:message name="IFeedCacheService_GetEntries_FeedCacheFaultFault_FaultMessage">
  <wsdl:part xmlns:tns="http://Microsoft/Office/Server/FeedCache" name="detail"
  element="tns:FeedCacheFault"/>
</wsdl:message>
<wsdl:message name="IFeedCacheService_GetEntries_InputMessage">
  <wsdl:part name="parameters" element="tns3:GetEntries"/>
</wsdl:message>
<wsdl:message name="IFeedCacheService_GetEntries_OutputMessage">
  <wsdl:part name="parameters" element="tns3:GetEntriesResponse"/>
</wsdl:message>
<wsdl:message name="IFeedCacheService_GetFeeds_FeedCacheFaultFault_FaultMessage">
  <wsdl:part xmlns:tns="http://Microsoft/Office/Server/FeedCache" name="detail"
  element="tns:FeedCacheFault"/>
</wsdl:message>
<wsdl:message name="IFeedCacheService_GetFeeds_InputMessage">
  <wsdl:part name="parameters" element="tns3:GetFeeds"/>
</wsdl:message>
<wsdl:message name="IFeedCacheService_GetFeeds_OutputMessage">
  <wsdl:part name="parameters" element="tns3:GetFeedsResponse"/>
</wsdl:message>
<wsdl:message name="IFeedCacheService_GetPublishedFeed_FeedCacheFaultFault_FaultMessage">
  <wsdl:part xmlns:tns="http://Microsoft/Office/Server/FeedCache" name="detail"
  element="tns:FeedCacheFault"/>
</wsdl:message>
<wsdl:message name="IFeedCacheService_GetPublishedFeed_InputMessage">
  <wsdl:part name="parameters" element="tns3:GetPublishedFeed"/>
</wsdl:message>
<wsdl:message name="IFeedCacheService_GetPublishedFeed_OutputMessage">
  <wsdl:part name="parameters" element="tns3:GetPublishedFeedResponse"/>
</wsdl:message>
<wsdl:message
name="IFeedCacheService_IsEntityActivelyFollowed_FeedCacheFaultFault_FaultMessage">
  <wsdl:part xmlns:tns="http://Microsoft/Office/Server/FeedCache" name="detail"
  element="tns:FeedCacheFault"/>
</wsdl:message>
<wsdl:message name="IFeedCacheService_IsEntityActivelyFollowed_InputMessage">
  <wsdl:part name="parameters" element="tns3:IsEntityActivelyFollowed"/>
</wsdl:message>
<wsdl:message name="IFeedCacheService_IsEntityActivelyFollowed_OutputMessage">
  <wsdl:part name="parameters" element="tns3:IsEntityActivelyFollowedResponse"/>
</wsdl:message>
<wsdl:message
name="IFeedCacheService_IsRepopulationNeeded_FeedCacheFaultFault_FaultMessage">
  <wsdl:part xmlns:tns="http://Microsoft/Office/Server/FeedCache" name="detail"
  element="tns:FeedCacheFault"/>
</wsdl:message>
<wsdl:message name="IFeedCacheService_IsRepopulationNeeded_InputMessage">
  <wsdl:part name="parameters" element="tns3:IsRepopulationNeeded"/>
</wsdl:message>
<wsdl:message name="IFeedCacheService_IsRepopulationNeeded_OutputMessage">
  <wsdl:part name="parameters" element="tns3:IsRepopulationNeededResponse"/>
</wsdl:message>
<wsdl:message name="IFeedCacheService_NewEntityFollower_FeedCacheFaultFault_FaultMessage">
  <wsdl:part xmlns:tns="http://Microsoft/Office/Server/FeedCache" name="detail"
  element="tns:FeedCacheFault"/>
</wsdl:message>
<wsdl:message name="IFeedCacheService_NewEntityFollower_InputMessage">
  <wsdl:part name="parameters" element="tns3:NewEntityFollower"/>
</wsdl:message>

```

```

    <wsdl:message name="IFeedCacheService_NewEntityFollower_OutputMessage">
      <wsdl:part name="parameters" element="tns3:NewEntityFollowerResponse"/>
    </wsdl:message>
  </wsdl:message>
  <wsdl:message
name="IFeedCacheService_RefreshFollowedEntities_FeedCacheFaultFault_FaultMessage">
    <wsdl:part xmlns:tns="http://Microsoft/Office/Server/FeedCache" name="detail"
element="tns:FeedCacheFault"/>
  </wsdl:message>
  <wsdl:message name="IFeedCacheService_RefreshFollowedEntities_InputMessage">
    <wsdl:part name="parameters" element="tns3:RefreshFollowedEntities"/>
  </wsdl:message>
  <wsdl:message name="IFeedCacheService_RefreshFollowedEntities_OutputMessage">
    <wsdl:part name="parameters" element="tns3:RefreshFollowedEntitiesResponse"/>
  </wsdl:message>
  <wsdl:message name="IFeedCacheService_RemoveEntityFeed_FeedCacheFaultFault_FaultMessage">
    <wsdl:part xmlns:tns="http://Microsoft/Office/Server/FeedCache" name="detail"
element="tns:FeedCacheFault"/>
  </wsdl:message>
  <wsdl:message name="IFeedCacheService_RemoveEntityFeed_InputMessage">
    <wsdl:part name="parameters" element="tns3:RemoveEntityFeed"/>
  </wsdl:message>
  <wsdl:message name="IFeedCacheService_RemoveEntityFeed_OutputMessage">
    <wsdl:part name="parameters" element="tns3:RemoveEntityFeedResponse"/>
  </wsdl:message>
  <wsdl:message name="IFeedCacheService_RemoveFeedEntry_FeedCacheFaultFault_FaultMessage">
    <wsdl:part xmlns:tns="http://Microsoft/Office/Server/FeedCache" name="detail"
element="tns:FeedCacheFault"/>
  </wsdl:message>
  <wsdl:message name="IFeedCacheService_RemoveFeedEntry_InputMessage">
    <wsdl:part name="parameters" element="tns3:RemoveFeedEntry"/>
  </wsdl:message>
  <wsdl:message name="IFeedCacheService_RemoveFeedEntry_OutputMessage">
    <wsdl:part name="parameters" element="tns3:RemoveFeedEntryResponse"/>
  </wsdl:message>
  <wsdl:message
name="IFeedCacheService_RemoveInternalRegions_FeedCacheFaultFault_FaultMessage">
    <wsdl:part xmlns:tns="http://Microsoft/Office/Server/FeedCache" name="detail"
element="tns:FeedCacheFault"/>
  </wsdl:message>
  <wsdl:message name="IFeedCacheService_RemoveInternalRegions_InputMessage">
    <wsdl:part name="parameters" element="tns3:RemoveInternalRegions"/>
  </wsdl:message>
  <wsdl:message name="IFeedCacheService_RemoveInternalRegions_OutputMessage">
    <wsdl:part name="parameters" element="tns3:RemoveInternalRegionsResponse"/>
  </wsdl:message>
</wsdl:definitions>

```

7 Appendix B: Full XML Schema

Schema name	Prefix	Section
http://Microsoft/Office/Server/FeedCache	tns	7.3
http://Microsoft/Office/Server/FeedyCache	tns1	7.8
http://Microsoft/Office/Server/UserProfiles	q3	7.6
http://schemas.microsoft.com/2003/10/Serialization/Arrays	q1	7.4
http://schemas.microsoft.com/2003/10/Serialization/	ser	7.2
http://schemas.datacontract.org/2004/07/System.Collections.Generic	tns2	7.5
http://schemas.datacontract.org/2004/07/System	q5	7.7
http://tempuri.org/	tns3	7.1

For ease of implementation, the following sections provide the full XML schema for this protocol.

7.1 http://tempuri.org/ Schema

```
<?xml version="1.0"?>
<xs:schema elementFormDefault="qualified" targetNamespace="http://tempuri.org/"
xmlns:xs="http://www.w3.org/2001/XMLSchema">
  <xs:element name="AddFeedEntry">
    <xs:complexType>
      <xs:sequence>
        <xs:element xmlns:tns="http://Microsoft/Office/Server/FeedCache" minOccurs="0"
name="entity" nillable="true" type="tns:E"/>
        <xs:element xmlns:tns="http://Microsoft/Office/Server/FeedCache" minOccurs="0"
name="entry" nillable="true" type="tns:P"/>
      </xs:sequence>
    </xs:complexType>
  </xs:element>
  <xs:element name="AddFeedEntryResponse">
    <xs:complexType>
      <xs:sequence>
        <xs:element minOccurs="0" name="AddFeedEntryResult" type="xs:boolean"/>
      </xs:sequence>
    </xs:complexType>
  </xs:element>
  <xs:element name="AddFeedEntries">
    <xs:complexType>
      <xs:sequence>
        <xs:element xmlns:tns="http://Microsoft/Office/Server/FeedCache" minOccurs="0"
name="entries" nillable="true" type="tns:PC"/>
      </xs:sequence>
    </xs:complexType>
  </xs:element>
  <xs:element name="AddFeedEntriesResponse">
    <xs:complexType>
      <xs:sequence>
        <xs:element minOccurs="0" name="AddFeedEntriesResult" type="xs:boolean"/>
      </xs:sequence>
    </xs:complexType>
  </xs:element>
</xs:schema>
```

```

</xs:element>
<xs:element name="RemoveFeedEntry">
  <xs:complexType>
    <xs:sequence>
      <xs:element xmlns:tns="http://Microsoft/Office/Server/FeedCache" minOccurs="0"
name="entity" nillable="true" type="tns:E"/>
      <xs:element xmlns:tns="http://Microsoft/Office/Server/FeedCache" minOccurs="0"
name="entry" nillable="true" type="tns:P"/>
    </xs:sequence>
  </xs:complexType>
</xs:element>
<xs:element name="RemoveFeedEntryResponse">
  <xs:complexType>
    <xs:sequence>
      <xs:element minOccurs="0" name="RemoveFeedEntryResult" type="xs:boolean"/>
    </xs:sequence>
  </xs:complexType>
</xs:element>
<xs:element name="RemoveEntityFeed">
  <xs:complexType>
    <xs:sequence>
      <xs:element xmlns:tns="http://Microsoft/Office/Server/FeedCache" minOccurs="0"
name="entity" nillable="true" type="tns:E"/>
    </xs:sequence>
  </xs:complexType>
</xs:element>
<xs:element name="RemoveEntityFeedResponse">
  <xs:complexType>
    <xs:sequence>
      <xs:element minOccurs="0" name="RemoveEntityFeedResult" type="xs:boolean"/>
    </xs:sequence>
  </xs:complexType>
</xs:element>
<xs:element name="RemoveInternalRegions">
  <xs:complexType>
    <xs:sequence>
      <xs:element minOccurs="0" name="webAppUrl" nillable="true" type="xs:string"/>
    </xs:sequence>
  </xs:complexType>
</xs:element>
<xs:element name="RemoveInternalRegionsResponse">
  <xs:complexType>
    <xs:sequence>
      <xs:element minOccurs="0" name="RemoveInternalRegionsResult" type="xs:boolean"/>
    </xs:sequence>
  </xs:complexType>
</xs:element>
<xs:element name="GetConsolidatedFeed">
  <xs:complexType>
    <xs:sequence>
      <xs:element xmlns:tns="http://Microsoft/Office/Server/FeedCache" minOccurs="0"
name="fcRetEntity" nillable="true" type="tns:FCRE"/>
      <xs:element xmlns:tns="http://Microsoft/Office/Server/FeedCache" minOccurs="0"
name="followedEntities" nillable="true" type="tns:ArrayOfE"/>
      <xs:element xmlns:tns="http://Microsoft/Office/Server/FeedCache" minOccurs="0"
name="fcRetOptions" nillable="true" type="tns:FCRO"/>
    </xs:sequence>
  </xs:complexType>
</xs:element>

```

```

<xs:element name="GetConsolidatedFeedResponse">
  <xs:complexType>
    <xs:sequence>
      <xs:element xmlns:tns1="http://Microsoft/Office/Server/FeedyCache" minOccurs="0"
name="GetConsolidatedFeedResult" nillable="true" type="tns1:FCCR"/>
    </xs:sequence>
  </xs:complexType>
</xs:element>
<xs:element name="GetPublishedFeed">
  <xs:complexType>
    <xs:sequence>
      <xs:element xmlns:tns="http://Microsoft/Office/Server/FeedCache" minOccurs="0"
name="fcTargetEntity" nillable="true" type="tns:FCRE"/>
      <xs:element xmlns:tns="http://Microsoft/Office/Server/FeedCache" minOccurs="0"
name="fcViewingEntity" nillable="true" type="tns:FCRE"/>
      <xs:element xmlns:tns="http://Microsoft/Office/Server/FeedCache" minOccurs="0"
name="fcRetOptions" nillable="true" type="tns:FCRO"/>
    </xs:sequence>
  </xs:complexType>
</xs:element>
<xs:element name="GetPublishedFeedResponse">
  <xs:complexType>
    <xs:sequence>
      <xs:element xmlns:tns1="http://Microsoft/Office/Server/FeedyCache" minOccurs="0"
name="GetPublishedFeedResult" nillable="true" type="tns1:FCCR"/>
    </xs:sequence>
  </xs:complexType>
</xs:element>
<xs:element name="GetCategoricalFeed">
  <xs:complexType>
    <xs:sequence>
      <xs:element xmlns:tns="http://Microsoft/Office/Server/FeedCache" minOccurs="0"
name="fcRetEntity" nillable="true" type="tns:FCRE"/>
      <xs:element xmlns:tns="http://Microsoft/Office/Server/FeedCache" minOccurs="0"
name="followedEntities" nillable="true" type="tns:ArrayOfE"/>
      <xs:element xmlns:tns="http://Microsoft/Office/Server/FeedCache" minOccurs="0"
name="fcRetOptions" nillable="true" type="tns:FCRO"/>
    </xs:sequence>
  </xs:complexType>
</xs:element>
<xs:element name="GetCategoricalFeedResponse">
  <xs:complexType>
    <xs:sequence>
      <xs:element xmlns:tns1="http://Microsoft/Office/Server/FeedyCache" minOccurs="0"
name="GetCategoricalFeedResult" nillable="true" type="tns1:FCCR"/>
    </xs:sequence>
  </xs:complexType>
</xs:element>
<xs:element name="GetEntries">
  <xs:complexType>
    <xs:sequence>
      <xs:element xmlns:tns="http://Microsoft/Office/Server/FeedCache" minOccurs="0"
name="entryIdentifiers" nillable="true" type="tns:ArrayOfPI"/>
    </xs:sequence>
  </xs:complexType>
</xs:element>
<xs:element name="GetEntriesResponse">
  <xs:complexType>
    <xs:sequence>

```

```

        <xs:element xmlns:tns="http://Microsoft/Office/Server/FeedCache" minOccurs="0"
name="GetEntriesResult" nillable="true" type="tns:PC"/>
    </xs:sequence>
</xs:complexType>
</xs:element>
<xs:element name="NewEntityFollower">
    <xs:complexType>
        <xs:sequence>
            <xs:element xmlns:tns="http://Microsoft/Office/Server/FeedCache" minOccurs="0"
name="entity" nillable="true" type="tns:E"/>
        </xs:sequence>
    </xs:complexType>
</xs:element>
<xs:element name="NewEntityFollowerResponse">
    <xs:complexType>
        <xs:sequence>
            <xs:element minOccurs="0" name="NewEntityFollowerResult" type="xs:boolean"/>
        </xs:sequence>
    </xs:complexType>
</xs:element>
<xs:element name="IsEntityActivelyFollowed">
    <xs:complexType>
        <xs:sequence>
            <xs:element xmlns:tns="http://Microsoft/Office/Server/FeedCache" minOccurs="0"
name="entity" nillable="true" type="tns:E"/>
        </xs:sequence>
    </xs:complexType>
</xs:element>
<xs:element name="IsEntityActivelyFollowedResponse">
    <xs:complexType>
        <xs:sequence>
            <xs:element minOccurs="0" name="IsEntityActivelyFollowedResult" type="xs:boolean"/>
        </xs:sequence>
    </xs:complexType>
</xs:element>
<xs:element name="RefreshFollowedEntities">
    <xs:complexType>
        <xs:sequence>
            <xs:element xmlns:tns="http://Microsoft/Office/Server/FeedCache" minOccurs="0"
name="followedEntities" nillable="true" type="tns:ArrayOfE"/>
        </xs:sequence>
    </xs:complexType>
</xs:element>
<xs:element name="RefreshFollowedEntitiesResponse">
    <xs:complexType>
        <xs:sequence>
            <xs:element minOccurs="0" name="RefreshFollowedEntitiesResult" type="xs:boolean"/>
        </xs:sequence>
    </xs:complexType>
</xs:element>
<xs:element name="BulkLMTUpdate">
    <xs:complexType>
        <xs:sequence>
            <xs:element xmlns:ser="http://schemas.microsoft.com/2003/10/Serialization/"
minOccurs="0" name="callerID" type="ser:guid"/>
            <xs:element
xmlns:tns2="http://schemas.datacontract.org/2004/07/System.Collections.Generic" minOccurs="0"
name="lastModifiedTimes" nillable="true" type="tns2:ArrayOfKeyValuePairOfELEHsv_SlRZJ"/>
        </xs:sequence>
    </xs:complexType>

```

```

    </xs:complexType>
  </xs:element>
  <xs:element name="BulkLMTUpdateResponse">
    <xs:complexType>
      <xs:sequence>
        <xs:element minOccurs="0" name="BulkLMTUpdateResult" type="xs:boolean"/>
      </xs:sequence>
    </xs:complexType>
  </xs:element>
  <xs:element name="AddFeedEntriesForRepop">
    <xs:complexType>
      <xs:sequence>
        <xs:element xmlns:tns="http://Microsoft/Office/Server/FeedCache" minOccurs="0"
name="entity" nillable="true" type="tns:E"/>
        <xs:element xmlns:tns="http://Microsoft/Office/Server/FeedCache" minOccurs="0"
name="entries" nillable="true" type="tns:PC"/>
        <xs:element minOccurs="0" name="lastDeleted" nillable="true" type="xs:dateTime"/>
      </xs:sequence>
    </xs:complexType>
  </xs:element>
  <xs:element name="AddFeedEntriesForRepopResponse">
    <xs:complexType>
      <xs:sequence>
        <xs:element minOccurs="0" name="AddFeedEntriesForRepopResult" type="xs:boolean"/>
      </xs:sequence>
    </xs:complexType>
  </xs:element>
  <xs:element name="IsRepopulationNeeded">
    <xs:complexType>
      <xs:sequence>
        <xs:element xmlns:ser="http://schemas.microsoft.com/2003/10/Serialization/"
minOccurs="0" name="callerID" type="ser:guid"/>
      </xs:sequence>
    </xs:complexType>
  </xs:element>
  <xs:element name="IsRepopulationNeededResponse">
    <xs:complexType>
      <xs:sequence>
        <xs:element minOccurs="0" name="IsRepopulationNeededResult" type="xs:boolean"/>
      </xs:sequence>
    </xs:complexType>
  </xs:element>
  <xs:element name="GetFeeds">
    <xs:complexType>
      <xs:sequence>
        <xs:element xmlns:ser="http://schemas.microsoft.com/2003/10/Serialization/"
minOccurs="0" name="callerID" type="ser:guid"/>
        <xs:element xmlns:tns="http://Microsoft/Office/Server/FeedCache" minOccurs="0"
name="requestingEntity" nillable="true" type="tns:E"/>
        <xs:element xmlns:tns="http://Microsoft/Office/Server/FeedCache" minOccurs="0"
name="entityNewerThanPair" nillable="true" type="tns:ArrayOfEDT"/>
        <xs:element minOccurs="0" name="maxItemsPerEntity" type="xs:int"/>
      </xs:sequence>
    </xs:complexType>
  </xs:element>
  <xs:element name="GetFeedsResponse">
    <xs:complexType>
      <xs:sequence>

```



```

        <xs:element xmlns:tns="http://Microsoft/Office/Server/FeedCache" minOccurs="0"
name="GetFeedsResult" nillable="true" type="tns:PC"/>
    </xs:sequence>
</xs:complexType>
</xs:element>
<xs:import namespace="http://Microsoft/Office/Server/FeedCache"/>
<xs:import namespace="http://Microsoft/Office/Server/FeedyCache"/>
<xs:import namespace="http://schemas.datacontract.org/2004/07/System.Collections.Generic"/>
<xs:import namespace="http://schemas.microsoft.com/2003/10/Serialization"/>
</xs:schema>

```

7.2 http://schemas.microsoft.com/2003/10/Serialization/ Schema

```

<?xml version="1.0"?>
<xs:schema xmlns:ser="http://schemas.microsoft.com/2003/10/Serialization/"
attributeFormDefault="qualified" elementFormDefault="qualified"
targetNamespace="http://schemas.microsoft.com/2003/10/Serialization/"
xmlns:xs="http://www.w3.org/2001/XMLSchema">
    <xs:element name="anyType" nillable="true" type="xs:anyType"/>
    <xs:element name="anyURI" nillable="true" type="xs:anyURI"/>
    <xs:element name="base64Binary" nillable="true" type="xs:base64Binary"/>
    <xs:element name="boolean" nillable="true" type="xs:boolean"/>
    <xs:element name="byte" nillable="true" type="xs:byte"/>
    <xs:element name="dateTime" nillable="true" type="xs:dateTime"/>
    <xs:element name="decimal" nillable="true" type="xs:decimal"/>
    <xs:element name="double" nillable="true" type="xs:double"/>
    <xs:element name="float" nillable="true" type="xs:float"/>
    <xs:element name="int" nillable="true" type="xs:int"/>
    <xs:element name="long" nillable="true" type="xs:long"/>
    <xs:element name="QName" nillable="true" type="xs:QName"/>
    <xs:element name="short" nillable="true" type="xs:short"/>
    <xs:element name="string" nillable="true" type="xs:string"/>
    <xs:element name="unsignedByte" nillable="true" type="xs:unsignedByte"/>
    <xs:element name="unsignedInt" nillable="true" type="xs:unsignedInt"/>
    <xs:element name="unsignedLong" nillable="true" type="xs:unsignedLong"/>
    <xs:element name="unsignedShort" nillable="true" type="xs:unsignedShort"/>
    <xs:element name="char" nillable="true" type="ser:char"/>
    <xs:simpleType name="char">
        <xs:restriction base="xs:int"/>
    </xs:simpleType>
    <xs:element name="duration" nillable="true" type="ser:duration"/>
    <xs:simpleType name="duration">
        <xs:restriction base="xs:duration">
            <xs:pattern value="\-?P(\d*D)?(T(\d*H)?(\d*M)?(\d*(\.\d*)?S)?)?"/>
            <xs:minInclusive value="-P10675199DT2H48M5.4775808S"/>
            <xs:maxInclusive value="P10675199DT2H48M5.4775807S"/>
        </xs:restriction>
    </xs:simpleType>
    <xs:element name="guid" nillable="true" type="ser:guid"/>
    <xs:simpleType name="guid">
        <xs:restriction base="xs:string">
            <xs:pattern value="[\da-fA-F]{8}-[\da-fA-F]{4}-[\da-fA-F]{4}-[\da-fA-F]{4}-[\da-fA-F]{12}"/>
        </xs:restriction>
    </xs:simpleType>
    <xs:attribute name="FactoryType" type="xs:QName"/>
    <xs:attribute name="Id" type="xs:ID"/>
    <xs:attribute name="Ref" type="xs:IDREF"/>

```

```
</xs:schema>
```

7.3 http://Microsoft/Office/Server/FeedCache Schema

```
<?xml version="1.0"?>
<xs:schema xmlns:tns="http://Microsoft/Office/Server/FeedCache"
xmlns:ser="http://schemas.microsoft.com/2003/10/Serialization/"
elementFormDefault="qualified" targetNamespace="http://Microsoft/Office/Server/FeedCache"
xmlns:xs="http://www.w3.org/2001/XMLSchema">
  <xs:complexType name="E">
    <xs:sequence>
      <xs:element minOccurs="0" name="ET" type="tns:ET"/>
      <xs:element minOccurs="0" name="LID" type="ser:guid"/>
      <xs:element minOccurs="0" name="PID" type="ser:guid"/>
      <xs:element minOccurs="0" name="SID" type="ser:guid"/>
      <xs:element minOccurs="0" name="Url" nillable="true" type="xs:string"/>
      <xs:element minOccurs="0" name="WID" type="ser:guid"/>
    </xs:sequence>
  </xs:complexType>
  <xs:element name="E" nillable="true" type="tns:E"/>
  <xs:simpleType name="ET">
    <xs:list>
      <xs:simpleType>
        <xs:restriction base="xs:string">
          <xs:enumeration value="Unknown"/>
          <xs:enumeration value="User"/>
          <xs:enumeration value="Document"/>
          <xs:enumeration value="Site"/>
          <xs:enumeration value="Tag"/>
          <xs:enumeration value="Group"/>
        </xs:restriction>
      </xs:simpleType>
    </xs:list>
  </xs:simpleType>
  <xs:element name="ET" nillable="true" type="tns:ET"/>
  <xs:complexType name="P">
    <xs:sequence>
      <xs:element minOccurs="0" name="AD" nillable="true" type="xs:string"/>
      <xs:element minOccurs="0" name="D1" nillable="true" type="xs:string"/>
      <xs:element minOccurs="0" name="D2" nillable="true" type="xs:string"/>
      <xs:element minOccurs="0" name="D3" nillable="true" type="xs:string"/>
      <xs:element minOccurs="0" name="D4" nillable="true" type="xs:string"/>
      <xs:element minOccurs="0" name="DP" nillable="true" type="xs:string"/>
      <xs:element minOccurs="0" name="EID" nillable="true" type="xs:string"/>
      <xs:element minOccurs="0" name="En" nillable="true" type="tns:E"/>
      <xs:element minOccurs="0" name="M" type="xs:dateTime"/>
      <xs:element minOccurs="0" name="MBD" type="xs:int"/>
      <xs:element minOccurs="0" name="MBT" type="xs:int"/>
      <xs:element minOccurs="0" name="PL" nillable="true" type="xs:string"/>
      <xs:element minOccurs="0" name="R1" nillable="true" type="xs:string"/>
      <xs:element minOccurs="0" name="R2" nillable="true" type="xs:string"/>
      <xs:element minOccurs="0" name="R3" type="xs:int"/>
      <xs:element minOccurs="0" name="ST" type="xs:int"/>
    </xs:sequence>
  </xs:complexType>
  <xs:element name="P" nillable="true" type="tns:P"/>
  <xs:complexType name="FeedCacheFault">
    <xs:sequence>
```

```

        <xs:element minOccurs="0" name="FailureDetail" nillable="true" type="xs:string"/>
        <xs:element minOccurs="0" name="FaultCode" type="tns:FeedCacheFaultCodes"/>
    </xs:sequence>
</xs:complexType>
<xs:element name="FeedCacheFault" nillable="true" type="tns:FeedCacheFault"/>
<xs:simpleType name="FeedCacheFaultCodes">
    <xs:restriction base="xs:string">
        <xs:enumeration value="UnknownError"/>
        <xs:enumeration value="InvalidInput"/>
        <xs:enumeration value="InvalidConfiguration"/>
    </xs:restriction>
</xs:simpleType>
<xs:element name="FeedCacheFaultCodes" nillable="true" type="tns:FeedCacheFaultCodes"/>
<xs:complexType name="PC">
    <xs:sequence>
        <xs:element minOccurs="0" name="D" nillable="true" type="tns:ArrayOfEDT"/>
        <xs:element minOccurs="0" name="En" nillable="true" type="tns:ArrayOfP"/>
        <xs:element minOccurs="0" name="I" type="xs:boolean"/>
        <xs:element minOccurs="0" name="M" type="xs:int"/>
        <xs:element minOccurs="0" name="N" nillable="true" type="xs:dateTime"/>
        <xs:element minOccurs="0" name="O" nillable="true" type="xs:dateTime"/>
        <xs:element minOccurs="0" name="R" type="xs:boolean"/>
        <xs:element minOccurs="0" name="S" type="xs:boolean"/>
        <xs:element minOccurs="0" name="T" type="xs:boolean"/>
    </xs:sequence>
</xs:complexType>
<xs:element name="PC" nillable="true" type="tns:PC"/>
<xs:complexType name="ArrayOfEDT">
    <xs:sequence>
        <xs:element minOccurs="0" maxOccurs="unbounded" name="EDT" nillable="true"
type="tns:EDT"/>
    </xs:sequence>
</xs:complexType>
<xs:element name="ArrayOfEDT" nillable="true" type="tns:ArrayOfEDT"/>
<xs:complexType name="EDT">
    <xs:sequence>
        <xs:element minOccurs="0" name="D" type="xs:dateTime"/>
        <xs:element minOccurs="0" name="E" nillable="true" type="tns:E"/>
    </xs:sequence>
</xs:complexType>
<xs:element name="EDT" nillable="true" type="tns:EDT"/>
<xs:complexType name="ArrayOfP">
    <xs:sequence>
        <xs:element minOccurs="0" maxOccurs="unbounded" name="P" nillable="true" type="tns:P"/>
    </xs:sequence>
</xs:complexType>
<xs:element name="ArrayOfP" nillable="true" type="tns:ArrayOfP"/>
<xs:complexType name="FCRE">
    <xs:sequence>
        <xs:element minOccurs="0" name="a" nillable="true" type="tns:E"/>
        <xs:element minOccurs="0" name="b" nillable="true" type="xs:string"/>
        <xs:element minOccurs="0" name="c" type="tns:UPL"/>
        <xs:element minOccurs="0" name="d" type="ser:guid"/>
        <xs:element minOccurs="0" name="e" type="xs:boolean"/>
    </xs:sequence>
</xs:complexType>
<xs:element name="FCRE" nillable="true" type="tns:FCRE"/>
<xs:simpleType name="UPL">
    <xs:restriction base="xs:string">

```

```

    <xs:enumeration value="ByEmail"/>
    <xs:enumeration value="ByAccountName"/>
    <xs:enumeration value="BySid"/>
  </xs:restriction>
</xs:simpleType>
<xs:element name="UPL" nillable="true" type="tns:UPL"/>
<xs:complexType name="ArrayOfE">
  <xs:sequence>
    <xs:element minOccurs="0" maxOccurs="unbounded" name="E" nillable="true" type="tns:E"/>
  </xs:sequence>
</xs:complexType>
<xs:element name="ArrayOfE" nillable="true" type="tns:ArrayOfE"/>
<xs:complexType name="FCRO">
  <xs:sequence>
    <xs:element xmlns:q1="http://schemas.microsoft.com/2003/10/Serialization/Arrays"
minOccurs="0" name="a" nillable="true" type="q1:ArrayOfint"/>
    <xs:element minOccurs="0" name="b" type="xs:int"/>
    <xs:element minOccurs="0" name="c" type="xs:boolean"/>
    <xs:element minOccurs="0" name="d" type="xs:int"/>
    <xs:element minOccurs="0" name="e" type="xs:int"/>
    <xs:element minOccurs="0" name="f" type="xs:int"/>
    <xs:element minOccurs="0" name="g" nillable="true" type="xs:dateTime"/>
    <xs:element minOccurs="0" name="h" nillable="true" type="xs:dateTime"/>
    <xs:element minOccurs="0" name="i" type="ser:duration"/>
  </xs:sequence>
</xs:complexType>
<xs:element name="FCRO" nillable="true" type="tns:FCRO"/>
<xs:complexType name="ArrayOfEC">
  <xs:sequence>
    <xs:element minOccurs="0" maxOccurs="unbounded" name="EC" nillable="true"
type="tns:EC"/>
  </xs:sequence>
</xs:complexType>
<xs:element name="ArrayOfEC" nillable="true" type="tns:ArrayOfEC"/>
<xs:complexType name="EC">
  <xs:sequence>
    <xs:element minOccurs="0" name="C" type="xs:int"/>
    <xs:element minOccurs="0" name="ET" type="tns:ET"/>
  </xs:sequence>
</xs:complexType>
<xs:element name="EC" nillable="true" type="tns:EC"/>
<xs:complexType name="ArrayOfPI">
  <xs:sequence>
    <xs:element minOccurs="0" maxOccurs="unbounded" name="PI" nillable="true"
type="tns:PI"/>
  </xs:sequence>
</xs:complexType>
<xs:element name="ArrayOfPI" nillable="true" type="tns:ArrayOfPI"/>
<xs:complexType name="PI">
  <xs:sequence>
    <xs:element minOccurs="0" name="E" nillable="true" type="tns:E"/>
    <xs:element xmlns:q1="http://schemas.microsoft.com/2003/10/Serialization/Arrays"
minOccurs="0" name="I" nillable="true" type="q1:ArrayOfstring"/>
  </xs:sequence>
</xs:complexType>
<xs:element name="PI" nillable="true" type="tns:PI"/>
<xs:complexType name="LE">
  <xs:sequence>
    <xs:element minOccurs="0" name="b" type="xs:unsignedLong"/>

```

```

    <xs:element minOccurs="0" name="c" type="xs:unsignedShort"/>
    <xs:element minOccurs="0" name="r" type="xs:long"/>
    <xs:element minOccurs="0" name="t" type="xs:long"/>
  </xs:sequence>
</xs:complexType>
<xs:element name="LE" nillable="true" type="tns:LE"/>
<xs:import namespace="http://schemas.microsoft.com/2003/10/Serialization/" />
<xs:import namespace="http://schemas.microsoft.com/2003/10/Serialization/Arrays" />
</xs:schema>

```

7.4 http://schemas.microsoft.com/2003/10/Serialization/Arrays Schema

```

<?xml version="1.0"?>
<xs:schema xmlns:q1="http://schemas.microsoft.com/2003/10/Serialization/Arrays"
  elementFormDefault="qualified"
  targetNamespace="http://schemas.microsoft.com/2003/10/Serialization/Arrays"
  xmlns:xs="http://www.w3.org/2001/XMLSchema">
  <xs:complexType name="ArrayOfint">
    <xs:sequence>
      <xs:element minOccurs="0" maxOccurs="unbounded" name="int" type="xs:int"/>
    </xs:sequence>
  </xs:complexType>
  <xs:element name="ArrayOfint" nillable="true" type="q1:ArrayOfint"/>
  <xs:complexType name="ArrayOfstring">
    <xs:sequence>
      <xs:element minOccurs="0" maxOccurs="unbounded" name="string" nillable="true"
        type="xs:string"/>
    </xs:sequence>
  </xs:complexType>
  <xs:element name="ArrayOfstring" nillable="true" type="q1:ArrayOfstring"/>
</xs:schema>

```

7.5 http://schemas.datacontract.org/2004/07/System.Collections.Generic Schema

```

<?xml version="1.0"?>
<xs:schema xmlns:tns2="http://schemas.datacontract.org/2004/07/System.Collections.Generic"
  elementFormDefault="qualified"
  targetNamespace="http://schemas.datacontract.org/2004/07/System.Collections.Generic"
  xmlns:xs="http://www.w3.org/2001/XMLSchema">
  <xs:complexType name="ArrayOfKeyValuePairOfELEHsv_SlRZJ">
    <xs:sequence>
      <xs:element minOccurs="0" maxOccurs="unbounded" name="KeyValuePairOfELEHsv_SlRZJ"
        type="tns2:KeyValuePairOfELEHsv_SlRZJ"/>
    </xs:sequence>
  </xs:complexType>
  <xs:element name="ArrayOfKeyValuePairOfELEHsv_SlRZJ" nillable="true"
    type="tns2:ArrayOfKeyValuePairOfELEHsv_SlRZJ"/>
  <xs:complexType name="KeyValuePairOfELEHsv_SlRZJ">
    <xs:sequence>
      <xs:element xmlns:tns="http://Microsoft/Office/Server/FeedCache" name="key"
        nillable="true" type="tns:E"/>
      <xs:element xmlns:tns="http://Microsoft/Office/Server/FeedCache" name="value"
        nillable="true" type="tns:LE"/>
    </xs:sequence>
  </xs:complexType>

```

```

    <xs:element name="KeyValuePairOfELEHsv_SlRZJ" nillable="true"
type="tns2:KeyValuePairOfELEHsv_SlRZJ"/>
    <xs:import namespace="http://Microsoft/Office/Server/FeedCache"/>
    <xs:import namespace="http://schemas.microsoft.com/2003/10/Serialization/" />
</xs:schema>

```

7.6 http://Microsoft/Office/Server/UserProfiles Schema

```

<?xml version="1.0"?>
<xs:schema xmlns:q3="http://Microsoft/Office/Server/UserProfiles"
xmlns:ser="http://schemas.microsoft.com/2003/10/Serialization/"
elementFormDefault="qualified" targetNamespace="http://Microsoft/Office/Server/UserProfiles"
xmlns:xs="http://www.w3.org/2001/XMLSchema">
    <xs:import namespace="http://schemas.microsoft.com/2003/10/Serialization/" />
    <xs:complexType name="ArrayOfUserData">
        <xs:sequence>
            <xs:element minOccurs="0" maxOccurs="unbounded" name="UserData" nillable="true"
type="q3:UserData"/>
        </xs:sequence>
    </xs:complexType>
    <xs:element name="ArrayOfUserData" nillable="true" type="q3:ArrayOfUserData"/>
    <xs:complexType name="UserData">
        <xs:sequence>
            <xs:element minOccurs="0" name="Department" nillable="true" type="xs:string"/>
            <xs:element minOccurs="0" name="Email" nillable="true" type="xs:string"/>
            <xs:element minOccurs="0" name="EmailOptin" type="xs:int"/>
            <xs:element minOccurs="0" name="FeedIdentifier" nillable="true" type="xs:string"/>
            <xs:element minOccurs="0" name="FeedPrivacyActivity" type="xs:int"/>
            <xs:element minOccurs="0" name="IsPeopleListPublic" type="xs:boolean"/>
            <xs:element minOccurs="0" name="LastUpdate" type="xs:dateTime"/>
            <xs:element minOccurs="0" name="MasterRecordID" type="xs:long"/>
            <xs:element minOccurs="0" name="NTName" nillable="true" type="xs:string"/>
            <xs:element minOccurs="0" name="O15FirstRunExperience" type="xs:int"/>
            <xs:element minOccurs="0" name="PartitionID" type="ser:guid"/>
            <xs:element minOccurs="0" name="PersonalSiteCapabilities" type="xs:int"/>
            <xs:element minOccurs="0" name="PersonalSiteInstantiationState" type="xs:int"/>
            <xs:element minOccurs="0" name="PersonalSpace" nillable="true" type="xs:string"/>
            <xs:element minOccurs="0" name="PictureExchangeSyncState" type="xs:int"/>
            <xs:element minOccurs="0" name="PicturePlaceholderState" type="xs:int"/>
            <xs:element minOccurs="0" name="PictureTimestamp" nillable="true" type="xs:string"/>
            <xs:element minOccurs="0" name="PictureUrl" nillable="true" type="xs:string"/>
            <xs:element minOccurs="0" name="PreferredName" nillable="true" type="xs:string"/>
            <xs:element minOccurs="0" name="ProfileSubtypeID" type="xs:int"/>
            <xs:element minOccurs="0" name="RecordID" type="xs:long"/>
            <xs:element minOccurs="0" name="SID" nillable="true" type="xs:base64Binary"/>
            <xs:element minOccurs="0" name="SipAddress" nillable="true" type="xs:string"/>
            <xs:element minOccurs="0" name="StatusNote" nillable="true" type="xs:string"/>
            <xs:element minOccurs="0" name="Title" nillable="true" type="xs:string"/>
            <xs:element minOccurs="0" name="UserID" type="ser:guid"/>
        </xs:sequence>
    </xs:complexType>
    <xs:element name="UserData" nillable="true" type="q3:UserData"/>
</xs:schema>

```

7.7 http://schemas.datacontract.org/2004/07/System Schema

```

<?xml version="1.0"?>

```

```

<xs:schema xmlns:q5="http://schemas.datacontract.org/2004/07/System"
xmlns:ser="http://schemas.microsoft.com/2003/10/Serialization/"
elementFormDefault="qualified"
targetNamespace="http://schemas.datacontract.org/2004/07/System"
xmlns:xs="http://www.w3.org/2001/XMLSchema">
  <xs:import namespace="http://schemas.microsoft.com/2003/10/Serialization/" />
  <xs:complexType name="ArrayOfNullableOfguid">
    <xs:sequence>
      <xs:element minOccurs="0" maxOccurs="unbounded" name="guid" nillable="true"
type="ser:guid" />
    </xs:sequence>
  </xs:complexType>
  <xs:element name="ArrayOfNullableOfguid" nillable="true" type="q5:ArrayOfNullableOfguid" />
</xs:schema>

```

7.8 http://Microsoft/Office/Server/FeedyCache Schema

```

<?xml version="1.0"?>
<xs:schema xmlns:tns1="http://Microsoft/Office/Server/FeedyCache"
elementFormDefault="qualified" targetNamespace="http://Microsoft/Office/Server/FeedyCache"
xmlns:xs="http://www.w3.org/2001/XMLSchema">
  <xs:complexType name="FCCR">
    <xs:sequence>
      <xs:element xmlns:tns="http://Microsoft/Office/Server/FeedCache" minOccurs="0"
name="EC" nillable="true" type="tns:PC" />
      <xs:element xmlns:tns="http://Microsoft/Office/Server/FeedCache" minOccurs="0"
name="FC" nillable="true" type="tns:ArrayOfEC" />
      <xs:element xmlns:q3="http://Microsoft/Office/Server/UserProfiles" minOccurs="0"
name="P" nillable="true" type="q3:ArrayOfUserData" />
      <xs:element xmlns:q1="http://schemas.microsoft.com/2003/10/Serialization/Arrays"
minOccurs="0" name="S" nillable="true" type="q1:ArrayOfString" />
      <xs:element xmlns:q5="http://schemas.datacontract.org/2004/07/System" minOccurs="0"
name="T" nillable="true" type="q5:ArrayOfNullableOfguid" />
      <xs:element minOccurs="0" name="TN" nillable="true" type="xs:dateTime" />
      <xs:element minOccurs="0" name="TO" nillable="true" type="xs:dateTime" />
    </xs:sequence>
  </xs:complexType>
  <xs:element name="FCCR" nillable="true" type="tns1:FCCR" />
  <xs:import namespace="http://Microsoft/Office/Server/FeedCache" />
  <xs:import namespace="http://Microsoft/Office/Server/UserProfiles" />
  <xs:import namespace="http://schemas.datacontract.org/2004/07/System" />
  <xs:import namespace="http://schemas.microsoft.com/2003/10/Serialization/Arrays" />
</xs:schema>

```

8 Appendix C: Product Behavior

The information in this specification is applicable to the following Microsoft products or supplemental software. References to product versions include released service packs:

- Microsoft SharePoint Server 2013

Exceptions, if any, are noted below. If a service pack or Quick Fix Engineering (QFE) number appears with the product version, behavior changed in that service pack or QFE. The new behavior also applies to subsequent service packs of the product unless otherwise specified. If a product edition appears with the product version, behavior is different in that product edition.

Unless otherwise specified, any statement of optional behavior in this specification that is prescribed using the terms SHOULD or SHOULD NOT implies product behavior in accordance with the SHOULD or SHOULD NOT prescription. Unless otherwise specified, the term MAY implies that the product does not follow the prescription.

9 Change Tracking

This section identifies changes that were made to the [MS-UPFCWS] protocol document between the February 2014 and April 2014 releases. Changes are classified as New, Major, Minor, Editorial, or No change.

The revision class **New** means that a new document is being released.

The revision class **Major** means that the technical content in the document was significantly revised. Major changes affect protocol interoperability or implementation. Examples of major changes are:

- A document revision that incorporates changes to interoperability requirements or functionality.
- The removal of a document from the documentation set.

The revision class **Minor** means that the meaning of the technical content was clarified. Minor changes do not affect protocol interoperability or implementation. Examples of minor changes are updates to clarify ambiguity at the sentence, paragraph, or table level.

The revision class **Editorial** means that the formatting in the technical content was changed. Editorial changes apply to grammatical, formatting, and style issues.

The revision class **No change** means that no new technical changes were introduced. Minor editorial and formatting changes may have been made, but the technical content of the document is identical to the last released version.

Major and minor changes can be described further using the following change types:

- New content added.
- Content updated.
- Content removed.
- New product behavior note added.
- Product behavior note updated.
- Product behavior note removed.
- New protocol syntax added.
- Protocol syntax updated.
- Protocol syntax removed.
- New content added due to protocol revision.
- Content updated due to protocol revision.
- Content removed due to protocol revision.
- New protocol syntax added due to protocol revision.
- Protocol syntax updated due to protocol revision.
- Protocol syntax removed due to protocol revision.

- Obsolete document removed.

Editorial changes are always classified with the change type **Editorially updated**.

Some important terms used in the change type descriptions are defined as follows:

- **Protocol syntax** refers to data elements (such as packets, structures, enumerations, and methods) as well as interfaces.
- **Protocol revision** refers to changes made to a protocol that affect the bits that are sent over the wire.

The changes made to this document are listed in the following table. For more information, please contact dochelp@microsoft.com.

Section	Tracking number (if applicable) and description	Major change (Y or N)	Change type
2.2.4.9 E	In the description of the ET element, updated the section reference.	N	Content updated.
2.2.4.15 FCRO	Changed the type of the i element from TimeSpan to duration, and updated the associated reference accordingly.	N	Content updated.
2.2.4.15 FCRO	Changed the type of the a element from "an integer bitmask field" to "a list of numerical values representing the definition of the entry," and revised the description for this element accordingly.	N	Content updated.
3.1.4.6.2.1 GetFeeds	In the description for the entityNewerThanPair element, changed "pairs" to "sequence of pairs".	N	Content updated.
3.1.4.7.2.2 GetPublishedFeedResponse	In the GetPublishedFeedResult element, changed the type from PC to FCCR and updated the associated section reference accordingly.	N	Content updated.

10 Index

A

Abstract data model
 [server](#) 30
[AddFeedEntry example](#) 70
[Applicability](#) 12
[ArrayOfECcomplex type](#) 15
[ArrayOfEcomplex type](#) 15
[ArrayOfEDTcomplex type](#) 15
[ArrayOfintcomplex type](#) 16
[ArrayOfNullableOfguidcomplex type](#) 16
[ArrayOfPcomplex type](#) 16
[ArrayOfstringcomplex type](#) 17
[ArrayOfUserDatacomplex type](#) 17
[Attribute groups](#) 28
[Attributes](#) 27

C

[Capability negotiation](#) 12
[Change tracking](#) 97
[charsimple type](#) 25
[Complex types](#) 14
 [ArrayOfE](#) 15
 [ArrayOfEC](#) 15
 [ArrayOfEDT](#) 15
 [ArrayOfint](#) 16
 [ArrayOfNullableOfguid](#) 16
 [ArrayOfP](#) 16
 [ArrayOfstring](#) 17
 [ArrayOfUserData](#) 17
 E 17
 EC 18
 EDT 18
 FCCR 19
 FCRE 20
 FCRO 20
 [FeedCacheFault](#) 18
 P 21
 PC 22
 [UserData](#) 23

D

Data model - abstract
 [server](#) 30
[durationsimple type](#) 25

E

[ECcomplex type](#) 18
[Ecomplex type](#) 17
[EDTcomplex type](#) 18
[ETsimple type](#) 26
Events
 [local - server](#) 69
 [timer - server](#) 69
Examples

[AddFeedEntry](#) 70
[GetPublishedFeed](#) 71

F

[FCCRcomplex type](#) 19
[FCREcomplex type](#) 20
[FCROcomplex type](#) 20
[FeedCacheFaultCodessimple type](#) 26
[FeedCacheFaultcomplex type](#) 18
[Fields - vendor-extensible](#) 12
[Full WSDL](#) 74
[Full XML Schema](#) 84
 [http://Microsoft/Office/Server/FeedCache Schema](#) 90
 [http://Microsoft/Office/Server/FeedyCache Schema](#) 95
 [http://Microsoft/Office/Server/UserProfiles Schema](#) 94
 [http://schemas.datacontract.org/2004/07/System.Schema](#) 94
 [http://schemas.datacontract.org/2004/07/System.Collections.Generic.Schema](#) 93
 [http://schemas.microsoft.com/2003/10/Serialization/Schema](#) 89
 [http://schemas.microsoft.com/2003/10/Serialization/Arrays.Schema](#) 93
 [http://tempuri.org/Schema](#) 84

G

[GetPublishedFeed example](#) 71
[Glossary](#) 9
[Groups](#) 27
[guidsimple type](#) 26

I

[Implementer - security considerations](#) 73
[Index of security parameters](#) 73
[Informative references](#) 11
Initialization
 [server](#) 31
[Introduction](#) 9

L

Local events
 [server](#) 69

M

Message processing
 [server](#) 31
Messages
 [ArrayOfECcomplex type](#) 15
 [ArrayOfEcomplex type](#) 15
 [ArrayOfEDTcomplex type](#) 15

- [ArrayOfintcomplex type](#) 16
- [ArrayOfNullableOfguidcomplex type](#) 16
- [ArrayOfPcomplex type](#) 16
- [ArrayOfstringcomplex type](#) 17
- [ArrayOfUserDatacomplex type](#) 17
- [attribute groups](#) 28
- [attributes](#) 27
- [charsimple type](#) 25
- [complex types](#) 14
- [durationsimple type](#) 25
- [ECcomplex type](#) 18
- [Ecomplex type](#) 17
- [EDTcomplex type](#) 18
- [elements](#) 14
- [enumerated](#) 14
- [ETsimple type](#) 26
- [FCCRcomplex type](#) 19
- [FCREcomplex type](#) 20
- [FCROcomplex type](#) 20
- [FeedCacheFaultCodessimple type](#) 26
- [FeedCacheFaultcomplex type](#) 18
- [groups](#) 27
- [guidsimple type](#) 26
- [namespaces](#) 13
- [PCcomplex type](#) 22
- [Pcomplex type](#) 21
- [simple types](#) 25
- [syntax](#) 13
- [transport](#) 13
- [UPLsimple type](#) 27
- [UserDatacomplex type](#) 23

N

- [Namespaces](#) 13
- [Normative references](#) 10

O

Operations

- [AddFeedEntries](#) 62
- [AddFeedEntriesForRepop](#) 66
- [AddFeedEntry](#) 32
- [BulkLMTUpdate](#) 34
- [GetCategoricalFeed](#) 37
- [GetConsolidatedFeed](#) 40
- [GetEntries](#) 42
- [GetFeeds](#) 45
- [GetPublishedFeed](#) 47
- [IsEntityActivelyFollowed](#) 49
- [IsRepopulationNeeded](#) 51
- [NewEntityFollower](#) 53
- [RefreshFollowedEntities](#) 56
- [RemoveEntityFeed](#) 58
- [RemoveFeedEntry](#) 60
- [RemoveInternalRegions](#) 64
- [Overview \(synopsis\)](#) 11

P

- [Parameters - security index](#) 73
- [PCcomplex type](#) 22

- [Pcomplex type](#) 21
- [Preconditions](#) 11
- [Prerequisites](#) 11
- [Product behavior](#) 96
- Protocol Details
 - [overview](#) 29

R

- [References](#) 10
 - [informative](#) 11
 - [normative](#) 10
- [Relationship to other protocols](#) 11

S

Security

- [implementer considerations](#) 73
- [parameter index](#) 73

Sequencing rules

- [server](#) 31

Server

- [abstract data model](#) 30
- [AddFeedEntries operation](#) 62
- [AddFeedEntriesForRepop operation](#) 66
- [AddFeedEntry operation](#) 32
- [BulkLMTUpdate operation](#) 34
- [GetCategoricalFeed operation](#) 37
- [GetConsolidatedFeed operation](#) 40
- [GetEntries operation](#) 42
- [GetFeeds operation](#) 45
- [GetPublishedFeed operation](#) 47
- [initialization](#) 31
- [IsEntityActivelyFollowed operation](#) 49
- [IsRepopulationNeeded operation](#) 51
- [local events](#) 69
- [message processing](#) 31
- [NewEntityFollower operation](#) 53
- [RefreshFollowedEntities operation](#) 56
- [RemoveEntityFeed operation](#) 58
- [RemoveFeedEntry operation](#) 60
- [RemoveInternalRegions operation](#) 64
- [sequencing rules](#) 31
- [timer events](#) 69
- [timers](#) 31
- [Server details](#) 29
- [Simple types](#) 25
 - [char](#) 25
 - [duration](#) 25
 - [ET](#) 26
 - [FeedCacheFaultCodes](#) 26
 - [guid](#) 26
 - [UPL](#) 27
- [Standards assignments](#) 12

Syntax

- [messages - overview](#) 13

T

Timer events

- [server](#) 69

Timers

[server](#) 31
[Tracking changes](#) 97
[Transport](#) 13
Types
 [complex](#) 14
 [simple](#) 25

U

[UPLsimple type](#) 27
[UserDatacomplex type](#) 23

V

[Vendor-extensible fields](#) 12
[Versioning](#) 12

W

[WSDL](#) 74

X

[XML Schema](#) 84
 [http://Microsoft/Office/Server/FeedCache
 Schema](#) 90
 [http://Microsoft/Office/Server/FeedyCache
 Schema](#) 95
 [http://Microsoft/Office/Server/UserProfiles
 Schema](#) 94
 [http://schemas.datacontract.org/2004/07/Syste
 m Schema](#) 94
 [http://schemas.datacontract.org/2004/07/Syste
 m.Collections.Generic Schema](#) 93
 [http://schemas.microsoft.com/2003/10/Serializat
 ion/ Schema](#) 89
 [http://schemas.microsoft.com/2003/10/Serializat
 ion/Arrays Schema](#) 93
 [http://tempuri.org/ Schema](#) 84