

[MS-UPFCWS]: User Activity Feed Cache Web Service Protocol Specification

Intellectual Property Rights Notice for Open Specifications Documentation

- **Technical Documentation.** Microsoft publishes Open Specifications documentation for protocols, file formats, languages, standards as well as overviews of the interaction among each of these technologies.
- **Copyrights.** This documentation is covered by Microsoft copyrights. Regardless of any other terms that are contained in the terms of use for the Microsoft website that hosts this documentation, you may make copies of it in order to develop implementations of the technologies described in the Open Specifications and may distribute portions of it in your implementations using these technologies or your documentation as necessary to properly document the implementation. You may also distribute in your implementation, with or without modification, any schema, IDL's, or code samples that are included in the documentation. This permission also applies to any documents that are referenced in the Open Specifications.
- **No Trade Secrets.** Microsoft does not claim any trade secret rights in this documentation.
- **Patents.** Microsoft has patents that may cover your implementations of the technologies described in the Open Specifications. Neither this notice nor Microsoft's delivery of the documentation grants any licenses under those or any other Microsoft patents. However, a given Open Specification may be covered by Microsoft [Open Specification Promise](#) or the [Community Promise](#). If you would prefer a written license, or if the technologies described in the Open Specifications are not covered by the Open Specifications Promise or Community Promise, as applicable, patent licenses are available by contacting iplg@microsoft.com.
- **Trademarks.** The names of companies and products contained in this documentation may be covered by trademarks or similar intellectual property rights. This notice does not grant any licenses under those rights.
- **Fictitious Names.** The example companies, organizations, products, domain names, e-mail addresses, logos, people, places, and events depicted in this documentation are fictitious. No association with any real company, organization, product, domain name, email address, logo, person, place, or event is intended or should be inferred.

Reservation of Rights. All other rights are reserved, and this notice does not grant any rights other than specifically described above, whether by implication, estoppel, or otherwise.

Tools. The Open Specifications do not require the use of Microsoft programming tools or programming environments in order for you to develop an implementation. If you have access to Microsoft programming tools and environments you are free to take advantage of them. Certain Open Specifications are intended for use in conjunction with publicly available standard specifications and network programming art, and assumes that the reader either is familiar with the aforementioned material or has immediate access to it.

Revision Summary

Date	Revision History	Revision Class	Comments
01/20/2012	0.1	New	Released new document.
04/11/2012	0.1	No change	No changes to the meaning, language, or formatting of the technical content.
07/16/2012	0.1	No change	No changes to the meaning, language, or formatting of the technical content.
09/12/2012	0.1	No change	No changes to the meaning, language, or formatting of the technical content.
10/08/2012	1.0	Major	Significantly changed the technical content.

Table of Contents

1 Introduction	9
1.1 Glossary	9
1.2 References	10
1.2.1 Normative References	10
1.2.2 Informative References	11
1.3 Overview	11
1.4 Relationship to Other Protocols	11
1.5 Prerequisites/Preconditions	11
1.6 Applicability Statement	12
1.7 Versioning and Capability Negotiation	12
1.8 Vendor-Extensible Fields	12
1.9 Standards Assignments	12
2 Messages	13
2.1 Transport	13
2.2 Common Message Syntax	13
2.2.1 Namespaces	13
2.2.2 Messages	14
2.2.3 Elements	14
2.2.4 Complex Types	14
2.2.4.1 ArrayOfE	15
2.2.4.2 ArrayOfEDT	15
2.2.4.3 ArrayOfP	15
2.2.4.4 E	16
2.2.4.5 EDT	16
2.2.4.6 FeedCacheFault	17
2.2.4.7 P	17
2.2.4.8 PC	18
2.2.4.9 ArrayOfEC	19
2.2.4.10 ArrayOfint	19
2.2.4.11 ArrayOfNullableOfguid	20
2.2.4.12 ArrayOfstring	20
2.2.4.13 ArrayOfUserData	20
2.2.4.14 EC	20
2.2.4.15 FCCR	21
2.2.4.16 FCRE	22
2.2.4.17 FCRO	22
2.2.4.18 UserData	23
2.2.5 Simple Types	24
2.2.5.1 char	25
2.2.5.2 duration	25
2.2.5.3 FeedCacheFaultCodes	25
2.2.5.4 guid	26
2.2.5.5 ET	26
2.2.5.6 UPL	27
2.2.6 Attributes	27
2.2.7 Groups	27
2.2.8 Attribute Groups	27
3 Protocol Details	28

3.1	Server Details	28
3.1.1	Abstract Data Model	29
3.1.2	Timers	30
3.1.3	Initialization	30
3.1.4	Message Processing Events and Sequencing Rules	30
3.1.4.1	AddFeedEntry.....	31
3.1.4.1.1	Messages	31
3.1.4.1.1.1	IFeedCacheService_AddFeedEntry_InputMessage	31
3.1.4.1.1.2	IFeedCacheService_AddFeedEntry_OutputMessage	32
3.1.4.1.2	Elements.....	32
3.1.4.1.2.1	AddFeedEntry	32
3.1.4.1.2.2	AddFeedEntryResponse	32
3.1.4.1.3	Complex Types	33
3.1.4.1.4	Simple Types.....	33
3.1.4.1.5	Attributes.....	33
3.1.4.1.6	Groups.....	33
3.1.4.1.7	Attribute Groups	33
3.1.4.2	BulkLMTUpdate	33
3.1.4.2.1	Messages	33
3.1.4.2.1.1	IFeedCacheService_BulkLMTUpdate_InputMessage	34
3.1.4.2.1.2	IFeedCacheService_BulkLMTUpdate_OutputMessage	34
3.1.4.2.2	Elements.....	34
3.1.4.2.2.1	BulkLMTUpdate	34
3.1.4.2.2.2	BulkLMTUpdateResponse	35
3.1.4.2.3	Complex Types	35
3.1.4.2.3.1	ArrayOfKeyValuePairOfELEHsv_SIRZJ	35
3.1.4.2.3.2	KeyValuePairOfELEHsv_SIRZJ.....	35
3.1.4.2.3.3	LE.....	36
3.1.4.2.4	Simple Types.....	36
3.1.4.2.5	Attributes.....	36
3.1.4.2.6	Groups.....	36
3.1.4.2.7	Attribute Groups	36
3.1.4.3	GetCategoricalFeed	36
3.1.4.3.1	Messages	37
3.1.4.3.1.1	IFeedCacheService_GetCategoricalFeed_InputMessage	37
3.1.4.3.1.2	IFeedCacheService_GetCategoricalFeed_OutputMessage	37
3.1.4.3.2	Elements.....	37
3.1.4.3.2.1	GetCategoricalFeed	38
3.1.4.3.2.2	GetCategoricalFeedResponse	38
3.1.4.3.3	Complex Types	38
3.1.4.3.4	Simple Types.....	38
3.1.4.3.5	Attributes.....	38
3.1.4.3.6	Groups.....	38
3.1.4.3.7	Attribute Groups	39
3.1.4.4	GetConsolidatedFeed	39
3.1.4.4.1	Messages	39
3.1.4.4.1.1	IFeedCacheService_GetConsolidatedFeed_InputMessage	39
3.1.4.4.1.2	IFeedCacheService_GetConsolidatedFeed_OutputMessage	39
3.1.4.4.2	Elements.....	40
3.1.4.4.2.1	GetConsolidatedFeed	40
3.1.4.4.2.2	GetConsolidatedFeedResponse	40
3.1.4.4.3	Complex Types	40
3.1.4.4.4	Simple Types.....	41

3.1.4.4.5	Attributes.....	41
3.1.4.4.6	Groups.....	41
3.1.4.4.7	Attribute Groups	41
3.1.4.5	GetEntries	41
3.1.4.5.1	Messages	41
3.1.4.5.1.1	IFeedCacheService_GetEntries_InputMessage.....	41
3.1.4.5.1.2	IFeedCacheService_GetEntries_OutputMessage.....	42
3.1.4.5.2	Elements.....	42
3.1.4.5.2.1	GetEntries	42
3.1.4.5.2.2	GetEntriesResponse	42
3.1.4.5.3	Complex Types	42
3.1.4.5.3.1	ArrayOfPI	43
3.1.4.5.3.2	PI	43
3.1.4.5.4	Simple Types.....	43
3.1.4.5.5	Attributes.....	43
3.1.4.5.6	Groups.....	43
3.1.4.5.7	Attribute Groups	43
3.1.4.6	GetFeeds.....	44
3.1.4.6.1	Messages	44
3.1.4.6.1.1	IFeedCacheService_GetFeeds_InputMessage	44
3.1.4.6.1.2	IFeedCacheService_GetFeeds_OutputMessage	44
3.1.4.6.2	Elements.....	44
3.1.4.6.2.1	GetFeeds.....	45
3.1.4.6.2.2	GetFeedsResponse.....	45
3.1.4.6.3	Complex Types	45
3.1.4.6.4	Simple Types.....	46
3.1.4.6.5	Attributes.....	46
3.1.4.6.6	Groups.....	46
3.1.4.6.7	Attribute Groups	46
3.1.4.7	GetPublishedFeed	46
3.1.4.7.1	Messages	46
3.1.4.7.1.1	IFeedCacheService_GetPublishedFeed_InputMessage	46
3.1.4.7.1.2	IFeedCacheService_GetPublishedFeed_OutputMessage	47
3.1.4.7.2	Elements.....	47
3.1.4.7.2.1	GetPublishedFeed	47
3.1.4.7.2.2	GetPublishedFeedResponse.....	47
3.1.4.7.3	Complex Types	48
3.1.4.7.4	Simple Types.....	48
3.1.4.7.5	Attributes.....	48
3.1.4.7.6	Groups.....	48
3.1.4.7.7	Attribute Groups	48
3.1.4.8	IsEntityActivelyFollowed	48
3.1.4.8.1	Messages	48
3.1.4.8.1.1	IFeedCacheService_IsEntityActivelyFollowed_InputMessage.....	49
3.1.4.8.1.2	IFeedCacheService_IsEntityActivelyFollowed_OutputMessage	49
3.1.4.8.2	Elements.....	49
3.1.4.8.2.1	IsEntityActivelyFollowed	49
3.1.4.8.2.2	IsEntityActivelyFollowedResponse.....	50
3.1.4.8.3	Complex Types	50
3.1.4.8.4	Simple Types.....	50
3.1.4.8.5	Attributes.....	50
3.1.4.8.6	Groups.....	50
3.1.4.8.7	Attribute Groups	50

3.1.4.9	IsRepopulationNeeded.....	50
3.1.4.9.1	Messages	51
3.1.4.9.1.1	IFeedCacheService_IsRepopulationNeeded_InputMessage	51
3.1.4.9.1.2	IFeedCacheService_IsRepopulationNeeded_OutputMessage	51
3.1.4.9.2	Elements.....	51
3.1.4.9.2.1	IsRepopulationNeeded	51
3.1.4.9.2.2	IsRepopulationNeededResponse	52
3.1.4.9.3	Complex Types	52
3.1.4.9.4	Simple Types.....	52
3.1.4.9.5	Attributes.....	52
3.1.4.9.6	Groups.....	52
3.1.4.9.7	Attribute Groups	52
3.1.4.10	NewEntityFollower	52
3.1.4.10.1	Messages	53
3.1.4.10.1.1	IFeedCacheService_NewEntityFollower_InputMessage	53
3.1.4.10.1.2	IFeedCacheService_NewEntityFollower_OutputMessage.....	53
3.1.4.10.2	Elements.....	53
3.1.4.10.2.1	NewEntityFollower	53
3.1.4.10.2.2	NewEntityFollowerResponse	54
3.1.4.10.3	Complex Types	54
3.1.4.10.4	Simple Types	54
3.1.4.10.5	Attributes	54
3.1.4.10.6	Groups.....	54
3.1.4.10.7	Attribute Groups.....	54
3.1.4.11	RefreshFollowedEntities	54
3.1.4.11.1	Messages	55
3.1.4.11.1.1	IFeedCacheService_RefreshFollowedEntities_InputMessage	55
3.1.4.11.1.2	IFeedCacheService_RefreshFollowedEntities_OutputMessage	55
3.1.4.11.2	Elements.....	55
3.1.4.11.2.1	RefreshFollowedEntities	56
3.1.4.11.2.2	RefreshFollowedEntitiesResponse.....	56
3.1.4.11.3	Complex Types	56
3.1.4.11.4	Simple Types	56
3.1.4.11.5	Attributes	56
3.1.4.11.6	Groups.....	56
3.1.4.11.7	Attribute Groups.....	57
3.1.4.12	RemoveEntityFeed	57
3.1.4.12.1	Messages	57
3.1.4.12.1.1	IFeedCacheService_RemoveEntityFeed_InputMessage.....	57
3.1.4.12.1.2	IFeedCacheService_RemoveEntityFeed_OutputMessage	57
3.1.4.12.2	Elements.....	57
3.1.4.12.2.1	RemoveEntityFeed	58
3.1.4.12.2.2	RemoveEntityFeedResponse.....	58
3.1.4.12.3	Complex Types	58
3.1.4.12.4	Simple Types	58
3.1.4.12.5	Attributes	58
3.1.4.12.6	Groups.....	58
3.1.4.12.7	Attribute Groups.....	59
3.1.4.13	RemoveFeedEntry	59
3.1.4.13.1	Messages	59
3.1.4.13.1.1	IFeedCacheService_RemoveFeedEntry_InputMessage	59
3.1.4.13.1.2	IFeedCacheService_RemoveFeedEntry_OutputMessage	59
3.1.4.13.2	Elements.....	59

3.1.4.13.2.1	RemoveFeedEntry	60
3.1.4.13.2.2	RemoveFeedEntryResponse	60
3.1.4.13.3	Complex Types	60
3.1.4.13.4	Simple Types	60
3.1.4.13.5	Attributes	60
3.1.4.13.6	Groups.....	61
3.1.4.13.7	Attribute Groups.....	61
3.1.4.14	AddFeedEntries.....	61
3.1.4.14.1	Messages	61
3.1.4.14.1.1	IFeedCacheService_AddFeedEntries_InputMessage	61
3.1.4.14.1.2	IFeedCacheService_AddFeedEntries_OutputMessage	62
3.1.4.14.2	Elements.....	62
3.1.4.14.2.1	AddFeedEntries	62
3.1.4.14.2.2	AddFeedEntriesResponse	62
3.1.4.14.3	Complex Types	62
3.1.4.14.4	Simple Types	63
3.1.4.14.5	Attributes.....	63
3.1.4.14.6	Groups.....	63
3.1.4.14.7	Attribute Groups.....	63
3.1.4.15	RemoveInternalRegions	63
3.1.4.15.1	Messages	63
3.1.4.15.1.1	IFeedCacheService_RemoveInternalRegions_InputMessage	63
3.1.4.15.1.2	IFeedCacheService_RemoveInternalRegions_OutputMessage	64
3.1.4.15.2	Elements.....	64
3.1.4.15.2.1	RemoveInternalRegions.....	64
3.1.4.15.2.2	RemoveInternalRegionsResponse	64
3.1.4.15.3	Complex Types	65
3.1.4.15.4	Simple Types	65
3.1.4.15.5	Attributes.....	65
3.1.4.15.6	Groups.....	65
3.1.4.15.7	Attribute Groups.....	65
3.1.4.16	AddFeedEntriesForRepop	65
3.1.4.16.1	Messages	65
3.1.4.16.1.1	IFeedCacheService_AddFeedEntriesForRepop_InputMessage	66
3.1.4.16.1.2	IFeedCacheService_AddFeedEntriesForRepop_OutputMessage.....	66
3.1.4.16.2	Elements.....	66
3.1.4.16.2.1	AddFeedEntriesForRepop	66
3.1.4.16.2.2	AddFeedEntriesForRepopResponse	67
3.1.4.16.3	Complex Types	67
3.1.4.16.4	Simple Types	67
3.1.4.16.5	Attributes.....	67
3.1.4.16.6	Groups.....	67
3.1.4.16.7	Attribute Groups.....	67
3.1.5	Timer Events	67
3.1.6	Other Local Events	67
4	Protocol Examples.....	68
4.1	AddFeedEntry.....	68
4.2	GetPublishedFeed	69
5	Security.....	71
5.1	Security Considerations for Implementers.....	71
5.2	Index of Security Parameters	71

6	Appendix A: Full WSDL	72
7	Appendix B: Full XML Schema	82
7.1	http://tempuri.org/ Schema	82
7.2	http://schemas.microsoft.com/2003/10/Serialization/ Schema	87
7.3	http://Microsoft/Office/Server/FeedCache Schema	88
7.4	http://schemas.microsoft.com/2003/10/Serialization/Arrays Schema	91
7.5	http://schemas.datacontract.org/2004/07/System.Collections.Generic Schema	91
7.6	http://Microsoft/Office/Server/UserProfiles Schema	92
7.7	http://schemas.datacontract.org/2004/07/System Schema	93
8	Appendix C: Product Behavior	94
9	Change Tracking.....	95
10	Index	98

1 Introduction

The User Activity Feed Cache Web Service Protocol enables protocol clients to store and retrieve data related to social feed posts and feed metadata in an in-memory cache on a protocol server.

Sections 1.8, 2, and 3 of this specification are normative and can contain the terms MAY, SHOULD, MUST, MUST NOT, and SHOULD NOT as defined in RFC 2119. Sections 1.5 and 1.9 are also normative but cannot contain those terms. All other sections and examples in this specification are informative.

1.1 Glossary

The following terms are defined in [\[MS-GLOS\]](#):

Coordinated Universal Time (UTC)
GUID
Hypertext Transfer Protocol (HTTP)
Hypertext Transfer Protocol over Secure Sockets Layer (HTTPS)
security identifier (SID)
Transmission Control Protocol (TCP)
user object

The following terms are defined in [\[MS-OFCGLOS\]](#):

application server
datetime
document
email address
endpoint
list
login name
partition identifier
Simple Object Access Protocol (SOAP)
site
site collection
SOAP action
SOAP body
SOAP fault
social tag
tenant
Uniform Resource Identifier (URI)
Uniform Resource Locator (URL)
user profile
User Profile Service
web application
web service
Web Services Description Language (WSDL)
WSDL message
WSDL operation
XML namespace
XML namespace prefix
XML schema

The following terms are specific to this document:

feed entity: An object that represents anything that can have a feed, such as a user, a document, or a site.

feed entry: The data contained in a posting to a feed.

MAY, SHOULD, MUST, SHOULD NOT, MUST NOT: These terms (in all caps) are used as described in [\[RFC2119\]](#). All statements of optional behavior use either MAY, SHOULD, or SHOULD NOT.

1.2 References

References to Microsoft Open Specifications documentation do not include a publishing year because links are to the latest version of the technical documents, which are updated frequently. References to other documents include a publishing year when one is available.

1.2.1 Normative References

We conduct frequent surveys of the normative references to assure their continued availability. If you have any issue with finding a normative reference, please contact dochelp@microsoft.com. We will assist you in finding the relevant information. Please check the archive site, <http://msdn2.microsoft.com/en-us/library/E4BD6494-06AD-4aed-9823-445E921C9624>, as an additional source.

[MS-SPSTWS] Microsoft Corporation, "[SharePoint Security Token Service Web Service Protocol Specification](#)".

[MS-UPSCWS] Microsoft Corporation, "[User Profile Service Application Caching Web Service Protocol Specification](#)".

[RFC2119] Bradner, S., "Key words for use in RFCs to Indicate Requirement Levels", BCP 14, RFC 2119, March 1997, <http://www.rfc-editor.org/rfc/rfc2119.txt>

[RFC2616] Fielding, R., Gettys, J., Mogul, J., et al., "Hypertext Transfer Protocol -- HTTP/1.1", RFC 2616, June 1999, <http://www.ietf.org/rfc/rfc2616.txt>

[RFC2818] Rescorla, E., "HTTP Over TLS", RFC 2818, May 2000, <http://www.ietf.org/rfc/rfc2818.txt>

[SOAP1.1] Box, D., Ehnebuske, D., Kakivaya, G., et al., "Simple Object Access Protocol (SOAP) 1.1", May 2000, <http://www.w3.org/TR/2000/NOTE-SOAP-20000508/>

[SOAP1.2/1] Gudgin, M., Hadley, M., Mendelsohn, N., Moreau, J., and Nielsen, H.F., "SOAP Version 1.2 Part 1: Messaging Framework", W3C Recommendation, June 2003, <http://www.w3.org/TR/2003/REC-soap12-part1-20030624>

[SOAP1.2/2] Gudgin, M., Hadley, M., Mendelsohn, N., Moreau, J., and Nielsen, H.F., "SOAP Version 1.2 Part 2: Adjuncts", W3C Recommendation, June 2003, <http://www.w3.org/TR/2003/REC-soap12-part2-20030624>

[WSDL] Christensen, E., Curbera, F., Meredith, G., and Weerawarana, S., "Web Services Description Language (WSDL) 1.1", W3C Note, March 2001, <http://www.w3.org/TR/2001/NOTE-wsdl-20010315>

[XMLNS] Bray, T., Hollander, D., Layman, A., et al., Eds., "Namespaces in XML 1.0 (Third Edition)", W3C Recommendation, December 2009, <http://www.w3.org/TR/2009/REC-xml-names-20091208/>

[XMLSCHEMA1] Thompson, H.S., Ed., Beech, D., Ed., Maloney, M., Ed., and Mendelsohn, N., Ed., "XML Schema Part 1: Structures", W3C Recommendation, May 2001, <http://www.w3.org/TR/2001/REC-xmlschema-1-20010502/>

[XMLSCHEMA2] Biron, P.V., Ed. and Malhotra, A., Ed., "XML Schema Part 2: Datatypes", W3C Recommendation, May 2001, <http://www.w3.org/TR/2001/REC-xmlschema-2-20010502/>

1.2.2 Informative References

[MC-NMF] Microsoft Corporation, "[.NET Message Framing Protocol Specification](#)".

[MS-GLOS] Microsoft Corporation, "[Windows Protocols Master Glossary](#)".

[MS-OFCGLOS] Microsoft Corporation, "[Microsoft Office Master Glossary](#)".

[MS-SPTWS] Microsoft Corporation, "[Service Platform Topology Web Service Protocol Specification](#)".

1.3 Overview

This protocol allows protocol clients to store data related to social feed posts and feed metadata in an in-memory cache on a middle-tier **application server**. A typical scenario is a protocol client fetching the posts from a number of users to display a consolidated view of recent activities.

1.4 Relationship to Other Protocols

This protocol uses the **SOAP** message protocol for formatting requests and responses as described in [\[SOAP1.1\]](#), [\[SOAP1.2/1\]](#) and [\[SOAP1.2/2\]](#). It transmits these messages by using **HTTP** protocol as described in [\[RFC2616\]](#), or the **HTTPS** protocol as described in [\[RFC2818\]](#) or the **TCP** protocol as described in [\[MC-NMF\]](#).

The following diagram shows the underlying messaging and transport stack used by the protocol.

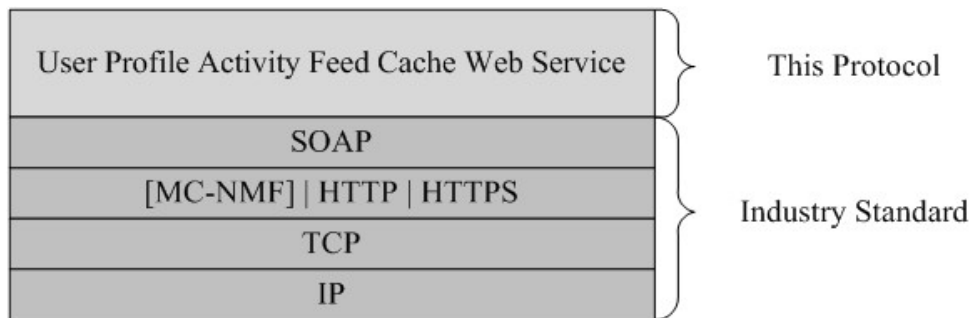


Figure 1: This protocol in relation to other protocols

1.5 Prerequisites/Preconditions

This protocol operates against a protocol server that exposes one or more **endpoint (4) URIs** that are known by protocol clients. The endpoint (4) URI of the protocol server and the transport that is used by the protocol server are either known by the protocol client or obtained by using the discovery mechanism that is described in [\[MS-SPTWS\]](#).

The protocol client obtains the requisite ApplicationClassId and ApplicationVersion values and the endpoint (4) URI of the protocol server that provides the discovery mechanism, as described in [\[MS-SPTWS\]](#), by means that are independent of either protocol.

This protocol requires the protocol client to have appropriate permission to call the methods on the protocol server.

The protocol client implements the token-based security mechanisms that are required by the protocol server and related security protocols, as described in [\[MS-SPSTWS\]](#).

1.6 Applicability Statement

The protocol is designed to work with cached feed data.

1.7 Versioning and Capability Negotiation

This specification covers versioning issues in the following areas:

- **Supported Transports:** This protocol can be implemented by using transports that support sending Simple Object Access Protocol (SOAP) messages, as specified in section 2.1.
- **Protocol Versions:** This protocol is not versioned.

Capability Negotiation: This protocol does not support version negotiation.

1.8 Vendor-Extensible Fields

None

1.9 Standards Assignments

None

2 Messages

2.1 Transport

Protocol servers MUST support Simple Object Access Protocol (SOAP) over Hypertext Transfer Protocol (HTTP), Hypertext Transfer Protocol over Secure Sockets Layer (HTTPS), or TCP.

All protocol messages MUST be transported by using HTTP or TCP bindings at the transport level.

Protocol messages MUST be formatted as specified in either [\[SOAP1.1\]](#) section 4 or [\[SOAP1.2/1\]](#) section 5. Protocol server faults MUST be returned by using HTTP status codes, as specified in [\[RFC2616\]](#) section 10, or **SOAP faults**, as specified in [\[SOAP1.1\]](#) section 4.4 or [\[SOAP1.2/1\]](#) section 5.4.

If the HTTPS transport is used, a server certificate MUST be deployed.

This protocol MAY transmit an additional SOAP header, the **ServiceContext** header, as specified in [\[MS-SPSTWS\]](#).

This protocol does not define any means for activating a protocol server or protocol client. The protocol server MUST be configured and begin listening in an implementation-specific way. In addition, the protocol client MUST know the format and transport that is used by the server, for example, the SOAP format over an HTTP transport.

2.2 Common Message Syntax

This section contains common definitions that are used by this protocol. The syntax of the definitions uses **XML schema**, as specified in [\[XMLSCHEMA1\]](#) and [\[XMLSCHEMA2\]](#), and **WSDL**, as specified in [\[WSDL\]](#).

2.2.1 Namespaces

This specification defines and references various **XML namespaces** using the mechanisms specified in [\[XMLNS\]](#). Although this specification associates a specific **XML namespace prefix** for each XML namespace that is used, the choice of any particular XML namespace prefix is implementation-specific and not significant for interoperability.

Prefix	Namespace URI	Reference
q1	http://schemas.microsoft.com/2003/10/Serialization/Arrays	
q2	http://Microsoft/Office/Server/UserProfiles	
q4	http://schemas.datacontract.org/2004/07/System	
ser	http://schemas.microsoft.com/2003/10/Serialization/	
soap	http://schemas.xmlsoap.org/wsdl/soap/	[SOAP1.1]
tns	http://Microsoft/Office/Server/FeedCache	
tns1	http://schemas.datacontract.org/2004/07/System.Collections.Generic	
tns2	http://tempuri.org/	
tns3	http://tempuri.org/Imports	

Prefix	Namespace URI	Reference
wsaw	http://www.w3.org/2006/05/addressing/wsd	
wSDL	http://schemas.xmlsoap.org/wsd/	[WSDL]
xs	http://www.w3.org/2001/XMLSchema	[XMLSCHEMA1] [XMLSCHEMA2]

2.2.2 Messages

This specification does not define any common **WSDL message** definitions.

2.2.3 Elements

This specification does not define any common XML schema element definitions.

2.2.4 Complex Types

The following table summarizes the set of common XML schema complex type definitions defined by this specification. XML schema complex type definitions that are specific to a particular operation are described with the operation.

Complex type	Description
ArrayOfE	The ArrayOfE complex type is a sequence of 0 or more E entries which are described in section 2.2.4.4 .
ArrayOfEC	The ArrayOfEC complex type specifies a sequence of zero or more EC entries that are described in section 2.2.4.14 .
ArrayOfEDT	The ArrayOfEDT complex type is a sequence of 0 or more EDT entries which are described in section 2.2.4.5 .
ArrayOfint	The ArrayOfint complex type represents an array of arbitrary integer values.
ArrayOfNullableOfguid	The ArrayOfNullableOfguid complex type represents an array of arbitrary GUID values.
ArrayOfP	The ArrayOfP complex type is a sequence of 0 or more P entries which are described in section 2.2.4.7 .
ArrayOfstring	The ArrayOfstring complex type represents an array of arbitrary string values.
ArrayOfUserData	The ArrayOfUserData complex type is defined in [MS-UPSCWS] section 2.2.4.5.
E	The E complex type specifies the details of Feed entity .
EC	The EC complex type consists of a pair of feed entity type and a count.
EDT	The EDT complex type specifies a pair of feed entity and date time.
FCCR	The FCCR complex type represents the result of various operations to get feed entries .
FCRE	The FCRE complex type represents the input of various operations to get feed

Complex type	Description
	entries.
FCRO	The FCRO complex type specifies the retrieval options used by various methods to retrieve the feed entries.
FeedCacheFault	The FeedCacheFault complex type describes errors that have occurred at the transport or the service layer.
P	The P complex type specifies a feed entry.
PC	The PC complex type specifies a sequence of zero or more feed entries as described in section 2.2.4.7 along with associated metadata.
UserData	The UserData complex type is defined in [MS-UPSCWS] section 2.2.4.6.

2.2.4.1 ArrayOfE

Namespace: <http://Microsoft/Office/Server/FeedCache>

The **ArrayOfE** complex type is a sequence of 0 or more **E** entries which are described in section [2.2.4.4](#).

```
<xs:complexType name="ArrayOfE" xmlns:xs="http://www.w3.org/2001/XMLSchema">
  <xs:sequence>
    <xs:element minOccurs="0" maxOccurs="unbounded" name="E" nillable="true" type="tns:E"/>
  </xs:sequence>
</xs:complexType>
```

E: Feed entity as described in section [2.2.4.4](#).

2.2.4.2 ArrayOfEDT

Namespace: <http://Microsoft/Office/Server/FeedCache>

The **ArrayOfEDT** complex type is a sequence of 0 or more **EDT** entries which are described in section [2.2.4.5](#).

```
<xs:complexType name="ArrayOfEDT" xmlns:xs="http://www.w3.org/2001/XMLSchema">
  <xs:sequence>
    <xs:element minOccurs="0" maxOccurs="unbounded" name="EDT" nillable="true"
      type="tns:EDT"/>
  </xs:sequence>
</xs:complexType>
```

EDT: Entity data time pair as described in section [2.2.4.5](#).

2.2.4.3 ArrayOfP

Namespace: <http://Microsoft/Office/Server/FeedCache>

The **ArrayOfP** complex type is a sequence of 0 or more **P** entries which are described in section [2.2.4.7](#).

```
<xs:complexType name="ArrayOfP" xmlns:xs="http://www.w3.org/2001/XMLSchema">
  <xs:sequence>
    <xs:element minOccurs="0" maxOccurs="unbounded" name="P" nillable="true" type="tns:P"/>
  </xs:sequence>
</xs:complexType>
```

P: Feed entry as described in section [2.2.4.7](#).

2.2.4.4 E

Namespace: http://Microsoft/Office/Server/FeedCache

The **E** complex type specifies the details of Feed entity.

```
<xs:complexType name="E" xmlns:xs="http://www.w3.org/2001/XMLSchema">
  <xs:sequence>
    <xs:element minOccurs="0" name="ET" type="tns:ET"/>
    <xs:element minOccurs="0" name="LID" type="ser:guid"/>
    <xs:element minOccurs="0" name="PID" type="ser:guid"/>
    <xs:element minOccurs="0" name="SID" type="ser:guid"/>
    <xs:element minOccurs="0" name="Url" nillable="true" type="xs:string"/>
    <xs:element minOccurs="0" name="WID" type="ser:guid"/>
  </xs:sequence>
</xs:complexType>
```

ET: Specifies the type of feed entity as described in section [2.2.5.3](#). The value MUST NOT be null or empty.

LID: Specifies the identifier of the **list (1)** where the entity feed is stored. The value MUST NOT be null or empty.

PID: Specifies the identifier of the **tenant** to which this entity belongs. The value MUST NOT be null or empty.

SID: Specifies the identifier of the **site collection** where the entity feed is stored. The value MUST NOT be null or empty.

Url: Specifies the **Uniform Resource Locator (URL)** of the **site (1)** where the entity feed is stored. The value MUST NOT be null or empty.

WID: Specifies the identifier of the site (1) where the entity feed is stored. The value MUST NOT be null or empty.

2.2.4.5 EDT

Namespace: http://Microsoft/Office/Server/FeedCache

The **EDT** complex type specifies a pair of feed entity and date time.

```
<xs:complexType name="EDT" xmlns:xs="http://www.w3.org/2001/XMLSchema">
  <xs:sequence>
    <xs:element minOccurs="0" name="D" type="xs:dateTime"/>
    <xs:element minOccurs="0" name="E" nillable="true" type="tns:E"/>
  </xs:sequence>
```



```
</xs:complexType>
```

D: This specifies a date and time value. This value **MUST NOT** be null.

E: This specifies a feed entity as described in section [2.2.4.4](#). This value **MUST NOT** be null.

2.2.4.6 FeedCacheFault

Namespace: <http://Microsoft/Office/Server/FeedCache>

The **FeedCacheFault** complex type describes errors that have occurred at the transport or the service layer.

```
<xs:complexType name="FeedCacheFault" xmlns:xs="http://www.w3.org/2001/XMLSchema">
  <xs:sequence>
    <xs:element minOccurs="0" name="FailureDetail" nillable="true" type="xs:string"/>
    <xs:element minOccurs="0" name="FaultCode" type="tns:FeedCacheFaultCodes"/>
  </xs:sequence>
</xs:complexType>
```

FailureDetail: Specifies an error string. The protocol does not impose any restriction on the behavior of the protocol client with respect to this field.

FaultCode: Specifies an indicator of the error that occurred as described in section [2.2.5.3](#). The protocol does not impose any restriction on the behavior of the protocol client with respect to this field.

2.2.4.7 P

Namespace: <http://Microsoft/Office/Server/FeedCache>

The **P** complex type specifies a feed entry.

```
<xs:complexType name="P" xmlns:xs="http://www.w3.org/2001/XMLSchema">
  <xs:sequence>
    <xs:element minOccurs="0" name="AD" nillable="true" type="xs:string"/>
    <xs:element minOccurs="0" name="D1" nillable="true" type="xs:string"/>
    <xs:element minOccurs="0" name="D2" nillable="true" type="xs:string"/>
    <xs:element minOccurs="0" name="D3" nillable="true" type="xs:string"/>
    <xs:element minOccurs="0" name="D4" nillable="true" type="xs:string"/>
    <xs:element minOccurs="0" name="DP" nillable="true" type="xs:string"/>
    <xs:element minOccurs="0" name="EID" nillable="true" type="xs:string"/>
    <xs:element minOccurs="0" name="En" nillable="true" type="tns:E"/>
    <xs:element minOccurs="0" name="M" type="xs:dateTime"/>
    <xs:element minOccurs="0" name="MBD" type="xs:int"/>
    <xs:element minOccurs="0" name="MBT" type="xs:int"/>
    <xs:element minOccurs="0" name="PL" nillable="true" type="xs:string"/>
    <xs:element minOccurs="0" name="R1" nillable="true" type="xs:string"/>
    <xs:element minOccurs="0" name="R2" nillable="true" type="xs:string"/>
    <xs:element minOccurs="0" name="R3" type="xs:int"/>
    <xs:element minOccurs="0" name="ST" type="xs:int"/>
  </xs:sequence>
</xs:complexType>
```

AD: Specifies a string value representing author. It is up to the protocol client how to use this field.

D1: Specifies a string value representing entry data. It is up to the protocol client how to use this field.

D2: Specifies a string value representing entry data. It is up to the protocol client how to use this field.

D3: Specifies a string value representing entry data. It is up to the protocol client how to use this field.

D4: Specifies a string value representing entry data. It is up to the protocol client how to use this field.

DP: Specifies a string value representing participant data. It is up to the protocol client how to use this field.

EID: Specifies a unique identifier for this entry. The value MUST NOT be null.

En: Specifies the feed entity this entry belongs to as described in section [2.2.4.4](#).

M: Specifies a date and time value in **Coordinated Universal Time (UTC)** when this entry was last modified. The value MUST NOT be null.

MBD: Specifies a numerical value representing the definition of the entry. It is up to the protocol client how to use this field.

MBT: Specifies a numerical value representing the type of the entry. It is up to the protocol client how to use this field.

PL: Specifies a string value representing participant data. It is up to the protocol client how to use this field.

R1: Specifies a related feed entity. It is up to the protocol client how to use this field.

R2: Specifies a related feed entry. It is up to the protocol client how to use this field.

R3: Specifies a related feed entity type. It is up to the protocol client how to use this field.

ST: Specifies an integer value representing entry data. It is up to the protocol client how to use this field.

2.2.4.8 PC

Namespace: <http://Microsoft/Office/Server/FeedCache>

The **PC** complex type specifies a sequence of zero or more feed entries as described in section [2.2.4.7](#) along with associated metadata.

```
<xs:complexType name="PC" xmlns:xs="http://www.w3.org/2001/XMLSchema">
  <xs:sequence>
    <xs:element minOccurs="0" name="D" nillable="true" type="tns:ArrayOfEDT"/>
    <xs:element minOccurs="0" name="En" nillable="true" type="tns:ArrayOfP"/>
    <xs:element minOccurs="0" name="I" type="xs:boolean"/>
    <xs:element minOccurs="0" name="M" type="xs:int"/>
    <xs:element minOccurs="0" name="N" nillable="true" type="xs:dateTime"/>
    <xs:element minOccurs="0" name="O" nillable="true" type="xs:dateTime"/>
    <xs:element minOccurs="0" name="R" type="xs:boolean"/>
  </xs:sequence>
</xs:complexType>
```

```

    <xs:element minOccurs="0" name="S" type="xs:boolean"/>
    <xs:element minOccurs="0" name="T" type="xs:boolean"/>
  </xs:sequence>
</xs:complexType>

```

D: Specifies a sequence of zero or more pairs of feed entities and last deletion time as specified in section [2.2.4.5](#).

En: Specifies the sequence of feed entries as specified in section [2.2.4.7](#).

I: Specifies if the sequence **En** is incomplete.

M: Specifies the maximum number of feed entries to return for a particular feed entity. The protocol server MUST NOT return more entries than this value for any entity.

N: Specifies a **datetime** value. If a value is present, the protocol server MUST only return entries having modified time newer than this value.

O: Specifies a datetime value. If a value is present, the protocol server MUST only return entries having modified time older than this value.

R: Specifies if the protocol server MUST return delete markers.

S: Indicates if the sequence **En** is already sorted.

T: Indicates if the protocol server timed out before retrieving the sequence **En**. True indicates that the protocol server timed out, and false indicates that it did not time out.

2.2.4.9 ArrayOfEC

Namespace: <http://Microsoft/Office/Server/FeedCache>

The **ArrayOfEC** complex type specifies a sequence of zero or more **EC** entries that are described in section [2.2.4.14](#).

```

<xs:complexType name="ArrayOfEC" xmlns:xs="http://www.w3.org/2001/XMLSchema">
  <xs:sequence>
    <xs:element minOccurs="0" maxOccurs="unbounded" name="EC" nillable="true" type="tns:EC"/>
  </xs:sequence>
</xs:complexType>

```

EC: The EC entry as described in section [2.2.4.14](#).

2.2.4.10 ArrayOfint

Namespace: <http://schemas.microsoft.com/2003/10/Serialization/Arrays>

The **ArrayOfint** complex type represents an array of arbitrary integer values.

```

<xs:complexType name="ArrayOfint" xmlns:xs="http://www.w3.org/2001/XMLSchema">
  <xs:sequence>
    <xs:element minOccurs="0" maxOccurs="unbounded" name="int" type="xs:int"/>
  </xs:sequence>
</xs:complexType>

```

int: A single integer value.

2.2.4.11 ArrayOfNullableOfguid

Namespace: http://schemas.datacontract.org/2004/07/System

The **ArrayOfNullableOfguid** complex type represents an array of arbitrary GUID values.

```
<xs:complexType name="ArrayOfNullableOfguid" xmlns:xs="http://www.w3.org/2001/XMLSchema">
  <xs:sequence>
    <xs:element minOccurs="0" maxOccurs="unbounded" name="guid" nillable="true"
type="ser:guid"/>
  </xs:sequence>
</xs:complexType>
```

guid: A single GUID value or NULL.

2.2.4.12 ArrayOfstring

Namespace: http://schemas.microsoft.com/2003/10/Serialization/Arrays

The **ArrayOfstring** complex type represents an array of arbitrary string values.

```
<xs:complexType name="ArrayOfstring" xmlns:xs="http://www.w3.org/2001/XMLSchema">
  <xs:sequence>
    <xs:element minOccurs="0" maxOccurs="unbounded" name="string" nillable="true"
type="xs:string"/>
  </xs:sequence>
</xs:complexType>
```

string: A single string value.

2.2.4.13 ArrayOfUserData

Namespace: http://Microsoft/Office/Server/UserProfiles

The **ArrayOfUserData** complex type is defined in [\[MS-UPSCWS\]](#) section 2.2.4.5.

```
<xs:complexType name="ArrayOfUserData" xmlns:xs="http://www.w3.org/2001/XMLSchema">
  <xs:sequence>
    <xs:element minOccurs="0" maxOccurs="unbounded" name="UserData" nillable="true"
type="q2:UserData"/>
  </xs:sequence>
</xs:complexType>
```

UserData: Defined in [\[MS-UPSCWS\]](#) section 2.2.4.5.

2.2.4.14 EC

Namespace: http://Microsoft/Office/Server/FeedCache

The **EC** complex type consists of a pair of feed entity type and a count.

```
<xs:complexType name="EC" xmlns:xs="http://www.w3.org/2001/XMLSchema">
```

```

<xs:sequence>
  <xs:element minOccurs="0" name="C" type="xs:int"/>
  <xs:element minOccurs="0" name="ET" type="tns:ET"/>
</xs:sequence>
</xs:complexType>

```

C: An integer denoting the count for this particular feed entity type.

ET: A Feed entity type as described in section [2.2.5.5](#).

2.2.4.15 FCCR

Namespace: <http://Microsoft/Office/Server/FeedCache>

The **FCCR** complex type represents the result of various operations to get feed entries.

```

<xs:complexType name="FCCR" xmlns:xs="http://www.w3.org/2001/XMLSchema">
  <xs:sequence>
    <xs:element minOccurs="0" name="EC" nillable="true" type="tns:PC"/>
    <xs:element minOccurs="0" name="FC" nillable="true" type="tns:ArrayOfEC"/>
    <xs:element xmlns:q2="http://Microsoft/Office/Server/UserProfiles" minOccurs="0" name="P"
nillable="true" type="q2:ArrayOfUserData"/>
    <xs:element xmlns:q1="http://schemas.microsoft.com/2003/10/Serialization/Arrays"
minOccurs="0" name="S" nillable="true" type="q1:ArrayOfstring"/>
    <xs:element xmlns:q4="http://schemas.datacontract.org/2004/07/System" minOccurs="0"
name="T" nillable="true" type="q4:ArrayOfNullableOfguid"/>
    <xs:element minOccurs="0" name="TN" nillable="true" type="xs:dateTime"/>
    <xs:element minOccurs="0" name="TO" nillable="true" type="xs:dateTime"/>
  </xs:sequence>
</xs:complexType>

```

EC: A feed entry collection as specified in section [2.2.4.8](#).

FC: A list of **EC**. **EC** is specified in section [2.2.4.14](#).

P: An **ArrayOfUserData** of all users who have participated in the entries contained in this returned feed entry collection.

The **ArrayOfUserData** complex type is defined in [\[MS-UPSCWS\]](#) section 2.2.4.5.

S: An **ArrayOfstring** of the identifiers corresponding to the feed identifiers of those Participants in the returned feed entry collection who are also followed by the feed entity provided in the supplied **FCRE**. This collection will be empty if the value of the **FCRE** field **e** as defined in [\[MS-UPSCWS\]](#) section 2.2.4.5 is true.

The **ArrayOfstring** complex type is defined in [\[MS-UPSCWS\]](#) section 2.2.4.5.

T: An **ArrayOfNullableOfguid** containing the list of GUIDs of taxonomy identifiers followed by the querying feed entity provided in the supplied **FCRE**. This collection will be empty if the value of the **FCRE** field **e** as defined in [\[MS-UPSCWS\]](#) section 2.2.4.5 is true.

The **ArrayOfNullableOfguid** complex type is defined in [\[MS-UPSCWS\]](#) section 2.2.4.121.

TN: Specifies a **datetime** value, indicating the last-modified-time of the newest feed cache entry considered when assembling the contents of the **EC** field.

TO: Specifies a **datetime** value, indicating the last-modified-time of the oldest feed cache entry considered when assembling the contents of **EC** field.

2.2.4.16 FCRE

Namespace: http://Microsoft/Office/Server/FeedCache

The **FCRE** complex type represents the input of various operations to get feed entries.

```
<xs:complexType name="FCRE" xmlns:xs="http://www.w3.org/2001/XMLSchema">
  <xs:sequence>
    <xs:element minOccurs="0" name="a" nillable="true" type="tns:E"/>
    <xs:element minOccurs="0" name="b" nillable="true" type="xs:string"/>
    <xs:element minOccurs="0" name="c" type="tns:UPL"/>
    <xs:element minOccurs="0" name="d" type="ser:guid"/>
    <xs:element minOccurs="0" name="e" type="xs:boolean"/>
  </xs:sequence>
</xs:complexType>
```

a: The feed entity on behalf of which this operation is being executed. If **b** is present, then this value MUST be ignored.

b: Specifies the string identifier of the feed entity.

c: Specifies how to lookup the feed entity, as specified in section [2.2.5.6](#).

d: A globally unique **partition identifier**.

e: A Boolean field. When true will suppress retrieval of followed feed entity information (people, tags) for the specified feed entity.

2.2.4.17 FCRO

Namespace: http://Microsoft/Office/Server/FeedCache

The **FCRO** complex type specifies the retrieval options used by various methods to retrieve the feed entries.

```
<xs:complexType name="FCRO" xmlns:xs="http://www.w3.org/2001/XMLSchema">
  <xs:sequence>
    <xs:element xmlns:q1="http://schemas.microsoft.com/2003/10/Serialization/Arrays"
      minOccurs="0" name="a" nillable="true" type="q1:ArrayOfint"/>
    <xs:element minOccurs="0" name="b" type="xs:int"/>
    <xs:element minOccurs="0" name="c" type="xs:boolean"/>
    <xs:element minOccurs="0" name="d" type="xs:int"/>
    <xs:element minOccurs="0" name="e" type="xs:int"/>
    <xs:element minOccurs="0" name="f" type="xs:int"/>
    <xs:element minOccurs="0" name="g" nillable="true" type="xs:dateTime"/>
    <xs:element minOccurs="0" name="h" nillable="true" type="xs:dateTime"/>
    <xs:element minOccurs="0" name="i" type="ser:duration"/>
  </xs:sequence>
</xs:complexType>
```

a: An integer bitmask field, which indicates that feed entries will be considered for inclusion in the **FCCR** field **EC**, if a bitwise AND of this field, and the value of the field **MBD** of the candidate feed entry of complex type **P** as defined in in [\[MS-UPSCWS\]](#) section 2.2.4.5 has a non-zero result.

b: An integer bitmask field, which indicates that feed entries will be considered for inclusion in the **FCCR** field **EC**, if a bitwise AND of this field, and the value of the field **MBT** of the candidate feed entry of complex type **P** as defined in in [\[MS-UPSCWS\]](#) section 2.2.4.5 has a non-zero result. .

c: A Boolean field which, if true, indicates that feed entries will be considered for inclusion in the **FCCR** field **EC**, the value of the field **ST** of the candidate feed entry of complex type **P** as defined in in [\[MS-UPSCWS\]](#) section 2.2.4.5 is non-zero.

d: MaxItemsPerEntity: An integer field indicating the maximum number of feed entries of complex type **P**, as specified in section [2.2.4.5](#), belonging to a single feed entity to be included in the returned **FCCR** field **EC**.

e: MaxNumberEntities: An integer field indicating the maximum number of feed entities to examine when considering feed entries for inclusion in the returned **FCCR** field **EC**.

f: MaxTotalItems: An integer field indicating the maximum permissible number of feed entries to include in the returned **FCCR** field **EC**.

g: Specifies a **datetime** value, indicating the most recent last-modified-time for a feed cache entry to be considered for inclusion in the **FCCR** field **EC**.

h: Specifies a **datetime** value, indicating the oldest permissible last-modified-time for a feed cache entry to be considered for inclusion in the **FCCR** field **EC**.

i: A **TimeSpan** object indicating the desired maximum duration permitted for execution of the feed cache for entries meeting the constraints of the **FCRO** for the supplied **FCRE**. Upon detection of queries lasting longer than this time, the query will be terminated, and a partial **FCCR** will be returned, marked as incomplete.

2.2.4.18 UserData

Namespace: <http://Microsoft/Office/Server/UserProfiles>

The **UserData** complex type is defined in [\[MS-UPSCWS\]](#) section 2.2.4.6.

```
<xs:complexType name="UserData" xmlns:xs="http://www.w3.org/2001/XMLSchema">
  <xs:sequence>
    <xs:element minOccurs="0" name="Department" nillable="true" type="xs:string"/>
    <xs:element minOccurs="0" name="Email" nillable="true" type="xs:string"/>
    <xs:element minOccurs="0" name="EmailOptin" type="xs:int"/>
    <xs:element minOccurs="0" name="FeedIdentifier" nillable="true" type="xs:string"/>
    <xs:element minOccurs="0" name="FeedPrivacyActivity" type="xs:int"/>
    <xs:element minOccurs="0" name="IsPeopleListPublic" type="xs:boolean"/>
    <xs:element minOccurs="0" name="LastUpdate" type="xs:dateTime"/>
    <xs:element minOccurs="0" name="MasterRecordID" type="xs:long"/>
    <xs:element minOccurs="0" name="NTName" nillable="true" type="xs:string"/>
    <xs:element minOccurs="0" name="O15FirstRunExperience" type="xs:int"/>
    <xs:element minOccurs="0" name="PartitionID" type="ser:guid"/>
    <xs:element minOccurs="0" name="PersonalSiteCapabilities" type="xs:int"/>
    <xs:element minOccurs="0" name="PersonalSiteInstantiationState" type="xs:int"/>
    <xs:element minOccurs="0" name="PersonalSpace" nillable="true" type="xs:string"/>
    <xs:element minOccurs="0" name="PictureUrl" nillable="true" type="xs:string"/>
    <xs:element minOccurs="0" name="PreferredName" nillable="true" type="xs:string"/>
    <xs:element minOccurs="0" name="ProfileSubtypeID" type="xs:int"/>
    <xs:element minOccurs="0" name="RecordID" type="xs:long"/>
    <xs:element minOccurs="0" name="SID" nillable="true" type="xs:base64Binary"/>
    <xs:element minOccurs="0" name="SipAddress" nillable="true" type="xs:string"/>
  </xs:sequence>
</xs:complexType>
```

```
<xs:element minOccurs="0" name="StatusNote" nillable="true" type="xs:string"/>
<xs:element minOccurs="0" name="Title" nillable="true" type="xs:string"/>
<xs:element minOccurs="0" name="UserID" type="ser:guid"/>
</xs:sequence>
</xs:complexType>
```

Department: Defined in [\[MS-UPSCWS\]](#) section 2.2.4.6.

Email: Defined in [\[MS-UPSCWS\]](#) section 2.2.4.6.

EmailOptin: Defined in [\[MS-UPSCWS\]](#) section 2.2.4.6.

FeedIdentifier: Defined in [\[MS-UPSCWS\]](#) section 2.2.4.6.

FeedPrivacyActivity: Defined in [\[MS-UPSCWS\]](#) section 2.2.4.6.

IsPeopleListPublic: Defined in [\[MS-UPSCWS\]](#) section 2.2.4.6.

LastUpdate: Defined in [\[MS-UPSCWS\]](#) section 2.2.4.6.

MasterRecordID: Defined in [\[MS-UPSCWS\]](#) section 2.2.4.6.

NTName: Defined in [\[MS-UPSCWS\]](#) section 2.2.4.6.

O15FirstRunExperience: Defined in [\[MS-UPSCWS\]](#) section 2.2.4.6.

PartitionID: Defined in [\[MS-UPSCWS\]](#) section 2.2.4.6.

PersonalSiteCapabilities: Defined in [\[MS-UPSCWS\]](#) section 2.2.4.6.

PersonalSiteInstantiationState: Defined in [\[MS-UPSCWS\]](#) section 2.2.4.6.

PersonalSpace: Defined in [\[MS-UPSCWS\]](#) section 2.2.4.6.

PictureUrl: Defined in [\[MS-UPSCWS\]](#) section 2.2.4.6.

PreferredName: Defined in [\[MS-UPSCWS\]](#) section 2.2.4.6.

ProfileSubtypeID: Defined in [\[MS-UPSCWS\]](#) section 2.2.4.6.

RecordID: Defined in [\[MS-UPSCWS\]](#) section 2.2.4.6.

SID: Defined in [\[MS-UPSCWS\]](#) section 2.2.4.6.

SipAddress: Defined in [\[MS-UPSCWS\]](#) section 2.2.4.6.

StatusNote: Defined in [\[MS-UPSCWS\]](#) section 2.2.4.6.

Title: Defined in [\[MS-UPSCWS\]](#) section 2.2.4.6.

UserID: Defined in [\[MS-UPSCWS\]](#) section 2.2.4.6.

2.2.5 Simple Types

The following table summarizes the set of common XML schema simple type definitions defined by this specification. XML schema simple type definitions that are specific to a particular operation are described with the operation.

Simple type	Description
char	The char simple type is a Unicode character that is stored in a 4-byte integer.
duration	The duration simple type is the length of time, as specified in [XMLSCHEMA1] and [XMLSCHEMA2] .
ET	The ET simple type specifies the type of Feed entity.
FeedCacheFaultCodes	The FeedCacheFaultCodes simple type describes the errors that have occurred either at the endpoint (4) of this protocol or in the transport layer.
guid	The guid simple type denotes a GUID.
UPL	The UPL simple type specifies how to lookup user profiles .

2.2.5.1 char

Namespace: <http://schemas.microsoft.com/2003/10/Serialization/>

The **char** simple type is a Unicode character that is stored in a 4-byte integer.

```
<xs:simpleType name="char" xmlns:xs="http://www.w3.org/2001/XMLSchema">
  <xs:restriction base="xs:int"/>
</xs:simpleType>
```

2.2.5.2 duration

Namespace: <http://schemas.microsoft.com/2003/10/Serialization/>

The **duration** simple type is the length of time, as specified in [\[XMLSCHEMA1\]](#) and [\[XMLSCHEMA2\]](#).

```
<xs:simpleType name="duration" xmlns:xs="http://www.w3.org/2001/XMLSchema">
  <xs:restriction base="xs:duration">
    <xs:pattern value="\-?P(\d*D)?(T(\d*H)?(\d*M)?(\d*(\.\d*)?S)?)?"/>
    <xs:minInclusive value="-P10675199DT2H48M5.4775808S"/>
    <xs:maxInclusive value="P10675199DT2H48M5.4775807S"/>
  </xs:restriction>
</xs:simpleType>
```

2.2.5.3 FeedCacheFaultCodes

Namespace: <http://Microsoft/Office/Server/FeedCache>

The **FeedCacheFaultCodes** simple type describes the errors that have occurred either at the endpoint (4) of this protocol or in the transport layer.

```
<xs:simpleType name="FeedCacheFaultCodes" xmlns:xs="http://www.w3.org/2001/XMLSchema">
  <xs:restriction base="xs:string">
    <xs:enumeration value="UnknownError"/>
    <xs:enumeration value="InvalidInput"/>
    <xs:enumeration value="InvalidConfiguration"/>
  </xs:restriction>
</xs:simpleType>
```

The following table specifies the allowable values for the **FeedCacheFaultCodes** simple type.

Value	Meaning
UnknownError	The error occurred because of unknown reasons.
InvalidInput	The error occurred because of invalid input.
InvalidConfiguration	The error occurred because of a configuration failure.

2.2.5.4 guid

Namespace: http://schemas.microsoft.com/2003/10/Serialization/

The **guid** simple type denotes a GUID.

```
<xs:simpleType name="guid" xmlns:xs="http://www.w3.org/2001/XMLSchema">
  <xs:restriction base="xs:string">
    <xs:pattern value="\{8\}-\{4\}-\{4\}-\{4\}-\{12\}" />
  </xs:restriction>
</xs:simpleType>
```

2.2.5.5 ET

Namespace: http://Microsoft/Office/Server/FeedCache

The **ET** simple type specifies the type of Feed entity.

```
<xs:simpleType name="ET" xmlns:xs="http://www.w3.org/2001/XMLSchema">
  <xs:list>
    <xs:simpleType>
      <xs:restriction base="xs:string">
        <xs:enumeration value="Unknown" />
        <xs:enumeration value="User" />
        <xs:enumeration value="Document" />
        <xs:enumeration value="Site" />
        <xs:enumeration value="Tag" />
        <xs:enumeration value="Group" />
      </xs:restriction>
    </xs:simpleType>
  </xs:list>
</xs:simpleType>
```

The following table specifies the allowable values for the **ET** simple type.

Value	Meaning
Unknown	The type of the Feed entity is not known.
User	The Feed entity is of type user and is associated with a user profile.
Document	The Feed entity is of type document .
Site	The Feed entity is of type site.

Value	Meaning
Tag	The Feed entity is of type social tag .
Group	This Feed entity MUST NOT be used.

2.2.5.6 UPL

Namespace: http://Microsoft/Office/Server/FeedCache

The **UPL** simple type specifies how to lookup user profiles.

```
<xs:simpleType name="UPL" xmlns:xs="http://www.w3.org/2001/XMLSchema">
  <xs:restriction base="xs:string">
    <xs:enumeration value="ByEmail"/>
    <xs:enumeration value="ByAccountName"/>
    <xs:enumeration value="BySid"/>
  </xs:restriction>
</xs:simpleType>
```

The following table specifies the allowable values for the **UPL** simple type.

Value	Meaning
ByEmail	Lookup by e-mail address .
ByAccountName	Lookup by login name .
BySid	Lookup by security identifier (SID) .

2.2.6 Attributes

This specification does not define any common XML schema attribute definitions.

2.2.7 Groups

This specification does not define any common XML schema group definitions.

2.2.8 Attribute Groups

This specification does not define any common XML schema attribute group definitions.

3 Protocol Details

The client side of this protocol is simply a pass-through. That is, no additional timers or other state is required on the client side of this protocol. Calls that are made by the higher-layer protocol or application are passed directly to the transport, and the results that are returned by the transport are passed directly to the higher-layer protocol or application.

Except where specified, protocol clients SHOULD interpret Hypertext Transfer Protocol (HTTP) status codes that are returned by the protocol server as specified in [\[RFC2616\]](#), section 10.

This protocol allows protocol servers to notify protocol clients of application-level faults by using SOAP faults. Except where otherwise specified, these SOAP faults are not significant for interoperability and protocol clients can interpret them in an implementation-specific manner.

This protocol allows protocol servers to perform implementation-specific authorization checks and to notify protocol clients of authorization faults by using either HTTP status codes or SOAP faults, as specified previously in this section.

3.1 Server Details

This protocol is based on stateless interaction between the protocol client and protocol server. The protocol simply exposes the current configuration state of the **User Profile Service** to all authenticated **user objects**. There are no dependencies between the information sent in one client-server request/response pair and the next pair; all dependencies are based on the current state of the application service. They are specified in the following figure.

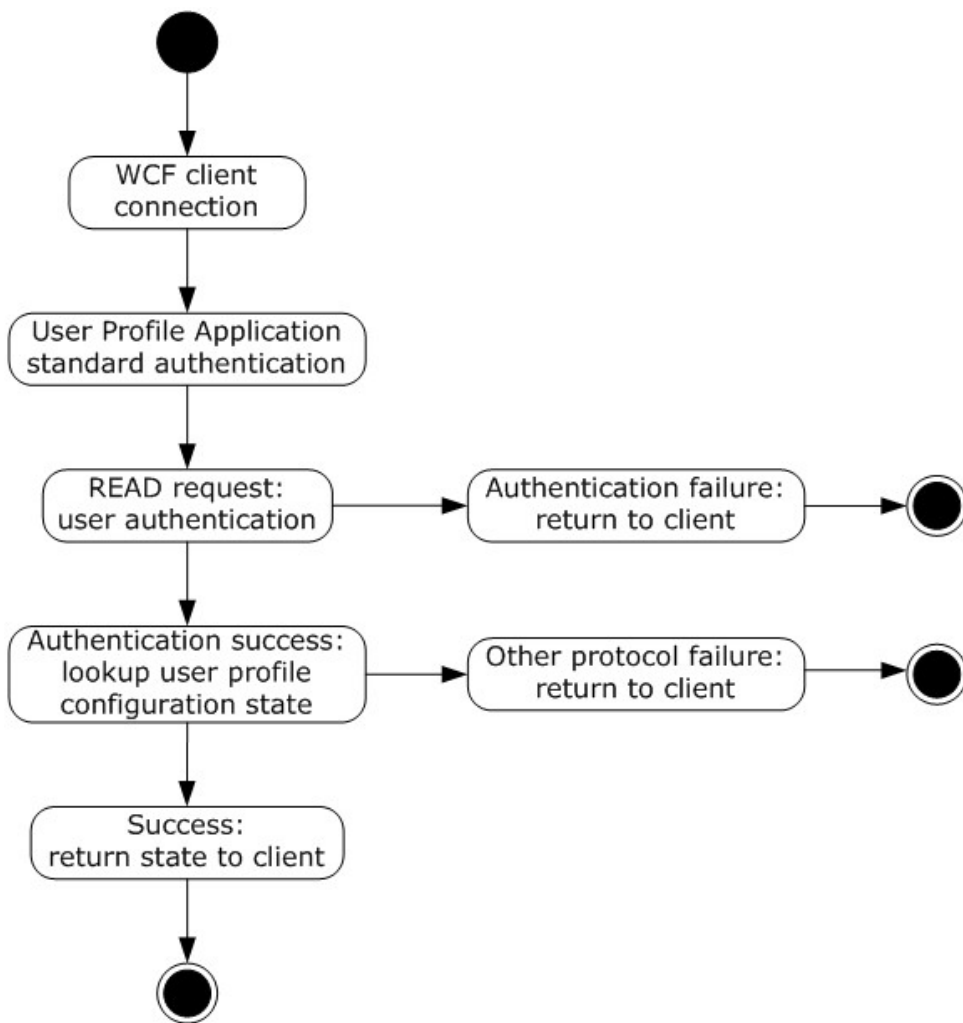


Figure 2: State dependencies of the application service

The User Profile Service uses authentication mechanisms that are standard for **Web services** and SOAP.

3.1.1 Abstract Data Model

This section describes a conceptual model of possible data organization that an implementation maintains to participate in this protocol. The described organization is provided to facilitate the explanation of how the protocol behaves. This specification does not mandate that implementations adhere to this model as long as their external behavior is consistent with that described in this specification.

This protocol allows protocol clients to store feed data and later retrieve it in various ways. The protocol server needs to maintain the state between each of the operations as described in section [3.1.4](#).

The protocol server needs to keep track of:

Feed entries: The protocol server needs to see how many feed entries have been added using the operations described in section [3.1.4](#). It also needs to track which feed entry corresponds to which feed entity. It is up to the protocol server how long it keeps track of this information.

Feed entity followed status: The protocol server also needs to keep track if a given entity has been marked as followed using the operations described in section [3.1.4](#). It is up to the protocol server how long it keeps track of this information.

LMT repopulation needed: The protocol server needs to keep track of whether last modified time repopulation is required for any given protocol client. It is up to the protocol server how long it keeps track of this information.

3.1.2 Timers

None.

3.1.3 Initialization

None.

3.1.4 Message Processing Events and Sequencing Rules

The following table summarizes the list of operations as defined by this specification.

Operation	Description
AddFeedEntries	This WSDL operation helps in adding multiple feed entries.
AddFeedEntriesForRepop	This WSDL operation helps in adding multiple feed entries.
AddFeedEntry	This WSDL operation adds a feed entry for a given feed entity.
BulkLMTUpdate	This WSDL operation updates the last modified times of a number of feed entities.
GetCategoricalFeed	This WSDL operation retrieves up to 100 recently modified feed entries from the provided feed entities.
GetConsolidatedFeed	This WSDL operation retrieves recent feed entries from the provided feed entities.
GetEntries	This WSDL operation lets a protocol client query feed entries given their feed entry identifiers.
GetFeeds	This WSDL operation lets the protocol client to get feed entries from the specified feed entities.
GetPublishedFeed	This WSDL operation lets a protocol client retrieve the published feed entries for a specific feed entity.
IsEntityActivelyFollowed	This WSDL operation checks if a given feed entity has earlier been marked as followed.
IsRepopulationNeeded	This WSDL operation lets a protocol client know if last modified time repopulation is needed.
NewEntityFollower	This WSDL operation lets a protocol client mark a given feed entity as being actively followed.

Operation	Description
RefreshFollowedEntities	This WSDL operation lets a protocol client mark a number of feed entities as followed.
RemoveEntityFeed	This WSDL operation is used to remove all the feed entries of a given feed entity.
RemoveFeedEntry	This WSDL operation removes a given feed entry from a given feed entity.
RemoveInternalRegions	This WSDL operation removes some internal data structure. This operation MUST NOT be called by any protocol client.

3.1.4.1 AddFeedEntry

This WSDL operation adds a feed entry for a given feed entity.

```
<wsdl:operation name="AddFeedEntry" xmlns:wsdl="http://schemas.xmlsoap.org/wsdl/">
  <wsdl:input wsaw:Action="http://Microsoft.Office.Server.UserProfiles/AddFeedEntry"
    message="tns2:IFeedCacheService_AddFeedEntry_InputMessage"
    xmlns:wsaw="http://www.w3.org/2006/05/addressing/wsdl"/>
  <wsdl:output wsaw:Action="http://tempuri.org/IFeedCacheService/AddFeedEntryResponse"
    message="tns2:IFeedCacheService_AddFeedEntry_OutputMessage"
    xmlns:wsaw="http://www.w3.org/2006/05/addressing/wsdl"/>
  <wsdl:fault
    wsaw:Action="http://tempuri.org/IFeedCacheService/AddFeedEntryFeedCacheFaultFault"
    name="FeedCacheFaultFault"
    message="tns2:IFeedCacheService_AddFeedEntry_FeedCacheFaultFault_FaultMessage"
    xmlns:wsaw="http://www.w3.org/2006/05/addressing/wsdl"/>
</wsdl:operation>
```

AddFeedEntry adds a feed entry to a feed entity. The entries can later be retrieved by the retrieval operations as described in section [3.1.4.4](#), section [3.1.4.3](#), section [3.1.4.5](#), section [3.1.4.6](#), and section [3.1.4.7](#). The feed entry can also be removed as described in section [3.1.4.12](#), and section [3.1.4.13](#).

3.1.4.1.1 Messages

The following table summarizes the set of WSDL message definitions that are specific to this operation.

Message	Description
IFeedCacheService_AddFeedEntry_InputMessage	The request WSDL message for the AddFeedEntry WSDL operation.
IFeedCacheService_AddFeedEntry_OutputMessage	The response WSDL message for the AddFeedEntry WSDL operation.

3.1.4.1.1.1 IFeedCacheService_AddFeedEntry_InputMessage

The request WSDL message for the **AddFeedEntry** WSDL operation.

The **SOAP action** value is:

<http://Microsoft.Office.Server.UserProfiles/AddFeedEntry>

The **SOAP body** contains the **AddFeedEntry** element.

3.1.4.1.1.2 IFeedCacheService_AddFeedEntry_OutputMessage

The response WSDL message for the **AddFeedEntry** WSDL operation.

The SOAP body contains the **AddFeedEntryResponse** element.

3.1.4.1.2 Elements

The following table summarizes the XML schema element definitions that are specific to this operation.

Element	Description
AddFeedEntry	The input data for the AddFeedEntry WSDL operation.
AddFeedEntryResponse	The result data for the AddFeedEntry WSDL operation.

3.1.4.1.2.1 AddFeedEntry

The **AddFeedEntry** element specifies the input data for the **AddFeedEntry** WSDL operation.

```
<xs:element name="AddFeedEntry" xmlns:xs="http://www.w3.org/2001/XMLSchema">
  <xs:complexType>
    <xs:sequence>
      <xs:element xmlns:tns="http://Microsoft/Office/Server/FeedCache" minOccurs="0"
name="entity" nillable="true" type="tns:E"/>
      <xs:element xmlns:tns="http://Microsoft/Office/Server/FeedCache" minOccurs="0"
name="entry" nillable="true" type="tns:P"/>
    </xs:sequence>
  </xs:complexType>
</xs:element>
```

entity: The feed entity to which this feed entry is to be added.

entry: The feed entry to be added.

3.1.4.1.2.2 AddFeedEntryResponse

The **AddFeedEntryResponse** element specifies the result data for the **AddFeedEntry** WSDL operation.

```
<xs:element name="AddFeedEntryResponse" xmlns:xs="http://www.w3.org/2001/XMLSchema">
  <xs:complexType>
    <xs:sequence>
      <xs:element minOccurs="0" name="AddFeedEntryResult" type="xs:boolean"/>
    </xs:sequence>
  </xs:complexType>
</xs:element>
```


AddFeedEntryResult: A Boolean value that indicates whether the operation succeeded or failed.

3.1.4.1.3 Complex Types

None.

3.1.4.1.4 Simple Types

None.

3.1.4.1.5 Attributes

None.

3.1.4.1.6 Groups

None.

3.1.4.1.7 Attribute Groups

None.

3.1.4.2 BulkLMTUpdate

This WSDL operation updates the last modified times of a number of feed entities.

```
<wsdl:operation name="BulkLMTUpdate" xmlns:wsdl="http://schemas.xmlsoap.org/wsdl/">
  <wsdl:input wsaw:Action="http://Microsoft.Office.Server.UserProfiles/BulkLMTUpdate"
    message="tns2:IFeedCacheService_BulkLMTUpdate_InputMessage"
    xmlns:wsaw="http://www.w3.org/2006/05/addressing/wsdl"/>
  <wsdl:output wsaw:Action="http://tempuri.org/IFeedCacheService/BulkLMTUpdateResponse"
    message="tns2:IFeedCacheService_BulkLMTUpdate_OutputMessage"
    xmlns:wsaw="http://www.w3.org/2006/05/addressing/wsdl"/>
  <wsdl:fault
    wsaw:Action="http://tempuri.org/IFeedCacheService/BulkLMTUpdateFeedCacheFaultFault"
    name="FeedCacheFaultFault"
    message="tns2:IFeedCacheService_BulkLMTUpdate_FeedCacheFaultFault_FaultMessage"
    xmlns:wsaw="http://www.w3.org/2006/05/addressing/wsdl"/>
</wsdl:operation>
```

This operation helps update the last modified times of feed entities. This operation is used in conjunction with **IsRepopulationNeeded** as outlined in section [3.1.4.9](#). If **IsRepopulationNeeded** returns true, the protocol client can use this operation to update the last modified times.

3.1.4.2.1 Messages

The following table summarizes the set of WSDL message definitions that are specific to this operation.

Message	Description
IFeedCacheService_BulkLMTUpdate_InputMessage	The request WSDL message for the BulkLMTUpdate WSDL operation.

Message	Description
IFeedCacheService_BulkLMTUpdate_OutputMessage	The response WSDL message for the BulkLMTUpdate WSDL operation.

3.1.4.2.1.1 IFeedCacheService_BulkLMTUpdate_InputMessage

The request WSDL message for the **BulkLMTUpdate** WSDL operation.

The SOAP action value is:

```
http://Microsoft.Office.Server.UserProfiles/BulkLMTUpdate
```

The SOAP body contains the **BulkLMTUpdate** element.

3.1.4.2.1.2 IFeedCacheService_BulkLMTUpdate_OutputMessage

The response WSDL message for the **BulkLMTUpdate** WSDL operation.

The SOAP body contains the **BulkLMTUpdateResponse** element.

3.1.4.2.2 Elements

The following table summarizes the XML schema element definitions that are specific to this operation.

Element	Description
BulkLMTUpdate	The input data for the BulkLMTUpdate WSDL operation.
BulkLMTUpdateResponse	The result data for the BulkLMTUpdate WSDL operation.

3.1.4.2.2.1 BulkLMTUpdate

The **BulkLMTUpdate** element specifies the input data for the **BulkLMTUpdate** WSDL operation.

```
<xs:element name="BulkLMTUpdate" xmlns:xs="http://www.w3.org/2001/XMLSchema">
  <xs:complexType>
    <xs:sequence>
      <xs:element xmlns:ser="http://schemas.microsoft.com/2003/10/Serialization/"
        minOccurs="0" name="callerID" type="ser:guid"/>
      <xs:element
        xmlns:tns1="http://schemas.datacontract.org/2004/07/System.Collections.Generic" minOccurs="0"
        name="lastModifiedTimes" nillable="true" type="tns1:ArrayOfKeyValuePairOfELEHsv_S1RZJ"/>
    </xs:sequence>
  </xs:complexType>
</xs:element>
```

callerID: The identifier for the protocol client. This value MUST NOT be null or empty.

lastModifiedTimes: Specifies the list of feed entries and their associated last modified time as specified in section [3.1.4.2.3.1](#).

3.1.4.2.2 BulkLMTUpdateResponse

The **BulkLMTUpdateResponse** element specifies the result data for the **BulkLMTUpdate** WSDL operation.

```
<xs:element name="BulkLMTUpdateResponse" xmlns:xs="http://www.w3.org/2001/XMLSchema">
  <xs:complexType>
    <xs:sequence>
      <xs:element minOccurs="0" name="BulkLMTUpdateResult" type="xs:boolean"/>
    </xs:sequence>
  </xs:complexType>
</xs:element>
```

BulkLMTUpdateResult: A Boolean value that indicates whether the operation succeeded or failed.

3.1.4.2.3 Complex Types

The following table summarizes the XML schema complex type definitions that are specific to this operation.

Complex type	Description
ArrayOfKeyValuePairOfELEHsv_SIRZJ	Contains zero or more KeyValuePairOfELEHsv_SIRZJ objects.
KeyValuePairOfELEHsv_SIRZJ	A key value pair of feed entity and the last time it was modified.
LE	Represents the last modified time data of a given feed entity.

3.1.4.2.3.1 ArrayOfKeyValuePairOfELEHsv_SIRZJ

Namespace: http://schemas.datacontract.org/2004/07/System.Collections.Generic

This complex type contains zero or more **KeyValuePairOfELEHsv_SIRZJ** objects.

```
<xs:complexType name="ArrayOfKeyValuePairOfELEHsv_SIRZJ"
xmlns:xs="http://www.w3.org/2001/XMLSchema">
  <xs:sequence>
    <xs:element minOccurs="0" maxOccurs="unbounded" name="KeyValuePairOfELEHsv_SIRZJ"
type="tns1:KeyValuePairOfELEHsv_SIRZJ"/>
  </xs:sequence>
</xs:complexType>
```

KeyValuePairOfELEHsv_SIRZJ: Specifies the key value pair of entity and last modified time as detailed in section [3.1.4.2.3.2](#).

3.1.4.2.3.2 KeyValuePairOfELEHsv_SIRZJ

Namespace: http://schemas.datacontract.org/2004/07/System.Collections.Generic

This complex type is a key value pair of feed entity and the last time it was modified.

```
<xs:complexType name="KeyValuePairOfELEHsv_SIRZJ"
xmlns:xs="http://www.w3.org/2001/XMLSchema">
```

```

    <xs:sequence>
      <xs:element xmlns:tns="http://Microsoft/Office/Server/FeedCache" name="key"
nillable="true" type="tns:E"/>
      <xs:element xmlns:tns="http://Microsoft/Office/Server/FeedCache" name="value"
nillable="true" type="tns:LE"/>
    </xs:sequence>
  </xs:complexType>

```

key: Specifies the feed entity.

value: Specifies the last modified data as specified in section [3.1.4.2.3.3](#).

3.1.4.2.3.3 LE

Namespace: http://Microsoft/Office/Server/FeedCache

This complex type represents the last modified time data of a given feed entity.

```

<xs:complexType name="LE" xmlns:xs="http://www.w3.org/2001/XMLSchema">
  <xs:sequence>
    <xs:element minOccurs="0" name="b" type="xs:unsignedLong"/>
    <xs:element minOccurs="0" name="c" type="xs:unsignedShort"/>
    <xs:element minOccurs="0" name="r" type="xs:long"/>
    <xs:element minOccurs="0" name="t" type="xs:long"/>
  </xs:sequence>
</xs:complexType>

```

b: This value MUST be ZERO (0).

c:

r: This value MUST be null.

t: This MUST contain the last time this feed entity was modified.

3.1.4.2.4 Simple Types

None.

3.1.4.2.5 Attributes

None.

3.1.4.2.6 Groups

None.

3.1.4.2.7 Attribute Groups

None.

3.1.4.3 GetCategoricalFeed

This WSDL operation retrieves up to 100 recently modified feed entries from the provided feed entities.

```

<wsdl:operation name="GetCategoricalFeed" xmlns:wsdl="http://schemas.xmlsoap.org/wsdl/">
  <wsdl:input wsaw:Action="http://Microsoft.Office.Server.UserProfiles/GetCategoricalFeed"
  message="tns2:IFeedCacheService_GetCategoricalFeed_InputMessage"
  xmlns:wsaw="http://www.w3.org/2006/05/addressing/wsdl"/>
  <wsdl:output wsaw:Action="http://tempuri.org/IFeedCacheService/GetCategoricalFeedResponse"
  message="tns2:IFeedCacheService_GetCategoricalFeed_OutputMessage"
  xmlns:wsaw="http://www.w3.org/2006/05/addressing/wsdl"/>
  <wsdl:fault
  wsaw:Action="http://tempuri.org/IFeedCacheService/GetCategoricalFeedFeedCacheFaultFault"
  name="FeedCacheFaultFault"
  message="tns2:IFeedCacheService_GetCategoricalFeed_FeedCacheFaultFault_FaultMessage"
  xmlns:wsaw="http://www.w3.org/2006/05/addressing/wsdl"/>
</wsdl:operation>

```

3.1.4.3.1 Messages

The following table summarizes the set of WSDL message definitions that are specific to this operation.

Message	Description
IFeedCacheService_GetCategoricalFeed_InputMessage	The request WSDL message for the GetCategoricalFeed WSDL operation.
IFeedCacheService_GetCategoricalFeed_OutputMessage	The response WSDL message for the GetCategoricalFeed WSDL operation.

3.1.4.3.1.1 IFeedCacheService_GetCategoricalFeed_InputMessage

The request WSDL message for the **GetCategoricalFeed** WSDL operation.

The SOAP action value is:

```
http://Microsoft.Office.Server.UserProfiles/GetCategoricalFeed
```

The SOAP body contains the **GetCategoricalFeed** element.

3.1.4.3.1.2 IFeedCacheService_GetCategoricalFeed_OutputMessage

The response WSDL message for the **GetCategoricalFeed** WSDL operation.

The SOAP body contains the **GetCategoricalFeedResponse** element.

3.1.4.3.2 Elements

The following table summarizes the XML schema element definitions that are specific to this operation.

Element	Description
GetCategoricalFeed	The input data for the GetCategoricalFeed WSDL operation.
GetCategoricalFeedResponse	The result data for the GetCategoricalFeed WSDL operation.

3.1.4.3.2.1 GetCategoricalFeed

The **GetCategoricalFeed** element specifies the input data for the **GetCategoricalFeed** WSDL operation.

```
<xs:element name="GetCategoricalFeed" xmlns:xs="http://www.w3.org/2001/XMLSchema">
  <xs:complexType>
    <xs:sequence>
      <xs:element xmlns:tns="http://Microsoft/Office/Server/FeedCache" minOccurs="0"
name="fcRetEntity" nillable="true" type="tns:FCRE"/>
      <xs:element xmlns:tns="http://Microsoft/Office/Server/FeedCache" minOccurs="0"
name="followedEntities" nillable="true" type="tns:ArrayOfE"/>
      <xs:element xmlns:tns="http://Microsoft/Office/Server/FeedCache" minOccurs="0"
name="fcRetOptions" nillable="true" type="tns:FCRO"/>
    </xs:sequence>
  </xs:complexType>
</xs:element>
```

fcRetEntity:

followedEntities: The feed entities whose feed entries are to be retrieved.

fcRetOptions:

3.1.4.3.2.2 GetCategoricalFeedResponse

The **GetCategoricalFeedResponse** element specifies the result data for the **GetCategoricalFeed** WSDL operation.

```
<xs:element name="GetCategoricalFeedResponse" xmlns:xs="http://www.w3.org/2001/XMLSchema">
  <xs:complexType>
    <xs:sequence>
      <xs:element xmlns:tns="http://Microsoft/Office/Server/FeedCache" minOccurs="0"
name="GetCategoricalFeedResult" nillable="true" type="tns:FCCR"/>
    </xs:sequence>
  </xs:complexType>
</xs:element>
```

GetCategoricalFeedResult: Element of type **PC** as described in section [2.2.4.8](#).

3.1.4.3.3 Complex Types

None.

3.1.4.3.4 Simple Types

None.

3.1.4.3.5 Attributes

None.

3.1.4.3.6 Groups

None.

3.1.4.3.7 Attribute Groups

None.

3.1.4.4 GetConsolidatedFeed

This WSDL operation retrieves recent feed entries from the provided feed entities.

```
<wsdl:operation name="GetConsolidatedFeed" xmlns:wsdl="http://schemas.xmlsoap.org/wsdl/">
  <wsdl:input wsaw:Action="http://Microsoft.Office.Server.UserProfiles/GetConsolidatedFeed"
    message="tns2:IFeedCacheService_GetConsolidatedFeed_InputMessage"
    xmlns:wsaw="http://www.w3.org/2006/05/addressing/wsdl"/>
  <wsdl:output wsaw:Action="http://tempuri.org/IFeedCacheService/GetConsolidatedFeedResponse"
    message="tns2:IFeedCacheService_GetConsolidatedFeed_OutputMessage"
    xmlns:wsaw="http://www.w3.org/2006/05/addressing/wsdl"/>
  <wsdl:fault
    wsaw:Action="http://tempuri.org/IFeedCacheService/GetConsolidatedFeedFeedCacheFaultFault"
    name="FeedCacheFaultFault"
    message="tns2:IFeedCacheService_GetConsolidatedFeed_FeedCacheFaultFault_FaultMessage"
    xmlns:wsaw="http://www.w3.org/2006/05/addressing/wsdl"/>
</wsdl:operation>
```

3.1.4.4.1 Messages

The following table summarizes the set of WSDL message definitions that are specific to this operation.

Message	Description
IFeedCacheService_GetConsolidatedFeed_InputMessage	The request WSDL message for the GetConsolidatedFeed WSDL operation.
IFeedCacheService_GetConsolidatedFeed_OutputMessage	The response WSDL message for the GetConsolidatedFeed WSDL operation.

3.1.4.4.1.1 IFeedCacheService_GetConsolidatedFeed_InputMessage

The request WSDL message for the **GetConsolidatedFeed** WSDL operation.

The SOAP action value is:

```
http://Microsoft.Office.Server.UserProfiles/GetConsolidatedFeed
```

The SOAP body contains the **GetConsolidatedFeed** element.

3.1.4.4.1.2 IFeedCacheService_GetConsolidatedFeed_OutputMessage

The response WSDL message for the **GetConsolidatedFeed** WSDL operation.

The SOAP body contains the **GetConsolidatedFeedResponse** element.

3.1.4.4.2 Elements

The following table summarizes the XML schema element definitions that are specific to this operation.

Element	Description
GetConsolidatedFeed	The input data for the GetConsolidatedFeed WSDL operation.
GetConsolidatedFeedResponse	The result data for the GetConsolidatedFeed WSDL operation.

3.1.4.4.2.1 GetConsolidatedFeed

The **GetConsolidatedFeed** element specifies the input data for the **GetConsolidatedFeed** WSDL operation.

```
<xs:element name="GetConsolidatedFeed" xmlns:xs="http://www.w3.org/2001/XMLSchema">
  <xs:complexType>
    <xs:sequence>
      <xs:element xmlns:tns="http://Microsoft/Office/Server/FeedCache" minOccurs="0"
name="fcRetEntity" nillable="true" type="tns:FCRE"/>
      <xs:element xmlns:tns="http://Microsoft/Office/Server/FeedCache" minOccurs="0"
name="followedEntities" nillable="true" type="tns:ArrayOfE"/>
      <xs:element xmlns:tns="http://Microsoft/Office/Server/FeedCache" minOccurs="0"
name="fcRetOptions" nillable="true" type="tns:FCRO"/>
    </xs:sequence>
  </xs:complexType>
</xs:element>
```

fcRetEntity:

followedEntities: The feed entities whose feed entries are to be retrieved.

fcRetOptions:

3.1.4.4.2.2 GetConsolidatedFeedResponse

The **GetConsolidatedFeedResponse** element specifies the result data for the **GetConsolidatedFeed** WSDL operation.

```
<xs:element name="GetConsolidatedFeedResponse" xmlns:xs="http://www.w3.org/2001/XMLSchema">
  <xs:complexType>
    <xs:sequence>
      <xs:element xmlns:tns="http://Microsoft/Office/Server/FeedCache" minOccurs="0"
name="GetConsolidatedFeedResult" nillable="true" type="tns:FCCR"/>
    </xs:sequence>
  </xs:complexType>
</xs:element>
```

GetConsolidatedFeedResult: Element of type **PC** as described in section [2.2.4.8](#).

3.1.4.4.3 Complex Types

None.

3.1.4.4.4 Simple Types

None.

3.1.4.4.5 Attributes

None.

3.1.4.4.6 Groups

None.

3.1.4.4.7 Attribute Groups

None.

3.1.4.5 GetEntries

This WSDL operation lets a protocol client query feed entries given their feed entry identifiers.

```
<wsdl:operation name="GetEntries" xmlns:wsdl="http://schemas.xmlsoap.org/wsdl/">
  <wsdl:input wsaw:Action="http://Microsoft.Office.Server.UserProfiles/GetThreadEntries"
    message="tns2:IFeedCacheService_GetEntries_InputMessage"
    xmlns:wsaw="http://www.w3.org/2006/05/addressing/wsdl"/>
  <wsdl:output wsaw:Action="http://tempuri.org/IFeedCacheService/GetEntriesResponse"
    message="tns2:IFeedCacheService_GetEntries_OutputMessage"
    xmlns:wsaw="http://www.w3.org/2006/05/addressing/wsdl"/>
  <wsdl:fault
    wsaw:Action="http://tempuri.org/IFeedCacheService/GetEntriesFeedCacheFaultFault"
    name="FeedCacheFaultFault"
    message="tns2:IFeedCacheService_GetEntries_FeedCacheFaultFault_FaultMessage"
    xmlns:wsaw="http://www.w3.org/2006/05/addressing/wsdl"/>
</wsdl:operation>
```

3.1.4.5.1 Messages

The following table summarizes the set of WSDL message definitions that are specific to this operation.

Message	Description
IFeedCacheService_GetEntries_InputMessage	The request WSDL message for the GetEntries WSDL operation.
IFeedCacheService_GetEntries_OutputMessage	The response WSDL message for the GetEntries WSDL operation.

3.1.4.5.1.1 IFeedCacheService_GetEntries_InputMessage

The request WSDL message for the **GetEntries** WSDL operation.

The SOAP action value is:

```
http://Microsoft.Office.Server.UserProfiles/GetThreadEntries
```

The SOAP body contains the **GetEntries** element.

3.1.4.5.1.2 IFeedCacheService_GetEntries_OutputMessage

The response WSDL message for the **GetEntries** WSDL operation.

The SOAP body contains the **GetEntriesResponse** element.

3.1.4.5.2 Elements

The following table summarizes the XML schema element definitions that are specific to this operation.

Element	Description
GetEntries	The input data for the GetEntries WSDL operation.
GetEntriesResponse	The result data for the GetEntries WSDL operation.

3.1.4.5.2.1 GetEntries

The **GetEntries** element specifies the input data for the **GetEntries** WSDL operation.

```
<xs:element name="GetEntries" xmlns:xs="http://www.w3.org/2001/XMLSchema">
  <xs:complexType>
    <xs:sequence>
      <xs:element xmlns:tns="http://Microsoft/Office/Server/FeedCache" minOccurs="0"
name="entryIdentifiers" nillable="true" type="tns:ArrayOfPI"/>
    </xs:sequence>
  </xs:complexType>
</xs:element>
```

entryIdentifiers: Array of entry identifiers as specified in section [3.1.4.5.3.1](#).

3.1.4.5.2.2 GetEntriesResponse

The **GetEntriesResponse** element specifies the result data for the **GetEntries** WSDL operation.

```
<xs:element name="GetEntriesResponse" xmlns:xs="http://www.w3.org/2001/XMLSchema">
  <xs:complexType>
    <xs:sequence>
      <xs:element xmlns:tns="http://Microsoft/Office/Server/FeedCache" minOccurs="0"
name="GetEntriesResult" nillable="true" type="tns:PC"/>
    </xs:sequence>
  </xs:complexType>
</xs:element>
```

GetEntriesResult: Element of type **PC** as described in section [2.2.4.8](#).

3.1.4.5.3 Complex Types

The following table summarizes the XML schema complex type definitions that are specific to this operation.

Complex type	Description
ArrayOfPI	A sequence of zero or more elements of type PI .
PI	A pair of feed entity and the associated feed entry identifiers.

3.1.4.5.3.1 ArrayOfPI

Namespace: http://Microsoft/Office/Server/FeedCache

The complex type **ArrayOfPI** is a sequence of zero or more elements of type **PI**.

```
<xs:complexType name="ArrayOfPI" xmlns:xs="http://www.w3.org/2001/XMLSchema">
  <xs:sequence>
    <xs:element minOccurs="0" maxOccurs="unbounded" name="PI" nillable="true" type="tns:PI"/>
  </xs:sequence>
</xs:complexType>
```

PI: A pair of feed entity and feed entry identifiers as specified in section [3.1.4.5.3.2](#).

3.1.4.5.3.2 PI

Namespace: http://Microsoft/Office/Server/FeedCache

The complex type **PI** is actually a pair of feed entity and the associated feed entry identifiers.

```
<xs:complexType name="PI" xmlns:xs="http://www.w3.org/2001/XMLSchema">
  <xs:sequence>
    <xs:element minOccurs="0" name="E" nillable="true" type="tns:E"/>
    <xs:element xmlns:q1="http://schemas.microsoft.com/2003/10/Serialization/Arrays"
      minOccurs="0" name="I" nillable="true" type="q1:ArrayOfstring"/>
  </xs:sequence>
</xs:complexType>
```

E: Specifies the feed entity.

I: A sequence of zero (0) or more feed entry identifiers.

3.1.4.5.4 Simple Types

None.

3.1.4.5.5 Attributes

None.

3.1.4.5.6 Groups

None.

3.1.4.5.7 Attribute Groups

None.

3.1.4.6 GetFeeds

This WSDL operation lets the protocol client to get feed entries from the specified feed entities.

```
<wsdl:operation name="GetFeeds" xmlns:wsdl="http://schemas.xmlsoap.org/wsdl/">
  <wsdl:input wsaw:Action="http://Microsoft.Office.Server.UserProfiles/GetFeeds"
  message="tns2:IFeedCacheService_GetFeeds_InputMessage"
  xmlns:wsaw="http://www.w3.org/2006/05/addressing/wsdl"/>
  <wsdl:output wsaw:Action="http://tempuri.org/IFeedCacheService/GetFeedsResponse"
  message="tns2:IFeedCacheService_GetFeeds_OutputMessage"
  xmlns:wsaw="http://www.w3.org/2006/05/addressing/wsdl"/>
  <wsdl:fault wsaw:Action="http://tempuri.org/IFeedCacheService/GetFeedsFeedCacheFaultFault"
  name="FeedCacheFaultFault"
  message="tns2:IFeedCacheService_GetFeeds_FeedCacheFaultFault_FaultMessage"
  xmlns:wsaw="http://www.w3.org/2006/05/addressing/wsdl"/>
</wsdl:operation>
```

This operation helps retrieve feed entries for a number of feed entities in one call. One possible use of this is to transfer data between two protocol servers.

3.1.4.6.1 Messages

The following table summarizes the set of WSDL message definitions that are specific to this operation.

Message	Description
IFeedCacheService_GetFeeds_InputMessage	The request WSDL message for the GetFeeds WSDL operation.
IFeedCacheService_GetFeeds_OutputMessage	The response WSDL message for the GetFeeds WSDL operation.

3.1.4.6.1.1 IFeedCacheService_GetFeeds_InputMessage

The request WSDL message for the **GetFeeds** WSDL operation.

The SOAP action value is:

```
http://Microsoft.Office.Server.UserProfiles/GetFeeds
```

The SOAP body contains the **GetFeeds** element.

3.1.4.6.1.2 IFeedCacheService_GetFeeds_OutputMessage

The response WSDL message for the **GetFeeds** WSDL operation.

The SOAP body contains the **GetFeedsResponse** element.

3.1.4.6.2 Elements

The following table summarizes the XML schema element definitions that are specific to this operation.

Element	Description
GetFeeds	The input data for the GetFeeds WSDL operation.
GetFeedsResponse	The result data for the GetFeeds WSDL operation.

3.1.4.6.2.1 GetFeeds

The **GetFeeds** element specifies the input data for the **GetFeeds** WSDL operation.

```
<xs:element name="GetFeeds" xmlns:xs="http://www.w3.org/2001/XMLSchema">
  <xs:complexType>
    <xs:sequence>
      <xs:element xmlns:ser="http://schemas.microsoft.com/2003/10/Serialization/"
        minOccurs="0" name="callerID" type="ser:guid"/>
      <xs:element xmlns:tns="http://Microsoft/Office/Server/FeedCache" minOccurs="0"
        name="requestingEntity" nillable="true" type="tns:E"/>
      <xs:element xmlns:tns="http://Microsoft/Office/Server/FeedCache" minOccurs="0"
        name="entityNewerThanPair" nillable="true" type="tns:ArrayOfEDT"/>
      <xs:element minOccurs="0" name="maxItemsPerEntity" type="xs:int"/>
    </xs:sequence>
  </xs:complexType>
</xs:element>
```

callerID: The identifier for the protocol client. This value **MUST NOT** be null or empty.

requestingEntity: The feed entity on behalf of which this call is being made.

entityNewerThanPair: A pair of feed entity and a date time value. The operation **MUST NOT** return feed entries for this feed entity having a modified time older than this date time.

maxItemsPerEntity: An integer specifying the maximum number of feed entries to return for a given feed entity. The "M" element in the response is also set to this value.

3.1.4.6.2.2 GetFeedsResponse

The **GetFeedsResponse** element specifies the result data for the **GetFeeds** WSDL operation.

```
<xs:element name="GetFeedsResponse" xmlns:xs="http://www.w3.org/2001/XMLSchema">
  <xs:complexType>
    <xs:sequence>
      <xs:element xmlns:tns="http://Microsoft/Office/Server/FeedCache" minOccurs="0"
        name="GetFeedsResult" nillable="true" type="tns:PC"/>
    </xs:sequence>
  </xs:complexType>
</xs:element>
```

GetFeedsResult: Element of type **PC** as described in section [2.2.4.8](#).

3.1.4.6.3 Complex Types

None.

3.1.4.6.4 Simple Types

None.

3.1.4.6.5 Attributes

None.

3.1.4.6.6 Groups

None.

3.1.4.6.7 Attribute Groups

None.

3.1.4.7 GetPublishedFeed

This WSDL operation lets a protocol client retrieve the published feed entries for a specific feed entity.

```
<wsdl:operation name="GetPublishedFeed" xmlns:wsdl="http://schemas.xmlsoap.org/wsdl/">
  <wsdl:input wsaw:Action="http://Microsoft.Office.Server.UserProfiles/GetPublishedFeed"
  message="tns2:IFeedCacheService_GetPublishedFeed_InputMessage"
  xmlns:wsaw="http://www.w3.org/2006/05/addressing/wsdl"/>
  <wsdl:output wsaw:Action="http://tempuri.org/IFeedCacheService/GetPublishedFeedResponse"
  message="tns2:IFeedCacheService_GetPublishedFeed_OutputMessage"
  xmlns:wsaw="http://www.w3.org/2006/05/addressing/wsdl"/>
  <wsdl:fault
  wsaw:Action="http://tempuri.org/IFeedCacheService/GetPublishedFeedFeedCacheFaultFault"
  name="FeedCacheFaultFault"
  message="tns2:IFeedCacheService_GetPublishedFeed_FeedCacheFaultFault_FaultMessage"
  xmlns:wsaw="http://www.w3.org/2006/05/addressing/wsdl"/>
</wsdl:operation>
```

3.1.4.7.1 Messages

The following table summarizes the set of WSDL message definitions that are specific to this operation.

Message	Description
IFeedCacheService_GetPublishedFeed_InputMessage	The request WSDL message for the GetPublishedFeed WSDL operation.
IFeedCacheService_GetPublishedFeed_OutputMessage	The response WSDL message for the GetPublishedFeed WSDL operation.

3.1.4.7.1.1 IFeedCacheService_GetPublishedFeed_InputMessage

The request WSDL message for the **GetPublishedFeed** WSDL operation.

The SOAP action value is:

http://Microsoft.Office.Server.UserProfiles/GetPublishedFeed

The SOAP body contains the **GetPublishedFeed** element.

3.1.4.7.1.2 IFeedCacheService_GetPublishedFeed_OutputMessage

The response WSDL message for the **GetPublishedFeed** WSDL operation.

The SOAP body contains the **GetPublishedFeedResponse** element.

3.1.4.7.2 Elements

The following table summarizes the XML schema element definitions that are specific to this operation.

Element	Description
GetPublishedFeed	The input data for the GetPublishedFeed WSDL operation.
GetPublishedFeedResponse	The result data for the GetPublishedFeed WSDL operation.

3.1.4.7.2.1 GetPublishedFeed

The **GetPublishedFeed** element specifies the input data for the **GetPublishedFeed** WSDL operation.

```
<xs:element name="GetPublishedFeed" xmlns:xs="http://www.w3.org/2001/XMLSchema">
  <xs:complexType>
    <xs:sequence>
      <xs:element xmlns:tns="http://Microsoft/Office/Server/FeedCache" minOccurs="0"
name="fcTargetEntity" nillable="true" type="tns:FCRE"/>
      <xs:element xmlns:tns="http://Microsoft/Office/Server/FeedCache" minOccurs="0"
name="fcViewingEntity" nillable="true" type="tns:FCRE"/>
      <xs:element xmlns:tns="http://Microsoft/Office/Server/FeedCache" minOccurs="0"
name="fcRetOptions" nillable="true" type="tns:FCRO"/>
    </xs:sequence>
  </xs:complexType>
</xs:element>
```

fcTargetEntity:

fcViewingEntity:

fcRetOptions:

3.1.4.7.2.2 GetPublishedFeedResponse

The **GetPublishedFeedResponse** element specifies the result data for the **GetPublishedFeed** WSDL operation.

```
<xs:element name="GetPublishedFeedResponse" xmlns:xs="http://www.w3.org/2001/XMLSchema">
  <xs:complexType>
    <xs:sequence>
```

```

        <xs:element xmlns:tns="http://Microsoft/Office/Server/FeedCache" minOccurs="0"
name="GetPublishedFeedResult" nillable="true" type="tns:FCCR"/>
    </xs:sequence>
</xs:complexType>
</xs:element>

```

GetPublishedFeedResult: Element of type **PC** as described in section [2.2.4.8](#).

3.1.4.7.3 Complex Types

None.

3.1.4.7.4 Simple Types

None.

3.1.4.7.5 Attributes

None.

3.1.4.7.6 Groups

None.

3.1.4.7.7 Attribute Groups

None.

3.1.4.8 IsEntityActivelyFollowed

This WSDL operation checks if a given feed entity has earlier been marked as followed.

```

<wsdl:operation name="IsEntityActivelyFollowed"
xmlns:wsdl="http://schemas.xmlsoap.org/wsdl/">
    <wsdl:input
wsaw:Action="http://Microsoft.Office.Server.UserProfiles/IsEntityActivelyFollowed"
message="tns2:IFeedCacheService_IsEntityActivelyFollowed_InputMessage"
xmlns:wsaw="http://www.w3.org/2006/05/addressing/wsdl"/>
    <wsdl:output
wsaw:Action="http://tempuri.org/IFeedCacheService/IsEntityActivelyFollowedResponse"
message="tns2:IFeedCacheService_IsEntityActivelyFollowed_OutputMessage"
xmlns:wsaw="http://www.w3.org/2006/05/addressing/wsdl"/>
    <wsdl:fault
wsaw:Action="http://tempuri.org/IFeedCacheService/IsEntityActivelyFollowedFeedCacheFaultFault"
name="FeedCacheFaultFault"
message="tns2:IFeedCacheService_IsEntityActivelyFollowed_FeedCacheFaultFault_FaultMessage"
xmlns:wsaw="http://www.w3.org/2006/05/addressing/wsdl"/>
</wsdl:operation>

```

3.1.4.8.1 Messages

The following table summarizes the set of WSDL message definitions that are specific to this operation.

Message	Description
IFeedCacheService_IsEntityActivelyFollowed_InputMessage	The request WSDL message for the IsEntityActivelyFollowed WSDL operation.
IFeedCacheService_IsEntityActivelyFollowed_OutputMessage	The response WSDL message for the IsEntityActivelyFollowed WSDL operation.

3.1.4.8.1.1 IFeedCacheService_IsEntityActivelyFollowed_InputMessage

The request WSDL message for the **IsEntityActivelyFollowed** WSDL operation.

The SOAP action value is:

```
http://Microsoft.Office.Server.UserProfiles/IsEntityActivelyFollowed
```

The SOAP body contains the **IsEntityActivelyFollowed** element.

3.1.4.8.1.2 IFeedCacheService_IsEntityActivelyFollowed_OutputMessage

The response WSDL message for the **IsEntityActivelyFollowed** WSDL operation.

The SOAP body contains the **IsEntityActivelyFollowedResponse** element.

3.1.4.8.2 Elements

The following table summarizes the XML schema element definitions that are specific to this operation.

Element	Description
IsEntityActivelyFollowed	The input data for the IsEntityActivelyFollowed WSDL operation.
IsEntityActivelyFollowedResponse	The result data for the IsEntityActivelyFollowed WSDL operation.

3.1.4.8.2.1 IsEntityActivelyFollowed

The **IsEntityActivelyFollowed** element specifies the input data for the **IsEntityActivelyFollowed** WSDL operation.

```
<xs:element name="IsEntityActivelyFollowed" xmlns:xs="http://www.w3.org/2001/XMLSchema">
  <xs:complexType>
    <xs:sequence>
      <xs:element xmlns:tns="http://Microsoft/Office/Server/FeedCache" minOccurs="0"
        name="entity" nillable="true" type="tns:E"/>
    </xs:sequence>
  </xs:complexType>
</xs:element>
```

entity: The feed entity to check for.

3.1.4.8.2 IsEntityActivelyFollowedResponse

The **IsEntityActivelyFollowedResponse** element specifies the result data for the **IsEntityActivelyFollowed** WSDL operation.

```
<xs:element name="IsEntityActivelyFollowedResponse"
  xmlns:xs="http://www.w3.org/2001/XMLSchema">
  <xs:complexType>
    <xs:sequence>
      <xs:element minOccurs="0" name="IsEntityActivelyFollowedResult" type="xs:boolean"/>
    </xs:sequence>
  </xs:complexType>
</xs:element>
```

IsEntityActivelyFollowedResult: A Boolean value that indicates whether the feed entity has been marked as followed or not.

3.1.4.8.3 Complex Types

None.

3.1.4.8.4 Simple Types

None.

3.1.4.8.5 Attributes

None.

3.1.4.8.6 Groups

None.

3.1.4.8.7 Attribute Groups

None.

3.1.4.9 IsRepopulationNeeded

This WSDL operation lets a protocol client know if last modified time repopulation is needed.

```
<wsdl:operation name="IsRepopulationNeeded" xmlns:wsdl="http://schemas.xmlsoap.org/wsdl/">
  <wsdl:input wsaw:Action="http://Microsoft.Office.Server.UserProfiles/IsRepopulationNeeded"
    message="tns2:IFeedCacheService_IsRepopulationNeeded_InputMessage"
    xmlns:wsaw="http://www.w3.org/2006/05/addressing/wsdl"/>
  <wsdl:output
    wsaw:Action="http://tempuri.org/IFeedCacheService/IsRepopulationNeededResponse"
    message="tns2:IFeedCacheService_IsRepopulationNeeded_OutputMessage"
    xmlns:wsaw="http://www.w3.org/2006/05/addressing/wsdl"/>
  <wsdl:fault
    wsaw:Action="http://tempuri.org/IFeedCacheService/IsRepopulationNeededFeedCacheFaultFault"
    name="FeedCacheFaultFault"
    message="tns2:IFeedCacheService_IsRepopulationNeeded_FeedCacheFaultFault_FaultMessage"
    xmlns:wsaw="http://www.w3.org/2006/05/addressing/wsdl"/>
</wsdl:operation>
```

This operation is to be used by protocol clients to check if they need to repopulate the last modified times. If this operation returns true, then the protocol client can use the **BulkLMTUpdate** operation as specified in section [3.1.4.2.2.1](#) to update the last modified times.

3.1.4.9.1 Messages

The following table summarizes the set of WSDL message definitions that are specific to this operation.

Message	Description
IFeedCacheService_IsRepopulationNeeded_InputMessage	The request WSDL message for the IsRepopulationNeeded WSDL operation.
IFeedCacheService_IsRepopulationNeeded_OutputMessage	The response WSDL message for the IsRepopulationNeeded WSDL operation.

3.1.4.9.1.1 IFeedCacheService_IsRepopulationNeeded_InputMessage

The request WSDL message for the **IsRepopulationNeeded** WSDL operation.

The SOAP action value is:

```
http://Microsoft.Office.Server.UserProfiles/IsRepopulationNeeded
```

The SOAP body contains the **IsRepopulationNeeded** element.

3.1.4.9.1.2 IFeedCacheService_IsRepopulationNeeded_OutputMessage

The response WSDL message for the **IsRepopulationNeeded** WSDL operation.

The SOAP body contains the **IsRepopulationNeededResponse** element.

3.1.4.9.2 Elements

The following table summarizes the XML schema element definitions that are specific to this operation.

Element	Description
IsRepopulationNeeded	The input data for the IsRepopulationNeeded WSDL operation.
IsRepopulationNeededResponse	The result data for the IsRepopulationNeeded WSDL operation.

3.1.4.9.2.1 IsRepopulationNeeded

The **IsRepopulationNeeded** element specifies the input data for the **IsRepopulationNeeded** WSDL operation.

```
<xs:element name="IsRepopulationNeeded" xmlns:xs="http://www.w3.org/2001/XMLSchema">
  <xs:complexType>
    <xs:sequence>
```

```

    <xs:element xmlns:ser="http://schemas.microsoft.com/2003/10/Serialization/"
minOccurs="0" name="callerID" type="ser:guid"/>
  </xs:sequence>
</xs:complexType>
</xs:element>

```

callerID: The identifier for the protocol client. This value MUST NOT be null or empty.

3.1.4.9.2.2 IsRepopulationNeededResponse

The **IsRepopulationNeededResponse** element specifies the result data for the **IsRepopulationNeeded** WSDL operation.

```

<xs:element name="IsRepopulationNeededResponse" xmlns:xs="http://www.w3.org/2001/XMLSchema">
  <xs:complexType>
    <xs:sequence>
      <xs:element minOccurs="0" name="IsRepopulationNeededResult" type="xs:boolean"/>
    </xs:sequence>
  </xs:complexType>
</xs:element>

```

IsRepopulationNeededResult: A Boolean value that indicates whether repopulation is needed.

3.1.4.9.3 Complex Types

None.

3.1.4.9.4 Simple Types

None.

3.1.4.9.5 Attributes

None.

3.1.4.9.6 Groups

None.

3.1.4.9.7 Attribute Groups

None.

3.1.4.10 NewEntityFollower

This WSDL operation lets a protocol client mark a given feed entity as being actively followed.

```

<wsdl:operation name="NewEntityFollower" xmlns:wsdl="http://schemas.xmlsoap.org/wsdl/">
  <wsdl:input wsaw:Action="http://Microsoft.Office.Server.UserProfiles/NewEntityFollower"
message="tns2:IFeedCacheService_NewEntityFollower_InputMessage"
xmlns:wsaw="http://www.w3.org/2006/05/addressing/wsdl"/>
  <wsdl:output wsaw:Action="http://tempuri.org/IFeedCacheService/NewEntityFollowerResponse"
message="tns2:IFeedCacheService_NewEntityFollower_OutputMessage"
xmlns:wsaw="http://www.w3.org/2006/05/addressing/wsdl"/>

```

```

    <wsdl:fault
      wsaw:Action="http://tempuri.org/IFeedCacheService/NewEntityFollowerFeedCacheFaultFault"
      name="FeedCacheFaultFault"
      message="tns2:IFeedCacheService_NewEntityFollower_FeedCacheFaultFault_FaultMessage"
      xmlns:wsaw="http://www.w3.org/2006/05/addressing/wsdl"/>
  </wsdl:operation>

```

3.1.4.10.1 Messages

The following table summarizes the set of WSDL message definitions that are specific to this operation.

Message	Description
IFeedCacheService_NewEntityFollower_InputMessage	The request WSDL message for the NewEntityFollower WSDL operation.
IFeedCacheService_NewEntityFollower_OutputMessage	The response WSDL message for the NewEntityFollower WSDL operation.

3.1.4.10.1.1 IFeedCacheService_NewEntityFollower_InputMessage

The request WSDL message for the **NewEntityFollower** WSDL operation.

The SOAP action value is:

```
http://Microsoft.Office.Server.UserProfiles/NewEntityFollower
```

The SOAP body contains the **NewEntityFollower** element.

3.1.4.10.1.2 IFeedCacheService_NewEntityFollower_OutputMessage

The response WSDL message for the **NewEntityFollower** WSDL operation.

The SOAP body contains the **NewEntityFollowerResponse** element.

3.1.4.10.2 Elements

The following table summarizes the XML schema element definitions that are specific to this operation.

Element	Description
NewEntityFollower	The input data for the NewEntityFollower WSDL operation.
NewEntityFollowerResponse	The result data for the NewEntityFollower WSDL operation.

3.1.4.10.2.1 NewEntityFollower

The **NewEntityFollower** element specifies the input data for the **NewEntityFollower** WSDL operation.

```
<xs:element name="NewEntityFollower" xmlns:xs="http://www.w3.org/2001/XMLSchema">
```

```

<xs:complexType>
  <xs:sequence>
    <xs:element xmlns:tns="http://Microsoft/Office/Server/FeedCache" minOccurs="0"
name="entity" nillable="true" type="tns:E"/>
  </xs:sequence>
</xs:complexType>
</xs:element>

```

entity: The feed entity which is to be marked as followed.

3.1.4.10.2 NewEntityFollowerResponse

The **NewEntityFollowerResponse** element specifies the result data for the **NewEntityFollower** WSDL operation.

```

<xs:element name="NewEntityFollowerResponse" xmlns:xs="http://www.w3.org/2001/XMLSchema">
  <xs:complexType>
    <xs:sequence>
      <xs:element minOccurs="0" name="NewEntityFollowerResult" type="xs:boolean"/>
    </xs:sequence>
  </xs:complexType>
</xs:element>

```

NewEntityFollowerResult: A Boolean value that indicates whether the operation succeeded or failed.

3.1.4.10.3 Complex Types

None.

3.1.4.10.4 Simple Types

None.

3.1.4.10.5 Attributes

None.

3.1.4.10.6 Groups

None.

3.1.4.10.7 Attribute Groups

None.

3.1.4.11 RefreshFollowedEntities

This WSDL operation lets a protocol client mark a number of feed entities as followed.

```

<wsdl:operation name="RefreshFollowedEntities" xmlns:wsdl="http://schemas.xmlsoap.org/wsdl/">
  <wsdl:input
wsaw:Action="http://Microsoft.Office.Server.UserProfiles/RefreshFollowedEntities"

```

```

message="tns2:IFeedCacheService_RefreshFollowedEntities_InputMessage"
xmlns:wsaw="http://www.w3.org/2006/05/addressing/wsdl"/>
  <wsdl:output
wsaw:Action="http://tempuri.org/IFeedCacheService/RefreshFollowedEntitiesResponse"
message="tns2:IFeedCacheService_RefreshFollowedEntities_OutputMessage"
xmlns:wsaw="http://www.w3.org/2006/05/addressing/wsdl"/>
  <wsdl:fault
wsaw:Action="http://tempuri.org/IFeedCacheService/RefreshFollowedEntitiesFeedCacheFaultFault"
name="FeedCacheFaultFault"
message="tns2:IFeedCacheService_RefreshFollowedEntities_FeedCacheFaultFault_FaultMessage"
xmlns:wsaw="http://www.w3.org/2006/05/addressing/wsdl"/>
</wsdl:operation>

```

3.1.4.11.1 Messages

The following table summarizes the set of WSDL message definitions that are specific to this operation.

Message	Description
IFeedCacheService_RefreshFollowedEntities_InputMessage	The request WSDL message for the RefreshFollowedEntities WSDL operation.
IFeedCacheService_RefreshFollowedEntities_OutputMessage	The response WSDL message for the RefreshFollowedEntities WSDL operation.

3.1.4.11.1.1 IFeedCacheService_RefreshFollowedEntities_InputMessage

The request WSDL message for the **RefreshFollowedEntities** WSDL operation.

The SOAP action value is:

```
http://Microsoft.Office.Server.UserProfiles/RefreshFollowedEntities
```

The SOAP body contains the **RefreshFollowedEntities** element.

3.1.4.11.1.2 IFeedCacheService_RefreshFollowedEntities_OutputMessage

The response WSDL message for the **RefreshFollowedEntities** WSDL operation.

The SOAP body contains the **RefreshFollowedEntitiesResponse** element.

3.1.4.11.2 Elements

The following table summarizes the XML schema element definitions that are specific to this operation.

Element	Description
RefreshFollowedEntities	The input data for the RefreshFollowedEntities WSDL operation.
RefreshFollowedEntitiesResponse	The result data for the RefreshFollowedEntities WSDL operation.

Element	Description
	operation.

3.1.4.11.2.1 RefreshFollowedEntities

The **RefreshFollowedEntities** element specifies the input data for the **RefreshFollowedEntities** WSDL operation.

```
<xs:element name="RefreshFollowedEntities" xmlns:xs="http://www.w3.org/2001/XMLSchema">
  <xs:complexType>
    <xs:sequence>
      <xs:element xmlns:tns="http://Microsoft/Office/Server/FeedCache" minOccurs="0"
name="followedEntities" nillable="true" type="tns:ArrayOfE"/>
    </xs:sequence>
  </xs:complexType>
</xs:element>
```

followedEntities: A sequence of zero or more feed entities to mark as followed.

3.1.4.11.2.2 RefreshFollowedEntitiesResponse

The **RefreshFollowedEntitiesResponse** element specifies the result data for the **RefreshFollowedEntities** WSDL operation.

```
<xs:element name="RefreshFollowedEntitiesResponse"
xmlns:xs="http://www.w3.org/2001/XMLSchema">
  <xs:complexType>
    <xs:sequence>
      <xs:element minOccurs="0" name="RefreshFollowedEntitiesResult" type="xs:boolean"/>
    </xs:sequence>
  </xs:complexType>
</xs:element>
```

RefreshFollowedEntitiesResult: A Boolean value that indicates whether the operation succeeded or failed.

3.1.4.11.3 Complex Types

None.

3.1.4.11.4 Simple Types

None.

3.1.4.11.5 Attributes

None.

3.1.4.11.6 Groups

None.

3.1.4.11.7 Attribute Groups

None.

3.1.4.12 RemoveEntityFeed

This WSDL operation is used to remove all the feed entries of a given feed entity.

```
<wsdl:operation name="RemoveEntityFeed" xmlns:wsdl="http://schemas.xmlsoap.org/wsdl/">
  <wsdl:input wsaw:Action="http://Microsoft.Office.Server.UserProfiles/RemoveEntityFeed"
    message="tns2:IFeedCacheService_RemoveEntityFeed_InputMessage"
    xmlns:wsaw="http://www.w3.org/2006/05/addressing/wsdl"/>
  <wsdl:output wsaw:Action="http://tempuri.org/IFeedCacheService/RemoveEntityFeedResponse"
    message="tns2:IFeedCacheService_RemoveEntityFeed_OutputMessage"
    xmlns:wsaw="http://www.w3.org/2006/05/addressing/wsdl"/>
  <wsdl:fault
    wsaw:Action="http://tempuri.org/IFeedCacheService/RemoveEntityFeedFeedCacheFaultFault"
    name="FeedCacheFaultFault"
    message="tns2:IFeedCacheService_RemoveEntityFeed_FeedCacheFaultFault_FaultMessage"
    xmlns:wsaw="http://www.w3.org/2006/05/addressing/wsdl"/>
</wsdl:operation>
```

3.1.4.12.1 Messages

The following table summarizes the set of WSDL message definitions that are specific to this operation.

Message	Description
IFeedCacheService_RemoveEntityFeed_InputMessage	The request WSDL message for the RemoveEntityFeed WSDL operation.
IFeedCacheService_RemoveEntityFeed_OutputMessage	The response WSDL message for the RemoveEntityFeed WSDL operation.

3.1.4.12.1.1 IFeedCacheService_RemoveEntityFeed_InputMessage

The request WSDL message for the **RemoveEntityFeed** WSDL operation.

The SOAP action value is:

```
http://Microsoft.Office.Server.UserProfiles/RemoveEntityFeed
```

The SOAP body contains the **RemoveEntityFeed** element.

3.1.4.12.1.2 IFeedCacheService_RemoveEntityFeed_OutputMessage

The response WSDL message for the **RemoveEntityFeed** WSDL operation.

The SOAP body contains the **RemoveEntityFeedResponse** element.

3.1.4.12.2 Elements

The following table summarizes the XML schema element definitions that are specific to this operation.

Element	Description
RemoveEntityFeed	The input data for the RemoveEntityFeed WSDL operation.
RemoveEntityFeedResponse	The result data for the RemoveEntityFeed WSDL operation.

3.1.4.12.2.1 RemoveEntityFeed

The **RemoveEntityFeed** element specifies the input data for the **RemoveEntityFeed** WSDL operation.

```
<xs:element name="RemoveEntityFeed" xmlns:xs="http://www.w3.org/2001/XMLSchema">
  <xs:complexType>
    <xs:sequence>
      <xs:element xmlns:tns="http://Microsoft/Office/Server/FeedCache" minOccurs="0"
        name="entity" nillable="true" type="tns:E"/>
    </xs:sequence>
  </xs:complexType>
</xs:element>
```

entity: The feed entity whose feed entries to remove. The entity MUST be of type 'User'.

3.1.4.12.2.2 RemoveEntityFeedResponse

The **RemoveEntityFeedResponse** element specifies the result data for the **RemoveEntityFeed** WSDL operation.

```
<xs:element name="RemoveEntityFeedResponse" xmlns:xs="http://www.w3.org/2001/XMLSchema">
  <xs:complexType>
    <xs:sequence>
      <xs:element minOccurs="0" name="RemoveEntityFeedResult" type="xs:boolean"/>
    </xs:sequence>
  </xs:complexType>
</xs:element>
```

RemoveEntityFeedResult: A Boolean value that indicates whether the operation succeeded or failed.

3.1.4.12.3 Complex Types

None.

3.1.4.12.4 Simple Types

None.

3.1.4.12.5 Attributes

None.

3.1.4.12.6 Groups

None.

3.1.4.12.7 Attribute Groups

None.

3.1.4.13 RemoveFeedEntry

This WSDL operation removes a given feed entry from a given feed entity.

```
<wsdl:operation name="RemoveFeedEntry" xmlns:wsdl="http://schemas.xmlsoap.org/wsdl/">
  <wsdl:input wsaw:Action="http://Microsoft.Office.Server.UserProfiles/RemoveFeedEntry"
message="tns2:IFeedCacheService_RemoveFeedEntry_InputMessage"
xmlns:wsaw="http://www.w3.org/2006/05/addressing/wsdl"/>
  <wsdl:output wsaw:Action="http://tempuri.org/IFeedCacheService/RemoveFeedEntryResponse"
message="tns2:IFeedCacheService_RemoveFeedEntry_OutputMessage"
xmlns:wsaw="http://www.w3.org/2006/05/addressing/wsdl"/>
  <wsdl:fault
wsaw:Action="http://tempuri.org/IFeedCacheService/RemoveFeedEntryFeedCacheFaultFault"
name="FeedCacheFaultFault"
message="tns2:IFeedCacheService_RemoveFeedEntry_FeedCacheFaultFault_FaultMessage"
xmlns:wsaw="http://www.w3.org/2006/05/addressing/wsdl"/>
</wsdl:operation>
```

3.1.4.13.1 Messages

The following table summarizes the set of WSDL message definitions that are specific to this operation.

Message	Description
IFeedCacheService_RemoveFeedEntry_InputMessage	The request WSDL message for the RemoveFeedEntry WSDL operation.
IFeedCacheService_RemoveFeedEntry_OutputMessage	The response WSDL message for the RemoveFeedEntry WSDL operation.

3.1.4.13.1.1 IFeedCacheService_RemoveFeedEntry_InputMessage

The request WSDL message for the **RemoveFeedEntry** WSDL operation.

The SOAP action value is:

```
http://Microsoft.Office.Server.UserProfiles/RemoveFeedEntry
```

The SOAP body contains the **RemoveFeedEntry** element.

3.1.4.13.1.2 IFeedCacheService_RemoveFeedEntry_OutputMessage

The response WSDL message for the **RemoveFeedEntry** WSDL operation.

The SOAP body contains the **RemoveFeedEntryResponse** element.

3.1.4.13.2 Elements

The following table summarizes the XML schema element definitions that are specific to this operation.

Element	Description
RemoveFeedEntry	The input data for the RemoveFeedEntry WSDL operation.
RemoveFeedEntryResponse	The result data for the RemoveFeedEntry WSDL operation.

3.1.4.13.2.1 RemoveFeedEntry

The **RemoveFeedEntry** element specifies the input data for the **RemoveFeedEntry** WSDL operation.

```
<xs:element name="RemoveFeedEntry" xmlns:xs="http://www.w3.org/2001/XMLSchema">
  <xs:complexType>
    <xs:sequence>
      <xs:element xmlns:tns="http://Microsoft/Office/Server/FeedCache" minOccurs="0"
name="entity" nillable="true" type="tns:E"/>
      <xs:element xmlns:tns="http://Microsoft/Office/Server/FeedCache" minOccurs="0"
name="entry" nillable="true" type="tns:P"/>
    </xs:sequence>
  </xs:complexType>
</xs:element>
```

entity: The feed entity whose feed entry to remove.

entry: The feed entry to remove.

3.1.4.13.2.2 RemoveFeedEntryResponse

The **RemoveFeedEntryResponse** element specifies the result data for the **RemoveFeedEntry** WSDL operation.

```
<xs:element name="RemoveFeedEntryResponse" xmlns:xs="http://www.w3.org/2001/XMLSchema">
  <xs:complexType>
    <xs:sequence>
      <xs:element minOccurs="0" name="RemoveFeedEntryResult" type="xs:boolean"/>
    </xs:sequence>
  </xs:complexType>
</xs:element>
```

RemoveFeedEntryResult: A Boolean value that indicates whether the operation succeeded or failed.

3.1.4.13.3 Complex Types

None.

3.1.4.13.4 Simple Types

None.

3.1.4.13.5 Attributes

None.

3.1.4.13.6 Groups

None.

3.1.4.13.7 Attribute Groups

None.

3.1.4.14 AddFeedEntries

This WSDL operation helps in adding multiple feed entries.

```
<wsdl:operation name="AddFeedEntries" xmlns:wsdl="http://schemas.xmlsoap.org/wsdl/">
  <wsdl:input wsaw:Action="http://Microsoft.Office.Server.UserProfiles/AddFeedEntries"
message="tns2:IFeedCacheService_AddFeedEntries_InputMessage"
xmlns:wsaw="http://www.w3.org/2006/05/addressing/wsdl"/>
  <wsdl:output wsaw:Action="http://tempuri.org/IFeedCacheService/AddFeedEntriesResponse"
message="tns2:IFeedCacheService_AddFeedEntries_OutputMessage"
xmlns:wsaw="http://www.w3.org/2006/05/addressing/wsdl"/>
  <wsdl:fault
wsaw:Action="http://tempuri.org/IFeedCacheService/AddFeedEntriesFeedCacheFaultFault"
name="FeedCacheFaultFault"
message="tns2:IFeedCacheService_AddFeedEntries_FeedCacheFaultFault_FaultMessage"
xmlns:wsaw="http://www.w3.org/2006/05/addressing/wsdl"/>
</wsdl:operation>
```

This operation is used to add a number of feed entries potentially associated with separate feed entities in a single operation. This can be used in scenarios such as repopulating feed entries of a given feed entity or in some automated process.

3.1.4.14.1 Messages

The following table summarizes the set of WSDL message definitions that are specific to this operation.

Message	Description
IFeedCacheService_AddFeedEntries_InputMessage	The request WSDL message for the AddFeedEntries WSDL operation.
IFeedCacheService_AddFeedEntries_OutputMessage	The response WSDL message for the AddFeedEntries WSDL operation.

3.1.4.14.1.1 IFeedCacheService_AddFeedEntries_InputMessage

The request WSDL message for the **AddFeedEntries** WSDL operation.

The SOAP action value is:

```
http://Microsoft.Office.Server.UserProfiles/AddFeedEntries
```

The SOAP body contains the **AddFeedEntries** element.

3.1.4.14.1.2 IFeedCacheService_AddFeedEntries_OutputMessage

The response WSDL message for the **AddFeedEntries** WSDL operation.

The SOAP body contains the **AddFeedEntriesResponse** element.

3.1.4.14.2 Elements

The following table summarizes the XML schema element definitions that are specific to this operation.

Element	Description
AddFeedEntries	The input data for the AddFeedEntries WSDL operation.
AddFeedEntriesResponse	The result data for the AddFeedEntries WSDL operation.

3.1.4.14.2.1 AddFeedEntries

The **AddFeedEntries** element specifies the input data for the **AddFeedEntries** WSDL operation.

```
<xs:element name="AddFeedEntries" xmlns:xs="http://www.w3.org/2001/XMLSchema">
  <xs:complexType>
    <xs:sequence>
      <xs:element xmlns:tns="http://Microsoft/Office/Server/FeedCache" minOccurs="0"
name="entries" nillable="true" type="tns:PC"/>
    </xs:sequence>
  </xs:complexType>
</xs:element>
```

entries: An element of type **PC**, as specified in section [2.2.4.8](#). MUST NOT be null. Only the EN element is used by this operation, and it specifies a sequence of zero or more feed entries as specified in section [2.2.4.7](#). MUST NOT be null.

3.1.4.14.2.2 AddFeedEntriesResponse

The **AddFeedEntriesResponse** element specifies the result data for the **AddFeedEntries** WSDL operation.

```
<xs:element name="AddFeedEntriesResponse" xmlns:xs="http://www.w3.org/2001/XMLSchema">
  <xs:complexType>
    <xs:sequence>
      <xs:element minOccurs="0" name="AddFeedEntriesResult" type="xs:boolean"/>
    </xs:sequence>
  </xs:complexType>
</xs:element>
```

AddFeedEntriesResult: A Boolean value that indicates whether the operation succeeded or failed.

3.1.4.14.3 Complex Types

None.

3.1.4.14.4 Simple Types

None.

3.1.4.14.5 Attributes

None.

3.1.4.14.6 Groups

None.

3.1.4.14.7 Attribute Groups

None.

3.1.4.15 RemoveInternalRegions

This WSDL operation removes some internal data structure. This operation MUST NOT be called by any protocol client.

```
<wsdl:operation name="RemoveInternalRegions" xmlns:wsdl="http://schemas.xmlsoap.org/wsdl/">
  <wsdl:input wsaw:Action="http://Microsoft.Office.Server.UserProfiles/RemoveInternalRegions"
    message="tns2:IFeedCacheService_RemoveInternalRegions_InputMessage"
    xmlns:wsaw="http://www.w3.org/2006/05/addressing/wsdl"/>
  <wsdl:output
    wsaw:Action="http://tempuri.org/IFeedCacheService/RemoveInternalRegionsResponse"
    message="tns2:IFeedCacheService_RemoveInternalRegions_OutputMessage"
    xmlns:wsaw="http://www.w3.org/2006/05/addressing/wsdl"/>
  <wsdl:fault
    wsaw:Action="http://tempuri.org/IFeedCacheService/RemoveInternalRegionsFeedCacheFaultFault"
    name="FeedCacheFaultFault"
    message="tns2:IFeedCacheService_RemoveInternalRegions_FeedCacheFaultFault_FaultMessage"
    xmlns:wsaw="http://www.w3.org/2006/05/addressing/wsdl"/>
</wsdl:operation>
```

3.1.4.15.1 Messages

The following table summarizes the set of WSDL message definitions that are specific to this operation.

Message	Description
IFeedCacheService_RemoveInternalRegions_InputMessage	The request WSDL message for the RemoveInternalRegions WSDL operation.
IFeedCacheService_RemoveInternalRegions_OutputMessage	The response WSDL message for the RemoveInternalRegions WSDL operation.

3.1.4.15.1.1 IFeedCacheService_RemoveInternalRegions_InputMessage

The request WSDL message for the **RemoveInternalRegions** WSDL operation.

The SOAP action value is:

http://Microsoft.Office.Server.UserProfiles/RemoveInternalRegions

The SOAP body contains the **RemoveInternalRegions** element.

3.1.4.15.1.2 IFeedCacheService_RemoveInternalRegions_OutputMessage

The response WSDL message for the **RemoveInternalRegions** WSDL operation.

The SOAP body contains the **RemoveInternalRegionsResponse** element.

3.1.4.15.2 Elements

The following table summarizes the XML schema element definitions that are specific to this operation.

Element	Description
RemoveInternalRegions	The input data for the RemoveInternalRegions WSDL operation.
RemoveInternalRegionsResponse	The result data for the RemoveInternalRegions WSDL operation.

3.1.4.15.2.1 RemoveInternalRegions

The **RemoveInternalRegions** element specifies the input data for the **RemoveInternalRegions** WSDL operation.

```
<xs:element name="RemoveInternalRegions" xmlns:xs="http://www.w3.org/2001/XMLSchema">  
  <xs:complexType>  
    <xs:sequence>  
      <xs:element minOccurs="0" name="webAppUrl" nillable="true" type="xs:string"/>  
    </xs:sequence>  
  </xs:complexType>  
</xs:element>
```

webAppUrl: The URL of the calling **Web application**.

3.1.4.15.2.2 RemoveInternalRegionsResponse

The **RemoveInternalRegionsResponse** element specifies the result data for the **RemoveInternalRegions** WSDL operation.

```
<xs:element name="RemoveInternalRegionsResponse" xmlns:xs="http://www.w3.org/2001/XMLSchema">  
  <xs:complexType>  
    <xs:sequence>  
      <xs:element minOccurs="0" name="RemoveInternalRegionsResult" type="xs:boolean"/>  
    </xs:sequence>  
  </xs:complexType>  
</xs:element>
```

RemoveInternalRegionsResult: A Boolean value that indicates whether the operation succeeded or failed.

3.1.4.15.3 Complex Types

None.

3.1.4.15.4 Simple Types

None.

3.1.4.15.5 Attributes

None.

3.1.4.15.6 Groups

None.

3.1.4.15.7 Attribute Groups

None.

3.1.4.16 AddFeedEntriesForRepop

This WSDL operation helps in adding multiple feed entries.

```
<wsdl:operation name="AddFeedEntriesForRepop" xmlns:wsdl="http://schemas.xmlsoap.org/wsdl/">
  <wsdl:input
    wsaw:Action="http://Microsoft.Office.Server.UserProfiles/AddFeedEntriesForRepop"
    message="tns2:IFeedCacheService_AddFeedEntriesForRepop_InputMessage"
    xmlns:wsaw="http://www.w3.org/2006/05/addressing/wsdl"/>
  <wsdl:output
    wsaw:Action="http://tempuri.org/IFeedCacheService/AddFeedEntriesForRepopResponse"
    message="tns2:IFeedCacheService_AddFeedEntriesForRepop_OutputMessage"
    xmlns:wsaw="http://www.w3.org/2006/05/addressing/wsdl"/>
  <wsdl:fault
    wsaw:Action="http://tempuri.org/IFeedCacheService/AddFeedEntriesForRepopFeedCacheFaultFault"
    name="FeedCacheFaultFault"
    message="tns2:IFeedCacheService_AddFeedEntriesForRepop_FeedCacheFaultFault_FaultMessage"
    xmlns:wsaw="http://www.w3.org/2006/05/addressing/wsdl"/>
</wsdl:operation>
```

3.1.4.16.1 Messages

The following table summarizes the set of WSDL message definitions that are specific to this operation.

Message	Description
IFeedCacheService_AddFeedEntriesForRepop_InputMessage	The request WSDL message for the AddFeedEntriesForRepop WSDL operation.
IFeedCacheService_AddFeedEntriesForRepop_OutputMessage	The response WSDL message for the AddFeedEntriesForRepop WSDL operation.

3.1.4.16.1.1 IFeedCacheService_AddFeedEntriesForRepop_InputMessage

The request WSDL message for the **AddFeedEntriesForRepop** WSDL operation.

The SOAP action value is:

```
http://Microsoft.Office.Server.UserProfiles/AddFeedEntriesForRepop
```

The SOAP body contains the **AddFeedEntriesForRepop** element.

3.1.4.16.1.2 IFeedCacheService_AddFeedEntriesForRepop_OutputMessage

The response WSDL message for the **AddFeedEntriesForRepop** WSDL operation.

The SOAP body contains the **AddFeedEntriesForRepopResponse** element.

3.1.4.16.2 Elements

The following table summarizes the XML schema element definitions that are specific to this operation.

Element	Description
AddFeedEntriesForRepop	The input data for the AddFeedEntriesForRepop WSDL operation.
AddFeedEntriesForRepopResponse	The result data for the AddFeedEntriesForRepop WSDL operation.

3.1.4.16.2.1 AddFeedEntriesForRepop

The **AddFeedEntriesForRepop** element specifies the input data for the **AddFeedEntriesForRepop** WSDL operation.

```
<xs:element name="AddFeedEntriesForRepop" xmlns:xs="http://www.w3.org/2001/XMLSchema">
  <xs:complexType>
    <xs:sequence>
      <xs:element xmlns:tns="http://Microsoft/Office/Server/FeedCache" minOccurs="0"
name="entity" nillable="true" type="tns:E"/>
      <xs:element xmlns:tns="http://Microsoft/Office/Server/FeedCache" minOccurs="0"
name="entries" nillable="true" type="tns:PC"/>
      <xs:element minOccurs="0" name="lastDeleted" nillable="true" type="xs:dateTime"/>
    </xs:sequence>
  </xs:complexType>
</xs:element>
```

entity: The feed entity on behalf of which this operation is being executed.

entries: A sequence of zero or more feed entries of type **PC** (as specified in section [2.2.4.8](#)) that are to be added.

lastDeleted: A date and time indicating when the last time a feed entry was deleted from the feed entity.

3.1.4.16.2.2 AddFeedEntriesForRepopResponse

The **AddFeedEntriesForRepopResponse** element specifies the result data for the **AddFeedEntriesForRepop** WSDL operation.

```
<xs:element name="AddFeedEntriesForRepopResponse"
  xmlns:xs="http://www.w3.org/2001/XMLSchema">
  <xs:complexType>
    <xs:sequence>
      <xs:element minOccurs="0" name="AddFeedEntriesForRepopResult" type="xs:boolean"/>
    </xs:sequence>
  </xs:complexType>
</xs:element>
```

AddFeedEntriesForRepopResult: A Boolean value that indicates whether the operation succeeded or failed.

3.1.4.16.3 Complex Types

None.

3.1.4.16.4 Simple Types

None.

3.1.4.16.5 Attributes

None.

3.1.4.16.6 Groups

None.

3.1.4.16.7 Attribute Groups

None.

3.1.5 Timer Events

None.

3.1.6 Other Local Events

None.

4 Protocol Examples

4.1 AddFeedEntry

To add a feed entry, the protocol client sends the following WSDL message:

```
<s:Envelope xmlns:s="http://www.w3.org/2003/05/soap-envelope"
xmlns:a="http://www.w3.org/2005/08/addressing" xmlns:u="http://docs.oasis-
open.org/wss/2004/01/oasis-200401-wss-wssecurity-utility-1.0.xsd">
  <s:Header>
    <a:Action
s:mustUnderstand="1">http://Microsoft.Office.Server.UserProfiles/AddFeedEntry</a:Action>
    <a:MessageID>urn:uuid:e2a9eb1e-6fde-4934-be39-9cf816f1f655</a:MessageID>
    <a:ReplyTo>
      <a:Address>http://www.w3.org/2005/08/addressing/anonymous</a:Address>
    </a:ReplyTo>
  </s:Header>
  <s:Body>
    <AddFeedEntry xmlns="http://tempuri.org/">
      <entity xmlns:b="http://Microsoft/Office/Server/FeedCache"
xmlns:i="http://www.w3.org/2001/XMLSchema-instance">
        <b:ET>User</b:ET>
        <b:LID>61e7fd65-62f4-4321-8f44-945640eb2ce1</b:LID>
        <b:PID>0c37852b-34d0-418e-91c6-2ac25af4be5b</b:PID>
        <b:SID>354936ff-bb63-45a5-b08d-ba6373087cf7</b:SID>
        <b:Url>http://machine/my/personal/user</b:Url>
        <b:WID>6c00a125-2a29-44c3-97ea-7e6f2341000e</b:WID>
      </entity>
      <entry xmlns:b="http://Microsoft/Office/Server/FeedCache"
xmlns:i="http://www.w3.org/2001/XMLSchema-instance">
        <b:D1>entry</b:D1>
        <b:EID>364a93b2a29d459ebea86a959b104d98</b:EID>
        <b:M>2011-10-29T00:06:15.0336138Z</b:M>
        <b:MBD>1</b:MBD>
        <b:MBT>2</b:MBT>
      </entry>
    </AddFeedEntry>
  </s:Body>
</s:Envelope>
```

The protocol server responds with:

```
<s:Envelope xmlns:s="http://www.w3.org/2003/05/soap-envelope"
xmlns:a="http://www.w3.org/2005/08/addressing" xmlns:u="http://docs.oasis-
open.org/wss/2004/01/oasis-200401-wss-wssecurity-utility-1.0.xsd">
  <s:Header>
    <a:Action
s:mustUnderstand="1">http://tempuri.org/IFeedCacheService/AddFeedEntryResponse</a:Action>
  </s:Header>
  <s:Body>
    <AddFeedEntryResponse xmlns="http://tempuri.org/">
      <AddFeedEntryResult>true</AddFeedEntryResult>
    </AddFeedEntryResponse>
  </s:Body>
</s:Envelope>
```

4.2 GetPublishedFeed

To get the feed entries back for this feed entity, the protocol client sends the following WSDL message:

```
<s:Envelope xmlns:s="http://www.w3.org/2003/05/soap-envelope"
xmlns:a="http://www.w3.org/2005/08/addressing" xmlns:u="http://docs.oasis-
open.org/wss/2004/01/oasis-200401-wss-wssecurity-utility-1.0.xsd">
  <s:Header>
    <a:Action
s:mustUnderstand="1">http://Microsoft.Office.Server.UserProfiles/GetPublishedFeed</a:Action>
    <a:MessageID>urn:uuid:ef48db0d-d770-4e13-8710-496c38a1f82c</a:MessageID>
    <a:ReplyTo>
      <a:Address>http://www.w3.org/2005/08/addressing/anonymous</a:Address>
    </a:ReplyTo>
  </s:Header>
  <s:Body>
    <GetPublishedFeed xmlns="http://tempuri.org/">
      <entity xmlns:b="http://Microsoft/Office/Server/FeedCache"
xmlns:i="http://www.w3.org/2001/XMLSchema-instance">
        <b:ET>User</b:ET>
        <b:LID>61e7fd65-62f4-4321-8f44-945640eb2ce1</b:LID>
        <b:PID>0c37852b-34d0-418e-91c6-2ac25af4be5b</b:PID>
        <b:SID>354936ff-bb63-45a5-b08d-ba6373087cf7</b:SID>
        <b:Url>http://machine/my/personal/user</b:Url>
        <b:WID>6c00a125-2a29-44c3-97ea-7e6f2341000e</b:WID>
      </entity>
      <maxItemsPerEntity>20</maxItemsPerEntity>
      <newerThan i:nil="true" xmlns:i="http://www.w3.org/2001/XMLSchema-instance"/>
      <olderThan>2011-10-28T23:37:53.266Z</olderThan>
    </GetPublishedFeed>
  </s:Body>
</s:Envelope>
```

The protocol server responds with:

```
<s:Envelope xmlns:s="http://www.w3.org/2003/05/soap-envelope"
xmlns:a="http://www.w3.org/2005/08/addressing" xmlns:u="http://docs.oasis-
open.org/wss/2004/01/oasis-200401-wss-wssecurity-utility-1.0.xsd">
  <s:Header>
    <a:Action
s:mustUnderstand="1">http://tempuri.org/IFeedCacheService/GetPublishedFeedResponse</a:Action>
    <a:RelatesTo>urn:uuid:ef48db0d-d770-4e13-8710-496c38a1f82c</a:RelatesTo>
    <ActivityId CorrelationId="6e89a29a-db76-4de4-8465-11c526e28acb"
xmlns="http://schemas.microsoft.com/2004/09/ServiceModel/Diagnostics">00000000-0000-0000-
0000-000000000000</ActivityId>
  </s:Header>
  <s:Body>
    <GetPublishedFeedResponse xmlns="http://tempuri.org/">
      <GetPublishedFeedResult xmlns:b="http://Microsoft/Office/Server/FeedCache"
xmlns:i="http://www.w3.org/2001/XMLSchema-instance">
        <b:En>
          <b:P>
            <b:D1>entry</b:D1>
            <b:EID>ff2bc270089f4bf0a54690c30eae9d30</b:EID>
          </b:En>
          <b:ET>User</b:ET>
        </b:En>
      </GetPublishedFeedResult>
    </GetPublishedFeedResponse>
  </s:Body>
</s:Envelope>
```

```
<b:LID>61e7fd65-62f4-4321-8f44-945640eb2ce1</b:LID>
<b:PID>0c37852b-34d0-418e-91c6-2ac25af4be5b</b:PID>
<b:SID>354936ff-bb63-45a5-b08d-ba6373087cf7</b:SID>
<b:Url>http://machine/my/personal/user</b:Url>
<b:WID>6c00a125-2a29-44c3-97ea-7e6f2341000e</b:WID>
</b:En>
<b:M>2011-10-28T23:37:53.2668995Z</b:M>
<b:MBD>1</b:MBD>
<b:MBT>2</b:MBT>
</b:P>
</b:En>
<b:M>20</b:M>
</GetPublishedFeedResult>
</GetPublishedFeedResponse>
</s:Body>
</s:Envelope>
```

5 Security

5.1 Security Considerations for Implementers

None.

5.2 Index of Security Parameters

None.

6 Appendix A: Full WSDL

For ease of implementation, the full WSDL is provided in this appendix.

```
<?xml version="1.0"?>
<wsdl:definitions xmlns:soap="http://schemas.xmlsoap.org/wsdl/soap/"
xmlns:wsaw="http://www.w3.org/2006/05/addressing/wsdl"
xmlns:xs="http://www.w3.org/2001/XMLSchema" xmlns:tns2="http://tempuri.org/"
targetNamespace="http://tempuri.org/" xmlns:wsdl="http://schemas.xmlsoap.org/wsdl/">
  <wsdl:types>
    <xs:schema xmlns:tns3="http://tempuri.org/Imports"
targetNamespace="http://tempuri.org/Imports">
      <xs:import namespace="http://tempuri.org/" />
      <xs:import namespace="http://Microsoft/Office/Server/FeedCache" />
      <xs:import namespace="http://schemas.microsoft.com/2003/10/Serialization/" />
      <xs:import namespace="http://schemas.microsoft.com/2003/10/Serialization/Arrays" />
      <xs:import namespace="http://Microsoft/Office/Server/UserProfiles" />
      <xs:import namespace="http://schemas.datacontract.org/2004/07/System" />
      <xs:import
namespace="http://schemas.datacontract.org/2004/07/System.Collections.Generic" />
    </xs:schema>
  </wsdl:types>
  <wsdl:message name="IFeedCacheService_AddFeedEntry_InputMessage">
    <wsdl:part name="parameters" element="tns2:AddFeedEntry" />
  </wsdl:message>
  <wsdl:message name="IFeedCacheService_AddFeedEntry_OutputMessage">
    <wsdl:part name="parameters" element="tns2:AddFeedEntryResponse" />
  </wsdl:message>
  <wsdl:message name="IFeedCacheService_AddFeedEntry_FeedCacheFaultFault_FaultMessage">
    <wsdl:part xmlns:tns="http://Microsoft/Office/Server/FeedCache" name="detail"
element="tns:FeedCacheFault" />
  </wsdl:message>
  <wsdl:message name="IFeedCacheService_AddFeedEntries_InputMessage">
    <wsdl:part name="parameters" element="tns2:AddFeedEntries" />
  </wsdl:message>
  <wsdl:message name="IFeedCacheService_AddFeedEntries_OutputMessage">
    <wsdl:part name="parameters" element="tns2:AddFeedEntriesResponse" />
  </wsdl:message>
  <wsdl:message name="IFeedCacheService_AddFeedEntries_FeedCacheFaultFault_FaultMessage">
    <wsdl:part xmlns:tns="http://Microsoft/Office/Server/FeedCache" name="detail"
element="tns:FeedCacheFault" />
  </wsdl:message>
  <wsdl:message name="IFeedCacheService_RemoveFeedEntry_InputMessage">
    <wsdl:part name="parameters" element="tns2:RemoveFeedEntry" />
  </wsdl:message>
  <wsdl:message name="IFeedCacheService_RemoveFeedEntry_OutputMessage">
    <wsdl:part name="parameters" element="tns2:RemoveFeedEntryResponse" />
  </wsdl:message>
  <wsdl:message name="IFeedCacheService_RemoveFeedEntry_FeedCacheFaultFault_FaultMessage">
    <wsdl:part xmlns:tns="http://Microsoft/Office/Server/FeedCache" name="detail"
element="tns:FeedCacheFault" />
  </wsdl:message>
  <wsdl:message name="IFeedCacheService_RemoveEntityFeed_InputMessage">
    <wsdl:part name="parameters" element="tns2:RemoveEntityFeed" />
  </wsdl:message>
  <wsdl:message name="IFeedCacheService_RemoveEntityFeed_OutputMessage">
    <wsdl:part name="parameters" element="tns2:RemoveEntityFeedResponse" />
  </wsdl:message>
  <wsdl:message name="IFeedCacheService_RemoveEntityFeed_FeedCacheFaultFault_FaultMessage">
```



```

    <wsdl:part xmlns:tns="http://Microsoft/Office/Server/FeedCache" name="detail"
element="tns:FeedCacheFault"/>
  </wsdl:message>
  <wsdl:message name="IFeedCacheService_RemoveInternalRegions_InputMessage">
    <wsdl:part name="parameters" element="tns2:RemoveInternalRegions"/>
  </wsdl:message>
  <wsdl:message name="IFeedCacheService_RemoveInternalRegions_OutputMessage">
    <wsdl:part name="parameters" element="tns2:RemoveInternalRegionsResponse"/>
  </wsdl:message>
  <wsdl:message
name="IFeedCacheService_RemoveInternalRegions_FeedCacheFaultFault_FaultMessage">
    <wsdl:part xmlns:tns="http://Microsoft/Office/Server/FeedCache" name="detail"
element="tns:FeedCacheFault"/>
  </wsdl:message>
  <wsdl:message name="IFeedCacheService_GetConsolidatedFeed_InputMessage">
    <wsdl:part name="parameters" element="tns2:GetConsolidatedFeed"/>
  </wsdl:message>
  <wsdl:message name="IFeedCacheService_GetConsolidatedFeed_OutputMessage">
    <wsdl:part name="parameters" element="tns2:GetConsolidatedFeedResponse"/>
  </wsdl:message>
  <wsdl:message
name="IFeedCacheService_GetConsolidatedFeed_FeedCacheFaultFault_FaultMessage">
    <wsdl:part xmlns:tns="http://Microsoft/Office/Server/FeedCache" name="detail"
element="tns:FeedCacheFault"/>
  </wsdl:message>
  <wsdl:message name="IFeedCacheService_GetPublishedFeed_InputMessage">
    <wsdl:part name="parameters" element="tns2:GetPublishedFeed"/>
  </wsdl:message>
  <wsdl:message name="IFeedCacheService_GetPublishedFeed_OutputMessage">
    <wsdl:part name="parameters" element="tns2:GetPublishedFeedResponse"/>
  </wsdl:message>
  <wsdl:message name="IFeedCacheService_GetPublishedFeed_FeedCacheFaultFault_FaultMessage">
    <wsdl:part xmlns:tns="http://Microsoft/Office/Server/FeedCache" name="detail"
element="tns:FeedCacheFault"/>
  </wsdl:message>
  <wsdl:message name="IFeedCacheService_GetCategoricalFeed_InputMessage">
    <wsdl:part name="parameters" element="tns2:GetCategoricalFeed"/>
  </wsdl:message>
  <wsdl:message name="IFeedCacheService_GetCategoricalFeed_OutputMessage">
    <wsdl:part name="parameters" element="tns2:GetCategoricalFeedResponse"/>
  </wsdl:message>
  <wsdl:message name="IFeedCacheService_GetCategoricalFeed_FeedCacheFaultFault_FaultMessage">
    <wsdl:part xmlns:tns="http://Microsoft/Office/Server/FeedCache" name="detail"
element="tns:FeedCacheFault"/>
  </wsdl:message>
  <wsdl:message name="IFeedCacheService_GetEntries_InputMessage">
    <wsdl:part name="parameters" element="tns2:GetEntries"/>
  </wsdl:message>
  <wsdl:message name="IFeedCacheService_GetEntries_OutputMessage">
    <wsdl:part name="parameters" element="tns2:GetEntriesResponse"/>
  </wsdl:message>
  <wsdl:message name="IFeedCacheService_GetEntries_FeedCacheFaultFault_FaultMessage">
    <wsdl:part xmlns:tns="http://Microsoft/Office/Server/FeedCache" name="detail"
element="tns:FeedCacheFault"/>
  </wsdl:message>
  <wsdl:message name="IFeedCacheService_NewEntityFollower_InputMessage">
    <wsdl:part name="parameters" element="tns2:NewEntityFollower"/>
  </wsdl:message>
  <wsdl:message name="IFeedCacheService_NewEntityFollower_OutputMessage">
    <wsdl:part name="parameters" element="tns2:NewEntityFollowerResponse"/>

```

```

</wsdl:message>
<wsdl:message name="IFeedCacheService_NewEntityFollower_FeedCacheFaultFault_FaultMessage">
  <wsdl:part xmlns:tns="http://Microsoft/Office/Server/FeedCache" name="detail"
  element="tns:FeedCacheFault"/>
</wsdl:message>
<wsdl:message name="IFeedCacheService_IsEntityActivelyFollowed_InputMessage">
  <wsdl:part name="parameters" element="tns2:IsEntityActivelyFollowed"/>
</wsdl:message>
<wsdl:message name="IFeedCacheService_IsEntityActivelyFollowed_OutputMessage">
  <wsdl:part name="parameters" element="tns2:IsEntityActivelyFollowedResponse"/>
</wsdl:message>
<wsdl:message
name="IFeedCacheService_IsEntityActivelyFollowed_FeedCacheFaultFault_FaultMessage">
  <wsdl:part xmlns:tns="http://Microsoft/Office/Server/FeedCache" name="detail"
  element="tns:FeedCacheFault"/>
</wsdl:message>
<wsdl:message name="IFeedCacheService_RefreshFollowedEntities_InputMessage">
  <wsdl:part name="parameters" element="tns2:RefreshFollowedEntities"/>
</wsdl:message>
<wsdl:message name="IFeedCacheService_RefreshFollowedEntities_OutputMessage">
  <wsdl:part name="parameters" element="tns2:RefreshFollowedEntitiesResponse"/>
</wsdl:message>
<wsdl:message
name="IFeedCacheService_RefreshFollowedEntities_FeedCacheFaultFault_FaultMessage">
  <wsdl:part xmlns:tns="http://Microsoft/Office/Server/FeedCache" name="detail"
  element="tns:FeedCacheFault"/>
</wsdl:message>
<wsdl:message name="IFeedCacheService_BulkLMTUpdate_InputMessage">
  <wsdl:part name="parameters" element="tns2:BulkLMTUpdate"/>
</wsdl:message>
<wsdl:message name="IFeedCacheService_BulkLMTUpdate_OutputMessage">
  <wsdl:part name="parameters" element="tns2:BulkLMTUpdateResponse"/>
</wsdl:message>
<wsdl:message name="IFeedCacheService_BulkLMTUpdate_FeedCacheFaultFault_FaultMessage">
  <wsdl:part xmlns:tns="http://Microsoft/Office/Server/FeedCache" name="detail"
  element="tns:FeedCacheFault"/>
</wsdl:message>
<wsdl:message name="IFeedCacheService_AddFeedEntriesForRepop_InputMessage">
  <wsdl:part name="parameters" element="tns2:AddFeedEntriesForRepop"/>
</wsdl:message>
<wsdl:message name="IFeedCacheService_AddFeedEntriesForRepop_OutputMessage">
  <wsdl:part name="parameters" element="tns2:AddFeedEntriesForRepopResponse"/>
</wsdl:message>
<wsdl:message
name="IFeedCacheService_AddFeedEntriesForRepop_FeedCacheFaultFault_FaultMessage">
  <wsdl:part xmlns:tns="http://Microsoft/Office/Server/FeedCache" name="detail"
  element="tns:FeedCacheFault"/>
</wsdl:message>
<wsdl:message name="IFeedCacheService_IsRepopulationNeeded_InputMessage">
  <wsdl:part name="parameters" element="tns2:IsRepopulationNeeded"/>
</wsdl:message>
<wsdl:message name="IFeedCacheService_IsRepopulationNeeded_OutputMessage">
  <wsdl:part name="parameters" element="tns2:IsRepopulationNeededResponse"/>
</wsdl:message>
<wsdl:message
name="IFeedCacheService_IsRepopulationNeeded_FeedCacheFaultFault_FaultMessage">
  <wsdl:part xmlns:tns="http://Microsoft/Office/Server/FeedCache" name="detail"
  element="tns:FeedCacheFault"/>
</wsdl:message>
<wsdl:message name="IFeedCacheService_GetFeeds_InputMessage">

```

```

    <wsdl:part name="parameters" element="tns2:GetFeeds"/>
  </wsdl:message>
  <wsdl:message name="IFeedCacheService_GetFeeds_OutputMessage">
    <wsdl:part name="parameters" element="tns2:GetFeedsResponse"/>
  </wsdl:message>
  <wsdl:message name="IFeedCacheService_GetFeeds_FeedCacheFaultFault_FaultMessage">
    <wsdl:part xmlns:tns="http://Microsoft/Office/Server/FeedCache" name="detail"
element="tns:FeedCacheFault"/>
  </wsdl:message>
  <wsdl:portType name="IFeedCacheService">
    <wsdl:operation name="AddFeedEntry">
      <wsdl:input wsaw:Action="http://Microsoft.Office.Server.UserProfiles/AddFeedEntry"
message="tns2:IFeedCacheService_AddFeedEntry_InputMessage"/>
      <wsdl:output wsaw:Action="http://tempuri.org/IFeedCacheService/AddFeedEntryResponse"
message="tns2:IFeedCacheService_AddFeedEntry_OutputMessage"/>
      <wsdl:fault
wsaw:Action="http://tempuri.org/IFeedCacheService/AddFeedEntryFeedCacheFaultFault"
name="FeedCacheFaultFault"
message="tns2:IFeedCacheService_AddFeedEntry_FeedCacheFaultFault_FaultMessage"/>
    </wsdl:operation>
    <wsdl:operation name="AddFeedEntries">
      <wsdl:input wsaw:Action="http://Microsoft.Office.Server.UserProfiles/AddFeedEntries"
message="tns2:IFeedCacheService_AddFeedEntries_InputMessage"/>
      <wsdl:output wsaw:Action="http://tempuri.org/IFeedCacheService/AddFeedEntriesResponse"
message="tns2:IFeedCacheService_AddFeedEntries_OutputMessage"/>
      <wsdl:fault
wsaw:Action="http://tempuri.org/IFeedCacheService/AddFeedEntriesFeedCacheFaultFault"
name="FeedCacheFaultFault"
message="tns2:IFeedCacheService_AddFeedEntries_FeedCacheFaultFault_FaultMessage"/>
    </wsdl:operation>
    <wsdl:operation name="RemoveFeedEntry">
      <wsdl:input wsaw:Action="http://Microsoft.Office.Server.UserProfiles/RemoveFeedEntry"
message="tns2:IFeedCacheService_RemoveFeedEntry_InputMessage"/>
      <wsdl:output wsaw:Action="http://tempuri.org/IFeedCacheService/RemoveFeedEntryResponse"
message="tns2:IFeedCacheService_RemoveFeedEntry_OutputMessage"/>
      <wsdl:fault
wsaw:Action="http://tempuri.org/IFeedCacheService/RemoveFeedEntryFeedCacheFaultFault"
name="FeedCacheFaultFault"
message="tns2:IFeedCacheService_RemoveFeedEntry_FeedCacheFaultFault_FaultMessage"/>
    </wsdl:operation>
    <wsdl:operation name="RemoveEntityFeed">
      <wsdl:input wsaw:Action="http://Microsoft.Office.Server.UserProfiles/RemoveEntityFeed"
message="tns2:IFeedCacheService_RemoveEntityFeed_InputMessage"/>
      <wsdl:output
wsaw:Action="http://tempuri.org/IFeedCacheService/RemoveEntityFeedResponse"
message="tns2:IFeedCacheService_RemoveEntityFeed_OutputMessage"/>
      <wsdl:fault
wsaw:Action="http://tempuri.org/IFeedCacheService/RemoveEntityFeedFeedCacheFaultFault"
name="FeedCacheFaultFault"
message="tns2:IFeedCacheService_RemoveEntityFeed_FeedCacheFaultFault_FaultMessage"/>
    </wsdl:operation>
    <wsdl:operation name="RemoveInternalRegions">
      <wsdl:input
wsaw:Action="http://Microsoft.Office.Server.UserProfiles/RemoveInternalRegions"
message="tns2:IFeedCacheService_RemoveInternalRegions_InputMessage"/>
      <wsdl:output
wsaw:Action="http://tempuri.org/IFeedCacheService/RemoveInternalRegionsResponse"
message="tns2:IFeedCacheService_RemoveInternalRegions_OutputMessage"/>
      <wsdl:fault
wsaw:Action="http://tempuri.org/IFeedCacheService/RemoveInternalRegionsFeedCacheFaultFault"
name="FeedCacheFaultFault"
message="tns2:IFeedCacheService_RemoveInternalRegions_FeedCacheFaultFault_FaultMessage"/>
    </wsdl:operation>
  </wsdl:portType>

```

```

    </wsdl:operation>
    <wsdl:operation name="GetConsolidatedFeed">
      <wsdl:input
wsaw:Action="http://Microsoft.Office.Server.UserProfiles/GetConsolidatedFeed"
message="tns2:IFeedCacheService_GetConsolidatedFeed_InputMessage"/>
      <wsdl:output
wsaw:Action="http://tempuri.org/IFeedCacheService/GetConsolidatedFeedResponse"
message="tns2:IFeedCacheService_GetConsolidatedFeed_OutputMessage"/>
      <wsdl:fault
wsaw:Action="http://tempuri.org/IFeedCacheService/GetConsolidatedFeedFeedCacheFaultFault"
name="FeedCacheFaultFault"
message="tns2:IFeedCacheService_GetConsolidatedFeed_FeedCacheFaultFault_FaultMessage"/>
    </wsdl:operation>
    <wsdl:operation name="GetPublishedFeed">
      <wsdl:input wsaw:Action="http://Microsoft.Office.Server.UserProfiles/GetPublishedFeed"
message="tns2:IFeedCacheService_GetPublishedFeed_InputMessage"/>
      <wsdl:output
wsaw:Action="http://tempuri.org/IFeedCacheService/GetPublishedFeedResponse"
message="tns2:IFeedCacheService_GetPublishedFeed_OutputMessage"/>
      <wsdl:fault
wsaw:Action="http://tempuri.org/IFeedCacheService/GetPublishedFeedFeedCacheFaultFault"
name="FeedCacheFaultFault"
message="tns2:IFeedCacheService_GetPublishedFeed_FeedCacheFaultFault_FaultMessage"/>
    </wsdl:operation>
    <wsdl:operation name="GetCategoricalFeed">
      <wsdl:input
wsaw:Action="http://Microsoft.Office.Server.UserProfiles/GetCategoricalFeed"
message="tns2:IFeedCacheService_GetCategoricalFeed_InputMessage"/>
      <wsdl:output
wsaw:Action="http://tempuri.org/IFeedCacheService/GetCategoricalFeedResponse"
message="tns2:IFeedCacheService_GetCategoricalFeed_OutputMessage"/>
      <wsdl:fault
wsaw:Action="http://tempuri.org/IFeedCacheService/GetCategoricalFeedFeedCacheFaultFault"
name="FeedCacheFaultFault"
message="tns2:IFeedCacheService_GetCategoricalFeed_FeedCacheFaultFault_FaultMessage"/>
    </wsdl:operation>
    <wsdl:operation name="GetEntries">
      <wsdl:input wsaw:Action="http://Microsoft.Office.Server.UserProfiles/GetThreadEntries"
message="tns2:IFeedCacheService_GetEntries_InputMessage"/>
      <wsdl:output wsaw:Action="http://tempuri.org/IFeedCacheService/GetEntriesResponse"
message="tns2:IFeedCacheService_GetEntries_OutputMessage"/>
      <wsdl:fault
wsaw:Action="http://tempuri.org/IFeedCacheService/GetEntriesFeedCacheFaultFault"
name="FeedCacheFaultFault"
message="tns2:IFeedCacheService_GetEntries_FeedCacheFaultFault_FaultMessage"/>
    </wsdl:operation>
    <wsdl:operation name="NewEntityFollower">
      <wsdl:input wsaw:Action="http://Microsoft.Office.Server.UserProfiles/NewEntityFollower"
message="tns2:IFeedCacheService_NewEntityFollower_InputMessage"/>
      <wsdl:output
wsaw:Action="http://tempuri.org/IFeedCacheService/NewEntityFollowerResponse"
message="tns2:IFeedCacheService_NewEntityFollower_OutputMessage"/>
      <wsdl:fault
wsaw:Action="http://tempuri.org/IFeedCacheService/NewEntityFollowerFeedCacheFaultFault"
name="FeedCacheFaultFault"
message="tns2:IFeedCacheService_NewEntityFollower_FeedCacheFaultFault_FaultMessage"/>
    </wsdl:operation>
    <wsdl:operation name="IsEntityActivelyFollowed">
      <wsdl:input
wsaw:Action="http://Microsoft.Office.Server.UserProfiles/IsEntityActivelyFollowed"
message="tns2:IFeedCacheService_IsEntityActivelyFollowed_InputMessage"/>

```

```

    <wsdl:output
wsaw:Action="http://tempuri.org/IFeedCacheService/IsEntityActivelyFollowedResponse"
message="tns2:IFeedCacheService_IsEntityActivelyFollowed_OutputMessage"/>
    <wsdl:fault
wsaw:Action="http://tempuri.org/IFeedCacheService/IsEntityActivelyFollowedFeedCacheFaultFault"
name="FeedCacheFaultFault"
message="tns2:IFeedCacheService_IsEntityActivelyFollowed_FeedCacheFaultFault_FaultMessage"/>
    </wsdl:operation>
    <wsdl:operation name="RefreshFollowedEntities">
    <wsdl:input
wsaw:Action="http://Microsoft.Office.Server.UserProfiles/RefreshFollowedEntities"
message="tns2:IFeedCacheService_RefreshFollowedEntities_InputMessage"/>
    <wsdl:output
wsaw:Action="http://tempuri.org/IFeedCacheService/RefreshFollowedEntitiesResponse"
message="tns2:IFeedCacheService_RefreshFollowedEntities_OutputMessage"/>
    <wsdl:fault
wsaw:Action="http://tempuri.org/IFeedCacheService/RefreshFollowedEntitiesFeedCacheFaultFault"
name="FeedCacheFaultFault"
message="tns2:IFeedCacheService_RefreshFollowedEntities_FeedCacheFaultFault_FaultMessage"/>
    </wsdl:operation>
    <wsdl:operation name="BulkLMTUpdate">
    <wsdl:input wsaw:Action="http://Microsoft.Office.Server.UserProfiles/BulkLMTUpdate"
message="tns2:IFeedCacheService_BulkLMTUpdate_InputMessage"/>
    <wsdl:output wsaw:Action="http://tempuri.org/IFeedCacheService/BulkLMTUpdateResponse"
message="tns2:IFeedCacheService_BulkLMTUpdate_OutputMessage"/>
    <wsdl:fault
wsaw:Action="http://tempuri.org/IFeedCacheService/BulkLMTUpdateFeedCacheFaultFault"
name="FeedCacheFaultFault"
message="tns2:IFeedCacheService_BulkLMTUpdate_FeedCacheFaultFault_FaultMessage"/>
    </wsdl:operation>
    <wsdl:operation name="AddFeedEntriesForRepop">
    <wsdl:input
wsaw:Action="http://Microsoft.Office.Server.UserProfiles/AddFeedEntriesForRepop"
message="tns2:IFeedCacheService_AddFeedEntriesForRepop_InputMessage"/>
    <wsdl:output
wsaw:Action="http://tempuri.org/IFeedCacheService/AddFeedEntriesForRepopResponse"
message="tns2:IFeedCacheService_AddFeedEntriesForRepop_OutputMessage"/>
    <wsdl:fault
wsaw:Action="http://tempuri.org/IFeedCacheService/AddFeedEntriesForRepopFeedCacheFaultFault"
name="FeedCacheFaultFault"
message="tns2:IFeedCacheService_AddFeedEntriesForRepop_FeedCacheFaultFault_FaultMessage"/>
    </wsdl:operation>
    <wsdl:operation name="IsRepopulationNeeded">
    <wsdl:input
wsaw:Action="http://Microsoft.Office.Server.UserProfiles/IsRepopulationNeeded"
message="tns2:IFeedCacheService_IsRepopulationNeeded_InputMessage"/>
    <wsdl:output
wsaw:Action="http://tempuri.org/IFeedCacheService/IsRepopulationNeededResponse"
message="tns2:IFeedCacheService_IsRepopulationNeeded_OutputMessage"/>
    <wsdl:fault
wsaw:Action="http://tempuri.org/IFeedCacheService/IsRepopulationNeededFeedCacheFaultFault"
name="FeedCacheFaultFault"
message="tns2:IFeedCacheService_IsRepopulationNeeded_FeedCacheFaultFault_FaultMessage"/>
    </wsdl:operation>
    <wsdl:operation name="GetFeeds">
    <wsdl:input wsaw:Action="http://Microsoft.Office.Server.UserProfiles/GetFeeds"
message="tns2:IFeedCacheService_GetFeeds_InputMessage"/>
    <wsdl:output wsaw:Action="http://tempuri.org/IFeedCacheService/GetFeedsResponse"
message="tns2:IFeedCacheService_GetFeeds_OutputMessage"/>
    <wsdl:fault
wsaw:Action="http://tempuri.org/IFeedCacheService/GetFeedsFeedCacheFaultFault"

```

```

name="FeedCacheFaultFault"
message="tns2:IFeedCacheService_GetFeeds_FeedCacheFaultFault_FaultMessage"/>
  </wsdl:operation>
</wsdl:portType>
<wsdl:binding name="DefaultBinding_IFeedCacheService" type="tns2:IFeedCacheService">
  <soap:binding transport="http://schemas.xmlsoap.org/soap/http"/>
  <wsdl:operation name="AddFeedEntry">
    <soap:operation soapAction="http://Microsoft.Office.Server.UserProfiles/AddFeedEntry"
style="document"/>
    <wsdl:input>
      <soap:body use="literal"/>
    </wsdl:input>
    <wsdl:output>
      <soap:body use="literal"/>
    </wsdl:output>
    <wsdl:fault name="FeedCacheFaultFault">
      <soap:fault use="literal" name="FeedCacheFaultFault" namespace=""/>
    </wsdl:fault>
  </wsdl:operation>
  <wsdl:operation name="AddFeedEntries">
    <soap:operation soapAction="http://Microsoft.Office.Server.UserProfiles/AddFeedEntries"
style="document"/>
    <wsdl:input>
      <soap:body use="literal"/>
    </wsdl:input>
    <wsdl:output>
      <soap:body use="literal"/>
    </wsdl:output>
    <wsdl:fault name="FeedCacheFaultFault">
      <soap:fault use="literal" name="FeedCacheFaultFault" namespace=""/>
    </wsdl:fault>
  </wsdl:operation>
  <wsdl:operation name="RemoveFeedEntry">
    <soap:operation
soapAction="http://Microsoft.Office.Server.UserProfiles/RemoveFeedEntry" style="document"/>
    <wsdl:input>
      <soap:body use="literal"/>
    </wsdl:input>
    <wsdl:output>
      <soap:body use="literal"/>
    </wsdl:output>
    <wsdl:fault name="FeedCacheFaultFault">
      <soap:fault use="literal" name="FeedCacheFaultFault" namespace=""/>
    </wsdl:fault>
  </wsdl:operation>
  <wsdl:operation name="RemoveEntityFeed">
    <soap:operation
soapAction="http://Microsoft.Office.Server.UserProfiles/RemoveEntityFeed" style="document"/>
    <wsdl:input>
      <soap:body use="literal"/>
    </wsdl:input>
    <wsdl:output>
      <soap:body use="literal"/>
    </wsdl:output>
    <wsdl:fault name="FeedCacheFaultFault">
      <soap:fault use="literal" name="FeedCacheFaultFault" namespace=""/>
    </wsdl:fault>
  </wsdl:operation>
  <wsdl:operation name="RemoveInternalRegions">

```

```

    <soap:operation
soapAction="http://Microsoft.Office.Server.UserProfiles/RemoveInternalRegions"
style="document"/>
    <wsdl:input>
        <soap:body use="literal"/>
    </wsdl:input>
    <wsdl:output>
        <soap:body use="literal"/>
    </wsdl:output>
    <wsdl:fault name="FeedCacheFaultFault">
        <soap:fault use="literal" name="FeedCacheFaultFault" namespace=""/>
    </wsdl:fault>
</wsdl:operation>
<wsdl:operation name="GetConsolidatedFeed">
    <soap:operation
soapAction="http://Microsoft.Office.Server.UserProfiles/GetConsolidatedFeed"
style="document"/>
    <wsdl:input>
        <soap:body use="literal"/>
    </wsdl:input>
    <wsdl:output>
        <soap:body use="literal"/>
    </wsdl:output>
    <wsdl:fault name="FeedCacheFaultFault">
        <soap:fault use="literal" name="FeedCacheFaultFault" namespace=""/>
    </wsdl:fault>
</wsdl:operation>
<wsdl:operation name="GetPublishedFeed">
    <soap:operation
soapAction="http://Microsoft.Office.Server.UserProfiles/GetPublishedFeed" style="document"/>
    <wsdl:input>
        <soap:body use="literal"/>
    </wsdl:input>
    <wsdl:output>
        <soap:body use="literal"/>
    </wsdl:output>
    <wsdl:fault name="FeedCacheFaultFault">
        <soap:fault use="literal" name="FeedCacheFaultFault" namespace=""/>
    </wsdl:fault>
</wsdl:operation>
<wsdl:operation name="GetCategoricalFeed">
    <soap:operation
soapAction="http://Microsoft.Office.Server.UserProfiles/GetCategoricalFeed"
style="document"/>
    <wsdl:input>
        <soap:body use="literal"/>
    </wsdl:input>
    <wsdl:output>
        <soap:body use="literal"/>
    </wsdl:output>
    <wsdl:fault name="FeedCacheFaultFault">
        <soap:fault use="literal" name="FeedCacheFaultFault" namespace=""/>
    </wsdl:fault>
</wsdl:operation>
<wsdl:operation name="GetEntries">
    <soap:operation
soapAction="http://Microsoft.Office.Server.UserProfiles/GetThreadEntries" style="document"/>
    <wsdl:input>
        <soap:body use="literal"/>
    </wsdl:input>

```

```

    <wsdl:output>
      <soap:body use="literal"/>
    </wsdl:output>
    <wsdl:fault name="FeedCacheFaultFault">
      <soap:fault use="literal" name="FeedCacheFaultFault" namespace=""/>
    </wsdl:fault>
  </wsdl:operation>
  <wsdl:operation name="NewEntityFollower">
    <soap:operation
soapAction="http://Microsoft.Office.Server.UserProfiles/NewEntityFollower" style="document"/>
    <wsdl:input>
      <soap:body use="literal"/>
    </wsdl:input>
    <wsdl:output>
      <soap:body use="literal"/>
    </wsdl:output>
    <wsdl:fault name="FeedCacheFaultFault">
      <soap:fault use="literal" name="FeedCacheFaultFault" namespace=""/>
    </wsdl:fault>
  </wsdl:operation>
  <wsdl:operation name="IsEntityActivelyFollowed">
    <soap:operation
soapAction="http://Microsoft.Office.Server.UserProfiles/IsEntityActivelyFollowed"
style="document"/>
    <wsdl:input>
      <soap:body use="literal"/>
    </wsdl:input>
    <wsdl:output>
      <soap:body use="literal"/>
    </wsdl:output>
    <wsdl:fault name="FeedCacheFaultFault">
      <soap:fault use="literal" name="FeedCacheFaultFault" namespace=""/>
    </wsdl:fault>
  </wsdl:operation>
  <wsdl:operation name="RefreshFollowedEntities">
    <soap:operation
soapAction="http://Microsoft.Office.Server.UserProfiles/RefreshFollowedEntities"
style="document"/>
    <wsdl:input>
      <soap:body use="literal"/>
    </wsdl:input>
    <wsdl:output>
      <soap:body use="literal"/>
    </wsdl:output>
    <wsdl:fault name="FeedCacheFaultFault">
      <soap:fault use="literal" name="FeedCacheFaultFault" namespace=""/>
    </wsdl:fault>
  </wsdl:operation>
  <wsdl:operation name="BulkLMTUpdate">
    <soap:operation soapAction="http://Microsoft.Office.Server.UserProfiles/BulkLMTUpdate"
style="document"/>
    <wsdl:input>
      <soap:body use="literal"/>
    </wsdl:input>
    <wsdl:output>
      <soap:body use="literal"/>
    </wsdl:output>
    <wsdl:fault name="FeedCacheFaultFault">
      <soap:fault use="literal" name="FeedCacheFaultFault" namespace=""/>
    </wsdl:fault>
  </wsdl:operation>

```



```

    </wsdl:fault>
  </wsdl:operation>
  <wsdl:operation name="AddFeedEntriesForRepop">
    <soap:operation
      soapAction="http://Microsoft.Office.Server.UserProfiles/AddFeedEntriesForRepop"
      style="document"/>
    <wsdl:input>
      <soap:body use="literal"/>
    </wsdl:input>
    <wsdl:output>
      <soap:body use="literal"/>
    </wsdl:output>
    <wsdl:fault name="FeedCacheFaultFault">
      <soap:fault use="literal" name="FeedCacheFaultFault" namespace=""/>
    </wsdl:fault>
  </wsdl:operation>
  <wsdl:operation name="IsRepopulationNeeded">
    <soap:operation
      soapAction="http://Microsoft.Office.Server.UserProfiles/IsRepopulationNeeded"
      style="document"/>
    <wsdl:input>
      <soap:body use="literal"/>
    </wsdl:input>
    <wsdl:output>
      <soap:body use="literal"/>
    </wsdl:output>
    <wsdl:fault name="FeedCacheFaultFault">
      <soap:fault use="literal" name="FeedCacheFaultFault" namespace=""/>
    </wsdl:fault>
  </wsdl:operation>
  <wsdl:operation name="GetFeeds">
    <soap:operation soapAction="http://Microsoft.Office.Server.UserProfiles/GetFeeds"
      style="document"/>
    <wsdl:input>
      <soap:body use="literal"/>
    </wsdl:input>
    <wsdl:output>
      <soap:body use="literal"/>
    </wsdl:output>
    <wsdl:fault name="FeedCacheFaultFault">
      <soap:fault use="literal" name="FeedCacheFaultFault" namespace=""/>
    </wsdl:fault>
  </wsdl:operation>
</wsdl:binding>
</wsdl:definitions>

```

7 Appendix B: Full XML Schema

For ease of implementation, the following sections provide the full XML schema for this protocol.

Schema name	Prefix	Section
http://Microsoft/Office/Server/FeedCache	tns	7.3
http://Microsoft/Office/Server/UserProfiles	q2	7.6
http://schemas.microsoft.com/2003/10/Serialization/Arrays	q1	7.4
http://schemas.microsoft.com/2003/10/Serialization/	ser	7.2
http://schemas.datacontract.org/2004/07/System.Collections.Generic	tns1	7.5
http://schemas.datacontract.org/2004/07/System	q4	7.7
http://tempuri.org/	tns2	7.1

7.1 http://tempuri.org/ Schema

```
<?xml version="1.0"?>
<xs:schema elementFormDefault="qualified" targetNamespace="http://tempuri.org/"
xmlns:xs="http://www.w3.org/2001/XMLSchema">
  <xs:import namespace="http://Microsoft/Office/Server/FeedCache"/>
  <xs:import namespace="http://schemas.microsoft.com/2003/10/Serialization/" />
  <xs:import namespace="http://schemas.datacontract.org/2004/07/System.Collections.Generic"/>
  <xs:element name="AddFeedEntry">
    <xs:complexType>
      <xs:sequence>
        <xs:element xmlns:tns="http://Microsoft/Office/Server/FeedCache" minOccurs="0"
name="entity" nillable="true" type="tns:E"/>
        <xs:element xmlns:tns="http://Microsoft/Office/Server/FeedCache" minOccurs="0"
name="entry" nillable="true" type="tns:P"/>
      </xs:sequence>
    </xs:complexType>
  </xs:element>
  <xs:element name="AddFeedEntryResponse">
    <xs:complexType>
      <xs:sequence>
        <xs:element minOccurs="0" name="AddFeedEntryResult" type="xs:boolean"/>
      </xs:sequence>
    </xs:complexType>
  </xs:element>
  <xs:element name="AddFeedEntries">
    <xs:complexType>
      <xs:sequence>
        <xs:element xmlns:tns="http://Microsoft/Office/Server/FeedCache" minOccurs="0"
name="entries" nillable="true" type="tns:PC"/>
      </xs:sequence>
    </xs:complexType>
  </xs:element>
  <xs:element name="AddFeedEntriesResponse">
    <xs:complexType>
      <xs:sequence>
        <xs:element minOccurs="0" name="AddFeedEntriesResult" type="xs:boolean"/>
      </xs:sequence>
    </xs:complexType>
  </xs:element>
</xs:schema>
```

```

        </xs:sequence>
    </xs:complexType>
</xs:element>
<xs:element name="RemoveFeedEntry">
    <xs:complexType>
        <xs:sequence>
            <xs:element xmlns:tns="http://Microsoft/Office/Server/FeedCache" minOccurs="0"
name="entity" nillable="true" type="tns:E"/>
            <xs:element xmlns:tns="http://Microsoft/Office/Server/FeedCache" minOccurs="0"
name="entry" nillable="true" type="tns:P"/>
        </xs:sequence>
    </xs:complexType>
</xs:element>
<xs:element name="RemoveFeedEntryResponse">
    <xs:complexType>
        <xs:sequence>
            <xs:element minOccurs="0" name="RemoveFeedEntryResult" type="xs:boolean"/>
        </xs:sequence>
    </xs:complexType>
</xs:element>
<xs:element name="RemoveEntityFeed">
    <xs:complexType>
        <xs:sequence>
            <xs:element xmlns:tns="http://Microsoft/Office/Server/FeedCache" minOccurs="0"
name="entity" nillable="true" type="tns:E"/>
        </xs:sequence>
    </xs:complexType>
</xs:element>
<xs:element name="RemoveEntityFeedResponse">
    <xs:complexType>
        <xs:sequence>
            <xs:element minOccurs="0" name="RemoveEntityFeedResult" type="xs:boolean"/>
        </xs:sequence>
    </xs:complexType>
</xs:element>
<xs:element name="RemoveInternalRegions">
    <xs:complexType>
        <xs:sequence>
            <xs:element minOccurs="0" name="webAppUrl" nillable="true" type="xs:string"/>
        </xs:sequence>
    </xs:complexType>
</xs:element>
<xs:element name="RemoveInternalRegionsResponse">
    <xs:complexType>
        <xs:sequence>
            <xs:element minOccurs="0" name="RemoveInternalRegionsResult" type="xs:boolean"/>
        </xs:sequence>
    </xs:complexType>
</xs:element>
<xs:element name="GetConsolidatedFeed">
    <xs:complexType>
        <xs:sequence>
            <xs:element xmlns:tns="http://Microsoft/Office/Server/FeedCache" minOccurs="0"
name="fcRetEntity" nillable="true" type="tns:FCRE"/>
            <xs:element xmlns:tns="http://Microsoft/Office/Server/FeedCache" minOccurs="0"
name="followedEntities" nillable="true" type="tns:ArrayOfE"/>
            <xs:element xmlns:tns="http://Microsoft/Office/Server/FeedCache" minOccurs="0"
name="fcRetOptions" nillable="true" type="tns:FCRO"/>
        </xs:sequence>
    </xs:complexType>
</xs:element>

```

```

    </xs:complexType>
  </xs:element>
  <xs:element name="GetConsolidatedFeedResponse">
    <xs:complexType>
      <xs:sequence>
        <xs:element xmlns:tns="http://Microsoft/Office/Server/FeedCache" minOccurs="0"
name="GetConsolidatedFeedResult" nillable="true" type="tns:FCCR"/>
        </xs:sequence>
      </xs:complexType>
    </xs:element>
    <xs:element name="GetPublishedFeed">
      <xs:complexType>
        <xs:sequence>
          <xs:element xmlns:tns="http://Microsoft/Office/Server/FeedCache" minOccurs="0"
name="fcTargetEntity" nillable="true" type="tns:FCRE"/>
          <xs:element xmlns:tns="http://Microsoft/Office/Server/FeedCache" minOccurs="0"
name="fcViewingEntity" nillable="true" type="tns:FCRE"/>
          <xs:element xmlns:tns="http://Microsoft/Office/Server/FeedCache" minOccurs="0"
name="fcRetOptions" nillable="true" type="tns:FCRO"/>
          </xs:sequence>
        </xs:complexType>
      </xs:element>
      <xs:element name="GetPublishedFeedResponse">
        <xs:complexType>
          <xs:sequence>
            <xs:element xmlns:tns="http://Microsoft/Office/Server/FeedCache" minOccurs="0"
name="GetPublishedFeedResult" nillable="true" type="tns:FCCR"/>
            </xs:sequence>
          </xs:complexType>
        </xs:element>
        <xs:element name="GetCategoricalFeed">
          <xs:complexType>
            <xs:sequence>
              <xs:element xmlns:tns="http://Microsoft/Office/Server/FeedCache" minOccurs="0"
name="fcRetEntity" nillable="true" type="tns:FCRE"/>
              <xs:element xmlns:tns="http://Microsoft/Office/Server/FeedCache" minOccurs="0"
name="followedEntities" nillable="true" type="tns:ArrayOfE"/>
              <xs:element xmlns:tns="http://Microsoft/Office/Server/FeedCache" minOccurs="0"
name="fcRetOptions" nillable="true" type="tns:FCRO"/>
              </xs:sequence>
            </xs:complexType>
          </xs:element>
          <xs:element name="GetCategoricalFeedResponse">
            <xs:complexType>
              <xs:sequence>
                <xs:element xmlns:tns="http://Microsoft/Office/Server/FeedCache" minOccurs="0"
name="GetCategoricalFeedResult" nillable="true" type="tns:FCCR"/>
                </xs:sequence>
              </xs:complexType>
            </xs:element>
            <xs:element name="GetEntries">
              <xs:complexType>
                <xs:sequence>
                  <xs:element xmlns:tns="http://Microsoft/Office/Server/FeedCache" minOccurs="0"
name="entryIdentifiers" nillable="true" type="tns:ArrayOfPI"/>
                  </xs:sequence>
                </xs:complexType>
              </xs:element>
              <xs:element name="GetEntriesResponse">
                <xs:complexType>

```

```

    <xs:sequence>
      <xs:element xmlns:tns="http://Microsoft/Office/Server/FeedCache" minOccurs="0"
name="GetEntriesResult" nillable="true" type="tns:PC"/>
    </xs:sequence>
  </xs:complexType>
</xs:element>
<xs:element name="NewEntityFollower">
  <xs:complexType>
    <xs:sequence>
      <xs:element xmlns:tns="http://Microsoft/Office/Server/FeedCache" minOccurs="0"
name="entity" nillable="true" type="tns:E"/>
    </xs:sequence>
  </xs:complexType>
</xs:element>
<xs:element name="NewEntityFollowerResponse">
  <xs:complexType>
    <xs:sequence>
      <xs:element minOccurs="0" name="NewEntityFollowerResult" type="xs:boolean"/>
    </xs:sequence>
  </xs:complexType>
</xs:element>
<xs:element name="IsEntityActivelyFollowed">
  <xs:complexType>
    <xs:sequence>
      <xs:element xmlns:tns="http://Microsoft/Office/Server/FeedCache" minOccurs="0"
name="entity" nillable="true" type="tns:E"/>
    </xs:sequence>
  </xs:complexType>
</xs:element>
<xs:element name="IsEntityActivelyFollowedResponse">
  <xs:complexType>
    <xs:sequence>
      <xs:element minOccurs="0" name="IsEntityActivelyFollowedResult" type="xs:boolean"/>
    </xs:sequence>
  </xs:complexType>
</xs:element>
<xs:element name="RefreshFollowedEntities">
  <xs:complexType>
    <xs:sequence>
      <xs:element xmlns:tns="http://Microsoft/Office/Server/FeedCache" minOccurs="0"
name="followedEntities" nillable="true" type="tns:ArrayOfE"/>
    </xs:sequence>
  </xs:complexType>
</xs:element>
<xs:element name="RefreshFollowedEntitiesResponse">
  <xs:complexType>
    <xs:sequence>
      <xs:element minOccurs="0" name="RefreshFollowedEntitiesResult" type="xs:boolean"/>
    </xs:sequence>
  </xs:complexType>
</xs:element>
<xs:element name="BulkLMTUpdate">
  <xs:complexType>
    <xs:sequence>
      <xs:element xmlns:ser="http://schemas.microsoft.com/2003/10/Serialization/"
minOccurs="0" name="callerID" type="ser:guid"/>
      <xs:element
xmlns:tns1="http://schemas.datacontract.org/2004/07/System.Collections.Generic" minOccurs="0"
name="lastModifiedTimes" nillable="true" type="tns1:ArrayOfKeyValuePairOfELEHsv_SlRZJ"/>
    </xs:sequence>
  </xs:complexType>
</xs:element>

```

```

        </xs:sequence>
    </xs:complexType>
</xs:element>
<xs:element name="BulkLMTUpdateResponse">
    <xs:complexType>
        <xs:sequence>
            <xs:element minOccurs="0" name="BulkLMTUpdateResult" type="xs:boolean"/>
        </xs:sequence>
    </xs:complexType>
</xs:element>
<xs:element name="AddFeedEntriesForRepop">
    <xs:complexType>
        <xs:sequence>
            <xs:element xmlns:tns="http://Microsoft/Office/Server/FeedCache" minOccurs="0"
name="entity" nillable="true" type="tns:E"/>
            <xs:element xmlns:tns="http://Microsoft/Office/Server/FeedCache" minOccurs="0"
name="entries" nillable="true" type="tns:PC"/>
            <xs:element minOccurs="0" name="lastDeleted" nillable="true" type="xs:dateTime"/>
        </xs:sequence>
    </xs:complexType>
</xs:element>
<xs:element name="AddFeedEntriesForRepopResponse">
    <xs:complexType>
        <xs:sequence>
            <xs:element minOccurs="0" name="AddFeedEntriesForRepopResult" type="xs:boolean"/>
        </xs:sequence>
    </xs:complexType>
</xs:element>
<xs:element name="IsRepopulationNeeded">
    <xs:complexType>
        <xs:sequence>
            <xs:element xmlns:ser="http://schemas.microsoft.com/2003/10/Serialization/"
minOccurs="0" name="callerID" type="ser:guid"/>
        </xs:sequence>
    </xs:complexType>
</xs:element>
<xs:element name="IsRepopulationNeededResponse">
    <xs:complexType>
        <xs:sequence>
            <xs:element minOccurs="0" name="IsRepopulationNeededResult" type="xs:boolean"/>
        </xs:sequence>
    </xs:complexType>
</xs:element>
<xs:element name="GetFeeds">
    <xs:complexType>
        <xs:sequence>
            <xs:element xmlns:ser="http://schemas.microsoft.com/2003/10/Serialization/"
minOccurs="0" name="callerID" type="ser:guid"/>
            <xs:element xmlns:tns="http://Microsoft/Office/Server/FeedCache" minOccurs="0"
name="requestingEntity" nillable="true" type="tns:E"/>
            <xs:element xmlns:tns="http://Microsoft/Office/Server/FeedCache" minOccurs="0"
name="entityNewerThanPair" nillable="true" type="tns:ArrayOfEDT"/>
            <xs:element minOccurs="0" name="maxItemsPerEntity" type="xs:int"/>
        </xs:sequence>
    </xs:complexType>
</xs:element>
<xs:element name="GetFeedsResponse">
    <xs:complexType>
        <xs:sequence>

```

```

        <xs:element xmlns:tns="http://Microsoft/Office/Server/FeedCache" minOccurs="0"
name="GetFeedsResult" nillable="true" type="tns:PC"/>
    </xs:sequence>
</xs:complexType>
</xs:element>
</xs:schema>

```

7.2 http://schemas.microsoft.com/2003/10/Serialization/ Schema

```

<?xml version="1.0"?>
<xs:schema xmlns:ser="http://schemas.microsoft.com/2003/10/Serialization/"
attributeFormDefault="qualified" elementFormDefault="qualified"
targetNamespace="http://schemas.microsoft.com/2003/10/Serialization/"
xmlns:xs="http://www.w3.org/2001/XMLSchema">
    <xs:element name="anyType" nillable="true" type="xs:anyType"/>
    <xs:element name="anyURI" nillable="true" type="xs:anyURI"/>
    <xs:element name="base64Binary" nillable="true" type="xs:base64Binary"/>
    <xs:element name="boolean" nillable="true" type="xs:boolean"/>
    <xs:element name="byte" nillable="true" type="xs:byte"/>
    <xs:element name="dateTime" nillable="true" type="xs:dateTime"/>
    <xs:element name="decimal" nillable="true" type="xs:decimal"/>
    <xs:element name="double" nillable="true" type="xs:double"/>
    <xs:element name="float" nillable="true" type="xs:float"/>
    <xs:element name="int" nillable="true" type="xs:int"/>
    <xs:element name="long" nillable="true" type="xs:long"/>
    <xs:element name="QName" nillable="true" type="xs:QName"/>
    <xs:element name="short" nillable="true" type="xs:short"/>
    <xs:element name="string" nillable="true" type="xs:string"/>
    <xs:element name="unsignedByte" nillable="true" type="xs:unsignedByte"/>
    <xs:element name="unsignedInt" nillable="true" type="xs:unsignedInt"/>
    <xs:element name="unsignedLong" nillable="true" type="xs:unsignedLong"/>
    <xs:element name="unsignedShort" nillable="true" type="xs:unsignedShort"/>
    <xs:element name="char" nillable="true" type="ser:char"/>
    <xs:simpleType name="char">
        <xs:restriction base="xs:int"/>
    </xs:simpleType>
    <xs:element name="duration" nillable="true" type="ser:duration"/>
    <xs:simpleType name="duration">
        <xs:restriction base="xs:duration">
            <xs:pattern value="\-?P(\d*D)?(T(\d*M)?(\d*(\.\d*)?S)?)?" />
            <xs:minInclusive value="-P10675199DT2H48M5.4775808S"/>
            <xs:maxInclusive value="P10675199DT2H48M5.4775807S"/>
        </xs:restriction>
    </xs:simpleType>
    <xs:element name="guid" nillable="true" type="ser:guid"/>
    <xs:simpleType name="guid">
        <xs:restriction base="xs:string">
            <xs:pattern value="[\da-fA-F]{8}-[\da-fA-F]{4}-[\da-fA-F]{4}-[\da-fA-F]{4}-[\da-fA-F]{12}" />
        </xs:restriction>
    </xs:simpleType>
    <xs:attribute name="FactoryType" type="xs:QName"/>
    <xs:attribute name="Id" type="xs:ID"/>
    <xs:attribute name="Ref" type="xs:IDREF"/>
</xs:schema>

```

7.3 http://Microsoft/Office/Server/FeedCache Schema

```
<?xml version="1.0"?>
<xs:schema xmlns:tns="http://Microsoft/Office/Server/FeedCache"
xmlns:ser="http://schemas.microsoft.com/2003/10/Serialization/"
elementFormDefault="qualified" targetNamespace="http://Microsoft/Office/Server/FeedCache"
xmlns:xs="http://www.w3.org/2001/XMLSchema">
  <xs:import namespace="http://schemas.microsoft.com/2003/10/Serialization/" />
  <xs:import namespace="http://schemas.microsoft.com/2003/10/Serialization/Arrays" />
  <xs:import namespace="http://Microsoft/Office/Server/UserProfiles" />
  <xs:import namespace="http://schemas.datacontract.org/2004/07/System" />
  <xs:complexType name="E">
    <xs:sequence>
      <xs:element minOccurs="0" name="ET" type="tns:ET" />
      <xs:element minOccurs="0" name="LID" type="ser:guid" />
      <xs:element minOccurs="0" name="PID" type="ser:guid" />
      <xs:element minOccurs="0" name="SID" type="ser:guid" />
      <xs:element minOccurs="0" name="Url" nillable="true" type="xs:string" />
      <xs:element minOccurs="0" name="WID" type="ser:guid" />
    </xs:sequence>
  </xs:complexType>
  <xs:element name="E" nillable="true" type="tns:E" />
  <xs:simpleType name="ET">
    <xs:list>
      <xs:simpleType>
        <xs:restriction base="xs:string">
          <xs:enumeration value="Unknown" />
          <xs:enumeration value="User" />
          <xs:enumeration value="Document" />
          <xs:enumeration value="Site" />
          <xs:enumeration value="Tag" />
          <xs:enumeration value="Group" />
        </xs:restriction>
      </xs:simpleType>
    </xs:list>
  </xs:simpleType>
  <xs:element name="ET" nillable="true" type="tns:ET" />
  <xs:complexType name="P">
    <xs:sequence>
      <xs:element minOccurs="0" name="AD" nillable="true" type="xs:string" />
      <xs:element minOccurs="0" name="D1" nillable="true" type="xs:string" />
      <xs:element minOccurs="0" name="D2" nillable="true" type="xs:string" />
      <xs:element minOccurs="0" name="D3" nillable="true" type="xs:string" />
      <xs:element minOccurs="0" name="D4" nillable="true" type="xs:string" />
      <xs:element minOccurs="0" name="DP" nillable="true" type="xs:string" />
      <xs:element minOccurs="0" name="EID" nillable="true" type="xs:string" />
      <xs:element minOccurs="0" name="En" nillable="true" type="tns:E" />
      <xs:element minOccurs="0" name="M" type="xs:dateTime" />
      <xs:element minOccurs="0" name="MBD" type="xs:int" />
      <xs:element minOccurs="0" name="MBT" type="xs:int" />
      <xs:element minOccurs="0" name="PL" nillable="true" type="xs:string" />
      <xs:element minOccurs="0" name="R1" nillable="true" type="xs:string" />
      <xs:element minOccurs="0" name="R2" nillable="true" type="xs:string" />
      <xs:element minOccurs="0" name="R3" type="xs:int" />
      <xs:element minOccurs="0" name="ST" type="xs:int" />
    </xs:sequence>
  </xs:complexType>
  <xs:element name="P" nillable="true" type="tns:P" />
  <xs:complexType name="FeedCacheFault">
```



```

    <xs:sequence>
      <xs:element minOccurs="0" name="FailureDetail" nillable="true" type="xs:string"/>
      <xs:element minOccurs="0" name="FaultCode" type="tns:FeedCacheFaultCodes"/>
    </xs:sequence>
  </xs:complexType>
  <xs:element name="FeedCacheFault" nillable="true" type="tns:FeedCacheFault"/>
  <xs:simpleType name="FeedCacheFaultCodes">
    <xs:restriction base="xs:string">
      <xs:enumeration value="UnknownError"/>
      <xs:enumeration value="InvalidInput"/>
      <xs:enumeration value="InvalidConfiguration"/>
    </xs:restriction>
  </xs:simpleType>
  <xs:element name="FeedCacheFaultCodes" nillable="true" type="tns:FeedCacheFaultCodes"/>
  <xs:complexType name="PC">
    <xs:sequence>
      <xs:element minOccurs="0" name="D" nillable="true" type="tns:ArrayOfEDT"/>
      <xs:element minOccurs="0" name="En" nillable="true" type="tns:ArrayOfP"/>
      <xs:element minOccurs="0" name="I" type="xs:boolean"/>
      <xs:element minOccurs="0" name="M" type="xs:int"/>
      <xs:element minOccurs="0" name="N" nillable="true" type="xs:dateTime"/>
      <xs:element minOccurs="0" name="O" nillable="true" type="xs:dateTime"/>
      <xs:element minOccurs="0" name="R" type="xs:boolean"/>
      <xs:element minOccurs="0" name="S" type="xs:boolean"/>
      <xs:element minOccurs="0" name="T" type="xs:boolean"/>
    </xs:sequence>
  </xs:complexType>
  <xs:element name="PC" nillable="true" type="tns:PC"/>
  <xs:complexType name="ArrayOfEDT">
    <xs:sequence>
      <xs:element minOccurs="0" maxOccurs="unbounded" name="EDT" nillable="true"
type="tns:EDT"/>
    </xs:sequence>
  </xs:complexType>
  <xs:element name="ArrayOfEDT" nillable="true" type="tns:ArrayOfEDT"/>
  <xs:complexType name="EDT">
    <xs:sequence>
      <xs:element minOccurs="0" name="D" type="xs:dateTime"/>
      <xs:element minOccurs="0" name="E" nillable="true" type="tns:E"/>
    </xs:sequence>
  </xs:complexType>
  <xs:element name="EDT" nillable="true" type="tns:EDT"/>
  <xs:complexType name="ArrayOfP">
    <xs:sequence>
      <xs:element minOccurs="0" maxOccurs="unbounded" name="P" nillable="true" type="tns:P"/>
    </xs:sequence>
  </xs:complexType>
  <xs:element name="ArrayOfP" nillable="true" type="tns:ArrayOfP"/>
  <xs:complexType name="FCRE">
    <xs:sequence>
      <xs:element minOccurs="0" name="a" nillable="true" type="tns:E"/>
      <xs:element minOccurs="0" name="b" nillable="true" type="xs:string"/>
      <xs:element minOccurs="0" name="c" type="tns:UPL"/>
      <xs:element minOccurs="0" name="d" type="ser:guid"/>
      <xs:element minOccurs="0" name="e" type="xs:boolean"/>
    </xs:sequence>
  </xs:complexType>
  <xs:element name="FCRE" nillable="true" type="tns:FCRE"/>
  <xs:simpleType name="UPL">

```

```

    <xs:restriction base="xs:string">
      <xs:enumeration value="ByEmail"/>
      <xs:enumeration value="ByAccountName"/>
      <xs:enumeration value="BySid"/>
    </xs:restriction>
  </xs:simpleType>
  <xs:element name="UPL" nillable="true" type="tns:UPL"/>
  <xs:complexType name="ArrayOfE">
    <xs:sequence>
      <xs:element minOccurs="0" maxOccurs="unbounded" name="E" nillable="true" type="tns:E"/>
    </xs:sequence>
  </xs:complexType>
  <xs:element name="ArrayOfE" nillable="true" type="tns:ArrayOfE"/>
  <xs:complexType name="FCRO">
    <xs:sequence>
      <xs:element xmlns:q1="http://schemas.microsoft.com/2003/10/Serialization/Arrays"
minOccurs="0" name="a" nillable="true" type="q1:ArrayOfint"/>
      <xs:element minOccurs="0" name="b" type="xs:int"/>
      <xs:element minOccurs="0" name="c" type="xs:boolean"/>
      <xs:element minOccurs="0" name="d" type="xs:int"/>
      <xs:element minOccurs="0" name="e" type="xs:int"/>
      <xs:element minOccurs="0" name="f" type="xs:int"/>
      <xs:element minOccurs="0" name="g" nillable="true" type="xs:dateTime"/>
      <xs:element minOccurs="0" name="h" nillable="true" type="xs:dateTime"/>
      <xs:element minOccurs="0" name="i" type="ser:duration"/>
    </xs:sequence>
  </xs:complexType>
  <xs:element name="FCRO" nillable="true" type="tns:FCRO"/>
  <xs:complexType name="FCCR">
    <xs:sequence>
      <xs:element minOccurs="0" name="EC" nillable="true" type="tns:PC"/>
      <xs:element minOccurs="0" name="FC" nillable="true" type="tns:ArrayOfEC"/>
      <xs:element xmlns:q2="http://Microsoft/Office/Server/UserProfiles" minOccurs="0"
name="P" nillable="true" type="q2:ArrayOfUserData"/>
      <xs:element xmlns:q1="http://schemas.microsoft.com/2003/10/Serialization/Arrays"
minOccurs="0" name="S" nillable="true" type="q1:ArrayOfstring"/>
      <xs:element xmlns:q4="http://schemas.datacontract.org/2004/07/System" minOccurs="0"
name="T" nillable="true" type="q4:ArrayOfNullableOfguid"/>
      <xs:element minOccurs="0" name="TN" nillable="true" type="xs:dateTime"/>
      <xs:element minOccurs="0" name="TO" nillable="true" type="xs:dateTime"/>
    </xs:sequence>
  </xs:complexType>
  <xs:element name="FCCR" nillable="true" type="tns:FCCR"/>
  <xs:complexType name="ArrayOfEC">
    <xs:sequence>
      <xs:element minOccurs="0" maxOccurs="unbounded" name="EC" nillable="true"
type="tns:EC"/>
    </xs:sequence>
  </xs:complexType>
  <xs:element name="ArrayOfEC" nillable="true" type="tns:ArrayOfEC"/>
  <xs:complexType name="EC">
    <xs:sequence>
      <xs:element minOccurs="0" name="C" type="xs:int"/>
      <xs:element minOccurs="0" name="ET" type="tns:ET"/>
    </xs:sequence>
  </xs:complexType>
  <xs:element name="EC" nillable="true" type="tns:EC"/>
  <xs:complexType name="ArrayOfPI">
    <xs:sequence>

```

```

    <xs:element minOccurs="0" maxOccurs="unbounded" name="PI" nillable="true"
type="tns:PI"/>
  </xs:sequence>
</xs:complexType>
<xs:element name="ArrayOfPI" nillable="true" type="tns:ArrayOfPI"/>
<xs:complexType name="PI">
  <xs:sequence>
    <xs:element minOccurs="0" name="E" nillable="true" type="tns:E"/>
    <xs:element xmlns:q1="http://schemas.microsoft.com/2003/10/Serialization/Arrays"
minOccurs="0" name="I" nillable="true" type="q1:ArrayOfstring"/>
  </xs:sequence>
</xs:complexType>
<xs:element name="PI" nillable="true" type="tns:PI"/>
<xs:complexType name="LE">
  <xs:sequence>
    <xs:element minOccurs="0" name="b" type="xs:unsignedLong"/>
    <xs:element minOccurs="0" name="c" type="xs:unsignedShort"/>
    <xs:element minOccurs="0" name="r" type="xs:long"/>
    <xs:element minOccurs="0" name="t" type="xs:long"/>
  </xs:sequence>
</xs:complexType>
<xs:element name="LE" nillable="true" type="tns:LE"/>
</xs:schema>

```

7.4 http://schemas.microsoft.com/2003/10/Serialization/Arrays Schema

```

<?xml version="1.0"?>
<xs:schema xmlns:q1="http://schemas.microsoft.com/2003/10/Serialization/Arrays"
elementFormDefault="qualified"
targetNamespace="http://schemas.microsoft.com/2003/10/Serialization/Arrays"
xmlns:xs="http://www.w3.org/2001/XMLSchema">
  <xs:complexType name="ArrayOfint">
    <xs:sequence>
      <xs:element minOccurs="0" maxOccurs="unbounded" name="int" type="xs:int"/>
    </xs:sequence>
  </xs:complexType>
  <xs:element name="ArrayOfint" nillable="true" type="q1:ArrayOfint"/>
  <xs:complexType name="ArrayOfstring">
    <xs:sequence>
      <xs:element minOccurs="0" maxOccurs="unbounded" name="string" nillable="true"
type="xs:string"/>
    </xs:sequence>
  </xs:complexType>
  <xs:element name="ArrayOfstring" nillable="true" type="q1:ArrayOfstring"/>
</xs:schema>

```

7.5 http://schemas.datacontract.org/2004/07/System.Collections.Generic Schema

```

<?xml version="1.0"?>
<xs:schema xmlns:tns1="http://schemas.datacontract.org/2004/07/System.Collections.Generic"
elementFormDefault="qualified"
targetNamespace="http://schemas.datacontract.org/2004/07/System.Collections.Generic"
xmlns:xs="http://www.w3.org/2001/XMLSchema">
  <xs:import namespace="http://Microsoft/Office/Server/FeedCache"/>
  <xs:import namespace="http://schemas.microsoft.com/2003/10/Serialization/" />
  <xs:complexType name="ArrayOfKeyValuePairOfELEHsv_SlRZJ">

```

```

    <xs:sequence>
      <xs:element minOccurs="0" maxOccurs="unbounded" name="KeyValuePairOfELEHsv_SlRZJ"
type="tns1:KeyValuePairOfELEHsv_SlRZJ"/>
    </xs:sequence>
  </xs:complexType>
  <xs:element name="ArrayOfKeyValuePairOfELEHsv_SlRZJ" nillable="true"
type="tns1:ArrayOfKeyValuePairOfELEHsv_SlRZJ"/>
  <xs:complexType name="KeyValuePairOfELEHsv_SlRZJ">
    <xs:sequence>
      <xs:element xmlns:tns="http://Microsoft/Office/Server/FeedCache" name="key"
nillable="true" type="tns:E"/>
      <xs:element xmlns:tns="http://Microsoft/Office/Server/FeedCache" name="value"
nillable="true" type="tns:LE"/>
    </xs:sequence>
  </xs:complexType>
  <xs:element name="KeyValuePairOfELEHsv_SlRZJ" nillable="true"
type="tns1:KeyValuePairOfELEHsv_SlRZJ"/>
</xs:schema>

```

7.6 http://Microsoft/Office/Server/UserProfiles Schema

```

<?xml version="1.0"?>
<xs:schema xmlns:ser="http://schemas.microsoft.com/2003/10/Serialization/"
xmlns:q2="http://Microsoft/Office/Server/UserProfiles" elementFormDefault="qualified"
targetNamespace="http://Microsoft/Office/Server/UserProfiles"
xmlns:xs="http://www.w3.org/2001/XMLSchema">
  <xs:import namespace="http://schemas.microsoft.com/2003/10/Serialization/" />
  <xs:complexType name="ArrayOfUserData">
    <xs:sequence>
      <xs:element minOccurs="0" maxOccurs="unbounded" name="UserData" nillable="true"
type="q2:UserData"/>
    </xs:sequence>
  </xs:complexType>
  <xs:element name="ArrayOfUserData" nillable="true" type="q2:ArrayOfUserData"/>
  <xs:complexType name="UserData">
    <xs:sequence>
      <xs:element minOccurs="0" name="Department" nillable="true" type="xs:string"/>
      <xs:element minOccurs="0" name="Email" nillable="true" type="xs:string"/>
      <xs:element minOccurs="0" name="EmailOptin" type="xs:int"/>
      <xs:element minOccurs="0" name="FeedIdentifier" nillable="true" type="xs:string"/>
      <xs:element minOccurs="0" name="FeedPrivacyActivity" type="xs:int"/>
      <xs:element minOccurs="0" name="IsPeopleListPublic" type="xs:boolean"/>
      <xs:element minOccurs="0" name="LastUpdate" type="xs:dateTime"/>
      <xs:element minOccurs="0" name="MasterRecordID" type="xs:long"/>
      <xs:element minOccurs="0" name="NTName" nillable="true" type="xs:string"/>
      <xs:element minOccurs="0" name="O15FirstRunExperience" type="xs:int"/>
      <xs:element minOccurs="0" name="PartitionID" type="ser:guid"/>
      <xs:element minOccurs="0" name="PersonalSiteCapabilities" type="xs:int"/>
      <xs:element minOccurs="0" name="PersonalSiteInstantiationState" type="xs:int"/>
      <xs:element minOccurs="0" name="PersonalSpace" nillable="true" type="xs:string"/>
      <xs:element minOccurs="0" name="PictureUrl" nillable="true" type="xs:string"/>
      <xs:element minOccurs="0" name="PreferredName" nillable="true" type="xs:string"/>
      <xs:element minOccurs="0" name="ProfileSubtypeID" type="xs:int"/>
      <xs:element minOccurs="0" name="RecordID" type="xs:long"/>
      <xs:element minOccurs="0" name="SID" nillable="true" type="xs:base64Binary"/>
      <xs:element minOccurs="0" name="SipAddress" nillable="true" type="xs:string"/>
      <xs:element minOccurs="0" name="StatusNote" nillable="true" type="xs:string"/>
      <xs:element minOccurs="0" name="Title" nillable="true" type="xs:string"/>
    </xs:sequence>
  </xs:complexType>

```

```
        <xs:element minOccurs="0" name="UserID" type="ser:guid"/>
    </xs:sequence>
</xs:complexType>
<xs:element name="UserData" nillable="true" type="q2:UserData"/>
</xs:schema>
```

7.7 <http://schemas.datacontract.org/2004/07/System> Schema

```
<?xml version="1.0"?>
<xs:schema xmlns:q4="http://schemas.datacontract.org/2004/07/System"
  xmlns:ser="http://schemas.microsoft.com/2003/10/Serialization/"
  elementFormDefault="qualified"
  targetNamespace="http://schemas.datacontract.org/2004/07/System"
  xmlns:xs="http://www.w3.org/2001/XMLSchema">
  <xs:import namespace="http://schemas.microsoft.com/2003/10/Serialization/" />
  <xs:complexType name="ArrayOfNullableOfguid">
    <xs:sequence>
      <xs:element minOccurs="0" maxOccurs="unbounded" name="guid" nillable="true"
type="ser:guid"/>
    </xs:sequence>
  </xs:complexType>
  <xs:element name="ArrayOfNullableOfguid" nillable="true" type="q4:ArrayOfNullableOfguid"/>
</xs:schema>
```

8 Appendix C: Product Behavior

The information in this specification is applicable to the following Microsoft products or supplemental software. References to product versions include released service packs:

- Microsoft® SharePoint® Server 2013

Exceptions, if any, are noted below. If a service pack or Quick Fix Engineering (QFE) number appears with the product version, behavior changed in that service pack or QFE. The new behavior also applies to subsequent service packs of the product unless otherwise specified. If a product edition appears with the product version, behavior is different in that product edition.

Unless otherwise specified, any statement of optional behavior in this specification that is prescribed using the terms SHOULD or SHOULD NOT implies product behavior in accordance with the SHOULD or SHOULD NOT prescription. Unless otherwise specified, the term MAY implies that the product does not follow the prescription.

9 Change Tracking

This section identifies changes that were made to the [MS-UPFCWS] protocol document between the September 2012 and October 2012 releases. Changes are classified as New, Major, Minor, Editorial, or No change.

The revision class **New** means that a new document is being released.

The revision class **Major** means that the technical content in the document was significantly revised. Major changes affect protocol interoperability or implementation. Examples of major changes are:

- A document revision that incorporates changes to interoperability requirements or functionality.
- An extensive rewrite, addition, or deletion of major portions of content.
- The removal of a document from the documentation set.
- Changes made for template compliance.

The revision class **Minor** means that the meaning of the technical content was clarified. Minor changes do not affect protocol interoperability or implementation. Examples of minor changes are updates to clarify ambiguity at the sentence, paragraph, or table level.

The revision class **Editorial** means that the language and formatting in the technical content was changed. Editorial changes apply to grammatical, formatting, and style issues.

The revision class **No change** means that no new technical or language changes were introduced. The technical content of the document is identical to the last released version, but minor editorial and formatting changes, as well as updates to the header and footer information, and to the revision summary, may have been made.

Major and minor changes can be described further using the following change types:

- New content added.
- Content updated.
- Content removed.
- New product behavior note added.
- Product behavior note updated.
- Product behavior note removed.
- New protocol syntax added.
- Protocol syntax updated.
- Protocol syntax removed.
- New content added due to protocol revision.
- Content updated due to protocol revision.
- Content removed due to protocol revision.
- New protocol syntax added due to protocol revision.

- Protocol syntax updated due to protocol revision.
- Protocol syntax removed due to protocol revision.
- New content added for template compliance.
- Content updated for template compliance.
- Content removed for template compliance.
- Obsolete document removed.

Editorial changes are always classified with the change type **Editorially updated**.

Some important terms used in the change type descriptions are defined as follows:

- **Protocol syntax** refers to data elements (such as packets, structures, enumerations, and methods) as well as interfaces.
- **Protocol revision** refers to changes made to a protocol that affect the bits that are sent over the wire.

The changes made to this document are listed in the following table. For more information, please contact protocol@microsoft.com.

Section	Tracking number (if applicable) and description	Major change (Y or N)	Change type
1 Introduction	Updated all preliminary information in the document.	Y	Content updated.
3.1.4.2 BulkLMTUpdate	Revised description related to IsRepopulationNeeded for clarity.	N	Content updated.
3.1.4.3.2.1 GetCategoricalFeed	Updated the description for the newerThan element to include how this value affects the "N" element in the response.	N	Content updated.
3.1.4.3.2.1 GetCategoricalFeed	Updated the description for the timeout element to include details about how the server will behave if it cannot complete its work within the specified timeout limit.	N	Content updated.
3.1.4.4.2.1 GetConsolidatedFeed	Fixed, please review and assign to TR to review.	N	New content added.
3.1.4.4.2.1 GetConsolidatedFeed	Updated the description for GetConsolidatedFeed, GetFeeds, and GetPublishedFeed operation.	N	New content added.
3.1.4.4.2.1 GetConsolidatedFeed	Updated the description for the newerThan element to include how this value affects the "N" element in the response.	N	Content updated.
3.1.4.4.2.1 GetConsolidatedFeed	Updated the description for the timeout element to include details about how the server will behave if it cannot complete its work within the specified timeout	N	Content updated.

Section	Tracking number (if applicable) and description	Major change (Y or N)	Change type
	limit.		
3.1.4.6.2.1 GetFeeds	Added details to the description of the maxItemsPerEntity to indicate that the "M" element in the response is also set to this value.	N	New content added.
3.1.4.7 GetPublishedFeed	Revised description for clarity.	N	Content updated.
3.1.4.7.2.1 GetPublishedFeed	Updated the description for GetConsolidatedFeed, GetFeeds, and GetPublishedFeed operations.	N	New content added.
3.1.4.7.2.1 GetPublishedFeed	Revised description of newerThan element for clarity.	N	Content updated.
3.1.4.7.2.1 GetPublishedFeed	Updated the description for the newerThan element to include how this value affects the "N" element in the response.	N	Content updated.
3.1.4.12 RemoveEntityFeed	Revised description for clarity.	N	Content updated.
3.1.4.12 RemoveEntityFeed	Used escape characters to replace "<" and ">" in xml fragment.	N	Content updated.
3.1.4.12 RemoveEntityFeed	Please delete the duplicated description in section 2.2.5.13.	N	Content updated.
3.1.4.12 RemoveEntityFeed	Removed the description about audience rule from the definition of LastPropertyUpdate.	N	Content removed.
3.1.4.12 RemoveEntityFeed	Changed the value of @correlationId to NULL in section 4.6.	N	Content removed.
3.1.4.12 RemoveEntityFeed	Deleted the description about "The value of @Collation MUST NOT be NULL".	N	Content removed.
3.1.4.12 RemoveEntityFeed	Deleted the corresponding description in section 2.2.5.16.	N	Content removed.
3.1.4.12 RemoveEntityFeed	Added the corresponding internal references.	N	New content added.
3.1.4.14 AddFeedEntries	Revised description for clarity.	N	Content updated.
3.1.4.14.2.1 AddFeedEntries	Updated the description for the "entries" element to clarify usage of the EN element.	N	Content updated.

10 Index

A

Abstract data model
 [server](#) 29
[AddFeedEntry example](#) 68
[Applicability](#) 12
[ArrayOfE complex type](#) 15
[ArrayOfEC complex type](#) 19
[ArrayOfEDT complex type](#) 15
[ArrayOfint complex type](#) 19
[ArrayOfNullableOfguid complex type](#) 20
[ArrayOfP complex type](#) 15
[ArrayOfstring complex type](#) 20
[ArrayOfUserData complex type](#) 20
[Attribute groups](#) 27
[Attributes](#) 27

C

[Capability negotiation](#) 12
[Change tracking](#) 95
[char simple type](#) 25
[Complex types](#) 14
 [ArrayOfE](#) 15
 [ArrayOfEC](#) 19
 [ArrayOfEDT](#) 15
 [ArrayOfint](#) 19
 [ArrayOfNullableOfguid](#) 20
 [ArrayOfP](#) 15
 [ArrayOfstring](#) 20
 [ArrayOfUserData](#) 20
 [E](#) 16
 [EC](#) 20
 [EDT](#) 16
 [FCCR](#) 21
 [FCRE](#) 22
 [FCRO](#) 22
 [FeedCacheFault](#) 17
 [P](#) 17
 [PC](#) 18
 [UserData](#) 23

D

Data model - abstract
 [server](#) 29
[duration simple type](#) 25

E

[E complex type](#) 16
[EC complex type](#) 20
[EDT complex type](#) 16
[ET simple type](#) 26
Events
 [local - server](#) 67
 [timer - server](#) 67
Examples

[AddFeedEntry](#) 68
[GetPublishedFeed](#) 69

F

[FCCR complex type](#) 21
[FCRE complex type](#) 22
[FCRO complex type](#) 22
[FeedCacheFault complex type](#) 17
[FeedCacheFaultCodes simple type](#) 25
[Fields - vendor-extensible](#) 12
[Full WSDL](#) 72
[Full XML Schema](#) 82
 [http://Microsoft/Office/Server/FeedCache Schema](#) 88
 [http://Microsoft/Office/Server/UserProfiles Schema](#) 92
 [http://schemas.datacontract.org/2004/07/System Schema](#) 93
 [http://schemas.datacontract.org/2004/07/System.Collections.Generic.Schema](#) 91
 [http://schemas.microsoft.com/2003/10/Serialization/Schema](#) 87
 [http://schemas.microsoft.com/2003/10/Serialization/Arrays Schema](#) 91
 [http://tempuri.org/Schema](#) 82

G

[GetPublishedFeed example](#) 69
[Glossary](#) 9
[Groups](#) 27
[guid simple type](#) 26

I

[Implementer - security considerations](#) 71
[Index of security parameters](#) 71
[Informative references](#) 11
Initialization
 [server](#) 30
[Introduction](#) 9

L

Local events
 [server](#) 67

M

Message processing
 [server](#) 30
Messages
 [ArrayOfE complex type](#) 15
 [ArrayOfEC complex type](#) 19
 [ArrayOfEDT complex type](#) 15
 [ArrayOfint complex type](#) 19
 [ArrayOfNullableOfguid complex type](#) 20

- [ArrayOfP complex type](#) 15
- [ArrayOfstring complex type](#) 20
- [ArrayOfUserData complex type](#) 20
- [attribute groups](#) 27
- [attributes](#) 27
- [char simple type](#) 25
- [complex types](#) 14
- [duration simple type](#) 25
- [E complex type](#) 16
- [EC complex type](#) 20
- [EDT complex type](#) 16
- [elements](#) 14
- [enumerated](#) 14
- [ET simple type](#) 26
- [FCCR complex type](#) 21
- [FCRE complex type](#) 22
- [FCRO complex type](#) 22
- [FeedCacheFault complex type](#) 17
- [FeedCacheFaultCodes simple type](#) 25
- [groups](#) 27
- [guid simple type](#) 26
- [namespaces](#) 13
- [P complex type](#) 17
- [PC complex type](#) 18
- [simple types](#) 24
- [syntax](#) 13
- [transport](#) 13
- [UPL simple type](#) 27
- [UserData complex type](#) 23

N

- [Namespaces](#) 13
- [Normative references](#) 10

O

Operations

- [AddFeedEntries](#) 61
- [AddFeedEntriesForRepop](#) 65
- [AddFeedEntry](#) 31
- [BulkLMTUpdate](#) 33
- [GetCategoricalFeed](#) 36
- [GetConsolidatedFeed](#) 39
- [GetEntries](#) 41
- [GetFeeds](#) 44
- [GetPublishedFeed](#) 46
- [IsEntityActivelyFollowed](#) 48
- [IsRepopulationNeeded](#) 50
- [NewEntityFollower](#) 52
- [RefreshFollowedEntities](#) 54
- [RemoveEntityFeed](#) 57
- [RemoveFeedEntry](#) 59
- [RemoveInternalRegions](#) 63
- [Overview \(synopsis\)](#) 11

P

- [P complex type](#) 17
- [Parameters - security index](#) 71
- [PC complex type](#) 18
- [Preconditions](#) 11

- [Prerequisites](#) 11
- [Product behavior](#) 94

R

- [References](#) 10
 - [informative](#) 11
 - [normative](#) 10
- [Relationship to other protocols](#) 11

S

Security

- [implementer considerations](#) 71
- [parameter index](#) 71

Sequencing rules

- [server](#) 30

Server

- [abstract data model](#) 29
- [AddFeedEntries operation](#) 61
- [AddFeedEntriesForRepop operation](#) 65
- [AddFeedEntry operation](#) 31
- [BulkLMTUpdate operation](#) 33
- [GetCategoricalFeed operation](#) 36
- [GetConsolidatedFeed operation](#) 39
- [GetEntries operation](#) 41
- [GetFeeds operation](#) 44
- [GetPublishedFeed operation](#) 46
- [initialization](#) 30
- [IsEntityActivelyFollowed operation](#) 48
- [IsRepopulationNeeded operation](#) 50
- [local events](#) 67
- [message processing](#) 30
- [NewEntityFollower operation](#) 52
- [RefreshFollowedEntities operation](#) 54
- [RemoveEntityFeed operation](#) 57
- [RemoveFeedEntry operation](#) 59
- [RemoveInternalRegions operation](#) 63
- [sequencing rules](#) 30
- [timer events](#) 67
- [timers](#) 30
- [Server details](#) 28
- [Simple types](#) 24
 - [char](#) 25
 - [duration](#) 25
 - [ET](#) 26
 - [FeedCacheFaultCodes](#) 25
 - [guid](#) 26
 - [UPL](#) 27
- [Standards assignments](#) 12
- Syntax
 - [messages - overview](#) 13

T

Timer events

- [server](#) 67

Timers

- [server](#) 30
- [Tracking changes](#) 95
- [Transport](#) 13

Types

[complex](#) 14
[simple](#) 24

U

[UPL simple type](#) 27
[UserData complex type](#) 23

V

[Vendor-extensible fields](#) 12
[Versioning](#) 12

W

[WSDL](#) 72

X

[XML Schema](#) 82
<http://Microsoft/Office/Server/FeedCache Schema> 88
<http://Microsoft/Office/Server/UserProfiles Schema> 92
<http://schemas.datacontract.org/2004/07/System Schema> 93
<http://schemas.datacontract.org/2004/07/System.Collections.Generic Schema> 91
<http://schemas.microsoft.com/2003/10/Serialization/ Schema> 87
<http://schemas.microsoft.com/2003/10/Serialization/Arrays Schema> 91
<http://tempuri.org/ Schema> 82