

# [MS-UPFCWS]: User Activity Feed Cache Web Service Protocol Specification

---

## Intellectual Property Rights Notice for Open Specifications Documentation

- **Technical Documentation.** Microsoft publishes Open Specifications documentation for protocols, file formats, languages, standards as well as overviews of the interaction among each of these technologies.
- **Copyrights.** This documentation is covered by Microsoft copyrights. Regardless of any other terms that are contained in the terms of use for the Microsoft website that hosts this documentation, you may make copies of it in order to develop implementations of the technologies described in the Open Specifications and may distribute portions of it in your implementations using these technologies or your documentation as necessary to properly document the implementation. You may also distribute in your implementation, with or without modification, any schema, IDL's, or code samples that are included in the documentation. This permission also applies to any documents that are referenced in the Open Specifications.
- **No Trade Secrets.** Microsoft does not claim any trade secret rights in this documentation.
- **Patents.** Microsoft has patents that may cover your implementations of the technologies described in the Open Specifications. Neither this notice nor Microsoft's delivery of the documentation grants any licenses under those or any other Microsoft patents. However, a given Open Specification may be covered by Microsoft [Open Specification Promise](#) or the [Community Promise](#). If you would prefer a written license, or if the technologies described in the Open Specifications are not covered by the Open Specifications Promise or Community Promise, as applicable, patent licenses are available by contacting [iplg@microsoft.com](mailto:iplg@microsoft.com).
- **Trademarks.** The names of companies and products contained in this documentation may be covered by trademarks or similar intellectual property rights. This notice does not grant any licenses under those rights.
- **Fictitious Names.** The example companies, organizations, products, domain names, e-mail addresses, logos, people, places, and events depicted in this documentation are fictitious. No association with any real company, organization, product, domain name, email address, logo, person, place, or event is intended or should be inferred.

**Reservation of Rights.** All other rights are reserved, and this notice does not grant any rights other than specifically described above, whether by implication, estoppel, or otherwise.

**Tools.** The Open Specifications do not require the use of Microsoft programming tools or programming environments in order for you to develop an implementation. If you have access to Microsoft programming tools and environments you are free to take advantage of them. Certain Open Specifications are intended for use in conjunction with publicly available standard specifications and network programming art, and assumes that the reader either is familiar with the aforementioned material or has immediate access to it.

**Preliminary Documentation.** This Open Specification provides documentation for past and current releases and/or for the pre-release (beta) version of this technology. This Open Specification is final documentation for past or current releases as specifically noted in the document, as applicable; it is preliminary documentation for the pre-release (beta) versions. Microsoft will release final documentation in connection with the commercial release of the updated or new version of this technology. As the documentation may change between this preliminary version and the final version of this technology, there are risks in relying on preliminary documentation. To the extent that you incur additional development obligations or any other costs as a result of relying on this preliminary documentation, you do so at your own risk.

## Revision Summary

Date	Revision History	Revision Class	Comments
01/20/2012	0.1	New	Released new document.
04/11/2012	0.1	No change	No changes to the meaning, language, or formatting of the technical content.
07/16/2012	0.1	No change	No changes to the meaning, language, or formatting of the technical content.
09/12/2012	0.1	No change	No changes to the meaning, language, or formatting of the technical content.

# Table of Contents

<b>1 Introduction</b>	<b>9</b>
1.1 Glossary	9
1.2 References	10
1.2.1 Normative References	10
1.2.2 Informative References	10
1.3 Overview	11
1.4 Relationship to Other Protocols	11
1.5 Prerequisites/Preconditions	11
1.6 Applicability Statement	11
1.7 Versioning and Capability Negotiation	12
1.8 Vendor-Extensible Fields	12
1.9 Standards Assignments	12
<b>2 Messages</b>	<b>13</b>
2.1 Transport	13
2.2 Common Message Syntax	13
2.2.1 Namespaces	13
2.2.2 Messages	14
2.2.3 Elements	14
2.2.4 Complex Types	14
2.2.4.1 ArrayOfE	14
2.2.4.2 ArrayOfEDT	15
2.2.4.3 ArrayOfP	15
2.2.4.4 E	15
2.2.4.5 EDT	16
2.2.4.6 FeedCacheFault	16
2.2.4.7 P	17
2.2.4.8 PC	17
2.2.5 Simple Types	18
2.2.5.1 char	18
2.2.5.2 duration	19
2.2.5.3 ET	19
2.2.5.4 FeedCacheFaultCodes	20
2.2.5.5 guid	20
2.2.6 Attributes	20
2.2.7 Groups	20
2.2.8 Attribute Groups	21
<b>3 Protocol Details</b>	<b>22</b>
3.1 Server Details	22
3.1.1 Abstract Data Model	23
3.1.2 Timers	24
3.1.3 Initialization	24
3.1.4 Message Processing Events and Sequencing Rules	24
3.1.4.1 AddFeedEntry	25
3.1.4.1.1 Messages	25
3.1.4.1.1.1 IFeedCacheService_AddFeedEntry_InputMessage	25
3.1.4.1.1.2 IFeedCacheService_AddFeedEntry_OutputMessage	26
3.1.4.1.2 Elements	26
3.1.4.1.2.1 AddFeedEntry	26

3.1.4.1.2.2	AddFeedEntryResponse .....	26
3.1.4.1.3	Complex Types .....	27
3.1.4.1.4	Simple Types .....	27
3.1.4.1.5	Attributes .....	27
3.1.4.1.6	Groups .....	27
3.1.4.1.7	Attribute Groups .....	27
3.1.4.2	BulkAddFeedEntry .....	27
3.1.4.2.1	Messages .....	27
3.1.4.2.1.1	IFeedCacheService_BulkAddFeedEntry_InputMessage .....	28
3.1.4.2.1.2	IFeedCacheService_BulkAddFeedEntry_OutputMessage .....	28
3.1.4.2.2	Elements .....	28
3.1.4.2.2.1	BulkAddFeedEntry .....	28
3.1.4.2.2.2	BulkAddFeedEntryResponse .....	28
3.1.4.2.3	Complex Types .....	29
3.1.4.2.4	Simple Types .....	29
3.1.4.2.5	Attributes .....	29
3.1.4.2.6	Groups .....	29
3.1.4.2.7	Attribute Groups .....	29
3.1.4.3	BulkLMTUpdate .....	29
3.1.4.3.1	Messages .....	30
3.1.4.3.1.1	IFeedCacheService_BulkLMTUpdate_InputMessage .....	30
3.1.4.3.1.2	IFeedCacheService_BulkLMTUpdate_OutputMessage .....	30
3.1.4.3.2	Elements .....	30
3.1.4.3.2.1	BulkLMTUpdate .....	30
3.1.4.3.2.2	BulkLMTUpdateResponse .....	31
3.1.4.3.3	Complex Types .....	31
3.1.4.3.3.1	ArrayOfKeyValuePairOfELEHsv_SIRZJ .....	31
3.1.4.3.3.2	KeyValuePairOfELEHsv_SIRZJ .....	32
3.1.4.3.3.3	LE .....	32
3.1.4.3.4	Simple Types .....	32
3.1.4.3.5	Attributes .....	32
3.1.4.3.6	Groups .....	32
3.1.4.3.7	Attribute Groups .....	32
3.1.4.4	GetCategoricalFeed .....	33
3.1.4.4.1	Messages .....	33
3.1.4.4.1.1	IFeedCacheService_GetCategoricalFeed_InputMessage .....	33
3.1.4.4.1.2	IFeedCacheService_GetCategoricalFeed_OutputMessage .....	33
3.1.4.4.2	Elements .....	33
3.1.4.4.2.1	GetCategoricalFeed .....	34
3.1.4.4.2.2	GetCategoricalFeedResponse .....	34
3.1.4.4.3	Complex Types .....	35
3.1.4.4.4	Simple Types .....	35
3.1.4.4.5	Attributes .....	35
3.1.4.4.6	Groups .....	35
3.1.4.4.7	Attribute Groups .....	35
3.1.4.5	GetConsolidatedFeed .....	35
3.1.4.5.1	Messages .....	35
3.1.4.5.1.1	IFeedCacheService_GetConsolidatedFeed_InputMessage .....	35
3.1.4.5.1.2	IFeedCacheService_GetConsolidatedFeed_OutputMessage .....	36
3.1.4.5.2	Elements .....	36
3.1.4.5.2.1	GetConsolidatedFeed .....	36
3.1.4.5.2.2	GetConsolidatedFeedResponse .....	37
3.1.4.5.3	Complex Types .....	37

3.1.4.5.4	Simple Types	37
3.1.4.5.5	Attributes	37
3.1.4.5.6	Groups	37
3.1.4.5.7	Attribute Groups	37
3.1.4.6	GetEntries	37
3.1.4.6.1	Messages	38
3.1.4.6.1.1	IFeedCacheService_GetEntries_InputMessage	38
3.1.4.6.1.2	IFeedCacheService_GetEntries_OutputMessage	38
3.1.4.6.2	Elements	38
3.1.4.6.2.1	GetEntries	39
3.1.4.6.2.2	GetEntriesResponse	39
3.1.4.6.3	Complex Types	39
3.1.4.6.3.1	ArrayOfPI	39
3.1.4.6.3.2	PI	40
3.1.4.6.3.3	ArrayOfstring	40
3.1.4.6.4	Simple Types	40
3.1.4.6.5	Attributes	40
3.1.4.6.6	Groups	40
3.1.4.6.7	Attribute Groups	40
3.1.4.7	GetFeeds	41
3.1.4.7.1	Messages	41
3.1.4.7.1.1	IFeedCacheService_GetFeeds_InputMessage	41
3.1.4.7.1.2	IFeedCacheService_GetFeeds_OutputMessage	41
3.1.4.7.2	Elements	41
3.1.4.7.2.1	GetFeeds	42
3.1.4.7.2.2	GetFeedsResponse	42
3.1.4.7.3	Complex Types	42
3.1.4.7.3.1	ArrayOfKeyValuePairOfEdateTimeKkKWL8eh	43
3.1.4.7.3.2	KeyValuePairOfEdateTimeKkKWL8eh	43
3.1.4.7.4	Simple Types	43
3.1.4.7.5	Attributes	43
3.1.4.7.6	Groups	44
3.1.4.7.7	Attribute Groups	44
3.1.4.8	GetPublishedFeed	44
3.1.4.8.1	Messages	44
3.1.4.8.1.1	IFeedCacheService_GetPublishedFeed_InputMessage	44
3.1.4.8.1.2	IFeedCacheService_GetPublishedFeed_OutputMessage	44
3.1.4.8.2	Elements	45
3.1.4.8.2.1	GetPublishedFeed	45
3.1.4.8.2.2	GetPublishedFeedResponse	45
3.1.4.8.3	Complex Types	46
3.1.4.8.4	Simple Types	46
3.1.4.8.5	Attributes	46
3.1.4.8.6	Groups	46
3.1.4.8.7	Attribute Groups	46
3.1.4.9	IsEntityActivelyFollowed	46
3.1.4.9.1	Messages	46
3.1.4.9.1.1	IFeedCacheService_IsEntityActivelyFollowed_InputMessage	47
3.1.4.9.1.2	IFeedCacheService_IsEntityActivelyFollowed_OutputMessage	47
3.1.4.9.2	Elements	47
3.1.4.9.2.1	IsEntityActivelyFollowed	47
3.1.4.9.2.2	IsEntityActivelyFollowedResponse	47
3.1.4.9.3	Complex Types	48

3.1.4.9.4	Simple Types	48
3.1.4.9.5	Attributes	48
3.1.4.9.6	Groups	48
3.1.4.9.7	Attribute Groups	48
3.1.4.10	IsRepopulationNeeded	48
3.1.4.10.1	Messages	48
3.1.4.10.1.1	IFeedCacheService_IsRepopulationNeeded_InputMessage	49
3.1.4.10.1.2	IFeedCacheService_IsRepopulationNeeded_OutputMessage	49
3.1.4.10.2	Elements	49
3.1.4.10.2.1	IsRepopulationNeeded	49
3.1.4.10.2.2	IsRepopulationNeededResponse	49
3.1.4.10.3	Complex Types	50
3.1.4.10.4	Simple Types	50
3.1.4.10.5	Attributes	50
3.1.4.10.6	Groups	50
3.1.4.10.7	Attribute Groups	50
3.1.4.11	NewEntityFollower	50
3.1.4.11.1	Messages	50
3.1.4.11.1.1	IFeedCacheService_NewEntityFollower_InputMessage	51
3.1.4.11.1.2	IFeedCacheService_NewEntityFollower_OutputMessage	51
3.1.4.11.2	Elements	51
3.1.4.11.2.1	NewEntityFollower	51
3.1.4.11.2.2	NewEntityFollowerResponse	51
3.1.4.11.3	Complex Types	52
3.1.4.11.4	Simple Types	52
3.1.4.11.5	Attributes	52
3.1.4.11.6	Groups	52
3.1.4.11.7	Attribute Groups	52
3.1.4.12	RefreshFollowedEntities	52
3.1.4.12.1	Messages	52
3.1.4.12.1.1	IFeedCacheService_RefreshFollowedEntities_InputMessage	53
3.1.4.12.1.2	IFeedCacheService_RefreshFollowedEntities_OutputMessage	53
3.1.4.12.2	Elements	53
3.1.4.12.2.1	RefreshFollowedEntities	53
3.1.4.12.2.2	RefreshFollowedEntitiesResponse	54
3.1.4.12.3	Complex Types	54
3.1.4.12.4	Simple Types	54
3.1.4.12.5	Attributes	54
3.1.4.12.6	Groups	54
3.1.4.12.7	Attribute Groups	54
3.1.4.13	RemoveEntityFeed	54
3.1.4.13.1	Messages	55
3.1.4.13.1.1	IFeedCacheService_RemoveEntityFeed_InputMessage	55
3.1.4.13.1.2	IFeedCacheService_RemoveEntityFeed_OutputMessage	55
3.1.4.13.2	Elements	55
3.1.4.13.2.1	RemoveEntityFeed	55
3.1.4.13.2.2	RemoveEntityFeedResponse	56
3.1.4.13.3	Complex Types	56
3.1.4.13.4	Simple Types	56
3.1.4.13.5	Attributes	56
3.1.4.13.6	Groups	56
3.1.4.13.7	Attribute Groups	56
3.1.4.14	RemoveFeedEntry	56

3.1.4.14.1	Messages .....	57
3.1.4.14.1.1	IFeedCacheService_RemoveFeedEntry_InputMessage .....	57
3.1.4.14.1.2	IFeedCacheService_RemoveFeedEntry_OutputMessage .....	57
3.1.4.14.2	Elements .....	57
3.1.4.14.2.1	RemoveFeedEntry .....	57
3.1.4.14.2.2	RemoveFeedEntryResponse .....	58
3.1.4.14.3	Complex Types .....	58
3.1.4.14.4	Simple Types .....	58
3.1.4.14.5	Attributes .....	58
3.1.4.14.6	Groups .....	58
3.1.4.14.7	Attribute Groups .....	58
3.1.4.15	AddFeedEntries .....	58
3.1.4.15.1	Messages .....	59
3.1.4.15.1.1	IFeedCacheService_AddFeedEntries_InputMessage .....	59
3.1.4.15.1.2	IFeedCacheService_AddFeedEntries_OutputMessage .....	59
3.1.4.15.2	Elements .....	59
3.1.4.15.2.1	AddFeedEntries .....	59
3.1.4.15.2.2	AddFeedEntriesResponse .....	60
3.1.4.15.3	Complex Types .....	60
3.1.4.15.4	Simple Types .....	60
3.1.4.15.5	Attributes .....	60
3.1.4.15.6	Groups .....	60
3.1.4.15.7	Attribute Groups .....	60
3.1.4.16	RemoveInternalRegions .....	60
3.1.4.16.1	Messages .....	61
3.1.4.16.1.1	IFeedCacheService_RemoveInternalRegions_InputMessage .....	61
3.1.4.16.1.2	IFeedCacheService_RemoveInternalRegions_OutputMessage .....	61
3.1.4.16.2	Elements .....	61
3.1.4.16.2.1	RemoveInternalRegions .....	61
3.1.4.16.2.2	RemoveInternalRegionsResponse .....	62
3.1.4.16.3	Complex Types .....	62
3.1.4.16.4	Simple Types .....	62
3.1.4.16.5	Attributes .....	62
3.1.4.16.6	Groups .....	62
3.1.4.16.7	Attribute Groups .....	62
3.1.5	Timer Events .....	62
3.1.6	Other Local Events .....	62
<b>4</b>	<b>Protocol Examples .....</b>	<b>63</b>
4.1	AddFeedEntry .....	63
4.2	GetPublishedFeed .....	64
<b>5</b>	<b>Security .....</b>	<b>66</b>
5.1	Security Considerations for Implementers .....	66
5.2	Index of Security Parameters .....	66
<b>6</b>	<b>Appendix A: Full WSDL .....</b>	<b>67</b>
<b>7</b>	<b>Appendix B: Full XML Schema .....</b>	<b>77</b>
7.1	http://tempuri.org/ Schema .....	77
7.2	http://schemas.microsoft.com/2003/10/Serialization/ Schema .....	82
7.3	http://Microsoft/Office/Server/FeedCache Schema .....	83
7.4	http://Microsoft/Office/Server/FeedyCache Schema .....	85
7.5	http://schemas.microsoft.com/2003/10/Serialization/Arrays Schema .....	85

7.6 <http://schemas.datacontract.org/2004/07/System.Collections.Generic.Schema> ..... 85

**8 Appendix C: Product Behavior** ..... **87**

**9 Change Tracking**..... **88**

**10 Index** ..... **89**

Preliminary



# 1 Introduction

This document specifies the User Activity Feed Cache Web Service Protocol. This protocol allows protocol clients to store and retrieve data related to social feed posts and feed metadata in an in-memory cache on a protocol server.

Sections 1.8, 2, and 3 of this specification are normative and can contain the terms MAY, SHOULD, MUST, MUST NOT, and SHOULD NOT as defined in RFC 2119. Sections 1.5 and 1.9 are also normative but cannot contain those terms. All other sections and examples in this specification are informative.

## 1.1 Glossary

The following terms are defined in [\[MS-GLOS\]](#):

**Coordinated Universal Time (UTC)**  
**GUID**  
**Hypertext Transfer Protocol (HTTP)**  
**Hypertext Transfer Protocol over Secure Sockets Layer (HTTPS)**  
**Transmission Control Protocol (TCP)**  
**user object**

The following terms are defined in [\[MS-OFCGLOS\]](#):

**application server**  
**datetime**  
**document**  
**endpoint**  
**list**  
**Simple Object Access Protocol (SOAP)**  
**site**  
**site collection**  
**SOAP action**  
**SOAP body**  
**SOAP fault**  
**social tag**  
**tenant**  
**Uniform Resource Identifier (URI)**  
**Uniform Resource Locator (URL)**  
**user profile**  
**User Profile Service**  
**web application**  
**Web Services Description Language (WSDL)**  
**WSDL message**  
**WSDL operation**  
**XML namespace**  
**XML namespace prefix**  
**XML schema**

The following terms are specific to this document:

**feed entity:** An object that represents anything that can have a feed, such as a user, a document, or a site.

**feed entry:** The data contained in a posting to a feed.

**MAY, SHOULD, MUST, SHOULD NOT, MUST NOT:** These terms (in all caps) are used as described in [RFC2119]. All statements of optional behavior use either MAY, SHOULD, or SHOULD NOT.

## 1.2 References

References to Microsoft Open Specifications documentation do not include a publishing year because links are to the latest version of the technical documents, which are updated frequently. References to other documents include a publishing year when one is available.

### 1.2.1 Normative References

We conduct frequent surveys of the normative references to assure their continued availability. If you have any issue with finding a normative reference, please contact [dochelp@microsoft.com](mailto:dochelp@microsoft.com). We will assist you in finding the relevant information. Please check the archive site, <http://msdn2.microsoft.com/en-us/library/E4BD6494-06AD-4aed-9823-445E921C9624>, as an additional source.

[MS-SPSTWS] Microsoft Corporation, "[SharePoint Security Token Service Web Service Protocol Specification](#)".

[RFC2119] Bradner, S., "Key words for use in RFCs to Indicate Requirement Levels", BCP 14, RFC 2119, March 1997, <http://www.rfc-editor.org/rfc/rfc2119.txt>

[RFC2616] Fielding, R., Gettys, J., Mogul, J., et al., "Hypertext Transfer Protocol -- HTTP/1.1", RFC 2616, June 1999, <http://www.ietf.org/rfc/rfc2616.txt>

[RFC2818] Rescorla, E., "HTTP Over TLS", RFC 2818, May 2000, <http://www.ietf.org/rfc/rfc2818.txt>

[SOAP1.1] Box, D., Ehnebuske, D., Kakivaya, G., et al., "Simple Object Access Protocol (SOAP) 1.1", May 2000, <http://www.w3.org/TR/2000/NOTE-SOAP-20000508/>

[SOAP1.2/1] Gudgin, M., Hadley, M., Mendelsohn, N., Moreau, J., and Nielsen, H.F., "SOAP Version 1.2 Part 1: Messaging Framework", W3C Recommendation, June 2003, <http://www.w3.org/TR/2003/REC-soap12-part1-20030624>

[SOAP1.2/2] Gudgin, M., Hadley, M., Mendelsohn, N., Moreau, J., and Nielsen, H.F., "SOAP Version 1.2 Part 2: Adjuncts", W3C Recommendation, June 2003, <http://www.w3.org/TR/2003/REC-soap12-part2-20030624>

[WSDL] Christensen, E., Curbera, F., Meredith, G., and Weerawarana, S., "Web Services Description Language (WSDL) 1.1", W3C Note, March 2001, <http://www.w3.org/TR/2001/NOTE-wsdl-20010315>

[XMLNS] Bray, T., Hollander, D., Layman, A., et al., Eds., "Namespaces in XML 1.0 (Third Edition)", W3C Recommendation, December 2009, <http://www.w3.org/TR/2009/REC-xml-names-20091208/>

[XMLSCHEMA1] Thompson, H.S., Ed., Beech, D., Ed., Maloney, M., Ed., and Mendelsohn, N., Ed., "XML Schema Part 1: Structures", W3C Recommendation, May 2001, <http://www.w3.org/TR/2001/REC-xmlschema-1-20010502/>

[XMLSCHEMA2] Biron, P.V., Ed. and Malhotra, A., Ed., "XML Schema Part 2: Datatypes", W3C Recommendation, May 2001, <http://www.w3.org/TR/2001/REC-xmlschema-2-20010502/>

### 1.2.2 Informative References

[MC-NMF] Microsoft Corporation, "[.NET Message Framing Protocol Specification](#)".

[MS-GLOS] Microsoft Corporation, "[Windows Protocols Master Glossary](#)".

[MS-OFCGLOS] Microsoft Corporation, "[Microsoft Office Master Glossary](#)".

[MS-SPTWS] Microsoft Corporation, "[Service Platform Topology Web Service Protocol Specification](#)".

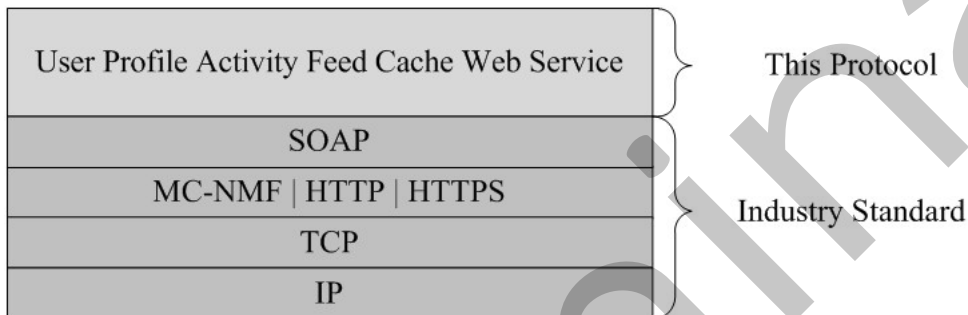
### 1.3 Overview

This protocol allows protocol clients to store data related to social feed posts and feed metadata in an in-memory cache on a middle-tier **application server**. A typical scenario is a protocol client fetching the posts from a number of users to display a consolidated view of recent activities.

### 1.4 Relationship to Other Protocols

This protocol uses the **SOAP** message protocol for formatting requests and responses as described in [\[SOAP1.1\]](#), [\[SOAP1.2/1\]](#) and [\[SOAP1.2/2\]](#). It transmits these messages by using **HTTP** protocol as described in [\[RFC2616\]](#), or the **HTTPS** protocol as described in [\[RFC2818\]](#) or the **TCP** protocol as described in [\[MC-NMF\]](#).

The following diagram shows the underlying messaging and transport stack used by the protocol.



**Figure 1: This protocol in relation to other protocols**

### 1.5 Prerequisites/Preconditions

This protocol operates against a protocol server that exposes one or more **endpoint (4) URIs** that are known by protocol clients. The endpoint (4) URI of the protocol server and the transport that is used by the protocol server are either known by the protocol client or obtained by using the discovery mechanism that is described in [\[MS-SPTWS\]](#).

The protocol client obtains the requisite ApplicationClassId and ApplicationVersion values and the endpoint (4) URI of the protocol server that provides the discovery mechanism, as described in [\[MS-SPTWS\]](#), by means that are independent of either protocol.

This protocol requires the protocol client to have appropriate permission to call the methods on the protocol server.

The protocol client implements the token-based security mechanisms that are required by the protocol server and related security protocols, as described in [\[MS-SPSTWS\]](#).

### 1.6 Applicability Statement

The protocol is designed to work with cached feed data.

## 1.7 Versioning and Capability Negotiation

This specification covers versioning issues in the following areas:

- **Supported Transports:** This protocol can be implemented by using transports that support sending Simple Object Access Protocol (SOAP) messages, as specified in section 2.1.
- **Protocol Versions:** This protocol is not versioned.

**Capability Negotiation:** This protocol does not support version negotiation.

## 1.8 Vendor-Extensible Fields

None

## 1.9 Standards Assignments

None

## 2 Messages

### 2.1 Transport

Protocol servers MUST support Simple Object Access Protocol (SOAP) over Hypertext Transfer Protocol (HTTP), Hypertext Transfer Protocol over Secure Sockets Layer (HTTPS), or TCP.

All protocol messages MUST be transported by using HTTP or TCP bindings at the transport level.

Protocol messages MUST be formatted as specified in either [\[SOAP1.1\]](#) section 4 or [\[SOAP1.2/1\]](#) section 5. Protocol server faults MUST be returned by using HTTP status codes, as specified in [\[RFC2616\]](#) section 10, or **SOAP faults**, as specified in [\[SOAP1.1\]](#) section 4.4 or [\[SOAP1.2/1\]](#) section 5.4.

If the HTTPS transport is used, a server certificate MUST be deployed.

This protocol MAY transmit an additional SOAP header, the **ServiceContext** header, as specified in [\[MS-SPSTWS\]](#).

This protocol does not define any means for activating a protocol server or protocol client. The protocol server MUST be configured and begin listening in an implementation-specific way. In addition, the protocol client MUST know the format and transport that is used by the server, for example, the SOAP format over an HTTP transport.

### 2.2 Common Message Syntax

This section contains common definitions that are used by this protocol. The syntax of the definitions uses **XML schema**, as specified in [\[XMLSCHEMA1\]](#) and [\[XMLSCHEMA2\]](#), and **WSDL**, as specified in [\[WSDL\]](#).

#### 2.2.1 Namespaces

This specification defines and references various **XML namespaces** using the mechanisms specified in [\[XMLNS\]](#). Although this specification associates a specific **XML namespace prefix** for each XML namespace that is used, the choice of any particular XML namespace prefix is implementation-specific and not significant for interoperability.

Prefix	Namespace URI	Reference
q1	<a href="http://Microsoft/Office/Server/FeedCache">http://Microsoft/Office/Server/FeedCache</a>	
q11	<a href="http://schemas.microsoft.com/2003/10/Serialization/">http://schemas.microsoft.com/2003/10/Serialization/</a>	
q2	<a href="http://Microsoft/Office/Server/FeedyCache">http://Microsoft/Office/Server/FeedyCache</a>	
q23	<a href="http://schemas.datacontract.org/2004/07/System.Collections.Generic">http://schemas.datacontract.org/2004/07/System.Collections.Generic</a>	
q3	<a href="http://schemas.microsoft.com/2003/10/Serialization/Arrays">http://schemas.microsoft.com/2003/10/Serialization/Arrays</a>	
soap	<a href="http://schemas.xmlsoap.org/wsdl/soap/">http://schemas.xmlsoap.org/wsdl/soap/</a>	<a href="#">[SOAP1.1]</a>
tns	<a href="http://tempuri.org/">http://tempuri.org/</a>	
tns1	<a href="http://tempuri.org/Imports">http://tempuri.org/Imports</a>	
wsam	<a href="http://www.w3.org/2007/05/addressing/metadata">http://www.w3.org/2007/05/addressing/metadata</a>	

Prefix	Namespace URI	Reference
wSDL	http://schemas.xmlsoap.org/wSDL/	[WSDL]
xs	http://www.w3.org/2001/XMLSchema	[XMLSCHEMA1] [XMLSCHEMA2]

## 2.2.2 Messages

This specification does not define any common WSDL message definitions.

## 2.2.3 Elements

This specification does not define any common XML schema element definitions.

## 2.2.4 Complex Types

The following table summarizes the set of common XML schema complex type definitions defined by this specification. XML schema complex type definitions that are specific to a particular operation are described with the operation.

Complex Type	Description
ArrayOfE	The <b>ArrayOfE</b> complex type is a sequence of 0 or more <b>E</b> entries which are described in section <a href="#">2.2.4.4</a> .
ArrayOfEDT	The <b>ArrayOfEDT</b> complex type is a sequence of 0 or more <b>EDT</b> entries which are described in section <a href="#">2.2.4.5</a> .
ArrayOfP	The <b>ArrayOfP</b> complex type is a sequence of 0 or more <b>P</b> entries which are described in section <a href="#">2.2.4.7</a> .
E	The <b>E</b> complex type specifies the details of <b>Feed entity</b> .
EDT	The <b>EDT</b> complex type specifies a pair of feed entity and date time.
FeedCacheFault	The <b>FeedCacheFault</b> complex type describes errors that have occurred at the transport or the service layer.
P	The <b>P</b> complex type specifies a feed entry.
PC	The <b>PC</b> complex type specifies a sequence of zero or more <b>feed entries</b> as described in section <a href="#">2.2.4.7</a> along with associated metadata.

### 2.2.4.1 ArrayOfE

**Namespace:** http://Microsoft/Office/Server/FeedCache

The **ArrayOfE** complex type is a sequence of 0 or more **E** entries which are described in section [2.2.4.4](#).

```
<xs:complexType name="ArrayOfE" xmlns:xs="http://www.w3.org/2001/XMLSchema">
  <xs:sequence>
    <xs:element minOccurs="0" maxOccurs="unbounded" name="E" nillable="true" type="q1:E"/>
  </xs:sequence>
</xs:complexType>
```

```
</xs:complexType>
```

**E:** Feed entity as described in section [2.2.4.4](#).

### 2.2.4.2 ArrayOfEDT

**Namespace:** <http://Microsoft/Office/Server/FeedCache>

The **ArrayOfEDT** complex type is a sequence of 0 or more **EDT** entries which are described in section [2.2.4.5](#).

```
<xs:complexType name="ArrayOfEDT" xmlns:xs="http://www.w3.org/2001/XMLSchema">
  <xs:sequence>
    <xs:element minOccurs="0" maxOccurs="unbounded" name="EDT" nillable="true"
type="q1:EDT"/>
  </xs:sequence>
</xs:complexType>
```

**EDT:** Entity data time pair as described in section [2.2.4.5](#).

### 2.2.4.3 ArrayOfP

**Namespace:** <http://Microsoft/Office/Server/FeedCache>

The **ArrayOfP** complex type is a sequence of 0 or more **P** entries which are described in section [2.2.4.7](#).

```
<xs:complexType name="ArrayOfP" xmlns:xs="http://www.w3.org/2001/XMLSchema">
  <xs:sequence>
    <xs:element minOccurs="0" maxOccurs="unbounded" name="P" nillable="true" type="q1:P"/>
  </xs:sequence>
</xs:complexType>
```

**P:** Feed Entry as described in section [2.2.4.7](#).

### 2.2.4.4 E

**Namespace:** <http://Microsoft/Office/Server/FeedCache>

The **E** complex type specifies the details of Feed entity.

```
<xs:complexType name="E" xmlns:xs="http://www.w3.org/2001/XMLSchema">
  <xs:sequence>
    <xs:element xmlns:q2="http://Microsoft/Office/Server/FeedCache" minOccurs="0" name="ET"
type="q2:ET"/>
    <xs:element minOccurs="0" name="LID" type="q1:guid"/>
    <xs:element minOccurs="0" name="PID" type="q1:guid"/>
    <xs:element minOccurs="0" name="SID" type="q1:guid"/>
    <xs:element minOccurs="0" name="Url" nillable="true" type="xs:string"/>
    <xs:element minOccurs="0" name="WID" type="q1:guid"/>
  </xs:sequence>
</xs:complexType>
```

**ET:** Specifies the type of feed entity as described in section [2.2.5.3](#). The value MUST NOT be null or empty.

**LID:** Specifies the identifier of the **list (1)** where the entity feed is stored. The value MUST NOT be null or empty.

**PID:** Specifies the identifier of the **tenant** to which this entity belongs. The value MUST NOT be null or empty.

**SID:** Specifies the identifier of the **site collection** where the entity feed is stored. The value MUST NOT be null or empty.

**Url:** Specifies the **URL** of the **site (1)** where the entity feed is stored. The value MUST NOT be null or empty.

**WID:** Specifies the identifier of the site (1) where the entity feed is stored. The value MUST NOT be null or empty.

#### 2.2.4.5 EDT

**Namespace:** http://Microsoft/Office/Server/FeedCache

The **EDT** complex type specifies a pair of feed entity and date time.

```
<xs:complexType name="EDT" xmlns:xs="http://www.w3.org/2001/XMLSchema">
  <xs:sequence>
    <xs:element minOccurs="0" name="D" type="xs:dateTime"/>
    <xs:element minOccurs="0" name="E" nillable="true" type="q1:E"/>
  </xs:sequence>
</xs:complexType>
```

**D:** This specifies a date and time value. This value MUST NOT be null.

**E:** This specifies a feed entity as described in section [2.2.4.4](#). This value MUST NOT be null.

#### 2.2.4.6 FeedCacheFault

**Namespace:** http://Microsoft/Office/Server/FeedCache

The **FeedCacheFault** complex type describes errors that have occurred at the transport or the service layer.

```
<xs:complexType name="FeedCacheFault" xmlns:xs="http://www.w3.org/2001/XMLSchema">
  <xs:sequence>
    <xs:element minOccurs="0" name="FailureDetail" nillable="true" type="xs:string"/>
    <xs:element minOccurs="0" name="FaultCode" type="q1:FeedCacheFaultCodes"/>
  </xs:sequence>
</xs:complexType>
```

**FailureDetail:** Specifies an error string. The protocol does not impose any restriction on the behavior of the protocol client with respect to this field.

**FaultCode:** Specifies an indicator of the error that occurred as described in section [2.2.5.4](#). The protocol does not impose any restriction on the behavior of the protocol client with respect to this field.



## 2.2.4.7 P

**Namespace:** http://Microsoft/Office/Server/FeedCache

The **P** complex type specifies a feed entry.

```
<xs:complexType name="P" xmlns:xs="http://www.w3.org/2001/XMLSchema">
  <xs:sequence>
    <xs:element minOccurs="0" name="AD" nillable="true" type="xs:string"/>
    <xs:element minOccurs="0" name="D1" nillable="true" type="xs:string"/>
    <xs:element minOccurs="0" name="D2" nillable="true" type="xs:string"/>
    <xs:element minOccurs="0" name="D3" nillable="true" type="xs:string"/>
    <xs:element minOccurs="0" name="EID" nillable="true" type="xs:string"/>
    <xs:element minOccurs="0" name="En" nillable="true" type="q1:E"/>
    <xs:element minOccurs="0" name="M" type="xs:dateTime"/>
    <xs:element minOccurs="0" name="MBD" type="xs:int"/>
    <xs:element minOccurs="0" name="MBT" type="xs:int"/>
  </xs:sequence>
</xs:complexType>
```

**AD:** Specifies a string value representing author. It is up to the protocol client how to use this field.

**D1:** Specifies a string value representing entry data. It is up to the protocol client how to use this field.

**D2:** Specifies a string value representing entry data. It is up to the protocol client how to use this field.

**D3:** Specifies a string value representing entry data. It is up to the protocol client how to use this field.

**EID:** Specifies a unique identifier for this entry. The value MUST NOT be null.

**En:** Specifies the feed entity this entry belongs to as described in section [2.2.4.4](#).

**M:** Specifies a date and time value in **UTC** when this entry was last modified. The value MUST NOT be null.

**MBD:** Specifies a numerical value representing the definition of the entry. It is up to the protocol client how to use this field.

**MBT:** Specifies a numerical value representing the type of the entry. It is up to the protocol client how to use this field.

## 2.2.4.8 PC

**Namespace:** http://Microsoft/Office/Server/FeedCache

The **PC** complex type specifies a sequence of zero or more feed entries as described in section [2.2.4.7](#) along with associated metadata.

```
<xs:complexType name="PC" xmlns:xs="http://www.w3.org/2001/XMLSchema">
  <xs:sequence>
    <xs:element minOccurs="0" name="D" nillable="true" type="q1:ArrayOfEDT"/>
    <xs:element minOccurs="0" name="En" nillable="true" type="q1:ArrayOfP"/>
    <xs:element minOccurs="0" name="I" type="xs:boolean"/>
    <xs:element minOccurs="0" name="M" type="xs:int"/>
  </xs:sequence>
</xs:complexType>
```

```

<xs:element minOccurs="0" name="N" nillable="true" type="xs:dateTime"/>
<xs:element minOccurs="0" name="O" nillable="true" type="xs:dateTime"/>
<xs:element minOccurs="0" name="R" type="xs:boolean"/>
<xs:element minOccurs="0" name="S" type="xs:boolean"/>
<xs:element minOccurs="0" name="T" type="xs:boolean"/>
</xs:sequence>
</xs:complexType>

```

**D:** Specifies a sequence of zero or more pairs of feed entities and last deletion time as specified in section [2.2.4.5](#).

**En:** Specifies the sequence of feed entries as specified in section [2.2.4.7](#).

**I:** Specifies if the sequence En is incomplete.

**M:** Specifies the maximum number of feed entries to return for a particular feed entity. The protocol server MUST NOT return more entries than this value for any entity.

**N:** Specifies a **datetime** value. If a value is present, the protocol server MUST only return entries having modified time newer than this value.

**O:** Specifies a datetime value. If a value is present, the protocol server MUST only return entries having modified time older than this value.

**R:** Specifies if the protocol server MUST return delete markers.

**S:** Indicates if the sequence En is already sorted.

**T:** Indicates if the protocol server timed out before retrieving the sequence En.

## 2.2.5 Simple Types

The following table summarizes the set of common XML schema simple type definitions defined by this specification. XML schema simple type definitions that are specific to a particular operation are described with the operation.

Simple type	Description
char	The <b>char</b> simple type is a Unicode character that is stored in a 4-byte integer.
duration	The <b>duration</b> simple type is the length of time, as specified in <a href="#">[XMLSCHEMA1]</a> and <a href="#">[XMLSCHEMA2]</a> .
ET	The <b>ET</b> simple type specifies the type of Feed entity.
FeedCacheFaultCodes	The <b>FeedCacheFaultCodes</b> simple type describes the errors that have occurred either at the endpoint (4) of this protocol or in the transport layer.
guid	The <b>guid</b> simple type denotes a <b>GUID</b> .

### 2.2.5.1 char

**Namespace:** <http://schemas.microsoft.com/2003/10/Serialization/>

The **char** simple type is a Unicode character that is stored in a 4-byte integer.

```

<xs:simpleType name="char" xmlns:xs="http://www.w3.org/2001/XMLSchema">
  <xs:restriction base="xs:int"/>
</xs:simpleType>

```

### 2.2.5.2 duration

**Namespace:** http://schemas.microsoft.com/2003/10/Serialization/

The **duration** simple type is the length of time, as specified in [\[XMLSCHEMA1\]](#) and [\[XMLSCHEMA2\]](#).

```

<xs:simpleType name="duration" xmlns:xs="http://www.w3.org/2001/XMLSchema">
  <xs:restriction base="xs:duration">
    <xs:pattern value="\-?P(\d*D)?(T(\d*H)?(\d*M)?(\d*(\.\d*)S)?)?"/>
    <xs:minInclusive value="-P10675199DT2H48M5.4775808S"/>
    <xs:maxInclusive value="P10675199DT2H48M5.4775807S"/>
  </xs:restriction>
</xs:simpleType>

```

### 2.2.5.3 ET

**Namespace:** http://Microsoft/Office/Server/FeedyCache

The **ET** simple type specifies the type of Feed entity.

```

<xs:simpleType name="ET" xmlns:xs="http://www.w3.org/2001/XMLSchema">
  <xs:list>
    <xs:simpleType>
      <xs:restriction base="xs:string">
        <xs:enumeration value="Unknown"/>
        <xs:enumeration value="User"/>
        <xs:enumeration value="Content"/>
        <xs:enumeration value="Community"/>
        <xs:enumeration value="Site"/>
        <xs:enumeration value="Tag"/>
        <xs:enumeration value="UseUniqueID"/>
      </xs:restriction>
    </xs:simpleType>
  </xs:list>
</xs:simpleType>

```

The following table specifies the allowable values for **ET**.

Value	Meaning
Unknown	The type of the Feed entity is not known
User	The Feed entity is of type user and is associated with a <b>user profile</b>
Content	The Feed entity is of type <b>document</b>
Community	This Feed entity MUST NOT be used
Site	The Feed entity is of type site

Value	Meaning
Tag	The Feed entity is of type <b>social tag</b>
UseUniqueID	This Feed entity MUST NOT be used

#### 2.2.5.4 FeedCacheFaultCodes

**Namespace:** http://Microsoft/Office/Server/FeedCache

The **FeedCacheFaultCodes** simple type describes the errors that have occurred either at the endpoint (4) of this protocol or in the transport layer.

```
<xs:simpleType name="FeedCacheFaultCodes" xmlns:xs="http://www.w3.org/2001/XMLSchema">
  <xs:restriction base="xs:string">
    <xs:enumeration value="UnknownError"/>
    <xs:enumeration value="InvalidInput"/>
    <xs:enumeration value="InvalidConfiguration"/>
    <xs:enumeration value="LMTOutOfDate"/>
  </xs:restriction>
</xs:simpleType>
```

The following table specifies the allowable values for **FeedCacheFaultCodes**.

Value	Meaning
UnknownError	The error occurred because of unknown reasons
InvalidInput	The error occurred because of invalid input
InvalidConfiguration	The error occurred because of a configuration failure
LMTOutOfDate	Removed from code

#### 2.2.5.5 guid

**Namespace:** http://schemas.microsoft.com/2003/10/Serialization/

The **guid** simple type denotes a GUID.

```
<xs:simpleType name="guid" xmlns:xs="http://www.w3.org/2001/XMLSchema">
  <xs:restriction base="xs:string">
    <xs:pattern value="[\da-fA-F]{8}-[\da-fA-F]{4}-[\da-fA-F]{4}-[\da-fA-F]{4}-[\da-fA-F]{12}"/>
  </xs:restriction>
</xs:simpleType>
```

#### 2.2.6 Attributes

This specification does not define any common XML schema attribute definitions.

#### 2.2.7 Groups

This specification does not define any common XML schema group definitions.

### **2.2.8 Attribute Groups**

This specification does not define any common XML schema attribute group definitions.

Preliminary

### 3 Protocol Details

The client side of this protocol is simply a pass-through. That is, no additional timers or other state is required on the client side of this protocol. Calls that are made by the higher-layer protocol or application are passed directly to the transport, and the results that are returned by the transport are passed directly to the higher-layer protocol or application.

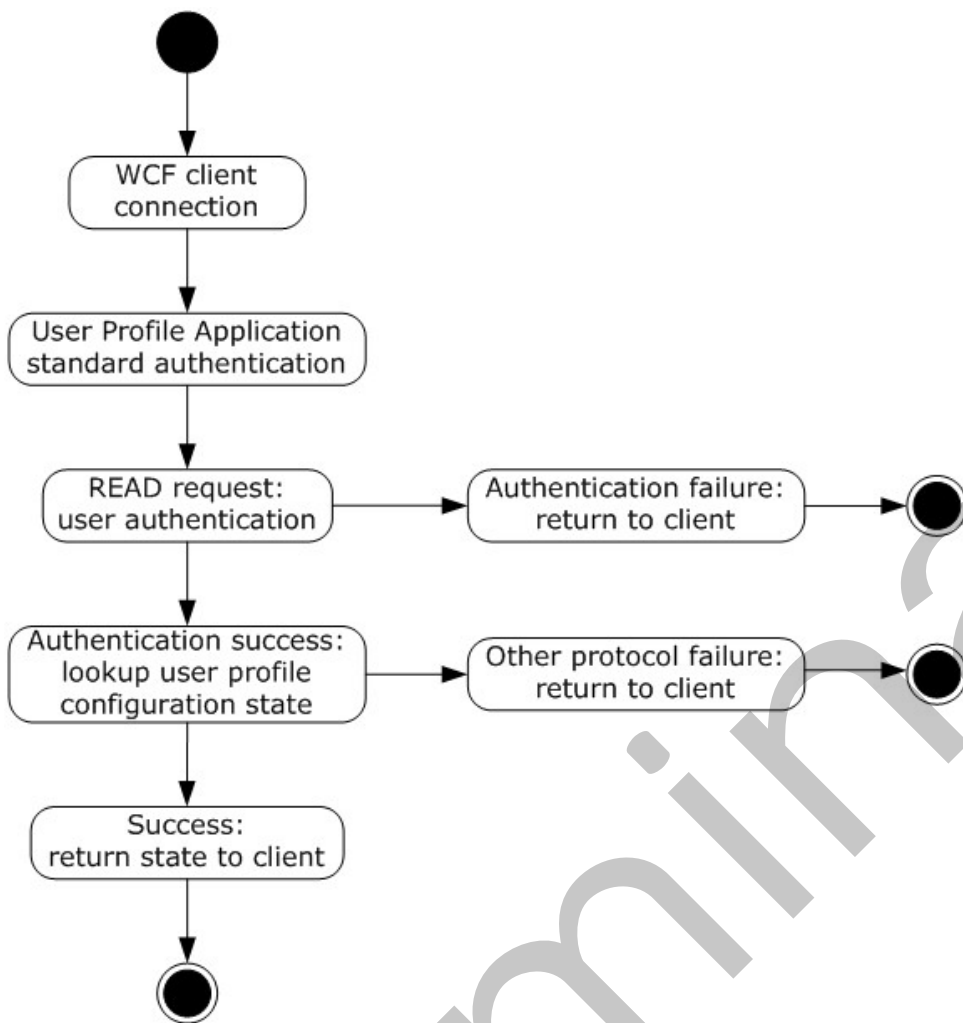
Except where specified, protocol clients SHOULD interpret Hypertext Transfer Protocol (HTTP) status codes that are returned by the protocol server as specified in [\[RFC2616\]](#), section 10.

This protocol allows protocol servers to notify protocol clients of application-level faults by using SOAP faults. Except where otherwise specified, these SOAP faults are not significant for interoperability and protocol clients can interpret them in an implementation-specific manner.

This protocol allows protocol servers to perform implementation-specific authorization checks and to notify protocol clients of authorization faults by using either HTTP status codes or SOAP faults, as specified previously in this section.

#### 3.1 Server Details

This protocol is based on stateless interaction between the protocol client and protocol server. The protocol simply exposes the current configuration state of the **User Profile Service** to all authenticated **user objects**. There are no dependencies between the information sent in one client-server request/response pair and the next pair; all dependencies are based on the current state of the application service. They are specified in the following figure.



**Figure 2: State dependencies of the application service**

The User Profile Service uses authentication mechanisms that are standard for Web Services and SOAP.

### 3.1.1 Abstract Data Model

This section describes a conceptual model of possible data organization that an implementation maintains to participate in this protocol. The described organization is provided to facilitate the explanation of how the protocol behaves. This specification does not mandate that implementations adhere to this model as long as their external behavior is consistent with that described in this specification.

This protocol allows protocol clients to store feed data and later retrieve it in various ways. The protocol server needs to maintain the state between each of the operations as described in section [3.1.4](#).

The protocol server needs to keep track of:

**Feed entries:** The protocol server needs to see how many feed entries have been added using the operations described in section [3.1.4](#). It also needs to track which feed entry corresponds to which feed entity. It is up to the protocol server how long it keeps track of this information.

**Feed entity followed status:** The protocol server also needs to keep track if a given entity has been marked as followed using the operations described in section [3.1.4](#). It is up to the protocol server how long it keeps track of this information.

**LMT repopulation needed:** The protocol server needs to keep track of whether last modified time repopulation is required for any given protocol client. It is up to the protocol server how long it keeps track of this information.

### 3.1.2 Timers

None.

### 3.1.3 Initialization

None.

### 3.1.4 Message Processing Events and Sequencing Rules

The following table summarizes the list of operations as defined by this specification:

Operation	Description
AddFeedEntries	This WSDL operation helps in adding multiple feed entries.
AddFeedEntry	This WSDL operation adds a feed entry for a given feed entity.
BulkAddFeedEntry	This section will be removed in favor of AddFeedEntries
BulkLMTUpdate	This WSDL operation updates the last modified times of a number of feed entities.
GetCategoricalFeed	This WSDL operation retrieves up to 100 recently modified feed entries from the provided feed entities.
GetConsolidatedFeed	This WSDL operation retrieves recent feed entries from the provided feed entities.
GetEntries	This WSDL operation lets a protocol client query feed entries given their feed entry identifiers.
GetFeeds	This WSDL operation lets the protocol client to get feed entries from the specified feed entities.
GetPublishedFeed	This WSDL operation lets a protocol client retrieve feed entries for a specific feed entity.
IsEntityActivelyFollowed	This WSDL operation checks if a given feed entity has earlier been marked as followed.
IsRepopulationNeeded	This WSDL operation lets a protocol client know if last modified time repopulation is needed.
NewEntityFollower	This WSDL operation lets a protocol client mark a given feed entity as being actively followed.



Operation	Description
RefreshFollowedEntities	This WSDL operation lets a protocol client mark a number of feed entities as followed.
RemoveEntityFeed	This WSDL operation can be used to remove all the feed entries of a given feed entity.
RemoveFeedEntry	This WSDL operation removes a given feed entry from a given feed entity.
RemoveInternalRegions	This WSDL operation removes some internal data structure. This operation MUST NOT be called by any protocol client.

### 3.1.4.1 AddFeedEntry

This WSDL operation adds a feed entry for a given feed entity.

```
<wsdl:operation name="AddFeedEntry" xmlns:wsdl="http://schemas.xmlsoap.org/wsdl/">
  <wsdl:input wsam:Action="http://Microsoft.Office.Server.UserProfiles/AddFeedEntry"
  message="tns:IFeedCacheService_AddFeedEntry_InputMessage"
  xmlns:wsam="http://www.w3.org/2007/05/addressing/metadata"/>
  <wsdl:output wsam:Action="http://tempuri.org/IFeedCacheService/AddFeedEntryResponse"
  message="tns:IFeedCacheService_AddFeedEntry_OutputMessage"
  xmlns:wsam="http://www.w3.org/2007/05/addressing/metadata"/>
  <wsdl:fault
  wsam:Action="http://tempuri.org/IFeedCacheService/AddFeedEntryFeedCacheFaultFault"
  name="FeedCacheFaultFault"
  message="tns:IFeedCacheService_AddFeedEntry_FeedCacheFaultFault_FaultMessage"
  xmlns:wsam="http://www.w3.org/2007/05/addressing/metadata"/>
</wsdl:operation>
```

AddFeedEntry adds a feed entry to a feed entity. The entries can later be retrieved by the retrieval operations as described in section [3.1.4.5](#), section [3.1.4.4](#), section [3.1.4.6](#), section [3.1.4.7](#), and section [3.1.4.8](#). The feed entry can also be removed as described in section [3.1.4.13](#), and section [3.1.4.14](#).

#### 3.1.4.1.1 Messages

The following table summarizes the set of **WSDL message** definitions that are specific to this operation.

Message	Description
IFeedCacheService_AddFeedEntry_InputMessage	The request WSDL message for the <b>AddFeedEntry WSDL operation</b> .
IFeedCacheService_AddFeedEntry_OutputMessage	The response WSDL message for the <b>AddFeedEntry WSDL operation</b> .

##### 3.1.4.1.1.1 IFeedCacheService\_AddFeedEntry\_InputMessage

The request WSDL message for the **AddFeedEntry WSDL operation**.

The **SOAP action** value is:

<http://Microsoft.Office.Server.UserProfiles/AddFeedEntry>

The **SOAP body** contains the **AddFeedEntry** element.

### 3.1.4.1.1.2 IFeedCacheService\_AddFeedEntry\_OutputMessage

The response WSDL message for the **AddFeedEntry** WSDL operation.

The SOAP body contains the **AddFeedEntryResponse** element.

### 3.1.4.1.2 Elements

The following table summarizes the XML schema element definitions that are specific to this operation.

Element	Description
AddFeedEntry	The input data for the <b>AddFeedEntry</b> WSDL operation.
AddFeedEntryResponse	The result data for the <b>AddFeedEntry</b> WSDL operation.

#### 3.1.4.1.2.1 AddFeedEntry

The input data for the **AddFeedEntry** WSDL operation.

```
<xs:element name="AddFeedEntry" xmlns:xs="http://www.w3.org/2001/XMLSchema">
  <xs:complexType>
    <xs:sequence>
      <xs:element xmlns:q1="http://Microsoft/Office/Server/FeedCache" minOccurs="0"
name="entity" nillable="true" type="q1:E"/>
      <xs:element xmlns:q1="http://Microsoft/Office/Server/FeedCache" minOccurs="0"
name="entry" nillable="true" type="q1:P"/>
    </xs:sequence>
  </xs:complexType>
</xs:element>
```

**entity:** The feed entity to which this feed entry is to be added.

**entry:** The feed entry to be added.

#### 3.1.4.1.2.2 AddFeedEntryResponse

The result data for the **AddFeedEntry** WSDL operation.

```
<xs:element name="AddFeedEntryResponse" xmlns:xs="http://www.w3.org/2001/XMLSchema">
  <xs:complexType>
    <xs:sequence>
      <xs:element minOccurs="0" name="AddFeedEntryResult" type="xs:boolean"/>
    </xs:sequence>
  </xs:complexType>
</xs:element>
```

**AddFeedEntryResult:** A Boolean value that indicates whether the operation succeeded or failed.

### 3.1.4.1.3 Complex Types

None.

### 3.1.4.1.4 Simple Types

None.

### 3.1.4.1.5 Attributes

None.

### 3.1.4.1.6 Groups

None.

### 3.1.4.1.7 Attribute Groups

None.

### 3.1.4.2 BulkAddFeedEntry

This section will be removed in favor of AddFeedEntries

```
<wsdl:operation name="BulkAddFeedEntry" xmlns:wsdl="http://schemas.xmlsoap.org/wsdl/">
  <wsdl:input wsam:Action="http://Microsoft.Office.Server.UserProfiles/BulkAddFeedEntry"
    message="tns:IFeedCacheService_BulkAddFeedEntry_InputMessage"
    xmlns:wsam="http://www.w3.org/2007/05/addressing/metadata"/>
  <wsdl:output wsam:Action="http://tempuri.org/IFeedCacheService/BulkAddFeedEntryResponse"
    message="tns:IFeedCacheService_BulkAddFeedEntry_OutputMessage"
    xmlns:wsam="http://www.w3.org/2007/05/addressing/metadata"/>
  <wsdl:fault
    wsam:Action="http://tempuri.org/IFeedCacheService/BulkAddFeedEntryFeedCacheFaultFault"
    name="FeedCacheFaultFault"
    message="tns:IFeedCacheService_BulkAddFeedEntry_FeedCacheFaultFault_FaultMessage"
    xmlns:wsam="http://www.w3.org/2007/05/addressing/metadata"/>
</wsdl:operation>
```

To be removed in favor of AddFeedEntries

#### 3.1.4.2.1 Messages

The following table summarizes the set of WSDL message definitions that are specific to this operation.

Message	Description
IFeedCacheService_BulkAddFeedEntry_InputMessage	The request WSDL message for the <b>BulkAddFeedEntry</b> WSDL operation.
IFeedCacheService_BulkAddFeedEntry_OutputMessage	The response WSDL message for the <b>BulkAddFeedEntry</b> WSDL operation.

### 3.1.4.2.1.1 IFeedCacheService\_BulkAddFeedEntry\_InputMessage

The request WSDL message for the **BulkAddFeedEntry** WSDL operation.

The SOAP action value is:

```
http://Microsoft.Office.Server.UserProfiles/BulkAddFeedEntry
```

The SOAP body contains the **BulkAddFeedEntry** element.

### 3.1.4.2.1.2 IFeedCacheService\_BulkAddFeedEntry\_OutputMessage

The response WSDL message for the **BulkAddFeedEntry** WSDL operation.

The SOAP body contains the **BulkAddFeedEntryResponse** element.

### 3.1.4.2.2 Elements

The following table summarizes the XML schema element definitions that are specific to this operation.

Element	Description
BulkAddFeedEntry	The input data for the <b>BulkAddFeedEntry</b> WSDL operation.
BulkAddFeedEntryResponse	The result data for the <b>BulkAddFeedEntry</b> WSDL operation.

#### 3.1.4.2.2.1 BulkAddFeedEntry

The input data for the **BulkAddFeedEntry** WSDL operation.

```
<xs:element name="BulkAddFeedEntry" xmlns:xs="http://www.w3.org/2001/XMLSchema">
  <xs:complexType>
    <xs:sequence>
      <xs:element xmlns:q1="http://Microsoft/Office/Server/FeedCache" minOccurs="0"
name="entity" nillable="true" type="q1:E"/>
      <xs:element xmlns:q1="http://Microsoft/Office/Server/FeedCache" minOccurs="0"
name="entries" nillable="true" type="q1:ArrayOfP"/>
      <xs:element minOccurs="0" name="lastDeleted" nillable="true" type="xs:dateTime"/>
    </xs:sequence>
  </xs:complexType>
</xs:element>
```

**entity:** The feed entity on behalf of which this operation is being executed.

**entries:** A sequence of zero or more feed entries of type **PC** as specified in section [2.2.4.8](#) that are to be added.

**lastDeleted:** A date and time indicating when the last time a feed entry was deleted from the feed entity.

#### 3.1.4.2.2.2 BulkAddFeedEntryResponse

The result data for the **BulkAddFeedEntry** WSDL operation.

```

<xs:element name="BulkAddFeedEntryResponse" xmlns:xs="http://www.w3.org/2001/XMLSchema">
  <xs:complexType>
    <xs:sequence>
      <xs:element minOccurs="0" name="BulkAddFeedEntryResult" type="xs:boolean"/>
    </xs:sequence>
  </xs:complexType>
</xs:element>

```

**BulkAddFeedEntryResult:** A Boolean value that indicates whether the operation succeeded or failed.

### 3.1.4.2.3 Complex Types

None.

### 3.1.4.2.4 Simple Types

None.

### 3.1.4.2.5 Attributes

None.

### 3.1.4.2.6 Groups

None.

### 3.1.4.2.7 Attribute Groups

None.

### 3.1.4.3 BulkLMTUpdate

This WSDL operation updates the last modified times of a number of feed entities.

```

<wsdl:operation name="BulkLMTUpdate" xmlns:wsdl="http://schemas.xmlsoap.org/wsdl/">
  <wsdl:input wsam:Action="http://Microsoft.Office.Server.UserProfiles/BulkLMTUpdate"
    message="tns:IFeedCacheService_BulkLMTUpdate_InputMessage"
    xmlns:wsam="http://www.w3.org/2007/05/addressing/metadata"/>
  <wsdl:output wsam:Action="http://tempuri.org/IFeedCacheService/BulkLMTUpdateResponse"
    message="tns:IFeedCacheService_BulkLMTUpdate_OutputMessage"
    xmlns:wsam="http://www.w3.org/2007/05/addressing/metadata"/>
  <wsdl:fault
    wsam:Action="http://tempuri.org/IFeedCacheService/BulkLMTUpdateFeedCacheFaultFault"
    name="FeedCacheFaultFault"
    message="tns:IFeedCacheService_BulkLMTUpdate_FeedCacheFaultFault_FaultMessage"
    xmlns:wsam="http://www.w3.org/2007/05/addressing/metadata"/>
</wsdl:operation>

```

This operation helps update the last modified times of feed entities. This operation can be used in conjunction with **IsRepopulationNeeded** as outlined in section [3.1.4.10](#). If **IsRepopulationNeeded** returns true, the protocol client can use this operation to update the last modified times.

### 3.1.4.3.1 Messages

The following table summarizes the set of WSDL message definitions that are specific to this operation.

Message	Description
IFeedCacheService_BulkLMTUpdate_InputMessage	The request WSDL message for the <b>BulkLMTUpdate</b> WSDL operation.
IFeedCacheService_BulkLMTUpdate_OutputMessage	The response WSDL message for the <b>BulkLMTUpdate</b> WSDL operation.

#### 3.1.4.3.1.1 IFeedCacheService\_BulkLMTUpdate\_InputMessage

The request WSDL message for the **BulkLMTUpdate** WSDL operation.

The SOAP action value is:

```
http://Microsoft.Office.Server.UserProfiles/BulkLMTUpdate
```

The SOAP body contains the **BulkLMTUpdate** element.

#### 3.1.4.3.1.2 IFeedCacheService\_BulkLMTUpdate\_OutputMessage

The response WSDL message for the **BulkLMTUpdate** WSDL operation.

The SOAP body contains the **BulkLMTUpdateResponse** element.

### 3.1.4.3.2 Elements

The following table summarizes the XML schema element definitions that are specific to this operation.

Element	Description
BulkLMTUpdate	The input data for the <b>BulkLMTUpdate</b> WSDL operation.
BulkLMTUpdateResponse	The result data for the <b>BulkLMTUpdate</b> WSDL operation.

#### 3.1.4.3.2.1 BulkLMTUpdate

The input data for the **BulkLMTUpdate** WSDL operation.

```
<xs:element name="BulkLMTUpdate" xmlns:xs="http://www.w3.org/2001/XMLSchema">
  <xs:complexType>
    <xs:sequence>
      <xs:element xmlns:q11="http://schemas.microsoft.com/2003/10/Serialization/"
        minOccurs="0" name="callerID" type="q11:guid"/>
      <xs:element
        xmlns:q23="http://schemas.datacontract.org/2004/07/System.Collections.Generic" minOccurs="0"
        name="lastModifiedTimes" nillable="true" type="q23:ArrayOfKeyValuePairOfELEHsv_SlRZJ"/>
    </xs:sequence>
  </xs:complexType>
```

```
</xs:element>
```

**callerID:** The identifier for the protocol client. This value MUST NOT be null or empty.

**lastModifiedTimes:** Specifies the list of feed entries and their associated last modified time as specified in section [3.1.4.3.3.1](#).

### 3.1.4.3.2 BulkLMTUpdateResponse

The result data for the **BulkLMTUpdate** WSDL operation.

```
<xs:element name="BulkLMTUpdateResponse" xmlns:xs="http://www.w3.org/2001/XMLSchema">
  <xs:complexType>
    <xs:sequence>
      <xs:element minOccurs="0" name="BulkLMTUpdateResult" type="xs:boolean"/>
    </xs:sequence>
  </xs:complexType>
</xs:element>
```

**BulkLMTUpdateResult:** A Boolean value that indicates whether the operation succeeded or failed.

### 3.1.4.3.3 Complex Types

The following table summarizes the XML schema complex type definitions that are specific to this operation.

Complex type	Description
ArrayOfKeyValuePairOfELEHsv_SIRZJ	Contains zero or more <b>KeyValuePairOfELEHsv_SIRZJ</b> objects.
KeyValuePairOfELEHsv_SIRZJ	A key value pair of feed entity and the last time it was modified.
LE	Represents the last modified time data of a given feed entity.

#### 3.1.4.3.3.1 ArrayOfKeyValuePairOfELEHsv\_SIRZJ

**Namespace:** <http://schemas.datacontract.org/2004/07/System.Collections.Generic>

This complex type contains zero or more **KeyValuePairOfELEHsv\_SIRZJ** objects.

```
<xs:complexType name="ArrayOfKeyValuePairOfELEHsv_SlRZJ"
xmlns:xs="http://www.w3.org/2001/XMLSchema">
  <xs:sequence>
    <xs:element minOccurs="0" maxOccurs="unbounded" name="KeyValuePairOfELEHsv_SlRZJ"
type="q23:KeyValuePairOfELEHsv_SlRZJ"/>
  </xs:sequence>
</xs:complexType>
```

**KeyValuePairOfELEHsv\_SIRZJ:** Specifies the key value pair of entity and last modified time as detailed in section [3.1.4.3.3.2](#).

### 3.1.4.3.3.2 KeyValuePairOfELEHsv\_SIRZJ

**Namespace:** http://schemas.datacontract.org/2004/07/System.Collections.Generic

This complex type is a key value pair of feed entity and the last time it was modified.

```
<xs:complexType name="KeyValuePairOfELEHsv_SIRZJ"
xmlns:xs="http://www.w3.org/2001/XMLSchema">
  <xs:sequence>
    <xs:element xmlns:q1="http://Microsoft/Office/Server/FeedCache" name="key"
nillable="true" type="q1:E"/>
    <xs:element xmlns:q1="http://Microsoft/Office/Server/FeedCache" name="value"
nillable="true" type="q1:LE"/>
  </xs:sequence>
</xs:complexType>
```

**key:** Specifies the feed entity.

**value:** Specifies the last modified data as specified in section [3.1.4.3.3.3](#).

### 3.1.4.3.3.3 LE

**Namespace:** http://Microsoft/Office/Server/FeedCache

This complex type represents the last modified time data of a given feed entity.

```
<xs:complexType name="LE" xmlns:xs="http://www.w3.org/2001/XMLSchema">
  <xs:sequence>
    <xs:element minOccurs="0" name="b" type="xs:unsignedLong"/>
    <xs:element minOccurs="0" name="r" nillable="true" type="xs:dateTime"/>
    <xs:element minOccurs="0" name="t" type="xs:dateTime"/>
  </xs:sequence>
</xs:complexType>
```

**b:** This value MUST be ZERO (0).

**r:** This value MUST be null.

**t:** This MUST contain the last time this feed entity was modified.

### 3.1.4.3.4 Simple Types

None.

### 3.1.4.3.5 Attributes

None.

### 3.1.4.3.6 Groups

None.

### 3.1.4.3.7 Attribute Groups

None.



### 3.1.4.4 GetCategoricalFeed

This WSDL operation retrieves up to 100 recently modified feed entries from the provided feed entities.

```
<wsdl:operation name="GetCategoricalFeed" xmlns:wsdl="http://schemas.xmlsoap.org/wsdl/">
  <wsdl:input wsam:Action="http://Microsoft.Office.Server.UserProfiles/GetCategoricalFeed"
    message="tns:IFeedCacheService_GetCategoricalFeed_InputMessage"
    xmlns:wsam="http://www.w3.org/2007/05/addressing/metadata"/>
  <wsdl:output wsam:Action="http://tempuri.org/IFeedCacheService/GetCategoricalFeedResponse"
    message="tns:IFeedCacheService_GetCategoricalFeed_OutputMessage"
    xmlns:wsam="http://www.w3.org/2007/05/addressing/metadata"/>
  <wsdl:fault
    wsam:Action="http://tempuri.org/IFeedCacheService/GetCategoricalFeedFeedCacheFaultFault"
    name="FeedCacheFaultFault"
    message="tns:IFeedCacheService_GetCategoricalFeed_FeedCacheFaultFault_FaultMessage"
    xmlns:wsam="http://www.w3.org/2007/05/addressing/metadata"/>
</wsdl:operation>
```

#### 3.1.4.4.1 Messages

The following table summarizes the set of WSDL message definitions that are specific to this operation.

Message	Description
IFeedCacheService_GetCategoricalFeed_InputMessage	The request WSDL message for the <b>GetCategoricalFeed</b> WSDL operation.
IFeedCacheService_GetCategoricalFeed_OutputMessage	The response WSDL message for the <b>GetCategoricalFeed</b> WSDL operation.

##### 3.1.4.4.1.1 IFeedCacheService\_GetCategoricalFeed\_InputMessage

The request WSDL message for the **GetCategoricalFeed** WSDL operation.

The SOAP action value is:

```
http://Microsoft.Office.Server.UserProfiles/GetCategoricalFeed
```

The SOAP body contains the **GetCategoricalFeed** element.

##### 3.1.4.4.1.2 IFeedCacheService\_GetCategoricalFeed\_OutputMessage

The response WSDL message for the **GetCategoricalFeed** WSDL operation.

The SOAP body contains the **GetCategoricalFeedResponse** element.

#### 3.1.4.4.2 Elements

The following table summarizes the XML schema element definitions that are specific to this operation.

Element	Description
GetCategoricalFeed	The input data for the <b>GetCategoricalFeed</b> WSDL operation.
GetCategoricalFeedResponse	The result data for the <b>GetCategoricalFeed</b> WSDL operation.

### 3.1.4.4.2.1 GetCategoricalFeed

The input data for the **GetCategoricalFeed** WSDL operation.

```
<xs:element name="GetCategoricalFeed" xmlns:xs="http://www.w3.org/2001/XMLSchema">
  <xs:complexType>
    <xs:sequence>
      <xs:element xmlns:q1="http://Microsoft/Office/Server/FeedCache" minOccurs="0"
name="entity" nillable="true" type="q1:E"/>
      <xs:element xmlns:q1="http://Microsoft/Office/Server/FeedCache" minOccurs="0"
name="followedEntities" nillable="true" type="q1:ArrayOfE"/>
      <xs:element minOccurs="0" name="newerThan" nillable="true" type="xs:dateTime"/>
      <xs:element minOccurs="0" name="olderThan" nillable="true" type="xs:dateTime"/>
      <xs:element xmlns:q11="http://schemas.microsoft.com/2003/10/Serialization/"
minOccurs="0" name="timeout" nillable="true" type="q11:duration"/>
    </xs:sequence>
  </xs:complexType>
</xs:element>
```

**entity:** The feed entity on behalf of which this operation is being executed. The value MUST be ignored.

**followedEntities:** The feed entities whose feed entries to retrieve.

**newerThan:** A date and time indicating that the operation MUST NOT return feed entries modified before this value. The value MAY be null.

**olderThan:** A date and time indicating that the operation MUST NOT return feed entries modified after this value. The value MAY be null.

**timeout:** A value indicating that the protocol server SHOULD try to finish its work within this duration. This value is just a hint provided by the protocol client to the protocol server.

### 3.1.4.4.2.2 GetCategoricalFeedResponse

The result data for the **GetCategoricalFeed** WSDL operation.

```
<xs:element name="GetCategoricalFeedResponse" xmlns:xs="http://www.w3.org/2001/XMLSchema">
  <xs:complexType>
    <xs:sequence>
      <xs:element xmlns:q1="http://Microsoft/Office/Server/FeedCache" minOccurs="0"
name="GetCategoricalFeedResult" nillable="true" type="q1:PC"/>
    </xs:sequence>
  </xs:complexType>
</xs:element>
```

**GetCategoricalFeedResult:** Element of type **PC** as described in section [2.2.4.8](#).

### 3.1.4.4.3 Complex Types

None.

### 3.1.4.4.4 Simple Types

None.

### 3.1.4.4.5 Attributes

None.

### 3.1.4.4.6 Groups

None.

### 3.1.4.4.7 Attribute Groups

None.

### 3.1.4.5 GetConsolidatedFeed

This WSDL operation retrieves recent feed entries from the provided feed entities.

```
<wsdl:operation name="GetConsolidatedFeed" xmlns:wsdl="http://schemas.xmlsoap.org/wsdl/">
  <wsdl:input wsam:Action="http://Microsoft.Office.Server.UserProfiles/GetConsolidatedFeed"
    message="tns:IFeedCacheService_GetConsolidatedFeed_InputMessage"
    xmlns:wsam="http://www.w3.org/2007/05/addressing/metadata"/>
  <wsdl:output wsam:Action="http://tempuri.org/IFeedCacheService/GetConsolidatedFeedResponse"
    message="tns:IFeedCacheService_GetConsolidatedFeed_OutputMessage"
    xmlns:wsam="http://www.w3.org/2007/05/addressing/metadata"/>
  <wsdl:fault
    wsam:Action="http://tempuri.org/IFeedCacheService/GetConsolidatedFeedFeedCacheFaultFault"
    name="FeedCacheFaultFault"
    message="tns:IFeedCacheService_GetConsolidatedFeed_FeedCacheFaultFault_FaultMessage"
    xmlns:wsam="http://www.w3.org/2007/05/addressing/metadata"/>
</wsdl:operation>
```

#### 3.1.4.5.1 Messages

The following table summarizes the set of WSDL message definitions that are specific to this operation.

Message	Description
IFeedCacheService_GetConsolidatedFeed_InputMessage	The request WSDL message for the <b>GetConsolidatedFeed</b> WSDL operation.
IFeedCacheService_GetConsolidatedFeed_OutputMessage	The response WSDL message for the <b>GetConsolidatedFeed</b> WSDL operation.

##### 3.1.4.5.1.1 IFeedCacheService\_GetConsolidatedFeed\_InputMessage

The request WSDL message for the **GetConsolidatedFeed** WSDL operation.

The SOAP action value is:

```
http://Microsoft.Office.Server.UserProfiles/GetConsolidatedFeed
```

The SOAP body contains the **GetConsolidatedFeed** element.

### 3.1.4.5.1.2 IFeedCacheService\_GetConsolidatedFeed\_OutputMessage

The response WSDL message for the **GetConsolidatedFeed** WSDL operation.

The SOAP body contains the **GetConsolidatedFeedResponse** element.

### 3.1.4.5.2 Elements

The following table summarizes the XML schema element definitions that are specific to this operation.

Element	Description
GetConsolidatedFeed	The input data for the <b>GetConsolidatedFeed</b> WSDL operation.
GetConsolidatedFeedResponse	The result data for the <b>GetConsolidatedFeed</b> WSDL operation.

#### 3.1.4.5.2.1 GetConsolidatedFeed

The input data for the **GetConsolidatedFeed** WSDL operation.

```
<xs:element name="GetConsolidatedFeed" xmlns:xs="http://www.w3.org/2001/XMLSchema">
  <xs:complexType>
    <xs:sequence>
      <xs:element xmlns:q1="http://Microsoft/Office/Server/FeedCache" minOccurs="0"
name="entity" nillable="true" type="q1:E"/>
      <xs:element xmlns:q1="http://Microsoft/Office/Server/FeedCache" minOccurs="0"
name="followedEntities" nillable="true" type="q1:ArrayOfE"/>
      <xs:element minOccurs="0" name="maxItemsPerEntity" type="xs:int"/>
      <xs:element minOccurs="0" name="maxNumberEntities" type="xs:int"/>
      <xs:element minOccurs="0" name="maxTotalItems" type="xs:int"/>
      <xs:element xmlns:q11="http://schemas.microsoft.com/2003/10/Serialization/"
minOccurs="0" name="timeout" type="q11:duration"/>
      <xs:element minOccurs="0" name="newerThan" nillable="true" type="xs:dateTime"/>
      <xs:element minOccurs="0" name="olderThan" nillable="true" type="xs:dateTime"/>
    </xs:sequence>
  </xs:complexType>
</xs:element>
```

**entity:** The feed entity on behalf of which this operation is being executed. The value MUST be ignored.

**followedEntities:** The feed entities whose feed entries to retrieve.

**maxItemsPerEntity:** An integer specifying the maximum number of feed entries to return for a given feed entity.

**maxNumberEntities:** Specifies the maximum number of feed entities to return.

**maxTotalItems:** Specifies the number of items the caller is asking for. The server SHOULD try to return as much feed entries as this, but the server can return more or less feed entries than the value specified here. This is just a hint for the protocol server.

**timeout:** A value indicating that the protocol server SHOULD try to finish its work within this duration. This is just a hint for the protocol server.

**newerThan:** A date and time indicating that the operation MUST NOT return feed entries modified before this value. The value MAY be null.

**olderThan:** A date and time indicating that the operation MUST NOT return feed entries modified after this value. The value MAY be null.

### 3.1.4.5.2.2 GetConsolidatedFeedResponse

The result data for the **GetConsolidatedFeed** WSDL operation.

```
<xs:element name="GetConsolidatedFeedResponse" xmlns:xs="http://www.w3.org/2001/XMLSchema">
  <xs:complexType>
    <xs:sequence>
      <xs:element xmlns:q1="http://Microsoft/Office/Server/FeedCache" minOccurs="0"
name="GetConsolidatedFeedResult" nillable="true" type="q1:PC"/>
    </xs:sequence>
  </xs:complexType>
</xs:element>
```

**GetConsolidatedFeedResult:** Element of type **PC** as described in section [2.2.4.8](#).

### 3.1.4.5.3 Complex Types

None.

### 3.1.4.5.4 Simple Types

None.

### 3.1.4.5.5 Attributes

None.

### 3.1.4.5.6 Groups

None.

### 3.1.4.5.7 Attribute Groups

None.

### 3.1.4.6 GetEntries

This WSDL operation lets a protocol client query feed entries given their feed entry identifiers.

```
<wsdl:operation name="GetEntries" xmlns:wsdl="http://schemas.xmlsoap.org/wsdl/">
```

```

    <wsdl:input wsam:Action="http://Microsoft.Office.Server.UserProfiles/GetThreadEntries"
    message="tns:IFeedCacheService_GetEntries_InputMessage"
    xmlns:wsam="http://www.w3.org/2007/05/addressing/metadata"/>
    <wsdl:output wsam:Action="http://tempuri.org/IFeedCacheService/GetEntriesResponse"
    message="tns:IFeedCacheService_GetEntries_OutputMessage"
    xmlns:wsam="http://www.w3.org/2007/05/addressing/metadata"/>
    <wsdl:fault
    wsam:Action="http://tempuri.org/IFeedCacheService/GetEntriesFeedCacheFaultFault"
    name="FeedCacheFaultFault"
    message="tns:IFeedCacheService_GetEntries_FeedCacheFaultFault_FaultMessage"
    xmlns:wsam="http://www.w3.org/2007/05/addressing/metadata"/>
  </wsdl:operation>

```

### 3.1.4.6.1 Messages

The following table summarizes the set of WSDL message definitions that are specific to this operation.

Message	Description
IFeedCacheService_GetEntries_InputMessage	The request WSDL message for the <b>GetEntries</b> WSDL operation.
IFeedCacheService_GetEntries_OutputMessage	The response WSDL message for the <b>GetEntries</b> WSDL operation.

#### 3.1.4.6.1.1 IFeedCacheService\_GetEntries\_InputMessage

The request WSDL message for the **GetEntries** WSDL operation.

The SOAP action value is:

```
http://Microsoft.Office.Server.UserProfiles/GetThreadEntries
```

The SOAP body contains the **GetEntries** element.

#### 3.1.4.6.1.2 IFeedCacheService\_GetEntries\_OutputMessage

The response WSDL message for the **GetEntries** WSDL operation.

The SOAP body contains the **GetEntriesResponse** element.

### 3.1.4.6.2 Elements

The following table summarizes the XML schema element definitions that are specific to this operation.

Element	Description
GetEntries	The input data for the <b>GetEntries</b> WSDL operation.
GetEntriesResponse	The result data for the <b>GetEntries</b> WSDL operation.

### 3.1.4.6.2.1 GetEntries

The input data for the **GetEntries** WSDL operation.

```
<xs:element name="GetEntries" xmlns:xs="http://www.w3.org/2001/XMLSchema">
  <xs:complexType>
    <xs:sequence>
      <xs:element xmlns:q1="http://Microsoft/Office/Server/FeedCache" minOccurs="0"
name="entryIdentifiers" nillable="true" type="q1:ArrayOfPI"/>
    </xs:sequence>
  </xs:complexType>
</xs:element>
```

**entryIdentifiers:** Array of entry identifiers as specified in section [3.1.4.6.3.1](#).

### 3.1.4.6.2.2 GetEntriesResponse

The result data for the **GetEntries** WSDL operation.

```
<xs:element name="GetEntriesResponse" xmlns:xs="http://www.w3.org/2001/XMLSchema">
  <xs:complexType>
    <xs:sequence>
      <xs:element xmlns:q1="http://Microsoft/Office/Server/FeedCache" minOccurs="0"
name="GetEntriesResult" nillable="true" type="q1:PC"/>
    </xs:sequence>
  </xs:complexType>
</xs:element>
```

**GetEntriesResult:** Element of type **PC** as described in section [2.2.4.8](#).

### 3.1.4.6.3 Complex Types

The following table summarizes the XML schema complex type definitions that are specific to this operation.

Complex type	Description
ArrayOfPI	A sequence of zero or more elements of type <b>PI</b> .
PI	A pair of feed entity and the associated feed entry identifiers.
ArrayOfstring	A sequence of zero or more elements of type string with each string specifying a feed entry identifier.

#### 3.1.4.6.3.1 ArrayOfPI

**Namespace:** http://Microsoft/Office/Server/FeedCache

The complex type **ArrayOfPI** is a sequence of zero or more elements of type **PI**.

```
<xs:complexType name="ArrayOfPI" xmlns:xs="http://www.w3.org/2001/XMLSchema">
  <xs:sequence>
    <xs:element minOccurs="0" maxOccurs="unbounded" name="PI" nillable="true" type="q1:PI"/>
  </xs:sequence>
```

```
</xs:complexType>
```

**PI:** A pair of feed entity and feed entry identifiers as specified in section [3.1.4.6.3.2](#).

### 3.1.4.6.3.2 PI

**Namespace:** http://Microsoft/Office/Server/FeedCache

The complex type **PI** is actually a pair of feed entity and the associated feed entry identifiers.

```
<xs:complexType name="PI" xmlns:xs="http://www.w3.org/2001/XMLSchema">
  <xs:sequence>
    <xs:element minOccurs="0" name="E" nillable="true" type="q1:E"/>
    <xs:element xmlns:q3="http://schemas.microsoft.com/2003/10/Serialization/Arrays"
      minOccurs="0" name="I" nillable="true" type="q3:ArrayOfstring"/>
  </xs:sequence>
</xs:complexType>
```

**E:** Specifies the feed entity.

**I:** A sequence of zero (0) or more feed entry identifiers.

### 3.1.4.6.3.3 ArrayOfstring

**Namespace:** http://schemas.microsoft.com/2003/10/Serialization/Arrays

This complex type is a sequence of zero or more elements of type string with each string specifying a feed entry identifier.

```
<xs:complexType name="ArrayOfstring" xmlns:xs="http://www.w3.org/2001/XMLSchema">
  <xs:sequence>
    <xs:element minOccurs="0" maxOccurs="unbounded" name="string" nillable="true"
      type="xs:string"/>
  </xs:sequence>
</xs:complexType>
```

**string:** A string specifying a feed entry identifier.

### 3.1.4.6.4 Simple Types

None.

### 3.1.4.6.5 Attributes

None.

### 3.1.4.6.6 Groups

None.

### 3.1.4.6.7 Attribute Groups

None.



### 3.1.4.7 GetFeeds

This WSDL operation lets the protocol client to get feed entries from the specified feed entities.

```
<wsdl:operation name="GetFeeds" xmlns:wsdl="http://schemas.xmlsoap.org/wsdl/">
  <wsdl:input wsam:Action="http://Microsoft.Office.Server.UserProfiles/GetFeeds"
    message="tns:IFeedCacheService_GetFeeds_InputMessage"
    xmlns:wsam="http://www.w3.org/2007/05/addressing/metadata"/>
  <wsdl:output wsam:Action="http://tempuri.org/IFeedCacheService/GetFeedsResponse"
    message="tns:IFeedCacheService_GetFeeds_OutputMessage"
    xmlns:wsam="http://www.w3.org/2007/05/addressing/metadata"/>
  <wsdl:fault wsam:Action="http://tempuri.org/IFeedCacheService/GetFeedsFeedCacheFaultFault"
    name="FeedCacheFaultFault"
    message="tns:IFeedCacheService_GetFeeds_FeedCacheFaultFault_FaultMessage"
    xmlns:wsam="http://www.w3.org/2007/05/addressing/metadata"/>
</wsdl:operation>
```

This operation helps retrieve feed entries for a number of feed entities in one call. One possible use of this is to transfer data between two protocol servers.

#### 3.1.4.7.1 Messages

The following table summarizes the set of WSDL message definitions that are specific to this operation.

Message	Description
IFeedCacheService_GetFeeds_InputMessage	The request WSDL message for the <b>GetFeeds</b> WSDL operation.
IFeedCacheService_GetFeeds_OutputMessage	The response WSDL message for the <b>GetFeeds</b> WSDL operation.

##### 3.1.4.7.1.1 IFeedCacheService\_GetFeeds\_InputMessage

The request WSDL message for the **GetFeeds** WSDL operation.

The SOAP action value is:

```
http://Microsoft.Office.Server.UserProfiles/GetFeeds
```

The SOAP body contains the **GetFeeds** element.

##### 3.1.4.7.1.2 IFeedCacheService\_GetFeeds\_OutputMessage

The response WSDL message for the **GetFeeds** WSDL operation.

The SOAP body contains the **GetFeedsResponse** element.

#### 3.1.4.7.2 Elements

The following table summarizes the XML schema element definitions that are specific to this operation.

Element	Description
GetFeeds	The input data for the <b>GetFeeds</b> WSDL operation.
GetFeedsResponse	The result data for the <b>GetFeeds</b> WSDL operation.

### 3.1.4.7.2.1 GetFeeds

The input data for the **GetFeeds** WSDL operation.

```
<xs:element name="GetFeeds" xmlns:xs="http://www.w3.org/2001/XMLSchema">
  <xs:complexType>
    <xs:sequence>
      <xs:element xmlns:q1="http://schemas.microsoft.com/2003/10/Serialization/"
        minOccurs="0" name="callerID" type="q1:guid"/>
      <xs:element xmlns:q1="http://Microsoft/Office/Server/FeedCache" minOccurs="0"
        name="requestingEntity" nillable="true" type="q1:E"/>
      <xs:element
        xmlns:q23="http://schemas.datacontract.org/2004/07/System.Collections.Generic" minOccurs="0"
        name="entityNewerThanPair" nillable="true"
        type="q23:ArrayOfKeyValuePairOfEdateTimeKkKWL8eh"/>
      <xs:element minOccurs="0" name="maxItemsPerEntity" type="xs:int"/>
    </xs:sequence>
  </xs:complexType>
</xs:element>
```

**callerID:** The identifier for the protocol client. This value **MUST NOT** be null or empty.

**requestingEntity:** The feed entity on behalf of which this call is being made.

**entityNewerThanPair:** A pair of feed entity and a date time value. The operation **MUST NOT** return feed entries for this feed entity having a modified time older than this date time.

**maxItemsPerEntity:** An integer specifying the maximum number of feed entries to return for a given feed entity.

### 3.1.4.7.2.2 GetFeedsResponse

The result data for the **GetFeeds** WSDL operation.

```
<xs:element name="GetFeedsResponse" xmlns:xs="http://www.w3.org/2001/XMLSchema">
  <xs:complexType>
    <xs:sequence>
      <xs:element xmlns:q1="http://Microsoft/Office/Server/FeedCache" minOccurs="0"
        name="GetFeedsResult" nillable="true" type="q1:PC"/>
    </xs:sequence>
  </xs:complexType>
</xs:element>
```

**GetFeedsResult:** Element of type **PC** as described in section [2.2.4.8](#).

### 3.1.4.7.3 Complex Types

The following table summarizes the XML schema complex type definitions that are specific to this operation.

Complex type	Description
ArrayOfKeyValuePairOfEdateTimeKkKWL8eh	This complex type is a sequence of zero or more elements of type <b>KeyValuePairOfEdateTimeKkKWL8eh</b> as specified in section <a href="#">3.1.4.7.3.2</a> .
KeyValuePairOfEdateTimeKkKWL8eh	This complex type is a pair of feed entity and a date time.

### 3.1.4.7.3.1 ArrayOfKeyValuePairOfEdateTimeKkKWL8eh

**Namespace:** http://schemas.datacontract.org/2004/07/System.Collections.Generic

This complex type is a sequence of zero or more elements of type **KeyValuePairOfEdateTimeKkKWL8eh** as specified in section [3.1.4.7.3.2](#).

```
<xs:complexType name="ArrayOfKeyValuePairOfEdateTimeKkKWL8eh"
xmlns:xs="http://www.w3.org/2001/XMLSchema">
  <xs:sequence>
    <xs:element minOccurs="0" maxOccurs="unbounded" name="KeyValuePairOfEdateTimeKkKWL8eh"
type="q23:KeyValuePairOfEdateTimeKkKWL8eh"/>
  </xs:sequence>
</xs:complexType>
```

**KeyValuePairOfEdateTimeKkKWL8eh:** A key value pair of feed entity and a date time value.

### 3.1.4.7.3.2 KeyValuePairOfEdateTimeKkKWL8eh

**Namespace:** http://schemas.datacontract.org/2004/07/System.Collections.Generic

This complex type is a pair of feed entity and a date time.

```
<xs:complexType name="KeyValuePairOfEdateTimeKkKWL8eh"
xmlns:xs="http://www.w3.org/2001/XMLSchema">
  <xs:sequence>
    <xs:element xmlns:q1="http://Microsoft/Office/Server/FeedCache" name="key"
nillable="true" type="q1:E"/>
    <xs:element name="value" type="xs:dateTime"/>
  </xs:sequence>
</xs:complexType>
```

**key:** Specifies the feed entity.

**value:** Specifies a date time value. The protocol server MUST NOT return any feed entry older than this value.

### 3.1.4.7.4 Simple Types

None.

### 3.1.4.7.5 Attributes

None.

### 3.1.4.7.6 Groups

None.

### 3.1.4.7.7 Attribute Groups

None.

### 3.1.4.8 GetPublishedFeed

This WSDL operation lets a protocol client retrieve feed entries for a specific feed entity.

```
<wsdl:operation name="GetPublishedFeed" xmlns:wsdl="http://schemas.xmlsoap.org/wsdl/">
  <wsdl:input wsam:Action="http://Microsoft.Office.Server.UserProfiles/GetPublishedFeed"
    message="tns:IFeedCacheService_GetPublishedFeed_InputMessage"
    xmlns:wsam="http://www.w3.org/2007/05/addressing/metadata"/>
  <wsdl:output wsam:Action="http://tempuri.org/IFeedCacheService/GetPublishedFeedResponse"
    message="tns:IFeedCacheService_GetPublishedFeed_OutputMessage"
    xmlns:wsam="http://www.w3.org/2007/05/addressing/metadata"/>
  <wsdl:fault
    wsam:Action="http://tempuri.org/IFeedCacheService/GetPublishedFeedFeedCacheFaultFault"
    name="FeedCacheFaultFault"
    message="tns:IFeedCacheService_GetPublishedFeed_FeedCacheFaultFault_FaultMessage"
    xmlns:wsam="http://www.w3.org/2007/05/addressing/metadata"/>
</wsdl:operation>
```

#### 3.1.4.8.1 Messages

The following table summarizes the set of WSDL message definitions that are specific to this operation.

Message	Description
IFeedCacheService_GetPublishedFeed_InputMessage	The request WSDL message for the <b>GetPublishedFeed</b> WSDL operation.
IFeedCacheService_GetPublishedFeed_OutputMessage	The response WSDL message for the <b>GetPublishedFeed</b> WSDL operation.

##### 3.1.4.8.1.1 IFeedCacheService\_GetPublishedFeed\_InputMessage

The request WSDL message for the **GetPublishedFeed** WSDL operation.

The SOAP action value is:

```
http://Microsoft.Office.Server.UserProfiles/GetPublishedFeed
```

The SOAP body contains the **GetPublishedFeed** element.

##### 3.1.4.8.1.2 IFeedCacheService\_GetPublishedFeed\_OutputMessage

The response WSDL message for the **GetPublishedFeed** WSDL operation.

The SOAP body contains the **GetPublishedFeedResponse** element.

### 3.1.4.8.2 Elements

The following table summarizes the XML schema element definitions that are specific to this operation.

Element	Description
GetPublishedFeed	The input data for the <b>GetPublishedFeed</b> WSDL operation.
GetPublishedFeedResponse	The result data for the <b>GetPublishedFeed</b> WSDL operation.

#### 3.1.4.8.2.1 GetPublishedFeed

The input data for the **GetPublishedFeed** WSDL operation.

```
<xs:element name="GetPublishedFeed" xmlns:xs="http://www.w3.org/2001/XMLSchema">
  <xs:complexType>
    <xs:sequence>
      <xs:element xmlns:q1="http://Microsoft/Office/Server/FeedCache" minOccurs="0"
name="entity" nillable="true" type="q1:E"/>
      <xs:element minOccurs="0" name="maxItemsPerEntity" type="xs:int"/>
      <xs:element minOccurs="0" name="newerThan" nillable="true" type="xs:dateTime"/>
      <xs:element minOccurs="0" name="olderThan" nillable="true" type="xs:dateTime"/>
    </xs:sequence>
  </xs:complexType>
</xs:element>
```

**entity:** The feed entity whose feed entries to retrieve.

**maxItemsPerEntity:** An integer specifying the maximum number of feed entries to return for a given feed entity.

**newerThan:** A date and time indicating that the operation MUST NOT return feed entries modified before this value. The value MAY be null.

**olderThan:** A date and time indicating that the operation MUST NOT return feed entries modified after this value. The value MAY be null.

#### 3.1.4.8.2.2 GetPublishedFeedResponse

The result data for the **GetPublishedFeed** WSDL operation.

```
<xs:element name="GetPublishedFeedResponse" xmlns:xs="http://www.w3.org/2001/XMLSchema">
  <xs:complexType>
    <xs:sequence>
      <xs:element xmlns:q1="http://Microsoft/Office/Server/FeedCache" minOccurs="0"
name="GetPublishedFeedResult" nillable="true" type="q1:PC"/>
    </xs:sequence>
  </xs:complexType>
</xs:element>
```

**GetPublishedFeedResult:** Element of type **PC** as described in section [2.2.4.8](#).

### 3.1.4.8.3 Complex Types

None.

### 3.1.4.8.4 Simple Types

None.

### 3.1.4.8.5 Attributes

None.

### 3.1.4.8.6 Groups

None.

### 3.1.4.8.7 Attribute Groups

None.

### 3.1.4.9 IsEntityActivelyFollowed

This WSDL operation checks if a given feed entity has earlier been marked as followed.

```
<wsdl:operation name="IsEntityActivelyFollowed"
  xmlns:wsdl="http://schemas.xmlsoap.org/wsdl/">
  <wsdl:input
    wsam:Action="http://Microsoft.Office.Server.UserProfiles/IsEntityActivelyFollowed"
    message="tns:IFeedCacheService_IsEntityActivelyFollowed_InputMessage"
    xmlns:wsam="http://www.w3.org/2007/05/addressing/metadata"/>
  <wsdl:output
    wsam:Action="http://tempuri.org/IFeedCacheService/IsEntityActivelyFollowedResponse"
    message="tns:IFeedCacheService_IsEntityActivelyFollowed_OutputMessage"
    xmlns:wsam="http://www.w3.org/2007/05/addressing/metadata"/>
  <wsdl:fault
    wsam:Action="http://tempuri.org/IFeedCacheService/IsEntityActivelyFollowedFeedCacheFaultFault"
    name="FeedCacheFaultFault"
    message="tns:IFeedCacheService_IsEntityActivelyFollowed_FeedCacheFaultFault_FaultMessage"
    xmlns:wsam="http://www.w3.org/2007/05/addressing/metadata"/>
</wsdl:operation>
```

#### 3.1.4.9.1 Messages

The following table summarizes the set of WSDL message definitions that are specific to this operation.

Message	Description
IFeedCacheService_IsEntityActivelyFollowed_InputMessage	The request WSDL message for the <b>IsEntityActivelyFollowed</b> WSDL operation.
IFeedCacheService_IsEntityActivelyFollowed_OutputMessage	The response WSDL message for the <b>IsEntityActivelyFollowed</b> WSDL operation.

### 3.1.4.9.1.1 IFeedCacheService\_IsEntityActivelyFollowed\_InputMessage

The request WSDL message for the **IsEntityActivelyFollowed** WSDL operation.

The SOAP action value is:

```
http://Microsoft.Office.Server.UserProfiles/IsEntityActivelyFollowed
```

The SOAP body contains the **IsEntityActivelyFollowed** element.

### 3.1.4.9.1.2 IFeedCacheService\_IsEntityActivelyFollowed\_OutputMessage

The response WSDL message for the **IsEntityActivelyFollowed** WSDL operation.

The SOAP body contains the **IsEntityActivelyFollowedResponse** element.

### 3.1.4.9.2 Elements

The following table summarizes the XML schema element definitions that are specific to this operation.

Element	Description
IsEntityActivelyFollowed	The input data for the <b>IsEntityActivelyFollowed</b> WSDL operation.
IsEntityActivelyFollowedResponse	The result data for the <b>IsEntityActivelyFollowed</b> WSDL operation.

#### 3.1.4.9.2.1 IsEntityActivelyFollowed

The input data for the **IsEntityActivelyFollowed** WSDL operation.

```
<xs:element name="IsEntityActivelyFollowed" xmlns:xs="http://www.w3.org/2001/XMLSchema">
  <xs:complexType>
    <xs:sequence>
      <xs:element xmlns:q1="http://Microsoft/Office/Server/FeedCache" minOccurs="0"
name="entity" nillable="true" type="q1:E"/>
    </xs:sequence>
  </xs:complexType>
</xs:element>
```

**entity:** The feed entity to check for.

#### 3.1.4.9.2.2 IsEntityActivelyFollowedResponse

The result data for the **IsEntityActivelyFollowed** WSDL operation.

```
<xs:element name="IsEntityActivelyFollowedResponse"
xmlns:xs="http://www.w3.org/2001/XMLSchema">
  <xs:complexType>
    <xs:sequence>
      <xs:element minOccurs="0" name="IsEntityActivelyFollowedResult" type="xs:boolean"/>
    </xs:sequence>
  </xs:complexType>
```

</xs:element>

**IsEntityActivelyFollowedResult:** A Boolean value that indicates whether the feed entity has been marked as followed or not.

### 3.1.4.9.3 Complex Types

None.

### 3.1.4.9.4 Simple Types

None.

### 3.1.4.9.5 Attributes

None.

### 3.1.4.9.6 Groups

None.

### 3.1.4.9.7 Attribute Groups

None.

### 3.1.4.10 IsRepopulationNeeded

This WSDL operation lets a protocol client know if last modified time repopulation is needed.

```
<wsdl:operation name="IsRepopulationNeeded" xmlns:wsdl="http://schemas.xmlsoap.org/wsdl/">
  <wsdl:input wsam:Action="http://Microsoft.Office.Server.UserProfiles/IsRepopulationNeeded"
    message="tns:IFeedCacheService_IsRepopulationNeeded_InputMessage"
    xmlns:wsam="http://www.w3.org/2007/05/addressing/metadata"/>
  <wsdl:output
    wsam:Action="http://tempuri.org/IFeedCacheService/IsRepopulationNeededResponse"
    message="tns:IFeedCacheService_IsRepopulationNeeded_OutputMessage"
    xmlns:wsam="http://www.w3.org/2007/05/addressing/metadata"/>
  <wsdl:fault
    wsam:Action="http://tempuri.org/IFeedCacheService/IsRepopulationNeededFeedCacheFaultFault"
    name="FeedCacheFaultFault"
    message="tns:IFeedCacheService_IsRepopulationNeeded_FeedCacheFaultFault_FaultMessage"
    xmlns:wsam="http://www.w3.org/2007/05/addressing/metadata"/>
</wsdl:operation>
```

This operation is to be used by protocol clients to check if they need to repopulate the last modified times. If this operation returns TRUE, then the protocol client can use the **BulkLMTUpdate** operation as specified in section [3.1.4.3.2.1](#) to update the last modified times.

#### 3.1.4.10.1 Messages

The following table summarizes the set of WSDL message definitions that are specific to this operation.



Message	Description
IFeedCacheService_IsRepopulationNeeded_InputMessage	The request WSDL message for the <b>IsRepopulationNeeded</b> WSDL operation.
IFeedCacheService_IsRepopulationNeeded_OutputMessage	The response WSDL message for the <b>IsRepopulationNeeded</b> WSDL operation.

### 3.1.4.10.1.1 IFeedCacheService\_IsRepopulationNeeded\_InputMessage

The request WSDL message for the **IsRepopulationNeeded** WSDL operation.

The SOAP action value is:

```
http://Microsoft.Office.Server.UserProfiles/IsRepopulationNeeded
```

The SOAP body contains the **IsRepopulationNeeded** element.

### 3.1.4.10.1.2 IFeedCacheService\_IsRepopulationNeeded\_OutputMessage

The response WSDL message for the **IsRepopulationNeeded** WSDL operation.

The SOAP body contains the **IsRepopulationNeededResponse** element.

### 3.1.4.10.2 Elements

The following table summarizes the XML schema element definitions that are specific to this operation.

Element	Description
IsRepopulationNeeded	The input data for the <b>IsRepopulationNeeded</b> WSDL operation.
IsRepopulationNeededResponse	The result data for the <b>IsRepopulationNeeded</b> WSDL operation.

### 3.1.4.10.2.1 IsRepopulationNeeded

The input data for the **IsRepopulationNeeded** WSDL operation.

```
<xs:element name="IsRepopulationNeeded" xmlns:xs="http://www.w3.org/2001/XMLSchema">
  <xs:complexType>
    <xs:sequence>
      <xs:element xmlns:q11="http://schemas.microsoft.com/2003/10/Serialization/"
        minOccurs="0" name="callerID" type="q11:guid"/>
    </xs:sequence>
  </xs:complexType>
</xs:element>
```

**callerID:** The identifier for the protocol client. This value MUST NOT be null or empty.

### 3.1.4.10.2.2 IsRepopulationNeededResponse

The result data for the **IsRepopulationNeeded** WSDL operation.

```

<xs:element name="IsRepopulationNeededResponse" xmlns:xs="http://www.w3.org/2001/XMLSchema">
  <xs:complexType>
    <xs:sequence>
      <xs:element minOccurs="0" name="IsRepopulationNeededResult" type="xs:boolean"/>
    </xs:sequence>
  </xs:complexType>
</xs:element>

```

**IsRepopulationNeededResult:** A Boolean value that indicates whether repopulation is needed.

### 3.1.4.10.3 Complex Types

None.

### 3.1.4.10.4 Simple Types

None.

### 3.1.4.10.5 Attributes

None.

### 3.1.4.10.6 Groups

None.

### 3.1.4.10.7 Attribute Groups

None.

### 3.1.4.11 NewEntityFollower

This WSDL operation lets a protocol client mark a given feed entity as being actively followed.

```

<wsdl:operation name="NewEntityFollower" xmlns:wsdl="http://schemas.xmlsoap.org/wsdl/">
  <wsdl:input wsam:Action="http://Microsoft.Office.Server.UserProfiles/NewEntityFollower"
    message="tns:IFeedCacheService_NewEntityFollower_InputMessage"
    xmlns:wsam="http://www.w3.org/2007/05/addressing/metadata"/>
  <wsdl:output wsam:Action="http://tempuri.org/IFeedCacheService/NewEntityFollowerResponse"
    message="tns:IFeedCacheService_NewEntityFollower_OutputMessage"
    xmlns:wsam="http://www.w3.org/2007/05/addressing/metadata"/>
  <wsdl:fault
    wsam:Action="http://tempuri.org/IFeedCacheService/NewEntityFollowerFeedCacheFaultFault"
    name="FeedCacheFaultFault"
    message="tns:IFeedCacheService_NewEntityFollower_FeedCacheFaultFault_FaultMessage"
    xmlns:wsam="http://www.w3.org/2007/05/addressing/metadata"/>
</wsdl:operation>

```

#### 3.1.4.11.1 Messages

The following table summarizes the set of WSDL message definitions that are specific to this operation.

Message	Description
IFeedCacheService_NewEntityFollower_InputMessage	The request WSDL message for the <b>NewEntityFollower</b> WSDL operation.
IFeedCacheService_NewEntityFollower_OutputMessage	The response WSDL message for the <b>NewEntityFollower</b> WSDL operation.

### 3.1.4.11.1.1 IFeedCacheService\_NewEntityFollower\_InputMessage

The request WSDL message for the **NewEntityFollower** WSDL operation.

The SOAP action value is:

```
http://Microsoft.Office.Server.UserProfiles/NewEntityFollower
```

The SOAP body contains the **NewEntityFollower** element.

### 3.1.4.11.1.2 IFeedCacheService\_NewEntityFollower\_OutputMessage

The response WSDL message for the **NewEntityFollower** WSDL operation.

The SOAP body contains the **NewEntityFollowerResponse** element.

### 3.1.4.11.2 Elements

The following table summarizes the XML schema element definitions that are specific to this operation.

Element	Description
NewEntityFollower	The input data for the <b>NewEntityFollower</b> WSDL operation.
NewEntityFollowerResponse	The result data for the <b>NewEntityFollower</b> WSDL operation.

#### 3.1.4.11.2.1 NewEntityFollower

The input data for the **NewEntityFollower** WSDL operation.

```
<xs:element name="NewEntityFollower" xmlns:xs="http://www.w3.org/2001/XMLSchema">
  <xs:complexType>
    <xs:sequence>
      <xs:element xmlns:q1="http://Microsoft/Office/Server/FeedCache" minOccurs="0"
name="entity" nillable="true" type="q1:E"/>
    </xs:sequence>
  </xs:complexType>
</xs:element>
```

**entity:** The feed entity which is to be marked as followed.

#### 3.1.4.11.2.2 NewEntityFollowerResponse

The result data for the **NewEntityFollower** WSDL operation.

```

<xs:element name="NewEntityFollowerResponse" xmlns:xs="http://www.w3.org/2001/XMLSchema">
  <xs:complexType>
    <xs:sequence>
      <xs:element minOccurs="0" name="NewEntityFollowerResult" type="xs:boolean"/>
    </xs:sequence>
  </xs:complexType>
</xs:element>

```

**NewEntityFollowerResult:** A Boolean value that indicates whether the operation succeeded or failed.

### 3.1.4.11.3 Complex Types

None.

### 3.1.4.11.4 Simple Types

None.

### 3.1.4.11.5 Attributes

None.

### 3.1.4.11.6 Groups

None.

### 3.1.4.11.7 Attribute Groups

None.

### 3.1.4.12 RefreshFollowedEntities

This WSDL operation lets a protocol client mark a number of feed entities as followed.

```

<wsdl:operation name="RefreshFollowedEntities" xmlns:wsdl="http://schemas.xmlsoap.org/wsdl/">
  <wsdl:input
    wsam:Action="http://Microsoft.Office.Server.UserProfiles/RefreshFollowedEntities"
    message="tns:IFeedCacheService_RefreshFollowedEntities_InputMessage"
    xmlns:wsam="http://www.w3.org/2007/05/addressing/metadata"/>
  <wsdl:output
    wsam:Action="http://tempuri.org/IFeedCacheService/RefreshFollowedEntitiesResponse"
    message="tns:IFeedCacheService_RefreshFollowedEntities_OutputMessage"
    xmlns:wsam="http://www.w3.org/2007/05/addressing/metadata"/>
  <wsdl:fault
    wsam:Action="http://tempuri.org/IFeedCacheService/RefreshFollowedEntitiesFeedCacheFaultFault"
    name="FeedCacheFaultFault"
    message="tns:IFeedCacheService_RefreshFollowedEntities_FeedCacheFaultFault_FaultMessage"
    xmlns:wsam="http://www.w3.org/2007/05/addressing/metadata"/>
</wsdl:operation>

```

### 3.1.4.12.1 Messages

The following table summarizes the set of WSDL message definitions that are specific to this operation.

Message	Description
IFeedCacheService_RefreshFollowedEntities_InputMessage	The request WSDL message for the <b>RefreshFollowedEntities</b> WSDL operation.
IFeedCacheService_RefreshFollowedEntities_OutputMessage	The response WSDL message for the <b>RefreshFollowedEntities</b> WSDL operation.

### 3.1.4.12.1.1 IFeedCacheService\_RefreshFollowedEntities\_InputMessage

The request WSDL message for the **RefreshFollowedEntities** WSDL operation.

The SOAP action value is:

```
http://Microsoft.Office.Server.UserProfiles/RefreshFollowedEntities
```

The SOAP body contains the **RefreshFollowedEntities** element.

### 3.1.4.12.1.2 IFeedCacheService\_RefreshFollowedEntities\_OutputMessage

The response WSDL message for the **RefreshFollowedEntities** WSDL operation.

The SOAP body contains the **RefreshFollowedEntitiesResponse** element.

### 3.1.4.12.2 Elements

The following table summarizes the XML schema element definitions that are specific to this operation.

Element	Description
RefreshFollowedEntities	The input data for the <b>RefreshFollowedEntities</b> WSDL operation.
RefreshFollowedEntitiesResponse	The result data for the <b>RefreshFollowedEntities</b> WSDL operation.

#### 3.1.4.12.2.1 RefreshFollowedEntities

The input data for the **RefreshFollowedEntities** WSDL operation.

```
<xs:element name="RefreshFollowedEntities" xmlns:xs="http://www.w3.org/2001/XMLSchema">
  <xs:complexType>
    <xs:sequence>
      <xs:element xmlns:q1="http://Microsoft/Office/Server/FeedCache" minOccurs="0"
name="followedEntities" nillable="true" type="q1:ArrayOfE"/>
    </xs:sequence>
  </xs:complexType>
</xs:element>
```

**followedEntities:** A sequence of zero or more feed entities to mark as followed.

### 3.1.4.12.2 RefreshFollowedEntitiesResponse

The result data for the **RefreshFollowedEntities** WSDL operation.

```
<xs:element name="RefreshFollowedEntitiesResponse"
  xmlns:xs="http://www.w3.org/2001/XMLSchema">
  <xs:complexType>
    <xs:sequence>
      <xs:element minOccurs="0" name="RefreshFollowedEntitiesResult" type="xs:boolean"/>
    </xs:sequence>
  </xs:complexType>
</xs:element>
```

**RefreshFollowedEntitiesResult:** A Boolean value that indicates whether the operation succeeded or failed.

### 3.1.4.12.3 Complex Types

None.

### 3.1.4.12.4 Simple Types

None.

### 3.1.4.12.5 Attributes

None.

### 3.1.4.12.6 Groups

None.

### 3.1.4.12.7 Attribute Groups

None.

### 3.1.4.13 RemoveEntityFeed

This WSDL operation can be used to remove all the feed entries of a given feed entity.

```
<wsdl:operation name="RemoveEntityFeed" xmlns:wsdl="http://schemas.xmlsoap.org/wsdl/">
  <wsdl:input wsam:Action="http://Microsoft.Office.Server.UserProfiles/RemoveEntityFeed"
    message="tns:IFeedCacheService_RemoveEntityFeed_InputMessage"
    xmlns:wsam="http://www.w3.org/2007/05/addressing/metadata"/>
  <wsdl:output wsam:Action="http://tempuri.org/IFeedCacheService/RemoveEntityFeedResponse"
    message="tns:IFeedCacheService_RemoveEntityFeed_OutputMessage"
    xmlns:wsam="http://www.w3.org/2007/05/addressing/metadata"/>
  <wsdl:fault
    wsam:Action="http://tempuri.org/IFeedCacheService/RemoveEntityFeedFeedCacheFaultFault"
    name="FeedCacheFaultFault"
    message="tns:IFeedCacheService_RemoveEntityFeed_FeedCacheFaultFault_FaultMessage"
    xmlns:wsam="http://www.w3.org/2007/05/addressing/metadata"/>
</wsdl:operation>
```

### 3.1.4.13.1 Messages

The following table summarizes the set of WSDL message definitions that are specific to this operation.

Message	Description
IFeedCacheService_RemoveEntityFeed_InputMessage	The request WSDL message for the <b>RemoveEntityFeed</b> WSDL operation.
IFeedCacheService_RemoveEntityFeed_OutputMessage	The response WSDL message for the <b>RemoveEntityFeed</b> WSDL operation.

#### 3.1.4.13.1.1 IFeedCacheService\_RemoveEntityFeed\_InputMessage

The request WSDL message for the **RemoveEntityFeed** WSDL operation.

The SOAP action value is:

```
http://Microsoft.Office.Server.UserProfiles/RemoveEntityFeed
```

The SOAP body contains the **RemoveEntityFeed** element.

#### 3.1.4.13.1.2 IFeedCacheService\_RemoveEntityFeed\_OutputMessage

The response WSDL message for the **RemoveEntityFeed** WSDL operation.

The SOAP body contains the **RemoveEntityFeedResponse** element.

### 3.1.4.13.2 Elements

The following table summarizes the XML schema element definitions that are specific to this operation.

Element	Description
RemoveEntityFeed	The input data for the <b>RemoveEntityFeed</b> WSDL operation.
RemoveEntityFeedResponse	The result data for the <b>RemoveEntityFeed</b> WSDL operation.

#### 3.1.4.13.2.1 RemoveEntityFeed

The input data for the **RemoveEntityFeed** WSDL operation.

```
<xs:element name="RemoveEntityFeed" xmlns:xs="http://www.w3.org/2001/XMLSchema">
  <xs:complexType>
    <xs:sequence>
      <xs:element xmlns:q1="http://Microsoft/Office/Server/FeedCache" minOccurs="0"
        name="entity" nillable="true" type="q1:E"/>
    </xs:sequence>
  </xs:complexType>
</xs:element>
```

**entity:** The feed entity whose feed entries to remove. The entity MUST be of type 'User'.

### 3.1.4.13.2 RemoveEntityFeedResponse

The result data for the **RemoveEntityFeed** WSDL operation.

```
<xs:element name="RemoveEntityFeedResponse" xmlns:xs="http://www.w3.org/2001/XMLSchema">
  <xs:complexType>
    <xs:sequence>
      <xs:element minOccurs="0" name="RemoveEntityFeedResult" type="xs:boolean"/>
    </xs:sequence>
  </xs:complexType>
</xs:element>
```

**RemoveEntityFeedResult:** A Boolean value that indicates whether the operation succeeded or failed.

### 3.1.4.13.3 Complex Types

None.

### 3.1.4.13.4 Simple Types

None.

### 3.1.4.13.5 Attributes

None.

### 3.1.4.13.6 Groups

None.

### 3.1.4.13.7 Attribute Groups

None.

### 3.1.4.14 RemoveFeedEntry

This WSDL operation removes a given feed entry from a given feed entity.

```
<wsdl:operation name="RemoveFeedEntry" xmlns:wsdl="http://schemas.xmlsoap.org/wsdl/">
  <wsdl:input wsam:Action="http://Microsoft.Office.Server.UserProfiles/RemoveFeedEntry"
    message="tns:IFeedCacheService_RemoveFeedEntry_InputMessage"
    xmlns:wsam="http://www.w3.org/2007/05/addressing/metadata"/>
  <wsdl:output wsam:Action="http://tempuri.org/IFeedCacheService/RemoveFeedEntryResponse"
    message="tns:IFeedCacheService_RemoveFeedEntry_OutputMessage"
    xmlns:wsam="http://www.w3.org/2007/05/addressing/metadata"/>
  <wsdl:fault
    wsam:Action="http://tempuri.org/IFeedCacheService/RemoveFeedEntryFeedCacheFaultFault"
    name="FeedCacheFaultFault"
    message="tns:IFeedCacheService_RemoveFeedEntry_FeedCacheFaultFault_FaultMessage"
    xmlns:wsam="http://www.w3.org/2007/05/addressing/metadata"/>
</wsdl:operation>
```



### 3.1.4.14.1 Messages

The following table summarizes the set of WSDL message definitions that are specific to this operation.

Message	Description
IFeedCacheService_RemoveFeedEntry_InputMessage	The request WSDL message for the <b>RemoveFeedEntry</b> WSDL operation.
IFeedCacheService_RemoveFeedEntry_OutputMessage	The response WSDL message for the <b>RemoveFeedEntry</b> WSDL operation.

#### 3.1.4.14.1.1 IFeedCacheService\_RemoveFeedEntry\_InputMessage

The request WSDL message for the **RemoveFeedEntry** WSDL operation.

The SOAP action value is:

```
http://Microsoft.Office.Server.UserProfiles/RemoveFeedEntry
```

The SOAP body contains the **RemoveFeedEntry** element.

#### 3.1.4.14.1.2 IFeedCacheService\_RemoveFeedEntry\_OutputMessage

The response WSDL message for the **RemoveFeedEntry** WSDL operation.

The SOAP body contains the **RemoveFeedEntryResponse** element.

### 3.1.4.14.2 Elements

The following table summarizes the XML schema element definitions that are specific to this operation.

Element	Description
RemoveFeedEntry	The input data for the <b>RemoveFeedEntry</b> WSDL operation.
RemoveFeedEntryResponse	The result data for the <b>RemoveFeedEntry</b> WSDL operation.

#### 3.1.4.14.2.1 RemoveFeedEntry

The input data for the **RemoveFeedEntry** WSDL operation.

```
<xs:element name="RemoveFeedEntry" xmlns:xs="http://www.w3.org/2001/XMLSchema">
  <xs:complexType>
    <xs:sequence>
      <xs:element xmlns:q1="http://Microsoft/Office/Server/FeedCache" minOccurs="0"
        name="entity" nillable="true" type="q1:E"/>
      <xs:element xmlns:q1="http://Microsoft/Office/Server/FeedCache" minOccurs="0"
        name="entry" nillable="true" type="q1:P"/>
    </xs:sequence>
  </xs:complexType>
</xs:element>
```

**entity:** The feed entity whose feed entry to remove.

**entry:** The feed entry to remove.

### 3.1.4.14.2 RemoveFeedEntryResponse

The result data for the **RemoveFeedEntry** WSDL operation.

```
<xs:element name="RemoveFeedEntryResponse" xmlns:xs="http://www.w3.org/2001/XMLSchema">
  <xs:complexType>
    <xs:sequence>
      <xs:element minOccurs="0" name="RemoveFeedEntryResult" type="xs:boolean"/>
    </xs:sequence>
  </xs:complexType>
</xs:element>
```

**RemoveFeedEntryResult:** A Boolean value that indicates whether the operation succeeded or failed.

### 3.1.4.14.3 Complex Types

None.

### 3.1.4.14.4 Simple Types

None.

### 3.1.4.14.5 Attributes

None.

### 3.1.4.14.6 Groups

None.

### 3.1.4.14.7 Attribute Groups

None.

### 3.1.4.15 AddFeedEntries

This WSDL operation helps in adding multiple feed entries.

```
<wsdl:operation name="AddFeedEntries" xmlns:wsdl="http://schemas.xmlsoap.org/wsdl/">
  <wsdl:input wsam:Action="http://Microsoft.Office.Server.UserProfiles/AddFeedEntries"
    message="tns:IFeedCacheService_AddFeedEntries_InputMessage"
    xmlns:wsam="http://www.w3.org/2007/05/addressing/metadata"/>
  <wsdl:output wsam:Action="http://tempuri.org/IFeedCacheService/AddFeedEntriesResponse"
    message="tns:IFeedCacheService_AddFeedEntries_OutputMessage"
    xmlns:wsam="http://www.w3.org/2007/05/addressing/metadata"/>
  <wsdl:fault
    wsam:Action="http://tempuri.org/IFeedCacheService/AddFeedEntriesFeedCacheFaultFault"
    name="FeedCacheFaultFault"
    message="tns:IFeedCacheService_AddFeedEntries_FeedCacheFaultFault_FaultMessage"
    xmlns:wsam="http://www.w3.org/2007/05/addressing/metadata"/>
```

</wsdl:operation>

This operation can be used to add a number of feed entries potentially associated with separate feed entities in a single operation. This can be used in scenarios such as repopulating feed entries of a given feed entity or in some automated process.

### 3.1.4.15.1 Messages

The following table summarizes the set of WSDL message definitions that are specific to this operation.

Message	Description
IFeedCacheService_AddFeedEntries_InputMessage	The request WSDL message for the <b>AddFeedEntries</b> WSDL operation.
IFeedCacheService_AddFeedEntries_OutputMessage	The response WSDL message for the <b>AddFeedEntries</b> WSDL operation.

#### 3.1.4.15.1.1 IFeedCacheService\_AddFeedEntries\_InputMessage

The request WSDL message for the **AddFeedEntries** WSDL operation.

The SOAP action value is:

```
http://Microsoft.Office.Server.UserProfiles/AddFeedEntries
```

The SOAP body contains the **AddFeedEntries** element.

#### 3.1.4.15.1.2 IFeedCacheService\_AddFeedEntries\_OutputMessage

The response WSDL message for the **AddFeedEntries** WSDL operation.

The SOAP body contains the **AddFeedEntriesResponse** element.

### 3.1.4.15.2 Elements

The following table summarizes the XML schema element definitions that are specific to this operation.

Element	Description
AddFeedEntries	The input data for the <b>AddFeedEntries</b> WSDL operation.
AddFeedEntriesResponse	The result data for the <b>AddFeedEntries</b> WSDL operation.

#### 3.1.4.15.2.1 AddFeedEntries

The input data for the **AddFeedEntries** WSDL operation.

```
<xs:element name="AddFeedEntries" xmlns:xs="http://www.w3.org/2001/XMLSchema">  
  <xs:complexType>  
    <xs:sequence>
```

```

    <xs:element xmlns:q1="http://Microsoft/Office/Server/FeedCache" minOccurs="0"
name="entries" nillable="true" type="q1:PC"/>
  </xs:sequence>
</xs:complexType>
</xs:element>

```

**entries:** A sequence of zero or more feed entries of type **PC** as specified in section [2.2.4.8](#).

### 3.1.4.15.2.2 AddFeedEntriesResponse

The result data for the **AddFeedEntries** WSDL operation.

```

<xs:element name="AddFeedEntriesResponse" xmlns:xs="http://www.w3.org/2001/XMLSchema">
  <xs:complexType>
    <xs:sequence>
      <xs:element minOccurs="0" name="AddFeedEntriesResult" type="xs:boolean"/>
    </xs:sequence>
  </xs:complexType>
</xs:element>

```

**AddFeedEntriesResult:** A Boolean value that indicates whether the operation succeeded or failed.

### 3.1.4.15.3 Complex Types

None.

### 3.1.4.15.4 Simple Types

None.

### 3.1.4.15.5 Attributes

None.

### 3.1.4.15.6 Groups

None.

### 3.1.4.15.7 Attribute Groups

None.

### 3.1.4.16 RemoveInternalRegions

This WSDL operation removes some internal data structure. This operation **MUST NOT** be called by any protocol client.

```

<wsdl:operation name="RemoveInternalRegions" xmlns:wsdl="http://schemas.xmlsoap.org/wsdl/">
  <wsdl:input wsam:Action="http://Microsoft.Office.Server.UserProfiles/RemoveInternalRegions"
message="tns:IFeedCacheService_RemoveInternalRegions_InputMessage"
xmlns:wsam="http://www.w3.org/2007/05/addressing/metadata"/>
  <wsdl:output
wsam:Action="http://tempuri.org/IFeedCacheService/RemoveInternalRegionsResponse"

```

```

message="tns:IFeedCacheService_RemoveInternalRegions_OutputMessage"
xmlns:wsam="http://www.w3.org/2007/05/addressing/metadata"/>
  <wsdl:fault
wsam:Action="http://tempuri.org/IFeedCacheService/RemoveInternalRegionsFeedCacheFaultFault"
name="FeedCacheFaultFault"
message="tns:IFeedCacheService_RemoveInternalRegions_FeedCacheFaultFault_FaultMessage"
xmlns:wsam="http://www.w3.org/2007/05/addressing/metadata"/>
</wsdl:operation>

```

### 3.1.4.16.1 Messages

The following table summarizes the set of WSDL message definitions that are specific to this operation.

Message	Description
IFeedCacheService_RemoveInternalRegions_InputMessage	The request WSDL message for the <b>RemoveInternalRegions</b> WSDL operation.
IFeedCacheService_RemoveInternalRegions_OutputMessage	The response WSDL message for the <b>RemoveInternalRegions</b> WSDL operation.

#### 3.1.4.16.1.1 IFeedCacheService\_RemoveInternalRegions\_InputMessage

The request WSDL message for the **RemoveInternalRegions** WSDL operation.

The SOAP action value is:

```
http://Microsoft.Office.Server.UserProfiles/RemoveInternalRegions
```

The SOAP body contains the **RemoveInternalRegions** element.

#### 3.1.4.16.1.2 IFeedCacheService\_RemoveInternalRegions\_OutputMessage

The response WSDL message for the **RemoveInternalRegions** WSDL operation.

The SOAP body contains the **RemoveInternalRegionsResponse** element.

### 3.1.4.16.2 Elements

The following table summarizes the XML schema element definitions that are specific to this operation.

Element	Description
RemoveInternalRegions	The input data for the <b>RemoveInternalRegions</b> WSDL operation.
RemoveInternalRegionsResponse	The result data for the <b>RemoveInternalRegions</b> WSDL operation.

#### 3.1.4.16.2.1 RemoveInternalRegions

The input data for the **RemoveInternalRegions** WSDL operation.

```
<xs:element name="RemoveInternalRegions" xmlns:xs="http://www.w3.org/2001/XMLSchema">
  <xs:complexType>
    <xs:sequence>
      <xs:element minOccurs="0" name="webAppUrl" nillable="true" type="xs:string"/>
    </xs:sequence>
  </xs:complexType>
</xs:element>
```

**webAppUrl:** The URL of the calling **Web application**.

#### 3.1.4.16.2.2 RemoveInternalRegionsResponse

The result data for the **RemoveInternalRegions** WSDL operation.

```
<xs:element name="RemoveInternalRegionsResponse" xmlns:xs="http://www.w3.org/2001/XMLSchema">
  <xs:complexType>
    <xs:sequence>
      <xs:element minOccurs="0" name="RemoveInternalRegionsResult" type="xs:boolean"/>
    </xs:sequence>
  </xs:complexType>
</xs:element>
```

**RemoveInternalRegionsResult:** A Boolean value that indicates whether the operation succeeded or failed.

#### 3.1.4.16.3 Complex Types

None.

#### 3.1.4.16.4 Simple Types

None.

#### 3.1.4.16.5 Attributes

None.

#### 3.1.4.16.6 Groups

None.

#### 3.1.4.16.7 Attribute Groups

None.

#### 3.1.5 Timer Events

None.

#### 3.1.6 Other Local Events

None.

## 4 Protocol Examples

### 4.1 AddFeedEntry

To add a feed entry, the protocol client sends the following WSDL message:

```
<s:Envelope xmlns:s="http://www.w3.org/2003/05/soap-envelope"
xmlns:a="http://www.w3.org/2005/08/addressing" xmlns:u="http://docs.oasis-
open.org/wss/2004/01/oasis-200401-wss-wssecurity-utility-1.0.xsd">
  <s:Header>
    <a:Action
s:mustUnderstand="1">http://Microsoft.Office.Server.UserProfiles/AddFeedEntry</a:Action>
    <a:MessageID>urn:uuid:e2a9eb1e-6fde-4934-be39-9cf816f1f655</a:MessageID>
    <a:ReplyTo>
      <a:Address>http://www.w3.org/2005/08/addressing/anonymous</a:Address>
    </a:ReplyTo>
  </s:Header>
  <s:Body>
    <AddFeedEntry xmlns="http://tempuri.org/">
      <entity xmlns:b="http://Microsoft/Office/Server/FeedCache"
xmlns:i="http://www.w3.org/2001/XMLSchema-instance">
        <b:ET>User</b:ET>
        <b:LID>61e7fd65-62f4-4321-8f44-945640eb2ce1</b:LID>
        <b:PID>0c37852b-34d0-418e-91c6-2ac25af4be5b</b:PID>
        <b:SID>354936ff-bb63-45a5-b08d-ba6373087cf7</b:SID>
        <b:Url>http://machine/my/personal/user</b:Url>
        <b:WID>6c00a125-2a29-44c3-97ea-7e6f2341000e</b:WID>
      </entity>
      <entry xmlns:b="http://Microsoft/Office/Server/FeedCache"
xmlns:i="http://www.w3.org/2001/XMLSchema-instance">
        <b:D1>entry</b:D1>
        <b:EID>364a93b2a29d459e86a959b104d98</b:EID>
        <b:M>2011-10-29T00:06:15.0336138Z</b:M>
        <b:MBD>1</b:MBD>
        <b:MBT>2</b:MBT>
      </entry>
    </AddFeedEntry>
  </s:Body>
</s:Envelope>
```

The protocol server responds with:

```
<s:Envelope xmlns:s="http://www.w3.org/2003/05/soap-envelope"
xmlns:a="http://www.w3.org/2005/08/addressing" xmlns:u="http://docs.oasis-
open.org/wss/2004/01/oasis-200401-wss-wssecurity-utility-1.0.xsd">
  <s:Header>
    <a:Action
s:mustUnderstand="1">http://tempuri.org/IFeedCacheService/AddFeedEntryResponse</a:Action>
  </s:Header>
  <s:Body>
    <AddFeedEntryResponse xmlns="http://tempuri.org/">
      <AddFeedEntryResult>true</AddFeedEntryResult>
    </AddFeedEntryResponse>
  </s:Body>
</s:Envelope>
```

## 4.2 GetPublishedFeed

To get the feed entries back for this feed entity, the protocol client sends the following WSDL message:

```
<s:Envelope xmlns:s="http://www.w3.org/2003/05/soap-envelope"
xmlns:a="http://www.w3.org/2005/08/addressing" xmlns:u="http://docs.oasis-
open.org/wss/2004/01/oasis-200401-wss-wssecurity-utility-1.0.xsd">
  <s:Header>
    <a:Action
s:mustUnderstand="1">http://Microsoft.Office.Server.UserProfiles/GetPublishedFeed</a:Action>
    <a:MessageID>urn:uuid:ef48db0d-d770-4e13-8710-496c38a1f82c</a:MessageID>
    <a:ReplyTo>
      <a:Address>http://www.w3.org/2005/08/addressing/anonymous</a:Address>
    </a:ReplyTo>
  </s:Header>
  <s:Body>
    <GetPublishedFeed xmlns="http://tempuri.org/">
      <entity xmlns:b="http://Microsoft/Office/Server/FeedCache"
xmlns:i="http://www.w3.org/2001/XMLSchema-instance">
        <b:ET>User</b:ET>
        <b:LID>61e7fd65-62f4-4321-8f44-945640eb2ce1</b:LID>
        <b:PID>0c37852b-34d0-418e-91c6-2ac25af4be5b</b:PID>
        <b:SID>354936ff-bb63-45a5-b08d-ba6373087cf7</b:SID>
        <b:Url>http://machine/my/personal/user</b:Url>
        <b:WID>6c00a125-2a29-44c3-97ea-7e6f2341000e</b:WID>
      </entity>
      <maxItemsPerEntity>20</maxItemsPerEntity>
      <newerThan i:nil="true" xmlns:i="http://www.w3.org/2001/XMLSchema-instance"/>
      <olderThan>2011-10-28T23:37:53.266Z</olderThan>
    </GetPublishedFeed>
  </s:Body>
</s:Envelope>
```

The protocol server responds with:

```
<s:Envelope xmlns:s="http://www.w3.org/2003/05/soap-envelope"
xmlns:a="http://www.w3.org/2005/08/addressing" xmlns:u="http://docs.oasis-
open.org/wss/2004/01/oasis-200401-wss-wssecurity-utility-1.0.xsd">
  <s:Header>
    <a:Action
s:mustUnderstand="1">http://tempuri.org/IFeedCacheService/GetPublishedFeedResponse</a:Action>
    <a:RelatesTo>urn:uuid:ef48db0d-d770-4e13-8710-496c38a1f82c</a:RelatesTo>
    <ActivityId CorrelationId="6e89a29a-db76-4de4-8465-11c526e28acb"
xmlns="http://schemas.microsoft.com/2004/09/ServiceModel/Diagnostics">00000000-0000-0000-
0000-000000000000</ActivityId>
  </s:Header>
  <s:Body>
    <GetPublishedFeedResponse xmlns="http://tempuri.org/">
      <GetPublishedFeedResult xmlns:b="http://Microsoft/Office/Server/FeedCache"
xmlns:i="http://www.w3.org/2001/XMLSchema-instance">
        <b:En>
          <b:P>
            <b:D1>entry</b:D1>
            <b:EID>ff2bc270089f4bf0a54690c30eae9d30</b:EID>
          </b:En>
        <b:ET>User</b:ET>
      </GetPublishedFeedResult>
    </GetPublishedFeedResponse>
  </s:Body>
</s:Envelope>
```



```
<b:LID>61e7fd65-62f4-4321-8f44-945640eb2ce1</b:LID>
<b:PID>0c37852b-34d0-418e-91c6-2ac25af4be5b</b:PID>
<b:SID>354936ff-bb63-45a5-b08d-ba6373087cf7</b:SID>
<b:Url>http://machine/my/personal/user</b:Url>
<b:WID>6c00a125-2a29-44c3-97ea-7e6f2341000e</b:WID>
</b:En>
<b:M>2011-10-28T23:37:53.2668995Z</b:M>
<b:MBD>1</b:MBD>
<b:MBT>2</b:MBT>
</b:P>
</b:En>
<b:M>20</b:M>
</GetPublishedFeedResult>
</GetPublishedFeedResponse>
</s:Body>
</s:Envelope>
```

## **5 Security**

### **5.1 Security Considerations for Implementers**

None.

### **5.2 Index of Security Parameters**

None.

Preliminary

## 6 Appendix A: Full WSDL

For ease of implementation, the full WSDL is provided in this appendix.

```
<?xml version="1.0"?>
<wsdl:definitions xmlns:tns="http://tempuri.org/"
xmlns:soap="http://schemas.xmlsoap.org/wsdl/soap/"
xmlns:xs="http://www.w3.org/2001/XMLSchema"
xmlns:wsam="http://www.w3.org/2007/05/addressing/metadata" name="FeedCacheService"
targetNamespace="http://tempuri.org/" xmlns:wsdl="http://schemas.xmlsoap.org/wsdl/">
  <wsdl:types>
    <xs:schema xmlns:tns1="http://tempuri.org/Imports"
targetNamespace="http://tempuri.org/Imports">
      <xs:import namespace="http://tempuri.org/" />
      <xs:import namespace="http://Microsoft/Office/Server/FeedCache" />
      <xs:import namespace="http://schemas.microsoft.com/2003/10/Serialization/" />
      <xs:import namespace="http://Microsoft/Office/Server/FeedCache" />
      <xs:import namespace="http://schemas.microsoft.com/2003/10/Serialization/Arrays" />
      <xs:import
namespace="http://schemas.datacontract.org/2004/07/System.Collections.Generic" />
    </xs:schema>
  </wsdl:types>
  <wsdl:message name="IFeedCacheService_AddFeedEntry_InputMessage">
    <wsdl:part name="parameters" element="tns:AddFeedEntry" />
  </wsdl:message>
  <wsdl:message name="IFeedCacheService_AddFeedEntry_OutputMessage">
    <wsdl:part name="parameters" element="tns:AddFeedEntryResponse" />
  </wsdl:message>
  <wsdl:message name="IFeedCacheService_AddFeedEntry_FeedCacheFaultFault_FaultMessage">
    <wsdl:part xmlns:q1="http://Microsoft/Office/Server/FeedCache" name="detail"
element="q1:FeedCacheFault" />
  </wsdl:message>
  <wsdl:message name="IFeedCacheService_AddFeedEntries_InputMessage">
    <wsdl:part name="parameters" element="tns:AddFeedEntries" />
  </wsdl:message>
  <wsdl:message name="IFeedCacheService_AddFeedEntries_OutputMessage">
    <wsdl:part name="parameters" element="tns:AddFeedEntriesResponse" />
  </wsdl:message>
  <wsdl:message name="IFeedCacheService_AddFeedEntries_FeedCacheFaultFault_FaultMessage">
    <wsdl:part xmlns:q1="http://Microsoft/Office/Server/FeedCache" name="detail"
element="q1:FeedCacheFault" />
  </wsdl:message>
  <wsdl:message name="IFeedCacheService_RemoveFeedEntry_InputMessage">
    <wsdl:part name="parameters" element="tns:RemoveFeedEntry" />
  </wsdl:message>
  <wsdl:message name="IFeedCacheService_RemoveFeedEntry_OutputMessage">
    <wsdl:part name="parameters" element="tns:RemoveFeedEntryResponse" />
  </wsdl:message>
  <wsdl:message name="IFeedCacheService_RemoveFeedEntry_FeedCacheFaultFault_FaultMessage">
    <wsdl:part xmlns:q1="http://Microsoft/Office/Server/FeedCache" name="detail"
element="q1:FeedCacheFault" />
  </wsdl:message>
  <wsdl:message name="IFeedCacheService_RemoveEntityFeed_InputMessage">
    <wsdl:part name="parameters" element="tns:RemoveEntityFeed" />
  </wsdl:message>
  <wsdl:message name="IFeedCacheService_RemoveEntityFeed_OutputMessage">
    <wsdl:part name="parameters" element="tns:RemoveEntityFeedResponse" />
  </wsdl:message>
  <wsdl:message name="IFeedCacheService_RemoveEntityFeed_FeedCacheFaultFault_FaultMessage">
```

```

    <wsdl:part xmlns:q1="http://Microsoft/Office/Server/FeedCache" name="detail"
element="q1:FeedCacheFault"/>
  </wsdl:message>
  <wsdl:message name="IFeedCacheService_RemoveInternalRegions_InputMessage">
    <wsdl:part name="parameters" element="tns:RemoveInternalRegions"/>
  </wsdl:message>
  <wsdl:message name="IFeedCacheService_RemoveInternalRegions_OutputMessage">
    <wsdl:part name="parameters" element="tns:RemoveInternalRegionsResponse"/>
  </wsdl:message>
  <wsdl:message
name="IFeedCacheService_RemoveInternalRegions_FeedCacheFaultFault_FaultMessage">
    <wsdl:part xmlns:q1="http://Microsoft/Office/Server/FeedCache" name="detail"
element="q1:FeedCacheFault"/>
  </wsdl:message>
  <wsdl:message name="IFeedCacheService_GetPublishedFeed_InputMessage">
    <wsdl:part name="parameters" element="tns:GetPublishedFeed"/>
  </wsdl:message>
  <wsdl:message name="IFeedCacheService_GetPublishedFeed_OutputMessage">
    <wsdl:part name="parameters" element="tns:GetPublishedFeedResponse"/>
  </wsdl:message>
  <wsdl:message name="IFeedCacheService_GetPublishedFeed_FeedCacheFaultFault_FaultMessage">
    <wsdl:part xmlns:q1="http://Microsoft/Office/Server/FeedCache" name="detail"
element="q1:FeedCacheFault"/>
  </wsdl:message>
  <wsdl:message name="IFeedCacheService_GetConsolidatedFeed_InputMessage">
    <wsdl:part name="parameters" element="tns:GetConsolidatedFeed"/>
  </wsdl:message>
  <wsdl:message name="IFeedCacheService_GetConsolidatedFeed_OutputMessage">
    <wsdl:part name="parameters" element="tns:GetConsolidatedFeedResponse"/>
  </wsdl:message>
  <wsdl:message
name="IFeedCacheService_GetConsolidatedFeed_FeedCacheFaultFault_FaultMessage">
    <wsdl:part xmlns:q1="http://Microsoft/Office/Server/FeedCache" name="detail"
element="q1:FeedCacheFault"/>
  </wsdl:message>
  <wsdl:message name="IFeedCacheService_GetCategoricalFeed_InputMessage">
    <wsdl:part name="parameters" element="tns:GetCategoricalFeed"/>
  </wsdl:message>
  <wsdl:message name="IFeedCacheService_GetCategoricalFeed_OutputMessage">
    <wsdl:part name="parameters" element="tns:GetCategoricalFeedResponse"/>
  </wsdl:message>
  <wsdl:message name="IFeedCacheService_GetCategoricalFeed_FeedCacheFaultFault_FaultMessage">
    <wsdl:part xmlns:q1="http://Microsoft/Office/Server/FeedCache" name="detail"
element="q1:FeedCacheFault"/>
  </wsdl:message>
  <wsdl:message name="IFeedCacheService_GetEntries_InputMessage">
    <wsdl:part name="parameters" element="tns:GetEntries"/>
  </wsdl:message>
  <wsdl:message name="IFeedCacheService_GetEntries_OutputMessage">
    <wsdl:part name="parameters" element="tns:GetEntriesResponse"/>
  </wsdl:message>
  <wsdl:message name="IFeedCacheService_GetEntries_FeedCacheFaultFault_FaultMessage">
    <wsdl:part xmlns:q1="http://Microsoft/Office/Server/FeedCache" name="detail"
element="q1:FeedCacheFault"/>
  </wsdl:message>
  <wsdl:message name="IFeedCacheService_NewEntityFollower_InputMessage">
    <wsdl:part name="parameters" element="tns:NewEntityFollower"/>
  </wsdl:message>
  <wsdl:message name="IFeedCacheService_NewEntityFollower_OutputMessage">
    <wsdl:part name="parameters" element="tns:NewEntityFollowerResponse"/>

```

```

</wsdl:message>
<wsdl:message name="IFeedCacheService_NewEntityFollower_FeedCacheFaultFault_FaultMessage">
  <wsdl:part xmlns:q1="http://Microsoft/Office/Server/FeedCache" name="detail"
  element="q1:FeedCacheFault"/>
</wsdl:message>
<wsdl:message name="IFeedCacheService_IsEntityActivelyFollowed_InputMessage">
  <wsdl:part name="parameters" element="tns:IsEntityActivelyFollowed"/>
</wsdl:message>
<wsdl:message name="IFeedCacheService_IsEntityActivelyFollowed_OutputMessage">
  <wsdl:part name="parameters" element="tns:IsEntityActivelyFollowedResponse"/>
</wsdl:message>
<wsdl:message
name="IFeedCacheService_IsEntityActivelyFollowed_FeedCacheFaultFault_FaultMessage">
  <wsdl:part xmlns:q1="http://Microsoft/Office/Server/FeedCache" name="detail"
  element="q1:FeedCacheFault"/>
</wsdl:message>
<wsdl:message name="IFeedCacheService_RefreshFollowedEntities_InputMessage">
  <wsdl:part name="parameters" element="tns:RefreshFollowedEntities"/>
</wsdl:message>
<wsdl:message name="IFeedCacheService_RefreshFollowedEntities_OutputMessage">
  <wsdl:part name="parameters" element="tns:RefreshFollowedEntitiesResponse"/>
</wsdl:message>
<wsdl:message
name="IFeedCacheService_RefreshFollowedEntities_FeedCacheFaultFault_FaultMessage">
  <wsdl:part xmlns:q1="http://Microsoft/Office/Server/FeedCache" name="detail"
  element="q1:FeedCacheFault"/>
</wsdl:message>
<wsdl:message name="IFeedCacheService_BulkLMTUpdate_InputMessage">
  <wsdl:part name="parameters" element="tns:BulkLMTUpdate"/>
</wsdl:message>
<wsdl:message name="IFeedCacheService_BulkLMTUpdate_OutputMessage">
  <wsdl:part name="parameters" element="tns:BulkLMTUpdateResponse"/>
</wsdl:message>
<wsdl:message name="IFeedCacheService_BulkLMTUpdate_FeedCacheFaultFault_FaultMessage">
  <wsdl:part xmlns:q1="http://Microsoft/Office/Server/FeedCache" name="detail"
  element="q1:FeedCacheFault"/>
</wsdl:message>
<wsdl:message name="IFeedCacheService_BulkAddFeedEntry_InputMessage">
  <wsdl:part name="parameters" element="tns:BulkAddFeedEntry"/>
</wsdl:message>
<wsdl:message name="IFeedCacheService_BulkAddFeedEntry_OutputMessage">
  <wsdl:part name="parameters" element="tns:BulkAddFeedEntryResponse"/>
</wsdl:message>
<wsdl:message name="IFeedCacheService_BulkAddFeedEntry_FeedCacheFaultFault_FaultMessage">
  <wsdl:part xmlns:q1="http://Microsoft/Office/Server/FeedCache" name="detail"
  element="q1:FeedCacheFault"/>
</wsdl:message>
<wsdl:message name="IFeedCacheService_IsRepopulationNeeded_InputMessage">
  <wsdl:part name="parameters" element="tns:IsRepopulationNeeded"/>
</wsdl:message>
<wsdl:message name="IFeedCacheService_IsRepopulationNeeded_OutputMessage">
  <wsdl:part name="parameters" element="tns:IsRepopulationNeededResponse"/>
</wsdl:message>
<wsdl:message
name="IFeedCacheService_IsRepopulationNeeded_FeedCacheFaultFault_FaultMessage">
  <wsdl:part xmlns:q1="http://Microsoft/Office/Server/FeedCache" name="detail"
  element="q1:FeedCacheFault"/>
</wsdl:message>
<wsdl:message name="IFeedCacheService_GetFeeds_InputMessage">
  <wsdl:part name="parameters" element="tns:GetFeeds"/>

```

```

</wsdl:message>
<wsdl:message name="IFeedCacheService_GetFeeds_OutputMessage">
  <wsdl:part name="parameters" element="tns:GetFeedsResponse"/>
</wsdl:message>
<wsdl:message name="IFeedCacheService_GetFeeds_FeedCacheFaultFault_FaultMessage">
  <wsdl:part xmlns:q1="http://Microsoft/Office/Server/FeedCache" name="detail"
element="q1:FeedCacheFault"/>
</wsdl:message>
<wsdl:portType name="IFeedCacheService">
  <wsdl:operation name="AddFeedEntry">
    <wsdl:input wsam:Action="http://Microsoft.Office.Server.UserProfiles/AddFeedEntry"
message="tns:IFeedCacheService_AddFeedEntry_InputMessage"/>
    <wsdl:output wsam:Action="http://tempuri.org/IFeedCacheService/AddFeedEntryResponse"
message="tns:IFeedCacheService_AddFeedEntry_OutputMessage"/>
    <wsdl:fault
wsam:Action="http://tempuri.org/IFeedCacheService/AddFeedEntryFeedCacheFaultFault"
name="FeedCacheFaultFault"
message="tns:IFeedCacheService_AddFeedEntry_FeedCacheFaultFault_FaultMessage"/>
  </wsdl:operation>
  <wsdl:operation name="AddFeedEntries">
    <wsdl:input wsam:Action="http://Microsoft.Office.Server.UserProfiles/AddFeedEntries"
message="tns:IFeedCacheService_AddFeedEntries_InputMessage"/>
    <wsdl:output wsam:Action="http://tempuri.org/IFeedCacheService/AddFeedEntriesResponse"
message="tns:IFeedCacheService_AddFeedEntries_OutputMessage"/>
    <wsdl:fault
wsam:Action="http://tempuri.org/IFeedCacheService/AddFeedEntriesFeedCacheFaultFault"
name="FeedCacheFaultFault"
message="tns:IFeedCacheService_AddFeedEntries_FeedCacheFaultFault_FaultMessage"/>
  </wsdl:operation>
  <wsdl:operation name="RemoveFeedEntry">
    <wsdl:input wsam:Action="http://Microsoft.Office.Server.UserProfiles/RemoveFeedEntry"
message="tns:IFeedCacheService_RemoveFeedEntry_InputMessage"/>
    <wsdl:output wsam:Action="http://tempuri.org/IFeedCacheService/RemoveFeedEntryResponse"
message="tns:IFeedCacheService_RemoveFeedEntry_OutputMessage"/>
    <wsdl:fault
wsam:Action="http://tempuri.org/IFeedCacheService/RemoveFeedEntryFeedCacheFaultFault"
name="FeedCacheFaultFault"
message="tns:IFeedCacheService_RemoveFeedEntry_FeedCacheFaultFault_FaultMessage"/>
  </wsdl:operation>
  <wsdl:operation name="RemoveEntityFeed">
    <wsdl:input wsam:Action="http://Microsoft.Office.Server.UserProfiles/RemoveEntityFeed"
message="tns:IFeedCacheService_RemoveEntityFeed_InputMessage"/>
    <wsdl:output
wsam:Action="http://tempuri.org/IFeedCacheService/RemoveEntityFeedResponse"
message="tns:IFeedCacheService_RemoveEntityFeed_OutputMessage"/>
    <wsdl:fault
wsam:Action="http://tempuri.org/IFeedCacheService/RemoveEntityFeedFeedCacheFaultFault"
name="FeedCacheFaultFault"
message="tns:IFeedCacheService_RemoveEntityFeed_FeedCacheFaultFault_FaultMessage"/>
  </wsdl:operation>
  <wsdl:operation name="RemoveInternalRegions">
    <wsdl:input
wsam:Action="http://Microsoft.Office.Server.UserProfiles/RemoveInternalRegions"
message="tns:IFeedCacheService_RemoveInternalRegions_InputMessage"/>
    <wsdl:output
wsam:Action="http://tempuri.org/IFeedCacheService/RemoveInternalRegionsResponse"
message="tns:IFeedCacheService_RemoveInternalRegions_OutputMessage"/>
    <wsdl:fault
wsam:Action="http://tempuri.org/IFeedCacheService/RemoveInternalRegionsFeedCacheFaultFault"
name="FeedCacheFaultFault"
message="tns:IFeedCacheService_RemoveInternalRegions_FeedCacheFaultFault_FaultMessage"/>
  </wsdl:operation>

```

```

    <wsdl:operation name="GetPublishedFeed">
      <wsdl:input wsam:Action="http://Microsoft.Office.Server.UserProfiles/GetPublishedFeed"
message="tns:IFeedCacheService_GetPublishedFeed_InputMessage"/>
      <wsdl:output
wsam:Action="http://tempuri.org/IFeedCacheService/GetPublishedFeedResponse"
message="tns:IFeedCacheService_GetPublishedFeed_OutputMessage"/>
      <wsdl:fault
wsam:Action="http://tempuri.org/IFeedCacheService/GetPublishedFeedFeedCacheFaultFault"
name="FeedCacheFaultFault"
message="tns:IFeedCacheService_GetPublishedFeed_FeedCacheFaultFault_FaultMessage"/>
    </wsdl:operation>
    <wsdl:operation name="GetConsolidatedFeed">
      <wsdl:input
wsam:Action="http://Microsoft.Office.Server.UserProfiles/GetConsolidatedFeed"
message="tns:IFeedCacheService_GetConsolidatedFeed_InputMessage"/>
      <wsdl:output
wsam:Action="http://tempuri.org/IFeedCacheService/GetConsolidatedFeedResponse"
message="tns:IFeedCacheService_GetConsolidatedFeed_OutputMessage"/>
      <wsdl:fault
wsam:Action="http://tempuri.org/IFeedCacheService/GetConsolidatedFeedFeedCacheFaultFault"
name="FeedCacheFaultFault"
message="tns:IFeedCacheService_GetConsolidatedFeed_FeedCacheFaultFault_FaultMessage"/>
    </wsdl:operation>
    <wsdl:operation name="GetCategoricalFeed">
      <wsdl:input
wsam:Action="http://Microsoft.Office.Server.UserProfiles/GetCategoricalFeed"
message="tns:IFeedCacheService_GetCategoricalFeed_InputMessage"/>
      <wsdl:output
wsam:Action="http://tempuri.org/IFeedCacheService/GetCategoricalFeedResponse"
message="tns:IFeedCacheService_GetCategoricalFeed_OutputMessage"/>
      <wsdl:fault
wsam:Action="http://tempuri.org/IFeedCacheService/GetCategoricalFeedFeedCacheFaultFault"
name="FeedCacheFaultFault"
message="tns:IFeedCacheService_GetCategoricalFeed_FeedCacheFaultFault_FaultMessage"/>
    </wsdl:operation>
    <wsdl:operation name="GetEntries">
      <wsdl:input wsam:Action="http://Microsoft.Office.Server.UserProfiles/GetThreadEntries"
message="tns:IFeedCacheService_GetEntries_InputMessage"/>
      <wsdl:output wsam:Action="http://tempuri.org/IFeedCacheService/GetEntriesResponse"
message="tns:IFeedCacheService_GetEntries_OutputMessage"/>
      <wsdl:fault
wsam:Action="http://tempuri.org/IFeedCacheService/GetEntriesFeedCacheFaultFault"
name="FeedCacheFaultFault"
message="tns:IFeedCacheService_GetEntries_FeedCacheFaultFault_FaultMessage"/>
    </wsdl:operation>
    <wsdl:operation name="NewEntityFollower">
      <wsdl:input wsam:Action="http://Microsoft.Office.Server.UserProfiles/NewEntityFollower"
message="tns:IFeedCacheService_NewEntityFollower_InputMessage"/>
      <wsdl:output
wsam:Action="http://tempuri.org/IFeedCacheService/NewEntityFollowerResponse"
message="tns:IFeedCacheService_NewEntityFollower_OutputMessage"/>
      <wsdl:fault
wsam:Action="http://tempuri.org/IFeedCacheService/NewEntityFollowerFeedCacheFaultFault"
name="FeedCacheFaultFault"
message="tns:IFeedCacheService_NewEntityFollower_FeedCacheFaultFault_FaultMessage"/>
    </wsdl:operation>
    <wsdl:operation name="IsEntityActivelyFollowed">
      <wsdl:input
wsam:Action="http://Microsoft.Office.Server.UserProfiles/IsEntityActivelyFollowed"
message="tns:IFeedCacheService_IsEntityActivelyFollowed_InputMessage"/>

```

```

    <wsdl:output
wsam:Action="http://tempuri.org/IFeedCacheService/IsEntityActivelyFollowedResponse"
message="tns:IFeedCacheService_IsEntityActivelyFollowed_OutputMessage"/>
    <wsdl:fault
wsam:Action="http://tempuri.org/IFeedCacheService/IsEntityActivelyFollowedFeedCacheFaultFault"
name="FeedCacheFaultFault"
message="tns:IFeedCacheService_IsEntityActivelyFollowed_FeedCacheFaultFault_FaultMessage"/>
    </wsdl:operation>
    <wsdl:operation name="RefreshFollowedEntities">
    <wsdl:input
wsam:Action="http://Microsoft.Office.Server.UserProfiles/RefreshFollowedEntities"
message="tns:IFeedCacheService_RefreshFollowedEntities_InputMessage"/>
    <wsdl:output
wsam:Action="http://tempuri.org/IFeedCacheService/RefreshFollowedEntitiesResponse"
message="tns:IFeedCacheService_RefreshFollowedEntities_OutputMessage"/>
    <wsdl:fault
wsam:Action="http://tempuri.org/IFeedCacheService/RefreshFollowedEntitiesFeedCacheFaultFault"
name="FeedCacheFaultFault"
message="tns:IFeedCacheService_RefreshFollowedEntities_FeedCacheFaultFault_FaultMessage"/>
    </wsdl:operation>
    <wsdl:operation name="BulkLMTUpdate">
    <wsdl:input wsam:Action="http://Microsoft.Office.Server.UserProfiles/BulkLMTUpdate"
message="tns:IFeedCacheService_BulkLMTUpdate_InputMessage"/>
    <wsdl:output wsam:Action="http://tempuri.org/IFeedCacheService/BulkLMTUpdateResponse"
message="tns:IFeedCacheService_BulkLMTUpdate_OutputMessage"/>
    <wsdl:fault
wsam:Action="http://tempuri.org/IFeedCacheService/BulkLMTUpdateFeedCacheFaultFault"
name="FeedCacheFaultFault"
message="tns:IFeedCacheService_BulkLMTUpdate_FeedCacheFaultFault_FaultMessage"/>
    </wsdl:operation>
    <wsdl:operation name="BulkAddFeedEntry">
    <wsdl:input wsam:Action="http://Microsoft.Office.Server.UserProfiles/BulkAddFeedEntry"
message="tns:IFeedCacheService_BulkAddFeedEntry_InputMessage"/>
    <wsdl:output
wsam:Action="http://tempuri.org/IFeedCacheService/BulkAddFeedEntryResponse"
message="tns:IFeedCacheService_BulkAddFeedEntry_OutputMessage"/>
    <wsdl:fault
wsam:Action="http://tempuri.org/IFeedCacheService/BulkAddFeedEntryFeedCacheFaultFault"
name="FeedCacheFaultFault"
message="tns:IFeedCacheService_BulkAddFeedEntry_FeedCacheFaultFault_FaultMessage"/>
    </wsdl:operation>
    <wsdl:operation name="IsRepopulationNeeded">
    <wsdl:input
wsam:Action="http://Microsoft.Office.Server.UserProfiles/IsRepopulationNeeded"
message="tns:IFeedCacheService_IsRepopulationNeeded_InputMessage"/>
    <wsdl:output
wsam:Action="http://tempuri.org/IFeedCacheService/IsRepopulationNeededResponse"
message="tns:IFeedCacheService_IsRepopulationNeeded_OutputMessage"/>
    <wsdl:fault
wsam:Action="http://tempuri.org/IFeedCacheService/IsRepopulationNeededFeedCacheFaultFault"
name="FeedCacheFaultFault"
message="tns:IFeedCacheService_IsRepopulationNeeded_FeedCacheFaultFault_FaultMessage"/>
    </wsdl:operation>
    <wsdl:operation name="GetFeeds">
    <wsdl:input wsam:Action="http://Microsoft.Office.Server.UserProfiles/GetFeeds"
message="tns:IFeedCacheService_GetFeeds_InputMessage"/>
    <wsdl:output wsam:Action="http://tempuri.org/IFeedCacheService/GetFeedsResponse"
message="tns:IFeedCacheService_GetFeeds_OutputMessage"/>
    <wsdl:fault
wsam:Action="http://tempuri.org/IFeedCacheService/GetFeedsFeedCacheFaultFault"
name="FeedCacheFaultFault"
message="tns:IFeedCacheService_GetFeeds_FeedCacheFaultFault_FaultMessage"/>

```



```

    </wsdl:operation>
  </wsdl:portType>
  <wsdl:binding name="CustomBinding_IFeedCacheService" type="tns:IFeedCacheService">
    <soap:binding transport="http://schemas.xmlsoap.org/soap/http"/>
    <wsdl:operation name="AddFeedEntry">
      <soap:operation soapAction="http://Microsoft.Office.Server.UserProfiles/AddFeedEntry"
style="document"/>
      <wsdl:input>
        <soap:body use="literal"/>
      </wsdl:input>
      <wsdl:output>
        <soap:body use="literal"/>
      </wsdl:output>
      <wsdl:fault name="FeedCacheFaultFault">
        <soap:fault use="literal" name="FeedCacheFaultFault" namespace=""/>
      </wsdl:fault>
    </wsdl:operation>
    <wsdl:operation name="AddFeedEntries">
      <soap:operation soapAction="http://Microsoft.Office.Server.UserProfiles/AddFeedEntries"
style="document"/>
      <wsdl:input>
        <soap:body use="literal"/>
      </wsdl:input>
      <wsdl:output>
        <soap:body use="literal"/>
      </wsdl:output>
      <wsdl:fault name="FeedCacheFaultFault">
        <soap:fault use="literal" name="FeedCacheFaultFault" namespace=""/>
      </wsdl:fault>
    </wsdl:operation>
    <wsdl:operation name="RemoveFeedEntry">
      <soap:operation
soapAction="http://Microsoft.Office.Server.UserProfiles/RemoveFeedEntry" style="document"/>
      <wsdl:input>
        <soap:body use="literal"/>
      </wsdl:input>
      <wsdl:output>
        <soap:body use="literal"/>
      </wsdl:output>
      <wsdl:fault name="FeedCacheFaultFault">
        <soap:fault use="literal" name="FeedCacheFaultFault" namespace=""/>
      </wsdl:fault>
    </wsdl:operation>
    <wsdl:operation name="RemoveEntityFeed">
      <soap:operation
soapAction="http://Microsoft.Office.Server.UserProfiles/RemoveEntityFeed" style="document"/>
      <wsdl:input>
        <soap:body use="literal"/>
      </wsdl:input>
      <wsdl:output>
        <soap:body use="literal"/>
      </wsdl:output>
      <wsdl:fault name="FeedCacheFaultFault">
        <soap:fault use="literal" name="FeedCacheFaultFault" namespace=""/>
      </wsdl:fault>
    </wsdl:operation>
    <wsdl:operation name="RemoveInternalRegions">

```

```

    <soap:operation
soapAction="http://Microsoft.Office.Server.UserProfiles/RemoveInternalRegions"
style="document"/>
    <wsdl:input>
        <soap:body use="literal"/>
    </wsdl:input>
    <wsdl:output>
        <soap:body use="literal"/>
    </wsdl:output>
    <wsdl:fault name="FeedCacheFaultFault">
        <soap:fault use="literal" name="FeedCacheFaultFault" namespace=""/>
    </wsdl:fault>
</wsdl:operation>
<wsdl:operation name="GetPublishedFeed">
    <soap:operation
soapAction="http://Microsoft.Office.Server.UserProfiles/GetPublishedFeed" style="document"/>
    <wsdl:input>
        <soap:body use="literal"/>
    </wsdl:input>
    <wsdl:output>
        <soap:body use="literal"/>
    </wsdl:output>
    <wsdl:fault name="FeedCacheFaultFault">
        <soap:fault use="literal" name="FeedCacheFaultFault" namespace=""/>
    </wsdl:fault>
</wsdl:operation>
<wsdl:operation name="GetConsolidatedFeed">
    <soap:operation
soapAction="http://Microsoft.Office.Server.UserProfiles/GetConsolidatedFeed"
style="document"/>
    <wsdl:input>
        <soap:body use="literal"/>
    </wsdl:input>
    <wsdl:output>
        <soap:body use="literal"/>
    </wsdl:output>
    <wsdl:fault name="FeedCacheFaultFault">
        <soap:fault use="literal" name="FeedCacheFaultFault" namespace=""/>
    </wsdl:fault>
</wsdl:operation>
<wsdl:operation name="GetCategoricalFeed">
    <soap:operation
soapAction="http://Microsoft.Office.Server.UserProfiles/GetCategoricalFeed"
style="document"/>
    <wsdl:input>
        <soap:body use="literal"/>
    </wsdl:input>
    <wsdl:output>
        <soap:body use="literal"/>
    </wsdl:output>
    <wsdl:fault name="FeedCacheFaultFault">
        <soap:fault use="literal" name="FeedCacheFaultFault" namespace=""/>
    </wsdl:fault>
</wsdl:operation>
<wsdl:operation name="GetEntries">
    <soap:operation
soapAction="http://Microsoft.Office.Server.UserProfiles/GetThreadEntries" style="document"/>
    <wsdl:input>
        <soap:body use="literal"/>
    </wsdl:input>

```

```

    <wsdl:output>
      <soap:body use="literal"/>
    </wsdl:output>
    <wsdl:fault name="FeedCacheFaultFault">
      <soap:fault use="literal" name="FeedCacheFaultFault" namespace=""/>
    </wsdl:fault>
  </wsdl:operation>
  <wsdl:operation name="NewEntityFollower">
    <soap:operation
      soapAction="http://Microsoft.Office.Server.UserProfiles/NewEntityFollower" style="document"/>
    <wsdl:input>
      <soap:body use="literal"/>
    </wsdl:input>
    <wsdl:output>
      <soap:body use="literal"/>
    </wsdl:output>
    <wsdl:fault name="FeedCacheFaultFault">
      <soap:fault use="literal" name="FeedCacheFaultFault" namespace=""/>
    </wsdl:fault>
  </wsdl:operation>
  <wsdl:operation name="IsEntityActivelyFollowed">
    <soap:operation
      soapAction="http://Microsoft.Office.Server.UserProfiles/IsEntityActivelyFollowed"
      style="document"/>
    <wsdl:input>
      <soap:body use="literal"/>
    </wsdl:input>
    <wsdl:output>
      <soap:body use="literal"/>
    </wsdl:output>
    <wsdl:fault name="FeedCacheFaultFault">
      <soap:fault use="literal" name="FeedCacheFaultFault" namespace=""/>
    </wsdl:fault>
  </wsdl:operation>
  <wsdl:operation name="RefreshFollowedEntities">
    <soap:operation
      soapAction="http://Microsoft.Office.Server.UserProfiles/RefreshFollowedEntities"
      style="document"/>
    <wsdl:input>
      <soap:body use="literal"/>
    </wsdl:input>
    <wsdl:output>
      <soap:body use="literal"/>
    </wsdl:output>
    <wsdl:fault name="FeedCacheFaultFault">
      <soap:fault use="literal" name="FeedCacheFaultFault" namespace=""/>
    </wsdl:fault>
  </wsdl:operation>
  <wsdl:operation name="BulkLMTUpdate">
    <soap:operation soapAction="http://Microsoft.Office.Server.UserProfiles/BulkLMTUpdate"
      style="document"/>
    <wsdl:input>
      <soap:body use="literal"/>
    </wsdl:input>
    <wsdl:output>
      <soap:body use="literal"/>
    </wsdl:output>
    <wsdl:fault name="FeedCacheFaultFault">
      <soap:fault use="literal" name="FeedCacheFaultFault" namespace=""/>
    </wsdl:fault>
  </wsdl:operation>

```

```

    </wsdl:fault>
  </wsdl:operation>
  <wsdl:operation name="BulkAddFeedEntry">
    <soap:operation
soapAction="http://Microsoft.Office.Server.UserProfiles/BulkAddFeedEntry" style="document"/>
    <wsdl:input>
      <soap:body use="literal"/>
    </wsdl:input>
    <wsdl:output>
      <soap:body use="literal"/>
    </wsdl:output>
    <wsdl:fault name="FeedCacheFaultFault">
      <soap:fault use="literal" name="FeedCacheFaultFault" namespace=""/>
    </wsdl:fault>
  </wsdl:operation>
  <wsdl:operation name="IsRepopulationNeeded">
    <soap:operation
soapAction="http://Microsoft.Office.Server.UserProfiles/IsRepopulationNeeded"
style="document"/>
    <wsdl:input>
      <soap:body use="literal"/>
    </wsdl:input>
    <wsdl:output>
      <soap:body use="literal"/>
    </wsdl:output>
    <wsdl:fault name="FeedCacheFaultFault">
      <soap:fault use="literal" name="FeedCacheFaultFault" namespace=""/>
    </wsdl:fault>
  </wsdl:operation>
  <wsdl:operation name="GetFeeds">
    <soap:operation soapAction="http://Microsoft.Office.Server.UserProfiles/GetFeeds"
style="document"/>
    <wsdl:input>
      <soap:body use="literal"/>
    </wsdl:input>
    <wsdl:output>
      <soap:body use="literal"/>
    </wsdl:output>
    <wsdl:fault name="FeedCacheFaultFault">
      <soap:fault use="literal" name="FeedCacheFaultFault" namespace=""/>
    </wsdl:fault>
  </wsdl:operation>
</wsdl:binding>
</wsdl:definitions>

```

## 7 Appendix B: Full XML Schema

For ease of implementation, the following sections provide the full XML schema for this protocol.

Schema name	Prefix	Section
http://tempuri.org/	tns	<a href="#">7.1</a>
http://schemas.microsoft.com/2003/10/Serialization/	q11	<a href="#">7.2</a>
http://Microsoft/Office/Server/FeedCache	q1	<a href="#">7.3</a>
http://Microsoft/Office/Server/FeedyCache	q2	<a href="#">7.4</a>
http://schemas.microsoft.com/2003/10/Serialization/Arrays	q3	<a href="#">7.5</a>
http://schemas.datacontract.org/2004/07/System.Collections.Generic	q23	<a href="#">7.6</a>

### 7.1 http://tempuri.org/ Schema

```
<?xml version="1.0"?>
<xs:schema elementFormDefault="qualified" targetNamespace="http://tempuri.org/"
xmlns:xs="http://www.w3.org/2001/XMLSchema">
  <xs:import namespace="http://Microsoft/Office/Server/FeedCache"/>
  <xs:import namespace="http://schemas.microsoft.com/2003/10/Serialization/" />
  <xs:import namespace="http://schemas.datacontract.org/2004/07/System.Collections.Generic"/>
  <xs:element name="AddFeedEntry">
    <xs:complexType>
      <xs:sequence>
        <xs:element xmlns:q1="http://Microsoft/Office/Server/FeedCache" minOccurs="0"
name="entity" nillable="true" type="q1:E"/>
        <xs:element xmlns:q1="http://Microsoft/Office/Server/FeedCache" minOccurs="0"
name="entry" nillable="true" type="q1:P"/>
      </xs:sequence>
    </xs:complexType>
  </xs:element>
  <xs:element name="AddFeedEntryResponse">
    <xs:complexType>
      <xs:sequence>
        <xs:element minOccurs="0" name="AddFeedEntryResult" type="xs:boolean"/>
      </xs:sequence>
    </xs:complexType>
  </xs:element>
  <xs:element name="AddFeedEntries">
    <xs:complexType>
      <xs:sequence>
        <xs:element xmlns:q1="http://Microsoft/Office/Server/FeedCache" minOccurs="0"
name="entries" nillable="true" type="q1:PC"/>
      </xs:sequence>
    </xs:complexType>
  </xs:element>
  <xs:element name="AddFeedEntriesResponse">
    <xs:complexType>
      <xs:sequence>
        <xs:element minOccurs="0" name="AddFeedEntriesResult" type="xs:boolean"/>
      </xs:sequence>
    </xs:complexType>
  </xs:element>
</xs:schema>
```

```

</xs:element>
<xs:element name="RemoveFeedEntry">
  <xs:complexType>
    <xs:sequence>
      <xs:element xmlns:q1="http://Microsoft/Office/Server/FeedCache" minOccurs="0"
name="entity" nillable="true" type="q1:E"/>
      <xs:element xmlns:q1="http://Microsoft/Office/Server/FeedCache" minOccurs="0"
name="entry" nillable="true" type="q1:P"/>
    </xs:sequence>
  </xs:complexType>
</xs:element>
<xs:element name="RemoveFeedEntryResponse">
  <xs:complexType>
    <xs:sequence>
      <xs:element minOccurs="0" name="RemoveFeedEntryResult" type="xs:boolean"/>
    </xs:sequence>
  </xs:complexType>
</xs:element>
<xs:element name="RemoveEntityFeed">
  <xs:complexType>
    <xs:sequence>
      <xs:element xmlns:q1="http://Microsoft/Office/Server/FeedCache" minOccurs="0"
name="entity" nillable="true" type="q1:E"/>
    </xs:sequence>
  </xs:complexType>
</xs:element>
<xs:element name="RemoveEntityFeedResponse">
  <xs:complexType>
    <xs:sequence>
      <xs:element minOccurs="0" name="RemoveEntityFeedResult" type="xs:boolean"/>
    </xs:sequence>
  </xs:complexType>
</xs:element>
<xs:element name="RemoveInternalRegions">
  <xs:complexType>
    <xs:sequence>
      <xs:element minOccurs="0" name="webAppUrl" nillable="true" type="xs:string"/>
    </xs:sequence>
  </xs:complexType>
</xs:element>
<xs:element name="RemoveInternalRegionsResponse">
  <xs:complexType>
    <xs:sequence>
      <xs:element minOccurs="0" name="RemoveInternalRegionsResult" type="xs:boolean"/>
    </xs:sequence>
  </xs:complexType>
</xs:element>
<xs:element name="GetPublishedFeed">
  <xs:complexType>
    <xs:sequence>
      <xs:element xmlns:q1="http://Microsoft/Office/Server/FeedCache" minOccurs="0"
name="entity" nillable="true" type="q1:E"/>
      <xs:element minOccurs="0" name="maxItemsPerEntity" type="xs:int"/>
      <xs:element minOccurs="0" name="newerThan" nillable="true" type="xs:dateTime"/>
      <xs:element minOccurs="0" name="olderThan" nillable="true" type="xs:dateTime"/>
    </xs:sequence>
  </xs:complexType>
</xs:element>
<xs:element name="GetPublishedFeedResponse">

```

```

    <xs:complexType>
      <xs:sequence>
        <xs:element xmlns:q1="http://Microsoft/Office/Server/FeedCache" minOccurs="0"
name="GetPublishedFeedResult" nillable="true" type="q1:PC"/>
      </xs:sequence>
    </xs:complexType>
  </xs:element>
  <xs:element name="GetConsolidatedFeed">
    <xs:complexType>
      <xs:sequence>
        <xs:element xmlns:q1="http://Microsoft/Office/Server/FeedCache" minOccurs="0"
name="entity" nillable="true" type="q1:E"/>
        <xs:element xmlns:q1="http://Microsoft/Office/Server/FeedCache" minOccurs="0"
name="followedEntities" nillable="true" type="q1:ArrayOfE"/>
        <xs:element minOccurs="0" name="maxItemsPerEntity" type="xs:int"/>
        <xs:element minOccurs="0" name="maxNumberEntities" type="xs:int"/>
        <xs:element minOccurs="0" name="maxTotalItems" type="xs:int"/>
        <xs:element xmlns:q11="http://schemas.microsoft.com/2003/10/Serialization/"
minOccurs="0" name="timeout" type="q11:duration"/>
        <xs:element minOccurs="0" name="newerThan" nillable="true" type="xs:dateTime"/>
        <xs:element minOccurs="0" name="olderThan" nillable="true" type="xs:dateTime"/>
      </xs:sequence>
    </xs:complexType>
  </xs:element>
  <xs:element name="GetConsolidatedFeedResponse">
    <xs:complexType>
      <xs:sequence>
        <xs:element xmlns:q1="http://Microsoft/Office/Server/FeedCache" minOccurs="0"
name="GetConsolidatedFeedResult" nillable="true" type="q1:PC"/>
      </xs:sequence>
    </xs:complexType>
  </xs:element>
  <xs:element name="GetCategoricalFeed">
    <xs:complexType>
      <xs:sequence>
        <xs:element xmlns:q1="http://Microsoft/Office/Server/FeedCache" minOccurs="0"
name="entity" nillable="true" type="q1:E"/>
        <xs:element xmlns:q1="http://Microsoft/Office/Server/FeedCache" minOccurs="0"
name="followedEntities" nillable="true" type="q1:ArrayOfE"/>
        <xs:element minOccurs="0" name="newerThan" nillable="true" type="xs:dateTime"/>
        <xs:element minOccurs="0" name="olderThan" nillable="true" type="xs:dateTime"/>
        <xs:element xmlns:q11="http://schemas.microsoft.com/2003/10/Serialization/"
minOccurs="0" name="timeout" nillable="true" type="q11:duration"/>
      </xs:sequence>
    </xs:complexType>
  </xs:element>
  <xs:element name="GetCategoricalFeedResponse">
    <xs:complexType>
      <xs:sequence>
        <xs:element xmlns:q1="http://Microsoft/Office/Server/FeedCache" minOccurs="0"
name="GetCategoricalFeedResult" nillable="true" type="q1:PC"/>
      </xs:sequence>
    </xs:complexType>
  </xs:element>
  <xs:element name="GetEntries">
    <xs:complexType>
      <xs:sequence>
        <xs:element xmlns:q1="http://Microsoft/Office/Server/FeedCache" minOccurs="0"
name="entryIdentifiers" nillable="true" type="q1:ArrayOfPI"/>
      </xs:sequence>
    </xs:complexType>
  </xs:element>

```

```

    </xs:complexType>
  </xs:element>
  <xs:element name="GetEntriesResponse">
    <xs:complexType>
      <xs:sequence>
        <xs:element xmlns:q1="http://Microsoft/Office/Server/FeedCache" minOccurs="0"
name="GetEntriesResult" nillable="true" type="q1:PC"/>
        </xs:sequence>
      </xs:complexType>
    </xs:element>
    <xs:element name="NewEntityFollower">
      <xs:complexType>
        <xs:sequence>
          <xs:element xmlns:q1="http://Microsoft/Office/Server/FeedCache" minOccurs="0"
name="entity" nillable="true" type="q1:E"/>
          </xs:sequence>
        </xs:complexType>
      </xs:element>
      <xs:element name="NewEntityFollowerResponse">
        <xs:complexType>
          <xs:sequence>
            <xs:element minOccurs="0" name="NewEntityFollowerResult" type="xs:boolean"/>
            </xs:sequence>
          </xs:complexType>
        </xs:element>
        <xs:element name="IsEntityActivelyFollowed">
          <xs:complexType>
            <xs:sequence>
              <xs:element xmlns:q1="http://Microsoft/Office/Server/FeedCache" minOccurs="0"
name="entity" nillable="true" type="q1:E"/>
              </xs:sequence>
            </xs:complexType>
          </xs:element>
          <xs:element name="IsEntityActivelyFollowedResponse">
            <xs:complexType>
              <xs:sequence>
                <xs:element minOccurs="0" name="IsEntityActivelyFollowedResult" type="xs:boolean"/>
                </xs:sequence>
              </xs:complexType>
            </xs:element>
            <xs:element name="RefreshFollowedEntities">
              <xs:complexType>
                <xs:sequence>
                  <xs:element xmlns:q1="http://Microsoft/Office/Server/FeedCache" minOccurs="0"
name="followedEntities" nillable="true" type="q1:ArrayOfE"/>
                  </xs:sequence>
                </xs:complexType>
              </xs:element>
              <xs:element name="RefreshFollowedEntitiesResponse">
                <xs:complexType>
                  <xs:sequence>
                    <xs:element minOccurs="0" name="RefreshFollowedEntitiesResult" type="xs:boolean"/>
                    </xs:sequence>
                  </xs:complexType>
                </xs:element>
                <xs:element name="BulkLMTUpdate">
                  <xs:complexType>
                    <xs:sequence>

```



```

        <xs:element xmlns:q11="http://schemas.microsoft.com/2003/10/Serialization/"
minOccurs="0" name="callerID" type="q11:guid"/>
        <xs:element
xmlns:q23="http://schemas.datacontract.org/2004/07/System.Collections.Generic" minOccurs="0"
name="lastModifiedTimes" nillable="true" type="q23:ArrayOfKeyValuePairOfELEHsv_S1RZJ"/>
        </xs:sequence>
    </xs:complexType>
</xs:element>
<xs:element name="BulkLMTUpdateResponse">
    <xs:complexType>
        <xs:sequence>
            <xs:element minOccurs="0" name="BulkLMTUpdateResult" type="xs:boolean"/>
        </xs:sequence>
    </xs:complexType>
</xs:element>
<xs:element name="BulkAddFeedEntry">
    <xs:complexType>
        <xs:sequence>
            <xs:element xmlns:q1="http://Microsoft/Office/Server/FeedCache" minOccurs="0"
name="entity" nillable="true" type="q1:E"/>
            <xs:element xmlns:q1="http://Microsoft/Office/Server/FeedCache" minOccurs="0"
name="entries" nillable="true" type="q1:ArrayOfP"/>
            <xs:element minOccurs="0" name="lastDeleted" nillable="true" type="xs:dateTime"/>
        </xs:sequence>
    </xs:complexType>
</xs:element>
<xs:element name="BulkAddFeedEntryResponse">
    <xs:complexType>
        <xs:sequence>
            <xs:element minOccurs="0" name="BulkAddFeedEntryResult" type="xs:boolean"/>
        </xs:sequence>
    </xs:complexType>
</xs:element>
<xs:element name="IsRepopulationNeeded">
    <xs:complexType>
        <xs:sequence>
            <xs:element xmlns:q11="http://schemas.microsoft.com/2003/10/Serialization/"
minOccurs="0" name="callerID" type="q11:guid"/>
        </xs:sequence>
    </xs:complexType>
</xs:element>
<xs:element name="IsRepopulationNeededResponse">
    <xs:complexType>
        <xs:sequence>
            <xs:element minOccurs="0" name="IsRepopulationNeededResult" type="xs:boolean"/>
        </xs:sequence>
    </xs:complexType>
</xs:element>
<xs:element name="GetFeeds">
    <xs:complexType>
        <xs:sequence>
            <xs:element xmlns:q11="http://schemas.microsoft.com/2003/10/Serialization/"
minOccurs="0" name="callerID" type="q11:guid"/>
            <xs:element xmlns:q1="http://Microsoft/Office/Server/FeedCache" minOccurs="0"
name="requestingEntity" nillable="true" type="q1:E"/>
            <xs:element
xmlns:q23="http://schemas.datacontract.org/2004/07/System.Collections.Generic" minOccurs="0"
name="entityNewerThanPair" nillable="true"
type="q23:ArrayOfKeyValuePairOfEdateTimeKkKWL8eh"/>
            <xs:element minOccurs="0" name="maxItemsPerEntity" type="xs:int"/>
        </xs:sequence>
    </xs:complexType>
</xs:element>

```

```

    </xs:sequence>
  </xs:complexType>
</xs:element>
<xs:element name="GetFeedsResponse">
  <xs:complexType>
    <xs:sequence>
      <xs:element xmlns:q1="http://Microsoft/Office/Server/FeedCache" minOccurs="0"
name="GetFeedsResult" nillable="true" type="q1:PC"/>
    </xs:sequence>
  </xs:complexType>
</xs:element>
</xs:schema>

```

## 7.2 http://schemas.microsoft.com/2003/10/Serialization/ Schema

```

<?xml version="1.0"?>
<xs:schema xmlns:q1="http://schemas.microsoft.com/2003/10/Serialization/"
attributeFormDefault="qualified" elementFormDefault="qualified"
targetNamespace="http://schemas.microsoft.com/2003/10/Serialization/"
xmlns:xs="http://www.w3.org/2001/XMLSchema">
  <xs:element name="anyType" nillable="true" type="xs:anyType"/>
  <xs:element name="anyURI" nillable="true" type="xs:anyURI"/>
  <xs:element name="base64Binary" nillable="true" type="xs:base64Binary"/>
  <xs:element name="boolean" nillable="true" type="xs:boolean"/>
  <xs:element name="byte" nillable="true" type="xs:byte"/>
  <xs:element name="dateTime" nillable="true" type="xs:dateTime"/>
  <xs:element name="decimal" nillable="true" type="xs:decimal"/>
  <xs:element name="double" nillable="true" type="xs:double"/>
  <xs:element name="float" nillable="true" type="xs:float"/>
  <xs:element name="int" nillable="true" type="xs:int"/>
  <xs:element name="long" nillable="true" type="xs:long"/>
  <xs:element name="QName" nillable="true" type="xs:QName"/>
  <xs:element name="short" nillable="true" type="xs:short"/>
  <xs:element name="string" nillable="true" type="xs:string"/>
  <xs:element name="unsignedByte" nillable="true" type="xs:unsignedByte"/>
  <xs:element name="unsignedInt" nillable="true" type="xs:unsignedInt"/>
  <xs:element name="unsignedLong" nillable="true" type="xs:unsignedLong"/>
  <xs:element name="unsignedShort" nillable="true" type="xs:unsignedShort"/>
  <xs:element name="char" nillable="true" type="q1:char"/>
  <xs:simpleType name="char">
    <xs:restriction base="xs:int"/>
  </xs:simpleType>
  <xs:element name="duration" nillable="true" type="q1:duration"/>
  <xs:simpleType name="duration">
    <xs:restriction base="xs:duration">
      <xs:pattern value="\-?P(\d*D)?(T(\d*H)?(\d*M)?(\d*(\.\d*)?S)?)?"/>
      <xs:minInclusive value="-P10675199DT2H48M5.4775808S"/>
      <xs:maxInclusive value="P10675199DT2H48M5.4775807S"/>
    </xs:restriction>
  </xs:simpleType>
  <xs:element name="guid" nillable="true" type="q1:guid"/>
  <xs:simpleType name="guid">
    <xs:restriction base="xs:string">
      <xs:pattern value="[\da-fA-F]{8}-[\da-fA-F]{4}-[\da-fA-F]{4}-[\da-fA-F]{4}-[\da-fA-F]{12}"/>
    </xs:restriction>
  </xs:simpleType>
  <xs:attribute name="FactoryType" type="xs:QName"/>

```

```

    <xs:attribute name="Id" type="xs:ID"/>
    <xs:attribute name="Ref" type="xs:IDREF"/>
</xs:schema>

```

### 7.3 http://Microsoft/Office/Server/FeedCache Schema

```

<?xml version="1.0"?>
<xs:schema xmlns:q1="http://Microsoft/Office/Server/FeedCache"
xmlns:q11="http://schemas.microsoft.com/2003/10/Serialization/"
elementFormDefault="qualified" targetNamespace="http://Microsoft/Office/Server/FeedCache"
xmlns:xs="http://www.w3.org/2001/XMLSchema">
  <xs:import namespace="http://Microsoft/Office/Server/FeedCache"/>
  <xs:import namespace="http://schemas.microsoft.com/2003/10/Serialization/" />
  <xs:import namespace="http://schemas.microsoft.com/2003/10/Serialization/Arrays" />
  <xs:complexType name="E">
    <xs:sequence>
      <xs:element xmlns:q2="http://Microsoft/Office/Server/FeedCache" minOccurs="0"
name="ET" type="q2:ET"/>
      <xs:element minOccurs="0" name="LID" type="q11:guid"/>
      <xs:element minOccurs="0" name="PID" type="q11:guid"/>
      <xs:element minOccurs="0" name="SID" type="q11:guid"/>
      <xs:element minOccurs="0" name="Url" nillable="true" type="xs:string"/>
      <xs:element minOccurs="0" name="WID" type="q11:guid"/>
    </xs:sequence>
  </xs:complexType>
  <xs:element name="E" nillable="true" type="q1:E"/>
  <xs:complexType name="P">
    <xs:sequence>
      <xs:element minOccurs="0" name="AD" nillable="true" type="xs:string"/>
      <xs:element minOccurs="0" name="D1" nillable="true" type="xs:string"/>
      <xs:element minOccurs="0" name="D2" nillable="true" type="xs:string"/>
      <xs:element minOccurs="0" name="D3" nillable="true" type="xs:string"/>
      <xs:element minOccurs="0" name="EID" nillable="true" type="xs:string"/>
      <xs:element minOccurs="0" name="En" nillable="true" type="q1:E"/>
      <xs:element minOccurs="0" name="M" type="xs:dateTime"/>
      <xs:element minOccurs="0" name="MBD" type="xs:int"/>
      <xs:element minOccurs="0" name="MBT" type="xs:int"/>
    </xs:sequence>
  </xs:complexType>
  <xs:element name="P" nillable="true" type="q1:P"/>
  <xs:complexType name="FeedCacheFault">
    <xs:sequence>
      <xs:element minOccurs="0" name="FailureDetail" nillable="true" type="xs:string"/>
      <xs:element minOccurs="0" name="FaultCode" type="q1:FeedCacheFaultCodes"/>
    </xs:sequence>
  </xs:complexType>
  <xs:element name="FeedCacheFault" nillable="true" type="q1:FeedCacheFault"/>
  <xs:simpleType name="FeedCacheFaultCodes">
    <xs:restriction base="xs:string">
      <xs:enumeration value="UnknownError"/>
      <xs:enumeration value="InvalidInput"/>
      <xs:enumeration value="InvalidConfiguration"/>
      <xs:enumeration value="LMTOutOfDate"/>
    </xs:restriction>
  </xs:simpleType>
  <xs:element name="FeedCacheFaultCodes" nillable="true" type="q1:FeedCacheFaultCodes"/>
  <xs:complexType name="PC">
    <xs:sequence>

```

```

    <xs:element minOccurs="0" name="D" nillable="true" type="q1:ArrayOfEDT"/>
    <xs:element minOccurs="0" name="En" nillable="true" type="q1:ArrayOfP"/>
    <xs:element minOccurs="0" name="I" type="xs:boolean"/>
    <xs:element minOccurs="0" name="M" type="xs:int"/>
    <xs:element minOccurs="0" name="N" nillable="true" type="xs:dateTime"/>
    <xs:element minOccurs="0" name="O" nillable="true" type="xs:dateTime"/>
    <xs:element minOccurs="0" name="R" type="xs:boolean"/>
    <xs:element minOccurs="0" name="S" type="xs:boolean"/>
    <xs:element minOccurs="0" name="T" type="xs:boolean"/>
  </xs:sequence>
</xs:complexType>
<xs:element name="PC" nillable="true" type="q1:PC"/>
<xs:complexType name="ArrayOfEDT">
  <xs:sequence>
    <xs:element minOccurs="0" maxOccurs="unbounded" name="EDT" nillable="true"
type="q1:EDT"/>
  </xs:sequence>
</xs:complexType>
<xs:element name="ArrayOfEDT" nillable="true" type="q1:ArrayOfEDT"/>
<xs:complexType name="EDT">
  <xs:sequence>
    <xs:element minOccurs="0" name="D" type="xs:dateTime"/>
    <xs:element minOccurs="0" name="E" nillable="true" type="q1:E"/>
  </xs:sequence>
</xs:complexType>
<xs:element name="EDT" nillable="true" type="q1:EDT"/>
<xs:complexType name="ArrayOfP">
  <xs:sequence>
    <xs:element minOccurs="0" maxOccurs="unbounded" name="P" nillable="true" type="q1:P"/>
  </xs:sequence>
</xs:complexType>
<xs:element name="ArrayOfP" nillable="true" type="q1:ArrayOfP"/>
<xs:complexType name="ArrayOfE">
  <xs:sequence>
    <xs:element minOccurs="0" maxOccurs="unbounded" name="E" nillable="true" type="q1:E"/>
  </xs:sequence>
</xs:complexType>
<xs:element name="ArrayOfE" nillable="true" type="q1:ArrayOfE"/>
<xs:complexType name="ArrayOfPI">
  <xs:sequence>
    <xs:element minOccurs="0" maxOccurs="unbounded" name="PI" nillable="true"
type="q1:PI"/>
  </xs:sequence>
</xs:complexType>
<xs:element name="ArrayOfPI" nillable="true" type="q1:ArrayOfPI"/>
<xs:complexType name="PI">
  <xs:sequence>
    <xs:element minOccurs="0" name="E" nillable="true" type="q1:E"/>
    <xs:element xmlns:q3="http://schemas.microsoft.com/2003/10/Serialization/Arrays"
minOccurs="0" name="I" nillable="true" type="q3:ArrayOfstring"/>
  </xs:sequence>
</xs:complexType>
<xs:element name="PI" nillable="true" type="q1:PI"/>
<xs:complexType name="LE">
  <xs:sequence>
    <xs:element minOccurs="0" name="b" type="xs:unsignedLong"/>
    <xs:element minOccurs="0" name="r" nillable="true" type="xs:dateTime"/>
    <xs:element minOccurs="0" name="t" type="xs:dateTime"/>
  </xs:sequence>

```

```

    </xs:complexType>
    <xs:element name="LE" nillable="true" type="q1:LE"/>
</xs:schema>

```

#### 7.4 <http://Microsoft/Office/Server/FeedyCache> Schema

```

<?xml version="1.0"?>
<xs:schema xmlns:q2="http://Microsoft/Office/Server/FeedyCache"
elementFormDefault="qualified" targetNamespace="http://Microsoft/Office/Server/FeedyCache"
xmlns:xs="http://www.w3.org/2001/XMLSchema">
  <xs:import namespace="http://schemas.microsoft.com/2003/10/Serialization/" />
  <xs:simpleType name="ET">
    <xs:list>
      <xs:simpleType>
        <xs:restriction base="xs:string">
          <xs:enumeration value="Unknown"/>
          <xs:enumeration value="User"/>
          <xs:enumeration value="Content"/>
          <xs:enumeration value="Community"/>
          <xs:enumeration value="Site"/>
          <xs:enumeration value="Tag"/>
          <xs:enumeration value="UseUniqueID"/>
        </xs:restriction>
      </xs:simpleType>
    </xs:list>
  </xs:simpleType>
  <xs:element name="ET" nillable="true" type="q2:ET"/>
</xs:schema>

```

#### 7.5 <http://schemas.microsoft.com/2003/10/Serialization/Arrays> Schema

```

<?xml version="1.0"?>
<xs:schema xmlns:q3="http://schemas.microsoft.com/2003/10/Serialization/Arrays"
elementFormDefault="qualified"
targetNamespace="http://schemas.microsoft.com/2003/10/Serialization/Arrays"
xmlns:xs="http://www.w3.org/2001/XMLSchema">
  <xs:complexType name="ArrayOfstring">
    <xs:sequence>
      <xs:element minOccurs="0" maxOccurs="unbounded" name="string" nillable="true"
type="xs:string"/>
    </xs:sequence>
  </xs:complexType>
  <xs:element name="ArrayOfstring" nillable="true" type="q3:ArrayOfstring"/>
</xs:schema>

```

#### 7.6 <http://schemas.datacontract.org/2004/07/System.Collections.Generic> Schema

```

<?xml version="1.0"?>
<xs:schema xmlns:q23="http://schemas.datacontract.org/2004/07/System.Collections.Generic"
elementFormDefault="qualified"
targetNamespace="http://schemas.datacontract.org/2004/07/System.Collections.Generic"
xmlns:xs="http://www.w3.org/2001/XMLSchema">
  <xs:import namespace="http://Microsoft/Office/Server/FeedCache"/>
  <xs:import namespace="http://schemas.microsoft.com/2003/10/Serialization/" />

```

```

<xs:complexType name="ArrayOfKeyValuePairOfELEHsv_SlRZJ">
  <xs:sequence>
    <xs:element minOccurs="0" maxOccurs="unbounded" name="KeyValuePairOfELEHsv_SlRZJ"
type="q23:KeyValuePairOfELEHsv_SlRZJ"/>
  </xs:sequence>
</xs:complexType>
<xs:element name="ArrayOfKeyValuePairOfELEHsv_SlRZJ" nillable="true"
type="q23:ArrayOfKeyValuePairOfELEHsv_SlRZJ"/>
<xs:complexType name="KeyValuePairOfELEHsv_SlRZJ">
  <xs:sequence>
    <xs:element xmlns:q1="http://Microsoft/Office/Server/FeedCache" name="key"
nillable="true" type="q1:E"/>
    <xs:element xmlns:q1="http://Microsoft/Office/Server/FeedCache" name="value"
nillable="true" type="q1:LE"/>
  </xs:sequence>
</xs:complexType>
<xs:element name="KeyValuePairOfELEHsv_SlRZJ" nillable="true"
type="q23:KeyValuePairOfELEHsv_SlRZJ"/>
<xs:complexType name="ArrayOfKeyValuePairOfEdateTimeKkKWL8eh">
  <xs:sequence>
    <xs:element minOccurs="0" maxOccurs="unbounded" name="KeyValuePairOfEdateTimeKkKWL8eh"
type="q23:KeyValuePairOfEdateTimeKkKWL8eh"/>
  </xs:sequence>
</xs:complexType>
<xs:element name="ArrayOfKeyValuePairOfEdateTimeKkKWL8eh" nillable="true"
type="q23:ArrayOfKeyValuePairOfEdateTimeKkKWL8eh"/>
<xs:complexType name="KeyValuePairOfEdateTimeKkKWL8eh">
  <xs:sequence>
    <xs:element xmlns:q1="http://Microsoft/Office/Server/FeedCache" name="key"
nillable="true" type="q1:E"/>
    <xs:element name="value" type="xs:dateTime"/>
  </xs:sequence>
</xs:complexType>
<xs:element name="KeyValuePairOfEdateTimeKkKWL8eh" nillable="true"
type="q23:KeyValuePairOfEdateTimeKkKWL8eh"/>
</xs:schema>

```

## 8 Appendix C: Product Behavior

The information in this specification is applicable to the following Microsoft products or supplemental software. References to product versions include released service packs:

- Microsoft® SharePoint® Server 2013 Preview

Exceptions, if any, are noted below. If a service pack or Quick Fix Engineering (QFE) number appears with the product version, behavior changed in that service pack or QFE. The new behavior also applies to subsequent service packs of the product unless otherwise specified. If a product edition appears with the product version, behavior is different in that product edition.

Unless otherwise specified, any statement of optional behavior in this specification that is prescribed using the terms SHOULD or SHOULD NOT implies product behavior in accordance with the SHOULD or SHOULD NOT prescription. Unless otherwise specified, the term MAY implies that the product does not follow the prescription.

## 9 Change Tracking

No table of changes is available. The document is either new or has had no changes since its last release.

Preliminary



## 10 Index

### A

Abstract data model  
  [server](#) 23  
[Applicability](#) 11  
[ArrayOfE complex type](#) 14  
[ArrayOfEDT complex type](#) 15  
[ArrayOfP complex type](#) 15  
[Attribute groups](#) 21  
[Attributes](#) 20

### C

[Capability negotiation](#) 12  
[Change tracking](#) 88  
[char simple type](#) 18  
[Complex types](#) 14  
  [ArrayOfE](#) 14  
  [ArrayOfEDT](#) 15  
  [ArrayOfP](#) 15  
[E](#) 15  
[EDT](#) 16  
[FeedCacheFault](#) 16  
[P](#) 17  
[PC](#) 17

### D

Data model - abstract  
  [server](#) 23  
[duration simple type](#) 19

### E

[E complex type](#) 15  
[EDT complex type](#) 16  
[ET simple type](#) 19  
Events  
  [local - server](#) 62  
  [timer - server](#) 62

### F

[FeedCacheFault complex type](#) 16  
[FeedCacheFaultCodes simple type](#) 20  
[Fields - vendor-extensible](#) 12  
[Full WSDL](#) 67  
[Full XML Schema](#) 77  
  <http://Microsoft/Office/Server/FeedCache Schema> 83  
  <http://Microsoft/Office/Server/FeedyCache Schema> 85  
  <http://schemas.datacontract.org/2004/07/System.Collections.Generic.Schema> 85  
  <http://schemas.microsoft.com/2003/10/Serialization/ Schema> 82  
  <http://schemas.microsoft.com/2003/10/Serialization/ Arrays Schema> 85  
  <http://tempuri.org/ Schema> 77

### G

[Glossary](#) 9  
[Groups](#) 20  
[guid simple type](#) 20

### I

[Implementer - security considerations](#) 66  
[Index of security parameters](#) 66  
[Informative references](#) 10  
Initialization  
  [server](#) 24  
[Introduction](#) 9

### L

Local events  
  [server](#) 62

### M

Message processing  
  [server](#) 24  
Messages  
  [ArrayOfE complex type](#) 14  
  [ArrayOfEDT complex type](#) 15  
  [ArrayOfP complex type](#) 15  
  [attribute groups](#) 21  
  [attributes](#) 20  
  [char simple type](#) 18  
  [complex types](#) 14  
  [duration simple type](#) 19  
  [E complex type](#) 15  
  [EDT complex type](#) 16  
  [elements](#) 14  
  [enumerated](#) 14  
  [ET simple type](#) 19  
  [FeedCacheFault complex type](#) 16  
  [FeedCacheFaultCodes simple type](#) 20  
  [groups](#) 20  
  [guid simple type](#) 20  
  [namespaces](#) 13  
  [P complex type](#) 17  
  [PC complex type](#) 17  
  [simple types](#) 18  
  [syntax](#) 13  
  [transport](#) 13

### N

[Namespaces](#) 13  
[Normative references](#) 10

### O

Operations  
  [AddFeedEntries](#) 58

[AddFeedEntry](#) 25  
[BulkAddFeedEntry](#) 27  
[BulkLMTUpdate](#) 29  
[GetCategoricalFeed](#) 33  
[GetConsolidatedFeed](#) 35  
[GetEntries](#) 37  
[GetFeeds](#) 41  
[GetPublishedFeed](#) 44  
[IsEntityActivelyFollowed](#) 46  
[IsRepopulationNeeded](#) 48  
[NewEntityFollower](#) 50  
[RefreshFollowedEntities](#) 52  
[RemoveEntityFeed](#) 54  
[RemoveFeedEntry](#) 56  
[RemoveInternalRegions](#) 60  
[Overview \(synopsis\)](#) 11

## P

[P complex type](#) 17  
[Parameters - security index](#) 66  
[PC complex type](#) 17  
[Preconditions](#) 11  
[Prerequisites](#) 11  
[Product behavior](#) 87

## R

[References](#) 10  
  [informative](#) 10  
  [normative](#) 10  
[Relationship to other protocols](#) 11

## S

Security  
  [implementer considerations](#) 66  
  [parameter index](#) 66  
Sequencing rules  
  [server](#) 24  
Server  
  [abstract data model](#) 23  
  [AddFeedEntries operation](#) 58  
  [AddFeedEntry operation](#) 25  
  [BulkAddFeedEntry operation](#) 27  
  [BulkLMTUpdate operation](#) 29  
  [GetCategoricalFeed operation](#) 33  
  [GetConsolidatedFeed operation](#) 35  
  [GetEntries operation](#) 37  
  [GetFeeds operation](#) 41  
  [GetPublishedFeed operation](#) 44  
  [initialization](#) 24  
  [IsEntityActivelyFollowed operation](#) 46  
  [IsRepopulationNeeded operation](#) 48  
  [local events](#) 62  
  [message processing](#) 24  
  [NewEntityFollower operation](#) 50  
  [RefreshFollowedEntities operation](#) 52  
  [RemoveEntityFeed operation](#) 54  
  [RemoveFeedEntry operation](#) 56  
  [RemoveInternalRegions operation](#) 60  
  [sequencing rules](#) 24

[timer events](#) 62  
  [timers](#) 24  
[Server details](#) 22  
[Simple types](#) 18  
  [char](#) 18  
  [duration](#) 19  
  [ET](#) 19  
  [FeedCacheFaultCodes](#) 20  
  [guid](#) 20  
[Standards assignments](#) 12  
Syntax  
  [messages - overview](#) 13

## T

Timer events  
  [server](#) 62  
Timers  
  [server](#) 24  
[Tracking changes](#) 88  
[Transport](#) 13  
Types  
  [complex](#) 14  
  [simple](#) 18

## V

[Vendor-extensible fields](#) 12  
[Versioning](#) 12

## W

[WSDL](#) 67

## X

[XML Schema](#) 77  
  [http://Microsoft/Office/Server/FeedCache Schema](#) 83  
  [http://Microsoft/Office/Server/FeedCache Schema](#) 85  
  [http://schemas.datacontract.org/2004/07/System.Collections.Generic.Schema](#) 85  
  [http://schemas.microsoft.com/2003/10/Serialization/ Schema](#) 82  
  [http://schemas.microsoft.com/2003/10/Serialization/Arrays Schema](#) 85  
  [http://tempuri.org/ Schema](#) 77