

[MS-SPEMAWS]:

SharePoint Email Web Service Protocol

Intellectual Property Rights Notice for Open Specifications Documentation

- **Technical Documentation.** Microsoft publishes Open Specifications documentation (“this documentation”) for protocols, file formats, data portability, computer languages, and standards support. Additionally, overview documents cover inter-protocol relationships and interactions.
- **Copyrights.** This documentation is covered by Microsoft copyrights. Regardless of any other terms that are contained in the terms of use for the Microsoft website that hosts this documentation, you can make copies of it in order to develop implementations of the technologies that are described in this documentation and can distribute portions of it in your implementations that use these technologies or in your documentation as necessary to properly document the implementation. You can also distribute in your implementation, with or without modification, any schemas, IDLs, or code samples that are included in the documentation. This permission also applies to any documents that are referenced in the Open Specifications documentation.
- **No Trade Secrets.** Microsoft does not claim any trade secret rights in this documentation.
- **Patents.** Microsoft has patents that might cover your implementations of the technologies described in the Open Specifications documentation. Neither this notice nor Microsoft's delivery of this documentation grants any licenses under those patents or any other Microsoft patents. However, a given Open Specifications document might be covered by the Microsoft [Open Specifications Promise](#) or the [Microsoft Community Promise](#). If you would prefer a written license, or if the technologies described in this documentation are not covered by the Open Specifications Promise or Community Promise, as applicable, patent licenses are available by contacting iplg@microsoft.com.
- **License Programs.** To see all of the protocols in scope under a specific license program and the associated patents, visit the [Patent Map](#).
- **Trademarks.** The names of companies and products contained in this documentation might be covered by trademarks or similar intellectual property rights. This notice does not grant any licenses under those rights. For a list of Microsoft trademarks, visit www.microsoft.com/trademarks.
- **Fictitious Names.** The example companies, organizations, products, domain names, email addresses, logos, people, places, and events that are depicted in this documentation are fictitious. No association with any real company, organization, product, domain name, email address, logo, person, place, or event is intended or should be inferred.

Reservation of Rights. All other rights are reserved, and this notice does not grant any rights other than as specifically described above, whether by implication, estoppel, or otherwise.

Tools. The Open Specifications documentation does not require the use of Microsoft programming tools or programming environments in order for you to develop an implementation. If you have access to Microsoft programming tools and environments, you are free to take advantage of them. Certain Open Specifications documents are intended for use in conjunction with publicly available standards specifications and network programming art and, as such, assume that the reader either is familiar with the aforementioned material or has immediate access to it.

Support. For questions and support, please contact dochelp@microsoft.com.

Revision Summary

Date	Revision History	Revision Class	Comments
4/4/2008	0.1	New	Initial Availability
6/27/2008	1.0	Major	Revised and edited the technical content
8/15/2008	1.01	Editorial	Revised and edited the technical content
12/12/2008	1.02	Editorial	Revised and edited the technical content
7/13/2009	1.03	Major	Revised and edited the technical content
8/28/2009	1.04	Editorial	Revised and edited the technical content
11/6/2009	1.05	Editorial	Revised and edited the technical content
2/19/2010	2.0	Minor	Updated the technical content
3/31/2010	2.01	Editorial	Revised and edited the technical content
4/30/2010	2.02	Editorial	Revised and edited the technical content
6/7/2010	2.03	Editorial	Revised and edited the technical content
6/29/2010	2.04	Minor	Clarified the meaning of the technical content.
7/23/2010	2.04	None	No changes to the meaning, language, or formatting of the technical content.
9/27/2010	2.04	None	No changes to the meaning, language, or formatting of the technical content.
11/15/2010	2.04	None	No changes to the meaning, language, or formatting of the technical content.
12/17/2010	2.04	None	No changes to the meaning, language, or formatting of the technical content.
3/18/2011	2.04	None	No changes to the meaning, language, or formatting of the technical content.
6/10/2011	2.04	None	No changes to the meaning, language, or formatting of the technical content.
1/20/2012	3.0	Major	Significantly changed the technical content.
4/11/2012	3.0	None	No changes to the meaning, language, or formatting of the technical content.
7/16/2012	3.0	None	No changes to the meaning, language, or formatting of the technical content.
9/12/2012	3.0	None	No changes to the meaning, language, or formatting of the technical content.
10/8/2012	3.1	Minor	Clarified the meaning of the technical content.
2/11/2013	3.1	None	No changes to the meaning, language, or formatting of the technical content.
7/30/2013	3.2	Minor	Clarified the meaning of the technical content.

Date	Revision History	Revision Class	Comments
11/18/2013	3.2	None	No changes to the meaning, language, or formatting of the technical content.
2/10/2014	3.2	None	No changes to the meaning, language, or formatting of the technical content.
4/30/2014	3.3	Minor	Clarified the meaning of the technical content.
7/31/2014	3.3	None	No changes to the meaning, language, or formatting of the technical content.
10/30/2014	3.3	None	No changes to the meaning, language, or formatting of the technical content.
3/16/2015	4.0	Major	Significantly changed the technical content.
2/26/2016	5.0	Major	Significantly changed the technical content.
7/15/2016	5.0	None	No changes to the meaning, language, or formatting of the technical content.
9/14/2016	5.0	None	No changes to the meaning, language, or formatting of the technical content.
7/24/2018	6.0	Major	Significantly changed the technical content.
10/1/2018	7.0	Major	Significantly changed the technical content.
6/18/2019	7.0	None	No changes to the meaning, language, or formatting of the technical content.
4/22/2021	8.0	Major	Significantly changed the technical content.
7/20/2021	9.0	Major	Significantly changed the technical content.
8/17/2021	10.0	Major	Significantly changed the technical content.
10/5/2021	10.0	None	No changes to the meaning, language, or formatting of the technical content.
2/15/2022	10.0	None	No changes to the meaning, language, or formatting of the technical content.

Table of Contents

1	Introduction	8
1.1	Glossary	8
1.2	References	9
1.2.1	Normative References	9
1.2.2	Informative References	10
1.3	Overview	10
1.4	Relationship to Other Protocols	10
1.5	Prerequisites/Preconditions	11
1.6	Applicability Statement	11
1.7	Versioning and Capability Negotiation	11
1.8	Vendor-Extensible Fields	11
1.9	Standards Assignments.....	11
2	Messages.....	12
2.1	Transport	12
2.2	Common Message Syntax	12
2.2.1	Namespaces	12
2.2.2	Messages.....	12
2.2.3	Elements	12
2.2.4	Complex Types.....	13
2.2.4.1	ArrayOfString	13
2.2.4.2	RequestInfo	13
2.2.4.3	RequestResponse.....	14
2.2.5	Simple Types	14
2.2.5.1	ContactFlags	15
2.2.5.2	DistributionGroupFlags	15
2.2.5.3	guid	15
2.2.5.4	RequestStatus	16
2.2.6	Attributes	17
2.2.7	Groups	17
2.2.8	Attribute Groups.....	17
2.2.9	Common Data Structures	17
3	Protocol Details	18
3.1	SharepointEmailWSSoap Server Details	18
3.1.1	Abstract Data Model.....	18
3.1.2	Timers	19
3.1.3	Initialization.....	19
3.1.4	Message Processing Events and Sequencing Rules	19
3.1.4.1	ChangeContactsMembershipInDistributionGroup	19
3.1.4.1.1	Messages	20
3.1.4.1.1.1	ChangeContactsMembershipInDistributionGroupSoapIn	20
3.1.4.1.1.2	ChangeContactsMembershipInDistributionGroupSoapOut	20
3.1.4.1.2	Elements.....	20
3.1.4.1.2.1	ChangeContactsMembershipInDistributionGroup	21
3.1.4.1.2.2	ChangeContactsMembershipInDistributionGroupResponse.....	21
3.1.4.1.3	Complex Types	22
3.1.4.1.4	Simple Types	22
3.1.4.1.5	Attributes	22
3.1.4.1.6	Groups.....	22
3.1.4.1.7	Attribute Groups.....	22
3.1.4.2	ChangeUsersMembershipInDistributionGroup	22
3.1.4.2.1	Messages	23
3.1.4.2.1.1	ChangeUsersMembershipInDistributionGroupSoapIn	23
3.1.4.2.1.2	ChangeUsersMembershipInDistributionGroupSoapOut	23

3.1.4.2.2	Elements	23
3.1.4.2.2.1	ChangeUsersMembershipInDistributionGroup	24
3.1.4.2.2.2	ChangeUsersMembershipInDistributionGroupResponse	24
3.1.4.2.3	Complex Types	25
3.1.4.2.4	Simple Types	25
3.1.4.2.5	Attributes	25
3.1.4.2.6	Groups.....	25
3.1.4.2.7	Attribute Groups.....	25
3.1.4.3	CreateContact	25
3.1.4.3.1	Messages	26
3.1.4.3.1.1	CreateContactSoapIn	26
3.1.4.3.1.2	CreateContactSoapOut	26
3.1.4.3.2	Elements	26
3.1.4.3.2.1	CreateContact	27
3.1.4.3.2.2	CreateContactResponse	27
3.1.4.3.3	Complex Types	28
3.1.4.3.4	Simple Types	28
3.1.4.3.5	Attributes	28
3.1.4.3.6	Groups.....	28
3.1.4.3.7	Attribute Groups.....	28
3.1.4.4	CreateDistributionGroup	28
3.1.4.4.1	Messages	28
3.1.4.4.1.1	CreateDistributionGroupSoapIn	29
3.1.4.4.1.2	CreateDistributionGroupSoapOut	29
3.1.4.4.2	Elements	29
3.1.4.4.2.1	CreateDistributionGroup	29
3.1.4.4.2.2	CreateDistributionGroupResponse	30
3.1.4.4.3	Complex Types	31
3.1.4.4.4	Simple Types	31
3.1.4.4.5	Attributes	31
3.1.4.4.6	Groups.....	31
3.1.4.4.7	Attribute Groups.....	31
3.1.4.5	DeleteContact.....	31
3.1.4.5.1	Messages	31
3.1.4.5.1.1	DeleteContactSoapIn.....	32
3.1.4.5.1.2	DeleteContactSoapOut.....	32
3.1.4.5.2	Elements.....	32
3.1.4.5.2.1	DeleteContact.....	32
3.1.4.5.2.2	DeleteContactResponse	33
3.1.4.5.3	Complex Types	33
3.1.4.5.4	Simple Types	33
3.1.4.5.5	Attributes	33
3.1.4.5.6	Groups.....	33
3.1.4.5.7	Attribute Groups.....	33
3.1.4.6	DeleteDistributionGroup.....	34
3.1.4.6.1	Messages	34
3.1.4.6.1.1	DeleteDistributionGroupSoapIn.....	34
3.1.4.6.1.2	DeleteDistributionGroupSoapOut	34
3.1.4.6.2	Elements.....	35
3.1.4.6.2.1	DeleteDistributionGroup.....	35
3.1.4.6.2.2	DeleteDistributionGroupResponse	35
3.1.4.6.3	Complex Types	36
3.1.4.6.4	Simple Types	36
3.1.4.6.5	Attributes	36
3.1.4.6.6	Groups.....	36
3.1.4.6.7	Attribute Groups.....	36
3.1.4.7	GetJobStatus.....	36
3.1.4.7.1	Messages	37

3.1.4.7.1.1	GetJobStatusSoapIn	37
3.1.4.7.1.2	GetJobStatusSoapOut	37
3.1.4.7.2	Elements	38
3.1.4.7.2.1	GetJobStatus	38
3.1.4.7.2.2	GetJobStatusResponse	38
3.1.4.7.3	Complex Types	39
3.1.4.7.4	Simple Types	39
3.1.4.7.5	Attributes	39
3.1.4.7.6	Groups	39
3.1.4.7.7	Attribute Groups	39
3.1.4.8	ModifyContact	39
3.1.4.8.1	Messages	40
3.1.4.8.1.1	ModifyContactSoapIn	40
3.1.4.8.1.2	ModifyContactSoapOut	40
3.1.4.8.2	Elements	40
3.1.4.8.2.1	ModifyContact	41
3.1.4.8.2.2	ModifyContactResponse	41
3.1.4.8.3	Complex Types	42
3.1.4.8.4	Simple Types	42
3.1.4.8.5	Attributes	42
3.1.4.8.6	Groups	42
3.1.4.8.7	Attribute Groups	42
3.1.4.9	ModifyDistributionGroup	42
3.1.4.9.1	Messages	43
3.1.4.9.1.1	ModifyDistributionGroupSoapIn	43
3.1.4.9.1.2	ModifyDistributionGroupSoapOut	43
3.1.4.9.2	Elements	43
3.1.4.9.2.1	ModifyDistributionGroup	44
3.1.4.9.2.2	ModifyDistributionGroupResponse	44
3.1.4.9.3	Complex Types	45
3.1.4.9.4	Simple Types	45
3.1.4.9.5	Attributes	45
3.1.4.9.6	Groups	45
3.1.4.9.7	Attribute Groups	45
3.1.4.10	RenameDistributionGroup	45
3.1.4.10.1	Messages	46
3.1.4.10.1.1	RenameDistributionGroupSoapIn	46
3.1.4.10.1.2	RenameDistributionGroupSoapOut	46
3.1.4.10.2	Elements	46
3.1.4.10.2.1	RenameDistributionGroup	47
3.1.4.10.2.2	RenameDistributionGroupResponse	47
3.1.4.10.3	Complex Types	48
3.1.4.10.4	Simple Types	48
3.1.4.10.5	Attributes	48
3.1.4.10.6	Groups	48
3.1.4.10.7	Attribute Groups	48
3.1.5	Timer Events	48
3.1.6	Other Local Events	48
4	Protocol Examples	49
4.1	Create and Add a User to a Distribution List	49
4.1.1	Create a Distribution List	49
4.1.2	Add a User to a Distribution List	49
4.2	Create and Add a Contact to a Distribution List	50
4.2.1	Create a Contact	50
4.2.2	Add a Contact to a Distribution List	51
4.3	Modify a Contact	51
4.4	Remove a Contact and Rename a Distribution List	52

4.4.1	Remove a Contact from a Distribution List	52
4.4.2	Delete a Contact.....	53
4.4.3	Change the Name of a Distribution List.....	53
4.5	Modify a Distribution List.....	54
4.6	Delete a Distribution List.....	55
4.7	Check the Status of a Deletion Request.....	56
4.7.1	Delete a Distribution List	56
4.7.2	Check the Status of a Job	56
5	Security	59
5.1	Security Considerations for Implementers	59
5.2	Index of Security Parameters	59
6	Appendix A: Full WSDL	60
7	Appendix B: Product Behavior	69
8	Change Tracking.....	70
9	Index.....	71

1 Introduction

The SharePoint Email Web Service Protocol is a SOAP-based protocol that enables system administrators to manage information about contacts and groups of contacts that are controlled by **Active Directory Domain Services (AD DS)** or a directory service that is compatible with AD DS. This protocol also enables system administrators to query the status of operations that are defined by this protocol.

Sections 1.5, 1.8, 1.9, 2, and 3 of this specification are normative. All other sections and examples in this specification are informative.

1.1 Glossary

This document uses the following terms:

Active Directory Domain Services (AD DS): A **directory service (DS)** implemented by a domain controller (DC). The **DS** provides a data store for objects that is distributed across multiple DCs. The DCs interoperate as peers to ensure that a local change to an object replicates correctly across DCs. AD DS is a deployment of Active Directory [\[MS-ADTS\]](#).

authenticated user: A built-in security group specified in [\[MS-WSO\]](#) whose members include all users that can be authenticated by a computer.

contact: A person, company, or other entity that is stored in a directory and is associated with one or more unique identifiers and attributes, such as an Internet message address or login name.

directory service (DS): A service that stores and organizes information about a computer network's users and network shares, and that allows network administrators to manage users' access to the shares. See also Active Directory.

distribution list: A collection of users, computers, contacts, or other groups that is used only for email distribution, and addressed as a single recipient.

domain account: A stored set of attributes representing a principal used to authenticate a user or machine to an Active Directory domain.

email address: A string that identifies a user and enables the user to receive Internet messages.

email alias: A string which is the local-part of a mailbox as specified in [\[RFC2821\]](#).

endpoint: A communication port that is exposed by an application server for a specific shared service and to which messages can be addressed.

globally unique identifier (GUID): A term used interchangeably with universally unique identifier (UUID) in Microsoft protocol technical documents (TDs). Interchanging the usage of these terms does not imply or require a specific algorithm or mechanism to generate the value. Specifically, the use of this term does not imply or require that the algorithms described in [\[RFC4122\]](#) or [\[C706\]](#) must be used for generating the **GUID**. See also universally unique identifier (UUID).

Hypertext Transfer Protocol (HTTP): An application-level protocol for distributed, collaborative, hypermedia information systems (text, graphic images, sound, video, and other multimedia files) on the World Wide Web.

Hypertext Transfer Protocol Secure (HTTPS): An extension of HTTP that securely encrypts and decrypts web page requests. In some older protocols, "Hypertext Transfer Protocol over Secure Sockets Layer" is still used (Secure Sockets Layer has been deprecated). For more information, see [\[SSL3\]](#) and [\[RFC5246\]](#).

SOAP: A lightweight protocol for exchanging structured information in a decentralized, distributed environment. **SOAP** uses XML technologies to define an extensible messaging framework, which provides a message construct that can be exchanged over a variety of underlying protocols. The framework has been designed to be independent of any particular programming model and other implementation-specific semantics. SOAP 1.2 supersedes SOAP 1.1. See [\[SOAP1.2-1/2003\]](#).

SOAP action: The HTTP request header field used to indicate the intent of the **SOAP** request, using a URI value. See [\[SOAP1.1\]](#) section 6.1.1 for more information.

SOAP body: A container for the payload data being delivered by a SOAP message to its recipient. See [\[SOAP1.2-1/2007\]](#) section 5.3 for more information.

SOAP fault: A container for error and status information within a SOAP message. See [\[SOAP1.2-1/2007\]](#) section 5.4 for more information.

Web Services Description Language (WSDL): An XML format for describing network services as a set of endpoints that operate on messages that contain either document-oriented or procedure-oriented information. The operations and messages are described abstractly and are bound to a concrete network protocol and message format in order to define an endpoint. Related concrete endpoints are combined into abstract endpoints, which describe a network service. WSDL is extensible, which allows the description of endpoints and their messages regardless of the message formats or network protocols that are used.

XML namespace: A collection of names that is used to identify elements, types, and attributes in XML documents identified in a URI reference [\[RFC3986\]](#). A combination of XML namespace and local name allows XML documents to use elements, types, and attributes that have the same names but come from different sources. For more information, see [\[XMLNS-2ED\]](#).

XML schema: A description of a type of XML document that is typically expressed in terms of constraints on the structure and content of documents of that type, in addition to the basic syntax constraints that are imposed by XML itself. An XML schema provides a view of a document type at a relatively high level of abstraction.

MAY, SHOULD, MUST, SHOULD NOT, MUST NOT: These terms (in all caps) are used as defined in [\[RFC2119\]](#). All statements of optional behavior use either MAY, SHOULD, or SHOULD NOT.

1.2 References

Links to a document in the Microsoft Open Specifications library point to the correct section in the most recently published version of the referenced document. However, because individual documents in the library are not updated at the same time, the section numbers in the documents may not match. You can confirm the correct section numbering by checking the [Errata](#).

1.2.1 Normative References

We conduct frequent surveys of the normative references to assure their continued availability. If you have any issue with finding a normative reference, please contact dochelp@microsoft.com. We will assist you in finding the relevant information.

[MS-ADA1] Microsoft Corporation, "[Active Directory Schema Attributes A-L](#)".

[MS-ADA3] Microsoft Corporation, "[Active Directory Schema Attributes N-Z](#)".

[RFC2119] Bradner, S., "Key words for use in RFCs to Indicate Requirement Levels", BCP 14, RFC 2119, March 1997, <http://www.rfc-editor.org/rfc/rfc2119.txt>

[RFC2616] Fielding, R., Gettys, J., Mogul, J., et al., "Hypertext Transfer Protocol -- HTTP/1.1", RFC 2616, June 1999, <http://www.rfc-editor.org/rfc/rfc2616.txt>

[SOAP1.1] Box, D., Ehnebuske, D., Kakivaya, G., et al., "Simple Object Access Protocol (SOAP) 1.1", W3C Note, May 2000, <http://www.w3.org/TR/2000/NOTE-SOAP-20000508/>

[SOAP1.2-1/2007] Gudgin, M., Hadley, M., Mendelsohn, N., et al., "SOAP Version 1.2 Part 1: Messaging Framework (Second Edition)", W3C Recommendation, April 2007, <http://www.w3.org/TR/2007/REC-soap12-part1-20070427/>

[SOAP1.2-2/2007] Gudgin, M., Hadley, M., Mendelsohn, N., et al., "SOAP Version 1.2 Part 2: Adjuncts (Second Edition)", W3C Recommendation, April 2007, <http://www.w3.org/TR/2007/REC-soap12-part2-20070427/>

[WSDL] Christensen, E., Curbera, F., Meredith, G., and Weerawarana, S., "Web Services Description Language (WSDL) 1.1", W3C Note, March 2001, <http://www.w3.org/TR/2001/NOTE-wsdl-20010315>

[XMLNS] Bray, T., Hollander, D., Layman, A., et al., Eds., "Namespaces in XML 1.0 (Third Edition)", W3C Recommendation, December 2009, <http://www.w3.org/TR/2009/REC-xml-names-20091208/>

[XMLSCHEMA1/2] Thompson, H., Beech, D., Maloney, M., and Mendelsohn, N., Eds., "XML Schema Part 1: Structures Second Edition", W3C Recommendation, October 2004, <http://www.w3.org/TR/2004/REC-xmlschema-1-20041028/>

[XMLSCHEMA1] Thompson, H., Beech, D., Maloney, M., and Mendelsohn, N., Eds., "XML Schema Part 1: Structures", W3C Recommendation, May 2001, <http://www.w3.org/TR/2001/REC-xmlschema-1-20010502/>

[XMLSCHEMA2/2] Biron, P., and Malhotra, A., Eds., "XML Schema Part 2: Datatypes Second Edition", W3C Recommendation, October 2004, <http://www.w3.org/TR/2004/REC-xmlschema-2-20041028/>

[XMLSCHEMA2] Biron, P.V., Ed. and Malhotra, A., Ed., "XML Schema Part 2: Datatypes", W3C Recommendation, May 2001, <http://www.w3.org/TR/2001/REC-xmlschema-2-20010502/>

1.2.2 Informative References

[RFC2818] Rescorla, E., "HTTP Over TLS", RFC 2818, May 2000, <http://www.rfc-editor.org/rfc/rfc2818.txt>

1.3 Overview

This protocol enables system administrators to manage **contacts** and groups of contacts that are controlled by either **Active Directory Domain Services (AD DS)** or a **directory service (DS)** that is compatible with AD DS. System administrators can use this protocol to do the following:

- Create, modify, and delete contacts.
- Add, update, and remove contacts from existing groups of contacts, which are referred to as **distribution lists**.
- Create, update, and delete distribution lists.
- Check the status of operations that are defined by this protocol.
- Integrate a protocol server with AD DS.

1.4 Relationship to Other Protocols

This protocol uses the **SOAP** message protocol for formatting request and response messages, as described in [\[SOAP1.1\]](#), [\[SOAP1.2-1/2007\]](#) and [\[SOAP1.2-2/2007\]](#). It transmits those messages by

using **HTTP**, as described in [\[RFC2616\]](#), or **Hypertext Transfer Protocol over Secure Sockets Layer (HTTPS)**, as described in [\[RFC2818\]](#).

The following diagram shows the underlying messaging and transport stack used by the protocol:

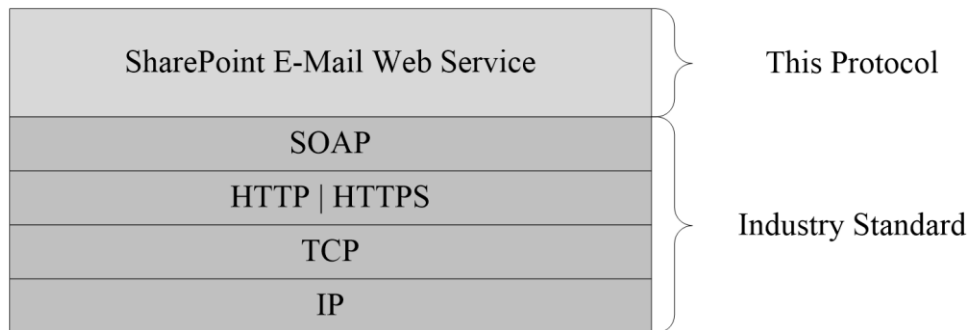


Figure 1: This protocol in relation to other protocols

1.5 Prerequisites/Preconditions

This protocol operates against a site that is identified by a URL that is known by protocol clients. The protocol server **endpoint** is formed by appending `"/_vti_bin/SharepointEmailWS.asmx"` to the URL of the site, for example `"http://www.example.com/Repository/_vti_bin/SharepointEmailWS.asmx"`.

This protocol assumes that authentication has been performed by the underlying protocols.

1.6 Applicability Statement

This protocol is designed to enable a protocol client to create, modify, or delete **contacts** and **distribution lists** that are controlled by either **AD DS** or a **DS** that is compatible with AD DS. It also enables a protocol server to require external approval for operations that are defined by this protocol.

This protocol does not enable a protocol client to query the state of a DS.

1.7 Versioning and Capability Negotiation

This protocol uses multiple transports as specified in section [2.1](#).

1.8 Vendor-Extensible Fields

None.

1.9 Standards Assignments

None.

2 Messages

2.1 Transport

Protocol servers **MUST** support **Simple Object Access Protocol (SOAP)** over **Hypertext Transfer Protocol (HTTP)**. Protocol servers **SHOULD** additionally support SOAP over **Hypertext Transfer Protocol over Secure Sockets Layer (HTTPS)** to help secure communications with protocol clients.

Protocol messages **MUST** be formatted as specified in either [\[SOAP1.1\]](#) section 4 or [\[SOAP1.2-1/2007\]](#) section 5. Server faults **MUST** be returned by using either HTTP status codes, as specified in [\[RFC2616\]](#) section 10, or **SOAP faults**, as specified in [\[SOAP1.1\]](#) section 4.4 or [\[SOAP1.2-1/2007\]](#) section 5.4.

2.2 Common Message Syntax

This section contains common definitions that are used by this protocol. The syntax of the definitions uses **XML schema**, as specified in [\[XMLSCHEMA1/2\]](#) and [\[XMLSCHEMA2/2\]](#), and **WSDL**, as specified in [\[WSDL\]](#).

2.2.1 Namespaces

This specification defines and references various **XML namespaces** using the mechanisms specified in [\[XMLNS\]](#). Although this specification associates a specific XML namespace prefix for each XML namespace that is used, the choice of any particular XML namespace prefix is implementation-specific and not significant for interoperability. These namespaces are described in the following table.

Prefix	Namespace URI	Reference
Soap	http://schemas.xmlsoap.org/wsdl/soap/	[SOAP1.1]
Tns	http://microsoft.com/webservices/SharePoint/SharepointEmailWS/	
s1	http://microsoft.com/wsdl/types/	
S	http://www.w3.org/2001/XMLSchema	[XMLSCHEMA1] [XMLSCHEMA2]
soap12	http://schemas.xmlsoap.org/wsdl/soap12/	[SOAP1.2-1/2007] [SOAP1.2-2/2007]
WSDL	http://schemas.xmlsoap.org/wsdl/	[WSDL]

2.2.2 Messages

This specification does not define any common **WSDL** message definitions.

2.2.3 Elements

This specification does not define any common **XML schema** element definitions.

2.2.4 Complex Types

The following table summarizes the set of common **XML schema** complex type definitions defined by this specification. XML schema complex type definitions that are specific to a particular operation are described with the operation.

Complex type	Description
ArrayOfString	Stores an array of strings.
RequestInfo	Specifies information about a request to create, modify, or delete a distribution list .
RequestResponse	Contains return information for a request.

2.2.4.1 ArrayOfString

The **ArrayOfString** complex type contains an array of string values. It is used by the **ChangeContactsMembershipInDistributionGroup** (section [3.1.4.1](#)) and **ChangeUsersMembershipInDistributionGroup** (section [3.1.4.2](#)) operations.

```
<s:complexType name="ArrayOfString">
  <s:sequence>
    <s:element name="string" type="s:string" nillable="true" minOccurs="0" maxOccurs="unbounded"
    />
  </s:sequence>
</s:complexType>
```

string: A string variable that contains email aliases of the **contacts** or **domain accounts** for the users.

2.2.4.2 RequestInfo

The **RequestInfo** complex type contains information about a request to create, modify, or delete a **distribution list**. It is used by the following operations:

- **CreateDistributionGroup** (section [3.1.4.4](#))
- **DeleteDistributionGroup** (section [3.1.4.6](#))
- **ModifyDistributionGroup** (section [3.1.4.9](#))
- **RenameDistributionGroup** (section [3.1.4.10](#))

```
<s:complexType name="RequestInfo">
  <s:sequence>
    <s:element name="RequestorEmail" type="s:string" />
    <s:element name="Justification" type="s:string" minOccurs="0" />
    <s:element name="RequestId" type="s1:guid" />
  </s:sequence>
</s:complexType>
```

RequestorEmail: The **e-mail address** of the user who is attempting to create, modify, or delete the distribution list. This value **MUST** be 255 or fewer characters. Additional limitations on this value are defined in [\[MS-ADA1\]](#) section [2.110](#).

Justification: The requestor's reasons for making the request. This value MUST be 4,000 or fewer characters.

RequestId: A **GUID** that identifies the request. This value MUST be ignored by the protocol server.

2.2.4.3 RequestResponse

The **RequestResponse** complex type specifies return information for a request. It is used by the following operations:

- **CreateDistributionGroup** (section [3.1.4.4](#))
- **DeleteDistributionGroup** (section [3.1.4.6](#))
- **GetJobStatus** (section [3.1.4.7](#))
- **ModifyDistributionGroup** (section [3.1.4.9](#))
- **RenameDistributionGroup** (section [3.1.4.10](#))

```
<s:complexType name="RequestResponse">
  <s:sequence>
    <s:element name="JobID" type="s:int" />
    <s:element name="Comment" type="s:string" minOccurs="0" />
    <s:element name="JobStatus" type="tns:RequestStatus" />
    <s:element name="Alias" type="s:string" minOccurs="0" />
  </s:sequence>
</s:complexType>
```

JobID: An integer that identifies a newly created job or an existing job whose status is being retrieved by the **GetJobStatus** operation. If a new job was created, this value MUST be greater than 0. If the job creation failed and **JobStatus** equals **AccessDenied**, this value MUST be -1. Otherwise, if the job creation failed or the request was automatically approved, this value MUST be 0.

Comment: A string that contains additional information about the request.

JobStatus: A **RequestStatus** simple type (section [2.2.5.4](#)) that contains the status of the request.

Alias: The **e-mail alias** of the **contact** or **distribution list** that the request applies to.

2.2.5 Simple Types

The following table summarizes the set of common **XML schema** simple type definitions defined by this specification. XML schema simple type definitions that are specific to a particular operation are described with the operation.

Simple type	Description
ContactFlags	Enumerates the properties and constraints on a contact .
DistributionGroupFlags	Enumerates the properties and constraints on a distribution list .
guid	Specifies the unique identifier.
RequestStatus	Enumerates the status of a request message.

2.2.5.1 ContactFlags

The **ContactFlags** simple type enumerates properties and constraints on a **contact**. It is used by the **CreateContact** (section [3.1.4.3](#)) and **ModifyContact** (section [3.1.4.8](#)) operations.

```
<s:simpleType name="ContactFlags">
  <s:restriction base="s:string">
    <s:enumeration value="None"/>
    <s:enumeration value="OnlyAllowAuthenticatedEmail"/>
  </s:restriction>
</s:simpleType>
```

The following table defines the allowable values for the **ContactFlags** simple type.

Value	Description
None	No flags are associated with the contact.
OnlyAllowAuthenticatedEmail	The contact is allowed to receive e-mail messages only from accounts that are associated with authenticated users.

2.2.5.2 DistributionGroupFlags

The **DistributionGroupFlags** simple type enumerates properties and constraints on a **distribution list**. It is used by the **CreateDistributionGroup** (section [3.1.4.4](#)) and the **ModifyDistributionGroup** (section [3.1.4.9](#)) operations.

```
<s:simpleType name="DistributionGroupFlags">
  <s:restriction base="s:string">
    <s:enumeration value="None"/>
    <s:enumeration value="OnlyAllowAuthenticatedEmail"/>
  </s:restriction>
</s:simpleType>
```

The following table defines the allowable values for the **DistributionGroupFlags** simple type.

Value	Description
None	No flags are associated with the distribution list.
OnlyAllowAuthenticatedEmail	The distribution list is allowed to receive e-mail messages only from authenticated users .

2.2.5.3 guid

The **guid** simple type specifies the unique identifier. [<1>](#)

```
<s:simpleType name="guid">
  <s:restriction base="s:string">
    <s:pattern value="[0-9a-fA-F]{8}-[0-9a-fA-F]{4}-[0-9a-fA-F]{4}-[0-9a-fA-F]{4}-[0-9a-fA-F]{12}" />
  </s:restriction>
```

```
</s:simpleType>
```

2.2.5.4 RequestStatus

The **RequestStatus** simple type enumerates the status of a request. It is used by the following operations:

- **ChangeContactsMembershipInDistributionGroup** (section [3.1.4.1](#))
- **ChangeUsersMembershipInDistributionGroup** (section [3.1.4.2](#))
- **CreateContact** (section [3.1.4.3](#))
- **DeleteContact** (section [3.1.4.5](#))
- **ModifyContact** (section [3.1.4.8](#))

It is also used by the **RequestResponse** complex type (section [2.2.4.3](#)).

```
<s:simpleType name="RequestStatus">  
  <s:restriction base="s:string">  
    <s:enumeration value="Success"/>  
    <s:enumeration value="PendingApproval"/>  
    <s:enumeration value="ApprovalDenied"/>  
    <s:enumeration value="DuplicateAlias"/>  
    <s:enumeration value="InvalidArgument"/>  
    <s:enumeration value="ServiceNotConfigured"/>  
    <s:enumeration value="AccessDenied"/>  
    <s:enumeration value="ServerUnavailable"/>  
    <s:enumeration value="ObjectNotFound"/>  
    <s:enumeration value="InvalidMember"/>  
    <s:enumeration value="InternalError"/>  
  </s:restriction>  
</s:simpleType>
```

The following table defines the allowable values for the **RequestStatus** simple type.

Value	Description
Success	The operation finished successfully.
PendingApproval	The operation requires approval and approval has not been granted or denied yet.
ApprovalDenied	The operation requires approval and approval was denied.
DuplicateAlias	The specified e-mail address already exists in the DS .
InvalidArgument	One or more arguments are not valid.
ServiceNotConfigured	The DS is not configured.
AccessDenied	The protocol client does not have sufficient permission to access one or more of the objects that are needed for the operation.
ServerUnavailable	A protocol server that is needed for the operation cannot be accessed.
ObjectNotFound	The specified distribution list or contact cannot be found.

Value	Description
InvalidMember	One or more of the specified e-mail addresses is not valid.
InternalError	The operation failed because an unexpected internal error occurred.

2.2.6 Attributes

This specification does not define any common **XML schema** attribute definitions.

2.2.7 Groups

This specification does not define any common **XML schema** group definitions.

2.2.8 Attribute Groups

This specification does not define any common **XML schema** attribute group definitions.

2.2.9 Common Data Structures

This specification does not define any common **XML schema** data structures.

3 Protocol Details

The client side of this protocol is simply a pass-through. That is, no additional timers or other state is required on the client side of this protocol. Calls made by the higher-layer protocol or application are passed directly to the transport, and the results returned by the transport are passed directly back to the higher-layer protocol or application.

This protocol enables protocol servers to perform implementation-specific authorization checks and to notify protocol clients of authorization faults by using either HTTP status codes or **SOAP faults**. Except where specified otherwise, protocol clients SHOULD interpret HTTP status codes as specified in [\[RFC2616\]](#) section 10. Except where specified otherwise, SOAP faults are not significant for interoperability and protocol clients can interpret them in an implementation-specific manner.

3.1 SharepointEmailWSSoap Server Details

3.1.1 Abstract Data Model

This section describes a conceptual model of possible data organization that an implementation maintains to participate in this protocol. The described organization is provided to facilitate the explanation of how the protocol behaves. This document does not mandate that implementations adhere to this model as long as their external behavior is consistent with that described in this document.

The following diagram shows the server data structure.

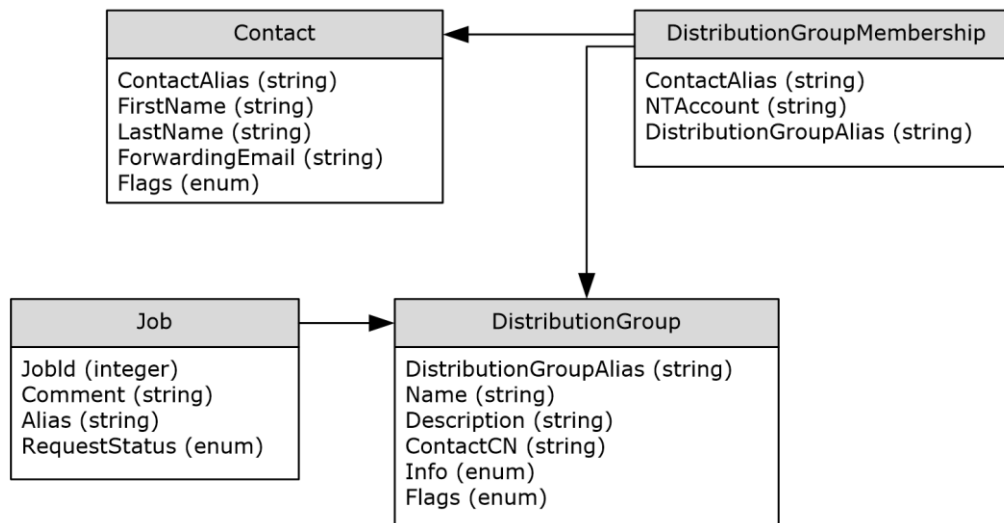


Figure 2: Data structure on a protocol server

The back-end, data storage system maintains the following sets of data for this protocol.

Contact: Contains information about **contacts**. Each contact is uniquely identified by an **e-mail alias** that is assigned to it by a protocol client.

DistributionGroup: Contains information about **distribution lists**. Each distribution list is uniquely identified by an e-mail alias that is assigned to it by a protocol client.

Job: Contains information about changes that were requested by a protocol client. Each job is uniquely identified by a job identifier that is assigned to it by a protocol server.

DistributionGroupMembership: Contains information about contacts that are members of a distribution list.

3.1.2 Timers

None.

3.1.3 Initialization

None.

3.1.4 Message Processing Events and Sequencing Rules

The following table summarizes the list of **WSDL** operations as defined by this specification:

WSDL operation	Description
ChangeContactsMembershipInDistributionGroup	Adds or removes contacts from a distribution list .
ChangeUsersMembershipInDistributionGroup	Adds or removes users from a distribution list.
CreateContact	Creates a new contact.
CreateDistributionGroup	Creates a new distribution list.
DeleteContact	Deletes a contact.
DeleteDistributionGroup	Deletes a distribution list.
GetJobStatus	Requests an update on the status of a request that was pending approval when it was last checked.
ModifyContact	Changes information about a contact.
ModifyDistributionGroup	Changes information about a distribution list.
RenameDistributionGroup	Changes the name of a distribution list.

3.1.4.1 ChangeContactsMembershipInDistributionGroup

The **ChangeContactsMembershipInDistributionGroup** operation is used to add and remove **contacts** from a **distribution list**.

```
<wsdl:operation name="ChangeContactsMembershipInDistributionGroup">  
<wsdl:input message="tns:ChangeContactsMembershipInDistributionGroupSoapIn" />  
<wsdl:output message="tns:ChangeContactsMembershipInDistributionGroupSoapOut" />  
</wsdl:operation>
```

The protocol client sends a **ChangeContactsMembershipInDistributionGroupSoapIn** request message, and the protocol server responds with a **ChangeContactsMembershipInDistributionGroupSoapOut** response message. The following diagram shows the message sequence.

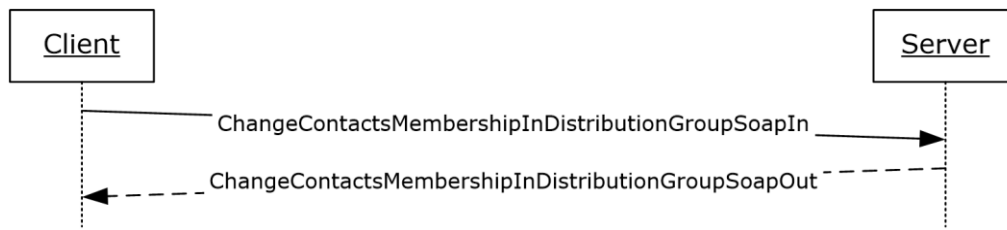


Figure 3: Message sequence for a ChangeContactsMembershipInDistributionGroup operation

3.1.4.1.1 Messages

The following table summarizes the set of **WSDL** message definitions that are specific to this operation.

Message	Description
ChangeContactsMembershipInDistributionGroupSoapIn	A request to initiate a ChangeContactsMembershipInDistributionGroup operation.
ChangeContactsMembershipInDistributionGroupSoapOut	A response from the protocol server at completion of the ChangeContactsMembershipInDistributionGroup operation.

3.1.4.1.1.1 ChangeContactsMembershipInDistributionGroupSoapIn

This is the request message for a **ChangeContactsMembershipInDistributionGroup** operation.

The **SOAP action** value of the message is defined as follows.

```
http://microsoft.com/webservices/SharePoint/SharepointEmailWS/ChangeContactsMembershipInDistributionGroup
```

The **SOAP body** contains a **ChangeContactsMembershipInDistributionGroup** element.

3.1.4.1.1.2 ChangeContactsMembershipInDistributionGroupSoapOut

This is the response message for a **ChangeContactsMembershipInDistributionGroup** operation.

The **SOAP action** value of the message is defined as follows.

```
http://microsoft.com/webservices/SharePoint/SharepointEmailWS/ChangeContactsMembershipInDistributionGroup
```

The **SOAP body** contains a **ChangeContactsMembershipInDistributionGroupResponse** element.

3.1.4.1.2 Elements

The following table summarizes the **XML schema** element definitions that are specific to this operation.

Element	Description
---------	-------------

Element	Description
ChangeContactsMembershipInDistributionGroup	Body of the ChangeContactsMembershipInDistributionGroup SoapIn message.
ChangeContactsMembershipInDistributionGroup Response	Body of the ChangeContactsMembershipInDistributionGroup SoapOut message.

3.1.4.1.2.1 ChangeContactsMembershipInDistributionGroup

The definition of the **ChangeContactsMembershipInDistributionGroup** element is as follows.

```
<s:element name="ChangeContactsMembershipInDistributionGroup">
  <s:complexType>
    <s:sequence>
      <s:element name="Alias" type="s:string" />
      <s:element name="AddListForContacts" type="tns:ArrayOfString" minOccurs="0" />
      <s:element name="DeleteListForContacts" type="tns:ArrayOfString" minOccurs="0" />
      <s:element name="DeleteAllCurrentMembers" type="s:boolean" />
    </s:sequence>
  </s:complexType>
</s:element>
```

Alias: The **e-mail alias** of the **distribution list**. This value **MUST** be 255 or fewer characters. Additional limitations on this value are specified in [\[MS-ADA1\]](#) section [2.110](#).

AddListForContacts: An array that contains the e-mail aliases of the **contacts** to add.

DeleteListForContacts: An array that contains the e-mail aliases of the contacts to remove.

DeleteAllCurrentMembers: A Boolean value that indicates whether to remove all members from the distribution list or only the contacts specified by the **DeleteListForContacts** element. If this value is **true**, the **DeleteListForContacts** element **MUST** be ignored by the server.

The addition of contacts to the distribution group **MUST** occur after all of the deletion requests are processed.

3.1.4.1.2.2 ChangeContactsMembershipInDistributionGroupResponse

The definition of the **ChangeContactsMembershipInDistributionGroupResponse** element is as follows.

```
<s:element name="ChangeContactsMembershipInDistributionGroupResponse">
  <s:complexType>
    <s:sequence>
      <s:element name="ChangeContactsMembershipInDistributionGroupResult"
        type="tns:RequestStatus"/>
    </s:sequence>
  </s:complexType>
</s:element>
```

ChangeContactsMembershipInDistributionGroupResult: The protocol server **MUST** return a **RequestStatus** simple type (section [2.2.5.4](#)) in the response message. The response **MUST** contain one of the values described in the following table.

Value	Description
RequestStatus.InvalidMember	The value of the DeleteAllCurrentMembers element is "FALSE" and one of the e-mail aliases specified in the DeleteListForContacts element either cannot be found or is not a valid member of the distribution list .
RequestStatus.ObjectNotFound	The specified e-mail alias cannot be found.
RequestStatus.AccessDenied	The protocol client does not have sufficient permission to access one or more of the objects that are needed for the operation.
RequestStatus.ServerUnavailable	A protocol server that is required for the operation cannot be accessed.
RequestStatus.InternalError	The operation failed because an unexpected internal error occurred.
RequestStatus.Success	The operation finished successfully.

3.1.4.1.3 Complex Types

None.

3.1.4.1.4 Simple Types

None.

3.1.4.1.5 Attributes

None.

3.1.4.1.6 Groups

None.

3.1.4.1.7 Attribute Groups

None.

3.1.4.2 ChangeUsersMembershipInDistributionGroup

The **ChangeUsersMembershipInDistributionGroup** operation is used to add and remove users from a **distribution list**.

```
<wsdl:operation name="ChangeUsersMembershipInDistributionGroup">
  <wsdl:input message="tns:ChangeUsersMembershipInDistributionGroupSoapIn" />
  <wsdl:output message="tns:ChangeUsersMembershipInDistributionGroupSoapOut" />
</wsdl:operation>
```

The protocol client sends a **ChangeUsersMembershipInDistributionGroupSoapIn** request message and the protocol server responds with a **ChangeUsersMembershipInDistributionGroupSoapOut** response message. The following diagram shows the message sequence.

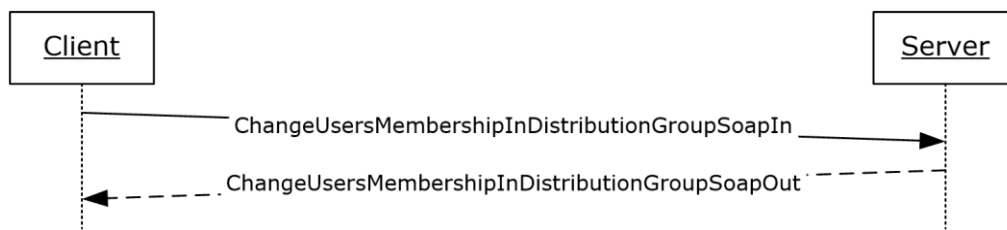


Figure 4: Message sequence for a `ChangeUsersMembershipInDistributionGroup` operation

3.1.4.2.1 Messages

The following table summarizes the set of **WSDL** message definitions that are specific to this operation.

Message	Description
ChangeUsersMembershipInDistributionGroupSoapIn	A request to initiate a ChangeUsersMembershipInDistributionGroup operation.
ChangeUsersMembershipInDistributionGroupSoapOut	A response from the protocol server at completion of the ChangeUsersMembershipInDistributionGroup operation.

3.1.4.2.1.1 `ChangeUsersMembershipInDistributionGroupSoapIn`

This is the request message for a **ChangeUsersMembershipInDistributionGroup** operation.

The **SOAP action** value of the message is defined as follows.

```
http://microsoft.com/webservices/SharePoint/SharepointEmailWS/ChangeUsersMembershipInDistributionGroup
```

The **SOAP body** contains a **ChangeUsersMembershipInDistributionGroup** element.

3.1.4.2.1.2 `ChangeUsersMembershipInDistributionGroupSoapOut`

This is the response message for a **ChangeUsersMembershipInDistributionGroup** operation.

The **SOAP action** value of the message is defined as follows.

```
http://microsoft.com/webservices/SharePoint/SharepointEmailWS/ChangeUsersMembershipInDistributionGroup
```

The **SOAP body** contains a **ChangeUsersMembershipInDistributionGroupResponse** element.

3.1.4.2.2 Elements

The following table summarizes the **XML schema** element definitions that are specific to this operation.

Element	Description
---------	-------------

Element	Description
ChangeUsersMembershipInDistributionGroup	Body of the ChangeUsersMembershipInDistributionGroupSoapIn message.
ChangeUsersMembershipInDistributionGroupResponse	Body of the ChangeUsersMembershipInDistributionGroupSoapOut message.

3.1.4.2.2.1 ChangeUsersMembershipInDistributionGroup

The definition of the **ChangeUsersMembershipInDistributionGroup** element is as follows.

```
<s:element name="ChangeUsersMembershipInDistributionGroup">
  <s:complexType>
    <s:sequence>
      <s:element name="Alias" type="s:string" minOccurs="0"/>
      <s:element name="AddNt4NameList" type="tns:ArrayOfString" minOccurs="0"/>
      <s:element name="DeleteNt4NameList" type="tns:ArrayOfString" minOccurs="0"/>
      <s:element name="DeleteAllCurrentMembers" type="s:boolean"/>
    </s:sequence>
  </s:complexType>
</s:element>
```

Alias: The **e-mail alias** of the **distribution list**. This value **MUST** be 255 or fewer characters. Additional limitations on this value are specified in [\[MS-ADA1\]](#) section [2.110](#).

AddNt4NameList: An array that contains the **domain accounts** for the users to add. This can be NULL.

DeleteNt4NameList: An array that contains the domain accounts for the users to remove. This can be NULL.

DeleteAllCurrentMembers: A Boolean value that indicates whether to remove all users from the distribution list or only the users specified by the **DeleteNt4NameList** element. If this value is **true**, the **DeleteListForContacts** element **MUST** be ignored.

The addition of users to the distribution group **MUST** occur after all of the deletion requests are processed.

3.1.4.2.2.2 ChangeUsersMembershipInDistributionGroupResponse

The definition of the **ChangeUsersMembershipInDistributionGroupResponse** element is as follows.

```
<s:element name="ChangeUsersMembershipInDistributionGroupResponse">
  <s:complexType>
    <s:sequence>
      <s:element name="ChangeUsersMembershipInDistributionGroupResult" type="tns:RequestStatus"/>
    </s:sequence>
  </s:complexType>
</s:element>
```

ChangeUsersMembershipInDistributionGroupResult: The protocol server **MUST** return a **RequestStatus** simple type (section [2.2.5.4](#)) in the response message. The response **MUST** contain one of the values described in the following table.

Value	Description
RequestStatus.ObjectNotFound	The specified e-mail alias cannot be found in the DS .
RequestStatus.AccessDenied	The protocol client does not have sufficient permission to access one or more of the objects that are needed for the operation.
RequestStatus.ServerUnavailable	A protocol server that is required for the operation cannot be accessed.
RequestStatus.InternalError	The operation failed because an unexpected internal error occurred or one of the e-mail aliases specified in the DeleteNt4NameList element either cannot be found or is not a valid member of the distribution list .
RequestStatus.Success	The valid specified accounts were added successfully. Invalid accounts were not added.

3.1.4.2.3 Complex Types

None.

3.1.4.2.4 Simple Types

None.

3.1.4.2.5 Attributes

None.

3.1.4.2.6 Groups

None.

3.1.4.2.7 Attribute Groups

None.

3.1.4.3 CreateContact

The **CreateContact** operation is used to add a **contact** to a **DS**.

```
<wsdl:operation name="CreateContact">
  <wsdl:input message="tns:CreateContactSoapIn" />
  <wsdl:output message="tns:CreateContactSoapOut" />
</wsdl:operation>
```

The protocol client sends a **CreateContactSoapIn** request message and the protocol server responds with a **CreateContactSoapOut** response message. The following diagram shows the message sequence.

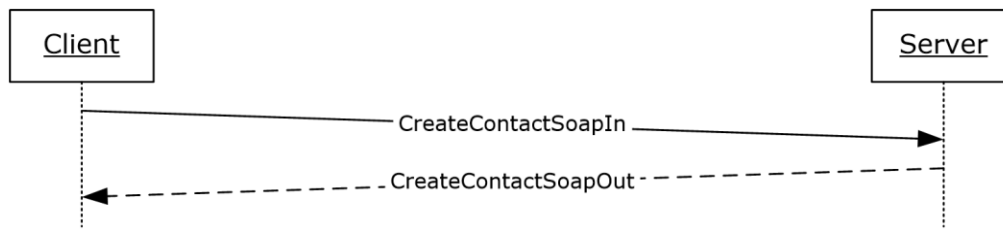


Figure 5: Message sequence for a CreateContact operation

3.1.4.3.1 Messages

The following table summarizes the set of **WSDL** message definitions that are specific to this operation.

Message	Description
CreateContactSoapIn	A request to initiate a CreateContact operation.
CreateContactSoapOut	A response from the protocol server at completion of the CreateContact operation.

3.1.4.3.1.1 CreateContactSoapIn

This is the request message for a **CreateContact** operation.

The **SOAP action** value of the message is defined as follows.

```
http://microsoft.com/webservices/SharePoint/SharepointEmailWS/CreateContact
```

The **SOAP body** contains a **CreateContact** element.

3.1.4.3.1.2 CreateContactSoapOut

This is the response message for a **CreateContact** operation.

The **SOAP action** value of the message is defined as follows.

```
http://microsoft.com/webservices/SharePoint/SharepointEmailWS/CreateContact
```

The **SOAP body** contains a **CreateContactResponse** element.

3.1.4.3.2 Elements

The following table summarizes the **XML schema** element definitions that are specific to this operation.

Element	Description
CreateContact	Body of the CreateContactSoapIn message.
CreateContactResponse	Body of the CreateContactSoapOut message.

3.1.4.3.2.1 CreateContact

The definition of the **CreateContact** element is as follows.

```
<s:element name="CreateContact">
  <s:complexType>
    <s:sequence>
      <s:element name="Alias" type="s:string" />
      <s:element name="FirstName" type="s:string" />
      <s:element name="LastName" type="s:string" />
      <s:element name="ForwardingEmail" type="s:string" />
      <s:element name="Flags" type="tns:ContactFlags" />
    </s:sequence>
  </s:complexType>
</s:element>
```

Alias: The **e-mail alias** of the **contact**. Limitations on this value are specified in [\[MS-ADA1\]](#) section [2.110](#). Additionally, this value MUST consist of 255 or fewer characters.

FirstName: The first name of the contact. Limitations on this value are specified in [\[MS-ADA1\]](#) section [2.273](#).

LastName: The last name of the contact. Limitations on this value are specified in [\[MS-ADA3\]](#) section [2.276](#).

ForwardingEmail: The **e-mail address** where e-mail messages are sent for the contact.

Flags: A **ContactFlags** simple type (section [2.2.5.1](#)) that contains any additional properties or constraints on the contact.

3.1.4.3.2.2 CreateContactResponse

The definition of the **CreateContactResponse** element is as follows.

```
<s:element name="CreateContactResponse">
  <s:complexType>
    <s:sequence>
      <s:element name="CreateContactResult" type="tns:RequestStatus"/>
    </s:sequence>
  </s:complexType>
</s:element>
```

CreateContactResult: The protocol server MUST return a **RequestStatus** simple type (section [2.2.5.4](#)) in the response message. The response MUST contain one of the values described in the following table.

Value	Description
RequestStatus.ServiceNotConfigured	The DS is not configured.
RequestStatus.InvalidArgument	The specified e-mail alias contains zero characters or a semicolon (;).
RequestStatus.DuplicateAlias	The specified e-mail alias already exists in the DS.
RequestStatus.AccessDenied	The protocol client does not have sufficient permission to access one or more of the objects that are needed for the operation.
RequestStatus.ServerUnavailable	A protocol server that is needed for the operation cannot be accessed.

Value	Description
RequestStatus.InternalError	The operation failed because an unexpected internal error occurred.
RequestStatus.Success	The operation finished successfully.

3.1.4.3.3 Complex Types

None.

3.1.4.3.4 Simple Types

None.

3.1.4.3.5 Attributes

None.

3.1.4.3.6 Groups

None.

3.1.4.3.7 Attribute Groups

None.

3.1.4.4 CreateDistributionGroup

The **CreateDistributionGroup** operation is used to create a **distribution list** in a **DS**.

```
<wsdl:operation name="CreateDistributionGroup">
  <wsdl:input message="tns:CreateDistributionGroupSoapIn" />
  <wsdl:output message="tns:CreateDistributionGroupSoapOut" />
</wsdl:operation>
```

The protocol client sends a **CreateDistributionGroupSoapIn** request message and the protocol server responds with a **CreateDistributionGroupSoapOut** response message. The following diagram shows the message sequence.

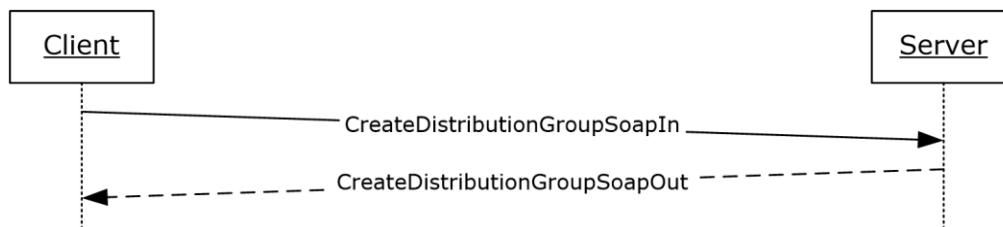


Figure 6: Message sequence for a CreateDistributionGroup operation

3.1.4.4.1 Messages

The following table summarizes the set of **WSDL** message definitions that are specific to this operation.

Message	Description
---------	-------------

Message	Description
CreateDistributionGroupSoapIn	A request to initiate a CreateDistributionGroup operation.
CreateDistributionGroupSoapOut	A response from the protocol server at completion of the CreateDistributionGroup operation.

3.1.4.4.1.1 CreateDistributionGroupSoapIn

This is the request message for a **CreateDistributionGroup** operation.

The **SOAP action** value of the message is defined as follows.

```
http://microsoft.com/webservices/SharePoint/SharepointEmailWS/CreateDistributionGroup
```

The **SOAP body** contains a **CreateDistributionGroup** element.

3.1.4.4.1.2 CreateDistributionGroupSoapOut

This is the response message for a **CreateDistributionGroup** operation.

The **SOAP action** value of the message is defined as follows.

```
http://microsoft.com/webservices/SharePoint/SharepointEmailWS/CreateDistributionGroup
```

The **SOAP body** contains a **CreateDistributionGroupResponse** element.

3.1.4.4.2 Elements

The following table summarizes the **XML schema** element definitions that are specific to this operation.

Element	Description
CreateDistributionGroup	Body of the CreateDistributionGroupSoapIn message.
CreateDistributionGroupResponse	Body of the CreateDistributionGroupSoapOut message.

3.1.4.4.2.1 CreateDistributionGroup

The definition of the **CreateDistributionGroup** element is as follows.

```
<s:element name="CreateDistributionGroup">
  <s:complexType>
    <s:sequence>
      <s:element name="Alias" type="s:string" />
      <s:element name="Name" type="s:string" />
      <s:element name="Description" type="s:string" minOccurs="0" />
      <s:element name="ContactCN" type="s:string" minOccurs="0" />
      <s:element name="Info" type="tns:RequestInfo" />
      <s:element name="Flags" type="tns:DistributionGroupFlags" />
    </s:sequence>
  </s:complexType>
</s:element>
```

```

</s:sequence>
</s:complexType>
</s:element>

```

Alias: The **e-mail alias** of the **distribution list**. This value MUST be 255 or fewer characters. Additional limitations enforced on this value by the **DS** are specified in [\[MS-ADA1\] section 2.110](#), which further restricts the number of characters to the "rangeUpper" value.

Name: The display name of the distribution list. This value MUST be 255 or fewer characters. Additional limitations on this value are specified in [\[MS-ADA1\] section 2.175](#).

Description: The description of the distribution group. This value MUST be 4,000 or fewer characters.

ContactCN: The e-mail alias of the **contact** to add to the distribution list. This value MUST be 255 or fewer characters. Additional limitations on this value are specified in [\[MS-ADA1\] section 2.110](#).

Info: A **RequestInfo** complex type (section [2.2.4.2](#)) that contains additional information about the request to create the distribution list.

Flags: A **DistributionGroupFlags** simple type (section [2.2.5.2](#)) that contains validation properties of the distribution list.

3.1.4.4.2 CreateDistributionGroupResponse

The definition of the **CreateDistributionGroupResponse** element is as follows.

```

<s:element name="CreateDistributionGroupResponse">
  <s:complexType>
    <s:sequence>
      <s:element name="CreateDistributionGroupResult" type="tns:RequestResponse" />
    </s:sequence>
  </s:complexType>
</s:element>

```

CreateDistributionGroupResult: The protocol server MUST return a **RequestResponse** complex type (section [2.2.4.3](#)). The **JobStatus** element of the **RequestResponse** type MUST contain one of the values described in the following table.

Value	Description
RequestStatus.ServiceNotConfigured	The DS is not configured.
RequestStatus.InvalidArgument	The specified e-mail alias contains zero characters or a semicolon (;), or the RequestorEmail element of the Info element is NULL.
RequestStatus.DuplicateAlias	The specified e-mail alias already exists in the collection of creation requests that are pending approval, or automatic approvals are enabled and the specified e-mail alias already exists in the DS.
RequestStatus.AccessDenied	Automatic approvals are enabled and the protocol client does not have sufficient permission to access one or more of the objects that are needed for the operation.
RequestStatus.ServerUnavailable	Automatic approvals are enabled and a protocol server that is needed for the operation cannot be accessed.
RequestStatus.InternalError	The operation failed because an unexpected internal error occurred.

Value	Description
RequestStatus.ObjectNotFound	Automatic approvals are enabled and the e-mail alias specified by the ContactCN element cannot be found in the DS.
RequestStatus.PendingApproval	Automatic approvals are disabled and a job was created for the request.
RequestStatus.Success	Automatic approvals are enabled and the operation finished successfully.

3.1.4.4.3 Complex Types

None.

3.1.4.4.4 Simple Types

None.

3.1.4.4.5 Attributes

None.

3.1.4.4.6 Groups

None.

3.1.4.4.7 Attribute Groups

None.

3.1.4.5 DeleteContact

The **DeleteContact** operation is used to delete a **contact** from a **DS**.

```
<wsdl:operation name="DeleteContact">
  <wsdl:input message="tns:DeleteContactSoapIn" />
  <wsdl:output message="tns:DeleteContactSoapOut" />
</wsdl:operation>
```

The protocol client sends a **DeleteContactSoapIn** request message and the protocol server responds with a **DeleteContactSoapOut** response message. The following diagram shows the message sequence.



Figure 7: Message sequence for a DeleteContact operation

3.1.4.5.1 Messages

The following table summarizes the set of **WSDL** message definitions that are specific to this operation.

Message	Description
DeleteContactSoapIn	A request to initiate a DeleteContact operation.
DeleteContactSoapOut	A response from the protocol server at completion of the DeleteContact operation.

3.1.4.5.1.1 DeleteContactSoapIn

This is the request message for a **DeleteContact** operation.

The **SOAP action** value of the message is defined as follows.

```
http://microsoft.com/webservices/SharePoint/SharepointEmailWS/DeleteContact
```

The **SOAP body** contains a **DeleteContact** element.

3.1.4.5.1.2 DeleteContactSoapOut

This is the response message for a **DeleteContact** operation.

The **SOAP action** value of the message is defined as follows.

```
http://microsoft.com/webservices/SharePoint/SharepointEmailWS/DeleteContact
```

The **SOAP body** contains a **DeleteContactResponse** element.

3.1.4.5.2 Elements

The following table summarizes the **XML schema** element definitions that are specific to this operation.

Element	Description
DeleteContact	Body of the DeleteContactSoapIn message.
DeleteContactResponse	Body of the DeleteContactSoapOut message.

3.1.4.5.2.1 DeleteContact

The definition of the **DeleteContact** element is as follows.

```
<s:element name="DeleteContact">
  <s:complexType>
    <s:sequence>
      <s:element name="Alias" type="s:string" />
    </s:sequence>
  </s:complexType>
</s:element>
```


Alias: The **e-mail alias** of the **contact** to delete from the **DS**. Limitations on this value are specified in [\[MS-ADA1\]](#) section [2.110](#). Additionally, this value **MUST** consist of 255 or fewer characters.

3.1.4.5.2.2 DeleteContactResponse

The definition of the **DeleteContactResponse** element is as follows.

```
<s:element name="DeleteContactResponse">
  <s:complexType>
    <s:sequence>
      <s:element name="DeleteContactResult" type="tns:RequestStatus"/>
    </s:sequence>
  </s:complexType>
</s:element>
```

DeleteContactResult: The protocol server **MUST** return a **RequestStatus** simple type (section [2.2.5.4](#)) in the response message. The response **MUST** contain one of the values described in the following table.

Value	Description
RequestStatus.ServiceNotConfigured	The DS is not configured.
RequestStatus.InvalidArgument	The specified e-mail alias contains zero characters or a semicolon (;).
RequestStatus.ObjectNotFound	The contact cannot be found in the DS.
RequestStatus.AccessDenied	The protocol client does not have sufficient permission to access one or more of the objects that are needed for the operation.
RequestStatus.ServerUnavailable	A protocol server that is needed for the operation cannot be accessed.
RequestStatus.InternalError	The operation failed because an unexpected internal error occurred.
RequestStatus.Success	The operation finished successfully.

3.1.4.5.3 Complex Types

None.

3.1.4.5.4 Simple Types

None.

3.1.4.5.5 Attributes

None.

3.1.4.5.6 Groups

None.

3.1.4.5.7 Attribute Groups

None.

3.1.4.6 DeleteDistributionGroup

The **DeleteDistributionGroup** operation is used to delete an existing **distribution list** from a **DS**.

```
<wsdl:operation name="DeleteDistributionGroup">
  <wsdl:input message="tns:DeleteDistributionGroupSoapIn" />
  <wsdl:output message="tns:DeleteDistributionGroupSoapOut" />
</wsdl:operation>
```

The protocol client sends a **DeleteDistributionGroupSoapIn** request message, and the protocol server responds with a **DeleteDistributionGroupSoapOut** response message. The following diagram shows the message sequence.

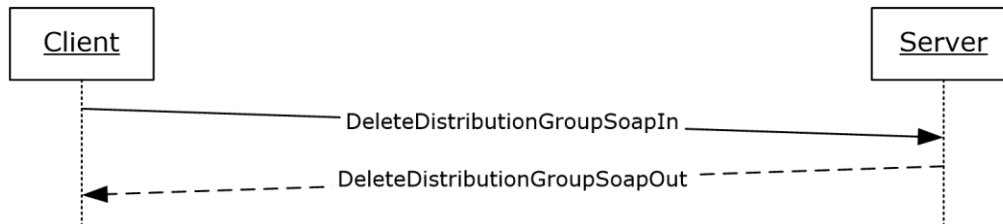


Figure 8: Message sequence for a DeleteDistributionGroup operation

3.1.4.6.1 Messages

The following table summarizes the set of **WSDL** message definitions that are specific to this operation.

Message	Description
DeleteDistributionGroupSoapIn	A request to initiate a DeleteDistributionGroup operation.
DeleteDistributionGroupSoapOut	A response from the protocol server at completion of the DeleteDistributionGroup operation.

3.1.4.6.1.1 DeleteDistributionGroupSoapIn

This is the request message for a **DeleteDistributionGroup** operation.

The **SOAP action** value of the message is defined as follows.

```
http://microsoft.com/webservices/SharePoint/SharepointEmailWS/DeleteDistributionGroup
```

The **SOAP body** contains a **DeleteDistributionGroup** element.

3.1.4.6.1.2 DeleteDistributionGroupSoapOut

This is the response message for a **DeleteDistributionGroup** operation.

The **SOAP action** value of the message is defined as follows.

```
http://microsoft.com/webservices/SharePoint/SharepointEmailWS/DeleteDistributionGroup
```

The **SOAP body** contains a **DeleteDistributionGroupResponse** element.

3.1.4.6.2 Elements

The following table summarizes the **XML schema** element definitions that are specific to this operation.

Element	Description
DeleteDistributionGroup	Body of the DeleteDistributionGroupSoapIn message.
DeleteDistributionGroupResponse	Body of the DeleteDistributionGroupSoapOut message.

3.1.4.6.2.1 DeleteDistributionGroup

The definition of the **DeleteDistributionGroup** element is as follows.

```
<s:element name="DeleteDistributionGroup">
  <s:complexType>
    <s:sequence>
      <s:element name="Alias" type="s:string" />
      <s:element name="Info" type="tns:RequestInfo" />
    </s:sequence>
  </s:complexType>
</s:element>
```

Alias: The **e-mail alias** of the **distribution list** to delete. This value MUST be 255 or fewer characters. Additional limitations enforced on this value by the **DS** are specified in [\[MS-ADA1\]](#) section [2.110](#), which further restricts the number of characters to the "rangeUpper" value.

Info: A **RequestInfo** complex type (section [2.2.4.2](#)) that contains additional information about the request to delete the distribution list.

3.1.4.6.2.2 DeleteDistributionGroupResponse

The definition of the **DeleteDistributionGroupResponse** element is as follows.

```
<s:element name="DeleteDistributionGroupResponse">
  <s:complexType>
    <s:sequence>
      <s:element name="DeleteDistributionGroupResult" type="tns:RequestResponse" />
    </s:sequence>
  </s:complexType>
</s:element>
```

DeleteDistributionGroupResult: The protocol server MUST return a **RequestResponse** complex type (section [2.2.4.3](#)). The **JobStatus** element of the **RequestResponse** type MUST contain one of the values described in the following table.

Value	Description
RequestStatus.ServiceNotConfigured	The DS is not configured.

Value	Description
RequestStatus.InvalidArgument	The specified e-mail alias contains zero characters or a semicolon (;), or the RequestorEmail element of the Info element is NULL.
RequestStatus.ObjectNotFound	The specified e-mail alias cannot be found in either the DS or the collection of distribution lists that are pending creation.
RequestStatus.AccessDenied	Automatic approvals are enabled and the protocol client does not have sufficient permission to access one or more of the objects that are needed for the operation.
RequestStatus.ServerUnavailable	Automatic approvals are enabled and a protocol server that is needed for the operation cannot be accessed.
RequestStatus.InternalError	The operation failed because an unexpected internal error occurred.
RequestStatus.PendingApproval	Automatic approvals are disabled and a job was created for the deletion request.
RequestStatus.Success	The operation finished successfully; the distribution group was deleted or a pending request to create the distribution group was cancelled.

3.1.4.6.3 Complex Types

None.

3.1.4.6.4 Simple Types

None.

3.1.4.6.5 Attributes

None.

3.1.4.6.6 Groups

None.

3.1.4.6.7 Attribute Groups

None.

3.1.4.7 GetJobStatus

The **GetJobStatus** operation is used to request an update on the status of an existing request that was created by any of the following operations:

- **CreateDistributionGroup** (section [3.1.4.4](#))
- **DeleteDistributionGroup** (section [3.1.4.6.2.1](#))
- **ModifyDistributionGroup** (section [3.1.4.9](#))
- **RenameDistributionGroup** (section [3.1.4.10](#))

If the request was created by a **CreateDistributionGroup** operation, and the **RequestStatus** element (section [2.2.5.4](#)) returned by the **GetJobStatus** operation contains any value other than

"PendingApproval" or "Success", both the job and the corresponding job identifier, as specified by the **JobID** element, are removed from the collection of jobs.

If the request was created by any operation other than a **CreateDistributionGroup** operation, and the **RequestStatus** element (section 2.2.5.4) returned by the **GetJobStatus** operation contains any value other than "PendingApproval", both the job and the corresponding job identifier, as specified by the **JobID** element, are removed from the collection of jobs.

In all other cases, neither the job nor the corresponding job identifier is removed from the collection of jobs.

```
<wsdl:operation name="GetJobStatus">
  <wsdl:input message="tns:GetJobStatusSoapIn" />
  <wsdl:output message="tns:GetJobStatusSoapOut" />
</wsdl:operation>
```

The protocol client sends a **GetJobStatusSoapIn** request message, and the protocol server responds with a **GetJobStatusSoapOut** response message. The following diagram shows the message sequence.

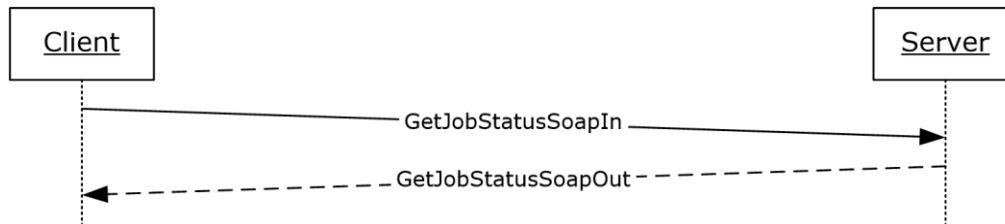


Figure 9: Message sequence for a GetJobStatus operation

3.1.4.7.1 Messages

The following table summarizes the set of **WSDL** message definitions that are specific to this operation.

Message	Description
GetJobStatusSoapIn	A request to initiate a GetJobStatus operation.
GetJobStatusSoapOut	A response from the protocol server at completion of the GetJobStatus operation.

3.1.4.7.1.1 GetJobStatusSoapIn

This is the request message for a **GetJobStatus** operation.

The **SOAP action** value of the message is defined as follows.

```
http://microsoft.com/webservices/SharePoint/SharepointEmailWS/GetJobStatus
```

The **SOAP body** contains a **GetJobStatus** element.

3.1.4.7.1.2 GetJobStatusSoapOut

This is the response message for a **GetJobStatus** operation.

The **SOAP action** value of the message is defined as follows.

```
http://microsoft.com/webservices/SharePoint/SharepointEmailWS/GetJobStatus
```

The **SOAP body** contains a **GetJobStatusResponse** element.

3.1.4.7.2 Elements

The following table summarizes the **XML schema** element definitions that are specific to this operation.

Element	Description
GetJobStatus	Body of the GetJobStatusSoapIn message.
GetJobStatusResponse	Body of the GetJobStatusSoapOut message.

3.1.4.7.2.1 GetJobStatus

The definition of the **GetJobStatus** element is as follows.

```
<s:element name="GetJobStatus">  
  <s:complexType>  
    <s:sequence>  
      <s:element name="JobId" type="s:int" />  
    </s:sequence>  
  </s:complexType>  
</s:element>
```

JobId: The identifier that is returned in a **RequestResponse** type (section [2.2.4.3](#)) by the original operation, which is either a **CreateDistributionGroup** (section [3.1.4.4](#)), **DeleteDistributionGroup** (section [3.1.4.6.2.1](#)), **ModifyDistributionGroup** (section [3.1.4.9](#)), or **RenameDistributionGroup** (section [3.1.4.10](#)) operation. This identifier **MUST** be in the collection of jobs. If the identifier does not exist in the collection of jobs, the protocol server **MUST** return a SOAP fault exception.

3.1.4.7.2.2 GetJobStatusResponse

The definition of the **GetJobStatusResponse** element is as follows.

```
<s:element name="GetJobStatusResponse">  
  <s:complexType>  
    <s:sequence>  
      <s:element name="GetJobStatusResult" type="tns:RequestResponse" />  
    </s:sequence>  
  </s:complexType>  
</s:element>
```

GetJobStatusResult: The protocol server **MUST** return a **RequestResponse** complex type (section [2.2.4.3](#)) in the response message. The **JobStatus** element of the **RequestResponse** type **MUST** contain one of the values described in the following table.

Value	Description
RequestStatus.AccessDenied	The protocol client does not have sufficient permission to access one or more of the objects that are needed for the operation.
RequestStatus.InvalidArgument	The value of the JobId element is less than or equal to zero.
RequestStatus.ApprovalDenied	Approval was denied for the job specified by the JobId element.
RequestStatus.PendingApproval	Approval has been neither granted nor denied yet for the job specified by the JobId element.
RequestStatus.InternalError	The operation failed because an unexpected internal error occurred.
RequestStatus.Success	Approval was granted for the job specified by the JobId element.

3.1.4.7.3 Complex Types

None.

3.1.4.7.4 Simple Types

None.

3.1.4.7.5 Attributes

None.

3.1.4.7.6 Groups

None.

3.1.4.7.7 Attribute Groups

None.

3.1.4.8 ModifyContact

The **ModifyContact** operation is used to modify the properties of an existing **contact** in a **DS**.

```
<wsdl:operation name="ModifyContact">
  <wsdl:input message="tns:ModifyContactSoapIn" />
  <wsdl:output message="tns:ModifyContactSoapOut" />
</wsdl:operation>
```

The protocol client sends a **ModifyContactSoapIn** request message, and the protocol server responds with a **ModifyContactSoapOut** response message. The following diagram shows the message sequence.

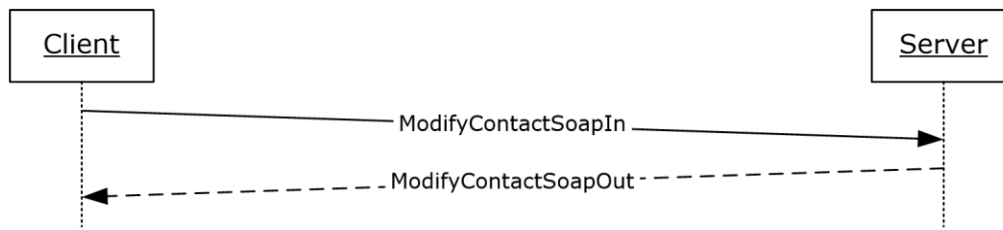


Figure 10: Message sequence for a **ModifyContact operation**

3.1.4.8.1 Messages

The following table summarizes the set of **WSDL** message definitions that are specific to this operation.

Message	Description
ModifyContactSoapIn	A request to initiate a ModifyContact operation.
ModifyContactSoapOut	A response from the protocol server at completion of the ModifyContact operation.

3.1.4.8.1.1 **ModifyContactSoapIn**

This is the request message for a **ModifyContact** operation.

The **SOAP action** value of the message is defined as follows.

```
http://microsoft.com/webservices/SharePoint/SharepointEmailWS/ModifyContact
```

The **SOAP body** contains a **ModifyContact** element.

3.1.4.8.1.2 **ModifyContactSoapOut**

This is the response message for a **ModifyContact** operation.

The **SOAP action** value of the message is defined as follows.

```
http://microsoft.com/webservices/SharePoint/SharepointEmailWS/ModifyContact
```

The **SOAP body** contains a **ModifyContactResponse** element.

3.1.4.8.2 Elements

The following table summarizes the **XML schema** element definitions that are specific to this operation.

Element	Description
ModifyContactStatus	Body of the ModifyContactSoapIn message.
ModifyContactResponse	Body of the ModifyContactSoapOut message.

3.1.4.8.2.1 ModifyContact

The definition of the **ModifyContact** element is as follows.

```
<s:element name="ModifyContact">
  <s:complexType>
    <s:sequence>
      <s:element name="OldAlias" type="s:string" />
      <s:element name="NewAlias" type="s:string" minOccurs="0"/>
      <s:element name="FirstName" type="s:string" />
      <s:element name="LastName" type="s:string" />
      <s:element name="ForwardingEmail" type="s:string" minOccurs="0"/>
      <s:element name="Flags" type="tns:ContactFlags" />
    </s:sequence>
  </s:complexType>
</s:element>
```

OldAlias: The current **e-mail alias** of the **contact**. Limitations on this value are specified in [\[MS-ADA1\]](#) section [2.110](#). Additionally, this value **MUST** consist of 255 or fewer characters.

NewAlias: The new e-mail alias of the contact. If a value is not specified, the e-mail alias of the contact is not changed. Limitations on this value are specified in [\[MS-ADA1\]](#) section [2.110](#). Additionally, this value **MUST** consist of 255 or fewer characters.

FirstName: The first name of the contact. Limitations on this value are specified in [\[MS-ADA1\]](#) section [2.273](#).

LastName: The last name of the contact. Limitations on this value are specified in [\[MS-ADA3\]](#) section [2.276](#).

ForwardingEmail: The **e-mail address** where e-mail messages are forwarded for the contact.

Flags: A **ContactFlags** simple type (section [2.2.5.1](#)) that contains any additional properties or constraints on the contact (3).

3.1.4.8.2.2 ModifyContactResponse

The definition of the **ModifyContactResponse** element is as follows.

```
<s:element name="ModifyContactResponse">
  <s:complexType>
    <s:sequence>
      <s:element name="ModifyContactResult" type="tns:RequestStatus"/>
    </s:sequence>
  </s:complexType>
</s:element>
```

ModifyContactResult: The protocol server **MUST** return a **RequestStatus** simple type (section [2.2.5.4](#)) in the response message. The response **MUST** contain one of the values described in the following table.

Value	Description
RequestStatus.ServiceNotConfigured	The DS is not configured.

Value	Description
RequestStatus.InvalidArgument	The value of the OldAlias element contains zero characters, or the value of the OldAlias or NewAlias element contains a semicolon (;).
RequestStatus.DuplicateAlias	A value was specified by the NewAlias element and that value is not equal to the value of the OldAlias element, ignoring case. However, the value specified by the NewAlias element already exists in the DS.
RequestStatus.AccessDenied	The protocol client does not have sufficient permission to access one or more of the objects that are needed for the operation.
RequestStatus.ServerUnavailable	A protocol server that is needed for the operation cannot be accessed.
RequestStatus.ObjectNotFound	The value specified by the OldAlias element does not exist in the DS.
RequestStatus.InternalError	The operation failed because an unexpected internal error occurred.
RequestStatus.Success	The operation finished successfully.

3.1.4.8.3 Complex Types

None.

3.1.4.8.4 Simple Types

None.

3.1.4.8.5 Attributes

None.

3.1.4.8.6 Groups

None.

3.1.4.8.7 Attribute Groups

None.

3.1.4.9 ModifyDistributionGroup

The **ModifyDistributionGroup** operation is used to change properties of an existing **distribution list** in a **DS**.

```
<wsdl:operation name="ModifyDistributionGroup">
  <wsdl:input message="tns:ModifyDistributionGroupSoapIn" />
  <wsdl:output message="tns:ModifyDistributionGroupSoapOut" />
</wsdl:operation>
```

The protocol client sends a **ModifyDistributionGroupSoapIn** request message, and the protocol server responds with a **ModifyDistributionGroupSoapOut** response message. The following diagram shows the message sequence.

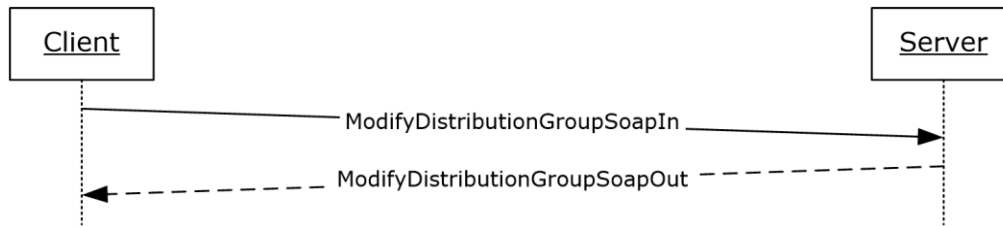


Figure 11: Message sequence for a ModifyDistributionGroup operation

3.1.4.9.1 Messages

The following table summarizes the set of **WSDL** message definitions that are specific to this operation.

Message	Description
ModifyDistributionGroupSoapIn	A request to initiate a ModifyDistributionGroup operation.
ModifyDistributionGroupSoapOut	A response from the protocol server at completion of the ModifyDistributionGroup operation.

3.1.4.9.1.1 ModifyDistributionGroupSoapIn

This is the request message for a **ModifyDistributionGroup** operation.

The **SOAP action** value of the message is defined as follows.

```
http://microsoft.com/webservices/SharePoint/SharepointEmailWS/ModifyDistributionGroup
```

The **SOAP body** contains a **ModifyDistributionGroup** element.

3.1.4.9.1.2 ModifyDistributionGroupSoapOut

This is the response message for a **ModifyDistributionGroup** operation.

The **SOAP action** value of the message is defined as follows.

```
http://microsoft.com/webservices/SharePoint/SharepointEmailWS/ModifyDistributionGroup
```

The **SOAP body** contains a **ModifyDistributionGroupResponse** element.

3.1.4.9.2 Elements

The following table summarizes the **XML schema** element definitions that are specific to this operation.

Element	Description
---------	-------------

Element	Description
ModifyDistributionGroup	Body of the ModifyDistributionGroupSoapIn message.
ModifyDistributionGroupResponse	Body of the ModifyDistributionGroupSoapOut message.

3.1.4.9.2.1 ModifyDistributionGroup

The definition of the **ModifyDistributionGroup** element is as follows.

```
<s:element name="ModifyDistributionGroup">
  <s:complexType>
    <s:sequence>
      <s:element name="Alias" type="s:string" />
      <s:element name="Name" type="s:string" />
      <s:element name="Description" type="s:string" minOccurs="0" />
      <s:element name="ContactCN" type="s:string" minOccurs="0" />
      <s:element name="Info" type="tns:RequestInfo" />
      <s:element name="Flags" type="tns:DistributionGroupFlags" />
    </s:sequence>
  </s:complexType>
</s:element>
```

Alias: The **e-mail alias** of the **distribution list**. This value MUST be 255 or fewer characters. Additional limitations enforced on this value by the **DS** are specified in [\[MS-ADA1\] section 2.110](#), which further restricts the number of characters to the "rangeUpper" value.

Name: The new display name of the distribution list. This value MUST be 255 or fewer characters. Additional limitations on this value are specified in [\[MS-ADA1\] section 2.175](#).

Description: The new description of the distribution list. This value MUST be 4,000 or fewer characters.

ContactCN: The e-mail alias of a **contact** to add to the distribution list. This value MUST be 255 or fewer characters. Additional limitations on this value are specified in [\[MS-ADA1\] section 2.110](#).

Info: A **RequestInfo** complex type ([section 2.2.4.2](#)) that contains additional information about the request.

Flags: A **DistributionGroupFlags** simple type ([section 2.2.5.2](#)) that contains updated validation properties or constraints on the distribution list.

3.1.4.9.2.2 ModifyDistributionGroupResponse

The definition of the **ModifyDistributionGroupResponse** element is as follows.

```
<s:element name="ModifyDistributionGroupResponse">
  <s:complexType>
    <s:sequence>
      <s:element name="ModifyDistributionGroupResult" type="tns:RequestResponse" />
    </s:sequence>
  </s:complexType>
</s:element>
```

ModifyDistributionGroupResult: The protocol server MUST return a **RequestResponse** complex type (section [2.2.4.3](#)) in the response message. The value of the **JobStatus** element of the **RequestResponse** type MUST be one of the values described in the following table.

Value	Description
RequestStatus.ServiceNotConfigured	The DS is not configured.
RequestStatus.InvalidArgument	The value specified by the Alias element is not valid or the RequestorEmail element of the Info element is NULL.
RequestStatus.ObjectNotFound	The value specified by the Alias element cannot be found in the DS or automatic approvals are enabled and the value specified by the ContactCN element cannot be found in the DS.
RequestStatus.AccessDenied	Automatic approvals are enabled but the protocol client does not have sufficient permission to access one or more of the objects that are needed for the operation.
RequestStatus.ServerUnavailable	Automatic approvals are enabled and a protocol server that is required for the operation cannot be accessed.
RequestStatus.InternalError	The operation failed because an unexpected internal error occurred.
RequestStatus.PendingApproval	Automatic approvals are disabled and a job was created for the request.
RequestStatus.Success	Automatic approvals are enabled and the operation finished successfully.

3.1.4.9.3 Complex Types

None.

3.1.4.9.4 Simple Types

None.

3.1.4.9.5 Attributes

None.

3.1.4.9.6 Groups

None.

3.1.4.9.7 Attribute Groups

None.

3.1.4.10 RenameDistributionGroup

The **RenameDistributionGroup** operation is used to change the name of an existing **distribution list** in a **DS**.

```
<wsdl:operation name="RenameDistributionGroup">
  <wsdl:input message="tns:RenameDistributionGroupSoapIn" />
  <wsdl:output message="tns:RenameDistributionGroupSoapOut" />
</wsdl:operation>
```

The protocol client sends a **RenameDistributionGroupSoapIn** request message, and the protocol server responds with a **RenameDistributionGroupSoapOut** response message. The following diagram shows the message sequence.

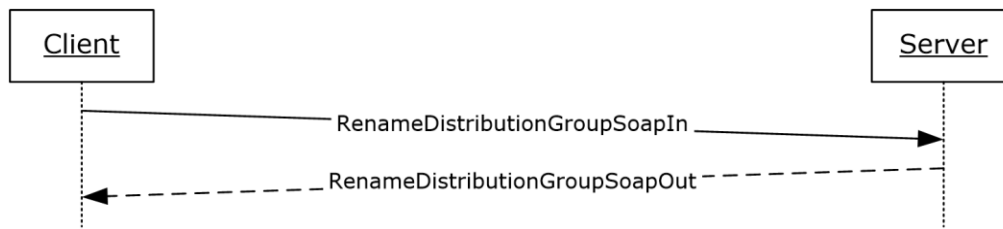


Figure 12: Message sequence for a RenameDistributionGroup operation

3.1.4.10.1 Messages

The following table summarizes the set of **WSDL** message definitions that are specific to this operation.

Message	Description
RenameDistributionGroupSoapIn	A request to initiate a RenameDistributionGroup operation.
RenameDistributionGroupSoapOut	A response from the protocol server at completion of the RenameDistributionGroup operation.

3.1.4.10.1.1 RenameDistributionGroupSoapIn

This is the request message for a **RenameDistributionGroup** operation.

The **SOAP action** value of the message is defined as follows.

```
http://microsoft.com/webservices/SharePoint/SharepointEmailWS/RenameDistributionGroup
```

The **SOAP body** contains a **RenameDistributionGroup** element.

3.1.4.10.1.2 RenameDistributionGroupSoapOut

This is the response message for a **RenameDistributionGroup** operation.

The **SOAP action** value of the message is defined as follows.

```
http://microsoft.com/webservices/SharePoint/SharepointEmailWS/RenameDistributionGroup
```

The **SOAP body** contains a **RenameDistributionGroupResponse** element.

3.1.4.10.2 Elements

The following table summarizes the **XML schema** element definitions that are specific to this operation.

Element	Description
---------	-------------

Element	Description
RenameDistributionGroup	Body of the RenameDistributionGroupSoapIn message.
RenameDistributionGroupResponse	Body of the RenameDistributionGroupSoapOut message.

3.1.4.10.2.1 RenameDistributionGroup

The definition of the **RenameDistributionGroup** is as follows.

```
<s:element name="RenameDistributionGroup">
  <s:complexType>
    <s:sequence>
      <s:element name="OldAlias" type="s:string" />
      <s:element name="NewAlias" type="s:string" />
      <s:element name="Info" type="tns:RequestInfo" />
    </s:sequence>
  </s:complexType>
</s:element>
```

OldAlias: The **e-mail alias** of the **distribution list**. This value MUST be 255 or fewer characters. Additional limitations enforced on this value by the **DS** are specified in [\[MS-ADA1\]](#) section [2.110](#), which further restricts the number of characters to the "rangeUpper" value.

NewAlias: The new e-mail alias for the distribution list. This value MUST be 255 or fewer characters. Additional limitations enforced on this value by the DS are specified in [\[MS-ADA1\]](#) section [2.110](#), which further restricts the number of characters to the "rangeUpper" value.

Info: A **RequestInfo** complex type (section [2.2.4.2](#)) that contains additional information about the request.

3.1.4.10.2.2 RenameDistributionGroupResponse

The definition of the **RenameDistributionGroupResponse** element is as follows.

```
<s:element name="RenameDistributionGroupResponse">
  <s:complexType>
    <s:sequence>
      <s:element name="RenameDistributionGroupResult" type="tns:RequestResponse" />
    </s:sequence>
  </s:complexType>
</s:element>
```

RenameDistributionGroupResult: The protocol server MUST return a **RequestResponse** complex type (section [2.2.4.3](#)) in the response message. The value of the **JobStatus** element of the **RequestResponse** type MUST be one of the values described in the following table.

Value	Description
RequestStatus.ServiceNotConfigured	The DS is not configured.

Value	Description
RequestStatus.InvalidArgument	The value specified by the OldAlias element or the NewAlias element contains zero characters or a semicolon (;), or the RequestorEmail element of the Info element is NULL.
RequestStatus.ObjectNotFound	The value specified by the OldAlias element cannot be found in the DS.
RequestStatus.DuplicateAlias	The value specified by the NewAlias element already exists in the DS.
RequestStatus.AccessDenied	Automatic approvals are enabled and the protocol client does not have sufficient permission to access one or more of the objects that are needed for the operation.
RequestStatus.ServerUnavailable	Automatic approvals are enabled and a protocol server that is required for the operation cannot be accessed.
RequestStatus.InternalError	The operation failed because an unexpected internal error occurred.
RequestStatus.PendingApproval	Automatic approvals are disabled and a job was created for the request.
RequestStatus.Success	Automatic approvals are enabled and the operation finished successfully.

3.1.4.10.3 Complex Types

None.

3.1.4.10.4 Simple Types

None.

3.1.4.10.5 Attributes

None.

3.1.4.10.6 Groups

None.

3.1.4.10.7 Attribute Groups

None.

3.1.5 Timer Events

None.

3.1.6 Other Local Events

None.

4 Protocol Examples

4.1 Create and Add a User to a Distribution List

This scenario demonstrates how to create a new **distribution list**, add a user to a distribution list, and verify that the requests were approved.

4.1.1 Create a Distribution List

In this example, a new **distribution list** named "DistGroup01" is created on the protocol server, in response to a request from a protocol client. The **e-mail alias** of the distribution list is "DistGroup01".

The protocol client sends the following request message:

```
<soap:Envelope xmlns:soap="http://schemas.xmlsoap.org/soap/envelope/"
xmlns:xsi="http://www.w3.org/2001/XMLSchema-instance"
xmlns:xsd="http://www.w3.org/2001/XMLSchema">
  <soap:Body>
    <CreateDistributionGroup
xmlns="http://microsoft.com/webservices/SharePoint/SharepointEmailWS/">
      <Alias>DistGroup01</Alias>
      <Name>DistGroup01</Name>
      <ContactCN />
      <Info>
        <RequestorEmail>adam.carter@example.com</RequestorEmail>
        <RequestId>00000000-0000-0000-0000-000000000000</RequestId>
      </Info>
      <Flags>None</Flags>
    </CreateDistributionGroup>
  </soap:Body>
</soap:Envelope>
```

The protocol server is configured to approve requests automatically. Therefore, it creates the distribution list and returns the status value "Success" in the following response message:

```
<soap:Envelope xmlns:soap="http://schemas.xmlsoap.org/soap/envelope/"
xmlns:xsi="http://www.w3.org/2001/XMLSchema-instance"
xmlns:xsd="http://www.w3.org/2001/XMLSchema">
  <soap:Body>
    <CreateDistributionGroupResponse
xmlns="http://microsoft.com/webservices/SharePoint/SharepointEmailWS/">
      <CreateDistributionGroupResult>
        <JobID>0</JobID>
        <JobStatus>Success</JobStatus>
        <Alias>DistGroup01</Alias>
      </CreateDistributionGroupResult>
    </CreateDistributionGroupResponse>
  </soap:Body>
</soap:Envelope>
```

4.1.2 Add a User to a Distribution List

In this example, the user uniquely identified by the **domain account** "Example\smasters" is added to a **distribution list** named "addmembersdl".

The protocol client sends the following request message:

```

<soap:Envelope xmlns:soap="http://schemas.xmlsoap.org/soap/envelope/"
xmlns:xsi="http://www.w3.org/2001/XMLSchema-instance"
xmlns:xsd="http://www.w3.org/2001/XMLSchema">
  <soap:Body>
    <ChangeUsersMembershipInDistributionGroup
xmlns="http://microsoft.com/webservices/SharePoint/SharepointEmailWS/">
      <Alias>addmembersdl</Alias>
      <AddNt4NameList>
        <string>Example\smasters</string>
      </AddNt4NameList>
      <DeleteNt4NameList />
      <DeleteAllCurrentMembers>false</DeleteAllCurrentMembers>
    </ChangeUsersMembershipInDistributionGroup>
  </soap:Body>
</soap:Envelope>

```

The protocol server adds the domain account "Example\smasters" to the distribution list named "addmembersdl" and returns the status value "Success" in the following response message:

```

<soap:Envelope xmlns:soap="http://schemas.xmlsoap.org/soap/envelope/"
xmlns:xsi="http://www.w3.org/2001/XMLSchema-instance"
xmlns:xsd="http://www.w3.org/2001/XMLSchema">
  <soap:Body>
    <ChangeUsersMembershipInDistributionGroupResponse
xmlns="http://microsoft.com/webservices/SharePoint/SharepointEmailWS/">
      <ChangeUsersMembershipInDistributionGroupResult>Success</ChangeUsersMembershipInDistributionGroupResult>
    </ChangeUsersMembershipInDistributionGroupResponse>
  </soap:Body>
</soap:Envelope>

```

4.2 Create and Add a Contact to a Distribution List

This scenario demonstrates how to create a new **contact** and how to add a contact to an existing **distribution list**.

4.2.1 Create a Contact

In this example, a **contact** named "Steve Masters" is added to the **DS**. The contact's **e-mail alias** is "Steve.Masters". The contact's forwarding e-mail address is "Steve.Masters@example.com".

The protocol client sends the following request message:

```

<soap:Envelope xmlns:soap="http://schemas.xmlsoap.org/soap/envelope/"
xmlns:xsi="http://www.w3.org/2001/XMLSchema-instance"
xmlns:xsd="http://www.w3.org/2001/XMLSchema">
  <soap:Body>
    <CreateContact
xmlns="http://microsoft.com/webservices/SharePoint/SharepointEmailWS/">
      <Alias>Steve.Masters</Alias>
      <FirstName>Steve</FirstName>
      <LastName>Masters</LastName>
      <ForwardingEmail>steve.masters@example.com</ForwardingEmail>
      <Flags>None</Flags>
    </CreateContact>
  </soap:Body>
</soap:Envelope>

```

The protocol server adds the contact "Steve Masters" to the DS and returns the status value "Success" in the following response message:

```
<soap:Envelope xmlns:soap="http://schemas.xmlsoap.org/soap/envelope/"
xmlns:xsi="http://www.w3.org/2001/XMLSchema-instance"
xmlns:xsd="http://www.w3.org/2001/XMLSchema">
  <soap:Body>
    <CreateContactResponse
xmlns="http://microsoft.com/webservices/SharePoint/SharepointEmailWS/">
      <CreateContactResult>Success</CreateContactResult>
    </CreateContactResponse>
  </soap:Body>
</soap:Envelope>
```

4.2.2 Add a Contact to a Distribution List

In this example, a **contact** with the **e-mail alias** "Lori.Kane" is added to the **distribution list** named "AddMembersDL".

The protocol client sends the following request message:

```
<soap:Envelope xmlns:soap="http://schemas.xmlsoap.org/soap/envelope/"
xmlns:xsi="http://www.w3.org/2001/XMLSchema-instance"
xmlns:xsd="http://www.w3.org/2001/XMLSchema">
  <soap:Body>
    <ChangeContactsMembershipInDistributionGroup
xmlns="http://microsoft.com/webservices/SharePoint/SharepointEmailWS/">
      <Alias>AddMembersDL</Alias>
      <AddListForContacts>
        <string>Lori.Kane</string>
      </AddListForContacts>
      <DeleteListForContacts>
        <string />
      </DeleteListForContacts>
      <DeleteAllCurrentMembers>false</DeleteAllCurrentMembers>
    </ChangeContactsMembershipInDistributionGroup>
  </soap:Body>
</soap:Envelope>
```

The protocol server adds the contact to the distribution list and returns the status value "Success" in the following response message:

```
<soap:Envelope xmlns:soap="http://schemas.xmlsoap.org/soap/envelope/"
xmlns:xsi="http://www.w3.org/2001/XMLSchema-instance"
xmlns:xsd="http://www.w3.org/2001/XMLSchema">
  <soap:Body>
    <ChangeContactsMembershipInDistributionGroupResponse
xmlns="http://microsoft.com/webservices/SharePoint/SharepointEmailWS/">
      <ChangeContactsMembershipInDistributionGroupResult>Success</ChangeContactsMembershipInDistributionGroupResult>
    </ChangeContactsMembershipInDistributionGroupResponse>
  </soap:Body>
</soap:Envelope>
```

4.3 Modify a Contact

This scenario demonstrates how to modify an existing **contact** in a **DS**. The contact's (3) **e-mail alias** is changed from "steve.masters" to "steved.masters". The contact's (3) name is changed from "Steve

Masters" to "Steve D Masters". The contact's (3) forwarding e-mail address is changed from "steve.masters@example.com" to "steved.masters@example.com".

The protocol client sends the following request message:

```
<soap:Envelope xmlns:soap="http://schemas.xmlsoap.org/soap/envelope/"
xmlns:xsi="http://www.w3.org/2001/XMLSchema-instance"
xmlns:xsd="http://www.w3.org/2001/XMLSchema">
  <soap:Body>
    <ModifyContact
xmlns="http://microsoft.com/webservices/SharePoint/SharepointEmailWS/">
      <OldAlias>steve.masters</OldAlias>
      <NewAlias>steved.masters</NewAlias>
      <FirstName>Steve D</FirstName>
      <LastName>Masters</LastName>
      <ForwardingEmail>steved.masters@example.com</ForwardingEmail>
      <Flags>None</Flags>
    </ModifyContact>
  </soap:Body>
</soap:Envelope>
```

The protocol server retrieves the existing contact, updates the requested properties of that contact (3), and returns the status value "Success" in the following response message:

```
<soap:Envelope xmlns:soap="http://schemas.xmlsoap.org/soap/envelope/"
xmlns:xsi="http://www.w3.org/2001/XMLSchema-instance"
xmlns:xsd="http://www.w3.org/2001/XMLSchema">
  <soap:Body>
    <ModifyContactResponse
xmlns="http://microsoft.com/webservices/SharePoint/SharepointEmailWS/">
      <ModifyContactResult>Success</ModifyContactResult>
    </ModifyContactResponse>
  </soap:Body>
</soap:Envelope>
```

4.4 Remove a Contact and Rename a Distribution List

This scenario demonstrates how to remove a **contact** from a **distribution list**, delete a contact, and rename a distribution list.

4.4.1 Remove a Contact from a Distribution List

In this example, a **contact** with the **e-mail alias** "steved.masters" is removed from the **distribution list** named "AddMembersDL".

The protocol client sends the following request message:

```
<soap:Envelope xmlns:soap="http://schemas.xmlsoap.org/soap/envelope/"
xmlns:xsi="http://www.w3.org/2001/XMLSchema-instance"
xmlns:xsd="http://www.w3.org/2001/XMLSchema">
  <soap:Body>
    <ChangeContactsMembershipInDistributionGroup
xmlns="http://microsoft.com/webservices/SharePoint/SharepointEmailWS/">
      <Alias>AddMembersDL</Alias>
      <AddListForContacts>
        <string />
      </AddListForContacts>
      <DeleteListForContacts>
        <string>steved.masters</string>
      </DeleteListForContacts>
      <DeleteAllCurrentMembers>>false</DeleteAllCurrentMembers>
    </ChangeContactsMembershipInDistributionGroup>
  </soap:Body>
</soap:Envelope>
```

```

    </ChangeContactsMembershipInDistributionGroup>
  </soap:Body>
</soap:Envelope>

```

The protocol server removes the contact from the distribution list and returns the status value "Success" in the following response message:

```

<soap:Envelope xmlns:soap="http://schemas.xmlsoap.org/soap/envelope/"
xmlns:xsi="http://www.w3.org/2001/XMLSchema-instance"
xmlns:xsd="http://www.w3.org/2001/XMLSchema">
  <soap:Body>
    <ChangeContactsMembershipInDistributionGroupResponse
xmlns="http://microsoft.com/webservices/SharePoint/SharepointEmailWS/">
      <ChangeContactsMembershipInDistributionGroupResult>Success</ChangeContactsMembershipInDistri
butionGroupResult>
    </ChangeContactsMembershipInDistributionGroupResponse>
  </soap:Body>
</soap:Envelope>

```

4.4.2 Delete a Contact

In this example, the **contact** with the **e-mail alias** "steved.masters" is deleted from the **DS**.

The protocol client sends the following request message:

```

<soap:Envelope xmlns:soap="http://schemas.xmlsoap.org/soap/envelope/"
xmlns:xsi="http://www.w3.org/2001/XMLSchema-instance"
xmlns:xsd="http://www.w3.org/2001/XMLSchema">
  <soap:Body>
    <DeleteContact
xmlns="http://microsoft.com/webservices/SharePoint/SharepointEmailWS/">
      <Alias>steved.masters</Alias>
    </DeleteContact>
  </soap:Body>
</soap:Envelope>

```

The protocol server deletes the contact (3) with the specified e-mail alias, and returns the status value "Success" in the following response message:

```

<soap:Envelope xmlns:soap="http://schemas.xmlsoap.org/soap/envelope/"
xmlns:xsi="http://www.w3.org/2001/XMLSchema-instance"
xmlns:xsd="http://www.w3.org/2001/XMLSchema">
  <soap:Body>
    <DeleteContactResponse
xmlns="http://microsoft.com/webservices/SharePoint/SharepointEmailWS/">
      <DeleteContactResult>Success</DeleteContactResult>
    </DeleteContactResponse>
  </soap:Body>
</soap:Envelope>

```

4.4.3 Change the Name of a Distribution List

In this example, a protocol client with the **e-mail address** "adam.carter@example.com" submits a request to change the **e-mail alias** of an existing **distribution list** from "DistGroup01" to "RenamedDG01".

The protocol client sends the following request message:

```

<soap:Envelope xmlns:soap="http://schemas.xmlsoap.org/soap/envelope/"
xmlns:xsi="http://www.w3.org/2001/XMLSchema-instance"
xmlns:xsd="http://www.w3.org/2001/XMLSchema">
  <soap:Body>
    <RenameDistributionGroup
xmlns="http://microsoft.com/webservices/SharePoint/SharepointEmailWS/">
      <OldAlias>DistGroup01</OldAlias>
      <NewAlias>RenamedDG01</NewAlias>
      <Info>
        <RequestorEmail>adam.carter@example.com</RequestorEmail>
        <RequestId>00000000-0000-0000-0000-000000000000</RequestId>
      </Info>
    </RenameDistributionGroup>
  </soap:Body>
</soap:Envelope>

```

The protocol server is not configured to approve requests automatically. Therefore, it creates a job for the request, stores the job as a **RequestStatus** simple type (section 2.2.5.4) with the value "PendingApproval", and returns information about this job in the following response message:

```

<soap:Envelope xmlns:soap="http://schemas.xmlsoap.org/soap/envelope/"
xmlns:xsi="http://www.w3.org/2001/XMLSchema-instance"
xmlns:xsd="http://www.w3.org/2001/XMLSchema">
  <soap:Body>
    <RenameDistributionGroupResponse
xmlns="http://microsoft.com/webservices/SharePoint/SharepointEmailWS/">
      <RenameDistributionGroupResult>
        <JobID>76</JobID>
        <JobStatus>PendingApproval</JobStatus>
        <Alias>DistGroup01</Alias>
      </RenameDistributionGroupResult>
    </RenameDistributionGroupResponse>
  </soap:Body>
</soap:Envelope>

```

4.5 Modify a Distribution List

In this example, a protocol client with the **e-mail address** "adam.carter@example.com" submits a request to change the display name of an existing **distribution list** from "RenamedDG01" to "NewNameDG01".

The protocol client sends the following request message:

```

<soap:Envelope xmlns:soap="http://schemas.xmlsoap.org/soap/envelope/"
xmlns:xsi="http://www.w3.org/2001/XMLSchema-instance"
xmlns:xsd="http://www.w3.org/2001/XMLSchema">
  <soap:Body>
    <ModifyDistributionGroup
xmlns="http://microsoft.com/webservices/SharePoint/SharepointEmailWS/">
      <Alias>RenamedDG01</Alias>
      <Name>NewNameDG01</Name>
      <Description>any description</Description>
      <Info>
        <RequestorEmail>adam.carter@example.com</RequestorEmail>
        <RequestId>00000000-0000-0000-0000-000000000000</RequestId>
      </Info>
      <Flags>None</Flags>
    </ModifyDistributionGroup>
  </soap:Body>
</soap:Envelope>

```

The protocol server is not configured to approve requests automatically. Therefore, it creates a job for the modify request, stores that job as a **RequestStatus** simple type (section [2.2.5.4](#)) with the value "PendingApproval", and returns information about the job in the following response message:

```
<soap:Envelope xmlns:soap="http://schemas.xmlsoap.org/soap/envelope/"
xmlns:xsi="http://www.w3.org/2001/XMLSchema-instance"
xmlns:xsd="http://www.w3.org/2001/XMLSchema">
  <soap:Body>
    <ModifyDistributionGroupResponse
xmlns="http://microsoft.com/webservices/SharePoint/SharepointEmailWS/">
      <ModifyDistributionGroupResult>
        <JobID>78</JobID>
        <JobStatus>PendingApproval</JobStatus>
        <Alias>RenamedDG01</Alias>
      </ModifyDistributionGroupResult>
    </ModifyDistributionGroupResponse>
  </soap:Body>
</soap:Envelope>
```

4.6 Delete a Distribution List

In this example, a protocol client with the **e-mail address** "adam.carter@example.com" submits a request to delete an existing **distribution list**, which has the **e-mail alias** "RenamedDG01".

The protocol client sends the following request message:

```
<soap:Envelope xmlns:soap="http://schemas.xmlsoap.org/soap/envelope/"
xmlns:xsi="http://www.w3.org/2001/XMLSchema-instance"
xmlns:xsd="http://www.w3.org/2001/XMLSchema">
  <soap:Body>
    <DeleteDistributionGroup
xmlns="http://microsoft.com/webservices/SharePoint/SharepointEmailWS/">
      <Alias>RenamedDG01</Alias>
      <Info>
        <RequestorEmail>adam.carter@example.com</RequestorEmail>
        <RequestId>00000000-0000-0000-0000-000000000000</RequestId>
      </Info>
    </DeleteDistributionGroup>
  </soap:Body>
</soap:Envelope>
```

The protocol server is configured to approve requests automatically. Therefore, it deletes the distribution list and returns the status value "Success" in the following response message:

```
<soap:Envelope xmlns:soap="http://schemas.xmlsoap.org/soap/envelope/"
xmlns:xsi="http://www.w3.org/2001/XMLSchema-instance"
xmlns:xsd="http://www.w3.org/2001/XMLSchema">
  <soap:Body>
    <DeleteDistributionGroupResponse
xmlns="http://microsoft.com/webservices/SharePoint/SharepointEmailWS/">
      <DeleteDistributionGroupResult>
        <JobID>0</JobID>
        <JobStatus>Success</JobStatus>
        <Alias>RenamedDG01</Alias>
      </DeleteDistributionGroupResult>
    </DeleteDistributionGroupResponse>
  </soap:Body>
</soap:Envelope>
```

4.7 Check the Status of a Deletion Request

This scenario demonstrates how to delete a **distribution list** and check the status of that request before and after the request is processed by the protocol server.

4.7.1 Delete a Distribution List

In this example, a protocol client with the **e-mail address** "adam.carter@example.com" submits a request to delete the existing **distribution list** that has the **e-mail alias** "SorosalDL6".

The protocol client sends the following request message:

```
<soap:Envelope xmlns:soap="http://schemas.xmlsoap.org/soap/envelope/"
xmlns:xsi="http://www.w3.org/2001/XMLSchema-instance"
xmlns:xsd="http://www.w3.org/2001/XMLSchema">
  <soap:Body>
    <DeleteDistributionGroup
xmlns="http://microsoft.com/webservices/SharePoint/SharepointEmailWS/">
      <Alias>SorosalDL6</Alias>
      <Info>
        <RequestorEmail>adam.carter@example.com</RequestorEmail>
        <RequestId>00000000-0000-0000-0000-000000000000</RequestId>
      </Info>
    </DeleteDistributionGroup>
  </soap:Body>
</soap:Envelope>
```

The protocol server is not configured to approve requests automatically. Therefore, it creates a job for the request, stores that job as a **RequestStatus** simple type (section [2.2.5.4](#)) with the value "PendingApproval", and returns information about the job in the following response message:

```
<soap:Envelope xmlns:soap="http://schemas.xmlsoap.org/soap/envelope/"
xmlns:xsi="http://www.w3.org/2001/XMLSchema-instance"
xmlns:xsd="http://www.w3.org/2001/XMLSchema">
  <soap:Body>
    <DeleteDistributionGroupResponse
xmlns="http://microsoft.com/webservices/SharePoint/SharepointEmailWS/">
      <DeleteDistributionGroupResult>
        <JobID>108</JobID>
        <JobStatus>PendingApproval</JobStatus>
        <Alias>SorosalDL6</Alias>
      </DeleteDistributionGroupResult>
    </DeleteDistributionGroupResponse>
  </soap:Body>
</soap:Envelope>
```

4.7.2 Check the Status of a Job

In this example, a protocol client submits a request to check the status of a job that is associated with the job identifier "108".

The protocol client sends the following request message:

```
<soap:Envelope xmlns:soap="http://schemas.xmlsoap.org/soap/envelope/"
xmlns:xsi="http://www.w3.org/2001/XMLSchema-instance"
xmlns:xsd="http://www.w3.org/2001/XMLSchema">
  <soap:Body>
    <GetJobStatus xmlns="http://microsoft.com/webservices/SharePoint/SharepointEmailWS/">
      <JobId>108</JobId>
    </GetJobStatus>
  </soap:Body>
```



```
</soap:Envelope>
```

By referencing the **JobID** element of the **RequestResponse** complex type (section [2.2.4.3](#)) that stores information about the job, the protocol server finds the job, retrieves the status, and sends the following response message:

```
<soap:Envelope xmlns:soap="http://schemas.xmlsoap.org/soap/envelope/"
xmlns:xsi="http://www.w3.org/2001/XMLSchema-instance"
xmlns:xsd="http://www.w3.org/2001/XMLSchema">
  <soap:Body>
    <GetJobStatusResponse
xmlns="http://microsoft.com/webservices/SharePoint/SharepointEmailWS/">
      <GetJobStatusResult>
        <JobID>108</JobID>
        <Comment />
        <JobStatus>PendingApproval</JobStatus>
        <Alias>SorosaldL6</Alias>
      </GetJobStatusResult>
    </GetJobStatusResponse>
  </soap:Body>
</soap:Envelope>
```

After the job completes successfully, the protocol server deletes it from the list of jobs and returns the following response message:

```
<soap:Envelope xmlns:soap="http://schemas.xmlsoap.org/soap/envelope/"
xmlns:xsi="http://www.w3.org/2001/XMLSchema-instance"
xmlns:xsd="http://www.w3.org/2001/XMLSchema">
  <soap:Body>
    <GetJobStatusResponse
xmlns="http://microsoft.com/webservices/SharePoint/SharepointEmailWS/">
      <GetJobStatusResult>
        <JobID>108</JobID>
        <Comment />
        <JobStatus>Success</JobStatus>
        <Alias>SorosaldL6</Alias>
      </GetJobStatusResult>
    </GetJobStatusResponse>
  </soap:Body>
</soap:Envelope>
```

If a protocol client requests the status of the job after it is deleted, the protocol server returns the following error:

```
System.Reflection.TargetInvocationException: Exception has been thrown by the target of an
invocation. ---> System.Web.Services.Protocols.SoapException: Server was unable to process
request. ---> Value does not fall within the expected range.
   at System.Web.Services.Protocols.SoapHttpClientProtocol.ReadResponse(SoapClientMessage
message, WebResponse response, Stream responseStream, Boolean asyncCall)
   at System.Web.Services.Protocols.SoapHttpClientProtocol.Invoke(String methodName, Object[]
parameters)
   at WebSvcClient.SharepointEmailWSProxy.SharepointEmailWS.GetJobStatus(Int32 JobId)
   --- End of inner exception stack trace ---
   at System.RuntimeMethodHandle._InvokeMethodFast(Object target, Object[] arguments,
SignatureStruct& sig, MethodAttributes methodAttributes, RuntimeTypeHandle typeOwner)
   at System.RuntimeMethodHandle.InvokeMethodFast(Object target, Object[] arguments,
Signature sig, MethodAttributes methodAttributes, RuntimeTypeHandle typeOwner)
   at System.Reflection.RuntimeMethodInfo.Invoke(Object obj, BindingFlags invokeAttr, Binder
binder, Object[] parameters, CultureInfo culture, Boolean skipVisibilityChecks)
   at System.Reflection.RuntimeMethodInfo.Invoke(Object obj, BindingFlags invokeAttr, Binder
binder, Object[] parameters, CultureInfo culture)
```

at WebSvcClient.ProxyWrapper.WebMethodCallWorker()

5 Security

5.1 Security Considerations for Implementers

None.

5.2 Index of Security Parameters

None.

6 Appendix A: Full WSDL

For ease of implementation, the full WSDL and schema are provided in this appendix.

```
<?xml version="1.0" encoding="utf-8"?>
  <wsdl:definitions xmlns:soap="http://schemas.xmlsoap.org/wsdl/soap/"
xmlns:tm="http://microsoft.com/wsdl/mime/textMatching/"
xmlns:soapenc="http://schemas.xmlsoap.org/soap/encoding/"
xmlns:mime="http://schemas.xmlsoap.org/wsdl/mime/"
xmlns:tns="http://microsoft.com/webservices/SharePoint/SharepointEmailWS/"
xmlns:sl="http://microsoft.com/wsdl/types/" xmlns:s="http://www.w3.org/2001/XMLSchema"
xmlns:soap12="http://schemas.xmlsoap.org/wsdl/soap12/"
xmlns:http="http://schemas.xmlsoap.org/wsdl/http/"
targetNamespace="http://microsoft.com/webservices/SharePoint/SharepointEmailWS/"
xmlns:wsdl="http://schemas.xmlsoap.org/wsdl/">Sharepoint Email
Integration Web Service</wsdl:definitions>
  <wsdl:types>
    <s:schema elementFormDefault="qualified"
targetNamespace="http://microsoft.com/webservices/SharePoint/SharepointEmailWS/">
      <s:import namespace="http://microsoft.com/wsdl/types/" />
      <s:element name="CreateContact">
        <s:complexType>
          <s:sequence>
            <s:element name="Alias" type="s:string" />
            <s:element name="FirstName" type="s:string" />
            <s:element name="LastName" type="s:string" />
            <s:element name="ForwardingEmail" type="s:string" />
            <s:element name="Flags" type="tns:ContactFlags" />
          </s:sequence>
        </s:complexType>
      </s:element>
      <s:simpleType name="ContactFlags">
        <s:restriction base="s:string">
          <s:enumeration value="None" />
          <s:enumeration value="OnlyAllowAuthenticatedEmail" />
        </s:restriction>
      </s:simpleType>
      <s:element name="CreateContactResponse">
        <s:complexType>
          <s:sequence>
            <s:element name="CreateContactResult" type="tns:RequestStatus" />
          </s:sequence>
        </s:complexType>
      </s:element>
      <s:simpleType name="RequestStatus">
        <s:restriction base="s:string">
          <s:enumeration value="Success" />
          <s:enumeration value="PendingApproval" />
          <s:enumeration value="ApprovalDenied" />
          <s:enumeration value="DuplicateAlias" />
          <s:enumeration value="InvalidArgument" />
          <s:enumeration value="ServiceNotConfigured" />
          <s:enumeration value="AccessDenied" />
          <s:enumeration value="ServerUnavailable" />
          <s:enumeration value="ObjectNotFound" />
          <s:enumeration value="InvalidMember" />
          <s:enumeration value="InternalError" />
        </s:restriction>
      </s:simpleType>
      <s:element name="DeleteContact">
        <s:complexType>
          <s:sequence>
            <s:element name="Alias" type="s:string" />
          </s:sequence>
        </s:complexType>
      </s:element>
    </s:schema>
  </wsdl:types>

```

```

<s:element name="DeleteContactResponse">
  <s:complexType>
    <s:sequence>
      <s:element name="DeleteContactResult" type="tns:RequestStatus" />
    </s:sequence>
  </s:complexType>
</s:element>
<s:element name="ModifyContact">
  <s:complexType>
    <s:sequence>
      <s:element name="OldAlias" type="s:string" />
      <s:element minOccurs="0" name="NewAlias" type="s:string" />
      <s:element name="FirstName" type="s:string" />
      <s:element name="LastName" type="s:string" />
      <s:element minOccurs="0" name="ForwardingEmail" type="s:string" />
      <s:element name="Flags" type="tns:ContactFlags" />
    </s:sequence>
  </s:complexType>
</s:element>
<s:element name="ModifyContactResponse">
  <s:complexType>
    <s:sequence>
      <s:element name="ModifyContactResult" type="tns:RequestStatus" />
    </s:sequence>
  </s:complexType>
</s:element>
<s:element name="CreateDistributionGroup">
  <s:complexType>
    <s:sequence>
      <s:element name="Alias" type="s:string" />
      <s:element name="Name" type="s:string" />
      <s:element minOccurs="0" name="Description" type="s:string" />
      <s:element minOccurs="0" name="ContactCN" type="s:string" />
      <s:element name="Info" type="tns:RequestInfo" />
      <s:element name="Flags" type="tns:DistributionGroupFlags" />
    </s:sequence>
  </s:complexType>
</s:element>
<s:complexType name="RequestInfo">
  <s:sequence>
    <s:element name="RequestorEmail" type="s:string" />
    <s:element minOccurs="0" name="Justification" type="s:string" />
    <s:element name="RequestId" type="s:guid" />
  </s:sequence>
</s:complexType>
<s:element name="CreateDistributionGroupResponse">
  <s:complexType>
    <s:sequence>
      <s:element name="CreateDistributionGroupResult"
type="tns:RequestResponse" />
    </s:sequence>
  </s:complexType>
</s:element>
<s:complexType name="RequestResponse">
  <s:sequence>
    <s:element name="JobID" type="s:int" />
    <s:element minOccurs="0" name="Comment" type="s:string" />
    <s:element name="JobStatus" type="tns:RequestStatus" />
    <s:element minOccurs="0" name="Alias" type="s:string" />
  </s:sequence>
</s:complexType>
<s:element name="DeleteDistributionGroup">
  <s:complexType>
    <s:sequence>
      <s:element name="Alias" type="s:string" />
      <s:element name="Info" type="tns:RequestInfo" />
    </s:sequence>
  </s:complexType>
</s:element>

```

```

    <s:element name="DeleteDistributionGroupResponse">
      <s:complexType>
        <s:sequence>
          <s:element name="DeleteDistributionGroupResult"
type="tns:RequestResponse" />
        </s:sequence>
      </s:complexType>
    </s:element>
    <s:element name="RenameDistributionGroup">
      <s:complexType>
        <s:sequence>
          <s:element name="OldAlias" type="s:string" />
          <s:element name="NewAlias" type="s:string" />
          <s:element name="Info" type="tns:RequestInfo" />
        </s:sequence>
      </s:complexType>
    </s:element>
    <s:element name="RenameDistributionGroupResponse">
      <s:complexType>
        <s:sequence>
          <s:element name="RenameDistributionGroupResult"
type="tns:RequestResponse" />
        </s:sequence>
      </s:complexType>
    </s:element>
    <s:element name="ModifyDistributionGroup">
      <s:complexType>
        <s:sequence>
          <s:element name="Alias" type="s:string" />
          <s:element name="Name" type="s:string" />
          <s:element minOccurs="0" name="Description" type="s:string" />
          <s:element minOccurs="0" name="ContactCN" type="s:string" />
          <s:element name="Info" type="tns:RequestInfo" />
          <s:element name="Flags" type="tns:DistributionGroupFlags" />
        </s:sequence>
      </s:complexType>
    </s:element>
    <s:simpleType name="DistributionGroupFlags">
      <s:restriction base="s:string">
        <s:enumeration value="None" />
        <s:enumeration value="OnlyAllowAuthenticatedEmail" />
      </s:restriction>
    </s:simpleType>
    <s:element name="ModifyDistributionGroupResponse">
      <s:complexType>
        <s:sequence>
          <s:element name="ModifyDistributionGroupResult"
type="tns:RequestResponse" />
        </s:sequence>
      </s:complexType>
    </s:element>
    <s:element name="GetJobStatus">
      <s:complexType>
        <s:sequence>
          <s:element name="JobId" type="s:int" />
        </s:sequence>
      </s:complexType>
    </s:element>
    <s:element name="GetJobStatusResponse">
      <s:complexType>
        <s:sequence>
          <s:element name="GetJobStatusResult" type="tns:RequestResponse" />
        </s:sequence>
      </s:complexType>
    </s:element>
    <s:element name="ChangeUsersMembershipInDistributionGroup">
      <s:complexType>
        <s:sequence>
          <s:element minOccurs="0" name="Alias" type="s:string" />

```

```

                <s:element minOccurs="0" name="AddNt4NameList" type="tns:ArrayOfString"
/>
                <s:element minOccurs="0" name="DeleteNt4NameList"
type="tns:ArrayOfString" />
                <s:element name="DeleteAllCurrentMembers" type="s:boolean" />
            </s:sequence>
        </s:complexType>
    </s:element>
    <s:complexType name="ArrayOfString">
        <s:sequence>
            <s:element minOccurs="0" maxOccurs="unbounded" name="string"
nillable="true" type="s:string" />
        </s:sequence>
    </s:complexType>
    <s:element name="ChangeUsersMembershipInDistributionGroupResponse">
        <s:complexType>
            <s:sequence>
                <s:element name="ChangeUsersMembershipInDistributionGroupResult"
type="tns:RequestStatus" />
            </s:sequence>
        </s:complexType>
    </s:element>
    <s:element name="ChangeContactsMembershipInDistributionGroup">
        <s:complexType>
            <s:sequence>
                <s:element name="Alias" type="s:string" />
                <s:element minOccurs="0" name="AddListForContacts"
type="tns:ArrayOfString" />
                <s:element minOccurs="0" name="DeleteListForContacts"
type="tns:ArrayOfString" />
                <s:element name="DeleteAllCurrentMembers" type="s:boolean" />
            </s:sequence>
        </s:complexType>
    </s:element>
    <s:element name="ChangeContactsMembershipInDistributionGroupResponse">
        <s:complexType>
            <s:sequence>
                <s:element name="ChangeContactsMembershipInDistributionGroupResult"
type="tns:RequestStatus" />
            </s:sequence>
        </s:complexType>
    </s:element>
</s:schema>
<s:schema elementFormDefault="qualified"
targetNamespace="http://microsoft.com/wsdl/types/">
    <s:simpleType name="guid">
        <s:restriction base="s:string">
            <s:pattern value="[0-9a-fA-F]{8}-[0-9a-fA-F]{4}-[0-9a-fA-F]{4}-[0-9a-fA-
F]{4}-[0-9a-fA-F]{12}" />
        </s:restriction>
    </s:simpleType>
</s:schema>
</wsdl:types>
<wsdl:message name="CreateContactSoapIn">
    <wsdl:part name="parameters" element="tns:CreateContact" />
</wsdl:message>
<wsdl:message name="CreateContactSoapOut">
    <wsdl:part name="parameters" element="tns:CreateContactResponse" />
</wsdl:message>
<wsdl:message name="DeleteContactSoapIn">
    <wsdl:part name="parameters" element="tns>DeleteContact" />
</wsdl:message>
<wsdl:message name="DeleteContactSoapOut">
    <wsdl:part name="parameters" element="tns>DeleteContactResponse" />
</wsdl:message>
<wsdl:message name="ModifyContactSoapIn">
    <wsdl:part name="parameters" element="tns:ModifyContact" />
</wsdl:message>
<wsdl:message name="ModifyContactSoapOut">

```

```

<wsdl:part name="parameters" element="tns:ModifyContactResponse" />
</wsdl:message>
<wsdl:message name="CreateDistributionGroupSoapIn">
  <wsdl:part name="parameters" element="tns:CreateDistributionGroup" />
</wsdl:message>
<wsdl:message name="CreateDistributionGroupSoapOut">
  <wsdl:part name="parameters" element="tns:CreateDistributionGroupResponse" />
</wsdl:message>
<wsdl:message name="DeleteDistributionGroupSoapIn">
  <wsdl:part name="parameters" element="tns:DeleteDistributionGroup" />
</wsdl:message>
<wsdl:message name="DeleteDistributionGroupSoapOut">
  <wsdl:part name="parameters" element="tns:DeleteDistributionGroupResponse" />
</wsdl:message>
<wsdl:message name="RenameDistributionGroupSoapIn">
  <wsdl:part name="parameters" element="tns:RenameDistributionGroup" />
</wsdl:message>
<wsdl:message name="RenameDistributionGroupSoapOut">
  <wsdl:part name="parameters" element="tns:RenameDistributionGroupResponse" />
</wsdl:message>
<wsdl:message name="ModifyDistributionGroupSoapIn">
  <wsdl:part name="parameters" element="tns:ModifyDistributionGroup" />
</wsdl:message>
<wsdl:message name="ModifyDistributionGroupSoapOut">
  <wsdl:part name="parameters" element="tns:ModifyDistributionGroupResponse" />
</wsdl:message>
<wsdl:message name="GetJobStatusSoapIn">
  <wsdl:part name="parameters" element="tns:GetJobStatus" />
</wsdl:message>
<wsdl:message name="GetJobStatusSoapOut">
  <wsdl:part name="parameters" element="tns:GetJobStatusResponse" />
</wsdl:message>
<wsdl:message name="ChangeUsersMembershipInDistributionGroupSoapIn">
  <wsdl:part name="parameters" element="tns:ChangeUsersMembershipInDistributionGroup" />
</wsdl:message>
<wsdl:message name="ChangeUsersMembershipInDistributionGroupSoapOut">
  <wsdl:part name="parameters"
element="tns:ChangeUsersMembershipInDistributionGroupResponse" />
</wsdl:message>
<wsdl:message name="ChangeContactsMembershipInDistributionGroupSoapIn">
  <wsdl:part name="parameters" element="tns:ChangeContactsMembershipInDistributionGroup"
/>
/>
</wsdl:message>
<wsdl:message name="ChangeContactsMembershipInDistributionGroupSoapOut">
  <wsdl:part name="parameters"
element="tns:ChangeContactsMembershipInDistributionGroupResponse" />
</wsdl:message>
<wsdl:portType name="SharepointEmailWSSoap">
  <wsdl:operation name="CreateContact">
    <wsdl:input message="tns:CreateContactSoapIn" />
    <wsdl:output message="tns:CreateContactSoapOut" />
  </wsdl:operation>
  <wsdl:operation name="DeleteContact">
    <wsdl:input message="tns:DeleteContactSoapIn" />
    <wsdl:output message="tns:DeleteContactSoapOut" />
  </wsdl:operation>
  <wsdl:operation name="ModifyContact">
    <wsdl:input message="tns:ModifyContactSoapIn" />
    <wsdl:output message="tns:ModifyContactSoapOut" />
  </wsdl:operation>
  <wsdl:operation name="CreateDistributionGroup">
    <wsdl:input message="tns:CreateDistributionGroupSoapIn" />
    <wsdl:output message="tns:CreateDistributionGroupSoapOut" />
  </wsdl:operation>
  <wsdl:operation name="DeleteDistributionGroup">
    <wsdl:input message="tns:DeleteDistributionGroupSoapIn" />
    <wsdl:output message="tns:DeleteDistributionGroupSoapOut" />
  </wsdl:operation>
  <wsdl:operation name="RenameDistributionGroup">

```



```

        <wsdl:input message="tns:RenameDistributionGroupSoapIn" />
        <wsdl:output message="tns:RenameDistributionGroupSoapOut" />
    </wsdl:operation>
    <wsdl:operation name="ModifyDistributionGroup">
        <wsdl:input message="tns:ModifyDistributionGroupSoapIn" />
        <wsdl:output message="tns:ModifyDistributionGroupSoapOut" />
    </wsdl:operation>
    <wsdl:operation name="GetJobStatus">
        <wsdl:input message="tns:GetJobStatusSoapIn" />
        <wsdl:output message="tns:GetJobStatusSoapOut" />
    </wsdl:operation>
    <wsdl:operation name="ChangeUsersMembershipInDistributionGroup">
        <wsdl:input message="tns:ChangeUsersMembershipInDistributionGroupSoapIn" />
        <wsdl:output message="tns:ChangeUsersMembershipInDistributionGroupSoapOut" />
    </wsdl:operation>
    <wsdl:operation name="ChangeContactsMembershipInDistributionGroup">
        <wsdl:input message="tns:ChangeContactsMembershipInDistributionGroupSoapIn" />
        <wsdl:output message="tns:ChangeContactsMembershipInDistributionGroupSoapOut" />
    </wsdl:operation>
</wsdl:portType>
<wsdl:binding name="SharepointEmailWSSoap" type="tns:SharepointEmailWSSoap">
    <soap:binding transport="http://schemas.xmlsoap.org/soap/http" />
    <wsdl:operation name="CreateContact">
        <soap:operation
soapAction="http://microsoft.com/webservices/SharePoint/SharepointEmailWS/CreateContact"
style="document" />
        <wsdl:input>
            <soap:body use="literal" />
        </wsdl:input>
        <wsdl:output>
            <soap:body use="literal" />
        </wsdl:output>
    </wsdl:operation>
    <wsdl:operation name="DeleteContact">
        <soap:operation
soapAction="http://microsoft.com/webservices/SharePoint/SharepointEmailWS/DeleteContact"
style="document" />
        <wsdl:input>
            <soap:body use="literal" />
        </wsdl:input>
        <wsdl:output>
            <soap:body use="literal" />
        </wsdl:output>
    </wsdl:operation>
    <wsdl:operation name="ModifyContact">
        <soap:operation
soapAction="http://microsoft.com/webservices/SharePoint/SharepointEmailWS/ModifyContact"
style="document" />
        <wsdl:input>
            <soap:body use="literal" />
        </wsdl:input>
        <wsdl:output>
            <soap:body use="literal" />
        </wsdl:output>
    </wsdl:operation>
    <wsdl:operation name="CreateDistributionGroup">
        <soap:operation
soapAction="http://microsoft.com/webservices/SharePoint/SharepointEmailWS/CreateDistributionG
roup" style="document" />
        <wsdl:input>
            <soap:body use="literal" />
        </wsdl:input>
        <wsdl:output>
            <soap:body use="literal" />
        </wsdl:output>
    </wsdl:operation>
    <wsdl:operation name="DeleteDistributionGroup">

```

```

        <soap:operation
soapAction="http://microsoft.com/webservices/SharePoint/SharepointEmailWS/DeleteDistributionG
roup" style="document" />
        <wsdl:input>
            <soap:body use="literal" />
        </wsdl:input>
        <wsdl:output>
            <soap:body use="literal" />
        </wsdl:output>
    </wsdl:operation>
    <wsdl:operation name="RenameDistributionGroup">
        <soap:operation
soapAction="http://microsoft.com/webservices/SharePoint/SharepointEmailWS/RenameDistributionG
roup" style="document" />
        <wsdl:input>
            <soap:body use="literal" />
        </wsdl:input>
        <wsdl:output>
            <soap:body use="literal" />
        </wsdl:output>
    </wsdl:operation>
    <wsdl:operation name="ModifyDistributionGroup">
        <soap:operation
soapAction="http://microsoft.com/webservices/SharePoint/SharepointEmailWS/ModifyDistributionG
roup" style="document" />
        <wsdl:input>
            <soap:body use="literal" />
        </wsdl:input>
        <wsdl:output>
            <soap:body use="literal" />
        </wsdl:output>
    </wsdl:operation>
    <wsdl:operation name="GetJobStatus">
        <soap:operation
soapAction="http://microsoft.com/webservices/SharePoint/SharepointEmailWS/GetJobStatus"
style="document" />
        <wsdl:input>
            <soap:body use="literal" />
        </wsdl:input>
        <wsdl:output>
            <soap:body use="literal" />
        </wsdl:output>
    </wsdl:operation>
    <wsdl:operation name="ChangeUsersMembershipInDistributionGroup">
        <soap:operation
soapAction="http://microsoft.com/webservices/SharePoint/SharepointEmailWS/ChangeUsersMembersh
ipInDistributionGroup" style="document" />
        <wsdl:input>
            <soap:body use="literal" />
        </wsdl:input>
        <wsdl:output>
            <soap:body use="literal" />
        </wsdl:output>
    </wsdl:operation>
    <wsdl:operation name="ChangeContactsMembershipInDistributionGroup">
        <soap:operation
soapAction="http://microsoft.com/webservices/SharePoint/SharepointEmailWS/ChangeContactsMembe
rshipInDistributionGroup" style="document" />
        <wsdl:input>
            <soap:body use="literal" />
        </wsdl:input>
        <wsdl:output>
            <soap:body use="literal" />
        </wsdl:output>
    </wsdl:operation>
</wsdl:binding>
<wsdl:binding name="SharepointEmailWSSoap12" type="tns:SharepointEmailWSSoap">
    <soap12:binding transport="http://schemas.xmlsoap.org/soap/http" />
    <wsdl:operation name="CreateContact">

```

```

        <soap12:operation
soapAction="http://microsoft.com/webservices/SharePoint/SharepointEmailWS/CreateContact"
style="document" />
        <wsdl:input>
            <soap12:body use="literal" />
        </wsdl:input>
        <wsdl:output>
            <soap12:body use="literal" />
        </wsdl:output>
    </wsdl:operation>
    <wsdl:operation name="DeleteContact">
        <soap12:operation
soapAction="http://microsoft.com/webservices/SharePoint/SharepointEmailWS/DeleteContact"
style="document" />
        <wsdl:input>
            <soap12:body use="literal" />
        </wsdl:input>
        <wsdl:output>
            <soap12:body use="literal" />
        </wsdl:output>
    </wsdl:operation>
    <wsdl:operation name="ModifyContact">
        <soap12:operation
soapAction="http://microsoft.com/webservices/SharePoint/SharepointEmailWS/ModifyContact"
style="document" />
        <wsdl:input>
            <soap12:body use="literal" />
        </wsdl:input>
        <wsdl:output>
            <soap12:body use="literal" />
        </wsdl:output>
    </wsdl:operation>
    <wsdl:operation name="CreateDistributionGroup">
        <soap12:operation
soapAction="http://microsoft.com/webservices/SharePoint/SharepointEmailWS/CreateDistributionG
roup" style="document" />
        <wsdl:input>
            <soap12:body use="literal" />
        </wsdl:input>
        <wsdl:output>
            <soap12:body use="literal" />
        </wsdl:output>
    </wsdl:operation>
    <wsdl:operation name="DeleteDistributionGroup">
        <soap12:operation
soapAction="http://microsoft.com/webservices/SharePoint/SharepointEmailWS/DeleteDistributionG
roup" style="document" />
        <wsdl:input>
            <soap12:body use="literal" />
        </wsdl:input>
        <wsdl:output>
            <soap12:body use="literal" />
        </wsdl:output>
    </wsdl:operation>
    <wsdl:operation name="RenameDistributionGroup">
        <soap12:operation
soapAction="http://microsoft.com/webservices/SharePoint/SharepointEmailWS/RenameDistributionG
roup" style="document" />
        <wsdl:input>
            <soap12:body use="literal" />
        </wsdl:input>
        <wsdl:output>
            <soap12:body use="literal" />
        </wsdl:output>
    </wsdl:operation>
    <wsdl:operation name="ModifyDistributionGroup">
        <soap12:operation
soapAction="http://microsoft.com/webservices/SharePoint/SharepointEmailWS/ModifyDistributionG
roup" style="document" />

```

```

        <wsdl:input>
          <soap12:body use="literal" />
        </wsdl:input>
        <wsdl:output>
          <soap12:body use="literal" />
        </wsdl:output>
      </wsdl:operation>
      <wsdl:operation name="GetJobStatus">
        <soap12:operation
soapAction="http://microsoft.com/webservices/SharePoint/SharepointEmailWS/GetJobStatus"
style="document" />
        <wsdl:input>
          <soap12:body use="literal" />
        </wsdl:input>
        <wsdl:output>
          <soap12:body use="literal" />
        </wsdl:output>
      </wsdl:operation>
      <wsdl:operation name="ChangeUsersMembershipInDistributionGroup">
        <soap12:operation
soapAction="http://microsoft.com/webservices/SharePoint/SharepointEmailWS/ChangeUsersMembersh
ipInDistributionGroup" style="document" />
        <wsdl:input>
          <soap12:body use="literal" />
        </wsdl:input>
        <wsdl:output>
          <soap12:body use="literal" />
        </wsdl:output>
      </wsdl:operation>
      <wsdl:operation name="ChangeContactsMembershipInDistributionGroup">
        <soap12:operation
soapAction="http://microsoft.com/webservices/SharePoint/SharepointEmailWS/ChangeContactsMembe
rshipInDistributionGroup" style="document" />
        <wsdl:input>
          <soap12:body use="literal" />
        </wsdl:input>
        <wsdl:output>
          <soap12:body use="literal" />
        </wsdl:output>
      </wsdl:operation>
    </wsdl:binding>
  </wsdl:definitions>

```

7 Appendix B: Product Behavior

The information in this specification is applicable to the following Microsoft products or supplemental software. References to product versions include updates to those products.

- The 2007 Microsoft Office system
- Microsoft Office 2010 suites
- Microsoft Office 2013
- Windows SharePoint Services 3.0
- Microsoft SharePoint Foundation 2010
- Microsoft SharePoint Foundation 2013
- Microsoft Office 2016
- Microsoft SharePoint Server 2016
- Microsoft Office 2019
- Microsoft SharePoint Server 2019
- Microsoft Office 2021
- Microsoft SharePoint Server Subscription Edition

Exceptions, if any, are noted in this section. If an update version, service pack or Knowledge Base (KB) number appears with a product name, the behavior changed in that update. The new behavior also applies to subsequent updates unless otherwise specified. If a product edition appears with the product version, behavior is different in that product edition.

Unless otherwise specified, any statement of optional behavior in this specification that is prescribed using the terms "SHOULD" or "SHOULD NOT" implies product behavior in accordance with the SHOULD or SHOULD NOT prescription. Unless otherwise specified, the term "MAY" implies that the product does not follow the prescription.

[<1> Section 2.2.5.3](#): This type is available only in Office 2013 and SharePoint Foundation 2013.

8 Change Tracking

No table of changes is available. The document is either new or has had no changes since its last release.

9 Index

A

Abstract data model
 [server](#) 18
Add a contact to a distribution list example ([section 4.1.2](#) 49, [section 4.2.2](#) 51)
[Applicability](#) 11
[ArrayOfString complex type](#) 13
[Attribute groups](#) 17
[Attributes](#) 17

C

[Capability negotiation](#) 11
[Change the e-mail alias of a distribution list example](#) 54
[Change the name of a distribution list example](#) 53
[Change tracking](#) 70
[Check the status of a job example](#) 56
Client
 [overview](#) 18
[Common data structures](#) 17
[Complex types](#) 13
 [ArrayOfString](#) 13
 [RequestInfo](#) 13
 [RequestResponse](#) 14
[ContactFlags simple type](#) 15
[Create a contact example](#) 50
[Create a distribution list example](#) 49

D

Data model - abstract
 [server](#) 18
[Delete a contact example](#) 53
Delete a distribution list example ([section 4.6](#) 55, [section 4.7.1](#) 56)
[DistributionGroupFlags simple type](#) 15

E

Elements
 server
 [ChangeContactsMembershipInDistributionGroup](#) 21

 [ChangeContactsMembershipInDistributionGroup Response](#) 21
 [ChangeUsersMembershipInDistributionGroup](#) 24

 [ChangeUsersMembershipInDistributionGroupResponse](#) 24
 [CreateContact](#) 27
 [CreateContactResponse](#) 27
 [CreateDistributionGroup](#) 29
 [CreateDistributionGroupResponse](#) 30
 [DeleteContact](#) 32
 [DeleteContactResponse](#) 33
 [DeleteDistributionGroup](#) 35
 [DeleteDistributionGroupResponse](#) 35
 [GetJobStatus](#) 38
 [GetJobStatusResponse](#) 38

[ModifyContact](#) 41
 [ModifyContactResponse](#) 41
 [ModifyDistributionGroup](#) 44
 [ModifyDistributionGroupResponse](#) 44
 [RenameDistributionGroup](#) 47
 [RenameDistributionGroupResponse](#) 47

Events

[local - server](#) 48
 [timer - server](#) 48

Examples

 add a contact to a distribution list ([section 4.1.2](#) 49, [section 4.2.2](#) 51)
 [change the e-mail alias of a distribution list](#) 54
 [change the name of a distribution list](#) 53
 [check the status of a job](#) 56
 [create a contact](#) 50
 [create a distribution list](#) 49
 [delete a contact](#) 53
 delete a distribution list ([section 4.6](#) 55, [section 4.7.1](#) 56)
 [modify a contact](#) 51
 [remove a contact from a distribution list](#) 52

F

[Fields - vendor-extensible](#) 11
[Full WSDL](#) 60

G

[Glossary](#) 8
[Groups](#) 17
[guid simple type](#) 15

I

[Implementer - security considerations](#) 59
[Index of security parameters](#) 59
[Informative references](#) 10
Initialization
 [server](#) 19
[Introduction](#) 8

L

Local events
 [server](#) 48

M

Message processing
 [server](#) 19
Messages
 [ArrayOfString complex type](#) 13
 [attribute groups](#) 17
 [attributes](#) 17
 [common data structures](#) 17
 [complex types](#) 13
 [ContactFlags simple type](#) 15
 [DistributionGroupFlags simple type](#) 15
 [elements](#) 12
 [enumerated](#) 12

- [groups](#) 17
- [guid simple type](#) 15
- [namespaces](#) 12
- [RequestInfo complex type](#) 13
- [RequestResponse complex type](#) 14
- [RequestStatus simple type](#) 16
- server
 - [ChangeContactsMembershipInDistributionGroup SoapIn](#) 20
 - [ChangeContactsMembershipInDistributionGroup SoapOut](#) 20
 - [ChangeUsersMembershipInDistributionGroup SoapIn](#) 23
 - [ChangeUsersMembershipInDistributionGroup SoapOut](#) 23
 - [CreateContactSoapIn](#) 26
 - [CreateContactSoapOut](#) 26
 - [CreateDistributionGroupSoapIn](#) 29
 - [CreateDistributionGroupSoapOut](#) 29
 - [DeleteContactSoapIn](#) 32
 - [DeleteContactSoapOut](#) 32
 - [DeleteDistributionGroupSoapIn](#) 34
 - [DeleteDistributionGroupSoapOut](#) 34
 - [GetJobStatusSoapIn](#) 37
 - [GetJobStatusSoapOut](#) 37
 - [ModifyContactSoapIn](#) 40
 - [ModifyContactSoapOut](#) 40
 - [ModifyDistributionGroupSoapIn](#) 43
 - [ModifyDistributionGroupSoapOut](#) 43
 - [RenameDistributionGroupSoapIn](#) 46
 - [RenameDistributionGroupSoapOut](#) 46
 - [simple types](#) 14
 - [syntax](#) 12
 - [transport](#) 12
- [Modify a contact example](#) 51

N

- [Namespaces](#) 12
- [Normative references](#) 9

O

- Operations
 - [ChangeContactsMembershipInDistributionGroup](#) 19
 - [ChangeUsersMembershipInDistributionGroup](#) 22
 - [CreateContact](#) 25
 - [CreateDistributionGroup](#) 28
 - [DeleteContact](#) 31
 - [DeleteDistributionGroup](#) 34
 - [GetJobStatus](#) 36
 - [ModifyContact](#) 39
 - [ModifyDistributionGroup](#) 42
 - [RenameDistributionGroup](#) 45
- [Overview \(synopsis\)](#) 10

P

- [Parameters - security index](#) 59
- [Preconditions](#) 11
- [Prerequisites](#) 11

- [Product behavior](#) 69
- Protocol Details
 - [overview](#) 18

R

- [References](#) 9
 - [informative](#) 10
 - [normative](#) 9
- [Relationship to other protocols](#) 10
- [Remove a contact from a distribution list example](#) 52
- [RequestInfo complex type](#) 13
- [RequestResponse complex type](#) 14
- [RequestStatus simple type](#) 16

S

- Security
 - [implementer considerations](#) 59
 - [parameter index](#) 59
- Sequencing rules
 - [server](#) 19
- Server
 - [abstract data model](#) 18
 - [ChangeContactsMembershipInDistributionGroup operation](#) 19
 - [ChangeUsersMembershipInDistributionGroup operation](#) 22
 - [CreateContact operation](#) 25
 - [CreateDistributionGroup operation](#) 28
 - [DeleteContact operation](#) 31
 - [DeleteDistributionGroup operation](#) 34
 - [GetJobStatus operation](#) 36
 - [initialization](#) 19
 - [local events](#) 48
 - [message processing](#) 19
 - [ModifyContact operation](#) 39
 - [ModifyDistributionGroup operation](#) 42
 - [overview](#) 18
 - [RenameDistributionGroup operation](#) 45
 - [sequencing rules](#) 19
 - SharepointEmailWSSoap
 - [details](#) 18
 - [timer events](#) 48
 - [timers](#) 19
 - [Simple types](#) 14
 - [ContactFlags](#) 15
 - [DistributionGroupFlags](#) 15
 - [guid](#) 15
 - [RequestStatus](#) 16
 - [Standards assignments](#) 11
- Syntax
 - [messages - overview](#) 12

T

- Timer events
 - [server](#) 48
- Timers
 - [server](#) 19
- [Tracking changes](#) 70
- [Transport](#) 12
- Types
 - [complex](#) 13
 - [ArrayOfString](#) 13

[RequestInfo](#) 13
[RequestResponse](#) 14
[simple](#) 14
[ContactFlags](#) 15
[DistributionGroupFlags](#) 15
[RequestStatus](#) 16

V

[Vendor-extensible fields](#) 11
[Versioning](#) 11

W

[WSDL](#) 60