

# [MS-OXWSUSRCFG]: User Configuration Web Service Protocol Specification

---

## Intellectual Property Rights Notice for Open Specifications Documentation

- **Technical Documentation.** Microsoft publishes Open Specifications documentation for protocols, file formats, languages, standards as well as overviews of the interaction among each of these technologies.
- **Copyrights.** This documentation is covered by Microsoft copyrights. Regardless of any other terms that are contained in the terms of use for the Microsoft website that hosts this documentation, you may make copies of it in order to develop implementations of the technologies described in the Open Specifications and may distribute portions of it in your implementations using these technologies or your documentation as necessary to properly document the implementation. You may also distribute in your implementation, with or without modification, any schema, IDL's, or code samples that are included in the documentation. This permission also applies to any documents that are referenced in the Open Specifications.
- **No Trade Secrets.** Microsoft does not claim any trade secret rights in this documentation.
- **Patents.** Microsoft has patents that may cover your implementations of the technologies described in the Open Specifications. Neither this notice nor Microsoft's delivery of the documentation grants any licenses under those or any other Microsoft patents. However, a given Open Specification may be covered by Microsoft [Open Specification Promise](#) or the [Community Promise](#). If you would prefer a written license, or if the technologies described in the Open Specifications are not covered by the Open Specifications Promise or Community Promise, as applicable, patent licenses are available by contacting [iplg@microsoft.com](mailto:iplg@microsoft.com).
- **Trademarks.** The names of companies and products contained in this documentation may be covered by trademarks or similar intellectual property rights. This notice does not grant any licenses under those rights.
- **Fictitious Names.** The example companies, organizations, products, domain names, e-mail addresses, logos, people, places, and events depicted in this documentation are fictitious. No association with any real company, organization, product, domain name, email address, logo, person, place, or event is intended or should be inferred.

**Reservation of Rights.** All other rights are reserved, and this notice does not grant any rights other than specifically described above, whether by implication, estoppel, or otherwise.

**Tools.** The Open Specifications do not require the use of Microsoft programming tools or programming environments in order for you to develop an implementation. If you have access to Microsoft programming tools and environments you are free to take advantage of them. Certain Open Specifications are intended for use in conjunction with publicly available standard specifications and network programming art, and assumes that the reader either is familiar with the aforementioned material or has immediate access to it.

**Preliminary Documentation.** This Open Specification provides documentation for past and current releases and/or for the pre-release (beta) version of this technology. This Open Specification is final

documentation for past or current releases as specifically noted in the document, as applicable; it is preliminary documentation for the pre-release (beta) versions. Microsoft will release final documentation in connection with the commercial release of the updated or new version of this technology. As the documentation may change between this preliminary version and the final version of this technology, there are risks in relying on preliminary documentation. To the extent that you incur additional development obligations or any other costs as a result of relying on this preliminary documentation, you do so at your own risk.

## Revision Summary

Date	Revision History	Revision Class	Comments
07/15/2009	1.0	Major	Initial Availability.
11/04/2009	1.0.1	Editorial	Revised and edited the technical content.
02/10/2010	1.2.0	Minor	Updated the technical content.
05/05/2010	1.2.1	Editorial	Revised and edited the technical content.
08/04/2010	1.3	Minor	Clarified the meaning of the technical content.
11/03/2010	1.3	No change	No changes to the meaning, language, or formatting of the technical content.
03/18/2011	2.0	Major	Significantly changed the technical content.
08/05/2011	3.0	Major	Significantly changed the technical content.
10/07/2011	3.0	No change	No changes to the meaning, language, or formatting of the technical content.
01/20/2012	4.0	Major	Significantly changed the technical content.
04/27/2012	4.0	No change	No changes to the meaning, language, or formatting of the technical content.
07/16/2012	4.0	No change	No changes to the meaning, language, or formatting of the technical content.

# Table of Contents

<b>1 Introduction</b>	<b>6</b>
1.1 Glossary	6
1.2 References	6
1.2.1 Normative References	6
1.2.2 Informative References	7
1.3 Overview	7
1.4 Relationship to Other Protocols	8
1.5 Prerequisites/Preconditions	9
1.6 Applicability Statement	9
1.7 Versioning and Capability Negotiation	9
1.8 Vendor-Extensible Fields	9
1.9 Standards Assignments	9
<b>2 Messages</b>	<b>10</b>
2.1 Transport	10
2.2 Common Message Syntax	10
2.2.1 Namespaces	10
2.2.2 Messages	10
2.2.3 Elements	10
2.2.4 Complex Types	11
2.2.4.1 t:UserConfigurationDictionaryEntryType Complex Type	11
2.2.4.2 t:UserConfigurationDictionaryObjectType Complex Type	11
2.2.4.3 t:UserConfigurationDictionaryType Complex Type	12
2.2.4.4 t:UserConfigurationNameType Complex Type	12
2.2.4.5 t:UserConfigurationType Complex Type	13
2.2.5 Simple Types	14
2.2.5.1 t:UserConfigurationDictionaryObjectTypesType Simple Type	14
2.2.5.2 t:UserConfigurationPropertyType Simple Type	15
2.2.6 Attributes	16
2.2.7 Groups	16
2.2.8 Attribute Groups	16
2.2.9 Common Data Structures	16
<b>3 Protocol Details</b>	<b>17</b>
3.1 ExchangeServicePortType Server Details	17
3.1.1 Abstract Data Model	17
3.1.2 Timers	17
3.1.3 Initialization	17
3.1.4 Message Processing Events and Sequencing Rules	17
3.1.4.1 CreateUserConfiguration	18
3.1.4.1.1 Messages	18
3.1.4.1.1.1 CreateUserConfigurationSoapIn	19
3.1.4.1.1.2 CreateUserConfigurationSoapOut	19
3.1.4.1.2 Elements	20
3.1.4.1.2.1 CreateUserConfiguration Element	20
3.1.4.1.2.2 CreateUserConfigurationResponse Element	20
3.1.4.1.3 Complex Types	20
3.1.4.1.3.1 m:CreateUserConfigurationResponseType Complex Type	21
3.1.4.1.3.2 m:CreateUserConfigurationType Complex Type	21
3.1.4.1.4 Simple Types	21

3.1.4.1.5	Attributes.....	22
3.1.4.1.6	Groups.....	22
3.1.4.1.7	Attribute Groups .....	22
3.1.4.2	DeleteUserConfiguration .....	22
3.1.4.2.1	Messages .....	22
3.1.4.2.1.1	DeleteUserConfigurationSoapIn .....	23
3.1.4.2.1.2	DeleteUserConfigurationSoapOut.....	23
3.1.4.2.2	Elements.....	24
3.1.4.2.2.1	DeleteUserConfiguration Element .....	24
3.1.4.2.2.2	DeleteUserConfigurationResponse Element .....	24
3.1.4.2.3	Complex Types .....	25
3.1.4.2.3.1	m>DeleteUserConfigurationResponseType Complex Type .....	25
3.1.4.2.3.2	m>DeleteUserConfigurationType Complex Type .....	25
3.1.4.2.4	Simple Types.....	26
3.1.4.2.5	Attributes.....	26
3.1.4.2.6	Groups.....	26
3.1.4.2.7	Attribute Groups .....	26
3.1.4.3	GetUserConfiguration .....	26
3.1.4.3.1	Messages .....	27
3.1.4.3.1.1	GetUserConfigurationSoapIn .....	27
3.1.4.3.1.2	GetUserConfigurationSoapOut.....	28
3.1.4.3.2	Elements.....	28
3.1.4.3.2.1	GetUserConfiguration Element .....	28
3.1.4.3.2.2	GetUserConfigurationResponse Element .....	28
3.1.4.3.3	Complex Types .....	28
3.1.4.3.3.1	t:GetUserConfigurationResponseMessageType Complex Type.....	29
3.1.4.3.3.2	m:GetUserConfigurationResponseType Complex Type .....	29
3.1.4.3.3.3	m:GetUserConfigurationType Complex Type .....	30
3.1.4.3.4	Simple Types.....	30
3.1.4.3.5	Attributes.....	30
3.1.4.3.6	Groups.....	30
3.1.4.3.7	Attribute Groups .....	31
3.1.4.4	UpdateUserConfiguration .....	31
3.1.4.4.1	Messages .....	31
3.1.4.4.1.1	UpdateUserConfigurationSoapIn .....	32
3.1.4.4.1.2	UpdateUserConfigurationSoapOut.....	32
3.1.4.4.2	Elements.....	33
3.1.4.4.2.1	UpdateUserConfiguration Element .....	33
3.1.4.4.2.2	UpdateUserConfigurationResponse Element .....	33
3.1.4.4.3	Complex Types .....	33
3.1.4.4.3.1	m:UpdateUserConfigurationResponseType Complex Type .....	33
3.1.4.4.3.2	m:UpdateUserConfigurationType Complex Type .....	34
3.1.4.4.4	Simple Types.....	34
3.1.4.4.5	Attributes.....	34
3.1.4.4.6	Groups.....	34
3.1.4.4.7	Attribute Groups .....	35
3.1.5	Timer Events .....	35
3.1.6	Other Local Events .....	35
<b>4</b>	<b>Protocol Examples.....</b>	<b>36</b>
<b>5</b>	<b>Security.....</b>	<b>37</b>
5.1	Security Considerations for Implementers.....	37

5.2 Index of Security Parameters ..... 37

**6 Appendix A: Full WSDL ..... 38**

**7 Appendix B: Full XML Schema ..... 42**

    7.1 Messages Schema..... 42

    7.2 Types Schema..... 44

**8 Appendix C: Product Behavior ..... 46**

**9 Change Tracking..... 47**

**10 Index ..... 48**

Preliminary

# 1 Introduction

The User Configuration Web Service Protocol is used to access user configuration objects. Clients use the SOAP Protocol, as described in [\[SOAP1.1\]](#), to contact the user configuration service.

Sections 1.8, 2, and 3 of this specification are normative and can contain the terms MAY, SHOULD, MUST, MUST NOT, and SHOULD NOT as defined in RFC 2119. Sections 1.5 and 1.9 are also normative but cannot contain those terms. All other sections and examples in this specification are informative.

## 1.1 Glossary

The following terms are defined in [\[MS-GLOS\]](#):

**Hypertext Transfer Protocol (HTTP)**  
**Hypertext Transfer Protocol over Secure Sockets Layer (HTTPS)**  
**XML**

The following terms are defined in [\[MS-OXGLOS\]](#):

**endpoint**  
**folder associated information (FAI)**  
**mailbox**  
**SOAP action**  
**SOAP body**  
**SOAP header**  
**SOAP message**  
**Web Services Description Language (WSDL)**  
**WSDL message**  
**WSDL port type**  
**XML namespace**  
**XML schema**

The following terms are specific to this document:

**MAY, SHOULD, MUST, SHOULD NOT, MUST NOT:** These terms (in all caps) are used as described in [\[RFC2119\]](#). All statements of optional behavior use either MAY, SHOULD, or SHOULD NOT.

## 1.2 References

References to Microsoft Open Specifications documentation do not include a publishing year because links are to the latest version of the technical documents, which are updated frequently. References to other documents include a publishing year when one is available.

### 1.2.1 Normative References

We conduct frequent surveys of the normative references to assure their continued availability. If you have any issue with finding a normative reference, please contact [dochelp@microsoft.com](mailto:dochelp@microsoft.com). We will assist you in finding the relevant information. Please check the archive site, <http://msdn2.microsoft.com/en-us/library/E4BD6494-06AD-4aed-9823-445E921C9624>, as an additional source.

[MS-OXWSCDATA] Microsoft Corporation, "[Common Web Service Data Types](#)".

[MS-OXWSCORE] Microsoft Corporation, "[Core Items Web Service Protocol Specification](#)".

[MS-OXWSFOLD] Microsoft Corporation, "[Folders and Folder Permissions Web Service Protocol Specification](#)".

[RFC2119] Bradner, S., "Key words for use in RFCs to Indicate Requirement Levels", BCP 14, RFC 2119, March 1997, <http://www.rfc-editor.org/rfc/rfc2119.txt>

[RFC2818] Rescorla, E., "HTTP Over TLS", RFC 2818, May 2000, <http://www.ietf.org/rfc/rfc2818.txt>

[RFC3066] Alvestrand, H., "Tags for the Identification of Language", RFC 3066, January 2001, <http://www.ietf.org/rfc/rfc3066.txt>

[SOAP1.1] Box, D., Ehnebuske, D., Kakivaya, G., et al., "Simple Object Access Protocol (SOAP) 1.1", May 2000, <http://www.w3.org/TR/2000/NOTE-SOAP-20000508/>

[WSDL] Christensen, E., Curbera, F., Meredith, G., and Weerawarana, S., "Web Services Description Language (WSDL) 1.1", W3C Note, March 2001, <http://www.w3.org/TR/2001/NOTE-wsdl-20010315>

[XMLNS] Bray, T., Hollander, D., Layman, A., et al., Eds., "Namespaces in XML 1.0 (Third Edition)", W3C Recommendation, December 2009, <http://www.w3.org/TR/2009/REC-xml-names-20091208/>

[XMLSCHEMA1] Thompson, H.S., Ed., Beech, D., Ed., Maloney, M., Ed., and Mendelsohn, N., Ed., "XML Schema Part 1: Structures", W3C Recommendation, May 2001, <http://www.w3.org/TR/2001/REC-xmlschema-1-20010502/>

[XMLSCHEMA2] Biron, P.V., Ed. and Malhotra, A., Ed., "XML Schema Part 2: Datatypes", W3C Recommendation, May 2001, <http://www.w3.org/TR/2001/REC-xmlschema-2-20010502/>

### 1.2.2 Informative References

[MS-GLOS] Microsoft Corporation, "[Windows Protocols Master Glossary](#)".

[MS-OXDCLI] Microsoft Corporation, "[Autodiscover Publishing and Lookup Protocol Specification](#)".

[MS-OXGLOS] Microsoft Corporation, "[Exchange Server Protocols Master Glossary](#)".

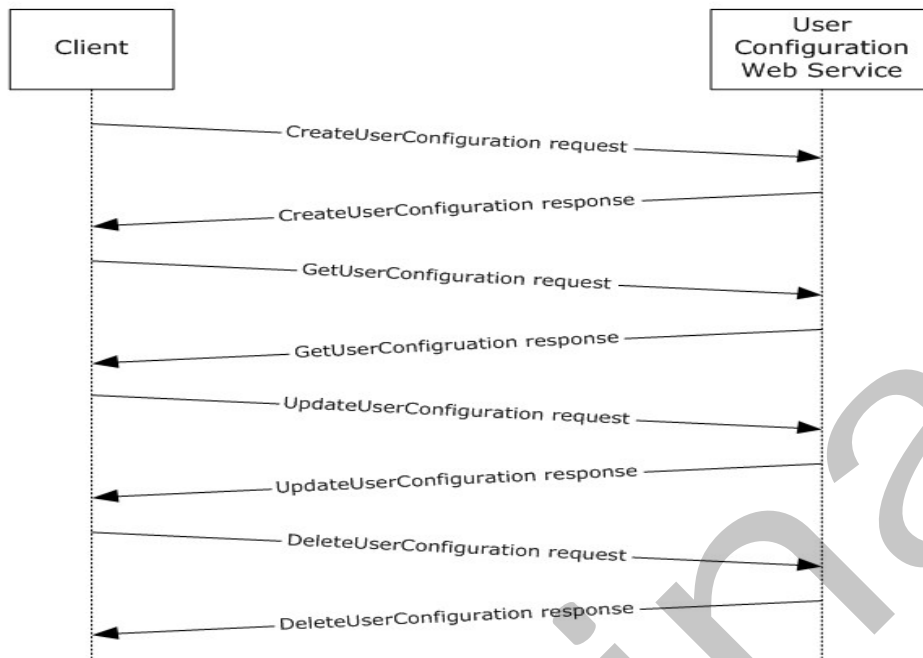
[MS-OXWSADISC] Microsoft Corporation, "[Autodiscover Publishing and Lookup SOAP-Based Web Service Protocol Specification](#)".

[RFC2616] Fielding, R., Gettys, J., Mogul, J., et al., "Hypertext Transfer Protocol -- HTTP/1.1", RFC 2616, June 1999, <http://www.ietf.org/rfc/rfc2616.txt>

### 1.3 Overview

The User Configuration Web Service Protocol specifies the messages that are used to create, delete, get, and update user configuration objects, also known as **folder associated information (FAI)**.

The following figure shows the User Configuration Web Service Protocol request and response messages.



**Figure 1: User Configuration Web Service Protocol request and response messages**

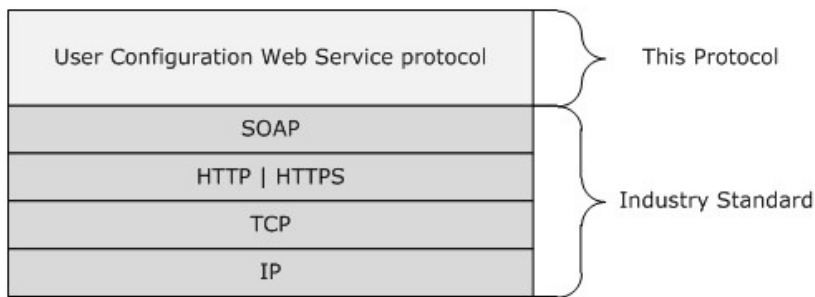
#### 1.4 Relationship to Other Protocols

A client that implements this protocol can use the Autodiscover Publishing and Lookup SOAP-Based Web Service Protocol, as described in [\[MS-OXWSADISC\]](#), or the Autodiscover Publishing and Lookup Protocol, as described in [\[MS-OXDSCLI\]](#), to identify the target **endpoint (4)** to use for each operation.

This protocol uses the SOAP Protocol, as described in [\[SOAP1.1\]](#), to specify the structure information exchanged between the client and the server. This protocol uses the **XML** Protocol, as described in [\[XMLSCHEMA1\]](#) and [\[XMLSCHEMA2\]](#), to describe the message content sent to and from the server.

This protocol uses SOAP over **HTTP**, as described in [\[RFC2616\]](#), and SOAP over **HTTPS**, as described in [\[RFC2818\]](#), as shown in the following layering diagram.





**Figure 2: This protocol in relation to other protocols**

## 1.5 Prerequisites/Preconditions

The endpoint (4) URL that is returned by either the Autodiscover Publishing Lookup SOAP-Based Web Service Protocol, as described in [\[MS-OXWSADISC\]](#), or the Autodiscover Publishing and Lookup Protocol, as described in [\[MS-OXDSCLI\]](#), is required to form the HTTP request to the Web server that hosts this protocol. The operations that this protocol defines cannot be accessed unless the correct endpoint (4) is identified in the HTTP Web requests that target this protocol.

## 1.6 Applicability Statement

The protocol specified in this document is applicable to environments that create, delete, get, or update folder associated information (FAI).

## 1.7 Versioning and Capability Negotiation

This document covers versioning issues in the following areas:

- **Supported Transports:** This protocol uses SOAP 1.1, as specified in section [2.1](#).
- **Protocol Versions:** This protocol specifies only one **WSDL port type** version. The **WSDL** version of the request is identified by using the **t:RequestServerVersion** element, as described in [\[MS-OXWSCDATA\]](#) section 2.2.5.9, and the version of the server responding to the request is identified by using the **t:ServerVersionInfo** element, as described in [\[MS-OXWSCDATA\]](#) section 2.2.5.10.
- **Security and Authentication Methods:** This protocol relies on the Web server that is hosting it to perform authentication.
- **Capability Negotiation:** This protocol does not support version negotiation.

## 1.8 Vendor-Extensible Fields

This protocol consists of extensible fields. The applicable property types for extended fields are specified in section [2.2.5.2](#).

## 1.9 Standards Assignments

None.

## 2 Messages

In the following sections, the schema definition might differ from the processing rules imposed by the protocol. The WSDL in this specification provides a base description of the protocol. The schema in this specification provides a base description of the message syntax. The text that specifies the WSDL and schema might specify restrictions that reflect actual protocol behavior. For example, the schema definition might allow for an element to be **empty**, **null**, or **not present** but the behavior of the protocol as specified restricts the same elements to being **non-empty**, **not null**, or **present**.

### 2.1 Transport

The SOAP version supported is SOAP 1.1. For details, see [\[SOAP1.1\]](#).

This protocol relies on the Web server that hosts the application to perform authentication. The protocol SHOULD use secure communications by means of HTTPS, as defined in [\[RFC2818\]](#).

### 2.2 Common Message Syntax

This section contains common definitions that are used by this protocol. The syntax of the definitions uses XML schema, as defined in [\[XMLSCHEMA1\]](#) and [\[XMLSCHEMA2\]](#), and Web Services Description Language (WSDL), as defined in [\[WSDL\]](#).

#### 2.2.1 Namespaces

This specification defines and references various **XML namespaces** by using the mechanisms specified in [\[XMLNS\]](#). Although this specification associates a specific XML namespace prefix for each XML namespace that is used, the choice of any particular XML namespace prefix is implementation-specific and not significant for interoperability.

Prefix	Namespace URI	Reference
soap	<a href="http://schemas.xmlsoap.org/wsdl/soap/">http://schemas.xmlsoap.org/wsdl/soap/</a>	<a href="#">[SOAP1.1]</a>
m	<a href="http://schemas.microsoft.com/exchange/services/2006/messages">http://schemas.microsoft.com/exchange/services/2006/messages</a>	
t	<a href="http://schemas.microsoft.com/exchange/services/2006/types">http://schemas.microsoft.com/exchange/services/2006/types</a>	
xs	<a href="http://www.w3.org/2001/XMLSchema">http://www.w3.org/2001/XMLSchema</a>	<a href="#">[XMLSCHEMA1]</a>
wsdl	<a href="http://schemas.xmlsoap.org/wsdl/">http://schemas.xmlsoap.org/wsdl/</a>	<a href="#">[WSDL]</a>
tns	<a href="http://schemas.microsoft.com/exchange/services/2006/messages">http://schemas.microsoft.com/exchange/services/2006/messages</a>	
targetNamespace	<a href="http://schemas.microsoft.com/exchange/services/2006/messages">http://schemas.microsoft.com/exchange/services/2006/messages</a>	

#### 2.2.2 Messages

This specification does not define any common **WSDL message** definitions.

#### 2.2.3 Elements

This specification does not define any common **XML schema** element definitions.

## 2.2.4 Complex Types

The following table summarizes the set of common XML schema complex type definitions that are defined by this specification. XML schema complex type definitions that are specific to a particular operation are defined with the operation.

Complex type name	Description
<b>UserConfigurationDictionaryEntryType</b>	Specifies the contents of a single dictionary entry property.
<b>UserConfigurationDictionaryObjectType</b>	Specifies a dictionary object.
<b>UserConfigurationDictionaryType</b>	Specifies a set of dictionary properties.
<b>UserConfigurationNameType</b>	Specifies the name and the associated folder for a user configuration object.
<b>UserConfigurationType</b>	Specifies a single user configuration object.

### 2.2.4.1 t:UserConfigurationDictionaryEntryType Complex Type

The **UserConfigurationDictionaryEntryType** complex type specifies the contents of a single dictionary entry property.

```
<xs:complexType name="UserConfigurationDictionaryEntryType">
  <xs:sequence>
    <xs:element name="DictionaryKey"
      type="t:UserConfigurationDictionaryObjectType"
    />
    <xs:element name="DictionaryValue"
      type="t:UserConfigurationDictionaryObjectType"
      nillable="true"
    />
  </xs:sequence>
</xs:complexType>
```

The following table lists and describes the child elements of the **UserConfigurationDictionaryEntryType** complex type.

Element name	Type	Description
<b>DictionaryKey</b>	<b>t:UserConfigurationDictionaryObjectType</b> (section <a href="#">2.2.4.2</a> )	Specifies the dictionary key for a dictionary property.
<b>DictionaryValue</b>	<b>t:UserConfigurationDictionaryObjectType</b> (section <a href="#">2.2.4.2</a> )	Specifies the dictionary value for a dictionary property.

### 2.2.4.2 t:UserConfigurationDictionaryObjectType Complex Type

The **UserConfigurationDictionaryObjectType** complex type specifies a dictionary object.

```
<xs:complexType name="UserConfigurationDictionaryObjectType">
  <xs:sequence>
    <xs:element name="Type"
```

```

        type="t:UserConfigurationDictionaryObjectTypesType"
      />
    <xs:element name="Value"
      type="xs:string"
      maxOccurs="unbounded"
    />
  </xs:sequence>
</xs:complexType>

```

The following table lists and describes the child elements of the **UserConfigurationDictionaryObjectType** complex type.

Element name	Type	Description
<b>Type</b>	<b>t:UserConfigurationDictionaryObjectTypesType</b> (section <a href="#">2.2.5.1</a> )	Specifies the dictionary object type.
<b>Value</b>	<b>xs:string</b> ( <a href="#">XMLSCHEMA2</a> )	Specifies the dictionary object value as a string.

### 2.2.4.3 t:UserConfigurationDictionaryType Complex Type

The **UserConfigurationDictionaryType** complex type specifies a set of dictionary properties.

```

<xs:complexType name="UserConfigurationDictionaryType">
  <xs:sequence>
    <xs:element name="DictionaryEntry"
      type="t:UserConfigurationDictionaryEntryType"
      minOccurs="0"
      maxOccurs="unbounded"
    />
  </xs:sequence>
</xs:complexType>

```

The following table lists and describes the child elements of the **UserConfigurationDictionaryType** complex type.

Element	Type
<b>DictionaryEntry</b>	<b>t:UserConfigurationDictionaryEntryType</b> (section <a href="#">2.2.4.1</a> )

### 2.2.4.4 t:UserConfigurationNameType Complex Type

The **UserConfigurationNameType** complex type specifies the name and the associated folder for a user configuration object.

```

<xs:complexType name="UserConfigurationNameType">
  <xs:complexContent>
    <xs:extension
      base="t:TargetFolderIdType"
    />
  >

```

```

    <xs:attribute name="Name"
      type="t:NonEmptyStringType"
      use="required"
    />
  </xs:extension>
</xs:complexContent>
</xs:complexType>

```

The following table lists and describes the attributes of the **UserConfigurationNameType** complex type.

Attribute name	Type	Description
<b>Name</b>	<b>t:NonEmptyStringType</b> (section <a href="#">2.2.3.19</a> )	Specifies the name of a user configuration object.

### 2.2.4.5 t:UserConfigurationType Complex Type

The **UserConfigurationType** complex types specifies a single user configuration object.

```

<xs:complexType name="UserConfigurationType">
  <xs:sequence>
    <xs:element name="UserConfigurationName"
      type="t:UserConfigurationNameType"
    />
    <xs:element name="ItemId"
      type="t:ItemIdType"
      minOccurs="0"
    />
    <xs:element name="Dictionary"
      type="t:UserConfigurationDictionaryType"
      minOccurs="0"
    />
    <xs:element name="XmlData"
      type="xs:base64Binary"
      minOccurs="0"
    />
    <xs:element name="BinaryData"
      type="xs:base64Binary"
      minOccurs="0"
    />
  </xs:sequence>
</xs:complexType>

```

The following table lists and describes the child elements of the **UserConfigurationType** complex type.

Element name	Type	Description
<b>UserConfigurationName</b>	<b>t:UserConfigurationNameType</b> (section <a href="#">2.2.4.4</a> )	Specifies the user configuration object name. The user configuration object name

Element name	Type	Description
		MUST be present.
<b>ItemId</b>	<b>t:ItemIdType</b> ( <a href="#">[MS-OXWSCORE]</a> section 2.2.4.18)	Specifies the user configuration object item identifier.
<b>Dictionary</b>	<b>t:UserConfigurationDictionaryType</b> (section <a href="#">2.2.4.3</a> )	Specifies a set of dictionary property entries.
<b>XmlData</b>	<b>xs:base64Binary</b> ( <a href="#">[XMLSCHEMA2]</a> )	Specifies XML data property content.
<b>BinaryData</b>	<b>xs:base64Binary</b> ( <a href="#">[XMLSCHEMA2]</a> )	Specifies binary data property content.

## 2.2.5 Simple Types

The following table summarizes the set of common XML schema simple type definitions that are defined by this specification. XML schema simple type definitions that are specific to a particular operation are described with the operation.

Simple type name	Description
<b>UserConfigurationDictionaryObjectTypesType</b>	Specifies the data type for a user configuration object dictionary property.
<b>UserConfigurationPropertyType</b>	Specifies the property types to get in a <b>GetUserConfiguration</b> operation, as specified in section <a href="#">3.1.4.3</a> .

### 2.2.5.1 t:UserConfigurationDictionaryObjectTypesType Simple Type

The **UserConfigurationDictionaryObjectTypesType** simple type specifies the data type for a user configuration object dictionary property.

```
<xs:simpleType name="UserConfigurationDictionaryObjectTypesType">
  <xs:restriction
    base="xs:string"
  >
    <xs:enumeration
      value="DateTime"
    />
    <xs:enumeration
      value="Boolean"
    />
    <xs:enumeration
      value="Byte"
    />
    <xs:enumeration
      value="String"
    />
    <xs:enumeration
      value="Integer32"
    />
    <xs:enumeration
      value="UnsignedInteger32"
    />
  </xs:restriction>
</xs:simpleType>
```

```

/>
<xs:enumeration
  value="Integer64"
/>
<xs:enumeration
  value="UnsignedInteger64"
/>
<xs:enumeration
  value="StringArray"
/>
<xs:enumeration
  value="ByteArray"
/>
</xs:restriction>
</xs:simpleType>

```

The following table lists and describes the values that are defined by the **UserConfigurationDictionaryObjectTypesType** simple type.

Value name	Description
<b>DateTime</b>	Specifies a DateTime data type for a dictionary entry.
<b>Boolean</b>	Specifies a Boolean data type for a dictionary entry.
<b>Byte</b>	Specifies a byte data type for a dictionary entry.
<b>String</b>	Specifies a string data type for a dictionary entry.
<b>Integer32</b>	Specifies a signed 32-bit integer data type for a dictionary entry.
<b>UnsignedInteger32</b>	Specifies an unsigned 32-bit integer data type for a dictionary entry.
<b>Integer64</b>	Specifies a signed 64-bit integer data type for a dictionary entry.
<b>UnsignedInteger64</b>	Specifies an unsigned 64-bit integer data type for a dictionary entry.
<b>StringArray</b>	Specifies a string array data type for a dictionary entry.
<b>ByteArray</b>	Specifies a byte array data type for a dictionary entry.

### 2.2.5.2 t:UserConfigurationPropertyType Simple Type

The **UserConfigurationPropertyType** simple type specifies the property types to get in a **GetUserConfiguration** operation, as specified in section [3.1.4.3](#).

```

<xs:simpleType name="UserConfigurationPropertyType">
  <xs:list>
    <xs:simpleType>
      <xs:restriction
        base="xs:string"
      >
        <xs:enumeration
          value="Id"
        />
      </xs:restriction>
    </xs:simpleType>
  </xs:list>
</xs:simpleType>

```

```

        value="Dictionary"
      />
    <xs:enumeration
      value="XmlData"
    />
    <xs:enumeration
      value="BinaryData"
    />
    <xs:enumeration
      value="All"
    />
  </xs:restriction>
</xs:simpleType>
</xs:list>
</xs:simpleType>

```

The following table lists and describes the values that are defined by the **UserConfigurationPropertyType** simple type.

Value name	Description
<b>Id</b>	Specifies the identifier property.
<b>Dictionary</b>	Specifies dictionary property types.
<b>XmlData</b>	Specifies XML data property types.
<b>BinaryData</b>	Specifies binary data property types.
<b>All</b>	Specifies the identifier, dictionary, XML data, and binary property types.

### 2.2.6 Attributes

This specification does not define any common XML schema attribute definitions.

### 2.2.7 Groups

This specification does not define any common XML schema group definitions.

### 2.2.8 Attribute Groups

This specification does not define any common XML schema attribute group definitions.

### 2.2.9 Common Data Structures

This specification does not define any common XML schema data structures.



## 3 Protocol Details

The client side of this protocol is simply a pass-through. That is, no additional timers or other state is required on the client side of this protocol. Calls made by the higher-layer protocol or application are passed directly to the transport, and the results that are returned by the transport are passed directly back to the higher-layer protocol or application.

### 3.1 ExchangeServicePortType Server Details

The User Configuration Web Service Protocol defines a single WSDL port type. This protocol uses the operations that are listed and described in the following table.

Operation name	Description
<a href="#">CreateUserConfiguration</a>	Specifies the WSDL messages for creating user configuration objects.
<a href="#">DeleteUserConfiguration</a>	Specifies the WSDL messages for deleting user configuration objects.
<a href="#">GetUserConfiguration</a>	Specifies the WSDL messages for getting user configuration objects.
<a href="#">UpdateUserConfiguration</a>	Specifies the WSDL messages for updating user configuration objects.

#### 3.1.1 Abstract Data Model

The User Configuration Web Service Protocol is a stateless protocol. The server maintains the user configuration object data.

The client is not required to maintain the state of the user configuration objects on the server and can retrieve the current set of configuration objects at any time. If more than one client accesses user configuration objects at the same time, there is no requirement that the server lock the existing set of permissions for changes.

#### 3.1.2 Timers

None.

#### 3.1.3 Initialization

None.

#### 3.1.4 Message Processing Events and Sequencing Rules

The following table summarizes the WSDL operations as defined by this specification. The operations do not have any sequencing rules.

Operation name	Description
<b>CreateUserConfiguration</b> (section <a href="#">3.1.4.1</a> )	Specifies the WSDL messages for creating user configuration objects.
<b>DeleteUserConfiguration</b> (section <a href="#">3.1.4.2</a> )	Specifies the WSDL messages for deleting user configuration objects.
<b>GetUserConfiguration</b> (section <a href="#">3.1.4.3</a> )	Specifies the WSDL messages for getting user configuration objects.

Operation name	Description
<b>UpdateUserConfiguration</b> (section <a href="#">3.1.4.4</a> )	Specifies the WSDL messages for updating user configuration objects.

### 3.1.4.1 CreateUserConfiguration

The **CreateUserConfiguration** operation specifies the WSDL messages for creating user configuration objects.

The following is the WSDL port type definition of this operation.

```
<wsdl:operation name="CreateUserConfiguration">
  <wsdl:input message="tns:CreateUserConfigurationSoapIn"/>
  <wsdl:output message="tns:CreateUserConfigurationSoapOut"/>
</wsdl:operation>
```

The following is the WSDL binding specification for this operation.

```
<wsdl:operation name="CreateUserConfiguration">
  <soap:operation
soapAction="http://schemas.microsoft.com/exchange/services/2006/messages/CreateUserConfigurat
ion" />
  <wsdl:input>
    <soap:header message="tns:CreateUserConfigurationSoapIn" part="Impersonation"
use="literal"/>
    <soap:header message="tns:CreateUserConfigurationSoapIn" part="MailboxCulture"
use="literal"/>
    <soap:header message="tns:CreateUserConfigurationSoapIn" part="RequestVersion"
use="literal"/>
    <soap:body parts="request" use="literal" />
  </wsdl:input>
  <wsdl:output>
    <soap:body parts="CreateUserConfigurationResult" use="literal" />
    <soap:header message="tns:CreateUserConfigurationSoapOut" part="ServerVersion"
use="literal"/>
  </wsdl:output>
</wsdl:operation>
```

#### 3.1.4.1.1 Messages

The following table lists and describes the WSDL message definitions that are specific to the **CreateUserConfiguration** operation.

Message name	Description
<b>CreateUserConfigurationSoapIn</b>	Specifies the <b>SOAP message</b> that creates a user configuration object.
<b>CreateUserConfigurationSoapOut</b>	Specifies the SOAP message that is returned by the server in response to a <b>CreateUserConfiguration</b> operation request.

### 3.1.4.1.1.1 CreateUserConfigurationSoapIn

The **CreateUserConfigurationSoapIn** WSDL message specifies the **CreateUserConfiguration** operation request to create a user configuration object.

```
<wsdl:message name="CreateUserConfigurationSoapIn">
  <wsdl:part name="request" element="tns:CreateUserConfiguration" />
  <wsdl:part name="Impersonation" element="t:ExchangeImpersonation"/>
  <wsdl:part name="MailboxCulture" element="t:MailboxCulture"/>
  <wsdl:part name="RequestVersion" element="t:RequestServerVersion"/>
</wsdl:message>
```

The **CreateUserConfigurationSoapIn** WSDL message is the input message for the **SOAP action** <http://schemas.microsoft.com/exchange/services/2006/messages/CreateUserConfiguration>.

The parts of the **CreateUserConfigurationSoapIn** WSDL message are listed and described in the following table.

Part name	Element/type	Description
<b>request</b>	<b>tns:CreateUserConfiguration</b> (section <a href="#">3.1.4.1.2.1</a> )	Specifies the <b>SOAP body</b> of the request to create a user configuration object. This part is required.
<b>Impersonation</b>	<b>t:ExchangeImpersonation</b> ( <a href="#">[MS-OXWSCDATA]</a> section 2.2.5.3)	Specifies a <b>SOAP header</b> that identifies the user whom the client application is impersonating. This part is optional.
<b>MailboxCulture</b>	<b>t:MailboxCulture</b> ( <a href="#">[MS-OXWSCDATA]</a> section 2.2.5.6)	Specifies a SOAP header that identifies the culture to use for accessing the <b>mailbox</b> . The cultures are defined in <a href="#">[RFC3066]</a> . This part is optional.
<b>RequestVersion</b>	<b>t:RequestServerVersion</b> ( <a href="#">[MS-OXWSCDATA]</a> section 2.2.5.9)	Specifies a SOAP header that identifies the schema version for the <b>CreateUserConfiguration</b> operation request.

### 3.1.4.1.1.2 CreateUserConfigurationSoapOut

The **CreateUserConfigurationSoapOut** WSDL message specifies the server response to a **CreateUserConfiguration** operation request to create a user configuration object.

```
<wsdl:message name="CreateUserConfigurationSoapOut">
  <wsdl:part name="CreateUserConfigurationResult"
    element="tns:CreateUserConfigurationResponse" />
  <wsdl:part name="ServerVersion" element="t:ServerVersionInfo"/>
</wsdl:message>
```

The **CreateUserConfigurationSoapOut** WSDL message is the output message for the SOAP action <http://schemas.microsoft.com/exchange/services/2006/messages/CreateUserConfiguration>.

The parts of the **CreateUserConfigurationSoapOut** WSDL message are listed and described in the following table.

Part name	Element/type	Description
<b>CreateUserConfigurationResult</b>	<b>tns:CreateUserConfigurationResponse</b> (section <a href="#">3.1.4.1.2.2</a> )	Specifies the SOAP body of the response to a <b>CreateUserConfiguration</b> operation request.
<b>ServerVersion</b>	<b>t:ServerVersionInfo</b> ( <a href="#">IMS-OXWSCDATA</a> section 2.2.5.10)	Specifies the SOAP header that identifies the server version for the response to a <b>CreateUserConfiguration</b> request.

### 3.1.4.1.2 Elements

The following table lists and describes the XML schema element definitions that are specific to the **CreateUserConfiguration** operation.

Element name	Description
<b>CreateUserConfiguration</b>	Specifies a request to create a user configuration object.
<b>CreateUserConfigurationResponse</b>	Specifies a response to a <b>CreateUserConfiguration</b> operation request.

#### 3.1.4.1.2.1 CreateUserConfiguration Element

The **CreateUserConfiguration** element specifies a request to create a user configuration object.

```
<xs:element name="CreateUserConfiguration"
  type="m:CreateUserConfigurationType"
  />
```

#### 3.1.4.1.2.2 CreateUserConfigurationResponse Element

The **CreateUserConfigurationResponse** element specifies a response to a **CreateUserConfiguration** operation request (section [3.1.4.1](#)).

```
<xs:element name="CreateUserConfigurationResponse"
  type="m:CreateUserConfigurationResponseType"
  />
```

### 3.1.4.1.3 Complex Types

The following table lists and describes the XML schema complex type definitions that are specific to the **CreateUserConfiguration** operation.

Complex type name	Description
<b>CreateUserConfigurationResponseType</b>	Specifies a response to a <b>CreateUserConfiguration</b>

Complex type name	Description
	operation request.
<b>CreateUserConfigurationType</b>	Specifies a <b>CreateUserConfiguration</b> operation request.

### 3.1.4.1.3.1 m:CreateUserConfigurationResponseType Complex Type

The **CreateUserConfigurationResponseType** complex type specifies the response to a **CreateUserConfiguration** operation request (section [3.1.4.1](#)). The **CreateUserConfigurationResponseType** complex type extends the **BaseResponseMessageType** complex type, as specified in [\[MS-OXWSCDATA\]](#) section 2.2.4.16.

```
<xs:complexType name="CreateUserConfigurationResponseType">
  <xs:complexContent>
    <xs:extension
      base="m:BaseResponseMessageType"
    />
  </xs:complexContent>
</xs:complexType>
```

### 3.1.4.1.3.2 m:CreateUserConfigurationType Complex Type

The **CreateUserConfigurationType** complex type specifies a **CreateUserConfiguration** operation request (section [3.1.4.1](#)). The **CreateUserConfigurationType** complex type extends the **BaseRequestType** complex type, as specified in [\[MS-OXWSCDATA\]](#) section 2.2.4.15.

```
<xs:complexType name="CreateUserConfigurationType">
  <xs:complexContent>
    <xs:extension
      base="m:BaseRequestType"
    >
    <xs:sequence>
      <xs:element name="UserConfiguration"
        type="t:UserConfigurationType"
      />
    </xs:sequence>
  </xs:complexContent>
</xs:complexType>
```

The following table lists and describes the child elements of the **CreateUserConfigurationType** complex type.

Element name	Type	Description
<b>UserConfiguration</b>	<b>t:UserConfigurationType</b> (section <a href="#">2.2.4.5</a> )	Specifies the user configuration object to be created.

### 3.1.4.1.4 Simple Types

None.

### 3.1.4.1.5 Attributes

None.

### 3.1.4.1.6 Groups

None

### 3.1.4.1.7 Attribute Groups

None.

## 3.1.4.2 DeleteUserConfiguration

The **DeleteUserConfiguration** operation specifies the WSDL messages for deleting user configuration objects.

The following is the WSDL port type definition of this operation.

```
<wsdl:operation name="DeleteUserConfiguration">
  <wsdl:input message="tns:DeleteUserConfigurationSoapIn"/>
  <wsdl:output message="tns:DeleteUserConfigurationSoapOut"/>
</wsdl:operation>
```

The following is the WSDL binding specification for this operation.

```
<wsdl:operation name="DeleteUserConfiguration">
  <soap:operation
    soapAction="http://schemas.microsoft.com/exchange/services/2006/messages/DeleteUserConfiguration" />
  <wsdl:input>
    <soap:header message="tns:DeleteUserConfigurationSoapIn" part="Impersonation"
      use="literal"/>
    <soap:header message="tns:DeleteUserConfigurationSoapIn" part="MailboxCulture"
      use="literal"/>
    <soap:header message="tns:DeleteUserConfigurationSoapIn" part="RequestVersion"
      use="literal"/>
    <soap:body parts="request" use="literal" />
  </wsdl:input>
  <wsdl:output>
    <soap:body parts="DeleteUserConfigurationResult" use="literal" />
    <soap:header message="tns:DeleteUserConfigurationSoapOut" part="ServerVersion"
      use="literal"/>
  </wsdl:output>
</wsdl:operation>
```

### 3.1.4.2.1 Messages

The following table lists and describes the WSDL message definitions that are specific to the **DeleteUserConfiguration** operation.

Message name	Description
<b>DeleteUserConfigurationSoapIn</b>	Specifies the SOAP message that deletes a user configuration object.
<b>DeleteUserConfigurationSoapOut</b>	Specifies the SOAP message that is returned by the server in response to a <b>DeleteUserConfiguration</b> operation request.

### 3.1.4.2.1.1 DeleteUserConfigurationSoapIn

The **DeleteUserConfigurationSoapIn** WSDL message specifies a **DeleteUserConfiguration** operation request to delete a user configuration object.

```
<wsdl:message name="DeleteUserConfigurationSoapIn">
  <wsdl:part name="request" element="tns:DeleteUserConfiguration" />
  <wsdl:part name="Impersonation" element="t:ExchangeImpersonation"/>
  <wsdl:part name="MailboxCulture" element="t:MailboxCulture"/>
  <wsdl:part name="RequestVersion" element="t:RequestServerVersion"/>
</wsdl:message>
```

The **DeleteUserConfigurationSoapIn** WSDL message is the input message for the SOAP action <http://schemas.microsoft.com/exchange/services/2006/messages/DeleteUserConfiguration>.

The parts of the **DeleteUserConfigurationSoapIn** WSDL message are listed and described in the following table.

Part name	Element/type	Description
<b>request</b>	<b>tns:DeleteUserConfiguration</b> (section <a href="#">3.1.4.2.2.1</a> )	Specifies the SOAP body of a request to delete a user configuration object. This part is required.
<b>Impersonation</b>	<b>t:ExchangeImpersonation</b> ( <a href="#">[MS-OXWSCDATA]</a> section 2.2.5.3)	Specifies a SOAP header that identifies the user whom the client application is impersonating. This part is optional.
<b>MailboxCulture</b>	<b>t:MailboxCulture</b> ( <a href="#">[MS-OXWSCDATA]</a> section 2.2.5.6)	Specifies a SOAP header that identifies the culture to be used for accessing the mailbox. The cultures are defined in <a href="#">[RFC3066]</a> . This part is optional.
<b>RequestVersion</b>	<b>t:RequestServerVersion</b> ( <a href="#">[MS-OXWSCDATA]</a> section 2.2.5.9)	Specifies a SOAP header that identifies the schema version for the <b>DeleteUserConfiguration</b> operation request (section <a href="#">3.1.4.2</a> ).

### 3.1.4.2.1.2 DeleteUserConfigurationSoapOut

The **DeleteUserConfigurationSoapOut** WSDL message specifies the server response to a **DeleteUserConfiguration** operation request to delete a user configuration object.

```
<wsdl:message name="DeleteUserConfigurationSoapOut">
  <wsdl:part name="DeleteUserConfigurationResult"
    element="tns:DeleteUserConfigurationResponse" />
  <wsdl:part name="ServerVersion" element="t:ServerVersionInfo"/>
</wsdl:message>
```

</wsdl:message>

The **DeleteUserConfigurationSoapOut** WSDL message is the output message for the SOAP action <http://schemas.microsoft.com/exchange/services/2006/messages/DeleteUserConfiguration>.

The parts of the **DeleteUserConfigurationSoapOut** WSDL message are listed and described in the following table.

Part name	Element/type	Description
<b>DeleteUserConfigurationResult</b>	<b>tns&gt;DeleteUserConfigurationResponse</b> (section <a href="#">3.1.4.2.2.2</a> )	Specifies the SOAP body of the response to a <b>DeleteUserConfiguration</b> operation request.
<b>ServerVersion</b>	<b>t:ServerVersionInfo</b> ( <a href="#">IMS-OXWSCDATA</a> section 2.2.5.10)	Specifies the SOAP header that identifies the server version for the response.

### 3.1.4.2.2 Elements

The following table lists and describes the XML schema element definitions that are specific to the **DeleteUserConfiguration** operation.

Element name	Description
<b>DeleteUserConfiguration</b>	Specifies a request to delete a user configuration object.
<b>DeleteUserConfigurationResponse</b>	Specifies the response to a <b>DeleteUserConfiguration</b> operation request.

#### 3.1.4.2.2.1 DeleteUserConfiguration Element

The **DeleteUserConfiguration** element specifies a request to delete a user configuration object.

```
<xs:element name="DeleteUserConfiguration"
  type="m:DeleteUserConfigurationType"
  />
```

#### 3.1.4.2.2.2 DeleteUserConfigurationResponse Element

The **DeleteUserConfigurationResponse** element specifies the response to a **DeleteUserConfiguration** operation request (section [3.1.4.2](#)).

```
<xs:element name="DeleteUserConfigurationResponse"
  type="m:DeleteUserConfigurationResponseType"
  />
```



### 3.1.4.2.3 Complex Types

The following table lists and describes the XML schema complex type definitions that are specific to the **DeleteUserConfiguration** operation.

Complex type name	Description
<b>DeleteUserConfigurationResponseType</b>	Specifies the response to a <b>DeleteUserConfiguration</b> operation request.
<b>DeleteUserConfigurationType</b>	Specifies a <b>DeleteUserConfiguration</b> operation request.

#### 3.1.4.2.3.1 m>DeleteUserConfigurationResponseType Complex Type

The **DeleteUserConfigurationResponseType** complex type specifies the response for a **DeleteUserConfiguration** operation request (section [3.1.4.2](#)). The **DeleteUserConfigurationResponseType** complex type extends the **BaseResponseMessageType** complex type, as specified in [\[MS-OXWSCDATA\]](#) section 2.2.4.16.

```
<xs:complexType name="DeleteUserConfigurationResponseType">
  <xs:complexContent>
    <xs:extension
      base="m:BaseResponseMessageType"
    />
  </xs:complexContent>
</xs:complexType>
```

#### 3.1.4.2.3.2 m>DeleteUserConfigurationType Complex Type

The **DeleteUserConfigurationType** complex type specifies a **DeleteUserConfiguration** operation request (section [3.1.4.2](#)). The **DeleteUserConfigurationType** complex type extends the **BaseRequestType** complex type, as specified in [\[MS-OXWSCDATA\]](#) section 2.2.4.15.

```
<xs:complexType name="DeleteUserConfigurationType">
  <xs:complexContent>
    <xs:extension
      base="m:BaseRequestType"
    >
    <xs:sequence>
      <xs:element name="UserName"
        type="t:UserName"
      />
    </xs:sequence>
    </xs:extension>
  </xs:complexContent>
</xs:complexType>
```

The following table lists and describes the child elements of the **DeleteUserConfigurationType** complex type.

Element name	Type	Description
<b>UserConfigurationName</b>	<b>t:UserConfigurationNameType</b> (section <a href="#">2.2.4.4</a> )	Specifies the name of the user configuration object to be deleted.

#### 3.1.4.2.4 Simple Types

None.

#### 3.1.4.2.5 Attributes

None

#### 3.1.4.2.6 Groups

None.

#### 3.1.4.2.7 Attribute Groups

None.

#### 3.1.4.3 GetUserConfiguration

The **GetUserConfiguration** operation specifies the WSDL messages that are used to get user configuration objects.

The following is the WSDL port type definition of this operation.

```
<wsdl:operation name="GetUserConfiguration">
  <wsdl:input message="tns:GetUserConfigurationSoapIn"/>
  <wsdl:output message="tns:GetUserConfigurationSoapOut"/>
</wsdl:operation>
```

The following is the WSDL binding specification for this operation.

```
<wsdl:operation name="GetUserConfiguration">
  <soap:operation
soapAction="http://schemas.microsoft.com/exchange/services/2006/messages/GetUserConfiguration" />
  <wsdl:input>
    <soap:header message="tns:GetUserConfigurationSoapIn" part="Impersonation"
use="literal"/>
    <soap:header message="tns:GetUserConfigurationSoapIn" part="MailboxCulture"
use="literal"/>
    <soap:header message="tns:GetUserConfigurationSoapIn" part="RequestVersion"
use="literal"/>
    <soap:body parts="request" use="literal" />
  </wsdl:input>
  <wsdl:output>
    <soap:body parts="GetUserConfigurationResult" use="literal" />
    <soap:header message="tns:GetUserConfigurationSoapOut" part="ServerVersion"
use="literal"/>
  </wsdl:output>
```

```
</wsdl:operation>
```

### 3.1.4.3.1 Messages

The following table lists and describes the WSDL message definitions that are specific to the **GetUserConfiguration** operation.

Message name	Description
<b>GetUserConfigurationSoapIn</b>	Specifies the SOAP message that gets a user configuration object.
<b>GetUserConfigurationSoapOut</b>	Specifies the SOAP message that is returned by the server in response to the <b>GetUserConfiguration</b> operation request.

#### 3.1.4.3.1.1 GetUserConfigurationSoapIn

The **GetUserConfigurationSoapIn** WSDL message specifies a **GetUserConfiguration** operation request to delete a user configuration object.

```
<wsdl:message name="GetUserConfigurationSoapIn">
  <wsdl:part name="request" element="tns:GetUserConfiguration" />
  <wsdl:part name="Impersonation" element="t:ExchangeImpersonation"/>
  <wsdl:part name="MailboxCulture" element="t:MailboxCulture"/>
  <wsdl:part name="RequestVersion" element="t:RequestServerVersion"/>
</wsdl:message>
```

The **GetUserConfigurationSoapIn** WSDL message is the input message for the SOAP action <http://schemas.microsoft.com/exchange/services/2006/messages/GetUserConfiguration>.

The parts of the **GetUserConfigurationSoapIn** WSDL message are listed and described in the following table.

Part name	Element/type	Description
<b>request</b>	<b>tns:GetUserConfiguration</b> (section <a href="#">3.1.4.3.2.1</a> )	Specifies the SOAP body of a request to get a user configuration object. This part is required.
<b>Impersonation</b>	<b>t:ExchangeImpersonation</b> ([MS-OXWSCDATA] section 2.2.5.3)	Specifies a SOAP header that identifies the user whom the client application is impersonating. This part is optional.
<b>MailboxCulture</b>	<b>t:MailboxCulture</b> ([MS-OXWSCDATA] section 2.2.5.6)	Specifies a SOAP header that identifies the culture to be used for accessing the mailbox. The cultures are defined in <a href="#">RFC3066</a> . This part is optional.
<b>RequestVersion</b>	<b>t:RequestServerVersion</b> ([MS-OXWSCDATA] section 2.2.5.9)	Specifies a SOAP header that identifies the schema version for the <b>GetUserConfiguration</b> operation request (section <a href="#">3.1.4.3</a> ).

### 3.1.4.3.1.2 GetUserConfigurationSoapOut

The **GetUserConfigurationSoapOut** WSDL message specifies the server response to a **GetUserConfiguration** operation request to get a user configuration object.

The parts of the **GetUserConfigurationSoapOut** WSDL message are listed and described in the following table.

Part name	Element/type	Description
<b>GetUserConfigurationResult</b>	<b>tns:GetUserConfigurationResponse</b> (section <a href="#">3.1.4.3.2.2</a> )	Specifies the SOAP body of the response to a <b>GetUserConfiguration</b> operation request.
<b>ServerVersion</b>	<b>t:ServerVersionInfo</b> ( <a href="#">[MS-OXWSCDATA]</a> section 2.2.5.10)	Specifies the SOAP header that identifies the server version for the response.

### 3.1.4.3.2 Elements

The following table lists and describes the XML schema element definitions that are specific to the **GetUserConfiguration** operation.

Element name	Description
<b>GetUserConfiguration</b>	Specifies a request to get a user configuration object.
<b>GetUserConfigurationResponse</b>	Specifies the response to a <b>GetUserConfiguration</b> operation request.

#### 3.1.4.3.2.1 GetUserConfiguration Element

The **GetUserConfiguration** element specifies a request to get a user configuration object.

```
<xs:element name="GetUserConfiguration"
  type="m:GetUserConfigurationType"
/>
```

#### 3.1.4.3.2.2 GetUserConfigurationResponse Element

The **GetUserConfigurationResponse** element specifies the response to a **GetUserConfiguration** operation request (section [3.1.4.3](#)).

```
<xs:element name="GetUserConfigurationResponse"
  type="m:GetUserConfigurationResponseType"
/>
```

### 3.1.4.3.3 Complex Types

The following table lists and describes the XML schema complex type definitions that are specific to the **GetUserConfiguration** operation.

Complex type name	Description
<b>GetUserConfigurationResponseMessageType</b>	Specifies a user configuration object returned in a response.
<b>GetUserConfigurationResponseType</b>	Specifies a response to a <b>GetUserConfiguration</b> operation request.
<b>GetUserConfigurationType</b>	Specifies a <b>GetUserConfiguration</b> operation request.

### 3.1.4.3.3.1 t:GetUserConfigurationResponseMessageType Complex Type

The **GetUserConfigurationResponseMessageType** complex type specifies a user configuration object that is returned in a response to a **GetUserConfiguration** operation request. The **GetUserConfigurationResponseMessageType** complex type extends the **ResponseMessageType** complex type, as specified in [\[MS-OXWSCDATA\]](#) section 2.2.4.57.

```
<xs:complexType name="GetUserConfigurationResponseMessageType">
  <xs:complexContent>
    <xs:extension
      base="m:ResponseMessageType"
    >
      <xs:sequence>
        <xs:element name="UserConfiguration"
          type="t:UserConfigurationType"
          minOccurs="0"
        />
      </xs:sequence>
    </xs:extension>
  </xs:complexContent>
</xs:complexType>
```

The following table lists and describes the child elements of the **GetUserConfigurationResponseMessageType** complex type.

Element name	Type	Description
<b>UserConfiguration</b>	<b>t:UserConfigurationType</b> (section <a href="#">2.2.4.5</a> )	Specifies a single user configuration object.

### 3.1.4.3.3.2 m:GetUserConfigurationResponseType Complex Type

The **GetUserConfigurationResponseType** complex type specifies the response to a **GetUserConfiguration** operation request (section [3.1.4.3](#)). The **GetUserConfigurationResponseType** complex type extends the **BaseResponseMessageType** complex type, as specified in [\[MS-OXWSCDATA\]](#) section 2.2.4.16.

```
<xs:complexType name="GetUserConfigurationResponseType">
  <xs:complexContent>
    <xs:extension
      base="m:BaseResponseMessageType"
    />
  </xs:complexContent>
</xs:complexType>
```

### 3.1.4.3.3 m:GetUserConfigurationType Complex Type

The **GetUserConfigurationType** complex type specifies a **GetUserConfiguration** operation request (section 3.1.4.3). The **GetUserConfigurationType** complex type extends the **BaseRequestType** complex type, as specified in [MS-OXWSCDATA] section 2.2.4.15.

```
<xs:complexType name="GetUserConfigurationType">
  <xs:complexContent>
    <xs:extension
      base="m:BaseRequestType"
    >
      <xs:sequence>
        <xs:element name="UserConfigurationName"
          type="t:UserConfigurationNameType"
        />
        <xs:element name="UserConfigurationProperties"
          type="t:UserConfigurationPropertyType"
        />
      </xs:sequence>
    </xs:extension>
  </xs:complexContent>
</xs:complexType>
```

The following table lists and describes the child elements of the **GetUserConfigurationType** complex type.

Element name	Type	Description
<b>UserConfigurationName</b>	<b>t:UserConfigurationNameType</b> (section 2.2.4.4)	Specifies the name and the associated folder for a user configuration object.
<b>UserConfigurationProperties</b>	<b>t:UserConfigurationPropertyType</b> (section 2.2.5.2)	Specifies the property types to get in a <b>GetUserConfiguration</b> operation (section 3.1.4.3).

### 3.1.4.3.4 Simple Types

None.

### 3.1.4.3.5 Attributes

None.

### 3.1.4.3.6 Groups

None.

### 3.1.4.3.7 Attribute Groups

None.

### 3.1.4.4 UpdateUserConfiguration

The **UpdateUserConfiguration** operation specifies the WSDL messages for updating user configuration objects.

The following is the WSDL port type definition of this operation.

```
<wsdl:operation name="UpdateUserConfiguration">
  <wsdl:input message="tns:UpdateUserConfigurationSoapIn"/>
  <wsdl:output message="tns:UpdateUserConfigurationSoapOut"/>
</wsdl:operation>
```

The following is the WSDL binding specification for the operation.

```
<wsdl:operation name="UpdateUserConfiguration">
  <soap:operation
    soapAction="http://schemas.microsoft.com/exchange/services/2006/messages/UpdateUserConfiguration" />
  <wsdl:input>
    <soap:header message="tns:UpdateUserConfigurationSoapIn" part="Impersonation"
      use="literal"/>
    <soap:header message="tns:UpdateUserConfigurationSoapIn" part="MailboxCulture"
      use="literal"/>
    <soap:header message="tns:UpdateUserConfigurationSoapIn" part="RequestVersion"
      use="literal"/>
    <soap:body parts="request" use="literal" />
  </wsdl:input>
  <wsdl:output>
    <soap:body parts="UpdateUserConfigurationResult" use="literal" />
    <soap:header message="tns:UpdateUserConfigurationSoapOut" part="ServerVersion"
      use="literal"/>
  </wsdl:output>
</wsdl:operation>
```

#### 3.1.4.4.1 Messages

The following table lists and describes the WSDL message definitions that are specific to the **UpdateUserConfiguration** operation.

Message name	Description
<b>UpdateUserConfigurationSoapIn</b>	Specifies the SOAP message that updates a user configuration object.
<b>UpdateUserConfigurationSoapOut</b>	Specifies the SOAP message that is returned by the server in response to a <b>UpdateUserConfiguration</b> operation request.

### 3.1.4.4.1.1 UpdateUserConfigurationSoapIn

The **UpdateUserConfigurationSoapIn** WSDL message specifies an **UpdateUserConfiguration** operation request to update a user configuration object.

```
<wsdl:message name="UpdateUserConfigurationSoapIn">
  <wsdl:part name="request" element="tns:UpdateUserConfiguration" />
  <wsdl:part name="Impersonation" element="t:ExchangeImpersonation"/>
  <wsdl:part name="MailboxCulture" element="t:MailboxCulture"/>
  <wsdl:part name="RequestVersion" element="t:RequestServerVersion"/>
</wsdl:message>
```

The **UpdateUserConfigurationSoapIn** WSDL message is the input message for the SOAP action <http://schemas.microsoft.com/exchange/services/2006/messages/UpdateUserConfiguration>.

The parts of the **UpdateUserConfigurationSoapIn** WSDL message are listed and described in the following table.

Part name	Element/type	Description
<b>request</b>	<b>tns:UpdateUserConfiguration</b> (section <a href="#">3.1.4.4.2.1</a> )	Specifies the SOAP body of a request to update a user configuration object. This part is required.
<b>Impersonation</b>	<b>t:ExchangeImpersonation</b> ( <a href="#">[MS-OXWSCDATA]</a> section 2.2.5.3)	Specifies a SOAP header that identifies the user whom the client application is impersonating. This part is optional.
<b>MailboxCulture</b>	<b>t:MailboxCulture</b> ( <a href="#">[MS-OXWSCDATA]</a> section 2.2.5.6)	Specifies a SOAP header that identifies the culture to be used for accessing the mailbox. The cultures are defined in <a href="#">[RFC3066]</a> . This part is optional.
<b>RequestVersion</b>	<b>t:RequestServerVersion</b> ( <a href="#">[MS-OXWSCDATA]</a> section 2.2.5.9)	Specifies a SOAP header that identifies the schema version for a <b>UpdateUserConfiguration</b> operation (section <a href="#">3.1.4.4</a> ) request.

### 3.1.4.4.1.2 UpdateUserConfigurationSoapOut

The **UpdateUserConfigurationSoapOut** WSDL message specifies the server response to a **UpdateUserConfiguration** operation request to update a user configuration object.

The parts of the **UpdateUserConfigurationSoapOut** WSDL message are listed and described in the following table.

Part name	Element/type	Description
<b>UpdateUserConfigurationResult</b>	<b>tns:UpdateUserConfigurationResponse</b> (section <a href="#">3.1.4.4.2.2</a> )	Specifies the SOAP body of the response to an <b>UpdateUserConfiguration</b> operation request.
<b>ServerVersion</b>	<b>t:ServerVersionInfo</b> ( <a href="#">[MS-OXWSCDATA]</a> section 2.2.5.10)	Specifies the SOAP header that identifies the server version for the response to an



Part name	Element/type	Description
		<b>UpdateUserConfiguration</b> operation request.

### 3.1.4.4.2 Elements

The following table lists and describes the XML schema element definitions that are specific to the **UpdateUserConfiguration** operation.

Element name	Description
<b>UpdateUserConfiguration</b>	Specifies a request to update a user configuration object.
<b>UpdateUserConfigurationResponse</b>	Specifies the response to an <b>UpdateUserConfiguration</b> operation request.

#### 3.1.4.4.2.1 UpdateUserConfiguration Element

The **UpdateUserConfiguration** element specifies a request to update a user configuration object.

```
<xs:element name="UpdateUserConfiguration"
  type="m:UpdateUserConfigurationType"
  />
```

#### 3.1.4.4.2.2 UpdateUserConfigurationResponse Element

The **UpdateUserConfigurationResponse** element specifies the response to an **UpdateUserConfiguration** operation request (section [3.1.4.4](#)).

```
<xs:element name="UpdateUserConfigurationResponse"
  type="m:UpdateUserConfigurationResponseType"
  />
```

### 3.1.4.4.3 Complex Types

The following table lists and describes the XML schema complex type definitions that are specific to the **UpdateUserConfiguration** operation.

Complex type name	Description
<b>UpdateUserConfigurationResponseType</b>	Specifies the response to an <b>UpdateUserConfiguration</b> operation request.
<b>UpdateUserConfigurationType</b>	Specifies an <b>UpdateUserConfiguration</b> operation request.

#### 3.1.4.4.3.1 m:UpdateUserConfigurationResponseType Complex Type

The **UpdateUserConfigurationResponseType** complex type specifies the response to an **UpdateUserConfiguration** operation request (section [3.1.4.4](#)). The

**UpdateUserConfigurationResponseType** complex type extends the **BaseResponseMessageType** complex type, as specified in [\[MS-OXWSCDATA\]](#) section 2.2.4.16.

```
<xs:complexType name="UpdateUserConfigurationResponseType">
  <xs:complexContent>
    <xs:extension
      base="m:BaseResponseMessageType"
    />
  </xs:complexContent>
</xs:complexType>
```

### 3.1.4.4.3.2 m:UpdateUserConfigurationType Complex Type

The **UpdateUserConfigurationType** complex type specifies an **UpdateUserConfiguration** operation request (section [3.1.4.4](#)). The **UpdateUserConfigurationType** complex type extends the **BaseRequestType** complex type, as specified in [\[MS-OXWSCDATA\]](#) section 2.2.4.15.

```
<xs:complexType name="UpdateUserConfigurationType">
  <xs:complexContent>
    <xs:extension
      base="m:BaseRequestType"
    >
      <xs:sequence>
        <xs:element name="UserConfiguration"
          type="t:UserConfigurationType"
        />
      </xs:sequence>
    </xs:extension>
  </xs:complexContent>
</xs:complexType>
```

The following table lists and describes the child elements of the **UpdateUserConfigurationType** complex type.

Element name	Type	Description
<b>UserConfiguration</b>	<b>t:UserConfigurationType</b> (section <a href="#">2.2.4.5</a> )	Specifies the user configuration object that contains updated data.

### 3.1.4.4.4 Simple Types

None.

### 3.1.4.4.5 Attributes

None.

### 3.1.4.4.6 Groups

None.

#### **3.1.4.4.7 Attribute Groups**

None.

#### **3.1.5 Timer Events**

None.

#### **3.1.6 Other Local Events**

None.

Preliminary

## 4 Protocol Examples

None.

Preliminary

## **5 Security**

### **5.1 Security Considerations for Implementers**

None.

### **5.2 Index of Security Parameters**

None.

Preliminary

## 6 Appendix A: Full WSDL

The XML files that are listed in the following table are required in order to implement the functionality specified in this document.

File name	Description	Section
MS-OXWSUSRCFG.wsdl	Contains the WSDL for the implementation of this protocol.	<a href="#">6</a>
MS-OXWSUSRCFG-messages.xsd	Contains the XML schema message definitions that are used in this protocol.	<a href="#">7.1</a>
MS-OXWSUSRCFG-types.xsd	Contains the XML schema type definitions that are used in this protocol.	<a href="#">7.2</a>

These files have to be placed in a common folder in order for the WSDL to validate and operate. Also, any schema files that are included in or imported into the MS-OXWSUSRCFG-types.xsd or MS-OXWSUSRCFG-messages.xsd schemas have to be placed in the common folder with these files.

This section contains the contents of the MS-OXWSUSRCFG.wsdl file.

```
<?xml version="1.0" encoding="utf-8"?>
<wsdl:definitions xmlns:soap="http://schemas.xmlsoap.org/wsdl/soap/"
xmlns:tns="http://schemas.microsoft.com/exchange/services/2006/messages"
xmlns:s="http://www.w3.org/2001/XMLSchema" xmlns:wsdl="http://schemas.xmlsoap.org/wsdl/"
xmlns:t="http://schemas.microsoft.com/exchange/services/2006/types"
targetNamespace="http://schemas.microsoft.com/exchange/services/2006/messages">
  <wsdl:types>
    <xs:schema id="messages" elementFormDefault="qualified" version="Exchange2010"
xmlns:m="http://schemas.microsoft.com/exchange/services/2006/messages"
xmlns:tns="http://schemas.microsoft.com/exchange/services/2006/messages"
xmlns:t="http://schemas.microsoft.com/exchange/services/2006/types"
xmlns:xs="http://www.w3.org/2001/XMLSchema"
targetNamespace="http://schemas.microsoft.com/exchange/services/2006/messages"
xmlns="http://schemas.microsoft.com/exchange/services/2006/messages">
      <xs:include schemaLocation="MS-OXWSUSRCFG-messages.xsd"/>
    </xs:schema>
    <xs:schema id="types" elementFormDefault="qualified" version="Exchange2010"
xmlns:t="http://schemas.microsoft.com/exchange/services/2006/types"
targetNamespace="http://schemas.microsoft.com/exchange/services/2006/types"
xmlns="http://schemas.microsoft.com/exchange/services/2006/types"
xmlns:tns="http://schemas.microsoft.com/exchange/services/2006/types"
xmlns:xs="http://www.w3.org/2001/XMLSchema">
      <xs:import namespace="http://www.w3.org/XML/1998/namespace"/>
    </xs:schema>
  </wsdl:types>
  <wsdl:portType name="ExchangeServicePortType">
    <wsdl:operation name="CreateUserConfiguration">
      <wsdl:input message="tns:CreateUserConfigurationSoapIn"/>
      <wsdl:output message="tns:CreateUserConfigurationSoapOut"/>
    </wsdl:operation>
    <wsdl:operation name="DeleteUserConfiguration">
      <wsdl:input message="tns:DeleteUserConfigurationSoapIn"/>
      <wsdl:output message="tns:DeleteUserConfigurationSoapOut"/>
    </wsdl:operation>
    <wsdl:operation name="GetUserConfiguration">
      <wsdl:input message="tns:GetUserConfigurationSoapIn"/>
      <wsdl:output message="tns:GetUserConfigurationSoapOut"/>
    </wsdl:operation>
  </wsdl:portType>

```

```

        <wsdl:operation name="UpdateUserConfiguration">
            <wsdl:input message="tns:UpdateUserConfigurationSoapIn"/>
            <wsdl:output message="tns:UpdateUserConfigurationSoapOut"/>
        </wsdl:operation>
    </wsdl:portType>
    <wsdl:binding name="ExchangeServiceBinding" type="tns:ExchangeServicePortType">
        <wsdl:documentation>
            <wsi:Claim conformsTo="http://ws-i.org/profiles/basic/1.0"
xmlns:wsi="http://ws-i.org/schemas/conformanceClaim/" />
        </wsdl:documentation>
        <soap:binding style="document" transport="http://schemas.xmlsoap.org/soap/http"/>
        <wsdl:operation name="CreateUserConfiguration">
            <soap:operation
soapAction="http://schemas.microsoft.com/exchange/services/2006/messages/CreateUserConfigurat
ion"/>
            <wsdl:input>
                <soap:header message="tns:CreateUserConfigurationSoapIn"
part="Impersonation" use="literal"/>
                <soap:header message="tns:CreateUserConfigurationSoapIn"
part="MailboxCulture" use="literal"/>
                <soap:header message="tns:CreateUserConfigurationSoapIn"
part="RequestVersion" use="literal"/>
                <soap:body parts="request" use="literal"/>
            </wsdl:input>
            <wsdl:output>
                <soap:body parts="CreateUserConfigurationResult" use="literal"/>
                <soap:header message="tns:CreateUserConfigurationSoapOut"
part="ServerVersion" use="literal"/>
            </wsdl:output>
        </wsdl:operation>
        <wsdl:operation name="DeleteUserConfiguration">
            <soap:operation
soapAction="http://schemas.microsoft.com/exchange/services/2006/messages/DeleteUserConfigurat
ion"/>
            <wsdl:input>
                <soap:header message="tns:DeleteUserConfigurationSoapIn"
part="Impersonation" use="literal"/>
                <soap:header message="tns:DeleteUserConfigurationSoapIn"
part="MailboxCulture" use="literal"/>
                <soap:header message="tns:DeleteUserConfigurationSoapIn"
part="RequestVersion" use="literal"/>
                <soap:body parts="request" use="literal"/>
            </wsdl:input>
            <wsdl:output>
                <soap:body parts="DeleteUserConfigurationResult" use="literal"/>
                <soap:header message="tns:DeleteUserConfigurationSoapOut"
part="ServerVersion" use="literal"/>
            </wsdl:output>
        </wsdl:operation>
        <wsdl:operation name="GetUserConfiguration">
            <soap:operation
soapAction="http://schemas.microsoft.com/exchange/services/2006/messages/GetUserConfiguration
"/>
            <wsdl:input>
                <soap:header message="tns:GetUserConfigurationSoapIn"
part="Impersonation" use="literal"/>
                <soap:header message="tns:GetUserConfigurationSoapIn"
part="MailboxCulture" use="literal"/>
                <soap:header message="tns:GetUserConfigurationSoapIn"
part="RequestVersion" use="literal"/>
                <soap:body parts="request" use="literal"/>
            </wsdl:input>
        </wsdl:operation>
    </wsdl:binding>
</wsdl:service>

```

```

        </wsdl:input>
        <wsdl:output>
            <soap:body parts="GetUserConfigurationResult" use="literal"/>
            <soap:header message="tns:GetUserConfigurationSoapOut"
part="ServerVersion" use="literal"/>
        </wsdl:output>
    </wsdl:operation>
    <wsdl:operation name="UpdateUserConfiguration">
        <soap:operation
soapAction="http://schemas.microsoft.com/exchange/services/2006/messages/UpdateUserConfigurat
ion"/>
        <wsdl:input>
            <soap:header message="tns:UpdateUserConfigurationSoapIn"
part="Impersonation" use="literal"/>
            <soap:header message="tns:UpdateUserConfigurationSoapIn"
part="MailboxCulture" use="literal"/>
            <soap:header message="tns:UpdateUserConfigurationSoapIn"
part="RequestVersion" use="literal"/>
            <soap:body parts="request" use="literal"/>
        </wsdl:input>
        <wsdl:output>
            <soap:body parts="UpdateUserConfigurationResult" use="literal"/>
            <soap:header message="tns:UpdateUserConfigurationSoapOut"
part="ServerVersion" use="literal"/>
        </wsdl:output>
    </wsdl:operation>
</wsdl:binding>
<wsdl:message name="CreateUserConfigurationSoapIn">
    <wsdl:part name="request" element="tns:CreateUserConfiguration"/>
    <wsdl:part name="Impersonation" element="t:ExchangeImpersonation"/>
    <wsdl:part name="MailboxCulture" element="t:MailboxCulture"/>
    <wsdl:part name="RequestVersion" element="t:RequestServerVersion"/>
</wsdl:message>
<wsdl:message name="CreateUserConfigurationSoapOut">
    <wsdl:part name="CreateUserConfigurationResult"
element="tns:CreateUserConfigurationResponse"/>
    <wsdl:part name="ServerVersion" element="t:ServerVersionInfo"/>
</wsdl:message>
<wsdl:message name="DeleteUserConfigurationSoapIn">
    <wsdl:part name="request" element="tns>DeleteUserConfiguration"/>
    <wsdl:part name="Impersonation" element="t:ExchangeImpersonation"/>
    <wsdl:part name="MailboxCulture" element="t:MailboxCulture"/>
    <wsdl:part name="RequestVersion" element="t:RequestServerVersion"/>
</wsdl:message>
<wsdl:message name="DeleteUserConfigurationSoapOut">
    <wsdl:part name="DeleteUserConfigurationResult"
element="tns>DeleteUserConfigurationResponse"/>
    <wsdl:part name="ServerVersion" element="t:ServerVersionInfo"/>
</wsdl:message>
<wsdl:message name="GetUserConfigurationSoapIn">
    <wsdl:part name="request" element="tns:GetUserConfiguration"/>
    <wsdl:part name="Impersonation" element="t:ExchangeImpersonation"/>
    <wsdl:part name="MailboxCulture" element="t:MailboxCulture"/>
    <wsdl:part name="RequestVersion" element="t:RequestServerVersion"/>
</wsdl:message>
<wsdl:message name="GetUserConfigurationSoapOut">
    <wsdl:part name="GetUserConfigurationResult"
element="tns:GetUserConfigurationResponse"/>
    <wsdl:part name="ServerVersion" element="t:ServerVersionInfo"/>
</wsdl:message>

```



```
<wsdl:message name="UpdateUserConfigurationSoapIn">
  <wsdl:part name="request" element="tns:UpdateUserConfiguration"/>
  <wsdl:part name="Impersonation" element="t:ExchangeImpersonation"/>
  <wsdl:part name="MailboxCulture" element="t:MailboxCulture"/>
  <wsdl:part name="RequestVersion" element="t:RequestServerVersion"/>
</wsdl:message>
<wsdl:message name="UpdateUserConfigurationSoapOut">
  <wsdl:part name="UpdateUserConfigurationResult"
element="tns:UpdateUserConfigurationResponse"/>
  <wsdl:part name="ServerVersion" element="t:ServerVersionInfo"/>
</wsdl:message>
</wsdl:definitions>
```

## 7 Appendix B: Full XML Schema

For ease of implementation, the following sections provide the full XML schema for this protocol.

Schema name	Prefix	Section
Messages schema	m:	<a href="#">7.1</a>
Types schema	t:	<a href="#">7.2</a>

These files have to be placed in a common folder in order for the WSDL to validate and operate. Also, any schema files that are included in or imported into the MS-OXWSUSRCFG-types.xsd or MS-OXWSUSRCFG-messages.xsd schemas have to be placed in the common folder along with the files listed in the table.

### 7.1 Messages Schema

This section contains the contents of the MS-OXWSUSRCFG-messages.xsd file and information about additional files that this schema file requires to operate correctly.

MS-OXWSUSRCFG-messages.xsd includes the file listed in the following table. To operate correctly, this file has to be present in the folder that contains the WSDL, types schema, and messages schema files for this protocol.

File name	Defining specification
MS-OXWSCDATA-messages.xsd	<a href="#">[MS-OXWSCDATA]</a> section 7.1

```
<?xml version="1.0" encoding="utf-8"?>
<xs:schema xmlns:m="http://schemas.microsoft.com/exchange/services/2006/messages"
  xmlns:tns="http://schemas.microsoft.com/exchange/services/2006/messages"
  xmlns:t="http://schemas.microsoft.com/exchange/services/2006/types"
  xmlns:xs="http://www.w3.org/2001/XMLSchema"
  targetNamespace="http://schemas.microsoft.com/exchange/services/2006/messages"
  elementFormDefault="qualified" version="Exchange2010" id="messages">
  <xs:include schemaLocation="MS-OXWSCDATA-messages.xsd"/>
  <xs:import namespace="http://schemas.microsoft.com/exchange/services/2006/types"
    schemaLocation="MS-OXWSUSRCFG-types.xsd"/>
  <xs:complexType name="CreateUserConfigurationType">
    <xs:complexContent>
      <xs:extension base="m:BaseRequestType">
        <xs:sequence>
          <xs:element name="UserConfiguration"
            type="t:UserConfigurationType"/>
        </xs:sequence>
      </xs:extension>
    </xs:complexContent>
  </xs:complexType>
  <xs:element name="CreateUserConfiguration" type="m:CreateUserConfigurationType"/>
  <xs:complexType name="CreateUserConfigurationResponseType">
    <xs:complexContent>
      <xs:extension base="m:BaseResponseMessageType">
        </xs:complexContent>
      </xs:extension>
    </xs:complexContent>
  </xs:complexType>
  <xs:element name="CreateUserConfigurationResponse"
    type="m:CreateUserConfigurationResponseType"/>
  <xs:complexType name="DeleteUserConfigurationType">
```

```

    <xs:complexContent>
      <xs:extension base="m:BaseRequestType">
        <xs:sequence>
          <xs:element name="UserConfigurationName"
type="t:UserConfigurationNameType"/>
        </xs:sequence>
      </xs:extension>
    </xs:complexContent>
  </xs:complexType>
  <xs:element name="DeleteUserConfiguration" type="m:DeleteUserConfigurationType"/>
  <xs:complexType name="DeleteUserConfigurationResponseType">
    <xs:complexContent>
      <xs:extension base="m:BaseResponseMessageType"/>
    </xs:complexContent>
  </xs:complexType>
  <xs:element name="DeleteUserConfigurationResponse"
type="m:DeleteUserConfigurationResponseType"/>
  <xs:complexType name="GetUserConfigurationType">
    <xs:complexContent>
      <xs:extension base="m:BaseRequestType">
        <xs:sequence>
          <xs:element name="UserConfigurationName"
type="t:UserConfigurationNameType"/>
          <xs:element name="UserConfigurationProperties"
type="t:UserConfigurationPropertyType"/>
        </xs:sequence>
      </xs:extension>
    </xs:complexContent>
  </xs:complexType>
  <xs:element name="GetUserConfiguration" type="m:GetUserConfigurationType"/>
  <xs:complexType name="GetUserConfigurationResponseMessageType">
    <xs:complexContent>
      <xs:extension base="m:ResponseMessageType">
        <xs:sequence>
          <xs:element name="UserConfiguration" type="t:UserConfigurationType"
minOccurs="0"/>
        </xs:sequence>
      </xs:extension>
    </xs:complexContent>
  </xs:complexType>
  <xs:complexType name="GetUserConfigurationResponseType">
    <xs:complexContent>
      <xs:extension base="m:BaseResponseMessageType"/>
    </xs:complexContent>
  </xs:complexType>
  <xs:element name="GetUserConfigurationResponse"
type="m:GetUserConfigurationResponseType"/>
  <xs:complexType name="UpdateUserConfigurationType">
    <xs:complexContent>
      <xs:extension base="m:BaseRequestType">
        <xs:sequence>
          <xs:element name="UserConfiguration"
type="t:UserConfigurationType"/>
        </xs:sequence>
      </xs:extension>
    </xs:complexContent>
  </xs:complexType>
  <xs:element name="UpdateUserConfiguration" type="m:UpdateUserConfigurationType"/>
  <xs:complexType name="UpdateUserConfigurationResponseType">

```

```

        <xs:complexContent>
            <xs:extension base="m:BaseResponseMessageType"/>
        </xs:complexContent>
    </xs:complexType>
    <xs:element name="UpdateUserConfigurationResponse"
type="m:UpdateUserConfigurationResponseType"/>
</xs:schema>

```

## 7.2 Types Schema

This section contains the contents of the MS-OXWSUSRCFG-types.xsd file and information about additional files that this schema file requires to operate correctly.

MS-OXWSUSRCFG-types.xsd includes the file listed in the following table. To operate correctly, this file has to be present in the folder that contains the WSDL, types, and messages schema files for this protocol.

File name	Defining specification
MS-OXWSFOLD-types.xsd	<a href="#">[MS-OXWSFOLD]</a> section 6

```

<?xml version="1.0" encoding="utf-8"?>
<xs:schema xmlns:t="http://schemas.microsoft.com/exchange/services/2006/types"
xmlns:tns="http://schemas.microsoft.com/exchange/services/2006/types"
xmlns:xs="http://www.w3.org/2001/XMLSchema"
targetNamespace="http://schemas.microsoft.com/exchange/services/2006/types"
elementFormDefault="qualified" version="Exchange2010" id="types">
    <xs:import namespace="http://www.w3.org/XML/1998/namespace"/>
    <xs:include schemaLocation="MS-OXWSFOLD-types.xsd"/>
    <xs:complexType name="UserConfigurationNameType">
        <xs:complexContent>
            <xs:extension base="t:TargetFolderIdType">
                <xs:attribute name="Name" type="t:NonEmptyStringType" use="required"/>
            </xs:extension>
        </xs:complexContent>
    </xs:complexType>
    <xs:simpleType name="UserConfigurationDictionaryObjectTypesType">
        <xs:restriction base="xs:string">
            <xs:enumeration value="DateTime"/>
            <xs:enumeration value="Boolean"/>
            <xs:enumeration value="Byte"/>
            <xs:enumeration value="String"/>
            <xs:enumeration value="Integer32"/>
            <xs:enumeration value="UnsignedInteger32"/>
            <xs:enumeration value="Integer64"/>
            <xs:enumeration value="UnsignedInteger64"/>
            <xs:enumeration value="StringArray"/>
            <xs:enumeration value="ByteArray"/>
        </xs:restriction>
    </xs:simpleType>
    <xs:complexType name="UserConfigurationDictionaryObjectType">
        <xs:sequence>
            <xs:element name="Type" type="t:UserConfigurationDictionaryObjectTypesType"/>
            <xs:element name="Value" type="xs:string" maxOccurs="unbounded"/>
        </xs:sequence>
    </xs:complexType>
    <xs:complexType name="UserConfigurationDictionaryEntryType">
        <xs:sequence>

```

```

        <xs:element name="DictionaryKey"
type="t:UserConfigurationDictionaryObjectType"/>
        <xs:element name="DictionaryValue"
type="t:UserConfigurationDictionaryObjectType" nillable="true"/>
    </xs:sequence>
</xs:complexType>
<xs:complexType name="UserConfigurationDictionaryType">
    <xs:sequence>
        <xs:element name="DictionaryEntry"
type="t:UserConfigurationDictionaryEntryType" minOccurs="0" maxOccurs="unbounded"/>
    </xs:sequence>
</xs:complexType>
<xs:complexType name="UserConfigurationType">
    <xs:sequence>
        <xs:element name="UserConfigurationName" type="t:UserConfigurationNameType"/>
        <xs:element name="ItemId" type="t:ItemIdType" minOccurs="0"/>
        <xs:element name="Dictionary" type="t:UserConfigurationDictionaryType"
minOccurs="0"/>
        <xs:element name="XmlData" type="xs:base64Binary" minOccurs="0"/>
        <xs:element name="BinaryData" type="xs:base64Binary" minOccurs="0"/>
    </xs:sequence>
</xs:complexType>
<xs:simpleType name="UserConfigurationPropertyType">
    <xs:list>
        <xs:simpleType>
            <xs:restriction base="xs:string">
                <xs:enumeration value="Id"/>
                <xs:enumeration value="Dictionary"/>
                <xs:enumeration value="XmlData"/>
                <xs:enumeration value="BinaryData"/>
                <xs:enumeration value="All"/>
            </xs:restriction>
        </xs:simpleType>
    </xs:list>
</xs:simpleType>
</xs:schema>

```

## 8 Appendix C: Product Behavior

The information in this specification is applicable to the following Microsoft products or supplemental software. References to product versions include released service packs:

- Microsoft® Exchange Server 2010
- Microsoft® Exchange Server 2013 Preview

Exceptions, if any, are noted below. If a service pack or Quick Fix Engineering (QFE) number appears with the product version, behavior changed in that service pack or QFE. The new behavior also applies to subsequent service packs of the product unless otherwise specified. If a product edition appears with the product version, behavior is different in that product edition.

Unless otherwise specified, any statement of optional behavior in this specification that is prescribed using the terms SHOULD or SHOULD NOT implies product behavior in accordance with the SHOULD or SHOULD NOT prescription. Unless otherwise specified, the term MAY implies that the product does not follow the prescription.

## 9 Change Tracking

No table of changes is available. The document is either new or has had no changes since its last release.

Preliminary

## 10 Index

### A

Abstract data model  
[server](#) 17  
[Applicability](#) 9  
[Attribute groups](#) 16  
[Attributes](#) 16

### C

[Capability negotiation](#) 9  
[Change tracking](#) 47  
[Common data structures](#) 16  
[Complex types](#) 11  
[t:UserConfigurationDictionaryEntryType Complex Type](#) 11  
[t:UserConfigurationDictionaryObjectType Complex Type](#) 11  
[t:UserConfigurationDictionaryType Complex Type](#) 12  
[t:UserConfigurationNameType Complex Type](#) 12  
[t:UserConfigurationType Complex Type](#) 13

### D

Data model - abstract  
[server](#) 17

### E

Events  
[local - server](#) 35  
[timer - server](#) 35

### F

[Fields - vendor-extensible](#) 9  
[Full WSDL](#) 38  
[Full XML Schema](#) 42  
[Messages Schema](#) 42  
[Types Schema](#) 44

### G

[Glossary](#) 6  
[Groups](#) 16

### I

[Implementer - security considerations](#) 37  
[Index of security parameters](#) 37  
[Informative references](#) 7  
Initialization  
[server](#) 17  
[Introduction](#) 6

### L

Local events

[server](#) 35

### M

Message processing  
[server](#) 17  
Messages  
[attribute groups](#) 16  
[attributes](#) 16  
[common data structures](#) 16  
[complex types](#) 11  
[elements](#) 10  
[enumerated](#) 10  
[groups](#) 16  
[namespaces](#) 10  
[simple types](#) 14  
[syntax](#) 10  
[t:UserConfigurationDictionaryEntryType Complex Type complex type](#) 11  
[t:UserConfigurationDictionaryObjectType Complex Type complex type](#) 11  
[t:UserConfigurationDictionaryObjectTypesType Simple Type simple type](#) 14  
[t:UserConfigurationDictionaryType Complex Type complex type](#) 12  
[t:UserConfigurationNameType Complex Type complex type](#) 12  
[t:UserConfigurationPropertyType Simple Type simple type](#) 15  
[t:UserConfigurationType Complex Type complex type](#) 13  
[transport](#) 10

### N

[Namespaces](#) 10  
[Normative references](#) 6

### O

Operations  
[CreateUserConfiguration](#) 18  
[DeleteUserConfiguration](#) 22  
[GetUserConfiguration](#) 26  
[UpdateUserConfiguration](#) 31  
[Overview \(synopsis\)](#) 7

### P

[Parameters - security index](#) 37  
[Preconditions](#) 9  
[Prerequisites](#) 9  
[Product behavior](#) 46

### R

[References](#) 6  
[informative](#) 7  
[normative](#) 6



[Relationship to other protocols](#) 8

[WSDL](#) 38

## S

### Security

[implementer considerations](#) 37  
[parameter index](#) 37

### Sequencing rules

[server](#) 17

### Server

[abstract data model](#) 17  
[CreateUserConfiguration operation](#) 18  
[DeleteUserConfiguration operation](#) 22  
[GetUserConfiguration operation](#) 26  
[initialization](#) 17  
[local events](#) 35  
[message processing](#) 17  
[sequencing rules](#) 17  
[timer events](#) 35  
[timers](#) 17  
[UpdateUserConfiguration operation](#) 31

### Simple types

[t:UserConfigurationDictionaryObjectTypesType Simple Type](#) 14  
[t:UserConfigurationPropertyType Simple Type](#) 15

### Standards assignments

### Syntax

[messages - overview](#) 10

## T

[t:UserConfigurationDictionaryEntryType Complex Type complex type](#) 11

[t:UserConfigurationDictionaryObjectType Complex Type complex type](#) 11

[t:UserConfigurationDictionaryObjectTypesType Simple Type simple type](#) 14

[t:UserConfigurationDictionaryType Complex Type complex type](#) 12

[t:UserConfigurationNameType Complex Type complex type](#) 12

[t:UserConfigurationPropertyType Simple Type simple type](#) 15

[t:UserConfigurationType Complex Type complex type](#) 13

### Timer events

[server](#) 35

### Timers

[server](#) 17

[Tracking changes](#) 47

[Transport](#) 10

### Types

[complex](#) 11

[simple](#) 14

## V

[Vendor-extensible fields](#) 9

[Versioning](#) 9

## W

## X

[XML Schema](#) 42

[Messages Schema](#) 42

[Types Schema](#) 44