

[MS-OXWSUSRCFG]: User Configuration Web Service Protocol Specification

Intellectual Property Rights Notice for Open Specifications Documentation

- **Technical Documentation.** Microsoft publishes Open Specifications documentation for protocols, file formats, languages, standards as well as overviews of the interaction among each of these technologies.
- **Copyrights.** This documentation is covered by Microsoft copyrights. Regardless of any other terms that are contained in the terms of use for the Microsoft website that hosts this documentation, you may make copies of it in order to develop implementations of the technologies described in the Open Specifications and may distribute portions of it in your implementations using these technologies or your documentation as necessary to properly document the implementation. You may also distribute in your implementation, with or without modification, any schema, IDL's, or code samples that are included in the documentation. This permission also applies to any documents that are referenced in the Open Specifications.
- **No Trade Secrets.** Microsoft does not claim any trade secret rights in this documentation.
- **Patents.** Microsoft has patents that may cover your implementations of the technologies described in the Open Specifications. Neither this notice nor Microsoft's delivery of the documentation grants any licenses under those or any other Microsoft patents. However, a given Open Specification may be covered by Microsoft's Open Specification Promise (available here: <http://www.microsoft.com/interop/osp>) or the Community Promise (available here: <http://www.microsoft.com/interop/cp/default.msp>). If you would prefer a written license, or if the technologies described in the Open Specifications are not covered by the Open Specifications Promise or Community Promise, as applicable, patent licenses are available by contacting iplg@microsoft.com.
- **Trademarks.** The names of companies and products contained in this documentation may be covered by trademarks or similar intellectual property rights. This notice does not grant any licenses under those rights.
- **Fictitious Names.** The example companies, organizations, products, domain names, e-mail addresses, logos, people, places, and events depicted in this documentation are fictitious. No association with any real company, organization, product, domain name, email address, logo, person, place, or event is intended or should be inferred.

Reservation of Rights. All other rights are reserved, and this notice does not grant any rights other than specifically described above, whether by implication, estoppel, or otherwise.

Tools. The Open Specifications do not require the use of Microsoft programming tools or programming environments in order for you to develop an implementation. If you have access to Microsoft programming tools and environments you are free to take advantage of them. Certain Open Specifications are intended for use in conjunction with publicly available standard specifications and network programming art, and assumes that the reader either is familiar with the aforementioned material or has immediate access to it.

Revision Summary

Date	Revision History	Revision Class	Comments
07/15/2009	1.0	Major	Initial Availability.
11/04/2009	1.0.1	Editorial	Revised and edited the technical content.
02/10/2010	1.2.0	Minor	Updated the technical content.
05/05/2010	1.2.1	Editorial	Revised and edited the technical content.
08/04/2010	1.3	Minor	Clarified the meaning of the technical content.
11/03/2010	1.3	No change	No changes to the meaning, language, or formatting of the technical content.
03/18/2011	2.0	Major	Significantly changed the technical content.
08/05/2011	3.0	Major	Significantly changed the technical content.

Table of Contents

1 Introduction	6
1.1 Glossary	6
1.2 References	6
1.2.1 Normative References	6
1.2.2 Informative References	7
1.3 Overview	7
1.4 Relationship to Other Protocols	8
1.5 Prerequisites/Preconditions	9
1.6 Applicability Statement	9
1.7 Versioning and Capability Negotiation	9
1.8 Vendor-Extensible Fields	9
1.9 Standards Assignments	9
2 Messages	10
2.1 Transport	10
2.2 Common Message Syntax	10
2.2.1 Namespaces	10
2.2.2 Messages	10
2.2.3 Elements	10
2.2.4 Complex Types	10
2.2.4.1 t:UserConfigurationDictionaryEntryType Complex Type	11
2.2.4.2 t:UserConfigurationDictionaryObjectType Complex Type	11
2.2.4.3 t:UserConfigurationDictionaryType Complex Type	12
2.2.4.4 t:UserConfigurationNameType Complex Type	12
2.2.4.5 t:UserConfigurationType Complex Type	13
2.2.5 Simple Types	14
2.2.5.1 t:UserConfigurationDictionaryObjectTypesType Simple Type	14
2.2.5.2 t:UserConfigurationPropertyType Simple Type	15
2.2.6 Attributes	16
2.2.7 Groups	16
2.2.8 Attribute Groups	16
2.2.9 Common Data Structures	16
3 Protocol Details	17
3.1 ExchangeServicePortType Server Details	17
3.1.1 Abstract Data Model	17
3.1.2 Timers	17
3.1.3 Initialization	17
3.1.4 Message Processing Events and Sequencing Rules	17
3.1.4.1 CreateUserConfiguration	18
3.1.4.1.1 Messages	18
3.1.4.1.1.1 CreateUserConfigurationSoapIn	19
3.1.4.1.1.2 CreateUserConfigurationSoapOut	19
3.1.4.1.2 Elements	20
3.1.4.1.2.1 CreateUserConfiguration Element	20
3.1.4.1.2.2 CreateUserConfigurationResponse Element	20
3.1.4.1.3 Complex Types	20
3.1.4.1.3.1 m:CreateUserConfigurationResponseType Complex Type	21
3.1.4.1.3.2 m:CreateUserConfigurationType Complex Type	21
3.1.4.1.4 Simple Types	21

3.1.4.1.5	Attributes.....	22
3.1.4.1.6	Groups.....	22
3.1.4.1.7	Attribute Groups	22
3.1.4.2	DeleteUserConfiguration	22
3.1.4.2.1	Messages	22
3.1.4.2.1.1	DeleteUserConfigurationSoapIn	23
3.1.4.2.1.2	DeleteUserConfigurationSoapOut.....	23
3.1.4.2.2	Elements.....	24
3.1.4.2.2.1	DeleteUserConfiguration Element	24
3.1.4.2.2.2	DeleteUserConfigurationResponse Element	24
3.1.4.2.3	Complex Types	25
3.1.4.2.3.1	m>DeleteUserConfigurationResponseType Complex Type	25
3.1.4.2.3.2	m>DeleteUserConfigurationType Complex Type	25
3.1.4.2.4	Simple Types.....	26
3.1.4.2.5	Attributes.....	26
3.1.4.2.6	Groups.....	26
3.1.4.2.7	Attribute Groups	26
3.1.4.3	GetUserConfiguration	26
3.1.4.3.1	Messages	27
3.1.4.3.1.1	GetUserConfigurationSoapIn	27
3.1.4.3.1.2	GetUserConfigurationSoapOut.....	28
3.1.4.3.2	Elements.....	28
3.1.4.3.2.1	GetUserConfiguration Element	28
3.1.4.3.2.2	GetUserConfigurationResponse Element	28
3.1.4.3.3	Complex Types	28
3.1.4.3.3.1	t:GetUserConfigurationResponseMessageType Complex Type.....	29
3.1.4.3.3.2	m:GetUserConfigurationResponseType Complex Type	29
3.1.4.3.3.3	m:GetUserConfigurationType Complex Type	30
3.1.4.3.4	Simple Types.....	30
3.1.4.3.5	Attributes.....	30
3.1.4.3.6	Groups.....	30
3.1.4.3.7	Attribute Groups	31
3.1.4.4	UpdateUserConfiguration	31
3.1.4.4.1	Messages	31
3.1.4.4.1.1	UpdateUserConfigurationSoapIn	32
3.1.4.4.1.2	UpdateUserConfigurationSoapOut.....	32
3.1.4.4.2	Elements.....	33
3.1.4.4.2.1	UpdateUserConfiguration Element	33
3.1.4.4.2.2	UpdateUserConfigurationResponse Element	33
3.1.4.4.3	Complex Types	33
3.1.4.4.3.1	m:UpdateUserConfigurationResponseType Complex Type	33
3.1.4.4.3.2	m:UpdateUserConfigurationType Complex Type	34
3.1.4.4.4	Simple Types.....	34
3.1.4.4.5	Attributes.....	34
3.1.4.4.6	Groups.....	34
3.1.4.4.7	Attribute Groups	35
3.1.5	Timer Events	35
3.1.6	Other Local Events	35
3.2	Client Details.....	35
3.2.1	Abstract Data Model	35
3.2.2	Timers	35
3.2.3	Initialization	35
3.2.4	Message Processing Events and Sequencing	35

3.2.5	Timer Events	35
3.2.6	Other Local Events	35
4	Protocol Examples	36
5	Security	37
5.1	Security Considerations for Implementers	37
5.2	Index of Security Parameters	37
6	Appendix A: Full WSDL	38
7	Appendix B: Full XML Schema	42
7.1	Messages Schema.....	42
7.2	Types Schema.....	44
8	Appendix C: Product Behavior	46
9	Change Tracking.....	47
10	Index	53

1 Introduction

The User Configuration Web Service Protocol is used to access user configuration objects. Clients use the SOAP Protocol, as described in [\[SOAP1.1\]](#), to contact the user configuration service.

Sections 1.8, 2, and 3 of this specification are normative and contain RFC 2119 language. Section 1.5 and 1.9 are also normative but cannot contain RFC 2119 language. All other sections and examples in this specification are informative.

1.1 Glossary

The following terms are defined in [\[MS-GLOS\]](#):

Hypertext Transfer Protocol (HTTP)
Hypertext Transfer Protocol over Secure Sockets Layer (HTTPS)
XML

The following terms are defined in [\[MS-OXGLOS\]](#):

endpoint
folder associated information (FAI)
mailbox
SOAP action
SOAP body
SOAP header
SOAP message
Web Services Description Language (WSDL)
WSDL message
WSDL port type
XML namespace
XML schema

The following terms are specific to this document:

MAY, SHOULD, MUST, SHOULD NOT, MUST NOT: These terms (in all caps) are used as described in [\[RFC2119\]](#). All statements of optional behavior use either MAY, SHOULD, or SHOULD NOT.

1.2 References

1.2.1 Normative References

We conduct frequent surveys of the normative references to assure their continued availability. If you have any issue with finding a normative reference, please contact dochelp@microsoft.com. We will assist you in finding the relevant information. Please check the archive site, <http://msdn2.microsoft.com/en-us/library/E4BD6494-06AD-4aed-9823-445E921C9624>, as an additional source.

[MS-OXWSCDATA] Microsoft Corporation, "[Common Web Service Data Types](#)".

[MS-OXWSCORE] Microsoft Corporation, "[Core Items Web Service Protocol Specification](#)".

[MS-OXWSFOLD] Microsoft Corporation, "[Folders and Folder Permissions Web Service Protocol Specification](#)".

[RFC2119] Bradner, S., "Key words for use in RFCs to Indicate Requirement Levels", BCP 14, RFC 2119, March 1997, <http://www.rfc-editor.org/rfc/rfc2119.txt>

[RFC2818] Rescorla, E., "HTTP Over TLS", RFC 2818, May 2000, <http://www.ietf.org/rfc/rfc2818.txt>

[RFC3066] Alvestrand, H., "Tags for the Identification of Language", RFC 3066, January 2001, <http://www.ietf.org/rfc/rfc3066.txt>

[SOAP1.1] Box, D., Ehnebuske, D., Kakivaya, G., et al., "Simple Object Access Protocol (SOAP) 1.1", May 2000, <http://www.w3.org/TR/2000/NOTE-SOAP-20000508/>

[WSDL] Christensen, E., Curbera, F., Meredith, G., and Weerawarana, S., "Web Services Description Language (WSDL) 1.1", W3C Note, March 2001, <http://www.w3.org/TR/2001/NOTE-wsdl-20010315>

[XMLNS] Bray, T., Hollander, D., Layman, A., et al., Eds., "Namespaces in XML 1.0 (Third Edition)", W3C Recommendation, December 2009, <http://www.w3.org/TR/2009/REC-xml-names-20091208/>

[XMLSCHEMA1] Thompson, H.S., Ed., Beech, D., Ed., Maloney, M., Ed., and Mendelsohn, N., Ed., "XML Schema Part 1: Structures", W3C Recommendation, May 2001, <http://www.w3.org/TR/2001/REC-xmlschema-1-20010502/>

[XMLSCHEMA2] Biron, P.V., Ed. and Malhotra, A., Ed., "XML Schema Part 2: Datatypes", W3C Recommendation, May 2001, <http://www.w3.org/TR/2001/REC-xmlschema-2-20010502/>

1.2.2 Informative References

[MS-GLOS] Microsoft Corporation, "[Windows Protocols Master Glossary](#)".

[MS-OXDCLI] Microsoft Corporation, "[Autodiscover Publishing and Lookup Protocol Specification](#)".

[MS-OXGLOS] Microsoft Corporation, "[Exchange Server Protocols Master Glossary](#)".

[MS-OXWSADISC] Microsoft Corporation, "[Autodiscover Publishing and Lookup SOAP-Based Web Service Protocol Specification](#)".

[RFC2616] Fielding, R., Gettys, J., Mogul, J., et al., "Hypertext Transfer Protocol -- HTTP/1.1", RFC 2616, June 1999, <http://www.ietf.org/rfc/rfc2616.txt>

1.3 Overview

The User Configuration Web Service Protocol specifies the messages that are used to create, delete, get, and update user configuration objects, also known as **folder associated information (FAI)**.

The following figure shows the User Configuration Web Service Protocol request and response messages.

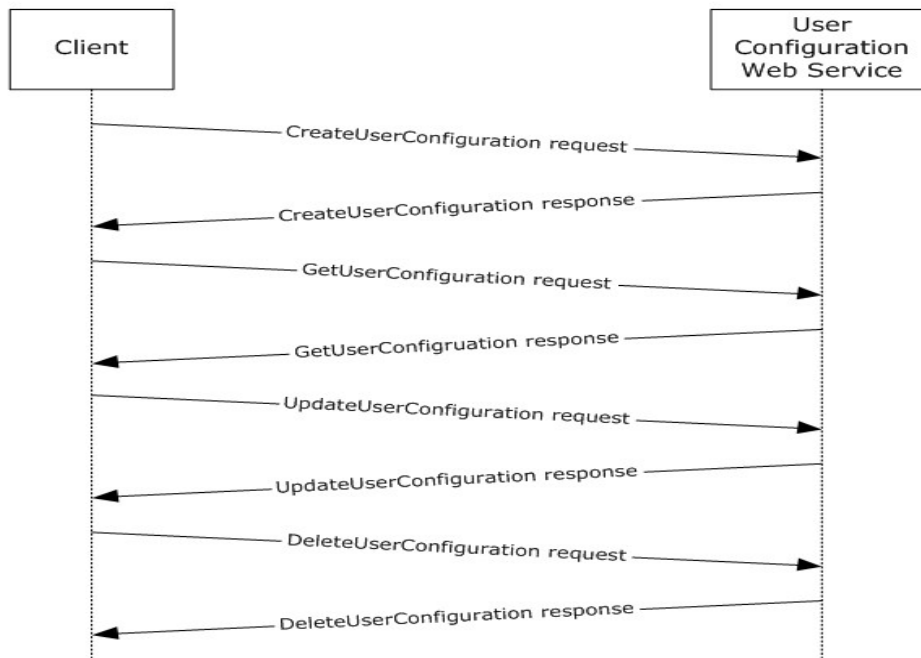


Figure 1: User Configuration Web Service Protocol request and response messages

1.4 Relationship to Other Protocols

A client that implements this protocol can use the Autodiscover Publishing and Lookup SOAP-Based Web Service Protocol, as described in [\[MS-OXWSADISC\]](#), or the Autodiscover Publishing and Lookup Protocol, as described in [\[MS-OXDCLI\]](#), to identify the target **endpoint (4)** to use for each operation.

This protocol uses the SOAP Protocol, as described in [\[SOAP1.1\]](#), to specify the structure information exchanged between the client and the server. This protocol uses the **XML** Protocol, as described in [\[XMLSCHEMA1\]](#) and [\[XMLSCHEMA2\]](#), to describe the message content sent to and from the server.

This protocol uses SOAP over **HTTP**, as described in [\[RFC2616\]](#), and SOAP over **HTTPS**, as described in [\[RFC2818\]](#), as shown in the following layering diagram.

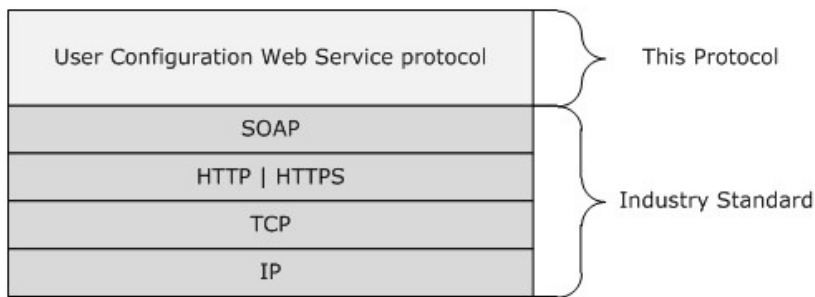


Figure 2: User Configuration Web Service Protocol HTTP stack

1.5 Prerequisites/Preconditions

The endpoint(4) URL that is returned by either the Autodiscover Publishing Lookup SOAP-Based Web Service Protocol, as described in [\[MS-OXWSADISC\]](#), or the Autodiscover Publishing and Lookup Protocol, as described in [\[MS-OXDSCLI\]](#), is required to form the HTTP request to the Web server that hosts this protocol. The operations that this protocol defines cannot be accessed unless the correct endpoint (4) is identified in the HTTP Web requests that target this protocol.

1.6 Applicability Statement

The protocol specified in this document is applicable to environments that create, delete, get, or update folder associated information (FAI).

1.7 Versioning and Capability Negotiation

This document covers versioning issues in the following areas:

- **Supported Transports:** This protocol uses SOAP 1.1, as specified in section [2.1](#).
- **Protocol Versions:** This protocol specifies only one **WSDL port type** version. The **WSDL** version of the request is identified by using the **t:RequestServerVersion** element, as described in [\[MS-OXWSCDATA\]](#) section 2.2.4.8, and the version of the server responding to the request is identified by using the **t:ServerVersionInfo** element, as described in [\[MS-OXWSCDATA\]](#) section 2.2.4.9.
- **Security and Authentication Methods:** This protocol relies on the Web server that is hosting it to perform authentication.
- **Capability Negotiation:** This protocol does not support version negotiation.

1.8 Vendor-Extensible Fields

This protocol consists of extensible fields. The applicable property types for extended fields are specified in section [2.2.5.2](#).

1.9 Standards Assignments

None.

2 Messages

2.1 Transport

The SOAP version supported is SOAP 1.1. For details, see [\[SOAP1.1\]](#).

This protocol relies on the Web server that hosts the application to perform authentication. The protocol SHOULD use secure communications by means of HTTPS, as defined in [\[RFC2818\]](#).

2.2 Common Message Syntax

This section contains common definitions that are used by this protocol. The syntax of the definitions uses XML schema, as defined in [\[XMLSCHEMA1\]](#) and [\[XMLSCHEMA2\]](#), and Web Services Description Language (WSDL), as defined in [\[WSDL\]](#).

2.2.1 Namespaces

This specification defines and references various **XML namespaces** by using the mechanisms specified in [\[XMLNS\]](#). Although this specification associates a specific XML namespace prefix for each XML namespace that is used, the choice of any particular XML namespace prefix is implementation-specific and not significant for interoperability.

Prefix	Namespace URI	Reference
soap	http://schemas.xmlsoap.org/wsdl/soap/	[SOAP1.1]
m	http://schemas.microsoft.com/exchange/services/2006/messages	
t	http://schemas.microsoft.com/exchange/services/2006/types	
xs	http://www.w3.org/2001/XMLSchema	[XMLSCHEMA1]
wsdl	http://schemas.xmlsoap.org/wsdl/	[WSDL]
tns	http://schemas.microsoft.com/exchange/services/2006/messages	
targetNamespace	http://schemas.microsoft.com/exchange/services/2006/messages	

2.2.2 Messages

This specification does not define any common **WSDL message** definitions.

2.2.3 Elements

This specification does not define any common **XML schema** element definitions.

2.2.4 Complex Types

The following table summarizes the set of common XML schema complex type definitions that are defined by this specification. XML schema complex type definitions that are specific to a particular operation are defined with the operation.

Complex type name	Description
UserConfigurationDictionaryEntryType	Specifies the contents of a single dictionary entry property.

Complex type name	Description
UserConfigurationDictionaryObjectType	Specifies a dictionary object.
UserConfigurationDictionaryType	Specifies a set of dictionary properties.
UserConfigurationNameType	Specifies the name and the associated folder for a user configuration object.
UserConfigurationType	Specifies a single user configuration object.

2.2.4.1 t:UserConfigurationDictionaryEntryType Complex Type

The **UserConfigurationDictionaryEntryType** complex type specifies the contents of a single dictionary entry property.

```
<xs:complexType name="UserConfigurationDictionaryEntryType">
  <xs:sequence>
    <xs:element name="DictionaryKey"
      type="t:UserConfigurationDictionaryObjectType"
    />
    <xs:element name="DictionaryValue"
      type="t:UserConfigurationDictionaryObjectType"
      nillable="true"
    />
  </xs:sequence>
</xs:complexType>
```

The following table lists and describes the child elements of the **UserConfigurationDictionaryEntryType** complex type.

Element name	Type	Description
DictionaryKey	t:UserConfigurationDictionaryObjectType (section 2.2.4.2)	Specifies the dictionary key for a dictionary property.
DictionaryValue	t:UserConfigurationDictionaryObjectType (section 2.2.4.2)	Specifies the dictionary value for a dictionary property.

2.2.4.2 t:UserConfigurationDictionaryObjectType Complex Type

The **UserConfigurationDictionaryObjectType** complex type specifies a dictionary object.

```
<xs:complexType name="UserConfigurationDictionaryObjectType">
  <xs:sequence>
    <xs:element name="Type"
      type="t:UserConfigurationDictionaryObjectTypesType"
    />
    <xs:element name="Value"
      type="xs:string"
      maxOccurs="unbounded"
    />
  </xs:sequence>
</xs:complexType>
```

The following table lists and describes the child elements of the **UserConfigurationDictionaryObjectType** complex type.

Element name	Type	Description
Type	t:UserConfigurationDictionaryObjectTypesType (section 2.2.5.1)	Specifies the dictionary object type.
Value	xs:string ([XMLSCHEMA2])	Specifies the dictionary object value as a string.

2.2.4.3 t:UserConfigurationDictionaryType Complex Type

The **UserConfigurationDictionaryType** complex type specifies a set of dictionary properties.

```
<xs:complexType name="UserConfigurationDictionaryType">
  <xs:sequence>
    <xs:element name="DictionaryEntry"
      type="t:UserConfigurationDictionaryEntryType"
      minOccurs="0"
      maxOccurs="unbounded"
    />
  </xs:sequence>
</xs:complexType>
```

The following table lists and describes the child elements of the **UserConfigurationDictionaryType** complex type.

Element	Type
DictionaryEntry	t:UserConfigurationDictionaryEntryType (section 2.2.4.1)

2.2.4.4 t:UserConfigurationNameType Complex Type

The **UserConfigurationNameType** complex type specifies the name and the associated folder for a user configuration object.

```
<xs:complexType name="UserConfigurationNameType">
  <xs:complexContent>
    <xs:extension
      base="t:TargetFolderIdType"
    >
      <xs:attribute name="Name"
        type="t:NonEmptyStringType"
        use="required"
      />
    </xs:extension>
  </xs:complexContent>
</xs:complexType>
```

The following table lists and describes the attributes of the **UserConfigurationNameType** complex type.

Attribute name	Type	Description
Name	t:NonEmptyStringType (section 2.2.2.18)	Specifies the name of a user configuration object.

2.2.4.5 t:UserConfigurationType Complex Type

The **UserConfigurationType** complex types specifies a single user configuration object.

```
<xs:complexType name="UserConfigurationType">
  <xs:sequence>
    <xs:element name="UserConfigurationName"
      type="t:UserConfigurationNameType"
    />
    <xs:element name="ItemId"
      type="t:ItemIdType"
      minOccurs="0"
    />
    <xs:element name="Dictionary"
      type="t:UserConfigurationDictionaryType"
      minOccurs="0"
    />
    <xs:element name="XmlData"
      type="xs:base64Binary"
      minOccurs="0"
    />
    <xs:element name="BinaryData"
      type="xs:base64Binary"
      minOccurs="0"
    />
  </xs:sequence>
</xs:complexType>
```

The following table lists and describes the child elements of the **UserConfigurationType** complex type.

Element name	Type	Description
UserConfigurationName	t:UserConfigurationNameType (section 2.2.4.4)	Specifies the user configuration object name. The user configuration object name MUST be present.
ItemId	t:ItemIdType ([MS-OXWSCORE] section 2.2.4.13)	Specifies the user configuration object item identifier.
Dictionary	t:UserConfigurationDictionaryType (section 2.2.4.3)	Specifies a set of dictionary property entries.

Element name	Type	Description
XmlData	xs:base64Binary ([XMLSCHEMA2])	Specifies XML data property content.
BinaryData	xs:base64Binary ([XMLSCHEMA2])	Specifies binary data property content.

2.2.5 Simple Types

The following table summarizes the set of common XML schema simple type definitions that are defined by this specification. XML schema simple type definitions that are specific to a particular operation are described with the operation.

Simple type name	Description
UserConfigurationDictionaryObjectTypesType	Specifies the data type for a user configuration object dictionary property.
UserConfigurationPropertyType	Specifies the property types to get in a GetUserConfiguration operation, as specified in section 3.1.4.3 .

2.2.5.1 t:UserConfigurationDictionaryObjectTypesType Simple Type

The **UserConfigurationDictionaryObjectTypesType** simple type specifies the data type for a user configuration object dictionary property.

```
<xs:simpleType name="UserConfigurationDictionaryObjectTypesType">
  <xs:restriction
    base="xs:string"
  >
    <xs:enumeration
      value="DateTime"
    />
    <xs:enumeration
      value="Boolean"
    />
    <xs:enumeration
      value="Byte"
    />
    <xs:enumeration
      value="String"
    />
    <xs:enumeration
      value="Integer32"
    />
    <xs:enumeration
      value="UnsignedInteger32"
    />
    <xs:enumeration
      value="Integer64"
    />
    <xs:enumeration
      value="UnsignedInteger64"
    />
    <xs:enumeration
```

```

        value="StringArray"
      />
      <xs:enumeration
        value="ByteArray"
      />
    </xs:restriction>
  </xs:simpleType>

```

The following table lists and describes the values that are defined by the **UserConfigurationDictionaryObjectTypesType** simple type.

Value name	Description
DateTime	Specifies a DateTime data type for a dictionary entry.
Boolean	Specifies a Boolean data type for a dictionary entry.
Byte	Specifies a byte data type for a dictionary entry.
String	Specifies a string data type for a dictionary entry.
Integer32	Specifies a signed 32-bit integer data type for a dictionary entry.
UnsignedInteger32	Specifies an unsigned 32-bit integer data type for a dictionary entry.
Integer64	Specifies a signed 64-bit integer data type for a dictionary entry.
UnsignedInteger64	Specifies an unsigned 64-bit integer data type for a dictionary entry.
StringArray	Specifies a string array data type for a dictionary entry.
ByteArray	Specifies a byte array data type for a dictionary entry.

2.2.5.2 t:UserConfigurationPropertyType Simple Type

The **UserConfigurationPropertyType** simple type specifies the property types to get in a **GetUserConfiguration** operation, as specified in section [3.1.4.3](#).

```

<xs:simpleType name="UserConfigurationPropertyType">
  <xs:list>
    <xs:simpleType>
      <xs:restriction
        base="xs:string"
      >
        <xs:enumeration
          value="Id"
        />
        <xs:enumeration
          value="Dictionary"
        />
        <xs:enumeration
          value="XmlData"
        />
        <xs:enumeration
          value="BinaryData"
        />
      </xs:restriction>
    </xs:simpleType>
  </xs:list>
</xs:simpleType>

```

```

    <xs:enumeration
      value="All"
    />
  </xs:restriction>
</xs:simpleType>
</xs:list>
</xs:simpleType>

```

The following table lists and describes the values that are defined by the **UserConfigurationPropertyType** simple type.

Value name	Description
Id	Specifies the identifier property.
Dictionary	Specifies dictionary property types.
XmlData	Specifies XML data property types.
BinaryData	Specifies binary data property types.
All	Specifies the identifier, dictionary, XML data, and binary property types.

2.2.6 Attributes

This specification does not define any common XML schema attribute definitions.

2.2.7 Groups

This specification does not define any common XML schema group definitions.

2.2.8 Attribute Groups

This specification does not define any common XML schema attribute group definitions.

2.2.9 Common Data Structures

This specification does not define any common XML schema data structures.

3 Protocol Details

The client side of this protocol is simply a pass-through. That is, no additional timers or other state is required on the client side of this protocol. Calls made by the higher-layer protocol or application are passed directly to the transport, and the results that are returned by the transport are passed directly back to the higher-layer protocol or application.

3.1 ExchangeServicePortType Server Details

The User Configuration Web Service Protocol defines a single WSDL port type. This protocol uses the operations that are listed and described in the following table.

Operation name	Description
CreateUserConfiguration	Specifies the WSDL messages for creating user configuration objects.
DeleteUserConfiguration	Specifies the WSDL messages for deleting user configuration objects.
GetUserConfiguration	Specifies the WSDL messages for getting user configuration objects.
UpdateUserConfiguration	Specifies the WSDL messages for updating user configuration objects.

3.1.1 Abstract Data Model

The User Configuration Web Service Protocol is a stateless protocol. The server maintains the user configuration object data.

The client is not required to maintain the state of the user configuration objects on the server and can retrieve the current set of configuration objects at any time. If more than one client accesses user configuration objects at the same time, there is no requirement that the server lock the existing set of permissions for changes.

3.1.2 Timers

None.

3.1.3 Initialization

None.

3.1.4 Message Processing Events and Sequencing Rules

The following table summarizes the WSDL operations as defined by this specification. The operations do not have any sequencing rules.

Operation name	Description
CreateUserConfiguration (section 3.1.4.1)	Specifies the WSDL messages for creating user configuration objects.
DeleteUserConfiguration (section 3.1.4.2)	Specifies the WSDL messages for deleting user configuration objects.
GetUserConfiguration (section 3.1.4.3)	Specifies the WSDL messages for getting user configuration objects.

Operation name	Description
UpdateUserConfiguration (section 3.1.4.4)	Specifies the WSDL messages for updating user configuration objects.

3.1.4.1 CreateUserConfiguration

The **CreateUserConfiguration** operation specifies the WSDL messages for creating user configuration objects.

The following is the WSDL port type definition of this operation.

```
<wsdl:operation name="CreateUserConfiguration">
  <wsdl:input message="tns:CreateUserConfigurationSoapIn"/>
  <wsdl:output message="tns:CreateUserConfigurationSoapOut"/>
</wsdl:operation>
```

The following is the WSDL binding specification for this operation.

```
<wsdl:operation name="CreateUserConfiguration">
  <soap:operation
soapAction="http://schemas.microsoft.com/exchange/services/2006/messages/CreateUserConfigurat
ion" />
  <wsdl:input>
    <soap:header message="tns:CreateUserConfigurationSoapIn" part="Impersonation"
use="literal"/>
    <soap:header message="tns:CreateUserConfigurationSoapIn" part="MailboxCulture"
use="literal"/>
    <soap:header message="tns:CreateUserConfigurationSoapIn" part="RequestVersion"
use="literal"/>
    <soap:body parts="request" use="literal" />
  </wsdl:input>
  <wsdl:output>
    <soap:body parts="CreateUserConfigurationResult" use="literal" />
    <soap:header message="tns:CreateUserConfigurationSoapOut" part="ServerVersion"
use="literal"/>
  </wsdl:output>
</wsdl:operation>
```

3.1.4.1.1 Messages

The following table lists and describes the WSDL message definitions that are specific to the **CreateUserConfiguration** operation.

Message name	Description
CreateUserConfigurationSoapIn	Specifies the SOAP message that creates a user configuration object.
CreateUserConfigurationSoapOut	Specifies the SOAP message that is returned by the server in response to a CreateUserConfiguration operation request.

3.1.4.1.1.1 CreateUserConfigurationSoapIn

The **CreateUserConfigurationSoapIn** WSDL message specifies the **CreateUserConfiguration** operation request to create a user configuration object.

```
<wsdl:message name="CreateUserConfigurationSoapIn">
  <wsdl:part name="request" element="tns:CreateUserConfiguration" />
  <wsdl:part name="Impersonation" element="t:ExchangeImpersonation"/>
  <wsdl:part name="MailboxCulture" element="t:MailboxCulture"/>
  <wsdl:part name="RequestVersion" element="t:RequestServerVersion"/>
</wsdl:message>
```

The **CreateUserConfigurationSoapIn** WSDL message is the input message for the **SOAP action** <http://schemas.microsoft.com/exchange/services/2006/messages/CreateUserConfiguration>.

The parts of the **CreateUserConfigurationSoapIn** WSDL message are listed and described in the following table.

Part name	Element/type	Description
request	tns:CreateUserConfiguration (section 3.1.4.1.2.1)	Specifies the SOAP body of the request to create a user configuration object. This part is required.
Impersonation	t:ExchangeImpersonation ([MS-OXWSCDATA] section 2.2.4.3)	Specifies a SOAP header that identifies the user whom the client application is impersonating. This part is optional.
MailboxCulture	t:MailboxCulture ([MS-OXWSCDATA] section 2.2.4.6)	Specifies a SOAP header that identifies the culture to use for accessing the mailbox . The cultures are defined in [RFC3066] . This part is optional.
RequestVersion	t:RequestServerVersion ([MS-OXWSCDATA] section 2.2.4.8)	Specifies a SOAP header that identifies the schema version for the CreateUserConfiguration operation request.

3.1.4.1.1.2 CreateUserConfigurationSoapOut

The **CreateUserConfigurationSoapOut** WSDL message specifies the server response to a **CreateUserConfiguration** operation request to create a user configuration object.

```
<wsdl:message name="CreateUserConfigurationSoapOut">
  <wsdl:part name="CreateUserConfigurationResult"
    element="tns:CreateUserConfigurationResponse" />
  <wsdl:part name="ServerVersion" element="t:ServerVersionInfo"/>
</wsdl:message>
```

The **CreateUserConfigurationSoapOut** WSDL message is the output message for the SOAP action <http://schemas.microsoft.com/exchange/services/2006/messages/CreateUserConfiguration>.

The parts of the **CreateUserConfigurationSoapOut** WSDL message are listed and described in the following table.

Part name	Element/type	Description
CreateUserConfigurationResult	tns:CreateUserConfigurationResponse (section 3.1.4.1.2.2)	Specifies the SOAP body of the response to a CreateUserConfiguration operation request.
ServerVersion	t:ServerVersionInfo (IMS-OXWSCDATA section 2.2.4.9)	Specifies the SOAP header that identifies the server version for the response to a CreateUserConfiguration request.

3.1.4.1.2 Elements

The following table lists and describes the XML schema element definitions that are specific to the **CreateUserConfiguration** operation.

Element name	Description
CreateUserConfiguration	Specifies a request to create a user configuration object.
CreateUserConfigurationResponse	Specifies a response to a CreateUserConfiguration operation request.

3.1.4.1.2.1 CreateUserConfiguration Element

The **CreateUserConfiguration** element specifies a request to create a user configuration object.

```
<xs:element name="CreateUserConfiguration"
  type="m:CreateUserConfigurationType"
  />
```

3.1.4.1.2.2 CreateUserConfigurationResponse Element

The **CreateUserConfigurationResponse** element specifies a response to a **CreateUserConfiguration** operation request (section [3.1.4.1](#)).

```
<xs:element name="CreateUserConfigurationResponse"
  type="m:CreateUserConfigurationResponseType"
  />
```

3.1.4.1.3 Complex Types

The following table lists and describes the XML schema complex type definitions that are specific to the **CreateUserConfiguration** operation.

Complex type name	Description
CreateUserConfigurationResponseType	Specifies a response to a CreateUserConfiguration

Complex type name	Description
	operation request.
CreateUserConfigurationType	Specifies a CreateUserConfiguration operation request.

3.1.4.1.3.1 m:CreateUserConfigurationResponseType Complex Type

The **CreateUserConfigurationResponseType** complex type specifies the response to a **CreateUserConfiguration** operation request (section [3.1.4.1](#)). The **CreateUserConfigurationResponseType** complex type extends the **BaseResponseMessageType** complex type, as specified in [\[MS-OXWSCDATA\]](#) section 2.2.3.15.

```
<xs:complexType name="CreateUserConfigurationResponseType">
  <xs:complexContent>
    <xs:extension
      base="m:BaseResponseMessageType"
    />
  </xs:complexContent>
</xs:complexType>
```

3.1.4.1.3.2 m:CreateUserConfigurationType Complex Type

The **CreateUserConfigurationType** complex type specifies a **CreateUserConfiguration** operation request (section [3.1.4.1](#)). The **CreateUserConfigurationType** complex type extends the **BaseRequestType** complex type, as specified in [\[MS-OXWSCDATA\]](#) section 2.2.3.14.

```
<xs:complexType name="CreateUserConfigurationType">
  <xs:complexContent>
    <xs:extension
      base="m:BaseRequestType"
    >
    <xs:sequence>
      <xs:element name="UserConfiguration"
        type="t:UserConfigurationType"
      />
    </xs:sequence>
  </xs:complexContent>
</xs:complexType>
```

The following table lists and describes the child elements of the **CreateUserConfigurationType** complex type.

Element name	Type	Description
UserConfiguration	t:UserConfigurationType (section 2.2.4.5)	Specifies the user configuration object to be created.

3.1.4.1.4 Simple Types

None.

3.1.4.1.5 Attributes

None.

3.1.4.1.6 Groups

None

3.1.4.1.7 Attribute Groups

None.

3.1.4.2 DeleteUserConfiguration

The **DeleteUserConfiguration** operation specifies the WSDL messages for deleting user configuration objects.

The following is the WSDL port type definition of this operation.

```
<wsdl:operation name="DeleteUserConfiguration">
  <wsdl:input message="tns:DeleteUserConfigurationSoapIn"/>
  <wsdl:output message="tns:DeleteUserConfigurationSoapOut"/>
</wsdl:operation>
```

The following is the WSDL binding specification for this operation.

```
<wsdl:operation name="DeleteUserConfiguration">
  <soap:operation
    soapAction="http://schemas.microsoft.com/exchange/services/2006/messages/DeleteUserConfiguration" />
  <wsdl:input>
    <soap:header message="tns:DeleteUserConfigurationSoapIn" part="Impersonation"
      use="literal"/>
    <soap:header message="tns:DeleteUserConfigurationSoapIn" part="MailboxCulture"
      use="literal"/>
    <soap:header message="tns:DeleteUserConfigurationSoapIn" part="RequestVersion"
      use="literal"/>
    <soap:body parts="request" use="literal" />
  </wsdl:input>
  <wsdl:output>
    <soap:body parts="DeleteUserConfigurationResult" use="literal" />
    <soap:header message="tns:DeleteUserConfigurationSoapOut" part="ServerVersion"
      use="literal"/>
  </wsdl:output>
</wsdl:operation>
```

3.1.4.2.1 Messages

The following table lists and describes the WSDL message definitions that are specific to the **DeleteUserConfiguration** operation.

Message name	Description
DeleteUserConfigurationSoapIn	Specifies the SOAP message that deletes a user configuration object.
DeleteUserConfigurationSoapOut	Specifies the SOAP message that is returned by the server in response to a DeleteUserConfiguration operation request.

3.1.4.2.1.1 DeleteUserConfigurationSoapIn

The **DeleteUserConfigurationSoapIn** WSDL message specifies a **DeleteUserConfiguration** operation request to delete a user configuration object.

```
<wsdl:message name="DeleteUserConfigurationSoapIn">
  <wsdl:part name="request" element="tns:DeleteUserConfiguration" />
  <wsdl:part name="Impersonation" element="t:ExchangeImpersonation"/>
  <wsdl:part name="MailboxCulture" element="t:MailboxCulture"/>
  <wsdl:part name="RequestVersion" element="t:RequestServerVersion"/>
</wsdl:message>
```

The **DeleteUserConfigurationSoapIn** WSDL message is the input message for the SOAP action <http://schemas.microsoft.com/exchange/services/2006/messages/DeleteUserConfiguration>.

The parts of the **DeleteUserConfigurationSoapIn** WSDL message are listed and described in the following table.

Part name	Element/type	Description
request	tns:DeleteUserConfiguration (section 3.1.4.2.2.1)	Specifies the SOAP body of a request to delete a user configuration object. This part is required.
Impersonation	t:ExchangeImpersonation ([MS-OXWSCDATA] section 2.2.4.3)	Specifies a SOAP header that identifies the user whom the client application is impersonating. This part is optional.
MailboxCulture	t:MailboxCulture ([MS-OXWSCDATA] section 2.2.4.6)	Specifies a SOAP header that identifies the culture to be used for accessing the mailbox. The cultures are defined in [RFC3066] . This part is optional.
RequestVersion	t:RequestServerVersion ([MS-OXWSCDATA] section 2.2.4.8)	Specifies a SOAP header that identifies the schema version for the DeleteUserConfiguration operation request (section 3.1.4.2).

3.1.4.2.1.2 DeleteUserConfigurationSoapOut

The **DeleteUserConfigurationSoapOut** WSDL message specifies the server response to a **DeleteUserConfiguration** operation request to delete a user configuration object.

```
<wsdl:message name="DeleteUserConfigurationSoapOut">
  <wsdl:part name="DeleteUserConfigurationResult"
    element="tns:DeleteUserConfigurationResponse" />
  <wsdl:part name="ServerVersion" element="t:ServerVersionInfo"/>
</wsdl:message>
```

```
</wsdl:message>
```

The **DeleteUserConfigurationSoapOut** WSDL message is the output message for the SOAP action <http://schemas.microsoft.com/exchange/services/2006/messages/DeleteUserConfiguration>.

The parts of the **DeleteUserConfigurationSoapOut** WSDL message are listed and described in the following table.

Part name	Element/type	Description
DeleteUserConfigurationResult	tns>DeleteUserConfigurationResponse (section 3.1.4.2.2.2)	Specifies the SOAP body of the response to a DeleteUserConfiguration operation request.
ServerVersion	t:ServerVersionInfo (IMS-OXWSCDATA section 2.2.4.9)	Specifies the SOAP header that identifies the server version for the response.

3.1.4.2.2 Elements

The following table lists and describes the XML schema element definitions that are specific to the **DeleteUserConfiguration** operation.

Element name	Description
DeleteUserConfiguration	Specifies a request to delete a user configuration object.
DeleteUserConfigurationResponse	Specifies the response to a DeleteUserConfiguration operation request.

3.1.4.2.2.1 DeleteUserConfiguration Element

The **DeleteUserConfiguration** element specifies a request to delete a user configuration object.

```
<xs:element name="DeleteUserConfiguration"
  type="m>DeleteUserConfigurationType"
/>
```

3.1.4.2.2.2 DeleteUserConfigurationResponse Element

The **DeleteUserConfigurationResponse** element specifies the response to a **DeleteUserConfiguration** operation request (section [3.1.4.2](#)).

```
<xs:element name="DeleteUserConfigurationResponse"
  type="m>DeleteUserConfigurationResponseType"
/>
```


3.1.4.2.3 Complex Types

The following table lists and describes the XML schema complex type definitions that are specific to the **DeleteUserConfiguration** operation.

Complex type name	Description
DeleteUserConfigurationResponseType	Specifies the response to a DeleteUserConfiguration operation request.
DeleteUserConfigurationType	Specifies a DeleteUserConfiguration operation request.

3.1.4.2.3.1 m>DeleteUserConfigurationResponseType Complex Type

The **DeleteUserConfigurationResponseType** complex type specifies the response for a **DeleteUserConfiguration** operation request (section [3.1.4.2](#)). The **DeleteUserConfigurationResponseType** complex type extends the **BaseResponseMessageType** complex type, as specified in [\[MS-OXWSCDATA\]](#) section 2.2.3.15.

```
<xs:complexType name="DeleteUserConfigurationResponseType">
  <xs:complexContent>
    <xs:extension
      base="m:BaseResponseMessageType"
    />
  </xs:complexContent>
</xs:complexType>
```

3.1.4.2.3.2 m>DeleteUserConfigurationType Complex Type

The **DeleteUserConfigurationType** complex type specifies a **DeleteUserConfiguration** operation request (section [3.1.4.2](#)). The **DeleteUserConfigurationType** complex type extends the **BaseRequestType** complex type, as specified in [\[MS-OXWSCDATA\]](#) section 2.2.3.14.

```
<xs:complexType name="DeleteUserConfigurationType">
  <xs:complexContent>
    <xs:extension
      base="m:BaseRequestType"
    >
    <xs:sequence>
      <xs:element name="UserConfigurationName"
        type="t:UserConfigurationNameType"
      />
    </xs:sequence>
  </xs:extension>
</xs:complexContent>
</xs:complexType>
```

The following table lists and describes the child elements of the **DeleteUserConfigurationType** complex type.

Element name	Type	Description
UserConfigurationName	t:UserConfigurationNameType (section 2.2.4.4)	Specifies the name of the user configuration object to be deleted.

3.1.4.2.4 Simple Types

None.

3.1.4.2.5 Attributes

None

3.1.4.2.6 Groups

None.

3.1.4.2.7 Attribute Groups

None.

3.1.4.3 GetUserConfiguration

The **GetUserConfiguration** operation specifies the WSDL messages that are used to get user configuration objects.

The following is the WSDL port type definition of this operation.

```
<wsdl:operation name="GetUserConfiguration">
  <wsdl:input message="tns:GetUserConfigurationSoapIn"/>
  <wsdl:output message="tns:GetUserConfigurationSoapOut"/>
</wsdl:operation>
```

The following is the WSDL binding specification for this operation.

```
<wsdl:operation name="GetUserConfiguration">
  <soap:operation
soapAction="http://schemas.microsoft.com/exchange/services/2006/messages/GetUserConfiguration" />
  <wsdl:input>
    <soap:header message="tns:GetUserConfigurationSoapIn" part="Impersonation"
use="literal"/>
    <soap:header message="tns:GetUserConfigurationSoapIn" part="MailboxCulture"
use="literal"/>
    <soap:header message="tns:GetUserConfigurationSoapIn" part="RequestVersion"
use="literal"/>
    <soap:body parts="request" use="literal" />
  </wsdl:input>
  <wsdl:output>
    <soap:body parts="GetUserConfigurationResult" use="literal" />
    <soap:header message="tns:GetUserConfigurationSoapOut" part="ServerVersion"
use="literal"/>
  </wsdl:output>
```

```
</wsdl:operation>
```

3.1.4.3.1 Messages

The following table lists and describes the WSDL message definitions that are specific to the **GetUserConfiguration** operation.

Message name	Description
GetUserConfigurationSoapIn	Specifies the SOAP message that gets a user configuration object.
GetUserConfigurationSoapOut	Specifies the SOAP message that is returned by the server in response to the GetUserConfiguration operation request.

3.1.4.3.1.1 GetUserConfigurationSoapIn

The **GetUserConfigurationSoapIn** WSDL message specifies a **GetUserConfiguration** operation request to delete a user configuration object.

```
<wsdl:message name="GetUserConfigurationSoapIn">
  <wsdl:part name="request" element="tns:GetUserConfiguration" />
  <wsdl:part name="Impersonation" element="t:ExchangeImpersonation"/>
  <wsdl:part name="MailboxCulture" element="t:MailboxCulture"/>
  <wsdl:part name="RequestVersion" element="t:RequestServerVersion"/>
</wsdl:message>
```

The **GetUserConfigurationSoapIn** WSDL message is the input message for the SOAP action <http://schemas.microsoft.com/exchange/services/2006/messages/GetUserConfiguration>.

The parts of the **GetUserConfigurationSoapIn** WSDL message are listed and described in the following table.

Part name	Element/type	Description
request	tns:GetUserConfiguration (section 3.1.4.3.2.1)	Specifies the SOAP body of a request to get a user configuration object. This part is required.
Impersonation	t:ExchangeImpersonation ([MS-OXWSCDATA] section 2.2.4.3)	Specifies a SOAP header that identifies the user whom the client application is impersonating. This part is optional.
MailboxCulture	t:MailboxCulture ([MS-OXWSCDATA] section 2.2.4.6)	Specifies a SOAP header that identifies the culture to be used for accessing the mailbox. The cultures are defined in [RFC3066] . This part is optional.
RequestVersion	t:RequestServerVersion ([MS-OXWSCDATA] section 2.2.4.8)	Specifies a SOAP header that identifies the schema version for the GetUserConfiguration operation request (section 3.1.4.3).

3.1.4.3.1.2 GetUserConfigurationSoapOut

The **GetUserConfigurationSoapOut** WSDL message specifies the server response to a **GetUserConfiguration** operation request to get a user configuration object.

The parts of the **GetUserConfigurationSoapOut** WSDL message are listed and described in the following table.

Part name	Element/type	Description
GetUserConfigurationResult	tns:GetUserConfigurationResponse (section 3.1.4.3.2.2)	Specifies the SOAP body of the response to a GetUserConfiguration operation request.
ServerVersion	t:ServerVersionInfo ([MS-OXWSCDATA] section 2.2.4.9)	Specifies the SOAP header that identifies the server version for the response.

3.1.4.3.2 Elements

The following table lists and describes the XML schema element definitions that are specific to the **GetUserConfiguration** operation.

Element name	Description
GetUserConfiguration	Specifies a request to get a user configuration object.
GetUserConfigurationResponse	Specifies the response to a GetUserConfiguration operation request.

3.1.4.3.2.1 GetUserConfiguration Element

The **GetUserConfiguration** element specifies a request to get a user configuration object.

```
<xs:element name="GetUserConfiguration"
  type="m:GetUserConfigurationType"
/>
```

3.1.4.3.2.2 GetUserConfigurationResponse Element

The **GetUserConfigurationResponse** element specifies the response to a **GetUserConfiguration** operation request (section [3.1.4.3](#)).

```
<xs:element name="GetUserConfigurationResponse"
  type="m:GetUserConfigurationResponseType"
/>
```

3.1.4.3.3 Complex Types

The following table lists and describes the XML schema complex type definitions that are specific to the **GetUserConfiguration** operation.

Complex type name	Description
GetUserConfigurationResponseMessageType	Specifies a user configuration object returned in a response.
GetUserConfigurationResponseType	Specifies a response to a GetUserConfiguration operation request.
GetUserConfigurationType	Specifies a GetUserConfiguration operation request.

3.1.4.3.3.1 t:GetUserConfigurationResponseMessageType Complex Type

The **GetUserConfigurationResponseMessageType** complex type specifies a user configuration object that is returned in a response to a **GetUserConfiguration** operation request. The **GetUserConfigurationResponseMessageType** complex type extends the **ResponseMessageType** complex type, as specified in [\[MS-OXWSCDATA\]](#) section 2.2.3.52.

```
<xs:complexType name="GetUserConfigurationResponseMessageType">
  <xs:complexContent>
    <xs:extension
      base="m:ResponseMessageType"
    >
      <xs:sequence>
        <xs:element name="UserConfiguration"
          type="t:UserConfigurationType"
          minOccurs="0"
        />
      </xs:sequence>
    </xs:extension>
  </xs:complexContent>
</xs:complexType>
```

The following table lists and describes the child elements of the **GetUserConfigurationResponseMessageType** complex type.

Element name	Type	Description
UserConfiguration	t:UserConfigurationType (section 2.2.4.5)	Specifies a single user configuration object.

3.1.4.3.3.2 m:GetUserConfigurationResponseType Complex Type

The **GetUserConfigurationResponseType** complex type specifies the response to a **GetUserConfiguration** operation request (section [3.1.4.3](#)). The **GetUserConfigurationResponseType** complex type extends the **BaseResponseMessageType** complex type, as specified in [\[MS-OXWSCDATA\]](#) section 2.2.3.15.

```
<xs:complexType name="GetUserConfigurationResponseType">
  <xs:complexContent>
    <xs:extension
      base="m:BaseResponseMessageType"
    />
  </xs:complexContent>
</xs:complexType>
```

3.1.4.3.3 m:GetUserConfigurationType Complex Type

The **GetUserConfigurationType** complex type specifies a **GetUserConfiguration** operation request (section [3.1.4.3](#)). The **GetUserConfigurationType** complex type extends the **BaseRequestType** complex type, as specified in [\[MS-OXWSCDATA\]](#) section 2.2.3.14.

```
<xs:complexType name="GetUserConfigurationType">
  <xs:complexContent>
    <xs:extension
      base="m:BaseRequestType"
    >
      <xs:sequence>
        <xs:element name="UserConfigurationName"
          type="t:UserConfigurationNameType"
        />
        <xs:element name="UserConfigurationProperties"
          type="t:UserConfigurationPropertyType"
        />
      </xs:sequence>
    </xs:extension>
  </xs:complexContent>
</xs:complexType>
```

The following table lists and describes the child elements of the **GetUserConfigurationType** complex type.

Element name	Type	Description
UserConfigurationName	t:UserConfigurationNameType (section 2.2.4.4)	Specifies the name and the associated folder for a user configuration object.
UserConfigurationProperties	t:UserConfigurationPropertyType (section 2.2.5.2)	Specifies the property types to get in a GetUserConfiguration operation (section 3.1.4.3).

3.1.4.3.4 Simple Types

None.

3.1.4.3.5 Attributes

None.

3.1.4.3.6 Groups

None.

3.1.4.3.7 Attribute Groups

None.

3.1.4.4 UpdateUserConfiguration

The **UpdateUserConfiguration** operation specifies the WSDL messages for updating user configuration objects.

The following is the WSDL port type definition of this operation.

```
<wsdl:operation name="UpdateUserConfiguration">
  <wsdl:input message="tns:UpdateUserConfigurationSoapIn"/>
  <wsdl:output message="tns:UpdateUserConfigurationSoapOut"/>
</wsdl:operation>
```

The following is the WSDL binding specification for the operation.

```
<wsdl:operation name="UpdateUserConfiguration">
  <soap:operation
soapAction="http://schemas.microsoft.com/exchange/services/2006/messages/UpdateUserConfigurat
ion" />
  <wsdl:input>
    <soap:header message="tns:UpdateUserConfigurationSoapIn" part="Impersonation"
use="literal"/>
    <soap:header message="tns:UpdateUserConfigurationSoapIn" part="MailboxCulture"
use="literal"/>
    <soap:header message="tns:UpdateUserConfigurationSoapIn" part="RequestVersion"
use="literal"/>
    <soap:body parts="request" use="literal" />
  </wsdl:input>
  <wsdl:output>
    <soap:body parts="UpdateUserConfigurationResult" use="literal" />
    <soap:header message="tns:UpdateUserConfigurationSoapOut" part="ServerVersion"
use="literal"/>
  </wsdl:output>
</wsdl:operation>
```

3.1.4.4.1 Messages

The following table lists and describes the WSDL message definitions that are specific to the **UpdateUserConfiguration** operation.

Message name	Description
UpdateUserConfigurationSoapIn	Specifies the SOAP message that updates a user configuration object.
UpdateUserConfigurationSoapOut	Specifies the SOAP message that is returned by the server in response to a UpdateUserConfiguration operation request.

3.1.4.4.1.1 UpdateUserConfigurationSoapIn

The **UpdateUserConfigurationSoapIn** WSDL message specifies an **UpdateUserConfiguration** operation request to update a user configuration object.

```
<wsdl:message name="UpdateUserConfigurationSoapIn">
  <wsdl:part name="request" element="tns:UpdateUserConfiguration" />
  <wsdl:part name="Impersonation" element="t:ExchangeImpersonation"/>
  <wsdl:part name="MailboxCulture" element="t:MailboxCulture"/>
  <wsdl:part name="RequestVersion" element="t:RequestServerVersion"/>
</wsdl:message>
```

The **UpdateUserConfigurationSoapIn** WSDL message is the input message for the SOAP action <http://schemas.microsoft.com/exchange/services/2006/messages/UpdateUserConfiguration>.

The parts of the **UpdateUserConfigurationSoapIn** WSDL message are listed and described in the following table.

Part name	Element/type	Description
request	tns:UpdateUserConfiguration (section 3.1.4.4.2.1)	Specifies the SOAP body of a request to update a user configuration object. This part is required.
Impersonation	t:ExchangeImpersonation ([MS-OXWSCDATA] section 2.2.4.3)	Specifies a SOAP header that identifies the user whom the client application is impersonating. This part is optional.
MailboxCulture	t:MailboxCulture ([MS-OXWSCDATA] section 2.2.4.6)	Specifies a SOAP header that identifies the culture to be used for accessing the mailbox. The cultures are defined in [RFC3066] . This part is optional.
RequestVersion	t:RequestServerVersion ([MS-OXWSCDATA] section 2.2.4.8)	Specifies a SOAP header that identifies the schema version for a UpdateUserConfiguration operation (section 3.1.4.4) request.

3.1.4.4.1.2 UpdateUserConfigurationSoapOut

The **UpdateUserConfigurationSoapOut** WSDL message specifies the server response to a **UpdateUserConfiguration** operation request to update a user configuration object.

The parts of the **UpdateUserConfigurationSoapOut** WSDL message are listed and described in the following table.

Part name	Element/type	Description
UpdateUserConfigurationResult	tns:UpdateUserConfigurationResponse (section 3.1.4.4.2.2)	Specifies the SOAP body of the response to an UpdateUserConfiguration operation request.
ServerVersion	t:ServerVersionInfo ([MS-OXWSCDATA] section 2.2.4.9)	Specifies the SOAP header that identifies the server version for the response to an

Part name	Element/type	Description
		UpdateUserConfiguration operation request.

3.1.4.4.2 Elements

The following table lists and describes the XML schema element definitions that are specific to the **UpdateUserConfiguration** operation.

Element name	Description
UpdateUserConfiguration	Specifies a request to update a user configuration object.
UpdateUserConfigurationResponse	Specifies the response to an UpdateUserConfiguration operation request.

3.1.4.4.2.1 UpdateUserConfiguration Element

The **UpdateUserConfiguration** element specifies a request to update a user configuration object.

```
<xs:element name="UpdateUserConfiguration"
  type="m:UpdateUserConfigurationType"
/>
```

3.1.4.4.2.2 UpdateUserConfigurationResponse Element

The **UpdateUserConfigurationResponse** element specifies the response to an **UpdateUserConfiguration** operation request (section [3.1.4.4](#)).

```
<xs:element name="UpdateUserConfigurationResponse"
  type="m:UpdateUserConfigurationResponseType"
/>
```

3.1.4.4.3 Complex Types

The following table lists and describes the XML schema complex type definitions that are specific to the **UpdateUserConfiguration** operation.

Complex type name	Description
UpdateUserConfigurationResponseType	Specifies the response to an UpdateUserConfiguration operation request.
UpdateUserConfigurationType	Specifies an UpdateUserConfiguration operation request.

3.1.4.4.3.1 m:UpdateUserConfigurationResponseType Complex Type

The **UpdateUserConfigurationResponseType** complex type specifies the response to an **UpdateUserConfiguration** operation request (section [3.1.4.4](#)). The

UpdateUserConfigurationResponseType complex type extends the **BaseResponseMessageType** complex type, as specified in [\[MS-OXWSCDATA\]](#) section 2.2.3.15.

```
<xs:complexType name="UpdateUserConfigurationResponseType">
  <xs:complexContent>
    <xs:extension
      base="m:BaseResponseMessageType"
    />
  </xs:complexContent>
</xs:complexType>
```

3.1.4.4.3.2 m:UpdateUserConfigurationType Complex Type

The **UpdateUserConfigurationType** complex type specifies an **UpdateUserConfiguration** operation request (section [3.1.4.4](#)). The **UpdateUserConfigurationType** complex type extends the **BaseRequestType** complex type, as specified in [\[MS-OXWSCDATA\]](#) section 2.2.3.14.

```
<xs:complexType name="UpdateUserConfigurationType">
  <xs:complexContent>
    <xs:extension
      base="m:BaseRequestType"
    >
    <xs:sequence>
      <xs:element name="UserConfiguration"
        type="t:UserConfigurationType"
      />
    </xs:sequence>
  </xs:extension>
</xs:complexContent>
</xs:complexType>
```

The following table lists and describes the child elements of the **UpdateUserConfigurationType** complex type.

Element name	Type	Description
UserConfiguration	t:UserConfigurationType (section 2.2.4.5)	Specifies the user configuration object that contains updated data.

3.1.4.4.4 Simple Types

None.

3.1.4.4.5 Attributes

None.

3.1.4.4.6 Groups

None.

3.1.4.4.7 Attribute Groups

None.

3.1.5 Timer Events

None.

3.1.6 Other Local Events

None.

3.2 Client Details

None.

3.2.1 Abstract Data Model

None.

3.2.2 Timers

None.

3.2.3 Initialization

None.

3.2.4 Message Processing Events and Sequencing

None.

3.2.5 Timer Events

None.

3.2.6 Other Local Events

None.

4 Protocol Examples

None.

5 Security

5.1 Security Considerations for Implementers

None.

5.2 Index of Security Parameters

None.

6 Appendix A: Full WSDL

The XML files that are listed in the following table are required in order to implement the functionality specified in this document.

File name	Description	Section
MS-OXWSUSRCFG.wsdl	Contains the WSDL for the implementation of this protocol.	6
MS-OXWSUSRCFG-messages.xsd	Contains the XML schema message definitions that are used in this protocol.	7.1
MS-OXWSUSRCFG-types.xsd	Contains the XML schema type definitions that are used in this protocol.	7.2

These files have to be placed in a common folder in order for the WSDL to validate and operate. Also, any schema files that are included in or imported into the MS-OXWSUSRCFG-types.xsd or MS-OXWSUSRCFG-messages.xsd schemas have to be placed in the common folder with these files.

This section contains the contents of the MS-OXWSUSRCFG.wsdl file.

```
<?xml version="1.0" encoding="utf-8"?>
<wsdl:definitions xmlns:soap="http://schemas.xmlsoap.org/wsdl/soap/"
xmlns:tns="http://schemas.microsoft.com/exchange/services/2006/messages"
xmlns:s="http://www.w3.org/2001/XMLSchema" xmlns:wsdl="http://schemas.xmlsoap.org/wsdl/"
xmlns:t="http://schemas.microsoft.com/exchange/services/2006/types"
targetNamespace="http://schemas.microsoft.com/exchange/services/2006/messages">
  <wsdl:types>
    <xs:schema id="messages" elementFormDefault="qualified" version="Exchange2010"
xmlns:m="http://schemas.microsoft.com/exchange/services/2006/messages"
xmlns:tns="http://schemas.microsoft.com/exchange/services/2006/messages"
xmlns:t="http://schemas.microsoft.com/exchange/services/2006/types"
xmlns:xs="http://www.w3.org/2001/XMLSchema"
targetNamespace="http://schemas.microsoft.com/exchange/services/2006/messages"
xmlns="http://schemas.microsoft.com/exchange/services/2006/messages">
      <xs:include schemaLocation="MS-OXWSUSRCFG-messages.xsd"/>
    </xs:schema>
    <xs:schema id="types" elementFormDefault="qualified" version="Exchange2010"
xmlns:t="http://schemas.microsoft.com/exchange/services/2006/types"
targetNamespace="http://schemas.microsoft.com/exchange/services/2006/types"
xmlns="http://schemas.microsoft.com/exchange/services/2006/types"
xmlns:tns="http://schemas.microsoft.com/exchange/services/2006/types"
xmlns:xs="http://www.w3.org/2001/XMLSchema">
      <xs:import namespace="http://www.w3.org/XML/1998/namespace"/>
    </xs:schema>
  </wsdl:types>
  <wsdl:portType name="ExchangeServicePortType">
    <wsdl:operation name="CreateUserConfiguration">
      <wsdl:input message="tns:CreateUserConfigurationSoapIn"/>
      <wsdl:output message="tns:CreateUserConfigurationSoapOut"/>
    </wsdl:operation>
    <wsdl:operation name="DeleteUserConfiguration">
      <wsdl:input message="tns:DeleteUserConfigurationSoapIn"/>
      <wsdl:output message="tns:DeleteUserConfigurationSoapOut"/>
    </wsdl:operation>
    <wsdl:operation name="GetUserConfiguration">
      <wsdl:input message="tns:GetUserConfigurationSoapIn"/>
      <wsdl:output message="tns:GetUserConfigurationSoapOut"/>
    </wsdl:operation>
  </wsdl:portType>

```

```

        <wsdl:operation name="UpdateUserConfiguration">
            <wsdl:input message="tns:UpdateUserConfigurationSoapIn"/>
            <wsdl:output message="tns:UpdateUserConfigurationSoapOut"/>
        </wsdl:operation>
    </wsdl:portType>
    <wsdl:binding name="ExchangeServiceBinding" type="tns:ExchangeServicePortType">
        <wsdl:documentation>
            <wsi:Claim conformsTo="http://ws-i.org/profiles/basic/1.0"
xmlns:wsi="http://ws-i.org/schemas/conformanceClaim"/>
        </wsdl:documentation>
        <soap:binding style="document" transport="http://schemas.xmlsoap.org/soap/http"/>
        <wsdl:operation name="CreateUserConfiguration">
            <soap:operation
soapAction="http://schemas.microsoft.com/exchange/services/2006/messages/CreateUserConfigurat
ion"/>
            <wsdl:input>
                <soap:header message="tns:CreateUserConfigurationSoapIn"
part="Impersonation" use="literal"/>
                <soap:header message="tns:CreateUserConfigurationSoapIn"
part="MailboxCulture" use="literal"/>
                <soap:header message="tns:CreateUserConfigurationSoapIn"
part="RequestVersion" use="literal"/>
                <soap:body parts="request" use="literal"/>
            </wsdl:input>
            <wsdl:output>
                <soap:body parts="CreateUserConfigurationResult" use="literal"/>
                <soap:header message="tns:CreateUserConfigurationSoapOut"
part="ServerVersion" use="literal"/>
            </wsdl:output>
        </wsdl:operation>
        <wsdl:operation name="DeleteUserConfiguration">
            <soap:operation
soapAction="http://schemas.microsoft.com/exchange/services/2006/messages/DeleteUserConfigurat
ion"/>
            <wsdl:input>
                <soap:header message="tns:DeleteUserConfigurationSoapIn"
part="Impersonation" use="literal"/>
                <soap:header message="tns:DeleteUserConfigurationSoapIn"
part="MailboxCulture" use="literal"/>
                <soap:header message="tns:DeleteUserConfigurationSoapIn"
part="RequestVersion" use="literal"/>
                <soap:body parts="request" use="literal"/>
            </wsdl:input>
            <wsdl:output>
                <soap:body parts="DeleteUserConfigurationResult" use="literal"/>
                <soap:header message="tns:DeleteUserConfigurationSoapOut"
part="ServerVersion" use="literal"/>
            </wsdl:output>
        </wsdl:operation>
        <wsdl:operation name="GetUserConfiguration">
            <soap:operation
soapAction="http://schemas.microsoft.com/exchange/services/2006/messages/GetUserConfiguration
"/>
            <wsdl:input>
                <soap:header message="tns:GetUserConfigurationSoapIn"
part="Impersonation" use="literal"/>
                <soap:header message="tns:GetUserConfigurationSoapIn"
part="MailboxCulture" use="literal"/>
                <soap:header message="tns:GetUserConfigurationSoapIn"
part="RequestVersion" use="literal"/>
                <soap:body parts="request" use="literal"/>
            </wsdl:input>
            <wsdl:output>
                <soap:body parts="GetUserConfigurationResult" use="literal"/>
                <soap:header message="tns:GetUserConfigurationSoapOut"
part="ServerVersion" use="literal"/>
            </wsdl:output>
        </wsdl:operation>
    </wsdl:binding>
</wsdl:service>

```

```

        </wsdl:input>
        <wsdl:output>
            <soap:body parts="GetUserConfigurationResult" use="literal"/>
            <soap:header message="tns:GetUserConfigurationSoapOut"
part="ServerVersion" use="literal"/>
        </wsdl:output>
    </wsdl:operation>
    <wsdl:operation name="UpdateUserConfiguration">
        <soap:operation
soapAction="http://schemas.microsoft.com/exchange/services/2006/messages/UpdateUserConfigurat
ion"/>
        <wsdl:input>
            <soap:header message="tns:UpdateUserConfigurationSoapIn"
part="Impersonation" use="literal"/>
            <soap:header message="tns:UpdateUserConfigurationSoapIn"
part="MailboxCulture" use="literal"/>
            <soap:header message="tns:UpdateUserConfigurationSoapIn"
part="RequestVersion" use="literal"/>
            <soap:body parts="request" use="literal"/>
        </wsdl:input>
        <wsdl:output>
            <soap:body parts="UpdateUserConfigurationResult" use="literal"/>
            <soap:header message="tns:UpdateUserConfigurationSoapOut"
part="ServerVersion" use="literal"/>
        </wsdl:output>
    </wsdl:operation>
</wsdl:binding>
<wsdl:message name="CreateUserConfigurationSoapIn">
    <wsdl:part name="request" element="tns:CreateUserConfiguration"/>
    <wsdl:part name="Impersonation" element="t:ExchangeImpersonation"/>
    <wsdl:part name="MailboxCulture" element="t:MailboxCulture"/>
    <wsdl:part name="RequestVersion" element="t:RequestServerVersion"/>
</wsdl:message>
<wsdl:message name="CreateUserConfigurationSoapOut">
    <wsdl:part name="CreateUserConfigurationResult"
element="tns:CreateUserConfigurationResponse"/>
    <wsdl:part name="ServerVersion" element="t:ServerVersionInfo"/>
</wsdl:message>
<wsdl:message name="DeleteUserConfigurationSoapIn">
    <wsdl:part name="request" element="tns>DeleteUserConfiguration"/>
    <wsdl:part name="Impersonation" element="t:ExchangeImpersonation"/>
    <wsdl:part name="MailboxCulture" element="t:MailboxCulture"/>
    <wsdl:part name="RequestVersion" element="t:RequestServerVersion"/>
</wsdl:message>
<wsdl:message name="DeleteUserConfigurationSoapOut">
    <wsdl:part name="DeleteUserConfigurationResult"
element="tns>DeleteUserConfigurationResponse"/>
    <wsdl:part name="ServerVersion" element="t:ServerVersionInfo"/>
</wsdl:message>
<wsdl:message name="GetUserConfigurationSoapIn">
    <wsdl:part name="request" element="tns:GetUserConfiguration"/>
    <wsdl:part name="Impersonation" element="t:ExchangeImpersonation"/>
    <wsdl:part name="MailboxCulture" element="t:MailboxCulture"/>
    <wsdl:part name="RequestVersion" element="t:RequestServerVersion"/>
</wsdl:message>
<wsdl:message name="GetUserConfigurationSoapOut">
    <wsdl:part name="GetUserConfigurationResult"
element="tns:GetUserConfigurationResponse"/>
    <wsdl:part name="ServerVersion" element="t:ServerVersionInfo"/>
</wsdl:message>

```



```
<wsdl:message name="UpdateUserConfigurationSoapIn">
  <wsdl:part name="request" element="tns:UpdateUserConfiguration"/>
  <wsdl:part name="Impersonation" element="t:ExchangeImpersonation"/>
  <wsdl:part name="MailboxCulture" element="t:MailboxCulture"/>
  <wsdl:part name="RequestVersion" element="t:RequestServerVersion"/>
</wsdl:message>
<wsdl:message name="UpdateUserConfigurationSoapOut">
  <wsdl:part name="UpdateUserConfigurationResult"
element="tns:UpdateUserConfigurationResponse"/>
  <wsdl:part name="ServerVersion" element="t:ServerVersionInfo"/>
</wsdl:message>
</wsdl:definitions>
```

7 Appendix B: Full XML Schema

For ease of implementation, the following sections provide the full XML schema for this protocol.

Schema name	Prefix	Section
Messages schema	m:	7.1
Types schema	t:	7.2

These files have to be placed in a common folder in order for the WSDL to validate and operate. Also, any schema files that are included in or imported into the MS-OXWSUSRCFG-types.xsd or MS-OXWSUSRCFG-messages.xsd schemas have to be placed in the common folder along with the files listed in the table.

7.1 Messages Schema

This section contains the contents of the MS-OXWSUSRCFG-messages.xsd file and information about additional files that this schema file requires to operate correctly.

MS-OXWSUSRCFG-messages.xsd includes the file listed in the following table. To operate correctly, this file has to be present in the folder that contains the WSDL, types schema, and messages schema files for this protocol.

File name	Defining specification
MS-OXWSCDATA-messages.xsd	[MS-OXWSCDATA] section 7.1

```
<?xml version="1.0" encoding="utf-8"?>
<xs:schema xmlns:m="http://schemas.microsoft.com/exchange/services/2006/messages"
  xmlns:tns="http://schemas.microsoft.com/exchange/services/2006/messages"
  xmlns:t="http://schemas.microsoft.com/exchange/services/2006/types"
  xmlns:xs="http://www.w3.org/2001/XMLSchema"
  targetNamespace="http://schemas.microsoft.com/exchange/services/2006/messages"
  elementFormDefault="qualified" version="Exchange2010" id="messages">
  <xs:include schemaLocation="MS-OXWSCDATA-messages.xsd"/>
  <xs:import namespace="http://schemas.microsoft.com/exchange/services/2006/types"
    schemaLocation="MS-OXWSUSRCFG-types.xsd"/>
  <xs:complexType name="CreateUserConfigurationType">
    <xs:complexContent>
      <xs:extension base="m:BaseRequestType">
        <xs:sequence>
          <xs:element name="UserConfiguration"
            type="t:UserConfigurationType"/>
        </xs:sequence>
      </xs:extension>
    </xs:complexContent>
  </xs:complexType>
  <xs:element name="CreateUserConfiguration" type="m:CreateUserConfigurationType"/>
  <xs:complexType name="CreateUserConfigurationResponseType">
    <xs:complexContent>
      <xs:extension base="m:BaseResponseMessageType"/>
    </xs:complexContent>
  </xs:complexType>
  <xs:element name="CreateUserConfigurationResponse"
    type="m:CreateUserConfigurationResponseType"/>
  <xs:complexType name="DeleteUserConfigurationType">
```

```

        <xs:complexContent>
            <xs:extension base="m:BaseRequestType">
                <xs:sequence>
                    <xs:element name="UserConfigurationName"
type="t:UserConfigurationNameType"/>
                </xs:sequence>
            </xs:extension>
        </xs:complexContent>
    </xs:complexType>
    <xs:element name="DeleteUserConfiguration" type="m:DeleteUserConfigurationType"/>
    <xs:complexType name="DeleteUserConfigurationResponseType">
        <xs:complexContent>
            <xs:extension base="m:BaseResponseMessageType"/>
        </xs:complexContent>
    </xs:complexType>
    <xs:element name="DeleteUserConfigurationResponse"
type="m:DeleteUserConfigurationResponseType"/>
    <xs:complexType name="GetUserConfigurationType">
        <xs:complexContent>
            <xs:extension base="m:BaseRequestType">
                <xs:sequence>
                    <xs:element name="UserConfigurationName"
type="t:UserConfigurationNameType"/>
                    <xs:element name="UserConfigurationProperties"
type="t:UserConfigurationPropertyType"/>
                </xs:sequence>
            </xs:extension>
        </xs:complexContent>
    </xs:complexType>
    <xs:element name="GetUserConfiguration" type="m:GetUserConfigurationType"/>
    <xs:complexType name="GetUserConfigurationResponseMessageType">
        <xs:complexContent>
            <xs:extension base="m:ResponseMessageType">
                <xs:sequence>
                    <xs:element name="UserConfiguration" type="t:UserConfigurationType"
minOccurs="0"/>
                </xs:sequence>
            </xs:extension>
        </xs:complexContent>
    </xs:complexType>
    <xs:complexType name="GetUserConfigurationResponseType">
        <xs:complexContent>
            <xs:extension base="m:BaseResponseMessageType"/>
        </xs:complexContent>
    </xs:complexType>
    <xs:element name="GetUserConfigurationResponse"
type="m:GetUserConfigurationResponseType"/>
    <xs:complexType name="UpdateUserConfigurationType">
        <xs:complexContent>
            <xs:extension base="m:BaseRequestType">
                <xs:sequence>
                    <xs:element name="UserConfiguration"
type="t:UserConfigurationType"/>
                </xs:sequence>
            </xs:extension>
        </xs:complexContent>
    </xs:complexType>
    <xs:element name="UpdateUserConfiguration" type="m:UpdateUserConfigurationType"/>
    <xs:complexType name="UpdateUserConfigurationResponseType">

```

```

        <xs:complexContent>
            <xs:extension base="m:BaseResponseMessageType"/>
        </xs:complexContent>
    </xs:complexType>
    <xs:element name="UpdateUserConfigurationResponse"
type="m:UpdateUserConfigurationResponseType"/>
</xs:schema>

```

7.2 Types Schema

This section contains the contents of the MS-OXWSUSRCFG-types.xsd file and information about additional files that this schema file requires to operate correctly.

MS-OXWSUSRCFG-types.xsd includes the file listed in the following table. To operate correctly, this file has to be present in the folder that contains the WSDL, types, and messages schema files for this protocol.

File name	Defining specification
MS-OXWSFOLD-types.xsd	[MS-OXWSFOLD] section 6

```

<?xml version="1.0" encoding="utf-8"?>
<xs:schema xmlns:t="http://schemas.microsoft.com/exchange/services/2006/types"
xmlns:tns="http://schemas.microsoft.com/exchange/services/2006/types"
xmlns:xs="http://www.w3.org/2001/XMLSchema"
targetNamespace="http://schemas.microsoft.com/exchange/services/2006/types"
elementFormDefault="qualified" version="Exchange2010" id="types">
    <xs:import namespace="http://www.w3.org/XML/1998/namespace"/>
    <xs:include schemaLocation="MS-OXWSFOLD-types.xsd"/>
    <xs:complexType name="UserConfigurationNameType">
        <xs:complexContent>
            <xs:extension base="t:TargetFolderIdType">
                <xs:attribute name="Name" type="t:NonEmptyStringType" use="required"/>
            </xs:extension>
        </xs:complexContent>
    </xs:complexType>
    <xs:simpleType name="UserConfigurationDictionaryObjectTypesType">
        <xs:restriction base="xs:string">
            <xs:enumeration value="DateTime"/>
            <xs:enumeration value="Boolean"/>
            <xs:enumeration value="Byte"/>
            <xs:enumeration value="String"/>
            <xs:enumeration value="Integer32"/>
            <xs:enumeration value="UnsignedInteger32"/>
            <xs:enumeration value="Integer64"/>
            <xs:enumeration value="UnsignedInteger64"/>
            <xs:enumeration value="StringArray"/>
            <xs:enumeration value="ByteArray"/>
        </xs:restriction>
    </xs:simpleType>
    <xs:complexType name="UserConfigurationDictionaryObjectType">
        <xs:sequence>
            <xs:element name="Type" type="t:UserConfigurationDictionaryObjectTypesType"/>
            <xs:element name="Value" type="xs:string" maxOccurs="unbounded"/>
        </xs:sequence>
    </xs:complexType>
    <xs:complexType name="UserConfigurationDictionaryEntryType">
        <xs:sequence>

```

```

        <xs:element name="DictionaryKey"
type="t:UserConfigurationDictionaryObjectType"/>
        <xs:element name="DictionaryValue"
type="t:UserConfigurationDictionaryObjectType" nillable="true"/>
    </xs:sequence>
</xs:complexType>
<xs:complexType name="UserConfigurationDictionaryType">
    <xs:sequence>
        <xs:element name="DictionaryEntry"
type="t:UserConfigurationDictionaryEntryType" minOccurs="0" maxOccurs="unbounded"/>
    </xs:sequence>
</xs:complexType>
<xs:complexType name="UserConfigurationType">
    <xs:sequence>
        <xs:element name="UserConfigurationName" type="t:UserConfigurationNameType"/>
        <xs:element name="ItemId" type="t:ItemIdType" minOccurs="0"/>
        <xs:element name="Dictionary" type="t:UserConfigurationDictionaryType"
minOccurs="0"/>
        <xs:element name="XmlData" type="xs:base64Binary" minOccurs="0"/>
        <xs:element name="BinaryData" type="xs:base64Binary" minOccurs="0"/>
    </xs:sequence>
</xs:complexType>
<xs:simpleType name="UserConfigurationPropertyType">
    <xs:list>
        <xs:simpleType>
            <xs:restriction base="xs:string">
                <xs:enumeration value="Id"/>
                <xs:enumeration value="Dictionary"/>
                <xs:enumeration value="XmlData"/>
                <xs:enumeration value="BinaryData"/>
                <xs:enumeration value="All"/>
            </xs:restriction>
        </xs:simpleType>
    </xs:list>
</xs:simpleType>
</xs:schema>

```

8 Appendix C: Product Behavior

The information in this specification is applicable to the following Microsoft products or supplemental software. References to product versions include released service packs:

- Microsoft® Exchange Server 2010

Exceptions, if any, are noted below. If a service pack or Quick Fix Engineering (QFE) number appears with the product version, behavior changed in that service pack or QFE. The new behavior also applies to subsequent service packs of the product unless otherwise specified. If a product edition appears with the product version, behavior is different in that product edition.

Unless otherwise specified, any statement of optional behavior in this specification that is prescribed using the terms SHOULD or SHOULD NOT implies product behavior in accordance with the SHOULD or SHOULD NOT prescription. Unless otherwise specified, the term MAY implies that the product does not follow the prescription.

9 Change Tracking

This section identifies changes that were made to the [MS-OXWSUSRCFG] protocol document between the March 2011 and August 2011 releases. Changes are classified as New, Major, Minor, Editorial, or No change.

The revision class **New** means that a new document is being released.

The revision class **Major** means that the technical content in the document was significantly revised. Major changes affect protocol interoperability or implementation. Examples of major changes are:

- A document revision that incorporates changes to interoperability requirements or functionality.
- An extensive rewrite, addition, or deletion of major portions of content.
- The removal of a document from the documentation set.
- Changes made for template compliance.

The revision class **Minor** means that the meaning of the technical content was clarified. Minor changes do not affect protocol interoperability or implementation. Examples of minor changes are updates to clarify ambiguity at the sentence, paragraph, or table level.

The revision class **Editorial** means that the language and formatting in the technical content was changed. Editorial changes apply to grammatical, formatting, and style issues.

The revision class **No change** means that no new technical or language changes were introduced. The technical content of the document is identical to the last released version, but minor editorial and formatting changes, as well as updates to the header and footer information, and to the revision summary, may have been made.

Major and minor changes can be described further using the following change types:

- New content added.
- Content updated.
- Content removed.
- New product behavior note added.
- Product behavior note updated.
- Product behavior note removed.
- New protocol syntax added.
- Protocol syntax updated.
- Protocol syntax removed.
- New content added due to protocol revision.
- Content updated due to protocol revision.
- Content removed due to protocol revision.
- New protocol syntax added due to protocol revision.

- Protocol syntax updated due to protocol revision.
- Protocol syntax removed due to protocol revision.
- New content added for template compliance.
- Content updated for template compliance.
- Content removed for template compliance.
- Obsolete document removed.

Editorial changes are always classified with the change type **Editorially updated**.

Some important terms used in the change type descriptions are defined as follows:

- **Protocol syntax** refers to data elements (such as packets, structures, enumerations, and methods) as well as interfaces.
- **Protocol revision** refers to changes made to a protocol that affect the bits that are sent over the wire.

The changes made to this document are listed in the following table. For more information, please contact protocol@microsoft.com.

Section	Tracking number (if applicable) and description	Major change (Y or N)	Change type
1.3 Overview	Changed "folder associated items" to "folder associated information".	N	Content updated.
1.4 Relationship to Other Protocols	Replaced two layering diagrams with a single layering diagram. Also added reference information.	N	Content updated.
1.4 Relationship to Other Protocols	Added information about other protocols that are related to this protocol.	N	New content added.
1.5 Prerequisites/Preconditions	Added information about prerequisites.	N	New content added.
1.6 Applicability Statement	Changed "folder associated items" to "folder associated information".	N	Content updated.
1.7 Versioning and Capability Negotiation	Added information about protocol versions.	N	Content updated.
1.8 Vendor-Extensible Fields	Added information about extensible fields.	Y	New content added.
2.1 Transport	Added information about authentication.	Y	New content

Section	Tracking number (if applicable) and description	Major change (Y or N)	Change type
			added.
2.2.4 Complex Types	Added content.	Y	New content added.
2.2.4.1 t:UserConfigurationDictionaryEntryType Complex Type	Added reference to element types.	N	New content added.
2.2.4.2 t:UserConfigurationDictionaryObjectType Complex Type	Added reference to element types.	N	New content added.
2.2.4.3 t:UserConfigurationDictionaryType Complex Type	Added reference to element types.	N	New content added.
2.2.4.4 t:UserConfigurationNameType Complex Type	Added reference to attribute types.	N	New content added.
2.2.4.5 t:UserConfigurationType Complex Type	Added reference to element types.	N	Content updated.
2.2.5 Simple Types	Added content.	Y	New content added.
2.2.5.1 t:UserConfigurationDictionaryObjectTypesType Simple Type	Added content.	N	Content updated.
2.2.5.2 t:UserConfigurationPropertyType Simple Type	Added content.	N	Content updated.
2.2.9 Common Data Structures	Added section.	Y	New content added.
3.1.1 Abstract Data Model	Added information about the Abstract Data Model section.	N	Content updated.
3.1.4.1 CreateUserConfiguration	Rearranged the subsections of this section.	N	Content updated.
3.1.4.1 CreateUserConfiguration	Updated the CreateUserConfiguration section with the WSDL binding specification.	N	Content updated.
3.1.4.1.1.1 CreateUserConfigurationSoapIn	Added information about the CreateUserConfigurationSoapIn message.	Y	Content updated.
3.1.4.1.1.2	Added information about the CreateUserConfigurationSoapOut	Y	Content

Section	Tracking number (if applicable) and description	Major change (Y or N)	Change type
CreateUserConfigurationSoapOut	message.		updated.
3.1.4.1.1.2 CreateUserConfigurationSoapOut	Add table of complex type definitions.	N	New content added.
3.1.4.1.2 Elements	Added table of element definitions.	N	Content updated.
3.1.4.1.3 Complex Types	Added complex types definition.	N	New content added.
3.1.4.1.3.1 m:CreateUserConfigurationResponseType Complex Type	Added reference to extended base type.	N	New content added.
3.1.4.1.3.2 m:CreateUserConfigurationType Complex Type	Added reference to extended base type.	N	New content added.
3.1.4.2 DeleteUserConfiguration	Rearranged the subsections of this section..	N	Content updated.
3.1.4.2 DeleteUserConfiguration	Updated the DeleteUserConfiguration section with the WSDL binding specification.	N	Content updated.
3.1.4.2.1 Messages	Added table of SOAP messages.	N	Content updated.
3.1.4.2.1.1 DeleteUserConfigurationSoapIn	Updated the SOAP message specification.	Y	Content updated.
3.1.4.2.1.2 DeleteUserConfigurationSoapOut	Updated the SOAP message specification.	Y	Content updated.
3.1.4.2.2 Elements	Added table of elements.	N	New content added.
3.1.4.2.3 Complex Types	Added table of complex types.	N	New content added.
3.1.4.2.3.1 m>DeleteUserConfigurationResponseType Complex Type	Added reference to extended base type.	N	New content added.
3.1.4.2.3.2 m>DeleteUserConfigurationType Complex Type	Added reference to extended base type.	N	Content updated.
3.1.4.3 GetUserConfiguration	Rearranged the subsections of this section..	N	Content updated.

Section	Tracking number (if applicable) and description	Major change (Y or N)	Change type
3.1.4.3 GetUserConfiguration	Updated the GetUserConfiguration section with the WSDL binding specification.	N	Content updated.
3.1.4.3.1 Messages	Added table of WSDL messages.	N	Content updated.
3.1.4.3.1.1 GetUserConfigurationSoapIn	Updated the WSDL message specification.	N	Content updated.
3.1.4.3.1.2 GetUserConfigurationSoapOut	Updated the WSDL message specification.	N	Content updated.
3.1.4.3.2 Elements	Added table of elements.	N	Content updated.
3.1.4.3.3 Complex Types	Added table of complex types.	N	Content updated.
3.1.4.3.3.1 t:GetUserConfigurationResponseMessageType Complex Type	Added references to base types.	N	Content updated.
3.1.4.3.3.2 m:GetUserConfigurationResponseType Complex Type	Added information about extended base type.	N	Content updated.
3.1.4.3.3.3 m:GetUserConfigurationType Complex Type	Added information about extended base type.	N	Content updated.
3.1.4.4 UpdateUserConfiguration	Rearranged the subsections of this section.	N	Content updated.
3.1.4.4 UpdateUserConfiguration	Updated the DeleteUserConfiguration section with the WSDL binding specification.	N	Content updated.
3.1.4.4.1 Messages	Added table of SOAP messages.	N	Content updated.
3.1.4.4.1.1 UpdateUserConfigurationSoapIn	Updated the WSDL message specification.	Y	Content updated.
3.1.4.4.1.2 UpdateUserConfigurationSoapOut	Updated the WSDL message specification.	N	Content updated.
3.1.4.4.2 Elements	Added table of elements.	N	New content added.
3.1.4.4.3 Complex Types	Added table of complex types.	N	New content added.

Section	Tracking number (if applicable) and description	Major change (Y or N)	Change type
3.1.4.4.3.1 m:UpdateUserConfigurationResponseType Complex Type	Added reference to extended base type.	N	Content updated.
3.1.4.4.3.2 m:UpdateUserConfigurationType Complex Type	Added reference to extended base type.	N	Content updated.
5.1 Security Considerations for Implementers	Changed the text to "None".	N	Content updated.
6 Appendix A: Full WSDL	Added boilerplate content.	N	New content added.
6 Appendix A: Full WSDL	Moved WSDL content from section 6.1 to this section.	N	Content updated for template compliance.
7 Appendix B: Full XML Schema	Added new section.	N	New content added for template compliance.
7.1 Messages Schema	Added new section and moved content from section 6.2 to this section.	N	New content added for template compliance.
7.2 Types Schema	Added new section and moved content from section 6.3 to this section.	N	New content added for template compliance.
	Removed sections 6.1, 6.2, and 6.3.	N	Content removed for template compliance.

10 Index

A

Abstract data model
[client](#) 35
[server](#) 17
[Applicability](#) 9
[Attribute groups](#) 16
[Attributes](#) 16

C

[Capability negotiation](#) 9
[Change tracking](#) 47
Client
[abstract data model](#) 35
[initialization](#) 35
[local events](#) 35
[timer events](#) 35
[timers](#) 35
[Complex types](#) 10
[t:UserConfigurationDictionaryEntryType Complex Type](#) 11
[t:UserConfigurationDictionaryObjectType Complex Type](#) 11
[t:UserConfigurationDictionaryType Complex Type](#) 12
[t:UserConfigurationNameType Complex Type](#) 12
[t:UserConfigurationType Complex Type](#) 13

D

Data model - abstract
[client](#) 35
[server](#) 17

E

Events
[local - client](#) 35
[local - server](#) 35
[timer - client](#) 35
[timer - server](#) 35

F

[Fields - vendor-extensible](#) 9
[Full WSDL](#) 38

G

[Glossary](#) 6
[Groups](#) 16

I

[Implementer - security considerations](#) 37
[Index of security parameters](#) 37
[Informative references](#) 7

Initialization
[client](#) 35
[server](#) 17
[Introduction](#) 6

L

Local events
[client](#) 35
[server](#) 35

M

Message processing
[server](#) 17
Messages
[attribute groups](#) 16
[attributes](#) 16
[complex types](#) 10
[elements](#) 10
[enumerated](#) 10
[groups](#) 16
[namespaces](#) 10
[simple types](#) 14
[syntax](#) 10
[t:UserConfigurationDictionaryEntryType Complex Type complex type](#) 11
[t:UserConfigurationDictionaryObjectType Complex Type complex type](#) 11
[t:UserConfigurationDictionaryObjectTypesType Simple Type simple type](#) 14
[t:UserConfigurationDictionaryType Complex Type complex type](#) 12
[t:UserConfigurationNameType Complex Type complex type](#) 12
[t:UserConfigurationPropertyType Simple Type simple type](#) 15
[t:UserConfigurationType Complex Type complex type](#) 13
[transport](#) 10

N

[Namespaces](#) 10
[Normative references](#) 6

O

Operations
[CreateUserConfiguration](#) 18
[DeleteUserConfiguration](#) 22
[GetUserConfiguration](#) 26
[UpdateUserConfiguration](#) 31
[Overview \(synopsis\)](#) 7

P

[Parameters - security index](#) 37

[Preconditions](#) 9
[Prerequisites](#) 9
[Product behavior](#) 46

R

References
[informative](#) 7
[normative](#) 6
[Relationship to other protocols](#) 8

S

Security
[implementer considerations](#) 37
[parameter index](#) 37
Sequencing rules
[server](#) 17
Server
[abstract data model](#) 17
[CreateUserConfiguration operation](#) 18
[DeleteUserConfiguration operation](#) 22
[GetUserConfiguration operation](#) 26
[initialization](#) 17
[local events](#) 35
[message processing](#) 17
[sequencing rules](#) 17
[timer events](#) 35
[timers](#) 17
[UpdateUserConfiguration operation](#) 31
[Simple types](#) 14
[t:UserConfigurationDictionaryObjectTypesType Simple Type](#) 14
[t:UserConfigurationPropertyType Simple Type](#) 15
[Standards assignments](#) 9
Syntax
[messages - overview](#) 10

T

[t:UserConfigurationDictionaryEntryType Complex Type complex type](#) 11
[t:UserConfigurationDictionaryObjectType Complex Type complex type](#) 11
[t:UserConfigurationDictionaryObjectTypesType Simple Type simple type](#) 14
[t:UserConfigurationDictionaryType Complex Type complex type](#) 12
[t:UserConfigurationNameType Complex Type complex type](#) 12
[t:UserConfigurationPropertyType Simple Type simple type](#) 15
[t:UserConfigurationType Complex Type complex type](#) 13
Timer events
[client](#) 35
[server](#) 35
Timers
[client](#) 35
[server](#) 17
[Tracking changes](#) 47
[Transport](#) 10

Types
[complex](#) 10
[simple](#) 14

V

[Vendor-extensible fields](#) 9
[Versioning](#) 9

W

[WSDL](#) 38