

# [MS-OXWSPERS]: Persona Web Service Protocol

---

## Intellectual Property Rights Notice for Open Specifications Documentation

- **Technical Documentation.** Microsoft publishes Open Specifications documentation for protocols, file formats, languages, standards as well as overviews of the interaction among each of these technologies.
- **Copyrights.** This documentation is covered by Microsoft copyrights. Regardless of any other terms that are contained in the terms of use for the Microsoft website that hosts this documentation, you may make copies of it in order to develop implementations of the technologies described in the Open Specifications and may distribute portions of it in your implementations using these technologies or your documentation as necessary to properly document the implementation. You may also distribute in your implementation, with or without modification, any schema, IDL's, or code samples that are included in the documentation. This permission also applies to any documents that are referenced in the Open Specifications.
- **No Trade Secrets.** Microsoft does not claim any trade secret rights in this documentation.
- **Patents.** Microsoft has patents that may cover your implementations of the technologies described in the Open Specifications. Neither this notice nor Microsoft's delivery of the documentation grants any licenses under those or any other Microsoft patents. However, a given Open Specification may be covered by Microsoft [Open Specification Promise](#) or the [Community Promise](#). If you would prefer a written license, or if the technologies described in the Open Specifications are not covered by the Open Specifications Promise or Community Promise, as applicable, patent licenses are available by contacting [iplg@microsoft.com](mailto:iplg@microsoft.com).
- **Trademarks.** The names of companies and products contained in this documentation may be covered by trademarks or similar intellectual property rights. This notice does not grant any licenses under those rights. For a list of Microsoft trademarks, visit [www.microsoft.com/trademarks](http://www.microsoft.com/trademarks).
- **Fictitious Names.** The example companies, organizations, products, domain names, e-mail addresses, logos, people, places, and events depicted in this documentation are fictitious. No association with any real company, organization, product, domain name, email address, logo, person, place, or event is intended or should be inferred.

**Reservation of Rights.** All other rights are reserved, and this notice does not grant any rights other than specifically described above, whether by implication, estoppel, or otherwise.

**Tools.** The Open Specifications do not require the use of Microsoft programming tools or programming environments in order for you to develop an implementation. If you have access to Microsoft programming tools and environments you are free to take advantage of them. Certain Open Specifications are intended for use in conjunction with publicly available standard specifications and network programming art, and assumes that the reader either is familiar with the aforementioned material or has immediate access to it.

## Revision Summary

Date	Revision History	Revision Class	Comments
07/16/2012	0.1	New	Released new document.
10/08/2012	1.0	Major	Significantly changed the technical content.
02/11/2013	1.0	No change	No changes to the meaning, language, or formatting of the technical content.

# Table of Contents

<b>1 Introduction</b>	<b>6</b>
1.1 Glossary	6
1.2 References	6
1.2.1 Normative References	7
1.2.2 Informative References	7
1.3 Overview	8
1.4 Relationship to Other Protocols	8
1.5 Prerequisites/Preconditions	9
1.6 Applicability Statement	9
1.7 Versioning and Capability Negotiation	9
1.8 Vendor-Extensible Fields	9
1.9 Standards Assignments	9
<b>2 Messages</b>	<b>10</b>
2.1 Transport	10
2.2 Common Message Syntax	10
2.2.1 Namespaces	10
2.2.2 Messages	10
2.2.3 Elements	10
2.2.4 Complex Types	11
2.2.4.1 ArrayOfBodyContentAttributedValueType	13
2.2.4.2 ArrayOfEmailAddressAttributedValueType	13
2.2.4.3 ArrayOfExtendedPropertyAttributedValueType	13
2.2.4.4 ArrayOfFolderIdType	14
2.2.4.5 ArrayOfPersonaAttributionsType	14
2.2.4.6 ArrayOfPhoneNumberAttributedValueType	14
2.2.4.7 ArrayOfPostalAddressAttributedValueType	14
2.2.4.8 ArrayOfStringArrayAttributedValueType	15
2.2.4.9 ArrayOfStringAttributedValueType	15
2.2.4.10 ArrayOfStringValueType	15
2.2.4.11 ArrayOfValueAttributionsType	16
2.2.4.12 BodyContentAttributedValueType	16
2.2.4.13 BodyContentType	16
2.2.4.14 EmailAddressAttributedValueType	17
2.2.4.15 ExtendedPropertyAttributedValueType	17
2.2.4.16 PersonaAttributionType	18
2.2.4.17 PersonaPhoneNumberType	18
2.2.4.18 PersonaPostalAddressType	19
2.2.4.19 PersonaType	20
2.2.4.20 PhoneNumberAttributedValueType	28
2.2.4.21 PostalAddressAttributedValueType	29
2.2.4.22 StringArrayAttributedValueType	29
2.2.4.23 StringAttributedValueType	29
2.2.5 Simple Types	30
2.2.5.1 LocationSourceType	30
2.2.6 Attributes	31
2.2.7 Groups	31
2.2.8 Attribute Groups	31
<b>3 Protocol Details</b>	<b>32</b>

3.1 ExchangeServicePortType Server Details .....	32
3.1.1 Abstract Data Model .....	32
3.1.2 Timers .....	32
3.1.3 Initialization .....	32
3.1.4 Message Processing Events and Sequencing Rules .....	32
3.1.4.1 FindPeople .....	32
3.1.4.1.1 Messages .....	33
3.1.4.1.1.1 FindPeopleSoapIn .....	33
3.1.4.1.1.2 FindPeopleSoapOut .....	34
3.1.4.1.2 Elements .....	34
3.1.4.1.2.1 FindPeople .....	35
3.1.4.1.2.2 FindPeopleResponse .....	35
3.1.4.1.3 Complex Types .....	35
3.1.4.1.3.1 FindPeopleType .....	35
3.1.4.1.3.2 PersonaResponseShapeType .....	36
3.1.4.1.3.3 FindPeopleResponseMessageType .....	36
3.1.4.1.3.4 ArrayOfPeopleType .....	37
3.1.4.1.4 Simple Types .....	37
3.1.4.1.5 Attributes .....	37
3.1.4.1.6 Groups .....	37
3.1.4.1.7 Attribute Groups .....	37
3.1.4.2 GetPersona .....	38
3.1.4.2.1 Messages .....	38
3.1.4.2.1.1 GetPersonaSoapIn .....	38
3.1.4.2.1.2 GetPersonaSoapOut .....	39
3.1.4.2.2 Elements .....	40
3.1.4.2.2.1 GetPersona .....	40
3.1.4.2.2.2 GetPersonaResponseMessage .....	40
3.1.4.2.3 Complex Types .....	40
3.1.4.2.3.1 GetPersonaType .....	40
3.1.4.2.3.2 GetPersonaResponseMessageType .....	41
3.1.4.2.4 Simple Types .....	41
3.1.4.2.5 Attributes .....	41
3.1.4.2.6 Groups .....	41
3.1.4.2.7 Attribute Groups .....	41
3.1.5 Timer Events .....	41
3.1.6 Other Local Events .....	41
<b>4 Protocol Examples .....</b>	<b>42</b>
<b>5 Security .....</b>	<b>44</b>
5.1 Security Considerations for Implementers .....	44
5.2 Index of Security Parameters .....	44
<b>6 Appendix A: Full WSDL .....</b>	<b>45</b>
<b>7 Appendix B: Full XML Schema .....</b>	<b>47</b>
7.1 http://schemas.microsoft.com/exchange/services/2006/messages Schema .....	47
7.2 http://schemas.microsoft.com/exchange/services/2006/types Schema .....	48
<b>8 Appendix C: Product Behavior .....</b>	<b>55</b>
<b>9 Change Tracking .....</b>	<b>56</b>

**10 Index ..... 57**

# 1 Introduction

The Persona Web Service Protocol enables clients to use a **web service** to find and retrieve linked **contacts (3)**.

Sections 1.8, 2, and 3 of this specification are normative and can contain the terms MAY, SHOULD, MUST, MUST NOT, and SHOULD NOT as defined in RFC 2119. Sections 1.5 and 1.9 are also normative but cannot contain those terms. All other sections and examples in this specification are informative.

## 1.1 Glossary

The following terms are defined in [\[MS-GLOS\]](#):

**Hypertext Transfer Protocol (HTTP)**  
**Hypertext Transfer Protocol over Secure Sockets Layer (HTTPS)**

The following terms are defined in [\[MS-OXGLOS\]](#):

**contact**  
**Contacts folder**  
**distribution list**  
**email address**  
**endpoint**  
**Global Address List (GAL)**  
**instant messaging**  
**mailbox**  
**message body**  
**Simple Object Access Protocol (SOAP)**  
**SOAP action**  
**SOAP body**  
**SOAP header**  
**Uniform Resource Identifier (URI)**  
**web server**  
**web service**  
**Web Services Description Language (WSDL)**  
**WSDL message**  
**WSDL operation**  
**WSDL port type**  
**XML namespace**  
**XML namespace prefix**  
**XML schema**

The following terms are specific to this document:

**MAY, SHOULD, MUST, SHOULD NOT, MUST NOT:** These terms (in all caps) are used as described in [\[RFC2119\]](#). All statements of optional behavior use either MAY, SHOULD, or SHOULD NOT.

## 1.2 References

References to Microsoft Open Specifications documentation do not include a publishing year because links are to the latest version of the technical documents, which are updated frequently. References to other documents include a publishing year when one is available.

## 1.2.1 Normative References

We conduct frequent surveys of the normative references to assure their continued availability. If you have any issue with finding a normative reference, please contact [dochelp@microsoft.com](mailto:dochelp@microsoft.com). We will assist you in finding the relevant information. Please check the archive site, <http://msdn2.microsoft.com/en-us/library/E4BD6494-06AD-4aed-9823-445E921C9624>, as an additional source.

[MS-OXDCLI] Microsoft Corporation, "[Autodiscover Publishing and Lookup Protocol](#)".

[MS-OXWSADISC] Microsoft Corporation, "[Autodiscover Publishing and Lookup SOAP-Based Web Service Protocol](#)".

[MS-OXWSCDATA] Microsoft Corporation, "[Common Web Service Data Types](#)".

[MS-OXWSCORE] Microsoft Corporation, "[Core Items Web Service Protocol](#)".

[MS-OXWSFOLD] Microsoft Corporation, "[Folders and Folder Permissions Web Service Protocol](#)".

[MS-OXWSSRCH] Microsoft Corporation, "[Mailbox Search Web Service Protocol](#)".

[MS-OXWSXPROP] Microsoft Corporation, "[Extended Properties Structure](#)".

[RFC2119] Bradner, S., "Key words for use in RFCs to Indicate Requirement Levels", BCP 14, RFC 2119, March 1997, <http://www.rfc-editor.org/rfc/rfc2119.txt>

[RFC2616] Fielding, R., Gettys, J., Mogul, J., et al., "Hypertext Transfer Protocol -- HTTP/1.1", RFC 2616, June 1999, <http://www.ietf.org/rfc/rfc2616.txt>

[RFC2818] Rescorla, E., "HTTP Over TLS", RFC 2818, May 2000, <http://www.ietf.org/rfc/rfc2818.txt>

[SOAP1.1] Box, D., Ehnebuske, D., Kakivaya, G., et al., "Simple Object Access Protocol (SOAP) 1.1", May 2000, <http://www.w3.org/TR/2000/NOTE-SOAP-20000508/>

[WSDL] Christensen, E., Curbera, F., Meredith, G., and Weerawarana, S., "Web Services Description Language (WSDL) 1.1", W3C Note, March 2001, <http://www.w3.org/TR/2001/NOTE-wsdl-20010315>

[WSIBASIC] Ballinger, K., Ehnebuske, D., Gudgin, M., et al., Eds., "Basic Profile Version 1.0", Final Material, April 2004, <http://www.ws-i.org/Profiles/BasicProfile-1.0-2004-04-16.html>

[XMLNS] Bray, T., Hollander, D., Layman, A., et al., Eds., "Namespaces in XML 1.0 (Third Edition)", W3C Recommendation, December 2009, <http://www.w3.org/TR/2009/REC-xml-names-20091208/>

[XMLSCHEMA1] Thompson, H.S., Beech, D., Maloney, M., Eds., and Mendelsohn, N., Ed., "XML Schema Part 1: Structures", W3C Recommendation, May 2001, <http://www.w3.org/TR/2001/REC-xmlschema-1-20010502/>

[XMLSCHEMA2] Biron, P.V., and Malhotra, A., Eds., "XML Schema Part 2: Datatypes", W3C Recommendation, May 2001, <http://www.w3.org/TR/2001/REC-xmlschema-2-20010502/>

## 1.2.2 Informative References

[MS-GLOS] Microsoft Corporation, "[Windows Protocols Master Glossary](#)".

[MS-OXGLOS] Microsoft Corporation, "[Exchange Server Protocols Master Glossary](#)".

[MS-OXPROTO] Microsoft Corporation, "[Exchange Server Protocols System Overview](#)".

[MS-OXWSCOS] Microsoft Corporation, "[Unified Contact Store Web Service Protocol](#)".

[MS-OXWSMTGS] Microsoft Corporation, "[Calendaring Web Service Protocol](#)".

### 1.3 Overview

The Persona Web Service Protocol enables clients to link, search, browse, and retrieve information about a person from multiple sources and organize that information into a single logical entity called a persona.

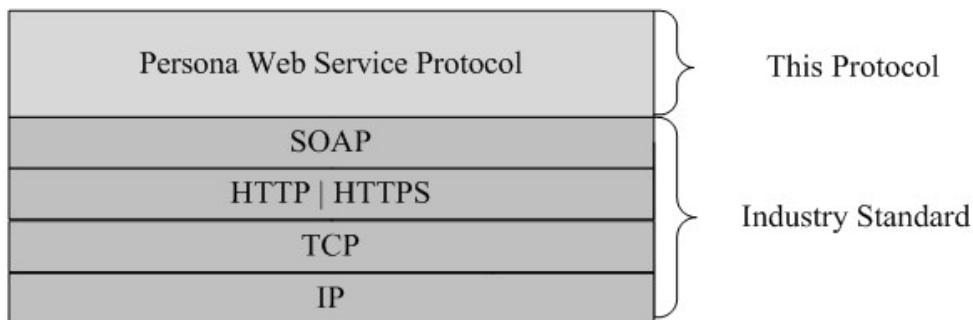
Personas differ from contacts (3) in that a contact (3) is a collection of data from a single source that is associated with an individual, whereas a persona is a collection of integrated data from various sources.

### 1.4 Relationship to Other Protocols

A client that implements this protocol can use the Autodiscover Publishing and Lookup SOAP-Based Web Service Protocol, as described in [\[MS-OXWSADISC\]](#), or the Autodiscover Publishing and Lookup Protocol, as described in [\[MS-OXDSCLI\]](#), to identify the target **endpoint (4)** to use for each operation.

This protocol uses **SOAP**, as described in [\[SOAP1.1\]](#), to specify the structure information that is exchanged between the client and the server. This protocol uses the **XML schema**, as described in [\[XMLSCHEMA1\]](#) and [\[XMLSCHEMA2\]](#), to describe the message content that is sent to and from the server.

This protocol uses SOAP over **HTTP**, as described in [\[RFC2616\]](#), and SOAP over **HTTPS**, as described in [\[RFC2818\]](#), as shown in the following layering diagram.



**Figure 1: This protocol in relation to other protocols**

The following protocols use the persona information provided by the common types defined in section [2.2.4.1](#) through section [2.2.5.1](#):

- Calendaring Web Service Protocol, as described in [\[MS-OXWSMTGS\]](#)
- Unified Contact Store Web Service Protocol, as described in [\[MS-OXWSCOS\]](#)

For conceptual background information and overviews of the relationships and interactions between this and other protocols, see [\[MS-OXPROTO\]](#).



## 1.5 Prerequisites/Preconditions

The operations that this protocol defines cannot be accessed unless the correct endpoint (4) is identified in the HTTP web requests that target this protocol. This endpoint(4) URL is returned by either the Autodiscover Publishing Lookup SOAP-Based Web Service Protocol, as specified in [\[MS-OXWSADISC\]](#), or the Autodiscover Publishing and Lookup Protocol, as specified in [\[MS-OXDSCLI\]](#).

## 1.6 Applicability Statement

This protocol is applicable to environments that use web services to implement personas. This protocol is applicable to all SOAP-based clients, as described in [\[SOAP1.1\]](#).

## 1.7 Versioning and Capability Negotiation

This document covers versioning issues in the following areas:

- **Supported Transports:** This protocol uses SOAP 1.1, as described in section [2.1](#).
- **Protocol Versions:** This protocol describes only one **WSDL port type** version. The **RequestServerVersion** element, as described in [\[MS-OXWSCDATA\]](#) section 2.2.5.9, identifies the WSDL port type version. The **ServerVersionInfo** element, as described in [\[MS-OXWSCDATA\]](#) section 2.2.5.10, identifies the version of the server responding to the request.
- **Security and Authentication Methods:** This protocol relies on the **web server** that is hosting it to perform authentication.
- **Localization:** This protocol includes date/time formats in the **PersonaType** complex type, as described in section [2.2.4.19](#).
- **Capability Negotiation:** This protocol does not support version negotiation.

## 1.8 Vendor-Extensible Fields

None.

## 1.9 Standards Assignments

None.

## 2 Messages

In the following sections, the schema definition might differ from the processing rules imposed by the protocol. The **Web Services Description Language (WSDL)** in this specification provides a base description of the protocol. The schema in this specification provides a base description of the message syntax. The text that specifies the WSDL and schema might specify restrictions that reflect actual protocol behavior. For example, the schema definition might allow for an element to be empty, null, or not present but the behavior of the protocol as specified restricts the same elements to being non-empty, not null, or present.

### 2.1 Transport

This protocol uses SOAP 1.1, as specified in [\[SOAP1.1\]](#).

This protocol **MUST** support SOAP over HTTP, as specified in [\[RFC2616\]](#). The protocol **SHOULD** use secure communications by means of HTTPS, as specified in [\[RFC2818\]](#).

### 2.2 Common Message Syntax

This section contains common definitions that are used by this protocol. The syntax of the definitions uses XML schema, as specified in [\[XMLSCHEMA1\]](#) and [\[XMLSCHEMA2\]](#), and WSDL, as specified in [\[WSDL\]](#).

#### 2.2.1 Namespaces

This specification defines and references various **XML namespaces** using the mechanisms specified in [\[XMLNS\]](#). Although this specification associates a specific **XML namespace prefix** for each XML namespace that is used, the choice of any particular XML namespace prefix is implementation-specific and not significant for interoperability.

Prefix	Namespace URI	Reference
m	<a href="http://schemas.microsoft.com/exchange/services/2006/messages">http://schemas.microsoft.com/exchange/services/2006/messages</a>	
soap	<a href="http://schemas.xmlsoap.org/wsdl/soap/">http://schemas.xmlsoap.org/wsdl/soap/</a>	<a href="#">[SOAP1.1]</a>
t	<a href="http://schemas.microsoft.com/exchange/services/2006/types">http://schemas.microsoft.com/exchange/services/2006/types</a>	
wsdl	<a href="http://schemas.xmlsoap.org/wsdl/">http://schemas.xmlsoap.org/wsdl/</a>	<a href="#">[WSDL]</a>
wsi	<a href="http://ws-i.org/schemas/conformanceClaim/">http://ws-i.org/schemas/conformanceClaim/</a>	<a href="#">[WSIBASIC]</a>
xs	<a href="http://www.w3.org/2001/XMLSchema">http://www.w3.org/2001/XMLSchema</a>	<a href="#">[XMLSCHEMA1]</a> <a href="#">[XMLSCHEMA2]</a>

#### 2.2.2 Messages

This specification does not define any common **WSDL message** definitions.

#### 2.2.3 Elements

This specification does not define any common XML schema element definitions.

## 2.2.4 Complex Types

The following table summarizes the set of common XML schema complex type definitions defined by this specification. XML schema complex type definitions that are specific to a particular operation are described with the operation.

Complex type	Description
<b>ArrayOfBodyContentAttributedValuesType</b>	The <b>ArrayOfBodyContentAttributedValuesType</b> complex type specifies an array of <b>BodyContentAttributedValue</b> elements.
<b>ArrayOfEmailAddressAttributedValuesType</b>	The <b>ArrayOfEmailAddressAttributedValuesType</b> complex type specifies an array of <b>EmailAddressAttributedValue</b> elements.
<b>ArrayOfExtendedPropertyAttributedValueType</b>	The <b>ArrayOfExtendedPropertyAttributedValueType</b> complex type specifies an array of <b>ExtendedPropertyAttributedValue</b> elements.
<b>ArrayOfFolderIdType</b>	The <b>ArrayOfFolderIdType</b> complex type specifies an array of <b>FolderId</b> elements.
<b>ArrayOfPersonaAttributionsType</b>	The <b>ArrayOfPersonaAttributionsType</b> complex type specifies an array of persona attributions.
<b>ArrayOfPhoneNumberAttributedValuesType</b>	The <b>ArrayOfPhoneNumberAttributedValuesType</b> complex type specifies an array of <b>PhoneNumberAttributedValue</b> elements.
<b>ArrayOfPostalAddressAttributedValuesType</b>	The <b>ArrayOfPostalAddressAttributedValuesType</b> complex type specifies an array of <b>PostalAddressAttributedValue</b> elements.
<b>ArrayOfStringArrayAttributedValuesType</b>	The <b>ArrayOfStringArrayAttributedValuesType</b> complex type specifies an array of <b>StringArrayAttributedValue</b> elements.
<b>ArrayOfStringAttributedValuesType</b>	The <b>ArrayOfStringAttributedValuesType</b> complex type specifies an array of <b>StringAttributedValue</b> elements.
<b>ArrayOfStringValueType</b>	The <b>ArrayOfStringValueType</b> complex type specifies an array of strings.
<b>ArrayOfValueAttributionsType</b>	The <b>ArrayOfValueAttributionsType</b> complex type specifies an array of strings, where each string matches one of the identifier values of the attributions of a persona.
<b>BodyContentAttributedValueType</b>	The <b>BodyContentAttributedValueType</b> complex type specifies the attributions of the body content of an item.
<b>BodyContentType</b>	The <b>BodyContentType</b> complex type specifies the body content and format of an item.

Complex type	Description
<b>EmailAddressAttributedValueType</b>	The <b>EmailAddressAttributedValueType</b> complex type specifies an <b>EmailAddressType</b> element, as specified in <a href="#">[MS-OXWSCDATA]</a> section 2.2.4.27, and an <b>ArrayOfValueAttributionsType</b> complex type, as specified in section <a href="#">2.2.4.11</a> , pair. This complex type represents an <b>email address</b> paired with a list of the attributions for the email address.
<b>ExtendedPropertyAttributedValueType</b>	The <b>ExtendedPropertyAttributedValueType</b> complex type specifies arrays of extended properties and attributions for a persona.
<b>PersonaAttributionType</b>	The <b>PersonaAttributionType</b> complex type specifies the type of one attribution of the persona, which represents information about one of the underlying contacts (3) or directory service recipients aggregated into the persona.
<b>PersonaPhoneNumberType</b>	The <b>PersonaPhoneNumberType</b> complex type specifies a phone number of for a <b>PersonaType</b> complex type, as specified in section <a href="#">2.2.4.19</a> .
<b>PersonaPostalAddressType</b>	The <b>PersonaPostalAddressType</b> complex type specifies a postal address for a <b>PersonaType</b> complex type, as specified in section <a href="#">2.2.4.19</a> .
<b>PersonaType</b>	The <b>PersonaType</b> complex type specifies the type of a persona.
<b>PhoneNumberAttributedValueType</b>	The <b>PhoneNumberAttributedValueType</b> complex type specifies a <b>PersonaPhoneNumberType</b> , as defined in section <a href="#">2.2.4.17</a> , and <b>ArrayOfValueAttributionsType</b> , as defined in section <a href="#">2.2.4.11</a> , complex type pair. This complex type represents a phone number for a persona, paired with a list of the attributions for the phone number.
<b>PostalAddressAttributedValueType</b>	The <b>PostalAddressAttributedValueType</b> complex type specifies a pair of <b>PersonaPostalAddressType</b> , as defined in section <a href="#">2.2.4.18</a> , and <b>ArrayOfValueAttributionsType</b> , as defined in section <a href="#">2.2.4.11</a> , complex types. This complex type specifies a postal address for a persona, paired with a list of the attributions for that address.
<b>StringArrayAttributedValueType</b>	The <b>StringArrayAttributedValueType</b> complex type specifies an <b>ArrayOfStringValueType</b> , as defined in section <a href="#">2.2.4.10</a> , and an <b>ArrayOfValueAttributionsType</b> , as defined in section <a href="#">2.2.4.11</a> , complex type pair.
<b>StringAttributedValueType</b>	The <b>StringAttributedValueType</b> complex type encapsulates a string value and multiple attributions for the value.

### 2.2.4.1 ArrayOfBodyContentAttributedValuesType

**Namespace:** <http://schemas.microsoft.com/exchange/services/2006/types>

The **ArrayOfBodyContentAttributedValuesType** complex type specifies an array of **BodyContentAttributedValue** elements.

```
<xs:complexType name="ArrayOfBodyContentAttributedValuesType"
xmlns:xs="http://www.w3.org/2001/XMLSchema">
  <xs:sequence>
    <xs:element minOccurs="0" maxOccurs="unbounded" name="BodyContentAttributedValue"
type="t:BodyContentAttributedValueType"/>
  </xs:sequence>
</xs:complexType>
```

**BodyContentAttributedValue:** An element of type **BodyContentAttributedValueType**, as defined in section [2.2.4.12](#), that represents the source of the **message body (2)**.

### 2.2.4.2 ArrayOfEmailAddressAttributedValuesType

**Namespace:** <http://schemas.microsoft.com/exchange/services/2006/types>

The **ArrayOfEmailAddressAttributedValuesType** complex type specifies an array of **EmailAddressAttributedValue** elements.

```
<xs:complexType name="ArrayOfEmailAddressAttributedValuesType"
xmlns:xs="http://www.w3.org/2001/XMLSchema">
  <xs:sequence>
    <xs:element minOccurs="0" maxOccurs="unbounded" name="EmailAddressAttributedValue"
type="t:EmailAddressAttributedValueType"/>
  </xs:sequence>
</xs:complexType>
```

**EmailAddressAttributedValue:** An element of type **EmailAddressAttributedValueType**, as defined in section [2.2.4.14](#), that represents the email address of a persona.

### 2.2.4.3 ArrayOfExtendedPropertyAttributedValueType

**Namespace:** <http://schemas.microsoft.com/exchange/services/2006/types>

The **ArrayOfExtendedPropertyAttributedValueType** complex type specifies an array of **ExtendedPropertyAttributedValue** elements.

```
<xs:complexType name="ArrayOfExtendedPropertyAttributedValueType"
xmlns:xs="http://www.w3.org/2001/XMLSchema">
  <xs:sequence>
    <xs:element minOccurs="0" maxOccurs="unbounded" name="ExtendedPropertyAttributedValue"
type="t:ExtendedPropertyAttributedValueType"/>
  </xs:sequence>
</xs:complexType>
```

**ExtendedPropertyAttributedValue:** An element of type **ExtendedPropertyAttributedValueType**, as defined in section [2.2.4.15](#), that represents extended properties for a persona.

#### 2.2.4.4 ArrayOfFolderIdType

**Namespace:** http://schemas.microsoft.com/exchange/services/2006/types

The **ArrayOfFolderIdType** complex type specifies an array of **FolderId** elements.

```
<xs:complexType name="ArrayOfFolderIdType" xmlns:xs="http://www.w3.org/2001/XMLSchema">
  <xs:choice minOccurs="0" maxOccurs="unbounded">
    <xs:element name="FolderId" type="t:FolderIdType"/>
  </xs:choice>
</xs:complexType>
```

**FolderId:** An element of type **FolderIdType**, as defined in [\[MS-OXWSCDATA\]](#) section 2.2.4.31, that represents the identifier of a folder.

#### 2.2.4.5 ArrayOfPersonaAttributionsType

**Namespace:** http://schemas.microsoft.com/exchange/services/2006/types

The **ArrayOfPersonaAttributionsType** complex type specifies an array of persona attributions.

```
<xs:complexType name="ArrayOfPersonaAttributionsType"
xmlns:xs="http://www.w3.org/2001/XMLSchema">
  <xs:sequence>
    <xs:element minOccurs="1" maxOccurs="unbounded" name="Attribution"
type="t:PersonaAttributionType"/>
  </xs:sequence>
</xs:complexType>
```

**Attribution:** An element of type **PersonaAttributionType**, as defined in section [2.2.4.16](#), that represents a set of attributes for a **PersonaType** complex type.

#### 2.2.4.6 ArrayOfPhoneNumberAttributedValuesType

**Namespace:** http://schemas.microsoft.com/exchange/services/2006/types

The **ArrayOfPhoneNumberAttributedValuesType** complex type specifies an array of **PhoneNumberAttributedValue** elements.

```
<xs:complexType name="ArrayOfPhoneNumberAttributedValuesType"
xmlns:xs="http://www.w3.org/2001/XMLSchema">
  <xs:sequence>
    <xs:element minOccurs="0" maxOccurs="unbounded" name="PhoneNumberAttributedValue"
type="t:PhoneNumberAttributedValueType"/>
  </xs:sequence>
</xs:complexType>
```

**PhoneNumberAttributedValue:** An element of type **PhoneNumberAttributedValueType**, as defined in section [2.2.4.20](#), that represents an array of phone numbers and their associated attributions.

#### 2.2.4.7 ArrayOfPostalAddressAttributedValuesType

**Namespace:** http://schemas.microsoft.com/exchange/services/2006/types

The **ArrayOfPostalAddressAttributedValuesType** complex type specifies an array of **PostalAddressAttributedValue** elements.

```
<xs:complexType name="ArrayOfPostalAddressAttributedValuesType"
  xmlns:xs="http://www.w3.org/2001/XMLSchema">
  <xs:sequence>
    <xs:element minOccurs="0" maxOccurs="unbounded" name="PostalAddressAttributedValue"
      type="t:PostalAddressAttributedValueType"/>
  </xs:sequence>
</xs:complexType>
```

**PostalAddressAttributedValue:** An element of type **PostalAddressAttributedValueType**, as defined in section [2.2.4.21](#), that represents an array of postal addresses and their associated attributions.

#### 2.2.4.8 ArrayOfStringArrayAttributedValuesType

**Namespace:** <http://schemas.microsoft.com/exchange/services/2006/types>

The **ArrayOfStringArrayAttributedValuesType** complex type specifies an array of **StringArrayAttributedValue** elements.

```
<xs:complexType name="ArrayOfStringArrayAttributedValuesType"
  xmlns:xs="http://www.w3.org/2001/XMLSchema">
  <xs:sequence>
    <xs:element minOccurs="0" maxOccurs="unbounded" name="StringArrayAttributedValue"
      type="t:StringArrayAttributedValueType"/>
  </xs:sequence>
</xs:complexType>
```

**StringArrayAttributedValue:** An element of type **StringArrayAttributedValueType**, as defined in section [2.2.4.22](#), that represents an array of string data for a persona.

#### 2.2.4.9 ArrayOfStringAttributedValuesType

**Namespace:** <http://schemas.microsoft.com/exchange/services/2006/types>

The **ArrayOfStringAttributedValuesType** complex type specifies an array of **StringAttributedValue** elements.

```
<xs:complexType name="ArrayOfStringAttributedValuesType"
  xmlns:xs="http://www.w3.org/2001/XMLSchema">
  <xs:sequence>
    <xs:element minOccurs="0" maxOccurs="unbounded" name="StringAttributedValue"
      type="t:StringAttributedValueType"/>
  </xs:sequence>
</xs:complexType>
```

**StringAttributedValue:** An element of type **StringAttributedValueType**, as defined in section [2.2.4.23](#), that represents an array of attributes associated with a persona.

#### 2.2.4.10 ArrayOfStringValueType

**Namespace:** <http://schemas.microsoft.com/exchange/services/2006/types>

The **ArrayOfStringValue** complex type specifies an array of strings.

```
<xs:complexType name="ArrayOfStringValue" xmlns:xs="http://www.w3.org/2001/XMLSchema">
  <xs:sequence>
    <xs:element minOccurs="1" maxOccurs="unbounded" name="Value" type="xs:string"/>
  </xs:sequence>
</xs:complexType>
```

**Value:** An element of type **string**, as defined in [\[XMLSCHEMA2\]](#), that represents attributions data.

#### 2.2.4.11 ArrayOfValueAttributionsType

**Namespace:** <http://schemas.microsoft.com/exchange/services/2006/types>

The **ArrayOfValueAttributionsType** complex type specifies an array of strings, where each string matches one of the identifier values of the attributions of a persona.

```
<xs:complexType name="ArrayOfValueAttributionsType"
xmlns:xs="http://www.w3.org/2001/XMLSchema">
  <xs:sequence>
    <xs:element minOccurs="1" maxOccurs="unbounded" name="Attribution" type="xs:string"/>
  </xs:sequence>
</xs:complexType>
```

**Attribution:** An element of type **string**, as defined in [\[XMLSCHEMA2\]](#), that identifies an attribution for a persona.

#### 2.2.4.12 BodyContentAttributedValueType

**Namespace:** <http://schemas.microsoft.com/exchange/services/2006/types>

The **BodyContentAttributedValueType** complex type specifies the attributions of the body content of an item.

```
<xs:complexType name="BodyContentAttributedValueType"
xmlns:xs="http://www.w3.org/2001/XMLSchema">
  <xs:sequence>
    <xs:element minOccurs="1" maxOccurs="1" name="Value" type="t:BodyContentType"/>
    <xs:element minOccurs="1" maxOccurs="1" name="Attributions"
type="t:ArrayOfValueAttributionsType"/>
  </xs:sequence>
</xs:complexType>
```

**Value:** An element of type **BodyContentType**, as defined in section [2.2.4.13](#), that specifies the body content.

**Attributions:** An element of type **ArrayOfValueAttributionsType**, as defined in section [2.2.4.11](#), that represents an array of attribution identifiers that are associated with the body content.

#### 2.2.4.13 BodyContentType

**Namespace:** <http://schemas.microsoft.com/exchange/services/2006/types>

The **BodyContentType** complex type specifies the body content and format of an item.



```

<xs:complexType name="BodyContentType" xmlns:xs="http://www.w3.org/2001/XMLSchema">
  <xs:sequence>
    <xs:element minOccurs="1" maxOccurs="1" name="Value" type="xs:string"/>
    <xs:element minOccurs="1" maxOccurs="1" name="BodyType" type="t:BodyTypeType"/>
  </xs:sequence>
</xs:complexType>

```

**Value:** An element of type **string**, as defined in [\[XMLSCHEMA2\]](#), that specifies the value of the message body (2).

**BodyType:** An element of type **BodyTypeType**, as defined in [\[MS-OXWSCDATA\]](#) section 2.2.3.2, that specifies the type of the text of the message body (2).

#### 2.2.4.14 EmailAddressAttributedValueType

**Namespace:** <http://schemas.microsoft.com/exchange/services/2006/types>

The **EmailAddressAttributedValueType** complex type specifies an **EmailAddressType** element, as specified in [\[MS-OXWSCDATA\]](#) section 2.2.4.27, and an **ArrayOfValueAttributionsType** complex type, as specified in section [2.2.4.11](#), pair. This complex type represents an email address paired with a list of the attributions for the email address.

```

<xs:complexType name="EmailAddressAttributedValueType"
xmlns:xs="http://www.w3.org/2001/XMLSchema">
  <xs:sequence>
    <xs:element minOccurs="1" maxOccurs="1" name="Value" type="t:EmailAddressType"/>
    <xs:element minOccurs="1" maxOccurs="1" name="Attributions"
type="t:ArrayOfValueAttributionsType"/>
  </xs:sequence>
</xs:complexType>

```

**Value:** An element of type **EmailAddressType**, as defined in [\[MS-OXWSCDATA\]](#) section 2.2.4.27, that represents an email address.

**Attributions:** An element of type **ArrayOfValueAttributionsType**, as defined in section [2.2.4.11](#), that represents an array of attribution identifiers that are associated with an email address.

#### 2.2.4.15 ExtendedPropertyAttributedValueType

**Namespace:** <http://schemas.microsoft.com/exchange/services/2006/types>

The **ExtendedPropertyAttributedValueType** complex type specifies arrays of extended properties and attributions for a persona.

```

<xs:complexType name="ExtendedPropertyAttributedValueType"
xmlns:xs="http://www.w3.org/2001/XMLSchema">
  <xs:sequence>
    <xs:element minOccurs="1" maxOccurs="1" name="Value" type="t:ExtendedPropertyType"/>
    <xs:element minOccurs="1" maxOccurs="1" name="Attributions"
type="t:ArrayOfValueAttributionsType"/>
  </xs:sequence>
</xs:complexType>

```

**Value:** An element of type **ExtendedPropertyType**, as defined in [\[MS-OXWSXPROP\]](#) section 2.1.5, that contains an array of extended properties for a persona.

**Attributions:** An element of type **ArrayOfValueAttributionsType**, as defined in section [2.2.4.11](#), that represents an array that contains a set of attributions for its associated **Value** element.

### 2.2.4.16 PersonaAttributionType

**Namespace:** <http://schemas.microsoft.com/exchange/services/2006/types>

The **PersonaAttributionType** complex type specifies the type of one attribution of the persona, which represents information about one of the underlying contacts (3) or directory service recipients aggregated into the persona.

```
<xs:complexType name="PersonaAttributionType" xmlns:xs="http://www.w3.org/2001/XMLSchema">
  <xs:sequence>
    <xs:element minOccurs="1" maxOccurs="1" name="Id" type="xs:string"/>
    <xs:element minOccurs="1" maxOccurs="1" name="SourceId" type="t:ItemIdType"/>
    <xs:element minOccurs="1" maxOccurs="1" name="DisplayName" type="xs:string"/>
    <xs:element minOccurs="0" maxOccurs="1" name="IsWritable" type="xs:boolean"/>
    <xs:element minOccurs="0" maxOccurs="1" name="IsQuickContact" type="xs:boolean"/>
    <xs:element minOccurs="0" maxOccurs="1" name="IsHidden" type="xs:boolean"/>
    <xs:element minOccurs="0" maxOccurs="1" name="FolderId" type="t:FolderIdType"/>
  </xs:sequence>
</xs:complexType>
```

**Id:** An element of type **string**, as defined in [\[XMLSCHEMA2\]](#), that identifies this attribution within the persona.

**SourceId:** An element of type **ItemIdType**, as defined in [\[MS-OXWSCORE\]](#) section 2.2.4.19, that represents the identifier of the contact (3) or directory service recipient.

**DisplayName:** An element of type **string** that contains the name for this attribution that is suitable for display.

**IsWritable:** An element of type **boolean**, as defined in [\[XMLSCHEMA2\]](#), that indicates whether the underlying contact or directory service recipient can be written to.

**IsQuickContact:** An element of type **boolean** that indicates whether the underlying contact or directory service recipient is a quick contact.

**IsHidden:** An element of type **boolean** that indicates whether the underlying contact or directory service recipient is displayed as part of the persona.

**FolderId:** An element of type **FolderIdType**, as defined in [\[MS-OXWSCDATA\]](#) section 2.2.4.31, that represents the identifier of the folder for the underlying contact (3).

### 2.2.4.17 PersonaPhoneNumberType

**Namespace:** <http://schemas.microsoft.com/exchange/services/2006/types>

The **PersonaPhoneNumberType** complex type specifies a phone number of for a **PersonaType** complex type, as specified in section [2.2.4.19](#).

```
<xs:complexType name="PersonaPhoneNumberType" xmlns:xs="http://www.w3.org/2001/XMLSchema">
  <xs:sequence>
```

```

    <xs:element minOccurs="1" maxOccurs="1" name="Number" type="xs:string"/>
    <xs:element minOccurs="1" maxOccurs="1" name="Type" type="xs:string"/>
  </xs:sequence>
</xs:complexType>

```

**Number:** An element of type **string**, as defined in [\[XMLSCHEMA2\]](#), that contains a phone number.

**Type:** An element of type **string** that specifies the type of phone number (for example, Mobile, Business, or Home) of an associated **Number** element value.

#### 2.2.4.18 PersonaPostalAddressType

**Namespace:** <http://schemas.microsoft.com/exchange/services/2006/types>

The **PersonaPostalAddressType** complex type specifies a postal address for a **PersonaType** complex type, as specified in section [2.2.4.19](#).

```

<xs:complexType name="PersonaPostalAddressType" xmlns:xs="http://www.w3.org/2001/XMLSchema">
  <xs:sequence>
    <xs:element minOccurs="0" maxOccurs="1" name="Street" type="xs:string"/>
    <xs:element minOccurs="0" maxOccurs="1" name="City" type="xs:string"/>
    <xs:element minOccurs="0" maxOccurs="1" name="State" type="xs:string"/>
    <xs:element minOccurs="0" maxOccurs="1" name="Country" type="xs:string"/>
    <xs:element minOccurs="0" maxOccurs="1" name="PostalCode" type="xs:string"/>
    <xs:element minOccurs="0" maxOccurs="1" name="PostOfficeBox" type="xs:string"/>
    <xs:element minOccurs="0" maxOccurs="1" name="Type" type="xs:string"/>
    <xs:element minOccurs="0" maxOccurs="1" name="Latitude" type="xs:double"/>
    <xs:element minOccurs="0" maxOccurs="1" name="Longitude" type="xs:double"/>
    <xs:element minOccurs="0" maxOccurs="1" name="Accuracy" type="xs:double"/>
    <xs:element minOccurs="0" maxOccurs="1" name="Altitude" type="xs:double"/>
    <xs:element minOccurs="0" maxOccurs="1" name="AltitudeAccuracy" type="xs:double"/>
    <xs:element minOccurs="0" maxOccurs="1" name="FormattedAddress" type="xs:string"/>
    <xs:element minOccurs="0" maxOccurs="1" name="LocationUri" type="xs:string"/>
    <xs:element minOccurs="0" maxOccurs="1" name="LocationSource"
      type="t:LocationSourceType"/>
  </xs:sequence>
</xs:complexType>

```

**Street:** An element of type **string**, as defined in [\[XMLSCHEMA2\]](#), that represents the street portion of a postal address.

**City:** An element of type **string** that represents the city portion of a postal address.

**State:** An element of type **string** that represents the state portion of a postal address.

**Country:** An element of type **string** that represents the country/region portion of a postal address.

**PostalCode:** An element of type **string** that represents the postal code portion of a postal address.

**PostOfficeBox:** An element of type **string** that represents the post office box portion of a postal address.

**Type:** An element of type **string** that specifies the type of postal address; for example, Home or Business.

**Latitude:** An element of type **double**, as defined in [\[XMLSCHEMA2\]](#), that represents the latitude of the location of the associated postal address.

**Longitude:** An element of type **double** that represents the longitude of the location of the associated postal address.

**Accuracy:** An element of type **double** that represents the accuracy of the latitude and longitude of the associated postal address.

**Altitude:** An element of type **double** that represents the altitude of the associated postal address.

**AltitudeAccuracy:** An element of type **double** that represents the accuracy of the altitude of the associated postal address.

**FormattedAddress:** An element of type **string** that specifies the formatted display value of the associated postal address.

**LocationUri:** An element of type **string** that specifies a **URI**, for example for an Internet address, of the associated postal address.

**LocationSource:** An element of type **LocationSourceType**, as defined in section [2.2.5.1](#), that contains information about the origin of the associated postal address; for example, a contact (3) or a telephone book.

### 2.2.4.19 PersonaType

**Namespace:** <http://schemas.microsoft.com/exchange/services/2006/types>

The **PersonaType** complex type specifies the type of a persona.

```
<xs:complexType name="PersonaType" xmlns:xs="http://www.w3.org/2001/XMLSchema">
  <xs:sequence>
    <xs:element minOccurs="1" maxOccurs="1" name="PersonaId" type="t:ItemIdType"/>
    <xs:element minOccurs="0" maxOccurs="1" name="PersonaType" type="xs:string"/>
    <xs:element minOccurs="0" maxOccurs="1" name="PersonaObjectStatus" type="xs:string"/>
    <xs:element minOccurs="0" maxOccurs="1" name="CreationTime" type="xs:dateTime"/>
    <xs:element minOccurs="0" name="Bodies" type="t:ArrayOfBodyContentAttributedValuesType"/>
    <xs:element minOccurs="0" maxOccurs="1" name="DisplayNameFirstLastSortKey"
type="xs:string"/>
    <xs:element minOccurs="0" maxOccurs="1" name="DisplayNameLastFirstSortKey"
type="xs:string"/>
    <xs:element minOccurs="0" maxOccurs="1" name="CompanyNameSortKey" type="xs:string"/>
    <xs:element minOccurs="0" maxOccurs="1" name="HomeCitySortKey" type="xs:string"/>
    <xs:element minOccurs="0" maxOccurs="1" name="WorkCitySortKey" type="xs:string"/>
    <xs:element minOccurs="0" maxOccurs="1" name="DisplayNameFirstLastHeader"
type="xs:string"/>
    <xs:element minOccurs="0" maxOccurs="1" name="DisplayNameLastFirstHeader"
type="xs:string"/>
    <xs:element minOccurs="0" maxOccurs="1" name="FileAsHeader" type="xs:string"/>
    <xs:element minOccurs="0" maxOccurs="1" name="DisplayName" type="xs:string"/>
    <xs:element minOccurs="0" maxOccurs="1" name="DisplayNameFirstLast" type="xs:string"/>
    <xs:element minOccurs="0" maxOccurs="1" name="DisplayNameLastFirst" type="xs:string"/>
    <xs:element minOccurs="0" maxOccurs="1" name="FileAs" type="xs:string"/>
    <xs:element minOccurs="0" maxOccurs="1" name="FileAsId" type="xs:string"/>
    <xs:element minOccurs="0" maxOccurs="1" name="DisplayNamePrefix" type="xs:string"/>
    <xs:element minOccurs="0" maxOccurs="1" name="GivenName" type="xs:string"/>
    <xs:element minOccurs="0" maxOccurs="1" name="MiddleName" type="xs:string"/>
    <xs:element minOccurs="0" maxOccurs="1" name="Surname" type="xs:string"/>
  </xs:sequence>
</xs:complexType>
```

```

<xs:element minOccurs="0" maxOccurs="1" name="Generation" type="xs:string"/>
<xs:element minOccurs="0" maxOccurs="1" name="Nickname" type="xs:string"/>
<xs:element minOccurs="0" maxOccurs="1" name="YomiCompanyName" type="xs:string"/>
<xs:element minOccurs="0" maxOccurs="1" name="YomiFirstName" type="xs:string"/>
<xs:element minOccurs="0" maxOccurs="1" name="YomiLastName" type="xs:string"/>
<xs:element minOccurs="0" maxOccurs="1" name="Title" type="xs:string"/>
<xs:element minOccurs="0" maxOccurs="1" name="Department" type="xs:string"/>
<xs:element minOccurs="0" maxOccurs="1" name="CompanyName" type="xs:string"/>
<xs:element minOccurs="0" maxOccurs="1" name="Location" type="xs:string"/>
<xs:element minOccurs="0" maxOccurs="1" name="EmailAddress" type="t:EmailAddressType"/>
<xs:element minOccurs="0" maxOccurs="1" name="EmailAddresses"
type="t:ArrayOfEmailAddressesType"/>
<xs:element minOccurs="0" maxOccurs="1" name="PhoneNumber"
type="t:PersonaPhoneNumberType"/>
<xs:element minOccurs="0" maxOccurs="1" name="ImAddress" type="xs:string"/>
<xs:element minOccurs="0" maxOccurs="1" name="HomeCity" type="xs:string"/>
<xs:element minOccurs="0" maxOccurs="1" name="WorkCity" type="xs:string"/>
<xs:element minOccurs="0" maxOccurs="1" name="RelevanceScore" type="xs:int"/>
<xs:element minOccurs="0" maxOccurs="1" name="FolderIds" type="t:ArrayOfFolderIdType"/>
<xs:element minOccurs="0" maxOccurs="1" name="Attributions"
type="t:ArrayOfPersonaAttributionsType"/>
<xs:element minOccurs="0" name="DisplayNames"
type="t:ArrayOfStringAttributedValuesType"/>
<xs:element minOccurs="0" name="FileAses" type="t:ArrayOfStringAttributedValuesType"/>
<xs:element minOccurs="0" name="FileAsIds" type="t:ArrayOfStringAttributedValuesType"/>
<xs:element minOccurs="0" name="DisplayNamePrefixes"
type="t:ArrayOfStringAttributedValuesType"/>
<xs:element minOccurs="0" name="GivenNames" type="t:ArrayOfStringAttributedValuesType"/>
<xs:element minOccurs="0" name="MiddleNames" type="t:ArrayOfStringAttributedValuesType"/>
<xs:element minOccurs="0" name="Surnames" type="t:ArrayOfStringAttributedValuesType"/>
<xs:element minOccurs="0" name="Generations" type="t:ArrayOfStringAttributedValuesType"/>
<xs:element minOccurs="0" name="Nicknames" type="t:ArrayOfStringAttributedValuesType"/>
<xs:element minOccurs="0" name="Initials" type="t:ArrayOfStringAttributedValuesType"/>
<xs:element minOccurs="0" name="YomiCompanyName"
type="t:ArrayOfStringAttributedValuesType"/>
<xs:element minOccurs="0" name="YomiFirstNames"
type="t:ArrayOfStringAttributedValuesType"/>
<xs:element minOccurs="0" name="YomiLastNames"
type="t:ArrayOfStringAttributedValuesType"/>
<xs:element minOccurs="0" name="BusinessPhoneNumbers"
type="t:ArrayOfPhoneNumberAttributedValuesType"/>
<xs:element minOccurs="0" name="BusinessPhoneNumbers2"
type="t:ArrayOfPhoneNumberAttributedValuesType"/>
<xs:element minOccurs="0" name="HomePhones"
type="t:ArrayOfPhoneNumberAttributedValuesType"/>
<xs:element minOccurs="0" name="HomePhones2"
type="t:ArrayOfPhoneNumberAttributedValuesType"/>
<xs:element minOccurs="0" name="MobilePhones"
type="t:ArrayOfPhoneNumberAttributedValuesType"/>
<xs:element minOccurs="0" name="MobilePhones2"
type="t:ArrayOfPhoneNumberAttributedValuesType"/>
<xs:element minOccurs="0" name="AssistantPhoneNumbers"
type="t:ArrayOfPhoneNumberAttributedValuesType"/>
<xs:element minOccurs="0" name="CallbackPhones"
type="t:ArrayOfPhoneNumberAttributedValuesType"/>
<xs:element minOccurs="0" name="CarPhones"
type="t:ArrayOfPhoneNumberAttributedValuesType"/>
<xs:element minOccurs="0" name="HomeFaxes"
type="t:ArrayOfPhoneNumberAttributedValuesType"/>
<xs:element minOccurs="0" name="OrganizationMainPhones"
type="t:ArrayOfPhoneNumberAttributedValuesType"/>

```

```

    <xs:element minOccurs="0" name="OtherFaxes"
type="t:ArrayOfPhoneNumberAttributedValuesType"/>
    <xs:element minOccurs="0" name="OtherTelephones"
type="t:ArrayOfPhoneNumberAttributedValuesType"/>
    <xs:element minOccurs="0" name="OtherPhones2"
type="t:ArrayOfPhoneNumberAttributedValuesType"/>
    <xs:element minOccurs="0" name="Pagers" type="t:ArrayOfPhoneNumberAttributedValuesType"/>
    <xs:element minOccurs="0" name="RadioPhones"
type="t:ArrayOfPhoneNumberAttributedValuesType"/>
    <xs:element minOccurs="0" name="TelexNumbers"
type="t:ArrayOfPhoneNumberAttributedValuesType"/>
    <xs:element minOccurs="0" name="TTYTDDPhoneNumbers"
type="t:ArrayOfPhoneNumberAttributedValuesType"/>
    <xs:element minOccurs="0" name="WorkFaxes"
type="t:ArrayOfPhoneNumberAttributedValuesType"/>
    <xs:element minOccurs="0" maxOccurs="1" name="Emails1"
type="t:ArrayOfEmailAddressAttributedValuesType"/>
    <xs:element minOccurs="0" maxOccurs="1" name="Emails2"
type="t:ArrayOfEmailAddressAttributedValuesType"/>
    <xs:element minOccurs="0" maxOccurs="1" name="Emails3"
type="t:ArrayOfEmailAddressAttributedValuesType"/>
    <xs:element minOccurs="0" name="BusinessHomePages"
type="t:ArrayOfStringAttributedValuesType"/>
    <xs:element minOccurs="0" name="PersonalHomePages"
type="t:ArrayOfStringAttributedValuesType"/>
    <xs:element minOccurs="0" name="OfficeLocations"
type="t:ArrayOfStringAttributedValuesType"/>
    <xs:element minOccurs="0" name="ImAddresses" type="t:ArrayOfStringAttributedValuesType"/>
    <xs:element minOccurs="0" name="ImAddresses2"
type="t:ArrayOfStringAttributedValuesType"/>
    <xs:element minOccurs="0" name="ImAddresses3"
type="t:ArrayOfStringAttributedValuesType"/>
    <xs:element minOccurs="0" maxOccurs="1" name="BusinessAddresses"
type="t:ArrayOfPostalAddressAttributedValuesType"/>
    <xs:element minOccurs="0" maxOccurs="1" name="HomeAddresses"
type="t:ArrayOfPostalAddressAttributedValuesType"/>
    <xs:element minOccurs="0" maxOccurs="1" name="OtherAddresses"
type="t:ArrayOfPostalAddressAttributedValuesType"/>
    <xs:element minOccurs="0" name="Titles" type="t:ArrayOfStringAttributedValuesType"/>
    <xs:element minOccurs="0" name="Departments" type="t:ArrayOfStringAttributedValuesType"/>
    <xs:element minOccurs="0" name="CompanyNames"
type="t:ArrayOfStringAttributedValuesType"/>
    <xs:element minOccurs="0" name="Managers" type="t:ArrayOfStringAttributedValuesType"/>
    <xs:element minOccurs="0" name="AssistantNames"
type="t:ArrayOfStringAttributedValuesType"/>
    <xs:element minOccurs="0" name="Professions" type="t:ArrayOfStringAttributedValuesType"/>
    <xs:element minOccurs="0" name="SpouseNames" type="t:ArrayOfStringAttributedValuesType"/>
    <xs:element minOccurs="0" name="Children"
type="t:ArrayOfStringArrayAttributedValuesType"/>
    <xs:element minOccurs="0" name="Schools" type="t:ArrayOfStringAttributedValuesType"/>
    <xs:element minOccurs="0" name="Hobbies" type="t:ArrayOfStringAttributedValuesType"/>
    <xs:element minOccurs="0" name="WeddingAnniversaries"
type="t:ArrayOfStringAttributedValuesType"/>
    <xs:element minOccurs="0" name="Birthdays" type="t:ArrayOfStringAttributedValuesType"/>
    <xs:element minOccurs="0" name="Locations" type="t:ArrayOfStringAttributedValuesType"/>
    <xs:element minOccurs="0" name="ExtendedProperties"
type="t:ArrayOfExtendedPropertyAttributedValueType"/>
  </xs:sequence>
</xs:complexType>

```

**PersonaId:** An element of type **ItemIdType**, as defined in [\[MS-OXWSCORE\]](#) section 2.2.4.19, that represents an item identifier that is associated with a persona.

**PersonaType:** An element of type **string**, as defined in [\[XMLSCHEMA2\]](#), that represents the type of the associated persona; for example, a person or a **distribution list**.

**PersonaObjectStatus:** An element of type **string** that specifies whether the information in the associated persona is complete or partial.

**CreationTime:** An element of type **datetime**, as defined in [\[XMLSCHEMA2\]](#), that specifies when the associated persona was created.

**Bodies:** An element of type **ArrayOfBodyContentAttributedValuesType**, as defined in section [2.2.4.1](#), that represents an array of attributions for the content of the body.

**DisplayNameFirstLastSortKey:** An element of type **string** that represents the sort key for a display name in first name, last name order.

**DisplayNameLastFirstSortKey:** An element of type **string** that represents the sort key for a display name in last name, first name order.

**CompanyNameSortKey:** An element of type **string** that represents the sort key for a company name.

**HomeCitySortKey:** An element of type **string** that represents the sort key for the home city.

**WorkCitySortKey:** An element of type **string** that represents the sort key for the work city.

**DisplayNameFirstLastHeader:** An element of type **string** that represents the header for a display name in first name, last name order.

**DisplayNameLastFirstHeader:** An element of type **string** that represents the header for a display name in last name, first name order.

**FileAsHeader:** An element of type **string** that contains the computed header, based on locale, of the value in the **FileAs** element.

**DisplayName:** An element of type **string** that specifies the display name of the associated persona.

**DisplayNameFirstLast:** An element of type **string** that specifies the display name of the associated persona in first name, last name order.

**DisplayNameLastFirst:** An element of type **string** that specifies the display name of the associated persona in last name, first name order.

**FileAs:** An element of type **string** that specifies how the persona is to be filed.

**FileAsId:** An element of type **string** that specifies the **FileAs** element identifier.

**DisplayNamePrefix:** An element of type **string** that specifies the prefix of the display name of the associated persona; for example, Mr., Ms., or Dr.

**GivenName:** An element of type **string** that specifies the given name of the associated persona.

**MiddleName:** An element of type **string** that specifies the middle name of the associated persona.

**Surname:** An element of type **string** that specifies the surname of the associated persona.

**Generation:** An element of type **string** that specifies the generation (Sr., Jr., III, and so on) of the associated persona.

**Nickname:** An element of type **string** that specifies the nickname of the associated persona.

**YomiCompanyName:** An element of type **string** that specifies the phonetic Japanese company name of the associated persona.

**YomiFirstName:** An element of type **string** that contains the phonetic Japanese first name of the associated persona.

**YomiLastName:** An element of type **xs:string** that contains the phonetic Japanese last name of the associated persona.

**Title:** An element of type **string** that specifies the job title of the associated persona.

**Department:** An element of type **string** that specifies the department name of the associated persona.

**CompanyName:** An element of type **string** that specifies the company name of the associated persona.

**Location:** An element of type **string** that specifies the location of the associated persona.

**EmailAddress:** An element of type **EmailAddressType**, as defined in [\[MS-OXWSCDATA\]](#) section 2.2.4.27, that contains the default email address of the associated persona.

**EmailAddresses:** An element of type **ArrayOfEmailAddressesType**, as defined in [\[MS-OXWSCDATA\]](#) section 2.2.4.5, that contains an array of all email addresses of the associated persona.

**PhoneNumber:** An element of type **PersonaPhoneNumberType**, as defined in section [2.2.4.17](#), that contains the default phone number of the associated persona.

**ImAddress:** An element of type **string** that specifies the **instant messaging** address of the associated persona.

**HomeCity:** An element of type **string** that specifies the city of the home address of the associated persona.

**WorkCity:** An element of type **string** that specifies the city of the work address of the associated persona.

**RelevanceScore:** An element of type **int**, as defined in [\[XMLSCHEMA2\]](#), that specifies how relevant the associated persona is to the client.

**FolderIds:** An element of type **ArrayOfFolderIdType**, as defined in section [2.2.4.4](#), that represents the parent folders of all the contacts (3) aggregated into the associated persona.

**Attributions:** An element of type **ArrayOfPersonaAttributionsType**, as defined in section [2.2.4.5](#), that contains attribution information for the associated persona.

**DisplayNames:** An element of type **ArrayOfStringAttributedValuesType**, as defined in section [2.2.4.8](#), that contains an array of display names and the identifiers of their source attributions for the associated persona.

**FileAses:** An element of type **ArrayOfStringAttributedValuesType** that contains an array of **FileAs** element values and the identifiers of their source attributions for the associated persona.



**FileAsIds:** An element of type **ArrayOfStringAttributedValuesType** that contains an array of **FileAsId** element values and the identifiers of their source attributions for the associated persona.

**DisplayNamePrefixes:** An element of type **ArrayOfStringAttributedValuesType** that contains an array of display name prefixes and the identifiers of their source attributions for the associated persona.

**GivenNames:** An element of type **ArrayOfStringAttributedValuesType** that contains an array of given name values and the identifiers of their source attributions for the associated persona.

**MiddleNames:** An element of type **ArrayOfStringAttributedValuesType** that contains an array of middle name values and the identifiers of their source attributions for the associated persona.

**Surnames:** An element of type **ArrayOfStringAttributedValuesType** that contains an array of surname values and the identifiers of their source attributions for the associated persona.

**Generations:** An element of type **ArrayOfStringAttributedValuesType** that contains an array of generation values and the identifiers of their source attributions for the associated persona.

**Nicknames:** An element of type **ArrayOfStringAttributedValuesType** that contains an array of nickname values and the identifiers of their source attributions for the associated persona.

**Initials:** An element of type **ArrayOfStringAttributedValuesType** that contains an array of initials values and the identifiers of their source attributions for the associated persona.

**YomiCompanyNames:** An element of type **ArrayOfStringAttributedValuesType** that contains an array of phonetic Japanese company names and the identifiers of their source attributions for the associated persona.

**YomiFirstNames:** An element of type **ArrayOfStringAttributedValuesType** that contains an array of phonetic Japanese company names and the identifiers of their source attributions for the associated persona.

**YomiLastNames:** An element of type **ArrayOfStringAttributedValuesType** that contains an array of phonetic Japanese last names and the identifiers of their source attributions for the associated persona.

**BusinessPhoneNumbers:** An element of type **ArrayOfPhoneNumberAttributedValuesType**, as defined in section [2.2.4.6](#), that contains an array of business phone numbers and the identifiers of their source attributions for the associated persona.

**BusinessPhoneNumbers2:** An element of type **ArrayOfPhoneNumberAttributedValuesType** that contains an array of business phone numbers and the identifiers of their source attributions for the associated persona.

**HomePhones:** An element of type **ArrayOfPhoneNumberAttributedValuesType** that contains an array of home phone numbers and the identifiers of their source attributions for the associated persona.

**HomePhones2:** An element of type **ArrayOfPhoneNumberAttributedValuesType** that contains an array of phone numbers and the identifiers of their source attributions for the associated persona.

**MobilePhones:** An element of type **ArrayOfPhoneNumberAttributedValuesType** that contains an array of mobile phone numbers and the identifiers of their source attributions for the associated persona.

**MobilePhones2:** An element of type **ArrayOfPhoneNumberAttributedValuesType** that contains an array of mobile phone numbers and the identifiers of their source attributions for the associated persona.

**AssistantPhoneNumbers:** An element of type **ArrayOfPhoneNumberAttributedValuesType** that contains an array of assistant phone numbers and the identifiers of their source attributions for the associated persona.

**CallbackPhones:** An element of type **ArrayOfPhoneNumberAttributedValuesType** that contains an array of call-back phone numbers and the identifiers of their source attributions for the associated persona.

**CarPhones:** An element of type **ArrayOfPhoneNumberAttributedValuesType** that contains an array of car phone numbers and the identifiers of their source attributions for the associated persona.

**HomeFaxes:** An element of type **ArrayOfPhoneNumberAttributedValuesType** that contains an array of home fax numbers and the identifiers of their source attributions for the associated persona.

**OrganizationMainPhones:** An element of type **ArrayOfPhoneNumberAttributedValuesType** that contains an array of the main phone numbers of an organization and the identifiers of their source attributions for the associated persona.

**OtherFaxes:** An element of type **ArrayOfPhoneNumberAttributedValuesType** that contains an array of fax numbers and the identifiers of their source attributions for the associated persona.

**OtherTelephones:** An element of type **ArrayOfPhoneNumberAttributedValuesType** that contains an array of telephone numbers and the identifiers of their source attributions for the associated persona.

**OtherPhones2:** An element of type **ArrayOfPhoneNumberAttributedValuesType** that contains an array of telephone numbers and the identifiers of their source attributions for the associated persona.

**Pagers:** An element of type **ArrayOfPhoneNumberAttributedValuesType** that contains an array of pager phone numbers and the identifiers of their source attributions for the associated persona.

**RadioPhones:** An element of type **ArrayOfPhoneNumberAttributedValuesType** that contains an array of radio phone numbers and the identifiers of their source attributions for the associated persona.

**TelexNumbers:** An element of type **ArrayOfPhoneNumberAttributedValuesType** that contains an array of Telex numbers and the identifiers of their source attributions for the associated persona.

**TTYTDDPhoneNumbers:** An element of type **ArrayOfPhoneNumberAttributedValuesType** that contains an array of Text Telephone/Telecommunications Device for the Deaf (TTY/TDD) text telephone numbers and the identifiers of their source attributions for the associated persona.

**WorkFaxes:** An element of type **ArrayOfPhoneNumberAttributedValuesType** that contains an array of work fax numbers and the identifiers of their source attributions for the associated persona.

**Emails1:** An element of type **ArrayOfEmailAddressAttributedValuesType**, as defined in section [2.2.4.2](#) that contains an array of email addresses and the identifiers of their source attributions for the associated persona.

**Emails2:** An element of type **ArrayOfEmailAddressAttributedValuesType** that contains an array of email addresses and the identifiers of their source attributions for the associated persona.

**Emails3:** An element of type **ArrayOfEmailAddressAttributedValuesType** that contains an array of email addresses and the identifiers of their source attributions for the associated persona.

**BusinessHomePages:** An element of type **ArrayOfStringAttributedValuesType**, as defined in section [2.2.4.9](#), that contains an array of business home page values and the identifiers of their source attributions for the associated persona.

**PersonalHomePages:** An element of type **ArrayOfStringAttributedValuesType** that contains an array of personal home page values and the identifiers of their source attributions for the associated persona.

**OfficeLocations:** An element of type **ArrayOfStringAttributedValuesType** that contains an array of office locations and the identifiers of their source attributions for the associated persona.

**ImAddresses:** An element of type **ArrayOfStringAttributedValuesType** that contains an array of instant messaging addresses and the identifiers of their source attributions for the associated persona.

**ImAddresses2:** An element of type **ArrayOfStringAttributedValuesType** that contains an array of instant messaging addresses and the identifiers of their source attributions for the associated persona.

**ImAddresses3:** An element of type **ArrayOfStringAttributedValuesType** that contains an array of instant messaging addresses and the identifiers of their source attributions for the associated persona.

**BusinessAddresses:** An element of type **ArrayOfPostalAddressAttributedValuesType**, as defined in section [2.2.4.7](#), that contains an array of business addresses and the identifiers of their source attributions for the associated persona.

**HomeAddresses:** An element of type **ArrayOfPostalAttributedValuesType** that contains an array of home addresses and the identifiers of their source attributions for the associated persona.

**OtherAddresses:** An element of type **ArrayOfPostalAttributedValuesType** that contains an array of addresses and the identifiers of their source attributions for the associated persona.

**Titles:** An element of type **ArrayOfStringArrayAttributedValuesType**, as defined in section [2.2.4.8](#), that contains an array of job titles and the identifiers of their source attributions for the associated persona.

**Departments:** An element of type **ArrayOfStringArrayAttributedValuesType** that contains an array of department names and the identifiers of their source attributions for the associated persona.

**CompanyNames:** An element of type **ArrayOfStringArrayAttributedValuesType** that contains an array of company names and the identifiers of their source attributions for the associated persona.

**Managers:** An element of type **ArrayOfStringArrayAttributedValuesType** that contains an array of manager names and the identifiers of their source attributions for the associated persona.

**AssistantNames:** An element of type **ArrayOfStringArrayAttributedValuesType** that contains an array of assistant names and the identifiers of their source attributions for the associated persona.

**Professions:** An element of type **ArrayOfStringArrayAttributedValueType** that contains an array of profession values and the identifiers of their source attributions for the associated persona.

**SpouseNames:** An element of type **ArrayOfStringArrayAttributedValueType** that contains an array of spouse/partner names and the identifiers of their source attributions for the associated persona.

**Children:** An element of type **ArrayOfStringArrayAttributedValueType** that contains an array of child names and identifiers of their source attributions for the associated persona.

**Schools:** An element of type **ArrayOfStringArrayAttributedValueType** that contains an array of school names and the identifiers of their source attributions for the associated persona.

**Hobbies:** An element of type **ArrayOfStringArrayAttributedValueType** that contains an array of hobbies and the identifiers of their source attributions for the associated persona.

**WeddingAnniversaries:** An element of type **ArrayOfStringArrayAttributedValueType** that contains an array of wedding anniversary dates, stored as strings, and the identifiers of their source attributions for the associated persona.

**Birthdays:** An element of type **ArrayOfStringArrayAttributedValueType** that contains an array of birthdays, stored as strings, and the identifiers of their source attributions for the associated persona.

**Locations:** An element of type **ArrayOfStringArrayAttributedValueType** that contains an array of location values and the identifiers of their source attributions for the associated persona.

**ExtendedProperties:** An element of type **ArrayOfExtendedPropertyAttributedValueType**, as defined in section [2.2.4.3](#), that contains an array of additional properties and the identifiers of their source attributions for the associated persona. Extended properties are typically private properties on contacts that are used for application-specific functions.

## 2.2.4.20 PhoneNumberAttributedValueType

**Namespace:** <http://schemas.microsoft.com/exchange/services/2006/types>

The **PhoneNumberAttributedValueType** complex type specifies a **PersonaPhoneNumberType**, as defined in section [2.2.4.17](#), and **ArrayOfValueAttributionsType**, as defined in section [2.2.4.11](#), complex type pair. This complex type represents a phone number for a persona, paired with a list of the attributions for the phone number.

```
<xs:complexType name="PhoneNumberAttributedValueType"
  xmlns:xs="http://www.w3.org/2001/XMLSchema">
  <xs:sequence>
    <xs:element minOccurs="1" maxOccurs="1" name="Value" type="t:PersonaPhoneNumberType"/>
    <xs:element minOccurs="1" maxOccurs="1" name="Attributions"
      type="t:ArrayOfValueAttributionsType"/>
  </xs:sequence>
</xs:complexType>
```

**Value:** An element of type **PersonalPhoneNumberType**, as defined in section [2.2.4.17](#), that contains a phone number and type information and is associated with a set of attributions.

**Attributions:** An element of type **ArrayOfValueAttributionsType**, as defined in section [2.2.4.11](#), that contains an array of attribution identifiers associated with a phone number.

### 2.2.4.21 PostalAddressAttributedValueType

**Namespace:** http://schemas.microsoft.com/exchange/services/2006/types

The **PostalAddressAttributedValueType** complex type specifies a pair of **PersonaPostalAddressType**, as defined in section [2.2.4.18](#), and **ArrayOfValueAttributionsType**, as defined in section [2.2.4.11](#), complex types. This complex type specifies a postal address for a persona, paired with a list of the attributions for that address.

```
<xs:complexType name="PostalAddressAttributedValueType"
  xmlns:xs="http://www.w3.org/2001/XMLSchema">
  <xs:sequence>
    <xs:element minOccurs="1" maxOccurs="1" name="Value" type="t:PersonaPostalAddressType"/>
    <xs:element minOccurs="1" maxOccurs="1" name="Attributions"
  type="t:ArrayOfValueAttributionsType"/>
  </xs:sequence>
</xs:complexType>
```

**Value:** An element of type **PersonalPostalAddressType**, as defined in section [2.2.4.18](#), that contains information associated with a postal address.

**Attributions:** An element of type **ArrayOfValueAttributionsType**, as defined in section [2.2.4.11](#), that contains an array of attribution IDs that are associated with a postal address.

### 2.2.4.22 StringArrayAttributedValueType

**Namespace:** http://schemas.microsoft.com/exchange/services/2006/types

The **StringArrayAttributedValueType** complex type specifies an **ArrayOfStringValue**, as defined in section [2.2.4.10](#), and an **ArrayOfValueAttributionsType**, as defined in section [2.2.4.11](#), complex type pair.

```
<xs:complexType name="StringArrayAttributedValueType"
  xmlns:xs="http://www.w3.org/2001/XMLSchema">
  <xs:sequence>
    <xs:element minOccurs="1" maxOccurs="1" name="Values" type="t:ArrayOfStringValueType"/>
    <xs:element minOccurs="1" maxOccurs="1" name="Attributions"
  type="t:ArrayOfValueAttributionsType"/>
  </xs:sequence>
</xs:complexType>
```

**Values:** An element of type **ArrayOfStringValue**, as defined in section [2.2.4.10](#), that represents the values in an array of text values associated with the persona.

**Attributions:** An element of type **ArrayOfValueAttributionsType**, as defined in section [2.2.4.11](#), that contains a list of attributions for the **Values** element that is associated with it.

### 2.2.4.23 StringAttributedValueType

**Namespace:** http://schemas.microsoft.com/exchange/services/2006/types

The **StringAttributedValueType** complex type encapsulates a string value and multiple attributions for the value.

```
<xs:complexType name="StringAttributedValueType" xmlns:xs="http://www.w3.org/2001/XMLSchema">
```

```

<xs:sequence>
  <xs:element minOccurs="1" maxOccurs="1" name="Value" type="xs:string"/>
  <xs:element minOccurs="1" maxOccurs="1" name="Attributions"
type="t:ArrayOfValueAttributionsType"/>
</xs:sequence>
</xs:complexType>

```

**Value:** An element of type **string**, as defined in [\[XMLSCHEMA2\]](#), that represents an instance of a paired string and attributions array.

**Attributions:** An element of type **ArrayOfValueAttributionsType**, as defined in section [2.2.4.11](#), that contains a set of attributions for the **Value** element that is associated with it.

## 2.2.5 Simple Types

The following table summarizes the set of common XML schema simple type definitions defined by this specification. XML schema simple type definitions that are specific to a particular operation are described with the operation.

Simple type	Description
<b>LocationSourceType</b>	The <b>LocationSourceType</b> simple type specifies the source from which the resolution of the location was derived.

### 2.2.5.1 LocationSourceType

**Namespace:** <http://schemas.microsoft.com/exchange/services/2006/types>

The **LocationSourceType** simple type specifies the source from which the resolution of the location was derived.

```

<xs:simpleType name="LocationSourceType" xmlns:xs="http://www.w3.org/2001/XMLSchema">
  <xs:restriction base="xs:string">
    <xs:enumeration value="None"/>
    <xs:enumeration value="LocationServices"/>
    <xs:enumeration value="PhonebookServices"/>
    <xs:enumeration value="Device"/>
    <xs:enumeration value="Contact"/>
    <xs:enumeration value="Resource"/>
  </xs:restriction>
</xs:simpleType>

```

The following table specifies the allowable values for the **LocationSourceType** simple type.

Value	Meaning
None	Not resolved.
LocationServices	Resolved by external location services, such as an Internet search engine.
PhonebookServices	Resolved by external phone book services.
Device	Resolved by a GPS-enabled device, such as a mobile phone.
Contact	Sourced from a contact card.

Value	Meaning
Resource	Resolved by a resource mailbox, such as a conference room.

### 2.2.6 Attributes

This specification does not define any common XML schema attribute definitions.

### 2.2.7 Groups

This specification does not define any common XML schema group definitions.

### 2.2.8 Attribute Groups

This specification does not define any common XML schema attribute group definitions.

## 3 Protocol Details

The client side of this protocol is simply a pass-through. That is, no additional timers or other state is required on the client side of this protocol. Calls made by the higher-layer protocol or application are passed directly to the transport, and the results returned by the transport are passed directly back to the higher-layer protocol or application.

In the following sections, the schema definition might be less restrictive than the processing rules imposed by the protocol. The WSDL in this specification matches the WSDL that shipped with the product and provides a base description of the schema. The text that introduces the WSDL specifies additional restrictions that reflect actual Microsoft product behavior. For example, the schema definition might allow for an element to be empty, null, or not present but the behavior of the protocol as specified restricts the same elements to being non-empty, not null and present.

### 3.1 ExchangeServicePortType Server Details

This protocol describes a single WSDL port type with two operations that find and retrieve information about a persona.

#### 3.1.1 Abstract Data Model

None.

#### 3.1.2 Timers

None.

#### 3.1.3 Initialization

None.

#### 3.1.4 Message Processing Events and Sequencing Rules

The following table summarizes the list of operations as defined by this specification.

Operation	Description
<b>FindPeople</b>	The <b>FindPeople WSDL operation</b> returns all persona objects from a specified <b>Contacts folder</b> or retrieves contacts (3) that match a specified query string.
<b>GetPersona</b>	The <b>GetPersona WSDL operation</b> retrieves a persona.

##### 3.1.4.1 FindPeople

The **FindPeople WSDL operation** returns all persona objects from a specified Contacts folder or retrieves contacts (3) that match a specified query string.

```
<wsdl:operation name="FindPeople" xmlns:wsdl="http://schemas.xmlsoap.org/wsdl/">
  <wsdl:input message="m:FindPeopleSoapIn"/>
  <wsdl:output message="m:FindPeopleSoapOut"/>
</wsdl:operation>
```

The following is the WSDL binding specification of the **FindPeople WSDL operation**.



```

<wsdl:operation name="FindPeople" xmlns:wsdl="http://schemas.xmlsoap.org/wsdl/">
  <soap:operation
    soapAction="http://schemas.microsoft.com/exchange/services/2006/messages/FindPeople"
    xmlns:soap="http://schemas.xmlsoap.org/wsdl/soap/" />
  <wsdl:input>
    <soap:body use="literal" parts="request"
      xmlns:soap="http://schemas.xmlsoap.org/wsdl/soap/" />
    <soap:header message="m:FindPeopleSoapIn" part="RequestVersion" use="literal"
      xmlns:soap="http://schemas.xmlsoap.org/wsdl/soap/" />
    <soap:header message="m:FindPeopleSoapIn" part="Impersonation" use="literal"
      xmlns:soap="http://schemas.xmlsoap.org/wsdl/soap/" />
  </wsdl:input>
  <wsdl:output>
    <soap:body use="literal" parts="FindPeopleResult"
      xmlns:soap="http://schemas.xmlsoap.org/wsdl/soap/" />
    <soap:header message="m:FindPeopleSoapOut" part="ServerVersion" use="literal"
      xmlns:soap="http://schemas.xmlsoap.org/wsdl/soap/" />
  </wsdl:output>
</wsdl:operation>

```

The **FindPeople** WSDL operation builds on the existing functionality of the **RestrictionType** complex type, as defined in [\[MS-OXWSSRCH\]](#) section 2.2.4.24, and the **DefaultBaseNamesType** simple type, as defined in [\[MS-OXWSCDATA\]](#) section 2.2.3.7 by adding an aggregation restriction and the ability to return additional properties. By using a restriction, a client can specify filters such as "only return results that have an instant messaging address". The default search behavior targets both the specified user's personal **mailbox** and the **Global Address List (GAL)**.

### 3.1.4.1.1 Messages

The following table summarizes the set of WSDL message definitions that are specific to this operation.

Message	Description
<b>FindPeopleSoapIn</b>	Specifies the request to find people.
<b>FindPeopleSoapOut</b>	Specifies the response to the <b>FindPeopleSoapIn</b> request WSDL message.

#### 3.1.4.1.1.1 FindPeopleSoapIn

The **FindPeopleSoapIn** WSDL message specifies the request to find people.

The following is the **FindPeopleSoapIn** WSDL message specification.

```

<wsdl:message name="FindPeopleSoapIn" xmlns:wsdl="http://schemas.xmlsoap.org/wsdl/">
  <wsdl:part name="request" element="m:FindPeople" />
  <wsdl:part name="Impersonation" element="t:ExchangeImpersonation" />
  <wsdl:part name="RequestVersion" element="t:RequestServerVersion" />
</wsdl:message>

```

The **FindPeopleSoapIn** WSDL message is the input message for the **SOAP action** <http://schemas.microsoft.com/exchange/services/2006/messages/FindPeople>.

The parts of the **FindPeopleSoapIn** WSDL message are described in the following table.

Part name	Element/type	Description
<b>request</b>	m:FindPeople	Specifies the <b>SOAP body</b> of the request to find people.
<b>Impersonation</b>	t:ExchangeImpersonation ( <a href="#">[MS-OXWSCDATA]</a> section 2.2.5.3)	Specifies a <b>SOAP header</b> that identifies the user whom the client is impersonating.
<b>RequestVersion</b>	t:RequestServerVersion ( <a href="#">[MS-OXWSCDATA]</a> section 2.2.5.9)	Specifies a SOAP header that identifies the schema version for the <b>FindPeople</b> WSDL operation request.

### 3.1.4.1.1.2 FindPeopleSoapOut

The **FindPeopleSoapOut** WSDL message specifies the response to the **FindPeopleSoapIn** request WSDL message.

The following is the **FindPeopleSoapOut** WSDL message specification.

```
<wsdl:message name="FindPeopleSoapOut" xmlns:wsdl="http://schemas.xmlsoap.org/wsdl/">
  <wsdl:part name="FindPeopleResult" element="m:FindPeopleResponse"/>
  <wsdl:part name="ServerVersion" element="t:ServerVersionInfo"/>
</wsdl:message>
```

The **FindPeopleSoapOut** WSDL message is the output message for the SOAP action <http://schemas.microsoft.com/exchange/services/2006/messages/FindPeople>.

The parts of the **FindPeopleSoapOut** WSDL message are described in the following table.

Part name	Element/type	Description
<b>FindPeopleResult</b>	m:FindPeopleResponse	Specifies the SOAP body of the response that contains the requested information.
<b>ServerVersion</b>	t:ServerVersionInfo ( <a href="#">[MS-OXWSCDATA]</a> section 2.2.5.10)	Specifies a SOAP header that identifies the server version for the response.

A successful **FindPeople** WSDL operation request returns a **FindPeopleResponse** element with the **ResponseClass** attribute set to "Success". The **ResponseCode** element of the **FindPeopleResponse** element is set to "NoError".

If the **FindPeople** WSDL operation is not successful, it returns a **FindPeopleResponse** element with the **ResponseClass** attribute set to "Error". The **ResponseCode** element of the **FindPeopleResponse** element is set to one of the common errors defined in [\[MS-OXWSCDATA\]](#) section 2.2.3.23.

### 3.1.4.1.2 Elements

The following table summarizes the XML schema element definitions that are specific to this operation.

Element	Description
<b>FindPeople</b>	The input data for the <b>FindPeople</b> WSDL operation.
<b>FindPeopleResponse</b>	The result data for the <b>FindPeople</b> WSDL operation.

### 3.1.4.1.2.1 FindPeople

The **FindPeople** element specifies the input data for the **FindPeople** WSDL operation.

```
<xs:element name="FindPeople" type="m:FindPeopleType"
xmlns:xs="http://www.w3.org/2001/XMLSchema"/>
```

### 3.1.4.1.2.2 FindPeopleResponse

The **FindPeopleResponse** element specifies the result data for the **FindPeople** WSDL operation.

```
<xs:element name="FindPeopleResponse" type="m:FindPeopleResponseMessageType"
xmlns:xs="http://www.w3.org/2001/XMLSchema"/>
```

### 3.1.4.1.3 Complex Types

The following table summarizes the XML schema complex type definitions that are specific to this operation.

Complex type	Description
<b>FindPeopleType</b>	Specifies a request to find contacts (3).
<b>PersonaResponseShapeType</b>	Specifies the shape of the persona results from the <b>FindPeople</b> WSDL operation.
<b>FindPeopleResponseMessageType</b>	Specifies the response message for a <b>FindPeople</b> WSDL operation.
<b>ArrayOfPeopleType</b>	Specifies an array of <b>PersonaType</b> complex types.

#### 3.1.4.1.3.1 FindPeopleType

**Namespace:** <http://schemas.microsoft.com/exchange/services/2006/messages>

The **FindPeopleType** complex type specifies a request to find contacts (3). The **FindPeopleType** complex type extends the **BaseRequestType** complex type, as specified in [\[MS-OXWSCDATA\]](#) section 2.2.4.15.

```
<xs:complexType name="FindPeopleType" xmlns:xs="http://www.w3.org/2001/XMLSchema">
  <xs:complexContent mixed="false">
    <xs:extension base="m:BaseRequestType">
      <xs:sequence>
        <xs:element minOccurs="0" name="PersonaShape" type="t:PersonaResponseShapeType"/>
        <xs:element name="IndexedPageItemView" type="t:IndexedPageViewType"/>
        <xs:element minOccurs="0" name="Restriction" type="t:RestrictionType"/>
        <xs:element minOccurs="0" name="AggregationRestriction" type="t:RestrictionType"/>
        <xs:element minOccurs="0" name="SortOrder" type="t:NonEmptyArrayOfFieldOrdersType"/>
      </xs:sequence>
    </xs:extension>
  </xs:complexContent>
</xs:complexType>
```

```

    <xs:element minOccurs="0" name="ParentFolderId" type="t:TargetFolderIdType"/>
    <xs:element minOccurs="0" name="QueryString" type="xs:string"/>
  </xs:sequence>
</xs:extension>
</xs:complexContent>
</xs:complexType>

```

**PersonaShape:** An element of type **PersonaResponseShapeType** that represents the persona properties.

**IndexedPageItemView:** An element of type **IndexedPageViewType**, as defined in [\[MS-OXWSSRCH\]](#) section 2.2.4.14, that represents how paged item information is returned in the response.

**Restriction:** An element of type **RestrictionType**, as defined in [\[MS-OXWSSRCH\]](#) section 2.2.4.24, that represents a restriction definition that filters the results based on raw contact (3) properties.

**AggregationRestriction:** An element of type **RestrictionType** that represents a restriction definition that filters the results based on aggregated persona properties.

**SortOrder:** An element of type **NonEmptyArrayOfFieldOrdersType**, as defined in [\[MS-OXWSSRCH\]](#) section 3.1.4.2.3.8, that represents the sort order.

**ParentFolderId:** An element of type **TargetFolderIdType**, as defined in [\[MS-OXWSFOLD\]](#) section 2.2.4.14, that represents the identifier of the parent folder.

**QueryString:** An element of type **string**, as defined in [\[XMLSCHEMA2\]](#), that contains the query string.

### 3.1.4.1.3.2 PersonaResponseShapeType

**Namespace:** <http://schemas.microsoft.com/exchange/services/2006/types>

The **PersonaResponseShapeType** complex type specifies the shape for the persona results from the **FindPeople** WSDL operation. It defines the set of persona properties to be returned for each **PersonaType** complex type in the result set.

```

<xs:complexType name="PersonaResponseShapeType" xmlns:xs="http://www.w3.org/2001/XMLSchema">
  <xs:sequence>
    <xs:element name="BaseShape" type="t:DefaultShapeNamesType"/>
    <xs:element minOccurs="0" name="AdditionalProperties"
type="t:NonEmptyArrayOfPathsToElementType"/>
  </xs:sequence>
</xs:complexType>

```

**BaseShape:** An element of type **DefaultShapeNamesType**, as defined in [\[MS-OXWSCDATA\]](#) section 2.2.3.7, that represents the base shape for the **PersonaResponseShapeType** complex type, as defined in section [3.1.4.1.3.2](#).

**AdditionalProperties:** An element of type **NonEmptyArrayOfPathsToElementType**, as defined in [\[MS-OXWSCDATA\]](#) section 2.2.4.44, that represents additional requested properties.

### 3.1.4.1.3.3 FindPeopleResponseMessageType

**Namespace:** <http://schemas.microsoft.com/exchange/services/2006/messages>

The **FindPeopleResponseMessageType** complex type specifies the response message for a **FindPeople** WSDL operation. The **FindPeopleResponseMessageType** complex type extends the **ResponseMessageType** complex type, as specified in [\[MS-OXWSCDATA\]](#) section 2.2.4.57.

```
<xs:complexType name="FindPeopleResponseMessageType"
  xmlns:xs="http://www.w3.org/2001/XMLSchema">
  <xs:complexContent mixed="false">
    <xs:extension base="m:ResponseMessageType">
      <xs:sequence>
        <xs:element minOccurs="0" name="People" type="t:ArrayOfPeopleType"/>
        <xs:element minOccurs="0" name="TotalNumberOfPeopleInView" type="xs:int"/>
      </xs:sequence>
    </xs:extension>
  </xs:complexContent>
</xs:complexType>
```

**People:** An element of type **ArrayOfPeopleType** that represents an array of **PersonaType** complex types.

**TotalNumberOfPeopleInView:** An element of type **int**, as defined in [\[XMLSCHEMA2\]](#), that represents the number of contacts (3) that appear.

#### 3.1.4.1.3.4 ArrayOfPeopleType

**Namespace:** <http://schemas.microsoft.com/exchange/services/2006/types>

The **ArrayOfPeopleType** complex type specifies an array of **PersonaType** complex types.

```
<xs:complexType name="ArrayOfPeopleType" xmlns:xs="http://www.w3.org/2001/XMLSchema">
  <xs:choice minOccurs="0" maxOccurs="unbounded">
    <xs:element name="Persona" type="t:PersonaType"/>
  </xs:choice>
</xs:complexType>
```

**Persona:** An element of type **PersonaType**, as defined in section [2.2.4.19](#), that encapsulates a set of contact (3) data from one or more sources linked by a common persona identifier.

#### 3.1.4.1.4 Simple Types

None.

#### 3.1.4.1.5 Attributes

None.

#### 3.1.4.1.6 Groups

None.

#### 3.1.4.1.7 Attribute Groups

None.

### 3.1.4.2 GetPersona

The **GetPersona** WSDL operation retrieves a persona.

```
<wsdl:operation name="GetPersona" xmlns:wsdl="http://schemas.xmlsoap.org/wsdl/">
  <wsdl:input message="m:GetPersonaSoapIn"/>
  <wsdl:output message="m:GetPersonaSoapOut"/>
</wsdl:operation>
```

The following is the WSDL binding specification of the **GetPersona** WSDL operation.

```
<wsdl:operation name="GetPersona" xmlns:wsdl="http://schemas.xmlsoap.org/wsdl/">
  <soap:operation
    soapAction="http://schemas.microsoft.com/exchange/services/2006/messages/GetPersona"
    xmlns:soap="http://schemas.xmlsoap.org/wsdl/soap/" />
  <wsdl:input>
    <soap:body use="literal" parts="request"
      xmlns:soap="http://schemas.xmlsoap.org/wsdl/soap/" />
    <soap:header message="m:GetPersonaSoapIn" part="RequestVersion" use="literal"
      xmlns:soap="http://schemas.xmlsoap.org/wsdl/soap/" />
    <soap:header message="m:GetPersonaSoapIn" part="Impersonation" use="literal"
      xmlns:soap="http://schemas.xmlsoap.org/wsdl/soap/" />
  </wsdl:input>
  <wsdl:output>
    <soap:body use="literal" parts="GetPersonaResult"
      xmlns:soap="http://schemas.xmlsoap.org/wsdl/soap/" />
    <soap:header message="m:GetPersonaSoapOut" part="ServerVersion" use="literal"
      xmlns:soap="http://schemas.xmlsoap.org/wsdl/soap/" />
  </wsdl:output>
</wsdl:operation>
```

The protocol client sends a **GetPersonaSoapIn** request WSDL message and the protocol server responds with a **GetPersonaSoapOut** response.

#### 3.1.4.2.1 Messages

The following table summarizes the set of WSDL message definitions that are specific to this operation.

Message	Description
<b>GetPersonaSoapIn</b>	Specifies the request to retrieve a persona.
<b>GetPersonaSoapOut</b>	Specifies the response to the <b>GetPersonaSoapIn</b> request WSDL message.

##### 3.1.4.2.1.1 GetPersonaSoapIn

The **GetPersonaSoapIn** WSDL message specifies the request to retrieve a persona.

The following is the **GetPersonaSoapIn** WSDL message specification.

```
<wsdl:message name="GetPersonaSoapIn" xmlns:wsdl="http://schemas.xmlsoap.org/wsdl/">
  <wsdl:part name="request" element="m:GetPersona"/>
  <wsdl:part name="Impersonation" element="t:ExchangeImpersonation"/>
  <wsdl:part name="RequestVersion" element="t:RequestServerVersion"/>
</wsdl:message>
```

```
</wsdl:message>
```

The **GetPersonaSoapIn** WSDL message is the input message for the SOAP action <http://schemas.microsoft.com/exchange/services/2006/messages/GetPersona>.

The parts of the **GetPersonaSoapIn** WSDL message are described in the following table.

Part name	Element/type	Description
<b>request</b>	m:GetPersona	Specifies the SOAP body of the request for a persona.
<b>Impersonation</b>	t:ExchangeImpersonation ( <a href="#">[MS-OXWSCDATA]</a> section 2.2.5.3)	Specifies a SOAP header that identifies the user whom the client is impersonating.
<b>RequestVersion</b>	t:RequestServerVersion ( <a href="#">[MS-OXWSCDATA]</a> section 2.2.5.9)	Specifies a SOAP header that identifies the schema version for the <b>GetPersona</b> WSDL operation request.

### 3.1.4.2.1.2 GetPersonaSoapOut

The **GetPersonaSoapOut** WSDL message specifies the response to the **GetPersonaSoapIn** request WSDL message.

The following is the **GetPersonaSoapOut** WSDL message specification.

```
<wsdl:message name="GetPersonaSoapOut" xmlns:wsdl="http://schemas.xmlsoap.org/wsdl/">  
  <wsdl:part name="GetPersonaResult" element="m:GetPersonaResponseMessage"/>  
  <wsdl:part name="ServerVersion" element="t:ServerVersionInfo"/>  
</wsdl:message>
```

The **GetPersonaSoapOut** WSDL message is the output message for the SOAP action <http://schemas.microsoft.com/exchange/services/2006/messages/GetPersona>.

The parts of the **GetPersonaSoapOut** WSDL message are described in the following table.

Part name	Element/type	Description
<b>GetPersonaResult</b>	m:GetPersonaResponseMessage	Specifies the SOAP body of the response that contains the requested information.
<b>ServerVersion</b>	t:ServerVersionInfo ( <a href="#">[MS-OXWSCDATA]</a> section 2.2.5.10)	Specifies a SOAP header that identifies the server version for the response.

A successful **GetPersona** WSDL operation request returns a **GetPersonaResponseMessage** element with the **ResponseClass** attribute set to "Success". The **ResponseCode** element of the **GetPersonaResponseMessage** element is set to "NoError".

If the **GetPersona** operation is not successful, it returns a **GetPersonaResponseMessage** element with the **ResponseClass** attribute set to "Error". The **ResponseCode** element of the **GetPersonaResponseMessage** is set to one of the common error codes defined in [\[MS-OXWSCDATA\]](#) section 2.2.3.23.

### 3.1.4.2.2 Elements

The following table summarizes the XML schema element definitions that are specific to this operation.

Element	Description
<b>GetPersona</b>	The input data for the <b>GetPersona</b> WSDL operation.
<b>GetPersonaResponseMessage</b>	The result data for the <b>GetPersona</b> WSDL operation.

#### 3.1.4.2.2.1 GetPersona

The **GetPersona** element specifies the input data for the **GetPersona** WSDL operation.

```
<xs:element name="GetPersona" type="m:GetPersonaType"
xmlns:xs="http://www.w3.org/2001/XMLSchema"/>
```

#### 3.1.4.2.2.2 GetPersonaResponseMessage

The **GetPersonaResponseMessage** element specifies the result data for the **GetPersona** WSDL operation.

```
<xs:element name="GetPersonaResponseMessage" type="m:GetPersonaResponseMessageType"
xmlns:xs="http://www.w3.org/2001/XMLSchema"/>
```

### 3.1.4.2.3 Complex Types

The following table summarizes the XML schema complex type definitions that are specific to this operation.

Complex type	Description
<b>GetPersonaType</b>	Specifies a request to retrieve a persona.
<b>GetPersonaResponseMessageType</b>	Specifies the response message for a <b>GetPersona</b> WSDL operation.

#### 3.1.4.2.3.1 GetPersonaType

**Namespace:** <http://schemas.microsoft.com/exchange/services/2006/messages>

The **GetPersonaType** complex type specifies a request to retrieve a persona. The **GetPersonaType** complex type extends the **BaseRequestType** complex type, as specified in [\[MS-OXWSCDATA\]](#) section 2.2.4.15.

```
<xs:complexType name="GetPersonaType" xmlns:xs="http://www.w3.org/2001/XMLSchema">
  <xs:complexContent mixed="false">
    <xs:extension base="m:BaseRequestType">
      <xs:sequence>
        <xs:element name="PersonaId" type="t:ItemIdType"/>
      </xs:sequence>
    </xs:extension>
  </xs:complexContent>
</xs:complexType>
```



```
</xs:complexContent>
</xs:complexType>
```

**PersonaId:** An element of type **ItemIdType**, as defined in [\[MS-OXWSCORE\]](#) section 2.2.4.19, that represents the identifier of a persona.

### 3.1.4.2.3.2 GetPersonaResponseMessageType

**Namespace:** <http://schemas.microsoft.com/exchange/services/2006/messages>

The **GetPersonaResponseMessageType** complex type specifies the response message for a **GetPersona** WSDL operation. The **GetPersonaResponseMessageType** complex type extends the **ResponseMessageType** complex type, as specified in [\[MS-OXWSCDATA\]](#) section 2.2.4.57.

```
<xs:complexType name="GetPersonaResponseMessageType"
  xmlns:xs="http://www.w3.org/2001/XMLSchema">
  <xs:complexContent mixed="false">
    <xs:extension base="m:ResponseMessageType">
      <xs:sequence>
        <xs:element name="Persona" type="t:PersonaType"/>
      </xs:sequence>
    </xs:extension>
  </xs:complexContent>
</xs:complexType>
```

**Persona:** An element of type **PersonaType**, as defined in section [2.2.4.19](#), that represents the persona to be retrieved.

### 3.1.4.2.4 Simple Types

None.

### 3.1.4.2.5 Attributes

None.

### 3.1.4.2.6 Groups

None.

### 3.1.4.2.7 Attribute Groups

None.

## 3.1.5 Timer Events

None.

## 3.1.6 Other Local Events

None.

## 4 Protocol Examples

The following example of a **FindPeople** WSDL operation request shows how to return all contacts (3) from the Contacts folder.

```
<?xml version="1.0" encoding="UTF-8"?>
<soap:Envelope xmlns:soap="http://schemas.xmlsoap.org/soap/envelope/"
  xmlns:t="http://schemas.microsoft.com/exchange/services/2006/types"
  xmlns:m="http://schemas.microsoft.com/exchange/services/2006/messages">
  <soap:Header>
    <t:RequestServerVersion Version="Exchange2013" />
  </soap:Header>
  <soap:Body >
    <m:FindPeople>
      <m:IndexedPageItemView BasePoint="Beginning" MaxEntriesReturned="100" Offset="0"/>
      <m:ParentFolderId>
        <t:DistinguishedFolderId Id="contacts"/>
      </m:ParentFolderId>
    </m:FindPeople>
  </soap:Body>
</soap:Envelope>
```

The following example shows a successful response to a **FindPeople** WSDL operation request.

```
<?xml version="1.0" encoding="utf-8"?><s:Envelope
  xmlns:s="http://schemas.xmlsoap.org/soap/envelope/">
  <s:Header>
    <h:ServerVersionInfo MajorVersion="15"
      MinorVersion="0"
      MajorBuildNumber="349"
      MinorBuildNumber="0"
      Version="Exchange2013"
      xmlns="http://schemas.microsoft.com/exchange/services/2006/types"
      xmlns:xsd="http://www.w3.org/2001/XMLSchema"
      xmlns:xsi="http://www.w3.org/2001/XMLSchema-instance"
      xmlns:h="http://schemas.microsoft.com/exchange/services/2006/types"
    />
  </s:Header>
  <s:Body xmlns:xsi="http://www.w3.org/2001/XMLSchema-instance"
    xmlns:xsd="http://www.w3.org/2001/XMLSchema">
    <FindPeopleResponse ResponseClass="Success"
      xmlns="http://schemas.microsoft.com/exchange/services/2006/messages">
      <ResponseCode>NoError</ResponseCode>
      <People>
        <Person xmlns="http://schemas.microsoft.com/exchange/services/2006/types">
          <PersonaId
            Id="AAQkAGQ1MjJjMTBkLTc4Y2UtNDA5Ny04ZjU5LWI3MTYzNGNkZmRkYQAQOjFqObcLmtOlz1RnHdXQjo=" />
          <CreationTime>2012-01-11T22:25:37Z</CreationTime>
          <DisplayName>Terry Adams</DisplayName>
          <DisplayNameFirstLast>Terry Adams</DisplayNameFirstLast>
          <DisplayNameLastFirst>Adams Terry</DisplayNameLastFirst>
          <FileAs>Adams, Terry</FileAs>
          <GivenName>Terry</GivenName>
          <Surname>Adams</Surname>
          <EmailAddress>
            <Name>terry@litwareinc.com</Name>
            <EmailAddress>terry@litwareinc.com</EmailAddress>
```

```
<RoutingType>SMTP</RoutingType>
</EmailAddress>
<EmailAddresses>
  <EmailAddress>
    <Name>terry@litwareinc.com</Name>
    <EmailAddress>terry@litwareinc.com</EmailAddress>
    <RoutingType>SMTP</RoutingType>
  </EmailAddress>
  <EmailAddress>
    <Name>tadams@contoso.com</Name>
    <EmailAddress>tadams@contoso.com</EmailAddress>
    <RoutingType>SMTP</RoutingType>
  </EmailAddress>
</EmailAddresses>
<RelevanceScore>2147483647</RelevanceScore>
</Persona>
</People>
<TotalNumberOfPeopleInView>1</TotalNumberOfPeopleInView>
</FindPeopleResponse>
</s:Body>
</s:Envelope>
```

## **5 Security**

### **5.1 Security Considerations for Implementers**

None.

### **5.2 Index of Security Parameters**

None.

## 6 Appendix A: Full WSDL

For ease of implementation, the full WSDL is provided in this appendix.

```
<?xml version="1.0"?>
<wsdl:definitions xmlns:soap="http://schemas.xmlsoap.org/wsdl/soap/"
xmlns:m="http://schemas.microsoft.com/exchange/services/2006/messages"
xmlns:t="http://schemas.microsoft.com/exchange/services/2006/types"
targetNamespace="http://schemas.microsoft.com/exchange/services/2006/messages"
xmlns:wsdl="http://schemas.xmlsoap.org/wsdl/">
  <wsdl:types>
    <xs:schema elementFormDefault="qualified"
targetNamespace="http://schemas.microsoft.com/exchange/services/2006/messages"
version="Exchange2013" id="messages" xmlns:xs="http://www.w3.org/2001/XMLSchema">
      <xs:include schemaLocation="MS-OXWSPERS-messages.xsd"/>
    </xs:schema>
  </wsdl:types>
  <wsdl:message name="FindPeopleSoapIn">
    <wsdl:part name="request" element="m:FindPeople"/>
    <wsdl:part name="Impersonation" element="t:ExchangeImpersonation"/>
    <wsdl:part name="RequestVersion" element="t:RequestServerVersion"/>
  </wsdl:message>
  <wsdl:message name="FindPeopleSoapOut">
    <wsdl:part name="FindPeopleResult" element="m:FindPeopleResponse"/>
    <wsdl:part name="ServerVersion" element="t:ServerVersionInfo"/>
  </wsdl:message>
  <wsdl:message name="GetPersonaSoapIn">
    <wsdl:part name="request" element="m:GetPersona"/>
    <wsdl:part name="Impersonation" element="t:ExchangeImpersonation"/>
    <wsdl:part name="RequestVersion" element="t:RequestServerVersion"/>
  </wsdl:message>
  <wsdl:message name="GetPersonaSoapOut">
    <wsdl:part name="GetPersonaResult" element="m:GetPersonaResponseMessage"/>
    <wsdl:part name="ServerVersion" element="t:ServerVersionInfo"/>
  </wsdl:message>
  <wsdl:portType name="ExchangeServicePortType">
    <wsdl:operation name="FindPeople">
      <wsdl:input message="m:FindPeopleSoapIn"/>
      <wsdl:output message="m:FindPeopleSoapOut"/>
    </wsdl:operation>
    <wsdl:operation name="GetPersona">
      <wsdl:input message="m:GetPersonaSoapIn"/>
      <wsdl:output message="m:GetPersonaSoapOut"/>
    </wsdl:operation>
  </wsdl:portType>
  <wsdl:binding name="ExchangeServiceBinding" type="m:ExchangeServicePortType">
    <wsdl:documentation>
      <wsi:Claim conformsTo="http://ws-i.org/profiles/basic/1.0" xmlns:wsi="http://ws-
i.org/schemas/conformanceClaim"/>
    </wsdl:documentation>
    <soap:binding transport="http://schemas.xmlsoap.org/soap/http"/>
    <wsdl:operation name="FindPeople">
      <soap:operation
soapAction="http://schemas.microsoft.com/exchange/services/2006/messages/FindPeople"/>
      <wsdl:input>
        <soap:body use="literal" parts="request"/>
        <soap:header message="m:FindPeopleSoapIn" part="RequestVersion" use="literal"/>
        <soap:header message="m:FindPeopleSoapIn" part="Impersonation" use="literal"/>
      </wsdl:input>
    </wsdl:operation>
  </wsdl:binding>

```

```
<wsdl:output>
  <soap:body use="literal" parts="FindPeopleResult"/>
  <soap:header message="m:FindPeopleSoapOut" part="ServerVersion" use="literal"/>
</wsdl:output>
</wsdl:operation>
<wsdl:operation name="GetPersona">
  <soap:operation
soapAction="http://schemas.microsoft.com/exchange/services/2006/messages/GetPersona"/>
  <wsdl:input>
    <soap:body use="literal" parts="request"/>
    <soap:header message="m:GetPersonaSoapIn" part="RequestVersion" use="literal"/>
    <soap:header message="m:GetPersonaSoapIn" part="Impersonation" use="literal"/>
  </wsdl:input>
  <wsdl:output>
    <soap:body use="literal" parts="GetPersonaResult"/>
    <soap:header message="m:GetPersonaSoapOut" part="ServerVersion" use="literal"/>
  </wsdl:output>
</wsdl:operation>
</wsdl:binding>
</wsdl:definitions>
```

## 7 Appendix B: Full XML Schema

For ease of implementation, the following sections provide the full XML schema for this protocol.

Schema name	Prefix	Section
<a href="http://schemas.microsoft.com/exchange/services/2006/messages">http://schemas.microsoft.com/exchange/services/2006/messages</a>	m	<a href="#">7.1</a>
<a href="http://schemas.microsoft.com/exchange/services/2006/types">http://schemas.microsoft.com/exchange/services/2006/types</a>	t	<a href="#">7.2</a>

### 7.1 <http://schemas.microsoft.com/exchange/services/2006/messages> Schema

This section contains the MS-OXWSPERS-messages.xsd and information about additional files that this schema file requires to operate correctly.

MS-OXWSPERS-messages.xsd includes the files listed in the following table. To operate correctly, these files have to be present in the folder that contains the WSDL, types schema, and messages schema for this protocol.

File name	Defining specification/section
MS-OXWSCDATA-messages.xsd	<a href="#">[MS-OXWSCDATA]</a> section 7.1
MS-OXWSPERS-types.xsd	<a href="#">7.2</a>

```
<?xml version="1.0"?>
<xs:schema xmlns:m="http://schemas.microsoft.com/exchange/services/2006/messages"
xmlns:t="http://schemas.microsoft.com/exchange/services/2006/types"
elementFormDefault="qualified"
targetNamespace="http://schemas.microsoft.com/exchange/services/2006/messages"
version="Exchange2013" id="messages" xmlns:xs="http://www.w3.org/2001/XMLSchema">
  <xs:import schemaLocation="MS-OXWSPERS-types.xsd"
namespace="http://schemas.microsoft.com/exchange/services/2006/types"/>
  <xs:include schemaLocation="MS-OXWSCDATA-messages.xsd"/>
  <xs:complexType name="FindPeopleType">
    <xs:complexContent mixed="false">
      <xs:extension base="m:BaseRequestType">
        <xs:sequence>
          <xs:element minOccurs="0" name="PersonaShape" type="t:PersonaResponseShapeType"/>
          <xs:element name="IndexedPageItemView" type="t:IndexedPageViewType"/>
          <xs:element minOccurs="0" name="Restriction" type="t:RestrictionType"/>
          <xs:element minOccurs="0" name="AggregationRestriction" type="t:RestrictionType"/>
          <xs:element minOccurs="0" name="SortOrder"
type="t:NonEmptyArrayOfFieldOrdersType"/>
          <xs:element minOccurs="0" name="ParentFolderId" type="t:TargetFolderIdType"/>
          <xs:element minOccurs="0" name="QueryString" type="xs:string"/>
        </xs:sequence>
      </xs:extension>
    </xs:complexContent>
  </xs:complexType>
  <xs:element name="FindPeople" type="m:FindPeopleType"/>
  <xs:complexType name="FindPeopleResponseMessageType">
    <xs:complexContent mixed="false">
      <xs:extension base="m:ResponseMessageType">
```

```

    <xs:sequence>
      <xs:element minOccurs="0" name="People" type="t:ArrayOfPeopleType"/>
      <xs:element minOccurs="0" name="TotalNumberOfPeopleInView" type="xs:int"/>
    </xs:sequence>
  </xs:extension>
</xs:complexContent>
</xs:complexType>
<xs:element name="FindPeopleResponse" type="m:FindPeopleResponseMessageType"/>
<xs:complexType name="GetPersonaType">
  <xs:complexContent mixed="false">
    <xs:extension base="m:BaseRequestType">
      <xs:sequence>
        <xs:element name="PersonaId" type="t:ItemIdType"/>
      </xs:sequence>
    </xs:extension>
  </xs:complexContent>
</xs:complexType>
<xs:element name="GetPersona" type="m:GetPersonaType"/>
<xs:complexType name="GetPersonaResponseMessageType">
  <xs:complexContent mixed="false">
    <xs:extension base="m:ResponseMessageType">
      <xs:sequence>
        <xs:element name="Persona" type="t:PersonaType"/>
      </xs:sequence>
    </xs:extension>
  </xs:complexContent>
</xs:complexType>
<xs:element name="GetPersonaResponseMessage" type="m:GetPersonaResponseMessageType"/>
</xs:schema>

```

## 7.2 <http://schemas.microsoft.com/exchange/services/2006/types> Schema

This section contains the MS-OXWSPERS-types.xsd and information about additional files that this schema file requires to operate correctly.

MS-OXWSPERS-types.xsd includes the file listed in the following table. To operate correctly, this file has to be present in the folder that contains the WSDL, types schema, and messages schema for this protocol.

File name	Defining specification/section
MS-OXWSCORE-types.xsd	<a href="#">[MS-OXWSCORE]</a> section 7.2

```

<?xml version="1.0"?>
<xs:schema xmlns:t="http://schemas.microsoft.com/exchange/services/2006/types"
  elementFormDefault="qualified"
  targetNamespace="http://schemas.microsoft.com/exchange/services/2006/types"
  version="Exchange2013" id="types" xmlns:xs="http://www.w3.org/2001/XMLSchema">
  <xs:import namespace="http://www.w3.org/XML/1998/namespace"/>
  <xs:include schemaLocation="MS-OXWSCORE-types.xsd"/>
  <xs:complexType name="ArrayOfFolderIdType">
    <xs:choice minOccurs="0" maxOccurs="unbounded">
      <xs:element name="FolderId" type="t:FolderIdType"/>
    </xs:choice>
  </xs:complexType>
  <xs:complexType name="ArrayOfStringAttributedValuesType">
    <xs:sequence>

```



```

        <xs:element minOccurs="0" maxOccurs="unbounded" name="StringAttributedValue"
type="t:StringAttributedValueType"/>
    </xs:sequence>
</xs:complexType>
<xs:complexType name="ArrayOfStringArrayAttributedValuesType">
    <xs:sequence>
        <xs:element minOccurs="0" maxOccurs="unbounded" name="StringArrayAttributedValue"
type="t:StringArrayAttributedValueType"/>
    </xs:sequence>
</xs:complexType>
<xs:complexType name="ArrayOfEmailAddressAttributedValuesType">
    <xs:sequence>
        <xs:element minOccurs="0" maxOccurs="unbounded" name="EmailAddressAttributedValue"
type="t:EmailAddressAttributedValueType"/>
    </xs:sequence>
</xs:complexType>
<xs:complexType name="ArrayOfPeopleType">
    <xs:choice minOccurs="0" maxOccurs="unbounded">
        <xs:element name="Persona" type="t:PersonaType"/>
    </xs:choice>
</xs:complexType>
<xs:complexType name="ArrayOfPhoneNumberAttributedValuesType">
    <xs:sequence>
        <xs:element minOccurs="0" maxOccurs="unbounded" name="PhoneNumberAttributedValue"
type="t:PhoneNumberAttributedValueType"/>
    </xs:sequence>
</xs:complexType>
<xs:complexType name="ArrayOfPostalAddressAttributedValuesType">
    <xs:sequence>
        <xs:element minOccurs="0" maxOccurs="unbounded" name="PostalAddressAttributedValue"
type="t:PostalAddressAttributedValueType"/>
    </xs:sequence>
</xs:complexType>
<xs:complexType name="ArrayOfExtendedPropertyAttributedValueType">
    <xs:sequence>
        <xs:element minOccurs="0" maxOccurs="unbounded" name="ExtendedPropertyAttributedValue"
type="t:ExtendedPropertyAttributedValueType"/>
    </xs:sequence>
</xs:complexType>
<xs:complexType name="ArrayOfPersonaAttributionsType">
    <xs:sequence>
        <xs:element minOccurs="1" maxOccurs="unbounded" name="Attribution"
type="t:PersonaAttributionType"/>
    </xs:sequence>
</xs:complexType>
<xs:complexType name="ArrayOfValueAttributionsType">
    <xs:sequence>
        <xs:element minOccurs="1" maxOccurs="unbounded" name="Attribution" type="xs:string"/>
    </xs:sequence>
</xs:complexType>
<xs:complexType name="ArrayOfStringValueType">
    <xs:sequence>
        <xs:element minOccurs="1" maxOccurs="unbounded" name="Value" type="xs:string"/>
    </xs:sequence>
</xs:complexType>
<xs:complexType name="ArrayOfBodyContentAttributedValuesType">
    <xs:sequence>
        <xs:element minOccurs="0" maxOccurs="unbounded" name="BodyContentAttributedValue"
type="t:BodyContentAttributedValueType"/>
    </xs:sequence>

```

```

</xs:complexType>
<xs:complexType name="BodyContentType">
  <xs:sequence>
    <xs:element minOccurs="1" maxOccurs="1" name="Value" type="xs:string"/>
    <xs:element minOccurs="1" maxOccurs="1" name="BodyType" type="t:BodyType"/>
  </xs:sequence>
</xs:complexType>
<xs:complexType name="BodyContentAttributedValueType">
  <xs:sequence>
    <xs:element minOccurs="1" maxOccurs="1" name="Value" type="t:BodyContentType"/>
    <xs:element minOccurs="1" maxOccurs="1" name="Attributions"
type="t:ArrayOfValueAttributionsType"/>
  </xs:sequence>
</xs:complexType>
<xs:complexType name="EmailAddressAttributedValueType">
  <xs:sequence>
    <xs:element minOccurs="1" maxOccurs="1" name="Value" type="t:EmailAddressType"/>
    <xs:element minOccurs="1" maxOccurs="1" name="Attributions"
type="t:ArrayOfValueAttributionsType"/>
  </xs:sequence>
</xs:complexType>
<xs:complexType name="ExtendedPropertyAttributedValueType">
  <xs:sequence>
    <xs:element minOccurs="1" maxOccurs="1" name="Value" type="t:ExtendedPropertyType"/>
    <xs:element minOccurs="1" maxOccurs="1" name="Attributions"
type="t:ArrayOfValueAttributionsType"/>
  </xs:sequence>
</xs:complexType>
<xs:simpleType name="LocationSourceType">
  <xs:restriction base="xs:string">
    <xs:enumeration value="None"/>
    <xs:enumeration value="LocationServices"/>
    <xs:enumeration value="PhonebookServices"/>
    <xs:enumeration value="Device"/>
    <xs:enumeration value="Contact"/>
    <xs:enumeration value="Resource"/>
  </xs:restriction>
</xs:simpleType>
<xs:complexType name="PersonaAttributionType">
  <xs:sequence>
    <xs:element minOccurs="1" maxOccurs="1" name="Id" type="xs:string"/>
    <xs:element minOccurs="1" maxOccurs="1" name="SourceId" type="t:ItemIdType"/>
    <xs:element minOccurs="1" maxOccurs="1" name="DisplayName" type="xs:string"/>
    <xs:element minOccurs="0" maxOccurs="1" name="IsWritable" type="xs:boolean"/>
    <xs:element minOccurs="0" maxOccurs="1" name="IsQuickContact" type="xs:boolean"/>
    <xs:element minOccurs="0" maxOccurs="1" name="IsHidden" type="xs:boolean"/>
    <xs:element minOccurs="0" maxOccurs="1" name="FolderId" type="t:FolderIdType"/>
  </xs:sequence>
</xs:complexType>
<xs:complexType name="PersonaPhoneNumberType">
  <xs:sequence>
    <xs:element minOccurs="1" maxOccurs="1" name="Number" type="xs:string"/>
    <xs:element minOccurs="1" maxOccurs="1" name="Type" type="xs:string"/>
  </xs:sequence>
</xs:complexType>
<xs:complexType name="PersonaPostalAddressType">
  <xs:sequence>
    <xs:element minOccurs="0" maxOccurs="1" name="Street" type="xs:string"/>
    <xs:element minOccurs="0" maxOccurs="1" name="City" type="xs:string"/>
  </xs:sequence>
</xs:complexType>

```

```

<xs:element minOccurs="0" maxOccurs="1" name="State" type="xs:string"/>
<xs:element minOccurs="0" maxOccurs="1" name="Country" type="xs:string"/>
<xs:element minOccurs="0" maxOccurs="1" name="PostalCode" type="xs:string"/>
<xs:element minOccurs="0" maxOccurs="1" name="PostOfficeBox" type="xs:string"/>
<xs:element minOccurs="0" maxOccurs="1" name="Type" type="xs:string"/>
<xs:element minOccurs="0" maxOccurs="1" name="Latitude" type="xs:double"/>
<xs:element minOccurs="0" maxOccurs="1" name="Longitude" type="xs:double"/>
<xs:element minOccurs="0" maxOccurs="1" name="Accuracy" type="xs:double"/>
<xs:element minOccurs="0" maxOccurs="1" name="Altitude" type="xs:double"/>
<xs:element minOccurs="0" maxOccurs="1" name="AltitudeAccuracy" type="xs:double"/>
<xs:element minOccurs="0" maxOccurs="1" name="FormattedAddress" type="xs:string"/>
<xs:element minOccurs="0" maxOccurs="1" name="LocationUri" type="xs:string"/>
<xs:element minOccurs="0" maxOccurs="1" name="LocationSource"
type="t:LocationSourceType"/>
</xs:sequence>
</xs:complexType>
<xs:complexType name="PersonaResponseShapeType">
<xs:sequence>
<xs:element name="BaseShape" type="t:DefaultShapeNamesType"/>
<xs:element minOccurs="0" name="AdditionalProperties"
type="t:NonEmptyArrayOfPathsToElementType"/>
</xs:sequence>
</xs:complexType>
<xs:complexType name="PersonaType">
<xs:sequence>
<xs:element minOccurs="1" maxOccurs="1" name="PersonaId" type="t:ItemIdType"/>
<xs:element minOccurs="0" maxOccurs="1" name="PersonaType" type="xs:string"/>
<xs:element minOccurs="0" maxOccurs="1" name="PersonaObjectStatus" type="xs:string"/>
<xs:element minOccurs="0" maxOccurs="1" name="CreationTime" type="xs:dateTime"/>
<xs:element minOccurs="0" name="Bodies"
type="t:ArrayOfBodyContentAttributedValuesType"/>
<xs:element minOccurs="0" maxOccurs="1" name="DisplayNameFirstLastSortKey"
type="xs:string"/>
<xs:element minOccurs="0" maxOccurs="1" name="DisplayNameLastFirstSortKey"
type="xs:string"/>
<xs:element minOccurs="0" maxOccurs="1" name="CompanyNameSortKey" type="xs:string"/>
<xs:element minOccurs="0" maxOccurs="1" name="HomeCitySortKey" type="xs:string"/>
<xs:element minOccurs="0" maxOccurs="1" name="WorkCitySortKey" type="xs:string"/>
<xs:element minOccurs="0" maxOccurs="1" name="DisplayNameFirstLastHeader"
type="xs:string"/>
<xs:element minOccurs="0" maxOccurs="1" name="DisplayNameLastFirstHeader"
type="xs:string"/>
<xs:element minOccurs="0" maxOccurs="1" name="FileAsHeader" type="xs:string"/>
<xs:element minOccurs="0" maxOccurs="1" name="DisplayName" type="xs:string"/>
<xs:element minOccurs="0" maxOccurs="1" name="DisplayNameFirstLast" type="xs:string"/>
<xs:element minOccurs="0" maxOccurs="1" name="DisplayNameLastFirst" type="xs:string"/>
<xs:element minOccurs="0" maxOccurs="1" name="FileAs" type="xs:string"/>
<xs:element minOccurs="0" maxOccurs="1" name="FileAsId" type="xs:string"/>
<xs:element minOccurs="0" maxOccurs="1" name="DisplayNamePrefix" type="xs:string"/>
<xs:element minOccurs="0" maxOccurs="1" name="GivenName" type="xs:string"/>
<xs:element minOccurs="0" maxOccurs="1" name="MiddleName" type="xs:string"/>
<xs:element minOccurs="0" maxOccurs="1" name="Surname" type="xs:string"/>
<xs:element minOccurs="0" maxOccurs="1" name="Generation" type="xs:string"/>
<xs:element minOccurs="0" maxOccurs="1" name="Nickname" type="xs:string"/>
<xs:element minOccurs="0" maxOccurs="1" name="YomiCompanyName" type="xs:string"/>
<xs:element minOccurs="0" maxOccurs="1" name="YomiFirstName" type="xs:string"/>
<xs:element minOccurs="0" maxOccurs="1" name="YomiLastName" type="xs:string"/>
<xs:element minOccurs="0" maxOccurs="1" name="Title" type="xs:string"/>
<xs:element minOccurs="0" maxOccurs="1" name="Department" type="xs:string"/>

```

```

    <xs:element minOccurs="0" maxOccurs="1" name="CompanyName" type="xs:string"/>
    <xs:element minOccurs="0" maxOccurs="1" name="Location" type="xs:string"/>
    <xs:element minOccurs="0" maxOccurs="1" name="EmailAddress" type="t:EmailAddressType"/>
    <xs:element minOccurs="0" maxOccurs="1" name="EmailAddresses"
type="t:ArrayOfEmailAddressType"/>
    <xs:element minOccurs="0" maxOccurs="1" name="PhoneNumber"
type="t:PersonaPhoneNumberType"/>
    <xs:element minOccurs="0" maxOccurs="1" name="ImAddress" type="xs:string"/>
    <xs:element minOccurs="0" maxOccurs="1" name="HomeCity" type="xs:string"/>
    <xs:element minOccurs="0" maxOccurs="1" name="WorkCity" type="xs:string"/>
    <xs:element minOccurs="0" maxOccurs="1" name="RelevanceScore" type="xs:int"/>
    <xs:element minOccurs="0" maxOccurs="1" name="FolderIds" type="t:ArrayOfFolderIdType"/>
    <xs:element minOccurs="0" maxOccurs="1" name="Attributions"
type="t:ArrayOfPersonaAttributionsType"/>
    <xs:element minOccurs="0" name="DisplayNames"
type="t:ArrayOfStringAttributedValuesType"/>
    <xs:element minOccurs="0" name="FileAses" type="t:ArrayOfStringAttributedValuesType"/>
    <xs:element minOccurs="0" name="FileAsIds" type="t:ArrayOfStringAttributedValuesType"/>
    <xs:element minOccurs="0" name="DisplayNamePrefixes"
type="t:ArrayOfStringAttributedValuesType"/>
    <xs:element minOccurs="0" name="GlivenNames"
type="t:ArrayOfStringAttributedValuesType"/>
    <xs:element minOccurs="0" name="MiddleNames"
type="t:ArrayOfStringAttributedValuesType"/>
    <xs:element minOccurs="0" name="Surnames" type="t:ArrayOfStringAttributedValuesType"/>
    <xs:element minOccurs="0" name="Generations"
type="t:ArrayOfStringAttributedValuesType"/>
    <xs:element minOccurs="0" name="Nicknames" type="t:ArrayOfStringAttributedValuesType"/>
    <xs:element minOccurs="0" name="Initials" type="t:ArrayOfStringAttributedValuesType"/>
    <xs:element minOccurs="0" name="YomiCompanyNames"
type="t:ArrayOfStringAttributedValuesType"/>
    <xs:element minOccurs="0" name="YomiFirstNames"
type="t:ArrayOfStringAttributedValuesType"/>
    <xs:element minOccurs="0" name="YomiLastNames"
type="t:ArrayOfStringAttributedValuesType"/>
    <xs:element minOccurs="0" name="BusinessPhoneNumbers"
type="t:ArrayOfPhoneNumberAttributedValuesType"/>
    <xs:element minOccurs="0" name="BusinessPhoneNumbers2"
type="t:ArrayOfPhoneNumberAttributedValuesType"/>
    <xs:element minOccurs="0" name="HomePhones"
type="t:ArrayOfPhoneNumberAttributedValuesType"/>
    <xs:element minOccurs="0" name="HomePhones2"
type="t:ArrayOfPhoneNumberAttributedValuesType"/>
    <xs:element minOccurs="0" name="MobilePhones"
type="t:ArrayOfPhoneNumberAttributedValuesType"/>
    <xs:element minOccurs="0" name="MobilePhones2"
type="t:ArrayOfPhoneNumberAttributedValuesType"/>
    <xs:element minOccurs="0" name="AssistantPhoneNumbers"
type="t:ArrayOfPhoneNumberAttributedValuesType"/>
    <xs:element minOccurs="0" name="CallbackPhones"
type="t:ArrayOfPhoneNumberAttributedValuesType"/>
    <xs:element minOccurs="0" name="CarPhones"
type="t:ArrayOfPhoneNumberAttributedValuesType"/>
    <xs:element minOccurs="0" name="HomeFaxes"
type="t:ArrayOfPhoneNumberAttributedValuesType"/>
    <xs:element minOccurs="0" name="OrganizationMainPhones"
type="t:ArrayOfPhoneNumberAttributedValuesType"/>
    <xs:element minOccurs="0" name="OtherFaxes"
type="t:ArrayOfPhoneNumberAttributedValuesType"/>
    <xs:element minOccurs="0" name="OtherTelephones"
type="t:ArrayOfPhoneNumberAttributedValuesType"/>

```

```

    <xs:element minOccurs="0" name="OtherPhones2"
type="t:ArrayOfPhoneNumberAttributedValuesType"/>
    <xs:element minOccurs="0" name="Paggers"
type="t:ArrayOfPhoneNumberAttributedValuesType"/>
    <xs:element minOccurs="0" name="RadioPhones"
type="t:ArrayOfPhoneNumberAttributedValuesType"/>
    <xs:element minOccurs="0" name="TelexNumbers"
type="t:ArrayOfPhoneNumberAttributedValuesType"/>
    <xs:element minOccurs="0" name="TTYTDDPhoneNumbers"
type="t:ArrayOfPhoneNumberAttributedValuesType"/>
    <xs:element minOccurs="0" name="WorkFaxes"
type="t:ArrayOfPhoneNumberAttributedValuesType"/>
    <xs:element minOccurs="0" maxOccurs="1" name="Emails1"
type="t:ArrayOfEmailAddressAttributedValuesType"/>
    <xs:element minOccurs="0" maxOccurs="1" name="Emails2"
type="t:ArrayOfEmailAddressAttributedValuesType"/>
    <xs:element minOccurs="0" maxOccurs="1" name="Emails3"
type="t:ArrayOfEmailAddressAttributedValuesType"/>
    <xs:element minOccurs="0" name="BusinessHomePages"
type="t:ArrayOfStringAttributedValuesType"/>
    <xs:element minOccurs="0" name="PersonalHomePages"
type="t:ArrayOfStringAttributedValuesType"/>
    <xs:element minOccurs="0" name="OfficeLocations"
type="t:ArrayOfStringAttributedValuesType"/>
    <xs:element minOccurs="0" name="ImAddresses"
type="t:ArrayOfStringAttributedValuesType"/>
    <xs:element minOccurs="0" name="ImAddresses2"
type="t:ArrayOfStringAttributedValuesType"/>
    <xs:element minOccurs="0" name="ImAddresses3"
type="t:ArrayOfStringAttributedValuesType"/>
    <xs:element minOccurs="0" maxOccurs="1" name="BusinessAddresses"
type="t:ArrayOfPostalAddressAttributedValuesType"/>
    <xs:element minOccurs="0" maxOccurs="1" name="HomeAddresses"
type="t:ArrayOfPostalAddressAttributedValuesType"/>
    <xs:element minOccurs="0" maxOccurs="1" name="OtherAddresses"
type="t:ArrayOfPostalAddressAttributedValuesType"/>
    <xs:element minOccurs="0" name="Titles" type="t:ArrayOfStringAttributedValuesType"/>
    <xs:element minOccurs="0" name="Departments"
type="t:ArrayOfStringAttributedValuesType"/>
    <xs:element minOccurs="0" name="CompanyNames"
type="t:ArrayOfStringAttributedValuesType"/>
    <xs:element minOccurs="0" name="Managers" type="t:ArrayOfStringAttributedValuesType"/>
    <xs:element minOccurs="0" name="AssistantNames"
type="t:ArrayOfStringAttributedValuesType"/>
    <xs:element minOccurs="0" name="Professions"
type="t:ArrayOfStringAttributedValuesType"/>
    <xs:element minOccurs="0" name="SpouseNames"
type="t:ArrayOfStringAttributedValuesType"/>
    <xs:element minOccurs="0" name="Children"
type="t:ArrayOfStringArrayAttributedValuesType"/>
    <xs:element minOccurs="0" name="Schools" type="t:ArrayOfStringAttributedValuesType"/>
    <xs:element minOccurs="0" name="Hobbies" type="t:ArrayOfStringAttributedValuesType"/>
    <xs:element minOccurs="0" name="WeddingAnniversaries"
type="t:ArrayOfStringAttributedValuesType"/>
    <xs:element minOccurs="0" name="Birthdays" type="t:ArrayOfStringAttributedValuesType"/>
    <xs:element minOccurs="0" name="Locations" type="t:ArrayOfStringAttributedValuesType"/>
    <xs:element minOccurs="0" name="ExtendedProperties"
type="t:ArrayOfExtendedPropertyAttributedValueTypes"/>
  </xs:sequence>
</xs:complexType>
<xs:complexType name="PhoneNumberAttributedValueType">

```

```

    <xs:sequence>
      <xs:element minOccurs="1" maxOccurs="1" name="Value" type="t:PersonaPhoneNumberType"/>
      <xs:element minOccurs="1" maxOccurs="1" name="Attributions"
type="t:ArrayOfValueAttributionsType"/>
    </xs:sequence>
  </xs:complexType>
  <xs:complexType name="PostalAddressAttributedValueType">
    <xs:sequence>
      <xs:element minOccurs="1" maxOccurs="1" name="Value"
type="t:PersonaPostalAddressType"/>
      <xs:element minOccurs="1" maxOccurs="1" name="Attributions"
type="t:ArrayOfValueAttributionsType"/>
    </xs:sequence>
  </xs:complexType>
  <xs:complexType name="StringArrayAttributedValueType">
    <xs:sequence>
      <xs:element minOccurs="1" maxOccurs="1" name="Values" type="t:ArrayOfStringValueType"/>
      <xs:element minOccurs="1" maxOccurs="1" name="Attributions"
type="t:ArrayOfValueAttributionsType"/>
    </xs:sequence>
  </xs:complexType>
  <xs:complexType name="StringAttributedValueType">
    <xs:sequence>
      <xs:element minOccurs="1" maxOccurs="1" name="Value" type="xs:string"/>
      <xs:element minOccurs="1" maxOccurs="1" name="Attributions"
type="t:ArrayOfValueAttributionsType"/>
    </xs:sequence>
  </xs:complexType>
</xs:schema>

```

## 8 Appendix C: Product Behavior

The information in this specification is applicable to the following Microsoft products or supplemental software. References to product versions include released service packs:

- Microsoft Exchange Server 2013
- Microsoft Lync 2013

Exceptions, if any, are noted below. If a service pack or Quick Fix Engineering (QFE) number appears with the product version, behavior changed in that service pack or QFE. The new behavior also applies to subsequent service packs of the product unless otherwise specified. If a product edition appears with the product version, behavior is different in that product edition.

Unless otherwise specified, any statement of optional behavior in this specification that is prescribed using the terms SHOULD or SHOULD NOT implies product behavior in accordance with the SHOULD or SHOULD NOT prescription. Unless otherwise specified, the term MAY implies that the product does not follow the prescription.

## 9 Change Tracking

No table of changes is available. The document is either new or has had no changes since its last release.



## 10 Index

### A

Abstract data model  
    [server](#) 32  
[Applicability](#) 9  
[ArrayOfBodyContentAttributedValuesType complex type](#) 13  
[ArrayOfEmailAddressAttributedValuesType complex type](#) 13  
[ArrayOfExtendedPropertyAttributedValueType complex type](#) 13  
[ArrayOfFolderIdType complex type](#) 14  
[ArrayOfPersonaAttributionsType complex type](#) 14  
[ArrayOfPhoneNumberAttributedValuesType complex type](#) 14  
[ArrayOfPostalAddressAttributedValuesType complex type](#) 14  
[ArrayOfStringArrayAttributedValuesType complex type](#) 15  
[ArrayOfStringAttributedValuesType complex type](#) 15  
[ArrayOfStringValueComplexType complex type](#) 15  
[ArrayOfValueAttributionsType complex type](#) 16  
[Attribute groups](#) 31  
[Attributes](#) 31

### B

[BodyContentAttributedValueType complex type](#) 16  
[BodyContentType complex type](#) 16

### C

[Capability negotiation](#) 9  
[Change tracking](#) 56  
[Complex types](#) 11  
    [ArrayOfBodyContentAttributedValuesType](#) 13  
    [ArrayOfEmailAddressAttributedValuesType](#) 13  
    [ArrayOfExtendedPropertyAttributedValueType](#) 13  
    [ArrayOfFolderIdType](#) 14  
    [ArrayOfPersonaAttributionsType](#) 14  
    [ArrayOfPhoneNumberAttributedValuesType](#) 14  
    [ArrayOfPostalAddressAttributedValuesType](#) 14  
    [ArrayOfStringArrayAttributedValuesType](#) 15  
    [ArrayOfStringAttributedValuesType](#) 15  
    [ArrayOfStringValueComplexType](#) 15  
    [ArrayOfValueAttributionsType](#) 16  
    [BodyContentAttributedValueType](#) 16  
    [BodyContentType](#) 16  
    [EmailAddressAttributedValueType](#) 17  
    [ExtendedPropertyAttributedValueType](#) 17  
    [PersonaAttributionType](#) 18  
    [PersonaPhoneNumberType](#) 18  
    [PersonaPostalAddressType](#) 19  
    [PersonaType](#) 20  
    [PhoneNumberAttributedValueType](#) 28  
    [PostalAddressAttributedValueType](#) 29  
    [StringArrayAttributedValueType](#) 29  
    [StringAttributedValueType](#) 29

### D

Data model - abstract  
    [server](#) 32

### E

[EmailAddressAttributedValueType complex type](#) 17  
Events  
    [local - server](#) 41  
    [timer - server](#) 41  
[ExtendedPropertyAttributedValueType complex type](#) 17

### F

[Fields - vendor-extensible](#) 9  
[Full WSDL](#) 45  
[Full XML Schema](#) 47  
    <http://schemas.microsoft.com/exchange/services/2006/messages Schema> 47  
    <http://schemas.microsoft.com/exchange/services/2006/types Schema> 48

### G

[Glossary](#) 6  
[Groups](#) 31

### I

[Implementer - security considerations](#) 44  
[Index of security parameters](#) 44  
[Informative references](#) 7  
Initialization  
    [server](#) 32  
[Introduction](#) 6

### L

Local events  
    [server](#) 41  
[LocationSourceType simple type](#) 30

### M

Message processing  
    [server](#) 32  
Messages  
    [ArrayOfBodyContentAttributedValuesType complex type](#) 13  
    [ArrayOfEmailAddressAttributedValuesType complex type](#) 13  
    [ArrayOfExtendedPropertyAttributedValueType complex type](#) 13  
    [ArrayOfFolderIdType complex type](#) 14  
    [ArrayOfPersonaAttributionsType complex type](#) 14

[ArrayOfPhoneNumberAttributedValueType](#)  
  [complex type](#) 14  
[ArrayOfPostalAddressAttributedValueType](#)  
  [complex type](#) 14  
[ArrayOfStringArrayAttributedValueType](#) [complex type](#) 15  
[ArrayOfStringAttributedValueType](#) [complex type](#) 15  
[ArrayOfStringValueComplexType](#) [complex type](#) 15  
[ArrayOfValueAttributionsType](#) [complex type](#) 16  
[attribute groups](#) 31  
[attributes](#) 31  
[BodyContentAttributedValueType](#) [complex type](#) 16  
[BodyContentType](#) [complex type](#) 16  
[complex types](#) 11  
[elements](#) 10  
[EmailAddressAttributedValueType](#) [complex type](#) 17  
[enumerated](#) 10  
[ExtendedPropertyAttributedValueType](#) [complex type](#) 17  
[groups](#) 31  
[LocationSourceType](#) [simple type](#) 30  
[namespaces](#) 10  
[PersonaAttributionType](#) [complex type](#) 18  
[PersonaPhoneNumberType](#) [complex type](#) 18  
[PersonaPostalAddressType](#) [complex type](#) 19  
[PersonaType](#) [complex type](#) 20  
[PhoneNumberAttributedValueType](#) [complex type](#) 28  
[PostalAddressAttributedValueType](#) [complex type](#) 29  
[simple types](#) 30  
[StringArrayAttributedValueType](#) [complex type](#) 29  
[StringAttributedValueType](#) [complex type](#) 29  
[syntax](#) 10  
[transport](#) 10

## N

[Namespaces](#) 10  
[Normative references](#) 7

## O

Operations  
  [FindPeople](#) 32  
  [GetPersona](#) 38  
[Overview \(synopsis\)](#) 8

## P

[Parameters - security index](#) 44  
[PersonaAttributionType](#) [complex type](#) 18  
[PersonaPhoneNumberType](#) [complex type](#) 18  
[PersonaPostalAddressType](#) [complex type](#) 19  
[PersonaType](#) [complex type](#) 20  
[PhoneNumberAttributedValueType](#) [complex type](#) 28  
[PostalAddressAttributedValueType](#) [complex type](#) 29  
[Preconditions](#) 9  
[Prerequisites](#) 9

[Product behavior](#) 55

## R

[References](#) 6  
  [informative](#) 7  
  [normative](#) 7  
[Relationship to other protocols](#) 8

## S

Security  
  [implementer considerations](#) 44  
  [parameter index](#) 44  
Sequencing rules  
  [server](#) 32  
Server  
  [abstract data model](#) 32  
  [FindPeople operation](#) 32  
  [GetPersona operation](#) 38  
  [initialization](#) 32  
  [local events](#) 41  
  [message processing](#) 32  
  [sequencing rules](#) 32  
  [timer events](#) 41  
  [timers](#) 32  
[Simple types](#) 30  
  [LocationSourceType](#) 30  
[Standards assignments](#) 9  
[StringArrayAttributedValueType](#) [complex type](#) 29  
[StringAttributedValueType](#) [complex type](#) 29  
Syntax  
  [messages - overview](#) 10

## T

Timer events  
  [server](#) 41  
Timers  
  [server](#) 32  
[Tracking changes](#) 56  
[Transport](#) 10  
Types  
  [complex](#) 11  
  [simple](#) 30

## V

[Vendor-extensible fields](#) 9  
[Versioning](#) 9

## W

[WSDL](#) 45

## X

[XML Schema](#) 47  
  <http://schemas.microsoft.com/exchange/services/2006/messages Schema> 47  
  <http://schemas.microsoft.com/exchange/services/2006/types Schema> 48