

[MS-OXWSADISC]: Autodiscover Publishing and Lookup SOAP-Based Web Service Protocol Specification

Intellectual Property Rights Notice for Open Specifications Documentation

- **Technical Documentation.** Microsoft publishes Open Specifications documentation for protocols, file formats, languages, standards as well as overviews of the interaction among each of these technologies.
- **Copyrights.** This documentation is covered by Microsoft copyrights. Regardless of any other terms that are contained in the terms of use for the Microsoft website that hosts this documentation, you may make copies of it in order to develop implementations of the technologies described in the Open Specifications and may distribute portions of it in your implementations using these technologies or your documentation as necessary to properly document the implementation. You may also distribute in your implementation, with or without modification, any schema, IDL's, or code samples that are included in the documentation. This permission also applies to any documents that are referenced in the Open Specifications.
- **No Trade Secrets.** Microsoft does not claim any trade secret rights in this documentation.
- **Patents.** Microsoft has patents that may cover your implementations of the technologies described in the Open Specifications. Neither this notice nor Microsoft's delivery of the documentation grants any licenses under those or any other Microsoft patents. However, a given Open Specification may be covered by Microsoft's Open Specification Promise (available here: <http://www.microsoft.com/interop/osp>) or the Community Promise (available here: <http://www.microsoft.com/interop/cp/default.mspx>). If you would prefer a written license, or if the technologies described in the Open Specifications are not covered by the Open Specifications Promise or Community Promise, as applicable, patent licenses are available by contacting iplg@microsoft.com.
- **Trademarks.** The names of companies and products contained in this documentation may be covered by trademarks or similar intellectual property rights. This notice does not grant any licenses under those rights.
- **Fictitious Names.** The example companies, organizations, products, domain names, e-mail addresses, logos, people, places, and events depicted in this documentation are fictitious. No association with any real company, organization, product, domain name, email address, logo, person, place, or event is intended or should be inferred.

Reservation of Rights. All other rights are reserved, and this notice does not grant any rights other than specifically described above, whether by implication, estoppel, or otherwise.

Tools. The Open Specifications do not require the use of Microsoft programming tools or programming environments in order for you to develop an implementation. If you have access to Microsoft programming tools and environments you are free to take advantage of them. Certain Open Specifications are intended for use in conjunction with publicly available standard specifications and network programming art, and assumes that the reader either is familiar with the aforementioned material or has immediate access to it.

Revision Summary

Date	Revision History	Revision Class	Comments
07/15/2009	1.0	Major	Initial Availability.
11/04/2009	2.0.0	Major	Updated and revised the technical content.
02/10/2010	3.0.0	Major	Updated and revised the technical content.
05/05/2010	4.0.0	Major	Updated and revised the technical content.
08/04/2010	5.0	Major	Significantly changed the technical content.

Contents

1 Introduction	7
1.1 Glossary	7
1.2 References	7
1.2.1 Normative References	7
1.2.2 Informative References	8
1.3 Overview	8
1.4 Relationship to Other Protocols	11
1.5 Prerequisites/Preconditions	11
1.6 Applicability Statement	11
1.7 Versioning and Capability Negotiation	12
1.8 Vendor Extensible Fields	12
1.9 Standards Assignments	12
2 Messages	13
2.1 Transport	13
2.2 Common Message Syntax	13
2.2.1 Namespaces	13
2.2.2 Messages	14
2.2.3 Elements	14
2.2.3.1 ServerVersionInfo Element	14
2.2.3.2 Domains Element	14
2.2.4 Complex Types	14
2.2.4.1 tns:ServerVersionInfo Complex Type	14
2.2.4.2 tns:Domains Complex Type	15
2.2.5 Simple Types	16
2.2.6 Attributes	16
2.2.7 Groups	16
2.2.8 Attribute Groups	16
3 Protocol Details	17
3.1 Autodiscover Server Details	17
3.1.1 Abstract Data Model	17
3.1.2 Timers	17
3.1.3 Initialization	17
3.1.4 Message Processing Events and Sequencing	17
3.1.4.1 GetDomainSettings	17
3.1.4.1.1 Messages	18
3.1.4.1.1.1 tns:GetDomainSettingsRequestMessage	18
3.1.4.1.1.2 tns:GetDomainSettingsRequestMessage_Headers	19
3.1.4.1.1.3 tns:GetDomainSettingsResponseMessage	19
3.1.4.1.1.4 tns:GetDomainSettingsResponseMessage_Headers	19
3.1.4.1.2 Elements	20
3.1.4.1.2.1 GetDomainSettingsRequestMessage Element	21
3.1.4.1.2.2 GetDomainSettingsResponseMessage Element	21
3.1.4.1.2.3 GetDomainSettingsRequest Element	22
3.1.4.1.2.4 GetDomainSettingsResponse Element	22
3.1.4.1.2.5 ArrayOfDomainResponse Element	22
3.1.4.1.2.6 DomainResponse Element	22
3.1.4.1.2.7 DomainSettingErrors Element	22
3.1.4.1.2.8 DomainSettingError Element	23

3.1.4.1.2.9	DomainSettings Element	23
3.1.4.1.2.10	DomainSetting Element	23
3.1.4.1.2.11	DomainStringSetting Element.....	23
3.1.4.1.3	Complex Types	23
3.1.4.1.3.1	tns:GetDomainSettingsRequest Complex Type	24
3.1.4.1.3.2	tns:GetDomainSettingsResponse Complex Type	25
3.1.4.1.3.3	tns:ArrayOfDomainResponse Complex Type.....	26
3.1.4.1.3.4	tns:DomainResponse Complex Type	26
3.1.4.1.3.5	tns:DomainSettingErrors Complex Type	27
3.1.4.1.3.6	tns:DomainSettingError Complex Type.....	27
3.1.4.1.3.7	tns:DomainSettings Complex Type	28
3.1.4.1.3.8	tns:DomainSetting Complex Type.....	28
3.1.4.1.3.9	tns:DomainStringSetting Complex Type	29
3.1.4.2	GetFederationInformation	29
3.1.4.2.1	Messages	31
3.1.4.2.1.1	tns:GetFederationInformationRequestMessage	31
3.1.4.2.1.2	tns:GetFederationInformationRequestMessage_Headers.....	31
3.1.4.2.1.3	tns:GetFederationInformationResponseMessage	32
3.1.4.2.1.4	tns:GetFederationInformationResponseMessage_Headers.....	32
3.1.4.2.2	Elements.....	33
3.1.4.2.2.1	GetFederationInformationRequestMessage Element	33
3.1.4.2.2.2	GetFederationInformationResponseMessage Element	33
3.1.4.2.2.3	GetFederationInformationRequest Element	34
3.1.4.2.2.4	GetFederationInformationResponse Element	34
3.1.4.2.3	Complex Types	34
3.1.4.2.3.1	tns:GetFederationInformationRequest Complex Type	35
3.1.4.2.3.2	tns:GetFederationInformationResponse Complex Type	35
3.1.4.2.3.3	tns:TokenIssuer Complex Type	36
3.1.4.2.3.4	tns:TokenIssuers Complex Type	37
3.1.4.3	GetUserSettings	37
3.1.4.3.1	Messages	38
3.1.4.3.1.1	tns:GetUserSettingsRequestMessage	38
3.1.4.3.1.2	tns:GetUserSettingsRequestMessage_Headers	39
3.1.4.3.1.3	tns:GetUserSettingsResponseMessage	39
3.1.4.3.1.4	tns:GetUserSettingsResponseMessage_Headers	39
3.1.4.3.2	Elements.....	40
3.1.4.3.2.1	GetUserSettingsRequestMessage Element.....	41
3.1.4.3.2.2	GetUserSettingsResponseMessage Element.....	42
3.1.4.3.2.3	GetUserSettingsRequest Element.....	42
3.1.4.3.2.4	GetUserSettingsResponse Element.....	43
3.1.4.3.2.5	AutodiscoverRequest Element	43
3.1.4.3.2.6	Users Element.....	43
3.1.4.3.2.7	User Element	43
3.1.4.3.2.8	RequestedSettings Element	43
3.1.4.3.2.9	RequestedServerVersion Element	44
3.1.4.3.2.10	AutodiscoverResponse Element	44
3.1.4.3.2.11	ErrorCode Element.....	44
3.1.4.3.2.12	ArrayOfUserResponse Element	44
3.1.4.3.2.13	UserResponse Element	45
3.1.4.3.2.14	UserSettingErrors Element	45
3.1.4.3.2.15	UserSettingError Element	45
3.1.4.3.2.16	UserSettings Element	45
3.1.4.3.2.17	UserSetting Element	45

3.1.4.3.2.18	StringSetting Element	46
3.1.4.3.2.19	WebClientUrlCollectionSetting Element	46
3.1.4.3.2.20	WebClientUrls Element	46
3.1.4.3.2.21	WebClientUrl Element.....	46
3.1.4.3.2.22	ProtocolConnectionCollectionSetting Element	46
3.1.4.3.2.23	ProtocolConnections Element	47
3.1.4.3.2.24	ProtocolConnection Element.....	47
3.1.4.3.2.25	AlternateMailboxCollectionSetting Element.....	47
3.1.4.3.2.26	AlternateMailboxes Element	47
3.1.4.3.2.27	AlternateMailbox Element	47
3.1.4.3.3	Complex Types	48
3.1.4.3.3.1	tns:GetUserSettingsRequest Complex Type.....	49
3.1.4.3.3.2	tns:AutodiscoverRequest Complex Type	50
3.1.4.3.3.3	tns:Users Complex Type.....	50
3.1.4.3.3.4	tns:User Complex Type	51
3.1.4.3.3.5	tns:RequestedSettings Complex Type	51
3.1.4.3.3.6	tns:GetUserSettingsResponse Complex Type	53
3.1.4.3.3.7	tns:AutodiscoverResponse Complex Type	54
3.1.4.3.3.8	tns:UserResponse Complex Type.....	55
3.1.4.3.3.9	tns:UserSettingErrors Complex Type.....	56
3.1.4.3.3.10	tns:ArrayOfUserResponse Complex Type	56
3.1.4.3.3.11	tns:UserSettingError Complex Type	57
3.1.4.3.3.12	tns:UserSettings Complex Type	57
3.1.4.3.3.13	tns:UserSetting Complex Type	58
3.1.4.3.3.14	tns:StringSetting Complex Type	58
3.1.4.3.3.15	tns:WebClientUrlCollectionSetting Complex Type	59
3.1.4.3.3.16	tns:WebClientUrls Complex Type	59
3.1.4.3.3.17	tns:WebClientUrl Complex Type.....	60
3.1.4.3.3.18	tns:ProtocolConnectionCollectionSetting Complex Type	60
3.1.4.3.3.19	tns:ProtocolConnections Complex Type	61
3.1.4.3.3.20	tns:ProtocolConnection Complex Type	61
3.1.4.3.3.21	tns:AlternateMailboxCollectionSetting Complex Type.....	62
3.1.4.3.3.22	tns:AlternateMailboxes Complex Type	62
3.1.4.3.3.23	tns:AlternateMailbox Complex Type	63
3.1.4.3.4	Simple Types.....	64
3.1.4.3.4.1	tns:ExchangeVersion Simple Type	64
3.1.4.3.4.2	tns:ErrorCode Simple Type	64
3.1.4.4	GetOrganizationRelationshipSettings.....	66
3.1.4.4.1	Messages	66
3.1.4.4.1.1	tns:GetOrganizationRelationshipSettingsRequestMessage	67
3.1.4.4.1.2	tns:GetOrganizationRelationshipSettingsRequestMessage_Headers.....	67
3.1.4.4.1.3	tns:GetOrganizationRelationshipSettingsResponseMessage	67
3.1.4.4.1.4	tns:GetOrganizationRelationshipSettingsResponseMessage_Headers....	68
3.1.4.4.2	Elements.....	68
3.1.4.4.2.1	GetOrganizationRelationshipSettingsRequestMessage Element	69
3.1.4.4.2.2	GetOrganizationRelationshipSettingsRequest Element	69
3.1.4.4.2.3	GetOrganizationRelationshipSettingsResponseMessage Element	69
3.1.4.4.2.4	OrganizationRelationshipSettingsCollection Element.....	70
3.1.4.4.3	Complex Types	70
3.1.4.4.3.1	tns:GetOrganizationRelationshipSettingsRequest Complex Type	70
3.1.4.4.3.2	tns:GetOrganizationRelationshipSettingsResponse Complex Type	71
3.1.4.4.3.3	tns:OrganizationRelationshipSettingsCollection Complex Type.....	72
3.1.4.4.3.4	tns:OrganizationRelationshipSettings Complex Type	72

3.1.5	Timer Events	73
3.1.6	Other Local Events	73
4	Protocol Examples	74
4.1	GetDomainSettings_Example	74
4.2	GetFederationInformation_Example	75
4.3	GetUserSettings_Example.....	76
5	Security	79
5.1	Security Considerations for Implementers.....	79
5.2	Index of Security Parameters	79
6	Appendix A: Full WSDL	80
6.1	WSDL.....	80
6.2	Messages XSD.....	85
6.3	Types XSD	93
7	Appendix B: Product Behavior	94
8	Change Tracking.....	96
9	Index	107

1 Introduction

This document specifies the Autodiscover Publishing and Lookup SOAP-Based Web Service protocol, which sends the request-response messages for retrieving the user settings configuration information. Clients use the Autodiscover Publishing and Lookup SOAP-Based Web Service protocol to get specific configuration settings by passing in their e-mail addresses as simple strings.

1.1 Glossary

The following terms are defined in [\[MS-OXGLOS\]](#):

Active Directory
Endpoint (2)
fully qualified domain name (FQDN)
Internet Message Access Protocol – Version 4 (IMAP4)
Legacy DN
mailbox
offline address book (OAB)
Post Office Protocol -Version 3 (POP3)
Simple Mail Transfer Protocol (SMTP)
SOAP header
SOAP message
Unified Messaging
Uniform Resource Identifier (URI)
Uniform Resource Locator (URL)
Web Services Description Language (WSDL)
WSDL message
XML
XML namespace
XML schema

The following terms are specific to this document:

MAY, SHOULD, MUST, SHOULD NOT, MUST NOT: These terms (in all caps) are used as described in [\[RFC2119\]](#). All statements of optional behavior use either MAY, SHOULD, or SHOULD NOT.

1.2 References

1.2.1 Normative References

We conduct frequent surveys of the normative references to assure their continued availability. If you have any issue with finding a normative reference, please contact dochelp@microsoft.com. We will assist you in finding the relevant information. Please check the archive site, <http://msdn2.microsoft.com/en-us/library/E4BD6494-06AD-4aed-9823-445E921C9624>, as an additional source.

[MS-OXWSLVID] Microsoft Corporation, "[Federated Internet Authentication Web Service Protocol Specification](#)", November 2009.

[MS-OXWSCDATA] Microsoft Corporation, "[Common Web Service Data Types](#)", July 2009.

[RFC2119] Bradner, S., "Key words for use in RFCs to Indicate Requirement Levels", BCP 14, RFC 2119, March 1997, <http://www.ietf.org/rfc/rfc2119.txt>

[SOAP1.1] Box, D., Ehnebuske, D., Kakivaya, G., et al., "Simple Object Access Protocol (SOAP) 1.1", W3C Note, May 2000, <http://www.w3.org/TR/2000/NOTE-SOAP-20000508/>

[WSA10] "WS-Addressing 1.0 Namespace: <http://www.w3.org/2005/08/addressing>", <http://www.w3.org/2005/08/addressing/>

[WSADDRCORE] Gudgin, M., Hadley, M., Rogers, T., Eds., "Web Services Addressing 1.0 – Core", W3C Recommendation, May 2006, <http://www.w3.org/TR/2006/REC-ws-addr-core-20060509/>

[WSADDR-Metadata] Gudgin, M., Hadley, M., Rogers, T., and Yalçinalp, Ü., Eds., "Web Services Addressing 1.0 – Metadata", W3C Recommendation, September 2007, <http://www.w3.org/TR/ws-addr-metadata/>

[WSAddressing] Box, D., Ed., Christensen, E., Curbera, F., Ed., et al., "Web Services Addressing (WS-Addressing)", W3C Member Submission, August 2004, <http://www.w3.org/Submission/ws-addressing/>

[WS-MetadataExchange] "Web Services Metadata Exchange (WS-MetadataExchange)", August 2006, <http://schemas.xmlsoap.org/ws/2004/09/mex/>

[WS-Policy] "Web Services Policy Framework (WS-Policy) and Web Services Policy Attachment (WS-PolicyAttachment)", March 2006, <http://specs.xmlsoap.org/ws/2004/09/policy/>

[WSDL] Christensen, E., Curbera, F., Meredith, G., and Weerawarana, S., "Web Services Description Language (WSDL) 1.1", W3C Note, March 2001, <http://www.w3.org/TR/2001/NOTE-wsdl-20010315>

[WSDLSOAP] Angelov, D., Ballinger, K., Butek, R., et al., "WSDL 1.1 Binding Extension for SOAP 1.2", W3C Member Submission, April 2006, <http://www.w3.org/Submission/wsdl11soap12>

[XMLNS] Bray, T., Hollander, D., Layman, A., Eds., et al., "Namespaces in XML 1.0 (Third Edition)", December 2009, <http://www.w3.org/TR/REC-xml-names/>

[XMLSCHEMA1] Thompson, H., Beech, D., Maloney, M., and Mendelsohn, N., Eds., "XML Schema Part 1: Structures", W3C Recommendation, May 2001, <http://www.w3.org/TR/2001/REC-xmlschema-1-20010502/>

[XMLSCHEMA2] Biron, P., and Malhotra, A., Eds., "XML Schema Part 2: Datatypes", W3C Recommendation, May 2001, <http://www.w3.org/TR/2001/REC-xmlschema-2-20010502/>

1.2.2 Informative References

[MS-OXGLOS] Microsoft Corporation, "[Exchange Server Protocols Master Glossary](#)", April 2008.

1.3 Overview

The Autodiscover Web Service protocol allows clients to learn e-mail configuration settings for specific e-mail address. The Autodiscover Web Service protocol includes four operations — **GetDomainSetting** (section [3.1.4.1](#)), **GetFederationInformation** (section [3.1.4.2](#)), **GetOrganizationRelationshipSettings** (section [3.1.4.4](#)), and **GetUserSettings** (section [3.1.4.3](#)) — to request specific configuration settings. The following user configuration settings are in a valid server response, if they are implemented by the server.

Configuration setting	Description
UserDisplayName	The display name of the user.

Configuration setting	Description
UserDN	The Legacy DN of the user.
UserDeploymentId	The deployment identifier of the user.
InternalMailboxServer	The fully qualified domain name (FQDN) of the mailbox server.
InternalRpcClientServer	The (FQDN) of the RPC client server.
InternalMailboxServerDN	The Legacy DN of the mailbox server.
InternalEcpUrl	The internal Uniform Resource Locator (URL) of the server Control Panel.
InternalEcpVoicemailUrl	The internal URL of the server Control Panel for Voice Mail Customization.
InternalEcpEmailSubscriptionsUrl	The internal URL of the server Control Panel for e-mail Subscriptions.
InternalEcpTextMessagingUrl	The internal URL of the server Control Panel for Text Messaging.
InternalEcpDeliveryReportUrl	The internal URL of the server Control Panel for Delivery Reports.
InternalEcpRetentionPolicyTagsUrl	The internal URL of the server Control Panel for RetentionPolicy Tags. <1>
InternalEcpPublishingUrl	The internal URL of the server Control Panel for Publishing. <2>
InternalEwsUrl	The internal URL of the server's Web services.
InternalOABUrl	The internal URL of the offline address book (OAB) .
InternalUMUrl	The internal URL of the Unified Messaging services.
InternalWebClientUrls	The internal URLs of the server's Web client.
MailboxDN	The DN of the mailbox database of the user's mailbox.
PublicFolderServer	The name of the Public Folders server.
ActiveDirectoryServer	The name of the Active Directory server.
ExternalMailboxServer	The name of the RPC over HTTP server.
ExternalMailboxServerRequiresSSL	Indicates whether the RPC over HTTP server requires SSL.
ExternalMailboxServerAuthenticationMethods	The authentication methods supported by the RPC over HTTP server.
EcpVoicemailUrlFragment	The URL fragment of the server Control Panel for Voice Mail Customization.
EcpEmailSubscriptionsUrlFragment	The URL fragment of the server Control Panel for e-mail Subscriptions.

Configuration setting	Description
EcpTextMessagingUrlFragment	The URL fragment of the server Control Panel for Text Messaging.
EcpDeliveryReportUrlFragment	The URL fragment of the server Control Panel for Delivery Reports.
EcpRetentionPolicyTagsUrlFragment	The URL fragment of the server Control Panel for RetentionPolicy Tags.<3>
EcpPublishingUrlFragment	The URL fragment of the server Control Panel for Publishing.<4>
ExternalEcpUrl	The external URL of the server Control Panel.
ExternalEcpVoicemailUrl	The external URL of the server Control Panel for Voice Mail Customization.
ExternalEcpEmailSubscriptionsUrl	The external URL of the server Control Panel for e-mail Subscriptions.
ExternalEcpTextMessagingUrl	The external URL of the server Control Panel for Text Messaging.
ExternalEcpDeliveryReportUrl	The external URL of the server Control Panel for Delivery Reports.
ExternalEcpRetentionPolicyTagsUrl	The external URL of the server Control Panel for RetentionPolicy Tags.<5>
ExternalEcpPublishingUrl	The external URL of the server Control Panel for Publishing.<6>
ExternalEwsUrl	The external URL of the server's Web services.
ExternalOABUrl	The external URL of the OAB.
ExternalUMUrl	The external URL of the Unified Messaging services.
ExternalWebClientUrls	The external URLs of the server Web client.
CrossOrganizationSharingEnabled	Indicates that cross-organization sharing is enabled.
AlternateMailboxes	A collection of alternate mailboxes.
CasVersion	The version of the Client Access server that is serving the request (for example, 14.XX.YYY.ZZZ)
EwsSupportedSchemas	A comma-separated list of schema versions supported by server's Web services.
InternalPop3Connections	The internal connection settings list for POP3 protocol connections.
ExternalPop3Connections	The external connection settings list for POP3 protocol connections.
InternalImap4Connections	The internal connection settings list for IMAP4 protocol connections.

Configuration setting	Description
ExternalImap4Connections	The external connection settings list for IMAP4 protocol connections.
InternalSmtpConnections	The internal connection settings list for SMTP protocol connections.
ExternalSmtpConnections	The external connection settings list for SMTP protocol connections.
ExchangeRpcUrl	Indicates whether clients can call the server via XTC. <7>
ExternalEwsVersion	The version of the Web services server that is serving the request. <8>

1.4 Relationship to Other Protocols

The Autodiscover Web Service protocol uses SOAP over **HTTP** and SOAP over **HTTPS**, as in the following figures.

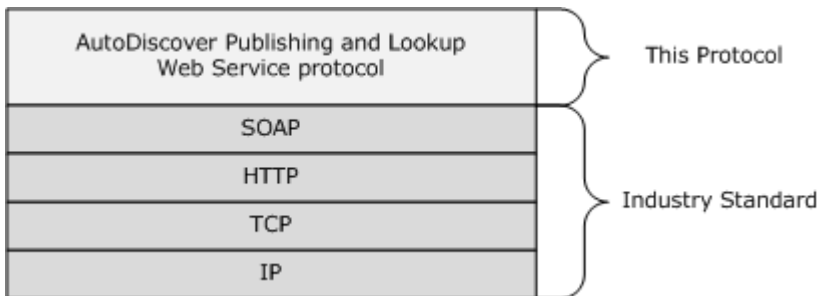


Figure 1: SOAP over HTTP

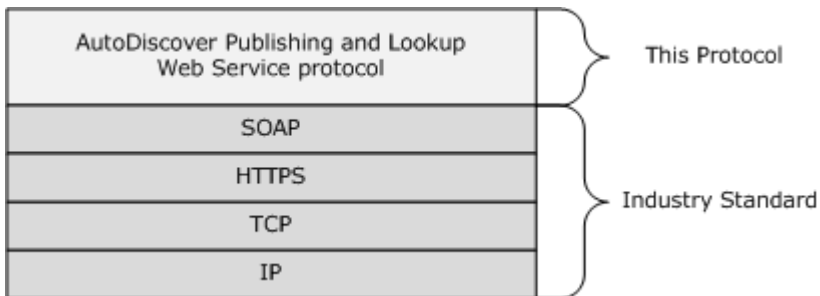


Figure 2: SOAP over HTTPS

1.5 Prerequisites/Preconditions

None.

1.6 Applicability Statement

The protocol specified in this document is applicable to environments that are to perform an auto discovery of a user from the user's e-mail address, using the server's Web Services.

1.7 Versioning and Capability Negotiation

This document covers versioning issues in the following areas:

- **Supported Transports:** This protocol uses SOAP 1.1, as specified in section 2.1.
- **Protocol Versions:** This protocol specifies only one **WSDL** portType version.
- **Security and Authentication Methods:** This protocol relies on the Web server that is hosting it to perform authentication.
- **Localization:** This protocol includes text strings in various messages. Localization considerations for such strings are specified in section [3.1.4](#).
- **Capability Negotiation:** None.

1.8 Vendor Extensible Fields

None.

1.9 Standards Assignments

None.

2 Messages

2.1 Transport

The SOAP version supported is SOAP 1.1. For details, see [\[SOAP1.1\]](#).

2.2 Common Message Syntax

This section contains common definitions that are used by this protocol. The syntax of the definitions uses **XML schema** as defined in [\[XMLSCHEMA1\]](#) and [\[XMLSCHEMA2\]](#), and **Web Services Description Language (WSDL)** as defined in [\[WSDL\]](#).

2.2.1 Namespaces

This specification defines and references various **XML namespaces** by using the mechanisms specified in [\[XMLNS\]](#). Although this specification associates a specific XML namespace prefix for each XML namespace that is used, the choice of any particular XML namespace prefix is implementation-specific and not significant for interoperability.

Prefix	Namespace URI	Reference
soap	http://schemas.xmlsoap.org/wsdl/soap/	[SOAP1.1]
wsu	http://docs.oasis-open.org/wss/2004/01/oasis-200401-wss-wssecurity-utility-1.0.xsd	
soapenc	http://schemas.xmlsoap.org/soap/encoding/	[SOAP1.1]
wsam	http://www.w3.org/2007/05/addressing/metadata	[WSADDR-Metadata]
tns	http://schemas.microsoft.com/exchange/2010/Autodiscover	
wsa	http://schemas.xmlsoap.org/ws/2004/08/addressing	[WSAddressing]
wsp	http://schemas.xmlsoap.org/ws/2004/09/policy	[WS-Policy]
wsap	http://schemas.xmlsoap.org/ws/2004/08/addressing/policy	Not implemented.
xsd	http://www.w3.org/2001/XMLSchema	[XMLSCHEMA1] , [XMLSCHEMA2]
msc	http://schemas.microsoft.com/ws/2005/12/wsdl/contract	Not implemented.
wsaw	http://www.w3.org/2006/05/addressing/wsdl	[WSADDRCORE]
soap12	http://schemas.xmlsoap.org/wsdl/soap12	[WSDLSOAP]
wsa10	http://www.w3.org/2005/08/addressing	[WSA10]
wsx	http://schemas.xmlsoap.org/ws/2004/09/mex	[WS-MetadataExchange]
targetNamespace	http://schemas.microsoft.com/exchange/2010/Autodiscover	
wsdl	http://schemas.xmlsoap.org/wsdl/	[WSDL]

2.2.2 Messages

This specification does not define any common XML schema message definitions.

2.2.3 Elements

The following table summarizes the set of XML schema element definitions that are specific to this operation.

Element	Description
<ServerVersionInfo>	Represents the message server's version number, including the Major and Minor Version numbers as well as the Major and Minor Build numbers.
<Domains>	Represents a list of domains to be discovered.

2.2.3.1 ServerVersionInfo Element

The <ServerVersionInfo> element represents the message server's version number, including the Major and Minor Version numbers as well as the Major and Minor Build numbers.

```
<xs:element name="ServerVersionInfo"
  type="tns:ServerVersionInfo"
  nillable="true"
/>
```

2.2.3.2 Domains Element

The <Domains> element represents a list of domains to be discovered.

```
<xs:element name="Domains"
  type="tns:Domains"
  nillable="true"
/>
```

2.2.4 Complex Types

The following table summarizes the set of XML schema complex type definitions that are specific to this operation.

Complex Type	Description
ServerVersionInfo	Represents the message server version. This type is returned in the SOAP header of a Web Services response message.
Domains	Represents a collection of domain names to be used in the Autodiscovery.

2.2.4.1 tns:ServerVersionInfo Complex Type

The **ServerVersionInfo** complex type represents the message server version. This type is returned in the SOAP header of a Web Services response message.

```

<xs:complexType name="ServerVersionInfo">
  <xs:sequence>
    <xs:element name="MajorVersion"
      type="xs:int"
      minOccurs="0"
    />
    <xs:element name="MinorVersion"
      type="xs:int"
      minOccurs="0"
    />
    <xs:element name="MajorBuildNumber"
      type="xs:int"
      minOccurs="0"
    />
    <xs:element name="MinorBuildNumber"
      type="xs:int"
      minOccurs="0"
    />
    <xs:element name="Version"
      type="xs:string"
      minOccurs="0"
      nillable="true"
    />
  </xs:sequence>
</xs:complexType>

```

Child Elements

Element	Type	Description
MajorVersion	xs:int	The major version number for the server.
MinorVersion	xs:int	The minor version number for the server.
MajorBuildNumber	xs:int	The major build number for the server.
MinorBuildNumber	xs:int	The minor build number for the server.
Version	xs:string	A description of the server product version.

Specifies the version of the Autodiscovery service.

2.2.4.2 tns:Domains Complex Type

The **Domains** complex type represents a collection of domain names to be used in the Autodiscovery.

```

<xs:complexType name="Domains">
  <xs:sequence>
    <xs:element name="Domain"
      type="xs:string"
      maxOccurs="unbounded"
      minOccurs="0"
      nillable="true"
    />
  </xs:sequence>

```

</xs:complexType>

Child Elements

Element	Type	Description
Domain	xs:string	The User's domain. The location of the mail server.

This type is submitted in the request message.

2.2.5 Simple Types

This specification does not define any common XML schema simple type definitions.

2.2.6 Attributes

This specification does not define any common XML schema attribute definitions.

2.2.7 Groups

This specification does not define any common XML schema group definitions.

2.2.8 Attribute Groups

This specification does not define any common XML schema attribute group definitions.

3 Protocol Details

The client side of this protocol is simply a pass-through. That is, no additional timers or other state is required on the client side of this protocol. Calls made by the higher-layer protocol or application are passed directly to the transport, and the results returned by the transport are passed directly back to the higher-layer protocol or application.

3.1 Autodiscover Server Details

The Autodiscovery Web Service protocol allows the user to determine specific user configuration settings by e-mail address.

Operation	Description
GetUserSettings	Performs an Autodiscovery for the specified user and returns the requested configuration settings.

3.1.1 Abstract Data Model

This section describes a conceptual model of possible data organization that an implementation maintains to participate in this protocol. The described organization is provided to facilitate the explanation of how the protocol behaves. This document does not mandate that implementations adhere to this model as long as their external behavior is consistent with that specified in this document.

3.1.2 Timers

None.

3.1.3 Initialization

None.

3.1.4 Message Processing Events and Sequencing

This protocol includes the operation listed in the following table.

Operation	Description
GetDomainSettings	Gets the domain data for a specified domain.
GetFederationInformation	Gets the configuration data for the security token service.
GetUserSettings	Gets the specified configurations settings for the e-mail user.

3.1.4.1 GetDomainSettings

The **GetDomainSettings** operation retrieves the specified settings of the domain for the user.

```
<wsdl:operation name="GetDomainSettings">
  <wsdl:input wsaw:Action="http://schemas.microsoft.com/exchange/2010/
    Autodiscover/Autodiscover/GetDomainSettings"
    name="GetDomainSettingsRequestMessage"
    message="tns:GetDomainSettingsRequestMessage" />
```

```

<wsdl:output wsaw:Action="http://schemas.microsoft.com/exchange/2010/
Autodiscover/Autodiscover/GetDomainSettingsResponse"
name="GetDomainSettingsResponseMessage"
message="tns:GetDomainSettingsResponseMessage" />
</wsdl:operation>

```

Request

Message Format	Description
tns:GetDomainSettingsRequestMessage	Specifies the SOAP message that requests the user's domain configuration settings.

Response

Message Format	Description
tns:GetDomainSettingsResponseMessage	Specifies the SOAP message that is returned by the server in response.

3.1.4.1.1 Messages

The following following table summarizes the set of WSDL message definitions that are specific to this operation.

Messages	Description
GetDomainSettingsRequestMessage	Retrieves the specified settings for a domain.
GetDomainSettingsRequestMessage_Headers	Specifies the SOAP header for a GetDomainSettingsRequest operation (section 3.1.4.1.2.3).
GetDomainSettingsResponseMessage	Represents the response to a GetDomainSettings call (section 3.1.4.1) for an individual domain.
GetDomainSettingsResponseMessage_Headers	Specifies the SOAP header for a GetDomainSettingsResponse operation (section 3.1.4.1.2.4).

3.1.4.1.1.1 tns:GetDomainSettingsRequestMessage

The **GetDomainSettingsRequestMessage** WSDL message specifies the SOAP message that represents a request to get the specified settings for a domain.

```

<wsdl:message name="GetDomainSettingsRequestMessage">
  <wsdl:part name="parameters" element="tns:GetDomainSettingsRequestMessage" />
</wsdl:message>

```

The **GetDomainSettingsRequestMessage** WSDL message contains one part, as described in the following table.

Part Name	Element/Type	Description
parameters	<GetDomainSettingsRequestMessage> element (section 3.1.4.1.2.1)	Represents the parameters of a call to GetDomainSettings operation (section 3.1.4.1) request.

3.1.4.1.1.2 tns:GetDomainSettingsRequestMessage_Headers

The **GetDomainSettingsRequestMessage_Headers Message** WSDL message specifies the SOAP header for a **GetDomainSettings** operation (section [3.1.4.1](#)).

```
<wsdl:message name="GetDomainSettingsRequestMessage_Headers">
  <wsdl:part name="RequestedServerVersion" element="tns:RequestedServerVersion" />
</wsdl:message>
```

The **GetDomainSettingsRequestMessage_Headers** WSDL message contains one part, as described in the following table.

Part Name	Element/Type	Description
RequestedServerVersion	<RequestedServerVersion> element (section 3.1.4.3.2.9)	Specifies which server version the GetDomainSettings operation (section 3.1.4.1) request targets.

3.1.4.1.1.3 tns:GetDomainSettingsResponseMessage

The **GetDomainSettingsResponseMessage** WSDL message specifies the SOAP message that represents the response to a **GetDomainSettings** operation (section [3.1.4.1](#)) for an individual domain.

```
<wsdl:message name="GetDomainSettingsResponseMessage">
  <wsdl:part name="parameters" element="tns:GetDomainSettingsResponseMessage" />
</wsdl:message>
```

The **GetDomainSettingsResponseMessage** WSDL message contains one part, as described in the following table.

Part Name	Element/Type	Description
parameters	<GetDomainSettingsResponseMessage> element (section 3.1.4.1.2.2)	Represents a response to a GetDomainSettings operation (section 3.1.4.1).

3.1.4.1.1.4 tns:GetDomainSettingsResponseMessage_Headers

The **GetDomainSettingsResponseMessage_Headers Message** WSDL message specifies the SOAP header for a **GetDomainSettings** operation (section [3.1.4.1](#)).

```

<wsdl:message name="GetDomainSettingsResponseMessage_Headers">
  <wsdl:part name="ServerVersionInfo" element="tns:ServerVersionInfo" />
</wsdl:message>

```

The **GetDomainSettingsResponseMessage_Headers** WSDL message contains one part, as described in the following table.

Part Name	Element/Type	Description
ServerVersionInfo	ServerVersionInfo ([MS-OXWSCDATA] section 2.2.4.8)	Contains the version of the server that processed the GetDomainSettings operation (section 3.1.4.1) request.

3.1.4.1.2 Elements

The following following table summarizes the set of XML schema element definitions that are specific to this operation.

Element	Description
<GetDomainSettingsRequestMessage>	Prepares a call to the server, requesting configuration setting for the domain of the user. The GetDomainSettingsResponseMessage contains the Domain Settings requested in this call.
<GetDomainSettingsResponseMessage>	Returns to the caller the user's configuration settings that were requested in the GetDomainSettingsRequestMessage call.
<GetDomainSettingsRequest>	Represents the parameters of a call to GetDomainSettings .
<GetDomainSettingsResponse>	Represents the response to a GetDomainSettings operation for a domain, and returns the domain settings.
<ArrayOfDomainResponse>	Represents an array of DomainResponse elements. Each DomainResponse element contains the requested settings for the specified user.
<DomainResponse>	Contains the requested settings for the specified domain.
<DomainSettingErrors>	Contains error information for settings that could not be returned.
<DomainSettingError>	Represents an error that occurred while retrieving a domain setting. This represents an error from a GetDomainSettings request.
<DomainSettings>	Represents the domain settings that were submitted in a request or returned by an Autodiscover response.
<DomainSetting>	Represents the base class for all domain settings returned by the GetDomainSettings request.
<DomainStringSetting>	Represents a domain setting whose value is of type string.

3.1.4.1.2.1 GetDomainSettingsRequestMessage Element

The <GetDomainSettingsRequestMessage> element prepares a call to the server, requesting configuration setting for the domain of the user. The [GetDomainSettingsResponseMessage](#) contains the Domain Settings requested in this call.

```
<xs:element name="GetDomainSettingsRequestMessage">
  <xs:complexType>
    <xs:sequence>
      <xs:element name="Request"
        type="tns:GetDomainSettingsRequest"
        nillable="true"
        minOccurs="0"
      />
    </xs:sequence>
  </xs:complexType>
</xs:element>
```

Child Elements

Element	Type	Description
Request	tns:GetDomainSettingsRequest	Represents a GetDomainSettings request.

3.1.4.1.2.2 GetDomainSettingsResponseMessage Element

The <GetDomainSettingsResponseMessage> element returns to the caller the user's configuration settings that were requested in the [GetDomainSettingsRequestMessage](#) call.

The Name-Value pairs for each returned Domain Setting is included in the Response. The [GetDomainSettings](#) returns only the requested configuration settings.

```
<xs:element name="GetDomainSettingsResponseMessage">
  <xs:complexType>
    <xs:sequence>
      <xs:element name="Response"
        type="tns:GetDomainSettingsResponse"
        nillable="true"
        minOccurs="0"
      />
    </xs:sequence>
  </xs:complexType>
</xs:element>
```

Child Elements

Element	Type	Description
Response	tns:GetDomainSettingsResponse	Represents the response to a GetDomainSettings call for an individual domain.

3.1.4.1.2.3 GetDomainSettingsRequest Element

The <GetDomainSettingsRequest> element represents the parameters of a call to [GetDomainSettings](#).

```
<xs:element name="GetDomainSettingsRequest"
  type="tns:GetDomainSettingsRequest"
  nillable="true"
/>
```

3.1.4.1.2.4 GetDomainSettingsResponse Element

The <GetDomainSettingsResponse> element represents the response to a [GetDomainSettings](#) operation for a domain, and returns the domain settings.

```
<xs:element name="GetDomainSettingsResponse"
  type="tns:GetDomainSettingsResponse"
  nillable="true"
/>
```

3.1.4.1.2.5 ArrayOfDomainResponse Element

The <ArrayOfDomainResponse> element represents an array of [DomainResponse](#) elements. Each DomainResponse element contains the requested settings for the specified user.

```
<xs:element name="ArrayOfDomainResponse"
  type="tns:ArrayOfDomainResponse"
  nillable="true"
/>
```

3.1.4.1.2.6 DomainResponse Element

The <DomainResponse> element contains the requested settings for the specified domain.

```
<xs:element name="DomainResponse"
  type="tns:DomainResponse"
  nillable="true"
/>
```

3.1.4.1.2.7 DomainSettingErrors Element

The <DomainSettingErrors> element contains error information for settings that could not be returned.

```
<xs:element name="DomainSettingErrors"
  type="tns:DomainSettingErrors"
  nillable="true"
/>
```

3.1.4.1.2.8 DomainSettingError Element

The <DomainSettingError> element represents an error that occurred while retrieving a domain setting. This represents an error from a [GetDomainSettings](#) request.

```
<xs:element name="DomainSettingError"
  type="tns:DomainSettingError"
  nillable="true"
/>
```

3.1.4.1.2.9 DomainSettings Element

The <DomainSettings> element represents the domain settings that were submitted in a request or returned by an Autodiscover response.

```
<xs:element name="DomainSettings"
  type="tns:DomainSettings"
  nillable="true"
/>
```

3.1.4.1.2.10 DomainSetting Element

The <DomainSetting> element represents the base class for all domain settings returned by the [GetDomainSettings](#) request.

```
<xs:element name="DomainSetting"
  type="tns:DomainSettings"
  nillable="true"
/>
```

3.1.4.1.2.11 DomainStringSetting Element

The <DomainStringSetting> element represents a domain setting whose value is of type string.

```
<xs:element name="DomainStringSetting"
  type="tns:DomainStringSetting"
  nillable="true"
/>
```

3.1.4.1.3 Complex Types

The following table summarizes the set of XML schema complex type definitions that are specific to this operation.

Complex Type	Description
GetDomainSettingsRequest	Retrieves the specified setting for a domain.
GetDomainSettingsResponse	Contains an array of domain settings. The domain response contains the configuration settings for the specific domain. This type represents the response to a GetDomainSettings operation (section 3.1.4.1) call for an individual domain.
ArrayOfDomainResponse	Represents an array of DomainResponse (section 3.1.4.1.3.4) objects.
DomainResponse	Represents a response to a GetDomainSettings operation (section 3.1.4.1) call for an individual domain. The returned DomainResponse (section 3.1.4.1.3.4) object contains the requested settings for the specified domain.
DomainSettingErrors	Represents a collection of DomainSettingError (section 3.1.4.1.3.6) objects containing error information for settings that could not be returned.
DomainSettingError	Represents an error from a GetDomainSettings operation (section 3.1.4.1) request. This is an error that occurred while retrieving a domain setting.
DomainSettings	Represents a collection of DomainSetting (section 3.1.4.1.3.8) objects, the base class for all domain settings returned by the GetDomainSettings operation (section 3.1.4.1).
DomainSetting	Represents the domain settings to be returned by the GetDomainSettings operation (section 3.1.4.1).
DomainStringSetting	Represents a domain setting whose value is of type string.

3.1.4.1.3.1 tns:GetDomainSettingsRequest Complex Type

The **GetDomainSettingsRequest** complex type retrieves the specified setting for a domain. The **GetDomainSettingsRequest** complex type contains the domain for which autodiscover is to be performed and the settings that are to be returned by the server. The **GetDomainSettingsRequest** complex type represents a **GetDomainSettings** operation (section [3.1.4.1](#)) request. The **GetDomainSettingsRequest** complex type returns a **DomainResponse** complex type (section [3.1.4.1.3.4](#)) object that contains the requested settings for the specified domain.

```
<xs:complexType name="GetDomainSettingsRequest"
  mixed="false"
>
  <xs:complexContent
    mixed="false"
  >
    <xs:extension
      base="tns:AutodiscoverRequest"
    >
      <xs:sequence>
        <xs:element name="Domains"
          type="tns:Domains"
          nillable="true"
        />
      </xs:sequence>
    </xs:extension>
  </xs:complexContent>
</xs:complexType>
```



```

    <xs:element name="RequestedSettings"
      type="tns:RequestedSettings"
      nillable="true"
    />
    <xs:element name="RequestedVersion"
      type="tns:ExchangeVersion"
      nillable="true"
    />
  </xs:sequence>
</xs:extension>
</xs:complexContent>
</xs:complexType>

```

Child Elements

Element	Type	Description
Domains	tns:Domains	The domains for which autodiscover is to be performed.
RequestedSettings	tns:RequestedSettings	The configuration settings being requested.
RequestedVersion	tns:ExchangeVersion	The specific server version the provider would like to utilize. <9>

3.1.4.1.3.2 tns:GetDomainSettingsResponse Complex Type

The **GetDomainSettingsResponse** complex type contains an array of domain settings. The domain response contains the configuration settings for the specific domain. This type represents the response to a **GetDomainSettings** operation (section [3.1.4.1](#)) call for an individual domain.

```

<xs:complexType name="GetDomainSettingsResponse"
  mixed="false"
>
  <xs:complexContent
    mixed="false"
  >
    <xs:extension
      base="tns:AutodiscoverResponse"
    >
      <xs:sequence>
        <xs:element name="DomainResponses"
          type="tns:ArrayOfDomainResponse"
          nillable="true"
          minOccurs="0"
        />
      </xs:sequence>
    </xs:extension>
  </xs:complexContent>
</xs:complexType>

```

Child Elements

Element	Type	Description
DomainResponses	tns:ArrayOfDomainResponse	Contains the response for each domain.

3.1.4.1.3.3 tns:ArrayOfDomainResponse Complex Type

The **ArrayOfDomainResponse** complex type represents an array of **DomainResponse** complex types (section [3.1.4.1.3.4](#)). Each **DomainResponse** complex type contains a **DomainSettings** complex type (section [3.1.4.1.3.7](#)) for the specified domain.

```
<xs:complexType name="ArrayOfDomainResponse">
  <xs:sequence>
    <xs:element name="DomainResponse"
      type="tns:DomainResponse"
      nillable="true"
      minOccurs="0"
      maxOccurs="unbounded"
    />
  </xs:sequence>
</xs:complexType>
```

Child Elements

Element	Type	Description
DomainResponse	tns:DomainResponse	Contains the DomainSettingErrors complex type (section 3.1.4.1.3.5), the DomainSettings complex type, and the <RedirectTarget> element for the domain.

3.1.4.1.3.4 tns:DomainResponse Complex Type

The **DomainResponse** complex type represents a response to a **GetDomainSettings** operation (section [3.1.4.1](#)) call for an individual domain. The **DomainResponse Type** complex type (section [3.1.4.1.3.4](#)) object contains the requested settings for the specified domain.

```
<xs:complexType name="DomainResponse"
  mixed="false"
>
  <xs:complexContent
    mixed="false"
  >
    <xs:extension
      base="tns:AutodiscoverResponse"
    >
      <xs:sequence>
        <xs:element name="DomainSettingErrors"
          type="tns:DomainSettingErrors"
          nillable="true"
          minOccurs="0"
        />
        <xs:element name="DomainSettings"
          type="tns:DomainSettings"
          nillable="true"
          minOccurs="0"
        />
      </xs:sequence>
    </xs:extension>
  </xs:complexContent>
</xs:complexType>
```

```

    />
    <xs:element name="RedirectTarget"
      type="xs:string"
      nillable="true"
      minOccurs="0"
    />
  </xs:sequence>
</xs:extension>
</xs:complexContent>
</xs:complexType>

```

Child Elements

Element	Type	Description
DomainSettingErrors	tns:DomainSettingErrors	Error information for settings that could not be returned.
DomainSettings	tns:DomainSettings	The requested settings for the domain.
RedirectTarget	xs:string	The redirectionTarget (URL or email address).

3.1.4.1.3.5 tns:DomainSettingErrors Complex Type

The **DomainSettingErrors** complex type represents a collection of **DomainSettingError Type** complex type (section [3.1.4.1.3.6](#)) objects containing error information for settings that could not be returned.

```

<xs:complexType name="DomainSettingErrors">
  <xs:sequence>
    <xs:element name="DomainSettingError"
      type="tns:DomainSettingError"
      nillable="true"
      minOccurs="0"
      maxOccurs="unbounded"
    />
  </xs:sequence>
</xs:complexType>

```

Child Elements

Element	Type	Description
DomainSettingError	tns:DomainSettingError	Represents an error from a GetDomainSettings request.

3.1.4.1.3.6 tns:DomainSettingError Complex Type

The **DomainSettingError** complex type represents an error from a **GetDomainSettings** operation (section [3.1.4.1](#)) request. This is an error that occurred while retrieving a domain setting.

```

<xs:complexType name="DomainSettingError">
  <xs:sequence>

```

```

<xs:element name="ErrorCode"
  type="tns:ErrorCode"
/>
<xs:element name="ErrorMessage"
  type="xs:string"
  nillable="true"
/>
<xs:element name="SettingName"
  type="xs:string"
  nillable="true"
/>
</xs:sequence>
</xs:complexType>

```

Child Elements

Element	Type	Description
ErrorCode	tns:ErrorCode	Specifies the error code associated with the specific request.
ErrorMessage	xs:string	Specifies the error message associated with the specific request.
SettingName	xs:string	The name of the setting.

3.1.4.1.3.7 tns:DomainSettings Complex Type

The **DomainSettings** complex type represents a collection of **DomainSetting** objects, elements (section [3.1.4.1.2.10](#)) the base class for all domain settings returned by the [GetDomainSettings](#) method.

```

<xs:complexType name="DomainSettings">
  <xs:sequence>
    <xs:element name="DomainSetting"
      type="tns:DomainSetting"
      nillable="true"
      minOccurs="0"
      maxOccurs="unbounded"
    />
  </xs:sequence>
</xs:complexType>

```

Child Elements

Element	Type	Description
DomainSetting	tns:DomainSetting	Represents the base class for all domain settings returned by the GetDomainSettings method.

3.1.4.1.3.8 tns:DomainSetting Complex Type

The **DomainSetting** complex type represents the domain settings to be returned by the **GetDomainSettings** operation (section [3.1.4.1](#)) call.

```

<xs:complexType name="DomainSetting">
  <xs:sequence>
    <xs:element name="Name"
      type="xs:string"
      nillable="true"
    />
  </xs:sequence>
</xs:complexType>

```

Child Elements

Element	Type	Description
Name	xs:string	The name of the setting.

3.1.4.1.3.9 tns:DomainStringSetting Complex Type

The **DomainStringSetting** complex type represents a domain setting whose value is of type string.

```

<xs:complexType name="DomainStringSetting"
  mixed="false"
>
  <xs:complexContent
    mixed="false"
  >
    <xs:extension
      base="tns:DomainSetting"
    >
      <xs:sequence>
        <xs:element name="Value"
          type="xs:string"
          nillable="true"
          minOccurs="0"
        />
      </xs:sequence>
    </xs:extension>
  </xs:complexContent>
</xs:complexType>

```

Child Elements

Element	Type	Description
Value	xs:string	The value of the setting.

3.1.4.2 GetFederationInformation

The **GetFederationInformation** operation provides information about the federation status of the organization, such as the target **URI** to be used when requesting tokens targeted at this organization, and the other domains that the organization has also federated. When the caller doesn't know the URL to use to communicate with the server that hosts the domain of interest, the

caller MUST execute either of the following sequences to reach the server that can provide the information.

Direct attempt:

- Compose URLs for Autodiscover endpoints, where {0} is the domain of interest, in the following order:

U1: `https://autodiscover.{0}/autodiscover/autodiscover.svc`

U2: `https://{0}/autodiscover/autodiscover.svc`

- Call the **GetFederationInformation** method at the Autodiscover endpoints U1 and U2. Use the results from the first discovered URL that provides a successful response.
- Follow HTTP 302 redirects only to HTTPS URLs.

Indirect attempt:

- Probe for an HTTP 302 redirect on a non-SSL endpoint.
- Compose the URL for an Autodiscover endpoint, where {0} is the domain of interest:

`http://autodiscover.{0}/autodiscover/autodiscover.xml`

- The response MUST be an HTTP 302 redirect. The redirect URL in response MUST start with `https://` and end with `/autodiscover/autodiscover.xml`.
- Parse the host element of the URL and compose the following URL, where {0} is the host element of the previous URL:

`https://{0}/autodiscover/autodiscover.svc`

- Call the [GetFederationInformation](#) method at the Autodiscover endpoint.
- Follow HTTP 302 redirects only to HTTPS URLs.

```
<wsdl:operation name="GetFederationInformation">
  <wsdl:input wsaw:Action="http://schemas.microsoft.com/exchange/2010/
    Autodiscover/Autodiscover/GetFederationInformation"
    name="GetFederationInformationRequestMessage"
    message="tns:GetFederationInformationRequestMessage" />
  <wsdl:output wsaw:Action="http://schemas.microsoft.com/exchange/2010/
    Autodiscover/Autodiscover/GetFederationInformationResponse"
    name="GetFederationInformationResponseMessage"
    message="tns:GetFederationInformationResponseMessage" />
</wsdl:operation>
```

Request

Message Format	Description
tns:GetFederationInformationRequestMessage Messages	Specifies the SOAP message that requests the server federation information.

Response

Message Format	Description
tns:GetFederationInformationResponseMessage Messages	Specifies the SOAP message that is returned by the server in response.

3.1.4.2.1 Messages

The following WSDL message definitions are specific to this operation.

Message	Description
GetFederationInformationRequestMessage	Retrieves the federation status of an organization.
GetFederationInformationRequestMessage_Headers	Specifies the SOAP header header for a GetFederationInformationRequest operation (section 3.1.4.2.2.3).
GetFederationInformationResponseMessage	Represents the response to a GetFederationInformation operation (section 3.1.4.2) for an individual domain.
GetFederationInformationResponseMessage_Headers	Specifies the SOAP header for a GetFederationInformationResponse operation (section 3.1.4.2.2.4).

3.1.4.2.1.1 tns:GetFederationInformationRequestMessage

The **GetFederationInformationRequestMessage** WSDL message specifies the SOAP message that represents a request to get the federation status of an organization.

```
<wsdl:message name="GetFederationInformationRequestMessage">
  <wsdl:part name="parameters" element="tns:GetFederationInformationRequestMessage" />
</wsdl:message>
```

The **GetFederationInformationRequestMessage** WSDL message contains one part, as described in the following table.

Part Name	Element/Type	Description
parameters	GetFederationInformationRequestMessage element (section 3.1.4.2.2.1)	This part specifies the request.

3.1.4.2.1.2 tns:GetFederationInformationRequestMessage_Headers

The **GetFederationInformationRequestMessage_Headers Messages** WSDL messagespecifies the SOAP header header for a **GetFederationInformation** operation (section [3.1.4.2](#)).

```
<wsdl:message name="GetFederationInformationRequestMessage_Headers">
  <wsdl:part name="RequestedServerVersion" element="tns:RequestedServerVersion" />
</wsdl:message>
```

The **GetFederationInformationRequestMessage_Headers** WSDL message contains one part, as described in the following table.

Part Name	Element/Type	Description
RequestedServerVersion	RequestedServerVersion element (section 3.1.4.3.2.9)	Specifies which server version the GetFederationInformation operation (section 3.1.4.2) request targets.

3.1.4.2.1.3 tns:GetFederationInformationResponseMessage

The **GetFederationInformationResponseMessage** WSDL message specifies the SOAP message that represents the response to a **GetFederationInformation** operation (section [3.1.4.2](#)) for an individual domain.

```
<wsdl:message name="GetFederationInformationResponseMessage">
  <wsdl:part name="parameters" element="tns:GetFederationInformationResponseMessage" />
</wsdl:message>
```

The **GetFederationInformationResponseMessage** WSDL message contains one part, as described in the following table..

Part Name	Element/Type	Description
parameters	GetFederationInformationResponseMessage element (section 3.1.4.2.2.2)	This part specifies the response.

3.1.4.2.1.4 tns:GetFederationInformationResponseMessage_Headers

The **GetFederationInformationResponseMessage_Headers Messages** WSDL messagespecifies the SOAP header for a **GetFederationInformation** operation (section [3.1.4.2](#)).

```
<wsdl:message name="GetFederationInformationResponseMessage_Headers">
  <wsdl:part name="ServerVersionInfo" element="tns:ServerVersionInfo" />
</wsdl:message>
```

The **GetFederationInformationResponseMessage_Headers** WSDL message contains one part, as described in the following table.

Part Name	Element/Type	Description
ServerVersionInfo	ServerVersionInfo ([MS-OXWSCDATA] section 2.2.4.8)	Contains the version of the server that processed the GetFederationInformation operation (section 3.1.4.2) request.

3.1.4.2.2 Elements

The following XML schema element definitions are specific to this operation.

Element	Description
<GetFederationInformationRequestMessage>	Prepares a call to the server, requesting configuration data for the security token service (STS).
<GetFederationInformationResponseMessage>	Returns to the caller the Federations configuration settings that were requested in the <GetFederationInformationRequestMessage> element (section 3.1.4.2.2.1).
<GetFederationInformationRequest>	Represents the parameters of a call to <GetFederationInformation> operation (section 3.1.4.2).
<GetFederationInformationResponse>	Represents the response to a GetFederationInformationRequest element (section 3.1.4.2.2.3).

3.1.4.2.2.1 GetFederationInformationRequestMessage Element

The <GetFederationInformationRequestMessage> element prepares a call to the server, requesting configuration data for the security token service (STS). The **GetFederationInformationResponseMessage** element (section [3.1.4.2.2.2](#)) contains the Federation settings.

```
<xs:element name="GetFederationInformationRequestMessage">
  <xs:complexType>
    <xs:sequence>
      <xs:element name="Request"
        type="tns:GetFederationInformationRequest"
        nillable="true"
        minOccurs="0"
      />
    </xs:sequence>
  </xs:complexType>
</xs:element>
```

Child Elements

Element	Type	Description
Request	tns:GetFederationInformationRequest	Represents a <GetFederationInformation> operation (section 3.1.4.2)request.

3.1.4.2.2.2 GetFederationInformationResponseMessage Element

The <GetFederationInformationResponseMessage> element returns to the caller the Federations configuration settings that were requested in the <GetFederationInformationRequestMessage> element (section [3.1.4.2.2.1](#)).

The security token service (STS) is specified in the response message.

```
<xs:element name="GetFederationInformationResponseMessage">
  <xs:complexType>
    <xs:sequence>
      <xs:element name="Response"
        type="tns:GetFederationInformationResponse"
        nillable="true"
        minOccurs="0"
      />
    </xs:sequence>
  </xs:complexType>
</xs:element>
```

Child Elements

Element	Type
Response	tns:GetFederationInformationResponse

3.1.4.2.2.3 GetFederationInformationRequest Element

The <GetFederationInformationRequest> element represents the parameters of a call to <GetFederationInformation> operation (section [3.1.4.2](#)).

```
<xs:element name="GetFederationInformationRequest"
  type="tns:GetFederationInformationRequest"
  nillable="true"
/>
```

3.1.4.2.2.4 GetFederationInformationResponse Element

The <GetFederationInformationResponse> element represents the response to a **GetFederationInformationRequest** element (section [3.1.4.2.2.3](#)).

```
<xs:element name="GetFederationInformationResponse"
  type="tns:GetFederationInformationResponse"
  nillable="true"
/>
```

3.1.4.2.3 Complex Types

The following XML schema complex type definitions are specific to this operation.

Complex Type	Description
GetFederationInformationRequest	Retrieves the specified federation settings for a user and contains the federation information, including federated domain names, from an external server. The requestor provides the domain name that allows the server to return the federation

Complex Type	Description
	settings.
GetFederationInformationResponse	Returns to the caller the federation information that was requested in the GetFederationInformationRequest complex type complex type (section 3.1.4.2.3.1).
TokenIssuer	Specifies the URI and Endpoint (2) for the security token service.
TokenIssuers	Represents a collection of TokenIssuer complex types (section 3.1.4.2.3.3) to be used in the Autodiscovery.

3.1.4.2.3.1 tns:GetFederationInformationRequest Complex Type

The **GetFederationInformationRequest** complex type retrieves the specified federation settings for a user. The **GetFederationInformationRequest** complex type contains the federation information, including federated domain names, from an external server. The requestor provides the domain name that allows the server to return the federation settings.

```
<xs:complexType name="GetFederationInformationRequest"
  mixed="false"
>
  <xs:complexContent
    mixed="false"
  >
    <xs:extension
      base="tns:AutodiscoverRequest"
    >
      <xs:sequence>
        <xs:element name="Domain"
          type="xs:string"
          nillable="true"
        />
      </xs:sequence>
    </xs:extension>
  </xs:complexContent>
</xs:complexType>
```

Child Elements

Element	Type	Description
Domain	xs:string	The domain with the federation trust.

3.1.4.2.3.2 tns:GetFederationInformationResponse Complex Type

The **GetFederationInformationResponse** complex type returns to the caller the federation information that was requested in the **GetFederationInformationRequest** complex type (section [3.1.4.2.3.1](#)).

```
<xs:complexType name="GetFederationInformationResponse"
  mixed="false"
```

```

>
<xs:complexContent
  mixed="false"
  >
  <xs:extension
    base="tns:AutodiscoverResponse"
    >
    <xs:sequence>
      <xs:element name="ApplicationUri"
        type="xs:anyURI"
        nillable="true"
        minOccurs="0"
        />
      <xs:element name="TokenIssuers"
        type="tns:TokenIssuers Type"
        minOccurs="0"
        nillable="true"
        />
      <xs:element name="Domains"
        type="tns:Domains"
        nillable="true"
        minOccurs="0"
        />
    </xs:sequence>
  </xs:extension>
</xs:complexContent>
</xs:complexType>

```

Child Elements

Element	Type	Description
ApplicationUri	xs:anyURI	The caller uses this value in AppliesTo/EndpointReference/Address element of RST (as specified in [MS-OXWSLVID]) if it intends to make a request to web services against this server.
TokenIssuers	tns:TokenIssuers Type	Represents a collection of TokenIssuer complex types (section 3.1.4.2.3.3) to be used in the Autodiscovery.
Domains	tns:Domains	Besides the domain presented in the request, the server returns additional domains the organization has federated. These are domains this server uses in the EmailAddress claim when it makes requests to other servers outside its organization, including the caller's.

3.1.4.2.3.3 tns:TokenIssuer Complex Type

The **TokenIssuer** complex type specifies the URI and Endpoint (2) for the security token service.

```

<xs:complexType name="TokenIssuer">
  <xs:sequence>
    <xs:element name="Uri"
      type="xs:anyURI"
      minOccurs="0"
      nillable="true"
      />
  </xs:sequence>
</xs:complexType>

```

```

    <xs:element name="Endpoint"
      type="xs:anyURI"
      minOccurs="0"
      nillable="true"
    />
  </xs:sequence>
</xs:complexType>

```

Child Elements

Element	Type	Description
Uri	xs:anyURI	The URI of the security token service that issued the security token.
Endpoint	xs:anyURI	The web service Endpoint (2) URI.

3.1.4.2.3.4 tns:TokenIssuers Complex Type

The **TokenIssuers** complex type represents a collection of **TokenIssuer** complex types (section [3.1.4.2.3.3](#)) to be used in the Autodiscovery.

```

<xs:complexType name="TokenIssuers">
  <xs:sequence>
    <xs:element name="TokenIssuer"
      type="tns:TokenIssuer Type"
      minOccurs="0"
      maxOccurs="unbounded"
      nillable="true"
    />
  </xs:sequence>
</xs:complexType>

```

Child Elements

Element	Type	Description
TokenIssuer	tns:TokenIssuer Type	The URI and Endpoint (2) of the security token service that issued the security token.

3.1.4.3 GetUserSettings

Retrieves the specified settings for a user.

```

<wsdl:operation name="GetUserSettings">
  <wsdl:input wsaw:Action="http://schemas.microsoft.com/exchange/2010/
    Autodiscover/Autodiscover/GetUserSettings"
    name="GetUserSettingsRequestMessage"
    message="tns:GetUserSettingsRequestMessage" />
  <wsdl:output wsaw:Action="http://schemas.microsoft.com/exchange/2010/
    Autodiscover/Autodiscover/GetUserSettingsResponse"
    name="GetUserSettingsResponseMessage"
    message="tns:GetUserSettingsResponseMessage" />

```

</wsdl:operation>

Request

Message Format	Description
tns:GetUserSettingsRequestMessage	Specifies the [SOAP] message that requests the user's configuration setting.

Response

Message Format	Description
tns:GetUserSettingsResponseMessage	Specifies the [SOAP] message returned by the server in response.

The [GetUserSettings](#) enables the client to request specific configuration settings by passing in their names as simple strings and receive results as a simple dictionary of string name/value pairs.

3.1.4.3.1 Messages

The following **WSDL message** definitions are specific to this operation.

Message	Description
GetUserSettingsRequestMessage	Retrieves the specified settings for a user.
GetUserSettingsRequestMessage_Headers	Specifies the SOAP header for a GetUserSettingsRequest operation (section 3.1.4.3.2.3). This message contains one part.
GetUserSettingsResponseMessage	Represents the response to a GetUserSettings call (section 3.1.4.3) for an individual user.
GetUserSettingsResponseMessage_Headers	Specifies the SOAP header for a GetUserSettingsResponse operation (section 3.1.4.3.2.4).

3.1.4.3.1.1 tns:GetUserSettingsRequestMessage

The **GetUserSettingsRequestMessage** WSDL message specifies the SOAP message that represents a request to get the specified settings for a user.

```
<wsdl:message name="GetUserSettingsRequestMessage">  
  <wsdl:part name="parameters" element="tns:GetUserSettingsRequestMessage" />  
</wsdl:message>
```

The **GetUserSettingsRequestMessage** WSDL message contains one part, as described in the following table.

Part Name	Element/Type	Description
parameters	<GetUserSettingsRequestMessage> element (section 3.1.4.3.2.1)	Represents the parameters of a call to GetUserSettings operation (section 3.1.4.3) request.

3.1.4.3.1.2 tns:GetUserSettingsRequestMessage_Headers

The **GetUserSettingsRequestMessage_Headers** WSDL message specifies the SOAP header for a **GetUserSettings** call (section [3.1.4.3](#)).

```
<wsdl:message name="GetUserSettingsRequestMessage_Headers">
  <wsdl:part name="RequestedServerVersion" element="tns:RequestedServerVersion" />
</wsdl:message>
```

The **GetUserSettingsRequestMessage_Headers** WSDL message contains one part, as described in the following table.

Part Name	Element/Type	Description
RequestedServerVersion	RequestedServerVersion element (section 3.1.4.3.2.9)	Specifies which server version the GetUserSettings operation (section 3.1.4.3) request targets.

3.1.4.3.1.3 tns:GetUserSettingsResponseMessage

The **GetUserSettingsResponseMessage** WSDL message specifies the SOAP message that represents the response to a **GetUserSettings** call (section [3.1.4.3](#)) for an individual user.

```
<wsdl:message name="GetUserSettingsResponseMessage">
  <wsdl:part name="parameters" element="tns:GetUserSettingsResponseMessage" />
</wsdl:message>
```

The **GetUserSettingsResponseMessage** WSDL message contains one part, as described in the following table.

Part Name	Element/Type	Description
parameters	GetUserSettingsResponseMessage element (section 3.1.4.3.2.2)	Represents a response to a GetUserSettings operation (section 3.1.4.3).

3.1.4.3.1.4 tns:GetUserSettingsResponseMessage_Headers

The **GetUserSettingsResponseMessage_Headers** WSDL message specifies the SOAP header for a **GetUserSettings** operation (section [3.1.4.3](#)).

```
<wsdl:message name="GetUserSettingsResponseMessage_Headers">
```

```
<wsdl:part name="ServerVersionInfo" element="tns:ServerVersionInfo" />
</wsdl:message>
```

The **GetUserSettingsResponseMessage_Headers** WSDL message contains one part, as described in the following table.

Part Name	Element/Type	Description
ServerVersionInfo	ServerVersionInfo (IMS-OXWSCDATA section 2.2.4.8)	Contains the version of the server that processed the GetUserSettings operation (section 3.1.4.3) request.

3.1.4.3.2 Elements

The following XML schema element definitions are specific to this operation.

Element	Description
<GetUserSettingsRequestMessage>	Prepares a call to the server, specifying the configuration settings to be returned along with the e-mail address of the user for whom to retrieve the settings. The GetUserSettingsResponseMessage element (section 3.1.4.3.2.2) contains the setting requested in this call.
<GetUserSettingsResponseMessage>	Returns to the caller the user's configuration settings that were requested in the <GetUserSettingsRequestMessage> element (section 3.1.4.3.2.1) call.
<GetUserSettingsRequest>	Represents the parameters of a call to GetUserSettings operation (section 3.1.4.3).
<GetUserSettingsResponse>	Represents the response to a GetUserSettings operation (section 3.1.4.3) for an individual user.
<AutodiscoverRequest>	Represents the base element of all Autodiscover requests.
<Users>	Represents a list of <User> elements (section 3.1.4.3.2.7). Each user includes an e-mail address.
<User>	Represents the user.
<RequestedSettings>	Represents the configuration settings to be returned in the autodiscovery.
<RequestedServerVersion>	Specifies the server version that an Autodiscover method call targets. For example, Exchange2010.
<AutodiscoverResponse>	Represents the base class for all responses returned by the Autodiscover service. The <AutodiscoverResponse> element introduces the ErrorCode simple type (section 3.1.4.3.4.2) and ErrorMessage elements.
<ErrorCode>	The <ErrorCode> element defines the error codes that can be returned by the Autodiscover service.
<ArrayOfUserResponse>	Contains an array of UserResponse elements. Each

Element	Description
	<UserResponse> element (section 3.1.4.3.2.13) contains the requested settings for the specified specific user.
<UserResponse>	Contains the requested settings for the specified user.
<UserSettingErrors>	Contains error information for settings that could not be returned.
<UserSettingError>	Represents an error that occurred while retrieving a user setting. This represents an error from a GetUserSettings operation (section 3.1.4.3) request.
<UserSettings>	Represents the base class for all user settings returned by the GetUserSettings operation (section 3.1.4.3) request.
<UserSetting>	Represents the base class for all user settings returned by the GetUserSettings operation (section 3.1.4.3).
<StringSetting>	Represents a user setting whose value is of type string.
<WebClientUrlCollectionSetting>	Represents a user setting whose value is a collection of web client URLs.
<WebClientUrls>	Represents the internal and external URLs of a web client.
<WebClientUrl>	Represents a URL of a web client.
<ProtocolConnectionCollectionSetting>	Represents a collection of server protocol connection settings.
<ProtocolConnections>	Represents the collection of protocol connections.
<ProtocolConnection>	Represents the email Protocol connection settings for pop/imap/smtp protocols.
<AlternateMailboxCollectionSetting>	Represents a collection of alternate mailbox settings.
<AlternateMailboxes>	The <AlternateMailboxes> element represents a collection of alternate mailboxes.
<AlternateMailbox>	Represents an alternative mailbox, an archived mailbox.

3.1.4.3.2.1 GetUserSettingsRequestMessage Element

The <GetUserSettingsRequestMessage> element prepares a call to the server, specifying the configuration settings to be returned along with the e-mail address of the user for whom to retrieve the settings. The **GetUserSettingsResponseMessage** element (section [3.1.4.3.2.2](#)) contains the setting requested in this call.

```
<xs:element name="GetUserSettingsRequestMessage">
  <xs:complexType>
    <xs:sequence>
      <xs:element name="Request"
        type="tns:GetUserSettingsRequest"
        nillable="true"
        minOccurs="0"
      />
    </xs:sequence>
  </xs:complexType>
</xs:element>
```

```

    </xs:complexType>
  </xs:element>

```

Child Elements

Element	Type	Description
Request	tns:GetUserSettingsRequest	Represents a GetUserSettings request.

3.1.4.3.2.2 GetUserSettingsResponseMessage Element

The <GetUserSettingsResponseMessage> element returns to the caller the user's configuration settings that were requested in the <GetUserSettingsRequestMessage> element (section [3.1.4.3.2.1](#)) call.

The Name-Value pairs for each returned user setting is included in the response. The <GetUserSettings> element (section [3.1.4.3](#)) returns only the requested configuration settings if they exist on the server.

```

<xs:element name="GetUserSettingsResponseMessage">
  <xs:complexType>
    <xs:sequence>
      <xs:element name="Response"
        type="tns:GetUserSettingsResponse"
        nillable="true"
        minOccurs="0"
      />
    </xs:sequence>
  </xs:complexType>
</xs:element>

```

Child Elements

Element	Type	Description
Response	tns:GetUserSettingsResponse	Represents the response to a <GetUserSettings> element (section 3.1.4.3) call for an individual user.

3.1.4.3.2.3 GetUserSettingsRequest Element

The <GetUserSettingsRequest> element represents the parameters of a call to **GetUserSettings** operation (section [3.1.4.3](#)).

```

<xs:element name="GetUserSettingsRequest"
  type="tns:GetUserSettingsRequest"
  nillable="true"
/>

```

3.1.4.3.2.4 GetUserSettingsResponse Element

The <GetUserSettingsResponse> element represents the response to a **GetUserSettings** operation (section [3.1.4.3](#)) for an individual user.

```
<xs:element name="GetUserSettingsResponse"
  type="tns:GetUserSettingsResponse"
  nillable="true"
/>
```

3.1.4.3.2.5 AutodiscoverRequest Element

The <AutodiscoverRequest> element represents the base element of all Autodiscover requests.

```
<xs:element name="AutodiscoverRequest"
  type="tns:AutodiscoverRequest"
  nillable="true"
/>
```

3.1.4.3.2.6 Users Element

The <Users> element represents a list of <User> elements (section [3.1.4.3.2.7](#)). Each user includes an e-mail address.

```
<xs:element name="Users"
  type="tns:Users"
  nillable="true"
/>
```

3.1.4.3.2.7 User Element

The <User> element represents the user.

```
<xs:element name="User"
  type="tns:User"
  nillable="true"
/>
```

3.1.4.3.2.8 RequestedSettings Element

The <RequestedSettings> element represents the configuration settings to be returned in the autodiscovery.

```
<xs:element name="RequestedSettings"
  type="tns:RequestedSettings"
  nillable="true"
/>
```

3.1.4.3.2.9 RequestedServerVersion Element

The <RequestedServerVersion> element specifies the server version that an Autodiscover method call targets. For example, Exchange2010.

```
<xs:element name="RequestedServerVersion">
  <xs:simpleType>
    <xs:restriction
      base="tns:ExchangeVersion"
    />
  </xs:simpleType>
</xs:element>
```

3.1.4.3.2.10 AutodiscoverResponse Element

The <AutodiscoverResponse> element represents the base class for all responses returned by the Autodiscover service. The <AutodiscoverResponse> element introduces the **ErrorCode** simple type (section [3.1.4.3.4.2](#)) and ErrorMessage elements.

```
<xs:element name="AutodiscoverResponse"
  type="tns:AutodiscoverResponse"
  nillable="true"
/>
```

3.1.4.3.2.11 ErrorCode Element

The <ErrorCode> element defines the error codes that can be returned by the Autodiscover service.

```
<xs:element name="ErrorCode"
  type="tns:ErrorCode"
  nillable="true"
/>
```

3.1.4.3.2.12 ArrayOfUserResponse Element

The <ArrayOfUserResponse> element contains an array of [UserResponse](#) elements. Each <UserResponse> element (section [3.1.4.3.2.13](#)) contains the requested settings for the specified specific user.

```
<xs:element name="ArrayOfUserResponse"
  type="tns:ArrayOfUserResponse"
  nillable="true"
/>
```

3.1.4.3.2.13 UserResponse Element

A <UserResponse> element contains the requested settings for the specified user.

```
<xs:element name="UserResponse"
  type="tns:UserResponse"
  nillable="true"
/>
```

3.1.4.3.2.14 UserSettingErrors Element

The <UserSettingErrors> element contains error information for settings that could not be returned.

```
<xs:element name="UserSettingErrors"
  type="tns:UserSettingErrors"
  nillable="true"
/>
```

3.1.4.3.2.15 UserSettingError Element

The <UserSettingError> element represents an error that occurred while retrieving a user setting. This represents an error from a **GetUserSettings** operation (section [3.1.4.3](#)) request.

```
<xs:element name="UserSettingError"
  type="tns:UserSettingError"
  nillable="true"
/>
```

3.1.4.3.2.16 UserSettings Element

The <UserSettings> element represents the base class for all user settings returned by the **GetUserSettings** operation (section [3.1.4.3](#)) request.

```
<xs:element name="UserSettings"
  type="tns:UserSettings"
  nillable="true"
/>
```

3.1.4.3.2.17 UserSetting Element

The <UserSetting> element represents the base class for all user settings returned by the **GetUserSettings** operation (section [3.1.4.3](#)).

```
<xs:element name="UserSetting"
  type="tns:UserSetting"
  nillable="true"
/>
```

3.1.4.3.2.18 StringSetting Element

The <StringSetting> element represents a user setting whose value is of type string.

```
<xs:element name="StringSetting"
  type="tns:StringSetting"
  nillable="true"
/>
```

3.1.4.3.2.19 WebClientUrlCollectionSetting Element

The <WebClientUrlCollectionSetting> element represents a user setting whose value is a collection of web client URLs.

```
<xs:element name="WebClientUrlCollectionSetting"
  type="tns:WebClientUrlCollectionSetting"
  nillable="true"
/>
```

3.1.4.3.2.20 WebClientUrls Element

The <WebClientUrls> element represents the internal and external URLs of a web client.

```
<xs:element name="WebClientUrls"
  type="tns:WebClientUrls"
  nillable="true"
/>
```

3.1.4.3.2.21 WebClientUrl Element

The <WebClientUrl> element represents a URL of a web client.

```
<xs:element name="WebClientUrl"
  type="tns:WebClientUrl"
  nillable="true"
/>
```

3.1.4.3.2.22 ProtocolConnectionCollectionSetting Element

The <ProtocolConnectionCollectionSetting> element represents a collection of server protocol connection settings.

```
<xs:element name="ProtocolConnectionCollectionSetting"
  type="tns:ProtocolConnectionCollectionSetting"
```

```
    nillable="true"  
  />
```

3.1.4.3.2.23 ProtocolConnections Element

The <ProtocolConnections> element represents the collection of protocol connections.

```
<xs:element name="ProtocolConnections"  
  type="tns:ProtocolConnections"  
  nillable="true"  
 />
```

3.1.4.3.2.24 ProtocolConnection Element

The <ProtocolConnection> element represents the email Protocol connection settings for pop/imap/smtp protocols.

```
<xs:element name="ProtocolConnection"  
  type="tns:ProtocolConnection"  
  nillable="true"  
 />
```

3.1.4.3.2.25 AlternateMailboxCollectionSetting Element

The <AlternateMailboxCollectionSetting> element represents a collection of alternate mailbox settings.

```
<xs:element name="AlternateMailboxCollectionSetting"  
  type="tns:AlternateMailboxCollectionSetting"  
  nillable="true"  
 />
```

3.1.4.3.2.26 AlternateMailboxes Element

The <AlternateMailboxes> element represents a collection of alternate mailboxes.

```
<xs:element name="AlternateMailboxes"  
  type="tns:AlternateMailboxes"  
  nillable="true"  
 />
```

3.1.4.3.2.27 AlternateMailbox Element

The <AlternateMailbox> represents an alternative mailbox, an archived mailbox.

```

<xs:element name="AlternateMailbox"
  type="tns:AlternateMailbox"
  nillable="true"
/>

```

An alternate mailbox corresponds to an external mailbox of the user's such as a personal POP/IMAP account, a user's webmail account, or an archived account.

3.1.4.3.3 Complex Types

The following XML schema complex type definitions are specific to this operation.

Complex Type	Description
GetUserSettingsRequest	Retrieves the specified settings for one or more users.
AutodiscoverRequest	Represents the base class for all requests made to the Autodiscover service.
Users	Represents a collection of User element (section 3.1.4.3.2.7) representing users for whom settings are to be retrieved.
User	Represents a user for whose settings are to be retrieved. The user is identified by SMTP address or Legacy DN.
RequestedSettings	The RequestedSettings complex type specifies the configuration settings to be returned by the server for the GetUserSettings operation (section 3.1.4.3).
GetUserSettingsResponse	Represents a response that contains an array of user responses.
AutodiscoverResponse	Represents the base class for all responses returned by the Autodiscover service. It introduces the <code>ErrorCode</code> and <code>ErrorMessage</code> properties.
UserResponse	Represents a response to a GetUserSettings operation (section 3.1.4.3) for an individual user. The server returns only the configuration settings requested by the client.
UserSettingErrors	Represents a collection of UserSettingError elements (section 3.1.4.3.2.17) that contains error information for settings that could not be returned.
ArrayOfUserResponse	Represents an array of UserResponse elements (section 3.1.4.3.2.13) that contains the responses for each user.
UserSettingError	Represents an error from a GetUserSettings operation (section 3.1.4.3) request. This is an error that occurred while retrieving a user setting.
UserSettings	The UserSettings complex type represents a collection of UserSetting elements (section 3.1.4.3.2.17), the base class for all user settings returned by the GetUserSettings operation (section 3.1.4.3).
UserSetting	Represents the user settings to be returned by the

Complex Type	Description
	GetUserSettings operation (section 3.1.4.3).
StringSetting	Represents a user setting whose value is of type string.
WebClientUrlCollectionSetting	Represents a collection of WebClientUrls elements (section 3.1.4.3.2.20).
WebClientUrls	Represents a collection of WebClientUrl elements (section 3.1.4.3.2.21). This represents the server's web client.
WebClientUrl	Represents the URL of the server web client.
ProtocolConnectionCollectionSetting	Represents a collection of ProtocolConnection elements (section 3.1.4.3.2.24).
ProtocolConnections	Represents a collection of <ProtocolConnection> elements (section 3.1.4.3.2.24). ProtocolConnections represents the internal and external protocol connection of the server's Web client.
ProtocolConnection	Represents the email Protocol connection settings for pop/imap/smtp protocols.
AlternateMailboxCollectionSetting	Represents a collection of AlternateMailboxes elements (section 3.1.4.3.2.26).
AlternateMailboxes	Represents a collection of AlternateMailbox elements (section 3.1.4.3.2.27).
AlternateMailbox	Represents an alternate mailbox.

3.1.4.3.3.1 tns:GetUserSettingsRequest Complex Type

The **GetUserSettingsRequest** complex type retrieves the specified settings for one or more users. The **GetUserSettingsRequest** complex type contains the e-mail addresses for whom to retrieve settings. The **GetUserSettingsRequest** complex type returns a **UserResponse** complex type (section [3.1.4.3.3.8](#)) object that contains the requested settings for the specified user.

```
<xs:complexType name="GetUserSettingsRequest"
  mixed="false"
>
  <xs:complexContent
    mixed="false"
  >
    <xs:extension
      base="tns:AutodiscoverRequest"
    >
      <xs:sequence>
        <xs:element name="Users"
          type="tns:Users"
          nillable="true"
        />
        <xs:element name="RequestedSettings"
          type="tns:RequestedSettings"
          nillable="true"
        />
      </xs:sequence>
    </xs:extension>
  </xs:complexContent>
</xs:complexType>
```

```

    <xs:element name="RequestedVersion"
      type="tns:ExchangeVersion"
      nillable="true"
    />
  </xs:sequence>
</xs:extension>
</xs:complexContent>
</xs:complexType>

```

Child Elements

Element	Type	Description
Users	tns:Users	The e-mail addresses of the users for whom settings should be retrieved.
RequestedSettings	tns:RequestedSettings	The configuration settings being requested.
RequestedVersion	tns:ExchangeVersion	The specific server version the provider would like to utilize.

3.1.4.3.3.2 tns:AutodiscoverRequest Complex Type

The **AutodiscoverRequest** complex type represents the base class for all requests made to the Autodiscover service.

```

<xs:complexType name="AutodiscoverRequest">
  <xs:sequence />
</xs:complexType>

```

The [GetUserSettingsRequest Type](#), [GetDomainSettingsRequest Type](#) and the [GetFederationInformationRequest Type](#) extend the **AutodiscoverRequest** complex type.

3.1.4.3.3.3 tns:Users Complex Type

The **Users** complex type represents a collection of **User** element (section [3.1.4.3.2.7](#)) representing users for whom settings are to be retrieved.

```

<xs:complexType name="Users">
  <xs:sequence>
    <xs:element name="User"
      type="tns:User"
      nillable="true"
      minOccurs="0"
      maxOccurs="unbounded"
    />
  </xs:sequence>
</xs:complexType>

```

Child Elements

Element	Type	Description
User	tns:User	The user for whom to retrieve settings.

3.1.4.3.3.4 tns:User Complex Type

The **User** complex type represents a user for whose settings are to be retrieved. The user is identified by SMTP address or Legacy DN.

```
<xs:complexType name="User">
  <xs:sequence>
    <xs:element name="Mailbox"
      type="xs:string"
      nillable="true"
    />
  </xs:sequence>
</xs:complexType>
```

Child Elements

Element	Type	Description
Mailbox	xs:string	The e-mail address of the user to be discovered.

The [GetUserSettings](#) method uses the e-mail address to discover the mailbox. The <User> element MUST be present.

3.1.4.3.3.5 tns:RequestedSettings Complex Type

The **RequestedSettings** complex type specifies the configuration settings to be returned by the server for the **GetUserSettings** operation (section [3.1.4.3](#)).

```
<xs:complexType name="RequestedSettings">
  <xs:sequence>
    <xs:element name="Setting"
      type="xs:string"
      nillable="true"
      minOccurs="0"
      maxOccurs="unbounded"
    />
  </xs:sequence>
</xs:complexType>
```

Child Elements

Element	Type	Description
Setting	xs:string	The configuration settings to be returned.

The collection of Setting elements MAY be:

Setting Element	Description
UserDisplayName	The display name of the user.
UserDN	The Legacy DN of the user.
UserDeploymentId	The deployment ID of the user.
InternalMailboxServer	The (FQDN) of the mailbox server.
InternalRpcClientServer	The (FQDN) of the RPC client server.
InternalMailboxServerDN	The Legacy DN of the mailbox server.
InternalEcpUrl	The internal URL of the Exchange Control Panel.
InternalEcpVoicemailUrl	The internal URL of the Exchange Control Panel for voice mail customization.
InternalEcpEmailSubscriptionsUrl	The internal URL of the Exchange Control Panel for e-mail subscriptions.
InternalEcpTextMessagingUrl	The internal URL of the Exchange Control Panel for text messaging.
InternalEcpDeliveryReportUrl	The internal URL of the Exchange Control Panel for delivery reports.
InternalEwsUrl	The internal URL of the Web Services.
InternalOABUrl	The internal URL of the OAB.
InternalUMUrl	The internal URL of the Unified Messaging services.
InternalWebClientUrls	The internal URLs of the web client.
MailboxDN	The distinguished name of the mailbox database of the user's mailbox.
PublicFolderServer	The name of the public folders server.
ActiveDirectoryServer	The name of the Active Directory server.
ExternalMailboxServer	The name of the RPC over HTTP server.
ExternalMailboxServerRequiresSSL	Indicates whether the RPC over HTTP server requires SSL.
ExternalMailboxServerAuthenticationMethods	The authentication methods supported by the RPC over HTTP server.
EcpVoicemailUrlFragment	The URL fragment of the Exchange Control Panel for voice mail customization.
EcpEmailSubscriptionsUrlFragment	The URL fragment of the Exchange Control Panel for e-mail subscriptions.
EcpTextMessagingUrlFragment	The URL fragment of the Exchange Control Panel for text messaging.
EcpDeliveryReportUrlFragment	The URL fragment of the Exchange Control Panel for

Setting Element	Description
	delivery reports.
ExternalEcpUrl	The external URL of the Exchange Control Panel.
ExternalEcpVoicemailUrl	The external URL of the Exchange Control Panel for voice mail customization.
ExternalEcpEmailSubscriptionsUrl	The external URL of the Exchange Control Panel for e-mail subscriptions.
ExternalEcpTextMessagingUrl	The external URL of the Exchange Control Panel for text messaging.
ExternalEcpDeliveryReportUrl	The external URL of the Exchange Control Panel for delivery Reports.
ExternalEwsUrl	The external URL of the Exchange Web Services.
ExternalOABUrl	The external URL of the Offline Address Book.
ExternalUMUrl	The external URL of the Unified Messaging services.
ExternalWebClientUrls	The external URLs of the Exchange web client.
CrossOrganizationSharingEnabled	Indicates that cross-organization sharing is enabled for the user.
AlternateMailboxes	A list of alternate mailboxes.
CasVersion	The version of the Client Access server that is serving the request (for example, 14.XX.YYY.ZZZ).
EwsSupportedSchemas	A comma-separated list of schema versions that are supported by Exchange Web Services. The schema version values will be the same as the values of the ExchangeVersion .
InternalPop3Connections	The internal connection settings list for the POP3 protocol.
ExternalPop3Connections	The external connection settings list for the POP3 protocol.
InternalImap4Connections	The internal connection settings list for the IMAP4 protocol.
ExternalImap4Connections	The external connection settings list for the IMAP4 protocol.
InternalSmtpConnections	The internal connection settings list for the SMTP protocol.
ExternalSmtpConnections	The external connection settings list for the SMTP protocol.

3.1.4.3.3.6 tns:GetUserSettingsResponse Complex Type

The **GetUserSettingsResponse** complex type represents a response that contains an array of user responses. A single user response contains the configuration settings for a specific user. The **GetUserSettingsResponse** complex type returns to the caller the user's configuration settings that were requested in the **GetUserSettingRequest** complex type (section [3.1.4.3.3.1](#)).

The Name-Value pairs for each returned User Setting is included in the response. The **GetUserSettings** operation (section [3.1.4.3](#)) returns only the requested configuration settings, if they exist on the server.

```
<xs:complexType name="GetUserSettingsResponse"
  mixed="false"
>
  <xs:complexContent
    mixed="false"
  >
    <xs:extension
      base="tns:AutodiscoverResponse"
    >
      <xs:sequence>
        <xs:element name="UserResponses"
          type="tns:ArrayOfUserResponse"
          nillable="true"
          minOccurs="0"
        />
      </xs:sequence>
    </xs:extension>
  </xs:complexContent>
</xs:complexType>
```

Child Elements

Element	Type	Description
UserResponses	tns:ArrayOfUserResponse	Contains the response for each user.

3.1.4.3.3.7 tns:AutodiscoverResponse Complex Type

The **AutodiscoverResponse** complex type represents the base class for all responses returned by the Autodiscover service. It introduces the ErrorCode and ErrorMessage properties.

```
<xs:complexType name="AutodiscoverResponse">
  <xs:sequence>
    <xs:element name="ErrorCode"
      type="tns:ErrorCode"
      minOccurs="0"
    />
    <xs:element name="ErrorMessage"
      type="xs:string"
      nillable="true"
      minOccurs="0"
    />
  </xs:sequence>
</xs:complexType>
```

Child Elements

Element	Type	Description
ErrorCode	tns:ErrorCode	The error code associated with this response.
ErrorMessage	xs:string	The error message associated with this response.

The **GetUserSettingsResponse** complex type (section [3.1.4.3.3.6](#)), **UserResponse** complex type (section [3.1.4.3.3.8](#)), **GetDomainSettingsResponse** complex type (section [3.1.4.1.3.2](#)), **DomainResponse** complex type (section [3.1.4.1.3.4](#)), and the **GetFederationInformationResponse** complex type (section [3.1.4.2.3.2](#)) extend the **AutodiscoverResponse**.

3.1.4.3.3.8 tns:UserResponse Complex Type

The **UserResponse** complex type represents a response to a **GetUserSettings** operation (section [3.1.4.3](#)), for an individual user. The server returns only the configuration settings requested by the client.

```
<xs:complexType name="UserResponse"
  mixed="false"
>
  <xs:complexContent
    mixed="false"
  >
    <xs:extension
      base="tns:AutodiscoverResponse"
    >
      <xs:sequence>
        <xs:element name="RedirectTarget"
          type="xs:string"
          nillable="true"
          minOccurs="0"
        />
        <xs:element name="UserSettingErrors"
          type="tns:UserSettingErrors"
          nillable="true"
          minOccurs="0"
        />
        <xs:element name="UserSettings"
          type="tns:UserSettings"
          nillable="true"
          minOccurs="0"
        />
      </xs:sequence>
    </xs:extension>
  </xs:complexContent>
</xs:complexType>
```

Child Elements

Element	Type	Description
RedirectTarget	xs:string	The target of the redirection (URL or email address).
UserSettingErrors	tns:UserSettingErrors	Error information for settings that could not be returned.

Element	Type	Description
UserSettings	tns:UserSettings	The requested settings for the user.

3.1.4.3.3.9 tns:UserSettingErrors Complex Type

The **UserSettingErrors** complex type represents a collection of **UserSettingError** elements (section [3.1.4.3.2.17](#)) that contains error information for settings that could not be returned.

```
<xs:complexType name="UserSettingErrors">
  <xs:sequence>
    <xs:element name="UserSettingError"
      type="tns:UserSettingError"
      nillable="true"
      minOccurs="0"
      maxOccurs="unbounded"
    />
  </xs:sequence>
</xs:complexType>
```

Child Elements

Element	Type	Description
UserSettingError	tns:UserSettingError	Represents an error from a GetUserSettings request.

3.1.4.3.3.10 tns:ArrayOfUserResponse Complex Type

The **ArrayOfUserResponse** represents an array of **UserResponse** elements (section [3.1.4.3.2.13](#)) that contains the responses for each user.

```
<xs:complexType name="ArrayOfUserResponse">
  <xs:sequence>
    <xs:element name="UserResponse"
      type="tns:UserResponse"
      nillable="true"
      minOccurs="0"
      maxOccurs="unbounded"
    />
  </xs:sequence>
</xs:complexType>
```

Child Elements

Element	Type	Description
UserResponse	tns:UserResponse	Represents a response to a GetUserSettings operation (section 3.1.4.3) for an individual user.

3.1.4.3.3.11 tns:UserSettingError Complex Type

The **UserSettingError** complex type represents an error from a **GetUserSettings** operation (section [3.1.4.3](#)) request. This is an error that occurred while retrieving a user setting.

```
<xs:complexType name="UserSettingError">
  <xs:sequence>
    <xs:element name="ErrorCode"
      type="tns:ErrorCode"
    />
    <xs:element name="ErrorMessage"
      type="xs:string"
      nillable="true"
    />
    <xs:element name="SettingName"
      type="xs:string"
      nillable="true"
    />
  </xs:sequence>
</xs:complexType>
```

Child Elements

Element	Type	Description
ErrorCode	tns:ErrorCode	Specifies the error code associated with the specific request.
ErrorMessage	xs:string	Specifies the error message associated with the specific request.
SettingName	xs:string	The name of the setting.

3.1.4.3.3.12 tns:UserSettings Complex Type

The **UserSettings** complex type represents a collection of **UserSetting** elements (section [3.1.4.3.2.17](#)), the base class for all user settings returned by the **GetUserSettings** operation (section [3.1.4.3](#)).

```
<xs:complexType name="UserSettings">
  <xs:sequence>
    <xs:element name="UserSetting"
      type="tns:UserSetting"
      nillable="true"
      minOccurs="0"
      maxOccurs="unbounded"
    />
  </xs:sequence>
</xs:complexType>
```

Child Elements

Element	Type	Description
UserSetting	tns:UserSetting	Represents the base class for all user settings returned by the

Element	Type	Description
		GetUserSettings method.

3.1.4.3.3.13 tns:UserSetting Complex Type

The **UserSetting** complex type represents the user settings to be returned by the **GetUserSettings** operation (section [3.1.4.3](#)).

```
<xs:complexType name="UserSetting">
  <xs:sequence>
    <xs:element name="Name"
      type="xs:string"
      nillable="true"
    />
  </xs:sequence>
</xs:complexType>
```

Child Elements

Element	Type	Description
Name	xs:string	The name of the setting.

The **ProtocolConnectionCollectionSetting** complex type (section [3.1.4.3.3.18](#)), **StringSetting** complex type (section [3.1.4.3.2.18](#)), **WebClientUrlCollectionSetting** complex type (section [3.1.4.3.3.15](#)), and **AlternateMailboxCollectionSetting** complex type (section [3.1.4.3.3.21](#)) extend the **UserSetting** complex type.

3.1.4.3.3.14 tns:StringSetting Complex Type

The **StringSetting** complex type represents a user setting whose value is of type string.

```
<xs:complexType name="StringSetting"
  mixed="false"
>
  <xs:complexContent
    mixed="false"
  >
    <xs:extension
      base="tns:UserSetting"
    >
      <xs:sequence>
        <xs:element name="Value"
          type="xs:string"
          nillable="true"
          minOccurs="0"
        />
      </xs:sequence>
    </xs:extension>
  </xs:complexContent>
</xs:complexType>
```

Child Elements

Element	Type	Description
Value	xs:string	The value of the setting.

3.1.4.3.3.15 tns:WebClientUrlCollectionSetting Complex Type

The **WebClientUrlCollectionSetting** complex type represents a collection of **WebClientUrls** elements (section [3.1.4.3.2.20](#)).

```
<xs:complexType name="WebClientUrlCollectionSetting"
  mixed="false"
>
  <xs:complexContent
    mixed="false"
  >
    <xs:extension
      base="tns:UserSetting"
    >
      <xs:sequence>
        <xs:element name="WebClientUrls"
          type="tns:WebClientUrls"
          nillable="true"
        />
      </xs:sequence>
    </xs:extension>
  </xs:complexContent>
</xs:complexType>
```

Child Elements

Element	Type	Description
WebClientUrls	tns:WebClientUrls	The URLs.

3.1.4.3.3.16 tns:WebClientUrls Complex Type

The **WebClientUrls** complex type represents a collection of **WebClientUrl** elements (section [3.1.4.3.2.21](#)). This represents the internal and external URLs of the server's web client.

```
<xs:complexType name="WebClientUrls">
  <xs:sequence>
    <xs:element name="WebClientUrl"
      type="tns:WebClientUrl"
      nillable="true"
      minOccurs="0"
      maxOccurs="unbounded"
    />
  </xs:sequence>
</xs:complexType>
```

Child Elements

Element	Type	Description
WebClientUrl	tns:WebClientUrl	Represents the URL of the server web client.

3.1.4.3.3.17 tns:WebClientUrl Complex Type

The **WebClientUrl** complex type represents the URL of the server web client.

```
<xs:complexType name="WebClientUrl">
  <xs:sequence>
    <xs:element name="AuthenticationMethods"
      type="xs:string"
      nillable="true"
    />
    <xs:element name="Url"
      type="xs:string"
      nillable="true"
    />
  </xs:sequence>
</xs:complexType>
```

Child Elements

Element	Type	Description
AuthenticationMethods	xs:string	The authentication methods.
Url	xs:string	The URL.

The **WebClientUrl** can be used for retrieving data from a Web Service.

3.1.4.3.3.18 tns:ProtocolConnectionCollectionSetting Complex Type

The **ProtocolConnectionCollectionSetting** complex type represents a collection of **ProtocolConnection** elements (section [3.1.4.3.2.24](#)).

```
<xs:complexType name="ProtocolConnectionCollectionSetting"
  mixed="false"
>
  <xs:complexContent
    mixed="false"
  >
    <xs:extension
      base="tns:UserSetting"
    >
      <xs:sequence>
        <xs:element name="ProtocolConnections"
          type="tns:ProtocolConnections"
          nillable="true"
        />
      </xs:sequence>
    </xs:extension>
  </xs:complexType>
```

```

    </xs:complexContent>
</xs:complexType>

```

Child Elements

Element	Type	Description
ProtocolConnections	tns:ProtocolConnections	The protocol connections.

3.1.4.3.3.19 tns:ProtocolConnections Complex Type

The **ProtocolConnections** complex type represents a collection of <ProtocolConnection> elements (section [3.1.4.3.2.24](#)). **ProtocolConnections** represents the internal and external protocol connection of the server's Web client.

```

<xs:complexType name="ProtocolConnections">
  <xs:sequence>
    <xs:element name="ProtocolConnection"
      type="tns:ProtocolConnection"
      nillable="true"
      minOccurs="0"
      maxOccurs="unbounded"
    />
  </xs:sequence>
</xs:complexType>

```

Child Elements

Element	Type	Description
ProtocolConnection	tns:ProtocolConnection	Represents the protocol connection of the server Web client.

3.1.4.3.3.20 tns:ProtocolConnection Complex Type

The **ProtocolConnection** complex type represents the email Protocol connection settings for pop/imap/smtp protocols.

```

<xs:complexType name="ProtocolConnection">
  <xs:sequence>
    <xs:element name="Hostname"
      type="xs:string"
      nillable="true"
    />
    <xs:element name="Port"
      type="xs:int"
    />
    <xs:element name="EncryptionMethod"
      type="xs:string"
      nillable="true"
    />
  </xs:sequence>

```

```
</xs:complexType>
```

Child Elements

Element	Type	Description
Hostname	xs:string	Host name portion of the full computer name of the computer.
Port	xs:int	The port number to use for the protocol.
EncryptionMethod	xs:string	The selected cryptographic method to use for protocol.

3.1.4.3.3.21 tns:AlternateMailboxCollectionSetting Complex Type

The **AlternateMailboxCollectionSetting** complex type represents a collection of **AlternateMailboxes** elements (section [3.1.4.3.2.26](#)).

```
<xs:complexType name="AlternateMailboxCollectionSetting"
  mixed="false"
>
  <xs:complexContent
    mixed="false"
  >
    <xs:extension
      base="tns:UserSetting"
    >
      <xs:sequence>
        <xs:element name="AlternateMailboxes"
          type="tns:AlternateMailboxes"
          nillable="true"
        />
      </xs:sequence>
    </xs:extension>
  </xs:complexContent>
</xs:complexType>
```

Child Elements

Element	Type	Description
AlternateMailboxes	tns:AlternateMailboxes	Collection of alternate mailboxes.

3.1.4.3.3.22 tns:AlternateMailboxes Complex Type

The **AlternateMailboxes** complex type represents a collection of **AlternateMailbox** elements (section [3.1.4.3.2.27](#)).

```
<xs:complexType name="AlternateMailboxes">
  <xs:sequence>
    <xs:element name="AlternateMailbox"
      type="tns:AlternateMailbox"
      nillable="true"
    />
  </xs:sequence>
</xs:complexType>
```

```

        minOccurs="0"
        maxOccurs="unbounded"
    />
</xs:sequence>
</xs:complexType>

```

Child Elements

Element	Type	Description
AlternateMailbox	tns:AlternateMailbox	Represents an alternate mailbox.

3.1.4.3.3.23 tns:AlternateMailbox Complex Type

The **AlternateMailbox** complex type represents an alternate mailbox.

```

<xs:complexType name="AlternateMailbox">
  <xs:sequence>
    <xs:element name="Type"
      type="xs:string"
      nillable="true"
    />
    <xs:element name="DisplayName"
      type="xs:string"
      nillable="true"
    />
    <xs:element name="LegacyDN"
      type="xs:string"
      nillable="true"
    />
    <xs:element name="Server"
      type="xs:string"
      nillable="true"
    />
  </xs:sequence>
</xs:complexType>

```

Child Elements

Element	Type	Description
Type	xs:string	The alternate mailbox type.
DisplayName	xs:string	The alternate mailbox display name.
LegacyDN	xs:string	The alternate mailbox legacy DN.
Server	xs:string	The alternate mailbox server.

An alternate mailbox corresponds to a user's external mailbox, such as a personal POP/IMAP account, a Web mail account, or an archived account.

3.1.4.3.4 Simple Types

The following XML schema simple type definitions are specific to this operation.

Simple Type	Description
ExchangeVersion	Represents an enumeration that defines the server versions used with this protocol.
ErrorCode	Specifies the error codes that can be returned by the Autodiscover service.

3.1.4.3.4.1 tns:ExchangeVersion Simple Type

The **ExchangeVersion** simple type represents an enumeration that defines the server versions that are used with this protocol.

```
<xs:simpleType name="ExchangeVersion">
  <xs:restriction
    base="xs:string"
  >
    <xs:enumeration
      value="Exchange2010"
    />
    <xs:enumeration
      value="Exchange2010_SP1"
    />
  </xs:restriction>
</xs:simpleType>
```

Enumeration

The following values are defined by the **ExchangeVersion** simple type:

Value	Description
Exchange2010	Specifies the first version of the target Web service schema. <10> The xs:string type is specified in [XMLSCHEMA2] .
Exchange2010_SP1	Specifies the second version of the target Web service schema. <11>

3.1.4.3.4.2 tns:ErrorCode Simple Type

The **ErrorCode** simple type specifies the error codes that can be returned by the Autodiscover service.

```
<xs:simpleType name="ErrorCode">
  <xs:restriction
    base="xs:string"
  >
    <xs:enumeration
      value="NoError"
    />
    <xs:enumeration
      value="RedirectAddress"
    />
  </xs:restriction>
</xs:simpleType>
```



```

<xs:enumeration
  value="RedirectUrl"
/>
<xs:enumeration
  value="InvalidUser"
/>
<xs:enumeration
  value="InvalidRequest"
/>
<xs:enumeration
  value="InvalidSetting"
/>
<xs:enumeration
  value="SettingIsNotAvailable"
/>
<xs:enumeration
  value="ServerBusy"
/>
<xs:enumeration
  value="InvalidDomain"
/>
<xs:enumeration
  value="NotFederated"
/>
<xs:enumeration
  value="InternalServerError"
/>
</xs:restriction>
</xs:simpleType>

```

Enumeration

The following values are defined by the **ErrorCode** simple type:

Value	Description
NoError	There was no error.
RedirectAddress	The caller must follow the e-mail address redirection that was returned by Autodiscover.
RedirectUrl	The caller must follow the URL redirection that was returned by Autodiscover.
InvalidUser	The user that was passed in the request is invalid.
InvalidRequest	The request is invalid.
InvalidSetting	A specified setting is invalid.
SettingIsNotAvailable	A specified setting is not available.
ServerBusy	The server is too busy to process the request.
InvalidDomain	The requested domain is not valid.
NotFederated	The organization is not federated.

Value	Description
InternalServerError	The internal server error.

3.1.4.4 GetOrganizationRelationshipSettings

The **GetOrganizationRelationshipSettings** operation retrieves the settings from all matching OrganizationRelationships that have at least one domain in the **DomainNames** property that maps to at least to one EmailAddress claim in the token. [<12>](#)

```
<wsdl:operation name="GetOrganizationRelationshipSettings">
  <wsdl:input wsaw:Action="http://schemas.microsoft.com/exchange/2010/Autodiscover/Autodiscover/GetOrganizationRelationshipSettings"
    name="GetOrganizationRelationshipSettingsRequestMessage"
    message="tns:GetOrganizationRelationshipSettingsRequestMessage" />
  <wsdl:output wsaw:Action="http://schemas.microsoft.com/exchange/2010/Autodiscover/Autodiscover/GetOrganizationRelationshipSettingsResponse"
    name="GetOrganizationRelationshipSettingsResponseMessage"
    message="tns:GetOrganizationRelationshipSettingsResponseMessage" />
</wsdl:operation>
```

Request

Message Format	Description
tns:GetOrganizationRelationshipSettingsRequestMessage	Specifies the SOAP message that requests the user's organization relationships settings.

Response

Message Format	Description
tns:GetOrganizationRelationshipSettingsResponseMessage	Specifies the SOAP message that is returned by the server in response.

3.1.4.4.1 Messages

The following table summarizes the set of WSDL message definitions that are specific to this operation.

Message	Description
GetOrganizationRelationshipSettingsRequestMessage	Retrieves the organization relationship settings.
GetOrganizationRelationshipSettingsRequestMessage_Headers	Specifies the SOAP header for a GetOrganizationRelationshipSettings operation.
GetOrganizationRelationshipSettingsResponseMessage Messages	Represents a response to a GetOrganizationRelationshipSettings operation call. <13>

Message	Description
GetOrganizationRelationshipSettingsResponseMessage_Headers	Specifies the SOAP header for a GetOrganizationRelationshipSettingsResponse operation.

3.1.4.4.1.1 tns:GetOrganizationRelationshipSettingsRequestMessage

The **GetOrganizationRelationshipSettingsRequestMessage** WSDL message specifies the SOAP message that retrieves the organization relationship settings. [<14>](#)

```
<wsdl:message name="GetOrganizationRelationshipSettingsRequestMessage">
  <wsdl:part name="parameters"
    element="tns:GetOrganizationRelationshipSettingsRequestMessage" />
</wsdl:message>
```

The **GetOrganizationRelationshipSettingsRequestMessage** WSDL message has one part, as described in the following table.

Part name	Element/type	Description
parameters	GetOrganizationRelationshipSettingsRequestMessage element (section 3.1.4.4.2.1)	Represents the parameters of a call to GetOrganizationRelationshipSettings operation (section 3.1.4.4) request.

3.1.4.4.1.2 tns:GetOrganizationRelationshipSettingsRequestMessage_Headers

The **GetOrganizationRelationshipSettingsRequestMessage_Headers** WSDL message specifies the SOAP header for a **GetOrganizationRelationshipSettings** operation (section [3.1.4.4.2.2](#)). This message contains one part. [<15>](#)

Part Name	Element/Type	Description
RequestedServerVersion	tns:RequestedServerVersion	Specifies which server version the GetOrganizationRelationshipSettingsRequest operation (section 3.1.4.4.2.2) request targets.

3.1.4.4.1.3 tns:GetOrganizationRelationshipSettingsResponseMessage

The **GetOrganizationRelationshipSettingsResponseMessage** WSDL message specifies the SOAP message that represents a response to a **GetOrganizationRelationshipSettings** operation (section [3.1.4.4](#)).

```
<wsdl:message name="GetOrganizationRelationshipSettingsResponseMessage">
  <wsdl:part name="parameters"
    element="tns:GetOrganizationRelationshipSettingsResponseMessage" />
</wsdl:message>
```

The **GetOrganizationRelationshipSettingsResponseMessage** WSDL message contains one part, as described in the following table. <16>

Part name	Element/type	Description
parameters	GetOrganizationRelationshipSettingsResponseMessage element (section 3.1.4.4.2.3).	Represents a response to a call to GetOrganizationRelationshipSettings operation.

3.1.4.4.1.4 tns:GetOrganizationRelationshipSettingsResponseMessage_Headers

The **GetOrganizationRelationshipSettingsResponseMessage_Headers** WSDL message specifies the SOAP header for a **GetOrganizationRelationshipSettings** operation (section [3.1.4.4](#)) <17>

```
<wsdl:message name="GetOrganizationRelationshipSettingsResponseMessage_Headers">
  <wsdl:part name="ServerVersionInfo" element="tns:ServerVersionInfo" />
</wsdl:message>
```

The **GetOrganizationRelationshipSettingsResponseMessage_Headers** WSDL message contains one part, as described in the following table.

Part name	Element/type	Description
ServerVersionInfo	ServerVersionInfo (IMS-OXWSCDATA section 2.2.4.8)	Contains the version of the server that processed the GetOrganizationRelationshipSettings operation request.

3.1.4.4.2 Elements

The following table summarizes the XML schema element definitions that are specific to this operation. <18>

Element	Description
<GetOrganizationRelationshipSettingsRequestMessage>	Prepares a call to the server, requesting the organization relationship settings for the user.
<GetOrganizationRelationshipSettingsRequest>	Represents the parameters of a call to the GetOrganizationRelationshipSettings operation (section 3.1.4.4).
<GetOrganizationRelationshipSettingsResponseMessage>	Returns to the caller the organization relationship settings that were requested in the <GetOrganizationRelationshipSettingsRequestMessage> element (section 3.1.4.4.2.1) call.
<OrganizationRelationshipSettingsCollection>	Represents a list of organization relationships that match the query.

3.1.4.4.2.1 GetOrganizationRelationshipSettingsRequestMessage Element

The <GetOrganizationRelationshipSettingsRequestMessage> element prepares a call to the server, requesting the organization relationship settings for the user. [<19>](#)

```
<xs:element name="GetOrganizationRelationshipSettingsRequestMessage">
  <xs:complexType>
    <xs:sequence>
      <xs:element name="Request"
        type="tns:GetOrganizationRelationshipSettingsRequest"
        minOccurs="0"
        nillable="true"
      />
    </xs:sequence>
  </xs:complexType>
</xs:element>
```

Child Elements

Element	Type	Description
Request	tns:GetOrganizationRelationshipSettingsRequest	Represents a GetOrganizationRelationshipSettings operation (section 3.1.4.4) request.

3.1.4.4.2.2 GetOrganizationRelationshipSettingsRequest Element

The <GetOrganizationRelationshipSettingsRequest> element represents the parameters of a call to the **GetOrganizationRelationshipSettings** operation (section [3.1.4.4](#)). [<20>](#)

```
<xs:element name="GetOrganizationRelationshipSettingsRequest"
  type="tns:GetOrganizationRelationshipSettingsRequest"
  nillable="true"
/>
```

3.1.4.4.2.3 GetOrganizationRelationshipSettingsResponseMessage Element

The <GetOrganizationRelationshipSettingsResponseMessage> element returns to the caller the organization relationship settings that were requested in the <GetOrganizationRelationshipSettingsRequestMessage> element (section [3.1.4.4.2.1](#)) call. [<21>](#)

```
<xs:element name="GetOrganizationRelationshipSettingsResponseMessage">
  <xs:complexType>
    <xs:sequence>
      <xs:element name="Response"
        type="tns:GetOrganizationRelationshipSettingsResponse"
        minOccurs="0"
        nillable="true"
      />
    </xs:sequence>
  </xs:complexType>
</xs:element>
```

Child Elements

Element	Type	Description
Response	tns:GetOrganizationRelationshipSettingsResponse	Represents the response to a GetOrganizationRelationshipSettings operation (section 3.1.4.4).

3.1.4.4.2.4 OrganizationRelationshipSettingsCollection Element

The <OrganizationRelationshipSettingsCollection> element represents a list of organization relationships that match the query. [<22>](#)

```
<xs:element name="OrganizationRelationshipSettingsCollection"
  type="tns:OrganizationRelationshipSettingsCollection Type"
  />
```

3.1.4.4.3 Complex Types

The following table summarizes the XML schema complex type definitions that are specific to this operation. [<23>](#)

Complex type	Description
GetOrganizationRelationshipSettingsRequest	Represents the parameters of a call to the GetOrganizationRelationshipSettings operation (section 3.1.4.4).
GetOrganizationRelationshipSettingsResponse	Represents a response to a call to GetOrganizationRelationshipSettings operation.
OrganizationRelationshipSettingsCollection	Represents a list of organization relationships that match the query.
OrganizationRelationshipSettings	Represents the list of organization relationships for the selected organization and SMTP addresses.

3.1.4.4.3.1 tns:GetOrganizationRelationshipSettingsRequest Complex Type

The **GetOrganizationRelationshipSettingsRequest** complex type represents the parameters of a call to the **GetOrganizationRelationshipSettings** operation (section [3.1.4.4](#)). The **GetOrganizationRelationshipSettingsRequest** complex type returns a **GetOrganizationRelationshipSettingsResponse** complex type (section [3.1.4.4.3.2](#)) object that contains the request domain settings. [<24>](#)

```
<xs:complexType name="GetOrganizationRelationshipSettingsRequest">
  <xs:complexContent
    mixed="false"
  >
    <xs:extension
```

```

        base="tns:AutodiscoverRequest"
    >
    <xs:sequence>
        <xs:element name="Domains"
            type="tns:Domains"
            nillable="true"
        />
    </xs:sequence>
</xs:extension>
</xs:complexContent>
</xs:complexType>

```

Child Elements

Element	Type	Description
Domains	tns:Domains	The domains for which autodiscover is to be run and that are to be used in a query.

3.1.4.4.3.2 tns:GetOrganizationRelationshipSettingsResponse Complex Type

The **GetOrganizationRelationshipSettingsResponse** complex type represents a response to a call to the **GetOrganizationRelationshipSettings** operation (section [3.1.4.4.3.1](#)).<25>

```

<xs:complexType name="GetOrganizationRelationshipSettingsResponse">
    <xs:complexContent
        mixed="false"
    >
        <xs:extension
            base="tns:AutodiscoverResponse"
        >
            <xs:sequence>
                <xs:element name="OrganizationRelationshipSettingsCollection"
                    type="tns:OrganizationRelationshipSettingsCollection Type"
                    minOccurs="0"
                    nillable="true"
                />
            </xs:sequence>
        </xs:extension>
    </xs:complexContent>
</xs:complexType>

```

Child Elements

Element	Type	Description
OrganizationRelationshipSettingsCollection	tns:OrganizationRelationshipSettingsCollection Type	Represents a list of organization relationships that match the query.

3.1.4.4.3.3 tns:OrganizationRelationshipSettingsCollection Complex Type

The **OrganizationRelationshipSettingsCollection** complex type represents a list of organization relationships that match the query. [<26>](#)

```
<xs:complexType name="OrganizationRelationshipSettingsCollection">
  <xs:sequence>
    <xs:element name="OrganizationRelationshipSettings"
      type="tns:OrganizationRelationshipSettings"
      minOccurs="0"
      maxOccurs="unbounded"
      nillable="true"
    />
  </xs:sequence>
</xs:complexType>
```

Child Elements

Element	Type	Description
OrganizationRelationshipSettings	tns:OrganizationRelationshipSettings	Represents the organization relationships.

3.1.4.4.3.4 tns:OrganizationRelationshipSettings Complex Type

The **OrganizationRelationshipSettings** complex type represents the list of organization relationships for the selected organization and SMTP addresses. [<27>](#)

```
<xs:complexType name="OrganizationRelationshipSettings">
  <xs:sequence>
    <xs:element name="DeliveryReportEnabled"
      type="xs:boolean"
    />
    <xs:element name="DomainNames"
      type="tns:Domains"
      nillable="true"
    />
    <xs:element name="FreeBusyAccessEnabled"
      type="xs:boolean"
    />
    <xs:element name="FreeBusyAccessLevel"
      type="xs:string"
      nillable="true"
    />
    <xs:element name="MailTipsAccessEnabled"
      type="xs:boolean"
    />
    <xs:element name="MailTipsAccessLevel"
      type="xs:string"
      nillable="true"
    />
    <xs:element name="MailboxMoveEnabled"
      type="xs:boolean"
    />
    <xs:element name="Name"
```



```

        type="xs:string"
        nillable="true"
    />
    <xs:element name="TargetApplicationUri"
        type="xs:anyURI"
        nillable="true"
    />
    <xs:element name="TargetAutodiscoverEpr"
        type="xs:anyURI"
        nillable="true"
    />
    <xs:element name="TargetSharingEpr"
        type="xs:anyURI"
        nillable="true"
    />
</xs:sequence>
</xs:complexType>

```

Child Elements

Element	Type	Description
DeliveryReportEnabled	xs:boolean	The DeliveryReportEnabled flag.
DomainNames	tns:Domains	The domain names collection.
FreeBusyAccessEnabled	xs:boolean	The FreeBusyAccessEnabled flag.
FreeBusyAccessLevel	xs:string	The FreeBusyAccessLevel property.
MailTipsAccessEnabled	xs:boolean	The MailTipsAccessEnabled flag.
MailTipsAccessLevel	xs:string	The MailTipsLevel property.
MailboxMoveEnabled	xs:boolean	The MailboxMoveEnabled flag.
Name	xs:string	The name of the organization relationship.
TargetApplicationUri	xs:anyURI	The target application URI.
TargetAutodiscoverEpr	xs:anyURI	The TargetAutodiscoverEpr property.
TargetSharingEpr	xs:anyURI	The TargetSharingEpr property.

3.1.5 Timer Events

None.

3.1.6 Other Local Events

None.

4 Protocol Examples

The following are examples of an Autodiscovery Request and Response. Note that in the [GetUserSettings](#) and [GetDomainSettings](#) examples only the requested settings are returned to the client.

4.1 GetDomainSettings_Example

The following is an example of the GetDomainSettings operation.

To retrieve the requested Domain settings, the client constructs the Autodiscover Request XML and sends it to the server.

```
<?xml version="1.0" encoding="utf-8"?>
<soap:Envelope xmlns:a="http://schemas.microsoft.com/exchange/2010/Autodiscover"
  xmlns:wsa="http://www.w3.org/2005/08/addressing" xmlns:xsi="http://www.w3.org/2001/XMLSchema-instance"
  xmlns:soap="http://schemas.xmlsoap.org/soap/envelope/" >
  <soap:Header>
    <a:RequestedServerVersion>Exchange2010</a:RequestedServerVersion>
    <wsa:Action>http://schemas.microsoft.com/exchange/2010/Autodiscover/Autodiscover/GetDomainSettings</wsa:Action>
    <wsa:To>https://autodiscover.exchange.microsoft.com/autodiscover/autodiscover.svc</wsa:To>
  </soap:Header>
  <soap:Body>
    <a:GetDomainSettingsRequestMessage xmlns:a="http://schemas.microsoft.com/exchange/2010/Autodiscover">
      <a:Request>
        <a:Domains>
          <a:Domain>Redmond</a:Domain>
        </a:Domains>
        <a:RequestedSettings>
          <a:Setting>ExternalEwsUrl</a:Setting>
        </a:RequestedSettings>
      </a:Request>
    </a:GetDomainSettingsRequestMessage>
  </soap:Body>
</soap:Envelope>
</EwsLogEntry>
```

The server constructs the Autodiscover Response XML and sends it to the client.

```
<s:Envelope xmlns:s="http://schemas.xmlsoap.org/soap/envelope/" xmlns:a="http://www.w3.org/2005/08/addressing">
  <s:Header>
    <a:Action s:mustUnderstand="1">http://schemas.microsoft.com/exchange/2010/Autodiscover/Autodiscover/GetDomainSettingsResponse</a:Action>
    <h:ServerVersionInfo xmlns:h="http://schemas.microsoft.com/exchange/2010/Autodiscover"
      xmlns:i="http://www.w3.org/2001/XMLSchema-instance">
      <h:MajorVersion>14</h:MajorVersion>
      <h:MinorVersion>0</h:MinorVersion>
      <h:MajorBuildNumber>639</h:MajorBuildNumber>
      <h:MinorBuildNumber>20</h:MinorBuildNumber>
      <h:Version>Exchange2010</h:Version>
    </h:ServerVersionInfo>
  </s:Header>
  <s:Body>
    <a:Response>
      <a:Settings>
        <a:Setting>ExternalEwsUrl</a:Setting>
      </a:Settings>
    </a:Response>
  </s:Body>
</s:Envelope>
```

```

    </s:Header>
    <s:Body>
      <GetDomainSettingsResponseMessage xmlns="http://schemas.microsoft.com/exchange/2010/Autodiscover">
        <Response xmlns:i="http://www.w3.org/2001/XMLSchema-instance">
          <ErrorCode>NoError</ErrorCode>
          <ErrorMessage />
          <DomainResponses>
            <DomainResponse>
              <ErrorCode>NoError</ErrorCode>
              <ErrorMessage>No error.</ErrorMessage>
              <DomainSettingErrors />
              <DomainSettings>
                <DomainSetting i:type="DomainStringSetting">
                  <Name>ExternalEwsUrl</Name>
                  <Value>https://emea.mail.microsoft.com/EWS/Exchange.asmx</Value>
                </DomainSetting>
              </DomainSettings>
              <RedirectTarget i:nil="true" />
            </DomainResponse>
          </DomainResponses>
        </Response>
      </GetDomainSettingsResponseMessage>
    </s:Body>
  </s:Envelope>

```

4.2 GetFederationInformation_Example

The following is an example of the [GetFederationInformation](#) operation.

In the request the caller is requesting domain information for domain "contoso.com".

```

<?xml version="1.0" encoding="utf-8"?>
<soap:Envelope xmlns:exm="http://schemas.microsoft.com/exchange/services/2006/messages"
xmlns:ext="http://schemas.microsoft.com/exchange/services/2006/types"
xmlns:a="http://www.w3.org/2005/08/addressing"
xmlns:soap="http://schemas.xmlsoap.org/soap/envelope/"
xmlns:xsi="http://www.w3.org/2001/XMLSchema-instance"
xmlns:xsd="http://www.w3.org/2001/XMLSchema">
  <soap:Header>
    <a:MessageID>urn:uuid:6389558d-9e05-465e-ade9-aae14c4bcd10</a:MessageID>
    <a:Action
soap:mustUnderstand="1">http://schemas.microsoft.com/exchange/2010/Autodiscover/Autodiscover/
GetFederationInformation</a:Action>
    <a:To soap:mustUnderstand="1">https://autodiscover.byfcxu-
dom.extest.microsoft.com/autodiscover/autodiscover.svc</a:To>
    <a:ReplyTo>
      <a:Address>http://www.w3.org/2005/08/addressing/anonymous</a:Address>
    </a:ReplyTo>
  </soap:Header>
  <soap:Body>
    <GetFederationInformationRequestMessage
xmlns="http://schemas.microsoft.com/exchange/2010/Autodiscover">
      <Request>
        <Domain>contoso.com</Domain>
      </Request>
    </GetFederationInformationRequestMessage>

```

```
</soap:Body>
</soap:Envelope>
```

The server constructs the Response XML and sends it to the client.

```
<s:Envelope xmlns:s="http://schemas.xmlsoap.org/soap/envelope/"
xmlns:a="http://www.w3.org/2005/08/addressing">
  <s:Header>
    <a:Action
s:mustUnderstand="1">http://schemas.microsoft.com/exchange/2010/Autodiscover/Autodiscover/Get
FederationInformationResponse</a:Action>
    <a:RelatesTo>urn:uuid:6389558d-9e05-465e-ade9-aae14c4bcd10</a:RelatesTo>
  </s:Header>
  <s:Body>
    <GetFederationInformationResponseMessage
xmlns="http://schemas.microsoft.com/exchange/2010/Autodiscover">
      <Response xmlns:i="http://www.w3.org/2001/XMLSchema-instance">
        <ErrorCode>NoError</ErrorCode>
        <ErrorMessage/>
        <ApplicationUri>BYFCXU-DOM.EXTEST.MICROSOFT.COM</ApplicationUri>
        <Domains>
          <Domain>contoso.com</Domain>
          <Domain>europe.contoso.com</Domain>
          <Domain>americas.contoso.com</Domain>
          <Domain>contosolive.com</Domain>
        </Domains>
      </Response>
    </GetFederationInformationResponseMessage>
  </s:Body>
</s:Envelope>
```

4.3 GetUserSettings_Example

The following is an example of the GetUserSettings operation.

To retrieve the requested User settings, the client constructs the Autodiscover Request XML and sends it to the server.

```
<?xml version="1.0" encoding="utf-8"?>
<soap:Envelope xmlns:a="http://schemas.microsoft.com/exchange/2010/Autodiscover"
xmlns:wsa="http://www.w3.org/2005/08/addressing" xmlns:xsi="http://www.w3.org/2001/XMLSchema-instance"
xmlns:soap="http://schemas.xmlsoap.org/soap/envelope/">
  <soap:Header>
    <a:RequestedServerVersion>Exchange2010</a:RequestedServerVersion>
    <wsa:Action>http://schemas.microsoft.com/exchange/2010/Autodiscover/Autodiscover/GetUserSettings</wsa:Action>
    <wsa:To>https://autodiscover.exchange.microsoft.com/autodiscover/autodiscover.svc</wsa:To>
  </soap:Header>
  <soap:Body>
    <a:GetUserSettingsRequestMessage xmlns:a="http://schemas.microsoft.com/exchange/2010/Autodiscover">
      <a:Request>
```

```

    <a:Users>
      <a:User>
        <a:Mailbox>tadam@exchange.microsoft.com</a:Mailbox>
      </a:User>
    </a:Users>
    <a:RequestedSettings>
      <a:Setting>UserDisplayName</a:Setting>
      <a:Setting>UserDN</a:Setting>
      <a:Setting>UserDeploymentId</a:Setting>
      <a:Setting>InternalMailboxServer</a:Setting>
      <a:Setting>MailboxDN</a:Setting>
      <a:Setting>PublicFolderServer</a:Setting>
      <a:Setting>ActiveDirectoryServer</a:Setting>
      <a:Setting>ExternalEwsUrl</a:Setting>
      <a:Setting>CasVersion</a:Setting>
      <a:Setting>EwsSupportedSchemas</a:Setting>
    </a:RequestedSettings>
  </a:Request>
</a:GetUserSettingsRequestMessage>
</soap:Body>
</soap:Envelope>

```

The server constructs the Autodiscover Response XML and sends it to the client.

```

<s:Envelope xmlns:s="http://schemas.xmlsoap.org/soap/envelope/" xmlns:a="http://www.w3.org/2005/08/addressing">
  <s:Header>
    <a:Action s:mustUnderstand="1">http://schemas.microsoft.com/exchange/2010/Autodiscover/Autodiscover/GetUserSettingsResponse</a:Action>
    <h:ServerVersionInfo xmlns:h="http://schemas.microsoft.com/exchange/2010/Autodiscover" xmlns:i="http://www.w3.org/2001/XMLSchema-instance">
      <h:MajorVersion>14</h:MajorVersion>
      <h:MinorVersion>1</h:MinorVersion>
      <h:MajorBuildNumber>63</h:MajorBuildNumber>
      <h:MinorBuildNumber>0</h:MinorBuildNumber>
      <h:Version>Exchange2010_SP1</h:Version>
    </h:ServerVersionInfo>
  </s:Header>
  <s:Body>
    <GetUserSettingsResponseMessage xmlns="http://schemas.microsoft.com/exchange/2010/Autodiscover">
      <Response xmlns:i="http://www.w3.org/2001/XMLSchema-instance">
        <ErrorCode>NoError</ErrorCode>
        <ErrorMessage />
        <UserResponses>
          <UserResponse>
            <ErrorCode>NoError</ErrorCode>
            <ErrorMessage>No error.</ErrorMessage>
            <RedirectTarget i:nil="true" />
            <UserSettingErrors />
            <UserSettings>
              <UserSetting i:type="StringSetting">
                <Name>UserDisplayName</Name>
                <Value>Terry Adams</Value>
              </UserSetting>
              <UserSetting i:type="StringSetting">
                <Name>UserDN</Name>
                <Value>/o=microsoft/ou=Exchange Administrative Group (FYDIBOHF

```

```

23SPDLT)/cn=Recipients/cn=tadam</Value>
  </UserSetting>
  <UserSetting i:type="StringSetting">
    <Name>UserDeploymentId</Name>
    <Value>649d50b8-alce-4bac-8ace-2321e463f701</Value>
  </UserSetting>
  <UserSetting i:type="StringSetting">
    <Name>CasVersion</Name>
    <Value>14.01.0063.000</Value>
  </UserSetting>
  <UserSetting i:type="StringSetting">
    <Name>EwsSupportedSchemas</Name>
    <Value>Exchange2007, Exchange2007_SP1, Exchange2010,
Exchange2010_SP1</Value>
  </UserSetting>
  <UserSetting i:type="StringSetting">
    <Name>InternalMailboxServer</Name>
    <Value>DF-M14-05.Contoso.com</Value>
  </UserSetting>
  <UserSetting i:type="StringSetting">
    <Name>ActiveDirectoryServer</Name>
    <Value>CO1-EXCH-DC-05.Contoso.com</Value>
  </UserSetting>
  <UserSetting i:type="StringSetting">
    <Name>MailboxDN</Name>
    <Value>/o=microsoft/ou=Exchange Administrative Group (FYDIBOHF
23SPDLT)/cn=Configuration/cn=Servers/cn=outlookbeta.exchange.corp.microsoft.com/
cn=Microsoft Private MDB</Value>
  </UserSetting>
  <UserSetting i:type="StringSetting">
    <Name>PublicFolderServer</Name>
    <Value>DF-P14-01.Contoso.com</Value>
  </UserSetting>
  <UserSetting i:type="StringSetting">
    <Name>ExternalEwsUrl</Name>
    <Value>https://mail.Contoso.com/EWS/Exchange.asmx</
Value>
  </UserSetting>
</UserSettings>
</UserResponse>
</UserResponses>
</Response>
</GetUserSettingsResponseMessage>
</s:Body>
</s:Envelope>

```

5 Security

5.1 Security Considerations for Implementers

Auto discovery using this protocol over HTTPS (HTTP with SSL). Not providing SSL will seriously affect the operation of this protocol. The server will not answer Autodiscover queries unless the Autodiscover client has authenticated with the Autodiscover Server.

[GetFederationInformation](#) should be Anonymous. The intent of **GetFederationInformation** is to provide information to other organizations with STS in common on how to request tokens to authenticate against other services. As such, the caller needs to have access to the federation information without the need to authenticate first.

5.2 Index of Security Parameters

None.

6 Appendix A: Full WSDL

The Autodiscover Service has a WSDL and an XSD file.

6.1 WSDL

See [\[WSDL\]](#) for a specification of the Web Service Description Language (WSDL).

For ease of implementation, the full WSDL is included in this section.

```
<?xml version="1.0" encoding="utf-8"?>
  <wsdl:definitions xmlns:soap="http://schemas.xmlsoap.org/wsdl/soap/"
    xmlns:wsu="http://docs.oasis-open.org/wss/2004/01/oasis-200401-wss-wssecurity-
utility-1.0.xsd"
    xmlns:soapenc="http://schemas.xmlsoap.org/soap/encoding/"
    xmlns:wsam="http://www.w3.org/2007/05/addressing/metadata"
    xmlns:tns="http://schemas.microsoft.com/exchange/2010/Autodiscover"
    xmlns:wsa="http://schemas.xmlsoap.org/ws/2004/08/addressing"
    xmlns:wsp="http://schemas.xmlsoap.org/ws/2004/09/policy"
    xmlns:wsap="http://schemas.xmlsoap.org/ws/2004/08/addressing/policy"
    xmlns:xsd="http://www.w3.org/2001/XMLSchema"
    xmlns:msc="http://schemas.microsoft.com/ws/2005/12/wsdl/contract"
    xmlns:wsaw="http://www.w3.org/2006/05/addressing/wsdl"
    xmlns:soap12="http://schemas.xmlsoap.org/wsdl/soap12/"
    xmlns:wsa10="http://www.w3.org/2005/08/addressing"
    xmlns:wsx="http://schemas.xmlsoap.org/ws/2004/09/mex"
    targetNamespace="http://schemas.microsoft.com/exchange/2010/Autodiscover"
    xmlns:wsdl="http://schemas.xmlsoap.org/wsdl/">
  <wsdl:types>
    <xsd:schema
targetNamespace="http://schemas.microsoft.com/exchange/2010/Autodiscover/Imports">
      <xsd:import namespace="http://schemas.microsoft.com/exchange/2010/Autodiscover"
        location="messages.xsd" />
    </xsd:schema>
  </wsdl:types>
  <wsdl:message name="GetUserSettingsRequestMessage">
    <wsdl:part name="parameters" element="tns:GetUserSettingsRequestMessage" />
  </wsdl:message>
  <wsdl:message name="GetUserSettingsRequestMessage_Headers">
    <wsdl:part name="RequestedServerVersion" element="tns:RequestedServerVersion" />
  </wsdl:message>
  <wsdl:message name="GetUserSettingsResponseMessage">
    <wsdl:part name="parameters" element="tns:GetUserSettingsResponseMessage" />
  </wsdl:message>
  <wsdl:message name="GetUserSettingsResponseMessage_Headers">
    <wsdl:part name="ServerVersionInfo" element="tns:ServerVersionInfo" />
  </wsdl:message>
  <wsdl:message name="GetDomainSettingsRequestMessage">
    <wsdl:part name="parameters" element="tns:GetDomainSettingsRequestMessage" />
  </wsdl:message>
  <wsdl:message name="GetDomainSettingsRequestMessage_Headers">
    <wsdl:part name="RequestedServerVersion" element="tns:RequestedServerVersion" />
  </wsdl:message>
  <wsdl:message name="GetDomainSettingsResponseMessage">
    <wsdl:part name="parameters" element="tns:GetDomainSettingsResponseMessage" />
  </wsdl:message>
  <wsdl:message name="GetDomainSettingsResponseMessage_Headers">
    <wsdl:part name="ServerVersionInfo" element="tns:ServerVersionInfo" />
  </wsdl:message>
```



```

</wsdl:message>
<wsdl:message name="GetFederationInformationRequestMessage">
  <wsdl:part name="parameters" element="tns:GetFederationInformationRequestMessage" />
</wsdl:message>
<wsdl:message name="GetFederationInformationRequestMessage_Headers">
  <wsdl:part name="RequestedServerVersion" element="tns:RequestedServerVersion" />
</wsdl:message>
<wsdl:message name="GetFederationInformationResponseMessage">
  <wsdl:part name="parameters" element="tns:GetFederationInformationResponseMessage" />
</wsdl:message>
<wsdl:message name="GetFederationInformationResponseMessage_Headers">
  <wsdl:part name="ServerVersionInfo" element="tns:ServerVersionInfo" />
</wsdl:message>
<wsdl:message name="GetOrganizationRelationshipSettingsRequestMessage">
  <wsdl:part name="parameters"
element="tns:GetOrganizationRelationshipSettingsRequestMessage" />
</wsdl:message>
<wsdl:message name="GetOrganizationRelationshipSettingsRequestMessage_Headers">
  <wsdl:part name="RequestedServerVersion" element="tns:RequestedServerVersion" />
</wsdl:message>
<wsdl:message name="GetOrganizationRelationshipSettingsResponseMessage">
  <wsdl:part name="parameters"
element="tns:GetOrganizationRelationshipSettingsResponseMessage" />
</wsdl:message>
<wsdl:message name="GetOrganizationRelationshipSettingsResponseMessage_Headers">
  <wsdl:part name="ServerVersionInfo" element="tns:ServerVersionInfo" />
</wsdl:message>
<wsdl:portType name="Autodiscover">
  <wsdl:operation name="GetUserSettings">
    <wsdl:input wsaw:Action="http://schemas.microsoft.com/exchange/2010/
Autodiscover/Autodiscover/GetUserSettings"
name="GetUserSettingsRequestMessage"
message="tns:GetUserSettingsRequestMessage" />
    <wsdl:output wsaw:Action="http://schemas.microsoft.com/exchange/2010/Autodiscover/
Autodiscover/GetUserSettingsResponse"
name="GetUserSettingsResponseMessage"
message="tns:GetUserSettingsResponseMessage" />
  </wsdl:operation>
  <wsdl:operation name="GetDomainSettings">
    <wsdl:input wsaw:Action="http://schemas.microsoft.com/exchange/2010/
Autodiscover/Autodiscover/GetDomainSettings"
name="GetDomainSettingsRequestMessage"
message="tns:GetDomainSettingsRequestMessage" />
    <wsdl:output wsaw:Action="http://schemas.microsoft.com/exchange/2010/Autodiscover/
Autodiscover/GetDomainSettingsResponse"
name="GetDomainSettingsResponseMessage"
message="tns:GetDomainSettingsResponseMessage" />
  </wsdl:operation>
  <wsdl:operation name="GetFederationInformation">
    <wsdl:input wsaw:Action="http://schemas.microsoft.com/exchange/2010/
Autodiscover/Autodiscover/GetFederationInformation"
name="GetFederationInformationRequestMessage"
message="tns:GetFederationInformationRequestMessage" />
    <wsdl:output wsaw:Action="http://schemas.microsoft.com/exchange/2010/Autodiscover/
Autodiscover/GetFederationInformationResponse"
name="GetFederationInformationResponseMessage"
message="tns:GetFederationInformationResponseMessage" />
  </wsdl:operation>
  <wsdl:operation name="GetOrganizationRelationshipSettings">

```

```

<wsdl:input wsaw:Action="http://schemas.microsoft.com/exchange/2010/Autodiscover/
Autodiscover/GetOrganizationRelationshipSettings"
name="GetOrganizationRelationshipSettingsRequestMessage"
message="tns:GetOrganizationRelationshipSettingsRequestMessage" />
<wsdl:output wsaw:Action="http://schemas.microsoft.com/exchange/2010/Autodiscover/
Autodiscover/GetOrganizationRelationshipSettingsResponse"
name="GetOrganizationRelationshipSettingsResponseMessage"
message="tns:GetOrganizationRelationshipSettingsResponseMessage" />
</wsdl:operation>
</wsdl:portType>
<wsdl:binding name="DefaultBinding_Autodiscover" type="tns:Autodiscover">
<soap:binding transport="http://schemas.xmlsoap.org/soap/http" />
<wsdl:operation name="GetUserSettings">
<soap:operation soapAction="http://schemas.microsoft.com/exchange/2010/Autodiscover/
Autodiscover/GetUserSettings" style="document" />
<wsdl:input name="GetUserSettingsRequestMessage">
<soap:header message="tns:GetUserSettingsRequestMessage_Headers"
part="RequestedServerVersion" use="literal" />
<soap:body use="literal" />
</wsdl:input>
<wsdl:output name="GetUserSettingsResponseMessage">
<soap:header message="tns:GetUserSettingsResponseMessage_Headers"
part="ServerVersionInfo" use="literal" />
<soap:body use="literal" />
</wsdl:output>
</wsdl:operation>
<wsdl:operation name="GetDomainSettings">
<soap:operation soapAction="http://schemas.microsoft.com/exchange/2010/Autodiscover/
Autodiscover/GetDomainSettings" style="document" />
<wsdl:input name="GetDomainSettingsRequestMessage">
<soap:header message="tns:GetDomainSettingsRequestMessage_
Headers" part="RequestedServerVersion" use="literal" />
<soap:body use="literal" />
</wsdl:input>
<wsdl:output name="GetDomainSettingsResponseMessage">
<soap:header message="tns:GetDomainSettingsResponseMessage_
Headers" part="ServerVersionInfo" use="literal" />
<soap:body use="literal" />
</wsdl:output>
</wsdl:operation>
<wsdl:operation name="GetFederationInformation">
<soap:operation soapAction="http://schemas.microsoft.com/exchange/2010/Autodiscover/
Autodiscover/GetFederationInformation" style="document" />
<wsdl:input name="GetFederationInformationRequestMessage">
<soap:header message="tns:GetFederationInformationRequestMessage_Headers"
part="RequestedServerVersion" use="literal" />
<soap:body use="literal" />
</wsdl:input>
<wsdl:output name="GetFederationInformationResponseMessage">
<soap:header message="tns:GetFederationInformationResponseMessage_Headers"
part="ServerVersionInfo" use="literal" />
<soap:body use="literal" />
</wsdl:output>
</wsdl:operation>
<wsdl:operation name="GetOrganizationRelationshipSettings">
<soap:operation soapAction="http://schemas.microsoft.com/exchange/2010/Autodiscover/
Autodiscover/GetOrganizationRelationshipSettings" style="document" />
<wsdl:input name="GetOrganizationRelationshipSettingsRequestMessage">
<soap:header message="tns:GetOrganizationRelationshipSettingsRequestMessage_

```

```
        Headers" part="RequestedServerVersion" use="literal" />
      <soap:body use="literal" />
    </wsdl:input>
    <wsdl:output name="GetOrganizationRelationshipSettingsResponseMessage">
      <soap:header message="tns:GetOrganizationRelationshipSettingsResponseMessage_
        Headers" part="ServerVersionInfo" use="literal" />
      <soap:body use="literal" />
    </wsdl:output>
  </wsdl:operation>
</wsdl:binding>
</wsdl:definitions>
```


6.2 Messages XSD

See [XMLSCHEMA1](#) for a specification of the XML schema definition (XSD).

For ease of implementation, the message.xsd is included in this section.

```
<?xml version="1.0" encoding="utf-8"?>
<xs:schema xmlns:tns="http://schemas.microsoft.com/exchange/2010/Autodiscover"
  elementFormDefault="qualified"
    targetNamespace="http://schemas.microsoft.com/exchange/2010/Autodiscover"
    xmlns:xs="http://www.w3.org/2001/XMLSchema">
  <xs:element name="GetUserSettingsRequestMessage">
    <xs:complexType>
      <xs:sequence>
        <xs:element minOccurs="0" name="Request" nillable="true"
type="tns:GetUserSettingsRequest" />
      </xs:sequence>
    </xs:complexType>
  </xs:element>
  <xs:complexType name="GetUserSettingsRequest">
    <xs:complexContent mixed="false">
      <xs:extension base="tns:AutodiscoverRequest">
        <xs:sequence>
          <xs:element name="Users" nillable="true" type="tns:Users" />
          <xs:element name="RequestedSettings" nillable="true" type="tns:RequestedSettings"
/>
          <xs:element name="RequestedVersion" nillable="true" type="tns:ExchangeVersion" />
        </xs:sequence>
      </xs:extension>
    </xs:complexContent>
  </xs:complexType>
  <xs:element name="GetUserSettingsRequest" nillable="true" type="tns:GetUserSettingsRequest"
/>
  <xs:complexType name="AutodiscoverRequest">
    <xs:sequence />
  </xs:complexType>
  <xs:element name="AutodiscoverRequest" nillable="true" type="tns:AutodiscoverRequest" />
  <xs:complexType name="Users">
    <xs:sequence>
      <xs:element minOccurs="0" maxOccurs="unbounded" name="User" nillable="true"
type="tns:User" />
    </xs:sequence>
  </xs:complexType>
  <xs:element name="Users" nillable="true" type="tns:Users" />
  <xs:complexType name="User">
    <xs:sequence>
      <xs:element name="Mailbox" nillable="true" type="xs:string" />
    </xs:sequence>
  </xs:complexType>
</xs:schema>
```

```

<xs:element name="User" nillable="true" type="tns:User" />
<xs:complexType name="RequestedSettings">
  <xs:sequence>
    <xs:element minOccurs="0" maxOccurs="unbounded" name="Setting" nillable="true"
type="xs:string" />
  </xs:sequence>
</xs:complexType>
<xs:element name="RequestedSettings" nillable="true" type="tns:RequestedSettings" />
<xs:simpleType name="ExchangeVersion">
  <xs:restriction base="xs:string">
    <xs:enumeration value="Exchange2010" />
    <xs:enumeration value="Exchange2010_SP1" />
  </xs:restriction>
</xs:simpleType>
<xs:element name="RequestedServerVersion">
  <xs:simpleType>
    <xs:restriction base="tns:ExchangeVersion" />
  </xs:simpleType>
</xs:element>
<xs:element name="GetUserSettingsResponseMessage">
  <xs:complexType>
    <xs:sequence>
      <xs:element minOccurs="0" name="Response" nillable="true"
type="tns:GetUserSettingsResponse" />
    </xs:sequence>
  </xs:complexType>
</xs:element>
<xs:complexType name="GetUserSettingsResponse">
  <xs:complexContent mixed="false">
    <xs:extension base="tns:AutodiscoverResponse">
      <xs:sequence>
        <xs:element minOccurs="0" name="UserResponses" nillable="true"
type="tns:ArrayOfUserResponse" />
      </xs:sequence>
    </xs:extension>
  </xs:complexContent>
</xs:complexType>
<xs:element name="GetUserSettingsResponse" nillable="true"
type="tns:GetUserSettingsResponse" />
<xs:complexType name="AutodiscoverResponse">
  <xs:sequence>
    <xs:element minOccurs="0" name="ErrorCode" type="tns:ErrorCode" />
    <xs:element minOccurs="0" name="ErrorMessage" nillable="true" type="xs:string" />
  </xs:sequence>
</xs:complexType>
<xs:element name="AutodiscoverResponse" nillable="true" type="tns:AutodiscoverResponse" />
<xs:simpleType name="ErrorCode">
  <xs:restriction base="xs:string">
    <xs:enumeration value="NoError" />
    <xs:enumeration value="RedirectAddress" />
    <xs:enumeration value="RedirectUrl" />
    <xs:enumeration value="InvalidUser" />
    <xs:enumeration value="InvalidRequest" />
    <xs:enumeration value="InvalidSetting" />
    <xs:enumeration value="SettingIsNotAvailable" />
    <xs:enumeration value="ServerBusy" />
    <xs:enumeration value="InvalidDomain" />
    <xs:enumeration value="NotFederated" />
    <xs:enumeration value="InternalServerError" />
  </xs:restriction>

```

```

    </xs:restriction>
</xs:simpleType>
<xs:element name="ErrorCode" nillable="true" type="tns:ErrorCode" />
<xs:complexType name="ArrayOfUserResponse">
  <xs:sequence>
    <xs:element minOccurs="0" maxOccurs="unbounded" name="UserResponse"
      nillable="true" type="tns:UserResponse" />
  </xs:sequence>
</xs:complexType>
<xs:element name="ArrayOfUserResponse" nillable="true"
  type="tns:ArrayOfUserResponse" />
<xs:complexType name="UserResponse">
  <xs:complexContent mixed="false">
    <xs:extension base="tns:AutodiscoverResponse">
      <xs:sequence>
        <xs:element minOccurs="0" name="RedirectTarget" nillable="true" type="xs:string" />
        <xs:element minOccurs="0" name="UserSettingErrors" nillable="true"
type="tns:UserSettingErrors" />
        <xs:element minOccurs="0" name="UserSettings" nillable="true"
type="tns:UserSettings" />
      </xs:sequence>
    </xs:extension>
  </xs:complexContent>
</xs:complexType>
<xs:element name="UserResponse" nillable="true" type="tns:UserResponse" />
<xs:complexType name="UserSettingErrors">
  <xs:sequence>
    <xs:element minOccurs="0" maxOccurs="unbounded" name="UserSettingError"
      nillable="true" type="tns:UserSettingError" />
  </xs:sequence>
</xs:complexType>
<xs:element name="UserSettingErrors" nillable="true" type="tns:UserSettingErrors" />
<xs:complexType name="UserSettingError">
  <xs:sequence>
    <xs:element name="ErrorCode" type="tns:ErrorCode" />
    <xs:element name="ErrorMessage" nillable="true" type="xs:string" />
    <xs:element name="SettingName" nillable="true" type="xs:string" />
  </xs:sequence>
</xs:complexType>
<xs:element name="UserSettingError" nillable="true" type="tns:UserSettingError" />
<xs:complexType name="UserSettings">
  <xs:sequence>
    <xs:element minOccurs="0" maxOccurs="unbounded" name="UserSetting"
      nillable="true" type="tns:UserSetting" />
  </xs:sequence>
</xs:complexType>
<xs:element name="UserSettings" nillable="true" type="tns:UserSettings" />
<xs:complexType name="UserSetting">
  <xs:sequence>
    <xs:element name="Name" nillable="true" type="xs:string" />
  </xs:sequence>
</xs:complexType>
<xs:element name="UserSetting" nillable="true" type="tns:UserSetting" />
<xs:complexType name="ProtocolConnectionCollectionSetting">
  <xs:complexContent mixed="false">
    <xs:extension base="tns:UserSetting">
      <xs:sequence>
        <xs:element name="ProtocolConnections" nillable="true"
type="tns:ProtocolConnections" />
      </xs:sequence>
    </xs:extension>
  </xs:complexContent>
</xs:complexType>

```

```

        </xs:sequence>
    </xs:extension>
</xs:complexContent>
</xs:complexType>
<xs:element name="ProtocolConnectionCollectionSetting" nillable="true"
    type="tns:ProtocolConnectionCollectionSetting" />
<xs:complexType name="ProtocolConnections">
    <xs:sequence>
        <xs:element minOccurs="0" maxOccurs="unbounded" name="ProtocolConnection"
            nillable="true" type="tns:ProtocolConnection" />
    </xs:sequence>
</xs:complexType>
<xs:element name="ProtocolConnections" nillable="true" type="tns:ProtocolConnections" />
<xs:complexType name="ProtocolConnection">
    <xs:sequence>
        <xs:element name="Hostname" nillable="true" type="xs:string" />
        <xs:element name="Port" type="xs:int" />
        <xs:element name="EncryptionMethod" nillable="true" type="xs:string" />
    </xs:sequence>
</xs:complexType>
<xs:element name="ProtocolConnection" nillable="true" type="tns:ProtocolConnection" />
<xs:complexType name="StringSetting">
    <xs:complexContent mixed="false">
        <xs:extension base="tns:UserSetting">
            <xs:sequence>
                <xs:element minOccurs="0" name="Value" nillable="true" type="xs:string" />
            </xs:sequence>
        </xs:extension>
    </xs:complexContent>
</xs:complexType>
<xs:element name="StringSetting" nillable="true" type="tns:StringSetting" />
<xs:complexType name="WebClientUrlCollectionSetting">
    <xs:complexContent mixed="false">
        <xs:extension base="tns:UserSetting">
            <xs:sequence>
                <xs:element name="WebClientUrls" nillable="true" type="tns:WebClientUrls" />
            </xs:sequence>
        </xs:extension>
    </xs:complexContent>
</xs:complexType>
<xs:element name="WebClientUrlCollectionSetting" nillable="true"
    type="tns:WebClientUrlCollectionSetting" />
<xs:complexType name="WebClientUrls">
    <xs:sequence>
        <xs:element minOccurs="0" maxOccurs="unbounded" name="WebClientUrl"
            nillable="true" type="tns:WebClientUrl" />
    </xs:sequence>
</xs:complexType>
<xs:element name="WebClientUrls" nillable="true" type="tns:WebClientUrls" />
<xs:complexType name="WebClientUrl">
    <xs:sequence>
        <xs:element name="AuthenticationMethods" nillable="true" type="xs:string" />
        <xs:element name="Url" nillable="true" type="xs:string" />
    </xs:sequence>
</xs:complexType>
<xs:element name="WebClientUrl" nillable="true" type="tns:WebClientUrl" />
<xs:complexType name="AlternateMailboxCollectionSetting">
    <xs:complexContent mixed="false">
        <xs:extension base="tns:UserSetting">

```



```

        <xs:sequence>
          <xs:element name="AlternateMailboxes" nillable="true" type="tns:AlternateMailboxes"
/>
        </xs:sequence>
      </xs:extension>
    </xs:complexContent>
  </xs:complexType>
  <xs:element name="AlternateMailboxCollectionSetting" nillable="true"
    type="tns:AlternateMailboxCollectionSetting" />
  <xs:complexType name="AlternateMailboxes">
    <xs:sequence>
      <xs:element minOccurs="0" maxOccurs="unbounded" name="AlternateMailbox"
        nillable="true" type="tns:AlternateMailbox" />
    </xs:sequence>
  </xs:complexType>
  <xs:element name="AlternateMailboxes" nillable="true" type="tns:AlternateMailboxes" />
  <xs:complexType name="AlternateMailbox">
    <xs:sequence>
      <xs:element name="Type" nillable="true" type="xs:string" />
      <xs:element name="DisplayName" nillable="true" type="xs:string" />
      <xs:element name="LegacyDN" nillable="true" type="xs:string" />
      <xs:element name="Server" nillable="true" type="xs:string" />
    </xs:sequence>
  </xs:complexType>
  <xs:element name="AlternateMailbox" nillable="true" type="tns:AlternateMailbox" />
  <xs:complexType name="ServerVersionInfo">
    <xs:sequence>
      <xs:element minOccurs="0" name="MajorVersion" type="xs:int" />
      <xs:element minOccurs="0" name="MinorVersion" type="xs:int" />
      <xs:element minOccurs="0" name="MajorBuildNumber" type="xs:int" />
      <xs:element minOccurs="0" name="MinorBuildNumber" type="xs:int" />
      <xs:element minOccurs="0" name="Version" nillable="true" type="xs:string" />
    </xs:sequence>
  </xs:complexType>
  <xs:element name="ServerVersionInfo" nillable="true" type="tns:ServerVersionInfo" />
  <xs:element name="GetDomainSettingsRequestMessage">
    <xs:complexType>
      <xs:sequence>
        <xs:element minOccurs="0" name="Request" nillable="true"
          type="tns:GetDomainSettingsRequest" />
      </xs:sequence>
    </xs:complexType>
  </xs:element>
  <xs:complexType name="GetDomainSettingsRequest">
    <xs:complexContent mixed="false">
      <xs:extension base="tns:AutodiscoverRequest">
        <xs:sequence>
          <xs:element name="Domains" nillable="true" type="tns:Domains" />
          <xs:element name="RequestedSettings" nillable="true" type="tns:RequestedSettings"
/>
          <xs:element name="RequestedVersion" nillable="true" type="tns:ExchangeVersion" />
        </xs:sequence>
      </xs:extension>
    </xs:complexContent>
  </xs:complexType>
  <xs:element name="GetDomainSettingsRequest" nillable="true"
type="tns:GetDomainSettingsRequest" />
  <xs:complexType name="Domains">
    <xs:sequence>

```

```

        <xs:element minOccurs="0" maxOccurs="unbounded" name="Domain"
            nillable="true" type="xs:string" />
    </xs:sequence>
</xs:complexType>
<xs:element name="Domains" nillable="true" type="tns:Domains" />
<xs:element name="GetDomainSettingsResponseMessage">
    <xs:complexType>
        <xs:sequence>
            <xs:element minOccurs="0" name="Response" nillable="true"
                type="tns:GetDomainSettingsResponse" />
        </xs:sequence>
    </xs:complexType>
</xs:element>
<xs:complexType name="GetDomainSettingsResponse">
    <xs:complexContent mixed="false">
        <xs:extension base="tns:AutodiscoverResponse">
            <xs:sequence>
                <xs:element minOccurs="0" name="DomainResponses" nillable="true"
                    type="tns:ArrayOfDomainResponse" />
            </xs:sequence>
        </xs:extension>
    </xs:complexContent>
</xs:complexType>
<xs:element name="GetDomainSettingsResponse" nillable="true"
    type="tns:GetDomainSettingsResponse" />
<xs:complexType name="ArrayOfDomainResponse">
    <xs:sequence>
        <xs:element minOccurs="0" maxOccurs="unbounded" name="DomainResponse"
            nillable="true" type="tns:DomainResponse" />
    </xs:sequence>
</xs:complexType>
<xs:element name="ArrayOfDomainResponse" nillable="true"
    type="tns:ArrayOfDomainResponse" />
<xs:complexType name="DomainResponse">
    <xs:complexContent mixed="false">
        <xs:extension base="tns:AutodiscoverResponse">
            <xs:sequence>
                <xs:element minOccurs="0" name="DomainSettingErrors" nillable="true"
                    type="tns:DomainSettingErrors" />
                <xs:element minOccurs="0" name="DomainSettings" nillable="true"
                    type="tns:DomainSettings" />
                <xs:element minOccurs="0" name="RedirectTarget" nillable="true" type="xs:string" />
            </xs:sequence>
        </xs:extension>
    </xs:complexContent>
</xs:complexType>
<xs:element name="DomainResponse" nillable="true" type="tns:DomainResponse" />
<xs:complexType name="DomainSettingErrors">
    <xs:sequence>
        <xs:element minOccurs="0" maxOccurs="unbounded" name="DomainSettingError"
            nillable="true" type="tns:DomainSettingError" />
    </xs:sequence>
</xs:complexType>
<xs:element name="DomainSettingErrors" nillable="true" type="tns:DomainSettingErrors" />
<xs:complexType name="DomainSettingError">
    <xs:sequence>
        <xs:element name="ErrorCode" type="tns:ErrorCode" />
        <xs:element name="ErrorMessage" nillable="true" type="xs:string" />
        <xs:element name="SettingName" nillable="true" type="xs:string" />
    </xs:sequence>
</xs:complexType>

```

```

    </xs:sequence>
</xs:complexType>
<xs:element name="DomainSettingError" nillable="true" type="tns:DomainSettingError" />
<xs:complexType name="DomainSettings">
  <xs:sequence>
    <xs:element minOccurs="0" maxOccurs="unbounded" name="DomainSetting"
      nillable="true" type="tns:DomainSetting" />
  </xs:sequence>
</xs:complexType>
<xs:element name="DomainSettings" nillable="true"
  type="tns:DomainSettings" />
<xs:complexType name="DomainSetting">
  <xs:sequence>
    <xs:element name="Name" nillable="true" type="xs:string" />
  </xs:sequence>
</xs:complexType>
<xs:element name="DomainSetting" nillable="true"
  type="tns:DomainSetting" />
<xs:complexType name="DomainStringSetting">
  <xs:complexContent mixed="false">
    <xs:extension base="tns:DomainSetting">
      <xs:sequence>
        <xs:element minOccurs="0" name="Value" nillable="true" type="xs:string" />
      </xs:sequence>
    </xs:extension>
  </xs:complexContent>
</xs:complexType>
<xs:element name="DomainStringSetting" nillable="true"
  type="tns:DomainStringSetting" />
<xs:element name="GetFederationInformationRequestMessage">
  <xs:complexType>
    <xs:sequence>
      <xs:element minOccurs="0" name="Request" nillable="true"
        type="tns:GetFederationInformationRequest" />
    </xs:sequence>
  </xs:complexType>
</xs:element>
<xs:complexType name="GetFederationInformationRequest">
  <xs:complexContent mixed="false">
    <xs:extension base="tns:AutodiscoverRequest">
      <xs:sequence>
        <xs:element name="Domain" nillable="true" type="xs:string" />
      </xs:sequence>
    </xs:extension>
  </xs:complexContent>
</xs:complexType>
<xs:element name="GetFederationInformationRequest" nillable="true"
  type="tns:GetFederationInformationRequest" />
<xs:element name="GetFederationInformationResponseMessage">
  <xs:complexType>
    <xs:sequence>
      <xs:element minOccurs="0" name="Response" nillable="true"
        type="tns:GetFederationInformationResponse" />
    </xs:sequence>
  </xs:complexType>
</xs:element>
<xs:complexType name="GetFederationInformationResponse">
  <xs:complexContent mixed="false">
    <xs:extension base="tns:AutodiscoverResponse">

```

```

        <xs:sequence>
            <xs:element minOccurs="0" name="ApplicationUri" nillable="true" type="xs:anyURI" />
            <xs:element minOccurs="0" name="Domains" nillable="true" type="tns:Domains" />
        </xs:sequence>
    </xs:extension>
</xs:complexContent>
</xs:complexType>
<xs:element name="GetFederationInformationResponse" nillable="true"
    type="tns:GetFederationInformationResponse" />
<xs:element name="GetOrganizationRelationshipSettingsRequestMessage">
    <xs:complexType>
        <xs:sequence>
            <xs:element minOccurs="0" name="Request" nillable="true"
                type="tns:GetOrganizationRelationshipSettingsRequest" />
        </xs:sequence>
    </xs:complexType>
</xs:element>
<xs:complexType name="GetOrganizationRelationshipSettingsRequest">
    <xs:complexContent mixed="false">
        <xs:extension base="tns:AutodiscoverRequest">
            <xs:sequence>
                <xs:element name="Domains" nillable="true" type="tns:Domains" />
            </xs:sequence>
        </xs:extension>
    </xs:complexContent>
</xs:complexType>
<xs:element name="GetOrganizationRelationshipSettingsRequest"
    nillable="true" type="tns:GetOrganizationRelationshipSettingsRequest" />
<xs:element name="GetOrganizationRelationshipSettingsResponseMessage">
    <xs:complexType>
        <xs:sequence>
            <xs:element minOccurs="0" name="Response" nillable="true"
                type="tns:GetOrganizationRelationshipSettingsResponse" />
        </xs:sequence>
    </xs:complexType>
</xs:element>
<xs:complexType name="GetOrganizationRelationshipSettingsResponse">
    <xs:complexContent mixed="false">
        <xs:extension base="tns:AutodiscoverResponse">
            <xs:sequence>
                <xs:element minOccurs="0" name="OrganizationRelationshipSettingsCollection"
                    nillable="true" type="tns:OrganizationRelationshipSettingsCollection" />
            </xs:sequence>
        </xs:extension>
    </xs:complexContent>
</xs:complexType>
<xs:element name="GetOrganizationRelationshipSettingsResponse" nillable="true"
    type="tns:GetOrganizationRelationshipSettingsResponse" />
<xs:complexType name="OrganizationRelationshipSettingsCollection">
    <xs:sequence>
        <xs:element minOccurs="0" maxOccurs="unbounded" name="OrganizationRelationshipSettings"
            nillable="true" type="tns:OrganizationRelationshipSettings" />
    </xs:sequence>
</xs:complexType>
<xs:element name="OrganizationRelationshipSettingsCollection" nillable="true"
    type="tns:OrganizationRelationshipSettingsCollection" />
<xs:complexType name="OrganizationRelationshipSettings">
    <xs:sequence>
        <xs:element name="DeliveryReportEnabled" type="xs:boolean" />
    </xs:sequence>
</xs:complexType>

```

```
<xs:element name="DomainNames" nillable="true" type="tns:Domains" />
<xs:element name="FreeBusyAccessEnabled" type="xs:boolean" />
<xs:element name="FreeBusyAccessLevel" nillable="true" type="xs:string" />
<xs:element name="MailTipsAccessEnabled" type="xs:boolean" />
<xs:element name="MailTipsAccessLevel" nillable="true" type="xs:string" />
<xs:element name="MailboxMoveEnabled" type="xs:boolean" />
<xs:element name="Name" nillable="true" type="xs:string" />
<xs:element name="TargetApplicationUri" nillable="true" type="xs:anyURI" />
<xs:element name="TargetAutodiscoverEpr" nillable="true" type="xs:anyURI" />
<xs:element name="TargetSharingEpr" nillable="true" type="xs:anyURI" />
</xs:sequence>
</xs:complexType>
<xs:element name="OrganizationRelationshipSettings" nillable="true"
  type="tns:OrganizationRelationshipSettings" />
</xs:schema>
```

6.3 Types XSD

This protocol does not define a types XSD file.

7 Appendix B: Product Behavior

The information in this specification is applicable to the following Microsoft products:

- Microsoft® Exchange Server 2010
- Microsoft® Exchange Server 2010 Service Pack 1 (SP1)

Exceptions, if any, are noted below. If a service pack number appears with the product version, behavior changed in that service pack. The new behavior also applies to subsequent service packs of the product unless otherwise specified. If a product edition appears with the product version, behavior is different in that product edition.

Unless otherwise specified, any statement of optional behavior in this specification prescribed using the terms SHOULD or SHOULD NOT implies product behavior in accordance with the SHOULD or SHOULD NOT prescription. Unless otherwise specified, the term MAY implies that product does not follow the prescription.

[<1> Section 1.3:](#) Exchange 2010 does not include the InternalEcpRetentionPolicyTagsUrl enumerated value.

[<2> Section 1.3:](#) Exchange 2010 does not include the InternalEcpPublishingUrl enumerated value.

[<3> Section 1.3:](#) Exchange 2010 does not include the EcpRetentionPolicyTagsUrlFragment enumerated value.

[<4> Section 1.3:](#) Exchange 2010 does not include the EcpPublishingUrlFragment enumerated value.

[<5> Section 1.3:](#) Exchange 2010 does not include the ExternalEcpRetentionPolicyTagsUrl enumerated value.

[<6> Section 1.3:](#) Exchange 2010 does not include the ExternalEcpPublishingUrl enumerated value.

[<7> Section 1.3:](#) Exchange 2010 does not include the ExchangeRpcUrl enumerated value.

[<8> Section 1.3:](#) Exchange 2010 does not include the ExternalEwsVersion enumerated value.

[<9> Section 3.1.4.1.3.1:](#) Exchange 2010 does not include the <RequestedVersion> element.

[<10> Section 3.1.4.3.4.1:](#) Exchange 2010 only includes the target schema that is identified by the Exchange2010 enumeration value.

[<11> Section 3.1.4.3.4.1:](#) Exchange 2010 does not include the Exchange2010_SP1 value.

[<12> Section 3.1.4.4:](#) Exchange 2010 does not include the **GetOrganizationRelationshipSettings** operation.

[<13> Section 3.1.4.4.1:](#) Exchange 2010 does not include the **GetOrganizationRelationshipSettings** operation.

[<14> Section 3.1.4.4.1.1:](#) Exchange 2010 does not include the **GetOrganizationRelationshipSettingsRequestMessage** message.

[<15> Section 3.1.4.4.1.2:](#) Exchange 2010 does not include the **GetOrganizationRelationshipSettingsRequestMessage_Headers** message.

[<16> Section 3.1.4.4.1.3:](#) Exchange 2010 does not include the **GetOrganizationRelationshipSettingsResponseMessage** message.

<17> [Section 3.1.4.4.1.4](#): Exchange 2010 does not include the **GetOrganizationRelationshipSettingsResponseMessage_Headers** message.

<18> [Section 3.1.4.4.2](#): Exchange 2010 does not include the **GetOrganizationRelationshipSettings** operation.

<19> [Section 3.1.4.4.2.1](#): Exchange 2010 does not include the <GetOrganizationRelationshipSettingsRequestMessage> element.

<20> [Section 3.1.4.4.2.2](#): Exchange 2010 does not include the <GetOrganizationRelationshipSettingsRequest> element.

<21> [Section 3.1.4.4.2.3](#): Exchange 2010 does not include the <GetOrganizationRelationshipSettingsResponseMessage> element.

<22> [Section 3.1.4.4.2.4](#): Exchange 2010 does not include the <OrganizationRelationshipSettingsCollection> element.

<23> [Section 3.1.4.4.3](#): Exchange 2010 does not include the **GetOrganizationRelationshipSettings** operation.

<24> [Section 3.1.4.4.3.1](#): Exchange 2010 does not include the **GetOrganizationRelationshipSettingsRequest** complex type.

<25> [Section 3.1.4.4.3.2](#): Exchange 2010 does not include the **GetOrganizationRelationshipSettingsResponse** complex type.

<26> [Section 3.1.4.4.3.3](#): Exchange 2010 does not include the **OrganizationRelationshipSettingsCollection** complex type.

<27> [Section 3.1.4.4.3.4](#): Exchange 2010 does not include the **OrganizationRelationshipSettings** complex type.

8 Change Tracking

This section identifies changes that were made to the [MS-OXWSADISC] protocol document between the May 2010 and August 2010 releases. Changes are classified as New, Major, Minor, Editorial, or No change.

The revision class **New** means that a new document is being released.

The revision class **Major** means that the technical content in the document was significantly revised. Major changes affect protocol interoperability or implementation. Examples of major changes are:

- A document revision that incorporates changes to interoperability requirements or functionality.
- An extensive rewrite, addition, or deletion of major portions of content.
- The removal of a document from the documentation set.
- Changes made for template compliance.

The revision class **Minor** means that the meaning of the technical content was clarified. Minor changes do not affect protocol interoperability or implementation. Examples of minor changes are updates to clarify ambiguity at the sentence, paragraph, or table level.

The revision class **Editorial** means that the language and formatting in the technical content was changed. Editorial changes apply to grammatical, formatting, and style issues.

The revision class **No change** means that no new technical or language changes were introduced. The technical content of the document is identical to the last released version, but minor editorial and formatting changes, as well as updates to the header and footer information, and to the revision summary, may have been made.

Major and minor changes can be described further using the following change types:

- New content added.
- Content updated.
- Content removed.
- New product behavior note added.
- Product behavior note updated.
- Product behavior note removed.
- New protocol syntax added.
- Protocol syntax updated.
- Protocol syntax removed.
- New content added due to protocol revision.
- Content updated due to protocol revision.
- Content removed due to protocol revision.
- New protocol syntax added due to protocol revision.

- Protocol syntax updated due to protocol revision.
- Protocol syntax removed due to protocol revision.
- New content added for template compliance.
- Content updated for template compliance.
- Content removed for template compliance.
- Obsolete document removed.

Editorial changes are always classified with the change type "Editorially updated."

Some important terms used in the change type descriptions are defined as follows:

- **Protocol syntax** refers to data elements (such as packets, structures, enumerations, and methods) as well as interfaces.
- **Protocol revision** refers to changes made to a protocol that affect the bits that are sent over the wire.

The changes made to this document are listed in the following table. For more information, please contact protocol@microsoft.com.

Section	Tracking number (if applicable) and description	Major change (Y or N)	Change type
1.1 Glossary	Added "Simple Mail Transfer Protocol (SMTP) to the list of terms.	N	Editorially updated.
1.1 Glossary	Added "endpoint" to the list of terms terms.	Y	New content added.
1.1 Glossary	56036 Added "Active Directory", "fully qualified domain name (FQDN)", " Internet Message Access Protocol - Version 4 (IMAP4)", "mailbox", " Post Office Protocol - Version 3 (POP3)", and " offline address book (OAB)" to the list of terms that are defined in [MS-OXGLOS].	N	Content update.
1.2.1 Normative References	55751 Moved [MS-OXGLOS] from the Normative References section to	N	Content update.

Section	Tracking number (if applicable) and description	Major change (Y or N)	Change type
	the Informative References section.		
1.2.1 Normative References	Added the reference [MS-OXWSCDATA].	N	Content update.
1.2.1 Normative References	Changed [WS-addr-core] to [WSADDRCORE], [WS-addr-Metadata] to [WSADDR-Metadata], and [WS-Addressing] to [WSAddressing].	N	Content update.
1.3 Overview	Added UserSettingName enumerated values.	Y	Product behavior note updated.
2.2.3 Elements	55416 Added a table that lists and describes the elements.	N	Content update.
2.2.4 Complex Types	55416 Added a table that lists and describes the complex types.	N	Content update.
3.1 Autodiscover Server Details	57270 Updated the title from AutoDiscover to Autodiscover.	N	Editorially updated.
3.1.4.1.1 Messages	55416 Added a table that lists and describes the messages.	N	New content added.
3.1.4.1.1.1 tns:GetDomainSettingsRequestMessage	55416 Updated section reference. Added Example snippet.	N	Content update.
3.1.4.1.1.2 tns:GetDomainSettingsRequestMessage Headers	55416 Updated section reference. Added Example snippet.	N	Content update.
3.1.4.1.1.3 tns:GetDomainSettingsResponseMessage	55416 Updated section reference. Added Example snippet.	N	Content update.

Section	Tracking number (if applicable) and description	Major change (Y or N)	Change type
3.1.4.1.1.4 tns:GetDomainSettingsResponseMessage_Headers	55416 Updated section reference. Added Example snippet.	N	Content update.
3.1.4.1.2 Elements	53741 Added a table that lists and describes the elements.	N	New content added.
3.1.4.1.3 Complex Types	5555416 Added a table that lists and describes the complex types.	N	Product behavior note updated .
3.1.4.1.3.1 tns:GetDomainSettingsRequest Complex Type	56036 Added a product behavior note.	Y	New product behavior note added.
3.1.4.1.3.2 tns:GetDomainSettingsResponse Complex Type	55416 Updated section reference.	Y	Content update.
3.1.4.1.3.3 tns:ArrayOfDomainResponse Complex Type	Changed <ArrayOfDomanResponse> element to <DomainResponse> in the child element table.	Y	Content update.
3.1.4.1.3.4 tns:DomainResponse Complex Type	55416 Updated section reference.	N	Content update.
3.1.4.1.3.5 tns:DomainSettingErrors Complex Type	55416 Updated section reference.	N	Content update.
3.1.4.1.3.6 tns:DomainSettingError Complex Type	55416 Updated section reference.	N	Content update.
3.1.4.1.3.7 tns:DomainSettings Complex Type	55416 Updated section reference.	N	Content update.
3.1.4.1.3.8 tns:DomainSetting Complex Type	55416 Updated section reference.	N	Content update.
3.1.4.2	56036	N	Content

Section	Tracking number (if applicable) and description	Major change (Y or N)	Change type
GetFederationInformation	Added code snippet.		update.
3.1.4.2.1 Messages	55416 Added a table listing each message.	N	New content added.
3.1.4.2.1.1 tns:GetFederationInformationRequestMessage	Added description information about the retrieve request.	Y	New content added.
3.1.4.2.1.1 tns:GetFederationInformationRequestMessage	55416 Updated section reference. Added Example snippet.	N	Content update.
3.1.4.2.1.2 tns:GetFederationInformationRequestMessage_Headers	55416 Added template compliance references.	N	Content update.
3.1.4.2.1.3 tns:GetFederationInformationResponseMessage	55416 Added section reference. Added example snippet.	N	Content update.
3.1.4.2.1.4 tns:GetFederationInformationResponseMessage_Headers	55416 Added section reference. Added Example snippet.	N	Content update.
3.1.4.2.2 Elements	55416 Added a table listing each element.	N	Content update.
3.1.4.2.2.1 GetFederationInformationRequestMessage Element	55416 Updated section reference.	N	Content update.
3.1.4.2.2.2 GetFederationInformationResponseMessage Element	55416 Added section reference.	N	Content update.
3.1.4.2.2.3 GetFederationInformationRequest Element	Modified description to include that this includes the parameters of the call.	N	Content update.
3.1.4.2.2.4 GetFederationInformationResponse Element	Updated description to specify that this element represents the response.	N	Content update.
3.1.4.2.3 Complex Types	55416 Added a table listing each complex type.	Y	New content added.

Section	Tracking number (if applicable) and description	Major change (Y or N)	Change type
3.1.4.2.3 Complex Types	Added TokenIssuer and TokenIssuers complex types to the Complex Type table.	Y	Content update.
3.1.4.2.3.1 tns:GetFederationInformationRequest Complex Type	55416 Updated section reference.	Y	Content update.
3.1.4.2.3.2 tns:GetFederationInformationResponse Complex Type	55416 Updated section reference.	N	Content update.
3.1.4.2.3.2 tns:GetFederationInformationResponse Complex Type	Added the TokenIssuers element to the complex type.	Y	New content added.
3.1.4.2.3.3 tns:TokenIssuer Complex Type	Added new topic.	Y	New content added.
3.1.4.2.3.4 tns:TokenIssuers Complex Type	Added new topic.	Y	New content added.
3.1.4.3 GetUserSettings	56036 Added code snippet.	N	Content update.
3.1.4.3.1 Messages	55416 Added a table listing each message.	N	New content added.
3.1.4.3.1.1 tns:GetUserSettingsRequestMessage	55416 Updated section reference. Added Example snippet.	N	Content update.
3.1.4.3.1.2 tns:GetUserSettingsRequestMessage Headers	55416 Updated section references. Added Example snippet.	N	Product behavior note updated.
3.1.4.3.1.3 tns:GetUserSettingsResponseMessage	55416 Updated reference links.	N	Content update.
3.1.4.3.2 Elements	55416 Added table for each element.	N	New content added.
3.1.4.3.2.1 GetUserSettingsRequestMessage Element	55416 Updated section references.	N	Product behavior note updated.

Section	Tracking number (if applicable) and description	Major change (Y or N)	Change type
			.
3.1.4.3.2.3 GetUserSettingsRequest Element	55416 Updated section references.	N	Product behavior note updated .
3.1.4.3.2.4 GetUserSettingsResponse Element	55416 Updated section references.	N	Product behavior note updated .
3.1.4.3.2.6 Users Element	55416 Updated section references.	N	Content update.
3.1.4.3.2.10 AutodiscoverResponse Element	55416 Updated section references.	N	Content update.
3.1.4.3.2.12 ArrayOfUserResponse Element	55416 Updated section references	N	Content update.
3.1.4.3.2.15 UserSettingError Element	55416 Updated section references.	N	Content update.
3.1.4.3.2.16 UserSettings Element	55416 Updated section references.	N	Product behavior note updated .
3.1.4.3.2.17 UserSetting Element	55416 Updated section references.	N	Product behavior note updated .
3.1.4.3.3 Complex Types	55416 Added table for each complex type.	N	Content update.
3.1.4.3.3.3 tns:Users Complex Type	55416 Updated description with section reference.	N	Content update.
3.1.4.3.3.4 tns:User Complex Type	Updated the description to indicate that the user is identified by an SMTP address or a Legacy DN.	N	Content update.

Section	Tracking number (if applicable) and description	Major change (Y or N)	Change type
	Added information about how the GetUserSettings method discovers the mailbox and the <User> element requirement.		
3.1.4.3.3.6 tns:GetUserSettingsResponse Complex Type	55416 Updated section reference.	N	Content update.
3.1.4.3.3.7 tns:AutodiscoverResponse Complex Type	55416 Updated section reference.	N	Content update.
3.1.4.3.3.9 tns:UserSettingErrors Complex Type	55416 Updated section reference.	N	Content update.
3.1.4.3.3.10 tns:ArrayOfUserResponse Complex Type	55416 Updated section reference.	N	Content update.
3.1.4.3.3.12 tns:UserSettings Complex Type	55416 Updated section reference.	N	Content update.
3.1.4.3.3.13 tns:UserSetting Complex Type	55416 Added section reference.	N	Content update.
3.1.4.3.3.15 tns:WebClientUrlCollectionSetting Complex Type	55416 Updated section reference.	Y	Content update.
3.1.4.3.3.16 tns:WebClientUrls Complex Type	55416 Added section reference.	N	Content update.
3.1.4.3.3.21 tns:AlternateMailboxCollectionSetting Complex Type	55416 Updated section reference.	Y	Content update.
3.1.4.3.3.22 tns:AlternateMailboxes Complex Type	55416 Updated section reference.	N	Content update.
3.1.4.3.4 Simple Types	55416 Added table for each simple type.	N	Content update.
3.1.4.3.4.1 tns:ExchangeVersion Simple Type	56036 Added a product behavior note.	Y	New product behavior

Section	Tracking number (if applicable) and description	Major change (Y or N)	Change type
			note added.
3.1.4.3.4.1 tns:ExchangeVersion Simple Type	Updated the enumeration value descriptions.	N	Content update.
3.1.4.4 GetOrganizationRelationshipSettings	56036 Added a product behavior note and a WSDL snippet.	Y	New product behavior note added.
3.1.4.4.1 Messages	56036 Added a product behavior note.	Y	New product behavior note added.
3.1.4.4.1 Messages	55416 Added a table that lists and describes the messages.	N	Content update.
3.1.4.4.1.1 tns:GetOrganizationRelationshipSettingsRequestMessage	56036 Added a product behavior note.	Y	New product behavior note added.
3.1.4.4.1.1 tns:GetOrganizationRelationshipSettingsRequestMessage	55416 Updated the section to include the message syntax.	N	Content update.
3.1.4.4.1.2 tns:GetOrganizationRelationshipSettingsRequestMessage_Headers	56036 Added a product behavior note.	Y	New product behavior note added.
3.1.4.4.1.3 tns:GetOrganizationRelationshipSettingsResponseMessage	56036 Added a product behavior note.	Y	New product behavior note added.
3.1.4.4.1.4 tns:GetOrganizationRelationshipSettingsResponseMessage_Headers	55416 Added the message syntax.	N	Content update.
3.1.4.4.2 Elements	56036 Added a product behavior note.	Y	New product behavior

Section	Tracking number (if applicable) and description	Major change (Y or N)	Change type
			note added.
3.1.4.4.2 Elements	55416 Add a summary of the elements that are defined for the operation.	N	Content update.
3.1.4.4.2.1 GetOrganizationRelationshipSettingsRequestMessage Element	56036 Added a product behavior notes.	Y	New product behavior note added.
3.1.4.4.2.2 GetOrganizationRelationshipSettingsRequest Element	56036 Added a product behavior notes.	Y	New product behavior note added.
3.1.4.4.2.3 GetOrganizationRelationshipSettingsResponseMessage Element	56036 Added a product behavior note.	Y	Product behavior note updated .
3.1.4.4.3 Complex Types	56036 Added a product behavior note.	Y	New product behavior note added.
3.1.4.4.3 Complex Types	55416 Added table that lists the complex types for this operation.	N	Content update.
3.1.4.4.3.1 tns:GetOrganizationRelationshipSettingsRequest Complex Type	56036 Added a product behavior note.	Y	New product behavior note added.
3.1.4.4.3.2 tns:GetOrganizationRelationshipSettingsResponse Complex Type	56036 Added a product behavior note.	Y	New product behavior note added.
3.1.4.4.3.3 tns:OrganizationRelationshipSettingsCollection Complex Type	56036 Added a product behavior note.	Y	New product behavior note

Section	Tracking number (if applicable) and description	Major change (Y or N)	Change type
			added.
3.1.4.4.3.4 tns:OrganizationRelationshipSettings Complex Type	56036 Added a product behavior note.	Y	Product behavior note updated .
7 Appendix B: Product Behavior	56663 Removed "Beta" from Exchange Server 2010 SP1 product name.	N	Content update.
8 Change Tracking	55416 Removed section 3.2	N	Content removed .
8 Change Tracking	55416 Reorganized the content for template compliance.	N	Content update.
8 Change Tracking	55416 Reorganized the content for template compliance.	N	Product behavior note updated .

9 Index

A

[Applicability](#) 11

C

[Capability negotiation](#) 12

[Change tracking](#) 96

F

[Full WSDL](#) 80

G

[Glossary](#) 7

I

[Introduction](#) 7

M

Messages

[overview](#) 13

[syntax](#) 13

[transport](#) 13

O

[Overview \(synopsis\)](#) 8

P

[Preconditions](#) 11

[Prerequisites](#) 11

[Product behavior](#) 94

R

[Relationship to other protocols](#) 11

S

Security

[implementer considerations](#) 79

[overview](#) 79

[parameter index](#) 79

Server

[abstract data model](#) 17

[initialization](#) 17

[local events](#) 73

[message processing](#) 17

[overview](#) 17

[sequencing rules](#) 17

[timer events](#) 73

[timers](#) 17

[Standards assignments](#) 12

T

[Tracking changes](#) 96

V

[Vendor-extensible fields](#) 12

[Versioning](#) 12