

[MS-OXWSADISC]: AutoDiscover Publishing and Lookup SOAP-Based Web Service Protocol Specification

Intellectual Property Rights Notice for Open Specifications Documentation

- **Technical Documentation.** Microsoft publishes Open Specifications documentation for protocols, file formats, languages, standards as well as overviews of the interaction among each of these technologies.
- **Copyrights.** This documentation is covered by Microsoft copyrights. Regardless of any other terms that are contained in the terms of use for the Microsoft website that hosts this documentation, you may make copies of it in order to develop implementations of the technologies described in the Open Specifications and may distribute portions of it in your implementations using these technologies or your documentation as necessary to properly document the implementation. You may also distribute in your implementation, with or without modification, any schema, IDL's, or code samples that are included in the documentation. This permission also applies to any documents that are referenced in the Open Specifications.
- **No Trade Secrets.** Microsoft does not claim any trade secret rights in this documentation.
- **Patents.** Microsoft has patents that may cover your implementations of the technologies described in the Open Specifications. Neither this notice nor Microsoft's delivery of the documentation grants any licenses under those or any other Microsoft patents. However, a given Open Specification may be covered by Microsoft's Open Specification Promise (available here: <http://www.microsoft.com/interop/osp>) or the Community Promise (available here: <http://www.microsoft.com/interop/cp/default.mspx>). If you would prefer a written license, or if the technologies described in the Open Specifications are not covered by the Open Specifications Promise or Community Promise, as applicable, patent licenses are available by contacting iplq@microsoft.com.
- **Trademarks.** The names of companies and products contained in this documentation may be covered by trademarks or similar intellectual property rights. This notice does not grant any licenses under those rights.
- **Fictitious Names.** The example companies, organizations, products, domain names, e-mail addresses, logos, people, places, and events depicted in this documentation are fictitious. No association with any real company, organization, product, domain name, email address, logo, person, place, or event is intended or should be inferred.

Reservation of Rights. All other rights are reserved, and this notice does not grant any rights other than specifically described above, whether by implication, estoppel, or otherwise.

Tools. The Open Specifications do not require the use of Microsoft programming tools or programming environments in order for you to develop an implementation. If you have access to Microsoft programming tools and environments you are free to take advantage of them. Certain Open Specifications are intended for use in conjunction with publicly available standard specifications and network programming art, and assumes that the reader either is familiar with the aforementioned material or has immediate access to it.

Preliminary Documentation. This Open Specification provides documentation for past and current releases and/or for the pre-release (beta) version of this technology. This Open Specification is final documentation for past or current releases as specifically noted in the document, as applicable; it is preliminary documentation for the pre-release (beta) versions. Microsoft will release final documentation in connection with the commercial release of the updated or new version of this technology. As the documentation may change between this preliminary version and the final version of this technology, there are risks in relying on preliminary documentation. To the extent that you incur additional development obligations or any other costs as a result of relying on this preliminary documentation, you do so at your own risk.

Revision Summary

Date	Revision History	Revision Class	Comments
07/15/2009	1.0	Major	Initial Availability.
11/04/2009	2.0.0	Major	Updated and revised the technical content.
02/10/2010	3.0.0	Major	Updated and revised the technical content.
05/05/2010	4.0.0	Major	Updated and revised the technical content.

Table of Contents

1 Introduction	7
1.1 Glossary	7
1.2 References	7
1.2.1 Normative References	7
1.2.2 Informative References	8
1.3 Overview	8
1.4 Relationship to Other Protocols	10
1.5 Prerequisites/Preconditions	10
1.6 Applicability Statement	11
1.7 Versioning and Capability Negotiation	11
1.8 Vendor Extensible Fields	11
1.9 Standards Assignments	11
2 Messages	12
2.1 Transport	12
2.2 Common Message Syntax	12
2.2.1 Namespaces	12
2.2.2 Simple Types	13
2.2.3 Complex Types	13
2.2.3.1 ServerVersionInfo Complex Type	13
2.2.3.2 m:Domains Complex Type	14
2.2.4 Elements	14
2.2.4.1 ServerVersionInfo Element	14
2.2.4.2 Domains Element	14
2.2.5 Attributes	14
2.2.6 Groups	15
2.2.7 Attribute Groups	15
2.2.8 Messages	15
3 Protocol Details	16
3.1 AutoDiscover Server Details	16
3.1.1 Abstract Data Model	16
3.1.2 Timers	16
3.1.3 Initialization	16
3.1.4 Message Processing Events and Sequencing	16
3.1.4.1 GetDomainSettings	16
3.1.4.1.1 Simple Types	17
3.1.4.1.2 Complex Types	17
3.1.4.1.2.1 m:GetDomainSettingsRequest Complex Type	17
3.1.4.1.2.2 m:GetDomainSettingsResponse Complex Type	18
3.1.4.1.2.3 m:ArrayOfDomainResponse Complex Type	18
3.1.4.1.2.4 m:DomainResponse Complex Type	19
3.1.4.1.2.5 m:DomainSettingErrors Complex Type	20
3.1.4.1.2.6 m:DomainSettingError Complex Type	20
3.1.4.1.2.7 m:DomainSettings Complex Type	21
3.1.4.1.2.8 m:DomainSetting Complex Type	21
3.1.4.1.2.9 m:DomainStringSetting Complex Type	22
3.1.4.1.3 Elements	22
3.1.4.1.3.1 GetDomainSettingsRequestMessage Element	22
3.1.4.1.3.2 GetDomainSettingsResponseMessage Element	23

3.1.4.1.3.3	GetDomainSettingsRequest Element	23
3.1.4.1.3.4	GetDomainSettingsResponse Element	23
3.1.4.1.3.5	ArrayOfDomainResponse Element	24
3.1.4.1.3.6	DomainResponse Element	24
3.1.4.1.3.7	DomainSettingErrors Element	24
3.1.4.1.3.8	DomainSettingError Element	24
3.1.4.1.3.9	DomainSettings Element	24
3.1.4.1.3.10	DomainSetting Element	25
3.1.4.1.3.11	DomainStringSetting Element	25
3.1.4.1.4	Attributes	25
3.1.4.1.5	Groups	25
3.1.4.1.6	Attribute Groups	25
3.1.4.1.7	Messages	25
3.1.4.1.7.1	tns:GetDomainSettingsRequestMessage	25
3.1.4.1.7.2	tns:GetDomainSettingsRequestMessage_Headers	26
3.1.4.1.7.3	tns:GetDomainSettingsResponseMessage	26
3.1.4.1.7.4	tns:GetDomainSettingsResponseMessage_Headers	26
3.1.4.2	GetFederationInformation	26
3.1.4.2.1	Simple Types	27
3.1.4.2.2	Complex Types	27
3.1.4.2.2.1	m:GetFederationInformationRequest Complex Type	28
3.1.4.2.2.2	m:GetFederationInformationResponse Complex Type	28
3.1.4.2.3	Elements	29
3.1.4.2.3.1	GetFederationInformationRequestMessage Element	29
3.1.4.2.3.2	GetFederationInformationResponseMessage Element	30
3.1.4.2.3.3	GetFederationInformationRequest Element	30
3.1.4.2.3.4	GetFederationInformationResponse Element	30
3.1.4.2.4	Attributes	30
3.1.4.2.5	Groups	31
3.1.4.2.6	Attribute Groups	31
3.1.4.2.7	Messages	31
3.1.4.2.7.1	tns:GetFederationInformationRequestMessage	31
3.1.4.2.7.2	tns:GetFederationInformationRequestMessage_Headers	31
3.1.4.2.7.3	tns:GetFederationInformationResponseMessage	31
3.1.4.2.7.4	tns:GetFederationInformationResponseMessage_Headers	31
3.1.4.3	GetUserSettings	32
3.1.4.3.1	Simple Types	32
3.1.4.3.1.1	t:ExchangeVersion Simple Type	32
3.1.4.3.1.2	t:ErrorCode Simple Type	33
3.1.4.3.2	Complex Types	34
3.1.4.3.2.1	m:GetUserSettingsRequest Complex Type	34
3.1.4.3.2.2	m:AutodiscoverRequest Complex Type	35
3.1.4.3.2.3	m:Users Complex Type	35
3.1.4.3.2.4	m:User Complex Type	36
3.1.4.3.2.5	m:RequestedSettings Complex Type	36
3.1.4.3.2.6	m:GetUserSettingsResponse Complex Type	38
3.1.4.3.2.7	m:AutodiscoverResponse Complex Type	39
3.1.4.3.2.8	m:UserResponse Complex Type	40
3.1.4.3.2.9	m:UserSettingErrors Complex Type	40
3.1.4.3.2.10	m:ArrayOfUserResponse Complex Type	41
3.1.4.3.2.11	m:UserSettingError Complex Type	41
3.1.4.3.2.12	m:UserSettings Complex Type	42
3.1.4.3.2.13	m:UserSetting Complex Type	42

3.1.4.3.2.14	m:StringSetting Complex Type	43
3.1.4.3.2.15	m:WebClientUrlCollectionSetting Complex Type	43
3.1.4.3.2.16	m:WebClientUrls Complex Type	44
3.1.4.3.2.17	m:WebClientUrl Complex Type	44
3.1.4.3.2.18	m:ProtocolConnectionCollectionSetting Complex Type	45
3.1.4.3.2.19	m:ProtocolConnections Complex Type	45
3.1.4.3.2.20	m:ProtocolConnection Complex Type	46
3.1.4.3.2.21	m:AlternateMailboxCollectionSetting Complex Type	47
3.1.4.3.2.22	m:AlternateMailboxes Complex Type	47
3.1.4.3.2.23	m:AlternateMailbox Complex Type	48
3.1.4.3.3	Elements	48
3.1.4.3.3.1	GetUserSettingsRequestMessage Element	48
3.1.4.3.3.2	GetUserSettingsResponseMessage Element	49
3.1.4.3.3.3	GetUserSettingsRequest Element	49
3.1.4.3.3.4	GetUserSettingsResponse Element	50
3.1.4.3.3.5	AutodiscoverRequest Element	50
3.1.4.3.3.6	Users Element	50
3.1.4.3.3.7	User Element	50
3.1.4.3.3.8	RequestedSettings Element	50
3.1.4.3.3.9	RequestedServerVersion Element	51
3.1.4.3.3.10	AutodiscoverResponse Element	51
3.1.4.3.3.11	ErrorCode Element	51
3.1.4.3.3.12	ArrayOfUserResponse Element	51
3.1.4.3.3.13	UserResponse Element	51
3.1.4.3.3.14	UserSettingErrors Element	52
3.1.4.3.3.15	UserSettingError Element	52
3.1.4.3.3.16	UserSettings Element	52
3.1.4.3.3.17	UserSetting Element	52
3.1.4.3.3.18	StringSetting Element	52
3.1.4.3.3.19	WebClientUrlCollectionSetting Element	53
3.1.4.3.3.20	WebClientUrls Element	53
3.1.4.3.3.21	WebClientUrl Element	53
3.1.4.3.3.22	ProtocolConnectionCollectionSetting Element	53
3.1.4.3.3.23	ProtocolConnections Element	53
3.1.4.3.3.24	ProtocolConnection Element	54
3.1.4.3.3.25	AlternateMailboxCollectionSetting Element	54
3.1.4.3.3.26	AlternateMailboxes Element	54
3.1.4.3.3.27	AlternateMailbox Element	54
3.1.4.3.4	Attributes	55
3.1.4.3.5	Groups	55
3.1.4.3.6	Attribute Groups	55
3.1.4.3.7	Messages	55
3.1.4.3.7.1	tns:GetUserSettingsRequestMessage	55
3.1.4.3.7.2	tns:GetUserSettingsRequestMessage_Headers	55
3.1.4.3.7.3	tns:GetUserSettingsResponseMessage	55
3.1.4.3.7.4	tns:GetUserSettingsResponseMessage_Headers	56
3.1.4.4	GetOrganizationRelationshipSettings	56
3.1.4.4.1	Simple Types	56
3.1.4.4.2	Complex Types	56
3.1.4.4.2.1	tns:GetOrganizationRelationshipSettingsRequest Complex Type	56
3.1.4.4.2.2	tns:GetOrganizationRelationshipSettingsResponse Complex Type	57
3.1.4.4.2.3	tns:OrganizationRelationshipSettingsCollection Complex Type	57
3.1.4.4.2.4	tns:OrganizationRelationshipSettings Complex Type	58

3.1.4.4.3	Elements.....	59
3.1.4.4.3.1	GetOrganizationRelationshipSettingsRequestMessage Element	59
3.1.4.4.3.2	GetOrganizationRelationshipSettingsRequest Element	60
3.1.4.4.3.3	GetOrganizationRelationshipSettingsResponseMessage Element	60
3.1.4.4.3.4	OrganizationRelationshipSettingsCollection Element.....	61
3.1.4.4.4	Attributes.....	61
3.1.4.4.5	Groups.....	61
3.1.4.4.6	Attribute Groups	61
3.1.4.4.7	Messages	61
3.1.4.4.7.1	tns:GetOrganizationRelationshipSettingsRequestMessage	61
3.1.4.4.7.2	tns:GetOrganizationRelationshipSettingsRequestMessage_Headers.....	61
3.1.4.4.7.3	tns:GetOrganizationRelationshipSettingsResponseMessage.....	62
3.1.4.4.7.4	tns:GetOrganizationRelationshipSettingsResponseMessage_Headers.....	62
3.1.5	Timer Events	62
3.1.6	Other Local Events	62
3.2	Client Details.....	62
3.2.1	Abstract Data Model	62
3.2.2	Timers	62
3.2.3	Initialization	62
3.2.4	Message Processing Events and Sequencing	63
3.2.5	Timer Events	63
3.2.6	Other Local Events	63
4	Protocol Examples.....	64
4.1	GetDomainSettings_Example	64
4.2	GetFederationInformation_Example	65
4.3	GetUserSettings_Example.....	66
5	Security.....	69
5.1	Security Considerations for Implementers.....	69
5.2	Index of Security Parameters	69
6	Appendix A: Full WSDL.....	70
6.1	WSDL.....	70
6.2	Messages XSD.....	75
6.3	Types XSD	83
7	Appendix B: Product Behavior.....	84
8	Change Tracking.....	85
9	Index	93

1 Introduction

This document specifies the Autodiscover protocol, which sends the request-response messages for retrieving the user settings configuration information. Clients use the Autodiscover protocol to get specific configuration settings by passing in their e-mail address as simple strings.

1.1 Glossary

The following terms are defined in [\[MS-OXGLOS\]](#):

Legacy DN
SOAP header
SOAP message
Unified Messaging
Uniform Resource Identifier (URI)
Uniform Resource Locator (URL)
Web Services Description Language (WSDL)
WSDL message
XML
XML namespace
XML schema

The following terms are specific to this document:

MAY, SHOULD, MUST, SHOULD NOT, MUST NOT: These terms (in all caps) are used as described in [\[RFC2119\]](#). All statements of optional behavior use either MAY, SHOULD, or SHOULD NOT.

1.2 References

1.2.1 Normative References

We conduct frequent surveys of the normative references to assure their continued availability. If you have any issue with finding a normative reference, please contact dochelp@microsoft.com. We will assist you in finding the relevant information. Please check the archive site, <http://msdn2.microsoft.com/en-us/library/E4BD6494-06AD-4aed-9823-445E921C9624>, as an additional source.

[MS-OXGLOS] Microsoft Corporation, "[Exchange Server Protocols Master Glossary](#)", April 2008.

[MS-OXWSLVID] Microsoft Corporation, "[Federated Internet Authentication Web Service Protocol Specification](#)", November 2009.

[RFC2119] Bradner, S., "Key words for use in RFCs to Indicate Requirement Levels", RFC 2119, BCP 14, March 1997, <http://www.ietf.org/rfc/rfc2119.txt>

[SOAP1.1] Box, D., Ehnebuske, D., Kakivaya, G., et al., "Simple Object Access Protocol (SOAP) 1.1", W3C Note, May 2000, <http://www.w3.org/TR/2000/NOTE-SOAP-20000508/>

[WSA10] "WS-Addressing 1.0 Namespace: <http://www.w3.org/2005/08/addressing>", <http://www.w3.org/2005/08/addressing/>

[WS-addr-core] Web Services Addressing 1.0 – Core, W3C Recommendation 9 May 2006, <http://www.w3.org/TR/ws-addr-core/>

[WS-addr-Metadata] Web Services Addressing 1.0 – Metadata, W3C Recommendation 4 September 2007, <http://www.w3.org/TR/ws-addr-metadata/>

[WS-Addressing] Web Services Addressing (WS-Addressing), W3C Member Submission 10 August 2004, <http://www.w3.org/Submission/2004/SUBM-ws-addressing-20040810/>

[WS-MetadataExchange] "Web Services Metadata Exchange (WS-MetadataExchange)", August 2006, <http://schemas.xmlsoap.org/ws/2004/09/mex/>

[WS-Policy] "Web Services Policy Framework (WS-Policy) and Web Services Policy Attachment (WS-PolicyAttachment)", March 2006, <http://specs.xmlsoap.org/ws/2004/09/policy/>

[WSDL] Christensen, E., Curbera, F., Meredith, G., and Weerawarana, S., "Web Services Description Language (WSDL) 1.1", W3C Note, March 2001, <http://www.w3.org/TR/2001/NOTE-wsdl-20010315>

[WSDLSOAP] Angelov, D., Ballinger, K., Butek, R., et al., "WSDL 1.1 Binding Extension for SOAP 1.2", W3C Member Submission, April 2006, <http://www.w3.org/Submission/2006/SUBM-wsdl11soap12-20060405/>

[XMLNS] Bray, T., Hollander, D., Layman, A., Eds., et al., "Namespaces in XML 1.0 (Third Edition)", December 2009, <http://www.w3.org/TR/REC-xml-names/>

[XMLSCHEMA1] Thompson, H., Beech, D., Maloney, M., and Mendelsohn, N., Eds., "XML Schema Part 1: Structures", W3C Recommendation, May 2001, <http://www.w3.org/TR/2001/REC-xmlschema-1-20010502/>

[XMLSCHEMA2] Biron, P., and Malhotra, A., Eds., "XML Schema Part 2: Datatypes", W3C Recommendation, May 2001, <http://www.w3.org/TR/2001/REC-xmlschema-2-20010502/>

1.2.2 Informative References

None.

1.3 Overview

The Autodiscover Web Service protocol allows clients to learn e-mail configuration settings for specific e-mail address. The Web services implement four operations — **GetDomainSetting** operation [3.1.4.1](#), **GetFederationInformation** operation [3.1.4.2](#), **GetOrganizationRelationshipSettings** operation [3.1.4.4](#), and **GetUserSettings** operation [3.1.4.3](#) — to request specific configuration settings. The following user configuration settings MAY be returned in a valid server response, if they are implemented by the server.

Configuration Setting	Description
UserDisplayName	The display name of the user.
UserDN	The legacy distinguished name of the user.
UserDeploymentId	The deployment identifier of the user.
InternalMailboxServer	The fully qualified domain name of the mailbox server.
InternalRpcClientServer	The fully qualified domain name of the RPC client server.
InternalMailboxServerDN	The legacy distinguished name of the mailbox server.
InternalEcpUrl	The internal URL of the server Control Panel.

Configuration Setting	Description
InternalEcpVoicemailUrl	The internal URL of the server Control Panel for Voice Mail Customization.
InternalEcpEmailSubscriptionsUrl	The internal URL of the server Control Panel for e-mail Subscriptions.
InternalEcpTextMessagingUrl	The internal URL of the server Control Panel for Text Messaging.
InternalEcpDeliveryReportUrl	The internal URL of the server Control Panel for Delivery Reports.
InternalEwsUrl	The internal URL of the server's Web Services.
InternalOABUrl	The internal URL of the Offline Address Book.
InternalUMUrl	The internal URL of the Unified Messaging services.
InternalWebClientUrls	The internal URLs of the server's web client.
MailboxDN	The distinguished name of the mailbox database of the user's mailbox.
PublicFolderServer	The name of the Public Folders server.
ActiveDirectoryServer	The name of the Active Directory server.
ExternalMailboxServer	The name of the RPC over HTTP server.
ExternalMailboxServerRequiresSSL	Indicates whether the RPC over HTTP server requires SSL.
ExternalMailboxServerAuthenticationMethods	The authentication methods supported by the RPC over HTTP server.
EcpVoicemailUrlFragment	The URL fragment of the server Control Panel for VoiceMail Customization.
EcpEmailSubscriptionsUrlFragment	The URL fragment of the server Control Panel for e-mail Subscriptions.
EcpTextMessagingUrlFragment	The URL fragment of the server Control Panel for Text Messaging.
EcpDeliveryReportUrlFragment	The URL fragment of the server Control Panel for Delivery Reports.
ExternalEcpUrl	The external URL of the server Control Panel.
ExternalEcpVoicemailUrl	The external URL of the server Control Panel for VoiceMail Customization.
ExternalEcpEmailSubscriptionsUrl	The external URL of the server Control Panel for e-mail Subscriptions.
ExternalEcpTextMessagingUrl	The external URL of the server Control Panel for Text Messaging.
ExternalEcpDeliveryReportUrl	The external URL of the server Control Panel for Delivery

Configuration Setting	Description
	Reports.
ExternalEwsUrl	The external URL of the server's Web Services.
ExternalOABUrl	The external URL of the Offline Address Book.
ExternalUMUrl	The external URL of the Unified Messaging services.
ExternalWebClientUrls	The external URLs of the Server web client.
CrossOrganizationSharingEnabled	Indicates that cross-organization sharing is enabled.
AlternateMailboxes	Collection of alternate mailboxes.
CasVersion	The version of the Client Access Server serving the request (for example, 14.XX.YYY.ZZZ)
EwsSupportedSchemas	Comma-separated list of schema versions supported by server's Web Services.

1.4 Relationship to Other Protocols

The Autodiscover Web Service protocol uses SOAP over **HTTP** and SOAP over **HTTPS**, as in the following figures.

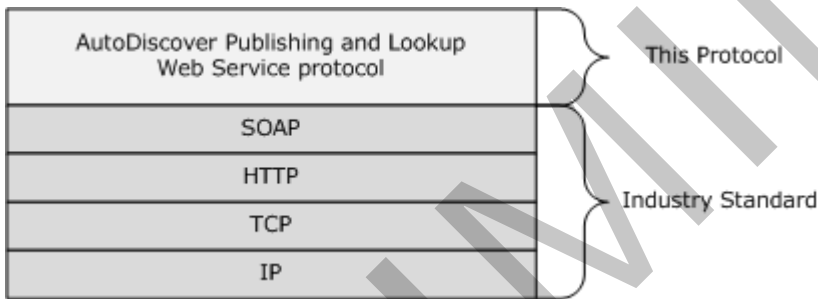


Figure 1: SOAP over HTTP

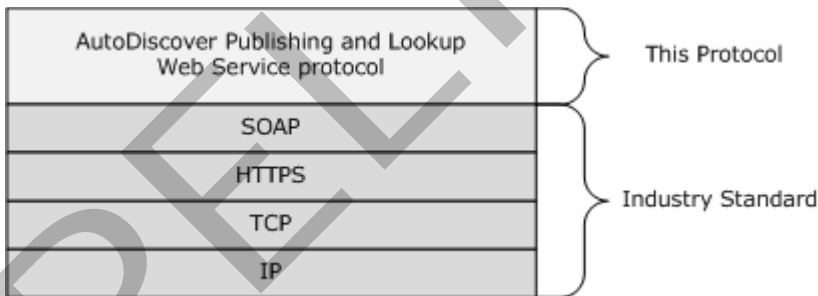


Figure 2: SOAP over HTTPS

1.5 Prerequisites/Preconditions

None.

1.6 Applicability Statement

The protocol specified in this document is applicable to environments that are to perform an auto discovery of a user from the user's e-mail address, using the server's Web Services.

1.7 Versioning and Capability Negotiation

This document covers versioning issues in the following areas:

- **Supported Transports:** This protocol uses SOAP 1.1, as specified in section 2.1.
- **Protocol Versions:** This protocol specifies only one **WSDL** portType version.
- **Security and Authentication Methods:** This protocol relies on the Web server that is hosting it to perform authentication.
- **Localization:** This protocol includes text strings in various messages. Localization considerations for such strings are specified in section [3.1.4](#).
- **Capability Negotiation:** None.

1.8 Vendor Extensible Fields

None.

1.9 Standards Assignments

None.

2 Messages

2.1 Transport

The SOAP version supported is SOAP 1.1. For details, see [\[SOAP1.1\]](#).

2.2 Common Message Syntax

This section contains common definitions that are used by this protocol. The syntax of the definitions uses **XML schema** as defined in [\[XMLSCHEMA1\]](#) and [\[XMLSCHEMA2\]](#), and **Web Services Description Language (WSDL)** as defined in [\[WSDL\]](#).

2.2.1 Namespaces

This specification defines and references various **XML namespaces** by using the mechanisms specified in [\[XMLNS\]](#). Although this specification associates a specific XML namespace prefix for each XML namespace that is used, the choice of any particular XML namespace prefix is implementation-specific and not significant for interoperability.

Prefix	Namespace URI	Reference
soap	http://schemas.xmlsoap.org/wsdl/soap/	[SOAP1.1]
wsu	http://docs.oasis-open.org/wss/2004/01/oasis-200401-wss-wssecurity-utility-1.0.xsd	[MS-OXWSADISC]
soapenc	http://schemas.xmlsoap.org/soap/encoding/	[SOAP1.1]
wsam	http://www.w3.org/2007/05/addressing/metadata	[WS-addr-Metadadata]
tns	http://schemas.microsoft.com/exchange/2010/Autodiscover	[MS-OXWSADISC]
wsa	http://schemas.xmlsoap.org/ws/2004/08/addressing	[WS-Addressing]
wsp	http://schemas.xmlsoap.org/ws/2004/09/policy	[WS-Policy]
wsap	http://schemas.xmlsoap.org/ws/2004/08/addressing/policy	Not implemented.
xsd	http://www.w3.org/2001/XMLSchema	[XMLSCHEMA1] , [XMLSCHEMA2]
msc	http://schemas.microsoft.com/ws/2005/12/wsdl/contract	Not implemented.
wsaw	http://www.w3.org/2006/05/addressing/wsdl	[WS-addr-core]
soap12	http://schemas.xmlsoap.org/wsdl/soap12	[WSDLSOAP]
wsa10	http://www.w3.org/2005/08/addressing	[WSA10]
wsx	http://schemas.xmlsoap.org/ws/2004/09/mex	[WS-MetadataExchange]
targetNamespace	http://schemas.microsoft.com/exchange/2010/Autodiscover	[MS-OXWSADISC]
wsdl	http://schemas.xmlsoap.org/wsdl/	[WSDL]

2.2.2 Simple Types

This specification does not define any common XML schema simple type definitions.

2.2.3 Complex Types

The following XML schema complex type definitions are specific to this operation.

2.2.3.1 ServerVersionInfo Complex Type

The **ServerVersionInfo** complex type represents the message server version. This type is returned in the **SOAP header** of a Web Services response message.

```
<xs:complexType name="ServerVersionInfo">
  <xs:sequence>
    <xs:element name="MajorVersion"
      type="xs:int"
      minOccurs="0"
    />
    <xs:element name="MinorVersion"
      type="xs:int"
      minOccurs="0"
    />
    <xs:element name="MajorBuildNumber"
      type="xs:int"
      minOccurs="0"
    />
    <xs:element name="MinorBuildNumber"
      type="xs:int"
      minOccurs="0"
    />
    <xs:element name="Version"
      type="xs:string"
      minOccurs="0"
      nillable="true"
    />
  </xs:sequence>
</xs:complexType>
```

Child Elements

Element	Type	Description
MajorVersion	xs:int	The major version number for the server.
MinorVersion	xs:int	The minor version number for the server.
MajorBuildNumber	xs:int	The major build number for the server.
MinorBuildNumber	xs:int	The minor build number for the server.
Version	xs:string	A description of the server product version.

Specifies the version of the Autodiscovery service.

2.2.3.2 m:Domains Complex Type

The **Domains** complex type represents a collection of domain names to be used in the Autodiscovery.

```
<xs:complexType name="Domains">
  <xs:sequence>
    <xs:element name="Domain"
      type="xs:string"
      maxOccurs="unbounded"
      minOccurs="0"
      nillable="true"
    />
  </xs:sequence>
</xs:complexType>
```

Child Elements

Element	Type	Description
Domain	xs:string	The User's domain. The location of the mail server.

This type is submitted in the request message.

2.2.4 Elements

The following XML schema element definitions are specific to this operation.

2.2.4.1 ServerVersionInfo Element

The <ServerVersionInfo> element represents the message server's version number, including the Major and Minor Version numbers as well as the Major and Minor Build numbers.

```
<xs:element name="ServerVersionInfo"
  type="tns:ServerVersionInfo"
  nillable="true"
/>
```

2.2.4.2 Domains Element

The <Domains> element represents a list of domains to be discovered.

```
<xs:element name="Domains"
  type="tns:Domains"
  nillable="true"
/>
```

2.2.5 Attributes

This specification does not define any common XML schema attribute definitions.

2.2.6 Groups

This specification does not define any common XML schema group definitions.

2.2.7 Attribute Groups

This specification does not define any common XML schema attribute group definitions.

2.2.8 Messages

This specification does not define any common XML schema message definitions.

PRELIMINARY

3 Protocol Details

The client side of this protocol is simply a pass-through. That is, no additional timers or other state is required on the client side of this protocol. Calls made by the higher-layer protocol or application are passed directly to the transport, and the results returned by the transport are passed directly back to the higher-layer protocol or application.

3.1 AutoDiscover Server Details

The Autodiscovery Web Service protocol allows the user to determine specific user configuration settings by e-mail address.

Operation	Description
GetUserSettings	Performs an Autodiscovery for the specified user and returns the requested configuration settings.

3.1.1 Abstract Data Model

This section describes a conceptual model of possible data organization that an implementation maintains to participate in this protocol. The described organization is provided to facilitate the explanation of how the protocol behaves. This document does not mandate that implementations adhere to this model as long as their external behavior is consistent with that specified in this document.

3.1.2 Timers

None.

3.1.3 Initialization

None.

3.1.4 Message Processing Events and Sequencing

This protocol includes the operation listed in the following table.

Operation	Description
GetDomainSettings	Gets the domain data for a specified domain.
GetFederationInformation	Gets the configuration data for the security token service.
GetUserSettings	Gets the specified configurations settings for the e-mail user.

3.1.4.1 GetDomainSettings

The **GetDomainSettings** operation retrieves the specified settings of the domain for the user.

Request

Message Format	Description
tns:GetDomainSettingsRequestMessage	Specifies the SOAP message that requests the user's

Message Format	Description
	domain configuration settings.

Response

Message Format	Description
tns:GetDomainSettingsResponseMessage	Specifies the SOAP message that is returned by the server in response.

3.1.4.1.1 Simple Types

This specification does not define any specific XML schema simple type definitions for this operation.

3.1.4.1.2 Complex Types

The following XML schema complex type definitions are specific to this operation.

3.1.4.1.2.1 m:GetDomainSettingsRequest Complex Type

The **GetDomainSettingsRequest** complex type retrieves the specified setting for a domain. The [m:GetDomainSettingsRequest Type](#) contains the domain to be Autodiscovered and the Settings to be returned by the server. This member represents a [GetDomainSettings](#) request. Returns a [m:DomainResponse Type](#) object containing the requested settings for the specified domain.

```

<xs:complexType name="GetDomainSettingsRequest"
  mixed="false"
>
  <xs:complexContent
    mixed="false"
  >
    <xs:extension
      base="tns:AutodiscoverRequest"
    >
      <xs:sequence>
        <xs:element name="Domains"
          type="tns:Domains"
          nillable="true"
        />
        <xs:element name="RequestedSettings"
          type="tns:RequestedSettings"
          nillable="true"
        />
        <xs:element name="RequestedVersion"
          type="tns:ExchangeVersion"
          nillable="true"
        />
      </xs:sequence>
    </xs:extension>
  </xs:complexContent>
</xs:complexType>

```

Child Elements

Element	Type	Description
Domains	tns:Domains	The domains being autodiscovered.
RequestedSettings	tns:RequestedSettings	The configuration settings being requested.
RequestedVersion	tns:ExchangeVersion	The specific server version the provider would like to utilize.

3.1.4.1.2.2 m:GetDomainSettingsResponse Complex Type

The **GetDomainSettingsResponse** complex type contains an array of domain settings. The domain response contains the configuration settings for the specific domain. This type represents the response to a [GetDomainSettings](#) call for an individual domain.

```
<xs:complexType name="GetDomainSettingsResponse"
  mixed="false"
>
  <xs:complexContent
    mixed="false"
  >
    <xs:extension
      base="tns:AutodiscoverResponse"
    >
      <xs:sequence>
        <xs:element name="DomainResponses"
          type="tns:ArrayOfDomainResponse"
          nillable="true"
          minOccurs="0"
        />
      </xs:sequence>
    </xs:extension>
  </xs:complexContent>
</xs:complexType>
```

Child Elements

Element	Type	Description
DomainResponses	tns:ArrayOfDomainResponse	Contains the response for each domain.

3.1.4.1.2.3 m:ArrayOfDomainResponse Complex Type

The **ArrayOfDomainResponse** complex type represents an array of [DomainResponse Type](#) objects. Each DomainResponse Type object contains [DomainSettings Type](#) for the specified domain.

```
<xs:complexType name="ArrayOfDomainResponse">
  <xs:sequence>
    <xs:element name="ArrayOfDomainResponse"
      type="tns:DomainResponse"
      nillable="true"
      minOccurs="0"
      maxOccurs="unbounded"
    />
  </xs:sequence>
</xs:complexType>
```

```

</xs:sequence>
</xs:complexType>

```

Child Elements

Element	Type	Description
ArrayOfDomainResponse	tns:DomainResponse	Contains domains m:DomainSettingErrors Type , m:DomainSetting Type , and RedirectTarget for the domain.

3.1.4.1.2.4 m:DomainResponse Complex Type

The **DomainResponse** complex type represents a response to a [GetDomainSettings](#) call for an individual domain. The [DomainResponse Type](#) object contains the requested settings for the specified domain.

```

<xs:complexType name="DomainResponse"
  mixed="false"
>
  <xs:complexContent
    mixed="false"
  >
    <xs:extension
      base="tns:AutodiscoverResponse"
    >
      <xs:sequence>
        <xs:element name="DomainSettingErrors"
          type="tns:DomainSettingErrors"
          nillable="true"
          minOccurs="0"
        />
        <xs:element name="DomainSettings"
          type="tns:DomainSettings"
          nillable="true"
          minOccurs="0"
        />
        <xs:element name="RedirectTarget"
          type="xs:string"
          nillable="true"
          minOccurs="0"
        />
      </xs:sequence>
    </xs:extension>
  </xs:complexContent>
</xs:complexType>

```

Child Elements

Element	Type	Description
DomainSettingErrors	tns:DomainSettingErrors	Error information for settings that could not be returned.

Element	Type	Description
DomainSettings	tns:DomainSettings	The requested settings for the domain.
RedirectTarget	xs:string	The redirectionTarget (URL or email address).

3.1.4.1.2.5 m:DomainSettingErrors Complex Type

The **DomainSettingErrors** complex type represents a collection of [DomainSettingError Type](#) objects containing error information for settings that could not be returned.

```
<xs:complexType name="DomainSettingErrors">
  <xs:sequence>
    <xs:element name="DomainSettingError"
      type="tns:DomainSettingError"
      nillable="true"
      minOccurs="0"
      maxOccurs="unbounded"
    />
  </xs:sequence>
</xs:complexType>
```

Child Elements

Element	Type	Description
DomainSettingError	tns:DomainSettingError	Represents an error from a GetDomainSettings request.

3.1.4.1.2.6 m:DomainSettingError Complex Type

The **DomainSettingError** complex type represents an error from a [GetDomainSettings](#) request. This is an error that occurred while retrieving a domain setting.

```
<xs:complexType name="DomainSettingError">
  <xs:sequence>
    <xs:element name="ErrorCode"
      type="tns:ErrorCode"
    />
    <xs:element name="ErrorMessage"
      type="xs:string"
      nillable="true"
    />
    <xs:element name="SettingName"
      type="xs:string"
      nillable="true"
    />
  </xs:sequence>
</xs:complexType>
```

Child Elements

Element	Type	Description
ErrorCode	tns:ErrorCode	Specifies the error code associated with the specific request.
ErrorMessage	xs:string	Specifies the error message associated with the specific request.
SettingName	xs:string	The name of the setting.

3.1.4.1.2.7 m:DomainSettings Complex Type

The **DomainSettings** complex type represents a collection of [DomainSetting](#) objects, the base class for all domain settings returned by the [GetDomainSettings](#) method.

```
<xs:complexType name="DomainSettings">
  <xs:sequence>
    <xs:element name="DomainSetting"
      type="tns:DomainSetting"
      nillable="true"
      minOccurs="0"
      maxOccurs="unbounded"
    />
  </xs:sequence>
</xs:complexType>
```

Child Elements

Element	Type	Description
DomainSetting	tns:DomainSetting	Represents the base class for all domain settings returned by the GetDomainSettings method.

3.1.4.1.2.8 m:DomainSetting Complex Type

The **DomainSetting** complex type represents the domain settings to be returned by the [GetDomainSettings](#) method.

```
<xs:complexType name="DomainSetting">
  <xs:sequence>
    <xs:element name="Name"
      type="xs:string"
      nillable="true"
    />
  </xs:sequence>
</xs:complexType>
```

Child Elements

Element	Type	Description
Name	xs:string	The name of the setting.

3.1.4.1.2.9 m:DomainStringSetting Complex Type

The **DomainStringSetting** complex type represents a domain setting whose value is of type string.

```
<xs:complexType name="DomainStringSetting"
  mixed="false"
>
  <xs:complexContent
    mixed="false"
  >
    <xs:extension
      base="tns:DomainSetting"
    >
      <xs:sequence>
        <xs:element name="Value"
          type="xs:string"
          nillable="true"
          minOccurs="0"
        />
      </xs:sequence>
    </xs:extension>
  </xs:complexContent>
</xs:complexType>
```

Child Elements

Element	Type	Description
Value	xs:string	The value of the setting.

3.1.4.1.3 Elements

The following XML schema element definitions are specific to this operation.

3.1.4.1.3.1 GetDomainSettingsRequestMessage Element

The `<GetDomainSettingsRequestMessage>` element prepares a call to the server, requesting configuration setting for the domain of the user. The [GetDomainSettingsResponseMessage](#) contains the Domain Settings requested in this call.

```
<xs:element name="GetDomainSettingsRequestMessage">
  <xs:complexType>
    <xs:sequence>
      <xs:element name="Request"
        type="tns:GetDomainSettingsRequest"
        nillable="true"
        minOccurs="0"
      />
    </xs:sequence>
  </xs:complexType>
</xs:element>
```

Child Elements

Element	Type	Description
Request	tns:GetDomainSettingsRequest	Represents a GetDomainSettings request.

3.1.4.1.3.2 GetDomainSettingsResponseMessage Element

The <GetDomainSettingsResponseMessage> element returns to the caller the user's configuration settings that were requested in the [GetDomainSettingsRequestMessage](#) call.

The Name-Value pairs for each returned Domain Setting is included in the Response. The [GetDomainSettings](#) returns only the requested configuration settings.

```
<xs:element name="GetDomainSettingsResponseMessage">
  <xs:complexType>
    <xs:sequence>
      <xs:element name="Response"
        type="tns:GetDomainSettingsResponse"
        nillable="true"
        minOccurs="0"
      />
    </xs:sequence>
  </xs:complexType>
</xs:element>
```

Child Elements

Element	Type	Description
Response	tns:GetDomainSettingsResponse	Represents the response to a GetDomainSettings call for an individual domain.

3.1.4.1.3.3 GetDomainSettingsRequest Element

The <GetDomainSettingsRequest> element represents the parameters of a call to [GetDomainSettings](#).

```
<xs:element name="GetDomainSettingsRequest"
  type="tns:GetDomainSettingsRequest"
  nillable="true"
/>
```

3.1.4.1.3.4 GetDomainSettingsResponse Element

The <GetDomainSettingsResponse> element represents the response to a [GetDomainSettings](#) operation for a domain, and returns the domain settings.

```
<xs:element name="GetDomainSettingsResponse"
  type="tns:GetDomainSettingsResponse"
  nillable="true"
/>
```

3.1.4.1.3.5 ArrayOfDomainResponse Element

The <ArrayOfDomainResponse> element represents an array of [DomainResponse](#) elements. Each DomainResponse element contains the requested settings for the specified user.

```
<xs:element name="ArrayOfDomainResponse"
  type="tns:ArrayOfDomainResponse"
  nillable="true"
/>
```

3.1.4.1.3.6 DomainResponse Element

The <DomainResponse> element contains the requested settings for the specified domain.

```
<xs:element name="DomainResponse"
  type="tns:DomainResponse"
  nillable="true"
/>
```

3.1.4.1.3.7 DomainSettingErrors Element

The <DomainSettingErrors> element contains error information for settings that could not be returned.

```
<xs:element name="DomainSettingErrors"
  type="tns:DomainSettingErrors"
  nillable="true"
/>
```

3.1.4.1.3.8 DomainSettingError Element

The <DomainSettingError> element represents an error that occurred while retrieving a domain setting. This represents an error from a [GetDomainSettings](#) request.

```
<xs:element name="DomainSettingError"
  type="tns:DomainSettingError"
  nillable="true"
/>
```

3.1.4.1.3.9 DomainSettings Element

The <DomainSettings> element represents the domain settings that were submitted in a request or returned by an Autodiscover response.


```
<xs:element name="DomainSettings"
  type="tns:DomainSettings"
  nillable="true"
/>
```

3.1.4.1.3.10 DomainSetting Element

The <DomainSetting> element represents the base class for all domain settings returned by the [GetDomainSettings](#) request.

```
<xs:element name="DomainSetting"
  type="tns:DomainSettings"
  nillable="true"
/>
```

3.1.4.1.3.11 DomainStringSetting Element

The <DomainStringSetting> element represents a domain setting whose value is of type string.

```
<xs:element name="DomainStringSetting"
  type="tns:DomainStringSetting"
  nillable="true"
/>
```

3.1.4.1.4 Attributes

This specification does not define any specific XML schema attribute definitions for this operation.

3.1.4.1.5 Groups

This specification does not define any specific XML schema group definitions for this operation.

3.1.4.1.6 Attribute Groups

This specification does not define any specific XML schema attribute group definitions for this operation.

3.1.4.1.7 Messages

The following WSDL message definitions are specific to this operation.

3.1.4.1.7.1 tns:GetDomainSettingsRequestMessage

Retrieves the specified settings for a domain.

The [GetDomainSettingsRequestMessage Message](#) has one part.

Part Name	Element/Type	Description
parameters	tns:GetDomainSettingsRequestMessage	Represents the parameters of a call to GetDomainSettings request.

3.1.4.1.7.2 tns:GetDomainSettingsRequestMessage_Headers

The **GetDomainSettingsRequestMessage_Headers Message** message specifies the SOAP header for a **GetDomainSettingsRequest** operation (section [3.1.4.1.3.3](#)). This message contains one part.

Part Name	Element/Type	Description
RequestedServerVersion	tns:RequestedServerVersion	Specifies which server version the GetDomainSettingsRequest operation (section 3.1.4.1.3.3) request targets.

3.1.4.1.7.3 tns:GetDomainSettingsResponseMessage

Represents the response to a [GetDomainSettings](#) call for an individual domain.

The [GetDomainSettingsResponseMessage](#) has one part.

Part Name	Element/Type	Description
parameters	tns:GetDomainSettingsResponseMessage	Represents a response to a call to GetDomainSettings .

3.1.4.1.7.4 tns:GetDomainSettingsResponseMessage_Headers

The **GetDomainSettingsResponseMessage_Headers Message** message specifies the SOAP header for a **GetDomainSettingsResponse** operation (section [3.1.4.1.3.4](#)). This message contains one part.

Part Name	Element/Type	Description
ServerVersionInfo	tns:ServerVersionInfo	Contains the version of the server that processed the GetDomainSettingsResponse operation (section 3.1.4.1.3.4) request.

3.1.4.2 GetFederationInformation

The **GetFederationInformation** operation provides information about the federation status of the organization, such as the target **URI** to be used when requesting tokens targeted at this organization, and the other domains that the organization has also federated. When the caller doesn't know the **URL** to use to communicate with the server that hosts the domain of interest, the caller **MUST** execute either of the following sequences to reach the server that can provide the information.

Direct attempt:

- Compose URLs for Autodiscover endpoints, where {0} is the domain of interest, in the following order:

U1: <https://autodiscover.{0}/autodiscover/autodiscover.svc>

U2: <https://{0}/autodiscover/autodiscover.svc>

- Call the **GetFederationInformation** method at the Autodiscover endpoints U1 and U2. Use the results from the first discovered URL that provides a successful response.
- Follow HTTP 302 redirects only to HTTPS URLs.

Indirect attempt:

- Probe for an HTTP 302 redirect on a non-SSL endpoint.
- Compose the URL for an Autodiscover endpoint, where {0} is the domain of interest:
<http://autodiscover.{0}/autodiscover/autodiscover.xml>
- The response MUST be an HTTP 302 redirect. The redirect URL in response MUST start with <https://> and end with </autodiscover/autodiscover.xml>.
- Parse the host element of the URL and compose the following URL, where {0} is the host element of the previous URL:
<https://{0}/autodiscover/autodiscover.svc>
- Call the [GetFederationInformation](#) method at the Autodiscover endpoint.
- Follow HTTP 302 redirects only to HTTPS URLs.

Request

Message Format	Description
tns:GetFederationInformationRequestMessage Messages	Specifies the SOAP message that requests the server federation information.

Response

Message Format	Description
tns:GetFederationInformationResponseMessage Messages	Specifies the SOAP message that is returned by the server in response.

3.1.4.2.1 Simple Types

This specification does not define any specific XML schema simple type definitions for this operation.

3.1.4.2.2 Complex Types

The following XML schema complex type definitions are specific to this operation.

3.1.4.2.2.1 m:GetFederationInformationRequest Complex Type

The **GetFederationInformationRequest** complex type retrieves the specified federation settings for a user. The [GetFederationInformationRequest Type](#) contains the federation information, including federated domain names, from an external server. The requestor provides the domain name that allows the server to return the federation settings.

```
<xs:complexType name="GetFederationInformationRequest"
  mixed="false"
>
  <xs:complexContent
    mixed="false"
  >
    <xs:extension
      base="tns:AutodiscoverRequest"
    >
      <xs:sequence>
        <xs:element name="Domain"
          type="xs:string"
          nillable="true"
        />
      </xs:sequence>
    </xs:extension>
  </xs:complexContent>
</xs:complexType>
```

Child Elements

Element	Type	Description
Domain	xs:string	The domain with the federation trust.

3.1.4.2.2.2 m:GetFederationInformationResponse Complex Type

The **GetFederationInformationResponse** complex type returns to the caller the federation information that was requested in the [GetFederationInformationRequest Type](#) call.

```
<xs:complexType name="GetFederationInformationResponse"
  mixed="false"
>
  <xs:complexContent
    mixed="false"
  >
    <xs:extension
      base="tns:AutodiscoverResponse"
    >
      <xs:sequence>
        <xs:element name="ApplicationUri"
          type="xs:anyURI"
          nillable="true"
          minOccurs="0"
        />
        <xs:element name="Domains"
          type="tns:Domains"
          nillable="true"
        />
      </xs:sequence>
    </xs:extension>
  </xs:complexContent>
</xs:complexType>
```

```

        minOccurs="0"
    />
</xs:sequence>
</xs:extension>
</xs:complexContent>
</xs:complexType>

```

Child Elements

Element	Type	Description
ApplicationUri	xs:anyURI	The caller uses this value in AppliesTo/EndpointReference/Address element of RST (as specified in [MS-OXWSLVID]) if it intends to make a request to web services against this server.
Domains	tns:Domains	Besides the domain presented in the request, the server returns additional domains the organization has federated. These are domains this server uses in the EmailAddress claim when it makes requests to other servers outside its organization, including the caller's.

3.1.4.2.3 Elements

The following XML schema element definitions are specific to this operation.

3.1.4.2.3.1 GetFederationInformationRequestMessage Element

The <GetFederationInformationRequestMessage> element prepares a call to the server, requesting configuration data for the security token service (STS). The [GetFederationInformationResponseMessage](#) contains the Federation settings.

```

<xs:element name="GetFederationInformationRequestMessage">
  <xs:complexType>
    <xs:sequence>
      <xs:element name="Request"
        type="tns:GetFederationInformationRequest"
        nillable="true"
        minOccurs="0"
      />
    </xs:sequence>
  </xs:complexType>
</xs:element>

```

Child Elements

Element	Type	Description
Request	tns:GetFederationInformationRequest	Represents a GetFederationInformation request.

3.1.4.2.3.2 GetFederationInformationResponseMessage Element

The <GetFederationInformationResponseMessage> returns to the caller the Federations configuration settings that were requested in the [GetFederationInformationRequestMessage](#) call.

The security token service (STS) is specified in the response message.

```
<xs:element name="GetFederationInformationResponseMessage">
  <xs:complexType>
    <xs:sequence>
      <xs:element name="Response"
        type="tns:GetFederationInformationResponse"
        nillable="true"
        minOccurs="0"
      />
    </xs:sequence>
  </xs:complexType>
</xs:element>
```

Child Elements

Element	Type
Response	tns:GetFederationInformationResponse

3.1.4.2.3.3 GetFederationInformationRequest Element

The <GetFederationInformationRequest> element prepares a call to the server, requesting configuration data for the security token service (STS).

```
<xs:element name="GetFederationInformationRequest"
  type="tns:GetFederationInformationRequest"
  nillable="true"
/>
```

3.1.4.2.3.4 GetFederationInformationResponse Element

The <GetFederationInformationResponse> element returns to the caller the Federations configuration settings.

```
<xs:element name="GetFederationInformationResponse"
  type="tns:GetFederationInformationResponse"
  nillable="true"
/>
```

3.1.4.2.4 Attributes

This specification does not define any specific XML schema attribute definitions for this operation.

3.1.4.2.5 Groups

This specification does not define any specific XML schema group definitions for this operation.

3.1.4.2.6 Attribute Groups

This specification does not define any specific XML schema attribute group definitions for this operation.

3.1.4.2.7 Messages

The following WSDL message definitions are specific to this operation.

3.1.4.2.7.1 tns:GetFederationInformationRequestMessage

The [GetFederationInformationRequestMessage](#) message contains one part.

Part Name	Element/Type	Description
parameters	tns:GetFederationInformationRequestMessage	This part specifies the request.

3.1.4.2.7.2 tns:GetFederationInformationRequestMessage_Headers

The [GetFederationInformationRequestMessage_Headers Messages](#) message specifies the SOAP header for a [GetFederationInformationRequest](#) operation. This message contains one part.

Part Name	Element/Type	Description
RequestedServerVersion	tns:RequestedServerVersion	Specifies which server version the tns:GetFederationInformationRequest request targets.

3.1.4.2.7.3 tns:GetFederationInformationResponseMessage

Represents the response to a [GetFederationInformation](#) call for an individual domain.

The [GetFederationInformationResponseMessage](#) message contains one part.

Part Name	Element/Type	Description
parameters	tns:GetFederationInformationResponseMessage	This part specifies the response.

3.1.4.2.7.4 tns:GetFederationInformationResponseMessage_Headers

The **GetFederationInformationResponseMessage_Headers Messages** message specifies the SOAP header for a **GetFederationInformationResponse** operation (section [3.1.4.2.3.4](#)). This message contains one part.

Part Name	Element/Type	Description
ServerVersionInfo	tns:ServerVersionInfo	Contains the version of the server that processed the GetFederationInformationResponse operation (section 3.1.4.2.3.4) request.

3.1.4.3 GetUserSettings

Retrieves the specified settings for a user.

Request

Message Format	Description
tns:GetUserSettingsRequestMessage	Specifies the [SOAP] message that requests the user's configuration setting.

Response

Message Format	Description
tns:GetUserSettingsResponseMessage	Specifies the [SOAP] message returned by the server in response.

The [GetUserSettings](#) enables the client to request specific configuration settings by passing in their names as simple strings and receive results as a simple dictionary of string name/value pairs.

3.1.4.3.1 Simple Types

The following XML schema simple type definitions are specific to this operation.

3.1.4.3.1.1 t:ExchangeVersion Simple Type

The **ExchangeVersion** simple type represents an enumeration that defines the server versions used with this protocol.

```
<xs:simpleType name="ExchangeVersion">
  <xs:restriction
    base="xs:string"
  >
    <xs:enumeration
      value="Exchange2010"
    />
    <xs:enumeration
      value="Exchange2010_SP1"
    />
  </xs:restriction>
</xs:simpleType>
```

Enumeration

The following values are defined by the **ExchangeVersion** simple type:

Value	Description
Exchange2010	Defines an available server version.
Exchange2010_SP1	Defines an available server version.

3.1.4.3.1.2 t:ErrorCode Simple Type

The **ErrorCode** simple type specifies the error codes that can be returned by the Autodiscover service.

```
<xs:simpleType name="ErrorCode">
  <xs:restriction
    base="xs:string"
  >
    <xs:enumeration
      value="NoError"
    />
    <xs:enumeration
      value="RedirectAddress"
    />
    <xs:enumeration
      value="RedirectUrl"
    />
    <xs:enumeration
      value="InvalidUser"
    />
    <xs:enumeration
      value="InvalidRequest"
    />
    <xs:enumeration
      value="InvalidSetting"
    />
    <xs:enumeration
      value="SettingIsNotAvailable"
    />
    <xs:enumeration
      value="ServerBusy"
    />
    <xs:enumeration
      value="InvalidDomain"
    />
    <xs:enumeration
      value="NotFederated"
    />
    <xs:enumeration
      value="InternalServerError"
    />
  </xs:restriction>
</xs:simpleType>
```

Enumeration

The following values are defined by the **ErrorCode** simple type:

Value	Description
NoError	There was no error.
RedirectAddress	The caller must follow the e-mail address redirection that was returned by Autodiscover.

Value	Description
RedirectUrl	The caller must follow the URL redirection that was returned by Autodiscover.
InvalidUser	The user that was passed in the request is invalid.
InvalidRequest	The request is invalid.
InvalidSetting	A specified setting is invalid.
SettingIsNotAvailable	A specified setting is not available.
ServerBusy	The server is too busy to process the request.
InvalidDomain	The requested domain is not valid.
NotFederated	The organization is not federated.
InternalServerError	The internal server error.

3.1.4.3.2 Complex Types

The following XML schema complex type definitions are specific to this operation.

3.1.4.3.2.1 m:GetUserSettingsRequest Complex Type

The **GetUserSettingsRequest** complex type retrieves the specified settings for one or more users. The [m:GetUserSettingsRequest Type](#) contains the e-mail addresses for whom to retrieve settings. Returns a [m:UserResponse](#) object containing the requested settings for the specified user.

```

<xs:complexType name="GetUserSettingsRequest"
  mixed="false"
>
  <xs:complexContent
    mixed="false"
  >
    <xs:extension
      base="tns:AutodiscoverRequest"
    >
      <xs:sequence>
        <xs:element name="Users"
          type="tns:Users"
          nillable="true"
        />
        <xs:element name="RequestedSettings"
          type="tns:RequestedSettings"
          nillable="true"
        />
        <xs:element name="RequestedVersion"
          type="tns:ExchangeVersion"
          nillable="true"
        />
      </xs:sequence>
    </xs:extension>
  </xs:complexContent>
</xs:complexType>

```

Child Elements

Element	Type	Description
Users	tns:Users	The e-mail addresses of the users for whom settings should be retrieved.
RequestedSettings	tns:RequestedSettings	The configuration settings being requested.
RequestedVersion	tns:ExchangeVersion	The specific server version the provider would like to utilize.

3.1.4.3.2.2 m:AutodiscoverRequest Complex Type

The **AutodiscoverRequest** complex type represents the base class for all requests made to the Autodiscover service.

```
<xs:complexType name="AutodiscoverRequest">  
  <xs:sequence />  
</xs:complexType>
```

The [GetUserSettingsRequest Type](#), [GetDomainSettingsRequest Type](#) and the [GetFederationInformationRequest Type](#) extend the **AutodiscoverRequest** complex type.

3.1.4.3.2.3 m:Users Complex Type

The **Users** complex type represents a collection of [User](#) types representing users for whom settings are to be retrieved.

```
<xs:complexType name="Users">  
  <xs:sequence>  
    <xs:element name="User"  
      type="tns:User"  
      nillable="true"  
      minOccurs="0"  
      maxOccurs="unbounded"  
    />  
  </xs:sequence>  
</xs:complexType>
```

Child Elements

Element	Type	Description
User	tns:User	The user for whom to retrieve settings.

3.1.4.3.2.4 m:User Complex Type

The **User** complex type represents a user for whose settings are to be retrieved. The user is identified by **SMTP** address or **Legacy DN**.

```
<xs:complexType name="User">
  <xs:sequence>
    <xs:element name="Mailbox"
      type="xs:string"
      nillable="true"
    />
  </xs:sequence>
</xs:complexType>
```

Child Elements

Element	Type	Description
Mailbox	xs:string	The e-mail address of the user to be discovered.

The [GetUserSettings](#) method uses the e-mail address to discover the mailbox. The <User> element MUST be present.

3.1.4.3.2.5 m:RequestedSettings Complex Type

The **RequestedSettings** complex type specifies the configuration settings to be returned by the server for the [GetUserSettings](#) method.

```
<xs:complexType name="RequestedSettings">
  <xs:sequence>
    <xs:element name="Setting"
      type="xs:string"
      nillable="true"
      minOccurs="0"
      maxOccurs="unbounded"
    />
  </xs:sequence>
</xs:complexType>
```

Child Elements

Element	Type	Description
Setting	xs:string	The configuration settings to be returned.

The collection of Setting elements MAY be:

Setting Element	Description
UserDisplayName	The display name of the user.
UserDN	The legacy distinguished name of the user.

Setting Element	Description
UserDeploymentId	The deployment ID of the user.
InternalMailboxServer	The fully qualified domain name of the mailbox server.
InternalRpcClientServer	The fully qualified domain name of the RPC client server.
InternalMailboxServerDN	The legacy distinguished name of the mailbox server.
InternalEcpUrl	The internal URL of the Exchange Control Panel.
InternalEcpVoicemailUrl	The internal URL of the Exchange Control Panel for voice mail customization.
InternalEcpEmailSubscriptionsUrl	The internal URL of the Exchange Control Panel for e-mail subscriptions.
InternalEcpTextMessagingUrl	The internal URL of the Exchange Control Panel for text messaging.
InternalEcpDeliveryReportUrl	The internal URL of the Exchange Control Panel for delivery reports.
InternalEwsUrl	The internal URL of the Web Services.
InternalOABUrl	The internal URL of the Offline Address Book.
InternalUMUrl	The internal URL of the Unified Messaging services.
InternalWebClientUrls	The internal URLs of the web client.
MailboxDN	The distinguished name of the mailbox database of the user's mailbox.
PublicFolderServer	The name of the public folders server.
ActiveDirectoryServer	The name of the Active Directory server.
ExternalMailboxServer	The name of the RPC over HTTP server.
ExternalMailboxServerRequiresSSL	Indicates whether the RPC over HTTP server requires SSL.
ExternalMailboxServerAuthenticationMethods	The authentication methods supported by the RPC over HTTP server.
EcpVoicemailUrlFragment	The URL fragment of the Exchange Control Panel for voice mail customization.
EcpEmailSubscriptionsUrlFragment	The URL fragment of the Exchange Control Panel for e-mail subscriptions.
EcpTextMessagingUrlFragment	The URL fragment of the Exchange Control Panel for text messaging.
EcpDeliveryReportUrlFragment	The URL fragment of the Exchange Control Panel for delivery reports.
ExternalEcpUrl	The external URL of the Exchange Control Panel.

Setting Element	Description
ExternalEcpVoicemailUrl	The external URL of the Exchange Control Panel for voice mail customization.
ExternalEcpEmailSubscriptionsUrl	The external URL of the Exchange Control Panel for e-mail subscriptions.
ExternalEcpTextMessagingUrl	The external URL of the Exchange Control Panel for text messaging.
ExternalEcpDeliveryReportUrl	The external URL of the Exchange Control Panel for delivery Reports.
ExternalEwsUrl	The external URL of the Exchange Web Services.
ExternalOABUrl	The external URL of the Offline Address Book.
ExternalUMUrl	The external URL of the Unified Messaging services.
ExternalWebClientUrls	The external URLs of the Exchange web client.
CrossOrganizationSharingEnabled	Indicates that cross-organization sharing is enabled for the user.
AlternateMailboxes	A list of alternate mailboxes.
CasVersion	The version of the Client Access server that is serving the request (for example, 14.XX.YYY.ZZZ).
EwsSupportedSchemas	A comma-separated list of schema versions that are supported by Exchange Web Services. The schema version values will be the same as the values of the ExchangeVersion .
InternalPop3Connections	The internal connection settings list for the POP3 protocol.
ExternalPop3Connections	The external connection settings list for the POP3 protocol.
InternalImap4Connections	The internal connection settings list for the IMAP4 protocol.
ExternalImap4Connections	The external connection settings list for the IMAP4 protocol.
InternalSmtpConnections	The internal connection settings list for the SMTP protocol.
ExternalSmtpConnections	The external connection settings list for the SMTP protocol.

3.1.4.3.2.6 m:GetUserSettingsResponse Complex Type

The **GetUserSettingsResponse** complex type represents a response that contains an array of user responses. A single user response contains the configuration settings for a specific user. The **GetUserSettingsResponse** complex type returns to the caller the user's configuration settings that were requested in the [GetDomainSettingsRequest](#) call.

The Name-Value pairs for each returned User Setting is included in the response. The [GetUserSettings](#) method returns only the requested configuration settings, if they exist on the server.

```

<xs:complexType name="GetUserSettingsResponse"
  mixed="false"
>
  <xs:complexContent
    mixed="false"
  >
    <xs:extension
      base="tns:AutodiscoverResponse"
    >
      <xs:sequence>
        <xs:element name="UserResponses"
          type="tns:ArrayOfUserResponse"
          nillable="true"
          minOccurs="0"
        />
      </xs:sequence>
    </xs:extension>
  </xs:complexContent>
</xs:complexType>

```

Child Elements

Element	Type	Description
UserResponses	tns:ArrayOfUserResponse	Contains the response for each user.

3.1.4.3.2.7 m:AutodiscoverResponse Complex Type

The **AutodiscoverResponse** complex type represents the base class for all responses returned by the Autodiscover service. It introduces the **ErrorCode** and **ErrorMessage** properties.

```

<xs:complexType name="AutodiscoverResponse">
  <xs:sequence>
    <xs:element name="ErrorCode"
      type="tns:ErrorCode"
      minOccurs="0"
    />
    <xs:element name="ErrorMessage"
      type="xs:string"
      nillable="true"
      minOccurs="0"
    />
  </xs:sequence>
</xs:complexType>

```

Child Elements

Element	Type	Description
ErrorCode	tns:ErrorCode	The error code associated with this response.
ErrorMessage	xs:string	The error message associated with this response.

The [GetUserSettingsResponse Type](#), [UserResponse Type](#), [GetDomainSettingsResponse Type](#), [DomainResponse Type](#), and the [GetFederationInformationResponse Type](#) extend the **AutodiscoverResponse**.

3.1.4.3.2.8 m:UserResponse Complex Type

The **UserResponse** complex type represents a response to a [GetUserSettings](#) for an individual user. The server returns only the configuration settings requested by the client.

```
<xs:complexType name="UserResponse"
  mixed="false"
>
  <xs:complexContent
    mixed="false"
  >
    <xs:extension
      base="tns:AutodiscoverResponse"
    >
      <xs:sequence>
        <xs:element name="RedirectTarget"
          type="xs:string"
          nillable="true"
          minOccurs="0"
        />
        <xs:element name="UserSettingErrors"
          type="tns:UserSettingErrors"
          nillable="true"
          minOccurs="0"
        />
        <xs:element name="UserSettings"
          type="tns:UserSettings"
          nillable="true"
          minOccurs="0"
        />
      </xs:sequence>
    </xs:extension>
  </xs:complexContent>
</xs:complexType>
```

Child Elements

Element	Type	Description
RedirectTarget	xs:string	The target of the redirection (URL or email address).
UserSettingErrors	tns:UserSettingErrors	Error information for settings that could not be returned.
UserSettings	tns:UserSettings	The requested settings for the user.

3.1.4.3.2.9 m:UserSettingErrors Complex Type

The **UserSettingErrors** complex type represents a collection of [UserSettingError](#) elements containing error information for settings that could not be returned.

```
<xs:complexType name="UserSettingErrors">
```



```

<xs:sequence>
  <xs:element name="UserSettingError"
    type="tns:UserSettingError"
    nillable="true"
    minOccurs="0"
    maxOccurs="unbounded"
  />
</xs:sequence>
</xs:complexType>

```

Child Elements

Element	Type	Description
UserSettingError	tns:UserSettingError	Represents an error from a GetUserSettings request.

3.1.4.3.2.10 m:ArrayOfUserResponse Complex Type

The **ArrayOfUserResponse** represents an array of [UserResponse](#) elements containing the responses for each user.

```

<xs:complexType name="ArrayOfUserResponse">
  <xs:sequence>
    <xs:element name="UserResponse"
      type="tns:UserResponse"
      nillable="true"
      minOccurs="0"
      maxOccurs="unbounded"
    />
  </xs:sequence>
</xs:complexType>

```

Child Elements

Element	Type	Description
UserResponse	tns:UserResponse	Represents a response to a GetUserSettings for an individual user.

3.1.4.3.2.11 m:UserSettingError Complex Type

The **UserSettingError** complex type represents an error from a [GetUserSettings](#) request. An error that occurred while retrieving a user setting.

```

<xs:complexType name="UserSettingError">
  <xs:sequence>
    <xs:element name="ErrorCode"
      type="tns:ErrorCode"
    />
    <xs:element name="ErrorMessage"
      type="xs:string"
      nillable="true"
    />
  </xs:sequence>
</xs:complexType>

```

```

    />
    <xs:element name="SettingName"
      type="xs:string"
      nillable="true"
    />
  </xs:sequence>
</xs:complexType>

```

Child Elements

Element	Type	Description
ErrorCode	tns:ErrorCode	Specifies the error code associated with the specific request.
ErrorMessage	xs:string	Specifies the error message associated with the specific request.
SettingName	xs:string	The name of the setting.

3.1.4.3.2.12 m:UserSettings Complex Type

The **UserSettings** complex type represents a collection of [UserSetting](#) objects, the base class for all user settings returned by the [GetUserSettings](#) method.

```

<xs:complexType name="UserSettings">
  <xs:sequence>
    <xs:element name="UserSetting"
      type="tns:UserSetting"
      nillable="true"
      minOccurs="0"
      maxOccurs="unbounded"
    />
  </xs:sequence>
</xs:complexType>

```

Child Elements

Element	Type	Description
UserSetting	tns:UserSetting	Represents the base class for all user settings returned by the GetUserSettings method.

3.1.4.3.2.13 m:UserSetting Complex Type

The **UserSetting** complex type represents the user settings to be returned by the [GetUserSettings](#) method.

```

<xs:complexType name="UserSetting">
  <xs:sequence>
    <xs:element name="Name"
      type="xs:string"
      nillable="true"
    />
  </xs:sequence>
</xs:complexType>

```

```

    </xs:sequence>
</xs:complexType>

```

Child Elements

Element	Type	Description
Name	xs:string	The name of the setting.

The [ProtocolConnectionCollectionSetting Type](#), [StringSetting Type](#), [WebClientUrlCollectionSetting Type](#), and [AlternateMailboxCollectionSetting Type](#) extend the **UserSetting**.

3.1.4.3.2.14 m:StringSetting Complex Type

The **StringSetting** complex type represents a user setting whose value is of type string.

```

<xs:complexType name="StringSetting"
  mixed="false"
>
  <xs:complexContent
    mixed="false"
  >
    <xs:extension
      base="tns:UserSetting"
    >
      <xs:sequence>
        <xs:element name="Value"
          type="xs:string"
          nillable="true"
          minOccurs="0"
        />
      </xs:sequence>
    </xs:extension>
  </xs:complexContent>
</xs:complexType>

```

Child Elements

Element	Type	Description
Value	xs:string	The value of the setting.

3.1.4.3.2.15 m:WebClientUrlCollectionSetting Complex Type

The **WebClientUrlCollectionSetting** complex type represents a collection of [WebClientUrls](#) types.

```

<xs:complexType name="WebClientUrlCollectionSetting"
  mixed="false"
>
  <xs:complexContent
    mixed="false"
  >

```

```

<xs:extension
  base="tns:UserSetting"
>
  <xs:sequence>
    <xs:element name="WebClientUrls"
      type="tns:WebClientUrls"
      nillable="true"
    />
  </xs:sequence>
</xs:extension>
</xs:complexContent>
</xs:complexType>

```

Child Elements

Element	Type	Description
WebClientUrls	tns:WebClientUrls	The URLs.

3.1.4.3.2.16 m:WebClientUrls Complex Type

The **WebClientUrls** complex type represents a collection of [WebClientUrl](#) elements. Represents the internal and external URLs of the server's web client.

```

<xs:complexType name="WebClientUrls">
  <xs:sequence>
    <xs:element name="WebClientUrl"
      type="tns:WebClientUrl"
      nillable="true"
      minOccurs="0"
      maxOccurs="unbounded"
    />
  </xs:sequence>
</xs:complexType>

```

Child Elements

Element	Type	Description
WebClientUrl	tns:WebClientUrl	Represents the URL of the server web client.

3.1.4.3.2.17 m:WebClientUrl Complex Type

The **WebClientUrl** complex type represents the URL of the server web client.

```

<xs:complexType name="WebClientUrl">
  <xs:sequence>
    <xs:element name="AuthenticationMethods"
      type="xs:string"
      nillable="true"
    />
    <xs:element name="Url"

```

```

        type="xs:string"
        nillable="true"
    />
</xs:sequence>
</xs:complexType>

```

Child Elements

Element	Type	Description
AuthenticationMethods	xs:string	The authentication methods.
Url	xs:string	The URL.

The [m:WebClientUrl Type](#) can be used for retrieving data from a Web Service.

3.1.4.3.2.18 m:ProtocolConnectionCollectionSetting Complex Type

The **ProtocolConnectionCollectionSetting** complex type represents a collection of [ProtocolConnection](#) types.

```

<xs:complexType name="ProtocolConnectionCollectionSetting"
    mixed="false"
>
    <xs:complexContent
        mixed="false"
    >
        <xs:extension
            base="tns:UserSetting"
        >
            <xs:sequence>
                <xs:element name="ProtocolConnections"
                    type="tns:ProtocolConnections"
                    nillable="true"
                />
            </xs:sequence>
        </xs:extension>
    </xs:complexContent>
</xs:complexType>

```

Child Elements

Element	Type	Description
ProtocolConnections	tns:ProtocolConnections	The protocol connections.

3.1.4.3.2.19 m:ProtocolConnections Complex Type

The **ProtocolConnections** complex type represents a collection of <ProtocolConnection> elements (section [3.1.4.3.3.24](#)). **ProtocolConnections** represents the internal and external protocol connection of the server's Web client.

```

<xs:complexType name="ProtocolConnections">
  <xs:sequence>
    <xs:element name="ProtocolConnection"
      type="tns:ProtocolConnection"
      nillable="true"
      minOccurs="0"
      maxOccurs="unbounded"
    />
  </xs:sequence>
</xs:complexType>

```

Child Elements

Element	Type	Description
ProtocolConnection	tns:ProtocolConnection	Represents the protocol connection of the server Web client.

3.1.4.3.2.20 m:ProtocolConnection Complex Type

The **ProtocolConnection** complex type represents the email Protocol connection settings for pop/imap/smtp protocols.

```

<xs:complexType name="ProtocolConnection">
  <xs:sequence>
    <xs:element name="Hostname"
      type="xs:string"
      nillable="true"
    />
    <xs:element name="Port"
      type="xs:int"
    />
    <xs:element name="EncryptionMethod"
      type="xs:string"
      nillable="true"
    />
  </xs:sequence>
</xs:complexType>

```

Child Elements

Element	Type	Description
Hostname	xs:string	Host name portion of the full computer name of the computer.
Port	xs:int	The port number to use for the protocol.
EncryptionMethod	xs:string	The selected cryptographic method to use for protocol.

3.1.4.3.2.21 m:AlternateMailboxCollectionSetting Complex Type

The **AlternateMailboxCollectionSetting** complex type represents a collection of [AlternateMailboxes](#) types.

```
<xs:complexType name="AlternateMailboxCollectionSetting"
  mixed="false"
>
  <xs:complexContent
    mixed="false"
  >
    <xs:extension
      base="tns:UserSetting"
    >
      <xs:sequence>
        <xs:element name="AlternateMailboxes"
          type="tns:AlternateMailboxes"
          nillable="true"
        />
      </xs:sequence>
    </xs:extension>
  </xs:complexContent>
</xs:complexType>
```

Child Elements

Element	Type	Description
AlternateMailboxes	tns:AlternateMailboxes	Collection of alternate mailboxes.

3.1.4.3.2.22 m:AlternateMailboxes Complex Type

The **AlternateMailboxes** complex type represents a collection of [m:AlternateMailbox Type](#) elements.

```
<xs:complexType name="AlternateMailboxes">
  <xs:sequence>
    <xs:element name="AlternateMailbox"
      type="tns:AlternateMailbox"
      nillable="true"
      minOccurs="0"
      maxOccurs="unbounded"
    />
  </xs:sequence>
</xs:complexType>
```

Child Elements

Element	Type	Description
AlternateMailbox	tns:AlternateMailbox	Represents an alternate mailbox.

3.1.4.3.2.23 m:AlternateMailbox Complex Type

The **AlternateMailbox** complex type represents an alternate mailbox.

```
<xs:complexType name="AlternateMailbox">
  <xs:sequence>
    <xs:element name="Type"
      type="xs:string"
      nillable="true"
    />
    <xs:element name="DisplayName"
      type="xs:string"
      nillable="true"
    />
    <xs:element name="LegacyDN"
      type="xs:string"
      nillable="true"
    />
    <xs:element name="Server"
      type="xs:string"
      nillable="true"
    />
  </xs:sequence>
</xs:complexType>
```

Child Elements

Element	Type	Description
Type	xs:string	The alternate mailbox type.
DisplayName	xs:string	The alternate mailbox display name.
LegacyDN	xs:string	The alternate mailbox legacy DN.
Server	xs:string	The alternate mailbox server.

An alternate mailbox corresponds to a user's external mailbox, such as a personal POP/IMAP account, a Web mail account, or an archived account.

3.1.4.3.3 Elements

The following XML schema element definitions are specific to this operation.

3.1.4.3.3.1 GetUserSettingsRequestMessage Element

The `<GetUserSettingsRequestMessage>` element prepares a call to the server, specifying the configuration settings to be returned along with the e-mail address of the user for whom to retrieve the settings. The [GetUserSettingsResponseMessage](#) contains the setting requested in this call.

```
<xs:element name="GetUserSettingsRequestMessage">
  <xs:complexType>
    <xs:sequence>
      <xs:element name="Request"
        type="tns:GetUserSettingsRequest"
      />
    </xs:sequence>
  </xs:complexType>
</xs:element>
```



```

        nillable="true"
        minOccurs="0"
      />
    </xs:sequence>
  </xs:complexType>
</xs:element>

```

Child Elements

Element	Type	Description
Request	tns:GetUserSettingsRequest	Represents a GetUserSettings request.

3.1.4.3.3.2 GetUserSettingsResponseMessage Element

The <GetUserSettingsResponseMessage> element returns to the caller the user's configuration settings that were requested in the <GetUserSettingsRequestMessage> element (section [3.1.4.3.3.1](#)) call.

The Name-Value pairs for each returned user setting is included in the response. The <GetUserSettings> element (section [3.1.4.3](#)) returns only the requested configuration settings if they exist on the server.

```

<xs:element name="GetUserSettingsResponseMessage">
  <xs:complexType>
    <xs:sequence>
      <xs:element name="Response"
        type="tns:GetUserSettingsResponse"
        nillable="true"
        minOccurs="0"
      />
    </xs:sequence>
  </xs:complexType>
</xs:element>

```

Child Elements

Element	Type	Description
Response	tns:GetUserSettingsResponse	Represents the response to a <GetUserSettings> element (section 3.1.4.3) call for an individual user.

3.1.4.3.3.3 GetUserSettingsRequest Element

The <GetUserSettingsRequest> element represents the parameters of a call to [GetUserSettings](#).

```

<xs:element name="GetUserSettingsRequest"
  type="tns:GetUserSettingsRequest"
  nillable="true"
/>

```

3.1.4.3.3.4 GetUserSettingsResponse Element

The <GetUserSettingsResponse> element represents the response to a [GetUserSettings](#) operation for an individual user.

```
<xs:element name="GetUserSettingsResponse"
  type="tns:GetUserSettingsResponse"
  nillable="true"
/>
```

3.1.4.3.3.5 AutodiscoverRequest Element

The <AutodiscoverRequest> element represents the base element of all Autodiscover requests.

```
<xs:element name="AutodiscoverRequest"
  type="tns:AutodiscoverRequest"
  nillable="true"
/>
```

3.1.4.3.3.6 Users Element

The <Users> element represents a list of [User](#) elements. Each user includes an e-mail address.

```
<xs:element name="Users"
  type="tns:Users"
  nillable="true"
/>
```

3.1.4.3.3.7 User Element

The <User> element represents the user.

```
<xs:element name="User"
  type="tns:User"
  nillable="true"
/>
```

3.1.4.3.3.8 RequestedSettings Element

The <RequestedSettings> element represents the configuration settings to be returned in the autodiscovery.

```
<xs:element name="RequestedSettings"
  type="tns:RequestedSettings"
  nillable="true"
/>
```

3.1.4.3.3.9 RequestedServerVersion Element

The <RequestedServerVersion> element specifies the server version that an Autodiscover method call targets. For example, Exchange2010.

```
<xs:element name="RequestedServerVersion">
  <xs:simpleType>
    <xs:restriction
      base="tns:ExchangeVersion"
    />
  </xs:simpleType>
</xs:element>
```

3.1.4.3.3.10 AutodiscoverResponse Element

The <AutodiscoverResponse> element represents the base class for all responses returned by the Autodiscover service. The [AutodiscoverResponse](#) introduces the [ErrorCode](#) and [ErrorMessage](#) elements.

```
<xs:element name="AutodiscoverResponse"
  type="tns:AutodiscoverResponse"
  nillable="true"
/>
```

3.1.4.3.3.11 ErrorCode Element

The <ErrorCode> element defines the error codes that can be returned by the Autodiscover service.

```
<xs:element name="ErrorCode"
  type="tns:ErrorCode"
  nillable="true"
/>
```

3.1.4.3.3.12 ArrayOfUserResponse Element

The <ArrayOfUserResponse> element contains an array of [UserResponse](#) elements. Each **UserResponse** element contains the requested settings for the specified specific user.

```
<xs:element name="ArrayOfUserResponse"
  type="tns:ArrayOfUserResponse"
  nillable="true"
/>
```

3.1.4.3.3.13 UserResponse Element

A <UserResponse> element contains the requested settings for the specified user.

```
<xs:element name="UserResponse"
```

```
    type="tns:UserResponse"
    nillable="true"
  />
```

3.1.4.3.3.14 UserSettingErrors Element

The <UserSettingErrors> element contains error information for settings that could not be returned.

```
<xs:element name="UserSettingErrors"
  type="tns:UserSettingErrors"
  nillable="true"
/>
```

3.1.4.3.3.15 UserSettingError Element

The <UserSettingError> element represents an error that occurred while retrieving a user setting. This represents an error from a [GetUserSettings](#) request.

```
<xs:element name="UserSettingError"
  type="tns:UserSettingError"
  nillable="true"
/>
```

3.1.4.3.3.16 UserSettings Element

The <UserSettings> element represents the base class for all user settings returned by the [GetUserSettings](#) request.

```
<xs:element name="UserSettings"
  type="tns:UserSettings"
  nillable="true"
/>
```

3.1.4.3.3.17 UserSetting Element

The <UserSetting> element represents the base class for all user settings returned by the [GetUserSettings](#) element.

```
<xs:element name="UserSetting"
  type="tns:UserSetting"
  nillable="true"
/>
```

3.1.4.3.3.18 StringSetting Element

The <StringSetting> element represents a user setting whose value is of type string.

```
<xs:element name="StringSetting"
  type="tns:StringSetting"
  nillable="true"
/>
```

3.1.4.3.3.19 WebClientUrlCollectionSetting Element

The <WebClientUrlCollectionSetting> element represents a user setting whose value is a collection of web client URLs.

```
<xs:element name="WebClientUrlCollectionSetting"
  type="tns:WebClientUrlCollectionSetting"
  nillable="true"
/>
```

3.1.4.3.3.20 WebClientUrls Element

The <WebClientUrls> element represents the internal and external URLs of a web client.

```
<xs:element name="WebClientUrls"
  type="tns:WebClientUrls"
  nillable="true"
/>
```

3.1.4.3.3.21 WebClientUrl Element

The <WebClientUrl> element represents a URL of a web client.

```
<xs:element name="WebClientUrl"
  type="tns:WebClientUrl"
  nillable="true"
/>
```

3.1.4.3.3.22 ProtocolConnectionCollectionSetting Element

The <ProtocolConnectionCollectionSetting> element represents a collection of server protocol connection settings.

```
<xs:element name="ProtocolConnectionCollectionSetting"
  type="tns:ProtocolConnectionCollectionSetting"
  nillable="true"
/>
```

3.1.4.3.3.23 ProtocolConnections Element

The <ProtocolConnections> element represents the collection of protocol connections.

```
<xs:element name="ProtocolConnections"
  type="tns:ProtocolConnections"
  nillable="true"
/>
```

3.1.4.3.3.24 ProtocolConnection Element

The <ProtocolConnection> element represents the email Protocol connection settings for pop/imap/smtp protocols.

```
<xs:element name="ProtocolConnection"
  type="tns:ProtocolConnection"
  nillable="true"
/>
```

3.1.4.3.3.25 AlternateMailboxCollectionSetting Element

The <AlternateMailboxCollectionSetting> element represents a collection of alternate mailbox settings.

```
<xs:element name="AlternateMailboxCollectionSetting"
  type="tns:AlternateMailboxCollectionSetting"
  nillable="true"
/>
```

3.1.4.3.3.26 AlternateMailboxes Element

The <AlternateMailboxes> element represents a collection of alternate mailboxes.

```
<xs:element name="AlternateMailboxes"
  type="tns:AlternateMailboxes"
  nillable="true"
/>
```

3.1.4.3.3.27 AlternateMailbox Element

The <AlternateMailbox> represents an alternative mailbox, an archived mailbox.

```
<xs:element name="AlternateMailbox"
  type="tns:AlternateMailbox"
  nillable="true"
/>
```

An alternate mailbox corresponds to an external mailbox of the user's such as a personal POP/IMAP account, a user's webmail account, or an archived account.

3.1.4.3.4 Attributes

This specification does not define any specific XML schema attribute definitions for this operation.

3.1.4.3.5 Groups

This specification does not define any specific XML schema group definitions for this operation.

3.1.4.3.6 Attribute Groups

This specification does not define any specific XML schema attribute group definitions for this operation.

3.1.4.3.7 Messages

The following **WSDL message** definitions are specific to this operation.

3.1.4.3.7.1 tns:GetUserSettingsRequestMessage

Retrieves the specified settings for a user.

The [tns:GetUserSettingsRequestMessage Messages](#) has one part.

Part Name	Element/Type	Description
parameters	tns:GetUserSettingsRequestMessage	Represents the parameters of a call to GetUserSettings request.

3.1.4.3.7.2 tns:GetUserSettingsRequestMessage_Headers

The [GetUserSettingsRequestMessage Headers Messages](#) message specifies the SOAP header for a [GetUserSettingsRequest](#) operation. This message contains one part.

Part Name	Element/Type	Description
RequestedServerVersion	tns:RequestedServerVersion	Specifies which server version the tns:GetUserSettingsRequest request targets.

3.1.4.3.7.3 tns:GetUserSettingsResponseMessage

Represents the response to a [GetUserSettings](#) call for an individual user.

The [tns:GetUserSettingsResponseMessage Messages](#) has one part.

Part Name	Element/Type	Description
parameters	tns:GetUserSettingsResponseMessage	Represents a response to a call to GetUserSettings .

3.1.4.3.7.4 tns:GetUserSettingsResponseMessage_Headers

The [GetUserSettingsResponseMessage Headers Messages](#) message specifies the SOAP header for a [GetUserSettingsResponse](#) operation. This message contains one part.

Part Name	Element/Type	Description
ServerVersionInfo	t:ServerVersionInfo	Contains the version of the server that processed the GetUserSettings request.

3.1.4.4 GetOrganizationRelationshipSettings

The **GetOrganizationRelationshipSettings** operation retrieves the settings from all matching OrganizationRelationships which have at least one domain in DomainNames property that maps to at least to one EmailAddress claim in the token.

Request

Message Format	Description
tns:GetOrganizationRelationshipSettingsRequestMessage	Specifies the SOAP message that requests the user's Organization Relationships settings.

Response

Message Format	Description
tns:GetOrganizationRelationshipSettingsResponseMessage	Specifies the SOAP message that is returned by the server in response.

3.1.4.4.1 Simple Types

This specification does not define any common XML schema simple type definitions.

3.1.4.4.2 Complex Types

The following XML schema complex type definitions are specific to this operation.

3.1.4.4.2.1 tns:GetOrganizationRelationshipSettingsRequest Complex Type

The **GetOrganizationRelationshipSettingsRequest** complex type represents the parameters of a call to the [GetOrganizationRelationshipSettings](#) operation. Returns a [tns:GetOrganizationRelationshipSettingsResponse Type](#) object containing the request domain settings.

```
<xs:complexType name="GetOrganizationRelationshipSettingsRequest">
  <xs:complexContent
    mixed="false"
  >
    <xs:extension
      base="tns:AutodiscoverRequest"
    >
      <xs:sequence>
```



```

    <xs:element name="Domains"
      type="tns:Domains"
      nillable="true"
    />
  </xs:sequence>
</xs:extension>
</xs:complexContent>
</xs:complexType>

```

Child Elements

Element	Type	Description
Domains	tns:Domains	The domains being autodiscovered and to be used in a query.

3.1.4.4.2.2 tns:GetOrganizationRelationshipSettingsResponse Complex Type

The **GetOrganizationRelationshipSettingsResponse** complex type represents a response to a call to [GetOrganizationRelationshipSettings](#).

```

<xs:complexType name="GetOrganizationRelationshipSettingsResponse">
  <xs:complexContent
    mixed="false"
  >
    <xs:extension
      base="tns:AutodiscoverResponse"
    >
      <xs:sequence>
        <xs:element name="OrganizationRelationshipSettingsCollection"
          type="tns:OrganizationRelationshipSettingsCollection Type"
          minOccurs="0"
          nillable="true"
        />
      </xs:sequence>
    </xs:extension>
  </xs:complexContent>
</xs:complexType>

```

Child Elements

Element	Type	Description
OrganizationRelationshipSettingsCollection	tns:OrganizationRelationshipSettingsCollection Type	List of Organization Relationships matching the query.

3.1.4.4.2.3 tns:OrganizationRelationshipSettingsCollection Complex Type

The **OrganizationRelationshipSettingsCollection** complex type represents a list of Organization Relationships matching the query.

```

<xs:complexType name="OrganizationRelationshipSettingsCollection">
  <xs:sequence>
    <xs:element name="OrganizationRelationshipSettings"
      type="tns:OrganizationRelationshipSettings"
      minOccurs="0"
      maxOccurs="unbounded"
      nillable="true"
    />
  </xs:sequence>
</xs:complexType>

```

Child Elements

Element	Type	Description
OrganizationRelationshipSettings	tns:OrganizationRelationshipSettings	The organization relationships.

3.1.4.4.2.4 tns:OrganizationRelationshipSettings Complex Type

The **OrganizationRelationshipSettings** complex type represents the list of organization relationships for the selected organization and smtp addresses.

```

<xs:complexType name="OrganizationRelationshipSettings">
  <xs:sequence>
    <xs:element name="DeliveryReportEnabled"
      type="xs:boolean"
    />
    <xs:element name="DomainNames"
      type="tns:Domains"
      nillable="true"
    />
    <xs:element name="FreeBusyAccessEnabled"
      type="xs:boolean"
    />
    <xs:element name="FreeBusyAccessLevel"
      type="xs:string"
      nillable="true"
    />
    <xs:element name="MailTipsAccessEnabled"
      type="xs:boolean"
    />
    <xs:element name="MailTipsAccessLevel"
      type="xs:string"
      nillable="true"
    />
    <xs:element name="MailboxMoveEnabled"
      type="xs:boolean"
    />
    <xs:element name="Name"
      type="xs:string"
      nillable="true"
    />
    <xs:element name="TargetApplicationUri"
      type="xs:anyURI"
      nillable="true"
    />
  </xs:sequence>
</xs:complexType>

```

```

    />
    <xs:element name="TargetAutodiscoverEpr"
      type="xs:anyURI"
      nillable="true"
    />
    <xs:element name="TargetSharingEpr"
      type="xs:anyURI"
      nillable="true"
    />
  </xs:sequence>
</xs:complexType>

```

Child Elements

Element	Type	Description
DeliveryReportEnabled	xs:boolean	The DeliveryReportEnabled flag.
DomainNames	tns:Domains	The domain names collection.
FreeBusyAccessEnabled	xs:boolean	The FreeBusyAccessEnabled flag.
FreeBusyAccessLevel	xs:string	The FreeBusyAccessLevel property.
MailTipsAccessEnabled	xs:boolean	The MailTipsAccessEnabled flag.
MailTipsAccessLevel	xs:string	The MailTipsLevel property.
MailboxMoveEnabled	xs:boolean	The MailboxMoveEnabled flag.
Name	xs:string	The name of the organization relationship.
TargetApplicationUri	xs:anyURI	The target application uri.
TargetAutodiscoverEpr	xs:anyURI	The TargetAutodiscoverEpr property.
TargetSharingEpr	xs:anyURI	The TargetSharingEpr property.

3.1.4.4.3 Elements

The following XML schema element definitions are specific to this operation.

3.1.4.4.3.1 GetOrganizationRelationshipSettingsRequestMessage Element

The <GetOrganizationRelationshipSettingsRequestMessage> element prepares a call to the server, requesting the organization relationship settings for the user.

```

<xs:element name="GetOrganizationRelationshipSettingsRequestMessage">
  <xs:complexType>
    <xs:sequence>
      <xs:element name="Request"
        type="tns:GetOrganizationRelationshipSettingsRequest"
        minOccurs="0"
        nillable="true"
      />
    </xs:sequence>
  </xs:complexType>
</xs:element>

```

```

    </xs:complexType>
  </xs:element>

```

Child Elements

Element	Type	Description
Request	tns:GetOrganizationRelationshipSettingsRequest	Represents a GetOrganizationRelationshipSettings request.

3.1.4.4.3.2 GetOrganizationRelationshipSettingsRequest Element

The <GetOrganizationRelationshipSettingsRequest> element represents the parameters of a call to [GetOrganizationRelationshipSettings](#).

```

<xs:element name="GetOrganizationRelationshipSettingsRequest"
  type="tns:GetOrganizationRelationshipSettingsRequest"
  nillable="true"
/>

```

3.1.4.4.3.3 GetOrganizationRelationshipSettingsResponseMessage Element

The <GetOrganizationRelationshipSettingsResponseMessage> element returns to the caller the organization relationship settings that were requested in the [tns:GetOrganizationRelationshipSettingsRequestMessage](#) call.

```

<xs:element name="GetOrganizationRelationshipSettingsResponseMessage">
  <xs:complexType>
    <xs:sequence>
      <xs:element name="Response"
        type="tns:GetOrganizationRelationshipSettingsResponse"
        minOccurs="0"
        nillable="true"
      />
    </xs:sequence>
  </xs:complexType>
</xs:element>

```

Child Elements

Element	Type	Description
Response	tns:GetOrganizationRelationshipSettingsResponse	Represents the response to a GetOrganizationRelationshipSettings call.

3.1.4.4.3.4 OrganizationRelationshipSettingsCollection Element

The <OrganizationRelationshipSettingsCollection> element represents a list of organization relationships matching the query.

```
<xs:element name="OrganizationRelationshipSettingsCollection"
  type="tns:OrganizationRelationshipSettingsCollection Type"
/>
```

3.1.4.4.4 Attributes

This specification does not define any specific XML schema attribute definitions for this operation.

3.1.4.4.5 Groups

This specification does not define any specific XML schema group definitions for this operation.

3.1.4.4.6 Attribute Groups

This specification does not define any specific XML schema attribute group definitions for this operation.

3.1.4.4.7 Messages

The following WSDL message definitions are specific to this operation.

3.1.4.4.7.1 tns:GetOrganizationRelationshipSettingsRequestMessage

Retrieves the organization relationship settings.

The **GetOrganizationRelationshipSettingsRequestMessage** has one part, as described in the following table.

Part Name	Element/Type	Description
parameters	tns:GetOrganizationRelationshipSettingsRequestMessage	Represents the parameters of a call to GetOrganizationRelationshipSettingsRequest .

3.1.4.4.7.2 tns:GetOrganizationRelationshipSettingsRequestMessage_Headers

The **GetOrganizationRelationshipSettingsRequestMessage_Headers** message specifies the SOAP header for a **GetOrganizationRelationshipSettingsRequest** operation (section [3.1.4.4.3.2](#)). This message contains one part.

Part Name	Element/Type	Description
RequestedServerVersion	tns:RequestedServerVersion	Specifies which server version the GetOrganizationRelationshipSettingsRequest operation (section 3.1.4.4.3.2) request targets.

3.1.4.4.7.3 tns:GetOrganizationRelationshipSettingsResponseMessage

Represents a response to a [GetOrganizationRelationshipSettings](#) call.

The **GetOrganizationRelationshipSettingsResponseMessage** has one part.

Part Name	Element/Type	Description
parameters	tns:GetOrganizationRelationshipSettingsResponseMessage	Represents a response to a call to GetOrganizationRelationshipSettings .

3.1.4.4.7.4 tns:GetOrganizationRelationshipSettingsResponseMessage_Headers

The **GetOrganizationRelationshipSettingsResponseMessage_Headers** message specifies the SOAP header for a [GetOrganizationRelationshipSettingsResponse](#) operation. This message contains one part.

Part Name	Element/Type	Description
ServerVersionInfo	tns:ServerVersionInfo	Contains the version of the server that processed the GetOrganizationRelationshipSettings request.

3.1.5 Timer Events

None.

3.1.6 Other Local Events

None.

3.2 Client Details

Client Details

The client side of this protocol is simply a pass-through. That is, no additional timers or other state is required on the client side of this protocol. Calls made by the higher-layer protocol or application are passed directly to the transport, and the results that are returned by the transport are passed directly back to the higher-layer protocol or application.

3.2.1 Abstract Data Model

None.

3.2.2 Timers

None.

3.2.3 Initialization

None.

3.2.4 Message Processing Events and Sequencing

None.

3.2.5 Timer Events

None.

3.2.6 Other Local Events

None.

PRELIMINARY

4 Protocol Examples

The following are examples of an Autodiscovery Request and Response. Note that in the [GetUserSettings](#) and [GetDomainSettings](#) examples only the requested settings are returned to the client.

4.1 GetDomainSettings_Example

The following is an example of the GetDomainSettings operation.

To retrieve the requested Domain settings, the client constructs the Autodiscover Request XML and sends it to the server.

```
<?xml version="1.0" encoding="utf-8"?>
<soap:Envelope xmlns:a="http://schemas.microsoft.com/exchange/2010/Autodiscover"
  xmlns:wsa="http://www.w3.org/2005/08/addressing" xmlns:xsi="http://www.w3.org/2001/XMLSchema-instance"
  xmlns:soap="http://schemas.xmlsoap.org/soap/envelope/" >
  <soap:Header>
    <a:RequestedServerVersion>Exchange2010</a:RequestedServerVersion>
    <wsa:Action>http://schemas.microsoft.com/exchange/2010/Autodiscover/Autodiscover/GetDomainSettings</wsa:Action>
    <wsa:To>https://autodiscover.exchange.microsoft.com/autodiscover/autodiscover.svc</wsa:To>
  </soap:Header>
  <soap:Body>
    <a:GetDomainSettingsRequestMessage xmlns:a="http://schemas.microsoft.com/exchange/2010/Autodiscover">
      <a:Request>
        <a:Domains>
          <a:Domain>Redmond</a:Domain>
        </a:Domains>
        <a:RequestedSettings>
          <a:Setting>ExternalEwsUrl</a:Setting>
        </a:RequestedSettings>
      </a:Request>
    </a:GetDomainSettingsRequestMessage>
  </soap:Body>
</soap:Envelope>
</EwsLogEntry>
```

The server constructs the Autodiscover Response XML and sends it to the client.

```
<s:Envelope xmlns:s="http://schemas.xmlsoap.org/soap/envelope/" xmlns:a="http://www.w3.org/2005/08/addressing">
  <s:Header>
    <a:Action s:mustUnderstand="1">http://schemas.microsoft.com/exchange/2010/Autodiscover/Autodiscover/GetDomainSettingsResponse</a:Action>
  </s:Header>
  <h:ServerVersionInfo xmlns:h="http://schemas.microsoft.com/exchange/2010/Autodiscover"
    xmlns:i="http://www.w3.org/2001/XMLSchema-instance">
    <h:MajorVersion>14</h:MajorVersion>
    <h:MinorVersion>0</h:MinorVersion>
    <h:MajorBuildNumber>639</h:MajorBuildNumber>
    <h:MinorBuildNumber>20</h:MinorBuildNumber>
    <h:Version>Exchange2010</h:Version>
  </h:ServerVersionInfo>
```



```

    </s:Header>
    <s:Body>
      <GetDomainSettingsResponseMessage xmlns="http://schemas.microsoft.com/exchange/2010/Autodiscover">
        <Response xmlns:i="http://www.w3.org/2001/XMLSchema-instance">
          <ErrorCode>NoError</ErrorCode>
          <ErrorMessage />
          <DomainResponses>
            <DomainResponse>
              <ErrorCode>NoError</ErrorCode>
              <ErrorMessage>No error.</ErrorMessage>
              <DomainSettingErrors />
              <DomainSettings>
                <DomainSetting i:type="DomainStringSetting">
                  <Name>ExternalEwsUrl</Name>
                  <Value>https://emea.mail.microsoft.com/EWS/Exchange.asmx</Value>
                </DomainSetting>
              </DomainSettings>
              <RedirectTarget i:nil="true" />
            </DomainResponse>
          </DomainResponses>
        </Response>
      </GetDomainSettingsResponseMessage>
    </s:Body>
  </s:Envelope>

```

4.2 GetFederationInformation_Example

The following is an example of the [GetFederationInformation](#) operation.

In the request the caller is requesting domain information for domain "contoso.com".

```

<?xml version="1.0" encoding="utf-8"?>
<soap:Envelope xmlns:exm="http://schemas.microsoft.com/exchange/services/2006/messages"
xmlns:ext="http://schemas.microsoft.com/exchange/services/2006/types"
xmlns:a="http://www.w3.org/2005/08/addressing"
xmlns:soap="http://schemas.xmlsoap.org/soap/envelope/"
xmlns:xsi="http://www.w3.org/2001/XMLSchema-instance"
xmlns:xsd="http://www.w3.org/2001/XMLSchema">
  <soap:Header>
    <a:MessageID>urn:uuid:6389558d-9e05-465e-ade9-aae14c4bcd10</a:MessageID>
    <a:Action
soap:mustUnderstand="1">http://schemas.microsoft.com/exchange/2010/Autodiscover/Autodiscover/
GetFederationInformation</a:Action>
    <a:To soap:mustUnderstand="1">https://autodiscover.byfcxu-
dom.extest.microsoft.com/autodiscover/autodiscover.svc</a:To>
    <a:ReplyTo>
      <a:Address>http://www.w3.org/2005/08/addressing/anonymous</a:Address>
    </a:ReplyTo>
  </soap:Header>
  <soap:Body>
    <GetFederationInformationRequestMessage
xmlns="http://schemas.microsoft.com/exchange/2010/Autodiscover">
      <Request>
        <Domain>contoso.com</Domain>
      </Request>
    </GetFederationInformationRequestMessage>
  </soap:Body>
</soap:Envelope>

```

```
</soap:Body>
</soap:Envelope>
```

The server constructs the Response XML and sends it to the client.

```
<s:Envelope xmlns:s="http://schemas.xmlsoap.org/soap/envelope/"
xmlns:a="http://www.w3.org/2005/08/addressing">
  <s:Header>
    <a:Action
s:mustUnderstand="1">http://schemas.microsoft.com/exchange/2010/Autodiscover/Autodiscover/Get
FederationInformationResponse</a:Action>
    <a:RelatesTo>urn:uuid:6389558d-9e05-465e-ade9-aae14c4bcd10</a:RelatesTo>
  </s:Header>
  <s:Body>
    <GetFederationInformationResponseMessage
xmlns="http://schemas.microsoft.com/exchange/2010/Autodiscover">
      <Response xmlns:i="http://www.w3.org/2001/XMLSchema-instance">
        <ErrorCode>NoError</ErrorCode>
        <ErrorMessage/>
        <ApplicationUri>BYFCXU-DOM.EXTEST.MICROSOFT.COM</ApplicationUri>
        <Domains>
          <Domain>contoso.com</Domain>
          <Domain>europe.contoso.com</Domain>
          <Domain>americas.contoso.com</Domain>
          <Domain>contosolive.com</Domain>
        </Domains>
      </Response>
    </GetFederationInformationResponseMessage>
  </s:Body>
</s:Envelope>
```

4.3 GetUserSettings_Example

The following is an example of the GetUserSettings operation.

To retrieve the requested User settings, the client constructs the Autodiscover Request XML and sends it to the server.

```
<?xml version="1.0" encoding="utf-8"?>
<soap:Envelope xmlns:a="http://schemas.microsoft.com/exchange/2010/Autodiscover"
xmlns:wsa="http://www.w3.org/2005/08/addressing" xmlns:xsi="http://www.w3.org/2001/XMLSchema-instance"
xmlns:soap="http://schemas.xmlsoap.org/soap/envelope/">
  <soap:Header>
    <a:RequestedServerVersion>Exchange2010</a:RequestedServerVersion>
    <wsa:Action>http://schemas.microsoft.com/exchange/2010/Autodiscover/Autodiscover/GetUserSettings</wsa:Action>
    <wsa:To>https://autodiscover.exchange.microsoft.com/autodiscover/autodiscover.svc</wsa:To>
  </soap:Header>
  <soap:Body>
    <a:GetUserSettingsRequestMessage xmlns:a="http://schemas.microsoft.com/exchange/2010/Autodiscover">
      <a:Request>
```

```

    <a:Users>
      <a:User>
        <a:Mailbox>tadam@exchange.microsoft.com</a:Mailbox>
      </a:User>
    </a:Users>
    <a:RequestedSettings>
      <a:Setting>UserDisplayName</a:Setting>
      <a:Setting>UserDN</a:Setting>
      <a:Setting>UserDeploymentId</a:Setting>
      <a:Setting>InternalMailboxServer</a:Setting>
      <a:Setting>MailboxDN</a:Setting>
      <a:Setting>PublicFolderServer</a:Setting>
      <a:Setting>ActiveDirectoryServer</a:Setting>
      <a:Setting>ExternalEwsUrl</a:Setting>
      <a:Setting>CasVersion</a:Setting>
      <a:Setting>EwsSupportedSchemas</a:Setting>
    </a:RequestedSettings>
  </a:Request>
</a:GetUserSettingsRequestMessage>
</soap:Body>
</soap:Envelope>

```

The server constructs the Autodiscover Response XML and sends it to the client.

```

<s:Envelope xmlns:s="http://schemas.xmlsoap.org/soap/envelope/" xmlns:a="http://www.w3.org/2005/08/addressing">
  <s:Header>
    <a:Action s:mustUnderstand="1">http://schemas.microsoft.com/exchange/2010/Autodiscover/Autodiscover/GetUserSettingsResponse</a:Action>
    <h:ServerVersionInfo xmlns:h="http://schemas.microsoft.com/exchange/2010/Autodiscover" xmlns:i="http://www.w3.org/2001/XMLSchema-instance">
      <h:MajorVersion>14</h:MajorVersion>
      <h:MinorVersion>1</h:MinorVersion>
      <h:MajorBuildNumber>63</h:MajorBuildNumber>
      <h:MinorBuildNumber>0</h:MinorBuildNumber>
      <h:Version>Exchange2010_SP1</h:Version>
    </h:ServerVersionInfo>
  </s:Header>
  <s:Body>
    <GetUserSettingsResponseMessage xmlns="http://schemas.microsoft.com/exchange/2010/Autodiscover">
      <Response xmlns:i="http://www.w3.org/2001/XMLSchema-instance">
        <ErrorCode>NoError</ErrorCode>
        <ErrorMessage />
        <UserResponses>
          <UserResponse>
            <ErrorCode>NoError</ErrorCode>
            <ErrorMessage>No error.</ErrorMessage>
            <RedirectTarget i:nil="true" />
            <UserSettingErrors />
            <UserSettings>
              <UserSetting i:type="StringSetting">
                <Name>UserDisplayName</Name>
                <Value>Terry Adams</Value>
              </UserSetting>
              <UserSetting i:type="StringSetting">
                <Name>UserDN</Name>
                <Value>/o=microsoft/ou=Exchange Administrative Group (FYDIBOHF

```

```

23SPDLT)/cn=Recipients/cn=tadam</Value>
  </UserSetting>
  <UserSetting i:type="StringSetting">
    <Name>UserDeploymentId</Name>
    <Value>649d50b8-alce-4bac-8ace-2321e463f701</Value>
  </UserSetting>
  <UserSetting i:type="StringSetting">
    <Name>CasVersion</Name>
    <Value>14.01.0063.000</Value>
  </UserSetting>
  <UserSetting i:type="StringSetting">
    <Name>EwsSupportedSchemas</Name>
    <Value>Exchange2007, Exchange2007_SP1, Exchange2010,
Exchange2010_SP1</Value>
  </UserSetting>
  <UserSetting i:type="StringSetting">
    <Name>InternalMailboxServer</Name>
    <Value>DF-M14-05.Contoso.com</Value>
  </UserSetting>
  <UserSetting i:type="StringSetting">
    <Name>ActiveDirectoryServer</Name>
    <Value>CO1-EXCH-DC-05.Contoso.com</Value>
  </UserSetting>
  <UserSetting i:type="StringSetting">
    <Name>MailboxDN</Name>
    <Value>/o=microsoft/ou=Exchange Administrative Group (FYDIBOHF
23SPDLT)/cn=Configuration/cn=Servers/cn=outlookbeta.exchange.corp.microsoft.com/
cn=Microsoft Private MDB</Value>
  </UserSetting>
  <UserSetting i:type="StringSetting">
    <Name>PublicFolderServer</Name>
    <Value>DF-P14-01.Contoso.com</Value>
  </UserSetting>
  <UserSetting i:type="StringSetting">
    <Name>ExternalEwsUrl</Name>
    <Value>https://mail.Contoso.com/EWS/Exchange.asmx</
Value>
  </UserSetting>
</UserSettings>
</UserResponse>
</UserResponses>
</Response>
</GetUserSettingsResponseMessage>
</s:Body>
</s:Envelope>

```

5 Security

5.1 Security Considerations for Implementers

Auto discovery using this protocol over HTTPS (HTTP with SSL). Not providing SSL will seriously affect the operation of this protocol. The server will not answer Autodiscover queries unless the Autodiscover client has authenticated with the Autodiscover Server.

[GetFederationInformation](#) should be Anonymous. The intent of **GetFederationInformation** is to provide information to other organizations with STS in common on how to request tokens to authenticate against other services. As such, the caller needs to have access to the federation information without the need to authenticate first.

5.2 Index of Security Parameters

None.

PRELIMINARY

6 Appendix A: Full WSDL

The Autodiscover Service has a WSDL and an XSD file.

6.1 WSDL

See [\[WSDL\]](#) for a specification of the Web Service Description Language (WSDL).

For ease of implementation, the full WSDL is included in this section.

```
<?xml version="1.0" encoding="utf-8"?>
  <wsdl:definitions xmlns:soap="http://schemas.xmlsoap.org/wsdl/soap/"
    xmlns:wsm="http://schemas.xmlsoap.org/wsdl/metadata/"
    xmlns:wsp="http://schemas.xmlsoap.org/ws/2004/09/policy"
    xmlns:wsa="http://schemas.xmlsoap.org/ws/2004/08/addressing"
    xmlns:wsu="http://docs.oasis-open.org/wss/2004/01/oasis-200401-wss-wssecurity-
utility-1.0.xsd"
    xmlns:soapenc="http://schemas.xmlsoap.org/soap/encoding/"
    xmlns:wsam="http://www.w3.org/2007/05/addressing/metadata"
    xmlns:tns="http://schemas.microsoft.com/exchange/2010/Autodiscover"
    xmlns:wsa="http://schemas.xmlsoap.org/ws/2004/08/addressing"
    xmlns:wsp="http://schemas.xmlsoap.org/ws/2004/09/policy"
    xmlns:wsap="http://schemas.xmlsoap.org/ws/2004/08/addressing/policy"
    xmlns:xsd="http://www.w3.org/2001/XMLSchema"
    xmlns:msc="http://schemas.microsoft.com/ws/2005/12/wsdl/contract"
    xmlns:wsaw="http://www.w3.org/2006/05/addressing/wsdl"
    xmlns:soap12="http://schemas.xmlsoap.org/wsdl/soap12/"
    xmlns:wsa10="http://www.w3.org/2005/08/addressing"
    xmlns:wsx="http://schemas.xmlsoap.org/ws/2004/09/mex"
    targetNamespace="http://schemas.microsoft.com/exchange/2010/Autodiscover"
    xmlns:wsdl="http://schemas.xmlsoap.org/wsdl/">
    <wsdl:types>
      <xsd:schema
targetNamespace="http://schemas.microsoft.com/exchange/2010/Autodiscover/Imports">
        <xsd:import namespace="http://schemas.microsoft.com/exchange/2010/Autodiscover"
          location="messages.xsd" />
      </xsd:schema>
    </wsdl:types>
    <wsdl:message name="GetUserSettingsRequestMessage">
      <wsdl:part name="parameters" element="tns:GetUserSettingsRequestMessage" />
    </wsdl:message>
    <wsdl:message name="GetUserSettingsRequestMessage_Headers">
      <wsdl:part name="RequestedServerVersion" element="tns:RequestedServerVersion" />
    </wsdl:message>
    <wsdl:message name="GetUserSettingsResponseMessage">
      <wsdl:part name="parameters" element="tns:GetUserSettingsResponseMessage" />
    </wsdl:message>
    <wsdl:message name="GetUserSettingsResponseMessage_Headers">
      <wsdl:part name="ServerVersionInfo" element="tns:ServerVersionInfo" />
    </wsdl:message>
    <wsdl:message name="GetDomainSettingsRequestMessage">
      <wsdl:part name="parameters" element="tns:GetDomainSettingsRequestMessage" />
    </wsdl:message>
    <wsdl:message name="GetDomainSettingsRequestMessage_Headers">
      <wsdl:part name="RequestedServerVersion" element="tns:RequestedServerVersion" />
    </wsdl:message>
    <wsdl:message name="GetDomainSettingsResponseMessage">
      <wsdl:part name="parameters" element="tns:GetDomainSettingsResponseMessage" />
    </wsdl:message>
    <wsdl:message name="GetDomainSettingsResponseMessage_Headers">
      <wsdl:part name="ServerVersionInfo" element="tns:ServerVersionInfo" />
    </wsdl:message>
```

```

</wsdl:message>
<wsdl:message name="GetFederationInformationRequestMessage">
  <wsdl:part name="parameters" element="tns:GetFederationInformationRequestMessage" />
</wsdl:message>
<wsdl:message name="GetFederationInformationRequestMessage_Headers">
  <wsdl:part name="RequestedServerVersion" element="tns:RequestedServerVersion" />
</wsdl:message>
<wsdl:message name="GetFederationInformationResponseMessage">
  <wsdl:part name="parameters" element="tns:GetFederationInformationResponseMessage" />
</wsdl:message>
<wsdl:message name="GetFederationInformationResponseMessage_Headers">
  <wsdl:part name="ServerVersionInfo" element="tns:ServerVersionInfo" />
</wsdl:message>
<wsdl:message name="GetOrganizationRelationshipSettingsRequestMessage">
  <wsdl:part name="parameters"
element="tns:GetOrganizationRelationshipSettingsRequestMessage" />
</wsdl:message>
<wsdl:message name="GetOrganizationRelationshipSettingsRequestMessage_Headers">
  <wsdl:part name="RequestedServerVersion" element="tns:RequestedServerVersion" />
</wsdl:message>
<wsdl:message name="GetOrganizationRelationshipSettingsResponseMessage">
  <wsdl:part name="parameters"
element="tns:GetOrganizationRelationshipSettingsResponseMessage" />
</wsdl:message>
<wsdl:message name="GetOrganizationRelationshipSettingsResponseMessage_Headers">
  <wsdl:part name="ServerVersionInfo" element="tns:ServerVersionInfo" />
</wsdl:message>
<wsdl:portType name="Autodiscover">
  <wsdl:operation name="GetUserSettings">
    <wsdl:input wsaw:Action="http://schemas.microsoft.com/exchange/2010/
Autodiscover/Autodiscover/GetUserSettings"
name="GetUserSettingsRequestMessage"
message="tns:GetUserSettingsRequestMessage" />
    <wsdl:output wsaw:Action="http://schemas.microsoft.com/exchange/2010/Autodiscover/
Autodiscover/GetUserSettingsResponse"
name="GetUserSettingsResponseMessage"
message="tns:GetUserSettingsResponseMessage" />
  </wsdl:operation>
  <wsdl:operation name="GetDomainSettings">
    <wsdl:input wsaw:Action="http://schemas.microsoft.com/exchange/2010/
Autodiscover/Autodiscover/GetDomainSettings"
name="GetDomainSettingsRequestMessage"
message="tns:GetDomainSettingsRequestMessage" />
    <wsdl:output wsaw:Action="http://schemas.microsoft.com/exchange/2010/Autodiscover/
Autodiscover/GetDomainSettingsResponse"
name="GetDomainSettingsResponseMessage"
message="tns:GetDomainSettingsResponseMessage" />
  </wsdl:operation>
  <wsdl:operation name="GetFederationInformation">
    <wsdl:input wsaw:Action="http://schemas.microsoft.com/exchange/2010/
Autodiscover/Autodiscover/GetFederationInformation"
name="GetFederationInformationRequestMessage"
message="tns:GetFederationInformationRequestMessage" />
    <wsdl:output wsaw:Action="http://schemas.microsoft.com/exchange/2010/Autodiscover/
Autodiscover/GetFederationInformationResponse"
name="GetFederationInformationResponseMessage"
message="tns:GetFederationInformationResponseMessage" />
  </wsdl:operation>
  <wsdl:operation name="GetOrganizationRelationshipSettings">

```

```

<wsdl:input wsaw:Action="http://schemas.microsoft.com/exchange/2010/Autodiscover/
  Autodiscover/GetOrganizationRelationshipSettings"
  name="GetOrganizationRelationshipSettingsRequestMessage"
  message="tns:GetOrganizationRelationshipSettingsRequestMessage" />
<wsdl:output wsaw:Action="http://schemas.microsoft.com/exchange/2010/Autodiscover/
  Autodiscover/GetOrganizationRelationshipSettingsResponse"
  name="GetOrganizationRelationshipSettingsResponseMessage"
  message="tns:GetOrganizationRelationshipSettingsResponseMessage" />
</wsdl:operation>
</wsdl:portType>
<wsdl:binding name="DefaultBinding_Autodiscover" type="tns:Autodiscover">
  <soap:binding transport="http://schemas.xmlsoap.org/soap/http" />
  <wsdl:operation name="GetUserSettings">
    <soap:operation soapAction="http://schemas.microsoft.com/exchange/2010/Autodiscover/
      Autodiscover/GetUserSettings" style="document" />
    <wsdl:input name="GetUserSettingsRequestMessage">
      <soap:header message="tns:GetUserSettingsRequestMessage_Headers"
        part="RequestedServerVersion" use="literal" />
      <soap:body use="literal" />
    </wsdl:input>
    <wsdl:output name="GetUserSettingsResponseMessage">
      <soap:header message="tns:GetUserSettingsResponseMessage_Headers"
        part="ServerVersionInfo" use="literal" />
      <soap:body use="literal" />
    </wsdl:output>
  </wsdl:operation>
  <wsdl:operation name="GetDomainSettings">
    <soap:operation soapAction="http://schemas.microsoft.com/exchange/2010/Autodiscover/
      Autodiscover/GetDomainSettings" style="document" />
    <wsdl:input name="GetDomainSettingsRequestMessage">
      <soap:header message="tns:GetDomainSettingsRequestMessage_
        Headers" part="RequestedServerVersion" use="literal" />
      <soap:body use="literal" />
    </wsdl:input>
    <wsdl:output name="GetDomainSettingsResponseMessage">
      <soap:header message="tns:GetDomainSettingsResponseMessage_
        Headers" part="ServerVersionInfo" use="literal" />
      <soap:body use="literal" />
    </wsdl:output>
  </wsdl:operation>
  <wsdl:operation name="GetFederationInformation">
    <soap:operation soapAction="http://schemas.microsoft.com/exchange/2010/Autodiscover/
      Autodiscover/GetFederationInformation" style="document" />
    <wsdl:input name="GetFederationInformationRequestMessage">
      <soap:header message="tns:GetFederationInformationRequestMessage_Headers"
        part="RequestedServerVersion" use="literal" />
      <soap:body use="literal" />
    </wsdl:input>
    <wsdl:output name="GetFederationInformationResponseMessage">
      <soap:header message="tns:GetFederationInformationResponseMessage_Headers"
        part="ServerVersionInfo" use="literal" />
      <soap:body use="literal" />
    </wsdl:output>
  </wsdl:operation>
  <wsdl:operation name="GetOrganizationRelationshipSettings">
    <soap:operation soapAction="http://schemas.microsoft.com/exchange/2010/Autodiscover/
      Autodiscover/GetOrganizationRelationshipSettings" style="document" />
    <wsdl:input name="GetOrganizationRelationshipSettingsRequestMessage">
      <soap:header message="tns:GetOrganizationRelationshipSettingsRequestMessage_

```



```
        Headers" part="RequestedServerVersion" use="literal" />
    <soap:body use="literal" />
</wsdl:input>
<wsdl:output name="GetOrganizationRelationshipSettingsResponseMessage">
    <soap:header message="tns:GetOrganizationRelationshipSettingsResponseMessage_
        Headers" part="ServerVersionInfo" use="literal" />
    <soap:body use="literal" />
</wsdl:output>
</wsdl:operation>
</wsdl:binding>
</wsdl:definitions>
```

PRELIMINARY

PRELIMINARY

6.2 Messages XSD

See [XMLSCHEMA1](#) for a specification of the XML schema definition (XSD).

For ease of implementation, the message.xsd is included in this section.

```
<?xml version="1.0" encoding="utf-8"?>
<xs:schema xmlns:tns="http://schemas.microsoft.com/exchange/2010/Autodiscover"
  elementFormDefault="qualified"
    targetNamespace="http://schemas.microsoft.com/exchange/2010/Autodiscover"
    xmlns:xs="http://www.w3.org/2001/XMLSchema">
  <xs:element name="GetUserSettingsRequestMessage">
    <xs:complexType>
      <xs:sequence>
        <xs:element minOccurs="0" name="Request" nillable="true"
          type="tns:GetUserSettingsRequest" />
      </xs:sequence>
    </xs:complexType>
  </xs:element>
  <xs:complexType name="GetUserSettingsRequest">
    <xs:complexContent mixed="false">
      <xs:extension base="tns:AutodiscoverRequest">
        <xs:sequence>
          <xs:element name="Users" nillable="true" type="tns:Users" />
          <xs:element name="RequestedSettings" nillable="true" type="tns:RequestedSettings"
            />
        </xs:sequence>
      </xs:extension>
    </xs:complexContent>
  </xs:complexType>
  <xs:element name="GetUserSettingsRequest" nillable="true" type="tns:GetUserSettingsRequest"
    />
  <xs:complexType name="AutodiscoverRequest">
    <xs:sequence />
  </xs:complexType>
  <xs:element name="AutodiscoverRequest" nillable="true" type="tns:AutodiscoverRequest" />
  <xs:complexType name="Users">
    <xs:sequence>
      <xs:element minOccurs="0" maxOccurs="unbounded" name="User" nillable="true"
        type="tns:User" />
    </xs:sequence>
  </xs:complexType>
  <xs:element name="Users" nillable="true" type="tns:Users" />
  <xs:complexType name="User">
    <xs:sequence>
      <xs:element name="Mailbox" nillable="true" type="xs:string" />
    </xs:sequence>
  </xs:complexType>
</xs:schema>
```

```

<xs:element name="User" nillable="true" type="tns:User" />
<xs:complexType name="RequestedSettings">
  <xs:sequence>
    <xs:element minOccurs="0" maxOccurs="unbounded" name="Setting" nillable="true"
type="xs:string" />
  </xs:sequence>
</xs:complexType>
<xs:element name="RequestedSettings" nillable="true" type="tns:RequestedSettings" />
<xs:simpleType name="ExchangeVersion">
  <xs:restriction base="xs:string">
    <xs:enumeration value="Exchange2010" />
    <xs:enumeration value="Exchange2010_SP1" />
  </xs:restriction>
</xs:simpleType>
<xs:element name="RequestedServerVersion">
  <xs:simpleType>
    <xs:restriction base="tns:ExchangeVersion" />
  </xs:simpleType>
</xs:element>
<xs:element name="GetUserSettingsResponseMessage">
  <xs:complexType>
    <xs:sequence>
      <xs:element minOccurs="0" name="Response" nillable="true"
type="tns:GetUserSettingsResponse" />
    </xs:sequence>
  </xs:complexType>
</xs:element>
<xs:complexType name="GetUserSettingsResponse">
  <xs:complexContent mixed="false">
    <xs:extension base="tns:AutodiscoverResponse">
      <xs:sequence>
        <xs:element minOccurs="0" name="UserResponses" nillable="true"
type="tns:ArrayOfUserResponse" />
      </xs:sequence>
    </xs:extension>
  </xs:complexContent>
</xs:complexType>
<xs:element name="GetUserSettingsResponse" nillable="true"
type="tns:GetUserSettingsResponse" />
<xs:complexType name="AutodiscoverResponse">
  <xs:sequence>
    <xs:element minOccurs="0" name="ErrorCode" type="tns:ErrorCode" />
    <xs:element minOccurs="0" name="ErrorMessage" nillable="true" type="xs:string" />
  </xs:sequence>
</xs:complexType>
<xs:element name="AutodiscoverResponse" nillable="true" type="tns:AutodiscoverResponse" />
<xs:simpleType name="ErrorCode">
  <xs:restriction base="xs:string">
    <xs:enumeration value="NoError" />
    <xs:enumeration value="RedirectAddress" />
    <xs:enumeration value="RedirectUrl" />
    <xs:enumeration value="InvalidUser" />
    <xs:enumeration value="InvalidRequest" />
    <xs:enumeration value="InvalidSetting" />
    <xs:enumeration value="SettingIsNotAvailable" />
    <xs:enumeration value="ServerBusy" />
    <xs:enumeration value="InvalidDomain" />
    <xs:enumeration value="NotFederated" />
    <xs:enumeration value="InternalServerError" />
  </xs:restriction>

```

```

    </xs:restriction>
</xs:simpleType>
<xs:element name="ErrorCode" nillable="true" type="tns:ErrorCode" />
<xs:complexType name="ArrayOfUserResponse">
  <xs:sequence>
    <xs:element minOccurs="0" maxOccurs="unbounded" name="UserResponse"
      nillable="true" type="tns:UserResponse" />
  </xs:sequence>
</xs:complexType>
<xs:element name="ArrayOfUserResponse" nillable="true"
  type="tns:ArrayOfUserResponse" />
<xs:complexType name="UserResponse">
  <xs:complexContent mixed="false">
    <xs:extension base="tns:AutodiscoverResponse">
      <xs:sequence>
        <xs:element minOccurs="0" name="RedirectTarget" nillable="true" type="xs:string" />
        <xs:element minOccurs="0" name="UserSettingErrors" nillable="true"
type="tns:UserSettingErrors" />
        <xs:element minOccurs="0" name="UserSettings" nillable="true"
type="tns:UserSettings" />
      </xs:sequence>
    </xs:extension>
  </xs:complexContent>
</xs:complexType>
<xs:element name="UserResponse" nillable="true" type="tns:UserResponse" />
<xs:complexType name="UserSettingErrors">
  <xs:sequence>
    <xs:element minOccurs="0" maxOccurs="unbounded" name="UserSettingError"
      nillable="true" type="tns:UserSettingError" />
  </xs:sequence>
</xs:complexType>
<xs:element name="UserSettingErrors" nillable="true" type="tns:UserSettingErrors" />
<xs:complexType name="UserSettingError">
  <xs:sequence>
    <xs:element name="ErrorCode" type="tns:ErrorCode" />
    <xs:element name="ErrorMessage" nillable="true" type="xs:string" />
    <xs:element name="SettingName" nillable="true" type="xs:string" />
  </xs:sequence>
</xs:complexType>
<xs:element name="UserSettingError" nillable="true" type="tns:UserSettingError" />
<xs:complexType name="UserSettings">
  <xs:sequence>
    <xs:element minOccurs="0" maxOccurs="unbounded" name="UserSetting"
      nillable="true" type="tns:UserSetting" />
  </xs:sequence>
</xs:complexType>
<xs:element name="UserSettings" nillable="true" type="tns:UserSettings" />
<xs:complexType name="UserSetting">
  <xs:sequence>
    <xs:element name="Name" nillable="true" type="xs:string" />
  </xs:sequence>
</xs:complexType>
<xs:element name="UserSetting" nillable="true" type="tns:UserSetting" />
<xs:complexType name="ProtocolConnectionCollectionSetting">
  <xs:complexContent mixed="false">
    <xs:extension base="tns:UserSetting">
      <xs:sequence>
        <xs:element name="ProtocolConnections" nillable="true"
type="tns:ProtocolConnections" />
      </xs:sequence>
    </xs:extension>
  </xs:complexContent>
</xs:complexType>

```

```

        </xs:sequence>
      </xs:extension>
    </xs:complexContent>
  </xs:complexType>
  <xs:element name="ProtocolConnectionCollectionSetting" nillable="true"
    type="tns:ProtocolConnectionCollectionSetting" />
  <xs:complexType name="ProtocolConnections">
    <xs:sequence>
      <xs:element minOccurs="0" maxOccurs="unbounded" name="ProtocolConnection"
        nillable="true" type="tns:ProtocolConnection" />
    </xs:sequence>
  </xs:complexType>
  <xs:element name="ProtocolConnections" nillable="true" type="tns:ProtocolConnections" />
  <xs:complexType name="ProtocolConnection">
    <xs:sequence>
      <xs:element name="Hostname" nillable="true" type="xs:string" />
      <xs:element name="Port" type="xs:int" />
      <xs:element name="EncryptionMethod" nillable="true" type="xs:string" />
    </xs:sequence>
  </xs:complexType>
  <xs:element name="ProtocolConnection" nillable="true" type="tns:ProtocolConnection" />
  <xs:complexType name="StringSetting">
    <xs:complexContent mixed="false">
      <xs:extension base="tns:UserSetting">
        <xs:sequence>
          <xs:element minOccurs="0" name="Value" nillable="true" type="xs:string" />
        </xs:sequence>
      </xs:extension>
    </xs:complexContent>
  </xs:complexType>
  <xs:element name="StringSetting" nillable="true" type="tns:StringSetting" />
  <xs:complexType name="WebClientUrlCollectionSetting">
    <xs:complexContent mixed="false">
      <xs:extension base="tns:UserSetting">
        <xs:sequence>
          <xs:element name="WebClientUrls" nillable="true" type="tns:WebClientUrls" />
        </xs:sequence>
      </xs:extension>
    </xs:complexContent>
  </xs:complexType>
  <xs:element name="WebClientUrlCollectionSetting" nillable="true"
    type="tns:WebClientUrlCollectionSetting" />
  <xs:complexType name="WebClientUrls">
    <xs:sequence>
      <xs:element minOccurs="0" maxOccurs="unbounded" name="WebClientUrl"
        nillable="true" type="tns:WebClientUrl" />
    </xs:sequence>
  </xs:complexType>
  <xs:element name="WebClientUrls" nillable="true" type="tns:WebClientUrls" />
  <xs:complexType name="WebClientUrl">
    <xs:sequence>
      <xs:element name="AuthenticationMethods" nillable="true" type="xs:string" />
      <xs:element name="Url" nillable="true" type="xs:string" />
    </xs:sequence>
  </xs:complexType>
  <xs:element name="WebClientUrl" nillable="true" type="tns:WebClientUrl" />
  <xs:complexType name="AlternateMailboxCollectionSetting">
    <xs:complexContent mixed="false">
      <xs:extension base="tns:UserSetting">

```

```

        <xs:sequence>
          <xs:element name="AlternateMailboxes" nillable="true" type="tns:AlternateMailboxes"
/>
        </xs:sequence>
      </xs:extension>
    </xs:complexContent>
  </xs:complexType>
  <xs:element name="AlternateMailboxCollectionSetting" nillable="true"
    type="tns:AlternateMailboxCollectionSetting" />
  <xs:complexType name="AlternateMailboxes">
    <xs:sequence>
      <xs:element minOccurs="0" maxOccurs="unbounded" name="AlternateMailbox"
        nillable="true" type="tns:AlternateMailbox" />
    </xs:sequence>
  </xs:complexType>
  <xs:element name="AlternateMailboxes" nillable="true" type="tns:AlternateMailboxes" />
  <xs:complexType name="AlternateMailbox">
    <xs:sequence>
      <xs:element name="Type" nillable="true" type="xs:string" />
      <xs:element name="DisplayName" nillable="true" type="xs:string" />
      <xs:element name="LegacyDN" nillable="true" type="xs:string" />
      <xs:element name="Server" nillable="true" type="xs:string" />
    </xs:sequence>
  </xs:complexType>
  <xs:element name="AlternateMailbox" nillable="true" type="tns:AlternateMailbox" />
  <xs:complexType name="ServerVersionInfo">
    <xs:sequence>
      <xs:element minOccurs="0" name="MajorVersion" type="xs:int" />
      <xs:element minOccurs="0" name="MinorVersion" type="xs:int" />
      <xs:element minOccurs="0" name="MajorBuildNumber" type="xs:int" />
      <xs:element minOccurs="0" name="MinorBuildNumber" type="xs:int" />
      <xs:element minOccurs="0" name="Version" nillable="true" type="xs:string" />
    </xs:sequence>
  </xs:complexType>
  <xs:element name="ServerVersionInfo" nillable="true" type="tns:ServerVersionInfo" />
  <xs:element name="GetDomainSettingsRequestMessage">
    <xs:complexType>
      <xs:sequence>
        <xs:element minOccurs="0" name="Request" nillable="true"
          type="tns:GetDomainSettingsRequest" />
      </xs:sequence>
    </xs:complexType>
  </xs:element>
  <xs:complexType name="GetDomainSettingsRequest">
    <xs:complexContent mixed="false">
      <xs:extension base="tns:AutodiscoverRequest">
        <xs:sequence>
          <xs:element name="Domains" nillable="true" type="tns:Domains" />
          <xs:element name="RequestedSettings" nillable="true" type="tns:RequestedSettings"
/>
          <xs:element name="RequestedVersion" nillable="true" type="tns:ExchangeVersion" />
        </xs:sequence>
      </xs:extension>
    </xs:complexContent>
  </xs:complexType>
  <xs:element name="GetDomainSettingsRequest" nillable="true"
    type="tns:GetDomainSettingsRequest" />
  <xs:complexType name="Domains">
    <xs:sequence>

```

```

        <xs:element minOccurs="0" maxOccurs="unbounded" name="Domain"
            nillable="true" type="xs:string" />
    </xs:sequence>
</xs:complexType>
<xs:element name="Domains" nillable="true" type="tns:Domains" />
<xs:element name="GetDomainSettingsResponseMessage">
    <xs:complexType>
        <xs:sequence>
            <xs:element minOccurs="0" name="Response" nillable="true"
                type="tns:GetDomainSettingsResponse" />
        </xs:sequence>
    </xs:complexType>
</xs:element>
<xs:complexType name="GetDomainSettingsResponse">
    <xs:complexContent mixed="false">
        <xs:extension base="tns:AutodiscoverResponse">
            <xs:sequence>
                <xs:element minOccurs="0" name="DomainResponses" nillable="true"
                    type="tns:ArrayOfDomainResponse" />
            </xs:sequence>
        </xs:extension>
    </xs:complexContent>
</xs:complexType>
<xs:element name="GetDomainSettingsResponse" nillable="true"
    type="tns:GetDomainSettingsResponse" />
<xs:complexType name="ArrayOfDomainResponse">
    <xs:sequence>
        <xs:element minOccurs="0" maxOccurs="unbounded" name="DomainResponse"
            nillable="true" type="tns:DomainResponse" />
    </xs:sequence>
</xs:complexType>
<xs:element name="ArrayOfDomainResponse" nillable="true"
    type="tns:ArrayOfDomainResponse" />
<xs:complexType name="DomainResponse">
    <xs:complexContent mixed="false">
        <xs:extension base="tns:AutodiscoverResponse">
            <xs:sequence>
                <xs:element minOccurs="0" name="DomainSettingErrors" nillable="true"
type="tns:DomainSettingErrors" />
                <xs:element minOccurs="0" name="DomainSettings" nillable="true"
type="tns:DomainSettings" />
                <xs:element minOccurs="0" name="RedirectTarget" nillable="true" type="xs:string" />
            </xs:sequence>
        </xs:extension>
    </xs:complexContent>
</xs:complexType>
<xs:element name="DomainResponse" nillable="true" type="tns:DomainResponse" />
<xs:complexType name="DomainSettingErrors">
    <xs:sequence>
        <xs:element minOccurs="0" maxOccurs="unbounded" name="DomainSettingError"
            nillable="true" type="tns:DomainSettingError" />
    </xs:sequence>
</xs:complexType>
<xs:element name="DomainSettingErrors" nillable="true" type="tns:DomainSettingErrors" />
<xs:complexType name="DomainSettingError">
    <xs:sequence>
        <xs:element name="ErrorCode" type="tns:ErrorCode" />
        <xs:element name="ErrorMessage" nillable="true" type="xs:string" />
        <xs:element name="SettingName" nillable="true" type="xs:string" />
    </xs:sequence>
</xs:complexType>

```



```

    </xs:sequence>
</xs:complexType>
<xs:element name="DomainSettingError" nillable="true" type="tns:DomainSettingError" />
<xs:complexType name="DomainSettings">
  <xs:sequence>
    <xs:element minOccurs="0" maxOccurs="unbounded" name="DomainSetting"
      nillable="true" type="tns:DomainSetting" />
  </xs:sequence>
</xs:complexType>
<xs:element name="DomainSettings" nillable="true"
  type="tns:DomainSettings" />
<xs:complexType name="DomainSetting">
  <xs:sequence>
    <xs:element name="Name" nillable="true" type="xs:string" />
  </xs:sequence>
</xs:complexType>
<xs:element name="DomainSetting" nillable="true"
  type="tns:DomainSetting" />
<xs:complexType name="DomainStringSetting">
  <xs:complexContent mixed="false">
    <xs:extension base="tns:DomainSetting">
      <xs:sequence>
        <xs:element minOccurs="0" name="Value" nillable="true" type="xs:string" />
      </xs:sequence>
    </xs:extension>
  </xs:complexContent>
</xs:complexType>
<xs:element name="DomainStringSetting" nillable="true"
  type="tns:DomainStringSetting" />
<xs:element name="GetFederationInformationRequestMessage">
  <xs:complexType>
    <xs:sequence>
      <xs:element minOccurs="0" name="Request" nillable="true"
        type="tns:GetFederationInformationRequest" />
    </xs:sequence>
  </xs:complexType>
</xs:element>
<xs:complexType name="GetFederationInformationRequest">
  <xs:complexContent mixed="false">
    <xs:extension base="tns:AutodiscoverRequest">
      <xs:sequence>
        <xs:element name="Domain" nillable="true" type="xs:string" />
      </xs:sequence>
    </xs:extension>
  </xs:complexContent>
</xs:complexType>
<xs:element name="GetFederationInformationRequest" nillable="true"
  type="tns:GetFederationInformationRequest" />
<xs:element name="GetFederationInformationResponseMessage">
  <xs:complexType>
    <xs:sequence>
      <xs:element minOccurs="0" name="Response" nillable="true"
        type="tns:GetFederationInformationResponse" />
    </xs:sequence>
  </xs:complexType>
</xs:element>
<xs:complexType name="GetFederationInformationResponse">
  <xs:complexContent mixed="false">
    <xs:extension base="tns:AutodiscoverResponse">

```

```

        <xs:sequence>
            <xs:element minOccurs="0" name="ApplicationUri" nillable="true" type="xs:anyURI" />
            <xs:element minOccurs="0" name="Domains" nillable="true" type="tns:Domains" />
        </xs:sequence>
    </xs:extension>
</xs:complexContent>
</xs:complexType>
<xs:element name="GetFederationInformationResponse" nillable="true"
    type="tns:GetFederationInformationResponse" />
<xs:element name="GetOrganizationRelationshipSettingsRequestMessage">
    <xs:complexType>
        <xs:sequence>
            <xs:element minOccurs="0" name="Request" nillable="true"
                type="tns:GetOrganizationRelationshipSettingsRequest" />
        </xs:sequence>
    </xs:complexType>
</xs:element>
<xs:complexType name="GetOrganizationRelationshipSettingsRequest">
    <xs:complexContent mixed="false">
        <xs:extension base="tns:AutodiscoverRequest">
            <xs:sequence>
                <xs:element name="Domains" nillable="true" type="tns:Domains" />
            </xs:sequence>
        </xs:extension>
    </xs:complexContent>
</xs:complexType>
<xs:element name="GetOrganizationRelationshipSettingsRequest"
    nillable="true" type="tns:GetOrganizationRelationshipSettingsRequest" />
<xs:element name="GetOrganizationRelationshipSettingsResponseMessage">
    <xs:complexType>
        <xs:sequence>
            <xs:element minOccurs="0" name="Response" nillable="true"
                type="tns:GetOrganizationRelationshipSettingsResponse" />
        </xs:sequence>
    </xs:complexType>
</xs:element>
<xs:complexType name="GetOrganizationRelationshipSettingsResponse">
    <xs:complexContent mixed="false">
        <xs:extension base="tns:AutodiscoverResponse">
            <xs:sequence>
                <xs:element minOccurs="0" name="OrganizationRelationshipSettingsCollection"
                    nillable="true" type="tns:OrganizationRelationshipSettingsCollection" />
            </xs:sequence>
        </xs:extension>
    </xs:complexContent>
</xs:complexType>
<xs:element name="GetOrganizationRelationshipSettingsResponse" nillable="true"
    type="tns:GetOrganizationRelationshipSettingsResponse" />
<xs:complexType name="OrganizationRelationshipSettingsCollection">
    <xs:sequence>
        <xs:element minOccurs="0" maxOccurs="unbounded" name="OrganizationRelationshipSettings"
            nillable="true" type="tns:OrganizationRelationshipSettings" />
    </xs:sequence>
</xs:complexType>
<xs:element name="OrganizationRelationshipSettingsCollection" nillable="true"
    type="tns:OrganizationRelationshipSettingsCollection" />
<xs:complexType name="OrganizationRelationshipSettings">
    <xs:sequence>
        <xs:element name="DeliveryReportEnabled" type="xs:boolean" />
    </xs:sequence>
</xs:complexType>

```

```
<xs:element name="DomainNames" nillable="true" type="tns:Domains" />
<xs:element name="FreeBusyAccessEnabled" type="xs:boolean" />
<xs:element name="FreeBusyAccessLevel" nillable="true" type="xs:string" />
<xs:element name="MailTipsAccessEnabled" type="xs:boolean" />
<xs:element name="MailTipsAccessLevel" nillable="true" type="xs:string" />
<xs:element name="MailboxMoveEnabled" type="xs:boolean" />
<xs:element name="Name" nillable="true" type="xs:string" />
<xs:element name="TargetApplicationUri" nillable="true" type="xs:anyURI" />
<xs:element name="TargetAutodiscoverEpr" nillable="true" type="xs:anyURI" />
<xs:element name="TargetSharingEpr" nillable="true" type="xs:anyURI" />
</xs:sequence>
</xs:complexType>
<xs:element name="OrganizationRelationshipSettings" nillable="true"
  type="tns:OrganizationRelationshipSettings" />
</xs:schema>
```

6.3 Types XSD

This protocol does not define a types XSD file.

7 Appendix B: Product Behavior

The information in this specification is applicable to the following product versions. References to product versions include released service packs.

- Microsoft® Exchange Server 2010
- Microsoft® Exchange Server 2010 SP1 Beta

Exceptions, if any, are noted below. If a service pack number appears with the product version, behavior changed in that service pack. The new behavior also applies to subsequent service packs of the product unless otherwise specified.

Unless otherwise specified, any statement of optional behavior in this specification prescribed using the terms SHOULD or SHOULD NOT implies product behavior in accordance with the SHOULD or SHOULD NOT prescription. Unless otherwise specified, the term MAY implies that product does not follow the prescription.

PRELIMINARY

8 Change Tracking

This section identifies changes made to [MS-OXWSADISC] protocol documentation between February 2010 and May 2010 releases. Changes are classed as major, minor, or editorial.

Major changes affect protocol interoperability or implementation. Examples of major changes are:

- A document revision that incorporates changes to interoperability requirements or functionality.
- An extensive rewrite, addition, or deletion of major portions of content.
- A protocol is deprecated.
- The removal of a document from the documentation set.
- Changes made for template compliance.

Minor changes do not affect protocol interoperability or implementation. Examples are updates to fix technical accuracy or ambiguity at the sentence, paragraph, or table level.

Editorial changes apply to grammatical, formatting, and style issues.

No changes means that the document is identical to its last release.

Major and minor changes can be described further using the following revision types:

- New content added.
- Content update.
- Content removed.
- New product behavior note added.
- Product behavior note updated.
- Product behavior note removed.
- New protocol syntax added.
- Protocol syntax updated.
- Protocol syntax removed.
- New content added due to protocol revision.
- Content updated due to protocol revision.
- Content removed due to protocol revision.
- New protocol syntax added due to protocol revision.
- Protocol syntax updated due to protocol revision.
- Protocol syntax removed due to protocol revision.
- New content added for template compliance.
- Content updated for template compliance.

- Content removed for template compliance.
- Obsolete document removed.

Editorial changes always have the revision type "Editorially updated."

Some important terms used in revision type descriptions are defined as follows:

Protocol syntax refers to data elements (such as packets, structures, enumerations, and methods) as well as interfaces.

Protocol revision refers to changes made to a protocol that affect the bits that are sent over the wire.

Changes are listed in the following table. If you need further information, please contact protocol@microsoft.com.

Section	Tracking number (if applicable) and description	Major change (Y or N)	Revision Type
1.1 Glossary	53741 Removed the terms "Hypertext Transfer Protocol (HTTP)", "Hypertext Transfer Protocol over Secure Socket Layers (HTTPS)", "Simple Mail Transfer Protocol (SMTP)", and "WSDL port type" from the list of terms that are defined in [MS-OXGLOS].	N	Content update.
1.1 Glossary	Added Glossary items URI aand URL.	N	New content added.
1.3 Overview	Updated the section title.	N	Content updated for template compliance .
2.2	53741	N	Content

Section	Tracking number (if applicable) and description	Major change (Y or N)	Revision Type
Common Message Syntax	Added a link to Web Services Description Language (WSDL) glossary term.		update.
2.2.3 Complex Types	53741 Added a link to XML schema glossary term.	N	Content update.
2.2.4 Elements	53741 Added a link to XML schema glossary term.	N	Content update.
2.2.5 Attributes	53741 Added a link to XML schema glossary term.	N	Content update.
2.2.6 Groups	53741 Added a link to XML schema glossary term.	N	Content update.
2.2.7 Attribute Groups	53741 Added a link to XML schema glossary term.	N	Content update.
2.2.8 Messages	53741 Added a link to XML schema glossary term.	N	Content update.
3.1.4.1.1 Simple Types	53741 Added a link to XML schema glossary term.	N	Content update.
3.1.4.1.2 Complex Types	53741 Added a link to XML schema glossary term.	N	Content update.
3.1.4.1.3 Elements	53741 Added a link to XML schema glossary term.	N	Content update.
3.1.4.1.4 Attributes	53741 Added a link to	N	Product behavior

Section	Tracking number (if applicable) and description	Major change (Y or N)	Revision Type
	XML schema glossary term.		note updated.
3.1.4.1.5 Groups	53741 Added a link to XML schema glossary term.	N	Content update.
3.1.4.1.6 Attribute Groups	53741 Added a link to XML schema glossary term.	N	Content update.
3.1.4.1.7 Messages	53741 Added a link to Web Services Description Language (WSDL) glossary term.	N	Content update.
3.1.4.2.1 Simple Types	53741 Added a link to XML schema glossary term.	N	Content update.
3.1.4.2.2 Complex Types	53741 Added a link to XML schema glossary term.	N	Content update.
3.1.4.2.2 Complex Types	54783 Updated the text to specify that the operation does define XML schema complex types.	N	Content update.
3.1.4.2.3 Elements	53741 Added a link to XML schema glossary term.	N	Content update.
3.1.4.2.4 Attributes	53741 Added a link to XML schema glossary term.	N	Content update.
3.1.4.2.5 Groups	53741 Added a link to XML schema glossary term.	N	Content update.

Section	Tracking number (if applicable) and description	Major change (Y or N)	Revision Type
3.1.4.2.6 Attribute Groups	53741 Added a link to XML schema glossary term.	N	Content update.
3.1.4.2.7 Messages	53741 Added a link to Web Services Description Language (WSDL) glossary term.	N	Content update.
3.1.4.3.1 Simple Types	53741 Added a link to XML schema glossary term.	N	Content update.
3.1.4.3.2 Complex Types	53741 Added a link to XML schema glossary term.	N	Content update.
3.1.4.3.2.4 m:User Complex Type	Updated the description to indicate that the user is identified by an SMTP address or a Legacy DN. Added information about how the GetUserSettings method discovers the mailbox and the <User> element requirement.	N	Content update.
3.1.4.3.2.5 m:RequestedSettings Complex Type	53741 Added a link to unified messaging glossary term.	N	Content update.
3.1.4.3.3 Elements	53741 Added a link to XML schema glossary term.	N	Content update.
3.1.4.3.4	53741 Added a link to	N	Content

Section	Tracking number (if applicable) and description	Major change (Y or N)	Revision Type
Attributes	XML schema glossary term.		update.
3.1.4.3.5 Groups	53741 Added a link to XML schema glossary term.	N	Content update.
3.1.4.3.7 Messages	53741 Added a link to Web Services Description Language (WSDL) glossary term.	N	Content update.
3.1.4.4 GetOrganizationRelationshipSettings	Added new section.	Y	New content added.
3.1.4.4.1 Simple Types	Added new section.	Y	New content added.
3.1.4.4.2 Complex Types	Added new section.	Y	New content added.
3.1.4.4.2.1 tns:GetOrganizationRelationshipSettingsRequest Complex Type	Added new section.	Y	New content added.
3.1.4.4.2.2 tns:GetOrganizationRelationshipSettingsResponse Complex Type	Added new section.	Y	New content added.
3.1.4.4.2.3 tns:OrganizationRelationshipSettingsCollection Complex Type	Added new section.	Y	New content added.
3.1.4.4.2.4 tns:OrganizationRelationshipSettings Complex Type	Added new section.	Y	New content added.
3.1.4.4.3 Elements	Added new section.	Y	New content added.
3.1.4.4.3.1 GetOrganizationRelationshipSettingsRequestMessage Element	Added new section.	Y	New content added.
3.1.4.4.3.2 GetOrganizationRelationshipSettingsRequest Element	Added new section.	Y	New content

Section	Tracking number (if applicable) and description	Major change (Y or N)	Revision Type
			added.
3.1.4.4.3.3 GetOrganizationRelationshipSettingsResponseMessage Element	Added new topic.	Y	New content added.
3.1.4.4.3.4 OrganizationRelationshipSettingsCollection Element	Added new section.	Y	New content added.
3.1.4.4.4 Attributes	Added new section.	Y	New content added.
3.1.4.4.5 Groups	Added new topic.	Y	New content added.
3.1.4.4.6 Attribute Groups	Added new topic.	Y	New content added.
3.1.4.4.7 Messages	Added new section.	Y	New content added.
3.1.4.4.7.1 tns:GetOrganizationRelationshipSettingsRequestMessage	Added new section.	Y	New content added.
3.1.4.4.7.2 tns:GetOrganizationRelationshipSettingsRequestMessage_Headers	Added new section.	Y	New content added.
3.1.4.4.7.3 tns:GetOrganizationRelationshipSettingsResponseMessage	Added new section.	Y	New content added.
3.1.4.4.7.4 tns:GetOrganizationRelationshipSettingsResponseMessage_Headers	Added new section.	Y	New content added.
6.1 WSDL	53741 Added a link to Web Services Description Language (WSDL) glossary term.	N	Content update.
6.1 WSDL	Updated to latest WSDL.	Y	New product behavior note

Section	Tracking number (if applicable) and description	Major change (Y or N)	Revision Type
			added.
6.2 Messages XSD	53741 Added a link to XML schema glossary term.	N	Content update.
6.2 Messages XSD	Updated to latest messages schema.	Y	New content added.

PRELIMINARY

9 Index

A

[Applicability](#) 11

C

[Capability negotiation](#) 11

[Change tracking](#) 85

Client

[abstract data model](#) 62

[initialization](#) 62

[local events](#) 63

[message processing](#) 63

[overview](#) 62

[sequencing rules](#) 63

[timer events](#) 63

[timers](#) 62

F

[Full WSDL](#) 70

G

[Glossary](#) 7

I

[Introduction](#) 7

M

Messages

[overview](#) 12

[syntax](#) 12

[transport](#) 12

O

[Overview](#) 8

P

[Preconditions](#) 10

[Prerequisites](#) 10

[Product behavior](#) 84

R

[Relationship to other protocols](#) 10

S

Security

[implementer considerations](#) 69

[overview](#) 69

[parameter index](#) 69

Server

[abstract data model](#) 16

[initialization](#) 16

[local events](#) 62

[message processing](#) 16

[overview](#) 16

[sequencing rules](#) 16

[timer events](#) 62

[timers](#) 16

[Standards assignments](#) 11

T

[Tracking changes](#) 85

V

[Vendor-extensible fields](#) 11

[Versioning](#) 11