

# [MS-OXWCONFIG]: Web Service Configuration Protocol Specification

---

## Intellectual Property Rights Notice for Open Specifications Documentation

- **Technical Documentation.** Microsoft publishes Open Specifications documentation for protocols, file formats, languages, standards as well as overviews of the interaction among each of these technologies.
- **Copyrights.** This documentation is covered by Microsoft copyrights. Regardless of any other terms that are contained in the terms of use for the Microsoft website that hosts this documentation, you may make copies of it in order to develop implementations of the technologies described in the Open Specifications and may distribute portions of it in your implementations using these technologies or your documentation as necessary to properly document the implementation. You may also distribute in your implementation, with or without modification, any schema, IDL's, or code samples that are included in the documentation. This permission also applies to any documents that are referenced in the Open Specifications.
- **No Trade Secrets.** Microsoft does not claim any trade secret rights in this documentation.
- **Patents.** Microsoft has patents that may cover your implementations of the technologies described in the Open Specifications. Neither this notice nor Microsoft's delivery of the documentation grants any licenses under those or any other Microsoft patents. However, a given Open Specification may be covered by Microsoft's Open Specification Promise (available here: <http://www.microsoft.com/interop/osp>) or the Community Promise (available here: <http://www.microsoft.com/interop/cp/default.mspx>). If you would prefer a written license, or if the technologies described in the Open Specifications are not covered by the Open Specifications Promise or Community Promise, as applicable, patent licenses are available by contacting [iplg@microsoft.com](mailto:iplg@microsoft.com).
- **Trademarks.** The names of companies and products contained in this documentation may be covered by trademarks or similar intellectual property rights. This notice does not grant any licenses under those rights.
- **Fictitious Names.** The example companies, organizations, products, domain names, e-mail addresses, logos, people, places, and events depicted in this documentation are fictitious. No association with any real company, organization, product, domain name, email address, logo, person, place, or event is intended or should be inferred.

**Reservation of Rights.** All other rights are reserved, and this notice does not grant any rights other than specifically described above, whether by implication, estoppel, or otherwise.

**Tools.** The Open Specifications do not require the use of Microsoft programming tools or programming environments in order for you to develop an implementation. If you have access to Microsoft programming tools and environments you are free to take advantage of them. Certain Open Specifications are intended for use in conjunction with publicly available standard specifications and network programming art, and assumes that the reader either is familiar with the aforementioned material or has immediate access to it.

## Revision Summary

Date	Revision History	Revision Class	Comments
04/10/2009	.1	Major	Initial Availability.
07/15/2009	1.0	Major	Revised and edited for technical content.
11/04/2009	1.1.0	Minor	Updated the technical content.
02/10/2010	2.0.0	Major	Updated and revised the technical content.
05/05/2010	3.0.0	Major	Updated and revised the technical content.
08/04/2010	3.1	Minor	Clarified the meaning of the technical content.
11/03/2010	3.2	Minor	Clarified the meaning of the technical content.
03/18/2011	3.2	No change	No changes to the meaning, language, or formatting of the technical content.
08/05/2011	3.3	Minor	Clarified the meaning of the technical content.
10/07/2011	3.3	No change	No changes to the meaning, language, or formatting of the technical content.

# Table of Contents

<b>1 Introduction</b>	<b>5</b>
1.1 Glossary	5
1.2 References	5
1.2.1 Normative References	5
1.2.2 Informative References	6
1.3 Overview	6
1.4 Relationship to Other Protocols	6
1.5 Prerequisites/Preconditions	7
1.6 Applicability Statement	7
1.7 Versioning and Capability Negotiation	7
1.8 Vendor-Extensible Fields	7
1.9 Standards Assignments	7
<b>2 Messages</b>	<b>8</b>
2.1 Transport	8
2.2 Common Message Syntax	8
2.2.1 Namespaces	8
2.2.2 Simple Types	8
2.2.3 Complex Types	8
2.2.4 Elements	8
2.2.5 Attributes	8
2.2.6 Groups	9
2.2.7 Attribute Groups	9
2.2.8 Messages	9
<b>3 Protocol Details</b>	<b>10</b>
3.1 ExchangeServicePortType Server Details	10
3.1.1 Abstract Data Model	10
3.1.2 Timers	10
3.1.3 Initialization	10
3.1.4 Message Processing Events and Sequencing Rules	10
3.1.4.1 GetServiceConfiguration	10
3.1.4.1.1 Simple Types	11
3.1.4.1.1.1 t:ProtectionRuleActionKindType Simple Type	11
3.1.4.1.1.2 t:ProtectionRuleAllInternalType Simple Type	11
3.1.4.1.1.3 t:ProtectionRuleTrueType Simple Type	12
3.1.4.1.1.4 t:ProtectionRuleValueType Simple Type	12
3.1.4.1.1.5 t:ServiceConfigurationType Simple Type	12
3.1.4.1.2 Complex Types	13
3.1.4.1.2.1 t:ArrayOfProtectionRulesType Complex Type	13
3.1.4.1.2.2 m:ArrayOfServiceConfigurationResponseMessageType Complex Type	14
3.1.4.1.2.3 m:ArrayOfServiceConfigurationType Complex Type	14
3.1.4.1.2.4 m:GetServiceConfigurationResponseMessageType Complex Type	15
3.1.4.1.2.5 m:GetServiceConfigurationType Complex Type	15
3.1.4.1.2.6 t:MailTipsServiceConfiguration Complex Type	16
3.1.4.1.2.7 t:ProtectionRuleActionType Complex Type	18
3.1.4.1.2.8 t:ProtectionRuleAndType Complex Type	19
3.1.4.1.2.9 t:ProtectionRuleArgumentType Complex Type	20
3.1.4.1.2.10 t:ProtectionRuleConditionType Complex Type	20
3.1.4.1.2.11 t:ProtectionRuleRecipientIsType Complex Type	22

3.1.4.1.2.12	t:ProtectionRuleSenderDepartmentsType Complex Type .....	22
3.1.4.1.2.13	t:ProtectionRulesServiceConfiguration Complex Type .....	23
3.1.4.1.2.14	t:ProtectionRuleType .....	24
3.1.4.1.2.15	t:ServiceConfiguration .....	25
3.1.4.1.2.16	ServiceConfigurationResponseMessageType Complex Type .....	25
3.1.4.1.2.17	t:SmtpDomain.....	26
3.1.4.1.2.18	t:SmtpDomainList.....	27
3.1.4.1.2.19	UnifiedMessageServiceConfiguration Complex Type.....	27
3.1.4.1.3	Elements.....	28
3.1.4.1.3.1	m:GetServiceConfiguration .....	28
3.1.4.1.3.2	m:GetServiceConfigurationResponse.....	28
3.1.4.1.4	Attributes.....	28
3.1.4.1.5	Groups.....	28
3.1.4.1.6	Attribute Groups .....	28
3.1.4.1.7	Messages .....	28
3.1.4.1.7.1	GetServiceConfigurationSoapIn Message .....	29
3.1.4.1.7.2	GetServiceConfigurationSoapOut Message .....	29
3.1.5	Timer Events .....	29
3.1.6	Other Local Events .....	29
3.2	Client Details.....	29
3.2.1	Abstract Data Model .....	29
3.2.2	Timers .....	30
3.2.3	Initialization .....	30
3.2.4	Message Processing Events and Sequencing Rules.....	30
3.2.5	Timer Events .....	30
3.2.6	Other Local Events .....	30
<b>4</b>	<b>Protocol Examples.....</b>	<b>31</b>
4.1	GetServiceConfiguration Request.....	31
4.2	GetServiceConfiguration Response.....	31
4.3	Unsuccessful Response.....	32
4.3.1	SOAP Exception .....	32
4.3.2	GetServiceConfiguration Error Response .....	33
<b>5</b>	<b>Security.....</b>	<b>34</b>
5.1	Security Considerations for Implementers.....	34
5.2	Index of Security Parameters .....	34
<b>6</b>	<b>Appendix A: Full WSDL.....</b>	<b>35</b>
<b>7</b>	<b>Appendix B: Full XML Schema .....</b>	<b>37</b>
7.1	Messages Schema.....	37
7.2	Types Schema.....	38
<b>8</b>	<b>Appendix C: Product Behavior .....</b>	<b>42</b>
<b>9</b>	<b>Change Tracking.....</b>	<b>43</b>
<b>10</b>	<b>Index .....</b>	<b>44</b>

# 1 Introduction

This document specifies the Web Service Configuration Protocol, which sends the request-response messages for retrieving configuration information that describes policy that clients use to either enforce or advise users.

## 1.1 Glossary

The following terms are defined in [\[MS-GLOS\]](#):

**domain**  
**Hypertext Transfer Protocol (HTTP)**  
**Hypertext Transfer Protocol over Secure Sockets Layer (HTTPS)**  
**XML**

The following terms are defined in [\[MS-OXGLOS\]](#):

**mail tip**  
**mailbox**  
**recipient**  
**Simple Mail Transfer Protocol (SMTP)**  
**SOAP message**  
**Web Services Description Language (WSDL)**  
**WSDL message**

The following terms are specific to this document:

**organization policy:** A policy that is comprised of a condition part and an action part. The condition part is expressed as a sequence of predicates that are evaluated by an e-mail client. The action part specifies what action the e-mail client takes if the condition is met. Organization policies are sets of conditions and associated actions that apply within an organization.

**MAY, SHOULD, MUST, SHOULD NOT, MUST NOT:** These terms (in all caps) are used as described in [\[RFC2119\]](#). All statements of optional behavior use either MAY, SHOULD, or SHOULD NOT.

## 1.2 References

### 1.2.1 Normative References

We conduct frequent surveys of the normative references to assure their continued availability. If you have any issue with finding a normative reference, please contact [dochelp@microsoft.com](mailto:dochelp@microsoft.com). We will assist you in finding the relevant information. Please check the archive site, <http://msdn2.microsoft.com/en-us/library/E4BD6494-06AD-4aed-9823-445E921C9624>, as an additional source.

[MS-OXWSADISC] Microsoft Corporation, "[Autodiscover Publishing and Lookup SOAP-Based Web Service Protocol Specification](#)".

[MS-OXWSCDATA] Microsoft Corporation, "[Common Web Service Data Types](#)".

[RFC2119] Bradner, S., "Key words for use in RFCs to Indicate Requirement Levels", BCP 14, RFC 2119, March 1997, <http://www.rfc-editor.org/rfc/rfc2119.txt>

[RFC3066] Alvestrand, H., "Tags for the Identification of Language", RFC 3066, January 2001, <http://www.ietf.org/rfc/rfc3066.txt>

[SOAP1.1] Box, D., Ehnebuske, D., Kakivaya, G., et al., "Simple Object Access Protocol (SOAP) 1.1", May 2000, <http://www.w3.org/TR/2000/NOTE-SOAP-20000508/>

[WSDL] Christensen, E., Curbera, F., Meredith, G., and Weerawarana, S., "Web Services Description Language (WSDL) 1.1", W3C Note, March 2001, <http://www.w3.org/TR/2001/NOTE-wsdl-20010315>

[XMLNS] Bray, T., Hollander, D., Layman, A., et al., Eds., "Namespaces in XML 1.0 (Third Edition)", W3C Recommendation, December 2009, <http://www.w3.org/TR/2009/REC-xml-names-20091208/>

[XMLSCHEMA1] Thompson, H.S., Ed., Beech, D., Ed., Maloney, M., Ed., and Mendelsohn, N., Ed., "XML Schema Part 1: Structures", W3C Recommendation, May 2001, <http://www.w3.org/TR/2001/REC-xmlschema-1-20010502/>

[XMLSCHEMA2] Biron, P.V., Ed. and Malhotra, A., Ed., "XML Schema Part 2: Datatypes", W3C Recommendation, May 2001, <http://www.w3.org/TR/2001/REC-xmlschema-2-20010502/>

### 1.2.2 Informative References

[MS-GLOS] Microsoft Corporation, "[Windows Protocols Master Glossary](#)".

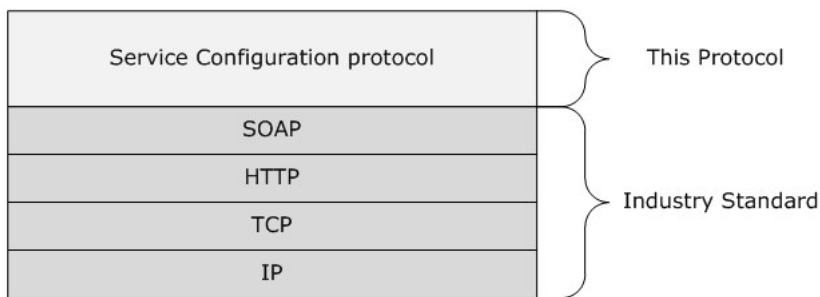
[MS-OXGLOS] Microsoft Corporation, "[Exchange Server Protocols Master Glossary](#)".

### 1.3 Overview

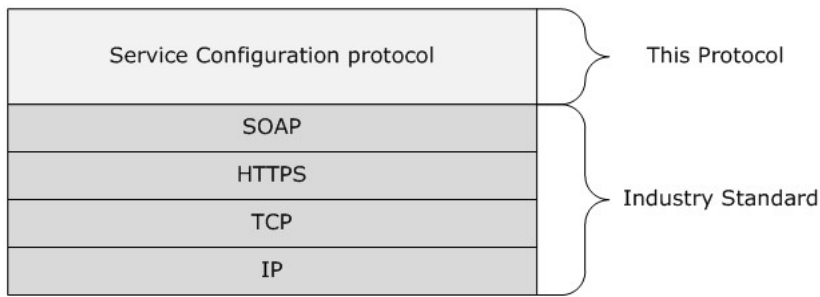
The Web Service Configuration Protocol sends the request-response messages that retrieve **organization policy** configuration information for a **mailbox**. Clients use the **SOAP** protocol [\[SOAP1.1\]](#) to contact the Web Service Configuration service.

### 1.4 Relationship to Other Protocols

The Web Service Configuration Protocol uses SOAP over **HTTP** and SOAP over **HTTPS**, as shown in the following figures.



**Figure 1: SOAP over HTTP**



**Figure 2: SOAP over HTTPS**

## 1.5 Prerequisites/Preconditions

The URL of the Web Service Configuration Protocol can be retrieved by using the Autodiscover Publishing and Lookup SOAP-Based Web Service Protocol [\[MS-OXWSADISC\]](#).

## 1.6 Applicability Statement

The Web Service Configuration Protocol can be used when access to organization policy configuration information is available and when communication with the server is enabled for SOAP over HTTP or SOAP over HTTPS.

## 1.7 Versioning and Capability Negotiation

This document covers versioning issues in the following areas:

- Supported Transports: This protocol uses SOAP 1.1, as specified in section [2.1](#).
- Protocol Versions: This protocol specifies only one **WSDL** portType version.
- Security and Authentication Methods: This protocol relies on the Web server that is hosting it to perform authentication.
- Capability Negotiation: None.

## 1.8 Vendor-Extensible Fields

None.

## 1.9 Standards Assignments

None.

## 2 Messages

### 2.1 Transport

The SOAP version supported is SOAP 1.1. For details, see [\[SOAP1.1\]](#).

### 2.2 Common Message Syntax

This section contains common definitions that are used by this protocol. The syntax of the definitions uses XML schema, as defined in [\[XMLSCHEMA1\]](#) and [\[XMLSCHEMA2\]](#), and Web Services Description Language (WSDL), as defined in [\[WSDL\]](#).

#### 2.2.1 Namespaces

This specification defines and references various XML namespaces by using the mechanisms specified in [\[XMLNS\]](#). Although this specification associates a specific **XML** namespace prefix for each XML namespace that is used, the choice of any particular XML namespace prefix is implementation-specific and not significant for interoperability.

Prefix	Namespace URI	Reference
soap	<a href="http://schemas.xmlsoap.org/WSDL/soap/">http://schemas.xmlsoap.org/WSDL/soap/</a>	<a href="#">[SOAP1.1]</a>
tns	<a href="http://schemas.microsoft.com/exchange/services/2006/messages">http://schemas.microsoft.com/exchange/services/2006/messages</a>	[MS-OXWCONFIG]
xs	<a href="http://www.w3.org/2001/XMLSchema">http://www.w3.org/2001/XMLSchema</a>	<a href="#">[XMLSCHEMA1]</a>
targetNamespace	<a href="http://schemas.microsoft.com/exchange/services/2006/messages">http://schemas.microsoft.com/exchange/services/2006/messages</a>	[MS-OXWCONFIG]
wsdl	<a href="http://schemas.xmlsoap.org/WSDL/">http://schemas.xmlsoap.org/WSDL/</a>	<a href="#">[WSDL]</a>
t	<a href="http://schemas.microsoft.com/exchange/services/2006/types">http://schemas.microsoft.com/exchange/services/2006/types</a>	[MS-OXWCONFIG]
m	<a href="http://schemas.microsoft.com/exchange/services/2006/messages">http://schemas.microsoft.com/exchange/services/2006/messages</a>	[MS-OXWCONFIG]

#### 2.2.2 Simple Types

This specification does not define any common XML schema simple type definitions.

#### 2.2.3 Complex Types

This specification does not define any common XML schema complex type definitions.

#### 2.2.4 Elements

This specification does not define any common XML schema element definitions.

#### 2.2.5 Attributes

This specification does not define any common XML schema attribute definitions.



### **2.2.6 Groups**

This specification does not define any common XML schema group definitions.

### **2.2.7 Attribute Groups**

This specification does not define any common XML schema attribute group definitions.

### **2.2.8 Messages**

This specification does not define any common **WSDL message** definitions.

## 3 Protocol Details

The client side of this protocol is simply a pass-through. That is, no additional timers or other state is required on the client side of this protocol. Calls made by the higher-layer protocol or application are passed directly to the transport, and the results returned by the transport are passed directly back to the higher-layer protocol or application.

### 3.1 ExchangeServicePortType Server Details

The Web Service Configuration Protocol defines a single port type.

```
<wsdl:portType name="ExchangeServicePortType">
  <wsdl:operation name="GetServiceConfiguration">
    <wsdl:input message="tns:GetServiceConfigurationSoapIn" />
    <wsdl:output message="tns:GetServiceConfigurationSoapOut" />
  </wsdl:operation>
</wsdl:portType>
```

Operation	Description
<a href="#">GetServiceConfiguration</a>	Gets organization policy configuration information for a mailbox.

#### 3.1.1 Abstract Data Model

The Web Service Configuration Protocol is a stateless protocol.

#### 3.1.2 Timers

None.

#### 3.1.3 Initialization

None.

#### 3.1.4 Message Processing Events and Sequencing Rules

This protocol includes the operation that is listed in the following table.

Operation	Description
<b>GetServiceConfiguration</b> (section <a href="#">3.1.4.1</a> )	Gets organization policy configuration information for a mailbox.

##### 3.1.4.1 GetServiceConfiguration

The **GetServiceConfiguration** operation gets the service configuration for a mailbox.

```
<wsdl:operation name="GetServiceConfiguration">
  <wsdl:input message="tns:GetServiceConfigurationSoapIn" />
  <wsdl:output message="tns:GetServiceConfigurationSoapOut" />
</wsdl:operation>
```

Request

Message format	Description
<a href="#">tns:GetServiceConfigurationSoapIn</a>	Specifies the <b>SOAP message</b> that gets the configuration information for a mailbox.

Response

Message format	Description
<a href="#">tns:GetServiceConfigurationSoapOut</a>	Specifies the SOAP message that is returned by the server in response.

### 3.1.4.1.1 Simple Types

The following XML schema simple definitions are specific to the **GetServiceConfiguration** operation.

#### 3.1.4.1.1.1 t:ProtectionRuleActionKindType Simple Type

The **ProtectionRuleActionKindType** simple type specifies the actions that are supported by the protection rules service.

```
<xs:simpleType name="ProtectionRuleActionKindType">
  <xs:restriction
    base="xs:string"
  >
    <xs:enumeration
      value="RightsProtectMessage"
    />
  </xs:restriction>
</xs:simpleType>
```

Enumeration

The following value is defined by the **ProtectionRuleActionKindType** simple type:

Value	Description
<b>RightsProtectMessage</b>	The specific permission template to apply to the message.

Only the **RightsProtectMessage** action is supported. The value MUST be **RightsProtectMessage**. The protection rules are used to apply a specific set of permissions.

#### 3.1.4.1.1.2 t:ProtectionRuleAllInternalType Simple Type

The **ProtectionRuleAllInternalType** simple type specifies the AllInternal predicate. The semantics of *AllInternal* is that the predicate matches if all recipients of the e-mail message are internal to the organization of the sender of that e-mail message.

```
<xs:simpleType name="ProtectionRuleAllInternalType">
  <xs:restriction
    base="xs:string"
  >
  </xs:restriction>
</xs:simpleType>
```

```

    <xs:length
      value="0"
    />
  </xs:restriction>
</xs:simpleType>

```

### 3.1.4.1.1.3 t:ProtectionRuleTrueType Simple Type

The **ProtectionRuleTrueType** simple type specifies the True predicate. The semantics of True is that the condition always matches.

```

<xs:simpleType name="ProtectionRuleTrueType">
  <xs:restriction
    base="xs:string"
  >
    <xs:length
      value="0"
    />
  </xs:restriction>
</xs:simpleType>

```

### 3.1.4.1.1.4 t:ProtectionRuleValueType Simple Type

The **ProtectionRuleValueType** simple type specifies additional arguments to the RecipientIs and SenderDepartments predicates. The value MUST be a string with a minimum length of one character.

```

<xs:simpleType name="ProtectionRuleValueType">
  <xs:restriction
    base="xs:string"
  >
    <xs:minLength
      value="1"
    />
  </xs:restriction>
</xs:simpleType>

```

### 3.1.4.1.1.5 t:ServiceConfigurationType Simple Type

The **ServiceConfigurationType** simple type specifies the service configurations that are returned in the response.

```

<xs:simpleType name="ServiceConfigurationType">
  <xs:list>
    <xs:simpleType>
      <xs:restriction
        base="xs:string"
      >
        <xs:enumeration
          value="MailTips"
        />
      </xs:restriction>
    </xs:simpleType>
  </xs:list>
</xs:simpleType>

```

```

    />
    <xs:enumeration
      value="UnifiedMessagingConfiguration"
    />
    <xs:enumeration
      value="ProtectionRules"
    />
  </xs:restriction>
</xs:simpleType>
</xs:list>
</xs:simpleType>

```

## Enumeration

The following values are defined by the **ServiceConfigurationType** simple type:

Value	Description
<b>MailTips</b>	Represents the <b>mail tips</b> service configuration.
<b>UnifiedMessagingConfiguration</b>	Represents the unified messaging service configuration.
<b>ProtectionRules</b>	Represents the protection rules service configuration.

### 3.1.4.1.2 Complex Types

The following XML schema complex type definitions are specific to this operation.

#### 3.1.4.1.2.1 t:ArrayOfProtectionRulesType Complex Type

The **ArrayOfProtectionRulesType** complex type specifies an array of protection rules.

```

<xs:complexType name="ArrayOfProtectionRulesType">
  <xs:sequence>
    <xs:element name="Rule"
      type="t:ProtectionRuleType"
      minOccurs="0"
      maxOccurs="unbounded"
    />
  </xs:sequence>
</xs:complexType>

```

## Child Elements

Element	Type	Description
<b>Rule</b>	<b>t:ProtectionRuleType</b> (section <a href="#">3.1.4.1.2.14</a> )	Contains a single protection rule. This element can occur zero or more times. This element occurs zero times when no protection rules are defined by the organization. It occurs one or more times if at least one rule is defined by the organization.

### 3.1.4.1.2.2 m:ArrayOfServiceConfigurationResponseType Complex Type

The **ArrayOfServiceConfigurationResponseType** complex type specifies an array of service configuration response messages.

```
<xs:complexType name="ArrayOfServiceConfigurationResponseType">
  <xs:sequence>
    <xs:element name="ServiceConfigurationResponseType"
      type="m:ServiceConfigurationResponseType"
      maxOccurs="unbounded"
      minOccurs="0"
    />
  </xs:sequence>
</xs:complexType>
```

#### Child Elements

Element	Type	Description
<b>ServiceConfigurationResponseType</b>	<b>m:ServiceConfigurationResponseType</b> (section <a href="#">3.1.4.1.2.16</a> )	Contains a service configuration response message. This element <b>MUST</b> occur at least once and can occur two or more times.

### 3.1.4.1.2.3 m:ArrayOfServiceConfigurationType Complex Type

The **ArrayOfServiceConfigurationType** complex type specifies the requested service configurations for a **GetServiceConfigurationSoapIn** message (section [3.1.4.1.7.1](#)).

```
<xs:complexType name="ArrayOfServiceConfigurationType">
  <xs:choice
    maxOccurs="unbounded"
    minOccurs="1"
  >
    <xs:element name="ConfigurationName"
      type="t:ServiceConfigurationType"
    />
  </xs:choice>
</xs:complexType>
```

#### Child Elements

Element	Type	Description
<b>ConfigurationName</b>	<a href="#">t:ServiceConfigurationType</a>	Specifies the service configuration that is returned in the response. This simple type MUST occur at least once.

#### 3.1.4.1.2.4 m:GetServiceConfigurationResponseMessageType Complex Type

The **GetServiceConfigurationResponseMessageType** type contains the response message for a **GetServiceConfiguration** operation. The **GetServiceConfigurationResponseMessageType** type extends the **ResponseMessageType**.

```
<xs:complexType name="GetServiceConfigurationResponseMessageType">
  <xs:complexContent>
    <xs:extension
      base="m:ResponseMessageType"
    >
      <xs:sequence>
        <xs:element name="ResponseMessages"
          type="m:ArrayOfServiceConfigurationResponseMessageType"
          minOccurs="0"
          maxOccurs="1"
        />
      </xs:sequence>
    </xs:extension>
  </xs:complexContent>
</xs:complexType>
```

#### Child Elements

Element	Type	Description
<b>ResponseMessages</b>	<b>m:ArrayOfServiceConfigurationResponseMessageType</b> (section <a href="#">3.1.4.1.2.2</a> )	Contains an array of service configuration response messages. This element MUST occur if there are configuration settings.

#### 3.1.4.1.2.5 m:GetServiceConfigurationType Complex Type

The **GetServiceConfigurationType** complex type specifies the requested service configurations and identifies the sender or recipient actor who is making the request. The recipient actor can be different from the user who authenticated with the server. The **GetServiceConfigurationType** type extends the **m:BaseRequestType** complex type.

```
<xs:complexType name="GetServiceConfigurationType">
  <xs:complexContent>
    <xs:extension
      base="m:BaseRequestType"
    >
      <xs:sequence>
```

```

<xs:element name="ActingAs"
  type="t:EmailAddressType"
  maxOccurs="1"
  minOccurs="0"
/>
<xs:element name="RequestedConfiguration"
  type="m:ArrayOfServiceConfigurationType"
  maxOccurs="1"
  minOccurs="1"
/>
</xs:sequence>
</xs:extension>
</xs:complexContent>
</xs:complexType>

```

### Child Elements

Element	Type	Description
<b>ActingAs</b>	<b>t:EmailAddressType</b>	Specifies who the caller is sending as. If this element is not present, the authenticated user is assumed to be the sender. The <b>ActingAs</b> element <b>MUST</b> be included for requesting sender hints. This element is optional.
<b>RequestedConfiguration</b>	<b>m:ArrayOfServiceConfigurationType</b> (section <a href="#">3.1.4.1.2.3</a> )	Specifies the requested service configurations. This element <b>MUST</b> be present.

### 3.1.4.1.2.6 t:MailTipsServiceConfiguration Complex Type

The **MailTipsServiceConfiguration** complex type contains service configuration for the mail tips service. The **MailTipsServiceConfiguration** complex type extends the **ServiceConfigurationType** simple type (section [3.1.4.1.1.5](#)).

```

<xs:complexType name="MailTipsServiceConfiguration">
  <xs:complexContent>
    <xs:extension
      base="t:ServiceConfiguration"
    >
      <xs:sequence>
        <xs:element name="MailTipsEnabled"
          type="xs:boolean"
          maxOccurs="1"
          minOccurs="1"
        />
        <xs:element name="MaxRecipientsPerGetMailTipsRequest"
          type="xs:int"
          maxOccurs="1"
          minOccurs="1"
        />
      </xs:sequence>
    </xs:extension>
  </xs:complexContent>
</xs:complexType>

```



```

/>
<xs:element name="MaxMessageSize"
  type="xs:int"
  maxOccurs="1"
  minOccurs="1"
/>
<xs:element name="LargeAudienceThreshold"
  type="xs:int"
  maxOccurs="1"
  minOccurs="1"
/>
<xs:element name="ShowExternalRecipientCount"
  type="xs:boolean"
  maxOccurs="1"
  minOccurs="1"
/>
<xs:element name="InternalDomains"
  type="t:SmtpDomainList"
  maxOccurs="1"
  minOccurs="1"
/>
</xs:sequence>
</xs:extension>
</xs:complexContent>
</xs:complexType>

```

#### Child Elements

Element	Type	Description
<b>MailTipsEnabled</b>	<b>xs:boolean</b>	Specifies whether the mail tips service is available.
<b>MaxRecipientsPerGetMailTipsRequest</b>	<b>xs:int</b>	Specifies the maximum number of <b>recipients</b> that can be passed to the <b>GetMailTips</b> operation (section ). This element <b>MUST</b> be included if the <b>MailTipsServiceConfiguration</b> complex type is used and <b>MUST</b> be a non-negative integer.
<b>MaxMessageSize</b>	<b>xs:int</b>	Specifies the maximum message size that the user identified by the <ActingAs> element can send. This element <b>MUST</b> be included if the <b>MailTipsServiceConfiguration</b> complex type is used and <b>MUST</b> be a non-negative integer.
<b>LargeAudienceThreshold</b>	<b>xs:int</b>	Specifies the large audience threshold for clients. This element <b>MUST</b> be included if the <b>MailTipsServiceConfiguration</b> complex type is used and <b>MUST</b> be a non-negative integer.

Element	Type	Description
<b>ShowExternalRecipientCount</b>	<b>xs:boolean</b>	Specifies whether consumers of the <b>GetMailTips</b> operation have to show mail tips that indicate the number of external recipients to which a message is addressed.  This element <b>MUST</b> be included if the <b>MailTipsServiceConfiguration</b> complex type is used.
<b>InternalDomains</b>	<b>t:SmtpDomainList</b> (section <a href="#">3.1.4.1.2.18</a> )	Specifies a list of <b>SMTP domains</b> that are considered internal to an organization. This information is provided so that mail client software can provide external recipient mail tips when offline.  This element <b>MUST</b> be included if the <b>MailTipsServiceConfiguration</b> complex type is used.

### 3.1.4.1.2.7 t:ProtectionRuleActionType Complex Type

The **ProtectionRuleActionType** complex type specifies the action that the client can take if the condition part of the associated rule matches.

```
<xs:complexType name="ProtectionRuleActionType">
  <xs:sequence>
    <xs:element name="Argument"
      type="t:ProtectionRuleArgumentType"
      maxOccurs="unbounded"
      minOccurs="0"
    />
  </xs:sequence>
  <xs:attribute name="Name"
    type="t:ProtectionRuleActionKindType"
    use="required"
  />
</xs:complexType>
```

#### Child Elements

Element	Type	Description
<b>Argument</b>	<b>t:ProtectionRuleArgumentType</b> (section <a href="#">3.1.4.1.2.9</a> )	Specifies arguments to the action. This element <b>MUST NOT</b> occur if the specified action does not require arguments to be specified. This element can occur one or more times if an action requires one or more arguments. The <b>RightsProtectMessage</b> action <b>MUST</b> contain a single argument.

#### Attributes

Name	Type	Description
<b>Name</b>	t:ProtectionRuleActionKindType (section <a href="#">3.1.4.1.1.1</a> )	Specifies the name of the action. This attribute MUST be present.

### 3.1.4.1.2.8 t:ProtectionRuleAndType Complex Type

The **ProtectionRuleAndType** complex type specifies that there MUST be more than one protection rule condition. Elements of type **ProtectionRuleAndType** MUST contain at least one child element.

```
<xs:complexType name="ProtectionRuleAndType">
  <xs:sequence>
    <xs:choice
      minOccurs="1"
      maxOccurs="unbounded"
    >
      <xs:element name="AllInternal"
        type="t:ProtectionRuleAllInternalType"
      />
      <xs:element name="And"
        type="t:ProtectionRuleAndType"
      />
      <xs:element name="RecipientIs"
        type="t:ProtectionRuleRecipientIsType"
      />
      <xs:element name="SenderDepartments"
        type="t:ProtectionRuleSenderDepartmentsType"
      />
      <xs:element name="True"
        type="t:ProtectionRuleTrueType"
      />
    </xs:choice>
  </xs:sequence>
</xs:complexType>
```

#### Child Elements

Element	Type	Description
<b>AllInternal</b>	<b>t:ProtectionRuleAllInternalType</b> (section <a href="#">3.1.4.1.1.2</a> )	Evaluates to <b>true</b> if all recipients of an e-mail message are internal to the sender's organization.
<b>And</b>	<b>t:ProtectionRuleAndType</b>	Specifies that all child elements MUST match to evaluate to <b>true</b> .
<b>RecipientIs</b>	<b>t:ProtectionRuleRecipientIsType</b> (section <a href="#">3.1.4.1.2.11</a> )	Evaluates to <b>true</b> if any recipient of the e-mail Message matches any of the specified recipients in the child <b>Value</b> elements.
<b>SenderDepartments</b>	<b>t:ProtectionRuleSenderDepartmentsType</b>	Evaluates to <b>true</b> if the department of the sender

Element	Type	Description
	(section <a href="#">3.1.4.1.2.12</a> )	matches any specified department in the child <b>Value</b> elements.
<b>True</b>	<b>t:ProtectionRuleTrueType</b> (section <a href="#">3.1.4.1.1.3</a> )	Specifies a condition that always matches.

### 3.1.4.1.2.9 t:ProtectionRuleArgumentType Complex Type

The **ProtectionRuleArgumentType** complex type specifies an attribute that is used to specify an argument to an action. The protection is identified by the **Value** attribute.

```
<xs:complexType name="ProtectionRuleArgumentType">
  <xs:attribute name="Value"
    use="required"
  >
    <xs:simpleType>
      <xs:restriction
        base="xs:string"
      >
        <xs:minLength
          value="1"
        />
      </xs:restriction>
    </xs:simpleType>
  </xs:attribute>
</xs:complexType>
```

#### Attributes

Name	Type	Description
<b>Value</b>	<b>xs:string</b>	Specifies the value of an argument to the action part of a protection rule. This attribute value <b>MUST</b> be a string of at least one character in length.

### 3.1.4.1.2.10 t:ProtectionRuleConditionType Complex Type

The **ProtectionRuleConditionType** complex type specifies the condition part of a protection rule.

```
<xs:complexType name="ProtectionRuleConditionType">
  <xs:choice
    maxOccurs="1"
    minOccurs="1"
  >
    <xs:element name="AllInternal"
      type="t:ProtectionRuleAllInternalType"
    />
    <xs:element name="And"
      type="t:ProtectionRuleAndType"
    />
    <xs:element name="RecipientIs"
      type="t:ProtectionRuleRecipientIsType"
    />
  </xs:choice>
</xs:complexType>
```

```

/>
<xs:element name="SenderDepartments"
  type="t:ProtectionRuleSenderDepartmentsType"
/>
<xs:element name="True"
  type="t:ProtectionRuleAllInternalType"
/>
</xs:choice>
</xs:complexType>

```

## Child Elements

Element	Type	Description
<b>AllInternal</b>	<b>t:ProtectionRuleAllInternalType</b> (section <a href="#">3.1.4.1.1.2</a> )	The <b>AllInternal</b> element evaluates to <b>true</b> if all recipients of an e-mail message are internal to the sender's organization.  If this element exists, the <b>And</b> , <b>RecipientsIs</b> , <b>SenderDeptments</b> , and <b>True</b> elements MUST NOT exist as a direct child node of elements of type <b>ProtectionRuleConditionType</b> .
<b>And</b>	<b>t:ProtectionRuleAndType</b> (section <a href="#">3.1.4.1.2.8</a> )	Specifies that all child elements MUST match to evaluate to <b>true</b> .  Specifies that there MUST be more than one protection rule child condition.  If this element exists, the <b>AllInternal</b> , <b>RecipientsIs</b> , <b>SenderDeptments</b> , and <b>True</b> elements MUST NOT exist as a direct child node of elements of type <b>ProtectionRuleConditionType</b> .
<b>RecipientIs</b>	<b>t:ProtectionRuleRecipientIsType</b> (section <a href="#">3.1.4.1.2.11</a> )	Specifies that any recipient of the e-mail message matches any of the specified recipients in the child <b>Value</b> elements.  If this element exists, the <b>And</b> , <b>AllInternal</b> , <b>SenderDeptments</b> , and <b>True</b> elements MUST NOT exist as a direct child node of elements of type <b>ProtectionRuleConditionType</b> .
<b>SenderDepartments</b>	<b>t:ProtectionRuleSenderDepartmentsType</b> (section <a href="#">3.1.4.1.2.12</a> )	Specifies that the department of the sender matches any of the specified departments in the child <b>Value</b> elements.  If this element exists, the <b>And</b> ,

Element	Type	Description
		<b>RecipientsIs</b> , <b>AllInternal</b> , and <b>True</b> elements MUST NOT exist as a direct child node of elements of type <b>ProtectionRuleConditionType</b> .
<b>True</b>	<b>t:ProtectionRuleAllInternalType</b>	Specifies a condition that always matches. If this element exists, the <b>And</b> , <b>RecipientsIs</b> , <b>SenderDeprtments</b> , and <b>AllInternal</b> elements MUST NOT exist as a direct child node of elements of type <b>ProtectionRuleConditionType</b> .

### 3.1.4.1.2.11 t:ProtectionRuleRecipientIsType Complex Type

The **ProtectionRuleRecipientIsType** complex type specifies a condition that matches if any recipients of the e-mail message match any specified recipients in the child <Value> elements.

```
<xs:complexType name="ProtectionRuleRecipientIsType">
  <xs:sequence>
    <xs:element name="Value"
      type="t:ProtectionRuleValueType"
      minOccurs="1"
      maxOccurs="unbounded"
    />
  </xs:sequence>
</xs:complexType>
```

#### Child Elements

Element	Type	Description
<b>Value</b>	<b>t:ProtectionRuleValueType</b> (section <a href="#">3.1.4.1.1.4</a> )	Specifies an argument to the <b>RecipientIs</b> condition. This element MUST occur at least once.

### 3.1.4.1.2.12 t:ProtectionRuleSenderDepartmentsType Complex Type

The **ProtectionRuleSenderDepartmentsType** type specifies a condition that matches if the department of the sender of the e-mail message matches any of the specified departments in the child <Value> elements.

```
<xs:complexType name="ProtectionRuleSenderDepartmentsType">
  <xs:sequence>
    <xs:element name="Value"
      type="t:ProtectionRuleValueType"
      minOccurs="1"
      maxOccurs="unbounded"
    />
  </xs:sequence>
</xs:complexType>
```

```

    </xs:sequence>
</xs:complexType>

```

#### Child Elements

Element	Type	Description
<b>Value</b>	<b>t:ProtectionRuleValueType</b> (section <a href="#">3.1.4.1.1.4</a> )	Specifies an argument to the <b>SenderDepartments</b> condition. This element MUST occur at least once.

#### 3.1.4.1.2.13 t:ProtectionRulesServiceConfiguration Complex Type

The **ProtectionRulesServiceConfiguration** complex type specifies the configuration of the protection rules service. The configuration is comprised of a list of rules, internal domains, and a refresh interval. The **ProtectionRulesServiceConfiguration** complex type extends the **t:ServiceConfiguration** type, as specified in section [3.1.4.1.2.15](#).

```

<xs:complexType name="ProtectionRulesServiceConfiguration">
  <xs:complexContent>
    <xs:extension
      base="t:ServiceConfiguration"
    >
      <xs:sequence>
        <xs:element name="Rules"
          type="t:ArrayOfProtectionRulesType"
          maxOccurs="1"
          minOccurs="1"
        />
        <xs:element name="InternalDomains"
          type="t:SmtpDomainList"
          maxOccurs="1"
          minOccurs="1"
        />
      </xs:sequence>
      <xs:attribute name="RefreshInterval"
        use="required"
      >
        <xs:simpleType>
          <xs:restriction
            base="xs:int"
          >
            <xs:minInclusive
              value="1"
            />
          </xs:restriction>
        </xs:simpleType>
      </xs:attribute>
    </xs:extension>
  </xs:complexContent>
</xs:complexType>

```

#### Child Elements

Element	Type	Description
<b>Rules</b>	<b>t:ArrayOfProtectionRulesType</b> (section <a href="#">3.1.4.1.2.1</a> )	Specifies the collection of rules to be evaluated.  This element <b>MUST</b> be included if the <b>ProtectionRulesServiceConfiguration</b> complex type is used.
<b>InternalDomains</b>	<b>t:SmtpDomainList</b> (section <a href="#">3.1.4.1.2.18</a> )	Specifies the list of internal SMTP domains of the organization.  This element <b>MUST</b> be included if the <b>ProtectionRulesServiceConfiguration</b> complex type is used.

#### Attributes

Name	Type	Description
<b>RefreshInterval</b>	<b>xs:int</b>	Specifies how often, in whole hours, the client <b>SHOULD</b> request protection rules from the server.  This element <b>MUST</b> be included if the <b>ProtectionRulesServiceConfiguration</b> complex type is used.

### 3.1.4.1.2.14 t:ProtectionRuleType

The **ProtectionRuleType** type specifies a single protection rule.

```
<xs:complexType name="ProtectionRuleType">
  <xs:sequence>
    <xs:element name="Condition" type="t:ProtectionRuleConditionType" minOccurs="1"
maxOccurs="1"/>
    <xs:element name="Action" type="t:ProtectionRuleActionType" minOccurs="1" maxOccurs="1"/>
  </xs:sequence>
  <xs:attribute name="Name" use="required">
    <xs:simpleType>
      <xs:restriction base="xs:string">
        <xs:minLength value="1"/>
      </xs:restriction>
    </xs:simpleType>
  </xs:attribute>
  <xs:attribute name="UserOverridable" type="xs:boolean" use="required" />
  <xs:attribute name="Priority" use="required" >
    <xs:simpleType>
      <xs:restriction base="xs:int">
        <xs:minInclusive value="1"/>
      </xs:restriction>
    </xs:simpleType>
  </xs:attribute>
</xs:complexType>
```

Element	Type	Definition
<b>Condition</b>	<b>t:ProtectionRuleConditionType</b>	Specifies the condition that <b>MUST</b> be satisfied for the action part of the rule to be executed.  This element <b>MUST</b> be included if the <b>ProtectionRuleType</b> type is used.



Element	Type	Definition
<b>Action</b>	<b>t:ProtectionRuleActionType</b>	Specifies what action MUST be executed if the condition part of the rule matches. This element MUST be included if the <b>ProtectionRuleType</b> type is used.

Attribute	Type	Definition
<b>Name</b>	<b>xs:string</b>	Specifies the name of the rule. This attribute MUST be included if the <b>ProtectionRuleType</b> type is used. This attribute value MUST contain a string of at least one character.
<b>UserOverridable</b>	<b>xs:boolean</b>	Specifies whether the rule is mandatory. If the rule is mandatory, this attribute value MUST be <b>FALSE</b> . This attribute MUST be included if the <b>ProtectionRuleType</b> type is used.
<b>Priority</b>	<b>xs:int</b>	Specifies the rule priority. The lower bound MUST be 1. This attribute MUST be included if the <b>ProtectionRuleType</b> type is used. This attribute value MUST contain an integer value of at least one.

### 3.1.4.1.2.15 t:ServiceConfiguration

The **ServiceConfiguration** type specifies the base type for the service configuration types.

```
<xs:complexType name="ServiceConfiguration">
</xs:complexType>
```

### 3.1.4.1.2.16 ServiceConfigurationResponseMessageType Complex Type

The **ServiceConfigurationResponseMessageType** complex type specifies service configuration settings. The **ServiceConfigurationResponseMessageType** complex type extends the **ResponseMessageType** complex type ([\[MS-OXWSCDATA\]](#) section 2.2.3.52).

```
<xs:complexType>
  <xs:complexContent>
    <xs:extension
      base="m:ResponseMessageType"
    >
      <xs:sequence>
        <xs:element name="MailTipsConfiguration"
          type="t:MailTipsServiceConfiguration"
          minOccurs="0"
          maxOccurs="1"
        />
        <xs:element name="UnifiedMessagingConfiguration"
          type="t:UnifiedMessageServiceConfiguration"
          maxOccurs="1"
          minOccurs="0"
        />
      </xs:sequence>
    </xs:extension>
  </xs:complexContent>
</xs:complexType>
```

```

    />
    <xs:element name="ProtectionRulesConfiguration"
      type="t:ProtectionRulesServiceConfiguration"
      maxOccurs="1"
      minOccurs="0"
    />
  </xs:sequence>
</xs:extension>
</xs:complexContent>
</xs:complexType>

```

### Child Elements

Element	Type	Description
<b>MailTipsConfiguration</b>	<b>t:MailTipsServiceConfiguration</b> (section <a href="#">3.1.4.1.2.6</a> )	Contains service configuration information for the mail tips service. This element <b>MUST</b> occur for mail tips service configuration.
<b>UnifiedMessagingConfiguration</b>	<b>t:UnifiedMessageServiceConfiguration</b> (section <a href="#">3.1.4.1.2.19</a> )	Contains service configuration information for the unified messaging service. This element <b>MUST</b> occur for unified messaging service configuration.
<b>ProtectionRulesConfiguration</b>	<b>t:ProtectionRulesServiceConfiguration</b> (section <a href="#">3.1.4.1.2.13</a> )	Contains service configuration information for the protection rules service. This element <b>MUST</b> occur for protection rules service configuration.

### 3.1.4.1.2.17 t:SmtpDomain

The **SmtpDomain** type specifies a single domain.

```

<xs:complexType name="SmtpDomain">
  <xs:attribute name="Name" type="xs:string" use="required"/>
  <xs:attribute name="IncludeSubdomains" type="xs:boolean" use="optional"/>
</xs:complexType>

```

Attribute	Type	Definition
<b>Name</b>	<b>xs:string</b>	Specifies the name of a domain. This attribute <b>MUST</b> be set.

Attribute	Type	Definition
<b>IncludeSubdomains</b>	<b>xs:boolean</b>	Specifies whether sub-domains of the domain identified by the <b>Name</b> attribute are considered internal.

### 3.1.4.1.2.18 t:SmtpDomainList

The **SmtpDomainList** type specifies a list of internal domains in a user's organization.

```
<xs:complexType name="SmtpDomainList">
  <xs:sequence>
    <xs:element minOccurs="0" maxOccurs="unbounded" name="Domain" type="t:SmtpDomain"/>
  </xs:sequence>
</xs:complexType>
```

Element	Type	Definition
<b>Domain</b>	<b>t:SmtpDomain</b>	Specifies a single SMTP domain. This element can occur 0 or more times.

### 3.1.4.1.2.19 UnifiedMessageServiceConfiguration Complex Type

The **UnifiedMessageServiceConfiguration** complex type specifies the configuration for Unified Messaging service. The **UnifiedMessageServiceConfiguration** complex type extends the **ServiceConfiguration** complex type (section [3.1.4.1.2.15](#)).

```
<xs:complexType name="UnifiedMessageServiceConfiguration">
  <xs:complexContent>
    <xs:extension
      base="t:ServiceConfiguration"
    >
    <xs:sequence>
      <xs:element name="UmEnabled"
        type="xs:boolean"
        minOccurs="1"
        maxOccurs="1"
      />
      <xs:element name="PlayOnPhoneDialString"
        type="xs:string"
        minOccurs="1"
        maxOccurs="1"
      />
      <xs:element name="PlayOnPhoneEnabled"
        type="xs:boolean"
        minOccurs="1"
        maxOccurs="1"
      />
    </xs:sequence>
  </xs:complexContent>
</xs:complexType>
```

Child Elements

Element	Type	Description
<b>UmEnabled</b>	<b>xs:boolean</b>	Specifies whether Unified Messaging is enabled. This element MUST be included if the <b>UnifiedMessageServiceConfiguration</b> complex type is used.
<b>PlayOnPhoneDialString</b>	<b>xs:string</b>	Specifies the telephone number for play-on-phone. This element MUST be included if the <b>UnifiedMessageServiceConfiguration</b> complex type is used.
<b>PlayOnPhoneEnabled</b>	<b>xs:boolean</b>	Specifies whether play-on-phone is enabled. This element MUST be included if the <b>UnifiedMessageServiceConfiguration</b> complex type is used.

### 3.1.4.1.3 Elements

The following XML schema element definitions are specific to this operation.

#### 3.1.4.1.3.1 m:GetServiceConfiguration

The **GetServiceConfiguration** element specifies the base element for a **GetServiceConfiguration** request.

```
<xs:element name="GetServiceConfiguration" type="m:GetServiceConfigurationType"/>
```

#### 3.1.4.1.3.2 m:GetServiceConfigurationResponse

The **GetServiceConfigurationResponse** element specifies the response message for a **GetServiceConfiguration** operation.

```
<xs:element name="GetServiceConfigurationResponse"
type="m:GetServiceConfigurationResponseMessageType"/>
```

#### 3.1.4.1.4 Attributes

This specification does not define any specific XML schema attribute definitions for this operation.

#### 3.1.4.1.5 Groups

This specification does not define any specific XML schema group definitions for this operation.

#### 3.1.4.1.6 Attribute Groups

This specification does not define any specific XML schema attribute group definitions for this operation.

#### 3.1.4.1.7 Messages

The following WSDL message definitions are specific to this operation.

### 3.1.4.1.7.1 GetServiceConfigurationSoapIn Message

The parts of the **GetServiceConfigurationSoapIn** message are described in the following table.

Part Name	Element/Type	Description
<b>request</b>	<b>m:GetServiceConfiguration</b>	Specifies the request.
<b>Impersonation</b>	<b>ExchangeImpersonation</b>	Specifies the account to impersonate. The <b>t:ExchangeImpersonation</b> element is defined in <a href="#">[MS-OXWSCDATA]</a> section 2.2.4.3.
<b>RequestVersion</b>	<b>RequestServerVersion</b>	Specifies the schema version for the <b>GetServiceConfiguration</b> operation request. The <b>RequestServerVersion</b> element is defined in <a href="#">[MS-OXWSCDATA]</a> section 2.2.4.8.
<b>MailboxCulture</b>	<b>MailboxCulture</b>	Specifies the culture to use for accessing the mailbox. The <b>MailboxCulture</b> element is defined in <a href="#">[MS-OXWSCDATA]</a> section 2.2.4.6. The cultures are defined by <a href="#">[RFC3066]</a> .

### 3.1.4.1.7.2 GetServiceConfigurationSoapOut Message

The parts of the **GetServiceConfigurationSoapOut** message are described in the following table.

Part name	Element/nype	Description
<b>GetServiceConfigurationResult</b>	<b>m:GetServiceConfigurationResponse</b>	Specifies the response.
<b>ServerVersion</b>	<b>t:ServerVersionInfo</b>	Specifies the server version for the response ( <a href="#">[MS-OXWSCDATA]</a> section 2.2.4.9).

### 3.1.5 Timer Events

None.

### 3.1.6 Other Local Events

None.

## 3.2 Client Details

The client side of this protocol is simply a pass-through. That is, no additional timers or other state is required on the client side of this protocol. Calls made by the higher-layer protocol or application are passed directly to the transport, and the results returned by the transport are passed directly back to the higher-layer protocol or application.

### 3.2.1 Abstract Data Model

None.

### **3.2.2 Timers**

None.

### **3.2.3 Initialization**

None.

### **3.2.4 Message Processing Events and Sequencing Rules**

None.

### **3.2.5 Timer Events**

None.

### **3.2.6 Other Local Events**

None.

## 4 Protocol Examples

### 4.1 GetServiceConfiguration Request

The following example shows how to get sender hints for a user.

```
<?xml version="1.0" encoding="utf-8" ?>
<soap:Envelope xmlns:xsi="http://www.w3.org/2001/XMLSchema-instance"
  xmlns:xsd="http://www.w3.org/2001/XMLSchema"
  xmlns:soap="http://schemas.xmlsoap.org/soap/envelope/"
  xmlns:t="http://schemas.microsoft.com/exchange/services/2006/types">
  <soap:Header>
    <t:RequestServerVersion Version="Exchange2010" />
  </soap:Header>

  <soap:Body>
    <GetServiceConfiguration
  xmlns="http://schemas.microsoft.com/exchange/services/2006/messages">
      <ActingAs>
        <t:EmailAddress>user1@contoso.com</t:EmailAddress>
        <t:RoutingType>SMTP</t:RoutingType>
      </ActingAs>
      <RequestedConfiguration>
        <ConfigurationName>MailTips</ConfigurationName>
      </RequestedConfiguration>
    </GetServiceConfiguration>
  </soap:Body>
</soap:Envelope>
```

### 4.2 GetServiceConfiguration Response

The following is an example of a successful response from the **GetServiceConfiguration** service.

```
<?xml version="1.0" encoding="utf-8"?>
<s:Envelope xmlns:s="http://schemas.xmlsoap.org/soap/envelope/">
  <s:Header>
    <h:ServerVersionInfo MajorVersion="14"
      MinorVersion="0"
      MajorBuildNumber="482"
      MinorBuildNumber="17"
      Version="Exchange2010"
      xmlns:h="http://schemas.microsoft.com/exchange/services/2006/types"
      xmlns="http://schemas.microsoft.com/exchange/services/2006/types"
      xmlns:xsi="http://www.w3.org/2001/XMLSchema-instance"
      xmlns:xsd="http://www.w3.org/2001/XMLSchema"/>
  </s:Header>
  <s:Body xmlns:xsi="http://www.w3.org/2001/XMLSchema-instance"
  xmlns:xsd="http://www.w3.org/2001/XMLSchema">
    <GetServiceConfigurationResponse ResponseClass="Success"
  xmlns="http://schemas.microsoft.com/exchange/services/2006/messages">
      <ResponseCode>NoError</ResponseCode>
      <ResponseMessages>
        <ServiceConfigurationResponseMessageType ResponseClass="Success">
          <ResponseCode>NoError</ResponseCode>
          <m:MailTipsConfiguration
  xmlns:m="http://schemas.microsoft.com/exchange/services/2006/messages">
```

```

        <t:MaxRecipientsPerGetMailTipsRequest
xmlns:t="http://schemas.microsoft.com/exchange/services/2006/types">50</t:MaxRecipientsPerGet
MailTipsRequest>
        <t:MaxMessageSize
xmlns:t="http://schemas.microsoft.com/exchange/services/2006/types">10485760</t:MaxMessageSiz
e>
        <t:LargeAudienceThreshold
xmlns:t="http://schemas.microsoft.com/exchange/services/2006/types">25</t:LargeAudienceThresh
old>
        <t>ShowExternalRecipientCount
xmlns:t="http://schemas.microsoft.com/exchange/services/2006/types">>false</t>ShowExternalReci
pientCount>
        <t:InternalDomains
xmlns:t="http://schemas.microsoft.com/exchange/services/2006/types">
        <t:Domain Name="contoso.com" IncludeSubdomains="false"/>
        <t:Domain Name="fabrikam.com" IncludeSubdomains="false"/>
        <t:Domain Name="example.com" IncludeSubdomains="false"/>
        </t:InternalDomains>
    </m:MailTipsConfiguration>
</ServiceConfigurationResponseMessageType>
</ResponseMessages>
</GetServiceConfigurationResponse>
</s:Body>
</s:Envelope>

```

## 4.3 Unsuccessful Response

### 4.3.1 SOAP Exception

The following is an example of a SOAP fault caused by the request failing schema validation.

```

<?xml version="1.0" encoding="utf-8"?><s:Envelope
xmlns:s="http://schemas.xmlsoap.org/soap/envelope/">
  <s:Body>
    <s:Fault>
      <faultcode
xmlns:a="http://schemas.microsoft.com/exchange/services/2006/types">a:ErrorSchemaValidation</
faultcode>
      <faultstring xml:lang="en-US">The request failed schema validation: The element
'RequestedConfiguration' in namespace
'http://schemas.microsoft.com/exchange/services/2006/messages' has incomplete content. List
of possible elements expected: 'ConfigurationName' in namespace
'http://schemas.microsoft.com/exchange/services/2006/messages'.</faultstring>
      <detail>
        <e:ResponseCode
xmlns:e="http://schemas.microsoft.com/exchange/services/2006/errors">ErrorSchemaValidation</e
:ResponseCode>
        <e:Message xmlns:e="http://schemas.microsoft.com/exchange/services/2006/errors">The
request failed schema validation.</e:Message>
        <e:MessageXml xmlns:e="http://schemas.microsoft.com/exchange/services/2006/errors">
          <t:LineNumber
xmlns:t="http://schemas.microsoft.com/exchange/services/2006/types">16</t:LineNumber>
          <t:LinePosition
xmlns:t="http://schemas.microsoft.com/exchange/services/2006/types">9</t:LinePosition>
          <t:Violation
xmlns:t="http://schemas.microsoft.com/exchange/services/2006/types">The element
'RequestedConfiguration' in namespace
'http://schemas.microsoft.com/exchange/services/2006/messages' has incomplete content. List

```



```

of possible elements expected: 'ConfigurationName' in namespace
'http://schemas.microsoft.com/exchange/services/2006/messages'.</t:Violation>
  </e:MessageXml>
</detail>
</s:Fault>
</s:Body>
</s:Envelope>

```

### 4.3.2 GetServiceConfiguration Error Response

The following is an example of a user specified in the **ActingAs** element not being found in the directory.

```

<?xml version="1.0" encoding="utf-8"?>
<s:Envelope xmlns:s="http://schemas.xmlsoap.org/soap/envelope/">
  <s:Header>
    <h:ServerVersionInfo MajorVersion="14"
      MinorVersion="0"
      MajorBuildNumber="482"
      MinorBuildNumber="17"
      Version="Exchange2010"
      xmlns:h="http://schemas.microsoft.com/exchange/services/2006/types"
      xmlns="http://schemas.microsoft.com/exchange/services/2006/types"
      xmlns:xsi="http://www.w3.org/2001/XMLSchema-instance"
      xmlns:xsd="http://www.w3.org/2001/XMLSchema"/>
  </s:Header>
  <s:Body xmlns:xsi="http://www.w3.org/2001/XMLSchema-instance"
    xmlns:xsd="http://www.w3.org/2001/XMLSchema">
    <GetServiceConfigurationResponse ResponseClass="Error"
      xmlns="http://schemas.microsoft.com/exchange/services/2006/messages">
      <MessageText>The ActingAs parameter does not match a user in the
        directory.</MessageText>
      <ResponseCode>ErrorInvalidArgument</ResponseCode>
      <DescriptiveLinkKey>0</DescriptiveLinkKey>
    </GetServiceConfigurationResponse>
  </s:Body>
</s:Envelope>

```

## **5 Security**

### **5.1 Security Considerations for Implementers**

The Service Configuration service does not use additional security mechanisms.

### **5.2 Index of Security Parameters**

None.

## 6 Appendix A: Full WSDL

The XML files that are listed in the following table are required in order to implement the functionality in this document.

File name	Description	Section
MS-OXWCONFIG.wsdl	Contains the WSDL for the implementation of this protocol.	<a href="#">6</a>
MS-OXWCONFIG-messages.xsd	Contains the XML schema message definitions that are used in this protocol.	<a href="#">7.1</a>
MS-OXWCONFIG-types.xsd	Contains the XML schema type definitions that are used in this protocol.	<a href="#">7.2</a>

These files have to be placed in a common folder in order for the WSDL to validate and operate. Also, any schema files that are included in or imported into the MS-OXWCONFIG-types.xsd or MS-OXWCONFIG-messages.xsd schemas have to be placed in the common folder with these files.

This section contains the contents of the MS-OXWCONFIG.wsdl file.

```
<?xml version="1.0" encoding="utf-8"?>
<wSDL:definitions xmlns:soap="http://schemas.xmlsoap.org/wsdl/soap/"
xmlns:tns="http://schemas.microsoft.com/exchange/services/2006/messages"
targetNamespace="http://schemas.microsoft.com/exchange/services/2006/messages"
xmlns:wSDL="http://schemas.xmlsoap.org/wsdl/"
xmlns:t="http://schemas.microsoft.com/exchange/services/2006/types">
  <wSDL:types>
    <xs:schema id="messages" elementFormDefault="qualified" version="Exchange2010"
xmlns:t="http://schemas.microsoft.com/exchange/services/2006/types"
xmlns:xs="http://www.w3.org/2001/XMLSchema"
targetNamespace="http://schemas.microsoft.com/exchange/services/2006/messages">
      <xs:include schemaLocation="MS-OXWCONFIG-messages.xsd"/>
    </xs:schema>
  </wSDL:types>
  <wSDL:message name="GetServiceConfigurationSoapIn">
    <wSDL:part name="request" element="tns:GetServiceConfiguration"/>
    <wSDL:part name="Impersonation" element="t:ExchangeImpersonation"/>
    <wSDL:part name="RequestVersion" element="t:RequestServerVersion"/>
    <wSDL:part name="MailboxCulture" element="t:MailboxCulture"/>
  </wSDL:message>
  <wSDL:message name="GetServiceConfigurationSoapOut">
    <wSDL:part name="GetServiceConfigurationResult"
element="tns:GetServiceConfigurationResponse"/>
    <wSDL:part name="ServerVersion" element="t:ServerVersionInfo"/>
  </wSDL:message>
  <wSDL:portType name="ExchangeServicePortType">
    <wSDL:operation name="GetServiceConfiguration">
      <wSDL:input message="tns:GetServiceConfigurationSoapIn"/>
      <wSDL:output message="tns:GetServiceConfigurationSoapOut"/>
    </wSDL:operation>
  </wSDL:portType>
  <wSDL:binding name="ExchangeServiceBinding" type="tns:ExchangeServicePortType">
    <wSDL:documentation>
      <wsi:Claim conformsTo="http://ws-i.org/profiles/basic/1.0" xmlns:wsi="http://ws-
i.org/schemas/conformanceClaim"/>
    </wSDL:documentation>
    <soap:binding transport="http://schemas.xmlsoap.org/soap/http" style="document"/>
  </wSDL:binding>
</wSDL:definitions>
```

```
<wsdl:operation name="GetServiceConfiguration">
  <soap:operation
soapAction="http://schemas.microsoft.com/exchange/services/2006/messages/GetServiceConfigurat
ion"/>
  <wsdl:input>
    <soap:body parts="request" use="literal"/>
    <soap:header message="tns:GetServiceConfigurationSoapIn" part="Impersonation"
use="literal"/>
    <soap:header message="tns:GetServiceConfigurationSoapIn" part="RequestVersion"
use="literal"/>
    <soap:header message="tns:GetServiceConfigurationSoapIn" part="MailboxCulture"
use="literal"/>
  </wsdl:input>
  <wsdl:output>
    <soap:body parts="GetServiceConfigurationResult" use="literal"/>
    <soap:header message="tns:GetServiceConfigurationSoapOut" part="ServerVersion"
use="literal"/>
  </wsdl:output>
</wsdl:operation>
</wsdl:binding>
</wsdl:definitions>
```

## 7 Appendix B: Full XML Schema

For ease of implementation, the following sections provide the full XML schema for this protocol.

Schema name	Prefix	Section
Messages schema	m:	<a href="#">7.1</a>
Types schema	t:	<a href="#">7.2</a>

These files have to be placed in a common folder in order for the WSDL to validate and operate. Also, any schema files that are included in or imported into the MS-OXWCONFIG-types.xsd or MS-OXWCONFIG-messages.xsd schemas have to be placed in the common folder along with the files listed in the table.

### 7.1 Messages Schema

This section contains the contents of the MS-OXWCONFIG-messages.xsd file and information about additional files that this schema file requires to operate correctly.

MS-OXWCONFIG-messages.xsd includes and imports the file listed in the following table. To operate correctly, this file has to be present in the folder that contains the WSDL, types schema, and messages schema files for this protocol.

File name	Defining specification
MS-OXWSCDATA-messages.xsd	<a href="#">[MS-OXWSCDATA]</a> section 7.1
MS-OXWCONFIG-types.xsd	<a href="#">7.2</a>

```
<?xml version="1.0" encoding="utf-8"?>
<xs:schema xmlns:m="http://schemas.microsoft.com/exchange/services/2006/messages"
xmlns:t="http://schemas.microsoft.com/exchange/services/2006/types"
xmlns:xs="http://www.w3.org/2001/XMLSchema"
targetNamespace="http://schemas.microsoft.com/exchange/services/2006/messages"
elementFormDefault="qualified" version="Exchange2010" id="messages">
  <xs:import namespace="http://schemas.microsoft.com/exchange/services/2006/types"
schemaLocation="MS-OXWCONFIG-types.xsd"/>
  <xs:include schemaLocation="MS-OXWSCDATA-messages.xsd"/>
  <xs:complexType name="ArrayOfServiceConfigurationResponseMessageType">
    <xs:sequence>
      <xs:element name="ServiceConfigurationResponseMessageType"
type="m:ServiceConfigurationResponseMessageType" minOccurs="1" maxOccurs="unbounded"/>
    </xs:sequence>
  </xs:complexType>
  <xs:complexType name="ArrayOfServiceConfigurationType">
    <xs:choice minOccurs="1" maxOccurs="unbounded">
      <xs:element name="ConfigurationName" type="t:ServiceConfigurationType"/>
    </xs:choice>
  </xs:complexType>
  <xs:complexType name="GetServiceConfigurationResponseMessageType">
    <xs:complexContent>
      <xs:extension base="m:ResponseMessageType">
        <xs:sequence>
          <xs:element name="ResponseMessages"
type="m:ArrayOfServiceConfigurationResponseMessageType" minOccurs="0" maxOccurs="1"/>
        </xs:sequence>
      </xs:extension>
    </xs:complexContent>
  </xs:complexType>
```

```

        </xs:extension>
    </xs:complexContent>
</xs:complexType>
<xs:complexType name="GetServiceConfigurationType">
    <xs:complexContent>
        <xs:extension base="m:BaseRequestType">
            <xs:sequence>
                <xs:element minOccurs="0" maxOccurs="1" name="ActingAs"
type="t:EmailAddressType"/>
                <xs:element minOccurs="1" maxOccurs="1" name="RequestedConfiguration"
type="m:ArrayOfServiceConfigurationType"/>
            </xs:sequence>
        </xs:extension>
    </xs:complexContent>
</xs:complexType>
<xs:complexType name="ServiceConfigurationResponseMessageType">
    <xs:complexContent>
        <xs:extension base="m:ResponseMessageType">
            <xs:sequence>
                <xs:element name="MailTipsConfiguration" type="t:MailTipsServiceConfiguration"
minOccurs="0" maxOccurs="1"/>
                <xs:element name="UnifiedMessagingConfiguration"
type="t:UnifiedMessageServiceConfiguration" minOccurs="0" maxOccurs="1"/>
                <xs:element name="ProtectionRulesConfiguration"
type="t:ProtectionRulesServiceConfiguration" minOccurs="0" maxOccurs="1"/>
            </xs:sequence>
        </xs:extension>
    </xs:complexContent>
</xs:complexType>
<xs:element name="GetServiceConfiguration" type="m:GetServiceConfigurationType"/>
<xs:element name="GetServiceConfigurationResponse"
type="m:GetServiceConfigurationResponseMessageType"/>
</xs:schema>

```

## 7.2 Types Schema

This section contains the contents of the MS-OXWCONFIG-types.xsd file.

```

<?xml version="1.0" encoding="utf-8"?>
<xs:schema xmlns:t="http://schemas.microsoft.com/exchange/services/2006/types"
xmlns:xs="http://www.w3.org/2001/XMLSchema"
targetNamespace="http://schemas.microsoft.com/exchange/services/2006/types"
elementFormDefault="qualified" version="Exchange2010" id="types">
    <xs:simpleType name="ProtectionRuleActionKindType">
        <xs:restriction base="xs:string">
            <xs:enumeration value="RightsProtectMessage"/>
        </xs:restriction>
    </xs:simpleType>
    <xs:simpleType name="ProtectionRuleAllInternalType">
        <xs:restriction base="xs:string">
            <xs:length value="0"/>
        </xs:restriction>
    </xs:simpleType>
    <xs:simpleType name="ProtectionRuleTrueType">
        <xs:restriction base="xs:string">
            <xs:length value="0"/>
        </xs:restriction>
    </xs:simpleType>

```

```

<xs:simpleType name="ProtectionRuleValueType">
  <xs:restriction base="xs:string">
    <xs:minLength value="1"/>
  </xs:restriction>
</xs:simpleType>
<xs:simpleType name="ServiceConfigurationType">
  <xs:list>
    <xs:simpleType>
      <xs:restriction base="xs:string">
        <xs:enumeration value="MailTips"/>
        <xs:enumeration value="UnifiedMessagingConfiguration"/>
        <xs:enumeration value="ProtectionRules"/>
      </xs:restriction>
    </xs:simpleType>
  </xs:list>
</xs:simpleType>
<xs:complexType name="MailTipsServiceConfiguration">
  <xs:complexContent>
    <xs:extension base="t:ServiceConfiguration">
      <xs:sequence>
        <xs:element minOccurs="1" maxOccurs="1"
name="MaxRecipientsPerGetMailTipsRequest" type="xs:int"/>
        <xs:element minOccurs="1" maxOccurs="1" name="MaxMessageSize" type="xs:int"/>
        <xs:element minOccurs="1" maxOccurs="1" name="LargeAudienceThreshold"
type="xs:int"/>
        <xs:element minOccurs="1" maxOccurs="1" name="ShowExternalRecipientCount"
type="xs:boolean"/>
        <xs:element minOccurs="1" maxOccurs="1" name="InternalDomains"
type="t:SmtpDomainList"/>
      </xs:sequence>
    </xs:extension>
  </xs:complexContent>
</xs:complexType>
<xs:complexType name="UnifiedMessageServiceConfiguration">
  <xs:complexContent>
    <xs:extension base="t:ServiceConfiguration">
      <xs:sequence>
        <xs:element minOccurs="1" maxOccurs="1" name="UmEnabled" type="xs:boolean"/>
        <xs:element minOccurs="1" maxOccurs="1" name="PlayOnPhoneDialString"
type="xs:string"/>
        <xs:element minOccurs="1" maxOccurs="1" name="PlayOnPhoneEnabled"
type="xs:boolean"/>
      </xs:sequence>
    </xs:extension>
  </xs:complexContent>
</xs:complexType>
<xs:complexType name="ArrayOfProtectionRulesType">
  <xs:sequence>
    <xs:element name="Rule" type="t:ProtectionRuleType" minOccurs="0"
maxOccurs="unbounded"/>
  </xs:sequence>
</xs:complexType>
<xs:complexType name="ProtectionRuleActionType">
  <xs:sequence>
    <xs:element name="Argument" type="t:ProtectionRuleArgumentType" minOccurs="0"
maxOccurs="unbounded"/>
  </xs:sequence>
  <xs:attribute name="Name" use="required" type="t:ProtectionRuleActionKindType"/>
</xs:complexType>
<xs:complexType name="ProtectionRuleAndType">

```

```

    <xs:sequence>
      <xs:choice minOccurs="1" maxOccurs="unbounded">
        <xs:element name="AllInternal" type="t:ProtectionRuleAllInternalType"/>
        <xs:element name="And" type="t:ProtectionRuleAndType"/>
        <xs:element name="RecipientIs" type="t:ProtectionRuleRecipientIsType"/>
        <xs:element name="SenderDepartments"
type="t:ProtectionRuleSenderDepartmentsType"/>
        <xs:element name="True" type="t:ProtectionRuleTrueType"/>
      </xs:choice>
    </xs:sequence>
  </xs:complexType>
  <xs:complexType name="ProtectionRuleArgumentType">
    <xs:attribute name="Value" use="required">
      <xs:simpleType>
        <xs:restriction base="xs:string">
          <xs:minLength value="1"/>
        </xs:restriction>
      </xs:simpleType>
    </xs:attribute>
  </xs:complexType>
  <xs:complexType name="ProtectionRuleConditionType">
    <xs:choice minOccurs="1" maxOccurs="1">
      <xs:element name="AllInternal" type="t:ProtectionRuleAllInternalType"/>
      <xs:element name="And" type="t:ProtectionRuleAndType"/>
      <xs:element name="RecipientIs" type="t:ProtectionRuleRecipientIsType"/>
      <xs:element name="SenderDepartments" type="t:ProtectionRuleSenderDepartmentsType"/>
      <xs:element name="True" type="t:ProtectionRuleTrueType"/>
    </xs:choice>
  </xs:complexType>
  <xs:complexType name="ProtectionRuleRecipientIsType">
    <xs:sequence>
      <xs:element name="Value" type="t:ProtectionRuleValueType" minOccurs="1"
maxOccurs="unbounded"/>
    </xs:sequence>
  </xs:complexType>
  <xs:complexType name="ProtectionRuleSenderDepartmentsType">
    <xs:sequence>
      <xs:element name="Value" type="t:ProtectionRuleValueType" minOccurs="1"
maxOccurs="unbounded"/>
    </xs:sequence>
  </xs:complexType>
  <xs:complexType name="ProtectionRulesServiceConfiguration">
    <xs:complexContent>
      <xs:extension base="t:ServiceConfiguration">
        <xs:sequence>
          <xs:element name="Rules" type="t:ArrayOfProtectionRulesType" minOccurs="1"
maxOccurs="1"/>
          <xs:element name="InternalDomains" type="t:SmtppDomainList" minOccurs="1"
maxOccurs="1"/>
        </xs:sequence>
        <xs:attribute name="RefreshInterval" use="required">
          <xs:simpleType>
            <xs:restriction base="xs:int">
              <xs:minInclusive value="1"/>
            </xs:restriction>
          </xs:simpleType>
        </xs:attribute>
      </xs:extension>
    </xs:complexContent>
  </xs:complexType>

```



```

</xs:complexType>
<xs:complexType name="ProtectionRuleType">
  <xs:sequence>
    <xs:element name="Condition" type="t:ProtectionRuleConditionType" minOccurs="1"
maxOccurs="1"/>
    <xs:element name="Action" type="t:ProtectionRuleActionType" minOccurs="1"
maxOccurs="1"/>
  </xs:sequence>
  <xs:attribute name="Name" use="required">
    <xs:simpleType>
      <xs:restriction base="xs:string">
        <xs:minLength value="1"/>
      </xs:restriction>
    </xs:simpleType>
  </xs:attribute>
  <xs:attribute name="UserOverridable" type="xs:boolean" use="required"/>
  <xs:attribute name="Priority" use="required">
    <xs:simpleType>
      <xs:restriction base="xs:int">
        <xs:minInclusive value="1"/>
      </xs:restriction>
    </xs:simpleType>
  </xs:attribute>
</xs:complexType>
<xs:complexType name="ServiceConfiguration"/>
<xs:complexType name="SmtDomain">
  <xs:attribute name="Name" type="xs:string" use="required"/>
  <xs:attribute name="IncludeSubdomains" type="xs:boolean" use="optional"/>
</xs:complexType>
<xs:complexType name="SmtDomainList">
  <xs:sequence>
    <xs:element minOccurs="0" maxOccurs="unbounded" name="Domain" type="t:SmtDomain"/>
  </xs:sequence>
</xs:complexType>
</xs:schema>

```

## 8 Appendix C: Product Behavior

The information in this specification is applicable to the following Microsoft products or supplemental software. References to product versions include released service packs:

- Microsoft® Exchange Server 2010
- Microsoft® Outlook® 2010

Exceptions, if any, are noted below. If a service pack or Quick Fix Engineering (QFE) number appears with the product version, behavior changed in that service pack or QFE. The new behavior also applies to subsequent service packs of the product unless otherwise specified. If a product edition appears with the product version, behavior is different in that product edition.

Unless otherwise specified, any statement of optional behavior in this specification that is prescribed using the terms SHOULD or SHOULD NOT implies product behavior in accordance with the SHOULD or SHOULD NOT prescription. Unless otherwise specified, the term MAY implies that the product does not follow the prescription.

## 9 Change Tracking

No table of changes is available. The document is either new or has had no changes since its last release.

## 10 Index

### A

Abstract data model  
[client](#) 29  
[server](#) 10  
[Applicability](#) 7  
[Attribute groups](#) 9  
[Attributes](#) 8

### C

[Capability negotiation](#) 7  
[Change tracking](#) 43  
Client  
[abstract data model](#) 29  
[initialization](#) 30  
[local events](#) 30  
[message processing](#) 30  
[sequencing rules](#) 30  
[timer events](#) 30  
[timers](#) 30  
[Complex types](#) 8

### D

Data model - abstract  
[client](#) 29  
[server](#) 10

### E

Events  
[local - client](#) 30  
[local - server](#) 29  
[timer - client](#) 30  
[timer - server](#) 29

### F

[Fields - vendor-extensible](#) 7  
[Full WSDL](#) 35

### G

[Glossary](#) 5  
[Groups](#) 9

### I

[Implementer - security considerations](#) 34  
[Index of security parameters](#) 34  
[Informative references](#) 6  
Initialization  
[client](#) 30  
[server](#) 10  
[Introduction](#) 5

### L

Local events  
[client](#) 30  
[server](#) 29

### M

Message processing  
[client](#) 30  
[server](#) 10  
Messages  
[attribute groups](#) 9  
[attributes](#) 8  
[complex types](#) 8  
[elements](#) 8  
[enumerated](#) 9  
[groups](#) 9  
[namespaces](#) 8  
[simple types](#) 8  
[syntax](#) 8  
[transport](#) 8

### N

[Namespaces](#) 8  
[Normative references](#) 5

### O

Operations  
[GetServiceConfiguration](#) 10  
[Overview \(synopsis\)](#) 6

### P

[Parameters - security index](#) 34  
[Preconditions](#) 7  
[Prerequisites](#) 7  
[Product behavior](#) 42

### R

References  
[informative](#) 6  
[normative](#) 5  
[Relationship to other protocols](#) 6

### S

Security  
[implementer considerations](#) 34  
[parameter index](#) 34  
Sequencing rules  
[client](#) 30  
[server](#) 10  
Server  
[abstract data model](#) 10  
[GetServiceConfiguration operation](#) 10  
[initialization](#) 10  
[local events](#) 29

- [message processing](#) 10
- [sequencing rules](#) 10
- [timer events](#) 29
- [timers](#) 10
- [Simple types](#) 8
- [Standards assignments](#) 7
- Syntax
  - [messages - overview](#) 8

## T

- Timer events
  - [client](#) 30
  - [server](#) 29
- Timers
  - [client](#) 30
  - [server](#) 10
- [Tracking changes](#) 43
- [Transport](#) 8
- Types
  - [complex](#) 8
  - [simple](#) 8

## V

- [Vendor-extensible fields](#) 7
- [Versioning](#) 7

## W

- [WSDL](#) 35