

[MS-OXSMTP]:

Simple Mail Transfer Protocol (SMTP) Extensions

Intellectual Property Rights Notice for Open Specifications Documentation

- **Technical Documentation.** Microsoft publishes Open Specifications documentation for protocols, file formats, languages, standards as well as overviews of the interaction among each of these technologies.
- **Copyrights.** This documentation is covered by Microsoft copyrights. Regardless of any other terms that are contained in the terms of use for the Microsoft website that hosts this documentation, you may make copies of it in order to develop implementations of the technologies described in the Open Specifications and may distribute portions of it in your implementations using these technologies or your documentation as necessary to properly document the implementation. You may also distribute in your implementation, with or without modification, any schema, IDL's, or code samples that are included in the documentation. This permission also applies to any documents that are referenced in the Open Specifications.
- **No Trade Secrets.** Microsoft does not claim any trade secret rights in this documentation.
- **Patents.** Microsoft has patents that may cover your implementations of the technologies described in the Open Specifications. Neither this notice nor Microsoft's delivery of the documentation grants any licenses under those or any other Microsoft patents. However, a given Open Specification may be covered by Microsoft [Open Specification Promise](#) or the [Community Promise](#). If you would prefer a written license, or if the technologies described in the Open Specifications are not covered by the Open Specifications Promise or Community Promise, as applicable, patent licenses are available by contacting iplg@microsoft.com.
- **Trademarks.** The names of companies and products contained in this documentation may be covered by trademarks or similar intellectual property rights. This notice does not grant any licenses under those rights. For a list of Microsoft trademarks, visit www.microsoft.com/trademarks.
- **Fictitious Names.** The example companies, organizations, products, domain names, e-mail addresses, logos, people, places, and events depicted in this documentation are fictitious. No association with any real company, organization, product, domain name, email address, logo, person, place, or event is intended or should be inferred.

Reservation of Rights. All other rights are reserved, and this notice does not grant any rights other than specifically described above, whether by implication, estoppel, or otherwise.

Tools. The Open Specifications do not require the use of Microsoft programming tools or programming environments in order for you to develop an implementation. If you have access to Microsoft programming tools and environments you are free to take advantage of them. Certain Open Specifications are intended for use in conjunction with publicly available standard specifications and network programming art, and assumes that the reader either is familiar with the aforementioned material or has immediate access to it.

Preliminary Documentation. This Open Specification provides documentation for past and current releases and/or for the pre-release version of this technology. This Open Specification is final documentation for past or current releases as specifically noted in the document, as applicable; it is preliminary documentation for the pre-release versions. Microsoft will release final documentation in connection with the commercial release of the updated or new version of this technology. As the documentation may change between this preliminary version and the final version of this technology, there are risks in relying on preliminary documentation. To the extent that you incur additional

development obligations or any other costs as a result of relying on this preliminary documentation, you do so at your own risk.

Preliminary

Revision Summary

Date	Revision History	Revision Class	Comments
4/4/2008	0.1		Initial Availability.
6/27/2008	1.0		Initial Release.
8/6/2008	1.01		Revised and edited technical content.
9/3/2008	1.02		Updated references.
12/3/2008	1.03		Updated IP notice.
4/10/2009	2.0		Updated applicable product releases.
7/15/2009	3.0	Major	Revised and edited for technical content.
11/4/2009	3.1.0	Minor	Updated the technical content.
2/10/2010	3.2.0	Minor	Updated the technical content.
5/5/2010	3.3.0	Minor	Updated the technical content.
8/4/2010	4.0	Major	Significantly changed the technical content.
11/3/2010	4.0	No change	No changes to the meaning, language, or formatting of the technical content.
3/18/2011	4.1	Minor	Clarified the meaning of the technical content.
8/5/2011	5.0	Major	Significantly changed the technical content.
10/7/2011	5.0	No Change	No changes to the meaning, language, or formatting of the technical content.
1/20/2012	6.0	Major	Significantly changed the technical content.
4/27/2012	6.1	Minor	Clarified the meaning of the technical content.
7/16/2012	6.1	No Change	No changes to the meaning, language, or formatting of the technical content.
10/8/2012	7.0	Major	Significantly changed the technical content.
2/11/2013	7.1	Minor	Clarified the meaning of the technical content.
7/26/2013	8.0	Major	Significantly changed the technical content.
11/18/2013	8.0	No Change	No changes to the meaning, language, or formatting of the technical content.
2/10/2014	8.0	No Change	No changes to the meaning, language, or formatting of the technical content.
4/30/2014	8.0	No Change	No changes to the meaning, language, or formatting of the technical content.
7/31/2014	8.0	No Change	No changes to the meaning, language, or formatting of the technical content.
10/30/2014	8.0	No Change	No changes to the meaning, language, or formatting of the technical content.
3/16/2015	9.0	Major	Significantly changed the technical content.

Table of Contents

1	Introduction	5
1.1	Glossary	5
1.2	References	5
1.2.1	Normative References	5
1.2.2	Informative References	6
1.3	Overview	6
1.4	Relationship to Other Protocols	6
1.5	Prerequisites/Preconditions	7
1.6	Applicability Statement	7
1.7	Versioning and Capability Negotiation	7
1.8	Vendor-Extensible Fields	7
1.9	Standards Assignments.....	7
2	Messages.....	8
2.1	Transport.....	8
2.2	Message Syntax.....	8
2.2.1	SASL_Mechanism_Supported	8
3	Protocol Details.....	9
3.1	Client Details.....	9
3.1.1	Abstract Data Model.....	9
3.1.2	Timers	9
3.1.3	Initialization.....	9
3.1.4	Higher-Layer Triggered Events	9
3.1.5	Message Processing Events and Sequencing Rules	9
3.1.5.1	Receiving a SASL_Mechanism_Supported Message.....	9
3.1.6	Timer Events.....	9
3.1.7	Other Local Events.....	9
3.2	Server Details.....	10
3.2.1	Abstract Data Model.....	10
3.2.2	Timers	10
3.2.3	Initialization.....	10
3.2.4	Higher-Layer Triggered Events	10
3.2.5	Message Processing Events and Sequencing Rules	10
3.2.5.1	Sending a SASL_Mechanism_Supported Message.....	10
3.2.6	Timer Events.....	10
3.2.7	Other Local Events.....	11
4	Protocol Examples.....	13
5	Security.....	14
5.1	Security Considerations for Implementers	14
5.2	Index of Security Parameters	14
6	Appendix A: Product Behavior	15
7	Change Tracking.....	17
8	Index.....	19

1 Introduction

The Simple Mail Transfer Protocol (SMTP) Extensions extend SMTP standards to facilitate authentication negotiation between a client and a server and to enable the server to close connections that exceed configured thresholds.

Sections 1.8, 2, and 3 of this specification are normative and can contain the terms MAY, SHOULD, MUST, MUST NOT, and SHOULD NOT as defined in [\[RFC2119\]](#). Sections 1.5 and 1.9 are also normative but do not contain those terms. All other sections and examples in this specification are informative.

1.1 Glossary

The following terms are specific to this document:

Augmented Backus-Naur Form (ABNF): A modified version of Backus-Naur Form (BNF), commonly used by Internet specifications. ABNF notation balances compactness and simplicity with reasonable representational power. ABNF differs from standard BNF in its definitions and uses of naming rules, repetition, alternatives, order-independence, and value ranges. For more information, see [\[RFC5234\]](#).

NT LAN Manager (NTLM) Authentication Protocol: A protocol using a challenge-response mechanism for authentication (2) in which clients are able to verify their identities without sending a password to the server. It consists of three messages, commonly referred to as Type 1 (negotiation), Type 2 (challenge) and Type 3 (authentication). For more information, see [\[MS-NLMP\]](#).

SASL: The Simple Authentication and Security Layer, as described in [\[RFC2222\]](#). This is an authentication (2) mechanism used by the Lightweight Directory Access Protocol (LDAP).

Simple Mail Transfer Protocol (SMTP): A member of the TCP/IP suite of protocols that is used to transport Internet messages, as described in [\[RFC5321\]](#).

Transmission Control Protocol (TCP): A protocol used with the Internet Protocol (IP) to send data in the form of message units between computers over the Internet. TCP handles keeping track of the individual units of data (called packets) that a message is divided into for efficient routing through the Internet.

MAY, SHOULD, MUST, SHOULD NOT, MUST NOT: These terms (in all caps) are used as defined in [\[RFC2119\]](#). All statements of optional behavior use either MAY, SHOULD, or SHOULD NOT.

1.2 References

1.2.1 Normative References

We conduct frequent surveys of the normative references to assure their continued availability. If you have any issue with finding a normative reference, please contact dochelp@microsoft.com. We will assist you in finding the relevant information.

[RFC2034] Freed, N., "SMTP Service Extension for Returning Enhanced Error Codes", RFC 2034, October 1996, <http://www.rfc-editor.org/rfc/rfc2034.txt>

[RFC2119] Bradner, S., "Key words for use in RFCs to Indicate Requirement Levels", BCP 14, RFC 2119, March 1997, <http://www.rfc-editor.org/rfc/rfc2119.txt>

[RFC2554] Myers, J., "SMTP Service Extension for Authentication", RFC 2554, March, 1999, <http://www.rfc-editor.org/rfc/rfc2554.txt>

[RFC3030] Vaudreuil, G., "SMTP Service Extensions for Transmission of Large and Binary MIME Messages", RFC 3030, December 2000, <http://www.rfc-editor.org/rfc/rfc3030.txt>

[RFC4954] Siemborski, R., and Melnikov, A., Eds., "SMTP Service Extension for Authentication", RFC 4954, July 2007, <http://www.rfc-editor.org/rfc/rfc4954.txt>

[RFC5321] Klensin, J., "Simple Mail Transfer Protocol", RFC 5321, October 2008, <http://rfc-editor.org/rfc/rfc5321.txt>

1.2.2 Informative References

[MS-NLMP] Microsoft Corporation, "[NT LAN Manager \(NTLM\) Authentication Protocol](#)".

[MS-OXPROTO] Microsoft Corporation, "[Exchange Server Protocols System Overview](#)".

[MS-SMTPNTLM] Microsoft Corporation, "[NT LAN Manager \(NTLM\) Authentication: Simple Mail Transfer Protocol \(SMTP\) Extension](#)".

[MS-XLOGIN] Microsoft Corporation, "[Simple Mail Transfer Protocol \(SMTP\) AUTH LOGIN Extension](#)".

[RFC1870] Klensin, J., Freed, N., Ed., and Moore, K., "SMTP Service Extension for Message Size Declaration", STD 10, RFC 1870, November 1995, <http://www.rfc-editor.org/rfc/rfc1870.txt>

[RFC2222] Myers, J., "Simple Authentication and Security Layer (SASL)", RFC 2222, October 1997, <http://www.ietf.org/rfc/rfc2222.txt>

[RFC3207] Hoffman, P., "SMTP Service Extension for Secure SMTP over Transport Layer Security", RFC 3207, February 2002, <http://www.rfc-editor.org/rfc/rfc3207.txt>

[RFC4409] Gellens, R., and Klensin, J., "Message Submission for Mail", RFC 4409, April 2006, <http://www.rfc-editor.org/rfc/rfc4409.txt>

[RFC5234] Crocker, D., Ed., and Overell, P., "Augmented BNF for Syntax Specifications: ABNF", STD 68, RFC 5234, January 2008, <http://www.rfc-editor.org/rfc/rfc5234.txt>

[RFC5322] Resnick, P., Ed., "Internet Message Format", RFC 5322, October 2008, <http://www.rfc-editor.org/rfc/rfc5322.txt>

1.3 Overview

This set of extensions enables additional features and communication between an **SMTP** client and server.

These extensions define the relaxed AUTH command extension, which extends [\[RFC4954\]](#) to provide an alternative response format for the first server challenge which allows the server to verify that it supports the requested **Simple Authentication and Security Layer (SASL)** mechanism.

These extensions define scenarios where the server can close connections that are consuming too many resources.

1.4 Relationship to Other Protocols

The SMTP Extensions extend [\[RFC5321\]](#), [\[RFC4954\]](#), and other related extensions.

The Relaxed AUTH Command Extension is used with SASL mechanisms, such as the NT LAN Manager (NTLM) Authentication: Simple Mail Transfer Protocol (SMTP) Extension specified in [\[MS-SMTPNTLM\]](#), that require the client to provide an initial response before the server can issue a challenge.

For conceptual background information and overviews of the relationships and interactions between this and other protocols, see [\[MS-OXPROTO\]](#).

1.5 Prerequisites/Preconditions

None.

1.6 Applicability Statement

The SMTP Extensions are applicable to scenarios in which clients will be authenticating to and submitting email messages directly to a server. This specification does not cover how SMTP transport agents affect or alter messages on the server.

1.7 Versioning and Capability Negotiation

The SMTP Extensions introduce no new versioning mechanisms beyond those that exist in SMTP, as described in [\[RFC5321\]](#).

Negotiation of SMTP options is specified in [\[RFC5321\]](#) section 4.1.1.1.

1.8 Vendor-Extensible Fields

None.

1.9 Standards Assignments

None.

2 Messages

2.1 Transport

The transport of the protocol that the SMTP Extensions extend is specified in [\[RFC5321\]](#) section 1.1.

2.2 Message Syntax

The syntax of the messages that are exchanged between the client and the server is specified in [\[RFC5321\]](#).

2.2.1 SASL_Mechanism_Supported

The **SASL_Mechanism_Supported** message is used in place of a server challenge that contains no data, as specified in [\[RFC4954\]](#) section 4. The format of this message is specified by the following **Augmented Backus-Naur Form (ABNF)** notation.

```
mechanism_supported = "334" SP mechanism SP "supported"  
mechanism           = 1*20 mech_char  
mech_char           = %x41-5A / %x30-39 / %x2D / %x5F
```

The value of the mechanism ABNF rule is equal to the mechanism argument passed in the **AUTH** command by the client.

3 Protocol Details

3.1 Client Details

The client role MUST conform to [\[RFC5321\]](#) for the exchange of messages with the server. The client role MUST conform to the SMTP Service Extension for Authentication specified in [\[RFC2554\]](#) and SHOULD conform to SMTP Service Extension for Authentication specified in [\[RFC4954\]](#). Throughout this section, SMTP Service Extension for Authentication refers to whichever version of the SMTP Service Extension for Authentication that the client supports.

3.1.1 Abstract Data Model

The client state model is specified in [\[RFC5321\]](#), with the additions in the SMTP Service Extension for Authentication.

3.1.2 Timers

None beyond what is specified in [\[RFC5321\]](#), with the additions in the SMTP Service Extension for Authentication.

3.1.3 Initialization

None.

3.1.4 Higher-Layer Triggered Events

None.

3.1.5 Message Processing Events and Sequencing Rules

Except as specified in section [3.1.5.1](#), the client MUST conform to [\[RFC5321\]](#), with the additions in the SMTP Service Extension for Authentication, for all message processing events and sequencing rules.

3.1.5.1 Receiving a SASL_Mechanism_Supported Message

When a client receives a **SASL_Mechanism_Supported** message, as specified in section [2.2.1](#), the client MUST verify that it sent an **AUTH** command with an initial-response. The client MAY also validate that the message contains the mechanism it sent in the **AUTH** command and fail the communication if such verification failed.

The client MUST then continue negotiation by sending a client response to the server with the content specified by the client's implementation of the negotiated SASL mechanism, as specified in the SMTP Service Extension for Authentication.

3.1.6 Timer Events

None beyond what is specified in [\[RFC5321\]](#), with the additions in the SMTP Service Extension for Authentication.

3.1.7 Other Local Events

None.

3.2 Server Details

The server role MUST conform to [\[RFC5321\]](#) for the exchange of messages with the client. The server role MUST conform to the SMTP Service Extension for Authentication specified in [\[RFC2554\]](#) and SHOULD [\[2\]](#) conform to the SMTP Service Extension for Authentication specified in [\[RFC4954\]](#). Throughout this section, SMTP Service Extension for Authentication refers to whichever version of the SMTP Service Extension for Authentication that the server supports.

3.2.1 Abstract Data Model

The server state model is specified in [\[RFC5321\]](#), with the addition in the SMTP Service Extension for Authentication.

3.2.2 Timers

ConnectionTimer: A timer that identifies how much time has elapsed since a session was initiated.

ConnectionInactivityTimer: A timer that identifies how much time has elapsed since a client provided input. This timer corresponds to the server time-out specified in [\[RFC5321\]](#) section 4.5.3.2.7.

3.2.3 Initialization

None.

3.2.4 Higher-Layer Triggered Events

None.

3.2.5 Message Processing Events and Sequencing Rules

Except as specified in section [3.2.5.1](#), the server role MUST be compliant with the message processing and sequencing rules that are specified in [\[RFC5321\]](#), with the additions in the SMTP Service Extension for Authentication.

3.2.5.1 Sending a SASL_Mechanism_Supported Message

When the server receives an **AUTH** command that does not include the optional initial response, as specified in [\[RFC4954\]](#) section 4, and the specified SASL mechanism provides an empty server string to include in the server challenge, the server SHOULD respond with a **SASL_Mechanism_Supported** message, as specified in section [2.2.1](#).

3.2.6 Timer Events

The **ConnectionTimeOut** timer event occurs when the **ConnectionTimer**, as specified in section [3.2.2](#), expires. The server MUST end the session as specified in [\[RFC5321\]](#) section 3.8.

The **ConnectionInactivityTimeOut** timer event occurs when the **ConnectionInactivityTimer**, as specified in section [3.2.2](#), expires. The server MUST end the session as specified in [\[RFC5321\]](#) section 3.8.

3.2.7 Other Local Events

ConnectionEstablished event: Occurs when a **TCP** connection is established to the server on the configured SMTP port. The server **MUST** initialize a **ConnectionTimer**, as specified in section 3.2.2, for each connection. If the server is a gateway server, as specified in [\[RFC5321\]](#) section 2.3.10, the **ConnectionTimer** **MUST** be set to 5 minutes. If the server is a relay server, as specified in [\[RFC5321\]](#) section 2.3.10, the **ConnectionTimer** **MUST** be set to 10 minutes. The server **MUST** initialize a **ConnectionInactivityTimer**, as specified in section 3.2.2, for each connection. The **ConnectionInactivityTimer** is set to a value configured by the administrator.

CommandReceived event: Occurs when the server receives a command from the client. The server **MUST** reset the **ConnectionInactivityTimer** associated with the client's TCP connection to the timeout value configured by the administrator.

MaxHopCount event: Occurs when the number of **Received** header fields, as specified in [\[RFC5321\]](#) section 6.3, exceeds the configured maximum. The SMTP response code **MUST** indicate a permanent failure, as specified in [\[RFC5321\]](#) section 4.2.1. This response is sent at the end of a **DATA** command, as specified in [\[RFC5321\]](#) section 4.1.1.4, or a **BDAT** command, as specified in [\[RFC3030\]](#).

MaxLocalHopCount event: Occurs when the server has received the message more than the configured maximum number of times. The SMTP response code **MUST** indicate a permanent failure, as specified in [\[RFC5321\]](#) section 4.2.1. This response is sent at the end of a **DATA** or **BDAT** command.

TooManyRecipients event: Occurs when the number of recipients exceeds the configured maximum. The SMTP response code **MUST** indicate a transient failure, as specified in [\[RFC5321\]](#) section 4.2.1. This response **MUST** be sent at the end of a **RCPT TO** command, as specified in [\[RFC5321\]](#) section 4.1.1.3.

MessageRateLimitExceeded event: Occurs when the message submission rate for a client has exceeded the configured limit. The SMTP response code **MUST** be 421, as specified in [\[RFC5321\]](#) section 4.2.2, and the enhanced status code, as specified in [\[RFC2034\]](#), **MUST** be 4.4.2. This response **MUST** be sent at the end of a **MAIL FROM** command, as specified in [\[RFC5321\]](#) section 4.1.1.2. The server **MUST** end the session.

HeaderSizeExceeded event: Occurs when the message header size exceeds the configured size limit. The SMTP response code **MUST** be 552 and the enhanced status code **MUST** be 5.3.4. This response **MUST** be sent at the end of a **DATA** or **BDAT** command.

MessageSizeExceeded event: Occurs when the message size exceeds the configured size limit. The SMTP response code **MUST** be 552 and the enhanced status code **MUST** be 5.3.4. This response **MUST** be sent at the end of a **DATA** or **BDAT** command.

ProtocolViolationCount event: Occurs when the configured maximum number of logon or protocol errors is exceeded. The SMTP response code **MUST** be 421 and the enhanced status code **MUST** be 4.7.0. The server **MUST** end the session.

OutOfResources event: Occurs when a client initiates a TCP connection to the server and the server is low on memory or disk space. The SMTP response code **MUST** be 452 and the enhanced status code **MUST** be 4.3.1.

NewConnectionNotAvailable event: Occurs when an SMTP server cannot process a new connection. It indicates that the process has stopped responding or is in a crashed condition. The SMTP response code **MUST** be 421 and the enhanced status code **MUST** be 4.4.2. The server **MUST** end the session.

BindingNotConfigured event: Occurs when an SMTP server is not configured to accept connections from a client at a specific IP address or from the specific user. The SMTP response code **MUST** be 421 and the enhanced status code **MUST** be 4.3.2. The server **MUST** end the session.

ConnectionCountExceeded event: Occurs when an SMTP server has exceeded the configured maximum concurrent inbound connections. The SMTP response code MUST be 421 and the enhanced status code MUST be 4.3.2. The server MUST end the session.

ConnectionCountPerSource event: Occurs when an SMTP server has exceeded the configured limit on inbound connections for an IP address. The SMTP response code MUST be 421 and the enhanced status code MUST be 4.3.2. The server MUST end the session.

IPAddressNotAllowed event: Occurs when a gateway SMTP server binding receives a connection from an IP address that the server has been configured to not accept connections from. The SMTP response code MUST be 550 and the enhanced status code MUST be 5.7.1.

AcknowledgementDelay event: Occurs when the server waits longer than the configured time limit for a mail item to be delivered to the next hop. This event occurs after the end of **DATA** or **BDAT LAST** command, as specified in [\[RFC3030\]](#) section 2. If the **AcknowledgementDelay** event occurs, the server MUST send acknowledgment of receiving the mail item even if transport has not delivered the item to the next hop. The server sends the response as specified in [\[RFC5321\]](#) and processes the next command. The server state does not change.

Tarquit event: Occurs at the end of a command when the server sends an error message to an unauthenticated user, and once again if the same client connects to the server. The server MUST ignore connection attempts for 5 seconds and then send the response to the client. The server sends the response as specified in [\[RFC5321\]](#) and processes the next command. The server state does not change.

Preliminary

4 Protocol Examples

The following sequence diagram shows an example of an authentication exchange that uses the **SASL_Mechanism_Supported** message described in section 2.2.1. In this example, the client requests authentication using the NT LAN Manager (NTLM) Authentication: Simple Mail Transfer Protocol (SMTP) Extension, as described in [MS-SMTPNTLM].

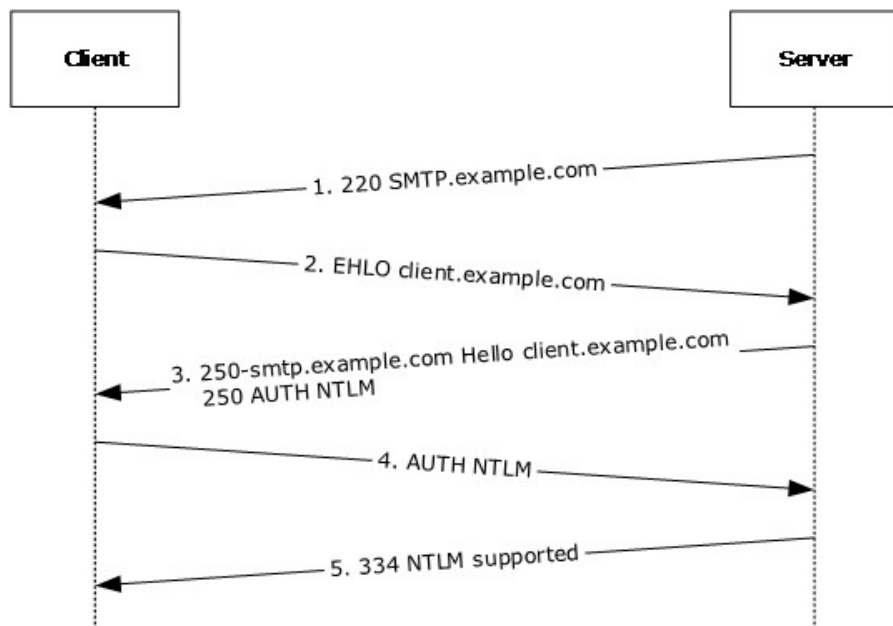


Figure 1: Example authentication exchange

1. The initial response by the SMTP server ("220 SMTP.example.com") is the greeting by the server as specified in [RFC5321].
2. The client sends the **EHLO** command.
3. The server responds with, among other things, an indication of support for **NTLM** authentication.
4. The client issues the **AUTH** NTLM command, omitting the initial response.
5. The server responds with the **SASL_Mechanism_Supported** message.

5 Security

5.1 Security Considerations for Implementers

Security considerations are described in [\[RFC1870\]](#) section 9, [\[RFC2034\]](#) section 7, [\[RFC3207\]](#) section 6, [\[RFC4409\]](#) section 9, [\[RFC4954\]](#) section 9, [\[RFC5321\]](#) section 7, [\[RFC5322\]](#) section 5, [\[MS-SMTPNTLM\]](#), and [\[MS-XLOGIN\]](#) section 5.1.

5.2 Index of Security Parameters

Security parameters for message submission authentication are described in [\[RFC4409\]](#).

Preliminary

6 Appendix A: Product Behavior

The information in this specification is applicable to the following Microsoft products or supplemental software. References to product versions include released service packs.

- Microsoft Exchange Server 2003
- Microsoft Exchange Server 2007
- Microsoft Exchange Server 2010
- Microsoft Exchange Server 2013
- Microsoft Office Outlook 2003
- Microsoft Office Outlook 2007
- Microsoft Outlook 2010
- Microsoft Outlook 2013
- Microsoft .NET Framework 2.0
- Microsoft .NET Framework 3.5
- Microsoft .NET Framework 4
- Microsoft .NET Framework 4.5
- Windows 2000 Professional operating system
- Windows XP operating system
- Windows Vista operating system
- Windows 7 operating system
- Windows 8 operating system
- Windows 8.1
- Windows 2000 Server operating system
- Windows Server 2003 operating system
- Windows Server 2008 operating system
- Windows Server 2012 operating system
- Windows Server 2012 R2
- Microsoft Outlook 2016 Preview

Exceptions, if any, are noted below. If a service pack or Quick Fix Engineering (QFE) number appears with the product version, behavior changed in that service pack or QFE. The new behavior also applies to subsequent service packs of the product unless otherwise specified. If a product edition appears with the product version, behavior is different in that product edition.

Unless otherwise specified, any statement of optional behavior in this specification that is prescribed using the terms SHOULD or SHOULD NOT implies product behavior in accordance with the SHOULD or

SHOULD NOT prescription. Unless otherwise specified, the term MAY implies that the product does not follow the prescription.

<1> [Section 3.1](#): Windows 2000 Professional, Windows XP, Windows Vista, Windows 7, Windows 8, Windows 8.1, Windows 2000 Server, Windows Server 2003, Windows Server 2008, Windows Server 2012, and Windows Server 2012 R2 do not conform to [\[RFC4954\]](#).

<2> [Section 3.2](#): Windows 2000 Professional, Windows XP, Windows 2000 Server, Windows Server 2003, Windows Server 2008, Windows Server 2012, and Windows Server 2012 R2 do not conform to [\[RFC4954\]](#).

Preliminary

7 Change Tracking

This section identifies changes that were made to this document since the last release. Changes are classified as New, Major, Minor, Editorial, or No change.

The revision class **New** means that a new document is being released.

The revision class **Major** means that the technical content in the document was significantly revised. Major changes affect protocol interoperability or implementation. Examples of major changes are:

- A document revision that incorporates changes to interoperability requirements or functionality.
- The removal of a document from the documentation set.

The revision class **Minor** means that the meaning of the technical content was clarified. Minor changes do not affect protocol interoperability or implementation. Examples of minor changes are updates to clarify ambiguity at the sentence, paragraph, or table level.

The revision class **Editorial** means that the formatting in the technical content was changed. Editorial changes apply to grammatical, formatting, and style issues.

The revision class **No change** means that no new technical changes were introduced. Minor editorial and formatting changes may have been made, but the technical content of the document is identical to the last released version.

Major and minor changes can be described further using the following change types:

- New content added.
- Content updated.
- Content removed.
- New product behavior note added.
- Product behavior note updated.
- Product behavior note removed.
- New protocol syntax added.
- Protocol syntax updated.
- Protocol syntax removed.
- New content added due to protocol revision.
- Content updated due to protocol revision.
- Content removed due to protocol revision.
- New protocol syntax added due to protocol revision.
- Protocol syntax updated due to protocol revision.
- Protocol syntax removed due to protocol revision.
- Obsolete document removed.

Editorial changes are always classified with the change type **Editorially updated**.

Some important terms used in the change type descriptions are defined as follows:

- **Protocol syntax** refers to data elements (such as packets, structures, enumerations, and methods) as well as interfaces.
- **Protocol revision** refers to changes made to a protocol that affect the bits that are sent over the wire.

The changes made to this document are listed in the following table. For more information, please contact dochelp@microsoft.com.

Section	Tracking number (if applicable) and description	Major change (Y or N)	Change type
6 Appendix A: Product Behavior	Updated list of supported products.	Y	Content updated due to protocol revision.

Preliminary

8 Index

A

Abstract data model

[client](#) 9
[server](#) 10

[Applicability](#) 7

C

[Capability negotiation](#) 7

[Change tracking](#) 17

Client

[abstract data model](#) 9
[higher-layer triggered events](#) 9
[initialization](#) 9
[message processing](#) 9
[other local events](#) 9
[overview](#) 9
[sequencing rules](#) 9
[timer events](#) 9
[timers](#) 9

D

Data model - abstract

[client](#) 9
[server](#) 10

F

[Fields - vendor-extensible](#) 7

G

[Glossary](#) 5

H

Higher-layer triggered events

[client](#) 9
[server](#) 10

I

[Implementer - security considerations](#) 14

[Index of security parameters](#) 14

[Informative references](#) 6

Initialization

[client](#) 9
[server](#) 10

[Introduction](#) 5

M

Message processing

[client](#) 9
[server](#) 10

Messages

[SASL Mechanism Supported](#) 8

[transport](#) 8

N

[Normative references](#) 5

O

Other local events

[client](#) 9
[server](#) 11

[Overview \(synopsis\)](#) 6

P

[Parameters - security index](#) 14

[Preconditions](#) 7

[Prerequisites](#) 7

[Product behavior](#) 15

R

References

[informative](#) 6
[normative](#) 5

[Relationship to other protocols](#) 6

S

[SASL Mechanism Supported message](#) 8

Security

[implementer considerations](#) 14
[parameter index](#) 14

Sequencing rules

[client](#) 9
[server](#) 10

Server

[abstract data model](#) 10
[higher-layer triggered events](#) 10
[initialization](#) 10
[message processing](#) 10
[other local events](#) 11
[overview](#) 10
[sequencing rules](#) 10
[timer events](#) 10
[timers](#) 10
[Standards assignments](#) 7

T

Timer events

[client](#) 9
[server](#) 10

Timers

[client](#) 9
[server](#) 10

[Tracking changes](#) 17

[Transport](#) 8

Triggered events - higher-layer

[client](#) 9
[server](#) 10

v

[Vendor-extensible fields](#) 7
[Versioning](#) 7

Preliminary