

# [MS-OXPOP3]: Post Office Protocol Version 3 (POP3) Extensions

---

## Intellectual Property Rights Notice for Open Specifications Documentation

- **Technical Documentation.** Microsoft publishes Open Specifications documentation for protocols, file formats, languages, standards as well as overviews of the interaction among each of these technologies.
- **Copyrights.** This documentation is covered by Microsoft copyrights. Regardless of any other terms that are contained in the terms of use for the Microsoft website that hosts this documentation, you may make copies of it in order to develop implementations of the technologies described in the Open Specifications and may distribute portions of it in your implementations using these technologies or your documentation as necessary to properly document the implementation. You may also distribute in your implementation, with or without modification, any schema, IDL's, or code samples that are included in the documentation. This permission also applies to any documents that are referenced in the Open Specifications.
- **No Trade Secrets.** Microsoft does not claim any trade secret rights in this documentation.
- **Patents.** Microsoft has patents that may cover your implementations of the technologies described in the Open Specifications. Neither this notice nor Microsoft's delivery of the documentation grants any licenses under those or any other Microsoft patents. However, a given Open Specification may be covered by Microsoft [Open Specification Promise](#) or the [Community Promise](#). If you would prefer a written license, or if the technologies described in the Open Specifications are not covered by the Open Specifications Promise or Community Promise, as applicable, patent licenses are available by contacting [iplg@microsoft.com](mailto:iplg@microsoft.com).
- **Trademarks.** The names of companies and products contained in this documentation may be covered by trademarks or similar intellectual property rights. This notice does not grant any licenses under those rights.
- **Fictitious Names.** The example companies, organizations, products, domain names, e-mail addresses, logos, people, places, and events depicted in this documentation are fictitious. No association with any real company, organization, product, domain name, email address, logo, person, place, or event is intended or should be inferred.

**Reservation of Rights.** All other rights are reserved, and this notice does not grant any rights other than specifically described above, whether by implication, estoppel, or otherwise.

**Tools.** The Open Specifications do not require the use of Microsoft programming tools or programming environments in order for you to develop an implementation. If you have access to Microsoft programming tools and environments you are free to take advantage of them. Certain Open Specifications are intended for use in conjunction with publicly available standard specifications and network programming art, and assumes that the reader either is familiar with the aforementioned material or has immediate access to it.

## Revision Summary

Date	Revision History	Revision Class	Comments
04/04/2008	0.1		Initial Availability.
06/27/2008	1.0		Initial Release.
08/06/2008	1.01		Edited technical content.
09/03/2008	1.02		Revised and edited technical content.
12/03/2008	1.03		Minor editorial fixes.
03/04/2009	1.04		Revised and edited technical content.
04/10/2009	2.0		Updated technical content and applicable product releases.
07/15/2009	3.0	Major	Revised and edited for technical content.
11/04/2009	3.1.0	Minor	Updated the technical content.
02/10/2010	3.2.0	Minor	Updated the technical content.
05/05/2010	3.2.1	Editorial	Revised and edited the technical content.
08/04/2010	4.0	Major	Significantly changed the technical content.
11/03/2010	5.0	Major	Significantly changed the technical content.
03/18/2011	6.0	Major	Significantly changed the technical content.
08/05/2011	6.1	Minor	Clarified the meaning of the technical content.
10/07/2011	6.1	No change	No changes to the meaning, language, or formatting of the technical content.
01/20/2012	7.0	Major	Significantly changed the technical content.
04/27/2012	7.0	No change	No changes to the meaning, language, or formatting of the technical content.
07/16/2012	7.0	No change	No changes to the meaning, language, or formatting of the technical content.
10/08/2012	8.0	Major	Significantly changed the technical content.

# Table of Contents

<b>1 Introduction</b> .....	<b>5</b>
1.1 Glossary .....	5
1.2 References.....	6
1.2.1 Normative References.....	6
1.2.2 Informative References .....	6
1.3 Overview .....	6
1.4 Relationship to Other Protocols.....	8
1.5 Prerequisites/Preconditions .....	9
1.6 Applicability Statement.....	9
1.7 Versioning and Capability Negotiation.....	9
1.8 Vendor-Extensible Fields.....	9
1.9 Standards Assignments .....	9
<b>2 Messages</b> .....	<b>10</b>
2.1 Transport.....	10
2.2 Message Syntax .....	10
2.2.1 AUTH Extensions.....	10
2.2.2 POP3 Delegate Access.....	11
<b>3 Protocol Details</b> .....	<b>13</b>
3.1 POP3 Client Details .....	13
3.1.1 Abstract Data Model .....	13
3.1.1.1 Client POP3 State Model .....	13
3.1.1.2 NTLM Subsystem Interaction.....	14
3.1.2 Timers .....	15
3.1.3 Initialization .....	15
3.1.4 Higher-Layer Triggered Events.....	15
3.1.5 Message Processing Events and Sequencing Rules.....	15
3.1.5.1 Receiving a POP3_NTLM_Supported_Response Message .....	15
3.1.5.2 Receiving a POP3_AUTH_NTLM_Fail_Response Message .....	15
3.1.5.3 Sending a POP3_AUTH_NTLM_Blob_Command Message .....	16
3.1.5.4 Receiving a POP3_AUTH_NTLM_Blob_Response Message.....	16
3.1.5.4.1 Error from NTLM .....	16
3.1.5.4.2 NTLM Reports Success and Returns an NTLM Message .....	16
3.1.5.5 Receiving a POP3_AUTH_NTLM_Succeeded_Response Message .....	16
3.1.5.6 Receiving a POP3_AUTH_NTLM_Fail_Response Message (inside_authentication).....	17
3.1.6 Timer Events .....	17
3.1.7 Other Local Events .....	17
3.2 POP3 Server Details .....	17
3.2.1 Abstract Data Model .....	17
3.2.1.1 Server POP3 State Model.....	17
3.2.1.2 NTLM Subsystem Interaction.....	19
3.2.2 Timers .....	20
3.2.3 Initialization .....	20
3.2.4 Higher-Layer Triggered Events.....	20
3.2.5 Message Processing Events and Sequencing Rules.....	20
3.2.5.1 Receiving a POP3_AUTH_NTLM_Initiation_Command Message.....	20
3.2.5.2 Receiving a POP3_AUTH_NTLM_Blob_Command Message .....	21
3.2.5.2.1 NTLM Returns Success, Returning an NTLM Message .....	21

3.2.5.2.2	NTLM Returns Success, Indicating Authentication Completed Successfully ..	21
3.2.5.2.3	NTLM Returns Status, Indicating User Name or Password Was Incorrect ....	21
3.2.5.2.4	NTLM Returns a Failure Status, Indicating Any Other Error .....	21
3.2.5.3	Sending a POP3_AUTH_NTLM_Blob_Response Message .....	21
3.2.5.4	Receiving a POP3_AUTH_NTLM_Cancellation_Command Message .....	22
3.2.6	Timer Events .....	22
3.2.7	Other Local Events .....	22
<b>4</b>	<b>Protocol Examples .....</b>	<b>23</b>
4.1	POP3 Client Successfully Authenticating to a POP3 Server.....	23
4.2	POP3 Client Unsuccessfully Authenticating to a POP3 Server .....	25
<b>5</b>	<b>Security .....</b>	<b>27</b>
5.1	Security Considerations for Implementers.....	27
5.2	Index of Security Parameters .....	27
<b>6</b>	<b>Appendix A: Product Behavior .....</b>	<b>28</b>
<b>7</b>	<b>Change Tracking.....</b>	<b>30</b>
<b>8</b>	<b>Index .....</b>	<b>32</b>

# 1 Introduction

The Post Office Protocol Version 3 (POP3) extensions specify extensions to the Post Office Protocol Version 3 (POP3). The following extensions are specified:

- The NT LAN Manager (NTLM) authentication mechanism for the POP3 protocol. This is a proprietary extension that is used with the POP3 **AUTH** command.
- The delegate access mechanism for the POP3 protocol.

For the purposes of this document, the NTLM authentication mechanism for POP3 is referred to in subsequent sections as "the NTLM POP3 Extension", and the delegate access mechanism for POP3 is referred to as "the POP3 Delegate Access extension".

Sections 1.8, 2, and 3 of this specification are normative and can contain the terms MAY, SHOULD, MUST, MUST NOT, and SHOULD NOT as defined in RFC 2119. Sections 1.5 and 1.9 are also normative but cannot contain those terms. All other sections and examples in this specification are informative.

## 1.1 Glossary

The following terms are defined in [\[MS-GLOS\]](#):

**ASCII**  
**Augmented Backus-Naur Form (ABNF)**  
**connection-oriented NTLM**  
**domain**  
**NT LAN Manager (NTLM) Authentication Protocol**  
**user principal name (UPN)**

The following terms are defined in [\[MS-OXGLOS\]](#):

**alias**  
**base64 encoding**  
**best body**  
**delegate**  
**delegator**  
**mailbox**  
**Multipurpose Internet Mail Extensions (MIME)**  
**NTLM message**  
**NTLM software**  
**plain text**

The following terms are specific to this document:

**POP3 response:** A message that is sent by a Post Office Protocol - Version 3 (POP3) server in response to a message from a POP3 client.

**MAY, SHOULD, MUST, SHOULD NOT, MUST NOT:** These terms (in all caps) are used as described in [\[RFC2119\]](#). All statements of optional behavior use either MAY, SHOULD, or SHOULD NOT.

## 1.2 References

References to Microsoft Open Specifications documentation do not include a publishing year because links are to the latest version of the technical documents, which are updated frequently. References to other documents include a publishing year when one is available.

### 1.2.1 Normative References

We conduct frequent surveys of the normative references to assure their continued availability. If you have any issue with finding a normative reference, please contact [dochelp@microsoft.com](mailto:dochelp@microsoft.com). We will assist you in finding the relevant information. Please check the archive site, <http://msdn2.microsoft.com/en-us/library/E4BD6494-06AD-4aed-9823-445E921C9624>, as an additional source.

[MS-NLMP] Microsoft Corporation, "[NT LAN Manager \(NTLM\) Authentication Protocol Specification](#)".

[MS-OXBBODY] Microsoft Corporation, "[Best Body Retrieval Algorithm](#)".

[RFC1734] Myers, J., "POP3 AUTHentication Command", RFC 1734, December 1994, <http://www.ietf.org/rfc/rfc1734.txt>

[RFC1939] Myers, J., and Rose, M., "Post Office Protocol - Version 3", STD 53, RFC 1939, May 1996, <http://www.ietf.org/rfc/rfc1939.txt>

[RFC2045] Freed, N., and Borenstein, N., "Multipurpose Internet Mail Extensions (MIME) Part One: Format of Internet Message Bodies", RFC 2045, November 1996, <http://ietf.org/rfc/rfc2045.txt>

[RFC2119] Bradner, S., "Key words for use in RFCs to Indicate Requirement Levels", BCP 14, RFC 2119, March 1997, <http://www.rfc-editor.org/rfc/rfc2119.txt>

[RFC2449] Gellens, R., Newman, C., and Lundblade, L., "POP3 Extension Mechanism", RFC 2449, November 1998, <http://www.rfc-editor.org/rfc/rfc2449.txt>

[RFC2595] Newman, C., "Using TLS with IMAP, POP3 and ACAP", RFC 2595, June 1999, <http://www.rfc-editor.org/rfc/rfc2595.txt>

[RFC5234] Crocker, D., Ed., and Overell, P., "Augmented BNF for Syntax Specifications: ABNF", STD 68, RFC 5234, January 2008, <http://www.rfc-editor.org/rfc/rfc5234.txt>

[RFC822] Crocker, D.H., "Standard for ARPA Internet Text Messages", STD 11, RFC 822, August 1982, <http://www.ietf.org/rfc/rfc0822.txt>

### 1.2.2 Informative References

[MS-GLOS] Microsoft Corporation, "[Windows Protocols Master Glossary](#)".

[MS-OXGLOS] Microsoft Corporation, "[Exchange Server Protocols Master Glossary](#)".

[MS-OXPROTO] Microsoft Corporation, "[Exchange Server Protocols System Overview](#)".

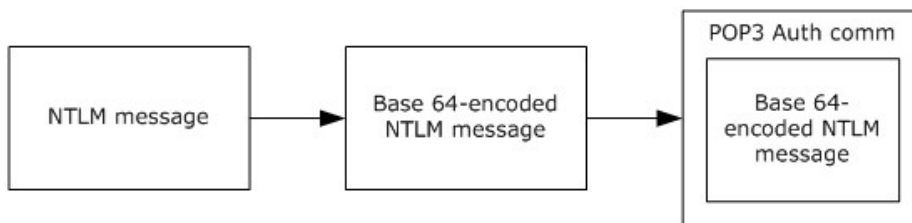
## 1.3 Overview

Client applications that connect to the Post Office Protocol - Version 3 (POP3) service can use either standard **plain text** password authentication, as described in [\[RFC1939\]](#), or NT LAN Manager (**NTLM**) authentication. [<1>](#)

The NTLM POP3 Extension specifies how a POP3 client and POP3 server can use the NT LAN Manager (NTLM) Authentication Protocol, as described in [MS-NLMP], so that the POP3 server can authenticate the POP3 client. NTLM is a challenge/response authentication protocol that depends on the application layer protocols to transport NTLM packets from client to server, and from server to client.

This specification defines how the POP3 **AUTH** command, as described in [RFC1734], is used to perform authentication by using the NTLM Authentication protocol. The POP3 **AUTH** command standard defines an extensibility mechanism for arbitrary authentication protocols to be plugged in to the core protocol.

This specification defines an embedded protocol in which NTLM authentication data is first transformed into a **base64 encoding** representation, and then formatted by padding with POP3 keywords as defined by the AUTH mechanism. The base64 encoding and the formatting are very rudimentary, and solely intended to make the NTLM data fit the framework described in [RFC1734]. The following figure shows the sequence of transformations that are performed on an **NTLM message** to produce a message that can be sent over POP3.



**Figure 1: Relationship between NTLM message and POP3: NTLM Authentication Protocol message**

This document specifies a pass-through protocol that does not specify the structure of NTLM information. Instead, the protocol relies on the software that implements the NTLM Authentication Protocol (as described in [MS-NLMP]) to process each NTLM message that is to be sent or received.

This specification defines a client role and a server role.

When POP3 performs an NTLM authentication, it has to interact with the NTLM subsystem appropriately. The following is an overview of this interaction.

If acting as a POP3 client:

1. The NTLM subsystem returns the first NTLM message to the client, to be sent to the server.
2. The client applies the base64 encoding and POP3-padding transformations mentioned earlier and described in detail later in this document to produce a POP3 message and send this message to the server.
3. The client waits for a response from the server. When the response is received, the client checks to determine whether the response indicates the end of authentication (success or failure) or that authentication is continuing.
4. If the authentication is continuing, the response message is stripped of the POP3 padding, base64 decoded, and passed into the NTLM subsystem, at which point the NTLM subsystem might return another NTLM message that has to be sent to the server. Steps 2 through 4 are repeated until authentication either succeeds or fails.

If acting as a POP3 server:

1. The server waits to receive the first POP3 authentication message from the client.
2. When a POP3 message is received from the client, the POP3 padding is removed, the message is base64 decoded, and the resulting NTLM message is passed into the NTLM subsystem.
3. The NTLM subsystem returns a status that indicates whether authentication completed successfully or failed, or whether more NTLM messages have to be exchanged to complete the authentication.
4. If the authentication is continuing, the NTLM subsystem returns an NTLM message that has to be sent to the client. This message is base64 encoded, and the POP3 padding is applied and sent to the client. Steps 2 through 4 are repeated until authentication either succeeds or fails.

The sequence that follows shows the typical flow of packets between client and server after NTLM authentication has been selected:

1. The POP3 client sends an NTLM **NEGOTIATE\_MESSAGE** message (as described in [MS-NLMP]) embedded in a **POP3\_AUTH\_NTLM\_Blob\_Command** command packet to the server.
2. On receiving the POP3 packet with an NTLM **NEGOTIATE\_MESSAGE** message, the POP3 server sends an NTLM **CHALLENGE\_MESSAGE** message (as described in [MS-NLMP]) embedded in a POP3 packet to the client.
3. In response, the POP3 client sends an NTLM **AUTHENTICATE\_MESSAGE** message (as described in [MS-NLMP]) embedded in a POP3 packet.
4. The server then sends a **POP3 response** to the client to complete the authentication process successfully.

The **NTLM NEGOTIATE\_MESSAGE**, **NTLM CHALLENGE\_MESSAGE**, and **NTLM AUTHENTICATE\_MESSAGE** message packets contain NTLM authentication data that has to be processed by the **NTLM software** that is installed on the local computer. The manner in which NTLM messages are to be retrieved and processed is described in [MS-NLMP].

This specification defines the delegate access mechanism that is used by a POP3 client.

Implementers of this specification have to conform to POP3, as described in [RFC1734] and [RFC1939], the **MIME** base64 encoding method, as described in [RFC2045], and the NTLM Authentication Protocol, as described in [MS-NLMP].

## 1.4 Relationship to Other Protocols

The NTLM POP3 Extension uses the POP3 AUTH extension mechanism, as specified in [RFC1734], and is an embedded protocol. Unlike stand-alone application protocols, such as Telnet or HTTP, packets for this specification are embedded in POP3 commands and server responses.

POP3 specifies only the sequence in which a POP3 server and POP3 client are required to exchange NTLM messages to authenticate the client to the server successfully. It does not specify how the client obtains NTLM messages from the local NTLM software, or how the POP3 server processes NTLM messages. The POP3 client and POP3 server implementations depend on the availability of an implementation of the NTLM Authentication Protocol (as specified in [MS-NLMP]) to obtain and process NTLM messages and on the availability of the base64 encoding and decoding mechanisms (as specified in [RFC2045]) to encode and decode the NTLM messages embedded in POP3 packets.

For conceptual background information and overviews of the relationships and interactions between this and other protocols, see [MS-OXPROTO].



## 1.5 Prerequisites/Preconditions

Because POP3 depends on NTLM to authenticate the client to the server, both server and client have access to an implementation of the NTLM Authentication Protocol (as specified in [\[MS-NLMP\]](#)) that is capable of supporting **connection-oriented NTLM**.

## 1.6 Applicability Statement

The NTLM POP3 Extension is used only when implementing a POP3 client that has to authenticate to a POP3 server by using NTLM authentication.

## 1.7 Versioning and Capability Negotiation

This document covers versioning issues in the following areas:

- Security and Authentication methods: The NTLM POP3 Extension supports the NTLMv1 and NTLMv2 authentication methods, as specified in [\[MS-NLMP\]](#).
- Capability Negotiation: POP3 does not support negotiation of which version of the NTLM authentication protocol to use. Instead, the NTLM authentication protocol version is configured on both the client and the server before authentication. NTLM authentication protocol version mismatches are handled by the NTLM Authentication Protocol implementation, not by POP3.

The client discovers whether the server supports NTLM AUTH through the **AUTH** command, issued without any arguments, at which point the server responds with a list of supported authentication mechanisms followed by a line that contains only a period (.). If NTLM is supported, the server includes the word "NTLM" in the list. The messages involved are specified in section [2.2](#) of this document. [<2><3>](#)

## 1.8 Vendor-Extensible Fields

None.

## 1.9 Standards Assignments

None.

## 2 Messages

### 2.1 Transport

The NTLM POP3 Extension does not establish transport connections. Instead, NTLM POP3 Extension messages are encapsulated in POP3 commands and responses. The way in which NTLM POP3 Extension messages are encapsulated in POP3 commands is specified in section [2.2](#).

### 2.2 Message Syntax

The NTLM POP3 Extension messages are divided into the following two categories:

1. AUTH extensions
2. Delegate Access

#### 2.2.1 AUTH Extensions

The first category of POP3 messages is messages that fall within the AUTH extensibility framework. These messages are specified in [\[RFC1734\]](#) and [\[RFC1939\]](#). Some messages have parameters that have to be customized by the extensibility mechanism (such as NTLM). The following customizations are introduced in this specification:

- [\[RFC1734\]](#) section 2 defines the syntax of the **AUTH** command to initiate authentication. The parameter "mechanism" is defined to be the string "NTLM" for the NTLM POP3 Extension. The command to initiate an NTLM conversation by a client in **Augmented Backus-Naur Form (ABNF)**, as specified in [\[RFC5234\]](#), is specified as follows. This is referred to as the **POP3\_AUTH\_NTLM\_Initiation\_Command** in this specification.

AUTH NTLM<CR><LF>

- If NTLM is supported, the POP3 server responds with a POP3 message to indicate that NTLM is supported, which is specified in [\[RFC1939\]](#). The syntax of this command in ABNF form is specified as follows. This is referred to as the **POP3\_NTLM\_Supported\_Response** command in this specification.

+<SP><CR><LF>

- If NTLM is not supported, the POP3 server returns a failure status code as defined by [\[RFC1734\]](#) and [\[RFC1939\]](#). The only data in this message that is useful is the "-ERR" string. The remaining data is human-readable data and has no bearing on the authentication. The syntax of this command in ABNF form is specified as follows. This is referred to as the **POP3\_AUTH\_NTLM\_Fail\_Response** command in this specification.

-ERR <human\_readable\_string> <CR><LF>

- At every point of time during the authentication exchange, the client **MUST** parse the responses in the messages sent by the server and interpret them as defined by [\[RFC1734\]](#). The responses define various states such as success in authenticating, failure to authenticate, and any other arbitrary failures that the software can encounter.

The client can receive any one of the following responses during authentication (note that the syntax and meaning of all these messages are specified in [\[RFC1734\]](#)):

- **POP3\_AUTH\_NTLM\_Blob\_Response**. This message is partially defined in [\[RFC1734\]](#). The '+' status code indicates ongoing authentication and also indicates that the <Base 64-encoded-

NTLM-message> is to be processed by the authentication subsystem. In this case, the client MUST de-encapsulate the data and pass it to the NTLM subsystem.

+ <Base 64-encoded-NTLM-message><CR><LF>

- **POP3\_AUTH\_NTLM\_Fail\_Response.** This message is defined in [\[RFC1939\]](#) and indicates that the authentication has terminated unsuccessfully, either because the user name or password was incorrect or because of some other arbitrary error, such as a software or data corruption error.

-ERR <human-readable-string><CR><LF>

- **POP3\_AUTH\_NTLM\_Succeeded\_Response.** This message is defined in [\[RFC1939\]](#) and indicates that the authentication negotiation has completed with the client successfully authenticating to the server.

+OK <human-readable-string><CR><LF>

- **POP3\_AUTH\_NTLM\_Cancelled\_Response.** This message is defined in [\[RFC1939\]](#) and indicates that the authentication negotiation has been canceled with the client.

-ERR <human-readable-string><CR><LF>

- NTLM messages encapsulated by the client and sent to the server are referred to as **POP3\_AUTH\_NTLM\_Blob\_Command** in this specification. They have the following syntax defined in ABNF, and they conform to the prescription as specified in [\[RFC1734\]](#).

<Base 64-encoded-NTLM-message><CR><LF>

- The client is able to cancel the authentication request by issuing a **POP3\_AUTH\_NTLM\_Cancellation\_Command**. This has the following syntax defined in ABNF:

\*<CR><LF>

## 2.2.2 POP3 Delegate Access

The POP3 Delegate Access extension extends the **USER** command, as specified in [\[RFC1939\]](#) section 7. The POP3 Delegate Access extension provides part of the logon mechanism for **delegates** to access a **delegator's mailbox**. There are four formats for using delegate access with POP3. In every case, the part after the last "/" of the user string is the mailbox identity in either **alias** or **user principal name (UPN)** format. The four formats are as follows:

- "USER" SP domain/delegateuseralias/principalalias
- "USER" SP domain/delegateuseralias/principalupn
- "USER" SP delegateuserupn/principalalias
- "USER" SP delegateuserupn/principalupn

The **domain** part of the **USER** string represents the delegate's domain.

The "delegateuserupn" part of the **USER** string represents the UPN of the delegate, which is composed of the user's identifier and domain, as specified in [\[RFC822\]](#) section 6.1.

The "delegateuseralias" part of the **USER** string represents the e-mail alias of the delegate.

The "principaluserupn" part of the **USER** string represents the UPN of the delegator, which is composed of the delegator's identifier and domain, as specified in [\[RFC822\]](#) section 6.1.

The "principaluseralias" part of the **USER** string represents the e-mail alias of the delegator.

## 3 Protocol Details

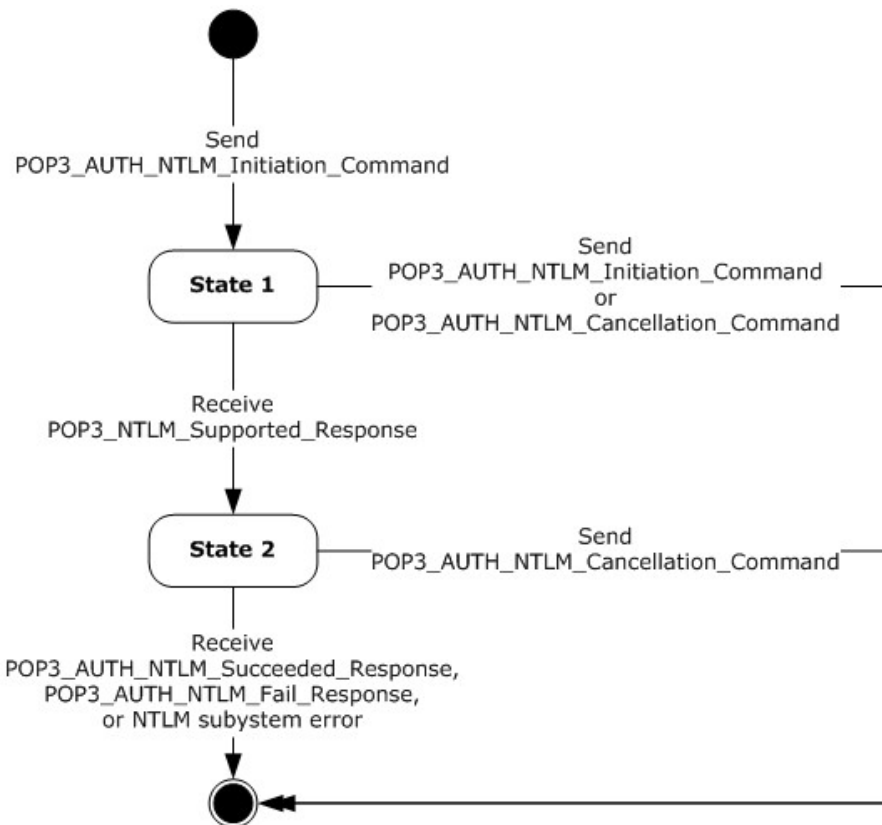
### 3.1 POP3 Client Details

#### 3.1.1 Abstract Data Model

This section describes a conceptual model of possible data organization that an implementation maintains to participate in this protocol. The described organization is provided to facilitate the explanation of how the protocol behaves. This document does not mandate that implementations adhere to this model as long as their external behavior is consistent with that described in this document.

##### 3.1.1.1 Client POP3 State Model

The following figure shows the client POP3 state model.



**Figure 2: Client POP3 state model**

The abstract data model for the NTLM POP3 Extension includes the following states:

1. Start

This is the state of the client before the **POP3\_AUTH\_NTLM\_Initiation\_Command** has been sent.

## 2. State 1: **sent\_authentication\_request**

This is the state of the client after the **POP3\_AUTH\_NTLM\_Initiation\_Command** has been sent.

## 3. State 2: **inside\_authentication**

This is the state entered by a client after it has received a **POP3\_NTLM\_Supported\_Response** message. In this state, the client initializes the NTLM subsystem by performing the following steps:

- Encapsulates the NTLM message, returned by the NTLM subsystem, into a **POP3\_AUTH\_NTLM\_Blob\_Command** message and sends the challenge message to the server. Waits for a response from the server.
- De-encapsulates the received **POP3\_AUTH\_NTLM\_Blob\_Response** message data (if any) from the server and converts it to NTLM messages data.
- Passes the NTLM message data to the NTLM subsystem.
- Encapsulates the NTLM authenticate message, returned by the NTLM subsystem, into a **POP3\_AUTH\_NTLM\_Blob\_Command** message.
- Sends the **POP3\_AUTH\_NTLM\_Blob\_Command** message to the server.

This state terminates when:

- For the client: a **POP3\_AUTH\_NTLM\_Succeeded\_Response** message or **POP3\_AUTH\_NTLM\_Fail\_Response** message is received. The **POP3\_AUTH\_NTLM\_Fail\_Response** message is received by the client from the server if the server received a **POP3\_AUTH\_NTLM\_Cancellation\_Command** command from the client.
- For either the client or the server: any failure is reported by the NTLM subsystem.

## 4. Stop: **completed\_authentication**

This is the state of the client on exiting the **inside\_authentication** state or the **sent\_authentication\_request** state. The rules for how the **inside\_authentication** state is exited are defined in section [3.1.5](#). The behavior of POP3 in this state is not in the scope of this specification. It represents the end state of the authentication protocol.

### 3.1.1.2 NTLM Subsystem Interaction

During the **inside\_authentication** phase, the POP3 client invokes the NTLM subsystem, as specified in [\[MS-NLMP\]](#). The NTLM protocol is used with these options:

1. The negotiation is a connection-oriented NTLM negotiation.
2. None of the flags specified in [\[MS-NLMP\]](#) is specific to NTLM.

The following is a description of how POP3 uses NTLM. All NTLM messages are encapsulated as specified in section [2.2](#). [\[MS-NLMP\]](#) describes the data model, internal states, and sequencing of NTLM messages in greater detail, as follows:

1. The client initiates the authentication by invoking NTLM, after which NTLM returns the NTLM **NEGOTIATE\_MESSAGE** message (as specified in [\[MS-NLMP\]](#)) to be sent to the server.

2. Subsequently, the exchange of NTLM messages goes on as defined by the NTLM protocol, with the POP3 client encapsulating the NTLM messages before sending them to the server, and de-encapsulating POP3 messages to obtain the NTLM message before giving it to NTLM.
3. The NTLM protocol completes authentication, either successfully or unsuccessfully, as follows:
  - The server sends the **POP3\_AUTH\_NTLM\_Succeeded\_Response** message to the client. On receiving this message, the client transitions to the **completed\_authentication** state and treats the authentication attempt as successful.
  - The server sends the **POP3\_AUTH\_NTLM\_Fail\_Response** message to the client. On receiving this message, the client transitions to the **completed\_authentication** state and treats the authentication attempt as failed.
  - Failures reported from the NTLM package (which can occur for any reason, including incorrect data being passed in, or implementation-specific errors) are reported to the client by NTLM and cause the client to transition to the **completed\_authentication** state.

### 3.1.2 Timers

None.

### 3.1.3 Initialization

None.

### 3.1.4 Higher-Layer Triggered Events

None.

### 3.1.5 Message Processing Events and Sequencing Rules

The NTLM POP3 Extension is driven by a series of message exchanges between a POP3 server and a POP3 client. The rules that govern the sequencing of commands and the internal states of the client and server are defined by a combination of [\[RFC1734\]](#) and [\[MS-NLMP\]](#). Section [3.1.1](#) defines how the rules specified in [\[RFC1734\]](#) and [\[MS-NLMP\]](#) govern POP3 authentication.

If the client receives a message that is not expected for its current state, the client MUST cancel the authentication process and transition to the **completed\_authentication** state.

#### 3.1.5.1 Receiving a POP3\_NTLM\_Supported\_Response Message

The expected state is **sent\_authentication\_request**.

On receiving this message, a client MUST generate the first NTLM message by calling the NTLM subsystem. The NTLM subsystem then generates the **NTLM\_NEGOTIATE\_MESSAGE** message, as specified in [\[MS-NLMP\]](#). The NTLM message is then encapsulated as defined previously and sent to the server.

The state of the client is changed to **inside\_authentication**.

#### 3.1.5.2 Receiving a POP3\_AUTH\_NTLM\_Fail\_Response Message

The expected state is **sent\_authentication\_request**.

On receiving this message, a client MUST end the NTLM authentication attempt and change the state to **complete\_authentication**.

### 3.1.5.3 Sending a POP3\_AUTH\_NTLM\_Blob\_Command Message

This section defines the processing of **POP3\_AUTH\_NTLM\_Blob\_Command** messages. These NTLM messages sent by the client are encapsulated as follows to conform to the AUTH mechanism:

1. Base64 encode the NTLM message data. This is needed because NTLM messages contain data outside the **ASCII** character range, whereas POP3 only supports ASCII characters.
2. Send the base64 encoded string.
3. Suffix the <CR> and <LF> characters (ASCII values 0x0D and 0x0A), as required by POP3.

The ABNF definition of a client message is as follows:

```
<Base 64-encoded-NTLM-message><CR><LF>
```

De-encapsulation of these messages by the client adheres to the reverse logic, as follows:

1. Remove the <CR> and <LF> characters (ASCII values 0x0D and 0x0A).
2. Base64 decode the POP3 data to produce the original NTLM message data.

### 3.1.5.4 Receiving a POP3\_AUTH\_NTLM\_Blob\_Response Message

The expected state is **inside\_authentication**.

On receiving this message, a client MUST de-encapsulate it to obtain the embedded NTLM message, and then pass it to the NTLM subsystem for processing. The NTLM subsystem can then either report an error, or report success and return an NTLM message to be sent to the server.

#### 3.1.5.4.1 Error from NTLM

If the NTLM subsystem reports an error, the client MUST change its internal state to **completed\_authentication** and conclude that the authentication has failed. The client can then take any action it considers appropriate; this specification does not mandate any specific course of action.

Typical actions in this scenario are to try other (non-authentication-related) POP3 commands or to disconnect the connection.

#### 3.1.5.4.2 NTLM Reports Success and Returns an NTLM Message

The NTLM message SHOULD be encapsulated and sent to the server. No change occurs in the state of the client.

### 3.1.5.5 Receiving a POP3\_AUTH\_NTLM\_Succeeded\_Response Message

Expected state: **inside\_authentication**.

The POP3 client MUST change its internal state to **completed\_authentication** and conclude that the authentication has succeeded. The client can then take any action it considers appropriate. This specification does not mandate any specific course of action.



### **3.1.5.6 Receiving a POP3\_AUTH\_NTLM\_Fail\_Response Message (inside\_authentication)**

Expected state: **inside\_authentication**.

The POP3 client MUST change its internal state to **completed\_authentication** and conclude that the authentication has failed. The client can then take any action it considers appropriate; this specification does not mandate any specific course of action.

### **3.1.6 Timer Events**

None.

### **3.1.7 Other Local Events**

None.

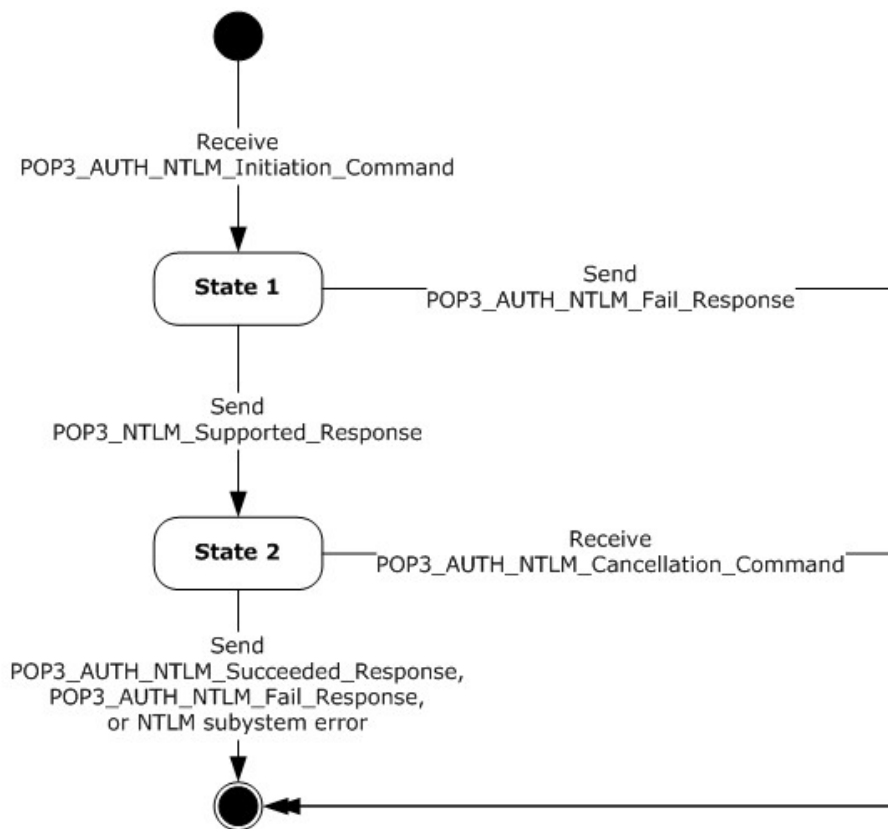
## **3.2 POP3 Server Details**

### **3.2.1 Abstract Data Model**

This section describes a conceptual model of possible data organization that an implementation maintains to participate in this protocol. The described organization is provided to facilitate the explanation of how the protocol behaves. This document does not mandate that implementations adhere to this model as long as their external behavior is consistent with that described in this document.

#### **3.2.1.1 Server POP3 State Model**

The following figure shows the server POP3 state model.



**Figure 3: Server POP3 state model**

The abstract data model for NTLM POP3 Extension includes the following states:

1. Start

This is the state of the server before the **POP3\_AUTH\_NTLM\_Initiation\_Command** command has been received.

2. State 1: **received\_authentication\_request**

This is the state of the server after the **POP3\_AUTH\_NTLM\_Initiation\_Command** command has been received.

3. State 2: **inside\_authentication**

This is the state entered by a server after it has sent a **POP3\_NTLM\_Supported\_Response** message. In this state, the server initializes the NTLM subsystem by performing the following steps:

- Waits for a message from the client.
- De-encapsulates the received **POP3\_AUTH\_NTLM\_Blob\_Command** message data from the client and obtains the embedded NTLM message data.
- Passes the NTLM message data to the NTLM subsystem.

- Encapsulates the NTLM message returned by the NTLM subsystem into a **POP3\_AUTH\_NTLM\_Blob\_Response** message.
- Sends the **POP3\_AUTH\_NTLM\_Blob\_Response** message to the client.

This state terminates when:

- The NTLM subsystem reports completion with either a success or failed authentication status, at which point it sends the client the **POP3\_AUTH\_NTLM\_Succeeded\_Response** message or the **POP3\_AUTH\_NTLM\_Fail\_Response** message, as specified in [\[RFC1734\]](#). The **POP3\_AUTH\_NTLM\_Fail\_Response** message is sent by the server to the client if the server has received a **POP3\_AUTH\_NTLM\_Cancellation\_Command** command from the client.
- Any failure is reported by the NTLM subsystem.

#### 4. Stop: **completed\_authentication**

This is the state of the server on exiting the **inside\_authentication** state or the **sent\_authentication\_request** state. The rules for how the **inside\_authentication** state is exited are defined in section [3.2.5](#). The behavior of POP3 in this state is specified in [\[RFC1734\]](#); it represents the end state of the authentication protocol.

### 3.2.1.2 NTLM Subsystem Interaction

During the **inside\_authentication** state, the POP3 server invokes the NTLM subsystem as specified in [\[MS-NLMP\]](#). The NTLM protocol is used with the following options:

1. The negotiation is a connection-oriented NTLM negotiation.
2. None of the flags specified in [\[MS-NLMP\]](#) is specific to NTLM.

The following is a description of how POP3 uses NTLM. For more details, see [\[MS-NLMP\]](#), which describes the data model and sequencing of NTLM packets in greater detail.

1. On receiving the NTLM **NEGOTIATE\_MESSAGE** message (as specified in [\[MS-NLMP\]](#)), the server passes it to the NTLM subsystem and is returned the NTLM **CHALLENGE\_MESSAGE** message (as specified in [\[MS-NLMP\]](#)), if the NTLM **NEGOTIATE\_MESSAGE** message was valid.
2. Subsequently, the exchange of NTLM messages goes on as defined by the NTLM protocol, with the POP3 server encapsulating the NTLM messages that are returned by NTLM before sending them to the client.
3. When the NTLM protocol completes authentication, either successfully or unsuccessfully, the NTLM subsystem notifies POP3 and the following occurs:
  - On successful completion, the server exits the **inside\_authentication** state, enters the **completed\_authentication** state, and send the **POP3\_AUTH\_NTLM\_Succeeded\_Response** message to the client. On receiving this message, the client transitions to the **completed\_authentication** state.
  - If a failure occurs because of an incorrect password error, as described in [\[MS-NLMP\]](#), the server enters the **completed\_authentication** state and sends the client a **POP3\_AUTH\_NTLM\_Fail\_Response** message.
  - If a failure occurs on the server because of any reason other than the incorrect password error, the server enters the **completed\_authentication** state and send the client a

**POP3\_AUTH\_NTLM\_Fail\_Response** message. On receiving this message, the client enters the **completed\_authentication** state.

### 3.2.2 Timers

None.

### 3.2.3 Initialization

None.

### 3.2.4 Higher-Layer Triggered Events

When the server receives a **POP3\_AUTH\_NTLM\_Blob\_Command** command that contains an **NTLM NEGOTIATE\_MESSAGE** message (as specified in [\[MS-NLMP\]](#)), the message is passed to the NTLM system. If the NTLM system is successful in handling the message, the NTLM system returns an **NTLM CHALLENGE\_MESSAGE** message (as specified in [\[MS-NLMP\]](#)). The NTLM system triggers the server to send a **POP3\_AUTH\_NTLM\_Blob\_Response** message that contains the NTLM **CHALLENGE\_MESSAGE** message.

When the server receives a **POP3\_AUTH\_NTLM\_Blob\_Command** command that contains an **NTLM AUTHENTICATE\_MESSAGE** message (as specified in [\[MS-NLMP\]](#)), the message is passed to the NTLM system. If the NTLM system is successful in handling the message, the NTLM system returns a confirmation that the client successfully logged on. The successful NTLM system logon triggers the server to send a **POP3\_Authentication\_Succeeded\_Response** message. The server state is then changed to the **completed\_authentication** state.

When the server receives a **POP3\_AUTH\_NTLM\_Blob\_Command** command that contains an **NTLM AUTHENTICATE\_MESSAGE** message, the message is passed to the NTLM system. If the NTLM system handles the **NTLM AUTHENTICATE\_MESSAGE** message and the message has an incorrect user name or password, the NTLM system MUST terminate authentication. The NTLM system informs the server that authentication has been stopped, which triggers the server to send a **POP3\_AUTH\_Failed\_Response** message to the client. The server state is then changed to the **completed\_authentication** state.

If the NTLM system returns any failure status, the failure status MUST trigger the server to send a **POP3\_AUTH\_Failed\_Response** message to the client.

### 3.2.5 Message Processing Events and Sequencing Rules

The NTLM POP3 Extension is driven by a series of message exchanges between a POP3 server and a POP3 client. The rules that govern the sequencing of commands and the internal states of the client and server are defined by a combination of [\[RFC1734\]](#) and [\[MS-NLMP\]](#). Section [3.2.1](#) defines how the rules specified in [\[RFC1734\]](#) and [\[MS-NLMP\]](#) govern POP3 authentication.

If the server receives a message that is not expected for its current state, the server MUST cancel the authentication process and transition to the completed state.

#### 3.2.5.1 Receiving a POP3\_AUTH\_NTLM\_Initiation\_Command Message

The expected state is **start**.

On receiving this message, the server MUST reply with the **POP3\_NTLM\_Supported\_Response** message, if it supports NTLM, and change its state to **inside\_authentication**.

If the server does not support NTLM, it MUST respond with the **POP3\_AUTH\_NTLM\_Fail\_Response** message, and the internal state is changed to **completed\_authentication**.

### 3.2.5.2 Receiving a POP3\_AUTH\_NTLM\_Blob\_Command Message

The expected state is **inside\_authentication**.

On receiving this message, a server MUST de-encapsulate the message, obtain the embedded NTLM message, and pass it to the NTLM subsystem. The NTLM subsystem can:

1. Report success in processing the message and return an NTLM message to continue authentication.
2. Report that authentication completed successfully.
3. Report that authentication failed because of a bad user name or password, as specified in [\[MS-NLMP\]](#).
4. Report that the authentication failed because of some other software error or message corruption.

#### 3.2.5.2.1 NTLM Returns Success, Returning an NTLM Message

The NTLM message MUST be encapsulated and sent to the client. The NTLM message sent to the client is the **POP3\_AUTH\_NTLM\_Blob\_Response** message that is specified in section [3.2.5.3](#). The internal state of the POP3 server remains unchanged.

#### 3.2.5.2.2 NTLM Returns Success, Indicating Authentication Completed Successfully

The server MUST return the **POP3\_AUTH\_NTLM\_Succeeded\_Response** message and change its internal state to **completed\_authentication**.

#### 3.2.5.2.3 NTLM Returns Status, Indicating User Name or Password Was Incorrect

The server MUST return the **POP3\_AUTH\_NTLM\_Fail\_Response** message and change its internal state to **completed\_authentication**.

#### 3.2.5.2.4 NTLM Returns a Failure Status, Indicating Any Other Error

The server MUST return the **POP3\_AUTH\_NTLM\_Fail\_Response** message and change its internal state to **completed\_authentication**.

### 3.2.5.3 Sending a POP3\_AUTH\_NTLM\_Blob\_Response Message

This section defines the creation of **POP3\_AUTH\_NTLM\_Blob\_Response** messages. These are NTLM messages sent by the server, and they MUST be encapsulated as follows to conform to syntax specified by the AUTH mechanism:

1. Base-64-encode the NTLM message data. [<4>](#)
2. To the base64 encoded string, prefix the POP3 response code with a plus sign (+).
3. Suffix the <CR> and <LF> characters (ASCII values 0x0D and 0x0A) as required by POP3.

The ABNF definition of a server message is as follows:

```
+<SP><Base 64-encoded-NTLM-message><CR><LF>
```

De-encapsulation of these messages by the client adheres to the reverse logic, as follows:

1. Remove the <CR> and <LF> characters (ASCII values 0x0D and 0x0A).
2. Remove the POP3 response code (+) and the space following it.

Decode the base64 encoded POP3 data to produce the original NTLM message data.[<5>](#)

#### **3.2.5.4 Receiving a POP3\_AUTH\_NTLM\_Cancellation\_Command Message**

On receiving this message, the server state is changed to **completed\_authentication**. The server sends a **POP3\_AUTH\_NTLM\_Failed\_Response** message to the client.

#### **3.2.6 Timer Events**

None.

#### **3.2.7 Other Local Events**

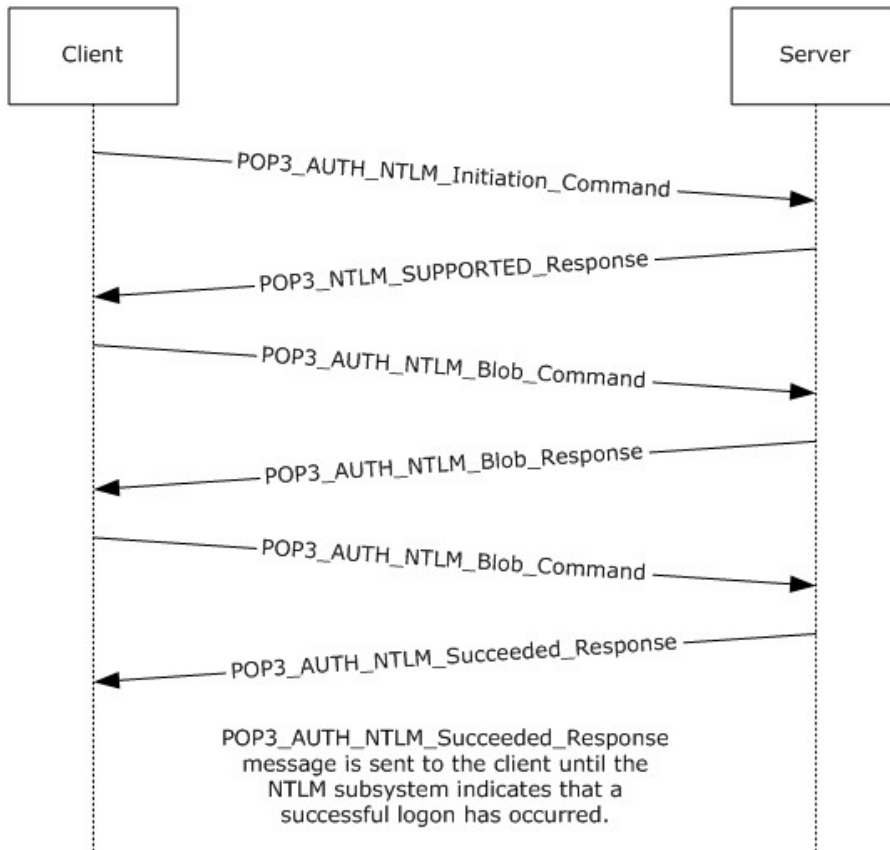
None.

## 4 Protocol Examples

The following subsections describe operations used in a common scenario to illustrate the function of the Post Office Protocol Version 3 (POP3) Extensions.

### 4.1 POP3 Client Successfully Authenticating to a POP3 Server

This section illustrates the NTLM POP3 Extension with a scenario in which a POP3 client successfully authenticates to a POP3 server by using NTLM. The following figure shows a POP3 client authenticating to a POP3 server.



**Figure 4: POP3 client successfully authenticating to POP3 server**

- The client sends a **POP3\_AUTH\_NTLM\_Initiation\_Command** command to the server. This command is described in [RFC1734](#) and does not carry any POP3-specific data. It is included in this example to provide a better understanding of the POP3 NTLM initiation command. The POP3 message is as follows:

AUTH NTLM

- The server sends the **POP3\_NTLM\_Supported\_Response** message, which indicates that it can perform NTLM authentication. The POP3 message is as follows:

+

1. The client sends a **POP3\_AUTH\_NTLM\_Blob\_Command** command that contains a base64 encoded NTLM **NEGOTIATE\_MESSAGE** message (as described in [MS-NLMP]).

The POP3 message is as follows:

```
TlRMTVNTUAAABAAAAB4IIogAAAAAAAAAAAAAAAAAAAAAFASgKAAAADw==
```

The original NTLM message is as follows:

```
00000000:4e 54 4c 4d 53 53 50 00 01 00 00 00 07 82 08 a2      NTLMSSP.....,ϕ
00000010:00 00 00 00 00 00 00 00 00 00 00 00 00 00 00 00      .....
00000020:05 01 28 0a 00 00 00 0f ..(.....
```

2. The server sends a **POP3\_AUTH\_NTLM\_Blob\_Response** message that contains a base64 encoded NTLM **CHALLENGE\_MESSAGE** message (as described in [MS-NLMP]).

The POP3 message is as follows:

```
+ TlRMTVNTUAAACAAAFAAAUADgAAAAFgoqinziKqGYjdlEAAAAAAAAAGQAZABMAAAABQ
```

The NTLM message is as follows:

```
LODgAAAA9UAEUUAUwBUAFMARQBSAFYARQBSAAIAFABUAEUUAUwBUAFMARQBSAFYARQBSAA
EAFABUAEUUAUwBUAFMARQBSAFYARQBSAAQAFABUAGUAcwB0AFMAZQByAHYAZQByAAMAFA
BUAGUAcwB0AFMAZQByAHYAZQByAAAAAAA=
00000000:4e 54 4c 4d 53 53 50 00 02 00 00 00 14 00 14 00      NTLMSSP.....
00000010:38 00 00 00 05 82 8a a2 9f 38 8a a8 66 23 76 51      8....,ŠćŸ8Š`f#vQ
00000020:00 00 00 00 00 00 00 00 64 00 64 00 4c 00 00 00      .....d.d.L...
00000030:05 02 ce 0e 00 00 00 0f 54 00 45 00 53 00 54 00      ..İ.....T.E.S.T.
00000040:53 00 45 00 52 00 56 00 45 00 52 00 02 00 14 00      S.E.R.V.E.R....
00000050:54 00 45 00 53 00 54 00 53 00 45 00 52 00 56 00      T.E.S.T.S.E.R.V.
00000060:45 00 52 00 01 00 14 00 54 00 45 00 53 00 54 00      E.R....T.E.S.T.
00000070:53 00 45 00 52 00 56 00 45 00 52 00 04 00 14 00      S.E.R.V.E.R....
00000080:54 00 65 00 73 00 74 00 53 00 65 00 72 00 76 00      T.e.s.t.S.e.r.v.
00000090:65 00 72 00 03 00 14 00 54 00 65 00 73 00 74 00      e.r....T.e.s.t.
000000a0:53 00 65 00 72 00 76 00 65 00 72 00 00 00 00 00      S.e.r.v.e.r....
```

3. The client sends a **POP3\_AUTH\_NTLM\_Blob\_Command** message that contains a base64 encoded NTLM **AUTHENTICATE\_MESSAGE** message (as described in [MS-NLMP]).

The POP3 message is as follows:

```
TlRMTVNTUAADAAAAGAAYAGIAAAAYABgAegAAAAAAAAABIAAACAAIAEgAAAASABIAUAAA
```

The NTLM message is as follow:

```
AAAAAACSAABYKIogUBKAoAAAAPdQBzAGUAcgBOAEYALQBDAEwASQBFAE4AVABKMiQ4
djhcSgAAAAAAAAAAAAAAAAAAC7zUSgB0Auy98bRi6h3mwHMJfbKntxmno=
00000000:4e 54 4c 4d 53 53 50 00 03 00 00 00 18 00 18 00      NTLMSSP.....
00000010:62 00 00 00 18 00 18 00 7a 00 00 00 00 00 00 00      b.....z.....
00000020:48 00 00 00 08 00 08 00 48 00 00 00 12 00 12 00      H.....H.....
00000030:50 00 00 00 00 00 00 92 00 00 00 05 82 88 a2      P.....'....,^ϕ
00000040:05 01 28 0a 00 00 00 0f 75 00 73 00 65 00 72 00      ..(....u.s.e.r.
00000050:4e 00 46 00 2d 00 43 00 4c 00 49 00 45 00 4e 00      N.F.-.C.L.I.E.N.
00000060:54 00 4a 32 24 38 76 38 5c 4a 00 00 00 00 00 00      T.J2$8v8\J....
00000070:00 00 00 00 00 00 00 00 00 00 00 00 bb cd 44 a0 07 40      .....»İD .@
00000080:2e cb df 1b 46 2e a1 de 6c 07 30 97 db 28 db 71      .Ëß.F. ;Ël.0-Û(Ûq
00000090:9a 6a šj
```

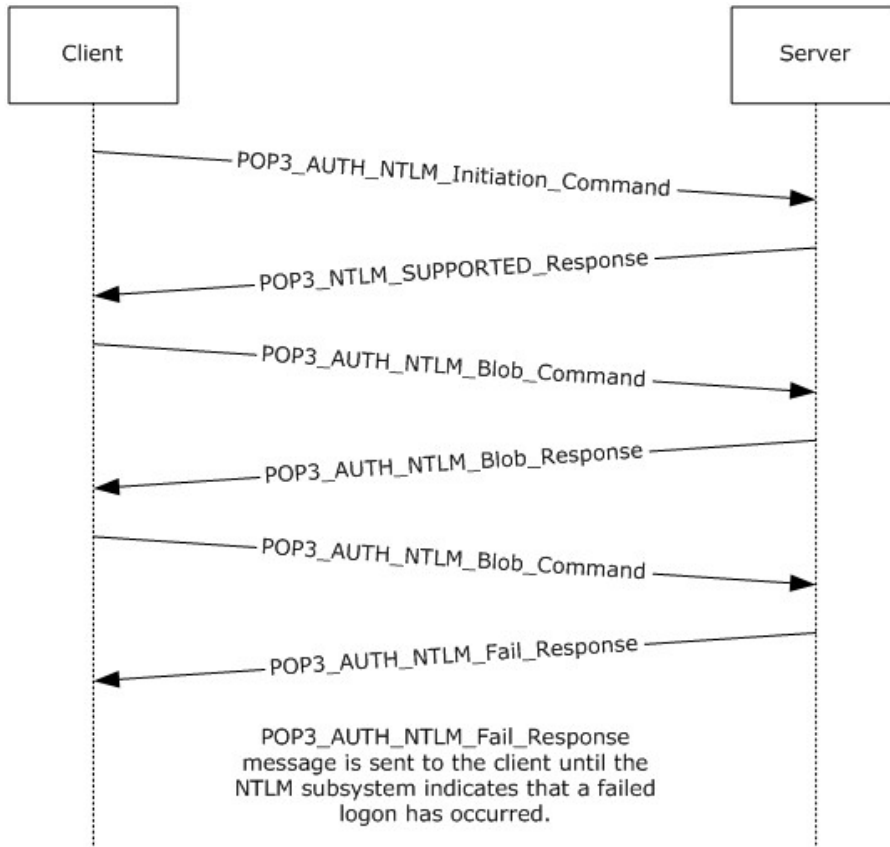
4. The server sends a **POP3\_AUTH\_NTLM\_Succeeded\_Response** message. The POP3 message is as follow:



+OK User successfully logged on

## 4.2 POP3 Client Unsuccessfully Authenticating to a POP3 Server

This section illustrates the NTLM POP3 Extension with a scenario in which a POP3 client tries NTLM authentication to a POP3 server and the authentication fails. The following figure shows the unsuccessful attempt to authenticate to the POP3 server.



**Figure 5: Client unsuccessfully authenticating to POP3 server**

- The client sends a **POP3\_AUTH\_NTLM\_Initiation\_Command** command to the server. This command is described in [RFC1734](#) and does not carry any POP3-specific data. It is included in this example to provide a better understanding of the POP3 NTLM initiation command. The POP3 message is as follows:

AUTH NTLM

1. The server sends the **POP3\_NTLM\_Supported\_Response** message, which indicates that it can perform NTLM authentication.
2. The client sends a **POP3\_AUTH\_NTLM\_Blob\_Command** command that contains a base64 encoding NTLM **NEGOTIATE\_MESSAGE** message (as described in [MS-NLMP](#)).

The POP3 message is as follows:

```
TlRMTVNTUAAABAAAAB4IIoqAAAAAAAAAAAAAAAAAAAAAFASgKAAAADw==
```

```

The NTLM message is as follows:
00000000:4e 54 4c 4d 53 53 50 00 01 00 00 00 07 82 08 a2      NTLMSSP.....,ç
00000010:00 00 00 00 00 00 00 00 00 00 00 00 00 00 00 00      .....
00000020:05 01 28 0a 00 00 00 0f ..(.....

```

3. The server sends a **POP3\_AUTH\_NTLM\_Blob\_Response** message that contains a base64 encoded NTLM **CHALLENGE\_MESSAGE** message (as described in [MS-NLMP]).

```

The POP3 message is as follows:
+ TlRMTVNTUAAACAAAFAAUADgAAAAFgoqieUWd5ES4Bi0AAAAAAAAAGQAZABMAA

```

```

The NTLM message is as follows:
AABQLODgAAA9UAEUUAUwBUAFMARQBSAFYARQBSAAIAFABUAEUUAUwBUAFMARQBSAF
YARQBSAAEFABUAEUUAUwBUAFMARQBSAFYARQBSAAQAFABUAGUAcwB0AFMAZQByAH
YAZQByAAMAFABUAGUAcwB0AFMAZQByAHYAZQByAAAAAAA=

```

```

00000000:4e 54 4c 4d 53 53 50 00 02 00 00 00 14 00 14 00      NTLMSSP.....
00000010:38 00 00 00 05 82 8a a2 79 45 9d e4 44 b8 06 2d      8....,ŠçyE•äd,.-
00000020:00 00 00 00 00 00 00 00 64 00 64 00 4c 00 00 00      .....d.d.L...
00000030:05 02 ce 0e 00 00 00 0f 54 00 45 00 53 00 54 00      ..î.....T.E.S.T.
00000040:53 00 45 00 52 00 56 00 45 00 52 00 02 00 14 00      S.E.R.V.E.R....
00000050:54 00 45 00 53 00 54 00 53 00 45 00 52 00 56 00      T.E.S.T.S.E.R.V.
00000060:45 00 52 00 01 00 14 00 54 00 45 00 53 00 54 00      E.R.....T.E.S.T.
00000070:53 00 45 00 52 00 56 00 45 00 52 00 04 00 14 00      S.E.R.V.E.R....
00000080:54 00 65 00 73 00 74 00 53 00 65 00 72 00 76 00      T.e.s.t.S.e.r.v.
00000090:65 00 72 00 03 00 14 00 54 00 65 00 73 00 74 00      e.r.....T.e.s.t.
000000a0:53 00 65 00 72 00 76 00 65 00 72 00 00 00 00 00      S.e.r.v.e.r....

```

4. The client sends a **POP3\_AUTH\_NTLM\_Blob\_Command** command that contains a base64 encoded NTLM **AUTHENTICATE\_MESSAGE** message (as described in [MS-NLMP]).

```

The NTLM message is as follows:
TlRMTVNTUAAADAAAAGAAYAGIAAAAYABgAegAAAAAAAAABIAAAACAAIAEgAAAASABIA
UAAAAAAAAACSAAAABYKIogUBKAcAAAAAPdQBzAGUAcgBOAEYALQBDAEwASQBFAE4A
VAAOarJ6lZ5ZNwAAAAAAAAAAAAAAAAAACD9mD8jmWs4FkZe59/nNb1cF2HkL0C
GZw=

```

```

00000000:4e 54 4c 4d 53 53 50 00 03 00 00 00 18 00 18 00      NTLMSSP.....
00000010:62 00 00 00 18 00 18 00 7a 00 00 00 00 00 00 00      b.....z.....
00000020:48 00 00 00 08 00 08 00 48 00 00 00 12 00 12 00      H.....H.....
00000030:50 00 00 00 00 00 00 00 92 00 00 00 05 82 88 a2      P.....'.....,^ç
00000040:05 01 28 0a 00 00 00 0f 75 00 73 00 65 00 72 00      ..(.....u.s.e.r.
00000050:4e 00 46 00 2d 00 43 00 4c 00 49 00 45 00 4e 00      N.F.-.C.L.I.E.N.
00000060:54 00 0e 6a b2 7a 95 9e 59 37 00 00 00 00 00 00      T..j²z•çY7.....
00000070:00 00 00 00 00 00 00 00 83 f6 60 fc 8e 65      .....fö`üTe
00000080:ac e0 59 19 7b 9f 7f 9c d6 f5 70 5d 87 90 bd 02      -àY.{ÿoeÖöp}#•¼.
00000090:19 9c .oe

```

5. The server sends a **POP3\_AUTH\_NTLM\_Fail\_Response** message. The POP3 message is as follows:

-ERR, Error: Command not valid

## 5 Security

The following sections specify security considerations for implementers of the NTLM POP3 Extension.

### 5.1 Security Considerations for Implementers

Implementers ought to familiarize themselves with the security considerations associated with using NTLM authentication. Those security considerations are described in [\[MS-NLMP\]](#).

### 5.2 Index of Security Parameters

Security parameter	Section
NTLM	<a href="#">2</a> and <a href="#">3</a>

## 6 Appendix A: Product Behavior

The information in this specification is applicable to the following Microsoft products or supplemental software. References to product versions include released service packs:

- Microsoft® Exchange Server 2003
- Microsoft® Exchange Server 2007
- Microsoft® Exchange Server 2010
- Microsoft® Exchange Server 2013
- Microsoft® Office Outlook® 2003
- Microsoft® Office Outlook® 2007
- Microsoft® Outlook® 2010
- Microsoft® Outlook® 2013

Exceptions, if any, are noted below. If a service pack or Quick Fix Engineering (QFE) number appears with the product version, behavior changed in that service pack or QFE. The new behavior also applies to subsequent service packs of the product unless otherwise specified. If a product edition appears with the product version, behavior is different in that product edition.

Unless otherwise specified, any statement of optional behavior in this specification that is prescribed using the terms SHOULD or SHOULD NOT implies product behavior in accordance with the SHOULD or SHOULD NOT prescription. Unless otherwise specified, the term MAY implies that the product does not follow the prescription.

[<1> Section 1.3:](#) POP3 servers support at least one authentication mechanism. Office Outlook 2003 supports **USER** and **PASS** verbs, as defined in [\[RFC1939\]](#). Office Outlook 2007 supports the AUTH verb, as defined in [\[RFC1734\]](#). Office Outlook 2003 and Office Outlook 2007 do not support the **APOP** command, as specified in [\[RFC1939\]](#) section 7. Both Office Outlook 2003 and Office Outlook 2007 support **AUTH NTLM**.

[<2> Section 1.7:](#) Exchange 2003, Exchange 2007, Exchange 2010, Exchange 2013, Office Outlook 2003, Office Outlook 2007, Outlook 2010, and Outlook 2013 clients mutually support [\[RFC1939\]](#), [\[RFC1734\]](#), and [\[RFC2449\]](#). Exchange 2007, Exchange 2010, Exchange 2013, Office Outlook 2007, Outlook 2010, and Outlook 2013 mutually support [\[RFC2595\]](#).

[<3> Section 1.7:](#) Exchange 2010 and Exchange 2013 are not [\[RFC822\]](#)-compliant by default. Exchange 2010 and Exchange 2013 can be made [\[RFC822\]](#)-compliant by setting **EnableExactRFC822Size** to "TRUE".

[<4> Section 3.2.5.3:](#) In Exchange 2003, messages received by using MAPI are converted to MIME the first time they are retrieved and subsequently stored. The MIME size can be different before the message is retrieved than after it is converted to MIME. This is necessary because NTLM messages contain data outside the ASCII character range, whereas POP3 supports only ASCII characters.

[<5> Section 3.2.5.3:](#) In Exchange 2003, the MIME stream is preserved. In Exchange 2007, Exchange 2010, and Exchange 2013 the MIME stream is not preserved. Only content of the **best body** as specified in [\[MS-OXBBODY\]](#) is preserved. The order in which the best body part is selected is as follows:

1. Enriched Text Format
2. HTML
3. Plain text

Therefore, the MIME stream is regenerated every time a message is retrieved. The alternative body parts are regenerated on demand as the message is retrieved. In Exchange 2010, the MIME headers and body parts of messages are stored if the headers existed when the messages were delivered. In Exchange 2010 SP1 and Exchange 2013, messages are not stored in MIME format. Messages are converted from MAPI to MIME before being sent to the client. When the client requests the size of a message before retrieving the actual message itself, the MIME size provided is the size associated with the message as a MAPI property. When the client retrieves the message, the message is converted from MAPI to MIME, and the message size calculated thereafter can be different from the size calculated from the MAPI property. Additionally, if the message is modified by MAPI, the size is likely to change again, as is the corresponding MIME size after actual conversion from MAPI to MIME.

## 7 Change Tracking

This section identifies changes that were made to the [MS-OXPOP3] protocol document between the July 2012 and October 2012 releases. Changes are classified as New, Major, Minor, Editorial, or No change.

The revision class **New** means that a new document is being released.

The revision class **Major** means that the technical content in the document was significantly revised. Major changes affect protocol interoperability or implementation. Examples of major changes are:

- A document revision that incorporates changes to interoperability requirements or functionality.
- An extensive rewrite, addition, or deletion of major portions of content.
- The removal of a document from the documentation set.
- Changes made for template compliance.

The revision class **Minor** means that the meaning of the technical content was clarified. Minor changes do not affect protocol interoperability or implementation. Examples of minor changes are updates to clarify ambiguity at the sentence, paragraph, or table level.

The revision class **Editorial** means that the language and formatting in the technical content was changed. Editorial changes apply to grammatical, formatting, and style issues.

The revision class **No change** means that no new technical or language changes were introduced. The technical content of the document is identical to the last released version, but minor editorial and formatting changes, as well as updates to the header and footer information, and to the revision summary, may have been made.

Major and minor changes can be described further using the following change types:

- New content added.
- Content updated.
- Content removed.
- New product behavior note added.
- Product behavior note updated.
- Product behavior note removed.
- New protocol syntax added.
- Protocol syntax updated.
- Protocol syntax removed.
- New content added due to protocol revision.
- Content updated due to protocol revision.
- Content removed due to protocol revision.
- New protocol syntax added due to protocol revision.

- Protocol syntax updated due to protocol revision.
- Protocol syntax removed due to protocol revision.
- New content added for template compliance.
- Content updated for template compliance.
- Content removed for template compliance.
- Obsolete document removed.

Editorial changes are always classified with the change type **Editorially updated**.

Some important terms used in the change type descriptions are defined as follows:

- **Protocol syntax** refers to data elements (such as packets, structures, enumerations, and methods) as well as interfaces.
- **Protocol revision** refers to changes made to a protocol that affect the bits that are sent over the wire.

The changes made to this document are listed in the following table. For more information, please contact [protocol@microsoft.com](mailto:protocol@microsoft.com).

Section	Tracking number (if applicable) and description	Major change (Y or N)	Change type
<a href="#">1.2.2 Informative References</a>	Added the reference [MS-OXPROTO].	N	Content updated.
<a href="#">1.4 Relationship to Other Protocols</a>	Added informative reference information for overview of relationships between this and other protocols.	N	Content updated.
<a href="#">1.7 Versioning and Capability Negotiation</a>	Added Exchange Server 2013 and Outlook 2013 to the product behavior note.	Y	Product behavior note updated.
<a href="#">3.2.5.3 Sending a POP3 AUTH NTLM Blob Response Message</a>	Added Exchange Server 2013 to the product behavior note.	Y	Product behavior note updated.

## 8 Index

### A

Abstract data model  
[client](#) 13  
[server](#) 17  
[Applicability](#) 9  
[AUTH Extensions message](#) 10

### C

[Capability negotiation](#) 9  
[Change tracking](#) 30  
Client  
[abstract data model](#) 13  
[higher-layer triggered events](#) 15  
[initialization](#) 15  
[message processing](#) 15  
[other local events](#) 17  
[sequencing rules](#) 15  
[timer events](#) 17  
[timers](#) 15

### D

Data model - abstract  
[client](#) 13  
[server](#) 17

### F

[Fields - vendor-extensible](#) 9

### G

[Glossary](#) 5

### H

Higher-layer triggered events  
[client](#) 15  
[server](#) 20

### I

[Implementer - security considerations](#) 27  
[Index of security parameters](#) 27  
[Informative references](#) 6  
Initialization  
[client](#) 15  
[server](#) 20  
[Introduction](#) 5

### M

Message processing  
[client](#) 15  
[server](#) 20  
Messages

[AUTH Extensions](#) 10  
[POP3 Delegate Access](#) 11  
[transport](#) 10

### N

[Normative references](#) 6

### O

Other local events  
[client](#) 17  
[server](#) 22  
[Overview \(synopsis\)](#) 6

### P

[Parameters - security index](#) 27  
[POP3 Delegate Access message](#) 11  
[Preconditions](#) 9  
[Prerequisites](#) 9  
[Product behavior](#) 28

### R

[References](#) 6  
[informative](#) 6  
[normative](#) 6  
[Relationship to other protocols](#) 8

### S

Security  
[implementer considerations](#) 27  
[parameter index](#) 27  
Sequencing rules  
[client](#) 15  
[server](#) 20  
Server  
[abstract data model](#) 17  
[higher-layer triggered events](#) 20  
[initialization](#) 20  
[message processing](#) 20  
[other local events](#) 22  
[sequencing rules](#) 20  
[timer events](#) 22  
[timers](#) 20  
[Standards assignments](#) 9

### T

Timer events  
[client](#) 17  
[server](#) 22  
Timers  
[client](#) 15  
[server](#) 20  
[Tracking changes](#) 30



[Transport](#) 10  
Triggered events - higher-layer  
  [client](#) 15  
  [server](#) 20

## **V**

[Vendor-extensible fields](#) 9  
[Versioning](#) 9