

# [MS-OXPOP3]: Post Office Protocol Version 3 (POP3) Extensions Specification

## Intellectual Property Rights Notice for Protocol Documentation

- **Copyrights.** This protocol documentation is covered by Microsoft copyrights. Regardless of any other terms that are contained in the terms of use for the Microsoft website that hosts this documentation, you may make copies of it in order to develop implementations of the protocols, and may distribute portions of it in your implementations of the protocols or your documentation as necessary to properly document the implementation. You may also distribute in your implementation, with or without modification, any schema, IDL's, or code samples that are included in the documentation. This permission also applies to any documents that are referenced in the protocol documentation.
- **No Trade Secrets.** Microsoft does not claim any trade secret rights in this documentation.
- **Patents.** Microsoft has patents that may cover your implementations of the protocols. Neither this notice nor Microsoft's delivery of the documentation grants any licenses under those or any other Microsoft patents. However, the protocols may be covered by Microsoft's Open Specification Promise (available here: <http://www.microsoft.com/interop/osp>). If you would prefer a written license, or if the protocols are not covered by the OSP, patent licenses are available by contacting [protocol@microsoft.com](mailto:protocol@microsoft.com).
- **Trademarks.** The names of companies and products contained in this documentation may be covered by trademarks or similar intellectual property rights. This notice does not grant any licenses under those rights.

**Reservation of Rights.** All other rights are reserved, and this notice does not grant any rights other than specifically described above, whether by implication, estoppel, or otherwise.

**Tools.** This protocol documentation is intended for use in conjunction with publicly available standard specifications and network programming art, and assumes that the reader either is familiar with the aforementioned material or has immediate access to it. A protocol specification does not require the use of Microsoft programming tools or programming environments in order for you to develop an implementation. If you have access to Microsoft programming tools and environments you are free to take advantage of them.

Revision Summary			
Author	Date	Version	Comments
Microsoft Corporation	April 4, 2008	0.1	Initial Availability.
Microsoft Corporation	June 27, 2008	1.0	Initial Release.
Microsoft Corporation	August 6, 2008	1.01	Edited technical content.
Microsoft Corporation	September 3, 2008	1.02	Revised and edited technical content.
Microsoft Corporation	December 3, 2008	1.03	Minor editorial fixes.
Microsoft Corporation	March 4, 2009	1.04	Revised and edited technical content.

# Table of Contents

<b>1</b>	<b>Introduction.....</b>	<b>4</b>
1.1	Glossary .....	4
1.2	References .....	5
1.2.1	Normative References .....	5
1.2.2	Informative References .....	6
1.3	Protocol Overview .....	6
1.4	Relationship to Other Protocols.....	8
1.5	Prerequisites/Preconditions.....	8
1.6	Applicability Statement.....	8
1.7	Versioning and Capability Negotiation.....	8
1.8	Vendor-Extensible Fields .....	9
1.9	Standards Assignments .....	9
<b>2</b>	<b>Messages.....</b>	<b>9</b>
2.1	Transport.....	9
2.2	Message Syntax.....	9
2.2.1	AUTH Extensions .....	10
2.2.2	POP3 Server Messages .....	12
2.2.3	POP3 Client Messages .....	12
2.2.4	POP3 Delegate Access.....	13
<b>3</b>	<b>Protocol Details.....</b>	<b>13</b>
3.1	POP3 Client Details .....	13
3.1.1	Abstract Data Model .....	13
3.1.1.1	POP3 State Model .....	13
3.1.1.2	NTLM Subsystem Interaction .....	15
3.1.2	Timers .....	16
3.1.3	Initialization.....	16
3.1.4	Higher-Layer Triggered Events.....	16
3.1.5	Message Processing Events and Sequencing Rules .....	16
3.1.5.1	Receiving a POP3_NTLM_Supported_Response Message.....	16
3.1.5.2	Receiving a POP3_AUTH_NTLM_Fail_Response Message.....	16
3.1.5.3	Receiving a POP3_NTLM_Blob_Response .....	16
3.1.5.3.1	Error from NTLM .....	17
3.1.5.3.2	NTLM Reports Success and Returns an NTLM Message.....	17
3.1.5.4	Receiving a POP3_AUTH_Succeeded_Response Message .....	17
3.1.5.5	Receiving a POP3_AUTH_NTLM_Fail_Response .....	17
3.1.6	Timer Events.....	17
3.1.7	Other Local Events.....	17
3.2	POP3 Server Details.....	18
3.2.1	Abstract Data Model .....	18
3.2.1.1	POP3 State Model .....	18
3.2.1.2	NTLM Subsystem Interaction .....	19
3.2.2	Timers .....	20

3.2.3	Initialization.....	20
3.2.4	Higher-Layer Triggered Events.....	20
3.2.5	Message Processing Events and Sequencing Rules .....	20
3.2.5.1	Receiving a POP3_AUTH_NTLM_Initiation_Command Message.....	20
3.2.5.2	Receiving a POP3_AUTH_NTLM_Blob_Command Message.....	20
3.2.5.2.1	NTLM Returns Success, Returning an NTLM Message .....	21
3.2.5.2.2	NTLM Returns Success, Indicating Authentication Completed Successfully.....	21
3.2.5.2.3	NTLM Returns Status, Indicating User Name or Password Was Incorrect	21
3.2.5.2.4	NTLM Returns a Failure Status, Indicating Any Other Error.....	21
3.2.5.2.5	NTLM Reports Success, Returning an NTLM Message .....	21
3.2.6	Timer Events.....	21
3.2.7	Other Local Events.....	21
<b>4</b>	<b><i>Protocol Examples</i></b> .....	<b>21</b>
4.1	POP3 Client Successfully Authenticating to a POP3 Server .....	22
4.2	POP3 Client Unsuccessfully Authenticating to a POP3 Server.....	23
<b>5</b>	<b><i>Security</i></b> .....	<b>25</b>
5.1	Security Considerations for Implementers.....	25
5.2	Index of Security Parameters.....	25
<b>6</b>	<b><i>Appendix A: Office/Exchange Behavior</i></b> .....	<b>26</b>
	<b><i>Index</i></b> .....	<b>28</b>

# 1 Introduction

This document specifies the implementation of extensions to the **POP3** protocol. The following extension is specified:

- **NTLM** authentication mechanism for the POP3 protocol. This is a proprietary extension that is used with the POP3 **AUTH command**, as documented in [RFC1734].
- Delegate access mechanism for the POP3 protocol. This is a proprietary extension that is used with the POP3 **USER command**, as documented in [RFC1939].

For the purpose of this document, the Exchange Server NTLM POP3 extension will be referred to in subsequent sections as "NTLM POP3 Extension."

## 1.1 Glossary

The following terms are defined in [MS-OXGLOS]:

**ASCII**  
**Augmented Backus-Naur Form (ABNF)**  
**best body**  
**connection-oriented NTLM**  
**message**  
**MIME**  
**NTLMNTLM AUTHENTICATE\_MESSAGE**  
**NTLM CHALLENGE\_MESSAGE**  
**NTLM message**  
**NTLM NEGOTIATE\_MESSAGE**  
**NTLM software**  
**plain text**  
**Post Office Protocol – Version 3 (POP3)**

The following terms are specific to this document:

**AUTH command:** A **Post Office Protocol – Version 3 (POP3)** optional command that is used to send authentication information, as specified in [RFC1734]. The "mechanism" name defined in the RFC is **NTLM**. The structure of the **AUTH command** is as follows:

```
AUTH NTLM<CR><LF>
```

**POP3 response:** A **message** sent by a **POP3** server in response to a message from a **POP3** client. The structure of this message, as specified in [RFC1939], is as follows:

```
<+OK> <response text><CR><LF>
```

Or:

<-ERR><response text><CR><LF>

**MAY, SHOULD, MUST, SHOULD NOT, MUST NOT:** These terms (in all caps) are used as described in [RFC2119]. All statements of optional behavior use either MAY, SHOULD, or SHOULD NOT.

## 1.2 References

### 1.2.1 Normative References

[MS-NLMP] Microsoft Corporation, "NT LAN Manager (NTLM) Authentication Protocol Specification", July 2006, <http://go.microsoft.com/fwlink/?LinkId=111472>.

[MS-OXBBODY] Microsoft Corporation, "Best Body Retrieval Protocol Specification", June 2008.

[MS-OXGLOS] Microsoft Corporation, "Exchange Server Protocols Master Glossary", June 2008.

[RFC1521] Borenstein, N. and Freed, N., "MIME (Multipurpose Internet Mail Extensions) Part One: Mechanisms for Specifying and Describing the Format of Internet Message Bodies", RFC 1521, September 1993, <http://www.ietf.org/rfc/rfc1521.txt>.

[RFC1734] Myers, J., "POP3 AUTHentication command", RFC 1734, December 1994, <http://www.ietf.org/rfc/rfc1734.txt>.

[RFC1939] Myers, J. and Rose, M., "Post Office Protocol – Version 3", RFC 1939, May 1996, <http://www.ietf.org/rfc/rfc1939.txt>.

[RFC2045] Freed, N., et al., "Multipurpose Internet Mail Extensions (MIME) Part One: Format of Internet Message Bodies", RFC 2045, November 1996, <http://www.ietf.org/rfc/rfc2045.txt>.

[RFC2119] Bradner, S., "Key words for use in RFCs to Indicate Requirement Levels", BCP 14, RFC 2119, March 1997, <http://www.ietf.org/rfc/rfc2119.txt>.

[RFC2449] Gellens, R., Newman, C., and Lundblade, L., "POP3 Extension Mechanism", RFC 2449, November 1998, <http://www.ietf.org/rfc/rfc2449.txt>.

[RFC4234] Crocker, D., Ed. and Overell, P., "Augmented BNF for Syntax Specifications: ABNF", RFC 4234, October 2005, <http://www.ietf.org/rfc/rfc4234.txt>.

[RFC822] Crocker, D.H., "Standard for ARPA Internet Text Messages", RFC 822, August 1982, <http://www.ietf.org/rfc/rfc0822.txt>.

## 1.2.2 Informative References

None.

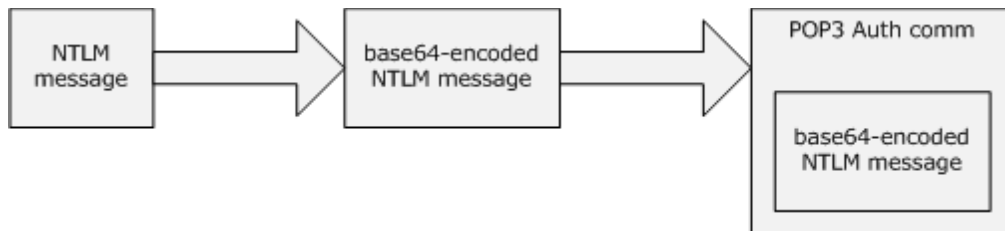
## 1.3 Protocol Overview

Client applications that connect to the **Post Office Protocol - Version 3 (POP3)** service can use either standard **plain text** password authentication, as specified in [RFC1939], or **NTLM** authentication. <1>

The NTLM POP3 Extension specifies how a POP3 client and POP3 server can use the NT LAN Manager (NTLM) Authentication protocol, as specified in [MS-NLMP], so that the POP3 server can authenticate the POP3 client. NTLM is a challenge/response authentication protocol that depends on the application layer protocols to transport NTLM packets from client to server, and from server to client.

This specification defines how the POP3 Authentication command, as specified in [RFC1734], is used to perform authentication by using the NTLM authentication protocol. The POP3 Authentication command standard defines an extensibility mechanism for arbitrary authentication protocols to be plugged in to the core protocol.

This specification defines an embedded protocol in which NTLM authentication data is first transformed into a base64 representation, and then formatted by padding with POP3 keywords as defined by the AUTH mechanism. The base64 encoding and the formatting are very rudimentary, and solely intended to make the NTLM data fit the framework specified in [RFC1734]. Figure 1 shows the sequence of transformations that are performed on an **NTLM message** to produce a message that can be sent over POP3.



**Figure 1: Relationship between NTLM message and POP3: NTLM Authentication Protocol message**

This document specifies a pass-through protocol that does not specify the structure of NTLM information. Instead, the protocol relies on the software that implements the NTLM Authentication protocol (as specified in [MS-NLMP]) to process each NTLM message that is to be sent or received.

This specification defines a server and a client role.

When POP3 performs an NTLM authentication, it needs to interact with the NTLM subsystem appropriately. The following is an overview of this interaction.

If acting as a POP3 client:

1. The NTLM subsystem returns the first NTLM message to the client, to be sent to the server.
2. The client applies the base64-encoding and POP3-padding transformations mentioned earlier and described in detail later in this document to produce a POP3 message and send this message to the server.
3. The client waits for a response from the server. When the response is received, the client checks to determine whether the response indicates the end of authentication (success or failure), or that authentication is continuing.
4. If the authentication is continuing, the response message is stripped of the POP3 padding, base64 decoded, and passed into the NTLM subsystem, upon which the NTLM subsystem might return another NTLM message that has to be sent to the server. Steps 2 through 4 are repeated until authentication succeeds or fails.

If acting as a POP3 server:

1. The server waits to receive the first POP3 authentication message from the client.
2. When a POP3 message is received from the client, the POP3 padding is removed, the message is base64 decoded, and the resulting NTLM message is passed into the NTLM subsystem.
3. The NTLM subsystem returns a status that indicates whether authentication completed successfully, failed, or whether more NTLM messages have to be exchanged to complete the authentication.
4. If the authentication is continuing, the NTLM subsystem will return an NTLM message that has to be sent to the server. This message is base64-encoded, and the POP3 padding is applied and sent to the client. Steps 2 through 4 are repeated until authentication succeeds or fails.

The sequence that follows shows the typical flow of packets between client and server after NTLM authentication has been selected.

1. The POP3 client sends an **NTLM NEGOTIATE\_MESSAGE** embedded in a **POP3\_AUTH\_NTLM\_Blob\_Command** packet to the server.
2. On receiving the POP3 packet with an **NTLM NEGOTIATE\_MESSAGE**, the POP3 server sends an **NTLM CHALLENGE\_MESSAGE** embedded in a POP3 packet to the client.

3. In response, the POP3 client sends an **NTLM AUTHENTICATE\_MESSAGE** embedded in a POP3 packet.
4. The server then sends a **POP3 response** to the client to successfully complete the authentication process.

The NTLM NEGOTIATE\_MESSAGE, NTLM CHALLENGE\_MESSAGE, and NTLM AUTHENTICATE\_MESSAGE packets contain NTLM authentication data that has to be processed by the **NTLM software** that is installed on the local computer. The way in which to retrieve and process NTLM messages is specified in [MS-NLMP].

This specification defines how to perform delegate access with POP3.

Implementers of this protocol have to conform to POP3, as specified [RFC1734] and [RFC1939], the **MIME** base64 encoding method, as specified in [RFC1521], and the NTLM Authentication protocol, as specified in [MS-NLMP].

#### ***1.4 Relationship to Other Protocols***

The NTLM POP3 Extension uses the **POP3 AUTH** extension mechanism, as specified in [RFC1734], and is an embedded protocol. Unlike stand-alone application protocols, such as Telnet or HTTP, packets for this specification are embedded in POP3 commands <2> and server responses.

POP3 specifies only the sequence in which a POP3 server and POP3 client are required to exchange **NTLM messages** to successfully authenticate the client to the server. It does not specify how the client obtains NTLM messages from the local **NTLM software**, or how the POP3 server processes NTLM messages. The POP3 client and POP3 server implementations depend on the availability of an implementation of the NTLM Authentication protocol (as specified in [MS-NLMP]) to obtain and process NTLM messages and on the availability of the base64 encoding and decoding mechanisms (as specified in [RFC1521]) to encode and decode the NTLM messages embedded in POP3 packets.

#### ***1.5 Prerequisites/Preconditions***

Because **POP3** depends on **NTLM** to authenticate the client to the server, both server and client will have access to an implementation of the NTLM Authentication protocol (as specified in [MS-NLMP]) that is capable of supporting **connection-oriented NTLM**.

#### ***1.6 Applicability Statement***

The NTLM POP3 Extension is used only when implementing a **POP3** client that has to authenticate to a POP3 server by using **NTLM** authentication.

#### ***1.7 Versioning and Capability Negotiation***

This specification covers versioning issues in the following areas:



- Security and Authentication methods. The NTLM POP3 Extension supports the NTLMv1 and NTLMv2 authentication methods, as specified in [MS-NLMP].
- Capability Negotiation. **POP3** does not support negotiation of which version of the NTLM Authentication protocol to use. Instead, the NTLM Authentication protocol version is configured on both the client and the server prior to authentication. NTLM Authentication protocol version mismatches are handled by the NTLM Authentication protocol implementation, not by POP3.

The client discovers whether the server supports **NTLM AUTH** through the **AUTH command**, issued without any arguments, upon which the server responds with a list of supported authentication mechanisms followed by a line that contains only a period (.). If NTLM is supported, the server will include the word "NTLM" in the list. The messages involved are formally described in section 2.2 of this document.<3> <4>

### ***1.8 Vendor-Extensible Fields***

None.

### ***1.9 Standards Assignments***

None.

## **2 Messages**

The following sections specify how the NTLM POP3 Extension messages are transported and NTLM POP3 Extension message syntax.

### ***2.1 Transport***

The NTLM POP3 Extension does not establish transport connections. Instead, NTLM POP3 Extension messages are encapsulated in **POP3** commands and responses. The way in which NTLM POP3 Extension messages are encapsulated in POP3 commands is specified in section 2.2.

### ***2.2 Message Syntax***

The NTLM POP3 Extension messages are divided into the three categories, depending on whether the message was sent by the server or the client:

- AUTH extensions
- **POP3** server messages
- POP3 client messages

The POP3 USER command argument uses the following format:

- Useralias
- Domain/useralias
- UPN

The POP3 USER command extension enables optional delegate access. The USER command extends the argument format to identify the principal in a delegate access scenario. There are four extended formats to the USER command as found in [RFC1939], section 7.

### 2.2.1 AUTH Extensions

The first category of **POP3** messages is messages that fall within the AUTH extensibility framework. These messages are specified in [RFC1734]. Some messages have parameters that have to be customized by the extensibility mechanism (such as **NTLM**). The following customizations are introduced in this specification:

- A client can query the server to see if NTLM is supported. This is accomplished by issuing the **AUTH command** without any parameters. This format is shown in **ABNF** in the following example (for more information about ABNF, see [RFC4234]). <5>

```
AUTH<CR><LF>
```

- The server responds to this message with a message followed by a list of supported authentication mechanisms, followed by a list termination message. This sequence is shown in ABNF format in the following example.

```
+OK<CR><LF>
```

```
NTLM <CR><LF>
```

```
GSSAPI<CR><LF>
```

```
PLAIN<CR><LF>
```

```
.<CR><LF>
```

- [RFC1734] section 2 defines the syntax of the **AUTH command** to initiate authentication. The parameter "mechanism" is defined to be the string "NTLM" for the NTLM POP3 Extension. The command to initiate an NTLM conversation by a client in ABNF is shown in the following example. This is referred to as the POP3\_AUTH\_NTLM\_Initiation\_Command in this specification.

```
AUTH NTLM<CR><LF>
```

- If NTLM is supported, the POP3 server will respond with a POP3 message to indicate that NTLM is supported. The syntax of this command in ABNF form is shown in the

following example. This is referred to as POP3\_NTLM\_Supported\_Response in this specification.

+<CR><LF>

- If NTLM is not supported, the POP3 server returns a failure status code as defined by [RFC1734]. The only data in this message that is useful is the -ERR. The remaining data is human-readable data and has no bearing on the authentication. The syntax of this command in ABNF form is shown in the following example. This is referred to as POP3\_AUTH\_NTLM\_Fail\_Response in this specification.

-ERR <human\_readable\_string> <CR><LF>

- At every point of time during the authentication exchange, the client MUST parse the responses in the messages sent by the server and interpret them as defined by [RFC1734]. The responses define various states such as success in authenticating, failure to authenticate, and any other arbitrary failures that the software may encounter.

The client can receive any one of the following responses during authentication (note that the syntax and meaning of all these messages are specified in [RFC1734]):

- POP3\_AUTH\_NTLM\_Blob\_Response. This message is partially defined in [RFC1734]. The '+' status code indicates ongoing authentication, and indicates that the <base64-encoded-NTLM-message> is to be processed by the authentication subsystem. In this case, the client MUST de-encapsulate the data, and pass it to the NTLM subsystem.

+ < base64-encoded-NTLM-message><CR><LF>

- POP3\_AUTH\_NTLM\_Fail\_Response. This message is defined in [RFC1734] and indicates that the authentication has terminated unsuccessfully, either because the username or password was incorrect, or due to some other arbitrary error, such as a software or data corruption error.

-ERR <human-readable-string><CR><LF>

- POP3\_AUTH\_NTLM\_Succeeded\_Response. This message is defined in [RFC1734] and indicates that the authentication negotiation has completed with the client successfully authenticating to the server.

+OK <human-readable-string><CR><LF>

- POP3\_AUTH\_NTLM\_Canceled\_Response. This message is defined in [RFC1734] and indicates that the authentication negotiation has been canceled with the client.

-ERR <human-readable-string><CR><LF>

- **NTLM messages** encapsulated by the client and sent to the server are referred to as POP3\_AUTH\_NTLM\_Blob\_Command in this specification. They have the following syntax defined in ABNF, and conform to the prescription as specified in [RFC1734].

< base64-encoded-NTLM-message><CR><LF>

- The client is able to cancel the authentication request by issuing a POP3\_AUTH\_Cancellation\_Command. This has the following syntax defined in ABNF:

\*<CR><LF>

### 2.2.2 POP3 Server Messages

This section defines the creation of POP3\_AUTH\_NTLM\_Blob\_Response messages. These are **NTLM messages** sent by the server and **MUST** be encapsulated as follows to conform to syntax specified by the AUTH mechanism:

1. Base64-encode the NTLM message data<6>. This is needed because NTLM messages contain data outside the **ASCII** character range, whereas **POP3** only supports ASCII characters.
2. To the base64-encoded string, prefix the **POP3 response** code with a plus sign (+).
3. Suffix the <CR> and <LF> character (ASCII values 0x0D and 0x0A) as required by POP3.

The **ABNF** definition of a server message is as follows:

+ <base64-encoded-NTLM-message><CR><LF>

De-encapsulation of these messages by the client follows the reverse logic, as follows:

1. Remove the <CR> and <LF> character (ASCII values 0x0D and 0x0A).
2. Remove the POP3 response code (+).
3. Decode the base64-encoded POP3 data to produce the original NTLM message data.<7>

### 2.2.3 POP3 Client Messages

This section defines the processing of POP3\_AUTH\_NTLM\_Blob\_Command messages. These **NTLM messages** sent by the client are encapsulated as follows to conform to the AUTH mechanism:

1. Base64-encode the NTLM message data. This is needed because NTLM messages contain data outside the **ASCII** character range, whereas **POP3** only supports ASCII characters.
2. Send the base64-encoded string.
3. Suffix the <CR> and <LF> character (ASCII values 0x0D and 0x0A), as required by POP3.

The ABNF definition of a client message is as follows:

```
<base64-encoded-NTLM-message><CR><LF>
```

De-encapsulation of these messages by the client follows the reverse logic, as follows:

1. Remove the <CR> and <LF> character (ASCII values 0x0D and 0x0A).
2. Base64-decode the POP3 data to produce the original NTLM message data.

## 2.2.4 POP3 Delegate Access

There are four formats for using delegate access with POP3. In every case, the part after the last / of the user string is the mailbox identity in either alias or upn format. The four formats are as follows:

- USER domain/delegateuseralias/principalalias
- USER domain/delegateuseralias/principalupn
- USER delegateuserupn/principalalias
- USER delegateuserupn/principalupn

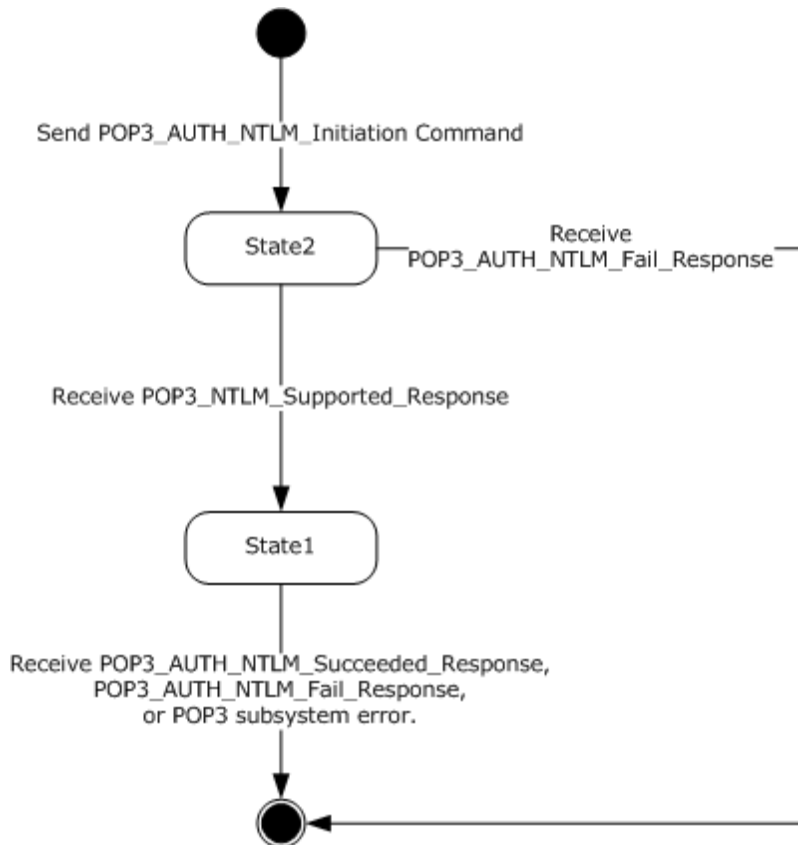
# 3 Protocol Details

## 3.1 POP3 Client Details

### 3.1.1 Abstract Data Model

#### 3.1.1.1 POP3 State Model

Figure 2 shows the client POP3 state model.



**Figure 2: Client POP3 state model**

The abstract data model for the NTLM POP3 Extension has the following states:

1. Start.

This is the state of the client before the POP3\_AUTH\_Initiation\_Command has been sent.

2. State 2: sent\_authentication\_request.

This is the state of the client after the POP3\_AUTH\_Initiation\_Command has been sent.

3. State 1: inside\_authentication.

This is the state entered by a client after it has received a POP3\_NTLM\_Supported\_Command. In this state, the client initializes the **NTLM** subsystem and repeats the following steps:

- Encapsulates the **NTLM message**, returned by the NTLM subsystem, into a **POP3** message. Waits for a response from the server.
- De-encapsulates received POP3 message data (if any) from the other party and converts it to NTLM message data.
- Passes it to the NTLM subsystem.

- Sends the POP3 message to the other party.

This state terminates when:

- For the server: The NTLM subsystem reports completion with either a success or failed authentication status, upon which it sends the client a POP3\_AUTH\_NTLM\_Succeeded\_Response or POP3\_AUTH\_NTLM\_Fail\_Response, as specified in [RFC1734].
- For the client: a POP3\_AUTH\_NTLM\_Succeeded\_Response or POP3\_AUTH\_NTLM\_Fail\_Response is received.
- For either client or server: when any failure is reported by the NTLM subsystem.

4. Stop: completed\_authentication.

This is the state of the client on exiting the inside\_authentication state. The rules for how the inside\_authentication state is exited are defined in section 3.1.5. The behavior of POP3 in this state is not in the scope of this specification. It represents the end state of the authentication protocol.

### 3.1.1.2 NTLM Subsystem Interaction

During the inside\_authentication phase, the **POP3** client invokes the **NTLM** subsystem, as specified in [MS-NLMP] section 3.1. The NTLM protocol is used with these options:

1. The negotiation is a **connection-oriented NTLM** negotiation.
2. None of the flags specified in [MS-NLMP] section 3.1.1 are specific to NTLM.

The following is a description of how POP3 uses NTLM. All **NTLM messages** are encapsulated as specified in section 2.1. [MS-NLMP] section 3.1.1 describes the data model, internal states, and sequencing of NTLM messages in greater detail.

1. The client initiates the authentication by invoking NTLM, after which NTLM will return the **NTLM NEGOTIATE\_MESSAGE** to be sent to the server.
2. Subsequently, the exchange of NTLM messages goes on as defined by the NTLM protocol, with the POP3 client encapsulating the NTLM messages before sending them to the server, and de-encapsulating POP3 messages to obtain the NTLM message before giving it to NTLM.
3. The NTLM protocol completes authentication, either successfully or unsuccessfully, as follows:
  - The server sends the POP3\_AUTH\_NTLM\_Succeeded\_Response to the client. On receiving this message, the client transitions to the completed\_authentication state and SHOULD treat the authentication attempt as successful.

- The server sends the POP3\_AUTH\_NTLM\_Fail\_Response to the client. On receiving this message, the client transitions to the completed\_authentication state and SHOULD treat the authentication attempt as failed.
- Failures reported from the NTLM package (which can occur for any reason, including incorrect data being passed in, or implementation-specific errors) MAY be reported to the client by NTLM and cause the client to transition to the completed\_authentication state.

### 3.1.2 Timers

None.

### 3.1.3 Initialization

None.

### 3.1.4 Higher-Layer Triggered Events

None.

### 3.1.5 Message Processing Events and Sequencing Rules

The NTLM POP3 Extension is driven by a series of message exchanges between a **POP3** server and a POP3 client. The rules that govern the sequencing of commands and the internal states of the client and server are defined by a combination of [RFC1734] and [MS-NLMP]. Section 3.1.1 defines how the rules specified in [RFC1734] and [MS-NLMP] govern POP3 authentication.

#### 3.1.5.1 Receiving a POP3\_NTLM\_Supported\_Response Message

The expected state is sent\_authentication\_request.

On receiving this message, a client **MUST** generate the first **NTLM message** by calling the NTLM subsystem. The NTLM subsystem then generates **NTLM NEGOTIATE\_MESSAGE**, as specified in [MS-NLMP]. The NTLM message is then encapsulated as defined previously and sent to the server.

The state of the client is changed to "inside\_authentication".

#### 3.1.5.2 Receiving a POP3\_AUTH\_NTLM\_Fail\_Response Message

The expected state is sent\_authentication\_request.

On receiving this message, a client **MUST** abort the **NTLM** authentication attempt.

#### 3.1.5.3 Receiving a POP3\_NTLM\_Blob\_Response

The expected state is inside\_authentication.



On receiving this message, a client **MUST** de-encapsulate it to obtain the embedded **NTLM message**, and pass it to the **NTLM** subsystem for processing. The **NTLM** subsystem can then either report an error, or report success and return an **NTLM** message to be sent to the server.

#### ***3.1.5.3.1 Error from NTLM***

If the **NTLM** subsystem reports an error, the client **MUST** change its internal state to "completed\_authentication" and consider that the authentication has failed. The client can then take any action it considers appropriate; this specification does not mandate any specific course of action.

Typical actions are to try other (non-authentication-related) **POP3** commands, or to disconnect the connection.

#### ***3.1.5.3.2 NTLM Reports Success and Returns an NTLM Message***

The **NTLM message** **SHOULD** be encapsulated and sent to the server. No change occurs in the state of the client.

#### **3.1.5.4 Receiving a POP3\_AUTH\_Succeeded\_Response Message**

Expected state: inside\_authentication.

The **POP3** client **MUST** change its internal state to completed\_authentication and consider that the authentication has succeeded. The client can then take any action it considers appropriate. This specification does not mandate any specific course of action.

#### **3.1.5.5 Receiving a POP3\_AUTH\_NTLM\_Fail\_Response**

Expected state: inside\_authentication.

The **POP3** client **MUST** change its internal state to completed\_authentication and consider that the authentication has failed. The client can then take any action it considers appropriate; this specification does not mandate any specific course of action.

#### **3.1.6 Timer Events**

None.

#### **3.1.7 Other Local Events**

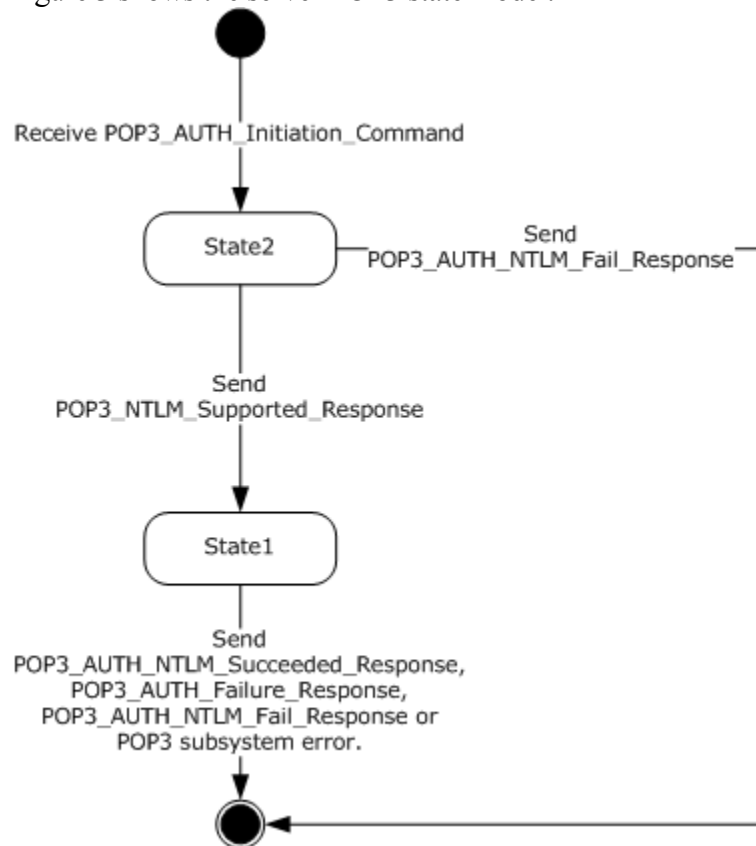
None.

## 3.2 POP3 Server Details

### 3.2.1 Abstract Data Model

#### 3.2.1.1 POP3 State Model

Figure 3 shows the server POP3 state model.



**Figure 3: Server POP3 state model**

The abstract data model for NTLM POP3 Extension has the following states:

1. Start.  
This is the state of the server before the POP3\_AUTH\_NTLM\_Initiation\_Command has been received.
2. State 2: received\_authentication\_request.  
This is the state of the client after the POP3\_AUTH\_NTLM\_Initiation\_Command has been received.
3. State 1: inside\_authentication.

This is the state entered by a server after it has sent a **POP3\_NTLM\_Supported\_Response**. In this state, the server initializes the **NTLM** subsystem and repeats the following steps:

- Waits for a message from the client.
- De-encapsulates received **POP3** message data from the other party and obtains the embedded **NTLM message** data.
- Passes it to the NTLM subsystem.
- Encapsulates the NTLM message returned by the NTLM subsystem into a POP3 message.
- Sends the POP3 message to the other party.

This state terminates when:

- The NTLM subsystem reports completion with either a success or failed authentication status, on which it sends the client and **POP3\_AUTH\_NTLM\_Succeeded\_Response** or **POP3\_AUTH\_NTLM\_Fail\_Response**, as specified in [RFC1734].
- Any failure is reported by the NTLM subsystem.

#### 4. Stop: **completed\_authentication**.

This is the state of the server on exiting the **inside\_authentication** state. The rules for how the **inside\_authentication** state is exited are defined in section 3.2.5. The behavior of POP3 in this state is specified in [RFC1734]—it represents the **end\_state** of the authentication protocol.

### 3.2.1.2 NTLM Subsystem Interaction

During the **inside\_authentication** state, the **POP3** server invokes the **NTLM** subsystem as specified in [MS-NLMP] section 3.1.1. The NTLM protocol is used with the following options:

1. The negotiation is a **connection-oriented NTLM** negotiation.
2. None of the flags specified in [MS-NLMP] section 3.1.1 are specific to NTLM.

The following is a description of how POP3 uses NTLM. For more details, see [MS-NLMP] section 3.1.1, which describes the data model and sequencing of NTLM packets in greater detail.

1. On receiving the **NTLM\_NEGOTIATE\_MESSAGE**, the server passes it to the NTLM subsystem and is returned the **NTLM\_CHALLENGE\_MESSAGE**, if the **NTLM\_NEGOTIATE\_MESSAGE** was valid.
2. Subsequently, the exchange of **NTLM messages** goes on as defined by the NTLM protocol, with the POP3 server encapsulating the NTLM messages that are returned by NTLM before sending them to the client.
3. When the NTLM protocol completes authentication, either successfully or unsuccessfully, the NTLM subsystem notifies POP3, and the following occurs:

- On successful completion, the server **MUST** exit the `inside_authentication` state and enter the `completed_authentication` state and send the `POP3_AUTH_Success_Response` to the client. On receiving this message, the client **MUST** also transition to the `completed_authentication` state.
- If a failure occurs due to an incorrect password error, as described in [MS-NLMP] section 3.3.1 and 3.3.2, the server **SHOULD** enter the `completed_authentication` state and send the client a `POP3_AUTH_Failure_Response` message.
- If a failure occurs on the server due to any reason other than the incorrect password error, the server enters the `completed_authentication` state and sends the client a `POP3_AUTH_Failure_Response` message. On receiving this message, the client **MUST** enter the `completed_authentication` state.

### **3.2.2 Timers**

None.

### **3.2.3 Initialization**

None.

### **3.2.4 Higher-Layer Triggered Events**

None.

### **3.2.5 Message Processing Events and Sequencing Rules**

The NTLM POP3 Extension is driven by a series of message exchanges between a **POP3** server and a POP3 client. The rules that govern the sequencing of commands and the internal states of the client and server are defined by a combination of [RFC1734] and [MS-NLMP]. Section 3.1.1 defines how the rules specified in [RFC1734] and [MS-NLMP] govern POP3 authentication.

#### **3.2.5.1 Receiving a POP3\_AUTH\_NTLM\_Initiation\_Command Message**

The expected state is `start`.

On receiving this message, the server **MUST** reply with the `POP3_NTLM_Supported_Response`, if it supports NTLM, and change its state to the `inside_authentication` state.

If the server does not support NTLM, it **MUST** respond with the `POP3_NTLM_AUTH_Fail_Response`, and the internal state remains unchanged.

#### **3.2.5.2 Receiving a POP3\_AUTH\_NTLM\_Blob\_Command Message**

The expected state is `inside_authentication`.

On receiving this message, a server **MUST** de-encapsulate the message, obtain the embedded **NTLM message**, and pass it to the **NTLM** subsystem. The **NTLM** subsystem **MAY**:

1. Report success in processing the **message** and return an **NTLM** message to continue authentication.
2. Report that authentication completed successfully.
3. Report that authentication failed due to a bad user name or password, as specified in [MS-NLMP].
4. Report that the authentication failed due to some other software error or message corruption.

#### ***3.2.5.2.1 NTLM Returns Success, Returning an NTLM Message***

The **NTLM message** **MUST** be encapsulated and sent to the client. The internal state of the **POP3** server remains unchanged.

#### ***3.2.5.2.2 NTLM Returns Success, Indicating Authentication Completed Successfully***

The server **MUST** return the **POP3\_NTLM\_AUTH\_Succeeded\_Response** and change its internal state to **completed\_authentication**.

#### ***3.2.5.2.3 NTLM Returns Status, Indicating User Name or Password Was Incorrect***

The server **MUST** return the **POP3\_AUTH\_NTLM\_Failed\_Response** and change its internal state to **completed\_authentication**.

#### ***3.2.5.2.4 NTLM Returns a Failure Status, Indicating Any Other Error***

The server **MUST** return the **POP3\_AUTH\_NTLM\_Failed\_Response** and change its internal state to **completed\_authentication**.

#### ***3.2.5.2.5 NTLM Reports Success, Returning an NTLM Message***

The **NTLM message** **MUST** be encapsulated and sent to the server. No change occurs in the state of the client.

### **3.2.6 Timer Events**

None.

### **3.2.7 Other Local Events**

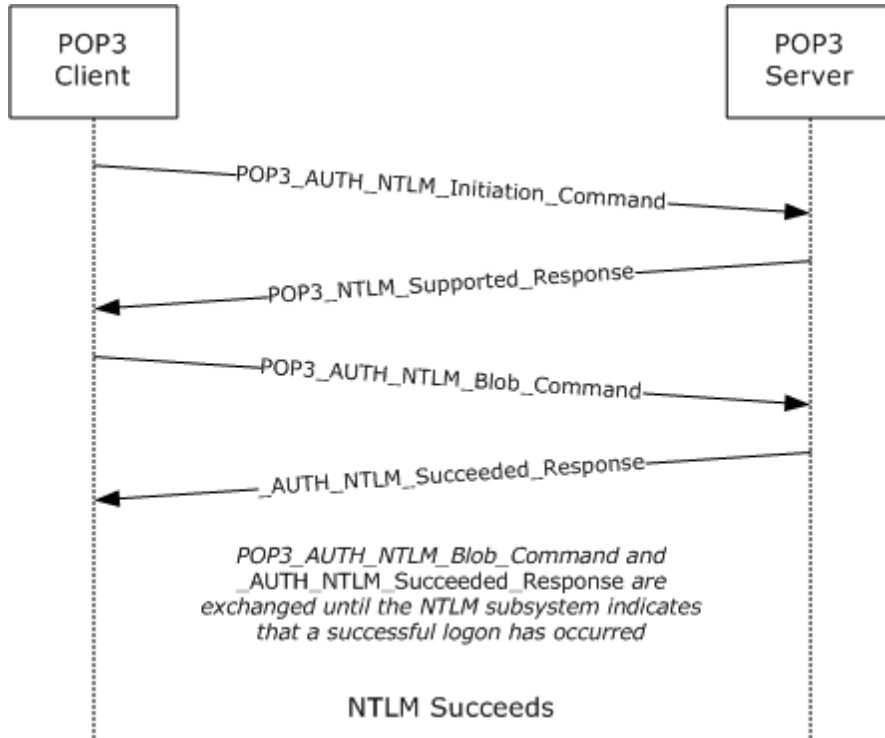
None.

## **4 Protocol Examples**

The following section describes operations used in a common scenario to illustrate the function of the **Post Office Protocol - Version3 (POP3)**.

#### 4.1 POP3 Client Successfully Authenticating to a POP3 Server

This section illustrates the NTLM POP3 Extension with a scenario in which a **POP3** client successfully authenticates to a POP3 server by using **NTLM**. Figure 4 shows a POP3 client authenticating to a POP3 server.



**Figure 4: POP3 client successfully authenticating to POP3 server**

1. The client sends a `POP3_AUTH_NTLM_Initiation_Command` to the server. This command is specified in [RFC1734] and does not carry any POP3-specific data. It is included in this example to provide a better understanding of the POP3 NTLM initiation command.

AUTH NTLM

2. The server sends the `POP3_NTLM_Supported_Response` message, which indicates that it can perform NTLM authentication.

+OK

3. The client sends a `POP3_AUTH_NTLM_Blob_Command` message that contains a base64-encoded **NTLM NEGOTIATE\_MESSAGE**.

```
TlRMTVNTUAABAAAAB4IIogAAAAAAAAAAAAAAAAAAAAAAAAAFASgKAAADw==
```

```

00000000:4e 54 4c 4d 53 53 50 00 01 00 00 00 07 82 08 a2 NTLMSSP.....,^
00000010:00 00 00 00 00 00 00 00 00 00 00 00 00 00 00 00 .....
00000020:05 01 28 0a 00 00 00 0f ..(.....

```

- The server sends a POP3\_AUTH\_NTLM\_Blob\_Response message that contains a base64-encoded NTLM CHALLENGE\_MESSAGE.

```

+ TlRMTVNTUAACAAAFAAUADgAAAAFgoqinziKqGYjdLEAAAAAAAAAGQAZABMAAABQ
LODgAAA9UAEUwBUAFMARQBSAFYARQBSAAIAFABUAEUwBUAFMARQBSAFYARQBSAA
EAFABUAEUwBUAFMARQBSAFYARQBSAAQAFABUAGUAcwB0AFMAZQByAHYAZQByAAMAFA
BUAGUAcwB0AFMAZQByAHYAZQByAAAAAA=
00000000:4e 54 4c 4d 53 53 50 00 02 00 00 00 14 00 14 00 NTLMSSP.....
00000010:38 00 00 00 05 82 8a a2 9f 38 8a a8 66 23 76 51 8.....,ŠčŸ8Š`f#vQ
00000020:00 00 00 00 00 00 00 00 64 00 64 00 4c 00 00 00 .....d.d.L...
00000030:05 02 ce 0e 00 00 00 0f 54 00 45 00 53 00 54 00 ..Î.....T.E.S.T.
00000040:53 00 45 00 52 00 56 00 45 00 52 00 02 00 14 00 S.E.R.V.E.R....
00000050:54 00 45 00 53 00 54 00 53 00 45 00 52 00 56 00 T.E.S.T.S.E.R.V.
00000060:45 00 52 00 01 00 14 00 54 00 45 00 53 00 54 00 E.R.....T.E.S.T.
00000070:53 00 45 00 52 00 56 00 45 00 52 00 04 00 14 00 S.E.R.V.E.R....
00000080:54 00 65 00 73 00 74 00 53 00 65 00 72 00 76 00 T.e.s.t.S.e.r.v.
00000090:65 00 72 00 03 00 14 00 54 00 65 00 73 00 74 00 e.r.....T.e.s.t.
000000a0:53 00 65 00 72 00 76 00 65 00 72 00 00 00 00 00 S.e.r.v.e.r....

```

- The client sends a POP3\_AUTH\_NTLM\_Blob\_Command message that contains a base64-encoded NTLM AUTHENTICATE\_MESSAGE.

```

TlRMTVNTUAADAAAAGAAAYAGIAAAAYABgAegAAAAAAAAABIAAAACAIAEgAAAASABIAUAAA
AAAAACSAAAABYKIogUBKaoAAAAPdQBzAGUAcgBOAEYALQBDAEwASQBFAE4AVABKMiQ4
djhCsgAAAAAAAAAAAAAAAAAAAC7zUSgB0Auy98bRi6h3mwHMJfbKntxmno=
00000000:4e 54 4c 4d 53 53 50 00 03 00 00 00 18 00 18 00 NTLMSSP.....
00000010:62 00 00 00 18 00 18 00 7a 00 00 00 00 00 00 00 b.....z.....
00000020:48 00 00 00 08 00 08 00 08 00 12 00 12 00 H.....H.....
00000030:50 00 00 00 00 00 00 00 92 00 00 00 05 82 88 a2 P.....',.....,^
00000040:05 01 28 0a 00 00 00 0f 75 00 73 00 65 00 72 00 ..(.....u.s.e.r.
00000050:4e 00 46 00 2d 00 43 00 4c 00 49 00 45 00 4e 00 N.F.-.C.L.I.E.N.
00000060:54 00 4a 32 24 38 76 38 5c 4a 00 00 00 00 00 00 T.J2$8v8\J.....
00000070:00 00 00 00 00 00 00 00 00 00 00 00 bb cd 44 a0 07 40 .....>ÍD .@
00000080:2e cb df 1b 46 2e a1 de 6c 07 30 97 db 28 db 71 .Ëß.F.;þl.0-Û(Ûq
00000090:9a 6a šj

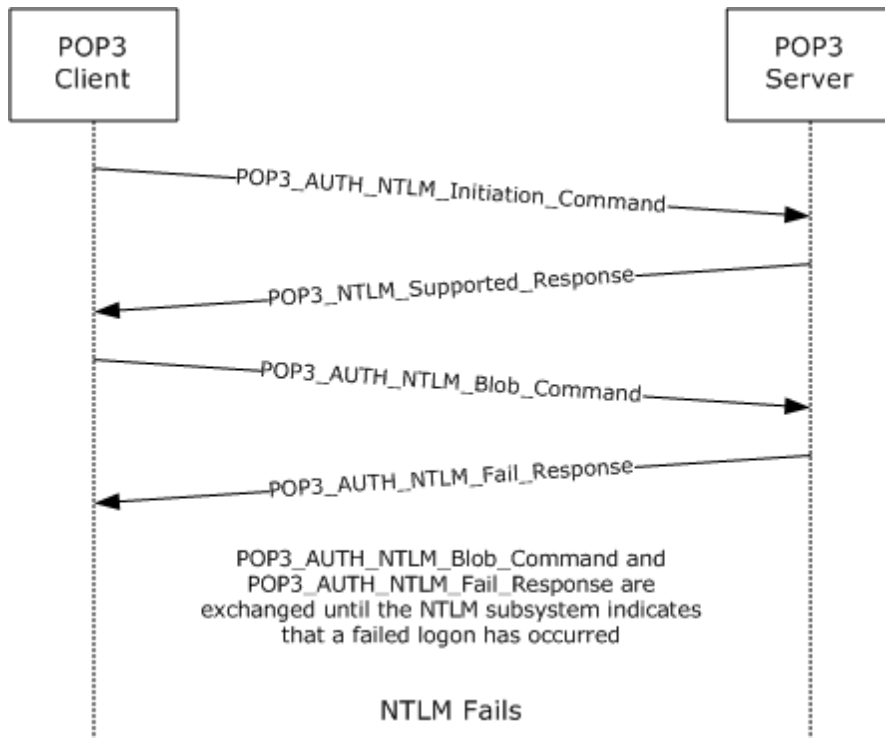
```

- The server sends a POP3\_Authentication\_Succeeded\_Response message.

```
+OK User successfully logged on
```

## 4.2 POP3 Client Unsuccessfully Authenticating to a POP3 Server

This section illustrates the NTLM POP3 Extension with a scenario in which a POP3 client tries NTLM authentication to a POP3 server and the authentication fails. Figure 5 shows the unsuccessful attempt to authenticate to the POP3 server.



**Figure 5: Client unsuccessfully authenticating to POP3 server**

The client sends a POP3\_AUTH\_NTLM\_Initiation\_Command to the server. This command is defined in [RFC1734] and does not carry any POP3-specific data. It is included in this example to provide a better understanding.

The server sends the POP3\_NTLM\_Supported\_Response message, which indicates that it can perform NTLM authentication.

The client sends a POP3\_AUTH\_NTLM\_Blob\_Command message.

1. The client sends a POP3\_AUTH\_NTLM\_Blob\_Command message that contains a base-64-encoded NTLM NEGOTIATE\_MESSAGE.

```

TlRMTVNTUAABAAAAB4IIogAAAAAAAAAAAAAAAAAAAAAAAAAFASgKAAAADw==
00000000:4e 54 4c 4d 53 53 50 00 01 00 00 00 07 82 08 a2 NTLMSSP....., .¢
00000010:00 00 00 00 00 00 00 00 00 00 00 00 00 00 00 00 .....
00000020:05 01 28 0a 00 00 00 0f ..(.....
  
```

2. The server sends a POP3\_AUTH\_NTLM\_Blob\_Response message that contains a base64-encoded NTLM CHALLENGE\_MESSAGE.

```

+ TlRMTVNTUAACAAAFAAUADgAAAAFgoqieUWd5ES4Bi0AAAAAAAAAAGQAZABMAA
AABQLODgAAAA9UAEUAUwBUAFMARQBSAFYARQBSAAIAFABUAEUwBUAFMARQBSAF
YARQBSAAEFABUAEUwBUAFMARQBSAFYARQBSAAQAFABUAGUAcwB0AFMAZQByAH
YAZQByAAMAFABUAGUAcwB0AFMAZQByAHYAZQByAAAAAA=
  
```



```

00000000:4e 54 4c 4d 53 53 50 00 02 00 00 00 14 00 14 00 NTLMSSP.....
00000010:38 00 00 00 05 82 8a a2 79 45 9d e4 44 b8 06 2d 8....,ŠçyE•äd,.-
00000020:00 00 00 00 00 00 00 00 64 00 64 00 4c 00 00 00 .....d.d.L...
00000030:05 02 ce 0e 00 00 00 0f 54 00 45 00 53 00 54 00 ..î.....T.E.S.T.
00000040:53 00 45 00 52 00 56 00 45 00 52 00 02 00 14 00 S.E.R.V.E.R....
00000050:54 00 45 00 53 00 54 00 53 00 45 00 52 00 56 00 T.E.S.T.S.E.R.V.
00000060:45 00 52 00 01 00 14 00 54 00 45 00 53 00 54 00 E.R.....T.E.S.T.
00000070:53 00 45 00 52 00 56 00 45 00 52 00 04 00 14 00 S.E.R.V.E.R.....
00000080:54 00 65 00 73 00 74 00 53 00 65 00 72 00 76 00 T.e.s.t.s.e.r.v.
00000090:65 00 72 00 03 00 14 00 54 00 65 00 73 00 74 00 e.r.....T.e.s.t.
000000a0:53 00 65 00 72 00 76 00 65 00 72 00 00 00 00 00 S.e.r.v.e.r.....

```

- The client sends a POP3\_AUTH\_NTLM\_Blob\_Command message that contains a base-64-encoded NTLM AUTHENTICATE\_MESSAGE.

```

TlRMTVNTUAADAAAAGAAAYAGIAAAAYABgAegAAAAAAAAABIAAAACAAIAEgAAAAABIA
UAAAAAAAAACSAAAABYKIogUBKAoAAAAAPdQBzAGUAcgBOAEYALQBDAEwASQBFAE4A
VAAOarJ6lZ5ZNwAAAAAAAAAAAAAAAAAACD9mD8jmWs4FkZe59/nNb1cF2HkL0C
GZw=

```

```

00000000:4e 54 4c 4d 53 53 50 00 03 00 00 00 18 00 18 00 NTLMSSP.....
00000010:62 00 00 00 18 00 18 00 7a 00 00 00 00 00 00 00 b.....z.....
00000020:48 00 00 00 08 00 08 00 48 00 00 00 12 00 12 00 H.....H.....
00000030:50 00 00 00 00 00 00 92 00 00 00 05 82 88 a2 P.....'.....,^ç
00000040:05 01 28 0a 00 00 00 0f 75 00 73 00 65 00 72 00 ..(.....u.s.e.r.
00000050:4e 00 46 00 2d 00 43 00 4c 00 49 00 45 00 4e 00 N.F.-.C.L.I.E.N.
00000060:54 00 0e 6a b2 7a 95 9e 59 37 00 00 00 00 00 00 T..j²z•tY7.....
00000070:00 00 00 00 00 00 00 83 f6 60 fc 8e 65 .....fö`üTe
00000080:ac e0 59 19 7b 9f 7f 9c d6 f5 70 5d 87 90 bd 02 -àY.{ÿoeÖöp]#•¼.
00000090:19 9c .oe

```

- The server sends a POP3\_AUTH\_Failed\_Response message.

```
-ERR, Error: Command not valid
```

## 5 Security

The following sections specify security considerations for implementers of the NTLM POP3 Extension.

### 5.1 Security Considerations for Implementers

Implementers ought to be aware of the security considerations of using NTLM authentication. Information about the security considerations for using NTLM authentication is specified in [MS-NLMP] section 5.

### 5.2 Index of Security Parameters

Security Parameter	Section
NTLM	2 and 3

## 6 Appendix A: Office/Exchange Behavior

The information in this specification is applicable to the following versions of Office/Exchange:

- Microsoft Office 2003
- Microsoft Exchange Server 2003
- Microsoft Office 2007
- Microsoft Exchange Server 2007

Exceptions, if any, are noted below. Unless otherwise specified, any statement of optional behavior in this specification prescribed using the terms SHOULD or SHOULD NOT implies Office/Exchange behavior in accordance with the SHOULD or SHOULD NOT prescription. Unless otherwise specified, the term MAY implies Office/Exchange does not follow the prescription.

---

<1> Section 1.3: **POP3** servers support at least one authentication mechanism. Outlook 2003 supports USER and PASS verbs as defined in [RFC1939]. Outlook 2007 supports the AUTH verb as defined in [RFC1734]. Outlook 2003 and Outlook 2007 do not support APOP. Both Outlook 2003 and Outlook 2007 support AUTH NTLM.

<2> Section 1.4: In Exchange 2007, the maximum **POP3** command size is 45 characters.

<3> Section 1.7: Exchange 2003, Exchange 2007, and Office clients mutually support [RFC1939], [RFC1734], and [RFC2449].

<4> Section 1.7: Exchange 2007 - Set the EnableExactRFC822Size to true for clients that expect an exact message size for the message they are retrieving.

<5> Section 2.2.1: In Exchange 2003 and Exchange 2007, the AUTH command issued without arguments will list the supported authentication mechanisms. This is not part of [RFC1734].

<6> Section 2.2.2: In Exchange 2003, messages received by using MAPI are converted to **MIME** the first time they are retrieved and subsequently stored. The MIME size can be different before the messages are retrieved than after they are converted to MIME.

<7> Section 2.2.2: In Exchange 2007, messages are not stored in **MIME** format. Messages are converted from MAPI to MIME before being sent to the client. When the client requests the size of the message before retrieving the actual message itself, the MIME size provided is the size that is associated with the message as a MAPI property. When the client retrieves the message, the message is converted from MAPI to MIME and the message size calculated

---

thereafter can be different than the size calculated from the MAPI property. Additionally, if the message is modified by MAPI, the size is likely to change again and thus the corresponding MIME size after actual conversion from MAPI to MIME changes.

In Exchange 2003, the MIME stream is preserved. In Exchange 2007, the MIME stream is not preserved. Only content of the **best body**, as specified in [MS-OXBBODY], is preserved. The order in which the best body part is selected is as follows:

- a. Enriched Text Format
- b. **HTML**
- c. **Plain text**

Therefore, the MIME stream is regenerated every time a message is retrieved. The alternative body parts are regenerated on demand as the message is retrieved.

## Index

- Applicability, 8
- Examples, 21
- Fields, vendor extensible, 9
- Glossary, 4
- Index of security parameters, 25
- Informative references, 6
- Introduction, 4
- Message syntax, 9
- Messages, 9
  - Syntax, 9
  - Transport, 9
- Normative references, 5
- Office/Exchange behavior, 26
- Overview, 6
- POP3 client protocol details, 13
- POP3 server protocol details, 18
- Preconditions, 8
- Prerequisites, 8
- Protocol details, 13
  - POP 3client, 13
  - POP3 server, 18
- References, 5
  - Informative references, 6
  - Normative references, 5
- Relationship to other protocols, 8
- Security, 25
  - Considerations for implementers, 25
  - Parameters, 25
- Security considerations for implementers, 25
- Standards assignments, 9
- Transport, 9
- Vendor-extensible fields, 9
- Versioning and capability negotiation, 8