

# [MS-OXOCFG]: Configuration Information Protocol

---

## Intellectual Property Rights Notice for Open Specifications Documentation

- **Technical Documentation.** Microsoft publishes Open Specifications documentation (“this documentation”) for protocols, file formats, data portability, computer languages, and standards support. Additionally, overview documents cover inter-protocol relationships and interactions.
- **Copyrights.** This documentation is covered by Microsoft copyrights. Regardless of any other terms that are contained in the terms of use for the Microsoft website that hosts this documentation, you can make copies of it in order to develop implementations of the technologies that are described in this documentation and can distribute portions of it in your implementations that use these technologies or in your documentation as necessary to properly document the implementation. You can also distribute in your implementation, with or without modification, any schemas, IDLs, or code samples that are included in the documentation. This permission also applies to any documents that are referenced in the Open Specifications documentation.
- **No Trade Secrets.** Microsoft does not claim any trade secret rights in this documentation.
- **Patents.** Microsoft has patents that might cover your implementations of the technologies described in the Open Specifications documentation. Neither this notice nor Microsoft's delivery of this documentation grants any licenses under those patents or any other Microsoft patents. However, a given Open Specifications document might be covered by the Microsoft [Open Specifications Promise](#) or the [Microsoft Community Promise](#). If you would prefer a written license, or if the technologies described in this documentation are not covered by the Open Specifications Promise or Community Promise, as applicable, patent licenses are available by contacting [iplg@microsoft.com](mailto:iplg@microsoft.com).
- **License Programs.** To see all of the protocols in scope under a specific license program and the associated patents, visit the [Patent Map](#).
- **Trademarks.** The names of companies and products contained in this documentation might be covered by trademarks or similar intellectual property rights. This notice does not grant any licenses under those rights. For a list of Microsoft trademarks, visit [www.microsoft.com/trademarks](http://www.microsoft.com/trademarks).
- **Fictitious Names.** The example companies, organizations, products, domain names, email addresses, logos, people, places, and events that are depicted in this documentation are fictitious. No association with any real company, organization, product, domain name, email address, logo, person, place, or event is intended or should be inferred.

**Reservation of Rights.** All other rights are reserved, and this notice does not grant any rights other than as specifically described above, whether by implication, estoppel, or otherwise.

**Tools.** The Open Specifications documentation does not require the use of Microsoft programming tools or programming environments in order for you to develop an implementation. If you have access to Microsoft programming tools and environments, you are free to take advantage of them. Certain Open Specifications documents are intended for use in conjunction with publicly available standards specifications and network programming art and, as such, assume that the reader either is familiar with the aforementioned material or has immediate access to it.

**Support.** For questions and support, please contact [dochelp@microsoft.com](mailto:dochelp@microsoft.com).

**Preliminary Documentation.** This particular Open Specifications document provides documentation for past and current releases and/or for the pre-release version of this technology. This document provides final documentation for past and current releases and preliminary documentation, as applicable and specifically noted in this document, for the pre-release version. Microsoft will release final documentation in connection with the commercial release of the updated or new version of this technology. Because this documentation might change between the pre-release version and the final

version of this technology, there are risks in relying on this preliminary documentation. To the extent that you incur additional development obligations or any other costs as a result of relying on this preliminary documentation, you do so at your own risk.

Preliminary

## Revision Summary

Date	Revision History	Revision Class	Comments
4/4/2008	0.1	Major	Initial Availability.
4/25/2008	0.2	Minor	Revised and updated property names and other technical content.
6/27/2008	1.0	Major	Initial Release.
8/6/2008	1.0.1	Editorial	Revised and edited technical content.
9/3/2008	1.0.2	Editorial	Revised and edited technical content.
12/3/2008	1.0.3	Editorial	Revised and edited technical content.
4/10/2009	2.0	Major	Updated technical content for new product releases.
7/15/2009	3.0	Major	Revised and edited for technical content.
11/4/2009	3.1.0	Minor	Updated the technical content.
2/10/2010	3.2.0	Minor	Updated the technical content.
5/5/2010	3.3.0	Minor	Updated the technical content.
8/4/2010	3.4	Minor	Clarified the meaning of the technical content.
11/3/2010	3.5	Minor	Clarified the meaning of the technical content.
3/18/2011	3.5	None	No changes to the meaning, language, and formatting of the technical content.
8/5/2011	4.0	Major	Significantly changed the technical content.
10/7/2011	4.1	Minor	Clarified the meaning of the technical content.
1/20/2012	5.0	Major	Significantly changed the technical content.
4/27/2012	5.0	None	No changes to the meaning, language, or formatting of the technical content.
7/16/2012	5.0	None	No changes to the meaning, language, or formatting of the technical content.
10/8/2012	6.0	Major	Significantly changed the technical content.
2/11/2013	6.1	Minor	Clarified the meaning of the technical content.
7/26/2013	7.0	Major	Significantly changed the technical content.
11/18/2013	8.0	Major	Significantly changed the technical content.
2/10/2014	8.0	None	No changes to the meaning, language, or formatting of the technical content.
4/30/2014	8.1	Minor	Clarified the meaning of the technical content.
7/31/2014	8.2	Minor	Clarified the meaning of the technical content.
10/30/2014	8.3	Minor	Clarified the meaning of the technical content.
3/16/2015	9.0	Major	Significantly changed the technical content.

<b>Date</b>	<b>Revision History</b>	<b>Revision Class</b>	<b>Comments</b>
5/26/2015	10.0	Major	Significantly changed the technical content.
9/14/2015	10.0	None	No changes to the meaning, language, or formatting of the technical content.
6/13/2016	10.0	None	No changes to the meaning, language, or formatting of the technical content.
9/14/2016	10.0	None	No changes to the meaning, language, or formatting of the technical content.
7/24/2018	11.0	Major	Significantly changed the technical content.
10/1/2018	12.0	Major	Significantly changed the technical content.
4/22/2021	13.0	Major	Significantly changed the technical content.

Preliminary

# Table of Contents

<b>1</b>	<b>Introduction</b>	<b>9</b>
1.1	Glossary	9
1.2	References	13
1.2.1	Normative References	13
1.2.2	Informative References	14
1.3	Overview	14
1.4	Relationship to Other Protocols	14
1.5	Prerequisites/Preconditions	16
1.6	Applicability Statement	16
1.7	Versioning and Capability Negotiation	16
1.8	Vendor-Extensible Fields	16
1.9	Standards Assignments	16
<b>2</b>	<b>Messages</b>	<b>17</b>
2.1	Transport	17
2.2	Message Syntax	17
2.2.1	Namespaces	17
2.2.2	Configuration Data Properties	17
2.2.2.1	PidTagRoamingDatatypes Property	17
2.2.2.2	PidTagRoamingDictionary Property	18
2.2.2.3	PidTagRoamingXmlStream Property	18
2.2.3	XML Format	18
2.2.4	Binary Format	19
2.2.5	Configuration Data	19
2.2.5.1	Dictionaries	19
2.2.5.1.1	Calendar Options	21
2.2.5.2	XML Streams	23
2.2.5.2.1	Working Hours	23
2.2.5.2.2	Category List	26
2.2.5.2.3	Retention and Archive Settings	31
2.2.6	View Definitions	36
2.2.6.1	PidTagViewDescriptorBinary Property	36
2.2.6.1.1	ColumnPacket Structure	39
2.2.6.1.2	RestrictionPacket Structure	41
2.2.6.1.2.1	LogicalAndRestriction Structure	42
2.2.6.1.2.2	LogicalOrRestriction Structure	43
2.2.6.1.2.3	LogicalNotRestriction Structure	43
2.2.6.1.2.4	ContentRestriction Structure	44
2.2.6.1.2.5	PropertyRestriction Structure	45
2.2.6.1.2.6	ComparePropsRestriction Structure	46
2.2.6.1.2.7	BitmaskRestriction Structure	47
2.2.6.1.2.8	SizeRestriction Structure	47
2.2.6.1.2.9	ExistRestriction Structure	48
2.2.6.1.2.10	SubObjectRestriction Structure	49
2.2.6.1.2.11	CommentRestriction Structure	49
2.2.6.1.3	Valid Property Types	50
2.2.6.1.4	PropertyValue Structure	51
2.2.6.2	PidTagViewDescriptorName Property	52
2.2.6.3	PidTagViewDescriptorStrings Property	52
2.2.6.4	PidTagViewDescriptorVersion Property	53
2.2.7	Folder Flags	53
2.2.7.1	Sub-property	53
2.2.7.1.1	Invalid	54
2.2.7.1.2	ExtendedFlags	54
2.2.7.1.3	SearchFolderID	55

2.2.7.1.4	ToDoFolderVersion.....	55
2.2.8	Conversation Actions.....	55
2.2.8.1	PidLidConversationActionLastAppliedTime Property .....	56
2.2.8.2	PidLidConversationActionMaxDeliveryTime Property .....	56
2.2.8.3	PidLidConversationActionMoveFolderEid Property .....	56
2.2.8.4	PidLidConversationActionMoveStoreEid Property .....	57
2.2.8.5	PidLidConversationActionVersion Property .....	57
2.2.8.6	PidLidConversationProcessed Property .....	57
2.2.8.7	PidNameKeywords Property.....	58
2.2.8.8	PidTagConversationIndex Property .....	58
2.2.8.9	PidTagMessageClass Property .....	58
2.2.8.10	PidTagSubject Property.....	58
2.2.9	Navigation Shortcuts.....	59
2.2.9.1	PidTagMessageClass Property .....	59
2.2.9.2	PidTagNormalizedSubject Property .....	59
2.2.9.3	PidTagWlinkGroupHeaderID Property.....	59
2.2.9.4	PidTagWlinkSaveStamp Property.....	59
2.2.9.5	PidTagWlinkType Property .....	59
2.2.9.6	PidTagWlinkFlags Property .....	60
2.2.9.7	PidTagWlinkOrdinal Property .....	61
2.2.9.8	PidTagWlinkEntryId Property .....	61
2.2.9.9	PidTagWlinkRecordKey Property.....	61
2.2.9.10	PidTagWlinkStoreEntryId Property.....	61
2.2.9.11	PidTagWlinkFolderType Property .....	61
2.2.9.12	PidTagWlinkGroupClsid Property .....	62
2.2.9.13	PidTagWlinkGroupName Property .....	62
2.2.9.14	PidTagWlinkSection Property .....	62
2.2.9.15	PidTagWlinkCalendarColor Property.....	62
2.2.9.16	PidTagWlinkAddressBookEID Property .....	63
2.2.9.17	PidTagWlinkAddressBookStoreEID Property.....	63
2.2.9.18	PidTagWlinkClientID Property .....	63
2.2.9.19	PidTagWlinkROGroupType Property .....	63
<b>3</b>	<b>Protocol Details.....</b>	<b>65</b>
3.1	Client Details.....	65
3.1.1	Abstract Data Model.....	65
3.1.2	Timers .....	65
3.1.3	Initialization.....	65
3.1.3.1	Navigation Shortcuts .....	65
3.1.4	Higher-Layer Triggered Events .....	65
3.1.4.1	Reading Configuration Data.....	65
3.1.4.1.1	Reading Dictionaries .....	66
3.1.4.1.2	Reading Working Hours.....	66
3.1.4.1.3	Reading Category List .....	67
3.1.4.2	Writing Configuration Data .....	67
3.1.4.2.1	Writing Dictionaries .....	68
3.1.4.2.2	Writing Working Hours .....	68
3.1.4.2.3	Writing Category List .....	68
3.1.4.3	Reading View Definitions.....	69
3.1.4.4	Writing View Definitions .....	69
3.1.4.5	Reading Folder Flags .....	70
3.1.4.5.1	Reading ExtendedFolderFlags.....	70
3.1.4.5.2	Reading SearchFolderID .....	70
3.1.4.5.3	Reading ToDoFolderVersion .....	71
3.1.4.6	Writing Folder Flags .....	71
3.1.4.6.1	Writing ExtendedFolderFlags.....	71
3.1.4.6.2	Writing SearchFolderID .....	71
3.1.4.6.3	Writing ToDoFolderVersion .....	71

3.1.4.7	Applying a Category to a Message.....	71
3.1.4.8	Performing a Conversation Action .....	71
3.1.4.9	Reading Navigation Shortcuts .....	73
3.1.4.10	Writing Navigation Shortcuts .....	73
3.1.4.10.1	Group Headers .....	74
3.1.4.10.2	Shortcuts .....	74
3.1.5	Message Processing Events and Sequencing Rules .....	75
3.1.5.1	Processing a Conversation Action on Incoming E-mail Objects .....	75
3.1.5.1.1	Duplicate Detection for Conversation Action Processing .....	76
3.1.5.2	Processing a Conversation Action on Outgoing E-mail Objects .....	76
3.1.6	Timer Events.....	76
3.1.6.1	Expiration of Conversation Actions .....	76
3.1.7	Other Local Events.....	77
3.2	Server Details.....	77
3.2.1	Abstract Data Model.....	77
3.2.2	Timers .....	77
3.2.3	Initialization.....	77
3.2.4	Higher-Layer Triggered Events .....	77
3.2.4.1	Reading Configuration Data.....	77
3.2.4.1.1	Reading Working Hours.....	77
3.2.4.1.2	Reading Category List .....	77
3.2.4.2	Writing Configuration Data .....	77
3.2.4.3	Reading View Definitions.....	78
3.2.4.4	Reading Folder Flags .....	78
3.2.4.4.1	Reading ExtendedFolderFlags.....	78
3.2.4.4.2	Reading SearchFolderID .....	78
3.2.4.5	Writing Folder Flags .....	78
3.2.4.5.1	Writing ExtendedFolderFlags.....	78
3.2.4.5.2	Writing ToDoFolderVersion .....	78
3.2.4.6	Applying a Category to a Message.....	78
3.2.5	Message Processing Events and Sequencing Rules .....	79
3.2.5.1	Processing a Change to a Conversation Action FAI Message.....	79
3.2.5.2	Processing a Conversation Action on Incoming E-mail Objects .....	79
3.2.5.3	Processing a Conversation Action on Outgoing E-mail Objects .....	80
3.2.6	Timer Events.....	80
3.2.7	Other Local Events.....	80
<b>4</b>	<b>Protocol Examples.....</b>	<b>81</b>
4.1	Configuration Data.....	81
4.1.1	Dictionaries.....	81
4.1.2	Working Hours .....	81
4.1.3	Category List.....	81
4.2	View Definitions .....	83
4.2.1	PidTagViewDescriptorBinary .....	83
4.2.1.1	Blank Column .....	85
4.2.1.2	Column "Importance" .....	86
4.2.1.3	Column "Reminder" .....	87
4.2.1.4	Column "Icon" .....	88
4.2.1.5	Column "Flag Status" .....	89
4.2.1.6	Column "Attachment" .....	89
4.2.1.7	Column "From" .....	89
4.2.1.8	Column "Subject".....	90
4.2.1.9	Column "Received" .....	90
4.2.1.10	Column "Size" .....	90
4.2.1.11	Column "Categories" .....	91
4.2.2	PidTagViewDescriptorStrings .....	91
4.3	Conversation Actions .....	92
4.3.1	A Categorized and Moved Conversation Action .....	92

4.4	Navigation Shortcut.....	93
4.4.1	Group Header .....	93
4.4.2	Navigation Shortcut .....	94
<b>5</b>	<b>Security.....</b>	<b>96</b>
5.1	Security Considerations for Implementers .....	96
5.2	Index of Security Parameters .....	96
<b>6</b>	<b>Appendix A: Product Behavior .....</b>	<b>97</b>
<b>7</b>	<b>Change Tracking.....</b>	<b>101</b>
<b>8</b>	<b>Index.....</b>	<b>102</b>

Preliminary



# 1 Introduction

The Configuration Information Protocol allows a client to share overlapping application settings with a server. Where appropriate, it can also be used to change the configuration of a feature on the client from the server or vice versa.

Sections 1.5, 1.8, 1.9, 2, and 3 of this specification are normative. All other sections and examples in this specification are informative.

## 1.1 Glossary

This document uses the following terms:

- action:** A discrete operation that is executed on an incoming **Message object** when all conditions in the same rule are TRUE. A rule contains one or more actions.
- archive policy:** A feature that determines when items are moved into an alternate **mailbox** for archival purposes.
- attachments table:** A Table object whose rows represent the Attachment objects that are attached to a **Message object**.
- calendar:** A date range that shows availability, meetings, and appointments for one or more users or resources. See also **Calendar object**.
- Calendar folder:** A Folder object that contains **Calendar objects**.
- Calendar object:** A **Message object** that represents an event, which can be a one-time event or a recurring event. The Calendar object includes properties that specify event details such as description, organizer, date and time, and status.
- calendar options dictionary:** A dictionary that contains calendar configuration data. It is stored in a **folder associated information (FAI)** message that is in a **Calendar special folder**.
- Calendar special folder:** A **Calendar folder** that is in a user's **mailbox** and in which meetings are created by default.
- category:** A subdivision of items into useful groups such as geographical regions. For example, categories that represent geographical regions could be North, South, East, and West.
- code page:** An ordered set of characters of a specific script in which a numerical index (code-point value) is associated with each character. Code pages are a means of providing support for character sets and keyboard layouts used in different countries. Devices such as the display and keyboard can be configured to use a specific code page and to switch from one code page (such as the United States) to another (such as Portugal) at the user's request.
- Common Views folder:** A **special folder** that contains the data for default views that are standard for a message store and can be used by any user of a client that accesses the message store.
- Contact object:** A **Message object** that contains properties pertaining to a contact.
- contents table:** A Table object whose rows represent the **Message objects** that are contained in a Folder object.
- conversation:** A single representation of a send/response series of email messages. A conversation appears in the Inbox as one unit and allows the user to view and read the series of related email messages in a single effort.

**conversation action:** A limited set of actions that a user applies to all **Message objects** that have the same PidTagConversationId value. The action is applied to all Message objects that are currently in the store or are delivered in the future.

**conversation ID:** A unique value that is associated with a conversation. It is assigned to each **Message object** that is part of a conversation and it is used to identify the conversation to which the message belongs.

**Coordinated Universal Time (UTC):** A high-precision atomic time standard that approximately tracks Universal Time (UT). It is the basis for legal, civil time all over the Earth. Time zones around the world are expressed as positive and negative offsets from UTC. In this role, it is also referred to as Zulu time (Z) and Greenwich Mean Time (GMT). In these specifications, all references to UTC refer to the time at UTC-0 (or GMT).

**dictionary:** A collection of key/value pairs. Each pair consists of a unique key and an associated value. Values in the dictionary are retrieved by providing a key for which the dictionary returns the associated value.

**display name:** A text string that is used to identify a principal or other object in the user interface. Also referred to as title.

**distribution list:** A collection of users, computers, contacts, or other groups that is used only for email distribution, and addressed as a single recipient.

**Email object:** A **Message object** that represents an email message in a message store and adheres to the property descriptions that are described in in [\[MS-OXOMSG\]](#).

**EntryID:** A sequence of bytes that is used to identify and access an object.

**FAI contents table:** A table of **folder associated information (FAI)** Message objects that are stored in a Folder object.

**folder associated information (FAI):** A collection of **Message objects** that are stored in a Folder object and are typically hidden from view by email applications. An FAI Message object is used to store a variety of settings and auxiliary data, including forms, views, calendar options, favorites, and category lists.

**free/busy status:** A property of an appointment that indicates how an appointment on the **calendar** of an attendee or resource affects their availability.

**globally unique identifier (GUID):** A term used interchangeably with universally unique identifier (UUID) in Microsoft protocol technical documents (TDs). Interchanging the usage of these terms does not imply or require a specific algorithm or mechanism to generate the value. Specifically, the use of this term does not imply or require that the algorithms described in [\[RFC4122\]](#) or [\[C706\]](#) must be used for generating the **GUID**. See also universally unique identifier (UUID).

**group header:** A navigation shortcut that groups other navigation shortcuts.

**handle:** Any token that can be used to identify and access an object such as a device, file, or a window.

**Inbox folder:** A **special folder** that is the default location for **Message objects** received by a user or resource.

**Internet Message Access Protocol - Version 4 (IMAP4):** A protocol that is used for accessing email and news items from mail servers, as described in [\[RFC3501\]](#).

**interpersonal messaging subtree:** The root of the hierarchy of folders commonly visible in a messaging client. This includes mailbox folders (such as the Inbox folder and Outbox folder) and user-created folders, including user-created public folders.

**Journal object:** A **Message object** that represents an entry in a journal or log and adheres to the property descriptions that are described in in [\[MS-OXOJRNL\]](#).

**little-endian:** Multiple-byte values that are byte-ordered with the least significant byte stored in the memory location with the lowest address.

**mailbox:** A **message store** that contains email, calendar items, and other **Message objects** for a single recipient.

**Meeting Request object:** A **Message object** that represents an invitation from the meeting organizer to an attendee.

**Meeting Response object:** A **Message object** that represents an attendee's response to a meeting organizer's invitation. The response indicates whether the attendee accepted, tentatively accepted, or declined the meeting request. The response can include a proposed new date or time for the meeting.

**message class:** A property that loosely defines the type of a message, contact, or other Personal Information Manager (PIM) object in a mailbox.

**Message object:** A set of properties that represents an email message, appointment, contact, or other type of personal-information-management object. In addition to its own properties, a Message object contains recipient properties that represent the addressees to which it is addressed, and an **attachments table** that represents any files and other Message objects that are attached to it.

**message store:** A unit of containment for a single hierarchy of Folder objects, such as a mailbox or public folders.

**named property:** A property that is identified by both a GUID and either a string name or a 32-bit identifier.

**Note object:** A **Message object** that represents a simple text note in a messaging store and that adheres to the property descriptions that are described in [\[MS-OXONOTE\]](#). A Note object functions as an electronic equivalent of a paper sticky note.

**permission:** A rule that is associated with an object and that regulates which users can gain access to the object and in what manner. See also rights.

**property ID:** A 16-bit numeric identifier of a specific attribute. A property ID does not include any **property type** information.

**property tag:** A 32-bit value that contains a property type and a property ID. The low-order 16 bits represent the property type. The high-order 16 bits represent the property ID.

**property type:** A 16-bit quantity that specifies the data type of a property value.

**public folder:** A Folder object that is stored in a location that is publicly available.

**recipient table:** The part of a **Message object** that represents users to whom a message is addressed. Each row of the table is a set of properties that represents one recipient.

**reminder:** A generally user-visible notification that a specified time has been reached. A reminder is most commonly related to the beginning of a meeting or the due time of a task but it can be applied to any object type.

**remote operation (ROP):** An operation that is invoked against a server. Each ROP represents an action, such as delete, send, or query. A ROP is contained in a ROP buffer for transmission over the wire.

**restriction:** A set of conditions that an item meets to be included in the search results that are returned by a query server in response to a search query.

**retention policy:** A policy that specifies the length of time during which data, documents, and other records must be available for recovery.

**root folder:** The folder at the top of a hierarchy of folders in a list.

**ROP request:** See **ROP request buffer**.

**ROP request buffer:** A ROP buffer that a client sends to a server to be processed.

**rule:** A condition or action, or a set of conditions or actions, that performs tasks automatically based on events and values.

**search folder:** A Folder object that provides a means of querying for items that match certain criteria. The search folder includes the search folder definition message and the search folder container.

**sort order:** The order in which the rows in a Table object are requested to appear. This can involve sorting on multiple properties and sorting of categories.

**special folder:** One of a default set of Folder objects that can be used by an implementation to store and retrieve user data objects.

**stream:** A flow of data from one host to another host, or the data that flows between two hosts.

**Stream object:** A Server object that is used to read and write large string and binary properties.

**subproperty:** A binary stream property that is embedded in another property, possibly in addition to other subproperties.

**Task object:** A **Message object** that represents an assignment to be completed.

**Unicode:** A character encoding standard developed by the Unicode Consortium that represents almost all of the written languages of the world. The **Unicode** standard [\[UNICODE5.0.0/2007\]](#) provides three forms (UTF-8, UTF-16, and UTF-32) and seven schemes (UTF-8, UTF-16, UTF-16 BE, UTF-16 LE, UTF-32, UTF-32 LE, and UTF-32 BE).

**UTF-8:** A byte-oriented standard for encoding Unicode characters, defined in the Unicode standard. Unless specified otherwise, this term refers to the UTF-8 encoding form specified in [\[UNICODE5.0.0/2007\]](#) section 3.9.

**Web Distributed Authoring and Versioning Protocol (WebDAV):** The Web Distributed Authoring and Versioning Protocol, as described in [\[RFC2518\]](#) or [\[RFC4918\]](#).

**working hours:** Times of the day that are valid for meetings to be considered for an attendee.

**XML:** The Extensible Markup Language, as described in [\[XML1.0\]](#).

**XML namespace:** A collection of names that is used to identify elements, types, and attributes in XML documents identified in a URI reference [\[RFC3986\]](#). A combination of XML namespace and local name allows XML documents to use elements, types, and attributes that have the same names but come from different sources. For more information, see [\[XMLNS-2ED\]](#).

**XML namespace prefix:** An abbreviated form of an **XML namespace**, as described in [\[XML\]](#).

**XML schema:** A description of a type of XML document that is typically expressed in terms of constraints on the structure and content of documents of that type, in addition to the basic syntax constraints that are imposed by **XML** itself. An XML schema provides a view of a document type at a relatively high level of abstraction.

**XML schema definition (XSD):** The World Wide Web Consortium (W3C) standard language that is used in defining XML schemas. Schemas are useful for enforcing structure and constraining the types of data that can be used validly within other XML documents. XML schema definition refers to the fully specified and currently recommended standard for use in authoring **XML schemas**.

**MAY, SHOULD, MUST, SHOULD NOT, MUST NOT:** These terms (in all caps) are used as defined in [\[RFC2119\]](#). All statements of optional behavior use either MAY, SHOULD, or SHOULD NOT.

## 1.2 References

Links to a document in the Microsoft Open Specifications library point to the correct section in the most recently published version of the referenced document. However, because individual documents in the library are not updated at the same time, the section numbers in the documents may not match. You can confirm the correct section numbering by checking the [Errata](#).

### 1.2.1 Normative References

We conduct frequent surveys of the normative references to assure their continued availability. If you have any issue with finding a normative reference, please contact [dochelp@microsoft.com](mailto:dochelp@microsoft.com). We will assist you in finding the relevant information.

- [MS-DTYP] Microsoft Corporation, "[Windows Data Types](#)".
- [MS-OXCADATA] Microsoft Corporation, "[Data Structures](#)".
- [MS-OXCFOLD] Microsoft Corporation, "[Folder Object Protocol](#)".
- [MS-OXCFXICS] Microsoft Corporation, "[Bulk Data Transfer Protocol](#)".
- [MS-OXCICAL] Microsoft Corporation, "[iCalendar to Appointment Object Conversion Algorithm](#)".
- [MS-OXCMSG] Microsoft Corporation, "[Message and Attachment Object Protocol](#)".
- [MS-OXCPERM] Microsoft Corporation, "[Exchange Access and Operation Permissions Protocol](#)".
- [MS-OXCPRPT] Microsoft Corporation, "[Property and Stream Object Protocol](#)".
- [MS-OXCROPS] Microsoft Corporation, "[Remote Operations \(ROP\) List and Encoding Protocol](#)".
- [MS-OXCTABL] Microsoft Corporation, "[Table Object Protocol](#)".
- [MS-OXOABK] Microsoft Corporation, "[Address Book Object Protocol](#)".
- [MS-OXOCAL] Microsoft Corporation, "[Appointment and Meeting Object Protocol](#)".
- [MS-OXOMSG] Microsoft Corporation, "[Email Object Protocol](#)".
- [MS-OXORMDR] Microsoft Corporation, "[Reminder Settings Protocol](#)".
- [MS-OXORULE] Microsoft Corporation, "[Email Rules Protocol](#)".
- [MS-OXOSFLD] Microsoft Corporation, "[Special Folders Protocol](#)".
- [MS-OXOSRCH] Microsoft Corporation, "[Search Folder List Configuration Protocol](#)".
- [MS-OXPROPS] Microsoft Corporation, "[Exchange Server Protocols Master Property List](#)".

[RFC2119] Bradner, S., "Key words for use in RFCs to Indicate Requirement Levels", BCP 14, RFC 2119, March 1997, <http://www.rfc-editor.org/rfc/rfc2119.txt>

[XMLBase] Marsh, J., and Tobin, R., Eds., "XML Base (Second Edition)", W3C Recommendation, January 2009, <http://www.w3.org/TR/2009/REC-xmlbase-20090128/>

[XMLNS] Bray, T., Hollander, D., Layman, A., et al., Eds., "Namespaces in XML 1.0 (Third Edition)", W3C Recommendation, December 2009, <http://www.w3.org/TR/2009/REC-xml-names-20091208/>

[XMLSCHEMA2] Biron, P.V., Ed. and Malhotra, A., Ed., "XML Schema Part 2: Datatypes", W3C Recommendation, May 2001, <http://www.w3.org/TR/2001/REC-xmlschema-2-20010502/>

### 1.2.2 Informative References

[MS-OXCMAPIHTTP] Microsoft Corporation, "[Messaging Application Programming Interface \(MAPI\) Extensions for HTTP](#)".

[MS-OXCRPC] Microsoft Corporation, "[Wire Format Protocol](#)".

[MS-OXOFLAG] Microsoft Corporation, "[Informational Flagging Protocol](#)".

[MS-OXPROTO] Microsoft Corporation, "[Exchange Server Protocols System Overview](#)".

### 1.3 Overview

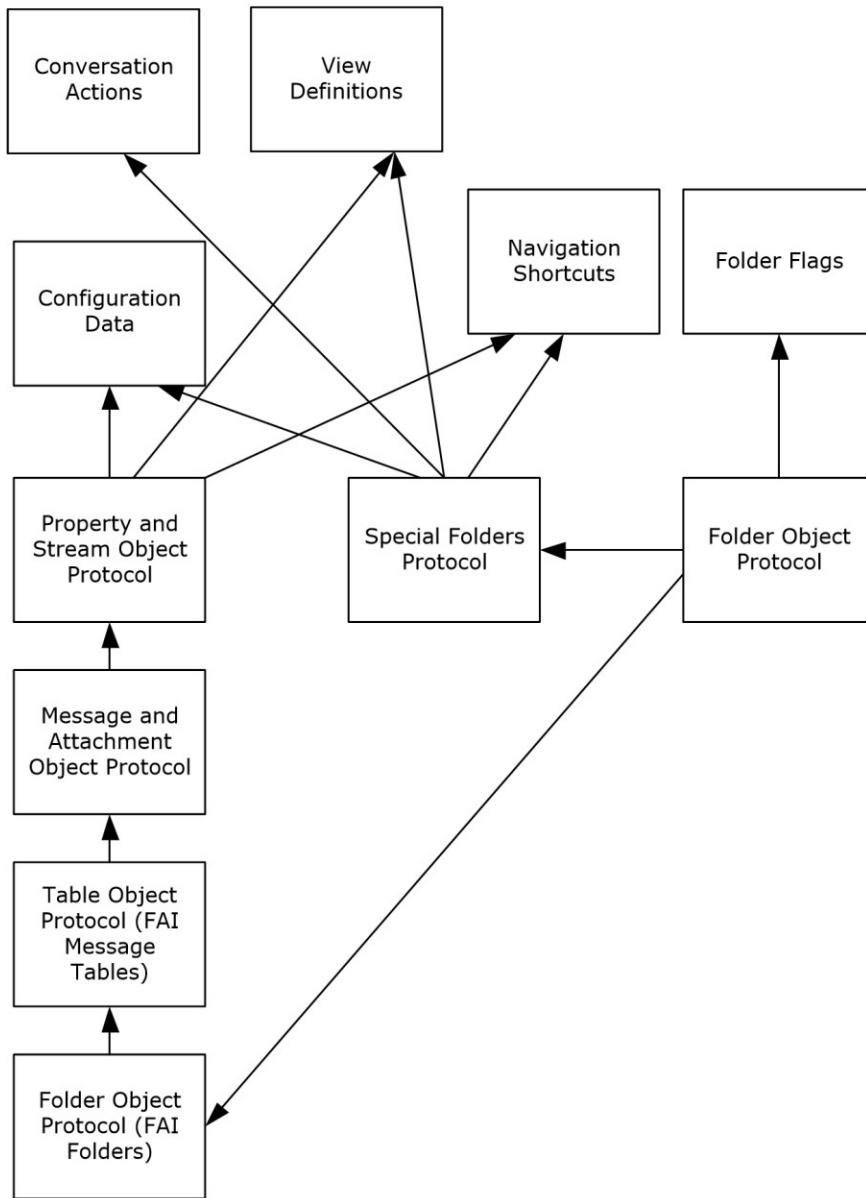
The Configuration Information Protocol consists of the settings that are shared between clients and servers, and the manner in which the settings are shared. The protocol enables both clients and servers to implement features based on user configuration information, such as using a user's preferred **working hours**, to propose optimal times for new appointments. The settings are divided into the following categories, each of which uses a different mechanism for sharing:

- configuration data
- view definitions
- folder flags
- conversation actions
- navigation shortcuts

In addition to the settings included in the protocol, a client or server can store additional, non-interoperable settings for the use of the respective application in a similar way. Despite the fact that the settings use a similar storage mechanism, they are not part of the protocol when they are used by only a single application.

### 1.4 Relationship to Other Protocols

The Configuration Information Protocol works with the protocols shown in the following diagram.



**Figure 1: Components of this protocol in relation to other protocols**

The configuration data, view definition, and navigation shortcut components of the Configuration Information Protocol use **folder associated information (FAI)** messages, as described in [\[MS-OXC FOLD\]](#), as the transport. Clients need to sort and restrict the **FAI contents table**, as described in [\[MS-OXC TABL\]](#), to find the required FAI message. Clients need to access properties on the FAI message, as described in [\[MS-OXC MSG\]](#), and need to use **Stream objects** for certain properties, as described in [\[MS-OXC PRPT\]](#). The FAI messages are sometimes contained in a **special folder**; therefore, these components need to use the Special Folders Protocol, as described in [\[MS-OXC OSFLD\]](#). The configuration data and view definitions are retrieved from properties on the FAI messages using

the Property and Stream Object Protocol, as described in [MS-OXCPRPT]. Conversation actions are stored as FAI messages in the conversation actions settings special folder, as described in [MS-OXOSFLD].

The folder flags component uses a binary property that is stored on the folder itself. The transport for folder flags is described in [MS-OXCFOLD].

For conceptual background information and overviews of the relationships and interactions between this and other protocols, see [\[MS-OXPROTO\]](#).

## 1.5 Prerequisites/Preconditions

The Configuration Information Protocol assumes that the client has previously logged on to the server.

## 1.6 Applicability Statement

Clients and servers can use the Configuration Information Protocol to share application settings when each application implements a similar feature with the same settings. Each application can also use this protocol to communicate the state of its own features, where that state affects the state of related features in the other application.

Clients can also use this protocol to synchronize application settings between multiple instances of the client that are connected to the same server.

## 1.7 Versioning and Capability Negotiation

**Capability negotiation:** The client checks the version number returned by the server in either the **EcDoConnectEx** method, as described in [\[MS-OXCRPC\]](#), or the **X-ServerApplication** header of the **Connect** request type response, as described in [\[MS-OXCMAPIHTTP\]](#). If the server returns a version that is greater than or equal to 14.0.324.0, the client never deletes the conversation action **FAI** message, as described in section [3.1.4.8](#), and disables almost all processing of incoming **E-mail objects**, as described in section [3.1.5.1](#).

## 1.8 Vendor-Extensible Fields

A third-party application can use **FAI** messages to store its own settings by specifying its own custom **PtypString** for the value of the **PidTagMessageClass** property ([\[MS-OXCMSG\]](#) section 2.2.1.3). A centralized authority that ensures uniqueness of the **PidTagMessageClass** property across different applications does not exist.

## 1.9 Standards Assignments

None.



## 2 Messages

### 2.1 Transport

Section 2.2 specifies how Configuration Information Protocol messages use properties and **streams** that have been set on **FAI** messages or folders as the underlying transport.

Streams are further specified in [\[MS-OXCPRPT\]](#). FAI messages and folders are further specified in [\[MS-OXCFOLD\]](#).

### 2.2 Message Syntax

Sections [2.2.1](#) through [2.2.9.19](#) specify the location and format of the property and **stream** buffers that are specific to the Configuration Information Protocol.

#### 2.2.1 Namespaces

This specification defines and references various **XML namespaces** using the mechanisms specified in [\[XMLNS\]](#). Although this specification associates a specific **XML namespace prefix** for each XML namespace that is used, the choice of any particular XML namespace prefix is implementation-specific and not significant for interoperability.

Prefix	Namespace URI	Reference
None	dictionary	
None	WorkingHours	
None	CategoryList	

#### 2.2.2 Configuration Data Properties

Configuration data consists of groups of related application settings. Each group of settings is stored in separate **stream** properties that are set on **FAI** messages.

The streams can contain a serialized **dictionary** of name-value pairs that allow access to individual settings by name. The dictionary is serialized using an **XML schema** that is common to all dictionary streams. Most simple settings use this type of stream.

For more structured data, such as the user's preferred **working hours**, the streams can contain an **XML** document that uses an arbitrary schema that corresponds to the structure of the data. The settings that use an arbitrary XML stream include the user's preferred working hours, which can be used by the client and server to make improved scheduling suggestions for that user, and the user's customized category list, which allows the user to build a list of commonly used message **categories** and assign color values to those categories.

The properties specified in sections [2.2.2.1](#) through [2.2.2.3](#) are present on FAI messages that contain configuration data.

##### 2.2.2.1 PidTagRoamingDatatypes Property

Type: **PtypInteger32** ([\[MS-OXCDATA\]](#) section 2.11.1)

The **PidTagRoamingDatatypes** property ([\[MS-OXPROPS\]](#) section 2.936) contains a bitmask that indicates which **stream** properties exist on the message. The types of the streams, and thus the flags, are not mutually exclusive.

The bitmask is a bitwise OR of the following bits. Other bits MUST NOT be set and MUST be ignored if set.

Value	Meaning
0x00000002	The <b>FAI</b> message contains an <b>XML</b> stream, which is stored in the <b>PidTagRoamingXmlStream</b> property (section <a href="#">2.2.2.3</a> ).
0x00000004	The FAI message contains a <b>dictionary</b> stream, which is stored in the <b>PidTagRoamingDictionary</b> property (section <a href="#">2.2.2.2</a> ). If the FAI message does not contain a dictionary stream, the application MUST treat the dictionary as having no entries.

### 2.2.2.2 PidTagRoamingDictionary Property

Type: **PtypBinary** ([\[MS-OXCDATA\]](#) section 2.11.1)

The **PidTagRoamingDictionary** property ([\[MS-OXPROPS\]](#) section 2.937) contains a **dictionary stream** that is serialized into a fixed **XML schema**, as specified in section [2.2.5.1](#).

### 2.2.2.3 PidTagRoamingXmlStream Property

Type: **PtypBinary** ([\[MS-OXCDATA\]](#) section 2.11.1)

The **PidTagRoamingXmlStream** property ([\[MS-OXPROPS\]](#) section 2.938) contains an **XML stream** that uses an arbitrary **XML schema**, as specified in section [2.2.5.2](#).

### 2.2.3 XML Format

The supported **XML** format to be read and written as configuration data, as specified in section [2.2.2](#), is a subset of the W3C recommendation specified in [\[XMLBase\]](#).

Applications MUST NOT depend on support for namespaces. Namespace support is specified in [\[XMLBase\]](#).

Applications MUST NOT output XML with namespaces except to declare the default namespace if specified in this protocol.

Applications MUST remove namespace prefixes from any qualified name in the default namespace.

Applications MUST escape the following special characters within quoted strings:

Special character	Escape sequence
"	&quot;
<	&lt;
>	&gt;
&	&amp;

Applications SHOULD [<1>](#) escape the following special characters within quoted strings:

Special character	Escape sequence
'	&apos;

## 2.2.4 Binary Format

Unless otherwise specified, the application serializes multibyte data types into binary **streams** using the **little-endian** byte order.

## 2.2.5 Configuration Data

The client and server SHOULD<2> store configuration data, as specified in section 2.2.2. The format and location of the configuration data, as well as which settings this data can include, are specified in sections 2.2.5.1 through 2.2.5.2.3.

The application stores configuration data in an **FAI** message. The application stores the FAI message in the **special folder** that is specified in the subsections of this section for each type of configuration data.

The message MUST have the **PidTagMessageClass** property ([MS-OXCMSG] section 2.2.1.3 set. The value of the property MUST use the prefix "IPM.Configuration." followed by a name that uniquely identifies this FAI message in that folder.

The message MUST have the **PidTagRoamingDatatypes** property set as specified in section 2.2.2.1.

### 2.2.5.1 Dictionaries

A message with a **dictionary stream** MUST have the **PidTagRoamingDatatypes** property (section 2.2.2.1) set. The value of the property MUST be a bitmask that includes the value 0x00000004.

The message MUST have the **PidTagRoamingDictionary** property (section 2.2.2.2) set. The value of the property is a binary stream that contains a **Unicode XML** document using **UTF-8** encoding. The XML document MUST conform to the following **XML schema definition (XSD)** in addition to the limitations specified in section 2.2.3.

```
<?xml version="1.0" encoding="utf-8"?>
<xs:schema targetNamespace="dictionary.xsd"
  xmlns="dictionary.xsd"
  xmlns:xs="http://www.w3.org/2001/XMLSchema">
  <xs:element name="UserConfiguration">
    <xs:complexType>
      <xs:sequence>
        <xs:element name="Info">
          <xs:complexType>
            <xs:sequence />
            <xs:attribute name="version"
              type="VersionString">
          </xs:attribute>
        </xs:complexType>
      </xs:element>
      <xs:element name="Data">
        <xs:complexType>
          <xs:sequence>
            <xs:element name="e"
              minOccurs="0"
              maxOccurs="unbounded"
              type="EntryType">
            </xs:element>
          </xs:sequence>
        </xs:complexType>
      </xs:element>
    </xs:sequence>
  </xs:element>
</xs:schema>
```

```

        </xs:complexType>
        <xs:unique name="uniqueKey">
          <xs:selector xpath="e" />
          <xs:field xpath="@k" />
        </xs:unique>
      </xs:element>
    </xs:sequence>
  </xs:complexType>
</xs:element>
<xs:simpleType name="VersionString">
  <xs:restriction base="xs:string">
    <xs:pattern value=".+\.\d+" />
  </xs:restriction>
</xs:simpleType>
<xs:complexType name="EntryType">
  <xs:sequence />
  <xs:attribute name="k"
    type="ValueString" />
  <xs:attribute name="v"
    type="ValueString" />
</xs:complexType>
<xs:simpleType name="ValueString">
  <xs:restriction
    base="xs:string">
    <xs:pattern value="\d+\-.*" />
  </xs:restriction>
</xs:simpleType>
</xs:schema>

```

**UserConfiguration:** A top-level element that MUST exist. It contains the **Info** and **Data** elements.

**Info:** An element that MUST exist. It contains information about the application that created the XML document in the **version** attribute.

**version:** An attribute on the **Info** element that specifies the name and version of the application that created the XML document. The type of this attribute MUST be **VersionString**.

**VersionString:** A **simpleType** based on a string. The name and version of the application that created this document is encoded in the version string. [<3>](#) The data is not validated; it is provided for future reference. The format of the version string is as follows.

```
<name>.<major version number>
```

**Data:** An element that MUST contain all the dictionary name-value pair entries.

**e:** An element of type **EntryType** that contains a name-value pair. There can be an unbounded number of **e** elements inside the top-level **Data** element.

**EntryType:** A **complexType** that represents a name-value pair. This type contains the following attributes:

- **k:** An attribute of the **EntryType** type that contains the name portion of the name-value pair. The type of this attribute is **ValueString**. The value of this attribute MUST be unique within the dictionary.

- **v**: An attribute of the **EntryType** type that contains the value portion of the name-value pair. The type of this attribute is **ValueString**.

**ValueString**: A **simpleType** that is based on a string. Different value types MUST be encoded in this **simpleType** as a string. The format of the string MUST be as follows.

```
<data type>-<string encoded value>
```

The data type MUST be an integer type code from the following table.

Type	Type code	Encoding
Boolean	3	"True" or "False"
32-bit signed integer	9	Decimal characters, prefixed with an optional "-" to denote a negative number
String	18	Unicode string

There is one reserved name-value pair that the client SHOULD include in every dictionary XML document. If the dictionary XML document does not include this name-value pair, the client MUST behave as though the default value were set:

- OLPrefsVersion
  - Name: (string) "OLPrefsVersion"
  - Value: (32-bit integer) The client uses this setting to determine whether to prefer the settings in the XML document or its own locally stored settings.
    - "0" or any negative integer: The client MUST prefer its own default or locally stored settings, and it MUST rewrite the XML document with those settings.
    - "1" or any positive integer: The client MUST prefer the settings in the XML document.
    - Default: (32-bit integer) "0"

### 2.2.5.1.1 Calendar Options

If the client or server supports configuration data as specified in section [2.2.2](#), it stores the settings specified in this section in a **calendar options dictionary**. The application stores the calendar options dictionary in an **FAI** message that is contained in the **Calendar special folder**. The format of the Calendar special folder is specified in [\[MS-OXOSFLD\]](#) section 2.2.8.

This message MUST have the **PidTagMessageClass** property ([\[MS-OXCMSG\]](#) section 2.2.1.3) set. The value of the property MUST be "IPM.Configuration.Calendar".

The **dictionary** SHOULD include the following settings.

**Note** Unless otherwise specified, any setting that is not included in the dictionary MUST revert to the default value.

- piRemindDefault
  - Name: (string) "piRemindDefault"

- Value: (32-bit integer) When creating a new appointment, the client or server SHOULD initialize the **reminder** time to be the start time of the appointment minus this number of minutes, as specified in [\[MS-OXORMDR\]](#).
- Default: (32-bit integer) "15"
- piReminderUpgradeTime
  - Name: (string) "piReminderUpgradeTime"
  - Value: (32-bit integer) The value of this setting is specified in [\[MS-OXORMDR\]](#) section 2.2.3.1.
  - Default: (missing) The default behavior when this setting is missing is specified in [\[MS-OXORMDR\]](#) section 3.1.3.1.
- piAutoProcess
  - Name: (string) "piAutoProcess"
  - Value: (Boolean) The client SHOULD use this setting to control automatic processing of **Meeting Request objects** and **Meeting Response objects**, as specified in [\[MS-OXOCAL\]](#).
    - "True": The client SHOULD enable automatic processing.
    - "False": The client SHOULD disable automatic processing.
    - Default: (Boolean) "True"
- AutomateProcessing
  - Name: (string) "AutomateProcessing"
  - Value: (32-bit integer) The server uses this setting to control automatic processing of Meeting Request objects and Meeting Response objects if it implements this feature. If the server does not implement this feature, the server MUST ignore this setting. This setting has three possible values:
    - "0": The server MUST disable automatic processing.
    - "1": The server MUST enable automatic processing, if it implements this feature.
    - "2": The server MUST enable automatic processing, if it implements this feature, treating the **Calendar object** as a meeting resource rather than an attendee, as specified in [\[MS-OXOCAL\]](#). The client MUST NOT change the setting when it has this value.
    - Default: (32-bit integer) "1"
- piAutoDeleteReceipts
  - Name: (string) "piAutoDeleteReceipts"
  - Value: (Boolean) The client SHOULD [<4>](#) use this setting to control automatic deletion of Meeting Response objects, as specified in [\[MS-OXOCAL\]](#).
    - "True": The client enables automatic deletion.
    - "False": The client disables automatic deletion.
    - Default: (Boolean) "False"

## 2.2.5.2 XML Streams

The message MUST have the **PidTagRoamingDatatypes** property (section [2.2.2.1](#)) set. The value of the property MUST be a bitmask that includes 0x00000002.

The message MUST have the **PidTagRoamingXmlStream** property (section [2.2.2.3](#)) set. The value of the property MUST be a **PtypBinary stream** that contains a **Unicode XML** document that is using the UTF8 encoding.

In addition to the **XSDs** that are specified in sections [2.2.5.2.1](#) through [2.2.5.2.3](#), the XML document MUST conform to the limitations specified in section [2.2.3](#).

If the application encounters unknown XML elements while parsing the document, it SHOULD preserve those elements without modification and include them whenever it makes modifications to the parts of the document that it understands.

### 2.2.5.2.1 Working Hours

If the client or server supports configuration data, as specified in section [2.2.2](#), it stores the settings that are specified in this section in a **working hours stream**. The application stores the working hours stream in an **FAI** message contained in the **Calendar special folder**.

The message MUST have the **PidTagMessageClass** property ([\[MS-OXCMSG\]](#) section 2.2.1.3) set. The value of the property MUST be "IPM.Configuration.WorkHours".

The **XML** document that is stored in the **PidTagRoamingXmlStream** property (section [2.2.2.3](#)) MUST conform to the following **XSD**.

```
<?xml version="1.0" encoding="utf-8"?>
<xs:schema targetNamespace="WorkingHours.xsd"
  xmlns="WorkingHours.xsd"
  xmlns:xs="http://www.w3.org/2001/XMLSchema">
  <xs:element name="Root">
    <xs:complexType>
      <xs:sequence>
        <xs:element name="WorkHoursVersion1">
          <xs:complexType>
            <xs:sequence>
              <xs:element name="TimeZone">
                <xs:complexType>
                  <xs:sequence>
                    <xs:element name="Bias"
                      type="xs:short"/>
                    <xs:element name="Standard"
                      type="DSTTransition" />
                    <xs:element name="DaylightSavings"
                      type="DSTTransition" />
                    <xs:element name="Name"
                      minOccurs="0"
                      maxOccurs="1"
                      type="xs:string" />
                  </xs:sequence>
                </xs:complexType>
              </xs:element>
              <xs:element name="TimeSlot">
                <xs:complexType>
                  <xs:sequence>
                    <xs:element name="Start"
                      type="xs:time" />
                    <xs:element name="End"
                      type="xs:time" />
                  </xs:sequence>
                </xs:complexType>
              </xs:element>
            </xs:sequence>
          </xs:complexType>
        </xs:element>
      </xs:sequence>
    </xs:complexType>
  </xs:element>
  <xs:element name="WorkDays">
```

```

        type="WorkDaysList" />
    </xs:sequence>
</xs:complexType>
</xs:element>
</xs:sequence>
</xs:complexType>
</xs:element>
<xs:complexType name="DSTTransition">
    <xs:sequence>
        <xs:element name="Bias"
            type="xs:short" />
        <xs:element name="ChangeDate">
            <xs:complexType>
                <xs:sequence>
                    <xs:element name="Time"
                        type="xs:time" />
                    <xs:element name="Date">
                        <xs:simpleType>
                            <xs:restriction base="xs:string">
                                <xs:annotation>
                                    <xs:documentation xml:lang="en-us">
                                        The Date element is a date formatted as
                                        "yyyy/mm/dd," where "yyyy" is the 4 digit
                                        year, "mm" is the 2 digit month, and "dd"
                                        is the 2 digit day of the month.
                                    </xs:documentation>
                                </xs:annotation>
                                <xs:pattern value="\d{4}/\d{2}/\d{2}"/>
                            </xs:restriction>
                        </xs:simpleType>
                    </xs:element>
                    <xs:element name="DayOfWeek">
                        <xs:simpleType>
                            <xs:restriction base="xs:unsignedByte">
                                <xs:minInclusive value="0"/>
                                <xs:maxInclusive value="7"/>
                            </xs:restriction>
                        </xs:simpleType>
                    </xs:element>
                </xs:sequence>
            </xs:complexType>
        </xs:element>
    </xs:sequence>
</xs:complexType>
<xs:simpleType name="WorkDaysList">
    <xs:list itemType="WorkDayType"/>
</xs:simpleType>
<xs:simpleType name="WorkDayType">
    <xs:restriction base="xs:string">
        <xs:enumeration value="Monday"/>
        <xs:enumeration value="Tuesday"/>
        <xs:enumeration value="Wednesday"/>
        <xs:enumeration value="Thursday"/>
        <xs:enumeration value="Friday"/>
        <xs:enumeration value="Saturday"/>
        <xs:enumeration value="Sunday"/>
    </xs:restriction>
</xs:simpleType>
</xs:schema>

```

**Root:** The top-level element in the XML document. This element **MUST** exist. The application specifies the **XML namespace** on this element as "WorkingHours.XSD". This element **MUST** contain the **WorkHoursVersion1** element.

**WorkHoursVersion1:** This element **MUST** exist and contains the **TimeZone**, **TimeSlot**, and **WorkDays** elements.



**TimeZone:** This element MUST exist and contains a description of the user's current time-zone settings. It contains the **Bias**, **Standard**, **DaylightSavings**, and **Name** elements.

**Bias:** This element MUST exist as a subelement of the **TimeZone** element. It contains the offset in minutes of the user's current time zone from **Coordinated Universal Time (UTC)**.

**Standard:** This element MUST exist and contains the definition of standard time in the user's time zone. The type of this element is **DSTTransition**.

**DaylightSavings:** This element MUST exist and contains the definition of daylight-saving time in the user's time zone. The type of this element is **DSTTransition**.

**Name:** This element SHOULD [<5>](#) exist and contains the standard name of the time zone described by the data in the **TimeZone** element. For possible values, see the **KeyName** field of the **PidLidAppointmentTimeZoneDefinitionRecur** property ([\[MS-OXOCAL\]](#) section 2.2.1.41).

**DSTTransition:** This **complexType** describes the differences between standard time and daylight-saving time in the user's current time zone. It contains the **Bias** and **ChangeDate** elements. The **Bias** element from the **DSTTransition** type MUST be added to the **Bias** element value contained in the **WorkHoursVersion1** element when this transition takes effect, which MUST be determined by the value of the **ChangeDate** element.

**Bias:** This element MUST exist as a subelement of the **DSTTransition** type. The **Bias** element value specified in the **DSTTransition** type MUST be added to the time zone bias after the transition.

**ChangeDate:** This element MUST exist as a subelement of the **DSTTransition** type. The value of this element determines when the transition takes place. This element contains a **Time** element, a **Date** element, and a **DayOfWeek** element.

**Time:** This element contains the time of day when the transition takes place.

**Date:** This element contains a date formatted as <yyyy/mm/dd>, where yyyy is the 4-digit year, mm is the 2-digit month, and dd is the 2-digit day of the month.

If the year is set to "0000", the application performs the transition every year. If the year is any other value, the application performs the transition only in that year.

The application performs the transition in the month that is specified.

If the year is set to "0000", the interpretation of the day of the month depends on the value of the **DayOfWeek** element, as specified in this section. If the year is any other value, the application performs the transition on the day of the month that is specified.

**DayOfWeek:** If the year portion of the **Date** element is set to "0000", this element MUST contain the day of the week when the transition takes place. The application selects the occurrence of that day of the week using the day of the month portion of the **Date** element. For example, if the **DayOfWeek** element contains the value 0, and the day of the month is 2 in the **Date** element, the application performs the transition on the second Sunday of the month. In this case, the day of the month in the **Date** element MUST be between 1 and 5, inclusive. The possible values for the **DayOfWeek** element are given in the following table.

Value	Meaning
0	The application performs the transition on a Sunday.
1	The application performs the transition on a Monday.
2	The application performs the transition on a Tuesday.
3	The application performs the transition on a Wednesday.

Value	Meaning
4	The application performs the transition on a Thursday.
5	The application performs the transition on a Friday.
6	The application performs the transition on a Saturday.

If the year portion of the **Date** element is any other value, the application MUST ignore the **DayOfWeek** element and use the day of the month portion of the **Date** element instead.

**TimeSlot:** This element contains the **Start** and **End** elements.

**Start:** This element contains the start time for the user's work day, relative to the user's current time zone, as specified in the **TimeZone** element.

**End:** This element contains the end time for the user's work day, relative to the user's current time zone, as specified in the **TimeZone** element.

**WorkDays:** This element contains a list of strings that specify which days of the week are work days for this user. The set of strings is defined by the enumeration **restriction** on the **WorkDayType simpleType**. The application treats any day that is included in this element as a work day for the user.

**WorkDayType:** A **simpleType** based on a string. The possible values are given in the following table.

Value	Meaning
Monday	If this string is included in the <b>WorkDays</b> element list, Monday is a work day for this user.
Tuesday	If this string is included in the <b>WorkDays</b> element list, Tuesday is a work day for this user.
Wednesday	If this string is included in the <b>WorkDays</b> element list, Wednesday is a work day for this user.
Thursday	If this string is included in the <b>WorkDays</b> element list, Thursday is a work day for this user.
Friday	If this string is included in the <b>WorkDays</b> element list, Friday is a work day for this user.
Saturday	If this string is included in the <b>WorkDays</b> element list, Saturday is a work day for this user.
Sunday	If this string is included in the <b>WorkDays</b> element list, Sunday is a work day for this user.

### 2.2.5.2.2 Category List

A category list is a type of configuration data, as specified in section [2.2.5](#), that contains a list of textual labels (or **categories**) with associated data, such as color. Other attributes of a category include a shortcut key that can be used to apply a category, a usage counter, the last time the category was applied or used by the user, and a **GUID**.

If the client or server supports configuration data, as specified in section [2.2.2](#), it MUST store the settings that are specified in this section in a category list **stream**. The application MUST store the category list stream in an **FAI** message that is contained in the **Calendar special folder**.

The message MUST have the **PidTagMessageClass** property ([\[MS-OXCMSG\]](#) section 2.2.1.3) set. The value of the property MUST be "IPM.Configuration.CategoryList".

The **XML** document that is stored in the **PidTagRoamingXmlStream** property (section [2.2.2.3](#)) MUST conform to the following **XSD**.

```

<?xml version="1.0"?>
<xs:schema targetNamespace="CategoryList.xsd"
  xmlns="CategoryList.xsd"
  xmlns:xs="http://www.w3.org/2001/XMLSchema">
  <xs:simpleType name="colorType">
    <xs:restriction base="xs:int">
    </xs:restriction>
  </xs:simpleType>

  <xs:simpleType name="keyboardShortcutType">
    <xs:restriction base="xs:unsignedInt">
    </xs:restriction>
  </xs:simpleType>

  <xs:simpleType name="dateTimeRestrictedType">
    <xs:restriction base="xs:dateTime">
    </xs:restriction>
  </xs:simpleType>

  <xs:simpleType name="renameOnFirstUseType">
    <xs:restriction base="xs:int">
      <xs:enumeration value="0"/>
      <xs:enumeration value="1"/>
    </xs:restriction>
  </xs:simpleType>

  <xs:simpleType name="guidType">
    <xs:restriction base="xs:string">
      <xs:pattern value="^\{ [0-9a-fA-F]{8}\-[0-9a-fA-F]{4}\-[0-9a-fA-F]{4}\-[0-9a-fA-F]{4}\-[0-9a-fA-F]{12}\}$"/>
    </xs:restriction>
  </xs:simpleType>

  <xs:element name="categories">
    <xs:complexType>
      <xs:sequence>
        <xs:element maxOccurs="unbounded"
          name="category">
          <xs:complexType>
            <xs:attribute name="name"
              type="xs:string"
              use="required" />
            <xs:attribute name="color"
              type="colorType"
              use="required" />
            <xs:attribute name="keyboardShortcut"
              type="keyboardShortcutType"
              use="required" />
            <xs:attribute name="usageCount"
              type="xs:unsignedInt"
              use="optional" />
            <xs:attribute name="lastTimeUsedNotes"
              type="dateTimeRestrictedType"
              use="optional" />
            <xs:attribute name="lastTimeUsedJournal"
              type="dateTimeRestrictedType"
              use="optional" />
            <xs:attribute name="lastTimeUsedContacts"
              type="dateTimeRestrictedType"
              use="optional" />
            <xs:attribute name="lastTimeUsedTasks"
              type="dateTimeRestrictedType"
              use="optional" />
            <xs:attribute name="lastTimeUsedCalendar"
              type="dateTimeRestrictedType"
              use="optional" />
            <xs:attribute name="lastTimeUsedMail"
              type="dateTimeRestrictedType"
              use="optional" />
          </xs:complexType>
        </xs:element>
      </xs:sequence>
    </xs:complexType>
  </xs:element>

```

```

        <xs:attribute name="lastTimeUsed"
                    type="dateTimeRestrictedType"
                    use="required" />
        <xs:attribute name="lastSessionUsed"
                    type="xs:int"
                    use="required" />
        <xs:attribute name="guid"
                    type="guidType"
                    use="required" />
        <xs:attribute name="renameOnFirstUse"
                    type="renameOnFirstUseType"
                    use="optional" />
    </xs:complexType>
</xs:element>
</xs:sequence>
<xs:attribute name="default"
              type="xs:string"
              use="required" />
<xs:attribute name="lastSavedSession"
              type="xs:int"
              use="required" />
<xs:attribute name="lastSavedTime"
              type="dateTimeRestrictedType"
              use="required" />
</xs:complexType>
<xs:unique name="uniqueName">
  <xs:selector xpath="category" />
  <xs:field xpath="@name" />
</xs:unique>
</xs:element>
</xs:schema>

```

**colorType:** A **simpleType** based on an integer. For possible values, see the description of the **color** attribute later in this section.

**keyboardShortcutType:** A **simpleType** based on an unsigned integer. For possible values, see the description of the **keyboardShortcut** attribute later in this section.

**dateTimeRestrictedType:** A **simpleType** based on a **dateTime** type as specified in [\[XMLSCHEMA2\]](#) section 3.2.7. Elements with this type have the following restrictions:

- The year MUST be between 1601 and 30827.
- The time 24:00:00 is not valid.
- Fractional seconds SHOULD have 3-digit precision (that is, milliseconds). The application can include additional digits. The application SHOULD [<6>](#) handle any extra digits if they are included.
- The application MUST specify the time in **UTC**. The application MAY append a Z for the time zone identifier. The application MUST ignore any other time zone identifier and interpret the time using UTC.

**renameOnFirstUseType:** A **simpleType** based on an integer. For possible values, see the description of the **renameOnFirstUse** attribute later in this section.

**guidType:** A **simpleType** based on a string. For possible values, see the description of the **guid** attribute later in this section.

**categories:** The top-level element in the XML document. This element MUST exist. The application specifies the **XML namespace** on this element as "CategoryList.xsd". This element MUST contain the **category** element.

**category:** This element MUST exist and contains the **name**, **color**, **keyboardShortcut**, **usageCount**, **lastTimeUsedNotes**, **lastTimeUsedJournal**, **lastTimeUsedContacts**, **lastTimeUsedTasks**, **lastTimeUsedCalendar**, **lastTimeUsedMail**, **lastTimeUsed**, **lastSessionUsed**, **guid**, and **renameOnFirstUse** attributes.

**name:** An attribute on the **category** element that describes the name of the category. A valid category name:

- MUST be unique in the category list (case insensitive).
- MUST NOT be empty.
- MUST NOT be longer than 255 characters.
- MUST NOT contain the comma character (,).
- SHOULD NOT contain the characters (;) (\x061B) (\xFE54) (\xFF1B).

It is also recommend that a category name not be in the form of the string representation of a GUID, as specified in the description of the **guid** attribute in this section. <7>

**color:** An attribute on the **category** element that describes the color of the category. The application SHOULD use a value from -1 to 24. If any other value is used, the application MUST interpret that value as if it were -1 (no color). The RGB values provided here are the basic colors for the category. Applications can choose to display the color category differently.

Value	Base R,G,B	Color name
-1	255, 255,255	No color
0	214, 37, 46	Red
1	240, 108, 21	Orange
2	255, 202, 76	Peach
3	255, 254, 61	Yellow
4	74, 182, 63	Green
5	64, 189, 149	Teal
6	133, 154, 82	Olive
7	50, 103, 184	Blue
8	97, 61, 180	Purple
9	163, 78, 120	Maroon
10	196, 204, 221	Steel
11	140, 156, 189	Dark steel
12	196, 196, 196	Gray
13	165, 165, 165	Dark gray
14	28, 28, 28	Black
15	175, 30, 37	Dark red
16	177, 79, 13	Dark orange

Value	Base R,G,B	Color name
17	171, 123, 5	Dark peach
18	153, 148, 0	Dark yellow
19	53, 121, 43	Dark green
20	46, 125, 100	Dark teal
21	95, 108, 58	Dark olive
22	42, 81, 145	Dark blue
23	80, 50, 143	Dark purple
24	130, 55, 95	Dark maroon

**keyboardShortcut:** An attribute on the **category** element that describes the keyboard shortcut of the category. [<8>](#) The application SHOULD use a value from 0 to 11. If any other value is used, the application MUST interpret that value as if it were 0 (no shortcut).

Value	Shortcut key
0	None
1	CTRL+F2
2	CTRL+F3
3	CTRL+F4
4	CTRL+F5
5	CTRL+F6
6	CTRL+F7
7	CTRL+F8
8	CTRL+F9
9	CTRL+F10
10	CTRL+F11
11	CTRL+F12

**usageCount:** An attribute on the **category** element. Reserved. Applications can write 0. Applications MAY [<9>](#) write the usage count and periodically apply an algorithm to reduce the usage count to facilitate creating a most frequently used list.

**lastTimeUsedNotes** (optional): An attribute on the **category** element. This attribute contains the last time the category was applied to a **Note object**.

**lastTimeUsedJournal** (optional): An attribute on the **category** element. This attribute contains the last time the category was applied to a **Journal object**.

**lastTimeUsedContacts** (optional): An attribute on the **category** element. This attribute contains the last time the category was applied to a **Contact object**.

**lastTimeUsedTasks** (optional): An attribute on the **category** element. This attribute contains the last time the category was applied to a **Task object**.

**lastTimeUsedCalendar** (optional): An attribute on the **category** element. This attribute contains the last time the category was applied to a **Calendar object**.

**lastTimeUsedMail** (optional): An attribute on the **category** element. This attribute contains the last time the category was applied to an **E-mail object**.

**lastTimeUsed**: An attribute on the **category** element. This attribute contains the last time the category was used. See section [3.1.4.2.3](#) for more details.

**lastSessionUsed**: An attribute on the **category**. Reserved. Applications SHOULD [<10>](#) write 0, but can write the last session that this category was applied or changed by the user.

**guid**: An attribute on the **category** element that describes a GUID that identifies the category and does not change if the user renames the category. The GUID MUST be stored in a string in the form of "{XXXXXXXX-XXXX-XXXX-XXXX-XXXXXXXXXXXX}", where X is any hexadecimal digit.

**renameOnFirstUse**: An attribute on the **category** element. If set to "1", an application SHOULD [<11>](#) prompt the user to rename the category when it is first applied to a message, as specified in section [3.1.4.7](#). If the user renames the category before applying it to a message, this attribute can be set to 0. If this attribute is missing, the application MUST use a default value of 0.

**default**: An attribute on the **categories** element that specifies the name of a category in the category list that is to be applied, as specified in section [3.1.4.7](#), if the application provides a one-click method to apply a category.

**lastSavedSession**: An attribute on the **categories** element. Reserved. Applications SHOULD write [0<12>](#) but can choose to increment this number at every new session.

**lastSavedTime**: An attribute on the **categories** element. The value MUST be set to the time in UTC when the category list was saved.

### 2.2.5.2.3 Retention and Archive Settings

If the client or server supports configuration data, as specified in section [2.2.2](#), and the **retention policy** or **archive policy** features are enabled, then it SHOULD store the settings that are specified in this section in a tags list **stream**. A tags list is a type of configuration data, as specified in section [2.2.5](#), that contains a list of settings for a retention policy or an archive policy. The application SHOULD [<13>](#) store the tags list stream in an **FAI** message that is contained in the **Inbox folder**. The message MUST have the **PidTagMessageClass** property ([\[MS-OXCMSG\]](#) section 2.2.1.3) set. The value of the property MUST be "IPM.Configuration.MRM". The **XML** document that is stored in the **PidTagRoamingXmlStream** property (section [2.2.2.3](#)) MUST conform to the following **XSD**.

```
<?xml version="1.0"?>
<xs:schema attributeFormDefault="unqualified" elementFormDefault="qualified"
xmlns:xs="http://www.w3.org/2001/XMLSchema">
  <xs:element name="UserConfiguration">
    <xs:complexType>
      <xs:sequence>
        <xs:element name="Info">
          <xs:complexType>
            <xs:sequence>
              <xs:element name="Data">
                <xs:complexType>
                  <xs:sequence>
                    <xs:element name="RetentionHold">
                      <xs:complexType>
                        <xs:attribute name="Enabled" type="xs:string" use="required" />
                        <xs:attribute name="RetentionComment" type="xs:string" />

```

```

        <xs:attribute name="RetentionPolicy" type="xs:string" />
    </xs:complexType>
</xs:element>
<xs:element maxOccurs="unbounded" name="PolicyTag">
    <xs:complexType>
        <xs:sequence minOccurs="0">
            <xs:element minOccurs="0" name="LocalizedName">
                <xs:complexType>
                    <xs:sequence>
                        <xs:element maxOccurs="unbounded" name="Name"
type="xs:string" />
                    </xs:sequence>
                </xs:complexType>
            </xs:element>
            <xs:element minOccurs="0" name="LocalizedComment">
                <xs:complexType>
                    <xs:sequence>
                        <xs:element maxOccurs="unbounded" name="Comment"
type="xs:string" />
                    </xs:sequence>
                </xs:complexType>
            </xs:element>
            <xs:element minOccurs="0" name="ContentSettings">
                <xs:complexType>
                    <xs:attribute name="Guid" type="xs:string" use="required" />
                    <xs:attribute name="ExpiryAgeLimit" type="xs:unsignedShort"
use="required" />
                    <xs:attribute name="MessageClass" type="xs:string"
use="required" />
                </xs:complexType>
            </xs:element>
        </xs:sequence>
        <xs:attribute name="Guid" type="xs:string" use="required" />
        <xs:attribute name="Name" type="xs:string" use="required" />
        <xs:attribute name="Comment" type="xs:string" />
        <xs:attribute name="Type" type="xs:string" use="required" />
        <xs:attribute name="MustDisplayComment" type="xs:string"
use="required" />
        <xs:attribute name="IsVisible" type="xs:string" use="required" />
        <xs:attribute name="OptedInto" type="xs:string" use="required" />
    </xs:complexType>
</xs:element>
<xs:element maxOccurs="unbounded" name="ArchiveTag">
    <xs:complexType>
        <xs:sequence minOccurs="0">
            <xs:element minOccurs="0" name="LocalizedName">
                <xs:complexType>
                    <xs:sequence>
                        <xs:element maxOccurs="unbounded" name="Name"
type="xs:string" />
                    </xs:sequence>
                </xs:complexType>
            </xs:element>
            <xs:element minOccurs="0" name="LocalizedComment">
                <xs:complexType>
                    <xs:sequence>
                        <xs:element maxOccurs="unbounded" name="Comment"
type="xs:string" />
                    </xs:sequence>
                </xs:complexType>
            </xs:element>
            <xs:element minOccurs="0" name="ContentSettings">
                <xs:complexType>
                    <xs:attribute name="Guid" type="xs:string" use="required" />
                    <xs:attribute name="ExpiryAgeLimit" type="xs:unsignedShort"
use="required" />
                    <xs:attribute name="MessageClass" type="xs:string"
use="required" />
                </xs:complexType>
            </xs:element>
        </xs:sequence>
    </xs:complexType>

```





Attribute name	Description
<b>version</b>	A string that specifies the version of the policy.

**Data:** A child of the **Info** element. A container element for the other retention policy settings.

**RetentionHold:** A child of the **Data** element. Includes a series of sub-elements that describe the retention policy in effect for this user. Has the following attributes:

Attribute name	Description
<b>Enabled</b>	Indicates whether retention is enabled for a user. If it is enabled, then the client can display specific information to indicate that messages will not expire. This value is configured by a server administrator. The value <b>MUST</b> be "True" or "False".
<b>RetentionComment</b>	Contains a string used to communicate information regarding the retention policy feature to the user. This value is configured by a server administrator. The client application <b>SHOULD</b> display this to the user. The string length <b>MUST</b> be between 0 and 1,024 characters.
<b>RetentionUrl</b>	Contains a link to a Web page that contains more information about the retention policy. This value is configured by a server administrator. The client application <b>SHOULD</b> display this to the user. The string length <b>MUST</b> be between 0 and 2,048 characters.

**PolicyTag:** A child of the **Data** element. Stores information about the retention policy. The information is stored in the attributes defined in the following table.

Attribute name	Description
<b>Guid</b>	A <b>GUID</b> value that provides a unique identity for the policy.
<b>Name</b>	The name of the policy tag. This value is configured by a server administrator. The value <b>MUST</b> be unique; no two policy tags or archive tags can have the same name. The string length <b>MUST</b> be between 1 and 264 characters.
<b>Comment</b>	A brief description of the policy tag. This value is configured by a server administrator. The string length <b>MUST</b> be between 1 and 264 characters.
<b>Type</b>	The type of policy tag. This value is configured by a server administrator. The possible values are as follows: <ul style="list-style-type: none"> <li>▪ All</li> <li>▪ Calendar</li> <li>▪ Contacts</li> <li>▪ ConversationHistory</li> <li>▪ DeletedItems</li> <li>▪ Drafts</li> <li>▪ Inbox</li> <li>▪ JunkEmail</li> <li>▪ Journal</li> </ul>

Attribute name	Description
	<ul style="list-style-type: none"> <li>▪ Notes</li> <li>▪ Outbox</li> <li>▪ Personal</li> <li>▪ RssSubscriptions</li> <li>▪ SentItems</li> <li>▪ SyncIssues</li> <li>▪ Tasks</li> </ul> <p>Policy tags with a type of "All" apply to all items that do not have an applicable policy tag. Policy tags of type "Personal" are applied explicitly by the user. All other tags are applied to the corresponding <b>special folder</b>.</p>
<b>MustDisplayComment</b>	The client application MAY use this setting to determine whether the user can hide the retention comment. The value SHOULD be "True" or "False". If the value is "True", the client MAY NOT allow the user to hide the retention comment.
<b>IsVisible</b>	The client application MUST use this setting to determine whether the policy tag is displayed in the list of tags available to the user. The value SHOULD be "True" or "False". If the value is "True", the client MUST display the policy tag in the list of tags available to the user.
<b>OptedInto</b>	Indicates whether the user voluntarily chose this tag for the <b>mailbox</b> or whether it was applied to the mailbox by the server administrator. The value SHOULD be "True" or "False". A value of "True" SHOULD <a href="#">&lt;14&gt;</a> indicate that the user voluntarily chose this tag.

**LocalizedName:** A child of the **PolicyTag** element. It is also a child of the **ArchiveTag** and **DefaultArchiveTag** elements. Can contain multiple **Name** elements as children. Each contains the ISO language code followed by a colon (":") and the localized name of the tag. The string length MUST be between 0 and 264 characters.

**LocalizedComment:** A child of the **PolicyTag** element. It is also a child of the **ArchiveTag** and **DefaultArchiveTag** elements. Can contain multiple **Comment** elements as children. Each contains the ISO language code followed by a colon (":") and the localized comment. The string length MUST be between 0 and 264 characters.

**ContentSettings:** A child of the **PolicyTag** element. It is also a child of the **ArchiveTag** and **DefaultArchiveTag** elements. Stores the settings that control when items expire and the types of items that expire. The settings are stored in the following attributes.

Attribute name	Description
<b>Guid</b>	A GUID value that provides a unique identity for the content setting.
<b>ExpiryAgeLimit</b>	The number of days after which an item SHOULD expire under this policy. This value is configured by a server administrator. The value MUST be between 0 and 24,855.
<b>MessageClass</b>	The <b>message classes</b> that this content setting applies to. This value is configured by a server administrator. This value can be any string that represents a message class. The value "*" represents any message class. The string length MUST be between 1 and 1,023 characters.

**ArchiveTag:** A child of the **Data** element. Stores information about an archive policy. The information is stored in attributes and child elements identical to those on the **PolicyTag** element. The value of the **ArchiveTag** element SHOULD NOT be displayed by the client application in the archive mailbox. It SHOULD be displayed only in the primary mailbox.

**DefaultArchiveTag**: A child of the **Data** element. Stores information about the default archive policy. The information is stored in attributes and child elements identical to those on the **PolicyTag** element. The value of the **DefaultArchiveTag** element SHOULD NOT be displayed by the client application in the archive mailbox. It SHOULD be displayed only in the primary mailbox.

## 2.2.6 View Definitions

The client and server MAY <15> store view settings as view definitions. The format of the view definitions, as well as which settings are included, is specified in sections 2.2.6.1 through 2.2.6.4.

View definitions can be created by the client to make view settings available to the server. These settings consist of column descriptions, including column header names and sizes, groupings, **sort orders**, and an optional **restriction**. The data is stored in several **stream** properties in an **FAI** message.

A message that contains view definitions MUST be an FAI message in the folder where the view is used. The message MUST have the following properties set on it, and the value of each property MUST meet the following criteria:

The message has the **PidTagMessageClass** property ([MS-OXCMSG] section 2.2.1.3) set and the value of the property is "IPM.Microsoft.FolderDesign.NamedView".

The message has the **PidTagViewDescriptorVersion** property (section 2.2.6.4) set and the value of the property is 0x00000008.

The message has the **PidTagViewDescriptorName** property (section 2.2.6.2) set and the value of the property is a non-empty string.

The view definitions MUST be stored as a binary stream in the **PidTagViewDescriptorBinary** property (section 2.2.6.1) of the message. The column headers are stored in the **PidTagViewDescriptorStrings** property (section 2.2.6.3) on the message as strings using the current **code page** of the client. Section 2.2.6.1 and section 2.2.6.3 specify the packet format of these two properties respectively.

### 2.2.6.1 PidTagViewDescriptorBinary Property

Type: **PtypBinary** ([MS-OXCDATA] section 2.11.1)

View definitions, as specified in section 2.2.6, MUST be stored in the **PidTagViewDescriptorBinary** property ([MS-OXPROPS] section 2.1055) of the message. <16> The property is in binary format, and the packet structure is specified as follows.

0	1	2	3	4	5	6	7	8	9	0	1	2	3	4	5	6	7	8	9	0	1	2	3	4	5	6	7	8	9	0	1
Reserved1																															
...																															
Version																															
ulFlags																															
Pres																															

Cvcd
ivcdSort
cCat
ulCatSort
Reserved2
...
...
...
...
...
ColumnInfo (variable)
...
RestrictionInfo (variable)
...

**Reserved1 (8 bytes):** This field MUST exist. The application can fill this field with any value when writing the **stream**. The application MUST ignore the value of this field when reading the stream.

**Version (4 bytes):** This field MUST exist. This is a fixed value of 0x00000008.

**ulFlags (4 bytes):** This field MUST exist. This specifies the **sort order** of the sorted column. The value of this field MUST be one of the following.

Value	Meaning
0x00000000	Ascending sort order
0x00000002	Descending sort order

The index of the sorted column is indicated in the **ivcdSort** field in the packet.

**Pres (4 bytes):** This field MUST exist. This field is filled with arbitrary value by the client and SHOULD NOT be used by the server.

**Cvcd (4 bytes):** This field MUST exist. This field specifies the number of **ColumnPacket** structures that are contained in the **ColumnInfo** field.

**ivcdSort (4 bytes):** This field MUST exist. The value of this field MUST be one of the following:

0 through (**Cvcd**-1): This value is an index into the **ColumnInfo** fields. The table MUST be sorted by that column. The sort order, ascending or descending, MUST be specified in the **ulFlags** field.

0xFFFFFFFF: The table MUST be arranged by **conversation**.

**cCat (4 bytes)**: This field MUST exist. This field specifies the number of "group by" columns that are stored in **ColumnInfo** fields. The minimum value for this field is 0. The maximum value is either 4 or the value of the **Cvcd** field, whichever is least.

**ulCatSort (4 bytes)**: This field MUST exist. This field uses bit flags to specify the ascending or descending order of the "group by" columns. The flags are specified as follows. In each case, if the flag is not set, the "group by" column is in descending order.

Flag	Meaning
0x00000001	If this flag is set, the first "group by" column is in ascending order.
0x00000002	If this flag is set, the second "group by" column is in ascending order.
0x00000004	If this flag is set, the third "group by" column is in ascending order.
0x00000008	If this flag is set, the fourth "group by" column is in ascending order.

**Reserved2 (24 bytes)**: This field MUST exist. The application can fill this field with any value when writing the stream. The application MUST ignore the value of this field when reading the stream.

**ColumnInfo (variable)**: Data type: array of **ColumnPacket** structures, as specified in section [2.2.6.1.1](#). The number of **ColumnPacket** structures contained in this field is indicated by the **Cvcd** field. This field MUST exist. This is where all the column information is stored, including "blank" column, "group by" columns, "visible" columns, and "order by" column.

The columns are stored in the following sequence in the packet:

The "blank" column: This is a single column that MUST have the following settings.

Field name	Value
<b>PropertyType</b>	0x0001
<b>PropertyID</b>	0x0004
<b>Cx</b>	0x00000007
<b>Flags</b>	0x00000028 (VCDF_BITMAP   VCDF_NOT_SORTABLE)
<b>Kind</b>	0x00000000
<b>ID</b>	0x00000004

The "group by" columns: The number of the "group by" columns MUST be stored in **cCat** field in the packet. Each bit in the **ulCatSort** field MUST specify whether the corresponding "group by" column is in ascending or descending order.

The "visible" columns: All columns that MUST be visible to users excluding the "group by" columns.

The "order by" column: If the sorted column is not a "group by" or "visible" column, it MUST be stored here.

**RestrictionInfo (variable)**: Data type: **RestrictionPacket** structure, as specified in section [2.2.6.1.2](#). This field is where the **restriction** of the table view MUST be stored.

### 2.2.6.1.1 ColumnPacket Structure

The **ColumnPacket** structure MUST contain the information of a single column, including the property ID, **property type**, and display attributes. The **ColumnPacket** structure contains the following fields.

0	1	2	3	4	5	6	7	8	9	0	1	2	3	4	5	6	7	8	9	0	1	2	3	4	5	6	7	8	9	0	1
PropertyType																PropertyID															
Cx																															
Reserved1																															
Flags																															
Reserved2																															
...																															
...																															
Kind																															
ID																															
Guid																															
...																															
...																															
...																															
BufferLength																															
Buffer (variable)																															
...																															

**PropertyType (2 bytes):** This field MUST exist. This field specifies the type of the property, as specified in section [2.2.6.1.3](#).

**PropertyID (2 bytes):** This field MUST exist. This field has the same value as the **ID** field. If the value of the **ID** field does not fit into a **WORD** ([\[MS-DTYP\]](#)), the value MUST be truncated and the two least significant bytes MUST be stored in this field.

**Cx (4 bytes):** This field MUST exist. This field specifies the column width in pixels.

**Reserved1 (4 bytes):** This field MUST exist. The application can fill this field with any value when writing the **stream**. The application MUST ignore the value of this field when reading the stream.

**Flags (4 bytes):** This field MUST exist. This field contains column descriptor flags. The bit setting and its meaning are listed in the following table.

Flag name	Value	Meaning
<b>VCDF_RIGHT_JUSTIFY</b>	0x00000001	Column is right justified. This flag is mutually exclusive with the <b>VCDF_CENTER_JUSTIFY</b> flag.
<b>VCDF_CENTER_JUSTIFY</b>	0x00000002	Column is center justified. This flag is mutually exclusive with the <b>VCDF_RIGHT_JUSTIFY</b> flag.
<b>VCDF_BITMAP</b>	0x00000008	Column header is in bitmap format.
<b>VCDF_NOT_SORTABLE</b>	0x00000020	Column is not sortable. This flag is mutually exclusive with the <b>VCDF_SORTDESCENDING</b> flag and the <b>VCDF_SORTDLG</b> flag.
<b>VCDF_SORTDESCENDING</b>	0x00000040	Column is sorted in descending order. This flag is mutually exclusive with the <b>VCDF_NOT_SORTABLE</b> flag.
<b>VCDF_MOVEABLE</b>	0x00000100	Clients and servers MUST ignore this setting.
<b>VCDF_COLUMNSDLG</b>	0x00000200	Clients and servers MUST ignore this setting.
<b>VCDF_SORTDLG</b>	0x00000400	Column MUST be able to be sorted. This flag is mutually exclusive with the <b>VCDF_NOT_SORTABLE</b> flag.
<b>VCDF_GROUPDLG</b>	0x00000800	Column MUST be able to be grouped.
<b>VCDF_NAMEDPROP</b>	0x00001000	The optional <b>Guid</b> field MUST be included in the packet. If <b>Kind</b> is <b>KindString</b> , then the <b>BufferLength</b> and <b>Buffer</b> fields MUST also be included in the packet.
<b>VCDF_RCOLUMNSDLG</b>	0x00002000	Clients and servers MUST ignore this setting.
<b>VCDF_MULTIVALUED</b>	0x00004000	Specifies whether the column <b>PropertyType</b> field MUST include the <b>VCDF_MULTIVALUED</b> flag ( <a href="#">[MS-OXCDATA]</a> section 2.11.1.3).

**Reserved2 (12 bytes):** This field MUST exist. The application can fill this field with any value when writing the stream. The application MUST ignore the value of this field when reading the stream.

**Kind (4 bytes):** This field MUST exist. The field contains one of the following values.

Value name	Value	Meaning
KindID	0x00000000	The property uses an integer identifier.
KindString	0x00000001	The property uses a string identifier.

**ID (4 bytes):** This field MUST exist. If the **VCDF\_NAMEDPROP** flag is not set in the **Flags** field, this field contains the property ID of the column. If the **VCDF\_NAMEDPROP** flag is set in the **Flags** field, and the value of the **Kind** field is "KindID", this field contains the integer ID that MUST be used with the **RopGetPropertyIdsFromNames remote operation (ROP)** ([\[MS-OXCROPS\]](#) section 2.2.8.1) to translate the **named property** into a property ID. If the **VCDF\_NAMEDPROP** flag is set and the value of **Kind** is "KindString", the application can fill this field with any value when writing the stream and MUST ignore the value of this field when reading the stream.

**Guid (16 bytes):** If the **VCDF\_NAMEDPROP** flag is set in the **Flags** field, this field contains the **GUID** that MUST be used with the **RopGetPropertyIdsFromNames** ROP to translate the named property into a property ID. If the **VCDF\_NAMEDPROP** flag is not set, the application MUST omit this field.



**BufferLength (4 bytes):** If the **VCDF\_NAMEDPROP** flag is set in the **Flags** field and the value of the **Kind** field is "KindString", this field contains the length of the **Buffer** field in bytes, including the **Unicode** terminating null character (0x0000). Otherwise, the application **MUST** omit this field.

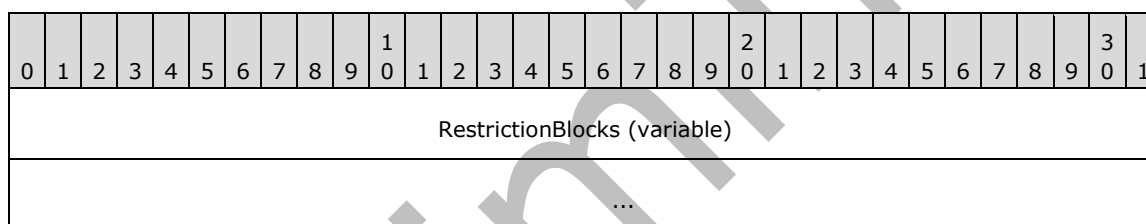
**Buffer (variable):** If the **VCDF\_NAMEDPROP** flag is set in the **Flags** field and the value of the **Kind** field is "KindString", this field contains the Unicode string that **MUST** be used with the **RopGetPropertyIdsFromNames** ROP to translate the named property into a property ID. Otherwise, the application **MUST** omit this field. This field includes a Unicode terminating null character (0x0000).

### 2.2.6.1.2 RestrictionPacket Structure

The **RestrictionPacket** structure contains the **restrictions** that are used to evaluate the **contents table** of the folder. Only those rows that evaluate to a value of **TRUE** **MUST** be displayed.

The **RestrictionPacket** structure is recursively built up by the restriction structures that are specified in section [2.2.6.1.2.1](#) through section [2.2.6.1.2.11](#). To determine the size of the **RestrictionPacket** structure, the application parses each restriction structure recursively if necessary. The restrictions are stored in a special format, which is different from the format specified for restrictions in [\[MS-OXCDATA\]](#) section 2.12.

The **RestrictionPacket** structure starts with a single restriction structure. The type of the restriction determines whether other restrictions will follow each restriction, as specified in the following description.



**RestrictionBlocks (variable):** This field contains one or more of the restriction structures that are specified in section 2.2.6.1.2.1 through section 2.2.6.1.2.11. From the restriction type, specified in the **RestrictionType** field of each restriction structure, the application can determine whether the restriction structure contains subrestrictions, which are stored sequentially in the **RestrictionPacket** structure. The server parses each restriction structure recursively, if necessary, to complete reading one sequence of restriction structures.

The following table specifies the values for the **RestrictionType** field and the associated restriction.

Value of RestrictionType field	Numeric value	Meaning
<b>RES_AND</b>	0x00000000	Indicates a <b>LogicalAndRestriction</b> structure (section 2.2.6.1.2.1). This structure has subrestrictions that follow it.
<b>RES_OR</b>	0x00000001	Indicates a <b>LogicalOrRestriction</b> structure (section <a href="#">2.2.6.1.2.2</a> ). This structure has subrestrictions that follow it.
<b>RES_NOT</b>	0x00000002	Indicates a <b>LogicalNotRestriction</b> structure (section <a href="#">2.2.6.1.2.3</a> ). This structure has a single subrestriction that follows it.
<b>RES_CONTENT</b>	0x00000003	Indicates a <b>ContentRestriction</b> structure (section <a href="#">2.2.6.1.2.4</a> ).
<b>RES_PROPERTY</b>	0x00000004	Indicates a <b>PropertyRestriction</b> structure (section <a href="#">2.2.6.1.2.5</a> ).

Value of RestrictionType field	Numeric value	Meaning
RES_COMPAREPROPS	0x00000005	Indicates a <b>ComparePropsRestriction</b> structure (section <a href="#">2.2.6.1.2.6</a> ).
RES_BITMASK	0x00000006	Indicates a <b>BitmaskRestriction</b> structure (section <a href="#">2.2.6.1.2.7</a> ).
RES_SIZE	0x00000007	Indicates a <b>SizeRestriction</b> structure (section <a href="#">2.2.6.1.2.8</a> ).
RES_EXIST	0x00000008	Indicates a <b>ExistRestriction</b> structure (section <a href="#">2.2.6.1.2.9</a> ).
RES_SUBRESTRICTION	0x00000009	Indicates a <b>SubObjectRestriction</b> structure (section <a href="#">2.2.6.1.2.10</a> ). This structure has a single subrestriction that follows it.
RES_COMMENT	0x0000000A	Indicates a <b>CommentRestriction</b> structure (section <a href="#">2.2.6.1.2.11</a> ). This structure has a single subrestriction that follows it.

### 2.2.6.1.2.1 LogicalAndRestriction Structure

The **LogicalAndRestriction** structure is used to join a group of two or more subrestrictions by using a logical **AND** operation. The result of the **AND** operation is TRUE if all of the subrestrictions evaluate to TRUE. The result is FALSE if any subrestriction evaluates to FALSE.

The **LogicalAndRestriction** structure has the following format.

0	1	2	3	4	5	6	7	8	9	10	11	12	13	14	15	16	17	18	19	20	21	22	23	24	25	26	27	28	29	30	31
RestrictionType																															
cRes																															
Reserved																															
...																															
SubCondition (variable)																															
...																															

**RestrictionType (4 bytes):** This field specifies the type of restriction and MUST be set to **RES\_AND** (0x00000000) for the **LogicalAndRestriction** structure.

**cRes (4 bytes):** Specifies the number of subrestrictions contained in the **SubCondition** field.

**Reserved (8 bytes):** The application can fill this field with any value when writing the **stream**. The application MUST ignore the value of this field when reading the stream.

**SubCondition (variable):** This field contains the subrestrictions that make up the **LogicalAndRestriction** structure. Each subrestriction MUST be one of the structures that is specified in section 2.2.6.1.2.1 through section [2.2.6.1.2.11](#).

### 2.2.6.1.2.2 LogicalOrRestriction Structure

The **LogicalOrRestriction** structure is used to join a group of two or more subrestrictions by using a logical **OR** operation. The result of the **OR** operation is TRUE if any of the subrestrictions evaluates to TRUE. The result is FALSE if all subrestrictions evaluate to FALSE.

The **LogicalOrRestriction** structure has the following format.

0	1	2	3	4	5	6	7	8	9	10	11	12	13	14	15	16	17	18	19	20	21	22	23	24	25	26	27	28	29	30	31
RestrictionType																															
cRes																															
Reserved																															
...																															
SubCondition (variable)																															
...																															

**RestrictionType (4 bytes):** This field specifies the type of restriction and MUST be set to **RES\_OR** (0x00000001) for the **LogicalOrRestriction** structure.

**cRes (4 bytes):** This field specifies the number of subrestrictions contained in the **SubCondition** field.

**Reserved (8 bytes):** The application can fill this field with any value when writing the **stream**. The application MUST ignore the value of this field when reading the stream.

**SubCondition (variable):** This field contains the subrestrictions that make up the **LogicalOrRestriction** structure. Each subrestriction MUST be one of the structures that is specified in section [2.2.6.1.2.1](#) through section [2.2.6.1.2.11](#).

### 2.2.6.1.2.3 LogicalNotRestriction Structure

The **LogicalNotRestriction** structure is used to apply a logical **NOT** operation to one subrestriction. The result is TRUE if the child condition evaluates to FALSE and FALSE otherwise.

The **LogicalNotRestriction** structure has the following format.

0	1	2	3	4	5	6	7	8	9	10	11	12	13	14	15	16	17	18	19	20	21	22	23	24	25	26	27	28	29	30	31
RestrictionType																															
Reserved																															
...																															
...																															

SubCondition (variable)
...

**RestrictionType (4 bytes):** This field specifies the type of restriction and MUST be set to **RES\_NOT** (0x00000002) for the **LogicalNotRestriction** structure.

**Reserved (12 bytes):** The application can fill this field with any value when writing the **stream**. The application MUST ignore the value of this field when reading the stream.

**SubCondition (Variable):** This field contains a single subrestriction that makes up this structure. The subrestriction MUST be one of the structures that is specified in section [2.2.6.1.2.1](#) through section [2.2.6.1.2.11](#).

#### 2.2.6.1.2.4 ContentRestriction Structure

The **ContentRestriction** structure is used to search for properties with values that match the value of a specified property.

The **ContentRestriction** structure has the following format.

0	1	2	3	4	5	6	7	8	9	10	11	12	13	14	15	16	17	18	19	20	21	22	23	24	25	26	27	28	29	30	31
RestrictionType																															
ulFuzzyLevel																															
PropertyType																PropertyID															
Reserved																															
PropValueNum																															
PropValue (variable)																															

**RestrictionType (4 bytes):** This field specifies the type of restriction and MUST be set to **RES\_CONTENT** (0x00000003) for the **ContentRestriction** structure.

**ulFuzzyLevel (4 bytes):** This field specifies flags that control the behavior of the string comparisons that are used to evaluate the **restriction**. The lower 16 bits of the fuzzy level are mutually exclusive. All possible values for this field are listed in the following table.

Flag name	Value	Meaning
<b>FL_FULLSTRING</b>	0x00000000	To match, the search string MUST be the same as the value of the property.
<b>FL_SUBSTRING</b>	0x00000001	To match, the search string MUST be contained anywhere within the property.
<b>FL_PREFIX</b>	0x00000002	To match, the search string MUST appear at the beginning of the property. The two strings MUST be compared only up to the length of the search.

The upper 16 bits of the fuzzy level can be set to the following values and can be combined using the logical **OR** operation.

Flag name	Value	Meaning
<b>FL_IGNORECASE</b>	0x00010000	The comparison <b>MUST</b> be made without considering the case.
<b>FL_IGNORENONSPACE</b>	0x00020000	The comparison <b>MUST</b> ignore <b>Unicode</b> -defined nonspacing characters.
<b>FL_LOOSE</b>	0x00040000	The comparison can result in a match whenever possible, ignoring case and nonspacing characters. The interpretation of this flag is left at the discretion of the algorithm that implements the restriction.

**PropertyType (2 bytes):** This field specifies the type of the property. Valid types are specified in section [2.2.6.1.3](#).

**PropertyID (2 bytes):** This field specifies the **property ID** of the property.

**Reserved (4 bytes):** The application can fill this field with any value when writing the **stream**. The application **MUST** ignore the value of this field when reading the stream.

**PropValueNum (4 bytes):** This field **MUST** be set to 0x00000001.

**PropValue (variable):** A **PropertyValue** structure, as specified in section [2.2.6.1.4](#), that specifies the value to be matched.

#### 2.2.6.1.2.5 PropertyRestriction Structure

The **PropertyRestriction** structure is used to compare the value of a property with a constant.

The **PropertyRestriction** structure has the following format.

0	1	2	3	4	5	6	7	8	9	10	11	12	13	14	15	16	17	18	19	20	21	22	23	24	25	26	27	28	29	30	31
RestrictionType																															
RelOp																															
PropertyType																PropertyID															
Reserved																															
PropValueNum																															
PropValue (variable)																															

**RestrictionType (4 bytes):** This field specifies the type of restriction and **MUST** be set to **RES\_PROPERTY** (0x00000004) for the **PropertyRestriction** structure.

**RelOp (4 bytes):** This field specifies the relational operator to be used in the comparison. The value **MUST** be one of the following.

Relational operator name	Value	Meaning
<b>RELOP_LT</b>	0x00000000	The condition evaluates to TRUE if the value of the property is less than the constant value.
<b>RELOP_LE</b>	0x00000001	The condition evaluates to TRUE if the value of the property is less than or equal to the constant value.
<b>RELOP_GT</b>	0x00000002	The condition evaluates to TRUE if the value of the property is greater than the constant value.
<b>RELOP_GE</b>	0x00000003	The condition evaluates to TRUE if the value of the property is greater than or equal to the constant value.
<b>RELOP_EQ</b>	0x00000004	The condition evaluates to TRUE if the value of the property is equal to the constant value.
<b>RELOP_NE</b>	0x00000005	The condition evaluates to TRUE if the value of the property is not equal to the constant value.

**PropertyType (2 bytes):** This field specifies the type of the property. Valid types are specified in section [2.2.6.1.3](#).

**PropertyID (2 bytes):** This field specifies the **property ID** of the property.

**Reserved (4 bytes):** The application can fill this field with any value when writing the **stream**. The application MUST ignore the value of this field when reading the stream.

**PropValueNum (4 bytes):** This field MUST be set to 0x00000001.

**PropValue (variable):** A **PropertyValue** structure, as specified in section [2.2.6.1.4](#), that specifies the value to be compared.

### 2.2.6.1.2.6 ComparePropsRestriction Structure

The **ComparePropsRestriction** structure is used to compare the values of two properties by using a relational operator.

The **ComparePropsRestriction** structure has the following format.

0	1	2	3	4	5	6	7	8	9	10	11	12	13	14	15	16	17	18	19	20	21	22	23	24	25	26	27	28	29	30	31
RestrictionType																															
RelOp																															
PropertyType1																PropertyID1															
PropertyType2																PropertyID2															

**RestrictionType (4 bytes):** This field specifies the type of restriction and MUST be set to **RES\_COMPAREPROPS** (0x00000005) for the **ComparePropsRestriction** structure.

**RelOp (4 bytes):** This field specifies the relational operator that is to be used in the comparison. Valid values for this field are the same as those specified for the **RelOp** field of the **PropertyRestriction** structure in section [2.2.6.1.2.5](#).

**PropertyType1 (2 bytes):** This field specifies the type of the first property. Valid types are specified in section [2.2.6.1.3](#).

**PropertyID1 (2 bytes):** This field specifies the **property ID** of the first property.

**PropertyType2 (2 bytes):** This field specifies the type of the second property. The type of the second property **MUST** match the type of the first property.

**PropertyID2 (2 bytes):** This field specifies the property ID of the second property.

### 2.2.6.1.2.7 BitmaskRestriction Structure

The **BitmaskRestriction** structure is used to perform a bitwise **AND** operation on the value of the property.

The **BitmaskRestriction** structure has the following format.

0	1	2	3	4	5	6	7	8	9	0	1	2	3	4	5	6	7	8	9	0	1	2	3	4	5	6	7	8	9	0	1
RestrictionType																															
RelOp																															
PropertyType																PropertyID															
Mask																															

**RestrictionType (4 bytes):** This field specifies the type of restriction and **MUST** be set to **RES\_BITMASK** (0x00000006) for the **BitmaskRestriction** structure.

**RelOp (4 bytes):** This field specifies the relational operator that is to be used in the search. The value **MUST** be one of the following.

Relational operator name	Value	Meaning
BMR_EQZ	0x00000000	Perform a bitwise <b>AND</b> operation between the value of the <b>Mask</b> field and the value of the property identified by the <b>PropertyID</b> and <b>PropertyType</b> fields. The comparison returns TRUE if the result of the operation is zero.
BMR_NEZ	0x00000001	Perform a bitwise <b>AND</b> operation between the value of the <b>Mask</b> field and the value of the property identified by the <b>PropertyID</b> and <b>PropertyType</b> fields. The comparison returns TRUE if the result of the operation is not zero.

**PropertyType (2 bytes):** This field specifies the type of the property. Valid types are specified in section [2.2.6.1.3](#).

**PropertyID (2 bytes):** This field specifies the **property ID** of the property.

**Mask (4 bytes):** This field specifies the bitmask that the application **MUST** use in a bitwise **AND** operation with the value of the property when performing the search.

### 2.2.6.1.2.8 SizeRestriction Structure

The **SizeRestriction** structure is used to test the size of a property value.

The **SizeRestriction** structure has the following format.

0	1	2	3	4	5	6	7	8	9	0	1	2	3	4	5	6	7	8	9	0	1	2	3	4	5	6	7	8	9	0	1
RestrictionType																															
RelOp																															
PropertyType								PropertyID																							
Size																															

**RestrictionType (4 bytes):** This field specifies the type of restriction and MUST be set to **RES\_SIZE** (0x00000007) for the **SizeRestriction** structure.

**RelOp (4 bytes):** This field specifies the relational operator that is to be used in the search. Valid values for this field are the same as those specified for the **RelOp** field of the **PropertyRestriction** structure in section [2.2.6.1.2.5](#).

**PropertyType (2 bytes):** This field specifies the type of the property. Valid types are specified in section [2.2.6.1.3](#).

**PropertyID (2 bytes):** This field specifies the **property ID** of the property.

**Size (4 bytes):** This field specifies the size, in bytes, that MUST be compared with the size of the value of this property when performing the search.

#### 2.2.6.1.2.9 ExistRestriction Structure

The **ExistRestriction** structure is used to test whether a particular property exists on a message.

The **ExistRestriction** structure has the following format.

0	1	2	3	4	5	6	7	8	9	0	1	2	3	4	5	6	7	8	9	0	1	2	3	4	5	6	7	8	9	0	1
RestrictionType																															
Reserved1																															
PropertyType								PropertyID																							
Reserved2																															

**RestrictionType (4 bytes):** This field specifies the type of restriction and MUST be set to **RES\_EXIST** (0x00000008) for the **ExistRestriction** structure.

**Reserved1 (4 bytes):** The application can fill this field with any value when writing the **stream**. The application MUST ignore the value of this field when reading the stream.

**PropertyType (2 bytes):** This field specifies the type of the property. Valid types are specified in section [2.2.6.1.3](#).

**PropertyID (2 bytes):** This field specifies the **property ID** of the property.



**Reserved2 (4 bytes):** The application can fill this field with any value when writing the stream. The application MUST ignore the value of this field when reading the stream.

### 2.2.6.1.2.10 SubObjectRestriction Structure

The **SubObjectRestriction** structure is used to test properties on the attachment or **recipient table** of a message.

The **SubObjectRestriction** structure has the following format.

0	1	2	3	4	5	6	7	8	9	10	11	12	13	14	15	16	17	18	19	20	21	22	23	24	25	26	27	28	29	30	31
RestrictionType																															
SubObject																															
Reserved																															
...																															
SubCondition (variable)																															
...																															

**RestrictionType (4 bytes):** This field specifies the type of restriction and MUST be set to **RES\_SUBRESTRICTION** (0x00000009) for the **SubObjectRestriction** structure.

**SubObject (4 bytes):** The application MUST use one of the following values for this field.

Value	Meaning
0x0E12000D	Apply the condition to the recipient table of a message.
0x0E13000D	Apply the condition to the <b>attachments table</b> of a message.

**Reserved (8 bytes):** The application can fill this field with any value when writing the **stream**. The application MUST ignore the value of this field when reading the stream.

**SubCondition (variable):** This field contains a single subrestriction that makes up this structure. The subrestriction MUST be one of the structures that is specified in section [2.2.6.1.2.1](#) through section [2.2.6.1.2.11](#).

### 2.2.6.1.2.11 CommentRestriction Structure

The **CommentRestriction** structure, unlike other restriction structures, is not evaluated and is used only for reference by the application. The comment condition is used to keep additional application-specific information with the **restriction** in the form of an arbitrary list of **property tag** and value pairs.

The **CommentRestriction** structure has the following format.

0	1	2	3	4	5	6	7	8	9	0	1	2	3	4	5	6	7	8	9	0	1	2	3	4	5	6	7	8	9	0	1
RestrictionType																															
cValues																															
Reserved																															
...																															
PropValueNum																															
PropTags (variable)																															
...																															
PropValues (variable)																															
...																															
SubCondition (variable)																															
...																															

**RestrictionType (4 bytes):** This field specifies the type of restriction and MUST be set to **RES\_COMMENT** (0x0000000A) for the **CommentRestriction** structure.

**cValues (4 bytes):** This field MUST have the same value as the **PropValueNum** field.

**Reserved (8 bytes):** The application can fill this field with any value when writing the **stream**. The application MUST ignore the value of this field when reading the stream.

**PropValueNum (4 bytes):** This field is specifies the number of structures contained in the **PropTags** field and the **PropValues** field.

**PropTags (variable):** An array of **PropertyTag** structures, each of which specifies the property tag of a property that is specified in the **PropValues** field. For details about the **PropertyTag** structure, see [\[MS-OXCADATA\]](#) section 2.9. The valid **property types** for restrictions are specified in section [2.2.6.1.3](#). The number of **PropertyTag** structures in the array is specified by the **PropValueNum** field.

**PropValues (variable):** An array of **PropertyValue** structures. For details about the **PropertyValue** structure, see section [2.2.6.1.4](#). The number of structures is specified by the **PropValueNum** field.

**SubCondition (variable):** This field contains a single subrestriction that makes up the **CommentRestriction** structure. The subrestriction MUST be one of the structures that is specified in section [2.2.6.1.2.1](#) through section [2.2.6.1.2.11](#).

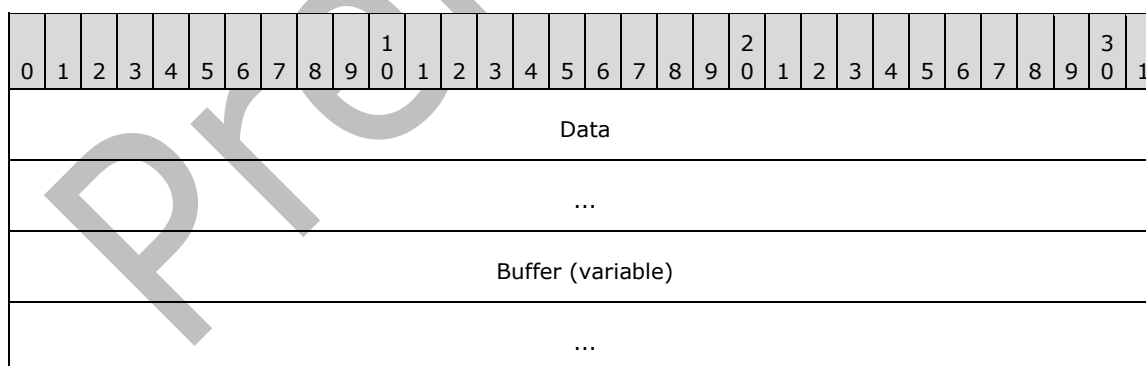
### 2.2.6.1.3 Valid Property Types

The following **property types** are valid for a **ColumnPacket** structure, as specified in section [2.2.6.1.1](#), or for a **RestrictionPacket** structure, as specified in section [2.2.6.1.2](#), that specifies a property.

Property data type	Type ID
<b>PtypInteger16</b>	0x0002
<b>PtypInteger32</b>	0x0003
<b>PtypFloating32</b>	0x0004
<b>PtypFloating64</b>	0x0005
<b>PtypCurrency</b>	0x0006
<b>PtypFloatingTime</b>	0x0007
<b>PtypErrorCode</b>	0x000A
<b>PtypBoolean</b>	0x000B
<b>PtypInteger64</b>	0x0014
<b>PtypString</b>	0x001F
<b>PtypTime</b>	0x0040
<b>PtypGuid</b>	0x0048
<b>PtypBinary</b>	0x0102

#### 2.2.6.1.4 PropertyValue Structure

The **PropertyValue** structure specifies the value of a property in a **ContentRestriction** structure, as specified in section [2.2.6.1.2.4](#), a **PropertyRestriction** structure, as specified in section [2.2.6.1.2.5](#), or a **CommentRestriction** structure, as specified in section [2.2.6.1.2.11](#).



**Data (8 bytes):** The format of this field depends on the **property type** that is specified in the **ContentRestriction**, **PropertyRestriction**, or **CommentRestriction** structures. The value of this field is read from the beginning of the field. In cases where the size of the data is less than the size of the **Data** field, the remaining bytes MUST be ignored. The following table lists the size and format of the value by property type.

Property type	Value size	Value format
<b>PtypInteger16</b>	2 bytes	Signed integer
<b>PtypInteger32</b>	4 bytes	Signed integer
<b>PtypFloating32</b>	4 bytes	Floating point number
<b>PtypFloating64</b>	8 bytes	Floating point number
<b>PtypCurrency</b>	8 bytes	Signed integer
<b>PtypFloatingTime</b>	8 bytes	Floating point number
<b>PtypErrorCode</b>	4 bytes	SCODE error code
<b>PtypBoolean</b>	2 bytes	WORD
<b>PtypInteger64</b>	8 bytes	Signed integer
<b>PtypString</b>	0 bytes	The string value MUST be stored separately in the <b>PidTagViewDescriptorStrings</b> property, as specified in section <a href="#">2.2.6.3</a> . The value of the <b>Data</b> field MUST be ignored.
<b>PtypTime</b>	8 bytes	Unsigned integer
<b>PtypGuid</b>	0 bytes	The value of the <b>Data</b> field MUST be ignored.
<b>PtypBinary</b>	4 bytes	Unsigned integer

**Buffer (variable):** This field MUST exist only when the property type is **PtypBinary**. The **Buffer** field contains an arbitrary binary **stream**. The size, in bytes, of the stream is specified in the **Data** field.

### 2.2.6.2 PidTagViewDescriptorName Property

Type: **PtypString** ([\[MS-OXCDATA\]](#) section [2.11.1](#))

The **PidTagViewDescriptorName** property ([\[MS-OXPROPS\]](#) section [2.1056](#)) contains the name of a view descriptor. [<17>](#)

### 2.2.6.3 PidTagViewDescriptorStrings Property

Type: **PtypString** ([\[MS-OXCDATA\]](#) section [2.11.1](#))

The client MUST store the display strings referenced in the **PidTagViewDescriptorBinary** property (section [2.2.6.1](#)) separately in the **PidTagViewDescriptorStrings** property ([\[MS-OXPROPS\]](#) section [2.1057](#)). [<18>](#) The client MUST concatenate the strings in the same order in which the strings are referenced in the **PidTagViewDescriptorBinary** property. The first set of strings consists of the **display names** of each of the **ColumnInfo** structures, followed by the value of each restriction structure's **PropValue** field that uses the **PtypString property type**.

The client MUST use the following binary layout in the **PidTagViewDescriptorStrings** property.

0	1	2	3	4	5	6	7	8	9	1	0	1	2	3	4	5	6	7	8	9	2	0	1	2	3	4	5	6	7	8	9	3	0	1
String (variable)																																		

...	Terminator
-----	------------

**String (variable):** This field is an arbitrary length buffer that contains a string. Clients SHOULD format the string using the current **code page** of the client. The application MUST NOT include the byte value 0x0A00, which corresponds to the newline character, in the string.

**Terminator (2 bytes):** This field contains the value 0x0A00. The application MUST include a **Terminator** field after every **String** field, including the last **String** field in the **stream**.

### 2.2.6.4 PidTagViewDescriptorVersion Property

Type: **PtypInteger32** ([\[MS-OXCDATA\]](#) section [2.11.1](#))

The **PidTagViewDescriptorVersion** property ([\[MS-OXPROPS\]](#) section [2.1056](#)) contains the version of a view descriptor. [<19>](#)

### 2.2.7 Folder Flags

Folder flags consist of a collection of small properties packed into a single binary property on a folder. The primary purpose of the folder flags is to store Boolean flags that affect the folder's display options.

The folder flags can also be used to store additional properties, such as a unique identifier for the folder that can be used to associate it with a specific feature or with a description of that folder that has been saved elsewhere.

The **PidTagExtendedFolderFlags** property ([\[MS-OXOSRCH\]](#) section 2.2.2.1.2) can be set on a folder. If the property is set, the value of this property MUST be a binary **stream** that contains encoded **subproperties** for the folder. The format of the binary stream MUST be as follows.

0	1	2	3	4	5	6	7	8	9	10	11	12	13	14	15	16	17	18	19	20	21	22	23	24	25	26	27	28	29	30	31
Sub-property1 (variable)										...										Sub-property2 (variable)											
...										...										Sub-property3 (variable)											
...										...										...											

The binary stream is divided into variable-length subproperty fields. The subproperty fields are byte-aligned within the binary stream. Each subproperty MUST be encoded as specified in section [2.2.7.1](#).

#### 2.2.7.1 Sub-property

The sub-property fields for folder flags specified in section 2.2.7.1 have the following format.

0	1	2	3	4	5	6	7	8	9	10	11	12	13	14	15	16	17	18	19	20	21	22	23	24	25	26	27	28	29	30	31
Id										Cb										Data (variable)											

...

**Id (1 byte):** The **subproperty** ID value. The value of this field SHOULD be one of the following. All other values of the **Id** field are reserved and MUST be ignored by the application. If the application needs to rewrite the **PidTagExtendedFolderFlags** property ([MS-OXOSRCH] section 2.2.2.1.2) with different values for the subproperties that it does understand, it MUST preserve the values of any subproperties that it did not understand. Each valid subproperty ID MUST appear 0 to 1 times in the **PidTagExtendedFolderFlags** property. The subproperties can appear in any order within the **PidTagExtendedFolderFlags** property **stream**.

Flag name	Value	Data format
<b>Invalid</b>	0x00	As specified in section <a href="#">2.2.7.1.1</a> .
<b>ExtendedFlags</b>	0x01	As specified in section <a href="#">2.2.7.1.2</a> .
<b>SearchFolderID</b>	0x02	As specified in section <a href="#">2.2.7.1.3</a> .
<b>SearchFolderTag</b>	0x03	As specified in [MS-OXOSRCH].
<b>Reserved</b>	0x04	N/A
<b>ToDoFolderVersion</b>	0x05	As specified in section <a href="#">2.2.7.1.4</a> .
<b>Reserved</b>	0x06	N/A

**Cb (1 byte):** This field specifies the unsigned size, in bytes, of the **Data** field of the subproperty.

**Data (variable):** This field contains the value of the subproperty. This field MUST be a variable-length buffer. Because the size is specified in a single unsigned byte in the **Cb** field, the minimum size of the buffer is 0 bytes and the maximum size is 255 bytes. The interpretation of this field is specified in the table earlier in this section.

### 2.2.7.1.1 Invalid

If the **Id** field is set to **Invalid**, the value of the **Data** field is invalid. The application MUST NOT use it.

### 2.2.7.1.2 ExtendedFlags

If the **Id** field is set to **ExtendedFlags**, the value of the **Data** field is in the following format. If the **subproperty** does not exist, or if the **PidTagExtendedFolderFlags** property ([MS-OXOSRCH] section 2.2.2.1.2) is not set on the folder, each flag SHOULD assume the specified default value.

0	1	2	3	4	5	6	7	8	9	1	0	1	2	3	4	5	6	7	8	9	2	0	1	2	3	4	5	6	7	8	9	3	0	1
r1			a		r2			b		r3																								

**r1 (2 bits):** Reserved. The application can set these flags to any value when writing the subproperty. The application MUST ignore these flags when reading the subproperty, but it MUST preserve preexisting values if it rewrites the subproperty.

**a (1 bit):** If the folder is subject to an administrative **retention policy**, this flag controls whether the application displays a string that describes the policy. The possible values are listed in the following table.



**conversation**. Unlike **rules**, as specified in [\[MS-OXORULE\]](#), at most one conversation action applies to any given E-mail object, and conversation actions can be automatically deleted after a period of disuse.

A conversation action is a combination of any of the following actions:

- Ignore
- Stop Ignoring
- Move to Folder
- Move to Store
- Stop Move
- Add Category
- Remove Category
- Clear All Categories

The client and server SHOULD<21> persist conversation action settings in an **FAI** message in the conversation actions settings **special folder**, as specified in [\[MS-OXOSFLD\]](#) section 2.2.5.1. The relevant properties of a conversation action FAI message are enumerated in sections [2.2.8.1](#) through [2.2.8.10](#).

### 2.2.8.1 PidLidConversationActionLastAppliedTime Property

Type: **PtypTime** ([\[MS-OXCDATA\]](#) section 2.11.1)

The **PidLidConversationActionLastAppliedTime** property ([\[MS-OXPROPS\]](#) section 2.82) SHOULD<22> be the time (in **UTC**) that an **E-mail object** was last received in the **conversation** or the last time that the user modified the conversation action, whichever occurs later.

### 2.2.8.2 PidLidConversationActionMaxDeliveryTime Property

Type: **PtypTime** ([\[MS-OXCDATA\]](#) section 2.11.1)

The **PidLidConversationActionMaxDeliveryTime** property ([\[MS-OXPROPS\]](#) section 2.83) SHOULD<23> be the maximum value of the **PidTagMessageDeliveryTime** property ([\[MS-OXOMSG\]](#) section 2.2.3.9) of all the **E-mail objects** modified in response to the last time the user changed a conversation action on the client. If no E-mail objects were changed, this property SHOULD be set to 00:00:00 Apr 1, 1601 (**UTC**).

### 2.2.8.3 PidLidConversationActionMoveFolderEid Property

Type: **PtypBinary** ([\[MS-OXCDATA\]](#) section 2.11.1)

The **PidLidConversationActionMoveFolderEid** property ([\[MS-OXPROPS\]](#) section 2.84) SHOULD<24> be set based on the **action** or actions being performed on the **conversation**, as shown in the following table.

Action on the conversation	Value
Move to Folder (move to a folder in the same <b>message store</b> as this <b>FAI</b> message)	The <b>EntryID</b> of that folder
Move to Store (move to a folder in a different message store than this FAI message)	The EntryID of that folder



Action on the conversation	Value
Ignore	Byte array of size zero
None of the above	Not set

#### 2.2.8.4 PidLidConversationActionMoveStoreEid Property

Type: **PtypBinary** ([\[MS-OXCDATA\]](#) section 2.11.1)

The **PidLidConversationActionMoveStoreEid** property ([\[MS-OXPROPS\]](#) section 2.85) SHOULD <25> be set based on the **action** or actions being performed on the **conversation**, as shown in the following table.

Action on the conversation	Value
Move to Folder (move to a folder in the same <b>message store</b> as this <b>FAI</b> message)	Not set
Move to Store (move to a folder in a different message store than this <b>FAI</b> message)	The <b>EntryID</b> of that message store
Ignore	Not set
None of the above	Not set

#### 2.2.8.5 PidLidConversationActionVersion Property

Type: **PtypInteger32** ([\[MS-OXCDATA\]](#) section 2.11.1)

The **PidLidConversationActionVersion** property ([\[MS-OXPROPS\]](#) section 2.86) SHOULD <26> be set to the version of the conversation action **FAI** message, as specified in section [2.2.8](#). The format of the value of this property MUST be as follows.

0	1	2	3	4	5	6	7	8	9	0	1	2	3	4	5	6	7	8	9	0	1	2	3	4	5	6	7	8	9	0	1
MajorVersion												MinorVersion																			

**MajorVersion (12 bits):** This field indicates the version compatibility of the conversation action **FAI** message. It MUST be set to 0x004.

**MinorVersion (20 bits):** This value is implementation-specific and can be set to any value. It SHOULD indicate the version of the client or server that last modified the conversation action **FAI** message.

#### 2.2.8.6 PidLidConversationProcessed Property

Type: **PtypInteger32** ([\[MS-OXCDATA\]](#) section 2.11.1)

The **PidLidConversationProcessed** property ([\[MS-OXPROPS\]](#) section 2.87) specifies a sequential number to be used in the processing of a **conversation action**, as specified in section [3.1.5.1](#).

### 2.2.8.7 PidNameKeywords Property

Type: **PtypMultipleString** ([MS-OXCDATA] section 2.11.1)

If this **conversation** is being categorized, the **PidNameKeywords** property ([MS-OXPROPS] section 2.451) SHOULD<27> be set to the list of **categories** that are being set on incoming **E-mail objects** in the conversation. Otherwise, this property SHOULD NOT be set.

### 2.2.8.8 PidTagConversationIndex Property

Type: **PtypBinary** ([MS-OXCDATA] section 2.11.1)

The **PidTagConversationIndex** property ([MS-OXPROPS] section 2.650) SHOULD<28> be set to a 22-byte array as specified below.

0	1	2	3	4	5	6	7	8	9	10	11	12	13	14	15	16	17	18	19	20	21	22	23	24	25	26	27	28	29	30	31
IndexPrefix																															
...											ConversationID																				
...																															
...																															
...																															
...																															

**IndexPrefix (6 bytes):** This field MUST be set to 0x010000000000.

**ConversationID (16 bytes):** This field MUST be set to the value of the **PidTagConversationId** property ([MS-OXOMSG] section 2.2.1.2) shared by all the **E-mail objects** in the **conversation**.

### 2.2.8.9 PidTagMessageClass Property

Type: **PtypString** ([MS-OXCDATA] section 2.11.1)

The **PidTagMessageClass** property ([MS-OXPROPS] section 2.787) SHOULD<29> be set to "IPM.ConversationAction".

### 2.2.8.10 PidTagSubject Property

Type: **PtypString** ([MS-OXCDATA] section 2.11.1)

The **PidTagSubject** property ([MS-OXPROPS] section 2.1033) SHOULD<30> be set to "Conv.Action:" followed by the value of the **PidTagNormalizedSubject** property (section 2.2.9.2) of an **E-mail object** in the **conversation**. This correlates the **FAI** message to the E-mail objects in the conversation.

## 2.2.9 Navigation Shortcuts

Navigation shortcuts are objects that contain identifying information to locate a folder in a **message store**. Clients can use navigation shortcuts to provide quick access to particular folders via the client's user interface.

Navigation shortcuts are stored as **FAI** messages, as specified in [\[MS-OXCMSG\]](#), in the **Common Views folder**, as specified in [\[MS-OXOSFLD\]](#), within a message database.

These messages possess additional properties that describe navigation shortcuts. These properties are described in sections [2.2.9.1](#) through [2.2.9.19](#).<31>

### 2.2.9.1 PidTagMessageClass Property

Type: **PtypString** ([\[MS-OXCDATA\]](#) section 2.11.1)

The **PidTagMessageClass** property ([\[MS-OXPROPS\]](#) section 2.787) identifies the message as a navigation shortcut message, as specified in section [2.2.9](#). The value is "IPM.Microsoft.WunderBar.Link".

### 2.2.9.2 PidTagNormalizedSubject Property

Type: **PtypString** ([\[MS-OXCDATA\]](#) section 2.11.1)

The **PidTagNormalizedSubject** property ([\[MS-OXPROPS\]](#) section 2.812) specifies the **display name** of the navigation shortcut, as specified in section [2.2.9](#).

### 2.2.9.3 PidTagWlinkGroupHeaderID Property

Type: **PtypBinary** ([\[MS-OXCDATA\]](#) section 2.11.1)

The **PidTagWlinkGroupHeaderID** property ([\[MS-OXPROPS\]](#) section 2.1071) specifies the ID of the navigation shortcut, as specified in section [2.2.9](#), that groups other navigation shortcuts. This property SHOULD be set only when the value of the **PidTagWlinkType** property (section [2.2.9.5](#)) is **wblHeader**.

### 2.2.9.4 PidTagWlinkSaveStamp Property

Type: **PtypInteger32** ([\[MS-OXCDATA\]](#) section 2.11.1)

The **PidTagWlinkSaveStamp** property ([\[MS-OXPROPS\]](#) section 2.1076) specifies an integer that allows a client to identify with a high probability whether the navigation shortcut, as specified in section [2.2.9](#), was saved by the current client session. When writing a navigation shortcut, the client writes the Session ID, as specified in section [3.1.3.1](#), as the value for this property.

### 2.2.9.5 PidTagWlinkType Property

Type: **PtypInteger32** ([\[MS-OXCDATA\]](#) section 2.11.1)

The **PidTagWlinkType** property ([\[MS-OXPROPS\]](#) section 2.1079) specifies the type of navigation shortcut, as specified in section [2.2.9](#). The valid values of this property are as follows.

Value	Value name	Meaning
0x00000000	wblNormalFolder	The shortcut points to a folder other than a <b>search folder</b> , <b>group header</b> shortcut, or a folder owned by a different user.

Value	Value name	Meaning
0x00000001	wblSearchFolder	The shortcut points to a search folder.
0x00000002	wblSharedFolder	The shortcut points to a folder that is owned by a different user.
0x00000004	wblHeader	The shortcut points to the group header shortcut.

### 2.2.9.6 PidTagWlinkFlags Property

Type: **PtypInteger32** ([\[MS-OXCDATA\]](#) section 2.11.1)

The **PidTagWlinkFlags** property ([\[MS-OXPROPS\]](#) section 2.1068) is a bit field in which each bit SHOULD be set to 1 if the associated condition in the following table applies and to 0 otherwise. The possible bit values are as follows.

Value	Flag name	Meaning
0x00000001	<b>sipPublicFolder</b>	Shortcut points to a server <b>public folder</b> .
0x00000004	<b>sipImapFolder</b>	Shortcut points to a folder that is accessed via the <b>Internet Message Access Protocol - Version 4 (IMAP4)</b> .
0x00000008	<b>sipWebDavFolder</b>	Shortcut points to a folder that is accessed via the <b>Web Distributed Authoring and Versioning Protocol (WebDAV)</b> .
0x00000010	<b>sipSharePointFolder</b>	Shortcut points to a folder that is accessed via a SharePoint folder.
0x00000020	<b>sipRootFolder</b>	Shortcut points to a <b>Root folder (interpersonal messaging subtree)</b> .
0x00000100	<b>sipSharedOut</b>	Shortcut points to a folder that has been shared with other users. This value can be used to display a visual indicator and does not set any <b>permissions</b> .
0x00000200	<b>sipSharedIn</b>	Shortcut points to a folder that is owned by another user. This value can be used to display a visual indicator and does not set any permissions.
0x00000400	<b>sipPersonFolder</b>	Shortcut points to a folder that belongs to another user.
0x00000800	<b>sipiCal</b>	Shortcut points to a folder that accesses data from an iCalendar data source (see <a href="#">[MS-OXCICAL]</a> ).
0x00001000	<b>sipOverlay</b>	Shortcut points to a <b>Calendar folder</b> . The contents of the Calendar folder, if displayed with other <b>calendars</b> , are merged into one calendar and the ordering determined by the <b>PidTagWlinkOrdinal</b> property (section <a href="#">2.2.9.7</a> ). Merging is purely a display; no objects are created or moved between folders.
0x00002000	<b>sipOneOffName</b>	Shortcut has been renamed such that the value of the <b>PidTagNormalizedSubject</b> property (section <a href="#">2.2.9.2</a> ) of the shortcut does not match the value of the <b>PidTagNormalizedSubject</b> property of the folder, or the shortcut is a <b>group header</b> and has been renamed from the default value.

All bits not specified in the above table are reserved. They MUST be ignored, but if set, they are to be preserved.

### 2.2.9.7 PidTagWlinkOrdinal Property

Type: **PtypBinary** ([\[MS-OXCDATA\]](#) section 2.11.1)

The **PidTagWlinkOrdinal** property ([\[MS-OXPROPS\]](#) section 2.1073) specifies a variable-length binary property that SHOULD be used to sort shortcuts lexicographically. For example, to insert a shortcut C between shortcut A with the one-byte ordinal value of 128 and shortcut B with the one-byte ordinal value of 129, shortcut C can be assigned the two-byte ordinal 128, 128. The final byte of this property MUST NOT be 0 or 255 to ensure that shortcuts can be inserted before and after other shortcuts.

### 2.2.9.8 PidTagWlinkEntryId Property

Type: **PtypBinary** ([\[MS-OXCDATA\]](#) section 2.11.1)

The **PidTagWlinkEntryId** property ([\[MS-OXPROPS\]](#) section 2.1067) specifies the **EntryID** of the folder pointed to by the shortcut.

### 2.2.9.9 PidTagWlinkRecordKey Property

Type: **PtypBinary** ([\[MS-OXCDATA\]](#) section 2.11.1)

The **PidTagWlinkRecordKey** property ([\[MS-OXPROPS\]](#) section 2.1074) specifies the value of the **PidTagRecordKey** property ([\[MS-OXCPRPT\]](#) section 2.2.1.8) of the folder pointed to by the shortcut.

### 2.2.9.10 PidTagWlinkStoreEntryId Property

Type: **PtypBinary** ([\[MS-OXCDATA\]](#) section 2.11.1)

The **PidTagWlinkStoreEntryId** property ([\[MS-OXPROPS\]](#) section 2.1078) specifies the value of the **PidTagStoreEntryId** property ([\[MS-OXPROPS\]](#) section 2.1028) of the folder pointed to by the shortcut.

### 2.2.9.11 PidTagWlinkFolderType Property

Type: **PtypBinary** ([\[MS-OXCDATA\]](#) section 2.11.1)

The **PidTagWlinkFolderType** property ([\[MS-OXPROPS\]](#) section 2.1069) specifies the type of folder pointed to by the shortcut. The possible values are listed in the following table.

Value	Value name	Meaning
{0x00780600, 0x0000, 0x0000, {0xC0, 0x00, 0x00, 0x00, 0x00, 0x00, 0x00, 0x46}}	<b>CLSID_MailFolder</b>	The folder is a mail folder.
{0x02780600, 0x0000, 0x0000, {0xC0, 0x00, 0x00, 0x00, 0x00, 0x00, 0x00, 0x46}}	<b>CLSID_CalendarFolder</b>	The folder is a <b>Calendar folder</b> .
{0x01780600, 0x0000, 0x0000, {0xC0, 0x00, 0x00, 0x00, 0x00, 0x00, 0x00, 0x46}}	<b>CLSID_ContactFolder</b>	The folder is a Contact folder.
{0x03780600, 0x0000, 0x0000, {0xC0, 0x00, 0x00, 0x00, 0x00, 0x00, 0x00, 0x46}}	<b>CLSID_TaskFolder</b>	The folder is a Task folder.
{0x04780600, 0x0000, 0x0000, {0xC0, 0x00, 0x00, 0x00, 0x00, 0x00, 0x00, 0x46}}	<b>CLSID_NoteFolder</b>	The folder is a Note folder.
{0x08780600, 0x0000, 0x0000, {0xC0, 0x00, 0x00, 0x00, 0x00, 0x00, 0x00, 0x46}}	<b>CLSID_JournalFolder</b>	The folder is a Journal folder.

### 2.2.9.12 PidTagWlinkGroupClsid Property

Type: **PtypBinary** ([\[MS-OXCDATA\]](#) section 2.11.1)

The **PidTagWlinkGroupClsid** property ([\[MS-OXPROPS\]](#) section 2.1070) specifies the value of the **PidTagWlinkGroupHeaderID** property (section [2.2.9.3](#)) of the **group header** associated with the shortcut.

### 2.2.9.13 PidTagWlinkGroupName Property

Type: **PtypString** ([\[MS-OXCDATA\]](#) section 2.11.1)

The **PidTagWlinkGroupName** property ([\[MS-OXPROPS\]](#) section 2.1072) specifies the value of the **PidTagNormalizedSubject** property (section [2.2.9.2](#)) of the **group header** associated with the shortcut.

### 2.2.9.14 PidTagWlinkSection Property

Type: **PtypInteger32** ([\[MS-OXCDATA\]](#) section 2.11.1)

The **PidTagWlinkSection** property ([\[MS-OXPROPS\]](#) section 2.1077) specifies the section where the shortcut can be grouped. The possible values are listed in the following table.

Value	Value name	Meaning
0x00000001	<b>wbsidMailFavorites</b>	Shortcut is grouped under Mail.
0x00000002	NA	NA
0x00000003	<b>wbsidCalendar</b>	Shortcut is grouped under Calendar.
0x00000004	<b>wbsidContacts</b>	Shortcut is grouped under Contacts.
0x00000005	<b>wbsidTasks</b>	Shortcut is grouped under Tasks.
0x00000006	<b>wbsidNotes</b>	Shortcut is grouped under Notes.
0x00000007	<b>wbsidJournal</b>	Shortcut is grouped under Journal.

### 2.2.9.15 PidTagWlinkCalendarColor Property

Type: **PtypInteger32** ([\[MS-OXCDATA\]](#) section 2.11.1)

The **PidTagWlinkCalendarColor** property ([\[MS-OXPROPS\]](#) section 2.1065) specifies the background color of the **calendar**. The RGB values listed in the following table can be used.

Value	Color (R, G, B)
-1	Automatic (determined by implementation)
0	141, 174, 217
1	156, 191, 139
2	209, 149, 170

Value	Color (R, G, B)
3	176, 182, 190
4	176, 182, 190
5	140, 140, 215
6	141, 193, 157
7	211, 150, 150
8	186, 186, 137
9	174, 153, 216
10	195, 176, 141
11	139, 191, 174
12	144, 182, 200
13	255, 223, 134
14	150, 169, 209

#### 2.2.9.16 PidTagWlinkAddressBookEID Property

Type: **PtypBinary** ([\[MS-OXCDATA\]](#) section 2.11.1)

The **PidTagWlinkAddressBookEID** property ([\[MS-OXPROPS\]](#) section 2.1063) specifies the value of the **PidTagEntryId** property ([\[MS-OXCPerm\]](#) section 2.2.4) of the user that the folder belongs to, as specified in [\[MS-OXOABK\]](#) section 2.2.3.2. This property SHOULD [<32>](#) be set on **calendar** shortcuts.

#### 2.2.9.17 PidTagWlinkAddressBookStoreEID Property

Type: **PtypBinary** ([\[MS-OXCDATA\]](#) section 2.11.1)

The **PidTagWlinkAddressBookStoreEID** property ([\[MS-OXPROPS\]](#) section 2.1064) specifies the value of the **PidTagStoreEntryId** property ([\[MS-OXPROPS\]](#) section 2.1028) of the current user (not the owner of the folder). This property SHOULD [<33>](#) be set on **calendar** shortcuts.

#### 2.2.9.18 PidTagWlinkClientID Property

Type: **PtypBinary** ([\[MS-OXCDATA\]](#) section 2.11.1)

The **PidTagWlinkClientID** property ([\[MS-OXPROPS\]](#) section 2.1066) specifies the Client ID that allows the client to determine whether the shortcut was created on the current machine or by the currently logged-in user via an equality test. The ID is specified in section [3.1.3.1](#). If this property is set, the client SHOULD [<34>](#) compare the value of this property to the Client ID and display the shortcut only if the **GUIDs** match.

#### 2.2.9.19 PidTagWlinkROGroupType Property

Type: **PtypInteger32** ([\[MS-OXCDATA\]](#) section 2.11.1)

The **PidTagWlinkROGroupType** property ([\[MS-OXPROPS\]](#) section 2.1075) specifies the type of **group header**. If the property does not exist, the client SHOULD [<35>](#) assume a value of -1. The possible values are listed in the following table.

Value	Value name	Meaning
-1	wbrogUndefined	None.
0	wbrogMyDepartment	Group contains shortcuts to users in his department.
1	wbrogOtherDepartment	Group contains shortcuts to users in another department.
2	wbrogDirectReportGroup	Group contains shortcuts to users in his direct reporting group.
3	wbrogCoworkerGroup	Group contains shortcuts to coworkers of the user.
4	wbrogDL	Group contains shortcuts to members of a <b>distribution list</b> .



## 3 Protocol Details

### 3.1 Client Details

#### 3.1.1 Abstract Data Model

None.

#### 3.1.2 Timers

None.

#### 3.1.3 Initialization

##### 3.1.3.1 Navigation Shortcuts

On initialization of the client, the client generates a Session ID that is valid as long as the client is running. The Session ID is of type **PtypInteger32** and is a randomly generated value. This value is saved as the value of the **PidTagWlinkSaveStamp** property (section [2.2.9.4](#)).

The client also generates a Client ID for the user that is valid across sessions on first-run initialization of the client. The Client ID is of type **PtypBinary** and is a randomly generated value. This value is saved as the value of the **PidTagWlinkClientID** property (section [2.2.9.18](#)).

Navigation shortcuts are specified in section [2.2.9](#).

#### 3.1.4 Higher-Layer Triggered Events

##### 3.1.4.1 Reading Configuration Data

To read settings in a configuration data settings group, as specified in section [2.2.2](#), the client MUST open the **special folder** that contains the configuration data message. The client MUST call the **RopGetContentsTable ROP** ([\[MS-OXCROPS\]](#) section 2.2.4.14) with the **Associated** flag to open the **FAI contents table**, as specified in [\[MS-OXCFOLD\]](#) section 2.2.1.14.

The client MUST find all the rows in the FAI contents table that have the **PidTagMessageClass** property ([\[MS-OXCMSG\]](#) section 2.2.1.3) specified by the configuration data message that the client is trying to open, by using steps equivalent to the following, as specified in [\[MS-OXCTABL\]](#):

- Send the **RopSetColumns** ROP ([\[MS-OXCROPS\]](#) section 2.2.5.1) with the following properties:
  - **PidTagFolderId** ([\[MS-OXCFOLD\]](#) section 2.2.2.2.1.6)
  - **PidTagMid** ([\[MS-OXCFXICS\]](#) section 2.2.1.2.1)
  - **PidTagMessageClass**
  - **PidTagRoamingDatatypes** (section [2.2.2.1](#))
- Send the **RopSortTable** ROP ([\[MS-OXCROPS\]](#) section 2.2.5.2) with a **sort order** that includes the following properties:
  - **PidTagMessageClass**, followed by
  - **PidTagLastModificationTime** ([\[MS-OXCMSG\]](#) section 2.2.2.2)

- Send the **RopFindRow** ROP ([MS-OXCROPS] section 2.2.5.13), searching for a match on the **PidTagMessageClass** property.
- Send the **RopQueryRows** ROP ([MS-OXCROPS] section 2.2.5.4) repeatedly until either the end of the table or a row with a **PidTagMessageClass** property that no longer matches the configuration data message is encountered.
- Based on the subsort by the **PidTagLastModificationTime** property, pick the message with the most recent (the greatest value) modification time that includes the bit that matches the **PidTagRoamingDatatypes** property specified by the configuration data message. If none of the messages match the **PidTagRoamingDatatypes** property of the configuration data message, the client MUST pick the most recently modified of all the messages.

If the client cannot find a row that matches the **PidTagMessageClass** and **PidTagRoamingDatatypes** properties of the configuration data message, that group of settings does not exist. When reading the settings, the client MUST use default values for those settings when the configuration data message cannot be found.

If the client found a matching row, it MUST open the existing message as specified in [MS-OXCMSG] section 2.2.3.1 by opening the message, using the **PidTagFolderId** and **PidTagMid** properties from the table row and setting the **ReadWrite** flag in the **OpenModeFlags** field, by sending the **RopOpenMessage** ROP ([MS-OXCROPS] section 2.2.6.1).

If the client found a matching message, it MUST retrieve the serialized settings **stream** from the property specified by the configuration data message by using steps equivalent to the following, as specified in [MS-OXCPRPT] section 2.2.14:

1. Open a **Stream object handle** on the stream property specified by the configuration data message by sending the **RopOpenStream** ROP ([MS-OXCROPS] section 2.2.9.1).
2. Read the serialized settings by using the **RopReadStream** ROP ([MS-OXCROPS] section 2.2.9.2).

If multiple configuration data messages of the same type are found, the configuration data messages are deemed in conflict and MUST be resolved. If no specific conflict resolution algorithm is available, the first matching message SHOULD be used, and the client SHOULD delete the rest of the matching configuration data messages from the **message store**. Regardless of the method of resolution, a client SHOULD resolve such conflicts as soon as possible and SHOULD delete any duplicates, leaving only one configuration data message that is the result of the conflict resolution.

#### 3.1.4.1.1 Reading Dictionaries

The client MUST prepopulate the **dictionaries** with default name-value property pairs, as specified in section 2.2.5.1.

The client MUST read any existing settings from the configuration data message, as specified in section 3.1.4.1. If any existing settings are found, the client MUST parse the **XML** document, as specified in section 2.2.5.1.

If the XML document does exist, and the XML document includes one of the valid **OLPrefsVersion** attributes specified in section 2.2.5.1, the client MUST then set the name-value pairs on the dictionary, overriding any default values that were prepopulated in the dictionary with matching names.

If the XML document did not exist, a valid **OLPrefsVersion** attribute did not exist or was incorrect, or any default settings did not overlap with previously saved settings, or if the client changes a setting after reading them, the client MUST write the contents of the dictionary to the configuration data message, as specified in section 3.1.4.1.

#### 3.1.4.1.2 Reading Working Hours

The client MUST read any existing settings from the configuration data message, as specified in section [3.1.4.1](#). If any existing settings are found, the client MUST parse the **XML** document, as specified in section [2.2.5.2](#).

If the client could not find a matching configuration data message and it used default values, [<36>](#) or if the user changes the preferred **working hours** through the client UI, the client MUST generate the XML document as specified in section 2.2.5.2 and save it to the configuration data message as specified in section [3.1.4.2](#)

When viewing the contents of another user's **Calendar folders** or displaying their **free/busy status** data, the client MUST attempt to open the other user's working hours configuration data message and translate the settings from the other user's time zone to the time zone of the client. The client MUST use the other user's preferred working hours in place of the client's settings when displaying the other user's Calendar folders.

If the client is unable to read the configuration data message from the other user's **Calendar special folder** (because the other user's **message store** is inaccessible or the client has not been granted sufficient **permissions** to access the **special folder**), the client MUST treat all times as being within the other user's preferred working hours.

#### 3.1.4.1.3 Reading Category List

A category list configuration data message, as specified in in section [2.2.2](#), is saved as an **FAI** message in the user's default **Calendar folder**. A client can read the category list, as specified in section [2.2.5.2.2](#), at any time.

When clients encounter unknown tags or attributes, they SHOULD ignore them, but they SHOULD also rewrite them as-is when they rewrite the category list back to the configuration data message.

All times are to be stored relative to **UTC**. When a **category** is applied to a message, as specified in section [3.1.4.7](#), or the user-visible properties of the category are changed (such as color or shortcut key), the client SHOULD update the **lastTimeUsed** attribute and, depending on whether the client separates different message types (Mail, Calendar, Contacts, Tasks, Notes, Journal), SHOULD update the appropriate time stamp attribute as specified in section 2.2.5.2.2 with the current time.

When viewing the contents of another user's folders, the client MUST try to open the other user's category list configuration data message. If the client is able to read the configuration data message from the other user's **Calendar special folder**, the client MUST use the other user's category list settings, including color assignments, in place of the client's settings when it displays the other user's folders.

If the client is unable to read the configuration data message from the other user's Calendar special folder (because the other user's **message store** is inaccessible or the client has not been granted sufficient **permissions** to access the **special folder**), the client MUST fall back to its own category list settings.

#### 3.1.4.2 Writing Configuration Data

To write settings in a configuration data settings group, as specified in section [2.2.2](#), the client MUST first look for a preexisting configuration data message with preexisting settings, as specified in section [3.1.4.1](#).

If the client found a matching message or created a new one, it MUST retrieve the serialized settings **stream** from the property specified by the configuration data message by using steps equivalent to the following, as specified in [\[MS-OXCPRPT\]](#) section 2.2.15:

1. Open a **Stream object handle** on the stream property specified by the configuration data message by sending the **RopOpenStream ROP** ([\[MS-OXCROPS\]](#) section 2.2.9.1).

2. Read the serialized settings by using the **RopReadStream** ROP ([MS-OXCROPS] section 2.2.9.2).

If the message does not exist, the client MUST create the message, as specified in [MS-OXCMSG] section 2.2.3.2, by sending the **RopCreateMessage** ROP ([MS-OXCROPS] section 2.2.6.2) on the folder and passing the **Associated** flag.

If the client found a matching message or created a new one, it MUST save the serialized settings stream into the property specified by the configuration data message by using steps equivalent to the following, as specified in [MS-OXCPRPT] section 2.2.16:

1. Open a Stream object handle on the stream property specified by the configuration data message by sending the **RopOpenStream** ROP.
2. Write the serialized settings by using the **RopWriteStream** ROP ([MS-OXCROPS] section 2.2.9.3).
3. Persist the stream back to the property by sending the **RopRelease** ROP ([MS-OXCROPS] section 2.2.15.3).
4. Persist changes to the message by sending the **RopSaveChangesMessage** ROP ([MS-OXCROPS] section 2.2.6.3).

#### 3.1.4.2.1 Writing Dictionaries

The client MUST read any existing settings from the configuration data message, as specified in section 3.1.4.1. If any existing settings are found, the client MUST parse the **XML** document, as specified in section 2.2.5.1.

The client MUST write the contents of the **dictionary** to the configuration data message, as specified in section 3.1.4.2.

#### 3.1.4.2.2 Writing Working Hours

The client MUST read any existing settings from the configuration data message, as specified in section 3.1.4.1. If any existing settings are found, the client MUST parse the **XML** document, as specified in section 2.2.5.2.

The client MUST generate the XML document as specified in section 2.2.5.2 and save it to the configuration data message as specified in section 3.1.4.2.

#### 3.1.4.2.3 Writing Category List

The client MUST read any existing settings from the configuration data message, as specified in section 3.1.4.1. If any existing settings are found, the client MUST parse the **XML** document, as specified in section 2.2.5.2.

When clients encounter unknown tags or attributes, they SHOULD ignore them, but they SHOULD also rewrite them as-is when they rewrite the category list back to the configuration data message.

The client MUST generate the XML document as specified in section 2.2.5.2 and save it to the configuration data message as specified in section 3.1.4.2.

Each **category** in the category list, as specified in section 2.2.5.2.2, contains the following attributes:

- **lastTimeUsed**
- **lastTimeUsedMail**
- **lastTimeUsedCalendar**

- **lastTimeUsedContacts**
- **lastTimeUsedTasks**
- **lastTimeUsedNotes**
- **lastTimeUsedJournal**

The **lastTimeUsed** attribute MUST be set on all categories. All others are optional and depend on whether the client shows different message types in separate windows or panes.

All times MUST be stored relative to **UTC**. When a category is applied to a message, as specified in section 3.1.4.7, or the user visible properties of the category are changed (such as color or shortcut key), the client SHOULD update the **lastTimeUsed** attribute and, depending on whether the client separates different message types, SHOULD replace the appropriate type-specific time stamp with the current time.

### 3.1.4.3 Reading View Definitions

To read the list of available view definitions for a folder, as specified in section 2.2.6, the client MUST enumerate all of the view definition **FAI** messages in the folders, searching for a match on the **PidTagMessageClass** property ([MS-OXCMSG] section 2.2.1.3) and the **PidTagViewDescriptorVersion** property (section 2.2.6.4) as specified in section 2.2.6.

After the client has built the list of view definition messages, it can select one of them by using the **PidTagViewDescriptorName** property (section 2.2.6.2). After it has selected a view definition message, the client MUST read the settings from the **PidTagViewDescriptorBinary** property (section 2.2.6.1) and the **PidTagViewDescriptorStrings** property (section 2.2.6.3) on the message.

### 3.1.4.4 Writing View Definitions

To write settings in a view definition, as specified in section 2.2.6, the client MUST open the folder that contains the view definition message. The client MUST save the view definition message in the folder that will display that view.

The client MUST call the **RopGetContentsTable ROP** ([MS-OXCROPS] section 2.2.4.14) with the **Associated** flag to open the **FAI contents table**, as specified in [MS-OXCFOLD] section 2.2.1.14.

If a view definition message already exists with the same **PidTagViewDescriptorName** property (section 2.2.6.2) in the same folder, the client MUST open that message and save the view definition there. The client MUST search for a matching row in the FAI contents table by using steps equivalent to the following, as specified in [MS-OXCTABL] section 2.2.2:

1. Send the **RopSetColumns** ROP ([MS-OXCROPS] section 2.2.5.1) with the following properties:
  - **PidTagFolderId** ([MS-OXCFOLD] section 2.2.2.2.1.6)
  - **PidTagMid** ([MS-OXPROPS] section 2.801)
  - **PidTagMessageClass** ([MS-OXCMSG] section 2.2.1.3)
  - **PidTagViewDescriptorVersion** (section 2.2.6.4)
  - **PidTagViewDescriptorName** (section 2.2.6.2)
2. Send the **RopSortTable** ROP ([MS-OXCROPS] section 2.2.5.2) with a **sort order** that includes the following properties:
  - **PidTagMessageClass**, followed by

- **PidTagViewDescriptorVersion**
  - **PidTagViewDescriptorName**
3. Send the **RopFindRow** ROP ([MS-OXCROPS] section 2.2.5.13), searching for a match on the **PidTagMessageClass**, **PidTagViewDescriptorVersion**, and **PidTagViewDescriptorName** properties, as specified in section 2.2.6.
  4. Send the **RopQueryRows** ROP ([MS-OXCROPS] section 2.2.5.4) to retrieve a single row and get the **PidTagFolderId** and **PidTagMid** properties of the matching message from the row.

If the message does not exist, the client MUST create the message as specified in [MS-OXCMSG] section 2.2.3.2 by sending the **RopCreateMessage** ROP ([MS-OXCROPS] section 2.2.6.2) on the folder, and passing the **Associated** flag.

If the client found a matching row, it MUST send the **RopOpenMessage** ROP ([MS-OXCROPS] section 2.2.6.1) to open the message, using the **PidTagFolderId** and **PidTagMid** properties from the table row and setting the **ReadWrite** flag in the **OpenModeFlags** field, as specified in [MS-OXCMSG] section 2.2.3.1.

If the client found a matching message or created a new one, it MUST save the serialized settings **streams** on the properties specified in section 2.2.6 by using steps equivalent to the following, as specified in [MS-OXCPRPT] section 2.2.16:

1. Send the **RopOpenStream** ROP ([MS-OXCROPS] section 2.2.9.1) to open Stream object **handles** on the **PidTagViewDescriptorBinary** property (section 2.2.6.1) and the **PidTagViewDescriptorStrings** property (section 2.2.6.3).
2. Write the serialized settings by using the **RopWriteStream** ROP ([MS-OXCROPS] section 2.2.9.3).
3. Persist the stream back to the property by sending the **RopRelease** ROP ([MS-OXCROPS] section 2.2.15.3).
4. Persist changes to the message by sending the **RopSaveChangesMessage** ROP ([MS-OXCROPS] section 2.2.6.3).

### 3.1.4.5 Reading Folder Flags

To read folder flags on a folder, as specified in section 2.2.7, the client MUST obtain a **handle** to the folder using the **RopOpenFolder** ROP ([MS-OXCROPS] section 2.2.4.1), as specified in [MS-OXCFCM] section 3.1.4.1. The client MUST then retrieve the data for the folder flags by sending the **RopGetPropertiesSpecific** ROP ([MS-OXCROPS] section 2.2.8.3) with the **PidTagExtendedFolderFlags** property ([MS-OXOSRCH] section 2.2.2.1.2) in the **PropertyTags** field of the request buffer ([MS-OXCROPS] section 2.2.8.3.1). The binary data MUST be interpreted as specified in section 2.2.7. Reading and writing each of the **subproperties** in the folder flags are triggered by different events.

#### 3.1.4.5.1 Reading ExtendedFolderFlags

The client MUST read the bit flags in the **ExtendedFolderFlags** **subproperty** before it can display the folder in the UI.

#### 3.1.4.5.2 Reading SearchFolderID

The client MUST read the value of the **SearchFolderID** subproperty from every **search folder**, as specified in [MS-OXOSRCH], in the Finder **special folder**. Any search folder that has this **subproperty** is a persistent search folder, and the client SHOULD display the search folder as such in

the UI. Searches with the Finder special folder are further specified in [MS-OXOSRCH] section 3.1.4.1.2. For more details about the Finder special folder, see [MS-OXOSFLD].

### 3.1.4.5.3 Reading ToDoFolderVersion

The client MUST read the value of the **ToDoFolderVersion** subproperty from the To-Do Search folder before it displays the contents of that folder. If the To-Do Search folder does not exist, does not contain this **subproperty**, or does not contain the required value as defined in section 2.2.7, then the client MUST re-create the To-Do Search folder, as specified in [MS-OXOSFLD] section 3.1.4.1.2, or reset the criteria of the **search folder**.

### 3.1.4.6 Writing Folder Flags

To write folder flags on a folder, as specified in section 2.2.7, the client MUST obtain a **handle** to the folder using the **RopOpenFolder ROP** ([MS-OXCROPS] section 2.2.4.1), as specified in [MS-OXCFOLD] section 3.1.4.1. The client MUST then format the binary data as specified in section 2.2.7. The client MUST then write the data for the folder flags by sending the **RopSetProperties ROP** ([MS-OXCROPS] section 2.2.8.6) with the **PidTagExtendedFolderFlags** property ([MS-OXOSRCH] section 2.2.2.1.2) and the value in the **PropertyValues** field of the **RopSetProperties ROP request buffer** ([MS-OXCROPS] section 2.2.8.6.1). In each case where the client needs to write a new value of one of the **subproperties** to the folder, it MUST preserve the values of any other unmodified subproperties on the folder, as specified in section 2.2.7.

#### 3.1.4.6.1 Writing ExtendedFolderFlags

Any time the user changes one of the display options for a folder, the client MUST rewrite the **subproperty** to the folder.

#### 3.1.4.6.2 Writing SearchFolderID

The client MUST write the **SearchFolderID subproperty** on any new persistent **search folders** that it creates.

#### 3.1.4.6.3 Writing ToDoFolderVersion

When the client re-creates or resets the criteria on the To-Do Search folder, it MUST set the **ToDoFolderVersion subproperty** on the folder.

#### 3.1.4.7 Applying a Category to a Message

A message can have a list of **categories** stored in the **PidNameKeywords** property (section 2.2.8.7). To apply a new category to a message, the client MUST read the current value of the **PidNameKeywords** property from the message and check to see whether the current value already contains the name of the new category. If the current value does not include the name of the new category, the client MUST insert the name of the category in the list and set the new value of **PidNameKeywords** property on the message.

#### 3.1.4.8 Performing a Conversation Action

The following user actions performed on a **conversation** SHOULD<37> modify the **conversation actions**, as specified in section 2.2.8, on a conversation and trigger special handling logic:

- Ignore
- Stop Ignoring
- Move to Folder

- Stop Move
- Add Category
- Remove Category
- Clear All Categories

When the user performs one of these actions on a conversation, the client SHOULD identify all unique values of the **PidTagConversationId** property ([MS-OXOMSG] section 2.2.1.2) on the **E-mail objects** and do the following for each **conversation ID**:

1. The client SHOULD locate the conversation action **FAI** message in the Conversation Actions Settings **special folder** with bytes 6-21 of the **PidTagConversationIndex** property (section 2.2.8.8) corresponding to the given conversation ID. If no such FAI message exists, proceed to step 4.
2. If the user is performing a Stop Ignoring action and the FAI message does not indicate that there is an Ignore conversation action (as specified in sections 2.2.8.3 and 2.2.8.4), the client SHOULD NOT perform the Stop Ignoring action for this conversation ID.
3. If the user is performing a Stop Move action and the FAI message does not indicate that there is a Move to Folder conversation action (as specified in sections 2.2.8.3 and 2.2.8.4), the client SHOULD NOT perform the Stop Move action for this conversation ID.
4. If no existing FAI message is found, a new FAI message SHOULD be created with the properties specified in section 2.2.8.
5. The client SHOULD <38> locate all E-mail objects on the **message store** with a **PidTagConversationId** property value matching the given conversation ID. If the operation cannot be done in a timely fashion, the client can proceed as though no E-mail objects were found.
6. The client SHOULD perform the appropriate **action** on all located E-mail objects, as specified in the second column of the table following this procedure.
7. The client SHOULD set the latest value of the **PidTagMessageDeliveryTime** property ([MS-OXOMSG] section 2.2.3.9) from the located E-mail objects as the **PidLidConversationActionMaxDeliveryTime** property (section 2.2.8.2) on the FAI message. If no messages were found, the **PidLidConversationActionMaxDeliveryTime** property SHOULD be set to 00:00:00 (UTC) April 1, 1601.
8. The client SHOULD set the current time (in UTC) as the **PidLidConversationActionLastAppliedTime** property (section 2.2.8.1) on the FAI message.
9. The client SHOULD perform the appropriate action on the FAI message, as specified in the third column of the table following this procedure.
10. If the server returned a version less than 14.0.324.0, as described in section 1.7, and the **PidLidConversationActionMoveFolderEid** (section 2.2.8.3) and **PidNameKeywords** (section 2.2.8.7) properties are both not set, the client SHOULD delete the FAI message.

Appropriate actions for the client to perform for each user action are specified in the following table.

User action	Action to perform on each E-mail object	Action to perform on the FAI message object
Ignore	If the E-mail object is not in the Sent Items special folder, move the E-mail object to the Deleted Items special folder.	Set the <b>PidLidConversationActionMoveFolderEid</b> property to an array of size 0. Delete the value of the



User action	Action to perform on each E-mail object	Action to perform on the FAI message object
		<b>PidLidConversationActionMoveStoreEid</b> property (section 2.2.8.4).
Stop Ignoring	If the E-mail object is in the Deleted Items special folder, move the E-mail object to the <b>Inbox folder</b> .	Delete the value of <b>PidLidConversationActionMoveFolderEid</b> property and of the <b>PidLidConversationActionMoveStoreEid</b> property.
Move to Folder	If the E-mail object is not in the Sent Items special folder, move the E-mail object to the user-specified folder.	Set the <b>PidLidConversationActionMoveFolderEid</b> property to the <b>EntryID</b> of the user-specified folder. If the user-specified folder is in the same message store as the FAI message, delete the value of the <b>PidLidConversationActionMoveStoreEid</b> property. Otherwise, set the <b>PidLidConversationActionMoveStoreEid</b> property to the EntryID of the user-specified message store.
Stop Move	None.	Delete the value of the <b>PidLidConversationActionMoveFolderEid</b> property and the <b>PidLidConversationActionMoveStoreEid</b> property.
Add Category	Append the user-specified <b>category</b> to the <b>PidNameKeywords</b> property of each E-mail object.	Append the user-specified category to the <b>PidNameKeywords</b> property of the FAI message.
Remove Category	Remove the user-specified category from the <b>PidNameKeywords</b> property of each E-mail object. If this operation would leave the <b>PidNameKeywords</b> property empty, delete the <b>PidNameKeywords</b> property instead.	Remove the user-specified category from the <b>PidNameKeywords</b> property of the FAI message. If this operation would leave the <b>PidNameKeywords</b> property empty, delete the <b>PidNameKeywords</b> property instead.
Clear All Categories	Delete the <b>PidNameKeywords</b> property from each E-mail object.	Delete the value of the <b>PidNameKeywords</b> property from the FAI message.

### 3.1.4.9 Reading Navigation Shortcuts

Navigation shortcuts, as specified in section 2.2.9, are stored as **FAI** messages in the **Common Views folder**, as specified in [MS-OXOSFLD] section 2.2, within a message database. Clients open this folder and process all messages where the value of the **PidTagMessageClass** property ([MS-OXCMSG] section 2.2.1.3) is "IPM.Microsoft.WunderBar.Link". Clients SHOULD advise for notifications on this folder to process changes to this table by other clients.

### 3.1.4.10 Writing Navigation Shortcuts

To write settings in a navigation shortcut, as specified in section 2.2.9, the client MUST open the **Common Views folder**, as specified in [MS-OXOSFLD] section 2.2. The client MUST save the navigation shortcut message in the Common Views folder.

If the client is creating a new navigation shortcut, the client MUST create a new message by sending the **ROPCreateMessage ROP** ([MS-OXCROPS] section 2.2.6.2) on the folder, passing the

**Associated** flag. If the client is modifying an existing navigation shortcut, the client MUST open the message for the navigation shortcut by sending the **RopOpenMessage** ROP ([MS-OXCROPS] section 2.2.6.1) with the **ReadWrite** flag in the **OpenModeFlags** field.

The client MUST then send the **RopSetProperties** ROP ([MS-OXCROPS] section 2.2.8.6) with the relevant properties, as specified in sections [3.1.4.10.1](#) and [3.1.4.10.2](#).

The client MUST then send the **RopSaveChangesMessage** ROP ([MS-OXCROPS] section 2.2.6.3) to persist changes to the message.

### 3.1.4.10.1 Group Headers

**Group headers** are shortcuts that group other non-group header shortcuts together. Group headers have the following properties:

- **PidTagWlinkGroupHeaderID** (section [2.2.9.3](#))
- **PidTagWlinkSaveStamp** (section [2.2.9.4](#))
- **PidTagWlinkType** (section [2.2.9.5](#))
- **PidTagWlinkFlags** (section [2.2.9.6](#))
- **PidTagWlinkOrdinal** (section [2.2.9.7](#))
- **PidTagWlinkFolderType** (section [2.2.9.8](#))
- **PidTagWlinkSection** (section [2.2.9.14](#))

### 3.1.4.10.2 Shortcuts

Shortcuts have the following properties:

- **PidTagWlinkSaveStamp** (section [2.2.9.4](#))
- **PidTagWlinkType** (section [2.2.9.5](#))
- **PidTagWlinkFlags** (section [2.2.9.6](#))
- **PidTagWlinkOrdinal** (section [2.2.9.7](#))
- **PidTagWlinkEntryId** (section [2.2.9.8](#))
- **PidTagWlinkRecordKey** (section [2.2.9.9](#))
- **PidTagWlinkStoreEntryId** (section [2.2.9.10](#))
- **PidTagWlinkFolderType** (section [2.2.9.11](#))
- **PidTagWlinkGroupClsid** (section [2.2.9.12](#))
- **PidTagWlinkGroupName** (section [2.2.9.13](#))
- **PidTagWlinkSection** (section [2.2.9.14](#))

Shortcuts with the value of the **PidTagWlinkSection** property set to **wbsidCalendar** SHOULD [<39>](#) have the following properties set:

- **PidTagWlinkCalendarColor** (section [2.2.9.15](#))
- **PidTagWlinkAddressBookEID** (section [2.2.9.16](#))

- **PidTagWlinkAddressBookStoreEID** (section [2.2.9.17](#))
- **PidTagWlinkROGroupType** (section [2.2.9.19](#))

Shortcuts have the following property available to limit the visibility of a shortcut to a single machine:

- **PidTagWlinkClientID** (section [2.2.9.18](#))

### 3.1.5 Message Processing Events and Sequencing Rules

#### 3.1.5.1 Processing a Conversation Action on Incoming E-mail Objects

When a new **E-mail object** arrives in a **message store**, the client SHOULD [<40>](#) perform the following steps:

1. The client SHOULD locate the **FAI** message for the **conversation action**, as specified in section [2.2.8](#), in the Conversation Actions Settings **special folder** with bytes 6-21 of the **PidTagConversationIndex** property (section [2.2.8.8](#)), corresponding to the **PidTagConversationId** property ([\[MS-OXOMSG\]](#) section 2.2.1.2) of the incoming E-mail object. If no FAI message is found, the client SHOULD NOT process any conversation actions on the incoming E-mail object.
2. If the **PidLidConversationProcessed** property (section [2.2.8.6](#)) is set on the incoming E-mail object, the client SHOULD execute duplicate detection (as specified in section [3.1.5.1.1](#)) and SHOULD NOT process any conversation actions on the incoming E-mail object.
3. The client SHOULD perform the appropriate **actions** on the incoming E-mail object based on the properties of the FAI message, as specified in the table that follows these steps. Note that more than one property can apply to a given FAI message.
4. If the server returned a version less than 14.0.324.0 and if step 3 did not encounter an error opening the message store, the **PidLidConversationProcessed** property SHOULD be set to a random number on the incoming E-mail object.
5. The client SHOULD set the current time (in **UTC**) as the value of the **PidLidConversationActionLastAppliedTime** property (section [2.2.8.1](#)) on the FAI message.

The conversation actions to be performed on the incoming E-mail object based on the properties of the FAI message are specified in the following table.

Properties on the FAI message	Action to perform on the incoming E-mail object
The <b>PidNameKeywords</b> property (section <a href="#">2.2.8.7</a> ) is set.	If the server returned a version less than 14.0.324.0, as described in section <a href="#">1.7</a> , the <b>categories</b> in the FAI message SHOULD be appended to the <b>PidNameKeywords</b> property of the incoming E-mail object.
The <b>PidLidConversationActionMoveStoreEid</b> property (section <a href="#">2.2.8.4</a> ) is not set and the value of the <b>PidLidConversationActionMoveFolderEid</b> property (section <a href="#">2.2.8.3</a> ) is not an array of size zero.	If the server returned a version less than 14.0.324.0, the client SHOULD move the incoming E-mail object to the folder with an <b>EntryID</b> equal to the <b>PidLidConversationActionMoveFolderEid</b> property on the FAI message.
The <b>PidLidConversationActionMoveStoreEid</b> property is not set and the value of the <b>PidLidConversationActionMoveFolderEid</b> property is an array of size zero.	If the server returned a version less than 14.0.324.0, the client SHOULD move the incoming E-mail object to the Deleted Items special folder.
The <b>PidLidConversationActionMoveStoreEid</b>	(Note that this case is not conditioned on the server)

Properties on the FAI message	Action to perform on the incoming E-mail object
property is set and the value of the <b>PidLidConversationActionMoveFolderEid</b> property is not an array of size zero.	version) The client SHOULD move the incoming E-mail object to the folder and message store identified by the <b>PidLidConversationActionMoveFolderEid</b> and <b>PidLidConversationActionMoveStoreEid</b> properties, respectively.
The <b>PidLidConversationActionMoveStoreEid</b> property is set and the value of the <b>PidLidConversationActionMoveFolderEid</b> property is an array of size zero.	The client SHOULD NOT move the incoming E-mail object.

### 3.1.5.1.1 Duplicate Detection for Conversation Action Processing

**E-mail objects** can be duplicated if two clients process a Move to Folder conversation action, as specified in section 2.2.8, on an incoming E-mail object simultaneously. If the server returned a version less than 14.0.324.0, as described in section 1.7, the client SHOULD <41> perform duplicate detection on incoming E-mail objects.

The client SHOULD <42> compare the **PidTagSearchKey** property ([MS-OXCPRPT] section 2.2.1.9) on the incoming E-mail object to the **PidTagSearchKey** property of all recently delivered E-mail objects in the same folder.

If a matching E-mail object was found, the client SHOULD compare the unsigned values of the **PidLidConversationProcessed** property (section 2.2.8.6) on both E-mail objects and delete the E-mail object with the smaller unsigned value, doing nothing if the unsigned values are equal.

### 3.1.5.2 Processing a Conversation Action on Outgoing E-mail Objects

When the client saves a copy of an outgoing **E-mail object**, the client SHOULD <43> perform additional processing on the copy of the E-mail object in the Sent Items **special folder**.

As specified in section 2.2.8.8, the client SHOULD locate the conversation action **FAI** message, as specified in section 2.2.8, in the conversation actions Settings special folder with bytes 6-21 of the **PidTagConversationIndex** property (section 2.2.8.8) corresponding to the **PidTagConversationId** property ([MS-OXOMSG] section 2.2.1.2) of the sent E-mail object. If no FAI message is found, the client SHOULD NOT process any conversation actions on the sent E-mail object.

If the **PidNameKeywords** property (section 2.2.8.7) is set on the FAI message, the **categories** in the FAI message SHOULD be appended to the **PidNameKeywords** property of the sent E-mail object.

## 3.1.6 Timer Events

### 3.1.6.1 Expiration of Conversation Actions

If the server returned a version less than 14.0.324.0, as described in section 1.7, and the elapsed time between the value of the **PidLidConversationActionLastAppliedTime** property (section 2.2.8.1) of the **FAI** message and the current time is greater than a client-specific <44> duration, the client SHOULD <45> delete the FAI message.

## 3.1.7 Other Local Events

None.

## 3.2 Server Details

Clients operate on folders and messages using the protocols specified in [\[MS-OXCFOld\]](#) and [\[MS-OXCMSG\]](#). How a server operates on folders and messages is implementation-dependent, but the results of any such operations MUST be exposed to clients in a manner that is consistent with the Configuration Information Protocol.

### 3.2.1 Abstract Data Model

None.

### 3.2.2 Timers

None.

### 3.2.3 Initialization

None.

### 3.2.4 Higher-Layer Triggered Events

#### 3.2.4.1 Reading Configuration Data

If multiple configuration data messages, as specified in section [2.2.2](#), of the same type are found, the configuration data messages are deemed in conflict and MUST be resolved. If no specific conflict resolution algorithm is available, the server SHOULD pick the message with the earliest creation time stored in the **PidTagCreationTime** property ([\[MS-OXCMSG\]](#) section 2.2.2.3) when opening the configuration data message, and the rest of the configuration data messages SHOULD be deleted from the **message store**.

##### 3.2.4.1.1 Reading Working Hours

The server is responsible for enforcing **permissions** that the user grants to the **Calendar special folder**. If the client tries to access the configuration data message, as specified in section [2.2.2](#), without the necessary permissions, the server MUST deny access to the message.

##### 3.2.4.1.2 Reading Category List

The server SHOULD [<46>](#) limit the size of the **XML** document that it will parse to 512 kilobytes.

The server is responsible for enforcing **permissions** that the user grants to the **Calendar special folder**. If the client tries to access the configuration data message, as specified in section [2.2.2](#), without the necessary permissions, the server MUST deny access to the message.

#### 3.2.4.2 Writing Configuration Data

If multiple configuration data messages, as specified in section [2.2.2](#), of the same type are found, the configuration data messages are deemed in conflict and MUST be resolved. If no specific conflict resolution algorithm is available, the server SHOULD pick the message with the earliest modification time stored in the **PidTagLastModificationTime** property ([\[MS-OXCMSG\]](#) section 2.2.2.2) when saving the configuration data message, and the rest of the configuration data messages SHOULD be deleted from the **message store**.

### 3.2.4.3 Reading View Definitions

To read the list of available view definitions for a folder as specified in section [2.2.6](#), the server MUST enumerate all of the view definition **FAI** messages in the folders, searching for a match on the **PidTagMessageClass** property ([\[MS-OXCMSG\]](#) section 2.2.1.3) and the **PidTagViewDescriptorVersion** property (section [2.2.6.4](#)) as specified in section 2.2.6.

After the server has built the list of view definition messages, it can select one of them by using the **PidTagViewDescriptorName** property (section [2.2.6.2](#)). After it has selected a view definition message, the server MUST read the settings from the **PidTagViewDescriptorBinary** property (section [2.2.6.1](#)) and the **PidTagViewDescriptorStrings** property (section [2.2.6.3](#)) on the message.

### 3.2.4.4 Reading Folder Flags

Reading and writing each of the **subproperties** in the folder flags, as specified in section [2.2.7](#), are triggered by different events.

#### 3.2.4.4.1 Reading ExtendedFolderFlags

The server MUST read the bit flags in the **ExtendedFolderFlags subproperty** before it can display the folder in the UI.

#### 3.2.4.4.2 Reading SearchFolderID

The server MUST read the value of the **SearchFolderID** subproperty from every **search folder**, as specified in [\[MS-OXOSRCH\]](#) section 2.2.4, in the Finder **special folder**. Any search folder that has this **subproperty** is a persistent search folder, and the server SHOULD display the search folder as such in the UI. Searches with the Finder special folder are further specified in [\[MS-OXOSRCH\]](#) section 3.1.4.1.2. For more details about the Finder special folder, see [\[MS-OXOSFLD\]](#).

### 3.2.4.5 Writing Folder Flags

In each case where the server needs to write a new value of one of the **subproperties** to the folder, it MUST preserve the values of any other unmodified subproperties on the folder, as specified in section [2.2.7](#).

Folder flags are defined in section 2.2.7.

#### 3.2.4.5.1 Writing ExtendedFolderFlags

Any time the user changes one of the display options for a folder, the server MUST rewrite the **ExtendedFolderFlags subproperty** to that folder.

#### 3.2.4.5.2 Writing ToDoFolderVersion

When the server re-creates or resets the criteria on the To-Do Search folder, it MUST set the **ToDoFolderVersion subproperty** on the folder. For more details about the To-Do Search folder, see [\[MS-OXOSFLD\]](#) section 3.1.1.2 and [\[MS-OXOSFLD\]](#) section 3.1.4.1.2.

### 3.2.4.6 Applying a Category to a Message

The server MUST store any new **categories** assigned to the **PidNameKeywords** property (section [2.2.8.7](#)).

## 3.2.5 Message Processing Events and Sequencing Rules

### 3.2.5.1 Processing a Change to a Conversation Action FAI Message

As specified in section 2.2.8.8, the client locates all **E-mail objects** in the **message store** that have a **PidTagConversationId** property ([MS-OXOMSG] section 2.2.1.2) matching bytes 6-21 of the **PidTagConversationIndex** property (section 2.2.8.8) on the **FAI** message and that have a **PidTagMessageDeliveryTime** property ([MS-OXOMSG] section 2.2.3.9) value greater than the value of the **PidLidConversationActionMaxDeliveryTime** property (section 2.2.8.2) on the FAI message.

When the client uploads a change to a conversation action FAI message, as specified in section 2.2.8, the server SHOULD<47> perform the appropriate **action** on all located E-mail objects, based on the changes to the FAI message, as specified in the following table (more than one action can apply to a given change).

FAI message change	Action to apply on the E-mail object
The value of the <b>PidLidConversationActionMoveFolderEid</b> property (section 2.2.8.3) is changed to an array of size 0.	If the E-mail object is not in the Sent Items <b>special folder</b> , move the E-mail object to the Deleted Items <b>special folder</b> .
The value of the <b>PidLidConversationActionMoveFolderEid</b> property was an array of size 0, now unset.	If the E-mail object is in the Deleted Items special folder, move the E-mail object to the <b>Inbox folder</b> .
The value of the <b>PidLidConversationActionMoveFolderEid</b> property changed to a non-empty array.	If the <b>PidLidConversationActionMoveStoreEid</b> property (section 2.2.8.4) is unset and if the E-mail object is not in the Sent Items special folder, move the E-mail object to the folder with an <b>EntryID</b> equal to the new <b>PidLidConversationActionMoveFolderEid</b> property on the FAI message. If the <b>PidLidConversationActionMoveStoreEid</b> property is set, do nothing.
The value of the <b>PidLidConversationActionMoveFolderEid</b> property was a non-empty array, now unset.	None.
The <b>PidNameKeywords</b> property (section 2.2.8.7) is unset, set, or modified.	For all <b>categories</b> added in this change, append the category to the <b>PidNameKeywords</b> property of each E-mail object. For all categories removed in this change, remove the category from the <b>PidNameKeywords</b> property of each E-mail object.

### 3.2.5.2 Processing a Conversation Action on Incoming E-mail Objects

When a new **E-mail object** arrives in a **message store**, the server SHOULD<48> do the following.

1. As specified in section 2.2.8.8, locate the conversation action **FAI** message, as specified in section 2.2.8, in the conversation actions Settings **special folder** with bytes 6-21 of **PidTagConversationIndex** property (section 2.2.8.8) corresponding to the **PidTagConversationId** property ([MS-OXOMSG] section 2.2.1.2) of the incoming E-mail object. If no FAI message is found, the server SHOULD NOT process any conversation actions on the incoming E-mail object.

2. Perform the appropriate **actions** on the incoming E-mail object based on the properties of the FAI message, as specified in the following table (more than one property can apply to a given FAI message).

Properties on the FAI message	Action to perform on the incoming E-mail object
The <b>PidNameKeywords</b> property (section <a href="#">2.2.8.7</a> ) is set.	The <b>categories</b> in the FAI message SHOULD be appended to the <b>PidNameKeywords</b> property of the incoming E-mail object.
The <b>PidLidConversationActionMoveStoreEid</b> property (section <a href="#">2.2.8.4</a> ) is not set and the value of the <b>PidLidConversationActionMoveFolderEid</b> property (section <a href="#">2.2.8.3</a> ) is not an array of size zero.	The server SHOULD move the incoming E-mail object to the folder with an <b>EntryID</b> equal to the <b>PidLidConversationActionMoveFolderEid</b> property on the FAI message.
The <b>PidLidConversationActionMoveStoreEid</b> property is not set and the value of the <b>PidLidConversationActionMoveFolderEid</b> property is an array of size zero.	The server SHOULD move the incoming E-mail object to the Deleted Items special folder.
The <b>PidLidConversationActionMoveStoreEid</b> property is set.	The server SHOULD NOT move the incoming E-mail object.

### 3.2.5.3 Processing a Conversation Action on Outgoing E-mail Objects

When the server saves a copy of an outgoing **E-mail object**, it SHOULD [<49>](#) perform the following additional processing on the copy of the E-mail object in the Sent Items **special folder**.

1. As specified in section [2.2.8.8](#), the server SHOULD locate the conversation action **FAI** message, as specified in section [2.2.8](#), in the conversation actions Settings special folder with bytes 6-21 of the **PidTagConversationIndex** property (section [2.2.8.8](#)) corresponding to the **PidTagConversationId** property ([\[MS-OXOMSG\]](#) section [2.2.1.2](#)) of the sent E-mail object. If no FAI message is found, the server SHOULD NOT process any conversation actions on the sent E-mail object.
2. If the **PidNameKeywords** property (section [2.2.8.7](#)) is set on the FAI message, the **categories** in the FAI message SHOULD be appended to the **PidNameKeywords** property of the sent E-mail object.

### 3.2.6 Timer Events

None.

### 3.2.7 Other Local Events

None.



## 4 Protocol Examples

### 4.1 Configuration Data

#### 4.1.1 Dictionaries

The following is a sample **XML** document stored in the **PidTagRoamingDictionary** property (section [2.2.2.2](#)) on a configuration data message, as described in section [2.2.5.1](#).

```
<?xml version="1.0"?>
<UserConfiguration>
<Info version="Outlook.12"/>
<Data>
<e k="18-piAutoProcess" v="3-True"/>
<e k="18-piRemindDefault" v="9-15"/>
<e k="18-piReminderUpgradeTime" v="9-212864507"/>
<e k="18-OLPrefsVersion" v="9-1"/>
</Data>
</UserConfiguration>
```

#### 4.1.2 Working Hours

The following is a sample **XML** document stored in the **PidTagRoamingXmlStream** property (section [2.2.2.3](#)) on a configuration data message, as described in section [2.2.5.2.1](#).

```
<?xml version="1.0"?>
<Root xmlns="WorkingHours.xsd">
<WorkHoursVersion1>
<TimeZone>
<Bias>480</Bias>
<Standard>
<Bias>0</Bias>
<ChangeDate>
<Time>02:00:00</Time>
<Date>0000/11/01</Date>
<DayOfWeek>0</DayOfWeek>
</ChangeDate>
</Standard>
<DaylightSavings>
<Bias>-60</Bias>
<ChangeDate>
<Time>02:00:00</Time>
<Date>0000/03/02</Date>
<DayOfWeek>0</DayOfWeek>
</ChangeDate>
</DaylightSavings>
<Name>Pacific Standard Time</Name>
</TimeZone>
<TimeSlot>
<Start>09:00:00</Start>
<End>17:00:00</End>
</TimeSlot>
<WorkDays>Monday Tuesday Wednesday Thursday Friday</WorkDays>
</WorkHoursVersion1>
</Root>
```

### 4.1.3 Category List

The following is a sample **XML** document stored in the **PidTagRoamingXmlStream** property (section [2.2.2.3](#)) on a configuration data message, as described in section [2.2.5.2.2](#).

```
<?xml version="1.0"?>
<categories default="Red Category"
  lastSavedSession="5"
  lastSavedTime="2007-12-28T03:01:50.429"
  xmlns="CategoryList.xsd">
  <category name="Red Category"
    color="0"
    keyboardShortcut="0"
    usageCount="7"
    lastTimeUsedNotes="1601-01-01T00:00:00.000"
    lastTimeUsedJournal="1601-01-01T00:00:00.000"
    lastTimeUsedContacts="1601-01-01T00:00:00.000"
    lastTimeUsedTasks="1601-01-01T00:00:00.000"
    lastTimeUsedCalendar="2007-11-28T20:05:04.703"
    lastTimeUsedMail="1601-01-01T00:00:00.000"
    lastTimeUsed="2007-11-28T20:05:04.703"
    lastSessionUsed="3"
    guid="{2B7FC69C-7046-44A2-8FF3-007D7467DC82}"/>
  <category name="Blue Category"
    color="7"
    keyboardShortcut="0"
    usageCount="6"
    lastTimeUsedNotes="1601-01-01T00:00:00.000"
    lastTimeUsedJournal="1601-01-01T00:00:00.000"
    lastTimeUsedContacts="1601-01-01T00:00:00.000"
    lastTimeUsedTasks="1601-01-01T00:00:00.000"
    lastTimeUsedCalendar="2007-12-28T03:00:07.102"
    lastTimeUsedMail="1601-01-01T00:00:00.000"
    lastTimeUsed="2007-12-28T03:00:07.102"
    lastSessionUsed="5"
    guid="{33A1EAE3-8E5E-4912-9580-69FC764FEA35}"/>
  <category name="Purple Category"
    color="8"
    keyboardShortcut="0"
    usageCount="7"
    lastTimeUsedNotes="1601-01-01T00:00:00.000"
    lastTimeUsedJournal="1601-01-01T00:00:00.000"
    lastTimeUsedContacts="1601-01-01T00:00:00.000"
    lastTimeUsedTasks="1601-01-01T00:00:00.000"
    lastTimeUsedCalendar="2007-11-28T20:03:06.018"
    lastTimeUsedMail="1601-01-01T00:00:00.000"
    lastTimeUsed="2007-11-28T20:03:06.018"
    lastSessionUsed="3"
    guid="{58AB8B90-BB05-428A-B8D2-F1C93968C144}"/>
  <category name="Green Category"
    color="4"
    keyboardShortcut="0"
    usageCount="7"
    lastTimeUsedNotes="1601-01-01T00:00:00.000"
    lastTimeUsedJournal="1601-01-01T00:00:00.000"
    lastTimeUsedContacts="1601-01-01T00:00:00.000"
    lastTimeUsedTasks="1601-01-01T00:00:00.000"
    lastTimeUsedCalendar="2007-11-28T20:05:19.468"
    lastTimeUsedMail="1601-01-01T00:00:00.000"
    lastTimeUsed="2007-11-28T20:05:19.468"
    lastSessionUsed="3"
    guid="{B60A1A8C-ECA3-4573-9CD8-842C284DCA59}"/>
  <category name="Orange Category"
    color="1"
    keyboardShortcut="0"
    usageCount="2"
    lastTimeUsedNotes="1601-01-01T00:00:00.000"
    lastTimeUsedJournal="1601-01-01T00:00:00.000"
```

```

        lastTimeUsedContacts="1601-01-01T00:00:00.000"
        lastTimeUsedTasks="1601-01-01T00:00:00.000"
        lastTimeUsedCalendar="1601-01-01T00:00:00.000"
        lastTimeUsedMail="1601-01-01T00:00:00.000"
        lastTimeUsed="2007-11-21T00:07:48.517"
        lastSessionUsed="0"
        guid="{F5F57BF3-A188-48D5-A096-863ACACB2D36}"
        renameOnFirstUse="1"/>
    <category name="Yellow Category"
        color="3"
        keyboardShortcut="0"
        usageCount="5"
        lastTimeUsedNotes="1601-01-01T00:00:00.000"
        lastTimeUsedJournal="1601-01-01T00:00:00.000"
        lastTimeUsedContacts="1601-01-01T00:00:00.000"
        lastTimeUsedTasks="1601-01-01T00:00:00.000"
        lastTimeUsedCalendar="2007-11-21T01:04:25.048"
        lastTimeUsedMail="1601-01-01T00:00:00.000"
        lastTimeUsed="2007-11-21T01:04:25.048"
        lastSessionUsed="2"
        guid="{CA791DEF-676C-4177-A839-CAF8878258F0}"/>
    <category name="Black Category"
        color="14"
        keyboardShortcut="0"
        usageCount="6"
        lastTimeUsedNotes="1601-01-01T00:00:00.000"
        lastTimeUsedJournal="1601-01-01T00:00:00.000"
        lastTimeUsedContacts="1601-01-01T00:00:00.000"
        lastTimeUsedTasks="1601-01-01T00:00:00.000"
        lastTimeUsedCalendar="2007-12-14T02:43:30.719"
        lastTimeUsedMail="1601-01-01T00:00:00.000"
        lastTimeUsed="2007-12-14T02:43:30.719"
        lastSessionUsed="4"
        guid="{77EA6484-D31F-496E-AA07-DC4839D4327A}"/>
</categories>

```

## 4.2 View Definitions

In this example, a client creates a new table view that includes the following 10 columns:

- Importance
- Reminder
- Icon
- Flag Status
- Attachment
- From
- Subject
- Received
- Size
- Categories

When this new view is applied and transported to the server, the **PidTagViewDescriptorBinary** property (section [2.2.6.1](#)) stores the column description data and the **PidTagViewDescriptorStrings** property (section [2.2.6.3](#)) stores the column headers.

## 4.2.1 PidTagViewDescriptorBinary

The following is the value of the **PidTagViewDescriptorBinary** property (section [2.2.6.1](#)) that represents the view described in section [4.2](#).

```
0000: 00 00 00 00 00 00 00 00 00-08 00 00 00 02 00 00 00
0010: 00 00 00 00 0B 00 00 00 00-08 00 00 00 00 00 00 00
0020: 00 00 00 00 00 00 00 00 00-00 00 00 00 00 00 00 00
0030: 00 00 00 00 00 00 00 00 00-00 00 00 00 01 00 04 00
0040: 07 00 00 00 00 00 00 00 00-28 00 00 00 00 00 00 00
0050: 00 00 00 00 00 00 00 00 00-00 00 00 00 04 00 00 00
0060: 03 00 17 00 12 00 00 00 00-00 00 00 00 4A 2F 00 00
0070: 00 00 00 00 00 00 00 00 00-00 00 00 00 00 00 00 00
0080: 17 00 00 00 0B 00 03 85-12 00 00 00 00 00 00 00 00
0090: 40 3F 00 00 00 00 00 00 00-00 00 00 00 34 01 9A 11
00a0: 00 00 00 00 03 85 00 00-08 20 06 00 00 00 00 00 00
00b0: C0 00 00 00 00 00 00 00 46-1E 00 1A 00 12 00 00 00
00c0: 00 00 00 00 0A 27 00 00-00 00 00 00 00 00 00 00
00d0: 00 00 00 00 00 00 00 00 00-1A 00 00 00 03 00 90 10
00e0: 12 00 00 00 00 00 00 00 00-4A 2F 00 00 00 00 00 00
00f0: 00 00 00 00 00 00 00 00 00-00 00 00 00 90 10 00 00
0100: 0B 00 1B 0E 12 00 00 00-00 00 00 00 00 4A 2F 00 00
0110: 00 00 00 00 00 00 00 00 00-00 00 00 00 00 00 00 00
0120: 1B 0E 00 00 1E 00 42 00-0C 00 00 00 00 00 00 00 00
0130: 00 2F 00 00 00 00 00 00 00-00 00 00 00 00 00 00 00
0140: 00 00 00 00 42 00 00 00-1E 00 37 00 11 00 00 00 00
0150: 00 00 00 00 2F 00 00 00-00 00 00 00 00 00 00 00 00
0160: 00 00 00 00 00 00 00 00 00-37 00 00 00 40 00 06 0E
0170: 10 00 00 00 00 00 00 00 00-40 2F 00 00 00 00 00 00
0180: 00 00 00 00 00 00 00 00 00-00 00 00 00 06 0E 00 00
0190: 03 00 08 0E 0C 00 00 00-00 00 00 00 40 27 00 00
01a0: 00 00 00 00 00 00 00 00 00-00 00 00 00 00 00 00 00
01b0: 08 0E 00 00 1E 10 00 00-12 00 00 00 00 00 00 00
01c0: 20 7B 00 00 00 00 00 00 00-00 00 00 00 34 01 9A 11
01d0: 01 00 00 00 64 A7 22 00-29 03 02 00 00 00 00 00 00
01e0: C0 00 00 00 00 00 00 00 46-12 00 00 00 4B 00 65 00
01f0: 79 00 77 00 6F 00 72 00-64 00 73 00 00 00 00 00
```

The first 8 bytes are reserved:

```
0000: 00 00 00 00 00 00 00 00
```

The next four bytes specify the **Version** field. After the **Version** field is the value for the **ulFlags** field.

```
0008: 08 00 00 00 02 00 00 00
```

**Version:** 0x00000008

**ulFlags:** 0x00000002 (VDF\_SORTDESCENDING)

The value of this **ulFlags** field means that the view is sorted by descending order.

Next are the **pres** and **cvcd** fields.

```
0010: 00 00 00 00 0B 00 00 00
```

**pres:** NULL

**cvcd:** 0x0B

The value 0x0B in the **cvcd** field means 11 columns (including the blank column) are stored in this packet.

Next are the **ivcdSort** and **cCat** fields.

```
0018: 08 00 00 00 00 00 00 00
```

**ivcdSort:** 0x08

**cCat:** 0x0

These values for the **ivcdSort** and **cCat** fields mean that the view is sorted by column "Received" and the **sort order** is descending (as specified by the **ulFlags** field).

**cCat** is zero; this means that the table is not grouped.

Next is the **ulCatSort** field:

```
0020: 00 00 00 00
```

**ulCatSort:** 0x0

Because the table is not grouped, the value of the **ulCatSort** field is zero.

The next 24 bytes are reserved.

```
0024-003b
```

**reserved**

All column information starts from address 003C. Because this view has not defined **restriction**, the buffer does not store any restriction values.

#### 4.2.1.1 Blank Column

The first column is Blank column. The column uses buffer address between 003C and 005F.

```
0030:                                     01 00 04 00
0040: 07 00 00 00 00 00 00 00 00-28 00 00 00 00 00 00 00
0050: 00 00 00 00 00 00 00 00 00-00 00 00 00 04 00 00 00
```

**PropertyType:** 0x0001

```
0030:                                     01 00
```

**PropertyID:** 0x0004

0030: 04 00

**Cx:** 0x00000007

0040: 07 00 00 00

**Reserved1:**

0040: 00 00 00 00

**Flags:** 0x00000028, or (VCDF\_BITMAP | VCDF\_NOT\_SORTABLE)

0040: 28 00 00 00

**Reserved2:**

0040: 00 00 00 00  
0050: 00 00 00 00 00 00 00 00

**Kind:** 0x00000000

0050: 00 00 00 00

**ID:** 0x00000004

0050: 04 00 00 00

#### 4.2.1.2 Column "Importance"

Next in the buffer is the description of the "Importance" column.

0060: 03 00 17 00 12 00 00 00-00 00 00 00 4A 2F 00 00  
0070: 00 00 00 00 00 00 00 00-00 00 00 00 00 00 00 00  
0080: 17 00 00 00

**PropertyType:** 0x0003

0060: 03 00

**PropertyID:** 0x0017 (**PidTagImportance** ([\[MS-OXCMSG\]](#) section 2.2.1.11))

0060: 17 00

**Cx:** 0x00000012

0060: 12 00 00 00

**Reserved1:** 0x00000000

0060: 00 00 00 00

**Flags:** 0x00002F4A, or (VCDF\_BITMAP | VCDF\_CENTER\_JUSTIFY | VCDF\_SORTDLG | VCDF\_GROUPDLG | VCDF\_SORTDESCENDING | VCDF\_RCOLUMNSDLG | VCDF\_MOVEABLE | VCDF\_COLUMNSDLG)

0060: 4A 2F 00 00

**Reserved2:** 0x00000000000000000000000000000000

0070: 00 00 00 00 00 00 00 00 00-00 00 00 00

**Kind:** 0x00000000

0070: 00 00 00 00

**ID:** 0x00000017

0080: 17 00 00 00

### 4.2.1.3 Column "Reminder"

Next in the buffer is the description of the "Reminder" column.

0080: 0B 00 03 85-12 00 00 00 00 00 00 00  
0090: 40 3F 00 00 00 00 00 00-00 00 00 00 34 01 9A 11  
00a0: 00 00 00 00 00 03 85 00 00-08 20 06 00 00 00 00 00  
00b0: C0 00 00 00 00 00 00 46

**PropertyType:** 0x000B

0080: 0B 00

**PropertyID:** 0x8503 (**PidLidReminderSet** ([\[MS-OXORMDR\]](#) section 2.2.1.1))

0080: 03 85

**Cx:** 0x00000012

0080: 12 00 00 00

**Reserved1:** 0x00000000

0080: 00 00 00 00

**Flags:** 0x00003F40, or (VCDF\_NAMEDPROP | VCDF\_SORTDESCENDING | VCDF-RCOLUMNSDLG | VCDF\_SORTDLG | VCDF\_GROUPDLG | VCDF\_MOVEABLE | VCDF\_COLUMNSDLG)

0090: 40 3F 00 00

**Reserved2:** 0x119A01340000000000000000

0090: 00 00 00 00-00 00 00 00 34 01 9A 11

**Kind:** 0x00000000

00a0: 00 00 00 00

**ID:** 0x00008503

00a0: 03 85 00 00

**Guid:** {00062008-0000-0000-C000-000000000046}

00a0: 08 20 06 00 00 00 00 00  
00b0: c0 00 00 00 00 00 00 46

#### 4.2.1.4 Column "Icon"

Next in the buffer is the description of the "Icon" column.

00b0: 1E 00 1A 00 12 00 00 00  
00c0: 00 00 00 00 0A 27 00 00-00 00 00 00 00 00 00  
00d0: 00 00 00 00 00 00 00 00-1A 00 00 00



**PropertyType:** 001E

**PropertyID:** 0x001A (**PidTagMessageClass** ([\[MS-OXCMSG\]](#) section 2.2.1.3))

**Cx:** 0x00000012

**Flags:** 0x0000270A

**Kind:** 0x00000000

**ID:** 0x0000001A

#### 4.2.1.5 Column "Flag Status"

Next in the buffer is the description of the "Flag Status" column.

```
00d0:                                     03 00 90 10
00e0: 12 00 00 00 00 00 00 00 00-4A 2F 00 00 00 00 00 00
00f0: 00 00 00 00 00 00 00 00 00-00 00 00 00 90 10 00 00
```

**PropertyType:** 0x0003

**PropertyID:** 0x1090 (**PidTagFlagStatus** ([\[MS-OXOFLAG\]](#) section 2.2.1.1))

**Cx:** 0x00000012

**Flags:** 0x00002F4A

**Kind:** 0x00000000

**ID:** 0x00001090

#### 4.2.1.6 Column "Attachment"

Next in the buffer is the description of the "Attachment" column.

```
0100: 0B 00 1B 0E 12 00 00 00-00 00 00 00 4A 2F 00 00
0110: 00 00 00 00 00 00 00 00-00 00 00 00 00 00 00 00
0120: 1B 0E 00 00
```

**PropertyType:** 0x000B

**PropertyID:** 0x0E1B (**PidTagHasAttachments** ([\[MS-OXCMSG\]](#) section 2.2.1.2))

**Cx:** 0x00000012

**Flags:** 0x00002F4A

**Kind:** 0x00000000

**ID:** 0x00000E1B

#### 4.2.1.7 Column "From"

Next in the buffer is the description of the "From" column.

```
0120:                                     1E 00 42 00-0C 00 00 00 00 00 00 00
0130: 00 2F 00 00 00 00 00 00-00 00 00 00 00 00 00 00
```

```
0140: 00 00 00 00 42 00 00 00
```

**PropertyType:** 0x001E

**PropertyID:** 0x0042 (**PidTagSentRepresentingName** ([\[MS-OXOMSG\] section 2.2.1.57](#)))

**Cx:** 0x0000000C

**Flags:** 0x00002F00

**Kind:** 0x00000000

**ID:** 0x00000042

#### 4.2.1.8 Column "Subject"

Next in the buffer is the description of the "Subject" column.

```
0140: 1E 00 37 00 11 00 00 00
0150: 00 00 00 00 00 2F 00 00-00 00 00 00 00 00 00
0160: 00 00 00 00 00 00 00 00-37 00 00 00
```

**PropertyType:** 0x001E

**PropertyID:** 0x0037 (**PidTagSubject** (section [2.2.8.10](#)))

**Cx:** 0x00000011

**Flags:** 0x00002F00

**Kind:** 0x00000000

**ID:** 0x00000037

#### 4.2.1.9 Column "Received"

Next in the buffer is the description of column "Received".

```
0160: 40 00 06 0E
0170: 10 00 00 00 00 00 00 00-40 2F 00 00 00 00 00
0180: 00 00 00 00 00 00 00 00-00 00 00 06 0E 00 00
```

**PropertyType:** 0x0040

**PropertyID:** 0x00E06 (**PidTagMessageDeliveryTime** ([\[MS-OXOMSG\] section 2.2.3.9](#)))

**Cx:** 0x00000010

**Flags:** 0x00002F40

**Kind:** 0x00000000

**ID:** 0x000000E06

#### 4.2.1.10 Column "Size"

Next in the buffer is the description of the "Size" column.

```
0190: 03 00 08 0E 0C 00 00 00-00 00 00 00 40 27 00 00
01a0: 00 00 00 00 00 00 00 00-00 00 00 00 00 00 00 00
01b0: 08 0E 00 00
```

**PropertyType:** 0x0003

**PropertyID:** 0x0E08 (**PidTagMessageSize** ([\[MS-OXCFOLD\]](#) section 2.2.2.2.1.10))

**Cx:** 0x0000000C

**Flags:** 0x00002740

**Kind:** 0x00000000

**ID:** 0x00000E08

#### 4.2.1.11 Column "Categories"

Next in the buffer is the description of the "categories" column. This is a column that has the **named property PidNameKeywords** (section [2.2.8.7](#)).

```
01b0: 1E 10 00 00-12 00 00 00 00 00 00 00 00 00 00
01c0: 20 7B 00 00 00 00 00 00-00 00 00 00 34 01 9A 11
01d0: 01 00 00 00 64 A7 22 00-29 03 02 00 00 00 00 00
01e0: C0 00 00 00 00 00 00 46-12 00 00 00 4B 00 65 00
01f0: 79 00 77 00 6F 00 72 00-64 00 73 00 00 00 00
```

**PropertyType:** 0x101E

**PropertyID:** 0x0000

**Cx:** 0x00000012

**Flags:** 0x00007B20

**Kind:** 0x00000001

**Guid:** {00020329-0000-0000-C000-000000000046}

**BufferLength:** 0x00000012

**Buffer:** "Keywords"

#### 4.2.2 PidTagViewDescriptorStrings

In this example, the **PidTagViewDescriptorStrings** property (section [2.2.6.3](#)) contains all the column headers delimited by "\n".

```
\nImportance\nReminder\nIcon\nFlag
Status\nAttachment\nFrom\nSubject\nReceived\nSize\nCategories\n
```

**Note** The value of the **PidTagViewDescriptorStrings** property begins with "\n" because the first string value in this example is an empty string.

## 4.3 Conversation Actions

### 4.3.1 A Categorized and Moved Conversation Action

In this example, a user has a **conversation** entitled "Solidifying our proposal to Fabrikam, Inc." in which the last **E-mail object** was delivered at 3:31 PM on 2/17/2009, Pacific Standard Time (11:31 PM on 2/17/2009, **UTC**). The E-mail objects in this conversation share the same value of the **PidTagConversationId** property ([\[MS-OXOMSG\]](#) section 2.2.1.2).

```
0000: B7 A2 B5 C4 AA 65 1C F2-D3 8C 62 8C 0E AF 56 C4
```

Around 3:50 PM, the user adds the **categories** "Fabrikam" and "Business Proposals" to the conversation. At 3:51 PM, the user moves the conversation to a folder, "FY09 Archive", that has the following **EntryID**.

```
0000: 00 00 00 00 0C 99 F4 ED-A2 F1 E4 41 B1 5B 9B 25
0010: 10 91 3E 9D 02 81 00 00
```

The folder is in a **message store**, "Archived Mail", that has the following EntryID.

```
0000: 00 00 00 00 38 A1 BB 10-05 E5 10 1A A1 BB 08 00
0010: 2B 2A 56 C2 00 00 6D 73-70 73 74 2E 64 6C 6C 00
0020: 00 00 00 00 4E 49 54 41-F9 BF B8 01 00 AA 00 37
0030: D9 6E 00 00 00 00 43 00-3A 00 5C 00 44 00 6F 00
0040: 63 00 75 00 6D 00 65 00-6E 00 74 00 73 00 20 00
0050: 61 00 6E 00 64 00 20 00-53 00 65 00 74 00 74 00
0060: 69 00 6E 00 67 00 73 00-5C 00 61 00 6A 00 61 00
0070: 6D 00 65 00 73 00 5C 00-4C 00 6F 00 63 00 61 00
0080: 6C 00 20 00 53 00 65 00-74 00 74 00 69 00 6E 00
0090: 67 00 73 00 5C 00 41 00-70 00 70 00 6C 00 69 00
00a0: 63 00 61 00 74 00 69 00-6F 00 6E 00 20 00 44 00
00b0: 61 00 74 00 61 00 5C 00-4D 00 69 00 63 00 72 00
00c0: 6F 00 73 00 6F 00 66 00-74 00 5C 00 4F 00 75 00
00d0: 74 00 6C 00 6F 00 6F 00-6B 00 5C 00 41 00 72 00
00e0: 63 00 68 00 69 00 76 00-65 00 64 00 20 00 4D 00
00f0: 61 00 69 00 6C 00 2E 00-70 00 73 00 74 00 00 00
```

The resulting **FAI** message in the conversation action Settings **special folder** will have the following properties.

Property name	Value
<b>PidLidConversationActionLastAppliedTime</b> (section <a href="#">2.2.8.1</a> )	23:51:11 2/17/2009
<b>PidLidConversationActionMaxDeliveryTime</b> (section <a href="#">2.2.8.2</a> )	23:31:42 2/17/2009
<b>PidLidConversationActionMoveFolderEid</b> (section <a href="#">2.2.8.3</a> )	0000: 00 00 00 00 0C 99 F4 ED-A2 F1 E4 41 B1 5B 9B 25 0010: 10 91 3E 9D 02 81 00 00
<b>PidLidConversationActionMoveStoreEid</b> (section <a href="#">2.2.8.4</a> )	0000: 00 00 00 00 38 A1 BB 10-05 E5 10 1A A1 BB 08 00 0010: 2B 2A 56 C2 00 00 6D 73-70 73 74 2E 64 6C 6C 00

Property name	Value
	0020: 00 00 00 00 4E 49 54 41-F9 BF B8 01 00 AA 00 37 0030: D9 6E 00 00 00 00 43 00-3A 00 5C 00 44 00 6F 00 0040: 63 00 75 00 6D 00 65 00-6E 00 74 00 73 00 20 00 0050: 61 00 6E 00 64 00 20 00-53 00 65 00 74 00 74 00 0060: 69 00 6E 00 67 00 73 00-5C 00 61 00 6A 00 61 00 0070: 6D 00 65 00 73 00 5C 00-4C 00 6F 00 63 00 61 00 0080: 6C 00 20 00 53 00 65 00-74 00 74 00 69 00 6E 00 0090: 67 00 73 00 5C 00 41 00-70 00 70 00 6C 00 69 00 00a0: 63 00 61 00 74 00 69 00-6F 00 6E 00 20 00 44 00 00b0: 61 00 74 00 61 00 5C 00-4D 00 69 00 63 00 72 00 00c0: 6F 00 73 00 6F 00 66 00-74 00 5C 00 4F 00 75 00 00d0: 74 00 6C 00 6F 00 6F 00-6B 00 5C 00 41 00 72 00 00e0: 63 00 68 00 69 00 76 00-65 00 64 00 20 00 4D 00 00f0: 61 00 69 00 6C 00 2E 00-70 00 73 00 74 00 00 00
<b>PidLidConversationActionVersion</b> (section <a href="#">2.2.8.5</a> )	0x003CCCCC
<b>PidNameKeywords</b> (section <a href="#">2.2.8.7</a> )	{"Fabrikam", "Business Proposals"}
<b>PidTagConversationIndex</b> (section <a href="#">2.2.8.8</a> )	0000: 01 00 00 00 00 00 B7 A2- B5 C4 AA 65 1C F2 D3 8C 0000: 62 8C 0E AF 56 C4
<b>PidTagMessageClass</b> (section <a href="#">2.2.8.9</a> )	"IPM.ConversationAction"
<b>PidTagSubject</b> (section <a href="#">2.2.8.10</a> )	"Conv.Action: Solidifying our proposal to Fabrikam, Inc."

## 4.4 Navigation Shortcut

### 4.4.1 Group Header

Ryan Gregg creates a new **group header** named "My Work Calendars" to group his shortcuts in his e-mail client application.

The client sends a **PropCreateMessage ROP** request ([\[MS-OXCROPS\]](#) section 2.2.6.2) that has a value for the **FolderId** field set to the ID of the **Common Views folder** and the **Associated** flag set to 1 and then waits for the server to respond. The server response contains a **handle** to the **Message object**.

The client uses the Session ID 0x12345678 (generated at random on initialization) and generates a **GUID** for this shortcut: 5BA943D8DAAA462CA63E9136F65C8681.

The client then sends a **RopSetProperties** ROP request ([MS-OXCROPS] section 2.2.8.6) to set the following properties. The property data types are all defined in ([MS-OXCADATA] section 2.11.1).

Property name	PropertyID	Property type	Value
<b>PidTagMessageClass</b> ([MS-OXCMSG] section 2.2.1.3)	0x001A	0x001F (PtypString)	"IPM.Microsoft.WunderBar.Link"
<b>PidTagNormalizedSubject</b> (section 2.2.9.2)	0x0E1D	0x001F (PtypString)	"My Work Calendars"
<b>PidTagWlinkGroupHeaderID</b> (section 2.2.9.3)	0x6842	0x0048 (PtypGuid)	5BA943D8DAAA462CA63E9136F65C8681
<b>PidTagWlinkSaveStamp</b> (section 2.2.9.4)	0x6847	0x0003 (PtypInteger32)	0x12345678
<b>PidTagWlinkType</b> (section 2.2.9.5)	0x6849	0x0003 (PtypInteger32)	0x00000004
<b>PidTagWlinkFlags</b> (section 2.2.9.6)	0x684A	0x0003 (PtypInteger32)	0x00000000
<b>PidTagWlinkOrdinal</b> (section 2.2.9.7)	0x684B	0x0102 (PtypBinary)	0x80
<b>PidTagWlinkFolderType</b> (section 2.2.9.11)	0x684F	0x0048 (PtypGuid)	0278060000000000 C000000000000046
<b>PidTagWlinkSection</b> (section 2.2.9.14)	0x6852	0x0003 (PtypInteger32)	0x00000003

The client then sends a **RopSaveChangesMessage** ROP request ([MS-OXCROPS] section 2.2.6.3) to persist the object on the server, and a **RopRelease** ROP request ([MS-OXCROPS] section 2.2.15.3) to release the object.

#### 4.4.2 Navigation Shortcut

Ryan creates a new shortcut to his folder "Meetings" and wants to group it under the new "My Work Calendars" group he created in the example in section 4.4.1.

The client sends a **RopCreateMessage ROP request** ([MS-OXCROPS] section 2.2.6.2) that has the FolderId set to the ID of the **Common Views folder** and the **Associated** flag set to 1 and then waits for the server to respond. The server response contains a **handle** to the **Message object**.

The client then sends a **RopSetProperties** ROP request ([MS-OXCROPS] section 2.2.8.6) to set the following properties. The property data types are all defined in ([MS-OXCADATA] section 2.11.1).

Property name	PropertyID	Property type	Value
<b>PidTagMessageClass</b> ([MS-OXCMSG] section 2.2.1.3)	0x001A	0x001F (PtypString)	"IPM.Microsoft.WunderBar.Link"
<b>PidTagNormalizedSubject</b> (section 2.2.9.2)	0x0E1D	0x001F (PtypString)	"Meetings"
<b>PidTagWlinkSaveStamp</b> (section 2.2.9.4)	0x6847	0x0003 (PtypInteger32)	0x12345678

Property name	PropertyID	Property type	Value
<b>PidTagWlinkType</b> (section <a href="#">2.2.9.5</a> )	0x6849	0x0003 ( <b>PtypInteger32</b> )	0x00000000
<b>PidTagWlinkFlags</b> (section <a href="#">2.2.9.6</a> )	0x684A	0x0003 ( <b>PtypInteger32</b> )	0x00000000
<b>PidTagWlinkOrdinal</b> (section <a href="#">2.2.9.7</a> )	0x684B	0x0102 ( <b>PtypBinary</b> )	0x80
<b>PidTagWlinkEntryId</b> (section <a href="#">2.2.9.8</a> )	0x684C	0x0102 ( <b>PtypBinary</b> )	See explanation following this table
<b>PidTagWlinkRecordKey</b> (section <a href="#">2.2.9.9</a> )	0x684D	0x0102 ( <b>PtypBinary</b> )	See explanation following this table
<b>PidTagWlinkStoreEntryId</b> (section <a href="#">2.2.9.10</a> )	0x684E	0x0102 ( <b>PtypBinary</b> )	See explanation following this table
<b>PidTagWlinkFolderType</b> (section <a href="#">2.2.9.11</a> )	0x684F	0x0048 ( <b>PtypGuid</b> )	0278060000000000 C000000000000046
<b>PidTagWlinkGroupClsid</b> (section <a href="#">2.2.9.12</a> )	0x6850	0x0048 ( <b>PtypGuid</b> )	5BA943D8DAAA462C A63E9136F65C8681
<b>PidTagWlinkGroupName</b> (section <a href="#">2.2.9.13</a> )	0x6851	0x001F ( <b>PtypString</b> )	"My Work Calendars"
<b>PidTagWlinkSection</b> (section <a href="#">2.2.9.14</a> )	0x6852	0x0003 ( <b>PtypInteger32</b> )	0x00000003

The values of the **PidTagWlinkEntryId**, **PidTagWlinkRecordKey**, and **PidTagWlinkStoreEntryId** properties are copied directly from the corresponding properties of the actual **Calendar folder** as described in section 2.2.9.8, section 2.2.9.9, and section 2.2.9.10.

The client then sends a **RopSaveChangesMessage** ROP request ([MS-OXCROPS] section 2.2.6.3) to persist the object on the server and a **RopRelease** ROP request ([MS-OXCROPS] section 2.2.15.3) to release the object.

## 5 Security

### 5.1 Security Considerations for Implementers

There are no special security considerations specific to the Configuration Information protocol. General security considerations pertaining to the underlying transport apply and are described in [\[MS-OXCMSG\]](#).

### 5.2 Index of Security Parameters

None.

Preliminary



## 6 Appendix A: Product Behavior

The information in this specification is applicable to the following Microsoft products or supplemental software. References to product versions include updates to those products.

- Microsoft Exchange Server 2003
- Microsoft Exchange Server 2007
- Microsoft Exchange Server 2010
- Microsoft Exchange Server 2013
- Microsoft Exchange Server 2016
- Microsoft Exchange Server 2019
- Microsoft Office Outlook 2003
- Microsoft Office Outlook 2007
- Microsoft Outlook 2010
- Microsoft Outlook 2013
- Microsoft Outlook 2016
- Microsoft Outlook 2019
- Microsoft Outlook 2021

Exceptions, if any, are noted in this section. If an update version, service pack or Knowledge Base (KB) number appears with a product name, the behavior changed in that update. The new behavior also applies to subsequent updates unless otherwise specified. If a product edition appears with the product version, behavior is different in that product edition.

Unless otherwise specified, any statement of optional behavior in this specification that is prescribed using the terms "SHOULD" or "SHOULD NOT" implies product behavior in accordance with the SHOULD or SHOULD NOT prescription. Unless otherwise specified, the term "MAY" implies that the product does not follow the prescription.

[<1> Section 2.2.3](#): When Office Outlook 2007, Outlook 2010, Outlook 2013, Outlook 2016, and Outlook 2019 are in Cached Mode and the local cached copy of the category list is in conflict with the copy on the server, Office Outlook 2007, Outlook 2010, Outlook 2013, Outlook 2016, and Outlook 2019 do not escape the single quote character.

[<2> Section 2.2.5](#): Exchange 2003 and Office Outlook 2003 do not read or write configuration data **FAI** messages.

[<3> Section 2.2.5.1](#): Exchange 2003 uses the string "Exchange.11", and Office Outlook 2003 uses the string "Outlook.11" for the **version** attribute. Exchange 2007 uses the string "Exchange.12", and Office Outlook 2007 uses the string "Outlook.12" for the **version** attribute. Exchange 2010 uses the string "Exchange.14", and Outlook 2010 uses the string "Outlook.14" for the **version** attribute. Exchange 2013 uses the string "Exchange.15", and Outlook 2013 uses the string "Outlook.15" for the **version** attribute. Exchange 2016 uses the string "Exchange.16", and Outlook 2016 uses the string "Outlook.16" for the **version** attribute.

[<4> Section 2.2.5.1.1](#): Office Outlook 2003 and Office Outlook 2007 do not support the **piAutoDeleteReceipts** property.

<5> [Section 2.2.5.2.1](#): Exchange 2003, Exchange 2007, Office Outlook 2003, and Office Outlook 2007 neither read nor write the **Name** element.

<6> [Section 2.2.5.2.2](#): Office Outlook 2007, Outlook 2010, Outlook 2013, Outlook 2016, and Outlook 2019 ignore any digits after the first 3, which means that the maximum precision of elements of the **dateTimeRestrictedType** is milliseconds.

<7> [Section 2.2.5.2.2](#): This **restriction** on the category name is supported only by Exchange 2003.

<8> [Section 2.2.5.2.2](#): Exchange 2003 does not use the **keyboardShortcut** attribute data.

<9> [Section 2.2.5.2.2](#): Office Outlook 2007, Outlook 2010, Outlook 2013, Outlook 2016, and Outlook 2019 write the usage count as indicated. However, the most frequently used list is not implemented, and the **usageCount** attribute is not used.

<10> [Section 2.2.5.2.2](#): Office Outlook 2007, Outlook 2010, Outlook 2013, Outlook 2016, and Outlook 2019 will write the last session that this **category** was applied or changed by the user, but this value is not used.

<11> [Section 2.2.5.2.2](#): Exchange 2003 and Microsoft Office Outlook 2003 Service Pack 3 (SP3) do not support renaming categories.

<12> [Section 2.2.5.2.2](#): Office Outlook 2007, Outlook 2010, Outlook 2013, Outlook 2016, and Outlook 2019 will increment this number on every session. A new session occurs for these clients either when the user starts Office Outlook 2007, Outlook 2010, Outlook 2013, Outlook 2016, or Outlook 2019 or when not less than 12 hours have elapsed since the previous session.

<13> [Section 2.2.5.2.3](#): Exchange 2003, Exchange 2007, Office Outlook 2003, and Office Outlook 2007 do not store the settings defined in this section.

<14> [Section 2.2.5.2.3](#): Exchange 2010, Exchange 2013, Exchange 2016, and Exchange 2019 set the value of the **OptedInto** attribute to "False".

<15> [Section 2.2.6](#): View definitions are used only by Office Outlook 2003 and Office Outlook 2007.

<16> [Section 2.2.6.1](#): Outlook 2010, Outlook 2013, Outlook 2016, and Outlook 2019 do not read or write the **PidTagViewDescriptorBinary** property ([\[MS-OXPROPS\]](#) section 2.1055).

<17> [Section 2.2.6.2](#): Outlook 2010, Outlook 2013, Outlook 2016, and Outlook 2019 do not read or write the **PidTagViewDescriptorName** property.

<18> [Section 2.2.6.3](#): Outlook 2010, Outlook 2013, Outlook 2016, and Outlook 2019 do not read or write the **PidTagViewDescriptorStrings** property ([\[MS-OXPROPS\]](#) section 2.1057).

<19> [Section 2.2.6.4](#): Outlook 2010, Outlook 2013, Outlook 2016, and Outlook 2019 do not read or write the **PidTagViewDescriptorVersion** property.

<20> [Section 2.2.7.1.2](#): Exchange 2003 and Office Outlook 2003 do not support displaying the policy description.

<21> [Section 2.2.8](#): Conversation actions are not supported by Exchange 2003, Exchange 2007, Office Outlook 2003, or Office Outlook 2007.

<22> [Section 2.2.8.1](#): The **PidLidConversationActionLastAppliedTime** property is not supported by Exchange 2003, Exchange 2007, Office Outlook 2003, or Office Outlook 2007.

<23> [Section 2.2.8.2](#): The **PidLidConversationActionMaxDeliveryTime** property is not supported by Exchange 2003, Exchange 2007, Office Outlook 2003, or Office Outlook 2007.

<24> [Section 2.2.8.3](#): The **PidLidConversationActionMoveFolderEid** property is not supported Exchange 2003, Exchange 2007, Office Outlook 2003, or Office Outlook 2007.

<25> [Section 2.2.8.4](#): The **PidLidConversationActionMoveStoreEid** property is not supported by Exchange 2003, Exchange 2007, Office Outlook 2003, or Office Outlook 2007.

<26> [Section 2.2.8.5](#): Exchange 2003, Exchange 2007, Office Outlook 2003, and Office Outlook 2007 do not set the **PidLidConversationActionVersion** property and ignore it if it is set.

<27> [Section 2.2.8.7](#): Exchange 2003, Exchange 2007, Office Outlook 2003, and Office Outlook 2007 do not set the **PidNameKeywords** property for **conversation actions**.

<28> [Section 2.2.8.8](#): Exchange 2003, Exchange 2007, Office Outlook 2003, and Office Outlook 2007 do not set the **PidTagConversationIndex** property for conversation actions.

<29> [Section 2.2.8.9](#): Exchange 2003, Exchange 2007, Office Outlook 2003, and Office Outlook 2007 do not set the **PidTagMessageClass** property to "IPM.ConversationAction".

<30> [Section 2.2.8.10](#): Exchange 2003, Exchange 2007, Office Outlook 2003, and Office Outlook 2007 do not set the **PidTagSubject** property for conversation actions.

<31> [Section 2.2.9](#): Navigation shortcuts are not supported by Exchange 2003, Exchange 2007, or Office Outlook 2003.

<32> [Section 2.2.9.16](#): The **PidTagWlinkAddressBookEID** property is not supported by Exchange 2003, Exchange 2007, Office Outlook 2003, or Office Outlook 2007. Outlook 2010, Outlook 2013, Outlook 2016, and Outlook 2019 set the **PidTagWlinkAddressBookEID** property on calendar shortcuts only.

<33> [Section 2.2.9.17](#): The **PidTagWlinkAddressBookStoreEID** property is not supported by Exchange 2003, Exchange 2007, Office Outlook 2003, or Office Outlook 2007. Outlook 2010, Outlook 2013, Outlook 2016, and Outlook 2019 set the **PidTagWlinkAddressBookStoreEID** property on calendar shortcuts only.

<34> [Section 2.2.9.18](#): The shortcut behavior is not supported by Exchange 2003, Exchange 2007, Office Outlook 2003, or Office Outlook 2007.

<35> [Section 2.2.9.19](#): The **PidTagWlinkROGroupType** property is not supported by Exchange 2003, Exchange 2007, Office Outlook 2003, or Office Outlook 2007.

<36> [Section 3.1.4.1.2](#): Office Outlook 2007, Outlook 2010, Outlook 2013, Outlook 2016, and Outlook 2019 use the default values of working from 8 A.M. to 5 P.M., Monday – Friday, in the user's current system time zone.

<37> [Section 3.1.4.8](#): Performing conversation actions is not supported by Exchange 2003, Exchange 2007, Office Outlook 2003, or Office Outlook 2007.

<38> [Section 3.1.4.8](#): Exchange 2003, Exchange 2007, Office Outlook 2003, and Office Outlook 2007 do not support finding matching **E-mail objects** related to a **conversation**. When connected to an online-mode server and performing an Ignore, Stop Ignoring, Move to Folder, or Stop Move conversation action, Outlook 2010, Outlook 2013, Outlook 2016, and Outlook 2019 will not attempt to locate matching E-mail objects. For all other scenarios, Outlook 2010, Outlook 2013, Outlook 2016, and Outlook 2019 will attempt to locate matching E-mail objects.

<39> [Section 3.1.4.10.2](#): Setting the properties specified in this section is not supported by Exchange 2003, Exchange 2007, Office Outlook 2003, or Office Outlook 2007. Whether Outlook 2010, Outlook 2013, Outlook 2016, and Outlook 2019 set the **PidTagWlinkCalendarColor** property (section [2.2.9.15](#)), the **PidTagWlinkAddressBookEID** property (section [2.2.9.16](#)), the **PidTagWlinkAddressBookStoreEID** property (section [2.2.9.17](#)), and the **PidTagWlinkROGroupType** property (section [2.2.9.19](#)) depends upon configuration or administrative settings.

<40> [Section 3.1.5.1](#): Performing conversation actions on incoming messages is not supported by Exchange 2003, Exchange 2007, Office Outlook 2003, or Office Outlook 2007.

<41> [Section 3.1.5.1.1](#): Duplicate detection on incoming E-mail objects is not supported by Exchange 2003, Exchange 2007, Office Outlook 2003, or Office Outlook 2007.

<42> [Section 3.1.5.1.1](#): Comparing the value of the **PidTagSearchKey** property ([MS-OXPROPS] section 2.997) on incoming E-mail objects is not supported by Exchange 2003, Exchange 2007, Office Outlook 2003, or Office Outlook 2007. Outlook 2010, Outlook 2013, Outlook 2016, and Outlook 2019 maintain a cache of all E-mail objects received in the past 15 minutes.

<43> [Section 3.1.5.2](#): Performing additional processing on the copy of the E-mail object in the Sent Items **special folder** is not supported by Exchange 2003, Exchange 2007, Office Outlook 2003, or Office Outlook 2007.

<44> [Section 3.1.6.1](#): Office Outlook 2003, Office Outlook 2007, Outlook 2010, Outlook 2013, Outlook 2016, and Outlook 2019 have the default duration of 336 hours (14 days).

<45> [Section 3.1.6.1](#): Office Outlook 2003, Office Outlook 2007, Outlook 2010, Outlook 2013, Outlook 2016, and Outlook 2019 implement conversation action expiration without timers. Instead, every time an algorithm calls for an FAI message to be located, Office Outlook 2003, Office Outlook 2007, Outlook 2010, Outlook 2013, Outlook 2016, and Outlook 2019 run the expiration logic before proceeding with the original algorithm.

<46> [Section 3.2.4.1.2](#): Exchange 2007, Exchange 2010, Exchange 2013, Exchange 2016, and Exchange 2019 will stop reading the **XML** document beyond 512 kilobytes.

<47> [Section 3.2.5.1](#): Processing in response to a client uploading changes to a conversation action FAI message is not supported by Exchange 2003, Exchange 2007, Office Outlook 2003, or Office Outlook 2007.

<48> [Section 3.2.5.2](#): Exchange 2003, Exchange 2007, Office Outlook 2003, and Office Outlook 2007 do not support processing conversation actions on incoming E-mail objects.

<49> [Section 3.2.5.3](#): The additional processing on the copy of the E-mail object in the Sent Items special folder specified in this section is not supported by Exchange 2003, Exchange 2007, Office Outlook 2003, or Office Outlook 2007.

## 7 Change Tracking

This section identifies changes that were made to this document since the last release. Changes are classified as Major, Minor, or None.

The revision class **Major** means that the technical content in the document was significantly revised. Major changes affect protocol interoperability or implementation. Examples of major changes are:

- A document revision that incorporates changes to interoperability requirements.
- A document revision that captures changes to protocol functionality.

The revision class **Minor** means that the meaning of the technical content was clarified. Minor changes do not affect protocol interoperability or implementation. Examples of minor changes are updates to clarify ambiguity at the sentence, paragraph, or table level.

The revision class **None** means that no new technical changes were introduced. Minor editorial and formatting changes may have been made, but the relevant technical content is identical to the last released version.

The changes made to this document are listed in the following table. For more information, please contact [dochelp@microsoft.com](mailto:dochelp@microsoft.com).

Section	Description	Revision class
<a href="#">2.2.6.2</a> PidTagViewDescriptorName Property	Added PidTagViewDescriptorName property.	Minor
<a href="#">2.2.6.4</a> PidTagViewDescriptorVersion Property	Added PidTagViewDescriptorVersion property.	Minor
<a href="#">6</a> Appendix A: Product Behavior	Updated list of supported products.	major

## 8 Index

### A

Abstract data model  
[client](#) 65  
[server](#) 77  
[Applicability](#) 16

### B

[Binary Format message](#) 19

### C

[Capability negotiation](#) 16  
[Change tracking](#) 101  
Client  
[abstract data model](#) 65  
[initialization - navigation shortcuts](#) 65  
[other local events](#) 77  
[timers](#) 65  
Client - higher layer triggered events  
[applying a category to a message](#) 71  
[performing a conversation action](#) 71  
[reading configuration data](#) 65  
[reading folder flags](#) 70  
[reading navigation shortcuts](#) 73  
[reading view definitions](#) 69  
[writing configuration data](#) 67  
[writing folder flags](#) 71  
[writing navigation shortcuts](#) 73  
[writing view definitions](#) 69  
Client - message processing  
[processing a conversation action on incoming E-mail objects](#) 75  
[processing a conversation action on outgoing E-mail objects](#) 76  
Client - sequencing rules  
[processing a conversation action on incoming E-mail objects](#) 75  
[processing a conversation action on outgoing E-mail objects](#) 76  
[Client - timer events - expiration of conversation actions](#) 76  
Configuration data  
[dictionaries](#) 19  
[XML streams](#) 23  
Configuration data example  
[category list](#) 81  
[dictionaries](#) 81  
[working hours](#) 81  
[Configuration Data message](#) 19  
Configuration data properties  
[PidTagRoamingDatatypes property](#) 17  
[PidTagRoamingDictionary property](#) 18  
PidTagRoamingXmlStream property ([section 2.2.2.3](#) 18, [section 2.2.6.2](#) 52, [section 2.2.6.4](#) 53)  
[Configuration Data Properties message](#) 17  
[Conversation actions example - a categorized and moved conversation action](#) 92  
[Conversation Actions message](#) 55

[PidLidConversationActionLastAppliedTime property](#) 56  
[PidLidConversationActionMaxDeliveryTime property](#) 56  
[PidLidConversationActionMoveFolderEid property](#) 56  
[PidLidConversationActionMoveStoreEid property](#) 57  
[PidLidConversationActionVersion property](#) 57  
[PidLidConversationProcessed property](#) 57  
[PidNameKeywords property](#) 58  
[PidTagConversationIndex property](#) 58  
[PidTagMessageClass property](#) 58  
[PidTagSubject property](#) 58

### D

Data model - abstract  
[client](#) 65  
[server](#) 77  
[Dictionaries configuration data](#) 19

### E

Examples - configuration data  
[category list](#) 81  
[dictionaries](#) 81  
[working hours](#) 81  
[Examples - conversation actions - a categorized and moved conversation action](#) 92  
Examples - navigation shortcut  
[group header](#) 93  
[navigation shortcut](#) 94  
Examples - view definitions  
[overview](#) 83  
[PidTagViewDescriptorBinary](#) 83  
[PidTagViewDescriptorStrings](#) 91

### F

[Fields - vendor-extensible](#) 16  
[Folder Flags message](#) 53  
[Folder flags message - sub-property](#) 53

### G

[Glossary](#) 9

### H

Higher layer triggered events - client  
[applying a category to a message](#) 71  
[performing a conversation action](#) 71  
[reading configuration data](#) 65  
[reading folder flags](#) 70  
[reading navigation shortcuts](#) 73  
[reading view definitions](#) 69  
[writing configuration data](#) 67  
[writing folder flags](#) 71  
[writing navigation shortcuts](#) 73  
[writing view definitions](#) 69  
Higher layer triggered events - server

[applying a category to a message](#) 78  
[reading configuration data](#) 77  
[reading folder flags](#) 78  
[reading view definitions](#) 78  
[writing configuration data](#) 77  
[writing folder flags](#) 78

## I

[Implementer - security considerations](#) 96  
[Index of security parameters](#) 96  
[Informative references](#) 14  
Initialization  
[client - navigation shortcuts](#) 65  
[server](#) 77  
[Introduction](#) 9

## M

Message processing - client  
[processing a conversation action on incoming E-mail objects](#) 75  
[processing a conversation action on outgoing E-mail objects](#) 76  
Message processing - server  
[processing a change to a conversation action FAI message](#) 79  
[processing a conversation action on incoming E-mail objects](#) 79  
[processing a conversation action on outgoing E-mail objects](#) 80  
[Message syntax](#) 17  
Messages  
[Binary Format](#) 19  
[Configuration Data](#) 19  
[Configuration Data Properties](#) 17  
[Conversation Actions](#) 55  
[Folder Flags](#) 53  
[message syntax](#) 17  
[Namespaces](#) 17  
[Navigation Shortcuts](#) 59  
[transport](#) 17  
[View Definitions](#) 36  
[XML Format](#) 18

## N

[Namespaces message](#) 17  
Navigation shortcut example  
[group header](#) 93  
[navigation shortcut](#) 94  
[Navigation Shortcuts message](#) 59  
[PidTagMessageClass property](#) 59  
[PidTagNormalizedSubject property](#) 59  
[PidTagWlinkAddressBookEID property](#) 63  
[PidTagWlinkAddressBookStoreEID property](#) 63  
[PidTagWlinkCalendarColor property](#) 62  
[PidTagWlinkClientID property](#) 63  
[PidTagWlinkEntryId property](#) 61  
[PidTagWlinkFlags property](#) 60  
[PidTagWlinkFolderType property](#) 61  
[PidTagWlinkGroupClsid property](#) 62  
[PidTagWlinkGroupHeaderID property](#) 59  
[PidTagWlinkGroupName property](#) 62  
[PidTagWlinkOrdinal property](#) 61

[PidTagWlinkRecordKey property](#) 61  
[PidTagWlinkROGroupType property](#) 63  
[PidTagWlinkSaveStamp property](#) 59  
[PidTagWlinkSection property](#) 62  
[PidTagWlinkStoreEntryId property](#) 61  
[PidTagWlinkType property](#) 59  
[Normative references](#) 13

## O

Other local events  
[client](#) 77  
[server](#) 80  
[Overview \(synopsis\)](#) 14

## P

[Parameters - security index](#) 96  
[PidLidConversationActionLastAppliedTime property conversation actions message](#) 56  
[PidLidConversationActionMaxDeliveryTime property conversation actions message](#) 56  
[PidLidConversationActionMoveFolderEid property conversation actions message](#) 56  
[PidLidConversationActionMoveStoreEid property conversation actions message](#) 57  
[PidLidConversationActionVersion property conversation actions message](#) 57  
[PidLidConversationProcessed property conversation actions message](#) 57  
[PidNameKeywords property conversation actions message](#) 58  
[PidTagConversationIndex property conversation actions message](#) 58  
[PidTagMessageClass property conversation actions message](#) 58  
[PidTagMessageClass property navigation shortcuts message](#) 59  
[PidTagNormalizedSubject property navigation shortcuts message](#) 59  
[PidTagRoamingDatatypes configuration data property](#) 17  
[PidTagRoamingDictionary configuration data property](#) 18  
PidTagRoamingXmlStream configuration data property ([section 2.2.2.3](#) 18, [section 2.2.6.2](#) 52, [section 2.2.6.4](#) 53)  
[PidTagSubject property conversation actions message](#) 58  
[PidTagViewDescriptorBinary property view definitions message](#) 36  
[PidTagViewDescriptorStrings property view definitions message](#) 52  
[PidTagWlinkAddressBookEID property navigation shortcuts message](#) 63  
[PidTagWlinkAddressBookStoreEID property navigation shortcuts message](#) 63  
[PidTagWlinkCalendarColor property navigation shortcuts message](#) 62  
[PidTagWlinkClientID property navigation shortcuts message](#) 63  
[PidTagWlinkEntryId property navigation shortcuts message](#) 61  
[PidTagWlinkFlags property navigation shortcuts message](#) 60

[PidTagWlinkFolderType property navigation shortcuts message](#) 61  
[PidTagWlinkGroupClsid property navigation shortcuts message](#) 62  
[PidTagWlinkGroupHeaderID property navigation shortcuts message](#) 59  
[PidTagWlinkGroupName property navigation shortcuts message](#) 62  
[PidTagWlinkOrdinal property navigation shortcuts message](#) 61  
[PidTagWlinkRecordKey property navigation shortcuts message](#) 61  
[PidTagWlinkROGroupType property navigation shortcuts message](#) 63  
[PidTagWlinkSaveStamp property navigation shortcuts message](#) 59  
[PidTagWlinkSection property navigation shortcuts message](#) 62  
[PidTagWlinkStoreEntryId property navigation shortcuts message](#) 61  
[PidTagWlinkType property navigation shortcuts message](#) 59  
[Preconditions](#) 16  
[Prerequisites](#) 16  
[Product behavior](#) 97

## R

[References](#) 13  
  [informative](#) 14  
  [normative](#) 13  
[Relationship to other protocols](#) 14

## S

Security  
  [implementer considerations](#) 96  
  [parameter index](#) 96  
Sequencing rules - client  
  [processing a conversation action on incoming E-mail objects](#) 75  
  [processing a conversation action on outgoing E-mail objects](#) 76  
Sequencing rules - server  
  [processing a change to a conversation action FAI message](#) 79  
  [processing a conversation action on incoming E-mail objects](#) 79  
  [processing a conversation action on outgoing E-mail objects](#) 80  
Server  
  [abstract data model](#) 77  
  [initialization](#) 77  
  [other local events](#) 80  
  [overview](#) 77  
  [timer events](#) 80  
  [timers](#) 77  
Server - higher layer triggered events  
  [applying a category to a message](#) 78  
  [reading configuration data](#) 77  
  [reading folder flags](#) 78  
  [reading view definitions](#) 78  
  [writing configuration data](#) 77  
  [writing folder flags](#) 78  
Server - message processing

[processing a change to a conversation action FAI message](#) 79  
  [processing a conversation action on incoming E-mail objects](#) 79  
  [processing a conversation action on outgoing E-mail objects](#) 80  
Server - sequencing rules  
  [processing a change to a conversation action FAI message](#) 79  
  [processing a conversation action on incoming E-mail objects](#) 79  
  [processing a conversation action on outgoing E-mail objects](#) 80  
[Standards assignments](#) 16  
[Sub-property folder flags message](#) 53

## T

Timer events  
  [client - expiration of conversation actions](#) 76  
  [server](#) 80  
Timers  
  [client](#) 65  
  [server](#) 77  
[Tracking changes](#) 101  
[Transport](#) 17  
Triggered events - client  
  [applying a category to a message](#) 71  
  [performing a conversation action](#) 71  
  [reading configuration data](#) 65  
  [reading folder flags](#) 70  
  [reading navigation shortcuts](#) 73  
  [reading view definitions](#) 69  
  [writing configuration data](#) 67  
  [writing folder flags](#) 71  
  [writing navigation shortcuts](#) 73  
  [writing view definitions](#) 69  
Triggered events - server  
  [applying a category to a message](#) 78  
  [reading configuration data](#) 77  
  [reading folder flags](#) 78  
  [reading view definitions](#) 78  
  [writing configuration data](#) 77  
  [writing folder flags](#) 78

## V

[Vendor-extensible fields](#) 16  
[Versioning](#) 16  
View definitions example  
  [overview](#) 83  
  [PidTagViewDescriptorBinary](#) 83  
  [PidTagViewDescriptorStrings](#) 91  
[View Definitions message](#) 36  
  [PidTagViewDescriptorBinary property](#) 36  
  [PidTagViewDescriptorStrings property](#) 52

## X

[XML Format message](#) 18  
[XML streams configuration data](#) 23