

[MS-OXDSCLI]: Autodiscover Publishing and Lookup Protocol

Intellectual Property Rights Notice for Open Specifications Documentation

- **Technical Documentation.** Microsoft publishes Open Specifications documentation for protocols, file formats, languages, standards as well as overviews of the interaction among each of these technologies.
- **Copyrights.** This documentation is covered by Microsoft copyrights. Regardless of any other terms that are contained in the terms of use for the Microsoft website that hosts this documentation, you may make copies of it in order to develop implementations of the technologies described in the Open Specifications and may distribute portions of it in your implementations using these technologies or your documentation as necessary to properly document the implementation. You may also distribute in your implementation, with or without modification, any schema, IDL's, or code samples that are included in the documentation. This permission also applies to any documents that are referenced in the Open Specifications.
- **No Trade Secrets.** Microsoft does not claim any trade secret rights in this documentation.
- **Patents.** Microsoft has patents that may cover your implementations of the technologies described in the Open Specifications. Neither this notice nor Microsoft's delivery of the documentation grants any licenses under those or any other Microsoft patents. However, a given Open Specification may be covered by Microsoft [Open Specification Promise](#) or the [Community Promise](#). If you would prefer a written license, or if the technologies described in the Open Specifications are not covered by the Open Specifications Promise or Community Promise, as applicable, patent licenses are available by contacting iplg@microsoft.com.
- **Trademarks.** The names of companies and products contained in this documentation may be covered by trademarks or similar intellectual property rights. This notice does not grant any licenses under those rights. For a list of Microsoft trademarks, visit www.microsoft.com/trademarks.
- **Fictitious Names.** The example companies, organizations, products, domain names, email addresses, logos, people, places, and events depicted in this documentation are fictitious. No association with any real company, organization, product, domain name, email address, logo, person, place, or event is intended or should be inferred.

Reservation of Rights. All other rights are reserved, and this notice does not grant any rights other than specifically described above, whether by implication, estoppel, or otherwise.

Tools. The Open Specifications do not require the use of Microsoft programming tools or programming environments in order for you to develop an implementation. If you have access to Microsoft programming tools and environments you are free to take advantage of them. Certain Open Specifications are intended for use in conjunction with publicly available standard specifications and network programming art, and assumes that the reader either is familiar with the aforementioned material or has immediate access to it.

Revision Summary

Date	Revision History	Revision Class	Comments
04/04/2008	0.1		Initial Availability.
04/25/2008	0.2		Revised and updated property names and other technical content.
06/27/2008	1.0		Initial Release.
08/06/2008	1.01		Revised and edited technical content.
09/03/2008	1.02		Revised and edited technical content.
12/03/2008	1.03		Revised and edited technical content.
03/04/2009	1.04		Revised and edited technical content.
04/10/2009	2.0		Updated technical content and applicable product releases.
07/15/2009	3.0	Major	Revised and edited for technical content.
11/04/2009	4.0.0	Major	Updated and revised the technical content.
02/10/2010	5.0.0	Major	Updated and revised the technical content.
05/05/2010	5.1.0	Minor	Updated the technical content.
08/04/2010	6.0	Major	Significantly changed the technical content.
11/03/2010	6.1	Minor	Clarified the meaning of the technical content.
03/18/2011	7.0	Major	Significantly changed the technical content.
08/05/2011	8.0	Major	Significantly changed the technical content.
10/07/2011	8.0	No change	No changes to the meaning, language, or formatting of the technical content.
01/20/2012	9.0	Major	Significantly changed the technical content.
04/27/2012	9.1	Minor	Clarified the meaning of the technical content.
07/16/2012	9.1	No change	No changes to the meaning, language, or formatting of the technical content.
10/08/2012	10.0	Major	Significantly changed the technical content.
02/11/2013	10.0	No change	No changes to the meaning, language, or formatting of the technical content.
07/26/2013	10.1	Minor	Clarified the meaning of the technical content.
11/18/2013	10.1	No change	No changes to the meaning, language, or formatting of the technical content.

Date	Revision History	Revision Class	Comments
02/10/2014	11.0	Major	Significantly changed the technical content.
04/30/2014	11.0.1	Editorial	Changed language and formatting in the technical content.
07/31/2014	11.0.1	No change	No changes to the meaning, language, or formatting of the technical content.

Table of Contents

1 Introduction	7
1.1 Glossary	7
1.2 References.....	8
1.2.1 Normative References.....	8
1.2.2 Informative References	9
1.3 Overview	9
1.4 Relationship to Other Protocols.....	9
1.5 Prerequisites/Preconditions	10
1.6 Applicability Statement.....	10
1.7 Versioning and Capability Negotiation.....	10
1.8 Vendor-Extensible Fields.....	10
1.9 Standards Assignments	10
2 Messages	11
2.1 Transport.....	11
2.2 Message Syntax	11
2.2.1 Namespaces	11
2.2.2 HTTP Headers	11
2.2.2.1 X-MapiHttpCapability	11
2.2.2.2 X-AnchorMailbox	11
2.2.3 Autodiscover Request	11
2.2.3.1 Autodiscover	12
2.2.3.1.1 Request	12
2.2.3.1.1.1 AcceptableResponseSchema	12
2.2.3.1.1.2 EMailAddress	12
2.2.3.1.1.3 LegacyDN	12
2.2.4 Autodiscover Response	12
2.2.4.1 Autodiscover	12
2.2.4.1.1 Response	12
2.2.4.1.1.1 User.....	13
2.2.4.1.1.1.1 AutoDiscoverSMTPAddress	13
2.2.4.1.1.1.2 DefaultABView	13
2.2.4.1.1.1.3 DeploymentId.....	13
2.2.4.1.1.1.4 DisplayName	13
2.2.4.1.1.1.5 LegacyDN	13
2.2.4.1.1.2 Account.....	13
2.2.4.1.1.2.1 AccountType.....	13
2.2.4.1.1.2.2 Action.....	14
2.2.4.1.1.2.3 AlternativeMailbox.....	14
2.2.4.1.1.2.3.1 DisplayName	14
2.2.4.1.1.2.3.2 LegacyDN.....	14
2.2.4.1.1.2.3.3 Server	14
2.2.4.1.1.2.3.4 SmtAddress	14
2.2.4.1.1.2.3.5 Type	15
2.2.4.1.1.2.4 Protocol	15
2.2.4.1.1.2.4.1 AD.....	15
2.2.4.1.1.2.4.2 ASUrl	15
2.2.4.1.1.2.4.3 AddressBook.....	16
2.2.4.1.1.2.4.3.1 ExternalUrl.....	16
2.2.4.1.1.2.4.3.2 InternalUrl	16

2.2.4.1.1.2.4.4	AuthPackage	16
2.2.4.1.1.2.4.5	AuthRequired	16
2.2.4.1.1.2.4.6	CertPrincipalName	17
2.2.4.1.1.2.4.7	DomainName	17
2.2.4.1.1.2.4.8	DomainRequired	17
2.2.4.1.1.2.4.9	EcpUrl	17
2.2.4.1.1.2.4.10	EcpUrl-aggr	18
2.2.4.1.1.2.4.11	EcpUrl-extinstall	18
2.2.4.1.1.2.4.12	EcpUrl-mt	18
2.2.4.1.1.2.4.13	EcpUrl-photo	18
2.2.4.1.1.2.4.14	EcpUrl-publish	19
2.2.4.1.1.2.4.15	EcpUrl-ret	19
2.2.4.1.1.2.4.16	EcpUrl-sms	19
2.2.4.1.1.2.4.17	EcpUrl-tm	19
2.2.4.1.1.2.4.18	EcpUrl-tmCreating	19
2.2.4.1.1.2.4.19	EcpUrl-tmEditing	20
2.2.4.1.1.2.4.20	EcpUrl-tmHiding	20
2.2.4.1.1.2.4.21	EcpUrl-um	20
2.2.4.1.1.2.4.22	Encryption	20
2.2.4.1.1.2.4.23	EwsUrl	21
2.2.4.1.1.2.4.24	External	21
2.2.4.1.1.2.4.25	Internal	21
2.2.4.1.1.2.4.25.1	OWAUrl	21
2.2.4.1.1.2.4.26	LoginName	22
2.2.4.1.1.2.4.27	MailStore	22
2.2.4.1.1.2.4.27.1	ExternalUrl	22
2.2.4.1.1.2.4.27.2	InternalUrl	22
2.2.4.1.1.2.4.28	MdbDN	22
2.2.4.1.1.2.4.29	OABUrl	22
2.2.4.1.1.2.4.30	OOFUrl	22
2.2.4.1.1.2.4.31	Port	22
2.2.4.1.1.2.4.32	PublicFolderServer	23
2.2.4.1.1.2.4.33	ReferralPort	23
2.2.4.1.1.2.4.34	Server	23
2.2.4.1.1.2.4.35	ServerDN	23
2.2.4.1.1.2.4.36	ServerExclusiveConnect	23
2.2.4.1.1.2.4.37	ServerVersion	23
2.2.4.1.1.2.4.38	SharingUrl	24
2.2.4.1.1.2.4.39	SiteMailboxCreationURL	24
2.2.4.1.1.2.4.40	SMTPLast	24
2.2.4.1.1.2.4.41	SPA	24
2.2.4.1.1.2.4.42	SSL	25
2.2.4.1.1.2.4.43	TTL	25
2.2.4.1.1.2.4.44	Type	25
2.2.4.1.1.2.4.45	UMUrl	26
2.2.4.1.1.2.4.46	UsePOPAuth	26
2.2.4.1.1.2.5	PublicFolderInformation	26
2.2.4.1.1.2.5.1	SmtAddress	26
2.2.4.1.1.2.6	RedirectAddr	26
2.2.4.1.1.2.7	RedirectUrl	27
2.2.4.1.1.3	Error	27
2.2.4.1.1.3.1	DebugData	27
2.2.4.1.1.3.2	ErrorCode	27

2.2.4.1.1.3.3	Message	28
3	Protocol Details	29
3.1	Client Details.....	29
3.1.1	Abstract Data Model	29
3.1.2	Timers	29
3.1.3	Initialization	29
3.1.4	Higher-Layer Triggered Events.....	29
3.1.5	Message Processing Events and Sequencing Rules.....	29
3.1.5.1	Nonfunctional URIs	30
3.1.5.2	HTTP 302 Redirects.....	30
3.1.5.3	Autodiscover Redirect	30
3.1.5.4	Autodiscover Configuration Information.....	30
3.1.5.5	Autodiscover Server Errors	31
3.1.6	Timer Events	31
3.1.7	Other Local Events	31
3.2	Server Details	31
3.2.1	Abstract Data Model	31
3.2.2	Timers	31
3.2.3	Initialization	31
3.2.4	Higher-Layer Triggered Events.....	31
3.2.5	Message Processing Events and Sequencing Rules.....	31
3.2.5.1	Processing the X-MapiHttpCapability Header	32
3.2.6	Timer Events	33
3.2.7	Other Local Events	33
4	Protocol Examples.....	34
4.1	Autodiscover Request.....	35
4.2	Autodiscover Redirect.....	36
4.3	Autodiscover Configuration	36
4.4	MapiHttp Response	37
4.5	Autodiscover Server Errors	38
5	Security.....	39
5.1	Security Considerations for Implementers.....	39
5.2	Index of Security Parameters	39
6	Appendix A: XSDs.....	40
6.1	Autodiscover Request XSD	40
6.2	Autodiscover Response XSD	40
6.3	Autodiscover Error Response XSD	43
6.4	Autodiscover Redirect Response XSD	44
7	Appendix B: Product Behavior	46
8	Change Tracking.....	49
9	Index	50

1 Introduction

The Autodiscover Publishing and Lookup Protocol is used by clients to retrieve **URLs** and settings that are needed to gain access to the **web services** that are offered by the server.

Sections 1.8, 2, and 3 of this specification are normative and can contain the terms MAY, SHOULD, MUST, MUST NOT, and SHOULD NOT as defined in [\[RFC2119\]](#). Sections 1.5 and 1.9 are also normative but does not contain those terms. All other sections and examples in this specification are informative.

1.1 Glossary

The following terms are defined in [\[MS-GLOS\]](#):

- Active Directory authentication distinguished name (DN)**
- domain**
- Domain Name System (DNS)**
- fully qualified domain name (FQDN)**
- GUID**
- Hypertext Transfer Protocol (HTTP)**
- Hypertext Transfer Protocol over Secure Sockets Layer (HTTPS)**
- Lightweight Directory Access Protocol (LDAP)**
- remote procedure call (RPC)**
- Secure Sockets Layer (SSL)**
- XML**
- XML namespace**

The following terms are defined in [\[MS-OXGLOS\]](#):

- address book**
- Autodiscover client**
- Autodiscover server**
- calendar**
- contact**
- Contacts folder**
- display name**
- email address**
- endpoint**
- enterprise/site/server distinguished name (ESSDN)**
- Global Address List (GAL)**
- Internet Message Access Protocol - Version 4 (IMAP4)**
- mail app**
- mailbox**
- message store**
- offline address book (OAB)**
- Out of Office (OOF)**
- Post Office Protocol - Version 3 (POP3)**
- public folder**
- Short Message Service (SMS)**
- Simple Mail Transfer Protocol (SMTP)**
- site mailbox**
- Transport Layer Security (TLS)**
- Uniform Resource Identifier (URI)**

Uniform Resource Locator (URL)
web server
web service
XML schema definition (XSD)

The following terms are specific to this document:

Exchange Control Panel (ECP): A feature that enables end users to manage server options without the assistance of an administrator.

MAY, SHOULD, MUST, SHOULD NOT, MUST NOT: These terms (in all caps) are used as described in [\[RFC2119\]](#). All statements of optional behavior use either MAY, SHOULD, or SHOULD NOT.

1.2 References

References to Microsoft Open Specification documents do not include a publishing year because links are to the latest version of the documents, which are updated frequently. References to other documents include a publishing year when one is available.

1.2.1 Normative References

We conduct frequent surveys of the normative references to assure their continued availability. If you have any issue with finding a normative reference, please contact dochelp@microsoft.com. We will assist you in finding the relevant information.

[MS-NLMP] Microsoft Corporation, "[NT LAN Manager \(NTLM\) Authentication Protocol](#)".

[MS-OXABREF] Microsoft Corporation, "[Address Book Name Service Provider Interface \(NSPI\) Referral Protocol](#)".

[MS-OXCMAPIHTTP] Microsoft Corporation, "[Messaging Application Programming Interface \(MAPI\) Extensions for HTTP](#)".

[MS-OXCRPC] Microsoft Corporation, "[Wire Format Protocol](#)".

[MS-OXDISCO] Microsoft Corporation, "[Autodiscover HTTP Service Protocol](#)".

[MS-OXWAVLS] Microsoft Corporation, "[Availability Web Service Protocol](#)".

[MS-OXWOAB] Microsoft Corporation, "[Offline Address Book \(OAB\) Retrieval File Format](#)".

[MS-OXWOOF] Microsoft Corporation, "[Out of Office \(OOF\) Web Service Protocol](#)".

[MS-OXWUMS] Microsoft Corporation, "[Voice Mail Settings Web Service Protocol](#)".

[MS-RPCH] Microsoft Corporation, "[Remote Procedure Call over HTTP Protocol](#)".

[RFC1939] Myers, J., and Rose, M., "Post Office Protocol - Version 3", STD 53, RFC 1939, May 1996, <http://www.ietf.org/rfc/rfc1939.txt>

[RFC2068] Fielding, R., Gettys, J., Mogul, J., et al., "Hypertext Transfer Protocol -- HTTP/1.1", RFC 2068, January 1997, <http://www.ietf.org/rfc/rfc2068.txt>

[RFC2119] Bradner, S., "Key words for use in RFCs to Indicate Requirement Levels", BCP 14, RFC 2119, March 1997, <http://www.rfc-editor.org/rfc/rfc2119.txt>

[RFC2246] Dierks, T., and Allen, C., "The TLS Protocol Version 1.0", RFC 2246, January 1999, <http://www.ietf.org/rfc/rfc2246.txt>

[RFC2518] Goland, Y., Whitehead, E., Faizi, A., et al., "HTTP Extensions for Distributed Authoring - WebDAV", RFC 2518, February 1999, <http://www.ietf.org/rfc/rfc2518.txt>

[RFC2617] Franks, J., Hallam-Baker, P., Hostetler, J., et al., "HTTP Authentication: Basic and Digest Access Authentication", RFC 2617, June 1999, <http://www.ietf.org/rfc/rfc2617.txt>

[RFC2821] Klensin, J., "Simple Mail Transfer Protocol", STD 10, RFC 2821, April 2001, <http://www.ietf.org/rfc/rfc2821.txt>

[RFC2822] Resnick, P., Ed., "Internet Message Format", STD 11, RFC 2822, April 2001, <http://www.ietf.org/rfc/rfc2822.txt>

[RFC3501] Crispin, M., "INTERNET MESSAGE ACCESS PROTOCOL ◆ VERSION 4rev1", RFC 3501, March 2003, <http://www.rfc-editor.org/rfc/rfc3501.txt>

[RFC3986] Berners-Lee, T., Fielding, R., and Masinter, L., "Uniform Resource Identifier (URI): Generic Syntax", STD 66, RFC 3986, January 2005, <http://www.ietf.org/rfc/rfc3986.txt>

[RFC4120] Neuman, C., Yu, T., Hartman, S., and Raeburn, K., "The Kerberos Network Authentication Service (V5)", RFC 4120, July 2005, <http://www.ietf.org/rfc/rfc4120.txt>

1.2.2 Informative References

[MS-GLOS] Microsoft Corporation, "[Windows Protocols Master Glossary](#)".

[MS-OXGLOS] Microsoft Corporation, "[Exchange Server Protocols Master Glossary](#)".

[MS-OXPROTO] Microsoft Corporation, "[Exchange Server Protocols System Overview](#)".

[RFC2616] Fielding, R., Gettys, J., Mogul, J., et al., "Hypertext Transfer Protocol -- HTTP/1.1", RFC 2616, June 1999, <http://www.ietf.org/rfc/rfc2616.txt>

[RFC2818] Rescorla, E., "HTTP Over TLS", RFC 2818, May 2000, <http://www.ietf.org/rfc/rfc2818.txt>

1.3 Overview

This protocol is a set of methods, headers, and content types that extend **HTTP** version 1.1, as described in [RFC2616](#). A list of possible **Autodiscover server URIs** is first discovered utilizing the Autodiscover HTTP Service Protocol, as described in [MS-OXDISCO](#). This protocol enables **Autodiscover clients** to acquire email configuration settings for specific **email addresses** from the list of Autodiscover servers obtained from the Autodiscover HTTP Service Protocol.

This document specifies the following Autodiscover operations:

- A mechanism for Autodiscover clients to issue queries against Autodiscover servers.
- A mechanism for Autodiscover servers to send client configuration data to Autodiscover clients.
- A mechanism for Autodiscover servers to send referrals to Autodiscover clients.

1.4 Relationship to Other Protocols

This protocol and the Autodiscover HTTP Service Protocol described in [MS-OXDISCO](#) work together to use the standard HTTP mechanisms described in [RFC2068](#) to provide client management over

the Internet. This protocol requires the Autodiscover HTTP Service Protocol to find Autodiscover servers that support this protocol. A higher-level protocol, given a server name or URL, uses this protocol to locate the corresponding **fully qualified domain name (FQDN)**.

This protocol relies on HTTP 1.1, as described in [\[RFC2616\]](#). It relies on **HTTPS**, as described in [\[RFC2818\]](#), for data protection services.

For conceptual background information and overviews of the relationships and interactions between this and other protocols, see [\[MS-OXPROTO\]](#).

1.5 Prerequisites/Preconditions

This protocol requires a **web server** that supports the **HTTP POST** command.

This protocol also requires that Autodiscover clients have URIs that point to Autodiscover servers. Autodiscover clients can obtain these URIs by using the Autodiscover HTTP Service Protocol specified in [\[MS-OXDISCO\]](#).

This protocol assumes that the client has found the Autodiscover server via the Autodiscover HTTP Service Protocol, as specified in [\[MS-OXDISCO\]](#).

1.6 Applicability Statement

This protocol is used by a client to discover email configuration settings for a given email address.

1.7 Versioning and Capability Negotiation

Different versions of this protocol can be negotiated by using the **AcceptableResponseSchema** element, specified in section [2.2.3.1.1.1](#).

1.8 Vendor-Extensible Fields

Vendors MAY pass additional **XML** elements to Autodiscover clients from the Autodiscover server. To do so, the vendor SHOULD use a separate **XML namespace** and pass this in the **AcceptableResponseSchema** element, as specified in section [2.2.3.1.1.1](#).

1.9 Standards Assignments

None.

2 Messages

2.1 Transport

Messages are transported by using an HTTP **POST** command, as specified in [\[RFC2518\]](#) and [\[RFC2068\]](#).

This protocol SHOULD be used with **Secure Sockets Layer (SSL)/Transport Layer Security (TLS)**, as specified in [\[RFC2246\].<1>](#)

2.2 Message Syntax

All messages sent between the Autodiscover client and the Autodiscover server are XML messages.

2.2.1 Namespaces

Autodiscover requests are in the "http://schemas.microsoft.com/exchange/autodiscover/outlook/requestschema/2006" namespace.

Autodiscover responses are in the "http://schemas.microsoft.com/exchange/autodiscover/outlook/responseschema/2006a" namespace.

2.2.2 HTTP Headers

This protocol defines the following HTTP headers, as specified in [\[RFC2616\]](#) section 4.2.

- X-MapiHttpCapability (section [2.2.2.1](#))
- X-AnchorMailbox (section [2.2.2.2](#))

2.2.2.1 X-MapiHttpCapability

The X-MapiHttpCapability header is an optional header used in Autodiscover requests to indicate support for the Messaging Application Programming Interface (MAPI) Extensions for HTTP, as specified in [\[MS-OXCMAPIHTTP\]](#). If present in a request, the value of this header MUST be an integer value greater than zero (0) that corresponds to the highest version of the response format for the **Protocol** element (section [2.2.4.1.1.2.4](#)) supported by the client. See section [3.2.5.1](#) for more details on the available versions of the response format.

2.2.2.2 X-AnchorMailbox

The X-AnchorMailbox header identifies the email address of the account for which the configuration information will be retrieved. This header SHOULD be passed if the client sends the X-MapiHttpCapability header.

2.2.3 Autodiscover Request

Autodiscover requests consist of a single **Autodiscover** element (section [2.2.3.1](#)), which contains information about the user within its child elements.

2.2.3.1 Autodiscover

The **Autodiscover** element is the root element of an Autodiscover request. The elements in the following sections can be child elements of the **Autodiscover** element.

2.2.3.1.1 Request

The **Request** element contains the request to the Autodiscover service. It is a required element of the **Autodiscover** element (section [2.2.3.1](#)).

The **AcceptableResponseSchema** element and the **EmailAddress** or **LegacyDN** element MUST be child elements of the **Request** element.

2.2.3.1.1.1 AcceptableResponseSchema

The **AcceptableResponseSchema** element identifies the schema for an Autodiscover response.

Clients MUST include this element. The value MUST be the following:
<http://schemas.microsoft.com/exchange/autodiscover/outlook/responseschema/2006a>.

2.2.3.1.1.2 EmailAddress

The **EmailAddress** element identifies the email address of the account for which the configuration information will be retrieved.

This element is an optional element for an Autodiscover request. If it is omitted, the **LegacyDN** MUST be present.

2.2.3.1.1.3 LegacyDN

The **LegacyDN** element identifies a user's **mailbox** by a legacy **distinguished name (DN)**. The **LegacyDN** element is also known as the **enterprise/site/server distinguished name (ESSDN)**, which is the naming scheme that defines the user.

The **LegacyDN** element is an optional element in the request. If it is omitted, the **EmailAddress** element MUST be present.

2.2.4 Autodiscover Response

Autodiscover responses consist of a single **Autodiscover** element (section [2.2.4.1](#)), which contains configuration information for the user's mailbox within its child elements.

2.2.4.1 Autodiscover

The **Autodiscover** element is the root element of an Autodiscover response. The elements in the following sections can be child elements of the **Autodiscover** element.

2.2.4.1.1 Response

The **Response** element contains the response from the Autodiscover server that includes a list of URLs that are used to establish a connection with web services.

The elements specified in the following sections can be child elements of the **Response** element. For an example that shows the XML schema of the **Response** element and its child elements, see section [4](#).

2.2.4.1.1.1 User

The **User** element and its child elements provide user-specific information. Servers MUST include this element.

The elements specified in the following sections can be child elements of the **User** element.

2.2.4.1.1.1.1 AutoDiscoverSMTPAddress

The **AutoDiscoverSMTPAddress** element represents the user's primary **Simple Mail Transfer Protocol (SMTP)** address. It is an optional child element of the **User** element (section [2.2.4.1.1.1](#)). This is the email address that is used for the Autodiscover process. The **AutoDiscoverSMTPAddress** element returns the proxy address in lieu of the email address if a proxy address exists.

2.2.4.1.1.1.2 DefaultABView

The **DefaultABView** element indicates the default view for the user's **address book**. If the **Global Address List (GAL)** is the default view, this element SHOULD NOT be present. If the **Contacts folder** in the user's mailbox is the default view, this element SHOULD [<3>](#) be present with a value of "contacts".

2.2.4.1.1.1.3 DeploymentId

The **DeploymentId** element uniquely identifies the server forest in a **GUID** format. It is an optional child element of the **User** element (section [2.2.4.1.1.1](#)).

The **DeploymentId** element is returned when the user is within a server forest. The returned value is the GUID identifier of the **Active Directory** forest in which the mailbox user account is contained.

2.2.4.1.1.1.4 DisplayName

The **DisplayName** element represents the user's **display name**. It is a required child element of the **User** element (section [2.2.4.1.1.1](#)).

2.2.4.1.1.1.5 LegacyDN

The **LegacyDN** element identifies a user's mailbox by **DN**. The **LegacyDN** is also known as the ESSDN, which is the naming scheme that defines the user. The **LegacyDN** element is a required child element of the **User** element (section [2.2.4.1.1.1](#)) if the **Account** child element (section [2.2.4.1.1.2](#)) of the **Response** element (section [2.2.4.1.1](#)) contains a **Protocol** child element (section [2.2.4.1.1.2.4](#)) with a **Type** child element (section [2.2.4.1.1.2.4.44](#)) with a value of "EXCH", "EXPR", or "EXHTTP".

2.2.4.1.1.2 Account

The **Account** element specifies account settings for the user.

The elements specified in the following sections can be child elements of the **Account** element.

2.2.4.1.1.2.1 AccountType

The **AccountType** element represents the account type. It is a required element of the **Account** element (section [2.2.4.1.1.2](#)). The value MUST be "email".

2.2.4.1.1.2.2 Action

The **Action** element provides information that is used to determine whether another Autodiscover request is required to return the user configuration information. It is a required child element of the **Account** element (section [2.2.4.1.1.2](#)). The following table specifies valid values for this element.

Value	Meaning
"settings"	The Autodiscover server has returned configuration settings in the Protocol element (section 2.2.4.1.1.2.4).
"redirectAddr"	The Autodiscover server has returned a RedirectAddr element (section 2.2.4.1.1.2.6).
"redirectUrl"	The Autodiscover server has returned a RedirectUrl element (section 2.2.4.1.1.2.7).

2.2.4.1.1.2.3 AlternativeMailbox

The **AlternativeMailbox** element contains information that enables clients to open an additional mailbox. It is an optional child element of the **Account** element (section [2.2.4.1.1.2](#)). [<4>](#)

The **AlternativeMailbox** element is returned only when an alternative mailbox is associated with the user.

The elements specified in the following sections can be child elements of the **AlternativeMailbox** element.

2.2.4.1.1.2.3.1 DisplayName

The **DisplayName** element represents the additional mailbox user's display name. It is a required child element of the **AlternativeMailbox** element (section [2.2.4.1.1.2.3](#)). This string MAY be used to override how a client will display the user's name in the alternative mailbox. [<5>](#)

2.2.4.1.1.2.3.2 LegacyDN

The **LegacyDN** element identifies the additional mailbox by DN. It is an optional child element of the **AlternativeMailbox** element (section [2.2.4.1.1.2.3](#)). The **LegacyDN** is also known as the ESSDN, which is the naming scheme that defines the alternative user. [<6>](#)

The **LegacyDN** element MUST be present if the **SmtpAddress** element (section [2.2.4.1.1.2.3.4](#)) is not present. The **LegacyDN** element MUST NOT be present if the **SmtpAddress** element is present.

2.2.4.1.1.2.3.3 Server

The **Server** element contains the FQDN of the mail server that contains the additional mailbox. It is an optional child element of the **AlternativeMailbox** element (section [2.2.4.1.1.2.3](#)). [<7>](#)

The **Server** element MUST be present if the **SmtpAddress** element (section [2.2.4.1.1.2.3.4](#)) is not present. The **Server** element MUST NOT be present if the **SmtpAddress** element is present.

2.2.4.1.1.2.3.4 SmtpAddress

The **SmtpAddress** element contains an SMTP address assigned to the alternative mailbox. This SMTP address can be used in the **EmailAddress** element (section [2.2.3.1.1.2](#)) of an Autodiscover request to discover configuration settings for the alternative mailbox. It is an optional child element of the **AlternativeMailbox** element (section [2.2.4.1.1.2.3](#)). [<8>](#)

The **SmtpAddress** element MUST be present if the **LegacyDN** element (section [2.2.4.1.1.2.3.2](#)) and the **Server** element (section [2.2.4.1.1.2.3.3](#)) are not present. The **SmtpAddress** element MUST NOT be present if the **LegacyDN** element and **Server** element are present.

2.2.4.1.1.2.3.5 Type

The **Type** element identifies the type of the additional mail account. [<9>](#) It is a required child element of the **AlternativeMailbox** element (section [2.2.4.1.1.2.3](#)).

The following table specifies the possible values of the **Type** element.

Value	Meaning
"Archive"	The alternative mailbox represented by the parent AlternativeMailbox element is an archive mailbox for the user.
"Delegate"	The alternative mailbox represented by the parent AlternativeMailbox element is owned by another user. The current user has permissions to open this mailbox.
"TeamMailbox" <10>	The alternative mailbox represented by the parent AlternativeMailbox element is a site mailbox that is configured for the user.

2.2.4.1.1.2.4 Protocol

The **Protocol** element contains the configuration information for connecting a client to the server.

The **Protocol** element is a required child element of the **Account** (section [2.2.4.1.1.2](#)) element when the value of the **Action** element (section [2.2.4.1.1.2.2](#)) is "settings". In this case, if the **Protocol** element contains information that the client can use to communicate with the mailbox via the Messaging Application Programming Interface (MAPI) Extensions for HTTP, as specified in [\[MS-OXCMAPIHTTP\]](#), it MUST contain the XML attributes listed in the following table.

Attribute	Value
Type	"mapiHttp"
Version	An integer value that MUST be greater than zero (0) and less than or equal to the value of the X-MapiHttpCapability header (section 2.2.2.1) included in the Autodiscover request.

The **Protocol** element is an optional child element of the **External** element (section [2.2.4.1.1.2.4.24](#)) and the **Internal** element (section [2.2.4.1.1.2.4.25](#)).

The following sections describe elements that can be child elements of the **Protocol** element.

2.2.4.1.1.2.4.1 AD

The **AD** element specifies the Active Directory server used in conjunction with the mailbox. It is an optional child element of the **Protocol** element (section [2.2.4.1.1.2.4](#)). The element contains the FQDN of a **Lightweight Directory Access Protocol (LDAP)** server that the client can connect to for directory information.

2.2.4.1.1.2.4.2 ASUrl

The **ASUrl** element specifies the URL of the best **endpoint (4)** instance of Availability web services for an email-enabled user, as specified in [\[MS-OXWAVLS\]](#). It is an optional child element of the **Protocol** element (section [2.2.4.1.1.2.4](#)).

2.2.4.1.1.2.4.3 AddressBook

The **AddressBook** element contains information that the client can use to connect to an NSPI server via Messaging Application Programming Interface (MAPI) Extensions for HTTP, as specified in [\[MS-OXCMAPIHTTP\]](#), to retrieve address book information.

2.2.4.1.1.2.4.3.1 ExternalUrl

The **ExternalUrl** element contains a URL that the client can use to connect to an NSPI server via Messaging Application Programming Interface (MAPI) Extensions for HTTP when the client is located outside of the firewall.

2.2.4.1.1.2.4.3.2 InternalUrl

The **InternalUrl** element contains a URL that the client can use to connect to an NSPI server via Messaging Application Programming Interface (MAPI) Extensions for HTTP when the client is located inside of the firewall.

2.2.4.1.1.2.4.4 AuthPackage

The **AuthPackage** element specifies the **authentication (2)** method that is used when authenticating to the server that contains the user's mailbox. It is an optional child element of the **Protocol** element (section [2.2.4.1.1.2.4](#)). The **AuthPackage** element is used only when the **Type** element has a text value of "EXCH", "EXPR", or "EXHTTP".

The possible values are specified in the following table.

Value	Meaning
"basic"	Indicates that the client SHOULD use basic authentication (2), as specified in [RFC2617] .
"kerb"	Indicates that the client SHOULD use Kerberos authentication (2), as specified in [RFC4120] .
"kerbntlm"	Indicates that the client SHOULD use Kerberos authentication (2) or NTLM authentication, as specified in [MS-NLMP] .
"ntlm"	Indicates that the client SHOULD use NTLM authentication (2).
"certificate"	Indicates that the client SHOULD use certificate authentication (2).
"negotiate"< 11 >	Indicates that the client SHOULD use the Negotiate method for authentication (2).
"anonymous"< 12 >	Indicates that the client SHOULD authenticate anonymously by using an SSL connection.

The **AuthPackage** element is returned only when there is an external mailbox server authentication (2) method. If the **AuthPackage** element is omitted, the client SHOULD use Kerberos or NTLM authentication (2).

2.2.4.1.1.2.4.5 AuthRequired

The **AuthRequired** element specifies whether authentication (2) is required. It is an optional child element of the **Protocol** element (section [2.2.4.1.1.2.4](#)). The possible values are specified in the following table.

Value	Meaning
"on"	Authentication (2) is required by the server.
"off"	Authentication (2) is not required by the server.

If a value is not specified, the default value is "on".

The **AuthRequired** element is returned only when the **Type** element (section [2.2.4.1.1.2.4.44](#)) has a text value of "**POP3**". [<13>](#)

2.2.4.1.1.2.4.6 CertPrincipalName

The **CertPrincipalName** element specifies the SSL certificate principal name that is required to connect to the server by using SSL. It is an optional child element of the **Protocol** element (section [2.2.4.1.1.2.4](#)).

If the **CertPrincipalName** element is not specified, the default value is "msstd:SERVER", where "SERVER" is the value that is specified in the **Server** element (section [2.2.4.1.1.2.4.34](#)). For example, if "SERVER" is specified as "server.Contoso.com" and **CertPrincipalName** is left blank with SSL turned on, the default value of **CertPrincipalName** would be "msstd:server.Contoso.com".

The **CertPrincipalName** element is returned only when the connection to the server is authenticated with SSL.

2.2.4.1.1.2.4.7 DomainName

The **DomainName** element specifies the user's **domain**. It is an optional child element of the **Protocol** element (section [2.2.4.1.1.2.4](#)). If no value is specified, the default value is the email address in **user principal name (UPN)** format. For example: <username>@<domain>. [<14>](#)

2.2.4.1.1.2.4.8 DomainRequired

The **DomainRequired** element contains a text value that indicates whether the domain is required for authentication (2). It is an optional child element of the **Protocol** element (section [2.2.4.1.1.2.4](#)). [<15>](#) The possible values are specified in the following table.

Value	Meaning
"on"	The domain name is required for authentication (2).
"off"	The domain name is not required for authentication (2).

2.2.4.1.1.2.4.9 EcpUrl

The **EcpUrl** element is the base **Exchange Control Panel (ECP)** URL. It is an optional child element of the **Protocol** element (section [2.2.4.1.1.2.4](#)). [<16>](#) The URL contains the following information:

- Protocol: requires "https"
- Host: Host name
- Path: ECP path within the host server

The value of the **EcpUri** element is similar to the following: "https://machine.domain.Contoso.com/ecp".

2.2.4.1.1.2.4.10 EcpUri-aggr

The **EcpUri-aggr** element contains a value that, when appended to the value of the **EcpUri** element (section [2.2.4.1.1.2.4.9](#)), results in a URL that can be used to access email aggregation settings. It is an optional child element of the **Protocol** element (section [2.2.4.1.1.2.4](#)).<17> The value of the **EcpUri-aggr** element is similar to the following:
"?p=personalsettings/EmailSubscriptions.slabs&exsvurl=1".

2.2.4.1.1.2.4.11 EcpUri-extinstall

The **EcpUri-extinstall** element contains a value that, when appended to the value of the **EcpUri** element (section [2.2.4.1.1.2.4.9](#)), results in a URL that can be used to view or change the **mail apps** currently installed in the user's mailbox. It is an optional child element of the **Protocol** element (section [2.2.4.1.1.2.4](#)).<18>

The value of the **EcpUri-extinstall** element is similar to the following:
"Extension/InstalledExtensions.slabs?exsvurl=1&realm=contoso.com".

2.2.4.1.1.2.4.12 EcpUri-mt

The **EcpUri-mt** element contains a value that, when appended to the value of the **EcpUri** element (section [2.2.4.1.1.2.4.9](#)), results in a URL that can be used to access email message tracking settings. It is an optional child element of the **Protocol** element (section [2.2.4.1.1.2.4](#)).<19>

The value of the **EcpUri-mt** element contains parameters contained within '<' and '>' characters that are substituted by the client as shown in the following table.

Parameter	Substitute with
<i>IsOWA</i>	n
<i>MsgID</i>	Internet message identifier of the message to be tracked as specified by the Message-ID header. See RFC2822 .
<i>Mbx</i>	The SMTP address of the user's mailbox.
<i>Sender</i>	The SMTP address of the message's sender.

The value of the **EcpUri-mt** element is similar to the following:
"PersonalSettings/DeliveryReport.aspx?exsvurl=1&IsOWA=<IsOWA>&MsgID=<MsgID>&Mbx=<Mbx>&Sender=<Sender>".

2.2.4.1.1.2.4.13 EcpUri-photo

The **EcpUri-photo** element contains a value that, when appended to the value of the **EcpUri** element (section [2.2.4.1.1.2.4.9](#)), results in a URL that can be used to view or change the user's current photo. It is an optional child element of the **Protocol** element (section [2.2.4.1.1.2.4](#)).<20>

The value of the **EcpUri-photo** element is similar to the following:
"PersonalSettings/EditAccount.aspx?chgPhoto=1&realm=contoso.com".

2.2.4.1.1.2.4.14 EcpUrl-publish

The **EcpUrl-publish** element contains a value that, when appended to the value of the **EcpUrl** element (section [2.2.4.1.1.2.4.9](#)), results in a URL that can be used to access **calendar** publishing settings. It is an optional child element of the **Protocol** element (section [2.2.4.1.1.2.4](#)).<21>

The value of the **EcpUrl-publish** element contains a parameter contained within '<' and '>' characters that are substituted by the client, as shown in the following table.

Parameter	Substitute with
<i>FldID</i>	The folder identifier to the calendar folder to be published.

The value of the **EcpUrl-publish** element is similar to the following:
"customize/calendarpublishing.slabs?exsvurl=1&FldID=<FldID>".

2.2.4.1.1.2.4.15 EcpUrl-ret

The **EcpUrl-ret** element contains a value that, when appended to the value of the **EcpUrl** element (section [2.2.4.1.1.2.4.9](#)), results in a URL that can be used to access retention tag settings. It is an optional child element of the **Protocol** element (section [2.2.4.1.1.2.4](#)).<22> The value of the **EcpUrl-ret** element is similar to the following: "?p=organize/retentionpolicytags.slabs&exsvurl=1".

2.2.4.1.1.2.4.16 EcpUrl-sms

The **EcpUrl-sms** element contains a value that, when appended to the value of the **EcpUrl** element (section [2.2.4.1.1.2.4.9](#)), results in a URL that can be used to access Short Message Service (SMS) settings. It is an optional child element of the **Protocol** element (section [2.2.4.1.1.2.4](#)).<23> The value of the **EcpUrl-sms** element is similar to the following:
"?p=sms/textmessaging.slabs&exsvurl=1".

2.2.4.1.1.2.4.17 EcpUrl-tm

The **EcpUrl-tm** element contains a value that, when appended to the value of the **EcpUrl** element (section [2.2.4.1.1.2.4.9](#)), results in a URL that can be used to access a list of all site mailboxes of which the user is currently a member. It is an optional child element of the **Protocol** element (section [2.2.4.1.1.2.4](#)).<24>

The value of the **EcpUrl-tm** element is similar to the following: "?ftr=TeamMailbox&realm=contoso.com".

2.2.4.1.1.2.4.18 EcpUrl-tmCreating

The **EcpUrl-tmCreating** element contains a value that, when appended to the value of the **EcpUrl** element (section [2.2.4.1.1.2.4.9](#)), results in a URL that can be used to create a new site mailbox. It is an optional child element of the **Protocol** element (section [2.2.4.1.1.2.4](#)).<25>

The value of the **EcpUrl-tmCreating** element contains parameters contained within '<' and '>' characters that are substituted by the client, as shown in the following table.

Parameter	Substitute with
<i>SPUrl</i>	Empty string
<i>Title</i>	Empty string

The value of the **EcpUrl-tmCreating** element is similar to the following:
"?ftr=TeamMailboxCreating&SPUrl=<SPUrl>&Title=<Title>&realm=contoso.com".

2.2.4.1.1.2.4.19 EcpUrl-tmEditing

The **EcpUrl-tmEditing** element contains a value that, when appended to the value of the **EcpUrl** element (section [2.2.4.1.1.2.4.9](#)), results in a URL that can be used to edit an existing site mailbox. It is an optional child element of the **Protocol** element (section [2.2.4.1.1.2.4](#)).<26>

The value of the **EcpUrl-tmEditing** element contains a parameter contained within '<' and '>' characters that is substituted by the client, as shown in the following table.

Parameter	Substitute with
<i>Id</i>	The SMTP email address or the ESSDN assigned to the site mailbox.

The value of the **EcpUrl-tmEditing** element is similar to the following:
"?ftr=TeamMailboxEditing&Id=<Id>&realm=contoso.com".

2.2.4.1.1.2.4.20 EcpUrl-tmHiding

The **EcpUrl-tmHiding** element contains a value that, when appended to the value of the **EcpUrl** element (section [2.2.4.1.1.2.4.9](#)), results in a URL that can be used to unsubscribe the user from a site mailbox. It is an optional child element of the **Protocol** element (section [2.2.4.1.1.2.4](#)).<27>

The value of the **EcpUrl-tmHiding** element contains a parameter contained within '<' and '>' characters that is substituted by the client, as shown in the following table.

Parameter	Substitute with
<i>Id</i>	The SMTP email address or the ESSDN assigned to the site mailbox.

The value of the **EcpUrl-tmHiding** element is similar to the following:
"?ftr=TeamMailboxHiding&Id=<Id>&realm=contoso.com".

2.2.4.1.1.2.4.21 EcpUrl-um

The **EcpUrl-um** element contains a value that, when appended to the value of the **EcpUrl** element (section [2.2.4.1.1.2.4.9](#)), results in a URL that can be used to access voice mail settings. It is an optional child element of the **Protocol** element (section [2.2.4.1.1.2.4](#)).<28> The value of the **EcpUrl-um** element is similar to the following: "?p=customize/voicemail.aspx&exsvurl=1".

2.2.4.1.1.2.4.22 Encryption

The **Encryption** element specifies the required encryption for the connection to the server. It is an optional child element of the **Protocol** element (section [2.2.4.1.1.2.4](#)).<29> This element is valid only if the value of the **Type** element (section [2.2.4.1.1.2.4.44](#)) is "IMAP", "POP3", or "SMTP". If the **Encryption** element is present, it overrides the **SSL** element (section [2.2.4.1.1.2.4.42](#)). The following table specifies the possible values of the **Encryption** element.

Value	Meaning
"None"	No encryption is used.

Value	Meaning
"SSL"	SSL encryption is used.
"TLS"	TLS encryption is used.
"Auto"	The most secure encryption that the client and server support is used.

2.2.4.1.1.2.4.23 EwsUrl

The **EwsUrl** element specifies the URL for the web services virtual directory. It is an optional child element of the **Protocol** element (section [2.2.4.1.1.2.4](#)).

2.2.4.1.1.2.4.24 External

The **External** element contains the collection of URLs that a client can connect to outside the firewall. It is an optional child element of the **Protocol** element (section [2.2.4.1.1.2.4](#)). If the server is configured for external access, the **External** element will contain a **Protocol** element (section [2.2.4.1.1.2.4](#)) and an **OWAUrl** element (section [2.2.4.1.1.2.4.25.1](#)). The **Protocol** element SHOULD contain an **ASUrl** element (section [2.2.4.1.1.2.4.2](#)) and a **Type** element (section [2.2.4.1.1.2.4.44](#)). The **Protocol** element SHOULD NOT contain any other child elements.

2.2.4.1.1.2.4.25 Internal

The **Internal** element contains a collection of URLs that a client can connect to when it is inside the firewall. It is an optional child element of the **Protocol** element (section [2.2.4.1.1.2.4](#)).

If the server is configured for internal access, the **Internal** element contains a **Protocol** element, (as specified in section [2.2.4.1.1.2.4](#)) and an **OWAUrl** element (as specified in section [2.2.4.1.1.2.4.25.1](#)). The **Protocol** child element SHOULD contain an **ASUrl** element (as specified in section [2.2.4.1.1.2.4.2](#)) and a **Type** element (as specified in section [2.2.4.1.1.2.4.44](#)). The **Protocol** child element SHOULD NOT contain any other child elements.

2.2.4.1.1.2.4.25.1 OWAUrl

The **OWAUrl** element describes the URL, as specified in [\[RFC3986\]](#), and the authentication (2) method that is used to access the server. It is a required child element of the **Internal** element (section [2.2.4.1.1.2.4.25](#)) and the **External** element (section [2.2.4.1.1.2.4.24](#)).

The **OWAUrl** has an optional **AuthenticationMethod** attribute. This attribute specifies the allowed authentication (2) methods that are supported by the server. This attribute can be one or more of the values in the following table. Multiple values are separated by commas.

Value	Authentication method
"WindowsIntegrated"	Integrated Windows Authentication
"Fba"	Forms Based Authentication
"Ntlm"	NTLM Authentication
"Digest"	Digest Authentication
"Basic"	Basic Authentication
"LiveIdFba" <30>	Live Id Authentication

2.2.4.1.1.2.4.26 LoginName

The **LoginName** element specifies the user's mail server logon name. It is an optional child element of the **Protocol** element (section [2.2.4.1.1.2.4](#)).<31>

2.2.4.1.1.2.4.27 MailStore

The **MailStore** element contains information that the client can use to connect to a mailbox via Messaging Application Programming Interface (MAPI) Extensions for HTTP, as specified in [\[MS-OXCMAPIHTTP\]](#), to retrieve mailbox information.

2.2.4.1.1.2.4.27.1 ExternalUrl

The **ExternalUrl** element contains a URL that the client can use to connect to a mailbox via Messaging Application Programming Interface (MAPI) Extensions for HTTP when the client is located outside of the firewall.

2.2.4.1.1.2.4.27.2 InternalUrl

The **InternalUrl** element contains a URL that the client can use to connect to a mailbox via Messaging Application Programming Interface (MAPI) Extensions for HTTP when the client is located inside of the firewall.

2.2.4.1.1.2.4.28 MdbDN

The **MdbDN** element contains the DN of the mailbox database. It is an optional child element of the **Protocol** element (section [2.2.4.1.1.2.4](#)).

2.2.4.1.1.2.4.29 OABUrl

The **OABUrl** element specifies the **offline address book (OAB)** configuration server URL for a server. It is an optional child element of the **Protocol** element (section [2.2.4.1.1.2.4](#)). For more details about the services that are available at this URL, see [\[MS-OXWOAB\]](#).

The **OABUrl** element is returned if there is an internal or external OAB configured for the user.

2.2.4.1.1.2.4.30 OOFUrl

The **OOFUrl** element specifies the URL of the best instance of the Out of Office (OOF) Web Service for a mail-enabled user. It is an optional child element of the **Protocol** element (section [2.2.4.1.1.2.4](#)). For more details about the services that are available at this URL, see [\[MS-OXWOOF\]](#).

The **OOFUrl** element is returned when the server implements a URL for internal or external access to the Out of Office (OOF) Web Service. If the **OOFUrl** element is omitted, the **Out of Office (OOF)** services are not available to the client.

2.2.4.1.1.2.4.31 Port

The **Port** element specifies the port that is used to connect to the **message store**. It is an optional child element of the **Protocol** element (section [2.2.4.1.1.2.4](#)).<32> For more details, see [\[MS-OXCRPC\]](#).

The **Port** element is not returned when the **Server** element contains a URL.

2.2.4.1.1.2.4.32 PublicFolderServer

The **PublicFolderServer** element specifies the FQDN for the **public folder** server. It is an optional child element of the **Protocol** element (section [2.2.4.1.1.2.4](#)).

2.2.4.1.1.2.4.33 ReferralPort

The **ReferralPort** element specifies the port that is used to get a referral to a directory. It is an optional child element of the **Protocol** element (section [2.2.4.1.1.2.4](#)).<33> For more details, see [\[MS-OXABREF\]](#).

2.2.4.1.1.2.4.34 Server

The **Server** element specifies the name of the mail server. It is a required child element of the **Protocol** element (section [2.2.4.1.1.2.4](#)) that has a **Type** element (section [2.2.4.1.1.2.4.44](#)) value of "EXCH", "EXPR", "EXHTTP", "POP3", "SMTP", or "IMAP". The value will be either a host name or an IP address.

2.2.4.1.1.2.4.35 ServerDN

The **ServerDN** element specifies the DN of the mail server. It is a required child element of the **Protocol** element (section [2.2.4.1.1.2.4](#)) when the **Type** element (section [2.2.4.1.1.2.4.44](#)) has a value of "EXCH".

2.2.4.1.1.2.4.36 ServerExclusiveConnect

The **ServerExclusiveConnect** element specifies whether the client uses the connection information contained in the parent **Protocol** element (section [2.2.4.1.1.2.4](#)) first when the client attempts to connect to the server. It is an optional child element of the **Protocol** element.<34>

The possible values are specified in the following table.

Value	Meaning
"on"	Clients SHOULD use the connection information in the parent Protocol element first when attempting to connect to the server.
"off"	Clients SHOULD NOT use the connection information in the parent Protocol element first when attempting to connect to the server unless there are no other Protocol elements that contain a ServerExclusiveConnect element with a value of "on".

If the element is not present, the default value is "off". If no **Protocol** elements in the response have a **ServerExclusiveConnect** element set to "on", the client can use the **Protocol** elements in any order.

The **ServerExclusiveConnect** element is used only when the **Type** element is equal to "EXPR", "EXCH", or "EXHTTP".

2.2.4.1.1.2.4.37 ServerVersion

The **ServerVersion** element represents the version number of the server software. It is an optional child element of the **Protocol** element (section [2.2.4.1.1.2.4](#)).

The **ServerVersion** value is a 32-bit hexadecimal number that contains the major version number, minor version number, and major build number of the server. The **ServerVersion** element is used only when the **Type** element (section [2.2.4.1.1.2.4.44](#)) has a value of "EXCH".

2.2.4.1.1.2.4.38 SharingUrl

The **SharingUrl** element specifies the endpoint (4) for a sharing server, which is a server used for sharing calendars and **contacts** (3). It is an optional child element of the **Protocol** element (section [2.2.4.1.1.2.4](#)).

The **SharingUrl** element is returned when the server implements a URL for cross-organization sharing.

2.2.4.1.1.2.4.39 SiteMailboxCreationURL

The **SiteMailboxCreationURL** element contains a URL to a self-service web site that can be used to create a new site mailbox. It is an optional child element of the **Protocol** element (section [2.2.4.1.1.2.4](#)).<35>

2.2.4.1.1.2.4.40 SMTPLast

The **SMTPLast** element specifies whether the Simple Mail Transfer Protocol (SMTP) server requires that email be downloaded before it sends email by using the SMTP server. It is an optional child element of the **Protocol** element (section [2.2.4.1.1.2.4](#)).<36>

The possible values are specified in the following table.

Value	Meaning
"on"	The server requires that email be downloaded before the client sends mail via SMTP.
"off"	The server does not require that email be downloaded before the client sends mail via SMTP.

If this element is not present, the default value is "off".

The **SMTPLast** element is used only when the **Type** element is equal to "SMTP".

2.2.4.1.1.2.4.41 SPA

The **SPA** element indicates whether secure password authentication (2) is required. It is an optional child element of the **Protocol** element (section [2.2.4.1.1.2.4](#)). This element is only valid when the value of the **Type** element (section [2.2.4.1.1.2.4.44](#)) is "SMTP", "POP3", or "IMAP". The possible values are specified in the following table.

Value	Meaning
"on"	SPA is required.
"off"	SPA is not required.

If this element is not present, the default value is "on".

2.2.4.1.1.2.4.42 SSL

The **SSL** element specifies whether the server requires SSL for logon. It is an optional child element of the **Protocol** element (section [2.2.4.1.1.2.4](#)).

The possible values are specified in the following table.

Value	Meaning
"on"	SSL is required.
"off"	SSL is not required.

If a value is not specified, the default value is "on".

2.2.4.1.1.2.4.43 TTL

The **TTL** element specifies the time, in hours, during which the settings remain valid. It is an optional child element of the **Protocol** element (section [2.2.4.1.1.2.4](#)).

A value of "0" (zero) indicates that rediscovery is not required. If the **TTL** element is omitted, the default value is "1".

2.2.4.1.1.2.4.44 Type

The **Type** element identifies the type of the configured mail account. It is an optional child element of the **Protocol** element (section [2.2.4.1.1.2.4](#)). If the **Protocol** element has a Type attribute, then the **Type** element MUST NOT be present. If the **Protocol** element does not have a Type attribute, then the **Type** element MUST be present. The possible values are specified in the following table.

Value	Meaning
"EXCH"	The Protocol element contains information that the Autodiscover client can use to communicate with the mailbox via a remote procedure call (RPC) . For details, see [MS-OXCRPC] .
"EXPR"	The Protocol element contains information that the Autodiscover client can use to communicate when outside the firewall, including RPC/HTTP connections. For details, see [MS-RPCH] .
"EXHTTP" <37>	The Protocol element contains information that the Autodiscover client can use to communicate via RPC/HTTP connections.
"POP3" <38>	The Protocol element contains settings that the client can use to communicate with the mail server via POP3. For details, see [RFC1939] .
"SMTP" <39>	The Protocol element contains settings the client can use to send mail via SMTP. For details, see [RFC2821] .
"IMAP" <40>	The Protocol element contains settings the client can use to communicate with the mail server via IMAP4 . For details, see [RFC3501] .
"DAV" <41>	The Protocol element contains settings the client can use to communicate with the mail server via the DAV protocol. For details, see [RFC2518] .
"WEB"	The Protocol element contains settings the client can use to connect via a web browser.

2.2.4.1.1.2.4.45 UMUrl

The **UMUrl** element specifies the URL of the best instance of the Voice Mail Settings Web Service protocol ([\[MS-OXWUMS\]](#)) for a mail-enabled user. It is an optional child element of the **Protocol** element (section [2.2.4.1.1.2.4](#)).

The **UMUrl** element is returned when the server implements a URL for internal or external access to the Voice Mail Settings Web Service.

2.2.4.1.1.2.4.46 UsePOPAuth

The **UsePOPAuth** element indicates whether the authentication (2) information that is provided for a POP3 type of account is also used for SMTP. It is an optional child element of the **Protocol** element (section [2.2.4.1.1.2.4](#)).<42>

The possible values are specified in the following table.

Value	Meaning
"on"	Use the POP3 authentication (2) information for SMTP.
"off"	Do not use the POP3 authentication (2) information for SMTP.

The **UsePOPAuth** element is used only when the value of the **Type** element (section [2.2.4.1.1.2.4.44](#)) is equal to "SMTP".

2.2.4.1.1.2.5 PublicFolderInformation

The **PublicFolderInformation** element contains information that enables clients to send an Autodiscover request to discover public folder settings. It is an optional child element of the **Account** element (section [2.2.4.1.1.2](#)). <43> There MUST NOT be more than one **PublicFolderInformation** element in a response.

The elements specified in the following sections can be child elements of the **PublicFolderInformation** element.

2.2.4.1.1.2.5.1 SmtAddress

The **SmtAddress** element contains an SMTP address assigned to the public folder message store configured for the user. This SMTP address can be used in the **EmailAddress** element (section [2.2.3.1.1.2](#)) of an Autodiscover request to discover public folder settings. It is a required child element of the **PublicFolderInformation** element (section [2.2.4.1.1.2.5](#)).

2.2.4.1.1.2.6 RedirectAddr

The **RedirectAddr** element specifies the email address to use for a subsequent Autodiscover request. It is a required child element of the **Account** element (section [2.2.4.1.1.2](#)) when the value of the **Action** element (section [2.2.4.1.1.2.2](#)) is "redirectAddr".

The **RedirectAddr** element is returned when the server requires another email address to perform another Autodiscover request.

2.2.4.1.1.2.7 RedirectUrl

The **RedirectUrl** element specifies the URL of the server to use for a subsequent Autodiscover request. It is a required child element of the **Account** element (section [2.2.4.1.1.2](#)) when the value of the **Action** element (section [2.2.4.1.1.2.2](#)) is "redirectUrl".

The **RedirectUrl** element is returned when the server requires another URL to perform another Autodiscover request.

2.2.4.1.1.3 Error

The **Error** element contains an Autodiscover error response. It is an optional child element of the **Response** element (section [2.2.4.1.1](#)). The **Error** element has two attributes, as listed in the following table.

Attribute	Description
Time	Represents the time when the error response was returned.
Id	Represents a hash value of the name of the mail server.

The elements specified in the following sections can be child elements of the **Error** element.

2.2.4.1.1.3.1 DebugData

The **DebugData** element contains the debug data for an Autodiscover error response. It is a required child element of the **Error** element (section [2.2.4.1.1.3](#)). The contents of this element will depend on the implementation of the Autodiscover server.

2.2.4.1.1.3.2 ErrorCode

The **ErrorCode** element contains the error code for an error Autodiscover response. It is a required child element of the **Error** element (section [2.2.4.1.1.3](#)).

The following table lists the current error codes.

Error code	Description
500	The email address cannot be found. The Autodiscover server cannot determine how to provide configuration information for the requested email address.
501	Bad Address. The Autodiscover server recognizes the given email address but is unable to provide configuration information because the given email address has no configuration options.
600	Invalid Request. The XML request was improperly formatted.
601	The Autodiscover server was unable to provide configuration information of the requested type.
602	Bad Address. The Autodiscover server recognizes the specified email address but is unable to provide configuration information because of configuration errors.
603	The Autodiscover server threw an internal error.

2.2.4.1.1.3.3 Message

The **Message** element contains the error message for an error Autodiscover response. It is a required child element of the **Error** element (section [2.2.4.1.1.3](#)). The **Message** element SHOULD be in the form of a human-readable error message.

3 Protocol Details

3.1 Client Details

3.1.1 Abstract Data Model

None.

3.1.2 Timers

Clients SHOULD implement a Time-To-Live timer, initialized to the number of hours specified by the value of the **TTL** element (section [2.2.4.1.1.2.4.43](#)) in the Autodiscover response. If the value of the **TTL** element is "0", this timer is not used. If the **TTL** element is absent, this timer SHOULD be initialized to one hour.

3.1.3 Initialization

It is assumed that the Autodiscover client has an email address for which discovery information is needed.

It is also assumed that the Autodiscover client has a list of potential Autodiscover server URIs. This list could be generated by using the [\[MS-OXDISCO\]](#) protocol. The list could also be preconfigured.

3.1.4 Higher-Layer Triggered Events

When an Autodiscover client is configuring itself to access a user's mailbox, it sends an HTTP **POST** request that contains an Autodiscover request, as specified in section [2.2.3](#). The client waits for a response and processes the response as specified in section [3.1.5](#).

If the client supports the Messaging Application Programming Interface (MAPI) Extensions for HTTP, as specified in [\[MS-OXCMAPIHTTP\]](#), it SHOULD include an X-MapiHttpCapability header (section [2.2.2.1](#)) in the Autodiscover request. If the client does not support the Messaging Application Programming Interface (MAPI) Extensions for HTTP, it MUST NOT include an X-MapiHttpCapability header in the Autodiscover request.

3.1.5 Message Processing Events and Sequencing Rules

The results of an Autodiscover request fall into the following categories.

- The URI is not functional. The client SHOULD process this response as specified in section [3.1.5.1](#).
- The HTTP **POST** command returns an HTTP 302 Redirection response. The client SHOULD process this response as specified in section [3.1.5.2](#).
- The Autodiscover server returns an **Action** element (section [2.2.4.1.1.2.2](#)) with a value of "redirectAddr" or "redirectUrl". The client SHOULD process this response as specified in section [3.1.5.3](#).
- The Autodiscover server returns configuration information. The client SHOULD process this response as specified in section [3.1.5.4](#).
- The Autodiscover server returns error information. The client SHOULD process this response as specified in section [3.1.5.5](#).

3.1.5.1 Nonfunctional URIs

If the Autodiscover client attempts to send an HTTP **POST** request to a nonfunctional URI, it SHOULD retry the HTTP **POST** request using the next URI in its list of potential Autodiscover server URIs. It SHOULD NOT abort the Autodiscover request unless it has attempted all of the URIs in its list of potential Autodiscover server URIs.

3.1.5.2 HTTP 302 Redirects

If the server returns a redirection URL via an HTTP 302 Redirect response, the client SHOULD repost the request to the redirection URL contained in the **Location** header (as specified in [\[RFC2068\]](#) section 14.30) of the response.

3.1.5.3 Autodiscover Redirect

If the server returns an Autodiscover response (as specified in section [2.2.4](#)) which contains an **Action** element (section [2.2.4.1.1.2.2](#)) with a value of "redirectAddr", the client SHOULD send a new Autodiscover request. The value of the **EmailAddress** element (section [2.2.3.1.1.2](#)) in the new request SHOULD be set to the value of the **RedirectAddr** element (section [2.2.4.1.1.2.6](#)) in the Autodiscover response.

If the server returns an Autodiscover response which contains an **Action** element with a value of "redirectUrl", the client SHOULD send a new Autodiscover request to the URL contained in the value of the **RedirectUrl** element (section [2.2.4.1.1.2.7](#)) in the Autodiscover response.

See section [4.2](#) for an example of an Autodiscover Redirect response.

3.1.5.4 Autodiscover Configuration Information

If the server returns an Autodiscover response (as specified in section [2.2.4](#)) that contains a **User** element (section [2.2.4.1.1.1](#)) and an **Account** element (section [2.2.4.1.1.2](#)), the client SHOULD use the information contained within the response to configure itself. It SHOULD NOT send further Autodiscover requests to the next URI in its list of potential Autodiscover server URIs. For an example of an Autodiscover response that contains configuration information, see section [4.3](#).

If the server response contains multiple **Protocol** elements (section [2.2.4.1.1.2.4](#)), the client uses the following rules to choose which **Protocol** element to use to connect.

1. If the server response contains a **Protocol** element that contains a **ServerExclusiveConnect** element (section [2.2.4.1.1.2.4.36](#)) with a value of "on", the configuration information in that **Protocol** element SHOULD [<44>](#) be used first.
2. If the server response contains one or more **Protocol** elements that contain a **Type** element (section [2.2.4.1.1.2.4.44](#)) with a value of "EXHTTP", the client SHOULD [<45>](#) ignore any **Protocol** elements that contain a **Type** element with a value of "EXPR".
3. If there are multiple **Protocol** elements that contain a **Type** element with a value of "EXHTTP", the client SHOULD [<46>](#) store each set of configuration information represented by these elements, and attempt to connect using the configuration information sets in the order in which they appeared in the response, stopping when a successful connection is made. For example, if a response contains two **Protocol** elements that contain a **Type** element with the value "EXHTTP", the client attempts to connect using the information in the first such **Protocol** element. If the connection attempt fails, the client attempts to connect using the information in the second such **Protocol** element.

3.1.5.5 Autodiscover Server Errors

If the server returns an Autodiscover response (as specified in section [2.2.4](#)) that contains an **Error** element (section [2.2.4.1.1.3](#)), the client SHOULD retry the HTTP **POST** request using the next URI in its list of potential Autodiscover server URIs. For an example of an Autodiscover response that contains an **Error** element, see section [4.5](#).

3.1.6 Timer Events

When the Time-To-Live timer specified in section [3.1.2](#) expires, clients SHOULD issue a new Autodiscover request and apply any changes indicated by the response to its configuration.

3.1.7 Other Local Events

None.

3.2 Server Details

3.2.1 Abstract Data Model

None.

3.2.2 Timers

None.

3.2.3 Initialization

None.

3.2.4 Higher-Layer Triggered Events

None.

3.2.5 Message Processing Events and Sequencing Rules

An Autodiscover server MUST respond to HTTP **POST** requests to the URL "https://<Server>/autodiscover/autodiscover.xml", where "<Server>" is a valid host name for the server.

The server SHOULD validate the body of the HTTP **POST** request, ensuring that it is a valid Autodiscover request as specified in section [2.2.3](#).

If the server receives a request that contains both the **EEmailAddress** element (section [2.2.3.1.1.2](#)) and the **LegacyDN** element (section [2.2.3.1.1.3](#)), the value of the **LegacyDN** element MUST be used.

If the server needs to redirect the Autodiscover client to another URL, it SHOULD send a 302 Redirect response with the **Location** header set to the new URL. Alternatively, it MAY send an Autodiscover response (as specified in section [2.2.4](#)) with a **RedirectUrl** element (section [2.2.4.1.1.2.7](#)) value set to the new URL.

If the server needs to redirect the Autodiscover client to another email address, it SHOULD send an Autodiscover response with a **RedirectAddr** element (section [2.2.4.1.1.2.6](#)) value set to the new email address.

If the server encounters an error, it SHOULD send an Autodiscover response with an **Error** element (section [2.2.4.1.1.3](#)). It SHOULD set the value of the **ErrorCode** element to one of the values in the table in section [2.2.4.1.1.3.2](#), but MAY use a value not in the table.

If the server does not need to redirect the request and encounters no errors, it MUST return an Autodiscover response with a **User** element (section [2.2.4.1.1.1](#)) containing information about the user represented by the email address in the **EmailAddress** element (section [2.2.3.1.1.2](#)) of the request and an **Account** element (section [2.2.4.1.1.2](#)) containing configuration information for the user's mailbox.

If the Autodiscover request includes an X-MapiHttpCapability header (section [2.2.2.1](#)), the server SHOULD [<47>](#) perform the additional processing specified in section 3.2.5.1.

3.2.5.1 Processing the X-MapiHttpCapability Header

If the Autodiscover request contains an X-MapiHttpCapability header (section [2.2.2.1](#)), the server validates the value of the header. The value is considered valid if it is an integer value greater than zero (0) and if the server supports a version of the response format for the **Protocol** element (section [2.2.4.1.1.2.4](#)) less than or equal to the value.

If the value of the X-MapiHttpCapability header is invalid, the server responds as if the X-MapiHttpCapability header was not present. The server MUST NOT include a **Protocol** element that contains a Type attribute set to "mapiHttp".

If the value of the X-MapiHttpCapability header is valid, the server modifies the Autodiscover response according to the following requirements.

1. The server determines the highest version of the response format for the **Protocol** element that it supports that is less than or equal to the value of the X-MapiHttpCapability header in the Autodiscover response.
2. The response MUST include a **Protocol** element that contains a Type attribute set to "mapiHttp" and a Version attribute, as specified in section [2.2.4.1.1.2.4](#), that corresponds to the highest version determined in step 1. The child elements of the **Protocol** element MUST conform to the version, as indicated in the table below.
3. The response MUST NOT include a **Protocol** element that contains a **Type** element (section [2.2.4.1.1.2.4.44](#)) set to "EXCH" or "EXPR".

The possible versions for the response format are specified in the following table.

Version	Response Format	Notes
1	<pre><MailStore> <InternalUrl>...</InternalUrl> <ExternalUrl>...</ExternalUrl> </MailStore> <AddressBook> <InternalUrl>...</InternalUrl> <ExternalUrl>...</ExternalUrl> </AddressBook></pre>	For both the MailStore element (section 2.2.4.1.1.2.4.27) and the AddressBook element (section 2.2.4.1.1.2.4.3), there must be at least one child element.

If the Autodiscover request contains an X-MapiHttpCapability header, the X-AnchorMailbox header (section [2.2.2.2](#)) SHOULD also be sent. If this header is not sent, the server does not fail but the response can reflect an incorrect state of accessing the mailbox.

3.2.6 Timer Events

None.

3.2.7 Other Local Events

None.

4 Protocol Examples

The following topology is used in this example and is illustrated in the following diagram:

- The **Domain Name System (DNS)** name of the mail server is mail.contoso.com.
- The DNS name of the Web service computer is webservice.contoso.com. It has a valid SSL certificate.
- Autodiscover web services are available at `https://webservice.contoso.com/autodiscover/autodiscover.xml`.

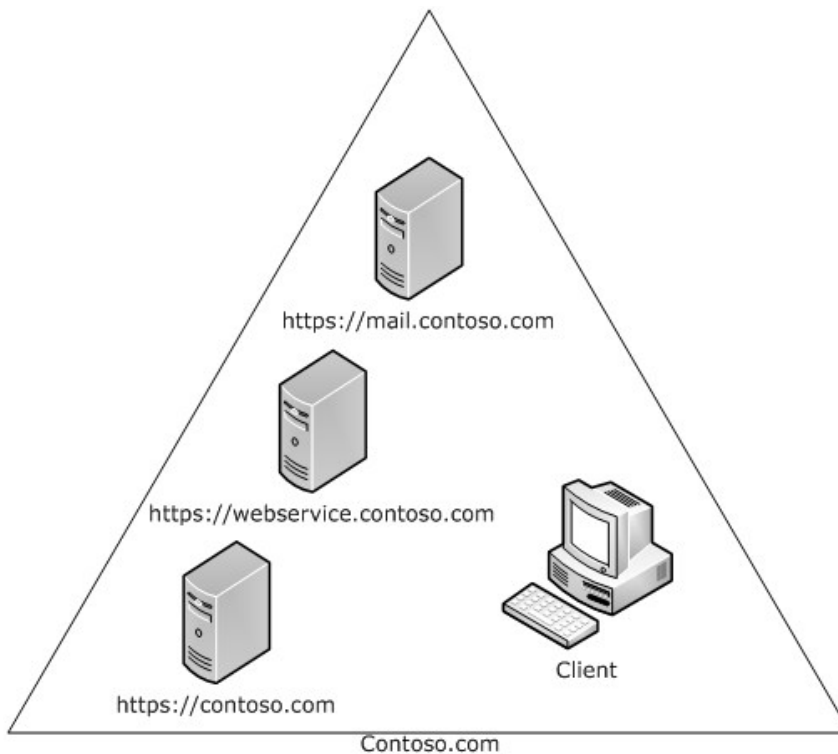


Figure 1: Client and server topology

From executing the Autodiscover HTTP Service Protocol [\[MS-OXDISCO\]](#), the client has the following list of possible Autodiscover servers:

- `https://contoso.com/autodiscover/autodiscover.xml`
- `https://webservice.contoso.com/autodiscover/autodiscover.xml`

The Autodiscover service is only available on `https://webservice.contoso.com/autodiscover/autodiscover.xml`, but `https://contoso.com/autodiscover/autodiscover.xml` is configured to respond with an HTTP 302 Redirect response with the **Location** header set to "`https://webservice.contoso.com/autodiscover/autodiscover.xml`".

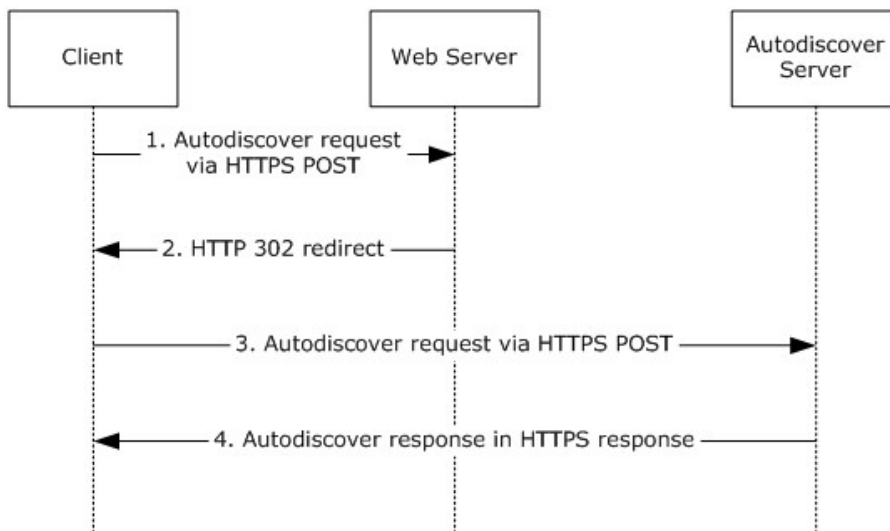


Figure 2: Client and server autodiscovery

Step 1

The Autodiscover client is configured to use the email address `user@contoso.com`.

The client sends the Autodiscover request XML shown in section [4.1](#) via **HTTP POST** to the following URL: `https://contoso.com/autodiscover/autodiscover.xml`.

Step 2

The client is returned an HTTP 302 redirection to the following URL: `https://webservice.contoso.com/autodiscover/autodiscover.xml`.

Step 3

The client then reposts the request to this URL.

Step 4

The user's mailbox is on `mail.contoso.com`. The server returns the response XML shown in section [4.3](#).

4.1 Autodiscover Request

The following example shows an Autodiscover request.

```

<Autodiscover
  xmlns="http://schemas.microsoft.com/exchange/autodiscover/outlook/requestschem/2006">
  <Request>
    <EmailAddress>user@contoso.com</EmailAddress>
    <AcceptableResponseSchema>
      http://schemas.microsoft.com/exchange/autodiscover/outlook/responseschem/2006a
    </AcceptableResponseSchema>
  </Request>
</Autodiscover>
  
```

4.2 Autodiscover Redirect

The following example shows an Autodiscover redirect to a new email address.

```
<?xml version="1.0" encoding="utf-8"?>
<Autodiscover xmlns="http://schemas.microsoft.com/exchange/autodiscover/responseschema/2006">
  <Response
    xmlns="http://schemas.microsoft.com/exchange/autodiscover/outlook/responseschema/2006a">
    <Account>
      <Action>redirectAddr</Action>
      <RedirectAddr>user@subdomain.contoso.com</RedirectAddr>
    </Account>
  </Response>
</Autodiscover>
```

4.3 Autodiscover Configuration

The following example shows an Autodiscover response that contains configuration information.

```
<?xml version="1.0" encoding="utf-8"?>
<Autodiscover xmlns="http://schemas.microsoft.com/exchange/autodiscover/responseschema/2006">
  <Response
    xmlns="http://schemas.microsoft.com/exchange/autodiscover/outlook/responseschema/2006a">
    <User>
      <DisplayName>User Display Name</DisplayName>
      <LegacyDN>/o=microsoft/ou=Contoso/cn=Recipients/cn=486021</LegacyDN>
      <AutoDiscoverSMTPAddress>user@Contoso.com</AutoDiscoverSMTPAddress>
      <DeploymentId>30c3a927-42aa-5de8-91e3-8e5b4655ed00</DeploymentId>
    </User>
    <Account>
      <AccountType>email</AccountType>
      <Action>settings</Action>
      <Protocol>
        <Type>EXCH</Type>
        <Server>ExchangeServer.Contoso.com</Server>
        <ServerDN>/o=Contoso/ou=Exchange Administrative Group (GZZHBOHF23SPELT)/
          cn=Configuration/cn=Servers/cn=ExchangeServer</ServerDN>
        <ServerVersion>720180F0</ServerVersion>
        <MdbDN>/o=Contoso/ou=Exchange Administrative Group (GZZHBOHF23SPELT)/
          cn=Configuration/cn=Servers/cn=ExchangeServer/cn=Microsoft Private MDB</MdbDN>
        <PublicFolderServer>PublicFolderServer.Contoso.com</PublicFolderServer>
        <AD>ADServer.Contoso.com</AD>
        <ASUrl>https://mail.Contoso.com/ews/exchange.asmx</ASUrl>
        <EwsUrl>https://mail. Contoso.com/ews/exchange.asmx</EwsUrl>
        <SharingUrl>https://machine.domain.Contoso.com/EWS/Exchange.asmx</SharingUrl>
        <OOFUrl>https://mail. Contoso.com/ews/exchange.asmx</OOFUrl>
        <UMUrl>https://mail. Contoso.com/unifiedmessaging/service.asmx</UMUrl>
        <OABUrl>https://mail. Contoso.com/oab/68b5509d-87f6-4e78-a9ff-74d7d9572787/</OABUrl>
      </Protocol>
      <Protocol>
        <Type>EXPR</Type>
        <Server>RPCHTTPServer.Contoso.com</Server>
        <SSL>On</SSL>
        <AuthPackage>Ntlm</AuthPackage>
        <ASUrl>https://mail.Contoso.com/ews/exchange.asmx</ASUrl>
        <EcpUrl>https://mail.Contoso.com/ecp</EcpUrl>
        <EcpUrl-um>?p=customize/voicemail.aspx&amp;exsvurl=1</EcpUrl-um>
      </Protocol>
    </Account>
  </Response>
</Autodiscover>
```

```

    <EcpUrl-aggr>?p=personalsettings/EmailSubscriptions.slab&amp;exsvurl=1</EcpUrl-aggr>
    <EcpUrl-sms>?p=sms/textmessaging.slab&amp;exsvurl=1</EcpUrl-sms>
    <EcpUrl-
publish>customize/calendarpublishing.slab?exsvurl=1&amp;FldID=&lt;FldID&gt;&lt;/EcpUrl-publish>
    <EcpUrl-mt>PersonalSettings/DeliveryReport.aspx?
        exsvurl=1&amp;IsOWA=&lt;IsOWA&gt;& &amp;MsgID=&lt;
        MsgID&gt;& &amp;Mbx=&lt;Mbx&gt;& &amp;Sender=&lt;Sender&gt;&lt;/EcpUrl-mt>
    <EcpUrl-ret>?p=organize/retentionpolicytags.slab&amp;exsvurl=1</EcpUrl-ret>
    <EwsUrl>https://mail.Contoso.com/ews/exchange.asmx</EwsUrl>
    <OOFUrl>https://mail.Contoso.com/ews/exchange.asmx</OOFUrl>
    <UMUrl>https://mail.Contoso.com/unifiedmessaging/service.asmx</UMUrl>
    <OABUrl>https://mail.Contoso.com/oab/58b5509d-87f6-4e78-a9ff-74d7d9572787</OABUrl>
</Protocol>
<Protocol>
    <Type>WEB</Type>
    <External>
        <OWAUrl AuthenticationMethod="Fba">https://mail.Contoso.com/owa</OWAUrl>
        <Protocol>
            <Type>EXPR</Type>
            <ASUrl>https://mail.Contoso.com/ews/exchange.asmx</ASUrl>
        </Protocol>
    </External>
    <Internal>
        <OWAUrl AuthenticationMethod="Ntlm,
WindowsIntegrated">https://Internal.mail.Contoso.com/owa</OWAUrl>
        <OWAUrl AuthenticationMethod="Basic, Fba">https://mail.Contoso.com/owa</OWAUrl>
        <Protocol>
            <Type>EXCH</Type>
            <ASUrl>https://mail.Contoso.com/ews/exchange.asmx</ASUrl>
        </Protocol>
    </Internal>
</Protocol>
</Account>
</Response>
</Autodiscover>

```

4.4 MapiHttp Response

The following example shows a MapiHttp response (section [2.2.4.1.1.2.4](#)) that contains configuration information.

```

<?xml version="1.0" encoding="utf-8"?>
<Autodiscover xmlns="http://schemas.microsoft.com/exchange/autodiscover/responseschema/2006">
    <Response
xmlns="http://schemas.microsoft.com/exchange/autodiscover/outlook/responseschema/2006a">
        <User>
            <DisplayName>User Display Name</DisplayName>
            <LegacyDN>/o=microsoft/ou=Contoso/cn=Recipients/cn=486021</LegacyDN>
            <AutoDiscoverSMTPAddress>user@Contoso.com</AutoDiscoverSMTPAddress>
            <DeploymentId>30c3a927-42aa-5de8-91e3-8e5b4655ed00</DeploymentId>
        </User>
        <Account>
            <AccountType>email</AccountType>
            <Action>settings</Action>
            <Protocol Type="mapiHttp" Version="1">
                <MailStore>

```

```

        <InternalUrl>https://mail.Contoso.com/mapi/emsmb/?MailboxId=416c6368-656d-794a-
6f45-57615272456e@Contoso.com</InternalUrl>
    </MailStore>
    <AddressBook>
        <InternalUrl>https://mail.Contoso.com/mapi/nsapi/?MailboxId=416c6368-656d-794a-6f45-
57615272456e@Contoso.com</InternalUrl>
    </AddressBook>
</Protocol>
<Protocol>
    <Type>WEB</Type>
    <External>
        <OWAUrl AuthenticationMethod="Fba">https://mail.Contoso.com/owa</OWAUrl>
        <Protocol>
            <Type>EXPR</Type>
            <ASUrl>https://mail.Contoso.com/ews/exchange.asmx</ASUrl>
        </Protocol>
    </External>
    <Internal>
        <OWAUrl AuthenticationMethod="Ntlm,
WindowsIntegrated">https://Internal.mail.Contoso.com/owa</OWAUrl>
        <OWAUrl AuthenticationMethod="Basic, Fba">https://mail.Contoso.com/owa</OWAUrl>
        <Protocol>
            <Type>EXCH</Type>
            <ASUrl>https://mail.Contoso.com/ews/exchange.asmx</ASUrl>
        </Protocol>
    </Internal>
</Protocol>
</Account>
</Response>
</Autodiscover>

```

4.5 Autodiscover Server Errors

The following example shows an Autodiscover response that contains an error.

```

<Autodiscover xmlns="http://schemas.microsoft.com/exchange/autodiscover/responseschema/2006">
  <Response>
    <Error Time="17:40:40.6157343" Id="3191339394">
      <ErrorCode>500</ErrorCode>
      <Message>The email address cannot be found.</Message>
      <DebugData />
    </Error>
  </Response>
</Autodiscover>

```

5 Security

5.1 Security Considerations for Implementers

There are no special security considerations specific to this specification. It is recommended that clients perform an Autodiscover request by using this protocol over HTTPS (HTTP with SSL).

It is also recommended that a server not answer Autodiscover queries unless the Autodiscover client has been authenticated with the Autodiscover server.

5.2 Index of Security Parameters

None.

6 Appendix A: XSDs

For ease of implementation, the following sections provide the four **XML schema definitions (XSDs)** for this protocol.

XSD name	Prefix	Section
Autodiscover request XSD	xs:	6.1
Autodiscover response XSD	xs:	6.2
Autodiscover error response XSD	xs:	6.3
Autodiscover redirect response XSD	xs:	6.4

6.1 Autodiscover Request XSD

The following is the Autodiscover request XSD.

```
<?xml version="1.0" encoding="utf-8"?>
<xs:schema attributeFormDefault="unqualified"
  elementFormDefault="qualified"

targetNamespace="http://schemas.microsoft.com/exchange/autodiscover/outlook/requestschem/2006"
  xmlns:xs="http://www.w3.org/2001/XMLSchema">
  <xs:element name="Autodiscover">
    <xs:complexType>
      <xs:sequence>
        <xs:element name="Request">
          <xs:complexType>
            <xs:sequence>
              <xs:element name="EmailAddress" type="xs:string" minOccurs="0" />
              <xs:element name="LegacyDN" type="xs:string" minOccurs="0"/>
              <xs:element name="AcceptableResponseSchema" type="xs:string" minOccurs="1"/>
            </xs:sequence>
          </xs:complexType>
        </xs:element>
      </xs:sequence>
    </xs:complexType>
  </xs:element>
</xs:schema>
```

6.2 Autodiscover Response XSD

The following is the Autodiscover response XSD.

```
<?xml version="1.0" encoding="utf-8"?>
<xs:schema attributeFormDefault="unqualified" elementFormDefault="qualified"
targetNamespace="http://schemas.microsoft.com/exchange/autodiscover/responseschem/2006"
xmlns:xs="http://www.w3.org/2001/XMLSchema">
  <xs:import
namespace="http://schemas.microsoft.com/exchange/autodiscover/outlook/responseschem/2006a"
/>
  <xs:element name="Autodiscover">
    <xs:complexType>
```



```

<xs:sequence>
  <xs:element name="Response">
    <xs:complexType>
      <xs:sequence>
        <xs:element name="User">
          <xs:complexType>
            <xs:sequence>
              <xs:element name="DisplayName" type="xs:string" />
              <xs:element name="LegacyDN" type="xs:string" />
              <xs:element name="AutoDiscoverSMTPAddress" type="xs:string" />
              <xs:element name="DeploymentId" type="xs:string" />
              <xs:element name="DefaultABView" type="xs:string" />
            </xs:sequence>
          </xs:complexType>
        </xs:element>
        <xs:element name="Account">
          <xs:complexType>
            <xs:sequence>
              <xs:element name="AccountType" type="xs:string" />
              <xs:element name="Action" type="xs:string" />
              <xs:element maxOccurs="unbounded" name="Protocol">
                <xs:complexType>
                  <xs:sequence>
                    <xs:element name="Type" type="xs:string" minOccurs="0"
minOccurs="0"/>
                    <xs:element name="MailStore" minOccurs="0">
                      <xs:complexType>
                        <xs:all minOccurs="1">
                          <xs:element name="InternalUrl" type="xs:string"
minOccurs="0"/>
                          <xs:element name="ExternalUrl" type="xs:string"
minOccurs="0"/>
                        </xs:all>
                      </xs:complexType>
                    </xs:element>
                    <xs:element name="AddressBook" minOccurs="0">
                      <xs:complexType>
                        <xs:all minOccurs="1">
                          <xs:element name="InternalUrl" type="xs:string"
minOccurs="0"/>
                          <xs:element name="ExternalUrl" type="xs:string"
minOccurs="0"/>
                        </xs:all>
                      </xs:complexType>
                    </xs:element>
                    <xs:element minOccurs="0" name="Internal">
                      <xs:complexType>
                        <xs:sequence>
                          <xs:element name="OWAUrl">
                            <xs:complexType>
                              <xs:simpleContent>
                                <xs:extension base="xs:string">
                                  <xs:attribute name="AuthenticationMethod"
type="xs:string" use="required" />
                                </xs:extension>
                              </xs:simpleContent>
                            </xs:complexType>
                          </xs:element>
                        </xs:sequence>
                      </xs:complexType>
                    </xs:element>
                    <xs:element name="Protocol">

```

```

        <xs:complexType>
            <xs:sequence>
                <xs:element name="Type" type="xs:string" />
                <xs:element name="ASUrl" type="xs:string" />
            </xs:sequence>
        </xs:complexType>
    </xs:element>
</xs:sequence>
</xs:complexType>
</xs:element>
<xs:element minOccurs="0" name="External">
    <xs:complexType>
        <xs:sequence>
            <xs:element name="OWAUrl">
                <xs:complexType>
                    <xs:simpleContent>
                        <xs:extension base="xs:string">
                            <xs:attribute name="AuthenticationMethod"
type="xs:string" use="required" />
                        </xs:extension>
                    </xs:simpleContent>
                </xs:complexType>
            </xs:element>
            <xs:element name="Protocol">
                <xs:complexType>
                    <xs:sequence>
                        <xs:element name="Type" type="xs:string" />
                        <xs:element name="ASUrl" type="xs:string" />
                    </xs:sequence>
                </xs:complexType>
            </xs:element>
        </xs:sequence>
    </xs:complexType>
</xs:element>
<xs:element minOccurs="0" name="Server" type="xs:string" />
<xs:element minOccurs="0" name="SSL" type="xs:string" />
<xs:element minOccurs="0" name="AuthPackage" type="xs:string" />
<xs:element minOccurs="0" name="ServerDN" type="xs:string" />
<xs:element minOccurs="0" name="ServerVersion" type="xs:string"
/>

<xs:element minOccurs="0" name="MdbDN" type="xs:string" />
<xs:element minOccurs="0" name="PublicFolderServer"
type="xs:string" />

<xs:element minOccurs="0" name="AD" type="xs:string" />
<xs:element minOccurs="0" name="ASUrl" type="xs:string" />
<xs:element minOccurs="0" name="EwsUrl" type="xs:string" />
<xs:element minOccurs="0" name="SharingUrl" type="xs:string" />
<xs:element minOccurs="0" name="EcpUrl" type="xs:string" />
<xs:element minOccurs="0" name="EcpUrl-um" type="xs:string" />
<xs:element minOccurs="0" name="EcpUrl-aggr" type="xs:string" />
<xs:element minOccurs="0" name="EcpUrl-tm" type="xs:string" />
<xs:element minOccurs="0" name="EcpUrl-ret" type="xs:string" />
<xs:element minOccurs="0" name="EcpUrl-sms" type="xs:string" />
<xs:element minOccurs="0" name="EcpUrl-publish" type="xs:string"
/>

<xs:element minOccurs="0" name="EcpUrl-tm" type="xs:string" />
<xs:element minOccurs="0" name="EcpUrl-tmCreating"
type="xs:string" />

```



```

<xs:complexType>
  <xs:sequence>
    <xs:element name="Response">
      <xs:complexType>
        <xs:sequence>
          <xs:element name="Error">
            <xs:complexType>
              <xs:sequence>
                <xs:element name="ErrorCode" type="xs:unsignedShort" minOccurs="1" />
                <xs:element name="Message" type="xs:string" minOccurs="1" />
                <xs:element name="DebugData" minOccurs="1" />
              </xs:sequence>
              <xs:attribute name="Time" type="xs:time" use="required" />
              <xs:attribute name="Id" type="xs:unsignedInt" use="required" />
            </xs:complexType>
          </xs:element>
        </xs:sequence>
      </xs:complexType>
    </xs:element>
  </xs:sequence>
</xs:complexType>
</xs:element>
</xs:sequence>
</xs:complexType>
</xs:element>
</xs:schema>

```

6.4 Autodiscover Redirect Response XSD

The following is the Autodiscover redirect response XSD.

```

<?xml version="1.0" encoding="utf-8"?>
<xs:schema attributeFormDefault="unqualified" elementFormDefault="qualified"
targetNamespace="http://schemas.microsoft.com/exchange/autodiscover/responseschema/2006"
xmlns:xs="http://www.w3.org/2001/XMLSchema">
  <xs:import
namespace="http://schemas.microsoft.com/exchange/autodiscover/outlook/responseschema/2006a"
/>
  <xs:element name="Autodiscover">
    <xs:complexType>
      <xs:sequence>
        <xs:element name="Response">
          <xs:complexType>
            <xs:sequence>
              <xs:element name="Account">
                <xs:complexType>
                  <xs:sequence>
                    <xs:element name="Action" type="xs:string" />
                    <xs:element name="RedirectAddr" type="xs:string" />
                    <xs:element name="RedirectUrl" type="xs:string" />
                  </xs:sequence>
                </xs:complexType>
              </xs:element>
            </xs:sequence>
          </xs:complexType>
        </xs:element>
      </xs:sequence>
    </xs:complexType>
  </xs:element>
</xs:schema>

```


7 Appendix B: Product Behavior

The information in this specification is applicable to the following Microsoft products or supplemental software. References to product versions include released service packs:

- Microsoft Exchange Server 2007
- Microsoft Exchange Server 2010
- Microsoft Exchange Server 2013
- Microsoft Office Outlook 2007
- Microsoft Outlook 2010
- Microsoft Outlook 2013

Exceptions, if any, are noted below. If a service pack or Quick Fix Engineering (QFE) number appears with the product version, behavior changed in that service pack or QFE. The new behavior also applies to subsequent service packs of the product unless otherwise specified. If a product edition appears with the product version, behavior is different in that product edition.

Unless otherwise specified, any statement of optional behavior in this specification that is prescribed using the terms SHOULD or SHOULD NOT implies product behavior in accordance with the SHOULD or SHOULD NOT prescription. Unless otherwise specified, the term MAY implies that the product does not follow the prescription.

[<1> Section 2.1](#): Office Outlook 2007, Outlook 2010, and Outlook 2013 will not use Autodiscover servers that do not use SSL.

[<2> Section 2.2.4.1.1.1.1](#): Exchange 2007 and the initial release version of Exchange 2010 do not include the **AutoDiscoverSMTPAddress** element. Exchange 2010 SP1 and Exchange 2013 include the **AutoDiscoverSMTPAddress** element.

[<3> Section 2.2.4.1.1.1.2](#): Exchange 2007, and the initial release version of Exchange 2010 do not include the **DefaultABView** element. Exchange 2010 SP1 and Exchange 2013 include the **DefaultABView** element.

[<4> Section 2.2.4.1.1.2.3](#): The **AlternativeMailbox** element is not supported by Exchange 2007.

[<5> Section 2.2.4.1.1.2.3.1](#): The **DisplayName** element is not supported by Exchange 2007.

[<6> Section 2.2.4.1.1.2.3.2](#): The **LegacyDN** element is not supported by Exchange 2007.

[<7> Section 2.2.4.1.1.2.3.3](#): The **Server** element is not supported by Exchange 2007.

[<8> Section 2.2.4.1.1.2.3.4](#): Exchange 2007 and Exchange 2010 do not support the **SmtptAddress** element. Office Outlook 2007 and Outlook 2010 ignore the **SmtptAddress** element.

[<9> Section 2.2.4.1.1.2.3.5](#): The **Type** element is not supported by Exchange 2007.

[<10> Section 2.2.4.1.1.2.3.5](#): Exchange 2007 and Exchange 2010 do not support the "TeamMailbox" value for the **Type** element. Office Outlook 2007 and Outlook 2010 ignore **AlternativeMailbox** elements with a value of "TeamMailbox" in the child **Type** element.

[<11> Section 2.2.4.1.1.2.4.4](#): The **Negotiate** authentication (2) method is not implemented in Exchange 2007, Exchange 2010, Office Outlook 2007, or Outlook 2010.

<12> [Section 2.2.4.1.1.2.4.4](#): The "anonymous" value for the **AuthPackage** element is not implemented in Exchange 2007, Exchange 2010, Office Outlook 2007, or Outlook 2010.

<13> [Section 2.2.4.1.1.2.4.5](#): Exchange 2007, Exchange 2010, and Exchange 2013 do not support the **AuthRequired** element.

<14> [Section 2.2.4.1.1.2.4.7](#): **DomainName** element is not implemented in Exchange 2007, Exchange 2010, Exchange 2013, Office Outlook 2007, Outlook 2010, or Outlook 2013.

<15> [Section 2.2.4.1.1.2.4.8](#): **DomainRequired** element is not implemented in Exchange 2007, Exchange 2010, Exchange 2013, Office Outlook 2007, Outlook 2010, or Outlook 2013.

<16> [Section 2.2.4.1.1.2.4.9](#): Exchange 2007 does not support the **EcpUrl** element.

<17> [Section 2.2.4.1.1.2.4.10](#): Exchange 2007 does not support the **EcpUrl-aggr** element.

<18> [Section 2.2.4.1.1.2.4.11](#): Exchange 2007 and Exchange 2010 do not support the **EcpUrl-extinstall** element. Office Outlook 2007 and Outlook 2010 ignore this element.

<19> [Section 2.2.4.1.1.2.4.12](#): Exchange 2007 does not support the **EcpUrl-mt** element.

<20> [Section 2.2.4.1.1.2.4.13](#): Exchange 2007 and Exchange 2010 do not support the **EcpUrl-photo** element. Office Outlook 2007 and Outlook 2010 ignore this element.

<21> [Section 2.2.4.1.1.2.4.14](#): Exchange 2007 and Exchange 2010 do not support the **EcpUrl-publish** element.

<22> [Section 2.2.4.1.1.2.4.15](#): Exchange 2007 does not support the **EcpUrl-ret** element.

<23> [Section 2.2.4.1.1.2.4.16](#): Exchange 2007 does not support the **EcpUrl-sms** element.

<24> [Section 2.2.4.1.1.2.4.17](#): Exchange 2007 and Exchange 2010 do not support the **EcpUrl-tm** element. Office Outlook 2007 and Outlook 2010 ignore this element.

<25> [Section 2.2.4.1.1.2.4.18](#): Exchange 2007 and Exchange 2010 do not support the **EcpUrl-tmCreating** element. Office Outlook 2007 and Outlook 2010 ignore this element.

<26> [Section 2.2.4.1.1.2.4.19](#): Exchange 2007 and Exchange 2010 do not support the **EcpUrl-tmEditing** element. Office Outlook 2007 and Outlook 2010 ignore this element.

<27> [Section 2.2.4.1.1.2.4.20](#): Exchange 2007 and Exchange 2010 do not support the **EcpUrl-tmHiding** element. Office Outlook 2007 and Outlook 2010 ignore this element.

<28> [Section 2.2.4.1.1.2.4.21](#): Exchange 2007 does not support the **EcpUrl-um** element.

<29> [Section 2.2.4.1.1.2.4.22](#): The **Encryption** element is not implemented in Exchange 2007, Exchange 2010, Exchange 2013, Office Outlook 2007, Outlook 2010, or Outlook 2013.

<30> [Section 2.2.4.1.1.2.4.25.1](#): The "LiveIdFba" value of the AuthenticationMethod attribute is not implemented in Exchange 2007, Exchange 2010, Exchange 2013, Office Outlook 2007, Outlook 2010, or Outlook 2013.

<31> [Section 2.2.4.1.1.2.4.26](#): The **LoginName** element is not implemented in Exchange 2007, Exchange 2010, Exchange 2013, Office Outlook 2007, Outlook 2010, or Outlook 2013.

<32> [Section 2.2.4.1.1.2.4.31](#): The **Port** element is not implemented in Exchange 2007, Exchange 2010, or Exchange 2013.

<33> [Section 2.2.4.1.1.2.4.33](#): The **ReferralPort** element is not implemented in Exchange 2007, Exchange 2010, or Exchange 2013.

<34> [Section 2.2.4.1.1.2.4.36](#): Exchange 2007, Exchange 2010, Office Outlook 2007, and Outlook 2010 do not support the **ServerExclusiveConnect** element.

<35> [Section 2.2.4.1.1.2.4.39](#): Exchange 2007 and Exchange 2010 do not support the **EcpUrl-
extinstall** element. Office Outlook 2007 and Outlook 2010 ignore this element.

<36> [Section 2.2.4.1.1.2.4.40](#): Exchange 2007, Exchange 2010, and Exchange 2013 do not support the **SMTPLast** element.

<37> [Section 2.2.4.1.1.2.4.44](#): Exchange 2007 and Exchange 2010 do not support the "EXHTTP" value for the **Type** element. Office Outlook 2007 and Outlook 2010 ignore **Protocol** elements with a **Type** child element that has a value of "EXHTTP".

<38> [Section 2.2.4.1.1.2.4.44](#): Exchange 2007, Exchange 2010, and Exchange 2013 do not support the "POP3" value for the **Type** element.

<39> [Section 2.2.4.1.1.2.4.44](#): Exchange 2007, Exchange 2010, and Exchange 2013 do not support the "SMTP" value for the **Type** element.

<40> [Section 2.2.4.1.1.2.4.44](#): Exchange 2007, Exchange 2010, and Exchange 2013 do not support the "IMAP" value for the **Type** element.

<41> [Section 2.2.4.1.1.2.4.44](#): Exchange 2007, Exchange 2010, and Exchange 2013 do not support the "DAV" value for the **Type** element.

<42> [Section 2.2.4.1.1.2.4.46](#): Exchange 2007, Exchange 2010, and Exchange 2013 do not support the **UsePopAuth** element.

<43> [Section 2.2.4.1.1.2.5](#): Exchange 2007 and Exchange 2010 do not support the **PublicFolderInformation** element. Office Outlook 2007 and Outlook 2010 ignore the **PublicFolderInformation** element.

<44> [Section 3.1.5.4](#): Office Outlook 2007 and Outlook 2010 ignore the **ServerExclusiveConnect** element.

<45> [Section 3.1.5.4](#): Office Outlook 2007 and Outlook 2010 ignore **Protocol** elements that contain a **Type** element with the "EXHTTP" value, and do not ignore **Protocol** elements that contain a **Type** element with the "EXPR" value in this case.

<46> [Section 3.1.5.4](#): Office Outlook 2007 and Outlook 2010 ignore **Protocol** elements that contain a **Type** element with the "EXHTTP" value.

<47> [Section 3.2.5](#): Exchange 2007 and Exchange 2010 do not support processing the X-MapiHttpCapability header.

8 Change Tracking

No table of changes is available. The document is either new or has had no changes since its last release.

9 Index

A

Abstract data model

[client](#) 29

[server](#) 31

[Applicability](#) 10

[Autodiscover configuration example](#) 36

[Autodiscover error response XSD](#) 43

[Autodiscover redirect example](#) 36

[Autodiscover redirect response XSD](#) 44

[Autodiscover request example](#) 35

[Autodiscover Request message](#) 11

[Autodiscover request XSD](#) 40

[Autodiscover Response message](#) 12

[Autodiscover response XSD](#) 40

[Autodiscover server errors example](#) 38

C

[Capability negotiation](#) 10

[Change tracking](#) 49

Client

[abstract data model](#) 29

[higher-layer triggered events](#) 29

[initialization](#) 29

[message processing](#) 29

[other local events](#) 31

[sequencing rules](#) 29

[timer events](#) 31

[timers](#) 29

D

Data model - abstract

[client](#) 29

[server](#) 31

E

Examples

[Autodiscover configuration](#) 36

[Autodiscover redirect](#) 36

[Autodiscover request](#) 35

[Autodiscover server errors](#) 38

[MapiHttp response](#) 37

[overview](#) 34

F

[Fields - vendor-extensible](#) 10

G

[Glossary](#) 7

H

Higher-layer triggered events

[client](#) 29

[server](#) 31

[HTTP Headers message](#) 11

I

[Implementer - security considerations](#) 39

[Index of security parameters](#) 39

[Informative references](#) 9

Initialization

[client](#) 29

[server](#) 31

[Introduction](#) 7

M

[MapiHttp response example](#) 37

Message processing

[client](#) 29

[server](#) 31

Messages

[Autodiscover Request](#) 11

[Autodiscover Response](#) 12

[HTTP Headers](#) 11

[Namespaces](#) 11

[transport](#) 11

N

[Namespaces message](#) 11

[Normative references](#) 8

O

Other local events

[client](#) 31

[server](#) 33

[Overview \(synopsis\)](#) 9

P

[Parameters - security index](#) 39

[Preconditions](#) 10

[Prerequisites](#) 10

[Product behavior](#) 46

R

[References](#) 8

[informative](#) 9

[normative](#) 8

[Relationship to other protocols](#) 9

S

Security

[implementer considerations](#) 39

[parameter index](#) 39

Sequencing rules

[client](#) 29

- [server](#) 31
- Server
 - [abstract data model](#) 31
 - [higher-layer triggered events](#) 31
 - [initialization](#) 31
 - [message processing](#) 31
 - [other local events](#) 33
 - [sequencing rules](#) 31
 - [timer events](#) 33
 - [timers](#) 31
- [Standards assignments](#) 10

T

- Timer events
 - [client](#) 31
 - [server](#) 33
- Timers
 - [client](#) 29
 - [server](#) 31
- [Tracking changes](#) 49
- [Transport](#) 11
- Triggered events - higher-layer
 - [client](#) 29
 - [server](#) 31

V

- [Vendor-extensible fields](#) 10
- [Versioning](#) 10

X

- [XML schema definitions](#) 40
- XSDs
 - [Autodiscover error response](#) 43
 - [Autodiscover redirect response](#) 44
 - [Autodiscover request](#) 40
 - [Autodiscover response](#) 40
 - [overview](#) 40