

[MS-OXDSCLI]: Autodiscover Publishing and Lookup Protocol Specification

Intellectual Property Rights Notice for Open Specifications Documentation

- **Technical Documentation.** Microsoft publishes Open Specifications documentation for protocols, file formats, languages, standards as well as overviews of the interaction among each of these technologies.
- **Copyrights.** This documentation is covered by Microsoft copyrights. Regardless of any other terms that are contained in the terms of use for the Microsoft website that hosts this documentation, you may make copies of it in order to develop implementations of the technologies described in the Open Specifications and may distribute portions of it in your implementations using these technologies or your documentation as necessary to properly document the implementation. You may also distribute in your implementation, with or without modification, any schema, IDL's, or code samples that are included in the documentation. This permission also applies to any documents that are referenced in the Open Specifications.
- **No Trade Secrets.** Microsoft does not claim any trade secret rights in this documentation.
- **Patents.** Microsoft has patents that may cover your implementations of the technologies described in the Open Specifications. Neither this notice nor Microsoft's delivery of the documentation grants any licenses under those or any other Microsoft patents. However, a given Open Specification may be covered by Microsoft [Open Specification Promise](#) or the [Community Promise](#). If you would prefer a written license, or if the technologies described in the Open Specifications are not covered by the Open Specifications Promise or Community Promise, as applicable, patent licenses are available by contacting iplg@microsoft.com.
- **Trademarks.** The names of companies and products contained in this documentation may be covered by trademarks or similar intellectual property rights. This notice does not grant any licenses under those rights.
- **Fictitious Names.** The example companies, organizations, products, domain names, e-mail addresses, logos, people, places, and events depicted in this documentation are fictitious. No association with any real company, organization, product, domain name, email address, logo, person, place, or event is intended or should be inferred.

Reservation of Rights. All other rights are reserved, and this notice does not grant any rights other than specifically described above, whether by implication, estoppel, or otherwise.

Tools. The Open Specifications do not require the use of Microsoft programming tools or programming environments in order for you to develop an implementation. If you have access to Microsoft programming tools and environments you are free to take advantage of them. Certain Open Specifications are intended for use in conjunction with publicly available standard specifications and network programming art, and assumes that the reader either is familiar with the aforementioned material or has immediate access to it.

Preliminary Documentation. This Open Specification provides documentation for past and current releases and/or for the pre-release (beta) version of this technology. This Open Specification is final documentation for past or current releases as specifically noted in the document, as applicable; it is preliminary documentation for the pre-release (beta) versions. Microsoft will release final documentation in connection with the commercial release of the updated or new version of this technology. As the documentation may change between this preliminary version and the final version of this technology, there are risks in relying on preliminary documentation. To the extent that you incur additional development obligations or any other costs as a result of relying on this preliminary documentation, you do so at your own risk.

Revision Summary

Date	Revision History	Revision Class	Comments
04/04/2008	0.1		Initial Availability.
04/25/2008	0.2		Revised and updated property names and other technical content.
06/27/2008	1.0		Initial Release.
08/06/2008	1.01		Revised and edited technical content.
09/03/2008	1.02		Revised and edited technical content.
12/03/2008	1.03		Revised and edited technical content.
03/04/2009	1.04		Revised and edited technical content.
04/10/2009	2.0		Updated technical content and applicable product releases.
07/15/2009	3.0	Major	Revised and edited for technical content.
11/04/2009	4.0.0	Major	Updated and revised the technical content.
02/10/2010	5.0.0	Major	Updated and revised the technical content.
05/05/2010	5.1.0	Minor	Updated the technical content.
08/04/2010	6.0	Major	Significantly changed the technical content.
11/03/2010	6.1	Minor	Clarified the meaning of the technical content.
03/18/2011	7.0	Major	Significantly changed the technical content.
08/05/2011	8.0	Major	Significantly changed the technical content.
10/07/2011	8.0	No change	No changes to the meaning, language, or formatting of the technical content.
01/20/2012	9.0	Major	Significantly changed the technical content.

Table of Contents

1 Introduction	6
1.1 Glossary	6
1.2 References	7
1.2.1 Normative References	7
1.2.2 Informative References	8
1.3 Overview	8
1.4 Relationship to Other Protocols	8
1.5 Prerequisites/Preconditions	8
1.6 Applicability Statement	9
1.7 Versioning and Capability Negotiation	9
1.8 Vendor-Extensible Fields	9
1.9 Standards Assignments	9
2 Messages	10
2.1 Transport	10
2.2 Message Syntax	10
2.2.1 Namespaces	10
2.2.2 Autodiscover Request	10
2.2.2.1 Autodiscover	10
2.2.2.1.1 Request	10
2.2.2.1.1.1 AcceptableResponseSchema	10
2.2.2.1.1.2 EMailAddress	10
2.2.2.1.1.3 LegacyDN	11
2.2.3 Autodiscover Response	11
2.2.3.1 Autodiscover	11
2.2.3.1.1 Response	11
2.2.3.1.1.1 User	11
2.2.3.1.1.1.1 DisplayName	11
2.2.3.1.1.1.2 LegacyDN	11
2.2.3.1.1.1.3 AutoDiscoverSMTPAddress	12
2.2.3.1.1.1.4 DeploymentId	12
2.2.3.1.1.1.5 DefaultABView	12
2.2.3.1.1.2 Account	12
2.2.3.1.1.2.1 AccountType	12
2.2.3.1.1.2.2 Action	12
2.2.3.1.1.2.3 RedirectAddr	12
2.2.3.1.1.2.4 RedirectUrl	13
2.2.3.1.1.2.5 Protocol	13
2.2.3.1.1.2.5.1 AD	13
2.2.3.1.1.2.5.2 ASUrl	13
2.2.3.1.1.2.5.3 AuthPackage	13
2.2.3.1.1.2.5.4 AuthRequired	14
2.2.3.1.1.2.5.5 CertPrincipalName	14
2.2.3.1.1.2.5.6 DomainName	14
2.2.3.1.1.2.5.7 DomainRequired	15
2.2.3.1.1.2.5.8 EcpUrl	15
2.2.3.1.1.2.5.9 EcpUrl-um	15
2.2.3.1.1.2.5.10 EcpUrl-aggr	15
2.2.3.1.1.2.5.11 EcpUrl-sms	15
2.2.3.1.1.2.5.12 EcpUrl-mt	15

2.2.3.1.1.2.5.13	EcpUrl-ret	16
2.2.3.1.1.2.5.14	EcpUrl-publish	16
2.2.3.1.1.2.5.15	EcpUrl-tm	16
2.2.3.1.1.2.5.16	EcpUrl-tmCreating	17
2.2.3.1.1.2.5.17	EcpUrl-tmEditing	17
2.2.3.1.1.2.5.18	EcpUrl-tmHiding	17
2.2.3.1.1.2.5.19	EwsUrl	18
2.2.3.1.1.2.5.20	LoginName	18
2.2.3.1.1.2.5.21	MdbDN	18
2.2.3.1.1.2.5.22	OABUrl	18
2.2.3.1.1.2.5.23	OOFUrl	18
2.2.3.1.1.2.5.24	Port	18
2.2.3.1.1.2.5.25	PublicFolderServer	18
2.2.3.1.1.2.5.26	ReferralPort	18
2.2.3.1.1.2.5.27	Server	19
2.2.3.1.1.2.5.28	ServerDN	19
2.2.3.1.1.2.5.29	ServerVersion	19
2.2.3.1.1.2.5.30	SharingUrl	19
2.2.3.1.1.2.5.31	TTL	19
2.2.3.1.1.2.5.32	Type	19
2.2.3.1.1.2.5.33	SMTPLast	20
2.2.3.1.1.2.5.34	SPA	20
2.2.3.1.1.2.5.35	SSL	21
2.2.3.1.1.2.5.36	UMUrl	21
2.2.3.1.1.2.5.37	UsePOPAuth	21
2.2.3.1.1.2.5.38	Internal	21
2.2.3.1.1.2.5.38.1	OWAUrl	22
2.2.3.1.1.2.5.39	External	22
2.2.3.1.1.2.5.40	Encryption	22
2.2.3.1.1.2.6	AlternativeMailbox	23
2.2.3.1.1.2.6.1	Type	23
2.2.3.1.1.2.6.2	DisplayName	23
2.2.3.1.1.2.6.3	LegacyDN	23
2.2.3.1.1.2.6.4	Server	23
2.2.3.1.1.2.6.5	SmtpAddress	24
2.2.3.1.1.2.7	PublicFolderInformation	24
2.2.3.1.1.2.7.1	SmtpAddress	24
2.2.3.1.1.3	Error	24
2.2.3.1.1.3.1	ErrorCode	25
2.2.3.1.1.3.2	DebugData	25
2.2.3.1.1.3.3	Message	25
3	Protocol Details	26
3.1	Client Details	26
3.1.1	Abstract Data Model	26
3.1.2	Timers	26
3.1.3	Initialization	26
3.1.4	Higher-Layer Triggered Events	26
3.1.5	Message Processing Events and Sequencing Rules	26
3.1.5.1	Nonfunctional URIs	26
3.1.5.2	HTTP 302 Redirects	27
3.1.5.3	Autodiscover Redirect	27
3.1.5.4	Autodiscover Configuration Information	27

3.1.5.5	Autodiscover Server Errors	27
3.1.6	Timer Events	28
3.1.7	Other Local Events	28
3.2	Server Details	28
3.2.1	Abstract Data Model	28
3.2.2	Timers	28
3.2.3	Initialization	28
3.2.4	Higher-Layer Triggered Events.....	28
3.2.5	Message Processing Events and Sequencing Rules.....	28
3.2.6	Timer Events	29
3.2.7	Other Local Events	29
4	Protocol Examples.....	30
4.1	Autodiscover Request.....	31
4.2	Autodiscover Redirect.....	32
4.3	Autodiscover Configuration	32
4.4	Autodiscover Server Errors	33
5	Security.....	34
5.1	Security Considerations for Implementers.....	34
5.2	Index of Security Parameters	34
6	Appendix A: XSDs.....	35
6.1	Autodiscover Request XSD	35
6.2	Autodiscover Response XSD.....	35
6.3	Autodiscover Error Response XSD.....	38
6.4	Autodiscover Redirect Response XSD	39
7	Appendix B: Product Behavior	40
8	Change Tracking.....	43
9	Index	50

1 Introduction

The Autodiscover Publishing and Lookup Protocol is used by clients to retrieve **URLs** and settings that are needed to gain access to the Web services that are offered by the server.

Sections 1.8, 2, and 3 of this specification are normative and contain RFC 2119 language. Sections 1.5 and 1.9 are also normative but cannot contain RFC 2119 language. All other sections and examples in this specification are informative.

1.1 Glossary

The following terms are defined in [\[MS-GLOS\]](#):

Active Directory distinguished name (DN)
domain
Domain Name System (DNS)
fully qualified domain name (FQDN)
GUID
Hypertext Transfer Protocol (HTTP)
Hypertext Transfer Protocol over Secure Sockets Layer (HTTPS)
Lightweight Directory Access Protocol (LDAP)
remote procedure call (RPC)
Secure Sockets Layer (SSL)
XML

The following terms are defined in [\[MS-OXGLOS\]](#):

address book
Autodiscover client
Autodiscover server
Contacts folder
endpoint
enterprise/site/server distinguished name (ESSDN)
Global Address List (GAL)
Internet Message Access Protocol - Version 4 (IMAP4)
mailbox
offline address book (OAB)
Out of Office (OOF)
Post Office Protocol - Version 3 (POP3)
public folder
Short Message Service (SMS)
Simple Mail Transfer Protocol (SMTP)
store
Transport Layer Security (TLS)
Uniform Resource Identifier (URI)
Uniform Resource Locator (URL)
Web server
XML namespace
XML schema definition (XSD)

The following terms are specific to this document:

Exchange Control Panel (ECP): A feature that enables end users to manage server options without the assistance of an administrator.

MAY, SHOULD, MUST, SHOULD NOT, MUST NOT: These terms (in all caps) are used as described in [\[RFC2119\]](#). All statements of optional behavior use either MAY, SHOULD, or SHOULD NOT.

1.2 References

References to Microsoft Open Specification documents do not include a publishing year because links are to the latest version of the documents, which are updated frequently. References to other documents include a publishing year when one is available.

1.2.1 Normative References

We conduct frequent surveys of the normative references to assure their continued availability. If you have any issue with finding a normative reference, please contact dochelp@microsoft.com. We will assist you in finding the relevant information. Please check the archive site, <http://msdn2.microsoft.com/en-us/library/E4BD6494-06AD-4aed-9823-445E921C9624>, as an additional source.

[MS-NLMP] Microsoft Corporation, "[NT LAN Manager \(NTLM\) Authentication Protocol Specification](#)".

[MS-OXABREF] Microsoft Corporation, "[Address Book Name Service Provider Interface \(NSPI\) Referral Protocol Specification](#)".

[MS-OXCRPC] Microsoft Corporation, "[Wire Format Protocol Specification](#)".

[MS-OXDISCO] Microsoft Corporation, "[Autodiscover HTTP Service Protocol Specification](#)".

[MS-OXWAVLS] Microsoft Corporation, "[Availability Web Service Protocol Specification](#)".

[MS-OXWOAB] Microsoft Corporation, "[Offline Address Book \(OAB\) Retrieval File Format](#)".

[MS-OXWOOF] Microsoft Corporation, "[Out of Office \(OOO\) Web Service Protocol Specification](#)".

[MS-OXWUMS] Microsoft Corporation, "[Voice Mail Settings Web Service Protocol Specification](#)".

[MS-RPCH] Microsoft Corporation, "[Remote Procedure Call over HTTP Protocol Specification](#)".

[RFC1939] Myers, J., and Rose, M., "Post Office Protocol - Version 3", STD 53, RFC 1939, May 1996, <http://www.ietf.org/rfc/rfc1939.txt>

[RFC2068] Fielding, R., Gettys, J., Mogul, J., et al., "Hypertext Transfer Protocol -- HTTP/1.1", RFC 2068, January 1997, <http://www.ietf.org/rfc/rfc2068.txt>

[RFC2119] Bradner, S., "Key words for use in RFCs to Indicate Requirement Levels", BCP 14, RFC 2119, March 1997, <http://www.rfc-editor.org/rfc/rfc2119.txt>

[RFC2246] Dierks, T., and Allen, C., "The TLS Protocol Version 1.0", RFC 2246, January 1999, <http://www.ietf.org/rfc/rfc2246.txt>

[RFC2518] Goland, Y., Whitehead, E., Faizi, A., et al., "HTTP Extensions for Distributed Authoring - WebDAV", RFC 2518, February 1999, <http://www.ietf.org/rfc/rfc2518.txt>

[RFC2617] Franks, J., Hallam-Baker, P., Hostetler, J., et al., "HTTP Authentication: Basic and Digest Access Authentication", RFC 2617, June 1999, <http://www.ietf.org/rfc/rfc2617.txt>

[RFC2821] Klensin, J., "Simple Mail Transfer Protocol", STD 10, RFC 2821, April 2001, <http://www.ietf.org/rfc/rfc2821.txt>

[RFC2822] Resnick, P., Ed., "Internet Message Format", STD 11, RFC 2822, April 2001, <http://www.ietf.org/rfc/rfc2822.txt>

[RFC3501] Crispin, M., "INTERNET MESSAGE ACCESS PROTOCOL – VERSION 4rev1", RFC 3501, March 2003, <http://www.rfc-editor.org/rfc/rfc3501.txt>

[RFC3986] Berners-Lee, T., Fielding, R., and Masinter, L., "Uniform Resource Identifier (URI): Generic Syntax", STD 66, RFC 3986, January 2005, <http://www.ietf.org/rfc/rfc3986.txt>

[RFC4120] Neuman, C., Yu, T., Hartman, S., and Raeburn, K., "The Kerberos Network Authentication Service (V5)", RFC 4120, July 2005, <http://www.ietf.org/rfc/rfc4120.txt>

1.2.2 Informative References

[MS-GLOS] Microsoft Corporation, "[Windows Protocols Master Glossary](#)".

[MS-OXGLOS] Microsoft Corporation, "[Exchange Server Protocols Master Glossary](#)".

[RFC2616] Fielding, R., Gettys, J., Mogul, J., et al., "Hypertext Transfer Protocol -- HTTP/1.1", RFC 2616, June 1999, <http://www.ietf.org/rfc/rfc2616.txt>

[RFC2818] Rescorla, E., "HTTP Over TLS", RFC 2818, May 2000, <http://www.ietf.org/rfc/rfc2818.txt>

1.3 Overview

This protocol is a set of methods, headers, and content types that extend **HTTP** version 1.1, as described in [\[RFC2616\]](#). A list of possible **Autodiscover server URIs** is first discovered utilizing the Autodiscover HTTP Service Protocol, as described in [\[MS-OXDISCO\]](#). This protocol enables **Autodiscover clients** to acquire email configuration settings for specific email addresses from the list of Autodiscover servers obtained from the Autodiscover HTTP Service Protocol.

This document specifies the following Autodiscover operations:

- A mechanism for Autodiscover clients to issue queries against Autodiscover servers.
- A mechanism for Autodiscover servers to send client configuration data to Autodiscover clients.
- A mechanism for Autodiscover servers to send referrals to Autodiscover clients.

1.4 Relationship to Other Protocols

This protocol and the Autodiscover HTTP Service Protocol described in [\[MS-OXDISCO\]](#) work together to use the standard HTTP mechanisms described in [\[RFC2068\]](#) to provide client management over the Internet. This protocol requires the Autodiscover HTTP Service Protocol to find Autodiscover servers that support this protocol. A higher-level protocol, given a server name or URL, uses this protocol to locate the corresponding **fully qualified domain name (FQDN)**.

This protocol relies on HTTP 1.1, as described in [\[RFC2616\]](#). It relies on **HTTPS**, as described in [\[RFC2818\]](#), for data protection services.

1.5 Prerequisites/Preconditions

This protocol requires a **Web server** that supports the **HTTP POST** command.

This protocol also requires that Autodiscover clients have URIs that point to Autodiscover servers. Autodiscover clients can obtain these URIs by using the Autodiscover HTTP Service Protocol specified in [\[MS-OXDISCO\]](#).

This protocol assumes that the client has found the Autodiscover server via the Autodiscover HTTP Service Protocol, as specified in [MS-OXDISCO].

1.6 Applicability Statement

This protocol is used by a client to discover email configuration settings for a given email address.

1.7 Versioning and Capability Negotiation

Different versions of this protocol can be negotiated by using the **AcceptableResponseSchema** element, specified in section [2.2.2.1.1.1](#).

1.8 Vendor-Extensible Fields

Vendors MAY pass additional **XML** elements to Autodiscover clients from the Autodiscover server. To do so, the vendor SHOULD use a separate **XML namespace** and pass this in the **AcceptableResponseSchema** element, as specified in section [2.2.2.1.1.1](#).

1.9 Standards Assignments

None.

2 Messages

2.1 Transport

Messages are transported by using an HTTP **POST** command, as specified in [\[RFC2518\]](#) and [\[RFC2068\]](#).

This protocol SHOULD be used with **Secure Sockets Layer (SSL)/Transport Layer Security (TLS)**, as specified in [\[RFC2246\].<1>](#)

2.2 Message Syntax

All messages sent between the Autodiscover client and the Autodiscover server are XML messages.

2.2.1 Namespaces

Autodiscover requests are in the "http://schemas.microsoft.com/exchange/autodiscover/outlook/requestschema/2006" namespace.

Autodiscover responses are in the "http://schemas.microsoft.com/exchange/autodiscover/outlook/responseschema/2006a" namespace.

2.2.2 Autodiscover Request

Autodiscover requests consist of a single **Autodiscover** element (section [2.2.2.1](#)), which contains information about the user within its child elements.

2.2.2.1 Autodiscover

The **Autodiscover** element is the root element of an Autodiscover request. The elements in the following sections can be child elements of the **Autodiscover** element.

2.2.2.1.1 Request

The **Request** element contains the request to the Autodiscover service. It is a required element of the **Autodiscover** element (section [2.2.2.1](#)).

The **AcceptableResponseSchema** element and the **EEmailAddress** or **LegacyDN** element MUST be child elements of the **Request** element.

2.2.2.1.1.1 AcceptableResponseSchema

The **AcceptableResponseSchema** element identifies the schema for an Autodiscover response.

Clients MUST include this element. The value MUST be the following:
<http://schemas.microsoft.com/exchange/autodiscover/outlook/responseschema/2006a>.

2.2.2.1.1.2 EEmailAddress

The **EEmailAddress** element identifies the email address of the account for which the configuration information will be retrieved.

This element is an optional element for an Autodiscover request. If it is omitted, the **LegacyDN** MUST be present.

2.2.2.1.1.3 LegacyDN

The **LegacyDN** element identifies a user's **mailbox** by a legacy **distinguished name (DN)**. The **LegacyDN** element is also known as the **enterprise/site/server distinguished name (ESSDN)**, which is the naming scheme that defines the user.

The **LegacyDN** element is an optional element in the request. If it is omitted, the **EEmailAddress** element **MUST** be present.

2.2.3 Autodiscover Response

Autodiscover responses consist of a single **Autodiscover** element (section [2.2.3.1](#)), which contains configuration information for the user's mailbox within its child elements.

2.2.3.1 Autodiscover

The **Autodiscover** element is the root element of an Autodiscover response. The elements in the following sections can be child elements of the **Autodiscover** element.

2.2.3.1.1 Response

The **Response** element contains the response from the Autodiscover server that includes a list of URLs that are used to establish a connection with Web services.

The elements specified in the following sections can be child elements of the **Response** element. For an example that shows the XML schema of the **Response** element and its child elements, see section [4](#).

2.2.3.1.1.1 User

The **User** element and its child elements provide user-specific information. Servers **MUST** include this element.

The elements specified in the following sections can be child elements of the **User** element.

2.2.3.1.1.1.1 DisplayName

The **DisplayName** element represents the user's display name. It is a required child element of the **User** element (section [2.2.3.1.1.1](#)).

2.2.3.1.1.1.2 LegacyDN

Note *Some of the information in this section is subject to change because it applies to a preliminary implementation of the protocol or structure. For information about specific differences between versions, see the behavior notes that are provided in the Product Behavior appendix.*

The **LegacyDN** element identifies a user's mailbox by **DN**. The **LegacyDN** is also known as the ESSDN, which is the naming scheme that defines the user. The **LegacyDN** element is a required child element of the **User** element (section [2.2.3.1.1.1](#)) if the **Account** child element (section [2.2.3.1.1.2](#)) of the **Response** element (section [2.2.3.1.1](#)) contains a **Protocol** child element (section [2.2.3.1.1.2.5](#)) with a **Type** child element (section [2.2.3.1.1.2.5.32](#)) with a value of "EXCH", "EXPR", or "EXHTTP".

2.2.3.1.1.1.3 AutoDiscoverSMTPAddress

The **AutoDiscoverSMTPAddress** element represents the user's primary **Simple Mail Transfer Protocol (SMTP)** address. It is an optional child element of the **User** element (section [2.2.3.1.1.1](#)).<2> This is the email address that is used for the Autodiscover process. The **AutoDiscoverSMTPAddress** element returns the proxy address in lieu of the email address if a proxy address exists.

2.2.3.1.1.1.4 DeploymentId

The **DeploymentId** element uniquely identifies the server forest in a **GUID** format. It is an optional child element of the **User** element (section [2.2.3.1.1.1](#)).

The **DeploymentId** element is returned when the user is within a server forest. The returned value is the GUID identifier of the **Active Directory** forest in which the mailbox user account is contained.

2.2.3.1.1.1.5 DefaultABView

The **DefaultABView** element indicates the default view for the user's **address book**. If the **Global Address List (GAL)** is the default view, this element SHOULD NOT be present. If the **Contacts folder** in the user's mailbox is the default view, this element SHOULD<3> be present with a value of "contacts".

2.2.3.1.1.2 Account

The **Account** element specifies account settings for the user.

The elements specified in the following sections can be child elements of the **Account** element.

2.2.3.1.1.2.1 AccountType

The **AccountType** element represents the account type. It is a required element of the **Account** element (section [2.2.3.1.1.2](#)). The value MUST be "email".

2.2.3.1.1.2.2 Action

The **Action** element provides information that is used to determine whether another Autodiscover request is required to return the user configuration information. It is a required child element of the **Account** element (section [2.2.3.1.1.2](#)). The following table specifies valid values for this element.

Value	Meaning
"settings"	The Autodiscover server has returned configuration settings in the Protocol element (section 2.2.3.1.1.2.5).
"redirectAddr"	The Autodiscover server has returned a RedirectAddr element (section 2.2.3.1.1.2.3).
"redirectUrl"	The Autodiscover server has returned a RedirectUrl element (section 2.2.3.1.1.2.4).

2.2.3.1.1.2.3 RedirectAddr

The **RedirectAddr** element specifies the email address to use for a subsequent Autodiscover request. It is a required child element of the **Account** element (section [2.2.3.1.1.2](#)) when the value of the **Action** element (section [2.2.3.1.1.2.2](#)) is "redirectAddr".

The **RedirectAddr** element is returned when the server requires another email address to perform another Autodiscover request.

2.2.3.1.1.2.4 RedirectUrl

The **RedirectUrl** element specifies the URL of the server to use for a subsequent Autodiscover request. It is a required child element of the **Account** element (section [2.2.3.1.1.2](#)) when the value of the **Action** element (section [2.2.3.1.1.2.2](#)) is "redirectUrl".

The **RedirectUrl** element is returned when the server requires another URL to perform another Autodiscover request.

2.2.3.1.1.2.5 Protocol

The **Protocol** element contains the configuration information for connecting a client to the server.

The **Protocol** element is a required child element of the **Account** (section [2.2.3.1.1.2](#)) element when the value of the **Action** element (section [2.2.3.1.1.2.2](#)) is "settings".

The **Protocol** element is an optional child element of the **External** element (section [2.2.3.1.1.2.5.39](#)) and the **Internal** element (section [2.2.3.1.1.2.5.38](#)).

The following sections describe elements that can be child elements of the **Protocol** element.

2.2.3.1.1.2.5.1 AD

The **AD** element specifies the Active Directory server used in conjunction with the mailbox. It is an optional child element of the **Protocol** element (section [2.2.3.1.1.2.5](#)). The element contains the FQDN of a **Lightweight Directory Access Protocol (LDAP)** server that the client can connect to for directory information.

2.2.3.1.1.2.5.2 ASUrl

The **ASUrl** element specifies the URL of the best **endpoint** instance of Availability Web services for an email-enabled user, as specified in [\[MS-OXWAVLS\]](#). It is an optional child element of the **Protocol** element (section [2.2.3.1.1.2.5](#)).

2.2.3.1.1.2.5.3 AuthPackage

Note *Some of the information in this section is subject to change because it applies to a preliminary implementation of the protocol or structure. For information about specific differences between versions, see the behavior notes that are provided in the Product Behavior appendix.*

The **AuthPackage** element specifies the authentication method that is used when authenticating to the server that contains the user's mailbox. It is an optional child element of the **Protocol** element (section [2.2.3.1.1.2.5](#)). The **AuthPackage** element is used only when the **Type** element has a text value of "EXCH", "EXPR", or "EXHTTP".

The possible values are specified in the following table.

Value	Meaning
"basic"	Indicates that the client SHOULD use basic authentication, as specified in [RFC2617] .
"kerb"	Indicates that the client SHOULD use Kerberos authentication, as specified in

Value	Meaning
	[RFC4120].
"kerbntlm"	Indicates that the client SHOULD use Kerberos authentication or NTLM authentication, as specified in [MS-NLMP].
"ntlm"	Indicates that the client SHOULD use NTLM authentication.
"certificate"	Indicates that the client SHOULD use certificate authentication.
"negotiate"<4>	Indicates that the client SHOULD use the Negotiate method for authentication.
"anonymous"<5>	Indicates that the client SHOULD authenticate anonymously.

The **AuthPackage** element is returned only when there is an external mailbox server authentication method. If the **AuthPackage** element is omitted, the client SHOULD use Kerberos or NTLM authentication.

2.2.3.1.1.2.5.4 AuthRequired

The **AuthRequired** element specifies whether authentication is required. It is an optional child element of the **Protocol** element (section 2.2.3.1.1.2.5). The possible values are specified in the following table.

Value	Meaning
"on"	Authentication is required by the server.
"off"	Authentication is not required by the server.

If a value is not specified, the default value is "on".

The **AuthRequired** element is returned only when the **Type** element (section 2.2.3.1.1.2.5.32) has a text value of "POP3". <6>

2.2.3.1.1.2.5.5 CertPrincipalName

The **CertPrincipalName** element specifies the SSL certificate principal name that is required to connect to the server by using SSL. It is an optional child element of the **Protocol** element (section 2.2.3.1.1.2.5).

If the **CertPrincipalName** element is not specified, the default value is "msstd:SERVER", where "SERVER" is the value that is specified in the **Server** element (section 2.2.3.1.1.2.5.27). For example, if "SERVER" is specified as "server.Contoso.com" and **CertPrincipalName** is left blank with SSL turned on, the default value of **CertPrincipalName** would be "msstd:server.Contoso.com".

The **CertPrincipalName** element is returned only when the connection to the server is authenticated with SSL.

2.2.3.1.1.2.5.6 DomainName

The **DomainName** element specifies the user's **domain**. It is an optional child element of the **Protocol** element (section 2.2.3.1.1.2.5). If no value is specified, the default value is the email address in **user principal name (UPN)** format. For example: <username>@<domain>. <7>

2.2.3.1.1.2.5.7 DomainRequired

The **DomainRequired** element contains a text value that indicates whether the domain is required for authentication. It is an optional child element of the **Protocol** element (section [2.2.3.1.1.2.5](#)).^{<8>} The possible values are specified in the following table.

Value	Meaning
"on"	The domain name is required for authentication.
"off"	The domain name is not required for authentication.

2.2.3.1.1.2.5.8 EcpUrl

The **EcpUrl** element is the base **Exchange Control Panel (ECP)** URL. It is an optional child element of the **Protocol** element (section [2.2.3.1.1.2.5](#)).^{<9>} The URL contains the following information:

- Protocol: requires "https"
- Host: Host name
- Path: ECP path within the host server

The value of the **EcpUrl** element is similar to the following: "https://machine.domain.Contoso.com/ecp".

2.2.3.1.1.2.5.9 EcpUrl-um

The **EcpUrl-um** element contains a value that, when appended to the value of the **EcpUrl** element (section [2.2.3.1.1.2.5.8](#)), results in a URL that can be used to access voice mail settings. It is an optional child element of the **Protocol** element (section [2.2.3.1.1.2.5](#)).^{<10>} The value of the **EcpUrl-um** element is similar to the following: "?p=customize/voicemail.aspx&exsvurl=1".

2.2.3.1.1.2.5.10 EcpUrl-aggr

The **EcpUrl-aggr** element contains a value that, when appended to the value of the **EcpUrl** element (section [2.2.3.1.1.2.5.8](#)), results in a URL that can be used to access email aggregation settings. It is an optional child element of the **Protocol** element (section [2.2.3.1.1.2.5](#)).^{<11>} The value of the **EcpUrl-aggr** element is similar to the following: "?p=personalsettings/EmailSubscriptions.slabs&exsvurl=1".

2.2.3.1.1.2.5.11 EcpUrl-sms

The **EcpUrl-sms** element contains a value that, when appended to the value of the **EcpUrl** element (section [2.2.3.1.1.2.5.8](#)), results in a URL that can be used to access Short Message Service (SMS) settings. It is an optional child element of the **Protocol** element (section [2.2.3.1.1.2.5](#)).^{<12>} The value of the **EcpUrl-sms** element is similar to the following: "?p=sms/textmessaging.slabs&exsvurl=1".

2.2.3.1.1.2.5.12 EcpUrl-mt

The **EcpUrl-mt** element contains a value that, when appended to the value of the **EcpUrl** element (section [2.2.3.1.1.2.5.8](#)), results in a URL that can be used to access email message tracking settings. It is an optional child element of the **Protocol** element (section [2.2.3.1.1.2.5](#)).^{<13>}

The value of the **EcpUrl-mt** element contains parameters contained within '<' and '>' characters that are substituted by the client as shown in the following table.

Parameter	Substitute with
<i>IsOWA</i>	n
<i>MsgID</i>	Internet message identifier of the message to be tracked as specified by the Message-ID header. See [RFC2822] .
<i>Mbx</i>	The SMTP address of the user's mailbox.
<i>Sender</i>	The SMTP address of the message's sender.

The value of the **EcpUrl-mt** element is similar to the following:
 "PersonalSettings/DeliveryReport.aspx?exsvurl=1&IsOWA=<IsOWA>&MsgID=<MsgID>&Mbx=<Mbx>&Sender=<Sender>".

2.2.3.1.1.2.5.13 EcpUrl-ret

The **EcpUrl-ret** element contains a value that, when appended to the value of the **EcpUrl** element (section [2.2.3.1.1.2.5.8](#)), results in a URL that can be used to access retention tag settings. It is an optional child element of the **Protocol** element (section [2.2.3.1.1.2.5](#)).^{<14>} The value of the **EcpUrl-ret** element is similar to the following: "?p=organize/retentionpolicytags.slab&exsvurl=1".

2.2.3.1.1.2.5.14 EcpUrl-publish

The **EcpUrl-publish** element contains a value that, when appended to the value of the **EcpUrl** element (section [2.2.3.1.1.2.5.8](#)), results in a URL that can be used to access calendar publishing settings. It is an optional child element of the **Protocol** element (section [2.2.3.1.1.2.5](#)).^{<15>}

The value of the **EcpUrl-publish** element contains a parameter contained within '<' and '>' characters that are substituted by the client, as shown in the following table.

Parameter	Substitute with
<i>FldID</i>	The folder identifier to the calendar folder to be published.

The value of the **EcpUrl-publish** element is similar to the following:
 "customize/calendarpublishing.slab?exsvurl=1&FldID=<FldID>".

2.2.3.1.1.2.5.15 EcpUrl-tm

Note All of the information in this section is subject to change because it applies to a preliminary implementation of the protocol or structure.

The **EcpUrl-tm** element contains a value that, when appended to the value of the **EcpUrl** element (section [2.2.3.1.1.2.5.8](#)), results in a URL that can be used to access a list of all team mailboxes of which the user is currently a member. It is an optional child element of the **Protocol** element (section [2.2.3.1.1.2.5](#)).^{<16>}

The value of the **EcpUrl-tm** element is similar to the following: "?ftr=TeamMailbox&realm=contoso.com".

2.2.3.1.1.2.5.16 EcpUrl-tmCreating

Note All of the information in this section is subject to change because it applies to a preliminary implementation of the protocol or structure.

The **EcpUrl-tmCreating** element contains a value that, when appended to the value of the **EcpUrl** element (section [2.2.3.1.1.2.5.8](#)), results in a URL that can be used to create a new team mailbox. It is an optional child element of the **Protocol** element (section [2.2.3.1.1.2.5](#)).<17>

The value of the **EcpUrl-tmCreating** element contains parameters contained within '<' and '>' characters that are substituted by the client, as shown in the following table.

Parameter	Substitute with
<i>SPUrl</i>	Empty string
<i>Title</i>	Empty string

The value of the **EcpUrl-tmCreating** element is similar to the following:
"?ftr=TeamMailboxCreating&SPUrl=<SPUrl>&Title=<Title>&realm=contoso.com".

2.2.3.1.1.2.5.17 EcpUrl-tmEditing

Note All of the information in this section is subject to change because it applies to a preliminary implementation of the protocol or structure.

The **EcpUrl-tmEditing** element contains a value that, when appended to the value of the **EcpUrl** element (section [2.2.3.1.1.2.5.8](#)), results in a URL that can be used to edit an existing team mailbox. It is an optional child element of the **Protocol** element (section [2.2.3.1.1.2.5](#)).<18>

The value of the **EcpUrl-tmEditing** element contains a parameter contained within '<' and '>' characters that is substituted by the client, as shown in the following table.

Parameter	Substitute with
<i>Id</i>	The SMTP email address or the ESSDN assigned to the team mailbox.

The value of the **EcpUrl-tmEditing** element is similar to the following:
"?ftr=TeamMailboxEditing&Id=<Id>&realm=contoso.com".

2.2.3.1.1.2.5.18 EcpUrl-tmHiding

Note All of the information in this section is subject to change because it applies to a preliminary implementation of the protocol or structure.

The **EcpUrl-tmHiding** element contains a value that, when appended to the value of the **EcpUrl** element (section [2.2.3.1.1.2.5.8](#)), results in a URL that can be used to unsubscribe the user from a team mailbox. It is an optional child element of the **Protocol** element (section [2.2.3.1.1.2.5](#)).<19>

The value of the **EcpUrl-tmHiding** element contains a parameter contained within '<' and '>' characters that is substituted by the client, as shown in the following table.

Parameter	Substitute with
<i>Id</i>	The SMTP email address or the ESSDN assigned to the team mailbox.

The value of the **EcpUrl-tmHiding** element is similar to the following:
"?ftr=TeamMailboxHiding&Id=<Id>&realm=contoso.com".

2.2.3.1.1.2.5.19 EwsUrl

The **EwsUrl** element specifies the URL for the Web services virtual directory. It is an optional child element of the **Protocol** element (section [2.2.3.1.1.2.5](#)).

2.2.3.1.1.2.5.20 LoginName

The **LoginName** element specifies the user's mail server logon name. It is an optional child element of the **Protocol** element (section [2.2.3.1.1.2.5](#)).<20>

2.2.3.1.1.2.5.21 MdbDN

The **MdbDN** element contains the DN of the mailbox database. It is an optional child element of the **Protocol** element (section [2.2.3.1.1.2.5](#)).

2.2.3.1.1.2.5.22 OABUrl

The **OABUrl** element specifies the **offline address book (OAB)** configuration server URL for a server. It is an optional child element of the **Protocol** element (section [2.2.3.1.1.2.5](#)). For more details about the services that are available at this URL, see [\[MS-OXWOAB\]](#).

The **OABUrl** element is returned if there is an internal or external OAB configured for the user.

2.2.3.1.1.2.5.23 OOFUrl

The **OOFUrl** element specifies the URL of the best instance of the Out of Office (OOF) Web Service for a mail-enabled user. It is an optional child element of the **Protocol** element (section [2.2.3.1.1.2.5](#)). For more details about the services that are available at this URL, see [\[MS-OXWOOF\]](#).

The **OOFUrl** element is returned when the server implements a URL for internal or external access to the Out of Office (OOF) Web Service. If the **OOFUrl** element is omitted, the **Out of Office (OOF)** services are not available to the client.

2.2.3.1.1.2.5.24 Port

The **Port** element specifies the port that is used to connect to the **store**. It is an optional child element of the **Protocol** element (section [2.2.3.1.1.2.5](#)).<21> For more details, see [\[MS-OXCRPC\]](#).

The **Port** element is not returned when the **Server** element contains a URL.

2.2.3.1.1.2.5.25 PublicFolderServer

The **PublicFolderServer** element specifies the FQDN for the **public folder** server. It is an optional child element of the **Protocol** element (section [2.2.3.1.1.2.5](#)).

2.2.3.1.1.2.5.26 ReferralPort

The **ReferralPort** element specifies the port that is used to get a referral to a directory. It is an optional child element of the **Protocol** element (section [2.2.3.1.1.2.5](#)).<22> For more details, see [\[MS-OXABREF\]](#).

2.2.3.1.1.2.5.27 Server

Note Some of the information in this section is subject to change because it applies to a preliminary implementation of the protocol or structure. For information about specific differences between versions, see the behavior notes that are provided in the Product Behavior appendix.

The **Server** element specifies the name of the mail server. It is a required child element of the **Protocol** element (section [2.2.3.1.1.2.5](#)) that has a **Type** element (section [2.2.3.1.1.2.5.32](#)) value of "EXCH", "EXPR", "EXHTTP", "POP3", "SMTP", or "IMAP". The value will be either a host name or an IP address.

2.2.3.1.1.2.5.28 ServerDN

The **ServerDN** element specifies the DN of the mail server. It is a required child element of the **Protocol** element (section [2.2.3.1.1.2.5](#)) when the **Type** element (section [2.2.3.1.1.2.5.32](#)) has a value of "EXCH".

2.2.3.1.1.2.5.29 ServerVersion

The **ServerVersion** element represents the version number of the server software. It is an optional child element of the **Protocol** element (section [2.2.3.1.1.2.5](#)).

The **ServerVersion** value is a 32-bit hexadecimal number that contains the major version number, minor version number, and major build number of the server. The **ServerVersion** element is used only when the **Type** element (section [2.2.3.1.1.2.5.32](#)) has a value of "EXCH".

2.2.3.1.1.2.5.30 SharingUrl

The **SharingUrl** element specifies the endpoint for a sharing server, which is a server used for sharing calendars and contacts. It is an optional child element of the **Protocol** element (section [2.2.3.1.1.2.5](#)).

The **SharingUrl** element is returned when the server implements a URL for cross-organization sharing.

2.2.3.1.1.2.5.31 TTL

The **TTL** element specifies the time, in hours, during which the settings remain valid. It is an optional child element of the **Protocol** element (section [2.2.3.1.1.2.5](#)).

A value of "0" (zero) indicates that rediscovery is not required. If the **TTL** element is omitted, the default value is "1".

2.2.3.1.1.2.5.32 Type

Note Some of the information in this section is subject to change because it applies to a preliminary implementation of the protocol or structure. For information about specific differences between versions, see the behavior notes that are provided in the Product Behavior appendix.

The **Type** element identifies the type of the configured mail account. It is a required child element of the **Protocol** element (section [2.2.3.1.1.2.5](#)). The possible values are specified in the following table.

Value	Meaning
"EXCH"	The Protocol element contains information that the Autodiscover client can use to communicate with the mailbox via a remote procedure call (RPC) . For details, see [MS-OXCRPC] .
"EXPR"	The Protocol element contains information that the Autodiscover client can use to communicate when outside the firewall, including RPC/HTTP connections. For details, see [MS-RPCH] .
"EXHTTP" <23>	The Protocol element contains information that the Autodiscover client can use to communicate via RPC/HTTP connections.
"POP3" <24>	The Protocol element contains settings that the client can use to communicate with the mail server via POP3. For details, see [RFC1939] .
"SMTP" <25>	The Protocol element contains settings the client can use to send mail via SMTP. For details, see [RFC2821] .
"IMAP" <26>	The Protocol element contains settings the client can use to communicate with the mail server via IMAP4 . For details, see [RFC3501] .
"DAV" <27>	The Protocol element contains settings the client can use to communicate with the mail server via the DAV protocol. For details, see [RFC2518] .
"WEB"	The Protocol element contains settings the client can use to connect via a Web browser.

2.2.3.1.1.2.5.33 SMTPLast

The **SMTPLast** element specifies whether the Simple Mail Transfer Protocol (SMTP) server requires that email be downloaded before it sends email by using the SMTP server. It is an optional child element of the **Protocol** element (section [2.2.3.1.1.2.5](#)). [<28>](#)

The possible values are specified in the following table.

Value	Meaning
"on"	The server requires that email be downloaded before the client sends mail via SMTP.
"off"	The server does not require that email be downloaded before the client sends mail via SMTP.

If this element is not present, the default value is "off".

The **SMTPLast** element is used only when the **Type** element is equal to "SMTP".

2.2.3.1.1.2.5.34 SPA

The **SPA** element indicates whether secure password authentication is required. It is an optional child element of the **Protocol** element (section [2.2.3.1.1.2.5](#)). This element is only valid when the value of the **Type** element (section [2.2.3.1.1.2.5.32](#)) is "SMTP", "POP3", or "IMAP". The possible values are specified in the following table.

Value	Meaning
"on"	SPA is required.

Value	Meaning
"off"	SPA is not required.

If this element is not present, the default value is "on".

2.2.3.1.1.2.5.35 SSL

The **SSL** element specifies whether the server requires SSL for logon. It is an optional child element of the **Protocol** element (section [2.2.3.1.1.2.5](#)).

The possible values are specified in the following table.

Value	Meaning
"on"	SSL is required.
"off"	SSL is not required.

If a value is not specified, the default value is "on".

2.2.3.1.1.2.5.36 UNSURL

The **UNSURL** element specifies the URL of the best instance of the Voice Mail Settings Web Service protocol ([\[MS-OXWUMS\]](#)) for a mail-enabled user. It is an optional child element of the **Protocol** element (section [2.2.3.1.1.2.5](#)).

The **UNSURL** element is returned when the server implements a URL for internal or external access to the Voice Mail Settings Web Service.

2.2.3.1.1.2.5.37 UsePOPAuth

The **UsePOPAuth** element indicates whether the authentication information that is provided for a POP3 type of account is also used for SMTP. It is an optional child element of the **Protocol** element (section [2.2.3.1.1.2.5](#)).<29>

The possible values are specified in the following table.

Value	Meaning
"on"	Use the POP3 authentication information for SMTP.
"off"	Do not use the POP3 authentication information for SMTP.

The **UsePOPAuth** element is used only when the value of the **Type** element (section [2.2.3.1.1.2.5.32](#)) is equal to "SMTP".

2.2.3.1.1.2.5.38 Internal

The **Internal** element contains a collection of URLs that a client can connect to when it is inside the firewall. It is an optional child element of the **Protocol** element (section [2.2.3.1.1.2.5](#)).

If the server is configured for internal access, the **Internal** element contains a **Protocol** element, (as specified in section [2.2.3.1.1.2.5](#)) and an **OWAUrl** element (as specified in section [2.2.3.1.1.2.5.38.1](#)). The **Protocol** child element SHOULD contain an **ASUrl** element (as specified in

section [2.2.3.1.1.2.5.2](#)) and a **Type** element (as specified in section [2.2.3.1.1.2.5.32](#)). The **Protocol** child element SHOULD NOT contain any other child elements.

2.2.3.1.1.2.5.38.1 OWAUrl

The **OWAUrl** element describes the URL, as specified in [\[RFC3986\]](#), and the authentication method that is used to access the server. It is a required child element of the **Internal** element (section [2.2.3.1.1.2.5.38](#)) and the **External** element (section [2.2.3.1.1.2.5.39](#)).

The **OWAUrl** has an optional **AuthenticationMethod** attribute. This attribute specifies the allowed authentication methods that are supported by the server. This attribute can be one or more of the values in the following table. Multiple values are separated by commas.

Value	Authentication method
"WindowsIntegrated"	Integrated Windows Authentication
"Fba"	Forms Based Authentication
"Ntlm"	NTLM Authentication
"Digest"	Digest Authentication
"Basic"	Basic Authentication
"LiveIdFba" <30>	Live Id Authentication

2.2.3.1.1.2.5.39 External

The **External** element contains the collection of URLs that a client can connect to outside the firewall. It is an optional child element of the **Protocol** element (section [2.2.3.1.1.2.5](#)). If the server is configured for external access, the **External** element will contain a **Protocol** element (section [2.2.3.1.1.2.5](#)) and an **OWAUrl** element (section [2.2.3.1.1.2.5.38.1](#)). The **Protocol** element SHOULD contain an **ASUrl** element (section [2.2.3.1.1.2.5.2](#)) and a **Type** element (section [2.2.3.1.1.2.5.32](#)). The **Protocol** element SHOULD NOT contain any other child elements.

2.2.3.1.1.2.5.40 Encryption

The **Encryption** element specifies the required encryption for the connection to the server. It is an optional child element of the **Protocol** element (section [2.2.3.1.1.2.5](#)). [<31>](#) This element is valid only if the value of the **Type** element (section [2.2.3.1.1.2.5.32](#)) is "IMAP", "POP3", or "SMTP". If the **Encryption** element is present, it overrides the **SSL** element (section [2.2.3.1.1.2.5.35](#)). The following table specifies the possible values of the **Encryption** element.

Value	Meaning
"None"	No encryption is used.
"SSL"	SSL encryption is used.
"TLS"	TLS encryption is used.
"Auto"	The most secure encryption that the client and server support is used.

2.2.3.1.1.2.6 AlternativeMailbox

The **AlternativeMailbox** element contains information that enables clients to open an additional mailbox. It is an optional child element of the **Account** element (section [2.2.3.1.1.2](#)). [<32>](#)

The **AlternativeMailbox** element is returned only when an alternative mailbox is associated with the user.

The elements specified in the following sections can be child elements of the **AlternativeMailbox** element.

2.2.3.1.1.2.6.1 Type

Note *Some of the information in this section is subject to change because it applies to a preliminary implementation of the protocol or structure. For information about specific differences between versions, see the behavior notes that are provided in the Product Behavior appendix.*

The **Type** element identifies the type of the additional mail account. [<33>](#) It is a required child element of the **AlternativeMailbox** element (section [2.2.3.1.1.2.6](#)).

The following table specifies the possible values of the **Type** element.

Value	Meaning
"Archive"	The alternative mailbox represented by the parent AlternativeMailbox element is an archive mailbox for the user.
"TeamMailbox" <34>	The alternative mailbox represented by the parent AlternativeMailbox element is a team mailbox that is configured for the user.

2.2.3.1.1.2.6.2 DisplayName

The **DisplayName** element represents the additional mailbox user's display name. It is a required child element of the **AlternativeMailbox** element (section [2.2.3.1.1.2.6](#)). This string MAY be used to override how a client will display the user's name in the alternative mailbox. [<35>](#)

2.2.3.1.1.2.6.3 LegacyDN

Note *Some of the information in this section is subject to change because it applies to a preliminary implementation of the protocol or structure. For information about specific differences between versions, see the behavior notes that are provided in the Product Behavior appendix.*

The **LegacyDN** element identifies the additional mailbox by DN. It is an optional child element of the **AlternativeMailbox** element (section [2.2.3.1.1.2.6](#)). The **LegacyDN** is also known as the ESSDN, which is the naming scheme that defines the alternative user. [<36>](#)

The **LegacyDN** element MUST be present if the **SmtetAddress** element (section [2.2.3.1.1.2.6.5](#)) is not present. The **LegacyDN** element MUST NOT be present if the **SmtetAddress** element is present.

2.2.3.1.1.2.6.4 Server

Note *Some of the information in this section is subject to change because it applies to a preliminary implementation of the protocol or structure. For information about specific differences between versions, see the behavior notes that are provided in the Product Behavior appendix.*

The **Server** element contains the FQDN of the mail server that contains the additional mailbox. It is an optional child element of the **AlternativeMailbox** element (section [2.2.3.1.1.2.6](#)).<37>

The **Server** element MUST be present if the **SmtetAddress** element (section [2.2.3.1.1.2.6.5](#)) is not present. The **Server** element MUST NOT be present if the **SmtetAddress** element is present

2.2.3.1.1.2.6.5 SmtetAddress

Note All of the information in this section is subject to change because it applies to a preliminary implementation of the protocol or structure.

The **SmtetAddress** element contains an SMTP address assigned to the alternative mailbox. This SMTP address can be used in the **EMailAddress** element (section [2.2.2.1.1.2](#)) of an Autodiscover request to discover configuration settings for the alternative mailbox. It is an optional child element of the **AlternativeMailbox** element (section [2.2.3.1.1.2.6](#)).<38>

The **SmtetAddress** element MUST be present if the **LegacyDN** element (section [2.2.3.1.1.2.6.3](#)) and the **Server** element (section [2.2.3.1.1.2.6.4](#)) are not present. The **SmtetAddress** element MUST NOT be present if the **LegacyDN** element and **Server** element are present.

2.2.3.1.1.2.7 PublicFolderInformation

Note All of the information in this section is subject to change because it applies to a preliminary implementation of the protocol or structure.

The **PublicFolderInformation** element contains information that enables clients to send an Autodiscover request to discover public folder settings. It is an optional child element of the **Account** element (section [2.2.3.1.1.2](#)). <39> There MUST NOT be more than one **PublicFolderInformation** element in a response.

The elements specified in the following sections can be child elements of the **PublicFolderInformation** element.

2.2.3.1.1.2.7.1 SmtetAddress

Note All of the information in this section is subject to change because it applies to a preliminary implementation of the protocol or structure.

The **SmtetAddress** element contains an SMTP address assigned to the public folder store configured for the user. This SMTP address can be used in the **EMailAddress** element (section [2.2.2.1.1.2](#)) of an Autodiscover request to discover public folder settings. It is a required child element of the **PublicFolderInformation** element (section [2.2.3.1.1.2.7](#)).

2.2.3.1.1.3 Error

The **Error** element contains an Autodiscover error response. It is an optional child element of the **Response** element (section [2.2.3.1.1](#)). The **Error** element has two attributes, as listed in the following table.

Attribute	Description
Time	Represents the time when the error response was returned.
Id	Represents a hash value of the name of the mail server.

The elements specified in the following sections can be child elements of the **Error** element.

2.2.3.1.1.3.1 ErrorCode

The **ErrorCode** element contains the error code for an error Autodiscover response. It is a required child element of the **Error** element (section [2.2.3.1.1.3](#)).

The following table lists the current error codes.

Error code	Description
500	The email address cannot be found. The Autodiscover server cannot determine how to provide configuration information for the requested email address.
501	Bad Address. The Autodiscover server recognizes the given email address but is unable to provide configuration information because the given email address has no configuration options.
600	Invalid Request. The XML request was improperly formatted.
601	The Autodiscover server was unable to provide configuration information of the requested type.
602	Bad Address. The Autodiscover server recognizes the specified email address but is unable to provide configuration information because of configuration errors.
603	The Autodiscover server threw an internal error.

2.2.3.1.1.3.2 DebugData

The **DebugData** element contains the debug data for an Autodiscover error response. It is a required child element of the **Error** element (section [2.2.3.1.1.3](#)). The contents of this element will depend on the implementation of the Autodiscover server.

2.2.3.1.1.3.3 Message

The **Message** element contains the error message for an error Autodiscover response. It is a required child element of the **Error** element (section [2.2.3.1.1.3](#)). The **Message** element SHOULD be in the form of a human-readable error message.

3 Protocol Details

The following sections specify details of the Autodiscover Publishing and Lookup Protocol, including abstract data models and message processing rules.

3.1 Client Details

3.1.1 Abstract Data Model

None.

3.1.2 Timers

Clients SHOULD implement a Time-To-Live timer, initialized to the number of hours specified by the value of the **TTL** element (section [2.2.3.1.1.2.5.31](#)) in the Autodiscover response. If the value of the **TTL** element is "0", this timer is not used. If the **TTL** element is absent, this timer SHOULD be initialized to one hour.

3.1.3 Initialization

It is assumed that the Autodiscover client has an email address for which discovery information is needed.

It is also assumed that the Autodiscover client has a list of potential Autodiscover server URIs. This list could be generated by using the [\[MS-OXDISCO\]](#) protocol. The list could also be preconfigured.

3.1.4 Higher-Layer Triggered Events

When an Autodiscover client is configuring itself to access a user's mailbox, it sends an HTTP **POST** request that contains an Autodiscover request, as specified in section [2.2.2](#). The client waits for a response and processes the response as specified in section [3.1.5](#).

3.1.5 Message Processing Events and Sequencing Rules

The results of an Autodiscover request fall into the following categories.

- The URI is not functional. The client SHOULD process this response as specified in section [3.1.5.1](#).
- The HTTP **POST** command returns an HTTP 302 Redirection response. The client SHOULD process this response as specified in section [3.1.5.2](#).
- The Autodiscover server returns an **Action** element () with a value of "redirectAddr" or "redirectUrl". The client SHOULD process this response as specified in section [3.1.5.3](#).
- The Autodiscover server returns configuration information. The client SHOULD process this response as specified in section [3.1.5.4](#).
- The Autodiscover server returns error information. The client SHOULD process this response as specified in section [3.1.5.5](#).

3.1.5.1 Nonfunctional URIs

If the Autodiscover client attempts to send an HTTP **POST** request to a nonfunctional URI, it SHOULD retry the HTTP **POST** request using the next URI in its list of potential Autodiscover server

URIs. It SHOULD NOT abort the Autodiscover request unless it has attempted all of the URIs in its list of potential Autodiscover server URIs.

3.1.5.2 HTTP 302 Redirects

If the server returns a redirection URL via an HTTP 302 Redirect response, the client SHOULD repost the request to the redirection URL contained in the **Location** header (as specified in [\[RFC2068\]](#) section 14.30) of the response.

3.1.5.3 Autodiscover Redirect

If the server returns an Autodiscover response (as specified in section [2.2.3](#)) which contains an **Action** element (section [2.2.3.1.1.2.2](#)) with a value of "redirectAddr", the client SHOULD send a new Autodiscover request. The value of the **EmailAddress** element (section [2.2.2.1.1.2](#)) in the new request SHOULD be set to the value of the **RedirectAddr** element (section [2.2.3.1.1.2.3](#)) in the Autodiscover response.

If the server returns an Autodiscover response which contains an **Action** element with a value of "redirectUrl", the client SHOULD send a new Autodiscover request to the URL contained in the value of the **RedirectUrl** element (section [2.2.3.1.1.2.4](#)) in the Autodiscover response.

See section [4.2](#) for an example of an Autodiscover Redirect response.

3.1.5.4 Autodiscover Configuration Information

Note *Some of the information in this section is subject to change because it applies to a preliminary implementation of the protocol or structure. For information about specific differences between versions, see the behavior notes that are provided in the Product Behavior appendix.*

If the server returns an Autodiscover response (as specified in section [2.2.3](#)) that contains a **User** element (section [2.2.3.1.1.1](#)) and an **Account** element (section [2.2.3.1.1.2](#)), the client SHOULD use the information contained within the response to configure itself. It SHOULD NOT send further Autodiscover requests to the next URI in its list of potential Autodiscover server URIs. For an example of an Autodiscover response that contains configuration information, see section [4.3](#).

If the server response contains one or more **Protocol** elements (section [2.2.3.1.1.2.5](#)) that contain a **Type** element (section [2.2.3.1.1.2.5.32](#)) with a value of "EXHTTP", the client SHOULD [<40>](#) ignore any **Protocol** elements that contain a **Type** element with a value of "EXPR".

If there are multiple **Protocol** elements that contain a **Type** element with a value of "EXHTTP", the client SHOULD [<41>](#) store each set of configuration information represented by these elements, and attempt to connect using the configuration information sets in the order in which they appeared in the response, stopping when a successful connection is made. For example, if a response contains two **Protocol** elements that contain a **Type** element with the value "EXHTTP", the client attempts to connect using the information in the first such **Protocol** element. If the connection attempt fails, the client attempts to connect using the information in the second such **Protocol** element.

3.1.5.5 Autodiscover Server Errors

If the server returns an Autodiscover response (as specified in section [2.2.3](#)) that contains an **Error** element (section [2.2.3.1.1.3](#)), the client SHOULD retry the HTTP **POST** request using the next URI in its list of potential Autodiscover server URIs. For an example of an Autodiscover response that contains an **Error** element, see section [4.4](#).

3.1.6 Timer Events

When the Time-To-Live timer specified in section [3.1.2](#) expires, clients SHOULD issue a new Autodiscover request and apply any changes indicated by the response to its configuration.

3.1.7 Other Local Events

None.

3.2 Server Details

3.2.1 Abstract Data Model

None.

3.2.2 Timers

None.

3.2.3 Initialization

None.

3.2.4 Higher-Layer Triggered Events

None.

3.2.5 Message Processing Events and Sequencing Rules

An Autodiscover server MUST respond to HTTP **POST** requests to the URL "https://<Server>/autodiscover/autodiscover.xml", where "<Server>" is a valid host name for the server.

The server SHOULD validate the body of the HTTP POST request, ensuring that it is a valid Autodiscover request as specified in section [2.2.2](#).

If the server receives a request that contains both the **EEmailAddress** element (section [2.2.2.1.1.2](#)) and the **LegacyDN** element (section [2.2.2.1.1.3](#)), the value of the **LegacyDN** element MUST be used.

If the server needs to redirect the Autodiscover client to another URL, it SHOULD send a 302 Redirect response with the **Location** header set to the new URL. Alternatively, it MAY send an Autodiscover response (as specified in section [2.2.3](#)) with a **RedirectUrl** element (section [2.2.3.1.1.2.4](#)) value set to the new URL.

If the server needs to redirect the Autodiscover client to another email address, it SHOULD send an Autodiscover response with a **RedirectAddr** element (section [2.2.3.1.1.2.3](#)) value set to the new email address.

If the server encounters an error, it SHOULD send an Autodiscover response with an **Error** element (section [2.2.3.1.1.3](#)). It SHOULD set the value of the **ErrorCode** element to one of the values in the table in section [2.2.3.1.1.3.1](#), but MAY use a value not in the table.

If the server does not need to redirect the request and encounters no errors, it MUST return an Autodiscover response with a **User** element (section [2.2.3.1.1.1](#)) containing information about the

user represented by the email address in the EMailAddress element (section [2.2.2.1.1.2](#)) of the request and an **Account** element (section [2.2.3.1.1.2](#)) containing configuration information for the user's mailbox.

3.2.6 Timer Events

None.

3.2.7 Other Local Events

None.

4 Protocol Examples

The following topology is used in this example and is illustrated in the following diagram:

- The **Domain Name System (DNS)** name of the mail server is mail.contoso.com.
- The DNS name of the Web service computer is webservice.contoso.com. It has a valid SSL certificate.
- Autodiscover Web services are available at <https://webservice.contoso.com/autodiscover/autodiscover.xml>.

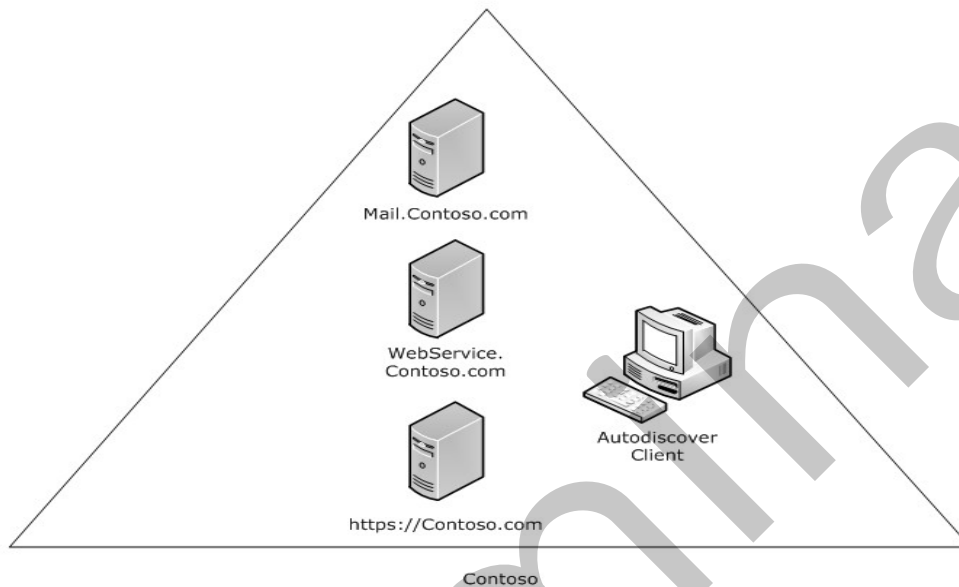


Figure 1: Client and server topology

From executing the Autodiscover HTTP Service Protocol [\[MS-OXDISCO\]](#), the client has the following list of possible Autodiscover servers:

- <https://contoso.com/autodiscover/autodiscover.xml>
- <https://webservice.contoso.com/autodiscover/autodiscover.xml>

The Autodiscover service is only available on <https://webservice.contoso.com/autodiscover/autodiscover.xml>, but <https://contoso.com/autodiscover/autodiscover.xml> is configured to respond with an HTTP 302 Redirect response with the **Location** header set to "<https://webservice.contoso.com/autodiscover/autodiscover.xml>".

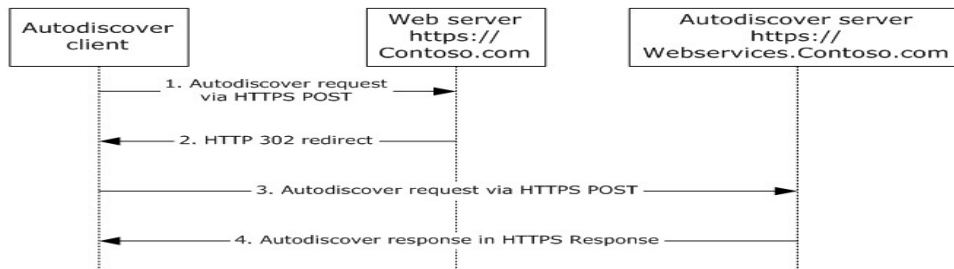


Figure 2: Client and server autodiscovery

Step 1

The Autodiscover client is configured to use the email address user@contoso.com.

The client sends the Autodiscover request XML shown in section 4.1 via **HTTP POST** to the following URL: https://contoso.com/autodiscover/autodiscover.xml.

Step 2

The client is returned an HTTP 302 redirection to the following URL: https://webservice.contoso.com/autodiscover/autodiscover.xml.

Step 3

The client then reposts the request to this URL.

Step 4

The user's mailbox is on mail.contoso.com. The server returns the response XML shown in section 4.3.

4.1 Autodiscover Request

The following example shows an Autodiscover request.

```

<Autodiscover
  xmlns="http://schemas.microsoft.com/exchange/autodiscover/outlook/requestschem/2006">
  <Request>
    <EmailAddress>user@contoso.com</EmailAddress>
    <AcceptableResponseSchema>
      http://schemas.microsoft.com/exchange/autodiscover/outlook/responseschem/2006a
    </AcceptableResponseSchema>
  </Request>
</Autodiscover>
  
```

4.2 Autodiscover Redirect

The following example shows an Autodiscover redirect to a new email address.

```
<?xml version="1.0" encoding="utf-8"?>
<Autodiscover xmlns="http://schemas.microsoft.com/exchange/autodiscover/responseschema/2006">
  <Response
    xmlns="http://schemas.microsoft.com/exchange/autodiscover/outlook/responseschema/2006a">
    <Account>
      <Action>redirectAddr</Action>
      <RedirectAddr>user@subdomain.contoso.com</RedirectAddr>
    </Account>
  </Response>
</Autodiscover>
```

4.3 Autodiscover Configuration

The following example shows an Autodiscover response that contains configuration information.

```
<?xml version="1.0" encoding="utf-8"?>
<Autodiscover xmlns="http://schemas.microsoft.com/exchange/autodiscover/responseschema/2006">
  <Response
    xmlns="http://schemas.microsoft.com/exchange/autodiscover/outlook/responseschema/2006a">
    <User>
      <DisplayName>User Display Name</DisplayName>
      <LegacyDN>/o=microsoft/ou=Contoso/cn=Recipients/cn=486021</LegacyDN>
      <AutoDiscoverSMTPAddress>user@Contoso.com</AutoDiscoverSMTPAddress>
      <DeploymentId>30c3a927-42aa-5de8-91e3-8e5b4655ed00</DeploymentId>
    </User>
    <Account>
      <AccountType>email</AccountType>
      <Action>settings</Action>
      <Protocol>
        <Type>EXCH</Type>
        <Server>ExchangeServer.Contoso.com</Server>
        <ServerDN>/o=Contoso/ou=Exchange Administrative Group (GZZHBOHF23SPELT)/
          cn=Configuration/cn=Servers/cn=ExchangeServer</ServerDN>
        <ServerVersion>720180F0</ServerVersion>
        <MdbDN>/o=Contoso/ou=Exchange Administrative Group (GZZHBOHF23SPELT)/
          cn=Configuration/cn=Servers/cn=ExchangeServer/cn=Microsoft Private MDB</MdbDN>
        <PublicFolderServer>PublicFolderServer.Contoso.com</PublicFolderServer>
        <AD>ADServer.Contoso.com</AD>
        <ASUrl>https://mail.Contoso.com/ews/exchange.asmx</ASUrl>
        <EwsUrl>https://mail. Contoso.com/ews/exchange.asmx</EwsUrl>
        <SharingUrl>https://machine.domain.Contoso.com/EWS/Exchange.asmx</SharingUrl>
        <OOFUrl>https://mail. Contoso.com/ews/exchange.asmx</OOFUrl>
        <UMUrl>https://mail. Contoso.com/unifiedmessaging/service.asmx</UMUrl>
        <OABUrl>https://mail. Contoso.com/oab/68b5509d-87f6-4e78-a9ff-74d7d9572787/</OABUrl>
      </Protocol>
      <Protocol>
        <Type>EXPR</Type>
        <Server>RPCHTTPServer.Contoso.com</Server>
        <SSL>On</SSL>
        <AuthPackage>Ntlm</AuthPackage>
        <ASUrl>https://mail.Contoso.com/ews/exchange.asmx</ASUrl>
        <EcpUrl>https://mail.Contoso.com/ecp</EcpUrl>
        <EcpUrl-um>?p=customize/voicemail.aspx&amp;exsvurl=1</EcpUrl-um>
      </Protocol>
    </Account>
  </Response>
</Autodiscover>
```



```

    <EcpUrl-aggr>?p=personalsettings/EmailSubscriptions.slab&amp;exsvurl=1</EcpUrl-aggr>
    <EcpUrl-sms>?p=sms/textmessaging.slab&amp;exsvurl=1</EcpUrl-sms>
    <EcpUrl-
publish>customize/calendarpublishing.slab?exsvurl=1&amp;FldID=&lt;FldID&gt;</EcpUrl-publish>
    <EcpUrl-mt>PersonalSettings/DeliveryReport.aspx?
        exsvurl=1&amp;IsOWA=&lt;IsOWA&gt;&amp;MsgID=&lt;
        MsgID&gt;&amp;Mbx=&lt;Mbx&gt;&amp;Sender=&lt;Sender&gt;</EcpUrl-mt>
    <EcpUrl-ret>?p=organize/retentionpolicytags.slab&amp;exsvurl=1</EcpUrl-ret>
    <EwsUrl>https://mail.Contoso.com/ews/exchange.asmx</EwsUrl>
    <OOFUrl>https://mail.Contoso.com/ews/exchange.asmx</OOFUrl>
    <UMUrl>https://mail.Contoso.com/unifiedmessaging/service.asmx</UMUrl>
    <OABUrl>https://mail.Contoso.com/oab/58b5509d-87f6-4e78-a9ff-74d7d9572787</OABUrl>
</Protocol>
<Protocol>
    <Type>WEB</Type>
    <External>
        <OWAUrl AuthenticationMethod="Fba">https://mail.Contoso.com/owa</OWAUrl>
        <Protocol>
            <Type>EXPR</Type>
            <ASUrl>https://mail.Contoso.com/ews/exchange.asmx</ASUrl>
        </Protocol>
    </External>
    <Internal>
        <OWAUrl AuthenticationMethod="Ntlm,
WindowsIntegrated">https://Internal.mail.Contoso.com/owa</OWAUrl>
        <OWAUrl AuthenticationMethod="Basic, Fba">https://mail.Contoso.com/owa</OWAUrl>
        <Protocol>
            <Type>EXCH</Type>
            <ASUrl>https://mail.Contoso.com/ews/exchange.asmx</ASUrl>
        </Protocol>
    </Internal>
</Protocol>
</Account>
</Response>
</Autodiscover>

```

4.4 Autodiscover Server Errors

The following example shows an Autodiscover response that contains an error.

```

<Autodiscover xmlns="http://schemas.microsoft.com/exchange/autodiscover/responseschema/2006">
    <Response>
        <Error Time="17:40:40.6157343" Id="3191339394">
            <ErrorCode>500</ErrorCode>
            <Message>The email address cannot be found.</Message>
            <DebugData />
        </Error>
    </Response>
</Autodiscover>

```

5 Security

5.1 Security Considerations for Implementers

There are no special security considerations specific to this specification. It is recommended that clients perform an Autodiscover request by using this protocol over HTTPS (HTTP with SSL).

It is also recommended that a server not answer Autodiscover queries unless the Autodiscover client has been authenticated with the Autodiscover server.

5.2 Index of Security Parameters

None.

6 Appendix A: XSDs

For ease of implementation, the following sections provide the four **XML schema definitions (XSDs)** for this protocol.

XSD name	Prefix	Section
Autodiscover request XSD	xs:	6.1
Autodiscover response XSD	xs:	6.2
Autodiscover error response XSD	xs:	6.3
Autodiscover redirect response XSD	xs:	6.4

6.1 Autodiscover Request XSD

The following is the Autodiscover request XSD.

```
<?xml version="1.0" encoding="utf-8"?>
<xs:schema attributeFormDefault="unqualified"
  elementFormDefault="qualified"

targetNamespace="http://schemas.microsoft.com/exchange/autodiscover/outlook/requestschema/2006"
  xmlns:xs="http://www.w3.org/2001/XMLSchema">
  <xs:element name="Autodiscover">
    <xs:complexType>
      <xs:sequence>
        <xs:element name="Request">
          <xs:complexType>
            <xs:sequence>
              <xs:element name="EmailAddress" type="xs:string" minOccurs="0" />
              <xs:element name="LegacyDN" type="xs:string" minOccurs="0"/>
              <xs:element name="AcceptableResponseSchema" type="xs:string" minOccurs="1"/>
            </xs:sequence>
          </xs:complexType>
        </xs:element>
      </xs:sequence>
    </xs:complexType>
  </xs:element>
</xs:schema>
```

6.2 Autodiscover Response XSD

Note Some of the information in this section is subject to change because it applies to a preliminary implementation of the protocol or structure. For information about specific differences between versions, see the behavior notes that are provided in the Product Behavior appendix.

The following is the Autodiscover response XSD.

```
<?xml version="1.0" encoding="utf-8"?>
<xs:schema attributeFormDefault="unqualified" elementFormDefault="qualified"
targetNamespace="http://schemas.microsoft.com/exchange/autodiscover/responseschema/2006"
xmlns:xs="http://www.w3.org/2001/XMLSchema">
```

```

<xs:import
namespace="http://schemas.microsoft.com/exchange/autodiscover/outlook/responseschema/2006a"
/>
<xs:element name="Autodiscover">
  <xs:complexType>
    <xs:sequence>
      <xs:element name="Response">
        <xs:complexType>
          <xs:sequence>
            <xs:element name="User">
              <xs:complexType>
                <xs:sequence>
                  <xs:element name="DisplayName" type="xs:string" />
                  <xs:element name="LegacyDN" type="xs:string" />
                  <xs:element name="AutoDiscoverSMTPAddress" type="xs:string" />
                  <xs:element name="DeploymentId" type="xs:string" />
                  <xs:element name="DefaultABView" type="xs:string" />
                </xs:sequence>
              </xs:complexType>
            </xs:element>
            <xs:element name="Account">
              <xs:complexType>
                <xs:sequence>
                  <xs:element name="AccountType" type="xs:string" />
                  <xs:element name="Action" type="xs:string" />
                  <xs:element maxOccurs="unbounded" name="Protocol">
                    <xs:complexType>
                      <xs:sequence>
                        <xs:element name="Type" type="xs:string" />
                        <xs:element minOccurs="0" name="Internal">
                          <xs:complexType>
                            <xs:sequence>
                              <xs:element name="OWAUrl">
                                <xs:complexType>
                                  <xs:simpleContent>
                                    <xs:extension base="xs:string">
                                      <xs:attribute name="AuthenticationMethod"
type="xs:string" use="required" />
                                    </xs:extension>
                                  </xs:simpleContent>
                                </xs:complexType>
                              </xs:element>
                            </xs:sequence>
                          </xs:complexType>
                        </xs:element>
                      </xs:sequence>
                    </xs:complexType>
                  </xs:element>
                  <xs:element name="Protocol">
                    <xs:complexType>
                      <xs:sequence>
                        <xs:element name="Type" type="xs:string" />
                        <xs:element name="ASUrl" type="xs:string" />
                      </xs:sequence>
                    </xs:complexType>
                  </xs:element>
                </xs:sequence>
              </xs:complexType>
            </xs:element>
            <xs:element minOccurs="0" name="External">
              <xs:complexType>
                <xs:sequence>
                  <xs:element name="OWAUrl">
                    <xs:complexType>
                      <xs:simpleContent>

```

```

        <xs:extension base="xs:string">
            <xs:attribute name="AuthenticationMethod"
type="xs:string" use="required" />
        </xs:extension>
    </xs:simpleContent>
</xs:complexType>
</xs:element>
<xs:element name="Protocol">
    <xs:complexType>
        <xs:sequence>
            <xs:element name="Type" type="xs:string" />
            <xs:element name="ASUrl" type="xs:string" />
        </xs:sequence>
    </xs:complexType>
</xs:element>
</xs:sequence>
</xs:complexType>
</xs:element>
<xs:element minOccurs="0" name="Server" type="xs:string" />
<xs:element minOccurs="0" name="SSL" type="xs:string" />
<xs:element minOccurs="0" name="AuthPackage" type="xs:string" />
<xs:element minOccurs="0" name="ServerDN" type="xs:string" />
<xs:element minOccurs="0" name="ServerVersion" type="xs:string"
/>

<xs:element minOccurs="0" name="MdbDN" type="xs:string" />
<xs:element minOccurs="0" name="PublicFolderServer"
type="xs:string" />

<xs:element minOccurs="0" name="AD" type="xs:string" />
<xs:element minOccurs="0" name="ASUrl" type="xs:string" />
<xs:element minOccurs="0" name="EwsUrl" type="xs:string" />
<xs:element minOccurs="0" name="SharingUrl" type="xs:string" />
<xs:element minOccurs="0" name="EcpUrl" type="xs:string" />
<xs:element minOccurs="0" name="EcpUrl-um" type="xs:string" />
<xs:element minOccurs="0" name="EcpUrl-aggr" type="xs:string" />
<xs:element minOccurs="0" name="EcpUrl-mt" type="xs:string" />
<xs:element minOccurs="0" name="EcpUrl-ret" type="xs:string" />
<xs:element minOccurs="0" name="EcpUrl-sms" type="xs:string" />
<xs:element minOccurs="0" name="EcpUrl-publish" type="xs:string"
/>

<xs:element minOccurs="0" name="EcpUrl-tm" type="xs:string" />
<xs:element minOccurs="0" name="EcpUrl-tmCreating"
type="xs:string" />

<xs:element minOccurs="0" name="EcpUrl-tmEditing"
type="xs:string" />

<xs:element minOccurs="0" name="EcpUrl-tmHiding" type="xs:string"
/>

<xs:element minOccurs="0" name="OOFUrl" type="xs:string" />
<xs:element minOccurs="0" name="UMUrl" type="xs:string" />
<xs:element minOccurs="0" name="OABUrl" type="xs:string" />
</xs:sequence>
</xs:complexType>
</xs:element>
<xs:element name="AlternativeMailbox">
    <xs:complexType>
        <xs:sequence>
            <xs:element name="Type" type="xs:string" />
            <xs:element name="DisplayName" type="xs:string" />
            <xs:element name="LegacyDN" type="xs:string" />
            <xs:element name="Server" type="xs:string" />
        </xs:sequence>
    </xs:complexType>
</xs:element>

```


6.4 Autodiscover Redirect Response XSD

The following is the Autodiscover redirect response XSD.

```
<?xml version="1.0" encoding="utf-8"?>
<xs:schema attributeFormDefault="unqualified" elementFormDefault="qualified"
targetNamespace="http://schemas.microsoft.com/exchange/autodiscover/responseschema/2006"
xmlns:xs="http://www.w3.org/2001/XMLSchema">
  <xs:import
namespace="http://schemas.microsoft.com/exchange/autodiscover/outlook/responseschema/2006a"
/>
  <xs:element name="Autodiscover">
    <xs:complexType>
      <xs:sequence>
        <xs:element name="Response">
          <xs:complexType>
            <xs:sequence>
              <xs:element name="Account">
                <xs:complexType>
                  <xs:sequence>
                    <xs:element name="Action" type="xs:string" />
                    <xs:element name="RedirectAddr" type="xs:string" />
                    <xs:element name="RedirectUrl" type="xs:string" />
                  </xs:sequence>
                </xs:complexType>
              </xs:element>
            </xs:sequence>
          </xs:complexType>
        </xs:element>
      </xs:sequence>
    </xs:complexType>
  </xs:element>
</xs:schema>
```

7 Appendix B: Product Behavior

The information in this specification is applicable to the following Microsoft products or supplemental software. References to product versions include released service packs:

- Microsoft® Exchange Server 2007
- Microsoft® Exchange Server 2010
- Microsoft® Exchange Server 15 Technical Preview
- Microsoft® Office Outlook® 2007
- Microsoft® Outlook® 2010
- Microsoft® Outlook® 15 Technical Preview

Exceptions, if any, are noted below. If a service pack or Quick Fix Engineering (QFE) number appears with the product version, behavior changed in that service pack or QFE. The new behavior also applies to subsequent service packs of the product unless otherwise specified. If a product edition appears with the product version, behavior is different in that product edition.

Unless otherwise specified, any statement of optional behavior in this specification that is prescribed using the terms SHOULD or SHOULD NOT implies product behavior in accordance with the SHOULD or SHOULD NOT prescription. Unless otherwise specified, the term MAY implies that the product does not follow the prescription.

[<1> Section 2.1:](#) Office Outlook 2007 and Outlook 2010 will not use Autodiscover servers that do not use SSL.

[<2> Section 2.2.3.1.1.3:](#) Exchange 2007 and the initial release version of Exchange 2010 do not include the **AutoDiscoverSMTPAddress** element. Exchange 2010 SP1 includes the **AutoDiscoverSMTPAddress** element.

[<3> Section 2.2.3.1.1.5:](#) Exchange 2007, and the initial release version of Exchange 2010 do not include the **DefaultABView** element. Exchange 2010 SP1 includes the **DefaultABView** element.

[<4> Section 2.2.3.1.2.5.3:](#) The **Negotiate** authentication method is not implemented in Exchange 2007, Exchange 2010, Office Outlook 2007, or Outlook 2010.

[<5> Section 2.2.3.1.2.5.3:](#) The "anonymous" value for the **AuthPackage** element is not implemented in Exchange 2007, Exchange 2010, Office Outlook 2007, or Outlook 2010.

[<6> Section 2.2.3.1.2.5.4:](#) Exchange 2007 and Exchange 2010 do not support the **AuthRequired** element.

[<7> Section 2.2.3.1.2.5.6:](#) **DomainName** element is not implemented in Exchange 2007, Exchange 2010, Office Outlook 2007, or Outlook 2010.

[<8> Section 2.2.3.1.2.5.7:](#) **DomainRequired** element is not implemented in Exchange 2007, Exchange 2010, Office Outlook 2007, or Outlook 2010.

[<9> Section 2.2.3.1.2.5.8:](#) Exchange 2007 does not support the **EcpUrl** element.

[<10> Section 2.2.3.1.2.5.9:](#) Exchange 2007 does not support the **EcpUrl-um** element.

[<11> Section 2.2.3.1.2.5.10:](#) Exchange 2007 does not support the **EcpUrl-aggr** element.

- [<12> Section 2.2.3.1.1.2.5.11:](#) Exchange 2007 does not support the **EcpUrl-sms** element.
- [<13> Section 2.2.3.1.1.2.5.12:](#) Exchange 2007 does not support the **EcpUrl-mt** element.
- [<14> Section 2.2.3.1.1.2.5.13:](#) Exchange 2007 does not support the **EcpUrl-ret** element.
- [<15> Section 2.2.3.1.1.2.5.14:](#) Exchange 2007 and Exchange 2010 do not support the **EcpUrl-publish** element.
- [<16> Section 2.2.3.1.1.2.5.15:](#) The **EcpUrl-tm** element was introduced in Exchange 15 Technical Preview. Office Outlook 2007 and Outlook 2010 ignore this element.
- [<17> Section 2.2.3.1.1.2.5.16:](#) The **EcpUrl-tmCreating** element was introduced in Exchange 15 Technical Preview. Office Outlook 2007 and Outlook 2010 ignore this element.
- [<18> Section 2.2.3.1.1.2.5.17:](#) The **EcpUrl-tmEditing** element was introduced in Exchange 15 Technical Preview. Office Outlook 2007 and Outlook 2010 ignore this element.
- [<19> Section 2.2.3.1.1.2.5.18:](#) The **EcpUrl-tmHiding** element was introduced in Exchange 15 Technical Preview. Office Outlook 2007 and Outlook 2010 ignore this element.
- [<20> Section 2.2.3.1.1.2.5.20:](#) The **LoginName** element is not implemented in Exchange 2007, Exchange 2010, Office Outlook 2007, or Outlook 2010.
- [<21> Section 2.2.3.1.1.2.5.24:](#) The **Port** element is not implemented in Exchange 2007 or Exchange 2010.
- [<22> Section 2.2.3.1.1.2.5.26:](#) The **ReferralPort** element is not implemented in Exchange 2007 or Exchange 2010.
- [<23> Section 2.2.3.1.1.2.5.32:](#) The "EXHTTP" value for the **Type** element was introduced in Exchange 15 Technical Preview. Office Outlook 2007 and Outlook 2010 ignore **Protocol** elements with a **Type** child element that has a value of "EXHTTP".
- [<24> Section 2.2.3.1.1.2.5.32:](#) Exchange 2007 and Exchange 2010 do not support the "POP3" value for the **Type** element.
- [<25> Section 2.2.3.1.1.2.5.32:](#) Exchange 2007 and Exchange 2010 do not support the "SMTP" value for the **Type** element.
- [<26> Section 2.2.3.1.1.2.5.32:](#) Exchange 2007 and Exchange 2010 do not support the "IMAP" value for the **Type** element.
- [<27> Section 2.2.3.1.1.2.5.32:](#) Exchange 2007 and Exchange 2010 do not support the "DAV" value for the **Type** element.
- [<28> Section 2.2.3.1.1.2.5.33:](#) Exchange 2007 and Exchange 2010 do not support the **SMTPLast** element.
- [<29> Section 2.2.3.1.1.2.5.37:](#) Exchange 2007 and Exchange 2010 do not support the **UsePopAuth** element.
- [<30> Section 2.2.3.1.1.2.5.38.1:](#) The "LiveIdFba" value of the AuthenticationMethod attribute is not implemented in Exchange 2007, Exchange 2010, Exchange 2010 SP1, Office Outlook 2007, or Outlook 2010.
- [<31> Section 2.2.3.1.1.2.5.40:](#) The **Encryption** element is not implemented in Exchange 2007, Exchange 2010, Office Outlook 2007, or Outlook 2010.

<32> [Section 2.2.3.1.1.2.6](#): The **AlternativeMailbox** element is not supported by Exchange 2007.

<33> [Section 2.2.3.1.1.2.6.1](#): The **Type** element is not supported by Exchange 2007.

<34> [Section 2.2.3.1.1.2.6.1](#): The "TeamMailbox" value for the **Type** element was introduced in Exchange 15 Technical Preview. Office Outlook 2007 and Outlook 2010 ignore **AlternativeMailbox** elements with a value of "TeamMailbox" in the child **Type** element.

<35> [Section 2.2.3.1.1.2.6.2](#): The **DisplayName** element is not supported by Exchange 2007.

<36> [Section 2.2.3.1.1.2.6.3](#): The **LegacyDN** element is not supported by Exchange 2007.

<37> [Section 2.2.3.1.1.2.6.4](#): The **Server** element is not supported by Exchange 2007.

<38> [Section 2.2.3.1.1.2.6.5](#): The **SmtpAddress** element was introduced in Exchange 15 Technical Preview. Office Outlook 2007 and Outlook 2010 ignore the **SmtpAddress** element.

<39> [Section 2.2.3.1.1.2.7](#): The **PublicFolderInformation** element was introduced in Exchange 15 Technical Preview. Office Outlook 2007 and Outlook 2010 ignore the **PublicFolderInformation** element.

<40> [Section 3.1.5.4](#): Office Outlook 2007 and Outlook 2010 ignore **Protocol** elements that contain a **Type** element with the "EXHTTP" value, and do not ignore **Protocol** elements that contain a **Type** element with the "EXPR" value in this case.

<41> [Section 3.1.5.4](#): Office Outlook 2007 and Outlook 2010 ignore **Protocol** elements that contain a **Type** element with the "EXHTTP" value.

8 Change Tracking

This section identifies changes that were made to the [MS-OXDCLI] protocol document between the October 2011 and January 2012 releases. Changes are classified as New, Major, Minor, Editorial, or No change.

The revision class **New** means that a new document is being released.

The revision class **Major** means that the technical content in the document was significantly revised. Major changes affect protocol interoperability or implementation. Examples of major changes are:

- A document revision that incorporates changes to interoperability requirements or functionality.
- An extensive rewrite, addition, or deletion of major portions of content.
- The removal of a document from the documentation set.
- Changes made for template compliance.

The revision class **Minor** means that the meaning of the technical content was clarified. Minor changes do not affect protocol interoperability or implementation. Examples of minor changes are updates to clarify ambiguity at the sentence, paragraph, or table level.

The revision class **Editorial** means that the language and formatting in the technical content was changed. Editorial changes apply to grammatical, formatting, and style issues.

The revision class **No change** means that no new technical or language changes were introduced. The technical content of the document is identical to the last released version, but minor editorial and formatting changes, as well as updates to the header and footer information, and to the revision summary, may have been made.

Major and minor changes can be described further using the following change types:

- New content added.
- Content updated.
- Content removed.
- New product behavior note added.
- Product behavior note updated.
- Product behavior note removed.
- New protocol syntax added.
- Protocol syntax updated.
- Protocol syntax removed.
- New content added due to protocol revision.
- Content updated due to protocol revision.
- Content removed due to protocol revision.
- New protocol syntax added due to protocol revision.

- Protocol syntax updated due to protocol revision.
- Protocol syntax removed due to protocol revision.
- New content added for template compliance.
- Content updated for template compliance.
- Content removed for template compliance.
- Obsolete document removed.

Editorial changes are always classified with the change type **Editorially updated**.

Some important terms used in the change type descriptions are defined as follows:

- **Protocol syntax** refers to data elements (such as packets, structures, enumerations, and methods) as well as interfaces.
- **Protocol revision** refers to changes made to a protocol that affect the bits that are sent over the wire.

The changes made to this document are listed in the following table. For more information, please contact protocol@microsoft.com.

Section	Tracking number (if applicable) and description	Major change (Y or N)	Change type
1.1 Glossary	Added "Contacts folder" and "Global Address List (GAL)" to the list of terms defined in MS-OXGLOS.	N	Content updated.
1.1 Glossary	Removed "Unified Messaging" from the list of terms defined in MS-OXGLOS.	N	Content updated.
1.2.1 Normative References	Added [MS-OXWUMS] to the list of normative references.	N	Content updated.
1.2.1 Normative References	Removed [RFC2616] and [RFC2818] from the list of normative references.	N	Content updated.
1.2.2 Informative References	Added [RFC2616] and [RFC2818] to the list of informative references.	N	Content updated.
2.2.2 Autodiscover Request	Added section to specify the format of an Autodiscover request.	N	New content added.
2.2.2.1 Autodiscover	Added section to specify the Autodiscover element.	N	New content added.
2.2.2.1.1 Request	Replaced EmailAddress with EMailAddress.	N	Content updated.
2.2.2.1.1.2 EMailAddress	Replaced EmailAddress with EMailAddress.	N	Content updated.
2.2.2.1.1.2 EMailAddress	Moved guidance for server behavior when EMailAddress and LegacyDN are both present	N	Content updated.

Section	Tracking number (if applicable) and description	Major change (Y or N)	Change type
	to section 3.2.5.		
2.2.2.1.1.3 LegacyDN	Replaced EmailAddress with EMailAddress.	N	Content updated.
2.2.2.1.1.3 LegacyDN	Moved guidance for server behavior when EMailAddress and LegacyDN are both present to section 3.2.5.	N	Content updated.
2.2.3 Autodiscover Response	Added section to specify the format of an Autodiscover response.	N	New content added.
2.2.3.1 Autodiscover	Added section to specify the Autodiscover element.	N	New content added.
2.2.3.1.1.1.2 LegacyDN	Added information about scenarios that require this element.	N	Content updated.
2.2.3.1.1.1.5 DefaultABView	Revised information about scenarios that require this element.	N	Content updated.
2.2.3.1.1.2.2 Action	Revised information about valid values for this element.	N	Content updated.
2.2.3.1.1.2.3 RedirectAddr	Revised information about scenarios that require this element.	N	Content updated.
2.2.3.1.1.2.4 RedirectUrl	Revised information about scenarios that require this element.	N	Content updated.
2.2.3.1.1.2.5 Protocol	Revised information about scenarios that require this element.	N	Content updated.
2.2.3.1.1.2.5.3 AuthPackage	Revised information about valid values for this element.	N	Content updated.
2.2.3.1.1.2.5.4 AuthRequired	Revised information about valid values for this element.	N	Content updated.
2.2.3.1.1.2.5.7 DomainRequired	Revised information about valid values for this element.	N	Content updated.
2.2.3.1.1.2.5.9 EcpUrl-um	Revised information about the interpretation of the value of this element.	N	Content updated.
2.2.3.1.1.2.5.10 EcpUrl-aggr	Revised information about the interpretation of the value of this element.	N	Content updated.
2.2.3.1.1.2.5.11 EcpUrl-sms	Revised information about the interpretation of the value of this element.	N	Content updated.
2.2.3.1.1.2.5.12 EcpUrl-mt	Revised information about the interpretation of the value of this element.	N	Content updated.
2.2.3.1.1.2.5.13 EcpUrl-ret	Revised information about the interpretation of the value of this element.	N	Content updated.

Section	Tracking number (if applicable) and description	Major change (Y or N)	Change type
2.2.3.1.1.2.5.14 EcpUrl-publish	Revised information about the interpretation of the value of this element.	N	Content updated.
2.2.3.1.1.2.5.15 EcpUrl-tm	Added new section to specify the EcpUrl-tm element.	N	New content added.
2.2.3.1.1.2.5.16 EcpUrl-tmCreating	Added new section to specify the EcpUrl-tmCreating element.	N	New content added.
2.2.3.1.1.2.5.17 EcpUrl-tmEditing	Added new section to specify the EcpUrl-tmEditing element.	N	New content added.
2.2.3.1.1.2.5.18 EcpUrl-tmHiding	Added new section to specify the EcpUrl-tmHiding element.	N	New content added.
2.2.3.1.1.2.5.27 Server	Revised information about scenarios that require this element.	N	Content updated.
2.2.3.1.1.2.5.32 Type	Revised information about valid values for this element.	N	Content updated.
2.2.3.1.1.2.5.32 Type	Added "EXHTTP" to the table of valid values.	N	Content updated.
2.2.3.1.1.2.5.33 SMTPLast	Revised information about valid values for this element.	N	Content updated.
2.2.3.1.1.2.5.34 SPA	Revised information about valid values for this element.	N	Content updated.
2.2.3.1.1.2.5.35 SSL	Revised information about valid values for this element.	N	Content updated.
2.2.3.1.1.2.5.36 UMLUrl	Corrected name of the web service and added reference to [MS-OXWUMS].	N	Content updated.
2.2.3.1.1.2.5.37 UsePOPAuth	Revised information about valid values for this element.	N	Content updated.
2.2.3.1.1.2.5.38.1 OWAUrl	Revised information about valid values for the AuthenticationMethod attribute for this element.	N	Content updated.
2.2.3.1.1.2.5.40 Encryption	Revised information about valid values for this element.	N	Content updated.
2.2.3.1.1.2.6.1 Type	Added information for the "TeamMailbox" value for the Type element.	N	Content updated.
2.2.3.1.1.2.6.3 LegacyDN	Added information about LegacyDN and SntpAddress.	N	Content updated.
2.2.3.1.1.2.6.4 Server	Added information about Server and SntpAddress.	N	Content updated.
2.2.3.1.1.2.6.5	Added section that specifies the SntpAddress	N	New content

Section	Tracking number (if applicable) and description	Major change (Y or N)	Change type
SmtpAddress	element.		added.
2.2.3.1.1.2.7 PublicFolderInformation	Added new section to specify the PublicFolderInformation element.	N	New content added.
2.2.3.1.1.2.7.1 SmtpAddress	Added new section to specify the SmtpAddress element.	N	New content added.
2.2.3.1.1.3.1 ErrorCode	Revised information about valid values for this element.	N	Content updated.
2.2.3.1.1.3.1 ErrorCode	Added the error code 600 to the table of error codes.	N	Content updated.
3.1.1 Abstract Data Model	Added "None" to indicate that content is not applicable in this section.	N	Content updated.
3.1.2 Timers	Removed "HTTP Timeout" as a timer, and revised details about the timer based on the TTL element value.	N	Content updated.
3.1.4 Higher-Layer Triggered Events	Added details about events that trigger Autodiscover requests.	N	Content updated.
3.1.5 Message Processing Events and Sequencing Rules	Revised content.	N	Content updated.
3.1.5.1 Nonfunctional URIs	Moved this section from under "Autodiscover Request" under "Client Details" to under "Message Processing Events and Sequencing Rules" under "Client Details".	N	Content updated.
3.1.5.1 Nonfunctional URIs	Revised content.	N	Content updated.
3.1.5.2 HTTP 302 Redirects	Moved this section from under "Autodiscover Request" under "Client Details" to under "Message Processing Events and Sequencing Rules" under "Client Details".	N	Content updated.
3.1.5.3 Autodiscover Redirect	Moved this section from under "Autodiscover Request" under "Client Details" to under "Message Processing Events and Sequencing Rules" under "Client Details".	N	Content updated.
3.1.5.3 Autodiscover Redirect	Revised content.	N	Content updated.
3.1.5.4 Autodiscover Configuration Information	Moved this section from under "Autodiscover Request" under "Client Details" to under "Message Processing Events and Sequencing Rules" under "Client Details".	N	Content updated.
3.1.5.4 Autodiscover Configuration	Revised content.	N	Content

Section	Tracking number (if applicable) and description	Major change (Y or N)	Change type
Information			updated.
3.1.5.4 Autodiscover Configuration Information	Added information about Protocol elements with a Type element value of "EXHTTP".	N	Content updated.
3.1.5.5 Autodiscover Server Errors	Moved this section from under "Autodiscover Request" under "Client Details" to under "Message Processing Events and Sequencing Rules" under "Client Details".	N	Content updated.
3.1.5.5 Autodiscover Server Errors	Revised content.	N	Content updated.
3.1.6 Timer Events	Added information about handling the Time-To-Live timer event.	N	Content updated.
3.2.1 Abstract Data Model	Added "None" to indicate that content is not applicable in this section.	N	Content updated.
3.2.5 Message Processing Events and Sequencing Rules	Moved content from "Autodiscover Response" under "Server Details" to "Message Processing Events and Sequencing Rules" under "Server Details".	N	Content updated.
4 Protocol Examples	Replaced the example XML in this section with references to the sections that contain that XML.	N	Content updated.
6.1 Autodiscover Request XSD	Removed product behavior note.	N	Product behavior note removed.
6.2 Autodiscover Response XSD	Added information for the EcpUrl-tm, EcpUrl-tmCreating, EcpUrl-tmEditing, and EcpUrl-tmHiding elements.	N	Content updated.
6.2 Autodiscover Response XSD	Added information for the PublicFolderInformation and SntpAddress elements.	N	Content updated.
6.2 Autodiscover Response XSD	Removed product behavior note.	N	Product behavior note removed.
6.4 Autodiscover Redirect Response XSD	Added RedirectUrl element to the redirect response XSD.	N	Content updated.
7 Appendix B: Product Behavior	Added Exchange 15 Technical Preview and Outlook 15 Technical Preview to the list of applicable product versions.	Y	Content updated.
	Removed the section "Autodiscover Request"	N	Content

Section	Tracking number (if applicable) and description	Major change (Y or N)	Change type
	under "Client Details".		removed.
	Removed the section "Autodiscover Response" under "Server Details".	N	Content removed.

Preliminary

9 Index

A

Abstract data model
[client](#) 26
[server](#) 28
[Applicability](#) 9
[Autodiscover Request message](#) 10
[Autodiscover Response message](#) 11

C

[Capability negotiation](#) 9
[Change tracking](#) 43

Client

[abstract data model](#) 26
[higher-layer triggered events](#) 26
[initialization](#) 26
[message processing](#) 26
[other local events](#) 28
[sequencing rules](#) 26
[timer events](#) 28
[timers](#) 26

D

Data model - abstract
[client](#) 26
[server](#) 28

F

[Fields - vendor-extensible](#) 9

G

[Glossary](#) 6

H

Higher-layer triggered events
[client](#) 26
[server](#) 28

I

[Implementer - security considerations](#) 34
[Index of security parameters](#) 34
[Informative references](#) 8
Initialization
[client](#) 26
[server](#) 28
[Introduction](#) 6

M

Message processing
[client](#) 26
[server](#) 28

Messages

[Autodiscover Request](#) 10
[Autodiscover Response](#) 11
[Namespaces](#) 10
[transport](#) 10

N

[Namespaces message](#) 10
[Normative references](#) 7

O

Other local events
[client](#) 28
[server](#) 29
[Overview \(synopsis\)](#) 8

P

[Parameters - security index](#) 34
[Preconditions](#) 8
[Prerequisites](#) 8
[Product behavior](#) 40

R

References
[informative](#) 8
[normative](#) 7
[Relationship to other protocols](#) 8

S

Security
[implementer considerations](#) 34
[parameter index](#) 34
Sequencing rules
[client](#) 26
[server](#) 28
Server
[abstract data model](#) 28
[higher-layer triggered events](#) 28
[initialization](#) 28
[message processing](#) 28
[other local events](#) 29
[sequencing rules](#) 28
[timer events](#) 29
[timers](#) 28
[Standards assignments](#) 9

T

Timer events
[client](#) 28
[server](#) 29
Timers
[client](#) 26

[server](#) 28
[Tracking changes](#) 43
[Transport](#) 10
Triggered events - higher-layer
 [client](#) 26
 [server](#) 28

V

[Vendor-extensible fields](#) 9
[Versioning](#) 9

Preliminary