

[MS-OCPROTO]: Office Client Protocols Overview

Intellectual Property Rights Notice for Open Specifications Documentation

- **Technical Documentation.** Microsoft publishes Open Specifications documentation for protocols, file formats, languages, standards as well as overviews of the interaction among each of these technologies.
- **Copyrights.** This documentation is covered by Microsoft copyrights. Regardless of any other terms that are contained in the terms of use for the Microsoft website that hosts this documentation, you may make copies of it in order to develop implementations of the technologies described in the Open Specifications and may distribute portions of it in your implementations using these technologies or your documentation as necessary to properly document the implementation. You may also distribute in your implementation, with or without modification, any schema, IDL's, or code samples that are included in the documentation. This permission also applies to any documents that are referenced in the Open Specifications.
- **No Trade Secrets.** Microsoft does not claim any trade secret rights in this documentation.
- **Patents.** Microsoft has patents that may cover your implementations of the technologies described in the Open Specifications. Neither this notice nor Microsoft's delivery of the documentation grants any licenses under those or any other Microsoft patents. However, a given Open Specification may be covered by Microsoft [Open Specification Promise](#) or the [Community Promise](#). If you would prefer a written license, or if the technologies described in the Open Specifications are not covered by the Open Specifications Promise or Community Promise, as applicable, patent licenses are available by contacting iplg@microsoft.com.
- **Trademarks.** The names of companies and products contained in this documentation may be covered by trademarks or similar intellectual property rights. This notice does not grant any licenses under those rights.
- **Fictitious Names.** The example companies, organizations, products, domain names, e-mail addresses, logos, people, places, and events depicted in this documentation are fictitious. No association with any real company, organization, product, domain name, email address, logo, person, place, or event is intended or should be inferred.

Reservation of Rights. All other rights are reserved, and this notice does not grant any rights other than specifically described above, whether by implication, estoppel, or otherwise.

Tools. The Open Specifications do not require the use of Microsoft programming tools or programming environments in order for you to develop an implementation. If you have access to Microsoft programming tools and environments you are free to take advantage of them. Certain Open Specifications are intended for use in conjunction with publicly available standard specifications and network programming art, and assumes that the reader either is familiar with the aforementioned material or has immediate access to it.

This document provides an overview of the Office Client Protocols Overview Protocol Family. It is intended for use in conjunction with the Microsoft Protocol Technical Documents, publicly available

standard specifications, network programming art, and Microsoft Windows distributed systems concepts. It assumes that the reader is either familiar with the aforementioned material or has immediate access to it.

A Protocol Family System Document does not require the use of Microsoft programming tools or programming environments in order to implement the Protocols in the System. Developers who have access to Microsoft programming tools and environments are free to take advantage of them.

Abstract

This document describes the intended functionality of the Microsoft® Office system and how the protocols within this system interact. It provides examples of some common user scenarios. It does not restate the processing rules and other details that are specific to each protocol. Those details are described in the protocol specifications for each of the protocols and data structures that make up this system.

The Office system is designed to help users design, develop, collect, share, and manage documents, data, and other types of information. The system consists of a collection of components, services, protocols, structures, and supporting protocol clients and protocol servers.

Revision Summary

Date	Revision History	Revision Class	Comments
04/04/2008	0.01	Major	Initial Availability
06/27/2008	1.0	Minor	Revised and edited technical content
10/06/2008	1.01	Editorial	Revised and edited technical content
12/12/2008	1.02	Editorial	Revised and edited technical content
07/13/2009	1.03	Major	Revised and edited the technical content
08/28/2009	1.04	Editorial	Revised and edited the technical content
11/06/2009	1.05	Editorial	Revised and edited the technical content
02/19/2010	2.0	Major	Updated and revised the technical content
03/31/2010	2.01	Editorial	Revised and edited the technical content
04/30/2010	2.02	Major	Updated and revised the technical content
06/07/2010	2.03	Editorial	Revised and edited the technical content
06/29/2010	2.04	Editorial	Changed language and formatting in the technical content.
07/23/2010	2.04	No change	No changes to the meaning, language, or formatting of the technical content.
08/26/2010	2.05	Minor	Clarified the meaning of the technical content.

Date	Revision History	Revision Class	Comments
09/27/2010	2.06	Minor	Clarified the meaning of the technical content.
11/15/2010	2.06	No change	No changes to the meaning, language, or formatting of the technical content.
12/17/2010	2.06	No change	No changes to the meaning, language, or formatting of the technical content.
03/18/2011	2.7	Minor	Clarified the meaning of the technical content.
06/10/2011	2.7	No change	No changes to the meaning, language, or formatting of the technical content.
01/20/2012	2.8	Minor	Clarified the meaning of the technical content.
04/11/2012	2.8	No change	No changes to the meaning, language, or formatting of the technical content.
07/16/2012	2.9	Minor	Clarified the meaning of the technical content.
10/08/2012	2.10	Minor	Clarified the meaning of the technical content.
02/11/2013	2.11	Minor	Clarified the meaning of the technical content.

Table of Contents

1 Introduction	7
1.1 Glossary	7
1.2 References	9
2 Functional Architecture	14
2.1 Overview	14
2.1.1 Authentication	14
2.1.2 File Access	14
2.1.2.1 Protocol Discovery and Feature Activation	14
2.1.2.1.1 Server Message Block File Shares	14
2.1.2.1.2 Web Servers	14
2.1.2.1.2.1 Web View	16
2.1.2.1.2.2 Additional Considerations	17
2.1.2.1.2.3 HTTP Conversion for UNC Redirector Files	17
2.1.3 Document Management	17
2.1.3.1 Protocol Discovery and Feature Activation	17
2.1.3.1.1 Document Recovery and Workflow	18
2.1.3.1.2 Version History	18
2.1.3.1.3 Check In and Check Out	19
2.1.3.1.4 Document Properties	20
2.1.3.1.5 Document Management Task Pane	21
2.1.4 Data Access	21
2.1.5 Information Rights Management	22
2.1.6 Active Directory Domain Services	22
2.1.7 Microsoft Error Reporting	22
2.1.8 Customer Experience Improvement Program	23
2.1.9 ActiveX Controls	23
2.1.10 Microsoft Word	25
2.1.11 Microsoft Excel	25
2.1.12 Microsoft PowerPoint	26
2.1.13 Microsoft Access	27
2.1.14 Microsoft OneNote	27
2.1.15 Microsoft Publisher	28
2.1.16 Microsoft InfoPath	28
2.1.17 Microsoft Outlook	29
2.1.18 Microsoft SharePoint Workspace and Groove	29
2.1.19 Microsoft Office Mobile	30
2.1.20 Office Broadcast Presentation Service	31
2.1.21 Web Application Open Platform Interface	31
2.1.22 Apps for Office	31
2.2 Protocol Summary	31
2.2.1 Common Protocols	32
2.2.1.1 Authentication	32
2.2.1.2 File Access	33
2.2.1.3 Document Management	34
2.2.1.4 Data Access	35
2.2.1.5 Information Rights Management	36
2.2.1.6 Active Directory Domain Services	36
2.2.1.7 Microsoft Error Reporting	36
2.2.1.8 Customer Experience Improvement Program	37

2.2.1.9	IMESync Structure	37
2.2.2	Microsoft Word	37
2.2.3	Microsoft Excel	38
2.2.4	Microsoft PowerPoint	38
2.2.5	Microsoft Access	39
2.2.6	Microsoft OneNote	40
2.2.7	Microsoft InfoPath	40
2.2.8	Microsoft Outlook	42
2.2.9	Microsoft Office Mobile	42
2.2.10	Office Broadcast Presentation Service	43
2.2.11	Web Application Open Platform Interface	43
2.2.12	Apps for Office	43
2.3	Environment	43
2.3.1	Dependencies on This System	44
2.3.1.1	Authentication	44
2.3.1.2	File Access	44
2.3.1.3	Document Management	44
2.3.1.4	Data Access	44
2.3.1.5	Information Rights Management	44
2.3.1.6	Mobility	44
2.3.2	Dependencies on Other Systems/Components	44
2.3.2.1	Authentication	44
2.3.2.2	Mobility	45
2.4	Assumptions and Preconditions	45
2.4.1	All Client/Server Protocols	45
2.4.2	Mobility	45
2.5	Use Cases	45
2.5.1	Authenticate Against a Web Server That Is Gated by Forms Authentication	46
2.5.2	Download a Document from a Web Server	47
2.5.3	Open a Historical Version of a File from a Web Server	48
2.5.4	Use Information Rights Management	49
2.5.5	Open a Document by Using an ActiveX Control	50
2.5.6	Synchronize a SharePoint List with Outlook	51
2.5.7	Receive E-mail Alerts in Outlook from a SharePoint Server	51
2.5.8	Publish an Access Database Application to a Web Server	52
2.5.9	Publish an InfoPath Form to a Server	53
2.5.9.1	Publish a Non-Browser-Enabled Form Template to the Server	54
2.5.9.2	Publish a Browser-Enabled Form Template to the Server	55
2.5.10	View the First Slide of a Broadcast Presentation in a Web Browser	56
2.5.11	Start a Broadcast Slide Show	56
2.5.12	Synchronize IME with a Remote List	57
2.5.13	Publish an Excel Workbook to a SharePoint Library	58
2.6	Versioning, Capability Negotiation, and Extensibility	59
2.7	Error Handling	59
2.8	Coherency Requirements	59
2.9	Security	59
2.10	Additional Considerations	59
3	Examples	60
3.1	Example 1: Open a Document from a Web Server Gated by Forms Authentication	60
3.2	Example 2: Check Out and Check In a Document	62
3.3	Example 3: Synchronize a SharePoint List with Outlook	64
3.4	Example 4: View the First Slide of a Presentation in a Web Browser	65

3.5 Example 5: Start a Broadcast Slide Show	66
3.6 Example 6: Synchronize IME with a Remote List.....	68
4 Microsoft Implementations	70
4.1 Product Behavior	70
5 Change Tracking.....	71
6 Index	73

1 Introduction

The Microsoft® Office system is a client-based system that is designed to facilitate the design, development, and management of content and data by information workers, developers, and IT professionals. The system consists of protocol clients and client-based components that can function as stand-alone applications, integrated applications that communicate with each other, and integrated applications that communicate with each other and supporting protocol servers. Protocol clients use the data structures, file formats, and protocols that are described in section [2.2](#) and related documents.

The primary protocol clients in the Office system are:

- Access® – Desktop database application that helps users track and report data, and share data more securely by using the Web.
- Excel® – Spreadsheet application that helps users analyze, report, and manage data.
- InfoPath® – Form development application that enables teams and organizations to gather, share, and reuse information by using electronic forms.
- OneNote® – Digital notebook application that enables users to gather, organize, and search notes and other types of information, and to share those notes with others.
- Outlook® – Internet messaging application that also provides a comprehensive time and information manager, enabling users to prioritize, organize, and search information.
- PowerPoint® – Presentation application that enables users to create and broadcast presentations, and it offers extensive graphics and formatting capabilities.
- Publisher – Desktop publishing application that enables users to create, personalize, and distribute a wide range of publications and marketing materials in-house.
- SharePoint® Workspace and Groove® – Collaboration application that enables teams to work together from virtually any location.
- Word – Document authoring application that provides a comprehensive set of writing tools, and helps users design, create, and share documents.

1.1 Glossary

The following terms are defined in [\[MS-GLOS\]](#):

authentication

broadcast

Component Object Model (COM)

digital certificate

Hypertext Transfer Protocol (HTTP)

Hypertext Transfer Protocol over Secure Sockets Layer (HTTPS)

Kerberos principal

LDAP

Lightweight Directory Access Protocol (LDAP)

NT LAN Manager (NTLM) Authentication Protocol

Server Message Block (SMB)

Universal Naming Convention (UNC)

The following terms are defined in [\[MS-OFCGLOS\]](#):

Active Directory Service Interfaces (ADSI)
ActiveX control
alert
app for Office
blog
broadcast session
browser-enable
cabinet (.cab) file
check in
check out
cookie
data connection
data source
document library
Document Workspace site
endpoint
form
form file
form server
form template
form template (.xsn) file
forms authentication
front-end web server
HTTP GET
HTTP HEAD
HTTP OPTIONS
HTTP POST
Hypertext Transfer Protocol 1.1 (HTTP/1.1)
IME
Input Method Editor (IME)
list
list view
mail merge
minor version
ODBC
OLE DB
Online Analytical Processing (OLAP)
Open Database Connectivity (ODBC)
picture library
PivotTable
presence
presentation
presentation slide
Reading Layout view
rights
shared space
Simple Object Access Protocol (SOAP)
site
site collection
slide
Slide Library
slide show
social rating
social tag
subsite

Uniform Resource Identifier (URI)
Uniform Resource Locator (URL)
Universal Data Connection (.udc, .udcx) file
Web Distributed Authoring and Versioning Protocol (WebDAV)

The following terms are specific to this document:

document property: A name/value pair that serves as metadata for a document.

1.2 References

References to Microsoft Open Specifications documentation do not include a publishing year because links are to the latest version of the technical documents, which are updated frequently. References to other documents include a publishing year when one is available.

We conduct frequent surveys of the informative references to assure their continued availability. If you have any issue with finding an informative reference, please contact dochelp@microsoft.com. We will assist you in finding the relevant information. Please check the archive site, <http://msdn2.microsoft.com/en-us/library/E4BD6494-06AD-4aed-9823-445E921C9624>, as an additional source.

[CIFS] Leach, P. and Naik, D., "A Common Internet File System (CIFS/1.0) Protocol", March 1997, http://www.microsoft.com/about/legal/intellectualproperty/protocols/BSTD/CIFS/dr_aft-leach-cifs-v1-spec-02.txt

[MC-FPSEWM] Microsoft Corporation, "[FrontPage Server Extensions: Website Management Protocol](#)".

[MS-ADTS] Microsoft Corporation, "[Active Directory Technical Specification](#)".

[MS-ALERTSS] Microsoft Corporation, "[Alerts Service Protocol](#)".

[MS-ASWS] Microsoft Corporation, "[Access Services Protocol](#)".

[MS-CCEIP] Microsoft Corporation, "[Corporate Customer Experience Improvement Program Client-to-Server Protocol Specification](#)".

[MS-CER] Microsoft Corporation, "[Corporate Error Reporting Version 1.0 Protocol Specification](#)".

[MS-CER2] Microsoft Corporation, "[Corporate Error Reporting Version 2.0 Protocol Specification](#)".

[MS-COPYS] Microsoft Corporation, "[Copy Web Service Protocol](#)".

[MSDN-ODBC] Microsoft Corporation, "Microsoft Open Database Connectivity (ODBC)", <http://msdn.microsoft.com/en-us/library/ms710252.aspx>

[MSDN-OLEDB] Microsoft Corporation, "Microsoft OLE DB", <http://msdn.microsoft.com/en-us/library/ms722784.aspx>

[MSDN-WSS3CLIENTSIDEAPI] Microsoft Corporation, "Client-Side API Reference", <http://msdn.microsoft.com/en-us/library/ms440037.aspx>

[MS-DPSP] Microsoft Corporation, "[Digest Protocol Extensions](#)".

[MS-DWSS] Microsoft Corporation, "[Document Workspace Web Service Protocol](#)".

[MS-ESURL] Microsoft Corporation, "[Excel Services Publishing Protocol](#)".

[MS-FORMS] Microsoft Corporation, "[Forms Service Protocol](#)".

[MS-FPSE] Microsoft Corporation, "[FrontPage Server Extensions Remote Protocol](#)".

[MS-FSDAP] Microsoft Corporation, "[Forms Services Design and Activation Web Service Protocol](#)".

[MS-FSFD] Microsoft Corporation, "[Forms Services Feature Detection Protocol](#)".

[MS-FSPP] Microsoft Corporation, "[Forms Services Proxy Web Service Protocol](#)".

[MS-FSSHHTTP] Microsoft Corporation, "[File Synchronization via SOAP over HTTP Protocol](#)".

[MS-GLOS] Microsoft Corporation, "[Windows Protocols Master Glossary](#)".

[MS-GRVPROT] Microsoft Corporation, "[Groove Protocols Overview](#)".

[MS-IMESYN] Microsoft Corporation, "[IMESync Syntax Structure](#)".

[MS-INFODCF] Microsoft Corporation, "[InfoPath Data Connection File Download Protocol](#)".

[MS-IPFF] Microsoft Corporation, "[InfoPath Form Template Format](#)".

[MS-IPFF2] Microsoft Corporation, "[InfoPath Form Template Format Version 2](#)".

[MS-IPFFX] Microsoft Corporation, "[InfoPath Form File Format](#)".

[MS-KILE] Microsoft Corporation, "[Kerberos Protocol Extensions](#)".

[MS-LISTSWS] Microsoft Corporation, "[Lists Web Service Protocol](#)".

[MS-MERX] Microsoft Corporation, "[Microsoft Error Reporting Extension to Corporate Error Reporting Version 1.0 Protocol](#)".

[MS-METAWEB] Microsoft Corporation, "[MetaWeblog Extensions Protocol](#)".

[MS-NLMP] Microsoft Corporation, "[NT LAN Manager \(NTLM\) Authentication Protocol Specification](#)".

[MS-OBPAS] Microsoft Corporation, "[Office Broadcast Participant Service](#)".

[MS-OBPRS] Microsoft Corporation, "[Office Broadcast Presentation Service](#)".

[MS-OFBA] Microsoft Corporation, "[Office Forms Based Authentication Protocol](#)".

[MS-OFGLS] Microsoft Corporation, "[Microsoft Office Master Glossary](#)".

[MS-OMPWHP] Microsoft Corporation, "[Office Mobile PowerPoint Web Handler Protocol](#)".

[MS-OMWWH] Microsoft Corporation, "[Office Mobile Word Web Handler Protocol](#)".

[MS-OSALER] Microsoft Corporation, "[Alerts Interoperability Protocol](#)".

[MS-OUTSPS] Microsoft Corporation, "[Lists Client Sync Protocol](#)".

[MS-OWEMXML] Microsoft Corporation, "[Office Web Extensibility Manifest Format](#)".

[MS-OXPROTO] Microsoft Corporation, "[Exchange Server Protocols System Overview](#)".

[MS-PASS] Microsoft Corporation, "[Passport Server Side Include \(SSI\) Version 1.4 Protocol Specification](#)".

[MS-PWBDPS] Microsoft Corporation, "[PowerPoint Web Broadcast Discovery Protocol](#)".

[MS-PWBHPS] Microsoft Corporation, "[PowerPoint Web Broadcast Host Protocol](#)".

[MS-PWBPS] Microsoft Corporation, "[PowerPoint Web Broadcast Protocol](#)".

[MS-PWEDPS] Microsoft Corporation, "[PowerPoint Web Editor Data Protocol](#)".

[MS-PWPHP] Microsoft Corporation, "[PowerPoint Web Presentation Handler Protocol](#)".

[MS-PWVPDP] Microsoft Corporation, "[PowerPoint Web Viewer Presentation Data Protocol](#)".

[MS-PWVRSC] Microsoft Corporation, "[PowerPoint Web Viewer Rendered Static Content Structure Specification](#)".

[MS-RMPR] Microsoft Corporation, "[Rights Management Services \(RMS\): Client-to-Server Protocol Specification](#)".

[MS-RMSI] Microsoft Corporation, "[Rights Management Services \(RMS\): ISV Extension Protocol Specification](#)".

[MS-SITEDATS] Microsoft Corporation, "[Site Data Web Service Protocol](#)".

[MS-SITESS] Microsoft Corporation, "[Sites Web Service Protocol](#)".

[MS-SLIDELI] Microsoft Corporation, "[Slide Library Web Service Protocol](#)".

[MS-SMB] Microsoft Corporation, "[Server Message Block \(SMB\) Protocol Specification](#)".

[MS-SMB2] Microsoft Corporation, "[Server Message Block \(SMB\) Version 2.0 Protocol Specification](#)".

[MS-SPNG] Microsoft Corporation, "[Simple and Protected Generic Security Service Application Program Interface Negotiation Mechanism \(SPNEGO\) Protocol Extensions](#)".

[MS-SSAS] Microsoft Corporation, "[SQL Server Analysis Services Protocol Specification](#)".

[MS-STSSYN] Microsoft Corporation, "[StsSync Data Structure](#)".

[MS-TDS] Microsoft Corporation, "[Tabular Data Stream Protocol Specification](#)".

[MS-UDCX] Microsoft Corporation, "[Universal Data Connection 2.0 XML File Format](#)".

[MS-UGS] Microsoft Corporation, "[UserGroup Web Service Protocol](#)".

[MS-UPSDWS] Microsoft Corporation, "[User Profile Social Data Web Service Protocol](#)".

[MS-VERSS] Microsoft Corporation, "[Versions Web Service Protocol](#)".

[MS-VIEWSS] Microsoft Corporation, "[Views Web Service Protocol](#)".

[MS-WDV] Microsoft Corporation, "[Web Distributed Authoring and Versioning \(WebDAV\) Protocol: Client Extensions](#)".

[MS-WDVME] Microsoft Corporation, "[Web Distributed Authoring and Versioning \(WebDAV\) Protocol: Microsoft Extensions](#)".

[MS-WDVMODUU] Microsoft Corporation, "[Office Document Update Utility Extensions Protocol Specification](#)".

[MS-WDVSE] Microsoft Corporation, "[Web Distributed Authoring and Versioning \(WebDAV\) Protocol: Server Extensions](#)".

[MS-WEBDAVE] Microsoft Corporation, "[Web Distributed Authoring and Versioning Error Extensions Protocol](#)".

[MS-WEBSS] Microsoft Corporation, "[Webs Web Service Protocol](#)".

[MS-WOPI] Microsoft Corporation, "[Web Application Open Platform Interface Protocol](#)".

[MS-WPPS] Microsoft Corporation, "[Web Part Pages Web Service Protocol](#)".

[MS-WSSCAP] Microsoft Corporation, "[Windows SharePoint Services Collaborative Application Protocol](#)".

[MS-WWSP] Microsoft Corporation, "[Workflow Web Service Protocol](#)".

[ODMA 1.0] ODMA Interoperability Exchange, "Open Document Management 1.0 API", <http://odma.info/>

[RFC2068] Fielding, R., Gettys, J., Mogul, J., Frystyk, H., and Berners-Lee, T., "Hypertext Transfer Protocol -- HTTP/1.1", RFC 2068, January 1997, <http://www.ietf.org/rfc/rfc2068.txt>

[RFC2109] Kristol, D., and Montulli, L., "HTTP State Management Mechanism", RFC 2109, February 1997, <http://www.ietf.org/rfc/rfc2109.txt>

[RFC2518] Goland, Y., Whitehead, E., Faizi, A., Carter, S., and Jensen, D., "HTTP Extensions for Distributed Authoring WebDAV", RFC 2518, February 1999, <http://www.ietf.org/rfc/rfc2518.txt>

[RFC2616] Fielding, R., et al., "Hypertext Transfer Protocol -- HTTP/1.1", RFC 2616, June 1999, <http://www.ietf.org/rfc/rfc2616.txt>

[RFC2617] Franks, J., Hallam-Baker, P., Hostetler, J., Lawrence, S., Leach, P., Luotonen, A., and Stewart, L., "HTTP Authentication: Basic and Digest Access Authentication", RFC 2617, June 1999, <http://www.ietf.org/rfc/rfc2617.txt>

[RFC2743] Linn, J., "Generic Security Service Application Program Interface Version 2, Update 1", RFC 2743, January 2000, <http://www.ietf.org/rfc/rfc2743.txt>

[RFC2818] Rescorla, E., "HTTP Over TLS", RFC 2818, May 2000, <http://www.ietf.org/rfc/rfc2818.txt>

[RFC2822] Resnick, P., Ed., "Internet Message Format", RFC 2822, April 2001, <http://www.ietf.org/rfc/rfc2822.txt>

[RFC2831] Leach, P. and Newman, C., "Using Digest Authentication as a SASL Mechanism", RFC 2831, May 2000, <http://www.ietf.org/rfc/rfc2831.txt>

[RFC4120] Neuman, C., Yu, T., Hartman, S., and Raeburn, K., "The Kerberos Network Authentication Service (V5)", RFC 4120, July 2005, <http://www.ietf.org/rfc/rfc4120.txt>

[RFC4287] Nottingham, M., Ed. and Sayre, R., Ed., "The Atom Syndication Format", RFC 4287, December 2005, <http://www.ietf.org/rfc/rfc4287.txt>

[RFC4559] Jaganathan, K., Zhu, L., and Brezak, J., "SPNEGO-based Kerberos and NTLM HTTP Authentication in Microsoft Windows", RFC 4559, June 2006, <http://www.ietf.org/rfc/rfc4559.txt>

[RFC5023] Gregorio, J., Ed. and de hOra, B., Ed., "The Atom Publishing Protocol", RFC 5023, October 2007, <http://www.ietf.org/rfc/rfc5023.txt>

[RFC822] Crocker, D.H., "Standard for the Format of ARPA Internet Text Messages", August 1982, <http://www.ietf.org/rfc/rfc0822.txt>

[RFC959] Postel, J. and Reynolds, J., "File Transfer Protocol (FTP)", RFC 959, October 1985, <http://www.ietf.org/rfc/rfc959.txt>

[SOAP1.1] Box, D., Ehnebuske, D., Kakivaya, G., et al., "Simple Object Access Protocol (SOAP) 1.1", May 2000, <http://www.w3.org/TR/2000/NOTE-SOAP-20000508/>

[UDDI 1.0] UDDI.org, "UDDI Programmer's API 1.0", UDDI Published Specification, June 2002, <http://www.uddi.org/pubs/ProgrammersAPI-V1.01-Published-20020628.pdf>

[UDDI 2.0] OASIS, "UDDI Version 2.04 API Specification", UDDI Committee Specification, July 2002, <http://uddi.org/pubs/ProgrammersAPI-V2.04-Published-20020719.pdf>

[XRML] ContentGuard, Inc., "XrML... eXtensible rights Markup Language", 2005, <http://www.contentguard.com/content/contact>

2 Functional Architecture

The following sections describe the functional architecture of the Microsoft® Office system.

2.1 Overview

The Microsoft® Office system is a client-based system that is designed to facilitate the design, development, and management of content and data by information workers, developers, and IT professionals. The system consists of protocol clients and client-based components that can function as stand-alone applications, integrated applications that communicate with each other, and integrated applications that communicate with each other and supporting protocol servers. The primary components of the system are client applications, such as Microsoft Word and Microsoft Excel. These applications use the data structures, file formats, and protocols that are described in this section, section [2.2](#), and related specifications.

The following sections describe features that are used by most or all protocol clients and components of the Microsoft Office system. Unless otherwise specified, these features are used by all protocol clients and components of the system.

2.1.1 Authentication

Protocol clients use the authentication services that are provided by the Microsoft Windows operating system. In some cases, protocol clients use **forms authentication**, as described in [\[MS-OFBA\]](#) and section [2.5.1](#) of this document. For information about which protocols are used, see section [2.2.1.1](#).

2.1.2 File Access

To gain access to files, protocol clients can communicate with protocol servers by using any of several protocols, depending on conditions such as the type of server, server capabilities, client and server operating system, and protocol client version.

2.1.2.1 Protocol Discovery and Feature Activation

To help ensure that the correct protocol is used and only supported features are enabled, protocol clients support discovery mechanisms that can be implemented on a protocol server or operating system. The most common system scenarios are gaining access to files that are stored in **Server Message Block (SMB)** file shares or on Web servers.

2.1.2.1.1 Server Message Block File Shares

Protocol clients can access files on Server Message Block (SMB) file shares by using the Server Message Block (SMB) Protocol, as described in [\[MS-SMB\]](#), or the Server Message Block (SMB) Version 2.0 Protocol, as described in [\[MS-SMB2\]](#). These services are provided by the operating system, and the operating system determines which discovery mechanism and protocol version to use.

2.1.2.1.2 Web Servers

Protocol clients do one of the following when they attempt to open a file on a Web server:

- Open the file with read-only permission in browse mode.
- Open the file with write permission in edit mode and lock the file. The lock helps ensure that the protocol client has exclusive access to the file.

To determine the correct action, a protocol client evaluates the full path to the file, factors explicit user actions such as choosing edit mode, and investigates the capabilities of the server that manages the path. The following steps describe this process.

1. The protocol client sends an **HTTP OPTIONS** request to the folder that contains the file, as described in [\[RFC2616\]](#).
2. The Web server does one of the following:
 - Responds with a list of supported methods for the folder with the specified **Uniform Resource Identifier (URI)**. The response also indicates whether the server supports various document management features, as described in section [2.1.3](#).
 - Rejects the request. If the request is rejected, the protocol client tries to open the file in browse mode by sending an **HTTP GET** request.
3. If the request is not rejected, the protocol client processes the response by evaluating the presence and value of the **X-MSFSSHTTP** header, and then the **MS-Author-Via** header, as described in the following sections.

X-MSFSSHTTP header

The protocol client evaluates the presence and value of the **X-MSFSSHTTP** header in the server response as follows, depending on which protocol client sent the request:

- Microsoft Excel 2013, Microsoft Excel 2010, Microsoft PowerPoint 2013, Microsoft PowerPoint 2010, Microsoft Word 2013, and Microsoft Word 2010 examine the **X-MSFSSHTTP** header value to determine whether to use the File Synchronization via SOAP over HTTP Protocol. If the value is greater than or equal to "1.0", the protocol client uses the File Synchronization via SOAP over HTTP Protocol to access the file. If the value is less than "1.0" or the header is not present, the protocol client does not use the File Synchronization via SOAP over HTTP Protocol to access the file, but proceeds to evaluate the **MS-Author-Via** header, as described following.
- Microsoft OneNote 2013 and Microsoft OneNote 2010 use the File Synchronization via SOAP over HTTP Protocol to access the file, as described in section [2.1.14](#).

MS-Author-Via header

After the protocol client evaluates the presence and value of the **X-MSFSSHTTP** header, it evaluates the value of the **MS-Author-Via** header, as described in [\[MS-WDVSE\]](#).

If the protocol client uses the File Synchronization via SOAP over HTTP Protocol, as described in [\[MS-FSSHTTP\]](#), it uses the value of the **MS-Author-Via** header to determine whether the server supports the FrontPage Server Extensions Remote Protocol, as described in [\[MS-FPSE\]](#), for data access calls. If the protocol client does not use the File Synchronization via SOAP over HTTP Protocol, it uses the value of the **MS-Author-Via** header to determine which Web authoring protocol to use. The following list describes the conditions under which these determinations are made:

- If the value of the **MS-Author-Via** header is "MS-FP/4.0,DAV", the server supports the FrontPage Server Extensions Remote Protocol and the HTTP Extensions for Distributed Authoring WebDAV, as described in [\[RFC2518\]](#). The determination of which protocol to use is then based on the version of the operating system and the protocol client that are in use:
 - If installed on Windows Vista operating system or Windows 7 operating system, Microsoft Office 2013, Microsoft Office 2010 suites, or the 2007 Microsoft Office system protocol clients use the HTTP Extensions for Distributed Authoring WebDAV to access the file.

- If installed on Windows XP operating system, both Office 2010 and the 2007 Office system protocol clients use the FrontPage Server Extensions Remote Protocol to access the file.
- Microsoft Office 2003 protocol clients use the FrontPage Server Extensions Remote Protocol to access the file.
- If the value of the **MS-Author-Via** header is "DAV", the server supports **WebDAV** and does not support the FrontPage Server Extensions Remote Protocol. The protocol client uses the HTTP Extensions for Distributed Authoring WebDAV to access the file.
- If the **MS-Author-Via** header is not present and a **DAV** header is present, the protocol client uses WebDAV to access the file and the following occurs, depending on the value of the **DAV** header:
 - If the value is "1", file locks are neither supported nor recommended. The protocol client does not notify the user that the server does not support file locks. If there are conflicting write operations to the file from separate protocol clients, the changes that are made in the last write operation are used.
 - If the value is "1,2", file locks are supported.
- If the server does not specify an authoring protocol, the protocol client sends an HTTP GET request to open the file as read-only in browse mode. This means that the protocol client can save only a copy of the file; it cannot save changes to the original file. Any data that is received by the HTTP GET request is considered file data unless the server responds with an "Access Denied" or "405 Not Supported" error. An "Access Denied" response consists of one of the following codes: 401, 302 (with additional headers), or 403 (with additional headers).

2.1.2.1.2.1 Web View

Web view allows a user to browse folders and files that are stored on a Web server by using the Open dialog box or the Save dialog box. The following steps describe the process for opening Web view within a protocol client.

1. If the browse path is an **HTTP** path, the protocol client does one of the following, depending on the version of the operating system and the protocol client that are in use:
 - An Microsoft Office 2013, Microsoft Office 2010 suites, or the 2007 Microsoft Office system protocol client that is installed on Windows Vista operating system or Windows 7 operating system sends a HEAD request to the **URL** for the Web view. If the request is successful, Web view is enabled.
 - A Microsoft Office 2003 protocol client that is installed on Windows Vista and Windows 7, or an Office 2010 or the 2007 Office system protocol client that is installed on Windows XP operating system sends an HTTP OPTIONS request to the URL for the Web view. If the response from the protocol server contains the **MicrosoftOfficeWebServer: 5.0_Collab** header, Web view is enabled.
2. The protocol client sends a GET request to obtain the Web view of the specified folder, and then displays the HTML response in the dialog box.

After the user selects a file, the protocol client uses the process that is described in section [2.1.2.1.2](#) to access the file.

For information about responses from the protocol server, see [\[MS-WSSCAP\]](#) section 3.1.4.6.

2.1.2.1.2.2 Additional Considerations

To enable protocol clients to access files on Web servers, consider the following when configuring the server:

- Protocol clients use the HTTP OPTIONS request described in [\[RFC2616\]](#). A Web server needs to handle this type of request to support full read/write access to a file from within a protocol client.
- When opening a file, a user can be prompted to provide credentials, such as a login name and password, before gaining access to the file. This behavior is expected and occurs if the Web server requires **authentication (2)** to process an HTTP OPTIONS request that is sent to the URL for the folder, or to provide access to a folder or a file. This behavior can be avoided by changing the server configuration to give anonymous users permission to browse the folder.
- If a user provides a **digital certificate** when connecting to a resource by using a Web browser, the user can be prompted to provide a digital certificate again when attempting to access that resource by using a protocol client. This behavior occurs because a protocol client creates a new session when it sends an HTTP OPTIONS request to the Web server or attempts to gain access to a file on that server. Each new session can produce additional security and other types of messages.
- When it sends an HTTP OPTIONS request, a protocol client does not include **cookie** information. If the Web server requires cookies for direct calls to a folder and those cookies are missing, HTTP OPTIONS and file-access requests can fail and the user can be asked repeatedly to provide authentication credentials. This problem is specific to server configurations that depend on cookie information instead of or in combination with authentication (2) information.

2.1.2.1.2.3 HTTP Conversion for UNC Redirector Files

The Windows Web Client service in Microsoft Windows operating systems allows WebDAV-enabled folders to appear as **Universal Naming Convention (UNC)** file shares to a protocol client. This means that a protocol client can be used to open, edit, and save a file in cases where the protocol client cannot interact directly with the HTTP server that hosts the file.

Document collaboration features of the Office system require more functionality than is provided by the Windows Web Client service. Therefore, protocol clients in the Office system determine if a file path is associated with the Windows Web Client service. If it is, the protocol client maps the path to a full Web URL, and then opens the file by using an appropriate protocol for the server that is handling requests for that URL. This enables the protocol client to provide all of the supported collaboration features for that document.

2.1.3 Document Management

Protocol clients support a variety of document management features, if those features are implemented on the protocol server that stores the document file. Examples of document management features are document recovery, workflow, version history, **check in** and **check out** operations, **document properties**, and a Document Management task pane. The following sections describe how a protocol client determines whether a document management feature is implemented on a protocol server and the conditions in which a feature is enabled in a protocol client.

2.1.3.1 Protocol Discovery and Feature Activation

When it initiates communications with a protocol server, a protocol client first determines which type of protocol server it is communicating with and which document management features are implemented on the protocol server. The protocol client obtains this information by sending an HTTP

OPTIONS request to the protocol server, and then evaluating the presence and values of the **MicrosoftSharePointTeamServices** and **DocumentManagementServer** headers in the response. These are single-value and multiple-value HTTP headers, respectively, that conform to the format that is described in [\[RFC2616\]](#). The following is an example of a **DocumentManagementServer** header in a response:

```
DocumentManagementServer: Version History;Source Control;\r\n
```

The following sections describe the features that can be enabled in a protocol client, depending on which document management features are supported on a protocol server. In general, document management features of protocol clients require a protocol server to support the FrontPage Server Extensions Web Site Management Protocol, as described in [\[MC-FPSEWM\]](#).

2.1.3.1.1 Document Recovery and Workflow

When it receives a response to an HTTP OPTIONS request, an Microsoft Office 2013, Microsoft Office 2010 suites, or the 2007 Microsoft Office system protocol client checks for the presence of the **DocumentManagementServer** header in the response. If the header exists, the protocol client automatically enables the following features and does not assume that the protocol server supports these features:

- Document recovery
- **Reading Layout view**
- Workflow

To support workflow, the protocol server needs to return data by using the Workflow Web Service Protocol, as described in [\[MS-WWSP\]](#).

An Office 2003 protocol client does not check for the **DocumentManagementServer** header in the response and does not enable these features.

2.1.3.1.2 Version History

By default, version history features are enabled in a protocol client only if a server response contains the correct header and header value. In addition, version history features work correctly in a protocol client only if the protocol server supports the FrontPage Server Extensions Web Site Management Protocol, as described in [\[MC-FPSEWM\]](#).

The following table describes additional conditions in which a protocol client enables version history features.

Protocol client version	MicrosoftSharePointTeamServices OPTIONS header	DocumentManagementServer OPTIONS header	Enabled
Microsoft Office 2003	Exists	Any (exists or not) - not checked	Yes
The 2007 Microsoft Office system	Exists and contains no value or a value that is less than "12"	Any (exists or not)	Yes

Protocol client version	MicrosoftSharePointTeamServices OPTIONS header	DocumentManagementServer OPTIONS header	Enabled
The 2007 Office system	Any (exists or not)	Exists and contains the value "Version History"	Yes
Microsoft Office 2010 suites	Exists and contains no value or a value that is less than "12"	Any (exists or not)	Yes
Office 2010	Any (exists or not)	Exists and contains the value "Version History"	Yes
Microsoft Office 2013	Exists and contains no value or a value that is less than "12"	Any (exists or not)	Yes
Office 2013	Any (exists or not)	Exists and contains the value "Version History"	Yes

2.1.3.1.3 Check In and Check Out

By default, check in and check out features are enabled in a protocol client only if a server response contains the correct header and header value. In addition, check in and check out features work correctly in a protocol client only if the protocol server supports the FrontPage Server Extensions Web Site Management Protocol, as described in [\[MC-FPSEWM\]](#).

The following table describes additional conditions in which a protocol client enables check in and check out features.

Protocol client version	MicrosoftSharePointTeamServices OPTIONS header	DocumentManagementServer OPTIONS header	Enabled
Microsoft Office 2003	Exists	Any (exists or not) – not checked	Yes
The 2007 Microsoft Office system	Exists	Any (exists or not)	Yes
The 2007 Office system	Any (exists or not)	Exists and contains the value "Source Control"	Yes
Microsoft Office 2010 suites	Exists	Any (exists or not)	Yes
Office 2010	Any (exists or not)	Exists and contains the value "Source Control"	Yes
Microsoft Office 2013	Exists	Any (exists or not)	Yes
Office 2013	Any (exists or not)	Exists and contains the value "Source Control"	Yes

In addition to these conditions, protocol clients enable check in and check out features only if the current user is permitted to check out the file. A protocol client uses the FrontPage Server Extensions Web Site Management Protocol, as described in [MC-FPSEWM], to examine permission settings for a file on a protocol server.

2.1.3.1.4 Document Properties

Protocol clients provide an integrated property panel that can be used to view and collect property information about a document and to save that information on a protocol server. When a user enters property information for a document by using this panel, the information is stored in the document file. When the file is subsequently saved to a protocol server, the protocol server can extract property information from the file and use that information for document management purposes.

The integrated property panel can be enabled for the following file types: doc, .docm, .docx, .dot, .dotm, .dotx, .pot, .potm, .potx, .pps, .ppsm, .ppsx, .ppt, .pptm, .pptx, .vsd, .vst, .xls, .xlsb, .xlsm, .xlsx, .xlt, .xltm, or .xltx. In addition, it can be enabled only if a server response contains the correct header and header value, and the protocol server supports use of the Lists Web Service Protocol, as described in [MS-LISTSWS], for retrieving and setting document properties.

The following table describes additional conditions in which a protocol client enables the integrated property panel.

Protocol client version	MicrosoftSharePointTeamServices OPTIONS header	DocumentManagementServer OPTIONS header	Enabled
Microsoft Office 2003	Does not apply	Does not apply	Not supported
The 2007 Microsoft Office system	Exists and contains a value that is greater than "12"	Does not apply	Yes
The 2007 Office system	Does not apply	Exists and contains the value "Properties Schema"	Yes
Microsoft Office 2010 suites	Exists and contains a value that is greater than "12"	Does not apply	Yes
Office 2010	Does not apply	Exists and contains the value "Properties Schema"	Yes
Microsoft Office 2013	Exists and contains a value that is greater than "12"	Does not apply	Yes
Office 2013	Does not apply	Exists and contains the value "Properties Schema"	Yes

If the integrated property panel cannot be enabled because the preceding conditions cannot be met, a Web-form property panel can be used instead. The Web-form property panel is a Web **form (2)** that is displayed in a protocol client, typically when a document is saved to a server for the first time by using a protocol client.

By default, the Web-form property panel is enabled only if a server response contains the correct header and header value. In addition, it works correctly only if the protocol server supports use of the FrontPage Server Extensions Web Site Management Protocol, as described in [\[MC-FPSEWM\]](#), to retrieve and set document properties.

The following table describes additional conditions in which a protocol client enables the Web-form property panel.

Protocol client version	MicrosoftOfficeWebServer OPTIONS header	Integrated property panel	Web-form property panel
Office 2003	Exists and contains the value "5.0_Collab"	Does not apply	Yes
The 2007 Office system	Exists and contains the value "5.0_Collab"	Not enabled by the preceding conditions	Yes
Office 2010	Exists and contains the value "5.0_Collab"	Not enabled by the preceding conditions	Yes
Office 2013	Exists and contains the value "5.0_Collab"	Not enabled by the preceding conditions	Yes

2.1.3.1.5 Document Management Task Pane

The Document Management task pane displays property information about a document that is stored on a **Document Workspace site**. It displays information such as document status and related tasks, a list of other site members and **presence (1)** information for each member, and a list of other documents in the Document Workspace site.

By default, Microsoft Office 2013, Microsoft Office 2010 suites, the 2007 Microsoft Office system, and Microsoft Office 2003 enable the Document Management task pane only if a protocol server includes the **MicrosoftSharePointTeamServices OPTIONS** header in its response to an HTTP OPTIONS request from the protocol client. In addition, the task pane works correctly only if the protocol server supports the Document Workspace Web Service Protocol, as described in [\[MS-DWSS\]](#).

2.1.4 Data Access

Protocol clients provide various features that can be used to access data that is stored locally or remotely. Such features enable tasks such as importing data into a table or **PivotTable** report in Microsoft Excel 2013, Microsoft Excel 2010 or Microsoft Office Excel 2007, linking to and displaying tabular data in Microsoft Access 2013, Microsoft Access 2010 or Microsoft Office Access 2007, and using data for mail-merge operations in Microsoft Word 2013, Microsoft Word 2010 or Microsoft Office Word 2007. Many of these features use **OLE DB**, as described in [\[MSDN-OLEDB\]](#), and **Open Database Connectivity (ODBC)**, as described in [\[MSDN-ODBC\]](#), which are client-side APIs for accessing data in local and remote locations by using **ODBC** drivers.

Typically, these features can be used to access a **data source (1)** by installing an ODBC driver that is appropriate for the type of data source (1) to be accessed, and then configuring a connection to the data source (1) from within a protocol client. ODBC drivers are available from various providers because ODBC is a client-side API that is used broadly across many products and technologies.

To communicate over the wire with a Microsoft SQL Server data source (1), the OLE DB drivers that are included in the Office system use the Tabular Data Stream Protocol, as described in [\[MS-TDS\]](#).

2.1.5 Information Rights Management

To help users restrict access to document content and e-mail messages, protocol clients support rights management functionality, which is referred to as Information Rights Management (IRM) in the Office system. This functionality enables a user to assign specific **rights** to content. Those rights specify whether content can be accessed, printed, forwarded, or copied by specific people or groups of people. Rights management information is stored by using the eXtensible Rights Markup Language (XrML), as described in [\[XRML\]](#), and that information travels with a document file or e-mail message.

When it processes an IRM-protected document or e-mail message, a protocol client communicates with the Rights Management Client component of the Microsoft Windows operating system. The operating system in turn communicates with a Rights Management Services (RMS) server, as described in [\[MS-RMPR\]](#), to determine the current user's rights for the document or e-mail message, and then shares that information with the protocol client. Depending on the rights that are specified for a user, the protocol client can then decrypt the document or e-mail message, and enable and disable features that correspond to the user's rights. For example, if content can be copied but not printed, the protocol client enables controls for copying and pasting content and disables controls for printing content.

To support IRM functionality, protocol clients require access to a protocol server that supports the Rights Management Services (RMS) Client-to-Server Protocol, as described in [\[MS-RMPR\]](#).

2.1.6 Active Directory Domain Services

To perform tasks such as finding printers and looking up user information, protocol clients communicate with Active Directory Domain Services (AD DS), and they do so by using **Lightweight Directory Access Protocol (LDAP)** APIs and **Active Directory Service Interfaces (ADSI)** APIs. When a protocol client calls ADSI APIs, it uses an ADSI LDAP Provider to communicate with AD DS. An ADSI LDAP Provider is a set of **Component Object Model (COM)** objects that implement ADSI, make **LDAP** calls, and run locally on the computer where an Office protocol client is installed. The LDAP protocols that communicate with AD DS are described in [\[MS-ADTS\]](#).

Protocol clients use ADSI, and therefore AD DS, to find printers based on specified search criteria and to install the appropriate printer drivers.

Microsoft Outlook 2013, Microsoft Outlook 2010, Microsoft Office Outlook 2007, Microsoft InfoPath 2013, Microsoft InfoPath 2010, Microsoft Office InfoPath 2007, Microsoft SharePoint Workspace 2010, and Microsoft Office Groove 2007 use ADSI and LDAP APIs, and consequently the protocols that are described in [\[MS-ADTS\]](#), to find user information, such as e-mail address and group membership, create and delete user accounts or passwords in AD DS, manage personal sites in Microsoft SharePoint Server, and integrate with instant messaging services.

2.1.7 Microsoft Error Reporting

Protocol clients support use of the Microsoft Error Reporting service to collect information about events and errors that occur, such as application exceptions, kernel faults, or generic events that are defined by an application. This information can be stored as an error report in a **cabinet (.cab) file**, as described in [\[MS-MERX\]](#).

By using the Corporate Error Reporting Version 1.0 Protocol, as described in [\[MS-CER\]](#), an organization can copy error reports from a set of client computers to a file share on a protocol server. An organization can also configure a protocol client to collect additional information for error reports by using both the Corporate Error Reporting Version 1.0 Protocol and the Microsoft Error Reporting Extension to Corporate Error Reporting Version 1.0 Protocol, as described in [\[MS-MERX\]](#).

As described in [MS-CER], policy settings can be used to specify the location of a file share that contains configuration files for report operations. These configuration files, if present, specify settings for protocol clients, such as whether report information is copied to the file share and additional data to be included in an error report. For more information, see [MS-CER].

If a protocol client is installed on Windows XP operating system or Windows Server 2003 operating system, the files are copied by using the Server Message Block (SMB) Protocol, as described in [MS-SMB], and the Corporate Error Reporting Version 1.0 Protocol, as described in [MS-CER]. If the protocol client is installed on Windows 7 operating system or Windows Vista operating system, the files are copied by using the **HTTP POST** method and the Corporate Error Reporting Version 2.0 Protocol, as described in [MS-CER2].

2.1.8 Customer Experience Improvement Program

Protocol clients support use of the Customer Experience Improvement Program (CEIP) service to collect instrumentation data, which is written to files on a client computer. By using the Corporate CEIP Protocol, an organization can redirect instrumentation files from a set of client computers to a specific protocol server.

Protocol clients collect instrumentation data only for users who choose to participate in the CEIP. The instrumentation data is written to files on the client computer. If the protocol client is configured with policy settings that specify an upload URL for the files, as described in [MS-CCEIP], the files are uploaded by using the HTTP POST method. The upload URL specifies a service URL as a query string parameter and the protocol redirects the files to the service URL.

2.1.9 ActiveX Controls

To enable additional functionality and system integration when documents and data are viewed by using a Web browser, the Office system installs several **ActiveX controls** on a user's computer. If a Web browser supports use of ActiveX controls, these controls can be invoked the same way any other type of ActiveX control is invoked from a Web page. Although these controls do not define any additional wire protocols, they are described in this document to facilitate interoperability. For more information about the ActiveX controls that are installed by the system, see [MSDN-WSS3CLIENTSIDEAPI].

The following table identifies and describes ActiveX controls that can be used to access and manage content on SharePoint **sites (2)**, without requiring a protocol client to start.

ActiveX control	Description	Related protocols
CopyCtl	Enables users to copy files, including associated metadata such as creation date and author, to one or more locations on a single protocol server or between different protocol servers.	Copy Web Service Protocol, as described in [MS-COPYS]
ListNet	Enables users to view, edit, and manipulate the data in a SharePoint list (1) by using a format that is similar to a table in a database or spreadsheet.	Lists Web Service Protocol, as described in [MS-LISTSWS]
UploadCtl	Enables users to upload multiple documents simultaneously to a document library on a SharePoint site (2).	Windows SharePoint Services Collaborative Application Protocol, as described in [MS-WSSCAP] FrontPage Server Extensions Remote Protocol, as described in

ActiveX control	Description	Related protocols
		[MS-FPSE]

The following table identifies and describes ActiveX controls that start a protocol client, interact with a protocol client by using client-side APIs, or specify settings that are subsequently used by a protocol client.

ActiveX control	Description
ExportDatabase	Enables users to create or open a database that contains data from a SharePoint list (1), by using an application such as Microsoft Access 2013, Microsoft Access 2010 or Microsoft Office Access 2007.
NameCtrl	Enables a Web page to display presence (1) information for people and enables users to take various related actions by using an on-object user interface in Windows SharePoint Services. This control integrates with Microsoft Lync 2013, Microsoft Lync 2010 and Microsoft Office Communicator 2007 through client-side APIs.
OISClientLauncher	Starts the Microsoft Office Picture Manager and passes command line parameters that enable users to download, edit, or upload pictures to picture libraries .
OpenDocuments	Starts a protocol client and enables users to create a document or edit an existing document. Also enables users to create a document that is based on a specific template, choose to open a document with read-only or read/write permission, and check out a document.
OpenXMLDocuments	Starts Microsoft InfoPath 2013, Microsoft InfoPath 2010 or Microsoft Office InfoPath 2007 and enables users to create or edit XML documents or forms (2) by using InfoPath.
PersonalSite	Configures the location of a user's My Site, which is used by protocol clients to discover and suggest locations of SharePoint sites (2) and libraries where users can save or open files. Also retrieves colleague suggestions that are generated from protocol clients.
PPActiveX	Starts Microsoft PowerPoint 2013, Microsoft PowerPoint 2010 or Microsoft Office PowerPoint 2007 and enables users to open presentations from a Slide Library and publish individual presentation slides to a Slide Library.
SharePoint.OfflineClient	Enables users to synchronize lists (2) and document libraries with shared spaces in Microsoft SharePoint Foundation 2013, Microsoft SharePoint Workspace 2010 or Microsoft Office Groove 2007, and to verify whether an installation of SharePoint Foundation 2013, SharePoint Workspace 2010 or Office Groove 2007 is enabled to synchronize lists (2) and document libraries.
SpreadSheetLauncher	Enables users to import lists (2) from Windows SharePoint Services to Microsoft Excel 2013, Microsoft Excel 2010, or Microsoft Office Excel 2007, and to verify whether an installation of Excel 2013, Excel 2010 or Office Excel 2007 is enabled to export and import lists (2) from Windows SharePoint Services.
StssyncHandler	Returns the name of the application that is used to synchronize event and contact lists between Windows SharePoint Services and a messaging application such as Microsoft Outlook 2013, Microsoft Outlook 2010 or Microsoft Office Outlook 2007.

2.1.10 Microsoft Word

Microsoft Word is a document authoring application that provides a comprehensive set of writing tools, and helps users design, create, and share documents. For common operations such as authenticating users, accessing files, and managing documents and content, Microsoft Word 2013, Microsoft Word 2010 and Microsoft Office Word 2007 use the protocols that are identified and described in section [2.2.1](#). To support application-specific operations, Word 2013, Word 2010 and Office Word 2007 use additional protocols.

For **mail merge** operations, Word 2013, Word 2010, and Office Word 2007 use the data access protocols that are described in section [2.2.1.4](#).

To support coauthoring, which is a feature that enables users to simultaneously edit and save changes to a document that is stored on a Microsoft SharePoint Foundation 2013 or Microsoft SharePoint Foundation 2010 server, Word 2013 and Word 2010 use the File Synchronization via SOAP over HTTP Protocol, as described in [\[MS-FSSHTTP\]](#) and discussed in section [2.2.1.2](#). Office Word 2007 does not provide this feature.

To support the publication of content to a **blog (1)**, Word 2013, Word 2010 and Office Word 2007 use the ATOM Publishing Protocol, as described in [\[RFC5023\]](#), and the MetaWeblog Extensions Protocol, as described in [\[MS-METAWEB\]](#). When communicating with blogs (1) that are hosted on protocol servers running SharePoint Foundation 2013 or SharePoint Foundation 2010, Word 2013, Word 2010, and Office Word 2007 use the MetaWeblog Extensions Protocol. For all scenarios, Word 2013, Word 2010 and Office Word 2007 determine which protocol to use based on the service provider that is specified by the user.

To facilitate integration with document management systems, Word 2013, Word 2010 and Office Word 2007 support the Open Document Management 1.0 API, as described in [\[ODMA 1.0\]](#). This is a client-side API that can be used if an ODMA provider is installed on the client computer.

For a complete list of the protocols that are used for application-specific operations, see section [2.2.2](#).

2.1.11 Microsoft Excel

Microsoft Excel® is a spreadsheet application that helps users analyze, report, and manage data. For common operations such as authenticating users and managing documents, Microsoft Excel 2013, Microsoft Excel 2010 and Microsoft Office Excel 2007 use the protocols that are identified and described in section [2.2.1](#). To support application-specific operations, Excel 2013, Excel 2010 and Office Excel 2007 use additional protocols.

To connect to Microsoft SQL Server Analysis Services and access **Online Analytical Processing (OLAP)** data, Excel 2013, Excel 2010 and Office Excel 2007 use the SQL Server Analysis Services Version 8.0 Protocol, as described in [\[MS-SSAS\]](#). To connect to other types of external data sources, Excel 2013, Excel 2010 and Office Excel 2007 use the protocols that are described in section [2.1.4](#).

To publish a workbook to a protocol server that is running Microsoft Office SharePoint Server 2007, Microsoft SharePoint Server 2010, or Microsoft SharePoint Foundation 2013 and providing support for Excel Calculation Services, Excel 2013, Excel 2010 and Office Excel 2007 use the Excel Services Publishing Protocol, as described in [\[MS-ESURL\]](#), to form the correct URL and associated query string parameters.

To import and synchronize data with SharePoint lists (1), Excel 2013, Excel 2010 and Office Excel 2007 use the Lists Web Services Protocol, as described in [\[MS-LISTSWS\]](#). Excel 2013, Excel 2010 and Office Excel 2007 also use the Lists Web Service Protocol to create lists (1) from existing tables in Excel worksheets.

For a complete list of the protocols that are used for application-specific operations, see section [2.2.3](#).

2.1.12 Microsoft PowerPoint

Microsoft PowerPoint® is a presentation application that enables users to create and broadcast presentations, and it offers extensive graphics and formatting capabilities. For common operations such as authenticating users, accessing data and files, and managing documents and content, Microsoft PowerPoint 2013, Microsoft PowerPoint 2010, and Microsoft Office PowerPoint 2007 use the protocols that are identified and described in section [2.2.1](#). To support application-specific operations, PowerPoint 2013, PowerPoint 2010, and Office PowerPoint 2007 use additional protocols.

PowerPoint 2013, PowerPoint 2010, and Office PowerPoint 2007 users can share and reuse individual presentation slides by storing them in a Slide Library that is hosted on a server running Microsoft SharePoint Foundation 2013, Microsoft SharePoint Server 2013, Microsoft SharePoint Server 2010, or Microsoft Office SharePoint Server 2007. After a presentation slide is added to a Slide Library, any instances of that **slide** in a presentation are associated with the original slide in the Slide Library. If a user opens a presentation that contains the slide, PowerPoint 2013, PowerPoint 2010, and Office PowerPoint 2007 notify the user if the slide has been updated and prompts the user to ignore the update, append the new version of the slide, or update the slide. To query and retrieve information about the content in a Slide Library, PowerPoint 2013, PowerPoint 2010, and Office PowerPoint 2007 use the Slide Library Web Service Protocol, as described in [\[MS-SLIDELI\]](#).

To support coauthoring, which is a feature that enables users to simultaneously edit and save changes to a presentation that is stored on a SharePoint Foundation 2013 or SharePoint Server 2010 server, PowerPoint 2013 or PowerPoint 2010 use the File Synchronization via SOAP over HTTP Protocol, as described in [\[MS-FSSHTTP\]](#) and discussed in section [2.2.1.2](#). Office PowerPoint 2007 does not provide this feature.

By using a Web browser and Microsoft PowerPoint Web App, users can directly view and edit presentations that are stored on a protocol server, without using PowerPoint 2013, PowerPoint 2010, or Office PowerPoint 2007. To support these tasks, PowerPoint Web App uses the PowerPoint Web Viewer Presentation Data Protocol, as described in [\[MS-PWVPDP\]](#), to retrieve information about a presentation and display presentation content, and it uses the PowerPoint Web Editor Data Protocol, as described in [\[MS-PWEDPS\]](#), to enable editing of presentation content.

By using PowerPoint 2010, users can broadcast a **slide show** for remote viewers to watch in a Web browser. To initiate and end a broadcast, PowerPoint 2010 uses the PowerPoint Web Broadcast Host Protocol, as described in [\[MS-PWBHPS\]](#). During a **broadcast**, PowerPoint 2010 communicates with a protocol server by using the PowerPoint Web Broadcast Discovery Protocol, as described in [\[MS-PWBDPS\]](#). To send updates about the state of the slide show, PowerPoint 2010 uses the PowerPoint Web Broadcast Protocol, as described in [\[MS-PWBPS\]](#). These three protocols are implemented in Microsoft SharePoint Foundation 2010.

In PowerPoint 2013, broadcasts are implemented in Microsoft Office Web Apps using Microsoft Lync 2013 and the Office Broadcast Presentation Service protocols, as described in section [2.1.20](#). Microsoft Lync Server 2013 uses the same protocols to communicate with the protocol server to provide backward capability for Microsoft Lync 2010 clients. A feature in Microsoft OneNote 2013 enables users to take notes linked to the presentation using the Office Broadcast Presentation Service Protocol, as described in [\[MS-OBPAS\]](#), as well as the PowerPoint Web Presentation Handler Protocol, as described in [\[MS-PWPHP\]](#).

For a complete list of the protocols that are used for application-specific operations, see section [2.2.4](#).

2.1.13 Microsoft Access

Microsoft Access® is a desktop database application that helps users track and report data, and share data more securely by using the Web. For common operations such as authenticating users, accessing data and files, and managing database files and data, Microsoft Access 2013, Microsoft Access 2010 and Microsoft Office Access 2007 use the protocols that are identified and described in section [2.2.1](#). To support application-specific operations, Access 2013, Access 2010 and Office Access 2007 use additional protocols.

To access external data sources, Access 2013, Access 2010 and Office Access 2007 use the data access protocols that are described in section [2.2.1.4](#) in addition to OLE DB, as described in [\[MSDN-OLEDB\]](#), and Open Database Connectivity (ODBC), as described in [\[MSDN-ODBC\]](#). ODBC provides client-side APIs for accessing data by using ODBC drivers, and these APIs use the Tabular Data Stream Protocol, as described in [\[MS-TDS\]](#), to communicate with Microsoft SQL Server.

To add, modify, and synchronize data between an Access database and a SharePoint list (1), Access 2013, Access 2010 and Office Access 2007 use the Lists Web Services Protocol, as described in [\[MS-LISTSWS\]](#). Access 2013, Access 2010 and Office Access 2007 also use the Lists Web Services Protocol to create lists (1) from tables in existing Access 2013, Access 2010 or Office Access 2007 databases. After a list is created from an existing table, Access 2013, Access 2010 and Office Access 2007 use the Views Web Service Protocol, as described in [\[MS-VIEWSWS\]](#), to modify the default view of the list (1) by hiding and displaying specific columns.

Access 2013, Access 2010 and Office Access 2007 also use the Web Part Pages Web Service Protocol, as described in [\[MS-WPPS\]](#), to provide a feature that enables users to open a list (1) as an Access database and display a specific form (2), instead of opening the list in a Web browser.

For a complete list of the protocols that are used for application-specific operations, see section [2.2.5](#).

2.1.14 Microsoft OneNote

Microsoft OneNote® is a digital notebook application that enables users to gather, organize, and search notes and other types of information, and to share those notes with others. For common operations such as authenticating users, Microsoft OneNote 2013, Microsoft OneNote 2010 and Microsoft Office OneNote 2007 use the protocols that are identified and described in section [2.2.1](#), except the data access protocols that are described in section [2.2.1.4](#) and the document management protocols that are described in section [2.2.1.3](#). To support application-specific operations, OneNote 2013, OneNote 2010 and Office OneNote 2007 use additional protocols.

To transfer and synchronize files that are stored on a server running SharePoint Products and Technologies, OneNote 2013 or OneNote 2010 determine which Web authoring protocol to use by sending a **SOAP** call to the protocol server by using the File Synchronization via SOAP over HTTP Protocol, as described in [\[MS-FSSHHTTP\]](#), and then processing the response as follows.

1. If the protocol server responds in the format that is defined by the File Synchronization via SOAP over HTTP Protocol, OneNote 2013 or OneNote 2010 use the File Synchronization via SOAP over HTTP Protocol to access the file.
2. If the protocol server does not respond in the format that is defined by the File Synchronization via SOAP over HTTP Protocol or it responds incorrectly, OneNote 2013 or OneNote 2010 use either of the following, depending on the version of the operating system on which it is running:
 - If it is running on Windows Vista operating system or Windows 7 operating system, OneNote 2013 or OneNote 2010 use the Web Distributed Authoring and Versioning (WebDAV) Protocol Client Extensions, as described in [\[MS-WDV\]](#).

- If it is running on Windows XP operating system, OneNote 2013 or OneNote 2010 uses the FrontPage Server Extensions Remote Protocol, as described in [\[MS-FPSE\]](#).

In addition to using the File Synchronization via SOAP over HTTP Protocol, the Web Distributed Authoring and Versioning (WebDAV) Protocol Client Extensions, or the FrontPage Server Extensions Remote Protocol, OneNote 2013 or OneNote 2010 use the protocols that are described in section [2.2.6](#) to synchronize files that are stored on a server running SharePoint Products and Technologies.

For a complete list of the protocols that are used for application-specific operations, see section [2.2.6](#).

2.1.15 Microsoft Publisher

Microsoft Publisher is a desktop publishing application that enables users to create, personalize, and distribute a wide range of publications and marketing materials in-house. For common operations such as authenticating users, accessing files, and managing documents and content, Microsoft Publisher 2010 and Microsoft Office Publisher 2007 use the protocols that are identified and described in section [2.2.1](#).

To support application-specific operations, Publisher 2010 and Office Publisher 2007 use additional protocols.

For mail merge and other types of data access operations, Publisher 2010 and Office Publisher 2007 use the protocols that are described in section [2.2.1.4](#) in addition to OLE DB, as described in [\[MSDN-OLEDB\]](#), and Open Database Connectivity (ODBC), as described in [\[MSDN-ODBC\]](#).

Neither Publisher 2010 nor Office Publisher 2007 uses any additional protocols that are specific to it.

2.1.16 Microsoft InfoPath

Microsoft InfoPath® is a form (2) development application that enables teams and organizations to gather, share, and reuse information by using electronic forms (2). For common operations such as authenticating users, and accessing and saving files, Microsoft InfoPath 2013, Microsoft InfoPath 2010 and Microsoft Office InfoPath 2007 use the protocols that are identified in section [2.2.1](#). To support application-specific operations, InfoPath 2013, InfoPath 2010 and Office InfoPath 2007 use additional protocols and custom file formats.

When a user designs a form (2), InfoPath 2013, InfoPath 2010 and Office InfoPath 2007 store the data structure, appearance, and behavior of the form (2) in a **form template (.xsn) file**. InfoPath 2013 and InfoPath 2010 store this information in a **form template** file that conforms to the file format that is described in [\[MS-IPFF2\]](#). Office InfoPath 2007 stores this information in a form template file that conforms to the file format that is described in [\[MS-IPFF\]](#). When a user enters data into a form (2), InfoPath 2013, InfoPath 2010 and Office InfoPath 2007 store that data in a **form file**, which is a file that conforms to the file format that is described in [\[MS-IPFFX\]](#).

To support broader-scale data collection and reuse, and by using InfoPath 2013 or InfoPath 2010 and Microsoft SharePoint Server 2013 or Microsoft SharePoint Server 2010, data that has been entered into a form (2) can be used in a list (1). In addition, users can publish form templates to a server that is running SharePoint Server 2013, SharePoint Server 2010 or Microsoft Office SharePoint Server 2007. SharePoint Server 2013, SharePoint Server 2010 and Office SharePoint Server 2007 provide services that can be used to define the behavior and display of an InfoPath form (2). SharePoint Server 2013, SharePoint Server 2010 and Office SharePoint Server 2007 support the InfoPath Form Template Format Structure, as described in [\[MS-IPFF\]](#). SharePoint Server 2013 and SharePoint Server 2010 also support the InfoPath Form Template Format Version 2 Structure, as described in [\[MS-IPFF2\]](#), but Office SharePoint Server 2007 does not.

For a complete list of the protocols that are used for application-specific operations, see section [2.2.7](#).

2.1.17 Microsoft Outlook

Microsoft Outlook® is an Internet messaging application that also provides a comprehensive time and information manager, enabling users to prioritize, organize, and search information. For common operations such as authenticating users and accessing files, Microsoft Outlook 2013, Microsoft Outlook 2010 and Microsoft Office Outlook 2007 use the protocols that are identified and described in section [2.2.1](#), except the data access protocols that are described in section [2.2.1.4](#). To support application-specific operations and integration with server technologies, Outlook 2013, Outlook 2010 and Office Outlook 2007 use additional protocols.

To communicate with protocol servers that are running Microsoft Exchange Server, Outlook 2013, Outlook 2010 and Office Outlook 2007 use the protocols that are listed and described in the Exchange Server Protocols System Overview document ([\[MS-OXPROTO\]](#)).

Outlook 2013, Outlook 2010 and Office Outlook 2007 can also integrate with protocol servers that are running Microsoft SharePoint Server 2013, Microsoft SharePoint Server 2010 or Microsoft Office SharePoint Server 2007, primarily by receiving **alerts** about content on SharePoint sites (2), and storing and synchronizing data with SharePoint lists (1). A user of SharePoint Server 2013, SharePoint Server 2010 or Office SharePoint Server 2007 can choose to be notified when a document, Web page, or other type of resource changes on a site (2). These notifications are referred to as alerts. An alert is a standard Internet message, as described in [\[RFC2822\]](#), that uses X-header fields, as described in [\[RFC822\]](#), to store additional information about that alert. To parse the information in those X-header fields, display the appropriate icons for alerts, and to catalog alert subscriptions, Outlook 2013, Outlook 2010 and Office Outlook 2007 use the Alerts Interoperability Protocol, as described in [\[MS-OSALER\]](#). To enable users to manage alert subscriptions, Outlook 2013, Outlook 2010 and Office Outlook 2007 use the Alerts Service Protocol, as described in [\[MS-ALERTSS\]](#).

To store and synchronize data with SharePoint lists (1), Outlook 2013, Outlook 2010 and Office Outlook 2007 use the StsSync Data Structure, as described in [\[MS-STSSYN\]](#), and the Lists Web Service Protocol, as described in [\[MS-LISTSWS\]](#). If Outlook 2013, Outlook 2010 or Office Outlook 2007 is installed on a client computer, the **Actions** menu in the user interface of a SharePoint list (1) provides an option to connect the list (1) to Outlook. When a user selects this option, an stssync URL (stssync://) is opened, Outlook 2013, Outlook 2010 or Office Outlook 2007 is registered with the operating system as a handler for that protocol, and Outlook 2013, Outlook 2010 or Office Outlook 2007 use the parameters specified in the initial stssync message to connect to the list, as described in [\[MS-STSSYN\]](#). After it connects to the list (1), the protocol client creates a local copy of the list (1) data by using the Lists Web Service Protocol, as described in [\[MS-LISTSWS\]](#). Thereafter, any changes to the local or server copies of the list (1) data are transmitted by using the Lists Web Service Protocol. For more information about these interactions, including how Outlook 2013, Outlook 2010 and Office Outlook 2007 handle the list schema, see [\[MS-OUTSPS\]](#).

For a complete list of the protocols that are used for application-specific operations, see section [2.2.8](#).

2.1.18 Microsoft SharePoint Workspace and Groove

Microsoft® SharePoint® Workspace 15 Technical Preview, Microsoft SharePoint Workspace 2010 and Microsoft Office Groove 2007 are collaboration applications that enable teams to work together from virtually any location, primarily through the use of shared spaces. For common operations such as authenticating users, Microsoft® SharePoint® Workspace 15 Technical Preview, SharePoint Workspace 2010 and Office Groove 2007 use the protocols that are identified and described in

section [2.2.1](#), except the data access protocols that are described in section [2.2.1.4](#) and the information rights management protocols that are described in section [2.2.1.5](#). To support application-specific operations, Microsoft® SharePoint® Workspace 15 Technical Preview, SharePoint Workspace 2010 and Office Groove 2007 use additional protocols.

To communicate with other protocol clients and protocol servers in the Groove and SharePoint Workspace system, Microsoft® SharePoint® Workspace 15 Technical Preview, SharePoint Workspace 2010 and Office Groove 2007 use the protocols and structures that are described in the Groove Protocols Overview ([\[MS-GRVPROT\]](#)).

When setting up connections to and synchronizing data with lists (1) and document libraries on protocol servers that are running Windows SharePoint Services, Microsoft® SharePoint® Workspace 15 Technical Preview, Office Groove 2007, and SharePoint Workspace 2010 use the following protocols:

- To detect server configurations and capabilities, the FrontPage Server Extensions Remote Protocol, as described in [\[MS-FPSE\]](#).
- To determine which sites (2) and lists (1) exist on a protocol server, the Webs Web Service Protocol, as described in [\[MS-WEBSS\]](#).
- To obtain information about a site (2) and its users, the Site Data Web Service Protocol, as described in [\[MS-SITEDATS\]](#), and the UserGroup Web Service Protocol, as described in [\[MS-UGS\]](#).
- To obtain details about **list views** for each list (1) or document library, the Views Web Service Protocol, as described in [\[MS-VIEWS\]](#).
- To collect information about the forms (2) that are associated with each list (1), the Forms Service Protocol, as described in [\[MS-FORMS\]](#).
- To obtain copies of data and files in lists (1) and document libraries, the Lists Web Service Protocol, as described in [\[MS-LISTSWS\]](#).

To synchronize changes between copies of data and files on the protocol client and protocol server, Microsoft® SharePoint® Workspace 15 Technical Preview, Office Groove 2007 and SharePoint Workspace 2010 use several protocols:

- To synchronize data for list (1) items, the Lists Web Service Protocol, as described in [\[MS-LISTSWS\]](#).
- To synchronize files in document libraries, the SharePoint Files Tool feature in Microsoft® SharePoint® Workspace 15 Technical Preview, SharePoint Workspace 2010, and Office Groove 2007 use WebDAV, as described in [\[RFC2518\]](#).
- To synchronize file attachments for list (1) items and documents and document templates in document libraries, Microsoft® SharePoint® Workspace 15 Technical Preview and SharePoint Workspace 2010 use the File Synchronization via SOAP over HTTP Protocol, as described in [\[MS-FSSHHTTP\]](#), if the protocol server supports that protocol. If the protocol server does not support the File Synchronization via SOAP over HTTP Protocol, files will not be able to be synchronized with Microsoft® SharePoint® Workspace 15 Technical Preview or SharePoint Workspace 2010.

2.1.19 Microsoft Office Mobile

Microsoft Word Mobile 2010 enables users to open and display documents by using a mobile device. It does so by using the Office Mobile Word Web Handler Protocol, as described in [\[MS-OMWWH\]](#), to communicate with Microsoft Word Web App or Microsoft Word Web App on a protocol server that is

running Microsoft SharePoint Foundation 2013 or Microsoft SharePoint Foundation 2010. The Office Mobile Word Web Handler Protocol can be used to create a mobile-ready version of a document, and to access the pages, text, and metadata about that version of a document. For more information about these communications and processes, see [MS-OMWWH].

Similarly, Microsoft PowerPoint Mobile 2010 enables users to open and display presentations by using a mobile device. It does so by communicating with Microsoft PowerPoint Web App or Microsoft PowerPoint Web App on a protocol server that is running SharePoint Foundation 2013 or SharePoint Foundation 2010. To retrieve information about a presentation and images of presentation slides, PowerPoint Mobile 2010 uses the Office Mobile PowerPoint Web Handler Protocol, as described in [MS-OMPWHP]. Some of the data that is used by this protocol conforms to the PowerPoint Web Viewer Rendered Static Content structure, as described in [MS-PWVRSC].

2.1.20 Office Broadcast Presentation Service

The Office Broadcast Presentation Service<1> allows hosts to broadcast Microsoft Word and Microsoft PowerPoint documents over the web using web viewers using Microsoft PowerPoint 2010, Microsoft PowerPoint 2013, and Microsoft Word 2013. The presentation service has presenter and attendee protocols, as described in section 2.2.10.

To present to a server running the presentation service, use the Office Broadcast Presentation Service protocol, as described in [MS-OBPRS].

To attend a **broadcast session** from a server running the presentation service, use the Office Broadcast Participant Service protocol, as described in [MS-OBPAS].

2.1.21 Web Application Open Platform Interface

The Web Application Open Platform Interface (WOPI)<2>, as described in [MS-WOPI], defines a set of operations that enables a client to access and change files stored by a server. This allows the client to render files and provide file editing functionality for files stored by the server.

One example of how a client might use WOPI is by providing a browser-based viewer for a specific type of file. That client uses WOPI to get the contents of the file in order to present that content to the user as a web page in a browser.

2.1.22 Apps for Office

Microsoft Office 2013 includes a new extensibility model for Office clients where web developers can create **apps for Office**. An app for Office is an area inside an Office application, containing a Web page that can interact with a document to augment content and provide new interactive content types and functionality. An app for Office consists of both Web page and a manifest file, the structure of which is described in Office Web Extensibility Manifest Format [MS-OWEMXML].

Collections of apps for Office manifest files, called app catalogs, can be made available through the Office Store, a SharePoint App Catalog (in the form of stand-alone apps for Office or components of a document template solution), or in a shared folder on a local network.

The following Office 2013 applications support apps for Office: Microsoft Excel 2013, Microsoft Excel Web App, Microsoft Word 2013, Microsoft PowerPoint 2013, Microsoft Outlook 2013, Microsoft Outlook Web App, and Microsoft Project 2013.

2.2 Protocol Summary

The following tables provide a comprehensive list of the member protocols of the Microsoft® Office system. The member protocols are grouped according to their primary purpose.

2.2.1 Common Protocols

The following tables provide a comprehensive list of the protocols that are used by all or most protocol clients in the Office system for common operations such as authenticating users, accessing files, and managing documents and content. The member protocols are grouped according to their primary purpose.

2.2.1.1 Authentication

Protocols in this table enable protocol clients in the Office system to authenticate users.

Protocol name	Description	Short name
Digest Protocol Extensions	Supports client authentication to protocol servers, based on user name and password, and server authentication to protocol clients. These are Microsoft Windows extensions to the Digest Authentication standard, as described in [RFC2617] , "HTTP Authentication: Basic and Digest Access Authentication," and [RFC2831] , "Using Digest Authentication as a SASL Mechanism."	[MS-DPSP]
HTTP Authentication: Basic and Digest Access Authentication	Defines an authentication scheme that can be used to verify that both parties to a communication know a shared secret (password). If Digest Access Authentication is used, this verification can be done without sending a password as cleartext.	[RFC2617]
Kerberos Protocol Extensions	Extends the Kerberos Network Authentication Service (V5) protocol, as described in [RFC4120] . These extensions provide additional capabilities for authorization information, including group memberships, interactive logon information and integrity levels, and constrained delegation and encryption supported by Kerberos principals .	[MS-KILE]
NT LAN Manager (NTLM) Authentication Protocol	Provided by the Windows operating system, enables authentication between protocol clients and protocol servers when the Kerberos Protocol Extensions, as described in [MS-KILE] , cannot be used. In Windows Server 2008 operating system with Service Pack 2 (SP2), Windows Vista operating system, Windows Server 2003 operating system, Windows XP operating system, and Windows 2000 Server operating system, Kerberos authentication replaces NT LAN Manager (NTLM) Authentication Protocol as the preferred authentication protocol.	[MS-NLMP]
Office Forms Based Authentication Protocol	Implemented by the Office system, establishes a user's identity by using HTTP-based forms authentication when other authentication mechanisms are not available.	[MS-OFBA]
Passport Server Side Include (SSI) Version 1.4 Protocol	An HTTP-based protocol that enables protocol clients to authenticate to a partner server with the assistance of an authentication server. Also referred to as the "Passport Tweener" protocol.	[MS-PASS]
Simple and Protected Generic Security Service Application Program Interface Negotiation Mechanism (SPNEGO)	Defines a negotiation mechanism for the Generic Security Service Application Program Interface (GSS-API), as described in [RFC2743] . SPNEGO provides a framework for two parties that are engaged in authentication to select from a set of possible authentication mechanisms, in a	[MS-SPNG]

Protocol name	Description	Short name
Protocol Extensions	manner that preserves the opaque nature of the security protocols to the application protocol that uses SPNEGO.	
SPNEGO-based Kerberos and NTLM HTTP Authentication in Microsoft Windows	Provided by Windows 2000 operating system, enhances the security of Web-based transactions by using Kerberos.	[RFC4559]

2.2.1.2 File Access

Protocols in this table enable protocol clients in the Office system to access files in local and remote locations.

Protocol name	Description	Short name
File Synchronization via SOAP over HTTP	Implemented by the Office system, enables protocol clients to synchronize changes to files, and related metadata, that are stored on a protocol server. It also enables a protocol server to process requests that it receives from protocol clients for different types of file-lock operations, which helps prevent merge conflicts. This protocol uses SOAP-based request/response message sequences.	[MS-FSSHHTTP]
File Transfer Protocol (FTP)	Enables users to open and save files by using protocol clients. Protocol clients do not support file-lock operations when they access files by using FTP.	[RFC959]
FrontPage Server Extensions Remote Protocol	Provides file server functionality that is similar to WebDAV by presenting the content of a Web site as a file share to users.	[MS-FPSE]
FrontPage Server Extensions Website Management Protocol	Provides a set of methods that enables users to upload, download, lock, and move files, and to create directories and listings on a protocol server by using protocol clients.	[MC-FPSEWM]
HTTP Extensions for Distributed Authoring -- WebDAV	Extends the HTTP/1.1 Protocol by providing a set of methods and defining headers and body formats for messages. These extensions enable users to create, query, and manage resources on a Web server by using protocol clients.	[RFC2518]
Hypertext Transfer Protocol -- HTTP/1.1	An application-level protocol for distributed, collaborative, and hypermedia information systems. It is a generic, stateless, protocol that can be used for many tasks, including file access. If other protocols are not supported, protocol clients use the HTTP GET method that is defined by this protocol to provide users with read-only access to files.	[RFC2616]
Office Document Update Utility Extensions Protocol	Provides a set of extensions to WebDAV, including header updates, a property that helps optimize protocol interaction during synchronization operations, and a property that allows a protocol server to send virus-infection information about a file to protocol clients. These extensions are used primarily during synchronization operations between protocol clients and Document Workspace sites.	[MS-WDVMODUU]
Server Message Block	Provides a set of extensions to the Common Internet File	[MS-SMB]

Protocol name	Description	Short name
(SMB) Version 1.0 Protocol	System (CIFS/1.0) Protocol, as described in [CIFS] , and enables protocol clients to connect to protocol servers, establish authenticated contexts for those connections, and issue requests to access files, printers, and named pipes for inter-process communication.	
Server Message Block (SMB) Version 2.0 Protocol	Provides a set of extensions and enhancements to the SMB Version 1.0 Protocol, as described in [MS-SMB] , and the Common Internet File System (CIFS/1.0) Protocol, as described in [CIFS] . The enhancements generally improve scalability and load balancing.	[MS-SMB2]
Web Distributed Authoring and Versioning Error Extensions Protocol	Extends WebDAV by describing the extended error codes that protocol clients can receive in responses from protocol servers, such as document checked out, minor version limit extended, and missing required document properties.	[MS-WEBCAVE]
Web Distributed Authoring and Versioning (WebDAV) Protocol: Client Extensions	Extends WebDAV, as described in [RFC2518] , by introducing new headers that enable protocol clients to support management of additional file types and to optimize processing and related interactions with supporting protocol servers.	[MS-WDV]
Web Distributed Authoring and Versioning (WebDAV) Protocol: Microsoft Extensions	Provides a set of Microsoft-specific extensions to WebDAV. These extensions are implemented in all versions of Windows SharePoint Services and are therefore used during interactions between protocol clients and protocol servers that are running a version of Windows SharePoint Services. Most of the extensions are designed to enhance support for authoring and managing documents that are stored on a protocol server. For example, a protocol server can use these extensions to indicate whether it supports various capabilities for document management through other protocols based on the value of a Document Management Server header.	[MS-WDVME]
Web Distributed Authoring and Versioning (WebDAV) Protocol: Server Extensions	Extends WebDAV, as described in [RFC2518] , by introducing new headers that enable protocol servers to support management of additional file types and to optimize processing and related interactions with supporting protocol clients.	[MS-WDVSE]
Windows SharePoint Services Collaborative Application Protocol	Enables communications between protocol clients and a front-end Web server to retrieve and manipulate various types of content that is stored on a protocol server.	[MS-WSSCAP]

2.2.1.3 Document Management

Protocols in this table enable protocol clients in the Office system to perform document management operations such as checking files in or out, and displaying and saving document properties.

Protocol name	Description	Short name
Document Workspace Web Service Protocol	Defines operations for creating, editing, and deleting files, folders, and subsites on a Document Workspace site by using the Document Management task pane in a protocol client.	[MS-DWSS]

Protocol name	Description	Short name
FrontPage Server Extensions Remote Protocol	Defines operations for accessing, checking in, and checking out files that are stored on a protocol server.	[MS-FPSE]
FrontPage Server Extensions Website Management Protocol	Defines operations for uploading, downloading, locking, and moving files, and for creating directories and listings on a protocol server.	[MC-FPSEWM]
Hypertext Transfer Protocol -- HTTP/1.1	An application-level protocol for distributed, collaborative, and hypermedia information systems. It is a generic, stateless, protocol that can be used for many tasks, including file access. Protocol clients use various HTTP methods to perform operations such as determining the type and document management capabilities of a protocol server.	[RFC2616]
Lists Web Service Protocol	Enumerates, retrieves changes to, and retrieves and sets properties for list (1) items and files.	[MS-LISTSWS]
User Profile Social Data Web Service Protocol	Enables a protocol client to add, update, remove, and retrieve social tags , notes, and social ratings for files and Web pages that are stored on a protocol server. This protocol allows a protocol client to pass criteria to a protocol server and receive a response that lists tags, notes, and ratings.	[MS-UPSDWS]
Versions Web Service Protocol	Provides programmatic access to a view and enables a protocol client to view, delete, and restore a version of a file on a protocol server. It also allows a protocol client to retrieve of all versions of a file.	[MS-VERSS]
Webs Web Service Protocol	Enables a protocol client to retrieve the parent site (2) of a file. The WebUrlFromPageUrl method, which is defined by this protocol, is commonly used as a precursor to method calls for other protocols.	[MS-WEBSS]
Workflow Web Service Protocol	Defines the communication sequences that protocol clients use to query, start, and manipulate workflows on a document. For a specified document, protocol clients can: query information about existing workflow instances and workflow tasks that are emitted by those instances, query for available workflows that are associated with a list (1), create workflow instances from the workflow association for a document, and modify workflow tasks that are related to a document.	[MS-WWSP]

2.2.1.4 Data Access

Protocols in this table enable protocol clients in the Office system to access data in local and remote locations.

Protocol name	Description	Short name
Tabular Data Stream Protocol	Protocol used for remote data access to Microsoft SQL Server.	[MS-TDS]

2.2.1.5 Information Rights Management

Protocols in this table enable protocol clients in the Office system to manage access to document content and e-mail messages.

Protocol name	Description	Short name
Rights Management Services (RMS): Client-to-Server Protocol	Used to obtain and issue digital certificates and licenses for creating and working with protected content.	[MS-RMPR]
Rights Management Services (RMS): ISV Extension Protocol	Facilitates the creation of applications that extend the capabilities of RMS-enabled applications or bridge capabilities of different software systems by allowing for direct communication between applications and RMS servers without the use of the RMS client. This protocol enables applications to decommission protected content and to retrieve a recipient's public key digital certificate.	[MS-RMSI]

2.2.1.6 Active Directory Domain Services

Protocols in this table enable protocol clients in the Office system to communicate with Active Directory Domain Services (AD DS).

Protocol name	Description	Short name
Active Directory Technical	The primary specification for AD DS, including both Active Directory Domain Services (AD DS) and Active Directory Lightweight Directory Services (AD LDS).	[MS-ADTS]

2.2.1.7 Microsoft Error Reporting

Protocols in this table enable protocol clients in the Office system to collect and report data about events and errors that occur, such as application exceptions, kernel faults, or generic events that are defined by an application.

Protocol name	Description	Short name
Corporate Error Reporting Version 1.0 Protocol	Multi-staged protocol used by Windows XP operating system and Windows Server 2003 operating system clients that allows components to send user mode and kernel mode error reports to a corporation's servers instead of to Microsoft servers. The reports are stored on a configurable shared folder location. This protocol uses SMB as a transport. All versions of the Microsoft Windows operating system implement basic server-side configurations, but the CER tool is required to implement the full range of server-side configuration options. The CER tool is available only under the software assurance application.	[MS-CER]
Corporate Error Reporting Version 2.0 Protocol	Multi-staged client service protocol that allows components to send user mode and kernel mode error reports to a corporation's servers. This protocol allows components to send failure information to the corporate servers instead of to Microsoft servers. Developers can	[MS-CER2]

Protocol name	Description	Short name
	configure failure report buckets to collect additional failure specific information and also send responses back to the client computers. The server side of the protocol is implemented by System Center Operations Manager 2007. This protocol is used by Windows Vista operating system and Windows 7 operating system clients.	
Microsoft Error Reporting Extension to Corporate Error Reporting Version 1.0 Protocol	Extends the original Corporate Error Reporting V.1 Protocol to support additional kinds of error reporting, additional options for existing protocol details, and more specific requirements about error report contents. This protocol is used by Windows XP and Windows Server 2003 clients.	[MS-MERX]

2.2.1.8 Customer Experience Improvement Program

Protocols in this table enable protocol clients in the Office system to collect instrumentation data for users who choose to participate in the Customer Experience Improvement Program (CEIP).

Protocol name	Description	Short name
Corporate Customer Experience Improvement Program Client-to-Server Protocol	Allows components to send instrumentation files to a corporation's servers instead of to Microsoft servers. This protocol uses Hypertext Transfer Protocol -- HTTP/1.1 [RFC2068] as a transport. This protocol is used by Windows XP operating system and Windows Vista operating system clients.	[MS-CCEIP]

2.2.1.9 IMESync Structure

Protocols in this table enable protocol clients in the Office system to locate and use a custom word list for an **Input Method Editor (IME)**.

Protocol name	Description	Short name
IMESync Syntax Structure	Used to locate a remote list (1), which is accessible through the Lists Web Service Protocol [MS-LISTSWS]. More specifically, this structure does the following: Enables a Web page to specify the location of a remote list, which is used to define a custom word list (1) for an IME. Enables the IME to locate the remote list (1). Enables the IME to download the list (1) content that defines a custom word list (1).	[MS-IMESYN]
Lists Web Service Protocol	Enumerates, retrieves changes to, and retrieves and sets properties for list (1) items and files.	[MS-LISTSWS]

2.2.2 Microsoft Word

The following table describes the protocols used by Microsoft Word 2013, Microsoft Word 2010, or Microsoft Office Word 2007 to publish to blogs (1).

Protocol name	Description	Short name
MetaWeblog Extensions Protocol	API for publishing blogs (1).	[MS-METAWEB]
The Atom Publishing Protocol	Simple HTTP-based protocol. Creates and updates Web resources.	[RFC5023]
The Atom Syndication Format	Describes the format of the data packet used by the Atom Publishing Protocol.	[RFC4287]

2.2.3 Microsoft Excel

The following table describes the protocols used by Microsoft Excel 2013, Microsoft Excel 2010, or Microsoft Office Excel 2007, in addition to the common protocols covered in section [2.2.1](#).

Protocol name	Description	Short name
Excel Services Publishing Protocol	Enables a protocol client to form the protocol server URL and associated query string parameters to display the workbook in the browser after the workbook is published to the protocol server.	[MS-ESURL]
Lists Web Service Protocol	Enumerates items, gets changes, gets and sets properties, and checks in or checks out list items.	[MS-LISTSWS]
SQL Server Analysis Services Protocol	Enables remote access to Online Analytical Processing (OLAP) data from Microsoft SQL Server Analysis Services.	[MS-SSAS]

2.2.4 Microsoft PowerPoint

The following table describes the protocol used by Microsoft PowerPoint 2013, Microsoft PowerPoint 2010, or Microsoft Office PowerPoint 2007 for communicating with Slide Libraries.

Protocol name	Description	Short name
Slide Library Web Service Protocol	Obtains information about slides in a PowerPoint Slide Library on a SharePoint site.	[MS-SLIDELI]

The following table describes the protocols used by Microsoft PowerPoint Web App for viewing and editing presentations stored on a server through a Web browser.

Protocol name	Description	Short name
PowerPoint Web Editor Data Protocol	This protocol enables a protocol client to send a request to modify presentation content to the protocol server and then receive from the protocol server information about the result of the modification. To facilitate this, the protocol allows the protocol client to send a request to the protocol server and then receive from the protocol server information about the existence of presentation slides, main master slides, and slide layouts. The protocol client can also send a request to the protocol server and then receive from the protocol server images of slide content.	[MS-PWEDPS]

Protocol name	Description	Short name
PowerPoint Web Viewer Presentation Data Protocol	This protocol enables a protocol client to send a request to retrieve presentation content from the protocol server. To facilitate this, the protocol allows the protocol client to request specific pieces of content from a presentation stored on the protocol server. In a presentation slide contained within a presentation, a protocol client can retrieve information describing the presentation slide contents as well as images of the presentation slide contents.	[MS-PWVPDP]

The following table describes the protocols used by PowerPoint 2010 and PowerPoint Web App for creating and viewing a broadcast slide show.

Protocol name	Description	Short name
PowerPoint Web Broadcast Discovery Protocol	This protocol enables a protocol client to send a request containing client information to the protocol server and then receive information about the endpoint (2) that is most suited for future communication with the protocol client. The protocol server uses the information provided by the protocol client such as the list of supported protocol versions to decide a suitable endpoint (2) .	[MS-PWBDP]
PowerPoint Web Broadcast Host Protocol	This protocol enables a protocol client to upload a presentation to a protocol server, delete a presentation from a protocol server, and retrieve information that is necessary to successfully start a presentation broadcast session. The protocol allows the protocol client to request information such as the protocol server settings, URL to upload the presentation to, location of the PowerPoint Web Broadcast service, and the URL to view the Presentation Broadcast session.	[MS-PWBHPS]
PowerPoint Web Broadcast Protocol	This protocol enables a protocol client to send requests to a protocol server allowing the client to start or end a broadcast session, and to store broadcast state data on the protocol server.	[MS-PWBPS]

In addition to the protocols used in the Office Broadcast Presentation Service (section [2.1.20](#)), the following table describes the protocols used by PowerPoint 2013 and PowerPoint Web App for creating and viewing a broadcast slide show.

Protocol name	Description	Short name
PowerPoint Web Presentation Handler Protocol	This protocol enables a protocol client to send a request to retrieve information about presentation content from the protocol server. To facilitate this, the protocol allows the protocol client to request specific pieces of content from a presentation stored on the protocol server.	[MS-PWPHP]

2.2.5 Microsoft Access

The following table describes the protocols used by Microsoft Access 2013, Microsoft Access 2010, or Microsoft Office Access 2007 for syncing, adding, and modifying list data and for modifying the default view of a list.

Protocol name	Description	Short name
Lists Web Service Protocol	Enumerates items, gets changes, gets and sets properties, and checks in or checks out list items.	[MS-LISTSWS]
Tabular Data Stream Protocol	Used for remote data access to a server running Microsoft SQL Server.	[MS-TDS]
Views Web Service Protocol	Provides methods to add a list view or to retrieve a specific view or the collection of list views.	[MS-VIEWS]
Web Part Pages Web Service Protocol	Enables a client to gather the information needed to author Web pages that use server resources and author execution logic that reacts to changes in the server state.	[MS-WPPS]
Webs Web Service Protocol	Maps file path URLs to document libraries for actions such as subsequent calls to the Lists Web Service Protocol [MS-LISTSWS].	[MS-WEBSS]

2.2.6 Microsoft OneNote

The following table describes the additional protocols used by Microsoft OneNote 2013, Microsoft OneNote 2010, or Microsoft Office OneNote 2007 when synchronizing files with servers running Windows SharePoint Services.

Protocol name	Description	Short name
Hypertext Transfer Protocol -- HTTP/1.1	Sends HTTP OPTIONS requests to the server to identify the server version and supported protocols. Sends HTTP HEAD requests to files and folders to validate their existence, invoke authentication, and check file modified times.	[RFC2616]
Lists Web Service Protocol	Enumerates Office OneNote 2007, OneNote 2010, or OneNote 2013 files in the document library folder, and efficiently enumerates changed files.	[MS-LISTSWS]
Webs Web Service Protocol	Maps file path URLs to document libraries for subsequent calls to the Lists Web Service Protocol [MS-LISTSWS].	[MS-WEBSS]

2.2.7 Microsoft InfoPath

The following table describes the additional protocols used by Microsoft InfoPath 2013, Microsoft InfoPath 2010, and Microsoft Office InfoPath 2007 (unless otherwise noted) when communicating with a **form server** for publishing form template files, saving form files, and using **data connections (3)**.

Protocol name	Description	Short name
Active Directory Technical	The primary specification for Active Directory Domain Services (AD DS), including both AD DS and Active Directory Lightweight Directory Services (AD LDS).	[MS-ADTS]
Forms Services Design and Activation Web Service Protocol	Allows a client to communicate with a form server to validate, browser-enable , or manipulate settings of form template files in supported scenarios.	[MS-FSDAP]

Protocol name	Description	Short name
Forms Services Feature Detection Protocol	Allows a client to detect whether InfoPath Forms Services is present and enabled on the server. InfoPath Forms Services is required to publish a browser-enabled form template (.xsn) file.	[MS-FSFD]
Forms Services Proxy Web Service Protocol	Forwards SOAP messages for a client, and returns the targeted Web service response.	[MS-FSPP]
HTTP Over TLS	Enables secure transmission of HTTP traffic.	[RFC2818]
Hypertext Transfer Protocol -- HTTP/1.1	Enables navigation to documents on the Internet.	[RFC2616]
InfoPath Data Connection File Download Protocol	Allows a client to retrieve a Universal Data Connection (.udc, .udcx) file .	[MS-INFODCF]
InfoPath Form File Format	Enables a form server, with an associated form template (.xsn) file, to render and edit form (2) data from a form file in a Web browser.	[MS-IPFFX]
InfoPath Form Template Format	Enables a form server to render and edit form (2) data in a Web browser.	[MS-IPFF]
InfoPath Form Template Format Version 2	Enables a form server to render and edit form (2) data in a Web browser. Supported only by InfoPath 2013 and InfoPath 2010.	[MS-IPFF2]
Lists Web Service Protocol	Manipulates the schema and contents of SharePoint lists (1).	[MS-LISTSWS]
Simple Object Access Protocol (SOAP) 1.1	Makes remote procedure calls to a protocol server.	[SOAP1.1]
Site Data Web Service Protocol	Specifies a set of server extensions used to augment a basic HTTP server so that it supports full and incremental indexing. Indexing, in this context, is defined as the process of exploring Web site content and building an index to use for search, systematic cataloging, content auditing, or similar purposes.	[MS-SITEDATS]
Tabular Data Stream Protocol	Enables remote access to data on a server running Microsoft SQL Server.	[MS-TDS]
UDDI Programmer's API 1.0 UDDI Version 2.04 API	Enables discovery of Web services exposed by a remote server.	[UDDI 1.0] [UDDI 2.0]
Universal Data Connection 2.0 XML File Structure	Provides a container for data connection (3) information.	[MS-UDCX]
Webs Web Service Protocol	Provides methods for modifying sites (2) in the site collection .	[MS-WEBSS]
Windows SharePoint Services Collaborative Application Protocol	Enables a client to retrieve and manipulate various types of content on a server.	[MS-WSSCAP]

2.2.8 Microsoft Outlook

The following table describes the additional protocols used by Microsoft Outlook 2013, Microsoft Outlook 2010, and Microsoft Office Outlook 2007.

Protocol name	Description	Short name
Alerts Interoperability Protocol	Extracts data from an alert sent from a server running Windows SharePoint Services to Office Outlook 2007, Outlook 2010, or Outlook 2013.	[MS-OSALER]
Alerts Web Service Protocol	Manages a user's alert subscriptions from within Office Outlook 2007, Outlook 2010, or Outlook 2013.	[MS-ALERTSS]
Exchange Server Protocols System Overview	Communicates and stores information related to e-mail, calendars, contacts, voicemail, task tracking, and other user collaboration functionality.	[MS-OXPROTO]
Lists Client Sync Protocol	Determines the correct processing and logic to correctly host local copies of SharePoint list (1) items in Office Outlook 2007, Outlook 2010, and Outlook 2013. Uses the Lists Web Service Protocol [MS-LISTSWS] for the actual transfers.	[MS-OUTSPS]
Lists Web Service Protocol	Transfers list items from the server to the client, and from the client to the server.	[MS-LISTSWS]
StsSync Data Structure	URL format that instantiates a connection between Office Outlook 2007, Outlook 2010, or Outlook 2013 and a given SharePoint list (1).	[MS-STSSYN]

2.2.9 Microsoft Office Mobile

The following table describes the mobility protocols used by Microsoft Word Mobile 2010 and Microsoft PowerPoint Mobile 2010.

Protocol name	Description	Short name
Office Mobile PowerPoint Web Handler Protocol	This protocol enables a protocol client to send a request to retrieve presentation content from the protocol server. To facilitate this, the protocol allows the protocol client to request specific pieces of content from a presentation stored on the protocol server. In a presentation slide contained within a presentation, a protocol client can retrieve information describing the presentation slide contents as well as images of the presentation slide contents.	[MS-OMPWHP]
Office Mobile Word Web Handler Protocol	This protocol specifies the communication between the client and the front-end Web server to get the mobile rendition information for a Word document. Each method is an HTTP GET request, as described in Hypertext Transfer Protocol -- HTTP/1.1 [RFC2616] , that accepts a set of parameters and returns an HTTP response depending upon the method called. The parameters to the method are sent as query parameters as part of the URL as described in Hypertext Transfer Protocol -- HTTP/1.1. All communication is transported over HTTP or Hypertext Transfer Protocol over Secure Sockets Layer (HTTPS).	[MS-OMWWH]

Protocol name	Description	Short name
PowerPoint Web Viewer Rendered Static Content Structure	A presentation consists of slides, pictures, and other content. A protocol client can use the Office Mobile PowerPoint Web Handler Protocol [MS-OMPWHP] to request specific pieces of presentation content stored on a protocol server. This structure specifies a set of data types that enable the transfer of such presentation content. It also specifies data types that encapsulate error information that enables the protocol server to signal the protocol client that it is unable to serve specific requests.	[MS-PWVRSC]

2.2.10 Office Broadcast Presentation Service

The following table describes the protocols used by the Office Broadcast Presentation Service <3>.

Protocol name	Description	Short name
Office Broadcast Presentation Service	This protocol enables a protocol client to send requests to a protocol server allowing the client to begin or end a document broadcast session, and to store data about the state of a broadcast session on the protocol server.	[MS-OBPRS]
Office Broadcast Participant Service	This protocol enables a protocol client to send requests to a protocol server allowing the client to join an in-progress document broadcast session, and to retrieve data about the state of a broadcast session on the protocol server.	[MS-OBPAS]

2.2.11 Web Application Open Platform Interface

The following table describes the protocols used by the Web Application Open Platform Interface (WOPI) <4>.

Protocol name	Description	Short name
Web Application Open Platform Interface Protocol	This protocol defines a set of operations that enables a client to access and change files stored by a server, allowing the client to render files and provide file editing functionality.	[MS-WOPI]

2.2.12 Apps for Office

The following table describes the structure used by apps for Office.

Structure name	Description	Short name
Office Web Extensibility Manifest Format	This structure specifies the schema for apps for Office manifest files.	[MS-OWEMXML]

2.3 Environment

The following sections identify the context in which the system exists, including the systems that use the interfaces provided by this system of protocols, other systems that depend on this system, and, as appropriate, how components of the system communicate.

2.3.1 Dependencies on This System

2.3.1.1 Authentication

All client applications covered by this overview document, which are listed in section [1](#), depend on the authentication protocols covered to access files from servers that require authenticated access.

2.3.1.2 File Access

All client applications covered in this overview document, which are listed in section [1](#), depend on the File Access protocols to access files from servers that support those protocols.

2.3.1.3 Document Management

All client applications that support document management features covered in this document depend on the document management protocols to enable those features.

2.3.1.4 Data Access

All client applications that support data access features covered in this document depend on the data access protocols to enable those features.

2.3.1.5 Information Rights Management

All client applications covered by this overview document, which are listed in section [1](#), depend on the rights management protocols to enable rights management features.

2.3.1.6 Mobility

- Microsoft PowerPoint Mobile 2010
- Microsoft Word Mobile 2010
- Microsoft Excel Mobile 2010

2.3.2 Dependencies on Other Systems/Components

2.3.2.1 Authentication

Authentication protocols depend on the following components:

- Internet protocols (HTTP, TCP/IP) and TCP/IP networks
- Domain Name System (DNS) servers
- Local area network (LAN) and Internet routers
- Computer operating systems supporting TCP/IP networking

Forms-based authentication over HTTP depends on the following:

- The Web server is configured such that the user's identity is established by using forms-based authentication. The user's identity is transferred between the protocol client and the server by using the HTTP State Management Mechanism [\[RFC2109\]](#).

- The protocol client is configured to store and transmit cookies as described in the HTTP State Management Mechanism.

2.3.2.2 Mobility

- Microsoft Office SharePoint Server 2007 or Microsoft SharePoint Server 2010
- Microsoft SQL Server 2005
- Microsoft SQL Server 2008
- Windows Server 2008 operating system or Windows Server 2008 R2 operating system
- HTTP 1.1
- Mobile Viewers for Microsoft Office

2.4 Assumptions and Preconditions

For information about assumptions and preconditions that apply to a specific protocol in this system, see the specification for that protocol.

2.4.1 All Client/Server Protocols

- The user can connect to the server.
- The user has permissions to access the server.

2.4.2 Mobility

- Administrative access to the server.
- If the installation is on a farm, the Microsoft SQL Server database can be installed on a separate computer.

2.5 Use Cases

Client and server protocol interactions differ by application and scenario. The following use cases are provided to facilitate an understanding of the Office Client Protocols system overall:

- Authenticate Against a Web Server That Is Gated by Forms Authentication
- Download a Document from a Web Server
- Open a Historical Version of a File from a Web Server
- Use Information Rights Management
- Open a Document by Using an ActiveX Control
- Synchronize a SharePoint List with Outlook
- Receive E-mail Alerts in Outlook from a SharePoint Server
- Publish an Access Database Application to a Web Server
- Publish an InfoPath Form to a Server

- View the First Slide of a Broadcast Presentation in a Web Browser
- Start a Broadcast Slide Show
- Synchronize IME with a Remote List
- Use the Windows Live SkyDrive Save to Web SOAP Web Service
- Publish an Excel Workbook to a SharePoint Library

These use cases are not intended to provide a thorough and complete model of the system for any implementation.

2.5.1 Authenticate Against a Web Server That Is Gated by Forms Authentication

Use Case Diagram

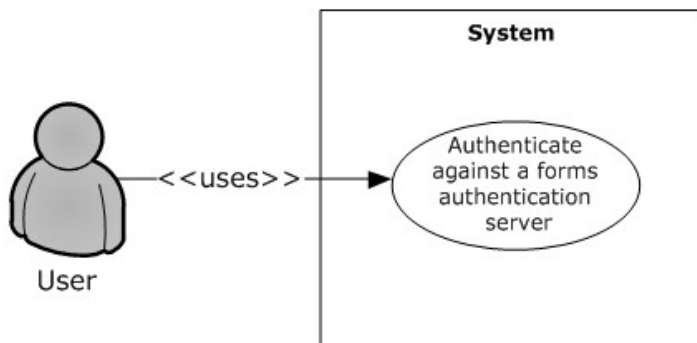


Figure 1: Process for authenticating against a forms authentication server

Preconditions

- The protocol client can connect to the server that hosts the document.
- The user has permissions to access the document on the server.
- The Web server and the protocol client both support the Office Forms Based Authentication Protocol [\[MS-OFBA\]](#).
- The Web server is configured such that the user's identity is established by using forms authentication. The user's identity is transferred between the protocol client and the server by using the HTTP State Management Mechanism [\[RFC2109\]](#).
- The protocol client is configured to store and transmit cookies, as described in [\[RFC2109\]](#).

Main Flow

1. The user opens the client application and brings up the file open dialog box.
2. The user navigates to the Web server in the file open dialog box.
3. The user is presented with a forms authentication logon prompt.
4. The user enters credentials and authenticates with the server.
5. The user selects a document from the Web server and chooses to open it in the client application.

Alternate Scenarios

- The user chooses to cancel out of the forms authentication logon prompt. This cancels the file open action.

Error Scenarios

- The user enters incorrect credentials in the forms authentication prompt three times. This cancels the file open action.

2.5.2 Download a Document from a Web Server

Use Case Diagram

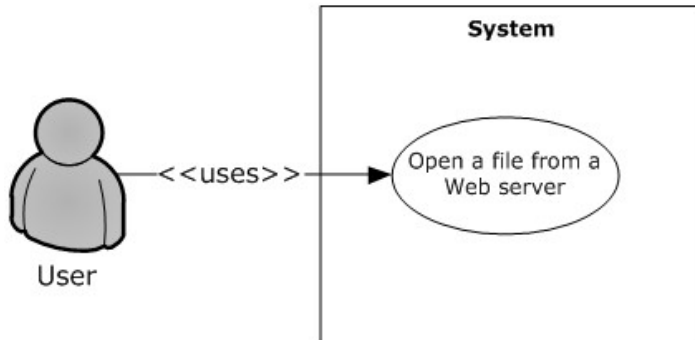


Figure 2: Process for downloading a document from a Web server

Preconditions

- The protocol client can connect to the server that hosts the document.
- The user has permissions to access the document on the Web server.

Main Flow

1. The user opens the client application and brings up the file open dialog box.
2. The user navigates to the Web server in the file open dialog box.
3. The user selects a document from the Web server and chooses to open it in the client application.
4. The client application issues an HTTP OPTIONS request to the Web server to determine the capabilities of the server.
5. The client application examines the response from the server and determines:
 - The Web authoring protocol to use (as described in **Alternate Scenarios** following).
 - The document management features to turn on.
6. The client application uses the File Synchronization via SOAP over HTTP Protocol [\[MS-FSSHTTP\]](#) to download the document.
7. The client application determines that the Web server supports the FrontPage Server Extensions: Website Management Protocol [\[MC-FPSEWM\]](#) and turns on the relevant document management features as described in section [2.1.3](#).

Alternate Scenarios

- The Web server does not support the File Synchronization via SOAP over HTTP Protocol, but does support the WebDAV protocol described in HTTP Extensions for Distributed Authoring WebDAV [RFC2518] and the FrontPage Server Extensions Remote Protocol [MS-FPSE]. In this case the document is downloaded by using the WebDAV protocol described in HTTP Extensions for Distributed Authoring WebDAV and the relevant document management features are turned on. The file is downloaded in read/write mode.
- The Web server does not support the File Synchronization via SOAP over HTTP Protocol or the FrontPage Server Extensions: Web Site Management Protocol, but does support the WebDAV protocol described in HTTP Extensions for Distributed Authoring WebDAV. In this case the document is downloaded by using the WebDAV protocol; however, none of the document management features are turned on. The file is downloaded in read/write mode.
- The Web server does not support the File Synchronization via SOAP over HTTP Protocol, FrontPage Server Extensions: Web Site Management Protocol, or the WebDAV protocol described in HTTP Extensions for Distributed Authoring WebDAV. However, the Web server does support the Hypertext Transfer Protocol -- HTTP/1.1 [RFC2068]. In this case the file is downloaded in read-only mode and none of the document management features are turned on.

2.5.3 Open a Historical Version of a File from a Web Server

Use Case Diagram

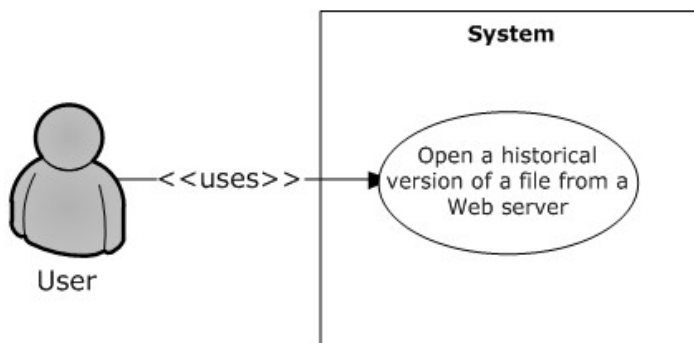


Figure 3: Process for opening a historical version of a file from a Web server

Preconditions

- The protocol client can connect to the server that hosts the document.
- The user has permissions to access the document on the Web server.
- The server supports the FrontPage Server Extensions: Web Site Management Protocol [MC-FPSEWWM].
- The server responds with an OPTIONS header described in the following table.

Client version	MicrosoftSharePointTeamServices OPTIONS header	DocumentManagementServer OPTIONS header	Enabled
Microsoft Office 2003	Exists	Any (exists or not); not checked	Yes

Client version	MicrosoftSharePointTeamServices OPTIONS header	DocumentManagementServer OPTIONS header	Enabled
The 2007 Microsoft Office system	Exists with no value or a value less than 12	Any (exists or not)	Yes
The 2007 Office system	Any (exists or not)	Exists with value Version History	Yes
Microsoft Office 2010 suites	Exists with no value or a value less than 12	Any (exists or not)	Yes
Office 2010	Any (exists or not)	Exists with value Version History	Yes
Microsoft Office 2013	Exists with no value or a value less than 12	Any (exists or not)	Yes
Office 2013	Any (exists or not)	Exists with value Version History	Yes

Main Flow

1. The user chooses to view the historical versions that are available on the Web server for a document that is already open from an entry point in the client application.
2. The user selects a historical version of the document to open.
3. The historical version is downloaded from the Web server and opened in read-only mode in the client application.

2.5.4 Use Information Rights Management

Use Case Diagram

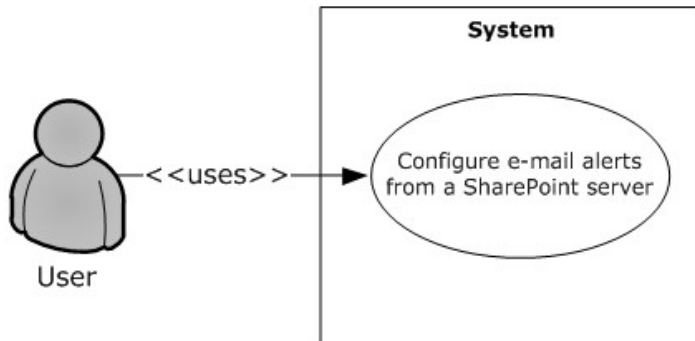


Figure 4: Process for protecting a document with rights management

Preconditions

- The protocol client can connect to a server that supports the rights management feature.

Main Flow

1. The user creates a document in the client application.
2. The user selects the option in the client application that enables the use of rights management to protect the document.
3. The client application protects the document, and this process is finished by using the Rights Management Services (RMS): Client-to-Server Protocol [\[MS-RMPR\]](#).

2.5.5 Open a Document by Using an ActiveX Control

Use Case Diagram

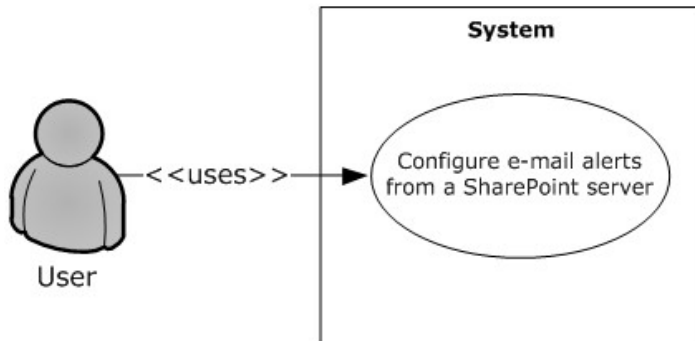


Figure 5: Process for opening a document by using an ActiveX control

Preconditions

- The protocol client can connect to the Web server that hosts the document.
- The protocol client has ActiveX controls enabled in the browser.
- The user has permissions to access the document on the Web server.

Main Flow

1. The user navigates to the Web server in the browser.
2. The user selects the document to open in the client application.
3. The user clicks the hyperlink that points to the document.
4. The user is presented with a dialog box, prompting a choice between opening the document in edit or read-only mode.
5. The user chooses to open the document in edit mode.
6. The client application opens the document by using a file access protocol. Refer to section [2.1.2.1.2](#) for more details.

Alternate Scenario

- The user chooses to open the document in read-only mode. The client application opens the document by using a file access protocol.

2.5.6 Synchronize a SharePoint List with Outlook

Use Case Diagram

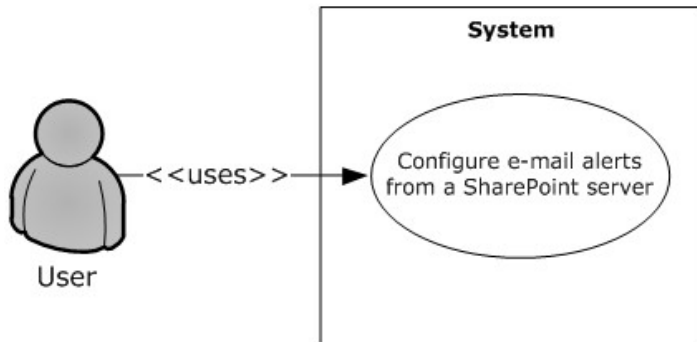


Figure 6: Process for synchronizing a SharePoint list (1) with Outlook

Preconditions

- The protocol client can connect to the server that hosts the list (1).
- The user has permissions to access the list (1) on the Web server.

Main Flow

1. The user navigates to the Web server and chooses to connect the list (1) to the protocol client.
2. The browser generates the protocol URL, which it hands off to the operating system that is registered to the protocol client.
3. The user reads the client prompt and accepts syncing the list (1) to the protocol client. In this scenario the following protocols for syncing the list data are used:
 - The StsSync Data Structure [\[MS-STSSYN\]](#) for generating the protocol URL.
 - The Lists Web Service Protocol [\[MS-LISTSWS\]](#) for obtaining the client copies of the server data.
 - The Lists Client Sync Protocol [\[MS-OUTSPS\]](#) for determining how the protocol client handles the list schema.

2.5.7 Receive E-mail Alerts in Outlook from a SharePoint Server

Use Case Diagram

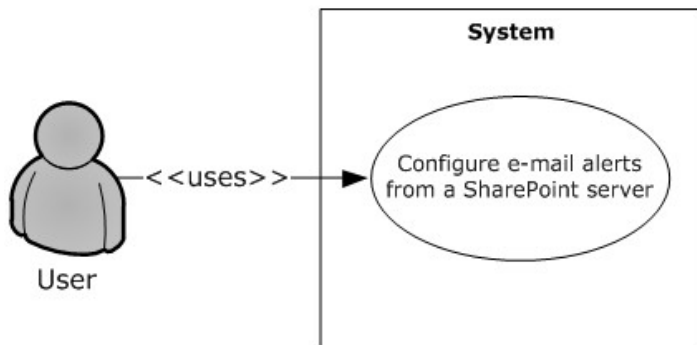


Figure 7: Process for receiving e-mail alerts from a SharePoint server

Preconditions

- The Web server is able to send Internet messages.
- The protocol client is able to receive Internet messages and interpret X-header fields.

Main Flow

1. The user navigates to the Web server, supplies an e-mail address, and configures alerts to be sent by e-mail.
2. The user receives an alert e-mail in the client application. In this scenario the following protocols are used:
 - The Internet Message Format [\[RFC2822\]](#) for generating a standard Internet message and storing additional alert information in the X-header fields on the Web server.
 - The Alerts Interoperability Protocol [\[MS-OSALER\]](#) for parsing this extra information, displaying icons for this message type, and cataloging the alert subscription in the client application.
 - The Alerts Service Protocol [\[MS-ALERTSS\]](#) for allowing the user to manage the alert subscriptions in the client application.

2.5.8 Publish an Access Database Application to a Web Server

Use Case Diagram

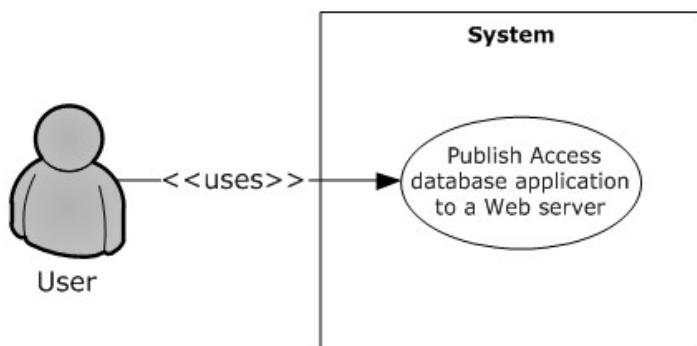


Figure 8: Process for publishing an Access database application to a Web server

Preconditions

- The protocol client can connect to the Web server that hosts the published Microsoft Access 2013, Microsoft Access 2010, or Microsoft Office Access 2007 database application.
- The user has permissions to create the Access 2013, Access 2010, or Office Access 2007 database application on the Web server.

Main Flow

1. The user opens the Access 2013, Access 2010, or Office Access 2007 client application.
2. The user creates the Access 2013, Access 2010, or Office Access 2007 database in the client application.
3. The user types the URL to the Access 2013, Access 2010, or Office Access 2007 application in the Publish Form dialog box. In this scenario the following protocols are used:
 - The Sites Web Service Protocol [\[MS-SITESS\]](#) for Site Template instantiation.
 - The Lists Web Service Protocol [\[MS-LISTSWS\]](#) for creating lists for each of the tables in the database application.
 - The Access Services Protocol [\[MS-ASWS\]](#) for moving data from the client cache to the lists on the Web server.

Browser-enabled database applications do not support all available Access 2013, Access 2010, or Office Access 2007 features. Application users who need to use database objects that are not supported in the Web browser can publish the database application, but are required to use the Access 2013, Access 2010, or Office Access 2007 client application to use those objects.

Updating a previously published database application uses the same set of protocols and a very similar process.

2.5.9 Publish an InfoPath Form to a Server

For a user to be able to fill out an Microsoft InfoPath 2013, Microsoft InfoPath 2010, or Microsoft Office InfoPath 2007 form, the form template is published to a network server where the user can access it. Servers running Microsoft SharePoint Server frequently act as these servers.

When using form files to store the data for an electronic form (2), a form template can be filled out by users in one of two ways: in the Web browser or in a client application such as InfoPath 2013, InfoPath 2010, or Office InfoPath 2007. If the form template is published as a browser-enabled form template, users can fill it out in a Web browser by using InfoPath Forms Services or by using the InfoPath 2013, InfoPath 2010, or Office InfoPath 2007 client application. If the form template is not published as a browser-enabled form template, users can complete it only if they have the InfoPath 2013, InfoPath 2010, or Office InfoPath 2007 client application installed. Some InfoPath 2013, InfoPath 2010, or Office InfoPath 2007 features are not available for browser-enabled form templates.

When using lists to store the data for an electronic form (2), a form template can be filled out by users in one of two ways: in the Web browser using Microsoft SharePoint Server 2013 or Microsoft SharePoint Server 2010, or in a client such as Microsoft SharePoint Workspace 2010.

The following sections provide an overview of the primary ways that an InfoPath 2013, InfoPath 2010, or Office InfoPath 2007 form template can be published.

2.5.9.1 Publish a Non-Browser-Enabled Form Template to the Server

Use Case Diagram

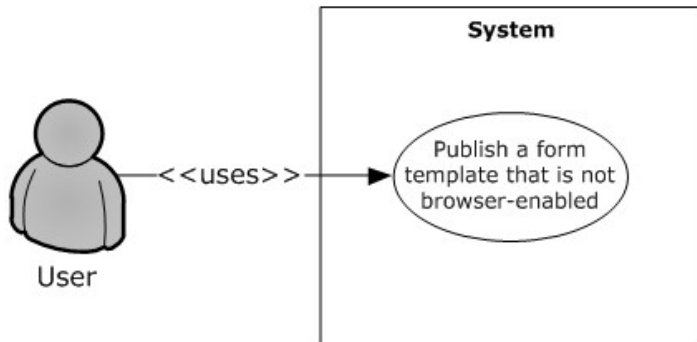


Figure 9: Process for publishing a non-browser-enabled form template

Preconditions

- The protocol client can connect to the server that hosts the published Microsoft InfoPath 2013, Microsoft InfoPath 2010, or Microsoft Office InfoPath 2007 form template.
- The user has permissions to create the InfoPath 2013, InfoPath 2010, or Office InfoPath 2007 form template on the server.

Main Flow

1. The user opens the InfoPath 2013, InfoPath 2010, or Office InfoPath 2007 client application.
2. The user creates the form template in the client application.
3. The user types the URL to the InfoPath 2013, InfoPath 2010, or Office InfoPath 2007 form template in the Publish Form dialog box. In this scenario the following protocols are used:
 - The FrontPage Server Extensions Remote Protocol [\[MS-FPSE\]](#) for getting Web site metadata, setting file properties, and performing file operations such as renaming.
 - The Windows SharePoint Services Collaborative Application Protocol [\[MS-WSSCAP\]](#) for performing the document library operations.
 - The Webs Web Service Protocol [\[MS-WEBSS\]](#) for getting site URLs and column fields.
 - The Lists Web Service Protocol [\[MS-LISTSWS\]](#) for managing content types.
4. The form template is uploaded to the server. In this scenario the Web Distributed Authoring and Versioning (WebDAV) Protocol: Client Extensions [\[MS-WDV\]](#) is used to upload the file.

Browser-enabled form templates do not support all available InfoPath 2013, InfoPath 2010, or Office InfoPath 2007 features. Form designers who need to use features that are not supported in the Web browser can publish a form template without enabling it for Web browsers. As a result, users are required to use the InfoPath 2013, InfoPath 2010, or Office InfoPath 2007 client application to complete it.

Updating a previously published form template uses the same set of protocols and a very similar process.

2.5.9.2 Publish a Browser-Enabled Form Template to the Server

Use Case Diagram

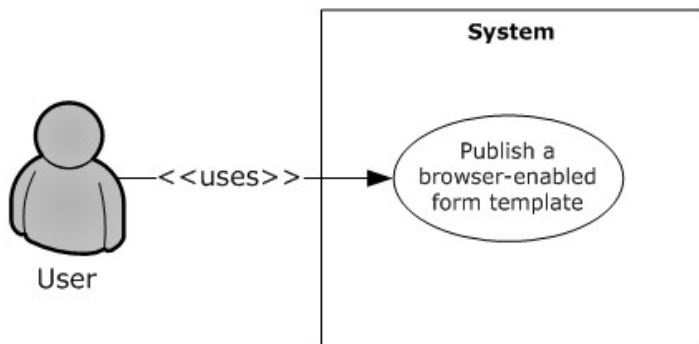


Figure 10: Process for publishing a browser-enabled form template

Preconditions

- The protocol client can connect to the server that hosts the published Microsoft InfoPath 2013, Microsoft InfoPath 2010, or Microsoft Office InfoPath 2007 form template.
- The user has permissions to create the InfoPath 2013, InfoPath 2010, or Office InfoPath 2007 form template on the server.

Main Flow

1. The user opens the InfoPath 2013, InfoPath 2010, or Office InfoPath 2007 client application.
2. The user creates the form template in the client application.
3. The user types the URL to the InfoPath 2013, InfoPath 2010, or Office InfoPath 2007 form template in the Publish Form dialog box. In this scenario the following protocols are used:
 - The FrontPage Server Extensions Remote Protocol [\[MS-FPSE\]](#) for getting Web site metadata, setting file properties, and performing file operations such as renaming.
 - The Windows SharePoint Services Collaborative Application Protocol [\[MS-WSSCAP\]](#) for document library operations.
 - The Webs Web Service Protocol [\[MS-WEBSS\]](#) for getting site URLs and column fields.
 - The Lists Web Service Protocol [\[MS-LISTSWS\]](#) to manage content types.
 - The Forms Services Feature Detection Protocol [\[MS-FSFD\]](#) to detect the presence of InfoPath Forms Services on the server.
4. The form template is uploaded to the server. In this scenario the Web Distributed Authoring and Versioning (WebDAV) Protocol: Client Extensions [\[MS-WDV\]](#) is used to upload the file.
5. The Forms Services Design and Activation Web Service Protocol [\[MS-FSDAP\]](#) is used to browser-enable the form template.

Updating a previously published form template uses the same set of protocols and a very similar process.

List content types are used to publish a form template to a list (1) on servers running Microsoft SharePoint Server 2013 or Microsoft SharePoint Server 2010. For more information, see [MS-LISTSWS].

2.5.10 View the First Slide of a Broadcast Presentation in a Web Browser

Use Case Diagram

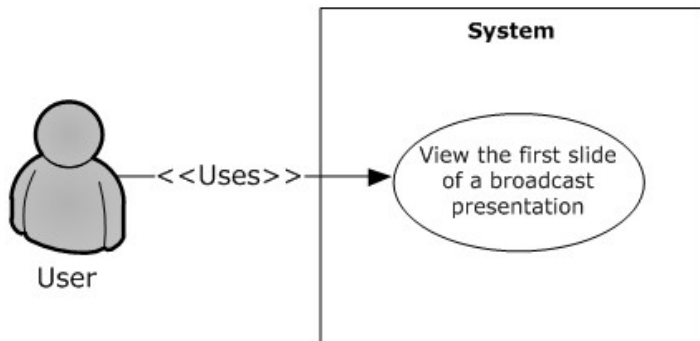


Figure 11: Process for viewing the first slide of a broadcast presentation in a Web browser

Preconditions

- The protocol client is a Web application.
- The protocol client can connect to the server that hosts the document.
- The user has permissions to access the server.
- The protocol client has obtained the identifier of a broadcast presentation that was uploaded by using the PowerPoint Web Broadcast Host Protocol [\[MS-PWBHPS\]](#).

Main Flow

1. A user navigates to a Web page to view a presentation.
2. The protocol client sends the URL of the presentation document by using the PowerPoint Web Editor Data Protocol [\[MS-PWEDPS\]](#).
3. The protocol server finds the document and issues a response that includes an identifier for the document.
4. The protocol client uses the PowerPoint Web Viewer Presentation Data Protocol [\[MS-PWVPDP\]](#) to retrieve the URL of an image of the first slide of the presentation.
5. The protocol client displays the image at this URL.

2.5.11 Start a Broadcast Slide Show

Use Case Diagram

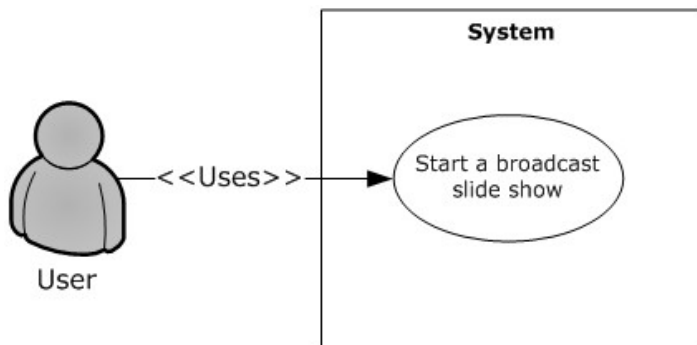


Figure 12: Process for starting a broadcast slide show

Preconditions

- The protocol client can connect to the broadcast server.
- The user has permissions to upload files to the server.

Main Flow

1. The user opens a presentation in the client application and chooses to start a broadcast slide show.
2. The user selects a broadcast service to connect to.
3. Microsoft PowerPoint 2010 or Microsoft PowerPoint 2013 connects to the service and starts the broadcast. It uses the following protocols:
 - The PowerPoint Web Broadcast Discovery Protocol [\[MS-PWBDPS\]](#) to retrieve the URL of a compatible PowerPoint Web Broadcast Host Protocol [\[MS-PWBHPS\]](#) service.
 - The PowerPoint Web Broadcast Host Protocol to retrieve the URL to upload the file, retrieve the URL of a PowerPoint Web Broadcast Protocol [\[MS-PWBPS\]](#) service, and retrieve an attendee URL.
 - The HTTP Extensions for Distributed Authoring WebDAV [\[RFC2518\]](#) to upload the file.
 - The PowerPoint Web Broadcast Protocol [\[MS-PWBPS\]](#) to create a session and set the initial state of the broadcast.
4. The user shares the broadcast attendee URL provided by the PowerPoint Web Broadcast Host Protocol.
5. The user begins presenting.

Alternate Scenarios

- The server does not support WebDAV. In this case, PowerPoint 2010 or PowerPoint 2013 uploads the file using an HTTP POST request with the file data included in the message body.

2.5.12 Synchronize IME with a Remote List

Use Case Diagram

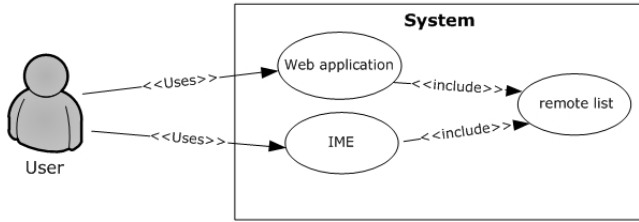


Figure 13: Process for synchronizing with a remote list

Preconditions

- The protocol client can connect to the remote list (1).
- The user has permissions to download list (1) contents from the remote list (1) by using the Lists Web Service Protocol [\[MS-LISTSWS\]](#).
- The remote list (1) has the item scheme described in [\[MS-IMESYN\]](#).

Main Flow

1. The user clicks a link or button on a Web page.
2. The Web page issues the URI protocol string described in the IMESync Syntax Structure [MS-IMESYN].
3. An **IME** component is launched and passed the URI protocol string.
4. The IME component parses the URI protocol string and extracts the location of the remote list (1).
5. The IME component downloads the list (1) contents in the located remote list (1) by using the Lists Web Service Protocol [MS-LISTSWS].
6. The IME component parses the list (1) contents and builds an IME custom dictionary from it by using these list (1) contents as custom words.
7. IME starts using this newly created custom dictionary with other existing IME dictionaries.

2.5.13 Publish an Excel Workbook to a SharePoint Library

Use Case Diagram

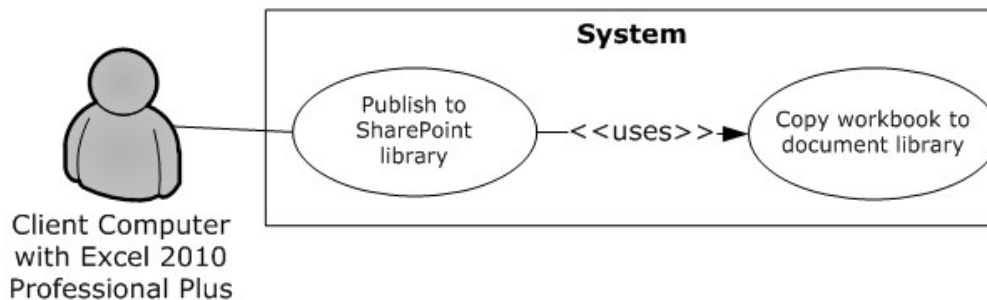


Figure 14: Process for publishing an Excel workbook to a SharePoint library

Preconditions:

- The user can connect to the site (2) that includes the SharePoint library for the published Microsoft Excel 2013, Microsoft Excel 2010, or Microsoft Office Excel 2007 workbook.
- The user has permissions to save files to a SharePoint document library.

Main flow:

1. The user opens the Excel 2013, Excel 2010, or Office Excel 2007 client application.
2. The user creates an Excel 2013, Excel 2010, or Office Excel 2007 workbook.
3. The user initiates publishing from Excel 2013, Excel 2010, or Office Excel 2007.
4. Excel 2013, Excel 2010, or Office Excel 2007 creates a file in a SharePoint document library. The web authoring protocol used to create the file is selected by the processes defined in section [2.1.2.1.2](#) above.
5. If requested, the workbook opens in a browser by using a URL that is specified according to the Excel Services Publishing Protocol, as described in [\[MS-ESURL\]](#).

2.6 Versioning, Capability Negotiation, and Extensibility

None.

2.7 Error Handling

None.

2.8 Coherency Requirements

None.

2.9 Security

Please refer directly to the protocols listed in section [2.2](#) for detailed information about protocol security.

2.10 Additional Considerations

None.

3 Examples

The examples in the following sections provide more information about the use and operation of the Office Client Protocols system. Protocol-level examples can be found in the individual protocol documents. The following system-level examples are provided in this document:

- Open a document from a Web server gated by forms authentication
- Check out and check in a document
- Synchronize a SharePoint list with Outlook
- View the first slide of a presentation in a Web browser
- Start a broadcast slide show
- Synchronize IME with a remote list

3.1 Example 1: Open a Document from a Web Server Gated by Forms Authentication

This example demonstrates how a document is opened from a Web server that is gated by forms authentication. This example builds on the use cases covered in "Authenticate Against a Web Server That Is Gated by Forms Authentication" (section [2.5.1](#)) and "Download a Document from a Web Server" (section [2.5.2](#)).

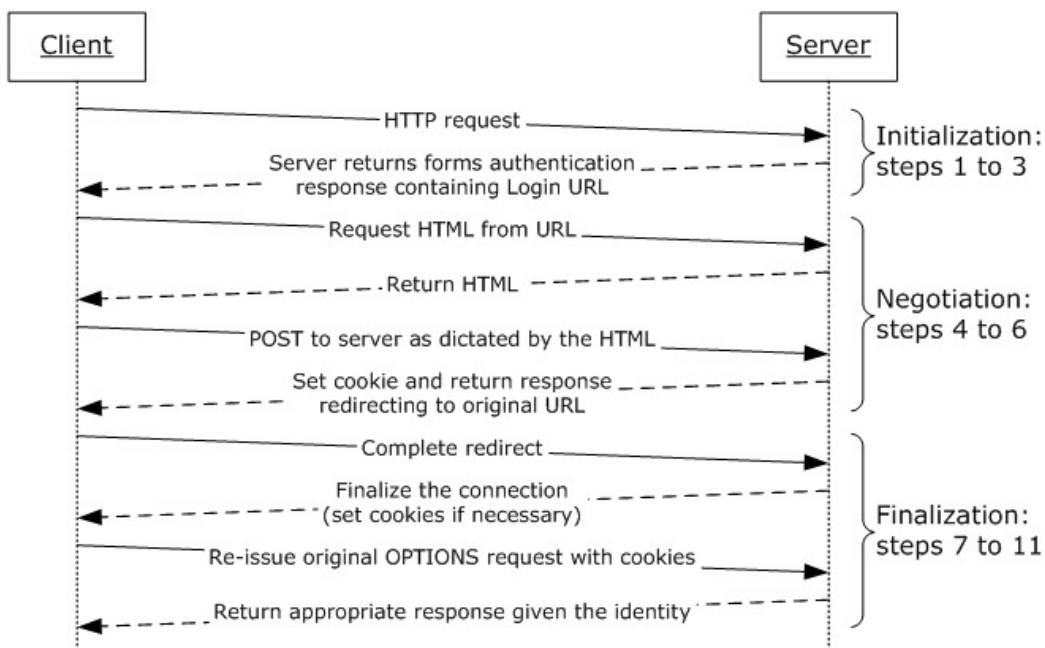


Figure 15: Sequence for opening a document from a Web server gated by forms authentication

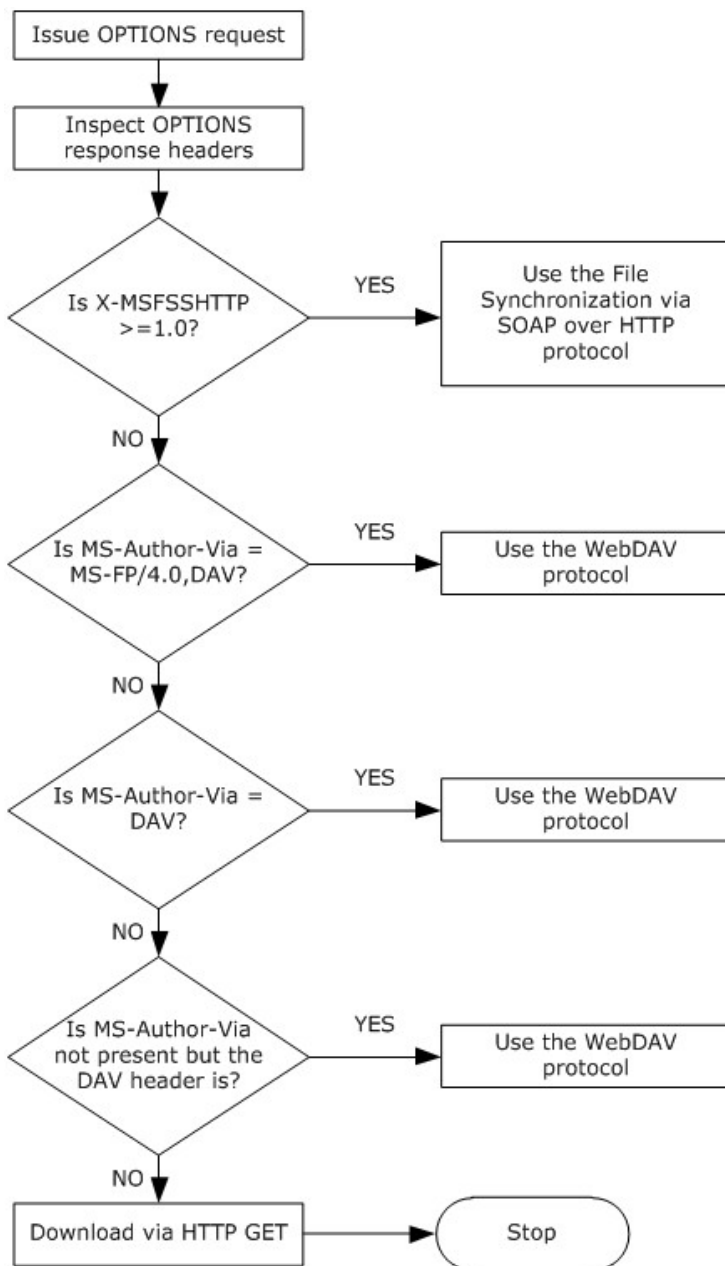


Figure 16: Process for selecting the file access protocol

Preconditions

- The protocol client can connect to the server that hosts the document.
- The user has permissions to access the document on the server.
- The Web server is configured such that the user’s identity is established by using forms authentication. The user’s identity is transferred between the protocol client and the server by using HTTP state management as described in HTTP State Management Mechanism [\[RFC2109\]](#).

- The protocol client is configured to store and transmit cookies as described in HTTP State Management Mechanism [\[RFC2109\]](#).

Main Flow

1. The user attempts to download an access-protected document from a Web server that is gated by forms authentication.
2. Prior to downloading the document, the client application attempts to determine the capabilities of the Web server by making an HTTP OPTIONS request.
3. The server issues a response indicating that it is capable of forms authentication in a format described by the Office Forms Based Authentication Protocol [\[MS-OFBA\]](#).
4. The protocol client follows the Office Forms Based Authentication Protocol and issues an HTTP request for the HTML form (2) that the user can use to establish identity.
5. On receipt of the HTML from the Web server, the protocol client instantiates a dialog box and renders the form (2).
6. The user then interacts with the form (2) to establish identity.
7. The Web server then responds with any finalization logic required.
8. Once this process is finished and the user's identity has been established, the protocol client issues an HTTP OPTIONS request to the server again to determine the capabilities of the server.
9. The Web server issues a response containing the headers **X-MSFSSHTTP=1.0** and **MS-Author-Via=MS-FP/4.0,DAV**. The **MS-Author-Via** header is described in Web Distributed Authoring and Versioning (WebDAV) Protocol: Server Extensions [\[MS-WDVSE\]](#).
10. The client application then downloads the file from the Web server by using the File Synchronization via SOAP over HTTP Protocol [\[MS-FSSHTTP\]](#).
11. The client application uses the FrontPage Server Extensions Remote Protocol [\[MS-FPSE\]](#) for document management functionality such as version history, check in and check out features, and the property panel, which are described in section [2.1.3](#).

3.2 Example 2: Check Out and Check In a Document

This example demonstrates the process for checking in and checking out a document from a Web server that supports the check in and check out features. This example builds on the use cases covered in "Download a Document from a Web Server" (section [2.5.2](#)) and "Open a Historical Version of a File from a Web Server" (section [2.5.3](#)).

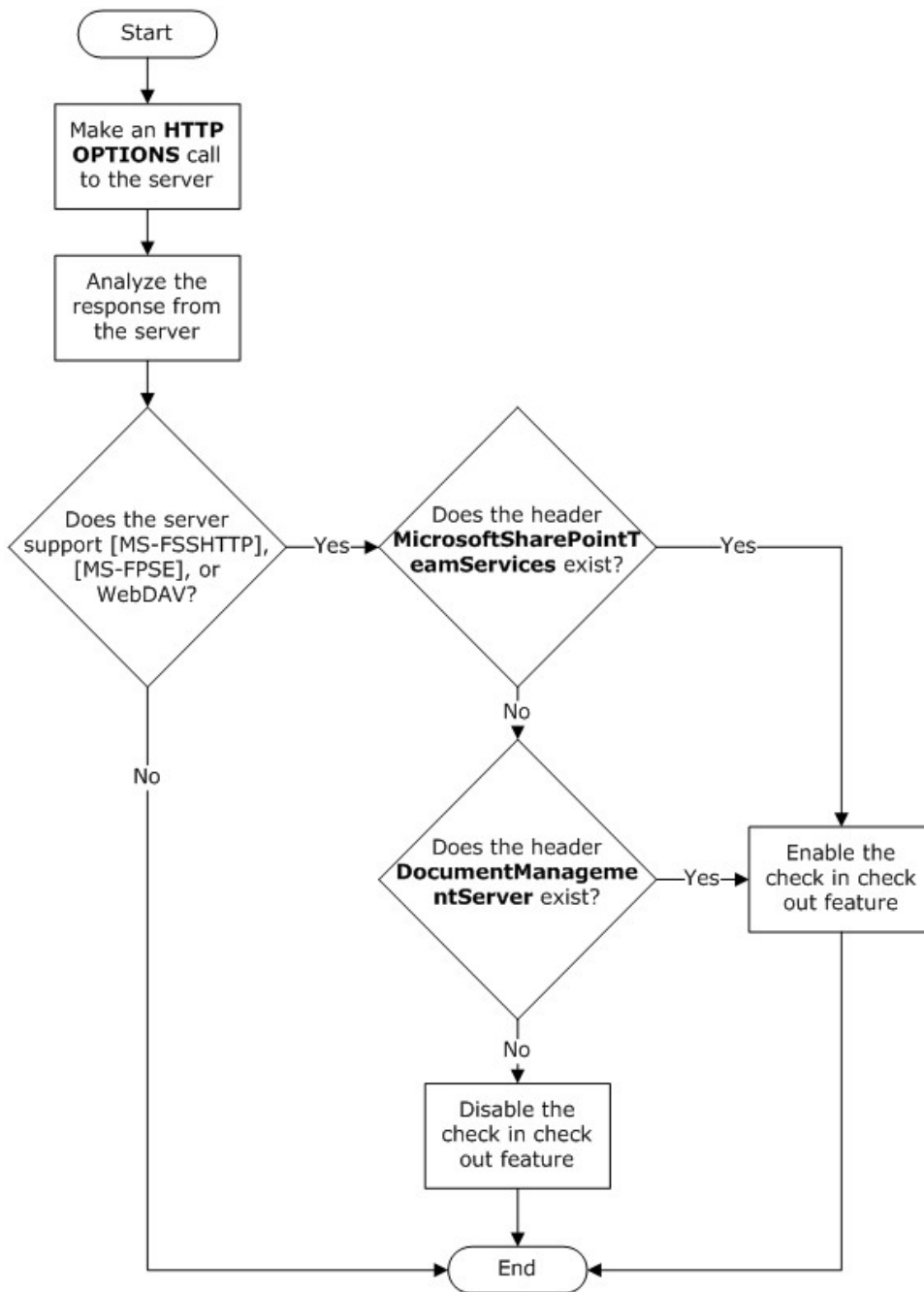


Figure 17: Process for enabling the check in and check out features in client applications

Preconditions

- The user has a document open from a Web server that supports the check in and check out features.
- The table in section [2.1.3.1.3](#) describes the conditions in which the client applications enable the check in and check out features.

- The user has permission to check out and edit the document on the Web server.

Main Flow

1. The user navigates to the option in the client application to check out the document.
2. The document is checked out from the Web server by using the Lists Web Service Protocol [MS-LISTSWS].
3. The user edits the document.
4. The user chooses the option in the client application for document to be checked in after upload.
5. The document is uploaded to the server by an HTTP PUT request. The Web authoring protocol, selected as described in example section 3.1, is used to lock and unlock the specific file on the server.
6. After the document has been uploaded to the server, the client application checks the document in by using the Lists Web Service Protocol [MS-LISTSWS].

3.3 Example 3: Synchronize a SharePoint List with Outlook

This example illustrates the process for synchronizing a SharePoint list (1) with a client application implementing the Lists Client Sync Protocol [MS-OUTSPS], such as Microsoft Outlook. It corresponds to the use case described in "Synchronize a SharePoint List with Outlook" (section 2.5.6).

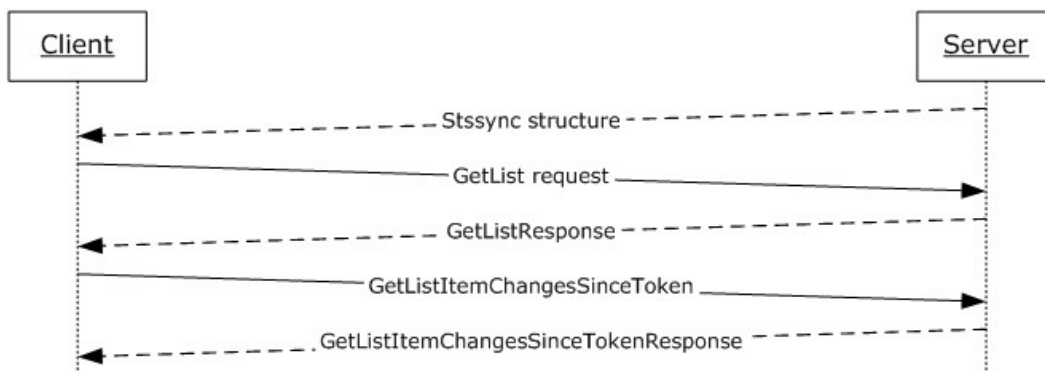


Figure 18: Sequence for synchronizing a SharePoint list (1) with Outlook

Preconditions

- The client application is an implementer of the Lists Client Sync Protocol [MS-OUTSPS].
- The client application can connect to the server that hosts the list (1).
- The user has permissions to access the list (1) on the server.

Main Flow

1. The user navigates to the Web server and connects the list (1) to the client application.
2. The browser generates the protocol URL, which it hands off to the operating system by using the StsSync Data Structure [MS-STSSYN].

3. The client application receives the protocol URL and parses it according to the StsSync Data Structure [MS-STSSYN].
4. Using the information obtained from the StsSync structure, the client application sends a **GetList** request to the server, as described in the Lists Web Service Protocol [MS-LISTSWS].
5. Using the Lists Web Service Protocol [MS-LISTSWS], the server responds with a **GetListResponse** call containing the **ListDefinitionSchema**.
6. The client application processes the **ListDefinitionSchema**, determining which fields are relevant.
7. Using the Lists Web Service Protocol [MS-LISTSWS], the client application sends a **GetListItemChangesSinceToken** request to the server that includes the relevant fields from the **ListDefinitionSchema** and the **GetListItemChangesSinceToken.viewFields.ViewFields** structure.
8. The server responds with the Lists Web Service Protocol [MS-LISTSWS] **GetListItemChangesSinceTokenResponse** call containing items in the list (1).
9. The client application processes the items in the **GetListItemChangesSinceTokenResponse**, as described in [MS-OUTSPS].
10. The client application processes the attributes of the **GetListItemChangesSinceTokenResponse** and determines whether more items are present. If so the client proceeds to step 7.
11. The client application adds the items to its local storage by sending an HTTP GET request.

3.4 Example 4: View the First Slide of a Presentation in a Web Browser

This example illustrates the process for viewing the first slide of a presentation in a Web Browser. It corresponds to the use case described in "View the First Slide of a Broadcast Presentation in a Web Browser" (section [2.5.10](#)).

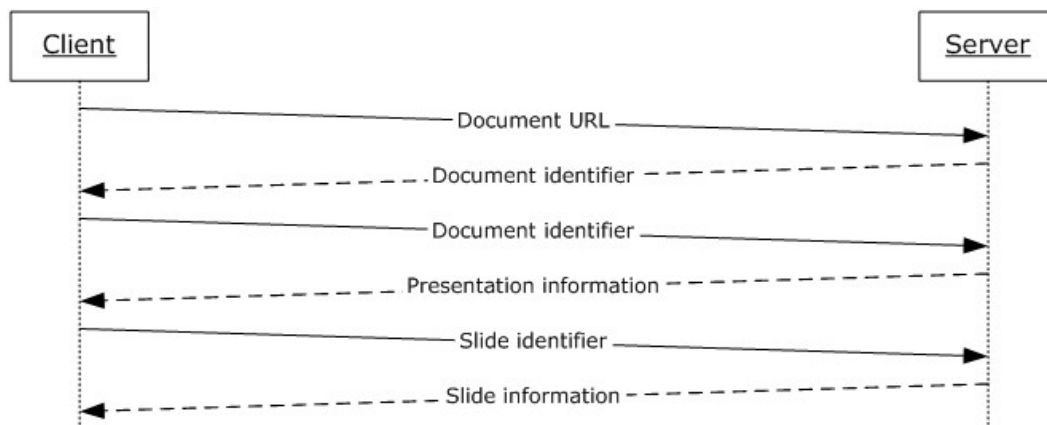


Figure 19: Sequence for viewing the first slide of a presentation in a Web browser

Preconditions

- The client application is a Web page.

- The client application can connect to the server that hosts the document.
- The user has permissions to access the document on the server.
- The client application has obtained the URL of the document stored on the server.

Main Flow

1. The user opens the client application in a Web browser.
2. The client application sends a request to the server with the URL of the document by using the PowerPoint Web Editor Data Protocol [\[MS-PWEDPS\]](#).
3. The server finds the document and issues a response that includes an identifier for this document.
4. The client application sends a request to the server for information about the presentation by using the PowerPoint Web Viewer Presentation Data Protocol [\[MS-PWVPDP\]](#).
5. The server loads the requested document and extracts information about the presentation.
6. The server issues a response with information about the presentation including a list of slides in the presentation.
7. The client application sends a request for information about the first slide in the list by using the PowerPoint Web Viewer Presentation Data Protocol [\[MS-PWVPDP\]](#).
8. The server issues a response with information about this slide, including the background appearance, a list of shapes, and a list of image resources.
9. The client application sends a request for each of the image resources.
10. The client application renders the slide by using the slide information and images returned by the server.

3.5 Example 5: Start a Broadcast Slide Show

This example illustrates the process for starting a broadcast slide show session. It corresponds to the use case described in "Start a Broadcast Slide Show" (section [2.5.11](#)).

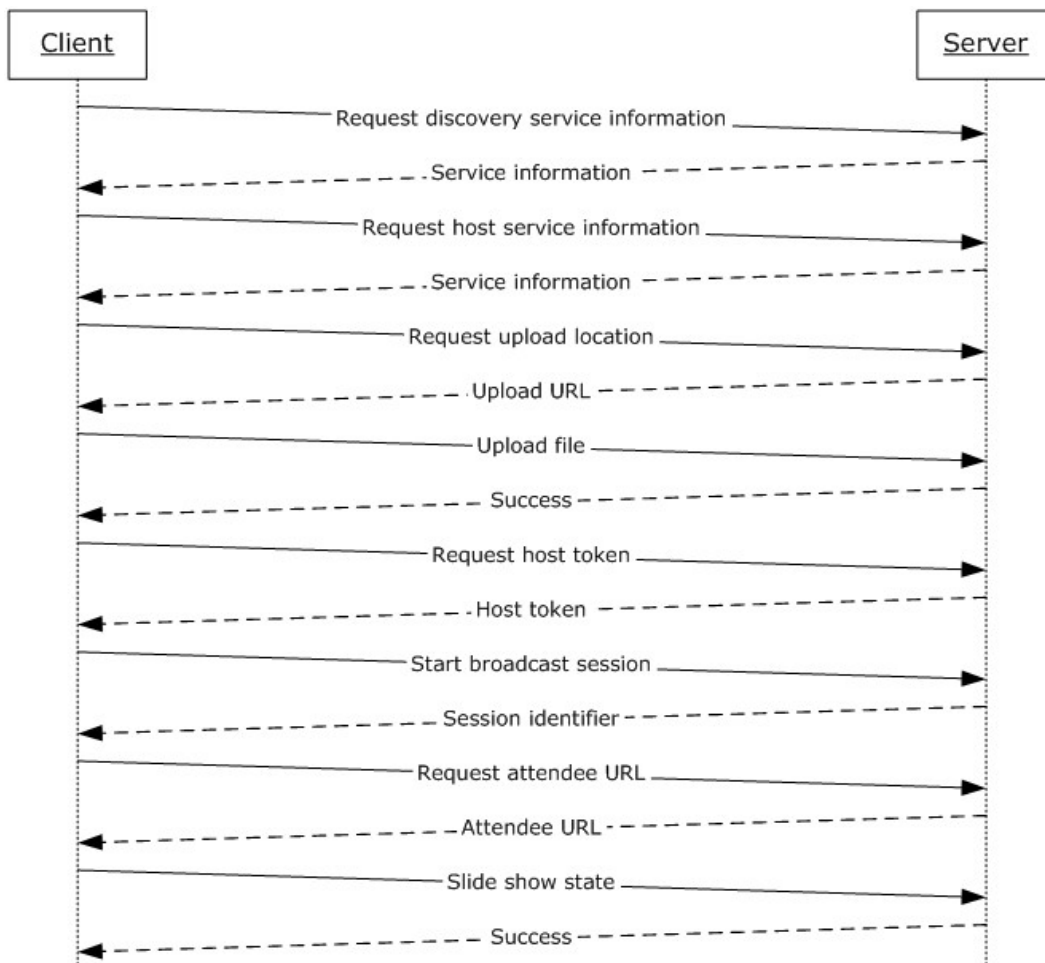


Figure 20: Sequence for starting a broadcast slide show

Preconditions

- The protocol client can connect to the broadcast server.
- The user has permissions to start a broadcast on the server.

Main Flow

1. The user chooses to start a broadcast in the client application.
2. The protocol client sends a request to the server for host information by using the PowerPoint Web Broadcast Discovery Protocol [\[MS-PWBDPS\]](#).
3. The server issues a response with the version number and URL of a service that implements the PowerPoint Web Broadcast Host Protocol [\[MS-PWBHPS\]](#).
4. The protocol client sends a request for server information to this URL by using the PowerPoint Web Broadcast Host Protocol [\[MS-PWBHPS\]](#).

5. The server issues a response with information about the service, including the capabilities it supports, the URL of a service that implements the PowerPoint Web Broadcast Protocol [[MS-PWBPS](#)], and the method that the protocol client can use to upload the file: HTTP Extensions for Distributed Authoring WebDAV [[RFC2518](#)] or an HTTP POST request.
6. The protocol client sends a request for the location to upload the presentation.
7. The server replies with the URL of an upload location.
8. The protocol client uploads the presentation to the specified location by using the protocol specified in step 5.
9. The protocol client sends a request for a broadcast host token by using the PowerPoint Web Broadcast Host Protocol [MS-PWBHPS].
10. The server generates a host token that represents the uploaded file and issues a response with this identifier.
11. The protocol client sends a request to start a broadcast session by using the PowerPoint Web Broadcast Protocol [MS-PWBPS].
12. The server generates a unique identifier for the session and stores information about the session.
13. The server issues a response with the session identifier.
14. The protocol client sends this session identifier in a request to generate an attendee URL by using the PowerPoint Web Broadcast Host Protocol [MS-PWBHPS].
15. The server generates a unique attendee URL for the session and issues a response with this URL.
16. The protocol client displays this URL to the user so they can share it with remote attendees.
17. The user starts presenting in the client application.
18. The protocol client sends information about the state of the slide show to the server by using the PowerPoint Web Broadcast Protocol [MS-PWBPS].

3.6 Example 6: Synchronize IME with a Remote List

This example illustrates the process for synchronizing a custom dictionary of IME with a remote list (1). It corresponds to the use case described in "Synchronize IME with a Remote List" (section [2.5.12](#)).

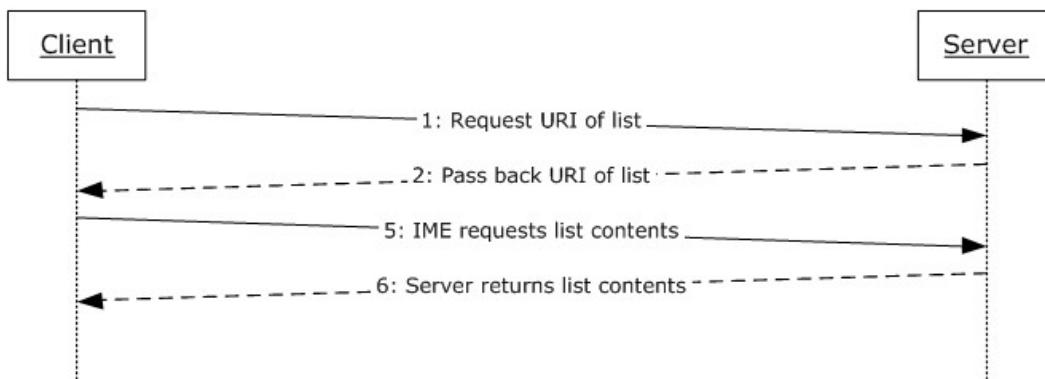


Figure 21: Sequence for synchronizing IME with a remote list

Preconditions

- The protocol client can connect to the remote list (1).
- The user has permissions to download list (1) contents from the remote list (1) by using the Lists Web Service Protocol [\[MS-LISTSWS\]](#).
- The remote list (1) has the item scheme described in the IMESync Syntax Structure Protocol [\[MS-IMESYN\]](#).

Main Flow

1. The user clicks a link or button on a Web page to issue the URI protocol string described in the IMESync Syntax Structure Protocol [\[MS-IMESYN\]](#).
2. The protocol server passes the URI protocol string back to the protocol client.
3. On the protocol client side an IME component is launched and passed the URI protocol string.
4. The IME component parses the URI protocol string and extracts the location of the remote list (1).
5. The protocol client sends a request to get the list (1) contents to the server located by the URI protocol string by using the Lists Web Service Protocol [\[MS-LISTSWS\]](#).
6. The server returns the list (1) contents by using the Lists Web Service Protocol [\[MS-LISTSWS\]](#).
7. The protocol client receives the list (1) contents and converts it to an IME custom dictionary.
8. IME starts using this newly created custom dictionary with another existing IME dictionary.

4 Microsoft Implementations

There are no variations in the behavior of the Office Client Protocols system in different versions of Microsoft Office 2003, the 2007 Microsoft Office system, Microsoft Office 2010 suites and Microsoft Office 2013 beyond those described in the specifications of the protocols supported by the system, as listed in section [2.2](#).

4.1 Product Behavior

Exceptions, if any, are noted below. If a service pack or Quick Fix Engineering (QFE) number appears with the product version, behavior changed in that service pack or QFE. The new behavior also applies to subsequent service packs of the product unless otherwise specified. If a product edition appears with the product version, behavior is different in that product edition.

[<1> Section 2.1.20](#): This service is available only in Office 2013.

[<2> Section 2.1.21](#): This interface is available only in Office 2013.

[<3> Section 2.2.10](#): This service is available only in Office 2013.

[<4> Section 2.2.11](#): This interface is available only in Office 2013.

5 Change Tracking

This section identifies changes that were made to the [MS-OCPROTO] protocol document between the October 2012 and February 2013 releases. Changes are classified as New, Major, Minor, Editorial, or No change.

The revision class **New** means that a new document is being released.

The revision class **Major** means that the technical content in the document was significantly revised. Major changes affect protocol interoperability or implementation. Examples of major changes are:

- A document revision that incorporates changes to interoperability requirements or functionality.
- An extensive rewrite, addition, or deletion of major portions of content.
- The removal of a document from the documentation set.
- Changes made for template compliance.

The revision class **Minor** means that the meaning of the technical content was clarified. Minor changes do not affect protocol interoperability or implementation. Examples of minor changes are updates to clarify ambiguity at the sentence, paragraph, or table level.

The revision class **Editorial** means that the language and formatting in the technical content was changed. Editorial changes apply to grammatical, formatting, and style issues.

The revision class **No change** means that no new technical or language changes were introduced. The technical content of the document is identical to the last released version, but minor editorial and formatting changes, as well as updates to the header and footer information, and to the revision summary, may have been made.

Major and minor changes can be described further using the following change types:

- New content added.
- Content updated.
- Content removed.
- New product behavior note added.
- Product behavior note updated.
- Product behavior note removed.
- New protocol syntax added.
- Protocol syntax updated.
- Protocol syntax removed.
- New content added due to protocol revision.
- Content updated due to protocol revision.
- Content removed due to protocol revision.
- New protocol syntax added due to protocol revision.

- Protocol syntax updated due to protocol revision.
- Protocol syntax removed due to protocol revision.
- New content added for template compliance.
- Content updated for template compliance.
- Content removed for template compliance.
- Obsolete document removed.

Editorial changes are always classified with the change type **Editorially updated**.

Some important terms used in the change type descriptions are defined as follows:

- **Protocol syntax** refers to data elements (such as packets, structures, enumerations, and methods) as well as interfaces.
- **Protocol revision** refers to changes made to a protocol that affect the bits that are sent over the wire.

The changes made to this document are listed in the following table. For more information, please contact protocol@microsoft.com.

Section	Tracking number (if applicable) and description	Major change (Y or N)	Change type
2.1.21 Web Application Open Platform Interface	Clarified product support for the "Web Application Open Platform Interface".	N	Content updated.

6 Index

A

- [Abstract](#) 1
- Access
 - [overview](#) 27
- Active Directory communications
 - [overview](#) 22
 - [protocols summary](#) 36
- ActiveX controls
 - [list of controls](#) 23
 - [overview](#) 23
- [Additional considerations](#) 59
- Applicable protocols ([section 2.2](#) 31, [section 2.2](#) 31)
- Apps for Office
 - [protocols summary](#) 43
- [Architecture](#) 14
- [Assumptions](#) 45
 - [all client/server protocols](#) 45
 - [mobility](#) 45
- Authenticate against a web server that is gated by forms authentication
 - [overview](#) 46
- Authentication
 - [dependencies - other systems](#) 44
 - [dependencies - this system](#) 44
 - [overview](#) 14
 - [protocols summary](#) 32

C

- [Capability negotiation](#) 59
- [Change tracking](#) 71
- Check out and check in a document
 - [details](#) 62
- Client/server protocols
 - [assumptions and preconditions](#) 45
- [Coherency requirements](#) 59
- [Communications](#) 43
- [Concepts](#) 14
- Considerations
 - [additional](#) 59
 - [security](#) 59
- Customer Experience Improvement Program
 - [protocol discovery and enablement](#) 23
 - [protocols summary](#) 37

D

- Data access
 - [dependencies](#) 44
 - [overview](#) 21
 - [protocols summary](#) 35
- Dependencies – on other systems
 - [authentication](#) 44
 - [mobility](#) 45
- Dependencies – on this system
 - [authentication](#) 44
 - [data access](#) 44

- [document management](#) 44
- [file access](#) 44
- [mobility](#) 44
- [rights management](#) 44
- Design intent
 - [authenticate against a web server that is gated by forms authentication](#) 46
 - [download a document from a web server](#) 47
 - [Excel Services](#) 58
 - [open a document by using an activex control](#) 50
 - [open a historical version of a file from a web server](#) 48
 - [overview](#) 45
 - [publish a browser-enabled form template to the server](#) 55
 - [publish a non-browser-enabled form template to the server](#) 54
 - [publish an access database application to a web server](#) 52
 - [publish an excel workbook to a sharepoint library](#) 58
 - [publish an infopath form to a server](#) 53
 - [receive e-mail alerts in outlook from a sharepoint server](#) 51
 - [start a broadcast slide show](#) 56
 - [synchronize a sharepoint list with outlook](#) 51
 - [synchronize ime with a remote list](#) 57
 - [use information rights management](#) 49
 - [view the first slide of a broadcast presentation in a web browser](#) 56

- Document management
 - [dependencies](#) 44
 - [overview](#) 17
 - [protocols summary](#) 34
- Download a document from a web server
 - [overview](#) 47

E

- [Environment](#) 43
- [Error handling](#) 59
- Error reporting
 - [overview](#) 22
 - [protocols summary](#) 36
- Examples
 - [check out and check in a document](#) 62
 - [open document from Web server gated by forms authentication](#) 60
 - [start a broadcast slide show](#) 66
 - [synchronize a SharePoint list with Outlook](#) 64
 - [synchronize IME with a remote list](#) 68
 - [view first slide of presentation in a Web browser](#) 65
- Excel
 - [overview](#) 25
- Extensibility
 - [Microsoft implementations](#) 70
 - [overview](#) 59

F

File access
[dependencies](#) 44
[overview](#) 14
[protocols summary](#) 33
[Functional architecture](#) 14
[Functional requirements - overview](#) 14

G

[Glossary](#) 7
Groove
[overview](#) 29

H

[Handling requirements](#) 59

I

IMESync Structure
[protocols summary](#) 37
[Implementations - Microsoft](#) 70
[Implementer - security considerations](#) 59
InfoPath
[overview](#) 28
[Informative references](#) 9
[Initial state](#) 45
[Introduction](#) 7

M

[Microsoft Error Reporting](#) 36
[Microsoft implementations](#) 70
Microsoft InfoPath
[overview](#) 28
Microsoft Office Access
[overview](#) 27
[protocols summary](#) 39
Microsoft Office Excel
[overview](#) 25
[protocols summary](#) 38
Microsoft Office Groove
[overview](#) 29
Microsoft Office InfoPath
[protocols summary](#) 40
Microsoft Office OneNote
[protocols summary](#) 40
Microsoft Office Outlook
[protocols summary](#) 42
Microsoft Office PowerPoint
[protocols summary](#) 38
Microsoft Office Publisher
[overview](#) 28
Microsoft Office Word
overview ([section 2.1.10](#) 25, [section 2.1.10](#) 25)
[protocols summary](#) 37
Microsoft OneNote
[overview](#) 27
Microsoft Outlook
[overview](#) 29

Microsoft PowerPoint
[overview](#) 26
Microsoft SharePoint Workspace
[overview](#) 29
Mobility
[assumptions and preconditions](#) 45
[dependencies - other systems](#) 45
[dependencies - this system](#) 44
[overview](#) 30
[protocols summary](#) 42

O

Office broadcast presentation service
[protocols summary](#) 43
OneNote
[overview](#) 27
Open a document by using an activex control
[overview](#) 50
Open a historical version of a file from a web server
[overview](#) 48
Open document from Web server gated by forms authentication
[details](#) 60
Outlook
[overview](#) 29
Overview
[abstract](#) 1
[active directory communications](#) 22
[ActiveX controls](#) 23
[authentication](#) 14
[Customer Experience Improvement Program](#) 23
[data access](#) 21
[document management](#) 17
[file access](#) 14
[Microsoft error reporting](#) 22
[Microsoft InfoPath](#) 28
[Microsoft Office Access](#) 27
[Microsoft Office Excel](#) 25
[Microsoft Office Groove](#) 29
[Microsoft Office Publisher](#) 28
Microsoft Office Word ([section 2.1.10](#) 25, [section 2.1.10](#) 25)
[Microsoft OneNote](#) 27
[Microsoft Outlook](#) 29
[Microsoft PowerPoint](#) 26
[Microsoft SharePoint Workspace](#) 29
[Mobility](#) 30
[rights management](#) 22
summary of protocols ([section 2.2](#) 31, [section 2.2](#) 31)
[synopsis](#) 14

P

PowerPoint
[overview](#) 26
[Preconditions](#) 45
[all client/server protocols](#) 45
[Mobility](#) 45
[Protocol Discovery and Enablement](#) 23
Protocol discovery and feature activation – overview

- [document management](#) 17
- [file access](#) 14
- [Protocols - summary](#) 31
 - [Access protocols summary](#) 39
 - [Active Directory communication protocols summary](#) 36
 - [Apps for Office](#) 43
 - [authentication protocols summary](#) 32
 - [Customer Experience Improvement Program protocols summary](#) 37
 - [data access protocols summary](#) 35
 - [document management protocols summary](#) 34
 - [Excel protocols summary](#) 38
 - [file access protocols summary](#) 33
 - [IMESync Structure protocols summary](#) 37
 - [InfoPath protocols summary](#) 40
 - [Microsoft Error Reporting protocols summary](#) 36
 - [Mobility protocols summary](#) 42
 - [Office broadcast presentation service](#) 43
 - [OneNote protocols summary](#) 40
 - [Outlook protocols summary](#) 42
 - [PowerPoint protocols summary](#) 38
 - [rights management protocols summary](#) 36
 - [Web application open platform interface](#) 43
 - [Word protocols summary](#) 37
- Publish a browser-enabled form template to the server
 - [overview](#) 55
- Publish a non-browser-enabled form template to the server
 - [overview](#) 54
- Publish an access database application to a web server
 - [overview](#) 52
- Publish an excel workbook to a sharepoint library
 - [overview](#) 58
- Publish an infopath form to a server
 - [overview](#) 53
- Publisher
 - [overview](#) 28

R

- Receive e-mail alerts in outlook from a sharepoint server
 - [overview](#) 51
- [References](#) 9
- Requirements
 - [coherency](#) 59
 - [error handling](#) 59
 - [overview](#) 14
 - [preconditions](#) 45
- Rights management
 - [dependencies](#) 44
 - [overview](#) 22
 - [protocols summary](#) 36

S

- [Security considerations](#) 59
- SharePoint Workspace
 - [overview](#) 29

- Start a broadcast slide show
 - [details](#) 66
 - [overview](#) 56
- Synchronize a sharepoint list with outlook
 - [details](#) 64
 - [overview](#) 51
- Synchronize ime with a remote list
 - [details](#) 68
 - [overview](#) 57
- [System architecture](#) 14
- [System dependencies](#) 43
- [System errors](#) 59
- System overview
 - [abstract](#) 1
- [System protocols](#) 31
- [System requirements - overview](#) 14
- System use cases
 - [authenticate against a web server that is gated by forms authentication](#) 46
 - [download a document from a web server](#) 47
 - [Excel Services](#) 58
 - [open a document by using an activex control](#) 50
 - [open a historical version of a file from a web server](#) 48
 - [overview](#) 45
 - [publish a browser-enabled form template to the server](#) 55
 - [publish a non-browser-enabled form template to the server](#) 54
 - [publish an access database application to a web server](#) 52
 - [publish an excel workbook to a sharepoint library](#) 58
 - [publish an infopath form to a server](#) 53
 - [receive e-mail alerts in outlook from a sharepoint server](#) 51
 - [start a broadcast slide show](#) 56
 - [synchronize a sharepoint list with outlook](#) 51
 - [synchronize ime with a remote list](#) 57
 - [use information rights management](#) 49
 - [view the first slide of a broadcast presentation in a web browser](#) 56

T

- Table of protocols ([section 2.2](#) 31, [section 2.2](#) 31)
- [Tracking changes](#) 71

U

- [Use cases](#) 45
 - [authenticate against a web server that is gated by forms authentication](#) 46
 - [download a document from a web server](#) 47
 - [Excel Services](#) 58
 - [open a document by using an activex control](#) 50
 - [open a historical version of a file from a web server](#) 48
 - [publish a browser-enabled form template to the server](#) 55
 - [publish a non-browser-enabled form template to the server](#) 54

[publish an access database application to a web server](#) 52
[publish an excel workbook to a sharepoint library](#) 58
[publish an infopath form to a server](#) 53
[receive e-mail alerts in outlook from a sharepoint server](#) 51
[start a broadcast slide show](#) 56
[synchronize a sharepoint list with outlook](#) 51
[synchronize ime with a remote list](#) 57
[use information rights management](#) 49
[view the first slide of a broadcast presentation in a web browser](#) 56
Use information rights management
[overview](#) 49

V

Versioning
[Microsoft implementations](#) 70
[overview](#) 59
View first slide of presentation in a Web browser
[details](#) 65
View the first slide of a broadcast presentation in a web browser
[overview](#) 56

W

Web application open platform interface
[protocols summary](#) 43
Word
overview ([section 2.1.10](#) 25, [section 2.1.10](#) 25)