

[MS-FSDAP]: Forms Services Design and Activation Web Service Protocol

Intellectual Property Rights Notice for Open Specifications Documentation

- **Technical Documentation.** Microsoft publishes Open Specifications documentation for protocols, file formats, languages, standards as well as overviews of the interaction among each of these technologies.
- **Copyrights.** This documentation is covered by Microsoft copyrights. Regardless of any other terms that are contained in the terms of use for the Microsoft website that hosts this documentation, you may make copies of it in order to develop implementations of the technologies described in the Open Specifications and may distribute portions of it in your implementations using these technologies or your documentation as necessary to properly document the implementation. You may also distribute in your implementation, with or without modification, any schema, IDL's, or code samples that are included in the documentation. This permission also applies to any documents that are referenced in the Open Specifications.
- **No Trade Secrets.** Microsoft does not claim any trade secret rights in this documentation.
- **Patents.** Microsoft has patents that may cover your implementations of the technologies described in the Open Specifications. Neither this notice nor Microsoft's delivery of the documentation grants any licenses under those or any other Microsoft patents. However, a given Open Specification may be covered by Microsoft [Open Specification Promise](#) or the [Community Promise](#). If you would prefer a written license, or if the technologies described in the Open Specifications are not covered by the Open Specifications Promise or Community Promise, as applicable, patent licenses are available by contacting iplg@microsoft.com.
- **Trademarks.** The names of companies and products contained in this documentation may be covered by trademarks or similar intellectual property rights. This notice does not grant any licenses under those rights. For a list of Microsoft trademarks, visit www.microsoft.com/trademarks.
- **Fictitious Names.** The example companies, organizations, products, domain names, email addresses, logos, people, places, and events depicted in this documentation are fictitious. No association with any real company, organization, product, domain name, email address, logo, person, place, or event is intended or should be inferred.

Reservation of Rights. All other rights are reserved, and this notice does not grant any rights other than specifically described above, whether by implication, estoppel, or otherwise.

Tools. The Open Specifications do not require the use of Microsoft programming tools or programming environments in order for you to develop an implementation. If you have access to Microsoft programming tools and environments you are free to take advantage of them. Certain Open Specifications are intended for use in conjunction with publicly available standard specifications and network programming art, and assumes that the reader either is familiar with the aforementioned material or has immediate access to it.

Revision Summary

Date	Revision History	Revision Class	Comments
04/04/2008	0.01	Major	Initial Availability
06/27/2008	1.0	Minor	Revised and edited technical content
12/12/2008	1.01	Editorial	Revised and edited technical content
07/13/2009	1.02	Major	Revised and edited the technical content
08/28/2009	1.03	Major	Updated and revised the technical content
11/06/2009	1.04	Editorial	Revised and edited the technical content
02/19/2010	2.0	Major	Updated and revised the technical content
03/31/2010	2.01	Editorial	Revised and edited the technical content
04/30/2010	2.02	Editorial	Revised and edited the technical content
06/07/2010	2.03	Editorial	Revised and edited the technical content
06/29/2010	2.04	Editorial	Changed language and formatting in the technical content.
07/23/2010	2.05	Major	Significantly changed the technical content.
09/27/2010	2.05	No change	No changes to the meaning, language, or formatting of the technical content.
11/15/2010	2.05	No change	No changes to the meaning, language, or formatting of the technical content.
12/17/2010	2.05	No change	No changes to the meaning, language, or formatting of the technical content.
03/18/2011	2.05	No change	No changes to the meaning, language, or formatting of the technical content.
06/10/2011	2.05	No change	No changes to the meaning, language, or formatting of the technical content.
01/20/2012	2.6	Minor	Clarified the meaning of the technical content.
04/11/2012	2.6	No change	No changes to the meaning, language, or formatting of the technical content.
07/16/2012	2.6	No change	No changes to the meaning, language, or formatting of the technical content.
09/12/2012	2.6	No change	No changes to the meaning, language, or formatting of the technical content.
10/08/2012	2.6.1	Editorial	Changed language and formatting in the technical content.

Date	Revision History	Revision Class	Comments
02/11/2013	2.6.1	No change	No changes to the meaning, language, or formatting of the technical content.
07/30/2013	3.0	Major	Significantly changed the technical content.
11/18/2013	3.0	No change	No changes to the meaning, language, or formatting of the technical content.
02/10/2014	3.0	No change	No changes to the meaning, language, or formatting of the technical content.
04/30/2014	3.0	No change	No changes to the meaning, language, or formatting of the technical content.
07/31/2014	3.1	Minor	Clarified the meaning of the technical content.

Table of Contents

1 Introduction	8
1.1 Glossary	8
1.2 References	9
1.2.1 Normative References	9
1.2.2 Informative References	10
1.3 Overview	10
1.4 Relationship to Other Protocols	11
1.5 Prerequisites/Preconditions	11
1.6 Applicability Statement	12
1.7 Versioning and Capability Negotiation	12
1.8 Vendor-Extensible Fields	12
1.9 Standards Assignments	12
2 Messages	13
2.1 Transport	13
2.2 Common Message Syntax	13
2.2.1 Namespaces	13
2.2.2 Messages	13
2.2.3 Elements	13
2.2.4 Complex Types	14
2.2.4.1 Categories	14
2.2.4.2 CategoryType	14
2.2.4.3 DesignCheckerInformation	15
2.2.4.4 Message	15
2.2.4.5 Messages	18
2.2.4.6 SourceLocation	18
2.2.5 Simple Types	19
2.2.5.1 Category	20
2.2.5.2 Feature	20
2.2.5.3 MessageType	22
2.2.6 Attributes	22
2.2.7 Groups	22
2.2.8 Attribute Groups	22
3 Protocol Details	23
3.1 Server Details	23
3.1.1 Abstract Data Model	23
3.1.2 Timers	23
3.1.3 Initialization	23
3.1.4 Message Processing Events and Sequencing Rules	23
3.1.4.1 BrowserEnableUserFormTemplate	24
3.1.4.1.1 Messages	25
3.1.4.1.1.1 BrowserEnableUserFormTemplateSoapIn	25
3.1.4.1.1.2 BrowserEnableUserFormTemplateSoapOut	25
3.1.4.1.2 Elements	25
3.1.4.1.2.1 BrowserEnableUserFormTemplate	26
3.1.4.1.2.2 BrowserEnableUserFormTemplateResponse	26
3.1.4.1.3 Complex Types	27
3.1.4.1.3.1 MessagesResponse	27
3.1.4.1.4 Simple Types	27

3.1.4.1.5	Attributes.....	27
3.1.4.1.6	Groups.....	27
3.1.4.1.7	Attribute Groups	27
3.1.4.2	DesignCheckFormTemplate	27
3.1.4.2.1	Messages	28
3.1.4.2.1.1	DesignCheckFormTemplateSoapIn	28
3.1.4.2.1.2	DesignCheckFormTemplateSoapOut.....	28
3.1.4.2.2	Elements.....	29
3.1.4.2.2.1	DesignCheckFormTemplate	29
3.1.4.2.2.2	DesignCheckFormTemplateResponse	29
3.1.4.2.3	Complex Types	30
3.1.4.2.4	Simple Types.....	30
3.1.4.2.5	Attributes.....	30
3.1.4.2.6	Groups.....	30
3.1.4.2.7	Attribute Groups	30
3.1.4.3	GetListFormLocation	30
3.1.4.3.1	Messages	31
3.1.4.3.1.1	GetListFormLocationSoapIn	31
3.1.4.3.1.2	GetListFormLocationSoapOut	31
3.1.4.3.2	Elements.....	31
3.1.4.3.2.1	GetListFormLocation	32
3.1.4.3.2.2	GetListFormLocationResponse	32
3.1.4.3.3	Complex Types	33
3.1.4.3.4	Simple Types.....	33
3.1.4.3.5	Attributes.....	33
3.1.4.3.6	Groups.....	33
3.1.4.3.7	Attribute Groups	33
3.1.4.4	GetUserCodeDeploymentDependencies	33
3.1.4.4.1	Messages	34
3.1.4.4.1.1	GetUserCodeDeploymentDependenciesSoapIn	34
3.1.4.4.1.2	GetUserCodeDeploymentDependenciesSoapOut	34
3.1.4.4.2	Elements.....	35
3.1.4.4.2.1	GetUserCodeDeploymentDependencies	35
3.1.4.4.2.2	GetUserCodeDeploymentDependenciesResponse	35
3.1.4.4.3	Complex Types	36
3.1.4.4.4	Simple Types.....	36
3.1.4.4.4.1	UserSolutionActivationStatus	36
3.1.4.4.5	Attributes.....	37
3.1.4.4.6	Groups.....	37
3.1.4.4.7	Attribute Groups	37
3.1.4.5	SetFormsForListItem.....	37
3.1.4.5.1	Messages	38
3.1.4.5.1.1	SetFormsForListItemSoapIn.....	38
3.1.4.5.1.2	SetFormsForListItemSoapOut.....	38
3.1.4.5.2	Elements.....	38
3.1.4.5.2.1	SetFormsForListItem.....	38
3.1.4.5.2.2	SetFormsForListItemResponse	39
3.1.4.5.3	Complex Types	40
3.1.4.5.4	Simple Types.....	40
3.1.4.5.5	Attributes.....	40
3.1.4.5.6	Groups.....	40
3.1.4.5.7	Attribute Groups	40
3.1.4.6	SetSchemaChangesForList.....	40

3.1.4.6.1	Messages	41
3.1.4.6.1.1	SetSchemaChangesForListSoapIn	41
3.1.4.6.1.2	SetSchemaChangesForListSoapOut	41
3.1.4.6.2	Elements	41
3.1.4.6.2.1	SetSchemaChangesForList	42
3.1.4.6.2.2	SetSchemaChangesForListResponse	43
3.1.4.6.3	Complex Types	43
3.1.4.6.4	Simple Types	43
3.1.4.6.5	Attributes	43
3.1.4.6.6	Groups	44
3.1.4.6.7	Attribute Groups	44
3.1.5	Timer Events	44
3.1.6	Other Local Events	44
4	Protocol Examples	45
4.1	DesignCheckFormTemplate Operation Examples	45
4.1.1	DesignCheckFormTemplate Request and Response with No Message Elements (No Issues Found)	45
4.1.2	DesignCheckFormTemplate Response with Message Elements (One or More Issues Found)	46
4.2	BrowserEnableUserFormTemplate Operation Examples	47
4.2.1	BrowserEnableUserFormTemplate Request/Response Indicating the Successful Browser Enabling of a Form Template (.xsn) File	47
4.3	SetFormsForListItem Operation Examples	48
4.3.1	SetFormsForListItem Request/Response Indicating Successful Operations on a List	48
4.3.2	SetFormsForListItem Response with Message Elements (One or More Issues Found)	49
4.4	GetListFormLocation Operation Examples	50
4.4.1	GetListFormLocation Request/Response	50
4.5	SetSchemaChangesForList Operation Examples	51
4.5.1	SetSchemaChangesForList Request/Response Indicating Successful Operations on a List	51
4.6	GetUserCodeDeploymentDependencies Operation Examples	52
4.6.1	GetUserCodeDeploymentDependencies Request/Response Indicating that the Form Template (.xsn) File with Code Can Be Browser-Enabled as a Sandboxed Solution	53
5	Security	54
5.1	Security Considerations for Implementers	54
5.2	Index of Security Parameters	54
6	Appendix A: Full WSDL	55
7	Appendix B: Product Messages	63
7.1	Messages for Office InfoPath 2007 Forms	63
7.1.1	Message Elements of Type "Error"	63
7.1.2	Message Elements of Type "Warning"	81
7.1.3	Message Elements of Type "Information"	86
7.2	Messages for InfoPath 2010 Forms	87
7.2.1	Message Elements of Type "Error"	87
7.2.2	Message Elements of Type "Warning"	107
7.2.3	Message Elements of Type "Information"	113
7.3	Messages for InfoPath 2013 Forms	114

8 Appendix C: Product Behavior 115
9 Change Tracking..... 117
10 Index 119

1 Introduction

The Forms Services Design and Activation Web Service Protocol enables a protocol client to verify whether the protocol server can transform a form from client to server, request the protocol server implement the transformation, and set and update the location and relationship of the transformed form on the protocol server.

Sections 1.8, 2, and 3 of this specification are normative and can contain the terms MAY, SHOULD, MUST, MUST NOT, and SHOULD NOT as defined in [\[RFC2119\]](#). Sections 1.5 and 1.9 are also normative but does not contain those terms. All other sections and examples in this specification are informative.

1.1 Glossary

The following terms are defined in [\[MS-GLOS\]](#):

- authentication**
- base64**
- Hypertext Transfer Protocol (HTTP)**
- Hypertext Transfer Protocol over Secure Sockets Layer (HTTPS)**
- language code identifier (LCID)**
- SOAP**
- SOAP action**
- SOAP body**
- SOAP fault**
- SOAP message**
- Unicode**
- Universal Naming Convention (UNC)**
- XML namespace**

The following terms are defined in [\[MS-OFCGLOS\]](#):

- assembly**
- base64 encoding**
- browser-enable**
- business logic**
- CAML**
- conditional formatting**
- content type**
- content type identifier**
- control**
- data adapter**
- data validation**
- design check**
- digital signature**
- document library**
- field**
- field internal name**
- form definition (.xsf) file**
- form template (.xsn) file**
- form view**
- Internationalized Resource Identifier (IRI)**
- list**
- list identifier**
- list schema**

localization
rule
sandboxed solution
site
site content type
Status-Code
submit
Uniform Resource Locator (URL)
user code
web service
Web Services Description Language (WSDL)
WSDL message
WSDL operation
XML fragment
XML namespace prefix
XML schema
XPath expression

The following terms are specific to this document:

MAY, SHOULD, MUST, SHOULD NOT, MUST NOT: These terms (in all caps) are used as described in [\[RFC2119\]](#). All statements of optional behavior use either MAY, SHOULD, or SHOULD NOT.

1.2 References

References to Microsoft Open Specification documents do not include a publishing year because links are to the latest version of the documents, which are updated frequently. References to other documents include a publishing year when one is available.

1.2.1 Normative References

We conduct frequent surveys of the normative references to assure their continued availability. If you have any issue with finding a normative reference, please contact dochelp@microsoft.com. We will assist you in finding the relevant information.

[CSS-LEVEL2] Bos, B., Celik, T., Hickson, I., and Lie, H., "Cascading Style Sheets Level 2 Revision 1 (CSS2.1) Specification: W3C Candidate Recommendation", July 2007, <http://www.w3.org/TR/2007/CR-CSS21-20070719/>

[HTML] World Wide Web Consortium, "HTML 4.01 Specification", December 1999, <http://www.w3.org/TR/html4/>

[MS-IPFF] Microsoft Corporation, "[InfoPath Form Template Format](#)".

[MS-IPFF2] Microsoft Corporation, "[InfoPath Form Template Format Version 2](#)".

[MS-LCID] Microsoft Corporation, "[Windows Language Code Identifier \(LCID\) Reference](#)".

[MS-LISTSWS] Microsoft Corporation, "[Lists Web Service Protocol](#)".

[MS-WSSFO3] Microsoft Corporation, "[Windows SharePoint Services \(WSS\): File Operations Database Communications Version 3 Protocol](#)".

[MS-WSSTS] Microsoft Corporation, "[Windows SharePoint Services](#)".

[RFC2119] Bradner, S., "Key words for use in RFCs to Indicate Requirement Levels", BCP 14, RFC 2119, March 1997, <http://www.rfc-editor.org/rfc/rfc2119.txt>

[RFC2396] Berners-Lee, T., Fielding, R., and Masinter, L., "Uniform Resource Identifiers (URI): Generic Syntax", RFC 2396, August 1998, <http://www.ietf.org/rfc/rfc2396.txt>

[RFC2616] Fielding, R., Gettys, J., Mogul, J., et al., "Hypertext Transfer Protocol -- HTTP/1.1", RFC 2616, June 1999, <http://www.ietf.org/rfc/rfc2616.txt>

[SOAP1.1] Box, D., Ehnebuske, D., Kakivaya, G., et al., "Simple Object Access Protocol (SOAP) 1.1", May 2000, <http://www.w3.org/TR/2000/NOTE-SOAP-20000508/>

[SOAP1.2/1] Gudgin, M., Hadley, M., Mendelsohn, N., Moreau, J., and Nielsen, H.F., "SOAP Version 1.2 Part 1: Messaging Framework", W3C Recommendation, June 2003, <http://www.w3.org/TR/2003/REC-soap12-part1-20030624>

[SOAP1.2/2] Gudgin, M., Hadley, M., Mendelsohn, N., Moreau, J., and Nielsen, H.F., "SOAP Version 1.2 Part 2: Adjuncts", W3C Recommendation, June 2003, <http://www.w3.org/TR/2003/REC-soap12-part2-20030624>

[W3C-XSLT] Clark, J., Ed., "XSL Transformations (XSLT) Version 1.0", W3C Recommendation, November 1999, <http://www.w3.org/TR/1999/REC-xslt-19991116>

[WSDL] Christensen, E., Curbera, F., Meredith, G., and Weerawarana, S., "Web Services Description Language (WSDL) 1.1", W3C Note, March 2001, <http://www.w3.org/TR/2001/NOTE-wsdl-20010315>

[XMLNS] Bray, T., Hollander, D., Layman, A., et al., Eds., "Namespaces in XML 1.0 (Third Edition)", W3C Recommendation, December 2009, <http://www.w3.org/TR/2009/REC-xml-names-20091208/>

[XMLSCHEMA1] Thompson, H.S., Beech, D., Maloney, M., and Mendelsohn, N., Eds., "XML Schema Part 1: Structures", W3C Recommendation, May 2001, <http://www.w3.org/TR/2001/REC-xmlschema-1-20010502/>

[XMLSCHEMA2] Biron, P.V., and Malhotra, A., Eds., "XML Schema Part 2: Datatypes", W3C Recommendation, May 2001, <http://www.w3.org/TR/2001/REC-xmlschema-2-20010502/>

[XPath] Clark, J. and DeRose, S., "XML Path Language (XPath), Version 1.0", W3C Recommendation, November 1999, <http://www.w3.org/TR/xpath>

1.2.2 Informative References

[MS-FSFD] Microsoft Corporation, "[Forms Services Feature Detection Protocol](#)".

[MS-GLOS] Microsoft Corporation, "[Windows Protocols Master Glossary](#)".

[MS-OFCGLOS] Microsoft Corporation, "[Microsoft Office Master Glossary](#)".

[RFC2818] Rescorla, E., "HTTP Over TLS", RFC 2818, May 2000, <http://www.ietf.org/rfc/rfc2818.txt>

1.3 Overview

Users of a protocol server often interact with sets of data – adding and modifying data in any given set. A **form template (.xsn) file** can be used as an interface to a dataset if the form template (.xsn) file can be rendered by the protocol server and if the correct relationships are established between the form template (.xsn) file and the appropriate data structure on the protocol server.

This protocol defines several methods by which a protocol client can request a protocol server to **browser-enable** or **design check** a specified form template (.xsn) file. There are several different scenarios in which different combinations of the web methods defined in this protocol can be used, but these methods can also be used independently. Scenarios involving the methods defined in this protocol include:

- Verifying that a form template (.xsn) file can be successfully browser-enabled by a protocol server without a file transfer, as a pre-emptive check, and sending back to the protocol client a list of any issues blocking browser-enabling.
- Transferring a form template (.xsn) file to a protocol server and browser-enabling it.
- Mapping a form template (.xsn) file to a **content type** on a protocol server and maintaining both of these items if changes are made to either one.
- Verifying whether a form template (.xsn) file that contains user-authored code can be uploaded to a protocol server, be browser-enabled, and successfully execute that **user code**.

1.4 Relationship to Other Protocols

This protocol uses the **SOAP** message protocol for formatting request and response messages, as described in [\[SOAP1.1\]](#), [\[SOAP1.2/1\]](#) and [\[SOAP1.2/2\]](#). It transmits those messages by using **HTTP**, as described in [\[RFC2616\]](#), or **Hypertext Transfer Protocol over Secure Sockets Layer (HTTPS)**, as described in [\[RFC2818\]](#).

A protocol client can use the Form Server Feature Detection protocol, as described in [\[MS-FSFD\]](#), to determine whether a protocol server implements the Forms Service Design and Activation protocol and also whether a protocol server implements Version 1 or Version 2 of the Forms Service Design and Activation Protocol. For more information, see [\[MS-FSFD\]](#) section 1.3.

The following diagram shows the underlying messaging and transport stack used by the protocol:

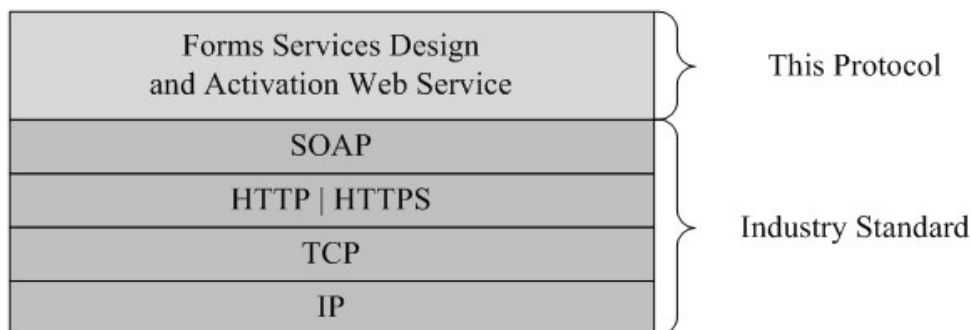


Figure 1: This protocol in relation to other protocols

1.5 Prerequisites/Preconditions

This protocol operates against a site that is identified by a **URL** that is known by protocol clients. The protocol server endpoint is formed by appending "_vti_bin/FormsServices.asmx" to the URL of the site. For example, this URL could be "http://www.contoso.com/Repository/_vti_bin/FormsServices.asmx". This protocol assumes that **authentication (2)** has been performed by the underlying protocols.

1.6 Applicability Statement

None.

1.7 Versioning and Capability Negotiation

This document covers versioning issues in the following areas.

File Format: This protocol refers to different file format specifications, as described in [\[MS-IPFF\]](#) and [\[MS-IPFF2\]](#), both of which define the structure of a valid form template (.xsn) file. In cases where both specifications are cited as references, the **SolutionFormatVersion** attribute of the **xDocumentClass** element, as described in [MS-IPFF2] section 2.2.1.2.1, specifies whether to use the InfoPath Form Template Format, as described in [MS-IPFF], or the InfoPath Form Template Format Version 2, as described in [MS-IPFF2].

Supported Transports: This protocol uses multiple transports with SOAP, as specified in section [2.1](#).

Localization: This protocol includes text strings in various messages. **Localization** considerations for such strings are specified in section [2.2.4.4](#).

1.8 Vendor-Extensible Fields

None.

1.9 Standards Assignments

None.

2 Messages

2.1 Transport

Protocol messages MUST be formatted as specified either in [\[SOAP1.1\]](#) section 4, or in [\[SOAP1.2/1\]](#) section 5.

Protocol server faults MUST be returned using either HTTP Status Codes, as specified in [\[RFC2616\]](#) section 10, or using **SOAP faults**, as specified in either [\[SOAP1.1\]](#) section 4.4, or [\[SOAP1.2/1\]](#) section 5.4.

Protocol servers MUST support SOAP over HTTP. Protocol servers SHOULD also support SOAP over HTTPS for securing communication with clients.

2.2 Common Message Syntax

This section contains common definitions that are used by this protocol. The syntax of the definitions uses **XML schema**, as specified in [\[XMLSCHEMA1\]](#) and [\[XMLSCHEMA2\]](#), and **WSDL**, as specified in [\[WSDL\]](#).

2.2.1 Namespaces

This specification defines and references various **XML namespaces** using the mechanisms specified in [\[XMLNS\]](#). Although this specification associates a specific **XML namespace prefix** for each XML namespace that is used, the choice of any particular XML namespace prefix is implementation-specific and not significant for interoperability.

Prefix	Namespace URI	Reference
http	http://schemas.xmlsoap.org/wsdl/http/	[WSDL]
soap	http://schemas.xmlsoap.org/wsdl/soap/	[SOAP1.1]
soap12	http://schemas.xmlsoap.org/wsdl/soap12/	[SOAP1.2/1] [SOAP1.2/2]
tns	http://schemas.microsoft.com/office/infopath/2007/formsServices	
wsdl	http://schemas.xmlsoap.org/wsdl/	[WSDL]
xs	http://www.w3.org/2001/XMLSchema	[XMLSCHEMA1] [XMLSCHEMA2]

2.2.2 Messages

This specification does not define any common **WSDL message** definitions.

2.2.3 Elements

This specification does not define any common XML schema element definitions.

2.2.4 Complex Types

The following table summarizes the set of common XML schema complex type definitions defined by this specification. XML schema complex type definitions that are specific to a particular operation are described with the operation.

Complex type	Description
Categories	The Categories element is a container for Category elements returned by the protocol server to the protocol client after design checking the form template (.xsn) file.
CategoryType	The CategoryType element provides suggestions for the protocol client on how to display the information contained within Message elements returned by the protocol server after the design check operation has finished. <1>
DesignCheckerInformation	The DesignCheckerInformation complex element is used by the protocol server to return data to the protocol client.
Message	The Message element indicates a specific issue the protocol server found within a form template during the browser-enable or design check processes.
Messages	The Messages element is the container for Message elements, as specified in section 2.2.4.4 , returned by the protocol server after attempting to browser-enable or design check the form template.
SourceLocation	This element indicates the location of an issue within the form template source files that is responsible for generating the corresponding Message element, as specified in section 2.2.4.4 .

2.2.4.1 Categories

Namespace: <http://schemas.microsoft.com/office/infopath/2007/formsServices>

The **Categories** element is a container for **Category** elements returned by the protocol server to the protocol client after design checking the form template (.xsn) file.

```
<xs:complexType name="Categories" xmlns:xs="http://www.w3.org/2001/XMLSchema">
  <xs:sequence>
    <xs:element minOccurs="0" maxOccurs="unbounded" name="Category" nillable="true"
      type="tns:CategoryType"/>
  </xs:sequence>
</xs:complexType>
```

Category: Specified in section [2.2.4.2](#).

2.2.4.2 CategoryType

Namespace: <http://schemas.microsoft.com/office/infopath/2007/formsServices>

The **CategoryType** element provides suggestions for the protocol client on how to display the information contained within **Message** elements returned by the protocol server after the design check operation has finished. [<2>](#)

```
<xs:complexType name="CategoryType" xmlns:xs="http://www.w3.org/2001/XMLSchema">
```

```

<xs:sequence>
  <xs:element minOccurs="1" maxOccurs="1" name="Id" type="tns:Category"/>
  <xs:element minOccurs="0" maxOccurs="1" name="Label" type="xs:string"/>
  <xs:element minOccurs="1" maxOccurs="1" name="HideWarningsByDefault" type="xs:boolean"/>
</xs:sequence>
</xs:complexType>

```

Id: Specified in section [2.2.5.1](#).

Label: Specifies a **Unicode** string describing the **Category** element, as specified in section [2.2.5.1](#), appropriate for display in the protocol client. For localization considerations see section [2.2.4.4](#).

HideWarningsByDefault: Specifies a **Boolean** value indicating whether **Message** elements with an associated **MessageType** of "Warning" are to be displayed on the protocol client application by default.

2.2.4.3 DesignCheckerInformation

Namespace: <http://schemas.microsoft.com/office/infopath/2007/formsServices>

The **DesignCheckerInformation** complex element is used by the protocol server to return data to the protocol client.

```

<xs:complexType name="DesignCheckerInformation" xmlns:xs="http://www.w3.org/2001/XMLSchema">
  <xs:sequence>
    <xs:element minOccurs="0" maxOccurs="1" name="ApplicationId" type="xs:string"/>
    <xs:element minOccurs="1" maxOccurs="1" name="Lcid" type="xs:int"/>
    <xs:element minOccurs="0" maxOccurs="1" name="Categories" type="tns:Categories"/>
    <xs:element minOccurs="0" maxOccurs="1" name="Messages" type="tns:Messages"/>
  </xs:sequence>
</xs:complexType>

```

ApplicationId: Specifies the Unicode **string** that identifies the protocol client that initiated the request. This Unicode **string** MUST be identical to the **string** sent by the protocol client in the **ApplicationId** element.

Lcid: Specifies a **language code identifier (LCID)**, as specified in [\[MS-LCID\]](#), of the preferred language for any messages returned by the protocol server, as specified in section [2.2.4.4](#).

Categories: Specified in section [2.2.4.1](#).

Messages: Specified in section [2.2.4.5](#).

2.2.4.4 Message

Namespace: <http://schemas.microsoft.com/office/infopath/2007/formsServices>

The **Message** element indicates a specific issue the protocol server found within a form template during the browser-enable or design check processes.

```

<xs:complexType name="Message" xmlns:xs="http://www.w3.org/2001/XMLSchema">
  <xs:sequence>
    <xs:element minOccurs="0" maxOccurs="1" name="ShortMessage" type="xs:string"/>
    <xs:element minOccurs="0" maxOccurs="1" name="DetailedMessage" type="xs:string"/>
    <xs:element minOccurs="0" maxOccurs="1" name="SourceLocation" type="tns:SourceLocation"/>
  </xs:sequence>
</xs:complexType>

```

```

</xs:sequence>
<xs:attribute name="Id" type="xs:int" use="required"/>
<xs:attribute name="Type" type="tns:MessageType" use="required"/>
<xs:attribute name="Feature" type="tns:Feature" use="required"/>
<xs:attribute name="Category" type="tns:Category" use="required"/>
</xs:complexType>

```

ShortMessage: A Unicode **string** suitable for display in the protocol client describing the issue. This element **MUST** have a value populated by the protocol server.

DetailedMessage: A Unicode **string** suitable for display in the protocol client describing the issue.

Any localized Unicode **strings** returned by the protocol server **SHOULD** be in the language requested by the protocol client in the associated **Web service** call. If the protocol server is unable to provide **strings** in the requested language, the protocol server **MAY** [<3>](#) use any available language.

SourceLocation: Specified in section [2.2.4.6](#).

Id: Specifies an integer that identifies the type of **Message** element.

Type: Specified in section [2.2.5.3](#).

Feature: Specified in section [2.2.5.2](#).

Category: Specified in section [2.2.5.1](#).

The following table specifies a set of reserved **Message** elements. For the check specified in the Description column, a protocol server **MUST** construct a **Message** element matching the details in the table row, in conjunction with the table specified in section [2.2.4.6](#). A protocol server **MUST NOT** redefine the **Id** attribute for any **Message** element in the following table [<4>](#).

For the reserved elements in the following table, **ShortMessage** and **DetailedMessage** are overwritten by the protocol client.

Either the InfoPath Form Template Format Structure, as specified in [\[MS-IPFF\]](#), or the InfoPath Form Template Format Version 2 Structure, as specified in [\[MS-IPFF2\]](#), **MUST** be used as described in section 1.7.

Id	Category	Feature	Type	Description
44	Browser-Compatibility	Controls	Error	This message MUST be generated when the form definition (.xsf) file contains an invalid documentSignatures element, as specified in [MS-IPFF] section 2.2.125 and [MS-IPFF2] section 2.2.1.2.106.
65	Browser-Compatibility	Controls	Error	This message MUST be generated when the form definition (.xsf) file contains an invalid xmlToEdit element, as specified in [MS-IPFF] section 2.2.124 and [MS-IPFF2] section 2.2.1.2.105.
70	Browser-Compatibility	Controls	Error	This message MUST be generated when the form view file contains an invalid construct, as specified in [MS-IPFF] section 2.4.1.23 and [MS-IPFF2] section 2.4.1.24.

Id	Category	Feature	Type	Description
104	Browser-Compatibility	Controls	Error	This message MUST be generated when the form definition (.xsf) file contains an unsupported roles element, as specified in [MS-IPFF] section 2.2.81 and [MS-IPFF2] section 2.2.1.2.62.
105	Browser-Compatibility	Controls	Error	This message MUST be generated when the form definition (.xsf) file contains an unsupported save element as specified in [MS-IPFF] section 2.2.80 and [MS-IPFF2] section 2.2.1.2.61.
106	Browser-Compatibility	Controls	Error	This message MUST be generated when the form definition (.xsf) file contains an unsupported scripts element as specified in [MS-IPFF] section 2.2.33 and [MS-IPFF2] section 2.2.1.2.14.
108	Browser-Compatibility	Controls	Error	This message MUST be generated when the form definition (.xsf) file contains an unsupported importParameters element that contains a useScriptHandler attribute set to "yes" as specified in [MS-IPFF] section 2.2.67 and [MS-IPFF2] section 2.2.1.2.58.
146	Browser-Compatibility	Controls	Warning	This message MUST be generated when the form definition (.xsf) file contains an errorMessage element as specified in [MS-IPFF] section 2.2.64 and [MS-IPFF2] section 2.2.1.2.45 and the value of the type attribute is not "modeless".
154	Browser-Compatibility	Controls	Error	This message MUST be generated by the protocol server when the form definition (.xsf) file contains an adoAdapter element, as specified in [MS-IPFF] section 2.2.38 and [MS-IPFF2] section 2.2.1.2.19, that is configured to submit the form file.
188	Browser-Compatibility	Controls	Error	This message MUST be generated when the form template (.xsn) file contains a dialogBoxExpressionAction element as specified in [MS-IPFF] section 2.2.137 and [MS-IPFF2] section 2.2.1.2.118.
190	Browser-Compatibility	Controls	Warning	This message MUST be generated when the form definition (.xsf) file contains a closeDocumentAction element with attribute promptToSaveChanges that has the value "yes" as specified in [MS-IPFF] section 2.2.142 and [MS-IPFF2] section 2.2.1.2.124.
282	Browser-Compatibility	Controls	Error	This message MUST be generated when the form definition (.xsf) file contains a dataObject element, as specified in [MS-IPFF2] section 2.2.1.2.17, that references a bdcAdapter element, as specified in [MS-IPFF2] section 2.2.1.2.129, along with additional references in the dataObject elements.
283	Browser-Compatibility	Controls	Error	This message MUST be generated when the form definition (.xsf) file contains a Signature Line Control , as specified in [MS-IPFF2] section 2.2.3.2.12.

Id	Category	Feature	Type	Description
284	Browser-Compatibility	Controls	Error	This message MUST be generated when a form definition (.xsf) file contains a List Control element, [MS-IPFF2] section 2.4.1.21.7, with the attribute xctname that has the value "ListItem_Formatted".
294	Browser-Compatibility	DataAdapters	Error	This message MUST be generated when a form definition (.xsf) file contains a dataObject element, as specified in [MS-IPFF2] section 2.2.1.2.17, that references a UNC path or local path.

2.2.4.5 Messages

Namespace: <http://schemas.microsoft.com/office/infopath/2007/formsServices>

The **Messages** element is the container for **Message** elements, as specified in section [2.2.4.4](#), returned by the protocol server after attempting to browser-enable or design check the form template.

```
<xs:complexType name="Messages" xmlns:xs="http://www.w3.org/2001/XMLSchema">
  <xs:sequence>
    <xs:element minOccurs="0" maxOccurs="unbounded" name="Message" nillable="true"
      type="tns:Message"/>
  </xs:sequence>
</xs:complexType>
```

Message: Specified in section [2.2.4.4](#).

2.2.4.6 SourceLocation

Namespace: <http://schemas.microsoft.com/office/infopath/2007/formsServices>

This element indicates the location of an issue within the form template source files that is responsible for generating the corresponding **Message** element, as specified in section [2.2.4.4](#).

```
<xs:complexType name="SourceLocation" xmlns:xs="http://www.w3.org/2001/XMLSchema">
  <xs:attribute name="ControlId" type="xs:string"/>
  <xs:attribute name="FileName" type="xs:string"/>
  <xs:attribute name="LineNumber" type="xs:int"/>
  <xs:attribute name="LinePosition" type="xs:int"/>
</xs:complexType>
```

ControlId: Specifies the Unicode **string** that identifies the **control** causing the associated **Message** element.

FileName: Specifies the Unicode **string** file name of the file within the form template source files containing the issue that caused the associated **Message** element.

LineNumber: Specifies the **integer** that represents the line within the file where the issue responsible for generating the corresponding **Message** element exists.

LinePosition: Specifies the **integer** column that represents the column within the file where the issue responsible for generating the corresponding **Message** element begins.

The following table specifies when the **ControlId**, **FileName**, **LineNumber** and **LinePosition** attributes MUST be populated when **Message** elements matching those specified in section [2.2.4.4](#) are constructed by the protocol server. In this table, "True" indicates that the attribute MUST be set and "False" indicates that the attribute MUST NOT be set.

Id	ControlId	FileName	LineNumber	LinePosition
44	False	True	False	False
65	False	True	True	True
70	False	True	True	True
101	False	True	False	False
104	False	True	False	False
105	False	True	False	False
106	False	True	False	False
107	False	True	False	False
108	False	True	False	False
146	False	True	False	False
154	False	True	False	False
188	False	True	False	False
190	False	True	False	False
282	False	True	False	False
283	True	True	True	False
284	True	True	True	False
285	False	True	False	False
294	False	False	False	False

2.2.5 Simple Types

The following table summarizes the set of common XML schema simple type definitions defined by this specification. XML schema simple type definitions that are specific to a particular operation are described with the operation.

Simple type	Description
Category	The Category element indicates whether the corresponding Message element, as specified in section 2.2.4.4 , is a potential performance issue or whether it represents an issue preventing the form template from being browser-enabled.
Feature	The Features element indicates the feature in the form template that is responsible for generating the corresponding Message element, as specified in section 2.2.4.4 , when the protocol server is attempting to browser-enable or design check the form template (.xsn) file.

Simple type	Description
MessageType	The MessageType element indicates whether the protocol server encountered an error, warning, or is simply relaying informative text while browser-enabling or design checking the form template (.xsn) file.

2.2.5.1 Category

Namespace: http://schemas.microsoft.com/office/infopath/2007/formsServices

The **Category** element indicates whether the corresponding **Message** element, as specified in section [2.2.4.4](#), is a potential performance issue or whether it represents an issue preventing the form template from being browser-enabled.

```
<xs:simpleType name="Category" xmlns:xs="http://www.w3.org/2001/XMLSchema">
  <xs:restriction base="xs:string">
    <xs:enumeration value="BrowserOptimization"/>
    <xs:enumeration value="BrowserCompatibility"/>
  </xs:restriction>
</xs:simpleType>
```

The following table specifies the allowable values for the **Category** simple type.

Value	Meaning
BrowserOptimization	This enumeration value MUST be used when a browser-optimization issue is found during the analysis of the form template (.xsn) file.
BrowserCompatibility	This enumeration value MUST be used for all issues that are not browser-optimization issues.

2.2.5.2 Feature

Namespace: http://schemas.microsoft.com/office/infopath/2007/formsServices

The **Features** element indicates the feature in the form template that is responsible for generating the corresponding **Message** element, as specified in section [2.2.4.4](#), when the protocol server is attempting to browser-enable or design check the form template (.xsn) file.

```
<xs:simpleType name="Feature" xmlns:xs="http://www.w3.org/2001/XMLSchema">
  <xs:restriction base="xs:string">
    <xs:enumeration value="GenericXsf"/>
    <xs:enumeration value="XsfSchema"/>
    <xs:enumeration value="GenericXsl"/>
    <xs:enumeration value="GenericXPath"/>
    <xs:enumeration value="TemplateXml"/>
    <xs:enumeration value="Layout"/>
    <xs:enumeration value="Controls"/>
    <xs:enumeration value="BusinessLogic"/>
    <xs:enumeration value="Calculations"/>
    <xs:enumeration value="Validation"/>
    <xs:enumeration value="DigitalSignatures"/>
    <xs:enumeration value="DataAdapters"/>
    <xs:enumeration value="Submit"/>
    <xs:enumeration value="Views"/>
  </xs:restriction>
</xs:simpleType>
```

```

    <xs:enumeration value="Rules"/>
    <xs:enumeration value="ConditionalFormatting"/>
    <xs:enumeration value="VersionUpgrade"/>
  </xs:restriction>
</xs:simpleType>

```

The following table specifies the allowable values for the **Feature** simple type.

Value	Meaning
GenericXsf	Issues related to the form definition (.xsf) file without a more specific Feature value available, as specified in [MS-IPFF] and [MS-IPFF2] section 2.2.
XsfSchema	Issues related to the form definition (.xsf) file, as specified in [MS-IPFF] and [MS-IPFF2] section 2.2.
GenericXsl	Issues related to form views without a more specific Feature value available, as specified in [MS-IPFF] and [MS-IPFF2] section 2.4.
GenericXPath	Issues related to a XPath expression without a more specific Feature value available.
TemplateXml	Issues in the template.xml , as specified in [MS-IPFF] and [MS-IPFF2] section 2.7.
Layout	Issues relating to form view layout, as specified in [MS-IPFF] and [MS-IPFF2] section 2.4.
Controls	Issues related to controls, as specified in [MS-IPFF] section 2.3 and [MS-IPFF] and [MS-IPFF2] section 2.4.
BusinessLogic	Issues related to business logic (1) declarations as specified in [MS-IPFF] and [MS-IPFF2] section 2.2.
Calculations	Issues related to calculation declarations, as specified in [MS-IPFF] and [MS-IPFF2] section 2.2.
Validation	Issues related to data validation declarations.
DigitalSignatures	Issues related to digital signatures (2) , as specified in [MS-IPFF] section 2.2.126 and [MS-IPFF2] section 2.2.1.2.107.
DataAdapters	Issues related to data adapter , as specified in [MS-IPFF] and [MS-IPFF2] section 2.2.
Submit	Issues related to submit .
Views	Issues related to form views , as specified in [MS-IPFF] and [MS-IPFF2] section 2.2.
Rules	Issues related to rules (1) , as specified in [MS-IPFF] and [MS-IPFF2] section 2.2.
ConditionalFormatting	Issues related to conditional formatting , as specified in [MS-IPFF] and [MS-IPFF2] section 2.4.
VersionUpgrade	Issues related to version upgrade, as specified in [MS-IPFF] and [MS-IPFF2] [MS-IPFF2] section 2.2.1.2.109.

2.2.5.3 MessageType

Namespace: http://schemas.microsoft.com/office/infopath/2007/formsServices

The **MessageType** element indicates whether the protocol server encountered an error, warning, or is simply relaying informative text while browser-enabling or design checking the form template (.xsn) file.

```
<xs:simpleType name="MessageType" xmlns:xs="http://www.w3.org/2001/XMLSchema">
  <xs:restriction base="xs:string">
    <xs:enumeration value="Error"/>
    <xs:enumeration value="Information"/>
    <xs:enumeration value="Warning"/>
  </xs:restriction>
</xs:simpleType>
```

The following table specifies the allowable values for the **MessageType** simple type.

Value	Meaning
Error	The protocol server MUST use this value for an issue that prevents a form template from being successfully browser-enabled
Information	The protocol server MUST use this value to specify informative text for the protocol client. The issue MUST NOT prevent a form template from being successfully browser-enabled.
Warning	The protocol server MUST use this value to specify an issue that could degrade the end user experience. The issue MUST NOT prevent a form template from being successfully browser-enabled.

2.2.6 Attributes

This specification does not define any common XML schema attribute definitions.

2.2.7 Groups

This specification does not define any common XML schema group definitions.

2.2.8 Attribute Groups

This specification does not define any common XML schema attribute group definitions.

3 Protocol Details

The client side of this protocol is simply a pass-through. That is, no additional timers or other state is required on the client side of this protocol. Calls made by the higher-layer protocol or application are passed directly to the transport, and the results returned by the transport are passed directly back to the higher-layer protocol or application.

Except where specified, protocol clients SHOULD interpret HTTP **Status-Codes** returned by the protocol server as specified in [\[RFC2616\]](#) section 10, **Status Code Definitions**. This protocol allows protocol servers to perform implementation-specific authorization checks and notify protocol clients of authorization faults either using HTTP Status-Codes or using SOAP faults.

3.1 Server Details

3.1.1 Abstract Data Model

This section describes a conceptual model of possible data organization that an implementation maintains to participate in this protocol. The described organization is provided to facilitate the explanation of how the protocol behaves. This document does not mandate that implementations adhere to this model as long as their external behavior is consistent with that described in this document.

For **list (1)**-related web methods, the protocol server maintains a mapping between a form template (.xsn) file and a list (1) content type, as specified in [\[MS-WSSTS\]](#) section 2.1.2.8.

For browser enabling web methods, the protocol server maintains a mapping between a form template (.xsn) file and a **document library** or **site content type**.

For design checking and user code checking web methods, the state of the protocol server does affect the responses it sends in response to the respective queries from the protocol client.

3.1.2 Timers

None.

3.1.3 Initialization

None.

3.1.4 Message Processing Events and Sequencing Rules

A protocol server MUST support form template (.xsn) files conformant to [\[MS-IPFF\]](#) and MUST support the **BrowserEnableUserFormTemplate**, as specified in section [3.1.4.1](#), and **DesignCheckFormTemplate**, as specified in section [3.1.4.2](#), **WSDL operations**. A protocol server SHOULD support form template (.xsn) files conformant to [\[MS-IPFF2\]](#).^{<5>} If a protocol server supports form template (.xsn) files conformant to [\[MS-IPFF2\]](#), that protocol server MUST support all WSDL operations specified in the following table. In response to any unsupported WSDL operation requests, the protocol server MAY^{<6>} return a SOAP fault.

Any protocol server that supports any of the WSDL operations **GetListFormLocation**, as specified in section [3.1.4.3](#), **SetFormsForListItem**, as specified in section [3.1.4.5](#), or **SetSchemaChangesForList**, as specified in section [3.1.4.6](#), MUST support all three of these WSDL operations.

The following table summarizes the list of operations as defined by this specification.

Operation	Description
BrowserEnableUserFormTemplate	The BrowserEnableUserFormTemplate WSDL operation is used to browser-enable a form template (.xsn) file.
DesignCheckFormTemplate	The DesignCheckFormTemplate WSDL operation is used to design check a form template (.xsn) file.
GetListFormLocation	The GetListFormLocation WSDL operation is used to determine if there is a form template (.xsn) file mapped to a content type, and where that file is located.
GetUserCodeDeploymentDependencies	The GetUserCodeDeploymentDependencies WSDL operation is used to determine if a form template (.xsn) file with code can be browser-enabled on a site (2) as a sandboxed solution .
SetFormsForListItem	The SetFormsForListItem WSDL operation is used to design check a form template (.xsn) file and subsequently map it to a content type.
SetSchemaChangesForList	The SetSchemaChangesForList WSDL operation is used to change the list schema of the specified list (1) by performing adds, deletes and updates to the fields (2) of the list (1).

3.1.4.1 BrowserEnableUserFormTemplate

The **BrowserEnableUserFormTemplate** WSDL operation is used to browser-enable a form template (.xsn) file.

The following is the WSDL port type specification of the **BrowserEnableUserFormTemplate** WSDL operation.

```
<wsdl:operation name="BrowserEnableUserFormTemplate"
xmlns:wsdl="http://schemas.xmlsoap.org/wsdl/">
  <wsdl:input message="tns:BrowserEnableUserFormTemplateSoapIn"/>
  <wsdl:output message="tns:BrowserEnableUserFormTemplateSoapOut"/>
</wsdl:operation>
```

As shown in the following figure, the protocol client sends a **BrowserEnableUserFormTemplateSoapIn** request **SOAP message**, and the protocol server responds with a **BrowserEnableUserFormTemplateSoapOut** response SOAP message.

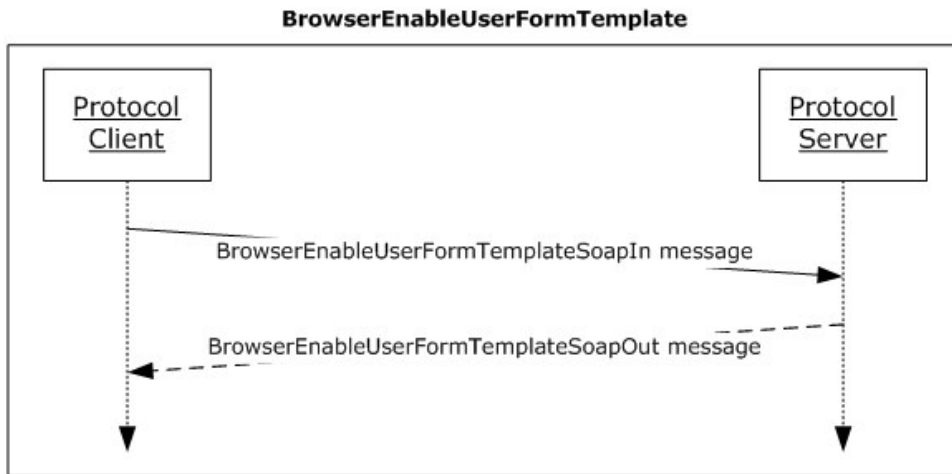


Figure 2: Exchange of SOAP messages for the BrowserEnableUserFormTemplate operation between protocol client and protocol server

3.1.4.1.1 Messages

The following table summarizes the set of WSDL message definitions that are specific to this operation.

Message	Description
BrowserEnableUserFormTemplateSoapIn	The request WSDL message for the BrowserEnableUserFormTemplate WSDL operation.
BrowserEnableUserFormTemplateSoapOut	The response WSDL message for the BrowserEnableUserFormTemplate WSDL operation.

3.1.4.1.1.1 BrowserEnableUserFormTemplateSoapIn

The request WSDL message for the **BrowserEnableUserFormTemplate** WSDL operation.

The **SOAP action** value is:

`http://schemas.microsoft.com/office/infopath/2007/formsServices/BrowserEnableUserFormTemplate`

The **SOAP body** contains the **BrowserEnableUserFormTemplate** element.

3.1.4.1.1.2 BrowserEnableUserFormTemplateSoapOut

The response WSDL message for the **BrowserEnableUserFormTemplate** WSDL operation.

The SOAP body contains the **BrowserEnableUserFormTemplateResponse** element.

3.1.4.1.2 Elements

The following table summarizes the XML schema element definitions that are specific to this operation.

Element	Description
BrowserEnableUserFormTemplate	The input data for the BrowserEnableUserFormTemplate WSDL operation.
BrowserEnableUserFormTemplateResponse	The result data for the BrowserEnableUserFormTemplate WSDL operation.

3.1.4.1.2.1 BrowserEnableUserFormTemplate

The **BrowserEnableUserFormTemplate** element specifies the input data for the **BrowserEnableUserFormTemplate** WSDL operation.

```
<xs:element name="BrowserEnableUserFormTemplate" xmlns:xs="http://www.w3.org/2001/XMLSchema">
  <xs:complexType>
    <xs:sequence>
      <xs:element minOccurs="0" maxOccurs="1" name="formTemplateLocation" type="xs:string"/>
    </xs:sequence>
  </xs:complexType>
</xs:element>
```

formTemplateLocation: This is the URL of a form template (.xsn) file on the protocol server. The protocol server MUST be able to decode a URL as specified in [\[RFC2396\]](#).

3.1.4.1.2.2 BrowserEnableUserFormTemplateResponse

The **BrowserEnableUserFormTemplateResponse** element specifies the result data for the **BrowserEnableUserFormTemplate** WSDL operation.

```
<xs:element name="BrowserEnableUserFormTemplateResponse"
  xmlns:xs="http://www.w3.org/2001/XMLSchema">
  <xs:complexType>
    <xs:sequence>
      <xs:element minOccurs="0" maxOccurs="1" name="BrowserEnableUserFormTemplateResult"
        type="tns:MessagesResponse"/>
    </xs:sequence>
  </xs:complexType>
</xs:element>
```

BrowserEnableUserFormTemplateResult: This element MUST be returned by the protocol server after attempting to browser-enable the form template. The form template (.xsn) file MUST be valid according to [\[MS-IPFF\]](#) or [\[MS-IPFF2\]](#) to be browser-enabled.

Either the InfoPath Form Template Format Structure, as specified in [\[MS-IPFF\]](#), or the InfoPath Form Template Format Version 2 Structure, as specified in [\[MS-IPFF2\]](#), MUST be used as described in section 1.7.

If the form template (.xsn) file was successfully browser-enabled, the protocol server MUST send zero **Message** elements in the **Messages** element of the associated **MessagesResponse** element. [<7>](#)

If the attempt to browser-enable the form template (.xsn) file was unsuccessful, the protocol server MUST send one or more **Message** elements with the **MessageType** attribute set to "Error" in the **Messages** element of the associated **MessagesResponse** element.

The protocol server MUST NOT return **Message** elements with a **MessageType** of "Warning" or "Information" in a response to the **BrowserEnableUserFormTemplate** operation.

3.1.4.1.3 Complex Types

The following table summarizes the XML schema complex type definitions that are specific to this operation.

Complex type	Description
MessagesResponse	Container for the Messages element, as specified in section 2.2.4.5

3.1.4.1.3.1 MessagesResponse

Namespace: <http://schemas.microsoft.com/office/infopath/2007/formsServices>

This is the container for the **Messages** element, as specified in section [2.2.4.5](#), returned by the protocol server after attempting to browser-enable.

```
<xs:complexType name="MessagesResponse" xmlns:xs="http://www.w3.org/2001/XMLSchema">
  <xs:sequence>
    <xs:element minOccurs="0" maxOccurs="1" name="Messages" type="tns:Messages"/>
  </xs:sequence>
</xs:complexType>
```

Messages: Specified in section [2.2.4.3](#), **Messages**.

3.1.4.1.4 Simple Types

None.

3.1.4.1.5 Attributes

None.

3.1.4.1.6 Groups

None.

3.1.4.1.7 Attribute Groups

None.

3.1.4.2 DesignCheckFormTemplate

The **DesignCheckFormTemplate** WSDL operation is used to design check a form template (.xsn) file.

The following is the WSDL port type specification of the **DesignCheckFormTemplate** WSDL operation.

```
<wsdl:operation name="DesignCheckFormTemplate" xmlns:wsdl="http://schemas.xmlsoap.org/wsdl/">
  <wsdl:input message="tns:DesignCheckFormTemplateSoapIn"/>
  <wsdl:output message="tns:DesignCheckFormTemplateSoapOut"/>
</wsdl:operation>
```

</wsdl:operation>

As shown in the following figure, the protocol client sends a **DesignCheckFormTemplateSoapIn** request SOAP message and the protocol server responds with a **DesignCheckFormTemplateSoapOut** response SOAP message.

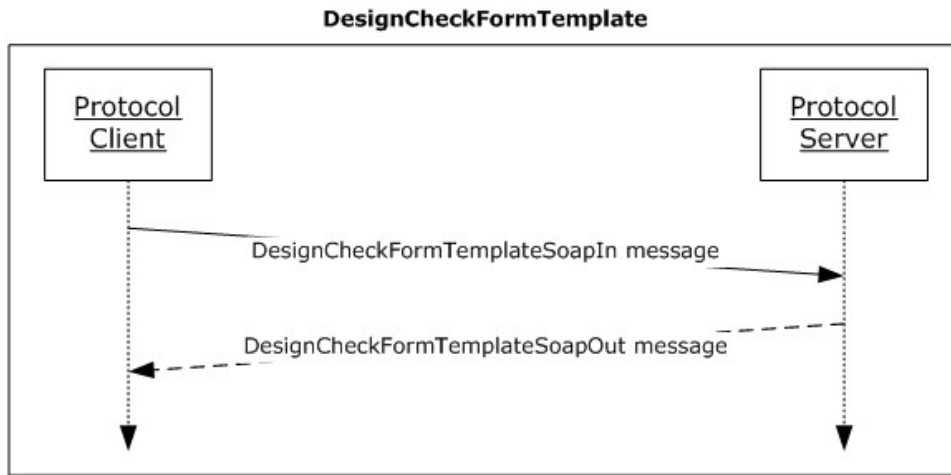


Figure 3: Exchange of SOAP messages for the DesignCheckFormTemplate operation between protocol client and protocol server

3.1.4.2.1 Messages

The following table summarizes the set of WSDL message definitions that are specific to this operation.

Message	Description
DesignCheckFormTemplateSoapIn	The request WSDL message for the DesignCheckFormTemplate WSDL operation.
DesignCheckFormTemplateSoapOut	The response WSDL message for the DesignCheckFormTemplate WSDL operation.

3.1.4.2.1.1 DesignCheckFormTemplateSoapIn

The request WSDL message for the **DesignCheckFormTemplate** WSDL operation.

The SOAP action value is:

`http://schemas.microsoft.com/office/infopath/2007/formsServices/DesignCheckFormTemplate`

The SOAP body contains the **DesignCheckFormTemplate** element.

3.1.4.2.1.2 DesignCheckFormTemplateSoapOut

The response WSDL message for the **DesignCheckFormTemplate** WSDL operation.

The SOAP body contains the **DesignCheckFormTemplateResponse** element.

3.1.4.2.2 Elements

The following table summarizes the XML schema element definitions that are specific to this operation.

Element	Description
DesignCheckFormTemplate	The input data for the DesignCheckFormTemplate WSDL operation.
DesignCheckFormTemplateResponse	The result data for the DesignCheckFormTemplate WSDL operation.

3.1.4.2.2.1 DesignCheckFormTemplate

The **DesignCheckFormTemplate** element specifies the input data for the **DesignCheckFormTemplate** WSDL operation.

```
<xs:element name="DesignCheckFormTemplate" xmlns:xs="http://www.w3.org/2001/XMLSchema">
  <xs:complexType>
    <xs:sequence>
      <xs:element minOccurs="1" maxOccurs="1" name="lcid" type="xs:int"/>
      <xs:element minOccurs="1" maxOccurs="1" name="base64FormTemplate" type="xs:string"/>
      <xs:element minOccurs="0" maxOccurs="1" name="applicationId" type="xs:string"/>
    </xs:sequence>
  </xs:complexType>
</xs:element>
```

lcid: A language code identifier (LCID), as specified in [\[MS-LCID\]](#).

base64FormTemplate: The form template (.xsn) file, encoded with **base64 encoding**, to design check. If the base64 encoding is not valid, the protocol server SHOULD return a **Message** element with a **MessageType** of "Error" to the protocol client, but it MAY [≤8](#) return a SOAP fault. When the **base64** value is decoded, it MUST be a form template (.xsn) file, as specified in [\[MS-IPFF\]](#) or [\[MS-IPFF2\]](#).

The **SolutionFormatVersion** attribute of the **xDocumentClass** element, as described in [\[MS-IPFF2\]](#) section 2.2.1.2.1, specifies whether the InfoPath Form Template Format, as described in [\[MS-IPFF\]](#), or the InfoPath Form Template Format Version 2, as described in [\[MS-IPFF2\]](#), MUST be used when both versions of those structures are cited.

applicationId: The Unicode **string** that identifies the protocol client that initiated the request to **DesignCheckFormTemplate**. [≤9](#)

3.1.4.2.2.2 DesignCheckFormTemplateResponse

The **DesignCheckFormTemplateResponse** element specifies the result data for the **DesignCheckFormTemplate** WSDL operation.

```
<xs:element name="DesignCheckFormTemplateResponse"
  xmlns:xs="http://www.w3.org/2001/XMLSchema">
  <xs:complexType>
    <xs:sequence>
```

```
<xs:element minOccurs="0" maxOccurs="1" name="DesignCheckFormTemplateResult"
type="tns:DesignCheckerInformation"/>
</xs:sequence>
</xs:complexType>
</xs:element>
```

DesignCheckFormTemplateResult: A **DesignCheckerInformation** (section [2.2.4.3](#)) value. This element is returned by the protocol server after design checking the form template (.xsn) file.

Any localized **strings** returned by the protocol server SHOULD be in the language requested by the protocol client. If the protocol server is unable to provide **strings** in the requested language, the protocol server MAY [<10>](#) use any available language.

3.1.4.2.3 Complex Types

None.

3.1.4.2.4 Simple Types

None.

3.1.4.2.5 Attributes

None.

3.1.4.2.6 Groups

None.

3.1.4.2.7 Attribute Groups

None.

3.1.4.3 GetListFormLocation

The GetListFormLocation WSDL operation is used to determine if there is a form template (.xsn) file mapped to a content type, and where that file is located.

The following is the WSDL port type specification of the **GetListFormLocation** WSDL operation.

```
<wsdl:operation name="GetListFormLocation" xmlns:wsdl="http://schemas.xmlsoap.org/wsdl/">
  <wsdl:input message="tns:GetListFormLocationSoapIn"/>
  <wsdl:output message="tns:GetListFormLocationSoapOut"/>
</wsdl:operation>
```

As shown in the following figure, the protocol client sends a **GetListFormLocationSoapIn** request SOAP message and the protocol server responds with a **GetListFormLocationSoapOut** response SOAP message.

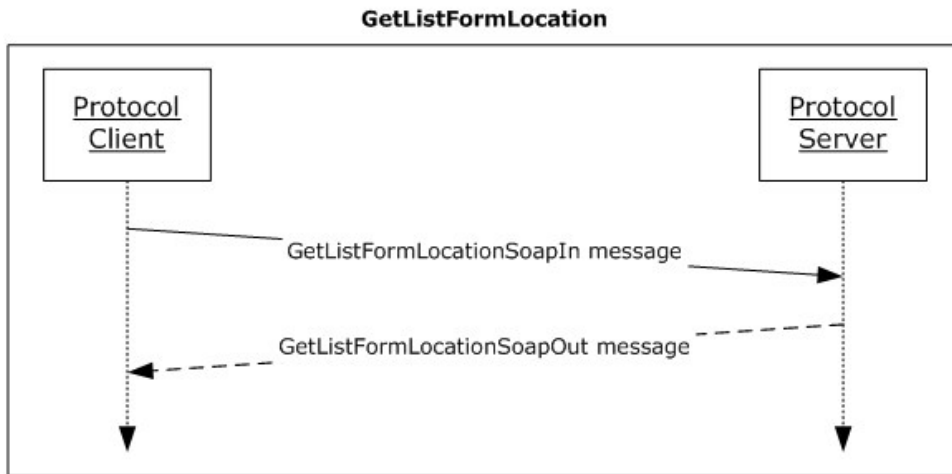


Figure 4: Exchange of SOAP messages for the GetListFormLocation operation between protocol client and protocol server

3.1.4.3.1 Messages

The following table summarizes the set of WSDL message definitions that are specific to this operation.

Message	Description
GetListFormLocationSoapIn	The request WSDL message for the GetListFormLocation WSDL operation.
GetListFormLocationSoapOut	The response WSDL message for the GetListFormLocation WSDL operation.

3.1.4.3.1.1 GetListFormLocationSoapIn

The request WSDL message for the **GetListFormLocation** WSDL operation.

The SOAP action value is:

```
http://schemas.microsoft.com/office/infopath/2007/formsServices/GetListFormLocation
```

The SOAP body contains the **GetListFormLocation** element.

3.1.4.3.1.2 GetListFormLocationSoapOut

The response WSDL message for the **GetListFormLocation** WSDL operation.

The SOAP body contains the **GetListFormLocationResponse** element.

3.1.4.3.2 Elements

The following table summarizes the XML schema element definitions that are specific to this operation.

Element	Description
GetListFormLocation	The input data for the GetListFormLocation WSDL operation.
GetListFormLocationResponse	The result data for the GetListFormLocation WSDL operation.

3.1.4.3.2.1 GetListFormLocation

The **GetListFormLocation** element specifies the input data for the **GetListFormLocation** WSDL operation.

```
<xs:element name="GetListFormLocation" xmlns:xs="http://www.w3.org/2001/XMLSchema">
  <xs:complexType>
    <xs:sequence>
      <xs:element minOccurs="1" maxOccurs="1" name="lcid" type="xs:int"/>
      <xs:element minOccurs="1" maxOccurs="1" name="listGuid" type="xs:string"/>
      <xs:element minOccurs="1" maxOccurs="1" name="contentTypeId" type="xs:string"/>
      <xs:element minOccurs="1" maxOccurs="1" name="checkDesignPermissions"
type="xs:boolean"/>
      <xs:element minOccurs="1" maxOccurs="1" name="checkCustomFormEnabled"
type="xs:boolean"/>
    </xs:sequence>
  </xs:complexType>
</xs:element>
```

lcid: A language code identifier (LCID), as specified in [\[MS-LCID\]](#), identifying the preferred message language of the protocol client. See section [2.2.4.4](#) for localization considerations.

listGuid: A **list identifier**, as specified in [\[MS-WSSTS\]](#) section 2.1.2.7.

contentTypeId: A **content type identifier**, as specified in [\[MS-WSSTS\]](#) section 2.1.2.8.1. The content type identified MUST be associated with the list (1) specified by **listGuid**.

checkDesignPermissions: If this parameter is "true", the protocol server MUST check for the same level of permissions as required for the **SetFormsForListItem** operation by ensuring that the protocol client has permissions to manage list forms. Otherwise, if the parameter value is "false", the protocol server MUST check for a WSS Rights Mask with the **OpenItems** flag set as specified in [\[MS-WSSFO3\]](#) section 2.2.2.15. If in either case the protocol client does not have sufficient rights, the protocol server MUST return a Status-Code 401 Unauthorized.

checkCustomFormEnabled: If this parameter is "true", the protocol server MUST only return a non-empty **GetListFormLocationResult**, as specified in section [3.1.4.3.2.2](#), when the **listGuid** and **contentTypeId** parameters identify a browser-enabled form template (.xsn) file. Otherwise, if the parameter value is "false", the protocol server MUST return a non-empty **GetListFormLocationResult**, as specified in section [3.1.4.3.2.2](#), when the **listGuid** and **contentTypeId** parameters identify a form template (.xsn) file that is not browser-enabled.

3.1.4.3.2.2 GetListFormLocationResponse

The **GetListFormLocationResponse** element specifies the result data for the **GetListFormLocation** WSDL operation.

```
<xs:element name="GetListFormLocationResponse" xmlns:xs="http://www.w3.org/2001/XMLSchema">
  <xs:complexType>
    <xs:sequence>
```



```

        <xs:element minOccurs="0" maxOccurs="1" name="GetListFormLocationResult"
type="xs:string"/>
    </xs:sequence>
</xs:complexType>
</xs:element>

```

GetListFormLocationResult: If the **contentTypeId** parameter does not identify an existing content type, the protocol server MUST return a SOAP fault. If there is no form template (.xsn) file mapped to the specified content type, the protocol server MUST return an empty

GetListFormLocationResult element. If a form template (.xsn) file is mapped to the content type, but the form template is not browser-enabled, and the **checkCustomFormEnabled** parameter is "true", the protocol server MUST return an empty **GetListFormLocationResult**. In all other cases, the **GetListFormLocationResult** element MUST be an absolute **Internationalized Resource Identifier (IRI)** pointing to the location of the form template (.xsn) file.

3.1.4.3.3 Complex Types

None.

3.1.4.3.4 Simple Types

None.

3.1.4.3.5 Attributes

None.

3.1.4.3.6 Groups

None.

3.1.4.3.7 Attribute Groups

None.

3.1.4.4 GetUserCodeDeploymentDependencies

The **GetUserCodeDeploymentDependencies** WSDL operation is used to determine if a form template (.xsn) file with code can be browser-enabled on a site (2) as a sandboxed solution.

The following is the WSDL port type specification of the **GetUserCodeDeploymentDependencies** WSDL operation.

```

<wsdl:operation name="GetUserCodeDeploymentDependencies"
xmlns:wsdl="http://schemas.xmlsoap.org/wsdl/">
    <wsdl:input message="tns:GetUserCodeDeploymentDependenciesSoapIn"/>
    <wsdl:output message="tns:GetUserCodeDeploymentDependenciesSoapOut"/>
</wsdl:operation>

```

As shown in the following figure, the protocol client sends a **GetUserCodeDeploymentDependenciesSoapIn** request SOAP message, and the protocol server responds with a **GetUserCodeDeploymentDependenciesSoapOut** response SOAP message.

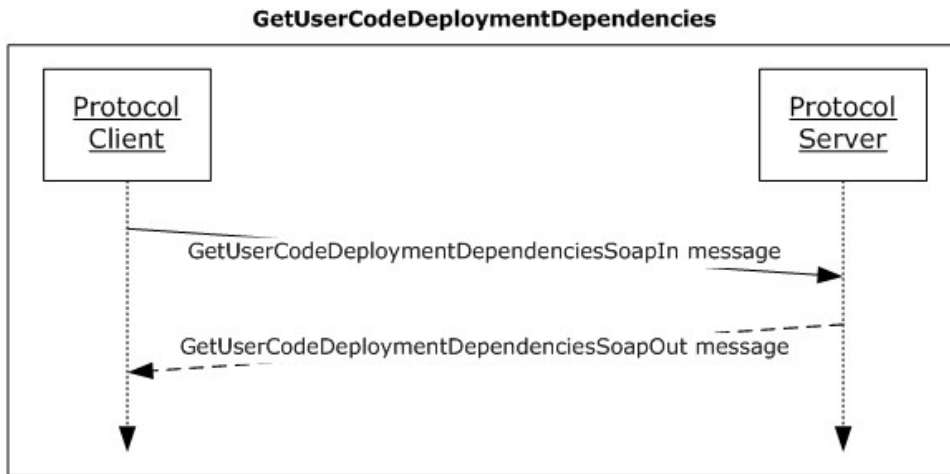


Figure 5: Exchange of SOAP messages for the GetUserCodeDeploymentDependencies operation between the protocol client and protocol server

3.1.4.4.1 Messages

The following table summarizes the set of WSDL message definitions that are specific to this operation.

Message	Description
GetUserCodeDeploymentDependenciesSoapIn	The request WSDL message for the GetUserCodeDeploymentDependencies WSDL operation.
GetUserCodeDeploymentDependenciesSoapOut	The response WSDL message for the GetUserCodeDeploymentDependencies WSDL operation.

3.1.4.4.1.1 GetUserCodeDeploymentDependenciesSoapIn

The request WSDL message for the **GetUserCodeDeploymentDependencies** WSDL operation.

The SOAP action value is:

```
http://schemas.microsoft.com/office/infopath/2007/formsServices/GetUserCodeDeploymentDependencies
```

The SOAP body contains the **GetUserCodeDeploymentDependencies** element.

3.1.4.4.1.2 GetUserCodeDeploymentDependenciesSoapOut

The response WSDL message for the **GetUserCodeDeploymentDependencies** WSDL operation.

The SOAP body contains the **GetUserCodeDeploymentDependenciesResponse** element.

3.1.4.4.2 Elements

The following table summarizes the XML schema element definitions that are specific to this operation.

Element	Description
GetUserCodeDeploymentDependencies	The input data for the GetUserCodeDeploymentDependencies WSDL operation.
GetUserCodeDeploymentDependenciesResponse	The result data for the GetUserCodeDeploymentDependencies WSDL operation.

3.1.4.4.2.1 GetUserCodeDeploymentDependencies

The **GetUserCodeDeploymentDependencies** element specifies the input data for the **GetUserCodeDeploymentDependencies** WSDL operation.

```
<xs:element name="GetUserCodeDeploymentDependencies"
  xmlns:xs="http://www.w3.org/2001/XMLSchema">
  <xs:complexType>
    <xs:sequence>
      <xs:element minOccurs="1" maxOccurs="1" name="siteCollectionLocation"
        type="xs:string"/>
    </xs:sequence>
  </xs:complexType>
</xs:element>
```

siteCollectionLocation: This element is the URL of the site (2) to verify that sandboxed solution activation is permitted. The protocol server **MUST** be able to decode the URL as specified in [\[RFC2396\]](#).

3.1.4.4.2.2 GetUserCodeDeploymentDependenciesResponse

The **GetUserCodeDeploymentDependenciesResponse** element specifies the result data for the **GetUserCodeDeploymentDependencies** WSDL operation.

```
<xs:element name="GetUserCodeDeploymentDependenciesResponse"
  xmlns:xs="http://www.w3.org/2001/XMLSchema">
  <xs:complexType>
    <xs:sequence>
      <xs:element minOccurs="1" maxOccurs="1" name="GetUserCodeDeploymentDependenciesResult"
        type="tns:UserSolutionActivationStatus"/>
    </xs:sequence>
  </xs:complexType>
</xs:element>
```

GetUserCodeDeploymentDependenciesResult: A child of the **GetUserCodeDeploymentDependenciesResponse** container. The protocol server **MUST** return one of the values specified in [3.1.4.4.4.1](#).

3.1.4.4.3 Complex Types

None.

3.1.4.4.4 Simple Types

The following table summarizes the XML schema simple type definitions that are specific to this operation.

Simple type	Description
UserSolutionActivationStatus	

3.1.4.4.4.1 UserSolutionActivationStatus

Namespace: http://schemas.microsoft.com/office/infopath/2007/formsServices

This element specifies the allowed values for the **GetUserCodeDeploymentDependenciesResult** element.

```
<xs:simpleType name="UserSolutionActivationStatus"
xmlns:xs="http://www.w3.org/2001/XMLSchema">
  <xs:restriction base="xs:string">
    <xs:enumeration value="ActivationAllowed"/>
    <xs:enumeration value="ActivationDenied"/>
    <xs:enumeration value="UserCodeServiceNotAvailable"/>
    <xs:enumeration value="ServiceQuotaExceeded"/>
    <xs:enumeration value="InsufficientUserPermissions"/>
  </xs:restriction>
</xs:simpleType>
```

The following table specifies the allowable values for the **UserSolutionActivationStatus** simple type.

Value	Meaning
ActivationAllowed	The protocol server MUST return this value to specify that the user code support is available on the server and the Web service user is allowed to browser-enable a form template (.xsn) file with code.
ActivationDenied	The protocol server MUST return this value to specify that the Web service user is not allowed to browser-enable a form template (.xsn) file with code on the site (2) specified in 3.1.4.4.2.1. The protocol server MUST NOT return this enumeration value for conditions that are covered by UserCodeServiceNotAvailable , ServiceQuotaExceeded , and InsufficientUserPermissions values specified in this table.
UserCodeServiceNotAvailable	The protocol server MUST return this value to specify that the user code support is not available on the server.
ServiceQuotaExceeded	The protocol server MUST return this value to specify that the user code support is not available on the site (2) specified in 3.1.4.4.2.1 because the quota allotted to sandboxed solutions has been exceeded.
InsufficientUserPermissions	The protocol server MUST return this value to specify that the Web service user is not allowed to browser-enable a form template (.xsn) file with code because the Web service user is not a site collection administrator on the

Value	Meaning
	site (2) specified in 3.1.4.4.2.1.

3.1.4.4.5 Attributes

None.

3.1.4.4.6 Groups

None.

3.1.4.4.7 Attribute Groups

None.

3.1.4.5 SetFormsForListItem

The **SetFormsForListItem** WSDL operation is used to design check a form template (.xsn) file and subsequently map it to a content type.

The following is the WSDL port type specification of the **SetFormsForListItem** WSDL operation.

```
<wsdl:operation name="SetFormsForListItem" xmlns:wsdl="http://schemas.xmlsoap.org/wsdl/">
  <wsdl:input message="tns:SetFormsForListItemSoapIn"/>
  <wsdl:output message="tns:SetFormsForListItemSoapOut"/>
</wsdl:operation>
```

As shown in the following figure, the protocol client sends a **SetFormForListItemSoapIn** request SOAP message and the protocol server responds with a **SetFormForListItemSoapOut** response SOAP message.

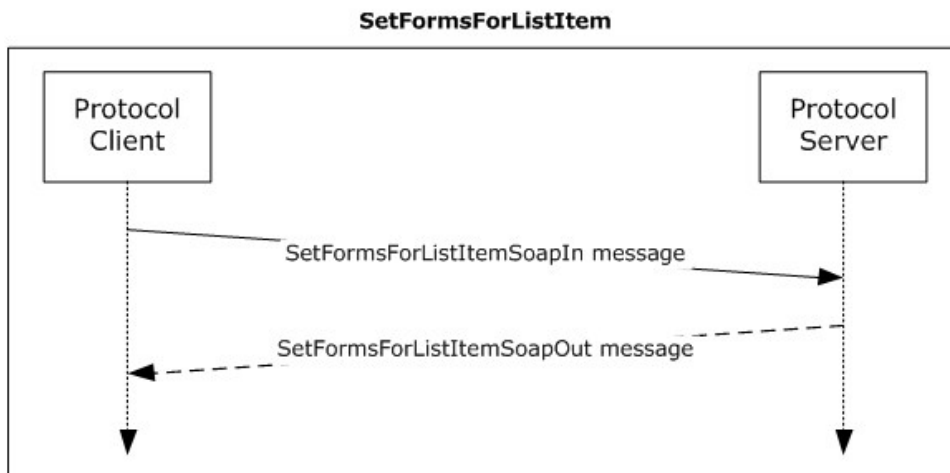


Figure 6: Exchange of SOAP messages for the SetFormsForListItem operation between protocol client and protocol server

3.1.4.5.1 Messages

The following table summarizes the set of WSDL message definitions that are specific to this operation.

Message	Description
SetFormsForListItemSoapIn	The request WSDL message for the SetFormsForListItem WSDL operation.
SetFormsForListItemSoapOut	The response WSDL message for the SetFormsForListItem WSDL operation.

3.1.4.5.1.1 SetFormsForListItemSoapIn

The request WSDL message for the **SetFormsForListItem** WSDL operation.

The SOAP action value is:

```
http://schemas.microsoft.com/office/infopath/2007/formsServices/SetFormsForListItem
```

The SOAP body contains the **SetFormsForListItem** element.

3.1.4.5.1.2 SetFormsForListItemSoapOut

The response WSDL message for the **SetFormsForListItem** WSDL operation.

The SOAP body contains the **SetFormsForListItemResponse** element.

3.1.4.5.2 Elements

The following table summarizes the XML schema element definitions that are specific to this operation.

Element	Description
SetFormsForListItem	The input data for the SetFormsForListItem WSDL operation.
SetFormsForListItemResponse	The result data for the SetFormsForListItem WSDL operation.

3.1.4.5.2.1 SetFormsForListItem

The **SetFormsForListItem** element specifies the input data for the **SetFormsForListItem** WSDL operation.

```
<xs:element name="SetFormsForListItem" xmlns:xs="http://www.w3.org/2001/XMLSchema">
  <xs:complexType>
    <xs:sequence>
      <xs:element minOccurs="1" maxOccurs="1" name="lcid" type="xs:int"/>
      <xs:element minOccurs="1" maxOccurs="1" name="base64FormTemplate" type="xs:string"/>
      <xs:element minOccurs="0" maxOccurs="1" name="applicationId" type="xs:string"/>
      <xs:element minOccurs="1" maxOccurs="1" name="listGuid" type="xs:string"/>
      <xs:element minOccurs="1" maxOccurs="1" name="contentTypeId" type="xs:string"/>
    </xs:sequence>
  </xs:complexType>
</xs:element>
```

```
</xs:complexType>
</xs:element>
```

lcid: A language code identifier (LCID), as specified in [\[MS-LCID\]](#).

base64FormTemplate: The form template (.xsn) file, encoded with base64 encoding, to map. If the base64 encoding is not valid, the protocol server SHOULD return a **Message** element with a **MessageType** of "Error" to the protocol client, but it MAY [<11>](#) return a SOAP fault. When the base64 value is decoded, it MUST be a form template (.xsn) file, as specified in [\[MS-IPFF\]](#) or [\[MS-IPFF2\]](#).

The **SolutionFormatVersion** attribute of the **xDocumentClass** element, as described in [\[MS-IPFF2\]](#) section 2.2.1.2.1, specifies whether the InfoPath Form Template Format, as described in [\[MS-IPFF\]](#), or the InfoPath Form Template Format Version 2, as described in [\[MS-IPFF2\]](#), MUST be used when both versions of those structures are cited.

applicationId: The Unicode **string** that identifies the protocol client that initiated the request to **SetFormsForListItem**. This element SHOULD be ignored by the protocol server. [<12>](#)

listGuid: A list identifier, as specified in [\[MS-WSSTS\]](#) section 2.1.2.7.

contentTypeId: A content type identifier, as specified in [\[MS-WSSTS\]](#) section 2.1.2.8.1. The content type identified MUST be associated with the list (1) specified by **listGuid**.

3.1.4.5.2.2 SetFormsForListItemResponse

The **SetFormsForListItemResponse** element specifies the result data for the **SetFormsForListItem** WSDL operation.

```
<xs:element name="SetFormsForListItemResponse" xmlns:xs="http://www.w3.org/2001/XMLSchema">
  <xs:complexType>
    <xs:sequence>
      <xs:element minOccurs="0" maxOccurs="1" name="SetFormsForListItemResult"
        type="tns:DesignCheckerInformation"/>
    </xs:sequence>
  </xs:complexType>
</xs:element>
```

SetFormsForListItemResult: This element is returned by the protocol server after attempting to map the form template (.xsn) file to the content type as specified by the protocol client request in the **SetFormsForListItem** request element. The form template (.xsn) file MUST be valid according to [\[MS-IPFF2\]](#) to be browser-enabled and mapped to a content type.

If the form template (.xsn) file was successfully mapped to the content type and also browser-enabled, the protocol server MUST send zero **Message** elements in the **Messages** element of the associated **MessagesResponse** element. [<13>](#)

If the attempt to browser-enable the form template (.xsn) file was unsuccessful, the protocol server MUST send one or more **Message** elements with the **MessageType** attribute set to "Error" in the **Messages** element of the associated **MessagesResponse** element. [<14>](#) For localization considerations regarding preferred message string language, see section [2.2.4.4](#).

If the attempt to browser-enable the form template (.xsn) file was successful, but the attempt to map the form template (.xsn) file to the content type was unsuccessful, the protocol server MUST return a SOAP fault.

The protocol server MUST NOT return **Message** elements with a **MessageType** of "Warning" or "Information" in a response to the **SetFormsForListItem** operation.

3.1.4.5.3 Complex Types

None.

3.1.4.5.4 Simple Types

None.

3.1.4.5.5 Attributes

None.

3.1.4.5.6 Groups

None.

3.1.4.5.7 Attribute Groups

None.

3.1.4.6 SetSchemaChangesForList

The **SetSchemaChangesForList** WSDL operation is used to change the list schema of the specified list (1) by performing adds, deletes and updates to the fields (2) of the list (1).

The following is the WSDL port type specification of the **SetSchemaChangesForList** WSDL operation.

```
<wsdl:operation name="SetSchemaChangesForList" xmlns:wsdl="http://schemas.xmlsoap.org/wsdl/">
  <wsdl:input message="tns:SetSchemaChangesForListSoapIn"/>
  <wsdl:output message="tns:SetSchemaChangesForListSoapOut"/>
</wsdl:operation>
```

As shown in the following figure, the protocol client sends a **SetSchemaChangesForListSoapIn** request **SOAP message** and the protocol server responds with a **SetSchemaChangesForListSoapOut** response **SOAP message**.

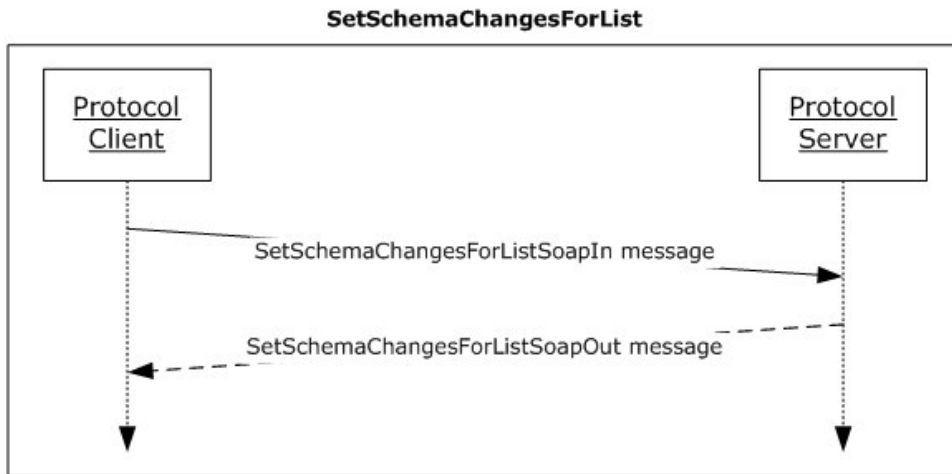


Figure 7: Exchange of SOAP messages for the SetSchemaChangesForList operation between the protocol client and protocol server

3.1.4.6.1 Messages

The following table summarizes the set of WSDL message definitions that are specific to this operation.

Message	Description
SetSchemaChangesForListSoapIn	The request WSDL message for the SetSchemaChangesForList WSDL operation.
SetSchemaChangesForListSoapOut	The response WSDL message for the SetSchemaChangesForList WSDL operation.

3.1.4.6.1.1 SetSchemaChangesForListSoapIn

The request WSDL message for the **SetSchemaChangesForList** WSDL operation.

The SOAP action value is:

`http://schemas.microsoft.com/office/infopath/2007/formsServices/SetSchemaChangesForList`

The SOAP body contains the **SetSchemaChangesForList** element.

3.1.4.6.1.2 SetSchemaChangesForListSoapOut

The response WSDL message for the **SetSchemaChangesForList** WSDL operation.

The SOAP body contains the **SetSchemaChangesForListResponse** element.

3.1.4.6.2 Elements

The following table summarizes the XML schema element definitions that are specific to this operation.

Element	Description
SetSchemaChangesForList	The input data for the SetSchemaChangesForList WSDL operation.
SetSchemaChangesForListResponse	The result data for the SetSchemaChangesForList WSDL operation.

3.1.4.6.2.1 SetSchemaChangesForList

The **SetSchemaChangesForList** element specifies the input data for the **SetSchemaChangesForList** WSDL operation.

```
<xs:element name="SetSchemaChangesForList" xmlns:xs="http://www.w3.org/2001/XMLSchema">
  <xs:complexType>
    <xs:sequence>
      <xs:element minOccurs="1" maxOccurs="1" name="lcid" type="xs:int"/>
      <xs:element minOccurs="1" maxOccurs="1" name="listGuid" type="xs:string"/>
      <xs:element minOccurs="1" maxOccurs="1" name="contentTypeId" type="xs:string"/>
      <xs:element minOccurs="0" maxOccurs="1" name="newFields">
        <xs:complexType mixed="true">
          <xs:sequence>
            <xs:any/>
          </xs:sequence>
        </xs:complexType>
      </xs:element>
      <xs:element minOccurs="0" maxOccurs="1" name="updateFields">
        <xs:complexType mixed="true">
          <xs:sequence>
            <xs:any/>
          </xs:sequence>
        </xs:complexType>
      </xs:element>
      <xs:element minOccurs="0" maxOccurs="1" name="deleteFields">
        <xs:complexType mixed="true">
          <xs:sequence>
            <xs:any/>
          </xs:sequence>
        </xs:complexType>
      </xs:element>
    </xs:sequence>
  </xs:complexType>
</xs:element>
```

lcid: A language code identifier (LCID), as specified in [\[MS-LCID\]](#), identifying the preferred language of the protocol server for all returned **strings**. For more information, see section [2.2.4.4](#).

listGuid: A list identifier, as specified in [\[MS-WSSTS\]](#) section 2.1.2.7.

contentTypeId: A content type identifier, as specified in [\[MS-WSSTS\]](#) section 2.1.2.8.1.

newFields: An **XML fragment** that defines the **CAML** representation for the fields (2) to add in the list (1), as specified in [\[MS-LISTSWS\]](#) section 2.2.4.12.

updateFields: An XML fragment that defines the CAML representation for the fields (2) to update in the list (1), as specified in [\[MS-LISTSWS\]](#) section 2.2.4.12.

deleteFields: An XML fragment that defines the CAML representation for the fields (2) to delete in the list (1), as specified in [\[MS-LISTSWS\]](#) section 2.2.4.12.

3.1.4.6.2.2 SetSchemaChangesForListResponse

The **SetSchemaChangesForListResponse** element specifies the result data for the **SetSchemaChangesForList** WSDL operation.

```
<xs:element name="SetSchemaChangesForListResponse"
  xmlns:xs="http://www.w3.org/2001/XMLSchema">
  <xs:complexType>
    <xs:sequence>
      <xs:element minOccurs="0" maxOccurs="1" name="SetSchemaChangesForListResult">
        <xs:complexType mixed="true">
          <xs:sequence>
            <xs:any/>
          </xs:sequence>
        </xs:complexType>
      </xs:element>
    </xs:sequence>
  </xs:complexType>
</xs:element>
```

SetSchemaChangesForListResult: An XML fragment returned by the protocol server after performing the requested field (2) operations. It represents the CAML of the new fields (2) added to the list (1) by the protocol server.

The protocol server **MUST** return a **NewFieldNameMapping** XML fragment for every field for which the protocol server assigns a different **field internal name** than the field internal name specified in the **newFields** element of **SetSchemaChangesForList**.

The **NewFieldsNameMapping** XML fragment **MUST NOT** contain any **NewFieldNameMapping** XML fragments if the protocol server does not assign a new field internal name to any field (2) added to the list (1).

The protocol server **MUST NOT** return **NewFieldNameMapping** XML fragments where the **Name** value does not match a field internal name specified in the **newFields** element of the **SetSchemaChangesForList** web method.

The protocol server **SHOULD** return a SOAP fault if any field (2) operation fails, but the protocol server **MAY** [<15>](#) proceed with the remaining field (2) operations requested by the protocol client.

3.1.4.6.3 Complex Types

None.

3.1.4.6.4 Simple Types

None.

3.1.4.6.5 Attributes

None.

3.1.4.6.6 Groups

None.

3.1.4.6.7 Attribute Groups

None.

3.1.5 Timer Events

None.

3.1.6 Other Local Events

None.

4 Protocol Examples

4.1 DesignCheckFormTemplate Operation Examples

This example shows the use of the **DesignCheckFormTemplate** operation.

4.1.1 DesignCheckFormTemplate Request and Response with No Message Elements (No Issues Found)

This example details a request to the **DesignCheckFormTemplate** operation and the subsequent response with zero **Message** elements, indicating no browser compatibility or browser-optimization issues were found.

The following example is the request to the **DesignCheckFormTemplate** operation sent by the protocol client.

```
<?xml version="1.0" encoding="UTF-8" standalone="no"?>
  <SOAP-ENV:Envelope xmlns:SOAPSDK1="http://www.w3.org/2001/XMLSchema"
    xmlns:SOAPSDK2="http://www.w3.org/2001/XMLSchema-instance" xmlns:SOAP-
    ENV="http://schemas.xmlsoap.org/soap/envelope/"> <SOAP-ENV:Body> <DesignCheckFormTemplate
    xmlns='http://schemas.microsoft.com/office/infopath/2007/formsServices'>
      <lcid>1033</lcid>
      <base64FormTemplate>...</base64FormTemplate>
      <applicationId>InfoPath 14</applicationId>
    </DesignCheckFormTemplate>
  </SOAP-ENV:Body>
</SOAP-ENV:Envelope>
```

The **lcid** element value of "1033" indicates the protocol client is requesting a response from the protocol server with strings suitable for display localized in English (United States).

The **base64FormTemplate** element value of ellipses ("...") indicate a form template (.xsn) file, encoded with base64 encoding.

The **applicationId** element value of "InfoPath 14" identifies the protocol client.

The following example is the response from the **DesignCheckFormTemplate** operation sent by the protocol server. Within the **Messages** element, it shows zero **Message** elements, indicating the form template (.xsn) file is compatible with the protocol server.

```
<?xml version="1.0" encoding="utf-8"?> <soap:Envelope
xmlns:soap="http://schemas.xmlsoap.org/soap/envelope/"
xmlns:xsi="http://www.w3.org/2001/XMLSchema-instance"
xmlns:xsd="http://www.w3.org/2001/XMLSchema"> <soap:Body> <DesignCheckFormTemplateResponse
xmlns="http://schemas.microsoft.com/office/infopath/2007/formsServices">
  <DesignCheckFormTemplateResult>
    <ApplicationId>InfoPath 14</ApplicationId>
    <Lcid>1033</Lcid>
    <Categories>
      <Category>
        <Id>BrowserOptimization</Id>
        <Label>Browser Optimization</Label>
        <HideWarningsByDefault>true</HideWarningsByDefault>
      </Category>
      <Category>
        <Id>BrowserCompatibility</Id>
```

```

        <Label>Browser Compatibility (Verified on server) </Label>
        <HideWarningsByDefault>>false</HideWarningsByDefault>
    </Category>
</Categories>
    <Messages />
</DesignCheckFormTemplateResult>
</DesignCheckFormTemplateResponse>
</soap:Body>
</soap:Envelope>

```

The **ApplicationId** element value of "InfoPath 14" demonstrates that the protocol server retains the value from the **applicationId** element in the request message and includes that value in the response.

The **Lcid** element value of "1033" indicates the protocol server is returning a **string** suitable for display to an end user in English (United States).

4.1.2 DesignCheckFormTemplate Response with Message Elements (One or More Issues Found)

This example details a response from the **DesignCheckFormTemplate** with **Message** elements, indicating browser compatibility or browser-optimization issues were found. For a typical request message, see section [4.1.1](#).

```

<?xml version="1.0" encoding="utf-8"?>
<soap:Envelope xmlns:soap="http://schemas.xmlsoap.org/soap/envelope/"
xmlns:xsi="http://www.w3.org/2001/XMLSchema-instance"
xmlns:xsd="http://www.w3.org/2001/XMLSchema">
    <soap:Body>
        <DesignCheckFormTemplateResponse
xmlns="http://schemas.microsoft.com/office/infopath/2007/formsServices">
            <DesignCheckFormTemplateResult>
                <ApplicationId>InfoPath 14</ApplicationId>
                <Lcid>1033</Lcid>
                <Categories>
                    <Category>
                        <Id>BrowserOptimization</Id>
                        <Label>Browser Optimization</Label>
                        <HideWarningsByDefault>>true</HideWarningsByDefault>
                    </Category>
                    <Category>
                        <Id>BrowserCompatibility</Id>
                        <Label>Browser Compatibility (Verified on server)</Label>
                        <HideWarningsByDefault>>false</HideWarningsByDefault>
                    </Category>
                </Categories>
                <Messages>
                    <Message Id="107" Type="Warning" Feature="Controls"
Category="BrowserCompatibility">
                        <ShortMessage>Custom task panes are not supported</ShortMessage>
                        <DetailedMessage>Custom task panes are not supported by Infopath Forms Services.
The custom task Pane will not be displayed when users fill out a form in a Web
browser.</DetailedMessage>
                        <SourceLocation FileName="manifest.xsf" />
                    </Message>
                    <Message Id="44" Type="Error" Feature="Controls" Category="BrowserCompatibility">

```

```

    <ShortMessage>Digital signatures on the entire form are not
supported</ShortMessage>
    <DetailedMessage>Digital signatures on the entire form are not supported by
Infopath Forms Services. Digital signature settings must be changed before the form can be
published. On the Tools menu, click Form Options, and then disable the digital signatures or
enable the digital signatures on specific data in the form.</DetailedMessage>
    <SourceLocation FileName="manifest.xsf" />
  </Message>
</Messages>
</DesignCheckFormTemplateResult>
</DesignCheckFormTemplateResponse>
</soap:Body>
</soap:Envelope>

```

The **ApplicationId** element value of "InfoPath 14" demonstrates the protocol server's pass-thru of the value from the request's **applicationId** element.

The **Lcid** element value of "1033" indicates the protocol server is returning a **string** suitable for display to an end user in English (United States).

The two **Message** elements demonstrate checks specified in section [2.2.4.4](#). One has the **Message Id** value "107", detailing a warning that does not prevent browser enabling a form template (.xsn) file. The other has the **Message Id** value "44", detailing an error that would prevent browser enabling a form template (.xsn) file.

4.2 BrowserEnableUserFormTemplate Operation Examples

This example shows the use of the **BrowserEnableUserFormTemplate** operation.

4.2.1 BrowserEnableUserFormTemplate Request/Response Indicating the Successful Browser Enabling of a Form Template (.xsn) File

This example details a request to the **BrowserEnableUserFormTemplate** operation and the subsequent response with zero **Message** elements, indicating the form template (.xsn) file was successfully browser-enabled.

The following example is the request to the **BrowserEnableUserFormTemplate** operation sent by the protocol client.

```

<?xml version="1.0" encoding="UTF-8" standalone="no"?>
<SOAP-ENV:Envelope xmlns:SOAPSDK1="http://www.w3.org/2001/XMLSchema"
xmlns:SOAPSDK2="http://www.w3.org/2001/XMLSchema-instance"
xmlns:SOAPSDK3="http://schemas.xmlsoap.org/soap/encoding/" xmlns:SOAP-
ENV="http://schemas.xmlsoap.org/soap/envelope/">
  <SOAP-ENV:Body>
    <BrowserEnableUserFormTemplate
xmlns='http://schemas.microsoft.com/office/infopath/2007/formsServices'>
      <formTemplateLocation>http://contoso/DocLib/forms/template.xsn</formTemplateLocation>
    </BrowserEnableUserFormTemplate>
  </SOAP-ENV:Body>
</SOAP-ENV:Envelope>

```

The **formTemplateLocation** element value of "http://contoso/DocLib/forms/template.xsn" represents the URL on the protocol server of a form template (.xsn) file that the protocol client is requesting to be browser-enabled.

The following example is the response from the **BrowserEnableUserFormTemplate** operation sent by the protocol server. Within the **Messages** element, it shows zero **Message** elements, indicating the form template (.xsn) file is compatible with the protocol server.

```
<?xml version="1.0" encoding="utf-8"?>
<soap:Envelope xmlns:soap="http://schemas.xmlsoap.org/soap/envelope/"
xmlns:xsi="http://www.w3.org/2001/XMLSchema-instance"
xmlns:xsd="http://www.w3.org/2001/XMLSchema">
  <soap:Body>
    <BrowserEnableUserFormTemplateResponse
xmlns="http://schemas.microsoft.com/office/infopath/2007/formsServices">
      <BrowserEnableUserFormTemplateResult>
        <Messages />
      </BrowserEnableUserFormTemplateResult>
    </BrowserEnableUserFormTemplateResponse>
  </soap:Body>
</soap:Envelope>
```

4.3 SetFormsForListItem Operation Examples

This example shows the use of the **SetFormsForListItem** operation.

4.3.1 SetFormsForListItem Request/Response Indicating Successful Operations on a List

This example details a request to the **SetFormsForListItem** operation and the subsequent response with zero **Message** elements, indicating no browser compatibility or browser-optimization issues were found, and there were no issues with mapping the form template (.xsn) file to the content type.

The following example is the request sent by the protocol client.

```
<?xml version="1.0" encoding="UTF-8" standalone="no"?>
<SOAP-ENV:Envelope xmlns:SOAPSDK1="http://www.w3.org/2001/XMLSchema"
xmlns:SOAPSDK2="http://www.w3.org/2001/XMLSchema-instance"
xmlns:SOAPSDK3="http://schemas.xmlsoap.org/soap/encoding/" xmlns:SOAP-
ENV="http://schemas.xmlsoap.org/soap/envelope/">
  <SOAP-ENV:Body>
    <SetFormsForListItem
xmlns='http://schemas.microsoft.com/office/infopath/2007/formsServices'>
      <lcid>1033</lcid>
      <base64FormTemplate>...</base64FormTemplate>
      <applicationId>InfoPath 14</applicationId>
      <listGuid>{6747CDB8-ADB5-4A5F-9323-AFCC3D329358}</listGuid>
      <contentTypeId>0x010500C8B78A06972AA34682872D813D9D0ED3</contentTypeId>
    </SetFormsForListItem>
  </SOAP-ENV:Body>
</SOAP-ENV:Envelope>
```

The **lcid** element value of "1033" indicates the protocol client is requesting a response from the protocol server with **strings** suitable for display localized in English (United States).

The **base64FormTemplate** element value of ellipses ("...") indicates a base64 encoded form template (.xsn) file.

The **applicationID** element value of "InfoPath 14" identifies the protocol client.

The **listGuid** element value is a valid list identifier on the protocol server.

The **contentTypeId** element value is a valid content type identifier on the protocol server.

The following example is the response from the **SetFormsForListItem** operation sent by the protocol server. Within the **Messages** element, it shows zero **Message** elements, indicating the form template (.xsn) file is compatible with the protocol server.

```
<?xml version="1.0" encoding="utf-8"?>
<soap:Envelope xmlns:soap="http://schemas.xmlsoap.org/soap/envelope/"
  xmlns:xsi="http://www.w3.org/2001/XMLSchema-instance"
  xmlns:xsd="http://www.w3.org/2001/XMLSchema">
  <soap:Body>
    <SetFormsForListItemResponse
      xmlns="http://schemas.microsoft.com/office/infopath/2007/formsServices">
      <SetFormsForListItemResult>
        <ApplicationId>InfoPath 14</ApplicationId>
        <Lcid>1033</Lcid>
        <Categories>
          <Category>
            <Id>BrowserOptimization</Id>
            <Label>Browser Optimization</Label>
            <HideWarningsByDefault>true</HideWarningsByDefault>
          </Category>
          <Category>
            <Id>BrowserCompatibility</Id>
            <Label>Browser Compatibility (Verified on server)</Label>
            <HideWarningsByDefault>>false</HideWarningsByDefault>
          </Category>
        </Categories>
        <Messages />
      </SetFormsForListItemResult>
    </SetFormsForListItemResponse>
  </soap:Body>
</soap:Envelope>
```

The **ApplicationId** element value of "InfoPath 14" demonstrates the protocol server's pass-through of the value from the request's **applicationId** element.

The **Lcid** element value of "1033" indicates the protocol server is returning **strings** suitable for display to an end user in English (United States).

4.3.2 SetFormsForListItem Response with Message Elements (One or More Issues Found)

This example details a response from the **SetFormsForListItem** operation with **Message** elements, indicating there was an issue with mapping the form template (.xsn) file to the content type. For a typical request message, see section [4.3.1](#).

```
<?xml version="1.0" encoding="utf-8"?>
<soap:Envelope xmlns:soap="http://schemas.xmlsoap.org/soap/envelope/"
  xmlns:xsi="http://www.w3.org/2001/XMLSchema-instance"
  xmlns:xsd="http://www.w3.org/2001/XMLSchema">
  <soap:Body>
    <SetFormsForListItemResponse
      xmlns="http://schemas.microsoft.com/office/infopath/2007/formsServices">
      <SetFormsForListItemResult>
```

```

<ApplicationId>InfoPath 14</ApplicationId>
<Lcid>1033</Lcid>
<Categories>
  <Category>
    <Id>BrowserOptimization</Id>
    <Label>Browser Optimization</Label>
    <HideWarningsByDefault>true</HideWarningsByDefault>
  </Category>
  <Category>
    <Id>BrowserCompatibility</Id>
    <Label>Browser Compatibility (Verified on server)</Label>
    <HideWarningsByDefault>>false</HideWarningsByDefault>
  </Category>
</Categories>
<Messages>
  <Message Id="278" Type="Error" Feature="Controls" Category="BrowserCompatibility">
    <ShortMessage>Invalid location for the xsn being published. </ShortMessage>
    <DetailedMessage>Invalid location for the xsn being published. </DetailedMessage>
  </Message>
</Messages>
</SetFormsForListItemResult>
</SetFormsForListItemResponse>
</soap:Body>
</soap:Envelope>

```

The **Message** element demonstrates checks specified in section [2.2.4.5](#). It has the **Message Id** value "278", detailing an error that would prevent mapping the form template (.xsn) file to the content type.

4.4 GetListFormLocation Operation Examples

This example shows the use of the **GetListFormLocation** operation.

4.4.1 GetListFormLocation Request/Response

This example details a request to the **GetListFormLocation** operation and the subsequent response pointing to the location of a form template (.xsn) file on the protocol server that is mapped to the content type requested by the protocol client.

The following example is the request to the **GetListFormLocation** operation sent by the protocol client.

```

<?xml version="1.0" encoding="UTF-8" standalone="no"?>
<SOAP-ENV:Envelope xmlns:SOAPSdk1="http://www.w3.org/2001/XMLSchema"
xmlns:SOAPSdk2="http://www.w3.org/2001/XMLSchema-instance"
xmlns:SOAPSdk3="http://schemas.xmlsoap.org/soap/encoding/" xmlns:SOAP-
ENV="http://schemas.xmlsoap.org/soap/envelope/">
  <SOAP-ENV:Body>
    <GetListFormLocation
xmlns='http://schemas.microsoft.com/office/infopath/2007/formsServices'>
      <lcid>1033</lcid>
      <listGuid>{6747CDB8-ADB5-4A5F-9323-AFCC3D329358}</listGuid>
      <contentTypeid>0x010500C8B78A06972AA34682872D813D9D0ED3</contentTypeid>
      <checkDesignPermissions>true</checkDesignPermissions>
    </GetListFormLocation>
  </SOAP-ENV:Body>

```

```
</SOAP-ENV:Envelope>
```

The **checkDesignPermissions** element value indicates that the protocol server checks for **ManageLists** WSS rights.

The following example is the response from the **GetListFormLocation** operation sent by the protocol server.

```
<?xml version="1.0" encoding="utf-8"?>
<soap:Envelope xmlns:soap="http://schemas.xmlsoap.org/soap/envelope/"
  xmlns:xsi="http://www.w3.org/2001/XMLSchema-instance"
  xmlns:xsd="http://www.w3.org/2001/XMLSchema">
  <soap:Body>
    <GetListFormLocationResponse
      xmlns="http://schemas.microsoft.com/office/infopath/2007/formsServices">
      <GetListFormLocationResult>http://contoso/Lists/Links/Link/template.xsn</GetListFormLocationResult>
    </GetListFormLocationResponse>
  </soap:Body>
</soap:Envelope>
```

The **GetListFormLocationResult** element value of "http://contoso/Lists/Links/Link/template.xsn" represents the URL of a form template (.xsn) file on the protocol server that is mapped to the content type specified by the client protocol in the request.

4.5 SetSchemaChangesForList Operation Examples

This example shows the use of the **SetSchemaChangesForList** operation.

4.5.1 SetSchemaChangesForList Request/Response Indicating Successful Operations on a List

This example details a request to the **SetSchemaChangesForList** operation and the subsequent response indicating the new field internal name mappings returned by the protocol server.

The following example is the request to the **SetSchemaChangesForList** operation sent by the protocol client.

```
<?xml version="1.0" encoding="UTF-8" standalone="no"?>
<SOAP-ENV:Envelope xmlns:SOAPSdk1="http://www.w3.org/2001/XMLSchema"
  xmlns:SOAPSdk2="http://www.w3.org/2001/XMLSchema-instance"
  xmlns:SOAPSdk3="http://schemas.xmlsoap.org/soap/encoding/" xmlns:SOAP-
  ENV="http://schemas.xmlsoap.org/soap/envelope/">
  <SOAP-ENV:Body>
    <SetSchemaChangesForList
      xmlns="http://schemas.microsoft.com/office/infopath/2007/formsServices">
      <lcid>1033</lcid>
      <listGuid>{3bbd50d4-524e-405a-b05f-22c15baac9a5}</listGuid>
      <contentTypeid>0x010041CAB86258A82E4BAFC7F3A9A8B00AA0</contentTypeid>
      <newFields>
        <Fields>
          <Field Type="Text" Name="title" DisplayName="title" MaxLength="255" Required="FALSE"
            ><Default></Default></Field>
          <Field Type="Note" Name="field6" DisplayName="field6" AppendOnly="FALSE"
            RichText="TRUE" RichTextMode="FullHtml" Required="FALSE" ></Field>
```

```

        <Field Type="Choice" Name="field7" DisplayName="field7" Required="FALSE"
FillInChoice="FALSE" ><Default></Default><CHOICES><CHOICE>Enter Choice
#1</CHOICE><CHOICE>Enter Choice #2</CHOICE><CHOICE>Enter Choice #3</CHOICE></CHOICES></Field>
    </Fields>
    </newFields>
    <updateFields>
    <Fields>
        <Field Type="Text" Name="Title" DisplayName="Title" MaxLength="255" Required="TRUE"
><Default></Default></Field><Field Type="Text" Name="field4" DisplayName="field4"
MaxLength="255" Required="FALSE" ><Default></Default></Field>
    </Fields>
    </updateFields>
    <deleteFields>
    <Fields>
        <Field Name="field1" ></Field><Field Name="field2" ></Field>
    </Fields>
    </deleteFields>
</SetSchemaChangesForList>
</SOAP-ENV:Body>
</SOAP-ENV:Envelope>

```

The **newFields**, **updateField**, and **deleteFields** element values represent the field operations that the protocol server will attempt to perform on the list (1).

The following example is the response from the **SetSchemaChangesForList** operation sent by the protocol server.

```

<?xml version="1.0" encoding="utf-8"?>
<soap:Envelope xmlns:soap="http://schemas.xmlsoap.org/soap/envelope/"
xmlns:xsi="http://www.w3.org/2001/XMLSchema-instance"
xmlns:xsd="http://www.w3.org/2001/XMLSchema">
    <soap:Body>
        <SetSchemaChangesForListResponse
xmlns="http://schemas.microsoft.com/office/infopath/2007/formsServices">
            <SetSchemaChangesForListResult>
                <Fields>
                    <newFields>
                        <Field Name="title" NewName="title0"></Field>
                    </newFields>
                </Fields>
            </SetSchemaChangesForListResult>
        </SetSchemaChangesForListResponse>
    </soap:Body>
</soap:Envelope>

```

The **NewName** element value of "title0" indicates that the protocol server is returning the new field internal name assigned for the requested field **Name** element value of "title".

4.6 GetUserCodeDeploymentDependencies Operation Examples

This example shows the use of the **GetUserCodeDeploymentDependencies** operation.

4.6.1 GetUserCodeDeploymentDependencies Request/Response Indicating that the Form Template (.xsn) File with Code Can Be Browser-Enabled as a Sandboxed Solution

This example details a request to the **GetUserCodeDeploymentDependencies** operation and the subsequent response indicating that the form template (.xsn) file can be browser-enabled as a sandboxed solution.

The following example is the request to the **GetUserCodeDeploymentDependencies** operation sent by the protocol client.

```
<?xml version="1.0" encoding="UTF-8" standalone="no"?>
<SOAP-ENV:Envelope xmlns:SOAPSdk1="http://www.w3.org/2001/XMLSchema"
  xmlns:SOAPSdk2="http://www.w3.org/2001/XMLSchema-instance"
  xmlns:SOAPSdk3="http://schemas.xmlsoap.org/soap/encoding/" xmlns:SOAP-
  ENV="http://schemas.xmlsoap.org/soap/envelope/">
  <SOAP-ENV:Body>
    <GetUserCodeDeploymentDependencies
      xmlns="http://schemas.microsoft.com/office/infopath/2007/formsServices">
      <siteCollectionLocation>http://contoso/site</siteCollectionLocation>
    </GetUserCodeDeploymentDependencies>
  </SOAP-ENV:Body>
</SOAP-ENV:Envelope>
```

The **siteCollectionLocation** element value of "http://contoso/site" represents the URL of the site collection that the protocol client requests to verify that sandboxed solution activation is permitted.

The following example is the response from the **GetUserCodeDeploymentDependencies** operation sent by the protocol server. The **GetUserCodeDeploymentDependenciesResponse** element has the value "ActivationAllowed", which indicates that the form template (.xsn) file with code can be browser-enabled as a sandboxed solution.

```
<?xml version="1.0" encoding="utf-8"?>
<soap:Envelope xmlns:soap="http://schemas.xmlsoap.org/soap/envelope/"
  xmlns:xsi="http://www.w3.org/2001/XMLSchema-instance"
  xmlns:xsd="http://www.w3.org/2001/XMLSchema">
  <soap:Body>
    <GetUserCodeDeploymentDependenciesResponse
      xmlns="http://schemas.microsoft.com/office/infopath/2007/formsServices">
      <GetUserCodeDeploymentDependenciesResult>ActivationAllowed</GetUserCodeDeploymentDependencies
      Result>
    </GetUserCodeDeploymentDependenciesResponse>
  </soap:Body>
</soap:Envelope>
```

5 Security

5.1 Security Considerations for Implementers

In addition to the security considerations applicable to the underlying protocols, a protocol server implementation of **DesignCheckFormTemplate** operation could involve expensive processing operations that need to be appropriately protected against denial of service attacks. The implementer could use an authorization policy to ensure that the Web service protocol cannot be used to mount this type of attack.

A protocol server implementation considers if it needs to execute compiled or interpreted code on the protocol server during the Forms Services Design and Activation Web Service Protocol. This is dangerous, because it can allow any user to use this protocol to execute un-trusted code in the server process.

5.2 Index of Security Parameters

None.

6 Appendix A: Full WSDL

For ease of implementation, the full WSDL is provided in this appendix.

```
<?xml version="1.0" encoding="UTF-8"?>
<wsdl:definitions xmlns:soap12="http://schemas.xmlsoap.org/wsdl/soap12/"
xmlns:http="http://schemas.xmlsoap.org/wsdl/http/"
xmlns:tns="http://schemas.microsoft.com/office/infopath/2007/formsServices"
xmlns:soap="http://schemas.xmlsoap.org/wsdl/soap/"
xmlns:xs="http://www.w3.org/2001/XMLSchema"
targetNamespace="http://schemas.microsoft.com/office/infopath/2007/formsServices"
xmlns:wsdl="http://schemas.xmlsoap.org/wsdl/">
  <wsdl:documentation>Forms Service</wsdl:documentation>
  <wsdl:types>
    <xs:schema elementFormDefault="qualified"
targetNamespace="http://schemas.microsoft.com/office/infopath/2007/formsServices">
      <xs:element name="BrowserEnableUserFormTemplate">
        <xs:complexType>
          <xs:sequence>
            <xs:element minOccurs="0" maxOccurs="1" name="formTemplateLocation"
type="xs:string"/>
          </xs:sequence>
        </xs:complexType>
      </xs:element>
      <xs:element name="BrowserEnableUserFormTemplateResponse">
        <xs:complexType>
          <xs:sequence>
            <xs:element minOccurs="0" maxOccurs="1"
name="BrowserEnableUserFormTemplateResult" type="tns:MessagesResponse"/>
          </xs:sequence>
        </xs:complexType>
      </xs:element>
      <xs:complexType name="MessagesResponse">
        <xs:sequence>
          <xs:element minOccurs="0" maxOccurs="1" name="Messages" type="tns:Messages"/>
        </xs:sequence>
      </xs:complexType>
      <xs:complexType name="Messages">
        <xs:sequence>
          <xs:element minOccurs="0" maxOccurs="unbounded" name="Message" nillable="true"
type="tns:Message"/>
        </xs:sequence>
      </xs:complexType>
      <xs:complexType name="Message">
        <xs:sequence>
          <xs:element minOccurs="0" maxOccurs="1" name="ShortMessage" type="xs:string"/>
          <xs:element minOccurs="0" maxOccurs="1" name="DetailedMessage" type="xs:string"/>
          <xs:element minOccurs="0" maxOccurs="1" name="SourceLocation"
type="tns:SourceLocation"/>
        </xs:sequence>
        <xs:attribute name="Id" type="xs:int" use="required"/>
        <xs:attribute name="Type" type="tns:MessageType" use="required"/>
        <xs:attribute name="Feature" type="tns:Feature" use="required"/>
        <xs:attribute name="Category" type="tns:Category" use="required"/>
      </xs:complexType>
      <xs:complexType name="SourceLocation">
        <xs:attribute name="ControlId" type="xs:string"/>
        <xs:attribute name="FileName" type="xs:string"/>
        <xs:attribute name="LineNumber" type="xs:int"/>
      </xs:complexType>
    </xs:schema>
  </wsdl:types>

```

```

    <xs:attribute name="LinePosition" type="xs:int"/>
</xs:complexType>
<xs:simpleType name="MessageType">
  <xs:restriction base="xs:string">
    <xs:enumeration value="Error"/>
    <xs:enumeration value="Information"/>
    <xs:enumeration value="Warning"/>
  </xs:restriction>
</xs:simpleType>
<xs:simpleType name="Feature">
  <xs:restriction base="xs:string">
    <xs:enumeration value="GenericXsf"/>
    <xs:enumeration value="XsfSchema"/>
    <xs:enumeration value="GenericXsl"/>
    <xs:enumeration value="GenericXPath"/>
    <xs:enumeration value="TemplateXml"/>
    <xs:enumeration value="Layout"/>
    <xs:enumeration value="Controls"/>
    <xs:enumeration value="BusinessLogic"/>
    <xs:enumeration value="Calculations"/>
    <xs:enumeration value="Validation"/>
    <xs:enumeration value="DigitalSignatures"/>
    <xs:enumeration value="DataAdapters"/>
    <xs:enumeration value="Submit"/>
    <xs:enumeration value="Views"/>
    <xs:enumeration value="Rules"/>
    <xs:enumeration value="ConditionalFormatting"/>
    <xs:enumeration value="VersionUpgrade"/>
  </xs:restriction>
</xs:simpleType>
<xs:simpleType name="UserSolutionActivationStatus">
  <xs:restriction base="xs:string">
    <xs:enumeration value="ActivationAllowed"/>
    <xs:enumeration value="ActivationDenied"/>
    <xs:enumeration value="UserCodeServiceNotAvailable"/>
    <xs:enumeration value="ServiceQuotaExceeded"/>
    <xs:enumeration value="InsufficientUserPermissions"/>
  </xs:restriction>
</xs:simpleType>
<xs:simpleType name="Category">
  <xs:restriction base="xs:string">
    <xs:enumeration value="BrowserOptimization"/>
    <xs:enumeration value="BrowserCompatibility"/>
  </xs:restriction>
</xs:simpleType>
<xs:element name="DesignCheckFormTemplate">
  <xs:complexType>
    <xs:sequence>
      <xs:element minOccurs="1" maxOccurs="1" name="lcid" type="xs:int"/>
      <xs:element minOccurs="1" maxOccurs="1" name="base64FormTemplate"
type="xs:string"/>
      <xs:element minOccurs="0" maxOccurs="1" name="applicationId" type="xs:string"/>
    </xs:sequence>
  </xs:complexType>
</xs:element>
<xs:element name="DesignCheckFormTemplateResponse">
  <xs:complexType>
    <xs:sequence>

```



```

        <xs:element minOccurs="0" maxOccurs="1" name="DesignCheckFormTemplateResult"
type="tns:DesignCheckerInformation"/>
    </xs:sequence>
</xs:complexType>
</xs:element>
<xs:element name="SetFormsForListItem">
    <xs:complexType>
        <xs:sequence>
            <xs:element minOccurs="1" maxOccurs="1" name="lcid" type="xs:int"/>
            <xs:element minOccurs="1" maxOccurs="1" name="base64FormTemplate"
type="xs:string"/>
            <xs:element minOccurs="0" maxOccurs="1" name="applicationId" type="xs:string"/>
            <xs:element minOccurs="1" maxOccurs="1" name="listGuid" type="xs:string"/>
            <xs:element minOccurs="1" maxOccurs="1" name="contentTypeId" type="xs:string"/>
        </xs:sequence>
    </xs:complexType>
</xs:element>
<xs:element name="SetFormsForListItemResponse">
    <xs:complexType>
        <xs:sequence>
            <xs:element minOccurs="0" maxOccurs="1" name="SetFormsForListItemResult"
type="tns:DesignCheckerInformation"/>
        </xs:sequence>
    </xs:complexType>
</xs:element>
<xs:element name="GetListFormLocation">
    <xs:complexType>
        <xs:sequence>
            <xs:element minOccurs="1" maxOccurs="1" name="lcid" type="xs:int"/>
            <xs:element minOccurs="1" maxOccurs="1" name="listGuid" type="xs:string"/>
            <xs:element minOccurs="1" maxOccurs="1" name="contentTypeId" type="xs:string"/>
            <xs:element minOccurs="1" maxOccurs="1" name="checkDesignPermissions"
type="xs:boolean"/>
            <xs:element minOccurs="1" maxOccurs="1" name="checkCustomFormEnabled"
type="xs:boolean"/>
        </xs:sequence>
    </xs:complexType>
</xs:element>
<xs:element name="GetListFormLocationResponse">
    <xs:complexType>
        <xs:sequence>
            <xs:element minOccurs="0" maxOccurs="1" name="GetListFormLocationResult"
type="xs:string"/>
        </xs:sequence>
    </xs:complexType>
</xs:element>
<xs:element name="SetSchemaChangesForList">
    <xs:complexType>
        <xs:sequence>
            <xs:element minOccurs="1" maxOccurs="1" name="lcid" type="xs:int"/>
            <xs:element minOccurs="1" maxOccurs="1" name="listGuid" type="xs:string"/>
            <xs:element minOccurs="1" maxOccurs="1" name="contentTypeId" type="xs:string"/>
            <xs:element minOccurs="0" maxOccurs="1" name="newFields">
                <xs:complexType mixed="true">
                    <xs:sequence>
                        <xs:any/>
                    </xs:sequence>
                </xs:complexType>
            </xs:element>
        </xs:sequence>
    </xs:complexType>
</xs:element>

```

```

    <xs:element minOccurs="0" maxOccurs="1" name="updateFields">
      <xs:complexType mixed="true">
        <xs:sequence>
          <xs:any/>
        </xs:sequence>
      </xs:complexType>
    </xs:element>
    <xs:element minOccurs="0" maxOccurs="1" name="deleteFields">
      <xs:complexType mixed="true">
        <xs:sequence>
          <xs:any/>
        </xs:sequence>
      </xs:complexType>
    </xs:element>
  </xs:sequence>
</xs:complexType>
</xs:element>
<xs:element name="SetSchemaChangesForListResponse">
  <xs:complexType>
    <xs:sequence>
      <xs:element minOccurs="0" maxOccurs="1" name="SetSchemaChangesForListResult">
        <xs:complexType mixed="true">
          <xs:sequence>
            <xs:any/>
          </xs:sequence>
        </xs:complexType>
      </xs:element>
    </xs:sequence>
  </xs:complexType>
</xs:element>
<xs:element name="GetUserCodeDeploymentDependencies">
  <xs:complexType>
    <xs:sequence>
      <xs:element minOccurs="1" maxOccurs="1" name="siteCollectionLocation"
type="xs:string"/>
    </xs:sequence>
  </xs:complexType>
</xs:element>
<xs:element name="GetUserCodeDeploymentDependenciesResponse">
  <xs:complexType>
    <xs:sequence>
      <xs:element minOccurs="1" maxOccurs="1"
name="GetUserCodeDeploymentDependenciesResult" type="tns:UserSolutionActivationStatus"/>
    </xs:sequence>
  </xs:complexType>
</xs:element>
<xs:complexType name="DesignCheckerInformation">
  <xs:sequence>
    <xs:element minOccurs="0" maxOccurs="1" name="ApplicationId" type="xs:string"/>
    <xs:element minOccurs="1" maxOccurs="1" name="Lcid" type="xs:int"/>
    <xs:element minOccurs="0" maxOccurs="1" name="Categories" type="tns:Categories"/>
    <xs:element minOccurs="0" maxOccurs="1" name="Messages" type="tns:Messages"/>
  </xs:sequence>
</xs:complexType>
<xs:complexType name="Categories">
  <xs:sequence>
    <xs:element minOccurs="0" maxOccurs="unbounded" name="Category" nillable="true"
type="tns:CategoryType"/>
  </xs:sequence>

```

```

    </xs:complexType>
    <xs:complexType name="CategoryType">
      <xs:sequence>
        <xs:element minOccurs="1" maxOccurs="1" name="Id" type="tns:Category"/>
        <xs:element minOccurs="0" maxOccurs="1" name="Label" type="xs:string"/>
        <xs:element minOccurs="1" maxOccurs="1" name="HideWarningsByDefault"
type="xs:boolean"/>
      </xs:sequence>
    </xs:complexType>
  </xs:schema>
</wsdl:types>
<wsdl:portType name="FormsServicesWebServiceSoap">
  <wsdl:operation name="BrowserEnableUserFormTemplate">
    <wsdl:input message="tns:BrowserEnableUserFormTemplateSoapIn"/>
    <wsdl:output message="tns:BrowserEnableUserFormTemplateSoapOut"/>
  </wsdl:operation>
  <wsdl:operation name="DesignCheckFormTemplate">
    <wsdl:input message="tns:DesignCheckFormTemplateSoapIn"/>
    <wsdl:output message="tns:DesignCheckFormTemplateSoapOut"/>
  </wsdl:operation>
  <wsdl:operation name="SetFormsForListItem">
    <wsdl:input message="tns:SetFormsForListItemSoapIn"/>
    <wsdl:output message="tns:SetFormsForListItemSoapOut"/>
  </wsdl:operation>
  <wsdl:operation name="GetListFormLocation">
    <wsdl:input message="tns:GetListFormLocationSoapIn"/>
    <wsdl:output message="tns:GetListFormLocationSoapOut"/>
  </wsdl:operation>
  <wsdl:operation name="SetSchemaChangesForList">
    <wsdl:input message="tns:SetSchemaChangesForListSoapIn"/>
    <wsdl:output message="tns:SetSchemaChangesForListSoapOut"/>
  </wsdl:operation>
  <wsdl:operation name="GetUserCodeDeploymentDependencies">
    <wsdl:input message="tns:GetUserCodeDeploymentDependenciesSoapIn"/>
    <wsdl:output message="tns:GetUserCodeDeploymentDependenciesSoapOut"/>
  </wsdl:operation>
</wsdl:portType>
<wsdl:binding name="FormsServicesWebServiceSoap" type="tns:FormsServicesWebServiceSoap">
  <soap:binding transport="http://schemas.xmlsoap.org/soap/http"/>
  <wsdl:operation name="BrowserEnableUserFormTemplate">
    <soap:operation
soapAction="http://schemas.microsoft.com/office/infopath/2007/formsServices/BrowserEnableUser
FormTemplate" style="document"/>
    <wsdl:input>
      <soap:body use="literal"/>
    </wsdl:input>
    <wsdl:output>
      <soap:body use="literal"/>
    </wsdl:output>
  </wsdl:operation>
  <wsdl:operation name="DesignCheckFormTemplate">
    <soap:operation
soapAction="http://schemas.microsoft.com/office/infopath/2007/formsServices/DesignCheckFormTe
mplate" style="document"/>
    <wsdl:input>
      <soap:body use="literal"/>
    </wsdl:input>
    <wsdl:output>
      <soap:body use="literal"/>
    </wsdl:output>
  </wsdl:operation>

```

```

        </wsdl:output>
    </wsdl:operation>
    <wsdl:operation name="SetFormsForListItem">
        <soap:operation
soapAction="http://schemas.microsoft.com/office/infopath/2007/formsServices/SetFormsForListIt
em" style="document"/>
        <wsdl:input>
            <soap:body use="literal"/>
        </wsdl:input>
        <wsdl:output>
            <soap:body use="literal"/>
        </wsdl:output>
    </wsdl:operation>
    <wsdl:operation name="GetListFormLocation">
        <soap:operation
soapAction="http://schemas.microsoft.com/office/infopath/2007/formsServices/GetListFormLocati
on" style="document"/>
        <wsdl:input>
            <soap:body use="literal"/>
        </wsdl:input>
        <wsdl:output>
            <soap:body use="literal"/>
        </wsdl:output>
    </wsdl:operation>
    <wsdl:operation name="SetSchemaChangesForList">
        <soap:operation
soapAction="http://schemas.microsoft.com/office/infopath/2007/formsServices/SetSchemaChangesF
orList" style="document"/>
        <wsdl:input>
            <soap:body use="literal"/>
        </wsdl:input>
        <wsdl:output>
            <soap:body use="literal"/>
        </wsdl:output>
    </wsdl:operation>
    <wsdl:operation name="GetUserCodeDeploymentDependencies">
        <soap:operation
soapAction="http://schemas.microsoft.com/office/infopath/2007/formsServices/GetUserCodeDeploy
mentDependencies" style="document"/>
        <wsdl:input>
            <soap:body use="literal"/>
        </wsdl:input>
        <wsdl:output>
            <soap:body use="literal"/>
        </wsdl:output>
    </wsdl:operation>
</wsdl:binding>
<wsdl:binding name="FormsServicesWebServiceSoap12" type="tns:FormsServicesWebServiceSoap">
    <soap12:binding transport="http://schemas.xmlsoap.org/soap/http"/>
    <wsdl:operation name="BrowserEnableUserFormTemplate">
        <soap12:operation
soapAction="http://schemas.microsoft.com/office/infopath/2007/formsServices/BrowserEnableUser
FormTemplate" style="document"/>
        <wsdl:input>
            <soap12:body use="literal"/>
        </wsdl:input>
        <wsdl:output>
            <soap12:body use="literal"/>
        </wsdl:output>
    </wsdl:operation>

```

```

    <wsdl:operation name="DesignCheckFormTemplate">
      <soap12:operation
soapAction="http://schemas.microsoft.com/office/infopath/2007/formsServices/DesignCheckFormTe
mplate" style="document"/>
      <wsdl:input>
        <soap12:body use="literal"/>
      </wsdl:input>
      <wsdl:output>
        <soap12:body use="literal"/>
      </wsdl:output>
    </wsdl:operation>
    <wsdl:operation name="SetFormsForListItem">
      <soap12:operation
soapAction="http://schemas.microsoft.com/office/infopath/2007/formsServices/SetFormsForListIt
em" style="document"/>
      <wsdl:input>
        <soap12:body use="literal"/>
      </wsdl:input>
      <wsdl:output>
        <soap12:body use="literal"/>
      </wsdl:output>
    </wsdl:operation>
    <wsdl:operation name="GetListFormLocation">
      <soap12:operation
soapAction="http://schemas.microsoft.com/office/infopath/2007/formsServices/GetListFormLocati
on" style="document"/>
      <wsdl:input>
        <soap12:body use="literal"/>
      </wsdl:input>
      <wsdl:output>
        <soap12:body use="literal"/>
      </wsdl:output>
    </wsdl:operation>
    <wsdl:operation name="SetSchemaChangesForList">
      <soap12:operation
soapAction="http://schemas.microsoft.com/office/infopath/2007/formsServices/SetSchemaChangesF
orList" style="document"/>
      <wsdl:input>
        <soap12:body use="literal"/>
      </wsdl:input>
      <wsdl:output>
        <soap12:body use="literal"/>
      </wsdl:output>
    </wsdl:operation>
    <wsdl:operation name="GetUserCodeDeploymentDependencies">
      <soap12:operation
soapAction="http://schemas.microsoft.com/office/infopath/2007/formsServices/GetUserCodeDeploy
mentDependencies" style="document"/>
      <wsdl:input>
        <soap12:body use="literal"/>
      </wsdl:input>
      <wsdl:output>
        <soap12:body use="literal"/>
      </wsdl:output>
    </wsdl:operation>
  </wsdl:binding>
  <wsdl:message name="BrowserEnableUserFormTemplateSoapIn">
    <wsdl:part name="parameters" element="tns:BrowserEnableUserFormTemplate"/>
  </wsdl:message>
  <wsdl:message name="BrowserEnableUserFormTemplateSoapOut">

```

```
<wsdl:part name="parameters" element="tns:BrowserEnableUserFormTemplateResponse"/>
</wsdl:message>
<wsdl:message name="DesignCheckFormTemplateSoapIn">
  <wsdl:part name="parameters" element="tns:DesignCheckFormTemplate"/>
</wsdl:message>
<wsdl:message name="DesignCheckFormTemplateSoapOut">
  <wsdl:part name="parameters" element="tns:DesignCheckFormTemplateResponse"/>
</wsdl:message>
<wsdl:message name="GetListFormLocationSoapIn">
  <wsdl:part name="parameters" element="tns:GetListFormLocation"/>
</wsdl:message>
<wsdl:message name="GetListFormLocationSoapOut">
  <wsdl:part name="parameters" element="tns:GetListFormLocationResponse"/>
</wsdl:message>
<wsdl:message name="GetUserCodeDeploymentDependenciesSoapIn">
  <wsdl:part name="parameters" element="tns:GetUserCodeDeploymentDependencies"/>
</wsdl:message>
<wsdl:message name="GetUserCodeDeploymentDependenciesSoapOut">
  <wsdl:part name="parameters" element="tns:GetUserCodeDeploymentDependenciesResponse"/>
</wsdl:message>
<wsdl:message name="SetFormsForListItemSoapIn">
  <wsdl:part name="parameters" element="tns:SetFormsForListItem"/>
</wsdl:message>
<wsdl:message name="SetFormsForListItemSoapOut">
  <wsdl:part name="parameters" element="tns:SetFormsForListItemResponse"/>
</wsdl:message>
<wsdl:message name="SetSchemaChangesForListSoapIn">
  <wsdl:part name="parameters" element="tns:SetSchemaChangesForList"/>
</wsdl:message>
<wsdl:message name="SetSchemaChangesForListSoapOut">
  <wsdl:part name="parameters" element="tns:SetSchemaChangesForListResponse"/>
</wsdl:message>
</wsdl:definitions>
```

7 Appendix B: Product Messages

The contents of this appendix comprise messages returned to the protocol client by the protocol server.

7.1 Messages for Office InfoPath 2007 Forms

Messages described in this section are generated by Microsoft Office SharePoint Server 2007, Microsoft SharePoint Server 2010, and Microsoft SharePoint Server 2013 when design checking a form template (.xsn) file as specified in [\[MS-IPFF\]](#).

7.1.1 Message Elements of Type "Error"

ID	Category	Feature	Message	Description
1	BrowserCompatibility	Controls	The form template is not browser-compatible. It might be possible to correct the problem by opening the form template in Microsoft InfoPath, and then republishing it.	The protocol server returns this error message when the form template file cannot be opened. This error will occur when the file is invalid or corrupt.
5	BrowserCompatibility	Controls	Error loading form code assembly: <i>[name of the user code module]</i> .	As specified in [MS-IPFF] section 2.2.147.50
6	BrowserCompatibility	Controls	A rule references a button that is missing from the view.	The protocol server returns this error message when a rule is associated with a button control that is not part of the form view.
12	BrowserCompatibility	Controls	Button <i>[button name]</i> has a value of the xd:action attribute that is not supported in browser-enabled form templates.	As specified in [MS-IPFF] section 2.4.2.1.
13	BrowserCompatibility	Controls	Expected anchor tag is missing.	As specified in [MS-IPFF] section 2.4.1.12.
14	BrowserCompatibility	Controls	List Box control is not supported.	As specified in [MS-IPFF] section 2.4.1.13.
15	BrowserCompatibility	Controls	Choice Section control is not supported.	As specified in [MS-IPFF] section 2.4.1.21.
16	BrowserCompatibility	Controls	Combo Box control is not supported.	As specified in [MS-IPFF] section 2.4.1.21.
18	BrowserCompatibility	Controls	<i>[Control Name]</i> control is not	As specified in [MS-IPFF] section 2.2.108.

ID	Category	Feature	Message	Description
			supported.	
21	BrowserCompatibility	Controls	Picture control is not supported.	As specified in [MS-IPFF] section 2.4.1.22.
22	BrowserCompatibility	Controls	Ink Picture control is not supported.	As specified in [MS-IPFF] section 2.4.1.21.
23	BrowserCompatibility	Controls	Horizontal Region control is not supported.	As specified in [MS-IPFF] section 2.4.1.21.
24	BrowserCompatibility	Controls	Master/detail control is not supported.	As specified in [MS-IPFF] section 2.4.2
25	BrowserCompatibility	Controls	Multiple-Selection List Box control is not supported.	As specified in [MS-IPFF] section 2.4.1.21.
26	BrowserCompatibility	Controls	Recursive control not supported.	As specified in [MS-IPFF] section 2.4.1.22.
27	BrowserCompatibility	Controls	Choice Section control is not supported.	As specified in [MS-IPFF] section 2.4.1.22.
28	BrowserCompatibility	Controls	Scrolling Region control is not supported.	As specified in [MS-IPFF] section 2.4.1.21.
30	BrowserCompatibility	Controls	Vertical text is not supported.	As specified in [MS-IPFF] section 2.4.1.21.
31	BrowserCompatibility	Controls	Controls that repeat horizontally are not supported.	As specified in [MS-IPFF] section 2.4.1.21.
40	BrowserCompatibility	Controls	Encountered an encoded identifier <i>[Identifier name]</i> . Encoded identifiers are not supported.	The protocol server returns this error message when parsing the cascading style sheet (CSS) associated with a form view and the CSS contains an encoded identifier.
45	BrowserCompatibility	Controls	The form locale <i>[locale identifier]</i> is not a valid language identifier. Assign a valid locale and try again.	As specified in [MS-IPFF] section 2.2.147.9.
46	BrowserCompatibility	Controls	An XSL file is missing from the form template.	As specified in [MS-IPFF] section 2.2.129.
57	BrowserCompatibility	Controls	Linked images are not supported by InfoPath Forms Services. To fix this problem, make the	The protocol server returns this error message when a form view contains an img element with a href attribute with a value of an

ID	Category	Feature	Message	Description
			image a part of the form template. The following image was found in view [view name]: [image name].	absolute URL.
58	BrowserCompatibility	Controls	Unexpected image tag encountered. It is missing a required href attribute.	The protocol server returns this error message when detecting an img element without a href attribute in a form view.
59	BrowserCompatibility	Controls	Only the .png, .gif, and .jpg graphics file formats are supported.	The protocol server returns this error message when the href attribute of an img element in a form view refers a file with an unsupported extension. The Microsoft Office InfoPath 2007 supports the file extensions.png, .gif, and .jpg.
60	BrowserCompatibility	Controls	The data source [data source name] referenced in the form template is not valid or cannot be found.	As specified in [MS-IPFF] section 2.4.3.9.2.
61	BrowserCompatibility	Controls	Invalid format for location attribute [attribute value].	As specified in [MS-IPFF] section 2.2.61.
62	BrowserCompatibility	Controls	An eval expression used in the form has invalid arguments.	As specified in [MS-IPFF] section 2.4.3.6.2.
63	BrowserCompatibility	Controls	The XPath [xpath expression] is invalid. [error details]	As specified in [XPATH] .
64	BrowserCompatibility	Controls	The following file is not a valid Xml Schema: [name of the schema file]	As specified in [XMLSCHEMA1] .
67	BrowserCompatibility	Controls	The following file is either missing or is not part of included in the form template: [filename]. To add a file to the form template in design mode, use the Resource Files dialog box on the Tools menu, and then add the file.	As specified in [MS-IPFF] section 2.2.98.

ID	Category	Feature	Message	Description
68	BrowserCompatibility	Controls	Multiple xsl:templates found with name corresponding to this xsl:call-template. Using the first xsl:template found.	The protocol server returns this error message when a form view file contains more than one XSL template element with the same value for the name attribute.
69	BrowserCompatibility	Controls	Did not find an xsl:template with the same name as this xsl:call-template. Ignoring the xsl:call-template.	As specified in [W3C-XSLT] .
71	BrowserCompatibility	Controls	Multiple xsl:templates found with mode corresponding to this xsl:apply-templates. Using the first xsl:template found.	The protocol server returns this error message when a form view file contains an apply-templates element that can find one or more xsl:template element to apply with the same mode attribute.
72	BrowserCompatibility	Controls	The xsl:stylesheet element had multiple xsl:template elements with no mode attribute. This is not supported. Using only the first of these xsl:templates.	As specified in [MS-IPFF] section 2.4.1.2.
73	BrowserCompatibility	Controls	The mode of this xsl:apply-templates element does not match the mode attribute of any xsl:template element.	As specified in [MS-IPFF] sections 2.4.1.15 and 2.4.1.18 .
74	BrowserCompatibility	Controls	Could not find an xsl:template without a mode inside xsl:stylesheet.	As specified in [MS-IPFF] section 2.4.1.2 or in [MS-IPFF2] section 2.4.1.2.
75	BrowserCompatibility	Controls	The following construct is not supported: 'xsl:apply-imports'.	As specified in [MS-IPFF] section 2.4.1 or in [MS-IPFF2] section 2.4.1.
76	BrowserCompatibility	Controls	The following construct is not supported: 'xsl:import'.	As specified in [MS-IPFF] section 2.4.1.
77	BrowserCompatibility	Controls	The following construct is not supported:	As specified in [MS-IPFF] section 2.4.1.

ID	Category	Feature	Message	Description
			'xsl:include'.	
79	BrowserCompatibility	Controls	An unexpected error has occurred while verifying the form template.	As specified in [MS-IPFF] section 2.1.
87	BrowserCompatibility	Calculations	The following expression could not be parsed because of a syntax error or because it uses an undefined namespace prefix or unsupported function: <i>[XPath expression]</i> .	As specified in [MS-IPFF] section 2.2.146, target and expression attributes.
88	BrowserCompatibility	ConditionalFormatting	Unsupported expression	As specified in [MS-IPFF] section 2.4.1.1.
89	BrowserCompatibility	Controls	Unsupported expression	As specified in [MS-IPFF] section 2.4.1.1.
90	BrowserCompatibility	DataAdapters	Unsupported expression	As specified in [MS-IPFF] section 2.2.44.
91	BrowserCompatibility	DigitalSignatures	Unsupported expression	As specified in [MS-IPFF] section 2.2.126, data and signatureLocation attributes.
92	BrowserCompatibility	GenericXsl	Unsupported expression	As specified in [MS-IPFF] section 2.4.1.
93	BrowserCompatibility	Rules	Unsupported expression	As specified in [MS-IPFF] section 2.2.133.
94	BrowserCompatibility	Controls	Unsupported expression	As specified in [MS-IPFF] section 2.2.63, expression and expressionContext attributes.
95	BrowserCompatibility	Controls	Unsupported expression	As specified in [MS-IPFF] sections 2.2.124 and 2.2.107 .
97	BrowserCompatibility	Controls	Browser-enabled form templates must have at least one browser-compatible view.	As specified in [MS-IPFF] section 2.2.122.
98	BrowserCompatibility	Controls	<i>[Detailed error message the XML Processor]</i>	As specified in [MS-IPFF] section 2.2.
99	BrowserCompatibility	Controls	Unexpected schema validation error: <i>[Schema Error]</i>	As specified in [MS-IPFF] section 2.2.60.
10	BrowserCompatibility	Controls	<i>[Detailed error message the XML</i>	As specified in [MS-IPFF] section

ID	Category	Feature	Message	Description
0	lity		<i>Processor]</i>	2.2.
102	BrowserCompatibility	Controls	HWS data connections are not supported.	As specified in [MS-IPFF] section 2.2.40.
103	BrowserCompatibility	Controls	HWS task pane is not supported.	As specified in [MS-IPFF] section 2.2.87.
111	BrowserCompatibility	Controls	The form template is not browser-compatible, perhaps as a result of modifications made outside of Microsoft InfoPath. It might be possible to correct the problem by republishing the form template from within Microsoft InfoPath.	As specified in [MS-IPFF] section 2.2.147.8, runtimeCompatibility attribute.
112	BrowserCompatibility	Controls	Character expected. Found an empty value.	As specified in [MS-IPFF] section 2.4.1.
113	BrowserCompatibility	Controls	Character expected. Found a string value.	As specified in [MS-IPFF] section 2.4.1.1.
114	BrowserCompatibility	Controls	Double value expected. <i>[value]</i> is not a valid double.	As specified in [MS-IPFF] section 2.4.1.
115	BrowserCompatibility	Controls	Invalid Uri found as value of href attribute of xsl:import.	The protocol server returns this error message when parsing the XSL of a form view file. The href attribute of an xsl:import element uses an invalid URI value.
116	BrowserCompatibility	Controls	Invalid Uri found as value of href attribute of xsl:include.	The protocol server returns this error message when parsing the XSL of a form view file. The href attribute of an xsl:include element uses an invalid URI value.
117	BrowserCompatibility	Controls	Invalid value: <i>[value]</i> for grouping-size attribute of xsl:number. The value must be a positive integer value.	The protocol server returns this error message when parsing the XSL of a form view file. The grouping-size attribute xsl:number element has an invalid value.
118	BrowserCompatibility	Controls	Invalid value: <i>[value]</i> for letter-value attribute of xsl:number. Valid	The protocol server returns this error message when parsing the XSL of a form view file. The letter-value attribute of an

ID	Category	Feature	Message	Description
			values are: 'alphabetic' and 'traditional'.	xsl:number element has a value different from "alphabetic" or "traditional".
119	BrowserCompatibility	Controls	Invalid value: <i>[value]</i> for level attribute of xsl:number. Valid values are: 'single', 'multiple' and 'any'.	The protocol server returns this error message when parsing the XSL of a form view file. The level attribute of an xsl:number element has a value different from "single", "multiple" or "any".
120	BrowserCompatibility	Controls	Invalid value: <i>[value]</i> for case-order attribute of xsl:sort. Valid values are: 'upper-first' and 'lower-first'.	The protocol server returns this error message when parsing the XSL of a form view file. The case-order attribute of an xsl:sort element has a value different from "upper-first" or "lower-first".
121	BrowserCompatibility	Controls	Invalid value: <i>[value]</i> for order attribute of xsl:sort. Valid values are: 'ascending' and 'descending'.	The protocol server returns this error message when parsing the XSL of a form view file. The order attribute of an xsl:sort element has a value different from "ascending" or "descending".
122	BrowserCompatibility	Controls	xsl:import encountered after other xsl constructs.	The protocol server returns this error message when parsing the XSL of a form view file. The parser found an xsl:import element that is not at the top level of the XSL document.
123	BrowserCompatibility	Controls	Integer value expected. <i>[value]</i> is not a valid integer.	The protocol server returns this error message when parsing the XSL of a form view file. The parser found an invalid value where an integer value was expected.
124	BrowserCompatibility	Controls	The qualified name <i>[name]</i> is not valid.	As specified in [MS-IPFF] section 2.4.1.
125	BrowserCompatibility	Controls	The qualified name <i>[original value]</i> is not a valid. Using qualified name <i>[replace value]</i> .	As specified in [MS-IPFF] section 2.4.1.
126	BrowserCompatibility	Controls	Xsl for view <i>[view name]</i> is not a valid xml file. <i>[Detailed error message the XML Processor]</i>	As specified in [MS-IPFF] section 2.4.
127	BrowserCompatibility	Controls	Multiple xsl:otherwise	As specified in [W3C-XSLT] section 9.2.

ID	Category	Feature	Message	Description
			elements in an xsl:when are not supported.	
128	BrowserCompatibility	Controls	xsl:template found with no match attribute and no name attribute. At least one must be specified.	As specified in [W3C-XSLT] section 5.3, 6
129	BrowserCompatibility	Controls	If a xsl:template element does not have a match attribute, it must not have a mode attribute.	As specified in [W3C-XSLT] section 5.7
130	BrowserCompatibility	Controls	xsl:otherwise element found without a corresponding xsl:when element.	As specified in [W3C-XSLT] section 9.2
131	BrowserCompatibility	Controls	xsl:param encountered after other xsl constructs.	As specified in [W3C-XSLT] section 15
132	BrowserCompatibility	Controls	The prefix <i>[namespace prefix]</i> is not declared in the current scope.	As specified in [W3C-XSLT] section 2.1
133	BrowserCompatibility	Controls	Unexpected attribute <i>{[namespace]}[attribute local-name]</i> encountered.	As specified in [W3C-XSLT] section 2.1
134	BrowserCompatibility	Controls	Unexpected element <i>{[namespace]}[element local-name]</i> encountered.	As specified in [W3C-XSLT] section 2.1
135	BrowserCompatibility	Controls	Unexpected node encountered.	As specified in [W3C-XSLT] section 2.1
136	BrowserCompatibility	Controls	Unexpected type of node <i>[node type]</i> encountered.	As specified in [W3C-XSLT] section 2.1
137	BrowserCompatibility	Controls	Unexpected child element for xsl:for-each. Only xsl:sort elements are allowed.	As specified in [W3C-XSLT] section 8
138	BrowserCompatibility	Controls	Unsupported value: <i>[value]</i> found for version attribute of	As specified in [MS-IPFF] section 2.4.1.2.

ID	Category	Feature	Message	Description
			xsl:stylesheet.	
139	BrowserCompatibility	Controls	Unexpected text encountered.	As specified in [MS-IPFF] section 2.4.1.22.
140	BrowserCompatibility	Controls	Unexpected value: <i>[value]</i> . Expected 'yes' or 'no'.	As specified in [W3C-XSLT] section B
141	BrowserCompatibility	Controls	Entity References are not supported.	As specified in [W3C-XSLT] section 2.4.
142	BrowserCompatibility	Controls	This element does not permit content if the select attribute is specified.	As specified in [W3C-XSLT] section 2.4.
143	BrowserCompatibility	Controls	Unexpected xsl:when element found after an xsl:otherwise.	As specified in [W3C-XSLT] section 9.2.
144	BrowserCompatibility	Controls	The form definition (.xsf) file has an invalid errorCondition -- errorMessage tag is missing.	As specified in [MS-IPFF] section 2.2.63, errorCondition element.
145	BrowserCompatibility	Controls	The form definition (.xsf) file has an invalid errorCondition -- errorMessage tag is missing.	As specified in [MS-IPFF] section 2.2.63, errorCondition element.
147	BrowserCompatibility	Controls	Duplicate data adapter name encountered.	As specified in [MS-IPFF] section 2.2.36, name attribute.
148	BrowserCompatibility	Controls	The specified onAfterSubmit action is not supported.	As specified in [MS-IPFF] section 2.2.72, onAfterSubmit attribute.
149	BrowserCompatibility	Controls	Invalid query or submit specification for data adapter.	As specified in [MS-IPFF] section 2.2.37.
150	BrowserCompatibility	Controls	Unsupported Data Adapter.	As specified in [MS-IPFF] section 2.2.59.
151	BrowserCompatibility	Controls	A partFragment tag is missing a match attribute.	As specified in [MS-IPFF] section 2.2.44, match attribute.
152	BrowserCompatibility	Controls	A partFragment tag is missing a replaceWith attribute.	As specified in [MS-IPFF] section 2.2.44, replaceWith attribute

ID	Category	Feature	Message	Description
155	BrowserCompatibility	Controls	The operation failed. The data contained multiple DataSets.	The protocol server returns this message when the data source returns more than one dataset. This could happen when querying data from a [Iseminger] database that supports multiple datasets.
158	BrowserCompatibility	Controls	One or more data connection library attributes is empty.	As specified in [MS-IPFF] section 2.2.147.30, connectionLinkType attribute.
160	BrowserCompatibility	Controls	Filters on Repeating Sections are not supported.	As specified in [MS-IPFF] section 2.4.1.15.
161	BrowserCompatibility	Controls	Filters on Repeating Tables are not supported.	As specified in [MS-IPFF] section 2.4.1.16.
162	BrowserCompatibility	Controls	The following HTML tag is not supported: 'Text Box'.	As specified in [MS-IPFF] section 2.4.2.11.
171	BrowserCompatibility	Controls	The XSL for the Date Picker is not in the expected form.	As specified in [MS-IPFF] section 2.4.1.8.
172	BrowserCompatibility	Controls	Invalid or malicious HTML was found in view [view name].	The server returns this message when the body element in a form view is not valid HTML or if an attribute on that element contains a quote (") character.
173	BrowserCompatibility	Controls	Invalid or malicious HTML was found in view [view name].	The protocol server returns this error message when a form view contains invalid or unsafe HTML elements or attributes, and the only SourceLocation information the protocol server is returning is the source file in which the issue occurs. Determining what HTML to consider unsafe is implementation-specific.
174	BrowserCompatibility	Controls	Invalid or malicious HTML was found in view [view Name].	The protocol server returns this error message when the server cannot determine whether or not a form view contains invalid or unsafe HTML elements or attributes. Determining what HTML to consider unsafe is implementation-specific.
175	BrowserCompatibility	Controls	Invalid or malicious HTML was found in view [view Name].	The protocol server returns this error message when a form view contains invalid or unsafe HTML elements or attributes, the

ID	Category	Feature	Message	Description
				SourceLocation information the protocol server is returning contains both the source file and line number in which the issue occurs, and the MessageType value for the corresponding Message is "Error". Determining what HTML to consider unsafe is implementation-specific.
176	BrowserCompatibility	Controls	Invalid or malicious HTML was found in view <i>[view Name]</i> .	The protocol server returns this error message when the server cannot determine whether or not a form view contains invalid or unsafe HTML elements or attributes. Determining what HTML to consider unsafe is implementation-specific.
177	BrowserCompatibility	TemplateXml	The form template cannot be browser-enabled because the template data is not valid according to its schema. <i>[Error details]</i>	As specified in [MS-IPFF] section 2.7.
178	BrowserCompatibility	Controls	A required parameter is missing for the data adapter <i>[adapter name]</i> : <i>[XPath expression for the missing parameter]</i>	As specified in [MS-IPFF] sections 2.2.39 and 2.2.41 .
179	BrowserCompatibility	Controls	A required parameter is missing for the data adapter <i>[adapter name]</i> : <i>[XPath expression for the missing parameter]</i>	As specified in [MS-IPFF] sections 2.2.39 and 2.2.41 .
180	BrowserCompatibility	Controls	Relative links to Data Connection Libraries located on different SharePoint site collection are not supported.	As specified in [MS-IPFF] section 2.2.147.30, siteCollection attribute.
183	BrowserCompatibility	Controls	Could not execute the following relative query <i>[data adapter name]</i> . Relative queries are not allowed for connections linked to the Data Connection Library.	As specified in [MS-IPFF] section 2.2.147.33.

ID	Category	Feature	Message	Description
184	BrowserCompatibility	Controls	Cannot run the relative query <i>[query]</i> . Relative queries are not allowed for connections linked to the Data Connection Library.	As specified in [MS-IPFF] section 2.2.147.34.
185	BrowserCompatibility	Controls	relativeQuery/@replace cannot be a relative, local, or UNC path.	As specified in [MS-IPFF] section 2.2.147.34.
186	BrowserCompatibility	Controls	Unsupported HTML constructs were found associated with this Repeating Table.	As specified in [MS-IPFF] section 2.4.1.16.
191	BrowserCompatibility	Controls	A text box is bound to an inappropriate datatype.	As specified in [MS-IPFF] section 2.4.1.20.
192	BrowserCompatibility	Controls	Rule was referenced but not defined: <i>[rulename]</i> .	As specified in [MS-IPFF] section 2.2.132, ruleSet attribute.
193	BrowserCompatibility	Controls	There has been a critical error while processing the form.	The protocol server returns this error message protocol server when an unknown error was encountered and the protocol server does not have a default method for handling this unknown error.
196	BrowserCompatibility	DataAdapters	This database is not supported. The database must be a Microsoft SQL Server.	The protocol server returns this error message when there is a data adapter that attempts to connection to a database that is not supported by the protocol server .
197	BrowserCompatibility	BusinessLogic	Unsupported object model version.	As specified in [MS-IPFF] section 2.2.147.50, version attribute.
200	BrowserCompatibility	GenericXsf	The definition of view <i>[view name]</i> does not exist.	As specified in [MS-IPFF] sections 2.2.68 , 2.2.114 , and 2.2.129 , transform attribute.
203	BrowserCompatibility	GenericXPath	A call to GetDOM failed. The DataObject does not exist.	As specified in [MS-IPFF] section 2.4.3.9.2.
204	BrowserCompatibility	ExpressionXPathAnalysis	Invalid expression encountered: <i>[XPath expression]</i> .	As specified in [XPATHT] .

ID	Category	Feature	Message	Description
205	BrowserCompatibility	ExpressionXPathAnalysis	Invalid binding XPath <i>[XPath expression]</i> .	As specified in [MS-IPFF] section 2.4.1.1, productions LEAF_XPATH, GROUP_XPATH, RELATIVE_REPEATING_GROUP_XPATH and RELATIVE_LEAF_XPATH.
206	BrowserCompatibility	ExpressionXPathAnalysis	Invalid binding XPath <i>[XPath expression]</i> .	As specified in [MS-IPFF] section 2.4.1.1, productions LEAF_XPATH, GROUP_XPATH, RELATIVE_REPEATING_GROUP_XPATH and RELATIVE_LEAF_XPATH.
207	BrowserCompatibility	ExpressionXPathAnalysis	Invalid binding XPath <i>[XPath expression]</i> .	As specified in [MS-IPFF] section 2.4.1.1 or in [MS-IPFF2] section 2.4.1.1, productions LEAF_XPATH, GROUP_XPATH, RELATIVE_REPEATING_GROUP_XPATH and RELATIVE_LEAF_XPATH.
208	BrowserCompatibility	ExpressionXPathAnalysis	Invalid binding XPath <i>[XPath expression]</i> .	As specified in [MS-IPFF] section 2.4.1.1, productions LEAF_XPATH, GROUP_XPATH, RELATIVE_REPEATING_GROUP_XPATH and RELATIVE_LEAF_XPATH.
209	BrowserCompatibility	ExpressionXPathAnalysis	Invalid binding XPath <i>[XPath expression]</i> .	As specified in [MS-IPFF] section 2.4.1.1, production LEAF_XPATH.
210	BrowserCompatibility	GenericXsf	The form template defines multiple schemas for the same namespace: <i>[namespace]</i>	As specified in [MS-IPFF] section 2.2.61, location attribute.
211	BrowserCompatibility	GenericXsf	Form template is not valid. The following schema file: <i>[filename]</i> was not found in the Form Template.	As specified in [MS-IPFF] section 2.2.98.
212	BrowserCompatibility	GenericXsf	The following DataObject either cannot be created or cannot be initialized: <i>[data objectName]</i> . The data adapter cannot be initialized. The form contains XML that cannot be parsed: <i>[Detailed error message the XML Processor]</i> .	As specified in [MS-IPFF] section 2.2.36, schema attribute.

ID	Category	Feature	Message	Description
213	BrowserCompatibility	GenericXsf	The specified XML template file (xsf:initialXmlDocument element) is not a valid XML document. <i>[Detailed error message the XML Processor]</i> .	As specified in [MS-IPFF] section 2.2.92.
214	BrowserCompatibility	GenericXsf	The specified XML template file (xsf:initialXmlDocument element) does not contain required processing instructions.	As specified in [MS-IPFF] section 2.2.94.
215	BrowserCompatibility	GenericXsf	The specified XML template file (xsf:initialXmlDocument element) is not a valid XML document. <i>[Detailed error message the XML Processor]</i>	As specified in [MS-IPFF] section 2.2.94.
216	BrowserCompatibility	GenericXsf	The XML template file (specified in the xsf:initialXmlDocument element of the form template definition file) has a processing instruction with a form template version that does not match the version of the form template.	As specified in [MS-IPFF] section 2.2.20, solutionVersion attribute and [MS-IPFF] section 2.7.
217	BrowserCompatibility	GenericXsf	The specified XML template file (xsf:initialXmlDocument element) contains a urn reference that does not match the solutions name.	As specified in [MS-IPFF] section 2.2.20, name attribute and [MS-IPFF] section 2.7.
218	BrowserCompatibility	GenericXsf	No XML template file is present in the form template.	As specified in [MS-IPFF] section 2.2.94, href attribute.
219	BrowserCompatibility	GenericXsf	The following XML template file is missing or is not part of the form template: <i>[file name]</i>	As specified in [MS-IPFF] section 2.2.94, href attribute.
22	BrowserCompatibility	GenericXsf	Duplicate property	As specified in [MS-IPFF] section

ID	Category	Feature	Message	Description
0	lity		name '[<i>property name</i>]' in file '[<i>file name</i>]'.	2.2.100, name attribute.
221	BrowserCompatibility	GenericXsf	A button element in the form definition file (manifest.xsf) has invalid attributes.	As specified in [MS-IPFF] section 2.2.106 and 2.2.110 .
223	BrowserCompatibility	DigitalSignatures	An error occurred when initializing a set of signable data. A name has not been specified for the set of data.	As specified in [MS-IPFF] section 2.2.126, name attribute.
234	BrowserCompatibility	DigitalSignatures	No group was found at the location specified for storing signatures for the set of signable data: [<i>XPath expression</i>]. Use the Digital Signatures category of the Form Options dialog box to edit the expression specifying the storage location for signatures.	As specified in [MS-IPFF] section 2.2.126, signatureLocation attribute.
235	BrowserCompatibility	DigitalSignatures	An error occurred when initializing the set of signable data: [<i>XPath expression</i>]. No group was found at the specified location.	As specified in [MS-IPFF] section 2.2.126, mode attribute.
236	BrowserCompatibility	DigitalSignatures	An error occurred when initializing the set of signable data: "[<i>XPath expression</i> ". No group was found at the specified location.	As specified in [MS-IPFF] section 2.2.126, mode attribute.
237	BrowserCompatibility	DigitalSignatures	No fields or groups were found corresponding to the set of signable data: [<i>XPath expression</i>]. Use the Digital Signatures category of the Form Options dialog box to edit the expression specifying the data to be signed.	As specified in [MS-IPFF] section 2.2.126, data attribute.

ID	Category	Feature	Message	Description
238	BrowserCompatibility	GenericXsl	No group was found at the location specified for storing signatures for the set of signable data: "[signed data block name]". Use the Digital Signatures category of the Form Options dialog box to edit the expression specifying the storage location for signatures.	As specified in [MS-IPFF] section 2.2.126, signatureLocation attribute.
239	BrowserCompatibility	GenericXsf	The following expression could not be parsed because of a syntax error or because it uses an undefined namespace prefix or unsupported function: [XPath expression].	As specified in [MS-IPFF] section 2.4.1.
240	BrowserCompatibility	Controls	Numbered List control is not supported	As specified in [MS-IPFF] section 2.4.1.21, xctName attribute.
241	BrowserCompatibility	Controls	Bulleted List control is not supported	As specified in [MS-IPFF] section 2.4.1.21, xctName attribute.
242	BrowserCompatibility	Controls	Plain List control is not supported	As specified in [MS-IPFF] section 2.4.1.21, xctName attribute.
247	BrowserCompatibility	Controls	This control formats the data to show both date and time. Date and time cannot be displayed together in the same control in server forms. Use two controls to display date and time separately and bind them to the same field.	As specified in [MS-IPFF] section 2.4.2.11.
248	BrowserCompatibility	Controls	This control formats the data using an invalid or unsupported time format [user format string]. Pick a different format.	As specified in [MS-IPFF] section 2.4.2.11.
24	BrowserCompatibility	Controls	This control formats	As specified in [MS-IPFF] section

ID	Category	Feature	Message	Description
9	lity		the data using an invalid or unsupported date format [<i>user format string</i>]. Pick a different format.	2.4.2.11.
250	BrowserCompatibility	GenericXsf	The restricted trust level is not supported.	As specified in [MS-IPFF] section 2.2.20, trustLevel attribute.
252	BrowserCompatibility	GenericXsf	This form template has not been correctly published to be browser-enabled. Open the form template in InfoPath Design mode, and click Publish Form Template in the Design Tasks task pane. Follow the steps in the Publishing Wizard to republish the form template, and then try again.	The protocol server returns this message when it encounters errors while trying to browser-enable a form template.
256	BrowserCompatibility	Controls	Selected rich text formatting options are not supported Selected rich text formatting options are not supported.	As specified in [MS-IPFF] section 2.2.147.43.
260	BrowserCompatibility	Controls	The following expression could not be parsed because of a syntax error or because it uses an undefined namespace prefix or unsupported function: [<i>XPath expression</i>].	As specified in [MS-IPFF] section 2.4.1.
261	BrowserCompatibility	Controls	Specifying a restricted set of allowable file types for a File Attachment control is not supported in server forms.	As specified in [MS-IPFF] section 2.2.108, allowedFileTypes attribute.
262	BrowserCompatibility	Controls	Conditionally formatting a File Attachment control is not supported in	As specified in [MS-IPFF] section 2.4.1.11.

ID	Category	Feature	Message	Description
			server forms	
267	BrowserCompatibility	GenericXsf	The form template is not browser-compatible, perhaps as a result of modifications made outside of Microsoft InfoPath. It might be possible to correct the problem by republishing the form template from within Microsoft InfoPath.	The protocol server returns this error message when the form template is not a browser-compatible form template and no more specific error message is applicable.
268	BrowserCompatibility	GenericXsf	Forms enabled for use on a mobile device are supported only for administrator-approved form templates.	As specified in [MS-IPFF] section 2.2.147.9, isMobileEnabled attribute
269	BrowserCompatibility	GenericXsf	Unbound Rich Text Box controls are not supported by InfoPath Forms Services.	As specified in [MS-IPFF] section 2.4.1.17.
270	BrowserCompatibility	GenericXsf	Unbound File Attachment controls are not supported by InfoPath Forms Services.	As specified in [MS-IPFF] section 2.4.1.11.
271	BrowserCompatibility	GenericXsf	Invalid or unsupported locale (LCID [<i>LCID</i>]) used in view [<i>view name</i>]. Try using different locale.	As specified in [MS-IPFF] section 2.4.1.4.
272	BrowserCompatibility	GenericXsf	The form cannot be converted because it was designed for a later version of InfoPath Forms Services.	As specified in [MS-IPFF] section 2.2.20, solutionFormatVersion attribute.
273	BrowserCompatibility	GenericXsl	The view contains nested formatting that is not supported on InfoPath Forms Services. Examples of such formatting include heavily nested tables and heavily formatted text.	The protocol server returns this error message when an XSL file is not supported because either the depth at which XML elements are nested in the file or the complexity of processing the file exceeds what the server supports. The depth and complexity at which this message is reported is an

ID	Category	Feature	Message	Description
				implementation choice left to the protocol implementer.
274	BrowserCompatibility	GenericXPath	An XPath requires complicated processing that is not supported on InfoPath Forms Services.	The protocol server returns this error message when an XPath expression contains more steps and axis than the server supports. The complexity at which this message is reported is an implementation choice left to the protocol implementer

7.1.2 Message Elements of Type "Warning"

ID	Category	Feature	Message	Description
11	BrowserCompatibility	Controls	One or more buttons have the same ID property as this one. The actions associated with the buttons may not execute correctly.	As specified in [MS-IPFF] section 2.4.2.10.
32	BrowserCompatibility	Controls	Unexpected token encountered. Expected an identifier for the class name.	The protocol server returns this message when the syntax of a CSS class name that follows a "." flag is invalid.
33	BrowserCompatibility	Controls	Unexpected token encountered. Expected an identifier for an id.	The protocol server returns this message when the syntax of a CSS identifier preceded by a "#" flag is invalid.
34	BrowserCompatibility	Controls	Unexpected token encountered. Expected an identifier for a pseudo style.	The protocol server returns this message when the syntax of a CSS pseudo-style preceded by a ":" flag is invalid.
35	BrowserCompatibility	Controls	Invalid or malicious CSS styles were found in view <i>[view name]</i> .	The protocol server returns this message when the syntax of a CSS associated with a form view contains invalid elements or XML constructs that could permit script injection.
36	BrowserCompatibility	Controls	Unexpected character encountered. It will be ignored	The protocol server returns this message server when parsing the CSS associated with a form view.
42	BrowserCompatibility	Controls	Potentially unsafe HTML was found in view ' <i>[view name]</i> '. It will be modified or removed when the form is shown to the user.	The protocol server will return this message when a form view contains XML determined to be a potential security issue during run time of the browser-enabled form

ID	Category	Feature	Message	Description
				template.
47	BrowserCompatibility	Controls	Unsupported html attribute <i>[attribute name]</i> encountered.	The protocol server returns this message when the form view contains an unsupported XML attribute to describe its layout.
48	BrowserCompatibility	Controls	Unsupported HTML attribute encountered: <i>[attribute name]</i> .	The protocol server returns this message when the form view contains an unsupported XML attribute to describe its layout.
50	BrowserCompatibility	Controls	The following HTML tag is not supported: <i>[tag name]</i> .	The protocol server returns this message when the form view contains an unsupported XML tag.
51	BrowserCompatibility	Controls	Unsupported value <i>[value]</i> for size attribute on the font element. Defaulting to medium font size (4).	The protocol server returns this message when the form view contains an unsupported value for the font size attribute.
52	BrowserCompatibility	Controls	The form has a control with border and margin that is too restrictive to properly show error visualization.	The protocol server returns this message when the form view contains a control that cannot properly display the error visualizations UI.
53	BrowserCompatibility	Controls	Unexpected type of list found. Supported values are: '1', 'a', 'A', 'i' and 'I'. Using the default list type.	The protocol server returns this message when it encounters invalid XML list or list item bullet styling, as specified in [HTML] section 10.2 and [CSS-LEVEL2] section 12.5.1.
54	BrowserCompatibility	Controls	The form sets the <i>[css-style-name]</i> style to a value (<i>[css-style-value]</i>) where the unit could not be safely approximated to pixels.	The protocol server returns this message when failing to convert the value of a CSS style value to an appropriate number of pixels.
56	BrowserCompatibility	Controls	Potentially unsafe HTML was found in view <i>[view name]</i> . It will be modified or removed when the form is shown to the user.	The protocol server will return this message when a form view contains CSS determined to be a potential security issue during run time of the browser-enabled form template.
78	BrowserCompatibility	Controls	A default height will be added to a multi-line Text Box control in view <i>[view name]</i> bound to a node <i>[control name]</i> .	The protocol server returns this message when encountering a multiline text box control (see [MS-IPFF] section 2.4.2.11), with a

ID	Category	Feature	Message	Description
				missing height attribute.
84	BrowserCompatibility	Controls	The language pack corresponding to the form locale [<i>locale name</i>] that has not been installed on the server. Text generated by InfoPath Forms Services, such as menus, messages, and dialog boxes, will use the locale and language settings of the site where the form is activated.	As specified in [MS-IPFF] section 2.2.147.9.
85	BrowserCompatibility	Controls	The language pack corresponding to the form locale [<i>LCID</i>] that has not been installed on the server. Text generated by InfoPath Forms Services, such as menus, messages, and dialog boxes, will use the locale and language settings of the site where the form is activated.	As specified in [MS-IPFF] section 2.2.147.9.
109	BrowserCompatibility	Controls	Printing headers and footers is not supported in server forms. The form printed from the browser will not have a header or footer.	As specified in [MS-IPFF] section 2.2.115.
110	BrowserCompatibility	Controls	Printing headers and footers is not supported	As specified in [MS-IPFF] section 2.2.115.
153	BrowserCompatibility	Controls	The useDataSet option is not supported.	As specified in [MS-IPFF] section 2.2.39.
187	BrowserCompatibility	Controls	Unsupported border styles were found associated with this Repeating Table. They have been converted to solid border. The conversion to solid border is for Internet Explorer® only.	The protocol server returns this error message when a Repeating Table Control uses the border-style attribute and is setting its value to a string different from "solid", "none", or "hidden".
199	BrowserCompatibility	Views	The view attribute xsf:toolbar is not supported.	As specified in [MS-IPFF] section 2.2.118.
222	BrowserCompatibility	GenericXsf	A toolbar button element in the form definition file (manifest.xsf) has the following error: [<i>XML of the xsf2:command</i>	As specified in [MS-IPFF] section 2.2.147.12.

ID	Category	Feature	Message	Description
			<i>element]</i>	
243	BrowserOptimization	Controls	By default this control will send data to the server whenever its value changes. Reason: <i>[details]</i> . This can lead to effects that can be evaluated only on the server. <i>[Optional description and count of any related message]</i> To override this behavior, modify Postback Settings on the Browser Forms tab of the Control Properties dialog box.	The protocol server returns this message when a leaf control has a browser-optimization issue. The detailed message can describe how many preceding related messages are also caused by this browser-optimization issue.
244	BrowserOptimization	Controls	By default this control will send data to the server on insert or delete. Reason: <i>[details]</i> . This can lead to effects that can be evaluated only on the server. <i>[Optional description and count of any related messages]</i> To override this behavior, modify Postback Settings on the Browser Forms tab of the Control Properties dialog box.	The protocol server returns this message when a form section has a browser-optimization issue. The detailed message can describe how many preceding related messages are also caused by this browser-optimization issue.
245	BrowserOptimization	Controls	By default this control will send data to the server on insert or delete. Reason: Other related controls require evaluation on the server. For more information, see the following 'primary cause' message in the Design Checker. To override this behavior, modify Postback Settings on the Browser Forms tab of the Control Properties dialog box.	The protocol server returns this message when it detects this form template has a potential browser-optimization issue. The server sends this message when a form control has a browser-optimization issue that is caused by another control in the same form view. A related message will appear later in the message list that identifies the other control that causes the browser-optimization issue with this control.
257	BrowserOptimization	Controls	Other controls are bound to the same field or group (<i>[XPath expression]</i>). This can lead to effects that can be evaluated only on the server. <i>[Optional description and count of any related message]</i>	The protocol server returns this message when it detects this form template has a potential browser-optimization issue. This message is returned when the optimization issue is because multiple controls have the same binding.

ID	Category	Feature	Message	Description
258	BrowserOptimization	Controls	This section contains a control bound to field or group (<i>[XPath expression]</i>) to which other controls are also bound. This can lead to effects that can be evaluated only on the server. <i>[Optional description and count of any related messages]</i>	The protocol server returns this message when it detects this form template has a potential browser-optimization issue. This message is returned when a form section has an optimization issue because the binding of a control is inside the form section.
259	BrowserOptimization	Controls	The section is bound to the root node (<i>[XPath expression]</i>) of the data source. This can lead to effects that can only be evaluated on the server. <i>[Optional description and count of any related message]</i>	The protocol server returns this message when it detects this form template has a potential browser-optimization issue. The server returns this message when a form section is binding to the root element.
262	BrowserCompatibility	Controls	Conditionally formatting a File Attachment control is not supported in server forms	As specified in [MS-IPFF] section 2.4.1.11.
263	BrowserOptimization	Controls	The binding of this section (<i>[binding]</i>) can lead to effects that can be evaluated only on the server. Reason: <i>[postback reason]</i> .As a result, other section or table controls must also send data to the server on insert or delete. For more information, see the preceding <i>[count]</i> message or messages in the Design Checker.	The protocol server returns this message when it detects this form template has a potential browser-optimization issue. This particular message is returned when a Section Control is determined to be a likely cause of the issue.
264	BrowserOptimization	Controls	By default this button will send data to the server whenever it is clicked. Reason: It is associated with a rule that uses the following expression that can be evaluated only on the server: <i>[postback reason]</i> .To override this behavior, modify Postback Settings on the Browser Forms table of the Button Properties dialog box.	The protocol server returns this message when it detects this form template has a potential browser-optimization issue. This particular message is returned when a XPath expression used by a Button Control is a likely cause of the issue.
275	BrowserCompatibility	Controls	Merged print views are not supported in browser-enabled forms. Instead a	The protocol server returns this message when the form definition (.xsf) file contains an

ID	Category	Feature	Message	Description
			read-only view of the current view will be displayed as the print view.	mergedPrintView element as specified in [MS-IPFF] section 2.2.147.21.
276	BrowserCompatibility	Controls	Digital signatures are not supported by InfoPath Forms Services for list forms. All digital signatures must be removed before the form can be published.	The protocol server returns this message when the form definition (.xsf) file contains an signedDataBlock element as specified in [MS-IPFF] section 2.2.125.

7.1.3 Message Elements of Type "Information"

ID	Category	Feature	Message	Description
37	BrowserCompatibility	Controls	Unexpected character <i>[character]</i> encountered, expected <i>[character]</i> . The unexpected character will be ignored.	The protocol server returns this message when parsing the CSS associated with a form view. The parser expects a "!" character in a comment tag.
38	BrowserCompatibility	Controls	Unexpected character <i>[character]</i> encountered, expected <i>[character]</i> . The unexpected character will be ignored.	The protocol server returns this message when parsing the CSS associated with a form view. The parser expects the first "-" character in a comment tag.
39	BrowserCompatibility	Controls	Unexpected character <i>[character]</i> encountered, expected <i>[character]</i> . The unexpected character will be ignored.	The protocol server returns this message when parsing the CSS associated with a form view. The parser expects the second "-" character in a comment tag.
41	BrowserCompatibility	Controls	Unexpected character encountered. Expected the end of the stylesheet declaration.	The protocol server returns this message when parsing the CSS associated with a form view. The parser could not find the end of the style sheet declaration.
43	BrowserCompatibility	Controls	Unterminated string encountered. This string will be ignored.	The protocol server returns this message when parsing the CSS associated with a form view that contains a string where quotes or double quotes are not properly closed.
96	BrowserCompatibility	Controls	Error in <i>[manifest file name]</i> . Invalid or unsupported value <i>[LCID value]</i> for the lang property of the <i>[xsl file name]</i> file. Ignoring the language	As specified in [MS-IPFF] section 2.2.100.

ID	Category	Feature	Message	Description
			attribute for this view.	

7.2 Messages for InfoPath 2010 Forms

Messages described in this section are generated by Microsoft SharePoint Server 2010 and Microsoft SharePoint Server 2013 when design checking a form template (.xsn) file as specified in [\[MS-IPFF2\]](#).

7.2.1 Message Elements of Type "Error"

ID	Category	Feature	Message	Description
1	BrowserCompatibility	Controls	The form template is not browser-compatible. It might be possible to correct the problem by opening the form template in Microsoft InfoPath, and then republishing it.	The protocol server returns this error message when the form template file cannot be opened. This error will occur when the file is invalid or corrupt.
5	BrowserCompatibility	Controls	Error loading form code assembly: <i>[name of the user code module]</i> .	As specified in [MS-IPFF2] section 2.2.2.2.43.
6	BrowserCompatibility	Controls	A rule references a button that is missing from the view.	The protocol server returns this error message when a rule is associated with a button control that is not part of the form view.
12	BrowserCompatibility	Controls	Button <i>[button name]</i> has a value of the xd:action attribute that is not supported in browser-enabled form templates.	As specified in [MS-IPFF2] section 2.4.2.1.
13	BrowserCompatibility	Controls	Expected anchor tag is missing.	As specified in [MS-IPFF2] section 2.4.1.12.
14	BrowserCompatibility	Controls	List Box control is not supported.	As specified in [MS-IPFF2] section 2.4.1.13.
16	BrowserCompatibility	Controls	Combo Box control is not supported.	As specified in [MS-IPFF2] section 2.4.1.21.
18	BrowserCompatibility	Controls	<i>[Control Name]</i> control is not supported.	As specified in [MS-IPFF2] section 2.2.1.2.89.
21	BrowserCompatibility	Controls	Picture control is not supported.	As specified in [MS-IPFF2] section 2.4.1.23.
22	BrowserCompatibility	Controls	Ink Picture control is	As specified in [MS-IPFF2]

ID	Category	Feature	Message	Description
	lity		not supported.	section 2.4.1.22.
23	BrowserCompatibily	Controls	Horizontal Region control is not supported.	As specified in [MS-IPFF2] section 2.4.1.22.
24	BrowserCompatibily	Controls	Master/detail control is not supported.	As specified in [MS-IPFF2] section 2.4.2.
26	BrowserCompatibily	Controls	Recursive control not supported.	As specified in [MS-IPFF2] section 2.4.1.23.
28	BrowserCompatibily	Controls	Scrolling Region control is not supported.	As specified in [MS-IPFF2] section 2.4.1.22.
30	BrowserCompatibily	Controls	Vertical text is not supported	As specified in [MS-IPFF2] section 2.4.1.22.
31	BrowserCompatibily	Controls	Controls that repeat horizontally are not supported.	As specified in [MS-IPFF2] section 2.4.1.22.
40	BrowserCompatibily	Controls	Encountered an encoded identifier <i>[Identifier name]</i> . Encoded identifiers are not supported.	The protocol server returns this error message when parsing the cascading style sheet (CSS) associated with a form view and the CSS contains an encoded identifier.
43	BrowserCompatibily	Controls	Unterminated string encountered. This string will be ignored.	The protocol server returns this message when parsing the CSS associated with a form view that contains a string where quotes or double quotes are not properly closed.
45	BrowserCompatibily	Controls	The form locale <i>[locale identifier]</i> is not a valid language identifier. Assign a valid locale and try again.	As specified in [MS-IPFF2] section 2.2.2.2.2.
46	BrowserCompatibily	Controls	An XSL file is missing from the form template.	As specified in [MS-IPFF2] section 2.2.1.2.110.
57	BrowserCompatibily	Controls	Linked images are not supported by InfoPath Forms Services. To fix this problem, make the image a part of the form template. The following image was found in view <i>[view name]</i> : <i>[image name]</i> .	The protocol server returns this error message when a form view contains an img element with a href attribute with a value of an absolute URL.

ID	Category	Feature	Message	Description
58	BrowserCompatibility	Controls	Unexpected image tag encountered. It is missing a required href attribute.	The protocol server returns this error message when detecting an img element without a href attribute in a form view.
59	BrowserCompatibility	Controls	Only the .png, .gif, and .jpg graphics file formats are supported.	The protocol server returns this error message when the href attribute of an img element in a form view refers a file with an unsupported extension. The Microsoft InfoPath 2010 supports the file extensions.png, .gif, and .jpg.
60	BrowserCompatibility	Controls	The data source <i>[data source name]</i> referenced in the form template is not valid or cannot be found.	As specified in [MS-IPFF2] section 2.4.3.9.2.
61	BrowserCompatibility	Controls	Invalid format for location attribute <i>[attribute value]</i> .	As specified in [MS-IPFF2] section 2.2.1.2.42.
62	BrowserCompatibility	Controls	An eval expression used in the form has invalid arguments.	As specified in [MS-IPFF2] section 2.4.3.6.2.
63	BrowserCompatibility	Controls	The XPath <i>[xpath expression]</i> is invalid. <i>[error details]</i> .	As specified in [XPATH] .
64	BrowserCompatibility	Controls	The following file is not a valid Xml Schema: <i>[name of the schema file]</i> .	As specified in [XMLSCHEMA1] .
67	BrowserCompatibility	Controls	The following file is either missing or is not part of included in the form template: <i>[filename]</i> . To add a file to the form template in design mode, use the Resource Files dialog box on the Tools menu, and then add the file.	As specified in [MS-IPFF2] section 2.2.1.2.79.
68	BrowserCompatibility	Controls	Multiple xsl:templates found with name corresponding to this xsl:call-template. Using the first	The protocol server returns this error message when a form view file contains more than one XSL template element with the same value for the name attribute.

ID	Category	Feature	Message	Description
			xsl:template found.	
69	BrowserCompatibility	Controls	Did not find an xsl:template with the same name as this xsl:call-template. Ignoring the xsl:call-template.	As specified in [W3C-XSLT] .
71	BrowserCompatibility	Controls	Multiple xsl:templates found with mode corresponding to this xsl:apply-templates. Using the first xsl:template found.	The protocol server returns this error message when a form view file contains an apply-templates element that can find one or more xsl:template element to apply with the same mode attribute.
72	BrowserCompatibility	Controls	The xsl:stylesheet element had multiple xsl:template elements with no mode attribute. This is not supported. Using only the first of these xsl:templates.	As specified in [MS-IPFF2] section 2.4.1.2.
73	BrowserCompatibility	Controls	The mode of this xsl:apply-templates element does not match the mode attribute of any xsl:template element.	As specified in [MS-IPFF2] sections 2.4.1.15 and 2.4.1.18 .
74	BrowserCompatibility	Controls	Could not find an xsl:template without a mode inside xsl:stylesheet.	As specified in [MS-IPFF2] section 2.4.1.2.
75	BrowserCompatibility	Controls	The following construct is not supported: 'xsl:apply-imports'.	As specified in [MS-IPFF2] section 2.4.1.
76	BrowserCompatibility	Controls	The following construct is not supported: 'xsl:import'.	As specified in [MS-IPFF2] section 2.4.1.
77	BrowserCompatibility	Controls	The following construct is not supported: 'xsl:include'.	As specified in [MS-IPFF2] section 2.4.1.
79	BrowserCompatibility	Controls	An unexpected error has occurred while verifying the form template.	As specified in [MS-IPFF2] section 2.1.

ID	Category	Feature	Message	Description
87	BrowserCompatibility	Calculations	The following expression could not be parsed because of a syntax error or because it uses an undefined namespace prefix or unsupported function: <i>[XPath expression]</i> .	As specified in [MS-IPFF2] section 2.2.1.2.127, target and expression attributes.
88	BrowserCompatibility	ConditionalFormatting	Unsupported expression.	As specified in [MS-IPFF2] section 2.4.1.1.
89	BrowserCompatibility	Controls	Unsupported expression.	As specified in [MS-IPFF2] section 2.4.1.1.
90	BrowserCompatibility	DataAdapters	Unsupported expression.	As specified in [MS-IPFF2] section 2.2.1.2.25.
91	BrowserCompatibility	DigitalSignatures	Unsupported expression.	As specified in [MS-IPFF2] section 2.2.1.2.107, data and signatureLocation attributes.
92	BrowserCompatibility	GenericXsl	Unsupported expression.	As specified in [MS-IPFF2] section 2.4.1.
93	BrowserCompatibility	Rules	Unsupported expression.	As specified in [MS-IPFF2] section 2.2.1.2.114.
94	BrowserCompatibility	Controls	Unsupported expression.	As specified in [MS-IPFF2] section 2.2.1.2.54, expression and expressionContext attributes.
95	BrowserCompatibility	Controls	Unsupported expression.	As specified in [MS-IPFF2] sections 2.2.1.2.105 and 2.2.1.2.88 .
97	BrowserCompatibility	Controls	Browser-enabled form templates must have at least one browser-compatible view.	As specified in [MS-IPFF2] section 2.2.1.2.103.
98	BrowserCompatibility	Controls	<i>[Detailed error message the XML Processor]</i> .	As specified in [MS-IPFF2] section 2.2.
99	BrowserCompatibility	Controls	Unexpected schema validation error: <i>[Schema Error]</i> .	As specified in [MS-IPFF2] section 2.2.1.2.41.
100	BrowserCompatibility	Controls	<i>[Detailed error message the XML Processor]</i> .	As specified in [MS-IPFF2] section 2.2.
102	BrowserCompatibility	Controls	HWS data connections are not	As specified in [MS-IPFF2] section 2.2.1.2.21.

ID	Category	Feature	Message	Description
			supported.	
103	BrowserCompatibility	Controls	HWS task pane is not supported.	As specified in [MS-IPFF2] section 2.2.1.2.68.
111	BrowserCompatibility	Controls	The form template is not browser-compatible, perhaps as a result of modifications made outside of Microsoft InfoPath. It might be possible to correct the problem by republishing the form template from within Microsoft InfoPath.	As specified in [MS-IPFF2] section 2.2.2.2.1, runtimeCompatibility attribute.
112	BrowserCompatibility	Controls	Character expected. Found an empty value.	As specified in [MS-IPFF2] section 2.4.1.
113	BrowserCompatibility	Controls	Character expected. Found a string value.	As specified in [MS-IPFF2] section 2.4.1.1.
114	BrowserCompatibility	Controls	Double value expected. <i>[value]</i> is not a valid double.	As specified in [MS-IPFF2] section 2.4.1.
115	BrowserCompatibility	Controls	Invalid Uri found as value of href attribute of xsl:import.	The protocol server returns this error message when parsing the XSL of a form view file. The href attribute of an xsl:import element uses an invalid URI value.
116	BrowserCompatibility	Controls	Invalid Uri found as value of href attribute of xsl:include.	The protocol server returns this error message when parsing the XSL of a form view file. The href attribute of an xsl:include element uses an invalid URI value.
117	BrowserCompatibility	Controls	Invalid value: <i>[value]</i> for grouping-size attribute of xsl:number. The value must be a positive integer value.	The protocol server returns this error message when parsing the XSL of a form view file. The grouping-size attribute xsl:number element has an invalid value.
118	BrowserCompatibility	Controls	Invalid value: <i>[value]</i> for letter-value attribute of xsl:number. Valid values are: 'alphabetic' and 'traditional'.	The protocol server returns this error message when parsing the XSL of a form view file. The letter-value attribute of an xsl:number element has a value different from "alphabetic" or "traditional".

ID	Category	Feature	Message	Description
119	BrowserCompatibility	Controls	Invalid value: <i>[value]</i> for level attribute of xsl:number. Valid values are: 'single', 'multiple' and 'any'.	The protocol server returns this error message when parsing the XSL of a form view file. The level attribute of an xsl:number element has a value different from "single", "multiple" or "any".
120	BrowserCompatibility	Controls	Invalid value: <i>[value]</i> for case-order attribute of xsl:sort. Valid values are: 'upper-first' and 'lower-first'.	The protocol server returns this error message when parsing the XSL of a form view file. The case-order attribute of an xsl:sort element has a value different from "upper-first" or "lower-first".
121	BrowserCompatibility	Controls	Invalid value: <i>[value]</i> for order attribute of xsl:sort. Valid values are: 'ascending' and 'descending'.	The protocol server returns this error message when parsing the XSL of a form view file. The order attribute of an xsl:sort element has a value different from "ascending" or "descending".
122	BrowserCompatibility	Controls	xsl:import encountered after other xsl constructs.	The protocol server returns this error message when parsing the XSL of a form view file. The parser found an xsl:import element that is not at the top level of the XSL document.
123	BrowserCompatibility	Controls	Integer value expected. <i>[value]</i> is not a valid integer.	The protocol server returns this error message when parsing the XSL of a form view file. The parser found an invalid value where an integer value was expected.
124	BrowserCompatibility	Controls	The qualified name <i>[name]</i> is not valid.	As specified in [MS-IPFF2] section 2.4.1.
125	BrowserCompatibility	Controls	The qualified name <i>[original value]</i> is not a valid. Using qualified name <i>[replace value]</i> .	As specified in [MS-IPFF2] section 2.4.1.
126	BrowserCompatibility	Controls	Xsl for view <i>[view name]</i> is not a valid xml file. <i>[Detailed error message the XML Processor]</i> .	As specified in [MS-IPFF2] section 2.4.
127	BrowserCompatibility	Controls	Multiple xsl:otherwise elements in an xsl:when are not supported.	As specified in [W3C-XSLT] section 9.2.

ID	Category	Feature	Message	Description
128	BrowserCompatibility	Controls	xsl:template found with no match attribute and no name attribute. At least one must be specified.	As specified in [W3C-XSLT] section 5.3, 6.
129	BrowserCompatibility	Controls	If a xsl:template element does not have a match attribute, it must not have a mode attribute.	As specified in [W3C-XSLT] section 5.7.
130	BrowserCompatibility	Controls	xsl:otherwise element found without a corresponding xsl:when element.	As specified in [W3C-XSLT] section 9.2.
131	BrowserCompatibility	Controls	xsl:param encountered after other xsl constructs.	As specified in [W3C-XSLT] section 15.
132	BrowserCompatibility	Controls	The prefix <i>[namespace prefix]</i> is not declared in the current scope.	As specified in [W3C-XSLT] section 2.1.
133	BrowserCompatibility	Controls	Unexpected attribute <i>{[namespace]}[attribute local-name]</i> encountered.	As specified in [W3C-XSLT] section 2.1.
134	BrowserCompatibility	Controls	Unexpected element <i>{[namespace]}[element local-name]</i> encountered.	As specified in [W3C-XSLT] section 2.1.
135	BrowserCompatibility	Controls	Unexpected node encountered.	As specified in [W3C-XSLT] section 2.1.
136	BrowserCompatibility	Controls	Unexpected type of node <i>[node type]</i> encountered.	As specified in [W3C-XSLT] section 2.1.
137	BrowserCompatibility	Controls	Unexpected child element for xsl:for-each. Only xsl:sort elements are allowed.	As specified in [W3C-XSLT] section 8.
138	BrowserCompatibility	Controls	Unsupported value: <i>[value]</i> ' found for version attribute of xsl:stylesheet.	As specified in [MS-IPFF2] section 2.4.1.2.
139	BrowserCompatibility	Controls	Unexpected text encountered.	As specified in [MS-IPFF2] section 2.4.1.23.

ID	Category	Feature	Message	Description
140	BrowserCompatibility	Controls	Unexpected value: <i>[value]</i> . Expected "yes" or "no".	As specified in [W3C-XSLT] section B.
141	BrowserCompatibility	Controls	Entity References are not supported.	As specified in [W3C-XSLT] section 2.4.
142	BrowserCompatibility	Controls	This element does not permit content if the select attribute is specified.	As specified in [W3C-XSLT] section 2.4.
143	BrowserCompatibility	Controls	Unexpected xsl:when element found after an xsl:otherwise.	As specified in [W3C-XSLT] section 9.2.
144	BrowserCompatibility	Controls	The form definition (.xsf) file has an invalid errorCondition -- errorMessage tag is missing.	As specified in [MS-IPFF2] section 2.2.1.2.44, errorCondition .
145	BrowserCompatibility	Controls	The form definition (.xsf) file has an invalid errorCondition -- errorMessage tag is missing.	As specified in [MS-IPFF2] section 2.2.1.2.44, errorCondition element.
147	BrowserCompatibility	Controls	Duplicate data adapter name encountered.	As specified in [MS-IPFF2] section 2.2.1.2.17, name attribute.
148	BrowserCompatibility	Controls	The specified onAfterSubmit action is not supported.	As specified in [MS-IPFF2] section 2.2.1.2.53, onAfterSubmit attribute.
149	BrowserCompatibility	Controls	Invalid query or submit specification for data adapter.	As specified in [MS-IPFF2] section 2.2.1.2.18.
150	BrowserCompatibility	Controls	Unsupported Data Adapter.	As specified in [MS-IPFF2] section 2.2.1.2.40.
151	BrowserCompatibility	Controls	A partFragment tag is missing a match attribute.	As specified in [MS-IPFF] section 2.2.44, match attribute.
152	BrowserCompatibility	Controls	A partFragment tag is missing a replaceWith attribute.	As specified in [MS-IPFF2] section 2.2.1.2.23, replaceWith attribute.
155	BrowserCompatibility	Controls	The operation failed. The data contained multiple DataSets.	The protocol server returns this message when the data source returns more than one dataset. This could happen when querying data from a

ID	Category	Feature	Message	Description
				[Iseminger] database that supports multiple datasets.
158	BrowserCompatibility	Controls	One or more data connection library attributes is empty.	As specified in [MS-IPFF2] section 2.2.1.2.23, connectionLinkType attribute.
162	BrowserCompatibility	Controls	The following HTML tag is not supported: 'Text Box'.	As specified in [MS-IPFF2] section 2.4.2.11.
171	BrowserCompatibility	Controls	The XSL for the Date Picker is not in the expected form.	As specified in [MS-IPFF2] section 2.4.1.8.
172	BrowserCompatibility	Controls	Invalid or malicious HTML was found in view <i>[view name]</i> .	The server returns this message when the body element in a form view is not valid HTML or if an attribute on that element contains a quote (") character.
173	BrowserCompatibility	Controls	Invalid or malicious HTML was found in view <i>[view name]</i> .	The protocol server returns this error message when a form view contains invalid or unsafe HTML elements or attributes, and the only SourceLocation information the protocol server is returning is the source file in which the issue occurs. Determining what HTML to consider unsafe is implementation-specific.
174	BrowserCompatibility	Controls	Invalid or malicious HTML was found in view <i>[view Name]</i> .	The protocol server returns this error message when the server cannot determine whether or not a form view contains invalid or unsafe HTML elements or attributes. Determining what HTML to consider unsafe is implementation-specific.
175	BrowserCompatibility	Controls	Invalid or malicious HTML was found in view <i>[view Name]</i> .	The protocol server returns this error message when a form view contains invalid or unsafe HTML elements or attributes, the SourceLocation information the protocol server is returning contains both the source file and line number in which the issue occurs, and the MessageType value for the corresponding Message is "Error". Determining what HTML to consider unsafe is implementation-specific.
176	BrowserCompatibility	Controls	Invalid or malicious HTML was found in view <i>[view Name]</i> .	The protocol server returns this error message when the server cannot determine whether or not

ID	Category	Feature	Message	Description
				a form view contains invalid or unsafe HTML elements or attributes. Determining what HTML to consider unsafe is implementation-specific.
177	BrowserCompatibility	TemplateXml	The form template cannot be browser-enabled because the template data is not valid according to its schema. <i>[Error details]</i> .	As specified in [MS-IPFF2] section 2.7.
178	BrowserCompatibility	Controls	A required parameter is missing for the data adapter <i>[adapter name]: [XPath expression for the missing parameter]</i> .	As specified in [MS-IPFF2] sections 2.2.1.2.20 and 2.2.1.2.22 .
179	BrowserCompatibility	Controls	A required parameter is missing for the data adapter <i>[adapter name]: [XPath expression for the missing parameter]</i> .	As specified in [MS-IPFF2] sections 2.2.1.2.20 and 2.2.1.2.22 .
180	BrowserCompatibility	Controls	Relative links to Data Connection Libraries located on different SharePoint site collection are not supported.	As specified in [MS-IPFF2] section 2.2.2.2.23, siteCollection attribute.
183	BrowserCompatibility	Controls	Could not execute the following relative query <i>[data adapter name]</i> . Relative queries are not allowed for connections linked to the Data Connection Library.	As specified in [MS-IPFF2] section 2.2.2.2.26.
184	BrowserCompatibility	Controls	Cannot run the relative query <i>[query]</i> . Relative queries are not allowed for connections linked to the Data Connection Library.	As specified in [MS-IPFF2] section 2.2.2.2.27.
185	BrowserCompatibility	Controls	relativeQuery/@replace cannot be a relative, local, or	As specified in [MS-IPFF2] section 2.2.2.2.27.

ID	Category	Feature	Message	Description
			UNC path.	
186	BrowserCompatibility	Controls	Unsupported HTML constructs were found associated with this Repeating Table.	As specified in [MS-IPFF2] section 2.4.1.16.
191	BrowserCompatibility	Controls	A text box is bound to an inappropriate datatype.	As specified in [MS-IPFF2] section 2.4.1.20.
192	BrowserCompatibility	Controls	Rule was referenced but not defined: <i>[rulenName]</i> .	As specified in [MS-IPFF2] section 2.2.1.2.113, ruleSet attribute.
193	BrowserCompatibility	Controls	There has been a critical error while processing the form.	The protocol server returns this error message protocol server when an unknown error was encountered and the protocol server does not have a default method for handling this unknown error.
196	BrowserCompatibility	DataAdapters	This database is not supported. The database must be a Microsoft SQL Server.	The protocol server returns this error message when there is a data adapter that attempts to connection to a database that is not supported by the protocol server .
197	BrowserCompatibility	BusinessLogic	Unsupported object model version.	As specified in [MS-IPFF2] section 2.2.2.2.43, version attribute.
200	BrowserCompatibility	GenericXsf	The definition of view <i>[view name]</i> does not exist.	As specified in [MS-IPFF2] sections 2.2.1.2.49 , 2.2.1.2.95 , and 2.2.1.2.110 , transform attribute.
203	BrowserCompatibility	GenericXPath	A call to GetDOM failed. The DataObject does not exist.	As specified in [MS-IPFF2] section 2.4.3.9.2.
204	BrowserCompatibility	ExpressionXPathAnalysis	Invalid expression encountered: <i>[XPath expression]</i> .	As specified in [XPath] .
205	BrowserCompatibility	ExpressionXPathAnalysis	Invalid binding XPath <i>[XPath expression]</i> .	As specified in [MS-IPFF2] section 2.4.1.1, productions LEAF_XPATH, GROUP_XPATH, RELATIVE_REPEATING_GROUP_XPATH and RELATIVE_LEAF_XPATH.
206	BrowserCompatibility	ExpressionXPathAnalysis	Invalid binding XPath <i>[XPath expression]</i> .	As specified in [MS-IPFF2] section 2.4.1.1, productions LEAF_XPATH, GROUP_XPATH,

ID	Category	Feature	Message	Description
				RELATIVE_REPEATING_GROUP_XPATH and RELATIVE_LEAF_XPATH.
207	BrowserCompatibility	ExpressionXPathAnalysis	Invalid binding XPath [<i>XPath expression</i>].	As specified in [MS-IPFF2] section 2.4.1.1, productions LEAF_XPATH, GROUP_XPATH, RELATIVE_REPEATING_GROUP_XPATH and RELATIVE_LEAF_XPATH.
208	BrowserCompatibility	ExpressionXPathAnalysis	Invalid binding XPath [<i>XPath expression</i>].	As specified in [MS-IPFF2] section 2.4.1.1, productions LEAF_XPATH, GROUP_XPATH, RELATIVE_REPEATING_GROUP_XPATH and RELATIVE_LEAF_XPATH.
209	BrowserCompatibility	ExpressionXPathAnalysis	Invalid binding XPath [<i>Xpath expression</i>].	As specified in [MS-IPFF2] section 2.4.1.1, production LEAF_XPATH.
210	BrowserCompatibility	GenericXsf	The form template defines multiple schemas for the same namespace: [<i>namespace</i>].	As specified in [MS-IPFF2] section 2.2.1.2.42, location attribute.
211	BrowserCompatibility	GenericXsf	Form template is not valid. The following schema file: [<i>filename</i>] was not found in the Form Template.	As specified in [MS-IPFF2] section 2.2.1.2.79.
212	BrowserCompatibility	GenericXsf	The following DataObject either cannot be created or cannot be initialized: [<i>data objectnName</i>]. The data adapter cannot be initialized. The form contains XML that cannot be parsed: [<i>Detailed error message the XML Processor</i>].	As specified in [MS-IPFF2] section 2.2.1.2.17, schema attribute.
213	BrowserCompatibility	GenericXsf	The specified XML template file (xsf:initialXmlDocument element) is not a valid XML document. [<i>Detailed error message the XML Processor</i>].	As specified in [MS-IPFF2] section 2.2.1.2.75.
214	BrowserCompatibility	GenericXsf	The specified XML template file	As specified in [MS-IPFF2] section 2.2.1.2.75.

ID	Category	Feature	Message	Description
			(xsf:initialXmlDocument element) does not contain required processing instructions.	
215	BrowserCompatibility	GenericXsf	The specified XML template file (xsf:initialXmlDocument element) is not a valid XML document. <i>[Detailed error message the XML Processor].</i>	As specified in [MS-IPFF2] section 2.2.1.2.75.
216	BrowserCompatibility	GenericXsf	The XML template file (specified in the xsf:initialXmlDocument element of the form template definition file) has a processing instruction with a form template version that does not match the version of the form template.	As specified in [MS-IPFF2] section 2.2.1.2.1, solutionVersion attribute and [MS-IPFF2] section 2.7.
217	BrowserCompatibility	GenericXsf	The specified XML template file (xsf:initialXmlDocument element) contains a urn reference that does not match the solutions name.	As specified in [MS-IPFF2] section 2.2.1.2.1, name attribute and [MS-IPFF2] section 2.7.
218	BrowserCompatibility	GenericXsf	No XML template file is present in the form template.	As specified in [MS-IPFF2] section 2.2.1.2.75, href attribute.
219	BrowserCompatibility	GenericXsf	The following XML template file is missing or is not part of the form template: <i>[file name]</i> .	As specified in [MS-IPFF] section 2.2.94 or in [MS-IPFF2] section 2.2.1.2.75, href attribute.
220	BrowserCompatibility	GenericXsf	Duplicate property name ' <i>[property name]</i> ' in file ' <i>[file name]</i> '.	As specified in [MS-IPFF] section 2.2.100, name attribute.
221	BrowserCompatibility	GenericXsf	A button element in the form definition file (manifest.xsf) has invalid attributes.	As specified in [MS-IPFF2] section 2.2.1.2.87 and 2.2.1.2.91 .

ID	Category	Feature	Message	Description
223	BrowserCompatibility	DigitalSignatures	An error occurred when initializing a set of signable data. A name has not been specified for the set of data.	As specified in [MS-IPFF2] section 2.2.1.2.107, name attribute.
234	BrowserCompatibility	DigitalSignatures	No group was found at the location specified for storing signatures for the set of signable data: <i>[XPath expression]</i> . Use the Digital Signatures category of the Form Options dialog box to edit the expression specifying the storage location for signatures.	As specified in [MS-IPFF2] section 2.2.1.2.107, signatureLocation attribute.
235	BrowserCompatibility	DigitalSignatures	An error occurred when initializing the set of signable data: <i>[XPath expression]</i> . No group was found at the specified location.	As specified in [MS-IPFF2] section 2.2.1.2.107, mode attribute.
236	BrowserCompatibility	DigitalSignatures	An error occurred when initializing the set of signable data: " <i>[XPath expression]</i> ". No group was found at the specified location.	As specified in [MS-IPFF2] section 2.2.1.2.107, mode attribute.
237	BrowserCompatibility	DigitalSignatures	No fields or groups were found corresponding to the set of signable data: <i>[XPath expression]</i> . Use the Digital Signatures category of the Form Options dialog box to edit the expression specifying the data to be signed.	As specified in [MS-IPFF2] section 2.2.1.2.107, data attribute.
238	BrowserCompatibility	GenericXsl	No group was found at the location specified for storing signatures for the set of signable data: " <i>[signed data block name]</i> ". Use the Digital Signatures category of the Form	As specified in [MS-IPFF2] section 2.2.1.2.107, signatureLocation attribute.

ID	Category	Feature	Message	Description
			Options dialog box to edit the expression specifying the storage location for signatures.	
239	BrowserCompatibility	GenericXsf	The following expression could not be parsed because of a syntax error or because it uses an undefined namespace prefix or unsupported function: <i>[XPath expression]</i> .	As specified in [MS-IPFF2] section 2.4.1.
240	BrowserCompatibility	Controls	Numbered List control is not supported.	As specified in [MS-IPFF2] section 2.4.1.21, xctName attribute.
241	BrowserCompatibility	Controls	Bulleted List control is not supported.	As specified in [MS-IPFF2] section 2.4.1.21, xctName attribute.
242	BrowserCompatibility	Controls	Plain List control is not supported.	As specified in [MS-IPFF2] section 2.4.1.21, xctName attribute.
247	BrowserCompatibility	Controls	This control formats the data to show both date and time. Date and time cannot be displayed together in the same control in server forms. Use two controls to display date and time separately and bind them to the same field.	As specified in [MS-IPFF2] section 2.4.2.11.
248	BrowserCompatibility	Controls	This control formats the data using an invalid or unsupported time format <i>[user format string]</i> . Pick a different format.	As specified in [MS-IPFF2] section 2.4.2.11.
249	BrowserCompatibility	Controls	This control formats the data using an invalid or unsupported date format <i>[user format string]</i> . Pick a different format.	As specified in [MS-IPFF2] section 2.4.2.11.

ID	Category	Feature	Message	Description
250	BrowserCompatibility	GenericXsf	The restricted trust level is not supported.	As specified in [MS-IPFF2] section 2.2.1.2.1, trustLevel attribute.
252	BrowserCompatibility	GenericXsf	This form template has not been published. Open the form in the InfoPath Designer and publish the form to SharePoint using the Administrator-approved form template method in the Publishing Wizard.	The protocol server returns this message when it encounters errors while trying to browser-enable a form template.
256	BrowserCompatibility	Controls	Selected rich text formatting options are not supported Selected rich text formatting options are not supported.	As specified in [MS-IPFF2] section 2.2.2.2.36.
260	BrowserCompatibility	Controls	The following expression could not be parsed because of a syntax error or because it uses an undefined namespace prefix or unsupported function: [<i>XPath expression</i>].	As specified in [MS-IPFF2] section 2.4.1.
261	BrowserCompatibility	Controls	Specifying a restricted set of allowable file types for a File Attachment control is not supported in server forms.	As specified in [MS-IPFF2] section 2.2.1.2.89, allowedFileTypes attribute.
262	BrowserCompatibility	Controls	Conditionally formatting a File Attachment control is not supported in server forms.	As specified in [MS-IPFF2] section 2.4.1.11.
267	BrowserCompatibility	GenericXsf	The form template is not browser-compatible, perhaps as a result of modifications made outside of Microsoft InfoPath. It might be possible to correct the problem by republishing the form	The protocol server returns this error message when the form template is not a browser-compatible form template and no more specific error message is applicable.

ID	Category	Feature	Message	Description
			template from within Microsoft InfoPath.	
268	BrowserCompatibility	GenericXsf	Forms enabled for use on a mobile device are supported only for administrator-approved form templates.	As specified in [MS-IPFF2] section 2.2.2.2.2, isMobileEnabled attribute.
269	BrowserCompatibility	GenericXsf	Unbound Rich Text Box controls are not supported by InfoPath Forms Services.	As specified in [MS-IPFF2] section 2.4.1.17.
270	BrowserCompatibility	GenericXsf	Unbound File Attachment controls are not supported by InfoPath Forms Services.	As specified in [MS-IPFF2] section 2.4.1.11.
271	BrowserCompatibility	GenericXsf	Invalid or unsupported locale (LCID [<i>LCID</i>]) used in view [<i>view name</i>]. Try using different locale.	As specified in [MS-IPFF2] section 2.4.1.4.
272	BrowserCompatibility	GenericXsf	The form cannot be converted because it was designed for a later version of InfoPath Forms Services.	As specified in [MS-IPFF2] section 2.2.1.2.1, solutionFormatVersion attribute.
273	BrowserCompatibility	GenericXsl	The view contains nested formatting that is not supported on InfoPath Forms Services. Examples of such formatting include heavily nested tables and heavily formatted text.	The protocol server returns this error message when an XSL file is not supported because either the depth at which XML elements are nested in the file or the complexity of processing the file exceeds what the server supports. The depth and complexity at which this message is reported is an implementation choice left to the protocol implementer.
274	BrowserCompatibility	GenericXPath	An XPath requires complicated processing that is not supported on InfoPath Forms Services.	The protocol server returns this error message when an XPath expression contains more steps and axis than the server supports. The complexity at which this message is reported is an implementation choice left to the protocol implementer.

ID	Category	Feature	Message	Description
278	BrowserCompatibility	Controls	Invalid location for the xsn being published.	The protocol server returns this message when the form definition (.xsf) file is being published to a location that does not support form publishing.
279	BrowserCompatibility	Controls	Repeating Choice Group control is not supported.	The protocol server returns this message when parsing the XSL associated with a form view that contains a Repeating Choice Group Control as specified in [MS-IPFF2] section 2.3.2.1.
280	BrowserCompatibility	Controls	Repeating Choice Section control is not supported.	The protocol server returns this message when parsing the XSL associated with a form view that contains a Repeating Choice Section control as specified in [MS-IPFF2] section 2.3.2.1.
281	BrowserCompatibility	Controls	Choice Section controls must be inside a Choice Group control.	The protocol server returns this message when the view definition (.xsl) file contains a Choice section as specified in [MS-IPFF2] section 2.3.2.1 that is not defined in a Choice Group control as specified in [MS-IPFF2] section 2.3.2.1.
287	BrowserCompatibility	BusinessLogic	The filter expression is not supported in Web browser forms.	The protocol server returns this message when the view definition (.xsl) file contains a predicate expression as specified in [MS-IPFF2] section 2.4.1 that cannot be evaluated on the protocol server.
288	BrowserCompatibility	BusinessLogic	The filter expression is on external data and could not be validated. It may not be supported in Web browser forms.	The protocol server returns this message when the view definition (.xsl) file contains a predicate expression as specified in [MS-IPFF2] section 2.4.1 on an external data source as specified in [MS-IPFF2] .
289	BrowserCompatibility	BusinessLogic	Unsupported binding expression used.	The protocol sever returns this message when a control as specified in [MS-IPFF2] section 2.4 contains a binding expression that is not supported.
290	BrowserCompatibility	BusinessLogic	Unsupported HTML constructs were found associated with this control.	The protocol server returns this message when the view definition (.xsl) file as specified in [MS-IPFF2] contains HTML that does not match required HTML as specified in [MS-IPFF2] .
29	BrowserCompatibility	Controls	An invalid XSL was	The protocol server returns this

ID	Category	Feature	Message	Description
1	lity		encountered.	message when no specific other specific error is available and parsing the XSL associated with a form definition (.xsf) file contains invalid XSL as specified in [MS-IPFF2] section 1.3.3.
295	BrowserCompatibilty	DataAdapters	Submitting through e-mail is not supported in sandboxed solutions. To publish this form to SharePoint, use the administrator-approved form template option in the Publishing Wizard or remove the e-mail connection [<i>E-mail adapter name</i>].	The protocol server returns this message when the form template is activated as a sandboxed solution and contains an e-mail adapter as specified in [MS-IPFF2] section 2.2.1.2.32.
296	BrowserCompatibilty	GenericXsf	Web Part connection input parameters are not supported in sandboxed solutions. To publish this form to SharePoint, change the parameter to an output parameter or use the administrator-approved form template option in the Publishing Wizard.	The protocol server returns this message when a Web Part connection has input parameters and user code is present in the form template.
297	BrowserCompatibilty	Controls	The External Item Picker is not supported in user code solutions.	The protocol server returns this message when the form template is activated as a sandboxed solution and contains an Entity Picker control as specified in [MS-IPFF2] section 2.3.2.4.
299	BrowserCompatibilty	Controls	The user solution with code could not be activated.	The protocol server returns this message when a form template that has a managedCode element as specified in [MS-IPFF2] section 2.2.2.2.50 cannot be activated as a sandboxed solution.
300	BrowserCompatibilty	Controls	An unexpected error has occurred while activating the user solution with code.	The protocol server returns this message when an unknown error condition occurs during the process of activated a form template as a sandboxed

ID	Category	Feature	Message	Description
				solution.
305	BrowserCompatibility	GenericXsf	Unbound control not supported.	The protocol server returns this message when the view definition (.xsl) file as specified in [MS-IPFF2] contains an unsupported unbound control.

7.2.2 Message Elements of Type "Warning"

ID	Category	Feature	Message	Description
11	BrowserCompatibility	Controls	One or more buttons have the same ID property as this one. The actions associated with the buttons might not execute correctly.	As specified in [MS-IPFF2] section 2.4.2.10.
32	BrowserCompatibility	Controls	Unexpected token encountered. Expected an identifier for the class name.	The protocol server returns this message when the syntax of a CSS class name that follows a "." flag is invalid.
33	BrowserCompatibility	Controls	Unexpected token encountered. Expected an identifier for an id.	The protocol server returns this message when the syntax of a CSS identifier preceded by a "#" flag is invalid.
34	BrowserCompatibility	Controls	Unexpected token encountered. Expected an identifier for a pseudo style.	The protocol server returns this message when the syntax of a CSS pseudo-style preceded by a ":" flag is invalid.
35	BrowserCompatibility	Controls	Invalid or malicious CSS styles were found in view <i>[view name]</i> .	The protocol server returns this message when the syntax of a CSS associated with a form view contains invalid elements or XML constructs that could permit script injection.
36	BrowserCompatibility	Controls	Unexpected character encountered. It will be ignored.	The protocol server returns this message server when parsing the CSS associated with a form view.
42	BrowserCompatibility	Controls	Potentially unsafe HTML was found in view ' <i>[view name]</i> '. It will be modified or removed when the form is shown to the user.	The protocol server will return this message when a form view contains XML determined to be a potential security issue during run time of the browser-enabled form template.
47	BrowserCompatibility	Controls	Unsupported html attribute <i>[attribute name]</i>	The protocol server returns this message when the form

ID	Category	Feature	Message	Description
			encountered.	view contains an unsupported XML attribute to describe its layout.
48	BrowserCompatibility	Controls	Unsupported HTML attribute encountered: <i>[attribute name]</i> .	The protocol server returns this message when the form view contains an unsupported XML attribute to describe its layout.
50	BrowserCompatibility	Controls	The following HTML tag is not supported: <i>[tag name]</i> .	The protocol server returns this message when the form view contains an unsupported XML tag.
51	BrowserCompatibility	Controls	Unsupported value <i>[value]</i> for size attribute on the font element. Defaulting to medium font size (4).	The protocol server returns this message when the form view contains an unsupported value for the font size attribute.
52	BrowserCompatibility	Controls	The form has a control with border and margin that is too restrictive to properly show error visualization.	The protocol server returns this message when the form view contains a control that cannot properly display the error visualizations UI.
53	BrowserCompatibility	Controls	Unexpected type of list found. Supported values are: '1', 'a', 'A', 'i' and 'I'. Using the default list type.	The protocol server returns this message when it encounters invalid XML list or list item bullet styling, as specified in [HTML] section 10.2 and [CSS-LEVEL2] section 12.5.1.
54	BrowserCompatibility	Controls	The form sets the <i>[css-style-name]</i> style to a value (<i>[css-style-value]</i>) where the unit could not be safely approximated to pixels.	The protocol server returns this message when failing to convert the value of a CSS style value to an appropriate number of pixels.
56	BrowserCompatibility	Controls	Potentially unsafe HTML was found in view <i>[view name]</i> . It will be modified or removed when the form is shown to the user.	The protocol server will return this message when a form view contains CSS determined to be a potential security issue during run time of the browser-enabled form template.
78	BrowserCompatibility	Controls	A default height will be added to a multi-line Text Box control in view <i>[view name]</i> bound to a node <i>[control name]</i> .	The protocol server returns this message when encountering a multiline text box control (see [MS-IPFF2] section 2.4.2.11), with a missing height attribute.
84	BrowserCompatibility	Controls	The language pack corresponding to the form	As specified in [MS-IPFF2] section 2.2.2.2.2.

ID	Category	Feature	Message	Description
			locale [<i>locale name</i>] that has not been installed on the server. Text generated by InfoPath Forms Services, such as menus, messages, and dialog boxes, will use the locale and language settings of the site where the form is activated.	
85	BrowserCompatibility	Controls	The language pack corresponding to the form locale [<i>LCID</i>] that has not been installed on the server. Text generated by InfoPath Forms Services, such as menus, messages, and dialog boxes, will use the locale and language settings of the site where the form is activated.	As specified in [MS-IPFF2] section 2.2.2.2.2.
109	BrowserCompatibility	Controls	Printing headers and footers is not supported in server forms. The form printed from the browser will not have a header or footer.	As specified in [MS-IPFF2] section 2.2.1.2.96.
110	BrowserCompatibility	Controls	Printing headers and footers is not supported.	As specified in [MS-IPFF2] section 2.2.1.2.96.
153	BrowserCompatibility	Controls	The useDataSet option is not supported.	As specified in [MS-IPFF2] section 2.2.1.2.20.
187	BrowserCompatibility	Controls	Unsupported border styles were found associated with this Repeating Table. They have been converted to solid border. The conversion to solid border is for Internet Explorer® only.	The protocol server returns this error message when a Repeating Table Control uses the border-style attribute and is setting its value to a string different from "solid", "none", or "hidden".
199	BrowserCompatibility	Views	The view attribute xsf:toolbar is not supported.	As specified in [MS-IPFF2] section 2.2.1.2.99.
222	BrowserCompatibility	GenericXsf	A toolbar button element in the form definition file (manifest.xsf) has the following error: [<i>XML of the xsf2:command element</i>].	As specified in [MS-IPFF2] section 2.2.2.2.5.
243	BrowserOptimization	Controls	By default this control will send data to the server	The protocol server returns this message when a leaf

ID	Category	Feature	Message	Description
			whenever its value changes. Reason: <i>[details]</i> . This can lead to effects that can be evaluated only on the server. <i>[Optional description and count of any related message]</i> To override this behavior, modify Postback Settings on the Browser Forms tab of the Control Properties dialog box.	control has a browser-optimization issue. The detailed message can describe how many preceding related messages are also caused by this browser-optimization issue.
244	BrowserOptimization	Controls	By default this control will send data to the server on insert or delete. Reason: <i>[details]</i> . This can lead to effects that can be evaluated only on the server. <i>[Optional description and count of any related messages]</i> To override this behavior, modify Postback Settings on the Browser Forms tab of the Control Properties dialog box.	The protocol server returns this message when a form section has a browser-optimization issue. The detailed message can describe how many preceding related messages are also caused by this browser-optimization issue.
245	BrowserOptimization	Controls	By default this control will send data to the server on insert or delete. Reason: Other related controls require evaluation on the server. For more information, see the following 'primary cause' message in the Design Checker. To override this behavior, modify Postback Settings on the Browser Forms tab of the Control Properties dialog box.	The protocol server returns this message when it detects this form template has a potential browser-optimization issue. The server sends this message when a form control has a browser-optimization issue that is caused by another control in the same form view. A related message will appear later in the message list that identifies the other control that causes the browser-optimization issue with this control.
257	BrowserOptimization	Controls	Other controls are bound to the same field or group (<i>[XPath expression]</i>). This can lead to effects that can be evaluated only on the server. <i>[Optional description and count of any related message]</i>	The protocol server returns this message when it detects this form template has a potential browser-optimization issue. This message is returned when the optimization issue is because multiple controls have the same binding.
258	BrowserOptimization	Controls	This section contains a control bound to field or group (<i>[XPath expression]</i>) to which	The protocol server returns this message when it detects this form template has a potential browser-optimization

ID	Category	Feature	Message	Description
			other controls are also bound. This can lead to effects that can be evaluated only on the server. <i>[Optional description and count of any related messages].</i>	issue. This message is returned when a form section has an optimization issue because the binding of a control is inside the form section.
259	BrowserOptimization	Controls	The section is bound to the root node (<i>[XPath expression]</i>) of the data source. This can lead to effects that can only be evaluated on the server. <i>[Optional description and count of any related message].</i>	The protocol server returns this message when it detects this form template has a potential browser-optimization issue. The server returns this message when a form section is binding to the root element.
262	BrowserCompatibility	Controls	Conditionally formatting a File Attachment control is not supported in server forms.	As specified in [MS-IPFF2] section 2.4.1.11.
263	BrowserOptimization	Controls	The binding of this section (<i>[binding]</i>) can lead to effects that can be evaluated only on the server. Reason: <i>[postback reason]</i> .As a result, other section or table controls must also send data to the server on insert or delete. For more information, see the preceding <i>[count]</i> message or messages in the Design Checker.	The protocol server returns this message when it detects this form template has a potential browser-optimization issue. This particular message is returned when a Section Control is determined to be a likely cause of the issue.
264	BrowserOptimization	Controls	By default this button will send data to the server whenever it is clicked. Reason: It is associated with a rule that uses the following expression that can be evaluated only on the server: <i>[postback reason]</i> .To override this behavior, modify Postback Settings on the Browser Forms table of the Button Properties dialog box.	The protocol server returns this message when it detects this form template has a potential browser-optimization issue. This particular message is returned when a XPath expression used by a Button Control is a likely cause of the issue.
275	BrowserCompatibility	Controls	Merged print views are not supported in browser-enabled forms. Instead a read-only view of the current view will be displayed as the print view.	The protocol server returns this message when the form definition (.xsf) file contains an mergedPrintView element as specified in [MS-IPFF2] section 2.2.1.2.14.

ID	Category	Feature	Message	Description
276	BrowserCompatibility	Controls	Digital Signatures are not supported by InfoPath Forms Services for list forms. All digital signatures must be removed before the form can be published.	The protocol server returns this message when the form definition (.xsf) file contains an signedDataBlock element as specified in [MS-IPFF2] section 2.2.1.2.106.
285	BrowserCompatibility	Controls	The sign signature line rule action is not supported in Web browser forms. The rule will be ignored when the form is edited in a Web browser.	The protocol server returns this message when the form definition (.xsf) file as specified in [MS-IPFF2] contains a SignatureLine element as specified in [MS-IPFF2] section 2.2.3.2.12.
286	BrowserCompatibility	Controls	The code in this form uses methods or properties that require assembly <i>[Assembly Name]</i> .	The protocol server returns this message when the form definition (.xsf) file as specified in [MS-IPFF2] contains a reference to an assembly as specified by the following element managedCode as specified in [MS-IPFF2] section 2.2.2.2.43 that cannot be found when the form is being published.
298	BrowserCompatibility	Controls	Never postback setting is not supported for the Button control in this version of InfoPath. In the Browser forms tab of the Button control properties dialog box, change the postback setting to the recommended option.	The protocol server returns this message when the form definition (.xsf) file contains a button control, as specified in [MS-IPFF2] section 2.4.1.5, that has the postback setting, as specified in [MS-IPFF2] section 2.4.2.29 set to "Never".
303	BrowserCompatibility	Controls	Unsupported text indentation formatting (first line or hanging) was found in view <i>[View Name]</i> . Use clear formatting to remove first line or hanging text indentation.	The protocol server returns this message when the view definition (.xsl) file, as specified in [MS-IPFF2] , contains a text indentation style markup.
304	BrowserCompatibility	Controls	Code events on Person/Group Picker controls are not supported in sandboxed solutions. To enable code events on Person/Group Picker controls use the administrator-approved form template option in the Publishing Wizard.	The protocol server returns this message when the view definition (.xsl) file, as specified in [MS-IPFF2] , contains a Contact Selector as specified in [MS-IPFF2] section 2.3.1.3 that has user code.

7.2.3 Message Elements of Type "Information"

ID	Category	Feature	Message	Description
37	BrowserCompatibility	Controls	Unexpected character <i>[character]</i> encountered, expected <i>[character]</i> . The unexpected character will be ignored.	The protocol server returns this message when parsing the CSS associated with a form view. The parser expects a "!" character in a comment tag.
38	BrowserCompatibility	Controls	Unexpected character <i>[character]</i> encountered, expected <i>[character]</i> . The unexpected character will be ignored.	The protocol server returns this message when parsing the CSS associated with a form view. The parser expects the first "-" character in a comment tag.
39	BrowserCompatibility	Controls	Unexpected character <i>[character]</i> encountered, expected <i>[character]</i> . The unexpected character will be ignored.	The protocol server returns this message when parsing the CSS associated with a form view. The parser expects the second "-" character in a comment tag.
41	BrowserCompatibility	Controls	Unexpected character encountered. Expected the end of the stylesheet declaration.	The protocol server returns this message when parsing the CSS associated with a form view. The parser could not find the end of the style sheet declaration.
96	BrowserCompatibility	Controls	Error in <i>[manifest file name]</i> . Invalid or unsupported value <i>[LCID value]</i> for the lang property of the <i>[xsl file name]</i> file. Ignoring the language attribute for this view.	As specified in [MS-IPFF2] section 2.2.1.2.81.
292	BrowserCompatibility	Controls	The custom control has duplicate attributes or elements. Please check the XSL to ensure there are no duplicate values.	The protocol server returns this message when the view definition (.xsl) file, as specified in [MS-IPFF2] has duplicate attributes for one of the following controls: Entity Picker as specified in [MS-IPFF2] section 2.3.2.4 or Contact Selector as specified in [MS-IPFF2] section 2.3.1.3.
302	BrowserCompatibility	Controls	Submitting to a hosting environment through code is not supported in sandboxed solutions. If your form submits to a hosting environment through code, use the administrator-approved form template option in the Publishing Wizard.	The protocol server returns this message when a solution can submit data to a hosted environment and has user code present.

7.3 Messages for InfoPath 2013 Forms

Messages described in this section are generated by Microsoft SharePoint Server 2013 when design checking a form template (.xsn) file as specified in [\[MS-IPFF2\]](#).

Messages for InfoPath 2013 Forms are the same as the messages for InfoPath 2010 Forms as specified in section [7.2](#).

8 Appendix C: Product Behavior

The information in this specification is applicable to the following Microsoft products or supplemental software. References to product versions include released service packs:

- Microsoft Office Forms Server 2007
- Microsoft Office InfoPath 2007
- Microsoft InfoPath 2010
- Microsoft InfoPath 2013
- Microsoft Office SharePoint Server 2007
- Microsoft SharePoint Server 2010
- Microsoft SharePoint Server 2013

Exceptions, if any, are noted below. If a service pack or Quick Fix Engineering (QFE) number appears with the product version, behavior changed in that service pack or QFE. The new behavior also applies to subsequent service packs of the product unless otherwise specified. If a product edition appears with the product version, behavior is different in that product edition.

Unless otherwise specified, any statement of optional behavior in this specification that is prescribed using the terms SHOULD or SHOULD NOT implies product behavior in accordance with the SHOULD or SHOULD NOT prescription. Unless otherwise specified, the term MAY implies that the product does not follow the prescription.

[<1> Section 2.2.4:](#) Office InfoPath 2007 and InfoPath 2010 ignore the suggestions contained in the **CategoryType** complex type.

[<2> Section 2.2.4.2:](#) Office InfoPath 2007 and InfoPath 2010 ignore the suggestions contained in the **CategoryType** complex type.

[<3> Section 2.2.4.4:](#) Office Forms Server 2007, Office SharePoint Server 2007, and SharePoint Server 2010 return strings in the protocol server's designated default language.

[<4> Section 2.2.4.4:](#) See section [7](#)

[<5> Section 3.1.4:](#) Office Forms Server 2007 and Office SharePoint Server 2007 support form template (.xsn) files conformant to [\[MS-IPFF\]](#). SharePoint Server 2010 supports form template (.xsn) files conformant to either [\[MS-IPFF\]](#) or [\[MS-IPFF2\]](#).

[<6> Section 3.1.4:](#) Office Forms Server 2007, Office SharePoint Server 2007, and SharePoint Server 2010 return SOAP faults in response to any unsupported WSDL operation requests.

[<7> Section 3.1.4.1.2.2:](#) Office InfoPath 2007 and InfoPath 2010 use zero messages as a sign of successfully browser-enabling the form template (.xsn) file.

[<8> Section 3.1.4.2.2.1:](#) Office Forms Server 2007 and Office SharePoint Server 2007 return a SOAP exception.

[<9> Section 3.1.4.2.2.1:](#) Office InfoPath 2007 uses the value "O12 Designer" and InfoPath 2010 uses the value "InfoPath 14". Office Forms Server 2007, Office SharePoint Server 2007, and SharePoint Server 2010 ignore this element.

<10> [Section 3.1.4.2.2.2:](#) Office Forms Server 2007, Office SharePoint Server 2007, and SharePoint Server 2010 return strings in the protocol server's designated default language.

<11> [Section 3.1.4.5.2.1:](#) Office Forms Server 2007, Office SharePoint Server 2007, and SharePoint Server 2010 return a SOAP exception.

<12> [Section 3.1.4.5.2.1:](#) InfoPath 2010 uses the value "InfoPath 14".

<13> [Section 3.1.4.5.2.2:](#) Office InfoPath 2007 and InfoPath 2010 use zero messages as a sign of successfully browser-enabling the form template (.xsn) file.

<14> [Section 3.1.4.5.2.2:](#) Office InfoPath 2007 and InfoPath 2010 typically call the **DesignCheckFormTemplate** operation after a response from **BrowserEnableUserFormTemplate** with at least one **Message** element of **MessageType** "Error".

<15> [Section 3.1.4.6.2.2:](#) SharePoint Server 2010 returns a SOAP exception and does not continue with additional field operations requested. No SOAP exception is returned if a **newFields** operation fails.

9 Change Tracking

This section identifies changes that were made to the [MS-FSDAP] protocol document between the April 2014 and July 2014 releases. Changes are classified as New, Major, Minor, Editorial, or No change.

The revision class **New** means that a new document is being released.

The revision class **Major** means that the technical content in the document was significantly revised. Major changes affect protocol interoperability or implementation. Examples of major changes are:

- A document revision that incorporates changes to interoperability requirements or functionality.
- The removal of a document from the documentation set.

The revision class **Minor** means that the meaning of the technical content was clarified. Minor changes do not affect protocol interoperability or implementation. Examples of minor changes are updates to clarify ambiguity at the sentence, paragraph, or table level.

The revision class **Editorial** means that the formatting in the technical content was changed. Editorial changes apply to grammatical, formatting, and style issues.

The revision class **No change** means that no new technical changes were introduced. Minor editorial and formatting changes may have been made, but the technical content of the document is identical to the last released version.

Major and minor changes can be described further using the following change types:

- New content added.
- Content updated.
- Content removed.
- New product behavior note added.
- Product behavior note updated.
- Product behavior note removed.
- New protocol syntax added.
- Protocol syntax updated.
- Protocol syntax removed.
- New content added due to protocol revision.
- Content updated due to protocol revision.
- Content removed due to protocol revision.
- New protocol syntax added due to protocol revision.
- Protocol syntax updated due to protocol revision.
- Protocol syntax removed due to protocol revision.

- Obsolete document removed.

Editorial changes are always classified with the change type **Editorially updated**.

Some important terms used in the change type descriptions are defined as follows:

- **Protocol syntax** refers to data elements (such as packets, structures, enumerations, and methods) as well as interfaces.
- **Protocol revision** refers to changes made to a protocol that affect the bits that are sent over the wire.

The changes made to this document are listed in the following table. For more information, please contact dochelp@microsoft.com.

Section	Tracking number (if applicable) and description	Major change (Y or N)	Change type
4.4.1 GetListFormLocation Request/Response	Removed prescriptive language.	N	Content removed for template compliance.
5.1 Security Considerations for Implementers	Removed prescriptive language.	N	Content removed for template compliance.
7.1 Messages for Office InfoPath 2007 Forms	Added Microsoft SharePoint Server 2013 to the list of products that generate the messages described in this section.	N	Content updated.
7.2 Messages for InfoPath 2010 Forms	Added Microsoft SharePoint Server 2013 to the list of products that generate the messages described in this section.	N	Content updated.
7.3 Messages for InfoPath 2013 Forms	Added new section.	N	New content added.

10 Index

A

Abstract data model
[server](#) 23
[Applicability](#) 12
[Attribute groups](#) 22
[Attributes](#) 22

B

[BrowserEnableUserFormTemplate example](#) 47
BrowserEnableUserFormTemplate operation
([section 3.1.4](#) 23, [section 3.1.4.1](#) 24)

C

[Capability negotiation](#) 12
[Categoriescomplex type](#) 14
[Categorysimple type](#) 20
[CategoryTypecomplex type](#) 14
[Change tracking](#) 117

Client

[overview](#) 23
[Complex types](#) 14
[Categories](#) 14
[CategoryType](#) 14
[DesignCheckerInformation](#) 15
[Message](#) 15
[Messages](#) 18
server
[MessagesResponse](#) 27
[SourceLocation](#) 18

D

Data model - abstract
[server](#) 23
[DesignCheckerInformationcomplex type](#) 15
DesignCheckFormTemplate operation ([section 3.1.4](#)
23, [section 3.1.4.2](#) 27)
[DesignCheckFormTemplate operation example](#) 45
[no issues found](#) 45
[one or more issues found](#) 46

E

Events

[local - server](#) 44
[timer - server](#) 44

Examples

[BrowserEnableUserFormTemplate operation](#) 47
[DesignCheckFormTemplate operation](#) 45
[no issues found](#) 45
[one or more issues found](#) 46
[GetListFormLocation operation](#) 50
[GetUserCodeDeploymentDependencies operation](#)
52
[SetFormsForListItem operation](#) 48

[no issues found](#) 48
[one or more issues found](#) 49
[SetSchemaChangesForList operation](#) 51

F

[Featuresimple type](#) 20
[Fields - vendor-extensible](#) 12
[Full WSDL](#) 55

G

[GetListFormLocation operation](#) ([section 3.1.4](#) 23,
[section 3.1.4.3](#) 30)
[GetListFormLocation operation example](#) 50
[GetUserCodeDeploymentDependencies operation](#)
([section 3.1.4](#) 23, [section 3.1.4.4](#) 33)
[GetUserCodeDeploymentDependencies operation](#)
[example](#) 52
[Glossary](#) 8
[Groups](#) 22

I

[Implementer - security considerations](#) 54
[Index of security parameters](#) 54
[Informative references](#) 10
Initialization
[server](#) 23
[Introduction](#) 8

L

Local events
[server](#) 44

M

Message processing
[server](#) 23
[Messagecomplex type](#) 15
Messages
[attribute groups](#) 22
[attributes](#) 22
[Categoriescomplex type](#) 14
[Categorysimple type](#) 20
[CategoryTypecomplex type](#) 14
[complex types](#) 14
[DesignCheckerInformationcomplex type](#) 15
[elements](#) 13
[enumerated](#) 13
[Featuresimple type](#) 20
[groups](#) 22
[Messagecomplex type](#) 15
[Messagescomplex type](#) 18
[MessageTypesimple type](#) 22
[namespaces](#) 13
[simple types](#) 19

[SourceLocationComplex type](#) 18
[syntax](#) 13
[transport](#) 13
[MessagesComplex type](#) 18
[MessageTypesSimple type](#) 22

N

[Namespaces](#) 13
[Normative references](#) 9

O

Operations

[BrowserEnableUserFormTemplate](#) 24
[DesignCheckFormTemplate](#) 27
[GetListFormLocation](#) 30
[GetUserCodeDeploymentDependencies](#) 33
[SetFormsForListItem](#) 37
[SetSchemaChangesForList](#) 40
[Overview \(synopsis\)](#) 10

P

[Parameters - security index](#) 54
[Preconditions](#) 11
[Prerequisites](#) 11
[Product behavior](#) 115
[Product messages](#) 63
Protocol Details
[overview](#) 23

R

[References](#) 9
[informative](#) 10
[normative](#) 9
[Relationship to other protocols](#) 11

S

Security

[implementer considerations](#) 54
[parameter index](#) 54

Sequencing rules

[server](#) 23

Server

[abstract data model](#) 23
[BrowserEnableUserFormTemplate operation](#) 24
[DesignCheckFormTemplate operation](#) 27
[GetListFormLocation operation](#) 30
[GetUserCodeDeploymentDependencies operation](#) 33
[initialization](#) 23
[local events](#) 44
[message processing](#) 23
[overview](#) 23
[sequencing rules](#) 23
[SetFormsForListItem operation](#) 37
[SetSchemaChangesForList operation](#) 40
[timer events](#) 44
[timers](#) 23

[SetFormsForListItem operation \(section 3.1.4, section 3.1.4.5\)](#) 23, 37
[SetFormsForListItem operation example](#) 48
[no issues found](#) 48
[one or more issues found](#) 49
[SetSchemaChangesForList operation \(section 3.1.4, section 3.1.4.6\)](#) 40
[SetSchemaChangesForList operation example](#) 51
[Simple types](#) 19
[Category](#) 20
[Feature](#) 20
[MessageType](#) 22
server
[UserSolutionActivationStatus](#) 36
[SourceLocationComplex type](#) 18
[Standards assignments](#) 12
Syntax
[messages - overview](#) 13

T

Timer events

[server](#) 44

Timers

[server](#) 23
[Tracking changes](#) 117
[Transport](#) 13

Types

[complex](#) 14
[simple](#) 19

V

[Vendor-extensible fields](#) 12

[Versioning](#) 12

W

[WSDL](#) 55