

# [MS-ESURL]:

## Excel Services Publishing Protocol

---

### Intellectual Property Rights Notice for Open Specifications Documentation

- **Technical Documentation.** Microsoft publishes Open Specifications documentation (“this documentation”) for protocols, file formats, data portability, computer languages, and standards support. Additionally, overview documents cover inter-protocol relationships and interactions.
- **Copyrights.** This documentation is covered by Microsoft copyrights. Regardless of any other terms that are contained in the terms of use for the Microsoft website that hosts this documentation, you can make copies of it in order to develop implementations of the technologies that are described in this documentation and can distribute portions of it in your implementations that use these technologies or in your documentation as necessary to properly document the implementation. You can also distribute in your implementation, with or without modification, any schemas, IDLs, or code samples that are included in the documentation. This permission also applies to any documents that are referenced in the Open Specifications documentation.
- **No Trade Secrets.** Microsoft does not claim any trade secret rights in this documentation.
- **Patents.** Microsoft has patents that might cover your implementations of the technologies described in the Open Specifications documentation. Neither this notice nor Microsoft's delivery of this documentation grants any licenses under those patents or any other Microsoft patents. However, a given Open Specifications document might be covered by the Microsoft [Open Specifications Promise](#) or the [Microsoft Community Promise](#). If you would prefer a written license, or if the technologies described in this documentation are not covered by the Open Specifications Promise or Community Promise, as applicable, patent licenses are available by contacting [iplg@microsoft.com](mailto:iplg@microsoft.com).
- **Trademarks.** The names of companies and products contained in this documentation might be covered by trademarks or similar intellectual property rights. This notice does not grant any licenses under those rights. For a list of Microsoft trademarks, visit [www.microsoft.com/trademarks](http://www.microsoft.com/trademarks).
- **Fictitious Names.** The example companies, organizations, products, domain names, email addresses, logos, people, places, and events that are depicted in this documentation are fictitious. No association with any real company, organization, product, domain name, email address, logo, person, place, or event is intended or should be inferred.

**Reservation of Rights.** All other rights are reserved, and this notice does not grant any rights other than as specifically described above, whether by implication, estoppel, or otherwise.

**Tools.** The Open Specifications documentation does not require the use of Microsoft programming tools or programming environments in order for you to develop an implementation. If you have access to Microsoft programming tools and environments, you are free to take advantage of them. Certain Open Specifications documents are intended for use in conjunction with publicly available standards specifications and network programming art and, as such, assume that the reader either is familiar with the aforementioned material or has immediate access to it.

## Revision Summary

Date	Revision History	Revision Class	Comments
4/4/2008	0.1	New	Initial Availability
6/27/2008	1.0	Major	Revised and edited the technical content
12/12/2008	1.01	Editorial	Revised and edited the technical content
3/18/2009	1.02	Editorial	Revised and edited the technical content
7/13/2009	1.03	Major	Revised and edited the technical content
8/28/2009	1.04	Editorial	Revised and edited the technical content
11/6/2009	1.05	Editorial	Revised and edited the technical content
2/19/2010	2.0	Minor	Updated the technical content
3/31/2010	2.01	Editorial	Revised and edited the technical content
4/30/2010	2.02	Editorial	Revised and edited the technical content
6/7/2010	2.03	Editorial	Revised and edited the technical content
6/29/2010	2.04	Editorial	Changed language and formatting in the technical content.
7/23/2010	2.05	Minor	Clarified the meaning of the technical content.
9/27/2010	2.05	None	No changes to the meaning, language, or formatting of the technical content.
11/15/2010	2.05	None	No changes to the meaning, language, or formatting of the technical content.
12/17/2010	2.05	None	No changes to the meaning, language, or formatting of the technical content.
3/18/2011	2.05	None	No changes to the meaning, language, or formatting of the technical content.
6/10/2011	2.05	None	No changes to the meaning, language, or formatting of the technical content.
1/20/2012	2.05	None	No changes to the meaning, language, or formatting of the technical content.
4/11/2012	2.05	None	No changes to the meaning, language, or formatting of the technical content.
7/16/2012	2.05	None	No changes to the meaning, language, or formatting of the technical content.
9/12/2012	2.05	None	No changes to the meaning, language, or formatting of the technical content.
10/8/2012	2.6	Minor	Clarified the meaning of the technical content.
2/11/2013	2.6	None	No changes to the meaning, language, or formatting of the technical content.
7/30/2013	2.7	Minor	Clarified the meaning of the technical content.

<b>Date</b>	<b>Revision History</b>	<b>Revision Class</b>	<b>Comments</b>
11/18/2013	2.7	None	No changes to the meaning, language, or formatting of the technical content.
2/10/2014	2.7	None	No changes to the meaning, language, or formatting of the technical content.
4/30/2014	2.7	None	No changes to the meaning, language, or formatting of the technical content.
7/31/2014	2.8	Minor	Clarified the meaning of the technical content.
10/30/2014	2.8	None	No changes to the meaning, language, or formatting of the technical content.
3/16/2015	3.0	Major	Significantly changed the technical content.
6/23/2016	3.0	None	No changes to the meaning, language, or formatting of the technical content.
9/14/2016	3.0	None	No changes to the meaning, language, or formatting of the technical content.

# Table of Contents

<b>1</b>	<b>Introduction .....</b>	<b>5</b>
1.1	Glossary .....	5
1.2	References .....	5
1.2.1	Normative References .....	5
1.2.2	Informative References .....	6
1.3	Overview .....	6
1.4	Relationship to Other Protocols .....	6
1.5	Prerequisites/Preconditions .....	7
1.6	Applicability Statement .....	7
1.7	Versioning and Capability Negotiation .....	7
1.8	Vendor-Extensible Fields .....	7
1.9	Standards Assignments.....	7
<b>2</b>	<b>Messages.....</b>	<b>8</b>
2.1	Transport .....	8
2.2	Message Syntax .....	8
2.2.1	Request Syntax .....	8
2.2.1.1	Request HTTP Version .....	8
2.2.1.2	Request HTTP Method.....	8
2.2.1.3	Request-URI Syntax .....	8
2.2.1.3.1	Query Segment.....	8
2.2.1.4	Request Header Syntax .....	9
2.2.2	Response Syntax .....	9
2.2.2.1	Response Status .....	9
2.2.2.2	Response Header Syntax .....	9
2.2.2.3	Response Body Syntax .....	9
<b>3</b>	<b>Protocol Details .....</b>	<b>10</b>
3.1	Common Details .....	10
3.1.1	Abstract Data Model.....	10
3.1.2	Timers .....	10
3.1.3	Initialization.....	10
3.1.4	Higher-Layer Triggered Events .....	10
3.1.5	Message Processing Events and Sequencing Rules .....	10
3.1.6	Timer Events.....	10
3.1.7	Other Local Events.....	10
<b>4</b>	<b>Protocol Examples .....</b>	<b>11</b>
<b>5</b>	<b>Security.....</b>	<b>19</b>
5.1	Security Considerations for Implementers .....	19
5.2	Index of Security Parameters .....	19
<b>6</b>	<b>Appendix A: Product Behavior .....</b>	<b>20</b>
<b>7</b>	<b>Change Tracking.....</b>	<b>21</b>
<b>8</b>	<b>Index.....</b>	<b>22</b>

# 1 Introduction

The Excel Services Publishing Protocol enables a protocol client to form the protocol server URL and associated query string parameters to display the workbook in the browser after the workbook is published to the protocol server.

Sections 1.5, 1.8, 1.9, 2, and 3 of this specification are normative. All other sections and examples in this specification are informative.

## 1.1 Glossary

This document uses the following terms:

**authentication:** The act of proving an identity to a server while providing key material that binds the identity to subsequent communications.

**Hypertext Transfer Protocol (HTTP):** An application-level protocol for distributed, collaborative, hypermedia information systems (text, graphic images, sound, video, and other multimedia files) on the World Wide Web.

**Hypertext Transfer Protocol Secure (HTTPS):** An extension of HTTP that securely encrypts and decrypts web page requests. In some older protocols, "Hypertext Transfer Protocol over Secure Sockets Layer" is still used (Secure Sockets Layer has been deprecated). For more information, see [\[SSL3\]](#) and [\[RFC5246\]](#).

**permission:** A rule that is associated with an object and that regulates which users can gain access to the object and in what manner. See also rights.

**Request-URI:** A URI in an **HTTP** request message, as described in [\[RFC2616\]](#).

**site:** A group of related pages and data within a SharePoint site collection. The structure and content of a site is based on a site definition. Also referred to as SharePoint site and web site.

**MAY, SHOULD, MUST, SHOULD NOT, MUST NOT:** These terms (in all caps) are used as defined in [\[RFC2119\]](#). All statements of optional behavior use either MAY, SHOULD, or SHOULD NOT.

## 1.2 References

Links to a document in the Microsoft Open Specifications library point to the correct section in the most recently published version of the referenced document. However, because individual documents in the library are not updated at the same time, the section numbers in the documents may not match. You can confirm the correct section numbering by checking the [Errata](#).

### 1.2.1 Normative References

We conduct frequent surveys of the normative references to assure their continued availability. If you have any issue with finding a normative reference, please contact [dochelp@microsoft.com](mailto:dochelp@microsoft.com). We will assist you in finding the relevant information.

[MS-WEBSS] Microsoft Corporation, "[Webs Web Service Protocol](#)".

[RFC1738] Berners-Lee, T., Masinter, L., and McCahill, M., Eds., "Uniform Resource Locators (URL)", RFC 1738, December 1994, <http://www.ietf.org/rfc/rfc1738.txt>

[RFC1945] Berners-Lee, T., Fielding, R., and Frystyk, H., "Hypertext Transfer Protocol -- HTTP/1.0", RFC 1945, May 1996, <http://www.ietf.org/rfc/rfc1945.txt>

[RFC2119] Bradner, S., "Key words for use in RFCs to Indicate Requirement Levels", BCP 14, RFC 2119, March 1997, <http://www.rfc-editor.org/rfc/rfc2119.txt>

[RFC2396] Berners-Lee, T., Fielding, R., and Masinter, L., "Uniform Resource Identifiers (URI): Generic Syntax", RFC 2396, August 1998, <http://www.rfc-editor.org/rfc/rfc2396.txt>

[RFC2616] Fielding, R., Gettys, J., Mogul, J., et al., "Hypertext Transfer Protocol -- HTTP/1.1", RFC 2616, June 1999, <http://www.rfc-editor.org/rfc/rfc2616.txt>

[RFC2818] Rescorla, E., "HTTP Over TLS", RFC 2818, May 2000, <http://www.rfc-editor.org/rfc/rfc2818.txt>

## 1.2.2 Informative References

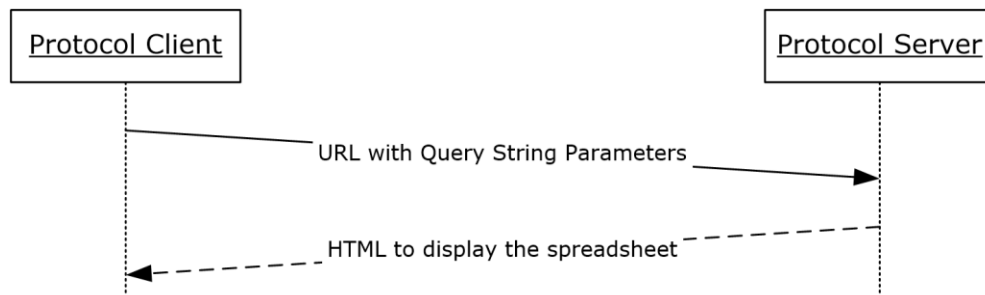
None.

## 1.3 Overview

This protocol specifies how the protocol server URL that is used for displaying the workbook in the browser is formed. At a high level, the protocol involves the following operations:

- Discovery of the URL that is used to display the workbook in the browser given the URL to the workbook.
- Setting the appropriate query string parameters in the URL for displaying the workbook in the browser.

The following sequence diagram illustrates the operations of the protocol.

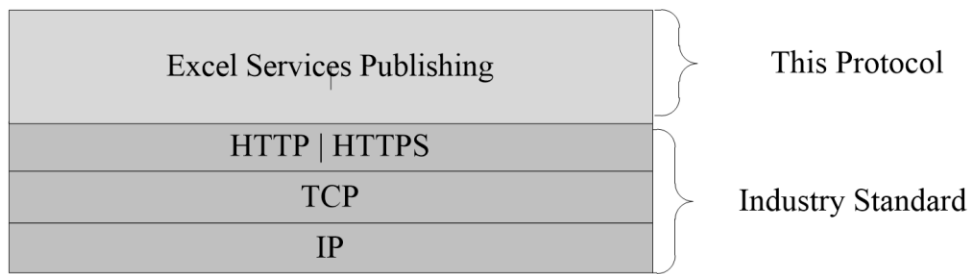


**Figure 1: This protocol message processing sequence**

## 1.4 Relationship to Other Protocols

This protocol uses **HTTP** 1.0, as described in [\[RFC1945\]](#), HTTP 1.1, as described in [\[RFC2616\]](#), or **Hypertext Transfer Protocol over Secure Sockets Layer (HTTPS)**, as described in [\[RFC2818\]](#), for message transport.

The following diagram shows the underlying messaging and transport stack used by the protocol:



**Figure 2: This protocol in relation to other protocols**

### 1.5 Prerequisites/Preconditions

This protocol operates against a **site** identified by a URL that is known by protocol clients. The protocol server endpoint is formed by appending `/_layouts/xlviewer.aspx` to the URL of the site, for example: `http://www.contoso.com/Repository/_layouts/xlviewer.aspx`.

The protocol assumes that **authentication** has been performed by the underlying protocols.

### 1.6 Applicability Statement

This protocol is for providing protocol clients access to an HTML rendering of a workbook.

### 1.7 Versioning and Capability Negotiation

Versioning and capability negotiation for this protocol is handled by either the HTTP protocols as described in [\[RFC1945\]](#) and [\[RFC2616\]](#), or the HTTPS protocol as described in [\[RFC2818\]](#).

### 1.8 Vendor-Extensible Fields

None.

### 1.9 Standards Assignments

None.

## 2 Messages

### 2.1 Transport

All protocol messages MUST use HTTP 1.0 (as specified in [\[RFC1945\]](#)), HTTP 1.1 (as specified in [\[RFC2616\]](#)), or the HTTPS protocol (as specified in [\[RFC2818\]](#)) for message transport.

### 2.2 Message Syntax

All messages in this protocol MUST be valid HTTP requests and responses as specified in [\[RFC2616\]](#).

#### 2.2.1 Request Syntax

##### 2.2.1.1 Request HTTP Version

The HTTP version MUST be either HTTP 1.0 or HTTP 1.1, as specified in [\[RFC2616\]](#) section 3.1.

##### 2.2.1.2 Request HTTP Method

The protocol client MUST use the HTTP GET method as specified in [\[RFC2616\]](#) section 9.

##### 2.2.1.3 Request-URI Syntax

The **Request-URI** MUST adhere to the following rules:

- The Request-URI sent in the HTTP request MUST be a valid URL as specified in [\[RFC1738\]](#).
- The Scheme Component MUST be either HTTP or HTTPS, as specified in [\[RFC2396\]](#) section 3.1.
- The protocol client MUST generate the Request-URI by appending "/\_layouts/xlviewer.aspx" to the site URI to which the workbook was published. The protocol client MUST determine the site URI by calling **WebUriFromPageUri** (as specified in [\[MS-WEBSS\]](#) section 3.1.4.21) with the full URI to which the workbook was published. Therefore the Path Component of the Request-URI MUST end with "/\_layouts/xlviewer.aspx", as specified in [\[RFC2396\]](#) section 3.3.
- The Query Component of the Request-URI MUST be present and follow the rules specified in section [2.2.1.3.1](#) and [\[RFC2396\]](#) section 3.4.

The complete contents of the Request-URI MUST be negotiated prior to initiating the protocol as described in section [1.5](#). This includes the Authority Component as specified in [\[RFC2396\]](#) section 3.2 and the Path Component specified in [\[RFC2396\]](#) section 3.3.

##### 2.2.1.3.1 Query Segment

The Query Component of the Request-URI MUST contain three query string parameters with the following names:

- ID
- DefaultItemOpen
- Cookie

The value for each query string parameter MUST be a non-empty string and a valid query string parameter value as specified in [\[RFC2396\]](#). The Query Component MUST NOT contain query string



parameters other than the three required parameters, as specified in [RFC2396] section 3.4. The protocol server MUST NOT require the query string parameters to appear in any particular order.

The protocol client and protocol server MUST interpret the query string parameters as defined in the following table.

Parameter name	Description
ID	The location to which the workbook is published. The value for this parameter MUST be a valid URL as specified in <a href="#">[RFC1738]</a> . The Scheme Component as specified in [RFC2396] section 3.1 of the ID URL MUST be either "HTTP" or "HTTPS".
DefaultItemOpen	The value for this parameter MUST be set to 1.
Cookie	An identifier used to make the Request-URI unique. SHOULD be ignored by the protocol server. The protocol client MUST set the value for this parameter to a unique value across all requests from that protocol client.

**Table 1: Query Parameters**

#### **2.2.1.4 Request Header Syntax**

The protocol client MUST provide valid Message Headers as specified in [\[RFC2616\]](#) section 4.2.

#### **2.2.2 Response Syntax**

##### **2.2.2.1 Response Status**

The protocol server MUST provide a valid status code as specified in [\[RFC2616\]](#) section 6.1.1.

##### **2.2.2.2 Response Header Syntax**

The protocol server MUST provide valid message headers as specified in [\[RFC2616\]](#) section 4.2.

##### **2.2.2.3 Response Body Syntax**

The protocol server MUST provide a valid message body as specified in [\[RFC2616\]](#) section 4.3.

## 3 Protocol Details

### 3.1 Common Details

#### 3.1.1 Abstract Data Model

None.

#### 3.1.2 Timers

None.

#### 3.1.3 Initialization

None.

#### 3.1.4 Higher-Layer Triggered Events

None.

#### 3.1.5 Message Processing Events and Sequencing Rules

The message processing events and sequencing rules are as follows:

- The protocol client MUST generate a valid Request-URI as specified in section [2.2.1.3](#).
- The protocol client MUST issue the HTTP GET request to the generated URL.
- The protocol server MUST verify that the client has **permission** to access the specified URL and MUST return the appropriate Status Code as specified in [\[RFC2616\]](#) section 6.1.1 if the protocol client does not have permissions. The client MUST be prepared to accept all status codes specified in [\[RFC2616\]](#) section 6.1.1.
- After performing any implementation specific processing, the protocol server MUST return a valid HTTP response as specified in section [2.2.2](#).

#### 3.1.6 Timer Events

None.

#### 3.1.7 Other Local Events

None.

## 4 Protocol Examples

The following is an example of this protocol usage. In this example, the workbook is published to the following location:

```
http://server-name/Site/Dir/Book1.xlsx
```

The URL generated by this protocol that will render the workbook in HTML is as follows:

```
http://server-name/Site/_layouts/xlviewer.aspx?id=http://server-name/Site/Dir/Book1.xlsx&DefaultItemOpen=1&Cookie=0
```

`http://server-name/Site` is the URL of the site to which the workbook was published. Protocol clients determine the site URL by calling **WebUrlFromPageUrl** (as described in [\[MS-WEBSS\]](#)) with the full URL to which the workbook was published.

### HTTP request

```
GET
/team/mysite/_layouts/xlviewer.aspx?id=http%3a%2f%2fServerName%2fSite%2fDocument%20Library%2f
Example.xlsx&DefaultItemOpen=1&Cookie=2 HTTP/1.1
Accept: */*
Host: ServerName
```

### HTTP response

```
HTTP/1.1 200 OK
Date: Fri, 22 Jan 2010 20:46:55 GMT
Server: Microsoft-IIS/6.0
MicrosoftSharePointTeamServices: 12.0.0.4017
X-Powered-By: ASP.NET
X-AspNet-Version: 2.0.50727
Set-Cookie: WSS_KeepSessionAuthenticated=80; path=/
Set-Cookie: MSOWebPartPage_AnonymousAccessCookie=80; expires=Fri, 22-Jan-2010 21:16:55 GMT;
path=/
Cache-Control: private, max-age=0
Expires: Thu, 07 Jan 2010 20:46:55 GMT
Last-Modified: Fri, 22 Jan 2010 20:46:55 GMT
Content-Type: text/html; charset=utf-8
Content-Length: 20300
<html id="m htmlTag" dir="ltr">
<head>
  <meta name="WebPartPageExpansion" content="full" />
  <meta name="GENERATOR" content="Microsoft SharePoint" />
  <meta name="ProgId" content="SharePoint.WebPartPage.Document" />
  <meta http-equiv="Content-Type" content="text/html; charset=utf-8" />
  <title id="m_title">Excel Web Access - http://ServerName/Site/Document
Library/Example.xlsx</title>
  <link rel="stylesheet" type="text/css"
href="/_layouts/1033/styles/EWRDefault.css?rev=0Iw8MMnEVJ5jKs65UzX4cw%3D%3D"/>
  <link rel="stylesheet" type="text/css"
href="/_layouts/1033/styles/core.css?rev=5msmprmeONfN6lJ3wtbAlA%3D%3D"/>

  <script type="text/javascript" language="javascript"
src="/_layouts/1033/init.js?rev=ck%2BhdHQ8ABQHif7kr%2Bj7iQ%3D%3D"></script>
```

```
<script src="/_layouts/1033/core.js?rev=S5dt4K8TJGVTYU9HrW6enw%3D%3D"></script>
<script src="/_layouts/1033/owsbrows.js?rev=%2F0cWXc03f8AvM0C%2F2LOCjA%3D%3D"></script>
<script src="/_layouts/EWRScripts.js?rev=yCNXUSNKKd1qh12ZwFcmTQ%3D%3D"></script>
<script type="text/javascript" language="javascript"
src="/_layouts/portal.js?rev=cRI8b5r5N%2BkLhTuWR03ICg%3D%3D"></script>

<meta name="Microsoft Theme" content="default" />
<meta name="Microsoft Border" content="none" />
<link type="text/xml" rel="alternate" href="_vti_bin/spdisco.aspx" />
</head>

<body style="overflow:auto;">
  <form name="ctl05" method="post"
action="xlviewer.aspx?id=http%3a%2f%2fServerName%2fSite%2fDocument+Library%2fExample.xlsx&
;DefaultItemOpen=1&Cookie=2" onsubmit="javascript:return WebForm_OnSubmit();" id="ctl05"
dir="ltr">
  <div>
  <input type="hidden" name="__EVENTTARGET" id="__EVENTTARGET" value="" />
  <input type="hidden" name="__EVENTARGUMENT" id="__EVENTARGUMENT" value="" />
  <input type="hidden" name="REQUESTDIGEST" id="REQUESTDIGEST"
value="0x287836C9DDD259475E14616190CA7036C18EBEF6F4F6F9AFB1D46B8A3C0D763F5CCFEC4B5E5C51BCB1E1
C4AF4E6327C0C726F3A1C10D7EC9EF9726A135AE3F55,22 Jan 2010 21:28:17 -0000" />
  <input type="hidden" name="VIEWSTATE" id="VIEWSTATE"
value="/wEPDwUkklT15NzU2NDc5Nw9kFgJmDxYCHGnKaXIFA2x0chYEAgEPFgIeCwLubmVyaHRtbAVNRXhjZwWgV2ViIE
FjY2VzcyAtIGh0dHA6Ly94bHNlcnZpY2VzL3RlYW0vbXN1cmkvU2hhcmVkiERvY3VtZW50cy9FeGFTcGxlLnhszc3hkAg0
PFgIAAUdbHRyFgoCBQ8PFgQeBFRlEhQFDk1hbnByYXkRhcCBTdXJpHgtOYXZpZ2F0ZVZvYbAUcaHR0cDovL3hsc2Vydmlj
ZXMvdG9hbS9tc3VyaWRkAgkPdXkYEFHwIFEFNoYXJlZCBEB2N1bWVudHMfAwUwL3RlYW0vbXN1cmkvU2hhcmVkiERvY3VtZ
W50cy9Gb3Jtcy9BzGxJGVtY5hc3B4ZGQCCw9kFgJmDxYCHGnKaXIFA2x0chYEAgEPFgIeCwLubmVyaHRtbAVNRXhjZwWgV2ViIE
ozcHgnPjwvc3Bhb3kAgIPDxYEHwIFB015IFNpdGUfAwUraHR0cDovL3hsc2VydmljZXM6NTYyNS9fbGF5b3V0cy9NeVN
pdGUuYXNweGRkAgQPfGIFAgU5PHNwYW4gc3R5bGU9J3BhZGRpbmctbGVmdDo0cHg7cGFkZGluZylyYWdodDozcHgnPnw8
L3NwYW4+ZAIND2QWAmYPZBYCAGMPFgIFAgUfBgQCDw8PFgIeEFBvYXZpZ3VzV29ya2Vjb2sF+AFscGxTSG5wSwk2N0J1c
zNCAw9tdmxhNX20aUlhSzBkUnc4Q3dCK0NiWEFhcEhrRVhBzjZoYmJlUHdBS1lXaUdGVThlUD1sZ1FiUG56c2gvMWVmbV
J4MFY4enQ5SFJxNG56Um8vQVVAk5MXJ5cGs0Yzk0a1BybWFSHFNRWx2Yk5TbTMvRHRMRjVkaWdsU3RsczRkVkmXU0Q
wRmw2Yyszm2FaczJ4WHdqTmlCT1fYS1dLS0tRd05KYXZqTkiI5QWVLRUQ4NldkUu9wCwLkEw1FT2tKRwoXNlHsnJjZJzJ1
TfdzZEdxTjv0kRmYxY3o2b1hOrkxjY3c9PwQWBMYPDxYOHgJobQsqm1N5c3R1bS5XZWIuVuku2ViQ29udHJvBhMuV2ViU
GfyDHMuV2ViUGfyDHJlBHNb2RlAR8ACymFAU1pY3Jvc29mdC5tY2FyZVZvYbA50LldlYlBhcnRyQWd1cy5EaXJlY3Rpb2
4sIE1e1pY3Jvc29mdC5tY2FyZVZvYbA50LldlYlBhcnRyQWd1cy5EaXJlY3Rpb24sIE1e1pY3Jvc29mdC5tY2FyZVZvYbA50
va2VuPtCzT1iY2UxMTF1OTQyOwMAHqJobGUeBnVybG9yZwMAWh0dHA6Ly94bHNlcnZpY2VzL3RlYW0vbXN1cmkvX2xh
eW91dHMveGx2aWV3ZXIuYXNweD9pZD1odHRwOi8veGx2ZXJ2aWw1cy90ZWFlL2l2dXJpLlNoYXJlZCBEB2N1bWVudHMvA3
XhbBzS54bHN4JkRlZmFlbHRJdGVtT3B1bj0xJkNvb2tpZT0yHgdld3JndWlkBRJtX2V4Y2VsV2ViUmVudG9yZVZlIeA9
VzcGGeCmNvb2tpZ2V5hbWUfATJkZAITBDxYCHG3YmlkBRttX2V4Y2VsV2ViUmVudG9yZVZlIeA9VzcGGeCmNvb2tpZ2V5hbWUf
PZBYCZg9kFgJmD2QWBMYPDxYCHglNZNzYwd1SUQLKZUBTWljcm9zb2Z0Lk9mZmljZS5FeGN1bC5TZXJ2ZXIuRhhjZWxT
ZXJ2ZXJNZNzYwd1SUQLKZUBTWljcm9zb2Z0Lk9mZmljZS5FeGN1bC5TZXJ2ZXIuRhhjZWxTZXJ2ZXJNZNzYwd1SUQLKZUBTWlj
XJ1PW5ldXRYWw5IFB1YmXpY0tleVRva2VuPtCzT1iY2UxMTF1OTQyOwMAHqJobGUeBnVybG9yZwMAWh0dHA6Ly94bHNlcnZpY2Vz
EwMCUeB3N0eWk1LmQp6LWluzGV40jA7ZAIBDxYCHw8FF3dpZHR0OjEwMCU7aGVpZ2h0OjEwMCU7aGVpZ2h0OjEwMCU7aGVpZ2h0Oj
Gb3JjRnRhbWVDb250ZW50BdMTDQo8aHRtbD4NCgk8Ym9keSBjQW1UaGVJbm10aWFSUGFnZT0nVHJ1ZSc+DQoJCTxmb3Jt
IG1ldGhvZD0ncG9zdCcgYWN0aW9uPScvdG9hbS9tc3VyaS9fbGF5b3V0cy9FeGN1bC5TZXJ2ZXIuRhhjZWxTZXJ2ZXJNZNzYwd1
CULcmVsb2FkJSgc3R5bGU9J2Rpc3BsYXk6bW9uZSc+DQoJQCk8aW5wdXQgbmFtZT0nZXdyUG9zderHdGEnIHZhbHVlPS
dscCUEB3N0eWk1LmQp6LWluzGV40jA7ZAIBDxYCHw8FF3dpZHR0OjEwMCU7aGVpZ2h0OjEwMCU7aGVpZ2h0OjEwMCU7aGVpZ2h0Oj
sZ1FiUG56c2gvMWVmbVJ4NERvcGxJVfhsQnZiVDQvRDBUaFhmVHFVSDNu1BMK1V6U3dsbXM2Nz1RWW1Db1htWdJpVdVVs
RHprZVpvNDNTZ3BoUmR6OFVrc1RaaDRhRmFzZEgZUFZFWWRtMXZ0oVNXt9eRsjZkUjJFZDZvVjBkU1FKd0xpVnFTL1MzO
HRStIyYXozVnJhbVJRDJOC9qRGN3QUNZaWZ2dDQdUVhb09Zc2toNmMvR2ZMOHBPWnZCdFNSU3UZL2E2bjBHSXdkk2
9zYzBG0E9xb11m20Q5REhXWVM2d0VpU0prYkRrTzBpDGSwMEgrVehNMMwyc2FmMkhBcGxZCWR1M2l2Z05xaDV5S9Y2S1Q
rRHFTNzVKeTjVtUdEcX1DR01vUXZFdkU1Tm11cEtXa2VEW19WVE1MT1ZnSG5UUWRSVnRtTitGL0duNvPbtUpvRzJRNVAx
RWhscm5VQjNGNH1oUEFzZHNtVXhgUWxoYXl30U030E1sOW90SU0vQ1o4Z3JKZDZpR09ieXBBY0Z3VzVOQndjTgDChnUra
WM2UHZISjVdek54WU1OenBLMEtHbURqMmRJVdH3SnhnaDRWVmh1VDJCM1FMRG56THRYZwxsZDdjdtNjNUJ6dJtU2RMZF
c2YVlhtVRWdF44WTBocU9HWUhgYxam1jTTNxdtY0RDZyaFhFMEZFT1Q4Z3Jxa1NPSW1kVtCv0t1MRGHGzcm1Rqnd3NFR
vbXRqaEdmbfMyMddRZGhjTkg5VU1sUHLqcDMYSHk1Z1ZwaTU2ME1zalh5eWJEcUJGb1JLNDZhrTY5dXlwbUZYZzhvVDRS
TEV6dWR1cXJhTHV2RlJUai95Q2U3VU1JaENFVdVou1VzUkhPdDBYaWZUQzFgTm4zZTR2VnBRTjNaSHZNMtF6Q0E5U1Rxc
U5QmVJYXRRA3BKcCtVMG3QVBhdEhmUjhjRlpvdkZosjkyQ1gdRjEwRD1TcC9jY3JyTkJfjOEfQTnNmJTVGJzVbmlvRy
9ieJr1eG1TZFNZ33VktNk2dHhIVlFFOHRHOX1iVmlhW5RQ1RdRjJSLCBhdHRYaWIPdQoJCQl7DQoJCQkJaWYyYgKN0cmwuaGFzQXR
0cmliXR1ICE9IG51bGwgKQ0KCQkQCQlYzXR1cm4gKGN0cmwuaGFzQXR0cmliXR1KGF0dHJpYykpID8gY3RybC5nZXRB
dHRyaWJldGUoYXR0cmliKSA6IG51bGw7DQoJCQkZJWxzZQ0KCQkQCQlYzXR1cm4gY3RybC5nZXRBdHRyaWJldGUoYXR0c
mliKTSnCGkJKX0NCg0KCQkZJnVuY3Rpb24gU2V0UG9zdgVvKmfja0FscmVhZHKodmFskQ0KCQkZew0KCQkZCXRYeQ0KCQ
kJXCsnCGkJKCQkZd2luZG93LmZyYw1lRWx1bWVudC5zZXRBdHRyaWJldGUoJ1Bvc3RlZEJhY2tBbHJlYWR5YjwgdMfSKTs
```

```
NCgkJCQl9DQoJCQkJY2F0Y2goZXgpDQoJCQkJew0KCQkJCX0NCgkJCX0NCg0KCQkJZnVuY3Rpb24gRXdyRnJhbWVwQb3N0
VG9TZXJ2ZXIoK0KCQkJew0KCQkJCXZhciB2YWwgPSAnU3VyZURpZCc7DQoJCQkjdHJ5DQoJCQkJew0KCQkJCQl2YWwgP
SBMb2NhbFNjcmldEdldEF0dHJpYnV0ZSh3aW5kb3cuZnJhbWVfVGVtZW50LCdQb3N0ZWRCYWNrQWxyZWZkeScpOw0KCQ
kJCX0NCgkJCQl1jYXRjaCAoZXgpDQoJCQkJew0KCQkJCX0NCgkJCQl2YXIGc3BlY2lhbFJlcG9zdCA9ICl1Y2FuY2VsJSI
gPT0gImNhbmlldD1UcnVlJiIgfHwgIiVyZWxvYWQlIiA9PSAicmVsb2FkPVRYdWUmIj5NCgkJCQlpZiAodmFsID09IG51
bGwgfHwgc3BlY2lhbFJlcG9zdCkNCgkJCQl7DQoJCQkJCWlmcGhc3BlY2lhbFJlcG9zdCkNCgkJCQkAodmFsID09IG51
2V0UG9zdGVkQmFja0FscmVhZkkoJ1N1cmVEaWQnKTSnCGkJCQkJfQ0KCQkJCQl1bHN1DQoJCQkJCXsNCgkJCQkJCXVn1dF
Bvc3RlZEJhY2tBbHJlYWR5K51bGwpOw0KCQkJCQkjd2luZG93LmZyYW1lRWxlbWVudC5zZXRBdHRyaWJ1dGUoIkV3clN
0YXR1cyIsICJsb2FkaW5nIik7DQoJCQkJCX0NCgkJCQkJZG9jdW11bnQuZm9ybXMuXRlbnSgwKS5zdWJtaXQoKTSnCGkJ
CQl9DQoJCQkJZWxzZQ0KCQkJCXsNCgkJCQkJU2V0UG9zdGVkQmFja0FscmVhZkkoJnVhZkbnVsb2Fk7DQoJCQkJCWhpc3RvcnkuY
mFjaygPw0KCQkJCQl3aW5kb3cuc2V0VGltZW91dCgid2luZG93LmZyYW1lRWxlbWVudC5zZXRBdHRyaWJ1dGUoIkV3clN
0YXR1cyIsICJsb2FkaW5nIik7DQoJCQkJCX0NCgkJCQkJZG9jdW11bnQuZm9ybXMuXRlbnSgwKS5zdWJtaXQoKTSnCGkJ
kJCQl9DQoJCQl9DQoJCQl3aW5kb3cuc2V0VGltZW91dCgid2luZG93LmZyYW1lRWxlbWVudC5zZXRBdHRyaWJ1dGUoIkV3clN
0YXR1cyIsICJsb2FkaW5nIik7DQoJCQkJCX0NCgkJCQkJZG9jdW11bnQuZm9ybXMuXRlbnSgwKS5zdWJtaXQoKTSnCGkJ
V2FpdEltYWdlHw4FBDEwMCUeC2ZyYW11Ym9yZGVyBQEW8FHHotaW5kZXg6MTt2aXNpYmlsaXR5OmhpZGR1bjsCVNjc
m9sbGluZwUCbm8eD0lZRXdyTWFpbklmcmFtZQUEdHJlZkR4JXdyU3RhdHVzZkR4JRHVtbXlQYWdlZWQCBAB8WBB8PBQ1kaX
NwbGF5Om5vbWU7HxZlZGRcHuXjujvwxWWE+rd32TchVa4Eaw==" />
</div>
```

```
<script type="text/javascript">
//
var theForm = document.forms['ctl105'];
if (!theForm) {
    theForm = document.ctl105;
}
function doPostBack(eventTarget, eventArgument) {
    if (!theForm.onsubmit || (theForm.onsubmit() != false)) {
        theForm. EVENTTARGET.value = eventTarget;
        theForm. __EVENTARGUMENT.value = eventArgument;
        theForm.submit();
    }
}
//]]&gt;
&lt;/script&gt;</pre></div><div data-bbox="143 466 783 491" data-label="Text"><pre>&lt;script src="/WebResource.axd?d=e0GKyGKnoukxMqsPUJZAlQ2&amp;amp;t=633911231850302493"
type="text/javascript"&gt;&lt;/script&gt;</pre></div><div data-bbox="143 501 883 868" data-label="Text"><pre>&lt;script&gt; var MSOWebPartPageFormName = 'ctl105';&lt;/script&gt;
&lt;script type="text/javascript"&gt;
//<![CDATA[
var originalFormAction = document.forms[0].action;
function FetchCallbackMenuItems(menuTemplate)
{
    var template=document.getElementById(menuTemplate);
    if(template == null || (template != null &amp;&amp; template.hasChildNodes()))
    {
        return;
    }
    theFormPostData = '';
    WebForm_InitCallback();
    var lastFormAction = document.forms[0].action;
    document.forms[0].action = originalFormAction;

    WebForm_DoCallback('ctl10$MyLinksMenu','',PopulateCallbackMenuItems,'^R^','^F^',ctl10_MyLinksMen
uMenu,ctl10_MyLinksMenuMenuTemplate',null,false);
    document.forms[0].action = lastFormAction;
}
//]]&gt;
&lt;/script&gt;
&lt;script type="text/JavaScript" language="JavaScript"&gt;
&lt;!--
var L_Menu_BaseUrl="/Site";
var L_Menu_LCID="1033";
var L_Menu_SiteTheme="";
//--&gt;
&lt;/script&gt;
&lt;script src="/ layouts/EWRScripts.js?rev=ycNXUsNKKd1qh12ZwFcmTQ%3D%3D"
type="text/javascript"&gt;&lt;/script&gt;
&lt;script type="text/javascript"&gt;</pre></div><div data-bbox="828 882 889 897" data-label="Page-Footer"><p>13 / 22</p></div><div data-bbox="112 901 384 954" data-label="Page-Footer"><p>[MS-ESURL] - v20160914<br/>Excel Services Publishing Protocol<br/>Copyright © 2016 Microsoft Corporation<br/>Release: September 14, 2016</p></div>
```

```

//
function WebForm_OnSubmit() {
UpdateFormDigest('\u002f\u002f', 1440000);
return true;
}
//]]&gt;
&lt;/script&gt;

&lt;div&gt;

<input type="hidden" name=" EVENTVALIDATION" id=" EVENTVALIDATION"
value="/wEWAgL85K7DagLdp935A227vZTrpVx+IX9lEdSAIKYOVXMc" /&gt;
&lt;/div&gt;

<table cellpadding="0" cellspacing="0" width="100%" height="100%" border="0"&gt;
<tr>
<td>
&lt;!-- begin global breadcrumb --&gt;
<table width="100%" cellpadding="3" cellspacing="0" border="0" class="ms-
globalbreadcrumb"&gt;
<tr>
<td nowrap="nowrap">
<span id="GlobalNavigationSiteMap">&lt;a
href="#GlobalNavigationSiteMap_SkipLink"&gt;&lt;img alt="Skip Navigation Links" height="0"
width="0" src="/WebResource.axd?d=1eQdCimhkLaqCJVEiXyRrQ2&amp;amp;t=633911231850302493"
style="border-width:0px;" /&gt;&lt;/a&gt;&lt;span&gt;&lt;a href="/"&gt;Excel Services&lt;/a&gt;&lt;/span&gt;&lt;span&gt; &amp;gt;
&lt;/span&gt;&lt;span&gt;&lt;a href="/team"&gt;Team&lt;/a&gt;&lt;/span&gt;&lt;span&gt; &amp;gt; &lt;/span&gt;&lt;span&gt;&lt;/span&gt;&lt;a
id="GlobalNavigationSiteMap_SkipLink"&gt;&lt;/a&gt;&lt;/span&gt;
&lt;/td&gt;
<td nowrap="nowrap">
&lt;a id="m webLink" href="http://ServerName/Site"&gt;Site Name&lt;/a&gt;
&lt;/td&gt;
<td nowrap="nowrap">
<span id="m backLinkSeparator"> &amp;gt; &lt;/span&gt;
&lt;/td&gt;
<td nowrap="nowrap">
&lt;a id="m_backLink"
href="/site/Document%20Library/Forms/AllItems.aspx"&gt;Shared Documents&lt;/a&gt;
&lt;/td&gt;
<td width="100%"&gt;
&amp;#160;
&lt;/td&gt;
<td nowrap="nowrap" class="ms-globallinks" align="right" style="padding-
left: 5px;padding-right: 5px"&gt;
<table cellpadding="0" cellspacing="0"&gt;
<tr>
<td class="ms-globallinks" nowrap="nowrap">
<span style='padding-left:3px'&gt;&lt;/span&gt;
&lt;a id="ctl108_hlMySite" href="http://ServerName:5625/_layouts/MySite.aspx"&gt;My Site&lt;/a&gt;
<span style='padding-left:4px;padding-right:3px'&gt;|&lt;/span&gt;
&lt;/td&gt;
<td class="ms-globallinks" nowrap="nowrap">
<table&gt;
<tr&gt;
<td class="ms-globallinks"&gt;&lt;span
id="ctl110_MyLinksMenu"&gt;&lt;span style="display:none"&gt;&lt;menu type='ServerMenu'
id="ctl110_MyLinksMenuMenuTemplate" largeIconMode="true"&gt;&lt;/menu&gt;&lt;/span&gt;&lt;span title="Open
Menu"&gt;&lt;span id="ctl110_MyLinksMenuMenu t" class="ms-SPLink ms-hovercellinactive"
onmouseover="MMU_PopMenuIfShowing(this);MMU_EcbTableMouseOverOut(this, true)"
hoverActive="ms-SPLink ms-hovercellactive" hoverInactive="ms-SPLink ms-hovercellinactive"
onclick="javascript:FetchCallbackMenuItems(&amp;#39;ctl110_MyLinksMenuMenuTemplate&amp;#39;);
MMU_Open(byid('ctl110_MyLinksMenuMenuTemplate'),
MMU_GetMenuFromClientId('ctl110_MyLinksMenuMenu'),event,true, null, 0);"
foa="MMU_GetMenuFromClientId('ctl110_MyLinksMenuMenu')" oncontextmenu="this.click(); return
false;" nowrap="nowrap"&gt;&lt;a id="ctl110_MyLinksMenuMenu" accesskey="M" href="#"
onclick="javascript:return false;" style="cursor:hand;white-space:nowrap;"
onfocus="MMU_EcbLinkOnFocusBlur(byid('ctl110_MyLinksMenuMenuTemplate'), this, true);"
onkeydown="MMU_EcbLinkOnKeyDown(byid('ctl110_MyLinksMenuMenuTemplate'),
MMU_GetMenuFromClientId('ctl110_MyLinksMenuMenu'), event);"
</pre>
</div>
<div data-bbox="828 882 889 897" data-label="Page-Footer">
<p>14 / 22</p>
</div>
<div data-bbox="111 901 383 954" data-label="Page-Footer">
<p>[MS-ESURL] - v20160914<br/>
Excel Services Publishing Protocol<br/>
Copyright © 2016 Microsoft Corporation<br/>
Release: September 14, 2016</p>
</div>
```

```

onclick="javascript:FetchCallbackMenuItems (&#39;ctl10_MyLinksMenuMenuTemplate&#39;);
MMU Open (byid ('ctl10 MyLinksMenuMenuTemplate'),
MMU GetMenuFromClientId ('ctl10 MyLinksMenuMenu'),event,true, null, 0);"
oncontextmenu="this.click(); return false;"
menuTokenValues="MENUCLIENTID=ctl10_MyLinksMenuMenu,TEMPLATECLIENTID=ctl10_MyLinksMenuMenuTem
plate" serverclientid="ctl10_MyLinksMenuMenu">My Links</a></span></span></span></td>
        <td class="ms-globallinks">|</td>
    </tr>
</table>
</td>
</tr>
</table>
</td>
</tr>
</table>
<!-- end global breadcrumb -->
</td>
</tr>
<tr>
    <td id="webpartContainerCell" height="100%" valign="top">
        <!-- begin Excel Web Renderer -->
        <table TOPLEVEL border="0" cellpadding="0" cellspacing="0" width="100%">
            <tr>
                <td valign="top"><div WebPartID="00000000-0000-0000-0000-000000000000"
HasPers="true" id="WebPartm_excelWebRenderer" width="100%" OnlyForMePart="true"
allowMinimize="false" allowRemove="false" allowDelete="false" style="height:100%;" ><div
id="m_excelWebRenderer" style="height:100%;"
                <span></span><input name="m_excelWebRenderer$wbid" type="hidden"
id="m_excelWebRenderer_wbid" wbid="m_excelWebRenderer_ECSFrame" /><table cellpadding="0"
cellspacing="0" border="0" style="border-
collapse:collapse;width:100%;height:100%;border:0;overflow:auto;">
                    <tr>
                        <td><span></span></td>
                    </tr>
                    <tr>
                        <td style="height:100%;"><div style="overflow:hidden;height:100%;"><div
id="m_excelWebRenderer WaitImage" width="100%" height="100%" style="z-
index:0;width:100%;height:100%;overflow:auto;">
<table style="height:100%;width:100%;">
    <tr style="height:48%;">
        <td>
            <div style="height:100%;;overflow:hidden;">&nbsp;</div>
        </td>
    </tr>
    <tr>
        <td>
            <table style="height:100%;width:100%;">
                <tr>
                    <td width="100%" valign="top" style="height:2%">
                        <table width="100%" border="0" cellspacing="0" cellpadding="0" class="ms-
propertySheet">
                            <tr>
                                <td align="center" valign="middle">
                                    <table cellpadding="0" cellspacing="0">
                                        <tr>
                                            <td>
                                                <table cellpadding="0" cellspacing="0">
                                                    <tr>
                                                        <td style="padding-top: 0px; padding-left: 20px;
padding-right: 20px;">
                                                            
                                                        </td>
                                                        <td MessageID = "Ewr_LoadProgress" style="padding-
right:20px;" vertical-align="middle">
                                                            <span class='ewr-progress-msg-font'>Operation in
progress...</span>
                                                    </tr>
                                                </table>
                                            </td>
                                        </tr>
                                    </table>
                                </td>
                            </tr>
                        </table>
                    </td>
                </tr>
            </table>
        </td>
    </tr>
</table>

```

```

        </td>
      </tr>
    <tr>
      <td colspan="2" style="height: 1px">
        </td>
      </tr>
    <tr>
      <td colspan="2">
        
      </td>
    </tr>
    <tr>
      <td colspan="2" style="height: 1px">
        
      </td>
    </tr>
    <tr>
      <td>
        
      </td>
    </tr>
    <td>
      <table cellpadding="0"
cellspacing="0"><tr><td style="width:100%;">
      </td>
      <td>
        <input id="ServerMessage2"
type="button" class="ewr-dialog-button" value="Cancel"
onclick="javascript:EwrCancelRequest(event, 'm_excelWebRenderer_ECSFrame', 'm_excelWebRender_
ctl106');" />
      </td>
    </tr>
  </table>
</td>
</tr>
</table>
</tr>
</table>
</td>
</tr>
</table>
</td>
</tr>
</table>
</td>
</tr>
</table>
</td>
</tr>
</table>
</td>
</tr>
</table>
</td>
</tr>
</table>
</td>
</tr>
</table>
</div><div style="width:100%;height:100%;"><IFrame id="m_excelWebRender_ ECSFrame"
ScriptForIFrameContent="
<html>
  <body IAmTheInitialPage='True'>
    <form method='post' action='/Site/_layouts/ExcelRenderer.aspx?%cancel%%reload%'
style='display:none'>
      <input name='ewrPostData'
value='lplSHnpIi67Bus3Biomvla5vtiMaK0dRw8CwB+CbXAapHkEXAf6hbBuPwAJYWiGFU8eP9lgQbPnzsh/1efmRx4
DoplITXlBvbT4/D0ThXfTqUH3n7PL+UzSwlms679QYYCnXmX2OuU1DzkeZo43SgphRdz8UksTZh4aFasdH3PVEYdm1vh9
SWLOkJ6dR2Ed6oV0dRQJwLiVqS/S38tkI22az3VramUID2N8/jDcwACYifGggPuEaoOYskh6c/GfL8pOZvBtSRSu3/a6n
0GIwJ+osc0F8OpoYf3D9DHqYS6wEiSjkbDk00otk00H+THM6l2saf2HAplYqde3msgNqh5yK/GJT+DqS75Jy5IMGDqyCG
MoQvEvE5NmupKWkeDZ/VTMLNVgHnTQdRVtSN+F/Gn5ZAMJoG2Q5P1Eh1rnUB3F4yhPASdsmUxjQlhayw9M78M19otIM/C

```



```

Z8grJd6iGObyAcFwW5NBwLgBnu+ic6PvHJ5CzNxYMNzPK0KGMdJ2dIT8wJxgh4VVhuT2B2QLDnzLtrellld7cu3c5Bzt
2mSdLdW6aYaMTVtWxY0hqOGYHFmv1jicM3qu64D6rhXE0FEOT8grqjSOIdU7/99LDhsrikBwy4TomtjhGf1S207QdhcN
H9UmlPyjp32Hy5gVpi560IsjXyybDqBFoRK46aE69ur0mFXfxoT4RLEzuduqraLuvFRTj/yCe7UMihCET5hRUSRH0t0Xi
fTC1jNn3e4vVpQN3ZHvM11zCA9STWqBlBeIatQkpJp+U1X7APatHLR8cFZovFhJ92CX0F10D9Sp/ccrNac8AmA3gzbst
bsnioG/bz4uxmSdSYwud596txHVQE8tG9ybVmaxNQDCWj18bIRbKFutdyvOxslMrxtMZg0XO89DRhX5bih45gWWtzp30
EDuic0YgmnfYcAV1SdRCS6Gf5vGCa5YjGgsTB2B6nibWcasatokcYqNhMYx7D/1KoDF+vnRRN0ckvcFI=>
  </form>
</body>
<script type='text/javascript' language='javascript'>
  <!--
    function LocalScriptGetAttribute(ctrl, attrib)
    {
      if (ctrl.hasAttribute != null )
        return (ctrl.hasAttribute(attrib)) ? ctrl.getAttribute(attrib) : null;
      else
        return ctrl.getAttribute(attrib);
    }

    function SetPostedBackAlready(val)
    {
      try
      {
        window.frameElement.setAttribute('PostedBackAlready', val);
      }
      catch(ex)
      {
      }
    }

    function EwrFramePostToServer()
    {
      var val = 'SureDid';
      try
      {
        val = LocalScriptGetAttribute(window.frameElement, 'PostedBackAlready');
      }
      catch (ex)
      {
      }
      var specialRepost = '&cancel=' == '&cancel=True&';
      '&reload=' == '&reload=True&';
      if (val == null || specialRepost)
      {
        if (!specialRepost)
        {
          SetPostedBackAlready('SureDid');
        }
        else
        {
          SetPostedBackAlready(null);
          window.frameElement.setAttribute('&EwrStatus');
          '&loading');
        }
        document.forms.item(0).submit();
      }
      else
      {
        SetPostedBackAlready(null);
        history.back();
        window.setTimeout('&window.location.reload(false);', 0);
      }
    }
    window.setTimeout('&EwrFramePostToServer()', 0);
  // -->
</script>
</html> width="100%" EwrWaitElementId="m_excelWebRenderer_WaitImage" height="100%"
frameborder="0" style="z-index:1;visibility:hidden;" Scrolling="no" IsEwrMainIframe="true"
EwrStatus="" DummyPage=""></IFrame></div>
<script type='text/javascript' language='javascript'>
  <!--

```

```

        FillIFrameWithForm('m_excelWebRenderer_ECSFrame', false, '');
    // -->
</script>
<script type='text/javascript' language='javascript'>
    <!--
        PollForDocumentCompletion('m_excelWebRenderer ECSFrame', false);
    // -->
</script><IFRAME id="m_excelWebRenderer_ctl06" style="display:none;" DummyPage=""></IFRAME>
<script type='text/javascript' language='javascript'>
    <!--
        function OpenEwrToolpaneForEditm_excelWebRenderer()
        {
            MSOTlPn_ShowToolPane2('Edit','m_excelWebRenderer');
        }
    // -->
</script></div></td>
    </tr>
    </table>
</div></div></td>
</tr>
</table>
        <!-- end Excel Web Renderer -->
    </td>
</tr>
</table>

<script type="text/javascript">
//
DoEwrResizeViewerPage();
WebForm InitCallback();//]]&gt;
&lt;/script&gt;

&lt;script type='text/javascript' language='javascript' for='window' event='onbeforeunload'&gt;
    &lt;!--
        EwrMainPageBeforeUnload();
    // --&gt;
&lt;/script&gt;&lt;/form&gt;
&lt;/body&gt;
&lt;/html&gt;
</pre>
</div>
<div data-bbox="828 882 891 897" data-label="Page-Footer">
<hr/>
<p>18 / 22</p>
</div>
<div data-bbox="111 901 384 954" data-label="Page-Footer">
<p>[MS-ESURL] - v20160914<br/>
Excel Services Publishing Protocol<br/>
Copyright © 2016 Microsoft Corporation<br/>
Release: September 14, 2016</p>
</div>
```

## 5 Security

### 5.1 Security Considerations for Implementers

When using this protocol over an untrusted network, an HTTPS (as described in [\[RFC2818\]](#)) connection can help mitigate risks of protocol messages being intercepted or tampered with.

The information contained in the workbook identified by the ID query string parameter is likely to be security sensitive. For example, it could contain confidential data such as financial records. Therefore it is recommended that the protocol server establish that the protocol client has permissions to access the workbook in any implementation in which the contents of this workbook are returned in the message body as described in section [2.2.2.3](#).

There are no restrictions on the protocol server regarding the message header content type, as described in section [2.2.2.2](#) and in [\[RFC2616\]](#) section 14.17. Therefore, it is recommended that the protocol client checks the Content-Type to avoid running any executable file that could pose a security risk.

### 5.2 Index of Security Parameters

None.

## 6 Appendix A: Product Behavior

The information in this specification is applicable to the following Microsoft products or supplemental software. References to product versions include released service packs.

- Microsoft Office Excel 2007
- Microsoft Excel 2010
- Microsoft Office SharePoint Server 2007
- Microsoft SharePoint Server 2010
- Microsoft Excel 2013
- Microsoft SharePoint Server 2013

Exceptions, if any, are noted below. If a service pack or Quick Fix Engineering (QFE) number appears with the product version, behavior changed in that service pack or QFE. The new behavior also applies to subsequent service packs of the product unless otherwise specified. If a product edition appears with the product version, behavior is different in that product edition.

Unless otherwise specified, any statement of optional behavior in this specification that is prescribed using the terms SHOULD or SHOULD NOT implies product behavior in accordance with the SHOULD or SHOULD NOT prescription. Unless otherwise specified, the term MAY implies that the product does not follow the prescription.

## 7 Change Tracking

No table of changes is available. The document is either new or has had no changes since its last release.

## 8 Index

### A

[Abstract data model](#) 10  
[Applicability](#) 7

### C

[Capability negotiation](#) 7  
[Change tracking](#) 21

### D

[Data model - abstract](#) 10

### E

Examples  
[overview](#) 11

### F

[Fields - vendor-extensible](#) 7

### G

[Glossary](#) 5

### H

[Higher-layer triggered events](#) 10

### I

[Implementer - security considerations](#) 19  
[Index of security parameters](#) 19  
[Informative references](#) 6  
[Initialization](#) 10  
[Introduction](#) 5

### L

[Local events](#) 10

### M

[Message processing](#) 10  
[Message syntax](#) 8  
Messages  
[request header syntax message](#) 9  
[request HTTP method message](#) 8  
[request HTTP version message](#) 8  
[request URI syntax message](#) 8  
[response body syntax message](#) 9  
[response header syntax message](#) 9  
[response status message](#) 9  
[syntax](#) 8  
[transport](#) 8

### N

[Normative references](#) 5

### O

[Overview \(synopsis\)](#) 6

### P

[Parameters - security index](#) 19  
[Preconditions](#) 7  
[Prerequisites](#) 7  
[Product behavior](#) 20

### R

[References](#) 5  
[informative](#) 6  
[normative](#) 5  
[Relationship to other protocols](#) 6  
[Request header syntax message](#) 9  
[Request HTTP method message](#) 8  
[Request HTTP version message](#) 8  
[Request URI syntax message](#) 8  
[Response body syntax message](#) 9  
[Response header syntax message](#) 9  
[Response status message](#) 9

### S

Security  
[implementer considerations](#) 19  
[parameter index](#) 19  
[Sequencing rules](#) 10  
[Standards assignments](#) 7

### T

[Timer events](#) 10  
[Timers](#) 10  
[Tracking changes](#) 21  
[Transport](#) 8  
[Triggered events - higher-layer](#) 10

### V

[Vendor-extensible fields](#) 7  
[Versioning](#) 7