

Preliminary

[MS-ESURL]: Excel Services Publishing Protocol Specification

Intellectual Property Rights Notice for Open Specifications Documentation

- **Technical Documentation.** Microsoft publishes Open Specifications documentation for protocols, file formats, languages, standards as well as overviews of the interaction among each of these technologies.
- **Copyrights.** This documentation is covered by Microsoft copyrights. Regardless of any other terms that are contained in the terms of use for the Microsoft website that hosts this documentation, you may make copies of it in order to develop implementations of the technologies described in the Open Specifications and may distribute portions of it in your implementations using these technologies or your documentation as necessary to properly document the implementation. You may also distribute in your implementation, with or without modification, any schema, IDL's, or code samples that are included in the documentation. This permission also applies to any documents that are referenced in the Open Specifications.
- **No Trade Secrets.** Microsoft does not claim any trade secret rights in this documentation.
- **Patents.** Microsoft has patents that may cover your implementations of the technologies described in the Open Specifications. Neither this notice nor Microsoft's delivery of the documentation grants any licenses under those or any other Microsoft patents. However, a given Open Specification may be covered by Microsoft [Open Specification Promise](#) or the [Community Promise](#). If you would prefer a written license, or if the technologies described in the Open Specifications are not covered by the Open Specifications Promise or Community Promise, as applicable, patent licenses are available by contacting iplg@microsoft.com.
- **Trademarks.** The names of companies and products contained in this documentation may be covered by trademarks or similar intellectual property rights. This notice does not grant any licenses under those rights.
- **Fictitious Names.** The example companies, organizations, products, domain names, e-mail addresses, logos, people, places, and events depicted in this documentation are fictitious. No association with any real company, organization, product, domain name, email address, logo, person, place, or event is intended or should be inferred.

Reservation of Rights. All other rights are reserved, and this notice does not grant any rights other than specifically described above, whether by implication, estoppel, or otherwise.

Tools. The Open Specifications do not require the use of Microsoft programming tools or programming environments in order for you to develop an implementation. If you have access to Microsoft programming tools and environments you are free to take advantage of them. Certain Open Specifications are intended for use in conjunction with publicly available standard specifications and network programming art, and assumes that the reader either is familiar with the aforementioned material or has immediate access to it.

Preliminary Documentation. This Open Specification provides documentation for past and current releases and/or for the pre-release (beta) version of this technology. This Open Specification is final documentation for past or current releases as specifically noted in the document, as applicable; it is

preliminary documentation for the pre-release (beta) versions. Microsoft will release final documentation in connection with the commercial release of the updated or new version of this technology. As the documentation may change between this preliminary version and the final version of this technology, there are risks in relying on preliminary documentation. To the extent that you incur additional development obligations or any other costs as a result of relying on this preliminary documentation, you do so at your own risk.

Revision Summary

Date	Revision History	Revision Class	Comments
04/04/2008	0.1		Initial Availability
06/27/2008	1.0	Major	Revised and edited the technical content
12/12/2008	1.01	Editorial	Revised and edited the technical content
03/18/2009	1.02	Editorial	Revised and edited the technical content
07/13/2009	1.03	Major	Revised and edited the technical content
08/28/2009	1.04	Editorial	Revised and edited the technical content
11/06/2009	1.05	Editorial	Revised and edited the technical content
02/19/2010	2.0	Minor	Updated the technical content
03/31/2010	2.01	Editorial	Revised and edited the technical content
04/30/2010	2.02	Editorial	Revised and edited the technical content
06/07/2010	2.03	Editorial	Revised and edited the technical content
06/29/2010	2.04	Editorial	Changed language and formatting in the technical content.
07/23/2010	2.05	Minor	Clarified the meaning of the technical content.
09/27/2010	2.05	No change	No changes to the meaning, language, or formatting of the technical content.
11/15/2010	2.05	No change	No changes to the meaning, language, or formatting of the technical content.
12/17/2010	2.05	No change	No changes to the meaning, language, or formatting of the technical content.
03/18/2011	2.05	No change	No changes to the meaning, language, or formatting of the technical content.
06/10/2011	2.05	No change	No changes to the meaning, language, or formatting of the technical content.
01/20/2012	2.05	No change	No changes to the meaning, language, or formatting of the technical content.

Date	Revision History	Revision Class	Comments
04/11/2012	2.05	No change	No changes to the meaning, language, or formatting of the technical content.

Table of Contents

1.1	Glossary	5
1.2	References.....	5
1.2.1	Normative References.....	5
1.2.2	Informative References	6
1.3	Protocol Overview (Synopsis)	6
1.4	Relationship to Other Protocols.....	6
1.5	Prerequisites/Preconditions	7
1.6	Applicability Statement.....	7
1.7	Versioning and Capability Negotiation.....	7
1.8	Vendor-Extensible Fields.....	7
1.9	Standards Assignments	7
2	Messages.....	8
2.1	Transport.....	8
2.2	Message Syntax	8
2.2.1	Request Syntax.....	8
2.2.1.1	Request HTTP Version	8
2.2.1.2	Request HTTP Method	8
2.2.1.3	Request-URI Syntax.....	8
2.2.1.3.1	Query Segment.....	8
2.2.1.4	Request Header Syntax	9
2.2.2	Response Syntax.....	9
2.2.2.1	Response Status.....	9
2.2.2.2	Response Header Syntax	9
2.2.2.3	Response Body Syntax	9
3	Protocol Details.....	10
3.1	Details.....	10
3.1.1	Abstract Data Model	10
3.1.2	Timers	10
3.1.3	Initialization	10
3.1.4	Higher-Layer Triggered Events.....	10
3.1.5	Message Processing Events and Sequencing Rules.....	10
3.1.6	Timer Events	10
3.1.7	Other Local Events	10
4	Protocol Examples.....	11
5	Security.....	20
5.1	Security Considerations for Implementers.....	20
5.2	Index of Security Parameters	20
6	Appendix A: Product Behavior.....	21

7 Change Tracking..... 22

8 Index 23

1 Introduction

This document specifies the Excel Services Publishing Protocol, which enables a protocol client to form the protocol server URL and associated query string parameters to display the workbook in the browser after the workbook is published to the protocol server.

Sections 1.8, 2, and 3 of this specification are normative and can contain the terms MAY, SHOULD, MUST, MUST NOT, and SHOULD NOT as defined in RFC 2119. Sections 1.5 and 1.9 are also normative but cannot contain those terms. All other sections and examples in this specification are informative.

1.1 Glossary

The following terms are defined in [\[MS-GLOS\]](#):

- authentication**
- Hypertext Transfer Protocol (HTTP)**
- Hypertext Transfer Protocol over Secure Sockets Layer (HTTPS)**

The following terms are defined in [\[MS-OFCGLOS\]](#):

- permission**
- Request-URI**
- site**

The following terms are specific to this document:

MAY, SHOULD, MUST, SHOULD NOT, MUST NOT: These terms (in all caps) are used as described in [\[RFC2119\]](#). All statements of optional behavior use either MAY, SHOULD, or SHOULD NOT.

1.2 References

References to Microsoft Open Specifications documentation do not include a publishing year because links are to the latest version of the documents, which are updated frequently. References to other documents include a publishing year when one is available.

1.2.1 Normative References

We conduct frequent surveys of the normative references to assure their continued availability. If you have any issue with finding a normative reference, please contact dochelp@microsoft.com. We will assist you in finding the relevant information. Please check the archive site, <http://msdn2.microsoft.com/en-us/library/E4BD6494-06AD-4aed-9823-445E921C9624>, as an additional source.

[MS-WEBSS] Microsoft Corporation, "[Webs Web Service Protocol Specification](#)".

[RFC1738] Berners-Lee, T., Masinter, L., and McCahill, M., "Uniform Resource Locators (URL)", RFC 1738, December 1994, <http://www.ietf.org/rfc/rfc1738.txt>

[RFC1945] Berners-Lee, T., Fielding, R., and Frystyk, H., "Hypertext Transfer Protocol -- HTTP/1.0", RFC 1945, May 1996, <http://www.ietf.org/rfc/rfc1945.txt>

[RFC2119] Bradner, S., "Key words for use in RFCs to Indicate Requirement Levels", BCP 14, RFC 2119, March 1997, <http://www.rfc-editor.org/rfc/rfc2119.txt>

[RFC2396] Berners-Lee, T., Fielding, R., and Masinter, L., "Uniform Resource Identifiers (URI): Generic Syntax", RFC 2396, August 1998, <http://www.ietf.org/rfc/rfc2396.txt>

[RFC2616] Fielding, R., Gettys, J., Mogul, J., et al., "Hypertext Transfer Protocol -- HTTP/1.1", RFC 2616, June 1999, <http://www.ietf.org/rfc/rfc2616.txt>

[RFC2818] Rescorla, E., "HTTP Over TLS", RFC 2818, May 2000, <http://www.ietf.org/rfc/rfc2818.txt>

1.2.2 Informative References

[MS-GLOS] Microsoft Corporation, "[Windows Protocols Master Glossary](#)".

[MS-OFCGLOS] Microsoft Corporation, "[Microsoft Office Master Glossary](#)".

1.3 Protocol Overview (Synopsis)

This protocol specifies how the protocol server URL that is used for displaying the workbook in the browser is formed. At a high level, the protocol involves the following operations:

- Discovery of the URL that is used to display the workbook in the browser given the URL to the workbook.
- Setting the appropriate query string parameters in the URL for displaying the workbook in the browser.

The following sequence diagram illustrates the operations of the protocol.

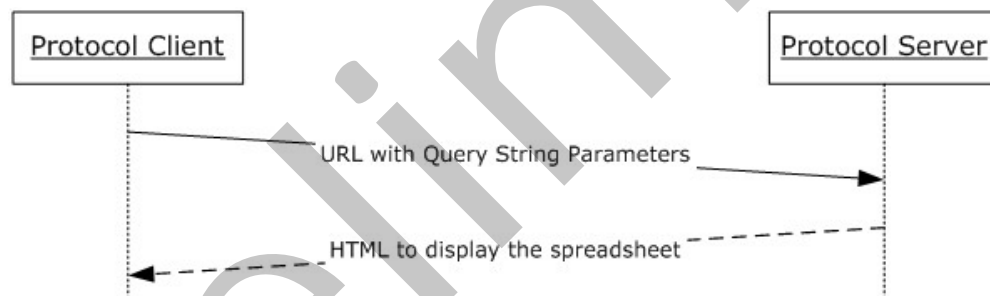


Figure 1: This protocol message processing sequence

1.4 Relationship to Other Protocols

This protocol uses **HTTP** 1.0, as described in [\[RFC1945\]](#), HTTP 1.1, as described in [\[RFC2616\]](#), or **Hypertext Transfer Protocol over Secure Sockets Layer (HTTPS)**, as described in [\[RFC2818\]](#), for message transport.

The following diagram shows the underlying messaging and transport stack used by the protocol:

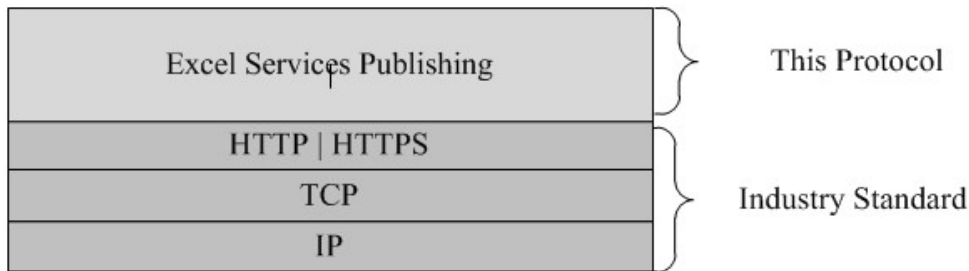


Figure 2: This protocol in relation to other protocols

1.5 Prerequisites/Preconditions

This protocol operates against a **site (2)** identified by a URL that is known by protocol clients. The protocol server endpoint is formed by appending `/_layouts/xlviewer.aspx` to the URL of the site (2), for example: `http://www.contoso.com/Repository/_layouts/xlviewer.aspx`.

The protocol assumes that **authentication (2)** has been performed by the underlying protocols.

1.6 Applicability Statement

This protocol is for providing protocol clients access to an HTML rendering of a workbook.

1.7 Versioning and Capability Negotiation

Versioning and capability negotiation for this protocol is handled by either the HTTP protocols as described in [\[RFC1945\]](#) and [\[RFC2616\]](#), or the HTTPS protocol as described in [\[RFC2818\]](#).

1.8 Vendor-Extensible Fields

None.

1.9 Standards Assignments

None.

2 Messages

2.1 Transport

All protocol messages MUST use HTTP 1.0 (as specified in [\[RFC1945\]](#)), HTTP 1.1 (as specified in [\[RFC2616\]](#)), or the HTTPS protocol (as specified in [\[RFC2818\]](#)) for message transport.

2.2 Message Syntax

All messages in this protocol MUST be valid HTTP requests and responses as specified in [\[RFC2616\]](#).

2.2.1 Request Syntax

2.2.1.1 Request HTTP Version

The HTTP version MUST be either HTTP 1.0 or HTTP 1.1, as specified in [\[RFC2616\]](#) section 3.1.

2.2.1.2 Request HTTP Method

The protocol client MUST use the HTTP GET method as specified in [\[RFC2616\]](#) section 9.

2.2.1.3 Request-URI Syntax

The **Request-URI** MUST adhere to the following rules:

- The Request-URI sent in the HTTP request MUST be a valid URI as specified in [\[RFC1738\]](#).
- The Scheme Component MUST be either HTTP or HTTPS, as specified in [\[RFC2396\]](#) section 3.1.
- The protocol client MUST generate the Request-URI by appending `"/_layouts/xlviewer.aspx"` to the site (2) URI to which the workbook was published. The protocol client MUST determine the site (2) URI by calling **WebUrlFromPageUrl** (as specified in [\[MS-WEBSS\]](#) section 3.1.4.21) with the full URI to which the workbook was published. Therefore the Path Component of the Request-URI MUST end with `"/_layouts/xlviewer.aspx"`, as specified in [\[RFC2396\]](#) section 3.3.
- The Query Component of the Request-URI MUST be present and follow the rules specified in section [2.2.1.3.1](#) and [\[RFC2396\]](#) section 3.4.

The complete contents of the Request-URI MUST be negotiated prior to initiating the protocol as described in section [1.5](#). This includes the Authority Component as specified in [\[RFC2396\]](#) section 3.2 and the Path Component specified in [\[RFC2396\]](#) section 3.3.

2.2.1.3.1 Query Segment

The Query Component of the Request-URI MUST contain three query string parameters with the following names:

- ID
- DefaultItemOpen
- Cookie

The value for each query string parameter MUST be a non-empty string and a valid query string parameter value as specified in [\[RFC2396\]](#). The Query Component MUST NOT contain query string parameters other than the three required parameters, as specified in [\[RFC2396\]](#) section 3.4. The protocol server MUST NOT require the query string parameters to appear in any particular order.

The protocol client and protocol server MUST interpret the query string parameters as defined in the following table.

Parameter name	Description
ID	The location to which the workbook is published. The value for this parameter MUST be a valid URL as specified in [RFC1738] . The Scheme Component as specified in [RFC2396] section 3.1 of the ID URL MUST be either "HTTP" or "HTTPS".
DefaultItemOpen	The value for this parameter MUST be set to 1.
Cookie	An identifier used to make the Request-URI unique. SHOULD be ignored by the protocol server. The protocol client MUST set the value for this parameter to a unique value across all requests from that protocol client.

Table 1: Query Parameters

2.2.1.4 Request Header Syntax

The protocol client MUST provide valid Message Headers as specified in [\[RFC2616\]](#) section 4.2.

2.2.2 Response Syntax

2.2.2.1 Response Status

The protocol server MUST provide a valid status code as specified in [\[RFC2616\]](#) section 6.1.1.

2.2.2.2 Response Header Syntax

The protocol server MUST provide valid message headers as specified in [\[RFC2616\]](#) section 4.2.

2.2.2.3 Response Body Syntax

The protocol server MUST provide a valid message body as specified in [\[RFC2616\]](#) section 4.3.

3 Protocol Details

3.1 Details

3.1.1 Abstract Data Model

None.

3.1.2 Timers

None.

3.1.3 Initialization

None.

3.1.4 Higher-Layer Triggered Events

None.

3.1.5 Message Processing Events and Sequencing Rules

The message processing events and sequencing rules are as follows:

- The protocol client MUST generate a valid Request-URI as specified in section [2.2.1.3](#).
- The protocol client MUST issue the HTTP GET request to the generated URL.
- The protocol server MUST verify that the client has **permission** to access the specified URL and MUST return the appropriate Status Code as specified in [\[RFC2616\]](#) section 6.1.1 if the protocol client does not have permissions. The client MUST be prepared to accept all status codes specified in [\[RFC2616\]](#) section 6.1.1.
- After performing any implementation specific processing, the protocol server MUST return a valid HTTP response as specified in section [2.2.2](#).

3.1.6 Timer Events

None.

3.1.7 Other Local Events

None.

4 Protocol Examples

The following is an example of this protocol usage. In this example, the workbook is published to the following location:

```
http://server-name/Site/Dir/Book1.xlsx
```

The URL generated by this protocol that will render the workbook in HTML is as follows:

```
http://server-name/Site/_layouts/xlviewer.aspx?id=http://server-name/Site/Dir/Book1.xlsx&DefaultItemOpen=1&Cookie=0
```

`http://server-name/Site` is the URL of the site (2) to which the workbook was published. Microsoft protocol clients determine the site (2) URL by calling **WebUrlFromPageUrl** (as described in [\[MS-WEBS\]](#)) with the full URL to which the workbook was published.

HTTP request

```
GET
/team/mysite/_layouts/xlviewer.aspx?id=http%3a%2f%2fServerName%2fSite%2fDocument%20Library%2f
Example.xlsx&DefaultItemOpen=1&Cookie=2 HTTP/1.1
Accept: */*
Host: ServerName
```

HTTP response

```
HTTP/1.1 200 OK
Date: Fri, 22 Jan 2010 20:46:55 GMT
Server: Microsoft-IIS/6.0
MicrosoftSharePointTeamServices: 12.0.0.4017
X-Powered-By: ASP.NET
X-AspNet-Version: 2.0.50727
Set-Cookie: WSS_KeepSessionAuthenticated=80; path=/
Set-Cookie: MSOWebPartPage_AnonymousAccessCookie=80; expires=Fri, 22-Jan-2010 21:16:55 GMT;
path=/
Cache-Control: private, max-age=0
Expires: Thu, 07 Jan 2010 20:46:55 GMT
Last-Modified: Fri, 22 Jan 2010 20:46:55 GMT
Content-Type: text/html; charset=utf-8
Content-Length: 20300
<html id="m_htmlTag" dir="ltr">
<head>
  <meta name="WebPartPageExpansion" content="full" />
  <meta name="GENERATOR" content="Microsoft SharePoint" />
  <meta name="ProgId" content="SharePoint.WebPartPage.Document" />
  <meta http-equiv="Content-Type" content="text/html; charset=utf-8" />
  <title id="m_title">Excel Web Access - http://ServerName/Site/Document
Library/Example.xlsx</title>
  <link rel="stylesheet" type="text/css"
href="/_layouts/1033/styles/EWRDefault.css?rev=oIw8MMnEVJ5jKs65UzX4cw%3D%3D"/>
  <link rel="stylesheet" type="text/css"
href="/_layouts/1033/styles/core.css?rev=5msmprmeONfN6lJ3wtbAlA%3D%3D"/>
```

```
<script type="text/javascript" language="javascript"
src="/_layouts/1033/init.js?rev=ck%2BHDHQ8ABQHif7kr%2Bj7iQ%3D%3D"></script>
<script src="/_layouts/1033/core.js?rev=S5dt4K8TJGVTYU9HrW6enw%3D%3D"></script>
<script src="/_layouts/1033/owsbrows.js?rev=%2F0cWXc03f8AvMOC%2F2LOCJA%3D%3D"></script>
<script src="/_layouts/EWRScripts.js?rev=yCNXUsNKKdlqhl2ZwFcmTQ%3D%3D"></script>
<script type="text/javascript" language="javascript"
src="/_layouts/portal.js?rev=cRI8b5r5N%2BkLhTuWR03ICg%3D%3D"></script>

<meta name="Microsoft Theme" content="default" />
<meta name="Microsoft Border" content="none" />
<link type="text/xml" rel="alternate" href="_vti_bin/spdisco.aspx" />
</head>

<body style="overflow:auto;">
<form name="ctl05" method="post"
action="xlviewer.aspx?id=http%3a%2f%2fServerName%2fSite%2fDocument+Library%2fExample.xlsx&
;DefaultItemOpen=1&Cookie=2" onsubmit="javascript:return WebForm_OnSubmit();" id="ctl05"
dir="ltr">
<div>
<input type="hidden" name="__EVENTTARGET" id="__EVENTTARGET" value="" />
<input type="hidden" name="__EVENTARGUMENT" id="__EVENTARGUMENT" value="" />
<input type="hidden" name="__REQUESTDIGEST" id="__REQUESTDIGEST"
value="0x28783c9DDD259475E14616190CA7036C18EBEF6F4F6F9AFB1D46B8A3C0D763F5CCFEC4B5E5C51BCB1E1
C4AF4E6327C0C726F3A1C10D7EC9EF9726A135AE3F55,22 Jan 2010 21:28:17 -0000" />
<input type="hidden" name="__VIEWSTATE" id="__VIEWSTATE"
value="/wEPDwUKLTI5NzU2NDc5Nw9kFgJmDxYCHgNkaXIFA2x0chYEAgEPFgIeCwLubmVyaHRtbAVNRXhjZWwgV2ViIE
FjY2VzcyAtIGh0dHA6Ly94bHNlcnZpY2VzL3RlYW0vbXN1cmkvU2hhcmVkJERvY3VtZW50cy9FeGFtcGxlLnhs3hkAg0
PFgIfAAUdBhRyFgoCBQ8PFgQeBFRLeHQFdk1hbnByYXRhcCBTdXJpHgtOYXZpZ2F0ZVVybAUcaHR0cDovL3hsc2Vydmlj
ZXMvdG9hbnB9tc3VyaWRkAgkPdXkYEHwIFEFNoYXJlZCBEB2N1bWVudHMfAwUwL3RlYW0vbXN1cmkvU2hhcmVkJERvY3Vt
W50cy9Gb3Jtcy9BbGxJdGVtcy5hc3B4ZGQCCw9kFgJmD2QWBMYPFgIFAgUmPHNwYw4gc3R5bGU9J3BhZGRpbmctbGVmdD
oczHgnPjwvc3Bhb3k5AgIPDxYEHwIFB015IFNpdGUfAwUraHR0cDovL3hsc2VydmljZXM6NTYyNS9fbGF5b3V0cy9NeVN
pdGUuYXNweGRkAgQPfGfAgU5PHNwYw4gc3R5bGU9J3BhZGRpbmctbGVmdDo0cHc7cGfGZGluZylyaWdodDozcHgnPnw8
L3NwYW4+ZAIIND2QWAmYzBYCAGMPFgIFAgUBfGQCDw8PFgIeEFByZXZpb3VzV29ya2Jvb2sF+AFscGxTSG5wSWk2N0J1c
zNCAw9tdmxhNXZ0aUlhSzbkUnc4Q3dCK0NiWEFhcEhrRVhBzjZoYmJ1UHdBS1lXaUdGVThlUD1sZlFiUG56c2gvMMWmbV
J4MFY4enQ5SFJxNG56Um8vQVVAxV5k5MXJ5cGs0Yz0a1BybWFESeHFRWx2Yk5TbTMyRHRMRjVkaWdSU3RsczR5b3V0cy9NeVN
wRmw2YyszM2FaczJ4WHdqTmlCTlFYs1dLS0tRd05KYXZgTkI5QWVLRUQ4N1dkUU9wcmWlKeW1FT2tKRWoxNlhSNjJJZjJ1
TjdzZEdxTj0RmYxY3o2b1hORkxJY3c9PWFQWBMYPDxYOHgJobQsqM1N5c3RlB5S5XZWIuVUkuV2ViQ29udHJvbHMUv2ViU
GFydhMUv2ViUGFyEh1bHBNb2RlAR8ACymFAU1pY3Jvc29mdC5TaGFyZVBvaW50Ld1dYlBhcnRQYwdlcy5EaXJlY3Rpb2
4sIE1pY3Jvc29mdC5TaGFyZVBvaW50LCBwZXJzaW9uPTEyLjAuMC4wLCBDDWx0dXJlPW5ldXRYeWwsIFB1YmXpY0tleVR
va2VuPTcxZTliY2UxMTFlOTQyOWMAHgJobGUEBnVybG9yZWwMAWh0dHA6Ly94bHNlcnZpY2VzL3RlYW0vbXN1cmkvU2hh
eW91dHMveGx2aWV3ZXIuYXNweD9pZD1odHRwOi8veGx2ZXJ2aWNlcy90ZWFTL2l1zdXJpL1NoYXJlZCBEB2N1bWVudHMvR
XhhbXBsZS54bHN4JkRlZmFlbHRJdGVtT3B1bj0xJkNvb2tpZT0yHgdld3JndWlkBRJtX2V4Y2VsV2ViUmVuZGVyZXIeA3
VzcGgeCmNvb2tpZW5hbWUfATJkZAIbDxYCHgR3YmlkBRttX2V4Y2VsV2ViUmVuZGVyZXJFRUNTRnJhbWVkaGAgIPZBYCAGe
PZBYCZg9kFgJmD2QWBMYPDxYCHg1NzXNzYwd1SUQLKZUBTWl1jcm9zb2Z0Lk9mZmljZS5FeGNlbC5TZXJ2ZXIuR3hZjZwX
TZXJ2ZXJNzXNzYwd1SWQsIE1pY3Jvc29mdC5PZmZpY2UuRXhjZWwU2VydMvYLCBwZXJzaW9uPTEyLjAuMC4wLCBDDWx0d
XJlPW5ldXRYeWwsIFB1YmXpY0tleVRva2VuPTcxZTliY2UxMTFlOTQyOWNFfGyEhBxdpZHRoBQQxMDA1HgZoZlNaHQFBD
EwMCUEBXN0eWx1BQp6LWluZGV4OjA7A2AIBDxYCHw8FF3dpZHRoOjEwMCU7aGVpZ2h0OjEwMCU7FgJmDxYUUhZTY3JpcHR
Gb3JURnJhbWVh250Zw50BdMTDQo8aHRtbD4NCGk8Ym9keSBjUW1UaGVJbml0aWFSUGFnZT0nVHJ1ZS+cDQoJCTxmb3Jt
IG1ldGhvZD0ncG9zdCcgYWN0aW9uPScvdGVhbnB9tc3VyaS9fbGF5b3V0cy9FeGNlbFJlbnRlcmVYLmFzcGg/JWNhbmN1b
CU1cmVsb2FkJSgcg3R5bGU9J2Rpc3BsYXk6b6m9uZSc+DQoJCCk8aW5wdXQgZmFtZT0nZXdYUG9zdEhRdGEnIHZhbHV1PS
dscGxTSG5wSWk2N0J1c3NCAw9tdmxhNXZ0aUlhSzbkUnc4Q3dCK0NiWEFhcEhrRVhBzjZoYmJ1UHdBS1lXaUdGVThlUD1
sZlFiUG56c2gvMMWmbVJ4NERvcGxJVfhsQnZiVDQvRDBUaFhmVHFVSDNuN1BMK1V6U3dsbXN2Nz1RWV1Db1htWDJpDvVs
RHprZVpvNDNTZ3BoUmR6OFVrc1RaaDRhRmFzZEGzUFZFWWRtMXZoOVNXTE9rSjZkUjJFZDZvVjBkU1FKd0xpVnFTL1MzO
HRrSTIyXozVnJhbVVRDJOOC9qRGN3QUNZawZH2ZdQdUVhb09Zc2toNmMvR2ZMOHBPwnZCdfNSU3UzL2E2bjBHSxdkK2
9zYzBGOE9wb1lm0Q5REhxWVM2d0VpU0prYkRrTzBPdGswMEgrVEhNNmWyc2FmMkhBcGxzcWRlM21zZ05xaDV5Sy9HS1Q
rRHFtnzVKEtVJTUdEcX1DR01vUXZFkU1Tm11cEtXa2VEwi9WVE1MTL1ZnSG5UUWRsVnRTitGL0duNvPBtUpvRzJRNvAx
RWhscm5VQjNGNH1oUEFzZHNTVXhqUwXoYXl3OU03OE1sOW90SU0vQ1o4Z3JKZDZpR09ieXBBY0Z3VzVOQndjTgdcBnUra
WM2UHZISjvDek54WU1OenBLMEtHbURqMmRJVdH3SnhnaDRWvmh1VDJCM1FMRG56THRYZWxsZDdjdTjNUJ6dJtU2RMZF
c2YV1hTVRwdf4WTBocU9HWUhgBXYxamljTTNxdTY0RDZyaFhFMEZFT1Q4Z3JxalNPSWlkVtVcOTLMRghzcmlrQnd5NFR
vbXRqaEdmBfMyMDrZGhjTkg5VU1sUhlqcDMYShk1Z1ZwaTU2ME1za1h5eWJECUjGbl1LNDZhrTY5dXIwbUzY2ZnhvVDRS
```

```
TEV6dWR1cXJhTHV2RlJUai95Q2U3VU1JaENFVDVou1VzUkhPdDBYaWZUQzFqTm4zZTR2VnBRTjNaSHZNMtF6Q0E5U1RXc
UJsQmVJYXRRA3BKcCtVMvg3QVBhdEhMujhJrLpvdKZoSjkyQlGwRjEwRDlTcC9jY3JyTkFjOEfTQTnNemJTVGJzBmlvRy
9iejR1eG1TzFNzd3VknTK2dHhIVlFFOHRHOXliVm1hWE5RQ0Rdd2psOGJJUmJLRnV0ZHL2T3N4bE1yeHRNWmcwWE84OUR
SaFglYmloNDVnV1d0enAzMEVEEdWljMFlnbW5mWWNBvMxTZfJDUzZHZjv2R0NhnVlqR2dzVEIyQjZuaWJXY2FzYXRva2NZ
cU5oTVl4N0QvMUtvREYrdm5SUK4wY2t2Y0ZJPSc+DQoJCTwvZm9ybT4NCgk8L2JvZHk+DQoJPHNjcm1wdCB0eXB1PSd0Z
Xh0L2phdmFzY3JpcHQnIGxhbmdlYWdlPSdqYXZhc2NyaXB0JydzXzH0L2phdmFzY3JpcHQnPg0KCQk8IS0tDQoJcQlmdw
5jdG1vbiBmb2NhbFNjcm1wdEdldEF0dHJpYnV0ZShjdHJsLCBhdHRyaWIpDQoJcQl7DQoJcQkJaWYgKGN0cmwuaGFzQXR
0cm1idXRlICE9IG51bGwgKQ0KCQkjcQlYzXR1cm4gKGN0cmwuaGFzQXR0cm1idXRlKGF0dHJpYi1kpID8gY3RybC5nZXRb
dHRyaWJldGUoYXR0cm1iKSA6IG51bGw7DQoJcQkjcWwzZQ0KCQkjcQlYzXR1cm4gY3RybC5nZXRbdHRyaWJldGUoYXR0c
mliKTsNCgkjcX0NCg0KCQkjcZnVuY3Rpb24gU2V0UG9zdGVkQmFja0FscmVhZHkodmFsKQ0KCQkjcX0KCQkjcX0KCQkjcX0
kjcXsNCgkjcQkjd2luZG93LmZyYW1lRWxlbWVudC5zZXRbdHRyaWJldGUoJ1Bvc3RlZEJhY2tBbHJlYWR5JywgdmFsKts
NCgkjcQl9DQoJcQkjcY2F0Y2F0ZGxpDQoJcQkjcX0NCgkjcX0NCgkjcX0NCgkjcZnVuY3Rpb24gRXdyRnJhbWVwQ3N0
VG9TZXJ2ZXIoKQ0KCQkjcX0KCQkjcXZhc2B2YwWgPSANU3VyZURpZCc7DQoJcQkjdHJ5DQoJcQkjcX0KCQkjcQl2YwWgP
SBMb2NhbFNjcm1wdEdldEF0dHJpYnV0ZSh3aW5kb3cuZnJhbWVfYmVtZW50L2R0ZWR0ZWR0ZWR0ZWR0ZWR0ZWR0ZWR0ZWR0
kjcX0NCgkjcQlYzXRjaCAoZGxpDQoJcQkjcX0KCQkjcX0NCgkjcQl2YXIGc3B1Y2lhbFJlcG9zdCA9IC1Y2FuY2VsJSI
gP0gkImNhbmlld1UcnV1JiIgfHwgIiVyZWxvYW1lIiA9PSAicmVsb2FkPVYdWUmIjsNCgkjcQlpZiAodmFsID09IG51
bGwgfHwg3B1Y2lhbFJlcG9zdCkNCgkjcQl7DQoJcQkjcWlmcGhc3B1Y2lhbFJlcG9zdCkNCgkjcQkjcX0KCQkjcQkjcU
2V0UG9zdGVkQmFja0FscmVhZHkodmFsKQ0KCQkjcQl1bHN1DQoJcQkjcXsNCgkjcQkjcX0NCgkjcQkjcX0NCgkjcQkjcX0
Bvc3RlZEJhY2tBbHJlYWR5K51bGwPw0KCQkjcQkjd2luZG93LmZyYW1lRWxlbWVudC5zZXRbdHRyaWJldGUoIkv3c1N
0YXRlcYIsICJs2FkaW5nIik7DQoJcQkjcX0NCgkjcQkjcZG9jdW1lbnQuZm9ybXMuXRlbSgWKS5zZWR0ZWR0ZWR0ZWR0ZWR0ZWR0
CQl9DQoJcQkjcWwzZQ0KCQkjcXsNCgkjcQkjcU2V0UG9zdGVkQmFja0FscmVhZHkodmFsKQ0KCQkjcQkjcX0NCgkjcQkjcX0
mFjaygPw0KCQkjcQl3aW5kb3cuZnV0VGltdW91dCgid2luZG93LmZyYW1lY2F0aW9uLnJlbG9hZChmYXZzSk7IiwkKtsNCg
kjcQl9DQoJcQl9DQoJcQl3aW5kb3cuZnV0VGltdW91dCgid2luZG93LmZyYW1lYm9yZGVyBQEW8FHHotaW5kZG6MTt2axNpYmlsaXR5OmhpZGRlbjseCNVj
m9sbGluZwUCbm8eD0lzRXdyTWFpbklmcmFtZQUEdHJlZUR4JRXdyU3RhdHVzZUR4JRHVtbXlQYwdlZWQ0BA8WB8PBQ1kaX
NwbGF5Om5vbWU7HxZlZGRcHuXjujvVxWwe+rd32TchVa4Eaw==" />
</div>
```

```
<script type="text/javascript">
//
var theForm = document.forms['ctl05'];
if (!theForm) {
    theForm = document.ctl05;
}
function __doPostBack(eventTarget, eventArgument) {
    if (!theForm.onsubmit || (theForm.onsubmit() != false)) {
        theForm.__EVENTTARGET.value = eventTarget;
        theForm.__EVENTARGUMENT.value = eventArgument;
        theForm.submit();
    }
}
//]]&gt;
&lt;/script&gt;</pre></div>
<div data-bbox="145 640 785 665" data-label="Code-Block"><pre>&lt;script src="/WebResource.axd?d=e0GKyGKnuokxMqsPUJZAlQ2&amp;amp;t=633911231850302493"
type="text/javascript"&gt;&lt;/script&gt;</pre></div>
<div data-bbox="145 675 725 815" data-label="Code-Block"><pre>&lt;script&gt; var MSOWebPartPageFormName = 'ctl05';&lt;/script&gt;
&lt;script type="text/javascript"&gt;
//<![CDATA[
var originalFormAction = document.forms[0].action;
function FetchCallbackMenuItems(menuTemplate)
{
    var template=document.getElementById(menuTemplate);
    if(template == null || (template != null &amp;&amp; template.hasChildNodes()))
    {
        return;
    }
}</pre></div>
<div data-bbox="830 850 885 865" data-label="Page-Footer"><p>13 / 23</p></div>
<div data-bbox="130 870 450 950" data-label="Page-Footer"><p>[MS-ESURL] — v20120411
Excel Services Publishing Protocol Specification
Copyright © 2012 Microsoft Corporation.
Release: Wednesday, April 11, 2012</p></div>
```

```

    __theFormPostData = '';
    WebForm_InitCallback();
    var lastFormAction = document.forms[0].action;
    document.forms[0].action = originalFormAction;

WebForm_DoCallback('ctl10$MyLinksMenu', '', PopulateCallbackMenuItems, '^R^,^F^',ctl10_MyLinksMen
uMenu,ctl10_MyLinksMenuMenuTemplate',null,false);
    document.forms[0].action = lastFormAction;
}
//]]>
</script>
<script type="text/JavaScript" language="JavaScript">
    <!--
        var L_Menu_BaseUrl="/Site";
        var L_Menu_LCID="1033";
        var L_Menu_SiteTheme="";
    //-->
</script>
<script src="/_layouts/EWRScripts.js?rev=yCNXUSNKKd1qh12ZwFcmTQ%3D%3D"
type="text/javascript"></script>
<script type="text/javascript">
    //
        function WebForm_OnSubmit() {
            UpdateFormDigest('\u002f\u002f', 1440000);
            return true;
        }
    //]]&gt;
&lt;/script&gt;

&lt;div&gt;

    &lt;input type="hidden" name=" __EVENTVALIDATION" id=" __EVENTVALIDATION"
value="/wEWAgl85K7DagLDp935A227vZTrpVx+IX91EdSAIKYOVXMc" /&gt;
&lt;/div&gt;

    &lt;table cellpadding="0" cellspacing="0" width="100%" height="100%" border="0"&gt;
        &lt;tr&gt;
            &lt;td&gt;
                &lt;!-- begin global breadcrumb --&gt;
                &lt;table width="100%" cellpadding="3" cellspacing="0" border="0" class="ms-
globalbreadcrumb"&gt;
                    &lt;tr&gt;
                        &lt;td nowrap="nowrap"&gt;
                            &lt;span id="GlobalNavigationSiteMap"&gt;&lt;a
href="#GlobalNavigationSiteMap_SkipLink"&gt;&lt;img alt="Skip Navigation Links" height="0"
width="0" src="/WebResource.axd?d=1eQdCimhkLaqCJVEiXyRrQ2&amp;amp;t=633911231850302493"
style="border-width:0px;" /&gt;&lt;/a&gt;&lt;span&gt;&lt;a href="/"&gt;Excel Services&lt;/a&gt;&lt;span&gt; &amp;gt;
&lt;/span&gt;&lt;span&gt;&lt;a href="/team"&gt;Team&lt;/a&gt;&lt;/span&gt;&lt;span&gt; &amp;gt; &lt;/span&gt;&lt;span&gt;&lt;/span&gt;&lt;a
id="GlobalNavigationSiteMap_SkipLink"&gt;&lt;/a&gt;&lt;/span&gt;
                            &lt;/td&gt;
                        &lt;td nowrap="nowrap"&gt;
                            &lt;a id="m_webLink" href="http://ServerName/Site"&gt;Site Name&lt;/a&gt;
                            &lt;/td&gt;
                        &lt;td nowrap="nowrap"&gt;
                            &lt;span id="m_backLinkSeparator"&gt; &amp;gt; &lt;/span&gt;
                            &lt;/td&gt;
                        &lt;td nowrap="nowrap"&gt;
</pre>
</div>
<div data-bbox="827 849 889 863" data-label="Page-Footer">
<p>14 / 23</p>
</div>
<div data-bbox="128 868 449 895" data-label="Page-Footer">
<p>[MS-ESURL] — v20120411<br/>Excel Services Publishing Protocol Specification</p>
</div>
<div data-bbox="132 904 407 920" data-label="Page-Footer">
<p>Copyright © 2012 Microsoft Corporation.</p>
</div>
<div data-bbox="132 929 379 945" data-label="Page-Footer">
<p>Release: Wednesday, April 11, 2012</p>
</div>
```

```

        <a id="m_backLink"
href="/site/Document%20Library/Forms/AllItems.aspx">Shared Documents</a>
    </td>
    <td width="100%">
        &#160;
    </td>
    <td nowrap="nowrap" class="ms-globallinks" align="right" style="padding-
left: 5px;padding-right: 5px">
        <table cellspacing="0" cellpadding="0">
            <tr>
                <td class="ms-globallinks" nowrap="nowrap">
                    <span style='padding-left:3px'></span>
                    <a id="ctl108_h1MySite" href="http://ServerName:5625/_layouts/MySite.aspx">My Site</a>
                    <span style='padding-left:4px;padding-right:3px'>|</span>
                </td>
                <td class="ms-globallinks" nowrap="nowrap">
                    <table>
                        <tr>
                            <td class="ms-globallinks"><span
id="ctl110_MyLinksMenu"><span style="display:none"><menu type='ServerMenu'
id="ctl110_MyLinksMenuMenuTemplate" largeIconMode="true"></menu></span><span title="Open
Menu"><span id="ctl110_MyLinksMenuMenu_t" class="ms-SPLink ms-hovercellinactive"
onmouseover="MMU_PopMenuIfShowing(this);MMU_EcbTableMouseOverOut(this, true)"
hoverActive="ms-SPLink ms-hovercellactive" hoverInactive="ms-SPLink ms-hovercellinactive"
onclick="javascript:FetchCallbackMenuItems (&#39;ctl110_MyLinksMenuMenuTemplate&#39;);
MMU_Open (byid ('ctl110_MyLinksMenuMenuTemplate'),
MMU_GetMenuFromClientId ('ctl110_MyLinksMenuMenu'), event, true, null, 0);"
foa="MMU_GetMenuFromClientId ('ctl110_MyLinksMenuMenu')" oncontextmenu="this.click(); return
false;" nowrap="nowrap"><a id="ctl110_MyLinksMenuMenu" accesskey="M" href="#"
onclick="javascript:return false;" style="cursor:hand;white-space:nowrap;"
onfocus="MMU_EcbLinkOnFocusBlur (byid ('ctl110_MyLinksMenuMenuTemplate'), this, true);"
onkeydown="MMU_EcbLinkOnKeyDown (byid ('ctl110_MyLinksMenuMenuTemplate'),
MMU_GetMenuFromClientId ('ctl110_MyLinksMenuMenu'), event);"
onclick="javascript:FetchCallbackMenuItems (&#39;ctl110_MyLinksMenuMenuTemplate&#39;);
MMU_Open (byid ('ctl110_MyLinksMenuMenuTemplate'),
MMU_GetMenuFromClientId ('ctl110_MyLinksMenuMenu'), event, true, null, 0);"
oncontextmenu="this.click(); return false;"
menuTokenValues="MENUCLIENTID=ctl110_MyLinksMenuMenu,TEMPLATECLIENTID=ctl110_MyLinksMenuMenuTem
plate" serverclientid="ctl110_MyLinksMenuMenu">My Links</a></span></span></span></td>
                            <td class="ms-globallinks">|</td>
                        </tr>
                    </table>
                </td>
            </tr>
        </table>
    </td>
</tr>
</table>
</td>
</tr>
<tr>
    <td id="webpartContainerCell" height="100%" valign="top">
        <!-- begin Excel Web Renderer -->
        <table TOPLEVEL border="0" cellpadding="0" cellspacing="0" width="100%">
            <tr>

```

```
  | |
```



```

<tr>
  <td colspan="2" style="height: 1px">
    
  </td>
</tr>
<tr>
  <td>
    
  </td>
</tr>
<table cellpadding="0"
cellspacing="0"><tr><td style="width:100%;">
  <td>
    <input id="ServerMessage2"
type="button" class="ewr-dialog-button" value="Cancel"
onclick="javascript:EwrCancelRequest(event,'m_excelWebRenderer_ECSFrame','m_excelWebRenderer_
ct106');" />
  </td>
</tr>
</table>
</td>
</tr>
</table>
</td>
</tr>
</table>
</td>
</tr>
</table>
</td>
</tr>
</table>
</td>
</tr>
</table>
</td>
</tr>
</table>
</td>
</tr>
</table>
</td>
</tr>
</table>
</td>
</tr>
</table>
</div><div style="width:100%;height:100%;"><IFrame id="m_excelWebRenderer_ECSFrame"
ScriptForIFrameContent="
<html>
  <body IAmTheInitialPage='True'>
    <form method='post' action='/Site/_layouts/ExcelRenderer.aspx?%cancel%%reload%'
style='display:none'>
      <input name='ewrPostData'
value='!p1SHnpIi67Bus3BiomvIa5vtiMaK0dRw8CwB+CbXAapHkEXAf6hbBuPwAJYWiGFU8eP9lgQbPnzsh/1efmRx4
DoplITXlBvbT4/D0ThXfTqUH3n7PL+UzSwlms679QYcNxmX2OuUldzkeZo43SgphRdz8UksTzh4aFasdH3PVEYdm1vh9
SWLOkJ6dR2Ed6oV0dRQJwLiVqS/S38tkI22az3VramUID2N8/jDcwACYifGggPuEaoOYskh6c/GfL8pOZvBtSRSu3/a6n
0GIwJ+osc0F8OpoYf3D9DHqYS6wEiSjkbDk000tk00H+THM6l2saf2HAplYqde3msgNqh5yK/GJT+DqS75Jy5IMGDqyCG
MoQvEvE5NmupKWkeDZ/VTMLNVgHnTQdRVtSN+F/Gn5ZAMJoG2Q5PlEhlrnUB3F4yhPasdsmUxjQlhayw9M78M19otIM/C
Z8grJd6iGobypAcFwW5NBwclGbnuc6PvHJ5CzNxYMNzpk0KGMdJ2dIT8wJxgh4VVhuT2B2QLDnzLtrellld7cu3c5Bzt
2mSdLdW6aYaMTvtWxY0hqOGYHFmvljicM3qu64D6rhXE0FEOT8grqjSOIidU7/99LDhsrikBwy4TomtjhgflS207Qdhcn
H9UM1Pyj32Hy5gVpi560IsjXyybDqBFoRK46aE69ur0mFXfxoT4RLEzuduqraLuvFRTj/yCe7UMIhCET5hrUsRH0t0Xi
fTCljNn3e4vVpQ3ZHvM11zCA9STWqBlBeIatQkpJp+U1X7APatHLR8cFZovFhJ92CX0F10D9Sp/ccrrNac8AmA3gzbst

```

bsnioG/bz4uxmSdSYwud596txHVQE8tG9ybVmaXNQDCDwj18bIRbKFutdyvOsxlMrxtMZg0XO89DRhX5bih45gWWtzp30
EDuic0YgmnfYcAV1SdRCS6Gf5vGCa5YjGgsTB2B6nibWcasatokcYqNhMYx7D/1KoDF+vnRRN0ckvcFI='>

```
</form>
</body>
<script type='text/javascript' language='javascript'>
<!--
function LocalScriptGetAttribute(ctrl, attrib)
{
    if (ctrl.hasAttribute != null )
        return (ctrl.hasAttribute(attrib)) ? ctrl.getAttribute(attrib) : null;
    else
        return ctrl.getAttribute(attrib);
}

function SetPostedBackAlready(val)
{
    try
    {
        window.frameElement.setAttribute('PostedBackAlready', val);
    }
    catch(ex)
    {
    }
}

function EwrFramePostToServer()
{
    var val = 'SureDid';
    try
    {
        val = LocalScriptGetAttribute(window.frameElement, 'PostedBackAlready');
    }
    catch (ex)
    {
    }
    var specialRepost = '&cancel%' == '&cancel=True&'; ||
    '&reload%' == '&reload=True&';
    if (val == null || specialRepost)
    {
        if (!specialRepost)
        {
            SetPostedBackAlready('SureDid');
        }
        else
        {
            SetPostedBackAlready(null);
            window.frameElement.setAttribute('&EwrStatus&',
            '&loading&');
        }
        document.forms.item(0).submit();
    }
    else
    {
        SetPostedBackAlready(null);
        history.back();
        window.setTimeout('&window.location.reload(false);&', 0);
    }
}
-->
```

```

        window.setTimeout (&quot;EwrFramePostToServer () &quot;, 0);
    // -->
    &lt;/script>
    &lt;/html>" width="100%" EwrWaitElementId="m_excelWebRendererer_WaitImage" height="100%"
    frameborder="0" style="z-index:1;visibility:hidden;" Scrolling="no" IsEwrMainIframe="true"
    EwrStatus="" DummyPage="">&lt;/IFrame>&lt;/div>
    <script type='text/javascript' language='javascript'>
        <!--
            FillIFrameWithForm('m_excelWebRendererer_ECSFrame', false, '');
        // -->
    </script>
    <script type='text/javascript' language='javascript'>
        <!--
            PollForDocumentCompletion('m_excelWebRendererer_ECSFrame', false);
        // -->
    </script>&lt;IFRAME id="m_excelWebRendererer_ct106" style="display:none;" DummyPage="">&lt;/IFRAME>
    <script type='text/javascript' language='javascript'>
        <!--
            function OpenEwrToolpaneForEditm_excelWebRendererer()
            {
                MSOT1Pn_ShowToolPane2('Edit', 'm_excelWebRendererer');
            }
        // -->
    </script>&lt;/div>&lt;/td>
        </tr>
        </table>
    </div>&lt;/div>&lt;/td>
    </tr>
    </table>
        <!-- end Excel Web Renderer -->
    </td>
    </tr>
    </table>

    <script type="text/javascript">
    //&lt;![CDATA[
    DoEwrResizeViewerPage();
    WebForm_InitCallback();//]]>
    </script>

    <script type='text/javascript' language='javascript' for='window' event='onbeforeunload'>
        <!--
            EwrMainPageBeforeUnload();
        // -->
    </script>&lt;/form>
    </body>
    </html>

```

5 Security

5.1 Security Considerations for Implementers

When using this protocol over an untrusted network, an HTTPS (as described in [\[RFC2818\]](#)) connection can help mitigate risks of protocol messages being intercepted or tampered with.

The information contained in the workbook identified by the ID query string parameter is likely to be security sensitive. For example, it could contain confidential data such as financial records. Therefore it is recommended that the protocol server establish that the protocol client has permissions to access the workbook in any implementation in which the contents of this workbook are returned in the message body as described in section [2.2.2.3](#).

There are no restrictions on the protocol server regarding the message header content type, as described in section [2.2.2.2](#) and in [\[RFC2616\]](#) section 14.17. Therefore, it is recommended that the protocol client checks the Content-Type to avoid running any executable file that could pose a security risk.

5.2 Index of Security Parameters

None.

6 Appendix A: Product Behavior

The information in this specification is applicable to the following Microsoft products or supplemental software. References to product versions include released service packs:

- Microsoft® Office Excel® 2007
- Microsoft® Excel® 2010
- Microsoft® Office SharePoint® Server 2007
- Microsoft® SharePoint® Server 2010
- Microsoft® Excel® 15 Technical Preview
- Microsoft® SharePoint® Server 15 Technical Preview

Exceptions, if any, are noted below. If a service pack or Quick Fix Engineering (QFE) number appears with the product version, behavior changed in that service pack or QFE. The new behavior also applies to subsequent service packs of the product unless otherwise specified. If a product edition appears with the product version, behavior is different in that product edition.

Unless otherwise specified, any statement of optional behavior in this specification that is prescribed using the terms SHOULD or SHOULD NOT implies product behavior in accordance with the SHOULD or SHOULD NOT prescription. Unless otherwise specified, the term MAY implies that the product does not follow the prescription.

7 Change Tracking

No table of changes is available. The document is either new or has had no changes since its last release.

Preliminary

8 Index

A

[Abstract data model](#) 10
[Applicability](#) 7

C

[Capability negotiation](#) 7
[Change tracking](#) 22

D

[Data model - abstract](#) 10

E

Examples
[overview](#) 11

F

[Fields - vendor-extensible](#) 7

G

[Glossary](#) 5

H

[Higher-layer triggered events](#) 10

I

[Implementer - security considerations](#) 20
[Index of security parameters](#) 20
[Informative references](#) 6
[Initialization](#) 10
[Introduction](#) 5

L

[Local events](#) 10

M

[Message processing](#) 10
[Message syntax](#) 8
Messages
[request header syntax message](#) 9
[request HTTP method message](#) 8
[request HTTP version message](#) 8
[request URI syntax message](#) 8
[response body syntax message](#) 9
[response header syntax message](#) 9
[response status message](#) 9
[syntax](#) 8
[transport](#) 8

N

[Normative references](#) 5

O

[Overview \(synopsis\)](#) 6

P

[Parameters - security index](#) 20
[Preconditions](#) 7
[Prerequisites](#) 7
[Product behavior](#) 21

R

[References](#) 5
[informative](#) 6
[normative](#) 5
[Relationship to other protocols](#) 6
[Request header syntax message](#) 9
[Request HTTP method message](#) 8
[Request HTTP version message](#) 8
[Request URI syntax message](#) 8
[Response body syntax message](#) 9
[Response header syntax message](#) 9
[Response status message](#) 9

S

Security
[implementer considerations](#) 20
[parameter index](#) 20
[Sequencing rules](#) 10
[Standards assignments](#) 7

T

[Timer events](#) 10
[Timers](#) 10
[Tracking changes](#) 22
[Transport](#) 8
[Triggered events - higher-layer](#) 10

V

[Vendor-extensible fields](#) 7
[Versioning](#) 7