

[MS-EDINTWS]: eDiscovery Internal Web Service Protocol

Intellectual Property Rights Notice for Open Specifications Documentation

- **Technical Documentation.** Microsoft publishes Open Specifications documentation for protocols, file formats, languages, standards as well as overviews of the interaction among each of these technologies.
- **Copyrights.** This documentation is covered by Microsoft copyrights. Regardless of any other terms that are contained in the terms of use for the Microsoft website that hosts this documentation, you may make copies of it in order to develop implementations of the technologies described in the Open Specifications and may distribute portions of it in your implementations using these technologies or your documentation as necessary to properly document the implementation. You may also distribute in your implementation, with or without modification, any schema, IDL's, or code samples that are included in the documentation. This permission also applies to any documents that are referenced in the Open Specifications.
- **No Trade Secrets.** Microsoft does not claim any trade secret rights in this documentation.
- **Patents.** Microsoft has patents that may cover your implementations of the technologies described in the Open Specifications. Neither this notice nor Microsoft's delivery of the documentation grants any licenses under those or any other Microsoft patents. However, a given Open Specification may be covered by Microsoft [Open Specification Promise](#) or the [Community Promise](#). If you would prefer a written license, or if the technologies described in the Open Specifications are not covered by the Open Specifications Promise or Community Promise, as applicable, patent licenses are available by contacting iplg@microsoft.com.
- **Trademarks.** The names of companies and products contained in this documentation may be covered by trademarks or similar intellectual property rights. This notice does not grant any licenses under those rights. For a list of Microsoft trademarks, visit www.microsoft.com/trademarks.
- **Fictitious Names.** The example companies, organizations, products, domain names, email addresses, logos, people, places, and events depicted in this documentation are fictitious. No association with any real company, organization, product, domain name, email address, logo, person, place, or event is intended or should be inferred.

Reservation of Rights. All other rights are reserved, and this notice does not grant any rights other than specifically described above, whether by implication, estoppel, or otherwise.

Tools. The Open Specifications do not require the use of Microsoft programming tools or programming environments in order for you to develop an implementation. If you have access to Microsoft programming tools and environments you are free to take advantage of them. Certain Open Specifications are intended for use in conjunction with publicly available standard specifications and network programming art, and assumes that the reader either is familiar with the aforementioned material or has immediate access to it.

Revision Summary

Date	Revision History	Revision Class	Comments
01/20/2012	0.1	New	Released new document.
04/11/2012	0.1	No change	No changes to the meaning, language, or formatting of the technical content.
07/16/2012	0.1	No change	No changes to the meaning, language, or formatting of the technical content.
09/12/2012	0.1	No change	No changes to the meaning, language, or formatting of the technical content.
10/08/2012	1.0	Major	Significantly changed the technical content.
02/11/2013	1.0	No change	No changes to the meaning, language, or formatting of the technical content.
07/30/2013	1.0	No change	No changes to the meaning, language, or formatting of the technical content.
11/18/2013	1.0	No change	No changes to the meaning, language, or formatting of the technical content.
02/10/2014	1.0	No change	No changes to the meaning, language, or formatting of the technical content.

Table of Contents

1 Introduction	6
1.1 Glossary	6
1.2 References	7
1.2.1 Normative References	7
1.2.2 Informative References	7
1.3 Overview	7
1.4 Relationship to Other Protocols	8
1.5 Prerequisites/Preconditions	8
1.6 Applicability Statement	8
1.7 Versioning and Capability Negotiation	8
1.8 Vendor-Extensible Fields	8
1.9 Standards Assignments	8
2 Messages	9
2.1 Transport	9
2.2 Common Message Syntax	9
2.2.1 Namespaces	9
2.2.2 Messages	9
2.2.3 Elements	9
2.2.4 Complex Types	10
2.2.4.1 ArrayOfString	10
2.2.5 Simple Types	10
2.2.6 Attributes	10
2.2.7 Groups	10
2.2.8 Attribute Groups	10
3 Protocol Details	11
3.1 Server Details	11
3.1.1 Abstract Data Model	11
3.1.2 Timers	12
3.1.3 Initialization	12
3.1.4 Message Processing Events and Sequencing Rules	12
3.1.4.1 ValidateSource	12
3.1.4.1.1 Messages	13
3.1.4.1.1.1 ValidateSourceSoapIn	13
3.1.4.1.1.2 ValidateSourceSoapOut	13
3.1.4.1.2 Elements	13
3.1.4.1.2.1 ValidateSource	13
3.1.4.1.2.2 ValidateSourceResponse	14
3.1.4.1.3 Complex Types	14
3.1.4.1.3.1 SourceValidation	14
3.1.4.1.4 Simple Types	16
3.1.4.1.4.1 guid	16
3.1.4.1.4.2 SourceType	16
3.1.4.1.5 Attributes	17
3.1.4.1.6 Groups	17
3.1.4.1.7 Attribute Groups	17
3.1.4.2 CopySavedSearch	17
3.1.4.2.1 Messages	17
3.1.4.2.1.1 CopySavedSearchSoapIn	17

3.1.4.2.1.2	CopySavedSearchSoapOut.....	18
3.1.4.2.2	Elements.....	18
3.1.4.2.2.1	CopySavedSearch.....	18
3.1.4.2.2.2	CopySavedSearchResponse	18
3.1.4.2.3	Complex Types	18
3.1.4.2.4	Simple Types.....	19
3.1.4.2.5	Attributes.....	19
3.1.4.2.6	Groups.....	19
3.1.4.2.7	Attribute Groups	19
3.1.4.3	ParseKQLQueryForStats.....	19
3.1.4.3.1	Messages	19
3.1.4.3.1.1	ParseKQLQueryForStatsSoapIn.....	20
3.1.4.3.1.2	ParseKQLQueryForStatsSoapOut	20
3.1.4.3.2	Elements.....	20
3.1.4.3.2.1	ParseKQLQueryForStats	20
3.1.4.3.2.2	ParseKQLQueryForStatsResponse	20
3.1.4.3.3	Complex Types	21
3.1.4.3.4	Simple Types.....	21
3.1.4.3.5	Attributes.....	21
3.1.4.3.6	Groups.....	21
3.1.4.3.7	Attribute Groups	21
3.1.4.4	UpdateSourceErrorInfo	21
3.1.4.4.1	Messages	21
3.1.4.4.1.1	UpdateSourceErrorInfoSoapIn	22
3.1.4.4.1.2	UpdateSourceErrorInfoSoapOut.....	22
3.1.4.4.2	Elements.....	22
3.1.4.4.2.1	UpdateSourceErrorInfo.....	22
3.1.4.4.2.2	UpdateSourceErrorInfoResponse	22
3.1.4.4.3	Complex Types	23
3.1.4.4.4	Simple Types.....	23
3.1.4.4.5	Attributes.....	23
3.1.4.4.6	Groups.....	23
3.1.4.4.7	Attribute Groups	23
3.1.4.5	UpdateStatistics	23
3.1.4.5.1	Messages	24
3.1.4.5.1.1	UpdateStatisticsSoapIn	24
3.1.4.5.1.2	UpdateStatisticsSoapOut	24
3.1.4.5.2	Elements.....	24
3.1.4.5.2.1	UpdateStatistics	24
3.1.4.5.2.2	UpdateStatisticsResponse	25
3.1.4.5.3	Complex Types	25
3.1.4.5.4	Simple Types.....	25
3.1.4.5.5	Attributes.....	25
3.1.4.5.6	Groups.....	25
3.1.4.5.7	Attribute Groups	25
3.1.4.6	GetExportStatistics	25
3.1.4.6.1	Messages	26
3.1.4.6.1.1	GetExportStatisticsSoapIn	26
3.1.4.6.1.2	GetExportStatisticsSoapOut	26
3.1.4.6.2	Elements.....	26
3.1.4.6.2.1	GetExportStatistics	26
3.1.4.6.2.2	GetExportStatisticsResponse	27
3.1.4.6.3	Complex Types	27

3.1.4.6.4	Simple Types.....	27
3.1.4.6.5	Attributes.....	27
3.1.4.6.6	Groups.....	27
3.1.4.6.7	Attribute Groups	27
3.1.5	Timer Events	27
3.1.6	Other Local Events	27
4	Protocol Examples.....	28
4.1	Validate Source	28
5	Security.....	29
5.1	Security Considerations for Implementers.....	29
5.2	Index of Security Parameters	29
6	Appendix A: Full WSDL.....	30
7	Appendix B: Product Behavior	37
8	Change Tracking.....	38
9	Index	39

1 Introduction

The eDiscovery Internal Web Service Protocol enables a protocol client to perform UI interaction operations in support of an electronic discovery (eDiscovery) application.

Sections 1.8, 2, and 3 of this specification are normative and can contain the terms MAY, SHOULD, MUST, MUST NOT, and SHOULD NOT as defined in RFC 2119. Sections 1.5 and 1.9 are also normative but cannot contain those terms. All other sections and examples in this specification are informative.

1.1 Glossary

The following terms are defined in [\[MS-GLOS\]](#):

- file system**
- GUID**
- Hypertext Transfer Protocol (HTTP)**
- Hypertext Transfer Protocol over Secure Sockets Layer (HTTPS)**
- SOAP**
- SOAP action**
- SOAP body**
- SOAP fault**
- XML namespace**

The following terms are defined in [\[MS-OFCGLOS\]](#):

- crawl log**
- discovery case**
- discovery source**
- email address**
- legal hold**
- mailbox**
- membership group**
- search query**
- site**
- site collection**
- SOAP envelope**
- SOAP Message**
- Uniform Resource Locator (URL)**
- web service**
- Web Services Description Language (WSDL)**
- website**
- WSDL message**
- WSDL operation**
- XML namespace prefix**
- XML schema**

The following terms are specific to this document:

MAY, SHOULD, MUST, SHOULD NOT, MUST NOT: These terms (in all caps) are used as described in [\[RFC2119\]](#). All statements of optional behavior use either MAY, SHOULD, or SHOULD NOT.

1.2 References

References to Microsoft Open Specifications documentation do not include a publishing year because links are to the latest version of the documents, which are updated frequently. References to other documents include a publishing year when one is available.

1.2.1 Normative References

We conduct frequent surveys of the normative references to assure their continued availability. If you have any issue with finding a normative reference, please contact dochelp@microsoft.com. We will assist you in finding the relevant information.

[MS-KQL] Microsoft Corporation, "[Keyword Query Language Structure Protocol](#)".

[RFC2119] Bradner, S., "Key words for use in RFCs to Indicate Requirement Levels", BCP 14, RFC 2119, March 1997, <http://www.rfc-editor.org/rfc/rfc2119.txt>

[RFC2616] Fielding, R., Gettys, J., Mogul, J., et al., "Hypertext Transfer Protocol -- HTTP/1.1", RFC 2616, June 1999, <http://www.ietf.org/rfc/rfc2616.txt>

[SOAP1.1] Box, D., Ehnebuske, D., Kakivaya, G., et al., "Simple Object Access Protocol (SOAP) 1.1", May 2000, <http://www.w3.org/TR/2000/NOTE-SOAP-20000508/>

[SOAP1.2/1] Gudgin, M., Hadley, M., Mendelsohn, N., Moreau, J., and Nielsen, H.F., "SOAP Version 1.2 Part 1: Messaging Framework", W3C Recommendation, June 2003, <http://www.w3.org/TR/2003/REC-soap12-part1-20030624>

[SOAP1.2/2] Gudgin, M., Hadley, M., Mendelsohn, N., Moreau, J., and Nielsen, H.F., "SOAP Version 1.2 Part 2: Adjuncts", W3C Recommendation, June 2003, <http://www.w3.org/TR/2003/REC-soap12-part2-20030624>

[WSDL] Christensen, E., Curbera, F., Meredith, G., and Weerawarana, S., "Web Services Description Language (WSDL) 1.1", W3C Note, March 2001, <http://www.w3.org/TR/2001/NOTE-wsdl-20010315>

[XMLNS] Bray, T., Hollander, D., Layman, A., et al., Eds., "Namespaces in XML 1.0 (Third Edition)", W3C Recommendation, December 2009, <http://www.w3.org/TR/2009/REC-xml-names-20091208/>

[XMLSCHEMA1] Thompson, H.S., Beech, D., Maloney, M., and Mendelsohn, N., Eds., "XML Schema Part 1: Structures", W3C Recommendation, May 2001, <http://www.w3.org/TR/2001/REC-xmlschema-1-20010502/>

[XMLSCHEMA2] Biron, P.V., and Malhotra, A., Eds., "XML Schema Part 2: Datatypes", W3C Recommendation, May 2001, <http://www.w3.org/TR/2001/REC-xmlschema-2-20010502/>

1.2.2 Informative References

[MS-GLOS] Microsoft Corporation, "[Windows Protocols Master Glossary](#)".

[MS-OFCGLOS] Microsoft Corporation, "[Microsoft Office Master Glossary](#)".

[RFC2818] Rescorla, E., "HTTP Over TLS", RFC 2818, May 2000, <http://www.ietf.org/rfc/rfc2818.txt>

1.3 Overview

This protocol enables a protocol client to perform UI interaction operations in support of an application that manages a **discovery case**. For example, it enables a protocol client to validate

whether the identifier of a location that a user has entered is a valid location to use as a **discovery source** or to update statistics for the discovery case once a discovery source is added.

1.4 Relationship to Other Protocols

This protocol uses **Simple Object Access Protocol (SOAP)** over **Hypertext Transfer Protocol (HTTP)**, as described in [\[RFC2616\]](#), and SOAP over **Hypertext Transfer Protocol over Secure Sockets Layer (HTTPS)**, as described in [\[RFC2818\]](#), as shown in the following layering diagram.

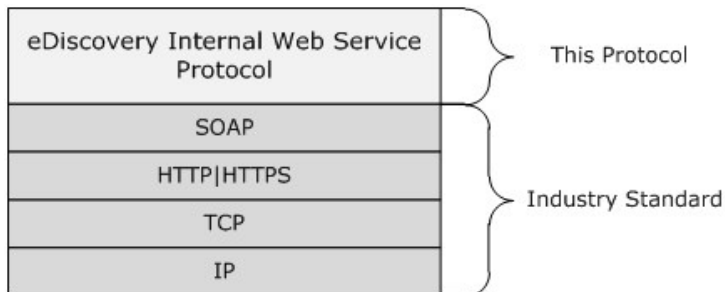


Figure 1: This protocol in relation to other protocols.

1.5 Prerequisites/Preconditions

This protocol operates against a site that is identified by a **URL** that is known by protocol clients. The protocol server endpoint is formed by appending `"/_vti_bin/discoveryinternalservice.asmx"` to the URL of the **site (1)**, for example `http://contoso.com/Repository/_vti_bin/discoveryinternalservice.asmx`.

The protocol assumes that authentication has been performed by the underlying protocols.

1.6 Applicability Statement

This protocol is designed to be used in low throughput, that is less than one client request per second, situations by protocol clients that provide an appropriate asynchronous UI experience.

1.7 Versioning and Capability Negotiation

This document covers versioning issues in the following areas:

- **Supported Transports:** This protocol can be implemented by using transports that support sending Simple Object Access Protocol (SOAP) messages, as specified in [section 2.1](#).
- **Protocol Versions:** This protocol is not versioned.
- **Capability Negotiation:** This protocol does not support version negotiation.

1.8 Vendor-Extensible Fields

None.

1.9 Standards Assignments

None.

2 Messages

2.1 Transport

Protocol servers MUST support Simple Object Access Protocol (SOAP) over HTTP. Protocol servers SHOULD additionally support SOAP over HTTPS for securing communication with clients.

Protocol messages MUST be formatted as specified either in [\[SOAP1.1\]](#) (Section 4, **SOAP envelope**) or in [\[SOAP1.2/1\]](#) (Section 5, **SOAP Message Construct**). Protocol server faults MUST be returned either using HTTP status codes as specified in [\[RFC2616\]](#) (Section 10, Status Code Definitions) or using **SOAP faults** as specified either in [\[SOAP1.1\]](#) (Section 4.4, SOAP Fault) or in [\[SOAP1.2/1\]](#)(Section 5.4 SOAP Fault).

2.2 Common Message Syntax

This section contains common definitions that are used by this protocol. The syntax of the definitions uses **XML schema**, as specified in [\[XMLSCHEMA1\]](#) and [\[XMLSCHEMA2\]](#), and **WSDL**, as specified in [\[WSDL\]](#).

2.2.1 Namespaces

This specification defines and references various **XML namespaces** using the mechanisms specified in [\[XMLNS\]](#). Although this specification associates a specific **XML namespace prefix** for each XML namespace that is used, the choice of any particular XML namespace prefix is implementation-specific and not significant for interoperability.

Prefix	Namespace URI	Reference
http	http://schemas.xmlsoap.org/wsd/http/	
s1	http://microsoft.com/wsd/types/	
soap	http://schemas.xmlsoap.org/wsd/soap/	[SOAP1.1]
soap12	http://schemas.xmlsoap.org/wsd/soap12/	[SOAP1.2/1] [SOAP1.2/2]
tns	http://schemas.microsoft.com/sharepoint/discovery/soap/	
wSDL	http://schemas.xmlsoap.org/wsd/	[WSDL]
xs	http://www.w3.org/2001/XMLSchema	[XMLSCHEMA1] [XMLSCHEMA2]

2.2.2 Messages

This specification does not define any common **WSDL message** definitions.

2.2.3 Elements

This specification does not define any common XML schema element definitions.

2.2.4 Complex Types

The following table summarizes the set of common XML schema complex type definitions defined by this specification. XML schema complex type definitions that are specific to a particular operation are described with the operation.

Complex type	Description
ArrayOfString	The ArrayOfstring complex type represents an array of string values.

2.2.4.1 ArrayOfString

Namespace: <http://schemas.microsoft.com/sharepoint/discovery/soap/>

The **ArrayOfstring** complex type represents an array of string values.

```
<xs:complexType name="ArrayOfString" xmlns:xs="http://www.w3.org/2001/XMLSchema">
  <xs:sequence>
    <xs:element minOccurs="0" maxOccurs="unbounded" name="string" nillable="true"
      type="xs:string"/>
  </xs:sequence>
</xs:complexType>
```

string: A single string value.

2.2.5 Simple Types

This specification does not define any common XML schema simple type definitions.

2.2.6 Attributes

This specification does not define any common XML schema attribute definitions.

2.2.7 Groups

This specification does not define any common XML schema group definitions.

2.2.8 Attribute Groups

This specification does not define any common XML schema attribute group definitions.

3 Protocol Details

The client side of this protocol is simply a pass-through. That is, no additional timers or other state is required on the client side of this protocol. Calls made by the higher-layer protocol or application are passed directly to the transport, and the results returned by the transport are passed directly back to the higher-layer protocol or application.

In the following sections, the schema definition might be less restrictive than the processing rules imposed by the protocol. The WSDL in this specification matches the WSDL that shipped with the product and provides a base description of the schema. The text that introduces the WSDL specifies additional restrictions that reflect actual Microsoft product behavior. For example, the schema definition might allow for an element to be empty, null, or not present but the behavior of the protocol as specified restricts the same elements to being non-empty, not null and present.

Except where specified, protocol clients SHOULD interpret HTTP status codes returned by the protocol server as specified in [RFC2616](#) (Section 10, Status Code Definitions).

This protocol allows protocol servers to notify protocol clients of application-level faults using SOAP faults. Except where specified, these SOAP faults are not significant for interoperability, and protocol clients can interpret them in an implementation-specific manner.

This protocol allows protocol servers to perform implementation-specific authorization checks and notify protocol clients of authorization faults either using HTTP status codes or using SOAP faults as specified previously in this section.

3.1 Server Details

3.1.1 Abstract Data Model

This section describes a conceptual model of possible data organization that an implementation maintains to participate in this protocol. The described organization is provided to facilitate the explanation of how the protocol behaves. This document does not mandate that implementations adhere to this model as long as their external behavior is consistent with that described in this document.

The protocol server maintains a multiple collections of discovery cases, for example lawsuits for 2005-2010 and lawsuits for 2000-2005.

For each case, the protocol server maintains a list of discovery sources, that are applicable to the scope of the discovery case. For example, if a case were about Contoso vs. Fabrikam, an exemplary discovery source might be the email **mailbox** for the executives of Contoso. The protocol server also maintains internal state about actions that need to be performed for discovery sources, such as when a given discovery source should be placed on **legal hold**, as well as the status of whether those actions have been performed.

In addition, the protocol server maintains a list of **search queries** applicable to the discovery sources of a given case, as well as metadata about when those search queries have been exported, that is downloaded.

The protocol server maintains a set of statistics, such as the number of items and the size of those items, that apply to the entire discovery sources, as well as the size when filtered using the list of applicable search queries.

The protocol server also maintains a directory of valid email mailboxes.

3.1.2 Timers

None.

3.1.3 Initialization

None.

3.1.4 Message Processing Events and Sequencing Rules

The following table summarizes the list of operations as defined by this specification.

Operation	Description
CopySavedSearch	This operation is used by the protocol client to copy a search query within a discovery case.
GetExportStatistics	This operation is used by the protocol client to get the statistics for search queries in a discovery case.
ParseKQLQueryForStats	This operation is used by the protocol client to get a list of component search queries for a given search query.
UpdateSourceErrorInfo	This operation is used by the protocol client to update status info for discovery sources in a discovery case.
UpdateStatistics	This operation is used by the protocol client to update the statistics for search queries in a discovery case.
ValidateSource	This operation is used by the protocol clients to verify whether the provided location can be used as a discovery source or not.

3.1.4.1 ValidateSource

This operation is used by the protocol clients to verify whether the provided location can be used as a discovery source or not.

The following is the WSDL port type specification of the **ValidateSource WSDL operation**.

```
<wsdl:operation name="ValidateSource" xmlns:wsdl="http://schemas.xmlsoap.org/wsdl/">
  <wsdl:input message="tns:ValidateSourceSoapIn"/>
  <wsdl:output message="tns:ValidateSourceSoapOut"/>
</wsdl:operation>
```

The protocol client sends a **ValidateSourceSoapIn** (section [3.1.4.1.1.1](#)) request message and the protocol server responds with a **ValidateSourceSoapOut** (section [3.1.4.1.1.2](#)) response message as follows:

- If **location** is empty, the protocol server sets **IsValid** to true and returns.
- If **isLocation** is true, the protocol server determines whether the **location** is a **Web site (2)** that the protocol server can use as a discovery source.
- Otherwise, the protocol server determines whether the **location** is a valid email mailbox that the protocol server can use as a discovery source.

- The protocol server sets the value of **IsValid** to true if it is determined as a valid discovery source.
- If **IsValid** is true, the protocol server provides additional metadata that identifies the location.

3.1.4.1.1 Messages

The following table summarizes the set of WSDL message definitions that are specific to this operation.

Message	Description
ValidateSourceSoapIn	The request WSDL message for the ValidateSource WSDL operation.
ValidateSourceSoapOut	The response WSDL message for the ValidateSource WSDL operation.

3.1.4.1.1.1 ValidateSourceSoapIn

The request WSDL message for the **ValidateSource** WSDL operation.

The **SOAP action** value is:

```
http://schemas.microsoft.com/sharepoint/discovery/soap/ValidateSource
```

The **SOAP body** contains the **ValidateSource** element.

3.1.4.1.1.2 ValidateSourceSoapOut

The response WSDL message for the **ValidateSource** WSDL operation.

The SOAP body contains the **ValidateSourceResponse** element.

3.1.4.1.2 Elements

The following table summarizes the XML schema element definitions that are specific to this operation.

Element	Description
ValidateSource	The input data for the ValidateSource WSDL operation.
ValidateSourceResponse	The result data for the ValidateSource WSDL operation.

3.1.4.1.2.1 ValidateSource

The **ValidateSource** element specifies the input data for the **ValidateSource** WSDL operation.

```
<xs:element name="ValidateSource" xmlns:xs="http://www.w3.org/2001/XMLSchema">
  <xs:complexType>
    <xs:sequence>
      <xs:element minOccurs="0" maxOccurs="1" name="location" type="xs:string"/>
      <xs:element minOccurs="1" maxOccurs="1" name="isLocation" type="xs:boolean"/>
    </xs:sequence>
  </xs:complexType>
```

```
</xs:element>
```

location: The location to verify.

isLocation: Whether the **location** is a Web site (2) or **file system** (versus an email mailbox).

3.1.4.1.2.2 ValidateSourceResponse

The **ValidateSourceResponse** element specifies the result data for the **ValidateSource** WSDL operation.

```
<xs:element name="ValidateSourceResponse" xmlns:xs="http://www.w3.org/2001/XMLSchema">
  <xs:complexType>
    <xs:sequence>
      <xs:element minOccurs="0" maxOccurs="1" name="ValidateSourceResult"
type="tns:SourceValidation"/>
    </xs:sequence>
  </xs:complexType>
</xs:element>
```

ValidateSourceResult: The result of source validation.

3.1.4.1.3 Complex Types

The following table summarizes the XML schema complex type definitions that are specific to this operation.

Complex type	Description
SourceValidation	The result of source validation.

3.1.4.1.3.1 SourceValidation

Namespace: <http://schemas.microsoft.com/sharepoint/discovery/soap/>

The **SourceValidation** complex type contains information about source validation of a location to verify if it can be used as a discovery source or not. For valid sources, it additionally contains metadata about the location that can be used to identify it as a discovery source.

```
<xs:complexType name="SourceValidation" xmlns:xs="http://www.w3.org/2001/XMLSchema">
  <xs:sequence>
    <xs:element minOccurs="1" maxOccurs="1" name="WebId"
xmlns:s1="http://microsoft.com/wsdl/types/" type="s1:guid"/>
    <xs:element minOccurs="1" maxOccurs="1" name="SiteId"
xmlns:s1="http://microsoft.com/wsdl/types/" type="s1:guid"/>
    <xs:element minOccurs="1" maxOccurs="1" name="FederationId"
xmlns:s1="http://microsoft.com/wsdl/types/" type="s1:guid"/>
    <xs:element minOccurs="1" maxOccurs="1" name="ExternalFederationId"
xmlns:s1="http://microsoft.com/wsdl/types/" type="s1:guid"/>
    <xs:element minOccurs="0" maxOccurs="1" name="SmtAddress" type="xs:string"/>
    <xs:element minOccurs="0" maxOccurs="1" name="ExternalEndPoint" type="xs:string"/>
    <xs:element minOccurs="1" maxOccurs="1" name="SourceType" type="tns:SourceType"/>
    <xs:element minOccurs="0" maxOccurs="1" name="ContainerId" type="xs:string"/>
    <xs:element minOccurs="1" maxOccurs="1" name="IsValid" type="xs:boolean"/>
    <xs:element minOccurs="0" maxOccurs="1" name="Query" type="xs:string"/>
  </xs:sequence>
</xs:complexType>
```

```

    <xs:element minOccurs="1" maxOccurs="1" name="IsLocation" type="xs:boolean"/>
    <xs:element minOccurs="1" maxOccurs="1" name="IsTopLevelSiteCollection"
type="xs:boolean"/>
    <xs:element minOccurs="1" maxOccurs="1" name="IsMembershipGroup" type="xs:boolean"/>
    <xs:element minOccurs="0" maxOccurs="1" name="ValidationText" type="xs:string"/>
    <xs:element minOccurs="0" maxOccurs="1" name="Title" type="xs:string"/>
    <xs:element minOccurs="0" maxOccurs="1" name="DisplayId" type="xs:string"/>
    <xs:element minOccurs="0" maxOccurs="1" name="InputText" type="xs:string"/>
  </xs:sequence>
</xs:complexType>

```

WebId: The identifier of the Web site (2). MUST be non-empty if **IsLocation** is true; otherwise, MUST be ignored.

SiteId: The identifier of the **site collection** containing the Web site (2). MUST be non-empty if **IsLocation** is true; otherwise, MUST be ignored.

FederationId: The identifier of the system that contains the discovery source.

ExternalFederationId: The identifier of the external system that can perform actions on the discovery source. MUST be non-empty if **IsLocation** is false; otherwise, MUST be ignored.

SmtpAddress: The SMTP **e-mail address** of an email inbox. MUST be non-empty if **IsLocation** is false; otherwise, MUST be ignored.

ExternalEndPoint: The **Web service** URL of the external system that can perform actions on the discovery source.

SourceType: The source type of the discovery source. MUST be of type **SourceType** (section [3.1.4.1.4.2](#))

ContainerId: The identifier of the location. MUST be a non-empty URL if **IsLocation** is true; otherwise, MUST be a non-empty identifier of the email mailbox.

IsValid: Whether the location is valid or not. Note that all other values MUST be ignored if **IsValid** is false.

Query: Reserved. MUST be ignored.

IsLocation: Whether the location is a Web site (2) or file system (versus an email mailbox).

IsTopLevelSiteCollection: Whether the Web site (2) contains multiple site collections. MUST be ignored if **IsLocation** is false.

IsMembershipGroup: If **IsLocation** is false, specifies whether the location is a **membership group**. Otherwise, MUST be ignored.

ValidationText: A human-readable string that provides more information about the validation of the discovery source. For example, if there was an error during the validation process, this string gives more detail about the problem.

Title: The title of the discovery source.

DisplayId: The display name of the discovery source.

InputText: The string used to search for the location.

3.1.4.1.4 Simple Types

The following table summarizes the XML schema simple type definitions that are specific to this operation.

Simple type	Description
guid	Represents a GUID .
SourceType	Specifies the type of a discovery source.

3.1.4.1.4.1 guid

Namespace: http://microsoft.com/wsd/types/

The **guid** simple type contains a GUID.

```
<xs:simpleType name="guid" xmlns:xs="http://www.w3.org/2001/XMLSchema">
  <xs:restriction base="xs:string">
    <xs:pattern value="[0-9a-fA-F]{8}-[0-9a-fA-F]{4}-[0-9a-fA-F]{4}-[0-9a-fA-F]{4}-[0-9a-fA-F]{12}"/>
  </xs:restriction>
</xs:simpleType>
```

3.1.4.1.4.2 SourceType

Namespace: http://schemas.microsoft.com/sharepoint/discovery/soap/

Specifies the type of a discovery source.

```
<xs:simpleType name="SourceType" xmlns:xs="http://www.w3.org/2001/XMLSchema">
  <xs:restriction base="xs:string">
    <xs:enumeration value="Exchange"/>
    <xs:enumeration value="SharePointLegacy"/>
    <xs:enumeration value="SharePoint15"/>
    <xs:enumeration value="FileShare"/>
  </xs:restriction>
</xs:simpleType>
```

The following table specifies the allowable values for the **SourceType** simple type.

Value	Meaning
Exchange	The discovery source is a mailbox stored in an Exchange Server
SharePointLegacy	The discovery source is a Web site (2) in Microsoft SharePoint Server 2010 or Microsoft Office SharePoint Server 2007 server indexed by Microsoft SharePoint Server 2013 search system.
SharePoint15	The discovery source is a Web site (2) in SharePoint Server 2013 server.
FileShare	The discovery source is a file system indexed by SharePoint Server 2013 search system.

3.1.4.1.5 Attributes

None.

3.1.4.1.6 Groups

None.

3.1.4.1.7 Attribute Groups

None.

3.1.4.2 CopySavedSearch

This operation is used by the protocol client to copy a search query within a discovery case.

The following is the WSDL port type specification of the **CopySavedSearch** WSDL operation.

```
<wsdl:operation name="CopySavedSearch" xmlns:wsdl="http://schemas.xmlsoap.org/wsdl/">
  <wsdl:input message="tns:CopySavedSearchSoapIn"/>
  <wsdl:output message="tns:CopySavedSearchSoapOut"/>
</wsdl:operation>
```

The protocol client sends a **CopySavedSearchSoapIn** (section [3.1.4.2.1.1](#)) request message and the protocol server responds with a **CopySavedSearchSoapOut** (section [3.1.4.2.1.2](#)) response message as follows:

- The protocol server copies the search query identified by the specified **selectedId** and persists a copy.

3.1.4.2.1 Messages

The following table summarizes the set of WSDL message definitions that are specific to this operation.

Message	Description
CopySavedSearchSoapIn	The request WSDL message for the CopySavedSearch WSDL operation.
CopySavedSearchSoapOut	The response WSDL message for the CopySavedSearch WSDL operation.

3.1.4.2.1.1 CopySavedSearchSoapIn

The request WSDL message for the **CopySavedSearch** WSDL operation.

The SOAP action value is:

```
http://schemas.microsoft.com/sharepoint/discovery/soap/CopySavedSearch
```

The SOAP body contains the **CopySavedSearch** element.

3.1.4.2.1.2 CopySavedSearchSoapOut

The response WSDL message for the **CopySavedSearch** WSDL operation.

The SOAP body contains the **CopySavedSearchResponse** element.

3.1.4.2.2 Elements

The following table summarizes the XML schema element definitions that are specific to this operation.

Element	Description
CopySavedSearch	The input data for the CopySavedSearch WSDL operation.
CopySavedSearchResponse	The result data for the CopySavedSearch WSDL operation.

3.1.4.2.2.1 CopySavedSearch

The **CopySavedSearch** element specifies the input data for the **CopySavedSearch** WSDL operation.

```
<xs:element name="CopySavedSearch" xmlns:xs="http://www.w3.org/2001/XMLSchema">
  <xs:complexType>
    <xs:sequence>
      <xs:element minOccurs="1" maxOccurs="1" name="selectedId" type="xs:int"/>
    </xs:sequence>
  </xs:complexType>
</xs:element>
```

selectedId: The identifier of the search query.

3.1.4.2.2.2 CopySavedSearchResponse

The **CopySavedSearchResponse** element specifies the result data for the **CopySavedSearch** WSDL operation.

```
<xs:element name="CopySavedSearchResponse" xmlns:xs="http://www.w3.org/2001/XMLSchema">
  <xs:complexType>
    <xs:sequence>
      <xs:element minOccurs="0" maxOccurs="1" name="CopySavedSearchResult" type="xs:string"/>
    </xs:sequence>
  </xs:complexType>
</xs:element>
```

CopySavedSearchResult: If successful, the server will return an empty string value. Otherwise, the server will return the failure message.

3.1.4.2.3 Complex Types

None.

3.1.4.2.4 Simple Types

None.

3.1.4.2.5 Attributes

None.

3.1.4.2.6 Groups

None.

3.1.4.2.7 Attribute Groups

None.

3.1.4.3 ParseKQLQueryForStats

This operation is used by the protocol client to get a list of component search queries for a given search query.

The following is the WSDL port type specification of the **ParseKQLQueryForStats** WSDL operation.

```
<wsdl:operation name="ParseKQLQueryForStats" xmlns:wsdl="http://schemas.xmlsoap.org/wsdl/">
  <wsdl:input message="tns:ParseKQLQueryForStatsSoapIn"/>
  <wsdl:output message="tns:ParseKQLQueryForStatsSoapOut"/>
</wsdl:operation>
```

The protocol client sends a **ParseKQLQueryForStatsSoapIn** (section [3.1.4.3.1.1](#)) request message and the protocol server responds with a **ParseKQLQueryForStatsSoapOut** (section [3.1.4.3.1.2](#)) response message as follows:

- The protocol server verifies whether the **query** is empty; if the query is empty, it returns no components.
- Otherwise, the protocol server parses the query into a tree based on the Boolean operators in the **query**. It returns the top-level components of that tree. For example, if the **query** is "abc OR (def AND deg)", components can include "abc" and "def AND deg".

3.1.4.3.1 Messages

The following table summarizes the set of WSDL message definitions that are specific to this operation.

Message	Description
ParseKQLQueryForStatsSoapIn	The request WSDL message for the ParseKQLQueryForStats WSDL operation.
ParseKQLQueryForStatsSoapOut	The response WSDL message for the ParseKQLQueryForStats WSDL operation.

3.1.4.3.1.1 ParseKQLQueryForStatsSoapIn

The request WSDL message for the **ParseKQLQueryForStats** WSDL operation.

The SOAP action value is:

```
http://schemas.microsoft.com/sharepoint/discovery/soap/ParseKQLQueryForStats
```

The SOAP body contains the **ParseKQLQueryForStats** element.

3.1.4.3.1.2 ParseKQLQueryForStatsSoapOut

The response WSDL message for the **ParseKQLQueryForStats** WSDL operation.

The SOAP body contains the **ParseKQLQueryForStatsResponse** element.

3.1.4.3.2 Elements

The following table summarizes the XML schema element definitions that are specific to this operation.

Element	Description
ParseKQLQueryForStats	The input data for the ParseKQLQueryForStats WSDL operation.
ParseKQLQueryForStatsResponse	The result data for the ParseKQLQueryForStats WSDL operation.

3.1.4.3.2.1 ParseKQLQueryForStats

The **ParseKQLQueryForStats** element specifies the input data for the **ParseKQLQueryForStats** WSDL operation.

```
<xs:element name="ParseKQLQueryForStats" xmlns:xs="http://www.w3.org/2001/XMLSchema">  
  <xs:complexType>  
    <xs:sequence>  
      <xs:element minOccurs="0" maxOccurs="1" name="query" type="xs:string"/>  
    </xs:sequence>  
  </xs:complexType>  
</xs:element>
```

query: The KQL search query, as specified in [\[MS-KQL\]](#).

3.1.4.3.2.2 ParseKQLQueryForStatsResponse

The **ParseKQLQueryForStatsResponse** element specifies the result data for the **ParseKQLQueryForStats** WSDL operation.

```
<xs:element name="ParseKQLQueryForStatsResponse" xmlns:xs="http://www.w3.org/2001/XMLSchema">  
  <xs:complexType>  
    <xs:sequence>  
      <xs:element minOccurs="0" maxOccurs="1" name="ParseKQLQueryForStatsResult"  
type="tns:ArrayOfString"/>  
    </xs:sequence>
```

```
</xs:complexType>
</xs:element>
```

ParseKQLQueryForStatsResult: A list of query components.

3.1.4.3.3 Complex Types

None.

3.1.4.3.4 Simple Types

None.

3.1.4.3.5 Attributes

None.

3.1.4.3.6 Groups

None.

3.1.4.3.7 Attribute Groups

None.

3.1.4.4 UpdateSourceErrorInfo

This operation is used by the protocol client to update status info for discovery sources in a discovery case.

The following is the WSDL port type specification of the **UpdateSourceErrorInfo** WSDL operation.

```
<wsdl:operation name="UpdateSourceErrorInfo" xmlns:wsdl="http://schemas.xmlsoap.org/wsdl/">
  <wsdl:input message="tns:UpdateSourceErrorInfoSoapIn"/>
  <wsdl:output message="tns:UpdateSourceErrorInfoSoapOut"/>
</wsdl:operation>
```

The protocol client sends a **UpdateSourceErrorInfoSoapIn** (section [3.1.4.4.1.1](#)) request message and the protocol server responds with a **UpdateSourceErrorInfoSoapOut** (section [3.1.4.4.1.2](#)) response message as follows:

- For each discovery source corresponding to the specified **selectedIds**, the protocol server determines the status. For example, the protocol server examines the **crawl log** to determine whether there were errors processing the discovery source.

3.1.4.4.1 Messages

The following table summarizes the set of WSDL message definitions that are specific to this operation.

Message	Description
UpdateSourceErrorInfoSoapIn	The request WSDL message for the UpdateSourceErrorInfo WSDL

Message	Description
	operation.
UpdateSourceErrorInfoSoapOut	The response WSDL message for the UpdateSourceErrorInfo WSDL operation.

3.1.4.4.1.1 UpdateSourceErrorInfoSoapIn

The request WSDL message for the **UpdateSourceErrorInfo** WSDL operation.

The SOAP action value is:

```
http://schemas.microsoft.com/sharepoint/discovery/soap/UpdateSourceErrorInfo
```

The SOAP body contains the **UpdateSourceErrorInfo** element.

3.1.4.4.1.2 UpdateSourceErrorInfoSoapOut

The response WSDL message for the **UpdateSourceErrorInfo** WSDL operation.

The SOAP body contains the **UpdateSourceErrorInfoResponse** element.

3.1.4.4.2 Elements

The following table summarizes the XML schema element definitions that are specific to this operation.

Element	Description
UpdateSourceErrorInfo	The input data for the UpdateSourceErrorInfo WSDL operation.
UpdateSourceErrorInfoResponse	The result data for the UpdateSourceErrorInfo WSDL operation.

3.1.4.4.2.1 UpdateSourceErrorInfo

The **UpdateSourceErrorInfo** element specifies the input data for the **UpdateSourceErrorInfo** WSDL operation.

```
<xs:element name="UpdateSourceErrorInfo" xmlns:xs="http://www.w3.org/2001/XMLSchema">
  <xs:complexType>
    <xs:sequence>
      <xs:element minOccurs="0" maxOccurs="1" name="selectedIds" type="xs:string"/>
    </xs:sequence>
  </xs:complexType>
</xs:element>
```

selectedIds: The list of identifiers for discovery sources, delimited by the character `|`.

3.1.4.4.2.2 UpdateSourceErrorInfoResponse

The **UpdateSourceErrorInfoResponse** element specifies the result data for the **UpdateSourceErrorInfo** WSDL operation.

```
<xs:element name="UpdateSourceErrorInfoResponse" xmlns:xs="http://www.w3.org/2001/XMLSchema">
  <xs:complexType>
    <xs:sequence>
      <xs:element minOccurs="0" maxOccurs="1" name="UpdateSourceErrorInfoResult"
type="xs:string"/>
    </xs:sequence>
  </xs:complexType>
</xs:element>
```

UpdateSourceErrorInfoResult: If successful, the server will return an empty string value. Otherwise, the server will return the failure message.

3.1.4.4.3 Complex Types

None.

3.1.4.4.4 Simple Types

None.

3.1.4.4.5 Attributes

None.

3.1.4.4.6 Groups

None.

3.1.4.4.7 Attribute Groups

None.

3.1.4.5 UpdateStatistics

This operation is used by the protocol client to update the statistics for search queries in a discovery case.

The following is the WSDL port type specification of the **UpdateStatistics** WSDL operation.

```
<wsdl:operation name="UpdateStatistics" xmlns:wsdl="http://schemas.xmlsoap.org/wsdl/">
  <wsdl:input message="tns:UpdateStatisticsSoapIn"/>
  <wsdl:output message="tns:UpdateStatisticsSoapOut"/>
</wsdl:operation>
```

The protocol client sends a **UpdateStatisticsSoapIn** (section [3.1.4.5.1.1](#)) request message and the protocol server responds with a **UpdateStatisticsSoapOut** (section [3.1.4.5.1.2](#)) response message as follows:

- For each search query corresponding to the specified **selectedIds**, the protocol server performs the search query and persists the updated statistics, such as the number of items and their size.

3.1.4.5.1 Messages

The following table summarizes the set of WSDL message definitions that are specific to this operation.

Message	Description
UpdateStatisticsSoapIn	The request WSDL message for the UpdateStatistics WSDL operation.
UpdateStatisticsSoapOut	The response WSDL message for the UpdateStatistics WSDL operation.

3.1.4.5.1.1 UpdateStatisticsSoapIn

The request WSDL message for the **UpdateStatistics** WSDL operation.

The SOAP action value is:

```
http://schemas.microsoft.com/sharepoint/discovery/soap/UpdateStatistics
```

The SOAP body contains the **UpdateStatistics** element.

3.1.4.5.1.2 UpdateStatisticsSoapOut

The response WSDL message for the **UpdateStatistics** WSDL operation.

The SOAP body contains the **UpdateStatisticsResponse** element.

3.1.4.5.2 Elements

The following table summarizes the XML schema element definitions that are specific to this operation.

Element	Description
UpdateStatistics	The input data for the UpdateStatistics WSDL operation.
UpdateStatisticsResponse	The result data for the UpdateStatistics WSDL operation.

3.1.4.5.2.1 UpdateStatistics

The **UpdateStatistics** element specifies the input data for the **UpdateStatistics** WSDL operation.

```
<xs:element name="UpdateStatistics" xmlns:xs="http://www.w3.org/2001/XMLSchema">  
  <xs:complexType>  
    <xs:sequence>  
      <xs:element minOccurs="0" maxOccurs="1" name="selectedIds" type="xs:string"/>  
    </xs:sequence>  
  </xs:complexType>  
</xs:element>
```

selectedIds: The list of identifiers for search queries, delimited by the character `|`.

3.1.4.5.2 UpdateStatisticsResponse

The **UpdateStatisticsResponse** element specifies the result data for the **UpdateStatistics** WSDL operation.

```
<xs:element name="UpdateStatisticsResponse" xmlns:xs="http://www.w3.org/2001/XMLSchema">
  <xs:complexType>
    <xs:sequence>
      <xs:element minOccurs="0" maxOccurs="1" name="UpdateStatisticsResult"
        type="xs:string"/>
    </xs:sequence>
  </xs:complexType>
</xs:element>
```

UpdateStatisticsResult: If successful, the server will return an empty string value. Otherwise, the server will return the failure message.

3.1.4.5.3 Complex Types

None.

3.1.4.5.4 Simple Types

None.

3.1.4.5.5 Attributes

None.

3.1.4.5.6 Groups

None.

3.1.4.5.7 Attribute Groups

None.

3.1.4.6 GetExportStatistics

This operation is used by the protocol client to get the statistics for search queries in a discovery case.

The following is the WSDL port type specification of the **GetExportStatistics** WSDL operation.

```
<wsdl:operation name="GetExportStatistics" xmlns:wsdl="http://schemas.xmlsoap.org/wsdl/">
  <wsdl:input message="tns:GetExportStatisticsSoapIn"/>
  <wsdl:output message="tns:GetExportStatisticsSoapOut"/>
</wsdl:operation>
```

The protocol client sends a **GetExportStatisticsSoapIn** request message and the protocol server responds with a **GetExportStatisticsSoapOut** response message as follows:

- For each search query corresponding to the specified selectedIds, the protocol server performs the search query and returns statistics, such as the number of items and their size.

3.1.4.6.1 Messages

The following table summarizes the set of WSDL message definitions that are specific to this operation.

Message	Description
GetExportStatisticsSoapIn	The request WSDL message for the GetExportStatistics WSDL operation.
GetExportStatisticsSoapOut	The response WSDL message for the GetExportStatistics WSDL operation.

3.1.4.6.1.1 GetExportStatisticsSoapIn

The request WSDL message for the **GetExportStatistics** WSDL operation.

The SOAP action value is:

```
http://schemas.microsoft.com/sharepoint/discovery/soap/GetExportStatistics
```

The SOAP body contains the **GetExportStatistics** element.

3.1.4.6.1.2 GetExportStatisticsSoapOut

The response WSDL message for the **GetExportStatistics** WSDL operation.

The SOAP body contains the **GetExportStatisticsResponse** element.

3.1.4.6.2 Elements

The following table summarizes the XML schema element definitions that are specific to this operation.

Element	Description
GetExportStatistics	The input data for the GetExportStatistics WSDL operation.
GetExportStatisticsResponse	The result data for the GetExportStatistics WSDL operation.

3.1.4.6.2.1 GetExportStatistics

The **GetExportStatistics** element specifies the input data for the **GetExportStatistics** WSDL operation.

```
<xs:element name="GetExportStatistics" xmlns:xs="http://www.w3.org/2001/XMLSchema">  
  <xs:complexType>  
    <xs:sequence>  
      <xs:element minOccurs="0" maxOccurs="1" name="queries" type="xs:string"/>  
    </xs:sequence>  
  </xs:complexType>  
</xs:element>
```

queries: The list of identifiers for search queries, delimited by the character '|'.

3.1.4.6.2.2 GetExportStatisticsResponse

The **GetExportStatisticsResponse** element specifies the result data for the **GetExportStatistics** WSDL operation.

```
<xs:element name="GetExportStatisticsResponse" xmlns:xs="http://www.w3.org/2001/XMLSchema">
  <xs:complexType>
    <xs:sequence>
      <xs:element minOccurs="0" maxOccurs="1" name="GetExportStatisticsResult"
        type="tns:ArrayOfString"/>
    </xs:sequence>
  </xs:complexType>
</xs:element>
```

GetExportStatisticsResult: An array of strings containing the statistics, such as the number of items and their size.

3.1.4.6.3 Complex Types

None.

3.1.4.6.4 Simple Types

None.

3.1.4.6.5 Attributes

None.

3.1.4.6.6 Groups

None.

3.1.4.6.7 Attribute Groups

None.

3.1.5 Timer Events

None.

3.1.6 Other Local Events

None.

4 Protocol Examples

4.1 Validate Source

In this example the protocol client sends the following request to validate a location with the URL `http://contoso.com`:

```
<?xml version="1.0" encoding="utf-8"?>
<soap:Envelope xmlns:xsi="http://www.w3.org/2001/XMLSchema-instance"
xmlns:xsd="http://www.w3.org/2001/XMLSchema" xmlns:soap="http://www.w3.org/2003/05/soap-
envelope">
  <soap:Body>
    <ValidateSource xmlns="http://schemas.microsoft.com/sharepoint/discovery/soap/">
      <location>http://contoso.com</location>
      <isLocation>true</isLocation>
    </ValidateSource>
  </soap:Body>
</soap:Envelope>
```

The protocol server responds as follows:

```
<?xml version="1.0" encoding="utf-8"?>
<soap:Envelope xmlns:xsi="http://www.w3.org/2001/XMLSchema-instance"
xmlns:xsd="http://www.w3.org/2001/XMLSchema" xmlns:soap="http://www.w3.org/2003/05/soap-
envelope">
  <soap:Body>
    <ValidateSourceResponse xmlns="http://schemas.microsoft.com/sharepoint/discovery/soap/">
      <ValidateSourceResult>
        <WebId>1bcd3e3a-ba41-49f7-b0a7-1291732e23ea</WebId>
        <FederationId>00000000-0000-0000-0000-000000000000</FederationId>
        <ExternalFederationId></ExternalFederationId>
        <SmtpAddress></SmtpAddress>
        <ContainerId>http://contoso.com</ContainerId>
        <IsValid>true</IsValid>
        <Query> </Query>
        <IsLocation>true</IsLocation>
        <ValidationText>Validated</ValidationText>
        <Title>Contoso</Title>
      </ValidateSourceResult>
    </ValidateSourceResponse>
  </soap:Body>
</soap:Envelope>
```

5 Security

5.1 Security Considerations for Implementers

None.

5.2 Index of Security Parameters

None.

6 Appendix A: Full WSDL

For ease of implementation, the full WSDL is provided in this appendix.

```
<?xml version="1.0"?>
<wsdl:definitions xmlns:soap="http://schemas.xmlsoap.org/wsdl/soap/"
xmlns:http="http://schemas.xmlsoap.org/wsdl/http/"
xmlns:s1="http://microsoft.com/wsdl/types/"
xmlns:soap12="http://schemas.xmlsoap.org/wsdl/soap12/"
xmlns:tns="http://schemas.microsoft.com/sharepoint/discovery/soap/"
xmlns:xs="http://www.w3.org/2001/XMLSchema"
targetNamespace="http://schemas.microsoft.com/sharepoint/discovery/soap/"
xmlns:wsdl="http://schemas.xmlsoap.org/wsdl/">
  <wsdl:documentation>This web service is designed for the source picker
control</wsdl:documentation>
  <wsdl:types>
    <xs:schema elementFormDefault="qualified"
targetNamespace="http://schemas.microsoft.com/sharepoint/discovery/soap/"
  <xs:import namespace="http://microsoft.com/wsdl/types/">
    <xs:element name="ValidateSource">
      <xs:complexType>
        <xs:sequence>
          <xs:element minOccurs="0" maxOccurs="1" name="location" type="xs:string"/>
          <xs:element minOccurs="1" maxOccurs="1" name="isLocation" type="xs:boolean"/>
        </xs:sequence>
      </xs:complexType>
    </xs:element>
    <xs:element name="ValidateSourceResponse">
      <xs:complexType>
        <xs:sequence>
          <xs:element minOccurs="0" maxOccurs="1" name="ValidateSourceResult"
type="tns:SourceValidation"/>
        </xs:sequence>
      </xs:complexType>
    </xs:element>
    <xs:complexType name="SourceValidation">
      <xs:sequence>
        <xs:element minOccurs="1" maxOccurs="1" name="WebId" type="s1:guid"/>
        <xs:element minOccurs="1" maxOccurs="1" name="SiteId" type="s1:guid"/>
        <xs:element minOccurs="1" maxOccurs="1" name="FederationId" type="s1:guid"/>
        <xs:element minOccurs="1" maxOccurs="1" name="ExternalFederationId"
type="s1:guid"/>
        <xs:element minOccurs="0" maxOccurs="1" name="SmtpAddress" type="xs:string"/>
        <xs:element minOccurs="0" maxOccurs="1" name="ExternalEndPoint" type="xs:string"/>
        <xs:element minOccurs="1" maxOccurs="1" name="SourceType" type="tns:SourceType"/>
        <xs:element minOccurs="0" maxOccurs="1" name="ContainerId" type="xs:string"/>
        <xs:element minOccurs="1" maxOccurs="1" name="IsValid" type="xs:boolean"/>
        <xs:element minOccurs="0" maxOccurs="1" name="Query" type="xs:string"/>
        <xs:element minOccurs="1" maxOccurs="1" name="IsLocation" type="xs:boolean"/>
        <xs:element minOccurs="1" maxOccurs="1" name="IsTopLevelSiteCollection"
type="xs:boolean"/>
        <xs:element minOccurs="1" maxOccurs="1" name="IsMembershipGroup"
type="xs:boolean"/>
        <xs:element minOccurs="0" maxOccurs="1" name="ValidationText" type="xs:string"/>
        <xs:element minOccurs="0" maxOccurs="1" name="Title" type="xs:string"/>
        <xs:element minOccurs="0" maxOccurs="1" name="DisplayId" type="xs:string"/>
        <xs:element minOccurs="0" maxOccurs="1" name="InputText" type="xs:string"/>
      </xs:sequence>
    </xs:complexType>
  </xs:schema>
</wsdl:types>
```

```

<xs:simpleType name="SourceType">
  <xs:restriction base="xs:string">
    <xs:enumeration value="Exchange"/>
    <xs:enumeration value="SharePointLegacy"/>
    <xs:enumeration value="SharePoint15"/>
    <xs:enumeration value="FileShare"/>
  </xs:restriction>
</xs:simpleType>
<xs:element name="GetExportStatistics">
  <xs:complexType>
    <xs:sequence>
      <xs:element minOccurs="0" maxOccurs="1" name="queries" type="xs:string"/>
    </xs:sequence>
  </xs:complexType>
</xs:element>
<xs:element name="GetExportStatisticsResponse">
  <xs:complexType>
    <xs:sequence>
      <xs:element minOccurs="0" maxOccurs="1" name="GetExportStatisticsResult"
type="tns:ArrayOfString"/>
    </xs:sequence>
  </xs:complexType>
</xs:element>
<xs:complexType name="ArrayOfString">
  <xs:sequence>
    <xs:element minOccurs="0" maxOccurs="unbounded" name="string" nillable="true"
type="xs:string"/>
  </xs:sequence>
</xs:complexType>
<xs:element name="CopySavedSearch">
  <xs:complexType>
    <xs:sequence>
      <xs:element minOccurs="1" maxOccurs="1" name="selectedId" type="xs:int"/>
    </xs:sequence>
  </xs:complexType>
</xs:element>
<xs:element name="CopySavedSearchResponse">
  <xs:complexType>
    <xs:sequence>
      <xs:element minOccurs="0" maxOccurs="1" name="CopySavedSearchResult"
type="xs:string"/>
    </xs:sequence>
  </xs:complexType>
</xs:element>
<xs:element name="UpdateStatistics">
  <xs:complexType>
    <xs:sequence>
      <xs:element minOccurs="0" maxOccurs="1" name="selectedIds" type="xs:string"/>
    </xs:sequence>
  </xs:complexType>
</xs:element>
<xs:element name="UpdateStatisticsResponse">
  <xs:complexType>
    <xs:sequence>
      <xs:element minOccurs="0" maxOccurs="1" name="UpdateStatisticsResult"
type="xs:string"/>
    </xs:sequence>
  </xs:complexType>
</xs:element>

```

```

<xs:element name="UpdateSourceErrorInfo">
  <xs:complexType>
    <xs:sequence>
      <xs:element minOccurs="0" maxOccurs="1" name="selectedIds" type="xs:string"/>
    </xs:sequence>
  </xs:complexType>
</xs:element>
<xs:element name="UpdateSourceErrorInfoResponse">
  <xs:complexType>
    <xs:sequence>
      <xs:element minOccurs="0" maxOccurs="1" name="UpdateSourceErrorInfoResult"
type="xs:string"/>
    </xs:sequence>
  </xs:complexType>
</xs:element>
<xs:element name="ParseKQLQueryForStats">
  <xs:complexType>
    <xs:sequence>
      <xs:element minOccurs="0" maxOccurs="1" name="query" type="xs:string"/>
    </xs:sequence>
  </xs:complexType>
</xs:element>
<xs:element name="ParseKQLQueryForStatsResponse">
  <xs:complexType>
    <xs:sequence>
      <xs:element minOccurs="0" maxOccurs="1" name="ParseKQLQueryForStatsResult"
type="tns:ArrayOfString"/>
    </xs:sequence>
  </xs:complexType>
</xs:element>
</xs:schema>
<xs:schema elementFormDefault="qualified"
targetNamespace="http://microsoft.com/wsdl/types/">
  <xs:simpleType name="guid">
    <xs:restriction base="xs:string">
      <xs:pattern value="[0-9a-fA-F]{8}-[0-9a-fA-F]{4}-[0-9a-fA-F]{4}-[0-9a-fA-F]{4}-[0-
9a-fA-F]{12}"/>
    </xs:restriction>
  </xs:simpleType>
</xs:schema>
</wsdl:types>
<wsdl:portType name="Discovery_x0020_internal_x0020_web_x0020_serviceSoap">
  <wsdl:operation name="ValidateSource">
    <wsdl:input message="tns:ValidateSourceSoapIn"/>
    <wsdl:output message="tns:ValidateSourceSoapOut"/>
  </wsdl:operation>
  <wsdl:operation name="GetExportStatistics">
    <wsdl:input message="tns:GetExportStatisticsSoapIn"/>
    <wsdl:output message="tns:GetExportStatisticsSoapOut"/>
  </wsdl:operation>
  <wsdl:operation name="CopySavedSearch">
    <wsdl:input message="tns:CopySavedSearchSoapIn"/>
    <wsdl:output message="tns:CopySavedSearchSoapOut"/>
  </wsdl:operation>
  <wsdl:operation name="UpdateStatistics">
    <wsdl:input message="tns:UpdateStatisticsSoapIn"/>
    <wsdl:output message="tns:UpdateStatisticsSoapOut"/>
  </wsdl:operation>
  <wsdl:operation name="UpdateSourceErrorInfo">

```



```

        <wsdl:input message="tns:UpdateSourceErrorInfoSoapIn"/>
        <wsdl:output message="tns:UpdateSourceErrorInfoSoapOut"/>
    </wsdl:operation>
    <operation name="ParseKQLQueryForStats">
        <wsdl:input message="tns:ParseKQLQueryForStatsSoapIn"/>
        <wsdl:output message="tns:ParseKQLQueryForStatsSoapOut"/>
    </wsdl:operation>
</wsdl:portType>
<wsdl:binding name="Discovery_x0020_internal_x0020_web_x0020_serviceSoap"
type="tns:Discovery_x0020_internal_x0020_web_x0020_serviceSoap">
    <soap:binding transport="http://schemas.xmlsoap.org/soap/http"/>
    <wsdl:operation name="ValidateSource">
        <soap:operation
soapAction="http://schemas.microsoft.com/sharepoint/discovery/soap/ValidateSource"
style="document"/>
        <wsdl:input>
            <soap:body use="literal"/>
        </wsdl:input>
        <wsdl:output>
            <soap:body use="literal"/>
        </wsdl:output>
    </wsdl:operation>
    <wsdl:operation name="GetExportStatistics">
        <soap:operation
soapAction="http://schemas.microsoft.com/sharepoint/discovery/soap/GetExportStatistics"
style="document"/>
        <wsdl:input>
            <soap:body use="literal"/>
        </wsdl:input>
        <wsdl:output>
            <soap:body use="literal"/>
        </wsdl:output>
    </wsdl:operation>
    <wsdl:operation name="CopySavedSearch">
        <soap:operation
soapAction="http://schemas.microsoft.com/sharepoint/discovery/soap/CopySavedSearch"
style="document"/>
        <wsdl:input>
            <soap:body use="literal"/>
        </wsdl:input>
        <wsdl:output>
            <soap:body use="literal"/>
        </wsdl:output>
    </wsdl:operation>
    <wsdl:operation name="UpdateStatistics">
        <soap:operation
soapAction="http://schemas.microsoft.com/sharepoint/discovery/soap/UpdateStatistics"
style="document"/>
        <wsdl:input>
            <soap:body use="literal"/>
        </wsdl:input>
        <wsdl:output>
            <soap:body use="literal"/>
        </wsdl:output>
    </wsdl:operation>
    <wsdl:operation name="UpdateSourceErrorInfo">
        <soap:operation
soapAction="http://schemas.microsoft.com/sharepoint/discovery/soap/UpdateSourceErrorInfo"
style="document"/>
        <wsdl:input>

```

```

        <soap:body use="literal"/>
    </wsdl:input>
    <wsdl:output>
        <soap:body use="literal"/>
    </wsdl:output>
</wsdl:operation>
<wsdl:operation name="ParseKQLQueryForStats">
    <soap:operation
soapAction="http://schemas.microsoft.com/sharepoint/discovery/soap/ParseKQLQueryForStats"
style="document"/>
    <wsdl:input>
        <soap:body use="literal"/>
    </wsdl:input>
    <wsdl:output>
        <soap:body use="literal"/>
    </wsdl:output>
</wsdl:operation>
</wsdl:binding>
<wsdl:binding name="Discovery_x0020_internal_x0020_web_x0020_serviceSoap12"
type="tns:Discovery_x0020_internal_x0020_web_x0020_serviceSoap">
    <soap12:binding transport="http://schemas.xmlsoap.org/soap/http"/>
    <wsdl:operation name="ValidateSource">
        <soap12:operation
soapAction="http://schemas.microsoft.com/sharepoint/discovery/soap/ValidateSource"
style="document"/>
        <wsdl:input>
            <soap12:body use="literal"/>
        </wsdl:input>
        <wsdl:output>
            <soap12:body use="literal"/>
        </wsdl:output>
    </wsdl:operation>
    <wsdl:operation name="GetExportStatistics">
        <soap12:operation
soapAction="http://schemas.microsoft.com/sharepoint/discovery/soap/GetExportStatistics"
style="document"/>
        <wsdl:input>
            <soap12:body use="literal"/>
        </wsdl:input>
        <wsdl:output>
            <soap12:body use="literal"/>
        </wsdl:output>
    </wsdl:operation>
    <wsdl:operation name="CopySavedSearch">
        <soap12:operation
soapAction="http://schemas.microsoft.com/sharepoint/discovery/soap/CopySavedSearch"
style="document"/>
        <wsdl:input>
            <soap12:body use="literal"/>
        </wsdl:input>
        <wsdl:output>
            <soap12:body use="literal"/>
        </wsdl:output>
    </wsdl:operation>
    <wsdl:operation name="UpdateStatistics">
        <soap12:operation
soapAction="http://schemas.microsoft.com/sharepoint/discovery/soap/UpdateStatistics"
style="document"/>
        <wsdl:input>
            <soap12:body use="literal"/>

```

```

        </wsdl:input>
        <wsdl:output>
            <soap12:body use="literal"/>
        </wsdl:output>
    </wsdl:operation>
    <wsdl:operation name="UpdateSourceErrorInfo">
        <soap12:operation
soapAction="http://schemas.microsoft.com/sharepoint/discovery/soap/UpdateSourceErrorInfo"
style="document"/>
        <wsdl:input>
            <soap12:body use="literal"/>
        </wsdl:input>
        <wsdl:output>
            <soap12:body use="literal"/>
        </wsdl:output>
    </wsdl:operation>
    <wsdl:operation name="ParseKQLQueryForStats">
        <soap12:operation
soapAction="http://schemas.microsoft.com/sharepoint/discovery/soap/ParseKQLQueryForStats"
style="document"/>
        <wsdl:input>
            <soap12:body use="literal"/>
        </wsdl:input>
        <wsdl:output>
            <soap12:body use="literal"/>
        </wsdl:output>
    </wsdl:operation>
</wsdl:binding>
<wsdl:message name="CopySavedSearchSoapIn">
    <wsdl:part name="parameters" element="tns:CopySavedSearch"/>
</wsdl:message>
<wsdl:message name="CopySavedSearchSoapOut">
    <wsdl:part name="parameters" element="tns:CopySavedSearchResponse"/>
</wsdl:message>
<wsdl:message name="GetExportStatisticsSoapIn">
    <wsdl:part name="parameters" element="tns:GetExportStatistics"/>
</wsdl:message>
<wsdl:message name="GetExportStatisticsSoapOut">
    <wsdl:part name="parameters" element="tns:GetExportStatisticsResponse"/>
</wsdl:message>
<wsdl:message name="ParseKQLQueryForStatsSoapIn">
    <wsdl:part name="parameters" element="tns:ParseKQLQueryForStats"/>
</wsdl:message>
<wsdl:message name="ParseKQLQueryForStatsSoapOut">
    <wsdl:part name="parameters" element="tns:ParseKQLQueryForStatsResponse"/>
</wsdl:message>
<wsdl:message name="UpdateSourceErrorInfoSoapIn">
    <wsdl:part name="parameters" element="tns:UpdateSourceErrorInfo"/>
</wsdl:message>
<wsdl:message name="UpdateSourceErrorInfoSoapOut">
    <wsdl:part name="parameters" element="tns:UpdateSourceErrorInfoResponse"/>
</wsdl:message>
<wsdl:message name="UpdateStatisticsSoapIn">
    <wsdl:part name="parameters" element="tns:UpdateStatistics"/>
</wsdl:message>
<wsdl:message name="UpdateStatisticsSoapOut">
    <wsdl:part name="parameters" element="tns:UpdateStatisticsResponse"/>
</wsdl:message>
<wsdl:message name="ValidateSourceSoapIn">

```

```
<wsdl:part name="parameters" element="tns:ValidateSource"/>
</wsdl:message>
<wsdl:message name="ValidateSourceSoapOut">
  <wsdl:part name="parameters" element="tns:ValidateSourceResponse"/>
</wsdl:message>
</wsdl:definitions>
```

7 Appendix B: Product Behavior

The information in this specification is applicable to the following Microsoft products or supplemental software. References to product versions include released service packs:

- Microsoft SharePoint Server 2013

Exceptions, if any, are noted below. If a service pack or Quick Fix Engineering (QFE) number appears with the product version, behavior changed in that service pack or QFE. The new behavior also applies to subsequent service packs of the product unless otherwise specified. If a product edition appears with the product version, behavior is different in that product edition.

Unless otherwise specified, any statement of optional behavior in this specification that is prescribed using the terms SHOULD or SHOULD NOT implies product behavior in accordance with the SHOULD or SHOULD NOT prescription. Unless otherwise specified, the term MAY implies that the product does not follow the prescription.

8 Change Tracking

No table of changes is available. The document is either new or has had no changes since its last release.

9 Index

A

Abstract data model
 [server](#) 11
[Applicability](#) 8
[ArrayOfStringcomplex type](#) 10
[Attribute groups](#) 10
[Attributes](#) 10

C

[Capability negotiation](#) 8
[Change tracking](#) 38
[Complex types](#) 10
 [ArrayOfString](#) 10

D

Data model - abstract
 [server](#) 11

E

Events
 [local - server](#) 27
 [timer - server](#) 27
Examples
 [overview](#) 28
 [validate source](#) 28

F

[Fields - vendor-extensible](#) 8
[Full WSDL](#) 30

G

[Glossary](#) 6
[Groups](#) 10

I

[Implementer - security considerations](#) 29
[Index of security parameters](#) 29
[Informative references](#) 7
Initialization
 [server](#) 12
[Introduction](#) 6

L

Local events
 [server](#) 27

M

Message processing
 [server](#) 12
Messages

[ArrayOfStringcomplex type](#) 10
[attribute groups](#) 10
[attributes](#) 10
[complex types](#) 10
[elements](#) 9
[enumerated](#) 9
[groups](#) 10
[namespaces](#) 9
[simple types](#) 10
[syntax](#) 9
[transport](#) 9

N

[Namespaces](#) 9
[Normative references](#) 7

O

Operations
 [CopySavedSearch](#) 17
 [GetExportStatistics](#) 25
 [ParseKQLQueryForStats](#) 19
 [UpdateSourceErrorInfo](#) 21
 [UpdateStatistics](#) 23
 [ValidateSource](#) 12
[Overview \(synopsis\)](#) 7

P

[Parameters - security index](#) 29
[Preconditions](#) 8
[Prerequisites](#) 8
[Product behavior](#) 37
Protocol Details
 [overview](#) 11

R

[References](#) 7
 [informative](#) 7
 [normative](#) 7
[Relationship to other protocols](#) 8

S

Security
 [implementer considerations](#) 29
 [parameter index](#) 29
Sequencing rules
 [server](#) 12
Server
 [abstract data model](#) 11
 [CopySavedSearch operation](#) 17
 [GetExportStatistics operation](#) 25
 [initialization](#) 12
 [local events](#) 27
 [message processing](#) 12
 [ParseKQLQueryForStats operation](#) 19

[sequencing rules](#) 12
[timer events](#) 27
[timers](#) 12
[UpdateSourceErrorInfo operation](#) 21
[UpdateStatistics operation](#) 23
[ValidateSource operation](#) 12
[Simple types](#) 10
[Standards assignments](#) 8
Syntax
[messages - overview](#) 9

T

Timer events
[server](#) 27
Timers
[server](#) 12
[Tracking changes](#) 38
[Transport](#) 9
Types
[complex](#) 10
[simple](#) 10

V

[Validate source example](#) 28
[Vendor-extensible fields](#) 8
[Versioning](#) 8

W

[WSDL](#) 30