

[MS-FSADS]: Administration Database Structure

Intellectual Property Rights Notice for Open Specifications Documentation

- **Technical Documentation.** Microsoft publishes Open Specifications documentation for protocols, file formats, languages, standards as well as overviews of the interaction among each of these technologies.
- **Copyrights.** This documentation is covered by Microsoft copyrights. Regardless of any other terms that are contained in the terms of use for the Microsoft website that hosts this documentation, you may make copies of it in order to develop implementations of the technologies described in the Open Specifications and may distribute portions of it in your implementations using these technologies or your documentation as necessary to properly document the implementation. You may also distribute in your implementation, with or without modification, any schema, IDL's, or code samples that are included in the documentation. This permission also applies to any documents that are referenced in the Open Specifications.
- **No Trade Secrets.** Microsoft does not claim any trade secret rights in this documentation.
- **Patents.** Microsoft has patents that may cover your implementations of the technologies described in the Open Specifications. Neither this notice nor Microsoft's delivery of the documentation grants any licenses under those or any other Microsoft patents. However, a given Open Specification may be covered by Microsoft [Open Specification Promise](#) or the [Community Promise](#). If you would prefer a written license, or if the technologies described in the Open Specifications are not covered by the Open Specifications Promise or Community Promise, as applicable, patent licenses are available by contacting iplg@microsoft.com.
- **Trademarks.** The names of companies and products contained in this documentation may be covered by trademarks or similar intellectual property rights. This notice does not grant any licenses under those rights.
- **Fictitious Names.** The example companies, organizations, products, domain names, e-mail addresses, logos, people, places, and events depicted in this documentation are fictitious. No association with any real company, organization, product, domain name, email address, logo, person, place, or event is intended or should be inferred.

Reservation of Rights. All other rights are reserved, and this notice does not grant any rights other than specifically described above, whether by implication, estoppel, or otherwise.

Tools. The Open Specifications do not require the use of Microsoft programming tools or programming environments in order for you to develop an implementation. If you have access to Microsoft programming tools and environments you are free to take advantage of them. Certain Open Specifications are intended for use in conjunction with publicly available standard specifications and network programming art, and assumes that the reader either is familiar with the aforementioned material or has immediate access to it.

Revision Summary

Date	Revision History	Revision Class	Comments
11/06/2009	0.1	Major	Initial Availability
02/19/2010	1.0	Minor	Updated the technical content
03/31/2010	1.01	Editorial	Revised and edited the technical content
04/30/2010	1.02	Editorial	Revised and edited the technical content
06/07/2010	1.03	Editorial	Revised and edited the technical content
06/29/2010	1.04	Editorial	Changed language and formatting in the technical content.
07/23/2010	1.04	No change	No changes to the meaning, language, or formatting of the technical content.
09/27/2010	1.04	No change	No changes to the meaning, language, or formatting of the technical content.
11/15/2010	1.04	No change	No changes to the meaning, language, or formatting of the technical content.
12/17/2010	1.04	No change	No changes to the meaning, language, or formatting of the technical content.
03/18/2011	1.04	No change	No changes to the meaning, language, or formatting of the technical content.
06/10/2011	1.04	No change	No changes to the meaning, language, or formatting of the technical content.
01/20/2012	1.5	Minor	Clarified the meaning of the technical content.
04/11/2012	1.5	No change	No changes to the meaning, language, or formatting of the technical content.
07/16/2012	1.5	No change	No changes to the meaning, language, or formatting of the technical content.

Table of Contents

1 Introduction	4
1.1 Glossary	4
1.2 References	5
1.2.1 Normative References	5
1.2.2 Informative References	5
1.3 Structure Overview (Synopsis)	5
1.3.1 Keyword Management Domain Concepts	6
1.3.2 Dictionary Management Domain Concepts	7
1.3.3 Index Schema Management Domain Concepts	8
1.4 Relationship to Protocols and Other Structures	8
1.5 Applicability Statement	8
1.6 Versioning and Localization	8
1.7 Vendor-Extensible Fields	8
2 Structures	9
2.1 SearchSettingGroup Table	10
2.2 Keyword Table	11
2.3 SearchSetting Table	11
2.4 PromotedItem Table	13
2.5 SearchSettingContext Table	13
2.6 Context Table	13
2.7 ContextExpression Table	14
2.8 DictionaryStore Table	15
2.9 StoreEntry Table	15
2.10 RankProfiles Table	15
2.11 SchemaDefaults Table	16
2.12 FullTextIndexRankComponents Table	17
2.13 QualityComponents Table	18
2.14 FullTextIndexes Table	18
2.15 FullTextIndexMappings Table	19
2.16 ManagedProperties Table	19
2.17 ManagedPropertyBoostComponents Table	20
2.18 CrawledPropertiesMappings Table	21
2.19 CrawledProperties Table	21
2.20 PropsetCategoryMappings Table	22
2.21 Categories Table	23
2.22 Refiners Table	23
3 Structure Examples	25
3.1 Creating a Search Setting Group	25
3.2 Modifying a Keyword Description	25
3.2.1 Creating a Synonym	25
3.3 Creating a Crawled Property	26
4 Security Considerations	27
5 Appendix A: Product Behavior	28
6 Change Tracking	29
7 Index	30

1 Introduction

This document specifies the Administration Database Schema, which is used for persisting the information associated with operations in the Administration Services Protocol.

Sections 1.7 and 2 of this specification are normative and can contain the terms MAY, SHOULD, MUST, MUST NOT, and SHOULD NOT as defined in RFC 2119. All other sections and examples in this specification are informative.

1.1 Glossary

The following terms are defined in [\[MS-OFCGLOS\]](#):

best bet
crawl component
crawled property
dictionary
document summary
fallback managed property
featured content
field importance level
full-text index field
index partition
index schema
keyword
managed property
one-way synonym
promoted document
promoted expression
promoted location
promotion
property extraction
quality rank
query context
rank boost
rank profile
refinement bin
refiner
search setting
search setting context
search setting context expression
search setting group
stemming
Transact-Structured Query Language (T-SQL)
two-way synonym

The following terms are specific to this document:

MAY, SHOULD, MUST, SHOULD NOT, MUST NOT: These terms (in all caps) are used as described in [\[RFC2119\]](#). All statements of optional behavior use either MAY, SHOULD, or SHOULD NOT.

1.2 References

References to Microsoft Open Specifications documentation do not include a publishing year because links are to the latest version of the technical documents, which are updated frequently. References to other documents include a publishing year when one is available.

1.2.1 Normative References

We conduct frequent surveys of the normative references to assure their continued availability. If you have any issue with finding a normative reference, please contact dochelp@microsoft.com. We will assist you in finding the relevant information. Please check the archive site, <http://msdn2.microsoft.com/en-us/library/E4BD6494-06AD-4aed-9823-445E921C9624>, as an additional source.

[MSDN-TSQL-Ref] Microsoft Corporation, "Transact-SQL Reference", [http://msdn.microsoft.com/en-us/library/ms189826\(SQL.90\).aspx](http://msdn.microsoft.com/en-us/library/ms189826(SQL.90).aspx)

[MS-FSAS] Microsoft Corporation, "[Administration Services Protocol Specification](#)".

[PROPVARIANT] Microsoft Corporation, "PROPVARIANT", <http://msdn.microsoft.com/en-us/library/aa380072.aspx>

[RFC2046] Freed, N., and Borenstein, N., "Multipurpose Internet Mail Extensions (MIME) Part Two: Media Types", RFC 2046, November 1996, <http://ietf.org/rfc/rfc2046.txt>

[RFC2119] Bradner, S., "Key words for use in RFCs to Indicate Requirement Levels", BCP 14, RFC 2119, March 1997, <http://www.rfc-editor.org/rfc/rfc2119.txt>

1.2.2 Informative References

[MS-OFCGLOS] Microsoft Corporation, "[Microsoft Office Master Glossary](#)".

[MS-TDS] Microsoft Corporation, "[Tabular Data Stream Protocol Specification](#)".

1.3 Structure Overview (Synopsis)

This document describes the database schema used as a persistent store for the methods described in the Administration Services Protocol [\[MS-FSAS\]](#). These methods create instances of the various configuration concepts related to **keyword**, **dictionary**, and **index schema** management, instances that are retrieved, modified, or deleted through other methods associated with the Administration Services Protocol. A single method in the Administration Services Protocol Server typically results in one or more calls to the database, as specified in the following figure.

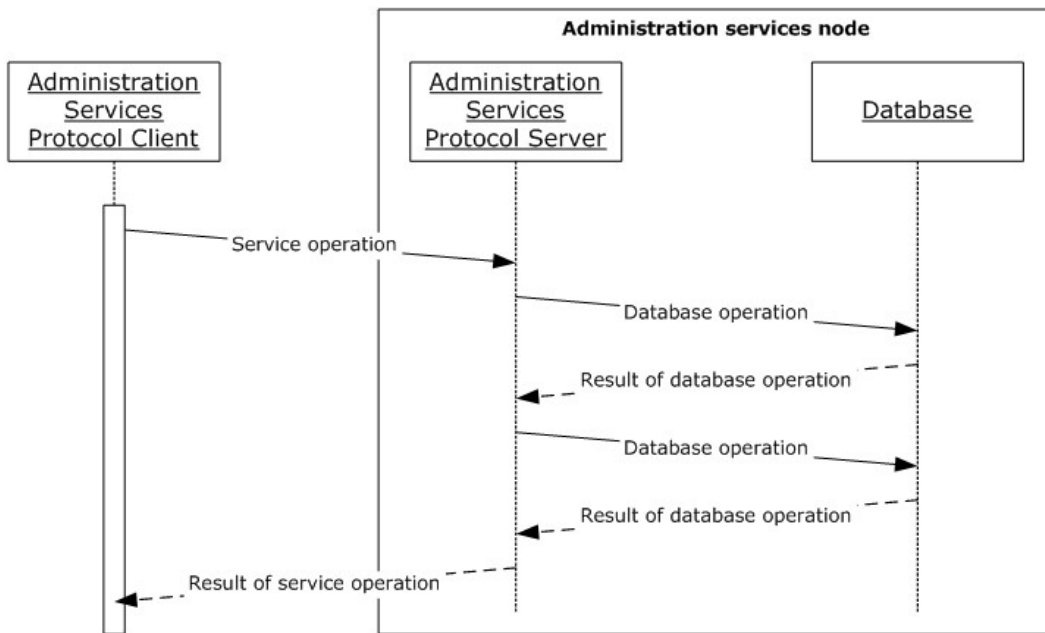


Figure 1: Flow of messages between the administration services and the database

In addition to providing persistent storage of these configuration items, the database maintains referential integrity between these items as they are created, modified, or deleted. The communication between the Administration Services Protocol Server and the database is performed by executing **Transact-Structured Query Language (T-SQL)** statements over the protocol described in the Tabular Data Stream Protocol Specification [\[MS-TDS\]](#).

1.3.1 Keyword Management Domain Concepts

The purpose of keyword management is to identify words or phrases that are important for the search system. By identifying and configuring these keywords, a site administrator determines business rules that impact the query results when the keyword is used in a query.

The following UML-diagram describes the relationships between the domain concepts of keyword management.

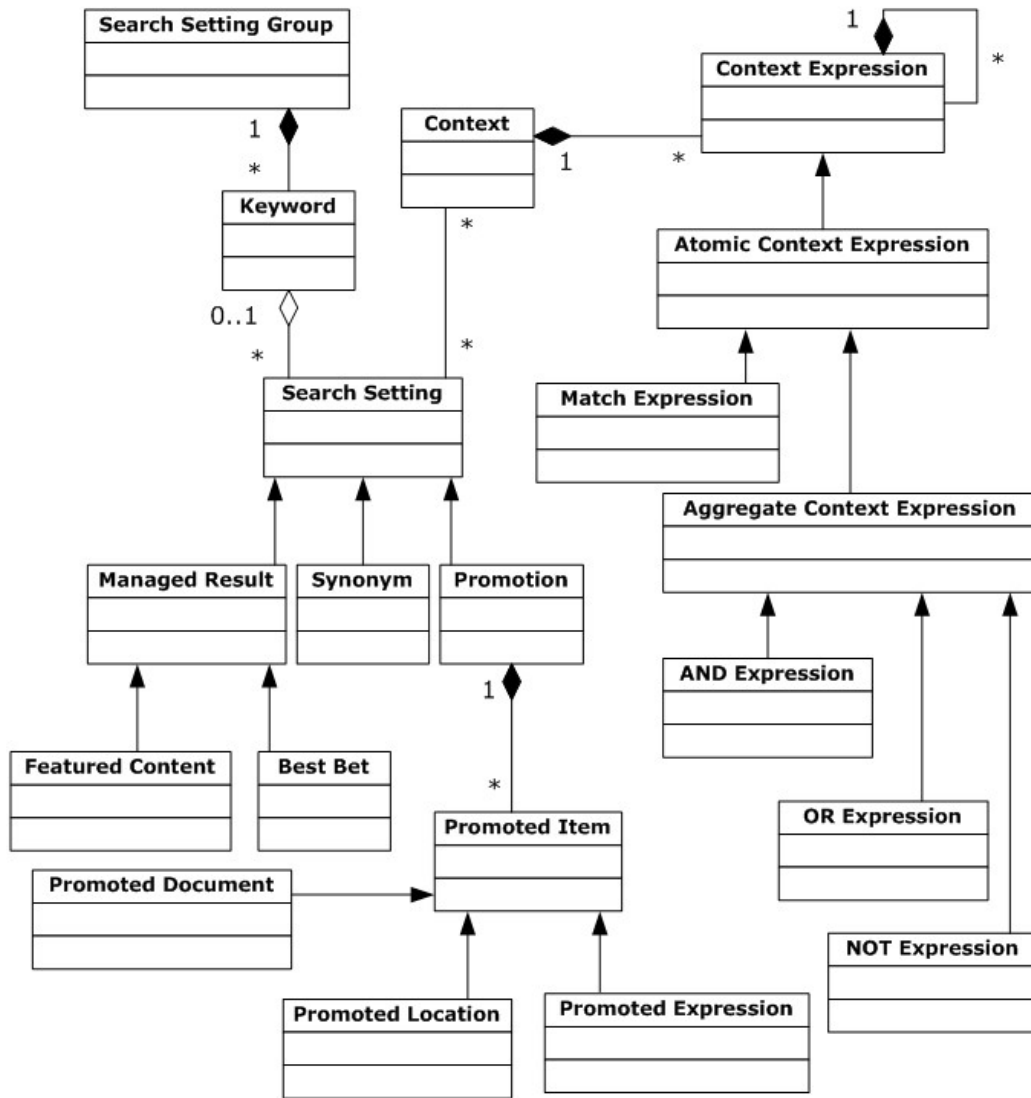


Figure 2: Keyword management concepts and their relationships

A **search setting group** contains a collection of keywords. A keyword and its associated **search settings** control how a search query submitted to a search system is rewritten when a query that uses that keyword is executed. Search settings are of type synonyms, **featured content**, **best bets**, or **promotion**. The search settings are applied by associating them with one or more **search setting contexts**. Each search setting context contains a logical expression represented by one or more **search setting context expression** nodes. A search setting is applied to a keyword only if the **query context** matches at least one search setting context expression associated with the search setting of the keyword.

1.3.2 Dictionary Management Domain Concepts

A dictionary is a list of entries that consists of a term and an optional description of the term. A term, which must be unique within the dictionary, can either be a single word or a phrase. The

persisted dictionary service described in the Administration Services Protocol [\[MS-FSAS\]](#) section 3.4 provides a means to create, update, retrieve, and delete dictionaries and dictionary entries in the database. The search system uses dictionaries for spell-checking and **property extraction**. Multiple dictionaries may exist, for example to support different languages.

1.3.3 Index Schema Management Domain Concepts

The schema service, described by the Administration Services Protocol [\[MS-FSAS\]](#) section 3.9, contains methods that can be used to manage metadata and relevance information for the search system. The data used by the schema service is stored in the database described by this document.

The schema management service manages metadata by mapping the contents of **crawled properties** to the contents of **managed properties**. The **crawl component** discovers crawled properties during the process of feeding content to the search system. It groups them into categories so that it can manage them at the category level and at the per crawled property level. The schema management service then performs the mapping. Managed properties are part of the search user experience. The schema service control properties on managed properties specify settings for **stemming**, sorting, **document summaries**, and other tasks.

Relevance management is the process of grouping managed properties into **full-text index fields** and managing the set of **rank profiles** used by the search system. A full-text index field groups the contents of managed properties and enables this content to be searchable. The search system applies **field importance level** and other relevance settings to each managed property. A rank profile is a group of relevance settings that the search system leverages to influence the order of search results when searching one or more full-text index fields.

1.4 Relationship to Protocols and Other Structures

None.

1.5 Applicability Statement

The database schema described by this document is designed to provide data storage for an implementation of the Administration Services Protocol [\[MS-FSAS\]](#).

1.6 Versioning and Localization

None.

1.7 Vendor-Extensible Fields

None.

2 Structures

The following figures specify the database tables for keyword, dictionary and index schema management, including the individual columns as well as an indication of the foreign key constraints between the tables. The data types and constraints are specified in later sections of this specification.

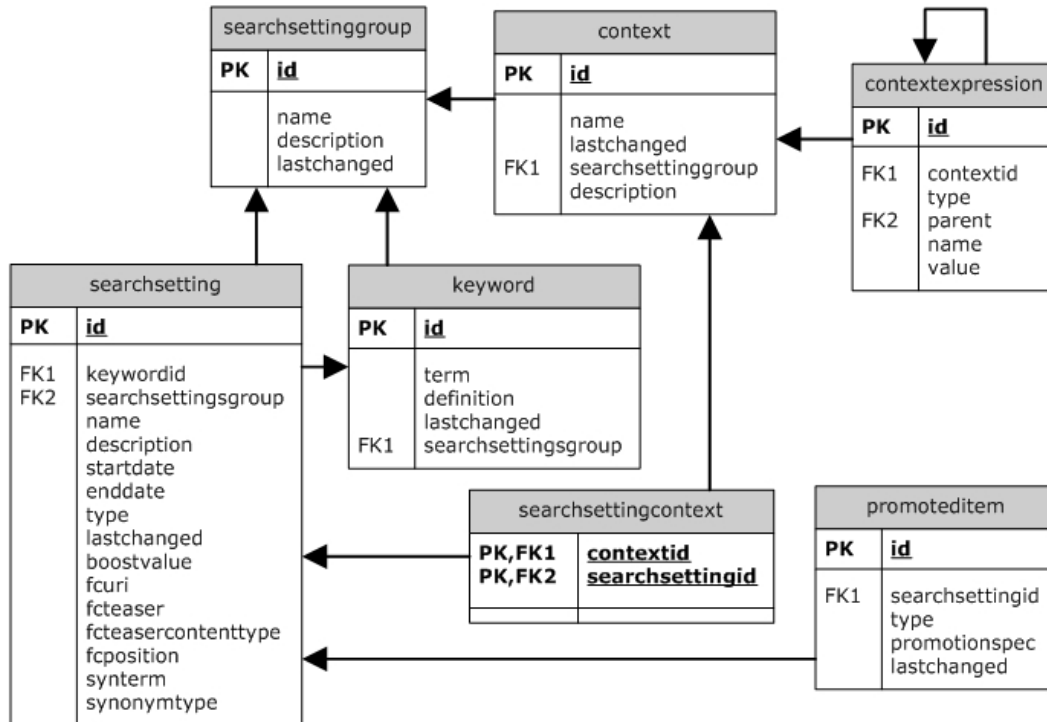


Figure 3: Database tables for keyword management

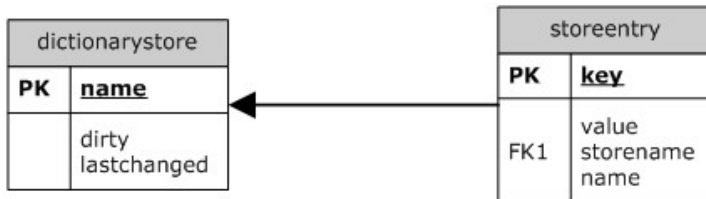


Figure 4: Database tables for dictionary management

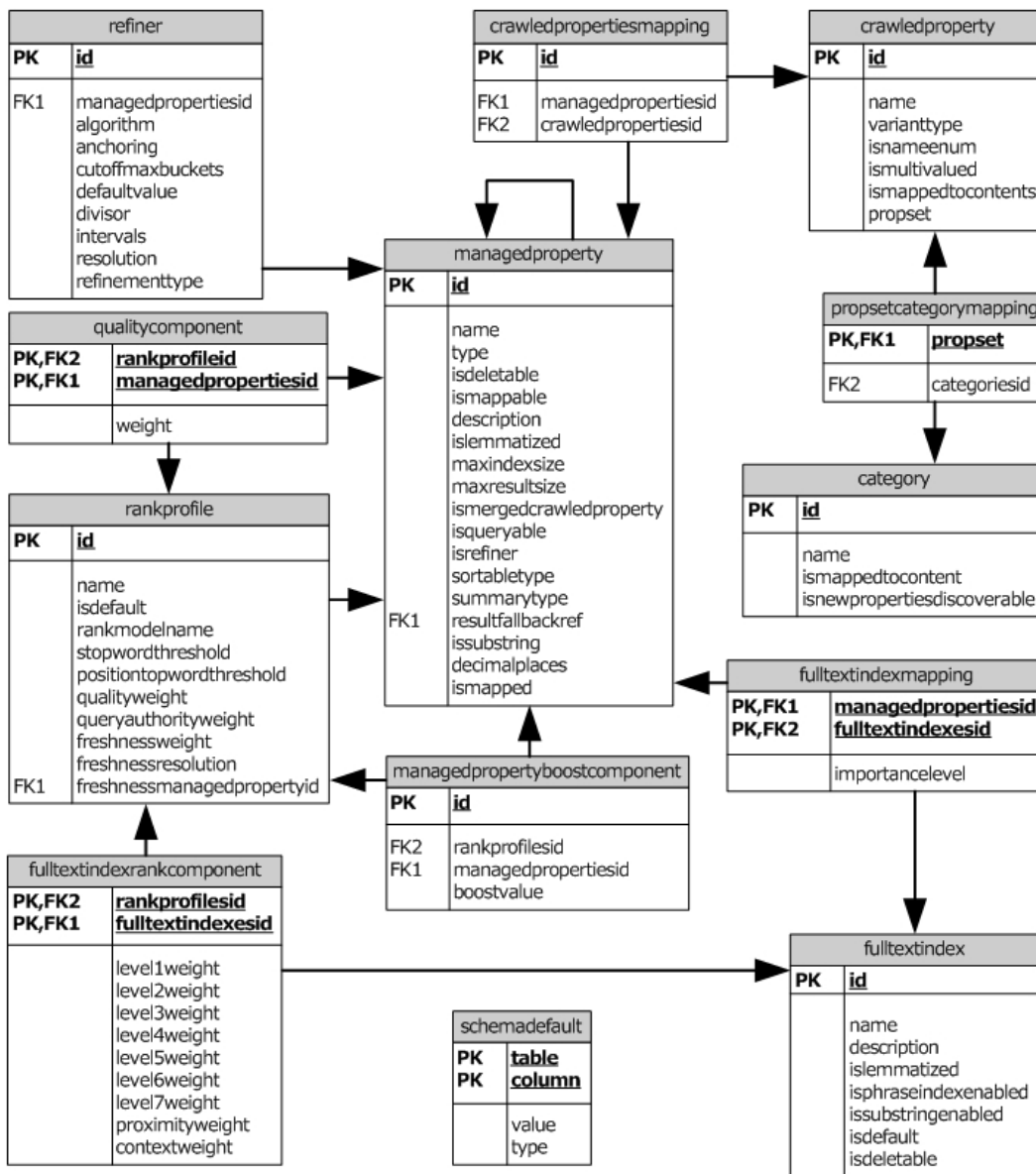


Figure 5: Database tables for index schema management

2.1 SearchSettingGroup Table

This contains information about the search setting groups. The T-SQL syntax for the table is as follows. T-SQL is specified in the T-SQL Language Reference [\[MSDN-TSQL-Ref\]](#).

```
CREATE TABLE admin.searchsettinggroup (
    id bigint IDENTITY NOT NULL
    CONSTRAINT PK_searchsettinggroup PRIMARY KEY,
    name nvarchar(256),
    description nvarchar(max),
    lastchanged datetime NOT NULL DEFAULT getutcdate());
```

id: A unique identifier assigned to the search setting group.

name: The unique name of the search setting group.

description: The description of the search setting group.

lastchanged: The time when the name or description of the search setting group was last changed.

2.2 Keyword Table

This stores information about keywords. The T-SQL syntax for the table is as follows:

```
CREATE TABLE admin.keyword (  
  id bigint IDENTITY NOT NULL CONSTRAINT PK_keyword PRIMARY KEY,  
  term nvarchar(256) NOT NULL,  
  definition nvarchar(max),  
  lastchanged datetime NOT NULL DEFAULT getutcdate(),  
  searchsettinggroup bigint NOT NULL  
);
```

id: A unique identifier assigned to the keyword.

term: The keyword term.

definition: The description of the keyword.

lastchanged: The time when the keyword or any of its search settings were changed.

searchsettinggroup: The identifier of the search setting group to which this keyword belongs.

2.3 SearchSetting Table

This stores information about search settings. The T-SQL syntax for the table is as follows:

```
CREATE TABLE admin.searchsetting (  
  id bigint identity NOT NULL CONSTRAINT PK_searchsetting PRIMARY KEY,  
  keywordid bigint NOT NULL,  
  searchsettinggroup bigint NOT NULL,  
  name nvarchar(256) NOT NULL,  
  description nvarchar(max),  
  startdate datetime,  
  enddate datetime,  
  type tinyint NOT NULL,  
  lastchanged datetime NOT NULL DEFAULT getutcdate(),  
  boostvalue int NOT NULL DEFAULT 0,  
  fcurl nvarchar(1024),  
  fcteaser nvarchar(max),  
  fcteasercontenttype nvarchar(256),  
  fcposition smallint,  
  synterm nvarchar(256),  
  synonymtype tinyint  
);
```

id: A unique identifier assigned to the search setting.

keywordid: The identifier of the keyword to which this search setting belongs.

searchsettinggroup: The identifier of the search setting group to which this search setting belongs.

name: The name of the search setting.

description: The description of the search setting.

startdate: The date on which the search setting became valid. If the value is **null**, the search setting becomes valid immediately.

enddate: The expiration date of the search setting. If the value is **null**, the search setting never expires.

type: The type of the search setting. MUST be a value specified in the following table.

Value	Meaning
1	Search setting is a synonym.
2	Search setting is a promotion.
3	Search setting is a best bet.
4	Search setting is featured content.

lastchanged: The time when the search setting was last changed. This includes promotions for the search setting.

boostvalue: The **rank boost** value of a search setting of type promotion. MUST be set when the **type** field is 2.

fcurl: The URI of a search setting of type featured content or best bet. MUST be set when the *type* field is 3 or 4.

fcteasercontenttype: The content type of the **fcteaser** field associated with a search setting of type featured content or best bet. This field MUST be set if the *type* is 3 or 4 and the *fcteaser* is not **null**. The value of this field is any valid MIME Content type as specified in Multipurpose Internet Mail Extensions (MIME) Part Two: Media Types [\[RFC2046\]](#).

fcteaser: Content that can be displayed to a user as part of a best bet or featured content. MAY be set when the **type** is 3 or 4.

synterm: The synonym term for a search setting of type synonym. MUST be set when the **type** is 1.

synonymtype: The synonym expansion type for a synonym search setting. This field is not used if the **type** field is not set to a value of 1. MUST be one of the values specified in the following table.

Value	Meaning
0	Synonym is a one-way synonym .
1	Synonym is a two-way synonym .

fcposition: The rank position in the result set for a search setting of type featured content or best bet.

2.4 PromotedItem Table

This stores information about **promoted documents**, **promoted locations**, and **promoted expressions**. The T-SQL syntax for the table is as follows:

```
CREATE TABLE admin.promoteditem (  
  id bigint IDENTITY NOT NULL CONSTRAINT PK_promoteditem PRIMARY KEY,  
  searchsettingid bigint NOT NULL,          type tinyint NOT NULL,          promotionspec  
  nvarchar(2048) NOT NULL,          lastchanged datetime NOT NULL DEFAULT getutcdate()  
);
```

id: A unique identifier assigned to the entry.

searchsettingid: The search setting to which this promotion applies.

type: The type of the promotion. MUST be one of the values specified in the following table:

Value	Meaning
8	Entry is a promoted document.
9	Entry is a promoted location.
10	Entry is a promoted expression.

promotionspec: The promotion specification. If the **type** field is set to 8, this MUST be a document identifier. If the **type** field is set to 9 this MUST be a URI. If the **type** field is set to 10 this MUST be a query expression.

lastchanged: The time when the entry was last changed.

2.5 SearchSettingContext Table

This maintains the many-to-many relationship between search settings and search setting contexts. The T-SQL syntax for the table is as follows:

```
CREATE TABLE admin.searchsettingcontext (  
  contextid bigint NOT NULL,  
  searchsettingid bigint NOT NULL,  
  CONSTRAINT PK_searchsettingcontext  
  PRIMARY KEY (contextid, searchsettingid)  
);
```

searchsettingid: The identifier of a search setting.

contextid: The identifier of a context.

2.6 Context Table

This contains information about search setting contexts. The T-SQL syntax for the table is as follows:

```
CREATE TABLE admin.context (  
  id bigint IDENTITY NOT NULL CONSTRAINT PK_context PRIMARY KEY,  
  name nvarchar(256) NOT NULL,
```

```

lastchanged datetime NOT NULL DEFAULT getutcdate(),
searchsettinggroup bigint NOT NULL,
description nvarchar(max)
);

```

id: A unique identifier assigned to the context entry.

name: The name of the context entry.

lastchanged: The time when the context entry or its associated context expression was last changed.

searchsettinggroup: The identifier of the search setting group to which the context entry belongs.

description: The description of the context entry.

2.7 ContextExpression Table

This contains information about search setting context expression nodes of search setting context expressions. The T-SQL syntax for the table is as follows:

```

CREATE TABLE admin.contextexpression (
id bigint IDENTITY NOT NULL CONSTRAINT PK_contextexpression PRIMARY KEY,
contextid bigint NOT NULL,
type tinyint NOT NULL,
parent bigint,
name nvarchar(256),
value nvarchar(256)
);

```

id: A unique identifier assigned to the context expression node.

contextid: The identifier of the context entry that is associated with this context expression node.

type: The type of the context expression node. MUST be one of the values specified in the following table.

Value	Meaning
0	Node is an AND node.
1	Node is a NOT node.
2	Node is an OR node.
3	Node is a MATCH node.

parent: MUST be set to the identifier of the parent node unless the entry represents a root node. For root nodes the value must be **null**.

name: MUST be set to the key of the key-value pair if **type** is 3. Otherwise, MUST be **null**.

value: MUST be set to the value of the key-value pair if **type** is 3. Otherwise, MUST be **null**.

2.8 DictionaryStore Table

This contains information about dictionaries. The T-SQL syntax for the table is as follows:

```
CREATE TABLE admin.dictionaryStore (  
  name nvarchar(256) NOT NULL CONSTRAINT PK_dictionarystore PRIMARY KEY,  
  dirty bit NOT NULL,  
  lastchanged datetime NOT NULL DEFAULT getutcdate()  
);
```

name: The name of the dictionary.

dirty: A bit that specifies whether the dictionary was changed. The protocol client sets and resets this bit for implementation-specific purposes.

lastchanged: The time when the dictionary was most recently changed.

2.9 StoreEntry Table

This table contains dictionary entries. The T-SQL syntax for the table is as follows:

```
CREATE TABLE admin.storeentry (  
  "key" nvarchar(256) NOT NULL,  
  value nvarchar(256),  
  storename nvarchar(256) NOT NULL,  
  CONSTRAINT PK_storeentry PRIMARY KEY ("key", storename)  
);
```

key: The dictionary term.

value: An optional description of the value.

storename: The name of the dictionary in which this term is located.

2.10 RankProfiles Table

This table contains information about rank profiles that the protocol client uses to query one or more full-text index fields. The T-SQL syntax for the table is as follows:

```
CREATE TABLE admin.rankprofiles (  
  id bigint IDENTITY NOT NULL CONSTRAINT PK_rankprofiles PRIMARY KEY,  
  name varchar(256) NOT NULL,  
  isdefault bit NOT NULL,  
  rankmodelname varchar(256) NOT NULL,  
  stopwordthreshold bigint NOT NULL,  
  positionstopwordthreshold bigint NOT NULL,  
  qualityweight int NOT NULL,  
  authorityweight int NOT NULL,  
  queryauthorityweight int NOT NULL,  
  freshnessweight int NOT NULL,  
  freshnessresolution int NOT NULL,  
  freshnessmanagedpropertyid bigint NOT NULL  
);
```

id: The identifier of the rank profile.

name: The unique name of the rank profile.

isdefault: Specifies whether this rank profile is the default.

rankmodelname: The name of the rank model that this rank profile extends. The rank model is an implementation specific profile controlling the detailed rank parameters. The default rank model is named "default".

stopwordthreshold: Specifies the maximum number of occurrences of a search term in a result set that will contribute to the rank score of documents. If the term appears more often than specified by the threshold, additional occurrences will be ignored. A low value gives better search performance but less result set relevance. A high value decreases search performance, but improves result set relevance.

positionstopwordthreshold: Specifies the maximum number of occurrences of a search term in a result set that will contribute to the proximity component of the rank score of documents.

qualityweight: Specifies the assigned importance of a document. The quality of a document is query-independent because quality metrics are assigned to individual documents or groups of documents.

authorityweight: Specifies the importance of a document as determined by the links from other documents to the document in question.

queryauthorityweight: The query authority weight for this rank profile.

freshnessweight: Specifies the age of a document compared to the time when the query was issued.

freshnessresolution: Specifies the resolution at which freshness values are used for computing rank scores of documents. The following table specifies valid values for this field.

Value	Meaning
0	Second resolution.
1	Minute resolution.
2	Hour resolution.
3	Day resolution.
4	Year resolution.

freshnessmanagedpropertyname: The managed property that represents the freshness.

2.11 SchemaDefaults Table

This table contains defaults that are used to create managed properties, full-text index fields, refiners, rank profiles, crawled properties, categories, or full-text index field rank components. The T-SQL syntax for the table is as follows:

```
CREATE TABLE admin.schemadefaults (  
    "table" varchar(256) NOT NULL,  
    "column" varchar(256) NOT NULL,  
    value varchar(1024) NOT NULL,  
    type int NOT NULL,
```



```

        CONSTRAINT PK_storeentry PRIMARY KEY ("table", "column")
    );

```

table: A string that specifies the name of a table in this database schema.

column: A string that specifies the name of a column in the table specified by the table field.

value: A string that specifies a value that will be inserted in the column specified by the table and column fields.

type: An integer that specifies the type of the value specified by the value field. Valid values for this field are specified by the following table.

Value	Meaning
0	String value.
1	Integer value.
2	Boolean value.

2.12 FullTextIndexRankComponents Table

This table contains information about full-text index field rank components. The T-SQL syntax for the table is as follows:

```

CREATE TABLE admin.fulltextindexrankcomponents (
    rankprofilesids bigint NOT NULL,
    fulltextindexesids bigint NOT NULL,
    level1weight int NOT NULL,
    level2weight int NOT NULL,
    level3weight int NOT NULL,
    level4weight int NOT NULL,
    level5weight int NOT NULL,
    level6weight int NOT NULL,
    level7weight int NOT NULL,
    proximityweight int NOT NULL,
    contextweight int NOT NULL,
    CONSTRAINT PK_fulltextindexrankcomponents PRIMARY KEY (
        rankprofilesids, fulltextindexesids
    )
);

```

rankprofilesids: The identifier of the rank profile to which the full-text index field belongs.

fulltextindexesids: The identifier of the full-text index field to which this rank component belongs.

level1weight: Specifies the rank boost contribution for field importance level 1 members.

level2weight: Specifies the rank boost contribution for field importance level 2 members.

level3weight: Specifies the rank boost contribution for field importance level 3 members.

level4weight: Specifies the rank boost contribution for field importance level 4 members.

level5weight: Specifies the rank boost contribution for field importance level 5 members.

level6weight: Specifies the rank boost contribution for field importance level 6 members.

level7weight: Specifies the rank boost contribution for field importance level 7 members.

contextweight: Context weight is related to assigning relevancy weights to different document fields inside a full-text index field.

proximityweight: Proximity weight relates to the distance between query terms in the matching documents.

2.13 QualityComponents Table

This table contains information about **quality rank** components. The T-SQL syntax for the table is as follows:

```
CREATE TABLE admin.qualitycomponents (
    rankprofileid bigint NOT NULL,
    managedpropertiesid bigint NOT NULL,
    weight int NOT NULL,
    CONSTRAINT PK_qualitycomponents PRIMARY KEY (
        rankprofileid, managedpropertiesid
    )
);
```

rankprofileid: The identifier of the rank profile to which this quality component is mapped.

managedpropertiesid: The identifier of the managed property to which this quality component is mapped.

weight: The weight of the quality component.

2.14 FullTextIndexes Table

This table contains information about full-text index fields. A full-text index field is a grouping of managed properties that a protocol client uses to query these managed properties. The T-SQL syntax for the table is as follows:

```
CREATE TABLE admin.fulltextindexes (
    id bigint IDENTITY
    CONSTRAINT PK_fulltextindexes PRIMARY KEY NOT NULL,
    name varchar(256) NOT NULL,
    description varchar(1024),
    islemmatized bit,
    isphraseindexenabled bit,
    issubstringenabled bit,
    isdefault bit,
    isdeletable bit
);
```

id: The identifier of the full-text index field.

name: The unique name of the full-text index field.

description: A optional description of the full-text index field.

islemmatized: Specifies whether the full-text index field is stemmed.

isphraseindexenabled: Not used.

issubstringenabled: Specifies whether the full-text index field supports substring queries.

isdefault: Specifies whether this full-text index field is the default.

isdeletable: Specifies whether this full-text index field can be deleted.

2.15 FullTextIndexMappings Table

This table contains mappings between managed properties and full-text index fields. The only properties that can be queried are the managed properties that are mapped to a full-text index field. The T-SQL syntax for the table is as follows:

```
CREATE TABLE admin.fulltextindexmappings (
    importancelevel int NOT NULL,
    managedpropertiesid bigint NOT NULL,
    fulltextindexesid bigint NOT NULL,
    CONSTRAINT PK_fulltextindexmappings PRIMARY KEY (
        managedpropertiesid, fulltextindexesid
    )
);
```

importancelevel: Importance of the referenced managed property within a full-text index field.

managedpropertiesid: The identifier of the managed property.

fulltextindexesid: The identifier of the full-text index field.

2.16 ManagedProperties Table

This table contains information about managed properties. The T-SQL syntax for the table is as follows:

```
CREATE TABLE admin.managedproperties (
    id bigint IDENTITY
        CONSTRAINT PK_managedproperties PRIMARY KEY NOT NULL,
    name varchar(256) NOT NULL,
    type int NOT NULL,
    isdeletable bit,
    ismappable bit,
    description varchar(1024),
    islemmatized bit,
    maxindexsize bigint,
    maxresultsize bigint,
    ismergedcrawledproperty bit,
    isqueryable bit,
    isrefiner bit,
    sortabletype int,
    summarytype int,
    resultfallbackref bigint,
    issubstring bit,
    decimalplaces int,
    ismapped bit
);
```

id: The identifier of the managed property.

name: The unique name of the managed property.

type: The type of managed property as specified in the Administration Services Protocol Specification [\[MS-FSAS\]](#) section 2.2.4.20.1.

isdeletable: Specifies whether the managed property can be deleted.

ismappable: Specifies whether it is possible to map new crawled properties to the managed property.

description: An optional description of the managed property.

islemmatized: Specifies whether the managed property is stemmed.

maxindexsize: A value that specifies the maximum number of kilobytes that are indexed for a managed property.

maxresultsize: Specifies the maximum size of the query result.

ismergedcrawledproperty: Specifies whether this managed property has more than one crawled property mapped to it.

isqueryable: Specifies whether this managed property can be queried.

isrefiner: Specifies whether this managed property is associated with a **refiner** object.

sortabletype: Specifies how this managed property is sorted.

summarytype: Specifies whether this managed property produces a summary, as specified in the Administration Services Protocol Specification [\[MS-FSAS\]](#) section 2.2.4.20.2.

resultfallbackref: A reference to the **fallback managed property**.

issubstring: Specifies whether this managed property is substring query optimized.

decimalplaces: Specifies the number of decimal places to persist for this managed property.

ismapped: Specifies whether any crawled properties have been mapped to the managed property.

2.17 ManagedPropertyBoostComponents Table

This table contains information about managed property rank boost components. The T-SQL syntax for the table is as follows:

```
CREATE TABLE admin.managedpropertyboostcomponents (  
    id bigint IDENTITY  
    CONSTRAINT PK_managedpropertyboostcomponents PRIMARY KEY NOT NULL,  
    rankprofilesid bigint NOT NULL,  
    managedpropertiesid bigint NOT NULL,  
    boostvalue varchar(2048) NOT NULL,  
);
```

id: The identifier of the managed property rank boost component entry.

rankprofilesid: The identifier of the rank profile to which this rank boost component is mapped.

managedpropertiesid: The identifier of the managed property to which this rank boost component is mapped.

boostvalue: The rank boost value.

2.18 CrawledPropertiesMappings Table

This table contains mappings between crawled properties and managed properties. The T-SQL syntax for the table is as follows:

```
CREATE TABLE admin.crawledpropertiesmappings (  
    id bigint IDENTITY  
    CONSTRAINT PK_crawledpropertiesmappings PRIMARY KEY NOT NULL,  
    crawledpropertiesid bigint NOT NULL,  
    managedpropertiesid bigint NOT NULL,  
);
```

id: The identifier of the crawled properties mapping entry.

crawledpropertiesid: The identifier of the crawled property.

managedpropertiesid: The identifier of the managed property.

2.19 CrawledProperties Table

This table contains information about crawled properties. The T-SQL syntax for the table is as follows:

```
CREATE TABLE admin.crawledproperties (  
    id bigint IDENTITY  
    CONSTRAINT PK_crawledproperties PRIMARY KEY NOT NULL,  
    name varchar(440) NOT NULL,  
    varianttype int NOT NULL,  
    isnameenum bit,  
    ismultivalued bit,  
    ismappedtocontents bit,  
    propset uniqueidentifier NOT NULL  
);
```

id: The identifier of the crawled property.

name: The name of the crawled property.

varianttype: The data type of the associated crawled property. Valid values for this field are the values specified for the **VARTYPE** field of the **PROPVARIANT** structure [\[PROPVARIANT\]](#) as listed in the following table.

Value	Name
0	VT_EMPTY
1	VT_NULL
2	VT_I2

Value	Name
3	VT_I4
4	VT_R4
5	VT_R8
6	VT_CY
7	VT_DATE
8	VT_BSTR
9	VT_DISPATCH
10	VT_ERROR
11	VT_BOOL
12	VT_VARIANT
13	VT_UNKNOWN
14	VT_DECIMAL
16	VT_I1
17	VT_UI1
18	VT_UI2
19	VT_UI4
20	VT_I8
21	VT_UI8
22	VT_INT
23	VT_UINT
30	VT_LPSTR
31	VT_LPWSTR
34	VT_FILETIME

isnameenum: Specifies whether the crawled property name is associated with an enumeration.

ismultivalued: Specifies whether the crawled property contains multiple values.

ismappedtocontents: Specifies whether the crawled property is mapped to a managed property.

propset: Specifies the category to which to map this crawled property.

2.20 PropsetCategoryMappings Table

This table contains mappings between crawled properties and categories. The T-SQL syntax for the table is as follows:

```

CREATE TABLE admin.propsetcategorymappings (
    propset uniqueidentifier
        CONSTRAINT PK_propsetcategorymappings PRIMARY KEY NOT NULL,
    categoriesid bigint NOT NULL
);

```

propset: A GUID that identifies the propset.

categoriesid: The identifier of the category to which the propset belongs.

2.21 Categories Table

This table contains information about categories. The T-SQL syntax for the table is as follows:

```

CREATE TABLE admin.categories (
    id bigint IDENTITY
        CONSTRAINT PK_categories PRIMARY KEY NOT NULL,
    name varchar(256) NOT NULL,
    ismappedtocontents bit,
    isnewpropertiesdiscoverable bit,
);

```

id: The identifier of the category.

name: The unique name of the category.

ismappedtocontents: Specifies whether the category is mapped to content properties.

isnewpropertiesdiscoverable: Specifies whether new crawled properties are reported when documents are processed.

2.22 Refiners Table

This table contains information about refiner objects. The T-SQL syntax for the table is as follows:

```

CREATE TABLE admin.refiners (
    id bigint IDENTITY
        CONSTRAINT PK_refiners PRIMARY KEY NOT NULL,
    managedpropertiesid bigint NOT NULL,
    algorithm int,
    anchoring int,
    cutoffmaxbuckets bigint,
    defaultvalue varchar(512),
    divisor float,
    intervals int,
    resolution int,
    refinementtype int
);

```

id: The identifier of the refiner.

managedpropertiesid: The identifier of the managed property to which this refiner is mapped.

algorithm: Contains a reference to the refiner algorithm, as specified in the Administration Services Protocol Specification [\[MS-FSAS\]](#) section 2.2.4.21.1.

anchoring: Contains a reference to the refiner anchoring option, as specified in the Administration Services Protocol Specification [MS-FSAS] section 2.2.4.21.2.

cutoffmaxbuckets: Specifies a limit for the number of unique values to return for a refiner within an **index partition**.

defaultvalue: Specifies a numeric or string value that internally represents an empty value for the field.

divisor: Specifies the divisor used to scale values before being displayed to the user. This value is only applicable for numeric refiners.

intervals: Specifies the maximum number of **refinement bins** returned by the refiner. This value is only applicable for numeric refiners.

resolution: Specifies the resolution of the refiner's refinement bins. For example, use the value of 1000 to align the refinement bins to whole thousand boundaries. This value is only applicable for numeric refiners.

refinementtype: The refinement type as specified in the Administration Services Protocol Specification [MS-FSAS] section 2.2.4.21.3.

3 Structure Examples

3.1 Creating a Search Setting Group

An implementation of the operation **AddSearchSettingGroup** described in the Administration Services Protocol Specification [\[MS-FSAS\]](#), section [3.8.4.1](#) could result in the following SQL-statement, where p0 is the name of a search setting group and p1 is the description of the search setting group. The **id** and **lastchanged** fields can be auto-generated by the database.

```
INSERT INTO searchsettinggroup(name, description)VALUES (@p0, @p1)
```

Example values for p0 and p1 are "Advanced Search Settings" and "The settings used for advanced users".

3.2 Modifying a Keyword Description

An implementation of the operation **UpdateKeyword** described in the Administration Services Protocol Specification [\[MS-FSAS\]](#), section [3.8.4.12](#) could result in the following SQL-statement, where p0 is the identifier of the keyword, p1 the identifier of the search setting group and p2 the new description. The **lastchanged** field can be auto-generated by the database.

```
UPDATE keyword SET definition = @p2WHERE (id = @p0) AND (searchsettinggroup = @p1)
```

Example values for p0, p1 and p2 are 1, 2 and "A statement of what a thing is.", where 1 is the identifier of an existing keyword and 2 is the identifier of an existing search setting group.

3.2.1 Creating a Synonym

An implementation of the **AddSynonym** operation described in the Administration Services Protocol Specification [\[MS-FSAS\]](#), section [3.8.4.31](#) could result in the following SQL-statement, where p0 is the identifier of the keyword, p1 the identifier of the search setting group, p2 the name of the synonym search setting, p3 is the description, p4 the first date from which the synonym is valid, p5 the last date the synonym is valid, p6 is the synonym term, and p7 the synonym type. The **id** and **lastchanged** fields can be auto-generated by the database.

```
INSERT INTO searchsetting  
(keywordid, searchsettinggroup, name, description, startdate, enddate, type, synterm,  
synonymtype)VALUES (@p0, @p1, @p2, @p3, @p4, @p5, 1, @p6, @p7)
```

Example values for the parameters are described in the following table.

Parameter	Example value	Description
p0	1	Identifier of an existing keyword
p1	2	Identifier of an existing search setting group
p2	"automobile"	The name of the synonym search setting
p3	"automobile is a synonym of car"	Informative description of the synonym
p4	2010-01-01 00:00:00	Activation date

Parameter	Example value	Description
p5	2010-02-28 23:59:59	Deactivation date
p6	"automobile"	The actual synonym
p7	1	This is a two-way synonym

3.3 Creating a Crawled Property

An implementation of the **CreateCrawledProperty** operation described in the Administration Services Protocol Specification [\[MS-FSAS\]](#) 4.2.4.8 could result in the following SQL statement, where p0 is the name of the crawled property, p1 the GUID of the propset and p2 is the variant type of the crawled property.

```
INSERT INTO crawledproperty(name, propset, varianttype)VALUES (@p0, @p1, @p2)
```

Example values for p0, p1 and p2 are "doc title", 25892e17-80f6-415f-9c65-7395632f0223 and 1.

4 Security Considerations

Unauthorized access to the database is prevented by only granting access to the user that runs the Administration Services Protocol Server described in the Administration Services Protocol Specification [\[MS-FSAS\]](#).

5 Appendix A: Product Behavior

The information in this specification is applicable to the following Microsoft products or supplemental software. References to product versions include released service packs:

- Microsoft® FAST™ Search Server 2010

Exceptions, if any, are noted below. If a service pack or Quick Fix Engineering (QFE) number appears with the product version, behavior changed in that service pack or QFE. The new behavior also applies to subsequent service packs of the product unless otherwise specified. If a product edition appears with the product version, behavior is different in that product edition.

Unless otherwise specified, any statement of optional behavior in this specification that is prescribed using the terms SHOULD or SHOULD NOT implies product behavior in accordance with the SHOULD or SHOULD NOT prescription. Unless otherwise specified, the term MAY implies that the product does not follow the prescription.

6 Change Tracking

No table of changes is available. The document is either new or has had no changes since its last release.

7 Index

A

[Applicability](#) 8

C

[Categories table](#) 23

[Change tracking](#) 29

Common data types and fields ([section 2 9](#), [section 2 9](#))

[Context table](#) 13

[ContextExpression table](#) 14

[CrawledProperties table](#) 21

[CrawledPropertiesMappings table](#) 21

[Creating a Crawled Property example](#) 26

[Creating a Search Setting Group example](#) 25

D

Data types and fields - common ([section 2 9](#), [section 2 9](#))

Details

[Categories table](#) 23

common data types and fields ([section 2 9](#), [section 2 9](#))

[Context table](#) 13

[ContextExpression table](#) 14

[CrawledProperties table](#) 21

[CrawledPropertiesMappings table](#) 21

[DictionaryStore table](#) 15

[FullTextIndexes table](#) 18

[FullTextIndexMappings table](#) 19

[FullTextIndexRankComponents table](#) 17

[Keyword table](#) 11

[ManagedProperties table](#) 19

[ManagedPropertyBoostComponents table](#) 20

[PromotedItem table](#) 13

[PropsetCategoryMappings table](#) 22

[QualityComponents table](#) 18

[RankProfiles table](#) 15

[Refiners table](#) 23

[SchemaDefaults table](#) 16

[SearchSetting table](#) 11

[SearchSettingContext table](#) 13

[SearchSettingGroup table](#) 10

[StoreEntry table](#) 15

[Dictionary management domain concepts](#) 7

[DictionaryStore table](#) 15

Domain concepts

[dictionary management](#) 7

[index schema management](#) 8

[keyword management](#) 6

E

Examples

[Creating a Crawled Property](#) 26

[Creating a Search Setting Group](#) 25

[Modifying a Keyword Description](#) 25

F

[Fields - vendor-extensible](#) 8

[FullTextIndexes table](#) 18

[FullTextIndexMappings table](#) 19

[FullTextIndexRankComponents table](#) 17

G

[Glossary](#) 4

I

[Implementer - security considerations](#) 27

[Index schema management domain concepts](#) 8

[Informative references](#) 5

[Introduction](#) 4

K

[Keyword management domain concepts](#) 6

[Keyword table](#) 11

L

[Localization](#) 8

M

[ManagedProperties table](#) 19

[ManagedPropertyBoostComponents table](#) 20

[Modifying a Keyword Description example](#) 25

N

[Normative references](#) 5

O

[Overview \(synopsis\)](#) 5

P

[Product behavior](#) 28

[PromotedItem table](#) 13

[PropsetCategoryMappings table](#) 22

Q

[QualityComponents table](#) 18

R

[RankProfiles table](#) 15

[References](#) 5

[informative](#) 5

[normative](#) 5

[Refiners table](#) 23

[Relationship to protocols and other structures](#) 8

V

[Vendor-extensible fields](#) 8

[Versioning](#) 8

S

[SchemaDefaults table](#) 16

[SearchSetting table](#) 11

[SearchSettingContext table](#) 13

[SearchSettingGroup table](#) 10

[Security - implementer considerations](#) 27

[StoreEntry table](#) 15

Structures

[Categories table](#) 23

[Context table](#) 13

[ContextExpression table](#) 14

[CrawledProperties table](#) 21

[CrawledPropertiesMappings table](#) 21

[DictionaryStore table](#) 15

[FullTextIndexes table](#) 18

[FullTextIndexMappings table](#) 19

[FullTextIndexRankComponents table](#) 17

[Keyword table](#) 11

[ManagedProperties table](#) 19

[ManagedPropertyBoostComponents table](#) 20

overview ([section 2 9](#), [section 2 9](#))

[PromotedItem table](#) 13

[PropsetCategoryMappings table](#) 22

[QualityComponents table](#) 18

[RankProfiles table](#) 15

[Refiners table](#) 23

[SchemaDefaults table](#) 16

[SearchSetting table](#) 11

[SearchSettingContext table](#) 13

[SearchSettingGroup table](#) 10

[StoreEntry table](#) 15

T

Tables

[Categories](#) 23

[Context](#) 13

[ContextExpression](#) 14

[CrawledProperties](#) 21

[CrawledPropertiesMappings](#) 21

[DictionaryStore](#) 15

[FullTextIndexes](#) 18

[FullTextIndexMappings](#) 19

[FullTextIndexRankComponents](#) 17

[Keyword](#) 11

[ManagedProperties](#) 19

[ManagedPropertyBoostComponents](#) 20

[PromotedItem](#) 13

[PropsetCategoryMappings](#) 22

[QualityComponents](#) 18

[RankProfiles](#) 15

[Refiners](#) 23

[SchemaDefaults](#) 16

[SearchSetting](#) 11

[SearchSettingContext](#) 13

[SearchSettingGroup](#) 10

[StoreEntry](#) 15

[Tracking changes](#) 29